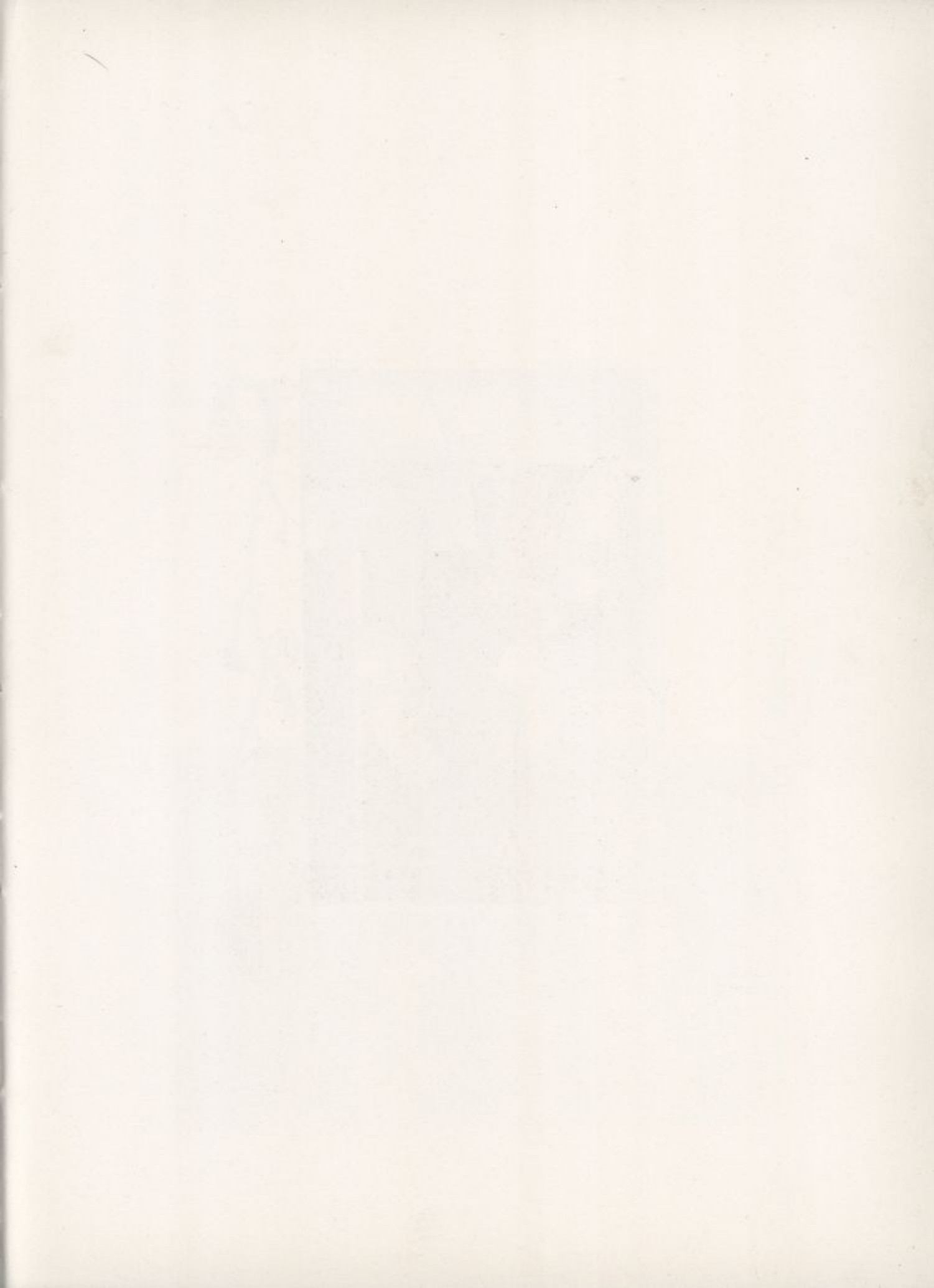


Classes of





Senior Class



Mr. C. Robert Kase

Class Officers

MARY LOVE MATLACK	<i>President</i>
DOROTHEA WEIR McLANE	<i>Vice-President</i>
ELIZABETH S. HARRIS	<i>Secretary</i>
MARGUERITE T. WENTZ	<i>Treasurer</i>
Mr. C. ROBERT KASE	<i>Faculty Advisor</i>



Mary E. Matlack

Senior Class History

YOUNG, timid, and very much afraid, we came. We stared at the buildings, we stared at the faculty, and we stared at the endless sea of unfamiliar faces about us. "We'll never, never get used to it," we told ourselves. But Freshman week was soon past, and we were on speaking terms with a countless number of people. Mary Matlack was our captain and we were a class! Then came mortar boards—diminutive in size but dynamic in color. We suffered, but we liked it. We were a class! We loved being together. We had a picnic all by our own selfish selves out at White Clay Creek, with hot dogs and marshmallows. And then there was stunt night with Helen Hackett wearing a hirsute adornment of shoe strings on her upper lip, and Isabelle Elliott and Biz Huggins doing their stuff as a pair of trained fleas. (Poor Isabelle, she bears the stigma of that night to this very day.) Then there was the dinner given by our big sisters, and next the Freshman Formal, most stupendous of all social functions. We were in love with college that night. We had a better time than we ever had before. We looked around at each other and smiled and thought, "Our class."

We came back in September '31 with a feeling of coming home. We belonged. We were Sophomores—ultra important. We did our best to impress the new Freshmen with our dignity and Sophomore superiority. We weren't so foolish at that—

our judgment wasn't faulty, at any rate, for we elected Pat Matlack president, and she has been president ever since, and a good one, too. That was the beginning of a big year. Our class acted as a unit during both terms. We won a hockey championship—which isn't as amazing as it might be when you consider the fact that Irene Hunter and Dottie McLane were on the team. Then we took second place in the humorous section of the song contest, thanks to Helen Clayton. The new gym was opened that year, and our "Praise Allahs" rang out across the campus. We were glad enough to forfeit the experience of "gyming" in what is now the Commuters' Room. And the commuters were glad, too, that there were no more steps to climb, no more chemistry odors, and no more deafening shouts in a two-by-four room. In the Spring we took our big sisters to the Senior-Sophomore luncheon, and felt extremely philanthropic about the whole event. But we enjoyed it quite as much as did our sister class. And then exams were upon us, with heart-clutching fears, and much polishing of eye glasses. A dark cloud settled over the campus—but, most amazingly, lifted in a very short time leaving us Juniors.

Our class was smaller in the Fall of '32. Nearly all the "getters-by" had been weeded out. Only "truly college material" came back. We consoled ourselves about our missing members, and decided that quality was far superior to quantity, and that the same old spirit of co-operation would make us a conquering class in spite of our diminished numbers. We accepted our duties as big sisters willingly and gladly. We liked the responsibility and the prestige. In fact, we took the Freshmen to Charlestown for a picnic. And they, not to be outdone, entertained us at bridge in the Hilarium. Then we didn't mind so much that the Freshmen couldn't go with us to the greatest dance in the history of all dances—our Junior Prom. It was great fun. It was even better than the Freshman Formal. We hated to admit it but it was. There was something aristocratic, and luxuriously formal—something dignified and golden about the whole thing. We weren't bubbling over with delight as we were at the Freshman Formal; we walked gracefully in our long, long dresses and glowed. Another victory came to us when our competitive play, directed by Cecilia Gordon won second place. And then we found ourselves facing another onslaught of exams. We were getting used to it by that time, but we still had a rather sinking feeling. But, we passed—and we came back for the "home stretch."

There is something grand about being a Senior. There's a certain dignity about a Senior no underclassman can possess. There's the feeling of being at the top. And it's rather wonderful to be the "oldest class on campus." But then there's something a little pathetic about it,—the feeling that the end is in view, that soon the world must be faced. Our class was a stronger unit than ever in its last year. We had known each other since the very beginning, and we were

used to the way we did things. We were proud of Flea Elliott on Founders' Day when she stood on the stage at Mitchell Hall and presented a superb speech in her capacity as president of the Student Council. We had dozens and dozens of presidents in our class. Cecilia Gordon was head of the Dramatic Board, and Pat Matlack president of Puppets. Ethel Lou Brady was "commander-in-chief" of the French Club, and Irene Hunter presided over the Athletic Council. Mary Ingram headed the Social Committee and Marian Kee was editor-in-chief of the *BLUE AND GOLD*. With so many presidents, it is no wonder that we were guests everywhere. Tea after tea—the Junior Prom—the Senior-Sophomore luncheon. It made us fairly dizzy. But we managed to keep our heads sufficiently to win second place in the competitive play contest. This time our play was original—"Twenty-eight Horizontal," by Ethel Lou Brady. Our Senior year seemed indeed to be the greatest and happiest of all our years. And to add to all the rest of our "glories," we have the distinction of graduating during the Centenary Year. We thank our lucky stars that we began in '30. We wish it weren't going to end—but it is inevitable. All we can say is that we loved every minute of it and will always feel that we are still one—a unit—the class of 1934.



Florence Mary Bailey

EDUCATION

MAURICETOWN, NEW JERSEY

Glee Club I, II, III, IV.

"She, the best of all musicians;

She, the sweetest of all singers."

Flo is, without a doubt, the songbird of our class. She sings in Glee Club, and she sings over the radio. Listening to her radio solos, however, has its disadvantages, for the pretty, happy face that suits her sweet tones so well is left to one's imagination. Flo has other accomplishments, too. She plays the piano well, and she loves to dance. She is interested in elementary education, and we can just see her organizing toy orchestras and playing singing games with her little pupils.

Anne Wilbraham Wright Bell

ARTS AND SCIENCE

WILMINGTON

Press Club III, IV; Phi Kappa Phi.

There are few who call her by her first name, for her dignity and austerity demand the more formal address of "Miss Bell." But smile at her, and an answering grin is ready, and a cheerful one, too. Those of that inner privileged circle where she is known as Anne find in her a staunch and witty friend, one with a very determined but sound judgment, and as ready to laugh as they are. Where, then, does one get this idea of formality? No one knows, unless it is in deference to her exalted position as the creator of "Mr. Bozo" and the "Golliwogs."





Ruth Eileen Bell

EDUCATION

WILMINGTON

Glee Club I, II, III; Orchestra I, II; String Quintet IV.

Music is said to have a calming effect, and it seems to have had such a one on Ruth's whole nature. The sweetness and beauty of the melodies she draws from her violin seem to have been absorbed back into her personality, from which she lets them drop in pleasant words and quiet smiles. We often wonder if it is not difficult for such great understanding and sympathy as hers to be crowded into one midget automobile and be carried from Wilmington to Newark.

Ethel Lourinda Brady

ARTS AND SCIENCE

WILMINGTON

Sub-Captain Class I; Vice-President Class I; Competitive Plays I, II, III, IV; President French Club IV; Cast of "A Murder Has Been Aftanged," "The Royal Family."

Blue eyes, golden hair, Irish—charmingly so. These things alone would content an ordinary girl, but not Ethel Lou. She boasts as well a keen mind, and a critical one. She is a cynic, but a gay one with Erin's gift of song and story. Her wit is lively, and not infrequently carries a sting, her assurance is easy but pardonable, and the characters she has created on the stage are as genuine as she herself. Sur-r-re, and she has kissed the Blarney Stone!





Elizabeth Dorsey Brookes

HOME ECONOMICS

BEL AIR, MARYLAND

Home Economics Club II, III, IV; Supper Club II, III, IV; Outing Club I, II, III; Class Competitive Play III; Athletic Association; Y. W. C. A. Cabinet; Hockey II, III; Soccer III; Baseball III; Volley Ball I, II, IV, Class Manager III; Page in May Court II.

Wouldn't you know just to look at Betty that she is a Home Economics student? Her all-embracing grin will certainly make some home happy, and she has a giggle to exchange for a trouble any time. She goes about her duties as though she loved them—as every true homemaker should. And in the future home we have planned for the little blonde house-wife (we hope she does not mind our looking ahead this way), friends will not be lacking, for everyone she meets likes her, and she has a ready friendship for all.

Edith Brown

EDUCATION

CARTERET, NEW JERSEY

Forum I, II, III; Chairman of Debates IV; Debating Team I; Cast of "Martha," "Autumn Crocus"; Production Staff of Plays; Hockey I, II; Basketball I, II.

Edith has the clear decisive manner of a good lawyer, and is at her best in the thick of a debate. Her enthusiasm is contagious and indiscriminating. It adds zest to all her activities both for herself and others, and her joy in living is unquenchable. She is a firm ally and a reliable friend, for, says Edith,

*" 'Tis not for any vote that
Friendship bears in heaven or earth
That I serve a friend."*





Vivian E. Lyle Casperson

ARTS AND SCIENCE

WILMINGTON

President German Club IV; Mathematics Club I, II, III, IV; Forum I; Class Competitive Play III.

We wonder what the correlation can be between math and bridge-playing ability. According to Viv it must be a high one, for in math (especially quadratic equations!) she is a whiz, and in the bridge contests in the commuters' room, she has proved herself to be Culbertson's only rival. One of the queer things about Vivian is that one moment after she has expressed a most emphatic opinion about someone or something (and believe us she does just that) she can laugh at her own positiveness and make fun of herself. But—don't get us wrong—her opinion remains still quite positive.

Helen Louise Clayton

HOME ECONOMICS

BRANDYWINE SUMMIT, PA.

A. A. Council I; Home Economics Club I, II, III, Secretary IV; Glee Club I, II, III, IV; Choral Society I, II; Hockey II, III, IV; Soccer I, II, III; Volley Ball II, III; Social Committee II, III, IV, Treasurer IV; Class Song Leader I, II, III, IV; College Song Leader IV; Prom Committee III; Outing Club I, II, III; Supper Club II, III; Freshman Formal Committee I; May Day Committee I, II; Orchestra II, III, IV; Blue and Gold Staff IV; Archery I; Phi Kappa Phi.

There are not many girls who can wear even pale gold hair straight and severe without detracting from their appearance, but Helen can and does with a decided effect. Nor is her unusual "hair-do" her sole accomplishment. Helen is a good student, a splendid athlete, and a musician. She and her trumpet are very much in demand for campus events. As a song leader, Helen has had the opportunity to use both her musical ability and her gift for leadership. She is always cool and self-assured, being one of those rare individuals who possess that quality known as "aplomb."





Hilda Cohen

ARTS AND SCIENCE

WILMINGTON

Art Staff Blue and Gold IV; Chairman of Program Committee, French Club IV.

Vivacious chatter, quick smiles, curly brown hair—these superficially are Hilda. But underneath this pleasant exterior, there is a far deeper person. As a friend she has no parallel, and as a *disense* she is admirable; but above all, her temperament is artistic. Discerningly critical, her judgments ring true, but the comments are never too sharp. Disarmingly frank, her manner suggests a natural shyness mingled with the nonchalance of a French major. As Hilda herself says, "My heart beats in my brain."

Violette Lillian Butter

ARTS AND SCIENCE

WILMINGTON

Hockey I, II, III, IV; French Club; Production Staff of "Cradle Song."

Behold the girl who has a purpose in life! Violette doesn't just "plan" to be a doctor; she's *going* to be one! A good student, Vi finished her pre-med course in three years, majoring in chemistry. Her ability to concentrate never ceases to be a source of wonder to us, and the beautiful suits she knits make us feel a bit envious. Although she has many weighty problems on her mind, Vi has a pleasant smile for everyone she meets, and she is always glad to stop and chat for a few minutes.





Mary Helen Eckert

HOME ECONOMICS

COLUMBIA, PENNSYLVANIA

Y. W. C. A. I, II, III, IV, Chairman of Matins III, President IV; Home Economics Club I, II, III, IV; Orchestra I, II; Hockey I, II; Junior Prom Committee III; Puppets IV, Dramatic Board III, IV; Cast of "Liliom" E 52; Thanksgiving Play I; Production Staff of Plays.

Helen is a girl of diverse interests and diverse characteristics. She is a Home Economics student, actively interested in the Y. W. C. A. and Forum, pretty, popular, and in addition, she has an odd twist of humor. Her interested eyes, and innocent pout would never betray her as the student in whom originates a variety of peculiar undertones in class. Somehow, she knows everyone in a friendly way—well enough to make "cracks" at them without fear of making an enemy. Indeed, they take it and like it!

Isabelle Hastings Elliott

ARTS AND SCIENCE

LAUREL

President Student Executive Council IV, Secretary III; Vice-President Class II; Mathematics Club I, II, III, IV; Chairman Program Committee II, Vice-President III; Y. W. C. A. Cabinet II; Glee Club I, II, III, IV, President III; French Club I, II, III; German Club IV; Supper Club II, III; Choral Society II; Forum; Chairman of Committee on Students of Women's College, Centenary IV; Gifts Committee, Centenary IV; Phi Kappa Phi.

Although Flea is the smallest girl in our class, she rates the highest score on accomplishment. Her most outstanding quality is the sincerity of purpose which enables her to devote herself whole heartedly to a just cause. She never ceases until her goal has been attained. She has poise and self-confidence, and she has rendered impressive speeches in her capacity as President of the Student Council. Flea is actively interested in German and the German Club, in all of her college work, and in her fellow students. Flea is charming, friendly, well groomed, and (amazing characteristic!) a good listener.





Elizabeth Jackson Fleming

HOME ECONOMICS

PERRY POINT, MARYLAND

Home Economics Club I, II, III, IV; Soccer III; Volley Ball III, IV, College Manager of Volley Ball IV.

It does one's heart good to meet a girl who loves her work, and Lib certainly revels in hers. She goes about her Home-Ecing with a delight that many of us are inclined to envy. Sincere in all her undertakings, she is loyal to her friends. Indeed, Lib has never made an enemy and, very likely, never will. Being quite an athlete, she served as College Manager of Volley Ball. We like her for her sweet and kindly nature, and wish that we could see more of those occasional grins of hers, and hear her surprising chuckles more often.

Janith Mildred George

ARTS AND SCIENCE

ELKTON, MARYLAND

Mathematics Club I, II, III, IV, President IV; Junior Prom Committee III; Production Staff of Plays; Advertising Committee and Assistant Business Manager Blue and Gold IV.

To see Janith outside of school, one would never suspect that she is a Math major. And in the commuters' room, too, her contagious giggle, and clever remarks would lead one to believe that she is anything but serious. But Janith has proved that she can concentrate on those x's and y's—(with very good results, too). Her personality has won her many staunch friends, including all the conductors on the P. R. R. from Newark to Elkton. Janith's middle name isn't really Mildred, it's "energy." She has so much pep and ambition that she has become one of our leaders, and we admire her faculty for getting things done.





Cecilia Gordon

ARTS AND SCIENCE

WILMINGTON

Dramatic Board I, II, III, IV, President IV; Press Club II, III; Advertising Staff Blue and Gold IV; Glee Club I; Ring Committee III; Puppets II, III, IV; Director of "A Murder Has Been Arranged"; Director of Competitive Play I, II, III, IV; Production Staff of Plays I, II, III, IV; Cast of "Bird In Hand," "Ivory Door," "The Royal Family."

In Cele is vested the main histrionic talent of the class. She acts well, and has that rare ability to teach others her art. Off stage, she is a calm, poised young woman with a mature outlook on life, and an enviable air of assurance. On stage, she assumes any number of personalities, her versatility being a continual source of admiration and envy to all of us. Cecilia is a definite personality, and a more understanding friend, or a more thorough student would be difficult to find.

Anne Hill Griffith

ARTS AND SCIENCE

ELMHURST

May Court III, IV; Advertising Staff, Blue and Gold IV; Class Competitive Play III.

This Anne is a decidedly different Anne from the one who arrived four short years ago, though there was about her then a foreshadowing of her present self. Calmness, coolness, and distinction she has always had, but to these she has added poise and sophistication. She is charmingly attractive and refreshing to the eyes. Almost taciturn at times, she suddenly offers an extremely candid opinion that calls forth much laughter from all of her hearers, for her candidness is bound to be witty.





Helen Carter Hackett

ARTS AND SCIENCE

WILMINGTON

May Court I, II, IV; Advertising Staff Blue and Gold IV.

Her easy, languid, rather listless grace has earned her the title of the "Grand Duchess." It is still a question whether her motions are the result of great effort, or whether they cost her no effort at all, for she floats along in the lazy fashion of a cloud on a nearly windless day. Her pale blonde beauty has earned her many admirers, and she often contributes her charms to the May Court. Does she sound like a girl interested in biology? But she is—very—tempered, of course, by enough French and English to offset the stringent effects of science.

Minerva Arlene Hall

HOME ECONOMICS

NORTH EAST, MARYLAND

Home Economics Club I, II, III, IV; Volley Ball I, III, IV; Baseball III; Soccer III.

Minnie is a "good egg" and we like her. That seems like a lot to say about one person, and to say it without any subtleties, but that's the way we feel about Minnie. She's a genuine person, and a good friend. When she does things she does them whole heartedly and good naturedly. There's nothing halfway about her. We like her sincerity, and we like her kindness. She was lots of fun at the practice house. We enjoyed having her live on campus with us. She's conscientious about her work, but she's no bore. She enjoys a good joke and we like to hear her laugh. It's not affected. It's genuine—just like everything about Minnie. Minnie's "on the level." You can depend on her.





Elizabeth Smithers Harris

ARTS AND SCIENCE

WILMINGTON

Vice-President Class II, Secretary Class IV; President Forum IV; Y. W. C. A. Cabinet III, IV; Social Committee IV; French Club I, II; Hockey I, II, III, IV; Art Editor of Blue and Gold IV; Puppets IV; E 52 Players; Production Staffs of Plays I, II, III, IV.

You wouldn't think Libby, with her fragile, cream-white femininity would be a whiz on the hockey field, would you? But Libby, you see, is a paradoxical person. She has a good many accomplishments you wouldn't suspect. She is interested in the Y. W. C. A., is president of Forum, and does some of the loveliest art work on campus. She is one of our most industrious postermakers, and she is the main-stay of the Women's College dramatic productions, for she designs and makes most of the sets for our plays. In fact, you can't really know Libby until you see her at Mitchell Hall wearing a smock, paint brush in hand, spattering flats, or directing the placement of furniture. All of which is most amazing when you consider that Libby looks like a piece of Dresden china—only she's lovelier, for who has ever seen a Dresden china figure with soft red hair, or whose eyes and nose wrinkle adorably when it laughs?

Ruth Rhodes Herring

ARTS AND SCIENCE

WILMINGTON

Freshman Play I; French Club I, II; French Play II; Vice-President Forum II; Art Staff Pambo I, II, III, IV; Art Staff Blue and Gold II, IV; Delegate from Forum to Conference on Cause and Cure of War in Washington II; Delegate from Forum to Conference of International Relations Clubs III; Phi Kappa Phi.

Mrs. Herring is one of the members in our class who really realizes the seriousness of her work. She does remarkably well in everything, but she is at her best in Art courses. Her work is appreciated and admired by the whole college, and shows real talent. But she does not limit her activities to making posters and illustrating *Pambo*; she is active in a variety of organizations. Forum is her pet. She is a lovely looking lady—tall, with smooth blonde hair. Her judgments are mature, accurate and dependable, and, in the opinion of her friends, she is extremely well worth knowing.





Margaret Gertrude Holloway

HOME ECONOMICS

BERLIN, MARYLAND

Home Economics Club I, II, III, President IV; Outing Club I, II, III; College Manager Hockey III; Secretary Y. W. C. A. III; Y. W. C. A. Cabinet IV; Supper Club II, III, IV; Hockey I, II, III, IV; Baseball I, II, III; Volleyball I, II, III; Soccer II; Advertising Staff Blue and Gold IV; Phi Kappa Phi.

If we were to name only one characteristic of Gertrude, we would chose her friendliness. She is known for her high scholarship, her work in the "Y", her interest in Home Economics Club, and her common sense. But she is famous for her ability to make and keep friends. We shall remember her for her jaunts to "Y" conferences and the good times she helped to make there. And Esmeralda with the reverse gear shift. And riotous times at the practice house. Gertrude has a smile all her own, she has a characteristic walk, and a pleasant way of speaking that make her different from the crowd. She is good fun, and something would have been lacking in our four years as a class if Gertrude had not been with us.

Elizabeth James Huggins

ARTS AND SCIENCE

UPPER DARBY, PENNSYLVANIA

Glee Club I, II, III, IV; Librarian II; French Club I, II; Hockey II.

Biz—the late Miss Huggins. Very rarely is this petite lady with the cute freckles on her nose in class at the conventional time. Nonchalantly she stalks in a little late (or more), heralded by a merry tune and the click of heels. Biz is always singing. She has a really lovely soprano voice—which is quite surprising from one so small. Another surprising thing about her is the candidness of her opinions (which has never lost her a single friend), for there is always a glimmer of humor in her big black eyes as she hurls forth her cocksure decisions.





Thelma Lucile Humphries

HOME ECONOMICS

WINTERTHUR

Home Economics Club III, IV; Glee Club III; Class Competitive Play II; Hockey III, IV; Basket Ball III, IV; Soccer IV.

It seems as if Thelma must have been with us always, but when we think back, we remember that she spent her Freshman year at Goucher. And we remember how well she fitted in when she came to us in 1932. We were sorry then that she hadn't been with us from the very beginning of our college life. Thelma is a good sport and a jolly good fellow. She's the girl who giggles—and the one who tries to hide those giggles behind her hand but never succeeds. She's the girl with the dark, dark hair, and the big brown eyes. She's the girl you just can't think about without thinking of bull sessions, and screamingly funny jokes, and genuine good times. Thelma has the greatest gift of all—that of making people laugh with her.

Irene May Hunter

ARTS AND SCIENCE

WILMINGTON

President of Athletic Association IV; Student Council IV; President of Outing Club III; Hockey I, II, III, IV, Captain II, Manager III; Basketball I, II, III, IV, Captain II, III, IV; Baseball II, III, Captain II; Track I, II, III, College Manager II; Swimming II, III, College Manager III; Volley Ball III, IV; Soccer III, IV; Archery I, III, Manager III; Class Competitive Play I; Glee Club I, II; Choral Society I, II; French Club I, II, III, Program Chairman III; Outing Club I, II, III, IV; Supper Club II, III; Student Manager of Bookstore IV.

A sportswoman, a gentlewoman, and a scholar! What could be better? In Greek and Latin, in athletics, in study and in comradeship, Irene excels. To see her tearing around the hockey field, or cutting through the water like a fish, one might exclaim "Look at that tomboy go!" But talk to Irene, and hear her smooth gentle voice, and see her sweet smile, and you will change your mind. Irene is a thoroughbred!





Mary Poynter Ingram

HOME ECONOMICS

LEWES

Glee Club I; Home Economics Club I, II, III, IV, Treasurer II; Class Competitive Play I, II; Freshman Formal Committee; Junior Prom Committee; Ring Committee III; Basketball I, II; Choral Club I; Social Committee II, III; Chairman IV; May Day Court II, III, IV; Class Treasurer III.

Look at her picture. Isn't she sweet? Look again—at her eyes this time—and see the little imp that lurks there waiting, waiting to hop out. Mary poses as sweet innocence in her classes, but peep behind you some time and you will no doubt catch her playing a practical joke on one of her friends. She is more like Puck than anyone we can think of, and we love to watch her delightful impersonations, and hear her sing popular tunes with her really beautiful voice. She is quicksilver—beware! She plays the fool or the queen with equal vivacity, the jokester or the student with equal ability. Is it any wonder that she is the most popular girl on campus?

Dorothy Marie Jacobson

ARTS AND SCIENCE

WILMINGTON

Student Council IV; Advertising Manager Blue and Gold IV.

A commuter, but one of the most active girls in Women's College. Everyone will be genuinely sorry to see Dot leave, for her dependability and her cheerful grin have endeared her to both faculty and students. She takes her work seriously and accomplishes so much that her less active classmates simply gasp and stare. Dot likes English, History, and good times, and she manages to work a great deal of her hobbies into her program of things. She's loyal and dependable, and she succeeds in everything but keeping the angry mob of commuters quiet. No one could do that (except Miss Clarke) so we can say truthfully, and without exception,—Dot succeeds in everything she undertakes.





Martha Matilda Jaquette

HOME ECONOMICS

NEWARK

Home Economics Club II, III, IV; Hockey II, III, IV; Basketball III, IV, Manager IV.

Here is a commuter who seems to enjoy the great rush of commuting, and finds no obstacle too difficult to surmount. Selma and the changing of her course put many extra responsibilities on her shoulders, but did not prevent her from enjoying the society of friends, and good times. She is always ready to help another with a quick understanding and good fellowship. Martha lives by the Golden Rule, and who could do otherwise than admire and love a girl with such a code and such high standards?

Marian Burge Kee

ARTS AND SCIENCE

NEW CASTLE

Editor of Blue and Gold IV; Student Council II, III; Class Treasurer I; Production Staffs of Plays I, III, IV; Cast of Class Competitive Play II; Freshman Play; Y. W. C. A. Cabinet II, III, IV; Mathematics Club I, II, III, IV; French Club I, II; Forum I, II, III, IV; Supper Club I, II, III, IV; Freshman Formal Committee; Junior Prom Committee; Ring Committee III; Commencement Announcement Committee IV.

*"A perfect woman, nobly planned
To warm, to comfort, and command."*

Marian is certainly all that and more. A girl who has been more active, or done more for her college is not to be found. A proposition placed in her able hands is sure to be a success, and many are the opportunities she has had to prove this. When she is gone, who will take her place? Someone will occupy her position, but we wonder if ever again anyone will do things just as Marian has done them. Marian is gifted with that rare ability of leadership—the faculty to command without stirring resentment in the commanded. To be able to succeed in the capacity of a leader one must have certain qualifications—friendliness, pleasantness, and good sportsmanship, for example. Marian has these and others—she has honor and ideals, a sense of humor, and a love of fun. Marian knows how to be happy, she knows how to be serious, and, above all, she knows how to command.





Mary Margaret Lynch

HOME ECONOMICS

COCHRANVILLE, PENNSYLVANIA

Home Economics Club I, II, III, IV, Secretary III, Programs IV; Press Club II, III, IV; Pambo Staff III, IV; Forum Cabinet IV; Y. W. C. A. Cabinet IV; May Day Committee III, IV.

"What is so rare" as the combination of the poetic and the practical in one personality? Knowing Mary, we know that it is possible for one individual to be very efficient and skillful in the field of Home Economics and also to be able to spend leisure hours in the enjoyment of the arts. Mary's lovely, wistful lyrics add many a charm to *Pambo* and reveal a phase of Mary's personality that is not so apparent in personal contacts. We usually see Mary bustling about getting things done for the "Y" or for Home Ec Club. But she impresses us as a very unusual person, and it is not surprising that she finds time to be a good friend and a valuable acquaintance. We consider ourselves lucky that she "happened" to our class.

Mary Loue Matlack

ARTS AND SCIENCE

NORRISTOWN, PENNSYLVANIA

Class Captain I; Class President II, III, IV; Freshman Formal Committee; Junior Prom Committee; Puppets II, III, IV; Class Competitive Play I, II; Thanksgiving Play I; Cast of "Liliom," "Ivory Door," "Death Takes a Holiday," "A Murder Has Been Arranged," "Royal Family"; Production Staff of Plays; E 52 Players.

Pat is our "Modish Mitzi" and might easily be called the best dressed girl on campus. Her slimness lends itself beautifully to her stylish frocks, and her curly hair, peeping from beneath her hats, makes a picture not easily forgotten. She is also our "perpetual president," for there has been only one term when she has not held the class gavel in her hand. Popular on both campuses, and always in demand, Pat is nevertheless good in her studies. She's always at dances—but what about those hours and hours in the Biology Lab? Pat is a fine actress, and has held together many a college play. Where she finds time for all her extra-curricular activities, we shall never know, but her charming and gay personality, and never tiring energy demand that she be a leader in whatever she undertakes.





Dorothea Weir McLane

ARTS AND SCIENCE

WILMINGTON

Class Secretary III, Vice-President IV; Glee Club I, II, Treasurer III, President IV; French Club I, II; Mathematics Club I; Prom Committee III; Ring Committee III; Chairman Dining Room Committee IV; Basketball I, II, III, IV; Swimming I, II, III; Baseball II, III; Track II, III; Soccer III, IV; Volleyball IV; College Swimming Manager IV; Forum Treasurer IV; May Day Committee IV.

Dot is characterized by her quick, decisive step, and her assured precision. She has quiet poise, and an air of determination and perseverance. Her abilities both to lead and co-operate made her a success in College athletics, while her agreeable sense of humor makes her a charming addition to any company. Wherever there is whole hearted fun—there will Dot be also.

Dorothy Anna Morgan

ARTS AND SCIENCE

BRIDGEVILLE

French Club I; Archery I, II, III; Class Competitive Play I.

The modernity of Dot's activities belies her interest in things ancient, for her love of Latin is agreeably coupled with her love of dancing and gay music. She is a joyous soul with a spontaneous good will and good cheer that have proved extremely contagious. Her voice is low and almost drawling, pleasing to the ear and soothing to the mind, making her excellent company when one desires relaxation.





Gertrude Haywood Mott

ARTS AND SCIENCE

WILMINGTON

Hockey IV, Captain IV; Basketball IV; Production Staff of "A Murder Has Been Arranged," "Autumn Crocus," "Royal Family"; Phi Kappa Phi.

Our class has great faith in the products of Junior Colleges, for Mottie—brilliant, witty, and gay, came to us in her Junior year from St. Mary's. Mottie is a true daughter of the South. She is hospitable and happy, and she has a most fascinating drawl and a bewitching smile. Although Mottie quavers before class and moans "Ah don't know a theeng!" she is always a shining light in her courses, with an enviable faculty for remembering dates and obscure names. And at dances, too, Mottie is a shining light. Dressed in some decorative gown she rolls those big brown eyes of hers and laughs the hours away. We like Mott—she's different and she's cute, and we sometimes torment her just to see her pout and drawl reproachfully, "Oh, Ah theenk youah just ohful."

Susie Eleanor O'Day

EDUCATION

SEAFORD

Baseball I, II, III; Forum I, II, III; Volley Ball I, II, III; Soccer I, II, III; Hockey II, III.

Golden-haired, laughing Susie is the kind of girl we like to know. Perhaps it's that bit of Irish in her that makes us like her. It probably accounts for her sunny disposition at any rate. She enjoys life, and seems to get a great deal out of living. Sue seems to be eternally happy. She loves the winter time, for her favorite sport is sledding. She goes about merrily on those cold winter days when the rest of us huddle up in warm corners and complain about the weather man. Indeed, Sue seems to be eternally happy. She's always willing to help anyone who needs assistance, she's always on hand when fun is in the air, and above all, she's always ready to be a staunch supporter of her friends. Sue is one of the most unselfish girls we know.





Catherine Ann Pennock

EDUCATION

WILMINGTON

Freshman Representative to Student Council I; Treasurer of Student Council II; Assistant Head of Dining Hall III; Head of Dining Hall IV; Basketball I, II; Math Club IV; Centenary Committee IV; Freshman Formal Committee I; Junior Prom Committee III; Class Competitive Plays I, II.

Of all the two year education students we were glad to welcome back into the fold, we were happiest when Ann decided to return and get her degree. For Ann is one of the mainstays of the class. Divinely tall, beautifully dressed, and very pretty, Ann is one of the prominent figures on campus. She is always ready to stop and talk on this and that for a minute or two, and she has a most amazing sense of humor. She loves being happy, and gets more joy out of living than any girl we know. When you think of Ann you simultaneously think of the word "pal". You can't help it. Ann is our idea of a "peach of a gal," and when she graduates and leaves us, we shall certainly miss her promenading around the dining hall.

Lois Phelps

HOME ECONOMICS

CHRISTIANA

Home Economics Club I, II, III, IV.

Lois, one of our merriest girls, and one of our tiniest, is friendly and dependable. She never takes anything too seriously, but acquits her tasks faithfully and well. Down in the commuters' room she is one of the greatest talkers and gigglers, in the arts of which she is particularly skilled. She has her own peculiar way about them too. Ask her to pronounce "banana," and you'll see.





Margaret Elizabeth Shrader

ARTS AND SCIENCE

WESTVILLE, NEW JERSEY

Track I, Class Manager I; Swimming II, College Manager II; Hockey I, III, IV; Basketball II; Baseball I; Outing Club I, II, Vice-President II; French Club I, II, Program Committee II; Mathematics Club I, II, III, IV, Program Committee II, Secretary-Treasurer III; Prom Committee III; Ring Committee III; Freshman Formal Committee; Social Committee IV; Forum III, IV; Y. W. C. A.; Blue and Gold Staff IV; Phi Kappa Phi.

There is nothing Peg does not do well! That's rather a broad statement, but it's true. She is especially good at lessons, and she's a whiz in athletics. She is human, certainly. You can tell by her smile, and her laugh, and the number of friends she has. Only in class is she inhuman. There she shows up the rest of us. We really think she should have the chair in the front of the room, from which imposing position, she might teach us the art of learning. Peg is a good teacher, too. She excels in everything—she's lucky at cards, and she's lucky at love. It all doesn't seem fair, somehow, but we don't begrudge Peg her talents. She's a great girl and she's bound to go through life a winner.

Alberta Estella Smith

HOME ECONOMICS

WASHINGTON, D. C.

Home Economics Club I, II, III, IV, Social Chairman IV; Outing Club II, III; Volley Ball I, II, III; Baseball I, II, III; Hockey II, III; Manager of Soccer II, IV; May Day Costume Committee III; Supper Club I, II, III, IV; Y. W. C. A.

Bert is an old-fashioned girl in a new-fashioned setting—like Grandmother's lovely old cameo reposing on the velvet of Paris' latest creation. She is so small, too, to embody such friendliness as hers, and so tiny to have such a tremendous will. She flutters about like a gay but determined little bird, but something about her implies an inward calmness that relates all her activity to a future goal.





Beatrice Etta Sortman

EDUCATION

WILMINGTON

Bea's philosophy is a laugh and a grin, and catastrophes become jokes under the crackle of her snappy wit. Among all her talents, her greatest is the ability to while away the commuters' blues when she sings like Helen Kane, or when she imitates any one who happens to come into her mind. Her hair is the envy of all amateurs in the art of "wind-blown" bobs, and the nonchalance with which she views life, is the envy of all "calamity-Janes."

Margaret Price Tyler

HOME ECONOMICS

MIDDLETOWN

Y. W. C. A. Vice-President III; Home Economics Club I, II, III, IV, Vice-President III; May Day Committee III; Page in May Court II; Glee Club II.

Peggy is a wee lass, blue eyed, and fair haired. A more earnest and satisfying companion cannot be found on campus, and a person more charming and more sympathetic does not exist. Peggy's interest in everything and everybody makes her a delightful friend and confidante. Books, organizations, and other activities keep her busy and happy; she has a cheery smile, and a kind word always at hand, and she imparts to all a cozy feeling of friendliness.





Eleanor Katherine Vausant

ARTS AND SCIENCE

NEWARK

Glee Club II, III, IV; Basketball II, III, IV; Hockey II, III, IV.

Eleanor—the girl with dancing feet and a mania for bridge. Eating and sleeping are nothing in Eleanor's life. Give her a lively tune or a deck of cards. She has a deep interest in the "has-beens" as well as the "ares" and "will-bes", however, and is methodical in her search after the facts of history. Eleanor is a likeable girl, an interesting talker, and one who will never be slighted when fun is afoot.

Elizabeth Anne Weber

ARTS AND SCIENCE

WILMINGTON

Glee Club I, II; Press Club II, III, IV; Advertising Staff Blue and Gold; Class Editor Blue and Gold; Competitive Play IV; May Court I, IV.

A really versatile personality, a striking appearance—throw in a bit of dash and gay good humor and you have Betty Weber. Proof of her versatility is in her literary contributions to *Pambo*, in dramatics, her apt portrayal of "Alyce" in the Senior competitive play and in the finer arts of music and art itself—only those who know her realize her talent. With such an artistic temperament it may seem surprising that Betty chose Biology for her major, but she has succeeded equally well in that noble science, and most any fair day you can see her gazing with interest at some rare species of flora.





Marguerite Townsend Wentz

ARTS AND SCIENCE

MILLVILLE

Baseball I, II; Basketball I, II, III, IV, Manager I; Hockey III, IV; Manager Volley Ball IV; Soccer I, II; Class Editor Blue and Gold II; Mathematics Club I; Class Treasurer II, IV; Class Manager Swimming II, IV; Class Vice-President III; Chairman of Ring Committee III; Chairman May Day Committee IV; May Day Committee II, III; Outing Club, Secretary-Treasurer IV; Student Council III, IV; May Court III; Press Club II, III; Student Centenary Committee.

Peg is a rather bewildering, but charming mixture of personalities. She is the sophisticated young lady with the blonde hair who loves to dance 'til midnight. She is the good sport with the sparkling eyes, who wins athletic honors for her class. She is the calm, sincere, dependable executive. She is the sweet, wistful, pensive young maiden. All these are Peg. Or rather, Peg is all of these. She puts her best into everything she does and has won the respect and admiration of all her fellow students and professors.

Helen Rebecca Wilson

ARTS AND SCIENCE

NEWARK

Helen's classes seem to be few and far between, for we usually find her adding to the general noise and merry-making in the commuters' room. Although she is about as big as a minute, her life ambition is no paltry one. She wants to become a buyer in the biggest department store she can find. In our opinion, she would make a better model in that same store, for she "walks in beauty as the night," and everyone knows that with beauty, a business sense is unnecessary. But it does do our hearts good to find a lovely looking girl with a purpose in life.





Junior Class



Miss Elizabeth G. Kelly

Class Officers

FRANCES LOUISE MCGEE	<i>President</i>
ELIZABETH MANCHESTER	<i>Vice-President</i>
ELIZABETH HICKMAN	<i>Secretary</i>
MARYLEE JONES	<i>Treasurer</i>
MISS ELIZABETH G. KELLY	<i>Faculty Advisor</i>



Frances Louise McGee

Junior Class History

ON September 16, we hung our little white tennis dresses on the nail in the back of our closets, put cucumber lotion on our faces, and vaseline on our eyelashes, and fervently prayed that we might turn beautiful and wise over night. We didn't, but we donned our smart new Fall hats—they were derbies, too—tucked away our last blue linen handkerchief, and came to college. It was raining a little, but that didn't seem to make any difference. All that mattered was the ghastly sinking feeling at the pit of our stomachs and the grey-green mist in front of our eyes. We vaguely wondered how pioneers ever stood it. Then we arrived, and were immediately dropped into a seething caldron of business offices, what's your room number? this is Residence; Sussex is the building over there, meet Miss Allen, have you been measured for your gym suit? and lunch and dinner in a strange hall with people—alien people staring, staring—and finally the peace of a little bed all our own and a small white pillow into which we wept tears of loneliness and woe.

But we soon regained our old identity and poise. Freshman Weeks don't last forever. And the first day is only twenty-four hours long. By the time the twenty-second drew near, we knew people and were known. There had been group meetings at night, and charming upperclassmen with tales of college life that made us want to stay—tales of dramatics, dances, games, Phi Kappa Phi. And stunt night with Sally Wells doing the horse in *The Highwayman*, and a

makeshift reproduction of the phenomenal wooden beast in *The Fall of Troy*. Then came hordes of upperclassmen swarming about, kissing everyone in sight. The next day classes began. We were heartily amazed. The difference between high school and college wasn't phenomenal after all, except that the number of pages to read in one assignment was appalling. But we settled down to it with a will. In fact, we settled down to everything with a will. We organized, electing Caroline Cobb class captain, and Elizabeth Hickman sub-captain. Then we smiled to ourselves. We belonged.

Founders' Day came and with it our class color—bright green—presented by our sister class. And later we were honored with insignia by the Sophomores—insignia that took the form of green hair ribbons and enormous pink celluloid ears. The auditory adornments had the remarkable faculty of making us look unusually handsome, and the annoying one of catching the sun and proclaiming the approach of Freshmen, though we were blocks away. They were removed on a cold dark morning before the Thanksgiving vacation, at which prone falls and "Praise Allahs" were the chief diversions. We perfected our abilities to walk up the stairs backwards and learned to sit down gently in the days which followed.

At the beginning of the second semester, we elected Frances McGee class president, and Miss Kelly class sponsor. And an orgy of events followed—the gym meet in a brand new gymnasium, at which we were properly embarrassed as we did out little forward rolls, and our serpentine. The Freshman Formal, with Fran McGee looking like a story-book princess in a blue taffeta dress, and Virginia Graves leading the grand march. Eyebrows that had hitherto remained unplucked were dark and fine that night. We all took on a new sophistication that was never to leave us. The first of May came and we presented our big sisters with bouquets of fragile Spring flowers. They, in turn, took us to see Ruth Chatterton in "Tomorrow and Tomorrow" after a very charming dinner in the south wing of the dining hall. All of which reminds us of the party we gave in honor of the Juniors when we dressed as four-to-six-year-olds and romped on the campus, casting to the winds our precious sophistication and worldlywiseness. Then came May Day, and our bosoms swelled with pride, for Elinor Townsend, our duchess, and Frances McGee and Vera McCall our attendants in the May court were the loveliest courtiers a May Queen could ever desire, and Hildegard Hagen looked so disarming in her Scottish kilt, that we couldn't help loving it all.

Indeed, by the end of the year, we had made quite a name for ourselves, considering the number of laurels we had won. The championships in Hockey, Basketball, and Track had all been ours, and our humorous song had taken first place in the Song Contest. Then there was the competitive play *Saved*, with Virginia Lee, and Kitty Quillen that took second place. And Wilson Walker and Marjorie Slider won first and second Dean Edward Laurence Smith Memorial Prizes, for their plays, "Hezekiah's White Chile" and "The Statue."

Forgetting the disgust with which we had viewed the unconfined emotions of the returning upperclassmen in 1931, we scrambled about on September 26, and swarmed exactly as had our predecessors. In fact, we too were not above kissing every classmate we overtook. There was something strangely right about being in Delaware, and something fine and uplifting about viewing once more the ivy-covered walls, and breathing in the warm September air. Frances McGee was

our president again, and we rallied to the brilliant green of the class of 1935, vowing to do great and noble deeds for our class and college. We did. On Founders' Day, dressed in white, we sedately carried our big sisters' caps and gowns. Later that afternoon we served tea in the Hilarium to our students and visitors.

Being a class with a flair for originality, we took it upon ourselves to improve upon the method of presenting greetings at the Thanksgiving banquet. So we turned our prize winning Freshman song about and rendered "We Are Thankful," causing much comment from every one, and many envious glances from the other classes. During the Thanksgiving season Miss Kelly gave us a delightful tea, and we congratulated ourselves again on the happy choice we made when we elected her as our class sponsor.

Remembering the shame and humiliation we had endured as Freshmen in artificial ears, we were gentle to our new Freshmen, presenting them with green bows that were pert and quite becoming—especially to the blondes and redheads, and little green name cards that helped us to tell them apart. Remembering also those bitter November nights when we applied liniment to our stiffened joints, our insignia-removal ceremony took the form of a party at which we played games of a really refined nature.

Marjorie Breuer, who had been the director of our competitive play, *Saved*, was asked to serve again in 1933. She responded with the play, *Lot's Wife*, which won first place in no mean competition. The cast, Virginia Lee, Betty Craig, Miriam Swayze, and Marjorie Slider, loved it as much as the audience, and it has become one of those things the classes never forget—a highpoint in college history to be discussed and rediscussed even after graduation and disintegration.

Strath Haven Inn was the scene of the Sophomore-Senior luncheon. It rained, but not enough to really matter. Everyone had a glorious time. The favors were old-fashioned bouquets in paper doilies, glazed almonds playing the part of flowers, and playing it most decoratively.

Then came the time when the class was eager for a genuine "get-together." It took the form of a picnic at White Clay Creek, with marshmallows and hot dogs. One of the high points of the afternoon was our running out of water, and Fran McGee and Marge Kennedy going through all kinds of perils to save us from thirst. Then there was the usual wading, and the usual taking of snapshots, and the usual hilarity. But our class, always doing the unusual, had to introduce an original note. We found a snake just to be different, and then we marched home doing "Swiss Navy Halts" the whole way.

We had been proud of our representatives in the May court our Freshman Year. But we were more than proud this year. The same girls glorified the May Queen's court—Frances McGee, and Vera McCall, and Elinor Townsend, but they were lovelier than ever.

And then came commencement. Our sister class was graduating. We marched solemnly beside them in the lantern procession on class night feeling a little sadness in spite of our pride. We had loved our big sisters—theirs was a splendid class. With their going, we should have to accept the responsibilities of a big sister class—we should have to grow up.



Rosalie Bader

EDUCATION

WILMINGTON

When we think of Rosalie, we cannot help but think of the lines from Andrew Lang:

*"The Love of Books, the Golden Key
That opens the Enchanted Door."*

For Rosalie reads and reads, and never seems to grow weary of books. And then, too, she has another accomplishment—she knits and knits, and never seems to grow weary of knitting. Her handiwork is far superior to that which most of us turn out—she makes bouclé suits, little hats, and soft white coats becoming to her blonde beauty. Her love for books is probably closely bound to her interest in history. And her knitting ability no doubt arises from the fact that Rosalie has a flair for art. Rosalie's notebooks are definitely her own, for they are usually covered with decorative sketches. Her dresses and smocks are trimmed with touches of embroidery or crocheted wool that Rosalie has made herself. Everything about her reflects her personality—a personality that is different.

Dorothy Smith Baughman

ARTS AND SCIENCE

WILMINGTON

Chairman of Ring Committee III; French Club; Production Staff of Competitive Plays I, II.

Dot's disarming grin reminds us of a mischievous little gamin, and her mop of yellow curls bobbing up and down makes us think of our little sister. But those steady blue eyes of hers, and her sincere, pleasant manner tell us at once, "here is someone on whom you can depend." Dot is the kind of a girl one might pick out for a best friend because her moral code stresses loyalty, and sincerity, and she enjoys living and being alive. She is someone to whom secrets can be told without the fear of their becoming public property. She is a girl to whom one can go when one is in need of sympathy and sound advice. Then, too, she's a good person to pick out of the crowd when you've just heard a good joke and want to pass it along to some one who is sure to appreciate it. Dot is blessed with just the right combination of humor, dependability, amiability, and charm to make a girl well rounded and popular.





Frances Fern Board

EDUCATION

WILMINGTON

Fran is one of the most charmingly feminine girls we have ever known. Her soft brown hair and her clear pink-and-white skin are only two of her many graces. There is something delicate and cameo-like about her, but the heartiness of her greeting assures us that she is not a clinging vine in spite of her dainty femininity. Fran is a student, and a cheerful one at that. Sometimes she likes Spanish, and sometimes she doesn't, but she always has her assignments done. She seems to be in a hurry most of the time, but hurrying or not, she is an asset to any group, for she can be either quietly at ease or delightfully vivacious.

Marjorie Dorothy Breuer

ARTS AND SCIENCE

WILMINGTON

Puppets III; E 52 Players; Dramatic Board II, III; German Club III; Director, Class Competitive Plays I, II, III; May Day Committee II, III; Cast of "Martha," "Suppressed Desires," "Cradle Song"; Production Staff "Doll's House."

Marge knows how to work successfully with people. As a result she has a great many friends. For three years she has been director of our competitive class play. And each year we have won; the first year, second place; the second and third years, first place. We Juniors know that the best part of the credit goes to Marge for her efficient workmanship, and her knack of getting along with every one. Who will ever forget "LOT'S WIFE?" And the pillar of salt? And Marge behind stage, calm to the very last moment, believing utterly in her play and her cast? But Marge has many other interests. She is a good English student, a good friend, and above all an upholder of commuters' rights!





Vernona Josephine Chalmers

ARTS AND SCIENCE

NEWARK

Mathematics Club I, II, III,

Vernona is a girl we do not always understand, because she is not the usual collegiate type. She is an omnivorous reader. A Christian who is nevertheless interested in other religions. She has a sense of humor:

"Where are your bangs today, Vernona?"

"My word! Haven't I got them on? I must have left them at home on the dresser!"

She has a low charming voice, and a graciousness toward others that some of us lack. We wager the future will not be unexciting for you, Vernona. Here's luck!

Phyllis Rose Chambers

ARTS AND SCIENCE

WILMINGTON

German Club III; Forum I, II.

It is impossible to be in classes with Phyllis, and not be aware of her good common sense. You recognize her discernment as soon as you hear her speak. She can talk intelligently on almost any subject, and she loves to do so. Pleasant and congenial at all times, with a heart of gold, she always has "room for one more" in her car when she sets out for Wilmington. She is truly efficient; she accomplishes things because she doesn't balk at anything, which is a truly great accomplishment. And, best of all, Phyllis is never afraid to dare.





Anne Easby Cheavens

ARTS AND SCIENCE

WILMINGTON

Hockey I, II, III, Captain I, Class Manager II, III; Baseball I, II, III, Class Manager II; Basketball I, II, III; Tennis I, II, III, College Manager III; Soccer II, III, Captain III; Swimming, Class Manager I; Press Club I, II, III; Art Editor Pambo III; Blue and Gold Staff I, III; Poster Committee II; German Club III; Junior Prom Committee III; Production Staffs of Plays II, III.

If we were to go through the class roll picking out the names of those girls whom we expect to succeed in life, Anne Cheavens would be one of the first names we would choose. Anne has been especially gifted. She is an artist of no mean ability. Who has not paused open-mouthed before her lovely posters in Science Hall? Who has not loved *Pambo's* stories the better for her beautiful illustrations? But then, Anne doesn't spend all of her time in art laboratories. Indeed, her favorite spot is the center of a fast hockey game. We know Anne as a good sport, a fine artist, and a favorite companion.

Ethel Jennie Clark

EDUCATION

HOCKESSIN

French Club I, II; Ring Committee III; Forum III.

In spite of the fact that she's only five feet two inches tall, Ethel has the loveliest hair in the class. It's blue-black, and it shines beautifully, filling the hearts of our less fortunate members with envy. Then, too, its waves are smooth, and each hair is always neatly in place. Which reminds us that Ethel is always well groomed. She looks as if she were always going somewhere. Her clothes are suited to her rich coloring and her green coat is fast becoming a campus tradition. In addition, she has a pair of sparkling brown eyes, revealing the fact that Ethel has a sense of humor, and is one of the best little sports we have ever met. She's a merry comrade and we like to be with her, for she's always the same—happy, laughing, good-natured Ethel.





Caroline Julia Cobb

ARTS AND SCIENCE

WILMINGTON

Student Council I, Treasurer II, Third Vice-President III; French Club I, Vice-President III; Glee Club I; Hockey I, II, III; Chairman Freshman Formal Committee I; Secretary German Club III; Cast of "Martha," "Overtones," "Suppressed Desires," "Autumn Crocus," French Club Play; E 52 Players; Advertising Staff Blue and Gold III; Production Staffs of Plays I, II, III; Centenary Committee.

Caroline has been on the Student Council for three years and has not lost a friend. Unique accomplishment! Next year, Carol will hold one of the highest student positions the Women's College is able to confer: President of the Student Board. But we shall remember Carol in a thousand different ways: as the interpreter with the black mustache in the French Club play; as the Irish maid in the Junior competitive play; as hostess, blond and poised, at French Club; as chief giggler at a certain table in the dining room. Carol's outstanding trait is her open-mindedness. She never judges her classmates. Perhaps that's why we like her.

Nannie Sue Cox

HOME ECONOMICS

LANDENBERG, PENNSYLVANIA

Home Economics Club I, II, III; Junior Prom Committee III.

Nannie has the greatest gift of all; she is effortlessly neat. Orderliness is inherent in Nannie's character. She works diligently in the Home Economics laboratory, snipping and stitching busily, wasting no time, looking up now and then to listen to something that interests her, her black eyes shining. Nannie's friends trust her, and are confident that anything she undertakes will be successful. She has a way of inspiring confidence in herself, because she is sincere and loyal, courageous and just.





Betty Craig

ARTS AND SCIENCE

WILMINGTON

French Club I, President II; Cast of Class Competitive Play II.

She speaks more beautifully and more correctly than any other student at the Women's College. She reads Chaucer well enough to satisfy Dr. Sypherd. An English major, she has active likes and dislikes in her chosen field. She likes Browning, dislikes Shakspeare. An education to Betty is not the accumulation of facts, and satisfactory recitations from day to day. Above all, Betty is an individualist. She is interested in the important questions of life, in philosophies and creeds. She is often unsatisfied, but at least her mind is not stagnant and slow moving. Not the usual girl, Betty. Have you ever seen her throw back her brown head and laugh?

Mildred Florence Cummins

EDUCATION

DOVER

We hesitate to use the word "cute," because it is so often applied to anything from grandfathers to little brothers. But "cute" is the first word we think of when we see Bill, cute in this case meaning two sparkling eyes, a delightful grin, and a charmingly turned-up nose. Bill is completely disarming. Her good nature is a thing at which we shall never cease to marvel, and her friendship a thing we shall always treasure. Bill goes about humming popular tunes all day long, and indeed, life itself must be one long song to a girl so merry. We don't know whether or not Bill was born on Sunday, but we know that she has all the ear marks of such a person, for

*"The child who is born on the Sabbath day
Is bonny and blithe and good and gay."*





Rosalind Morrison Curtin

EDUCATION

WILMINGTON

Rosalind is one of the most surprising persons we have ever known. One glance at her serene countenance would lead us to believe her demure, sweet, and very, very young. But Rosalind is a girl who has not reached her Junior year in college without acquiring a good deal of sophistication. She dresses neatly and beautifully, and we wonder how she ever manages to preserve that unruffled appearance. Rosalind is one of the members of "The Inseparable Three," an organization famous on the Women's College campus. The other two members are Helen Hackett and Betty Weber. Rosalind is seldom seen unaccompanied by her friends. And it is no wonder that they like her—or, indeed, that we all like her, for we have discovered that Rosalind is good fun.

Eleanor Ann Doordan

HOME ECONOMICS

NEWARK

Blue and Gold Staff III; Home Economics Club I, II, III; May Day Committee II; Senior-Sophomore Luncheon Committee II; Production Staffs of Plays II, III; Hockey I, II, III, Captain II, College Manager III; Soccer I, II, Class Manager I; Volley Ball I, II; Baseball I, II.

There is something about Eleanor that leads us to entrust her with important offices. For a person only five feet tall, she has an amazing supply of initiative and energy, and radiates more personality per square inch than most of the "five-feet-teners" we have known. She has confidence in herself, and it is no wonder, for she is efficient, and she always looks like a *Vogue* fashion plate. Eleanor is chic and smart looking, but we don't attribute that to the fact that she is a Home Economics student. We are sure that she would have been just the same if she had taken education, or were majoring in math. Being small, but sophisticated and stylish, are just parts of Eleanor's interesting personality.





Lenore Anne Dwyer

ARTS AND SCIENCE

NEWARK

Lenore's humorous upper lip and meditative eyes are the chief indicators of her character. Look at them and you will see that hers is a mixed nature. We would be willing to lay a wager that she lives a dual life, for those eyes say that she is introspective, analytical, serious, and quiet, yet her mouth says that she is witty, fun-loving, and sporting. What would you decide?

She's a scientist to be reckoned with, but her hilarious good humor just *will* pop out without the slightest warning. When you see a crowd around the sofa in the commuters' room, you know that Lenore is being funny, and if you have ever sat near her in class you know how dangerous *that* is! She gathers in A's as smoothly and effortlessly as she utters her little witticisms and cynicisms, and her recipe for producing A's is to read a good novel the night before the final. Evidently, it's a good method.

Katharine Buchm Eastburn

HOME ECONOMICS

NEWARK

Home Economics Club I, II, III.

The friendship and companionship Kitty offers are genuine and real, for they are tempered with truth, clarity, and freedom from hypocrisy and pretense. Kitty's friendship is a thing of worth, and her judgments matter. She is a person with a capacity for great understanding. Her advice is sound, because she is never hasty in forming opinions. She never judges on the spur of the moment. Qualities such as these point to a successful career for Kitty, and the fact that she is endowed with the knack of designing clothing, furthers our opinion that Kitty will be a lady of importance in the industrial and artistic worlds.





Louise Anne Ebner

ARTS AND SCIENCE

WILMINGTON

Mathematics Club I; Glee Club I, II; Christmas Play I; Freshman Formal Committee I; Junior Prom Committee III; Stage Manager Class Competitive Play II; E 52 Sub-group Plays I.

"Mike"—for she's Mike to us—is an interesting personality, for we never know just what to expect. One moment we find her intelligently discussing progressive education, and the next gaily chatting with someone or whirling around the dance floor. Mike loves to dance. She is full of pep, enthusiasm and initiative, and she is efficient in her management of dance committees and social affairs. Mike has decided likes and dislikes and is frank in disclosing them, but we like her the better for her sincerity. She has a good time and enjoys life, but business, in her scheme of things, comes before pleasure.

Alberta Elizabeth Edge

ARTS AND SCIENCE

WILMINGTON

Hockey I, II, III; Soccer II; Glee Club I, II, III, Secretary-Treasurer III; Athletic Association Secretary III; Press Club II, III; Business Manager of Pambo III.

We talk about girls who have won our affection, and girls who have won our friendship. Then there are girls with whom we laugh, and girls to whom we go for advice. We feel that Elizabeth is a friend of ours, we listen to her opinions on things, and we have a very special place in our hearts for her. But she has something besides, that we don't offer to many people. Elizabeth has won our respect. We recognize the fact that Lib has ideals—and that she lives up to them, and we are proud that she is in our class. We like the fact that she is both a scholar and an athlete. And we are delighted that we have in her a girl on whom we can depend always. Then, too, we enjoy hearing Lib sing—she has a lovely, deep voice, with a clear firm tone. And, last of all, we love her because she is unaffected and sincere.





Ruth Ellis

EDUCATION

DELMAR

Basketball I, II; Soccer I, II, III; Baseball I, II; Archery I, II, College Manager III; Y. W. C. A. I, II, Cabinet III; Forum I, II, III.

Active in sports, cheerful companion—a friend to all. Ruthie usually was in some difficulty—a broken knee, an operation, etc., but she managed to survive grinning. She is happiest when swimming, playing baseball, volley ball, and soccer, arching with the bow and arrow, or tumbling around in the snow. Clear blue eyes, pretty complexion, brown curly hair,—that describes the outer Ruthie. We miss her this semester but we can imagine her in the future taking dictation in the office of some big business man.

Dorothea Evelyn Ely

ARTS AND SCIENCE

WILMINGTON

French Club I, II, III; Hockey I, II, III, Captain III; Blue and Gold Staff III.

Dot is an Art major who can work in the art lab all day and appear at dinner with stainless hands. In the lab she works slowly and surely, turning out first rate work. She doesn't know the meaning of the word *temperament*. She indulges in English courses and contract bridge on the side-line. Her most prized possession is her little library, and her hobby is collecting books of verse. Her favorite authority on bridge is her father. Always interested, but not studious, Dot is an excellent companion. She can giggle with the best of them.





Sara Emma Eppihimer

EDUCATION

CLAYMONT

Sara has the pale blonde hair of a story-book princess. She has a quiet smiling politeness that is like the princess too, but she is a bit more efficient than that legendary lady. Study is not the most important thing in the world to Sara—it is, rather, one of many important things. Talking to one's friends is important, for instance, and enjoying life. She is too feminine for athletics, but we wager she will have a firm hand with her pupils when she teaches, and a quiet, forceful manner.

Ruth Willetta Euster

EDUCATION

WILMINGTON

Production Staff of Plays III; E 52 Players.

Although the Class of 1935 is well blessed with artists, Ruthie need never worry about too much competition. She can compete with the best of them and come out on top. Her favorite theme in art work is the Egyptian one, and her notebooks are decorated with oriental motifs. She doesn't spend all of her time in the art laboratories, however, but is to be found in the E 52 workshop at Mitchell Hall working on scenery. She is interested in dramatics and dances, and her philosophy of life seems to be "Never take anything too seriously!"





Anna Louise Garenta

HOME ECONOMICS

PEDRICKTOWN, NEW JERSEY

Home Economics Club I, II, III, Treasurer II, Vice-President III; Production Staffs of Plays III; Dining Room Committee III; Soccer III; May Day Committee III.

Anne is a girl of whom we can truthfully say, "Everybody likes her." Her vivid coloring and disarming smile make her a striking figure on campus. Her hearty laugh rings out at inopportune moments, and her giggles in the library draw dark glances from the librarian. She is an earnest student, sincere about everything she does, and one of the best sports we have ever known. The beautiful clothes she makes arouse in us both admiration and respect. It is not every girl who can make a suit that looks like a Parisian model. But Anne's greatest virtue seems to be the fact that she can keep in a good humor indefinitely, never seeming to be ruffled. The better we know Anne, the more we marvel at her pleasant disposition and her boundless generosity.

Anneliese Gerdum

ARTS AND SCIENCE

KASSEL, GERMANY

Anneliese came to us this year as a foreign student from Germany. Her intelligence and sincerity immediately won our respect, and her rapid adjustment to our customs strengthened it. She has acquired an admirable command of the English language and is always eager to learn the connotation of each new word she hears. One usually finds her absorbed in books, for she reads almost constantly. Anneliese doesn't believe in many of our silly conventions, and retains at all times her individuality and independence. But she is always ready and willing to tell us interesting stories about Germany. Incidentally, did you know that Anneliese received her M. A. in Economics before she came to America?





Barbara Eloise Green

EDUCATION

NEW MILFORD, CONNECTICUT

French Club I, II, III.

A true Yankee in our midst, with a bit of the North in her speech. We're glad she's here. She is an engaging person; always broke, always ready for a good time, the kind of person who keeps her friends. She can't play bridge, and is always trying to find time to learn. Apparently, she never studies, but she gets along smoothly, especially in Education. Her hands are lovely, being unusually small and feminine.

Hildegarde Cornelia Hagen

ARTS AND SCIENCE

LANCASTER, PENNSYLVANIA

Glee Club I; Mathematics Club I; French Club I, II, III; Student Council III; May Day Committee III; Press Club III.

Although Sir Edward Dyer and Hildegarde are of two different ages, they have something in common, for it was Dyer who said, "My mind to me a kingdom is." Hildegarde revels in learning things. In fact, she is one of the most intelligent girls in our class. She reads many more books than the rest of us, and her reading interests are varied. She doesn't care about cut and dried facts, but loves vital interesting things. She reads Pascal's *Pensées*, and she reads P. G. Wodehouse. She enjoys operas and symphony orchestras, but she likes *Mood Indigo* and Herbert Marshall as well. Take her to a lecture on basal metabolism, or spend an evening telling her funny stories and she will be equally happy, and equally entertained. She is fun at parties, and fun to accompany to Wilmington on a shopping tour. And in conclusion, she has a weakness for pigs in blankets, and is a good dancer for her size.





Helen Calvert Handy

ARTS AND SCIENCE

NEW BRIGHTON, NEW YORK

Hockey III; Glee Club III.

Helen is a transfer from Hollins College, but she has fitted in perfectly with her new Alma Mater. She is quiet and poised, a good student and a well rounded one. She admires the finer qualities in people and is a friend in whom one can confide. Unimpressed by ostentation, she always looks beneath the surface to unerringly find the good and the true.

Virginia Walter Harrington

EDUCATION

DOVER

E 52 Players; Forum III; Y. W. C. A. III; Cast of "Death Takes a Holiday," "The Doll's House," "The Importance of Being Earnest," "Royal Family"; Production Staffs of Plays II, III.

People look at Ginny a second time—not only because she has pretty features and beautiful coloring, but because she has a natural sophistication, and a graceful dignity, obvious in even the tilt of her head. We have quite a soft spot in our heart for Ginny because she is sweet and lovable, and because she is always ready to be friendly and kind. Her impersonations always amuse us—especially those of "Betty Loop" and Maurice Chevalier. Let come what may, Ginny remains calm and poised, with a consistently optimistic, pleasant temperament.





Elizabeth Seeds Hickman

ARTS AND SCIENCE

WILMINGTON

Class Secretary II, III; Chairman of Libraries I, II; Glee Club Accompanist I; French Club I, II, III; Photography Editor Blue and Gold III; Y. W. C. A. Treasurer II; Competitive Play I; Business Staff of "Cradle Song."

Libby does a lot of things well. She has astounded us with her skill at knitting, and her faculty of picking up a stitch six or eight rows back. Not only does she do her work, but she usually knows the assignment for "next time." She has time to work in the library too. In fact, she aspires to be a librarian some day. She does her hair well—sleek, with a low knot. She plays the piano better than well, and she amuses herself by taking pictures for the year book.

Mary Ruth Hitchens

ARTS AND SCIENCE

MILFORD

Glee Club I, II; French Club I; Outing Club I; Basketball I, II, III; Soccer III; Forum III.

Ruth is a comely, calm looking young person—so calm, in fact, that you'd never suspect what an imp she really is, full of mischief and fun. She is full of laughter, gaiety, and wit—to the never-failing amusement of her friends, which are far from few in number. For she has a genius for friendship; this warm-hearted, generous girl draws liking and affection to her wherever she goes, merely by being her placid, happy-go-lucky self.

But we do not mean to insinuate that she does not work—far from it, since her mind is as quick as her tongue. If you want to know anything about chemistry, find Ruth, who is a wizard when it comes to writing formulæ and solving equations. Although she is not likely to overwork herself, yet she has a keen, clear mind which makes her hours of study, no matter how few, highly profitable.





Ethel Mary Hobson

HOME ECONOMICS

NEWARK

Home Economics Club I, II, III.

You remember the old proverb, "As fine as fivepence, as neat as ninepence"? Well, that proverb reminds us of Ethel, for she is the very soul of neatness, and she is lovely, sympathetic, and sweet. While most of us go about with skirts awry and hair looking like Irish moss, Ethel looks as if her dresses had just paid a visit to the ironing board. Her hair lies in a soft yellow knot at the nape of her neck, with never a strand out of place. There is an air of placidity about Ethel that few people attain, and a calm, mild attitude toward things that leads her to be forever poised and undisturbed. Ethel appeals to us as a girl who is altogether charming and altogether sweet.

Louise Gibson Hutchison

ARTS AND SCIENCE

NEWARK

E 52 Players; Sophomore-Senior Luncheon Committee II; Junior Prom Committee; Production Staffs of Plays II, III; Advertising Staff of Blue and Gold III.

Louise is the black-haired girl who is always wearing a beret. She wears her berets rather smartly, too, for she is an athletic-looking person with a vigorous walk, and a disposition to be active. But she's not really a "hefty" athlete, but a very feminine girl, her secret passion being bridge games, and not hockey fields. She is socially minded, and likes to be with people and dance. And she is the very best property-getter in the whole college. She seems to be able to tell by looking at people that they have that orange tray with the blue handles, she needs for the second act, or a turkey red table cover with white fringe, for the first scene. Which makes her a valuable person, indeed. The fact is, we should feel lost without her.





Marylee Straughn Jones

ARTS AND SCIENCE

DELMAR

Social Committee III; Treasurer Junior Class III; Vice-President Outing Club II; Junior Prom Committee III; Swimming I; Baseball I; Y. W. C. A. Supper Club I; Athletic Association I, II, III.

Marylee is one of the girls whom everyone knows and everyone appreciates. She does more quiet work for her class than anyone will ever know about because she is so modest and self-effacing about it. She is efficient, practical, and industrious—a good combination for a class officer, and Marylee is a good officer. The girls think she is just about the salt of the earth, and they are probably right at that, for she is all-around—friendly, socially inclined, studious, sportsmanlike, and athletic. She is a loyal friend and a gay one, never speaking a cross word; and above all, she is honest to the backbone.

But in spite of being a public character, so to speak, she is an independent thinker and one who keeps her thoughts to herself largely. We often wonder, therefore, what is going on behind her twinkling eyes—whether she is laughing with us or at us, or merely having a good time all to herself.

Mary Alice LaMotte

ARTS AND SCIENCE

WILMINGTON

French Club III; Hockey Club III; Glee Club III.

Mary Alice is a transfer from Wheaton College, but two days after her arrival, one could not have guessed it, so well did she fit into Delaware life and ways. Meanna, as her best friends affectionately call her, is tall, with smooth hair, and quiet poised dignity. She is a good student and spends many hours at the library, but she takes numerous vacations too, especially over week-ends. Her ability as a hockey and baseball player is well known. She goes to all the dances and is generally—good fun!





Helen Layton

ARTS AND SCIENCE

PHILADELPHIA, PENNSYLVANIA

Hockey I, II, III; Track I, Class Manager I; Glee Club I, II; Chairman Junior Prom Committee III; Cast of "Remote Control"; Social Committee II, III; May Court III.

When we were newcomers, we had a difficult time during Freshman Week in seeming to belong. That is, all of us but Helen had a difficult time. She is a little younger than the average, yet she is unusually poised and gracious. Early she became prominent at dances and in sports, and still is. We often see her in receiving lines. She is one of our best looking girls, and a bright feather in the Sigma Nu's hat.

Virginia Van Allen Lee

ARTS AND SCIENCE

WILMINGTON

Glee Club I; Art Staff Blue and Gold III; Competitive Plays I, II, III; Cast of "Remote Control"; E 52 Players; Y. W. C. A.

Ginny is another of our Art majors, and we might say that she excels in "applied" art, for she always looks beautifully turned out. We think her hair a gorgeous color, and we like its lustre. We turn fairly green with envy when we behold her smooth, creamy complexion. Ginny is a good dancer, and she loves to apply her ability along that line too. In fact, she never thinks twice of studying when she hears a good orchestra on the radio. Her voice is lovely and she sings beautifully. Her hobby is dramatics, and she is experienced both as an actress and as a builder of scenery.





Katherine Elizabeth Lynch

ARTS AND SCIENCE

FARMINGTON

She is small and blonde, with perfectly kept hair. She studies a great deal and is rewarded with well-deserved A's. There is no subject in the curriculum which she cannot master if she tries. Biology is her pet, and even Economics does not phase her. All this is very surprising, but we have grown used to the fact that this little blonde, feminine girl has a great store of intelligence. As an individual we find her quiet, kind, helpful, and sweet.

Katherine MacSorley

ARTS AND SCIENCE

LITTLE CREEK

Hockey I, II, III; Basketball I; Swimming I; Track I; College Manager of Track I.

It is hard to mention Kitty without mentioning Peg Parry as well. The two are usually together, and have been since Freshman days. Kitty is a bright spot on both campuses. She excels in sports, but she has an ability in art that is surprising considering her athletic tendencies. She is always smiling and always interested. Her posters and block prints always interest and please us, and we admire her excellence in hockey, swimming, baseball, and tap dancing. Kitty goes to every dance, and whatever she does is good news for the reporters of *The Review*.





Emilie Wilhelmina Maier

ARTS AND SCIENCE

WILMINGTON

Mathematics Club I, II, III; Swimming I, II.

"Emmy" is the girl who smiles at everybody she meets, and who wears the nicest looking clothes this side of Japan. We know that's a slight exaggeration, but her shoes are always different from everyone else's, and her dresses are simply adorable. Emmy is another one of our famous knitters. There is something noble about people who can make themselves beautiful garments out of a few yards of yarn and two needles. And Emily plies her needles well. She is a cheerful companion, and she and Bart Stanton are inseparable friends. It is no wonder Bart thinks a lot of Emmy—we all do—she's a "swell" girl!

Elizabeth Marie Manchester

ARTS AND SCIENCE

WILMINGTON

Vice-President Class III; Business Manager of Blue and Gold III; French Club II, III; Basketball, Class Manager II; Baseball II; Hockey II, III; Production Staffs of Plays II, III; E S 2 Players; Puppets.

Betty is a sure cure for the blues. Her remedy consists of two twinkling brown eyes, a spontaneous giggle, a riotous sense of humor, and an abundance of pep. Because of her vivacious and sparkling personality, she is the life of any party. One of her chief interests is dramatics. Whenever a play is produced, Betty is on hand to do the make-up. We would not hesitate to wager that she has trimmed more beards than the most popular barber in New York City. One exceptionally nice thing about Betty is that she does not hesitate to offer her capable services when they are needed. She steps right in and lends a hand. She is generous and kind, and in addition to all her other qualities, she is a good student.





Jean Elizabeth Mason

ARTS AND SCIENCE

WILMINGTON

Press Club II, III; Poetry Editor of Pambo II, III.

Jean is a student, and a jolly one. Her prose and poetry have often been the strongest prop to a staggering *Pambo*. She has a talent for writing funny tales that just verge on pathos. She has more than a talent for modern verse with a bitter, serious note in it. More important is Jean the Person. Commuters know her best as the girl with the caustic wit and the clear head. Neither a romanticist nor a realist, she seems to view life in an orderly fashion. For Jean, too, we prophesy an exciting future.

Vera Patricia McCall

ARTS AND SCIENCE

WILMINGTON

Swimming I, II; May Court I, II, III; E 52 Players; Home Economics Club II; Cast of "Ivory Door," "The Statue," "Cradle Song," "Autumn Crocus," "A Murder Has Been Arranged," "Remote Control," "Royal Family"; Competitive Plays I, II, III; Production Staff of Plays III; Puppets.

Dashaway, flying Vera—she never has any time to study, to go to classes, or to take tests, but she has an interminable amount of time to go up town, to sparkle around the campus, and to lend herself to a comrade in distress. She's a great little sport with whom to go places, and she's always ready to go, always pepped up and full of spirits. And she has the most vivacious and expressive features on two campuses—as most of the other campus seems to have discovered long ago. We will all remember her best for her performances in Mitchell Hall, "Autumn Crocus" and "Royal Family" being the highlights of her career. She gives the most of her time to dramatics and dancing, and with good reason, too. Who can forget her gypsy dance in the 1933 May Court?—it was one of the brightest spots in the whole thing. Anyway, May Court simply would not be a court without Vera's graceful presence and delightful smile.





Frances Louise McGee

EDUCATION

LLANERCH, PENNSYLVANIA

Class President I, II, III; Cast of "Ivory Door," "The Statue," "A Murder Has Been Arranged" II; Competitive Plays II; Glee Club I, II, III; A. A. Council I; Y. W. C. A. Cabinet I, III; Social Committee III; May Court I, II, III; Volley Ball I, II, III; Hockey I, II, III; Soccer I, II, III; Basketball I, II, III; Baseball I, II, III; Blue and Gold Staff III; May Day Committee I; Assistant Head of Dining Hall III.

The golden-haired princess of fairy tale fame would turn green with envy if she ever met Fran, for Fran would make all the Rapunzels and Guineveres in the world look like orphan Annies. And who ever heard of a story book princess who played hockey anyway, or who presided over a class of college girls? Fran constantly amazes us with her extraordinary social sense. She always knows how to do and say the right thing. Her kindness and consideration for others is beautifully genuine and sincere—there is not a girl on campus but feels that Fran has a personal interest in her. And she does, for Fran loves people. She opens her arms and takes the whole world in. How she finds time to be so consistently charming is more than we can understand, for she participates in everything from Y. W. C. A. to receiving lines. We can't think of words of our own to describe her, so we choose some of Milton's which describe her perfectly:

"Love, sweetness, goodness, in her person shined."

Mary Smith Morris

ARTS AND SCIENCE

WILMINGTON

Mary came to us from Vassar. We soon learned that she was a good math student and an excellent bridge player. She is quite a valuable addition to the commuters' ranks because of her stylish clothes and her ready laugh. She requires a great deal of her friends, being an idealistic person, so that it is indeed a compliment if she sincerely likes you.





Elinor Bowman Mousley

ARTS AND SCIENCE

WILMINGTON

Elinor is the girl with the lovely auburn hair and the individual coiffure. We admire her, because as long as we have known her, she has never worn her hair quite like any one else. She arranges it according to the present mode, but it always manages to express her personality. She is an observant person, rather reserved at times. Whatever her task, a game of hockey, or a frog to dissect in the biology laboratory, she tackles it with a quiet interest that accomplishes much. She gives people the feeling that she may one day do something infinitely daring and surprising.

Rose Carolina Panariello

EDUCATION

WILMINGTON

Rosie is a friend of ours. And to Rosie friendship has the old classical meaning. Vera, for instance, is one of Rosie's friends, and Vera always will be. Lucky Vera. Rosie is small, with bright black eyes, and a smiling mouth. Life, to her, might be one long vacation under sunny southern skies. She is an Art major who is not very fond of English, who insists her name be pronounced correctly, and who is always in love, every other day with a different man.





Anna Margaret Parry

EDUCATION

DOVER

Hockey I, II, III, Class Manager I; Soccer I, II, III, College Manager III; Basketball I, II, III, Captain I; Swimming I, II; Baseball I, II; Track I; Secretary-Treasurer of Outing Club II; Cast of "Ivory Door."

If you see a little brunette dashing across campus in a big hurry to do something for someone else, or finding the person who's wanted on the telephone, it's sure to be Peg. She always goes out of her way to help people, for she is interested in others. She is active in all sports both as a participant (for she is a good athlete) and as a spectator. In spite of her social activities (Peg has a good time), she is conscientious in her work. One seldom finds her unoccupied. Incidentally, Peg is a good cook. We're wishing great success for this little "go-getter" in the teaching profession.

Viola Evelyn Phillips

HOME ECONOMICS

HICKORY, PENNSYLVANIA

Soccer II; Volley Ball I, II, III, College Manager II, Class Manager III; Basketball I, II, III, Captain II; Hockey III; Home Economics Club I, II, III, Secretary III; Cast of "Remote Control," "A Doll's House"; Production Staff of Plays III; Glee Club I, II, III.

Viola is neat, well dressed and efficient. Those seem like enough good qualities for one girl. However, she is dependable, athletic, and a graceful dancer. No matter where you go, you meet Viola, for she is one of the most active, interested, and popular girls in the Junior class. It didn't take the other campus long to discover that she was a good sport, and her popularity can be easily estimated by observing the number of dances she attends. Viola is also a favorite with her professors. What more could any man want?





Helen Regina Pohl

ARTS AND SCIENCE

HAVRE DE GRACE, MARYLAND

Mathematics Club I; French Club I, II; Forum I, II, III; Senior-Sophomore Luncheon Committee II; Press Club I; Outing Club I, II; Radio Committee III.

*"But oh! she dances such a way—
No sun upon an Easter day
Is half so fine a sight!"*

We felt that we might indulge in another quotation, when we came to Helen, because we remembered that this one fits her so well. She is a History major, and a math student, but she has dancing feet. When the radio is on in the Hilarium, she is there, but in the classroom she is the ideal student. Indeed, we always think of her when we consider the list of potential Phi Kappa Phi's. Helen is good at almost any academic subject, she's good at bridge, and she's fun to know:

Evelyn Roe

ARTS AND SCIENCE

PORT DEPOSIT, MARYLAND

It was last year that Evelyn came to us from Washington College. She came with her charmingly sweet smile and her dainty manner, and we at once took her to our hearts. She is a quiet unassuming girl—that is, until she goes to Latin class. There she is one of Dr. Conover's star pupils. She always has an air of understanding what the professor is talking about, and what's more, the grades she has collected indicate that she really does. The class of 1935 is proud of it's courageous Latin major!





Hazel Caroline Scotton

ARTS AND SCIENCE

EASTON, MARYLAND

Hockey I; Soccer I; Volley Ball I, II; Production Staff of Competitive Play I; "Bird in Hand"; Outing Club I, II, III; Forum I, II, III; Glee Club I, II, III; French Club I, II; Cast of "Remote Control."

Hazel is an interesting combination of the serious and the gay. One moment finds her discussing religion, her philosophy of life, or studying Latin, and the next, happily chatting, dancing, or singing the praises of a new dance orchestra. Hazel is interested in others, and is the possessor of an abundant supply of sympathy, understanding, and good sense. She enjoys life as it comes, and goes along "oblivious of what the neighbors think." Her interest in others, her ability to make friends quickly, her good sportsmanship, and pleasant, tactful ways have made her popular at both ends of the campus.

Harriet Clara Seely

ARTS AND SCIENCE

GREENWOOD

Vice-President Athletic Association III; May Day Committee III; Mathematics Club I; Soccer II, III, Class Manager II, III; Hockey I, II, III; Basketball I, III, Class Manager III; Baseball I, II, College Manager II; Outing Club I, II, III, President III; Volley Ball I, II, III; Archery II, III; Track I.

Harriet is one of those well rounded girls who fits in anywhere. She is very athletic (being incidentally, one of our few Physical Education majors). Well combined with this interest is her genius for Mathematics and Sciences. Harriet takes her work seriously, but she is full of fun and is always ready for a good time. She is a good dancer and is constantly in Sussex Common Room as a leader. She is one of those people of whom you can truthfully say "she'll do anything for you." Harriet is willing to sacrifice her own interests at any time to help a troubled friend. She is kind, whole hearted and sincere, with just enough reserve to lend her a pleasing dignity and an interesting personality.





Marjorie Armerling Slider

ARTS AND SCIENCE

LANGHORNE, PENNSYLVANIA

Press Club I, II, III; Class Song Leader I, II, III, Assistant College Song Leader III; Glee Club I, Accompanist II; Orchestra I; String Quintet II, III; French Club I, Secretary-Treasurer II; Literary Editor Blue and Gold III; Competitive Plays I, II; Dramatic Board III; Dean Edward Laurence Smith Memorial Prize I; Cast of "Cradle Song," "Remote Control," "A Murder Has Been Arranged"; Production Staffs of Plays II, III; Puppets.

Our Marge is a jack-of-all-trades, and also master of quite a few. Her spontaneous, uproariously funny imitations on one side; on another, her seriously motivated piano study; on still another, her undeniable talent with her pen. Clever, but far from a bookworm; moody, but highly capable, this young woman is something of a paradox. You can laugh with her, you can accompany her day after day to Pop's, you can enjoy her midnight feasts, you can talk to her as one can talk only to a warm hearted and sympathetic friend. And you can wonder eternally where she gets the time to do all these things, and still study, and take piano, and write for *Pambo*, and act in plays, but she finds time nevertheless. The only way to describe her is to exclaim, "*Quelle femme!*"

Martha Stanton

ARTS AND SCIENCE

WILMINGTON

Vice-President Class II; Secretary Student Council III; Treasurer A. A. Council II; May Day Committee II; Hockey I, II, III; Soccer I, II, III; Swimming I, II, III, Manager II, III; Circulation Manager Blue and Gold III.

Exotic is the word that describes Bart. Her straight brown hair and dark skin combine to make an unusual appearance that matches her unusual personality. Not that Bart's personality is exotic. Far from it. There is nothing of the snake charmer or the bathed-in-oriental-perfume-woman about her. She is what is commonly known in America as a "pal." Possessing a rare ability to get along with people, and a straightforwardness unusual in most women, she is a valued friend. Being on the Student Council did not cause a decrease in her list of friends. Rather, one more year in college served only to add many more. Bart is the kind of a girl you'd trust with your diamond bracelet, your last bar of chocolate, or your best boy friend. She's a square shooter. She has a passion for fig newtons, sports, and chemistry, and we don't know in what order to name them.





Mildred Mae Steele

HOME ECONOMICS

NEWARK

Glee Club I, II, III; Home Economics Club II, III.

Mil tells the best jokes in the commuters' room. She's a friendly sort of girl, always dancing or singing or laughing. Lessons are semi-serious to her. In fact, Mil just about strikes a happy medium in everything she does. The "Home Eckers" are glad she's a "Home Ec."

Miriam Elizabeth Swayze

ARTS AND SCIENCE

WILMINGTON

Competitive Play II.

Did you ever see a commuter knitting—well we did. It's Mim. And can she knit—whoie! All day long her needles and her tongue clack in time together—the result is she has knitted innumerable suits and dresses and also told innumerable tall stories. By the way, she can knit and read at the same time, an accomplishment invaluable to anyone who has to go to classes as an incidental accompaniment to knitting.

She has a smile for one and all, and a hello for everyone from Pop to Viola. She can talk on any subject at all—something which makes her in demand whenever one or more gather round for a talk fest. She's tolerant, good humored, quick on the uptake, and ready for most anything.

She can tell you the grandest tales with the straightest face you'd ever want to see—and do we all fall for them! Well, try it on yourself when you ask her to tell you about the time she visited the nudist colony at Olympia (very respectable, of course).





Esther Vitelia Topkis

ARTS AND SCIENCE

WILMINGTON

Esther, who came to us last year from Hood, has made a name for herself in scholarship. She is gifted with a clear, unbiased, analytical mind of which any girl would be envious. When Esther speaks, everyone listens, for they know that something worthwhile is going to be said. One feels her keenness, her understanding, and her poise. However, Esther is far from being a sophisticated intellectual—a girl with such pretty brown eyes couldn't be. She is clever, witty, and full of fun—her sense of humor and pleasant tactful ways never fail her. Her eyes always shine with friendship and good will, and her face always wears a pleasant smile.

Elinor Townsend

ARTS AND SCIENCE

NEWARK

Freshman Formal Committee; Junior Prom Committee; May Court I, II.

Behold the blonde beauty with the sun tanned skin! Elinor forever dazzles us with her unusual loveliness. It is not without reason that we have chosen her year after year to be in the May Court. It is not an exaggeration to say that she is one of the most striking girls who ever graced the Women's College campus. Then, too, Elinor has many social graces. She is popular, and it is no wonder, for she is at ease wherever she goes, she knows her way around, and she is a good dancer. And in addition, she plays the piano well—not using music the way most people do, but playing rhythmical jazz by ear. Now she has left us to grace a household as Mrs. Donald Welles.





Mary Catherine Vinyard

ARTS AND SCIENCE

MILFORD

French Club I; Freshman Formal Committee I; Press Club III; Blue and Gold Staff.

The first word to meet the mind when Mary meets the eye is—artistic. And no wonder, for when Mary's neat hair and pretty features are combined with her flair for colors the effect is—artistic. She is an Art major of ability, and no one would say that she does not take her work seriously—not in the face of that A in Bible! But she's not a grind—oh dear, no! She loves pleasure, excitement, dancing, and doing things—but always with perfect reserve and dignity. She is a social light of importance and keeps up with everything that's bruited about—yet always remains calm, cool, collected, and supremely tactful. One usually finds Mary in a characteristic smock either fingerwaving (for it is she who keeps the girls well groomed), working on some beautiful work of art, or walking up to town in a tastefully chosen outfit.

Kathryn Wilson Walker

ARTS AND SCIENCE

CATONSVILLE, MARYLAND

Press Club I, II; Competitive Play III; Dean Edward Laurence Smith Memorial Prize I; Freshman English Prize I; Blue and Gold Staff III; Cast of "Autumn Crocus" III; Forum III.

Tall and distinguished-looking with brown eyes, and smart clothes—this is the physical Wilson. It is not easy to describe the rest of her—her hearty contagious laugh, her (sometimes unhappy) impetuosity, her quick changes of mood, her generosity, her absentmindedness. Wilson has the power of selection—of being able to see the main point of a thing whether it be of an idea, of a book, of a person. It is perhaps that quality that makes her a sincere and frank friend (at times too frank, we fear), and that makes her appeal to many different kinds of people.





Pauline Elizabeth Meldin

EDUCATION

WILMINGTON

Glee Club I, II, Business Manager II; Mathematics Club I, II, III, Vice-President III; Y. W. C. A. Secretary III.

The happiness of many a girl depends on Polly, for she is our postmistress, and what bedlam would arise if she got our letters mixed! But she never does because she is dependable, efficient, and accurate. May her interest in math be a witness to this! She has beautiful red hair and the cream-and-rose complexion that only lucky golden-red haired girls can have. Furthermore, she wears a perpetual smile, and it is a joy to buy stamps and postcards from her. She never minds weighing letters for you, either. In fact, she is always glad to go out of her way to help any fellow student in distress. Polly has done some outstanding work in the Y. W. C. A., and she is one of our most treasured classmates.

Elizabeth Wood Mills

ARTS AND SCIENCE

NEWARK

Glee Club I, II, III; Production Staff of Plays I; President Press Club III; Editor of *Pambo* III.

She has accomplished more than any one person we ever knew. Mrs. Mills manages a home, performs all the duties of a minister's wife, is Editor of *Pambo*, and a good student. We remember being much impressed when she first appeared during "schedule making" at the close of Freshman Week. She was wearing pearl earrings, and she had more poise than all the rest of us put together. Then we heard her sing in the Glee Club and were charmed by her mellow contralto voice. She continually surprises us with the amount of work she manages to get done. She is a cheerful young person, and we like her.



Sophomore Class



Miss Amy Rextrew

Class Officers

ALICE BREME.....	<i>President</i>
VIRGINIA WILSON.....	<i>Vice-President</i>
MARGARET JAMES.....	<i>Secretary</i>
HELEN DUTTER.....	<i>Treasurer</i>



Alice Breme

Portrait of a Sophomore Talking to Herself

SO this is college. A dignified upperclassman meeting us at the door, smiling, glad to help us in this labyrinth . . . a dizzy whirl of lectures during the day, and parties in the evening . . . all of us sticking close to the friend we knew back home, making new friends slowly . . . and then when all the upperclassmen come back we seek out the faces remembered from that first week . . . that's how classes are born.

Then there's the awful suspense about insignia . . . will it be celluloid ears or something worse? NO . . . it's green hair ribbons presented after stunt night . . . who will forget it? A grand imitation of "Grand Hotel" . . . Arlene Wagner as Garbo . . . Charlotte Stout as Joan Crawford . . . then a period of sneaking furtively across campus . . . of marching as boldly as possible uptown with that hair ribbon almost burning your head . . . and finally the party that frees is of all things . . . this is the night when Margaret James recites the poem about the bass, and Queen Crossan the poem about Mary's lamb . . . our class captain is Dorothy Ross . . . sub-captain Marty Broad . . . we settle down to holding doors and answering phones . . . Marguerite Heiss is selected for the student board representative . . . we are suddenly aware that we are expected to produce a play for the competitives . . . Mary McCullough is in charge . . . the play is "Morley's Rehearsal"; and, as a result of our efforts, it receives honorable mention . . . remember the way Jean Wood as the old Irishman smoked a Pipe? We win the basketball championship, but our ego is deflated when we are

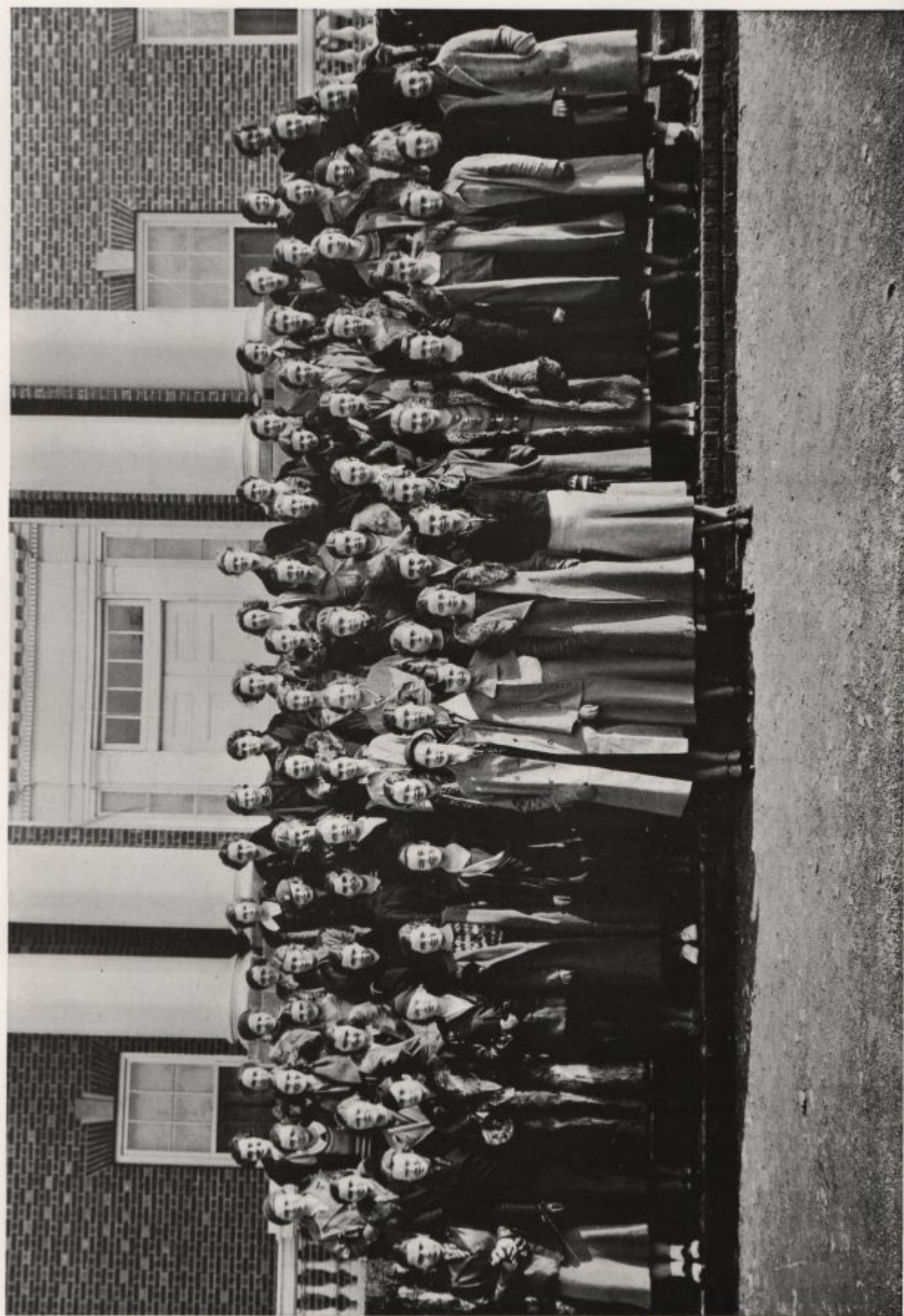
told that "freshman always win it" . . . Dorothy Ross becomes class president . . . Miss Rextrew is elected class advisor.

And then the Formal . . . Mary Louise Wolfenden manages it very well . . . everybody has a grand time except perhaps the treasurer who has trouble counting seventy-five dollars in one dollar bills . . . Virginia Wilson is our duchess in the May Court . . . her attendants are Elinor Clay and Peg Waples . . . May Day finds us running around in fantastic costumes and still more fantastic powder and paint . . . we write an elaborate song to the tune of "Neapolitan Nights" for the song contest . . . and then they call the whole thing off and where are we? Spring on the campus is unexpectedly lovely . . . the Juniors give us a picnic at Charles-town . . . the first sunburn of the season and plenty of hot dogs and rolls . . . we give a tea to the seniors of Wilmington High School . . . like veterans we show them the campus . . . now we're grown up . . . we're nearly Sophs.

Then suddenly we are Sophomores . . . Dorothy Ross as treasurer of the Student Council begs the whole school with tears in her eyes to pay their five dollars . . . Alice Breme as class president runs around trying to please everybody and is greatly agitated when she can't . . . right away we start agitating about insignia . . . stunt night this year we make into a miniature country fair . . . Helen Stelle sells everybody patent medicines, and Muriel Ridgeway lurches drunkenly everywhere . . . good sports, those freshmen . . . and so we present them with horn-rimmed spectacles—minus the glass, of course . . . the success of Founders' Day depends on us . . . at the last minute we have to dash uptown for yellow crepe paper and then make the ribbons out of it . . . everybody says the tea was a great success . . . then after Thanksgiving we give the freshmen a tea party in honor of the removal of their insignia . . . we win the soccer championship . . . and then, after some discussion on the part of the athletic council, we get the championship in volley ball . . . we go to Miss Robinson with the plea that "every class has fun but the Sophs, and we want a dance" . . . we talk it over and decide to give a Christmas play in the Hilarium and then give a tea dance the second semester . . . "Mimi Lights the Candle" is the play . . . Alice Pepper as Mimi blossoms into an actress, as does Gertrude Rosenberg . . . before Christmas vacation we go caroling on the campus . . . we come back to New Castle for cocoa and find that the cooks, Marguerite Heiss and Jean Wood, have had trouble . . . the bottom of the pan leaked, and the cocoa burned . . . and we drink it though.

The thrill of our first Junior Prom . . . and how important we feel when the Juniors say they depend on us to support it . . . next year it will be ours . . . Jane Yost turns director in the competitives, and Peg Waples proves herself an interesting gypsy . . . "Their Husband" is the play . . . Virginia Wilson is once more our duchess in the May Court . . . this time her attendants are Anne Roberson and Hazel Darrell . . . then the tea dance in the Hilarium with Alice Palmer in charge . . . a good orchestra, and a bar with bar-maids to serve the punch and pretzels . . . everyone highly pleased with it . . . maybe we've started another good old custom.

The Senior-Sophomore luncheon is our really big undertaking . . . Deborah Plummer in charge . . . we plan for a big day at Strath Haven Inn . . . a good menu and plenty of indoor and outdoor sports . . . with it behind us we can concentrate on becoming Juniors.



Sophomore Class Roll

ABLEMAN, MARION SYLVIA	<i>Arts and Science</i>	Georgetown, Del.
<i>"A merry heart maketh a cheerful countenance."</i>		
ADAMS, ISABELLE HORSEY	<i>Arts and Science</i>	Wilmington, Del.
<i>"In her alone 'twas natural to please."</i>		
ANTOINE, GAIL MARIE	<i>Arts and Science</i>	Wilmington, Del.
<i>"And French she spak ful faire and fetisly."</i>		
ASHBRIDGE, ISABELLE MACQUEEN	<i>Home Economics</i>	Newark, Del.
<i>"The time has come," the Walrus said, To talk of many things."</i>		
BALDT, MARIANNE HARRISON	<i>Arts and Science</i>	Wilmington, Del.
<i>"A merry heart goes all the day."</i>		
BARLOW, ELEANOR SELINA	<i>Arts and Science</i>	Wilmington, Del.
<i>"Thou art all beauty, or all blindness I."</i>		
BREME, ALICE ANNA	<i>Arts and Science</i>	Milford, Del.
<i>"True ease in writing comes from art, not chance."</i>		
BUNSTEIN, ELEANOR LEVAN	<i>Arts and Science</i>	Milford, Del.
<i>"Gentleness of speech and manners."</i>		
CAIRNS, MARY SNOWDEN	<i>Arts and Science</i>	Fort Du Pont, Del.
<i>"The silver waves of thy sweet singing."</i>		
CAMPBELL, MARGARET IRENE	<i>Arts and Science</i>	Wilmington, Del.
<i>"She's boyish and slim, with startlingly lovely violet eyes."</i>		
CANTWELL, NANCY	<i>Home Economics</i>	North East, Md.
<i>"The red-gold cataract of her hair."</i>		
CLAY, ELINOR ADA	<i>Education</i>	Elkton, Md.
<i>"Grace was in all her steps! Heaven in her eye!"</i>		
COOK, MARGARET IMOGENE	<i>Home Economics</i>	Montclair, N. J.
<i>"Fashioned so slenderly, Young and so fair!"</i>		

COOPER, MILDRED LEWIS	<i>Arts and Science</i>	Wilmington, Del.
<i>"You're my friend— What a thing friendship is, world without end!"</i>		
CROSSAN, MARY STEPHENS	<i>Home Economics</i>	Wilmington, Del.
<i>"She moves a goddess, and she looks a queen."</i>		
DANNER, VIRGINIA ANN	<i>Arts and Science</i>	Williamson School, Pa.
<i>"Sky among strangers, but jolly among her friends!"</i>		
DARRELL, HAZEL HILDRED	<i>Home Economics</i>	Newark, Del.
<i>"Still to be neat, still to be drest."</i>		
DEAKYNE, MARY ELIZABETH	<i>Home Economics</i>	Minquadale, Del.
<i>"Modesty cannot be taught; It may be born."</i>		
DE BARTOLOMEIS, JOSEPHINE	<i>Arts and Science</i>	Wilmington, Del.
<i>"Eat, drink, and be merry."</i>		
DENNEY, MARIAN CHRISTINE	<i>Home Economics</i>	Wilmington, Del.
<i>"When she is here, I sigh with pleasure— When she is gone, I sigh with grief."</i>		
DONOVAN, GRACE VIRGINIA	<i>Education</i>	Townsend, Del
<i>"Barkis is willin'."</i>		
DUTTER, HELEN MARIE	<i>Arts and Science</i>	Wilmington, Del.
<i>"Studies serve for delight, for ornament, and for ability."</i>		
DWORKIN, ROSE COHEN	<i>Arts and Science</i>	Wilmington, Del.
<i>"In quietness and in confidence shall be thy strength."</i>		
FORD, ADELAIDE AMANDA	<i>Arts and Science</i>	New Castle, Del.
<i>"A fervent and diligent woman is prepared for all things."</i>		
GEORGE, DORIS ISABEL	<i>Home Economics</i>	Elkton, Md.
<i>"It's guid to be merry and wise, It's guid to be honest and true."</i>		
HALSEY, ELEANOR ROSE	<i>Home Economics</i>	West Grove, Pa.
<i>"Age I do abhor thee; Youth, I do adore thee."</i>		

HARRINGTON, DORIS ELIZABETH	<i>Home Economics</i>	Harrington, Del.
<i>"If there is any kindness, or any good thing I can do to my fellow beings, let me do it now."</i>		
HEALY, ANN MARIE	<i>Arts and Science</i>	Mt. Cuba, Del.
<i>"Let it be no light care to cultivate the mind with the honorable arts; and to learn well the two languages Greek and Latin."</i>		
HEISS, MARGUERITE WILHELMINA	<i>Arts and Science</i>	Wilmington, Del.
<i>"A master-passion is the love of news."</i>		
HELLEN, LOUISA ANN	<i>Arts and Science</i>	Richardson Park, Del.
<i>"Peace is the most profitable of things."</i>		
HENRY, KATHLEEN AGNES	<i>Education</i>	Wilmington, Del.
<i>"And wit that loved to play, not wound."</i>		
HITCHENS, LEONA PAYNTER	<i>Education</i>	Newark, Del.
<i>"A diligent scholar, and the master's paid."</i>		
HOLLINGSWORTH, VIRGINIA PEACHES	<i>Home Economics</i>	Selbyville, Del.
<i>"Let the world slide, let the world go; A fig for care, and a fig for woe!"</i>		
HOWARD, MARTHA	<i>Home Economics</i>	Claymont, Del.
<i>"Silence that spoke, and eloquence of eyes."</i>		
JAMES, MARGARET ELIZABETH	<i>Arts and Science</i>	Seaford, Del.
<i>"As sweet and musical As bright Apollo's lute, strung with his hair."</i>		
JENSON, MARYA MADELINE	<i>Arts and Science</i>	Wilmington, Del.
<i>"There are two sides to every question—the wrong side and our side."</i>		
KELSO, ROSEMARY	<i>Arts and Science</i>	Wilmington, Del.
<i>"Hard are those questions;—answer harder still."</i>		
KING, MARIAN ELIZABETH	<i>Arts and Science</i>	Wilmington, Del.
<i>"Always at it wins the day."</i>		
KNOX, MARGARET ELLEN	<i>Arts and Science</i>	Wilmington, Del.
<i>"And her dark eyes—how eloquent!"</i>		
MASEMORE, MARY ELLEN	<i>Home Economics</i>	Elkton, Md.
<i>"Men are not to be measured by inches."</i>		

MASON, MARTHA BELL	<i>Arts and Science</i>	Naaman's, Del.
<i>"Sweetness of disposition charms the soul."</i>		
MATHIS, MARTHA JANE	<i>Home Economics</i>	Milton, Del.
<i>"'Tis in my memory locked."</i>		
MCCULLOUGH, MARY ELIZABETH	<i>Arts and Science</i>	Brooklyn, N. Y.
<i>"She is the poet of the dawn."</i>		
MEALEY, MARGARET VERONICA	<i>Education</i>	Wilmington, Del.
<i>"When Irish eyes are smiling."</i>		
MERRITT, JANE BENNUM	<i>Arts and Science</i>	Easton, Md.
<i>"Honour a physician with the honour due unto her."</i>		
MOELLER, MARIE ANNE	<i>Home Economics</i>	Newport, Del.
<i>"She can cook and sew a fine seam."</i>		
MURPHY, ROSE MARY	<i>Arts and Science</i>	Wilmington, Del.
<i>"In all thy humors, whether grave or mellow, Thou'rt such a wholesome, hearty, pleasant classmate."</i>		
MURRAY, ELEANOR	<i>Arts and Science</i>	Marshallton, Del.
<i>"Happy am I, from care am free."</i>		
NIVIN, HARRIETT ALETHEA	<i>Arts and Science</i>	Newark, Del.
<i>"Health and intellect are the two blessings of life."</i>		
OWENS, RUTH BURNA	<i>Arts and Science</i>	Wilmington, Del.
<i>"Quiet persons are welcome everywhere."</i>		
PALMER, ALICE CARY	<i>Arts and Science</i>	Wilmington, Del.
<i>"There is grace in small things."</i>		
PALMER, ELLEN REED	<i>Education</i>	Washington, D. C.
<i>"The Army and Navy forever, Three cheers for the red, white, and blue."</i>		
PAPPERMAN, BEULAH WARREN	<i>Education</i>	Wilmington, Del.
<i>"To see her is to love her, And love but her forever, For Nature made her what she is, And ne'er made sic anither!"</i>		

PEPPER, ALICE CLARA	<i>Arts and Science</i>	Georgetown, Del.
<i>"I am peppered, I warrant, for this world."</i>		
PHELPS, RACHEL	<i>Arts and Science</i>	Christiana, Del.
<i>"A reasoning, self-sufficing thing, An intellectual All-in-all."</i>		
PLUMMER, DEBORAH ALLEN	<i>Home Economics</i>	Edgemoor, Del.
<i>"I find earth not grey but rosy, Heaven not grim but fair of hue."</i>		
RAMSEY, DOROTHY EDNA	<i>Arts and Science</i>	Marietta, Pa.
<i>"Serene, yet warm; humane, yet firm her mind; As little touched as any man's with bad."</i>		
ROBERSON, ANNE LOWRY	<i>Arts and Science</i>	Wilmington, Del.
<i>"The glass of fashion and the mold of form."</i>		
ROSENBERG, GERTRUDE MARIAN	<i>Education</i>	Wilmington, Del.
<i>"The flush of modesty comes quickly to her cheeks and rivals the color of her copper hair."</i>		
ROSENBERG, GLORYA	<i>Arts and Science</i>	Atlantic City, N. J.
<i>"The truly generous is the truly wise."</i>		
ROSS, DOROTHY MAY	<i>Arts and Science</i>	Newport, Del.
<i>"To smile is to win."</i>		
SEELY, ALMA ELIZA	<i>Home Economics</i>	Greenwood, Del.
<i>"Mind cannot follow it, nor words express Her infinite sweetness."</i>		
SHELLENDER, ALICE CATHERINE	<i>Arts and Science</i>	Newark, Del.
<i>"All succeeds with cheerful people."</i>		
SPENCER, MARION STEPHENS	<i>Arts and Science</i>	Newark, Del.
<i>"Music, the greatest good that mortals know, And all the heaven we have below."</i>		
STAVING, MARY MARGARET	<i>Arts and Science</i>	Wilmington, Del.
<i>"Like the dormouse Alice knew, Mary is 'very inclined to sleep through anything.'"</i>		
STOUT, CHARLOTTE MAXINE	<i>Arts and Science</i>	Bywood, Upper Darby, Pa.
<i>"That unmatched form and figure of blown youth."</i>		

SULLIVAN, JULIA CYNTHIA	<i>Education</i>	Wilmington, Del.
<i>"And, oh, the smooth dark hair!"</i>		
SUNDERLAND, DOROTHY ROBERTA	<i>Arts and Science</i>	Wilmington, Del.
<i>"Her joy, to sing, Our joy, to listen."</i>		
TOSCANI, MARY ANN	<i>Education</i>	Wilmington, Del.
<i>"No speech ever uttered or utterable, is comparable to silence."</i>		
VREELAND, ELIZABETH TRUITT	<i>Arts and Science</i>	Lincoln, Del.
<i>"If worry were the only cause for death, then I should live forever."</i>		
WAGNER, HELEN ARLENE	<i>Home Economics</i>	Wilmington, Del.
<i>"She dances like an angel—she is always laughing, for she has an infinite deal of wit."</i>		
WALLIN, VIRGINIA STANTON	<i>Education</i>	Wilmington, Del.
<i>"Just of thy word, in every thought sincere."</i>		
WAPLES, MARGARET FRANCES	<i>Arts and Science</i>	Newark, Del.
<i>"Engagingly naïve, forever young."</i>		
WATSON, RUTH MARIE	<i>Home Economics</i>	Frankford, Del.
<i>"A faithful friend is the medicine of life."</i>		
WIGGLESWORTH, ANNE ELIZABETH	<i>Arts and Science</i>	Wilmington, Del.
<i>"On bokes for to rede, I me delyte."</i>		
WILLIAMS, BLANCHE LOUISE	<i>Arts and Science</i>	Millsboro, Del.
<i>"Eager in pursuit of studies and labours."</i>		
WILSON, VIRGINIA MAY	<i>Education</i>	Newark, Del.
<i>"To doubt her fairness were to want an eye, To doubt her pureness were to want a heart."</i>		
WOLFENDEN, MARY LOUISE	<i>Arts and Science</i>	Media, Pa.
<i>"Can anyone invent a diet for sprained ankles?"</i>		
WOOD, JEAN ELEANOR	<i>Home Economics</i>	Wilmington, Del.
<i>"For this is a jolly world And I must be jolly too."</i>		
YOST, ELEANOR JANE	<i>Arts and Science</i>	Philadelphia, Pa.
<i>"Muse of the many twinkling feet."</i>		

Freshman Class



Miss Harriet T. Baily

Class Officers

MARION JANE HARTSHORN.....	<i>President</i>
ELIZABETH BLADES CHILD.....	<i>Vice-President</i>
CORA HAZEL HUGHES.....	<i>Secretary</i>
KATHLEEN SPENCER.....	<i>Treasurer</i>
MISS HARRIET T. BAILEY.....	<i>Faculty Advisor</i>



Marion J. Hartshorn

Freshman Class History

WE started out as a class of "studes," but that wasn't our fault. We would have preferred to begin as a bevy of sirens or a crowd of jolly good fellows. But we were not given a choice in the matter. Our friends, the Sophomores, presented us with horn-rimmed spectacles, so students we were. It all began at a country fair in the Hilarium—or rather, in the halls of Residence, for the Hilarium was far too small to house all our freaks and side shows. Helen Stelle as a patent medicine vender, Dot Thiel as a monkey, Jean Boyd and Marge Allmond as Siamese twins—these were just a few of the wonderful and horrible impersonations we indulged in that night. And then came the goggles.

But this phase of our career was soon over, and we came up smiling. Our insignia were removed at a tea given in honor of the occasion by the Sophomore class.

Our next official entrance into public prominence came with our play, "Seven to One," directed by Mollie McNulty. It was given after the Thanksgiving dinner, and was without a doubt successful, for it lured at least three men from the other campus to our Hilarium. Virginia Boston was pleasing as the heroine, and Madeline Poinsett played a very convincing "villainess." We discovered that we had quite some dramatic ability in our class, and we glowed for a week.

The second semester began, and we found that examinations hadn't been so bad after all. At least, we had managed to survive them. We were now given the privilege of voting. We organized, and elected officers. Marion Hartshorn,

our captain of the first semester, was elected president, and Dorothy Rodman, our sub-captain, vice-president. We made Hazel Hughes secretary, and Kathleen Spencer treasurer. Emily Carr had previously been chosen Freshman representative to the Student Council.

We were struggling along in athletics, too, doing our best to win some championship or other for the class of 1937. And persistence always wins—we won the basketball championship, and were very proud of ourselves indeed.

Then came the banquet our big sisters gave in our honor. They took us to see "The Royal Family," and we loved it, and loved them for taking us.

And at last the night came when we were to have our big social event of the year—the Freshman Formal. Mary Louise Griffin, as chairman, had taken the responsibility, and to her, for the most part, goes the credit for the success of the dance. The only drawback to a perfect evening was a blizzard, and we refused to take any blame for that. The favors were bracelets or anklets, according to personal choice, and bronze keys, that matched the covers of the programs. There was quite some controversy in the class as to whether the bracelets were anklets, or the anklets were bracelets. An agreement was reached, however, when those who wanted bracelets took out the extra links and gave them to the girls who wanted anklets. All in all we had a glorious time—the best we'd had all year.

Competitive-play time drew near, and a Freshman representative was needed for the Dramatic Board. We choose Mollie McNulty, and made her director of our play as well. We didn't win—but we had a good time anyway, and we enjoyed seeing Emily Carr and Marian Price "emote" in our play. We admired, too, the ability of Katherine Rittenhouse as a character actress.

And then came May Day and with it corsages for our big sisters. We sighed and tried to imagine the time when we would be big sisters getting corsages—1937 does seem far, far away.



Freshman Class Roll

ALLEN, ANITA MIRIAM	Home Economics	Wilmington, Del.
<i>"The glittering tresses, now shaken loose, Shower'd gold."</i>		
ALLMOND, MARJORIE	Arts and Science	Wilmington, Del.
<i>"A daughter of the gods, divinely smiling, And most divinely fair."</i>		
ARTHURS, NANCY	Arts and Science	Kenton, Del.
<i>"Rare compound of oddity, frolic and fun! Who relished a joke and rejoic'd in a pun."</i>		
BENNETT, BETSY MARIA	Arts and Science	New Milford, Conn.
<i>"Made for the open spaces where men are men and women are too."</i>		
BOGASH, BEA	Arts and Science	Wilmington, Del.
<i>"A light-hearted girl whose sole worry seems to be her figure."</i>		
BOSTON, MARY VIRGINIA	Arts and Science	Wilmington, Del.
<i>"Age cannot wither nor custom stale her infinite variety."</i>		
BOYD, JEAN E.	Education	Wilmington, Del.
<i>"Who can know Jean and be unaware of those punny puns of hers?"</i>		
BOYER, GERTRUDE	Arts and Science	Wilmington, Del.
<i>"She can tell you 'strange tales that you have never dreamed of.'"</i>		
BUKAY, OLGA	Education	Wilmington, Del.
<i>"A girl whom you like at first sight and who improves on acquaintance."</i>		
CARR, EMILY HELEN	Arts and Science	West Grove, Pa.
<i>"Beauties in vain their pretty eyes may roll; Charm strikes the sight, but merit wins the soul."</i>		
CHILD, ELIZABETH B.	Arts and Science	Wilmington, Del.
<i>"That caressing and exquisite grace—never bold Ever present—which just a few women possess."</i>		
CLOUGH, ANNA M.	Arts and Science	Wilmington, Del.
<i>"A prodigious worker, and an ardent defender of one of our male professors."</i>		

- COHEN, REGINA R. *Arts and Science* Easton, Md.
*"Here's a girl who likes to be in everything and do everything—
and she does it well too."*
- CONNER, MARY *Education* Elsmere, Del.
*"I'd rather have a fool to make me merry
Than experience to make me sad."*
- DAMERON, HELEN LOUISE *Arts and Science* Newark, Del.
*"Now maybe Louise won't make the honor roll, but she gets along
all right and everybody likes her."*
- DAVIS, AUDREY M. *Arts and Science* Kenton, Del.
*"Up, up my friend and quit your books,
Or surely you'll grow double,
Up, up my friend and clear your looks,
Why all this toil and trouble?"*
- DAWSON, DOROTHY *Home Economics* Newark, Del.
"Blonde, sophisticated young thing."
- DIXON, NANCE ELIZABETH *Arts and Science* Spring City, Pa.
*"Toil and be glad! Let industry inspire
Into your quickened limbs her buoyant breath!"*
- DRAPER, GERTRUDE B. *Arts and Science* Wilmington, Del.
*"The driver of the 'Virginia Express,' known for her 'Is that so?—
so what?'"*
- ELDER, HELEN F. H. *Home Economics* Staten Island, N. Y.
"The noblest mind the best contentment has."
- ENGLISH, MILDRED D. *Home Economics* Laurel, Del.
"A sweet girl with a sweet way."
- FASSITT, MARY C. *Arts and Science* Selbyville, Del.
"Tall, slim, dark-haired girl from below Dover."
- FORD, DOROTHY *Arts and Science* Cheswold, Del.
"It's not often you find a pretty girl interested in technology."
- FRIEDEL, ANNA ROSALIE *Home Economics* Felton, Del.
*"An attractive girl with that swell combination of black curly hair
and big blue eyes."*

GILROY, MADELYN	<i>Arts and Science</i>	Claymont, Del.
<i>"And best of all along the way, Friendship and mirth."</i>		
GRAHAM, C. LOUISE	<i>Home Economics</i>	Wilmington, Del.
<i>"Oh, she was all made up of love and charm Delight of every eye."</i>		
GRAY, SARAH B.	<i>Arts and Science</i>	Frederica, Del.
<i>"She's rather distant, almost aloof, but once the ice is broken, one finds a heart of gold."</i>		
GREER, REBA F.	<i>Education</i>	New Castle, Del.
<i>"Why shouldn't a girl be unusual with a rare sense of humor and just enough red in her hair to cause comment?"</i>		
GRIFFIN, MARY LOUISE	<i>Arts and Science</i>	Fort Du Pont, Del.
<i>"A girl who's 'O. K.' and deserves her popularity."</i>		
HALL, MYRA I.	<i>Arts and Science</i>	Newark, Del.
<i>"A happy woman is a better thing to find than a hundred dollar gold piece."</i>		
HANDY, FRANCES M.	<i>Arts and Science</i>	Dover, Del.
<i>"Tall, pale, and ready to listen to a good joke."</i>		
HANLEY, RUTH R.	<i>Arts and Science</i>	Wilmington, Del.
<i>"Pretty little woman with heap big muscle."</i>		
HARTSHORN, MARION J.	<i>Home Economics</i>	Chappaqua, N. Y.
<i>"A friend to all, an enemy to none."</i>		
HEISER, M. ELIZABETH	<i>Home Economics</i>	Newark, Del.
<i>"Vivacious, talkative little Betty has a great deal under that gay exterior."</i>		
HOYT, DORIS	<i>Arts and Science</i>	Easton, Pa.
<i>"Doris, petite and blonde, does her best to live up to the old adage: The best of goods comes in small packages."</i>		
HUGHES, CLAIRE C.	<i>Arts and Science</i>	Kenton, Del.
<i>"She has always an extra smile in her pocket."</i>		
HUGHES, CORA HAZEL	<i>Arts and Science</i>	Felton, Del.
<i>"An affable, accommodating person, surprisingly feminine in her boyish way."</i>		

- | | | |
|--|-------------------------|-----------------------|
| JAMES, BERNICE E. | <i>Arts and Science</i> | Newark, Del. |
| <i>"She wears a 'coat of many colors.'"</i> | | |
| JONES, SARAH ALICE | <i>Education</i> | Delmar, Del. |
| <i>"A quietness of spirit; a gentleness of heart."</i> | | |
| KNOX, RAY ELIZABETH | <i>Arts and Science</i> | Wilmington, Del. |
| <i>"Happy art thou, as if every day thou hadst picked up a horseshoe."</i> | | |
| LAWRENCE, ALMA B. | <i>Arts and Science</i> | Clayton, Del. |
| <i>"I go, I go; look how I go,
Swifter than arrow from the Tartar's bow."</i> | | |
| LAYFIELD, MARGARET J. | <i>Arts and Science</i> | Carney's Point, N. J. |
| <i>"I count myself in nothing else so happy
As in a soul rememb'ring my good friends."</i> | | |
| MARKERT, DOROTHY ELIZABETH | <i>Education</i> | Harrington, Del. |
| <i>"With a keen mind and a lively personality, Dot's a girl who will
get somewhere in life."</i> | | |
| MATUSOFF, NINA | <i>Arts and Science</i> | Wilmington, Del. |
| <i>"Dancing feet, dancing eyes, and a face forever wreathed in dimpled smiles."</i> | | |
| McCABE, MILDRED A. | <i>Arts and Science</i> | Selbyville, Del. |
| <i>"Life's a pleasant institution
Let us take it as it comes."</i> | | |
| McGOWAN, DOROTHEA T. | <i>Education</i> | Wilmington, Del. |
| <i>"A merry heart maketh a merry countenance."</i> | | |
| McKELVEY, ELIZABETH W. | <i>Arts and Science</i> | Newark, Del. |
| <i>"We freshmen boast one 'smooth' sophisticated actress."</i> | | |
| McNULTY, MARGARET MARY | <i>Education</i> | Wilmington, Del. |
| <i>"Mollie is known by all for her beautiful voice and her Irish wit."</i> | | |
| MESSINA, LUCY K. | <i>Arts and Science</i> | Wilmington, Del. |
| <i>"A perfect mimic. Always entertaining and interesting."</i> | | |
| MINNER, RUTH A. | <i>Home Economics</i> | Middletown, Del. |
| <i>"A quiet dark fineness."</i> | | |
| MORRISON, MARGARET H. | <i>Home Economics</i> | Quarryville, Pa. |
| <i>"Peggy in her quiet way slips in where others fail to bluster through."</i> | | |

- NATHANS, FANNIE *Arts and Science* Wilmington, Del.
*"A brilliant mind and the will to work keep Fannie at the top
scholastically."*
- NEAL, ANNE LEE *Arts and Science* Hurlock, Md.
"Never an idle moment but thrifty and thoughtful of others."
- O'HARA, MARY A. *Arts and Science* Wilmington, Del.
"Friendly and cheerful to everyone; she's a real friend in need."
- O'NEILL, MARGARET J. *Education* Wilmington, Del.
*"Where am I going? I don't quite know.
What does it matter where people go?"*
- PIPPIN, DOROTHY M. *Home Economics* Wilmington, Del.
"For pep and humor seek no further."
- POINSETT, C. MADELINE *Arts and Science* Roselle, Del.
"Her 'prentice han' she tried on man—"
- PRICE, MARIAN E. *Arts and Science* West Chester, Pa.
"A girl who is fond of fun, study, and books."
- RITTENHOUSE, CATHERINE M. *Arts and Science* West Lawn, Pa.
"An every-ready smile and a sunny disposition."
- ROBINS, SELMA *Arts and Science* Wilmington, Del.
"The best story-teller you have ever met."
- SABEDRA, RITA *Arts and Science* Viola, Del.
*"Rita succeeds in everything she attempts, because she puts her
whole heart in it."*
- SCHINFELD, FRANCES A. *Arts and Science* Wilmington, Del.
*"Even modesty and artifice cannot disguise the fact that nature has
given her rosy cheeks and ears, and sometimes even a reddish nose."*
- SCOTT, ELIZABETH T. *Arts and Science* Quarryville, Pa.
"What harmony is this? My good friends hark? Marvelous sweet music."
- SHELDON, ALICE K. *Arts and Science* Newark, Del.
"Everybody knows her; everybody likes her; she's a good friend."
- SHIELDS, A. DOLORES *Arts and Science* Wilmington, Del.
"A little black haired, dark eyed, lovable miss."

SIGLER, L. JEAN	<i>Arts and Science</i>	Harrington, Del.
<i>"Jean excels in sports, but she manages to hold her own in everything else, too."</i>		
SIPPLE, ELLEN G.	<i>Arts and Science</i>	Milford, Del.
<i>"A poet could not but be gay In such jocund company."</i>		
SMITH, DORIS F.	<i>Education</i>	Newark, Del.
<i>"In small proportion we just beauties see And in short measures life may perfect be."</i>		
SMYTH, MARY EMILY	<i>Arts and Science</i>	Cape May, N. J.
<i>"Youth at the prow and pleasure at the helm."</i>		
SPENCER, KATHLEEN	<i>Arts and Science</i>	Newark, Del.
<i>"A girl so various that she seemed to be Not one, but all mankind's epitome."</i>		
SPINKEN, LILLIAN P.	<i>Arts and Science</i>	Wilmington, Del.
<i>"Whatsoever thy hand findeth to do, Do it with thy might."</i>		
STELLE, HELEN L.	<i>Home Economics</i>	Wilmington, Del.
<i>"If Helen were the shortest girl in college, she would still have the biggest heart."</i>		
STENGEL, FLORENCE K.	<i>Home Economics</i>	Newark, Del.
<i>"She who does more things than one Always finds time for fun."</i>		
STONE, BETTY M.	<i>Arts and Science</i>	Newark, Del.
<i>"Good nature and good sense are usually companions."</i>		
STRAHORN, DORIS E.	<i>Home Economics</i>	Newark, Del.
<i>"And whether coldness, pride, or virtue dignify A woman, so she's good, what does it signify?"</i>		
SWAIN, ANNA MAY	<i>Arts and Science</i>	Georgetown, Del.
<i>"A silent tongue and a true heart are the most admirable things on earth."</i>		
TANZER, REBECCA	<i>Arts and Science</i>	Wilmington, Del.
<i>"She upholds and waxes strong on bold and strange prerogatives."</i>		
THIEL, DOROTHEA E.	<i>Home Economics</i>	Wilmington, Del.
<i>"Haste thee, nymph, and bring with thee Jest and youthful jollity."</i>		

TIFFANY, E. ELIZABETH	Arts and Science	Newark, Del.
<i>"A pretty little brown eyed girl with a big heart."</i>		
TOUHEY, ANNA M.	Arts and Science	Yorklyn, Del.
<i>"The girl with the golden disposition."</i>		
TRIPPE, MARTHA HENRY	Arts and Science	Easton, Pa.
<i>"A quiet, reserved lass who endears herself to everyone with her quaint manner and speech."</i>		
TRUMBAUER, RUTH E.	Home Economics	Wyoming, Del.
<i>"It isn't hard to like her for her heart is full of laughter."</i>		
TRUMBULL, MARGARET C.	Arts and Science	Newark, Del.
<i>"She moved among us, absorbed, smiling and sure."</i>		
VERNON, ELIZABETH B.	Home Economics	Wilmington, Del.
<i>"Order is Heaven's first law."</i>		
VITIELLO, SOPHIE M.	Education	Wilmington, Del.
<i>"A quiet smile, a sympathetic nature, and a winning personality."</i>		
WAINWRIGHT, MARION E.	Home Economics	Seaford, Del.
<i>"Thy pleasant laughter, and thy smiles so bright, Thy many graces that all hearts delight."</i>		
WARD, NANCY LORRAINE	Arts and Science	Laurel, Del.
<i>"She is active, stirring all fire, Cannot rest; cannot tire."</i>		
WEBB, MILDRED	Arts and Science	Wilmington, Del.
<i>"She never worries—but she gets a report card that makes us poor 'normals' green with envy."</i>		
WEBER, JEANETTE A.	Education	Montclair, N. J.
<i>"In quietness and confidence shall be my strength."</i>		
WEBSTER, FRANCES B.	Home Economics	Lincoln University, Pa.
<i>"A wise woman is never passé."</i>		
WEST, DOROTHY E.	Home Economics	Newark, Del.
<i>"Small, blonde, young, and always ready for some 'devilment.'"</i>		
WRIGHT, ELEANOR H.	Arts and Science	Wilmington, Del.
<i>"Judge thou me by what I am. So shalt thou find me fairest."</i>		