



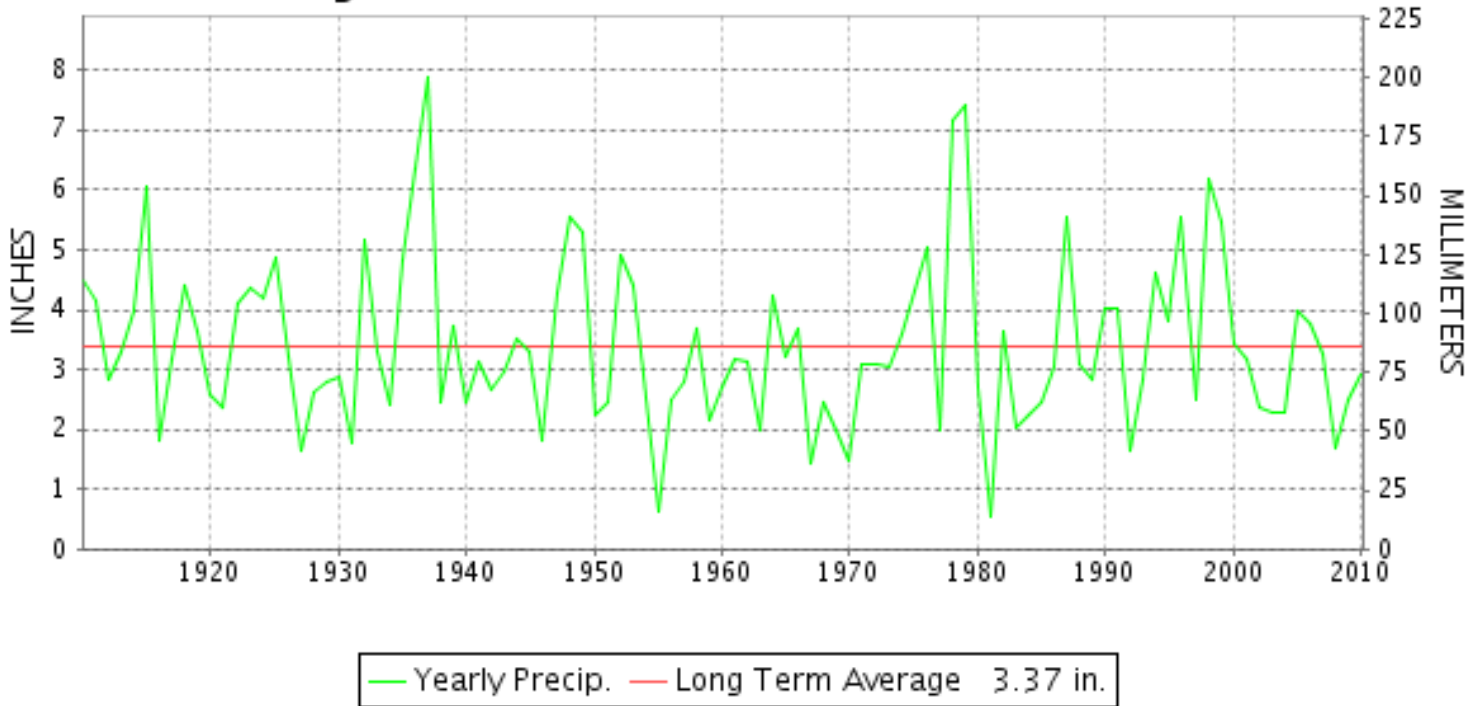
CLIMATOLOGICAL DATA

MARYLAND AND DELAWARE



JANUARY 2010
 VOLUME 114 NUMBER 01
 ISSN 0145-054

JANUARY PRECIPITATION BY YEAR



TEMPERATURE AND PRECIPITATION EXTREMES

MARYLAND

HIGHEST TEMPERATURE	68	JANUARY 25	MD SCI CTR BALTIMORE R
LOWEST TEMPERATURE	-7	JANUARY 31	OAKLAND 1 SE
GREATEST TOTAL PRECIPITATION	8.78		OAKLAND 1 SE
LEAST TOTAL PRECIPITATION	.48		SMITHSBURG 2NW
GREATEST 1 DAY PRECIPITATION	2.72	JANUARY 25	CATOCTIN MTN PARK
GREATEST TOTAL SNOWFALL	55.0		OAKLAND 1 SE
GREATEST DEPTH OF SNOW OR ICE	23	JANUARY 10	OAKLAND 1 SE

"I certify that this is an official publication of the National Oceanic and Atmospheric Administration (NOAA) It is compiled using information from weather observing sites supervised by NOAA/National Weather Service and received at the National Climatic Data Center(NCDC), Asheville, North Carolina 28801."

Director
 National Climatic Data Center

noaa

National
 Oceanic and
 Atmospheric Administration

National
 Environmental Satellite, Data
 and Information Service

National
 Climatic Data Center
 Asheville, North Carolina

DELAWARE

HIGHEST TEMPERATURE	63	JANUARY 25	DOVER
LOWEST TEMPERATURE	10	JANUARY 31	GREENWOOD 2NE
GREATEST TOTAL PRECIPITATION	2.93		GREENWOOD 2NE
LEAST TOTAL PRECIPITATION	2.49		WILMINGTON PORTER RES
GREATEST 1 DAY PRECIPITATION	1.77	JANUARY 25	BEAR 2 SW
GREATEST TOTAL SNOWFALL	9.1		DOVER
GREATEST DEPTH OF SNOW OR ICE	7	JANUARY 31	GREENWOOD 2NE

MONTHLY STATION AND DIVISION SUMMARY

STATION	TEMPERATURE (°F)											PRECIPITATION (IN)												
	AVERAGE MAXIMUM	AVERAGE MINIMUM	AVERAGE	DEPARTURE FROM NORMAL	HIGHEST	DATE	LOWEST	DATE	HEATING DEG. DAYS	COOLING DEG. DAYS	NO. OF DAYS				TOTAL	DEPARTURE FROM NORMAL	GREATEST 24 HOURS	DATE	ICE PELLETS, SNOW			NO. OF DAYS		
											MAX		MIN						TOTAL	MAX DEPTH ON GROUND	DATE	.10 OR MORE	.50 OR MORE	1.00 OR MORE
											>=90	<=32	<=32	<=0										
EMMITSBURG 2 SE	39.0	23.1	31.1	.1	61	26	8	31	1045	0	0	9	29	0	2.87	-.79	.92	18	4.5	3	31	6	3	0
FREDERICK 2 NNE	39.8	23.8	31.8		62	26+	2	31	1020	0	0	7	28	0	M 2.49	.74	18	5.5	4	31	4	3	0	
MILLERS 4 NE	37.6	23.5	30.6	.2	58	25	10	31	1059	0	0	13	27	0	2.85	-.79	1.46	25	4.7	3	30	5	2	1
SMITHSBURG 2NW	M	M	M		54	28	-1	31			0	6	15	1	.48		.25	8	M .0	M		2	0	0
--DIVISIONAL DATA-----> APPALACHIAN MOUNTAIN 07			31.0	-.2											2.44	-1.16			5.2					
CUMBERLAND 2	38.0	25.0	31.5	1.2	56	26	7	31	1034	0	0	13	25	0	2.75	-.14	1.11	25	5.5	6	8	4	3	1
FROSTBURG 2	28.3	17.5	22.9	-1.6	46	25+	1	4+	1296	0	0	19	28	0	2.87	-.70	1.17	25	14.0	13	9	5	3	1
SHARPSBURG 5 S	M	M	M		53	16+	8	12+			0	6	18	0	3.53		1.48	25	5.9	T		5	2	1
WILLIAMSPORT	38.5	22.6	30.6		60	25	6	31	1061	0	0	7	28	0	2.62		1.07	25	M 3.5	2	31	6	2	1
--DIVISIONAL DATA-----> ALLEGHENY PLATEAU 08			28.3	-.7											2.94	-.16			8.5					
OAKLAND 1 SE	27.9	15.9	21.9	-4.9	45	25+	-7	31	1327	0	0	20	30	2	8.78	5.27	1.15	24	M55.0	23	10	19	7	3
SAVAGE RIVER DAM	31.3	19.8	25.6	-6	49	26	2	31	1212	0	0	16	30	0	2.78	-.11	1.06	25	M	11	14	5	2	1
--DIVISIONAL DATA-----> DELAWARE NORTHERN 01			23.8	-2.0											5.78	2.23								
BEAR 2 SW	39.6	24.0	31.8		62	25	12	11	1021	0	0	9	29	0	2.90		1.77	25	6.1	4	30	3	2	1
WILMINGTON NEW CASTLE R	39.9	24.8	32.4	.9	62	25	12	31	1005	0	0	8	27	0	2.52	-.91	1.37	25	6.1	4	31	3	2	1
WILMINGTON PORTER RES	37.1	24.8	31.0	.9	52	15	13	10	1048	0	0	11	26	0	2.49	-.98	1.33	25	M 1.0	1	8	4	2	1
--DIVISIONAL DATA-----> SOUTHERN 02			31.7	.0											2.64	-1.06			6.1					
DOVER	42.6	26.3	34.5	-.8	63	25	11	31	939	0	0	6	24	0	2.80	-1.14			9.1	5	30	5	1	0
GREENWOOD 2NE	40.4	23.8	32.1	-1.0	62	26	10	31	1011	0	0	9	28	0	2.93	-.99	1.05	18	9.0	7	31	6	2	1
LEWES	M	M	M																M	M				
--DIVISIONAL DATA----->			33.3	-1.3											2.87	-1.12			9.1					

MARYLAND AND DELAWARE
JANUARY 2010

DAILY PRECIPITATION (INCHES)

STATION	TOTAL	DAY OF MONTH																															
		01	02	03	04	05	06	07	08	09	10	11	12	13	14	15	16	17	18	19	20	21	22	23	24	25	26	27	28	29	30	31	
MOUNTAIN 07																																	
CUMBERLAND 2	2.75	.01	T						.05								.02	.80					.58	.06		1.11	.02					.10	
FROSTBURG 2	2.87	.04	.06	T	T	T	T	T	.10	T		T					.02	.80		T		.52	.01		1.17	.03	.02	T	T		.10		
SHARPSBURG 5 S	3.53	.07				T			.06	T							.05	.72				.33	.07	.01	1.48	.37	.02				.35		
WILLIAMSPORT	2.62	.26							.05	.01								.76				.26	.10		1.07						.11		
ALLEGHENY PLATEAU 08																																	
OAKLAND 1 SE	8.78	.30	.15	.20	.55	1.10	.27	.67	1.08	.80	.13	.04	.10			.10	.57					.43			1.15	.34	.13	.05	.15		.47		
SAVAGE RIVER DAM	2.78	.06	.03		T	T	T	T	.11	.02	T		T				.09	.69					.44			1.06	.04	T	T	T	.24		
DELAWARE																																	
NORTHERN 01																																	
BEAR 2 SW	2.90	.01			T		T		.09			.02	T				.80	.01							.05	1.77	T				.15		
WILMINGTON NEW CASTLE R	2.52	.02			T		.01		.05			.02	T				.77	.01							.07	1.37	T				.20		
WILMINGTON PORTER RES	2.49						T		.01								.82	T							.10	1.33			.08		.15		
SOUTHERN 02																																	
DOVER	2.80			.01	.01	.01	.01	.12				.01				.85	.22				.06		.01			1.10	.17				.16	.06	
GREENWOOD 2NE	2.93	.13						.12				.02					.05	1.05			.01	T	.09	.09		.21	.71				.45		
LEWES	M	-	-	-	-	-	-	-	-	-	-	-	-	-	-	-	-	-	-	-	-	-	-	-	-	-	-	-	-	-	-		

DAILY TEMPERATURES (°F)

STATION	OB. TIME	MAX/MIN	DAY OF MONTH																															AVERAGE			
			01	02	03	04	05	06	07	08	09	10	11	12	13	14	15	16	17	18	19	20	21	22	23	24	25	26	27	28	29	30	31				
NATL ARBORETUM DC	07	MAX	38	44	28	27	33	34	37	37	29	35	30	35	34	42	50	56	51	51	55	58	44	43	43	46	61	66	44	44	53	26	21	41.8			
		MIN	24	26	16	16	25	26	28	28	22	19	19	19	25	22	24	27	30	30	33	27	27	28	30	36	36	28	29	19	19	10	25.1				
OXON HILL	08	MAX	35	43	28	27	32	34	37	38	30	35	31	36	34	44	52	57	51	44	55	59	43	43	44	46	60	66	46	46	53	26	20	41.8			
		MIN	31	26	15	15	23	26	28	28	21	19	18	19	26	23	24	26	30	39	33	33	29	29	31	33	36	37	29	30	19	19	14	26.1			
UPPER MARLBORO 3 NNW	08	MAX	35	43	29	27	33	35	38	38	30	33	31	38	34	43	52	59	52	44	55	59	44	43	42	46	60	66	46	45	53	26	20	41.9			
		MIN	31	25	15	15	23	25	27	27	21	18	17	20	22	19	19	23	26	38	28	28	26	25	25	28	34	36	29	27	18	18	13	24.1			
NORTHERN EASTERN SHORE 05																																					
CHESTERTOWN	23	MAX	40	31	27	32	35	35	36	30	31	30	35	35	36	44	54	47	43	50	50	42	41	40	39	55	60	44	40	49	27	20	38.9				
		MIN	29	21	16	24	29	27	25	18	19	18	18	28	24	29	30	34	34	35	35	32	32	32	30	30	44	34	29	27	18	15	16	26.8			
NORTHERN CENTRAL 06																																					
ABERDEEN PHILLIPS FLD	07	MAX	33	42	29	25	32	34	37	38	32	35	31	36	36	40	47	56	50	43	53	54	47	43	43	42	62	62	43	43	47	27	19	40.7			
		MIN	30	25	16	16	25	26	28	26	26	16	13	15	26	21	22	27	31	36	29	30	25	25	29	30	35	38	27	27	18	18	11	24.7			
CATOCTIN MTN PARK	17	MAX	35	30	20	29	26	28	30	28	33	27	29	25	32	49	45	49	46	43	43	36	35	37	41	38	57	47	43	40	36	16	29	35.5			
		OBS			30																																
		MIN	29	17	7	16	13	14	21	21	21	8	11	16	18	23	35	36	33	33	32	26	22	28	25	28	36	25	22	22	8	10	7	21.4			
		OBS													12																						
CONOWINGO DAM	07	MAX																																	M		
		MIN																																		M	
CYLBURN	08	MAX						35	37	39	31				36	42		54			55	57	46	45	43		62			49	25			M			
		MIN						23	26	25	22				23	23						32	25	25	27					16	14	10			M		
DAMASCUS 3 SSW	22	MAX	40	27	23	29	32	33	34	26	31	27	36	31	36	50	51	47	41	56	54	41	39	37	44	50	59	41	40	47	23	18	28	37.8			
		MIN	27	16	12	19	22	25	25	14	19	14	16	23	25	28	32	35	36	36	35	33	23	31	28	33	40	31	26	23	14	13	6	24.5			
EMMITSBURG 2 SE	07	MAX	33	41	26	24	29	32	35	35	29	32	29	35	33	39	52	52	52	40	51	48	42	41	41	43	60	61	41	42	47	24	19	39.0			
		OBS																																			
		MIN	26	23	15	15	23	23	26	23	20	14	15	14	24	22	20	29	32	35	30	30	22	22	22	29	32	35	28	28	15	15	8	23.1			
FREDERICK 2 NNE	07	MAX	33	41	26	25	30	33	35	35	27	33	30	36	33	39	51	54	52	41	53	53	43	42	41	46	62	62	43	44	48	24	19	39.8			
		MIN	21	24	15	15	24	25	28	25	21	16	14	21	25	22	22	29	33	36	29	30	22	23	27	27	32	37	30	29	16	17	2	23.8			
MILLERS 4 NE	18	MAX	40	32	22	27	30	31	33	26	29	28	32	32	38	49	51	51	41	52	50	41	40	40	43	44	58	48	38	44	31	18	27	37.6			
		MIN	30	19	13	19	20	22	24	19	18	13	12	21	21	22	31	36	34	34	30	26	20	31	24	29	44	32	22	26	12	13	10	23.5			
SMITHSBURG 2NW	08	MAX		36	21			28	31	31					36	47	48	50					39	39						54	43	21	17	M			
		MIN		21	12			20	26	18					19	18	31	31					23	25						25	13	12	-1	M			
APPALACHIAN MOUNTAIN 07																																					
CUMBERLAND 2	07	MAX	33	38	27	22	28	31	32	32	29	31	31	31	32	36	55	48	55	47	51	44	43	41	36	44	49	56	38	42	44	30	22	38.0			
		OBS																																			
		MIN	30	19	10	18	22	24	26	20	19	13	15	24	26	20	27	36	35	37	31	30	26	31	32	35	39	34	29	30	14	16	7	25.0			
		OBS																																			
FROSTBURG 2	07	MAX	33	33	12	11	17	20	22	22	15	21	17	25	21	28	46	38	46	37	40	37	32	32	30	33	46	45	28	30	34	15	12	28.3			
		MIN	20	11	1	1	11	15	17	10	8	6	6	14	16	18	24	35	35	33	31	25	20	24	27	28	28	26	20	20	4	5	5	17.5			
SHARPSBURG 5 S	07	MAX	34	38	25	24	30	33	34	34	26	33	29	34	32	40	53	53	52	42	52														M		

MARYLAND AND DELAWARE
JANUARY 2010

DAILY TEMPERATURES (°F)

STATION	OB. TIME	MAX/MIN	DAY OF MONTH																															AVERAGE			
			01	02	03	04	05	06	07	08	09	10	11	12	13	14	15	16	17	18	19	20	21	22	23	24	25	26	27	28	29	30	31				
WILLIAMSPORT	06	MIN	26	23	13	13	22	22	28	21	20	15	8	8	17	19	20	26	28	34	27																M
		OBS	34	38	24	24	30	33	33	35	27	***	***	29	34	34	38	50	51	53	40	53	47	43	41	39	44	60	56	38	42	46	25	19	38.5		
ALLEGHENY PLATEAU 08 OAKLAND 1 SE	07	MIN	25	24	14	14	22	24	27	24	21	13	12	12	25	19	18	25	32	33	29	30	23	22	28	26	33	34	29	26	15	15	6	22.6			
		OBS										***	***																								
SAVAGE RIVER DAM	08	MAX	29	29	10	15	17	18	21	12	17	16	22	20	26	26	37	45	39	38	39	32	32	33	38	36	45	42	29	35	31	11	25	27.9			
		MIN	24	2	3	-3	13	15	8	5	8	7	11	15	15	16	14	31	34	29	24	24	26	28	30	32	25	19	19	19	3	4	-7	15.9			
DELAWARE NORTHERN 01 BEAR 2 SW M	MID	OBS	9																																		
		MAX	34	34	16	15	23	25	22	27	18	24	20	34	26	30	41	47	48	38	42	42	36	35	32	37	43	49	31	32	37	19	14	31.3			
WILMINGTON NEW CASTLE M	MID	MIN	22	15	5	6	15	14	21	14	12	9	11	17	20	17	17	29	32	33	28	29	26	28	30	32	32	30	24	25	10	10	2	19.8			
		MIN	42	30	27	31	32	37	38	33	31	29	33	35	38	48	54	50	45	52	51	43	43	44	42	50	62	44	41	48	25	21	29	39.6			
WILMINGTON PORTER RES M	MID	MAX	30	21	19	24	25	28	26	23	21	15	12	25	23	19	21	27	32	30	28	27	23	25	22	29	43	33	26	22	17	15	13	24.0			
		MAX	42	30	28	31	33	38	38	33	31	30	33	36	38	47	55	50	45	53	50	44	43	45	42	53	62	44	41	47	25	21	28	39.9			
DOVER	16	MIN	30	20	19	23	24	28	27	22	20	14	16	25	25	23	24	30	34	33	28	28	25	30	25	31	42	33	27	21	16	15	12	24.8			
		MAX	41	31	26	30	32	37	36	32	29	27	32	34	35	46	52	51	44	51	51	42	40	42	40	40	45	34	37	43	24	18	28	37.1			
GREENWOOD 2NE	07	MIN	31	18	17	23	24	27	29	22	20	13	18	18	18	28	33	36	36	34	30	29	34	31	29	30	30	28	19	17	14	15	24.8				
		OBS																																			
LEWES	17	MAX	41	36	31	31	35	36	39	37	31	29	33	35	40	50	57	54	45	55	56	45	45	42	42	58	63	60	44	51	48	25	26	42.6			
		MIN	31	21	17	22	24	25	26	25	19	13	17	26	24	19	24	38	35	37	32	30	26	33	26	42	52	35	27	29	16	14	11	26.3			
SOUTHERN 02	07	MAX	32	26	17	17	24	25	24	24	15	13	13	12	24	20	26	28	38	29	30	27	27	25	29	36	33	28	28	19	19	10	23.8				
		MIN																																			
DOVER	16	MAX	41	36	31	31	35	36	39	37	31	29	33	35	40	50	57	54	45	55	56	45	45	42	42	58	63	60	44	51	48	25	26	42.6			
		MIN	31	21	17	22	24	25	26	25	19	13	17	26	24	19	24	38	35	37	32	30	26	33	26	42	52	35	27	29	16	14	11	26.3			
LEWES	17	MAX	36	42	29	27	31	34	35	37	31	31	28	33	32	38	49	56	50	47	52	56	44	42	42	41	61	62	47	42	52	25	21	40.4			
		MIN	32	26	17	17	24	25	24	24	15	13	13	12	24	20	26	28	38	29	30	27	27	25	29	36	33	28	28	19	19	10	23.8				
																																			M		
																																			M		

SNOWFALL AND SNOW ON GROUND (INCHES)

STATION		DAY OF MONTH																															
		01	02	03	04	05	06	07	08	09	10	11	12	13	14	15	16	17	18	19	20	21	22	23	24	25	26	27	28	29	30	31	
MARYLAND																																	
SOUTHERN EASTERN																																	
SHORE 01																																	
ASSATEAGUE	SNOWFALL																															5.0	6.0
	SN ON GND																														-	-	
PRINCESS ANNE	SNOWFALL																														10.0		
	SN ON GND																														-	-	
SALISBURY	SNOWFALL								3.0																						7.0	4.0	
	SN ON GND								-	-	-	-	-																	7	11		
SALISBURY FAA AP	SNOWFALL					T																									-	-	
	SN ON GND									-																					-	-	
SNOW HILL 4 N	SNOWFALL					T			2.0																						5.5	3.0	
	SN ON GND								1																						5	8	
CENTRAL EASTERN																																	
SHORE 02																																	
ROYAL OAK 2 SSW	SNOWFALL							T	2.0																							7.0	
	SN ON GND							T	1	1	T	T	T	T	T																7	6	
LOWER SOUTHERN 03																																	
MECHANICSVILLE 5 NE	SNOWFALL							T	1.8					.2																		8.5	
	SN ON GND	T	T	T	T	T	T		2	1	1	1	T	T	T	T	T	T														9	
SOLOMONS	SNOWFALL								1.8					.1																		*	10.0
	SN ON GND								2	T	T	T	T																			-	9
UPPER SOUTHERN 04																																	
BALTIMORE WASH INTL AP R	SNOWFALL					T	T	.1	1.7													.1	T					T			5.0		
	SN ON GND								2													T											5
	WTR EQUIV																																
BELTSVILLE	SNOWFALL								2.0																								6.0
	SN ON GND	1							2	1																							6
DALECARLIA RSVR	SNOWFALL																																.5
	SN ON GND																																1
LAUREL 3 W	SNOWFALL																																-
	SN ON GND	-	-	-	-	-	-	-	-	-	-	-	-	-	-	-	-	-	-	-	-	-	-	-	-	-	-	-	-	-	-	6	-

Snowfall: Includes snow and ice. Values for NWS stations (J index note) are Mid-Mid (LST).

Snow on ground: Includes snow, sleet, ice, and hail. Values for NWS stations (J index note) are observed at 12 UTC (GMT).

Water Equivalent: Given for NWS stations (J index note) only, when snow depth is 2 inches or more, and is measured at 18 UTC (GMT)

SNOWFALL AND SNOW ON GROUND (INCHES)

STATION		DAY OF MONTH																																
		01	02	03	04	05	06	07	08	09	10	11	12	13	14	15	16	17	18	19	20	21	22	23	24	25	26	27	28	29	30	31		
NATL ARBORETUM DC	SNOWFALL								1.5													T												5.0
	SN ON GND								-	-																								-
OXON HILL	SNOWFALL						T	T	1.5			T										T	.1	T									T	6.8
	SN ON GND								2	1	T											T										T		6
UPPER MARLBORO 3 NNW	SNOWFALL								1.5																									5.5
	SN ON GND								1	1	T	T																						6
NORTHERN EASTERN																																		
SHORE 05																																		
CHESTERTOWN	SNOWFALL						T		2.5			T	.5									T	T									5.0	T	
	SN ON GND						T		1	-	-	-	-	-	-	-						T	T									5	3	
NORTHERN CENTRAL 06																																		
ABERDEEN PHILLIPS FLD	SNOWFALL	.5						T	1.5																								4.5	
	SN ON GND	T						T	1																								4	
BRIGHTON DAM	SNOWFALL								2.0																								4.0	
	SN ON GND								-	-																							-	-
CATOCTIN MTN PARK	SNOWFALL																																3.0	
	SN ON GND	-	-	-	-	-	-	-	5	5	5	5	4	2	2	2																	3	3
CYLBURN	SNOWFALL								1.0																									
	SN ON GND	-	-	-	-	-	-	-	1	1	-	-	-	-	-	-	-	-	-	-	-													
DAMASCUS 3 SSW	SNOWFALL	T	T		T	T	T	T	1.5			T	T									T	T	.1			T	T				7.2	T	
	SN ON GND	T	T	T	T	T	T	T	1	T	T	T	T	T	T	T							T	T	T	T						7	4	
EMMITSBURG 2 SE	SNOWFALL								2.0																									2.5
	SN ON GND	-	-	-	-	-	-	-	-	-	-	-	-	-	-	-	-	-	-	-	-	-	-	-	-	-	-	-	-	-	-	-	3	
FREDERICK 2 NNE	SNOWFALL								1.0	.5																								4.0
	SN ON GND	-	-	-	-	-	-	-	1	1																								4
MILLERS 4 NE	SNOWFALL	T			T	T	.4		1.5				T																				2.8	T
	SN ON GND	T	T	T	T	T	T	T	1	T	T	T	T																				3	2
APPALACHIAN																																		
MOUNTAIN 07																																		
CUMBERLAND 2	SNOWFALL	T	T						1.0																								2.0	
	SN ON GND	5	5	5	5	5	5	5	6	5	5	5	5	4	4	4	3	1															2	
FROSTBURG 2	SNOWFALL	.2	2.3	.3	.4	1.2	1.0	.3	1.9	.8			.2																				3.4	
	SN ON GND	8	11	10	10	11	12	11	13	13	12	11	11	10	9	8	7	5	4	3	3	3	3	3	3	3	3	2	1	2	2	1	1	4
SHARPSBURG 5 S	SNOWFALL	T				T			.7	T																								5.2
	SN ON GND	T	T						T	T	-	-	-	-	-	-	-	-	-	-	-	-	-	-	-	-	-	-	-	-	-	-	-	-
WILLIAMSPORT	SNOWFALL								.8	-																								2.7

Snowfall: Includes snow and ice. Values for NWS stations (J index note) are Mid-Mid (LST).

Snow on ground: Includes snow, sleet, ice, and hail. Values for NWS stations (J index note) are observed at 12 UTC (GMT).

Water Equivalent: Given for NWS stations (J index note) only, when snow depth is 2 inches or more, and is measured at 18 UTC (GMT)

SNOWFALL AND SNOW ON GROUND (INCHES)

STATION		DAY OF MONTH																															
		01	02	03	04	05	06	07	08	09	10	11	12	13	14	15	16	17	18	19	20	21	22	23	24	25	26	27	28	29	30	31	
ALLEGHENY PLATEAU 08	SN ON GND																																2
OAKLAND 1 SE	SNOWFALL	3.0	1.5	2.0	5.5	11.0	2.4	5.0	8.5	5.8	1.4	1.0	1.5													2.3	2.3	.6	1.2	-			
	SN ON GND	9	10	11	13	18	15	18	23	23	23	20	18	13	10	10	10	10	8	8	7	6	6	5	5	5	4	4	5	4	9	8	
	WTR EQUIV	-	-	-	-	-	-	-	-	-	-	-	-	-	-	-	-	-	-	-	-	-	-	-	-	-	-	-	-	-	-	-	
SAVAGE RIVER DAM	SNOWFALL	-	-	-	-	-	-	-	-	-	-	-	-	-	-	-	-	-	-	-	-	-	-	-	-	-	-	-	-	-	-	-	
	SN ON GND	8	8	8	8	8	8	8	10	11	11	11	11	11	11	8	8	5	4	-	-	-	2	2	1	1	1	1	1	-	-	6	
DELAWARE																																	
NORTHERN 01																																	
BEAR 2 SW	SNOWFALL	T		T		.1		1.4			.3	T																			4.3		
	SN ON GND	T				T		1	T		T	T																			4	2	
WILMINGTON NEW CASTLE R	SNOWFALL	T		T		.1		1.4			.3	T																			4.3		
	SN ON GND							1	T																							4	
	WTR EQUIV																																
WILMINGTON PORTER RES	SNOWFALL								1.0																							-	
	SN ON GND								1	T																						-	
SOUTHERN 02																																	
DOVER	SNOWFALL			.1	.1	.1	.1	2.0				.1									.1										5.5	1.0	
	SN ON GND							2	1																						5	4	
GREENWOOD 2NE	SNOWFALL							2.0				T																				7.0	
	SN ON GND							2	1	1	T	T	T	T	T																	7	

Snowfall: Includes snow and ice. Values for NWS stations (J index note) are Mid-Mid (LST).

Snow on ground: Includes snow, sleet, ice, and hail. Values for NWS stations (J index note) are observed at 12 UTC (GMT).

Water Equivalent: Given for NWS stations (J index note) only, when snow depth is 2 inches or more, and is measured at 18 UTC (GMT)

STATION INDEX

STATION	INDEX NO.	DIVISION	COUNTY	LATITUDE	LONGITUDE	ELEVATION (IN FEET)	OBSERVATION TIME AND TABLES				OBSERVER
							LOCAL STD TIME				
							TEMP	PRECIP	EVAP	SPECIAL SEE (NOTES)	
MARYLAND											
ABERDEEN PHILLIPS FLD	0015	06	HARFORD	39 28	76 10W	57	07	07		C H	US ARMY ABERDEEN TST CTR
ASSATEAGUE	0335	01	WORCESTER	38 4	75 13W	10	MID	MID		H	ASSATEAGUE IS NATL SEA
BALTIMORE WASH INTL AP R	0465	04	ANNE ARUNDEL	39 10	76 41W	156	MID	MID		C HJ	ASOS - FAA
BELTSVILLE	0700	04	PRINCE GEORG	39 2	76 56W	145	08	08	08	C H	USDA AGRICULT RES SVC
BRIGHTON DAM	1125	06	MONTGOMERY	39 11	77 0W	330		07		H	WA SUBURB SANIT COMM
CATOCTIN MTN PARK	1530	06	FREDERICK	39 39	77 29W	1610	17	17		H	CATOCTIN MOUNTAIN PK
CHESTERTOWN	1750	05	KENT	39 13	76 3W	40	23	23		H	THOMAS W ELIASON JR
CONOWINGO DAM	2060	06	HARFORD	39 39	76 11W	40	07	07		H	SUSQUEHANNA ELECTRIC CO
CUMBERLAND 2	2282	07	ALLEGANY	39 39	78 45W	730	07	07		H	TIMOTHY B THOMAS
CYLBURN	2308	06	BALTIMORE	39 22	76 38W	400	08	08		H	CYLBURN ARBORETUM
DALECARLIA RSVR	2325	04	PRINCE GEORG	38 56	77 7W	150	08	08		H	USA CORPS OF ENGINEERS
DAMASCUS 3 SSW	2336	06	MONTGOMERY	39 16	77 14W	697	22	22		H	ROBERT J LEFFLER
EMMITSBURG 2 SE	2906	06	FREDERICK	39 41	77 17W	403	07	07		H	ERIC E GLASS
FREDERICK 2 NNE	3353	06	FREDERICK	39 26	77 24W	280	07	07		H	DIR PUBLIC WORK WTP
FROSTBURG 2	3415	07	ALLEGANY	39 40	78 56W	2170	07	07		H	GREGORY P LATTA
LAUREL 3 W	5111	04	PRINCE GEORG	39 5	76 54W	400	MID	MID		H	WA SUBURBAN SANITARY COM
MD SCI CTR BALTIMORE R	5718	04	BALTIMORE (C	39 17	76 37W	20	MID	MID		C H	ASOS - NWS
MECHANICSVILLE 5 NE	5865	03	ST. MARY'S	38 28	76 42W	100	07	07		H	SANDRA J HASTINGS
MILLERS 4 NE	5934	06	CARROLL	39 43	76 48W	860	18	18		C H	ROBERT MILLER
NATL ARBORETUM DC	6350	04	PRINCE GEORG	38 55	76 58W	50	07	07		H	US NATIONAL ARBORETUM
OAKLAND 1 SE	6620	08	GARRETT	39 25	79 24W	2420	07	07		H	GARRETT CO MEM HOSPITAL
OXON HILL	6800	04	PRINCE GEORG	38 48	77 0W	120	08	08		H	BRIAN SMITH
POTOMAC FLTR PLT	7272	06	MONTGOMERY	39 2	77 15W	270		08		H	POTOMAC WATER FILT PLANT
PRINCESS ANNE	7330	01	SOMERSET	38 13	75 41W	20	17	17		H	UNIV OF MD EASTERN SHORE
ROYAL OAK 2 SSW	7806	02	TALBOT	38 43	76 11W	10	18	18		H	JOHN L SWAINE JR
SALISBURY	8000	01	WICOMICO	38 22	75 35W	10	16	16		H	CITY OF SALISBURY
SALISBURY FAA AP	8005	01	WICOMICO	38 20	75 31W	48	MID	MID		H	FAA
SAVAGE RIVER DAM	8065	08	GARRETT	39 31	79 8W	1495	08	08	08	C H	USA CORPS OF ENGINEERS
SHARPSBURG 5 S	8207	07	WASHINGTON	39 24	77 43W	500	07	07		H	DAVID DOWNIN
SMITHSBURG 2NW	8371	06	WASHINGTON	39 40	77 35W	670	08	08		H	SMITHSBURG WWTP
SNOW HILL 4 N	8380	01	WORCESTER	38 14	75 23W	30	17	17		H	CURTIS E SHOCKLEY
SOLOMONS	8405	03	CALVERT	38 19	76 27W	12	08	08		H	CHESAPEAKE BIOLOGIC LAB
UPPER MARLBORO 3 NNW	9070	04	PRINCE GEORG	38 52	76 47W	100	08	08	08	H	UNIVERSITY OF MARYLAND
VIENNA	9140	02	DORCHESTER	38 29	75 49W	10	18	18		H	DELMARVA POWER AND LIGHT
WILLIAMSPORT	9570	07	WASHINGTON	39 36	77 50W	360	06	06		H	R C WILSON TREATMENT PLT
DELAWARE											
BEAR 2 SW	1200	01	NEW CASTLE	39 36	75 44W	80	MID	MID		H	R GARY GALLAHER
DOVER	2730	02	KENT	39 16	75 31W	30	16	16		H	DEPT OF TRANSPORTATION
GREENWOOD 2NE	3595	02	SUSSEX	38 49	75 35W	45	07	07		H	CONNIE SWARTZENTRUBER
LEWES	5320	02	SUSSEX	38 47	75 8W	15	17	17		H	BOARD OF PUBLIC WORKS
WILMINGTON NEW CASTLE R	9595	01	NEW CASTLE	39 40	75 36W	79	MID	MID		C HJ	ASOS - FAA
WILMINGTON PORTER RES	9605	01	NEW CASTLE	39 46	75 32W	270	MID	MID		H	WILMINGTON WATER DEPT

REFERENCE NOTES

DEFINITIONS

STATION NAMES: Name of the city, town or locality. Figures and letters following the station names indicate the distance in miles and direction from the post office or town community center.

DIVISIONS: Areas within a state of similar climatological characteristics. Division averages are calculated using data from stations that record both temperature and precipitation (i.e. not precipitation alone).

NORMALS: The average value of the meteorological element over a time period. Effective 1 January 2002, the averaging period is 1971 to 2000. The normals for National Weather Service localities have been adjusted so as to be representative for the current observation site.

MONTHLY DEGREE DAY TOTALS: One heating (cooling) degree day is accumulated for each whole degree that the daily mean temperature is below (above) 65 degrees Fahrenheit.

PRECIPITATION: Values shown in hundredths of inches are water equivalent totals, i.e., total of liquid and melted frozen precipitation. In the "Monthly Summarized Data" table the total snow and sleet values shown in tenths of inches are unmelted amounts. The max depth on ground values of snow and sleet shown in whole inches are cumulative unmelted amounts. The number of days with .10, .50, 1.00 or more refers to water equivalents.

PRECIPITATION QUALITY CONTROL: The NCDC quality control process may delete precipitation data that are spatially inconsistent; exceed climatological limits, or are inconsistent with prevailing weather patterns.

TEMPERATURE: Original and edited temperature values are given in the "Daily Temperature" table. Edited values are produced when an original value is missing or when surrounding stations indicated a suspect original value. When a line labeled OBS is present and contains either a daily temperature (suspect) or *** (missing), the temperature appearing directly above, on the line labeled MAX or MIN, is an edited value. Summary temperature information (averages, departures, extremes, monthly degree day totals) is based on the values labeled MAX/MIN.

WIND: (As shown in the "Evaporation and Wind" table) the total wind movement in miles over the evaporation pan as determined by an anemometer recorder located 6-8 inches above the pan.

SYMBOLS AND LETTERS USED IN THE STATION INDEX TABLE

Thermometers located in a rooftop shelter.
// Rain gage equipped with a windshield
AR Observation made "after rain" has occurred.
C Station is equipped with recording rain gage (R) but values in this bulletin are from a non-recording rain gage unless indicated by an R.
G Observations appear in the "Soil Temperatures" table.
H Observations appear in the "Snowfall and Snow on the Ground" table.
J Station also published as a Local Climatological Data publication.
MID Observation time is midnight.
MO Rain gage read once monthly, usually the last day.
OC Rain gage readings vary from a few weeks to several months.
R Amounts from recording rain gage.
SR Observation time near sunrise.

SS Observation time near sunset.
VAR Observation time varies.
WI Rain gage read weekly or irregularly.
WM Rain gage read weekly and last day of the month.

SYMBOLS AND LETTERS USED IN THE DATA TABLES

(DAILY DATA ARE FOR THE 24 HOURS IMMEDIATELY PRECEDING OBSERVATION TIME.)

BLANK Entries in the "Monthly Summarized Data" table indicate no record.

BLANK Entries in the "Daily Precipitation" and "Snowfall and Snow on the Ground" tables indicate zero.

BLANK Entries in the "Daily Temperature" table indicate a missing record where an edited value could not be determined. (See *** below)

- No record. Data not recorded, determined unreliable by quality control check, or not received in time for publication.

+ Precipitation or temperature extremes occurred on one or more previous dates during the month.

*** Missing original temperature which has been estimated during edit.

* Rain gage not read. Precipitation is included in the amount following the asterisks. Time distribution not known. A * preceding the monthly total indicates precipitation amount is being carried forward to next months total, and may include amounts from the previous month(s).
// Rain gage equipped with a windshield.

A Amount of precipitation is the total of observer's entries for the current month. It may include precipitation that occurred during the previous month. Refer to earlier bulletin to determine date of last reading. (Hawaii stations)

B Adjusted monthly value (estimated), (1-7 missing values for wind and evaporation).

M Insufficient or partial data. M is appended to average and/or total values computed with 1-9 daily values missing. M appears alone if 10 or more daily values are missing, (8 or more for wind and evaporation).

R Amounts from recording rain gage.

T Trace. An amount too small to measure.

V Includes total for previous month(s). (See * above)

SEASONAL TABLES: Monthly and seasonal snowfall and heating degree days for the 12 months ending with the June data are published in the July issue of this bulletin. Cooling degree days for the calendar year are published in the "Climatological Data Annual Summary."

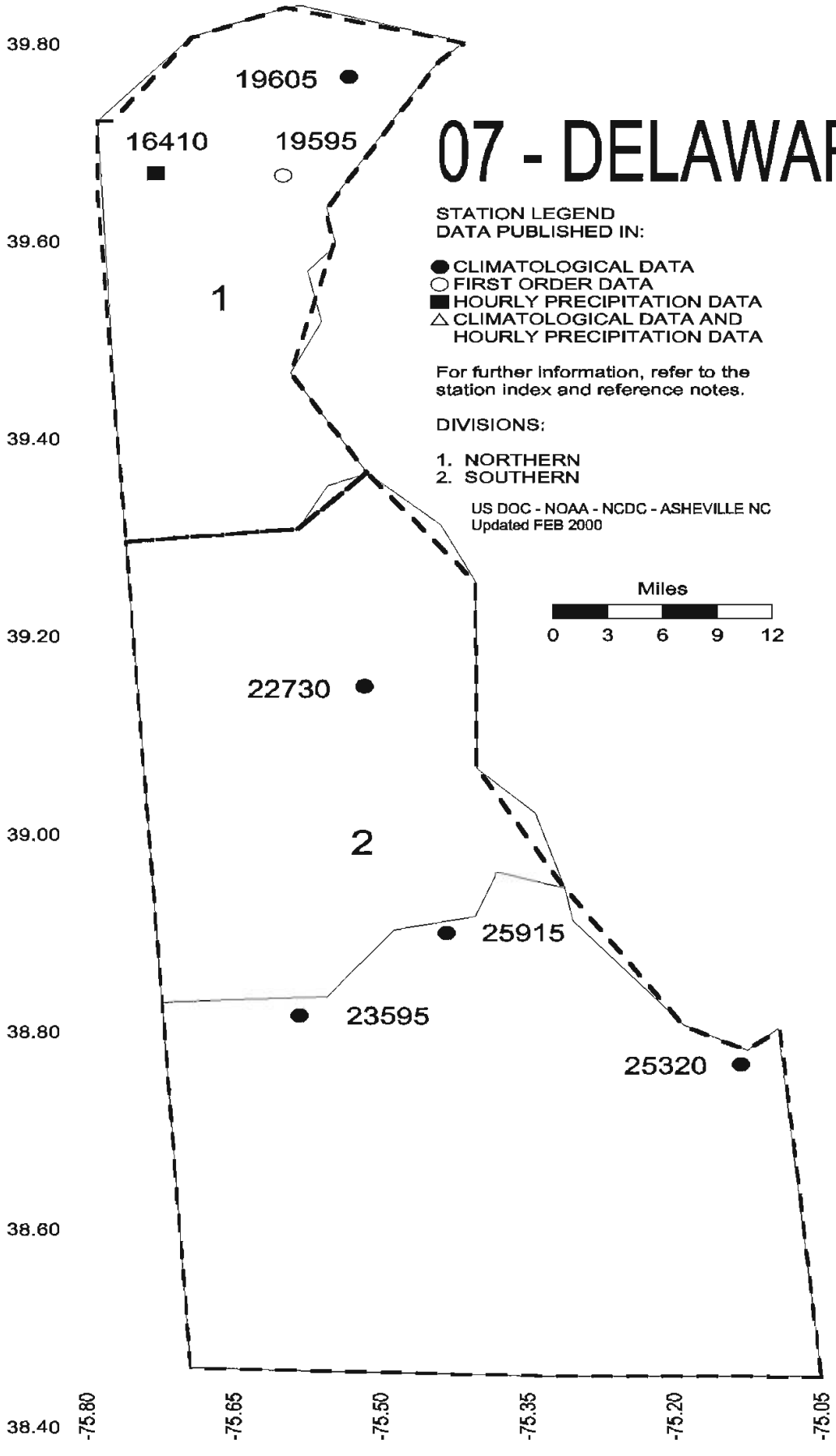
Information concerning the history of changes in locations, exposure, etc. of substations is kept on file at the National Climatic Data Center. Historical information of regular National Weather Service Offices may be obtained from the "Local Climatological Data" annual publication. The contents of this publication may be reprinted or otherwise used freely, with proper credit to the National Climatic Data Center. The data are also available in digital form on magnetic tape and diskette.

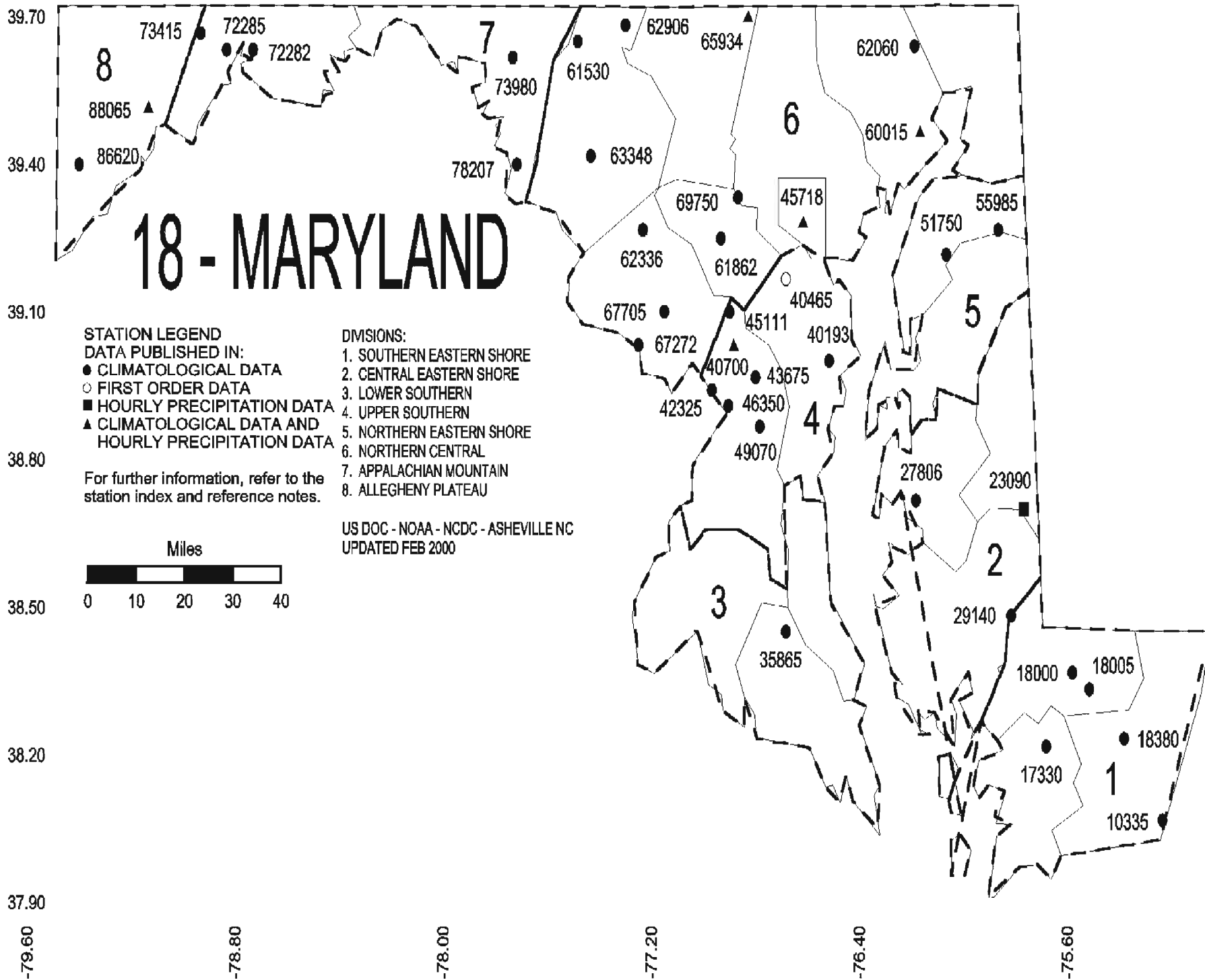
SUBSCRIPTION, PRICE, AND ORDERING INFORMATION AVAILABLE FROM:

NCDC Subscription Services Center
310 State Route 956
Building 300
Rocket Center, WV 26726

Toll free number: (866) 742-3322
Fax number: (304) 726-4409

07 - DELAWARE





These and other publications are available from the National Climatic Data Center

Hourly Precipitation Data

This publication contains hourly precipitation amounts obtained from recording rain gages located at National Weather Service, Federal Aviation Administration, and cooperative observer stations. Published data are displayed in inches and tenths or inches and hundredths at local standard time. HPD includes maximum precipitation for nine (9) time periods from 15 minutes to 24 hours, for selected stations.

Climatological Data

Monthly editions contain station daily maximum and minimum temperatures and precipitation. Some Stations provide daily snowfall, snow depth, evaporation, and soil temperature data. Each edition also contains monthly summaries for heating and cooling degree days (65 degree F base). The July issue contains a recap of monthly heating degree days and snow data for the preceding July through June.

The Annual issue contains monthly and annual averages of temperature, precipitation, temperature extremes, freeze data, soil temperatures, evaporation, and a recap of monthly cooling degree days.

Storm Data

Monthly issues contain a chronological listing, by states, of occurrences of storms and unusual weather phenomena. Reports contain information on storm paths, deaths, injuries, and property damage. An "Outstanding storms of the month" section highlights severe weather events with photographs, illustrations, and narratives. The December issue includes annual tornado, lightning, flash flood, and tropical cyclone summaries.

Monthly Climatic Data for the World

This publication contains monthly means for temperature, pressure, precipitation, vapor pressure, and sunshine for approximately 2,000 surface data collection stations worldwide and monthly mean upper air temperatures, dew point depressions, and wind velocities for approximately 500 observing sites.

Local Climatological Data

LCD publications summarize temperature, relative humidity, precipitation, cloudiness, wind speed and direction observations for several hundred cities in the U.S. and its territories. Each monthly publication also contains 3 hourly weather observations for that month and a hourly summary of precipitation. Annual LCD publications contain a summary of the past calendar year as well as historical averages and extremes.

For Information Call:

(866) 742-3322 (Toll free)

(828) 271-4010 (TDD)

(304) 726-4409 (Fax)

Subscription Service Center
310 State Route 956
Building 300
Rocket Center, WV 26726

PRSRT STD
POSTAGE & FEES PAID
United States Department of Commerce
NOAA Permit No. G-19

OFFICIAL BUSINESS
PENALTY FOR PRIVATE USE \$300
ADDRESS CORRECTION REQUESTED

To change your address, please return a copy of the mailing label along with your new address to:

NCDC Subscription Services Center
310 State Route 956
Building 300
Rocket Center, WV 26726

Toll free number : (866) 742-3322
TDD : (828) 271-4010
Fax number : (304) 726-4409

NCDC now offers an annual online subscription for the *Climatological Data* publication. When you purchase this subscription service, you will have **immediate online access** to all previous publications back to October 1997 and all publications thereafter until the expiration of the subscription. Your subscription is valid for one year after purchase. **The total cost is \$36 for online delivery (including back issues) compared to \$52 for offline delivery.** To order this and other subscriptions online with your credit card, go to: www.ncdc.noaa.gov/mpp.html and choose subscription.