



# CLIMATOLOGICAL DATA

## MARYLAND AND DELAWARE

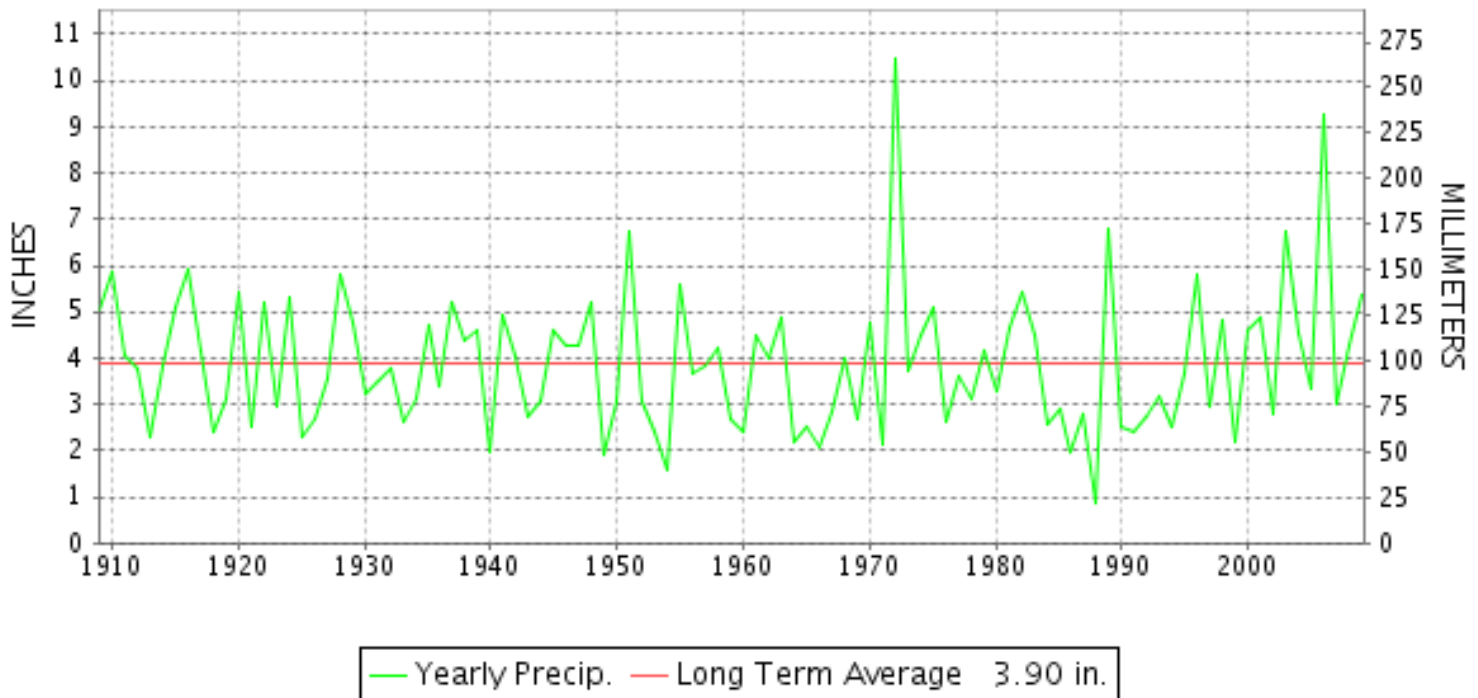


**JUNE 2009**

VOLUME 113 NUMBER 06

ISSN 0145-054

### JUNE PRECIPITATION BY YEAR



#### TEMPERATURE AND PRECIPITATION EXTREMES

##### MARYLAND

HIGHEST TEMPERATURE	100	JUNE 27	NATL ARBORETUM DC
LOWEST TEMPERATURE	37	JUNE 1	OAKLAND 1 SE
GREATEST TOTAL PRECIPITATION	8.77		SALISBURY
LEAST TOTAL PRECIPITATION	3.79		SHARPSBURG 5 S
GREATEST 1 DAY PRECIPITATION	2.37	JUNE 18	2 STATIONS

"I certify that this is an official publication of the National Oceanic and Atmospheric Administration (NOAA) It is compiled using information from weather observing sites supervised by NOAA/National Weather Service and received at the National Climatic Data Center(NCDC), Asheville, North Carolina 28801."

Director  
National Climatic Data Center

**noaa**

National  
Oceanic and  
Atmospheric Administration

National  
Environmental Satellite, Data  
and Information Service

National  
Climatic Data Center  
Asheville, North Carolina

**DELAWARE**

HIGHEST TEMPERATURE	91	JUNE 2	LEWES
LOWEST TEMPERATURE	42	JUNE 1	BEAR 2 SW
GREATEST TOTAL PRECIPITATION	6.67		WILMINGTON NEW CASTLE R
LEAST TOTAL PRECIPITATION	3.97		LEWES
GREATEST 1 DAY PRECIPITATION	1.81	JUNE 18	WILMINGTON NEW CASTLE R

### MONTHLY STATION AND DIVISION SUMMARY

STATION	TEMPERATURE (°F)													PRECIPITATION (IN)																								
	AVERAGE MAXIMUM	AVERAGE MINIMUM	AVERAGE	DEPARTURE FROM NORMAL	HIGHEST	DATE	LOWEST	DATE	HEATING DEG. DAYS	COOLING DEG. DAYS	NO. OF DAYS				TOTAL	DEPARTURE FROM NORMAL	GREATEST 24 HOURS	DATE	ICE PELLETS, SNOW			NO. OF DAYS																
											MAX		MIN						TOTAL	MAX DEPTH ON GROUND	DATE	.10 OR MORE	.50 OR MORE	1.00 OR MORE														
											>=90	<=32	<=32	<=0																								
<b>MARYLAND SOUTHERN EASTERN SHORE 01</b>																																						
ASSATEAGUE	79.9	64.2	72.1	1.9	88	2	56	2	0	220	0	0	0	0	5.43	2.58	2.37	5	.0	0				9	4	1												
PRINCESS ANNE	82.0M	59.8M	70.9M	-1.0	91	3	51	26	7	192	1	0	0	0	3.95	.82	1.07	13	M .0	0				8	3	1												
SALISBURY	81.9	64.5	73.2	.3	90	26	56	1	3	256	1	0	0	0	8.77	5.15	2.08	14	.0	0				12	5	3												
SALISBURY FAA AP	80.0	62.2	71.1	-1.1	89	2	51	1	9	198	0	0	0	0	6.57	3.00	1.79	13	.0	0				11	5	2												
SNOW HILL 4 N	82.2	63.1	72.7	-2	91	3+	54	1	0	234	2	0	0	0	4.12	.69	.62	18	.0	0				11	4	0												
--DIVISIONAL DATA----->			72.0	.2										5.77	2.39				.0																			
<b>CENTRAL EASTERN SHORE 02</b>																																						
ROYAL OAK 2 SSW	82.9	65.3	74.1	-1	89	26+	53	1	3	283	0	0	0	0	5.04	1.57	1.60	5	.0	0				10	2	2												
VIENNA	84.0	62.5	73.3	.0	91	3	53	1	5	260	4	0	0	0	6.79	3.07	1.72	19	.0	0				10	4	3												
--DIVISIONAL DATA----->			73.7	.8										5.92	2.37				.0																			
<b>LOWER SOUTHERN 03</b>																																						
MECHANICSVILLE 5 NE	79.1	62.1	70.6	-1.4	87	3	50	1	7	183	0	0	0	0	4.38	.11	.97	5	.0	0				9	4	0												
SOLOMONS	80.3	67.5	73.9	.0	90	3	60	5	5	281	1	0	0	0	M 5.33		1.32	3	.0	0				7	4	2												
--DIVISIONAL DATA----->			72.3	.6										4.38	.60				.0																			
<b>UPPER SOUTHERN 04</b>																																						
BALTIMORE WASH INTL AP R	80.6	62.2	71.4	-4	89	26+	46	1	13	213	0	0	0	0	5.52	2.09	1.77	18	.0	0				10	4	2												
BELTSVILLE	81.4	62.9	72.2	.1	91	27	46	1	9	232	3	0	0	0	7.50	3.91	2.13	11	.0	0				11	4	3												
DALECARLIA RSVR	80.4	63.1	71.8	-1.4	91	27	50	2	12	223	3	0	0	0	7.28	3.59	1.56	18	.0	0				12	5	2												
LAUREL 3 W	81.4	63.9	72.7	-1	90	26	51	1	11	248	1	0	0	0	7.11	3.19	2.18	18	.0	0				8	5	2												
MD SCI CTR BALTIMORE R	82.4	66.9	74.7		93	26	58	1	5	304	3	0	0	0	4.82		1.34	3	M	M				8	4	1												
NATL ARBORETUM DC	86.3	69.0	77.7	4.6	100	27	55	1	0	387	10	0	0	0	6.74	3.11	1.95	4	.0	0				10	4	1												
OXON HILL	82.4	64.6	73.5		90	27+	51	1	7	268	3	0	0	0	6.43		1.17	4	.0	0				11	7	2												
UPPER MARLBORO 3 NNW	81.3	63.3	72.3	1.0	92	26	48	1	8	234	3	0	0	0	5.60	1.77	1.10	9	.0	0				12	3	1												
--DIVISIONAL DATA----->			73.3	1.0										6.38	2.72				.0																			
<b>NORTHERN EASTERN SHORE 05</b>																																						
CHESTERTOWN	79.3	63.1	71.2	-1.5	88	25	50	1	16	209	0	0	0	0	4.71	.45	1.18	20	.0	0				9	3	1												
--DIVISIONAL DATA----->			71.2	-.5										4.71	.77				.0																			
<b>NORTHERN CENTRAL 06</b>																																						
ABERDEEN PHILLIPS FLD	79.5	62.9	71.2	-1.0	88	27	48	1	9	204	0	0	0	0	4.77	.74	1.16	22	.0	0				10	3	1												
CATOCTIN MTN PARK	79.7	59.2	69.5	.3	88	24	45	1	22	165	0	0	0	0	4.83	.22	.98	5	.0	0				8	5	0												
CONOWINGO DAM	82.9	M	M		95	26					2	0	0	0	5.29	1.14	.75	6	.0	0				10	6	0												
CYLBURN	71.5	57.6	64.6		83	2	47	2	45	40	0	0	0	0	5.35				.0	0				5	2	0												
DAMASCUS 3 SSW	78.9	60.8	69.9		87	26+	45	1	22	176	0	0	0	0	5.37		1.30	18	.0	0				10	5	2												

# MONTHLY STATION AND DIVISION SUMMARY

STATION	TEMPERATURE (°F)											PRECIPITATION (IN)												
	AVERAGE MAXIMUM	AVERAGE MINIMUM	AVERAGE	DEPARTURE FROM NORMAL	HIGHEST	DATE	LOWEST	DATE	HEATING DEG. DAYS	COOLING DEG. DAYS	NO. OF DAYS				TOTAL	DEPARTURE FROM NORMAL	GREATEST 24 HOURS	DATE	ICE PELLETS, SNOW			NO. OF DAYS		
											MAX		MIN						TOTAL	MAX DEPTH ON GROUND	DATE	.10 OR MORE	.50 OR MORE	1.00 OR MORE
											>=90	<=32	<=32	<=0										
EMMITSBURG 2 SE	78.2	59.6	68.9	-1.6	87	26	45	1	24	149	0	0	0	0	5.97	1.62	1.66	11	.0	0		8	4	2
FREDERICK 2 NNE	81.6	61.2	71.4		90	27	46	1	14	212	1	0	0	0	5.29	.95		5	M .0	0		11	3	0
MILLERS 4 NE	77.6	59.2	68.4	-1.3	85	26	44	1	25	135	0	0	0	0	4.41	.79	.78	5	.0	0		9	5	0
SMITHSBURG 2NW	77.8	55.8	66.8		86	26+	39	1	35	99	0	0	0	0	4.64		1.00	17	.0	0		8	5	1
--DIVISIONAL DATA-----> <b>APPALACHIAN MOUNTAIN 07</b>			68.8	-1.9											5.10	1.05			.0					
CUMBERLAND 2	82.3	60.3	71.3	1.1	91	26	44	1	13	213	3	0	0	0	4.82	1.70	1.55	18	.0	0		7	3	2
FROSTBURG 2	73.0	54.9	64.0	-2	83	26	39	1	68	44	0	0	0	0	5.84	2.00	1.91	18	.0	0		11	4	2
SHARPSBURG 5 S	80.2	56.4	68.3		89	3	40	1	28	132	0	0	0	0	3.79		1.18	18	.0	0		7	3	1
WILLIAMSPORT	80.2	58.0	69.1		89	26+	44	2+	25	154	0	0	0	0	4.93		1.87	18	.0	0		8	3	2
--DIVISIONAL DATA-----> <b>ALLEGHENY PLATEAU 08</b>			68.2	-3											4.85	1.33			.0					
OAKLAND 1 SE	74.9	53.8	64.4	.1	82	26+	37	1	58	45	0	0	0	0	5.88	1.28	2.04	18	.0	0		11	3	2
SAVAGE RIVER DAM	75.5	55.8	65.7	.2	83	26+	40	1	43	69	0	0	0	0	5.51	1.84	2.37	18	.0	0		10	2	2
--DIVISIONAL DATA-----> <b>DELAWARE NORTHERN 01</b>			65.1	.7											5.70	1.49			.0					
BEAR 2 SW	78.8	61.1	70.0		88	26	42	1	22	177	0	0	0	0	5.17		1.78	18	.0	0		8	4	1
WILMINGTON NEW CASTLE R	78.9	62.1	70.5	-1.0	88	26	47	1	19	190	0	0	0	0	6.67	3.08	1.81	18	.0	0		9	6	2
WILMINGTON PORTER RES	77.1	61.8	69.5	-1.3	86	26	50	1	23	162	0	0	0	0	5.94	1.88	1.47	18	.0	0		8	5	2
--DIVISIONAL DATA-----> <b>SOUTHERN 02</b>			70.0	-1.4											5.93	2.03			.0					
DOVER	80.3	62.9	71.6	-1.3	89	26	51	1	7	212	0	0	0	0	5.94	2.17	1.53	5	.0	0		11	4	3
GREENWOOD 2NE	79.1	62.0	70.6	-1	89	3	49	1	13	187	0	0	0	0	6.58	3.02	1.76	6	.0	0		12	5	2
LEWES	79.9	63.9	71.9	-6	91	2	57	1	5	218	4	0	0	0	3.97	.82	1.12	5	.0	0		7	3	2
--DIVISIONAL DATA----->			71.4	-3											5.50	2.09			.0					

MARYLAND AND DELAWARE  
JUNE 2009

## DAILY PRECIPITATION (INCHES)

STATION	TOTAL	DAY OF MONTH																																	
		01	02	03	04	05	06	07	08	09	10	11	12	13	14	15	16	17	18	19	20	21	22	23	24	25	26	27	28	29	30	31			
<b>MARYLAND</b>																																			
<b>SOUTHERN EASTERN SHORE 01</b>																																			
ASSATEAGUE	5.43			.04	.22	2.37				.13		.52		.67				.38		.80		.11		.19											
PRINCESS ANNE	3.95				.58	.22				.41	.26	.04	1.07					.49	.05				.65			.18									
SALISBURY	8.77			.40	.97	1.04	.11			1.98	.25	.02	.28	.01	2.08	.08			.45	.10	.35	.08	.02	.50	.05										
SALISBURY FAA AP	6.57		.01	1.08	.73	.17				.74		.10	.04	1.79	.73	T		T	.33		.27	T	.22		.36										
SNOW HILL 4 N	4.12			.03	.24	.56	.15			.37	.24		.21		.56			T	.62	.03	.31		.01	.55	.24										
<b>CENTRAL EASTERN SHORE 02</b>																																			
ROYAL OAK 2 SSW	5.04			.25	.14	1.60	.06			.25	1.05	.28			.44	.26		.04	.45		.22	T													
VIENNA	6.79			.17	1.23	1.70	.15			.14	.37		.20		.84	.06					1.72	.17		.04											
<b>LOWER SOUTHERN 03</b>																																			
MECHANICSVILLE 5 NE	4.38			.33	.44	.97	.68				.84	.18	.03						.14	.50		.27		T											
SOLOMONS	M 5.33			1.32	.26	1.30	.78	.01			.86	.02	.36	*	.03				.17	.08	*	.14		T											
<b>UPPER SOUTHERN 04</b>																																			
BALTIMORE WASH INTL AP R	5.52			1.10	.63	.64				.37	.15	.20	.02	.05			T	.16	1.77		.32	T	T											.11	
BELTSVILLE	7.50			.15	1.46	.64	.35	.03		.29	.20	2.13	.03		.17				1.27	.31	.02	.38										.07			
DALECARLIA RSVR	7.28			.11	.78	.82	.42			1.22	.60	.25	.05			.10		1.56	.49		.45											.43			
LAUREL 3 W	7.11			.30	1.75	.80				.34	.05	.76	.02				.09	2.18		.50	.03													.29	
MD SCI CTR BALTIMORE R	4.82			1.34	.53	.67				.05	.05	.11	.01	.08		.03	.14	.96		.39														.46	
NATL ARBORETUM DC	6.74			.10	1.95	.84	.40	.01		.78	.42	.38	.02		.09		T	.61	.38		.30						*	.46							
OXON HILL	6.43			.22	1.17	.58	.50			.29	.63	1.05	.03		.01		.05	.23	.80		.16	.01	T									.67		.03	
UPPER MARLBORO 3 NNW	5.60			.34	.71	.71	.25		.13	1.10	.41		.04		.48			.29	.40		.35	.01											.38		
<b>NORTHERN EASTERN SHORE 05</b>																																			
CHESTERTOWN	4.71			.20	.91	.80				.45		.11		T		.18		.04	.47		1.18														
<b>NORTHERN CENTRAL 06</b>																																			
ABERDEEN PHILLIPS FLD	4.77	.14		.21	.45	.66	.47			T	.85	.08	.15			.01	.02		.20	.36			1.16										.01		
BRIGHTON DAM	5.26			.15	1.16	.90				.16	.10		.30		.60			.15	1.32		.41													.01	
CATOCTIN MTN PARK	4.83			.02	.60	.98	.05			.80	.01	.20	.17		.01		T	.75	.69	.01	.31	.09	.04				.06	.01					.03		
CONOWINGO DAM	5.29			.10	.58	.65	.75				.68	.30	.08		.05			.37	.71		.72												.30		
CYLBURN	5.35			*	*	*	*	*	*	3.19	.56	.12	.07		*	*	.18	T	.82	.15	T	.26													
DAMASCUS 3 SSW	5.37			1.00	.51	.90	.02			.21	.16	.21					.21	1.30		.24	.04												.57		
EMMITSBURG 2 SE	5.97			.31	.26	.79	.48				.50	1.66	.06		.01		T		1.38		T	.45	T										.07		
FREDERICK 2 NNE	5.29			.38	.73	.95	.42			.41	.40	.07	.03		.06			.90	.25	.10	.12	.02										.44		.01	
MILLERS 4 NE	4.41			T	.66	.78	.04			.04	.44	.53	.02		.19	T		.34	.58		.50	.05													
POTOMAC FLTR PLT	7.77			1.58	.53	.87					1.41							.04	1.84	.08	.12														.24
SMITHSBURG 2NW	4.64				.51	.81	.51				.46	.62	.40					1.00			.33						.45	.45							.40
<b>APPALACHIAN</b>																																			

MARYLAND AND DELAWARE  
JUNE 2009

## DAILY PRECIPITATION (INCHES)

STATION	TOTAL	DAY OF MONTH																																
		01	02	03	04	05	06	07	08	09	10	11	12	13	14	15	16	17	18	19	20	21	22	23	24	25	26	27	28	29	30	31		
<b>MOUNTAIN 07</b>																																		
CUMBERLAND 2	4.82		.01	.23	.18	1.29	.22				.01	.58	.06					.08	1.55		.08	.48					*	.05						
FROSTBURG 2	5.84		.13	.20	.33	1.20	.26			.01	T	.51	.39		T			.17	1.91		.17	.56												
SHARPSBURG 5 S	3.79			.21	.54	.99	.41				.09	.10	.03					.02	1.18		.01	.15							.03		.03			
WILLIAMSPORT	4.93			.23	.53	1.16	.34				.45	.03	.17						1.87			.15												
<b>ALLEGHENY PLATEAU 08</b>																																		
OAKLAND 1 SE	5.88			.35	.09	1.25	.13				.25	.03	.40	.03			.15	.17	2.04	.01	.50	.30							.18					
SAVAGE RIVER DAM	5.51		T	.21	.22	1.33	.32				.11		.21					.24	2.37		.27	.19						.04						
<b>DELAWARE</b>																																		
<b>NORTHERN 01</b>																																		
BEAR 2 SW	5.17		.12	.74	.28	.68				.28		.29	.06	.05	T	T		.09	1.78		.70	T	.01						.01		.08			
WILMINGTON NEW CASTLE R	6.67	T	.53	.81	.41	.70				.02	T	.28	.02	1.21				.10	1.81		.68		.02				T	T	T		.08			
WILMINGTON PORTER RES	5.94		.23		1.22	.82				.13		.03	T	.85				.13	1.47		.96								.05		.05			
<b>SOUTHERN 02</b>																																		
DOVER	5.94	.61		.01	1.10	1.53	.15			.26	.10	.15	.03		.03		T	T	.47	.04	1.09	.21	T	.16	T				T					
GREENWOOD 2NE	6.58	.25		.11	.31	.51	1.76				.63	.02	.03	.09	1.34	T	.10		.07	.82	.16	.23	T	.14			.01							
LEWES	3.97				.07	1.12	.07			.45			.33		.11				1.00		.51	.27	.04					T						

MARYLAND AND DELAWARE  
JUNE 2009

# DAILY TEMPERATURES (°F)

STATION	OB. TIME	MAX/MIN	DAY OF MONTH																															AVERAGE
			01	02	03	04	05	06	07	08	09	10	11	12	13	14	15	16	17	18	19	20	21	22	23	24	25	26	27	28	29	30	31	
<b>MARYLAND SOUTHERN EASTERN SHORE 01</b>																																		
ASSATEAGUE M	MID	MAX	77	88	82	75	74	71	74	77	78	84	81	84	80	77	74	75	71	75	86	85	80	80	80	82	78	84	85	87	87	86	79.9	
		MIN	60	56	68	60	59	59	59	60	64	65	64	68	66	66	59	64	63	64	68	64	69	65	62	65	68	67	71	65	68	69	64.2	
PRINCESS ANNE	17	MAX	72	88	91	86	66			85	87	86	86	86			75	73	69	76	82		80	84	84	87	89			84	88	82.0		
		MIN	54	52	61	58	59			60	64	59	61	63			61	59	58	64	59		65	59	60	61	51			65	63	59.8		
SALISBURY	17	MAX	80	89	88	85	65	72	78	85	85	83	83	85	84	81	77	76	76	77	81	84	83	82	76	83	84	90	88	84	85	89	81.9	
		MIN	56	59	67	60	58	58	59	61	66	64	65	71	71	66	62	63	59	64	65	67	69	67	64	67	68	66	72	66	67	67	64.5	
SALISBURY FAA AP M	MID	MAX	73	89	84	68	65	73	79	85	82	84	83	85	84	78	75	73	69	77	81	83	78	81	77	82	83	88	85	83	85	88	80.0	
		MIN	51	54	65	58	59	57	56	60	64	63	65	70	66	62	61	59	58	64	64	63	69	65	63	67	64	64	62	63	67	62	62.2	
SNOW HILL 4 N	17	MAX	81	91	91	80	70	73	79	86	85	85	83	85	86	81	79	74	73	77	83	84	82	82	79	83	82	89	88	84	85	87	82.2	
		MIN	54	57	65	61	60	59	59	61	62	63	65	71	69	66	63	62	60	64	63	60	69	66	63	65	66	63	70	62	61	63	63.1	
<b>CENTRAL EASTERN SHORE 02</b>																																		
ROYAL OAK 2 SSW	18	MAX	80	89	89	84	65	75	80	86	86	83	83	86	85	83	81	76	73	79	83	83	84	84	83	87	87	89	88	83	85	88	82.9	
		MIN	53	65	66	58	59	59	61	67	69	61	66	72	70	64	64	64	59	64	62	68	72	70	66	67	67	72	73	67	67	66	65.3	
VIENNA	18	MAX	83	90	91	86	66	71	80	86	84	87	85	88	87	84	80	78	75	78	82	85	87	85	85	85	89	90	90	87	88	88	84.0	
		MIN	53	61	64	59	56	57	55	62	65	61	65	64	68	65	62	61	57	59	62	67	70	65	63	65	65	67	65	64	63	66	62.5	
		OBS			83										***																			
<b>LOWER SOUTHERN 03</b>																																		
MECHANICSVILLE 5 NE	07	MAX	78	74	87	79	69	63	71	78	84	82	80	79	83	82	82	81	81	69	77	80	81	77	82	81	83	86	85	83	73	83	79.1	
		MIN	50	51	59	60	60	59	58	58	68	60	61	68	68	66	62	64	62	62	61	61	69	65	63	63	64	66	68	63	64	61	62.1	
SOLOMONS	08	MAX	81	80	90	80	64	65	76	77	85	80	81	78	85	83	80	83	75	71	82	83	86	77	83	81	84	85	89	84	76	86	80.3	
		MIN	61	63	65	62	60	61	62	66	71	63	70	71	73	68	69	69	64	66	67	72	70	69	69	68	71	73	73	71	70	69	67.5	
<b>UPPER SOUTHERN 04</b>																																		
BALTIMORE WASH INTL APM	MID	MAX	75	87	83	64	62	76	81	84	86	80	76	85	82	81	81	73	66	79	83	86	79	85	84	87	89	89	85	80	84	87	80.6	
		MIN	46	59	62	58	59	59	55	64	64	60	67	69	65	62	61	61	61	64	60	66	68	66	66	64	63	67	67	61	62	61	62.2	
BELTSVILLE	08	MAX	82	76	90	84	63	63	77	83	88	89	82	78	85	84	81	83	74	69	80	84	87	79	85	83	86	90	91	83	77	86	81.4	
		MIN	46	60	65	59	59	58	55	64	68	61	65	68	66	65	60	67	61	62	60	67	69	68	66	66	64	67	65	62	63	61	62.9	
DALECARLIA RSVR	08	MAX	79	82	88	90	66	62	66	76	84	90	84	82	86	85	76	83	70	75	69	82	83	87	84	84	86	86	91	83	76	76	80.4	
		OBS			77																													
		MIN	58	50	61	59	52	59	60	58	65	62	67	69	67	66	63	63	61	62	62	61	69	69	71	64	65	69	71	63	63	63	63.1	
LAUREL 3 W M	MID	MAX	75	88	85	69	62	75	82	88	88	80	79	85	84	81	82	76	65	80	84	87	79	85	84	87	89	90	84	77	86	86	81.4	
		MIN	51	63	65	57	58	58	60	66	63	61	66	69	67	64	62	64	60	63	63	68	67	67	65	66	69	72	67	66	64	65	63.9	
MD SCI CTR BALTIMORE M	MID	MAX	75	91	83	65	64	78	82	86	89	81	78	88	85	82	83	74	67	81	84	89	81	86	85	87	92	93	85	83	87	89	82.4	
		MIN	58	65	62	60	60	60	61	67	67	66	68	72	70	68	68	63	62	66	66	70	70	70	70	71	71	74	73	71	69	70	66.9	
NATL ARBORETUM DC	07	MAX	89	80	84	95	68	69	88	86	91	91	86	93	90	88	88	86	79	72	84	87	90	82	89	88	90	92	100	87	87	90	86.3	
		OBS																																
		MIN	55	66	70	65	65	64	66	71	72	67	71	73	73	69	67	71	65	66	66	73	75	72	72	70	70	75	72	69	71	69.0		





DAILY TEMPERATURES (°F)

STATION	OB. TIME	MAX/MIN	DAY OF MONTH																															AVERAGE
			01	02	03	04	05	06	07	08	09	10	11	12	13	14	15	16	17	18	19	20	21	22	23	24	25	26	27	28	29	30	31	
FROSTBURG 2	07	MIN	44	51	61	52	55	56	53	60	67	63	63	66	64	55	59	58	62	64	59	68	68	64	60	59	63	68	61	62	59	64		60.3
		OBS	62																								68	83	78	74	77	75		73.0
SHARPSBURG 5 S	07	MAX	67	74	79	73	52	55	73	79	77	78	71	67	73	73	75	77	72	61	72	76	75	74	76	78	83	78	74	77	75		73.0	
		MIN	39	40	58	48	48	51	50	52	57	60	57	58	58	51	52	55	56	56	59	61	62	59	57	58	58	64	57	57	54	54		54.9
WILLIAMSPORT	06	MAX	80	73	89	79	59	61	78	82	85	88	79	77	83	83	81	84	77	66	82	81	86	77	85	84	87	89	88	84	75	85		80.2
		MIN	44	44	59	53	54	56	54	54	60	58	58	63	63	57	56	56	62	60	59	59	67	61	59	59	60	62	62	62	59	59		58.0
OAKLAND 1 SE	07	MAX	67	75	82	75	54	57	73	79	80	80	76	74	75	76	76	71	72	70	74	81	78	74	78	79	81	82	79	77	76	76		74.9
		MIN	37	47	55	51	50	49	46	53	60	55	58	59	58	48	52	56	58	58	55	64	62	54	51	49	54	58	52	54	52	60		53.8
SAVAGE RIVER DAM	08	MAX	70	75	82	74	53	58	73	79	80	82	77	70	75	76	76	78	78	65	74	82	77	74	78	80	83	83	81	78	77	76		75.5
		MIN	40	52	57	52	52	53	49	54	58	60	61	63	59	51	52	54	54	58	57	60	67	58	55	55	57	60	56	58	55	58		55.8
BEAR 2 SW	MID	MAX	73	85	78	63	61	76	80	85	82	81	72	84	82	79	77	69	68	75	79	79	83	82	84	86	88	82	83	84	85		78.8	
		MIN	42	57	59	57	57	58	55	61	64	58	65	68	66	64	59	59	56	62	59	62	68	65	65	65	64	68	63	63	61	62		61.1
WILMINGTON NEW CASTLE M	MID	MAX	71	86	78	63	62	76	81	84	81	82	73	85	81	80	76	70	69	72	79	78	79	84	83	83	84	88	83	85	84	86		78.9
		MIN	47	60	58	57	57	58	58	65	65	60	65	68	65	63	62	58	57	62	60	64	67	64	66	66	67	69	64	63	63	65		62.1
WILMINGTON PORTER RES M	MID	MAX	71	85	72	61	61	74	81	83	79	80	80	83	79	77	77	66	68	68	76	75	76	81	80	81	84	86	79	83	82	85		77.1
		MIN	50	60	56	56	56	57	60	65	65	62	62	67	63	62	61	59	56	60	62	63	66	65	66	67	67	65	63	62	64		61.8	
DOVER	16	MAX	82	87	87	79	61	73	79	83	82	80	81	84	82	77	80	73	68	71	78	84	79	81	83	81	85	89	88	83	85	83		80.3
		OBS	69																															
GREENWOOD 2NE	07	MIN	51	60	66	57	58	58	57	62	69	61	61	64	66	62	59	67	58	63	63	64	68	63	64	67	68	69	66	64	66	65		62.9
		MAX	79	76	89	80	64	62	72	80	85	83	82	81	85	81	76	76	72	68	76	80	83	79	80	81	82	83	88	83	82	84		79.1
LEWES	17	MIN	49	50	66	59	58	58	57	59	66	61	63	64	68	65	60	60	57	60	64	63	70	66	65	65	64	67	68	63	63	63		62.0
		MAX	81	91	90	74	64	73	79	86	84	76	75	85	81	76	73	72	68	76	76	80	81	77	79	80	81	90	90	83	86	89		79.9
		MIN	57	61	68	59	58	59	60	62	67	64	63	63	65	65	61	63	60	64	65	65	67	66	65	69	67	68	63	68	67	68		63.9

PAN EVAPORATION AND WIND

STATION		DAY OF MONTH																														TOTAL OR AVERAGE
		01	02	03	04	05	06	07	08	09	10	11	12	13	14	15	16	17	18	19	20	21	22	23	24	25	26	27	28	29	30	
MARYLAND UPPER SOUTHERN 04 BELTSVILLE	WIND	-	43	35	43	37	*	*	96	26	46	29	28	*	*	114	34	56	61	18	35	*	135	68	53	43	21	26	*	89	43	1220
	EVAP	-	23	22	28	4	*	*	31	24	23	-	3	*	*	73	20	15	6	12	22	*	38	27	27	26	23	19	*	37	28	5.69
UPPER MARLBORO 3 NNW	MAX	87	82	91	92	63	-	-	89	93	91	85	78	-	-	88	86	78	65	81	87	-	85	87	89	86	93	92	-	87	88	85.1
	MIN	51	52	63	61	57	-	-	58	70	61	61	62	-	-	63	63	59	59	63	63	-	63	63	64	64	67	64	-	62	61	61.4
	WIND	-	-	-	-	-	-	-	-	-	-	-	-	-	-	-	-	-	-	-	-	-	-	-	-	-	-	-	-	-	-	M
	EVAP	-	22	23	22	4	*	*	*	*	*	*	111	-	-	68	24	17	1	9	21	*	38	24	*	*	*	*	*	*	151	5.94
	MAX	93	88	95	96	67	66	83	93	97	94	89	85	98	93	96	96	85	71	84	94	89	84	93	93	96	99	100	95	80	95	89.6
	MIN	55	56	63	65	61	61	62	65	68	64	65	71	72	70	67	68	62	63	66	67	69	65	66	67	68	71	69	67	65	64	65.4

Evaporation: Is measured in hundredths of inches.

Wind: Is measured in miles.

Max and Min: The maximum and minimum temperatures (Fahreheit) of the water in the evaporation pan.

STATION INDEX

STATION	INDEX NO.	DIVISION	COUNTY	LATITUDE	LONGITUDE	ELEVATION (IN FEET)	OBSERVATION TIME AND TABLES				OBSERVER
							LOCAL STD TIME				
							TEMP	PRECIP	EVAP	SPECIAL SEE (NOTES)	
<b>MARYLAND</b>											
ABERDEEN PHILLIPS FLD	0015	06	HARFORD	39 28	76 10W	57	07	07		C H	US ARMY ABERDEEN TST CTR
ASSATEAGUE	0335	01	WORCESTER	38 4	75 13W	10	MID	MID		H	ASSATEAGUE IS NATL SEA
BALTIMORE WASH INTL AP R	0465	04	ANNE ARUNDEL	39 10	76 41W	156	MID	MID		C HJ	ASOS - FAA
BELTSVILLE	0700	04	PRINCE GEORG	39 2	76 56W	145	08	08	08	C H	USDA AGRICULT RES SVC
BRIGHTON DAM	1125	06	MONTGOMERY	39 11	77 0W	330		07		H	WA SUBURB SANIT COMM
CATOCTIN MTN PARK	1530	06	FREDERICK	39 39	77 29W	1610	19	19		H	CATOCTIN MOUNTAIN PK
CHESTERTOWN	1750	05	KENT	39 13	76 3W	40	23	23		H	THOMAS W ELIASON JR
CONOWINGO DAM	2060	06	HARFORD	39 39	76 11W	40	07	07		H	SUSQUEHANNA ELECTRIC CO
CUMBERLAND 2	2282	07	ALLEGANY	39 39	78 45W	730	07	07		H	TIMOTHY B THOMAS
CYLBURN	2308	06	BALTIMORE	39 22	76 38W	400	20	20		H	CYLBURN ARBORETUM
DALECARLIA RSVR	2325	04	PRINCE GEORG	38 56	77 7W	150	08	08		H	USA CORPS OF ENGINEERS
DAMASCUS 3 SSW	2336	06	MONTGOMERY	39 16	77 14W	697	22	22		H	ROBERT J LEFFLER
EMMITSBURG 2 SE	2906	06	FREDERICK	39 41	77 17W	403	07	07		H	ERIC E GLASS
FREDERICK 2 NNE	3353	06	FREDERICK	39 26	77 24W	280	07	07		H	DIR PUBLIC WORK WTP
FROSTBURG 2	3415	07	ALLEGANY	39 40	78 56W	2170	07	07		H	GREGORY P LATTA
LAUREL 3 W	5111	04	PRINCE GEORG	39 5	76 54W	400	MID	MID		H	WA SUBURBAN SANITARY COM
MD SCI CTR BALTIMORE R	5718	04	BALTIMORE (C	39 17	76 37W	20	MID	MID		C H	ASOS - NWS
MECHANICVILLE 5 NE	5865	03	ST. MARY'S	38 28	76 42W	100	07	07		H	SANDRA J HASTINGS
MILLERS 4 NE	5934	06	CARROLL	39 43	76 48W	860	18	18		C H	ROBERT MILLER
NATL ARBORETUM DC	6350	04	PRINCE GEORG	38 55	76 58W	50	07	07		H	US NATIONAL ARBORETUM
OAKLAND 1 SE	6620	08	GARRETT	39 25	79 24W	2420	07	07		H	GARRETT CO MEM HOSPITAL
OXON HILL	6800	04	PRINCE GEORG	38 48	77 0W	120	08	08		H	BRIAN SMITH
POTOMAC FLTR PLT	7272	06	MONTGOMERY	39 2	77 15W	270		08		H	POTOMAC WATER FILT PLANT
PRINCESS ANNE	7330	01	SOMERSET	38 13	75 41W	20	17	17		H	UNIV OF MD EASTERN SHORE
ROYAL OAK 2 SSW	7806	02	TALBOT	38 43	76 11W	10	18	18		H	JOHN L SWAINE JR
SALISBURY	8000	01	WICOMICO	38 22	75 35W	10	17	17		H	CITY OF SALISBURY
SALISBURY FAA AP	8005	01	WICOMICO	38 20	75 31W	48	MID	MID		H	FAA
SAVAGE RIVER DAM	8065	08	GARRETT	39 31	79 8W	1495	08	08	08	C H	USA CORPS OF ENGINEERS
SHARPSBURG 5 S	8207	07	WASHINGTON	39 24	77 43W	500	07	07		H	DAVID DOWNIN
SMITHSBURG 2NW	8371	06	WASHINGTON	39 40	77 35W	670	08	08		H	SMITHSBURG WWTP
SNOW HILL 4 N	8380	01	WORCESTER	38 14	75 23W	30	17	17		H	CURTIS E SHOCKLEY
SOLOMONS	8405	03	CALVERT	38 19	76 27W	12	08	08		H	CHESAPEAKE BIOLOGIC LAB
UPPER MARLBORO 3 NNW	9070	04	PRINCE GEORG	38 52	76 47W	100	08	08	08	H	UNIVERSITY OF MARYLAND
VIENNA	9140	02	DORCHESTER	38 29	75 49W	10	18	18		H	DELMARVA POWER AND LIGHT
WILLIAMSPORT	9570	07	WASHINGTON	39 36	77 50W	360	06	06		H	R C WILSON TREATMENT PLT
<b>DELAWARE</b>											
BEAR 2 SW	1200	01	NEW CASTLE	39 36	75 44W	80	MID	MID		H	R GARY GALLAHER
DOVER	2730	02	KENT	39 16	75 31W	30	16	16		H	DEPT OF TRANSPORTATION
GREENWOOD 2NE	3595	02	SUSSEX	38 49	75 35W	45	07	07		H	DANIEL M SWARTZENTRUBER
LEWES	5320	02	SUSSEX	38 47	75 8W	15	17	17		H	BOARD OF PUBLIC WORKS
WILMINGTON NEW CASTLE R	9595	01	NEW CASTLE	39 40	75 36W	79	MID	MID		C HJ	ASOS - FAA
WILMINGTON PORTER RES	9605	01	NEW CASTLE	39 46	75 32W	270	MID	MID		H	WILMINGTON WATER DEPT

# REFERENCE NOTES

## DEFINITIONS

**STATION NAMES:** Name of the city, town or locality. Figures and letters following the station names indicate the distance in miles and direction from the post office or town community center.

**DIVISIONS:** Areas within a state of similar climatological characteristics. Division averages are calculated using data from stations that record both temperature and precipitation (i.e. not precipitation alone).

**NORMALS:** The average value of the meteorological element over a time period. Effective 1 January 2002, the averaging period is 1971 to 2000. The normals for National Weather Service localities have been adjusted so as to be representative for the current observation site.

**MONTHLY DEGREE DAY TOTALS:** One heating (cooling) degree day is accumulated for each whole degree that the daily mean temperature is below (above) 65 degrees Fahrenheit.

**PRECIPITATION:** Values shown in hundredths of inches are water equivalent totals, i.e., total of liquid and melted frozen precipitation. In the "Monthly Summarized Data" table the total snow and sleet values shown in tenths of inches are unmelted amounts. The max depth on ground values of snow and sleet shown in whole inches are cumulative unmelted amounts. The number of days with .10, .50, 1.00 or more refers to water equivalents.

**PRECIPITATION QUALITY CONTROL:** The NCDC quality control process may delete precipitation data that are spatially inconsistent; exceed climatological limits, or are inconsistent with prevailing weather patterns.

**TEMPERATURE:** Original and edited temperature values are given in the "Daily Temperature" table. Edited values are produced when an original value is missing or when surrounding stations indicated a suspect original value. When a line labeled OBS is present and contains either a daily temperature (suspect) or \*\*\* (missing), the temperature appearing directly above, on the line labeled MAX or MIN, is an edited value. Summary temperature information (averages, departures, extremes, monthly degree day totals) is based on the values labeled MAX/MIN.

**WIND:** (As shown in the "Evaporation and Wind" table) the total wind movement in miles over the evaporation pan as determined by an anemometer recorder located 6-8 inches above the pan.

## SYMBOLS AND LETTERS USED IN THE STATION INDEX TABLE

# Thermometers located in a rooftop shelter.  
// Rain gage equipped with a windshield  
AR Observation made "after rain" has occurred.  
C Station is equipped with recording rain gage (R) but values in this bulletin are from a non-recording rain gage unless indicated by an R.  
G Observations appear in the "Soil Temperatures" table.  
H Observations appear in the "Snowfall and Snow on the Ground" table.  
J Station also published as a Local Climatological Data publication.  
MID Observation time is midnight.  
MO Rain gage read once monthly, usually the last day.  
OC Rain gage readings vary from a few weeks to several months.  
R Amounts from recording rain gage.  
SR Observation time near sunrise.

SS Observation time near sunset.  
VAR Observation time varies.  
WI Rain gage read weekly or irregularly.  
WM Rain gage read weekly and last day of the month.

## SYMBOLS AND LETTERS USED IN THE DATA TABLES

(DAILY DATA ARE FOR THE 24 HOURS IMMEDIATELY PRECEDING OBSERVATION TIME.)

BLANK Entries in the "Monthly Summarized Data" table indicate no record.

BLANK Entries in the "Daily Precipitation" and "Snowfall and Snow on the Ground" tables indicate zero.

BLANK Entries in the "Daily Temperature" table indicate a missing record where an edited value could not be determined. (See \*\*\* below)

- No record. Data not recorded, determined unreliable by quality control check, or not received in time for publication.

+ Precipitation or temperature extremes occurred on one or more previous dates during the month.

\*\*\* Missing original temperature which has been estimated during edit.

\* Rain gage not read. Precipitation is included in the amount following the asterisks. Time distribution not known. A \* preceding the monthly total indicates precipitation amount is being carried forward to next months total, and may include amounts from the previous month(s).  
// Rain gage equipped with a windshield.

A Amount of precipitation is the total of observer's entries for the current month. It may include precipitation that occurred during the previous month. Refer to earlier bulletin to determine date of last reading. (Hawaii stations)

B Adjusted monthly value (estimated), (1-7 missing values for wind and evaporation).

M Insufficient or partial data. M is appended to average and/or total values computed with 1-9 daily values missing. M appears alone if 10 or more daily values are missing, (8 or more for wind and evaporation).

R Amounts from recording rain gage.

T Trace. An amount too small to measure.

V Includes total for previous month(s). (See \* above)

**SEASONAL TABLES:** Monthly and seasonal snowfall and heating degree days for the 12 months ending with the June data are published in the July issue of this bulletin. Cooling degree days for the calendar year are published in the "Climatological Data Annual Summary."

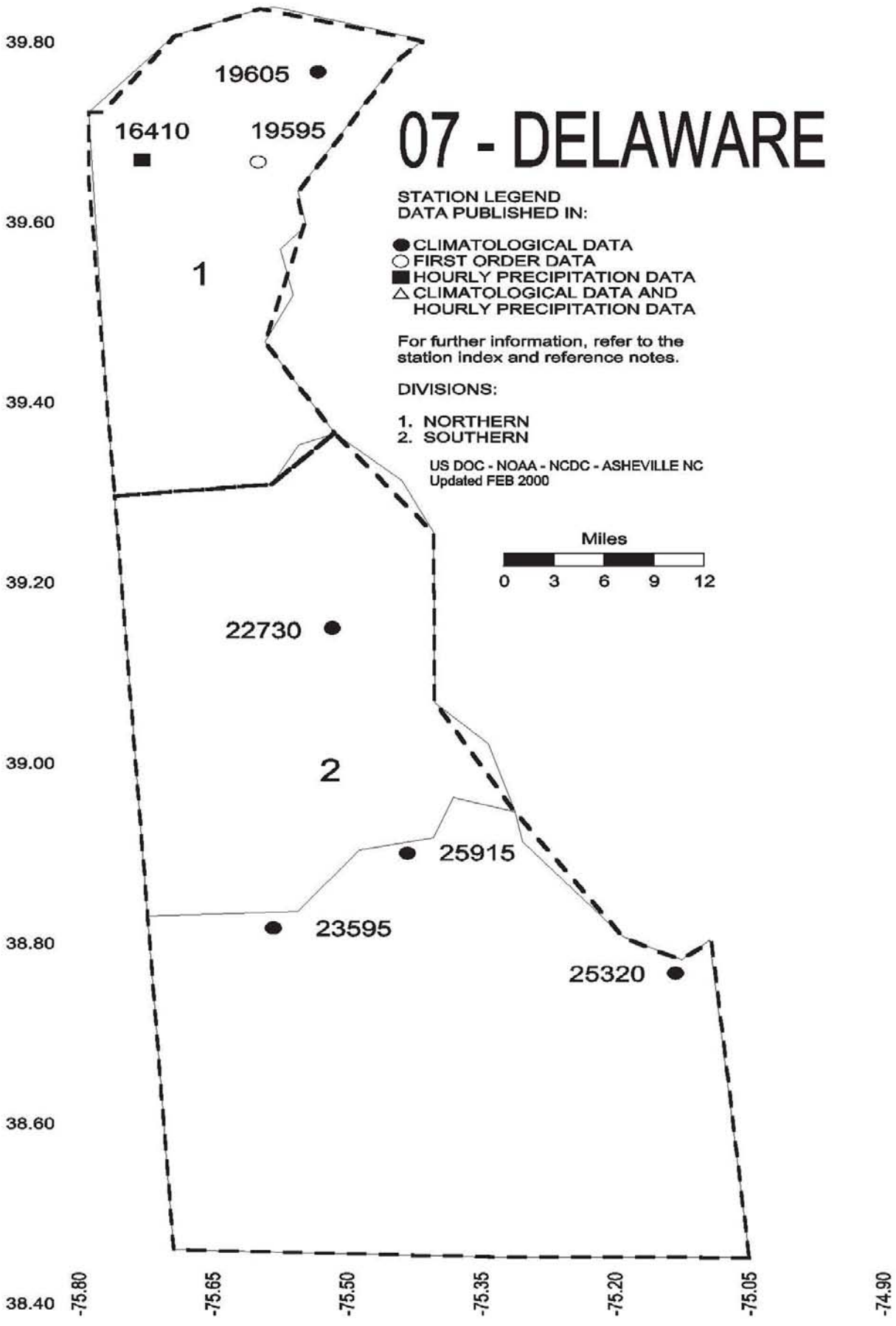
Information concerning the history of changes in locations, exposure, etc. of substations is kept on file at the National Climatic Data Center. Historical information of regular National Weather Service Offices may be obtained from the "Local Climatological Data" annual publication. The contents of this publication may be reprinted or otherwise used freely, with proper credit to the National Climatic Data Center. The data are also available in digital form on magnetic tape and diskette.

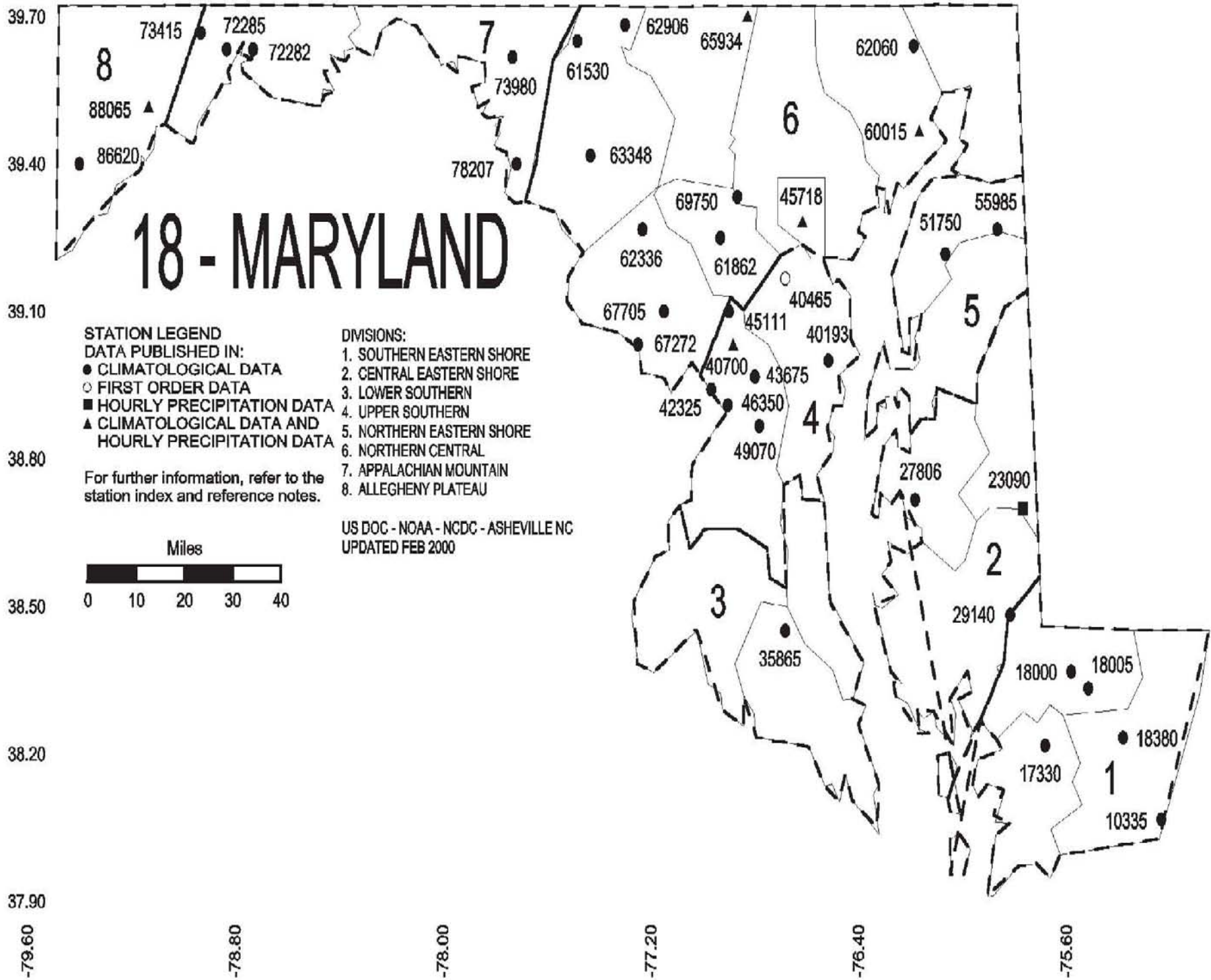
## SUBSCRIPTION, PRICE, AND ORDERING INFORMATION AVAILABLE FROM:

NCDC Subscription Services Center  
310 State Route 956  
Building 300  
Rocket Center, WV 26726

Toll free number: (866) 742-3322  
Fax number: (304) 726-4409

# 07 - DELAWARE





Station ID	Division	Data Type
73415	8	Climatological Data
72285	7	Climatological Data
72282	7	Climatological Data
88065	8	Climatological Data and Hourly Precipitation Data
86620	8	Climatological Data
73980	7	Climatological Data
62906	6	Climatological Data
65934	6	Climatological Data
62060	6	Climatological Data
61530	6	Climatological Data
60015	6	Climatological Data and Hourly Precipitation Data
63348	6	Climatological Data
69750	6	Climatological Data
45718	6	Climatological Data and Hourly Precipitation Data
55985	5	Climatological Data
51750	5	Climatological Data
62336	6	Climatological Data
61862	6	Climatological Data
40465	6	First Order Data
67705	6	Climatological Data
67272	6	Climatological Data
45111	6	Climatological Data and Hourly Precipitation Data
40193	6	Climatological Data
40700	6	Climatological Data and Hourly Precipitation Data
43675	6	Climatological Data
5	5	Division Label
42325	6	Climatological Data
46350	6	Climatological Data
4	4	Division Label
49070	6	Climatological Data
27806	6	Climatological Data
23090	6	Hourly Precipitation Data
3	3	Division Label
29140	6	Climatological Data
35865	6	Climatological Data
2	2	Division Label
18000	1	Climatological Data
18005	1	Climatological Data
1	1	Division Label
18380	1	Climatological Data
17330	1	Climatological Data
10335	1	Climatological Data

## **These and other publications are available from the National Climatic Data Center**

### **Hourly Precipitation Data**

This publication contains hourly precipitation amounts obtained from recording rain gages located at National Weather Service, Federal Aviation Administration, and cooperative observer stations. Published data are displayed in inches and tenths or inches and hundredths at local standard time. HPD includes maximum precipitation for nine (9) time periods from 15 minutes to 24 hours, for selected stations.

### **Climatological Data**

Monthly editions contain station daily maximum and minimum temperatures and precipitation. Some Stations provide daily snowfall, snow depth, evaporation, and soil temperature data. Each edition also contains monthly summaries for heating and cooling degree days (65 degree F base). The July issue contains a recap of monthly heating degree days and snow data for the preceding July through June.

The Annual issue contains monthly and annual averages of temperature, precipitation, temperature extremes, freeze data, soil temperatures, evaporation, and a recap of monthly cooling degree days.

### **Storm Data**

Monthly issues contain a chronological listing, by states, of occurrences of storms and unusual weather phenomena. Reports contain information on storm paths, deaths, injuries, and property damage. An "Outstanding storms of the month" section highlights severe weather events with photographs, illustrations, and narratives. The December issue includes annual tornado, lightning, flash flood, and tropical cyclone summaries.

### **Monthly Climatic Data for the World**

This publication contains monthly means for temperature, pressure, precipitation, vapor pressure, and sunshine for approximately 2,000 surface data collection stations worldwide and monthly mean upper air temperatures, dew point depressions, and wind velocities for approximately 500 observing sites.

### **Local Climatological Data**

LCD publications summarize temperature, relative humidity, precipitation, cloudiness, wind speed and direction observations for several hundred cities in the U.S. and its territories. Each monthly publication also contains 3 hourly weather observations for that month and a hourly summary of precipitation. Annual LCD publications contain a summary of the past calendar year as well as historical averages and extremes.

For Information Call:

(866) 742-3322 (Toll free)

(828) 271-4010 (TDD)

(304) 726-4409 (Fax)

Subscription Service Center  
310 State Route 956  
Building 300  
Rocket Center, WV 26726

PRSRT STD  
POSTAGE & FEES PAID  
United States Department of Commerce  
NOAA Permit No. G-19

**OFFICIAL BUSINESS**  
**PENALTY FOR PRIVATE USE \$300**  
**ADDRESS CORRECTION REQUESTED**

To change your address, please return a copy of the mailing label along with your new address to:

NCDC Subscription Services Center  
310 State Route 956  
Building 300  
Rocket Center, WV 26726

Toll free number : (866) 742-3322  
TDD : (828) 271-4010  
Fax number : (304) 726-4409

NCDC now offers an annual online subscription for the *Climatological Data* publication. When you purchase this subscription service, you will have **immediate online access** to all previous publications back to October 1997 and all publications thereafter until the expiration of the subscription. Your subscription is valid for one year after purchase. **The total cost is \$36 for online delivery (including back issues) compared to \$52 for offline delivery.** To order this and other subscriptions online with your credit card, go to: [www.ncdc.noaa.gov/mpp.html](http://www.ncdc.noaa.gov/mpp.html) and choose subscription.