



CLIMATOLOGICAL DATA

MARYLAND AND DELAWARE

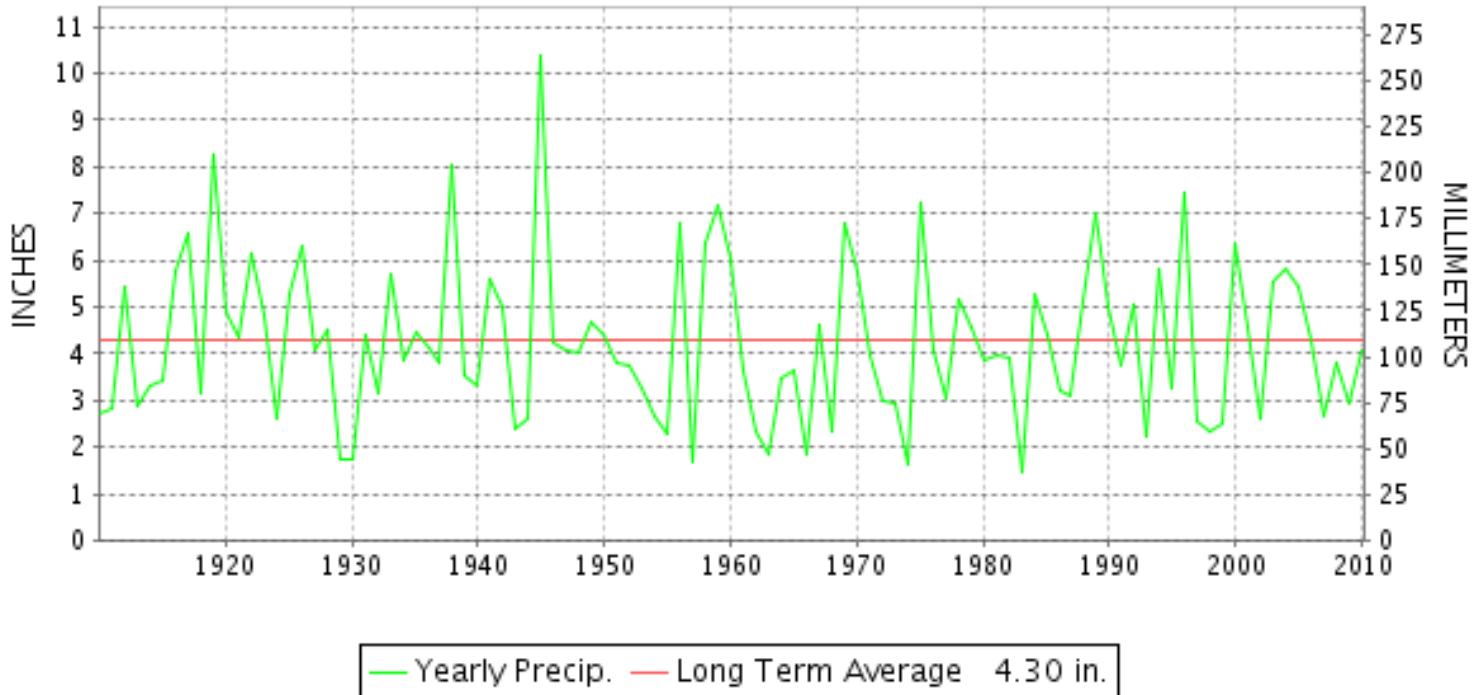


JULY 2010

VOLUME 114 NUMBER 07

ISSN 0145-054

JULY PRECIPITATION BY YEAR



TEMPERATURE AND PRECIPITATION EXTREMES

MARYLAND

HIGHEST TEMPERATURE	105	JULY 6	2 STATIONS
LOWEST TEMPERATURE	41	JULY 2	OAKLAND 1 SE
GREATEST TOTAL PRECIPITATION	7.74		CYLBURN
LEAST TOTAL PRECIPITATION	.85		SALISBURY FAA AP
GREATEST 1 DAY PRECIPITATION	2.20	JULY 11	CONOWINGO DAM

"I certify that this is an official publication of the National Oceanic and Atmospheric Administration (NOAA) It is compiled using information from weather observing sites supervised by NOAA/National Weather Service and received at the National Climatic Data Center(NCDC), Asheville, North Carolina 28801."

Director
National Climatic Data Center

noaa

National
Oceanic and
Atmospheric Administration

National
Environmental Satellite, Data
and Information Service

National
Climatic Data Center
Asheville, North Carolina

DELAWARE

HIGHEST TEMPERATURE	103	JULY 7	2 STATIONS
LOWEST TEMPERATURE	51	JULY 2	BEAR 2 SW
GREATEST TOTAL PRECIPITATION	9.66		WILMINGTON PORTER RES
LEAST TOTAL PRECIPITATION	4.94		BEAR 2 SW
GREATEST 1 DAY PRECIPITATION	3.47	JULY 14	WILMINGTON PORTER RES

MONTHLY STATION AND DIVISION SUMMARY

STATION	TEMPERATURE (°F)											PRECIPITATION (IN)												
	AVERAGE MAXIMUM	AVERAGE MINIMUM	AVERAGE	DEPARTURE FROM NORMAL	HIGHEST	DATE	LOWEST	DATE	HEATING DEG. DAYS	COOLING DEG. DAYS	NO. OF DAYS				TOTAL	DEPARTURE FROM NORMAL	GREATEST 24 HOURS	DATE	ICE PELLETS, SNOW			NO. OF DAYS		
											MAX		MIN						TOTAL	MAX DEPTH ON GROUND	DATE	.10 OR MORE	.50 OR MORE	1.00 OR MORE
											>=90	<=32	<=32	<=0										
EMMITSBURG 2 SE	89.1	64.9	77.0	2.0	99	25	50	3	1	377	17	0	0	0	1.86	-1.78	.64	14	.0	0		6	1	0
FREDERICK 2 NNE	92.2	68.1	80.2		101	25+	54	3+	0	477	20	0	0	0	2.59	.88	.88	14	.0	0		5	2	0
MILLERS 4 NE	88.1	65.1	76.6	2.7	98	6	49	2	2	367	11	0	0	0	4.64	1.07	1.23	13	.0	0		8	4	2
SMITHSBURG 2NW	89.1	63.1	76.1		99	26+	46	1	7	360	17	0	0	0	1.38	.65	.65	10	.0	0		3	2	0
--DIVISIONAL DATA-----> APPALACHIAN MOUNTAIN 07			77.9	2.6											3.99	.03	.0							
CUMBERLAND 2	92.8	65.7	79.3	4.8	102	8+	49	2	0	449	25	0	0	0	2.75	-.67	1.22	10	.0	0		4	2	2
FROSTBURG 2	82.1	60.5	71.3	2.8	92	9	45	1	19	223	2	0	0	0	3.71	-.20	1.69	10	.0	0		6	2	2
SHARPSBURG 5 S	90.6	62.4	76.5		100	25+	47	2+	4	367	19	0	0	0	2.15				.0	0		4	1	0
WILLIAMSPORT	92.2	64.5	78.4		101	24	51	3+	0	423	22	0	0	0	.93	.55	.55	10	.0	0		2	1	0
--DIVISIONAL DATA-----> ALLEGHENY PLATEAU 08			76.4	3.6											2.39	-1.25	.0							
OAKLAND 1 SE	82.2	58.7	70.5	2.1	90	8	41	2	27	204	1	0	0	0	4.40	-.83	2.15	14	.0	0		6	3	1
SAVAGE RIVER DAM	84.3	60.5	72.4	2.7	99	25	45	2	14	252	5	0	0	0	2.28	-1.91	1.11	14	.0	0		5	1	1
--DIVISIONAL DATA-----> DELAWARE NORTHERN 01			71.5	2.9											3.34	-1.53	.0							
BEAR 2 SW	89.8	67.7	78.8		103	7+	51	2	0	433	17	0	0	0	4.94		1.26	13	.0	0		7	5	2
WILMINGTON NEW CASTLE R	89.6	69.6	79.6	3.0	103	7+	54	2	0	462	15	0	0	0	6.15	1.87	2.45	13	.0	0		6	5	2
WILMINGTON PORTER RES	88.3	70.9	79.6	4.4	101	6	58	2	0	461	13	0	0	0	9.66	5.27	3.47	14	.0	0		8	5	3
--DIVISIONAL DATA-----> SOUTHERN 02			79.3	3.1											6.92	2.42	.0							
DOVER	90.5	71.6	81.1	3.3	101	7+	56	2	0	506	18	0	0	0	6.88	2.72	2.10	10	.0	0		5	4	4
GREENWOOD 2NE	M	M	M																M	M				
LEWES	M	M	M																M	M				
--DIVISIONAL DATA----->			81.1	4.6											6.88	2.96	.0							

DAILY PRECIPITATION (INCHES)

STATION	TOTAL	DAY OF MONTH																															
		01	02	03	04	05	06	07	08	09	10	11	12	13	14	15	16	17	18	19	20	21	22	23	24	25	26	27	28	29	30	31	
MARYLAND																																	
SOUTHERN EASTERN SHORE 01																																	
ASSATEAGUE	M	-	-	-	-	-	-	-	-	-	-	-	-	-	-	-	-	-	-	-	-	-	-	-	-	-	-	-	-	-	-	-	-
PRINCESS ANNE	1.46									.57			.55				*	*	.29												.05		
SALISBURY	1.23									.58			.10									.01								.04		.35	
SALISBURY FAA AP	.85			T				T	T	.43			.15	.13			.11													.08		.04	.35
SNOW HILL 4 N	1.28									.02	.63	T		.28	T												.02		.02		.31	.02	T
CENTRAL EASTERN SHORE 02																																	
ROYAL OAK 2 SSW	M	-	-	-	-	-	-	-	-	-	-	-	-	-	-	-	-	-	-	-	-	-	-	-	-	-	-	-	-	-	-	-	-
VIENNA	M	-	-	-	-	-	-	-	-	-	-	-	-	-	-	-	-	-	-	-	-	-	-	-	-	-	-	-	-	-	-	-	-
LOWER SOUTHERN 03																																	
MECHANICSVILLE 5 NE	1.79									.01	.65		.07	.25	T						.17	.27	.04	T					.16		.17		
SOLOMONS	2.61									*	.15		.14	1.14	T							.06	.02						.10		1.00		
UPPER SOUTHERN 04																																	
BALTIMORE WASH INTL AP R	4.36									.43		.98	.67	.75		T	.22	.48	T	.01						.41			.41				
BELTSVILLE	4.08									.32	.18		.78	1.44	.11		.17			.23		T				.68			.17				
DALECARLIA RSVR	6.40									.72	.05		.90	1.71	.10		.80			.25	.28					.65			.94				
LAUREL 3 W	3.00									.42		.05	.32	.35			.23			.65						.87			.11				
MD SCI CTR BALTIMORE R	6.09									.33		1.86	1.16	.71			.24				.34	.03			.25			1.17					
NATL ARBORETUM DC	M 3.46									.34	-		.47	1.70	.03		.56			.15	.05					-			.16				
OXON HILL	5.64									.16	1.00		1.11	1.73	T					.01	.04		.02			.82			.75				
UPPER MARLBORO 3 NNW	4.09									.10	.48		.65	1.27		.17				.37	.07		.10			.87			.01				
NORTHERN EASTERN SHORE 05																																	
CHESTERTOWN	6.64								1.03	1.09	.03	.05	.57	1.51			.18		1.50	.22					.30			.16					
NORTHERN CENTRAL 06																																	
ABERDEEN PHILLIPS FLD	5.41										1.96		.73	1.05	.19		.67			.04	.08				.40			.29					
BRIGHTON DAM	3.35									.45		.12	.81	1.20						.16	.05				.46			.10					
CATOCTIN MTN PARK	2.24									1.30			.71						.10	.13													
CONOWINGO DAM	6.91									.03	2.20			.34	.91	.70		.10		.58	.81	.03			1.21								
CYLBURN	7.74									.08	*	*	3.25	2.13	.09					.14	.80	.05			.09			1.11					
DAMASCUS 3 SSW	3.11									.49		.35	.56	.45				.12	.38		T				.31			.45					
EMMITSBURG 2 SE	1.86									.30	.33		.10	.64	.16				.06	.03	.08	.05				.11							
FREDERICK 2 NNE	2.59									.29	.12		.07	.88	.08											.34			.81				
MILLERS 4 NE	4.64									.12	.52		.14	1.23	1.21		.24		.04	.05	.04				.88			.17					
POTOMAC FLTR PLT	M	-	-	-	-	-	-	-	-	-	-	-	-	-	-	-	-	-	-	-	-	-	-	-	-	-	-	-	-	-	-	-	
SMITHSBURG 2NW	1.38									.65				.55												.18							
APPALACHIAN																																	

MARYLAND AND DELAWARE
JULY 2010

DAILY PRECIPITATION (INCHES)

STATION	TOTAL	DAY OF MONTH																															
		01	02	03	04	05	06	07	08	09	10	11	12	13	14	15	16	17	18	19	20	21	22	23	24	25	26	27	28	29	30	31	
MOUNTAIN 07																																	
CUMBERLAND 2	2.75									1.22				1.03						.09	.17		.02				.20				.02		
FROSTBURG 2	3.71									1.69			.12	1.14					.14	.04		.15				.39				.04			
SHARPSBURG 5 S	2.15								T	.53	T		*	*	*	*	.91				.21					.33					.17		
WILLIAMSPORT	.93									.55			.04	.08					.05	.10	.09										.02		
ALLEGHENY PLATEAU 08																																	
OAKLAND 1 SE	4.40									.13			.17	2.15			.09		.96	.05	.10					.70					.05		
SAVAGE RIVER DAM	2.28									.21			.27	1.11	T			.45	.03							.21			T				
DELAWARE																																	
NORTHERN 01																																	
BEAR 2 SW	4.94									1.21		.01	1.26	.61			.31		.20	.82						.52			T		.01		
WILMINGTON NEW CASTLE R	6.15								T	.76		T	2.45	1.32			.72		.23	.06	T				.60		T		.01				
WILMINGTON PORTER RES	9.66									.78		.26	2.10	3.47		.04	.55		.19	.05	.06				1.86				.30				
SOUTHERN 02																																	
DOVER	6.88									2.10		.02	1.88	1.65					.03	.12						1.08							
GREENWOOD 2NE	M	-	-	-	-	-	-	-	-	-	-	-	-	-	-	-	-	-	-	-	-	-	-	-	-	-	-	-	-	-	-		
LEWES	M	-	-	-	-	-	-	-	-	-	-	-	-	-	-	-	-	-	-	-	-	-	-	-	-	-	-	-	-	-	-		

TOTAL SNOWFALL AND NUMBER OF DAYS WITH ONE INCH OR MORE ON GROUND

STATION	JUL		AUG		SEP		OCT		NOV		DEC		JAN		FEB		MAR		APR		MAY		JUN		TOTAL		TOTAL PRECIPITATION				
	SNOWFALL	1 IN ON GD	SNOWFALL	1 IN ON GD	SNOWFALL	1 IN ON GD	SNOWFALL	1 IN ON GD	SNOWFALL	1 IN ON GD	SNOWFALL	1 IN ON GD	SNOWFALL	1 IN ON GD	SNOWFALL	1 IN ON GD	SNOWFALL	1 IN ON GD	SNOWFALL	1 IN ON GD	SNOWFALL	1 IN ON GD	SNOWFALL	1 IN ON GD	SNOWFALL	1 IN ON GD					
MARYLAND																															
SOUTHERN EASTERN SHORE 01																															
ASSATEAGUE			-	-							.3	0	11.0	-	M .0	-										M 11.3	M	60.70			
PRINCESS ANNE											-	-	10.0	-	15.0	-										M 25.0	M	49.50			
SALISBURY											5.8	2	14.0	-	6.0	-										25.8	M 2	57.54			
SALISBURY FAA AP											2.0	0	M .0	-	-	-										M 2.0	M	35.58			
SNOW HILL 4 N											.5	0	10.5	3	19.0	22	M .0	0								30.0	25	62.64			
CENTRAL EASTERN SHORE 02																															
ROYAL OAK 2 SSW												16.0	7	9.0	4	29.0	25										M 54.0	M 36	55.64		
LOWER SOUTHERN 03																															
MECHANICSVILLE 5 NE												M16.5	-	10.5	5	28.6	28										55.6	M 36	53.58		
SOLOMONS												M .0	-	M11.9	-	M19.6	-	T	0								31.5	M	50.55		
UPPER SOUTHERN 04																															
BALTIMORE WASH INTL AP R												20.1	11	6.9	2	50.0	22	T	0								77.0	35	49.93		
BELTSVILLE												20.5	10	8.0	4	M36.0	25										64.5	39	41.75		
DALECARLIA RSVR												5.7	-	.5	1	37.9	-										44.1	M 1	50.40		
NATL ARBORETUM DC												M .0	-	M19.0	-	6.5	-	M42.8	-								68.3	M	44.86		
OXON HILL												17.9	7	8.4	3	33.3	-	T	0								59.6	M 10	51.17		
UPPER MARLBORO 3 NNW												17.7	-	7.0	3	34.0	28										58.7	M 32	50.27		
NORTHERN EASTERN SHORE 05																															
CHESTERTOWN													M 2.0	-	8.0	-	39.0	-										49.0	M	48.37	
NORTHERN CENTRAL 06																															
ABERDEEN PHILLIPS FLD													22.0	9	6.5	2	M26.5	18										55.0	29	55.22	
BRIGHTON DAM													20.0	-	6.0	-	45.4	-										71.4	M	43.95	
CATOCTIN MTN PARK													5.0	-	M 3.0	-	M47.0	28										55.0	M 39	51.16	
CONOWINGO DAM													16.5	-	-	-	26	-	-								M 16.5	M 26	M 40.64		
CYLBURN													M .0	0	M .0	-	M .0	-										M 13.4	M	55.55	
DAMASCUS 3 SSW													31.2	12	8.8	3	58.3	28	M .0	2								98.5	48	51.22	
EMMITSBURG 2 SE													21.5	-	4.5	-	M41.0	-										67.0	M	48.57	
FREDERICK 2 NNE													17.5	-	5.5	-	-	-										M 23.0	M	39.77	
MILLERS 4 NE													29.9	11	4.7	3	52.2	27	.5	8								87.6	49	53.80	
APPALACHIAN MOUNTAIN 07																															
CUMBERLAND 2													24.2	-	5.5	-	33.5	28	T	4								63.2	M 32	38.96	
FROSTBURG 2													28.0	25	14.0	31	58.6	27	1.5	14								102.7	97	47.72	
SHARPSBURG 5 S													27.0	11	5.9	-	45.7	-										M 78.6	M 11	38.91	
WILLIAMSPORT													23.8	-	M 3.5	1	M34.2	-										61.5	M 1	35.38	
ALLEGHENY PLATEAU 08																															
OAKLAND 1 SE													4.0	1	M34.1	-	M55.0	31	111.3	-	4.1	-						208.5	M 32	52.86	
SAVAGE RIVER DAM													M28.0	-	-	-	M14.0	28	-	-								M 42.0	M 28	36.32	
DELAWARE																															
NORTHERN 01																															
BEAR 2 SW													19.7	8	6.1	3	46.9	22	T	0								72.7	33	54.55	
WILMINGTON NEW CASTLE R													19.7	7	6.1	2	46.9	22	T	0								72.7	31	52.72	
WILMINGTON PORTER RES														M 1.0	-	2.0	-												3.0	M	58.20
SOUTHERN 02																															
DOVER													18.5	-	9.1	4	38.0	25	-	-								M 65.6	M 29	49.29	
GREENWOOD 2NE													8.0	7	9.0	4	32.1	28	-	-								M 49.1	M 39	47.47	

DAILY TEMPERATURES (°F)

STATION	OB. TIME	MAX/MIN	DAY OF MONTH																															AVERAGE	
			01	02	03	04	05	06	07	08	09	10	11	12	13	14	15	16	17	18	19	20	21	22	23	24	25	26	27	28	29	30	31		
OXON HILL	08	MAX	80	80	82	88	94	97	101	99	93	92	80	92	86	87	88	93	96	93	93	91	91	91	94	97	100	99	88	86	93	93	86	91.1	
		OBS MIN	64	61	58	61	66	68	75	78	72	73	69	68	70	73	71	74	73	74	75	72	72	74	74	74	79	73	66	66	73	68	65	70.3	
UPPER MARLBORO 3 NNW	08	MAX	79	80	82	88	96	98	102	100	92	92	76	91	87	86	84	93	95	92	93	91	91	91	94	96	99	98	87	87	93	94	84	90.7	
		MIN	60	54	54	59	65	70	73	75	71	74	67	66	71	70	70	72	72	71	73	70	73	71	72	77	78	69	64	70	76	65	62	68.8	
NORTHERN EASTERN SHORE 05																																			
CHESTERTOWN	23	MAX	78	80	85	92	97	102	101	89	85	76	89	88	85	79	89	93	90	91	89	88	90	90	94	97	94	85	85	88	91	82	85	88.6	
		MIN	62	59	59	63	68	72	76	74	70	70	69	66	69	69	71	75	71	75	71	71	73	74	73	81	74	65	65	72	74	66	63	69.7	
NORTHERN CENTRAL 06																																			
ABERDEEN PHILLIPS FLD	07	MAX	81	81	81	84	93	96	101	100	92	88	74	90	88	87	83	90	94	91	93	92	86	90	91	96	100	95	86	86	90	90	83	89.4	
		MIN	62	57	56	59	65	69	75	76	73	70	69	65	69	74	71	74	71	72	76	74	74	73	74	74	80	66	65	66	75	68	62	69.5	
CATOCTIN MTN PARK	07	MAX	79	76	85	92	94	96	95	94	88	81	86	83	81	82	89	91	87	90	88	84	86	86	93	94								87.5	
		MIN	52	48	53	59	70	75	70	69	69	68	58	62	67	68	65	69	70	71	68	67	69	67	65	76								65.6	
CONOWINGO DAM	07	MAX	85	82	84	92	96	100	104	101	92	94	77	93	94	89	89	93	93	97	95	95	85	94	94	99	100	99	87	95	95	100	87	92.9	
		OBS MIN	59	53	54	59	57	63	74	74	73	74	69	63	66	64	74	72	72	72	71	70	69	69	69	70	76	65	64	66	75	66	62	67.2	
CYLBURN	08	MAX	76	74	76	83	92	93	95	94	89	87	71	86	83	82	77	86	90	87	88	89	85	85	85	92	94	93	80	83	87	86	77	85.3	
		MIN	58	57	57	61	66	72	74	74	71	71	66	64	67	70	68	72	72	72	73	71	71	69	70	72	80	64	64	67	73	64	62	68.1	
DAMASCUS 3 SSW	22	MAX	77	78	86	93	94	98	96	94	90	80	88	82	82	84	90	92	90	89	91	90	90	91	98	99	96	87	85	93	89	82	85	89.0	
		MIN	53	52	56	60	66	68	76	76	72	68	65	67	69	68	68	72	71	76	70	68	71	70	71	77	74	65	64	70	69	63	63	67.7	
EMMITSBURG 2 SE	07	MAX	79	77	78	85	92	94	97	97	94	89	80	88	85	84	85	90	92	90	92	91	86	90	90	97	99	98	86	87	93	93	84	89.1	
		MIN	53	53	50	55	60	64	67	68	71	71	63	60	61	70	68	70	70	72	72	69	70	67	67	67	81	66	60	60	69	61	57	64.9	
FREDERICK 2 NNE	07	MAX	82	79	82	88	96	97	100	101	97	94	84	91	86	88	89	95	97	94	94	94	92	92	95	101	101	99	89	87	95	93	86	92.2	
		MIN	55	54	54	58	62	68	72	74	74	72	65	64	65	71	71	72	73	75	74	72	73	72	69	78	83	67	63	64	71	65	62	68.1	
MILLERS 4 NE	18	MAX	75	78	86	93	94	98	97	94	89	84	87	86	84	80	88	91	89	91	89	84	88	87	93	97	95	82	85	90	89	85	83	88.1	
		MIN	53	49	54	59	66	70	72	69	69	66	65	61	66	67	66	69	68	68	70	68	68	67	67	77	69	61	59	66	72	61	57	65.1	
SMITHSBURG 2NW	08	MAX	78	76	79	85	93	94	97	98	96	92	83	92	84	85	85	87	93	92	90	86	91	89	90	93	99	99	86	90	85	91	83	89.1	
		OBS MIN	46	47	48	51	56	69	64	63	69	69	59	59	69	68	68	69	66	67	71	70	67	65	66	75	81	61	58	59	63	58	56	63.1	
		OBS											85																						
APPALACHIAN MOUNTAIN 07																																			
CUMBERLAND 2	18	MAX	80	83	91	96	98	101	102	102	99	90	92	90	83	90	92	93	92	94	92	91	90	93	98	98	97	89	91	96	95	89	89	92.8	
		MIN	50	49	51	57	64	67	69	69	72	69	59	62	66	68	67	68	67	74	70	68	71	69	69	82	74	63	60	64	77	61	61	65.7	
FROSTBURG 2	07	MAX	71	68	74	84	85	88	91	89	92	85	78	83	77	76	78	84	83	85	83	82	82	81	83	89	89	83	78	83	86	81	75	82.1	
		MIN	45	47	46	50	56	63	64	66	66	64	55	57	61	63	64	64	64	64	65	65	66	66	66	69	73	59	57	59	59	56	56	60.5	
SHARPSBURG 5 S	07	MAX	80	79	80	87	94	96	98	99	96	92	85	89	83	86	86	90	95	92	93	92	91	90	93	100	100	97	87	88	95	92	85	90.6	
		MIN	47	47	48	50	55	62	66	67	68	71	59	60	63	69	66	67	66	67	69	68	68	67	65	66	72	63	58	60	65	58	57	62.4	
WILLIAMSPORT	06	MAX	91	79	81	89	96	98	100	99	92	87	90	84	87	87	93	96	94	95	95	92	91	94	101	100	95	89	91	96	92	86	92.2		

MARYLAND AND DELAWARE
JULY 2010

DAILY TEMPERATURES (°F)

STATION	OB. TIME	MAX/MIN	DAY OF MONTH																															AVERAGE
			01	02	03	04	05	06	07	08	09	10	11	12	13	14	15	16	17	18	19	20	21	22	23	24	25	26	27	28	29	30	31	
ALLEGHENY PLATEAU 08 OAKLAND 1 SE		OBS MIN OBS	54	51	51	52	52	64	67	69	70	70	61	60	63	69	68	68	69	69	72	70	70	70	68	68	78	*** 63 ***	62	62	65	64	61	64.5
	07	MAX OBS MIN	66 78	71	73	82	84	87	89	90	89	87	79	83	78	81	80	85	85	83	82	82	80	80	85	87	88	84	81	84	86	82	75	82.2
SAVAGE RIVER DAM	08	MAX	42	41	44	50	55	58	60	60	61	63	51	56	60	63	62	60	62	69	66	65	67	64	64	71	73	59	55	55	61	51	53	58.7
		MIN	75	72	75	82	85	88	91	92	91	91	84	86	75	78	82	85	85	83	81	85	82	82	87	89	99	88	83	83	88	86	80	84.3
DELAWARE NORTHERN 01 BEAR 2 SW M	MID	MAX	80	81	88	96	98	103	103	89	90	76	91	92	88	83	90	94	91	93	91	85	90	90	94	97	94	85	86	88	89	83	85	89.8
		MIN	57	51	54	60	65	70	75	72	71	72	66	62	72	71	69	72	70	73	73	71	70	71	70	78	71	64	62	72	74	63	59	67.7
WILMINGTON NEW CASTLE M	MID	MAX	80	82	87	94	97	103	103	87	89	78	90	89	88	82	89	94	92	93	92	86	91	90	95	97	94	86	86	88	90	84	83	89.6
WILMINGTON PORTER RES M	MID	MIN	56	54	58	64	70	75	78	75	73	71	70	66	72	71	70	75	71	75	73	73	72	71	74	81	70	64	64	73	74	64	62	69.6
		MAX OBS MIN OBS	77 78	87 96	96 101	99 88	89 89	76 87	90 88	81 89	75 72	71 75	75 69	71 71	70 73	70 70	73 70	75 73	74 73	74 71	72 72	74 74	79 70	66 69	73 76	70 70	66 69	73 73	76 76	70 70	66	66	70.9	
SOUTHERN 02 DOVER	16	MAX	81	80	88	95	96	101	101	100	82	86	90	90	87	86	87	96	96	92	91	91	92	92	95	96	96	84	87	88	90	85	84	90.5
		MIN	58	56	60	66	70	76	80	75	75	73	73	71	76	72	73	75	74	74	72	72	74	76	76	81	76	66	66	73	78	68	64	71.6
GREENWOOD 2NE	07	MAX																																M
LEWES	17	MIN																																M
		MAX MIN																																

MONTHLY AND SEASONAL HEATING DEGREE DAYS

STATION	JUL	AUG	SEP	OCT	NOV	DEC	JAN	FEB	MAR	APR	MAY	JUN	TOTAL	SEASONAL NORM
MARYLAND														
SOUTHERN EASTERN SHORE 01														
ASSATEAGUE	0		2	142	319	708	906	808	550	247	60	0	M 3742	4266
PRINCESS ANNE	0B		16B	192B				916B		219B		0B	M 1343	4198
SALISBURY	0	0	8	173	334	768	895	875	447	161	37	0	3698	3936
SALISBURY FAA AP	0	0	27	218	396	815	970	921	520	247	78	0	4192	4254
SNOW HILL 4 N	0	0	11	204	352	769	915	897	463	191	46	0	3848	4008
CENTRAL EASTERN SHORE 02														
ROYAL OAK 2 SSW	0	0	15	206	370	804	923	882	450	158		0	M 3808	3967
VIENNA	0		14					880			32		M	4073
LOWER SOUTHERN 03														
MECHANICSVILLE 5 NE	0	0	45	334	475	909	1002	952	541	257	88	1	4604	4299
SOLOMONS	0	0	2	191	361	778	934	869	520	190	46	0	3891	
UPPER SOUTHERN 04														
BALTIMORE WASH INTL AP R	0	0	38	299	451	929	993	947	505	262	79	0	4503	4720
BELTSVILLE	0	0	21	283	450	926	991	949	501	243	82	0	4446	4707
DALECARLIA RSVR	0	0	6	308	447	919	975	924	520	203	78	0	4380	4382
LAUREL 3 W	0	0	21	258	413	904	982	932	462	203	83	0	4258	4505
MD SCI CTR BALTIMORE R	0	0	11	213B	339	809	909	850	413	164	66	0	B 3774	
NATL ARBORETUM DC	0	0	7	247	419	885	970	898	481	183	71	0	4161	4571
OXON HILL	0	0	15	273	435	880	955	889	475	182	70	0	4174	
UPPER MARLBORO 3 NNW	0	0	28	303	467	909	987	935	534	231	83	0	4477	4785
NORTHERN EASTERN SHORE 05														
CHESTERTOWN	0	0	31	280	451	903	987	950	525	263	92	6	4488	4559
NORTHERN CENTRAL 06														
ABERDEEN PHILLIPS FLD	0	0	28	315	443	902	993	949	542	263	104	0	4539	4459
CATOCTIN MTN PARK	2	0	76	386	511		1125	1024	575	222	116	11	M 4048	5370
CONOWINGO DAM			0	303B				937		311B	91	1	M 1657	5044
CYLBURN		4	109	348B	487								M	
DAMASCUS 3 SSW	0	1	53	344	468	970	1043	995	515	245	112	3	4749	
EMMITSBURG 2 SE	0	0	60	383	516	978	1045	1009	574	299	130	6	5000	5032
FREDERICK 2 NNE	0	0	36	327	493	964	1020		552	258	107	0	M 3757	
MILLERS 4 NE	0	0	68	354	509	1000	1059	1005	576	294	121	8	4994	5162
SMITHSBURG 2NW	4		65	422		1050		1102	636	356	127	7	M 3769	
APPALACHIAN MOUNTAIN 07														
CUMBERLAND 2	0	0	20	307	433	959	1034	949	498	216	78	2	4496	5191
FROSTBURG 2	40	6	135	520	637	1175	1296	1175	770	376	207	32	6369	6775
SHARPSBURG 5 S	0		64	385	523	1018			611	317	127	12	M 3057	
WILLIAMSPORT	0	0	41	358	507	990	1061	995	582	301	114	2B	B 4951	
ALLEGHENY PLATEAU 08														
OAKLAND 1 SE	66	14	161	552	641	1173	1327	1200	839	449	209	28	6659	6368
SAVAGE RIVER DAM	20	3	105	496	578	1118	1212	1134		364	196	13	M 5239	6375
DELAWARE														
NORTHERN 01														
BEAR 2 SW	0	0	50	334	477	919	1021	947	549	301	110	5	4713	
WILMINGTON NEW CASTLE R	0	0	33	302	453	910	1005	948	524	274	98	3	4550	4888
WILMINGTON PORTER RES	0	0	41	321		917	1048	951	508	266	94	0	M 4146	5110
SOUTHERN 02														
DOVER	0	0	15	234	394	850	939	922		216	65	0	M 3635	4212
GREENWOOD 2NE	0	0	40	294	426	874	1011	984		259	93	0	M 3981	4816
LEWES	0	0	2	174B	356	769B							M 1301	4098

PAN EVAPORATION AND WIND

STATION		DAY OF MONTH																															TOTAL OR AVERAGE
		01	02	03	04	05	06	07	08	09	10	11	12	13	14	15	16	17	18	19	20	21	22	23	24	25	26	27	28	29	30	31	
MARYLAND UPPER SOUTHERN 04 BELTSVILLE	WIND	50	66	38	*	67	38	43	32	55	*	116	43	44	39	63	22	49	55	51	53	59	58	*	*	149	58	33	38	46	39	40	1444
	EVAP	23	32	24	*	62	31	37	24	33	*	32	29	14	24	15	21	31	29	29	25	26	14	*	*	99	54	26	18	25	21	27	8.25
	MAX	82	84	87	-	93	94	97	94	97	-	96	94	85	90	89	98	97	95	96	95	96	96	-	-	101	100	96	90	99	94	93	93.6
	MIN	57	55	55	-	63	68	74	75	73	-	69	67	68	71	73	75	75	74	76	76	76	75	-	-	75	78	71	72	75	69	71	70.6
UPPER MARLBORO 3 NNW	WIND	-	-	-	-	-	-	-	-	-	-	-	-	-	-	-	-	-	-	-	-	-	-	-	-	-	-	-	-	-	-	-	M
	EVAP	23	31	*	*	*	124	*	63	30	*	*	62	16	21	12	24	*	*	85	27	19	20	25	*	*	96	24	18	25	16	-	7.86
	MAX	85	91	93	97	101	102	103	104	102	101	79	100	89	93	87	103	101	100	100	99	95	99	100	103	105	103	99	95	101	99	97	97.6
	MIN	59	58	59	61	65	69	74	77	72	73	70	69	70	73	74	74	76	73	74	74	75	74	75	76	76	73	68	70	73	68	66	70.6

Evaporation: Is measured in hundredths of inches.

Wind: Is measured in miles.

Max and Min: The maximum and minimum temperatures (Fahreheit) of the water in the evaporation pan.

STATION INDEX

STATION	INDEX NO.	DIVISION	COUNTY	LATITUDE	LONGITUDE	ELEVATION (IN FEET)	OBSERVATION TIME AND TABLES				OBSERVER
							LOCAL STD TIME				
							TEMP	PRECIP	EVAP	SPECIAL SEE (NOTES)	
MARYLAND											
ABERDEEN PHILLIPS FLD	0015	06	HARFORD	39 28	76 10W	57	07	07		C H	US ARMY ABERDEEN TST CTR
ASSATEAGUE	0335	01	WORCESTER	38 4	75 13W	10	MID	MID		H	ASSATEAGUE IS NATL SEA
BALTIMORE WASH INTL AP R	0465	04	ANNE ARUNDEL	39 10	76 41W	156	MID	MID		C HJ	ASOS - FAA
BELTSVILLE	0700	04	PRINCE GEORG	39 2	76 56W	145	08	08	08	C H	USDA AG RESEARCH SVC
BRIGHTON DAM	1125	06	MONTGOMERY	39 11	77 0W	330		07		H	WA SUBURB SANIT COMM
CATOCTIN MTN PARK	1530	06	FREDERICK	39 39	77 29W	1610	07	07		H	CATOCTIN MOUNTAIN PK
CHESTERTOWN	1750	05	KENT	39 13	76 3W	40	23	23		H	THOMAS W ELIASON JR
CONOWINGO DAM	2060	06	HARFORD	39 39	76 11W	40	07	07		H	SUSQUEHANNA ELECTRIC CO
CUMBERLAND 2	2282	07	ALLEGANY	39 39	78 45W	730	18	18		H	TIMOTHY B THOMAS
CYLBURN	2308	06	BALTIMORE	39 22	76 38W	400	08	08		H	CYLBURN ARBORETUM
DALLECARLIA RSVR	2325	04	PRINCE GEORG	38 56	77 7W	150	08	08		H	USA CORPS OF ENGINEERS
DAMASCUS 3 SSW	2336	06	MONTGOMERY	39 16	77 14W	697	22	22		H	ROBERT J LEFFLER
EMMITSBURG 2 SE	2906	06	FREDERICK	39 41	77 17W	403	07	07		H	ERIC E GLASS
FREDERICK 2 NNE	3353	06	FREDERICK	39 26	77 24W	280	07	07		H	DIR PUBLIC WORK WTP
FROSTBURG 2	3415	07	ALLEGANY	39 40	78 56W	2170	07	07		H	GREGORY P LATTA
LAUREL 3 W	5111	04	PRINCE GEORG	39 5	76 54W	400	MID	07		H	WA SUBURBAN SANITARY COM
MD SCI CTR BALTIMORE R	5718	04	BALTIMORE (C	39 17	76 37W	20	MID	MID		C H	ASOS - NWS
MECHANICVILLE 5 NE	5865	03	ST. MARY'S	38 28	76 42W	100	07	07		H	SANDRA J HASTINGS
MILLERS 4 NE	5934	06	CARROLL	39 43	76 48W	860	18	18		C H	ROBERT MILLER
NATL ARBORETUM DC	6350	04	PRINCE GEORG	38 55	76 58W	50	07	07		H	US NATIONAL ARBORETUM
OAKLAND 1 SE	6620	08	GARRETT	39 25	79 24W	2420	07	07		H	GARRETT CO MEM HOSPITAL
OXON HILL	6800	04	PRINCE GEORG	38 48	77 0W	120	08	08		H	BRIAN SMITH
POTOMAC FLTR PLT	7272	06	MONTGOMERY	39 2	77 15W	270		08		H	POTOMAC WATER FILT PLANT
PRINCESS ANNE	7330	01	SOMERSET	38 13	75 41W	20	17	17		H	UNIV OF MD EASTERN SHORE
ROYAL OAK 2 SSW	7806	02	TALBOT	38 43	76 11W	10	18	18		H	JOHN L SWAINE JR
SALISBURY	8000	01	WICOMICO	38 22	75 35W	10	16	16		H	CITY OF SALISBURY
SALISBURY FAA AP	8005	01	WICOMICO	38 20	75 31W	48	MID	MID		H	FAA
SAVAGE RIVER DAM	8065	08	GARRETT	39 31	79 8W	1495	08	08	08	C H	USA CORPS OF ENGINEERS
SHARPSBURG 5 S	8207	07	WASHINGTON	39 24	77 43W	500	07	07		H	DAVID DOWNIN
SMITHSBURG 2NW	8371	06	WASHINGTON	39 40	77 35W	670	08	08		H	SMITHSBURG WWTP
SNOW HILL 4 N	8380	01	WORCESTER	38 14	75 23W	30	17	17		H	CURTIS E SHOCKLEY
SOLOMONS	8405	03	CALVERT	38 19	76 27W	12	08	08		H	CHESAPEAKE BIOLOGIC LAB
UPPER MARLBORO 3 NNW	9070	04	PRINCE GEORG	38 52	76 47W	100	08	08	08	H	UNIVERSITY OF MARYLAND
VIENNA	9140	02	DORCHESTER	38 29	75 49W	10	18	18		H	DELMARVA POWER AND LIGHT
WILLIAMSPORT	9570	07	WASHINGTON	39 36	77 50W	360	06	06		H	R C WILSON TREATMENT PLT
DELAWARE											
BEAR 2 SW	1200	01	NEW CASTLE	39 36	75 44W	80	MID	MID		H	R GARY GALLAHER
DOVER	2730	02	KENT	39 16	75 31W	30	16	16		H	DEPT OF TRANSPORTATION
GREENWOOD 2NE	3595	02	SUSSEX	38 49	75 35W	45	07	07		H	CONNIE HOLMBERG
LEWES	5320	02	SUSSEX	38 47	75 8W	15	17	17		H	LEWES POWER PLANT
WILMINGTON NEW CASTLE R	9595	01	NEW CASTLE	39 40	75 36W	79	MID	MID		C HJ	ASOS - FAA
WILMINGTON PORTER RES	9605	01	NEW CASTLE	39 46	75 32W	270	MID	MID		H	WILMINGTON WATER DEPT

REFERENCE NOTES

DEFINITIONS

STATION NAMES: Name of the city, town or locality. Figures and letters following the station names indicate the distance in miles and direction from the post office or town community center.

DIVISIONS: Areas within a state of similar climatological characteristics. Division averages are calculated using data from stations that record both temperature and precipitation (i.e. not precipitation alone).

NORMALS: The average value of the meteorological element over a time period. Effective 1 January 2002, the averaging period is 1971 to 2000. The normals for National Weather Service localities have been adjusted so as to be representative for the current observation site.

MONTHLY DEGREE DAY TOTALS: One heating (cooling) degree day is accumulated for each whole degree that the daily mean temperature is below (above) 65 degrees Fahrenheit.

PRECIPITATION: Values shown in hundredths of inches are water equivalent totals, i.e., total of liquid and melted frozen precipitation. In the "Monthly Summarized Data" table the total snow and sleet values shown in tenths of inches are unmelted amounts. The max depth on ground values of snow and sleet shown in whole inches are cumulative unmelted amounts. The number of days with .10, .50, 1.00 or more refers to water equivalents.

PRECIPITATION QUALITY CONTROL: The NCDC quality control process may delete precipitation data that are spatially inconsistent; exceed climatological limits, or are inconsistent with prevailing weather patterns.

TEMPERATURE: Original and edited temperature values are given in the "Daily Temperature" table. Edited values are produced when an original value is missing or when surrounding stations indicated a suspect original value. When a line labeled OBS is present and contains either a daily temperature (suspect) or *** (missing), the temperature appearing directly above, on the line labeled MAX or MIN, is an edited value. Summary temperature information (averages, departures, extremes, monthly degree day totals) is based on the values labeled MAX/MIN.

WIND: (As shown in the "Evaporation and Wind" table) the total wind movement in miles over the evaporation pan as determined by an anemometer recorder located 6-8 inches above the pan.

SYMBOLS AND LETTERS USED IN THE STATION INDEX TABLE

Thermometers located in a rooftop shelter.
// Rain gage equipped with a windshield
AR Observation made "after rain" has occurred.
C Station is equipped with recording rain gage (R) but values in this bulletin are from a non-recording rain gage unless indicated by an R.
G Observations appear in the "Soil Temperatures" table.
H Observations appear in the "Snowfall and Snow on the Ground" table.
J Station also published as a Local Climatological Data publication.
MID Observation time is midnight.
MO Rain gage read once monthly, usually the last day.
OC Rain gage readings vary from a few weeks to several months.
R Amounts from recording rain gage.
SR Observation time near sunrise.

SS Observation time near sunset.
VAR Observation time varies.
WI Rain gage read weekly or irregularly.
WM Rain gage read weekly and last day of the month.

SYMBOLS AND LETTERS USED IN THE DATA TABLES

(DAILY DATA ARE FOR THE 24 HOURS IMMEDIATELY PRECEDING OBSERVATION TIME.)

BLANK Entries in the "Monthly Summarized Data" table indicate no record.

BLANK Entries in the "Daily Precipitation" and "Snowfall and Snow on the Ground" tables indicate zero.

BLANK Entries in the "Daily Temperature" table indicate a missing record where an edited value could not be determined. (See *** below)

- No record. Data not recorded, determined unreliable by quality control check, or not received in time for publication.

+ Precipitation or temperature extremes occurred on one or more previous dates during the month.

*** Missing original temperature which has been estimated during edit.

* Rain gage not read. Precipitation is included in the amount following the asterisks. Time distribution not known. A * preceding the monthly total indicates precipitation amount is being carried forward to next months total, and may include amounts from the previous month(s).
// Rain gage equipped with a windshield.

A Amount of precipitation is the total of observer's entries for the current month. It may include precipitation that occurred during the previous month. Refer to earlier bulletin to determine date of last reading. (Hawaii stations)

B Adjusted monthly value (estimated), (1-7 missing values for wind and evaporation).

M Insufficient or partial data. M is appended to average and/or total values computed with 1-9 daily values missing. M appears alone if 10 or more daily values are missing, (8 or more for wind and evaporation).

R Amounts from recording rain gage.

T Trace. An amount too small to measure.

V Includes total for previous month(s). (See * above)

SEASONAL TABLES: Monthly and seasonal snowfall and heating degree days for the 12 months ending with the June data are published in the July issue of this bulletin. Cooling degree days for the calendar year are published in the "Climatological Data Annual Summary."

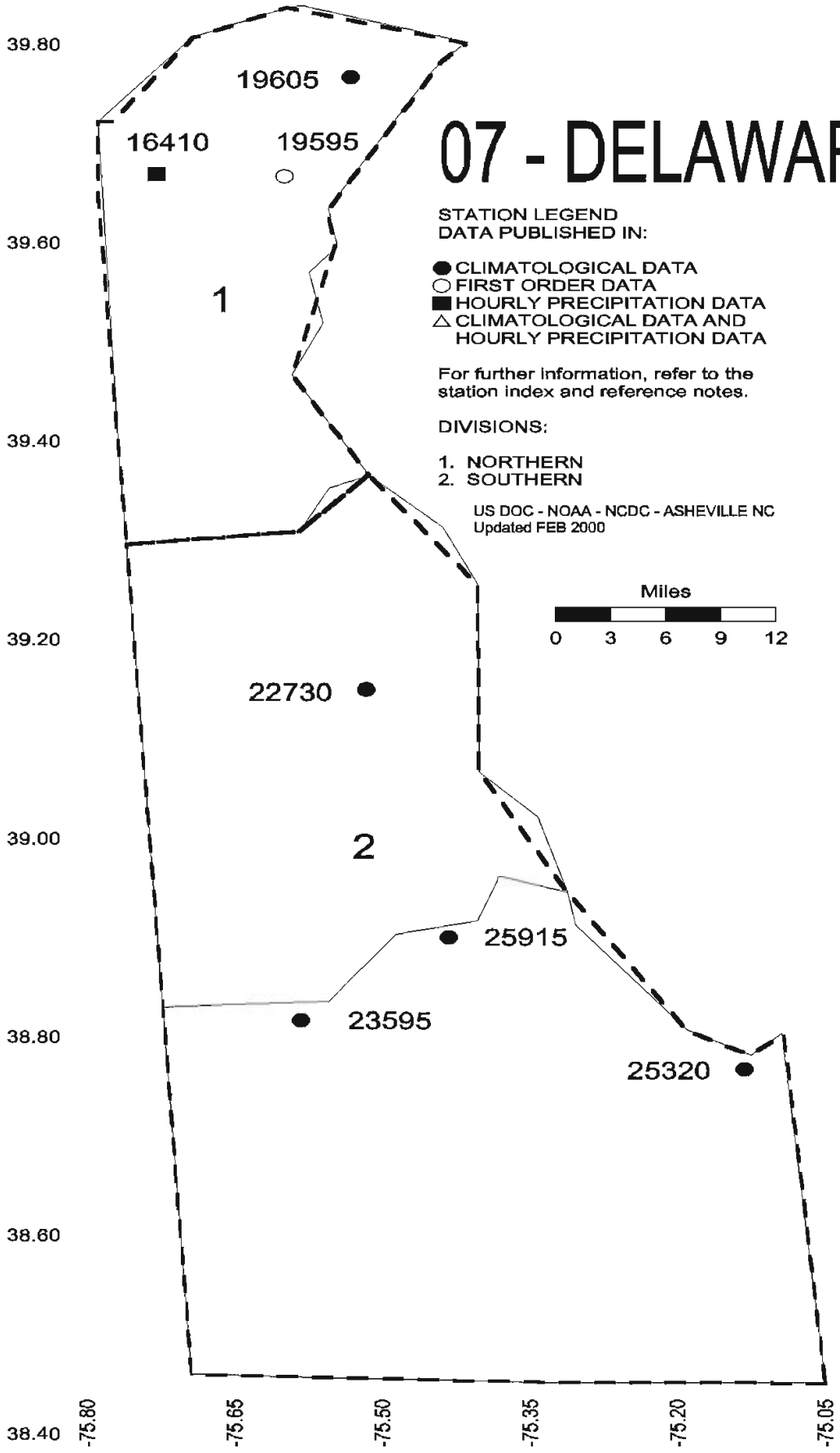
Information concerning the history of changes in locations, exposure, etc. of substations is kept on file at the National Climatic Data Center. Historical information of regular National Weather Service Offices may be obtained from the "Local Climatological Data" annual publication. The contents of this publication may be reprinted or otherwise used freely, with proper credit to the National Climatic Data Center. The data are also available in digital form on magnetic tape and diskette.

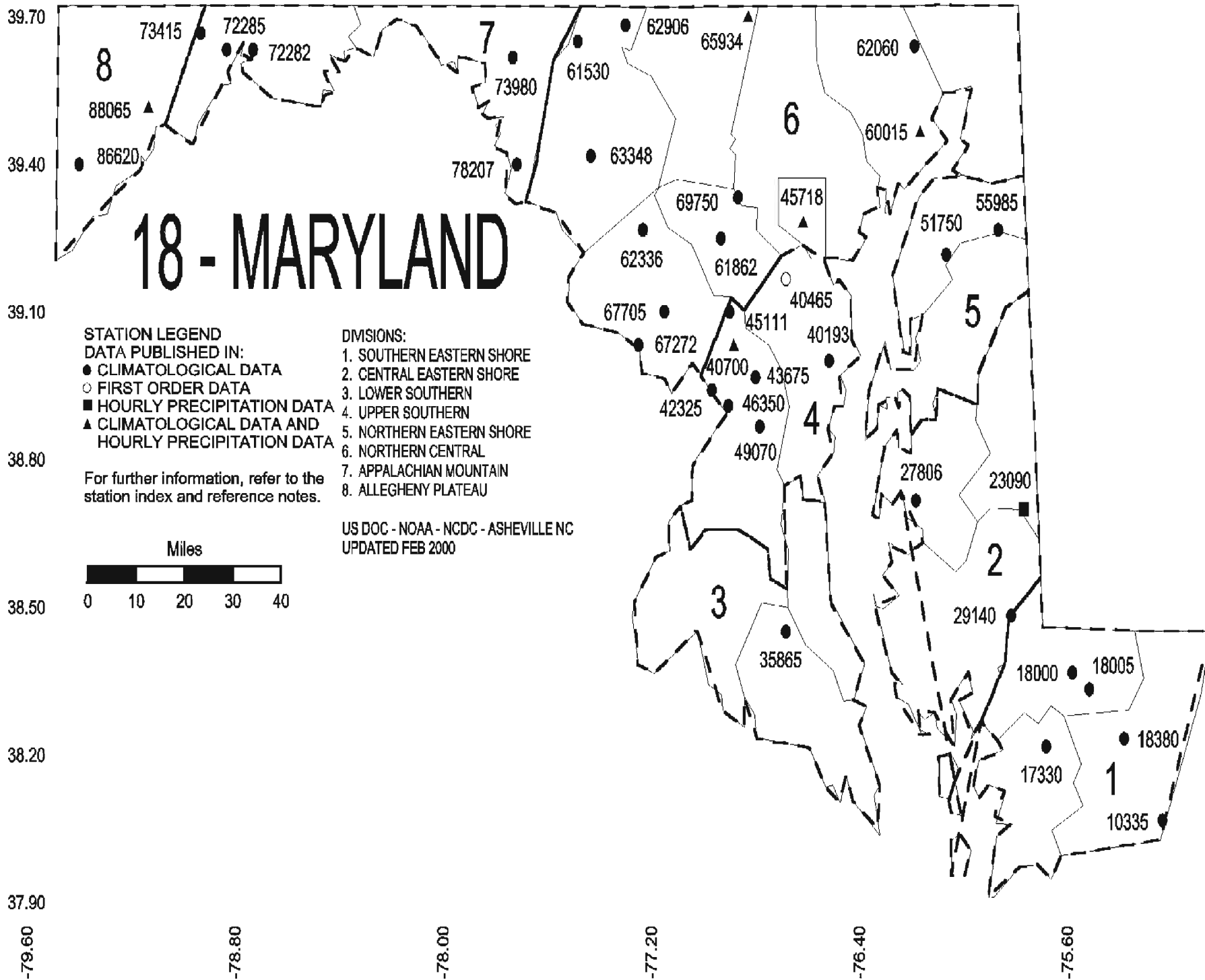
SUBSCRIPTION, PRICE, AND ORDERING INFORMATION AVAILABLE FROM:

NCDC Subscription Services Center
310 State Route 956
Building 300
Rocket Center, WV 26726

Toll free number: (866) 742-3322
Fax number: (304) 726-4409

07 - DELAWARE





These and other publications are available from the National Climatic Data Center

Hourly Precipitation Data

This publication contains hourly precipitation amounts obtained from recording rain gages located at National Weather Service, Federal Aviation Administration, and cooperative observer stations. Published data are displayed in inches and tenths or inches and hundredths at local standard time. HPD includes maximum precipitation for nine (9) time periods from 15 minutes to 24 hours, for selected stations.

Climatological Data

Monthly editions contain station daily maximum and minimum temperatures and precipitation. Some Stations provide daily snowfall, snow depth, evaporation, and soil temperature data. Each edition also contains monthly summaries for heating and cooling degree days (65 degree F base). The July issue contains a recap of monthly heating degree days and snow data for the preceding July through June.

The Annual issue contains monthly and annual averages of temperature, precipitation, temperature extremes, freeze data, soil temperatures, evaporation, and a recap of monthly cooling degree days.

Storm Data

Monthly issues contain a chronological listing, by states, of occurrences of storms and unusual weather phenomena. Reports contain information on storm paths, deaths, injuries, and property damage. An "Outstanding storms of the month" section highlights severe weather events with photographs, illustrations, and narratives. The December issue includes annual tornado, lightning, flash flood, and tropical cyclone summaries.

Monthly Climatic Data for the World

This publication contains monthly means for temperature, pressure, precipitation, vapor pressure, and sunshine for approximately 2,000 surface data collection stations worldwide and monthly mean upper air temperatures, dew point depressions, and wind velocities for approximately 500 observing sites.

Local Climatological Data

LCD publications summarize temperature, relative humidity, precipitation, cloudiness, wind speed and direction observations for several hundred cities in the U.S. and its territories. Each monthly publication also contains 3 hourly weather observations for that month and a hourly summary of precipitation. Annual LCD publications contain a summary of the past calendar year as well as historical averages and extremes.

For Information Call:

(866) 742-3322 (Toll free)

(828) 271-4010 (TDD)

(304) 726-4409 (Fax)

Subscription Service Center
310 State Route 956
Building 300
Rocket Center, WV 26726

PRSRT STD POSTAGE & FEES PAID United States Department of Commerce NOAA Permit No. G-19
--

OFFICIAL BUSINESS
PENALTY FOR PRIVATE USE \$300
ADDRESS CORRECTION REQUESTED

To change your address, please return a copy of the mailing label along with your new address to:

NCDC Subscription Services Center
310 State Route 956
Building 300
Rocket Center, WV 26726

Toll free number : (866) 742-3322
TDD : (828) 271-4010
Fax number : (304) 726-4409

NCDC now offers an annual online subscription for the *Climatological Data* publication. When you purchase this subscription service, you will have **immediate online access** to all previous publications back to October 1997 and all publications thereafter until the expiration of the subscription. Your subscription is valid for one year after purchase. **The total cost is \$36 for online delivery (including back issues) compared to \$52 for offline delivery.** To order this and other subscriptions online with your credit card, go to: www.ncdc.noaa.gov/mpp.html and choose subscription.