



AUGUST 2009 LOCAL CLIMATOLOGICAL DATA

NOAA, National Climatic Data Center

WILMINGTON, DE
NEW CASTLE COUNTY AIRPORT (KILG)
Lat:39° 40'N Long: 75° 36'W Elev (Ground) 75 Feet
Time Zone : EASTERN WBAN: 13781 ISSN#: 0198-117X



Date 1	Temperature °F						Deg Days BASE 65°		WEATHER 10	SNOW/ICE ON GND(IN)		PRECIPITATION ON GND(IN)		PRESSURE (INCHES OF HG)		WIND SPEED = MPH DIR = TENS OF DEGREES								Date 24
	MAXIMUM 2	MINIMUM 3	AVERAGE 4	DEP FROM NORMAL 5	AVERAGE DEW PT 6	AVERAGE WET BULB 7	HEATING 8	COOLING 9		0700 LST 11	1300 LST 12	2400 LST 13	2400 LST 14	AVERAGE STATION 15	AVERAGE SEA LEVEL 16	RESULTANT SPEED 17	RES DIR 18	AVERAGE SPEED 19	MAXIMUM					
																			3-SEC		2-MIN			
01	84	66	75	-2	68	70	0	10	BR	0		0.0	0.00	29.98	30.05	5.3	16	7.3	24	17	20	15	01	
02	80	69	75	-2	71	72	0	10	RA BR	0		0.0	1.02	29.83	29.90	4.4	17	6.1	37	27	31	27	02	
03	85	71	78	1	63	68	0	13		0		0.0	0.00	29.90	29.99	3.4	31	4.7			14	27	03	
04	86	65	76	-1	69	71	0	11	RA BR	0		0.0	T	29.88	29.96	4.9	17	5.8	28	13	16	15	04	
05	85	71	78	2	69	72	0	13	BR HZ	0		0.0	0.00	29.82	29.91	5.0	29	5.5	16	31	14	30	05	
06	78	64	71	-5	60	64	0	6	RA	0		0.0	0.17	29.88	29.98	2.6	36	5.3	15	04	13	04	06	
07	81	59	70	-6	56	63	0	5		0		0.0	0.00	30.00	30.11	6.0	31	6.6	20	28	16	28	07	
08	82	64	73	-3	59	65	0	8	RA	0		0.0	T	30.11	30.20	1.9	10	4.7	16	14	14	14	08	
09	87	70	79	3	70	72	0	14	RA BR HZ SQ	0		0.0	0.89	29.99	30.06	0.3	03	3.5	45*	36	35*	36	09	
10	93*	69	81	5	71	74	0	16		0		0.0	0.00	29.85	29.92	6.5	27	7.1	25	26	20	25	10	
11	88	73	81	5	69	73	0	16		0		0.0	0.00	29.79	29.88	6.2	29	7.2	21	30	16	26	11	
12	88	72	80	4	70	72	0	15	TS TSRA RA BR HZ	0		0.0	0.11	29.85	29.94	2.9	03	5.7	37	04	25	07	12	
13	78	70	74	-2	69	70	0	9	RA BR	0		0.0	0.61	29.97	30.08	4.3	04	6.2	15	04	13	03	13	
14	84	65	75	-1	66	69	0	10	BR	0		0.0	0.00	30.10	30.19	1.4	19	2.9	12	15	9	17	14	
15	87	67	77	2	67	70	0	12	BR HZ	0		0.0	0.00	30.09	30.18	3.2	16	3.9	18	17	15	17	15	
16	88	68	78	3	67	71	0	13	BR	0		0.0	0.00	30.09	30.18	2.4	23	3.3	14	22	9	23	16	
17	90	68	79	4	67	71	0	14	BR	0		0.0	0.00	30.09	30.17	3.7	23	4.3	16	21	13	21	17	
18	90	71	81	6	70	73	0	16	TS TSRA RA BR VCTS	0		0.0	0.15	29.99	30.06	4.0	21	5.3	39	29	29	30	18	
19	88	71	80	5	71	74	0	15	RA BR	0		0.0	T	29.90	29.98	3.1	24	4.0	16	25	12	20	19	
20	90	74	82	7	73	76	0	17	BR	0		0.0	0.00	29.85	29.93	6.2	19	6.6	18	23	13	21	20	
21	92	72	82*	8	73	75	0	17	TS TSRA RA BR VCTS	0		0.0	0.54	29.80	29.89	5.1	19	7.1	37	31	30	31	21	
22	87	72	80	6	72	73	0	15	TS TSRA RA FG BR	0		0.0	2.24	29.75	29.82	2.3	08	4.7	18	11	14	11	22	
23	86	73	80	6	70	73	0	15	RA BR HZ	0		0.0	0.34	29.75	29.87	4.7	30	5.2	14	31	12	30	23	
24	86	67	77	3	64	68	0	12		0		0.0	0.00	29.95	30.06	5.5	32	6.0	16	32	13	31	24	
25	85	65	75	1	62	67	0	10		0		0.0	0.00	30.03	30.12	2.6	29	4.8	14	01	10	27	25	
26	87	67	77	3	66	70	0	12		0		0.0	0.00	29.95	30.02	5.9	26	6.6	23	28	17	29	26	
27	84	71	78	5	64	69	0	13		0		0.0	0.00	29.98	30.07	4.1	07	5.5	15	13	13	13	27	
28	76	71	74	1	69	70	0	9	TS TSRA RA BR VCTS	0		0.0	0.64	29.96	30.04	6.1	07	6.9	20	07	16	07	28	
29	82	70	76	3	70	72	0	11	TS RA VCTS	0		0.0	0.02	29.70	29.78	1.2	08	4.6	25	31	22	31	29	
30	83	66	75	2	61	66	0	10	BR	0		0.0	0.00	29.81	29.92	5.3	30	5.8	22	30	18	29	30	
31	75	58*	67*	-5	52	58	0	2		0		0.0	0.00	30.03	30.14	6.7	34	7.3	22	01	14	33	31	

85.0	68.4	76.7	☼	66.7	70.0	0.0	11.9	< MONTHLY AVERAGES TOTALS >				0.0	6.73	29.93	30.01	1.1	27	5.5	< MONTHLY AVERAGES			
0.9	2.6	1.7		<----- DEPARTURE FROM NORMAL ----->						3.22	SUNSHINE, CLOUD, & VISIBILITY TABLES ON PAGE 3											
DEGREE DAYS								GREATEST 24-HR PRECIPITATION : 2.60 DATE : 21-22				SEA LEVEL PRESSURE				DATE TIME						
MONTHLY				SEASON TO DATE				GREATEST 24-HR SNOWFALL : 0.0 DATE :				MAXIMUM : 30.25 08 0935										
TOTAL DEPARTURE				TOTAL DEPARTURE				GREATEST SNOW DEPTH : 0 DATE :				MINIMUM : 29.70 29 1740										
HEATING :		0 -2		0		-3		NUMBER OF ->		MAXIMUM TEMP >= 90 : 5		MINIMUM TEMP <= 32 : 0		PRECIPITATION >= 0.01 INCH: 11								
COOLING :		369		52		935 -38		DAYS WITH		MAXIMUM TEMP <= 32 : 0		MINIMUM TEMP <= 0 : 0		PRECIPITATION >= 0.10 INCH: 10								
										THUNDERSTORMS : 6		HEAVY FOG : 0		SNOWFALL >= 1.0 INCH : 0								

AUGUST 2009
WILMINGTON, DE

HOURLY PRECIPITATION

(WATER EQUIVALENT IN INCHES)

WILMINGTON, DE (KILG)
AUGUST 2009

WBAN # 13781

Date	FOR HOUR (LST) ENDING AT												Date	FOR HOUR (LST) ENDING AT												Date	Sum of Hourly Data	2400 LST Water Equiv.
	1	2	3	4	5	6	7	8	9	10	11	12		13	14	15	16	17	18	19	20	21	22	23	24			
01													01												01	0.00	0.00	
02						T				0.01	0.99	0.02	02		T	T									02	1.02	1.02	
03													03												03	0.00	0.00	
04													04								T				04	T	T	
05													05												05	0.00	0.00	
06				T	0.07	0.05	0.04	0.01	T				06	T											06	0.17	0.17	
07													07												07	0.00	0.00	
08													08						T	T			T		08	T	T	
09	T	T			0.05	0.40	0.24	0.07					09	T	T			0.11	0.02					09	0.89	0.89		
10													10												10	0.00	0.00	
11													11												11	0.00	0.00	
12		T											12			T	0.02	0.03	0.06	T				12	0.11	0.11		
13			0.29	T		0.02	T		0.01	T	0.08	0.21	13		T	T								13	0.61	0.61		
14													14												14	0.00	0.00	
15													15												15	0.00	0.00	
16													16												16	0.00	0.00	
17													17												17	0.00	0.00	
18													18					0.15	T	T	T		T	18	0.15	0.15		
19		T											19												19	T	T	
20													20												20	0.00	0.00	
21													21		T	0.16	0.01				0.01	T	0.25	0.11	21	0.54	0.54	
22			T	0.02	0.34	T	0.03	0.05					22				0.73	0.67	0.15	0.24	0.01			22	2.24	2.24		
23			0.30	0.04									23												23	0.34	0.34	
24													24												24	0.00	0.00	
25													25												25	0.00	0.00	
26													26												26	0.00	0.00	
27													27												27	0.00	0.00	
28		0.03	0.17	0.06	0.05	0.04					T	T	28	T	0.16	0.10	0.01		T	0.01	0.01			28	0.64	0.64		
29							T	T					29			0.01	0.01	T				T		29	0.02	0.02		
30													30												30	0.00	0.00	
31													31												31	0.00	0.00	

* Indicates sum of Hourly and Daily disagree.

MAXIMUM SHORT DURATION PRECIPITATION (See Note)

Time Period (Minutes)	5	10	15	20	30	45	60	80	100	120	150	180
Precipitation (Inches)	0.30	0.48	0.63	0.76	0.88	1.27	1.36	1.40	1.44	1.48	1.58	1.66
Ending Date	22	22	22	22	22	22	22	22	22	22	22	22
Ending Time (Hr/Min)	1822	1758	1802	1800	1819	1825	1836	1855	1918	1936	2008	2040

Note : The hourly and daily precipitation totals are printed in the last 2 columns and hi-lighted in red when they disagree. NWS does not edit ASOS hourly values but may edit daily and monthly totals. Hourly, daily, and monthly totals are printed as reported by the ASOS site.

Date and time are not entered for TRACE amounts.

REFERENCE NOTES & SUPPLEMENTAL SUMMARIES

* = Extreme for the month (last occurrence if more than one).

T = Trace precipitation amount.

+ = also occurs on earlier date.

FG+ = Heavy fog, visibility .25 miles or less.

BLANK entries denote missing or unreported data.

Resultant wind is the vector sum of the wind speeds and directions divided by the number of observations.

Wind direction is recorded in tens of degrees (2 digits) clockwise from true north. '00' = calm, 'VR' = variable.

Precipitation is for the 24-hour period ending at the time indicated in the column heading.

Water Equivalent of snow on the ground is reported only when the depth is 2 or more inches.

NORMALS ARE FOR THE YEARS 1971-2000

WEATHER NOTATIONS

QUALIFIER	WEATHER PHENOMENA		
DESCRIPTOR	PRECIPITATION	OBSCURATION	OTHER
BC Patches	DZ Drizzle	BR Mist	DS Duststorm
BL Blowing	GR Hail	DU Widespread Dust	FC Funnel Cloud
DR Low Drifting	GS Small Hail and/or Snow Pellets	FG Fog	+FC Tornado Waterspout
FZ Freezing	IC Ice Crystals	FU Smoke	PO Well-Developed Dust/Sand Whirls
MI Shallow	PL Ice Pellets	HZ Haze	
PR Partial	RA Rain	PY Spray	SQ Squalls
SH Shower(s)	SG Snow Grains	SA Sand	SS Sandstorm
TS Thunderstorm	SN Snow	VA Volcanic Ash	GL Glaze
VC In the Vicinity	UP Unkown Precipitation		

Intensity (as indicated on pages 4 to 6):
'+' = Heavy '' = Moderate '-' = Light

WILMINGTON, DE AUGUST 2009

Ceilometer (30-second) data are used to derive cloudiness at or below 12,000 feet. This cloudiness is the mean cloud cover detected during sunrise to sunset (SR-SS), or midnight to midnight (MN-MN).

Satellite data are used to derive cloudiness above 12,000 feet. Effective Cloud Amount is based on the cloud cover and the transparency of the clouds within the satellite field of view (approx. 31x31 miles).

Sky Condition is based on the sum (not to exceed 8) of the sunrise to sunset cloud cover below and above 12,000 feet. Both ceilometer and satellite data must be present to compute Sky Condition. Clear = 0-2 oktas, Partly Cloudy = 3-6 oktas, Cloudy = 7-8 oktas.

A Heating (Cooling) Degree Day is the difference between the average daily temperature and 65 degrees F. The HDD season begins July 1, the CDD season begins January 1.

Dew Point is the temperature to which the air must be cooled to achieve 100% relative humidity. Wet Bulb is the temperature the air would have if cooled to saturation at constant pressure by evaporation of water into it.

Snow Depth, Snowfall, and Sunshine data may come from nearby sites that the National Weather Service deems Climatologically representative of this site.

ADDITIONAL NOTES:

Station Augmentation-BEAR 2 SW COOP
Lat/Lon:39.59167/-75.7325 Elevation:80
Distance:4 MI Dir:SE
Augmented Elements:Precip, Snow
Equipment:SRG, Snowfall

Date	SUNSHINE		CLOUDINESS (OKTAS)				VISIBILITY (MILES)		RESERVED
	TOTAL MINUTES	PERCENT POSSIBLE	SR-SS		MN-MN		MINIMUM	MAXIMUM	
			Sky Cover	Satellite	Sky Cover	Satellite			
01							3.00	10.00	
02							2.50	10.00	
03							8.00	10.00	
04							6.00	10.00	
05							3.00	10.00	
06							6.00	10.00	
07							10.00	10.00	
08							10.00	10.00	
09							1.50	10.00	
10							7.00	10.00	
11							9.00	10.00	
12							4.00	10.00	
13							1.50	10.00	
14							4.00	10.00	
15							5.00	10.00	
16							5.00	10.00	
17							5.00	10.00	
18							6.00	10.00	
19							5.00	10.00	
20							6.00	10.00	
21							1.75	10.00	
22							0.50	10.00	
23							1.75	10.00	
24							8.00	10.00	
25							10.00	10.00	
26							7.00	10.00	
27							8.00	10.00	
28							2.00	10.00	
29							8.00	10.00	
30							4.00	10.00	
31							10.00	10.00	
MONTHLY AVGS							5.44	10.00	
SUNSHINE (Minutes)									
Total : 0					Possible : 25452				
Percent Possible : 0									
NUMBER OF DAYS WITH : SKY CONDITION									
Clear		Partly CLDY			Cloudy			Missing	
MINIMUM VISIBILITY (MILES)									
<= .25			<= 3.0				>= 7.0		
0			9				11		

OBSERVATIONS AT 3-HOURLY INTERVALS

WILMINGTON, DE
AUGUST 2009
KILG

WBAN # 13781

HOUR (LST)	SKY COVER	CEILING 100's of FT.	SATELLITE		VISIBILITY (MILES)	WEATHER	TEMPERATURE °F			WIND SPEED (MPH) DIRECTION Tens of Deg	PRESSURE (INCHES, HG)		HOUR (LST)	SKY COVER	CEILING 100's of FT.	SATELLITE		VISIBILITY (MILES)	WEATHER	TEMPERATURE °F			WIND SPEED (MPH) DIRECTION Tens of Deg	PRESSURE (INCHES, HG)					
			Observation Time (LST)	Eff Cld Amt Oktas			DRY BULB	DEW POINT	WET BULB		RELATIVE HUMIDITY (PCT)	STATION				SEA LEVEL	Observation Time (LST)			Eff Cld Amt Oktas	DRY BULB	DEW POINT		WET BULB	RELATIVE HUMIDITY (PCT)	SPEED (MPH)	DIRECTION Tens of Deg	STATION	SEA LEVEL
SUNRISE: 0501													SUNRISE: 0507																
AUG 01													AUG 07																
SUNSET: 1916													SUNSET: 1910																
01	CLR	NC			10.00		69	66	67	90	7	28	29.94	30.03	01	CLR	NC			10.00		63	56	59	78	8	31	29.93	30.01
04	CLR	NC			7.00		68	66	67	93	0	00	29.96	30.03	04	CLR	NC			10.00		63	56	59	78	7	32	29.94	30.03
07	CLR	NC			7.00		72	67	69	84	0	00	30.02	30.10	07	CLR	NC			10.00		66	57	61	73	6	32	30.01	30.10
10	SCT	028			10.00		78	67	71	69	3	VR	30.01	30.10	10	CLR	NC			10.00		77	57	65	50	10	33	30.06	30.14
13	CLR	NC			10.00		82	67	72	61	7	VR	29.99	30.07	13	FEW	060			10.00		80	56	65	44	9	32	30.03	30.12
16	CLR	NC			10.00		83	69	74	63	10	17	29.94	30.03	16	CLR	NC			10.00		80	54	64	41	10	31	30.01	30.10
19	BKN	090			10.00		77	68	71	74	17	16	29.96	30.04	19	CLR	NC			10.00		74	56	63	54	3	25	30.04	30.13
22	CLR	NC			10.00		75	70	72	85	8	13	29.96	30.03	22	BKN	095			10.00		73	58	64	59	0	00	30.09	30.17
SUNRISE: 0502													SUNRISE: 0508																
AUG 02													AUG 08																
SUNSET: 1915													SUNSET: 1909																
01	CLR	NC			10.00		73	69	70	87	3	20	29.91	29.99	01	CLR	NC			10.00		69	59	63	71	3	28	30.09	30.18
04	BKN	047			7.00		73	71	72	93	5	10	29.86	29.94	04	CLR	NC			10.00		66	59	62	78	0	00	30.12	30.20
07	BKN	011			6.00	BR	76	74	75	94	11	18	29.85	29.92	07	CLR	NC			10.00		69	57	62	66	8	04	30.15	30.24
10	OVC	008			5.00	-RA BR	78	74	75	88	7	21	29.80	29.89	10	CLR	NC			10.00		76	52	62	43	7	10	30.15	30.24
13	BKN	060			10.00		75	70	72	85	6	11	29.78	29.87	13	CLR	NC			10.00		79	56	65	45	3	VR	30.11	30.20
16	CLR	NC			10.00		78	71	73	79	5	VR	29.77	29.85	16	SCT	080			10.00		80	59	67	49	7	18	30.09	30.17
19	CLR	NC			10.00		78	71	73	79	7	17	29.78	29.86	19	SCT	055			10.00		79	61	68	54	5	14	30.09	30.17
22	CLR	NC			10.00		75	70	72	85	3	25	29.82	29.90	22	FEW	110			10.00		73	65	68	76	5	12	30.07	30.16
SUNRISE: 0503													SUNRISE: 0509																
AUG 03													AUG 09																
SUNSET: 1914													SUNSET: 1908																
01	BKN	110			10.00		73	70	71	90	0	00	29.83	29.92	01	OVC	090			10.00		72	67	69	84	5	06	30.09	30.16
04	OVC	100			8.00		72	69	70	90	7	31	29.86	29.95	04	BKN	015			5.00	BR	71	68	69	90	7	08	30.02	30.11
07	SCT	080			10.00		74	64	68	71	5	36	29.93	30.00	07	OVC	011			1.50	+RA BR	72	71	71	97	3	36	29.99	30.07
10	CLR	NC			10.00		80	61	68	52	5	34	29.94	30.02	10	BKN	013			8.00		77	72	74	85	0	00	29.99	30.08
13	CLR	NC			10.00		84	59	68	43	9	27	29.93	30.01	13	CLR	NC			5.00	-RA	82	72	75	72	5	35	29.98	30.06
16	CLR	NC			10.00		83	60	68	46	10	31	29.91	29.99	16	CLR	NC			6.00	HZ	86	75	78	70	6	24	29.94	30.03
19	CLR	NC			10.00		79	62	68	56	3	29	29.91	29.99	19	CLR	NC			10.00		71	69	70	93	8	25	29.93	30.02
22	CLR	NC			10.00		74	64	68	71	0	00	29.93	30.01	22	CLR	NC			10.00		70	68	69	93	0	00	29.93	30.01
SUNRISE: 0504													SUNRISE: 0510																
AUG 04													AUG 10																
SUNSET: 1913													SUNSET: 1906																
01	CLR	NC			10.00		70	66	67	87	0	00	29.93	30.01	01	CLR	NC			10.00		70	68	69	93	6	29	29.93	30.01
04	CLR	NC			7.00		66	64	65	93	5	32	29.93	30.01	04	CLR	NC			10.00		70	67	68	90	0	00	29.88	29.96
07	CLR	NC			8.00		73	67	69	82	0	00	29.93	30.02	07	CLR	NC			7.00		73	69	70	87	6	28	29.90	29.98
10	CLR	NC			10.00		81	70	74	69	7	15	29.91	29.99	10	CLR	NC			8.00		87	73	77	63	7	30	29.88	29.97
13	FEW	080			9.00		85	69	74	59	13	15	29.88	29.96	13	FEW	049			10.00		91	73	78	56	10	31	29.85	29.93
16	CLR	NC			10.00		84	68	73	59	14	16	29.85	29.93	16	CLR	NC			10.00		91	72	78	54	9	24	29.78	29.87
19	CLR	NC			10.00		80	73	75	79	10	15	29.83	29.90	19	CLR	NC			10.00		86	70	75	59	10	25	29.78	29.86
22	CLR	NC			9.00		78	70	73	77	3	22	29.82	29.89	22	CLR	NC			10.00		84	71	75	65	7	22	29.80	29.87
SUNRISE: 0505													SUNRISE: 0511																
AUG 05													AUG 11																
SUNSET: 1912													SUNSET: 1905																
01	CLR	NC			8.00		74	70	71	87	3	20	29.80	29.88	01	CLR	NC			10.00		78	70	73	77	11	26	29.80	29.87
04	CLR	NC			6.00	BR	73	71	72	93	0	00	29.80	29.88	04	CLR	NC			10.00		74	66	69	76	5	28	29.78	29.86
07	CLR	NC			6.00	HZ	75	70	72	85	3	27	29.83	29.91	07	CLR	NC			10.00		76	67	70	74	8	31	29.82	29.89
10	CLR	NC			9.00		82	69	73	65	8	30	29.83	29.92	10	CLR	NC			10.00		82	68	73	63	8	30	29.83	29.91
13	BKN	042			10.00		82	66	71	58	9	27	29.83	29.92	13	CLR	NC			10.00		86	70	75	59	9	25	29.80	29.88
16	BKN	050			10.00		84	68	73	59	11	30	29.82	29.90	16	SCT	041			10.00		88	70	76	55	14	28	29.77	29.84
19	CLR	NC			8.00		79	67	71	67	7	29	29.83	29.90	19	CLR	NC			10.00		83	70	74	65	5	23	29.78	29.85
22	CLR	NC			8.00		76	68	71	76	3	27	29.85	29.94	22	CLR	NC			10.00		78	69	72	74	3	30	29.80	29.88
SUNRISE: 0506													SUNRISE: 0511																
AUG 06													AUG 12																
SUNSET: 1911													SUNSET: 1904																
01	CLR	NC			6.00	HZ	74	69	71	84	0	00	29.85	29.94	01	CLR	NC			10.00		75	68	70	79	8	31	29.80	29.89
04	BKN	095			10.00	-RA	71	62	65	73	6	36	29.88	29.96	04	CLR	NC			6.00	BR	73	70	71	90	3	34	29.80	29.88
07	OVC	080			10.00		65	61	63	87	5	01	29.91	29.98	07	CLR	NC			6.00	HZ	74	69	71	84	5	30	29.85	29.92
10	OVC	024			10.00		68	57	62	68	8	05	29.93	30.01	10	CLR	NC			10.00		81	69	73	67	0	00	29.86	29.95
13	OVC	060			10.00	-RA	72	57	63	59	0	00	29.91	29.99	13	FEW	028			10.00		84	72	76	67	8	30	29.85	29.94
16	BKN	090			10.00		76	57	65	52	0	00	29.88	29.96	16	OVC	095			5.00	-TSRA BR	73	70	71	90	14	08	29.85	29.94
19	CLR	NC			10.00		72	61	65	68	3	20	29.90	29.98	19	BKN	110			8.00	-RA	72	70	71	93	10	06	29.90	29.98
22	CLR	NC			10.00		68	62	64	81	7	27	29.91	29.99	22	OVC	027			10.00		72	69	70	90	6	05	29.91	30.00

OBSERVATIONS AT 3-HOURLY INTERVALS

WILMINGTON, DE
AUGUST 2009
KILG

WBAN # 13781

HOUR (LST)	SKY COVER	CEILING 100's of FT.	SATELLITE		VISIBILITY (MILES)	WEATHER	TEMPERATURE °F			WIND SPEED (MPH) DIRECTION Tens of Deg	PRESSURE (INCHES, HG)		HOUR (LST)	SKY COVER	CEILING 100's of FT.	SATELLITE		VISIBILITY (MILES)	WEATHER	TEMPERATURE °F			WIND SPEED (MPH) DIRECTION Tens of Deg	PRESSURE (INCHES, HG)																				
			Observation Time (LST)	Eff Cld Amt Oktas			DRY BULB	DEW POINT	WET BULB		RELATIVE HUMIDITY (PCT)	STATION				SEA LEVEL	Observation Time (LST)			Eff Cld Amt Oktas	DRY BULB	DEW POINT		WET BULB	RELATIVE HUMIDITY (PCT)	STATION	SEA LEVEL																	
<div style="display: flex; justify-content: space-between;"> <div style="width: 48%;"> <p>SUNRISE: 0512 AUG 13 SUNSET: 1903</p> </div> <div style="width: 48%;"> <p>SUNRISE: 0518 AUG 19 SUNSET: 1853</p> </div> </div>																																												
01	OVC	120			10.00		72	70	71	93	5	02	29.91	29.99	01	BKN	100			10.00		74	70	71	87	3	22	29.93	30.01	01	BKN	100			10.00		74	70	71	87	3	22	29.93	30.01
04	OVC	120			8.00		71	68	69	90	6	31	29.91	29.99	04	FEW	075			10.00		72	70	71	93	0	00	29.90	29.97	04	FEW	075			10.00		72	70	71	93	0	00	29.90	29.97
07	OVC	032			7.00		71	69	70	93	6	33	29.96	30.04	07	CLR	NC			8.00		75	72	73	90	0	00	29.91	29.99	07	CLR	NC			8.00		75	72	73	90	0	00	29.91	29.99
10	OVC	023			10.00		74	69	71	84	9	06	29.99	30.08	10	CLR	NC			9.00		84	71	75	65	6	VR	29.93	30.01	10	CLR	NC			9.00		84	71	75	65	6	VR	29.93	30.01
13	BKN	044			9.00		77	70	72	79	3	07	30.01	30.09	13	FEW	041			9.00		86	70	75	59	8	21	29.91	29.99	13	FEW	041			9.00		86	70	75	59	8	21	29.91	29.99
16	BKN	032			9.00		76	68	71	76	9	05	30.01	30.10	16	CLR	NC			10.00		88	70	76	55	7	23	29.86	29.95	16	CLR	NC			10.00		88	70	76	55	7	23	29.86	29.95
19	CLR	NC			10.00		74	66	69	76	6	07	30.04	30.12	19	CLR	NC			9.00		83	69	74	63	5	23	29.88	29.96	19	CLR	NC			9.00		83	69	74	63	5	23	29.88	29.96
22	CLR	NC			10.00		71	67	68	87	7	10	30.09	30.17	22	CLR	NC			10.00		79	71	74	77	6	23	29.86	29.95	22	CLR	NC			10.00		79	71	74	77	6	23	29.86	29.95
<div style="display: flex; justify-content: space-between;"> <div style="width: 48%;"> <p>SUNRISE: 0513 AUG 14 SUNSET: 1901</p> </div> <div style="width: 48%;"> <p>SUNRISE: 0519 AUG 20 SUNSET: 1852</p> </div> </div>																																												
01	CLR	NC			9.00		69	66	67	90	0	00	30.09	30.16	01	CLR	NC			9.00		76	73	74	90	0	00	29.86	29.95	01	CLR	NC			9.00		76	73	74	90	0	00	29.86	29.95
04	CLR	NC			5.00	BR	65	64	64	97	3	34	30.09	30.18	04	CLR	NC			6.00	BR	75	73	74	94	0	00	29.86	29.94	04	CLR	NC			6.00	BR	75	73	74	94	0	00	29.86	29.94
07	CLR	NC			7.00		68	66	67	93	3	32	30.14	30.22	07	OVC	017			8.00		76	73	74	90	3	20	29.88	29.96	07	OVC	017			8.00		76	73	74	90	3	20	29.88	29.96
10	BKN	027			10.00		77	65	69	67	0	00	30.14	30.23	10	BKN	022			10.00		80	72	75	77	7	19	29.90	29.98	10	BKN	022			10.00		80	72	75	77	7	19	29.90	29.98
13	SCT	039			10.00		82	66	71	58	0	00	30.11	30.20	13	CLR	NC			10.00		87	74	78	65	10	21	29.88	29.95	13	CLR	NC			10.00		87	74	78	65	10	21	29.88	29.95
16	SCT	037			10.00		81	66	71	60	6	15	30.09	30.18	16	CLR	NC			10.00		89	70	76	54	10	24	29.83	29.90	16	CLR	NC			10.00		89	70	76	54	10	24	29.83	29.90
19	CLR	NC			10.00		79	67	71	67	5	18	30.09	30.17	19	CLR	NC			10.00		85	74	77	70	8	17	29.80	29.89	19	CLR	NC			10.00		85	74	77	70	8	17	29.80	29.89
22	CLR	NC			10.00		73	68	70	84	6	19	30.10	30.18	22	CLR	NC			10.00		82	75	77	79	9	18	29.83	29.91	22	CLR	NC			10.00		82	75	77	79	9	18	29.83	29.91
<div style="display: flex; justify-content: space-between;"> <div style="width: 48%;"> <p>SUNRISE: 0514 AUG 15 SUNSET: 1859</p> </div> <div style="width: 48%;"> <p>SUNRISE: 0520 AUG 21 SUNSET: 1850</p> </div> </div>																																												
01	CLR	NC			10.00		71	67	68	87	0	00	30.09	30.18	01	CLR	NC			10.00		81	75	77	82	10	19	29.83	29.90	01	CLR	NC			10.00		81	75	77	82	10	19	29.83	29.90
04	CLR	NC			6.00	BR	68	66	67	93	0	00	30.10	30.19	04	CLR	NC			10.00		79	73	75	82	5	19	29.80	29.89	04	CLR	NC			10.00		79	73	75	82	5	19	29.80	29.89
07	CLR	NC			6.00	BR	72	68	69	87	0	00	30.12	30.21	07	CLR	NC			10.00		80	74	76	82	9	20	29.83	29.91	07	CLR	NC			10.00		80	74	76	82	9	20	29.83	29.91
10	CLR	NC			10.00		81	68	72	65	0	00	30.14	30.21	10	BKN	023			10.00		85	75	78	72	8	20	29.83	29.91	10	BKN	023			10.00		85	75	78	72	8	20	29.83	29.91
13	CLR	NC			10.00		84	65	72	53	7	14	30.09	30.17	13	SCT	050			10.00		91	73	78	56	15	20	29.77	29.85	13	SCT	050			10.00		91	73	78	56	15	20	29.77	29.85
16	CLR	NC			10.00		85	62	70	46	6	19	30.06	30.14	16	OVC	090	TS		10.00		73	70	71	90	8	19	29.85	29.92	16	OVC	090	TS		10.00		73	70	71	90	8	19	29.85	29.92
19	CLR	NC			10.00		78	70	73	77	14	16	30.06	30.15	19	FEW	008			10.00		76	73	74	90	0	00	29.82	29.90	19	FEW	008			10.00		76	73	74	90	0	00	29.82	29.90
22	CLR	NC			10.00		74	68	70	82	5	19	30.10	30.19	22	BKN	050	-RA		10.00	-RA	75	72	73	90	5	10	29.83	29.90	22	BKN	050	-RA		10.00	-RA	75	72	73	90	5	10	29.83	29.90
<div style="display: flex; justify-content: space-between;"> <div style="width: 48%;"> <p>SUNRISE: 0515 AUG 16 SUNSET: 1857</p> </div> <div style="width: 48%;"> <p>SUNRISE: 0521 AUG 22 SUNSET: 1849</p> </div> </div>																																												
01	CLR	NC			10.00		72	68	69	87	0	00	30.09	30.17	01	BKN	023			10.00	VCTS	73	71	72	93	6	09	29.80	29.89	01	BKN	023			10.00	VCTS	73	71	72	93	6	09	29.80	29.89
04	CLR	NC			8.00		68	66	67	93	0	00	30.09	30.17	04	OVC	010	-RA BR		4.00	-RA BR	74	72	73	94	6	27	29.80	29.88	04	OVC	010	-RA BR		4.00	-RA BR	74	72	73	94	6	27	29.80	29.88
07	CLR	NC			5.00	BR	73	69	70	87	0	00	30.12	30.21	07	BKN	017	RA BR		5.00	RA BR	74	72	73	94	8	09	29.78	29.87	07	BKN	017	RA BR		5.00	RA BR	74	72	73	94	8	09	29.78	29.87
10	CLR	NC			10.00		83	68	73	61	6	29	30.14	30.22	10	OVC	012			10.00		76	72	73	87	3	VR	29.80	29.88	10	OVC	012			10.00		76	72	73	87	3	VR	29.80	29.88
13	CLR	NC			10.00		88	64	72	45	7	VR	30.09	30.18	13	OVC	029			10.00		81	72	75	74	7	08	29.73	29.81	13	OVC	029			10.00		81	72	75	74	7	08	29.73	29.81
16	CLR	NC			10.00		88	64	72	45	6	21	30.06	30.14	16	FEW	043			10.00		83	71	75	67	5	09	29.67	29.75	16	FEW	043			10.00		83	71	75	67	5	09	29.67	29.75
19	CLR	NC			10.00		83	65	71	55	3	20	30.06	30.14	19	OVC	075			7.00	RA	74	72	73	94	5	14	29.70	29.79	19	OVC	075			7.00	RA	74	72	73	94	5	14	29.70	29.79
22	CLR	NC			10.00		77	68	71	74	3	25	30.09	30.18	22	CLR	NC			10.00		73	72	72	97	7	34	29.67	29.76	22	CLR	NC			10.00		73	72	72	97	7	34	29.67	29.76
<div style="display: flex; justify-content: space-between;"> <div style="width: 48%;"> <p>SUNRISE: 0516 AUG 17 SUNSET: 1856</p> </div> <div style="width: 48%;"> <p>SUNRISE: 0522 AUG 23 SUNSET: 1848</p> </div> </div>																																												
01	CLR	NC			10.00		72	66	68	82	0	00	30.10	30.18	01	BKN	120			8.00		73	72	72	97	5	30	29.67	29.76	01	BKN	120			8.00		73	72	72	97	5	30	29.67	29.76
04	CLR	NC			9.00		71	66	68	84	0	00	30.10	30.18	04	OVC	080			5.00	BR	74	71	72	90	3	28	29.70	29.78	04	OVC	080			5.00	BR	74	71	72					

OBSERVATIONS AT 3-HOURLY INTERVALS

WILMINGTON, DE
AUGUST 2009
KILG

WBAN # 13781

HOUR (LST)	SKY COVER	CEILING 100's of FT.	SATELLITE		WEATHER	TEMPERATURE °F			WIND		PRESSURE (INCHES, HG)						
			Observation Time (LST)	Eff Cl'd Amt Oktas		VISIBILITY (MILES)	DRY BULB	DEW POINT	WET BULB	RELATIVE HUMIDITY (PCT)	SPEED (MPH)	DIRECTION Tens of Deg	STATION	SEA LEVEL			
SUNRISE: 0524						AUG 25						SUNSET: 1845					
01	CLR	NC				67	63	65	87	6	33	30.04	30.13				
04	CLR	NC				66	62	64	87	5	34	30.04	30.13				
07	CLR	NC				70	63	66	79	9	36	30.07	30.16				
10	CLR	NC				80	64	70	58	6	03	30.09	30.18				
13	CLR	NC				84	61	69	46	3	31	30.04	30.12				
16	FEW	055				83	62	70	49	9	25	30.01	30.09				
19	CLR	NC				78	63	68	60	5	22	29.99	30.08				
22	CLR	NC				74	62	67	66	5	23	30.01	30.08				
SUNRISE: 0525						AUG 26						SUNSET: 1843					
01	CLR	NC				72	63	66	73	5	22	29.98	30.07				
04	SCT	060				68	64	66	87	3	27	29.98	30.06				
07	SCT	065				71	67	68	87	6	27	29.99	30.08				
10	CLR	NC				82	69	73	65	9	26	29.98	30.06				
13	CLR	NC				86	64	72	48	14	25	29.91	30.00				
16	FEW	050				87	66	73	50	11	28	29.88	29.97				
19	CLR	NC				82	67	72	61	3	23	29.91	29.98				
22	FEW	060				77	70	72	79	0	00	29.93	30.02				
SUNRISE: 0525						AUG 27						SUNSET: 1842					
01	CLR	NC			8.00	74	66	69	76	3	35	29.93	30.02				
04	CLR	NC			10.00	72	65	68	79	3	36	29.96	30.03				
07	CLR	NC			10.00	71	64	67	79	5	02	29.99	30.08				
10	CLR	NC			10.00	77	62	68	60	8	07	30.01	30.10				
13	CLR	NC			10.00	82	63	70	53	0	00	29.99	30.08				
16	CLR	NC			10.00	81	63	69	54	6	10	29.98	30.06				
19	BKN	032			10.00	77	67	70	71	8	10	29.99	30.08				
22	CLR	NC			10.00	73	66	69	79	7	11	30.02	30.10				
SUNRISE: 0526						AUG 28						SUNSET: 1840					
01	SCT	036			10.00	72	67	69	84	6	09	30.01	30.08				
04	OVC	012			6.00	71	69	70	93	6	31	29.99	30.07				
07	BKN	065			8.00	72	70	71	93	9	05	29.99	30.08				
10	BKN	041			10.00	74	68	70	82	10	05	30.01	30.09				
13	BKN	060			10.00	74	68	70	82	9	06	29.96	30.04				
16	SCT	006			9.00	72	70	71	93	9	11	29.93	30.01				
19	OVC	060			9.00	72	70	71	93	6	13	29.93	30.01				
22	BKN	013			10.00	71	69	70	93	8	08	29.90	29.98				
SUNRISE: 0527						AUG 29						SUNSET: 1839					
01	FEW	005			9.00	70	69	69	97	5	06	29.83	29.91				
04	OVC	019			10.00	71	69	70	93	5	07	29.75	29.84				
07	OVC	004			10.00	72	70	71	93	0	00	29.73	29.82				
10	BKN	017			10.00	75	71	72	87	3	09	29.69	29.77				
13	SCT	028			10.00	80	71	74	74	6	32	29.64	29.72				
16	CLR	NC			10.00	82	72	75	72	5	15	29.62	29.70				
19	CLR	NC			10.00	80	71	74	74	0	00	29.65	29.74				
22	OVC	040			10.00	73	68	70	84	9	32	29.73	29.82				
SUNRISE: 0528						AUG 30						SUNSET: 1837					
01	OVC	065			10.00	72	67	69	84	3	22	29.75	29.83				
04	SCT	110			5.00	69	68	68	97	0	00	29.75	29.83				
07	OVC	090			7.00	72	68	69	87	3	36	29.82	29.90				
10	SCT	075			10.00	79	63	69	58	0	00	29.85	29.92				
13	SCT	050			10.00	82	60	68	47	8	29	29.82	29.90				
16	SCT	065			10.00	82	61	69	49	14	29	29.83	29.90				
19	CLR	NC			10.00	70	58	63	66	8	33	29.88	29.96				
22	BKN	075			10.00	68	56	61	66	3	30	29.94	30.03				

HOUR (LST)	SKY COVER	CEILING 100's of FT.	SATELLITE		WEATHER	TEMPERATURE °F			WIND		PRESSURE (INCHES, HG)						
			Observation Time (LST)	Eff Cl'd Amt Oktas		VISIBILITY (MILES)	DRY BULB	DEW POINT	WET BULB	RELATIVE HUMIDITY (PCT)	SPEED (MPH)	DIRECTION Tens of Deg	STATION	SEA LEVEL			
SUNRISE: 0529						AUG 31						SUNSET: 1835					
01	BKN	075				65	53	58	65	9	33	29.98	30.06				
04	OVC	070				62	53	57	73	8	32	30.01	30.09				
07	CLR	NC				62	53	57	73	7	35	30.04	30.13				
10	CLR	NC				66	53	59	63	9	01	30.09	30.17				
13	SCT	042				72	52	61	50	3	VR	30.07	30.16				
16	BKN	060				74	52	61	46	9	01	30.04	30.13				
19	CLR	NC				64	52	57	65	5	33	30.07	30.15				
22	CLR	NC				58	53	55	84	6	32	30.11	30.19				

3-HOURLY OBSERVATION NOTES

Sky Cover is the amount of the sky obscured. CLR or SKC = 0, FEW = 1/8-2/8, SCT = 3/8-4/8, BKN = 5/8-7/8, OVC = 8/8, W = Vertical Visibility = 8/8

Ceiling is reported in hundreds of feet above ground level for clouds at or below 12,000 feet. NC = No Ceiling detected.

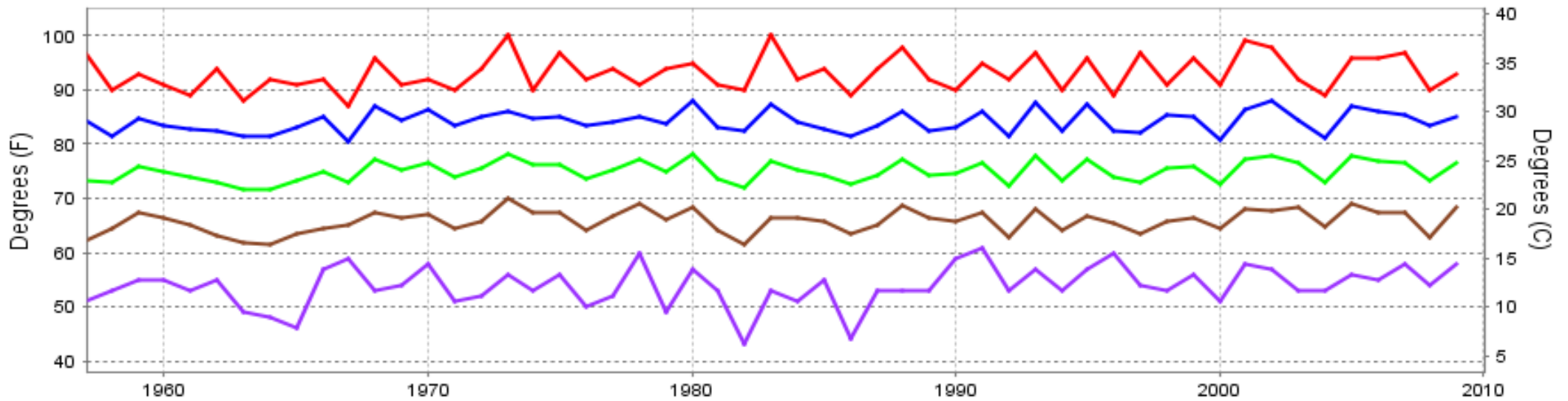
& = Original observation contained additional weather elements.

See page 3 for additional notes.

SUMMARY BY HOUR

HOUR (LST)	AVERAGES										RESULTANT WIND (MPH)	
	CEILOMETER	EFF CLD AMT	DRY BULB	DEW POINT	WET BULB	RELATIVE HUMIDITY	PRESSURE (Inches, HG)		VISIBILITY (Miles)	WIND SPEED (MPH)	SPEED	DIRECTION
							STATION	SEA LEVEL				
01			72	67	69	85	29.93	30.01	9.52	4	2	28
02			71	67	69	86	29.92	30.00	8.97	4	1	28
03			71	67	68	87	29.92	30.00	8.00	4	1	31
04			70	66	68	88	29.92	30.00	7.94	3	2	28
05			70	66	68	89	29.93	30.01	7.61	4	1	30
06			70	67	68	89	29.94	30.02	6.92	5	1	30
07			72	67	69	85	29.95	30.03	7.78	5	1	29
08			75	67	70	78	29.95	30.04	8.85	6	1	28
09			77	67	71	73	29.95	30.04	9.39	6	0	31
10			79	67	71	68	29.96	30.04	9.61	6	1	32
11			80	66	71	64	29.95	30.04	9.35	5	2	28
12			82	66	71	61	29.94	30.02	9.74	6	3	28
13			83	66	72	59	29.93	30.01	9.74	7	3	28
14			83	66	72	58	29.92	30.00	9.55	7	3	28
15			83	66	72	58	29.91	29.99	9.68	7	3	27
16			82	66	72	60	29.91	29.99	9.65	9	2	28
17			81	66	72	62	29.90	29.99	9.81	8	2	28
18			80	67	71	66	29.91	29.99	9.10	8	1	29
19			77	67	70	71	29.92	30.00	9.68	6	1	30
20			76	67	70	74	29.93	30.00	9.71	5	0	31
21			75	67	70	78	29.93	30.02	9.45	5	0	31
22			74	67	70	80	29.94	30.02	9.77	5	1	30
23			73	67	69	82	29.94	30.02	9.35	4	1	30
24			72	67	69	82	29.94	30.02	9.71	4	1	28

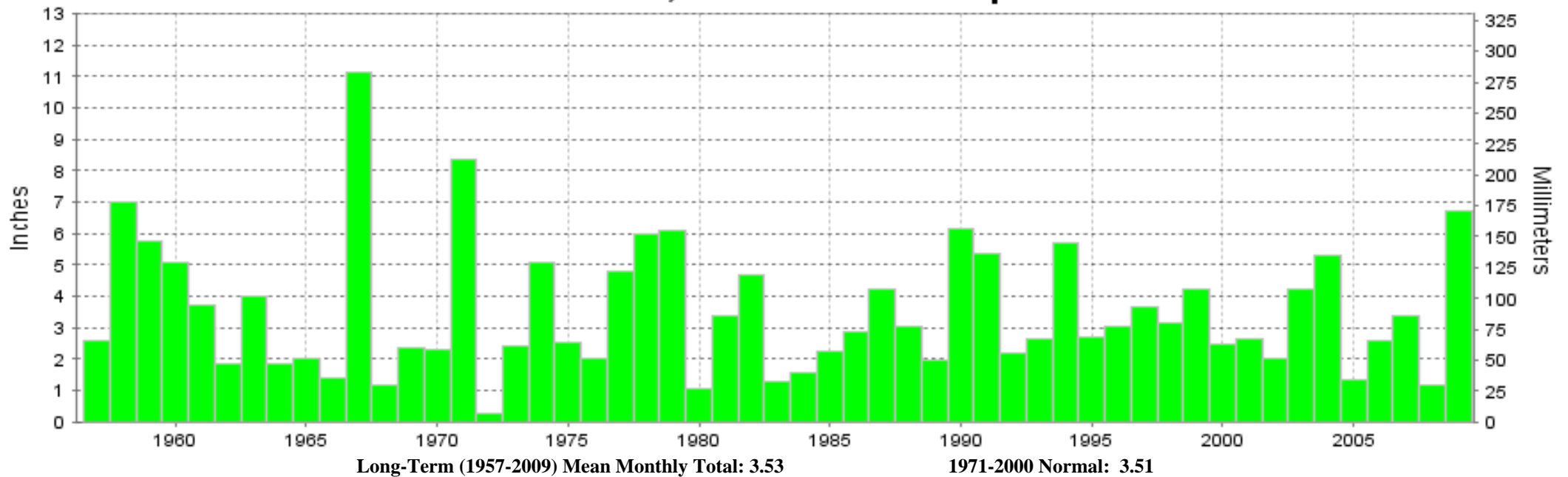
WILMINGTON, DE AUGUST Temperatures



— Extreme Max — Mean Max — Mean — Mean Min — Extreme Min

Long-Term (1957-2009) Mean: 75.0
1971-2000 Normal: 75.0

WILMINGTON, DE AUGUST Precipitation



Long-Term (1957-2009) Mean Monthly Total: 3.53

1971-2000 Normal: 3.51



AUGUST 2009
WILMINGTON, DE

LOCAL CLIMATOLOGICAL DATA NOAA, National Climatic Data Center

I certify that this is an official publication of the National Oceanic and Atmospheric Administration (NOAA). It is compiled using information from weather observing sites operated by NOAA-National Weather Service / Department Of Transportation-Federal Aviation Administration and received at the National Climatic Data Center (NCDC), Asheville, North Carolina 28801.

DIRECTOR

NCDC now offers an annual online subscription for the **Edited Local Climatological Data Publication**. When you purchase this subscription service, you will have **immediate online access** to all previous publications back to July 1996 and all publications thereafter until the expiration of the subscription. Your subscription is valid for one year after purchase. **The total cost for online delivery (including back issues) is significantly less than the cost for offline delivery.**

To order this and other subscriptions online with your credit card, go to: www.ncdc.noaa.gov and choose subscriptions.

We welcome your questions or comments, please contact us at:

Toll Free Number (866) 742-3322 (voice)

Fax Number : (304) 726-4409

TDD : (828) 271-4010

or Email : ncdc.info@noaa.gov

Local Climatological Data is available at www.ncdc.noaa.gov

NCDC Subscription Services Center
310 State Route 956 Building 300
Rocket Center, WV 26726
OFFICIAL BUSINESS, PENALTY FOR PRIVATE USE \$300

FIRST CLASS
POSTAGE AND FEES PAID
NOAA
PERMIT G-19

For address correction, please return a photocopy of this page to Subscription Services indicating changes