

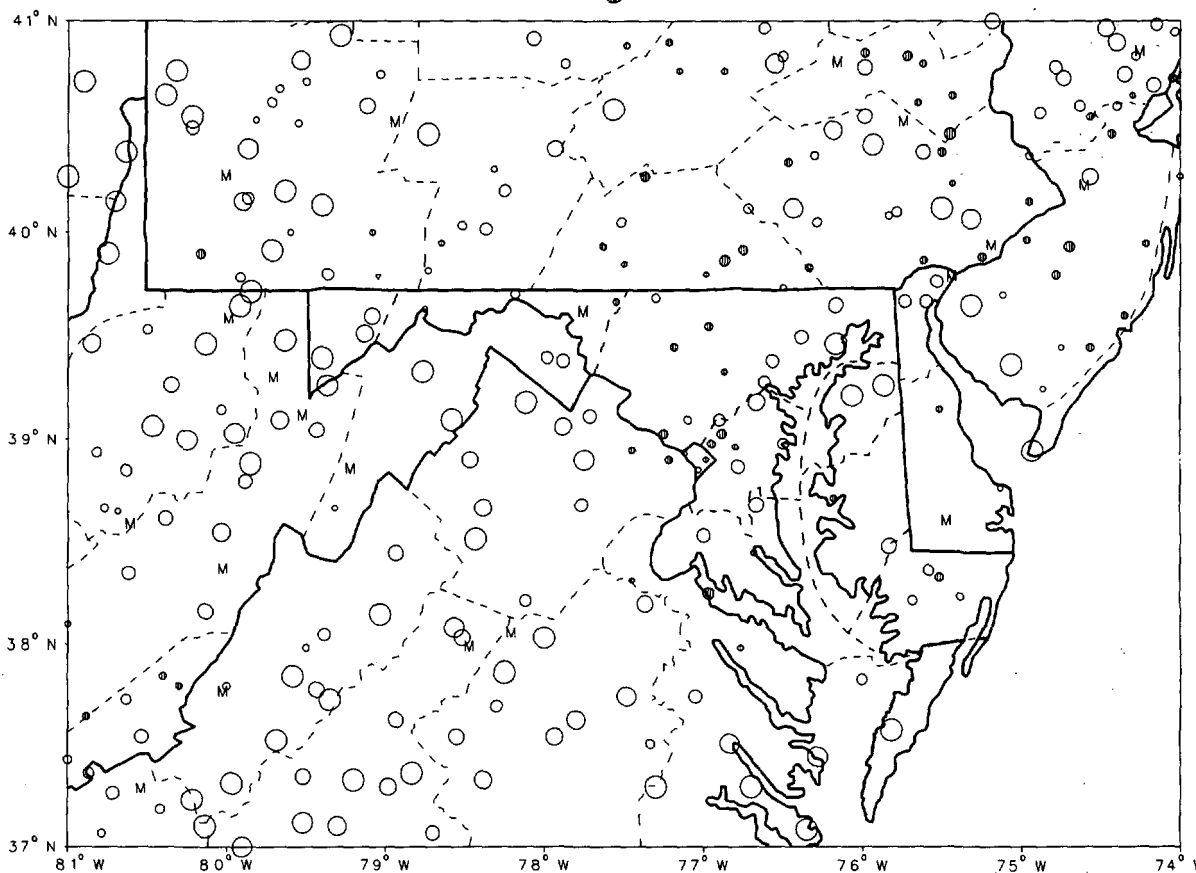


ISSN 0145-0549

# CLIMATOLOGICAL DATA MARYLAND AND DELAWARE AUGUST 1993 VOLUME 97 NUMBER 8

## MONTHLY PRECIPITATION DEPARTURE FROM INDIVIDUAL STATION NORMALS (1961-1990)

- M INCOMPLETE DATA FOR THE MONTH
- ▽ EXACTLY NORMAL
- 5,10,20... 50% OR MORE BELOW NORMAL
- 10,20,40...100% OR MORE ABOVE NORMAL



CIRCLE DIAMETER IS PROPORTIONAL TO DEPARTURE ON A CONTINUOUS SCALE

"I CERTIFY THAT THIS IS AN OFFICIAL PUBLICATION OF THE NATIONAL OCEANIC AND ATMOSPHERIC ADMINISTRATION (NOAA). IT IS COMPILED USING INFORMATION FROM WEATHER OBSERVING SITES SUPERVISED BY NOAA/NATIONAL WEATHER SERVICE AND RECEIVED AT THE NATIONAL CLIMATIC DATA CENTER (NCDC), ASHEVILLE, NORTH CAROLINA 28801."

*Kenneth D. Walden*

DIRECTOR, NATIONAL CLIMATIC DATA CENTER

# noaa

NATIONAL  
OCEANIC AND  
ATMOSPHERIC ADMINISTRATION

NATIONAL  
ENVIRONMENTAL SATELLITE, DATA  
AND INFORMATION SERVICE

NATIONAL  
CLIMATIC DATA CENTER  
ASHEVILLE NORTH CAROLINA

# TEMPERATURE AND PRECIPITATION EXTREMES

MARYLAND AND  
DELAWARE  
AUGUST 1993

MARYLAND  
 HIGHEST TEMPERATURE 104  
 LOWEST TEMPERATURE 45  
 GREATEST TOTAL PRECIPITATION 7.37  
 LEAST TOTAL PRECIPITATION 1.59  
 GREATEST 1 DAY PRECIPITATION 4.21

AUGUST 26  
 AUGUST 22  
 AUGUST 6

CONOWINGO DAM  
 OAKLAND 1 SE  
 SALISBURY FAA ARPT  
 ABERDEEN PHILLIPS FIEL  
 MECHANICSVILLE 5 NE

DELAWARE  
 HIGHEST TEMPERATURE 97  
 LOWEST TEMPERATURE 55  
 GREATEST TOTAL PRECIPITATION 5.19  
 LEAST TOTAL PRECIPITATION 2.65  
 GREATEST 1 DAY PRECIPITATION 2.84

AUGUST 28  
 AUGUST 22  
 AUGUST 18

2 STATIONS  
 NEWARK UNIVERSITY FARM  
 LEWES  
 WILMINGTON WSO ARPT R  
 DOVER

# MONTHLY SUMMARIZED STATION AND DIVISIONAL DATA

MARYLAND AND  
DELAWARE  
AUGUST 1993

STATION	TEMPERATURE (°F)											PRECIPITATION (IN)									
	AVERAGE MAXIMUM	AVERAGE MINIMUM	AVERAGE	DEPARTURE FROM NORMAL	HIGHEST DATE	LOWEST DATE	HEATING DEGREE DAYS	COOLING DEGREE DAYS	NO. OF DAYS				TOTAL	DEPARTURE FROM NORMAL	GREATEST DAY DATE	TOTAL	SNOW DEPTH ON GROUND DATE	NO. OF DAYS			
									90 OR ABOVE	32 OR BELOW	32 OR BELOW MIN	0 OR BELOW						.10 OR MORE	.50 OR MORE	1.00 OR MORE	
MARYLAND																					
SOUTHERN EASTERN SHORE 01																					
ASSATEAGUE IS NATL SEA	82.4	69.6	76.0		88 4	63 11	0	348	0	0	0	0	3.15		2.97	6	0	0	2	1	1
PRINCESS ANNE	88.0	60.5	74.3	-1.9	96 3+	52 23	0	294	1	0	0	0	4.50	-1.59	2.30	6	0	0	5	4	1
SALISBURY	86.8	67.6	77.2	1.3	94 2+	62 10	0	387	0	0	0	0	4.22	-1.77	1.77	6	0	0	7	2	3
SALISBURY FAA ARPT	87.1	65.9	76.5	1.2	96 26+	60 24+	0	362	0	0	0	0	4.22	-2.04	2.30	6	0	0	6	6	3
SNOW HILL 4 N	87.7	64.6	76.2	1.5	97 2+	58 12+	0	352	2	0	0	0	4.99	-1.38	2.62	6	0	0	5	3	1
--DIVISIONAL DATA-->			76.0	.3									4.85	-1.02			0	0			
CENTRAL EASTERN SHORE 02																					
ROYAL OAK 2 SSW	86.9	68.3	77.6	1.4	94 26+	57 22	0	400	7	0	0	0	4.84	.61	1.82	6	0	0	5	3	2
VIENNA	88.6	67.3	78.0	1.7	95 27	59 16	0	411	6	0	0	0	3.37	-1.50	1.62	6	0	0	5	2	1
--DIVISIONAL DATA-->			77.8	1.7									4.11	-1.29			0	0			
LOWER SOUTHERN 03																					
LA PLATA 1 W	84.9	66.5	75.7	1.1	92 28	58 22	0	340	5	0	0	0	3.30	-1.09	1.97	6	0	0	4	2	2
MECHANICSVILLE 5 NE	85.3	65.1	75.2	.6	94 2	55 22	0	325	5	0	0	0	4.37	.31	4.21	6	0	0	1	1	1
OWINGS FERRY LANDING	87.1	64.9	76.0	1.1	94 28+	56 22	0	349	8	0	0	0	2.52	-1.05	1.62	6	0	0	3	2	1
--DIVISIONAL DATA-->			75.6	.2									3.40	-.57			0	0			
UPPER SOUTHERN 04																					
ANNAPOLIS POLICE BRKS	88.7	67.8	78.3	2.0	97 28+	61 23	0	420	16	0	0	0	3.21	-.69	2.01	6	0	0	5	1	1
BALTIMORE WSO ARPT	87.8	65.5	76.7	1.1	98 28	58 23	0	371	13	0	0	0	2.55	-1.37	1.48	6	0	0	6	6	1
BELTSVILLE	88.7	65.0	76.9	2.7	96 29+	59 22	0	376	13	0	0	0	6.20	2.06			0	0	6	6	3
COLLEGE PARK	89.0	67.7	78.4	2.4	98 29	58 22	0	421	13	0	0	0	5.87	1.43	2.15	7	0	0	7	5	2
DALECARLIA RESERVOIR	89.5	65.2	77.4	1.6	97 28	53 1	0	389	7	0	0	0	4.28	-.01	2.00	6	0	0	6	7	2
GLENN DALE BELL STN	89.4	63.7	76.6	2.4	98 25	51 22	0	364	16	0	0	0	4.74	.42	2.67	6	0	0	6	7	1
LAUREL 3 W	89.4	64.5	77.0	1.2	98 28+	54 22	0	377	17	0	0	0	3.19	-.76	1.45	6	0	0	5	2	2
NATIONAL ARBORETUM DC	89.5	66.4	78.0	2.3	97 28+	57 22	0	409	17	0	0	0	4.53	-.14	2.34	7	0	0	6	2	1
UPPER MARLBORO 3 NNW	87.4	65.1	76.3	2.6	95 29+	56 22	0	357	12	0	0	0	2.96	-1.00	1.79	7	0	0	4	2	1
--DIVISIONAL DATA-->			77.3	2.0									4.17	.00			0	0			
NORTHERN EASTERN SHORE 05																					
CHESTERTOWN	89.0	65.8	77.4	1.8	98 28+	55 22	0	392	15	0	0	0	1.80	-2.16	.74	6	0	0	4	2	0
MILLINGTON 1 SE	88.5	64.9	76.7	2.4	97 28	54 22	0	371	15	0	0	0	1.67	-2.40	.87	18	0	0	3	2	0
--DIVISIONAL DATA-->			77.1	1.9									1.74	-2.14			0	0			
NORTHERN CENTRAL 06																					
ABERDEEN PHILLIPS FIEL	86.9	67.7	77.3	2.3	94 27+	60 23	0	389	8	0	0	0	1.59	-2.84	.85	6	0	0	3	1	0
BALTIMORE CITY	89.3	71.1	80.2	1.5	103 28	62 22+	0	479	15	0	0	0	3.40	-.88	1.14	6	0	0	6	6	3
BENSON POLICE BARRACKS	89.4	66.5	78.0	3.8	98 29	58 23	0	410	15	0	0	0	3.51	-1.20	1.54	6	0	0	6	4	1
CATOCTIN MOUNTAIN PARK	80.6	64.1	72.4		90 28	53 22	0	233	1	0	0	0	2.26		1.12	6	0	0	4	2	1
CLARKSVILLE 3 NNE	87.7	58.7	73.2		97 28	47 22	0	261	10	0	0	0	4.25		1.90	6	0	0	8	8	1
CONOWINGO DAM	91.3	67.5	79.4	5.4	104 26	60 23	0	451	24	0	0	0	3.22	-1.24	1.13	7	0	0	7	2	1
DAMASCUS 2 SSW	85.0	62.5	73.8		93 28+	52 22	1	279	6	0	0	0	5.53		1.91	3	0	0	6	3	3
EMMITSBURG 2 SE	84.5	61.9	73.2	.5	95 30+	50 22	2	262	6	0	0	0	3.28	-.33	1.70	6	0	0	6	6	3
FREDERICK POLICE BRKS	89.4	66.2	77.8		98 28	56 22	0	403	17	0	0	0	2.43		1.08	12	0	0	4	2	1
MILLERS 4 NE	83.9	63.0	73.5		93 28	52 22	0	269	4	0	0	0	5.08		2.43	12	0	0	6	6	2
ROCKVILLE 1 NE	85.3	66.4	75.9	2.9	92 28+	59 22	0	341	5	0	0	0	3.68	-.31	1.22	6	0	0	7	3	1
TOWSON	87.7				99 28		0	1	3	0	0	0	3.56	-1.06	1.20	6	0	0	8	8	2
UNIONVILLE	88.2	61.2	74.7	3.5	97 28	50 22	0	310	11	0	0	0	4.09		1.15	6	0	0	6	3	3

SEE REFERENCE NOTES FOLLOWING STATION INDEX

# MONTHLY SUMMARIZED STATION AND DIVISIONAL DATA

MARYLAND AND  
DELAWARE  
AUGUST 1993

STATION	TEMPERATURE (°F)													PRECIPITATION (IN)								
	AVERAGE MAXIMUM	AVERAGE MINIMUM	AVERAGE	DEPARTURE FROM NORMAL	HIGHEST DATE	LOWEST DATE	HEATING DEGREE DAYS	COOLING DEGREE DAYS	NO. OF DAYS				TOTAL	DEPARTURE FROM NORMAL	GREATEST DAY DATE	SNOW SLEET						
									90 OR ABOVE MAX	32 OR BELOW MIN	32 OR BELOW MIN	0 OR BELOW MIN				TOTAL	MAX. DEPTH ON GROUND	DATE	.10 OR MORE	.50 OR MORE	1.00 OR MORE	
WESTMINSTER POL BRKS	86.8	63.3	75.1	2.0	95 29+	52 22	0	318	9	0	0	0	4.57	1.15	1.43	4	.0	0		6	3	3
WOODSTOCK	87.7	63.5	75.6	1.6	96 28	53 22	0	334	13	0	0	0	3.85	.28	1.22	6	.0	0		7	3	2
--DIVISIONAL DATA----->			75.7	1.9									3.62	-.23			.0					
APPALACHIAN MOUNTAIN 07																						
CUMBERLAND 2	88.9	62.6	75.8	1.9	98 28	53 21	0	344	12	0	0	0	3.29	-.01	1.30	12	.0	0		4	3	1
FROSTBURG 2	79.2	59.1	69.2		88 28	51 9	17	152		0	0	0	2.61		.76	7	.0	0		5	3	
HAGERSTOWN	87.3	63.7	75.5	2.1	96 28	54 22	2	334	11	0	0	0	2.61		1.32	12	.0	0		5	3	
HANCOCK	87.1	61.9	74.5	2.9	98 28	50 22	2	305	8	0	0	0	2.81	-.34	.99	7	.0	0		5	2	0
--DIVISIONAL DATA----->			73.8	1.9									2.90	-.44			.0					
ALLEGHENY PLATEAU 08																						
MC HENRY 2 NW	79.9	59.0	69.5		90 28	52 22	17	164	1	0	0	0	3.86		1.18	12	.0	0		7	4	1
OAKLAND 1 SE	81.1	56.0	68.6	2.0	90 28	45 22	13	132	2	0	0	0	2.02	-2.15	.79	6	.0	0		7	1	0
SAVAGE RIVER DAM	83.0	58.3	70.7	2.4	94 28	50 23	7	192	6	0	0	0	2.01	-1.18	.97	7	.0	0		5	1	0
--DIVISIONAL DATA----->			69.6	2.7									2.63	-1.20			.0					
DELAWARE																						
NORTHERN 01																						
NEWARK UNIVERSITY FARM	87.6	64.6	76.1	1.5	97 28	55 22	0	354	12	0	0	0	3.12	-.88	1.10	6	.0	0		7	3	1
WILMINGTON WSO ARPT	87.6	67.9	77.8	2.8	97 28	57 22	0	405	12	0	0	0	2.65	-.75	1.02	6	.0	0		5	2	1
WILMINGTON PORTER RSVR	85.6	66.9	76.3	2.5	94 28	57 22	0	357	7	0	0	0	3.14	-.91	1.00	6	.0	0		6	2	1
--DIVISIONAL DATA----->			76.7	2.2									2.97	-.66			.0					
SOUTHERN 02																						
DOVER	85.0	67.4	76.2	.3	93 3+	61 10	0	356	4	0	0	0	4.79	.54	2.84	18	.0	0		7	3	1
GEORGETOWN 5 SW																						
GREENWOOD 2 NE	85.9	64.6	75.3		94 2	58 22+	0	326	7	0	0	0	3.35		1.10	21	.0	0		5	3	1
LEWES	85.4	67.7	76.6	1.7	95 2	61 1	0	369	7	0	0	0	5.19	-.05	2.42	17	.0	0		6	4	1
--DIVISIONAL DATA----->			76.0	.9									4.44	-.34			.0					

SEE REFERENCE NOTES FOLLOWING STATION INDEX

# DAILY PRECIPITATION (INCHES)

MARYLAND AND  
DELAWARE  
AUGUST 1993

STATION	TOTAL	DAY OF MONTH																																
		1	2	3	4	5	6	7	8	9	10	11	12	13	14	15	16	17	18	19	20	21	22	23	24	25	26	27	28	29	30	31		
MARYLAND																																		
SOUTHERN EASTERN SHORE 01																																		
ASSATEAGUE IS NATL SEA	3.15			.16		.01	2.97											.01																
PRINCESS ANNE	4.50			.02			2.30	.56	.60					.79	.03		.03	.12	.05															
SALISBURY	4.22			.15		.02	1.77	.35	.08					T	T		1.13	.22	.25															
SALISBURY FAA ARPT	7.37			.08		.02	2.30		.93				1.56	.04		1.13	.57			.70	.25						.01	.02		.01				
SNOW HILL 4 N	4.99			.06		.02	2.62	.12	.01				.87			T	.42	.02			.85													
CENTRAL EASTERN SHORE 02																																		
ROYAL OAK 2 SSW	4.84			.03		.01	1.82	.05	1.65				.68				T	.30																
VIENNA	3.37			.12	.03		1.62	.28	.75	.04			.08					.05	.31															
LOWER SOUTHERN 03																																		
LA PLATA 1 W	3.30			T			1.97	.04					.10				.15	1.04		T														
MECHANICSVILLE 5 NE	4.37			T		.01	4.21	.06	T				.02		T		T	.01	.06															
OWINGS FERRY LANDING	2.52			T			1.62	.17					.04				T	.08													.61			
UPPER SOUTHERN 04																																		
ANNAPOLIS POLICE BRKS	3.21		.03	.33			2.01	.20	.35	.01			.15						.05	.01		.05											.02	
BALTIMORE HSO ARPT	2.55		T	T	.26		1.48	.22					.13			T	.10			.05														
BELTSVILLE	6.20			.76	.06	.20	.11	*	*	3.23	.81	.31	.13					.05	.53															
COLLEGE PARK	5.87				1.20	.06	.57	2.15	.46		T		.57			.19		.04	.56			T												
DALECARLIA RESERVOIR	4.28		.49		1.16		2.00		.15				.18					.01	.09															
GLENN DALE BELL STN	4.74			.34			2.67	.20	.50	T	.02		.30				T	.40		.01	T											.30		
LAUREL 3 W	3.19		.20		.07		1.45	.01	.50				.42				.45																	
NATIONAL ARBORETUM DC	4.53			.03	.02		2.34	.02			.90	T	.49			.33		.27		T												.13		
UPPER MARLBORO 3 NNN	2.96			.03			1.79						.55	T				.16														.40		
NORTHERN EASTERN SHORE 05																																		
CHESTERTOWN	1.80		T		T	T	.74	T		T			.29	.01		T	.61				.13											.02	.00	
HILLINGTON 1 SE	1.67					.04	.52	.08					.10	.03					.87													.03	.00	
NORTHERN CENTRAL 06																																		
ABERDEEN PHILLIPS FIEL	1.59			T		.02	.85	*	*	.19			.17	.07		T	T	.22		*	*	.06						*		.01				
BALTIMORE CITY	3.40				.15		1.14	.11					.08				.33			.94														
BENSON POLICE BARRACKS	3.51						1.54	.09	.14			.65	.08				.44	.02	.91		.10											.27		
CATOCTIN MOUNTAIN PARK	2.26				.04	T	1.12	.06	.01				.53	.01			.29	.01		.13	.05											.01		
CLARKSVILLE 3 NNE	4.25				.44	.19	1.90	.03	.13	T			.97	.20			.16																	
CONOWINGO DAM	3.22						1.13	.29					.43	.38					.26			.23										.55		
DAMASCUS 2 SSW	5.53			1.91	.05		1.54	.09	.28				1.28				.22		.16		.16	.13					.05							
EMMITSBURG 2 SE	3.28		T	T		T	1.70	.30					.46				.10	.20	.45		.45								T			.07		
FREDERICK POLICE BRKS	2.43		.03				.82	.08	.05				1.08					.17				.20												
MILLERS 4 NE	5.08				T		1.29	.03	.16			T	2.43			T	.35	.28	.03								.05						.46	
POTOMAC FILTER PLANT	5.11			.16	1.35	.02	2.72	.10	.09			.28	.12				.10																	
ROCKVILLE 1 NE	3.68		T	1.00	.21	.04	1.22	.10	.07			.03	.75	T		.12	.10		.04												.17			
TOKSON	3.56			.20	.61	1.20	.10	.15					.69				.31	.05																
UNIONVILLE	4.09				T	.10	1.15	.02	.04	.02			1.12				1.07			.45		.25									.12			
WESTMINSTER POL BRKS WOODSTOCK																																		
WOODSTOCK	4.57				1.43	.02	1.29	.01	.14				1.15				.06	.11															.36	
WOODSTOCK	3.85				.50	.17	1.22	.07	.04				1.15	.05			.12	.10				.43											T	
APPALACHIAN MOUNTAIN 07																																		
CUMBERLAND 2	3.29			.58		T		.97				.35	1.30	.05			.02	.02															T	
EDGEMONT	3.78					.01		.99	.03				2.33					.07				.30										.04		
FROSTBURG 2	2.61	T		.56		.03	T	.76	.02			.33	.31					.04				.05										.51		
HAGERSTOWN HANCOCK																																		
HAGERSTOWN	H 2.61	*	*	.09				1.02					1.32					.15																
HANCOCK	2.81			.29			.93	.99	.06			.30										.22												.02

SEE REFERENCE NOTES FOLLOWING STATION INDEX  
5

# DAILY PRECIPITATION (INCHES)

MARYLAND AND  
DELAWARE  
AUGUST 1993

STATION	TOTAL	DAY OF MONTH																														
		1	2	3	4	5	6	7	8	9	10	11	12	13	14	15	16	17	18	19	20	21	22	23	24	25	26	27	28	29	30	31
ALLEGHENY PLATEAU 08																																
MC HENRY 2 NW	3.86	.02		.53		.08	.03	.56	T			.33	1.18	T				.20	T													
MERRILL	2.39			.25			.06	.60				.52	.45					.04												.47	.78	
OAKLAND 1 SE	2.02			.05	.03		.79	.18				.13	.09					.16			T	.11										
SAVAGE RIVER DAM	2.01		.01	.10		.05	.04	.97				.37	.36				T	.10	.01			T								T	T	
DELAWARE																																
NORTHERN 01																																
NEWARK UNIVERSITY FARM	3.12						1.10	.23		.03			.05	.24			.11		.25			.59								.52		
WILMINGTON HSO ARPT R	2.65			T	T		1.02	T	T			.03	.27	.08			.03	.13			.97									.10		
WILMINGTON PORTER RSVR	3.14				.02		1.00			.32			.24	.08			.43	.12			.88								.02	.05		.00
SOUTHERN 02																																
DOVER	4.79						.19	.53						.22				.70	2.84			.18									.13	.00
GEORGETOWN 5 SW	M	-	-	-	-	-	-	-	-	-	-	-	-	-	-	-	-	-	-	-	-	-	-	-	-	-	-	-	-	-	-	-
GREENWOOD 2 NE	3.35			.05			.95	.96	.13				T				.01	.10				1.10									.05	.00
LEWES	5.19			.51	.01	T	.78	.40									.03	2.42	.71			.33										

SEE REFERENCE NOTES FOLLOWING STATION INDEX

# DAILY TEMPERATURES (°F)

MARYLAND AND  
DELAWARE  
AUGUST 1993

STATION	OB. TIME	MAX/MIN	DAY OF MONTH																															AVERAGE			
			1	2	3	4	5	6	7	8	9	10	11	12	13	14	15	16	17	18	19	20	21	22	23	24	25	26	27	28	29	30	31				
MARYLAND																																					
SOUTHERN EASTERN SHORE 01																																					
ASSATEAGUE IS NATL SEA 07	MAX	84	84	82	88	79	74	79	79	82	81	81	83	82	84	86	84	80	79	81	82	82	82	81	82	83	87	85	87	84	83	83	82.4				
	MIN	71	72	71	75	68	66	67	64	67	70	63	65	71	70	71	72	72	71	70	68	66	66	70	66	72	72	73	73	73	69	75	69.6				
PRINCESS ANNE 17	MAX	90	96	96	91	89	86	86	83	82	82	84	88	86	88	91	90	85	84	85	88	88	84	84	87	87	93	93	92	92	90	87	88.0				
	MIN	57	65	65	68	68	62	54	58	57	54	54	54	61	59	60	62	68	62	60	60	63	54	52	55	63	61	63	67	66	64	61	60.5				
SALISBURY 17	MAX	88	94	93	91	87	80	80	80	82	83	84	86	86	89	91	90	83	85	84	88	87	84	83	86	87	92	92	91	90	89	85	86.8				
	MIN	66	71	74	74	68	65	63	65	65	62	63	65	64	67	67	68	72	69	66	67	71	63	63	64	70	70	70	73	74	68	70	67.6				
SALISBURY FAA ARPT MID	MAX	89	96	91	91	85	75	82	83	83	82	86	86	86	90	92	89	84	85	85	89	85	85	83	86	89	96	92	92	88	88	86	87.1				
	MIN	63	70	73	71	64	62	64	64	63	61	60	62	66	67	66	64	69	69	66	66	68	62	60	60	69	68	68	73	68	66	70	65.9				
SNOW HILL 4 N 17	MAX	91	97	95	94	90	82	81	82	83	82	84	87	86	87	89	90	84	84	84	90	86	84	85	87	91	94	92	94	91	87	85	87.7				
	MIN	59	69	72	70	66	58	63	60	62	58	58	58	65	66	64	66	73	69	65	63	68	61	59	59	68	66	66	72	71	63	67	64.6				
CENTRAL EASTERN SHORE 02																																					
ROYAL OAK 2 SSW 18	MAX	89	94	89	91	86	81	81	83	83	84	83	86	89	89	89	89	84	87	84	87	85	82	83	84	88	94	90	91	91	90	88	86.9				
	MIN	67	74	72	74	69	64	63	65	66	65	66	63	68	67	70	70	75	69	65	71	70	57	61	68	74	70	71	76	73	67	68	68.3				
VIENNA 18	MAX	91	92	92	91	90	86	83	84	84	84	84	87	87	90	91	92	90	90	87	89	87	85	84	87	84	93	95	93	92	92	92	88.6				
	OBS																																				
	MIN	64	73	72	68	66	66	61	68	64	64	63	64	68	68	**	**	**	59	74	67	65	68	70	60	65	66	72	69	70	75	73	67	71	67.3		
	OBS																																				
LOWER SOUTHERN 03																																					
LA PLATA 1 W 18	MAX	86	91	85	87	82	77	78	81	80	81	81	83	85	85	87	88	85	84	82	84	82	80	83	86	88	90	90	92	89	90	89	84.9				
	MIN	62	65	69	70	65	63	61	65	63	62	66	63	66	67	67	67	70	67	66	69	71	58	61	68	71	71	70	73	72	68	67	66.5				
MECHANICSVILLE 5 NE 19	MAX	88	94	86	90	82	78	79	81	82	81	82	83	85	87	88	88	83	82	83	86	83	81	84	86	89	91	90	92	88	88	85	85.3				
	MIN	63	65	68	69	64	62	60	60	61	60	63	63	65	64	65	65	72	67	64	67	71	55	57	64	70	69	68	72	72	66	66	65.1				
OWINGS FERRY LANDING 17	MAX	87	94	88	92	88	84	81	81	83	82	82	83	85	88	89	91	87	86	84	87	85	84	85	87	91	93	92	94	92	89	87	87.1				
	MIN	62	65	68	69	62	63	61	64	62	60	64	62	64	64	65	64	70	66	64	68	69	56	57	67	69	68	67	70	71	65	66	64.9				
UPPER SOUTHERN 04																																					
ANNAPOLIS POLICE BRKS 17	MAX	90	97	94	91	90	81	80	85	85	84	84	85	87	90	90	92	88	86	85	90	89	84	86	87	90	94	94	97	93	91	92	88.7				
	MIN	67	68	67	66	66	63	62	64	66	67	69	64	69	67	70	69	72	69	67	69	69	62	61	69	70	72	71	74	73	69	72	67.8				
	OBS																																				
BALTIMORE WSO ARPT MID	MAX	90	95	92	90	84	70	82	85	84	83	84	83	87	91	91	89	87	86	84	89	84	82	86	89	93	94	95	98	91	92	91	87.8				
	MIN	65	67	69	65	61	63	62	60	62	62	63	62	66	66	67	67	68	68	65	67	66	59	58	66	68	71	68	73	70	68	68	65.5				
BELTSVILLE 08	MAX	87	93	96	91	90	83	85	87	85	84	84	86	86	86	89	90	90	90	85	86	89	87	86	87	89	94	93	93	96	90	90	88.7				
	OBS																																				
	MIN	61	65	65	67	61	65	64	62	63	60	65	61	65	64	65	66	69	67	64	69	70	59	60	63	70	70	67	69	69	65	65	65.0				
	OBS																																				
COLLEGE PARK 09	MAX	89	93	97	93	90	84	68	83	86	87	87	86	86	88	90	92	93	92	86	88	92	85	85	88	85	92	96	95	98	93	93	89.0				
	OBS	**	**	**	**	**	**	**	**	**	**	**	**	**	**	**	**	**	**	**	**	**	**	**	**	**	**	**	**	**	**	**	**	**	**	**	
	MIN	66	68	68	69	64	66	64	63	63	64	68	68	67	66	68	69	72	68	66	71	72	58	60	70	75	74	70	71	73	69	69	67.7				
	OBS																																				
DALECARLIA RESERVOIR 17	MAX	93	96	93	92	83	81	82	86	86	86	86	87	88	91	92	90	90	86	87	90	90	84	88	89	94	94	95	97	92	93	92	89.5				
	MIN	53	66	58	66	63	63	63	62	64	64	67	63	67	67	67	68	67	66	66	71	70	57	61	63	70	72	60	72	70	68	68	65.2				
GLENN DALE BELL STN 16	MAX	88	93	90	88	88	79	79	82	87	86	86	84	88	88	93	92	92	90	88	90	86	89	90	92	98	97	96	95	92	92	92	89.4				
	MIN	59	60	64	64	58	59	59	57	60	60	63	62	65	66	64	66	69	66	63	68	69	51	56	64	68	70	70	72	72	65	65	63.7				
LAUREL 3 W MID	MAX	94	95	92	90	85	74	83	87	89	84	85	87	89	90	91	90	90	88	87	89	85	84	88	90	98	95	93	98	94	93	93	89.4				
	MIN	64	71	69	64	65	58	57	57	60	60	62	58	62	64	66	68	64	71	62	64	65	54	69	58	65	69	74	68	65	74	72	64.5				
NATIONAL ARBORETUM DC 07	MAX	95	94	97	94	92	85	70	82	87	87	86	87	86	85	90	92	94	92	88	87	90	85	84	88	91	95	94	97	96	93	92	89.5				
	MIN	65	67	70	67	62	65	66	66	64	62	65	63	66	67	65	68	71	66	63	69	70	57	59	65	66	72	70	73	73	69	67	66.4				
UPPER MARLBORO 3 NNW 08	MAX	84	90	95	88	92	85	68	82	84	83	83	85	84	86	90	91	91	89	84	86	89	84	84	86	89	94	94	93	95	91	91	87.4				
	MIN	63	66	68	68	63	61	63	63	63	61	64	63	65	64	66	66	70	67	65	68	70	56	58	62	68	70	67	69	71	66	65	65.1				

SEE REFERENCE NOTES FOLLOWING STATION INDEX

# DAILY TEMPERATURES (°F)

MARYLAND AND  
DELAWARE  
AUGUST 1993

STATION	OB. TIME	MAX/MIN	DAY OF MONTH																															AVERAGE		
			1	2	3	4	5	6	7	8	9	10	11	12	13	14	15	16	17	18	19	20	21	22	23	24	25	26	27	28	29	30	31			
			NORTHERN EASTERN SHORE	05																																
CHESTERTOWN	23	MAX MIN	92 65	96 70	93 69	93 69	85 62	69 62	80 62	86 62	85 65	86 61	87 63	86 64	89 64	91 65	91 65	92 68	86 70	86 69	87 68	88 68	83 68	84 55	87 60	90 66	95 70	98 69	97 70	98 74	93 69	94 66	93 67	89.0 65.8		
MILLINGTON 1 SE	18	MAX OBS MIN OBS	91 63	93 69	92 67	91 69	88 62	80 62	79 63	85 64	82 64	84 59	85 62	84 62	88 64	91 64	92 64	90 64	93 64	86 68	86 64	88 67	84 69	83 54	84 57	86 65	95 70	95 68	96 69	97 72	96 69	91 64	91 66	88.5 64.9		
NORTHERN CENTRAL	06																																			
ABERDEEN PHILLIPS FIEL	16	MAX MIN	90 69	90 70	90 71	87 64	78 64			83 67	82 66	82 65	82 63	86 65			89 67	85 72	85 71	85 65	86 68			84 60	86 68	91 74	94 71	94 70			91 78	91 76	86.9 67.7			
BALTIMORE CITY	MID	MAX MIN	90 72	98 74	92 76	92 71	83 69	71 62	80 63	85 65	85 68	84 68	83 65	85 64	88 71	94 74	94 76	92 78	87 70	87 70	87 71	94 72	85 70	84 62	85 66	88 70	95 74	99 80	97 78	103 78	94 76	95 76	91 76	89.3 71.1		
BENSON POLICE BARRACKS	17	MAX MIN	90 68	91 67	92 71	92 69	86 63	80 62	80 61	87 66	87 66	85 64	84 66	84 62	89 65	93 68	93 68	88 68	88 65	87 69	87 65	90 63	87 63	88 61	87 63	88 63	95 71	96 71	96 72	96 69	97 72	98 65	92 67	89.4 66.5		
CATOCTIN MOUNTAIN PARK	17	MAX MIN	81 65	80 66	84 66	83 64	74 60	75 57	74 59	78 59	78 62	77 62	75 59	81 65	81 62	81 67	81 69	82 66	82 64	80 64	79 66	76 63	80 63	83 61	87 71	86 61	89 63	90 71	85 71	85 72	86 65	89 67	90 68	80.6 64.1		
CLARKSVILLE 3 NNE	17	MAX MIN OBS	92 56	93 57	93 61	89 60	85 53	80 58	80 58	84 54	85 54	83 55	82 59	87 58	87 58	87 57	87 60	88 62	89 62	84 61	86 57	89 60	86 63	83 47	85 50	89 59	94 63	94 63	93 64	97 67	90 66	90 62	89 63	87.7 58.7		
CONOWINGO DAM	MID	MAX MIN	94 68	94 69	95 72	94 69	85 67	68 66	84 65	90 62	90 66	85 63	86 69	86 64	91 66	94 72	95 68	91 69	90 70	90 70	89 66	90 73	90 64	90 62	90 60	90 68	92 70	100 70	104 70	100 72	94 68	94 64	94 69	91.3 67.5		
DAMASCUS 2 SSW	22	MAX MIN	87 61	89 62	89 63	85 62	79 57	67 61	78 61	83 56	83 58	82 61	84 58	88 64	88 63	85 61	85 66	83 67	83 64	84 64	81 63	81 64	84 67	84 63	81 64	86 50	86 53	86 64	92 68	91 64	93 65	93 68	89 63	90 64	85.0 62.5	
EMMITSBURG 2 SE	17	MAX MIN	87 60	85 59	88 63	88 62	78 58	67 59	77 61	78 66	81 55	81 59	80 58	83 64	87 63	87 61	84 64	84 64	82 64	82 63	85 63	80 67	85 64	80 64	79 50	84 53	86 64	91 68	90 64	91 65	95 67	95 62	95 60	89 64	84.5 61.9	
FREDERICK POLICE BRKS	17	MAX MIN	91 69	91 69	94 70	93 69	87 67	86 61	80 61	82 58	88 58	84 64	85 68	84 60	87 66	89 66	90 66	90 69	90 72	86 65	90 68	89 70	89 56	90 60	89 67	88 60	93 71	95 71	95 70	98 73	95 69	93 67	93 70	89.4 66.2		
MILLERS 4 NE	18	MAX MIN	85 63	86 64	89 65	87 65	78 59	74 58	76 60	81 56	82 60	81 61	79 59	80 65	85 64	85 63	86 66	85 66	81 64	82 63	81 65	78 66	83 65	81 52	82 52	85 65	90 67	92 67	91 67	93 67	95 67	91 67	87 65	86 63	83.9 63.0	
ROCKVILLE 1 NE	MID	MAX MIN	88 67	90 69	89 69	85 67	79 65	70 62	80 63	82 62	83 62	81 65	80 63	83 61	85 66	88 65	87 68	88 68	86 68	84 68	85 65	86 69	81 65	81 59	86 60	87 69	87 71	91 73	92 70	90 71	92 72	89 71	88 67	88 68	85.3 66.4	
TOWSON	18	MAX MIN	88 67	95 69	92 70	89 69	82 67	72 61	80 61	85 58	86 58	85 60	81 61	84 65	86 64	90 64	90 64	90 66	85 68	85 68	85 68	86 65	85 69	86 65	90 59	88 60	88 69	94 71	95 73	95 70	99 72	95 71	90 67	90 68	87.7 M	
UNIONVILLE	17	MAX MIN	90 59	89 59	93 61	89 61	82 54	74 60	82 61	86 55	85 56	86 60	85 65	85 60	89 62	89 61	90 59	89 66	89 64	87 64	87 66	83 64	83 66	84 50	89 54	83 64	90 64	93 67	95 64	95 65	97 68	93 61	92 63	92 63	88.2 61.2	
WESTMINSTER POL BRKS	17	MAX MIN OBS	87 64	87 63	90 66	90 63	81 60	78 56	79 58	83 69	85 57	85 61	83 65	83 65	86 62	86 63	88 62	88 68	84 69	85 62	86 62	86 62	86 65	86 52	88 56	86 63	92 67	93 70	93 69	95 70	95 65	90 64	90 64	86.8 63.3		
WOODSTOCK	18	MAX MIN	90 63	92 64	92 66	89 65	81 59	74 56	81 62	85 59	84 59	84 60	84 65	84 60	88 65	90 64	90 64	88 66	87 68	86 66	86 66	89 62	89 65	84 53	84 56	84 65	94 68	94 68	95 66	96 69	90 68	91 64	90 66	87.7 63.5		
APPALACHIAN MOUNTAIN	07																																			
CUMBERLAND 2	18	MAX MIN	87 62	87 62	87 60	85 60	82 59	77 60	80 55	82 57	86 59	84 62	86 63	87 64	89 62	87 61	91 63	88 68	90 64	89 64	91 65	88 65	85 53	86 57	85 60	87 68	96 67	96 67	98 68	98 66	95 66	96 67	96 68	88.9 62.6		
FROSTBURG 2	07	MAX MIN	72 60	80 59	79 58	78 57	75 55	72 55	57 55	71 53	73 51	77 54	78 51	77 50	81 59	80 60	81 59	82 58	81 63	80 61	80 63	79 61	84 59	77 62	76 53	76 52	84 63	87 62	86 56	87 63	88 64	87 62	87 64	85 64	79.2 59.2	
HAGERSTOWN	08	MAX MIN OBS	80 63	88 64	91 64	92 65	88 62	81 61	67 59	81 57	84 60	86 59	85 61	86 61	87 61	89 65	89 63	90 68	89 69	90 66	85 67	87 67	85 67	83 54	83 58	88 58	90 68	94 69	94 69	95 68	96 67	91 65	93 65	87.3 63.7		
HANCOCK	08	MAX MIN	80 60	88 61	87 62	89 59	88 59	80 58	65 60	80 57	82 57	84 58	85 65	85 63	85 64	89 61	89 59	89 65	87 68	90 63	87 66	88 65	85 64	83 50	84 54	89 59	93 68	93 65	94 68	98 68	97 63	93 64	95 67	87.1 61.9		

SEE REFERENCE NOTES FOLLOWING STATION INDEX  
8



# DAILY TEMPERATURES (°F)

MARYLAND AND  
DELAWARE  
AUGUST 1993

STATION	OB. TIME	MAX/MIN.	DAY OF MONTH																															AVERAGE		
			1	2	3	4	5	6	7	8	9	10	11	12	13	14	15	16	17	18	19	20	21	22	23	24	25	26	27	28	29	30	31			
ALLEGHENY PLATEAU 08																																				
MC HENRY 2 NW	08	MAX	70	77	77	77	71	73	59	72	76	80	80	80	80	81	83	84	80	80	84	75	76	81	85	89	85	88	90	87	88	88	79.9			
		MIN	56	58	58	57	53	55	54	53	54	55	58	57	59	62	60	61	65	59	59	62	59	52	53	60	63	66	65	65	63	65	64	59.0		
OAKLAND 1 SE	17	MAX	78	79	79	77	72	71	72	74	77	77	79	81	82	81	82	81	81	79	84	83	76	80	83	88	87	86	88	88	90	88	90	81.1		
		MIN	53	53	58	54	52	54	56	49	48	54	61	58	58	55	53	53	66	58	57	56	57	45	51	58	66	57	57	62	60	58	59	56.0		
SAVAGE RIVER DAM	08	MAX	76	82	80	80	77	75	61	75	78	80	81	78	83	84	87	88	83	83	88	81	82	81	88	90	90	93	94	91	93	89	83.0			
		MIN	57	57	58	57	56	55	56	52	52	53	59	60	61	58	57	58	64	62	62	61	62	51	50	51	63	62	62	63	63	63	63	58.3		
DELAWARE																																				
NORTHERN																																				
NEWARK UNIVERSITY FARM 01	17	MAX	90	94	93	91	82	71	80	85	85	83	83	83	87	89	90	90	84	85	88	84	87	82	87	89	91	94	95	97	95	89	93	87.6		
		MIN	64	65	68	69	59	63	61	62	62	59	61	64	65	65	63	67	69	69	63	70	65	55	57	64	67	71	68	72	67	64	66	64.6		
WILMINGTON WSO ARPT	MID	MAX	90	93	93	91	84	72	80	85	85	83	81	83	87	92	94	88	84	86	86	89	84	83	84	87	95	97	94	97	92	90	87	87.6		
		MIN	68	70	71	68	63	65	64	66	67	64	66	66	68	68	68	72	73	71	66	69	65	57	63	69	72	72	72	74	69	67	72	67.9		
WILMINGTON PORTER RSVR	MID	MAX	89	91	91	89	82	71	79	82	84	82	81	83	85	88	90	88	82	83	85	86	80	80	83	85	92	93	94	94	87	89	87	85.6		
		MIN	67	72	71	68	64	63	62	65	65	62	63	64	67	68	70	70	71	69	65	68	65	57	62	68	70	72	71	72	68	66	69	66.9		
SOUTHERN																																				
DOVER 02	17	MAX	86	93	93	89	89	79	77	81	81	78	80	81	82	88	90	89	82	82	82	87	87	83	80	85	88	90	88	88	88	87	82	85.0		
		MIN	67	72	72	72	67	64	64	66	64	61	62	64	66	64	68	68	70	69	65	67	70	62	64	67	70	73	72	72	71	67	69	67.4		
GEORGETOWN 5 SW	08	MAX																																		
		MIN																																		
GREENWOOD 2 NE	18	MAX	87	94	89	90	82	79	78	82	82	80	80	85	87	90	91	89	83	83	84	87	82	83	83	86	89	92	92	92	87	87	87	85.9		
		OBS																																		
		MIN	61	66	68	70	64	62	62	65	62	58	59	61	64	64	64	65	70	68	63	65	65	58	62	63	68	68	68	71	69	64	66	64.6		
LEWES	17	MAX	85	95	91	89	89	83	77	80	80	79	80	82	84	86	86	88	83	80	80	89	86	86	82	85	90	91	92	93	91	83	82	85.4		
		MIN	61	71	70	72	68	63	64	66	65	62	62	63	69	66	70	71	70	69	69	67	71	63	64	65	71	70	71	74	74	68	71	67.7		

SEE REFERENCE NOTES FOLLOWING STATION INDEX

# EVAPORATION AND WIND

MARYLAND AND  
DELAWARE  
AUGUST 1993

STATION		DAY OF MONTH																															TOTAL OR AVG
		1	2	3	4	5	6	7	8	9	10	11	12	13	14	15	16	17	18	19	20	21	22	23	24	25	26	27	28	29	30	31	
MARYLAND																																	
UPPER SOUTHERN	04																																
BELTSVILLE		WIND	20	22	26	32	22	22	*	*	7	15	28	33	17	15	12	9	24	20	20	23	*	*	66	38	35	11	11	11	12	12	14
		EVAP	12	23	31	24	23	15	-	-	-	34	21	19	19	17	22	22	19	20	15	18	*	*	61	20	22	14	18	19	17	22	19
		MAX	86	92	96	95	95	84	-	-	-	91	89	87	94	93	97	98	91	95	90	95	90	-	-	94	96	96	98	97	99	99	97
		MIN	67	68	70	71	66	66	-	-	-	66	66	66	66	70	70	71	72	71	69	69	71	-	-	64	67	70	73	74	74	71	70
UPPER MARLBORO	3 NNW	WIND	-	4	14	3	8	3	3	2	1	2	4	14	0	1	1	2	4	2	3	1	5	6	2	5	7	0	1	3	2	2	
		EVAP	-	20	25	21	15	21	12	9	7	18	19	48	18	21	22	22	20	11	17	18	25	18	18	26	24	16	22	17	21	23	
		MAX	87	93	93	95	94	87	68	89	93	91	91	92	93	96	97	98	92	93	92	97	92	93	96	93	95	99	99	96	99	96	
		MIN	66	67	69	71	65	66	64	65	67	66	67	65	66	70	70	71	71	70	68	68	69	60	60	62	67	69	71	71	72	69	70
ALLEGHENY PLATEAU																																	
SAVAGE RIVER DAM	08	WIND	38	17	19	22	24	31	9	23	16	12	11	15	11	16	22	15	8	21	17	9	33	28	12	15	9	22	16	12	25	14	
		EVAP	7	9	5	18	17	10	-	10	22	4	14	11	10	22	20	17	10	10	-	-	7	23	14	20	9	21	17	18	15	32	-
		MAX	-	-	-	-	-	-	-	-	-	-	-	-	-	-	-	-	-	-	-	-	-	-	-	-	-	-	-	-	-	-	-
		MIN	-	-	-	-	-	-	-	-	-	-	-	-	-	-	-	-	-	-	-	-	-	-	-	-	-	-	-	-	-	-	-
DELAWARE																																	
NORTHERN	01																																
NEWARK UNIVERSITY FARM		WIND	7	9	8	16	19	7	8	0	3	10	7	7	6	8	6	2	5	8	7	4	13	6	4	6	5	3	3	9	5	3	
		EVAP	20	20	22	31	46	-	4	21	11	18	19	19	17	24	22	28	-	20	32	25	0	22	15	16	25	16	20	21	32	19	18
		MAX	-	-	-	-	-	-	-	-	-	-	-	-	-	-	-	-	-	-	-	-	-	-	-	-	-	-	-	-	-	-	-
		MIN	-	-	-	-	-	-	-	-	-	-	-	-	-	-	-	-	-	-	-	-	-	-	-	-	-	-	-	-	-	-	-

EVAPORATION: IS MEASURED IN HUNDRETHS OF INCHES

WIND: IS MEASURED IN MILES

MAX AND MIN: THE MAXIMUM AND MINIMUM TEMPERATURES (FAHRENHEIT) OF THE WATER IN THE EVAPORATION PAN

SEE REFERENCE NOTES FOLLOWING STATION INDEX

# SNOWFALL AND SNOW ON GROUND (INCHES)

MARYLAND AND  
DELAWARE  
AUGUST 1993

STATION	DAY OF MONTH																															
	1	2	3	4	5	6	7	8	9	10	11	12	13	14	15	16	17	18	19	20	21	22	23	24	25	26	27	28	29	30	31	
MARYLAND																																
SOUTHERN EASTERN SHORE 01																																
ASSATEAGUE IS NATL SEA																																
SALISBURY FAA ARPT																																
DELAWARE																																

SNOWFALL: INCLUDES SNOW AND ICE. VALUES FOR NWS STATIONS (J INDEX NOTE) ARE MID-MID (LST).  
 SNOW ON GROUND: INCLUDES SNOW, SLEET, ICE AND HAIL. VALUES FOR NWS STATIONS (J INDEX NOTE) ARE OBSERVED AT 0000 UTC (GMT).  
 WATER EQUIVALENT: GIVEN FOR NWS STATIONS (J INDEX NOTE) ONLY, WHEN SNOW DEPTH IS 2 INCHES OR MORE.  
 SEE REFERENCE NOTES FOLLOWING STATION INDEX

# STATION INDEX

MARYLAND AND  
DELAWARE  
AUGUST 1993

STATION	INDEX NO.	DIVISION	COUNTY	LATITUDE	LONGITUDE	ELEVATION (IN FEET)	OBSERVATION TIME AND TABLES				OBSERVER	
							LOCAL STD TIME					
							TEMP	PRECIP	EVAP	SPECIAL (SEE NOTES)		
MARYLAND												
ABERDEEN PHILLIPS FIEL	0015	06	HARFORD	39 28	76 10W	57	16	16				PHILLIPS ARMY AIRFIELD
ANNAPOLIS POLICE BRKS	0193	04	ANNE ARUNDEL	38 59	76 30W	25	17	17				ANNAPOLIS POLICE BRKS
ASSATEAGUE IS NATL SEA	0335	01	WORCESTER	38 14	75 8W	10	07	07				NATIONAL PARK SERVICE
BALTIMORE WSO ARPT	0465	04	ANNE ARUNDEL	39 11	76 40W	148	M	M				NATL WEATHER SERVICE
BALTIMORE CITY #	0470	06	BALTIMORE CI	39 17	76 37W	14	M	M				NATIONAL WEATHER SERVICE
BELTSVILLE	0700	04	PRINCE GEORG	39 2	76 53W	120	08	08				USDA CHEM & BIOPHYS LAB
BENSON POLICE BARRACKS	0732	06	HARFORD	39 30	76 23W	365	17	17				MARYLAND STATE POLICE
CATOCTIN MOUNTAIN PARK	1530	06	FREDERICK	39 39	77 29W	1610	17	17				CATOCTIN MOUNTAIN PARK
CHESTERTOWN	1750	05	KENT	39 13	76 4W	40	23	23				THOMAS W ELIASON JR
CLARKSVILLE 3 NNE	1862	06	HOWARD	39 15	76 56W	370	17	17				UNIV OF MD AGRONOMY DEPT
COLLEGE PARK	1995	04	PRINCE GEORG	38 59	76 57W	90	09	09				UNIVERSITY OF MARYLAND
CONOWINGO DAM	2060	06	HARFORD	39 39	76 10W	40	M	M				SUSQUEHANNA ELECTRIC CO
CUMBERLAND 2	2282	07	ALLEGANY	39 38	78 45W	730	18	07				TIMOTHY B THOMAS
DALECARLIA RESERVOIR	2325	04	DIS COLUMBIA	39 56	77 7W	150	17	17				U S CORPS OF ENGINEERS
DAMASCUS 2 SW	2335	06	MONTGOMERY	39 16	77 14W	722	19	19				INACTIVE 01/01/92
DAMASCUS 2 SSW	2336	06	MONTGOMERY	39 16	77 14W	670	22	22				ROBERT J LEFFLER
EDGEMONT	2770	07	WASHINGTON	39 40	77 33W	905		07				JOHN W HARNE
EMMITSBURG 2 SE	2906	06	FREDERICK	39 41	77 18W	416	17	17				LUCILLE K BEALE
FREDERICK POLICE BRKS	3348	06	FREDERICK	39 25	77 26W	380	17	17				MARYLAND STATE POLICE
FROSTBURG 2	3415	07	ALLEGANY	39 40	78 56W	2170	07	07				KENNETH L CLOSE
GLENN DALE BELL STN	3675	04	PRINCE GEORG	38 58	76 48W	150	16	16				USDA PLANT INTRODUCT STN
HAGERSTOWN	3975	07	WASHINGTON	39 39	77 44W	660	08	08				HAGERSTOWN RESERVOIR
HANCOCK	4030	07	WASHINGTON	39 42	78 11W	428	08	08				TOWN OF HANCOCK
LA PLATA 1 W	5080	03	CHARLES	38 32	77 0W	140	18	18				C RUSSELL LEVERING
LAUREL 3 W	5111	04	PRINCE GEORG	39 6	76 54W	400	M	M				WA SUBURBAN SANITARY COM
MC HENRY 2 NW	5832	08	GARRETT	39 35	79 22W	2680	08	08				JOSEPH F JOHENNING
MECHANICSVILLE 5 NE	5865	03	ST MARYS	38 27	76 41W	100	19	19				SANDRA J HASTINGS
MERRILL	5894	08	GARRETT	39 36	79 5W	1790		09				DELWOOD E MERRILL
MILLERS 4 NE	5934	06	CARROLL	39 43	76 48W	860	18	18				BOBBY P MILLER
MILLINGTON 1 SE	5985	05	KENT	39 16	75 52W	30	18	18				HOWARD L HARVEY
NATIONAL ARBORETUM DC	6350	04	DIS COLUMBIA	38 54	76 59W	50	07	07				US NATIONAL ARBORETUM
OAKLAND 1 SE	6620	08	GARRETT	39 24	79 24W	2420	17	17				BEA J CROSCO
OWINGS FERRY LANDING	6770	03	CALVERT	38 41	76 40W	160	17	17				JAMES C RASMUSSEN
POTOMAC FILTER PLANT	7272	06	MONTGOMERY	39 2	77 15W	270		08				POTOMAC WATER FILT PLANT
PRINCESS ANNE	7330	01	SOMERSET	38 13	75 41W	20	17	17				UNIV OF MD EASTERN SHORE
ROCKVILLE 1 NE	7705	06	MONTGOMERY	39 6	77 6W	440	M	17				WASHINGTON GAS & ELEC CO
ROYAL OAK 2 SSW	7806	02	TALBOT	38 43	76 11W	10	18	18				JOHN L SWAINE JR
SALISBURY	8000	01	WICOMICO	38 22	75 35W	10	17	17				CITY OF SALISBURY
SALISBURY FAA ARPT #	8005	01	WICOMICO	38 20	75 31W	50	M	M				FAA
SAVAGE RIVER DAM	8065	08	GARRETT	39 31	79 8W	1495	08	08				US CORPS OF ENGINEERS
SNOW HILL 4 N	8380	01	WORCESTER	38 14	75 23W	30	17	17				CURTIS E SHOCKLEY
TOWSON	8877	06	BALTIMORE	39 23	76 34W	390	18	18				ENVIRONMENTAL TECH GROUP
UNIONVILLE	9030	06	FREDERICK	39 27	77 11W	430	17	17				ROBERT YOUNG
UPPER MARLBORO 3 NNW	9070	04	PRINCE GEORG	38 52	76 47W	100	08	08				UNIVERSITY OF MARYLAND
VIENNA	9140	02	DORCHESTER	38 29	75 50W	10	18	18				DELMARVA POWER & LIGHT
WESTMINSTER POL BRKS	9440	06	CARROLL	39 33	76 58W	765	17	17				MARYLAND STATE POLICE
WOODSTOCK	9750	06	BALTIMORE	39 20	76 52W	460	18	18				JOHN A HILTZ
DELAWARE												
DOVER	2730	02	KENT	39 9	75 31W	30	17	17				STATE HIGHWAY DEPT
GEORGETOWN 5 SW	3570	02	SUSSEX	38 38	75 27W	45	08	08				UNIV OF DEL SUBSTATION
GREENWOOD 2 NE	3595	02	SUSSEX	38 50	75 35W	45	18	18				DANIEL M SWARTZENTRUBER
LEWES	3320	02	SUSSEX	38 46	75 8W	15	17	17				BOARD OF PUBLIC WORKS
NEWARK UNIVERSITY FARM	6410	01	NEW CASTLE	39 40	75 44W	90	17	17				UNIV OF DEL AGRIC FARM

SEE REFERENCE NOTES FOLLOWING STATION INDEX

# STATION INDEX

MARYLAND AND  
DELAWARE  
AUGUST 1993

STATION	INDEX NO.	DIVISION	COUNTY	LATITUDE	LONGITUDE	ELEVATION (IN FEET)	OBSERVATION TIME AND TABLES				OBSERVER
							LOCAL STD TIME				
							TEMP	PRECIP	EVAP	SPECIAL (SEE NOTES)	
WILMINGTON WSO ARPT	R9595	01	NEW CASTLE	39 40	75 36W	79	MID	MID		C H J	NATIONAL WEATHER SERVICE
WILMINGTON PORTER RSVR	9605	01	NEW CASTLE	39 46	75 32W	270	MID	MID		H	PUBLIC WORKS

SEE REFERENCE NOTES FOLLOWING STATION INDEX

# REFERENCE NOTES

MARYLAND AND  
DELAWARE  
AUGUST 1993

## DEFINITIONS

**STATION NAMES:** Name of the city, town or locality. Figures and letters following the station names indicate the distance in miles and direction from the post office or town community center.

**DIVISIONS:** Areas within a state of similar climatological characteristics. Division averages are calculated using data from stations that record both temperature and precipitation (i.e. not precipitation alone).

**NORMALS:** The average value of the meteorological element over a time period. Effective 1 January 1993, the averaging period is 1961 to 1990. The normals for National Weather Service localities have been adjusted so as to be representative for the current observation site.

**MONTHLY DEGREE DAY TOTALS:** One heating (cooling) degree day is accumulated for each whole degree that the daily mean temperature is below (above) 65 degrees Fahrenheit.

**PRECIPITATION:** Values shown in hundredths of inches are water equivalent totals, i.e., total of liquid and melted frozen precipitation. In the "Monthly Summarized Data" table the total snow and sleet values shown in tenths of inches are unmelted amounts. The max depth on ground values of snow and sleet shown in whole inches are cumulative unmelted amounts. The number of days with .10, .50, 1.00 or more refers to water equivalents.

**TEMPERATURE:** Original and edited temperature values are given in the "Daily Temperature" table. Edited values are produced when an original value is missing or when surrounding stations indicated a suspect original value. When a line labeled OBS is present and contains either a daily temperature (suspect) or \*\*\* (missing), the temperature appearing directly above, on the line labeled MAX or MIN, is an edited value. Summary temperature information (averages, departures, extremes, monthly degree day totals) is based on the values labeled MAX/MIN.

**WIND:** (As shown in the "Evaporation and Wind" table) the total wind movement in miles over the evaporation pan as determined by an anemometer recorder located 6-8 inches above the pan.

## SYMBOLS AND LETTERS USED IN THE STATION INDEX TABLE

# Thermometers located in a rooftop shelter.  
// Rain gage equipped with a windshield  
AR Observation made "after rain" has occurred.  
C Station is equipped with recording rain gage (R) but values in this bulletin are from a non-recording rain gage unless indicated by an R.  
G Observations appear in the "Soil Temperatures" table.  
H Observations appear in the "Snowfall and Snow on the Ground" table.  
J Station also published as a Local Climatological Data publication.  
MID Observation time is midnight.  
MO Rain gage read once monthly, usually the last day.  
OC Rain gage readings vary from a few weeks to several months.  
R Amounts from recording rain gage.  
SR Observation time near sunrise.  
SS Observation time near sunset.  
VAR Observation time varies.  
WI Rain gage read weekly or irregularly.  
WM Rain gage read weekly and last day of the month.

## SYMBOLS AND LETTERS USED IN THE DATA TABLES

(DAILY DATA ARE FOR THE 24 HOURS IMMEDIATELY PRECEDING OBSERVATION TIME.)

BLANK Entries in the "Monthly Summarized Data" table indicate no record.  
BLANK Entries in the "Daily Precipitation" and "Snowfall and Snow on the Ground" tables indicate zero.  
BLANK Entries in the "Daily Temperature" table indicate a missing record where an edited value could not be determined. (See \*\*\* below)  
- No record. Data not recorded, determined unreliable by quality control check, or not received in time for publication.  
+ Precipitation or temperature extremes occurred on one or more previous dates during the month.  
\*\*\* Missing original temperature which has been estimated during edit.  
\* Rain gage not read. Precipitation is included in the amount following the asterisks. Time distribution not known. A \* preceding the monthly total indicates precipitation amount is being carried forward to next months total, and may include amounts from the previous month(s).  
// Rain gage equipped with a windshield.  
A Amount of precipitation is the total of observer's entries for the current month. It may include precipitation that occurred during the previous month. Refer to earlier bulletin to determine date of last reading. (Hawaii stations)  
B Adjusted monthly value (estimated), (1-7 missing values for wind and evaporation).  
M Insufficient or partial data. M is appended to average and/or total values computed with 1-9 daily values missing. M appears alone if 10 or more daily values are missing, (8 or more for wind and evaporation).  
R Amounts from recording rain gage.  
I Trace: An amount too small to measure.  
V Includes total for previous month(s). (See \* above)

**SEASONAL TABLES:** Monthly and seasonal snowfall and heating degree days for the 12 months ending with the June data are published in the July issue of this bulletin. Cooling degree days for the calendar year are published in the "Climatological Data Annual Summary."

The graphic displays appearing in this publication were first produced for the January 1987 data month. The types of graphs and the information they portray may vary from month to month and from state to state in order to highlight climatic features of state, regional, and seasonal interest. Some graphs present information for "clusters." A cluster is a group of up to four adjacent divisions that comprise an area of similar climate.

Information concerning the history of changes in locations, exposure, etc. of substations is kept on file at the National Climatic Data Center. Historical information of regular National Weather Service Offices may be obtained from the "Local Climatological Data" annual publication. The contents of this publication may be reprinted or otherwise used freely, with proper credit to the National Climatic Data Center. The data are also available in digital form on magnetic tape and diskette.

## SUBSCRIPTION, PRICE, AND ORDERING INFORMATION AVAILABLE FROM:

NATIONAL CLIMATIC DATA CENTER  
FEDERAL BUILDING  
ASHEVILLE, NC 28801-2696

USCOMM-NOAA-ASHEVILLE, N.C. AUGUST 1993-0585

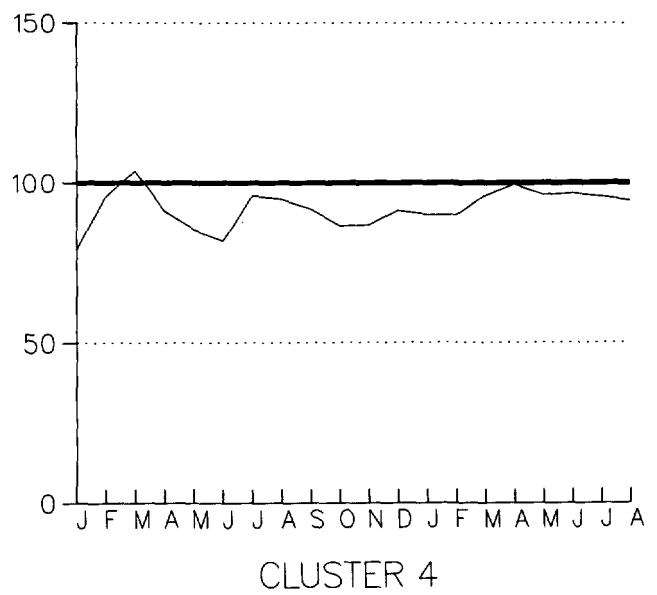
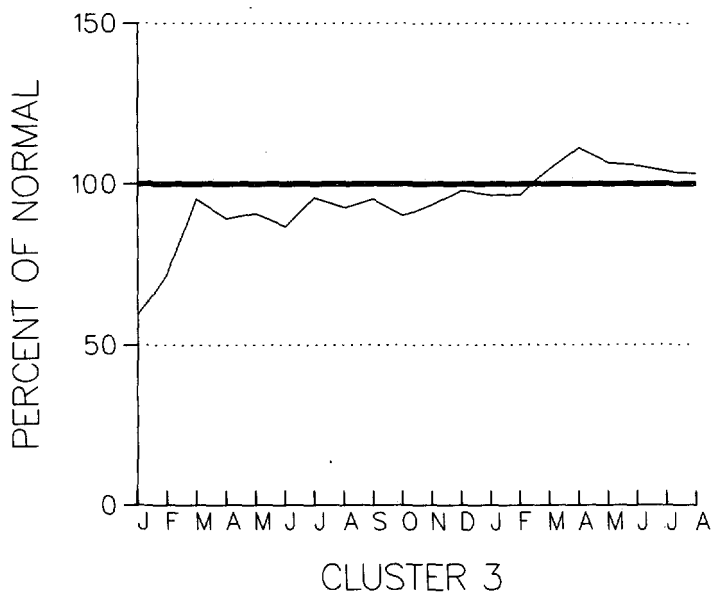
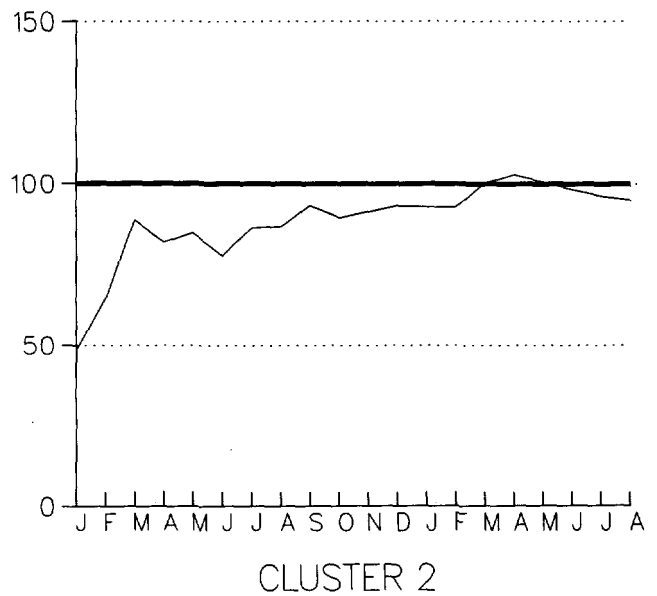
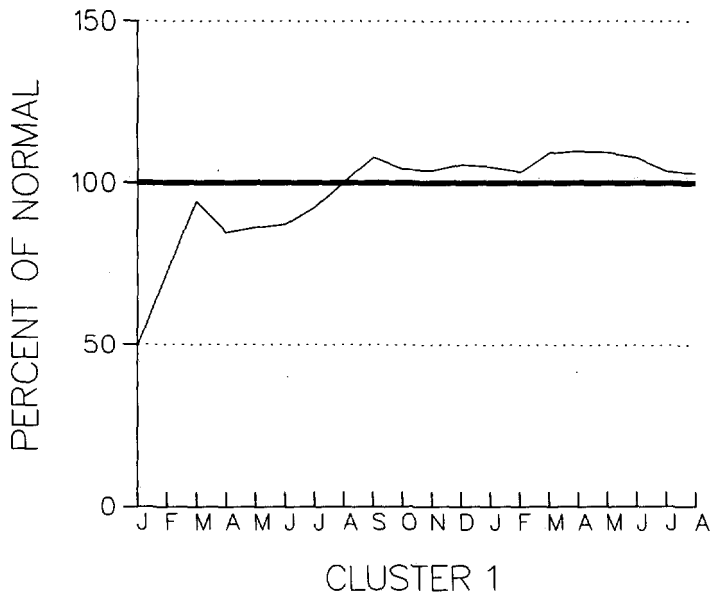
CUMULATIVE PRECIPITATION DEPARTURES FROM NORMAL (1961-1990)  
 FOR THE LAST 20 MONTHS  
 ENDING AUGUST 1993  
 MARYLAND

CLUSTER 1 -DIVISION(S):  
 SOUTHERN EASTERN SHORE 01  
 CENTRAL EASTERN SHORE 02  
 LOWER SOUTHERN 03

CLUSTER 2 -DIVISION(S):  
 UPPER SOUTHERN 04  
 NORTHERN EASTERN SHORE 05

CLUSTER 3 -DIVISION(S):  
 NORTHERN CENTRAL 06  
 APPALACHIAN MOUNTAIN 07

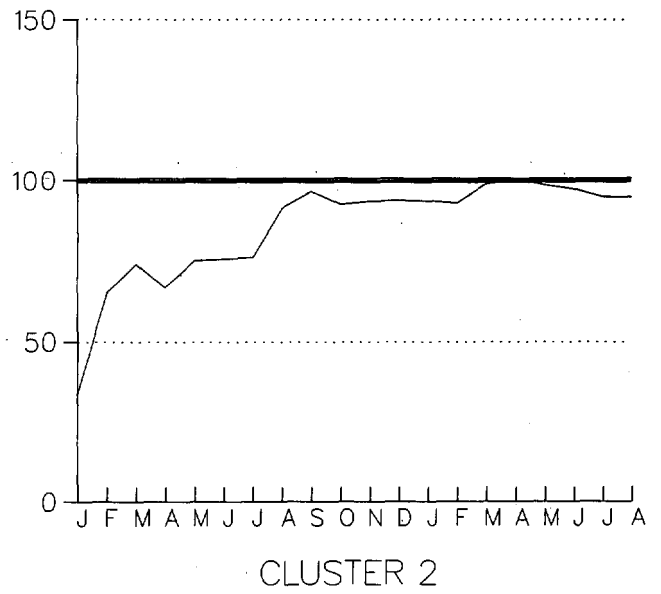
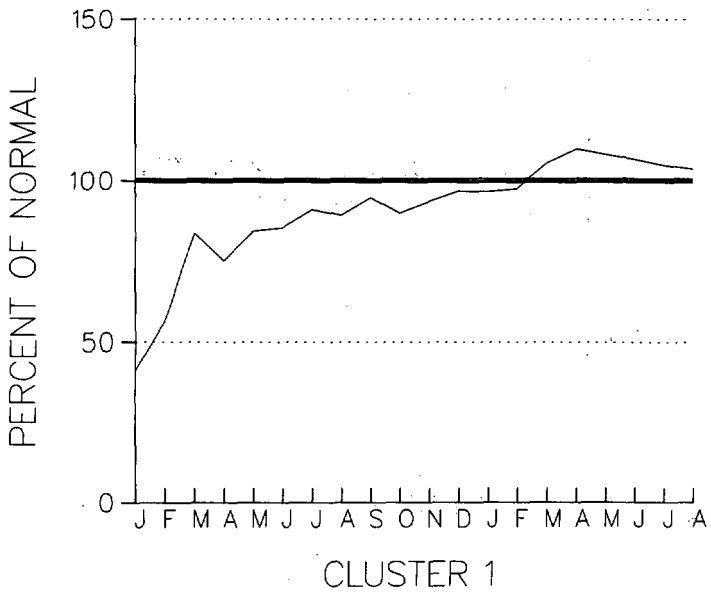
CLUSTER 4 -DIVISION(S):  
 ALLEGHENY PLATEAU 08



CUMULATIVE PRECIPITATION DEPARTURES FROM NORMAL (1961-1990)  
 FOR THE LAST 20 MONTHS  
 ENDING AUGUST 1993  
 DELAWARE

CLUSTER 1 - DIVISION(S):  
 NORTHERN 01

CLUSTER 2 - DIVISION(S):  
 SOUTHERN 02

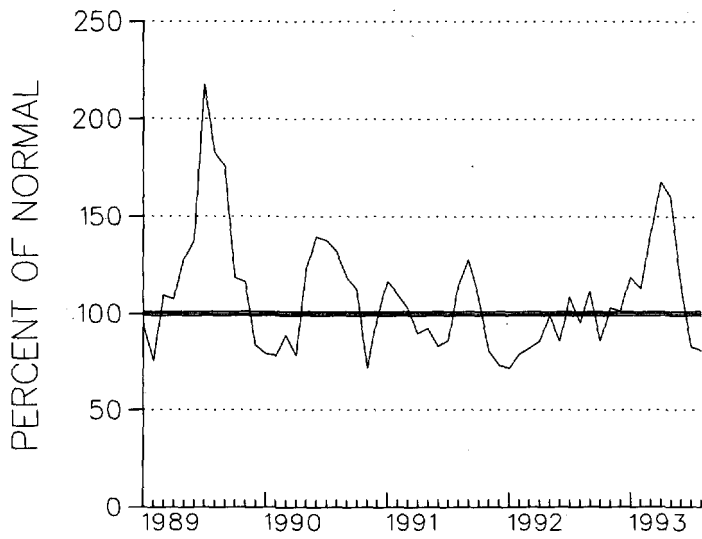




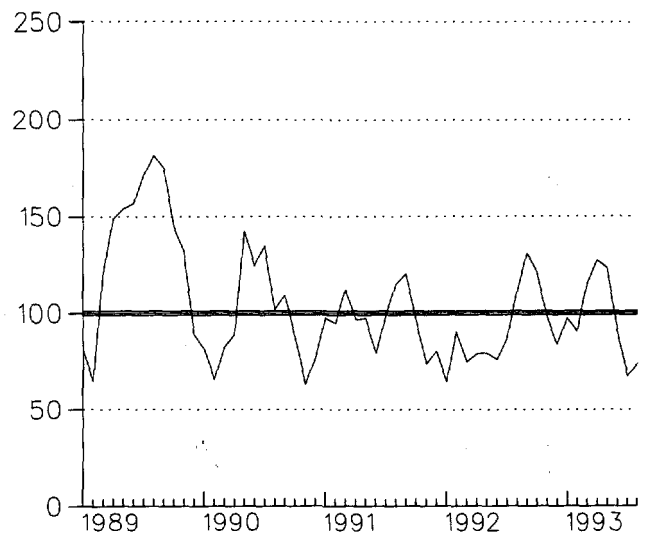
PRECIPITATION DEPARTURES FROM NORMAL (1961-1990)  
THREE MONTH RUNNING MEAN  
FOR THE 56 MONTHS ENDING WITH AUGUST 1993 DATA  
DELAWARE

CLUSTER 1 -DIVISION(S):  
NORTHERN 01

CLUSTER 2 -DIVISION(S):  
SOUTHERN 02



CLUSTER 1



CLUSTER 2

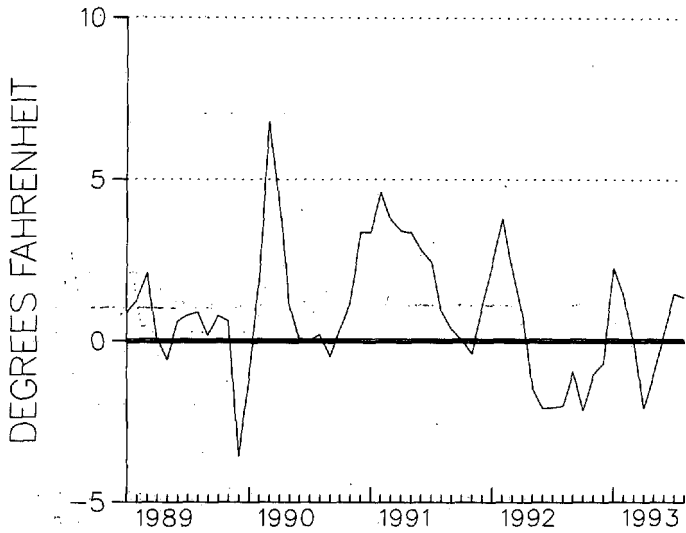
TEMPERATURE DEPARTURES FROM NORMAL (1961-1990)  
 THREE MONTH RUNNING MEAN  
 FOR THE 56 MONTHS ENDING WITH AUGUST 1993 DATA  
 MARYLAND

CLUSTER 1 -DIVISION(S):  
 SOUTHERN EASTERN SHORE 01  
 CENTRAL EASTERN SHORE 02  
 LOWER SOUTHERN 03

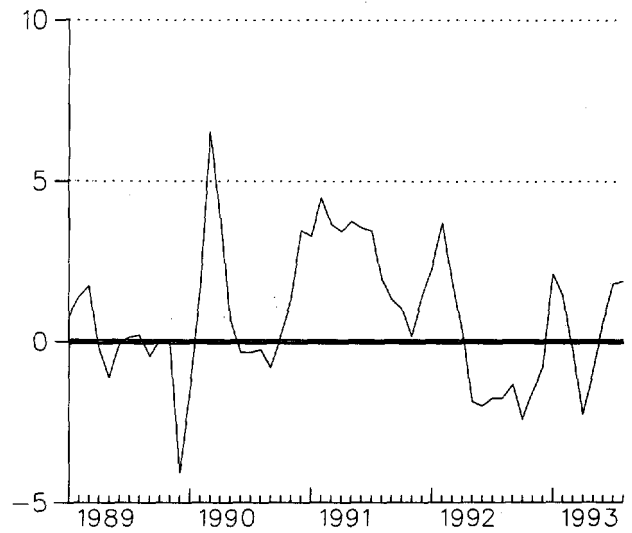
CLUSTER 2 -DIVISION(S):  
 UPPER SOUTHERN 04  
 NORTHERN EASTERN SHORE 05

CLUSTER 3 -DIVISION(S):  
 NORTHERN CENTRAL 06  
 APPALACHIAN MOUNTAIN 07

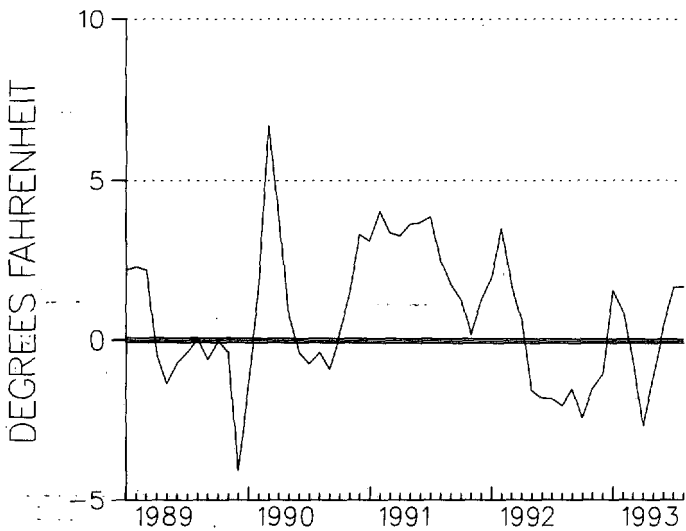
CLUSTER 4 -DIVISION(S):  
 ALLEGHENY PLATEAU 08



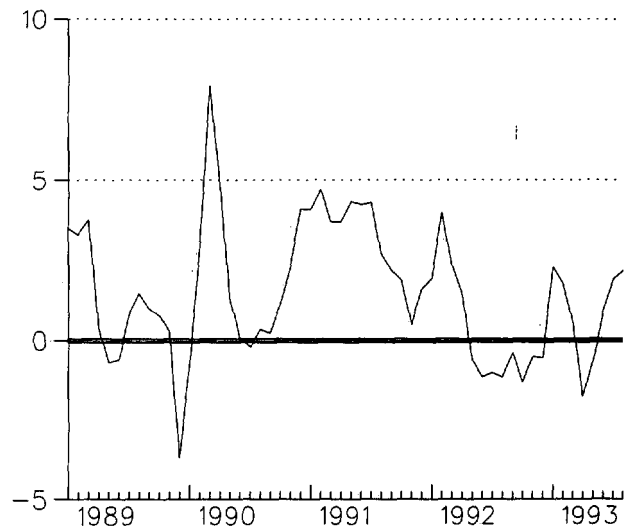
CLUSTER 1



CLUSTER 2



CLUSTER 3



CLUSTER 4

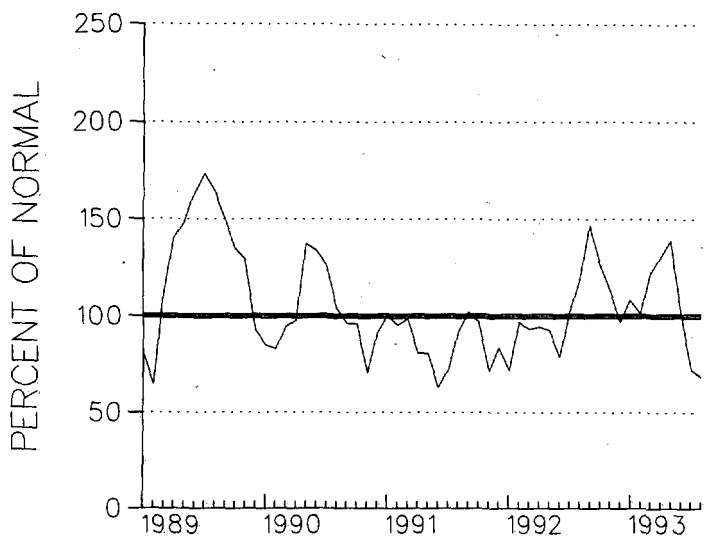
PRECIPITATION DEPARTURES FROM NORMAL (1961-1990)  
 THREE MONTH RUNNING MEAN  
 FOR THE 56 MONTHS ENDING WITH AUGUST 1993 DATA  
 MARYLAND

CLUSTER 1 - DIVISION(S):  
 SOUTHERN EASTERN SHORE 01  
 CENTRAL EASTERN SHORE 02  
 LOWER SOUTHERN 03

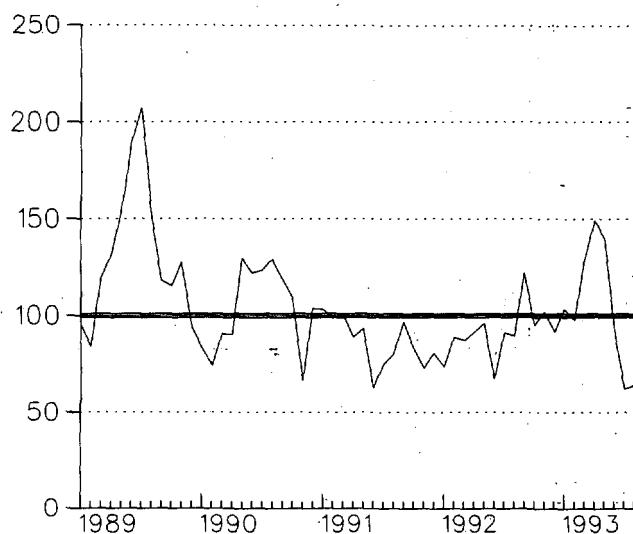
CLUSTER 2 - DIVISION(S):  
 UPPER SOUTHERN 04  
 NORTHERN EASTERN SHORE 05

CLUSTER 3 - DIVISION(S):  
 NORTHERN CENTRAL 06  
 APPALACHIAN MOUNTAIN 07

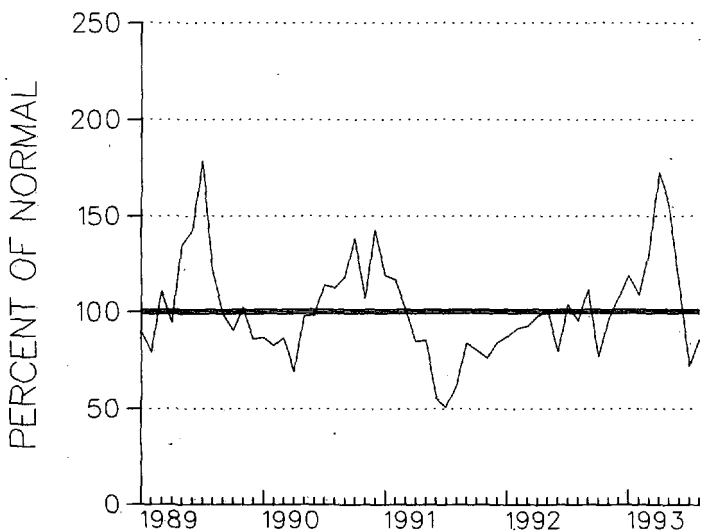
CLUSTER 4 - DIVISION(S):  
 ALLEGHENY PLATEAU 08



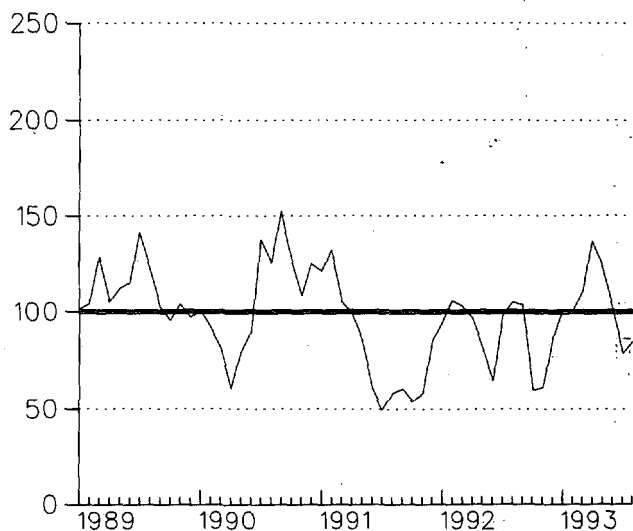
CLUSTER 1



CLUSTER 2



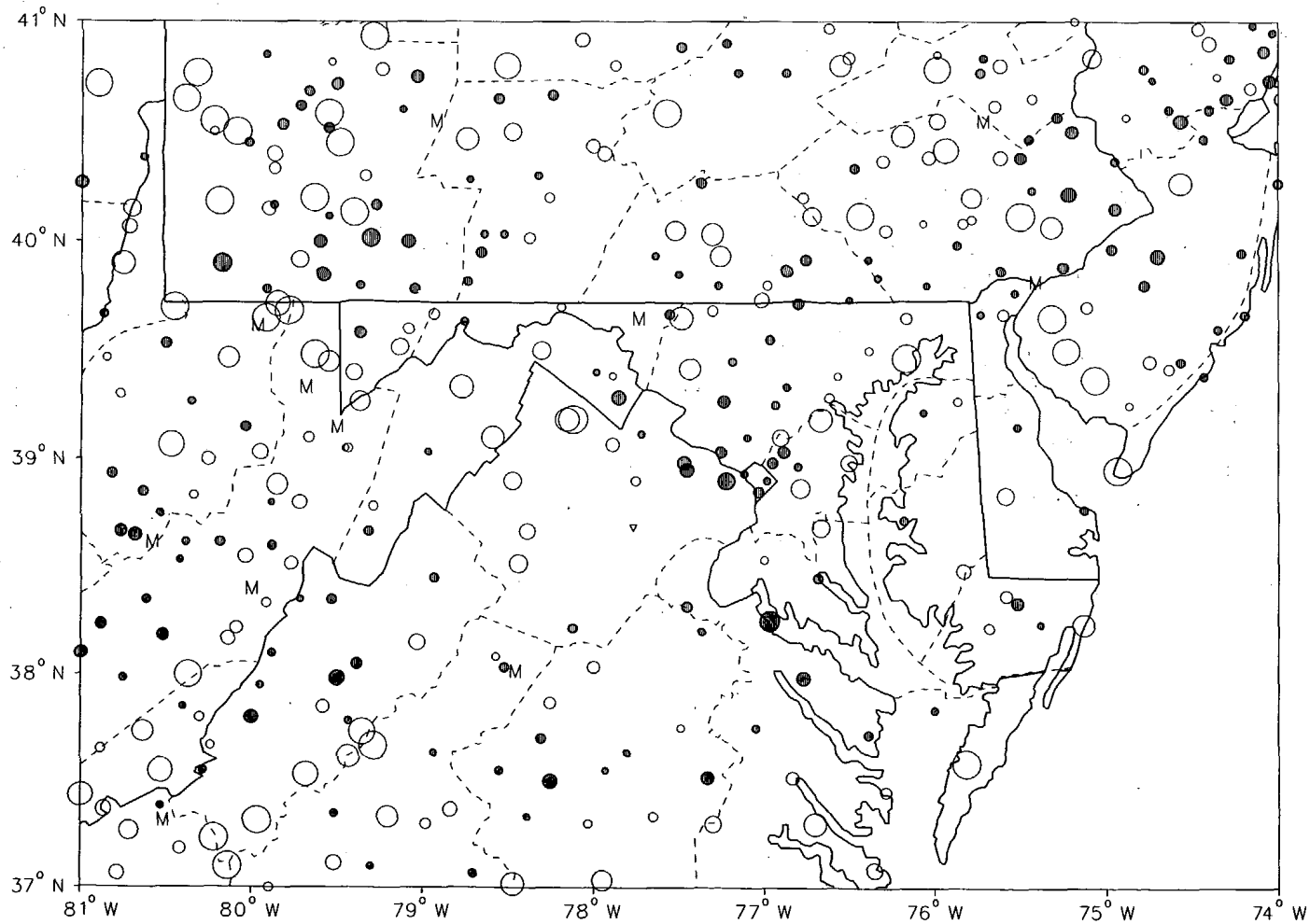
CLUSTER 3



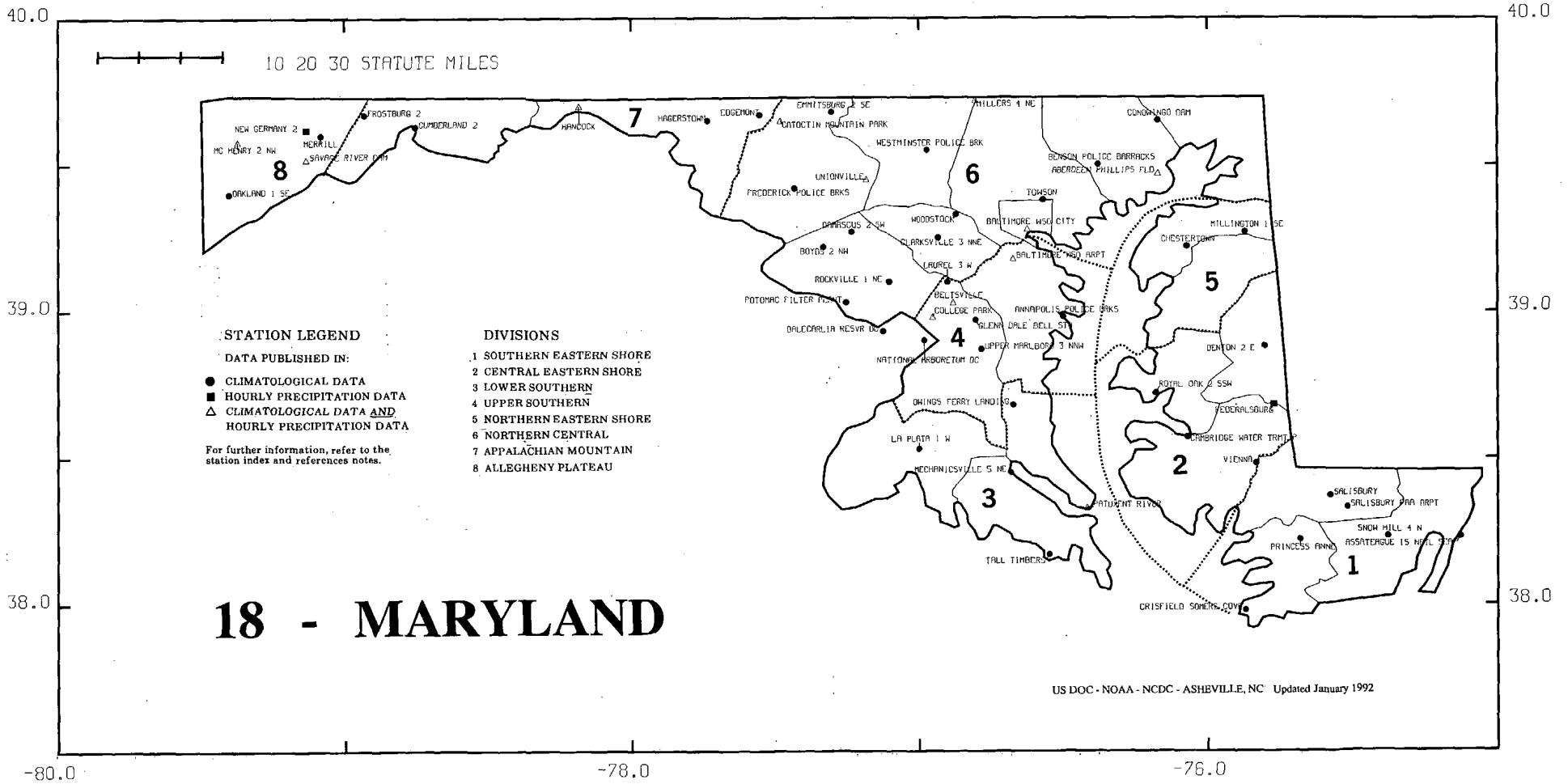
CLUSTER 4

MONTHLY PRECIPITATION DEPARTURE FROM  
THE DIVISIONAL AVERAGE FOR  
AUGUST 1993  
MARYLAND & DELAWARE

- M DENOTES INCOMPLETE DATA FOR THE MONTH
- ▽ ZERO DEPARTURE
- ○ ○ ○ ○ 5,10,20,... 50% OR MORE BELOW AVERAGE
- ● ● ● ● 10,20,40,...100% OR MORE ABOVE AVERAGE



CIRCLE DIAMETER IS PROPORTIONAL TO DEPARTURE ON A CONTINUOUS SCALE



40.0

40.

10 20 30 STATUTE MILES

# 07 - DELAWARE

1

### STATION LEGEND

DATA PUBLISHED IN:

- CLIMATOLOGICAL DATA
- HOURLY PRECIPITATION DATA
- △ CLIMATOLOGICAL DATA AND HOURLY PRECIPITATION DATA

For further information, refer to the station index and references notes.

### DIVISIONS

- 1 NORTHERN
- 2 SOUTHERN

DOVER

2

HILFORD 4 SE

GREENWOOD 2 NE

LEWES

GEORGETOWN 5 SW

NEHARK UNIVERSITY FARM

WILMINGTON MSO ARPT

WILMINGTON PORTER RESVR

US DOC - NOAA - NCDC - ASHEVILLE, NC  
Updated January 1992

39.0

39.

38.0  
-76.0

-75.5

-75.0

38.

STATION	ANNUAL	MONTH											
		JAN	FEB	MAR	APR	MAY	JUN	JUL	SEP	OCT	NOV	DEC	
NORTH CAROLINA	34.57	1.11	1.85	2.75	0.57	3.55				4.19	5.28	4.28	
ASHEVILLE WSO AP	25.87	0.71	1.57	1.81	0.53	2.8			2.77	4.15	2.84		
ASHEVILLE	36.74E	1.20	2.70	2.90	0.54E	2.8			3.80	4.90	4.80		
BADIN	-	1.70	1.30	3.60	1.54E				2.40	4.10	2.90		
B EVERETT JORDAN DAM	-	1.70	1.50	3.60						1.70			

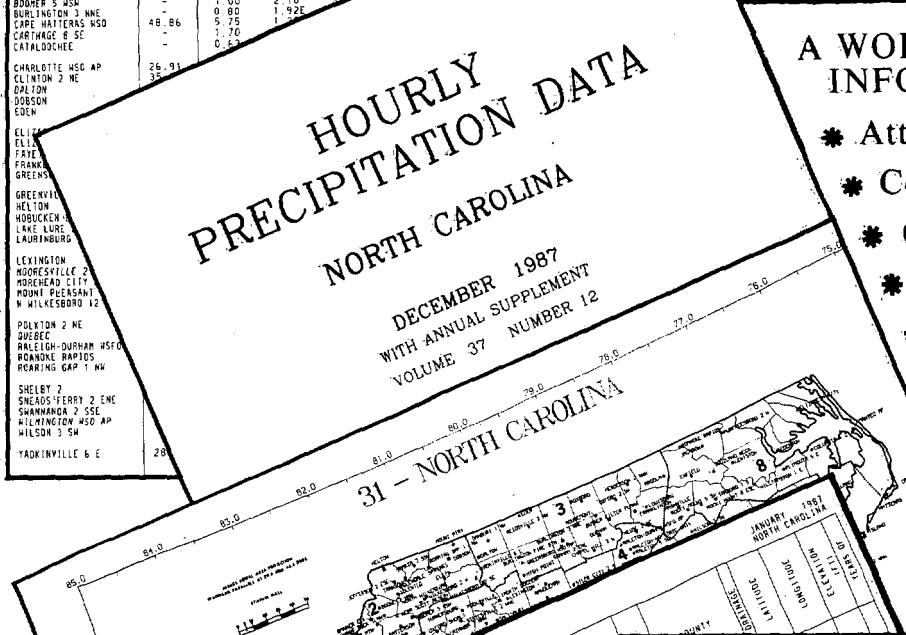
ANNUAL 1987  
NORTH CAROLINA

# HOURLY PRECIPITATION DATA NORTH CAROLINA

DECEMBER 1987  
WITH ANNUAL SUPPLEMENT  
VOLUME 37 NUMBER 12

A WORLD OF CLIMATIC INFORMATION FOR.....

- \* Attorneys
- \* Colleges & Universities
- \* Construction
- \* Consultants
- \* Governmental Agencies
- \* Industry
- \* Insurance Companies
- \* Public Utilities
- \* Research & Development
- \* Energy



### STATION INDEX

STATION	COUNTY	ELEVATION (FEET)	NO. OF RECORDS (30 DAY PERIOD)	NO. OF RECORDS (MONTH)	NO. OF RECORDS (YEAR)
NORTH CAROLINA			30	30	30
ASHEVILLE WSO AP		1920	24	24	24
ASHEVILLE		1820	24	24	24
ASHFORD		1820	24	24	24
B EVERETT JORDAN DAM		1820	24	24	24
BUNCOMBE		1820	24	24	24
BUCKINGHAM		1820	24	24	24
CARR		1820	24	24	24
CASWELL		1820	24	24	24
CATAWBA		1820	24	24	24
CHANCELLOR		1820	24	24	24
COLUMBIAN		1820	24	24	24

### MONTHLY PRECIPITATION MAXIMA

STATION	MAXIMA FOR MEASUREMENT PERIODS OF					
	15 MINUTES	30 MINUTES	45 MINUTES	1 HOUR	2 HOURS	3 HOURS
NORTH CAROLINA	10.2 (11/14/65)	10.2 (11/14/65)	10.2 (11/14/65)	10.2 (11/14/65)	10.2 (11/14/65)	10.2 (11/14/65)
ASHEVILLE WSO AP	10.2 (11/14/65)	10.2 (11/14/65)	10.2 (11/14/65)	10.2 (11/14/65)	10.2 (11/14/65)	10.2 (11/14/65)

### HOURLY PRECIPITATION

STATION	A. M. HOUR ENDING											
	1	2	3	4	5	6	7	8	9	10	11	12
NORTH CAROLINA	0.01	0.01	0.01	0.01	0.01	0.01	0.01	0.01	0.01	0.01	0.01	0.01
ASHEVILLE WSO AP	0.01	0.01	0.01	0.01	0.01	0.01	0.01	0.01	0.01	0.01	0.01	0.01

# HOURLY PRECIPITATION DATA NORTH CAROLINA

JANUARY 1987

VOLUME 37 NUMBER 1



**HOURLY PRECIPITATION DATA** is published monthly and presents daily, hourly, and maximum short duration data for recording rain gage stations in each state except Alaska. Also included are a published station index and a locator map for the state. In addition to the regularly published data, the December publication contains a tabulation of monthly and annual total precipitation amounts as an annual supplement.

**SHELF STOCK** of the printed publication is maintained only for the most recent 3 years. Earlier years are available on microfiche or paper copies reproduced from microfiche. The data is also available in digital form - on magnetic tape or floppy disk.

For further information call or write to the  
**NATIONAL CLIMATIC DATA CENTER**  
37 Battery Park Avenue, Asheville, NC 28801-2696  
Phone (704) 259-0682 or (704) CLIMATE

**noaa**  
NATIONAL OCEANOGRAPHIC AND ATMOSPHERIC ADMINISTRATION  
NATIONAL ENVIRONMENTAL, SATELLITE, DATA AND INFORMATION SERVICE  
NATIONAL CLIMATIC DATA CENTER  
ASHEVILLE, NORTH CAROLINA

ISSN 0364-6319

*To change your address, please return a copy of the mailing label along with your new address to: National Climatic Data Center (Subscription Service).*

CD

VALIDATED BY:

Gloria Anderson  
Steve DelGreco  
Rudy Kittel  
Joyce Morgan  
Lauren Plourd  
Beulah Taylor

Grant Goodge - Chief  
Quality Control

***Inquiries/Comments Call: (704) 271-4800***

National Climatic Data Center  
Federal Building  
37 Battery Park Avenue  
Asheville, NC 28801-2733

OFFICIAL BUSINESS  
PENALTY FOR PRIVATE USE \$300  
ADDRESS CORRECTION REQUESTED

<p>BULK RATE POSTAGE &amp; FEES PAID United States Department of Commerce NOAA Permit No. G-19</p>
--