

# Delaware Review



Vol. 82

October 24, 1958

Newark, Delaware

No. 6

## Judy Wilson Elected Queen For Homecoming Festivities

### Homecoming Parade Float Entries Made By Frats and Dorms

When the university marching band and begins its trek tomorrow at 12:15 p.m., towards Delaware Stadium, there is likely to be panic among a number of fraternity members.

Traditionally, the fraternities have worked until the last minute on their float entries for Homecoming Day, and some have even ended their efforts by applying the finishing touches while the parade is in progress.

Participants in tomorrow's parade, however, will be expected to be ready by assembly time. North Campus fraternities and dormitories will gather in the Knoll parking lot, and the South Campus entries will be waiting further along the parade route.

Knoll starters follow the university band. Kappa Alpha, Phi Kappa Tau, and Delta Tau Delta will join as the band goes by. They will be directed into place by members of the cheerleader squad and Norman Seymour, campus policeman.

As the parade moves towards the south end of the campus, girls' dormitories will join with floats. They will fall in line with the queen and candidates at the driveway in front of the Stenographic Center.

#### JUDGES CHOSEN

Judges for the parade will position themselves in the middle of the bridge near the stadium and will inspect the floats

### Review Rated ACP 1st Class

The Associated Collegiate Press has awarded the Delaware Review a First Class Honor Rating for the spring semester of last year.

Topics on which The Review was rated included coverage, features, copyreading, sports writing, make-up, headlines, typography, and photography.

An "excellent" rating was given the paper on creativeness, which includes the handling of features, interviews, speeches, school history, academic interests, personal experiences, and faculty and alumni news.

This is the second consecutive semester The Review received a first class rating. Of the 30 student newspapers in the same enrollment class, 10 others achieved first class. Six were awarded All-American.

The judge who evaluated the paper last semester said, "You do an extensive job of covering the news but could edit more sharply and display it better."

Ratings are based on competition with other college newspapers which are in the same enrollment class. The ACP does not take into account the progressive improvement of an entry.

as they pass by. They will also spend time looking at the floats after they have been stationed in the parking field adjacent to the stadium.

So far the following have been chosen as judges: John Stevenson of the Newark Hobby Center, Mrs. Virginia Mahanna of the Card Center, and Mrs. Mina Press Brown, vice president of the Alumni Association.

The floats will be in any shape or form the sponsors want as long as they are no higher than 12 feet. Members of the Homecoming Day Committee decided that there will be no restriction as on the cost of the floats.

#### RESPONSIBILITY TOO

Elbert Chance, chairman, said that those groups which enter floats will be expected to have them carted away from the parking field after the game.

The Newark Shopping Center will award \$25, \$15, and \$10 respectively for the top three entries.

(Cont. on Page 12, Col. 5)



QUEEN AND COURT — Homecoming Queen Judy Wilson (right) poses with her two duchesses (from left), Jeanne Hodgson and Mary Beth Carney. The court will be presented at tomorrow's game with the University of Connecticut.

### Freshmen Wins As 1407 Voters Turn in Ballots

#### Carney, Hodgson Attend Queen Judy

Judy Wilson, 5 foot 8 inch freshman home economics major from Westfield, N. J., is Homecoming Queen for 1958.

The new queen won decisively over 19 other candidates in the three day election sponsored by the Delaware Review.

In a record turnout at the polls, Queen Judy received almost 100 votes more than her closest opponent. She is sponsored by New Castle men's residence hall.

Attending the queen during the Homecoming festivities will be Mary Beth Carney, Kappa Alpha's candidate and Jeanne Hodgson, nominated by Delta Tau Delta.

Judy is the daughter of Mr. and Mrs. W. D. Wilson. During high school she was active in various service organizations, including the sub-junior women's club, as well as a member of the All-State Chorus. Judy resides in Cannon Hall.

Mary Beth Carney is a senior English major from Media, Pa. "Bip" is social chairman of Thompson Hall, active in the Aquatic club and a member of Women's Chorus.

Jeanne Hodgson is a junior elementary education major who lives in Newark. She is active in the women's commuter organization, a member of SGA and a junior counselor.

The queen and her court will appear with escorts on the field during halftime of tomorrow's football game with Connecticut, and will ride in the pre-game parade in convertibles. Pete Steele, president of the Senate, will present the queen with the traditional SGA cup.

(Cont. on Page 12, Col. 4)

## Council Assists Foundation With Graduate Fellowships

The National Academy of Sciences-National Research Council will again assist the National Science Foundation with its eighth regular predoctoral and postdoctoral fellowship programs which have been announced by the Foundation.

The NSF plans to award approximately 1,000 graduate and 200 postdoctoral fellowships in these two programs for scientific study during the 1959-1960 academic year.

The evaluation of each candidate's application is made by the Academy-Research Council selection panels and boards. The National Science Foundation will make the final selection of Fellows and will announce the awards on March 15, 1959.

These fellowships are open only to citizens of the United States and are awarded solely on the basis of ability. Fellowships will be awarded in the mathematical, physical, medical, biological, and engineering sciences, including anthropology, psychology (excluding clinical psychology), and geography, mathematical economics, econometrics,

demography, information and communication theory, experimental and quantitative sociology and the history and philosophy of science. Awards will also be granted in overlapping fields among two or more sciences.

Graduate fellowships are available to those who are working toward the masters' or doctoral degrees in the first, intermediate or terminal year of graduate study. College seniors who expect to receive a baccalaureate degree during the 1958-1959 academic year are also eligible to apply.

Postdoctoral fellowships are available to individuals who, as of the beginning of their fellowship tenure, have a doctorate in

one of the fields listed above or who have had research training and experience equivalent to that represented by such a degree.

All applicants for graduate awards will be required to take an examination designed to test scientific aptitude and achievement. This examination, administration by the Educational Testing Service, will be given

(Cont. on Page 12, Col. 1)

## Messiness of Center Rooms Is Topic of Men's Dorm Talk

Failure to return student center rooms to their original condition was the topic at the Men's Resident Hall Association meeting which was held recently.

MRHA suggested that an organization that is planning to use the room put up a bond of a certain amount and this bond would be returned to the organization if the room was returned to its original condition within the specified amount of time.

If not, the bond money would be used to reimburse the people, for their time, that had to do the work.

#### CONSTITUTION IMPROVED

Another topic brought to the council was the recommendations of the SGA for correcting the present constitution of the MRHA. Recommendation included all Residence halls to have regular meetings each month and a petition be required for

nominating any member to the Interdorm Council.

#### POINT SYSTEM

Point system of rating residence halls was referred to a council headed by the vice-president of the Interdorm Council, Fred Cirille, of Brown Hall.

Nominations for a sophomore independent living in dorms, to be a representative to the SGA, were called for by Jack Sirman, Junior Independent. An independent must not belong to any fraternity and live in a University Residence hall. He must have a 2.0 average.

The operation of vending machines in the Residence halls was also discussed. It was emphasized heavily that the purpose of these vending machines is not to provide an income for the university, or distributing firm, but the majority of the

(Cont. on Page 12, Col. 2)

## Center is Site Of Record Hop

Break time is the theme for the dance this evening sponsored by the recreation committee of the Student Center.

The record hop will be held this evening from 10-12 p. m. in the Dover Room for anyone working on the homecoming floats.

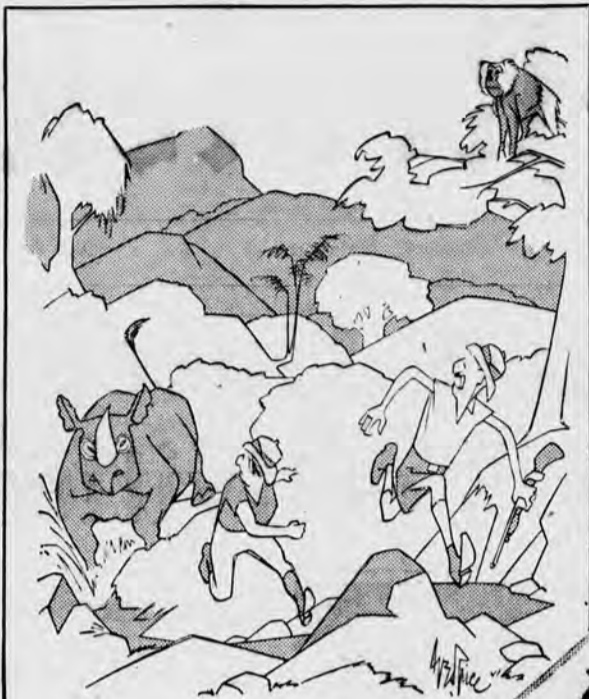
There is no charge for the dance. Dress for the evening includes sports shirts and slacks for the fellows and skirts for the girls, John Morris, chairman of the committee, announced.

## Alumni To Return For Homecoming

Back to college again but just for the day. Tomorrow many alumni will return to their alma mater for the annual Homecoming activities.

The first attraction of the day will be the Homecoming

(Cont. on Page 12, Col. 1)



"If he should get by you, Emma, double back for the Camels!"

More people keep going back for Camels than any other cigarette today. The Camel blend of costly tobaccos has never been equalled for rich flavor and easygoing mildness. Today as always, the best tobacco makes the best smoke.

By-pass the fads and fancy stuff . . .

Have a **real** cigarette—have a **CAMEL**



R. J. Reynolds Tob. Co., Winston-Salem, N. C.



**BS CANDIDATES**  
Choose employment  
or graduate study

**MS, PhD CANDIDATES**  
Choose direct assignment

**... As an RCA Engineer**

Receive your MS in Electrical Engineering, Mechanical Engineering or Physics at RCA's expense, through the RCA Graduate Study Program. At the same time, you're beginning your RCA career as an engineer on a fully professional level, getting a head start in the field you prefer. RCA pays the full cost of your tuition, fees and approved texts while you take graduate study part time at the University of Pennsylvania or Rutgers University. Or, you may prefer a different path ahead . . . RCA Design and Development Specialized Training. Here is another of RCA's programs for careers, in which you begin by working full-time on planned technical assign-

ments. Experienced engineers and interested management guide your progress. You may receive assignments in design and development of radar, airborne electronics, computers, missile electronics, television, radio and other equipment fields, as well as in Electron Tubes, Semiconductors and Components. MS, PhD Candidates are eligible for direct assignments in the above mentioned fields.

There's a lot more that's extremely interesting about an RCA engineering career. You should have these facts to make a wise decision about your future. Get them in person very soon when an RCA engineering management representative arrives on campus—

Right now, though, see your placement officer. Get squared away on a specific time for your interview. And get your copies of the brochures that also help to fill you in on the RCA picture. If you're tied up when RCA's representative is here, send a resume to:

Mr. Robert Haklisch, Manager  
College Relations, Dept. CR-11  
Radio Corporation of America  
Camden 2, New Jersey



Tomorrow is here today  
at RCA



**RIL Lecturer, Rabbi Gordis Reflects on Delaware Program**



**RABBI ROBERT GORDIS**

Rabbi Gordis, RIL lecturer, has climaxed his story here with a letter to Paul Hodgson, University Religious Council advisor.

Mr. Hodgson has released the following excerpts from the letter. "Now that my visit to the university campus is over, I should like to express my warmest appreciation to you, President Perkins, the Faculty, and the student leaders with whom I was privileged to work during Religion in Life Week.

As I reflect on the entire project, I feel that all aspects—

the public lectures, the seminars, the luncheon meetings, and the other informal gatherings with faculty, clergy and students, as well as the individual contacts, have been a vastly rewarding experience. I trust that the entire undertaking will redound to the enhancement of the spiritual life of the campus community . . . and will bear fruit in the kind of active year-round program by the University Religious Council as a whole and the individual religious groups, that we discussed on several occasions."

**US Army Showmobile to Give Musical Production in Mitchell**

The Second United States Army Showmobile will present enlisted personnel in its newest musical production "Tempo" in Mitchell Hall Tuesday, Oct. 28 at 8:15 p. m.

"The public is invited free of charge," stated Dr. Robert C. Kase, chairman dramatic arts and speech, "to enjoy one of the most successful programs in the world-wide Army Entertainment program. There will be no reserved seats."

Organized and operated under the auspices of the Special Services Section, the Showmobile is designed to stimulate area-wide interest in the Entertainment Program through the development of self-sufficient, mobile entertainment units and is scheduled to perform for troops

in the field and in military community locations throughout the seven-state Second Army Area.

Included in the lively presentation of 15 production numbers will be a Tempo of a Happy Mood—"It's Good to Be Alive"; Tempo of the Teens—"Puppy Love"; Viva La Jazz—"Afternoon in Paris"; Intriguing Interpretation—"Love Me or Leave Me"; Tempo from "High Society"—"Did You Evah!"; and Sophisticated Strings—"Josephine," "Lady of Spain," and "Jezebel."

The Showmobile has its own musical combo directed by Pvt. Clarence Oden. A graduate of Pittsburgh Musical Institute in Pennsylvania, Pvt. Oden has arranged much of the music for the production. By making use of definite jazz interpretations, he has achieved "pleasantly stimulating, delightfully listenable music."

"The Army showed that it has much more than the 'Explorer,'" declared the Ohio State Lantern (Ohio State U., Columbus, O.), which described the show as the "best this campus has seen in 5 years."

Harry A. Johnson, Director, Audio-Visual Center, Virginia State College, commented: "Showmobile is one of the finest shows which has ever appeared at Virginia State College. . . none of us expected the fast moving perfectly timed and precision master-piece which was presented before our audience."

**Circulation**

Students interested in working on the Circulation Staff of the Review are requested to contact Frank Helms at the Phi Tau House. The work is done principally between 2 and 4 p. m., Friday.

REAL ESTATE  
**grover surratt**  
45 east main street  
newark, delaware

**It's the DELAWARE MUSIC HOUSE**

For:

- Records
- Stereo
- Hi-Fi Components
- Sheet Music
- Music Supplies
- Tape Recorders
- Phonographs

132 E. Main St.

**Madri Music At At**

The University . . . will give a . . . abethan music . . . ning for the At . . .

The meeting . . . at 7:30 p. m. at . . . home of Dr. Cy . . . sor of English . . . will leave Brown . . . p. m.

The madrigal . . . gave its first per . . . year last Mond . . . the Religion in L . . . cation, is directe . . . nall.

The program . . . means will inclu . . . my Mistress' Fa . . . "Matona, lovely . . . diLasso; "Now i . . . Maying," by Moz . . . Swan," by Gibb . . . doth beg you'll . . . Lasso; "Ah dear . . . ons; "Three Oz . . . Hayes; "Adieu, . . . lies," by Wilbye . . . delightful, pleas . . . Purcell.

All interested . . . faculty members

**1959 Blue Hen Plans Spring Delivery**

There will be . . . in the Blue Hen . . . yearbook, this ye . . . of the staff will . . . cord all the activ . . . lege year.

Summer delive . . . will be used so . . . such as the May . . . spring sports a . . . can-be included.

Students who . . . the yearbook ma . . . 27, 28, and 29. . . Business manag . . . that members o . . . take orders on . . . from 11 a. m. to . . . from 5 to 6 p. m . . . Hall; and on Oc . . . the information . . . Student Center . . . hours of 11 a. m.

The price of the . . . Students who . . . from the purchase . . . Hen and have no . . . copy may pick up . . . this time also.

**Electrical, Engineers**

The American I . . . trical Engineers . . . tute of Radio Eng . . . a meeting Monday . . . Room 140 DuPont . . . p.m.

The speaker is . . . Hisch, from R.C.A . . . "The Problems of . . . iner." Mr. Hakli . . . interviewing engine . . . year for employ . . . should try and at . . . ing. This is an opp . . . engineers to lea . . . what an interview . . . them.

**BING'S B**  
A CA . . . FOR ANY O . . . 253 Main . . . Ph. EN 8

**Jackson's H**  
for . . . SPORTING . . . 30 E. Main

# Madrigal Group Give Music Program Sun. At Athenaean Society

The University Madrigal Singers will give a program of Elizabethan music this Sunday evening for the Athenaean Society.

The meeting will take place at 7:30 p. m. at 216 Dallam Road, home of Dr. Cyrus Day, professor of English. Transportation will leave Brown Lounge at 7:15 p. m.

The madrigal group, which gave its first performance of the year last Monday morning at the Religion in Life Week Convocation, is directed by Anne Tannal.

The program for the Athenaeans will include: "April is in my Mistress' Face," by Morley; "Matona, lovely maiden," by diLasso; "Now is the Month of Maying," by Morley; "The Silver Swan," by Gibbons; "My Heart doth beg you'll not forget," diLasso; "Ah dear Heart," by Gibbons; "Three Oxford Cries," by Hayes; "Adieu, sweet Amaryllis," by Wilbye and "In these delightful, pleasant groves," by Purcell.

All interested students and faculty members are invited.

## 1959 Blue Hen Plans Summer Delivery Date

There will be many changes in the Blue Hen, the university yearbook, this year, as members of the staff will attempt to record all the activities of the college year.

Summer delivery of the book will be used so that activities such as the May Day festivities, spring sports and graduation can be included.

Students who wish to order the yearbook may do so on Oct. 27, 28, and 29. Homer Lippard, Business manager, announced that members of his staff will take orders on Mon., Oct. 27 from 11 a. m. to 1:30 p. m. and from 5 to 6 p. m. in Kent Dining Hall; and on Oct. 28 and 29 at the information booth in the Student Center between the hours of 11 a. m. and 6 p. m.

The price of the book is \$5.

Students who have receipts from the purchase of a 1958 Blue Hen and have not received their copy may pick up their books at this time also.

## Electrical, Radio Engineers to Meet

The American Institute of Electrical Engineers and The Institute of Radio Engineers will hold a meeting Monday, October 27 in Room 140 DuPont Hall at 7:30 p.m.

The speaker is Mr. Robert Haklisch, from R.C.A. His subject is "The Problems of A Young Engineer." Mr. Haklisch will be interviewing engineers later in the year for employment by R.C.A. should try and attend this meeting. This is an opportunity for all engineers to learn first hand what an interviewer expects from them.

### BING'S BAKERY

A CAKE FOR ANY OCCASION  
253 Main St.  
Ph. EN 8-2226

### Jackson's Hardware

for SPORTING GOODS  
90 E. Main Newark

## Number in Error

The telephone number for Squire Hall Second Floor, has been changed to Endicott 8-9284. The number listed in the Student Handbook and the University of Delaware Telephone Directory is in error.

### CLASSIFIED

FOR SALE — An excellent buy in high fidelity equipment for anyone interested in two good components. Offering the Mark III 50 watt dynakit amplifier and Heathkit W.P. preamplifier, both in excellent operating condition. Will sell both for \$90. A bargain for anyone who really knows Hi-fi. Contact: Harvey Caney Box 311 Colburn Hall

## Latshaw's Puppets Appear in Mitchell

The Delaware Dramatic Association in cooperation with the university Dramatic Center will again present the George Latshaw Puppets in Mitchell Hall on Saturday, No. 1, at 10:30 a. m. and 2:30 p. m.

Latshaw's puppets appeared at the university last year in "The Runaway Rocket." They return this year in a completely

new show, "Wilbur and the Giant."

George Latshaw, former president of the Puppeteers of America, is one of the great artists in this field. Few in puppetry have both the artistic skill and the understanding of children's audiences that he possesses.

Tickets are 75 cents and may be purchased in advance by mail from the University Dramatic Center or at the Newark Department Store and the Card Center.

**FOR THE BEST**  
of  
**DANCING PLEASURE**  
**GEORGE MADDEN**  
and  
**HIS ORCHESTRA**  
**Tomorrow Evening**  
in the  
**DOVER ROOM**

Queen Judy Wilson will be crowned at Intermission

## A Week's

### Emphasis of Religion

When a week is set aside to devote to and emphasize religion, it always bears the connotation that there is no cognizance of religion during the rest of the year.

Pete French, chairman for this year's Religion in Life Week, and Dennis Fuhr, president of the University Religious Council, should be applauded for their efforts. They administered one of the more mature conference periods on religion and treated the subject on the larger philosophic plane, rather than through the everyday question of religious conformity.

A final appraisal of the week came during a panel discussion in the Morgan Room of the Student Center. It was called "Where Do We Stand Now?" Participants, including Chairman French, agreed that they would like to see a continuation of the discussions characteristic of those carried on in dormitory quarters and fraternity houses. Another suggestion was the possibility of starting a course on the campus which would concern itself with the explanation of religions in the world. They would treat the discussions from a standpoint of familiarization and not of indoctrination.

Such a course could well prove interesting. It seems that it would be easy, however, for it to become enmeshed in the monotony of dogmatic claims and never reach the deeper implication of religion. The committee also decided they will make a study of the university curriculum to see if courses which are now being offered suit their needs. One cited as example of course in the Bible which Dr. W. O. Sypherd taught several years ago.

French, Fuhr and their colleagues should be commended for their work. They may not have succeeded in solving the mysterious problem of the existence of God, but they have proceeded in the right direction.

RSW

## General

### And Legal Government

Gen. Charles deGaulle has proved that his government is legal. His instructions to the Army in Algeria to discontinue association with the Committees of Public Safety has brought an atmosphere of relief to the people of France.

Here is a man who, apparently worried over the legality of his power, has felt the time to act. This feeling came with the approval of his new constitution during the recent referendum which brought about the Fifth French Republic.

DeGaulle has an opportunity now to stop the war in Algeria. If he can produce an equal distribution of independence to the Moslems of Algeria, he may receive a nod of approval from the head of the Algerian underground, Fecho Abbar.

This military man, who in mind if not in fact, operates with categorical regularity, has demonstrated that he would unify France on all fronts, peacefully and not aggressively. The prime example is French Guinea, which voted "non" to the leader from Lorraine. Guinea is now independent.

RSW



## The Review Staff

Scott Wilson — Editor-in-Chief  
 Stan Gruber — Business Manager Dot Levy — Managing Editor

Nina Matheny News Editor	Jeanne Molitor Senior Associate Editor	Dave Heeren Sports Editor
Barbara Nolt Ellen Tantom News Ass'ts	Sheldon Weinstein National Ads. Manager	Priscilla Emmans Copy Editor
Gregg Wilson Photography Editor	Irving Hersfield Local Ads Manager	Frank Helms Circulation Manager
	Jane Doran Head Typist	

News Staff: Patricia Craven, George Carlisle, Mike Lewis, Judy Shapiro, Phyllis Herrmann, Ellen Morton.  
 Copy Staff: Martha Scate, Denise Granke.  
 Circulation Staff: Bobbie Lafferty, Eileen Lauber.  
 Typists: Ann Bugher, Charlotte Sonner, Audrey Hall, Eileen Payne, Lynn Roff.  
 Photography Staff: Malcolm Siegel, Dave Bailey.  
 Sports Staff: Jay Gorry, Ernie Levy.  
 Cub Staff: Bill Just, Edward Tomas, Dorothy Richards, Barbara Edwards, Nora Sutton, Sue Kurland, Jackie Stansel, Barbara Nero, Micki Mandell, Gail Thompson, Iris George, Joan Gibson, Marcia Toselli, Dan Lanning, Judy Cleek, Richard Bullock, Elizabeth Zane, Mi Papperman, Bonnie Baumgartner, Al Goldman, Alan Schallop, Leslie Galloway, Howard Issacs, Steve Cohen, Elizabeth Zane, Iris George.  
 Headline Staff: Gail Veasey  
 Special Service Staff: Jerry Greenspoon.  
 Secretary to the Editor: Pleasant Peirce.  
 Secretary to Business Manager—Barbara Janey  
 Cartoonist: Connie Parker

Represented for National Advertising By  
**National Advertising Services, Inc.**  
 College Publishers Representative  
 420 MADISON AVE., NEW YORK, N. Y.  
 Chicago Boston San Francisco Los Angeles Portland Seattle  
 Entered as second class matter Dec. 13, 1945 at the Newark Post Office, Newark, Delaware, under the act of March 3, 1879

## 'Neath the Arches

DEANNA SELTZER

Congratulations to our new Homecoming Queen and her court of campus lovelies. It certainly is a credit to the gentler side of our population to have such a nice representation of pulchritudinous femininity. (I studied last week.)

### VOTING? WHAT'S THAT?

Now that the voting is all over, yours truly can divulge a few interesting secrets about members of our university. So many of their queries as to the queens and the methods of casting a vote were too priceless to be ignored.

Some examples: "Do I have to register to vote?" Stock answer was "No, not unless your twenty-one!" Another query: "Do I put my name on the yellow slip of paper?" Answer: "No, only if you're sure of winning! Question: "Can I vote for anyone I want or must it be one of the twenty candidates?" Answer: (Clutch the aspirin bottle, smile sweetly) and explain that chaos would reign instead of a girl if one could write anyone's name on the ballot.

### COURSE SUGGESTION

Live and learn, but the question is "What do you learn?" Colleges should start a new course entitled, "The Principles behind Voting for a Campus Queen," or "The Multi-Purposes of a Yellow Ballot Slip at an Election," or better still, "How to Stuff the Ballot Box in Ten Sneaky Trips."

### AND THE RAINS CAME

Now's the time (just before Homecoming naturally) for the notorious, ever-present rains that Delaware is so well-known the world over to come. (perish the thought.) At least then, the people participating in the parade won't have to worry about transporting their floats. Ivory soap and our campus have something in common; they both float!

### AIR-BORNE COUPLES

As for floats and floating, a few couples seem to be on Cloud No. 9, especially Kay Hammond and Laurie Bliss who became engaged to Dick Lewis, Sigma Nu, and Bill Krebs, Alpha Tau Omega, respectively. Caroline Simon became pinned to an ole Ivy-Leaguer Ty Humphrey of Princeton, and Bob Price, Alpha Epsilon Pi pinned Georgiana Albers. Best of everything to you all. Just watch that low flying cloud.

### THE END

Hurrah for our "fantabulous" football team. Let's make tomorrow's game a real slaughter. The Guiding Light had a slight overhauling and the result was amazing. Conformity is not so bad as one may think. And with this thought-provoking (?) statement, I'll sign off. One last word, have a wonderful time this week-end.

## Student Poets Submit Entries

An Anthology of poetry by American and Canadian college students is being prepared for publication this winter by the American College Poetry Society.

Contributions must be the original work of the student. They should be submitted to Alan Fox, Executive Secretary, American College Poetry Society, Box 24463, Los Angeles 24, California on or before Dec. 1, 1958. Entries must include the author's name, address, and school.

Entries which are not accepted for publication cannot be acknowledged, nor can the Society compensate for poetry published.



"No, Mr. Smithers, That's Not What We Mean By Comparative Anatomy!"



PERFORMERS . . . in "Lady Precious Stream", current E52 University Theatre play, pictured above are Deborah Kieffer (left foreground), Joanne Dietz (right foreground), and Margaret Moore (rear). The play is set in China. Its second performance will be tonight at 8:15 in Mitchell Hall.

## Hocutt to Preside Saturday Over Dedication Ceremony

The new Student Center and Sypherd, Squire, Colburn and Thompson Halls will be dedicated tomorrow.

John E. Hocutt, Dean of Students, is presiding over the ceremony which will be held in the Harrington Lounge of the Student Center at 10:30 a. m. The Rev. Howard S. Hugus, of the St. Paul Lutheran Church of Newark, will give the invocation and benediction.

The keys to the building will be delivered to Judge Hugh M. Morris, president of the university Board of Trustees, by George Trautwein, of Trautwein and Howard, Philadelphia, who designed the Student Center.

Alex S. Corrigan, of McKim, Mead, and White, New York, who designed Colburn, Squire, Sypherd and Thompson, will also present keys.

Judge Hugh M. Morris will then present the keys to John A. Perkins, president of the university. After President Perkins accepts the keys, Peter V. Steele, president of SGA, will express student appreciation.

Those present at the dedication will be the trustees, members of the Women's Advisory Council candidates for the State Legislature, relatives of the persons for whom the new dormitories have been named, the officers of the Alumni Association, and representatives of the faculty, the administration and the architectural and contracting firms.

A coffee hour, held in the Kirkbridge room, and tour of the building will follow the program.

## Campus Calendar

- FRIDAY, OCT. 24
  - 7 p.m. Behind Student Center — Pep Fest.
  - 8 p.m. AEPJ House — House Party
  - 8:15 p.m. — Mitchell Hall — E-32 performance — Lady Precious Stream
- SATURDAY, OCT. 25 (Homecoming)
  - 1:45 p.m. Stadium — Football — Connecticut
  - 4:30 p.m. Residence Halls & Fraternities — Coffee Hour
  - 8 p.m. — Dover Room — S.C. SGA Homecoming Dance
  - 8:15 p.m. — Mitchell Hall — E-32 performance — Lady Precious Stream
  - 8:15 p.m. — Wolf Auditorium — Movie — Grand Hotel
- SUNDAY, OCT. 26
  - 3:15 & 8:15 p.m. — Wolf Auditorium — Movie — Grand Hotel
  - 6:30 p.m. — Mitchell Hall — Metropolitan Club Dance Practice
  - 7:30 p.m. — Dr. Day's Home — Athenaeum Society Meeting
- MONDAY, OCT. 27
  - 4 p.m. — Brown Hall — MRHA Treasurer's Meeting
  - 4:20 p.m. — 220 Hullihen Hall — Graduate Lecture — Dr. Walter Gulick, Speaker — Princeton vs. Harvard Ears.
  - 7 p.m. — Blue & Gold — S.C. — APO Meeting
  - 7 p.m. — Agnew — S.C. — Dela. Debating Soc. Meeting
  - 7:30 p.m. — Brown Auditorium — Lecture — Dr. C. C. Zollman, speaker Pre-stressed Concrete Design
- TUESDAY, OCT. 28
  - 12 Noon — Morgan & Vall S.C. — Women Commuter's Weekly Luncheon
  - 7 p.m. — Mitchell Hall — 2nd Army Showmobile Musical Review
  - 7 p.m. — Blue & Gold S.C. — Honor Court Meeting
  - 7:15 p.m. — Morgan & Vall S.C. — Newman Club Meeting
- WEDNESDAY, OCT. 29
  - 4:10 p.m. — Morgan & Vall S.C. — A & S Faculty Meeting — WEC Meeting
  - 7 p.m. — Blue & Gold S.C. — Student Rectal
  - 8:15 p.m. — Wolf Auditorium — Winterthur Lecture — Dr. E. S. Morgan, Yale "The Experimental Period of Amer. History 1703-1787"
- THURSDAY, OCT. 30
  - 6 p.m. — Blue & Gold S.C. — SGA Meeting
  - 7 p.m. — 200 S.C. — Kappa Delta Pi Meeting
  - 7 p.m. — Old College Lounge — Delaware Christian Fellowship Mtg.
  - 7:30 p.m. — Wolf Auditorium — Modern Physics for Engineers, Mtg. and Talk
- FRIDAY, OCT. 31
  - 12 Noon — Morgan & Vall S.C. — E52 Luncheon
  - 7 p.m. — Old College — Pep Fest
  - 8 p.m. — Women's Gym — Rec sponsored by Weekend Activities Club

## Student Annual Tea

University acted as hosts terday in co Delaware Station Conver Pierre S. DuF The tea ho administrator mentary a n schools part year's studen in cooperatio city's school The tea wa bers of the the direction vice-president Student Natio sation.

Those who Williams, Bet Hall, Cecile Kern, Nancy Molly Grinsel ba, Virginia inson, Peg Pryor, Louise Durboraw, C Saundra Jone This tea, a ers and adr schools and school of ed an annual pr class member

## Dr. Bun To We

Dr. John J. of the N Church. will ley Foundatio Heaven and at 7:15, Tues this week is a Party on Frid Lecture m each Tuesday m., and Ever Thursday at All weekly at the Wesle the Chapter E Dr. John Rev. Leland rectors, and son is the fa

## Keller A Picture

Merin Studi pus to take s 5, 6, and 7, Ja litor, announce All seniors their picture it retaken, sig Monday, Oct. the lobby of on Tues., O Oct. 29. If your pic at this time, the Yearbook, of activity c be collected If you do not lity card, you Blue Hen.

## a Swin Sta bigge pack

SWINGLINE Millions now tionally gara covers, fasten crafts, mends, able at your c SWINGLINE "Cob" Stople \$ Swin LONG ISLAND C

### Students Host Annual DSEA Tea Yesterday

University student teachers acted as hosts for a tea held yesterday in conjunction with the Delaware State Education Association Convention this week at Pierre S. DuPont High School.

The tea honored teachers and administrators from the 15 elementary and 15 secondary schools participating in this year's student teacher program in cooperation with the university's school of education.

The tea was served by members of the junior class under the direction of Marjorie Wright, vice-president of the Delaware Student National Education Association.

Those who served were Nancy Williams, Betty Kintigh, Audrey Hall, Cecile Endicott, Laurel Kern, Nancy Scafe, Carol Simon, Molly Grinsell, Marilyn Palomba, Virginia Hurm, Carol Sinkinson, Peg Ramsey, Charlotte Pryor, Louise Cramner, Gladys Durboraw, Claire Lyon, and Sandra Jones.

This tea, attended by teachers and administrators of 30 schools and the university's school of education faculty is an annual project of the junior class members of DSNEA.

## Information Service Gives European Job Opportunities

The American Student Information Service located in Limburg Lahn, Germany, has announced it will have jobs to offer American university students who wish to work in Europe next summer.

Most of the jobs available are on farms, in factories, on construction projects, at resorts, with the forest service, and in various technical industries.

Farm, construction, and forestry jobs are available to anyone who desires to broaden his European travel experience. These jobs provide free room, board and a small amount of pocket money.

Students interested in working

in Europe next summer must join the American Student Information Service at a cost of \$12. Applications must include the student's name, university address, age, sex, course of study, previous work experience, and the date the student wishes to begin working. The mailing address is Josef-Ludwig-Str. 4a, Limburg-Lahn, Germany.

The American Student Information Service was founded last year as an experiment to see if American university students would be interested in working during the summer months in Europe. The organization is non-profit.

Technical jobs are available

only to students who are qualified through past experience or course of study. Technical jobs pay approximately \$100 per month. The wages and conditions on all jobs are the same as those of the people with which the students are working.

### WEC Enacts Rule

Bermuda shorts are not to be worn in the dining halls at any time, stated Nancy Weir, chairman of the standards committee of WEC. The new regulation will go into effect immediately.

### Frosh Elect Three To Women's Exec

Barbara Franck, Cannon Hall; Jennie Haas, Squire; and Lois Johnson, Smyth, have been elected to Women's Executive Council as Freshmen Representatives.

Each residence hall for women plus the commuter organization elected a freshman representative from which three women were chosen to be active in WEC.

Freshman women are represented in WEC, to be better able to handle the problems concerning incoming Delaware students. Any freshman women may also go to the three representatives with constructive ideas or plans for future activities.

"Where You Get the Best for the Least"

### Angie's

STEAKS  
SUBS  
PIZZAS

Spaghetti and Ravioli Dinners

Open Daily 10:30 A.M. — 12:00 P.M.

Closed Mondays; Daily 2 - 4 P.M.

### DELUXE CANDY SHOP, INC.

41 E. MAIN ST.

Open 7:30 A.M. — Close 11:30 P.M.

Breakfast • Luncheons • Platters  
Toasted Sandwiches • Sodas • Cigarettes

"The Best Foods At The Lowest Prices"

I'LL MEET YOU THERE

### Dr. Bunting Talks To Wesley Group

Dr. John J. Bunting, minister of the Newark Methodist Church, will speak to the Wesley Foundation on "Concepts of Heaven and Hell in the Bible" at 7:15, Tuesday. Also featured this week is a Rutgers Exchange Party on Friday at 8:00 p. m.

Lecture meetings are held each Tuesday afternoon at 4 p. m., and Evening Prayer every Thursday at 6:30 p. m.

All weekly activities are held at the Wesley Foundation in the Chapter House.

Dr. John Bunting and the Rev. Leland Hall are the directors, and Mr. Paul Hodgson is the faculty advisor.

### Keller Announces Picture Deadlines

Merin Studios will be on campus to take senior pictures Nov. 5, 6, and 7. Janet Lee Keller, editor, announced.

All seniors who have not had their picture taken or who wish it retaken, sign up in Kent Hall Monday, Oct. 27, at noon and in the lobby of the Student Center on Tues., Oct. 28, and Wed., Oct. 29.

If your picture is not taken at this time, you will not be in the Yearbook. The same is true of activity cards, which will be collected at the same time. If you do not hand in an activity card, you will not be in the Blue Hen.

### a Swingline Stapler no bigger than a pack of gum!



SWINGLINE "TOT" Millions now in use. Unconditionally guaranteed. Makes book covers, fastens papers, arts and crafts, mends, tacks, etc. Available at your college bookstore.

SWINGLINE "Cub" Stapler \$1.29

Swingline INC. LONG ISLAND CITY, NEW YORK, N. Y.

# THINKLISH

### ENGLISH: endorsement of Lucky Strike cigarettes



THINKLISH TRANSLATION: Other brands of cigarettes burn (with envy) over the matchless taste of a Lucky Strike. Lucky's taste is honest taste—the rich, full taste of fine tobacco. So any endorsement of Luckies is bound to be a *Tastimonial*. Mmm!

English: UNHIP DOG



Thinklish: SQUARDALE

English: SCREWBALL BULLY



Thinklish: MEANIAC

English: EXTREMELY NARROW CAR



Thinklish: SLIMOUSINE

English: SICK REPTILE



Thinklish: ILLIGATOR

English: CROWDED COLLEGE GROUNDS



Thinklish: CRAMPUS

### SPEAK THINKLISH!

Put in a good word and MAKE \$25!

Here's the easiest way yet to make money! Just put two words together to form a new one. Example: slob + lobster=SLOBSTER. (English trans: shellfish with bad manners.) We'll pay \$25 each for the hundreds of Thinklish words judged best—and we'll feature many in our college ads. Send your Thinklish words (with translations) to Lucky Strike, Box 67A, Mt. Vernon, N. Y. Enclose name, address, college or university and class.



Get the genuine article

## Get the honest taste of a LUCKY STRIKE

Product of The American Tobacco Company—"Tobacco is our middle name"

## Kay Hammond Announces New Committee Chairmen

Four new committee chairmen for Women's Executive Council committees have been announced by Kay Hammond, Chair-

## E-52 Theater Group Presents Comedy

"Lady Precious Stream," the current E-52 theater production, may be seen tonight or tomorrow evening at 8:15 p. m. in Mitchell Hall.

Appearing in the Chinese comedy are Gretchen Berguido, Bernard McInnery, Joanne Dietz, Debbie Keiffer, and Carl Seltzer, members of the E-52 university's far-eastern touring company.

The cast is drawing on their recent experiences, a book entitled "Secrets of the Chinese Theater," and the aid of Dr. Hal Geyer, Wilmington, a former resident of China for 33 years to present the play with as much color and flavor of the Orient as possible.

By presenting their ID cards at the Box Office, undergraduates may secure reserved seats today without charge between 3:30-5 p. m. and 7-8 p. m.

man of W. E. C.

Adele Naylor, junior, is chairman of the Honor Court. The Honor Court is an elected judicial body. In the past, such a court was comprised of women already on WEC. Thus far this year, the Honor Court has been very successful in co-ordinating the honor system in dorms and in other overall business, stated Adele.

The Women's Co-ordinating Social Committee is headed by Ginger Predmore, junior. This group plans WEC social functions for the year.

Janet Lee Keller is chairman of the Inter-collegiate Association of Women Students Committee. The committee keeps contact with what other schools are doing in such areas as Honor Systems, commuters, Housing.

The Standards Committee, led by Nancy Weir, is the newest committee in the WEC. This group is going to work on dress standards so that they will be uniform throughout the campus.

# University Choir Entertains State Teacher's Convention



OPERA PREPARATION — Members of university concert choir preparing for concert. Seated—Linda Woodward Patton, accompanist. Left to right: Marie S. Oemler, mezzo soprano; Carl Miller, bass; Clifford Simon, tenor; Debbie Keiffer, alto; Walter Cartwright, tenor; Joe Pichette, baritone; Jerry Knotts, baritone; Carole Schulze Matthes, soprano; Joe Krewatch, baritone.

GET SATISFYING FLAVOR...

## So friendly to your taste!

No flat "filtered-out" flavor!  
No dry "smoked-out" taste!



You can light either end!

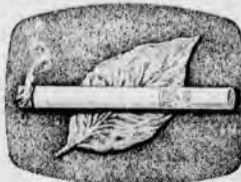
### See how

Pall Mall's famous length of fine tobacco travels and gentles the smoke — makes it mild — but does not filter out that satisfying flavor!

HERE'S WHY SMOKE "TRAVELED" THROUGH FINE TOBACCO TASTES BEST



1 You get Pall Mall's famous length of the finest tobaccos money can buy.



2 Pall Mall's famous length travels and gentles the smoke naturally.



3 Travels it over, under, around and through Pall Mall's fine tobaccos!

Outstanding...and they are **Mild!**

Product of The American Tobacco Company — "Tobacco is our middle name"

The Metropolitan Opera version of "La Perichole" will be given in its first Eastern performance by a university ensemble today when the university concert choir appears in the P. S. DuPont auditorium for the Delaware State Education Association convention.

The performance of the Jacques Offenbach opera under the direction of Dr. Ivan Trusler will begin at 1:45 p. m.

#### SOLOISTS INCLUDE

Soloists for the performance will be Eileen Harris, guest soloist, as La Perichole; Lawrence Reed Hansen, guest soloist, Paquillo; Carl Miller, Newark, Don Andres de Ribeirs; Joseph Pichette, freshman, Don Pedro de Hinojosa; Clifford Simon, freshman, The Count of Pana Telas; Joseph Krewatch, freshman, First Notary; Jerrold Knotts, freshman, second Notary; Walter Cartwright, freshman, the Prisoner; Carole Matthes, sophomore, Guadalupe; Deborah Keiffer, junior, Estrella; and Marie Oemler, sophomore, Virginella.

The story of "La Perichole" tells of two Spanish street singers, Paquillo and La Perichole, who are lovers, but too poor to er of the country, propositions La Perichole and she reluctantly consents.

#### HITCH

There is a hitch however. The law has it that the Viceroy's "Ladies in Waiting" must be married. By a strange twist of events, the husband chosen for La Perichole is none other than her former lover, Paquillo.

The wedding takes place, but Paquillo, through the ministries of Don Pedro, the governor, has become blindly drunk, so much so that he does not recognize his bride. Later, however, he discovers her identity, and when he becomes furious at being tricked, is thrown in the dungeon for recalcitrant husbands.

#### ESCAPE

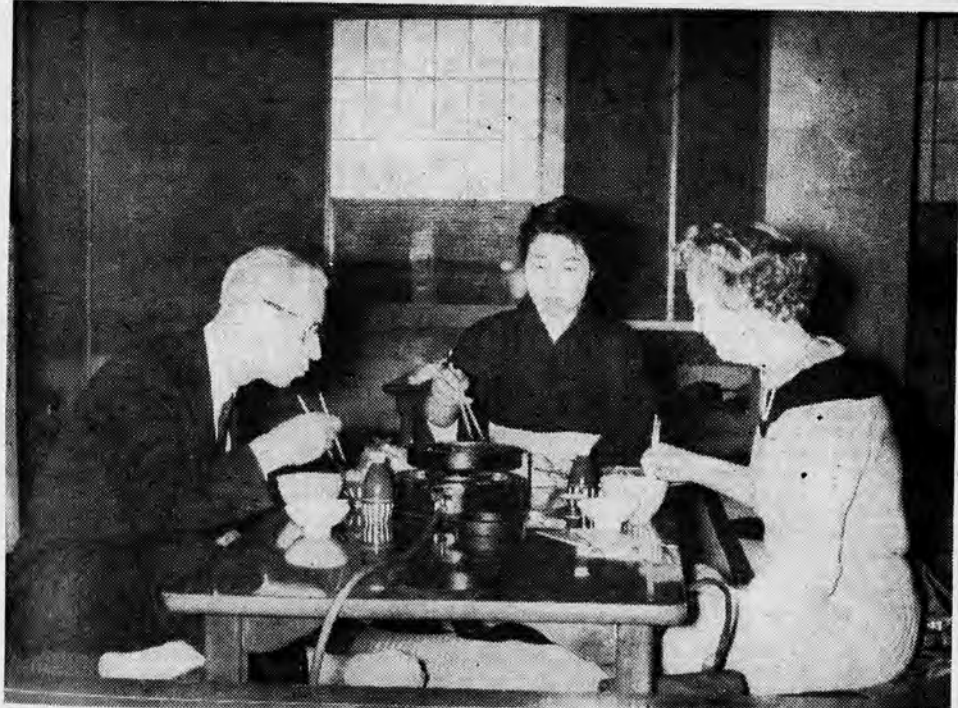
With La Perichole's help, he escapes, but the two lovers are apprehended by the Don Andres dragoons. Perichole pleads for their freedom, Don Andres is so moved that he not only grants her pleas but allows the lovers to retain their titles and lands. As Don Andres says at the close of the opera, "The lesson is true love shall never be forgotten as long as the kingdom endures."

Although professional opera companies have performed this comic opera frequently, the Peabody Conservatory of Nashville, Tenn., is the only other collegiate group to have undertaken its production.

Linda Woodward Patton will be the accompanist.



E-52 ON TOUR . . . Pictured on this page are some of the E-52 players on their recent world tour. At top left, Leslie Riley, Deborah Kieffer, Joanne Dietz, and Jan Cox wait for plane in San Francisco. Gretchen Berguido poses beside "Aloha" sign in Hawaii, at top right. At left, Dr. and Mrs. Robert Case eat with a Japanese waitress. At lower left, a whole group of E-52 femles, attired in Air Force gear, stand idle in a Korean airport. Joanne Dietz (lower right) waves a Japanese fan.



ins  
on

ated—  
Carl  
chette,  
ne.  
era vers-  
will be  
ern per-  
sity en-  
univer-  
s in the  
for the  
on Assoc.

the Jac-  
nder the  
sler will

formance  
quest sol-  
Lawrence  
oist, Pa-  
ark, Don  
ph Pich-  
o de Hi-  
fresh-  
na Tel-  
eshman,  
Knotts,  
y; Wal-  
an, the  
s, soph-  
rah Kief-  
d Marie  
ginella.  
erichole"  
et sing-  
erichole,  
poor to  
positions  
sluctant-

ver. The  
Viceroy's  
must be  
twist of  
open for  
er than  
lo.  
ace, but  
inistries  
nor, has  
o much  
ecognize  
he dis-  
d when  
t being  
e dung-  
ands.

help. he  
vers are  
Andres  
ads for  
es is so  
grants  
e lovers  
lands.  
he close  
is true  
often as  
endures.  
opera  
ed this  
he Pea-  
shville,  
colleg-  
ertaken  
on will

# Delaware Routs N. H., 36-14



**IN REVERSE . . .** Denny Luker (40) breaks into New Hampshire secondary after taking a handoff from Jack Turner (left, back to camera) on a double reverse play. Play was one of many that clicked for long yardage for Delaware in 36-14 vic-

tory. Tomorrow the Hens face Connecticut, another Yankee Conference opponent, at Delaware Stadium in the annual Homecoming game.

## Hens Break Game Open In 2nd Half

### Connecticut Faces Hens Tomorrow

By JAY GORRY

With the "breaks" finally coming Delaware's way, the Blue Hens stormed over New Hampshire, 36-14, last Saturday, Homecoming Day at New Hampshire. Twenty-eight of Delaware's points were scored in the second half.

The turning point of the game came in the third quarter with the score tied, 8-8. New Hampshire's punter Bob Trouville, dropped back to his 38 yard line to punt. Dick Broadbent and Dan Tripodi crashed in from the left side, and Tripodi blocked the kick. Captain Bob Jones grabbed the loose ball and carried it to the New Hampshire 25.

#### TURNER SCORES

Five plays later, halfback Jack Turner shot through the middle of the line for five yards and a touchdown. Denny Luker ran the extra points to put the Blue Hens in the lead, 16-8.

The tie score in the first half was a result of a Delaware touchdown by Jim Breyer and a plunge for the extra point by Turner in the first quarter. Then, in the second quarter, Wildcat quarterback Paul threw a 34 yard pass to Trouville for the New Hampshire touchdown. Trouville added the extra point on a run.

The tough line play on both sides prevented further scoring in the first half.

#### HENS CAPITALIZE

In the second half after the touchdown resulting from the blocked kick, Delaware continued to take advantage of Wildcat mistakes.

Late in the third quarter, right end Karl Frantz recovered a New Hampshire fumble on the Wildcat 41. Seven plays, all on the ground, put the ball on the 4 yard line from where Tony Suravitch went over for the third touchdown. A Breyer-Bownan pass was good for the extra point.

On the kickoff after the touchdown, sophomore Dick Hammer recovered another fumble on the 7. On the first play, Breyer threw to end Al Huey for a touchdown, just 55 seconds after the last touchdown. This made the score, 30-8.

New Hampshire, weak in reserve strength, was tired at this point but still fought gamely. (Cont. on Page 9, Col. 2)

## Haverford and Swarthmore Harriers Win

Delaware's cross country team was defeated by Swarthmore on Saturday, 19-40. Dave Denhardt of Swarthmore ran the 4.3 mile course in 23:30.2, to finish first. George Rust of Delaware did it in 24:09 for second, and Dave Hartsough also of Swarthmore, came in third.

The course record of 22:04 was made by Bob De Tombe of William and Mary on November 3, 1956; and the Delaware record of 22:24.2 was made by Dante Marini against PMC on November 11, 1955.

The eight man varsity, captained by Charlie Woodward, will go to Baltimore today to meet Johns Hopkins.

Eight freshmen runners will also go to Johns Hopkins for their first meet.

Varsity meets started last week with the Blue Hens losing to Haverford, 18-40, and they will continue until November 21, when the Middle Atlantic States Collegiate Athletic Conference championships will be held.

## Connecticut Is Homecoming Foe of Delaware Tomorrow

The University of Connecticut is Delaware's opponent tomorrow in the annual Homecoming Game at Delaware Stadium.

#### REBUILDING PROGRAM

Connecticut has succeeded in its rebuilding program this season, having lost 13 lettermen from last year.

In fact, the U Conns are currently rated second nationally in small college grid competition, and first in the East.

Although Connecticut is not a member of the Middle Atlantic Conference, a Blue Hen victory could be important.

Beating as highly a ranked

team as Connecticut would boost the Blue Hen status considerably.

#### UCONNS BEAT HENS

Last year the UConns out-pointed Delaware, 13-9, even though the Hens advanced 289 yards to 163 for Connecticut. The Blue and Gold gridgers have often moved almost at will against opponents, both this year and last, but have not been able to muster the necessary scoring power to win consistently.

Connecticut holds the edge in the seven game series, 4-3 with victories in the last two campaigns.

Supplying strength in the backfield for the New Englanders are five returning lettermen. Senior halfback, Larry Day, the leading offensive performer last year, is the key man in the Husky scoring threat.

Co-captains Paul Scagnelli, center, and Bill Wallner, guard, bolster the line. Gaps in the starting eleven are filled by eight men with some varsity experience and several men up from last year's frosh squad.

#### PREPARE FOR RUTGERS

If the Blue Hens can defeat Connecticut, they will be better prepared to face the highly touted Scarlet Knights from Rutgers.

Victories over these two foes would not only surprise many pre-season critics but also bolster Delaware prestige in this area. Presently the Hens rate the tenth slot in the East small university football division.

### Blue Hen of the Week

By ERNIE LEVY

Although not always a starter, tackle Dan Tripodi showed the prowess of one in last week's scourg, of New Hampshire. Tripodi played well until he was forced to leave the game as a result of a chest injury received from a beautifully executed blocked punt.

The 6' junior played football in his freshman year, gaining his numerals. As a sophomore, Dan found competition very keen, but did not see action.

In Englewood Cliffs, New Jersey, the 210 pound tackle en-

joyed prosperous years. Representing St. Cecilia High School, Dan participated in football all three years, with letters earned the last two. He captained his squad in his last season and was elected to the first team All-State Catholic Team for New Jersey along with an honorable mention on the All-Metropolitan Team covering the New York area.

A bacteriology major, Tripodi studies under a full scholarship and possesses a 2.51 cumulative index. He is contemplating graduate school and a career in bacteriological research. Interest in the University of Delaware was fostered by his high school football coach, who is a graduate of Delaware.

Theta Chi, Newman Club, and intramural basketball complete the Blue Hen's campus activities. Off campus, Dan enjoys reading, playing pinocle, sailing, and an occasional walk with his dog.

### Hen Soccer Team Loses Two Games

The Blue Hen soccer team, after a woeful first half in which they managed only three shots and permitted three goals, battled gamely in the second half and held Washington College to one goal while also managing one. However, the damage was done and the Hens were defeated, 4-1.

Jason Shaw, Blue Hen center forward, averted Delaware's being held scoreless for the third straight year by Washington, by popping in a goal early in the fourth quarter. Jim Bragg, opposing center forward, led Washington's scoring with two goals.

Bob Bunting, Delaware goalie, stood out in defeat for the Hens. This loss evened the Hens record at 1-1.

In the second game of the week, Temple defeated Delaware handily, 6-1. The Owls offense constantly kept the pressure on the Hens' defense, and only a fourth period penalty kick by Freddy Walters kept Delaware from being held scoreless.

## MAC Grid Standings

### MAC University Division

Rutgers 57, Bucknell 12

Lafayette 35, Temple 0

	Conference Games					All Games						
	W	L	T	For	AG.	Pct.	W	L	T	For	AG.	Pct.
Lafayette	3	0	0	69	20	1.000	3	1	0	69	40	.750
Rutgers	1	0	0	57	12	1.000	4	0	0	129	31	1.000
Gettysburg	1	0	1	20	14	.750	3	0	1	65	22	.875
Lehigh	1	0	1	22	21	.750	2	1	1	69	41	.625
Hulenberg	1	1	0	35	45	.500	2	1	0	77	57	.567
Delaware	1	2	0	48	29	.333	2	2	0	84	43	.500
Bucknell	0	2	0	12	63	.000	0	4	0	25	89	.000
Temple	0	3	0	32	91	.000	0	3	0	32	91	.000

### MAC College Division South

W. Chester 51, Drexel 0

Johns Hopkins 38, Haverford 14

P.M.C. 14, Moravian 8

Ursinus 0, Wilkes 8

P.M.C.	4	0	0	60	30	1.000	4	0	0	60	30	1.000
Johns Hopkins	3	0	0	70	22	1.000	3	0	0	70	22	1.000
W. Chester	1	0	0	51	0	1.000	4	1	0	106	35	.800
F. & M.	1	1	0	40	20	.500	2	2	0	72	61	.500
Haverford	1	2	0	42	53	.333	1	2	0	42	53	.333
Swarthmore	0	1	0	0	7	.000	0	3	0	20	62	.000
Western Md.	0	1	0	0	13	.000	1	3	0	46	53	.250
Drexel	0	2	0	0	72	.000	0	4	0	8	112	.000
Ursinus	0	3	0	0	26	.000	0	3	0	0	26	.000



**BUNTING PUNTING . . .** Star goalie Bob Bunting, captain of the Blue Hen soccer team, is shown getting off a boot in practice as Coach (Whitey) Burnham looks on. In spite of Bunting's efforts, the Hens were trounced twice last week: by Washington College, 4-1; and by Temple, 6-1.

A patter this fall. The following week. The pattern. This week. Next week. Even if. point, as h. incidentally. break the. certain the. downs.

Prospects Connecticut in the United Yale team. the Blue H. both Lehigh Delaware.

Also in D. Blue Hens' the Hens tr. Finally to may not be outplayed L. last fall), a last year's gained the lost, 13-9.

So, this y. Blue Hens' more often once more.

Basketball talent to w. is bolstered season, incl. forty fresh.

Even the finished to such shiny c. the numbers to that of th.

It was go. assistant fo. back and for.

This pair. ing and boot. just prior to pass combin. place kickin.

Overheard. hashing of t. It seems th. ing to evoke. trouncing th. thing like 'n.

This didn't. One of them. terms, that. in a war ag. 'good shot' body.



For class. can't beat. ing, and. more and. on M & M.

FREE S &



# Sports SLANTS

by Dave Heeren  
Sports Editor



A pattern is discernible in Delaware's football doings this fall. The Blue Hens lose by one point, then win the following week by three touchdowns.

The pattern will be broken either this week or next. This week the Hens take on Connecticut's powerful eleven. Next week the opponent is even more powerful Rutgers.

Even if the Blue Hens should manage to lose by one point, as has been their custom every other week (this, incidentally, is one of the 'other' weeks), they will surely break the spell next week against Rutgers, for it is quite certain that they won't lick the Scarlet by three touchdowns.

Prospects are not quite as dim as they seem, however. Connecticut, though ranked the No. 2 small college team in the United States, has already lost to an unspectacular Yale team. Furthermore, the Uconns will be favored over the Blue Hens tomorrow, a psychological advantage that both Lehigh and Lafayette used to their favor in upsetting Delaware.

Also in Delaware's favor is the fact that the game is the Blue Hens' Homecoming Game. In last year's HC game the Hens trounced New Hampshire, 59-6.

Finally to the Blue Hens' advantage is the fact that they may not be able to outplay Connecticut as easily as they outplayed Lehigh and Lafayette this fall (and the Uconns last fall), and thus may find it more difficult to lose. In last year's Connecticut game, for example, Delaware outgained the Uconns by a yardage ratio of almost 2:1, but lost, 13-9.

So, this year, and this week, may the Uconns push the Blue Hens all over the field, but may the Hens register more often on the scoreboard; and for the sake of justice, once more often would be superb.

Basketball coach Irv Wisniewski has more depth of talent to work with than he has had in years. The varsity is bolstered by several returning letterwinners of last season, including high scorer Frank Wickes; and about forty freshmen are trying out this fall for the cage sport.

Even the court has been improved. Its surface has been finished to a high gloss with varnish, shellac, or some such shiny coating. Let's hope that there is quality among the numbers, so that the team attains a lustre comparable to that of the court.

It was good to see Larry Catuzzi and Ben Klinger, now assistant football coaches, tossing and booting a football back and forth last week.

This pair was responsible for just about all of the tossing and booting done by the Blue Hens in the two autumns just prior to this one. Catuzzi-Klinger was the number one pass combination, Larry did the punting, and Ben the place kicking for the Hens last year and the year before.

Overheard in the 'socket' room last week was some rehashing of the 4-1 defeat to Washington College.

It seems that one of the Blue Hen booters, possibly wanting to evoke pity from the Washington boys who were trouncing the Hens, had hollered encouragingly something like 'nice play' to one of the aliens.

This didn't sit well with some of the defeated Blue Hens. One of them pointed out to the turncoat, in quiet but firm terms, that that was just like being on the front lines in a war against the Chinese Communists, and yelling 'good shot' to a Red who had just fired a bullet into his body.

# Blue Chick Football Coach Is Raymond (Scotty) Duncan

By HOWARD ISAACS

(This is the fourth in a series on the University of Delaware's coaches.)

Raymond B. (Scotty) Duncan, faculty manager of athletics, has been affiliated with the university since 1942. He served as freshman baseball coach during the 1956 season and is presently in his third term as freshman football mentor.

### FROSH COACH IMPORTANT

A great deal of credit for a successful varsity ball club goes

to the freshman coach. It is he

who first comes into contact with prospective varsity candidates, and it is he who must form a co-ordinated team from boys hailing from many different areas. Coach Duncan has his adeptness at this, compiling an 8-1-1 record in past seasons as frosh mentor.

Coach Duncan's athletic career began in his home town of Waterbury, Conn., where he participated in baseball, basketball, and football. At the Sheshire Academy, Scotty completed his secondary education and added

track to his athletic credit.

### STARS IN BASEBALL

He entered Washington College in 1941 and starred on the diamond. It was here, on the athletic field, that he had his first contact with Delaware.

Coming to the university in 1942 as a physical training instructor in the Army Special Training Reserve Program, Scotty enrolled as a student here, after the program concluded in 1943.

Football attracted the present frosh mentor in 1945, and the following year, he was varsity bound. He lettered in 1946 but a knee injury ended any further grid campaigns.

In spite of this, Duncan participated in baseball and basketball for three years and in 1948, served as assistant baseball coach.

After graduation, Coach Duncan's first assignment was as mentor of the basketball, football, and track teams at Dover high school. During his stay there, he helped develop Russ McNeal, blocking back for Dick Kazmaier at Princeton, and Howie Wright, VPI athlete.

### 9-7 AT NEWARK

Moving to Newark High School, Scotty engineered the Yellow Jackets through two seasons, chalking up a 9-7 record.

Locally, Duncan was elected president of the Delaware Inter-scholastic Football Coaches Association and was instrumental in the formation of a similar group for high school coaches in the state.

## Delaware Routs

Continued from Page 8)

Halfback John Robes skirted end for 50 yards to the Delaware 30. He was hauled down from behind by Dave Beinners and Tony Suravitch.

Second string quarterback, Gampy Pellegrini, intercepted a pass to halt the New Hampshire threat. With a backfield composed of Pellegrini and sophomores, Beinners, Papp Lukk and Hank Richards, Delaware moved 55 yards for the final touchdown. Beinners scored from the two yard line.

New Hampshire's final touchdown came on the last play of the game. Wildcat Bob LePore, in his first varsity game, intercepted a Ron Helley pass at his twenty-five yard line and rac-

ed 75 yards into the end zone.

Statistically, the Hens completely dominated play. Delaware picked up 17 first downs to New Hampshire's 7. In net yards rushing, the Blue Hens accumulated 202; New Hampshire 93.

In the air, the Blue Hens gained 112 yards as Breyer and Pellegrini continued to click. The two quarterbacks completed seven of thirteen passes. New Hampshire was three for ten.

Luker continues to be high scorer. The senior halfback has crossed the goal line three times for touchdowns and twice for extra points for a total of twenty-two pointsc. Turner is second with 14 points.

Tomorrow, before a homecoming crowd, the Hens face Connecticut, loser of only one game, to Yale. Last year, the Uconns defeated Delaware, 13-9.

Arrow cotton  
Wash-and-Wears  
earn their way  
through college

Why spend date money sending shirts home? Just wash and drip-dry these Arrow cotton wash-and-wears and you're ready to go.

Only Arrow offers so wide a range: your favorite styles of collars and cuffs in oxford and broadcloth, in white, solids and patterns.

And every shirt features exclusive Arrow Mitoga®-tailoring. \$4.00 up.

Cluett, Peabody & Co., Inc.



Shirts for any date  
... while you wait



We've a storeful of Arrow wash-and wear shirts. All the newest collar styles in oxfords and broadcloths, white, solid colors and patterns, French and regular cuffs. Look in soon and see them for yourself.

# Newark DEPARTMENT Store

Play a winning game...  
with M & M on your team!



**M & M**  
DRIVE-IN CLEANERS  
11 N. Chapel St.  
Shirt Laundry • Storage Vault

For class, for sport, for date... you can't beat M & M for quality cleaning and quick service. Learn why more and more of your friends depend on M & M to always look their best!

FREE S & H GREEN STAMPS, TOO!



4

k  
n  
f  
aces  
TROW

ally com-  
the Blue  
w Hamp-  
ay, Home-  
ampshire,  
Delaware's  
the second

the game  
arter with  
w Hamp-  
Trouville,  
yard line  
and Dan  
in the left  
cked the  
s grabbed  
ried it to  
6.

back Jack  
e middle  
rds and a  
er ran the  
Blue Hens

first half  
Delaware  
yer and a  
point by  
ter. Then,  
Wildcat  
ew a 34  
e for the  
ouchdown.  
extra point

on both  
er scoring

after the  
from the  
re contin-  
of Wild-

arter, right  
red a New  
the Wild-  
ll on the  
on the 4  
Tony Sur-  
the third  
er-Bowman  
the extra

the touch-  
t Hammer  
ole on the  
eyer threw  
ouchdown,  
the last  
the score,

ak in red  
ed at this  
t gamely.  
Col. 2)

captain  
boot in  
of Bunt-  
Wash-

## Spirits Flame At Fest Tonite

Tonight's bonfire pep fest will be held behind the Student Union at 7:15 p. m. The band will begin marching down campus from Old College at 7 p. m.

All residence halls and fraternities are urged to remain behind the band and cheerleaders at all times.

In case of wet grounds, the pep fest will be held as usual at Old College or in Taylor Gym if rain occurs at the actual time of the pep fest.

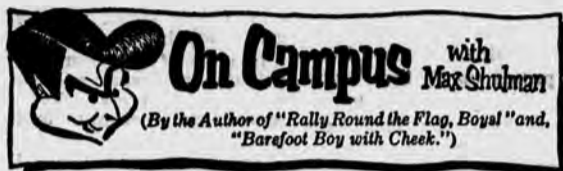
Judging of spirit will be done in the usual manner. Winners will be announced the following Friday.

## Delaware Males Visit Conference

Dr. Paul Musselman, Newark, and Clyde Nelson, Milford, will represent Delaware at the national convention of the American Dental Association next month.

They will serve as members of the ADA House of Delegates, policy-making body of the organization. The 99th annual session of the ADA will be held at Dallas Nov. 10-13.

Over 12,000 members are expected to attend the meeting. Alternate delegates are Dr. James C. Baker, Wilmington, and Dr. Joseph S. Mach, Seaford.



## On Campus with Max Shulman

(By the Author of "Rally Round the Flag, Boys!" and "Barefoot Boy with Cheek.")

### THE DRESS PARADE

In all my years of observing coed fashions—and I have been arrested many times—I have never seen such verve, such dash, such *Je ne sais quoi* as can be found in this year's styles!

I am particularly enchanted by the new "baby waist" dresses which so many of you girls are favoring this season. How demure you all look in your "baby waists"! How sweet! How innocent! How colorful when your housemother lifts you up and burps you after dinner!

Another trend that leaves me limp with rapture is the oversized handbag. Goodbye to dinky little purses that hold nothing at all! Hurrah for today's sensibly sized bag with plenty of room for your makeup, your pens and pencils, your shelter half, your Slinky toy, your MG, and your Marlboros.

Did I say Marlboros? Certainly I said Marlboros. What girl can consider herself in the van, in the swim, and in the know, if she doesn't smoke Marlboros? What man, for that matter. Do you want a filter that is truly new, genuinely advanced, but at the same time, does not rob you of the full flavor of first-rate tobacco? Then get Marlboro. Also get matches because the pleasure you derive from a Marlboro is necessarily limited if unlit.

To return to coed fashions, let us now discuss footwear. The popular flat shoe was introduced several years ago when it became obvious that girls were growing taller than boys. For a while the flat shoes kept the sexes in a state of uneasy balance, but today they will no longer serve. Now, even in flats, girls are towering over their dates, for the feminine growth rate has continued to rise with disturbing speed. In fact, it is now thought possible that we will see fifteen-foot girls in our lifetime.

But science is working on the problem, and I feel sure American know-how will find an answer. Meanwhile, a temporary measure is available—the reverse wedgie.

The reverse wedgie is simply a wedgie turned around. This tilts a girl backward at a 45 degree angle and cuts as much as three feet off her height. It is, of course, impossible to walk in this position unless you have support, so your date will have to keep his arm around your waist at all times. This will tire him out in fairly short order; therefore you must constantly give him encouragement. Keep looking up at him and batting your lashes and repeating in awed tones, "How strong you are, Shorty!"



Next we turn to hair styling. The hair-do this year is definitely the cloche-coif. One sees very few crew cuts or Irene Castle bobs, and the new Mohican cut seems not to have caught on at all. In fact, I saw only one girl with a Mohican—Rhodelle H. Sigafos, a sophomore of Bennington. Her classmates laughed and laughed at her, but it was Rhodelle who had the last laugh, for one night a dark, handsome stranger leaped from behind a birch and linked his arm in Rhodelle's and said, "I am Uncas, the last of the Mohicans—but I need not be the last, dear lady, if you will but be my wife." Today they are happily married and run a candied-apple stand near Macon, Ga., and have three little Mohicans named Patti, Maxine, and Laverne.

© 1958 Max Shulman

Congratulations to Mr. and Mrs. Uncas and to all of you who have discovered the pleasures of Marlboro and Marlboro's sister cigarette, non-filter Phillip Morris, both made by the sponsors of this column.

## Prepare Flowers for Game



**TASSEL MUM PROJECT** — Members of Tassel and guests prepare ribbons which they will attach to chrysanthemums for sale at tomorrow's football game. They are (from left) Mary Jo Dennis, Rosalie Ruskin, Kay Hammond, Nancy Williams, and Janet Lee Keller. The Homecoming Queen and her court will be sporting the flowers during the game tomorrow.



## Ever meet a Doubting Thomas?

A college senior once remarked to a Bell System interviewer: "A telephone career must be a mirage. I hear talk about fabulous training, fascinating work, grade-A job security, and rapid advancement in management. Sounds a bit too rosy. What's the real story?"

The interviewer knew mere talk wouldn't sell a skeptic. So he showed him some "profiles" of recent college graduates who had enjoyed that fabulous training, had worked at intriguing jobs, and had won early management promotions.

Our once-skeptical friend has been with the Bell System 3 years now—and is currently supervising the work of 55 people.

We've converted a host of Doubting Thomases. Whether doubtful or not, you'll learn a lot about rewarding telephone careers by talking with the Bell System interviewer when he visits your campus. Also read the Bell Telephone booklet on file in your Placement Office, or write for "Challenge and Opportunity" to:

College Employment Supervisor  
American Telephone and Telegraph Company  
195 Broadway, New York 7, N. Y.



**BELL TELEPHONE COMPANIES**

## Wiln

## As

Heads turned as travel... mington station... Delaware group... first leg of the... trip last weeker...

This was not... everyone was c... coats, candy, i... cluding drums a... and suitcases st... uniforms, hats, outfits.

The eight h... didn't dampen t... it since they... "The Fight Son... ware Forever."

From Boston... eled by bus to t... Hotel in Portsmo... of the group w...

## Aquatic Selects

## Swim S

The new Aqua... bers are Jean... man; Gail Cla... Peggy Lowery... Rovey, sophomor... erton, freshman... freshman; Dor... freshman; Suzan... sophomore; Betty... freshman; Barba... omore; Ann Simr... carol Wagner, fr... Netsch, freshma... hall, freshman; M... sophomore; Cami... man; and Irm... sophomore.

The auditions... demonstrations... back, side, and b... face dives, and... ming.

The present... Aquatic Club are... junior, president;... junior, vice pre... Bliss, senior, secre... nor Eastburn, s... gram chairman.

## a leader

BUILD A R... self with... FIND OUT... of opport... fields of y... possible th... and world

# Wilmingtonians Get Eyeful As UD Travelers Embark

Heads turned and eyes popped as travelers in the Wilmington station watched the Delaware group leave on the first leg of the New Hampshire trip last weekend.

This was not surprising since everyone was carrying books, coats, candy, instruments including drums and sousaphones, and suitcases stuffed with band uniforms, hats, and cheering outfits.

The eight hour train ride didn't dampen the group's spirit since they entered singing "The Fight Song" and "Delaware Forever."

From Boston the group traveled by bus to the Rockingham Hotel in Portsmouth, N. H. Most of the group were anxious to

## Aquatic Club Selects New Swim Stars

The new Aquatic Club members are Jean Fracassi, freshman; Gail Clark, freshman; Peggy Lowery, freshman; Jean Rovey, sophomore; Nancy Robertson, freshman; Barbara Wood, freshman; Dorothy Thomas, freshman; Suzanne Kleinfelder, sophomore; Betty Ann Robinson, freshman; Barbara Beeson, sophomore; Ann Simmons, freshman; Carol Wagner, freshman; Diane Netch, freshman; Nancy Newhall, freshman; Margie de Wilde, sophomore; Camille Miruk, freshman; and Irmgard Stallman, sophomore.

The auditions consisted of demonstrations of the crawl, back, side, and breast stroke, surface dives, and rhythmic swimming.

The present officers of the Aquatic Club are: Lynn Feeney, junior, president; Margie Pinney, junior, vice president; Laurie Bliss, senior, secretary; and Eleanor Eastburn, sophomore, program chairman.

change into flat heeled shoes and sports shirts and to find a place for a snack.

Into bus again Saturday morning and off to Durham, the home of the University of New Hampshire. After the band rehearsed, everyone had a chance to tour the beautiful campus.

The band and cheerleaders marched to the stadium before the game. Since naturally there were few Delaware fans at the game, the group screamed until they were hoarse.

At half-time the band presented the "Good Old Days." The show was enthusiastically received by the New Hampshire students and alumni. At the end of the victorious game, the elated Delaware band marched onto the field and formed a "D" in a diamond while playing the "Fight Song."

The social event for the evening was a dance for New Hampshire and Delaware students in their new Student Center.

Sunday morning the group was aroused by a cheery telephone call to each room — "Good morning, it's five o'clock." Tired students slowly packed and came down for breakfast.

Around 6:30 a. m. the group was back on the bus for Boston, where they caught the train for the long ride home. Most people intended to sleep on the way home. However, since the last two cars of the train were occupied by the Penn State Blue Band, few people found time to rest or study.

The train arrived in Wilmington at 4:30 p. m. Sunday. The bus from Wilmington to Newark was far more quiet than the Friday morning ride. Most people were too tired to talk or to find the energy to sing any Delaware songs.

J. Robert King, assistant professor of music and director of the band, stated that the trip was one of the best the band has ever made. It could not have been possible without the ex-

cellent cooperation of everyone on the trip.

Mr. King added that the New Hampshire photographer felt that this was the best band he had ever seen in the New Hampshire stadium.

"If everyone in the band had a good time, the planning was well worth the effort," he added.

## Band Presents Fashion Crises

Band activities for Homecoming include a parade to the stadium and a pre-game show.

The pre game show will feature the fashions of 1958. The band will form a girl in a sack dress and play "She Wore a Yellow Ribbon." "The Man on the Flying Trapeze" is played as the band changes from a sack dress to a trapeze dress.

A parachute dress will be formed as the band plays "The U. S. Air Force Song." "Charleston" is the theme for the chemise dress.

The band will offer a solution to the fashion dilemma of 1958 by forming a girl and playing "I Want a Girl Just Like the Girl That Married Dear Old Dad."

## Snakes Initiate: Fete Freshmen

Sigma Nu has announced the initiation of C. Larry Dean, junior, and the pledging of sophomores James Garry, Roger Huber, and Robert Warrington on Wednesday, Oct. 22.

The annual Freshman Girls' Party was held last Friday with entertainment provided by the brothers.

A highlight of the evening was the selection of Sigma Nu's Freshman Sweetheart, Sue Murray. She received a loving cup, presented to her by Lt. Commander Jack Loose.

## School of Home Economics Honors its Outstanding Girls

Top students in the various branches of home economics have been honored by the school of home economics, Dean Irma Ayers disclosed recently.

Photographs of top scholars for the last semester are being displayed on a special bulletin board in Alison Hall.

Miss Barbara Fox, junior, is the highest ranking student in the school. Barbara is a member of the concert choir, the Home Economics Club, a junior counselor and a participant in dormitory sports. She is chairman for the annual Home Economics Club banquet, scholarship chairman and a member of the honor court for Sussex Hall and a solicitor for the campus chest.

A graduate of Mt. Pleasant High School, Miss Fox has attained dean's list ranking every semester since enrolling at the university.

Other outstanding students are Esther J. Moore, senior; Nannette Jablonski, junior; Germaine B. Homan, junior; Connie L. Reburn, sophomore; and Jane Persons, senior.

Miss Moore, is majoring in child development. She has been a junior counselor, treasurer of the Modern Dance Club and a member of the Home Economics Club. She plans to teach in a nursery school following her graduation.

The most outstanding foods and nutrition student is Miss Jablonski, who also plays a prominent role in campus extracurricular affairs. She is head-of-house in Sussex Hall where she previously served as secretary and as a member of dormitory committees. She has been active

in the Home Economics Club and plays clarinet in the university band.

Nanette plans to complete the American Dietetic Association Internship after graduation. She is also considering the possibility of combining the internship with graduate work.

Miss Homan, is interested in the technical aspects of textiles and clothing. She is a member of the Home Economics Club and the Commuters' Club.

Miss Reburn is interested in textiles and clothing as a major field of study. She is a member of the Aquatic Club.

Miss Persons is a general home economics major. She is a member of the Women's Chorus, chairman of the Thompson Hall honor court, and treasurer of the Home Economics Club.

Jane's professional interest lies in the area of home equipment and after graduation she plans to seek employment in industry as a home economist in the home service department of a utility company.

## Deposit Petitions At Dean's Office

Completed petitions for the freshmen class elections candidates must be deposited at the Dean of Students Office in Hulihan Hall by 12 noon Tuesday, Oct. 28.

Any freshman in good standing with the university is eligible to run for the office of president, secretary or treasurer.

The class elections will be held Thursday and Friday, Nov. 13 and 14, from 9 a. m. to 5 p. m.

*We Are Specialists!*



When you dine at the Post-House, you are dining in a specialty restaurant. Having a limited menu, which is the same every day, we feel that when we serve EGGS, HOT CAKES, WAFFLES, COUNTRY HAM, HAMBURGERS, GRILLED SANDWICHES, CRAB CAKES and TENDERLOIN STEAK PLATTERS, we serve them better.

The above items which constitute 80% of our business are made fresh daily, and that is the secret of serving good restaurant food. "It has to be made Fresh Every Day."

The next time you are in the neighborhood of a Post-House, stop in for one of our House Specialties.

## POSTHOUSE RESTAURANTS

105 N. UNION  
OL. 4-4414

43rd & Market  
PO. 4-1248

NEWARK, DELAWARE  
EN 8-3459

# Top men go to Texaco

*a leader in the constantly expanding field of petroleum*

BUILD A REWARDING CAREER for yourself with The Texas Company.

FIND OUT FIRST HAND the broad range of opportunities and benefits in the fields of your particular studies, made possible through TEXACO's nation-wide and world-wide scope of operations.

TEXACO'S REPRESENTATIVE will be interviewing on your campus soon, on the dates posted. *Sign up now.*

YOU WILL find it informative to see the booklet: "Opportunities with Texaco." This booklet is available in your placement office.

*Your opportunity:*

Research and Technical	Refining	
Chem Eng	M PhD	Chem Eng
Mech Eng	M	Civil Eng
Chemistry	M PhD	Mech Eng

The Texas Company



