

# The Review

VOL. 93 NO. 20

UNIVERSITY OF DELAWARE, NEWARK, DELAWARE

MONDAY, OCTOBER 26, 1970

## Rodney B Women Lose S-R Privileges

By SUSAN GREGORY

Rodney B lost its S-R privileges for one week last Wednesday night by a decision of the dorm's Judicial Board.

The reason given by the dorm's Judicial Board Chairman, Elsa Pancoast, AS1, was the the "dorm's security was definitely jeopardized over the past few weeks." Despite numerous warnings to keep the door

locked, it was left open by several girls. Also, the dorm's combination had been given, not only to freshmen girls, but to several members of Rodney A.

At the meeting of the house Judicial Board, it was decided that the entire dorm must suffer for the failure of a few because the few who committed the offenses were not known. Upperclass women who knew of the offenses failed to report them.

The meeting also discussed the responsibility of each girl to maintain the dorm's security by asking the offenders to report themselves. The failure to do so caused the entire dorm to lose the privilege because of the negligence or ignorance of several of its members.

Nancy Hawthorne, AS1, campus chairman of the Judicial Policy Board, stated the women of Rodney B were exposed to warning signs but nothing had worked. There is "no sense," she said, "of having an S-R system if it's going to make the dorm insecure. Hopefully, this will help solve some of the problems."

A dorm meeting will be held after the one week period to discuss the role of the dorm resident in relation to S-R. Miss Pancoast sees this as an opportunity to educate the dorm residents. At the meeting, one of the women in Rodney B stated that S-R is a privilege, not a right, and that each woman should become aware of her responsibility.

The Rodney B incident is the first dorm suspension of S-R on campus. Stuart Sharkey, director of residence, said, "We want the dorms to use their own judgment in cases regarding S-R."

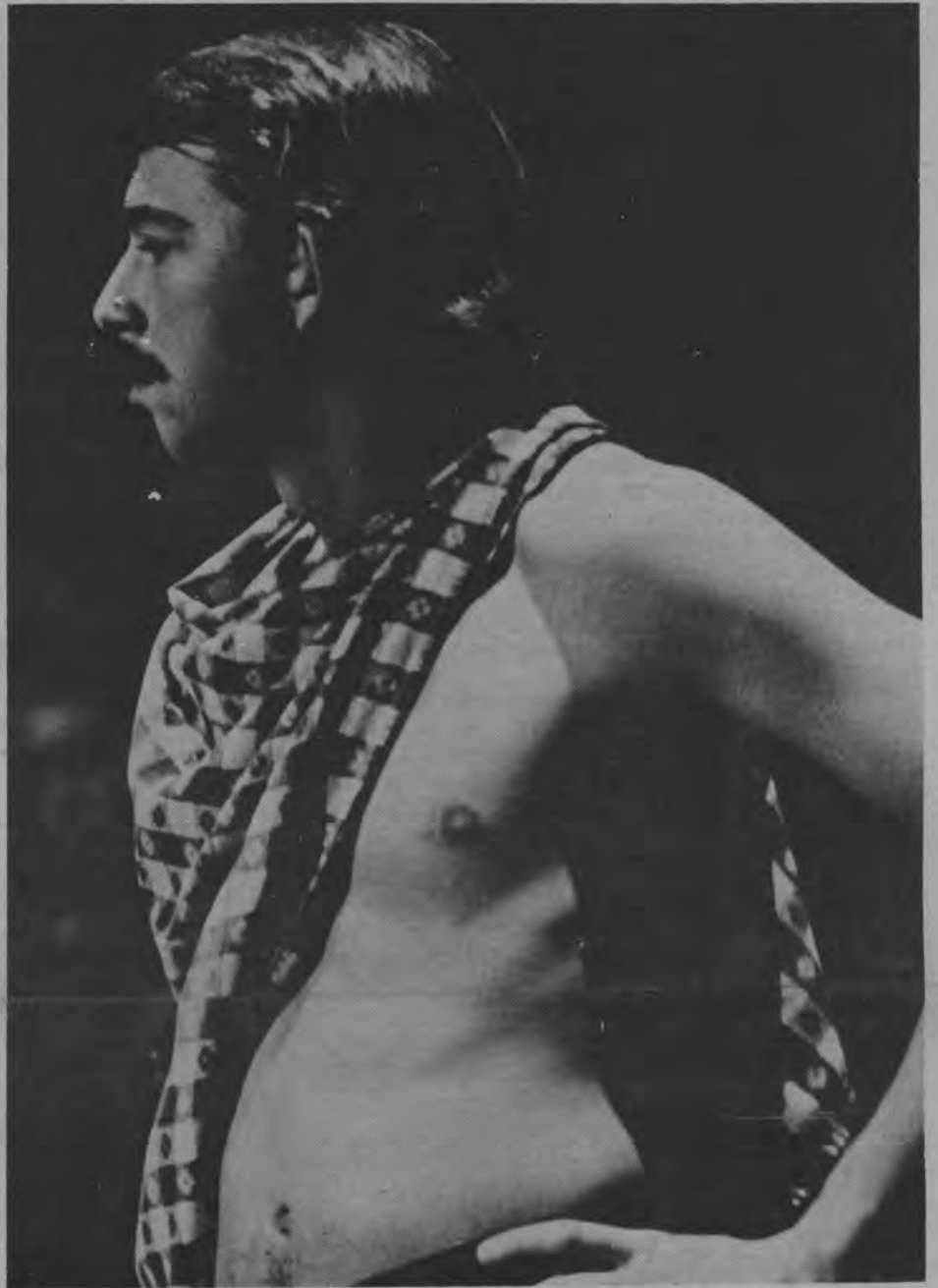
Miss Hawthorne added that freshmen have recently received S-R privileges which will probably eliminate future trouble.

### SR For Freshmen

Freshmen women now have self-regulated hours.

Judicial Policy Board passed self-regulation for freshmen women Tuesday afternoon with an 8-0 vote after SGA passed it unanimously Sunday 18.

Following the passage of self-regulation every women's dorm judicial board chairman was required to hold an orientation meeting by Friday. These meetings were held to collect the names of all participating girls to turn into security, and to familiarize these girls with the rules of self-regulation. The girls were given lists provided by the Residence Hall office on the rules.



Staff photo by Boonkens Yves

HECTOR ADAMANTLY REFUSES to commit his country to another war in the drama department's first seasonal production "Tiger at the Gates." Dave Pody, AS1, shot in rehearsal clothes, played the lead in the Mitchell production last week. See page 5 for the review.

## SGA Asks Bail Money For KSU Students

The Student Government Association Senate last night voted in favor of soliciting student contributions to help raise bail and legal aid money for indicted Kent State students.

A table for this purpose was to be set up today in the Student Center, manned by SGA Senators.

The meeting also saw a short demonstration by women senators protesting "male chauvinism" on the part of senate males. In addition to this senate action, Sami Bandak, Student Activities Committee Chairman, summed up his committee's future plans, and Mark McClafferty, SGA president, asked for student attendance at a Newark Town Meeting Tuesday at 8 p.m. in Town Hall to discuss the current parking problem.

The decision to solicit aid for Kent State students came in response to a telegram sent to the SGA from Kent State, asking that it help contribute to bail funds for more than 20 KSU students indicted by a federal grand jury.

The Senate also debated the possibility of matching student contributions with a corresponding contribution from SGA funds. The finance committee was directed

to investigate the issue and make a recommendation at next week's meeting.

Some senators felt that the SGA should not give money for political purposes. However, only one senator voted against soliciting voluntary student contributions.

"Down with male chauvinist pigs" read one of the placards carried by the women senators when they paraded into the SGA meeting last night. Their grievances apparently had come to a head when they were allegedly "slighted" by male senators in Sunday's touch football game between the SGA Senate and the Office of Student Affairs.

Kathy Tresham, AS2, introduced a bill demanding a public apology to all women students, recognizing their ability. The bill, co-sponsored by almost every woman present, was later withdrawn.

Bandak, in his report, apologized for this semester's lack of concerts. However, he promises three for next semester. The first will be Chicago at the Fieldhouse on February 28. The seats will be \$5 or \$6. Bandak said that the bands he had planned for this semester all pulled out at the last minute.

## Soles Explains Confrontation, Commitment

By RAY WILSON

Dr. James Soles, assistant professor of political science, lectured last Friday on "the challenges we face, confrontation and commitment" and expressed his disgust at Friday's Obituary issue of The Review.

The issue represented a lack of commitment and a "cop-out" on university problems according to Dr. Soles. He was especially angry at the title Obituary, because he maintained that the "university is not dead."

Dr. Soles addressed a small crowd of adults and students filling half of the Ewing Room in the Student Center. The main challenge that people must attempt is to "know thyself." Dr. Soles said that this is essential to confrontation since one cannot confront others if he cannot honestly look at himself.

### SELF-EXAMINATION

After self examination, one must then carefully make commitments and establish priorities. Dr. Soles emphasized that commitments will necessitate a loss in the individual's freedom because he must become totally involved with his commitments.

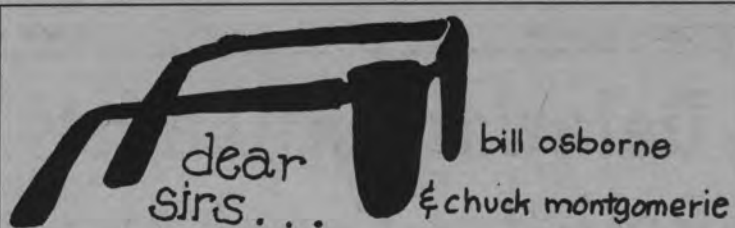
Examination of life must be a combination of reason and love. People who can combine these two are rare according to Dr. Soles.

He condemned those who only try to find a weak link in society so that they can attack it and also those who irrationally defend what they believe to be good. These two types of people often "lose their humanity" when involved in confrontation.

### PROTEST RIOTS

Violent protest riots are the easy way out of commitments according to Dr. Soles. Many of those who participate do so only because everyone else is involved. There is usually only a small hope that anything constructive will result.

In criticizing The Review, Dr. Soles disagreed with the statement that liberal professors have been hampered by the university administration.



bill osborne  
& chuck montgomerie

This column is designed to provide an easily accessible channel through which university community members may submit questions and receive honest and frank answers. The span of the questions is restricted only by your imagination and initiative. You ask it and we will fight the red tape to find you a qualified answer quickly.  
Send all questions to "Dear Sirs" c/o The Review, 301 Student Center. Your name and phone number must be included but may be withheld from publication upon your request. (The Editors).

Q. Dear Sirs:

I would appreciate learning why non-student personnel (frequently full time employees at the DuPont Company) are assigned the job of ushering at home football games and reimbursed with cash and free tickets. It is my opinion that these jobs should be allocated to students who are trying to finance their own education.

Yours truly,  
Allen Schwartzbaum  
Asst. Prof. Sociology

A. In order to answer your question, we again called on Delaware's assistant athletic director, Scott Duncan.

Duncan explained that when he first came to Delaware, 16 years ago, he began hiring students as ushers, program vendors, press box attendants, concession vendors, and parking lot attendants. The intention was to hire students whenever possible.

For the first three years that Duncan was at Delaware the only non-student employees were the main-gate ticket sellers. These people were usually bank tellers by profession who had an expertise in handling money.

However after a few years things gradually changed. Students, largely because of late morning Saturday classes, didn't arrive at the stadium in time to usher. Because of this reason and others Coach Duncan began to hire non-student personnel to usher at the games.

There are still students employed as press box attendants, program vendors, parking lot attendants, and concession vendors. As long as students can be hired that will efficiently perform these functions, student employees will be given a preference.

Ushers do not receive free tickets.

Q. Dear Sirs:

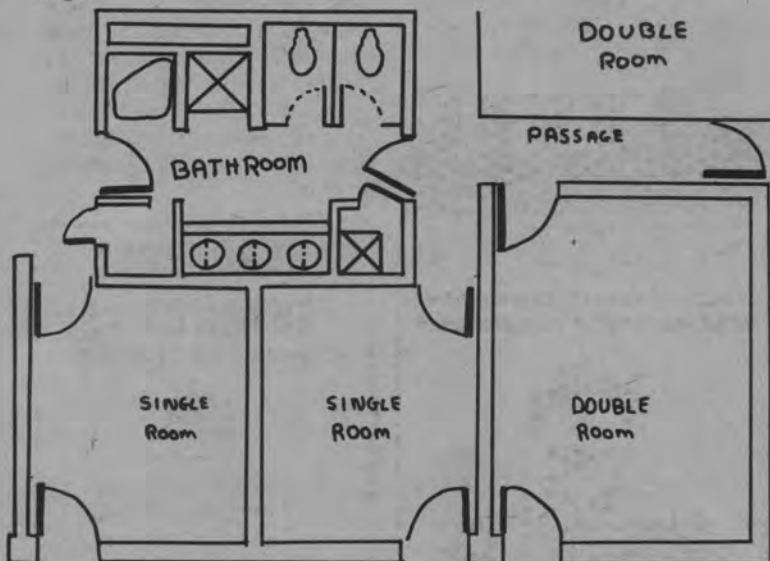
I would like some information concerning the new north campus dorm complex. Is there any truth to the rumor that these rooms are equipped with kitchen and bathroom facilities? Also, will the price of these rooms be any higher than the rest of the campus, and will they be opening as planned in September of 1971?

Jennifer Hankin AS2

A. We'll answer each of your questions separately.

1) There will be no kitchen facilities in the new dormitories. The only kitchens will be located in the hall commons, a separate building located in the center of a cluster of dorms. Each hall common will house lounges, TV rooms, vending machines and a kitchen.

The bathroom facilities are indicated in the following floor plan supplied by Richard P. Walker, the university's Superintendent of Construction. You will note that one bathroom will serve 12 students, four double rooms and four singles.



2) The rental price of the rooms has not been decided. The university treasurer's office told us that the Board of Trustees will establish rates for Pencader (new dorms) at their December meeting.

Other administrative sources, however, have speculated that rental rates will be higher for the new facilities. We are also informed that changes in the rental rates for all dorms are being considered. The new system would be graduated with the quality of the room.

If the new system is adopted it will probably work as follows: existing dorms-least expensive rates, Pencader dorms-moderately priced rates, New apartment dorms (yet to be constructed)-most expensive rates.

3) Yes, barring further costly strikes, the new dorms will be available for the fall semester of 1971-1972.

# New York Actors Present New Version 'Moby Dick'

By CHRISTINE MATUSZEWSKI

A new twist to a classic novel gave the E-204 and E-440 students at the university another perspective with which to view Melville's Moby Dick.

The production, staged by the Classical Stage Company Theatre in Greenwich Village, New York, took place on an almost empty stage with little lighting. The devices that were used, however, were extremely effective.

The whale was not seen by the audience--its presence was felt. A darkened room with a revolving overhead light, a noise resembling a foghorn and men violently pulling at ropes gave a very realistic picture of the confrontation with the whale.

The play itself ran true to the novel with one exception--the characters spoke in Shakespearean verse. Christopher Martin, Artistic Director (who also acted in the play), said he thought Melville to be inspired by Shakespeare.

Also, he thought the novel was originally conceived as a play because of extensive dialogue, built-in stage directions and several soliloquies.

The play, indeed, resembled one found in a Shakespearean theatre with American overtones. It became a bit incongruous at time, however, the overall

effect had great impact.

The audience which filled the little theatre was almost able to share in the characters' activities for there were about three feet away

from the action.

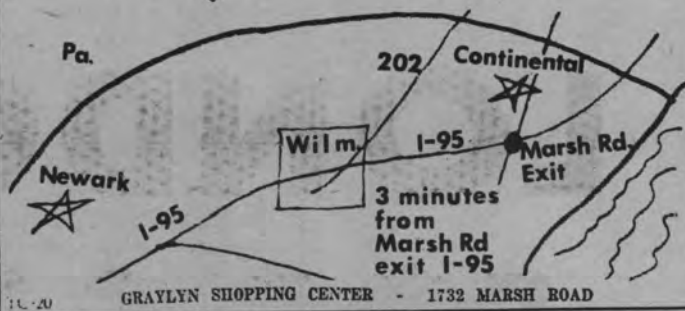
Moby Dick was an unusual production and gave the audience a glimpse of the romance and thrill of whaling.

CONTINENTAL JEWELERS, Inc. suggests.....

Symbol of a Dream  
**orange blossom**  
diamond rings



To the girl who knows what she wants but not where to find it. Match your style with our many distinctive designs. And ask us about our famous Orange Blossom guarantee.



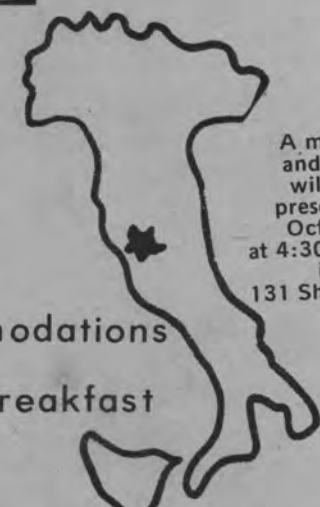
Spend a warm & Wonderful week in

From **Jan. 9** to **Jan. 16** **ROME**

For Only

**\$299<sup>00</sup>**

Price Includes: Round trip air fare, all transfers, luxurious hotel accommodations in the center of Rome, Continental Breakfast



A movie and talk will be presented Oct. 27 at 4:30 & 7:00 in 131 Sharp Lab

Each person plans his own individual itinerary from a complete list of options.

Credit is available--as a winterim project.

For More Info Call:  
994-7980  
738-2722  
738-9925

this trip open to students, faculty, staff and their immediate relatives.

Enclosed is a deposit of \$75 to reserve my seat to Rome.

Name \_\_\_\_\_  
Address \_\_\_\_\_  
Telephone \_\_\_\_\_  
Make checks payable to Bank of Del. Mail or drop checks off at the Bank of Del. office in the Newark Shopping Center.



# LONDON FOR SALE

**\$199**

**8 SMASHING DAYS**

**January 13-20**

**Round Trip Transportation Only -- \$140**

**Round trip jet, first class hotels, sightseeing, theatre tickets...**

A \$50 deposit is needed to insure reservations. Checks should be made payable to "London Holiday" and presented at the Charter Desk across from the Student Center Desk.

Additional information is available at the Charter Desk today, tomorrow and Wednesday from 11 a.m. to 2 p.m.

Final payment is due prior to December 2.

## Delaware Attempts Polluter Crackdown

By RAY WILSON

The state of Delaware is attempting to crack down on air polluters according to Joe Kliment, a chemist working for the Department of Natural Resources and Environmental Control.

At a meeting of the Student Coalition for the Environment last Thursday, Kliment outlined the various types of air pollutants and the methods that can be used to reduce them.

Kliment pointed out that pollution control is a new field in which we "don't have the technology" at present to adequately handle some of the problems. Many small companies simply do not have the money to buy expensive equipment to cut down pollution from their smokestacks.

There is also "not much cooperation" from neighboring states in the problem of "interstate pollution" caused by factories near the state line which allow their pollutants to drift into Delaware.

Kliment said that thousands of dollars worth of crops have been damaged over the years in New Castle County because of smog conditions. The ozone in smog also "attacks rubber." One observable effect of this is the small cracks that develop in whitewalls.

### COMBINATION OF GASES

Smog, which is fairly evenly distributed over New Castle County, is formed as the result of the combination of gases emitted from stacks and ultraviolet light from the sun. It is difficult to contain these gases. Kliment estimated that one and one-half million dollars would

be needed to control the pollution from each boiler in a power plant.

Particulates, which are the solid usually visible parts of stack emissions can be easily trapped by filters and sold at a profit to make material for building blocks. However, few companies are doing this.

Although the automobile is responsible for 40% of air pollution nationwide, according to Kliment, Delaware's problem is caused mainly by industry and power plants. Because of this, Governor Russell Peterson has decreed that all state buildings will burn only low sulfur fuel to lower pollution.

### INDUSTRY SHUT-DOWN

The governor also has the power to shut down certain industries if the pollution count gets too high and an alert is called.

Kliment predicted that the auto inspection lanes would soon have tests designed to keep "smokers" off the roads. New Jersey is already putting this into effect.

State police many even have the power to issue a summons to smoking diesels or cars when they travel on the interstate highway.

Open burning is already prohibited in upper New Castle County, except for the burning of leaves and branches which will be prohibited by new year. This has eliminated fires on garbage and auto dumps with the effect that Delaware is becoming a leading contributor for recycling of solid wastes.

The Student Coalition for the Environment now has a newsletter describing their activities. Copies can be obtained from Marci Malvin, AS4, editor, or at the Student Center desk. The Coalition meets every Thursday evening.

**STATE**  
Theatre  
NEWARK 348-3161

WED. THRU TUES.  
OCT. 21-27

DIRECT FROM ITS SENSATIONAL  
RESERVED SEAT ENGAGEMENT

20th Century-Fox presents  
**GEORGE C. SCOTT / KARL MALDEN**  
As General George S. Patton As General Omar N. Bradley  
in "PATTON"  
A FRANK McCARTHY-FRANKLIN J. SCHAFFNER PRODUCTION  
Produced by FRANK McCARTHY-FRANKLIN J. SCHAFFNER  
COLOR BY DE LUXE®

PHOTOGRAPHED IN  
**DIMENSION 150**  
100 NEW DIMENSIONS  
IN MOTION PICTURES

Show 8 p.m. only

SAT. & SUN. MATINEES  
OCT. 24, 25  
"HENSEL & GRETEL"  
Shown 1 P.M. Only

Starts Wed., Oct. 28th  
"BEYOND THE VALLEY  
OF THE DOLLS"

**SHADETREE**  
**AUTOMOTIVE**  
Imported Car Specialists

Race Preparation  
Foreign Car Repair  
And Maintenance  
998-0909  
Route 7 Stanton, Del.

THE PIPESMOKER'S  
HEADQUARTERS CUSTOM  
TOBACCO BLENDING  
IMPORTED TOBACCOS  
CIGARS FROM AROUND  
THE WORLD

**BEE HIVE co.**

39 E. MAIN ST.  
NEWARK, DEL.  
366-8725

# One Way To Help

"It wasn't constructive; it didn't offer any viable alternatives. All it did was criticize."

Last Friday The Review printed an Obituary Issue. A lot of people felt that it was simply a collection of empty, negative words.

It is true that constructive alternatives are needed; however, a campus newspaper has a responsibility to point out problems, and to make students, faculty, administrators and Board of Trustee members aware of the extent of these problems. The Review is as committed to solving the difficulties that

hinder the intellectual, social, and cultural advance of this campus as anyone else. We felt that our Obituary Issue was one way to help.

It is a shame that with so few people committed to encourage development here, that we should waste precious time quibbling over the "best" way. We should join together and thrust forward to make Delaware the campus we want and need. In the future, we intend to offer some viable alternatives. We urge others to do likewise.

## Letter To The Editor

# Conservatives At Delaware

To the Editor:

Before introducing Dave Dellinger a few weeks ago, Sami Bandak appeared before the audience as the persecuted soul if not the original discoverer of the Ten Commandments. It seems that the University students in inquiring why he only brings in sensational, radical grandstanders had implied that he just might possibly be somewhat biased.

Naturally Sami wanted to reassure we humble folk in this one-horse country town who are so desperately in need of some "culcha." After all, we found out, hadn't he contacted William F. Buckley and Barry Goldwater even though, of course, their schedules are filled for more than a year in advance.

Now it would seem that Mr. Bandak would be desperate for some genuine conservatives. With this thought in mind, we of the university Young Americans For Freedom chapter approached him

with the news that we were bringing Professors Lev Dobriansky and Yale Brozen to the campus. Their only fees would be for traveling expenses--peanuts compared to what the others would get for going into their skyrocket act.

We thought Sami would of course be agreeable to rendering us some financial support. Not so - all we got was an elaborate version of the Borneo jungle runaround, not once but twice.

It may just be that you won't have the opportunity to hear any conservatives at Delaware this year. Don't be misled into believing that you will, however, when Mr. Bandak brings in the despicable Ku Klux Klan and tries to foist them upon you as such.

John P. Fedele, AS1  
George R. Leach, AS1

## Our Man Hoppe

# Agnew And Elitist Snobs

By ARTHUR HOPPE

Mr. Agnew has been barnstorming the country lashing out at the haughty little clique of elitist snobs who "sneer at honesty, thrift, hard work, prudence, common decency and self-denial." Among other things.

So far, it's been a completely one-sided battle. Not a single elitist snob has stood up in his own defense.

Therefore, in the interests of fair play and equal time, we present an interview today with Mr. Nabob N. Nattering, a self-appointed spokesman for this haughty little clique.

\*\*\*

Q -- Are you now, or have you ever been, Mr. Nattering, an elitist snob?

A -- One of the elitist. My mother was Dr. Spock's first pateient. My father was a leading purveyor in the Eastern Establishmlishment of permissiveness and held the world's long-distance record in pussyfooting. I, myself, majored at an Ivy League college in snobbery with a minor in sneering. And I vote the straight Radiclib ticket.

Q -- Is it true that you sneer at honesty, thrift, hard work, prudence, common decency and self denial?

A -- Constantly. It's a sneer, I say, that makes the world go 'round. Due to years of constant sneering, you will notice that the left side of my upper lip is far more muscular than the right.

Q -- It isn't easy then?

A -- Oh, no. After sneering for three or four hours at, say, some example of common decency, one usually develops a tic. The secret is then to relax the sneer and arch a cynical eyebrow instead. I arch my right. In my case, it's the more disparaging one.

Q -- Are those your only weapons?

A -- Oh, no. I can also, if pressed by circumstances, look down my nose. For example, I always look down my nose at honesty and hard work. After all, driving a truck is not nearly as dignified or significant as pushing a pencil at a tax-exempt foundation.

Q -- Is that what you do, Mr. Nattering?

A -- Not a whit. I am the Vicar of Vacillation at our Temple of Sophomoric Sophistry. We worship at the Altar of Negativism. I lead the congregation of hopeless, mystical hypochondriacs of history in the pusillanimous chants.

Q -- What makes you this way, sir? Do you lust to divorce yourself from the ordinary?

A -- Of course. That's why we willingly wrench the Bill of Rights to cloak criminal and psychotic conduct.

Q -- Such as?

A -- Bank bombing. One of our functions is to hail as a hero the common criminal who throws a bomb at a bank. Before the dust has settled, we gather around and cry, "Hail, hero, hail!" By employing such techniques, we have, as you know, been able to take over the media, the college classroom and the entertainment and business worlds.

Q -- From his daily attacks it's obvious Mr. Agnew fears you as the gravest threat we face. Does your haughty little clique plan to take over the country?

A -- We'd like to. But, unfortunately, our little clique consists of only seven haughty members. Therefore, we're devoting our efforts to dividing the country by setting class against class, turning Americans against Americans and spreading hatred, contempt and vitriol. And I must say we're getting quite a bit of help.

Q -- But Mr. Agnew... Excuse me, Mr. Nattering, is that a haughty sneer?

A -- At the mention of Mr. Agnew? Good heavens, no. That's my comradely smile.

## The Review

VOL. 93 NO. 20 OCTOBER 26, 1970

Editor-in-chief ..... John M. Fuchs  
Executive Editor ..... Susan E. Shite  
Business Manager ..... Jane C. Ruppel  
Managing Editor ..... M. Brooke Murdock  
Sports Editor ..... Chuck Rau

Assistant Editors: Stu Drowos, Wayne Dean, Cathy Van Bergen, Kathy Horning.

Published twice weekly during the academic year by the undergraduate student body of the University of Delaware, Newark, Delaware 19711. Editorial (738-2648) and business (738-2649) offices are located at 300-303 Student Center.

Opinions expressed are not necessarily those of the university community. Advertising rates are on request. Subscriptions are \$6 per year.

Entered as second class matter, December 13, 1945, at the Newark, Delaware Post Office, under the Act of March 3, 1879.

National newspaper advertising sales handled through the National Educational Advertising Services.



**Bus To TEMPLE  
Game Of Oct. 31**

Round Trip Price:  
\$1.50  
Departure: 11:00 A.M.  
Student Center  
Parking Lot  
Bus Tickets: Room 100  
Student Center  
Game Tickets: Delaware  
Field House

**Review-WHEN Game**

Don't miss the annual REVIEW-WHEN football extravaganza Wednesday at 4:00 p.m. The REVIEW RAIDERS will try to make it two out of three against the weaker WHEN eagles.

**E-52 Good Quality**

**'Tiger' Growls Well**

By TOM HUNSDORFER

"Be it ever so humble, there's no place like Troy."

So sang the E 52' cast of "Tiger at the Gates" in the dressing room after their last performance on Sunday night, and sing they should. It was a good show.

Directed by John Mingus, a drama grad student, the Jean Giraudoux play ran for five nights with near record attendance. I saw the last presentation, and the cast responded well to an appreciative audience, giving a knowledgeable interpretation of an excellent play.

**ACTING GOOD**

While none of the acting was superb, much of it was very good. David Pody as Hector and Valerie Feiler as Cassandra were noteworthy, along with Terry Brubaker as Hecuba and Michael Walls as Ulysses.

Mr. Pody was particularly effective in presenting thoughtful, reasoned arguments against war while at the same time maintaining the poise and power of a warrior. Miss Feiler, too, was poised, and displayed a great sense of timing in her

excellent portrayal of the "Tiger" awakening.

Miss Brubaker did very well in appearing as a sage, bitter mother, a task which is difficult for a young actor. The appearance of worldliness and maturity was also handled nicely by Mr. Walls, who was very convincing and articulate in his speeches with Mr. Pody.

I was disappointed, however, by Lois Guibeson as Andromache and Elizabeth Reavey as Helen, but I am not quite sure why. Miss Guibeson was intense, but she showed very little of the love and pity of which she often spoke. Similarly, Miss Reavey was effective, but she failed to convey the passion and depth of feeling she spoke of

as being her existence.

**GOOD DIRECTION**

On the whole, though, it was a quality performance. The lesser characters, the music, the costumes and especially the simple, open setting were handled well. Mr. Mingus, the director, made a good blend of things.

His actors were always positioned well, and when there were groups on the stage, the focus was always on the important action. The end of the final scene was a skilled touch, with Helen being the last character we see, unchanged by all that has occurred.

In sum, it was a credible performance of a fine play, and a very enjoyable evening.

**Students Faculty Staff  
And Friends!**

come to a

film and discussion on

**ROME**

by a Representative of Lufthansa  
who has lived there

Admission Free

•Everyone Welcome

•Free Gifts Given

Tuesday October 27, 1970

4:30 P.M. and 7:00 P.M.

130 Sharp Lab

**High Rise Complex  
To Be Constructed**

The university has signed a contract not to exceed 10.5 million dollars for the erection of turn key housing for students on north campus, President E. A. Trabant announced last week.

Construction on the complex will begin immediately. The new structure will be paid for entirely by self-liquidating revenue bonds to be paid off by the rentals charged to tenants of the building.

The complex will feature twin 14 and 16 story residential units joined by a two-story lounge-recreation commons building.

The units will house approximately 1300 students in 452 suites each equipped with kitchenette and lounge-study room as well as bedrooms. There will be 255 double occupancy suites; 197 suites will accommodate four students each.

Signed October 19 by the president, the contract was awarded to Frederic G. Krapf and Sons Inc. of Delaware, the general contractor; the Ogden Development Corporation of New York City, the developer, and Charles Luckman Associates, of New York and Los Angeles, the architects.



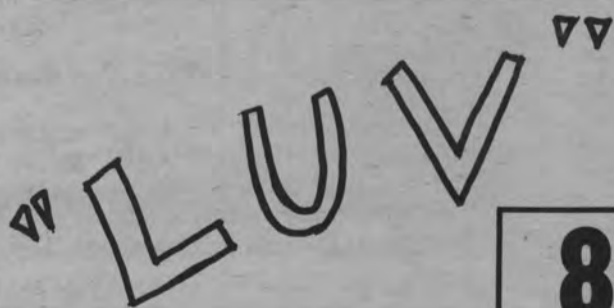
**52 Presents  
NO WHY**

and **IMAGES** by John Whiting

**8:00 P.M.**

AN EXPERIMENT  
IN AUDIENCE SENSITIVITY

**Oct. 29, 30, 31**



Murray  
by Schisgal

**8:15 P.M.**

**NOV. 12, 13, 14**

All Performances In 104 Mitchell Hall  
**Admission Free To All!**

**WAR**

When he dies he'll  
go to heaven  
because he's spent  
his time in hell.

The Guys and Dolls  
and the manage-  
ment also agree with  
him. Peace brother  
peace.



In hell



46 E. MAIN ST.  
NEWARK

# Electric Factory Dominos, Clapton Perform

By CHARLES D'ORAZIO

Recently, The Electric Factory saw Ballin' Jack, Toe Fat, and Derek and the Dominos, the last being Eric Clapton's new group. If the Dominos sounded remarkably like Delaney, Bonnie and Friends, it is because all the Dominos came out of the Friends.

Pianist/organist Bobby Whitlock and bass player Carl Radle were with Bonnie and Delanie from the beginning, drummer Jim Gordon joined up along the way, and Clapton has been associated with them since at least summer before last when Blind Faith toured the U. S. with Delaney Bramlett's then unknown group. Derek and the other three Dominos have played together in the Friends' "On Tour" album and in the "Eric Clapton" album, and have just released their own entitled "Lay-La and Other Love Songs."

Toe Fat is a British group currently touring the U.S. with Derek and the Dominos. With two guitars, drums and a singer they put down what could be called a loud, heavy, basic rock and roll beat; it could also be called monotonous, as every song ended up sounding about the same, each lasting a very standard two or three minutes.

Male chauvinism seems to be a big theme for this group, with a lead singer gyrating and stomping like a cross between Elvis Presley and Mick Jagger and lyrics like "I've got girls out in California, girls in New York City, girls in between; got to really work to keep my business clean."

Seattle based Ballin' Jack is a more jazz oriented group with a greater range of sound and instruments--flute, alto sax, trumpet, trombone, as well as guitars and drums, and a style not unlike Chicago's.

Just an observation in passing for what it's worth: both of these groups illustrated what might be a trend in rock toward the old look-alike look. It was not matching "Teddy boy" suits, but for Ballin' Jack it was matching white or maroon, slick, skin tight bells and variously colored body shirts, while Toe Fat all wore denim bells and either identical, orange knit shirts or identical, dark blue body shirts.

Is it possible that as rock music has come out of the 'underground' and become 'established,' conformity and imitation are destroying the earlier spontaneity?

Derek and the Dominos have the driving, quick tempo rock-and-roll and boogie beats of Delaney, Bonnie and Friends but without the musical range and variation of the larger orchestra type group.

Clapton's perfect finger work goes over, under, and around the basic rhythm put down by piano or organ, bass, and drums, and he delivers the vocals, solo for the most part but with some help from Bobby Whitlock. They did mostly new songs, including "Why Does Love Got to Be So Sad," "Blues Power," their new single "Tell the Truth," "Nobody Loves You When You're Down and Out," "Love That Country Life," and perhaps as a tribute, "Little Wing," a cut

of Hendrix' on "Axis: Bold as Love." The music was good (perfect?) but nothing to get excited about.

Excitement--the intensely (almost religiously) emotional excitement that can bond a rock concert crowd together in enthusiastic involvement and feelings of peace, love, and brotherhood--such as occurred at Woodstock or at the Lighthouse concert here last May (remember the medley that included "Love Is All You Need" and "Give Peace a Chance"?), just did not happen Friday nite at the Factory. The closest thing to the mystical audience involvement was a half-hearted teeny-bopperish mounting of the stage as the Dominos finished their set.

## ABORTION COUNSELING, INFORMATION AND REFERRAL SERVICES

Abortions up to 24 weeks of pregnancy are now legal in New York State. There are no residency restrictions at cooperating hospitals and clinics. Only the consent of the patient and the performing physician is required.

If you think you are pregnant, consult your doctor. Don't delay. Early abortions are simpler and safer.

If you need information or professional assistance, including immediate registration into available hospitals and clinics, telephone:

### THE ABORTION INFORMATION AGENCY, INC.

160 WEST 86th STREET  
NEW YORK, N. Y. 10024

212 - 873 - 6650

8 A.M. TO 10 P.M.  
SEVEN DAYS A WEEK

# From long to longest



No matter how long or how short your eyelashes are, they can only improve with Maybelline Ultra Lash Mascara. Because Ultra Lash lengthens and thickens each lash with every stroke. It works with a special formula hidden deep inside the brush that comes out only when it strokes your lash.

Ultra Lash darkens and curls lashes. Separates them, too. No matting. No messy fibers. So why settle for long when you can have long, longer... longest lashes with Ultra Lash Mascara from Maybelline.



*Maybelline*

The finest in eye make-up, yet sensibly priced.

Get your music needs at

# MAC ABEE'S

Records Tapes  
Stereos

Tape Players & Recorders

Accessories

## 10% DISCOUNT

On any album or tape purchase with this coupon only when presented at MacAbees

### REMEMBER

Thrifty Bees Shop at MacAbee's

# MAC ABEE'S

110 W. Main St. Newark  
368-5373

# Unbeaten Brown Takes Title

By RICH CONOVER

Brown (7-0) came from behind to defeat Sharp (6-1) 9-6 for the intramural football Dorm Division II crown.

Sharp scored on their first series for a 6-0 lead. Steve Tollman then forced Sharp

into a safety. The winning score came on a 20 yard pass from Rich Marsey to Ralph Piazza.

Lane and Russell C finished with 3-3-1 records. Dickinson B finished at 3-4; Gilbert A and Harrington E

ended up at 2-4-1 and Gilbert C had a perfect 0-7 record.

Russell A (6-1) leads the Dorm Division I after beating Harrington A 25-0. Sypherd (6-1-1) and Russell E (5-1-1) who tied for the first last week, tied 13-13. Sypherd also beat Rodney F 13-0.

win over Lambda Chi Alpha (0-10). Alpha Epsilon Pi (7-2) split its two games losing to KA 19-6 and beating Delta Upsilon (4-5) 13-6. Theta Chi beat Sig Ep 35-19 to help create the five-way tie.

Today Russell A could clinch their Divisional title by beating Gilbert E at Frazier Field.

Tomorrow has three very important games in the Frat League. Theta Chi and Sig Nu clash at Frazier Field. ATO also plays at Frazier Field against Delta Upsilon (4-5). At the South Field House AEPi takes on Sig Ep.

Lambert (Rodney A) beat Bob Bethards (Lambda Chi Alpha) to advance to the finals. Campus Division II saw Keith Shellenhamer (PKT) beat Ron Robinson (Brown) and Barry Sloan (Sharp) beat Bob Johnson (Sypherd) in the semi's. Campus Division III had Milt Ginsiorsky (Russell A) beat Bob Tober (PKT) and Denny Polinkoff (Rodney A) beat Al Feltzin (Sharp) in the semis. Independent Division I has Joe Lee (Gilbert A) meeting Arty Lincoln (AEPi) for the title.

Independent Division II semis had Eddy Dharmawan beat Jim Hayman (Harrington A) and Chuck Rau (Russell A) beat Larry Taylor (Gilbert A).

## RAH RAHS PERFECT

The Rah Rahs ended their independent season with a 10-0 record for the league championship. They beat the Sun Devils 20-6, beat the Zonkers 19-7 and beat Gilbert A "B" team 29-6.

Five teams are tied for the Fraternity League lead. Last week's leader Sigma Nu (7-2) lost to Sigma Phi Epsilon (7-2) 14-8. Sigma Nu had a 2-0 lead at half which they upped to 8-0. Sig Ep came back behind touchdowns by Jeff Burgher and Reagen Beck and conversions by Robby Schroeder and Rich Maraziti to win the game.

Kappa Alpha (5-4) rallied to upset Theta Chi (7-2) 19-13. Theta Chi took a 13-12 lead in the second half but a 30 yard pass from Bo Hudson to Dave Yates with four minutes to go gave KA its victory.

## ATO WINS TWICE

Alpha Tau Omega (7-2) beat Delta Tau Delta (2-7) 26-7 and received a forfeit

## PLAYOFFS START

On Wednesday the playoffs will start with the pitting of the Dorm champs against each other and the battle of the possible Frat co-leaders.

In the semifinals of the Campus League Handball Tournament John Fabris (Sig Nu) defeated Paul Kirkley (Sig Nu) and Ted Zink (ATO) defeated Bob Vinikoor (Sig Nu). Bill France (Sypherd) won the Independent League by beating Bill Rose (Sypherd).

## TABLE TENNIS SEMIS

In Campus League Division I of Table Tennis, Charlie Hahn (Russell A) beat Steve Luca (Sharp) and Bob

## FOR SALE

a historical journal of the university of delaware 1970-1971 in both color and black & white with a minimum amount of print which does not overburden the mind—ruin the aesthetic value of life for

\$8<sup>00</sup>

(until nov. 6)

## BUY A BLUE HEN

## THIS WEEK

Tomorrow

Politics- Coffee With The Candidates- Mr. John Daniello, Candidate for State Representative, will be the guest speaker in Harrington D and E Lounge.

Recital- student recital at 7 p.m. in Rm. 140, Smith Hall.

Wednesday

Environment- Robert D. Varrin, director of the Water Resources will speak at 7 p.m. in Rm. 007 Hall Education Building. The title of his lecture is 'Water and People.'

The Greatest Hits by the Greatest Composers on Columbia Records

**Gershwin's GREATEST HITS**  
Rhapsody in Blue, An American in Paris, 3 Preludes, Concerto in F, Finales, Porgy and Bess - A Symphonic Picture - Selections  
Leonard Bernstein, Eugene Ormandy, Philadelphia Orchestra  
Andre Kostelanetz, Oscar Lavant, Andre Previn



\*MS 7518

**Bach's GREATEST HITS Vol. 1**  
Jesu, Joy of Men's Desiring/A Mighty Fortress, Toccata and Fugue in D Minor, and more  
ORMANDY/BIGGS/CASALS  
Carlos/Folkman (Switched-On Bach)



\*MS 7501

**Beethoven's GREATEST HITS**  
Ode to Joy, Fifth Symphony (First Movement), Moonlight Sonata (First Movement), and more  
BERNSTEIN, PHILIPPE ENTREMONT, ORMANDY, MORMON TABERNACLE CHOIR



\*MS 7504

JOHANN STRAUSS' GREATEST HITS  
Blue Danube Waltz, Pizzicato Polka, Tales From the Vienna Woods, and more  
ORMANDY  
PHILADELPHIA ORCHESTRA



\*MS 7502

**CHOPIN'S GREATEST HITS:**  
Minute Waltz/Military Polonaise, Fantaisie Impromptu and others  
Eugene Ormandy, Philadelphia Orchestra  
Andre Kostelanetz, New York Philharmonic, Philippe Entremont



\*MS 7506

**Tchaikovsky's GREATEST HITS Vol. 1**  
1812 Overture, Waltz of the Flowers, Andante Cantabile, and more  
BERNSTEIN, NEW YORK PHILHARMONIC, ORMANDY, PHILADELPHIA ORCHESTRA



\*MS 7503

**Handel's GREATEST HITS**  
Largo, Hallelujah Chorus, The Harmonious Blacksmith, Water Music Suite, and others  
Mormon Tabernacle Choir  
E. Power Biggs, Igor Kipnis, Eugene Ormandy, Philadelphia Orchestra



\*MS 7515

**RACHMANINOFF'S GREATEST HITS**  
Piano Concerto No. 2, Vocalise, Eighteenth Variation, Preludes in G Minor, G-Sharp Minor and C-Sharp Minor  
Leonard Bernstein, Eugene Ormandy, New York Philharmonic, Philadelphia Orchestra  
Philippe Entremont, Gary Graffman



\*MS 7508

**Wagner's GREATEST HITS**  
Ride of the Valkyries, Brudal Chorus, Lohengrin, Tannhauser Festmarsch, Meistersinger Overture, Pilgrim's Chorus, and others  
Leonard Bernstein, Eugene Ormandy, George Szell, Mormon Tabernacle Choir



\*MS 7511

**Bartok's GREATEST HITS**  
Baba Lu Vasa, Paganini, and others  
Leonard Bernstein, New York Philharmonic, Eugene Ormandy, Philadelphia Orchestra



\*MS 7512

## MORE GREATEST HITS

- Bizet's Greatest Hits \*MS 7517
- Copland's Greatest Hits \*MS 7521
- Debussy's Greatest Hits MS 7523
- Dvorak's Greatest Hits \*MS 7524
- Grieg's Greatest Hits \*MS 7505
- Rimsky-Korsakov's Greatest Hits \*MS 7509
- Mendelssohn's Greatest Hits \*MS 7516
- Mozart's Greatest Hits \*MS 7507
- Puccini's Greatest Hits \*MS 7525
- Saint-Saëns' Greatest Hits MS 7522

\$5.98 Series

\$7.98 Series

\$3<sup>98</sup> Each LP

\$5<sup>98</sup> Each Tape

Also available on tape.

*Delaware Music House*

132 EAST MAIN STREET NEWARK • DELAWARE 19711

# Booters Beat Drexel 3-0; Face Tough PMC Wednesday

By WAYNE DEAN

Delaware's soccer team continue its winning ways Saturday as they defeated Drexel 3-0 in an away contest.

The big man for the Hens was Jerry Cooper as he scored all three goals and was assisted twice by Bill Dannenberg. Cooper's first goal came with two minutes and 50 seconds gone in the second period, assisted by Dannenberg.

Hens' coach Loren Kline stated that the first half was an aggressive one for the Hens. "The team completely dominated Drexel. Most of the half was played in their half of the field. Our boys showed aggressive playing with good passing and excellent ball control."

In the third period, Dannenberg again assisted Cooper as Cooper scored with eleven minutes left in the period. The Hens' final tally came with only one minute to go in the game as Cooper scored an unassisted goal.

## AGGRESSIVE

The Hens' aggressiveness is

verified by the statistics, especially the shots on goal of which Delaware had 41 and Drexel had nine. Drexel's goalie had to save 18 Delaware shots, while the Hen goalie saved four Drexel shots.

Coach Kline remarked, "Drexel seemed to be playing a defensive game. They were not aggressive and it seemed as though they were waiting for a break."

"I hope that this victory will be the turning point for us. After last week's tie with Gettysburg, it seemed as though we had hit rock bottom. I feel that now the team is striving for the all important Bucknell match."

## PMC WEDNESDAY

The Hens take a 7-0-1 record into their home match with PMC Wednesday. Coach Kline feels that they will be tough. "We don't know much about them," he remarked, "They will give us a tough match and I'm sure they remember their 1-0 victory

last year." Following the PMC match the Hens travel to temple on Saturday and finish up at home November 7 against Bucknell.

"The Temple and Bucknell games will hold the key for us," said Coach Kline, "We haven't beat temple in soccer for over 30 years and the Bucknell game should decide whether or not we win our section of the conference."

## FROSH WIN

The freshmen team playing its last match, defeated the Drexel frosh 4-0 making their final record 3-2.

Bruce Keisel scored for the Hens with 40 seconds gone in the match giving Delaware a 1-0 advantage. Bruce Weber scored two goals and Steve Monson one for the Hens.

When asked about freshman prospects for next year, Coach Kline said, "There are at least four or five players who can really help the varsity team. We will find out who the best prospects are during spring training."

## On Two Point Conversion

# Frosh Bow To Temple

By DAVE AYDELOTTE

Coach Jimmy Flynn summed it up in this fashion: "It was the best freshmen football game ever involving Delaware, but Temple just has a good football team."

Flynn and Delaware's

freshmen travelled to Philadelphia Friday afternoon with a 2-0 won lost record to meet the Owlets at their stadium. The result, a 22-21 victory for Temple. Quarterback Pete Selk threw to Bob Bernardo for a two

point conversion to clinch the game for Temple, following his ten yard TD scoring strike to Mike Blandina with only 2:50 left in the game.

The loss was the first of the year for the Blue Chicks, who rallied from a 14-0 deficit to take a 21-14 lead, only to then bow out in the fourth quarter.

## GOOD SECOND HALF

"We had the ball for 26 offensive plays in the first half," said Flynn, "and couldn't do a thing. In the second half, after those adjustments, we had it 37 times and played the way we're capable of playing."

Scotty Reihm, five-foot-11 inch quarterback from Middletown High, led Delaware's balanced attack completing seven of 14 passes, good for 156 yards and two touchdowns. On the ground the freshmen amassed 204 yards on 49 carries and one TD. Temple came close to matching Delaware's offensive statistics, passing for 165 yards and rushing for an additional 135 yards.

## REIHM'S BEST GAME

"There's no doubt about it," asserted offensive line coach Mickey Kwiatkowski, "Reihm played his best game of the year. He stayed real cool, real clam, and just did the job."

"There was some real fine hitting, and some good solid whacks out there this afternoon," said Flynn, "and I'm very proud of this team."



Staff photo by Chris Petroski

NOT ENOUGH --- Bob Stearns climbs one of the many hills on Delaware's home Polly Drummond course. Stearns and his team mates did not have it Saturday when they fell 17-38 to a strong American U' team.

# Roadrunners Fall; Mueller Fourth

By BILL HOEFMAN

Coach Larry Pratt's cross country team fell to a strong American College squad Saturday on the 5.25 mile Polly Drummond Hill course.

American exhibited team depth as they captured five of the first six places in a 17-38 meet. Andy Pawlowski won the race with a 28:57 time.

## MUELLER FOURTH

The Delaware harriers who placed, led by fourth place finisher Bob Mueller, were Bob Stearns, Pete Sukalo, Frank Whittington and DeWhit Henry.

Delaware's freshmen ran with the varsity as exhibition and would have greatly aided the score had they been counted. They placed seventh, ninth, tenth, and eleventh. They were Steve Sukov, Mike Riley, Tom Sherrier and Bob Romansky.

The usual course length for freshmen is 3.0 miles.

The harriers record to date is three wins and five losses. Delaware will next meet

## Wrestling Managers

The varsity wrestling team is in need of managers. If you are interested contact Lloyd Black at 737-9822, room 357.

Drexel this Wednesday at 3:30 p.m.

## Quick Pitch

# Rah Rah Not Dead Yet

By CHUCH RAU

When referring to the recent election of CYNTHIA (the chicken) as Delaware's Homecoming Queen personable Sami Bandak, Student Activities Committee Chairman, said, "It is a reflection of changes and not a joke."

"I hope it leads to the eradication of the whole event (Homecoming). The rah rah activity is a thing of the past as students look more seriously at the future."

Perhaps it is only because of my extreme naivety in regard to the inordinately serious problems which are presently pummeling this campus (I've never had a class cancelled because of a bomb scare), but I must wholeheartedly disagree with Mr. Bandak.

Anyone who thinks that Cynthia was elected because 433 students went to the polls thinking, "Ah, now I'll show those Delaware reactionaries where the real power lies on this campus. We'll elect Cynthia and make a farce of their ritualistic, tradition-found institution, Homecoming. All power to the people," has got problems.

Cynthia was elected as a joke. It was the thing to do. Why look, Temple elected a guy last year, why don't we have a chicken this year? And we did.

As for Cynthia's election leading to "the eradication" of Homecoming, it might. Only time will tell. But I'm sorry, as of now there is just no way that the "rah rah activity is a thing of the past."

Although future futures are not always necessarily equivalent to past futures, the rah rah

activity such as sports events are here to stay for a long time to come.

Without a little bit of rah rah activity to blow the steam off, the typical student would lose his mind, what with all those solutions to foreign and domestic problems that he and the President are expected to come up with daily.

No, Mr. Bandak, rah rah activity is not a thing of the past. The fact of the matter is that if the relevancy of student organizations on this campus were gauged by student participation and student support neither this newspaper, nor WHEN, nor SGA nor any other group save the most rah rah of all could truly be considered relevant to student life. That group would be our Big Blue Machine, the football team.

\*\*\*\*

Speaking of the football team, it looks as if they are going to have their work cut out for them this weekend. They travel to Temple for their third Homecoming in a row. The Owls will be out to get some revenge for last year's 33-0 loss at the hands of the Hens.

They just may have the manpower to do it, too. They are 5-1 on the season with only an opening loss to Akron to mar their record.

But the Hens will be ready for them, because with a big victory over Division I Temple under their wings, Delaware should go higher than seventh and sixth in the small college polls. They might even get a little ink in that national sports magazine that has a marked tendency to ignore the small time Hens, just maybe.