



ISSN 0145-0549

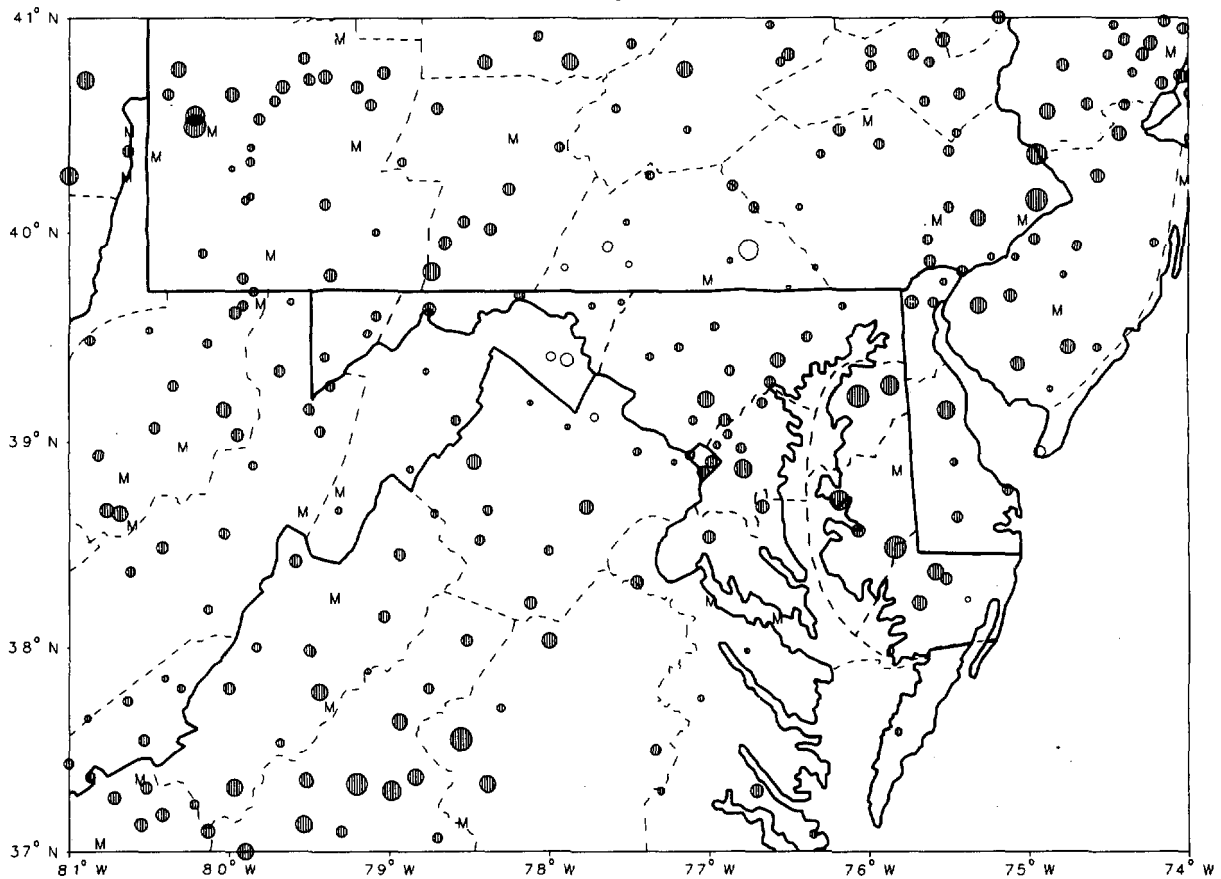
CLIMATOLOGICAL DATA MARYLAND AND DELAWARE

JUNE 1989

VOLUME 93 NUMBER 6

MONTHLY PRECIPITATION DEPARTURE FROM INDIVIDUAL STATION NORMALS (1951-1980)

- M INCOMPLETE DATA FOR THE MONTH
- ∇ EXACTLY NORMAL
- 5, 10, 20, ... 50% OR MORE BELOW NORMAL
- 10, 20, 40, ... 100% OR MORE ABOVE NORMAL



CIRCLE DIAMETER IS PROPORTIONAL TO DEPARTURE ON A CONTINUOUS SCALE

"I CERTIFY THAT THIS IS AN OFFICIAL PUBLICATION OF THE NATIONAL OCEANIC AND ATMOSPHERIC ADMINISTRATION (NOAA). IT IS COMPILED USING INFORMATION FROM WEATHER OBSERVING SITES SUPERVISED BY NOAA/NATIONAL WEATHER SERVICE AND RECEIVED AT THE NATIONAL CLIMATIC DATA CENTER (NCDC), ASHEVILLE, NORTH CAROLINA 28801."

Kenneth D. Haden

DIRECTOR, NATIONAL CLIMATIC DATA CENTER

noaa

NATIONAL
OCEANIC AND
ATMOSPHERIC ADMINISTRATION

NATIONAL
ENVIRONMENTAL SATELLITE, DATA
AND INFORMATION SERVICE

NATIONAL
CLIMATIC DATA CENTER
ASHEVILLE NORTH CAROLINA

TEMPERATURE AND PRECIPITATION EXTREMES

MARYLAND AND
DELAWARE
JUNE 1989

MARYLAND
 HIGHEST TEMPERATURE 102
 LOWEST TEMPERATURE 43
 GREATEST TOTAL PRECIPITATION 15.44
 LEAST TOTAL PRECIPITATION 2.90
 GREATEST 1 DAY PRECIPITATION 3.32

DELAWARE
 HIGHEST TEMPERATURE 96
 LOWEST TEMPERATURE 51
 GREATEST TOTAL PRECIPITATION 9.13
 LEAST TOTAL PRECIPITATION 4.74
 GREATEST 1 DAY PRECIPITATION 2.53

JUNE 3
 JUNE 18

 JUNE 23

 JUNE 27
 JUNE 12

 JUNE 21

ASSATEAGUE IS NATL SEA
 OAKLAND 1 SE
 CHESTERTOWN
 ASSATEAGUE IS NATL SEA
 CHESTERTOWN

 DOVER
 GEORGETOWN 5 SW
 DOVER
 MILFORD 4 SE
 DOVER

MONTHLY SUMMARIZED STATION AND DIVISIONAL DATA

MARYLAND AND
DELAWARE
JUNE 1989

STATION	TEMPERATURE (°F)													PRECIPITATION (IN)							
	AVERAGE MAXIMUM	AVERAGE MINIMUM	AVERAGE	DEPARTURE FROM NORMAL	HIGHEST DATE	LOWEST DATE	HEATING DEGREE DAYS	COOLING DEGREE DAYS	NO. OF DAYS				TOTAL	DEPARTURE FROM NORMAL	GREATEST DAY DATE	SNOW, SLEET			NO. OF DAYS		
									90 OR ABOVE	32 OR BELOW	32 OR BELOW	0 OR BELOW				TOTAL	DEPTH ON GROUND	DATE	.10 OR MORE	.50 OR MORE	1.00 OR MORE
EMMITSBURG 2 SE	84.9	66.3	75.1		9127	4912	3	22	1	0	0	0	5.73		1.30	17	.0	0	13	5	1
FREDERICK POLICE BRKS	84.9	66.3	75.1		9527	5512	3	22	1	0	0	0	4.94		1.73	20	.0	0	12	4	1
MILLERS 4 NE	79.6	66.3	71.4		9027	5130	3	22	1	0	0	0	4.91		1.02	22	.0	0	11	4	1
ROCKVILLE 1 NE	81.2	66.1	73.7	2.2	9027+	5412	0	22	2	0	0	0	5.48	1.49	2.11	23	.0	0	10	2	2
TOWSON	83.3	66.6	73.5		9527	5312	0	23	3	0	0	0	8.70	4.66	1.76	22	.0	0	11	7	3
UNIONVILLE	83.1	66.7	72.4	3.1	9227+	4812	0	23	4	0	0	0	5.84	1.76	1.07	23	.0	0	10	6	2
WESTMINSTER POLICE BRK	82.8	66.0	70.9	1.0	9328+	4914	0	19	4	0	0	0	5.71	1.62	1.70	23	.0	0	12	3	1
WOODSTOCK	82.8	66.0	73.7	3.4	9327	5112	0	26	4	0	0	0	6.01	1.98	1.74	24	.0	0	9	5	2
--DIVISIONAL DATA-->			73.0	2.2									5.87	1.82			.0				
APPALACHIAN MOUNTAIN 07																					
CUMBERLAND 2	82.0	60.1	71.1	.7	921	5117+	2	19	5	0	0	0	7.30	3.52	2.31	17	.0	0	12	6	1
FROSTBURG 2	74.2	57.6	65.9		8528	4811	4	8	0	0	0	0	4.83		.99	4	.0	0	9	3	0
HAGERSTOWN	81.6	62.9	72.3	1.3	9227+	4911	2	22	4	0	0	0	4.54	.62	1.12	9	.0	0	8	3	1
HANCOCK FRUIT LAB	81.5	59.1	70.3	1.8	932	4812	7	17	3	0	0	0	6.31	2.45	1.50	24	.0	0	11	3	2
--DIVISIONAL DATA-->			69.9	.4									5.75	2.00			.0				
ALLEGHENY PLATEAU 08																					
MC HENRY 2 NW	74.6	56.5	65.6		8528	4611	5	8	0	0	0	0	6.72		1.46	6	.0	0	13	6	2
OAKLAND 1 SE	75.4	56.9	66.2	2.6	8427+	4318+	4	8	0	0	0	0	6.44	2.08	1.18	6	.0	0	14	4	3
SAVAGE RIVER DAM	77.6	57.8	67.7	2.3	8826+	4612	2	11	0	0	0	0	4.62	1.12	.78	6	.0	0	13	3	0
--DIVISIONAL DATA-->			66.5	2.5									5.93	1.79			.0				
DELAWARE																					
NORTHERN 01																					
NEWARK UNIVERSITY FARM	83.6	63.3	73.5	2.2	9327+	5212	0	26	5	0	0	0	7.37	3.62	1.60	23	.0	0	9	6	3
WILMINGTON WSO ARPT	82.5	66.1	74.3	3.1	9327+	5412	0	28	4	0	0	0	5.43	1.92	1.00	7	.0	0	11	5	1
WILMINGTON PORTER RSVR	81.2	65.5	73.4	3.0	9527	5412	0	25	3	0	0	0	4.75	.75	1.78	7	.0	0	10	3	1
--DIVISIONAL DATA-->			73.7	2.5									5.85	2.16			.0				
SOUTHERN 02																					
DOVER	85.1	65.0	75.1	2.5	9627	5512	0	31	5	0	0	0	9.13	5.52	2.53	21	.0	0	12	7	3
GEORGETOWN 5 SW	84.3	66.1	75.2	3.7	9428+	5112	1	31	7	0	0	0	5.96	2.37	1.44	15	.0	0	8	5	3
GREENWOOD 2 NE	83.9	65.8	74.9		9227+	5312	0	30	4	0	0	0	7.23		1.76	7	.0	0	11	8	1
LEWES	84.6	67.9	76.3	5.6	942+	5813+	0	34	5	0	0	0	6.04	2.34	1.54	8	.0	0	8	5	2
MILFORD 4 SE	83.8	66.9	75.4	3.4	932+	5512	0	31	5	0	0	0	4.74	1.02	1.23	17	.0	0	11	3	2
--DIVISIONAL DATA-->			75.4	3.6									6.62	2.97			.0				

SEE REFERENCE NOTES FOLLOWING STATION INDEX

DAILY PRECIPITATION (INCHES)

MARYLAND AND
DELAWARE
JUNE 1989

STATION	TOTAL	DAY OF MONTH																														
		1	2	3	4	5	6	7	8	9	10	11	12	13	14	15	16	17	18	19	20	21	22	23	24	25	26	27	28	29	30	31
MARYLAND																																
SOUTHERN EASTERN SHORE 01																																
ASSATEAGUE IS NATL SEA	2.90				.15	.02			.10	.02	.16				.64	.78	.15	.32	.05	.01	.01					.45	.04					
CRISFIELD SOMERS COVE	3.74			.44	.01	.31	.04	.05	.18				.60	.12	.34	.85	.04				.17			.05	.17							
PRINCESS ANNE	7.18					.32	.03	1.73	1.00					.65	.80	.86					.15	.42	.90	.30			.02					
SALISBURY	8.27			T	.07	.14	.02	.95	1.28	T				.10	1.53	.04	.81	T			.02	.06	2.10	.85	.10		.20					
SALISBURY FAA ARPT	6.16		T		.01	.37	.20	.45	1.16				.69	1.33	T	.38	.07				.02	T	.66	.37	.32	T	.13					
SNOW HILL 4 N																																
SNOW HILL 4 N	3.78			T		.10	.11	T	.22	.35				.55	.85	.18	.64	.14				T	T	.56	.08	T	T					
CENTRAL EASTERN SHORE 02																																
CAMBRIDGE WATER TRMT P	6.93					.18	1.27	.19	.37					.19	2.16	.33	.48					.27	.80		.37	.07	.25					
DENTON 2 E	7.27																															
ROYAL OAK 2 SSW	9.37			.18			.34	1.40	.37	.69				.90	.32	1.60	.51				.85	.26	.66	T	1.29							
VIENNA	11.81					.10	.33	.50	.39				.10		2.58	.10						1.33	.67	2.94	.16	*	2.61					
LOWER SOUTHERN 03																																
LA PLATA 1 W	7.18					1.14	2.05		.83	.26	T	.53	T	.69	.89	.15						.34		.29	.01							
MECHANICSVILLE 5 NE	8.40		T		T	1.15	1.96	T	.57	.21	.13	.97	.75	.22	.98	.01					T	.34	.38	.71	.02							
OWINGS FERRY LANDING	7.27					1.11	2.18	T	.32	.37				.02	.13	1.23	.24				.19	.13	.04	.02	.22	T	T					
PATUXENT RIVER	6.48		.01		.31	.17	.38	.14	.34	.16				.24	.23	.80	.54	T			1.12	.20	.07	T	.30	.44	1.03					
TALL TIMBERS	M																															
UPPER SOUTHERN 04																																
ANNAPOLIS POLICE BRKS	7.13					1.67	1.05		.33					.32	.14	.10	.06				.09	2.06	.14	.77	.40							
BALTIMORE WSO ARPT	5.98		.04		1.38	.41	1.16		.16		T	T	.45	.19	.05	.17				.14	1.32	.06	.42	T							.03	
BELTSVILLE	5.46					1.00	1.05	.32	.34	.30			T	T	.52	.57	.08	.18				.57	.33	.05	.14	.01						
COLLEGE PARK	4.77					.66	1.25	.03	.52	.04			T	T	.77	.43	.11					.37	.24	.10	.15	.10						
DALECARLIA RESVR DC	5.59					.80	1.41		.70	.02			.90	.22	.36	.08						.07	.64	.29	.08	.02						
GLENN DALE BELL STN	6.19					1.05	1.70		.37	.10			.01	T	.69	.41	.08				.37	.56	.52	.05	.27						.01	
LAUREL 3 W	7.00				1.46	.39	.93		.69					.16	.23	.20	.30				1.03	.34	.03	1.00	.24							
NATIONAL ARBORETUM DC	7.02					.62	1.08	.34	.29	.20				.02	1.03	.90	.10					.12	.20	.02	2.05	.05						
UPPER MARLBORO 3 NNW	9.64					1.29	1.56	.12	.25	.46			.02	.02	1.40	.12	.06	.04	T			1.13	.33	2.77	.07							
NORTHERN EASTERN SHORE 05																																
CHESTERTOWN	15.44				1.65	.53	1.33		.87		T	T	.44	.22	.58	.12					1.26	1.68	1.23	3.32	1.96	.21					.04	
HILLINGTON 1 SE																																
HILLINGTON 1 SE	9.30					2.52	1.24		.57	.06				.31	.46	.34	.25				1.26	1.13	.03	.19	.73						.21	
NORTHERN CENTRAL 06																																
ABERDEEN PHILLIPS FLD	5.83					.92	.86		.54	*	*	.36	.04	.01	.24	.12	*	*	.21	.26	.25	1.09	.79	*	*	.10				.04	T	
BALTIMORE WSO CITY	6.25				1.59	.29	1.27		.63					1.13	.03	.05	.25				.31	.07	.52								.11	
BENSON POLICE BARRACKS	6.96					.53	1.35	.02	.72	1.61	.05	.03	.06	T	.27	.05	.04	.07			.50	.05	.08	1.12		.10					.31	
BOYDS 2 NW	3.13					.52	.99		.54				.03	.19	.05	.15					.38			.28								
BRIGHTON DAM	9.20				2.80	.90	.10		.60					.40	.10	.10	.20				2.10	1.20	.30	.40	T							
CATOCTIN MOUNTAIN PARK	4.75				.20	.08	.37		.50	.58	T		.10	.22	T	.66	.32				.27	.13	.30	.26	.01						.75	
CLARKSVILLE 3 NNE	9.87		T			2.90	.86		.43	T			.01	.56	.35	.02	.25				3.30	.41	.54	.04	.08	T					.12	
CONOWINGO DAM	5.26				.19	.44	.77		1.34		T		.02	.05	.06	.01	.03				.12	.28	.01	1.57	.01			.12			.24	
DAMASCUS 2 SW	4.48		T		T	.35	1.21		.38				.03	.49	.09	.05	.13				.88	.01	.05	.69	.01						.11	
EMHITSBURG 2 SE	5.73				.43	.10	.42		.55	.65	T	.10	.15	T	.12	1.30					.20	.38	.30	.55	T					.60		
FREDERICK POLICE BRKS	4.94				.02	.44	.32	T	.34				.10	T	.12	.69	.38				.73		.63	.70	.12						.35	
FREDERICK 3 E	5.31				T	.36	.73		.16	.30			.10	.14	.26	.15	.66					1.35	.08	.49	.16	T					.19	
MILLERS 4 NE	4.91				.70	.28	.45	.02	.28	.16	T		.02	.07	.31	.13						.29	.52	T	1.02	.01					.67	
POTOMAC FILTER PLANT	5.13				.90	.20	1.15		.35					.92	.04	.05	.22				.46			.84								
ROCKVILLE 1 NE																																
ROCKVILLE 1 NE	5.48		T		2.11	.40	1.33		.45		T	.02	.18	.10	.26	.30	T	T		.18	.13		.02								T	
TOWSON	8.70					1.36	1.15		.41	.63				.39	*	.47					1.76	.50	.80	.90	.22						.11	
UNIONVILLE	5.84			.07		.35	.47	T	.53	.03		T	.06	1.01	.03	.65	.15				.65	.27	T	1.07	T					.50		
WESTMINSTER POLICE BRK	5.71			.06		.32	.90		.25	T			.08	.38	T	.27	.10				.50	.31	.25	.10	1.70	.04					.45	
WOODSTOCK	6.01				1.18	.77			.46	.02		T	.03	.52	.02	.11	.19				1.74	.73	T	.15	.02						.07	

SEE REFERENCE NOTES FOLLOWING STATION INDEX

DAILY PRECIPITATION (INCHES)

MARYLAND AND
DELAWARE
JUNE 1989

STATION	TOTAL	DAY OF MONTH																														
		1	2	3	4	5	6	7	8	9	10	11	12	13	14	15	16	17	18	19	20	21	22	23	24	25	26	27	28	29	30	31
APPALACHIAN MOUNTAIN 07																																
CUMBERLAND 2	7.30				.90	T	.62	.06		.02	.24			.13	T	.07	.51	2.31				.81	.83	.12	.27	.16	.22			.03	T	
EDGEMONT	4.56				.43		.17	.28	.03	.04	.75			.02	.10	.20	.43	.34					.16	.16	.73	.11	.02		.51	T		
FROSTBURG 2	4.83			T	.99		.85	.04		T	.29			.23	.02	.14	.42	.98		T	T	.39	.24	.07	.04			.06				
HAGERSTOWN	4.54			*	.30	.01	.12	.29		1.12				.09	.15	.10	.65	*		.86		.26	.01					.58				
HANCOCK FRUIT LAB	6.31				.47	.02	.28	.15	.02	.04	.84			.23	.03	.09	.46	1.20				.02	.11	.22	.09	1.50	.02	.09	.41	.02		
ALLEGHENY PLATEAU 08																																
MC HENRY 2 NW	6.72				.25	.11	1.46	.02		T	.46			.28	.02	.50	.66	.69				1.09	.60	.17	.03	T		T	.28	.10		
MERRILL	5.52				.52		.93	.01		T	.20			.17	.05	.15	.60	.70				.25	.77	.05		1.00		.12				
OAKLAND 1 SE	6.44		T		.15	.31	1.18	.05			.26	.05	.05	.14	.12	.14	.48	.54		T	T	1.02	.24	.03	.35	.17		1.11				
SAVAGE RIVER DAM	4.62				.38	T	.78	.08	T	T	.49			.15	.01	.11	.32	.61		T	T	.19	.36	.05	.16	.57	T	T	.14	.22		
DELAWARE NORTHERN 01																																
NEWARK UNIVERSITY FARM	7.37						.90	.72		.75	.09			T	.02	.05	.17	.20				.02	1.18	1.30	1.60	.32			.05			
WILMINGTON WSO ARPT R	5.43			.19		.66	.19	1.00		.78			T	T	.05	.20	.14	.05				.20	.37	.08	.50	.99	T		.03			
WILMINGTON PORTER RSVR	4.75				.63	.25	1.78			.80					.02	.10	.11	.03				.18	.17	T	.23	.45		T				
SOUTHERN 02																																
DOVER	9.13					1.10	.90	.08	.42							.22	.53	.25	.50			.11	2.53	.72	1.25	.40	.07		.05			
GEORGETOWN 5 SW	5.96					.08	1.05	.63	.07	.37				.09	1.44	.02	1.05	.04					.01	.28	.23	.58	.02					
GREENWOOD 2 NE	7.23					.11	1.76		.60	.21					.50	.23	.77					.56	.96	.58	.92	.03						
LEWES	6.04					.36	.30	1.54	1.05						.41	.01	.87					.10	.11	.40	.55	T						
MILFORD 4 SE	4.74					.08	1.12	.33	.19	.06					.30	.14	1.23							.18	.50							

SEE REFERENCE NOTES FOLLOWING STATION INDEX

DAILY TEMPERATURES (°F)

MARYLAND AND
DELAWARE
JUNE 1989

STATION	OB. TIME	MAX/MIN	DAY OF MONTH																															AVERAGE		
			1	2	3	4	5	6	7	8	9	10	11	12	13	14	15	16	17	18	19	20	21	22	23	24	25	26	27	28	29	30	31			
MARYLAND																																				
SOUTHERN EASTERN SHORE 01																																				
ASSATEAGUE IS NATL SEA	07	MAX	90	95	102	89	92	75	84	89	78	77	88	81	79	89	77	83	93	87	78	79	83	90	90	82	80	82	85	89	86	79				
		MIN	69	73	70	72	66	66	66	66	62	62	59	64	64	61	66	63	60	62	66	63	69	69	68	68	70	70	70	70	70	61				
CRISFIELD SOMERS COVE	17	MAX	91	91	88	87	83	83	83	83	82	83	83	83	86	86	89	89	89	82	87	85	84	85	83	85	82	86	89	89	85	85				
		MIN	67	67	73	74	72	71	71	67	72	72	65	60	71	71	78	75	68	69	65	70	72	74	74	71	67	73	79	80	73	63				
PRINCESS ANNE	17	MAX	92	93	93	89	88	86	83	82	82	84	82	80	88	81	90	90	88	83	84	86	86	86	86	86	80	85	89	93	91	81	82			
		MIN	70	65	65	69	65	67	69	63	68	67	61	49	65	63	65	70	67	65	60	64	68	69	69	69	63	68	70	70	69	54				
SALISBURY	17	MAX	95	94	93	91	85	81																												
		MIN	68	67	69	70	68	68	63	60	60	58	56	49	60	62	62	66	64	63	59	62	65	74	68	66	60	65	69	71	66	54				
SALISBURY FAA ARPT	MID	MAX	94	94	86	91	81	81	81	82	80	83	77	80	88	78	90	87	79	84	83	85	85	84	82	80	86	90	92	88	80	82				
		MIN	73	67	68	70	68	68	67	65	70	67	55	51	69	65	67	69	69	63	63	65	69	73	72	70	66	69	71	71	61	57				
SNOW HILL 4 N	18	MAX	96	96	94	92	90	83	81	85	83	85	83	81	90	88	91	87	87	82	83	85	86	85	83	81	85	88	94	89	84	81				
		MIN	71	69	68	70	67	68	71	66	70	68	67	49	68	64	66	70	68	64	63	62	66	72	69	63	61	68	69	73	69	53				
CENTRAL EASTERN SHORE																																				
CAMBRIDGE WATER TRMT P	16	MAX	96	95	92	91	89	85	79	85	85	84	83	79	89	85	90	90	86	83	86	85	85	85	85	83	85	89	93	95	83	78				
		MIN	70	69	71	71	69	68	66	64	67	67	63	53	68	63	60	65	67	66	65	66	69	70	71	69	66	69	74	74	70	64				
DENTON 2 E	17	MAX																																		
		MIN																																		
ROYAL OAK 2 SSW	18	MAX	90	90	86	88	85	80	75	81	81	82	79	79	85	86	91	87	83	84	86	88	88	86	82	85	87	91	95	90	82	80				
		MIN	71	69	65	73	67	69	66	65	68	65	60	58	70	66	68	68	69	70	64	68	69	71	71	69	67	72	75	71	71	59				
VIENNA	18	MAX	96	97	94	93	89	85	85	86	84	85	84	80	91	85	90	90	88	87	88	89	87	87	88	81	89	89	98	97	85	85				
		OBS																																		
		MIN	69	69	66	69	67	67	66	62	65	65	58	54	67	57	60	69	66	66	63	63	67	69	67	67	64	66	72	72	67	57				
		OBS																																		
LOWER SOUTHERN																																				
LA PLATA 1 W	18	MAX	89	88	82	85	82	80	73	79	80	79	78	77	80	86	85	82	80	79	83	84	83	82	82	79	83	87	88	87	78	77				
		MIN	67	67	65	70	67	66	63	65	68	62	58	54	67	64	67	66	67	66	64	66	65	69	69	68	65	71	72	69	64	55				
MECHANICSVILLE 5 NE	19	MAX	91	91	84	87	85	79	75	81	79	81	76	79	84	86	86	85	80	81	83	84	85	89	82	83	86	88	92	85	79	79				
		MIN	68	67	64	70	64	67	65	63	68	63	56	52	66	64	67	68	67	65	62	65	68	66	68	66	64	70	72	68	69	54				
OWINGS FERRY LANDING	17	MAX	92	92	92	87	84	82	80	82	81	82	81	75	82	83	87	87	78	79	82	81	82	81	79	81	84	85	91	89	77	76				
		MIN	67	66	64	71	65	66	63	64	67	63	54	55	68	64	66	66	65	63	61	63	66	65	68	65	63	68	70	67	64	53				
PATUXENT RIVER	MID	MAX	94	95	84	92	82	83	76	84	82	84	78	79	91	84	91	88	88	84	83	83	83	84	87	83	87	91	92	88	77	78				
		MIN	71	71	68	68	68	68	67	66	68	65	59	59	69	67	69	67	69	65	66	68	70	71	70	68	67	66	75	72	69	60				
TALL TIMBERS	17	MAX																																		
		MIN																																		
UPPER SOUTHERN																																				
ANNAPOLIS POLICE BRKS	17	MAX	95	96	91	89	88	79	81	84	83	84	83	83	83	83	90	90	83	90	87	84	81	86	86	86	87	89	95	94	83	80				
		MIN	69	68	64	68	64	63	61	60	59	61	54	53	66	64	63	64	66	62	64	66	62	61	66	64	65	71	70	66	66	56				
BALTIMORE WSO ARPT	MID	MAX	91	90	83	85	80	80	70	80	78	80	77	76	82	78	86	84	80	82	84	80	83	84	82	84	88	91	93	81	76	80				
		MIN	70	69	64	66	65	65	63	62	68	62	57	55	66	65	66	68	64	63	64	67	68	67	71	69	66	71	72	70	61	60				
BELTSVILLE	08	MAX	88	90	89	85	84	82	80	72	82	78	81	78	78	81	86	86	84	80	84	85	82	83	86	83	85	91	94	96	84	79				
		MIN	67	66	61	66	63	66	62	60	65	63	54	52	66	63	65	66	66	60	63	65	67	66	69	65	65	68	69	69	66	52				
COLLEGE PARK	09	MAX	89	94	92	88	88	83	82	72	82	78	81	79	79	81	85	87	83	82	84	87	85	84	87	85	85	89	92	94	82	76				
		MIN	69	69	65	74	66	69	62	62	68	65	57	54	70	65	68	71	68	62	65	68	69	68	71	69	65	68	72	72	68	56				
DALECARLIA RESVR DC	17	MAX	94	93	87	86	85	83	81	82	85	81	81	78	84	88	87	86	80	84	86	87	82	87	85	85	89	92	94	93	82	82				
		MIN	78	63	60	67	67	62	58	58	62	63	51	59	63	58	59	63	60	57	61	61	67	64	56	64	63	66	66	67	59	66				

SEE REFERENCE NOTES FOLLOWING STATION INDEX

DAILY TEMPERATURES (°F)

MARYLAND AND
DELAWARE
JUNE 1989

STATION	OB. TIME	MAX/MIN	DAY OF MONTH																															AVERAGE
			1	2	3	4	5	6	7	8	9	10	11	12	13	14	15	16	17	18	19	20	21	22	23	24	25	26	27	28	29	30	31	
			GLENN DALE BELL STN	16	MAX MIN	93 66	93 65	87 60	84 64	86 60	80 65	79 60	80 59	82 65	80 60	80 51	78 49	80 67	85 61	83 63	86 67	82 66	82 60	84 60	85 64	83 65	85 65	85 72	82 65	83 64	90 70	94 68	95 67	
LAUREL 3 W	MID	MAX MIN	93 70	92 71	85 62	83 65	85 60	79 60	76 60	82 65	78 65	80 60	79 66	83 61	81 63	83 60	86 64	84 61	79 61	83 57	85 64	84 63	83 62	86 65	81 64	85 62	88 62	91 72	94 68	86 76	82 58	82 57	83.8 63.5	
NATIONAL ARBORETUM DC	08	MAX MIN	88 68	94 67	93 62	88 69	88 62	85 64	82 62	75 60	84 53	81 62	82 55	82 53	79 61	81 63	90 64	88 66	86 66	83 60	84 63	87 64	86 65	88 65	88 65	85 65	89 64	90 64	93 64	95 67	84 65	79 51	85.9 62.6	
UPPER MARLBORO 3 NNW	08	MAX MIN	88 67	94 67	96 61	86 70	88 62	82 65	78 61	73 60	82 62	80 60	81 54	78 50	77 65	81 62	84 64	87 67	84 65	82 63	83 61	85 64	81 66	84 65	84 67	82 66	84 63	89 67	92 69	95 67	83 63	77 52	84.0 63.2	
NORTHERN EASTERN SHORE	05																																	
CHESTERTOWN	23	MAX MIN	94 71	92 70	88 64	87 69	82 65	82 65	75 65	81 64	81 68	82 66	78 60	79 57	83 68	75 65	89 65	87 68	83 66	84 65	89 65	84 68	87 68	83 70	80 70	84 67	88 67	91 70	95 74	88 70	78 63	82 57	84.4 66.3	
MILLINGTON 1 SE	18	MAX MIN	93 68	92 67	86 61	87 66	85 62	80 64	80 65	80 63	80 65	81 66	80 58	77 52	83 68	78 64	82 65	85 69	84 68	83 64	84 59	84 64	85 68	84 71	78 71	83 70	85 65	90 69	93 71	89 69	78 65	80 54	83.6 65.0	
NORTHERN CENTRAL	06																																	
ABERDEEN PHILLIPS FLD	16	MAX OBS MIN OBS	93 70	93 68	88 64	86 67	77 65	78 67	78 65	77 62	77 68	79 64	77 57	77 52	80 67	75 63	82 61	84 69	84 67	82 63	85 59	85 65	84 69	83 68	81 69	83 69	86 67	86 70	93 69	92 68	78 66	78 58	82.7 65.2	
BALTIMORE WSO CITY	MID	MAX MIN	99 77	97 79	87 73	92 73	83 67	84 66	71 65	85 65	78 70	85 68	81 62	80 65	85 70	76 68	89 69	87 72	82 69	86 68	88 71	80 72	85 73	86 73	82 74	82 72	88 73	89 76	100 80	87 74	78 68	84 63	85.6 70.5	
BENSON POLICE BARRACKS	17	MAX MIN OBS	94 70	94 69	90 64	90 65	87 61	81 64	80 60	79 59	80 61	81 55	79 53	79 53	79 65	75 63	80 64	84 60	83 63	85 63	88 67	88 64	88 67	86 65	85 68	87 67	88 65	91 67	95 70	94 67	81 63	83 54	85.1 63.2	
BOYDS 2 NW	18	MAX MIN	89 70	88 71	88 65	82 66	80 62	78 64	74 59	80 58	77 65	74 57	77 64	75 55	77 65	81 63	83 64	87 66	82 66	86 59	88 63	80 60	85 67	86 64	82 67	82 65	85 66	87 70	90 72	87 67	78 64	84 55	80.9 63.9	
CATOCTIN MOUNTAIN PARK	17	MAX MIN	86 70	84 71	80 61	78 64	74 61	69 58	68 55	75 65	68 61	71 61	71 52	72 57	69 64	71 63	77 60	76 56	76 57	75 63	78 63	77 62	76 64	77 66	78 64	79 64	81 65	84 67	85 70	85 65	77 58	74 54	76.4 62.1	
CLARKSVILLE 3 NNE	17	MAX MIN	92 65	92 64	87 58	84 63	84 60	80 64	78 61	80 58	81 65	79 61	77 55	77 50	81 67	80 62	85 63	84 68	80 61	83 56	85 61	85 63	83 68	85 67	85 71	85 68	88 64	85 69	91 68	92 69	83 60	80 50	84.0 62.6	
CONOWINGO DAM	MID	MAX OBS MIN	93 64	91 64	84 60	88 62	78 58	79 63	75 60	80 57	75 60	82 60	82 54	78 50	80 64	69 62	82 62	84 63	80 62	88 58	85 56	82 61	84 66	85 67	82 67	84 67	85 63	82 64	90 66	93 61	81 57	82 58	82.6 61.2	
DAMASCUS 2 SW	19	MAX MIN	89 69	86 69	83 62	82 67	79 61	75 64	67 59	79 57	75 66	77 60	75 54	75 56	77 66	80 63	83 64	77 67	74 59	81 63	84 66	84 66	84 68	85 68	83 67	83 65	86 66	89 69	91 69	84 67	78 60	78 54	80.6 63.5	
EMMITSBURG 2 SE	17	MAX MIN	89 69	89 65	85 59	81 65	80 57	76 65	73 60	78 56	77 64	76 63	75 49	75 49	73 66	73 63	81 63	81 67	75 67	80 55	82 62	82 66	82 69	82 69	84 69	83 65	87 67	89 69	91 68	89 73	81 62	77 52	80.9 63.3	
FREDERICK POLICE BRKS	17	MAX OBS MIN	93 72	94 72	89 63	85 68	86 62	80 65	78 60	80 59	84 67	80 64	80 58	79 55	80 66	80 65	84 65	85 67	79 60	84 65	85 65	85 67	85 70	85 70	82 69	84 67	85 68	86 71	90 74	89 69	82 65	85 56	84.9 65.3	
MILLERS 4 NE	18	MAX MIN	88 70	86 68	83 61	81 65	77 58	74 65	69 60	76 57	67 64	76 62	74 53	75 52	73 66	71 63	80 64	80 67	80 60	82 58	82 60	79 66	79 68	83 68	83 67	84 65	85 68	88 70	90 67	85 67	79 62	77 51	79.6 63.1	
ROCKVILLE 1 NE	17	MAX MIN	90 73	87 73	85 66	82 69	81 65	77 64	71 61	80 58	79 67	77 65	76 58	76 50	77 68	82 65	85 67	80 68	75 66	80 61	85 67	85 68	83 69	83 67	81 70	83 68	86 68	88 72	90 74	82 68	75 62	80 56	81.2 66.1	
TOWSON	18	MAX OBS MIN	91 72	88 71	89 64	85 67	84 63	80 64	76 60	78 58	78 64	79 60	77 53	76 50	76 65	74 59	85 64	83 65	79 62	83 62	84 62	83 64	86 66	85 67	82 69	84 66	87 66	84 66	85 70	88 67	89 63	95 54	83.3 63.6	
UNIONVILLE	18	MAX MIN	92 63	90 62	87 56	85 63	81 57	78 65	75 61	80 56	78 64	80 62	78 52	77 48	79 66	78 61	83 62	83 62	77 59	82 54	85 62	82 65	83 69	86 69	85 69	86 67	86 67	88 64	92 68	92 66	89 68	82 58	80 49	83.1 61.7
WESTMINSTER POLICE BRK	17	MAX MIN	91 68	92 69	86 59	85 62	81 59	80 51	76 54	76 52	79 61	77 50	77 50	77 50	76 61	68 49	83 58	84 64	78 55	83 58	86 56	83 62	82 64	85 64	86 62	84 62	86 60	89 64	93 66	93 62	83 57	85 51	82.8 59.0	

SEE REFERENCE NOTES FOLLOWING STATION INDEX

DAILY TEMPERATURES (°F)

MARYLAND AND
DELAWARE
JUNE 1989

STATION	OB. TIME	MAX/MIN	DAY OF MONTH																															AVERAGE	
			1	2	3	4	5	6	7	8	9	10	11	12	13	14	15	16	17	18	19	20	21	22	23	24	25	26	27	28	29	30	31		
WOODSTOCK	18	MAX MIN	92 69	90 65	89 62	85 65	84 60	80 65	77 61	81 58	80 65	80 63	79 55	79 51	79 67	77 63	85 63	84 67	80 61	83 58	85 61	80 67	83 68	84 67	85 71	86 67	89 65	88 67	93 69	92 68	83 63	82 53	83.8 63.5		
APPALACHIAN MOUNTAIN	07																																		
CUMBERLAND 2	18	MAX MIN	92 70	89 60	85 63	80 56	75 56	72 59	74 55	83 55	81 64	77 55	78 51	75 52	76 62	81 62	77 63	76 57	77 51	82 59	85 63	80 62	85 62	85 66	83 66	88 66	90 67	91 67	91 68	90 59	81 53	81 53	82.0 60.1		
FROSTBURG 2	07	MAX MIN	82 67	84 68	77 55	76 55	70 53	64 55	65 55	69 52	76 53	70 58	69 48	70 49	65 53	70 62	75 59	72 55	67 53	69 53	76 53	76 57	73 63	76 64	78 62	76 61	82 63	82 64	84 67	85 63	77 54	71 49	74.2 57.6		
HAGERSTOWN	18	MAX MIN OBS OBS	92 70 70 70	88 69 61 61	85 61 61 61	84 66 66 66	75 59 64	75 64	71 60	82 56	78 62	74 61	78 49	76 52	74 65	81 63	82 62	76 64	75 61	81 57	84 63	79 65	84 69	85 68	85 68	86 67	86 66	90 69	92 70	92 68	89 61	79 53	77 53	81.6 62.9	
HANCOCK FRUIT LAB	16	MAX MIN OBS OBS	87 59 92 59	93 63 63 63	88 56 61 56	84 59	82 55	72 57	74 60	74 55	82 56	75 60	76 50	84 48	75 50	75 59	79 60	78 61	77 58	78 50	83 60	85 61	79 66	84 68	83 67	84 64	87 65	89 65	90 67	92 67	82 58	75 50	81.5 59.1		
ALLEGHENY PLATEAU	08																																		
MC HENRY 2 NW	08	MAX MIN	81 64	83 65	78 56	80 58	67 53	71 54	64 52	70 54	79 57	67 52	67 46	71 48	68 54	66 59	72 58	70 59	65 58	68 52	68 49	76 50	78 59	79 61	75 61	79 61	81 61	82 63	83 64	84 63	85 61	76 51	73 51	74.6 56.5	
OAKLAND 1 SE	17	MAX MIN	84 68	82 64	79 52	77 61	69 51	73 55	66 54	76 57	74 62	69 56	70 46	67 43	69 62	73 61	72 57	70 61	68 53	74 43	76 53	76 62	77 61	79 62	80 61	78 62	81 59	84 61	84 61	84 63	82 63	75 51	77 44	75.4 56.9	
SAVAGE RIVER DAM	08	MAX MIN	85 61	88 62	80 56	80 59	73 54	68 56	69 57	71 57	79 59	73 60	71 51	76 46	67 50	72 60	78 60	77 61	75 55	72 49	77 52	80 56	75 64	78 65	80 65	80 63	85 62	88 64	86 64	87 64	80 54	77 48	77.6 57.8		
DELAWARE																																			
NORTHERN	01																																		
NEWARK UNIVERSITY FARM	17	MAX MIN	93 67	91 65	88 62	86 63	84 60	79 64	77 63	79 61	78 63	81 61	79 54	80 52	80 64	75 60	79 63	86 65	82 66	83 58	86 58	84 64	84 68	88 69	80 68	83 68	86 67	90 68	93 71	92 68	82 63	80 57	83.6 63.3		
WILMINGTON WSO ARPT	MID	MAX MIN	93 70	91 69	83 65	86 66	79 64	80 66	77 65	79 63	79 66	81 65	78 55	79 54	81 67	78 63	80 66	86 69	81 67	84 63	85 62	82 68	86 70	88 73	80 73	82 71	86 69	91 71	93 74	81 71	76 61	80 57	82.5 66.1		
WILMINGTON PORTER RSVR	MID	MAX MIN	91 69	89 69	82 65	86 67	77 63	77 66	73 64	77 63	78 64	79 65	76 57	78 54	79 67	70 61	80 63	84 69	79 67	82 62	83 63	84 66	84 67	85 70	78 72	80 70	85 68	90 68	95 72	81 71	75 64	79 58	81.2 65.5		
SOUTHERN	02																																		
DOVER	17	MAX MIN	95 72	91 71	89 67	87 62	84 62	81 62	83 67	83 63	83 66	83 60	84 57	81 55	84 61	78 61	80 61	88 67	86 63	87 64	84 61	84 64	83 69	83 68	81 71	82 72	80 71	90 71	96 72	91 69	84 64	88 57	85.1 65.0		
GEORGETOWN 5 SW	08	MAX MIN	90 71	94 69	94 71	87 67	90 67	80 67	82 68	81 65	83 67	76 54	81 59	77 51	80 68	86 63	74 64	90 70	86 67	80 67	83 63	84 66	85 66	86 63	84 65	79 68	81 71	86 72	90 72	94 73	87 68	78 56	84.3 66.1		
GREENWOOD 2 NE	18	MAX MIN	92 71	92 69	86 65	88 68	81 65	81 66	81 66	81 65	80 68	81 65	77 59	81 53	83 68	83 63	87 63	88 69	84 68	80 66	83 63	83 65	86 68	85 71	81 70	80 70	87 64	90 69	92 69	89 71	78 62	81 55	83.9 65.8		
LEWES	17	MAX MIN	94 74	94 75	88 69	90 69	88 66	82 65	81 67	77 66	81 69	83 61	82 58	80 58	83 58	83 62	87 67	88 72	84 68	80 68	83 66	83 66	86 72	85 73	76 70	80 69	84 66	89 71	93 71	91 73	82 69	82 62	84.6 67.9		
MILFORD 4 SE	17	MAX MIN	93 73	93 72	90 67	89 67	87 65	82 66	81 68	78 65	81 68	82 68	80 59	81 55	85 67	79 62	83 66	88 69	86 68	84 67	82 64	80 67	85 70	83 72	77 71	78 68	83 64	86 68	92 74	90 71	79 68	77 58	83.8 66.9		

SEE REFERENCE NOTES FOLLOWING STATION INDEX

EVAPORATION AND WIND

MARYLAND AND
DELAWARE
JUNE 1989

STATION	DAY OF MONTH																															TOTAL OR AVG
	1	2	3	4	5	6	7	8	9	10	11	12	13	14	15	16	17	18	19	20	21	22	23	24	25	26	27	28	29	30	31	
MARYLAND																																
UPPER SOUTHERN 04																																
BELTSVILLE	WIND	15	19	26	27	24	22	8	5	3	14	41	23	35	11	15	36	43	7	5	17	17	16	9	4	6	3	4	11	21	34	521
	EVAP	16	27	15	26	36	19	14	9	14	19	35	20	14	12	14	22	23	17	23	24	11	11	13	17	4	22	24	26	15	28	5.70
	MAX	89	99	93	95	93	88	87	78	87	80	89	90	81	83	90	87	90	90	96	92	84	89	90	87	92	100	101	100	86	91	89.9
	MIN	71	72	69	69	66	66	65	65	65	69	58	59	63	68	69	70	68	68	68	69	71	70	72	72	69	75	75	73	67	60	68.0
UPPER MARLBORO 3 NNW																																
	WIND	-	-	-	-	-	-	-	-	-	-	-	-	-	-	-	-	-	-	-	-	-	-	-	-	-	-	-	-	-	-	M
	EVAP	15	17	25	24	27	27	-	11	19	12	32	24	15	9	35	19	18	20	25	25	24	13	-	12	13	20	18	22	16	30	6.088
	MAX	70	72	72	94	74	72	74	70	72	80	82	88	72	70	70	70	92	76	70	72	84	72	74	74	74	78	98	84	76	90	77.2
	MIN	70	62	70	66	70	68	66	64	64	66	60	60	62	66	66	68	66	66	68	70	70	72	72	74	72	72	76	74	68	60	67.6
DELAWARE																																
NORTHERN 01																																
NEWARK UNIVERSITY FARM	WIND	53	40	28	43	42	16	36	30	15	63	69	25	33	62	57	23	34	14	18	17	20	16	26	10	19	11	17	23	26	19	905
	EVAP	29	25	19	33	31	8	-	22	-	21	35	18	16	11	16	7	22	31	12	6	19	-	-	-	7	6	19	24	26	30	5.928
	MAX	-	-	-	-	-	-	-	-	-	-	-	-	-	-	-	-	-	-	-	-	-	-	-	-	-	-	-	-	-	-	M
	MIN	-	-	-	-	-	-	-	-	-	-	-	-	-	-	-	-	-	-	-	-	-	-	-	-	-	-	-	-	-	-	M
SOUTHERN 02																																
GEORGETOWN 5 SW	WIND	67	60	58	73	83	64	67	57	42	83	30	72	09	67	61	09	33	89	27	42	51	54	29	*	46	33	36	50	56	73	1921
	EVAP	45	32	41	28	25	32	9	32	12	-	30	18	26	23	31	22	-	21	15	29	21	20	10	36	8	8	34	33	14	46	7.518
	MAX	92	94	99	94	93	92	84	87	92	79	87	85	85	90	76	92	92	84	94	94	92	92	89	87	88	95	100	100	93	76	89.9
	MIN	67	73	69	68	67	66	71	68	70	59	63	57	63	68	67	72	69	71	69	71	72	74	75	73	70	70	75	78	70	66	69.0

EVAPORATION: IS MEASURED IN HUNDRETHS OF INCHES

WIND: IS MEASURED IN MILES

MAX AND MIN: THE MAXIMUM AND MINIMUM TEMPERATURES (FAHRENHEIT) OF THE WATER IN THE EVAPORATION PAN

SEE REFERENCE NOTES FOLLOWING STATION INDEX

STATION INDEX

MARYLAND AND
DELAWARE
JUNE 1989

STATION	INDEX NO.	DIVISION	COUNTY	LATITUDE	LONGITUDE	ELEVATION (IN FEET)	OBSERVATION TIME AND TABLES				OBSERVER		
							LOCAL STD TIME						
							TEMP	PRECIP	EVAP	SPECIAL (SEE NOTES)			
MARYLAND													
ABERDEEN PHILLIPS FLD	001506		HARFORD	39 28	76 10W	57	16	16		C	H	ROSS AVIATION INC	
ANNAPOLIS POLICE BRKS	019304		ANNE ARUNDEL	38 59	76 30W	30	17	17			H	ANNAPOLIS POLICE BRKS	
ASSATEAGUE IS NATL SEA	033501		WORCESTER	38 14	75 8W	7	07	07			H	NATIONAL PARK SERVICE	
BALTIMORE WSO ARPT	046504		ANNE ARUNDEL	39 11	76 40W	148	MID	MID		C	H	NATL WEATHER SERVICE	
BALTIMORE WSO CITY #	047006	R	BALTIMORE	39 17	76 37W	14	MID	MID		C	H	OCMI COMMANDING OFFICER	
BELTSVILLE	070004		PRINCE GEORG	39 22	76 53W	120	08	08	08		C	H	US DEPT OF AGRICULTURE
BENSON POLICE BARRACKS	073206		HARFORD	39 30	76 23W	365	17	17			H	MARYLAND STATE POLICE	
BOYDS 2 NW	103206		MONTGOMERY	39 13	77 20W	581	18	18			H	HUNTER F STALEY	
BRIGHTON DAM	112506		MONTGOMERY	39 12	77 1W	331		MID				WASH SUB SANY COMM	
CAMBRIDGE WATER TRMT P	138502		DORCHESTER	38 34	76 4W	10	16	16			H	WASTEWATER TRMT PLANT	
CATOCTIN MOUNTAIN PARK	153006		FREDERICK	39 39	77 29W	1610	17	17		C	H	CATOCTIN MOUNTAIN PARK	
CHESTERTOWN	175005		KENT	39 13	76 4W	39	23	23			H	THOMAS W ELIASON JR	
CLARKSVILLE 3 NNE	186206		HOWARD	39 15	76 56W	365	17	17			H	UNIVERSITY OF MARYLAND	
COLLEGE PARK	199904		PRINCE GEORG	38 59	76 57W	90	09	09		C	H	UNIVERSITY OF MARYLAND	
CONOWINGO DAM	206006		HARFORD	39 39	76 10W	39	MID	MID			H	SUSQUEHANNA ELECTRIC CO	
CRISFIELD SOMERS COVE	221501		SOMERSET	37 59	75 52W	8	17	17			H	SOMERS COVE MARINA	
CUMBERLAND 2	228207		ALLEGANY	39 38	78 45W	730	18	07			H	TIMOTHY B THOMAS	
DALECARLIA RESVR DC	232504		DIS COLUMBIA	38 56	77 7W	151	17	17			H	U S CORPS OF ENGINEERS	
DAMASCUS 2 SW	233506		MONTGOMERY	39 16	77 14W	722	19	19			H	RICHARD W SCHWERT	
DENTON 2 E	252302		CAROLINE	38 53	75 48W	49	17	17			H	ARTHUR REINHOLD	
EDGEMONT	277007		WASHINGTON	39 40	77 33W	905		07			H	JOHN W HARNE	
EMMITSBURG 2 SE	290606		FREDERICK	39 41	77 18W	420	17	17			H	MRS LUCILLE K BEALE	
FREDERICK POLICE BRKS	334906		FREDERICK	39 25	77 26W	381	17	17			H	MARYLAND STATE POLICE	
FREDERICK 3 E	335906		FREDERICK	39 24	77 22W	385		07			H	MISS I MARY STALEY	
FROSTBURG 2	341507		ALLEGANY	39 40	78 56W	2172	07	07			H	LEE K CLOSE	
GLENN DALE BELL STN	367504		PRINCE GEORG	38 58	76 48W	151	16	16			H	USDA PLT INTRODUCT STN	
HAGERSTOWN	397507		WASHINGTON	39 39	77 44W	659	18	18			H	HAGERSTOWN RESERVOIR	
HANCOCK FRUIT LAB	403007		WASHINGTON	39 42	78 11W	428	16	16		C	H	SHARPSBURG RESEARCH CTR	
LA PLATA 1 W	508003		CHARLES	38 32	77 0W	140	18	18			H	C RUSSELL LEVERING	
LAUREL 3 W	511104		PRINCE GEORG	39 6	76 54W	400	MID	MID			H	WASH SUB SANY COMM	
MC HENRY 2 NW	583208		GARRETT	39 35	79 22W	2680	08	08		C	H	JOSEPH F JOHENNINGS	
MECHANICSVILLE 5 NE	586603		ST MARYS	38 27	76 41W	100	19	19			H	SANDRA J HASTINGS	
MERRILL	589408		GARRETT	39 36	79 5W	1791		09			H	DELWOOD E MERRILL	
MILLERS 4 NE	593406		CARROLL	39 43	76 48W	860	18	18		C	H	ROBERT P MILLER	
MILLINGTON 1 SE	598505		KENT	39 16	75 52W	30	18	18			H	HOWARD L HARVEY	
NATIONAL ARBORETUM DC	635004		DIS COLUMBIA	38 54	76 59W	49	08	08			H	U S NATL ARBORETUM	
OAKLAND 1 SE	662008		GARRETT	39 24	79 24W	2421	17	17			H	BEA J CROSCO	
OWINGS FERRY LANDING	677003		CALVERT	38 41	76 40W	160	17	17			H	JAMES C RASMUSSEN	
PATUXENT RIVER	691503		ST MARYS	38 20	76 25W	38	MID	MID		C	H	NAVAL WEATHER SERVICE	
POTOMAC FILTER PLANT	727206		MONTGOMERY	39 2	77 15W	269		08			H	POTOMAC WATER FILT PLT	
PRINCESS ANNE	733001		SOMERSET	38 13	75 41W	20	17	17			H	UNIV OF MD EASTERN SHORE	
ROCKVILLE 1 NE	770506		MONTGOMERY	39 6	77 6W	440	17	17			H	WASHINGTON GAS AND LIGHT	
ROYAL OAK 2 SSW	780602		TALBOT	38 43	76 11W	10	18	18			H	JOHN L SWAINE JR	
SALISBURY	800001		WICOMICO	38 22	75 35W	10	17	17			H	CITY OF SALISBURY	
SALISBURY FAA ARPT #	800501		WICOMICO	38 20	75 31W	48	MID	MID			H	FAA	
SAVAGE RIVER DAM	806508		GARRETT	39 31	79 8W	1495	08	08		OBC	H	US CORPS OF ENGINEERS	
SNOW HILL 4 N	838001		WORCESTER	38 14	75 23W	30	18	18			H	CURTIS E SHOCKLEY	
TALL TIMBERS	875703		ST MARYS	38 10	76 33W	12	17	17			H	RICHARD A EVERETT	
TOWSON	888706		BALTIMORE	39 23	76 34W	390	18	18			H	BENDIX FRIEZ	
UNIONVILLE	903006		FREDERICK	39 27	77 11W	430	18	18			C	RICHARD GETZANDANNER	
UPPER MARLBORO 3 NNW	907004		PRINCE GEORG	38 52	76 47W	98	08	08		OBC	H	UNIVERSITY OF MARYLAND	
VIENNA	914006		DORCHESTER	38 29	75 50W	10	18	18			H	DELMARVA POWER & LIGHT	
WESTMINSTER POLICE BRK	944002		CARROLL	39 33	76 58W	765	17	17			H	MARYLAND STATE POLICE	

SEE REFERENCE NOTES FOLLOWING STATION INDEX

STATION INDEX

MARYLAND AND
DELAWARE
JUNE 1989

STATION	INDEX NO.	DIVISION	COUNTY	LATITUDE	LONGITUDE	ELEVATION (IN FEET)	OBSERVATION TIME AND TABLES				OBSERVER
							LOCAL STD TIME				
							TEMP	PRECIP	EVAP	SPECIAL (SEE NOTES)	
WOODSTOCK	9750	06	BALTIMORE	39 20	76 52W	459	18	18		H	JOHN A HILTZ
DELAWARE											
DOVER	2730	02	KENT	39 9	75 31W	30	17	17		H	STATE DIV OF HIGHWAYS
GEORGETOWN 5 SW	35700	02	SUSSEX	38 38	75 27W	45	08	08	08	C	UNIV OF DEL SUBSTATION
GREENWOOD 2 NE	35950	02	SUSSEX	38 50	75 35W	45	18	18		H	DANIEL M SHARTZENTRUBER
LEWES	53200	02	SUSSEX	38 46	75 8W	15	17	17		H	BOARD OF PUBLIC WORKS
MIDDLETOWN 3 E	58520	01	NEW CASTLE	39 27	75 40W	55	17	17		H	INACTIVE 03/01/88
MILFORD 4 SE	59150	02	SUSSEX	38 54	75 28W	30	17	17		H	DAVID S SCHLOTT
NEWARK UNIVERSITY FARM	64100	01	NEW CASTLE	39 40	75 44W	90	17	17	17	C	UNIV OF DEL AGRIC FARM
WILMINGTON WSD ARPT	R 95950	01	NEW CASTLE	39 40	75 36W	79	MID	MID		HJ	NATL WEATHER SERVICE
WILMINGTON PORTER RSVR	96050	01	NEW CASTLE	39 46	75 32W	274	MID	MID		H	WATER DEPARTMENT

SEE REFERENCE NOTES FOLLOWING STATION INDEX

REFERENCE NOTES

MARYLAND AND
DELAWARE
JUNE 1989

DEFINITIONS

STATION NAMES: Name of the city, town or locality. Figures and letters following the station names indicate the distance in miles and direction from the post office or town community center.

DIVISIONS: Areas within a state of similar climatological characteristics. Division averages are calculated using data from stations that record both temperature and precipitation (ie: not precipitation alone).

NORMALS: The average value of the meteorological element over a time period. Effective 1 January 1983, the averaging period is 1951 to 1980. The normals for National Weather Service localities have been adjusted so as to be representative for the current observation site.

MONTHLY DEGREE DAY TOTALS: One heating (cooling) degree day is accumulated for each whole degree that the daily mean temperature is BELOW (ABOVE) 65 degrees Fahrenheit.

PRECIPITATION: Values shown in hundredths of inches are water equivalent totals, i.e. total of liquid and melted frozen precipitation. In the "MONTHLY SUMMARIZED DATA" table the total snow and sleet values shown in tenths of inches are unmelted amounts. The max. depth on ground values of snow and sleet shown in whole inches are cumulative unmelted amounts. The no. of days with .10, .50, 1.00 or more refers to water equivalents.

TEMPERATURE: Original and edited temperature values are given in the Daily Temperature Table. Edited values are produced when an original value is missing or when surrounding stations indicate a suspect original value. When a line labeled OBS is present and contains either a daily temperature (suspect) or *** (missing), the temperature appearing directly above, on the line labeled MAX or MIN, is an edited value. Summary temperature information (averages, departures, extremes, monthly degree day totals) is based on the values labeled MAX/MIN.

WIND: (As shown in "Evaporation and Wind" table) The total wind movement in miles over the evaporation pan as determined by an anemometer recorder located 6-8 inches above the pan.

SYMBOLS AND LETTERS USED IN THE STATION INDEX TABLE

- # Thermometers located in a rooftop shelter.
- // Rain Gage equipped with a windshield.
- AR Observation made "after rain" has occurred.
- C Station is equipped with recording rain gage (R) but values in this bulletin are from a non-recording rain gage unless indicated by an R.
- G Observations appear in "Soil Temperatures" table.
- H Observations appear in "Snowfall and Snow on Ground" table.
- J Station also published as a Local Climatological Data publication.
- MID Observation time is midnight.
- MO Rain gage read once monthly, usually the last day.
- OC Rain gage readings vary from a few weeks to several months.
- R Amounts from recording rain gage.
- SR Observation time near sunrise.
- SS Observation time near sunset.
- VAR Observation time varies.
- WI Rain gage read weekly or irregularly.
- WM Rain gage read weekly and last day of month.

SYMBOLS AND LETTERS USED IN THE DATA TABLES

(DAILY DATA ARE FOR THE 24 HOURS IMMEDIATELY PRECEDING OBSERVATION TIME.)

BLANK entries in the "Monthly Summarized Data" table indicate no record. BLANK entries in the "Daily Precipitation" and "Snowfall and Snow on Ground" tables indicate zero.

BLANK entries in the "Daily Temperature" table indicate a missing record where an edited value could not be determined. (See *** below)

- No record. Data not recorded, determined unreliable by quality control checks, or not received in time for publication.

+ Precipitation or temperature extremes occurred on one or more previous dates during the month.

*** Missing original temperature which has been estimated during edit.

* Rain gage not read. Precipitation is included in the amount following the asterisks; Time distribution not known. A * preceding the monthly total indicates precipitation amount is being carried forward to next months total, and may include amounts from the previous month(s).

// Rain gage equipped with a windshield.

A Amount of precipitation is the total of observer's entries for the current month. It may include precipitation that occurred during the previous month. Refer to earlier bulletin to determine date of last reading. (HAWAII stations)

B Adjusted monthly value (estimated), (1-7 missing values for wind and evaporation).

M Insufficient or partial data. M is appended to average and/or total values computed with 1-9 daily values missing. M appears alone if 10 or more daily values are missing, (8 or more for wind and evaporation).

R Amounts from recording rain gage.

T Trace. An amount too small to measure.

V Includes total for previous month(s). (See * above)

Seasonal Tables: Monthly and seasonal snowfall and heating degree days for the 12 months ending with the June data are published in the July issue of this bulletin. Cooling degree days for the calendar year are published in the "Climatological Data Annual Summary".

The graphic displays appearing in this publication were first produced for the January 1987 data month. The types of graphs and the information they portray may vary from month to month and from state to state in order to highlight climatic features of state, regional, and seasonal interest. Some graphs present information for "clusters". A cluster is a group of up to four (4) adjacent divisions that comprise an area of similar climate.

Information concerning the history of changes in locations, exposure, etc. of substations is kept on file at the National Climatic Data Center. Historical information for regular National Weather Service Offices may be obtained from the "Local Climatological Data" annual publication. The contents of this publication may be reprinted or otherwise used freely, with proper credit to the National Climatic Data Center. The data are also available in digital form on magnetic tape and diskette.

SUBSCRIPTION, PRICE AND ORDERING INFORMATION AVAILABLE FROM:

NATIONAL CLIMATIC DATA CENTER
FEDERAL BUILDING
ASHEVILLE, NC 28801-2696

USCOMM-NOAA-ASHEVILLE, N.C. JUNE 1989-0585

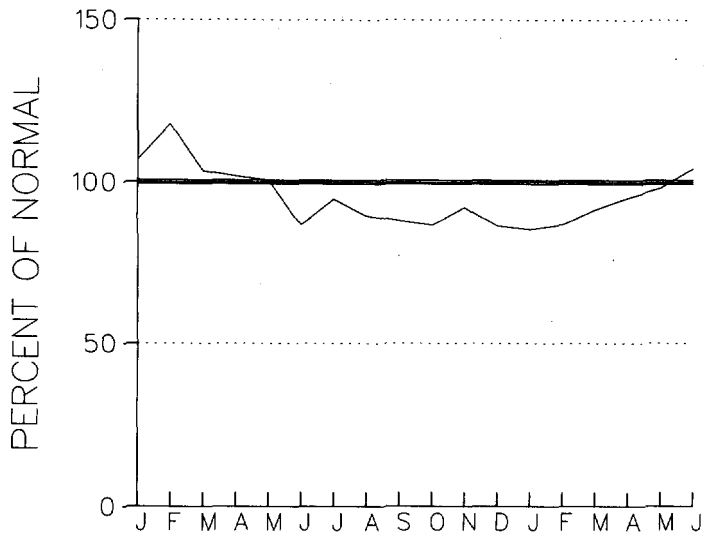
CUMULATIVE PRECIPITATION DEPARTURES FROM NORMAL (1951-1980)
FOR THE LAST 18 MONTHS
ENDING JUNE 1989
MARYLAND

CLUSTER 1 -DIVISION(S):
SOUTHERN EASTERN SHORE 01
CENTRAL EASTERN SHORE 02
LOWER SOUTHERN 03

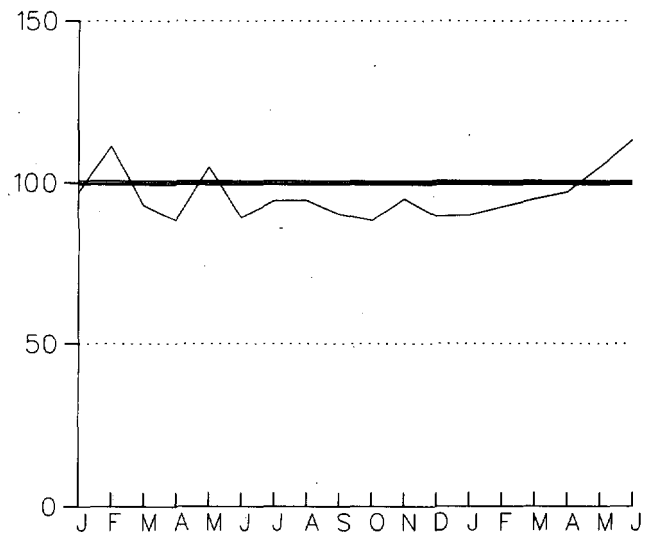
CLUSTER 2 -DIVISION(S):
UPPER SOUTHERN 04
NORTHERN EASTERN SHORE 05

CLUSTER 3 -DIVISION(S):
NORTHERN CENTRAL 06
APPALACHIAN MOUNTAIN 07

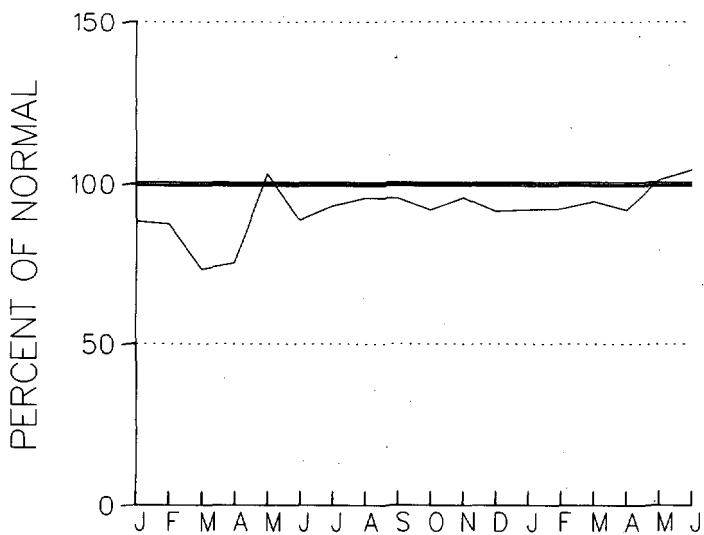
CLUSTER 4 -DIVISION(S):
ALLEGHENY PLATEAU 08



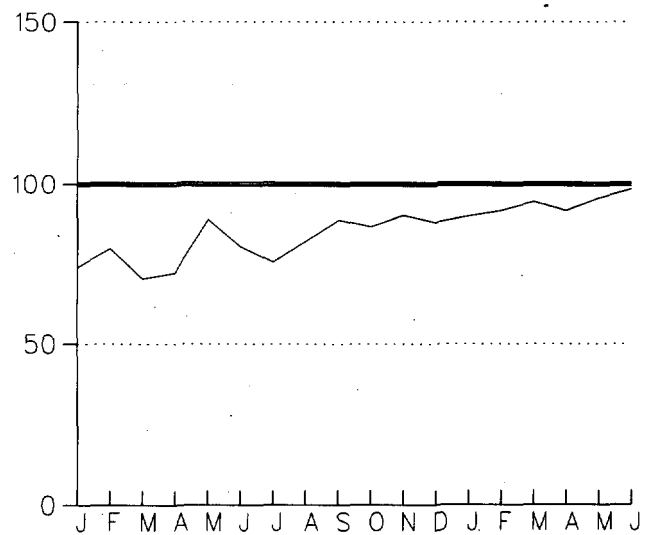
CLUSTER 1



CLUSTER 2



CLUSTER 3

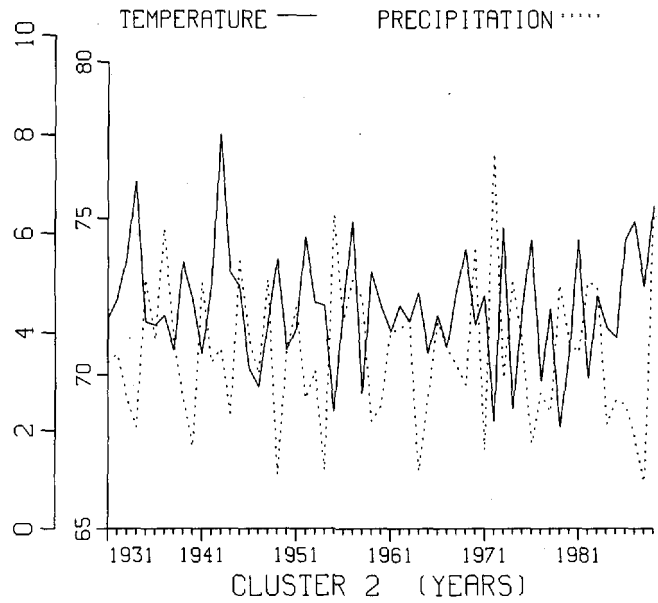
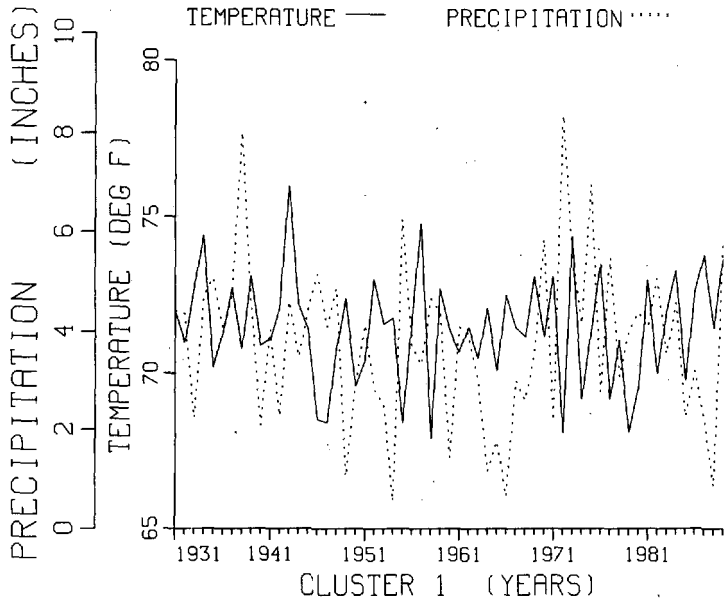


CLUSTER 4

MEAN MONTHLY TEMPERATURES AND PRECIPITATION
THE MONTH OF: JUNE
THE PERIOD OF: 1931 - 1989
DELAWARE

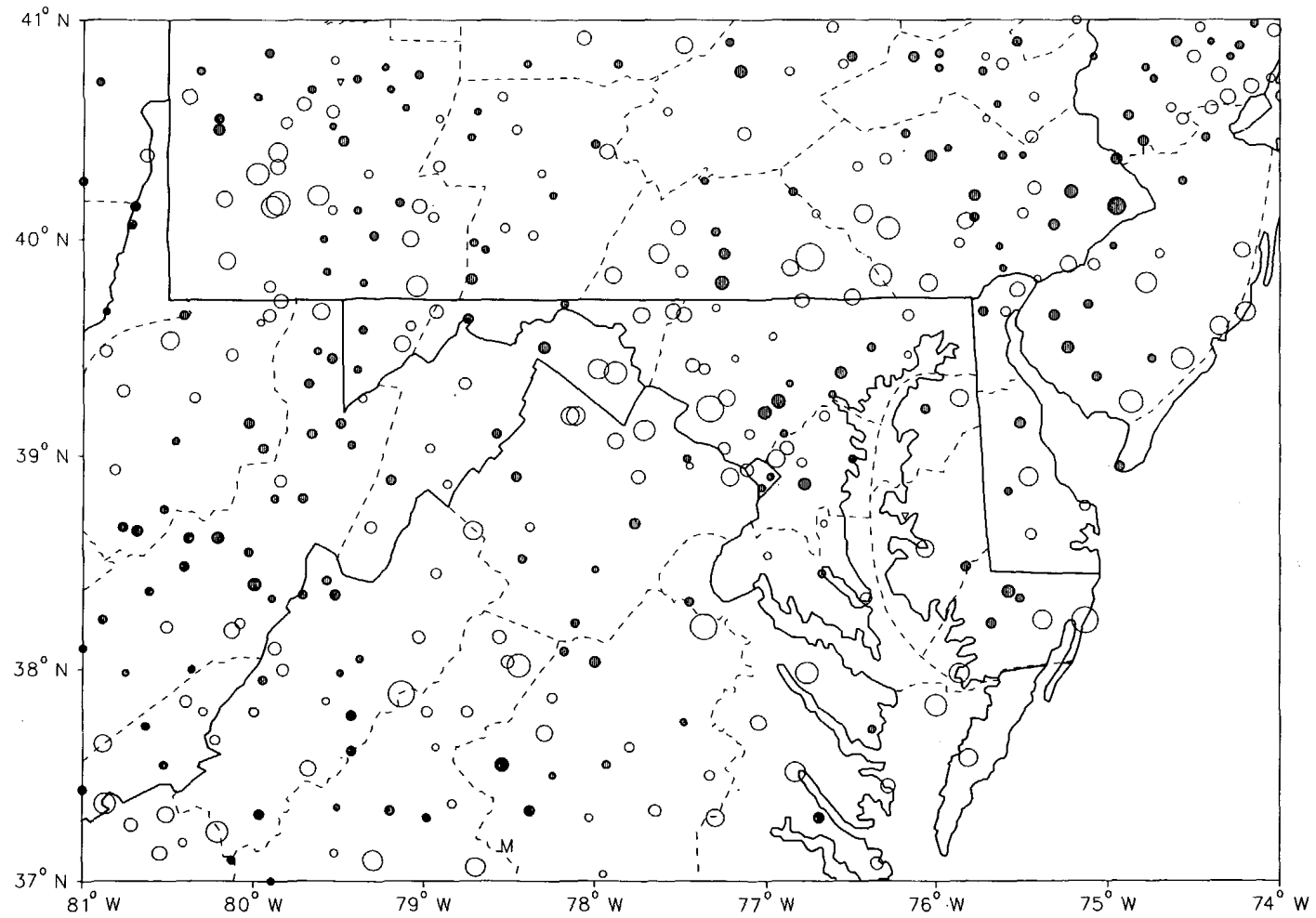
CLUSTER 1 -DIVISION(S):
NORTHERN 01

CLUSTER 2 -DIVISION(S):
SOUTHERN 02



MONTHLY PRECIPITATION DEPARTURE FROM
THE DIVISIONAL AVERAGE FOR
JUNE 1989
MARYLAND & DELAWARE

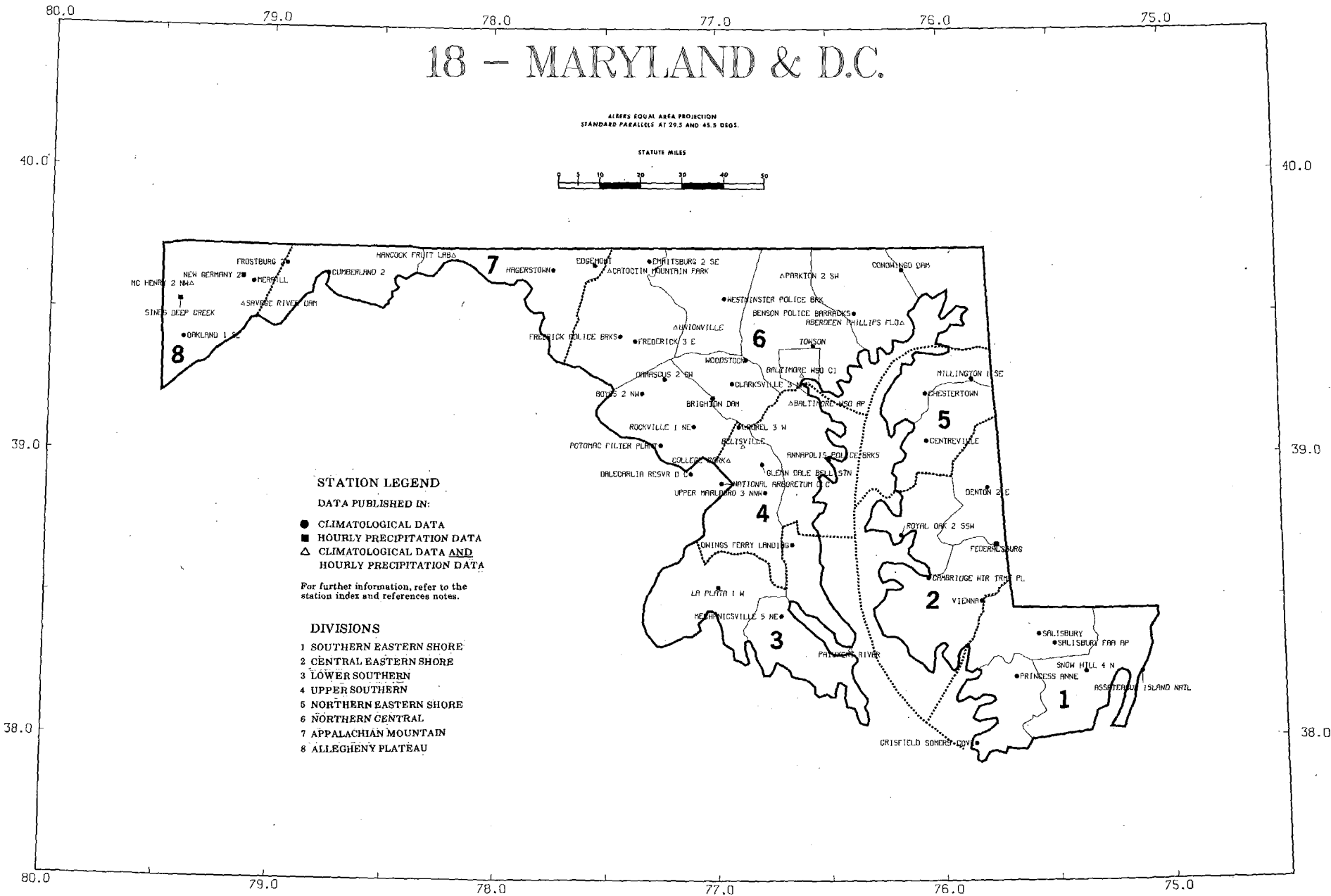
- M DENOTES INCOMPLETE DATA FOR THE MONTH
- ▽ ZERO DEPARTURE
- ○ ○ ○ ○ 5,10,20,... 50% OR MORE BELOW AVERAGE
- ● ● ● ● 10,20,40,...100% OR MORE ABOVE AVERAGE



18 - MARYLAND & D.C.

ALBERS EQUAL AREA PROJECTION
STANDARD PARALLELS AT 29.5 AND 45.5 DEGS.

STATUTE MILES



STATION LEGEND

DATA PUBLISHED IN:

- CLIMATOLOGICAL DATA
- HOURLY PRECIPITATION DATA
- △ CLIMATOLOGICAL DATA AND HOURLY PRECIPITATION DATA

For further information, refer to the station index and references notes.

DIVISIONS

- 1 SOUTHERN EASTERN SHORE
- 2 CENTRAL EASTERN SHORE
- 3 LOWER SOUTHERN
- 4 UPPER SOUTHERN
- 5 NORTHERN EASTERN SHORE
- 6 NORTHERN CENTRAL
- 7 APPALACHIAN MOUNTAIN
- 8 ALLEGHENY PLATEAU

40.0 76.0

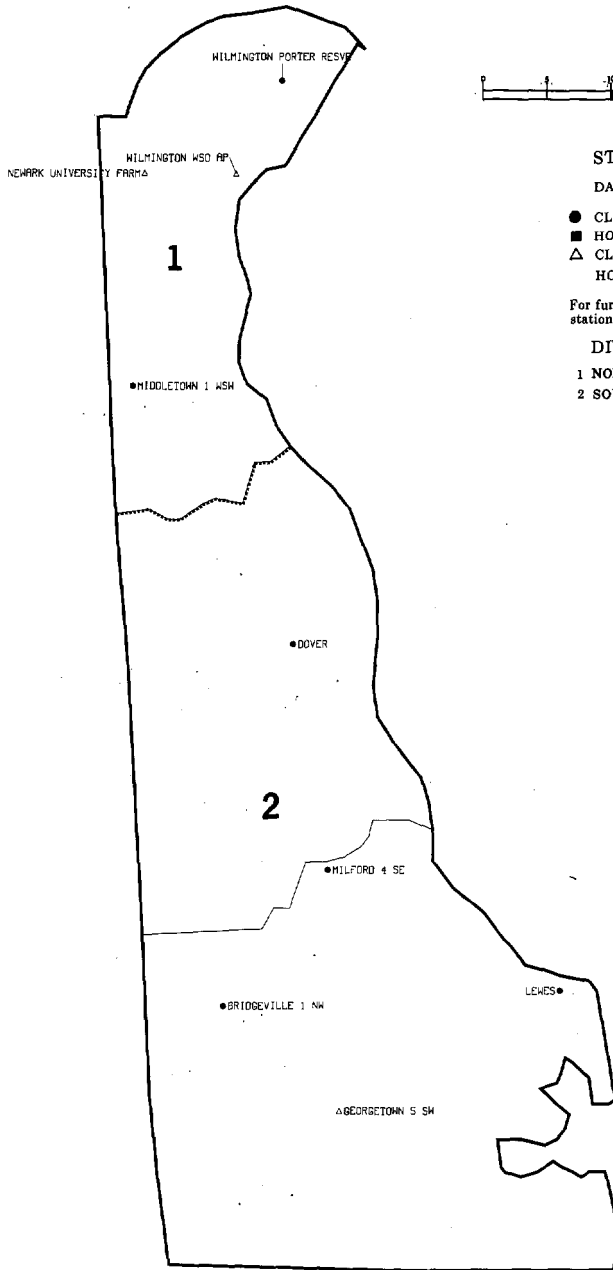
75.0

40.0

07 - DELAWARE

ALBERS EQUAL AREA PROJECTION
STANDARD PARALLELS AT 29.5 AND 45.5 DEGS.

STATUTE MILES



STATION LEGEND

DATA PUBLISHED IN:

- CLIMATOLOGICAL DATA
- HOURLY PRECIPITATION DATA
- △ CLIMATOLOGICAL DATA AND HOURLY PRECIPITATION DATA

For further information, refer to the station index and references notes.

DIVISIONS

- 1 NORTHERN
- 2 SOUTHERN

39.0

39.0

38.0 76.0

75.0

38.0

MONTHLY PRECIPITATION TOTALS

ANNUAL 1987
NORTH CAROLINA

STATION	ANNUAL	MONTH														
		JAN	FEB	MAR	APR	MAY	JUN	JUL	AUG	SEP	OCT	NOV	DEC			
NORTH CAROLINA																
ASHEVILLE HSO AP	34.57	1.11	1.85	2.75	0.57	3.55							4.19	5.28	4.28	
ASHEVILLE	25.67	0.71	1.57	1.81	0.53	2.55							2.77	4.15	2.94	
ASHFORD	36.74E	1.20	2.70	2.90	0.54E								3.80	4.90	4.80	
BADIN	-	-	1.30	2.60	1.20								2.40	4.10	2.90	
B EVERETT JORDAN DAM	-	1.70	1.50	3.60										1.70		
BOOMER 5 HSH	-	1.00	2.10													
BURLINGTON 3 NKE	-	0.80	1.92E													
CAPE HATTERAS HSG	46.86	5.75														
CARTHAGE 8 SE	-	1.70														
CATALDOCHEE	-	0.50														
CHARLOTTE HSO AP	26.91															
CLINTON 2 NE	35.35															
DALTON	-															
DOBSON	-															
EDEN	-															
ELIZABETH	-															
ELLENBORO	-															
FRANKFORD	-															
GREENSBORO	-															
GREENVILLE	-															
HELTON	-															
HOBOKEN	-															
LAKE LURE	-															
LAURINBURG	-															
LEXINGTON	-															
MORRISVILLE 2	-															
MORRISVILLE CITY	-															
MOUNT PLEASANT	-															
MILKESBORO 12	-															
POLKTON 2 NE	-															
QUEBEC	-															
RALEIGH-DURNHAM HSG	-															
ROANOKE RAPIDS	-															
ROARING GAP 1 NW	-															
SHELBY 2	-															
SNEADS FERRY 2 ENE	-															
SUNNYSIDE 2 SSE	-															
WILMINGTON HSO AP	-															
WILSON 3 SW	-															
YADKINVILLE 6 E	-															



HOURLY
PRECIPITATION DATA
NORTH CAROLINA

DECEMBER 1987
WITH ANNUAL SUPPLEMENT
VOLUME 37 NUMBER 12

A WORLD OF CLIMATIC
INFORMATION FOR

- * Attorneys
- * Colleges & Universities
- * Construction
- * Consultants
- * Governmental Agencies
- * Industry
- * Insurance Companies
- * Public Utilities
- * Research & Development
- * Energy

ISSN 0364-8319

HOURLY
PRECIPITATION DATA

NORTH CAROLINA

JANUARY 1987

VOLUME 37 NUMBER 1



HOURLY PRECIPITATION DATA is published monthly and presents daily, hourly, and maximum short duration data for recording rain gage stations in each state except Alaska. Also included are a published station index and a locator map for the state. In addition to the regularly published data, the December publication contains a tabulation of monthly and annual total precipitation amounts as an annual supplement.

SHELF STOCK of the printed publication is maintained only for the most recent three years. Earlier years are available on microfiche or paper copies reproduced from microfiche. The data are also available in digital form - on magnetic tape and diskette.

For further information,
call or write to the

NATIONAL CLIMATIC DATA CENTER

Federal Building, Asheville, N. C. 28801-2696

Phone (704) 259-0682 or (704)-CLIMATE

noaa

NATIONAL
OCEANIC AND
ATMOSPHERIC ADMINISTRATION

NATIONAL
ENVIRONMENTAL, SATELLITE, DATA
AND INFORMATION SERVICE

NATIONAL
CLIMATIC DATA CENTER
ASHEVILLE, NORTH CAROLINA

CD

VALIDATED BY:

Ted Burlew
Betty Edstrom
Bruce Emory
Joyce Morgan
Betty Shuford

DEPARTMENT OF COMMERCE
NATIONAL OCEANIC AND ATMOSPHERIC ADMINISTRATION
NATIONAL ENVIRONMENTAL SATELLITE, DATA, AND INFORMATION SERVICE
NATIONAL CLIMATIC DATA CENTER
FEDERAL BUILDING
ASHEVILLE, N.C. 28801

*TO CHANGE YOUR ADDRESS, PLEASE RETURN A COPY OF
THE MAILING LABEL ALONG WITH YOUR NEW ADDRESS.*

**BULK RATE
POSTAGE & FEES PAID**
United States Department Of Commerce
NOAA Permit No. G - 19