

Delaware Review

Vol. 83

October 23, 1959

Newark, Delaware

No. 6

Thompson, KA Place First



FIRST — Admiral Nelson leads his men to victory in Thompson Hall's winning homecoming float pictured above (left).



KA slaughtered the cat just as did the Blue Hens in their first place float, pictured above (right).

Sig Ep, Phi Tau Sypherd Take Second Places

Thompson, Theta Chi Sharp, Sypherd Win

Thompson Hall and Kappa Alpha accurately predicted the outcome of the homecoming game in the themes of their prize winning floats last weekend. Delaware slaughtered the cats as 'Admiral Nelson' steered the Hens to victory again.

Thompson pictured Admiral Nelson in the USS Delaware saluting his blue hen team that have just defeated the New Hampshire wildcats.

The confident wildcat went in one end of the slaughter house, but came out a skeleton in KA's mechanized float that predicted the Hens would "skin the cat."

As winner of the dormitory and fraternity division competition Thompson and KA received a trophy presented by The Review and \$25. from Newark shopping center merchant and the Alumni Association.

Sypherd won second place in the dorm division and Phi Tau and Sig Ep tied for second place in the fraternity division. They received \$15 for their accomplishment.

COMMUTERS WIN

The commuters won \$10 for their third place float and Theta Chi received an honorable mention. Even though Theta Chi received no monetary prize they will get third place points toward the spirit trophy.

Thompson, Theta Chi, Sharp, and Sypherd won first places at the pep rally held at Old College on Friday, Oct. 16.

Second places went to Squire, Harter, and AEPI. Kent, Brown and Kappa Alpha took third places.

SEND-OFF RESULTS

Squire, Smyth, Sharp, and Theta Chi received first place in the send off competition before the Lafayette game. Kent, Sharp, and Alpha Tau Omega took second places. New Castle won third place.

Winners of the pep fest before the Lehigh game were Cannon, Harter and Theta Chi. Squire Hall, Sypherd, and Kappa Alpha earned second places. Third places were copped by Kent, Sharp, and Sig Ep.

The winners will receive points from these spirit accomplishments which will go toward the spirit trophy which will be awarded later in the year.

Corvettes To Play Tonight for Dance

Following the pep fest this evening, a Post-Rally Dance, sponsored by the Senior class, will be held in the Dover Room from 8 p. m. to 11:30 p. m.

The dance will feature the Corvettes, announced Bill Brereton, chairman of the dance.

Dress will be informal with bermuda shorts excluded. The price is \$5.00 per person, stag or drag.

Delaware Student Spends Summer on Kodiak Island

BY KEN STONEMAN

Have you ever thought about paying for the privilege of working all summer? This is precisely what one member of the sophomore class did this past summer.

Vern Abbott, a business administration major from Dover, spent his summer painting houses, harvesting hay crops, and helping to clear a recreation area for an orphanage. All this was done without receiving or expecting one penny in remuneration.

ABBOTT ASSISTS IN MISSION

The site of this unusual activity was Kodiak Island, just off the coast of Alaska near the top of the Aleutian Islands chain. Vern, along with thirteen other college students from various parts of the United States, offered their services to the Kodiak Baptist Mission, which had requested help under the auspices of the World Council of Churches.

GIRLS ON KODIAK ISLAND

Since Kodiak has only about 5,000 inhabitants, most of whom are Indians and Russian Aleuts, one might wonder just what a group of college students would do for the proper amount of social activity. Luckily, out of the 14 students, six were girls.

As for the romantic interest of the Delaware participant in this work project, a picture of a beautiful blonde named "Jan" is prominently displayed just inside the door of 1 Sypherd Hall where one Vernon Abbott is said to reside.

ALASKAN STATEHOOD FETED

When asked about the most interesting and exciting events on the trip, Vern had two answers. (No, he did not wrestle any polar bears!) The only really exciting thing that happened

Cheerers Lead Cheer Tonight

There will be a pep-fest tonight at Old College. The band will leave Old College at 7:15 and will pick up the students at the library.

Students are urged to stay behind the band while going up campus says Barbara Balanconi, captain of the cheerleaders. If they don't stay behind the band the fraternities and dorms will have to draw numbers for places and they will have to keep the same spots all year.

FISHERMAN DESIGNED FLAG

Another aspect of the trip was an interview with Benny Benson, the fisherman who designed the Alaskan territorial flag many years ago, and a tour through the estate of the "Lord of Alaska." The latter, a gentleman named Berinoff, was the Alaskan governor in the days prior to the American purchase of Alaska.

GIRLS EQUAL MEN IN WORK

The mission where the group worked takes care of approximately 45 orphans within the mission area, and gives aid to many others for whom there are

(Continued on Page 11)

Frosh Election Plan Released

Plans for the coming Freshman elections have been announced by Typ Morris, vice-president of the senate and chairman of the elections committee.

The offices of president, vice president, secretary, treasurer representative are open to any and freshman woman's representative are open to any eligible freshman. All petitions must be submitted with 25 names by Nov. 2. The petitions may be obtained from the office of the Dean of Students.

Campaign posters may be put up on Nov. 4 and a rally is scheduled for 4:00 o'clock Nov. 9.

Typ urges freshmen to participate and keep informed of campaign issues in order to be prepared to vote on November 11 and 12 in the Student Center.

The members of the election committee assisting Typ are Bill Taylor, sophomore; Jerry Swartz, senior; Pat Widdows, junior; Mimi Berkman, junior and Tom Roe, junior. The committee will have a meeting on Tuesday, Oct. 27.

Rising Enrollment Creates Problems for University

Enrollment problems forecast by educators during the past decade are being realized at a faster-than-predicted rate at the university.

The increasing student population, variously labeled as the "tidal wave of students," the "burst rate in the birth rate," and "the post war baby boom," has made itself evident in the undergraduate enrollment figures released for 1959-60 by Dr. William G. Fletcher, director of admissions and records.

An all-time high of 2,523 students have enrolled for undergraduate work. This number exceeds by nearly 100 the number of students enrolled last year and surpasses by 200 the enrollment forecast prepared early last year by university authorities.

STUDENT POPULATION DOUBLED

Delaware, which received official recognition as a university

in 1921, has doubled its student population twice in the 38 years since that time. In 1921-22, there were 471 undergraduate students.

ENROLLMENT TOPS 900

Shortly before World War II, the enrollment topped 900, marking the first doubling in an interval of twenty years. In 1946-47, packed with returning G. I.'s, the university enrolled 1,817 students, of whom nearly 1,400 were men. This second doubling within just six years was not a temporary phenomenon. Ten years later the undergraduate student body exceeded 2,000.

With this statistical data proving that it can be and has been done, university officials are not discouraged by forecasts that enrollment, conservatively estimated, will double again by 1970.

Of this prospect, Dr. John A. Perkins, President of the university, said in his 1958 report,

"Enrollment forecasts are not alarming but encouraging. They indicate simply that Delaware in the future will more nearly do its share that it has in times past in providing the educated manpower which the country and this State with its technical industries have required."

How large will the university become? By 1971-72, it is expected that 5,582 students will comprise the undergraduate body. In both engineering and education, increases of more than 200% are expected.

"But," says Dr. Perkins, "anticipated growth will not make this university a large impersonal, factory-like place. It will be better for being bigger."

Office Hours

The Review has office hours Monday thru Friday from 11 a.m. until 2 p.m.

Campus Movie Is Award Color Film

An academy award winning film, "The Silent World," will be featured at Wolf Hall auditorium this Saturday and Sunday. The picture will start at 8:15 p. m.

"The Silent World" won the academy award for the best feature length documentary in 1956. This color production is a realistic drama similar to "The Sea Around Us."

This weekend's Wolf Hall Auditorium offering is one in a series of films selected by the Department of University Extension and is free to the public.

Japanese Arts In Miniature On Exhibit In Student Center



MINIATURES — Nancy Weir, senior (right) holds the tiny Japanese Arts which are on display in the exhibition Gallery of the Student Center.

Student chairman Gib Smith announces that a display of Japanese Arts in miniature is on display in the Exhibition Gallery of the Student Center.

Lasting until Nov. 1, the display consists of articles, prints and books concerning the Japanese Arts.

The collection consists of Netsuke and Inro sword guards, sword furniture, Seppuku knives, and other small oriental objects. The Netsuke articles are being lent by John Mang of Alexandria, Virginia and are an outstanding addition according to Dr. Ott.

The prints and books belong to the university. Included are the wall paintings of the Horyuji Monastery at Nara, Japan, the oldest wooden buildings in the world.

The exhibition is the first of a series to be presented under the supervision of the Student Center and the Arts-Project Subcommittee of the Cultural Activities Committee in the University.

Undergraduates Sought For Reserve Officers; Yeoman Visits Campus

College men enrolled in the freshman, sophomore, and junior classes are being sought by the Navy to enter in its Reserve Officer Candidate program.

Yeoman First Class William K. Fessenbecker will visit the university to explain the ROC program to interested students. He will be in the Agnew Room of the Student Center on Oct. 28 from 10 a.m. to 2 p.m.

SUMMER TRAINING

Those selected attend two summer courses lasting about eight weeks each at the Navy's Reserve Officer Candidate School at Newport, Rhode Island. Instruction in naval customs and history, seamanship, gunnery, navigation, communications, and other seagoing skills is given during these summer courses. Transportation to and from Newport plus pay commensurate with the rate held by the student during summer training is paid by the Navy. The Navy also provides housing, food, textbooks, and supplies during the summer training.

ENSIGN COMMISSION EARNED

The ROC student upon successfully completing the two summer training periods and upon graduation from college is commissioned as an ensign in the Naval Reserve. At a later time, those interested in the Navy as a career may apply for transfer to the Regular Navy. The ROC student, following commissioning as an ensign, is obligated for three years of active duty in an officer status.

APPLICANTS' QUALIFICATIONS

Applicants must be citizens of the United States; must be at least seventeen at the time of application; must be able to complete college and the two summer training periods prior to age twenty-seven and a half; must be physically, mentally, and morally qualified; and must show capacity for leadership to receive consideration for admission to the ROC program.

ENLIST FOR SIX YEARS

If selected for the ROC program, the student must enlist in the Naval Reserve for a period of six years and, while continuing in college, attend drills one night each week at the Naval Reserve Training Center located on the Kirkwood Highway between Newark and Wilmington.

INELIGIBLE STUDENTS

Students who are enrolled in the Advanced ROTC program at the university are not eligible, nor is any student who belongs to a reserve component of any other Federal or State military service unless first separated therefrom. Also, students who are enrolled in such programs of study as pre-medical, pre-dental, or other fields which could qualify the person for a commission in the Navy Medical Service Corps and pre-theological students are not eligible.

Fraternity Rushing Procedure Is Investigated by Committee

New York, N. Y. (I. P.)—Due to the recent troubles at American Universities caused by rushing practices, a committee was formed at Columbia College in New York to investigate these procedures. The decision was that the present system be retained.

This decision was reached after a study of rushing which the National Interfraternity Council conducted at 163 colleges.

The committee, in an 11 page report, stated the following reasons for its conclusion: A lower fraternity scholastic average is not caused by the present rushing system; fraternities are a definite aid, both socially and academically to the general acclimation of the freshmen or upper classmen at Columbia College.

The present rushing system precludes the necessity of the cumbersome rules and regulations found in a deferred rushing system. The vast majority of fraternity members and pledges are satisfied with their choice of fraternity and the system by which they choose.

Under the present system, many students have exercised individual deferment, there exists a harmonious relationship between fraternities, the fraternity members and the freshmen are relieved of their rushing obligations early in the semester, and, finally, the freshman feels no undue pressures either to pledge or to continue pledging.

The committee pointed out that there had been a system of deferred rushing at Columbia, which was felt to be detrimental to a healthy relationship between fraternities on campus. Furthermore, all interfraternity councils failed under this procedure.

Cadets to Pick Girl Sponsors

This year, as in years past, the university ROTC will select sponsors. Fourteen lucky co-eds will be selected by unit commanders to represent: 1. each of eight companies, 2. each of two battlegroups, 3. the entire Brigade, 4. the ROTC Band, 5. Scabbard and Blade Honor Society, and 6. Delaware Rifles Drill Team.

Military sponsors are selected on the basis of personality, appearance, and scholarship from women in the sophomore, junior, and senior classes. Any woman may be selected who has maintained at least a 2.0 overall index and who is not on disciplinary probation.

Nov. 24 is the tentative date on which the sponsors will be presented in an annual ROTC ceremony on Frazier Field. In the spring one of the sponsors will be selected to reign as queen over the Military Ball.

Telephone EN 8-8587
REAL ESTATE
Grover Surratt
45 E. Main St.
Newark, Del.

BING'S BAKERY
A Cake
For Any Occasion
253 Main St.
Ph. EN 8-2226

You're a triple threat man in this Heathrow

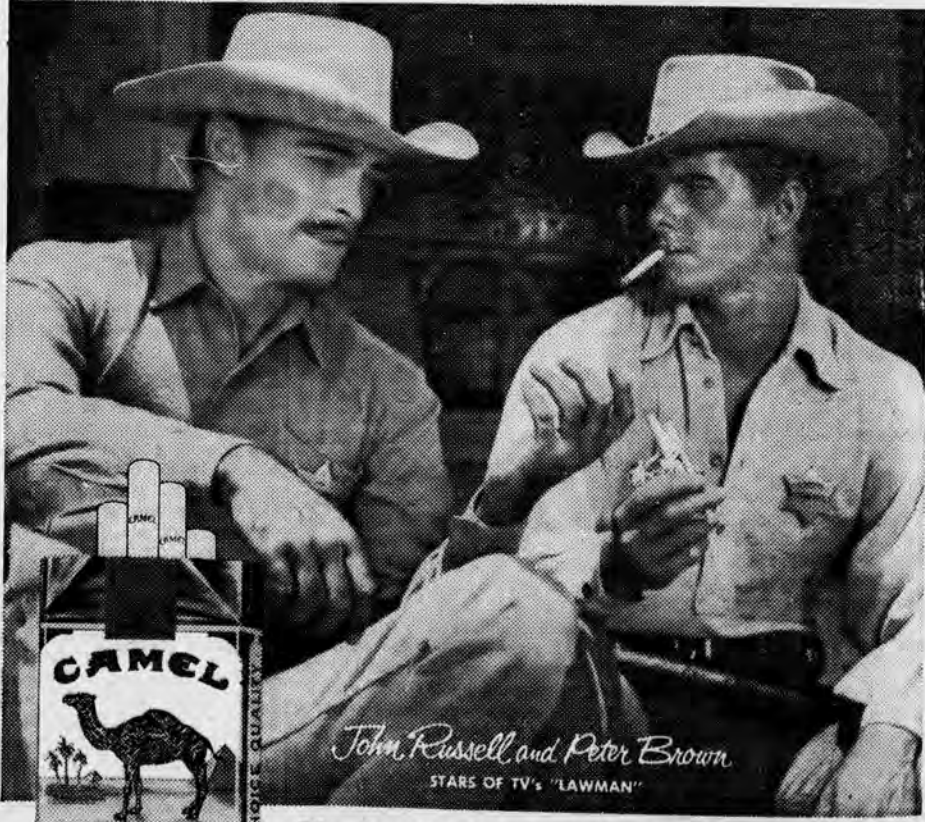
Blazer Trio

High-spirited 3-piece sport outfit for that "big wheel" look! Easy-going, colorfully lined jacket with natural shoulders and narrow lapels is accented by bright metal buttons. Matching Post-Grad slacks are slim, trim and terrific. Matching vest reverses to a lively Ancient Madder or Foulard print. Deftly tailored by H-I-S in soft Corduroy, luxury Woolens or interesting Hopsackings, \$29.95 to \$45.00. Handsome shades. At your favorite campus shop.



GO OUT FOR
his
SPORTSWEAR

Have a real cigarette—have a CAMEL



John Russell and Peter Brown
STARS OF TV'S "LAWMAN"

The best tobacco makes the best smoke!

R. J. Reynolds Tobacco Co., Winston-Salem, N. C.

A Residence Hall Director!

Suddenly, in the middle of the night, an anxious knock announces an emergency. Outside stands a boy, bent with pain.

There is no delay, no hesitation. On the other side of that door is one of the people in whom the university has placed one of its greatest trusts, a director of a men's residence hall. This is his job, he knows it well and does it right, not only in this situation, but in the multitude which he faces during the year.

DIRECTORS COUNSEL MEN

He is one of the people who man the watchtowers of human kindness, counsel troubled minds, soothe hurt feelings, and make sure the dormitory is kept in good order. They are close to the students, and their task is enormous.

FULL TIME DIRECTOR IN COLBURN

Delaware employs one full time residence director, Beatrice Lieb of Colburn Hall. The other five directors are graduate students actually listed as "part-time" employees, but the job they handle would awe most of us. These are Dr. Takeshita of Japan, a chemistry major who heads Brown Hall; Donald Hoffman of Harter, a history major; Peter Pence, head of Sypherd Hall and a chemical engineering major; Sharp Hall's Terry Brown, a graduate math major;

and David McCan who handles the combined forces of Bonham Johnson and Tiffany while doing graduate work in physics.

DIRECTORS ENJOY SUCCESS

Delaware is one of the few universities not having candidates for doctorates in psychology or social science manning these posts. Yet the success the directors have enjoyed has been outstanding as students and administration will attest.

Mr. James Robinson, director of residences for men sums it up, "These are the high-type people who can do well in any job; in this one they excel."

Rules Changed On 'Conditions'

Carl J. Rees, provost and dean of school of Graduate studies, has announced a change in academic regulations concerning deficiency grade reports.

In the past, students were notified if work at mid-semesters were unsatisfactory to the department and "conditions" were issued as notification. If an F or more than one D appeared in the mid-semester report, parents also were notified.

Provost Rees, speaking for the faculty, said, "We expect upperclassmen to be responsible and more mature. For this reason, this year reports will go to all students, but only to the parents of freshmen."

All students who are notified are urged to consult with their course instructors and advisors.

Madrigal Singers Organize Aided by Dr. Ivan Trusler



SOFTLY — Ann Tatnall, junior music major, directs the Madrigal Singers during one of their rehearsals. In the back row (left to right) are Scott Holzhauser, Winifred Buzinskis, Russ Fulton. Standing in front row (left to right) are Carol Dunai, Jerry Knotts, Debbie Kieffer, and Linda Haught.

Two years ago, a group of highly talented student musicians who were interested in Madrigal singing, formed the University Madrigal Singers. The students secured Dr. Ivan Trusler, director of Choral Organizations, as their faculty advisor, who helped select music and arrange concerts. Dr. Trusler's contribution to the Madrigal Singers now consists mainly of arranging concerts, indicating that the group is now a comparatively independent organization.

Director Anne Tatnall, who is one of the few remaining original members, selects the English and Flemish 16th and 17th century Madrigals that the sing-

ers perform, as well as rehearsing and conducting all concerts. Anne is a junior Music Major from Wilmington, who is studying choral conducting.

Anne anticipates the coming season to be as busy as the last, when the Singers performed 20 concerts for clubs, interested groups and University history and Literature classes. They made a record for the purpose of demonstrating the English Madrigal to such classes, and spent the summer as a professional church choir.

The group now consists of Jane Hamell, Carol Dunai and Winifred Buzinskis, sopranos; Debbie Kieffer, Linda Haught and Ellen Kwik, altos; Wilbur

Eakin and Russ Fulton, tenors; and Jerry Knotts and Scott Holzhauser, basses.

The quality of the present voices makes the use of two or three voices on each part possible, while high school Madrigal groups frequently use five or six voices to a part.

Students must be in the University Concert Choir to sing with the Madrigal Singers, which accounts in part for the high quality of the voices, which may be heard singing the lyrics of Elizabethan England at the Choral Festival on Nov. 4.

Cadets To Pick Girl Sponsors

Years past university ROTC unit commanders will select fourteen lucky co-ed commanders to sponsor each of eight companies, each of two battle groups, the entire Brigade, the ROTC Band, Scabbard and Blade Honor Society and Delaware Rifles Drill Team.

Military sponsors are selected on the basis of personality, appearance, and scholarship from women in the sophomore, junior and senior classes. Any woman may be selected who has maintained at least a 2.0 overall index and who is not on disciplinary probation.

Tentative date on which the sponsors will be presented in an annual ROTC ceremony on Frazer Field is Nov. 24. In the spring, one of the sponsors will be selected to reign as queen over the Military Ball.

Student Center To Show 'Bard' Film

Two films on William Shakespeare will be shown on Friday, Oct. 30. The first will be a biography. The second will be the story of the Shakespearean theater.

The showing will take place at 8 p. m. in the small cafeteria of the Student Center. There will be no charge for admission.

All those interested are cordially invited to attend.

GIGANTIC BOOK and PRINT SALE

AT THE

UNIVERSITY BOOKSTORE STUDENT CENTER

- Brand New Editions
- New Stock Added Daily
- Savings Up To 80%
- Supply Limited - Come Early

Starts Friday - Oct. 30th - For 2 Weeks Only

THE UNIVERSITY BOOKSTORE
IN THE STUDENT CENTER



The Review Staff

Sheldon Weinstein — Editor-in-Chief
Business Manager — **Nina Matheny** — Managing Editor

Ellen Tatum — News Editor
Ed Tomao — Gail Thompson — News Ass'ts

Dick Bullock — Photography Editor
Stevie Hingston — Office Manager

Irvin Hirshfeld — National Ads Manager
Louis Levitt — Local Ads Manager
Barbara Liebert — Head Typist
Bobbi Lafferty — Circulation Manager

Susie Ries — Associate Editor
Ernie Levy — Sports Editor
Howard Isaacs — Sports Ass't
Denise Granke — Copy Editor

News Staff: George Carlisle, Mike Lewis, Barbara Edwards, Ken Stone-
 man, Jo Ellen Lindh, Pat Jeffrey, Bill Kasudev, Brenda Davis, Lee Buckley,
 Emily Fish, Barbara McKie, Kay Smack, Charles Prettyman, Stevie Hing-
 ston, Evelyn Creasy, Marge Barbaleck, nn Roesser, David L. Kaplan, Cynthia
 Keen, Larry Clark, Jim Gurley, Pete Fisher, Marcia Toselli.
Circulation Staff: Harry Fogach, Barbara Edwards, Elaine O'Connell,
 Sandy Quinton.
Sports Staff: Barry Schlecker, Art Inden, Al Goldman, Pete Gray, Jim
 Pappas, Marge Barbalich, Barbara Biting.
Secretary to the Editor: Pleasant Peirce.
Secretary to Business Manager: Barbara Janney.
 Represented for National Advertising By

National Advertising Services, Inc.

College Publishers Representative
 420 MADISON AVE., NEW YORK, N. Y.

Entered as second class matter Dec. 13, 1945 at the Newark Post Office,
 Newark, Delaware under the act of March 3, 1879.
 Chicago Boston San Francisco Los Angeles Portland Seattle
 New York — Chicago — Philadelphia

Too Few Glasses

Dining Hall Inefficiency

Last week we intended to print an addition to the editorial concerning the university post office. However, we found it necessary, for the sake of space, to cut this as well as large portions of the sports page and other pages. We had approximately enough copy for a ten or eleven page paper but not enough for twelve. Hence, we had the choice of leaving a page for doodles or reducing the size of the paper to eight pages.

The omitted editorial piece concerned dining hall inefficiency. Last spring an editorial was printed defending University of Delaware dining hall food as better than average for colleges and universities. This we still maintain. However, the service often is inadequate.

Since the opening of classes, for example, there have been too few glasses in Kent Dining Hall. A sign was put up reading something like this: "Please take only one glass of milk. We are temporarily short of glasses."

One month has passed. The sign is still posted. Perhaps the word 'temporarily' should be changed to 'permanently'.

In the first place, it was known in the summer approximately how many students would attend the university this fall. Persons in charge of the dining hall should have made sure then that there would be enough dishes to accommodate the students.

Secondly, after it was known that there were too few glasses in Kent no direct action was taken to remedy the situation. It would perhaps have cost a little more to buy glasses directly from a dealer than to order them wholesale, but they should have been bought nevertheless. The order, as this was written, had not arrived.

Thirdly, although Kent is short of glasses, the Student Center Dining Hall is not. Students eating in the Center can take as many glasses as they want. Kent is across the street from the Student Center but no effort has been made to transport some glasses from the Center to Kent so that all students can have the standard two glasses of milk. Even two glasses are not enough for many students — athletes in particular — who require three or four.

In defense of the dining hall crew we will say that we appreciate the fact that a Delaware student can take as much milk as he wants. This is true even now in Kent if the student is willing to make refill trips. In many universities students are limited to one glass of milk, no refills.

Notes

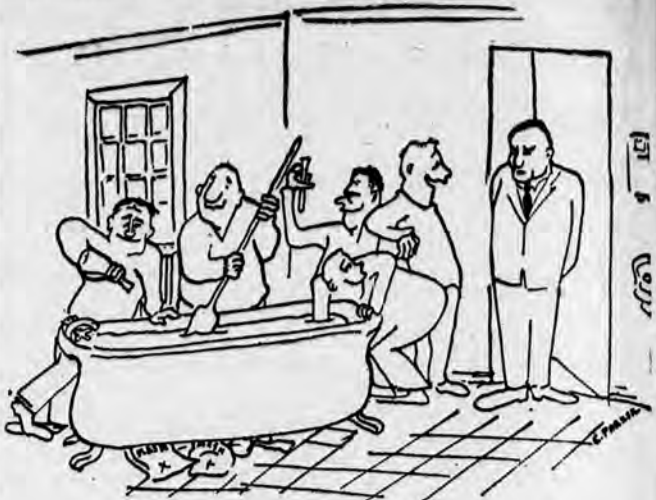
By Anne Tutnall

Tryouts for singing parts in "Carousel" will be held next Wednesday evening, Oct. 28, at 7 p. m. in Wolf Hall Auditorium. You may sing anything; bring your own accompanist if possible. The show will run for four nights during the second week in March.

If you are circling that date on your calendar, circle the following Wednesday, Nov. 4, the date of the annual Festival of choral music. One of the most popular concerts of the year, the Choral Festival includes all four choral organizations on campus.

The Concert Choir will open the program with the Schubert "Mass in G", accompanied by a string orchestra of Wilmington and Philadelphia professional musicians. The Mass, written when Schubert was only eighteen, is to me one of the loveliest and most immediately appealing choral works I have ever heard.

Virgil Thomson's "Seven Choruses from the Media of Euripides" will be performed by the Women's Chorus. The new, sixteen-voice Varsity Chorus will make its first Choral Festival appearance; the University Madrigal Singers will appear for the second time. The Choir will close the concert with the "Geographical Fugue"—a four-part (Continued on Page 7)



"Jest Havin' A Frennly 'Lil Experiment, Sir"

Offstage Notebook

By GEORGE SPELVIN

E 52 University Theatre opened its 28th season last night with an extremely effective production of Terrence Rattigan's THE WINSLOW BOY. The drama is a well-constructed one to begin with and includes a scene for almost every character in which they are the center of attention.

The story, very simply, is the fight of Arthur Winslow to have his son, Ronnie, acquitted of stealing a five-shilling postal order. It would only be fair to treat the performances individually because they were all basically well done, however, there are space limitations.

SHELIN PLAYS LEAD

The title role was played by Kenneth Shelin. The Players were rather lucky in that they were able to find someone who could physically fit the part. Mr. Shelin handled his part with almost delicate skill. His moment came when he was being cross-examined by Sir Robert Morton. Seldom have we seen such an emotion-packed scene carried off with such sensitivity to the part.

William Harpepr acted the part of Arthur Winslow with imagination and gusto. His was the most complete and detailed characterization in the show. Even though Arthur had arthritis which almost kept him from walking, the strength of Mr. Harper's character permeated throughout the show.

JONES PLAYS WIFE

Grace Winslow, Arthur's wife, was played by Phyllis Jones. Miss Jones knew what she was doing on the stage, but she seemed at times to be doing it as if there was nobody else there with her. She had a good idea of what her character should be, but again at times she didn't seem to have the spirit of the scene in which she was playing. Probably if she stopped playing up the tragedy and more or less balanced this with the lighter moments in her life, her characterization would have fitted in more with the rest of the show.

There was an extremely attractive new face in this production which we hope to see often in future shows. The name which

went with that face was Kay Salvatore. It is seldom that an aspiring freshman actress presents herself at the doors of Mitchell Hall with so much know-how. She is very capable on the stage and added a great deal of charm in almost every scene she appears in. Her charm was almost, but not quite, a detriment to her. The character of Catherine Winslow, Ronnie's sister, is a bit more masculine than she makes it. Her strength as a character, however, helps to overcome this difficulty.

FORD STANDS OUT

Of the rest of the actors we must say that they all did knowledgeable jobs in their roles. One did stand out in our mind though and that was Violet played by Allison Ford. She handled the part nicely and we have noticed quite a bit of improvement since her first stage appearance here at the University. She has one characteristic which has annoyed us ever since we first saw her and which she still hasn't gotten rid of, and that is her tendency to lean over toward the people she is acting with. She is tall and this may be the reason for her movement, but it certainly is disturbing to her character. Violet is an eccentric strong-willed maid, but when she leans over, she destroys all of the strength she has built up.

PEGG DIRECTS

The play is a typically well thought out product of Mr. Thomas Pegg's direction. Although the set sometimes appeared to be too busy we must say that Mr. Thomas Watson's design goes a long way toward setting the mood of the period.

TIDBITS—Joan Fontaine opened in Wilmington last week in a not-so-funny comedy entitled HILARY preceding a nation-wide tour.

LOOK HOMEWARD, ANGEL, is now playing at the Wilmington Playhouse with Miriam Hopkins.

Yours truly,
George

Commuter Chatter

By DAVE KAPLAN

The commuters would like to thank Dave DeRiemer for the excellent job he did as chairman for the float construction committee and all those who helped to make the float a third place winner. This marks the first time in the history of the competition that the commuters have ever placed.

The commuters are still looking into the possibility of having mailboxes located near the commuter lockers in the basement of the Student Center. If the commuters vote to accept the proposal of the mailboxes, Ralph Williams, junior, will approach the administration for permission to start planning for the construction of the boxes.

The next meeting of the organization will be held Oct. 28, at noon in the Morgan and Valandigham Room of the Student Center.

PLACEMENT OFFICE

Code: B—Bachelor's
 M—Master's
 D—Ph. D.
 *—Women only.
 #—Men only

CAMPUS INTERVIEW CALENDAR
 Week of: Monday, November 9, 1959
 Deadline for signing up: Wednesday, November 4, 1959

CLASSIFICATIONS TO BE INTERVIEWED

Date	Name of Company	Ch.E.	Engineers C.E. E.E.	M.E. Acct.	Biol.	Bus. Adm.	Arts & Science Chem. L.A.	Math.	Phys.	Agri.	Other	Sec'y	Any
Mon., Nov. 9	Texaco, Inc.	BMD	BM	BM			MD						
Tues., Nov. 10	Revere Copper & Brass, Inc. (United Aircraft)	B	B	B B		B1	B						
	Lever Brothers, Inc.						D						
Wed., Nov. 11	B. F. Goodrich Co.	MD	MB	MB			MD	MD	MD				
	Consolidation Coal Co.	MD					MD (Physical only)						
Thurs., Nov. 12	Food Machinery & Chemical Corp	BMD	B	B B			BMD						

Note: Until Further Notice, Interviews for Bachelor Degree Candidates are for January Graduates only.

Wed., Nov. 4	Travelers Insurance Co.												BM
	DuPont Company	BMD	BM	BM	MB		D	BMD	BMD				BMD
Thurs., Nov. 5	DuPont Company												
	W. R. Grace Co.												

Note: Until Further Notice, Interviews for Bachelor Degree Candidates are for January Graduates only.

'Neath the Arches

By MICHELE

Laurel Hall, the infirmary; Sick or Hurt! The sequence is amazingly right on the tip of your tongue, isn't it. Have you ben there No? Then you only see the building facing the library beyond the magnolia circle. Yes? Then you know about that other world!

To those of you who don't know, Laurel Hall is another world, right here on campus. It's an orderly, peaceful, and most-of-all quiet, world geared in first when the campus is in

drive (or fourth if you must drive a sports car) You can rest, recuperate and reorganize, all without the pressure of shifting between class and dorm when your motor run down or the gears are stripped, or even when your gas line is clogged. Thought you'd like to hear that it's a good human garage and not a mystery building you have to wonder about; don't mean to drum up business either, just straighten a few myths — (I know, I've been there.)

Ritchie Speaks To Debate Club

Before looking ahead, let's look behind and note that among the memories made over Homecoming 1959, for many, a special few will remember in a special way that everyone can see. Congratulations to Martha Skeen who became engaged to Fred Schmidt, and best wishes to Bonnie Blom who was pinned over the weekend by Rick Main wearing Alpha Tau Omega's Worthy Master; Lynn Beard pinned by Lex Taylor, Sigma Phi Epsilon; and Mary Ann McCombs by Jim Patterson, Beta Theta Pi, Dickinson College.

Looking ahead, look for another good pep fest tonight, another post pep fest dance in the Dover Room tonight promising to be better than ever, and another (we're rooting for one) victory tomorrow on our home grounds. Looking around, see you 'neath the arches.'

Theta Chi Appoints Five Soph. Officers

At a recent meeting of the Theta Chi Fraternity five of the members of the class of 1962 were elected to major offices. William A. Hayden, an English major was elected to fill the post of secretary. Edward A. Tomao, a pre-dental major, was unanimously appointed publicity director, and Jon Stieglitz, engineering major, was elected alternate representative to IFC. Donald G. Schnetzer, chemistry major, was appointed scholarship chairman. The position of chapter representative to the national magazine, 'Rattle', was filled by Walter N. Carlyle, a history major.

Theta Chi Party To Be A Masquerade

A masquerade party will be held at the Theta Chi house tomorrow night. The brothers and their dates will wear original costumes in the Halloween vein and music will be furnished by the Hurricanes. Prizes will be awarded for the most original costumes. Entertainment will feature traditional Halloween games.

Dance And Magic Spark C. C. Meet

There will be a meeting of the Cosmopolitan Club tonight at 8 p. m. The meeting will be held at the YWCA which is situated on South College Avenue right across the parking lot of the library. A cha-cha lesson will be given by Ed Myers and later there will be a magic show.

Jackson's Hardware
for
SPORTING GOODS
90 E. Main Newark

Center Corner

After all the publicity and talk about Homecoming, it almost seems like a let-down for me to have to tell you that the entire weekend was a huge success. I want to thank all you students who participated for helping to make 1959 Homecoming bigger and better. My personal congratulations to Queen Barbara Tomlin and all her lovely attendants.

Here at the Center, we're planning even bigger and better activities for the future. There will be a Bridge Session tonight at 8 p. m. in the Kirkbride Room. For those of you who can't make it tonight, there will be another session next Friday, Oct. 30, same time, same place. Two Snack Bar dances are planned for the weekend of October 30-31.

For those of you who are movie goers, there will be two Shakespeare movies shown on Oct. 30 at 8 p. m. in the small cafeteria. The first movie pertains to Shakespeare's life, while the second one deals with Shakespearean theater.

The Student Center is looking for a student to work on lighting at dances and other Center functions. The position is a paid one and if any of you students are interested, please contact either Dr. Ott or Gib Smith.

As ever,
Iyam Stoodn't

Social and Club News

Dr. Ralph Purcell To Present India's Administrative Process

A study in comparative Bureaucracy will be presented by Dr. Ralph Purcell on Oct. 26, at 4:20 p.m. in 220, Hulihan Hall.

According to Dr. Purcell, the text of his lecture will be, "the successful and effective execution of the process of the university — or lack of it — for the existing principles of administration on which the practice now rests."

ADMINISTRATIVE CONDITIONS DIFFICULT

The significance of the inquiry is enhanced by the conditions under which the administrative process takes place in India. Some of these conditions are the rising expectations of the people, shortage of resources, lack of administrative experience, the political immaturity of the people, and the inclusive plans of the government for the development of the society. The significance is further enhanced by the political context in which the experience of India, as a democratic government, succeeds in comparison with the efforts of the communist system in the People's Republic of China.

DISCUSS PRACTICES OF I.A.S.

Following, he will discuss the organization and practices in the new Indian Administrative Service, the system that was designed to administer the laws and carry out the policies determined by the peoples of independent India.

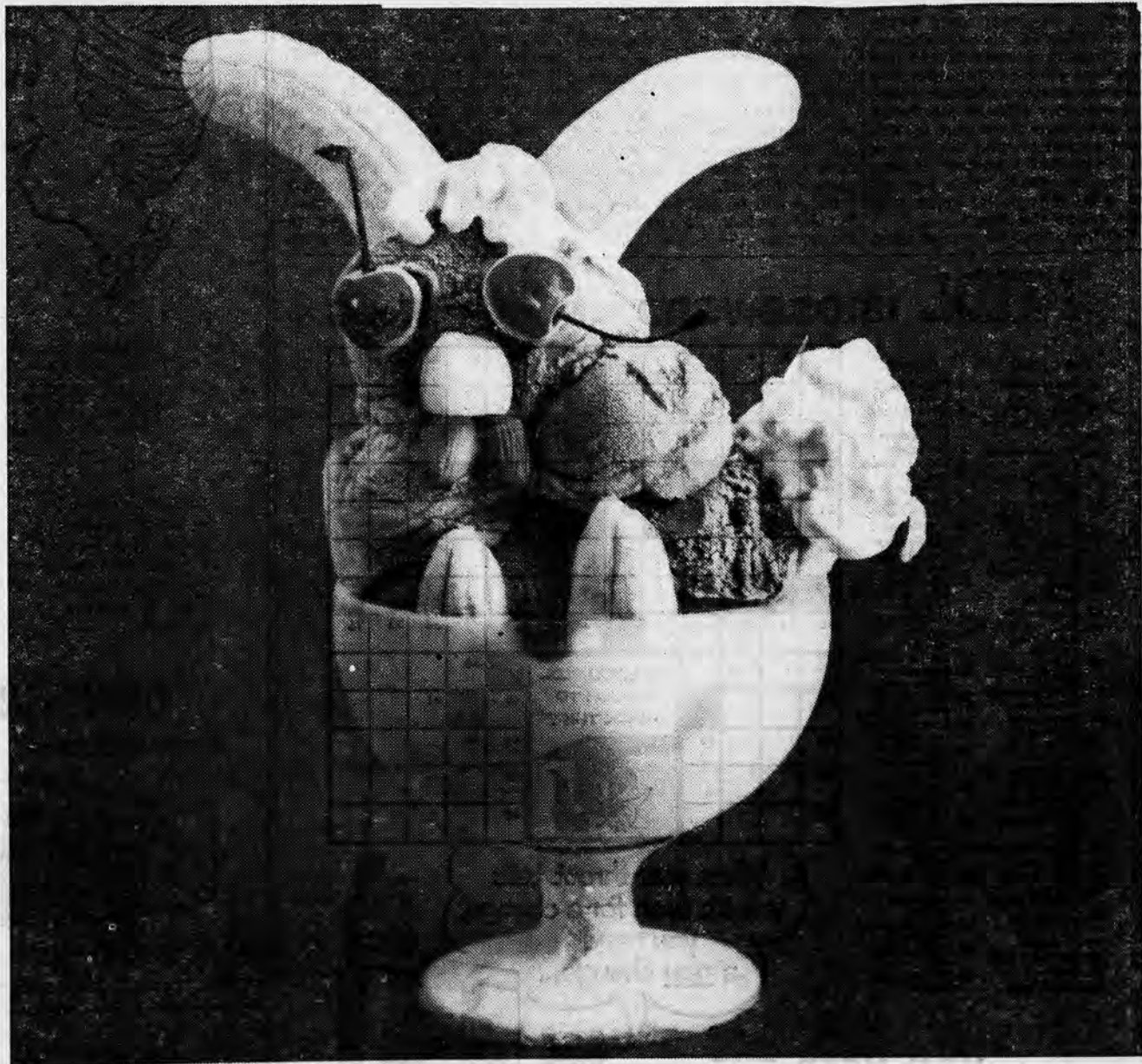
In the conclusion of his lecture, he will describe the relationship of the development of the Indian Administrative System to the political stability of India and its social and political future.

LOST

A Delaware letter jacket, contact Dan Tripodi in Colburn Hall.

ESSO RESEARCH works wonders with oil

Hav-a-banana-bunny!



Good eating...good for you...thatsa banana! But a fungus growth that attacks banana plants threatened the economy of banana production. Old-fashioned sprays were cumbersome to apply and expensive. Then Esso Research developed a special oil mist that ends this fungus growth easily and economically. People eat better...cars run better...because **ESSO RESEARCH** works wonders with oil.



E-52 Presents Second Show Of 'The Winslow Boy' Tonight

It was the real-life Archer-Shee case, one of the most notable chapters in the history of human liberty, that fired the imagination of playwright Terrence Rattigan, and moved him to write the powerful drama call "The Winslow Boy", which premiered last night in Mitchell Hall as the opening presentation of the E-52 University

It was the real-life Archer-Shee case, one of the most notable chapters in the history of human liberty, that fired the imagination of playwright Terrence Rattigan, and moved him to write the powerful drama story in The Winslow Boy, which premiered last night in Mitchell Hall as the opening presentation of the E 52 University Theatre's 28th season, and which continues through tonight and tomorrow night Although Rattigan has changed the names of the principals in the real drama of Martin Archer-Shee's fight for justice, the actual events in this inspiring case have been only slightly altered in the play.

In the fall of 1908, Martin Archer-Shee, a bank clerk in London, received word that the Royal Naval College was dismissing his thirteen-year-old son George, who had been proudly entered as a cadet only a few months before. George's crime? He was accused of having stolen, forged and cashed a five-shilling postal order. Was the accusation true? The boy denied it. What had made them think the boy guilty? The bewildered boy had no idea.

Realizing that he was challenging a great bureaucracy to battle when he dared to question the Admiralty's charges against his son, but knowing in his heart that the boy was innocent, Archer-Shee started his relentless two-year court battle by retaining Sir Edward Carson, the attorney, whose brilliant and merciless cross-examination had been the undoing of Oscar Wilde.

It was only after he had heard the boy's own story that Sir Edward agreed to take the case at all. From that interview he rose, saying in effect, "This boy did not steal that postal order. Nok let's get at the facts."

Getting at the facts took plen-

ty of doing, and getting the case into court was even more difficult, since the Archer-Shees and their attorney were blocked in every conceivable manner by a government which refused to allow itself the embarrassment of admitting that its officials had made a mistake.

But the fight was carried on through the newspapers, the courts and even Parliament, while the elder Archer-Shee staked everything he had to see that justice was done, and his son's innocence proclaimed. It ended in a payment of 7120 pounds to the boy's father, and with that payment the case may be said to have come to an end.

The Archer-Shee case, however, was no mere matter of a five-shilling note, and a youngster's reputation. As is clearly evident in vivid dramatization of this story in THE WINSLOW BOY, this one boy's fate is a symbol of the entire issue of the individual's right to question the actions of government officials.

The Mitchell Hall box-office will be open this afternoon from 3:30 to 5:00 P. M. and also this evening and tomorrow evening just before the show. Tickets for some good seats are still available for either night.

Policy Change On Reports To Paper

A change in the policy concerning activities reports has been inaugurated by the Review this year.

This policy requests that each organization turn in a report of its organizations by Monday noon of the week it wishes the news published.

News will be omitted from the Review unless reports are brought to the office.

Annual Parents Conference Expected to Bring Thousand

Preliminary plans have been completed for the Ninth Annual Parents Conference, Saturday, November 14, which is expected to bring about 1,000 parents of freshmen students to the campus.

Miss Margaret Black, counselor in the dean of students office, heads the student-faculty planning committee.

Response to the first parents conference, held in January, 1952, was so enthusiastic that the conference has become an annual affair. It is designed to bring about a closer relationship and understanding among parents, students and university

personnel.

November was selected because parents and instructors are, by this time, aware of the students' progress and problems. If adjustments are required for the students' eventual success, there is still time before the end of the semester for beneficial changes to be made.

Aiding Miss Black in arranging the program for 1959 are staff members Dr. Elizabeth E. Bohning, associate professor of modern languages and literatures; Dr. Raphael R. Ronkin, associate professor of biological sciences; Dr. Donald F. Crossan, assistant research professor in

plant pathology; Dr. Edmund J. Cain, associate professor of education; Miss Mary E. Wines, associate professor of clothing, school of home economics; W. Francis Lindell, associate professor of mechanical engineering; James F. Robinson, director of residence for men; and Miss Beatrice P. Hartshorn, chairman, women's physical education.

Student members of the committee are Leah A. Coverdale, junior; Richard F. Humphrys, junior; and Ralph O. Williams, junior.

MRHA Works On Constitution And Bus Plan

The MRHA met Monday night to lay the foundation of its new constitution. A preliminary draft had been circulated among the members, and the method of ratification was discussed in detail. Although the ratification procedure is still under investigation, it was decided to submit the constitution to the general membership and to require a two-thirds majority for approval.

The plan to run busses to "away" football games was discussed. Although there was insufficient participation for the Lafayette game, greater publicity will be given the trip to Rutgers, and more people are expected to attend. Individuals, instead of couples only, will be invited. The program is being directed by Sypher Hall.

The membership asked whether the students might not receive better seats for football games in the future. Currently, the public has the choice seats, and the students get the remainder. The Association prom-

ised to investigate the matter personally.

The individual dorms were requested to select Hall Managers and Scholarship Chairmen immediately. The Association plans to sponsor a dance in the near future, to be directed by the Social Committee.

Dorm residents were reminded that Bermuda shorts are not to be worn to meals in either Kent Dining Hall or the Dover Room. It was announced that all dorms will be completely opened to parents on Parents' Day, Nov. 14.

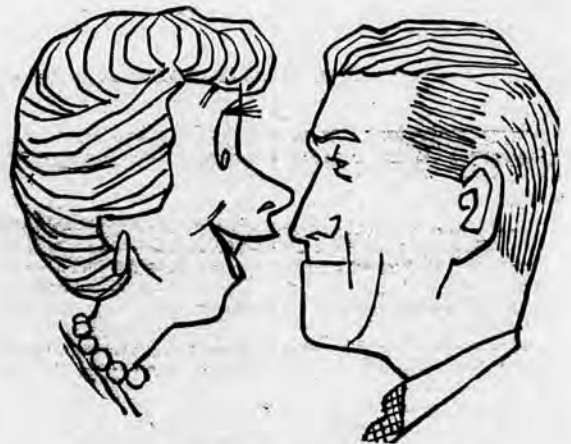
Lockers For Sale In Student Center

Commuter lockers are being sold this week at the main desk of the student Center.

A deposit of \$2, which will be refunded upon the return of the lock at the end of the year, and the \$2 rent will be charged.

The lockers are located in the basement of the Student Center for the convenience of university commuters.

"It's True, Herbie... M&M Does Get Clothes Cleaner, Brighter & Fresher"



But don't take our word for it... don't even take Herbie's word... prove it to yourself right now - TODAY! Take ALL your clothes* to M & M and see why we call M & M Delaware's most modern, most efficient cleaners!

*Modesty, of course, will dictate the retention of at least a few garments until your cleaning order is returned by M&M.



DRIVE-IN CLEANERS

SHIRT LAUNDRY

STORAGE VAULT



11 N. Chapel Street

Free! S & H Green Stamps

KOOL CROSSWORD

No. 6

- ACROSS**
- 1. Straw hat for yacht wear?
- 7. Jack and his non-dieting wife
- 13. All
- 14. Come down for a Kool?
- 15. That which is retained
- 16. To smoke (a Kool) in Italy
- 17. Bemused bird
- 18. Indians who sound weird
- 20. Place-kick tool
- 21. Start a tangerine
- 23. Small ensign
- 24. Ring, not for engagement purposes
- 25. Curl the lip at (2 words)
- 27. What too much water does
- 28. Motorcycle appendage
- 30. It's Holy in Worcester
- 33. What Kools do all day long
- 37. Heroine's boy friend, Leander's girl friend
- 38. Fill up with eats
- 39. Eggy prefix
- 41. Kind of Sack
- 42. This has Menthol Magic
- 44. Making like a monkey
- 46. Miss Fitz
- 47. Song, or a part
- 48. Inebriate
- 49. French pops
- DOWN**
- 1. French head covers
- 2. Kind of band
- 3. Make harmonious
- 4. Old school
- 5. Bird of the sea
- 6. Flat tire's reincarnation
- 7. They're for your protection
- 8. A little extra
- 9. This is edgy
- 10. Got all your marbles?
- 11. When your... tells you, switch to Kools
- 12. Hardens
- 19. Kind of collegiate
- 22. Plaster of Paris
- 24. Sounds of happy cats
- 26. Start to rise
- 27. British fly-boys
- 29. Chemical Engineer (abbr.)
- 30. Talented vegetables—Arti—
- 31. What some guys grow beards to do
- 32. Btd from Baltimore
- 34. Opposite of harder
- 35. Take it at the tee
- 36. Equivocal foliage
- 40. Sadie Hawkins' real daddy
- 43. It has a long arm
- 45. It's easy and edible



When your throat tells you it's time for a change, you need a real change...

YOU NEED THE Menthol Magic OF KOOL



Meat Ball Sandwiches Steaks, all kinds of Subs, Home Made Pizza Pies Free Delivery After 10 P. M.

Franks Sub Shop EN 8-9890 175 E. Main St.



(Continued from Page 4)

spoken chorus by Ernest Toch—and selections from "Kismet".

The brass choir, which is becoming something of a tradition on campus, is performing this afternoon for the opening meeting of the Delaware State Educators' Association, in Wilmington. The group, which plays music from the 16, 17 and 18 centuries, is directed by J. Robert King, director of the University band. I hope the campus will have a chance to become more aware of the brass choir than it has been in previous years. Let's hope that we hear them some time other than the annual carol sing after the Christmas Concert.

There is, by the way, a completely new instrumental group on campus this year. The orchestra, for the time being a string orchestra, rehearses at Old College on Wednesday evenings under Mr. King's direction. The group could use more string players; anyone interested should see Mr. King.

Tomorrow the campus will be invaded by 400 Delaware High school students, here for the annual band day. Each of the seven bands will perform separately. The bands will join to play Romberg's "Your Land and my Land" and the Delaware Alma Mater.

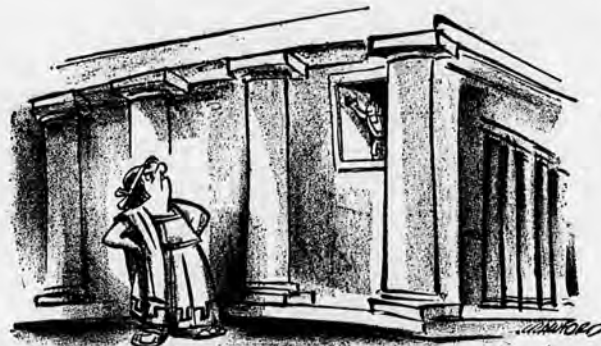
Don't forget the Choral Festival on Nov. 4. . . . Plan to come early; 200 people were turned away last year.



STUDYING CAN BE SCREAMS

If studying is bugging you, try mnemonics.

Mnemonics, as we all know, was invented by the great Greek philosopher Mnemon in 526 B.C. (Mnemonics, incidentally, was only one of the inventions of this fertile Athenian. He also invented the staircase which, as you may imagine, was of inestimable value to mankind. Before the staircase people who wished to go from floor to floor were forced to live out their lives, willy-nilly, on the ground floor, and many of them grew cross as bears. Especially Demosthenes who was elected Consul of Athens three times but never served because he was unable to get up to the office of Commissioner of Oaths on the third floor to be sworn in. But after Mnemon's staircase, Demosthenes got up to the third floor easy as pie—to Athens' sorrow, as it turned out. Demosthenes, his temper shortened by years of confinement to the ground floor, soon embroiled his countrymen in a series of senseless wars with the Persians, the Visigoths and the Ogallala Sioux. He was voted out of office in 517 B.C. and Mnemon, who had made his accession possible, was pelted to death with fruit salad in the Duomo. This later became known as the Missouri Compromise.)



...he was unable to get to the third floor to be sworn in.

But I digress. We were discussing mnemonics, which are nothing more than aids to memory—catchwords or jingles that help you remember names, dates and places. For example:

*Columbus sailed the ocean blue
In fourteen hundred ninety-two.*

See how simple? Make up your own jingles. What, for instance, is the important event immediately following Columbus's discovery of America? The Boston Tea Party, of course. Try this:

*Samuel Adams flung the tea
Into the briny Zuyder Zee.*

(NOTE: The Zuyder Zee was located in Boston Harbor until 1904 when Salmon P. Chase traded it to Holland for Louisiana and two outfielders.)

But I digress. To get back to mnemonics, you can see how simple and useful they are—not only for history but also for everyday living; for instance:

*In nineteen hundred fifty-nine
The smoke to look for is Alpine.*

"Why Alpine?" you ask. Taste that fine, fresh flavor. Enjoy that subtle coolness. Try the longest, purest filter yet devised. Until Alpine you needed two cigarettes to reap the benefits of Alpine—one for flavor, one for filtration—and smoking two cigarettes is never graceful; in fact, with mittens it is nigh impossible. Now you need only one cigarette—Alpines. Get some. You'll see.

© 1959 Max Shulman

The sponsors of this column make Alpine, Philip Morris and Marlboro Cigarettes. Pick what you please. What you pick will please you.

Modern Dance Club Selects Twelve Girls for Members

The following girls have been selected for membership in the Modern Dance Club: Nancy Jackson, Del Stover, Lynne Smith, Bonnie Brannen, Pat Edwards, Jean Newsome, Julie Welsh, Anita Ciconte, Helen-Keith Gould, Janet Coate, Sue Ellis, and Susan White.



GRACEFUL — New members of the modern dance club begin learning the graceful way to express things through dance.

These girls were selected on the basis of their ability to express an emotion and portray an inanimate object. No previous dance experience was required.

At a recent meeting Nancy Newsome was elected President; Ginni Staley, Secretary; and Sandy Kimball, Treasurer.

The annual Modern Dance Club Concert will be presented in April. This year it will be based on an original interpretation of the musical, "South Pacific."

E-52 Players Cast For Play By The 'Bard'

E-52 will present the Shakespearean play, "Much Ado About Nothing" at some future date. The casting has been partially completed, and is as follows: Cassandra Williams, freshman, has been awarded the role of Beatrice, and her understudy will be Helen Keith Gould, also a freshman; Dean Caras, is to be Benedick; Claudio will be portrayed by Bob Pack, sophomore; Hero, Julie Wittman, freshman; Phyllis Jones, senior, will play Margaret, her understudy being Bernice Magill; Debbie Kieffer, senior, will portray Ursula; the part of Leonato has been assigned to Ken Shelin, junior; and Jack Erthal will be Don Pedro.

Pete Fisher, sophomore, will assume the part of Dogberry; Jon Wendt will portray Belthaser; Alex Grant will be the first watch; Jim Marshall, sophomore, the second watch, and Dave De Riemer, sophomore, will be the sexton. Prompters are to be Helen Keith Gould and Bernice Magill.

There are five more parts yet to be cast: Verges, Don John, Borachio, Conrad, and Antonio. The play will be under the direction of Dr. Kase.

Swim Club Appoints 12 New Acquamaids

The Women's Aquatic Club has chosen thirteen new members for the coming year, Carolyn Joyce, president of the club, announced this week. Selected after extensive tryouts, the following girls will swim with the organization during the 1959-60 season; Paula Batchelder, Sandy Bixler, Mary Carmody, Nancy Coale, Kris Ehler, Elaine Fairman, Nancy Haubeln, Lorna Hoehn, Joyce Martella, Mary Dee Parker, Sue Smith, and Emily Spencer.

Membership in the club has grown from twenty-five active members last year to thirty-three members this season. Under the leadership of Carolyn Joyce and Carol Olson, program co-chairmen, and Mrs. Rothacher, faculty sponsor, the Aquatic Club works to promote swimming among women at the university, and to prepare an annual show of aquatic skill. Members meet for practice every Monday night in the Womens' Gymnasium.

CUFF LINKS FOUND

A pair of men's black onyx cuff links, inscribed with the seal of the University of New Hampshire, 1923, has been found. Please contact Barbara Lamber-ton, 306 Squire Hall, for further information.

Engineers' Ball Requires Theme

The Engineering Council and the Engineers' Ball Dance Committee installed a suggestion box in DuPont Hall this week. Suggestions for an appropriate dance theme are requested.

A free ticket to the Engineers' Ball is the prize for the winning suggestion. In addition, the winner will see his ideas materialize in the form of decorations for the coming dance.

Supplying music for everyone's dancing enjoyment for the third straight year will be Jack Garnett's Orchestra, playing from 8 p. m. to midnight on November 7, in the Student Center. Bob Pritchett, a junior electrical engineer and chairman of the Dance Committee, said the dance is for all undergraduates, not on-

Class of '62 To Nominate

Nominations for Sophomore class members to receive awards will be received at the Sophomore Steering Committee meeting to be held on Oct. 29. The awards are based on class participation and personal achievement.

The application for the World Service Program will also be presented to the committee for approval. The approved applications will be available later in the week for all interested members of the sophomore class. Under this program, the class is planning to send a university sophomore to Russia just as Vernon Abbot was sent to Alaska this past summer.

"The Class Clarion," a sophomore class newsletter, will be issued Nov. 10. The publication will be free and distributed to all residence halls.

Campus Calendar

- Oct. 23-30, 1959
- Friday, Oct. 23
 - 8 p.m., Dover Room, Senior Class Dance
- Saturday, Oct. 24
- Sunday, Oct. 25
- Monday, Oct. 26
 - 4:15 p.m., Agnew Room, URC Meeting
 - 4:15 p.m., McLane Room, IFC Meeting
 - 5 p.m., Vail Room, Camera Club Meeting
 - 7 p.m., M&V Room, AAUW
 - 7 p.m., McLane Room, APO Meeting
- Tuesday, Oct. 27
 - 12 noon, Morgan Room, Commuter Lunch
 - 4 p.m., McLane Room, Sophomore Comm. — SGA.
 - 6:30 p.m., McLane Room, Delegate Debate Society
 - 7 p.m., Kirkwood Room, Lutheran Student Association
 - 7:15 p.m., Blue & Gold, Newman Club Meeting
 - 8 p.m., Vail Room, Accounting Club
- Wednesday, Oct. 28
 - 10 a.m., Agnew Room, ROC Program
 - 5 p.m., M&V Room, Sophomore Class — Dinner Group
 - 7 p.m., Blue & Gold WEC Meeting
- Thursday, Oct. 29
 - 4:30 p.m., McLane Room, Honor Court
 - 6 p.m., Blue & Gold, WCCS Meeting
 - 7 p.m., McLane Room, 1962 Steering Committee
 - 7 p.m., Agnew & Kirkwood, Inter-University Christ Fellowship
 - 7:30 p.m., Blue & Gold, Young Republicans
- Friday, Oct. 30
 - 8 p.m., Faculty Lounge, Bridge Ses-
 - 8 p.m., Small Cafeteria, Movie — Shakespeare

John Latimer Is Subject of Hummel Talk

Charles F. Hummel, assistant curator of the Henry Francis duPont Winterthur Museum, will be the second lecturer in the 1959-1960 Winterthur Lecture Series sponsored by the University on Oct. 28 in Wolf Hall Auditorium at 8:15 p.m.

His topic will be "John R. Latimer, China Trader." Mr. Hummel, who has been associated with the Winterthur Museum at Greenville since 1955, is an authority on the life of John Latimer. He is currently editing the China-trade papers of Latimer for publication, and has previously written "John R. Latimer Comments Upon the American Scene" for Delaware History.

A graduate of City College of New York, Mr. Hummel is a member of Phi Beta Kappa. He received his master's degree in Early American Culture from the University of Delaware in 1955. He was appointed curatorial assistant at the museum in 1955, was named assistant director of the index of American cultures in 1956 and was promoted to his present position last January.

He is a member of the New Castle Historic Buildings Commission and numerous professional historical and educational organizations, including the American Association of Museums, American Historical Association and the Association for State and Local History.

Extra Cheers For Cheerers

Three cheers for the eleven cheerers for the freshmen football team. An extra cheer for the members of the newly organized pep group.

Kipp Humphries, Sue Bowles, Sandy Williams, Janet Coote, Judy Langhamer, Jackie Smith, Pat Fowler, Carol Brown, Lynn Lovness, and Bernie Meade recently elected to the freshman cheer squad.

This year the cheerleaders are organizing a pep group who will help to stimulate school spirit. Rita Ventura, Fran Bankert, Judy O'Hara, Katie Crowe, Mary Carmody, Judy Johnson, Doty Wilson, Chris Ehler, Linda Boone, Nancy McFran are the members of this new organization.

This group along with the new cheerleaders will sit on the sideline during the varsity home games and scream with all their might.

The permanent varsity squad will be picked from the ten frosh cheerers later in the year.

Hens Trounce Wildcats, 50-12

Turner Leads Attack; Scores Two, Converts

Jack Turner, Delaware's power-packed senior halfback from Philadelphia, has taken over the lead in total offense and scoring for the undefeated Blue Hen football team.

NEEDS 140 YARDS

Turner, who needs only 140 more yards to break Delaware's three-season career record of 1628, held by Jim Zaiser, had his best day last Saturday as the Hens' whipped New Hampshire 50-12, holding on to its unanimous first-place ranking in the Lambert Cup Poll.

GAINS 121

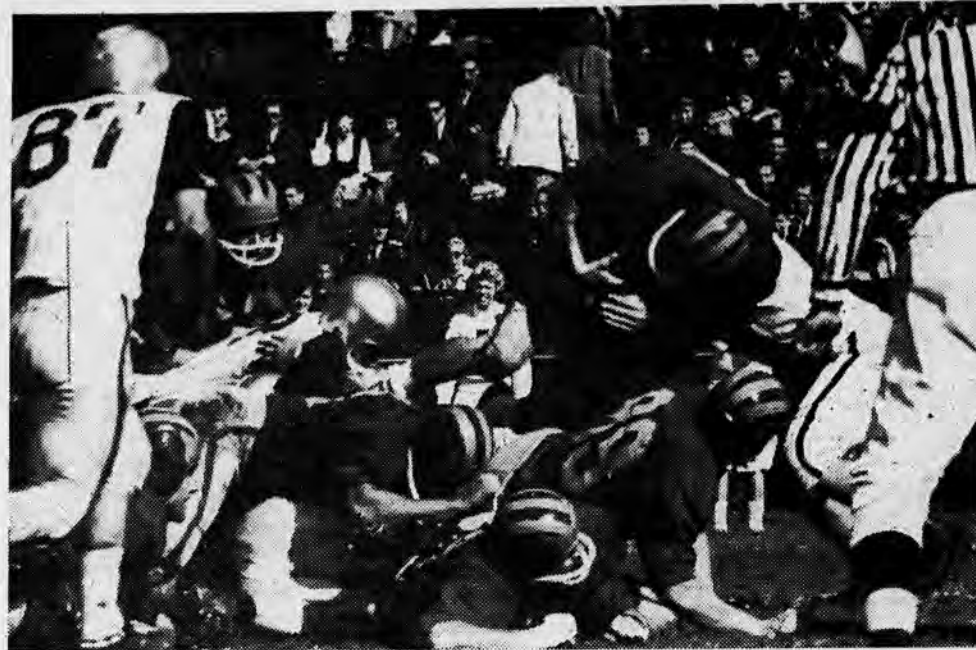
Turner piled up 121 on the ground against the Wildcats to bring his total rushing yardage to 351, just nine below the mark of 360 held by John Bowman who still leads in that department. Turner, however, took over the lead from Bowman in the total offense category, 397 to 384, and in scoring he passed Tony Suravitch by tallying two touchdowns and a bonus conversion to bring his season total to 28 points.

HEBERT VS. PELLEGRINI

Gary Hebert, the Hens' outstanding sophomore halfback from Needham, Mass., passed his way to within one yard of the team leader, quarterback Gampy Pellegrini, by throwing for 46 yards, a touchdown and a conversion. Hebert has completed four of six aeriels for 100 yards, while Pellegrini has racked up 101 yards with eight completions in 13 tries. Sophomore quarterback Barry Fetterman is not far behind with 85 yards on five of 16 attempts.

300 YARDS PER GAME

Team-wise, the powerful Blue Hen offense has ground-out 1189 yards while the defense has held the opposition to 514, giving the Hens a 297.2 per game average against the opponents' 128.5. While the Hens have attempted few passes, they've made them account for 356 yards. Delaware has completed 21 of 41 attempts, while the opposition has been held to 27 of 74 tries for 300 yards.



ACE HALBACK Jack Turner crashes over the line for a Hen first down. Teammates are providing strong backs over which Turner churns. The partially obliterated referee provided for five early New Hampshire showers in ejecting Wildcat "bad men".



the second quarter. Tony Suravitch and an unhe easily romps to a first down midway through the second quarter. Tony Suravitch and an unidentified Hen are providing blocks.

Foes Yield 30 Points in Third Cant; 5 Ousted

Hens, Bisons Tie For MAC Lead

BY HOWARD ISAACS

Delaware maintained its winning ways before an enthusiastic Homecoming crowd last week by thoroughly trouncing an over-rated New Hampshire eleven, 50-12.

By virtue of Bucknell's upset victory over Rutgers, defending Middle Atlantic Conference champs, the Bisons moved into a tie with the Blue Hens for the league lead. Paul Terhes, junior signal caller and last season's all-conference choice at that position, passed his team to a 15-8 triumph over the Scarlet Knights.

4-0 RECORD
Sporting a 4-0 overall record and a 2-0 conference slate, the Nelsonmen maintained their Lambert Cup lead. The Hens also continued in third position in the national small college standings.

New Hampshire, before the disastrous trip to Newark, sported a 2-0-1 record and were riding high in the Yankee Conference.

The first half proved a defensive battle as The Wildcats held the Hens on their own ten in the initial period and prevented further penetration until midway through the second quarter.

DRIVE STUFFED
A sustained drive by the visitors was stopped on the Blue and Gold five when the clock ran out to end the half.

Delaware's first score came on a two yard run up the middle by halfback Jack Turner, capping a 70 yard drive. Minutes before, a Turner score was recalled due to an offside penalty.

While New Hampshire played consistently in the first half, the bottom dropped out in the second. The Hens mounted an offensive surge that completely swamped the visitors.

SCORES EVERY TIME
Scoring every time they got the pigskin, Coach Dave Nelson's charges rolled to four touchdowns, chalking up 30 points. Helping the local cause were 94 yards given the Hens by the Wildcats through penalties.

The majority of the Hampshire violations were due to personal fouling. Five Wildcats were expelled from the game for excessive fouling, a very uncommon occurrence in collegiate football.

As the visitors were letting off steam by various illegal means, the Hen gridders continued to grind out yardage by legal methods.

TURNER IN FORM
Turner regained the form he displayed last year, as he carried 22 times for 121 yards and scored 14 points on a pair of touchdowns and a conversion plunge. He was the outstanding choice for back of the week.

Mark Hurn, captain and center, led the linemen for the second week. Backs Vern Walch and Ken Schroeck broke away for long scoring runs, while Dave Beinner set up another on a series of fine carries.

A trio of passers, Gampy Pellegrini, Barry Fetterman and Gary Hebert, accounted for two tallies, set up two others and added points on a pair of conversions. Ends Dick Broadbent and Mickey Heinecken hauled down most of the aeriels.

NH PUNTS
In the second half, after NH failed to move they punted. Turner's runs and a Pellegrini pass to Heinecken set the stage for Turner's second TD.

On the next series of downs Beinner carried to the Hampshire 13. A bootleg pass to the

Finnish Student, Homen, Is Expected to Break Records

The success of the Blue Hen cross-country team this fall lies in the hands of one man—Carl-Olaf Homen.

Carl is not an ordinary runner, nor an ordinary student. He is an exchange student from Finland, attending Delaware as a

special student for one year with the help of a Brittingham International Scholarship, sponsored by Thomas Brittingham, well known Wilmington industrialist. As a runner, Carl will probably break most if not all the Blue and Gold distance marks both in cross-country and in track and field. He runs the 1500-meter race in his native country in 3:55 and estimates that would be equal to a 4:10 mile. The Delaware mile record is 4:18.

In his first race as a Blue Hen Harrier, Carl handily took first over competitors from Juniata and Franklin and Marshall, beating his nearest rival by over a minute. He won the race over the 4.5-mile course in 24:25.

Carl said that in Finland and throughout Scandinavia, cross-country is not emphasized although there are races from time to time through forests. Those courses are relatively short compared to America's routes along back roads.

The Finlander has been running competitively for about the last four years after finding he was not suited for most other sports. Running is not his major pre-occupation, however, as he spends most of his time with more academic subjects.

Carl comes to Delaware from the University of Helsingfors, where he is a candidate for a law degree. Although he enjoys running, he's much more interested in student activities. At Helsingfors, located at the nation's capital, Carl was chairman of the board of his fraternity and chairman of the law club.



CARL-OLAF HOMAN

	TC	Rushing		NET	AVG.
		GAIN	LOSS		
John Bowman	46	368	8	360	7.8
Jack Turner	78	361	10	351	4.5
Tony Suravitch	42	221	0	221	5.3
Dave Beinner	19	81	0	81	4.3
Gary Hebert	18	75	0	75	4.2
Ken Schroeck	8	41	1	40	5.0
Vernon Walch	5	46	8	38	7.6
Pape Lukk	6	14	0	14	2.3
Don Osmun	4	11	0	11	2.8
Arthur Coury	1	6	0	6	6.0
Bill Regan	2	5	0	5	2.5
Dave Mann	1	5	0	5	5.0
Barry Fetterman	1	0	2	2	.0
Gampy Pellegrini	15	18	25	7	.0
Dick Constable	1	0	9	9	.0
Delaware	247	1252	63	1189	4.8 (297.2 per game)
Opponents	162	606	92	514	3.2 (128.5 per game)

	ATT.	COMP.	INT.	YDS.	TD	CONV.	PCT.
Gampy Pellegrini	13	9	0	101	1	1	.615
Gary Hebert	6	4	0	100	1	2	.667
Barry Fetterman	16	5	0	85	2	0	.313
Jack Turner	2	0	0	46	0	1	1.000
John Bowman	4	2	1	24	0	1	.500
Delaware	41	21	1	356	4	5	.512
Opponents	74	27	3	300	2	1	.365

	YDS.	TD	CONV.	PCT.
Jack Turner	80	397	4.96	
John Bowman	50	384	7.7	
Tony Suravitch	42	221	5.3	
Gary Hebert	24	175	7.2	
Gampy Pellegrini	28	94	3.4	
Barry Fetterman	17	83	4.3	
Dave Beinner	19	81	4.1	
Ken Schroeck	7	40	4.3	
Vernon Walch	5	38	7.6	
Pape Lukk	6	14	2.3	
Don Osmun	4	11	2.7	
Arthur Coury	1	6	6.0	
Bill Regan	2	5	2.5	
Dave Mann	1	5	5.0	
Dick Constable	1	9	0.0	
Delaware	288	1545	5.4 (386.2 per game)	
Opponents	236	814	3.4 (203.5 per game)	

	CGT	YDS.	TD	CONV.
Tony Suravitch	6	81	1	2
Bob Reeder	2	64	0	0
Dick Broadbent	2	65	1	2
Dave Beinner	2	34	0	0
Mickey Heinecken	2	32	1	1
Al Huey	2	27	0	0
Delaware	21	356	4	5
Opponents	27	300	2	1

	No	Yds.
Jack Turner	2	31
Dave Beinner	1	25
Delaware	3	56
Opponents	1	5

(Continued on Page 9)

(Continued on Page 9)

(Continued on Page 10)

Nelson Is Winningest In Blue Hen Football History

Coach Wins 50 At Delaware In Eight Seasons

Success is Due to Winged-T Offense

Coach David M. Nelson, of the university's undefeated Blue Hen football team, had added another distinction to an already colorful career by becoming the winningest coach in Delaware's 68-year gridiron history.

With the close of Saturday's 50-12 destruction of a previously unbeaten New Hampshire eleven, Nelson's record at Delaware showed 50 victories against 20 losses and a single tie in eight and one-half seasons of action. His overall records for twelve seasons as head coach at Delaware, Hillsdale, and Maine is 71-26-5.

WAS EQUAL

Prior to Saturday's game, Nelson's victory total had equalled that of another Delaware coaching great, William D. Murray, now head coach at Duke University. Murray's record for eight seasons of competition between 1940 and 1950 was 49-16-2. Delaware had no formal schedule during the war years, 1943-1945.

Only one other coach in the university's football history approached the victory totals of the two most recent mentors. William J. McAvoy, head coach for 12 seasons, 1908-1916 and 1922-1924, posted 42 victories. But he also was on the short end of the score 43 times and saw his team tied in 13 games.

IMPRESSIVE

Nelson's record is much more impressive than that of any previous Delaware coach. His teams have played consistently challenging schedules against such powerful Middle Atlantic Conference opponents as Rutgers, Lehigh, Lafayette, and Bucknell, and have met the best of other conferences — Connecticut, New Hampshire and Massachusetts from the Yankee Conference and Bowling Green and Kent State from the Mid-America Conference.

Much of his success has been due to his imaginative Wing-T offense which not only has brought victory to the Blue Hens but has made Nelson's name a byword wherever good football is played. The Wing-T and its variations have been adopted by many of the nation's finest teams, but most notably by Iowa and LSU, where Delaware coaches helped to install the systems that led to Rose Bowl and national championships.

UNANIMOUS CHOICE

The Blue Hens this season have earned the unanimous vote for three weeks of the Lambert Cup Poll for Eastern small college supremacy and are ranked in a national wire service poll third among the country's small college teams.

Nelson, a 1942 graduate of the University of Michigan, where he led the Wolverine rushers in his senior year with 6.31 yards a carry is, at 39, the youngest member of the 11-man NCAA rules committee. He developed the Wing-T offense in 1950 while at Maine, and in 1957 published a book on the new system in collaboration with long-time friend, Forest Evashevski, now the successful coach at Iowa.

The current Delaware team, best since the 1955 edition that went 8-1 and won the Refrigerator Bowl test, has averaged 388 yards a game while holding its opponents to 203. The Hens have scored 130 points to the opposition's 39. Nelson has the distinction of never having had a losing team at Delaware.



GOALIE BILL ZIEGLER makes a save as Howard Hurray stands by to aid the defense. The Washington Sho'men went on to win a thriller, 8-2.

Blue Booters First to Score Against Unbeaten Washington

The Blue and Gold booters under the tutelage of Alden "Whitey" Burnham journeyed to Chestertown, Md., last week to take on a strong Washington College team in their opening engagement.

Competing against the Mason-Dixon Conference champions, Washington College, the nine sophomores playing in starting roles moved the ball well and gained experience, despite the 8-2 loss.

FIRST TO SCORE

The two Delaware goals were the first to be scored against the Sho'men this year, who had previously white-washed Hofstra and Franklin and Marshall by scores of 2-0 and 4-0.

Sophomore Sam Allen, center forward, led the Hen offense. On the other side of the field, Jay Gorry, playing in his first soccer game, plugged up the goal. He handled the ball 24 times. Scoring was provided by sophs Allen and John Rishel.

Holding down the starting positions in the squad's first test were King Boynton, Rick Jones, Sam Allen, Rick Willis and Brint Ingram on the front line. This is virtually the same line that opened for the frosh booters last season. Boynton was moved from inside left to right wing. Willis will fill in at Boynton's former position.

Captain Pat Dyer, Howard Murray and John Harrison occupied the fullback berths. The Half-

backs were Don Conaway and John Rishel.

NEW TECHNIQUE

Coach Burnham is applying a technique employed by many of the nation's top coaches by giving his second stringers an identity of their own. Instead of giving them a romantic name such as the famed "Chinese Bandits" of Louisiana State, the redshirts have been christened with the dubious title of "Chicken Pluckers".

The schedule:

Date	Opponent	Location
Oct. 15	Washington College	Away
Oct. 24	Ursinus	Home
Oct. 28	Lehigh	Home
Oct. 30	Bucknell	Away
Nov. 3	Johns Hopkins	Away
Nov. 5	Muhlenberg	Home
Nov. 11	Western Maryland	Home
Nov. 13	St. Joseph's	Home
Nov. 17	LaSalle	Away
Nov. 21	Temple	Away

Finnish Student

(Continued from Page 8)

"I'm not a good runner — I run for fun," adds Carl.

He explains that in Finland sports are not part of a university's activities. There are no coaches, no organized teams, and very few inter-collegiate activities. Most of his country's sports are controlled by clubs and associations, comparable to our AAU organizations.

Carl admits he's won a "couple" of academic races, but that in club races, he's outclassed.

ACTIVITIES TAKE TIME

Homen doubts he'll follow-up running when he gets back. "Student activities take a lot of time, you know." And then there's that law degree he's seeking.

The Delaware harriers will continue their season Saturday at Swarthmore. The meet is scheduled for 2:30 p. m.

(Continued from Page 8)

Name	1	2	3	4	5
Karl Franz	1	18	1	0	0
Ken Schroeck	1	18	0	0	0
Jack Turner	2	18	0	0	0
Travis Cosaboom	1	9	0	0	0
Delaware	21	366	4	5	
Opponents	27	300	2	0	

Punting

Name	NO.	YARDS	BLOCKED	AVG.
Pape Lulck	4	163	0	40.7
Vern Walch	1	36	0	36.0
Gary Hebert	1	27	0	27.0
Tony Suravitch	1	23	0	23.0
Delaware	7	249	1	31.5
Opponents	20	633	1	31.5

Punt Returns

Name	NO.	YARDS	TD	AVG.
Jack Turner	3	31	0	10.3
Dave Beinler	2	25	0	12.5
Gary Hebert	2	12	0	6.0
Delaware	7	68	0	20.4
Opponents	5	102	0	20.4

Kickoff Returns

Name	NO.	YARDS	TD	AVG.
Bob Reeder	2	28	0	14.0
Jack Turner	2	25	0	12.5
Wayne Carmean	1	24	0	24.0
Tony Suravitch	2	22	0	11.0
Don Osmon	1	11	0	11.0
Karl Franz	1	7	0	7.0
Al Huey	1	3	0	3.0
Delaware	10	120	0	12.0
Opponents	21	479	1	22.8

Scoring

Name	TD	EP-Kick	EP-Run	EP-Pass	FG	TP
Jack Turner	4	0	2	0	0	28
Tony Suravitch	3	0	2	0	0	22
John Bowman	3	0	0	0	0	18
Garry Pellegrini	3	0	0	0	0	18
Dick Broadbent	1	0	0	2	0	10
Mickey Heinecken	1	0	0	1	0	8
Karl Franz	1	0	0	0	0	6
Vernon Walch	1	0	0	0	0	6
Dave Beinler	1	0	0	0	0	6
Ken Schroeck	1	0	0	0	0	6
Barry Fetterman	0	0	0	0	0	2
Delaware	19	0	3	5	0	130
Opponents	6	1	0	1	0	39

Blue Hen of Last Week

By BARRY SCHLECKER

One of the main cogs in Delaware's mighty grid machine this year has been Leon Dombrowski. In Easton, Pa., this past week end, there was a rumor that he was in the Lafayette backfield so much, he was invited into the huddle.

Tipping the scale at a hefty 205 pounds, the 6' senior has been called by his coaches as one of the best guards ever to play here; he has lived up to this statement more than adequately.

FOUR LETTERS

Leon attended Salesianum High School in Wilmington, where he lettered in four sports: football, baseball, basketball and track. He was picked as one of the outstanding linemen in interscholastic football in Delaware.

"Dumbo" attracted many scouts from top football schools of higher education, but he decided to accept Delaware's offer mainly because of the university's engineering department.

THE ATHLETE

Although he received a letter in his sophomore year, Leon didn't actually become a "first-stringer" until he was a junior. He also was a letter winner as a member of the Blue Hen nine on which he played the outfield.

SPORTS

Marshall Invades UD For First Time; Wing-T Offense Used by Green

The Delaware football season will be highlighted this week by the invasion of a new opponent into Delaware Stadium tomorrow. The Blue Hens will meet Marshall College, from Huntington, West Virginia, at 2 p. m.

Established in 1837, Marshall is a non-sectarian, state-supported school with an enrollment of over 4,000. Its football team, the Big Green, plays in the Mid-American Conference of which Bowling Green, another Blue Hen opponent, is also a member.

STARTED IN 1898

Since football was established at Marshall in 1898, the Big Green have won 223, lost 201 and tied 38 ball games. Through the years, Marshall has fielded consistently winning teams, although in only one year, 1919, did the squad go undefeated.

Sporting a 9-2 record in 1947, the Big Green met Catawba in the Tangerine Bowl, dropping the game 7-0.

Marshall's last good season was 1957, when it won six and lost three. Last year the Big Green were 3-6 and they have won only one contest so far this season. Marshall's schedule is loaded with tough opposition — Virginia Military, Bowling Green, Western Michigan, Toledo, Kent State, Louisville, Ohio University, and Buffalo.

GOOD CALIBER

Coach Dave Nelson knows well the caliber of football played in the Mid-American Conference. The Blue Hens are 1-1 against the midwestern conference team, whipping Kent State, 19-7, in the 1943 Refrigerator Bowl and bowing to Bowling Green two years ago, 7-0.

Charlie Snyder is in his first year as coach of the green and white team. Snyder, a 1948 Marshall graduate, is making his debut as a collegiate coach after a successful career at the high school level. He has installed the Delaware Winged-T offense in an attempt to raise the level of football at the West Virginia school.

SN Tops Grid Standings, 5-0

Now that the cold weather has finally come upon us, it seems a lot more like football season for the intramural teams. The season is more than half over with only nine more games left to be played.

Following are the standings of the teams in fraternities and dormitories.

Fraternities:

Team	Wins	Losses
SN	5	0
KA	3	1
SPE	3	1
ATO	2	2
TC	1	2
AEPi	1	3
PIKA	0	4

Dormitories:

Team	Wins	Losses
Colburn	4	0
Brown	2	2
Johnston-Bonham-Tiffany	1	1
Sharp	1	2
Harter	1	2
Sypherd	1	3

Handball has now got under way. This year they are in the brand-new four-wall handball courts in the Field House Extension.

The first round is to be completed by Oct. 24, there are 29 men participating.

Blue Hen of The Week

By Barry Schlecker

Shining brightly in the well polished Delaware backfield last week was hard-running Jack Turner.

Turner scored first in the second quarter and then later spearheaded the first of four touchdown drives in the third period. He emerged as the afternoon's leading runner netting 121 yards, approximately half of Delaware's rushing total, on 22 carries and scored 14 points on two touchdowns and one point-after-touchdown plunge.

The hustling senior showed the Homecoming crowd how he set the university school record for total yards gained (874) last year.

NOMINATED

As a junior, Jack was selected on several post-season All-Star teams. They include the following: All Middle Atlantic Conference, All ECAC, Honorable Mention Little All American, and All-East twice during the season. He was chosen on the All-Opponent teams of Rutgers, Massachusetts and Connecticut.

The 5'11", 185 pounder is a graduate of Germantown Academy in Philadelphia where he attracted scouts of top colleges by being selected on post season All-Star teams in football and basketball. He also captained the school baseball nine.

As a freshman, Jack won his numerals in baseball and football and earned his varsity letter in both sports as a sophomore. He wasn't actually considered a starter in either sport until his junior year.

WILL RETURN

Although he is an agriculture business management major, the sports-minded athlete plans to return to Delaware next year as a member of the Athletic Department; he will work for a degree in education, as he wants to teach and coach at a high school level.

When asked about this year's team, Turner said it has more hustle and is more enthusiastic than any he had ever played on.

Engaged to a hometown girl, Jack would like to settle in Delaware after serving in the Army where he will enter as a member of the advanced ROTC program.

(Continued from Page 10)

ing his first appearance of the season with the Blue Hen second-string offensive backfield, broke loose for a 30-yard touchdown run through the middle of the Wildcat line in the third quarter, giving the Hens a 36-0 lead. Overall, Walch ran the ball five times for a total of 38 yards. GARY HEBERT, halfback from Needham, Mass., won himself his third straight nomination for ECAC sophomore of the week honors by hurling a 37-yard touchdown pass to end Dick Broadbent in the fourth quarter. He also passed for two conversions, and piled up 46 aerial yards. Hebert now ranks second among Hen passers with 100 yards on four completions in six tries.

JOHN BOWMAN, halfback from York, Pa., held on to his individual rushing lead among Hen backs by piling up 69 yards in 12 carries.

MICKEY HEINECKEN, starting end from Philadelphia, caught the only three passes thrown to

Doctor 'Pictures' Modern Red Life

Dr. Harold Beachell, associate professor of chemistry, entertained at a recent meeting of the Russian Club by showing slides of Poland and Finland.

The scenes of Warsaw and Prague emphasized the grimness of life behind the Iron Curtain, for the war-torn cities are comprised of clumsy, hastily constructed buildings.

Yearly club dues of \$1 per member will be collected by Secretary-Treasurer Mary Drobin.

him this season for a touchdown and a two-point conversion. MARK HURM, senior center from Newark, Del., was nominated for all-east honors for the fourth week as he led the Hen forward wall defensively, holding the opposition to 242 yards running and passing.

DICK BROADBENT, junior starting end from Wilmington, caught a mighty 37-yard, touchdown pass and the ensuing conversion from Gary Hebert.

Girls' Dormitories Quest Catts Award

Residence halls on South Campus are vying for the coveted A. B. Catts Award which is presented annually to the dormitory displaying the most enthusiasm and participation in campus activities.

The plaque was donated in 1952 by Ann Barbara Catts, a graduate of Delaware, in order to stimulate spirit through inter-dormitory competition. The A. B. Catts Award is given to the dormitory which has accumulated the highest number of points based on participation in such activities as dorm floats and decorations, pep fests, Women's Playbill, and inter-dormitory sports.

The possession of this award has become highly enviable, and each year the Women's Residence Halls strive to outdo one another in enthusiasm and spirit. The plaque has served as an impetus to greater unity within the dorms and greater pride in the university as a whole.

Scholarship Opens For Publicity Work

A Service Scholarship is available in the Department of Dramatic Arts and Speech for a student to assist in the publicity for the university theatre program.

The position offers a real opportunity for valuable practical experience in the field of promotion and publicity. It includes assistance in the preparation and distribution of all types of publicity material: news stories, pictures, fliers, posters, etc. and in the planning and organization of a publicity program appropriate to individual productions.

The Service Scholarship should be of special interest to students planning careers in advertising, public relations, or business. For details, see Mrs. Hoskins, Secretary of the Department of Dramatic Arts and Speech, at once.

Political Group Begins Season

Plans for the first meeting of the Active Young Republicans Club have been announced by Ralph Williams, club president. The meeting will take place in the Blue and Gold Room on Thursday, October 29th, at 7:30 p. m.

William V. Roth Vice Chairman of the National Federation of Young Republicans will speak on the "Principles of the Republican Party in Contrast to the Democratic Party Principles". The subject is expected to be a controversial one in next year's elections.

Yearbook Reveals New Staff Needs

Carol Hoeffcker, editor of the Blue Hen, has announced that staff positions are still open to interested students. Those who are interested may stop in the office between 4 p. m. and 5 p. m. during the next two weeks.

Any students who have not yet had an opportunity to purchase their copy of the 1959 Blue Hen may do so during the above office hours. In addition, orders are now being taken for the 1960 issue for which deposits may be made.

Everyone is urged to take advantage of the hours indicated, since the staff will have few opportunities to maintain office hours after this month, said Carol.

Delaware Student

(Continued from Page 1)

insufficient housing facilities. The girls in the group stayed in the orphanage dormitories and the boys resided in a garage converted to living quarters. Interestingly enough, the girls did the same work as the boys, including painting, repairing buildings, digging postholes, and numerous other jobs ordinarily reserved for men.

As for social activities, there were adequate facilities for boating, fishing, swimming, and dancing. Musical interests of the teenage crowd were much the same as here. In Vern's words, "All you had to do to make them scream was to play a record by Ricky Nelson or Elvis Presley."

FISH FOR LIVELIHOOD

Actually, Kodiak is not the wild, uncivilized place that one might expect it to be. Most of the people depend upon fishing for their living, and with good luck, a fishing boat can bring in about \$6000. worth of fish during the three month season. The weather ranges from 50 to 85 degrees in the summer months, and there are often winters in which there is no "White Christmas." Kodiak has a large, modern school as well as most of the conveniences found elsewhere in the United States.

SOPH CLASS SPONSORS

Vern was fortunate in being the first student ever sponsored by a university for any of these work projects. In most cases, the students are sponsored by their home church, although many pay their own expenses. Vern's expenses were paid jointly by his home church in Dover and contributions collected by members of the class of 1962. This group, in cooperation with the university, hopes to sponsor a student for a trip to a project in Russia next summer.

Student applicants for the Alaskan venture were screened by the class steering committee, and interviewed by members of the faculty. The student selected then had to apply to the World Council of Churches in New York before being chosen for the trip.

Congratulations to Vern Abbott for taking part in this charitable project on Kodiak Island, home of the Kodiak brown bear; may the members of the Class of '62 do as well in their selection of a student for a trip to Russia, the land of the "great bear."

engineers

and what they do at Pratt & Whitney Aircraft...

The field has never been broader
The challenge has never been greater

Engineers at Pratt & Whitney Aircraft today are concerned with the development of all forms of flight propulsion systems—air breathing, rocket, nuclear and other advanced types for propulsion in space. Many of these systems are so entirely new in concept that their design and development, and allied research programs, require technical personnel not previously associated with the development of aircraft engines. Where the company was once primarily interested in graduates with degrees in mechanical and aeronautical engineering, it now also requires men with degrees in electrical, chemical, and nuclear engineering, and in physics, chemistry, and metallurgy.

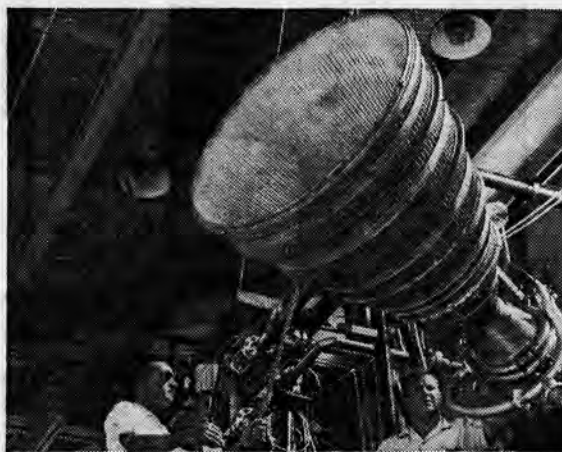
Included in a wide range of engineering activities open to technically trained graduates at all levels are these four basic fields:

ANALYTICAL ENGINEERING Men engaged in this activity are concerned with fundamental investigations in the fields of science or engineering related to the conception of new products. They carry out detailed analyses of advanced flight and space systems and interpret results in terms of practical design applications. They provide basic information which is essential in determining the types of systems that have development potential.

DESIGN ENGINEERING The prime requisite here is an active interest in the application of aerodynamics, thermodynamics, stress analysis, and principles of machine design to the creation of new flight propulsion systems. Men engaged in this activity at P&WA establish the specific performance and structural requirements of the new product and design it as a complete working mechanism.

EXPERIMENTAL ENGINEERING Here men supervise and coordinate fabrication, assembly and laboratory testing of experimental apparatus, system components, and development engines. They devise test rigs and laboratory setups, specify instrumentation and direct execution of the actual test programs. Responsibility in this phase of the development program also includes analysis of test data, reporting of results and recommendations for future effort.

MATERIALS ENGINEERING Men active in this field at P&WA investigate metals, alloys and other materials under various environmental conditions to determine their usefulness as applied to advanced flight propulsion systems. They devise material testing methods and design special test equipment. They are also responsible for the determination of new fabrication techniques and causes of failures or manufacturing difficulties.



Exhaustive testing of full-scale rocket engine thrust chambers is carried on at the Florida Research and Development Center.



Frequent informal discussions among analytical engineers assure continuous exchange of ideas on related research projects.



World's foremost designer and builder of aircraft engines

PRATT & WHITNEY AIRCRAFT

Division of United Aircraft Corporation

CONNECTICUT OPERATIONS — East Hartford

FLORIDA RESEARCH AND DEVELOPMENT CENTER — Palm Beach County, Florida

For further information regarding an engineering career at Pratt & Whitney Aircraft, contact your college placement officer.

Girls Announce Officers For Playbill Spectaculars In Nov.

Dates for Women's Playbill have been set as November 23 and 24 at 8 p.m. to be held in Mitchell Hall.

The co-ordinating directors of Women's Playbill are Eleanor Agnew, senior, director; Libby Stiff, sophomore, technical director; Mimi Berkman, junior, script director; Dorothea Kakavas, senior, publicity chairman; and Kay Riker, sophomore, script; and Patti Woodruff, junior, music.

Kent Hall Playbill officers are Edith Kelly, sophomore, and Sue Miller, sophomore, directors; Mary Dee Parker, freshman, technical director; Liz McKinney, junior script chairman; Anna May Talarowski, sophomore and Janet Cross, sophomore, choreography; and Sally Thornton, sophomore, music.

Warner Hall's representatives: Perri Schwartz, junior, director; Laura Brannon, sophomore, technical director; Carol Spindell, junior, script chairman; Linda Cook, junior, choreographer; and Pat Crossman, junior, music.

Playbill chiefs of Sussex Hall are: Louise Forgy, sophomore, director; Dale Ryan, freshman, script chairman; Adele Stoner, sophomore, choreographer; and Bonnie Brannon, sophomore, music.

Smyth (North) Playbill activities will be headed by: Helen-Keith Gould, sophomore, director; Anne Rambo, sophomore, and Linda Patnoli, sophomore, technical directors; Mimi Berkman, junior, script chairman; Anita Cleonte, sophomore, choreographer; and Helen Poore, junior and Brenda Davis, junior.

Smyth (South) will be represented by: Barbara Mateyka, junior, director; Maddie Fetterman, sophomore, technical director; Betsy Pilat, sophomore, script chairman; Julia Welsh, sophomore, choreographer; and Gail Potts, sophomore, music.

New Castle Hall's efforts will be headed by: Patti Woodruff, junior, music.

Russian Party Visits Campus, Sees Perkins

Soviet Minister of Higher and Secondary Specialized Education Vyacheslav P. Yelyutin visited the campus recently to confer with President John A. Perkins and members of the faculty and administrative staff.

Mr. Yelyutin had accompanied Premier Khrushchev during his tour of the United States. He was accompanied by Gennady D. Fursa, attache in the Soviet Embassy at Washington; Robert J. Martens, Foreign Affairs Officer, U. S. State Department; and Cyril M. Uromcew, State Department interpreter.

"We are pleased to oblige the State Department by providing an opportunity for these visiting educators to better understand our system of higher education," Dr. Perkins said. "I am pleased, too, that the State Department considers the University of Delaware an exemplary American university."

Friday evening a dinner was held at Belmont Hall, home of the president. Guests included President Courtney H. Smith, Swarthmore College; President Millard E. Gladfelter, Temple University; W. S. Carpenter, Jr., president of the University of Delaware board of trustees; Judge G. Burton Pearson, a board member; Dr. William A. Mosher, chairman, chemistry department; Dr. Russell G. Stauffer, director, reading-study center; and Dr. Edward W. Comings, dean of engineering.

Mr. Yelyutin holds a doctorate in the technical sciences and has strongly endorsed a new "polytechnical" school reform which combines study and practical work. Both he and Premier Khrushchev have made glowing claims for both the recent and the anticipated education of Russian engineers.

S.G.A. Selects News Women

Student Government Association representatives of the junior and sophomore women have selected committees to disseminate news from the SGA representatives to the respective dorms.

The junior class representative is Mimi Berkman, English major and junior counselor. Committee members are Toni Heesen, Cannon Hall; Elizabeth McKinney, Kent; Margie Bain, New Castle; Mi Papperman, Squire; Nancy Lloyd, Sussex; Margie DeWilde, Thompson; Joan Hannill, Warner, and Mimi Berkman, Smyth.

Jane Ann Davis, art major and art editor of the Blue Hen is the sophomore representative to SGA Members of her committee are Anna Mae Talarowski, Kent; Betty Lou Riker, New Castle; Mary Bahlman, Jo Ellen Lindh, and Roberta Phillips, Smyth; Betsy Moss, Squire; Pat Hayes, Sussex; Wendy Sempf, Thompson; Ruth DiGrossa Warner; and Jane Ann Davis, Cannon Hall.

An election of the men's representatives of the sophomore and junior classes will be held soon.

Statewide Blood Bank Assures Aid, Supply Students Able To Join

BY BILL HAYDEN

The Blood Bank of Delaware is a statewide, neighbor-help-neighbor plan that has been in existence for over four years. It assures its membership of all the whole blood they may need at anytime, without limit as to quantity.

Does this sound too good to be true? Over 40,000 subscribers and their families don't think so. Dr. Gordon Keppel, a Blood Bank director and university physician, says that this plan has saved many lives and has relieved its subscribers of the enormous costs, in some cases, for large quantities of blood replacements. It has attracted national attention due to the low cost of membership and its equitable distribution of responsibility among its subscribers.

In operation, the Blood Bank's plan is simple and effective. According to Dr. Keppel, each

subscriber shares the mutually agreed upon responsibility of maintaining an adequate supply of blood for replacing the blood given to each subscriber or his family. For two dollars the first year, and a dollar for every year thereafter, a subscriber and all dependents he can claim under Federal Income Tax are protected by the plan. The subscriber receives a certificate and a membership card. He then may be called on at any time from 30 days after joining to 7 years or more to give a pint of blood depending upon his blood-type and the circumstances.

Dr. Keppel says the Blood Bank of Delaware is a non-profit organization dedicated to the welfare of residents of the state. Further information concerning this neighbor-help-neighbor plan may be obtained by writing to the Blood Bank of Delaware, 1015 Wilmington Street, Wilmington, Del.

Never too strong.

Never too weak.

Always just right!

PALL MALL

FAMOUS CIGARETTES

You can light either end!

Get satisfying flavor...so friendly to your taste!

NO FLAT "FILTERED-OUT" FLAVOR!

NO DRY "SMOKED-OUT" TASTE!

HERE'S WHY SMOKE "TRAVELED" THROUGH FINE TOBACCO TASTES BEST

- 1 You get Pall Mall's famous length of the finest tobaccos money can buy.
- 2 Pall Mall's famous length travels and gentles the smoke naturally...
- 3 Travels it over, under, around and through Pall Mall's fine tobaccos... and makes it mild!