



CLIMATOLOGICAL DATA MARYLAND AND DELAWARE

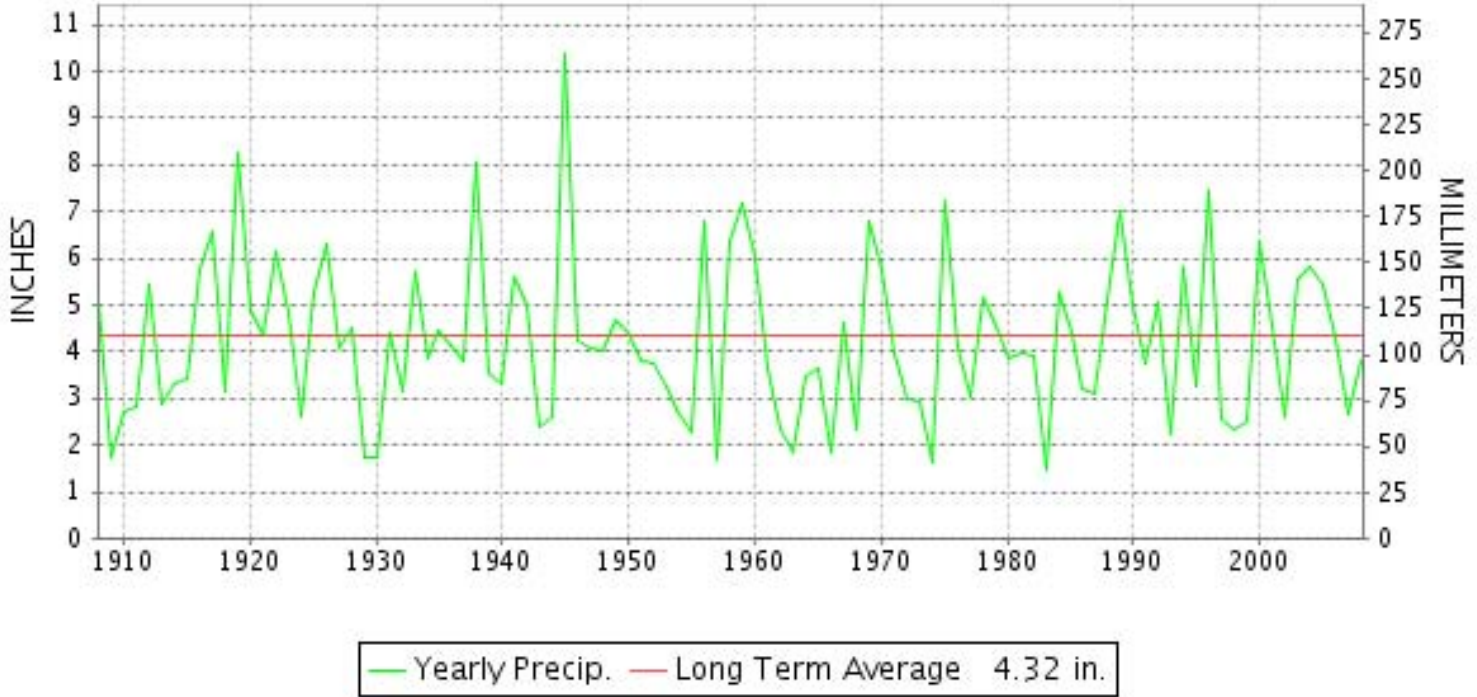


JULY 2008

VOLUME 112 NUMBER 07

ISSN 0145-054

JULY PRECIPITATION BY YEAR



TEMPERATURE AND PRECIPITATION EXTREMES

MARYLAND

HIGHEST TEMPERATURE	97	JULY 22+	3 STATIONS
LOWEST TEMPERATURE	46	JULY 2	OAKLAND 1 SE
GREATEST TOTAL PRECIPITATION	5.62		OAKLAND 1 SE
LEAST TOTAL PRECIPITATION	1.89		MECHANICSVILLE 5 NE
GREATEST 1 DAY PRECIPITATION	3.26	JULY 24	OXON HILL

"I certify that this is an official publication of the National Oceanic and Atmospheric Administration (NOAA) It is compiled using information from weather observing sites supervised by NOAA/National Weather Service and received at the National Climatic Data Center(NCDC), Asheville, North Carolina 28801."

Director
National Climatic Data Center

noaa

National
Oceanic and
Atmospheric Administration

National
Environmental Satellite, Data
and Information Service

National
Climatic Data Center
Asheville, North Carolina

DELAWARE

HIGHEST TEMPERATURE	96	JULY 19	WILMINGTON NEW CASTLE R
LOWEST TEMPERATURE	58	JULY 25	BEAR 2 SW
GREATEST TOTAL PRECIPITATION	7.07		WILMINGTON PORTER RSVR
LEAST TOTAL PRECIPITATION	3.95		GREENWOOD 2NE
GREATEST 1 DAY PRECIPITATION	2.57	JULY 23	WILMINGTON NEW CASTLE R

MONTHLY STATION AND DIVISION SUMMARY

STATION	TEMPERATURE (°F)											PRECIPITATION (IN)												
	AVERAGE MAXIMUM	AVERAGE MINIMUM	AVERAGE	DEPARTURE FROM NORMAL	HIGHEST	DATE	LOWEST	DATE	HEATING DEG. DAYS	COOLING DEG. DAYS	NO. OF DAYS				TOTAL	DEPARTURE FROM NORMAL	GREATEST 24 HOURS	DATE	ICE PELLETS, SNOW			NO. OF DAYS		
											MAX		MIN						TOTAL	MAX DEPTH ON GROUND	DATE	.10 OR MORE	.50 OR MORE	1.00 OR MORE
											>=90	<=32	<=32	<=0										
MARYLAND SOUTHERN EASTERN SHORE 01																								
ASSATEAGUE	86.5	64.9	75.7	.1	96	21	59	17+	0	339	5	0	0	0	2.71	-.91	1.81	24	.0	0		4	2	1
PRINCESS ANNE	M	M	M		95	24+	55	29			11	0	0	0	3.05	-1.22			.0	0		3	0	0
SALISBURY	88.3	69.3	78.8	1.3	93	22+	64	26+	0	432	9	0	0	0	3.13	-1.41	.75	24	.0	0		10	1	0
SALISBURY FAA AP	87.7	63.5	75.6	-1.7	95	22	54	26	0	335	8	0	0	0	3.97	-.57	1.04	29	.0	0		10	3	1
SNOW HILL 4 N	88.6	65.9	77.3	.3	94	22	54	25	0	389	9	0	0	0	4.74	.26	1.24	5	.0	0		5	4	2
--DIVISIONAL DATA----->			76.9	.2											3.52	-.79			.0					
CENTRAL EASTERN SHORE 02																								
ROYAL OAK 2 SSW	88.6	68.9	78.8	.2	94	21	61	25+	0	434	11	0	0	0	2.01	-2.21	.85	24	.0	0		4	1	0
VIENNA	90.8M	68.3M	79.6M	1.5	96	18	59	27	0	462	16	0	0	0	4.80	.94	2.94	24	.0	0		4	3	1
--DIVISIONAL DATA----->			79.2	1.5											3.41	-.78			.0					
LOWER SOUTHERN 03																								
MECHANICSVILLE 5 NE	85.6	65.3	75.5	-1.1	91	21+	59	26+	0	330	5	0	0	0	1.89	-2.59	.55	5	.0	0		6	1	0
SOLOMONS	86.9	70.6	78.8		92	20+	65	5	0	432	9	0	0	0	M 5.21		2.49	24	.0	0		7	3	1
--DIVISIONAL DATA----->			77.2	.9											1.89	-2.33			.0					
UPPER SOUTHERN 04																								
BALTIMORE WASH INTL AP R	87.7	67.2	77.5	1.0	94	20	59	25	0	395	10	0	0	0	5.47	1.62	2.42	23	.0	0		9	4	1
BELTSVILLE	86.9	67.0	77.0	.1	93	18	59	25	0	377	6	0	0	0	4.22	.13	1.39	24	.0	0		7	3	2
DALECARLIA RESERVOIR	89.5	66.0	77.8	.2	97	20	59	16	0	402	15	0	0	0	4.80	.54	1.57	24	.0	0		8	3	2
LAUREL 3 W	87.9	69.5	78.7	.9	94	21+	61	1	0	432	14	0	0	0	3.29	-.73	1.08	23	.0	0		7	3	1
MD SCI CTR BALTIMORE R	89.0	72.1	80.6		95	20+	65	1	0	491	12	0	0	0	5.13		1.66	23	M	M		8	3	1
NATL ARBORETUM DC	88.5	69.1	78.8	.9	95	18	62	25+	0	436	15	0	0	0	4.72	.51	2.02	24	.0	0		6	3	2
OXON HILL	88.4	68.6	78.5		94	27+	62	1	0	426	14	0	0	0	5.42		3.26	24	.0	0		6	3	1
UPPER MARLBORO 3 NNW	87.0	67.0	77.0	1.1	94	18	60	25+	0	378	6	0	0	0	4.17	.06	1.12	1	.0	0		8	3	2
--DIVISIONAL DATA----->			78.2	1.1											4.65	.51			.0					
NORTHERN EASTERN SHORE 05																								
CHESTERTOWN	86.5	68.0	77.3	-.1	92	17	62	25+	0	388	6	0	0	0	4.31	.37	2.12	9	M .0	0		7	2	1
--DIVISIONAL DATA----->			77.3	.7											4.31	.26								
NORTHERN CENTRAL 06																								
ABERDEEN PHILLIPS FLD	87.4	67.1	77.3	.3	94	20+	60	25	0	386	12	0	0	0	4.99	.78	1.62	24	.0	0		8	4	2
CATOCTIN MTN PARK	84.1	64.5	74.3	1.2	90	20+	57	1	0	296	3	0	0	0	2.87	-.95	.70	5	.0	0		7	3	0
CONOWINGO DAM	90.3	65.5	77.9	1.7	97	22+	57	16+	0	409	18	0	0	0	4.96	.76	1.35	24	.0	0		10	5	1
CYLBURN	84.9	65.1	75.0		92	18	58	25	0	316	5	0	0	0	4.08		2.36	24	.0	0		2	1	1
EMMITSBURG 2 SE	84.5	62.9	73.7	-1.3	91	22+	56	25	0	275	4	0	0	0	2.77	-.87	.98	14	.0	0		5	2	0

MONTHLY STATION AND DIVISION SUMMARY

STATION	TEMPERATURE (°F)											PRECIPITATION (IN)												
	AVERAGE MAXIMUM	AVERAGE MINIMUM	AVERAGE	DEPARTURE FROM NORMAL	HIGHEST	DATE	LOWEST	DATE	HEATING DEG. DAYS	COOLING DEG. DAYS	NO. OF DAYS				TOTAL	DEPARTURE FROM NORMAL	GREATEST 24 HOURS	DATE	ICE PELLETS, SNOW			NO. OF DAYS		
											MAX		MIN						TOTAL	MAX DEPTH ON GROUND	DATE	.10 OR MORE	.50 OR MORE	1.00 OR MORE
											>=90	<=32	<=32	<=0										
FREDERICK 2 NNE	87.6	65.7	76.7		95	21	58	25	0	370	11	0	0	0	2.61		1.10	14	.0	0		6	1	1
MILLERS 4 NE	84.2	63.5	73.9	.0	90	20+	54	25	0	279	2	0	0	0	3.68	.11	1.06	14	.0	0		8	2	1
SMITHSBURG 2NW	83.5	61.0	72.3		90	21	54	25+	0	232	1	0	0	0	3.58		1.15	14	.0	0		8	2	1
--DIVISIONAL DATA-----> APPALACHIAN MOUNTAIN 07			75.1	-2											3.69	-.27			.0					
CUMBERLAND 2	88.3	63.3	75.8	1.3	97	18	53	2	0	341	11	0	0	0	4.34	.92	1.10	23	.0	0		8	3	1
FROSTBURG 2	79.0	58.7	68.9	.4	86	21+	53	3+	4	132	0	0	0	0	3.34	-.57	.60	22	.0	0		8	3	0
SHARPSBURG 5 S	85.9	61.2	73.6		93	21	55	25+	0	273	7	0	0	0	4.87		1.47	14	.0	0		8	4	2
WILLIAMSPORT	86.0M	62.7M	74.4M		92	22+	58	26+	0	297	5	0	0	0	3.75		1.10	24	.0	0		5	3	2
--DIVISIONAL DATA-----> ALLEGHENY PLATEAU 08			73.2	.4											4.08	.44			.0					
OAKLAND 1 SE	79.4	56.0	67.7	-.7	87	18	46	2	16	107	0	0	0	0	M 5.62		1.06	8	.0	0		9	6	2
SAVAGE RIVER DAM	80.2	58.7	69.5	-.2	87	21+	51	2	4	150	0	0	0	0	3.83	-.36	.73	5	.0	0		9	3	0
--DIVISIONAL DATA-----> DELAWARE NORTHERN 01															3.83	-1.04			.0					
BEAR 2 SW	87.4	65.8	76.6		94	20+	58	25	0	365	9	0	0	0	5.75		2.47	23	.0	0		6	4	2
WILMINGTON NEW CASTLE R	88.2	67.9	78.1	1.5	96	19+	61	25	0	413	10	0	0	0	4.69	.41	2.57	23	.0	0		7	2	1
WILMINGTON PORTER RSVR	86.7	68.1	77.4	2.2	95	20+	62	25	0	392	6	0	0	0	7.07	2.68	2.46	23	.0	0		8	5	2
--DIVISIONAL DATA-----> SOUTHERN 02			77.4	1.2											5.84	1.34			.0					
DOVER	88.5	69.5	79.0	1.2	93	18+	63	13	0	442	10	0	0	0	4.73	.57	1.15	7	.0	0		6	4	3
GREENWOOD 2NE	86.5	65.9	76.2	.5	94	18	60	16	0	356	10	0	0	0	3.95	-.89	1.61	24	.0	0		4	4	2
LEWES	88.6	70.2	79.4	2.1	95	22	65	26+	0	454	14	0	0	0	4.74	.55	1.27	5	.0	0		6	4	3
--DIVISIONAL DATA----->			78.2	1.7											4.47	.55			.0					

MARYLAND AND DELAWARE
JULY 2008

DAILY PRECIPITATION (INCHES)

STATION	TOTAL	DAY OF MONTH																														
		01	02	03	04	05	06	07	08	09	10	11	12	13	14	15	16	17	18	19	20	21	22	23	24	25	26	27	28	29	30	31
MARYLAND																																
SOUTHERN EASTERN																																
SHORE 01																																
ASSATEAGUE	2.71			.51	.02				.07														.15	1.81			.14			.01		
PRINCESS ANNE	3.05		*	1.45				.13	.40										*	*	*	.09	*	.80						.18		
SALISBURY	3.13	.04			.34	.12	.01		.41	.23												.22	.41	.75				.10	.02	.20	.28	
SALISBURY FAA AP	3.97			.89	T	.15		.13	.15					T								.21	.15	.63	T		.08	1.04	.29	.25		
SNOW HILL 4 N	4.74	.78			1.24	.07			.31	.07												.05		1.15				.03	.94	.06	.04	
CENTRAL EASTERN																																
SHORE 02																																
ROYAL OAK 2 SSW	2.01	.47			.42	.01								.24									T		.85		.02					
VIENNA	4.80				.50			.90	*	.23				.05									.07		2.94			.11				
LOWER SOUTHERN 03																																
MECHANICSVILLE 5 NE	1.89	T			.55	.16	.24			.02				.37	.04							.01		.01	.32			.17	T			
SOLOMONS	M 5.21	.22			.91	*	.09	.13		.03		-		.10	.09									.35	2.49		*	.01	.73	T	.06	
UPPER SOUTHERN 04																																
BALTIMORE WASH INTL AP R	5.47			.10	.04	.19	T		.43				.71	.55							.24		T	2.42	.04		T	.65	T	.10	T	
BELTSVILLE	4.22	.10		.07	.24	.03	.12			.26				1.15	.01									.01	1.39			.80	.04			
DALECARLIA RESERVOIR	4.80	.30		.03	.23	.25	.60			.40				1.10	.01									.05	1.57			.23	.03			
LAUREL 3 W	3.29			.10	.02	.04	.26		.11				.70	.61										1.08			.33	.04				
MD SCI CTR BALTIMORE R	5.13			.09	.01	.37	.86		.31				.87	.42							.22			1.66	.05		.25	.02				
NATL ARBORETUM DC	4.72	.09		T	.18	.03	.10			.09				1.30									.12	T	2.02			.77	.02			
OXON HILL	5.42	.80		T	.17	.11	.09		T	T				.84											3.26			.14	.01	T	T	
UPPER MARLBORO 3 NNW	4.17	1.12			.42		.32			.39				1.03								.10	T		.67			.12				
NORTHERN EASTERN																																
SHORE 05																																
CHESTERTOWN	4.31			.20	.20	.42			2.12				.05	.32								T		.65	.28		T			.07		
NORTHERN CENTRAL 06																																
ABERDEEN PHILLIPS FLD	4.99	.01	.14				.16			.24				.68	.06								.35	.73	1.62			1.00				
CATOCTIN MTN PARK	2.87	.02			.70	.01			.16				.69	.30									.08	.10	.69	.12						
CONOWINGO DAM	4.96	.10			.33	.03	.80	.14		.84				.60	.02								.11	.14	1.35			.50				
CYLBURN	4.08	.06		*	*	*	.17			.34			*	1.00										.06	2.36		*	.08		.01		
EMMITSBURG 2 SE	2.77	.01	T	.37	.20	.03	.05			.19				.98									.02	.07	.79					.06		
FREDERICK 2 NNE	2.61			.28	.40	.04	.15			.06				1.10									.02	.02	.07	.36		.11				
MILLERS 4 NE	3.68			.35	.80		T		.22			T	.10	1.06								.05	T	.38	.48		.24			T		
POTOMAC FLTR PLT	M 2.45	-		.10	.10	.35	-		.06				.35	.40								.03		.15	.41		.22		.03	.25		
SMITHSBURG 2NW	3.58	.03	.03	.30	.27	.10				.10				1.15									.20	.34	.95		.06			.05		
APPALACHIAN																																
MOUNTAIN 07																																
CUMBERLAND 2	4.34	.02		.65	.26				.05	.02				.20									.37	.30	1.10	.48					.89	

MARYLAND AND DELAWARE
JULY 2008

DAILY PRECIPITATION (INCHES)

STATION	TOTAL	DAY OF MONTH																														
		01	02	03	04	05	06	07	08	09	10	11	12	13	14	15	16	17	18	19	20	21	22	23	24	25	26	27	28	29	30	31
FROSTBURG 2	3.34	.04			.40	.33	.40			.06	.07								T			.19	.60	.52	.14			T			.59	
SHARPSBURG 5 S	4.87	.10	.01		.50	.63				T	.18								1.47			.38	.04	.49	1.01			.04			.02	
WILLIAMSPORT	3.75	.04			.30	*	.06		.92													.01	.02	.17	1.10						.08	
ALLEGHENY PLATEAU 08																																
OAKLAND 1 SE	M 5.62	-	.02		.75	.62		.09	1.06	.25	.01											.70		.50	.39					.01	1.02	
SAVAGE RIVER DAM	3.83	.12			.36	.73	.04	T	.36	.04												.49	.51	.56	.33			.04	T	.01	.24	
DELAWARE																																
NORTHERN 01																																
BEAR 2 SW	5.75		T		.05	.01				.85	.01											.52	.01	2.47	.15			1.24				
WILMINGTON NEW CASTLE R	4.69	.02			.07	T	T			.29												.59	T	.28	2.57	.24		.19	T		T	
WILMINGTON PORTER RSVR	7.07				.10	.02		.28		.05												.43		2.46	1.40		.89	.66				
SOUTHERN 02																																
DOVER	4.73	T				1.13		1.15		T	.36														.86				1.01			
GREENWOOD 2NE	3.95	.02				1.15	.01	.50			.52														1.61				.04		.07	
LEWES	4.74	.01				1.27	1.12	.21		.03	.15														.86			1.08			.01	

TOTAL SNOWFALL AND NUMBER OF DAYS WITH ONE INCH OR MORE ON GROUND

STATION	JUL		AUG		SEP		OCT		NOV		DEC		JAN		FEB		MAR		APR		MAY		JUN		TOTAL		TOTAL PRECIPITATION	
	SNOWFALL	1 IN ON GD	SNOWFALL	1 IN ON GD	SNOWFALL	1 IN ON GD	SNOWFALL	1 IN ON GD	SNOWFALL	1 IN ON GD	SNOWFALL	1 IN ON GD	SNOWFALL	1 IN ON GD	SNOWFALL	1 IN ON GD	SNOWFALL	1 IN ON GD	SNOWFALL	1 IN ON GD	SNOWFALL	1 IN ON GD	SNOWFALL	1 IN ON GD	SNOWFALL	1 IN ON GD		
MARYLAND																												
SOUTHERN EASTERN SHORE 01																												
ASSATEAGUE											.5	0			1.4	-									1.9	M	41.88	
SALISBURY													M .5	0											.5		40.67	
SALISBURY FAA AP	T											T	0	1.3	1	1.5	0							2.8	1	38.36		
SNOW HILL 4 N											M 1.5	1	1.5	1	1.6	0								4.6	2	40.14		
CENTRAL EASTERN SHORE 02																												
ROYAL OAK 2 SSW											1.8	2	1.5	1	2.3	0									5.6	3	43.02	
LOWER SOUTHERN 03																												
MECHANICSVILLE 5 NE											1.0	2	1.4	0	2.0	0			M .0	0				4.4	2	42.20		
SOLOMONS							M .0	-	M .0	-	M .0	-	M 1.0	-	3.7	2	M .0	-	M .0	-	M .0	-		4.7	M 2	39.53		
UPPER SOUTHERN 04																												
BALTIMORE WASH INTL AP R									T	0	4.8	3	2.4	1	1.3	1								8.5	5	41.87		
BELTSVILLE											3.5	3	2.0	4	M .5	-								6.0	M 7	38.54		
DALECARLIA RESERVOIR											3.0	0	3.0	1										6.0	1	45.89		
NATL ARBORETUM DC											2.5	2	.8	1	.4	0								3.7	3	51.88		
OXON HILL											2.3	2	2.3	1	M 1.4	1								6.0	4	55.62		
UPPER MARLBORO 3 NNW													2.2	-	2.8	1								5.0	M 1	52.02		
NORTHERN EASTERN SHORE 05																												
CHESTERTOWN													3.0	2	2.5	0	2.5	-							8.0	M 2	36.50	
NORTHERN CENTRAL 06																												
ABERDEEN PHILLIPS FLD											4.0	2	2.0	1	1.1	1								7.1	4	43.43		
CATOCTIN MTN PARK		-									5.3	-	4.0	-	M 5.3	-								14.6	M	45.05		
CONOWINGO DAM											2.3	-	1.0	0	M .0	1								3.3	M 1	49.84		
CYLBURN											4.5	3	M .0	-	M 1.2	-								5.7	M 3	42.08		
EMMITSBURG 2 SE	-	-	M .0	-	-	-	-	-	-	-	4.0	-	2.5	-	4.5	-								M 11.0	M	M 32.20		
FREDERICK 2 NNE											M 4.0	-	2.0	-	2.0	-								8.0	M	45.33		
MILLERS 4 NE											7.5	3	4.8	5	M 5.7	3	T	0		T	0			18.0	11	45.39		
SMITHSBURG 2NW											4.3	3	M .0	1	M 2.5	-	M .0	0						6.8	M 4	50.77		
APPALACHIAN MOUNTAIN 07																												
CUMBERLAND 2													M 3.6	-	3.2	-	M 8.1	-	1.0	-				15.9	M	42.68		
FROSTBURG 2										.8	1	10.4	10	10.1	19	M 15.9	21	4.6	5	M .0	0			41.8	56	52.31		
SHARPSBURG 5 S	M .0	-					M .0	-			2.2	2	3.4	2	2.0	3	T	0						7.6	M 7	42.42		
WILLIAMSPORT											M 4.5	3	3.0	1	M 2.1	2								M 9.6	M 6	33.39		
ALLEGHENY PLATEAU 08																												
OAKLAND 1 SE											-	-	-	-	M 27.3	-	M .0	-						M 27.3	M	M 44.04		
SAVAGE RIVER DAM											-	-	-	-	M .0	-	M .0	3						M	M 3	48.94		
DELAWARE																												
NORTHERN 01																												
BEAR 2 SW											4.1	4	2.8	1	2.3	2	T	0							9.2	7	43.21	
WILMINGTON NEW CASTLE R	T										4.1	2	2.8	1	2.3	3	T	0						9.2	6	39.14		
WILMINGTON PORTER RSVR											1.8	-	.1	0	2.0	-								3.9	M	42.79		
SOUTHERN 02																												
DOVER											2.0	2	1.0	1	M .8	1								3.8	4	39.45		
GREENWOOD 2NE											2.0	-	1.0	-	1.0	2								4.0	M 2	37.06		
LEWES													.2	0	1.5	-								1.7	M	38.41		

DAILY TEMPERATURES (°F)

STATION	OB. TIME	MAX/MIN	DAY OF MONTH																															AVERAGE	
			01	02	03	04	05	06	07	08	09	10	11	12	13	14	15	16	17	18	19	20	21	22	23	24	25	26	27	28	29	30	31		
MARYLAND SOUTHERN EASTERN SHORE 01																																			
ASSATEAGUE M	MID	MAX	86	89	89	91	78	83	80	80	86	84	87	86	87	86	85	90	89	87	86	89	96	90	88	85	87	84	81	83	88	88	88	93	86.5
		MIN	63	64	64	63	63	65	64	65	62	67	59	61	61	69	67	61	59	68	70	70	66	73	70	65	60	60	67	63	64	70	70	64.9	
PRINCESS ANNE	17	MAX	88	85						90	88	90	86	89			90	89	91	95	95			95		95	88				90	92	93	M	
		MIN	60	59						62	71	67	68	57			57	63	57	56	60			65		66	57				55	62	71	M	
SALISBURY	17	MAX	85	85	89	89	81	85	86	88	87	85	88	88	88	86	87	88	93	93	93	93	92	93	91	90	86	87	88	85	88	90	89	88.3	
		MIN	66	67	67	69	69	73	71	74	71	73	64	66	66	72	70	65	65	68	72	69	74	71	74	68	65	64	70	67	69	73	75	69.3	
SALISBURY FAA AP M	MID	MAX	83	85	89	89	81	84	87	89	80	85	87	87	88	80	87	88	93	93	92	93	94	95	92	83	87	87	89	86	87	91	88	87.7	
		MIN	59	58	64	68	69	71	71	69	69	60	56	59	57	70	63	56	55	59	64	68	66	69	67	59	57	54	63	60	64	74	70	63.5	
SNOW HILL 4 N	17	MAX	88	87	89	92	90	85	87	89	86	85	88	88	86	85	87	88	92	93	92	91	92	94	91	85	87	86	88	89	89	89	89	88.6	
		MIN	64	64	66	69	68	72	70	70	69	71	60	61	59	70	65	60	58	62	69	74	63	71	69	69	54	57	70	61	63	73	72	65.9	
CENTRAL EASTERN SHORE 02																																			
ROYAL OAK 2 SSW	18	MAX	83	84	89	88	83	84	86	90	89	86	89	88	87	86	88	91	93	92	92	93	94	93	92	83	87	87	89	88	91	92	89	88.6	
		MIN	65	64	72	74	68	68	61	72	74	73	64	67	72	67	61	63	63	72	75	77	73	72	72	67	61	67	74	65	66	72	75	68.9	
VIENNA	18	MAX		93		90	87	91	92	91		91	95	90	88	86	89	91	95	96	93		93	94	93	91	88	89	87	87				90.8	
		MIN		64		72	74	74	75	65		64	63	65	68	66	67	63	64	71	72		72	73	74	68	81	60	59	66				68.3	
LOWER SOUTHERN 03																																			
MECHANICSVILLE 5 NE	07	MAX	84	84	83	89	86	78	80	81	87	80	81	85	87	87	87	85	87	91	91	90	91	90	86	87	81	85	85	88	83	87	89	85.6	
		MIN	61	61	64	64	66	66	66	67	69	70	62	64	65	67	64	61	61	62	68	70	72	70	69	64	59	59	65	64	65	67	71	65.3	
SOLOMONS	08	MAX	87	83	86	92	87	80	82	86	90	82	86	86	87	86	80	87	87	90	92	92	91	91	90	90	83	87	87	88	84	85	89	86.9	
		OBS					***						***													***									
		MIN	67	66	69	72	65	70	68	69	70	71	67	69	69	68	69	69	72	74	76	76	76	77	70	68	66	71	71	68	73	75	78	70.6	
		OBS					***						***													***									
UPPER SOUTHERN 04																																			
BALTIMORE WASH INTL APM	MID	MAX	83	85	91	85	81	85	86	90	86	86	90	89	88	85	87	91	93	93	93	94	93	91	85	82	87	86	88	86	88	88	84	87.7	
		MIN	61	62	64	69	69	68	71	68	72	67	62	68	69	67	63	62	67	70	69	74	70	72	66	64	59	67	69	62	69	71	73	67.2	
BELTSVILLE	08	MAX	83	80	84	89	84	81	83	84	88	85	84	88	88	89	84	86	89	93	91	92	92	92	89	84	83	87	87	88	86	91	89	86.9	
		MIN	61	66	60	69	69	68	69	67	71	70	62	68	67	69	63	63	65	68	66	72	70	71	73	63	59	64	69	62	69	71	72	67.0	
DALECARLIA RESERVOIR	08	MAX	86	83	87	93	87	85	84	87	93	88	84	90	92	91	86	89	92	96	95	97	86	94	93	86	84	89	91	93	87	92	93	89.5	
		MIN	60	62	63	63	68	67	68	67	71	69	64	69	66	64	62	59	66	69	69	68	71	69	67	62	63	68	66	63	64	71	69	66.0	
LAUREL 3 W M	MID	MAX	82	84	92	85	81	83	86	91	87	85	90	90	90	85	89	90	93	93	93	94	94	91	85	83	87	87	82	87	90	90	86	87.9	
		OBS																																	***
		MIN	61	66	66	70	70	69	71	69	72	71	70	72	69	68	67	67	74	74	73	76	73	73	66	63	63	69	72	68	70	70	74	69.5	
		OBS																																	***
MD SCI CTR BALTIMORE M	MID	MAX	84	86	94	85	83	86	88	93	89	86	90	91	89	85	88	91	94	95	95	95	94	93	87	84	87	88	88	88	90	89	85	89.0	
		MIN	65	67	68	70	72	73	72	72	74	75	71	74	72	68	70	71	76	77	74	77	75	77	68	66	68	72	74	72	71	76	77	72.1	
NATL ARBORETUM DC	07	MAX	83	81	85	91	91	81	84	85	90	85	86	88	91	91	85	89	91	95	93	94	94	93	91	86	84	88	89	90	87	91	92	88.5	

DAILY TEMPERATURES (°F)

STATION	OB. TIME	MAX/MIN	DAY OF MONTH																															AVERAGE
			01	02	03	04	05	06	07	08	09	10	11	12	13	14	15	16	17	18	19	20	21	22	23	24	25	26	27	28	29	30	31	
OXON HILL	08	MIN	62	67	65	71	69	69	69	70	73	65	69	70	68	65	66	67	74	72	76	71	72	74	64	62	69	73	64	67	72	74	69.1	
		MAX	85	83	85	91	87	84	86	86	90	85	86	88	90	91	85	87	91	94	93	86	84	84	90	94	93	94	88	86	91	90	88.4	
UPPER MARLBORO 3 NNW	08	MIN	62	66	65	72	68	69	70	69	71	74	66	70	68	68	66	66	67	69	71	71	64	63	64	72	72	73	66	66	72	74	68.6	
		MAX	86	81	84	89	86	81	84	83	89	84	86	89	88	88	82	87	89	94	91	91	91	92	88	85	83	86	86	88	86	89	90	87.0
NORTHERN EASTERN SHORE 05 CHESTERTOWN	23	MIN	60	63	63	68	68	67	70	68	70	71	63	67	68	68	64	63	64	69	69	73	71	70	71	64	60	63	70	64	66	70	72	67.0
		MAX	82	85	90	85	82	81	84	87	82	83	88	86	87	82	88	89	92	91	91	91	91	88	89	82	86	85	86	88	89	84	86.5	
NORTHERN CENTRAL 06 ABERDEEN PHILLIPS FLD	07	MIN	64	62	67	68	67	62	71	71	70	69	65	69	69	65	65	64	67	72	73	76	73	74	68	66	62	67	70	63	67	70	72	68.0
		MAX	84	83	85	91	81	81	79	86	90	86	85	90	88	90	82	88	90	94	94	94	93	92	90	85	83	87	87	86	87	90	87	87.4
CATOCTIN MTN PARK	17	MIN	63	62	63	66	68	68	69	72	73	72	63	65	68	66	64	64	65	68	68	72	71	73	72	66	60	62	67	62	64	71	73	67.1
		MAX	78	80	85	82	75	78	85	89	85	79	84	87	88	81	84	87	88	90	90	90	88	85	78	78	83	85	84	84	87	87	84	84.1
CONOWINGO DAM	07	MIN	57	58	64	64	63	64	66	64	69	62	63	68	66	61	62	65	67	70	68	70	65	66	65	58	61	63	67	62	66	70	66	64.5
		MAX	85	90	86	95	85	85	82	88	92	89	89	92	92	91	85	91	93	95	97	96	97	97	95	87	85	90	88	88	90	94	90.3	
CYLBURN	20	MIN	62	58	57	66	63	63	69	68	71	64	66	66	65	62	58	57	59	70	67	73	70	70	70	67	61	65	70	66	65	70	74	65.5
		MAX	79	82	81	83	77	78	83	89	85	82	87	86	88	80	85	87	90	92	90	91	90	89	82	79	85	86	83	84	88	88	83	84.9
EMMITSBURG 2 SE	07	OBS	80	79	82	81	83	77	78	83	89	85	82	87	86	88	80	85	87	90	92	90	91	90	89	82	79	85	86	83	84	88	88	88
		MIN	61	61	62	61	63	67	69	68	69	68	62	66	66	66	62	62	62	67	68	70	72	71	69	61	58	60	62	64	62	68	70	65.1
FREDERICK 2 NNE	07	MAX	79	78	81	87	78	78	80	85	87	83	82	85	88	88	81	84	87	89	90	91	91	91	87	74	80	83	85	86	85	87	88	84.5
		MIN	58	58	59	60	66	66	68	63	65	66	59	62	68	67	58	60	61	66	65	66	67	69	60	56	57	66	58	59	65	66	62.9	
MILLERS 4 NE	18	MAX	83	79	84	89	80	83	83	88	91	84	85	88	91	91	88	89	92	93	93	93	95	93	89	80	83	86	88	88	90	91	87.6	
		MIN	63	61	61	65	68	68	69	67	68	70	62	65	71	70	60	62	65	67	68	70	68	70	71	63	58	60	68	60	60	69	70	65.7
SMITHSBURG 2NW	08	MAX	78	80	86	84	77	79	83	86	85	81	84	86	86	80	84	87	89	89	90	90	89	88	84	79	82	84	82	83	86	85	83	84.2
		MIN	58	58	58	64	65	64	68	62	69	67	59	65	66	64	57	59	65	67	65	68	65	68	66	60	54	65	66	57	65	66	69	63.5
APPALACHIAN MOUNTAIN 07 CUMBERLAND 2	18	MAX	79	75	80	86	75	80	81	82	87	82	82	82	87	88	81	84	86	88	89	89	90	89	86	76	80	83	85	85	81	86	86	83.5
		MIN	57	54	54	65	64	65	65	67	62	61	57	62	57	65	55	58	58	62	63	64	63	65	66	59	54	55	65	55	61	66	67	61.0
FROSTBURG 2	07	OBS																																
		MIN	78	86	88	78	84	82	87	93	88	86	87	92	90	86	88	92	94	97	96	95	92	90	88	84	87	88	87	87	90	89	87	88.3
SHARPSBURG 5 S	07	MAX	59	53	56	67	66	67	67	66	70	63	58	64	70	65	56	57	62	66	65	63	66	66	69	60	55	62	67	59	66	64	69	63.3
		MIN	74	68	77	80	67	73	74	78	84	75	76	79	85	80	75	79	83	85	86	85	86	82	80	77	74	81	82	77	81	82	83	79.0
WILLIAMSPORT	06	MAX	56	53	53	60	62	62	62	60	64	58	55	56	62	56	57	55	61	62	60	61	63	62	58	55	56	60	56	61	62	58.7		
		MIN	81	77	83	88	77	82	81	87	90	85	84	87	90	89	84	85	88	90	92	91	93	91	88	77	82	85	87	87	85	88	89	85.9
ALLEGHENY PLATEAU 08 OAKLAND 1 SE	07	MAX	55	55	56	60	65	65	65	62	64	62	58	60	65	66	57	58	59	62	63	64	65	65	66	57	55	56	64	56	58	66	67	61.2
		MIN	82	77	82	88		81	82	86	89	88		88	88	83	85	87	91	92	91	92	92	87	76	83	85		84	89	89	86.0		
OAKLAND 1 SE	07	MAX	59	58	58	58		66	66	64	64																							
		OBS	75	68	75	79	79	79	74	78	84	76	76	80	85	80	77	80	81	87	86	86	85	80	81	74	74	79	81	79	79	83	82	79.4
			68	75	79	79	74	78	84	76	76	80	85	80	77	80	81	87	86	86	85	80	81	74	74	79	81	79	79	83	82	78		

MARYLAND AND DELAWARE
JULY 2008

DAILY TEMPERATURES (°F)

STATION	OB. TIME	MAX/MIN	DAY OF MONTH																															AVERAGE	
			01	02	03	04	05	06	07	08	09	10	11	12	13	14	15	16	17	18	19	20	21	22	23	24	25	26	27	28	29	30	31		
SAVAGE RIVER DAM	08	MIN	55	46	51	59	59	60	60	57	61	60	51	56	58	56	50	48	54	58	58	56	60	62	62	57	50	52	61	51	52	57	60	56.0	
		OBS	46	51	59	59	60	60	57	61	60	51	56	58	56	50	48	54	58	58	56	60	62	62	57	50	52	61	51	52	57	60	62		
		MAX	74	71	76	80	67	78	75	79	83	79	78	82	84	82	82	81	84	87	86	87	87	83	82	74	76	79	82	81	80	84	84	80.2	
		MIN	59	51	56	54	64	64	65	61	62	61	55	57	61	59	55	54	55	61	62	60	61	65	55	60	54	54	60	55	58	61	62	58.7	
DELAWARE																																			
NORTHERN 01																																			
BEAR 2 SW M	MID	MAX	84	85	91	84	84	83	89	90	86	83	88	88	85	83	89	90	93	93	94	94	90	90	88	82	86	86	87	85	88	87	84	87.4	
		MIN	64	61	61	66	68	70	72	70	70	66	61	65	64	67	62	60	62	69	67	74	70	72	69	62	58	62	65	60	64	68	70	65.8	
WILMINGTON NEW CASTLE M	MID	MAX	85	87	92	84	81	83	89	91	87	85	89	89	87	84	90	93	94	96	96	95	91	91	85	82	87	87	86	86	89	87	86	88.2	
		MIN	64	64	64	68	69	71	73	72	72	70	63	69	69	67	66	62	66	71	71	73	72	73	68	65	61	66	65	62	68	70	72	67.9	
WILMINGTON PORTER RSVRM	MID	MAX	82	84	90	79	80	82	87	89	84	83	83	87	89	86	87	89	94	95	95	95	87	91	85	80	86	87	86	85	89	88	83	86.7	
		OBS										71																							
		MIN	64	65	66	68	68	69	71	70	71	66	70	70	68	67	63	66	66	70	71	73	72	74	67	68	62	65	66	65	68	69	72	68.1	
		OBS														43		***	***																
SOUTHERN 02																																			
DOVER	16	MAX	88	85	90	90	87	80	86	87	89	83	88	88	89	87	87	89	93	93	92	92	92	91	91	91	86	88	88	86	89	89	89	88.5	
		MIN	65	66	69	69	68	69	71	70	72	71	68	67	63	70	65	67	67	73	73	75	76	75	72	70	64	66	71	68	70	70	73	69.5	
GREENWOOD 2NE	07	MAX	85	83	84	90	81	80	83	85	81	80	83	87	88	88	78	88	91	94	92	91	92	92	91	92	81	86	85	86	86	89	91	86.5	
		MIN	64	61	62	67	66	70	71	69	70	70	62	64	63	65	62	60	61	61	68	71	73	71	70	68	61	61	64	65	64	68	71	65.9	
LEWES	17	MAX	82	86	93	91	83	83	86	91	90	82	86	86	88	85	87	88	92	94	94	94	92	95	94	90	87	87	90	90	89	86	85	88.6	
		MIN	66	66	69	73	68	68	70	73	71	72	67	66	66	73	68	65	67	70	73	77	75	77	76	71	66	65	73	68	69	73	76	70.2	

MONTHLY AND SEASONAL HEATING DEGREE DAYS

STATION	JUL	AUG	SEP	OCT	NOV	DEC	JAN	FEB	MAR	APR	MAY	JUN	TOTAL	SEASONAL NORM
MARYLAND SOUTHERN EASTERN SHORE 01														
ASSATEAGUE	0	0	0	55	412	648	759	657	490	304	94	0	3419	4266
PRINCESS ANNE								673B				0B	M	4198
SALISBURY	0	0	8	74	458	675	763	618	447	199		0	M 3242	3936
SALISBURY FAA AP	6	0	37	156	605	793	913	738	580	301	183	3	4315	4254
SNOW HILL 4 N	0	0	16	98	491	691	796	665	498	202	115	0	3572	4008
CENTRAL EASTERN SHORE 02														
ROYAL OAK 2 SSW	0	0	14	81	468	726	793	678	509	202	93	0	3564	3967
VIENNA	0	0B	10	78	490	711	788B	679B	489	221	112	0	B 3578	4073
LOWER SOUTHERN 03														
MECHANICSVILLE 5 NE	1	0	43	153	576	830	888	781	617	288	196	0	4373	4299
SOLOMONS	0	0	6B			686B		666B		314B			M 1672	
UPPER SOUTHERN 04														
BALTIMORE WASH INTL AP R	0	0	26	143	559	835	909	799	614	274	165	0	4324	4720
BELTSVILLE	0	0	23	137	549	831	906	796	625	292	164	1	4324	4707
DALECARLIA RESERVOIR	0	1	21	118	517	791	899	780	582	273	148	0	4130	4382
LAUREL 3 W	0	0	13	112	549	813	873	801	603	267	133	0	4164	4505
MD SCI CTR BALTIMORE R	0	0	2	77	478	745	817	737	541	231	95	0	3723	
NATL ARBORETUM DC	0	0	13	110	532	802	871	752	564	260	117	0	4021	4571
OXON HILL	0	0	13	100	499	755	819	726	539	241	114	0	3806	
UPPER MARLBORO 3 NNW	0	0	26	129	541	829	892	783	622	280	158	0	4260	4785
NORTHERN EASTERN SHORE 05														
CHESTERTOWN	0	1	21	125	568	835	895	802	602	259	151	0	4259	4559
NORTHERN CENTRAL 06														
ABERDEEN PHILLIPS FLD	0	0	17	107	524	791	856	816	679	291	176	0	4257	4459
CATOCTIN MTN PARK	3	17	41	167	660	950	986	951	705	314	181	7	4982	5370
CONOWINGO DAM	0	1B	4B	107B	547	888	957	818	674B	310	166	0	B 4472	5044
CYLBURN	1	6	36	168	594	882	939	834	670	315	218	1	4664	
EMMITSBURG 2 SE				191	677	941	987	933	739	360	257	11	M 5096	5032
FREDERICK 2 NNE	0	3	37	162	626	887	944	880	678	311	204	2	4734	
MILLERS 4 NE	4	15	51	181	662	937	973	914	709	314	214	13	4987	5162
SMITHSBURG 2NW	2	8	56	202	669	940	990	960	759	371	307	14	5278	
APPALACHIAN MOUNTAIN 07														
CUMBERLAND 2	0	2	36	166	643	863	935	863	607	205	140	4	4464	5191
FROSTBURG 2	21	22	109	279	801	1044	1157	1086	910	419	343	36	6227	6775
SHARPSBURG 5 S	0B	0B	53	178	633	926	970	919	732	332	255	13	B 5011	
WILLIAMSPORT	0		40	163	641	895B	963	917	698B	313	240	9	M 4879	
ALLEGHENY PLATEAU 08														
OAKLAND 1 SE	47B	5	151B	349	788	975B	1194	1059	971	488	366	60	B 6453	6368
SAVAGE RIVER DAM	22	6	106	277	762	957	1127	1031	849	397	317	29	5880	6375
DELAWARE NORTHERN 01														
BEAR 2 SW	2	8	36	170	626	873	945	838	649	298	193	2	4640	
WILMINGTON NEW CASTLE R	0	3	20	136	582	840	901	809	629	301	170	0	4391	4888
WILMINGTON PORTER RSVR	0	10	23	150	626	885	934	864	668	292	194	1	4647	5110
SOUTHERN 02														
DOVER	0	1	14	100	498	759	830	684	541	248	116	0	3791	4212
GREENWOOD 2NE	1	0	25	140	560	814	888	772	653	308	182	0	4343	4816
LEWES	0	0	3	73	446	710	767	665	503	245	103	0	3515	4098

PAN EVAPORATION AND WIND

STATION		DAY OF MONTH																															TOTAL OR AVERAGE
		01	02	03	04	05	06	07	08	09	10	11	12	13	14	15	16	17	18	19	20	21	22	23	24	25	26	27	28	29	30	31	
MARYLAND UPPER SOUTHERN 04 BELTSVILLE	WIND	38	62	40	*	*	100	14	34	39	41	30	*	*	109	15	16	21	14	*	44	32	50	33	29	29	*	*	76	14	16	14	910
	EVAP	20	27	25	*	*	55	8	24	25	15	23	*	*	71	18	17	26	19	*	52	26	18	30	29	20	*	*	76	18	18	14	6.74
	MAX	96	94	97	-	-	90	88	94	96	88	92	-	-	95	90	89	94	98	-	99	98	95	96	86	86	-	-	92	89	95	91	92.8
	MIN	74	73	62	-	-	70	72	70	71	72	66	-	-	68	67	67	68	69	-	70	70	71	71	70	66	-	-	66	67	72	74	69.4
UPPER MARLBORO 3 NNW	WIND	-	-	-	-	-	-	-	-	-	-	-	-	-	-	-	-	-	-	-	-	-	-	-	-	-	-	-	-	-	-	-	M
	EVAP	31	23	35	*	*	58	12	22	27	18	20	*	*	75	15	22	24	25	*	*	81	25	19	17	22	*	*	66	*	37	17	6.91
	MAX	95	93	94	93	96	89	92	94	100	87	95	97	98	98	92	98	100	105	101	101	101	99	98	91	94	98	94	98	98	98	99	96.3
	MIN	64	66	64	66	70	70	72	69	70	71	68	69	67	69	69	68	68	69	69	71	73	73	72	66	65	65	67	67	67	71	73	68.6

Evaporation: Is measured in hundredths of inches.

Wind: Is measured in miles.

Max and Min: The maximum and minimum temperatures (Fahreheit) of the water in the evaporation pan.

STATION INDEX

STATION	INDEX NO.	DIVISION	COUNTY	LATITUDE	LONGITUDE	ELEVATION (IN FEET)	OBSERVATION TIME AND TABLES				OBSERVER
							LOCAL STD TIME				
							TEMP	PRECIP	EVAP	SPECIAL SEE (NOTES)	
MARYLAND											
ABERDEEN PHILLIPS FLD	0015	06	HARFORD	39 28	76 10W	57	07	07		C H	US ARMY ABERDEEN TST CTR
ASSATEAGUE	0335	01	WORCESTER	38 4	75 13W	10	MID	MID		H	ASSATEAGUE IS NATL SEA
BALTIMORE WASH INTL AP R	0465	04	ANNE ARUNDEL	39 10	76 41W	156	MID	MID		C HJ	ASOS - FAA
BELTSVILLE	0700	04	PRINCE GEORG	39 2	76 56W	145	08	08	08	C H	USDA AGRICULT RES SVC
CATOCTIN MTN PARK	1530	06	FREDERICK	39 39	77 29W	1610	17	17		H	CATOCTIN MOUNTAIN PK
CHESTERTOWN	1750	05	KENT	39 13	76 3W	40	23	23		H	THOMAS W ELIASON JR
CONOWINGO DAM	2060	06	HARFORD	39 39	76 11W	40	07	07		H	SUSQUEHANNA ELECTRIC CO
CUMBERLAND 2	2282	07	ALLEGANY	39 39	78 45W	730	18	18		H	TIMOTHY B THOMAS
CYLBURN	2308	06	BALTIMORE	39 22	76 38W	400	20	20		H	CYLBURN ARBORETUM
DALECARLIA RESERVOIR	2325	04	PRINCE GEORG	38 56	77 7W	150	08	08		H	USA CORPS OF ENGINEERS
EMMITSBURG 2 SE	2906	06	FREDERICK	39 41	77 17W	403	07	07		H	ERIC E GLASS
FREDERICK 2 NNE	3353	06	FREDERICK	39 26	77 24W	280	07	07		H	DIR PUBLIC WORK WTP
FROSTBURG 2	3415	07	ALLEGANY	39 40	78 56W	2170	07	07		H	GREGORY P LATTA
LAUREL 3 W	5111	04	PRINCE GEORG	39 5	76 54W	400	MID	MID		H	WA SUBURBAN SANITARY COM
MD SCI CTR BALTIMORE R	5718	04	BALTIMORE (C	39 17	76 37W	20	MID	MID		C H	ASOS - NWS
MECHANICSVILLE 5 NE	5865	03	ST. MARY'S	38 28	76 42W	100	07	07		H	SANDRA J HASTINGS
MILLERS 4 NE	5934	06	CARROLL	39 43	76 48W	860	18	18		C H	ROBERT MILLER
NATL ARBORETUM DC	6350	04	PRINCE GEORG	38 55	76 58W	50	07	07		H	US NATIONAL ARBORETUM
OAKLAND 1 SE	6620	08	GARRETT	39 25	79 24W	2420	07	07		H	GARRETT CO MEM HOSPITAL
OXON HILL	6800	04	PRINCE GEORG	38 48	77 0W	120	08	08		H	BRIAN SMITH
POTOMAC FLTR PLT	7272	06	MONTGOMERY	39 2	77 15W	270		08		H	POTOMAC WATER FILT PLANT
PRINCESS ANNE	7330	01	SOMERSET	38 13	75 41W	20	17	17		H	UNIV OF MD EAST SHORE
ROYAL OAK 2 SSW	7806	02	TALBOT	38 43	76 11W	10	18	18		H	JOHN L SWAINE JR
SALISBURY	8000	01	WICOMICO	38 22	75 35W	10	17	17		H	CITY OF SALISBURY
SALISBURY FAA AP	8005	01	WICOMICO	38 20	75 31W	48	MID	MID		H	FAA
SAVAGE RIVER DAM	8065	08	GARRETT	39 31	79 8W	1495	08	08	08	C H	USA CORPS OF ENGINEERS
SHARPSBURG 5 S	8207	07	WASHINGTON	39 24	77 43W	500	07	07		H	DAVID DOWNIN
SMITHSBURG 2NW	8371	06	WASHINGTON	39 40	77 35W	670	08	08		H	SMITHSBURG WWTP
SNOW HILL 4 N	8380	01	WORCESTER	38 14	75 23W	30	17	17		H	CURTIS E SHOCKLEY
SOLOMONS	8405	03	CALVERT	38 19	76 27W	12	08	08		H	CHESAPEAKE BIOLOGIC LAB
UPPER MARLBORO 3 NNW	9070	04	PRINCE GEORG	38 52	76 47W	100	08	08	08	H	UNIVERSITY OF MARYLAND
VIENNA	9140	02	DORCHESTER	38 29	75 49W	10	18	18		H	DELMARVA POWER AND LIGHT
WILLIAMSPORT	9570	07	WASHINGTON	39 36	77 50W	360	06	06		H	R C WILSON TREATMENT PLT
DELAWARE											
BEAR 2 SW	1200	01	NEW CASTLE	39 36	75 44W	80	MID	MID		H	R. GARY GALLAHER
DOVER	2730	02	KENT	39 16	75 31W	30	16	16		H	DEPT OF TRANSPORTATION
GREENWOOD 2NE	3595	02	SUSSEX	38 49	75 35W	45	07	07		H	DANIEL M SWARTZENTRUBER
LEWES	5320	02	SUSSEX	38 47	75 8W	15	17	17		H	BOARD OF PUBLIC WORKS
WILMINGTON NEW CASTLE R	9595	01	NEW CASTLE	39 40	75 36W	79	MID	MID		C HJ	ASOS - FAA
WILMINGTON PORTER RSVR	9605	01	NEW CASTLE	39 46	75 32W	270	MID	MID		H	WILMINGTON WATER DEPT

REFERENCE NOTES

DEFINITIONS

STATION NAMES: Name of the city, town or locality. Figures and letters following the station names indicate the distance in miles and direction from the post office or town community center.

DIVISIONS: Areas within a state of similar climatological characteristics. Division averages are calculated using data from stations that record both temperature and precipitation (i.e. not precipitation alone).

NORMALS: The average value of the meteorological element over a time period. Effective 1 January 2002, the averaging period is 1971 to 2000. The normals for National Weather Service localities have been adjusted so as to be representative for the current observation site.

MONTHLY DEGREE DAY TOTALS: One heating (cooling) degree day is accumulated for each whole degree that the daily mean temperature is below (above) 65 degrees Fahrenheit.

PRECIPITATION: Values shown in hundredths of inches are water equivalent totals, i.e., total of liquid and melted frozen precipitation. In the "Monthly Summarized Data" table the total snow and sleet values shown in tenths of inches are unmelted amounts. The max depth on ground values of snow and sleet shown in whole inches are cumulative unmelted amounts. The number of days with .10, .50, 1.00 or more refers to water equivalents.

PRECIPITATION QUALITY CONTROL: The NCDC quality control process may delete precipitation data that are spatially inconsistent; exceed climatological limits, or are inconsistent with prevailing weather patterns.

TEMPERATURE: Original and edited temperature values are given in the "Daily Temperature" table. Edited values are produced when an original value is missing or when surrounding stations indicated a suspect original value. When a line labeled OBS is present and contains either a daily temperature (suspect) or *** (missing), the temperature appearing directly above, on the line labeled MAX or MIN, is an edited value. Summary temperature information (averages, departures, extremes, monthly degree day totals) is based on the values labeled MAX/MIN.

WIND: (As shown in the "Evaporation and Wind" table) the total wind movement in miles over the evaporation pan as determined by an anemometer recorder located 6-8 inches above the pan.

SYMBOLS AND LETTERS USED IN THE STATION INDEX TABLE

Thermometers located in a rooftop shelter.
// Rain gage equipped with a windshield
AR Observation made "after rain" has occurred.
C Station is equipped with recording rain gage (R) but values in this bulletin are from a non-recording rain gage unless indicated by an R.
G Observations appear in the "Soil Temperatures" table.
H Observations appear in the "Snowfall and Snow on the Ground" table.
J Station also published as a Local Climatological Data publication.
MID Observation time is midnight.
MO Rain gage read once monthly, usually the last day.
OC Rain gage readings vary from a few weeks to several months.
R Amounts from recording rain gage.
SR Observation time near sunrise.

SS Observation time near sunset.
VAR Observation time varies.
WI Rain gage read weekly or irregularly.
WM Rain gage read weekly and last day of the month.

SYMBOLS AND LETTERS USED IN THE DATA TABLES

(DAILY DATA ARE FOR THE 24 HOURS IMMEDIATELY PRECEDING OBSERVATION TIME.)

BLANK Entries in the "Monthly Summarized Data" table indicate no record.

BLANK Entries in the "Daily Precipitation" and "Snowfall and Snow on the Ground" tables indicate zero.

BLANK Entries in the "Daily Temperature" table indicate a missing record where an edited value could not be determined. (See *** below)

- No record. Data not recorded, determined unreliable by quality control check, or not received in time for publication.

+ Precipitation or temperature extremes occurred on one or more previous dates during the month.

*** Missing original temperature which has been estimated during edit.

* Rain gage not read. Precipitation is included in the amount following the asterisks. Time distribution not known. A * preceding the monthly total indicates precipitation amount is being carried forward to next months total, and may include amounts from the previous month(s).
// Rain gage equipped with a windshield.

A Amount of precipitation is the total of observer's entries for the current month. It may include precipitation that occurred during the previous month. Refer to earlier bulletin to determine date of last reading. (Hawaii stations)

B Adjusted monthly value (estimated), (1-7 missing values for wind and evaporation).

M Insufficient or partial data. M is appended to average and/or total values computed with 1-9 daily values missing. M appears alone if 10 or more daily values are missing, (8 or more for wind and evaporation).

R Amounts from recording rain gage.
T Trace. An amount too small to measure.

V Includes total for previous month(s). (See * above)

SEASONAL TABLES: Monthly and seasonal snowfall and heating degree days for the 12 months ending with the June data are published in the July issue of this bulletin. Cooling degree days for the calendar year are published in the "Climatological Data Annual Summary."

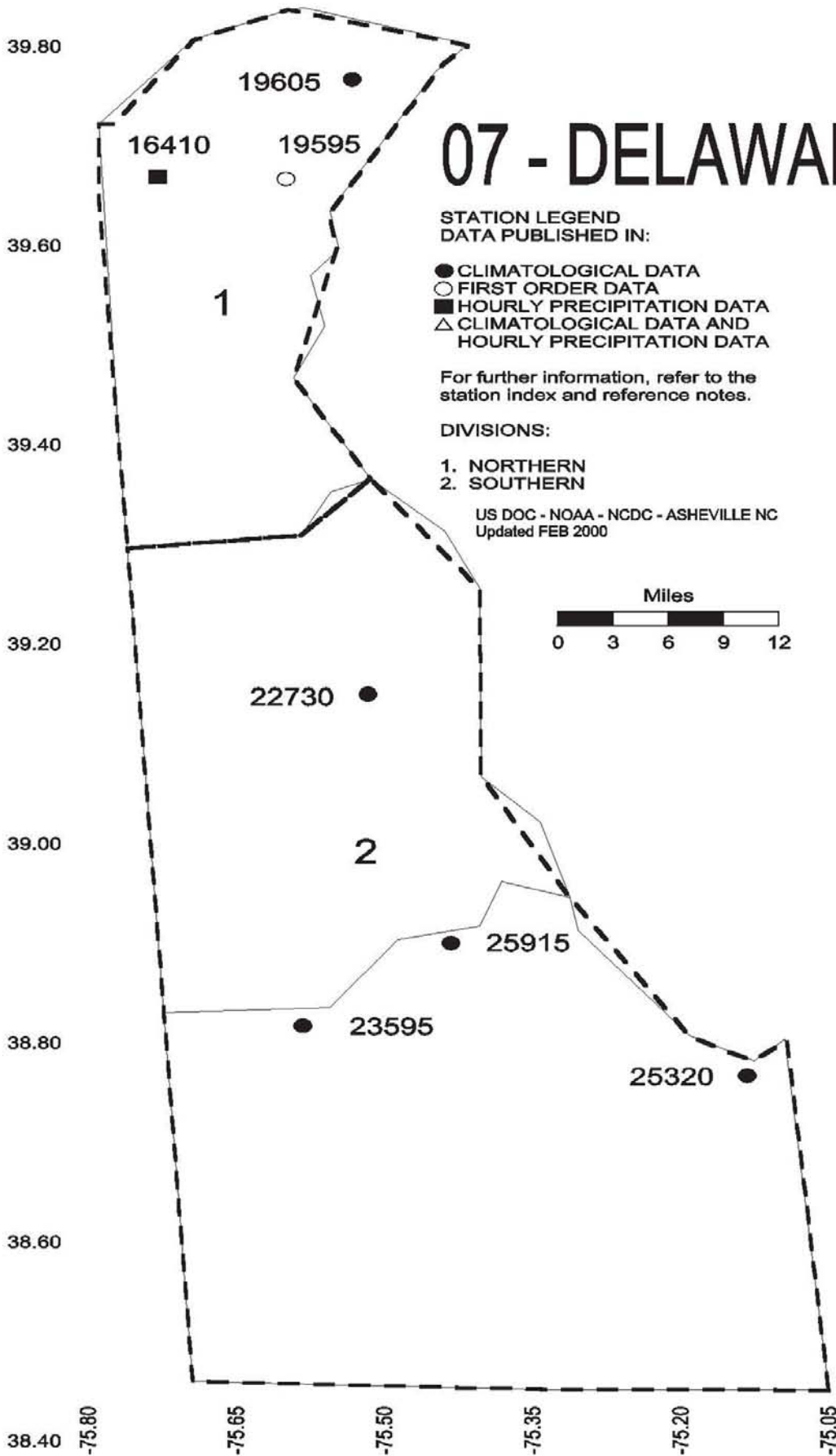
Information concerning the history of changes in locations, exposure, etc. of substations is kept on file at the National Climatic Data Center. Historical information of regular National Weather Service Offices may be obtained from the "Local Climatological Data" annual publication. The contents of this publication may be reprinted or otherwise used freely, with proper credit to the National Climatic Data Center. The data are also available in digital form on magnetic tape and diskette.

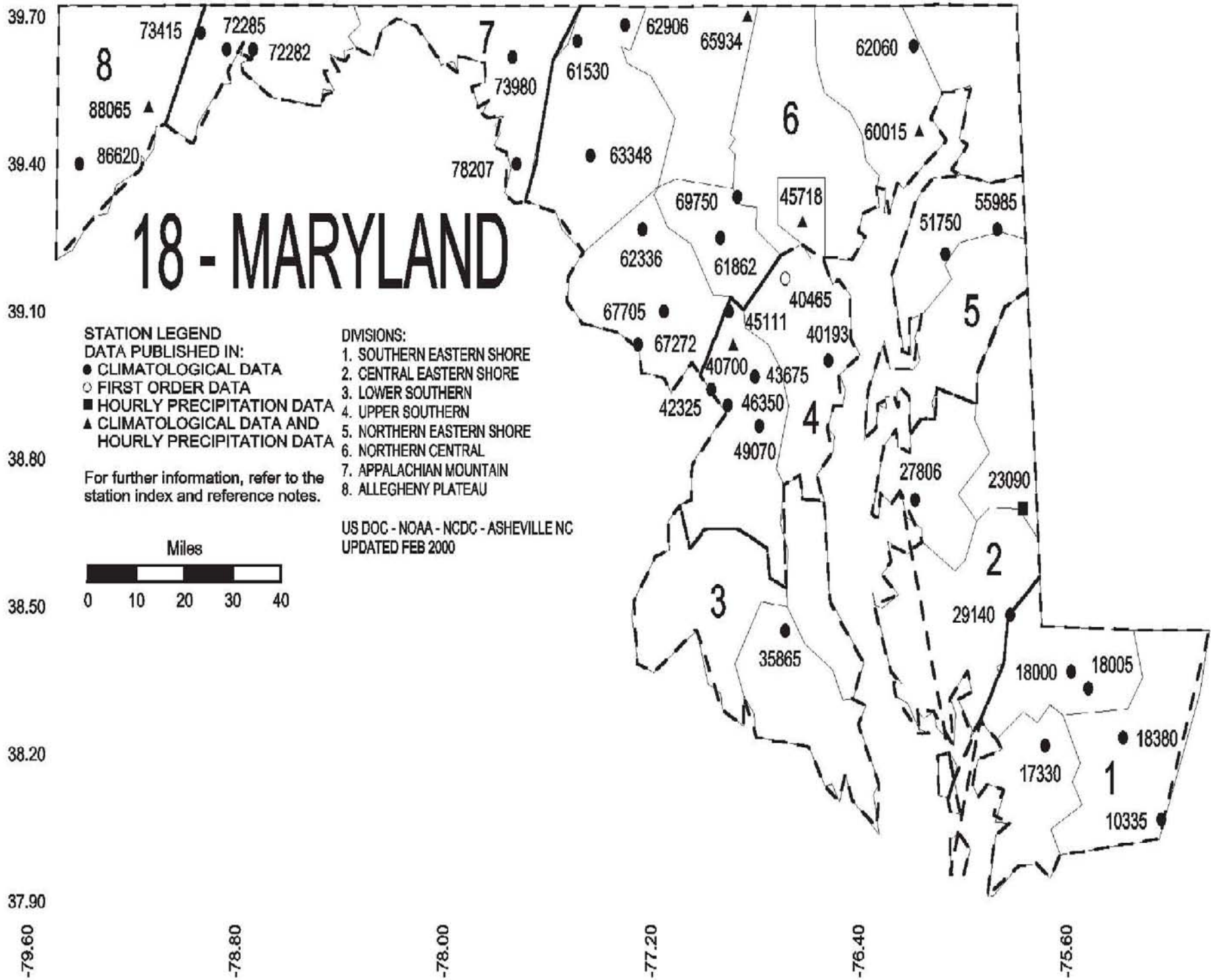
SUBSCRIPTION, PRICE, AND ORDERING INFORMATION AVAILABLE FROM:

NCDC Subscription Services Center
310 State Route 956
Building 300
Rocket Center, WV 26726

Toll free number: (866) 742-3322
Fax number: (304) 726-4409

07 - DELAWARE





These and other publications are available from the National Climatic Data Center

Hourly Precipitation Data

This publication contains hourly precipitation amounts obtained from recording rain gages located at National Weather Service, Federal Aviation Administration, and cooperative observer stations. Published data are displayed in inches and tenths or inches and hundredths at local standard time. HPD includes maximum precipitation for nine (9) time periods from 15 minutes to 24 hours, for selected stations.

Climatological Data

Monthly editions contain station daily maximum and minimum temperatures and precipitation. Some Stations provide daily snowfall, snow depth, evaporation, and soil temperature data. Each edition also contains monthly summaries for heating and cooling degree days (65 degree F base). The July issue contains a recap of monthly heating degree days and snow data for the preceding July through June.

The Annual issue contains monthly and annual averages of temperature, precipitation, temperature extremes, freeze data, soil temperatures, evaporation, and a recap of monthly cooling degree days.

Storm Data

Monthly issues contain a chronological listing, by states, of occurrences of storms and unusual weather phenomena. Reports contain information on storm paths, deaths, injuries, and property damage. An "Outstanding storms of the month" section highlights severe weather events with photographs, illustrations, and narratives. The December issue includes annual tornado, lightning, flash flood, and tropical cyclone summaries.

Monthly Climatic Data for the World

This publication contains monthly means for temperature, pressure, precipitation, vapor pressure, and sunshine for approximately 2,000 surface data collection stations worldwide and monthly mean upper air temperatures, dew point depressions, and wind velocities for approximately 500 observing sites.

Local Climatological Data

LCD publications summarize temperature, relative humidity, precipitation, cloudiness, wind speed and direction observations for several hundred cities in the U.S. and its territories. Each monthly publication also contains 3 hourly weather observations for that month and a hourly summary of precipitation. Annual LCD publications contain a summary of the past calendar year as well as historical averages and extremes.

For Information Call:

(866) 742-3322 (Toll free)

(828) 271-4010 (TDD)

(304) 726-4409 (Fax)

To change your address, please return a copy of the mailing label along with your new address to:

NCDC Subscription Services Center
310 State Route 956
Building 300
Rocket Center, WV 26726

Toll free number:(866) 742-3322
TDD: (828) 271-4010
Fax number: (304) 726-4409

NCDC now offers an annual online subscription for the *Climatological Data* publication. When you purchase this subscription service, you will have **immediate online access** to all previous publications back to October 1997 and all publications thereafter until the expiration of the subscription. Your subscription is valid for one year after purchase. **The total cost is \$36 for online delivery (including back issues) compared to \$50 for offline delivery.** To order this and other subscriptions online with your credit card, go to: **www.ncdc.noaa.gov/mpp.html** and choose subscriptions.

Inquiries/Comments Call: Toll free number:(866) 742-3322
TDD: (828) 271-4010
Fax number: (304) 726-4409

NCDC Subscription Services Center
310 State Route 956
Building 300
Rocket Center, WV 26726

PRSR STD POSTAGE & FEES PAID United States Department of Commerce NOAA Permit No. G-19

OFFICIAL BUSINESS
PENALTY FOR PRIVATE USE \$300
CHANGE SERVICE REQUESTED