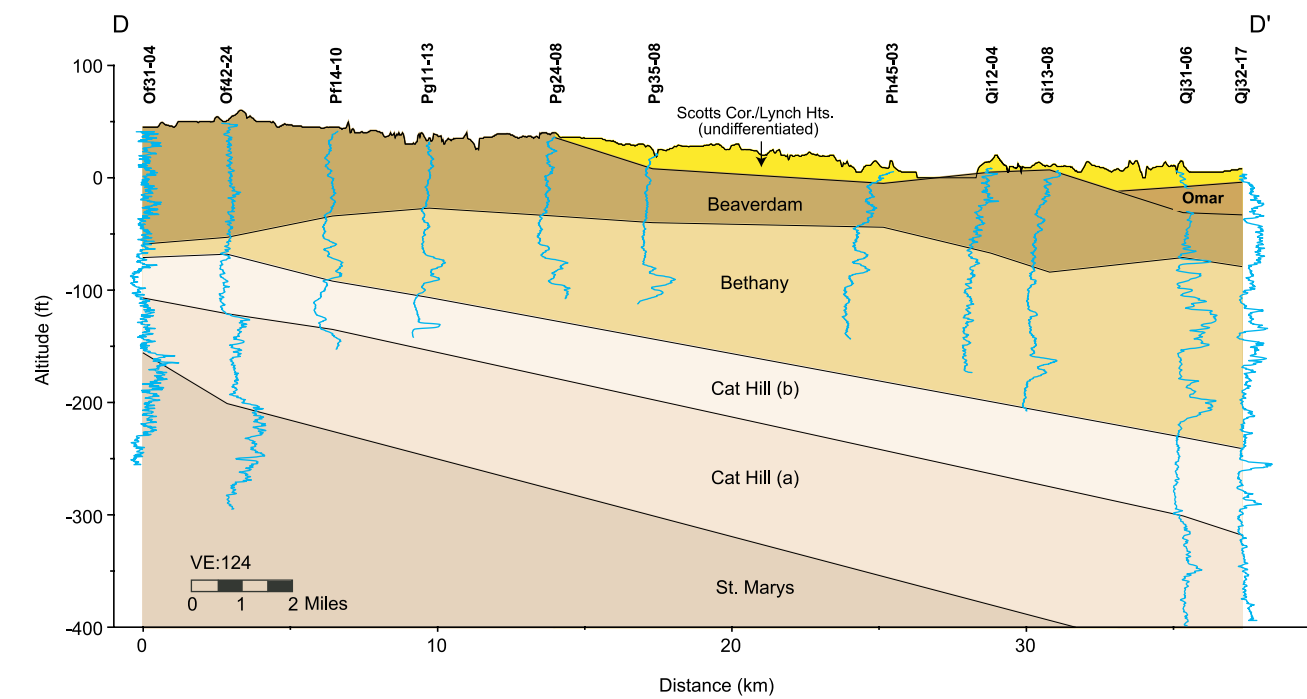
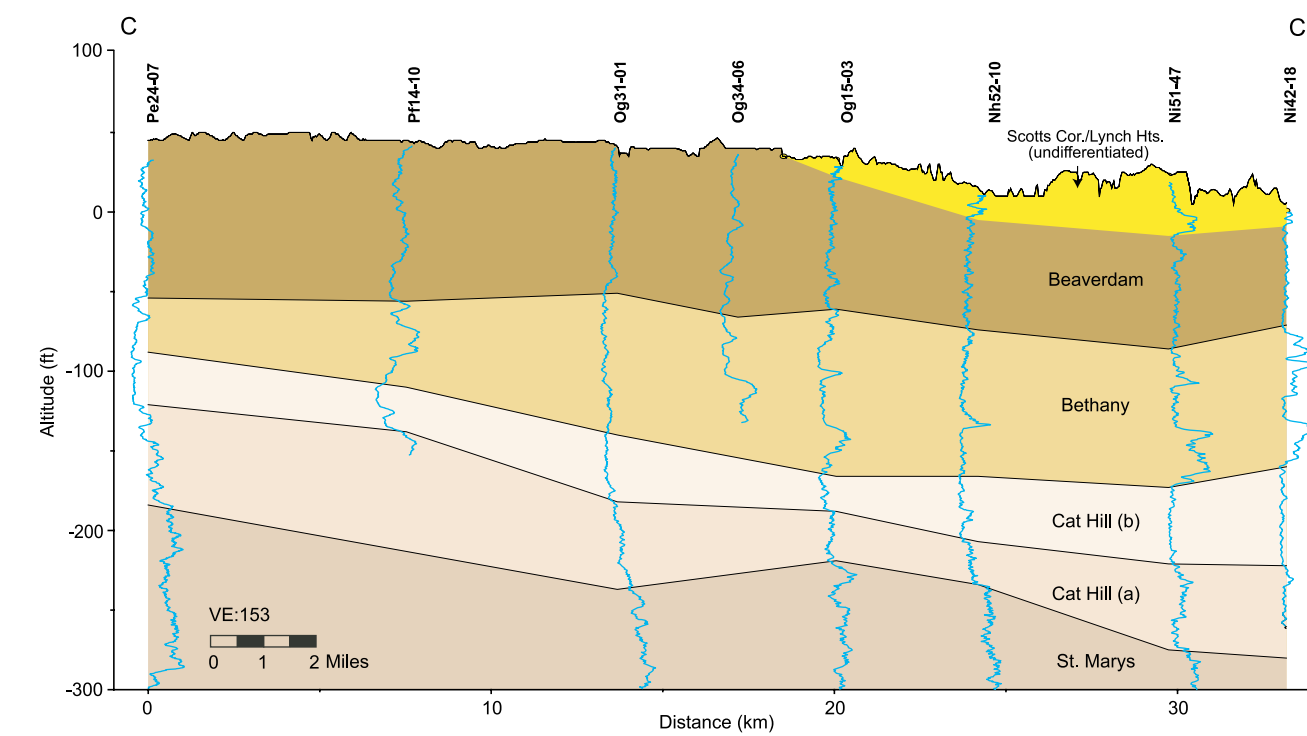
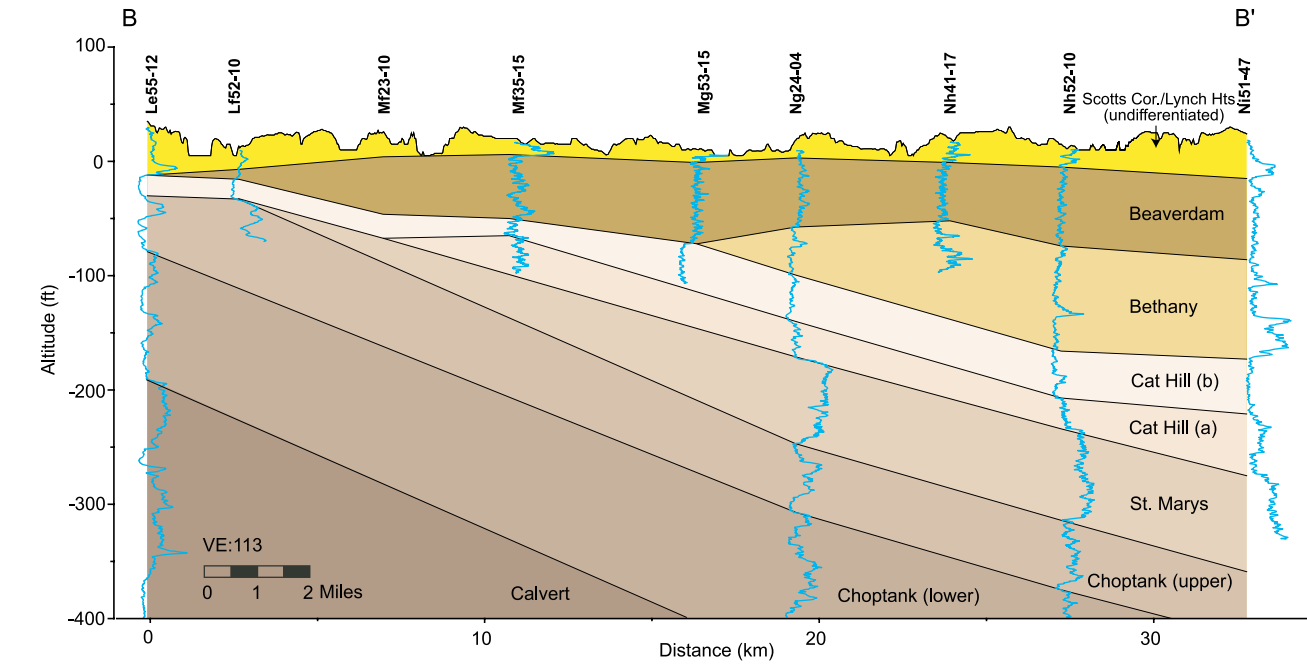
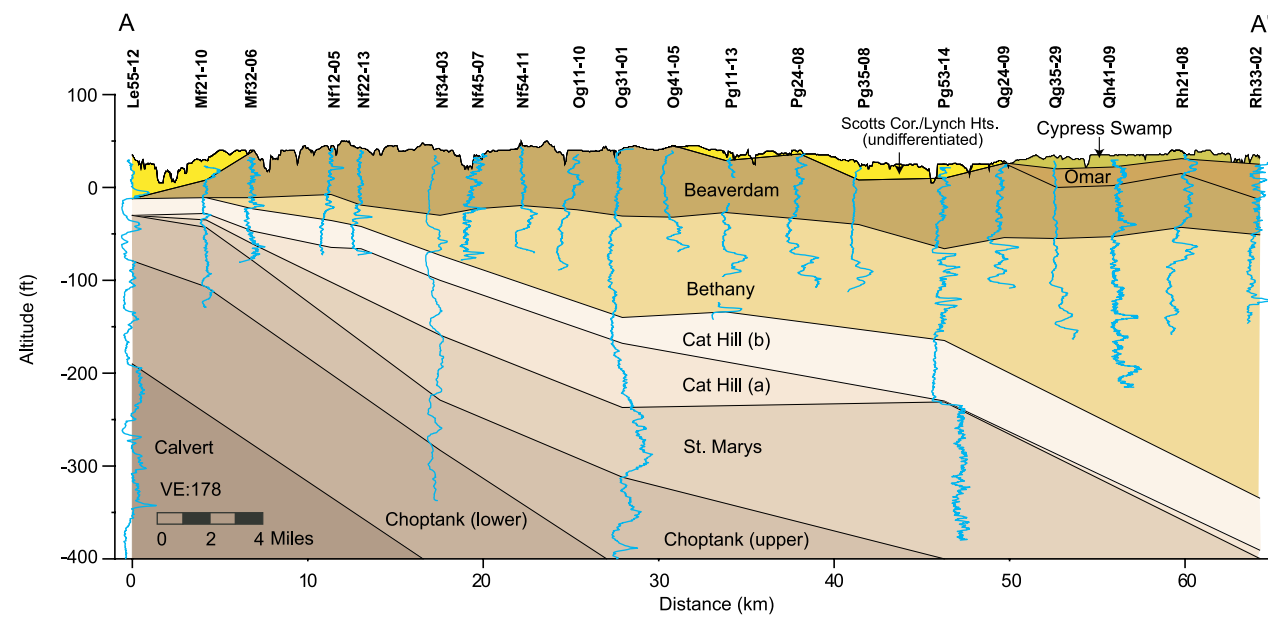
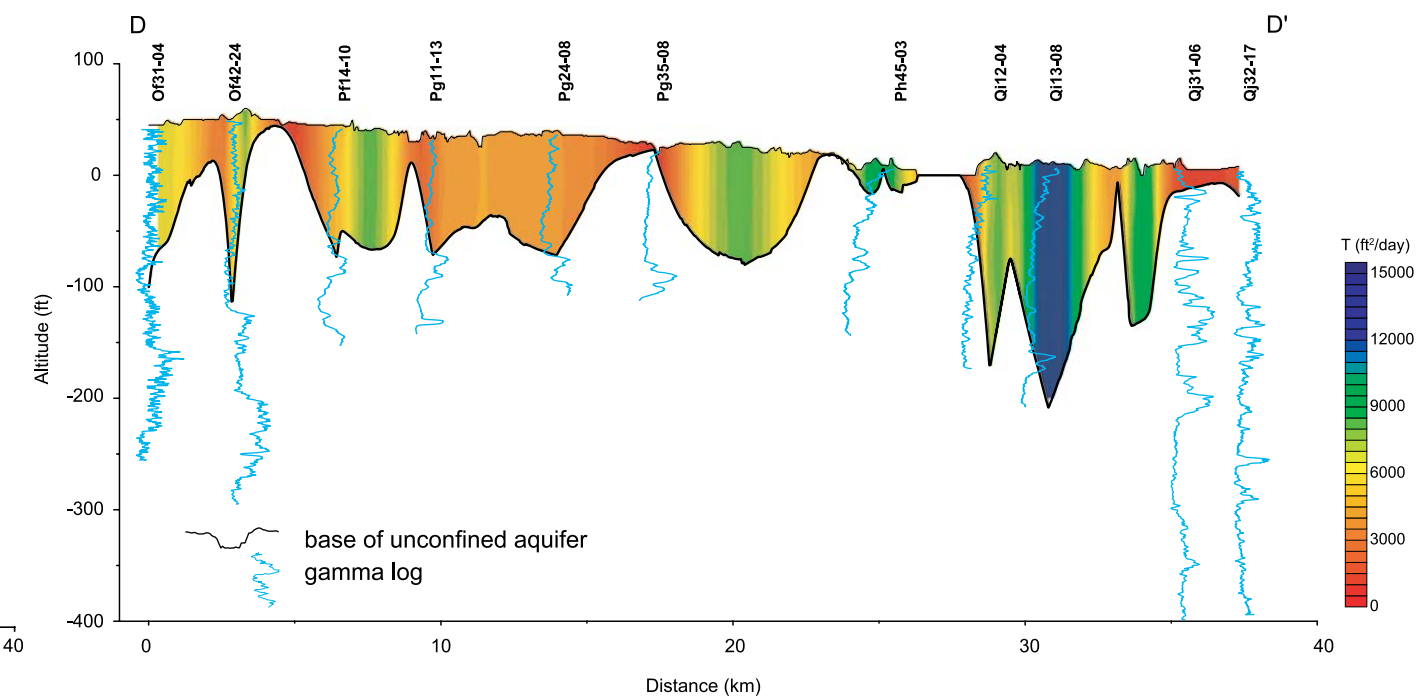
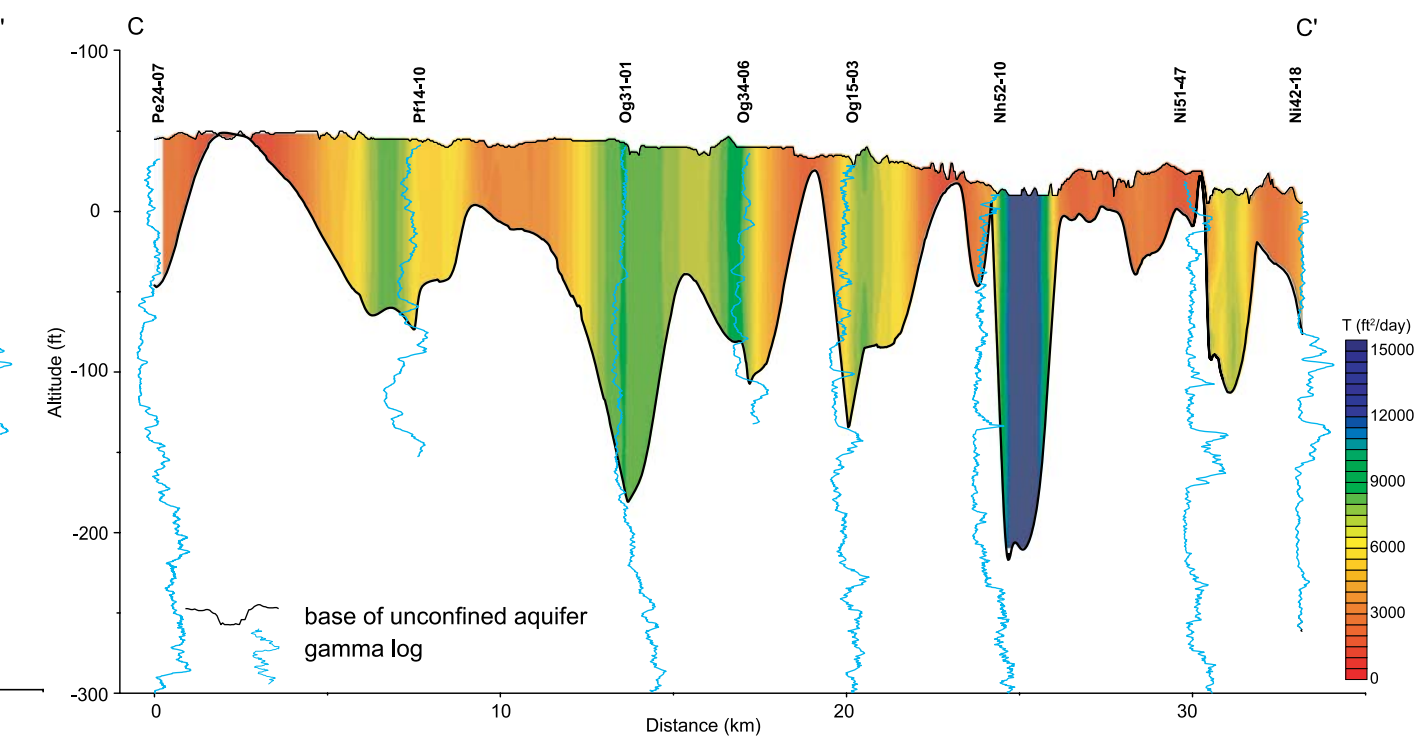
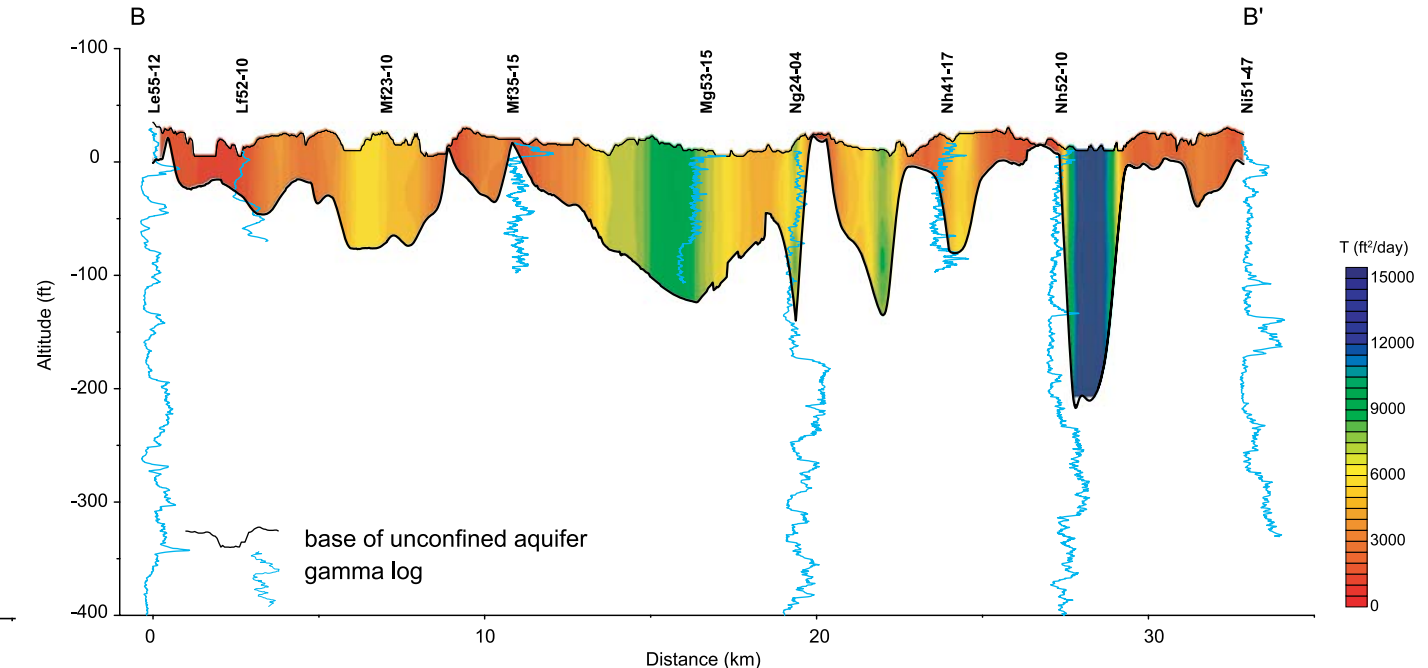
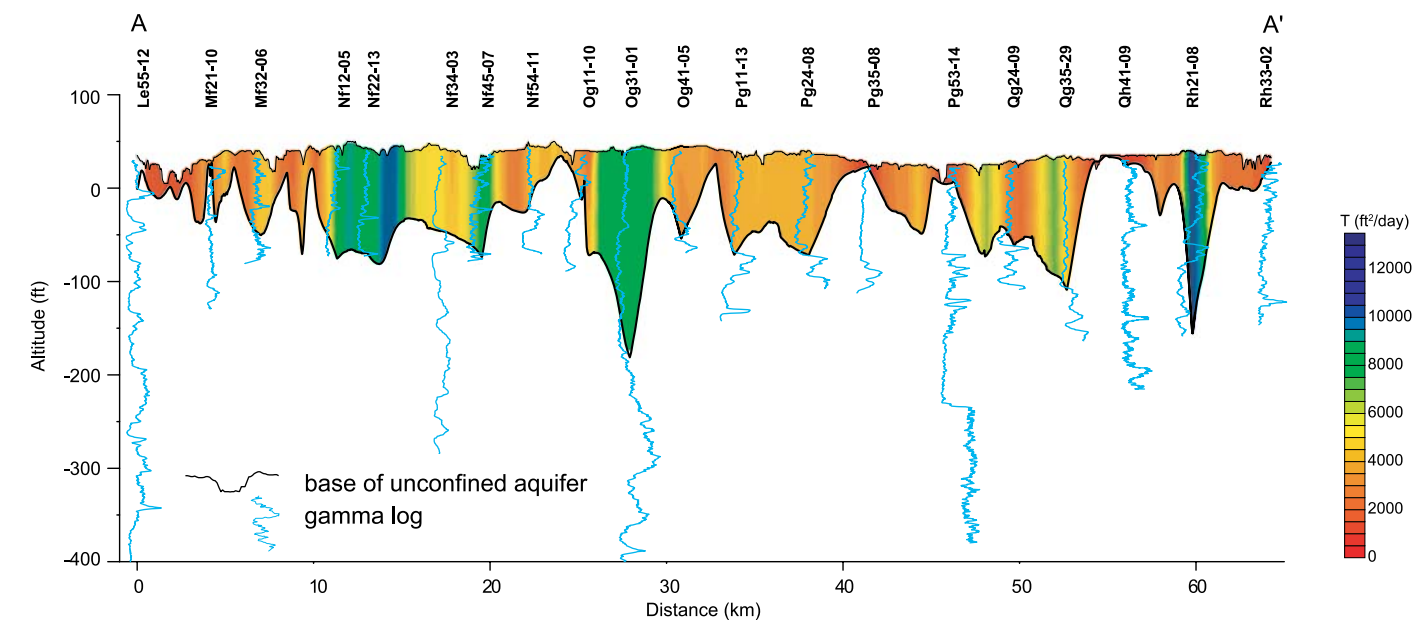


Lithologic Interpretations



Base of Unconfined Aquifer and Transmissivity (T)



A series of four geological cross sections has been constructed to illustrate the stratigraphic relationships of the units located in eastern Sussex County, Delaware. With the exception of well Mf23-10 (B-B'), correlations and lithologic interpretations are based on geophysical logs (gamma). Interpretations at well Mf23-10 were based on a descriptive log.

Cross sections show that the younger units are relatively thin and that sandy beds of the Beaverdam Formation form the bulk of the unconfined aquifer. Cross-sectional views of the transmissivity and base of the aquifer elevation grids show that the thickest sections of the aquifer do not always correspond to the most transmissive sections of the aquifer.

For an explanation of the methodology used in compiling these figures, refer to the accompanying report, *Thickness and Transmissivity of the Unconfined Aquifer of Eastern Sussex County, Delaware*.

Cross Sections of
 Eastern Sussex County, Delaware

by
 A. Scott Andres and Andrew D. Klingbeil
 2006