



1939-1940







THE BLUE HEN





## OLD COLLEGE


*Oh! stately pile, with accents true,  
Our voice with love we raise to you;  
'Midst us you stand a shrine of gold,  
Whose virtues we shall e'er uphold.  
Old College dear, with mem'ries sweet,  
'Tis where old friends we always meet,  
Who grasp us by the hand and sigh  
For times of joy in days gone by.*

—CHARLES E. GREEN, '25

K. D. GIVAN, '26

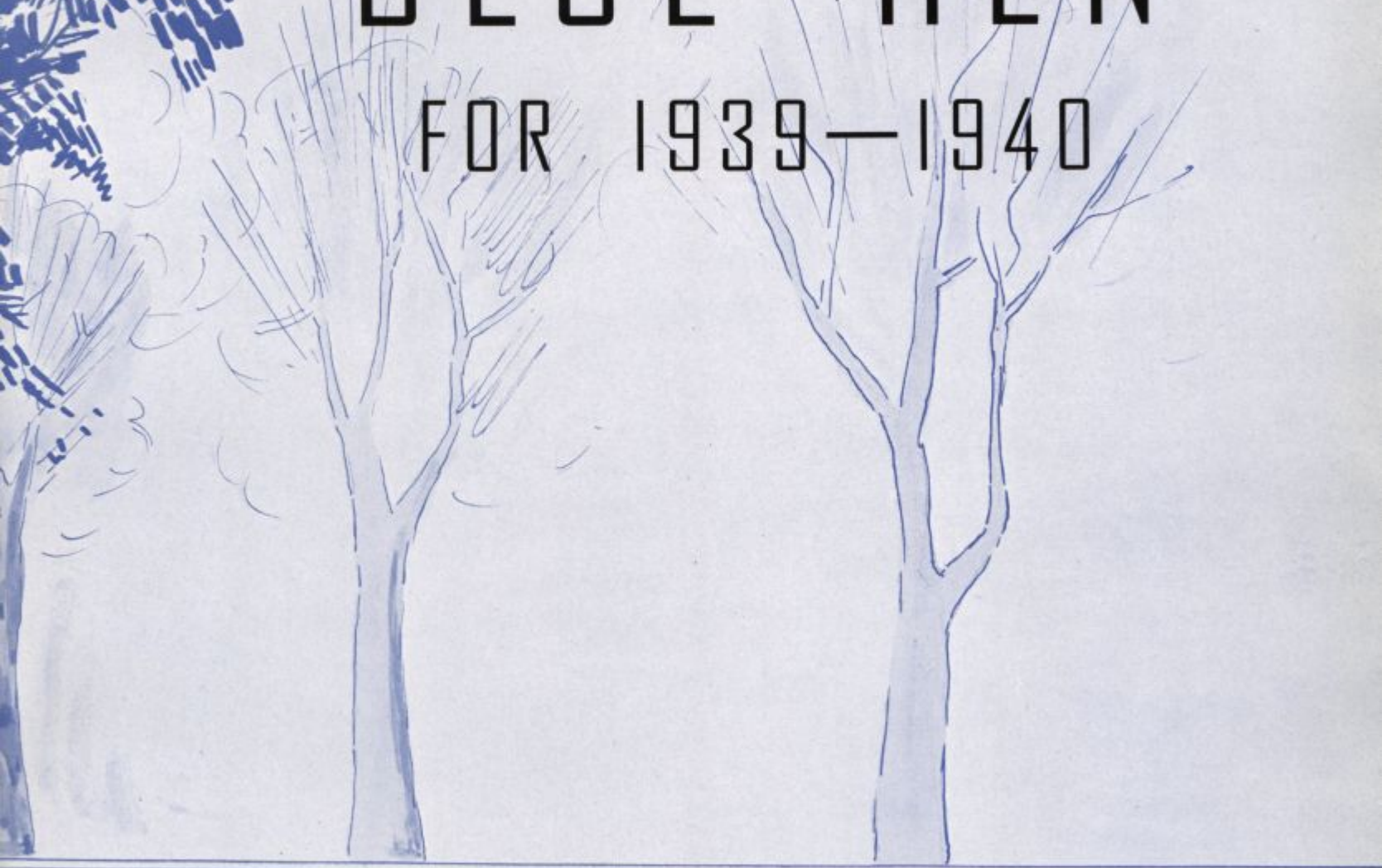


Lastans  
59



# THE BLUE HEN

FOR 1939—1940



---

Editor-in-Chief  
MARTIN R. TANNEN

Business Manager  
I. WILLIS JACOBY



Published by  
THE SENIOR AND JUNIOR CLASSES  
OF THE UNIVERSITY OF DELAWARE

# FOREWORD

The 1939-'40 Blue Hen has had a hectic career. After being launched by the original editors, it floundered in midstream and was slowly sinking until October, 1939, when the former editor was deposed and the present editors undertook publication of the book. Since that time, with the help of a sincere and co-operative staff, we have attempted to gather the loose ends and piece them together into a unified and complete whole.

At the time we took over, the book was far from completed and we took the liberty of inserting quite a few original ideas. However, shortage of time prevented us from making as many changes as we would have desired.

Be that as it may—here is your yearbook.

THE EDITORS

CONTENTS

BUILDINGS

ADMINISTRATION

FACULTY

CLASSES

ACTIVITIES

ATHLETICS

FRATERNITIES

ADVERTISEMENTS



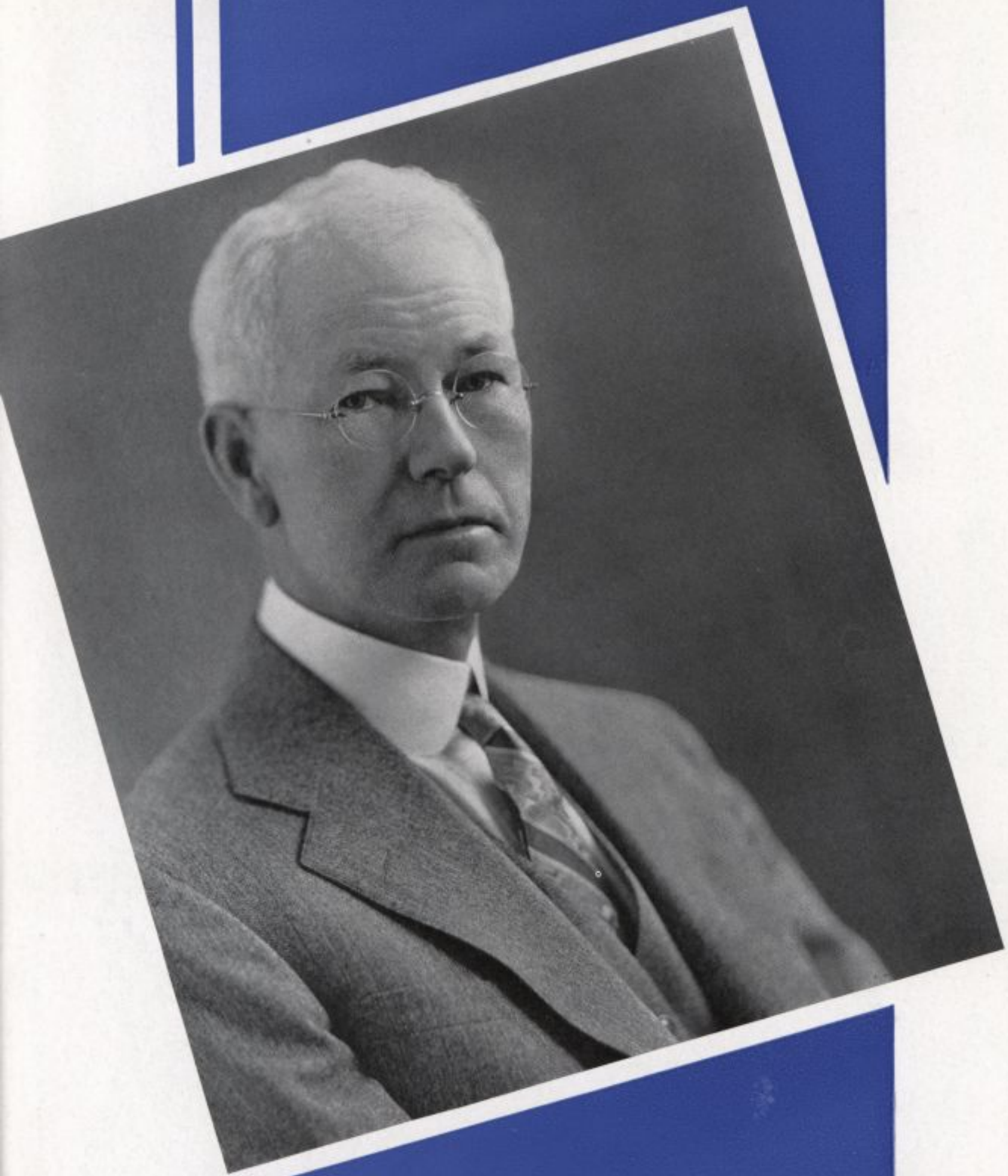
# DEDICATION

This book is gratefully dedicated to one of the university's sincerest and most generous friends,

MR. H. FLETCHER BROWN.

It has been through his tireless efforts and ever-present support that many of the University of Delaware's dreams have been realized. We are attempting in our small way to show our appreciation for all that he has done for education in general and this University in particular.

THE EDITORS





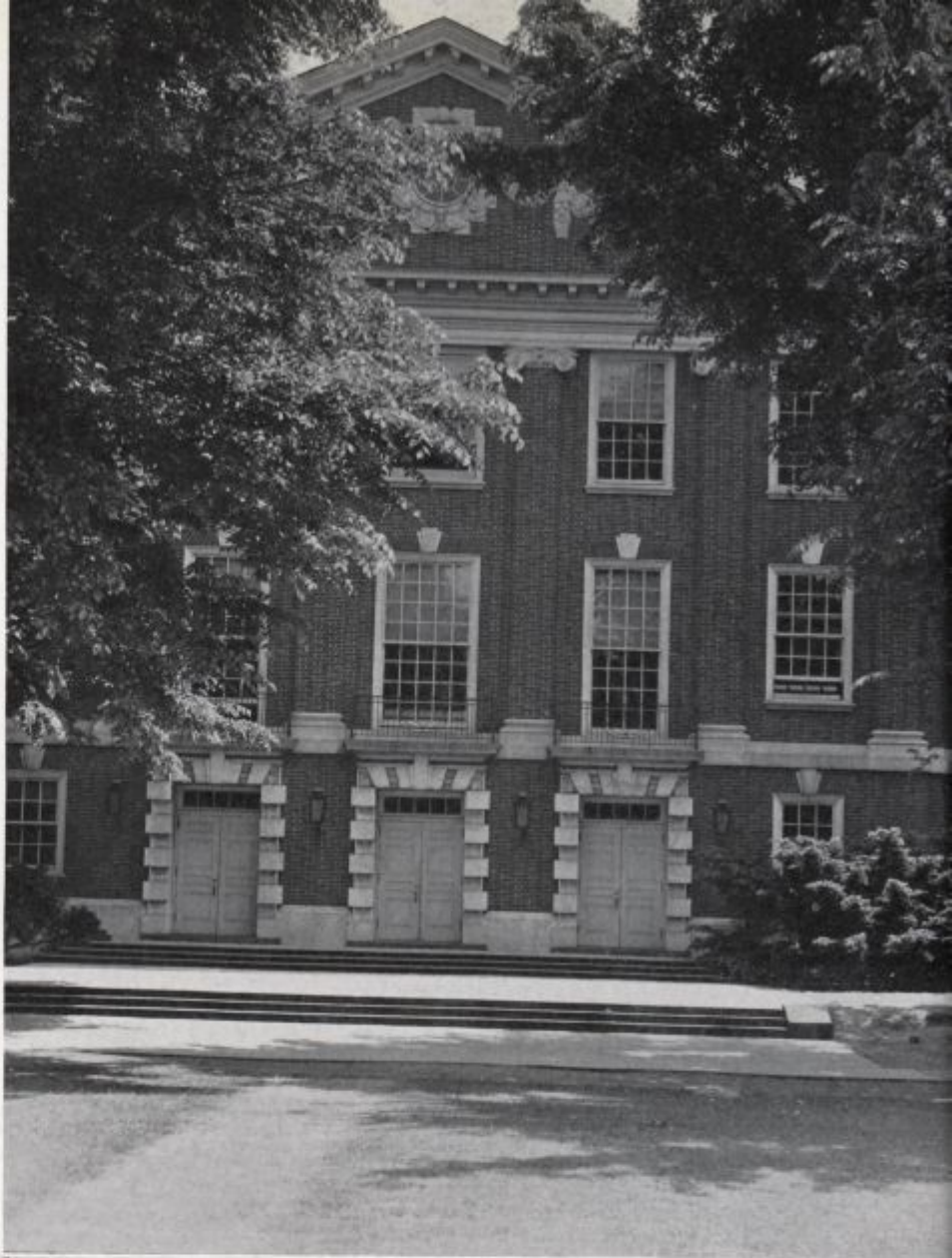
THE COLLEGE

## WOLF HALL

Wolf Hall is principally thought of as the home of the School of Agriculture. It also contains an auditorium whose outmoded stage is the scene of pepfests, freshmen meetings, and other boisterous, enthusiastic student demonstrations.

## EVANS HALL

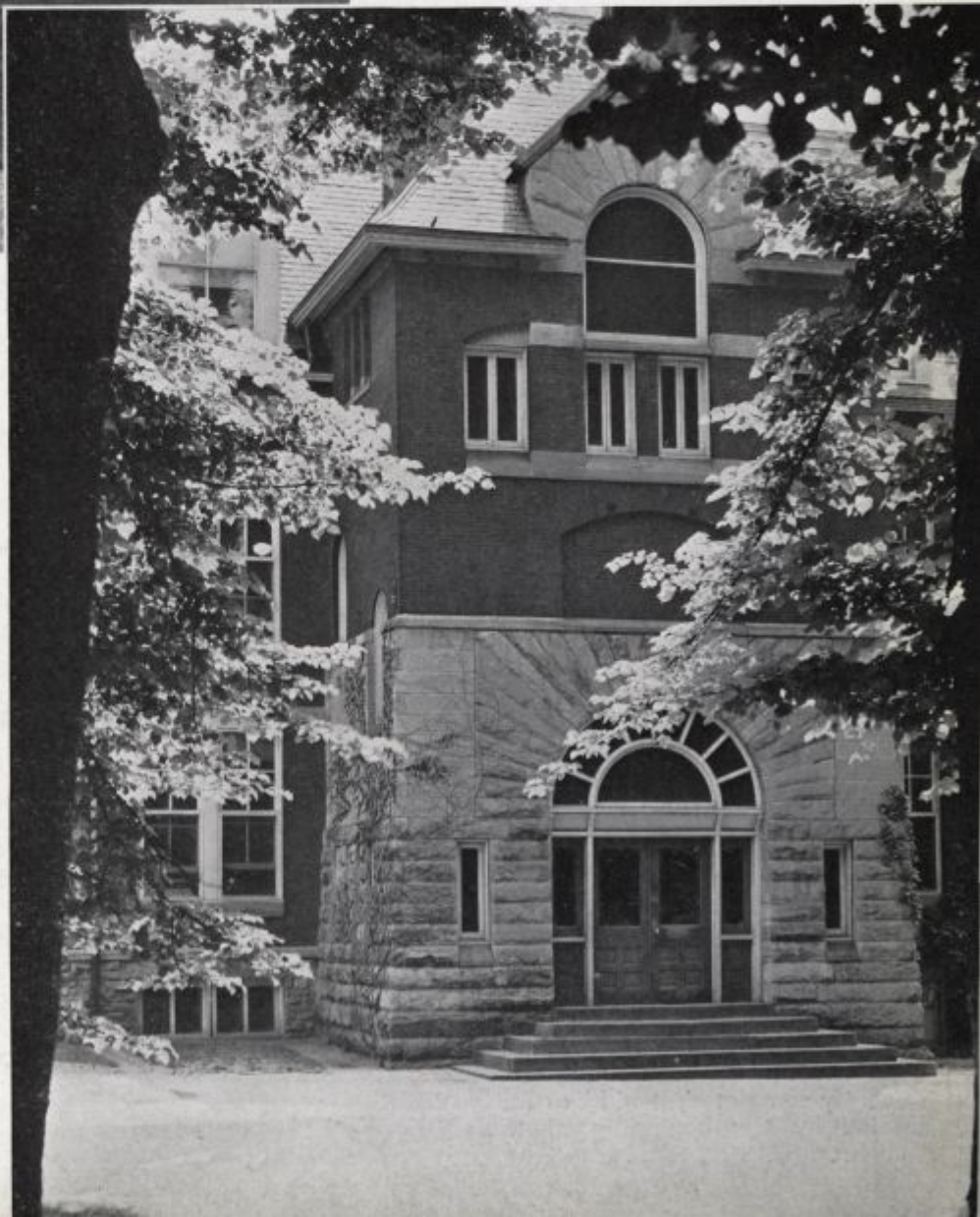
Set back from the normal line of buildings on the lower campus, this building houses the engineering schools. Here, on long winter afternoons, signs of life are seen after most of the other buildings are deserted.





## OLD COLLEGE

Its stately colonial pillars mark the entrance to the very heart of university life. Certainly the most imposing building on the campus, Old College has, since its erection in 1834, symbolized the spirit of the University of Delaware.



## RECITATION HALL

This building, which for so many years held the offices of the Dean and President of the University, has finally given way to the relentless arms of time and is soon to be superseded by a new administration building.



## CHEMISTRY BUILDING

Similar in architecture to the new Administration and Classroom building, this building contains laboratories and classrooms and also houses the offices of the professors in education, social science, and chemistry.

## ADMINISTRATION BUILDING

A gift to our school from one of its closest friends, this building furnishes a long-needed addition to the university campus. Recently completed, it will be occupied by the beginning of the February, 1940, term.





## MITCHELL HALL

Here embryo thespians toil and trouble on a modern and efficient stage to give us a brief respite from the "chains that bind."

## MEMORIAL LIBRARY

This building, beside being a storehouse of knowledge, serves as a meeting place for the students of both colleges. Its steps are used as a stamping ground for many an ambitious romancer.

