



WILLIAM H. HEALD, '83, *President*
 CHARLES W. BUSH, '03, *Vice President*
 W. OWEN SYPHERD, '96, *Secretary*
 C. A. SHORT, '96, *Treasurer*

THE Alumni Association was organized in 1846, and except during the years in which the college was closed, has met regularly every year in Newark, at Commencement. For many years it has offered prizes for undergraduates in public speaking and debating. In 1909-10 an Alumni Fund was created, from which the sum of \$500 is to be turned over to the college for five successive years, the money to be expended for immediate needs. During recent years the Alumni have had a dinner on Commencement Day; and on December 10, 1910, a dinner, attended by sixty men, was held at the Wilmington Country Club. So much interest was manifested in this reunion that it will probably be made an annual affair.



GEORGE A. HARTER, M. A. PH. D.
PRESIDENT OF THE COLLEGE



THE FACULTY

Sam'l Knapp '12



GEO. A. HARTER, M. A., Ph. D.

President



R. HARTER was born near Leitersburg, Washington County, Maryland, November 7, 1853. He received his early education in the county schools and the Normal School at Lebanon, Ohio. In the fall of 1874 he entered the Freshman Class at St. John's College and graduated in 1878. Immediately after graduation he was made Assistant Professor of Latin and Mathematics. During the collegiate year 1878 he pursued a post graduate course in early English, etc., with Dr. Garrett and Dr. Hopkins, and mathematics with Prof. Johnson. From St. John's Dr. Harter also received the degrees of M. A. and Ph. D. In 1880 he was elected principal of the Hagerstown High School at Hagerstown, Maryland, where he labored successfully for five years. In 1885 he was elected to the chair of Mathematics and Modern Languages in Delaware College. From 1888 till 1896 he was Professor of Mathematics and Physics. On the resignation of Dr. Raub in 1896 he was called to the presidency. Under his wise administration the registration has been nearly doubled, several new buildings have been erected and needed additions made to the original plant, and the standard of the college has been greatly increased.



FREDERIC H. ROBINSON, C. E.

Professor of Civil Engineering

PROFESSOR ROBINSON was born at Wilmington, Delaware, on August 28, 1850. His early education was received in the Wilmington public schools, and later in the William A. Reynolds' Classical and Mathematical Institute, Wilmington, Delaware. After graduating he taught mathematics and English in the latter institute, in this way earning the money with which to pay his way through college. In 1875 he was graduated from the Polytechnic College of the State of Pennsylvania with the degree of B. C. E., winning the prize for the best graduating thesis. In 1883 he received from the same college the degree of C. E. Since his graduation he has occupied the following positions: Assistant Engineer, Pittsburg Division of Pennsylvania Railroad; Assistant Professor and Professor of Mathematics, Polytechnic College; Draftsman, Edge Moor Bridge Works, Edge Moor, Delaware; Assistant Engineer and Chief Engineer, Department of Engineering and Surveying, Wilmington, Delaware; Instructor in the Wilmington Drafting School; member of the firm of Canby and Robinson, Civil Engineers and Surveyors, Wilmington, Delaware; Assistant Engineer in the corps of the Maryland Division P., B. & W. R. R.; since 1891 Professor of Civil Engineering, Delaware College, and since 1896 Secretary of the Faculty. He has written some verse, literary and scientific essays, and a portion of a text-book on surveying. He is a member of the religious society of Friends, Young Men's Republican Club of Wilmington, (honorary) Alumni of Friends' School, Wilmington, and of Delaware College; Phi Kappa Phi Fraternity, and the Society for the Promotion of Engineering Education.



ELISHA CONOVER, M. A.
Professor of Latin and Greek

PROFESSOR CONOVER was born at Harrisonville, N. J., on August 14, 1860. After being prepared at Pennington Seminary, N. J., he entered Dickinson College, from which he was graduated in 1884, receiving the degree of B. A. In 1887 he received the degree of M. A. from the same college, and in 1887-88 he took up graduate work at Johns Hopkins University. He is a member of the Phi Kappa Psi and Phi Kappa Phi Fraternities. Professor Conover taught for several years in Vermont and in the lower counties of Delaware and Maryland. He was principal of Georgetown Academy, 1884-85; principal of Oxford, Md., High School, 1886-87; taught Latin and Greek at Dover Academy, 1888-91; taught Latin and Greek at Montpelier Seminary, Vt., 1891-95. In 1895 he was elected Professor of Ancient Languages at Delaware College, which position he now holds.



EDWARD LAURENCE SMITH, M. A.

PROFESSOR EDWARD L. SMITH was born at Newark, Delaware, March 19, 1877. He entered Delaware College in 1892 and was graduated in 1896 with the degree of B. A. He then took a post-graduate course of two years in Latin, French, German, Spanish, and Latin. From 1898 to 1899 he was a university scholar in Romance Philology and student of the Romance and the Germanic languages and literatures at Columbia University. The degree of M. A. was conferred upon him by Delaware College in 1899. During the college year of 1899-1900, he was University Fellow in Romance Philology at Columbia University. He then went abroad, and from 1900 to 1901 he was a student of Romance Philology and Literatures at L' Universite de Paris, College de France, and Ecole des Hautes Etudes at Paris. Upon his return to the United States he became instructor in German, French, and Spanish at the Brooklyn Polytechnic Institute, and student of old Provencal, Columbia University, 1901 to 1902. He was elected instructor in Modern Languages at Delaware College in 1902, and promoted to professor in 1904. Professor Smith is a member of the Modern Language Association of America, the Kappa Alpha Fraternity, and secretary and treasurer and a regent of the Phi Kappa Phi Fraternity.



MERRILL VAN GIESEN SMITH, M. E.

Professor of Mechanical and Electrical Engineering

PROFESSOR SMITH was born at Montclair, N. J., where he received his early education in the public schools. After graduating from the Stevens High School he entered the Stevens Institute of Technology, and was graduated in 1896 with the degree of M. E. Before coming to Delaware College in September, 1904, he held the following positions: Editorial staff, "Railroad Gazette;" Instructor in Mechanical Engineering, University of Pennsylvania; Professor of Mechanical Engineering, Thomas S. Clarkson School of Technology. He is a member of the Phi Kappa Phi Fraternity.



CLINTON O. HOUGHTON, B. A.

Professor of Zoology and Entomologist in Experimental Station

PROFESSOR HOUGHTON was born at Helena, N. Y., April 7, 1873. He was prepared for college at the Potsdam State Normal School, from which he was graduated in June, 1890. The following September he entered Cornell University, from which in June, 1902, he was graduated with the degree of B. A. In 1902 he came to Delaware as Assistant Professor of Zoology, and in 1907 was made Professor of Zoology.

Professor Houghton is a member of the Sigma X and Alpha Gamma Societies, the American Association of Economic Entomologists, the American Entomological Society, and the American Association for the Advancement of Science.



W. OWEN SYPHERD, M. A., Ph. D.
Professor of English and Political Science

DOCTOR SYPHERD was born in Cecil County, Maryland, 1877. He prepared for college in the Snow Hill High School, Snow Hill, Md. In the spring of 1893 he entered Delaware College and was graduated in 1896 with the degree of B. A. From 1896 to 1898 he was principal of the public schools of Port Penn, Del. He entered the junior class of the University of Pennsylvania in 1898, and was graduated in 1900 with the degree of B. S. In 1901 he received the degree of M. A. from Harvard University. From 1901 to 1903 he was instructor in English at the University of Wisconsin. In 1906 Harvard conferred the degree of Ph. D. on him. Since then he has held the chair of English and Political Science at Delaware College. In the summer session of New York University, 1910, he gave three courses in English Literature. He is the author of several articles in American philological journals. "Chaucer's Eight Years' Sickness" appeared in *Modern Language Notes* in December, 1905; "Old French Influence on Middle English Phraseology" appeared in *Modern Philology* in July, 1907; "Le Songe Vert and Chaucer's Dream Poems" appeared in *Modern Language Notes* in 1909. He is also author of "Studies in Chaucer's House of Fame," a book published in November, 1907, by the Chaucer Society of England.



HARRY HAYWARD, M. S.

Dean of the Agricultural Department and Professor of Animal Husbandry

PROFESSOR HAYWARD was born on a farm near Lewistown, N. Y., in 1869. He attended the county district schools and worked on his father's farm until 17 years of age, when he entered the Mount Hermon School, Massachusetts, where he fitted for college. In 1890 he entered the College of Agriculture at Cornell University. After graduation there he became manager of a large farm in northern Indiana. After a short time he accepted a position as land agent in northern Delaware. His next position was at State College, Pa., where he organized and was the head of the Department of Dairying for eight years. From there he went to the New Hampshire College as Professor of Dairying and Animal Husbandry, thence to the Department of Agriculture at Washington as Assistant Chief of the Dairy Division. From there he was called to the Mount Hermon School, and organized and directed the Department of Agriculture at that institution. After filling this position for three years he came to Delaware College as the Director of the Experiment Station, and Professor of Agriculture.

Prof. Hayward has taken special work in the University of Minnesota, Harvard, and some of the agricultural institutions in Germany and England. He is a member of the Kappa Sigma Fraternity and Honorary Fraternities of Sigma Si and Phi Kappa Phi.



CLARENCE A. SHORT, M. S.

Professor of Mathematics and Civil Engineering

PROFESSOR SHORT was born near Georgetown, Del., July 2, 1873. After receiving his education at the public schools of Sussex county, in September, 1889, he entered Delaware College, where he remained one year. During the next three years he taught school near Laurel and at Shortley, Del. He re-entered Delaware College in April, 1893, and graduated in 1896, valedictorian of his class with the degree B. C. E. He has since occupied the following positions: Commandant of Cadets and Professor of Mathematics and History at Worthington Military School, Lincoln, Neb., 1896-7; Professor of Civics, History and Higher Mathematics at Hott's School for Boys, Burmingame, Cal., 1897-8; Professor of Mathematics, Commercial Branches and Rhetoric at Fayetteville Military Academy, Fayetteville, N. C., 1898-9; Principal of North Carolina Military Academy, Red Springs, N. C., where he taught Mathematics and English; Instructor in Mathematics and Engineering, Delaware College, September, 1903, to March, 1904; Assistant Professor of Mathematics and Engineering, Delaware College, March, 1904, to 1908, when he was made full professor. In the summer of 1904 he took a special course in Mathematics and Civil Engineering at University of the South, Sewanee, Tenn. In June, 1905, he received from Delaware College the M. S. degree. He has taken great interest in military matters and was Captain of E Company, Organized Militia of Delaware, for two and one-half years, and has since been promoted to Major and Inspector General on the General's staff.



LIEUTENANT EDGAR SIMON STAYER, TWENTY-THIRD UNITED STATES INFANTRY

Professor of Military Science and Tactics and Commandant of Cadets

LIEUTENANT EDGAR S. STAYER was born in Pennsylvania, November 7, 1875. He entered Wittenberg College and was graduated in 1894. At the outbreak of the Spanish-American War he was appointed to a Second Lieutenancy in the Fifth Pennsylvania Volunteers, May 11, 1898, and on July 13, 1899 he was appointed to a First Lieutenancy in the Twenty-eighth U. S. Volunteer Infantry. In 1899 he was ordered to the Philippine Islands, where he remained until 1901. On July 25, 1901, he received his commission as Second Lieutenant in the Twenty-third U. S. Infantry. During 1902 and 1903 he was stationed with his regiment at Plattsburg Barracks, N. Y. He was promoted to First Lieutenant in the same regiment on April 2, 1902. His second tour of duty in the Philippines extended from 1903 to 1905, and for the next two years he was stationed at Madison Barracks, N. Y. Lieutenant Stayer was detailed to Delaware College, while he was with his regiment at the Jamestown Exposition, Norfolk, Virginia, in 1907.



CHARLES FRANCIS DAWSON, M. D., D. V. S.
Professor of Veterinary Science

PROFESSOR DAWSON was born near Easton, Maryland, in 1860. From 1873 to 1876 he was a student in the McDonough School near Baltimore. From 1878 to 1889 he was laboratory curator in Johns Hopkins University. In 1889 he entered the Department of Medicine at the University of Maryland, studying at the Baltimore Medical College at the same time. In 1892 he received the degree of M. D. from the latter institution and was elected Chief of the Dispensary. He was Assistant in the Department of Agriculture from 1892 to 1900. At the same time he was Professor of Physiology and Secretary to the Faculty at the National Veterinary College at Washington, D. C., which institution conferred upon him the degree of D. V. S. in 1895. He had charge of the national exhibits at the Chicago, Atlanta, Nashville, and Omaha Expositions. In 1901 he went to the University of Florida, where until 1906 he was Professor of Veterinary Science and Physiology, and was State Veterinarian of Florida from 1901 to 1907. He had charge of the War Department's experiments for the destruction of water hyacinths in St. John's River, Florida, in 1906. In 1907 he was elected to his present position as Professor of Veterinary Science at Delaware College and Veterinarian to the Experimental Station and to the Delaware State Board of Agriculture.

Dr. Dawson is a member of the Society of American Bacteriologists, Fellow of the United States College of Veterinary Surgeons, honorary member of the State Veterinary Associations of North Carolina and Georgia, and the author of many publications on veterinary scientific subjects.



CHARLES A. McCUE, B. S.
Professor of Horticulture

PROFESSOR CHARLES A. McCUE was born near Cass City, Michigan, May 29, 1879. Professor McCue's early life was spent upon the farm, and his early education was obtained in the rural district schools. Later he entered the Cass City High School, graduating in 1897. In the fall of the same year he entered the Michigan State Agricultural College, and graduated with his class in 1901. Immediately after graduation he entered the employ of the then Bureau of Forestry of the United States Department of Agriculture. In October, 1903, he resigned from the Federal service, and returned to his Alma Mater for post-graduate work in Horticulture. In April, 1904, he was appointed Instructor of Horticulture at the Michigan State Agricultural College, in which capacity he served till March, 1907, when he was elected Professor of Horticulture in Delaware College and Horticulturist of the Delaware Agricultural Experimental Station.



ARTHUR ELLIOTT GRANTHAM, A. B., B. S. A.
Professor of Agronomy

PROFESSOR GRANTHAM was born June 1, 1878, at Ladoga, Indiana. He was reared on a farm and prepared for college at the Lafayette (Ind.) High School. He entered the University of Indiana and in 1903 was graduated with the degree of A. B. From 1898 to 1900 he was a student at De Pauw University, and from 1900 to 1901 and 1902 to 1903 he was assistant principal in the Stockwell, Indiana, High School. During the year 1903-1904 he was a student in the College of Agriculture, University of Illinois; 1904-1905, Assistant in Agriculture, Missouri Agriculture and Experimental Station; in 1905 he received the degree of B. S. A. from the University of Missouri; from 1905 to 1907 he was Instructor in Agronomy at the Missouri Experimental Station. In 1907 he came to Delaware as Professor of Agronomy and Agronomist to the Experimental Station. He is a member of the Kappa Psi Fraternity and the Alpha Zeta, honorary agricultural fraternity.



REV. WILLIAM J. ROWAN, A. M., Ph. D.
Professor of Rhetoric and Oratory

DR. ROWAN was born in Philadelphia and received his early education at the public schools of Chester, Pa. In 1891 he was graduated from Lafayette College with the degree of A. B. In 1894 he received from the same college the A. M. degree. He entered the Theological Seminary at Princeton, graduating in 1894. He became pastor of the Broadway Presbyterian Church, of Baltimore, on June 17, 1894. In September, 1899, he accepted the call to the Newark Presbyterian Church. In 1902 he was elected to the position of Instructor in Philosophy and Oratory in Delaware College. In 1907 he was promoted to the Professorship of Rhetoric and Oratory, which position he now holds in connection with his pastoral duties. While in Baltimore he studied under Hon. W. H. Purnell, L. L. D., for many years President of Delaware College, and at that time President of New Windsor College. Dr. Rowan presented and defended a thesis on Francis Andrea and the Precursors of the Protestant Reformation, besides being examined on history in general and the mythologies of Greece and Rome, receiving the degree of Ph. D.



CHARLES L. PENNY, M. A.

Professor of Chemistry, Mineralogy and Geology

PROFESSOR PENNY was born at Lewisburg, Pennsylvania, 1857. He was graduated from Bucknell University in the class of 1879 with the degree of B. A., and received the degree of M. A. from his Alma Mater in 1882. He taught several years in public schools and in a State Normal School of Pennsylvania, and studied chemistry at Heidelberg University for a while. He was elected chemist of the Delaware College Experiment Station in 1888, which position he held until 1907, when he went to State College, Pennsylvania. He returned to Delaware in 1909 as head of the Department of Chemistry, Mineralogy, and Geology. Professor Penny is a member of the Phi Kappa Phi Fraternity.



FIRMAN THOMPSON, B. S.
Chemist Experimental Station

PROFESSOR THOMPSON was born in New Castle, Ohio, in 1874. In 1897 he was graduated from the University of Michigan with the degree of B. S. in chemistry. He was appointed Assistant Chemist of the New York Agricultural Station in 1897. During the years 1899 and 1900 he was Assistant Chemist of the Sugar Planters' Experimental Station in Honolulu, Hawaii. He was First Assistant Chemist of the Bureau of Sugar Experimental Station, Queensland, Australia, during the years 1901 and 1902. In 1903 he returned to Hawaii and, until the year 1907 held the position of Assistant Chemist of the Sugar Planters' Experimental Station in Honolulu. During the year 1908 he was Assistant Professor of Chemistry in North Dakota Agricultural College. In the same year he was appointed Chemist of the Delaware College Experimental Station, which position he has held up to the present time.



MELVILLE THURSTON COOK, A. M., Ph. D.
Professor of Botany and Plant Pathologist

DOCTOR COOK was born at Coffeen, Illinois, September 20, 1859. He prepared for college at the Greencastle Preparatory School at Greencastle, Indiana. From 1890 to 1893 he was a student at the De Pauw University, and in 1894 he took the degree of A. B. at Leland Stanford Junior University. For one year after graduation he was principal of the High School at Vandaila, Illinois; Professor of Biology in De Pauw University, 1894 to 1904; chief and organizer of the Department of Plant Pathology and Economic Entomology of the Cuban Agriculture Experiment Station, Santiago de las Vagas, Cuba, 1904-06; Research Fellow in the New York Botanical Garden, 1906-07; Plant Pathologist in the Delaware Agriculture Experiment Station, and Professor of Botany in Delaware College, 1907; spent three summers in study in Marine Biological Laboratory at Woods Holl, Mass.; two summers in the University of Chicago, and two summers in the Ohio Lake Laboratory at Sandusky; Fellow in the Ohio State University, 1901-02; received A. M. degree from De Pauw in 1901, and Ph. D. from Ohio State in 1904; Special Lecturer in Human Embryology in the Central College of Physicians and Surgeons, Indianapolis, 1902-03; Special Lecturer in Comparative Anatomy in Medical College of Indiana, Indianapolis, 1903-04. Doctor Cook is a member of the Delta Upsilon Fraternity; he is also a member of the Botanical Society of America, the Entomological Society of America, and the Association of Economic Entomologists. He is a fellow in the Indiana Academy of Science and the American Association for the Advancement of Science, and contributes to the Botanical Gazette, Bulletin of the Torrey Botanical Club, Ohio Naturalists, Tooreya, Plant World, etc.



THOMAS LYON STURGES, JR., M. E.
Professor of Electrical Engineering

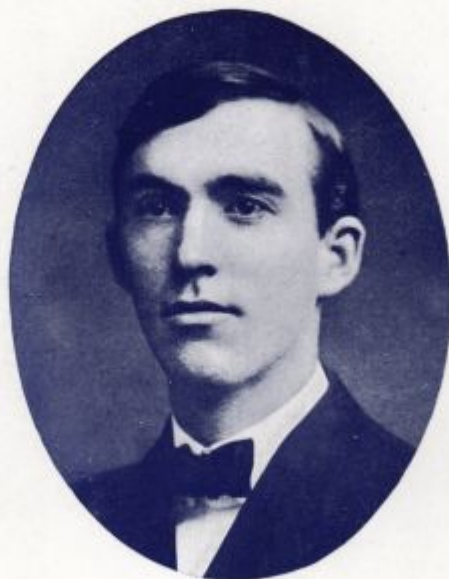
PROFESSOR STURGES was born in New York City in the year 1883. He obtained his early schooling in the public schools of New York and then prepared for college at the Stevens Preparatory School. He next entered Stevens Institute of Engineering and graduated with high honors. He then entered the Fore River Ship and Engine Co., situated at Quincy, Mass., the largest shipbuilding concern in the New England States, and obtained a thorough practical knowledge of electrical work of all kinds. In the fall of 1908 he accepted the position of instructor at Delaware College. Since the death of Prof. Freudenberger he has been promoted to Assistant Professor in the Mechanical and Electrical Department. He is a member of the Society for the Promotion of Engineering Education and the Delaware College Engineering Society.



HAROLD EDWARD TIFFANY, M. S.

Assistant Professor of Chemistry

MR. TIFFANY was born in November, 1879. He received his early education at the Wilkesbarre, Pa., public schools and at Keystone Academy, Factoryville, Pa. He is an honor graduate in chemistry of Bucknell University. For a while he taught Chemistry, Physics and Botany at the Everett, Mass., High School, and before coming to Delaware spent the fall and winter at Harvard University, doing research work in chemistry. Mr. Tiffany is a member of the Sigma Phi Epsilon Fraternity, the Boyleston Chemical Club of Harvard University, the American Chemical Society, and the American Association for the Advancement of Science.



JOSEPH M. McVEY, B. A.

Instructor in Mathematics and Engineering

JOSEPH M. McVEY was born near Northeast, Maryland, July 21, 1882. He graduated at the Cecil County High School in 1900 and at Tome Institute in 1901. He entered Delaware College in 1901 and graduated from the Latin Scientific Course in 1904. Mr. McVey was instructor in English and Mathematics at Temple University from 1904 to 1906 and was appointed Assistant Professor in English and Mathematics at the same place in 1906, which position he held for two years. He studied in the graduate school of the University of Pennsylvania for two years, and in the summer school of Harvard University in 1908. Mr. McVey came to Delaware College in 1908 as Instructor in Mathematics and Engineering, which position he now holds. He is a member of the Phi Kappa Phi, Honorary Fraternity, and of the Sigma Nu Fraternity.



REEVES D. STRING
Instructor in Shop Work



R. STRING was born in Camden, New Jersey, in the year 1870. He attended school in his native town and was graduated from the High School, where he obtained a good manual training education. After graduation he obtained work as a pattern maker for the Baldwin Locomotive Works of Philadelphia, Pennsylvania. Here he worked for five years till finally he was induced to accept a position with the Camden Iron Works of Camden, New Jersey. From here he went to Pittsburg, Pa., and held a position with the Westinghouse Air Brake Co. His next step was to come to Wilmington, Delaware, where he worked for the Remington Machine Co. until 1909, when he accepted his present position at Delaware College.



WILLIAM J. McAVOY, B. S.

Physical Director

MR. McAVOY was born at Hazleton, Pa., October 16, 1884. He was graduated from the Hazleton City Grammar School. While at the grammar school he began his career as an athlete, being captain of both the baseball and football teams. He completed his college preparatory course at the Bloomsburg State Normal School. At the Normal School he played on the baseball, basketball, and football teams. He is at present the holder of the school shot put record.

He was graduated from Lafayette College. While at Lafayette he played on the varsity football and baseball teams for three years, being captain-elect of the football team for the season of 1907. He received honorable mention during three successive years for the All-American Football Team, and was, for three years, chosen fullback on the All-Pennsylvania State Team. During the season of 1908-9 he coached the Delaware College Football Team, and played professional baseball.

At the beginning of the collegiate year of 1909-10 he accepted the position of Physical Director at Delaware College, which position he at present holds.



THOMAS HENRY WADE, M. A.

Instructor in English



R. WADE was born in Columbus, Georgia, in 1882, and obtained his early education in the public schools of that town. After completing his public school career he entered Emory College, Oxford, Ga., in 1900 and was graduated in 1904 with the degree of B. A. Immediately after graduation he was appointed instructor in Latin and Greek at the latter institution, which position he filled until he entered Oxford University in 1905 as a Rhodes scholar. He was graduated from this institution in 1908 and obtained the degree of B. A. He next returned to America and in 1909 was awarded an M. A. from Columbia. In 1909-1910 he was instructor in English at Brooklyn Polytechnic Institute, from which place he came, in September, 1910, to Delaware College.



Z. HARRY SRAGER, B. S.

Instructor in Mechanical and Electrical Engineering

MR. SRAGER was born in Plainfield, N. J., in 1886. His early education was obtained in the public schools of his native town, and upon graduation he entered Rutgers in 1904. He was graduated in 1908 with the degree of B. S. and immediately joined the firm of Herding and Son, Hillsdale, N. Y. In the spring of 1909 he was appointed principal of the Union High School, Union, N. Y., and in the fall became instructor of mechanical drawing at Gainsburg, Ill. From the latter position he was appointed Instructor in Mechanical Engineering at Delaware College in the fall of 1910.



JACOB J. TAUBENHAUS, M. S.

Assistant Plant Pathologist, Experimental Station

MR. TAUBENHAUS was born in Palestine in 1884. He prepared for school at the Agricultural School at Jaffa, Palestine, and the Agricultural School at Smyrna, Turkey. He then came to the United States and attended the National Farm School at Doylestown, Pa. From that place he came to Delaware College and studied during 1904 and 1906. He then attended Cornell and here he received the honorary title of B. S. A. and M. S. After his graduation from Cornell he obtained his present position at Delaware College. Mr. Taubenhau is a member of the American Phytopathological Society and the American Association for the Advancement of Science.



H. P. BASSETT, M. S., Ph. D.
Assistant in Chemistry



R. BASSETT received his early education at the Smith's Classical School, Cynthia, Kentucky. In 1898 he entered the chemical course in the Kentucky State College and was graduated in 1910 with the degree of B. S. In 1901 he was appointed Fellow and Instructor in Chemistry under Dr. J. H. Kartle at the above institution, at the same time pursuing studies for the degree of M. S., which he received in June, 1902. In the fall of 1902 he entered Johns Hopkins University as a graduate student and received the university scholarship in 1903, graduating in 1904 with the degree of Ph. D. He was appointed Carnegie Research Assistant in Physical Chemistry for the year 1904-05. In 1905 he accepted a position as Research Chemist for the General Electric Company in their research laboratory, Schenectady, N. Y. From 1906-08 he was with the duPont Powder Company, Gibbstown, N. J. The following year he entered the North Dakota Experimental Station, Fargo, N. D. In April, 1909, Dr. Bassett came to Delaware College, doing co-operative work with the Department of Plant Pathology on Fruit Diseases.