

## ADMINISTRATION

Admissions office extends privilege of attendance to high school seniors.

Hullihen Hall prognosticates return of Dark Ages.

Reign of Terror culminates in continuous unrest.

Administrative action seldom satisfies students.

Idea of university community strikes responsive chord in students.

University committees seek dedicated student participation.

Administrators disperse across campus to prevent student coup d'état.

Expanded university government requires additional office space.

University officials await latest decisions from Board of Trustees.

Financial directors check daily mail for bills for new construction.

Deans dream of eliminating long hair and earrings—on males.

Dining hall managers field student complaints about meals.

Residence Hall office battles the clamor for open dorms.

Beer, fireworks, riots receive university seal of disapproval.

Panty raids necessitate late hours for Dean of Men.





Edward A. Trabant, Ph.D.  
President

John W. Shirley, Ph.D.  
Provost



George M. Worrilow, B.S.; D.Ag.  
Vice President for University Relations



Daniel W. Wood, M.A.  
Assistant to the President and  
University Secretary



Randolph Meade, Jr., M.A.  
Vice President for Business and Finance

John E. Hocutt, M.S.  
Vice President for Student Affairs



John E. Worthen, Ed.D.  
Assistant to the Provost



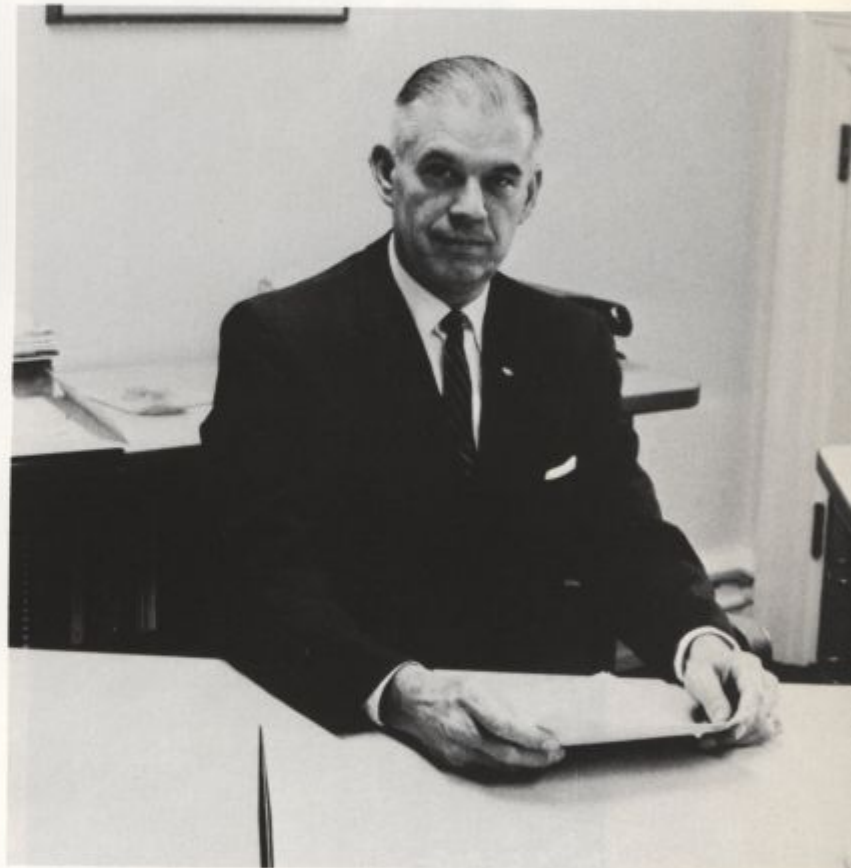
John A. Hodgson, B.A.  
Assistant to the Provost



John M. Dawson, Ph.D.  
Director of University Libraries



T. Elbert Chance, M.A.  
Director of Alumni and Public Relations



Paul E. Becker, Jr., MBA  
Treasurer and Director of Financial Planning



Gilbert P. Volmi, B.S.; M.S.  
Director of Housing and Food Service



Donald P. Hardy, M.Ed.  
Dean of Men

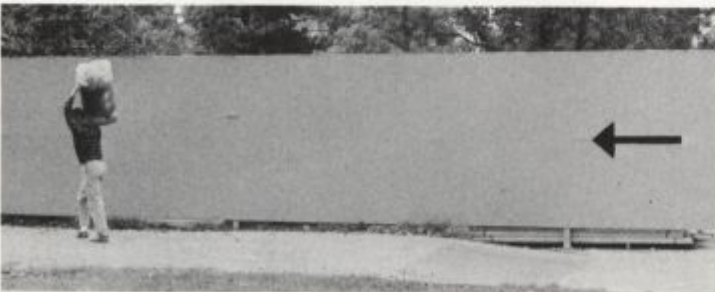
T. Albert Nikles, M.S.  
Assistant Dean of Men





Bessie B. Collins, M.S.  
Dean of Women

Ross Ann Jenny, M.Ed.  
Assistant Dean of Women





Robert W. Mayer, Ed.D.  
Director of Admissions and Records



Edward G. Allen, B.S.  
Director of Financial Aid



Geraldine M. Wyatt  
Director of Placement



Jack S. Sturgell, M.A.  
Director of Student Center



William D. Kerr, Ph.D.  
Director of Counseling and Testing



Stuart J. Sharkey, M.Ed.  
Director of Residence



Gordon Keppel, M.D.  
Director of Student Health Services and  
University Physician

Herbert L. Walter, M.D.  
Associate University Physician

Claire J. Timmons  
Foreign Student Adviser

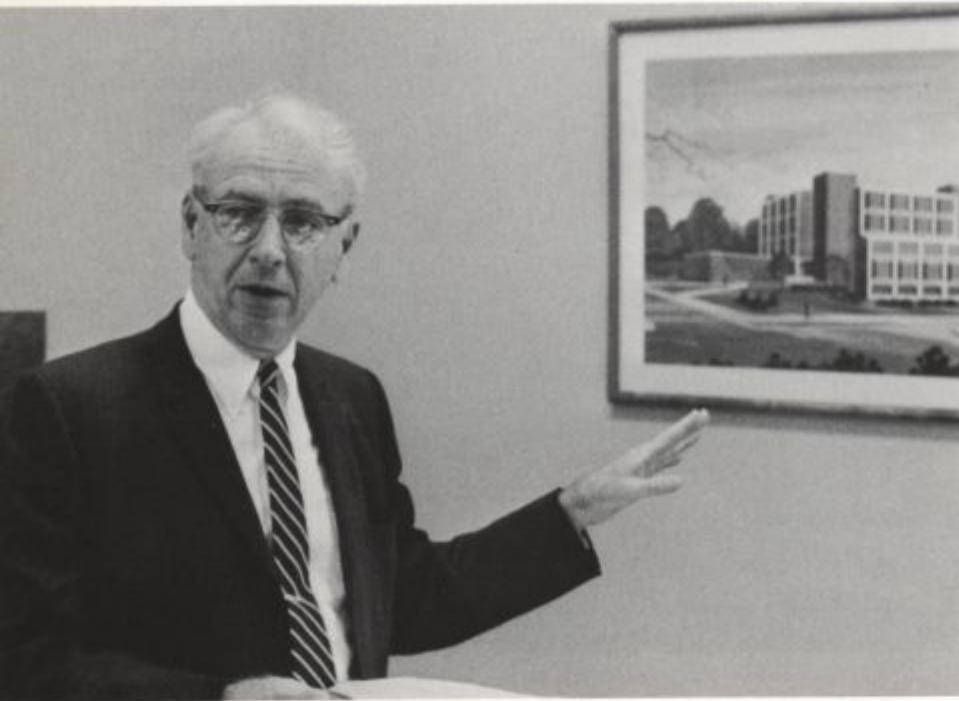




William E. McDaniel, Ph.D.  
Dean of Agricultural Sciences

Donald F. Crossan, Ph.D.  
Assistant Dean of Agricultural Sciences





Arnold L. Lippert, Ph.D.  
Dean of Arts and Science

Ronald H. Wenger, Ph.D.  
Assistant Dean of Arts and Sciences



Ray E. Keesey, Ph.D.  
Associate Dean of Arts and Science





Ruben V. Austin, Ph.D.  
Dean of Business and Economics



William G. de Colingy, Ph.D.  
Assistant Dean of Education



James B. Heck, Ph.D.  
Dean of Education



Thomas W. Brockenbrough, M.S.  
Assistant Dean of Engineering



Edward W. Comings, Sc.D.  
Dean of Engineering

David M. Nelson, M.S.  
Director of the Division of Physical  
Education and Athletics



Irma Ayers, Ed.D.  
Dean of Home Economics



Mary K. Carl, Ph.D.  
Dean of Nursing