



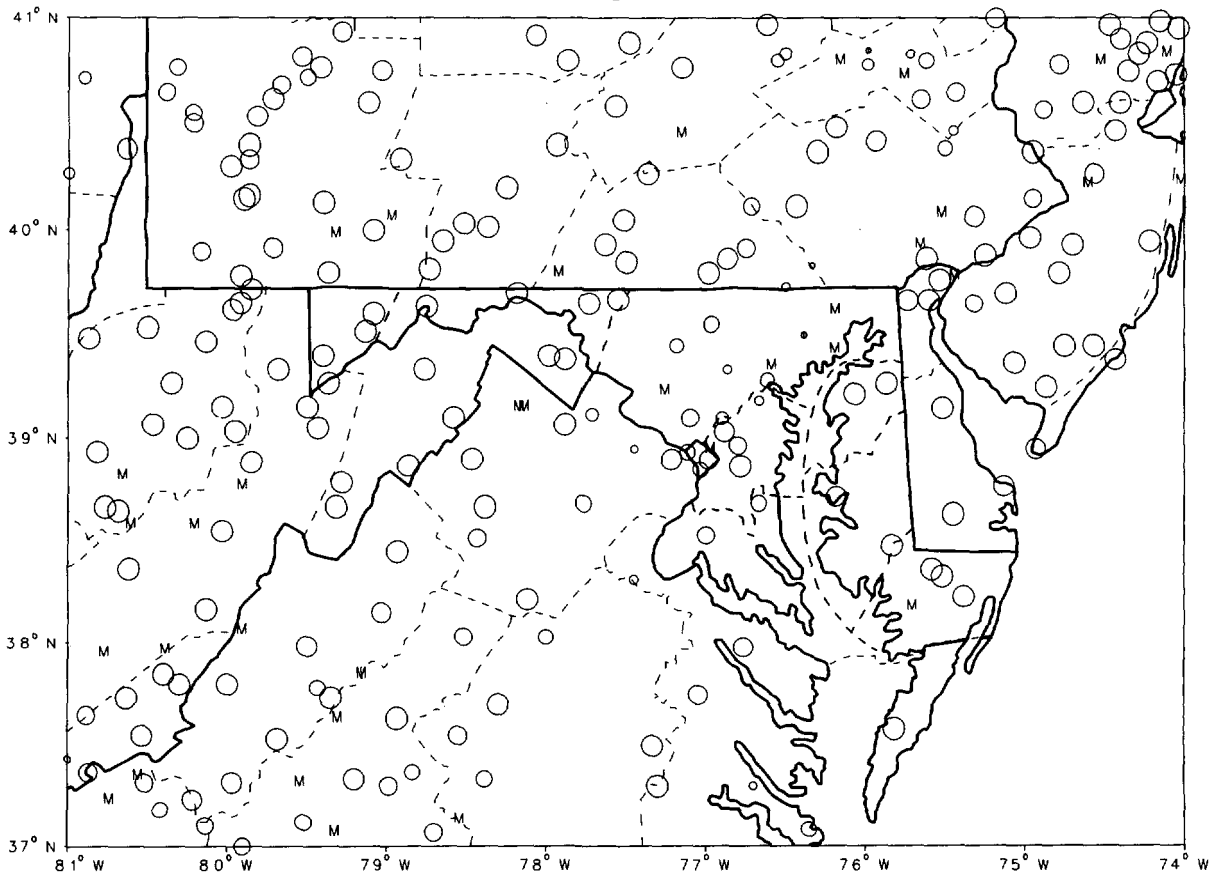
ISSN 0145-0549

# CLIMATOLOGICAL DATA MARYLAND AND DELAWARE

OCTOBER 1992  
VOLUME 96 NUMBER 10

## MONTHLY PRECIPITATION DEPARTURE FROM INDIVIDUAL STATION NORMALS (1951-1980)

- M INCOMPLETE DATA FOR THE MONTH
- ∇ EXACTLY NORMAL
- ○ ○ ○ ○ 5, 10, 20, ... 50% OR MORE BELOW NORMAL
- ● ● ● ● 10, 20, 40, ... 100% OR MORE ABOVE NORMAL



CIRCLE DIAMETER IS PROPORTIONAL TO DEPARTURE ON A CONTINUOUS SCALE

"I CERTIFY THAT THIS IS AN OFFICIAL PUBLICATION OF THE NATIONAL OCEANIC AND ATMOSPHERIC ADMINISTRATION (NOAA). IT IS COMPILED USING INFORMATION FROM WEATHER OBSERVING SITES SUPERVISED BY NOAA/NATIONAL WEATHER SERVICE AND RECEIVED AT THE NATIONAL CLIMATIC DATA CENTER (NCDC), ASHEVILLE, NORTH CAROLINA 28801."

*Kenneth D. Halpern*

DIRECTOR, NATIONAL CLIMATIC DATA CENTER

**noaa**

NATIONAL  
OCEANIC AND  
ATMOSPHERIC ADMINISTRATION

NATIONAL  
ENVIRONMENTAL SATELLITE, DATA  
AND INFORMATION SERVICE

NATIONAL  
CLIMATIC DATA CENTER  
ASHEVILLE NORTH CAROLINA

# TEMPERATURE AND PRECIPITATION EXTREMES

MARYLAND AND  
DELAWARE  
OCTOBER 1992

**MARYLAND**

HIGHEST TEMPERATURE	86
LOWEST TEMPERATURE	16
GREATEST TOTAL PRECIPITATION	3.23
LEAST TOTAL PRECIPITATION	.22
GREATEST 1 DAY PRECIPITATION	1.94
GREATEST TOTAL SNOWFALL	3.0
GREATEST DEPTH OF SNOW OR ICE	2

OCTOBER 15  
OCTOBER 20

BALTIMORE CITY	R
OAKLAND 1 SE	
BENSON POLICE BARRACKS	
CATOCTIN MOUNTAIN PARK	
BALTIMORE WSO ARPT	R
MC HENRY 2 NW	
MC HENRY 2 NW	

OCTOBER 9  
OCTOBER 19

**DELAWARE**

HIGHEST TEMPERATURE	83
LOWEST TEMPERATURE	25
GREATEST TOTAL PRECIPITATION	1.80
LEAST TOTAL PRECIPITATION	1.11
GREATEST 1 DAY PRECIPITATION	.67

OCTOBER 16+  
OCTOBER 20

2 STATIONS	
GREENWOOD 2 NE	
GREENWOOD 2 NE	
WILMINGTON WSO ARPT	R
GREENWOOD 2 NE	

OCTOBER 31

# MONTHLY SUMMARIZED STATION AND DIVISIONAL DATA

MARYLAND AND  
DELAWARE  
OCTOBER  
1992

STATION	TEMPERATURE (°F)													PRECIPITATION (IN)							
	AVERAGE MAXIMUM	AVERAGE MINIMUM	AVERAGE	DEPARTURE FROM NORMAL	HIGHEST DATE	LOWEST DATE	HEATING DEGREE DAYS	COOLING DEGREE DAYS	NO. OF DAYS				TOTAL	DEPARTURE FROM NORMAL	GREATEST DAY DATE	SNOW, SLEET					
									90 OR ABOVE	32 OR BELOW	32 OR BELOW	0 OR BELOW				TOTAL	MAX. DEPTH ON GROUND	DATE	.10 OR MORE	.50 OR MORE	1.00 OR MORE
MARYLAND																					
SOUTHERN EASTERN SHORE 01																					
ASSATEAGUE IS NATL SEA	64.4	45.6	55.0		73 16 +	31 20	304	0	0	0	1	0	2.07		.83	31	.0	.0	3	2	0
PRINCESS ANNE	M	M	M														M	M			
SALISBURY	67.3	45.5	56.4	-2.7	81 15	29 20	272	14	0	0	1	0	1.83	-1.80	.81	31	.0	.0	4	1	0
SALISBURY FAA ARPT	66.1	42.3	54.2	-2.2	83 15	25 20	336	8	0	0	2	0	1.86	-1.87	.54	4	.0	.0	4	1	0
SNOW HILL 4 N	67.8	43.3	55.6	-2.5	83 15	23 20	297	12	0	0	4	0	1.87	-1.93	.86	31	.0	.0	3	1	0
--DIVISIONAL DATA-->																					
CENTRAL EASTERN SHORE 02																					
ROYAL OAK 2 SSW	65.5	46.2	55.9	-3.4	80 15	33 20	284	8	0	0	0	0	1.97	-1.49	.55	31	.0	.0	4	1	0
VIENNA	68.1	44.4	56.3	-2.6	80 15	28 20	273	8	0	0	1	0	1.67	-1.77	.60	31	.0	.0	4	1	0
--DIVISIONAL DATA-->																					
LOWER SOUTHERN 03																					
LA PLATA 1 W	64.2	44.4	54.3	-3.3	78 15	29 20	327	6	0	0	1	0	2.15	-1.26	.62	31	.0	.0	6	1	0
MECHANICSVILLE 5 SE	63.3	43.5	53.4	-3.4	77 15	28 20	355	3	0	0	2	0	2.33		.60	31	.0	.0	6	1	0
OWINGS FERRY LANDING	65.5	43.0	54.3	-3.4	81 15	28 20	328	3	0	0	2	0	2.28	-.99	.63	31	.0	.0	6	2	0
--DIVISIONAL DATA-->																					
UPPER SOUTHERN 04																					
ANNAPOLIS POLICE BRKS	65.6	45.0	55.3		79 16	29 20	299	6	0	0	2	0	1.57		.50	31	.0	.0	5	1	0
BALTIMORE WSO ARPT	R	65.4	43.2	-2.6	85 15	28 20	328	4	0	0	1	0	2.73	-.38	1.94	9	.0	.0	4	1	1
BELTSVILLE	65.6	40.4	53.0	-2.0	84 16	27 20	367	2	0	0	3	0	1.77	-1.47	.62	10	M	M	4	2	0
COLLEGE PARK	M	M	M														M	M			
DALECARLIA RESERVOIR	68.0	33.7	50.9	-6.7	83 15	19 20	430	0	0	0	13	0	2.28	-1.02	.68	25	.0	.0	5	3	0
GLENN DALE BELL STN	67.0	40.5	53.8	-2.8	83 15	24 20	347	5	0	0	5	0	2.08	-1.22	.66	25	.0	.0	5	2	0
LAUREL 3 W	65.8	42.2	54.0	-4.2	85 15	27 20	345	8	0	0	1	0	2.45	-.68	1.80	9	.0	.0	5	1	1
NATIONAL ARBORETUM DC	66.2	41.9	54.1	-4.2	85 16	28 21	332	2	0	0	2	0	1.85	-1.32	.74	10	.0	.0	4	2	0
UPPER MARLBORO 3 NNW	65.2	41.2	53.2	-3.4	82 16	28 20	358	0	0	0	3	0	1.59	-1.70	.51	31	.0	.0	5	1	0
--DIVISIONAL DATA-->																					
NORTHERN EASTERN SHORE 05																					
CHESTERTOWN	65.7	41.8	53.8	-4.0	85 15	29 20	345	5	0	0	2	0	1.22	-1.94	.32	9	.0	.0	5	0	0
MILLINGTON 1 SE	65.7	41.9	53.8	-2.7	83 15	26 20	342	1	0	0	4	0	1.52	-1.53	.49	9	.0	.0	4	0	0
--DIVISIONAL DATA-->																					
NORTHERN CENTRAL 06																					
ABERDEEN PHILLIPS FIEL	M	66.2	49.2	-2.4	79 15	25 20	237	18	0	0	1	M	1.92		.87	9	M	M	1	1	0
BALTIMORE CITY	R	67.5	44.3	-1.1	86 15	34 20	277	4	0	0	0	0	2.28	-.81	1.84	9	M	M	4	1	1
BENSON POLICE BARRACKS	60.5	42.9	51.7		84 15	29 20	277	0	0	0	1	0	3.23	.25	1.19	9	.0	.0	5	3	2
CATOCTIN MOUNTAIN PARK	65.4	39.0	52.2		76 15	26 20	405	0	0	0	1	0	.22		.15	31	.0	.0	1	0	0
CLARKSVILLE 3 NNE	M	M	M		85 15	23 20	388	0	0	0	7	0	2.70		1.47	9	M	M	4	2	1
CONOWINGO DAM	M	M	M														M	M			
EMMITSBURG 2 SE	63.2	39.9	51.6		80 15	24 20	409	0	0	0	6	0	1.55		1.10	9	.0	.0	4	1	1
FREDERICK POLICE BRKS	65.4	44.8	55.1		82 16 +	31 20	308	6	0	0	1	0	1.69		.70	9	.0	.0	4	2	0
MILLERS 4 NE	61.9	41.6	51.8		79 15	26 20	402	0	0	0	3	0	1.79		1.15	9	.0	.0	4	1	1
ROCKVILLE 1 NE	62.4	43.0	52.7	-4.1	80 15	29 20	373	0	0	0	1	0	1.89	-1.11	1.33	9	.0	.0	3	1	1
TOWSON	M	M	M														M	M			
UNIONVILLE	64.1	38.5	51.3	-2.5	81 15	22 20	417	0	0	0	7	0	2.13	-.80	.92	9	.0	.0	4	2	0
WESTMINSTER POL BRKS	65.7	44.0	54.9		81 16	30 20	313	7	0	0	1	0	2.15	-.95	1.30	9	.0	.0	4	1	1

SEE REFERENCE NOTES FOLLOWING STATION INDEX

# MONTHLY SUMMARIZED STATION AND DIVISIONAL DATA

MARYLAND AND  
DELAWARE  
OCTOBER 1992

STATION	TEMPERATURE (°F)											PRECIPITATION (IN)										
	AVERAGE MAXIMUM	AVERAGE MINIMUM	AVERAGE	DEPARTURE FROM NORMAL	HIGHEST DATE	LOWEST DATE	HEATING DEGREE DAYS	COOLING DEGREE DAYS	NO. OF DAYS				TOTAL	DEPARTURE FROM NORMAL	GREATEST DAY DATE	SNOW SLEET			NO. OF DAYS			
									90 OR ABOVE	32 OR BELOW	32 OR BELOW	0 OR BELOW				TOTAL	MAX. DEPTH ON GROUND	DATE	.10 OR MORE	.50 OR MORE	1.00 OR MORE	
									MAX	MIN	MIN	MIN										
HOODSTOCK	65.5	41.0	53.3	-1.9	8315	2520	358	0	0	0	5	0	2.79	-1.33	1.52	9	.0	0		4	2	1
--DIVISIONAL DATA-->			53.5	-2.3									2.04	-1.11			.0	0				
APPALACHIAN MOUNTAIN 07																						
CUMBERLAND 2	67.0	38.3	52.7	-2.3	8415	2420+	375	1	0	0	8	0	.67	-2.04	.22	25	.0	0		3	0	0
FROSTBURG 2	58.0	37.6	47.8		7616	2121	527	0	0	0	0	0	.91		.22	12	1	0	1	9	0	0
HAGERSTOWN	63.7	39.8	51.8	-3.5	8116	2620	403	0	0	0	4	0	.57	-2.56	.24	10	.0	0		3	0	0
HANCOCK	65.8	36.0	50.9	-2.0	8416	2120	430	0	0	0	9	0	.38	-2.55	.15	31	.0	0		2	0	0
--DIVISIONAL DATA-->			50.8	-3.5									.63	-2.34			.5	0				
ALLEGHENY PLATEAU 08																						
MC HENRY 2 NW	57.2	36.3	46.8		7316	2120	560	0	0	0	8	0	1.17		.25	19	3.0	2	19	7	0	0
OAKLAND 1 SE	61.0	35.1	48.1	-1.4	7515	1620	518	0	0	0	11	0	.96	-2.21	.17	11+	2.0	0		5	0	0
SAVAGE RIVER DAM	61.6	35.9	48.8	-2.0	7815	2121	497	0	0	0	9	0	.53	-2.35	.12	17	.0	0		3	0	0
--DIVISIONAL DATA-->			47.9	-1.6									.89	-2.24			1.7	0				
DELAWARE																						
NORTHERN 01																						
NEWARK UNIVERSITY FARM	65.3	41.0	53.2	-3.1	8215	2620	360	0	0	0	3	0	1.62	-1.56	.54	9	.0	0		6	1	0
WILMINGTON WSO ARPT	63.8	42.6	53.2	-3.1	8115	2920	363	3	0	0	2	0	1.11	-1.78	.45	9	.0	0		4	0	0
WILMINGTON PORTER RSVR	62.2	43.8	53.0	-2.7	8015	3020	366	2	0	0	2	0	1.17	-2.06	.52	9	.0	0		5	1	0
--DIVISIONAL DATA-->			53.1	-3.3									1.30	-1.87			.0	0				
SOUTHERN 02																						
DOVER	65.5	45.3	55.4	-3.2	8216+	3020	300	9	0	0	1	0	1.53	-2.03	.48	31	.0	0		5	0	0
GEORGETOWN 5 SW	66.2	41.0	53.6	-3.4	8316	2920	351	5	0	0	4	0	1.57	-1.91	.65	5	.0	0		4	1	0
GREENWOOD 2 NE	64.4	41.9	53.2		8215	2520	362	4	0	0	3	0	1.80		.67	31	.0	0		7	1	0
LEWES	65.6	47.9	56.8	-.7	8315	3420	256	9	0	0	0	0	1.75	-1.58	.60	31	.0	0		4	2	0
--DIVISIONAL DATA-->			54.8	-2.9									1.66	-1.81			.0	0				

SEE REFERENCE NOTES FOLLOWING STATION INDEX

# DAILY PRECIPITATION (INCHES)

MARYLAND AND  
DELAWARE  
OCTOBER 1992

STATION	TOTAL	DAY OF MONTH																														
		1	2	3	4	5	6	7	8	9	10	11	12	13	14	15	16	17	18	19	20	21	22	23	24	25	26	27	28	29	30	31
MARYLAND																																
SOUTHERN EASTERN SHORE 01																																
ASSATEAGUE IS NATL SEA	2.07				.02		.45			.01	.09	.03								.06						.57			.01	T	T	.83
PRINCESS ANNE	M 1.83				.07	.49	T			.01	.18	.04	.04							.02		T				.17			T		.81	
SALISBURY FAA ARPT	1.86				.54	.05				T	.09	.07								.07		.01			.23	T			.01		.43	.36
SNOW HILL 4 N	1.87				.07	.48				.01	.01	.03	.04							.08		T				.28			.01		.86	
CENTRAL EASTERN SHORE 02																																
ROYAL OAK 2 SSW	1.97				.38	.06				.36		.09		.04						.05		.01				.43			T		.55	
VIENNA	1.67				.10	.47			.02			.04													.40			.04		.60		
LOWER SOUTHERN 03																																
LA PLATA 1 W	2.15				.44	.13				.37	.10	.09								T						.37			.03		T	.62
MECHANICSVILLE 5 SE	2.33				.32	.29				.47	T	.31								T						.32			T		.02	.60
OWINGS FERRY LANDING	2.28				.26	.24				.51	.18	.08	.02													.35			*	.01		.63
UPPER SOUTHERN 04																																
ANNAPOLIS POLICE BRKS	1.57									.42	.15	T	.16							.08						.26					.50	
BALTIMORE WSO ARPT	R 2.73									1.94	.07	.02				T			T	.02					.18			T		.13		
BELTSVILLE	1.77									.06	.62		.32													.15			.02		.60	
COLLEGE PARK	M 2.28																															
DALECARLIA RESERVOIR										.59	.27	.12					.01									.68					.61	
GLENN DALE BELL STN	2.08									.37	.30		.23							T		.01				.66			T		.51	
LAUREL 3 W	2.45									1.80		.10													.15					.10		
NATIONAL ARBORETUM DC	1.85					T				.02	.74		.11												.44				.01	.30	.53	
UPPER MARLBORO 3 NNW	1.59					.03				.13	.36		.21							.03					.32					.51		
NORTHERN EASTERN SHORE 05																																
CHESTERTOWN	1.22									.32	.14	.08								.05					.23					.13	.27	
MILLINGTON 1 SE	1.52									.49		.32	.03							.05					T	.18					.45	
NORTHERN CENTRAL 06																																
ABERDEEN PHILLIPS FIEL	M 1.92									.87	*	*	*	.79				*	*	.01					*	*	.25					
BALTIMORE CITY	R 2.28									1.84	.02									.01					.10					.16	.15	
BENSON POLICE BARRACKS	3.23									1.19	1.08	.03								.03		T			.02	.16	.50			.22		
CATOCTIN MOUNTAIN PARK	.22										.04	.01			.01										.01					.15		
CLARKSVILLE 3 NNE	2.70									1.47	.75	T								.01						.05				.13	.29	
CONOWINGO DAM	M 1.55											.10								T										T	.15	
EMMITSBURG 2 SE	1.69									.70	.58	.10																			.25	
FREDERICK POLICE BRKS	1.79									1.15	.37	.03								.01					T	.06			T	.01	.17	
MILLERS 4 NE																										.05						
POTOMAC FILTER PLANT	2.46									1.70	.16	.08													.04					.30	.18	
ROCKVILLE 1 NE	1.89									1.33	.02	.10				T				T					.01				.37	.06		
TOWSON	M 2.13																															
UNIONVILLE	2.15									.92	.70	.03	.10								T				.07				.01	.30		
WESTMINSTER POL BRKS										1.30	.45	T							.02							.13			T	.25		
HOODSTOCK																																
APPALACHIAN MOUNTAIN	07 2.79									1.52	.68	T									.02				T	.22				T	.35	
CUMBERLAND 2	.67									.15	.04		.03							.05						.22					.16	
EDGEHONT	.89									.12	.52	.04	.02							T						.01				.18		
FROSTBURG 2	.91									.10	.07	T	.22							T						.14				.17		
HAGERSTOWN	.57									.18	.24																				.15	
HANCOCK																																
	.38									.07	.13															.03					.15	

SEE REFERENCE NOTES FOLLOWING STATION INDEX

# DAILY PRECIPITATION (INCHES)

MARYLAND AND  
DELAWARE  
OCTOBER 1992

STATION	TOTAL	DAY OF MONTH																																
		1	2	3	4	5	6	7	8	9	10	11	12	13	14	15	16	17	18	19	20	21	22	23	24	25	26	27	28	29	30	31		
ALLEGHENY PLATEAU 08																																		
MC HENRY 2 NH	1.17									.10	.15	.03	.22							.11	.25	.06	T											
MERRILL	.77									.10		.32																						
OAKLAND 1 SE	.96									.17		.06																						
SAVAGE RIVER DAM	.53									.07	.07	T	.10				.04	.05	.12		.14	.03	.01				T	.15						.04
DELAWARE																																		
NORTHERN 01																																		
NEWARK UNIVERSITY FARM	1.62									.54	.26	.02	.26																					
WILMINGTON HSD ARPT R	1.11									.45	.01	.17			T		T		T	.07		T											.08	
WILMINGTON PORTER RSVR	1.17									.52	.08	.02								.10		T											.13	
SOUTHERN 02																																		
DOVER	1.53									.20	.29	.04	.02								.10													.48
GEORGETOWN 5 SW	1.57					.65						.07								.10													.41	
GREENWOOD 2 NE	1.80				.20	.15				.15		.13	.02								.10	.03										.01		.67
LEWES	1.75				T	.52				.09	T	T	T								.29											.01		.60

# DAILY TEMPERATURES (°F)

MARYLAND AND  
DELAWARE  
OCTOBER 1992

STATION	OB. TIME	MAX/MIN	DAY OF MONTH																															AVERAGE		
			1	2	3	4	5	6	7	8	9	10	11	12	13	14	15	16	17	18	19	20	21	22	23	24	25	26	27	28	29	30	31			
MARYLAND																																				
SOUTHERN EASTERN SHORE	01																																			
ASSATEAGUE IS NATL SEA	14	MAX MIN OBS	59 41	67 41	71 53	72 56	62 48	62 43	60 41	67 49	67 45	69 58	68 50	65 54	70 48	68 46	73 56	73 56	69 47	57 40	53 47	57 31	62 41	63 41	70 35	69 41	61 43	61 37	60 34	56 45	63 47	61 52	61 49	64.4 45.6		
PRINCESS ANNE	17	MAX MIN																																		M
SALISBURY	17	MAX MIN OBS	61 42	68 43	74 51	71 54	64 40	63 42	67 38	74 46	77 58	74 59	72 52	65 48	70 48	76 46	81 54	80 62	77 49	60 38	56 41	51 29	65 44	64 41	62 36	70 42	65 46	62 38	63 35	62 45	68 41	65 54	58 49	67.3 45.5		
SALISBURY FAA ARPT	MID	MAX MIN	61 39	68 38	74 48	65 50	61 41	64 39	68 34	74 42	77 57	75 50	65 49	66 47	72 43	77 42	83 49	78 62	69 37	60 35	50 36	52 25	67 47	60 37	64 33	71 37	58 38	60 29	65 43	61 42	70 44	61 51	54 48	66.1 42.3		
SNOW HILL 4 N	17	MAX MIN	63 37	71 37	76 45	72 49	62 56	63 39	68 32	75 40	77 55	75 59	72 47	68 47	73 45	77 41	83 52	79 62	70 49	60 34	55 40	54 23	68 41	65 39	65 32	72 37	65 47	60 28	67 44	60 40	70 43	61 50	57 47	67.8 43.3		
CENTRAL EASTERN SHORE	02																																			
ROYAL OAK 2 SSW	18	MAX MIN	64 40	70 43	76 54	71 54	62 48	63 39	65 37	74 45	72 59	72 55	65 52	67 51	68 49	74 51	80 51	78 64	71 47	60 38	53 39	50 33	64 46	62 41	61 36	67 49	62 47	61 39	59 49	59 41	60 45	62 54	59 47	65.5 46.2		
VIENNA	18	MAX MIN	63 40	70 43	75 53	63 45	63 40	67 37	76 47	76 59	74 57	72 52	67 47	71 51	75 45	80 53	77 56	74 46	67 36	62 35	62 28	66 44	69 44	68 38	71 38	65 45	63 37	63 35	62 42	60 40	60 50	59 47	68.1 44.4			
LOWER SOUTHERN	03																																			
LA PLATA 1 W	18	MAX MIN	60 40	67 41	72 48	61 46	59 45	59 39	62 37	72 47	72 62	71 56	66 53	63 43	65 46	73 52	78 43	77 60	72 49	58 35	51 38	51 29	66 45	60 39	62 35	69 44	65 44	64 35	62 45	58 43	59 46	60 50	57 41	64.2 44.4		
MECHANICSVILLE 5 SE	19	MAX MIN	60 38	65 42	71 45	62 51	59 47	58 37	63 34	70 44	71 58	68 57	69 54	64 43	66 46	70 51	77 43	76 59	67 46	56 34	50 40	50 28	66 44	57 38	60 32	68 40	63 43	63 35	62 43	58 40	61 43	60 48	53 47	63.3 43.5		
OWINGS FERRY LANDING	17	MAX OBS MIN OBS	62 39	69 40	75 46	73 51	60 45	60 38	65 34	72 43	72 57	71 54	67 50	65 45	67 45	73 44	81 49	77 58	75 45	57 35	53 40	50 28	66 43	61 38	62 32	71 43	66 40	64 35	63 43	59 40	59 38	61 49	53 46	65.5 43.0		
UPPER SOUTHERN	04																																			
ANNAPOLIS POLICE BRKS	17	MAX MIN OBS	64 43	70 44	77 49	73 53	64 48	61 41	63 38	71 37	71 62	71 54	69 53	67 48	68 48	71 45	76 51	79 58	76 46	58 39	54 37	51 29	68 42	62 40	60 35	66 43	62 46	64 30	61 50	59 43	62 46	60 52	57 46	65.6 45.0		
BALTIMORE WSO ARPT	MID	MAX MIN	65 41	71 42	78 48	66 52	63 48	63 41	68 36	73 42	71 59	73 53	69 49	66 45	67 46	73 45	85 48	79 55	58 39	59 36	51 33	51 28	67 44	61 36	64 35	71 40	57 38	65 34	64 44	59 45	62 42	59 48	49 46	65.4 43.2		
BELTSVILLE	08	MAX OBS MIN OBS	61 39	63 41	71 44	78 42	64 46	61 38	63 34	67 37	75 44	73 51	74 52	68 43	65 45	67 42	74 46	84 49	78 43	64 34	58 36	50 27	51 28	68 34	59 32	65 33	69 39	56 33	65 41	62 41	59 41	60 42	60 46	65.6 40.4		
COLLEGE PARK	09	MAX MIN																																		M
DALECARLIA RESERVOIR	17	MAX MIN OBS	65 32	71 32	78 36	75 30	64 37	62 30	65 30	75 34	74 52	75 46	73 44	67 35	68 38	75 36	83 28	81 38	76 35	58 26	53 33	51 19	69 33	67 26	64 30	72 26	72 31	67 23	66 38	60 33	61 33	62 44	60 38	68.0 33.7		
GLENN DALE BELL STN	16	MAX MIN	63 36	70 38	78 43	76 47	63 45	63 33	67 31	74 39	72 60	70 42	69 46	65 44	73 43	73 41	83 45	81 56	75 40	56 39	50 40	51 24	67 41	64 32	64 29	72 36	71 37	63 31	64 46	63 37	60 41	61 43	57 44	67.0 40.5		
LAUREL 3 W	MID	MAX MIN	64 38	72 42	78 46	65 51	63 42	65 36	64 38	75 42	71 57	72 50	69 49	66 46	67 47	74 46	85 61	77 49	65 39	59 34	51 33	52 27	67 41	62 36	67 35	68 40	59 37	64 42	62 41	68 41	59 43	60 43	49 40	65.8 42.2		
NATIONAL ARBORETUM DC	07	MAX MIN	61 42	65 41	72 43	78 47	64 47	63 38	62 36	67 36	76 43	74 54	74 55	70 47	68 47	69 44	75 46	85 48	78 46	57 35	58 35	51 29	51 28	68 36	61 34	64 34	70 45	58 36	66 43	63 41	60 45	62 50	62 47	66.2 41.9		

SEE REFERENCE NOTES FOLLOWING STATION INDEX

# DAILY TEMPERATURES (°F)

MARYLAND AND  
DELAWARE  
OCTOBER 1992

STATION	OB. TIME	MAX/MIN	DAY OF MONTH																															AVERAGE		
			1	2	3	4	5	6	7	8	9	10	11	12	13	14	15	16	17	18	19	20	21	22	23	24	25	26	27	28	29	30	31			
UPPER MARLBORO 3 NNW	08	MAX MIN	61 39	63 40	70 43	76 49	63 45	61 37	63 34	66 37	73 45	73 54	73 52	68 46	67 47	67 42	74 45	82 48	78 45	56 33	59 34	50 28	50 30	67 36	59 32	63 33	71 43	57 35	64 44	64 39	60 51	62 47	60 44	65.2 41.2		
NORTHERN EASTERN SHORE	05																																			
CHESTERTOWN	23	MAX MIN	64 38	71 41	77 48	66 50	61 43	62 35	68 34	77 40	74 57	74 51	68 48	67 43	68 47	76 41	85 45	79 59	71 39	60 34	50 37	50 29	67 41	59 36	64 32	69 41	58 39	64 33	61 40	60 40	61 48	58 45	49 42	65.7 41.8		
MILLINGTON 1 SE	18	MAX MIN OBS OBS	62 37	69 39	75 47	71 49	62 47	61 37	67 33	75 39	72 57	73 55	73 47	66 43	65 44	72 40	83 46	78 54	74 46	59 35	49 41	50 26	61 34	63 32	64 32	70 39	65 46	61 30	61 44	61 37	60 49	59 48	55 45	65.7 41.9		
NORTHERN CENTRAL	06																																			
ABERDEEN PHILLIPS FIEL	16	MAX MIN	62 42	69 41		60 47	60 40	64 35	71 42	71 61					65 48	71 41	79 48	78 55				47 42	48 25	62 45	62 35	61 34		62 35	60 51	59 40	59 49	59 53		M M		
BALTIMORE CITY	MID	MAX MIN	65 46	74 50	81 54	68 59	61 48	64 44	67 45	74 51	71 62	76 60	72 56	70 52	71 60	73 52	86 56	80 58	58 43	59 43	49 54	51 29	68 43	61 38	65 37	70 39	57 42	66 34	65 49	60 41	62 48	60 45	48 45	66.2 49.2		
BENSON POLICE BARRACKS	17	MAX MIN	66 40	73 46	79 46	78 52	65 43	66 39	69 36	74 43	73 59	75 54	75 53	67 45	68 51	73 44	84 49	79 52	76 45	59 38	54 41	51 29	66 43	64 38	66 37	67 39	62 42	63 34	65 49	60 41	60 48	60 52	56 45	67.5 44.3		
CATOCTIN MOUNTAIN PARK	17	MAX MIN	58 38	64 45	69 53	69 52	54 41	55 35	58 35	66 46	67 57	66 50	64 53	58 45	61 50	66 53	76 58	73 49	69 51	46 38	46 33	42 26	59 38	56 35	63 37	68 46	57 38	63 35	61 42	61 43	61 45	53 44	46 39	60.5 42.9		
CLARKSVILLE 3 NNE	17	MAX MIN	62 35	72 35	78 40	64 44	60 45	63 32	66 31	73 35	70 60	73 49	68 50	65 44	67 43	72 37	85 45	84 42	71 31	57 31	53 44	50 23	65 38	59 29	66 28	73 33	63 39	63 30	61 42	57 38	61 39	58 47	49 45	65.4 39.0		
CONOWINGO DAM	MID	MAX MIN																																		M M
EMMITSBURG 2 SE	17	MAX MIN	61 38	68 36	74 41	72 46	58 43	58 33	62 31	70 34	71 58	69 46	66 51	63 46	64 47	69 37	80 43	77 46	73 44	53 31	48 38	45 24	63 42	60 30	61 28	68 39	66 44	61 31	59 45	60 38	55 47	55 50	50 42	63.2 39.9		
FREDERICK POLICE BRKS	17	MAX MIN	62 43	70 44	75 49	76 51	64 46	60 38	65 37	71 41	71 60	71 50	68 55	63 47	65 49	70 43	82 56	82 56	76 49	53 35	48 39	47 31	64 44	62 39	63 39	69 43	69 45	64 39	62 50	61 47	59 42	58 50	56 42	65.4 44.8		
MILLERS 4 NE	18	MAX MIN	60 37	67 42	72 46	69 52	67 42	60 36	64 34	70 41	66 58	70 48	65 51	61 43	62 48	67 40	79 46	74 53	69 43	50 31	47 37	45 26	62 41	56 36	62 31	69 41	64 39	59 34	58 45	55 40	54 47	47 42	61.9 41.6			
ROCKVILLE 1 NE	MID	MAX MIN	61 40	67 42	75 46	64 50	60 45	61 38	64 36	72 41	69 59	69 54	67 50	62 44	65 48	72 43	80 50	74 56	54 41	48 35	48 34	48 29	57 45	57 34	62 33	68 44	54 42	63 36	60 44	58 44	59 41	48 46	62.4 43.0			
TOWSON	18	MAX MIN																																	M M	
UNIONVILLE	17	MAX MIN	63 34	70 35	76 39	70 44	60 42	62 30	66 30	72 35	70 60	71 46	66 50	65 43	67 40	72 36	81 43	75 46	72 42	53 30	48 38	47 22	65 39	58 28	64 27	70 36	56 41	61 27	61 44	61 42	59 35	57 46	50 44	64.1 38.5		
WESTMINSTER POL BRKS	17	MAX MIN	61 42	68 47	73 51	75 57	61 42	67 36	65 39	71 43	71 52	70 54	73 43	73 40	80 51	81 56	75 42	54 39	53 35	48 30	52 35	51 30	63 43	63 38	61 37	70 43	70 45	60 36	60 46	60 44	55 42	58 48	50 42	65.7 44.0		
WOODSTOCK	18	MAX MIN	65 37	71 37	78 43	70 47	62 44	64 35	67 32	75 38	69 59	73 52	70 50	66 44	67 45	73 40	83 45	77 51	70 43	55 32	50 39	49 25	65 40	60 32	66 30	70 36	62 40	62 33	62 45	58 42	59 41	58 49	53 44	65.5 41.0		
APPALACHIAN MOUNTAIN	07																																			
CUMBERLAND 2	18	MAX MIN	64 35	74 39	79 43	73 43	64 34	64 33	68 33	74 38	72 45	74 45	69 51	64 49	67 41	77 42	84 47	82 42	68 30	49 31	47 24	46 24	63 42	62 31	68 31	72 41	62 32	71 41	65 42	69 40	71 42	64 44	50 42	67.0 38.3		
FROSTBURG 2	07	MAX MIN	48 33	56 36	66 38	70 49	58 39	55 36	55 31	59 35	66 36	65 45	66 44	58 45	56 46	58 42	74 44	76 52	68 45	45 28	44 35	48 21	54 39	54 35	61 33	62 37	48 34	62 33	60 43	57 42	61 48	64 43	48 40	58.0 37.6		
HAGERSTOWN	08	MAX OBS MIN OBS	57 38	63 39	71 41	76 50	63 43	59 35	61 35	65 36	72 41	74 51	69 49	66 46	64 45	67 43	72 45	81 45	78 42	55 33	48 36	47 26	63 40	58 32	63 32	72 43	54 36	67 40	61 42	64 42	63 43	56 43	63.7 39.8			
HANCOCK	08	MAX MIN	57 37	64 35	72 33	78 36	63 43	61 30	61 33	64 34	72 39	75 41	70 43	65 45	65 43	68 41	73 42	84 42	81 44	56 29	51 30	47 21	49 24	66 37	62 30	67 29	75 34	57 29	73 31	66 39	68 39	70 40	59 43	65.8 36.0		

SEE REFERENCE NOTES FOLLOWING STATION INDEX



# DAILY TEMPERATURES (°F)

MARYLAND AND  
DELAWARE  
OCTOBER 1992

STATION	OB. TIME	MAX/MIN	DAY OF MONTH																															AVERAGE	
			1	2	3	4	5	6	7	8	9	10	11	12	13	14	15	16	17	18	19	20	21	22	23	24	25	26	27	28	29	30	31		
ALLEGHENY PLATEAU 08																																			
MC HENRY 2 NW	08	MAX	47	52	57	67	65	58	62	67	69	62	63	53	54	57	71	73	65	46	45	34	46	52	55	63	58	47	58	58	57	60	51	57.2	
		MIN	32	36	38	38	35	34	35	36	42	43	43	40	41	40	40	53	31	30	27	21	22	36	35	38	34	29	32	42	43	40	39	36.3	
OAKLAND 1 SE	17	MAX	57	65	69	65	58	61	66	70	70	66	65	56	59	74	75	74	60	46	44	43	56	59	66	65	57	62	60	58	62	57	46	61.0	
		OBS																	74																
		MIN	30	29	34	37	38	27	26	28	55	38	44	42	43	38	46	39	33	23	27	16	40	32	23	37	36	27	45	40	33	41	40	35.1	
SAVAGE RIVER DAM	08	MAX	53	61	69	72	61	62	60	63	71	67	67	60	62	62	78	71	71	50	49	43	51	59	58	65	65	53	65	61	62	64	56	61.6	
		MIN	33	35	36	42	39	31	30	31	34	42	42	45	44	38	40	45	38	28	29	22	21	37	29	30	40	33	37	43	37	39	42	35.9	
DELAWARE																																			
NORTHERN																																			
NEWARK UNIVERSITY FARM	01	17	MAX	61	70	77	75	62	62	66	74	69	73	68	65	65	70	82	77	75	60	54	50	64	66	63	67	61	60	60	57	59	59	54	65.3
		MIN	36	39	52	50	45	36	34	38	53	55	48	44	45	39	46	52	45	34	36	26	34	35	32	37	43	30	33	38	45	50	42	41.0	
WILMINGTON WSO ARPT	MID	MAX	63	69	76	68	60	62	66	71	70	74	67	66	65	70	81	78	60	57	48	50	65	60	63	69	54	61	60	57	58	61	48	63.8	
		MIN	37	42	50	52	41	38	37	42	60	54	51	45	46	42	49	57	40	37	32	29	42	37	35	40	38	33	38	37	47	48	44	42.6	
WILMINGTON PORTER RSVR	MID	MAX	60	69	75	66	58	60	65	70	68	71	65	63	63	69	80	77	62	56	46	48	64	57	62	66	56	59	57	55	57	57	47	62.2	
		MIN	39	45	50	52	45	39	40	44	58	53	52	48	47	45	49	57	43	38	35	30	46	40	38	43	37	32	40	38	45	46	43	43.8	
SOUTHERN																																			
DOVER	02	17	MAX	60	68	75	75	60	60	65	67	72	70	71	64	66	64	82	82	75	55	53	50	66	65	65	71	70	60	60	59	61	60	59	65.5
		MIN	42	42	51	51	50	40	36	43	56	57	50	49	50	44	52	61	54	39	44	30	40	39	34	44	41	34	49	40	47	50	46	45.3	
GEORGETOWN 5 SW	08	MAX	60	62	70	75	65	59	60	64	75	69	75	75	65	70	76	83	77	61	59	58	51	67	57	68	71	55	61	62	67	71	63	66.2	
		OBS																		73															
		MIN	37	38	40	46	51	38	33	41	47	48	54	44	45	42	44	57	44	33	35	29	30	37	31	38	40	30	40	39	42	47	51	41.0	
GREENWOOD 2 NE	18	MAX	61	68	74	70	58	61	66	74	75	74	64	64	67	74	82	76	71	57	47	51	66	57	62	69	59	59	60	59	58	64	50	64.4	
		MIN	37	38	49	50	49	37	33	41	53	52	48	47	44	42	49	59	40	33	38	25	39	38	31	39	38	30	44	37	46	49	45	41.9	
LEWES	17	MAX	61	70	76	71	60	58	64	71	73	70	69	66	68	71	83	78	73	57	54	52	68	65	60	72	68	61	56	61	64	58	56	65.6	
		MIN	45	44	53	56	54	49	38	46	60	61	52	49	51	47	47	63	50	44	41	34	42	48	37	44	45	38	52	52	46	46	50	47.9	

SEE REFERENCE NOTES FOLLOWING STATION INDEX

# EVAPORATION AND WIND

MARYLAND AND  
DELAWARE  
OCTOBER 1992

STATION		DAY OF MONTH																															TOTAL OR AVG	
		1	2	3	4	5	6	7	8	9	10	11	12	13	14	15	16	17	18	19	20	21	22	23	24	25	26	27	28	29	30	31		
MARYLAND																																		
UPPER SOUTHERN 04																																		
BELTSVILLE		WIND	22	5	1	9	42	11	0	0	30	*	28	17	21	5	4	7	73	17	5	76	1	0	0	28	47	2	0	0	0	6		
		EVAP	15	14	12	14	11	15	12	10	10	*	17	5	13	13	10	11	9	-	15	14	8	9	11	16	1	15	11	9	2	2	4	
		MAX	65	69	74	78	60	69	70	70	74	-	74	78	67	69	71	77	82	82	76	55	54	64	56	65	63	60	62	56	56	57	60	
		MIN	45	46	44	53	46	41	42	42	47	-	65	48	48	48	48	51	40	30	39	35	43	39	38	38	42	40	40	47	48	49	50	
UPPER MARLBORO 3 NNW		WIND	19	8	5	8	6	19	1	2	12	16	6	8	8	6	7	12	50	30	29	51	3	6	4	12	22	15	15	0	1	0	5	
		EVAP	12	9	5	10	13	12	11	10	6	3	9	9	10	10	10	12	10	5	7	30	7	8	12	9	4	14	14	4	2	2	2	
		MAX	64	64	66	68	63	64	64	63	65	66	69	66	64	64	65	67	67	61	60	57	55	59	58	58	59	57	58	53	57	58	-	
		MIN	58	56	56	58	59	55	53	53	56	62	62	59	57	56	56	58	58	53	53	49	49	51	50	49	52	49	52	52	53	54	-	
DELAWARE																																		
NORTHERN 01																																		
NEWARK UNIVERSITY FARM		WIND	42	25	18	17	50	19	12	12	22	25	4	41	30	17	17	15	82	21	54	35	26	22	13	11	84	46	33	7	4	13	28	
		EVAP	0	14	7	11	17	18	27	18	10	23	17	14	17	12	13	12	26	5	6	4	7	10	2	17	14	6	12	3	2	8	-	
		MAX	-	-	-	-	-	-	-	-	-	-	-	-	-	-	-	-	-	-	-	-	-	-	-	-	-	-	-	-	-	-	-	-
		MIN	-	-	-	-	-	-	-	-	-	-	-	-	-	-	-	-	-	-	-	-	-	-	-	-	-	-	-	-	-	-	-	-

EVAPORATION: IS MEASURED IN HUNDRETHS OF INCHES  
 WIND: IS MEASURED IN MILES  
 MAX AND MIN: THE MAXIMUM AND MINIMUM TEMPERATURES (FAHRENHEIT) OF THE WATER IN THE EVAPORATION PAN  
 SEE REFERENCE NOTES FOLLOWING STATION INDEX

# SNOWFALL AND SNOW ON GROUND (INCHES)

MARYLAND AND  
DELAWARE  
OCTOBER 1992

STATION	DAY OF MONTH																															
	1	2	3	4	5	6	7	8	9	10	11	12	13	14	15	16	17	18	19	20	21	22	23	24	25	26	27	28	29	30	31	
MARYLAND																																
NORTHERN CENTRAL 06 MILLERS 4 NE																																
APPALACHIAN MOUNTAIN 07 FROSTBURG 2																				1.5	.3											
ALLEGHENY PLATEAU 08 MC HENRY 2 NW																				2.5	.5											
OAKLAND 1 SE																				2.0												
DELAWARE																																

SNOWFALL: INCLUDES SNOW AND ICE. VALUES FOR NWS STATIONS (J INDEX NOTE) ARE MID-MID (LST).  
 SNOW ON GROUND: INCLUDES SNOW, SLEET, ICE AND HAIL. VALUES FOR NWS STATIONS (J INDEX NOTE) ARE OBSERVED AT 0000 UTC (GMT).  
 WATER EQUIVALENT: GIVEN FOR NWS STATIONS (J INDEX NOTE) ONLY, WHEN SNOW DEPTH IS 2 INCHES OR MORE.  
 SEE REFERENCE NOTES FOLLOWING STATION INDEX

# STATION INDEX

MARYLAND AND  
DELAWARE  
OCTOBER 1992

STATION	INDEX NO.	DIVISION	COUNTY	LATITUDE	LONGITUDE	ELEVATION (IN FEET)	OBSERVATION TIME AND TABLES				OBSERVER		
							LOCAL STD TIME						
							TEMP	PRECIP	EVAP	SPECIAL (SEE NOTES)			
MARYLAND													
ABERDEEN PHILLIPS FIEL	001506		HARFORD	39 28	76 10W	57	16	16		C	H	PHILLIPS ARMY AIRFIELD	
ANNAPOLIS POLICE BRKS	019304		ANNE ARUNDEL	38 59	76 30W	25	17	07			H	ANNAPOLIS POLICE BARRACK	
ASSATEAGUE IS NATL SEA	033501		WORCESTER	38 14	75 8W	100	14	07			H	NATIONAL PARK SERVICE	
BALTIMORE WSO ARPT	004650		ANNE ARUNDEL	39 11	76 40W	148	MID	MID		C	H	NATL WEATHER SERVICE	
BALTIMORE CITY #	004700		BALTIMORE	39 17	76 37W	14	MID	MID		C	C	NATIONAL WEATHER SERVICE	
BELTSVILLE	070004		PRINCE GEORG	39 2	76 53W	120	08	08	08		C	H	USDA CHEM & BIOPHYS LAB
BENSON POLICE BARRACKS	073206		HARFORD	39 30	76 23W	365	17	17			H	MARYLAND STATE POLICE	
CATOCTIN MOUNTAIN PARK	153006		FREDERICK	39 39	77 29W	1610	17	17			C	H	CATOCTIN MOUNTAIN PARK
CHESTERTOWN	175005		KENT	39 13	76 4W	40	23	23			H	THOMAS W ELIASON JR	
CLARKSVILLE 3 NNE	186206		HOWARD	39 15	76 56W	370	17	17			H	UNIV OF MD AGRONOMY DEPT	
COLLEGE PARK	199504		PRINCE GEORG	38 59	76 57W	90	09	09			C	H	UNIVERSITY OF MARYLAND
CONOWINGO DAM	206006		HARFORD	39 39	76 10W	40	MID	MID				SUSQUEHANNA ELECTRIC CO	
CUMBERLAND 2	222820		ALLEGANY	39 38	78 45W	730	18	07			H	TIMOTHY B THOMAS	
DALECARLIA RESERVOIR	232504		DIS COLUMBIA	38 56	77 7W	150	17	17				U S CORPS OF ENGINEERS	
DAMASCUS 2 SW	233506		MONTGOMERY	39 16	77 14W	722	19	19			H	INACTIVE 01/01/92	
EDGE MONT	277007		WASHINGTON	39 40	77 33W	905	07	07				JOHN W HARNE	
EMMITSBURG 2 SE	290606		FREDERICK	39 41	77 18W	416	17	17			H	LUCILLE K BEALE	
FREDERICK POLICE BRKS	334806		FREDERICK	39 25	77 26W	380	17	17			H	MARYLAND STATE POLICE	
FROSTBURG 2	341507		ALLEGANY	39 40	78 56W	2170	07	07			H	KENNETH L CLOSE	
GLENN DALE BELL STN	367504		PRINCE GEORG	38 58	76 48W	150	16	16			H	USDA PLANT INTRODUCT STN	
HAGERSTOWN	397507		WASHINGTON	39 39	77 44W	660	08	08			H	HAGERSTOWN RESERVOIR	
HANCOCK	403007		WASHINGTON	39 42	78 11W	428	08	08			C	H	TOWN OF HANCOCK
LA PLATA 1 W	508003		CHARLES	38 32	77 0W	140	18	18			H	C RUSSELL LEVERING	
LAUREL 3 W	511104		PRINCE GEORG	39 6	76 54W	400	MID	MID				WA SUBURBAN SANITARY COM	
MC HENRY 2 NW	583208		GARRETT	39 35	79 22W	2680	08	08			C	H	JOSEPH F JOHENNING
MECHANICSVILLE 5 SE	586503		ST MARYS	38 27	76 41W	100	19	19			H	SANDRA J HASTINGS	
MERRILL	589408		GARRETT	39 36	79 5W	1790		09			H	DELWOOD E MERRILL	
MILLERS 4 NE	593406		CARROLL	39 43	76 48W	860	18	18			C	H	BOBBY P MILLER
MILLINGTON 1 SE	598505		KENT	39 16	75 52W	30	18	18				H	HOWARD L HARVEY
NATIONAL ARBORETUM DC	635004		DIS COLUMBIA	38 54	76 59W	50	07	07			H	US NATIONAL ARBORETUM	
OAKLAND 1 SE	662008		GARRETT	39 24	79 24W	2420	17	17			H	BEA J CROSCO	
OWINGS FERRY LANDING	677003		CALVERT	38 41	76 40W	160	17	17			H	JAMES C RASMUSSEN	
POTOMAC FILTER PLANT	727206		MONTGOMERY	39 2	77 15W	270		08				POTOMAC WATER FILT PLANT	
PRINCESS ANNE	733001		SOMERSET	38 13	75 41W	20	17	17				UNIV OF MD EASTERN SHORE	
ROCKVILLE 1 NE	770506		MONTGOMERY	39 6	77 6W	440	MID	17			H	WASHINGTON GAS & ELEC CO	
ROYAL OAK 2 SSW	780602		TALBOT	38 43	76 11W	10	18	18			H	JOHN L SWAINE JR	
SALISBURY	800001		WICOMICO	38 22	75 35W	10	17	17				CITY OF SALISBURY	
SALISBURY FAA ARPT #	800501		WICOMICO	38 20	75 31W	50	MID	MID			H	FAA	
SAVAGE RIVER DAM	806508		GARRETT	39 31	79 8W	1495	08	08			O	C	US CORPS OF ENGINEERS
SNOW HILL 4 N	838001		WORCESTER	38 14	75 23W	30	17	17			H	CURTIS E SHOCKLEY	
TOWSON	887706		BALTIMORE	39 23	76 34W	390	18	18				H	ENVIRONMENTAL TECH GROUP
UNIONVILLE	903006		FREDERICK	39 27	77 11W	430	17	07			C	H	RICHARD GETZANDANNER
UPPER MARLBORO 3 NNW	907004		PRINCE GEORG	38 52	76 47W	100	08	08			O	H	UNIVERSITY OF MARYLAND
VIENNA	914002		DORCHESTER	38 29	75 50W	10	18	18				H	DELMARVA POWER & LIGHT
WESTMINSTER POL BRKS	944006		CARROLL	39 33	76 58W	765	17	17			H	MARYLAND STATE POLICE	
WOODSTOCK	975006		BALTIMORE	39 20	76 52W	460	18	18			H	JOHN A HILTZ	
DELAWARE													
DOVER	273002		KENT	39 9	75 31W	30	17	17			H	STATE DIV OF HIGHWAYS	
GEORGETOWN 5 SW	357002		SUSSEX	38 38	75 27W	45	08	08			O	C	UNIV OF DEL SUBSTATION
GREENWOOD 2 NE	359502		SUSSEX	38 50	75 35W	45	18	18			H	DANIEL M SWARTZENTRUBER	
LEWES	532002		SUSSEX	38 46	75 8W	15	17	17				H	BOARD OF PUBLIC WORKS
NEWARK UNIVERSITY FARM	641001		NEW CASTLE	39 40	75 44W	90	17	17			1	C	UNIV OF DEL AGRIC FARM
WILMINGTON WSO ARPT	R959501		NEW CASTLE	39 40	75 36W	79	MID	MID			C	H	NATIONAL WEATHER SERVICE

SEE REFERENCE NOTES FOLLOWING STATION INDEX

# STATION INDEX

MARYLAND AND  
DELAWARE  
OCTOBER 1992

STATION	INDEX NO.	DIVISION	COUNTY	LATITUDE	LONGITUDE	ELEVATION (IN FEET)	OBSERVATION TIME AND TABLES				OBSERVER
							LOCAL STD TIME				
							TEMP	PRECIP	EVAP	SPECIAL (SEE NOTES)	
WILMINGTON PORTER RSVR	960501		NEW CASTLE	39 46	75 32W	274	MID	MID		H	WATER DEPARTMENT

SEE REFERENCE NOTES FOLLOWING STATION INDEX

# REFERENCE NOTES

MARYLAND AND  
DELAWARE  
OCTOBER 1992

## DEFINITIONS

**STATION NAMES:** Name of the city, town or locality. Figures and letters following the station names indicate the distance in miles and direction from the post office or town community center.

**DIVISIONS:** Areas within a state of similar climatological characteristics. Division averages are calculated using data from stations that record both temperature and precipitation (ie: not precipitation alone).

**NORMALS:** The average value of the meteorological element over a time period. Effective 1 January 1983, the averaging period is 1951 to 1980. The normals for National Weather Service localities have been adjusted so as to be representative for the current observation site.

**MONTHLY DEGREE DAY TOTALS:** One heating (cooling) degree day is accumulated for each whole degree that the daily mean temperature is BELOW (ABOVE) 65 degrees Fahrenheit.

**PRECIPITATION:** Values shown in hundredths of inches are water equivalent totals, i.e. total of liquid and melted frozen precipitation. In the "MONTHLY SUMMARIZED DATA" table the total snow and sleet values shown in tenths of inches are unmelted amounts. The max. depth on ground values of snow and sleet shown in whole inches are cumulative unmelted amounts. The no. of days with .10, .50, 1.00 or more refers to water equivalents.

**TEMPERATURE:** Original and edited temperature values are given in the Daily Temperature Table. Edited values are produced when an original value is missing or when surrounding stations indicate a suspect original value. When a line labeled OBS is present and contains either a daily temperature (suspect) or \*\*\* (missing), the temperature appearing directly above, on the line labeled MAX or MIN, is an edited value. Summary temperature information (averages, departures, extremes, monthly degree day totals) is based on the values labeled MAX/MIN.

**WIND:** (As shown in "Evaporation and Wind" table) The total wind movement in miles over the evaporation pan as determined by an anemometer recorder located 6-8 inches above the pan.

## SYMBOLS AND LETTERS USED IN THE STATION INDEX TABLE

- # Thermometers located in a rooftop shelter.
- // Rain Gage equipped with a windshield.
- AR Observation made "after rain" has occurred.
- C Station is equipped with recording rain gage (R) but values in this bulletin are from a non-recording rain gage unless indicated by an R.
- G Observations appear in "Soil Temperatures" table.
- H Observations appear in "Snowfall and Snow on Ground" table.
- J Station also published as a Local Climatological Data publication.
- MID Observation time is midnight.
- MO Rain gage read once monthly, usually the last day.
- OC Rain gage readings vary from a few weeks to several months.
- R Amounts from recording rain gage.
- SR Observation time near sunrise.
- SS Observation time near sunset.
- VAR Observation time varies.
- WI Rain gage read weekly or irregularly.
- WM Rain gage read weekly and last day of month.

## SYMBOLS AND LETTERS USED IN THE DATA TABLES

(DAILY DATA ARE FOR THE 24 HOURS IMMEDIATELY PRECEDING OBSERVATION TIME.)

BLANK entries in the "Monthly Summarized Data" table indicate no record. BLANK entries in the "Daily Precipitation" and "Snowfall and Snow on Ground" tables indicate zero.

BLANK entries in the "Daily Temperature" table indicate a missing record where an edited value could not be determined. (See \*\*\* below)

- No record. Data not recorded, determined unreliable by quality control checks, or not received in time for publication.

+ Precipitation or temperature extremes occurred on one or more previous dates during the month.

\*\*\* Missing original temperature which has been estimated during edit.

\* Rain gage not read. Precipitation is included in the amount following the asterisks. Time distribution not known. A \* preceding the monthly total indicates precipitation amount is being carried forward to next months total, and may include amounts from the previous months).

// Rain gage equipped with a windshield.

A Amount of precipitation is the total of observer's entries for the current month. It may include precipitation that occurred during the previous month. Refer to earlier bulletin to determine date of last reading. (HAWAII stations)

B Adjusted monthly value (estimated), (1-7 missing values for wind and evaporation).

M Insufficient or partial data. M is appended to average and/or total values computed with 1-9 daily values missing. M appears alone if 10 or more daily values are missing, (8 or more for wind and evaporation).

R Amounts from recording rain gage.

T Trace. An amount too small to measure.

V Includes total for previous month(s). (See \* above)

Seasonal Tables: Monthly and seasonal snowfall and heating degree days for the 12 months ending with the June data are published in the July issue of this bulletin. Cooling degree days for the calendar year are published in the "Climatological Data Annual Summary".

The graphic displays appearing in this publication were first produced for the January 1987 data month. The types of graphs and the information they portray may vary from month to month and from state to state in order to highlight climatic features of state, regional, and seasonal interest. Some graphs present information for "clusters". A cluster is a group of up to four (4) adjacent divisions that comprise an area of similar climate.

Information concerning the history of changes in locations, exposure, etc. of substations is kept on file at the National Climatic Data Center. Historical information for regular National Weather Service Offices may be obtained from the "Local Climatological Data" annual publication. The contents of this publication may be reprinted or otherwise used freely, with proper credit to the National Climatic Data Center. The data are also available in digital form on magnetic tape and diskette.

SUBSCRIPTION, PRICE AND ORDERING INFORMATION AVAILABLE FROM:

NATIONAL CLIMATIC DATA CENTER  
FEDERAL BUILDING  
ASHEVILLE, NC 28801-2696

USCOMM-NOAA-ASHEVILLE, N.C. OCTOBER 1992-0585

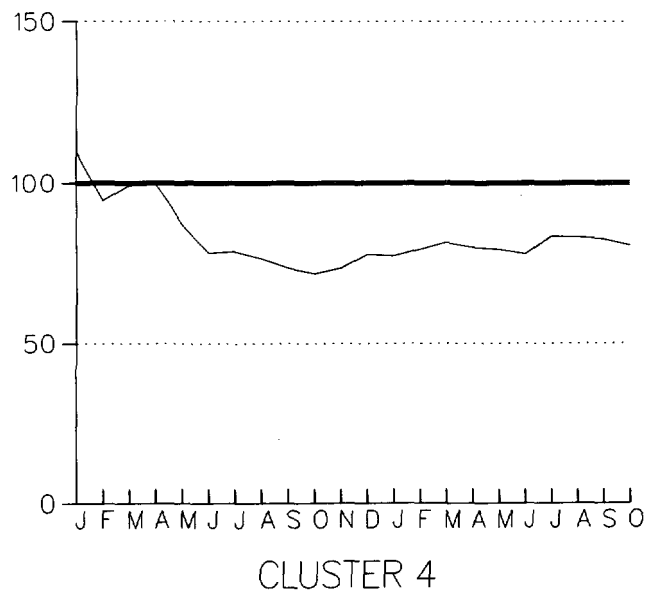
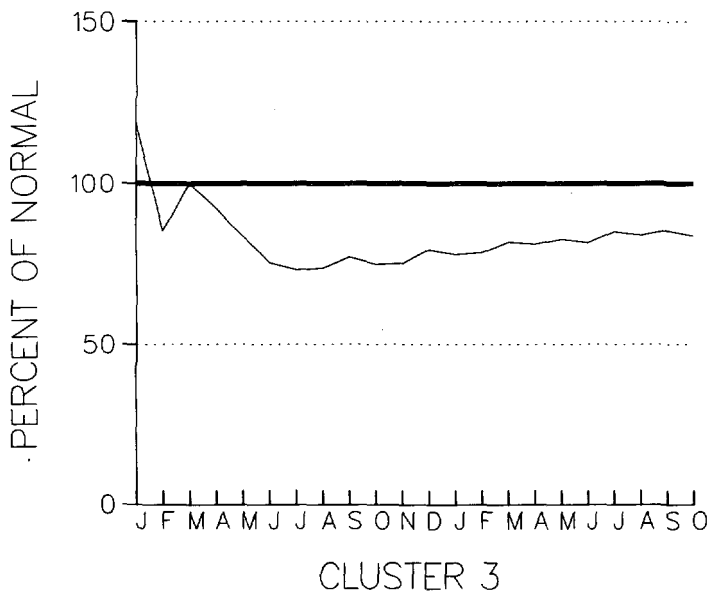
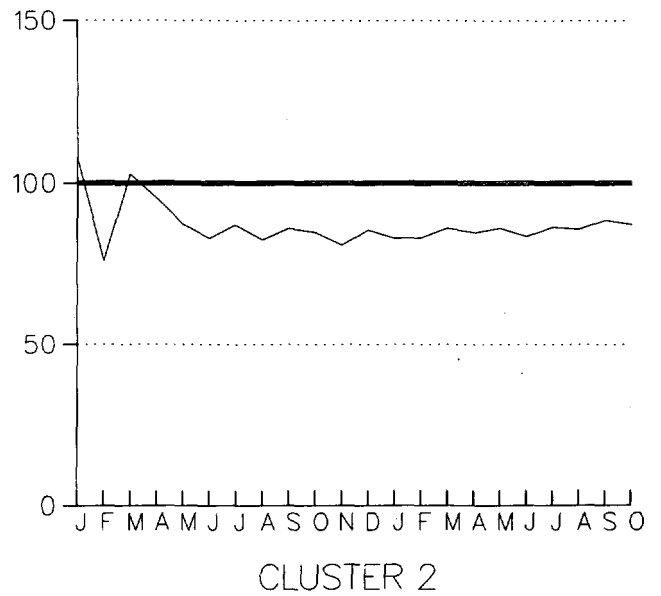
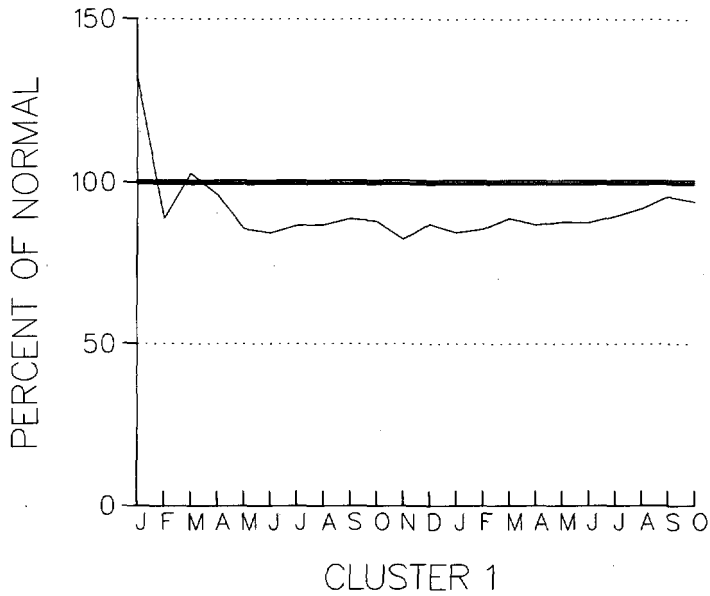
CUMULATIVE PRECIPITATION DEPARTURES FROM NORMAL (1951-1980)  
 FOR THE LAST 22 MONTHS  
 ENDING OCTOBER 1992  
 MARYLAND

CLUSTER 1 -DIVISION(S):  
 SOUTHERN EASTERN SHORE 01  
 CENTRAL EASTERN SHORE 02  
 LOWER SOUTHERN 03

CLUSTER 2 -DIVISION(S):  
 UPPER SOUTHERN 04  
 NORTHERN EASTERN SHORE 05

CLUSTER 3 -DIVISION(S):  
 NORTHERN CENTRAL 06  
 APPALACHIAN MOUNTAIN 07

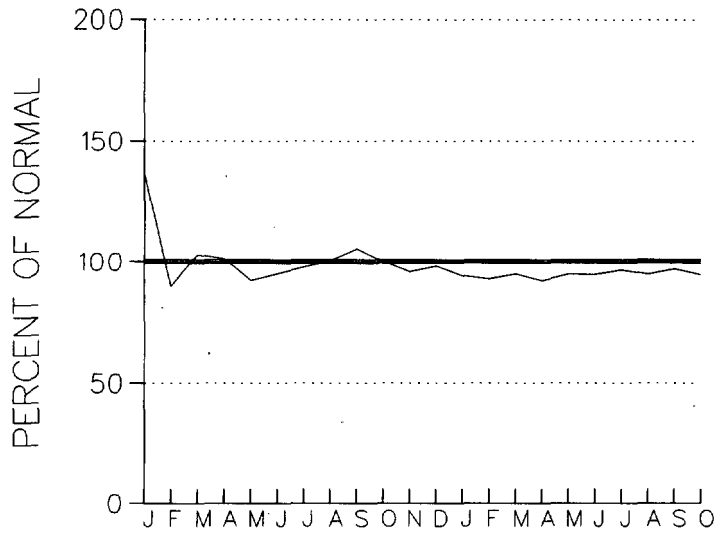
CLUSTER 4 -DIVISION(S):  
 ALLEGHENY PLATEAU 08



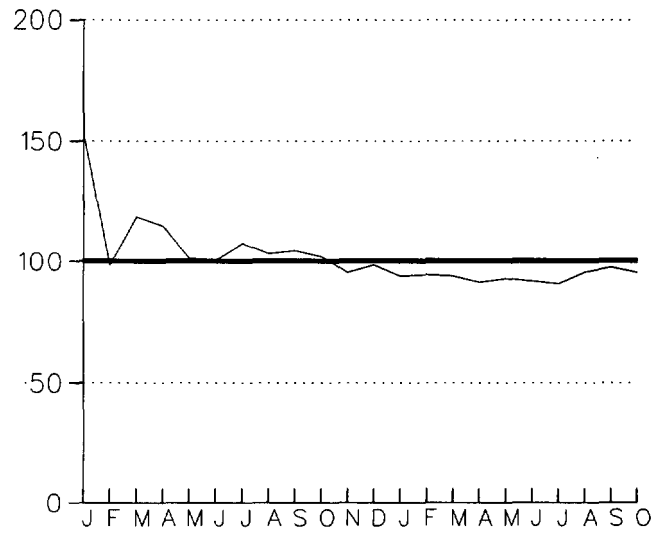
CUMULATIVE PRECIPITATION DEPARTURES FROM NORMAL (1951-1980)  
FOR THE LAST 22 MONTHS  
ENDING OCTOBER 1992  
DELAWARE

CLUSTER 1 - DIVISION(S):  
NORTHERN 01

CLUSTER 2 - DIVISION(S):  
SOUTHERN 02



CLUSTER 1



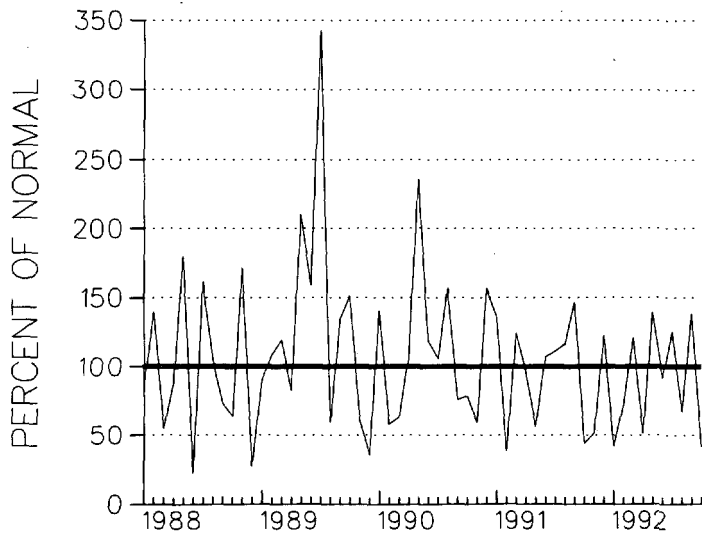
CLUSTER 2



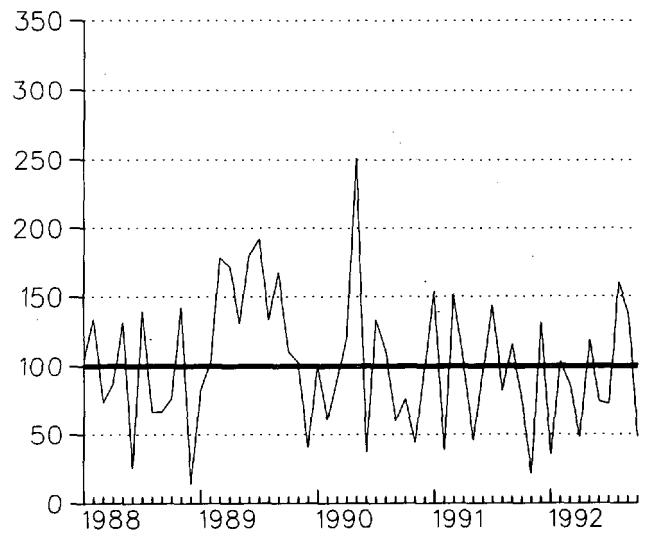
PRECIPITATION DEPARTURES FROM NORMAL (1951-1980)  
FOR THE 58 MONTHS  
ENDING OCTOBER 1992  
DELAWARE

CLUSTER 1 - DIVISION(S):  
NORTHERN 01

CLUSTER 2 - DIVISION(S):  
SOUTHERN 02



CLUSTER 1



CLUSTER 2

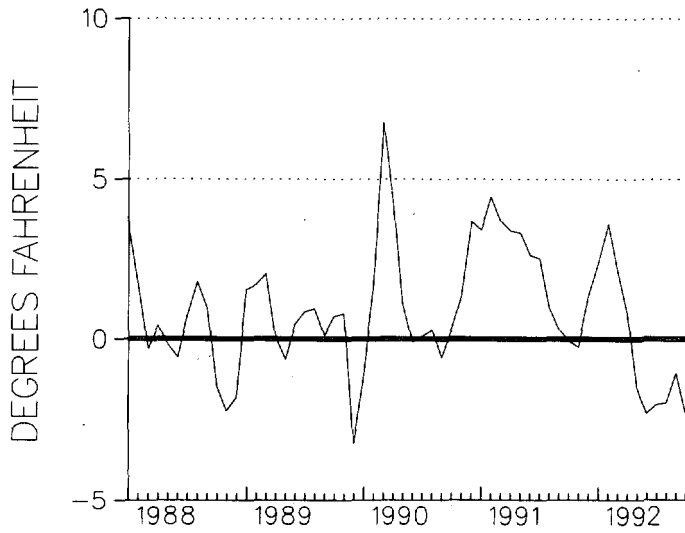
TEMPERATURE DEPARTURES FROM NORMAL (1951-1980)  
 THREE MONTH RUNNING MEAN  
 FOR THE 58 MONTHS ENDING WITH OCTOBER 1992 DATA  
 MARYLAND

CLUSTER 1 - DIVISION(S):  
 SOUTHERN EASTERN SHORE 01  
 CENTRAL EASTERN SHORE 02  
 LOWER SOUTHERN 03

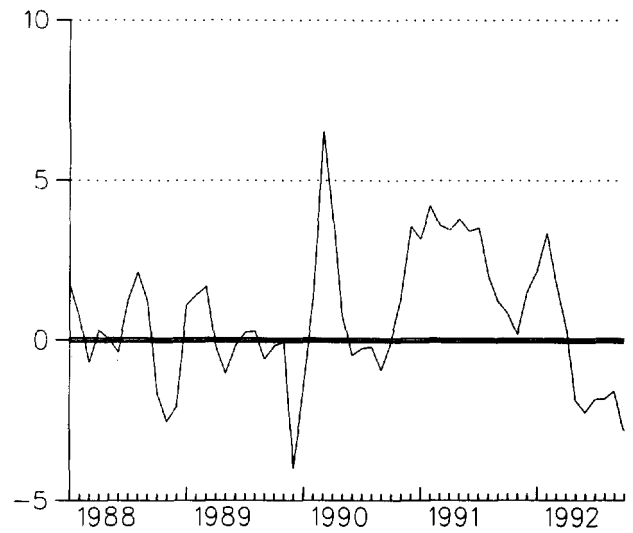
CLUSTER 2 - DIVISION(S):  
 UPPER SOUTHERN 04  
 NORTHERN EASTERN SHORE 05

CLUSTER 3 - DIVISION(S):  
 NORTHERN CENTRAL 06  
 APPALACHIAN MOUNTAIN 07

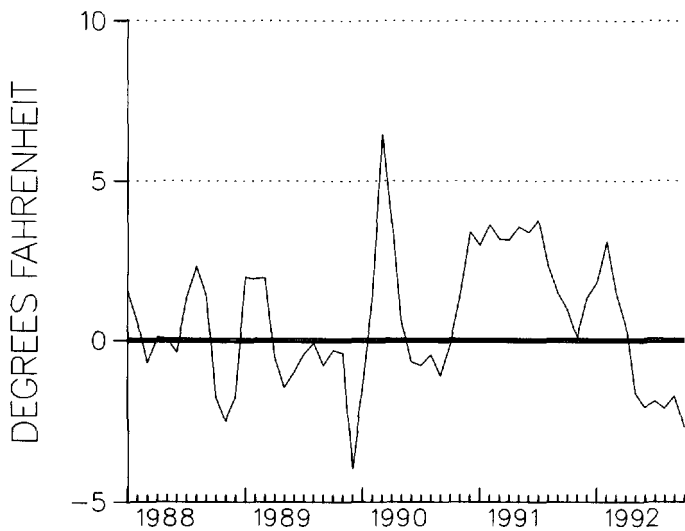
CLUSTER 4 - DIVISION(S):  
 ALLEGHENY PLATEAU 08



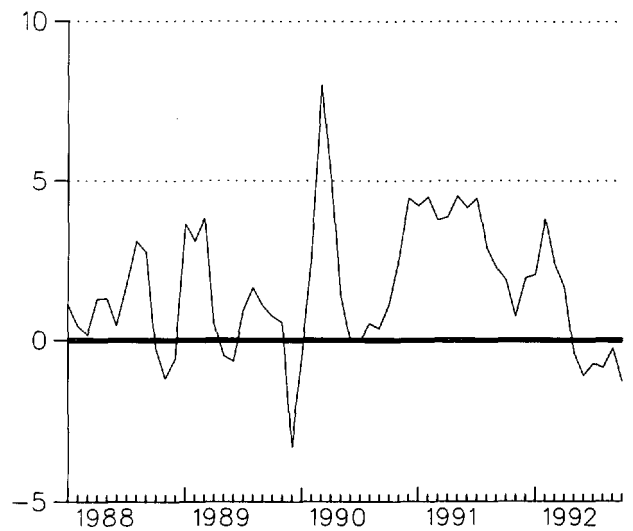
CLUSTER 1



CLUSTER 2



CLUSTER 3

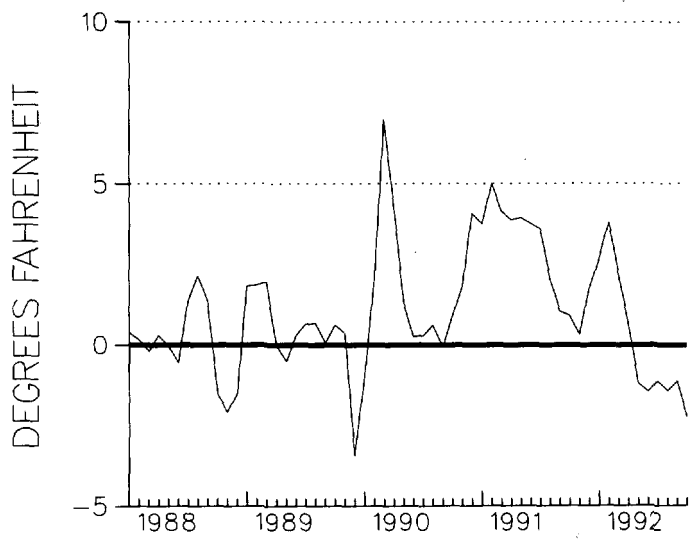


CLUSTER 4

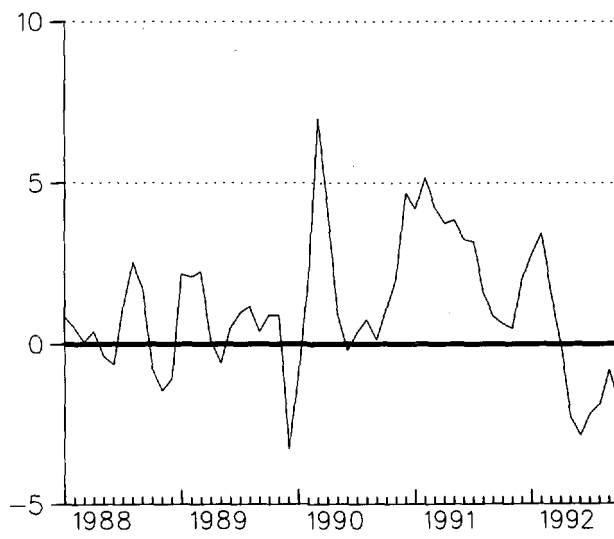
TEMPERATURE DEPARTURES FROM NORMAL (1951-1980)  
THREE MONTH RUNNING MEAN  
FOR THE 58 MONTHS ENDING WITH OCTOBER 1992 DATA  
DELAWARE

CLUSTER 1 -DIVISION(S):  
NORTHERN 01

CLUSTER 2 -DIVISION(S):  
SOUTHERN 02



CLUSTER 1



CLUSTER 2

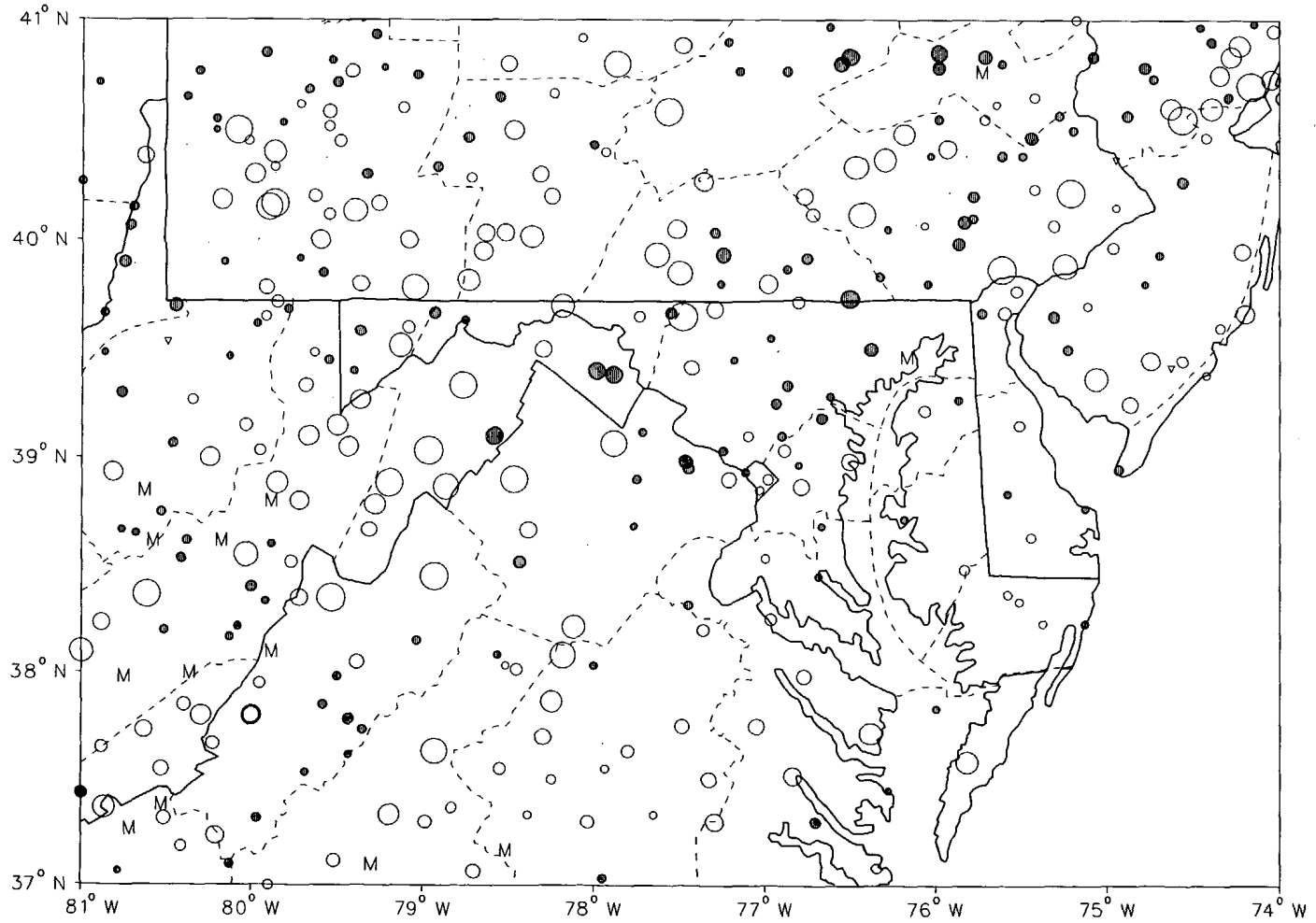
MONTHLY PRECIPITATION DEPARTURE FROM  
THE DIVISIONAL AVERAGE FOR  
OCTOBER 1992  
MARYLAND & DELAWARE

M DENOTES INCOMPLETE DATA FOR THE MONTH

∇ ZERO DEPARTURE

○ ○ ○ ○ 5,10,20,... 50% OR MORE BELOW AVERAGE

● ● ● ● 10,20,40,...100% OR MORE ABOVE AVERAGE

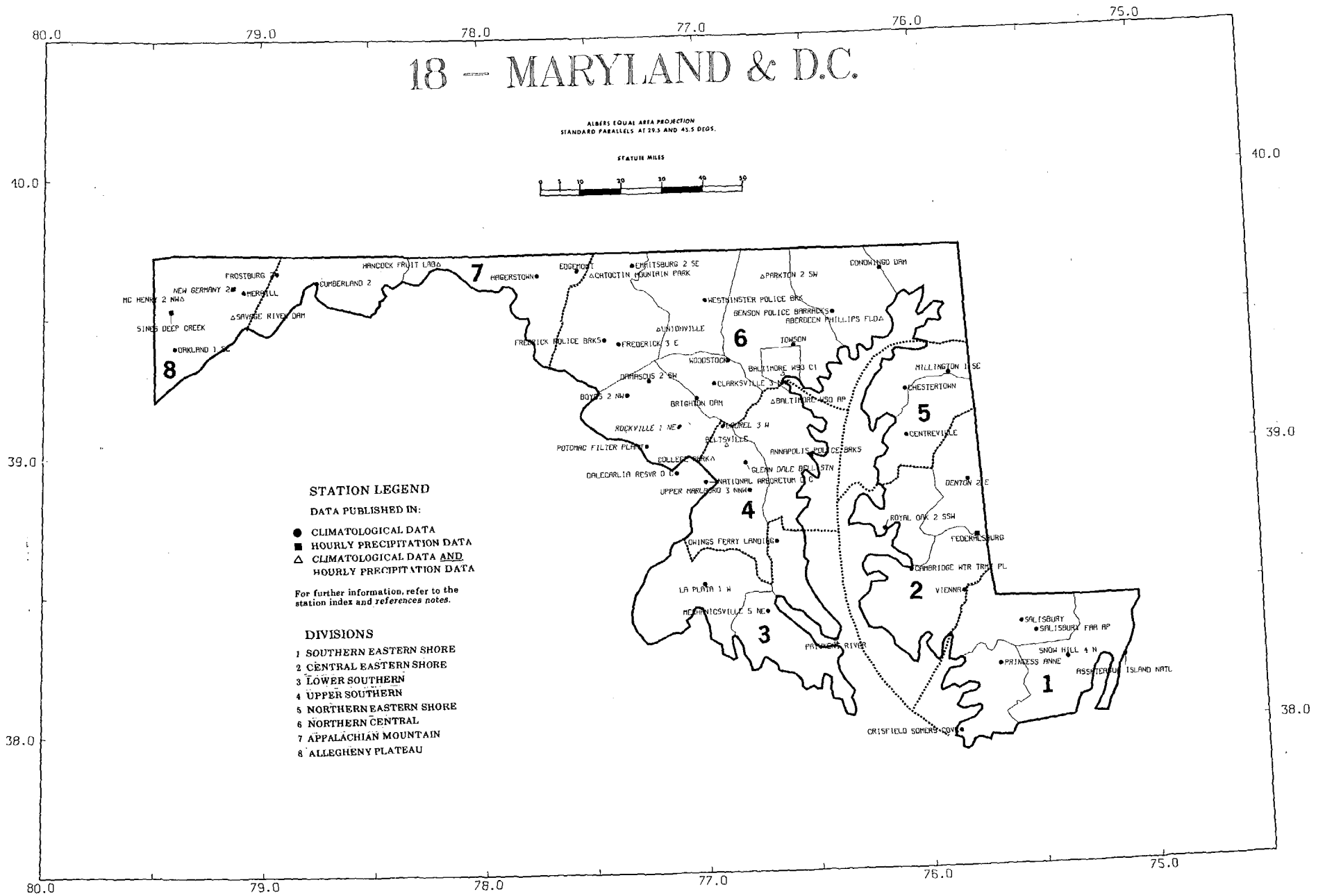


CIRCLE DIAMETER IS PROPORTIONAL TO DEPARTURE ON A CONTINUOUS SCALE

# 18 - MARYLAND & D.C.

ALBERS EQUAL AREA PROJECTION  
STANDARD PARALLELS AT 29.5 AND 45.5 DEGS.

STATUTE MILES



76.0  
40.0

75.0

40.0

# 07 - DELAWARE

ALBERS EQUAL AREA PROJECTION  
STANDARD PARALLELS AT 39.5 AND 45.5 DEGS.

STATUTE MILES



## STATION LEGEND

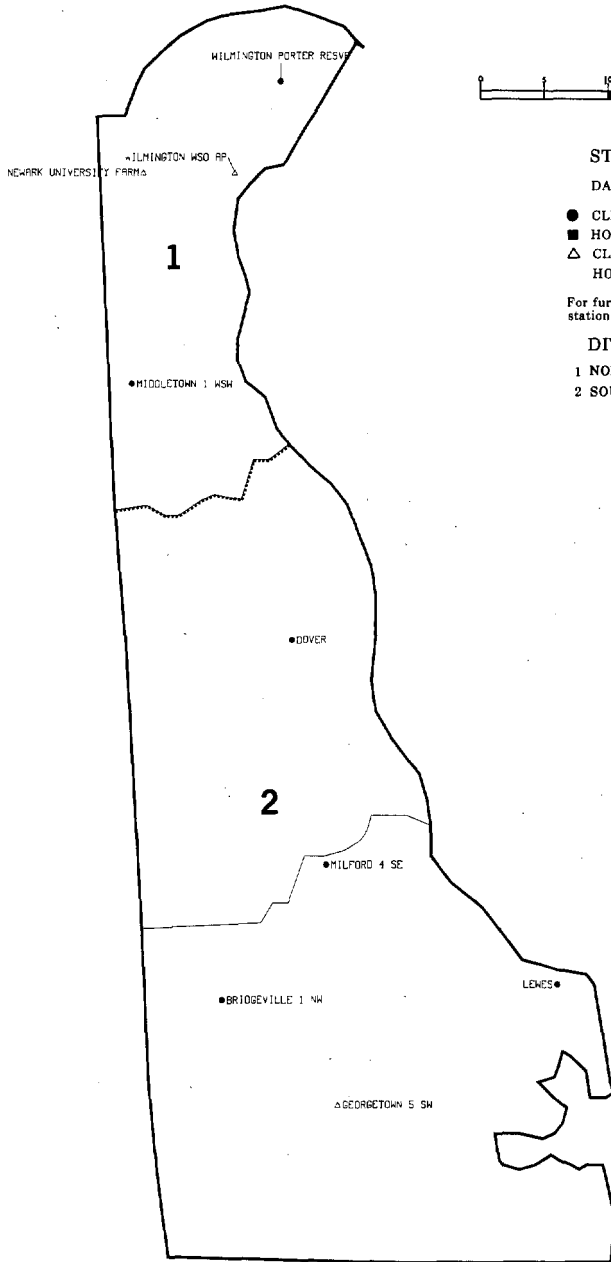
DATA PUBLISHED IN:

- CLIMATOLOGICAL DATA
- HOURLY PRECIPITATION DATA
- △ CLIMATOLOGICAL DATA AND HOURLY PRECIPITATION DATA

For further information, refer to the station index and references notes.

## DIVISIONS

- 1 NORTHERN
- 2 SOUTHERN



39.0

39.0

38.0  
76.0

75.0

38.0

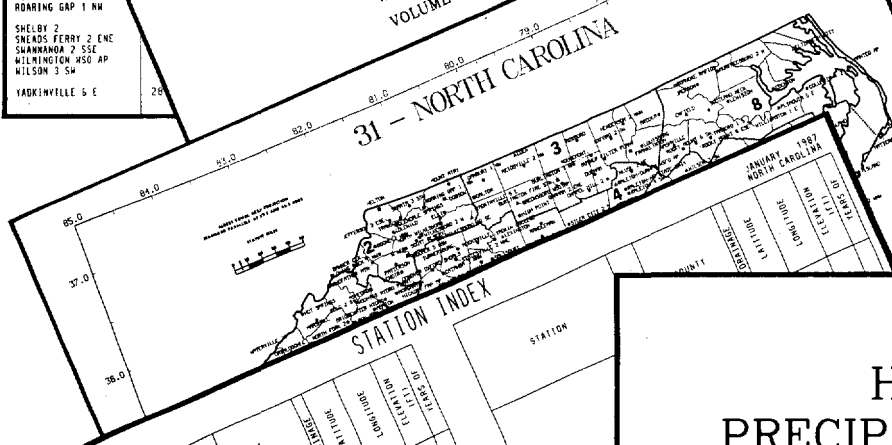
MONTHLY PRECIPITATION TOTALS													ANNUAL 1987 NORTH CAROLINA				
STATION	ANNUAL	MONTH															
		JAN	FEB	MAR	APR	MAY	JUN	JUL	AUG	SEP	OCT	NOV	DEC				
NORTH CAROLINA																	
ASHEVILLE WSO AP	34.57	1.11	1.85	2.75	0.57	3.55								4.19	5.26	4.28	
ASHEVILLE	25.57	0.71	1.57	1.81	0.53									2.77	4.15	2.94	
ASHFORD	36.74E	1.20	2.70	2.90	0.54E									3.80	4.30	4.60	
BADIN			1.20	2.60	1.20									2.40	4.10	2.90	
B EVERETT JORDAN DAM		1.70	1.50	3.60											1.70		
BOOMER 5 NSH		1.00	2.10														
BURLINGTON 3 NNE		0.80	1.25														
CAPE WALTERS WSO	48.86		5.75														
CARTHAGE 8 SE																	
CATALDOUCHEE			0.53														
CHARLOTTE WSO AP	26.91																
CLINTON 2 NE																	
DALTON																	
DOBSON																	
EDEN																	
ELI																	
ELI 2																	
ELI 3																	
FRANK GREENS																	
GREENVILLE																	
HILLTON																	
HODUCKEN																	
LAKE LURE																	
LADYBURG																	
LEXINGTON																	
HODGESVILLE 2																	
HORCHARD CITY																	
MOUNT PLEASANT																	
N WILKESBORO 12																	
POLKTON 2 NE																	
QUEBEC																	
RALEIGH-DURHAM WSO																	
ROANOKE RAPIDS																	
ROARING GAP 1 NW																	
SHELBY 2																	
SNEADS FERRY 2 ENE																	
SWANSON 2 SSE																	
WILMINGTON WSO AP																	
WILSON 3 SW																	
YADKINVILLE 5 E	26																

# HOURLY PRECIPITATION DATA NORTH CAROLINA

DECEMBER 1987  
WITH ANNUAL SUPPLEMENT  
VOLUME 37 NUMBER 12

A WORLD OF CLIMATIC INFORMATION FOR . . .

- \* Attorneys
- \* Colleges & Universities
- \* Construction
- \* Consultants
- \* Governmental Agencies
- \* Industry
- \* Insurance Companies
- \* Public Utilities
- \* Research & Development
- \* Energy



STATION	COUNTY	DATE	PRECIPITATION (INCHES)
NORTH CAROLINA			
ASHEVILLE WSO AP			
ASHFORD			
B EVERETT JORDAN DAM			

STATION	MAXIMA FOR MEASUREMENT PERIODS OF					
	15 MINUTES	30	60	1	2	3
NORTH CAROLINA						
ASHEVILLE WSO AP						
ASHFORD						
B EVERETT JORDAN DAM						

STATION	HOURLY PRECIPITATION											
	A.M. HOUR ENDING											
	1	2	3	4	5	6	7	8	9	10	11	12
NORTH CAROLINA												
ASHEVILLE WSO AP												
ASHFORD												
B EVERETT JORDAN DAM												

# HOURLY PRECIPITATION DATA NORTH CAROLINA

JANUARY 1987  
VOLUME 37 NUMBER 1



**HOURLY PRECIPITATION DATA** is published monthly and presents daily, hourly, and maximum short duration data for recording rain gage stations in each state except Alaska. Also included are a published station index and a locator map for the state. In addition to the regularly published data, the December publication contains a tabulation of monthly and annual total precipitation amounts as an annual supplement.

**SHELF STOCK** of the printed publication is maintained only for the most recent 3 years. Earlier years are available on microfiche or paper copies reproduced from microfiche. The data is also available in digital form - on magnetic tape or floppy disk.

call or write to the  
**NATIONAL CLIMATIC DATA CENTER**  
37 Battery Park Avenue, Asheville, NC 28801-2696  
Phone (704) 259-0682 or (704) CLIMATE

*To change your address, please return a copy of the mailing label along with your new address.*

CD  
VALIDATED BY:

Gloria Anderson  
Betty Edstrom  
Rudy Kittel  
Joyce Morgan  
Beulah Taylor

Grant Goodge - Chief  
Quality Control

National Climatic Data Center  
Federal Building  
37 Battery Park Avenue  
Asheville NC 28801-2733

OFFICIAL BUSINESS  
PENALTY FOR PRIVATE USE \$300  
FORWARD AND ADDRESS CORRECTION

<p>BULK RATE POSTAGE &amp; FEES PAID United States Department of Commerce NOAA Permit No. G - 19</p>
--