



ISSN 0145-0549

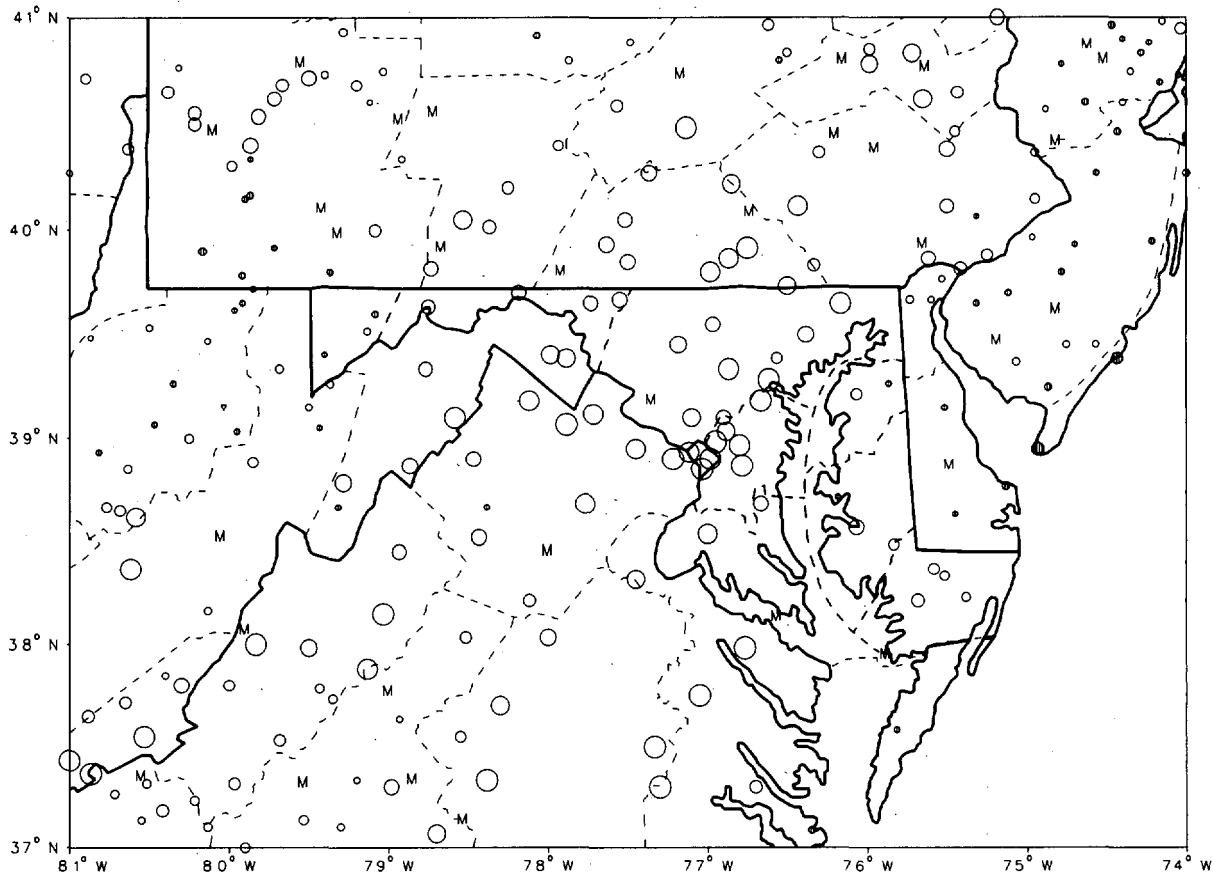
CLIMATOLOGICAL DATA MARYLAND AND DELAWARE

APRIL 1991

VOLUME 95 NUMBER 4

MONTHLY PRECIPITATION DEPARTURE FROM INDIVIDUAL STATION NORMALS (1951-1980)

- M INCOMPLETE DATA FOR THE MONTH
- ∇ EXACTLY NORMAL
- ○ ○ ○ ○ 5,10,20... 50% OR MORE BELOW NORMAL
- ● ● ● ● 10,20,40... 100% OR MORE ABOVE NORMAL



CIRCLE DIAMETER IS PROPORTIONAL TO DEPARTURE ON A CONTINUOUS SCALE

"I CERTIFY THAT THIS IS AN OFFICIAL PUBLICATION OF THE NATIONAL OCEANIC AND ATMOSPHERIC ADMINISTRATION (NOAA). IT IS COMPILED USING INFORMATION FROM WEATHER OBSERVING SITES SUPERVISED BY NOAA/NATIONAL WEATHER SERVICE AND RECEIVED AT THE NATIONAL CLIMATIC DATA CENTER (NCDC), ASHEVILLE, NORTH CAROLINA 28801."

Kenneth D. Walden

DIRECTOR, NATIONAL CLIMATIC DATA CENTER

noaa

NATIONAL
OCEANIC AND
ATMOSPHERIC ADMINISTRATION

NATIONAL
ENVIRONMENTAL SATELLITE, DATA
AND INFORMATION SERVICE

NATIONAL
CLIMATIC DATA CENTER
ASHEVILLE NORTH CAROLINA

TEMPERATURE AND PRECIPITATION EXTREMES

MARYLAND AND
DELAWARE
APRIL 1991

MARYLAND
HIGHEST TEMPERATURE 93
LOWEST TEMPERATURE 18
GREATEST TOTAL PRECIPITATION 4.85
LEAST TOTAL PRECIPITATION 1.27
GREATEST 1 DAY PRECIPITATION 1.96
GREATEST TOTAL SNOWFALL 3.0
GREATEST DEPTH OF SNOW OR ICE 1

DELAWARE
HIGHEST TEMPERATURE 88
LOWEST TEMPERATURE 27
GREATEST TOTAL PRECIPITATION 4.24
LEAST TOTAL PRECIPITATION 2.60
GREATEST 1 DAY PRECIPITATION 2.28

APRIL 9
APRIL 3

APRIL 21
APRIL 22

APRIL 9
APRIL 4+

APRIL 21

UPPER MARLBORO 3 NNW
OAKLAND 1 SE
MC HENRY 2 NW
COLLEGE PARK
PRINCESS ANNE
MC HENRY 2 NW
MC HENRY 2 NW

DOVER
3 STATIONS
LEWES
GREENWOOD 2 NE
LEWES

DAILY PRECIPITATION (INCHES)

MARYLAND AND
DELAWARE
APRIL 1991

STATION	TOTAL	DAY OF MONTH																																
		1	2	3	4	5	6	7	8	9	10	11	12	13	14	15	16	17	18	19	20	21	22	23	24	25	26	27	28	29	30	31		
MARYLAND																																		
SOUTHERN EASTERN SHORE 01																																		
ASSATEAGUE IS NATL SEA	1.37													.35																				
PRINCESS ANNE	2.56													.35	.12	.03				.05	.05	.01	.45	.25		.01	.04					.10		.01
SALISBURY	2.73					.02	T						.08	.29	.13	.01			.03	.03		.11	1.60	.10		.27	.07						.02	T
SALISBURY FAA ARPT	2.77					.02							.25	.20	.28			.04				.56	1.23	.08		.08						T	.02	T
SNOW HILL 4 N	2.97					T	T						.06	.22	.28				T			.18	1.84	.05		.07	T				T	.25	.02	
CENTRAL EASTERN SHORE 02																																		
CAMBRIDGE WATER TRMT P	2.30					.05	T						.12	.38	.11							.25	.85	.14		.22						.05	.05	
ROYAL OAK 2 SSW	3.45					.07							.15	.44	.13			T				.16	1.49	.07		.44	.08			T	.47	.03	T	
VIENNA	2.82												.23	.20	.10	.06						.19	1.51	.15		.33						.05		
LOWER SOUTHERN 03																																		
LA PLATA 1 W	1.82					.11	T						.30	.79	.25							.05	.05	.05		.07					.01	.09	.05	
MECHANICVILLE 5 NE	1.33					.05	.02						.28	.72	.11	T						.02	T	.04		.05					T	.25	.04	
UPPER SOUTHERN 04																																		
OWINGS FERRY LANDING	2.30					.04	.04						.21	.60	.35							.08	.11	.07		.15					.20	.09	.36	
UPPER SOUTHERN 04																																		
ANNAPOLIS POLICE BRKS	1.96					.06	.03						.21	.38	.14							.05	.61	.05		.28					.05	.02	.08	
BALTIMORE WSO ARPT	1.68	T				.05					T		.43	.09	.26			T				.05	.50	.03		.05					T	.03	.01	
BELTSVILLE	2.09					T	.10				T			.56	.12		.26	T		T		.03	.02	.17		T	.10				.25	.35	.13	
COLLEGE PARK	1.27		T			.03					.01			.62	.18											T	.05				.22	.06	.10	
DALECARLIA RESVR DC	2.01					.05							.32	.48	.24							.12	.02	.10		.03					.42	.09	.14	
GLENN DALE BELL STN	1.86	.01				.06					.08		.10	.50	.29	.02						.04	.18	.13		.14	.02				.16	.07	.06	
LAUREL 3 W	2.43					.11							.70	.27	.29							.60	.28								.01	.05	.01	
NATIONAL ARBORETUM DC	1.74													.69	.07	.19						.03	.01	.05		.03	.01				.06	.38	.12	
UPPER MARLBORO 3 NNW	1.61					.02								.66	.07	.20						.13	.15			.12	.01				.01	.08	.09	
NORTHERN EASTERN SHORE 05																																		
CHESTERTON	2.65	T				.08					.01		.44	.05	.26			T				.02	1.08	.08		.61					.02	.09	T	
MILLINGTON 1 SE	3.32					.06					.10		T	.66	.41							.10	1.00	.40		.56	.03				T		.02	T
NORTHERN CENTRAL 06																																		
ABERDEEN PHILLIPS FLD	2.55	.26				.02	T						*	*	.98	T			T		*	*	.82		.45	.02					T	.02	.02	
BALTIMORE WSO CITY	1.81					.05							.40	.06	.42							.07	.55			.24					.02	.02	.02	
BENSON POLICE BARRACKS	2.66	.03				.05	.03						.18	.40	.53	.02						.03	.80	.21		.33	.01				.03	.03	.01	
CATOCTIN MOUNTAIN PARK	2.95	.02				.17					.29		.37	.14	.62							.34	.53	.22		.07					.15	.03	.03	
CLARKSVILLE 3 NNE	1.92	T				.04					T		.25	.34	.58							.09	.37	.16		.02				T	.05	.02	.02	
CONOWINGO DAM	2.04												.25	.02	*	.47						.04	.91	.03		.30					.02	.02	.02	
DAMASCUS 2 SW	2.43	.01				.10					.06		.67	.25	.57							.22	.33	.05		.05					.10	.02	.02	
EMMITSBURG 2 SE	1.95					.10	.05						.35	.23	.67							T	.20	.20		.10					T	.02	.03	
FREDERICK POLICE BRKS																																		
MILLERS 4 NE	1.88	T	T			T	.12				.11	.05	.36	.03	.60							.25	.06	.20		T					.10	.02	.02	
POTOMAC FILTER PLANT	2.60	.01				.06	.02					.06	.21	.23	.59			T				.07	.59	.31		.41					.02	.02	.02	
ROCKVILLE 1 NE	1.92					.10							.62	.12	.37							.15	.15								.10	.10	.10	
TOWSON	1.99					.12					T		.69	.19	.44							.15	.23	T		T				.09	.05	.03	.03	
TOWSON	3.30	*	*	*	*	.50				*	*	*	*	*	*	*						.12	.76	.15		.31					.02	.02	.03	.03
UNIONVILLE																																		
WESTMINSTER POLICE BRK	2.26	T				.08					.02		.38	.25	.55							.21	.50	.13		.06					.08	.06	T	
WOODSTOCK	2.62	.14	T			.12	.10				.06		.25	.18	.56	T						.12	.28	.40		.35					.06	.06	T	
WOODSTOCK	1.97					.04					.03		.34	.30	.53							.09	.41	.13		T	T			.02	.06	.02	.02	
APPALACHIAN MOUNTAIN 07																																		
CUMBERLAND 2	2.50	.02	T			.07	.03				.33		.04	1.03	.27	.35						.18	.03	.04		.03					T	.08	.08	
EDGEMONT	2.53	.02	.03			.02	.15				.14			.44	.38	.27						.42	.02	.52		.03	T				.04	.08	.08	
FROSTBURG 2																																		
HAGERSTOWN	3.96	T	.03	T		.09	.06				.03	.43	.05	1.38	.53	.45						.32	.11	.13		.05	.08	.09		.01	T	T	.12	
HANCOCK	2.52		.03			*	*	*			.16	.33	.14	.35	.39	.35						.26	.04	.31		.02	.02			*	*	*	.12	
HANCOCK	2.32	.01				.05	.05				.19		.05	.56	.40	.31						.21	.06	.24		.09					.03	.07	.07	

SEE REFERENCE NOTES FOLLOWING STATION INDEX

DAILY PRECIPITATION (INCHES)

MARYLAND AND
DELAWARE
APRIL 1991

STATION	TOTAL	DAY OF MONTH																															
		1	2	3	4	5	6	7	8	9	10	11	12	13	14	15	16	17	18	19	20	21	22	23	24	25	26	27	28	29	30	31	
ALLEGHENY PLATEAU 08																																	
MC HENRY 2 NW	4.85	.12	.05		.06	.05			.09	.57			.13	1.85	.20	.56					.14	.25	.27	.02	.05	.25				.09	.10		
MERRILL	4.15				.10					.45			.40	1.77	.40	.24					.24	.05	.20		.10	.15				.03	.02		
OAKLAND 1 SE	4.53	T			.23				.07	.48			.79	1.05	.54					.09	.26	.12	.36		.24	.09		.05	.07	.09			
SAVAGE RIVER DAM	3.27	.07	.06		.03	.02			T	.27	T		.21	1.55	.34						.24	.03	.05		.05	.09		T	.11	T	.15		
DELAWARE																																	
NORTHERN 01																																	
NEWARK UNIVERSITY FARM	3.21	.11			.05								.18	.31	.50							1.48	.18		.39					.01			
WILMINGTON WSO ARPT R	3.28	.11			.03				T				.50	.02	.44			.02			.06	1.55	.02		.50				.03	T			
WILMINGTON PORTER RSVR	3.75	.15			.06								.60	.09	.52						.07	1.71	.06		.47				.02				
SOUTHERN 02																																	
DOVER	3.42				.07	.03							.17	.30	.63						.10				.53								
GEORGETOWN 5 SW	3.28												.08	.38	.06	.21					.10	1.15	.46			.77							
GREENWOOD 2 NE	2.60	T	T		.02						T		.15	.30	.11						.11	1.25	.05		.60								
LENES	4.24				.03								.07	.37	.09	.01																	
MILFORD 4 SE	H	-	-	-	-	-	-	-	-	-	-	-	-	-	-	-	-	-	-	-	-	-	-	-	-	-	-	-	-	-	-	-	

SEE REFERENCE NOTES FOLLOWING STATION INDEX

DAILY TEMPERATURES (°F)

MARYLAND AND
DELAWARE
APRIL 1991

STATION	OB. TIME	MAX/MIN	DAY OF MONTH																															AVERAGE
			1	2	3	4	5	6	7	8	9	10	11	12	13	14	15	16	17	18	19	20	21	22	23	24	25	26	27	28	29	30	31	
MARYLAND																																		
SOUTHERN EASTERN SHORE 01																																		
ASSATEAGUE IS NATL SEA	17	MAX OBS	57	55	60	64	70	71	82	75	75	81	68	49	50	49	60	62	74	64	49	50	54	60	57	60	62	62	67	75	71	75	63.6	
		MIN OBS	35	36	35	38	45	45	45	51	64	63	40	42	40	44	44	47	48	44	42	47	42	38	42	48	43	50	55	52	48	51	45.5	
PRINCESS ANNE	17	MAX OBS	61	59	58	64	63	74	83	85	83	82	74	62	61	55	65	76	81	81	55	52	55	59	66	73	71	74	79	79	77	81	69.6	
		MIN OBS	28	38	25	27	42	42	47	54	65	62	41	38	34	44	46	50	54	49	42	38	42	39	38	43	45	44	52	63	53	57	44.7	
SALISBURY	17	MAX OBS	59	58	57	66	65	75	84	86	84	82	74	63	60	55	66	76	82	84	53	53	52	60	66	72	73	73	79	80	77	81	69.8	
		MIN OBS	32	34	31	33	45	49	51	57	68	65	43	41	39	46	48	51	57	50	44	46	45	45	43	49	46	50	56	63	53	56	47.9	
SALISBURY FAA ARPT	MID	MAX OBS	58	55	57	65	65	75	83	85	82	74	62	60	54	53	67	76	82	53	52	52	51	59	66	73	73	75	79	77	76	80	67.3	
		MIN OBS	29	28	27	29	44	50	52	57	67	50	42	36	36	46	47	50	53	45	44	46	45	45	40	45	46	47	51	53	53	56	45.3	
SNOW HILL 4 N	18	MAX OBS	60	55	57	65	67	77	85	87	85	82	75	62	59	54	69	78	88	80	51	53	53	61	69	75	74	76	81	80	74	83	70.6	
		MIN OBS	28	29	26	27	42	50	48	54	65	64	40	37	34	47	48	49	51	49	44	46	45	45	40	45	45	45	52	59	53	56	45.4	
CENTRAL EASTERN SHORE 02																																		
CAMBRIDGE WATER TRMT P	16	MAX OBS	60	60	57	64	62	77	86	87	85	82	69	58	56	50	58	76	82	80	55	50	52	60	68	73	69	74	81	78	73	80	68.7	
		MIN OBS	30	34	39	34	45	48	49	56	65	56	45	42	42	45	46	48	52	48	43	45	45	44	38	49	46	49	57	63	52	56	47.1	
ROYAL OAK 2 SSW	18	MAX OBS	59	56	56	61	59	73	82	83	81	75	67	58	55	52	55	74	80	73	54	51	51	58	66	71	70	72	80	78	71	79	66.7	
		MIN OBS	31	37	30	36	50	49	48	54	66	57	43	39	41	45	46	48	51	50	44	46	45	45	40	51	48	49	57	61	53	57	47.2	
VIENNA	18	MAX OBS	61	60	58	63	62	77	85	85	82	80	76	64	60	60	61	71	82	65	52	50	50	57	65	65	65	73	71	72	77	74	67.3	
		MIN OBS	25	29	25	31	41	44	47	52	59	56	38	34	36	39	37	35	43	35	40	36	35	39	38	45	41	43	52	58	48	54	41.2	
LOWER SOUTHERN 03																																		
LA PLATA 1 W	18	MAX OBS	60	56	62	70	63	77	88	90	88	84	75	64	59	50	56	80	87	83	56	52	54	62	71	75	73	76	83	80	73	81	70.9	
		MIN OBS	29	32	28	32	50	42	47	54	66	56	41	39	43	38	37	37	53	51	46	46	44	42	37	52	45	51	56	62	53	58	45.6	
MECHANICSVILLE 5 NE	19	MAX OBS	60	57	59	68	63	78	87	89	88	80	74	62	52	51	58	79	86	79	54	51	54	61	70	76	72	76	83	78	66	82	69.8	
		MIN OBS	28	30	26	29	49	46	45	53	67	59	41	37	41	45	46	42	55	51	45	46	46	44	37	51	43	46	55	63	54	59	46.0	
OWINGS FERRY LANDING	17	MAX OBS	58	56	56	66	63	76	85	87	86	83	75	64	56	50	54	78	85	85	57	51	52	59	70	74	72	75	83	83	67	81	69.6	
		MIN OBS	28	32	26	30	46	47	47	52	65	55	41	38	38	44	45	42	51	50	45	45	45	44	35	49	41	47	55	58	53	58	45.1	
UPPER SOUTHERN 04																																		
ANNAPOLIS POLICE BRKS	17	MAX OBS	60	57	54	62	62	78	87	86	85	82	78	67	57	51	53	80	81	81	56	57	52	63	68	67	71	71	80	81	68	73	68.9	
		MIN OBS	29	27	26	25	39	47	46	53	66	58	42	41	45	44	45	46	52	51	45	42	44	43	40	51	39	49	53	60	52	57	45.2	
BALTIMORE WSO ARPT	MID	MAX OBS	58	52	59	64	64	76	85	87	85	74	63	60	49	47	55	77	81	59	52	50	50	61	68	67	73	75	81	76	62	80	66.3	
		MIN OBS	30	31	28	34	45	50	49	53	65	46	42	40	43	44	46	46	50	47	45	45	44	43	39	49	47	49	51	55	53	57	45.5	
BELTSVILLE	08	MAX OBS	52	58	53	59	68	64	76	85	87	85	74	63	60	49	48	56	77	85	62	53	50	50	60	69	70	74	77	82	76	62	66.1	
		MIN OBS	28	29	26	29	43	42	45	50	55	55	38	37	40	43	43	43	48	49	45	43	45	44	34	39	43	45	49	58	52	53	43.1	
COLLEGE PARK	09	MAX OBS	54	57	54	62	70	73	82	89	90	87	77	66	61	49	47	65	80	88	64	53	49	53	63	71	73	76	77	85	76	65	68.5	
		MIN OBS	32	32	28	31	48	46	47	54	68	57	42	39	45	44	45	44	51	51	46	45	46	45	36	51	47	48	52	60	53	55	46.3	
DALECARLIA RESVR DC	17	MAX OBS	61	53	62	69	69	77	89	88	89	85	76	63	59	49	54	79	88	85	59	51	52	62	72	72	74	78	84	84	71	84	71.3	
		MIN OBS	24	31	20	27	45	36	39	45	60	56	35	31	36	29	35	36	42	44	32	36	31	37	28	39	39	42	47	52	46	52	38.4	
GLENN DALE BELL STN	16	MAX OBS	59	58	62	69	69	78	82	87	87	85	76	65	60	48	55	77	85	86	61	51	50	59	69	73	73	77	82	84	73	80	70.7	
		MIN OBS	26	28	23	26	39	42	42	48	66	53	35	30	40	38	43	40	48	46	44	43	47	43	33	45	41	44	47	57	52	56	42.2	
LAUREL 3 W	MID	MAX OBS	59	53	67	69	64	77	87	87	86	82	65	62	50	48	54	79	85	67	54	50	49	61	69	73	75	78	84	76	63	82	68.5	
		MIN OBS	31	31	31	35	48	46	53	60	63	45	35	36	41	42	39	48	53	47	44	45	40	46	39	47	45	57	49	52	49	55	45.1	
NATIONAL ARBORETUM DC	08	MAX OBS	54	60	55	60	69	64	78	88	89	86	77	65	62	51	48	59	80	87	64	53	51	52	61	71	75	75	79	84	80	64	68.0	
		MIN OBS	31	34	29	36	48	47	50	55	67	57	45	42	43	41	41	43	53	53	47	46	46	46	38	47	48	51	53	59	55	55	46.9	

SEE REFERENCE NOTES FOLLOWING STATION INDEX

DAILY TEMPERATURES (°F)

MARYLAND AND
DELAWARE
APRIL 1991

STATION	OB. TIME	MAX/MIN	DAY OF MONTH																														AVERAGE	
			1	2	3	4	5	6	7	8	9	10	11	12	13	14	15	16	17	18	19	20	21	22	23	24	25	26	27	28	29	30		31
UPPER MARLBORO 3 NNW	08	MAX MIN	51 27	60 31	54 25	59 28	68 45	65 49	78 43	87 50	93 59	87 54	77 41	65 34	61 38	50 43	48 41	57 45	79 50	86 50	61 45	51 44	50 45	51 44	61 36	71 41	73 41	74 45	76 51	85 55	78 53	65 53	67.4 43.5	
NORTHERN EASTERN SHORE	05																																	
CHESTERTOWN	23	MAX MIN	57 29	54 34	57 29	66 34	61 46	78 48	85 50	87 53	86 64	74 50	64 41	57 39	49 40	49 42	54 44	78 42	84 49	60 47	51 41	50 42	50 44	60 41	70 39	66 47	73 47	77 46	83 53	71 53	66 51	79 54	66.5 44.6	
MILLINGTON 1. SE	18	MAX OBS MIN OBS	56 28	56 28	56 26	64 30	62 44	77 45	84 45	85 45	83 66	83 54	73 42	62 33	59 36	49 43	49 44	53 44	76 43	80 45	78 47	56 40	50 43	50 44	59 42	67 37	66 48	72 46	74 44	80 53	69 57	65 52	78 54	67.4 43.6
NORTHERN CENTRAL	06																																	
ABERDEEN PHILLIPS FLD	16	MAX OBS MIN OBS	55 31	55 35	55 30	63 33	63 46	74 49	82 51	83 53	83 66	83 62	73 42	63 40	61 38	51 43	51 45	51 47	74 45	77 47	77 51	56 45	54 45	52 46	56 45	67 43	67 51	71 49	74 46	78 52	78 59	68 53	74 56	67.3 46.6
BALTIMORE WSO CITY	MID	MAX MIN	58 37	52 39	60 36	66 41	64 52	80 54	91 56	92 63	91 68	79 49	70 46	63 44	53 46	50 44	60 45	80 54	81 59	62 50	56 47	54 46	55 47	65 46	71 49	70 52	75 53	77 63	84 76	76 65	82 57	81 61	69.4 50.5	
BENSON POLICE BARRACKS	17	MAX MIN	56 29	56 32	62 31	65 32	64 47	78 49	88 47	88 53	87 62	85 59	74 41	66 38	64 38	48 41	52 43	57 48	85 48	81 50	61 42	52 43	50 45	56 41	71 43	69 49	75 47	78 51	84 51	84 59	74 52	81 56	70.4 45.4	
CATOCTIN MOUNTAIN PARK	17	MAX MIN OBS	49 31	48 32	56 27	65 34	62 47	74 48	83 49	83 63	81 60	78 48	64 35	61 31	55 38	42 36	52 38	74 47	77 55	69 40	58 39	49 38	44 39	54 36	65 36	65 40	68 42	73 52	78 59	76 48	65 52	77 52	64.8 42.4	
CLARKSVILLE 3 NNE	17	MAX MIN	55 26	52 26	59 22	66 26	65 39	77 38	86 40	88 45	86 66	79 51	67 38	62 30	56 34	47 42	54 44	77 38	84 42	80 45	57 44	51 42	50 44	59 42	70 32	71 44	73 43	77 44	85 44	78 55	63 52	82 56	68.5 41.1	
CONOWINGO DAM	MID	MAX OBS MIN OBS	57 26	57 28	59 24	65 27	62 38	79 39	90 40	85 45	89 55	78 44	67 37	62 34	51 40	52 39	58 40	78 38	81 43	61 48	56 37	53 39	53 41	57 36	70 34	73 50	74 43	76 41	80 45	80 52	71 47	75 51	68.2 40.0	
DAMASCUS 2 SW	19	MAX MIN	54 31	51 32	59 29	67 36	60 51	75 49	84 55	86 60	83 64	78 54	61 39	58 35	47 41	45 40	53 42	75 47	82 51	64 44	52 43	47 41	47 42	57 38	67 38	67 50	71 43	75 51	81 53	75 60	62 50	80 56	65.4 45.5	
EMMITSBURG 2 SE	17	MAX MIN	55 29	50 29	56 23	66 29	64 48	76 40	85 41	84 47	82 65	80 54	64 40	62 33	53 35	44 41	51 43	75 36	77 45	69 41	60 44	49 41	49 41	56 42	65 37	64 45	69 44	73 44	78 46	78 54	68 51	79 56	66.0 42.1	
FREDERICK POLICE BRKS	17	MAX OBS MIN	55 33	55 32	58 28	68 34	68 50	76 49	85 49	86 55	85 66	84 55	72 40	63 37	58 43	45 42	50 43	76 40	81 50	81 45	69 45	55 42	50 45	56 42	67 38	68 50	73 48	75 50	81 55	81 61	67 50	81 55	69.0 45.7	
MILLERS 4 NE	18	MAX MIN	53 31	47 29	55 25	65 35	59 45	73 47	81 53	84 55	81 65	78 53	63 36	58 36	54 37	43 39	51 42	72 43	76 48	63 45	55 40	48 39	47 43	53 40	65 39	63 48	69 47	72 49	80 51	78 58	66 49	78 55	64.3 44.1	
ROCKVILLE 1 NE	MID	MAX MIN	55 31	49 33	60 28	68 37	63 52	76 50	85 48	88 54	85 64	72 45	62 40	59 38	50 42	47 42	56 44	77 46	83 51	63 47	51 44	50 43	50 43	57 44	67 37	65 50	72 47	76 48	82 56	76 54	60 53	79 58	66.1 45.6	
TOWSON	18	MAX MIN OBS	77 30						87 49																									
UNIONVILLE	17	MAX MIN	56 22	51 25	58 20	67 27	62 41	75 36	84 39	84 44	82 63	81 54	61 33	60 33	55 34	44 41	53 43	76 35	80 40	66 40	56 40	48 41	48 44	57 41	67 31	66 44	71 41	76 43	82 46	79 54	68 51	80 57	66.4 39.9	
WESTMINSTER POLICE BRK	17	MAX OBS MIN	54 30	50 31	58 31	65 36	67 46	74 50	85 58	85 61	85 65	83 54	70 39	60 35	57 40	46 38	51 40	74 49	81 44	68 44	61 41	51 39	48 41	53 35	67 41	69 47	72 46	76 82	82 82	68 68	82 82	67.5 44.7		
WOODSTOCK	18	MAX MIN	56 36	54 28	60 25	68 31	67 44	77 46	86 46	87 50	85 66	82 56	67 40	61 37	56 38	46 41	52 43	78 45	83 50	74 48	56 41	50 42	49 45	59 40	70 37	70 48	74 48	78 46	85 50	79 58	65 51	81 56	68.5 44.4	

SEE REFERENCE NOTES FOLLOWING STATION INDEX

DAILY TEMPERATURES (°F)

MARYLAND AND
DELAWARE
APRIL 1991

STATION	OB. TIME	MAX/MIN	DAY OF MONTH																															AVERAGE	
			1	2	3	4	5	6	7	8	9	10	11	12	13	14	15	16	17	18	19	20	21	22	23	24	25	26	27	28	29	30	31		
APPALACHIAN MOUNTAIN	07																																		
CUMBERLAND 2	18	MAX MIN OBS	50 31	50 26	63 33	74 37	70 42	77 46	85 47	85 55	84 52	82 40	62 36	61 36	58 42	45 42	62 42	77 44	79 44	75 44	65 44	46 44	47 41	55 39	67 42	64 43	72 45	77 50	83 52	85 55	78 55	81 45			
FROSTBURG 2	07	MAX MIN	45 21	42 31	41 26	55 26	66 37	58 48	69 47	77 55	79 56	77 49	56 34	53 32	52 31	40 36	40 37	63 40	69 48	72 36	60 36	42 38	40 38	40 34	46 34	59 39	51 38	64 40	69 49	75 51	76 51	56 50			
HAGERSTOWN	08	MAX MIN OBS	50 35	55 32	48 26	59 31	66 37	63 44	73 46	82 47	86 60	85 55	69 38	61 36	59 37	44 41	45 41	56 39	78 43	78 41	65 42	53 43	46 43	59 41	58 38	68 40	65 43	73 48	73 48	78 52	75 50	61 52			
HANCOCK	08	MAX MIN	54 27	55 26	50 21	62 27	71 33	69 41	78 38	87 42	87 57	86 54	69 34	68 30	60 33	45 42	46 42	56 31	78 43	83 35	67 39	51 44	46 40	50 43	59 34	71 36	66 37	74 40	78 32	83 48	81 54	60 53			
ALLEGHENY PLATEAU	08																																		
MC HENRY 2 NW	08	MAX MIN	48 20	41 27	43 27	61 32	69 44	55 44	70 47	77 56	79 56	76 40	56 29	54 27	53 28	53 36	45 36	64 43	69 46	72 33	67 35	44 35	40 35	37 32	42 32	60 36	49 35	64 36	69 50	73 53	76 52	64 52			
OAKLAND 1 SE	17	MAX MIN	43 31	44 28	60 18	69 26	64 48	66 39	76 43	78 45	77 53	73 43	54 31	54 28	54 39	67 40	69 39	75 36	69 30	62 40	46 40	45 34	45 33	58 33	55 35	64 30	71 45	75 41	77 46	75 54	71 57				
SAVAGE RIVER DAM	08	MAX MIN	50 25	41 37	46 24	60 27	69 34	62 41	72 42	80 43	81 50	80 47	59 36	58 31	56 31	45 39	45 39	68 38	72 38	76 34	65 35	47 41	45 41	44 38	49 37	63 37	53 35	68 35	73 46	80 47	80 47	58 52			
DELAWARE																																			
NORTHERN	01																																		
NEWARK UNIVERSITY FARM	17	MAX MIN	53 28	51 32	56 27	67 31	61 38	75 43	85 49	86 51	84 67	84 56	70 38	61 37	58 37	50 41	52 43	75 43	76 47	72 47	55 38	52 41	49 44	56 40	69 39	67 45	72 48	76 43	79 48	79 55	64 50	77 53			
WILMINGTON WSO ARPT	MID	MAX MIN	53 31	52 35	57 29	62 36	60 44	75 47	84 50	86 54	83 66	72 46	61 41	59 38	48 40	51 42	53 44	75 42	76 50	56 45	55 43	51 43	49 42	55 42	67 41	62 50	73 46	74 48	79 50	67 54	64 53	77 54			
WILMINGTON PORTER RSVR	MID	MAX MIN	51 32	50 37	55 33	62 37	59 47	74 49	83 57	85 57	82 66	71 46	60 41	57 39	47 37	52 41	52 44	73 43	74 51	55 45	55 42	50 41	47 42	54 40	65 42	60 48	71 47	73 49	80 53	67 55	63 51	77 53			
SOUTHERN	02																																		
DOVER	17	MAX MIN OBS	52 33	53 30	56 30	66 33	63 45	77 51	85 50	85 53	88 55	82 57	71 43	61 40	57 40	55 42	52 47	77 44	78 50	72 47	57 46	51 41	49 40	59 42	71 41	68 49	76 51	71 53	77 54	74 58	66 50	78 53			
GEORGETOWN 5 SW	08	MAX MIN	50 29	59 33	55 28	58 27	65 45	64 46	74 52	83 50	85 57	82 55	73 44	60 35	58 34	52 41	49 44	65 48	75 50	82 48	53 43	45 42	52 42	52 44	59 39	67 45	69 45	72 45	74 53	78 55	71 52	71 54			
GREENWOOD 2 NE	18	MAX OBS MIN	56 27	53 35	56 27	64 29	64 40	74 44	83 49	86 55	83 65	77 55	66 40	58 34	58 44	58 45	49 47	49 54	60 47	75 42	82 44	68 43	48 49	56 42	66 37	67 45	72 46	73 46	79 46	68 54	67 51	80 52			
LEWES	17	MAX MIN	56 33	54 38	54 38	61 35	67 46	75 54	84 56	87 63	83 68	83 61	72 43	62 44	54 42	51 45	64 46	76 46	76 58	71 48	49 44	50 45	51 45	60 44	68 43	67 50	69 48	71 51	80 55	80 52	60 51	79 52			
MILFORD 4 SE	17	MAX MIN																																	

SEE REFERENCE NOTES FOLLOWING STATION INDEX

EVAPORATION AND WIND

MARYLAND AND
DELAWARE
APRIL 1991

STATION	DAY OF MONTH																															TOTAL OR AVG	
	1	2	3	4	5	6	7	8	9	10	11	12	13	14	15	16	17	18	19	20	21	22	23	24	25	26	27	28	29	30	31		
MARYLAND																																	
UPPER SOUTHERN 04																																	
BELTSVILLE	WIND	-	64	64	28	46	33	31	38	55	44	33	72	43	45	30	14	42	39	57	61	56	91	53	32	67	22	37	15	47	18		
	EVAP	-	15	15	16	16	0	16	28	21	17	33	21	16	2	0	1	19	22	13	7	3	0	11	17	16	17	20	17	13	2		
	MAX	63	60	60	67	69	57	64	83	83	84	77	70	74	-	-	53	78	82	69	57	62	57	61	76	70	83	84	90	76	64		
	MIN	40	40	40	40	44	52	49	54	52	56	40	38	37	-	-	46	47	52	46	48	56	44	42	42	44	45	52	60	55	55		
UPPER MARLBORO 3 NNW	WIND	-	20	17	4	21	8	9	13	22	11	42	15	8	13	6	1	10	12	14	6	11	14	7	8	22	6	9	5	15	2		
	EVAP	-	13	16	12	18	-	18	23	22	20	30	23	16	0	2	7	23	21	19	4	1	0	11	18	27	8	17	16	15	5		
	MAX	62	62	65	68	70	62	77	73	78	82	67	70	63	50	48	53	82	80	72	56	49	53	61	78	72	82	60	78	80	66		
	MIN	39	40	38	39	41	49	50	53	58	61	41	41	40	45	44	46	46	52	48	46	46	44	42	42	44	44	53	55	53	55		
DELAWARE																																	
SOUTHERN 02																																	
GEORGETOWN 5 SW	WIND	40	73	63	38	16	74	65	84	143	118	69	166	20	100	87	55	109	125	75	67	14	124	71	78	90	36	140	*	108	49		
	EVAP	-	-	12	15	2	7	8	26	29	22	33	30	-	41	7	10	30	27	9	-	6	16	12	29	58	22	23	24	16	10		
	MAX	-	-	-	-	-	-	-	-	-	-	-	-	-	-	-	-	-	-	-	-	-	-	-	-	-	-	-	-	-	-	-	
	MIN	-	-	-	-	-	-	-	-	-	-	-	-	-	-	-	-	-	-	-	-	-	-	-	-	-	-	-	-	-	-	-	

EVAPORATION: IS MEASURED IN HUNDRETHS OF INCHES

WIND: IS MEASURED IN MILES

MAX AND MIN: THE MAXIMUM AND MINIMUM TEMPERATURES (FAHRENHEIT) OF THE WATER IN THE EVAPORATION PAN

SEE REFERENCE NOTES FOLLOWING STATION INDEX

SNOWFALL AND SNOW ON GROUND (INCHES)

MARYLAND AND
DELAWARE
APRIL 1991

STATION	DAY OF MONTH																														
	1	2	3	4	5	6	7	8	9	10	11	12	13	14	15	16	17	18	19	20	21	22	23	24	25	26	27	28	29	30	31
MARYLAND																															
NORTHERN EASTERN SHORE 05																															
CHESTERTOWN SNOWFALL SN ON GND																															
NORTHERN CENTRAL 06																															
DAMASCUS 2 SW SNOWFALL SN ON GND																															
MILLERS 4 NE SNOWFALL SN ON GND																															
APPALACHIAN MOUNTAIN 07																															
FROSTBURG 2 SNOWFALL SN ON GND																															
ALLEGHENY PLATEAU 08																															
MC HENRY 2 NW SNOWFALL SN ON GND																															
OAKLAND 1 SE SNOWFALL SN ON GND																															
DELAWARE																															
NORTHERN 01																															
WILMINGTON WSO ARPT SNOWFALL SN ON GND WTR EQUIV																															

SNOWFALL: INCLUDES SNOW AND ICE. VALUES FOR NWS STATIONS (J INDEX NOTE) ARE MID-MID (LST).
 SNOW ON GROUND: INCLUDES SNOW, SLEET, ICE AND HAIL. VALUES FOR NWS STATIONS (J INDEX NOTE) ARE OBSERVED AT 0000 UTC (GMT).
 WATER EQUIVALENT: GIVEN FOR NWS STATIONS (J INDEX NOTE) ONLY, WHEN SNOW DEPTH IS 2 INCHES OR MORE.
 SEE REFERENCE NOTES FOLLOWING STATION INDEX

STATION INDEX

MARYLAND AND
DELAWARE
APRIL 1991

STATION	INDEX NO.	DIVISION	COUNTY	LATITUDE	LONGITUDE	ELEVATION (IN FEET)	OBSERVATION TIME AND TABLES				OBSERVER	
							LOCAL		STD TIME			
							TEMP	PRECIP	EVAP	SPECIAL (SEE NOTES)		
MARYLAND												
ABERDEEN PHILLIPS FLD	0015506		HARFORD	39 28	76 10W	57	16	16		C	H	ROSS AVIATION INC
ANNAPOLIS POLICE BRKS	0193304		ANNE ARUNDEL	38 59	76 30W	30	17	17			H	ANNAPOLIS POLICE BRKS
ASSATEAGUE IS NATL SEA	0333501		WORCESTER	38 14	75 8W	7	17	07			H	NATIONAL PARK SERVICE
BALTIMORE WSO ARPT	0446504	R	ANNE ARUNDEL	39 11	76 40W	148	MID	MID		C	H	NATL WEATHER SERVICE
BALTIMORE WSO CITY #	0470006	R	BALTIMORE	39 17	76 37W	14	MID	MID		C	C	OCMI COMMANDING OFFICER
BELTSVILLE	0700006		PRINCE GEORG	39 22	76 53W	120	08	08		O	B	US DEPT OF AGRICULTURE
BEYSON POLICE BARRACKS	0732006		HARFORD	39 30	76 23W	365	17	17			H	MARYLAND STATE POLICE
BOYDS 2 NW	1032206		MONTGOMERY	39 13	77 20W	580	18	18			H	INACTIVE 02/01/91
CAMBRIDGE WATER TRMT P	1385002		DORCHESTER	38 34	76 4W	10	16	16			H	WASTEWATER TRTMT PLANT
CATOCTIN MOUNTAIN PARK	1530006		FREDERICK	39 39	77 29W	1610	17	17		C	H	CATOCTIN MOUNTAIN PARK
CHESTERTOWN	1750006		KENT	39 13	76 4W	39	23	23			H	THOMAS W ELIASON JR
CLARKSVILLE 3 NNE	1866206		HOWARD	39 15	76 56W	365	17	17			H	UNIVERSITY OF MARYLAND
COLLEGE PARK	1995004		PRINCE GEORG	38 59	76 57W	90	09	09		C	H	UNIVERSITY OF MARYLAND
CONOWINGO DAM	2060006		HARFORD	39 39	76 10W	39	MID	MID			H	SUSQUEHANNA ELECTRIC CO
CRISFIELD SOMERS COVE	2215001		ALLEGANY	37 59	75 52W	8	17	17			H	INACTIVE 03/01/91
CUMBERLAND 2	2282007		SOMERSET	39 38	78 45W	730	18	07			H	TIMOTHY B THOMAS
DALECARLIA RESVR DC	2325004		DIS COLUMBIA	38 56	77 7W	151	17	17			H	U S CORPS OF ENGINEERS
DAMASCUS 2 SW	2335006		MONTGOMERY	39 16	77 14W	722	19	19			H	RICHARD W SCHWERDT
DENTON 2 E	2523002		CAROLINE	38 53	75 48W	49	17	17			H	INACTIVE 04/01/90
EDGEMONT	2770007		WASHINGTON	39 40	77 33W	905	17	07			H	JOHN W HARNE
EMMITSBURG 2 SE	2906006		FREDERICK	39 41	77 18W	420	17	17			H	MRS LUCILLE K BEALE
FREDERICK POLICE BRKS	3348006		FREDERICK	39 25	77 26W	381	17	17			H	MARYLAND STATE POLICE
FROSTBURG 2	3415007		ALLEGANY	39 40	78 56W	2172	07	07			H	LEE K CLOSE
GLENN DALE BELL STN	3675004		PRINCE GEORG	38 58	76 48W	151	16	16			H	USDA PLT INTRODUCT STN
HAGERSTOWN	3975007		WASHINGTON	39 39	77 44W	659	08	08			H	HAGERSTOWN RESERVOIR
HANCOCK	4030007		WASHINGTON	39 42	78 11W	428	08	08		C	H	TOWN OF HANCOCK
LA PLATA 1 W	5080003		CHARLES	38 32	77 0W	140	18	18			H	C RUSSELL LEVERING
LAUREL 3 W	5111004		PRINCE GEORG	39 6	76 54W	2600	MID	MID			H	WASH SUB SANY COMM
MC HENRY 2 NW	5832008		GARRETT	39 35	79 22W	4800	08	08		C	H	JOSEPH F JOHENNING
MECHANICSVILLE 5 NE	5865003		ST MARYS	38 27	76 41W	100	19	19			H	SANDRA J HASTINGS
MERRILL	5894008		GARRETT	39 36	79 5W	1791	09	09			H	DELWOOD E MERRILL
MILLERS 4 NE	5934006		CARROLL	39 43	76 48W	860	18	18		C	H	ROBERT P MILLER
MILLINGTON 1 SE	5985005		KENT	39 16	75 52W	30	18	18			H	HOWARD L HARVEY
NATIONAL ARBORETUM DC	6350004		DIS COLUMBIA	38 54	76 59W	49	08	08			H	U S NATL ARBORETUM
OAKLAND 1 SE	6620008		GARRETT	39 24	79 24W	2421	17	17			H	BEA J CROSCO
OWINGS FERRY LANDING	6770003		CALVERT	38 41	76 40W	160	17	17			H	JAMES C RASMUSSEN
POTOMAC FILTER PLANT	7272006		MONTGOMERY	39 2	77 15W	269	08	08			H	POTOMAC WATER FILT PLT
PRINCESS ANNE	7330001		SOMERSET	38 13	75 41W	20	17	17			H	UNIV OF MD EASTERN SHORE
ROCKVILLE 1 NE	7705006		MONTGOMERY	39 6	77 6W	440	MID	17			H	WASHINGTON GAS AND LIGHT
ROYAL OAK 2 SSW	7806002		TALBOT	38 43	76 11W	10	18	18			H	JOHN L SWAINE JR
SALISBURY	8000001		WICOMICO	38 22	75 35W	10	17	17			H	CITY OF SALISBURY
SALISBURY FAA ARPT #	8005001		WICOMICO	38 20	75 31W	48	MID	MID			H	FAA
SAVAGE RIVER DAM	8065008		GARRETT	39 31	79 8W	1495	08	08		O	B	US CORPS OF ENGINEERS
SNOW HILL 4 N	8380001		WORCESTER	38 14	75 23W	30	18	18			H	CURTIS E SHOCKLEY
TALL TIMBERS	8757003		ST MARYS	38 10	76 33W	12	17	17			H	INACTIVE 01/01/91
TOWSON	8877006		BALTIMORE	39 23	76 34W	390	18	18			H	BENDIX FRIEZ
UNIONVILLE	9030006		FREDERICK	39 27	77 11W	430	17	07		C		RICHARD GETZANDANNER
UPPER MARLBORO 3 NNW	9070004		PRINCE GEORG	38 52	76 47W	98	08	08		O	B	UNIVERSITY OF MARYLAND
VIENNA	9140002		DORCHESTER	38 29	75 50W	10	18	18			H	DELMARVA POWER & LIGHT
WESTMINSTER POLICE BRK	9440006		CARROLL	39 33	76 58W	765	17	17			H	MARYLAND STATE POLICE
WOODSTOCK	9750006		BALTIMORE	39 20	76 52W	459	18	18			H	JOHN A HILTZ

SEE REFERENCE NOTES FOLLOWING STATION INDEX

STATION INDEX

MARYLAND AND
DELAWARE
APRIL 1991

STATION	INDEX NO.	DIVISION	COUNTY	LATITUDE	LONGITUDE	ELEVATION (IN FEET)	OBSERVATION TIME AND TABLES				OBSERVER	
							LOCAL		STD TIME			
							TEMP	PRECIP	EVAP	SPECIAL (SEE NOTES)		
DELAWARE												
DOVER	2730	02	KENT	39 9	75 31W	30	17	17			H	STATE DIV OF HIGHWAYS
GEORGETOWN 5 SW	3570	02	SUSSEX	38 38	75 27W	45	08	08	08	C	H	UNIV OF DEL SUBSTATION
GREENWOOD 2 NE	3595	02	SUSSEX	38 50	75 35W	45	18	18			H	DANIEL M SWARTZENTRUBER
LEWES	5320	02	SUSSEX	38 46	75 8W	15	17	17				BOARD OF PUBLIC WORKS
MILFORD 4 SE	5915	02	SUSSEX	38 54	75 28W	30	17	17			H	DAVID S SCHLOTT
NEWARK UNIVERSITY FARM	6410	01	NEW CASTLE	39 40	75 44W	90	17	17	17	C	H	UNIV OF DEL AGRIC FARM
WILMINGTON WSO ARPT	9595	01	NEW CASTLE	39 40	75 36W	79	MID	MID			H	NATL WEATHER SERVICE
WILMINGTON PORTER RSVR	9605	01	NEW CASTLE	39 46	75 32W	274	MID	MID			H	WATER DEPARTMENT

SEE REFERENCE NOTES FOLLOWING STATION INDEX

REFERENCE NOTES

MARYLAND AND
DELAWARE
APRIL 1991

DEFINITIONS

STATION NAMES: Name of the city, town or locality. Figures and letters following the station names indicate the distance in miles and direction from the post office or town community center.

DIVISIONS: Areas within a state of similar climatological characteristics. Division averages are calculated using data from stations that record both temperature and precipitation (ie: not precipitation alone).

NORMALS: The average value of the meteorological element over a time period. Effective 1 January 1983, the averaging period is 1951 to 1980. The normals for National Weather Service localities have been adjusted so as to be representative for the current observation site.

MONTHLY DEGREE DAY TOTALS: One heating (cooling) degree day is accumulated for each whole degree that the daily mean temperature is BELOW (ABOVE) 65 degrees Fahrenheit.

PRECIPITATION: Values shown in hundredths of inches are water equivalent totals, i.e. total of liquid and melted frozen precipitation. In the "MONTHLY SUMMARIZED DATA" table the total snow and sleet values shown in tenths of inches are unmelted amounts. The max. depth on ground values of snow and sleet shown in whole inches are cumulative unmelted amounts. The no. of days with .10, .50, 1.00 or more refers to water equivalents.

TEMPERATURE: Original and edited temperature values are given in the Daily Temperature Table. Edited values are produced when an original value is missing or when surrounding stations indicate a suspect original value. When a line labeled OBS is present and contains either a daily temperature (suspect) or *** (missing), the temperature appearing directly above, on the line labeled MAX or MIN, is an edited value. Summary temperature information (averages, departures, extremes, monthly degree day totals) is based on the values labeled MAX/MIN.

WIND: (As shown in "Evaporation and Wind" table) The total wind movement in miles over the evaporation pan as determined by an anemometer recorder located 6-8 inches above the pan.

SYMBOLS AND LETTERS USED IN THE STATION INDEX TABLE

- # Thermometers located in a rooftop shelter.
- // Rain Gage equipped with a windshield.
- AR Observation made "after rain" has occurred.
- C Station is equipped with recording rain gage (R) but values in this bulletin are from a non-recording rain gage unless indicated by an "R".
- G Observations appear in "Soil Temperatures" table.
- H Observations appear in "Snowfall and Snow on Ground" table.
- J Station also published as a Local Climatological Data publication.
- MID Observation time is midnight.
- MO Rain gage read once monthly, usually the last day.
- OC Rain gage readings vary from a few weeks to several months.
- R Amounts from recording rain gage.
- SR Observation time near sunrise.
- SS Observation time near sunset.
- VAR Observation time varies.
- WI Rain gage read weekly or irregularly.
- WM Rain gage read weekly and last day of month.

SYMBOLS AND LETTERS USED IN THE DATA TABLES

(DAILY DATA ARE FOR THE 24 HOURS IMMEDIATELY PRECEDING OBSERVATION TIME.)

BLANK entries in the "Monthly Summarized Data" table indicate no record. BLANK entries in the "Daily Precipitation" and "Snowfall and Snow on Ground" tables indicate zero.

BLANK entries in the "Daily Temperature" table indicate a missing record where an edited value could not be determined. (See *** below)

- No record. Data not recorded, determined unreliable by quality control checks, or not received in time for publication.

+ Precipitation or temperature extremes occurred on one or more previous dates during the month.

*** Missing original temperature which has been estimated during edit.

* Rain gage not read. Precipitation is included in the amount following the asterisks. Time distribution not known. A * preceding the monthly total indicates precipitation amount is being carried forward to next months total, and may include amounts from the previous month(s).

// Rain gage equipped with a windshield.

A Amount of precipitation is the total of observer's entries for the current month. It may include precipitation that occurred during the previous month. Refer to earlier bulletin to determine date of last reading. (HAWAII stations)

B Adjusted monthly value (estimated), (1-7 missing values for wind and evaporation).

M Insufficient or partial data. M is appended to average and/or total values computed with 1-9 daily values missing. M appears alone if 10 or more daily values are missing, (8 or more for wind and evaporation).

R Amounts from recording rain gage.

T Trace. An amount too small to measure.

V Includes total for previous month(s). (See * above)

Seasonal Tables: Monthly and seasonal snowfall and heating degree days for the 12 months ending with the June data are published in the July issue of this bulletin. Cooling degree days for the calendar year are published in the "Climatological Data Annual Summary".

The graphic displays appearing in this publication were first produced for the January 1987 data month. The types of graphs and the information they portray may vary from month to month and from state to state in order to highlight climatic features of state, regional, and seasonal interest. Some graphs present information for "clusters". A cluster is a group of up to four (4) adjacent divisions that comprise an area of similar climate.

Information concerning the history of changes in locations, exposure, etc. of substations is kept on file at the National Climatic Data Center. Historical information for regular National Weather Service Offices may be obtained from the "Local Climatological Data" annual publication. The contents of this publication may be reprinted or otherwise used freely, with proper credit to the National Climatic Data Center. The data are also available in digital form on magnetic tape and diskette.

SUBSCRIPTION, PRICE AND ORDERING INFORMATION AVAILABLE FROM:

NATIONAL CLIMATIC DATA CENTER
FEDERAL BUILDING
ASHEVILLE, NC 28801-2696

USCOMM-NOAA-ASHEVILLE, N.C. APRIL 1991-0585

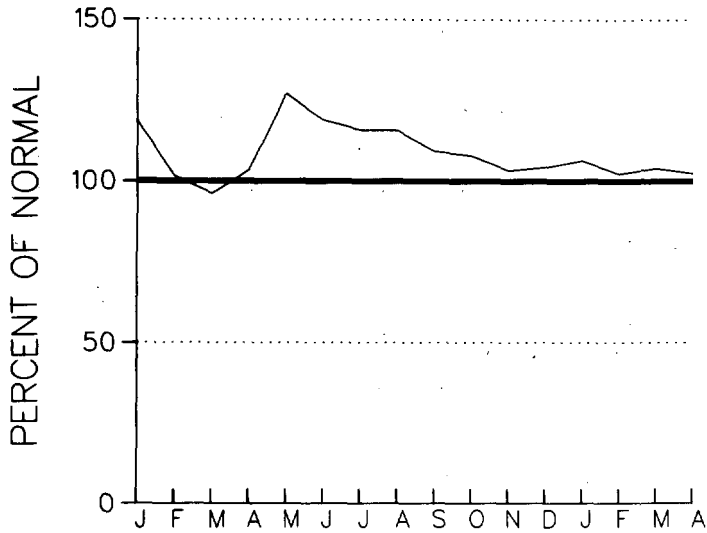
**CUMULATIVE PRECIPITATION DEPARTURES FROM NORMAL (1951-1980)
FOR THE LAST 16 MONTHS
ENDING APRIL 1991
MARYLAND**

CLUSTER 1 -DIVISION(S):
SOUTHERN EASTERN SHORE 01
CENTRAL EASTERN SHORE 02
LOWER SOUTHERN 03

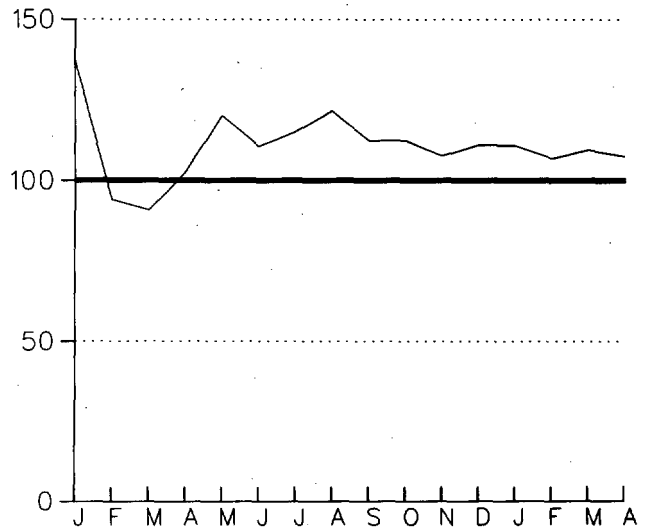
CLUSTER 2 -DIVISION(S):
UPPER SOUTHERN 04
NORTHERN EASTERN SHORE 05

CLUSTER 3 -DIVISION(S):
NORTHERN CENTRAL 06
APPALACHIAN MOUNTAIN 07

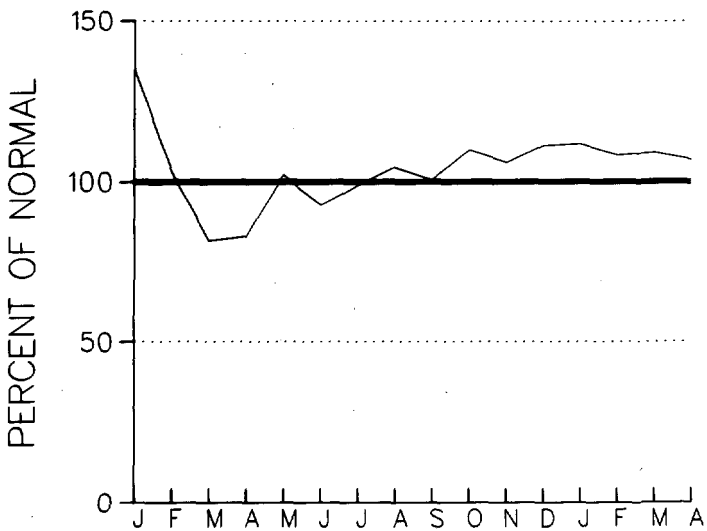
CLUSTER 4 -DIVISION(S):
ALLEGHENY PLATEAU 08



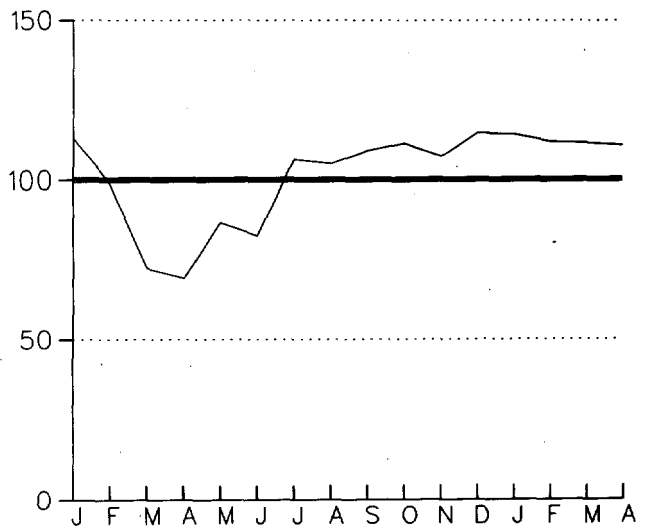
CLUSTER 1



CLUSTER 2



CLUSTER 3

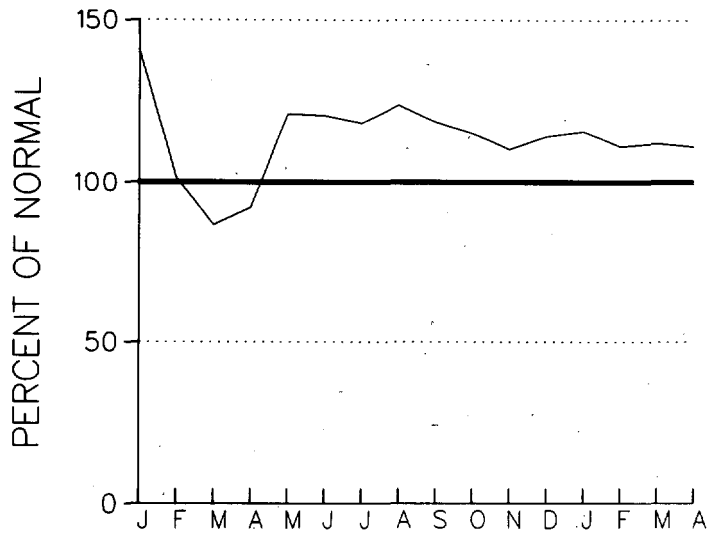


CLUSTER 4

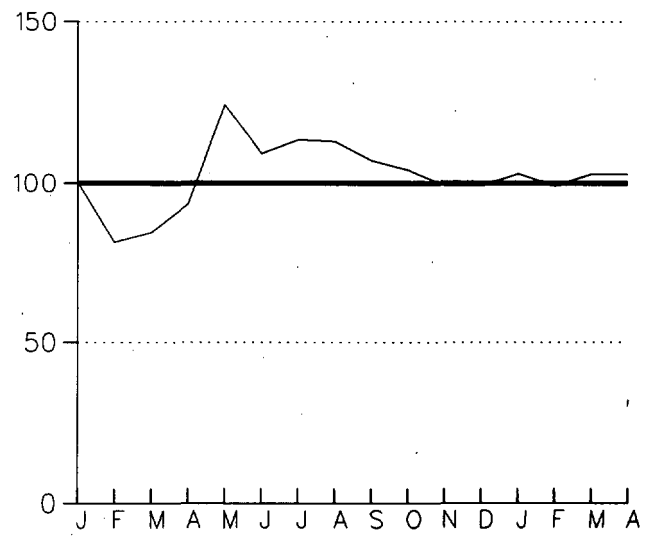
CUMULATIVE PRECIPITATION DEPARTURES FROM NORMAL (1951-1980)
 FOR THE LAST 16 MONTHS
 ENDING APRIL 1991
 DELAWARE

CLUSTER 1 - DIVISION(S):
 NORTHERN 01

CLUSTER 2 - DIVISION(S):
 SOUTHERN 02



CLUSTER 1



CLUSTER 2

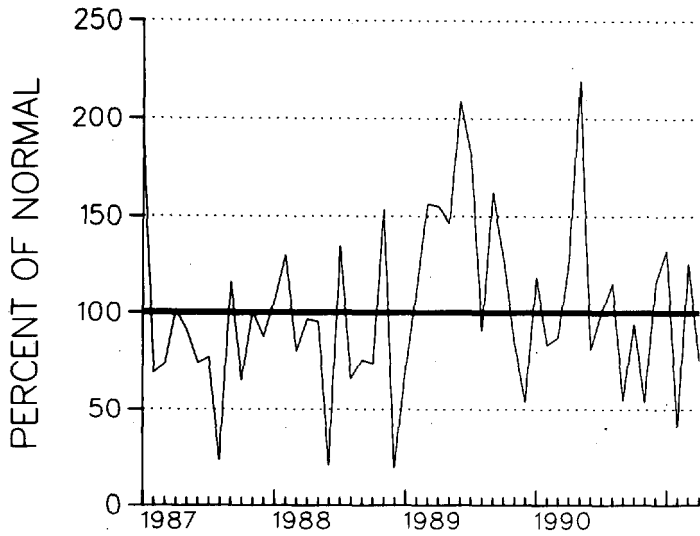
**PRECIPITATION DEPARTURES FROM NORMAL (1951-1980)
FOR THE 52 MONTHS
ENDING APRIL 1991
MARYLAND**

CLUSTER 1 -DIVISION(S):
SOUTHERN EASTERN SHORE 01
CENTRAL EASTERN SHORE 02
LOWER SOUTHERN 03

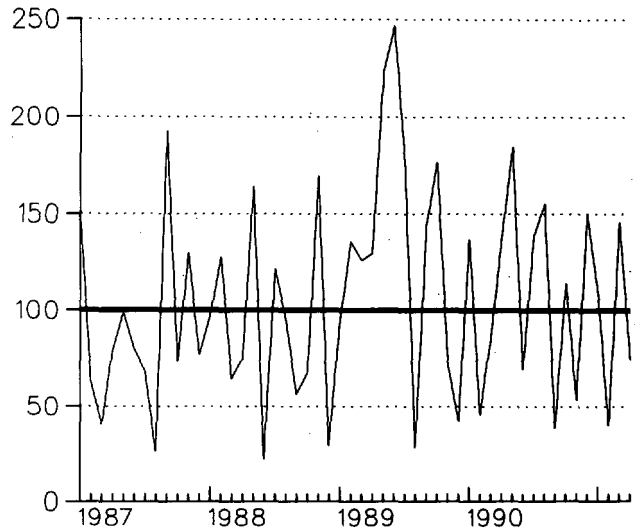
CLUSTER 2 -DIVISION(S):
UPPER SOUTHERN 04
NORTHERN EASTERN SHORE 05

CLUSTER 3 -DIVISION(S):
NORTHERN CENTRAL 06
APPALACHIAN MOUNTAIN 07

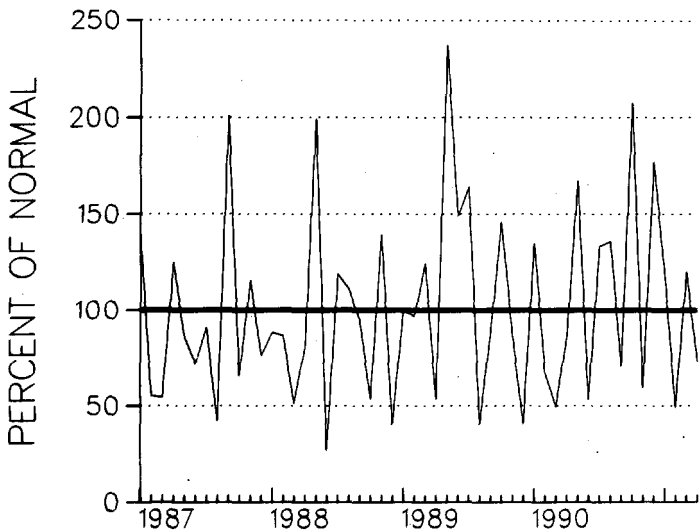
CLUSTER 4 -DIVISION(S):
ALLEGHENY PLATEAU 08



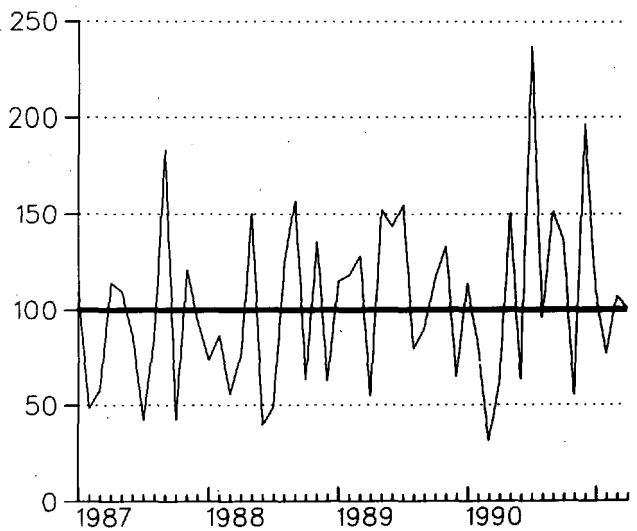
CLUSTER 1



CLUSTER 2



CLUSTER 3

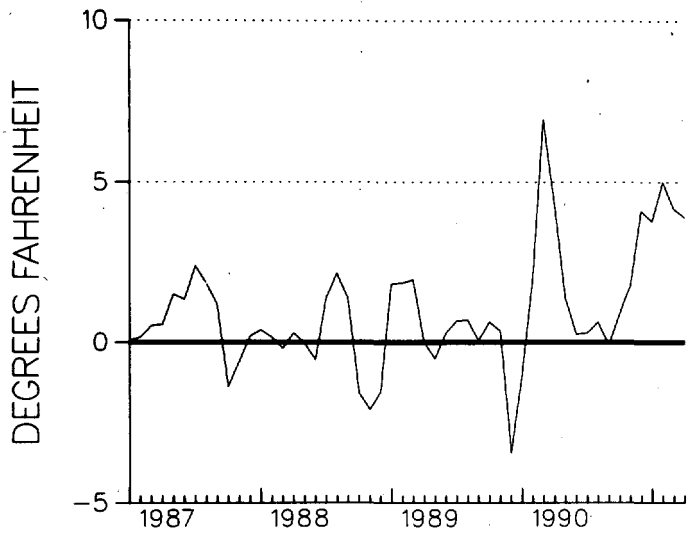


CLUSTER 4

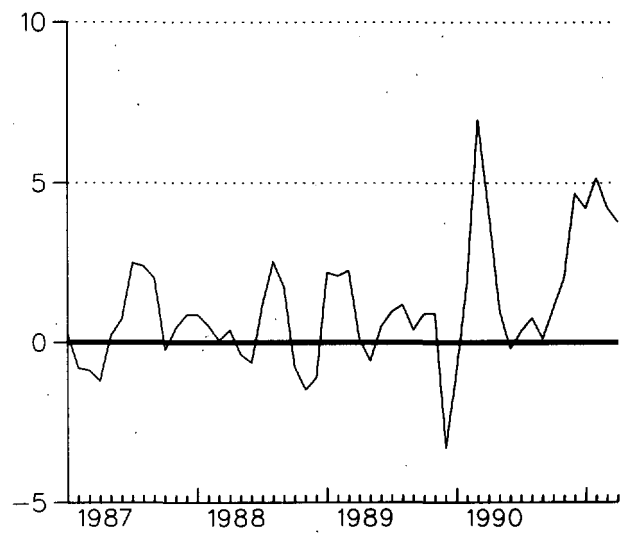
TEMPERATURE DEPARTURES FROM NORMAL (1951-1980)
THREE MONTH RUNNING MEAN
FOR THE 52 MONTHS ENDING WITH APRIL 1991 DATA
DELAWARE

CLUSTER 1 - DIVISION(S):
NORTHERN 01

CLUSTER 2 - DIVISION(S):
SOUTHERN 02



CLUSTER 1

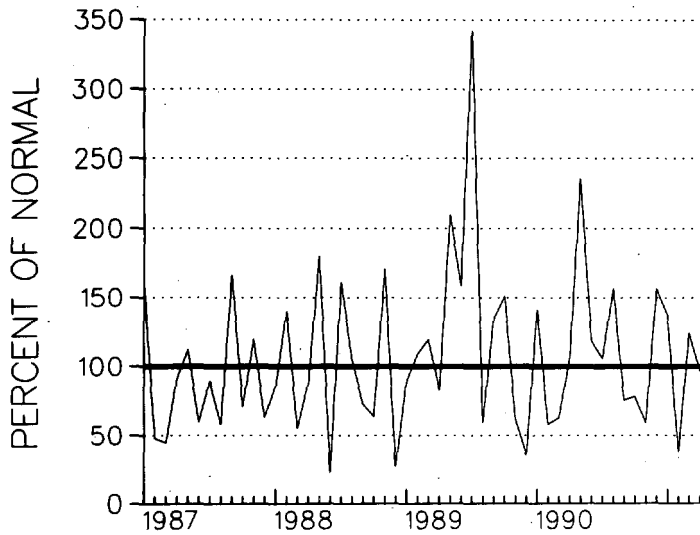


CLUSTER 2

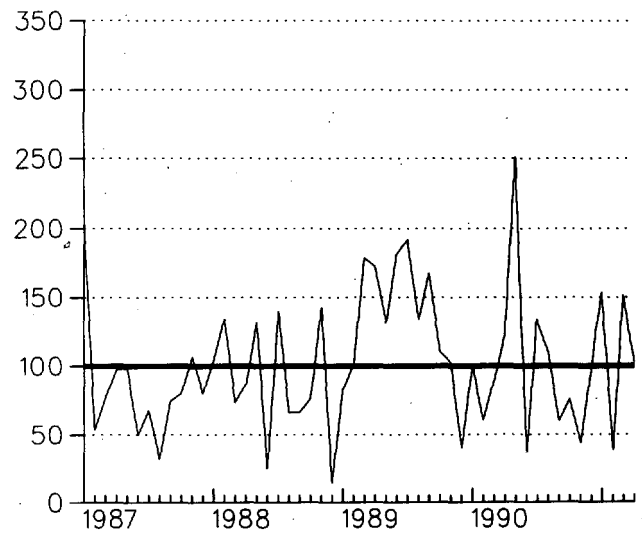
PRECIPITATION DEPARTURES FROM NORMAL (1951-1980)
FOR THE 52 MONTHS
ENDING APRIL 1991
DELAWARE

CLUSTER 1 - DIVISION(S):
NORTHERN 01

CLUSTER 2 - DIVISION(S):
SOUTHERN 02



CLUSTER 1



CLUSTER 2

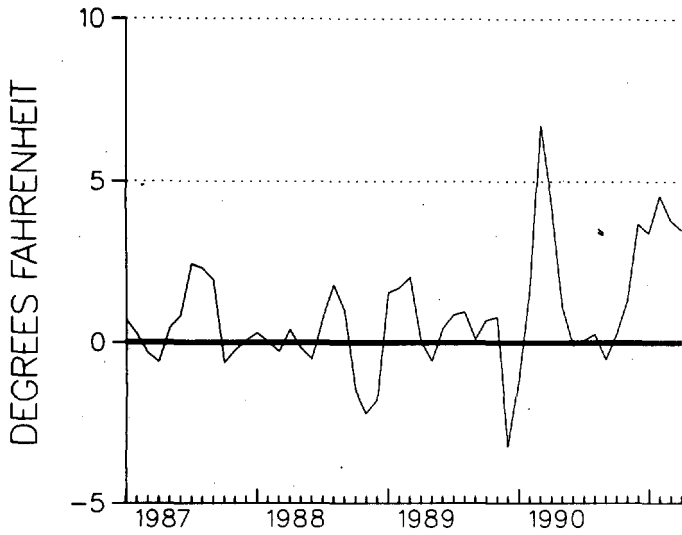
**TEMPERATURE DEPARTURES FROM NORMAL (1951-1980)
THREE MONTH RUNNING MEAN
FOR THE 52 MONTHS ENDING WITH APRIL 1991 DATA
MARYLAND**

CLUSTER 1 -DIVISION(S):
SOUTHERN EASTERN SHORE 01
CENTRAL EASTERN SHORE 02
LOWER SOUTHERN 03

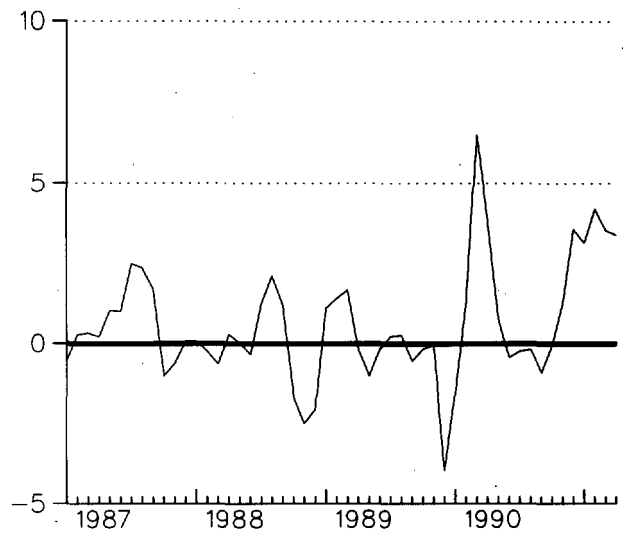
CLUSTER 2 -DIVISION(S):
UPPER SOUTHERN 04
NORTHERN EASTERN SHORE 05

CLUSTER 3 -DIVISION(S):
NORTHERN CENTRAL 06
APPALACHIAN MOUNTAIN 07

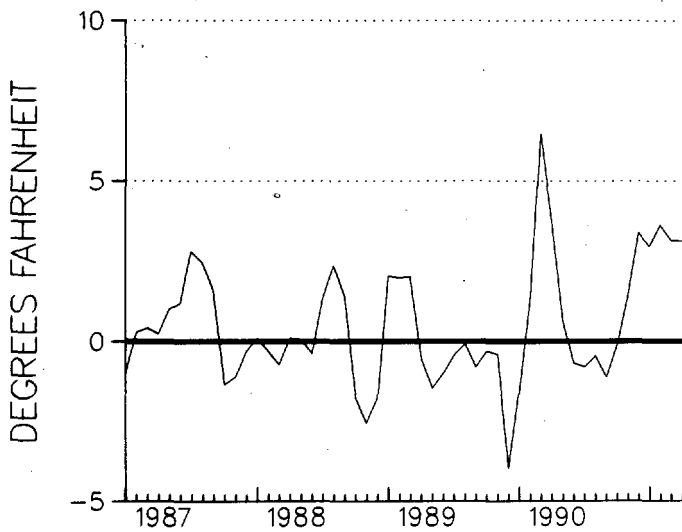
CLUSTER 4 -DIVISION(S):
ALLEGHENY PLATEAU 08



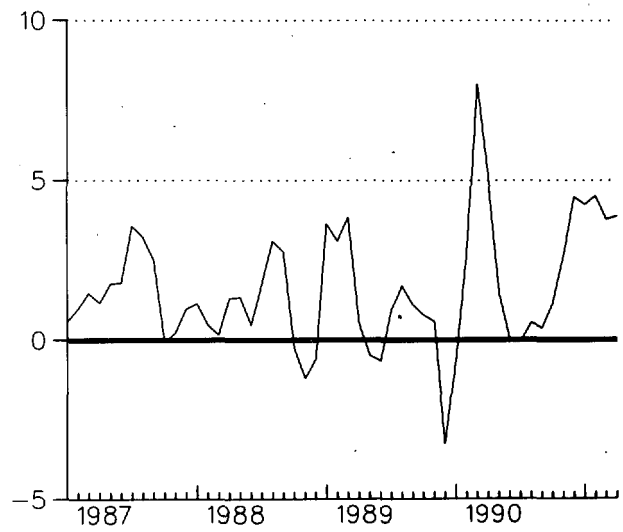
CLUSTER 1



CLUSTER 2



CLUSTER 3

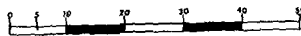


CLUSTER 4

18 - MARYLAND & D.C.

ALBERS EQUAL AREA PROJECTION
STANDARD PARALLELS AT 29.1 AND 45.5 DEGE.

STATUTE MILES



STATION LEGEND

DATA PUBLISHED IN:

- CLIMATOLOGICAL DATA
- HOURLY PRECIPITATION DATA
- △ CLIMATOLOGICAL DATA AND HOURLY PRECIPITATION DATA

For further information, refer to the station index and references notes.

DIVISIONS

- 1 SOUTHERN EASTERN SHORE
- 2 CENTRAL EASTERN SHORE
- 3 LOWER SOUTHERN
- 4 UPPER SOUTHERN
- 5 NORTHERN EASTERN SHORE
- 6 NORTHERN CENTRAL
- 7 APPALACHIAN MOUNTAIN
- 8 ALLEGHENY PLATEAU

76.0
40.0

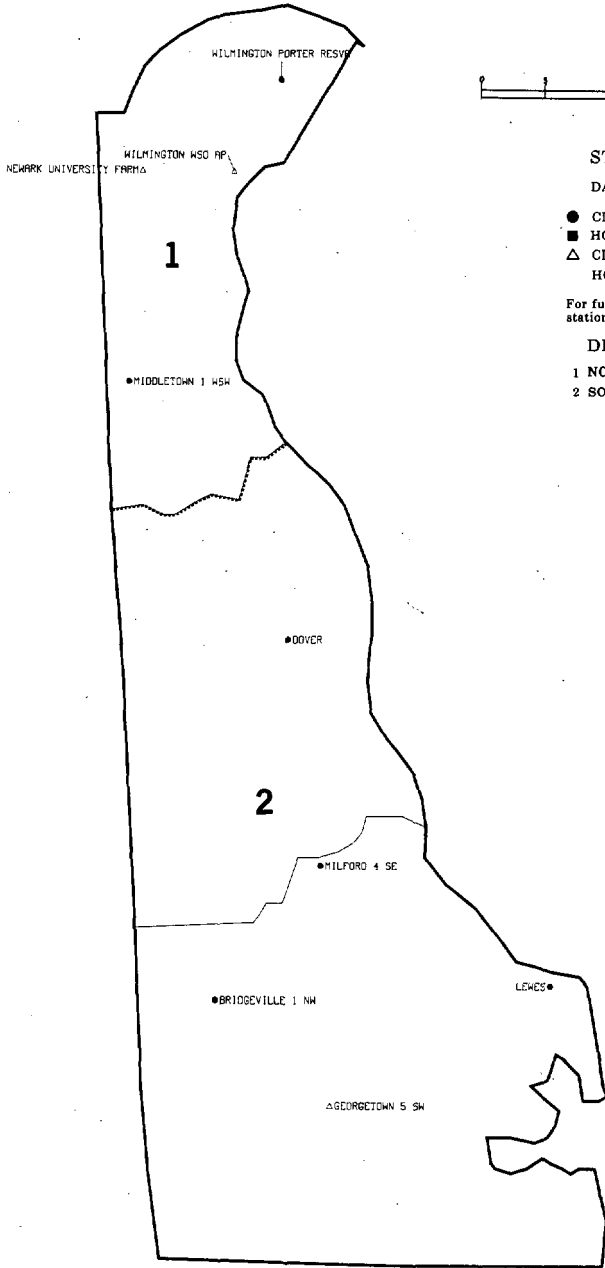
75.0

40.0

07 - DELAWARE

ALBERS EQUAL AREA PROJECTION
STANDARD PARALLEL AT 29.5 AND 45.5 DEGS.

STATUTE MILES



STATION LEGEND

DATA PUBLISHED IN:

- CLIMATOLOGICAL DATA
- HOURLY PRECIPITATION DATA
- △ CLIMATOLOGICAL DATA AND HOURLY PRECIPITATION DATA

For further information, refer to the station index and references notes.

DIVISIONS

- 1 NORTHERN
- 2 SOUTHERN

39.0

39.0

38.0
76.0

75.0

38.0

MONTHLY PRECIPITATION TOTALS

ANNUAL 1987
NORTH CAROLINA

STATION	ANNUAL	MONTH															
		JAN	FEB	MAR	APR	MAY	JUN	JUL	AUG	SEP	OCT	NOV	DEC				
NORTH CAROLINA																	
ASHEVILLE WSO AP	34.57	1.11	1.85	2.75	0.57	3.55								4.19	5.28	4.28	
ASHEVILLE	25.67	0.71	1.57	1.81	0.93	2.55								2.77	4.15	2.94	
ASHFORD	36.74E	1.20	2.70	2.90	0.54E									3.80	4.90	4.80	
BADIN			1.30	2.60	1.20									2.40	4.10	2.90	
B EVERETT JORDAN DAM		1.70	1.50	3.60											1.70		
BOONER 5 WSW		1.00	2.10														
BURLINGTON 3 WNE		0.80	1.32E														
CAPE HATTERAS WSO	49.86	5.75															
CARITHAGE 8 SE		1.70															
CATALDOOCHEE		0.63															
CHARLOTTE WSO AP	26.91																
CLINTON 2 NE	35																
CLINTON																	
DOBSON																	
EDEN																	
ELIZABETH																	
ELLEN																	
FRANK																	
GREENSBORO																	
GREENVILLE																	
HOLCOM																	
JOHNSCEN																	
LAKE LURE																	
LAURINBURG																	
LEXINGTON																	
MOORESVILLE 2																	
MOREHEAD CITY																	
MOUNT PLEASANT																	
N WILKESBORO 12																	
POLKTON 2 NE																	
QUEBEC																	
RALEIGH-DURHAM WSO																	
ROANKE RAPIDS																	
ROARING GAP 1 NW																	
SHELBY 2																	
SNEADS FERRY 2 ENE																	
SUNNYSIDE 2 SSE																	
WILMINGTON WSO AP																	
WILSON 3 SW																	
YADKINVILLE 6 E	28																

HOURLY PRECIPITATION DATA

NORTH CAROLINA

DECEMBER 1987
WITH ANNUAL SUPPLEMENT
VOLUME 37 NUMBER 12

- A WORLD OF CLIMATIC INFORMATION FOR
- * Attorneys
 - * Colleges & Universities
 - * Construction
 - * Consultants
 - * Governmental Agencies
 - * Industry
 - * Insurance Companies
 - * Public Utilities
 - * Research & Development
 - * Energy

STATION INDEX

STATION	OF STATE	COUNTY	DEPARTMENT	LAKE	LAND	TO STATE
NORTH CAROLINA						
ASHEVILLE WSO AP		SWAIN	ASHEVILLE	LAKE	LAND	TO STATE
ASHEVILLE		SWAIN	ASHEVILLE	LAKE	LAND	TO STATE
ASHFORD		SWAIN	ASHEVILLE	LAKE	LAND	TO STATE
B EVERETT JORDAN DAM		SWAIN	ASHEVILLE	LAKE	LAND	TO STATE

MONTHLY PRECIPITATION MAXIMA

MAXIMA FOR MEASUREMENT PERIODS OF

STATION	HOURS					
	15	30	45	1	2	3
NORTH CAROLINA						
ASHEVILLE WSO AP	10 201700-20 011700	10 201700-20 011700	20 201700-20 011700	30 181000-30 181000	30 181000-30 181000	42 181000-30 181000
ASHEVILLE	10 201700-20 011700	10 201700-20 011700	20 201700-20 011700	30 181000-30 181000	30 181000-30 181000	42 181000-30 181000
ASHFORD	10 201700-20 011700	10 201700-20 011700	20 201700-20 011700	30 181000-30 181000	30 181000-30 181000	42 181000-30 181000
B EVERETT JORDAN DAM	10 201700-20 011700	10 201700-20 011700	20 201700-20 011700	30 181000-30 181000	30 181000-30 181000	42 181000-30 181000

HOURLY PRECIPITATION

STATION	DATE	A. M. HOUR ENDING															
		1	2	3	4	5	6	7	8	9	10	11	12				
NORTH CAROLINA																	
ASHEVILLE WSO AP		01	01	02	01	01	02	04	04	03	03	04	01	02	01	05	
ASHEVILLE		01	01	02	01	01	02	04	04	03	03	04	01	02	01	05	
ASHFORD		01	01	02	01	01	02	04	04	03	03	04	01	02	01	05	
B EVERETT JORDAN DAM		01	01	02	01	01	02	04	04	03	03	04	01	02	01	05	

ISSN 0364-6319

HOURLY PRECIPITATION DATA

NORTH CAROLINA

JANUARY 1987
VOLUME 37 NUMBER 1

HOURLY PRECIPITATION DATA is published monthly and presents daily, hourly, and maximum short duration data for recording rain gage stations in each state except Alaska. Also included are a published station index and a locator map for the state. In addition to the regularly published data, the December publication contains a tabulation of monthly and annual total precipitation amounts as an annual supplement.

SHELF STOCK of the printed publication is maintained only for the most recent 3 years. Earlier years are available on microfiche or paper copies reproduced from microfiche. The data is also available in digital form - on magnetic tape or floppy disk.

noaa NATIONAL OCEANIC AND ATMOSPHERIC ADMINISTRATION
 NATIONAL ENVIRONMENTAL SATELLITE, DATA AND INFORMATION SERVICE
 NATIONAL CLIMATIC DATA CENTER ASHEVILLE, NORTH CAROLINA

For further information,
call or write to the
NATIONAL CLIMATIC DATA CENTER
Federal Building, Asheville, N. C. 28801-2696
Phone (704) 259-0682 or (704)-CLIMATE

CD

VALIDATED BY:

Gloria Anderson
Betty Edstrom
Rudy Kittel
Joyce Morgan
Beulah Taylor

Grant Goodge - Chief
Quality Control

DEPARTMENT OF COMMERCE
National Oceanic and Atmospheric Administration
National Environmental Satellite, Data, and Information Service
National Climatic Data Center
Federal Building
Asheville NC 28801

BULK RATE
POSTAGE & FEES PAID
United States Department Of Commerce
NOAA Permit No. G - 19

To change your address, please return a copy of the mailing label along with your new address.

"FORWARDING AND RETURN POSTAGE GUARANTEED - ADDRESS CORRECTION REQUESTED"