



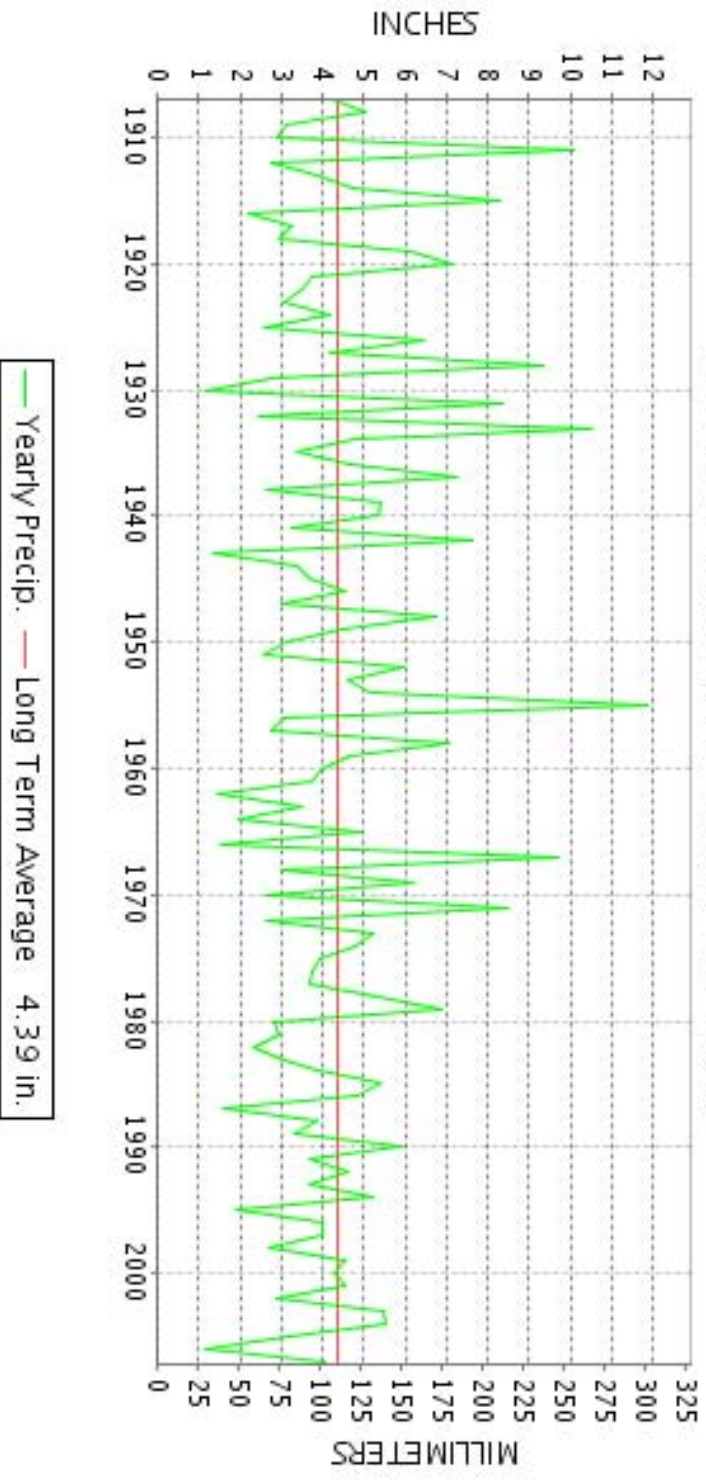
CLIMATOLOGICAL DATA

MARYLAND AND DELAWARE



AUGUST 2007
 VOLUME 111 NUMBER 08
 ISSN 0145-054

AUGUST PRECIPITATION BY YEAR



TEMPERATURE AND PRECIPITATION EXTREMES

MARYLAND			
HIGHEST TEMPERATURE	106	AUGUST 8	MD SCI CTR BALTIMORE R
LOWEST TEMPERATURE	48	AUGUST 14	OAKLAND 1 SE
GREATEST TOTAL PRECIPITATION	6.71		OAKLAND 1 SE
LEAST TOTAL PRECIPITATION	1.86		SALSBURY FAA AP
GREATEST 1 DAY PRECIPITATION	2.92	AUGUST 21	SAVAGE RIVER DAM

"I certify that this is an official publication of the National Oceanic and Atmospheric Administration (NOAA) and received at the National Climatic Data Center(NCDC), Asheville, North Carolina 28801."

Thomas R. Karl
 Director
 National Climatic Data Center

noaa National Oceanic and Atmospheric Administration

National Environmental Satellite, Data and Information Service

National Climatic Data Center Asheville, North Carolina

DELAWARE			
HIGHEST TEMPERATURE	100	AUGUST 9	2 STATIONS
LOWEST TEMPERATURE	55	AUGUST 14	BEAR 2 SW
GREATEST TOTAL PRECIPITATION	5.84		WILMINGTON PORTER RSVR
LEAST TOTAL PRECIPITATION	2.41		DOVER
GREATEST 1 DAY PRECIPITATION	2.18	AUGUST 20	WILMINGTON PORTER RSVR

MONTHLY STATION AND DIVISION SUMMARY

STATION	TEMPERATURE (°F)											PRECIPITATION (IN)												
	AVERAGE MAXIMUM	AVERAGE MINIMUM	AVERAGE	DEPARTURE FROM NORMAL	HIGHEST	DATE	LOWEST	DATE	HEATING DEG. DAYS	COOLING DEG. DAYS	NO. OF DAYS				TOTAL	DEPARTURE FROM NORMAL	GREATEST 24 HOURS	DATE	ICE PELLETS, SNOW			NO. OF DAYS		
											MAX		MIN						TOTAL	MAX DEPTH ON GROUND	DATE	.10 OR MORE	.50 OR MORE	1.00 OR MORE
											>=90	<=32	<=32	<=0										
MARYLAND																								
SOUTHERN EASTERN																								
SHORE 01																								
ASSATEAGUE	86.9	69.3	78.1	2.7	101	8	56	12	0	415	9	0	0	0	5.21	1.03	2.23	19	.0	0		7	3	1
PRINCESS ANNE	M	M	M		100	9	51	1			7	0	0	0	M 4.21		1.24	10	.0	0		4	2	1
SALISBURY	89.0	69.7	79.4	3.4	98	9+	62	29+	0	452	12	0	0	0	2.98	-1.74	1.10	20	.0	0		6	2	1
SALISBURY FAA AP	86.7	63.0	74.9	-.6	98	8	49	19	0	313	10	0	0	0	1.86	-3.13	.69	21	.0	0		5	1	0
SNOW HILL 4 N	90.0	65.6	77.8	2.5	100	8	52	19	0	403	18	0	0	0	3.42	-1.98	1.24	21	.0	0		4	3	2
--DIVISIONAL DATA----->																								
CENTRAL EASTERN																								
SHORE 02																								
ROYAL OAK 2 SSW	89.3	69.3	79.3	2.4	101	8	60	19	0	455	18	0	0	0	4.98	.88	1.50	21	.0	0		9	2	2
VIENNA	90.6M	66.6M	78.6M	2.5	100	10+	59	29+	0	435	16	0	0	0	3.48	-.89	1.25	21	M .0	0		4	2	1
--DIVISIONAL DATA----->																								
LOWER SOUTHERN 03																								
MECHANICSVILLE 5 NE	86.3	66.1	76.2	1.4	99	9	57	19	0	354	10	0	0	0	1.96	-1.98	.78	21	.0	0		5	2	0
SOLOMONS	88.6	70.5	79.6		101	9	64	22	0	457	16	0	0	0	3.19		1.40	6	.0	0		4	2	2
--DIVISIONAL DATA----->																								
UPPER SOUTHERN 04																								
BALTIMORE WASH INTL AP R	87.6	67.3	77.5	3.0	102	8	60	14	0	394	16	0	0	0	3.08	-.66	.77	20	.0	0		7	3	0
BELTSVILLE	88.2	67.4	77.8	2.5	101	9	60	15	0	402	17	0	0	0	2.45	-1.24	1.05	20	.0	0		5	2	1
DALECARLIA RESERVOIR	90.7	65.7	78.2	2.0	104	9	54	23	1	420	19	0	0	0	3.48	-.50	1.85	20	.0	0		6	2	1
GLENN DALE BELL STN	M	M	M																M	M				
LAUREL 3 W	87.3	68.8	78.1	1.6	100	9+	60	22+	0	410									M	M				
MD SCI CTR BALTIMORE R	90.7	73.9	82.3		106	8	64	22	0	545	19	0	0	0	2.54		.86	20	M	M		6	2	0
NATL ARBORETUM DC	90.6	69.3	80.0	3.9	101	9	61	20	0	470	22	0	0	0	3.74	-.16	1.10	20	.0	0		6	4	1
OXON HILL	89.9	69.7	79.8		102	9	63	20	0	465	19	0	0	0	4.11		1.07	26	.0	0		7	4	2
UPPER MARLBORO 3 NNW	88.1	67.1	77.6	3.5	100	9	59	19	0	399	16	0	0	0	5.22	1.32	1.46	21	.0	0		5	4	4
--DIVISIONAL DATA----->																								
NORTHERN EASTERN																								
SHORE 05																								
CHESTERTOWN	86.1	67.2	76.7	.9	101	8	59	22+	1	371	13	0	0	0	2.82	-.94	.54	20	.0	0		6	1	0
--DIVISIONAL DATA----->																								
NORTHERN CENTRAL 06																								
ABERDEEN PHILLIPS FLD	87.9	68.6	78.3	2.9	99	9+	59	11	0	421	14	0	0	0	5.32	1.25	1.41	9	.0	0		7	5	2
CATCTIN MTN PARK	81.7	64.6	73.2	1.7	93	1	55	20+	17	279	5	0	0	0	5.11	1.19	1.52	21	.0	0		9	4	1
CONOWINGO DAM	88.2	67.1M	77.7M	2.9	100	9	55	29	1	399	15	0	0	0	3.72	-.69	1.20	10	.0	0		6	3	1
CYLBURN	85.0	65.5	75.3		100	9	58	23	6	332	10	0	0	0	4.33		1.23	26	M .0	0		7	3	3

MONTHLY STATION AND DIVISION SUMMARY

STATION	TEMPERATURE (°F)										PRECIPITATION (IN)																											
	AVERAGE MAXIMUM	AVERAGE MINIMUM	AVERAGE	DEPARTURE FROM NORMAL	HIGHEST	DATE	LOWEST	DATE	HEATING DEG. DAYS	COOLING DEG. DAYS	NO. OF DAYS				TOTAL	DEPARTURE FROM NORMAL	GREATEST 24 HOURS	DATE	ICE PELLETS, SNOW			NO. OF DAYS																
											MAX		MIN						TOTAL	MAX DEPTH ON GROUND	DATE	.10 OR MORE	.50 OR MORE	1.00 OR MORE														
											>=90	<=32	<=32	<=0																								
DAMASCUS 3 SSW	M	M	M															M	M																			
FREDERICK 2 NNE	86.6	65.7	76.2		97	26+	59	16+	3	358	15	0	0	0	4.30		1.44	10	.0	0				7	3	2												
MILLERS 4 NE	83.6	63.0	73.3	.8	95	8	54	14	15	281	8	0	0	0	4.90	1.19	1.29	21	.0	0				10	3	2												
ROCKVILLE 1 NE	M	M	M																M	M																		
SMITHSBURG 2NW	84.5	63.3	73.9		95	9+	55	14	8	292	9	0	0	0	5.71		1.62	10	.0	0				7	5	2												
--DIVISIONAL DATA-----> APPALACHIAN MOUNTAIN 07			75.4	1.9											4.77	.93			.0																			
CUMBERLAND 2	88.5	65.4	77.0	4.1	99	25	57	15+	2	381	17	0	0	0	5.41	1.88	1.75	21	.0	0				7	5	1												
FROSTBURG 2	78.2	60.4	69.3	2.1	89	25	52	18	22	164	0	0	0	0	6.31	2.49	1.89	21	.0	0				11	5	1												
SHARPSBURG 5 S	87.3M	63.2M	75.3M		98	9	54	18	0	342	13	0	0	0	3.47				.0	0				5	0	0												
WILLIAMSPORT	M	M	M																M	M																		
--DIVISIONAL DATA-----> ALLEGHENY PLATEAU 08			73.9	2.7											5.06	1.61			.0																			
OAKLAND 1 SE	82.3	59.0	70.7	3.6	91	24	48	14+	5	189	1	0	0	0	6.71	2.56	2.53	20	.0	0				9	4	3												
SAVAGE RIVER DAM	80.5	61.2	70.9	2.6	89	25	53	16+	6	195	0	0	0	0	6.24	2.87	2.92	21	.0	0				7	3	2												
--DIVISIONAL DATA-----> DELAWARE NORTHERN 01			70.8	3.7											6.48	2.57			.0																			
BEAR 2 SW	84.7	65.1	74.9		96	8	55	14	8	320	8	0	0	0	3.10		.84	20	.0	0				7	3	0												
NEWARK UNIV FARM	M	M	M																M	M																		
WILMINGTON NEW CASTLE R	85.3	67.4	76.4	1.4	97	8	58	22	3	362	10	0	0	0	3.38	-.13	.99	20	.0	0				5	2	0												
WILMINGTON PORTER RSVR	83.1	67.3	75.2	1.4	93	8+	57	22+	10	334	6	0	0	0	5.84	1.79	2.18	20	.0	0				8	4	2												
--DIVISIONAL DATA-----> SOUTHERN 02			75.5	1.0											4.11	.39			.0																			
DOVER	86.8	68.5	77.7	1.5	97	25	60	29+	1	401	10	0	0	0	2.41	-2.32	1.05	21	.0	0				6	2	1												
GREENWOOD 2NE	87.2	65.7	76.5	2.6	100	9	57	29	0	361	15	0	0	0	4.14	.07	1.57	17	.0	0				6	3	1												
LEWES	87.2	70.3	78.8	2.9	100	9+	62	30	0	433	15	0	0	0	3.17	-2.17	1.75	17	.0	0				4	2	1												
--DIVISIONAL DATA----->			77.7	2.9											3.24	-1.65			.0																			

DAILY PRECIPITATION (INCHES)

STATION	TOTAL	DAY OF MONTH																																	
		01	02	03	04	05	06	07	08	09	10	11	12	13	14	15	16	17	18	19	20	21	22	23	24	25	26	27	28	29	30	31			
MARYLAND																																			
SOUTHERN EASTERN SHORE 01																																			
ASSATEAGUE	5.21					.26	.03			.39	.13		.02				.06		2.23	.48	.68	.04								.89					
PRINCESS ANNE	M 4.21					*	1.01				1.24	.12	.15				-			*	.87						.82								
SALISBURY	2.98					.02	.33				.25		T	.25			.10			1.10	.92	.01													
SALISBURY FAA AP	1.86					.21	.05			.20	.01			.18			T	.06		T	.43	.69	.03						T						
SNOW HILL 4 N	3.42					.02	.55				.27						.05		T	1.24	1.24	.03	.01						.01						
CENTRAL EASTERN SHORE 02																																			
ROYAL OAK 2 SSW	4.98					.44	.49			.03		.29	.15			.16	.02		.09	1.32	1.50	.18					.31								
VIENNA	3.48									*	.23		.32				.73		*	.70	1.25	.03					.22								
LOWER SOUTHERN 03																																			
MECHANICSVILLE 5 NE	1.96	.01					.21	T			.10						.01	T	T	.71	.78	.13	T				.01	T							
SOLOMONS	3.19						1.40	.02			.18						.07		T	T	.40	1.05	.07												
UPPER SOUTHERN 04																																			
BALTIMORE WASH INTL AP R	3.08					.10	.03			.43	T		.08		T	.13	T		.13	.77	.76	.03	T			.62	T								
BELTSVILLE	2.45						.12				.15						.08			1.05	.86	.04					.15								
DALECARLIA RESERVOIR	3.48						.30				.12						.11			1.85	.93	.03					.14								
GLENN DALE BELL STN	M	-	-	-	-	-	-	-	-	-	-	-	-	-	-	-	-	-	-	-	-	-	-	-	-	-	-	-	-	-	-	-	-		
LAUREL 3 W	M						.23			.82	.05					.14			.01	.70	.98	.03					.05								
MD SCI CTR BALTIMORE R	2.54					.04	.14			.34						.10			.09	.86	.58	.07				.32									
NATL ARBORETUM DC	3.74						.55				.05						.16		T	1.10	.93	.30	T				.65	T							
OXON HILL	4.11						.40	.04			.09						.12		T	.60	1.03	.26					1.07	.50							
UPPER MARLBORO 3 NNW	5.22						1.18		T		.06					.10				1.22	1.46	.08					1.09	.03							
NORTHERN EASTERN SHORE 05																																			
CHESTERTOWN	2.82					.07	.06			.46						.01			.40	.54	.49	.02				.34	.43								
NORTHERN CENTRAL 06																																			
ABERDEEN PHILLIPS FLD	5.32			T			.93		T	1.41	.76		.03			.14				.54	1.29	.14	.01				.07								
BRIGHTON DAM	2.42						.28			.43						.22			.02	.45	.87					.15									
CATOCTIN MTN PARK	5.11					.10	.24			.50	.80					.42			.05	.48	1.52	.11	.02	.05			.82								
CONOWINGO DAM	3.72						.38		.03		1.20						.20			.47	.85	.50					.09								
CYLBURN	4.33						.28	.03	.02		1.02		.03			.18				.23	1.11	.14	.01	T			1.23		.02					.03	
DAMASCUS 3 SSW	M	-	-	-	-	-	-	-	-	-	-	-	-	-	-	-	-	-	-	-	-	-	-	-	-	-	-	-	-	-	-	-	-	-	
FREDERICK 2 NNE	4.30						.58	.04			1.44					.17				.22	1.38	.26	.01	.01		.19									
MILLERS 4 NE	4.90			.09	.10	T	.45	T	.03	1.06	.53		.05			.34			.10	.24	1.29	.20	.01	T		.41									
POTOMAC FLTR PLT	3.46						.28			.39	.10					.20				1.28	.84	T				.22	.15								
ROCKVILLE 1 NE	M	-	-	-	-	-	-	-	-	-	-	-	-	-	-	-	-	-	-	-	-	-	-	-	-	-	-	-	-	-	-	-	-	-	
SMITHSBURG 2NW	5.71				.05		.35		.03		1.62					.54				.45	1.10	.70	.03				.80							.04	

MARYLAND AND DELAWARE
AUGUST 2007

DAILY PRECIPITATION (INCHES)

STATION	TOTAL	DAY OF MONTH																															
		01	02	03	04	05	06	07	08	09	10	11	12	13	14	15	16	17	18	19	20	21	22	23	24	25	26	27	28	29	30	31	
APPALACHIAN MOUNTAIN 07																																	
CUMBERLAND 2	5.41					.80		.01	.01	.85						.05	.50		.01	.85	1.75	.08	.26	.03		.18						.03	
FROSTBURG 2	6.31					.82	.01		.14	.78					T	.28			.26	.89	1.89	.10	.39	.03		.19						.53	
SHARPSBURG 5 S	3.47					.40	.02			.32							.33		*	*	1.79	.23	.01			.36						.01	
WILLIAMSPORT	M	-	-	-	-	-	-	-	-	-	-	-	-	-	-	-	-	-	-	-	-	-	-	-	-	-	-	-	-	-	-	-	
ALLEGHENY PLATEAU 08																																	
OAKLAND 1 SE	6.71	.04		.01		1.15	T	.03		1.00	.75	.01			.34				.18	2.53	.25					.32						.10	
SAVAGE RIVER DAM	6.24					.92				.41	.22						1.11			.48	2.92	.04	.02			.12						T	
DELAWARE NORTHERN 01																																	
BEAR 2 SW	3.10					.24	.08		.02	.68	.11					.08			.36	.84	.54	.12				.03							
NEWARK UNIV FARM	M	-	-	-	-	-	-	-	-	-	-	-	-	-	-	-	-	-	-	-	-	-	-	-	-	-	-	-	-	-	-	-	
WILMINGTON NEW CASTLE R	3.38					.48	.03		.02	.84	.06					.02			.45	.99	.47	.02			T								
WILMINGTON PORTER RSVR	5.84					1.53	T		.15	.54	.10					T	.08		.40	2.18	.72	.14											
SOUTHERN 02																																	
DOVER	2.41					.15			.20	.15									.17	.59	1.05	.05					.05						
GREENWOOD 2NE	4.14					.29				.05	.06		.02				1.57		.34	.70	.99	.01	.01			.10							
LEWES	3.17					.11			T	.08	T					1.75			.05	.34	.71	.08	.05										

DAILY TEMPERATURES (°F)

STATION	OB. TIME	MAX/MIN	DAY OF MONTH																															AVERAGE				
			01	02	03	04	05	06	07	08	09	10	11	12	13	14	15	16	17	18	19	20	21	22	23	24	25	26	27	28	29	30	31					
MARYLAND SOUTHERN EASTERN SHORE 01																																						
ASSATEAGUE M	MID	MAX	85	89	88	90	90	86	94	101	90	92	86	88	92	83	85	91	89	84	83	81	87	74	81	85	88	90	83	82	84	86	86	86	86	86.9		
		MIN	68	70	69	74	73	73	74	76	77	74	67	56	69	67	68	75	73	68	62	68	70	69	69	67	74	75	70	68	65	59	62	69.3				
PRINCESS ANNE	17	MAX	94	92				95		99	100				94	89	88	89																89	89	M		
		MIN	51	62				65		70	75				55	58	59	69															56	58	M			
SALISBURY	17	MAX	90	91	91	96	96	89	94	98	98	90	91	88	89	88	87	89	89	88	83	82	85	78	80	87	95	93	87	86	86	87	87	87	89.0			
		OBS																			61	66	69	66														
		MIN	69	69	72	74	72	71	76	80	81	74	65	63	69	67	66	74	73	68	62	67	70	67	67	68	74	73	73	66	62	63	66	66	69.7			
		OBS																			80	78	80	76														
SALISBURY FAA AP M	MID	MAX	90	91	91	95	87	88	93	98	90	89	78	87	89	86	88	89	90	81	80	76	80	72	80	87	95	91	87	83	84	86	88	86.7				
		OBS																				***																
		MIN	61	60	66	70	69	71	69	78	75	68	55	52	60	56	54	67	71	52	49	60	68	66	66	67	73	70	61	57	52	53	56	63.0				
		OBS																			***																	
SNOW HILL 4 N	17	MAX	93	93	93	98	91	90	97	100	98	91	89	89	92	88	90	92	92	90	82	79	84	84	80	88	97	93	89	84	86	88	90	90.0				
		MIN	64	62	69	73	71	71	72	77	76	73	65	54	62	54	56	70	70	64	52	66	68	66	65	67	72	70	71	62	56	55	60	65.6				
CENTRAL EASTERN SHORE 02																																						
ROYAL OAK 2 SSW	18	MAX	95	95	96	97	95	92	95	101	98	92	91	90	90	89	90	89	92	90	81	80	74	75	79	88	95	92	85	87	86	86	84	89.3				
		MIN	66	70	76	75	74	72	75	82	79	75	62	61	69	63	66	74	75	69	60	63	67	62	66	69	76	71	70	65	64	65	67	69.3				
VIENNA	18	MAX	93	93	92	99	98	91	100	100		100	90	87	91	88	91	93	90	86																		
		MIN	66	69	86	73	74	68	72	78		73	68	60	68																							
		OBS																			***																	
LOWER SOUTHERN 03																																						
MECHANICSVILLE 5 NE	07	MAX	87	90	93	93	95	88	89	93	99	95	89	82	89	90	85	89	88	91	81	80	71	74	70	75	87	92	86	85	83	83	83	86.3				
		MIN	63	63	69	69	71	71	73	73	76	74	68	61	61	60	62	62	72	66	57	58	64	64	64	64	70	70	67	65	64	63	64	66.1				
SOLOMONS	08	MAX	89	94	93	93	95	90	93	93	101	92	92	84	86	92	86	93	90	94	82	84	77	82	75	77	94	94	89	86	84	86	86	88.6				
		MIN	71	73	73	74	78	69	74	79	81	74	66	68	67	70	68	75	71	67	67	65	66	64	65	68	73	74	71	68	68	70	70.5					
UPPER SOUTHERN 04																																						
BALTIMORE WASH INTL APM	MID	MAX	93	95	96	98	87	93	97	102	94	91	85	92	92	87	92	90	94	82	73	70	68	69	75	90	96	87	87	84	84	88	86	87.6				
		MIN	65	67	71	69	72	72	73	80	73	69	61	61	68	60	61	70	74	61	62	61	62	61	66	70	73	71	67	65	65	70	67.3					
BELTSVILLE	08	MAX	90	94	96	95	97	88	94	96	101	94	91	87	91	91	87	93	90	93	82	80	71	68	70	76	92	98	86	86	84	86	87	88.2				
		MIN	64	66	70	68	75	73	72	76	77	73	63	61	69	61	60	69	72	67	62	62	63	62	62	67	73	71	67	65	67	64	68	67.4				
DALECARLIA RESERVOIR	08	MAX	93	96	99	100	100	93	96	99	104	97	93	89	83	93	90	95	92	96	84	85	73	72	74	80	93	99	88	89	88	89	90	90.7				
		MIN	73	67	72	69	73	73	72	70	73	72	63	62	68	60	59	57	67	64	60	59	60	57	54	63	70	67	64	70	65	66	67	65.7				
		OBS																																				
GLENN DALE BELL STN	08	MAX																																		M		
		MIN																																		M		
LAUREL 3 W M	MID	MAX	95	94	94	97	89	93	95	100	100	89	86	90	90	86	91	88	92	81	75	70	67	69	75	90	96	86	86	84	85	87	87	87	87.3			

DAILY TEMPERATURES (°F)

STATION	OB. TIME	MAX/MIN	DAY OF MONTH																															AVERAGE
			01	02	03	04	05	06	07	08	09	10	11	12	13	14	15	16	17	18	19	20	21	22	23	24	25	26	27	28	29	30	31	
MD SCI CTR BALTIMORE M	MID	MIN	72	71	72	73	71	71	76	80	70	73	60	68	73	68	66	70	72	65	65	60	62	60	65	70	75	70	66	65	68	68	67	68.8
		MAX	97	100	98	100	92	95	97	106	96	94	88	96	94	89	96	94	97	84	76	74	69	75	79	92	98	90	89	88	89	92	88	90.7
NATL ARBORETUM DC	07	MIN	78	79	78	79	76	76	82	85	77	71	65	72	77	73	70	76	79	72	67	65	65	64	68	75	76	76	73	74	74	73	75	73.9
		MAX	95	95	97	96	99	94	95	98	101	97	93	93	94	94	91	95	90	94	94	83	71	68	74	80	92	97	89	90	87	87	87	90.6
OXON HILL	08	MIN	66	70	74	72	77	72	74	80	79	75	65	65	72	65	66	73	72	69	64	61	62	62	63	68	73	71	68	67	69	67	67	69.3
		MAX	93	94	95	96	97	89	94	97	102	94	93	89	93	94	90	95	92	95	85	85	72	72	74	79	93	98	89	90	85	85	87	89.9
UPPER MARLBORO 3 NNW	08	MIN	68	71	72	72	77	73	73	79	80	75	67	66	67	68	65	66	74	71	64	63	64	64	64	68	72	72	69	68	69	69	72	69.7
		MAX	91	93	95	95	97	89	94	94	100	93	91	86	90	92	88	93	89	93	83	82	71	71	70	76	90	96	85	87	84	85	87	88.1
NORTHERN EASTERN SHORE 05 CHESTERTOWN	23	MIN	65	68	70	69	73	70	73	76	78	75	64	60	68	60	62	70	72	66	59	62	62	62	61	67	71	69	66	64	66	65	68	67.1
		MAX	92	95	95	95	86	90	94	101	92	90	82	90	90	85	89	87	92	81	71	71	67	69	77	87	95	84	85	84	86	86	82	86.1
NORTHERN CENTRAL 06 ABERDEEN PHILLIPS FLD	16	MIN	67	70	72	74	71	72	74	80	74	65	61	62	68	59	65	72	74	63	62	61	62	59	64	67	72	71	67	65	61	63	66	67.2
		MAX	92	94	94	95	94	88	94	99	99	90	90	88	89	89	88	88	91	93	81	68	68	69	77	88	94	94	87	87	86	87	85	87.9
CATOCTIN MTN PARK	17	OBS																		***	***						***	***						
		MIN	67	69	77	72	71	73	76	82	73	74	59	62	69	60	60	74	77	66	64	61	64	64	66	69	74	72	68	64	62	66	72	68.6
CONOWINGO DAM	07	OBS																		***	***						***	***						
		MAX	93	88	91	90	87	85	87	92	85	82	81	85	84	81	83	83	85	82	71	64	61	63	67	86	91	87	80	78	82	82	78	81.7
CYLBURN	08	MIN	68	68	68	73	65	65	72	74	68	67	59	64	67	60	65	62	70	55	59	55	57	56	61	66	72	67	60	64	66	65	65	64.6
		MAX	92	95	97	96	96	88	88	95	100	93	92	86	94	93	87	91	88	94	88	75	70	67	71	79	85	95	88	86	85	89	91	88.2
DAMASCUS 3 SSW	22	OBS																																
		MIN	70	66	67	70	70	68	71	74	78	77	62	66	66	60	62	64	76	68	64	63	62	60	60	64	71	73	66	67	55	74	67.1	
FREDERICK 2 NNE	07	MAX	90	92	95	94	92	86	89	93	100	94	85	80	87	88	84	90	87	89	76	68	68	64	69	74	86	93	84	85	83	85	84	85.0
		MIN	65	67	68	71	70	71	73	75	75	71	59	63	68	60	60	66	70	64	62	59	60	59	58	62	70	63	63	63	64	65	67	65.5
MILLERS 4 NE	18	OBS																																
		MAX	90	93	92	92	90	87	89	95	93	86	84	86	86	83	84	83	86	84	73	63	61	66	72	86	93	87	80	81	83	84	80	83.6
ROCKVILLE 1 NE	17	MIN	62	64	68	67	67	67	70	73	69	69	55	60	63	54	56	68	70	59	56	56	57	56	61	67	71	67	59	57	60	60	65	63.0
		MAX	90	92	95	94	93	86	88	90	95	88	87	89	87	88	83	87	87	86	76	68	65	65	68	74	90	93	81	82	82	84	86	84.5
APPALACHIAN MOUNTAIN 07 CUMBERLAND 2	18	MIN	61	63	66	67	67	68	70	74	71	69	63	62	61	55	56	64	64	57	58	58	59	60	60	65	70	69	58	59	62	63	64	63.3
		MAX	95	98	97	98	95	91	95	97	93	90	89	91	92	87	92	90	88	85	77	65	68	70	75	96	99	92	85	89	88	89	86	88.5

DAILY TEMPERATURES (°F)

STATION	OB. TIME	MAX/MIN	DAY OF MONTH																															AVERAGE
			01	02	03	04	05	06	07	08	09	10	11	12	13	14	15	16	17	18	19	20	21	22	23	24	25	26	27	28	29	30	31	
FROSTBURG 2	07	MIN	66	67	68	68	70	70	73	74	71	67	62	65	59	57	57	69	61	60	60	60	62	62	66	71	71	61	61	65	70	68	66	65.4
		OBS	83	84	87	85	84	70	79	84	85	83	80	78	81	80	77	81	82	79	70	65	59	63	65	71	89	85	75	78	80	80	82	78.2
SHARPSBURG 5 S	07	MIN	59	60	64	66	62	64	69	70	68	65	61	57	60	54	54	54	64	52	53	55	56	58	58	62	66	67	56	56	60	63	60	60.4
		OBS	91	93	96	95	95	84	90	94	98	88				91	86	91	89	90			68	69	70	76	91	97	84	85	85	87	88	87.3
WILLIAMSPORT	06	MIN	60	60	65	66	65	65	69	70	71	71				55	55	56	66	54			62	62	66	68	68	58	58	64	64	63	63.2	
		OBS	97										89																					M
		MIN																																
ALLEGHENY PLATEAU 08 OAKLAND 1 SE	07	MIN																																
		OBS	85	86	86	85	86	79	84	83	88	80	79	81	81	77	81	82	84	72	75	83	82	82	88	91	86	80	77	84	85	83	77	82.3
		MIN	58	58	60	63	65	62	70	68	65	57	55	56	48	48	54	55	51	52	56	60	57	62	62	62	64	55	59	61	61	63	61	59.0
SAVAGE RIVER DAM	08	OBS															63																46	
		MIN	84	86	88	87	87	71	80	86	88	88	82	79	82	83	78	83	84	80	74	70	62	71	73	76	89	87	80	76	80	80	83	80.5
DELAWARE NORTHERN 01 BEAR 2 SW M	MID	MIN	59	60	63	64	64	65	69	70	68	67	60	57	58	53	54	53	65	56	57	58	60	60	63	65	65	58	58	61	67	65	61.2	
		OBS	92	93	92	93	85	88	92	96	90	89	83	88	87	83	86	85	89	78	69	66	64	68	78	87	94	85	85	86	86	86	82	84.7
NEWARK UNIV FARM	17	MIN	64	66	69	70	69	72	73	79	72	62	59	60	71	55	58	70	72	60	58	60	60	58	63	67	70	71	65	60	60	60	66	65.1
		OBS																																
WILMINGTON NEW CASTLE M	MID	MIN	93	92	91	95	87	87	94	97	90	90	85	89	89	85	87	86	90	78	71	68	65	69	79	83	90	87	87	85	85	87	84	85.3
		OBS	67	71	73	73	72	73	73	80	74	62	60	64	72	59	62	75	73	62	61	62	61	58	65	68	74	72	66	63	63	65	66	67.4
WILMINGTON PORTER RSVRM	MID	MIN	89	93	93	92	87	85	91	93	87	79	86	85	81	86	85	89	75	70	65	63	66	77	83	91	82	83	83	84	85	80	83.1	
		OBS	71	73	72	73	70	70	74	78	74	61	62	67	65	64	64	73	71	61	60	60	57	57	61	68	76	72	66	66	64	66	69	67.3
SOUTHERN 02 DOVER	16	MIN																																
		OBS	91	92	92	94	90	88	93	96	96	86	83	88	89	88	88	89	89	89	81	70	70	68	78	84	97	95	85	85	85	86	85	86.8
GREENWOOD 2NE	07	MIN	67	69	74	73	73	72	76	80	76	74	62	63	71	65	68	74	74	63	63	63	64	60	64	67	74	72	69	64	60	65	65	68.5
		OBS	89	92	94	94	97	85	90	95	100	91	91	82	90	90	87	90	91	91	80	76	76	73	69	79	87	96	86	87	83	85	86	87.2
LEWES	17	MIN	64	66	69	71	72	72	72	73	78	73	63	58	61	60	62	65	71	65	59	63	63	63	62	65	68	70	70	63	57	59	60	65.7
		OBS	89	92	92	93	91	90	92	100	100	91	91	90	87	87	89	91	92	88	76	75	74	70	74	84	97	93	82	81	82	85	85	87.2
		MIN	69	72	73	75	74	73	76	80	79	75	65	67	70	70	67	75	71	70	63	67	68	66	67	67	74	73	73	69	63	62	65	70.3

PAN EVAPORATION AND WIND

STATION		DAY OF MONTH																															TOTAL OR AVERAGE
		01	02	03	04	05	06	07	08	09	10	11	12	13	14	15	16	17	18	19	20	21	22	23	24	25	26	27	28	29	30	31	
MARYLAND UPPER SOUTHERN 04 BELTSVILLE	WIND	42	27	48	*	*	*	174	37	28	98	*	*	151	69	40	38	59	*	*	173	27	45	20	19	*	*	141	38	28	32	34	1368
	EVAP	32	21	31	*	*	*	103	22	24	36	*	*	82	37	33	25	16	*	*	78	9	3	4	8	*	*	67	24	18	20	17	7.10
	MAX	92	88	93	-	-	-	93	95	95	94	-	-	91	90	88	88	85	-	-	92	69	66	69	75	-	-	95	90	84	87	87	86.6
	MIN	64	65	68	-	-	-	72	73	72	72	-	-	61	59	61	62	69	-	-	60	62	60	60	66	-	-	65	65	65	64	64	65.0
UPPER MARLBORO 3 NNW	WIND	-	-	-	-	-	-	-	-	-	-	-	-	-	-	-	-	-	-	-	-	-	-	-	-	-	-	-	-	-	-	-	M
	EVAP	23	20	28	*	*	61	16	19	29	19	*	*	71	31	27	21	13	*	*	66	13	3	6	8	*	*	59	-	-	18	16	6.06
	MAX	101	99	101	99	100	94	99	100	101	98	98	97	98	96	95	94	91	96	92	81	74	73	75	81	98	102	92	98	95	95	96	93.8
	MIN	69	70	69	70	72	72	73	77	77	76	67	64	65	65	64	65	72	63	64	64	65	65	65	68	72	72	72	69	70	69	69	68.8

Evaporation: Is measured in hundredths of inches.

Wind: Is measured in miles.

Max and Min: The maximum and minimum temperatures (Fahreheit) of the water in the evaporation pan.

STATION INDEX

STATION	INDEX NO.	DIVISION	COUNTY	LATITUDE	LONGITUDE	ELEVATION (IN FEET)	OBSERVATION TIME AND TABLES				OBSERVER
							TEMP	PRECIP	EVAP	SPECIAL SEE (NOTES)	
MARYLAND											
ABERDEEN PHILLIPS FLD	0015	06	HARFORD	39 28	76 10W	57	16	16		C H	US ARMY ABERDEEN TEST CT
ASSATEAGUE	0335	01	WORCESTER	38 4	75 13W	10	MID	MID		H	ASSATEAGUE IS NATL SEA
BALTIMORE WASH INTL AP R	0465	04	ANNE ARUNDEL	39 10	76 41W	156	MID	MID		C HI	ASOS - FAA
BELTSVILLE	0700	04	PRINCE GEORG	39 2	76 56W	145	08	08	08	C H	USDA AGRICULT RES SVC
BRIGHTON DAM	1125	06	MONTGOMERY	39 11	77 1W	330		07	07	H	WA SUBURB SANIT COMM
CATOCCTIN MTN PARK	1530	05	FREDERICK	39 39	77 29W	1610	17	17	17	H	CATOCCTIN MOUNTAIN PK
CHESTERTOWN	1750	06	KENT	39 13	76 3W	40	23	23		H	THOMAS W ELIASON JR
CLARKSVILLE 3 NNE	1862	06	HOWARD	39 15	76 56W	370	17	17	17	H	INACTIVE 12/02/2004
CONOWINGO DAM	2060	06	HARFORD	39 39	76 11W	40	07	07	07	H	SUSQUEHANNA ELECTRIC CO
CUMBERLAND 2	2282	07	ALLEGANY	39 39	78 45W	730	18	18		H	TIMOTHY B THOMAS
CYLBURN	2308	06	BALTIMORE, C	39 22	76 38W	400	08	08		H	CYLBURN ARBORETUM
DALECARLIA RESERVOIR	2325	04	PRINCE GEORG	38 56	77 7W	150	08	08		H	USA CORPS OF ENGINEERS
DAMASCUS 3 SSW	2336	06	FREDERICK	39 16	77 14W	697	22	22		H	ROBERT J LEFFLER
EMMITSBURG 2 SE	2906	06	MONTGOMERY	39 41	77 17W	416	17	17		H	INACTIVE 10/01/2005
FREDERICK 2 NNE	3353	06	FREDERICK	39 26	77 24W	280	07	07	07	H	DIR PUBLIC WORK WTP
FROSTBURG 2	3415	07	ALLEGANY	39 40	78 56W	2170	07	07		H	GREGORY P LATTI
GLENN DALE BELL STN	3675	04	PRINCE GEORG	38 58	76 48W	150	08	08		H	US NATL ARBORETUM
LAUREL 3 W	5111	04	PRINCE GEORG	39 5	76 54W	400	MID	MID		H	WA SUBURBAN SANITARY COM
MD SCI CTR BALTIMORE R	5718	04	BALTIMORE, C	39 17	76 37W	20	MID	MID		C H	ASOS - NWS
MECHANICSVILLE 5 NE	5865	03	ST. MARY'S	38 28	76 42W	100	07	07		H	SANDRA J HASTINGS
MILLERS 4 NE	5934	06	CARROLL	39 43	76 48W	860	18	18		C H	ROBERT MILLER
NATL ARBORETUM DC	6350	04	DISTRICT OF	38 55	76 58W	50	07	07		H	US NATIONAL ARBORETUM
OAKLAND 1 SE	6620	08	GARRETT	39 25	79 24W	2420	07	07		H	GARRETT CO MEM HOSPITAL
OXON HILL	6800	04	PRINCE GEORG	38 48	77 0W	120	08	08		H	BRIAN SMITH
POTOMAC FLTR PLT	7272	06	MONTGOMERY	39 2	77 15W	270		08	08	H	POTOMAC WATER FILT PLANT
PRINCESS ANNE	7330	01	SOMERSET	38 13	75 41W	20	17	17		H	UNIV OF MD EAST SHORE
ROCKVILLE 1 NE	7705	06	MONTGOMERY	39 6	77 9W	440	17	17		H	WASHINGTON GAS & ELEC CO
ROYAL OAK 2 SSW	7806	02	TALBOT	38 43	76 11W	10	18	18		H	JOHN L SWAINE JR
SALISBURY	8000	01	WICOMICO	38 22	75 35W	10	17	17		H	CITY OF SALISBURY
SALISBURY FAA AP	8005	01	WICOMICO	38 20	75 31W	48	MID	MID		H	FAA
SAVAGE RIVER DAM	8065	08	GARRETT	39 31	79 8W	1495	08	08	08	C H	USA CORPS OF ENGINEERS
SHARPSBURG 5 S	8207	07	WASHINGTON	39 24	77 43W	500	07	07		H	DAVID DOWNIN
SMITHSBURG 2NW	8371	06	WASHINGTON	39 40	77 35W	670	08	08		H	SMITHSBURG WWTTP
SNOW HILL 4 N	8380	01	WORCESTER	38 14	75 23W	30	17	17		H	CURTIS E SHOCKLEY
SOLOMONS	8405	03	CALVERT	38 19	76 27W	12	08	08		H	CHESEAPEAKE BIOLOGIC LAB
UPPER MARLBORO 3 NNW	9070	04	PRINCE GEORG	38 52	76 47W	100	08	08	08	H	UNIVERSITY OF MARYLAND
VIENNA	9140	02	DORCHESTER	38 29	75 49W	10	18	18		H	DELMARVA POWER & LIGHT
WILLIAMSPORT	9570	07	WASHINGTON	39 36	77 50W	360	06	06		H	R C WILSON TRTMT PLT
DELAWARE											
BEAR 2 SW	1200	01	NEW CASTLE	39 36	75 44W	80	MID	MID		H	R GARY GALLAHER
DOVER	2730	02	KENT	39 16	75 31W	30	16	16		H	DEPT OF TRANSPORTATION
GREENWOOD 2NE	3595	02	SUSSEX	38 49	75 35W	45	07	07		H	DANIEL M SWARTZENTRUBER
LEWES	5320	02	SUSSEX	38 47	75 8W	15	17	17		H	BOARD OF PUBLIC WORKS
NEWARK UNIV FARM	6410	01	NEW CASTLE	39 40	75 45W	90	17	17	17	C H	UNIV OF DE AGR FARM
WILMINGTON NEW CASTLE R	9595	01	NEW CASTLE	39 40	75 36W	79	MID	MID		C HI	ASOS - FAA
WILMINGTON PORTER RSVR	9605	01	NEW CASTLE	39 46	75 32W	270	MID	MID		H	WILMINGTON WATER DEPT

REFERENCE NOTES

DEFINITIONS

STATION NAMES: Name of the city, town or locality. Figures and letters following the station names indicate the distance in miles and direction from the post office or town community center.

DIVISIONS: Areas within a state of similar climatological characteristics. Division averages are calculated using data from stations that record both temperature and precipitation (i.e. not precipitation alone).

NORMALS: The average value of the meteorological element over a time period. Effective 1 January 2002, the averaging period is 1971 to 2000. The normals for National Weather Service localities have been adjusted so as to be representative for the current observation site.

MONTHLY DEGREE DAY TOTALS: One heating (cooling) degree day is accumulated for each whole degree that the daily mean temperature is below (above) 65 degrees Fahrenheit.

PRECIPITATION: Values shown in hundredths of inches are water equivalent totals, i.e., total of liquid and melted frozen precipitation. In the "Monthly Summarized Data" table the total snow and sleet values shown in tenths of inches are unmelted amounts. The max depth on ground values of snow and sleet shown in whole inches are cumulative unmelted amounts. The number of days with .10, .50, 1.00 or more refers to water equivalents.

PRECIPITATION QUALITY CONTROL: The NCDC quality control process may delete precipitation data that are spatially inconsistent; exceed climatological limits, or are inconsistent with prevailing weather patterns.

TEMPERATURE: Original and edited temperature values are given in the "Daily Temperature" table. Edited values are produced when an original value is missing or when surrounding stations indicated a suspect original value. When a line labeled OBS is present and contains either a daily temperature (suspect) or *** (missing), the temperature appearing directly above, on the line labeled MAX or MIN, is an edited value. Summary temperature information (averages, departures, extremes, monthly degree day totals) is based on the values labeled MAX/MIN.

WIND: (As shown in the "Evaporation and Wind" table) the total wind movement in miles over the evaporation pan as determined by an anemometer recorder located 6-8 inches above the pan.

SYMBOLS AND LETTERS USED IN THE STATION INDEX TABLE

Thermometers located in a rooftop shelter.
// Rain gage equipped with a windshield
AR Observation made "after rain" has occurred.
C Station is equipped with recording rain gage (R) but values in this bulletin are from a non-recording rain gage unless indicated by an R.
G Observations appear in the "Soil Temperatures" table.
H Observations appear in the "Snowfall and Snow on the Ground" table.
J Station also published as a Local Climatological Data publication.
MID Observation time is midnight.
MO Rain gage read once monthly, usually the last day.
OC Rain gage readings vary from a few weeks to several months.
R Amounts from recording rain gage.
SR Observation time near sunrise.

SS Observation time near sunset.
VAR Observation time varies.
WI Rain gage read weekly or irregularly.
WM Rain gage read weekly and last day of the month.

SYMBOLS AND LETTERS USED IN THE DATA TABLES

(DAILY DATA ARE FOR THE 24 HOURS IMMEDIATELY PRECEDING OBSERVATION TIME.)

BLANK Entries in the "Monthly Summarized Data" table indicate no record.

BLANK Entries in the "Daily Precipitation" and "Snowfall and Snow on the Ground" tables indicate zero.

BLANK Entries in the "Daily Temperature" table indicate a missing record where an edited value could not be determined. (See *** below)

- No record. Data not recorded, determined unreliable by quality control check, or not received in time for publication.

+ Precipitation or temperature extremes occurred on one or more previous dates during the month.

*** Missing original temperature which has been estimated during edit.

* Rain gage not read. Precipitation is included in the amount following the asterisks. Time distribution not known. A * preceding the monthly total indicates precipitation amount is being carried forward to next months total, and may include amounts from the previous month(s).
// Rain gage equipped with a windshield.

A Amount of precipitation is the total of observer's entries for the current month. It may include precipitation that occurred during the previous month. Refer to earlier bulletin to determine date of last reading. (Hawaii stations)

B Adjusted monthly value (estimated), (1-7 missing values for wind and evaporation).

M Insufficient or partial data. M is appended to average and/or total values computed with 1-9 daily values missing. M appears alone if 10 or more daily values are missing, (8 or more for wind and evaporation).

R Amounts from recording rain gage.

T Trace. An amount too small to measure.

V Includes total for previous month(s). (See * above)

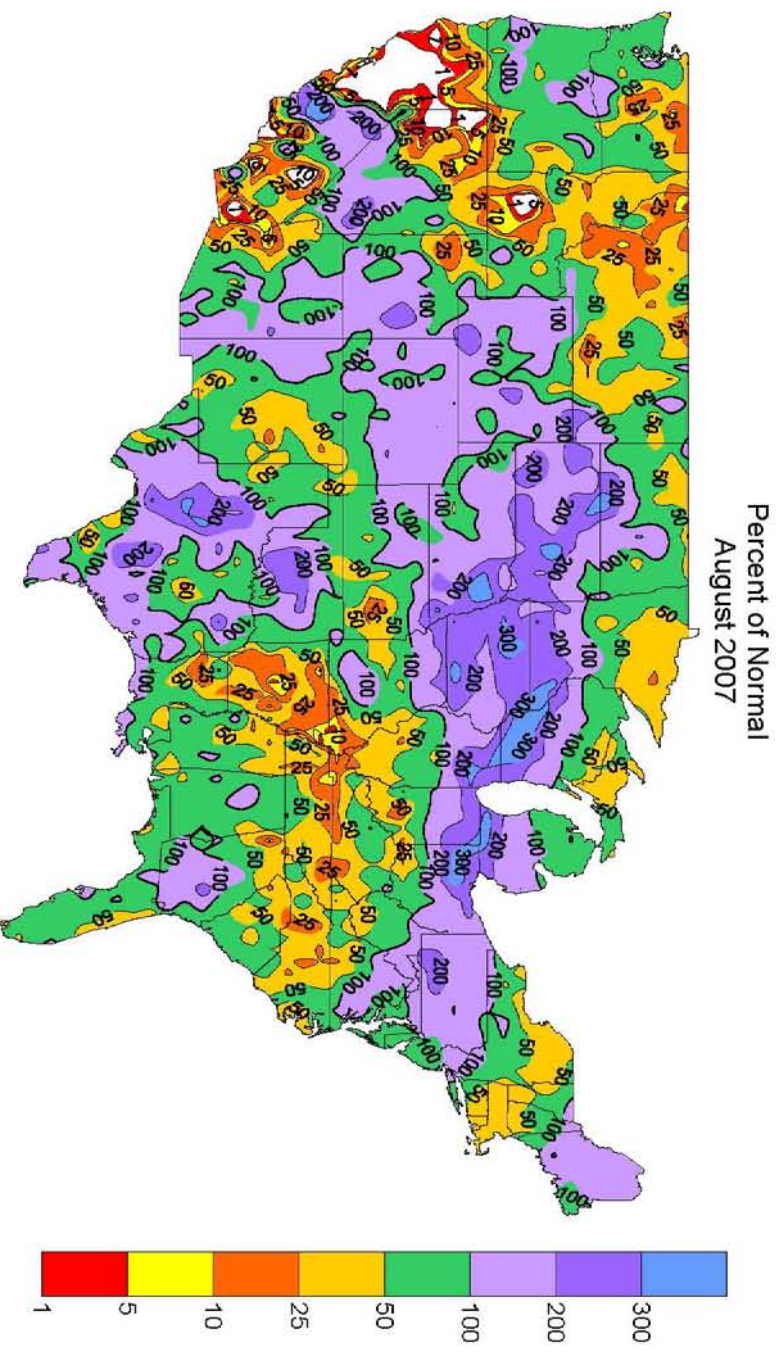
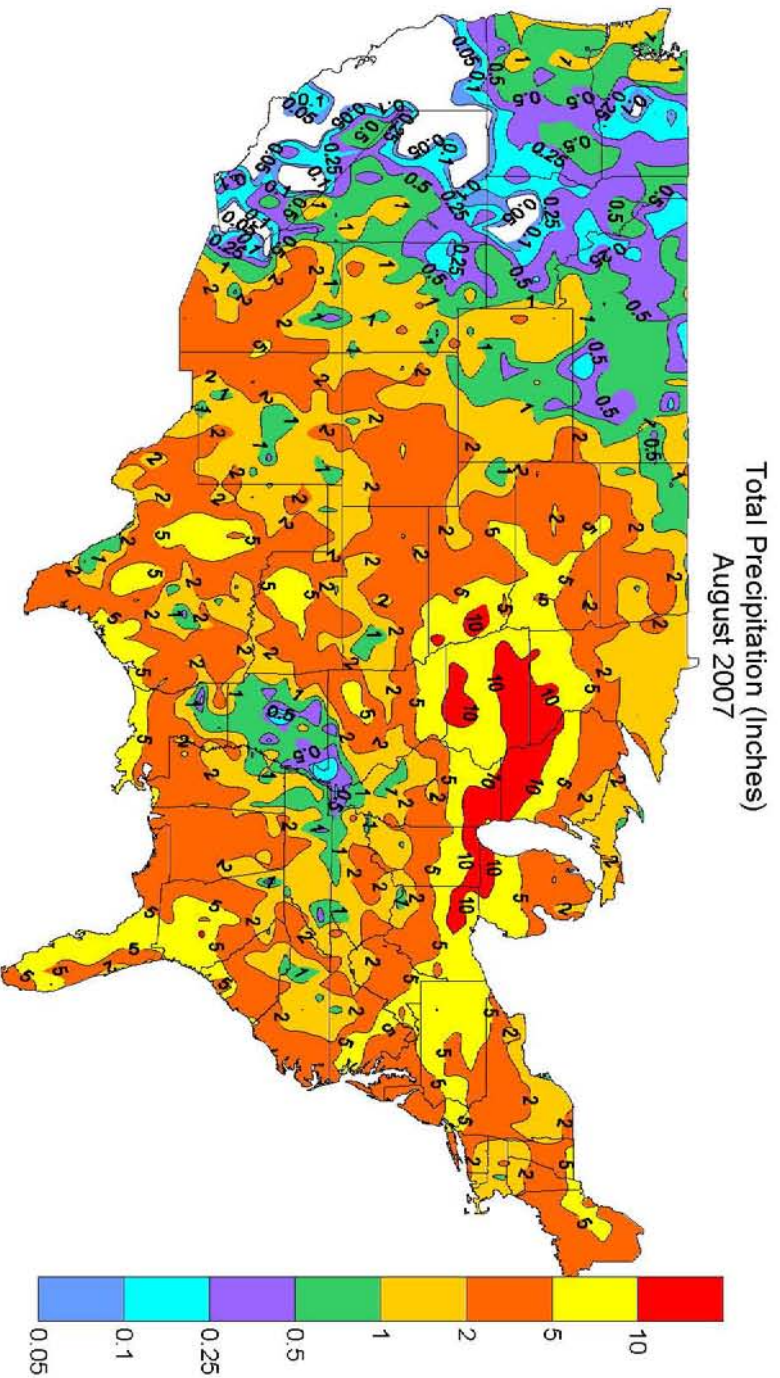
SEASONAL TABLES: Monthly and seasonal snowfall and heating degree days for the 12 months ending with the June data are published in the July issue of this bulletin. Cooling degree days for the calendar year are published in the "Climatological Data Annual Summary."

Information concerning the history of changes in locations, exposure, etc. of substations is kept on file at the National Climatic Data Center. Historical information of regular National Weather Service Offices may be obtained from the "Local Climatological Data" annual publication. The contents of this publication may be reprinted or otherwise used freely, with proper credit to the National Climatic Data Center. The data are also available in digital form on magnetic tape and diskette.

SUBSCRIPTION, PRICE, AND ORDERING INFORMATION AVAILABLE FROM:

NCDC Subscription Services Center
310 State Route 956
Building 300
Rocket Center, WV 26726

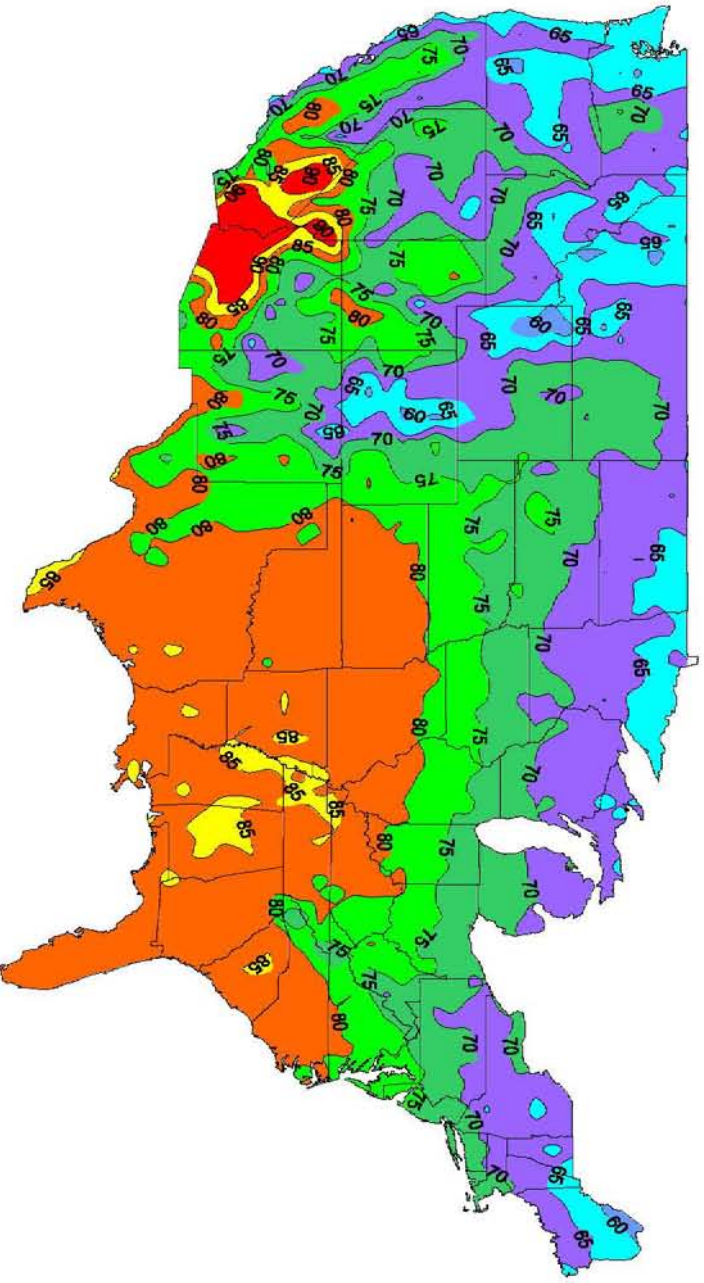
Toll free number: (866) 742-3322
Fax number: (304) 726-4409



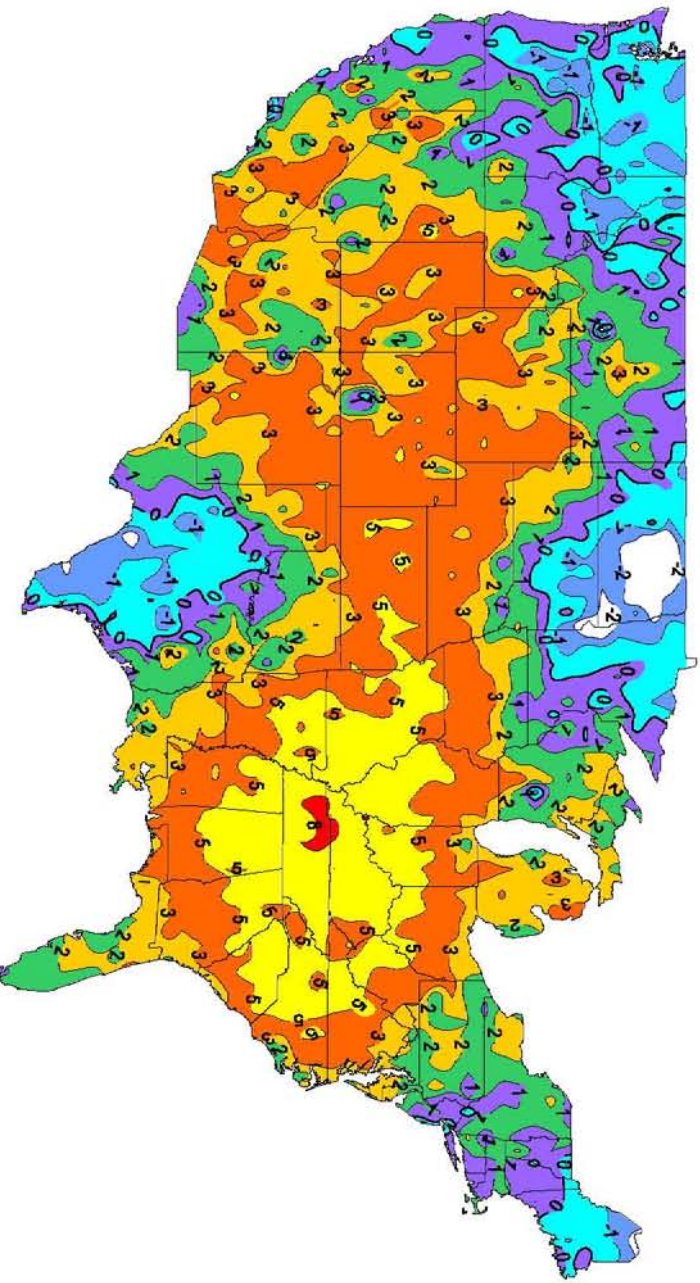
NOTE Contour maps are computer-generated and intended to show general temperature and precipitation patterns. Therefore, contours may not always account for individual datum points.

National Climatic Data Center, NOAA

Average Temperature (Degrees F)
August 2007



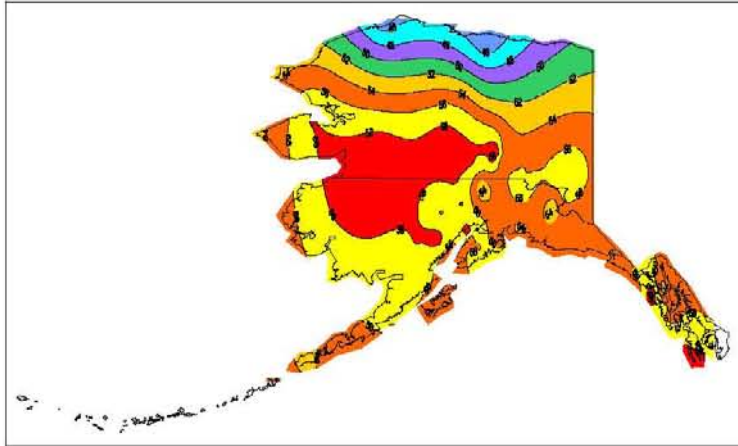
Departure of Average Temperature from Normal (Degrees F)
August 2007



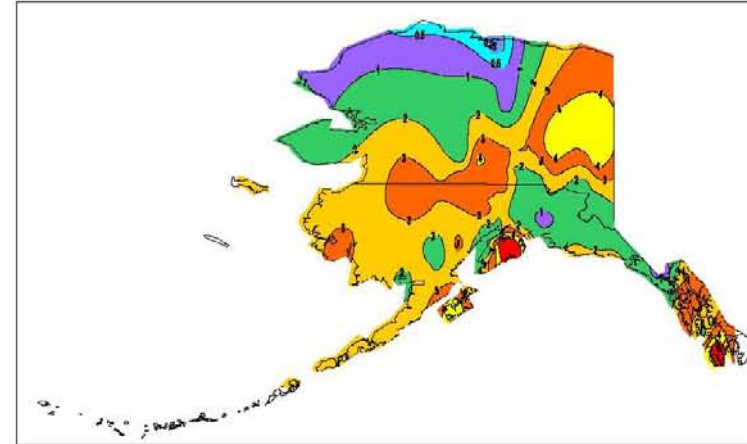
NOTE Contour maps are computer-generated and intended to show general temperature and precipitation patterns. Therefore, contours may not always account for individual datum points.

National Climatic Data Center, NOAA

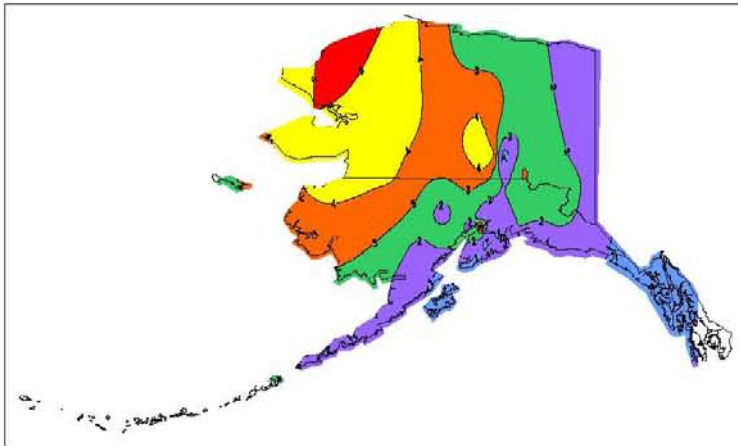
Average Temperature (Degrees F)
August 2007



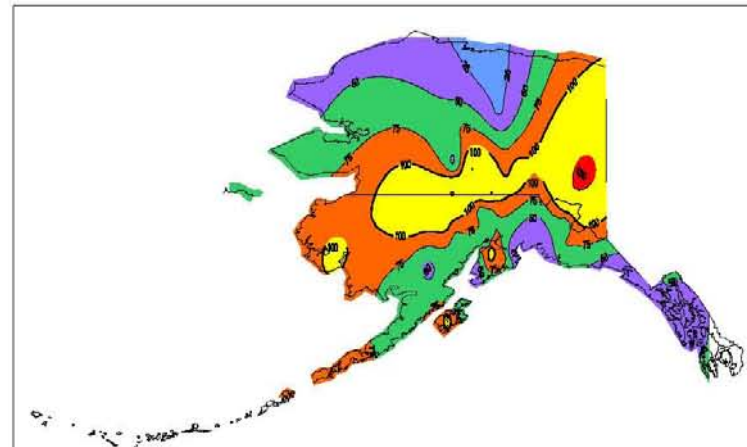
Alaska Precipitation (Inches)
August 2007



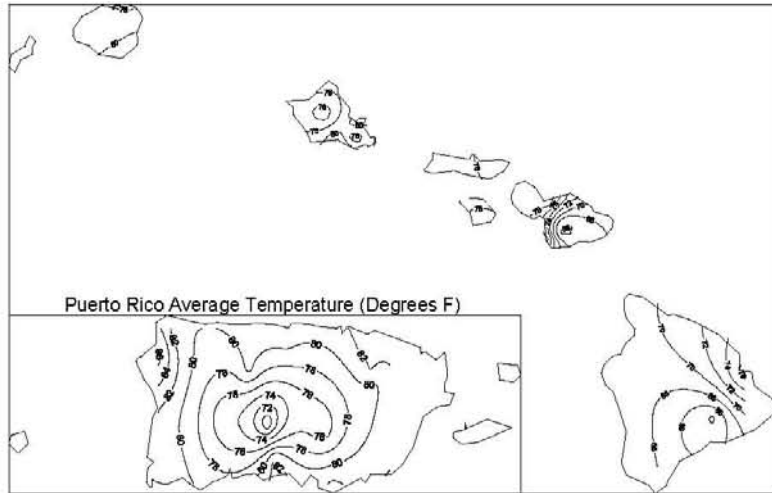
Departure of Average Temperature from Normal (Degrees F)
August 2007



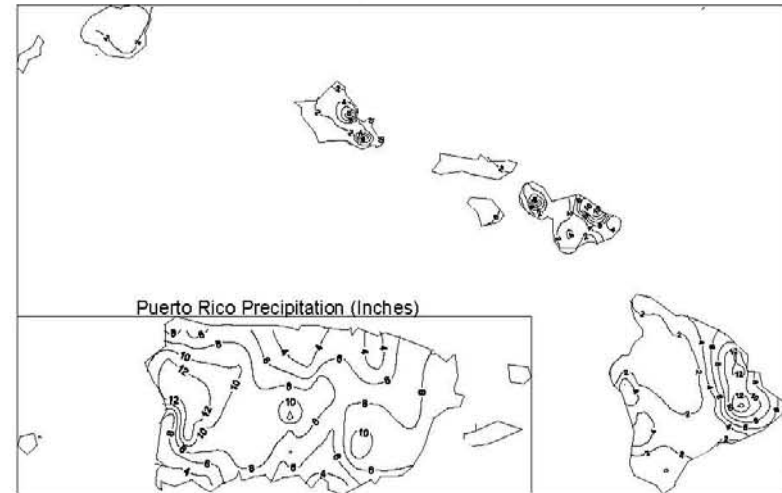
Percent of Normal Precipitation
August 2007



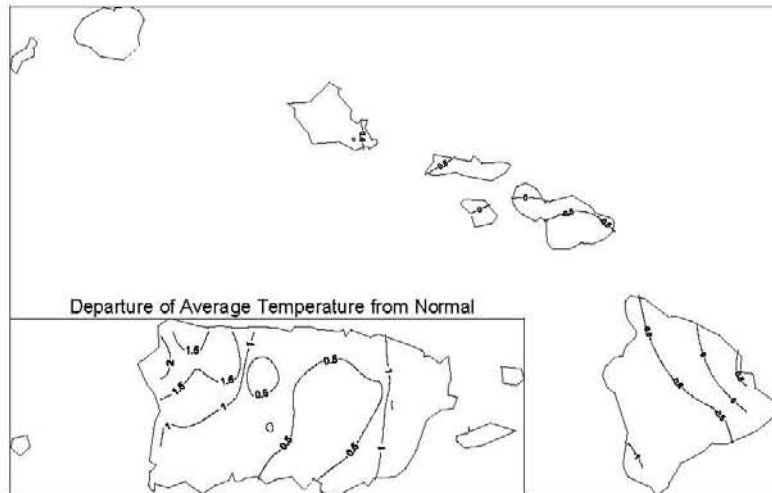
Hawaii Average Temperature (Degrees)
August 2007



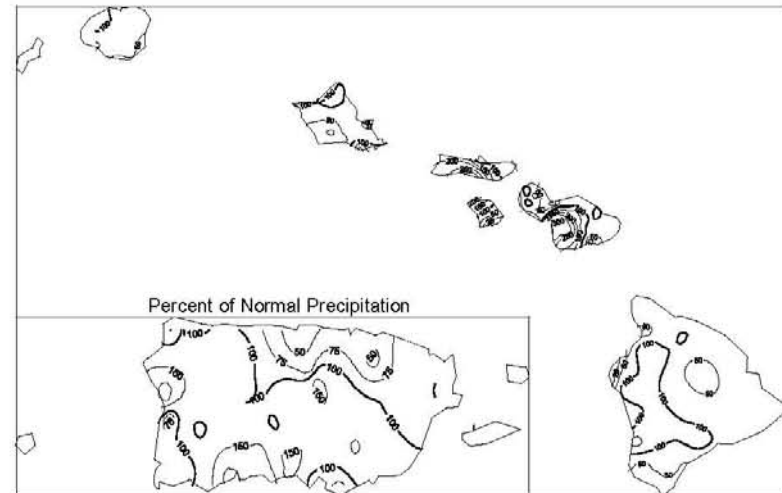
Hawaii Precipitation (Inches)
August 2007



Departure of Average Temperature from Normal (Degrees)
August 2007



Hawaii Percent of Normal Precipitation
August 2007



07 - DELAWARE

STATION LEGEND
DATA PUBLISHED IN:

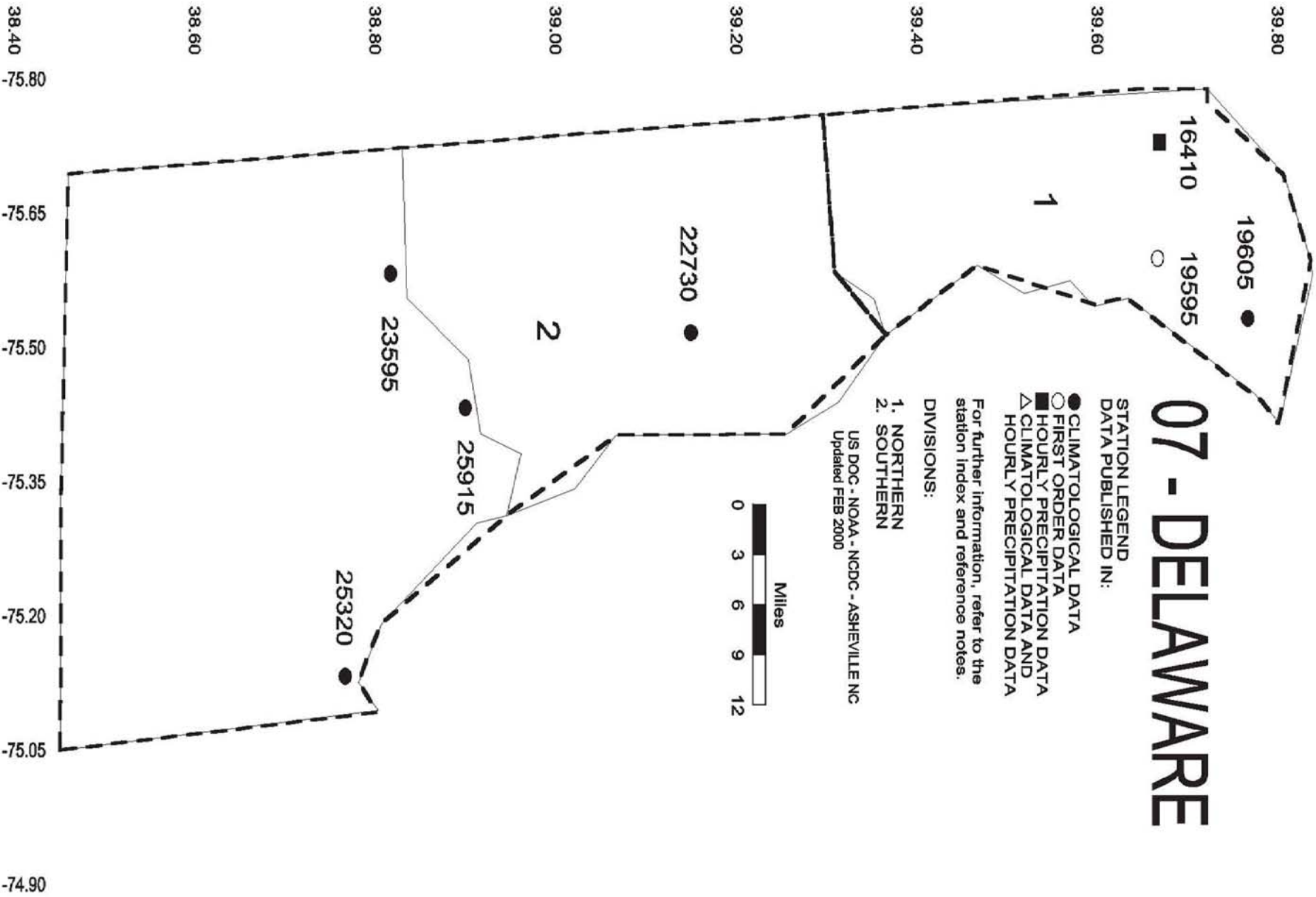
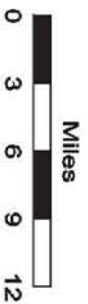
- CLIMATOLOGICAL DATA
- FIRST ORDER DATA
- HOURLY PRECIPITATION DATA
- △ CLIMATOLOGICAL DATA AND HOURLY PRECIPITATION DATA

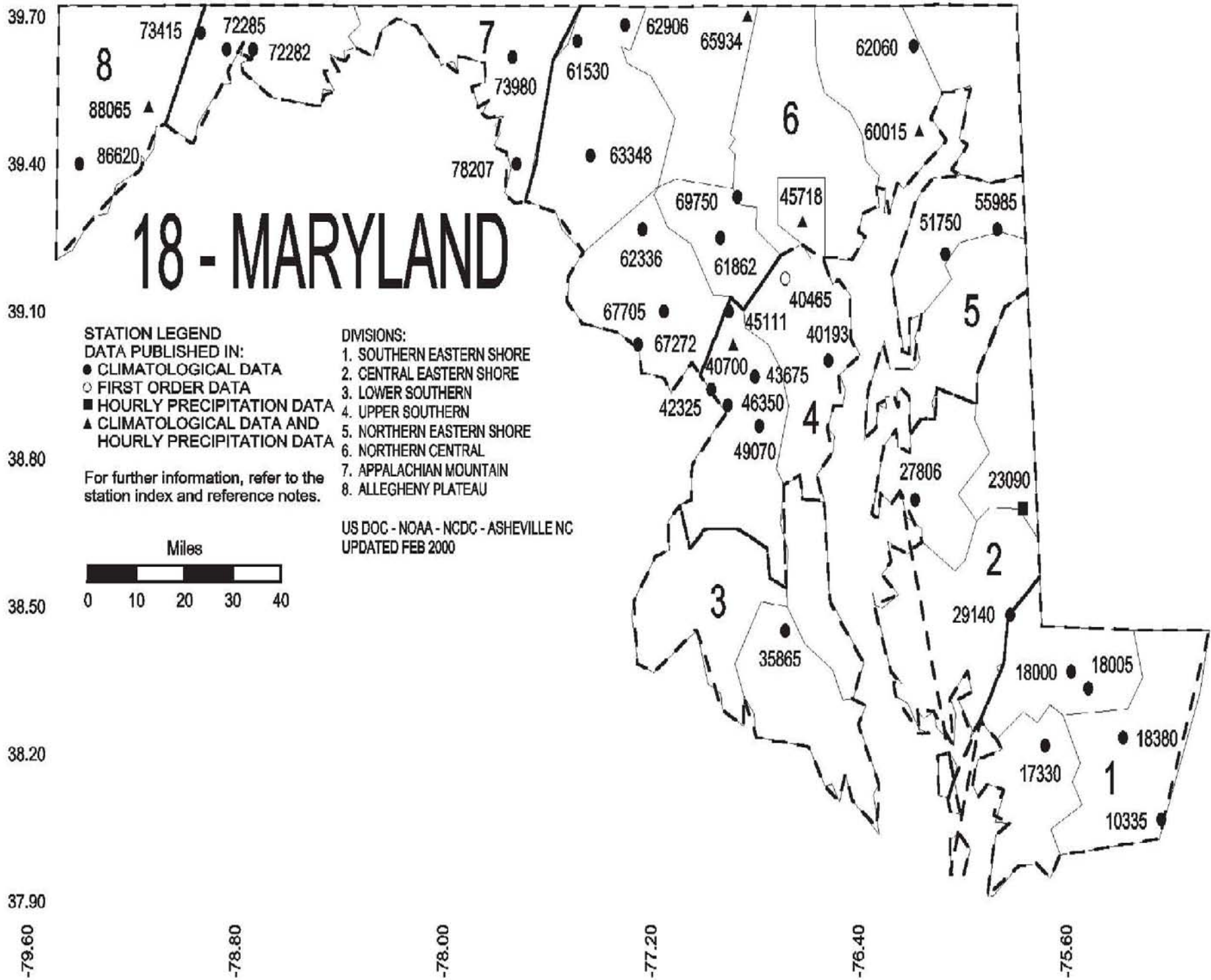
For further information, refer to the station index and reference notes.

DIVISIONS:

- 1. NORTHERN
- 2. SOUTHERN

US DOC - NOAA - NCDC - ASHEVILLE NC
Updated FEB 2000





These and other publications are available from the National Climatic Data Center

Hourly Precipitation Data

This publication contains hourly precipitation amounts obtained from recording rain gages located at National Weather Service, Federal Aviation Administration, and cooperative observer stations. Published data are displayed in inches and tenths or inches and hundredths at local standard time. HPD includes maximum precipitation for nine (9) time periods from 15 minutes to 24 hours, for selected stations.

Climatological Data

Monthly editions contain station daily maximum and minimum temperatures and precipitation. Some Stations provide daily snowfall, snow depth, evaporation, and soil temperature data. Each edition also contains monthly summaries for heating and cooling degree days (65 degree F base). The July issue contains a recap of monthly heating degree days and snow data for the preceding July through June.

The Annual issue contains monthly and annual averages of temperature, precipitation, temperature extremes, freeze data, soil temperatures, evaporation, and a recap of monthly cooling degree days.

Storm Data

Monthly issues contain a chronological listing, by states, of occurrences of storms and unusual weather phenomena. Reports contain information on storm paths, deaths, injuries, and property damage. An "Outstanding storms of the month" section highlights severe weather events with photographs, illustrations, and narratives. The December issue includes annual tornado, lightning, flash flood, and tropical cyclone summaries.

Monthly Climatic Data for the World

This publication contains monthly means for temperature, pressure, precipitation, vapor pressure, and sunshine for approximately 2,000 surface data collection stations worldwide and monthly mean upper air temperatures, dew point depressions, and wind velocities for approximately 500 observing sites.

Local Climatological Data

LCD publications summarize temperature, relative humidity, precipitation, cloudiness, wind speed and direction observations for several hundred cities in the U.S. and its territories. Each monthly publication also contains 3 hourly weather observations for that month and a hourly summary of precipitation. Annual LCD publications contain a summary of the past calendar year as well as historical averages and extremes.

For Information Call:

(866) 742-3322 (Toll free)

(828) 271-4010 (TDD)

(304) 726-4409 (Fax)

To change your address, please return a copy of the mailing label along with your new address to:

NCDC Subscription Services Center
310 State Route 956
Building 300
Rocket Center, WV 26726

Toll free number:(866) 742-3322
TDD: (828) 271-4010
Fax number: (304) 726-4409

NCDC now offers an annual online subscription for the *Climatological Data* publication. When you purchase this subscription service, you will have **immediate online access** to all previous publications back to October 1997 and all publications thereafter until the expiration of the subscription. Your subscription is valid for one year after purchase. **The total cost is \$36 for online delivery (including back issues) compared to \$50 for offline delivery.** To order this and other subscriptions online with your credit card, go to: www.ncdc.noaa.gov/mpp.html and choose subscriptions.

Inquiries/Comments Call: Toll free number:(866) 742-3322
TDD: (828) 271-4010
Fax number: (304) 726-4409

NCDC Subscription Services Center
310 State Route 956
Building 300
Rocket Center, WV 26726

PRSRRT STD
POSTAGE & FEES PAID
United States Department of Commerce
NOAA Permit No. G-19

OFFICIAL BUSINESS
PENALTY FOR PRIVATE USE \$300
CHANGE SERVICE REQUESTED