

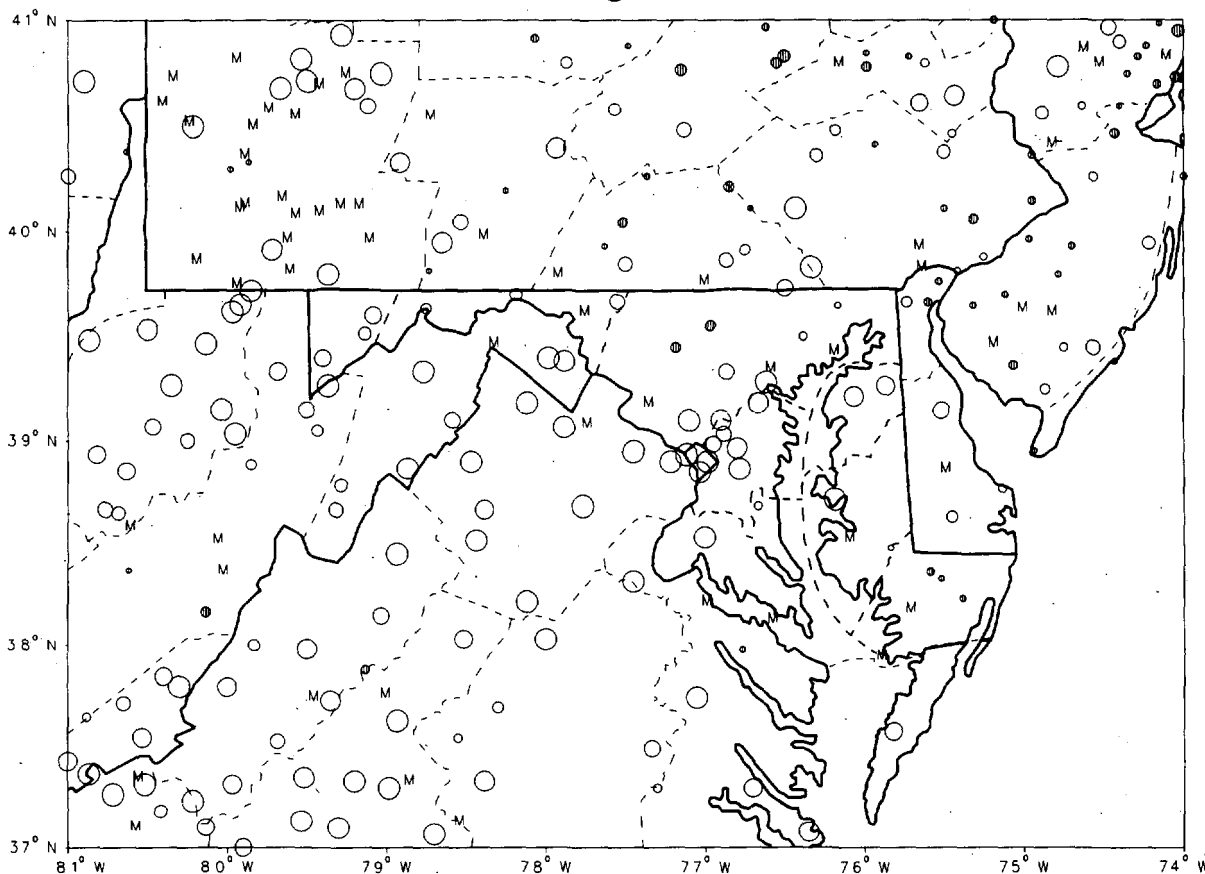


# CLIMATOLOGICAL DATA MARYLAND AND DELAWARE

## AUGUST 1991 VOLUME 95 NUMBER 8

### MONTHLY PRECIPITATION DEPARTURE FROM INDIVIDUAL STATION NORMALS (1951-1980)

- M INCOMPLETE DATA FOR THE MONTH
- ∇ EXACTLY NORMAL
- ○ ○ ○ 5, 10, 20, ... 50% OR MORE BELOW NORMAL
- ● ● ● 10, 20, 40, ... 100% OR MORE ABOVE NORMAL



CIRCLE DIAMETER IS PROPORTIONAL TO DEPARTURE ON A CONTINUOUS SCALE

"I CERTIFY THAT THIS IS AN OFFICIAL PUBLICATION OF THE NATIONAL OCEANIC AND ATMOSPHERIC ADMINISTRATION (NOAA). IT IS COMPILED USING INFORMATION FROM WEATHER OBSERVING SITES SUPERVISED BY NOAA/NATIONAL WEATHER SERVICE AND RECEIVED AT THE NATIONAL CLIMATIC DATA CENTER (NCDC), ASHEVILLE, NORTH CAROLINA 28801."

*Kenneth D. Walden*

DIRECTOR, NATIONAL CLIMATIC DATA CENTER

# noaa

NATIONAL  
OCEANIC AND  
ATMOSPHERIC ADMINISTRATION

NATIONAL  
ENVIRONMENTAL SATELLITE, DATA  
AND INFORMATION SERVICE

NATIONAL  
CLIMATIC DATA CENTER  
ASHEVILLE NORTH CAROLINA

# TEMPERATURE AND PRECIPITATION EXTREMES

MARYLAND AND  
DELAWARE  
AUGUST 1991

MARYLAND  
 HIGHEST TEMPERATURE 101  
 LOWEST TEMPERATURE 46  
 GREATEST TOTAL PRECIPITATION 7.22  
 LEAST TOTAL PRECIPITATION 1.47  
 GREATEST 1 DAY PRECIPITATION 5.31

AUGUST 3+  
 AUGUST 22

4 STATIONS  
 OAKLAND 1 SE  
 SALISBURY  
 POTOMAC FILTER PLANT  
 WESTMINSTER POLICE BRK

AUGUST 20

DELAWARE  
 HIGHEST TEMPERATURE 96  
 LOWEST TEMPERATURE 58  
 GREATEST TOTAL PRECIPITATION 5.42  
 LEAST TOTAL PRECIPITATION 3.41  
 GREATEST 1 DAY PRECIPITATION 3.96

AUGUST 30  
 AUGUST 7

NEWARK UNIVERSITY FARM  
 NEWARK UNIVERSITY FARM  
 WILMINGTON PORTER RSVR  
 DOVER  
 WILMINGTON PORTER RSVR

AUGUST 9

# MONTHLY SUMMARIZED STATION AND DIVISIONAL DATA

MARYLAND AND  
DELAWARE  
AUGUST 1991

STATION	TEMPERATURE (°F)										PRECIPITATION (IN)													
	AVERAGE MAXIMUM	AVERAGE MINIMUM	AVERAGE	DEPARTURE FROM NORMAL	HIGHEST	DATE	LOWEST	DATE	HEATING DEGREE DAYS	COOLING DEGREE DAYS	NO. OF DAYS				TOTAL	DEPARTURE FROM NORMAL	GREATEST DAY	DATE	SNOW SLEET					
											90 OR ABOVE	32 OR BELOW	32 OR BELOW	0 OR BELOW					TOTAL	MAX. DEPTH ON GROUND	DATE	.10 OR MORE	.50 OR MORE	1.00 OR MORE
MARYLAND																								
SOUTHERN EASTERN SHORE 01																								
ASSATEAGUE IS NATL SEA	84.1	68.9	76.5		95	27	61	6	0	36	5	0	0	0	4.58		2.06	9				4	3	2
PRINCESS ANNE	M	M	M																					
SALISBURY	86.6	68.6	77.6	1.6	92	31+	64	22+	0	40	5	0	0	0	7.22	1.50	3.90	9				5	4	3
SALISBURY FAA ARPT	85.5	67.0	76.3	1.0	92	31+	61	6	0	39	6	0	0	0	6.09	.37	4.33	9				5	2	1
SNOW HILL 4 N	88.0	66.7	77.4	2.4	95	30+	58	6	0	38	9	0	0	0	6.10	.67	3.34	10				4	3	3
--DIVISIONAL DATA----->																								
CENTRAL EASTERN SHORE 02																								
CAMBRIDGE WATER TRMT P																								
ROYAL OAK 2 SSW	86.6	68.9	77.8		94	31	62	22	0	40	6	0	0	0	2.44	-2.65								
VIENNA	88.1	62.2	75.2	-1.1	95	31+	53	14	0	32	10	0	0	0	5.54	-1.09	2.77	9				6	1	0
--DIVISIONAL DATA----->																								
LOWER SOUTHERN 03																								
LA PLATA 1 W	84.9	66.1	75.5	.7	95	30	58	9	0	33	5	0	0	0	2.42	-2.50	1.06	10				4	2	2
MECHANICSVILLE 5 NE	85.5	66.4	76.0		94	31+	57	22	0	34	5	0	0	0	2.92		2.14	9				4	1	1
OWINGS FERRY LANDING	86.2	65.9	76.1	1.1	93	31+	58	22+	0	35	2	0	0	0	3.85	-.34	1.35	9				5	3	2
--DIVISIONAL DATA----->																								
UPPER SOUTHERN 04																								
ANNAPOLIS POLICE BRKS	88.8	67.9	78.4		97	3+	59	23	0	42	1	0	0	0	4.29		1.89	9				4	3	2
BALTIMORE WSO ARPT	88.5	67.0	77.8	2.2	99	3	59	22	0	40	2	0	0	0	2.54	-2.08	1.68	9						
BELTSVILLE	87.7	65.0	76.4	2.4	98	4	57	22	0	38	9	0	0	0	3.27	-1.44	1.19	9				5	3	1
COLLEGE PARK	89.7	69.0	79.4	3.4	99	4	61	22	0	45	4	0	0	0	3.40	-1.60	1.43	9				5	3	1
DALECARLIA RESVR DC	89.7	61.3	75.5	-1.4	98	31+	52	22	0	33	4	0	0	0	1.51	-3.09	1.06	9				2	2	1
GLENN DALE BELL STN	88.7	64.5	76.6	2.1	98	3	55	22	0	36	4	0	0	0	2.71	-2.20	1.43	9				6	1	1
LAUREL 3 W	90.4	66.7	78.6	2.4	101	3	60	22	0	42	4	0	0	0	2.27	-1.90	1.35	9				3	2	1
NATIONAL ARBORETUM DC	89.5	68.1	78.8	2.1	99	31+	60	22	0	43	7	0	0	0	2.11	-2.99	1.14	10				3	2	1
UPPER MARLBORO 3 NNW	87.9	63.2	75.6	*	97	4	55	22+	0	33	4	0	0	0	2.04	-2.62	1.33	10				3	1	1
--DIVISIONAL DATA----->																								
NORTHERN EASTERN SHORE 05																								
CHESTERTOWN	88.5	67.5	78.0	2.2	96	30+	60	26+	0	41	0	0	0	0	2.62	-1.99	1.28	9				4	2	1
MILLINGTON 1 SE	86.5	65.2	75.9	1.4	95	30	59	23+	0	34	6	0	0	0	2.84	-1.90	1.44	9				5	1	1
--DIVISIONAL DATA----->																								
NORTHERN CENTRAL 06																								
ABERDEEN PHILLIPS FLD	86.8	67.4	77.1		94	30+	60	22+	0	38	1	7	0	0	5.23		2.88	20				3	2	2
BALTIMORE WSO CITY	90.5	74.1	82.3	3.9	100	3+	68	26	0	54	2	9	0	0	2.27	-2.30	1.36	20				3	1	1
BENSON POLICE BARRACKS	89.6	67.0	78.9	4.5	99	2	61	26+	0	42	1	14	0	0	4.51	-.40	2.02	20				5	2	2
CATOCTIN MOUNTAIN PARK	81.4	65.2	73.3		91	3+	58	21	0	26	4	2	0	0	2.97		1.07	20				5	1	1
CLARKSVILLE 3 NNE	88.7	62.3	75.5		99	3	54	6	0	33	2	2	0	0	3.18		1.60	20				4	4	2
CONOWINGO DAM	91.1	60.7	75.9	1.9	101	2	55	22+	0	34	6	2	0	0	4.40		1.32	9				4	4	3
DAMASCUS 2 SW	87.5	65.1	76.3		97	3+	58	22	0	35	7	0	0	0	2.48	-1.14	1.62	20				3	4	2
EMMITSBURG 2 SE	88.1	63.1	75.6		98	3+	56	12+	0	33	9	0	0	0	2.54		.67	20				8	5	1
FREDERICK POLICE BRKS	90.5	67.2	78.9		101	3	61	22+	0	43	7	0	0	0	2.97		.72	20				1	1	1
MILLERS 4 NE	85.7	64.4	75.1		97	2	58	22	0	31	9	6	0	0	4.55		2.13	20				7	2	2
ROCKVILLE 1 NE	86.5	67.1	76.8	2.4	96	3	61	22	0	37	3	9	0	0	1.85	-2.61	.86	9				3	2	0
TOWSON	M	M	M																					

SEE REFERENCE NOTES FOLLOWING STATION INDEX

# MONTHLY SUMMARIZED STATION AND DIVISIONAL DATA

MARYLAND AND  
DELAWARE  
AUGUST 1991

STATION	TEMPERATURE (°F)														PRECIPITATION (IN)									
	AVERAGE MAXIMUM	AVERAGE MINIMUM	AVERAGE	DEPARTURE FROM NORMAL	HIGHEST	DATE	LOWEST	DATE	HEATING DEGREE DAYS	COOLING DEGREE DAYS	NO. OF DAYS				TOTAL	DEPARTURE FROM NORMAL	GREATEST DAY	DATE	SNOW SLEET					
											90 OR ABOVE	32 OR BELOW	32 OR BELOW	0 OR BELOW					TOTAL	MAX. DEPTH ON GROUND	DATE	.10 OR MORE	.50 OR MORE	1.00 OR MORE
UNIONVILLE	88.0	61.7	74.9	2.7	98	3+	52	6	0	314	11	0	0	0	5.94	2.18	3.40	20	0	0		4	3	2
WESTMINSTER POLICE BRK	89.8	66.0	77.9	4.9	99	2+	58	23	0	408	14	0	0	0	6.32	2.32	5.31	20	0	0		4	1	1
WOODSTOCK	89.7	64.5	77.1	3.6	98	3+	57	22	0	384	14	0	0	0	2.71	-1.27	1.43	20	0	0		4	2	1
--DIVISIONAL DATA-->			76.8	2.9											3.59	-.71			0	0				
APPALACHIAN MOUNTAIN 07																								
CUMBERLAND 2	89.6	62.5	76.1	2.9	100	2	55	21	0	352	16	0	0	0	2.80	-.53	.97	20	0	0		7	2	0
FROSTBURG 2	80.7	59.2	70.0	1.9	90	31+	53	23	4	166	2	0	0	0	1.90		.56	24	0	0		6	1	0
HAGERSTOWN	88.3	63.5	75.9	2.5	101	3	58	22	0	345	12	0	0	0	2.72		.91	19	0	0		5	2	0
HANCOCK	88.3	60.3	74.3	2.6	99	3	55	22+	0	299	9	0	0	0	2.58	-.72	.90	21	0	0		5	3	0
--DIVISIONAL DATA-->			74.1	1.8											2.43	-1.08			0	0				
ALLEGHENY PLATEAU 08																								
MC HENRY 2 NW	79.5	58.4	69.0		90	31+	52	22	12	141	2	0	0	0	1.87		.43	20+	0	0		6	0	0
OAKLAND 1 SE	81.1	55.7	68.4	1.7	90	3+	46	22	11	123	2	0	0	0	2.98	-1.62	1.77	15	0	0		5	1	1
SAVAGE RIVER DAM	84.2	57.6	70.9	2.3	94	31+	52	23+	4	195	5	0	0	0	2.82	-.79	1.29	24	0	0		6	2	1
--DIVISIONAL DATA-->			69.4	2.6											2.56	-1.62			0	0				
DELAWARE																								
NORTHERN 01																								
NEWARK UNIVERSITY FARM	88.2	65.1	76.7	2.2	96	30	58	7+	0	369	10	0	0	0	3.75	-.75	1.56	20	0	0		5	2	2
WILMINGTON WSO ARPT	86.1	67.3	76.7	1.9	95	29	61	7	0	371	7	0	0	0	5.38	1.35	2.60	9	0	0		4	2	2
WILMINGTON PORTER RSVR	85.5	67.7	76.6	2.9	95	30	61	26	0	365	5	0	0	0	5.42	1.00	3.96	9	0	0		6	2	1
--DIVISIONAL DATA-->			76.7	2.2											4.85	.68			0	0				
SOUTHERN 02																								
DOVER	87.2	67.4	77.3	1.5	95	30+	61	22+	0	389	12	0	0	0	3.41	-1.71	1.28	19	0	0		5	4	1
GEORGETOWN 5 SW	85.1	65.7	75.4	.5	93	4	61	22+	0	330	2	0	0	0	4.46	-.97	1.39	10	0	0		4	4	2
GREENWOOD 2 NE	84.6	65.6	75.1		92	29	60	22+	0	320	5	0	0	0	4.47		2.00	9	0	0		5	3	3
LEWES	85.9	70.3	78.1	3.8	93	31+	66	22+	0	414	7	0	0	0	4.87	-.49	1.37	19	0	0		7	5	2
--DIVISIONAL DATA-->			76.5	1.4											4.30	-.94			0	0				

SEE REFERENCE NOTES FOLLOWING STATION INDEX

# DAILY PRECIPITATION (INCHES)

MARYLAND AND  
DELAWARE  
AUGUST 1991

STATION	TOTAL	DAY OF MONTH																															
		1	2	3	4	5	6	7	8	9	10	11	12	13	14	15	16	17	18	19	20	21	22	23	24	25	26	27	28	29	30	31	
MARYLAND																																	
SOUTHERN EASTERN SHORE 01																																	
ASSATEAGUE IS NATL SEA	4.58									2.06	.02				.10	.02			1.77		.60						.01						
PRINCESS ANNE	M																																
SALISBURY	7.22									3.90	1.30					.42					1.10		.50										
SALISBURY FAA ARPT.	6.09									4.33					.25	.09			.19		.72	.49											.02
SNOW HILL 4 N	6.10									1.14	3.34					.40					1.17		.05										
CENTRAL EASTERN SHORE 02																																	
CAMBRIDGE WATER TRMT P	M																																
ROYAL OAK 2 SSW	2.44									.99	.11					.41	.03			.03	.12	.47									.28		
VIENNA	5.54									2.77	.77				.43						1.11		.46										
LOWER SOUTHERN 03																																	
LA PLATA 1 W	2.42										T					.19														T			.15
MECHANICSVILLE 5 NE	2.92										2.14	.29				.19				T	T	.23								.07			
OWINGS FERRY LANDING	3.85									.01	.05	1.35	1.07			.05	.11	.33			.03	.09									.76		
UPPER SOUTHERN 04																																	
ANNAPOLIS POLICE BRKS	4.29										1.89	.10				.07					.59	1.57								.07			
BALTIMORE WSO ARPT	R 2.54										1.68					.10				T	.12	.53								.01			
BELTSVILLE	3.27										1.15	.39				.02	.52				.02	.08	.89								.22		
COLLEGE PARK	3.40										1.43	.09				.03	.52				.02	.17	.83							.07		.24	
DALECARLIA RESVR DC	1.51										1.06	.06				.01						.03	.28							.07			
GLENN DALE BELL STM	2.71										1.43	.46				.11	.13				.03	.38	.06						.11				
LAUREL 3 W	2.27										1.35					.56						.36											
NATIONAL ARBORETUM DC	2.11										.07	1.14				.03						.02	.53								.32		
UPPER MARLBORO 3 NNM	2.04										.31	1.33				.08	.18				.07	.05								.02			
NORTHERN EASTERN SHORE 05																																	
CHESTERTOWN	2.62											1.28				.01	.25			T	.08	.87											
HILLINGTON 1 SE	2.84										.02	1.44				.16					.46	.40	.36										
NORTHERN CENTRAL 06																																	
ABERDEEN PHILLIPS FLD	M 5.23										T	1.78	*	*	.09					*	*	.16	2.88	T				*	.11	.01			
BALTIMORE WSO CITY	R 2.27											1.36				.06	.07				.05	.40	.30										
BENSON POLICE BARRACKS	4.51											1.76	.27			.19	.06				.11	2.02	.07										
CATOCTIN MOUNTAIN PARK	2.97											.37				.36	.02					.53	1.07	.43							.01		
CLARKSVILLE 3 NNE	3.18											1.60				.02	.17				T	1.20	.10										
CONOWINGO DAM	4.40											1.32	.09			.09	T				.57	1.25	1.08										
DAMASCUS 2 SW	2.48											.52				.04					T	.30	1.62										
EMMITSBURG-2 SE	2.54											.40	.30			.01					.03	.10	.67	.47									
FREDERICK POLICE BRKS	2.97											.40	.08			.71						.54	.46	.72									
MILLERS 4 NE	4.55											.30	.17			1.17					.15	2.13	.41										
POTOMAC FILTER PLANT	1.47											.49				.05						.93	.00										
ROCKVILLE 1 NE	1.85											.86	T			.22						.77											
TOWSON	M																																
UPPER MOUNTAIN 07																																	
UNIONVILLE	5.94											.28	T			.04	.02				.94	3.40	1.26										
WESTMINSTER POLICE BRK	6.32											.27	.47									.08	5.31	.12									
WOODSTOCK	2.71											.68					.01				T	1.43	.26										.03
APPALACHIAN MOUNTAIN 07																																	
CUMBERLAND 2	2.80											.35	.26			.03	.25					.65	.97	.10									
EDGE MONT.	2.67											.25	.11			.07	.07					.83	.59	.70							.15		
FROSTBURG 2	1.90											.30	.03			T	.02	.08				.22	.21	.08									
HAGERSTOWN	M 2.72											.35	.08				.26					.91	.76	.31									
HANCOCK	2.58											.67					.17					.01	.66	.90									

SEE REFERENCE NOTES FOLLOWING STATION INDEX

# DAILY PRECIPITATION (INCHES)

MARYLAND AND  
DELAWARE  
AUGUST 1991

STATION	TOTAL	DAY OF MONTH																																
		1	2	3	4	5	6	7	8	9	10	11	12	13	14	15	16	17	18	19	20	21	22	23	24	25	26	27	28	29	30	31		
ALLEGHENY PLATEAU 08																																		
MC HENRY 2 NW	1.87				.05	.22				.24	.10					.32	.02				.43	.43	T	.06										
MERRILL	2.35				.05	.36				.31					T	.35					.43	.24				1.04								
OAKLAND 1 SE	2.98				.17					.35	.28					.02	1.77	.05				.22	.04											
SAVAGE RIVER DAM	2.82				.01	.13				.63	.28				.01	.13	.06					.22				1.29	.01			.08	T	.02		.01
DELAWARE																																		
NORTHERN 01																																		
NEMARK UNIVERSITY FARM	3.75				.01					1.54	.13					.20					.26	1.56	.05											
WILMINGTON WSO ARPT R	5.38				.67					2.60	.11				.02	.09				.03	1.77	.09												
WILMINGTON PORTER RSVR	5.42				.10					3.96	.31				.02	.12				.04	.69	.18												
SOUTHERN 02																																		
DOVER	3.41				.54				.05	.80	.03					.54					1.28		.17											
GEORGETOWN 5 SW	4.46									.06	1.39					.75	.08				1.20		.98											
GREENWOOD 2 NE	4.47				.03					2.00	.11					1.02					1.04	.02	.25											
LEMES	4.87				.02					.54	.53					.15				.75	1.37	.11	1.33										.07	

SEE REFERENCE NOTES FOLLOWING STATION INDEX

# DAILY TEMPERATURES (°F)

MARYLAND AND  
DELAWARE  
AUGUST 1991

STATION	OB. TIME	MAX/MIN	DAY OF MONTH																															AVERAGE	
			1	2	3	4	5	6	7	8	9	10	11	12	13	14	15	16	17	18	19	20	21	22	23	24	25	26	27	28	29	30	31		
			MARYLAND																																
SOUTHERN EASTERN SHORE																																			
ASSATEAGUE IS NATL SEA	07	MAX MIN	82 70	89 70	82 74	92 72	92 70	78 61	82 65	85 69	85 70	81 69	84 68	80 67	81 69	81 64	77 70	84 71	81 68		85 71	87 73	81 66	77 64	81 62	85 68	75 71	91 65	95 71	82 68	89 73	88 72	91 75	84.1 68.9	
PRINCESS ANNE																																			
SALISBURY	17	MAX MIN	86 70	91 72	92 74	89 76	88 70	83 64	84 68	84 65	83 70	84 71	84 66	87 65	87 66	86 67	82 69	88 68	88 68	90 72	86 69	86 71	83 66	85 64	87 65	86 66	84 67	82 65	86 69	88 67	92 72	92 73	92 73	86.6 68.6	
SALISBURY FAA ARPT	MID	MAX MIN	86 70	90 73	92 72	88 75	84 64	84 61	82 66	83 64	78 66	83 66	83 64	86 66	88 63	85 65	79 70	88 65	87 64	88 71	86 65	83 64	82 65	86 64	85 63	84 66	79 66	81 66	86 66	88 65	91 67	92 71	92 73	85.5 67.0	
SNOW HILL 4 N	18	MAX MIN	89 68	92 71	92 71	90 72	88 65	86 58	86 64	87 63	83 64	86 70	86 62	88 62	88 63	88 64	82 70	90 67	89 64	90 72	89 71	85 70	86 64	88 61	87 61	85 65	83 68	82 68	88 68	91 64	95 71	95 73	94 72	88.0 66.7	
CENTRAL EASTERN SHORE																																			
CAMBRIDGE WATER TRMT P																																			
ROYAL OAK 2 SSW	18	MAX MIN	89 65	93 76	93 76	90 77	87 69	84 64	82 69	86 64	83 72	85 70	86 66	85 64	87 64	85 71	81 69	88 66	88 67	89 74	86 72	84 70	82 66	83 62	86 67	87 65	83 67	83 63	85 66	87 71	92 76	91 71	94 78	86.6 68.9	
VIENNA	18	MAX MIN OBS MIN OBS	91 61	94 67	95 68	94 68	90 64	87 57	84 62	86 60	83 63	85 65	86 64	82 58	81 57	81 53	89 57	88 61	89 64	89 67	89 63	89 66	84 58	88 56	88 59	88 69	83 59	83 58	88 60	88 63	94 66	92 78	95 78	88.1 62.2	
LOWER SOUTHERN																																			
LA PLATA 1 W																																			
MECHANICSVILLE 5 NE	19	MAX MIN	87 63	92 72	94 74	87 72	85 64	84 58	81 55	84 64	82 58	83 69	85 60	83 67	87 62	82 66	80 68	87 65	87 64	88 69	88 69	81 69	81 61	83 57	86 61	85 63	80 69	79 66	82 66	88 67	92 70	94 71	94 73	85.5 66.4	
OWINGS FERRY LANDING	17	MAX MIN	88 64	93 70	93 71	90 73	88 64	85 58	82 67	84 64	82 69	84 68	85 62	83 62	86 63	84 65	82 68	88 65	87 66	88 69	87 72	87 67	82 61	88 58	86 61	85 63	84 67	80 64	80 64	89 68	91 69	93 70	93 72	86.2 65.9	
UPPER SOUTHERN																																			
ANNAPOLIS POLICE BRKS																																			
BALTIMORE WSO ARPT	MID	MAX MIN	92 64	97 72	97 71	94 74	85 68	87 66	85 66	86 66	86 71	89 68	89 62	88 63	88 66	84 65	84 65	91 64	90 67	91 70	89 69	82 65	81 63	86 59	89 61	88 67	80 66	82 64	86 66	93 67	95 71	98 72	94 74	88.5 67.0	
BELTSVILLE	08	MAX MIN	88 60	91 69	96 72	98 76	88 65	85 58	86 67	80 66	88 69	86 68	85 59	88 68	86 61	85 65	88 68	87 62	88 63	86 67	89 71	89 65	83 61	80 57	85 58	89 63	86 66	81 61	82 64	85 66	92 69	96 71	97 75	87.7 65.0	
COLLEGE PARK	09	MAX MIN	89 63	93 79	98 79	99 81	90 69	88 63	88 70	83 69	91 71	88 66	89 63	89 63	90 64	90 70	88 68	91 64	91 66	91 71	91 68	91 75	84 63	84 61	88 55	89 52	80 61	80 59	83 61	80 66	83 66	93 70	96 75	98 75	89.7 69.0
DALECARLIA RESVR DC	17	MAX MIN	92 55	96 67	98 65	95 68	88 66	87 53	87 62	89 65	87 55	88 61	88 55	86 55	87 57	86 60	87 65	88 56	88 62	86 62	86 62	84 65	84 55	89 52	89 61	84 55	90 52	89 61	86 59	86 60	92 66	95 64	97 65	89.7 61.3	
GLENN DALE BELL STN	16	MAX MIN	90 60	94 70	98 68	96 74	88 68	87 58	85 63	84 64	84 70	82 66	86 58	84 60	84 60	90 64	90 66	90 62	91 68	91 68	91 72	89 68	82 59	86 55	89 67	82 62	86 61	87 61	81 62	83 64	82 68	92 68	96 70	95 70	88.7 64.5
LAUREL 3 W	MID	MAX MIN	95 65	98 69	101 73	91 73	88 72	91 61	83 69	90 66	87 65	88 66	89 72	89 65	91 65	85 70	87 64	93 66	91 65	92 66	90 65	88 66	85 61	88 60	88 63	85 65	88 60	93 63	91 65	85 67	85 64	93 71	95 71	95 75	90.4 66.7
NATIONAL ARBORETUM DC	08	MAX MIN	88 71	92 70	97 76	99 76	91 70	87 63	88 71	82 67	90 70	87 63	86 62	90 62	87 64	86 68	90 69	87 65	91 67	92 69	92 73	92 68	85 62	84 60	88 63	85 67	88 60	87 63	91 66	90 64	82 66	82 71	96 73	99 76	89.5 68.1
UPPER MARLBORO 3 NNW	08	MAX MIN	87 59	92 64	96 70	97 71	90 61	87 55	85 65	81 62	86 68	86 60	87 59	87 60	88 59	89 66	86 61	89 63	89 68	89 68	89 70	88 65	88 63	82 59	88 55	87 61	87 57	81 61	82 61	83 66	93 61	94 66	96 70	87.9 63.2	

SEE REFERENCE NOTES FOLLOWING STATION INDEX





# DAILY TEMPERATURES (°F)

MARYLAND AND  
DELAWARE  
AUGUST 1991

STATION	OBS. TIME	MAX/MIN	DAY OF MONTH																														AVERAGE	
			1	2	3	4	5	6	7	8	9	10	11	12	13	14	15	16	17	18	19	20	21	22	23	24	25	26	27	28	29	30		31
ALLEGHENY PLATEAU 08	08	MAX	79	85	90	86	76	76	80	83	84	68	76	76	80	82	74	73	81	81	79	78	71	62	78	82	81	78	79	84	82	89	90	
MC HENRY 2 NW		MIN	57	58	64	64	53	54	54	60	60	57	53	56	56	59	60	58	58	59	60	57	55	52	53	58	60	59	58	59	66	66	66	
OAKLAND 1 SE	17	MAX	84	90	90	84	76	80	84	83	80	73	77	80	80	75	73	80	81	81	81	79	71	78	83	82	81	79	84	83	87	88	86	
		MIN	49	55	56	64	51	48	58	55	63	57	49	48	47	59	61	55	52	63	59	58	55	46	50	55	57	61	52	63	60	59	63	
SAVAGE RIVER DAM	08	MAX	84	88	94	91	81	78	85	87	90	77	80	80	86	87	80	78	86	86	84	85	77	70	85	88	84	78	80	88	86	94	94	
		MIN	54	55	60	61	55	52	54	61	62	60	53	53	53	53	62	60	56	57	64	60	57	52	52	57	58	61	58	58	63	63	63	
DELAWARE																																		
NORTHERN																																		
NEWARK UNIVERSITY FARM	17	MAX	91	95	95	90	89	84	87	89	89	84	84	85	88	89	84	89	91	91	86	85	83	85	89	87	80	84	87	91	94	96	94	
		MIN	62	70	69	71	62	58	58	60	69	66	62	61	63	65	70	63	69	70	70	68	66	59	59	64	65	59	60	66	70	69	74	65
WILMINGTON WSO ARPT	MID	MAX	89	93	94	88	83	83	83	85	77	83	82	85	88	85	80	90	88	89	86	80	82	84	87	86	80	84	86	90	95	93	91	
		MIN	66	71	74	71	63	63	61	64	72	68	64	63	66	68	71	65	70	72	69	69	67	63	64	68	65	62	64	69	71	74	68	67
WILMINGTON PORTER RSVR	MID	MAX	88	93	94	88	83	81	84	86	76	83	81	83	88	86	80	89	87	88	85	80	81	82	87	84	78	82	86	90	93	95	89	
		MIN	68	72	72	74	65	63	63	64	70	66	65	66	67	69	72	65	72	73	69	70	67	63	64	68	64	61	64	68	71	71	72	67
SOUTHERN																																		
DOVER	17	MAX	90	93	94	90	85	84	82	85	81	85	84	86	85	86	83	90	90	90	90	83	83	84	87	89	85	80	85	91	95	95	94	
		MIN	67	73	73	73	67	61	64	64	70	70	64	65	64	68	68	66	68	71	68	68	65	61	63	64	67	63	64	69	73	73	74	67
GEORGETOWN 5 SW	08	MAX	85	87	90	93	88	84	84	85	86	82	82	82	84	87	89	79	89	87	87	86	83	82	85	83	78	84	81	87	88	88	84	
		MIN	67	69	72	73	65	61	63	63	68	66	63	63	61	62	64	65	71	67	69	70	63	61	62	65	62	65	65	67	71	64	71	65
GREENWOOD 2 NE	18	MAX	87	91	91	85	82	82	85	84	78	82	82	82	86	83	78	87	85	87	84	83	81	81	85	87	76	80	86	88	92	91	91	
		MIN	64	71	73	73	63	60	63	61	68	69	64	62	62	65	68	64	65	65	69	68	64	60	61	62	66	63	63	65	71	69	72	65
LEWES	17	MAX	88	93	92	88	87	83	85	86	79	80	83	84	87	82	81	90	89	89	87	87	83	83	86	83	76	79	87	90	92	91	93	
		MIN	69	74	75	77	72	67	67	68	74	72	69	68	67	68	72	68	69	72	72	73	66	66	67	68	70	68	69	69	74	74	75	70

SEE REFERENCE NOTES FOLLOWING STATION INDEX

# EVAPORATION AND WIND

MARYLAND AND  
DELAWARE  
AUGUST 1991

STATION	DAY OF MONTH																															TOTAL OR AVG		
	1	2	3	4	5	6	7	8	9	10	11	12	13	14	15	16	17	18	19	20	21	22	23	24	25	26	27	28	29	30	31			
MARYLAND																																		
UPPER SOUTHERN 04																																		
BELTSVILLE	WIND	17	30	24	23	61	44	22	22	41	21	29	34	14	16	22	20	15	36	36	37	20	27	9	15	22	27	15	13	10	10	17	749	
	EVAP	22	25	25	27	25	28	23	9	25	9	27	26	17	21	12	22	25	25	17	22	20	18	18	31	8	15	13	8	17	18	16	6.14	
	MAX	95	97	99	103	93	94	92	79	94	85	94	88	91	94	89	91	96	97	97	95	90	88	94	95	95	95	90	91	99	99	74	92.7	
	MIN	68	68	74	75	64	63	62	69	69	73	70	66	66	68	71	67	67	67	67	70	65	64	64	65	64	65	65	70	71	74	-	67.7	
UPPER MARLBORO 3 NNW	WIND	0	4	2	1	4	1	1	0	3	2	3	6	0	1	3	1	0	4	2	2	1	1	0	0	1	4	0	0	1	0	1	49	
	EVAP	12	23	23	24	25	24	22	5	11	12	24	20	14	18	12	12	18	22	14	17	14	15	20	17	9	20	12	7	15	16	18	5.15	
	MAX	91	97	100	100	81	95	92	80	90	82	94	92	88	93	88	90	96	93	87	92	84	90	94	98	94	85	86	86	96	96	96	91.2	
	MIN	68	68	73	74	68	63	63	70	68	70	69	68	68	68	71	68	68	71	72	73	66	62	62	68	69	66	66	68	70	74	73	68.5	
ALLEGHENY PLATEAU 08																																		
SAVAGE RIVER DAM	WIND	27	19	23	37	45	42	19	22	19	28	41	44	26	24	18	36	27	18	27	38	32	34	23	23	15	27	24	13	18	15	21	825	
	EVAP	22	30	1	15	13	33	22	20	13	5	21	30	14	4	17	21	11	26	21	10	19	7	12	23	15	14	16	13	9	4	18	4.99	
	MAX	-	-	-	-	-	-	-	-	-	-	-	-	-	-	-	-	-	-	-	-	-	-	-	-	-	-	-	-	-	-	-	-	M
	MIN	-	-	-	-	-	-	-	-	-	-	-	-	-	-	-	-	-	-	-	-	-	-	-	-	-	-	-	-	-	-	-	-	M
DELAWARE																																		
NORTHERN 01																																		
NEWARK UNIVERSITY FARM	WIND	18	27	18	32	40	26	17	22	16	37	37	29	13	17	18	19	25	28	54	36	36	31	15	25	73	29	16	25	18	12	30	839	
	EVAP	22	28	24	18	26	19	29	23	-	23	21	21	19	20	15	17	21	26	17	29	15	26	22	26	28	14	18	20	10	20	33	6.71B	
	MAX	-	-	-	-	-	-	-	-	-	-	-	-	-	-	-	-	-	-	-	-	-	-	-	-	-	-	-	-	-	-	-	-	M
	MIN	-	-	-	-	-	-	-	-	-	-	-	-	-	-	-	-	-	-	-	-	-	-	-	-	-	-	-	-	-	-	-	-	M
SOUTHERN 02																																		
GEORGETOWN 5 SW	WIND	11	54	32	92	45	45	33	30	50	80	60	28	24	29	39	46	45	62	80	58	50	32	15	42	68	58	33	39	52	46	52	1430	
	EVAP	14	24	32	30	19	29	22	27	29	-	19	-	17	23	18	6	22	33	18	19	19	27	24	20	25	13	8	25	21	9	33	6.68B	
	MAX	-	-	-	-	-	-	-	-	-	-	-	-	-	-	-	-	-	-	-	-	-	-	-	-	-	-	-	-	-	-	-	-	M
	MIN	-	-	-	-	-	-	-	-	-	-	-	-	-	-	-	-	-	-	-	-	-	-	-	-	-	-	-	-	-	-	-	-	M

EVAPORATION: IS MEASURED IN HUNDRETHS OF INCHES  
 WIND: IS MEASURED IN MILES  
 MAX AND MIN: THE MAXIMUM AND MINIMUM TEMPERATURES (FAHRENHEIT) OF THE WATER IN THE EVAPORATION PAN  
 SEE REFERENCE NOTES FOLLOWING STATION INDEX

# STATION INDEX

MARYLAND AND  
DELAWARE  
AUGUST 1991

STATION	INDEX NO.	DIVISION	COUNTY	LATITUDE	LONGITUDE	ELEVATION (IN FEET)	OBSERVATION TIME AND TABLES				OBSERVER	
							LOCAL STD TIME					
							TEMP	PRECIP	EVAP	SPECIAL (SEE NOTES)		
MARYLAND												
ABERDEEN PHILLIPS FLD	00115	06	HARFORD	39 28	76 10W	57	16	16		C	H	ROSS AVIATION INC
ANNAPOLIS POLICE BRKS	01930	04	ANNE ARUNDEL	38 59	76 30W	30	17	17			H	ANNAPOLIS POLICE BRKS
ASSATEAGUE IS NATL SEA	03335	01	WORCESTER	38 14	75 8W	7	07	07			H	NATIONAL PARK SERVICE
BALTIMORE WSO ARPT	00465	04	ANNE ARUNDEL	39 11	76 40W	148	MID	MID		C	H	NATL WEATHER SERVICE
BALTIMORE WSO CITY #	00470	06	BALTIMORE CI	39 17	76 37W	14	MID	MID		C	C	OCCI COMMANDING OFFICER
BELTSVILLE	07000	04	PRINCE GEORG	39 2	76 53W	120	08	08			H	US DEPT OF AGRICULTURE
BENSON POLICE BARRACKS	07320	06	HARFORD	39 30	76 23W	365	17	17			H	MARYLAND STATE POLICE
BOYOS 2 NW	10320	06	MONTGOMERY	39 13	77 20W	580	18	18			H	INACTIVE 02/01/91
CAMBRIDGE WATER TRMT P	13850	02	DORCHESTER	38 34	76 4W	10	16	16			H	WASTEWATER TRMT PLANT
CATOCTIN MOUNTAIN PARK	15300	06	FREDERICK	39 39	77 29W	1610	17	17		C	H	CATOCTIN MOUNTAIN PARK
CHESTERTOWN	17500	05	KENT	39 13	76 4W	39	23	23			H	THOMAS W ELIASON JR
CLARKSVILLE 3 NNE	18620	06	HOWARD	39 15	76 56W	365	17	17			H	UNIVERSITY OF MARYLAND
COLLEGE PARK	19950	04	PRINCE GEORG	38 59	76 57W	90	09	09		C	H	UNIVERSITY OF MARYLAND
CONOWINGO DAM	20600	06	HARFORD	39 39	76 10W	39	MID	MID			H	SUSQUEHANNA ELECTRIC CO
CRISFIELD SOMERS COVE	22150	01	SOMERSET	37 59	75 52W	8	17	17			H	INACTIVE 03/01/91
CUMBERLAND 2	22820	07	ALLEGANY	39 38	78 45W	730	18	07			H	TIMOTHY B THOMAS
DALECARLIA RESVR DC	23225	04	DIS COLUMBIA	38 56	77 7W	151	17	17			H	U S CORPS OF ENGINEERS
DAMASCUS 2 SW	23335	06	MONTGOMERY	39 16	77 14W	722	19	19			H	RICHARD W SCHWERDT
DENTON 2 E	25230	02	CAROLINE	38 53	75 48W	49	17	17			H	INACTIVE 04/01/90
EDGEMONT	27700	07	WASHINGTON	39 40	77 33W	905		07			H	JOHN W HARNE
EMMITSBURG 2 SE	29060	06	FREDERICK	39 41	77 18W	420	17	17			H	MRS LUCILLE K BEALE
FREDERICK POLICE BRKS	33480	06	FREDERICK	39 25	77 26W	381	17	17			H	MARYLAND STATE POLICE
FROSTBURG 2	34150	07	ALLEGANY	39 40	78 56W	2172	07	07			H	LEE K CLOSE
GLENN DALE BELL STN	36750	04	PRINCE GEORG	38 58	76 48W	151	16	16			H	USDA PLT INTRODUCT STN
HAGERSTOWN	39750	07	WASHINGTON	39 39	77 44W	659	08	08			H	HAGERSTOWN RESERVOIR
HANCOCK	40300	07	WASHINGTON	39 42	78 11W	428	08	08		C	H	TOWN OF HANCOCK
LA PLATA 1 W	50800	03	CHARLES	38 32	77 0W	140	18	18			H	C. RUSSELL LEVERING
LAUREL 3 W	51110	04	PRINCE GEORG	39 6	76 54W	400	MID	MID			H	WASH SUB SANY COMM
MC HENRY 2 NW	58320	08	GARRETT	39 35	79 22W	2680	08	08		C	H	JOSEPH F JOHENNING
MECHANICSVILLE 5 NE	58650	03	ST MARYS	38 27	76 41W	100	19	19			H	SANDRA J HASTINGS
MERRILL	58940	08	GARRETT	39 36	79 5W	1791		09			H	DELWOOD E MERRILL
MILLERS 4 NE	59340	06	CARROLL	39 43	76 48W	860	18	18		C	H	BOBBY P MILLER
MILLINGTON 1 SE	59850	05	KENT	39 16	75 52W	30	18	18			H	HOWARD L HARVEY
NATIONAL ARBORETUM DC	63500	04	DIS COLUMBIA	38 54	76 59W	49	08	08			H	U S NATL ARBORETUM
OAKLAND 1 SE	66200	08	GARRETT	39 24	79 24W	2421	17	17			H	BEA J CROSCO
OWINGS FERRY LANDING	67700	03	CALVERT	38 41	76 40W	160	17	17			H	JAMES C RASMUSSEN
POTOMAC FILTER PLANT	72720	06	MONTGOMERY	39 2	77 15W	269		08			H	POTOMAC WATER FILT PLT
PRINCESS ANNE	73300	01	SOMERSET	38 13	75 41W	20	17	17			H	UNIV OF MD EASTERN SHORE
ROCKVILLE 1 NE	77050	06	MONTGOMERY	39 6	77 6W	440	MID	17			H	WASHINGTON GAS AND LIGHT
ROYAL OAK 2 SSW	78060	02	TALBOT	38 43	76 11W	10	18	18			H	JOHN L SWAINE JR
SALISBURY	80000	01	WICOMICO	38 22	75 35W	10	17	17			H	CITY OF SALISBURY
SALISBURY FAA ARPT #	80050	01	WICOMICO	38 20	75 31W	48	MID	MID			H	FAA
SAVAGE RIVER DAM	80650	08	GARRETT	39 31	79 8W	1495	08	08		OB	C	US CORPS OF ENGINEERS
SNOW HILL 4 N	83800	01	WORCESTER	38 14	75 23W	30	18	18			H	CURTIS E SHOCKLEY
TALL TIMBERS	87570	03	ST MARYS	38 10	76 33W	12	17	17			H	INACTIVE 01/01/91
TOWSON	88770	06	BALTIMORE	39 23	76 34W	390	18	18			H	BENDIX FRIEZ
UNIONVILLE	90300	06	FREDERICK	39 27	77 11W	430	17	07		C	H	RICHARD GETZANDANNER
UPPER MARLBORO 3 NNW	90700	04	PRINCE GEORG	38 52	76 47W	98	08	08		OB	H	UNIVERSITY OF MARYLAND
VIENNA	91400	02	DORCHESTER	38 29	75 50W	10	18	18			H	DELMARVA POWER & LIGHT
WESTMINSTER POLICE BRK	94400	06	CARROLL	39 33	76 58W	765	17	17			H	MARYLAND STATE POLICE
WOODSTOCK	97500	06	BALTIMORE	39 20	76 52W	459	18	18			H	JOHN A HILTZ

SEE REFERENCE NOTES FOLLOWING STATION INDEX

# STATION INDEX

MARYLAND AND  
DELAWARE  
AUGUST 1991

STATION	INDEX NO.	DIVISION	COUNTY	LATITUDE	LONGITUDE	ELEVATION (IN FEET)	OBSERVATION TIME AND TABLES				OBSERVER	
							LOCAL STD TIME					
							TEMP	PRECIP	EVAP	SPECIAL (SEE NOTES)		
DELAWARE												
DOVER	2730	002	KENT	39 9	75 31W	30	17	17		H	STATE DIV OF HIGHWAYS	
GEORGETOWN 5 SW	3570	002	SUSSEX	38 38	75 27W	45	08	08	08	C	H	UNIV OF DEL SUBSTATION
GREENWOOD 2 NE	3595	002	SUSSEX	38 50	75 35W	45	18	18			H	DANIEL M SWARTZENTRUBER
LEWES	5320	002	SUSSEX	38 46	75 8W	15	17	17				BOARD OF PUBLIC WORKS
MILFORD 4 SE	5915	002	SUSSEX	38 54	75 28W	30	17	17			H	INACTIVE 05/01/91
NEWARK UNIVERSITY FARM	6410	001	NEW CASTLE	39 40	75 44W	90	17	17	17	C	H	UNIV OF DEL AGRIC FARM
WILMINGTON HSO ARPT	9595	001	NEW CASTLE	39 40	75 36W	79	MID	MID			H	NATL WEATHER SERVICE
WILMINGTON PORTER RSVR	9605	001	NEW CASTLE	39 46	75 32W	274	MID	MID			H	WATER DEPARTMENT

SEE REFERENCE NOTES FOLLOWING STATION INDEX

# REFERENCE NOTES

MARYLAND AND  
DELAWARE  
AUGUST 1991

## DEFINITIONS

**STATION NAMES:** Name of the city, town or locality. Figures and letters following the station names indicate the distance in miles and direction from the post office or town community center.

**DIVISIONS:** Areas within a state of similar climatological characteristics. Division averages are calculated using data from stations that record both temperature and precipitation (ie: not precipitation alone).

**NORMALS:** The average value of the meteorological element over a time period. Effective 1 January 1983, the averaging period is 1951 to 1980. The normals for National Weather Service localities have been adjusted so as to be representative for the current observation site.

**MONTHLY DEGREE DAY TOTALS:** One heating (cooling) degree day is accumulated for each whole degree that the daily mean temperature is BELOW (ABOVE) 65 degrees Fahrenheit.

**PRECIPITATION:** Values shown in hundredths of inches are water equivalent totals, i.e. total of liquid and melted frozen precipitation. In the "MONTHLY SUMMARIZED DATA" table the total snow and sleet values shown in tenths of inches are unmelted amounts. The max. depth on ground values of snow and sleet shown in whole inches are cumulative unmelted amounts. The no. of days with .10, .50, 1.00 or more refers to water equivalents.

**TEMPERATURE:** Original and edited temperature values are given in the Daily Temperature Table. Edited values are produced when an original value is missing or when surrounding stations indicate a suspect original value. When a line labeled OBS is present and contains either a daily temperature (suspect) or \*\*\* (missing), the temperature appearing directly above, on the line labeled MAX or MIN, is an edited value. Summary temperature information (averages, departures, extremes, monthly degree day totals) is based on the values labeled MAX/MIN.

**WIND:** (As shown in "Evaporation and Wind" table) The total wind movement in miles over the evaporation pan as determined by an anemometer recorder located 6-8 inches above the pan.

## SYMBOLS AND LETTERS USED IN THE STATION INDEX TABLE

# Thermometers located in a rooftop shelter.  
// Rain Gage equipped with a windshield.  
AR Observation made "after rain" has occurred.  
C Station is equipped with recording rain gage (R) but values in this bulletin are from a non-recording rain gage unless indicated by an R.  
G Observations appear in "Soil Temperatures" table.  
H Observations appear in "Snowfall and Snow on Ground" table.  
J Station also published as a Local Climatological Data publication.  
MID Observation time is midnight.  
MO Rain gage read once monthly, usually the last day.  
OC Rain gage readings vary from a few weeks to several months.  
R Amounts from recording rain gage.  
SR Observation time near sunrise.  
SS Observation time near sunset.  
VAR Observation time varies.  
WI Rain gage read weekly or irregularly.  
WM Rain gage read weekly and last day of month.

## SYMBOLS AND LETTERS USED IN THE DATA TABLES

(DAILY DATA ARE FOR THE 24 HOURS IMMEDIATELY PRECEDING OBSERVATION TIME.)

BLANK entries in the "Monthly Summarized Data" table indicate no record. BLANK entries in the "Daily Precipitation" and "Snowfall and Snow on Ground" tables indicate zero.

BLANK entries in the "Daily Temperature" table indicate a missing record where an edited value could not be determined. (See \*\*\* below)

- No record. Data not recorded, determined unreliable by quality control checks, or not received in time for publication.

+ Precipitation or temperature extremes occurred on one or more previous dates during the month.

\*\*\* Missing original temperature which has been estimated during edit.

\* Rain gage not read. Precipitation is included in the amount following the asterisks. Time distribution not known. A \* preceding the monthly total indicates precipitation amount is being carried forward to next months total, and may include amounts from the previous month(s).

// Rain gage equipped with a windshield.

A Amount of precipitation is the total of observer's entries for the current month. It may include precipitation that occurred during the previous month. Refer to earlier bulletin to determine date of last reading. (HAWAII stations)

B Adjusted monthly value (estimated), 11-7 missing values for wind and evaporation).

M Insufficient or partial data. M is appended to average and/or total values computed with 1-9 daily values missing. M appears alone if 10 or more daily values are missing, 18 or more for wind and evaporation).

R Amounts from recording rain gage.

I Trace. An amount too small to measure.

V Includes total for previous month(s). (See \* above)

Seasonal Tables: Monthly and seasonal snowfall and heating degree days for the 12 months ending with the June data are published in the July issue of this bulletin. Cooling degree days for the calendar year are published in the "Climatological Data Annual Summary".

The graphic displays appearing in this publication were first produced for the January 1987 data month. The types of graphs and the information they portray may vary from month to month and from state to state in order to highlight climatic features of state, regional, and seasonal interest. Some graphs present information for "clusters". A cluster is a group of up to four (4) adjacent divisions that comprise an area of similar climate.

Information concerning the history of changes in locations, exposure, etc. of substations is kept on file at the National Climatic Data Center. Historical information for regular National Weather Service Offices may be obtained from the "Local Climatological Data" annual publication. The contents of this publication may be reprinted or otherwise used freely, with proper credit to the National Climatic Data Center. The data are also available in digital form on magnetic tape and diskette.

SUBSCRIPTION, PRICE AND ORDERING INFORMATION AVAILABLE FROM:

NATIONAL CLIMATIC DATA CENTER  
FEDERAL BUILDING  
ASHEVILLE, NC 28801-2696

USCOMM-NOAA-ASHEVILLE, N.C. AUGUST 1991-0585

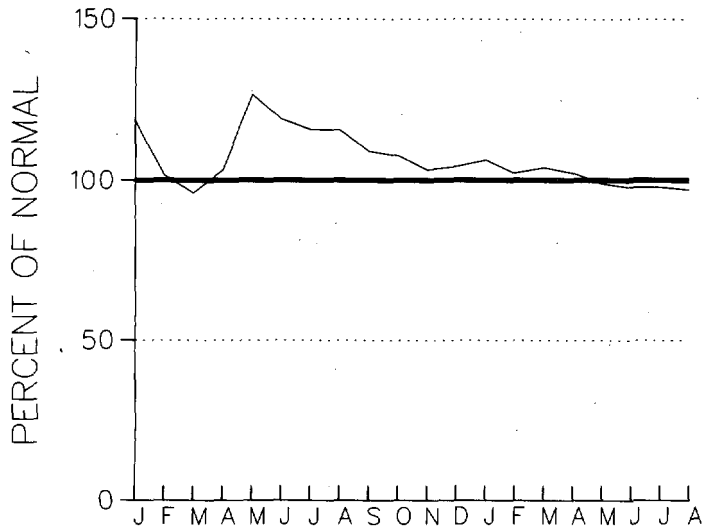
CUMULATIVE PRECIPITATION DEPARTURES FROM NORMAL (1951-1980)  
 FOR THE LAST 20 MONTHS  
 ENDING AUGUST 1991  
 MARYLAND

CLUSTER 1 -DIVISION(S):  
 SOUTHERN EASTERN SHORE 01  
 CENTRAL EASTERN SHORE 02  
 LOWER SOUTHERN 03

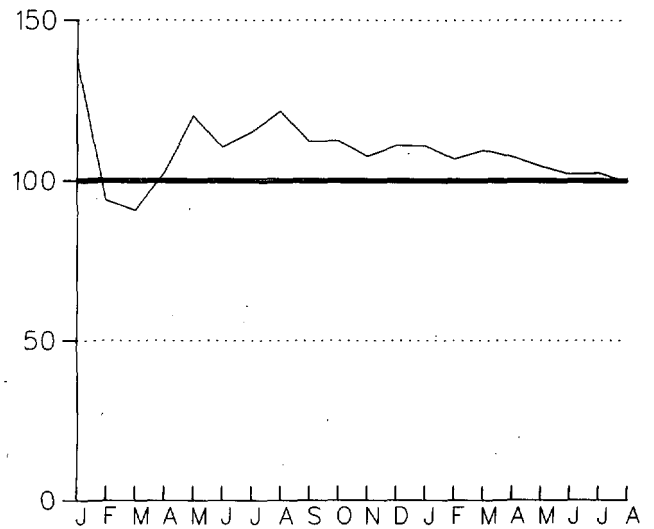
CLUSTER 2 -DIVISION(S):  
 UPPER SOUTHERN 04  
 NORTHERN EASTERN SHORE 05

CLUSTER 3 -DIVISION(S):  
 NORTHERN CENTRAL 06  
 APPALACHIAN MOUNTAIN 07

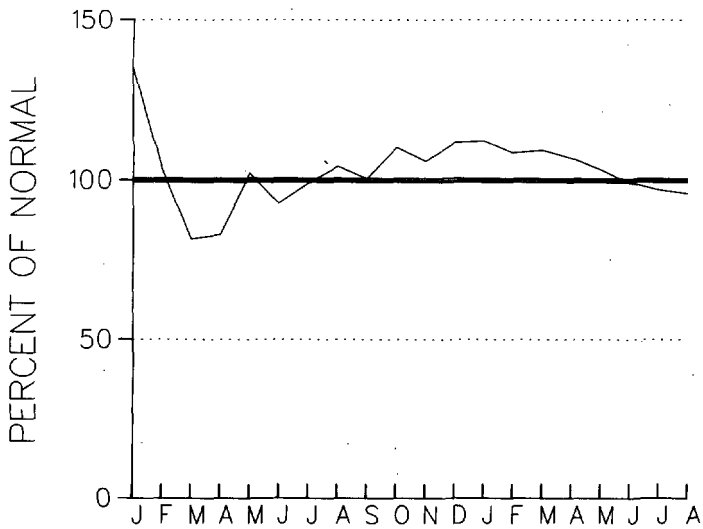
CLUSTER 4 -DIVISION(S):  
 ALLEGHENY PLATEAU 08



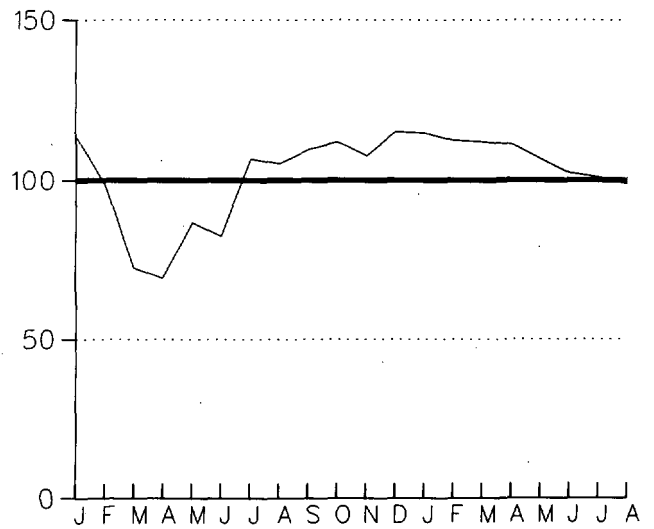
CLUSTER 1



CLUSTER 2



CLUSTER 3

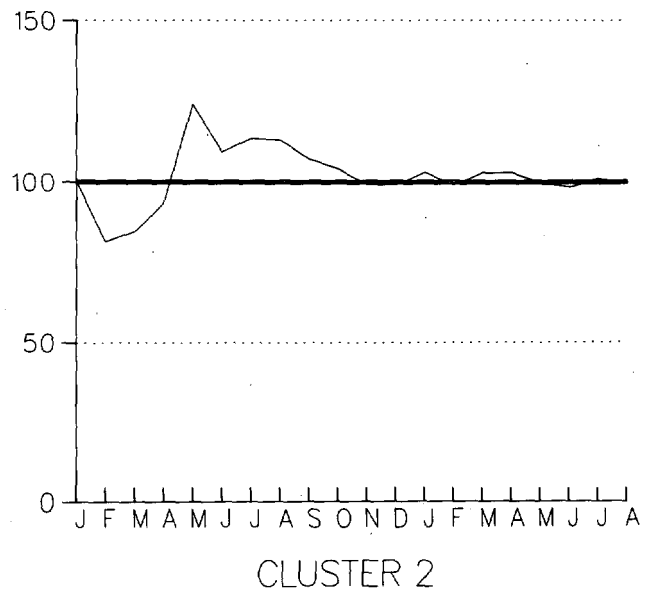
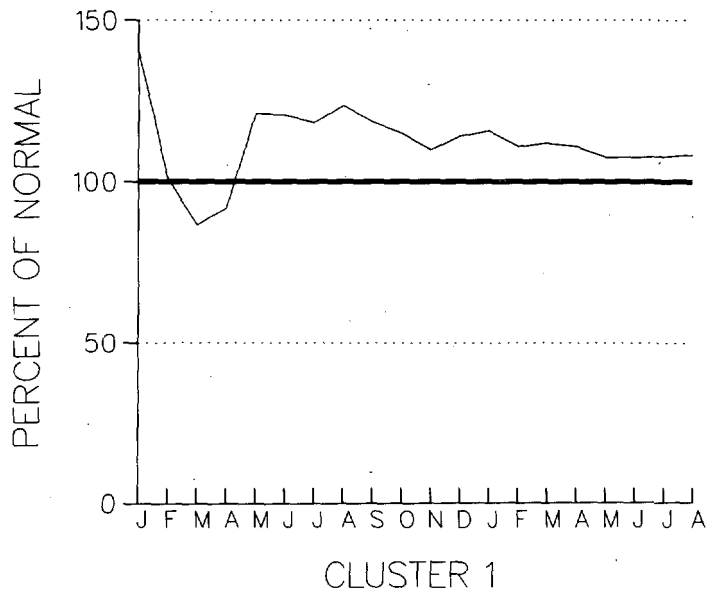


CLUSTER 4

CUMULATIVE PRECIPITATION DEPARTURES FROM NORMAL (1951-1980)  
 FOR THE LAST 20 MONTHS  
 ENDING AUGUST 1991  
 DELAWARE

CLUSTER 1 -DIVISION(S):  
 NORTHERN 01

CLUSTER 2 -DIVISION(S):  
 SOUTHERN 02



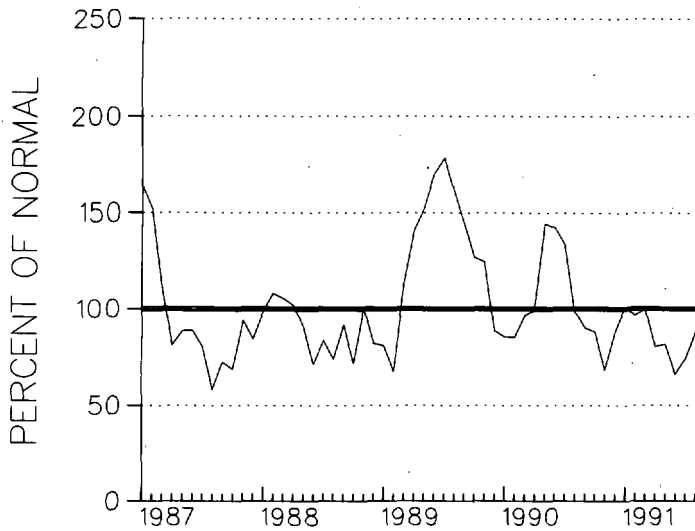
**PRECIPITATION DEPARTURES FROM NORMAL (1951-1980)  
THREE MONTH RUNNING MEAN  
FOR THE 56 MONTHS ENDING WITH AUGUST 1991 DATA  
MARYLAND**

CLUSTER 1 -DIVISION(S):  
SOUTHERN EASTERN SHORE 01  
CENTRAL EASTERN SHORE 02  
LOWER SOUTHERN 03

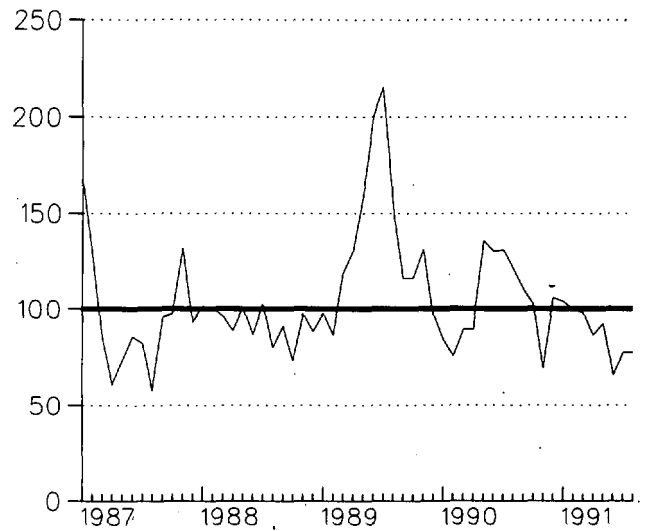
CLUSTER 2 -DIVISION(S):  
UPPER SOUTHERN 04  
NORTHERN EASTERN SHORE 05

CLUSTER 3 -DIVISION(S):  
NORTHERN CENTRAL 06  
APPALACHIAN MOUNTAIN 07

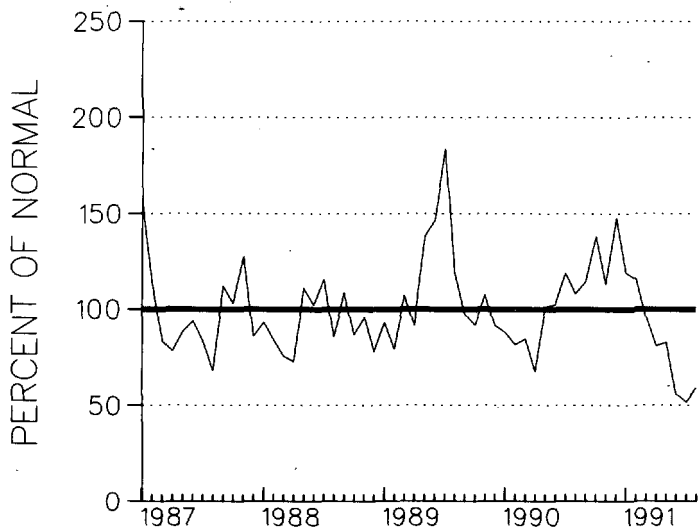
CLUSTER 4 -DIVISION(S):  
ALLEGHENY PLATEAU 08



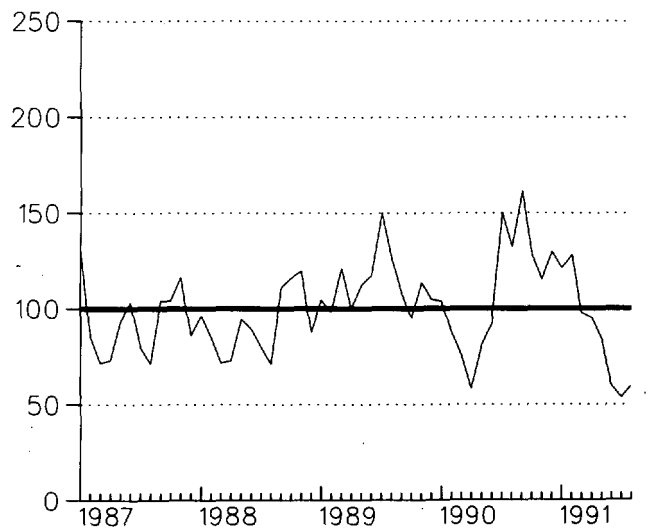
CLUSTER 1



CLUSTER 2



CLUSTER 3



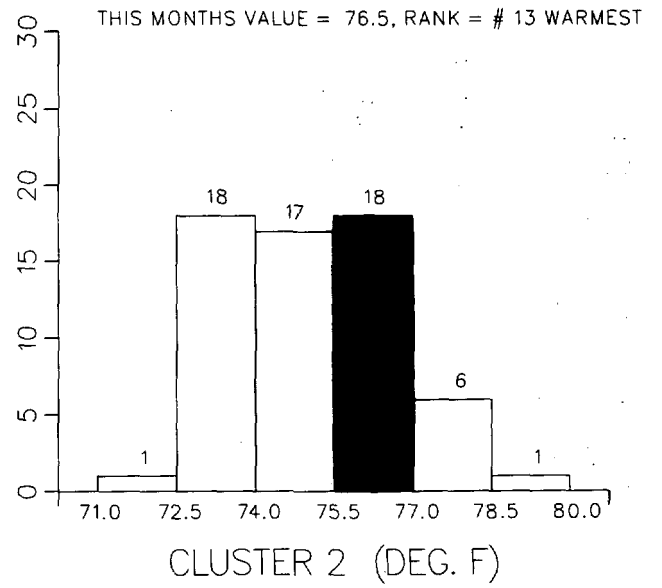
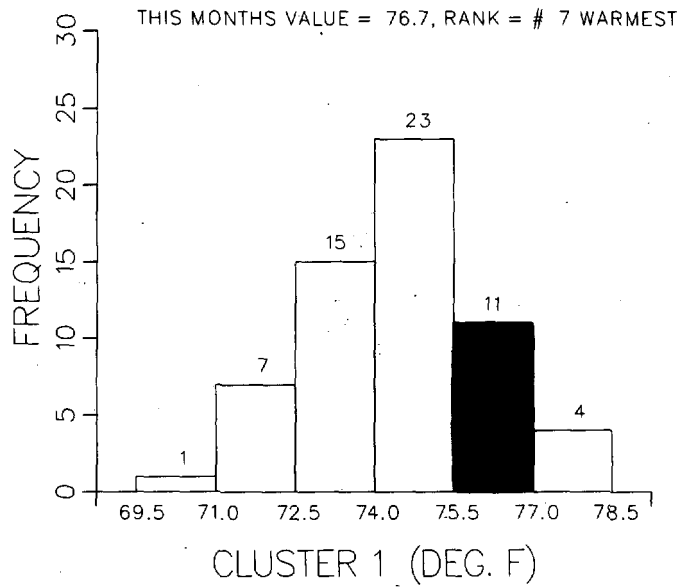
CLUSTER 4



MEAN MONTHLY TEMPERATURE FREQUENCY DISTRIBUTION  
 FOR PERIOD OF RECORD 1931-1991  
 FOR MONTH OF AUGUST  
 DELAWARE

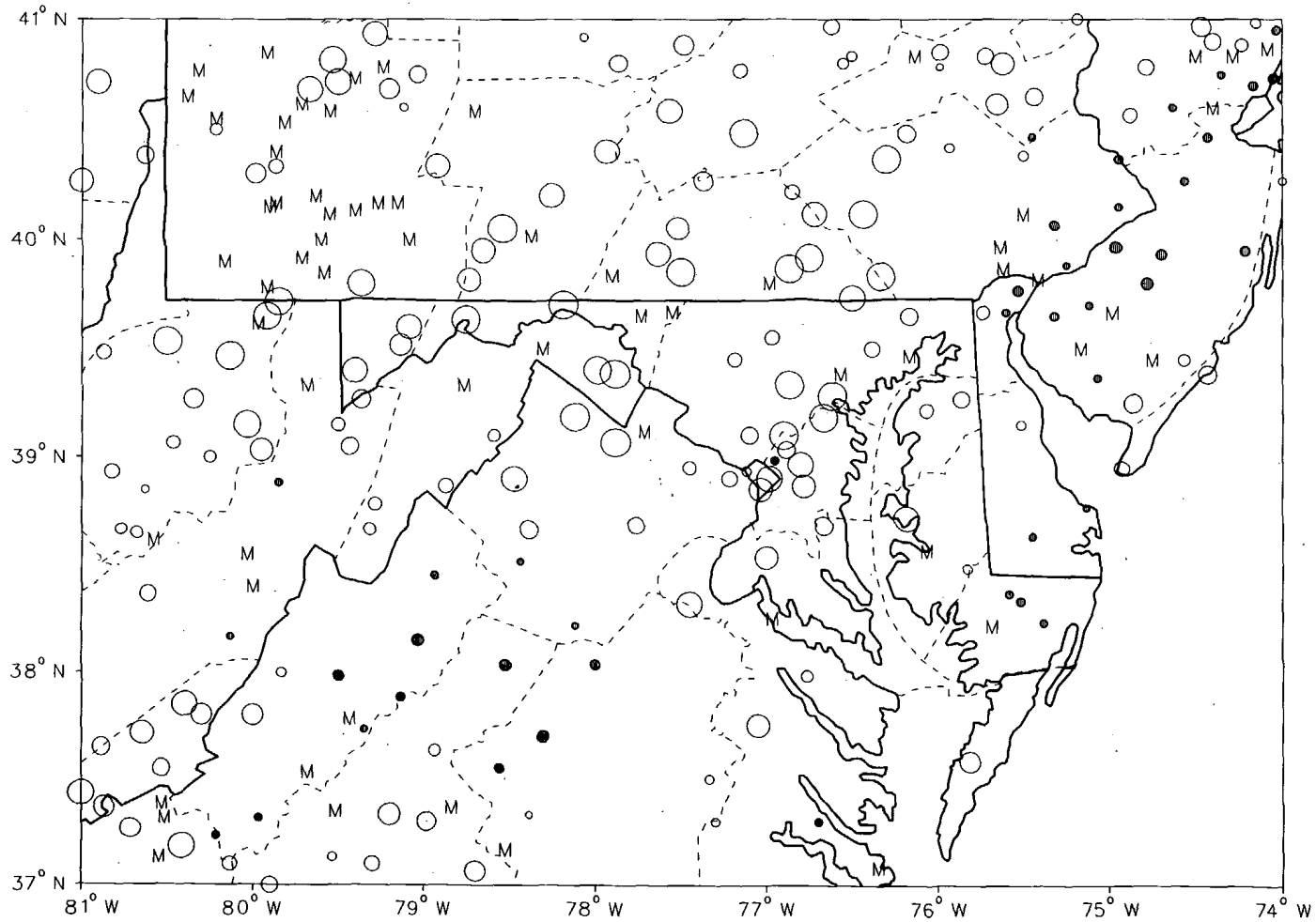
CLUSTER 1 - DIVISION(S):  
 NORTHERN 01

CLUSTER 2 - DIVISION(S):  
 SOUTHERN 02



CUMULATIVE 3 MONTHS PRECIPITATION DEPARTURE FROM  
 INDIVIDUAL STATION NORMALS (1951-1980)  
 FOR PERIOD ENDING AUGUST 1991  
 MARYLAND

- M INCOMPLETE DATA FOR THE PERIOD
- ▽ EXACTLY NORMAL
- ○ ○ ○ ○ 5,10,20,... 50% OR MORE BELOW NORMAL
- ● ● ● ● 10,20,40,...100% OR MORE ABOVE NORMAL

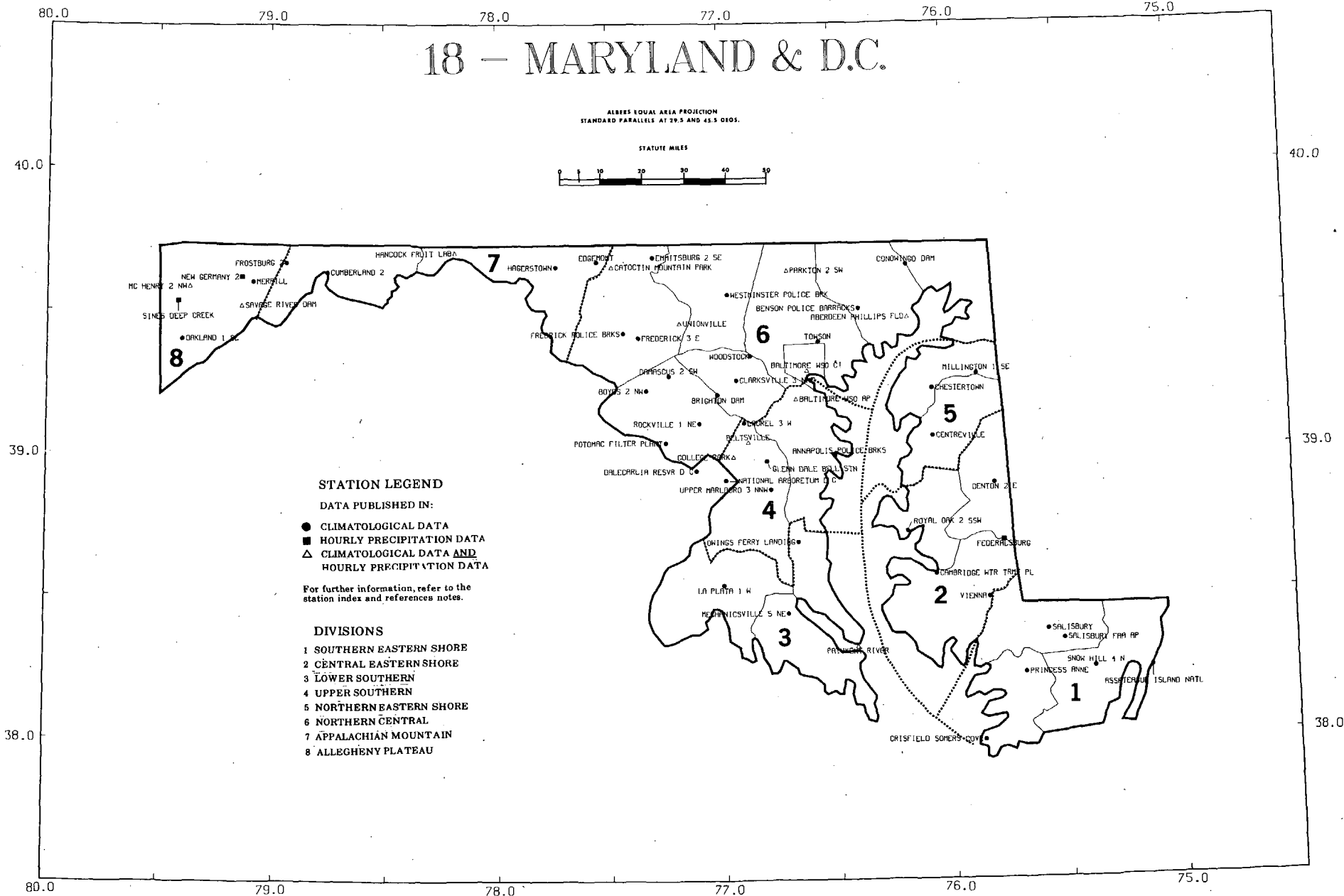
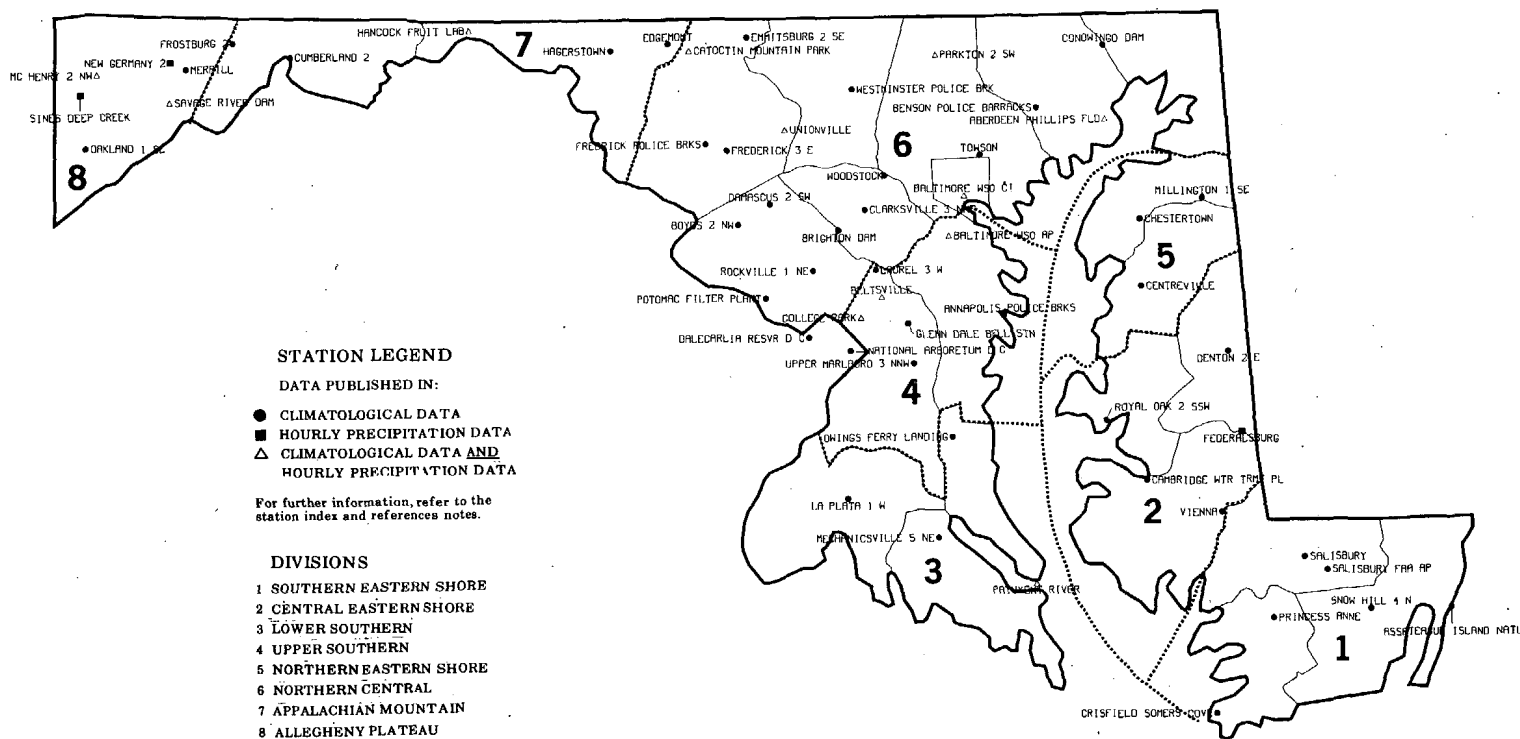


CIRCLE DIAMETER IS PROPORTIONAL TO DEPARTURE ON A CONTINUOUS SCALE

# 18 - MARYLAND & D.C.

ALBES EQUAL AREA PROJECTION  
STANDARD PARALLELS AT 29.5 AND 45.5 DEGS.

STATUTE MILES



76.0  
40.0

75.0

40.0

# 07 - DELAWARE

ALBERS EQUAL AREA PROJECTION  
STANDARD PARALLELS AT 29.5 AND 45.5 DEGS.

STATUTE MILES



## STATION LEGEND

### DATA PUBLISHED IN:

- CLIMATOLOGICAL DATA
- HOURLY PRECIPITATION DATA
- △ CLIMATOLOGICAL DATA AND HOURLY PRECIPITATION DATA

For further information, refer to the station index and references notes.

### DIVISIONS

- 1 NORTHERN
- 2 SOUTHERN

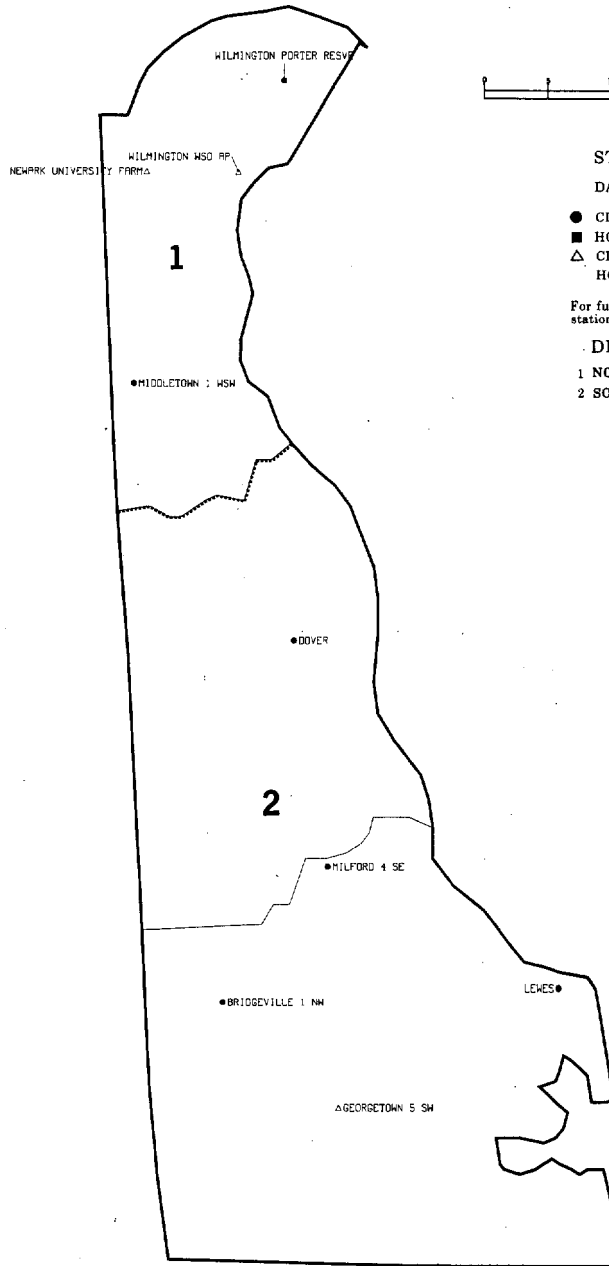
39.0

39.0

38.0  
76.0

75.0

38.0



### MONTHLY PRECIPITATION TOTALS

ANNUAL 1987  
NORTH CAROLINA

STATION	ANNUAL	MONTH																
		JAN	FEB	MAR	APR	MAY	JUN	JUL	AUG	SEP	OCT	NOV	DEC					
NORTH CAROLINA																		
ASHEVILLE MSD AP	34.57	1.11	1.85	2.75	0.57	3.55								4.19	5.28	4.28		
ASHEVILLE	35.67	0.71	1.52	1.81	0.93									2.77	4.15	2.94		
ASHFORD	36.74E	1.20	2.70	3.90	0.54E									3.80	4.90	4.80		
BADIN		1.30	2.60		1.25									2.40	4.10	2.90		
B EVERETT JORDAN DAM		1.70	1.50	3.60											1.70			
BOOMER 5 WSW		1.00	2.10															
BURLINGTON 3 NNE		0.80	1.92E															
CAPE HATTERAS WSO	48.86	5.75																
CAROLINA 8 SE		1.70																
CATALOCHEE		0.60																
CHARLOTTE MSD AP	26.91																	
CLINTON 2 NE	36																	
DALTON																		
DUSSON																		
ECONOMY																		
ELIZABETH																		
ELIZABETH																		
FAYETTE																		
FRANKLIN																		
GREENSBORO																		
GREENSBORO																		
GREENSBORO																		
HOLDEN																		
HOBOKEN																		
LAKE LURE																		
LAURENS																		
LEXINGTON																		
MOREHEAD CITY 2																		
MOREHEAD CITY 1																		
MOUNT PLEASANT																		
N WILKESBORO 12																		
POLKTON 2 NE																		
QUEBEC																		
RALEIGH-DURNAM WSO																		
REARDELL RAPIDS																		
ROARING GAP 1 NW																		
SHEPHERD 2																		
SNEADS FERRY 2 ENE																		
SWANNACRA 2 SSE																		
WILMINGTON MSD AP																		
WILSON 3 SW																		
WYCKINVILLE 6 E	28																	

# HOURLY PRECIPITATION DATA

## NORTH CAROLINA

DECEMBER 1987  
WITH ANNUAL SUPPLEMENT  
VOLUME 37 NUMBER 12

### A WORLD OF CLIMATIC INFORMATION FOR . . . .

- \* Attorneys
- \* Colleges & Universities
- \* Construction
- \* Consultants
- \* Governmental Agencies
- \* Industry
- \* Insurance Companies
- \* Public Utilities
- \* Research & Development
- \* Energy

### STATION INDEX

STATION	COUNTY	TIME	PRECIPITATION
ASHEVILLE MSD AP	SWAIN	191100	42
ASHEVILLE	SWAIN	191100	38
ASHFORD	SWAIN	191100	30
BADIN	SWAIN	191100	28
B EVERETT JORDAN DAM	SWAIN	191100	26
BOOMER 5 WSW	SWAIN	191100	24
BURLINGTON 3 NNE	SWAIN	191100	22
CAPE HATTERAS WSO	SWAIN	191100	20
CAROLINA 8 SE	SWAIN	191100	18
CATALOCHEE	SWAIN	191100	16
CHARLOTTE MSD AP	SWAIN	191100	14
CLINTON 2 NE	SWAIN	191100	12
DALTON	SWAIN	191100	10
DUSSON	SWAIN	191100	8
ECONOMY	SWAIN	191100	6
ELIZABETH	SWAIN	191100	4
ELIZABETH	SWAIN	191100	2
FAYETTE	SWAIN	191100	1
FRANKLIN	SWAIN	191100	0
GREENSBORO	SWAIN	191100	0
GREENSBORO	SWAIN	191100	0
HOLDEN	SWAIN	191100	0
HOBOKEN	SWAIN	191100	0
LAKE LURE	SWAIN	191100	0
LAURENS	SWAIN	191100	0
LEXINGTON	SWAIN	191100	0
MOREHEAD CITY 2	SWAIN	191100	0
MOREHEAD CITY 1	SWAIN	191100	0
MOUNT PLEASANT	SWAIN	191100	0
N WILKESBORO 12	SWAIN	191100	0
POLKTON 2 NE	SWAIN	191100	0
QUEBEC	SWAIN	191100	0
RALEIGH-DURNAM WSO	SWAIN	191100	0
REARDELL RAPIDS	SWAIN	191100	0
ROARING GAP 1 NW	SWAIN	191100	0
SHEPHERD 2	SWAIN	191100	0
SNEADS FERRY 2 ENE	SWAIN	191100	0
SWANNACRA 2 SSE	SWAIN	191100	0
WILMINGTON MSD AP	SWAIN	191100	0
WILSON 3 SW	SWAIN	191100	0
WYCKINVILLE 6 E	SWAIN	191100	0

# HOURLY PRECIPITATION DATA

## NORTH CAROLINA

JANUARY 1987  
VOLUME 37 NUMBER 1

ISSN 0364-6319

**HOURLY PRECIPITATION DATA** is published monthly and presents daily, hourly, and maximum short duration data for recording rain gage stations in each state except Alaska. Also included are a published station index and a locator map for the state. In addition to the regularly published data, the December publication contains a tabulation of monthly and annual total precipitation amounts as an annual supplement.

**SHELF STOCK** of the printed publication is maintained only for the most recent 3 years. Earlier years are available on microfiche or paper copies reproduced from microfiche. The data is also available in digital form - on magnetic tape or floppy disk.

**NOAA**

NATIONAL OCEANIC AND ATMOSPHERIC ADMINISTRATION

NATIONAL ENVIRONMENTAL SATELLITE, DATA AND INFORMATION SERVICE

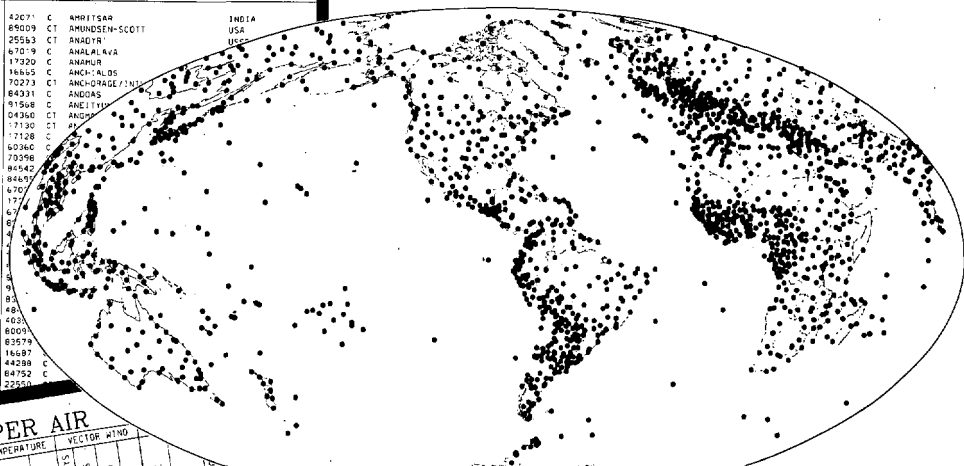
NATIONAL CLIMATIC DATA CENTER ASHEVILLE, NORTH CAROLINA

For further information,  
call or write to the  
**NATIONAL CLIMATIC DATA CENTER**  
Federal Building, Asheville, N. C. 28801-2696  
Phone (704) 259-0682 or (704)-CLIMATE

# CLIMATIC DATA STATIONS - WORLDWIDE

## STATION LIST WMO PUB 9 VOL A

41246 C	(SCHAR) MAJIS	OMAN	42071 C	AMRITSAR	INDIA																																																																																																																																																																								
40231 C	ABDAS	IRAN, ISLAMIC REP	85009 CT	AMUNDSEN-SCOTT	USA																																																																																																																																																																								
47409 C	ABASHIRI	JAPAN	25583 CT	ANADOLU	TURKEY																																																																																																																																																																								
71108 C	ABBOTSFORD, B. C.	CANADA	67019 C	ANALALAYA	INDIA																																																																																																																																																																								
84756 C	ABECHO	CHAD	17320 C	ANAMUR	TURKEY																																																																																																																																																																								
02091 C	ABERDEEN/VEVCE	USA	18885 C	ANCHALDS	NORWAY																																																																																																																																																																								
41112 C	ABHA	SAUDI ARABIA	70273 CT	ANGHRADE/IN	INDIA																																																																																																																																																																								
85578 CT	ABILENE	USA	84931 C	ANDAS	TURKEY																																																																																																																																																																								
72294 C	ABILENE, TX	USA	81508 C	ANGELI	INDIA																																																																																																																																																																								
41216 C	ABU DHABI BATEEN AIRPORT	U ARAB EMIRATES	04340 CT	ANGKOR	INDIA																																																																																																																																																																								
41217 CT	ABU DHABI INTL AIRPORT	U ARAB EMIRATES	71310 CT	ANGKOR	INDIA </tr <tr> <td>82640 C</td> <td>ABU HAMED</td> <td>SUDAN</td> <td>71208 C</td> <td>ANGKOR</td> <td>INDIA</td> </tr> <tr> <td>82795 C</td> <td>ABU MA'KHA</td> <td>SUDAN</td> <td>60366 C</td> <td>ANGKOR</td> <td>INDIA</td> </tr> <tr> <td>79650 C</td> <td>ACAJUTLA</td> <td>EL SALVADOR</td> <td>70398</td> <td>ANGKOR</td> <td>INDIA</td> </tr> <tr> <td>76005 C</td> <td>ACAPULCO, GRD.</td> <td>MEXICO</td> <td>86442</td> <td>ANGKOR</td> <td>INDIA</td> </tr> <tr> <td>90427 C</td> <td>ACARIGUA</td> <td>VENEZUELA</td> <td>84451</td> <td>ANGKOR</td> <td>INDIA</td> </tr> <tr> <td>12352 CT</td> <td>ADANA</td> <td>TURKEY</td> <td>670</td> <td>ANGKOR</td> <td>INDIA</td> </tr> <tr> <td>82850 CT</td> <td>ADDIS ABABA</td> <td>ETHIOPIA</td> <td>177</td> <td>ANGKOR</td> <td>INDIA</td> </tr> <tr> <td>94672 CT</td> <td>ADELIDE AIRPORT</td> <td>AUSTRALIA</td> <td>67</td> <td>ANGKOR</td> <td>INDIA</td> </tr> <tr> <td>41467 C</td> <td>ADEN KHIDRANKAR</td> <td>YEMEN</td> <td>67</td> <td>ANGKOR</td> <td>INDIA</td> </tr> <tr> <td>85585 C</td> <td>ADJAKE</td> <td>COTE D'IVOIRE</td> <td>67</td> <td>ANGKOR</td> <td>INDIA</td> </tr> <tr> <td>60620 C</td> <td>ADRAR</td> <td>ALGERIA</td> <td>67</td> <td>ANGKOR</td> <td>INDIA</td> </tr> <tr> <td>76679 CT</td> <td>AEROP. INTL MEXICO, D. F.</td> <td>MEXICO</td> <td>67</td> <td>ANGKOR</td> <td>INDIA</td> </tr> <tr> <td>76844 CT</td> <td>AEROP. INTL MERIDA, YUC.</td> <td>MEXICO</td> <td>67</td> <td>ANGKOR</td> <td>INDIA</td> </tr> <tr> <td>76394 T</td> <td>AEROP. INTL. MONTECERY, N. L.</td> <td>MEXICO</td> <td>67</td> <td>ANGKOR</td> <td>INDIA</td> </tr> <tr> <td>87582 C</td> <td>AREOPARQUE</td> <td>ARGENTINA</td> <td>67</td> <td>ANGKOR</td> <td>INDIA</td> </tr> <tr> <td>17100 C</td> <td>ARVON</td> <td>TURKEY</td> <td>67</td> <td>ANGKOR</td> <td>INDIA</td> </tr> <tr> <td>61024 C</td> <td>AGADEZ</td> <td>ALGERIA</td> <td>67</td> <td>ANGKOR</td> <td>INDIA</td> </tr> <tr> <td>60250 C</td> <td>AGADIR</td> <td>MOROCCO</td> <td>67</td> <td>ANGKOR</td> <td>INDIA</td> </tr> <tr> <td>61974 C</td> <td>AGALEGA</td> <td>INDIA</td> <td>67</td> <td>ANGKOR</td> <td>INDIA</td> </tr> <tr> <td>42261 C</td> <td>AGRA</td> <td>INDIA</td> <td>67</td> <td>ANGKOR</td> <td>INDIA</td> </tr> <tr> <td>16672 C</td> <td>AGRIKONIA (AIRPORT)</td> <td>GREECE</td> <td>67</td> <td>ANGKOR</td> <td>INDIA</td> </tr> <tr> <td>42847 CT</td> <td>AHMEDABAD</td> <td>INDIA</td> <td>67</td> <td>ANGKOR</td> <td>INDIA</td> </tr> <tr> <td>60560 C</td> <td>AJO SEFRA</td> <td>ALGERIA</td> <td>67</td> <td>ANGKOR</td> <td>INDIA</td> </tr> <tr> <td>61499 C</td> <td>AJON EL ATRUSS</td> <td>MAURITANIA</td> <td>67</td> <td>ANGKOR</td> <td>INDIA</td> </tr> <tr> <td>07751 CT</td> <td>AJACCIO</td> <td>FRANCE</td> <td>67</td> <td>ANGKOR</td> <td>INDIA</td> </tr> <tr> <td>31168 C</td> <td>AJMER</td> <td>INDIA</td> <td>67</td> <td>ANGKOR</td> <td>INDIA</td> </tr> <tr> <td>17184 C</td> <td>AKHISAR</td> <td>TURKEY</td> <td>67</td> <td>ANGKOR</td> <td>INDIA</td> </tr> <tr> <td>47582 CT</td> <td>AKTIA</td> <td>GREECE</td> <td>67</td> <td>ANGKOR</td> <td>INDIA</td> </tr>	82640 C	ABU HAMED	SUDAN	71208 C	ANGKOR	INDIA	82795 C	ABU MA'KHA	SUDAN	60366 C	ANGKOR	INDIA	79650 C	ACAJUTLA	EL SALVADOR	70398	ANGKOR	INDIA	76005 C	ACAPULCO, GRD.	MEXICO	86442	ANGKOR	INDIA	90427 C	ACARIGUA	VENEZUELA	84451	ANGKOR	INDIA	12352 CT	ADANA	TURKEY	670	ANGKOR	INDIA	82850 CT	ADDIS ABABA	ETHIOPIA	177	ANGKOR	INDIA	94672 CT	ADELIDE AIRPORT	AUSTRALIA	67	ANGKOR	INDIA	41467 C	ADEN KHIDRANKAR	YEMEN	67	ANGKOR	INDIA	85585 C	ADJAKE	COTE D'IVOIRE	67	ANGKOR	INDIA	60620 C	ADRAR	ALGERIA	67	ANGKOR	INDIA	76679 CT	AEROP. INTL MEXICO, D. F.	MEXICO	67	ANGKOR	INDIA	76844 CT	AEROP. INTL MERIDA, YUC.	MEXICO	67	ANGKOR	INDIA	76394 T	AEROP. INTL. MONTECERY, N. L.	MEXICO	67	ANGKOR	INDIA	87582 C	AREOPARQUE	ARGENTINA	67	ANGKOR	INDIA	17100 C	ARVON	TURKEY	67	ANGKOR	INDIA	61024 C	AGADEZ	ALGERIA	67	ANGKOR	INDIA	60250 C	AGADIR	MOROCCO	67	ANGKOR	INDIA	61974 C	AGALEGA	INDIA	67	ANGKOR	INDIA	42261 C	AGRA	INDIA	67	ANGKOR	INDIA	16672 C	AGRIKONIA (AIRPORT)	GREECE	67	ANGKOR	INDIA	42847 CT	AHMEDABAD	INDIA	67	ANGKOR	INDIA	60560 C	AJO SEFRA	ALGERIA	67	ANGKOR	INDIA	61499 C	AJON EL ATRUSS	MAURITANIA	67	ANGKOR	INDIA	07751 CT	AJACCIO	FRANCE	67	ANGKOR	INDIA	31168 C	AJMER	INDIA	67	ANGKOR	INDIA	17184 C	AKHISAR	TURKEY	67	ANGKOR	INDIA	47582 CT	AKTIA	GREECE	67	ANGKOR	INDIA
82640 C	ABU HAMED	SUDAN	71208 C	ANGKOR	INDIA																																																																																																																																																																								
82795 C	ABU MA'KHA	SUDAN	60366 C	ANGKOR	INDIA																																																																																																																																																																								
79650 C	ACAJUTLA	EL SALVADOR	70398	ANGKOR	INDIA																																																																																																																																																																								
76005 C	ACAPULCO, GRD.	MEXICO	86442	ANGKOR	INDIA																																																																																																																																																																								
90427 C	ACARIGUA	VENEZUELA	84451	ANGKOR	INDIA																																																																																																																																																																								
12352 CT	ADANA	TURKEY	670	ANGKOR	INDIA																																																																																																																																																																								
82850 CT	ADDIS ABABA	ETHIOPIA	177	ANGKOR	INDIA																																																																																																																																																																								
94672 CT	ADELIDE AIRPORT	AUSTRALIA	67	ANGKOR	INDIA																																																																																																																																																																								
41467 C	ADEN KHIDRANKAR	YEMEN	67	ANGKOR	INDIA																																																																																																																																																																								
85585 C	ADJAKE	COTE D'IVOIRE	67	ANGKOR	INDIA																																																																																																																																																																								
60620 C	ADRAR	ALGERIA	67	ANGKOR	INDIA																																																																																																																																																																								
76679 CT	AEROP. INTL MEXICO, D. F.	MEXICO	67	ANGKOR	INDIA																																																																																																																																																																								
76844 CT	AEROP. INTL MERIDA, YUC.	MEXICO	67	ANGKOR	INDIA																																																																																																																																																																								
76394 T	AEROP. INTL. MONTECERY, N. L.	MEXICO	67	ANGKOR	INDIA																																																																																																																																																																								
87582 C	AREOPARQUE	ARGENTINA	67	ANGKOR	INDIA																																																																																																																																																																								
17100 C	ARVON	TURKEY	67	ANGKOR	INDIA																																																																																																																																																																								
61024 C	AGADEZ	ALGERIA	67	ANGKOR	INDIA																																																																																																																																																																								
60250 C	AGADIR	MOROCCO	67	ANGKOR	INDIA																																																																																																																																																																								
61974 C	AGALEGA	INDIA	67	ANGKOR	INDIA																																																																																																																																																																								
42261 C	AGRA	INDIA	67	ANGKOR	INDIA																																																																																																																																																																								
16672 C	AGRIKONIA (AIRPORT)	GREECE	67	ANGKOR	INDIA																																																																																																																																																																								
42847 CT	AHMEDABAD	INDIA	67	ANGKOR	INDIA																																																																																																																																																																								
60560 C	AJO SEFRA	ALGERIA	67	ANGKOR	INDIA																																																																																																																																																																								
61499 C	AJON EL ATRUSS	MAURITANIA	67	ANGKOR	INDIA																																																																																																																																																																								
07751 CT	AJACCIO	FRANCE	67	ANGKOR	INDIA																																																																																																																																																																								
31168 C	AJMER	INDIA	67	ANGKOR	INDIA																																																																																																																																																																								
17184 C	AKHISAR	TURKEY	67	ANGKOR	INDIA																																																																																																																																																																								
47582 CT	AKTIA	GREECE	67	ANGKOR	INDIA																																																																																																																																																																								



NATIONAL CLIMATIC DATA CENTER



### UPPER AIR

STATION	LEVEL	TEMPERATURE		VECTOR WIND		LEVEL	TEMPERATURE		VECTOR WIND	
		TEMP	DEW	DIR	SPEED		TEMP	DEW	DIR	SPEED
ASIA - JAPAN	3000N 14000E OB 2	030	23.8	070	15	030	23.8	070	15	
ASIA - JAPAN	3000N 14000E OB 2	030	23.8	070	15	030	23.8	070	15	
ASIA - JAPAN	3000N 14000E OB 2	030	23.8	070	15	030	23.8	070	15	

### SURFACE

STATION	LATITUDE	LONGITUDE	ELEVATION	PRESSURE		TEMPERATURE		VAPOR PRESSURE		PRECIPITATION		SUNSHINE
				MEAN	MAX	MEAN	MAX	MEAN	MAX	MEAN	MAX	
EUROPE - NORWAY	60	15	1000	1000.5	1000.7	-10.0	-5.6	0.0	0.0	0.0	0.0	14.0
NORWAY	60	15	1000	1000.5	1000.7	-10.0	-5.6	0.0	0.0	0.0	0.0	14.0
JAW HATEN	60	15	1000	1000.5	1000.7	-10.0	-5.6	0.0	0.0	0.0	0.0	14.0

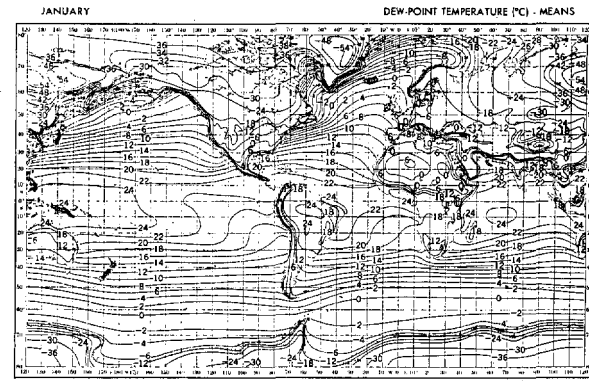
JANUARY 1988  
VOL. 41 NO. 1

ISSN 0027-0296



## MONTHLY CLIMATIC DATA FOR THE WORLD

PREPARED IN COOPERATION WITH THE  
WORLD METEOROLOGICAL ORGANIZATION



MONTHLY CLIMATIC DATA for the WORLD (MCDW) is a publication of monthly summaries of climatic data from around the world. Data are prepared by Members of the World Meteorological Organization for selected stations and exchanged via the Global Telecommunications System in coded format.

Tables of both Surface and Upper Air data are presented. Surface data tables contain elements of pressure, temperature, vapor pressure, precipitation, and sunshine. Upper Air tables contain geopotential heights, temperatures, dew point depressions, and vector winds for ten selected pressure levels between the surface and thirty millibars (hectopascals). A Station List is also provided which, in the January and July editions, contains all stations authorized for publication. In other months the list contains only those stations from which data no more than two months old have been recently received.

Currently, world maps of long term mean temperatures, dew points, and sea level pressures are included on the cover of the MCDW. The maps are generally representative of conditions during the 1950's to mid-1970's, however some data may be from as early as the 1850's.

SHelf STOCK of the printed publication is maintained only for the most recent three years. Earlier years are available on microfiche or paper copies reproduced from microfiche. The data are also available in digital form on magnetic tape and diskette.

I CERTIFY THAT THIS IS AN OFFICIAL PUBLICATION OF THE NATIONAL OCEANIC AND ATMOSPHERIC ADMINISTRATION AND IS COMPILED FROM INFORMATION RECEIVED AT THE NATIONAL CLIMATIC DATA CENTER, ASHEVILLE, NORTH CAROLINA 28801

*Donnell D. Valera*

DIRECTOR  
NATIONAL CLIMATIC DATA CENTER

For further information,  
call or write to the

**NATIONAL CLIMATIC DATA CENTER**

Federal Building, Asheville, N. C. 28801-2696

Phone (704) 259-0682 or (704) CLIMATE

**noaa**

NATIONAL OCEANIC AND ATMOSPHERIC ADMINISTRATION  
ENVIRONMENTAL SATELLITE, DATA AND INFORMATION SERVICE  
NATIONAL CLIMATIC DATA CENTER  
ASHEVILLE, NORTH CAROLINA

**CURRENT SERIAL PUBLICATIONS**

**A WORLD OF INFORMATION**

For . . . . .

- \* Industry
- \* Research and Development
- \* Public Utilities
- \* Government Agencies
- \* Attorneys
- \* Construction
- \* Consultants
- \* Insurance Companies
- \* Colleges and Universities
- \* Energy

ISSN 0364-0367

**HOURLY  
PRECIPITATION DATA**

ARIZONA

DECEMBER  
WITH ANNUAL SUPPLEMENT

ISSN 0145-0367

**CLIMATOLOGICAL DATA  
ANNUAL SUMMARY**

ARIZONA


NUMBER 13

ISSN 0364-0364

**HOURLY  
PRECIPITATION DATA**

ARIZONA

VOLUME 35, NUMBER



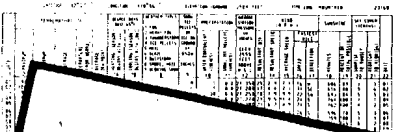
ISSN 0145-0367

**CLIMATOLOGICAL DATA**

ARIZONA

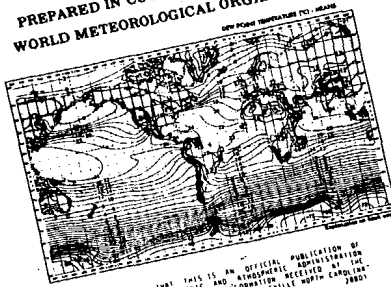
ISSN 0145-0367

**LOCAL  
CLIMATOLOGICAL DATA**  
Monthly Summary



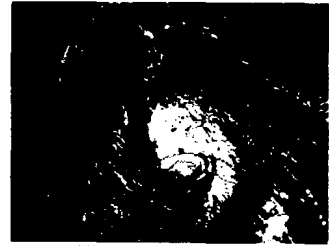
**MONTHLY CLIMATIC  
DATA FOR THE WORLD**

PREPARED IN COOPERATION WITH THE  
WORLD METEOROLOGICAL ORGANIZATION



NOAA NATIONAL OCEANIC AND ATMOSPHERIC ADMINISTRATION  
NATIONAL CLIMATIC DATA CENTER

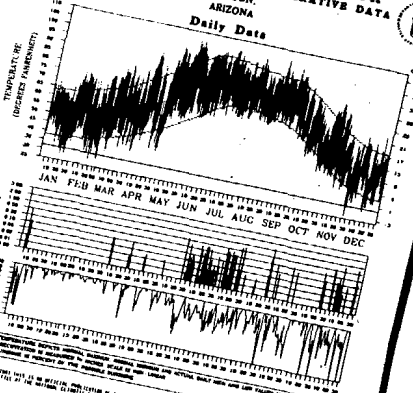
**STORM DATA**



NOAA NATIONAL OCEANIC AND ATMOSPHERIC ADMINISTRATION  
NATIONAL CLIMATIC DATA CENTER

**LOCAL CLIMATOLOGICAL DATA  
ANNUAL SUMMARY WITH COMPARATIVE DATA**  
TUCSON,  
ARIZONA

Daily Data



NOAA NATIONAL OCEANIC AND ATMOSPHERIC ADMINISTRATION  
NATIONAL CLIMATIC DATA CENTER

CD

VALIDATED BY:

Gloria Anderson  
Betty Edstrom  
Rudy Kittel  
Joyce Morgan  
Beulah Taylor

Grant Goodge - Chief  
Quality Control

**DEPARTMENT OF COMMERCE**

National Oceanic and Atmospheric Administration  
National Environmental Satellite, Data, and Information Service  
National Climatic Data Center  
Federal Building  
Asheville NC 28801

**BULK RATE  
POSTAGE & FEES PAID  
United States Department Of Commerce  
NOAA Permit No. G - 19**

*To change your address, please return a copy of the mailing label along with your new address.*