



CLIMATOLOGICAL DATA

MARYLAND AND DELAWARE

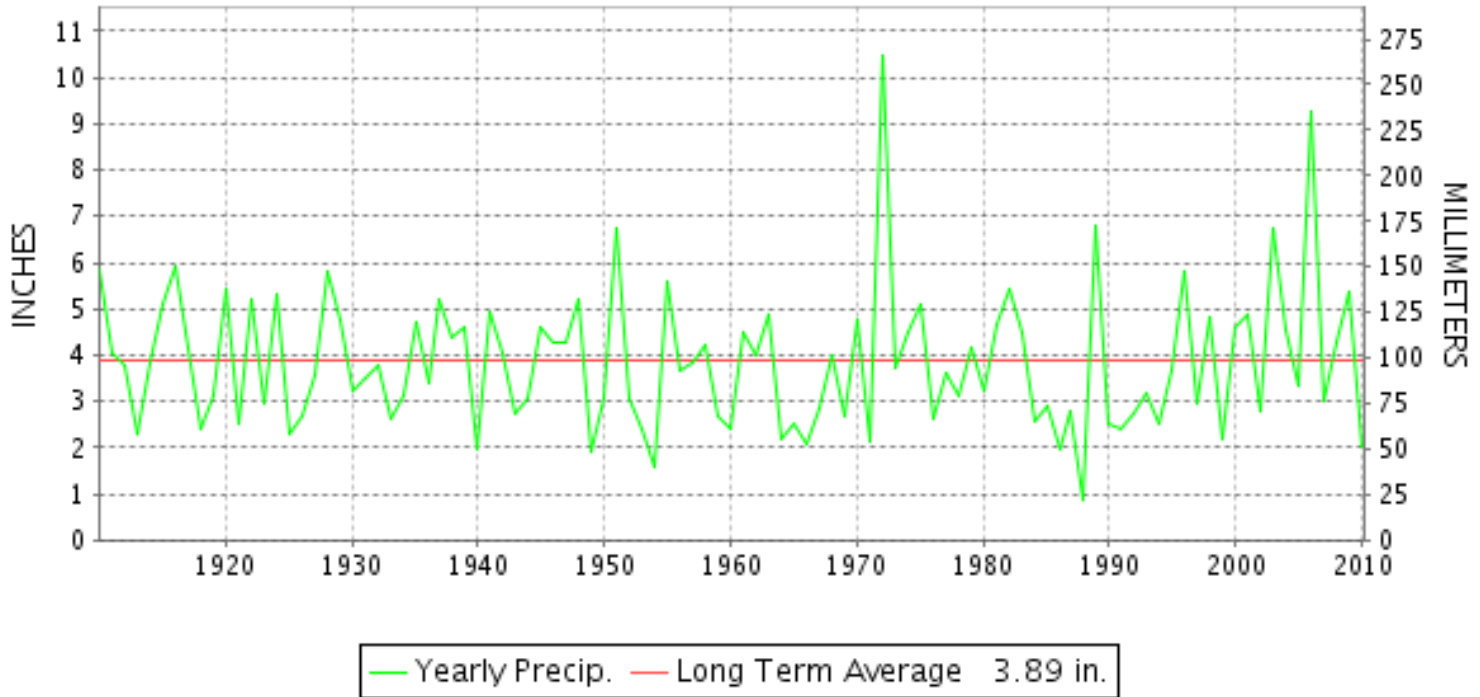


JUNE 2010

VOLUME 114 NUMBER 06

ISSN 0145-054

JUNE PRECIPITATION BY YEAR



TEMPERATURE AND PRECIPITATION EXTREMES

MARYLAND

HIGHEST TEMPERATURE	101	JUNE 27	MD SCI CTR BALTIMORE R
LOWEST TEMPERATURE	39	JUNE 8	OAKLAND 1 SE
GREATEST TOTAL PRECIPITATION	6.26		OAKLAND 1 SE
LEAST TOTAL PRECIPITATION	.66		CYLBURN
GREATEST 1 DAY PRECIPITATION	1.90	JUNE 6	FROSTBURG 2

"I certify that this is an official publication of the National Oceanic and Atmospheric Administration (NOAA) It is compiled using information from weather observing sites supervised by NOAA/National Weather Service and received at the National Climatic Data Center(NCDC), Asheville, North Carolina 28801."

Director
National Climatic Data Center

noaa

National
Oceanic and
Atmospheric Administration

National
Environmental Satellite, Data
and Information Service

National
Climatic Data Center
Asheville, North Carolina

DELAWARE

HIGHEST TEMPERATURE	99	JUNE 24	BEAR 2 SW
LOWEST TEMPERATURE	52	JUNE 9	BEAR 2 SW
GREATEST TOTAL PRECIPITATION	3.37		GREENWOOD 2NE
LEAST TOTAL PRECIPITATION	1.15		BEAR 2 SW
GREATEST 1 DAY PRECIPITATION	1.24	JUNE 25	GREENWOOD 2NE

MONTHLY STATION AND DIVISION SUMMARY

STATION	TEMPERATURE (°F)											PRECIPITATION (IN)												
	AVERAGE MAXIMUM	AVERAGE MINIMUM	AVERAGE	DEPARTURE FROM NORMAL	HIGHEST	DATE	LOWEST	DATE	HEATING DEG. DAYS	COOLING DEG. DAYS	NO. OF DAYS				TOTAL	DEPARTURE FROM NORMAL	GREATEST 24 HOURS	DATE	ICE PELLETS, SNOW			NO. OF DAYS		
											MAX		MIN						TOTAL	MAX DEPTH ON GROUND	DATE	.10 OR MORE	.50 OR MORE	1.00 OR MORE
											>=90	<=32	<=32	<=0										
EMMITSBURG 2 SE	82.6	63.8	73.2	2.7	93	28	52	8	6	261	2	0	0	0	1.56	-2.79	.61	10	.0	0		4	2	0
FREDERICK 2 NNE	87.0	65.7	76.4		98	28	54	8	0	350	11	0	0	0	1.01	.59	10	.0	0		3	1	0	
MILLERS 4 NE	83.0	62.6	72.8	3.1	94	27	50	8	8	249	4	0	0	0	2.02	-1.60	1.12	5	.0	0		4	1	1
SMITHSBURG 2NW	84.1	61.3	72.7		99	28	44	8	7	243	5	0	0	0	1.40	.65	10	.0	0		4	1	0	
--DIVISIONAL DATA-----> APPALACHIAN MOUNTAIN 07			74.4	3.7											1.44	-2.61			.0					
CUMBERLAND 2	87.2	64.0	75.6	5.4	96	27	47	8	2	327	12	0	0	0	1.45	-1.67	.49	10	.0	0		3	0	0
FROSTBURG 2	78.3	58.4	68.4	4.2	87	28	44	9+	32	141	0	0	0	0	5.15	1.31	1.90	6	.0	0		7	3	2
SHARPSBURG 5 S	84.7	60.6	72.7		95	28	45	8	12	247	5	0	0	0	2.73	.98	13	.0	0		5	2	0	
WILLIAMSPORT	85.1M	62.9M	74.0M		94	24	49	9	2	284	5	0	0	0	1.54	.58	10	.0	0		3	2	0	
--DIVISIONAL DATA-----> ALLEGHENY PLATEAU 08			72.7	4.2											2.72	-.80			.0					
OAKLAND 1 SE	78.6	57.6	68.1	3.8	86	28	39	8	28	129	0	0	0	0	6.26	1.66	1.30	7	.0	0		13	4	2
SAVAGE RIVER DAM	80.3	59.5	69.9	4.4	88	28	44	8	13	168	0	0	0	0	2.89	-.78	.85	7	.0	0		8	2	0
--DIVISIONAL DATA-----> DELAWARE NORTHERN 01			69.0	4.6											4.58	.37			.0					
BEAR 2 SW	87.5	64.9	76.2		99	24	52	9	5	350	13	0	0	0	1.15	.49	28	.0	0		3	0	0	
WILMINGTON NEW CASTLE R	87.0	66.3	76.7	5.2	98	24	53	7	3	360	13	0	0	0	1.83	-1.76	.71	24	.0	0		4	1	0
WILMINGTON PORTER RES	86.8	65.3	76.1	5.3	97	24	56	7	0	339	14	0	0	0	1.40	-2.66	.45	9	.0	0		5	0	0
--DIVISIONAL DATA-----> SOUTHERN 02			76.3	4.9											1.46	-2.44			.0					
DOVER	89.7	67.8	78.8	5.9	98	24	58	9+	0	419	17	0	0	0	1.41	-2.36	.46	24	.0	0		5	0	0
GREENWOOD 2NE	86.9	66.2	76.6	5.9	94	29+	55	9+	0	352	10	0	0	0	3.37	-.19	1.24	25	.0	0		5	3	2
LEWES	M	M	M																M	M				
--DIVISIONAL DATA----->			77.7	6.0											2.39	-1.02			.0					

MARYLAND AND DELAWARE
JUNE 2010

DAILY PRECIPITATION (INCHES)

STATION	TOTAL	DAY OF MONTH																														
		01	02	03	04	05	06	07	08	09	10	11	12	13	14	15	16	17	18	19	20	21	22	23	24	25	26	27	28	29	30	31
MARYLAND																																
SOUTHERN EASTERN SHORE 01																																
ASSATEAGUE	1.84	.11				.30			.01				.32		.01								.17	.67	.01				.24			
PRINCESS ANNE	1.71	.55		.11	*	*	.20			.05									*	*	.17	.02			.30	*	*	.27	.04			
SALISBURY	2.51		.30	.25			.02			.03				.03	.08						.77		.32		.33				.36	.02		
SALISBURY FAA AP	1.54	.18		.13	T	.03			.02				.02	.04		T					.12	.16		.43				.38				
SNOW HILL 4 N	2.27		.58				.12			T			.17	.22	.10						.05		.08		.43			.52				
CENTRAL EASTERN SHORE 02																																
ROYAL OAK 2 SSW	2.42	1.10		.62		.09	.05		.02	T			T			.10							.30		.12			.02	T			
VIENNA	M	-	-	-	-	-	-	-	-	-	-	-	-	-	-	-	-	-	-	-	-	-	-	-	-	-	-	-	-	-	-	
LOWER SOUTHERN 03																																
MECHANICSVILLE 5 NE	1.46		.10	.29			.12			.06			T	T	.67	T	T						.12		.06			.04				
SOLOMONS	M 1.87		.06	.45			.56		T	T					.02	.02					-		.37		.20			T	.19			
UPPER SOUTHERN 04																																
BALTIMORE WASH INTL AP R	1.55	.57		.23	T	.06			.11	.02		T	T		T	.05							T					.51				
BELTSVILLE	2.54		.01	.07	.02		.47		.01	.05					.06	.10	.75						.25					.75				
DALECARLIA RSVR	1.61			.11			.10							.10	.47		.03											.80				
LAUREL 3 W	3.42	.06		.10		.30			.12						.22							.99						1.63				
MD SCI CTR BALTIMORE R	.92	.10		.03				.21							.46													.12				
NATL ARBORETUM DC	1.81		.33	.12			.05		.12						.82	.02				.01			.01					.33				
OXON HILL	2.73		.28	.68		.11			.11				.03	.42	T								.05		T			1.05	T			
UPPER MARLBORO 3 NNW	2.11		.05	.51		.06			.07				.48	.06			.03						.21					.64				
NORTHERN EASTERN SHORE 05																																
CHESTERTOWN	.85	.21		.07	T	T			.06				.10	T	T	.15							T		T			.26				
NORTHERN CENTRAL 06																																
ABERDEEN PHILLIPS FLD	1.44		.04	T	.06		.02			.55				.08		T	.20						.35					.14				
BRIGHTON DAM	1.90			.38	.32		.30			.15					.15													.60				
CATOCTIN MTN PARK	1.62			.02	.01	.17	.65	.21					.05		.05	.19												.27				
CONOWINGO DAM	1.25				.02		.50			.37			.03	.35		.04	.04						.05					.22				
CYLBURN	.66			.02		.01				.37			*	*	*	.18			*	*	*	*	.08									
DAMASCUS 3 SSW	2.00	.03		.58	T	.12	.47	.07	.08	.07				.03	.04	.25								.01			.32					
EMMITSBURG 2 SE	1.56		.04		.50	.02	.01		.61						.04	.16					.04							.14				
FREDERICK 2 NNE	1.01			.05		.01			.59						.12	.20	.01				.03											
MILLERS 4 NE	2.02	T	.01	.09	1.12	.02	.32	.02		.03	T	.01	.09								T		T	.19			.12	T				
POTOMAC FLTR PLT	1.85			.25		.02	.32							.56		.25							.03					.42				
SMITHSBURG 2NW	1.40					.20			.65						.30													.25				
APPALACHIAN																																

MARYLAND AND DELAWARE
JUNE 2010

DAILY PRECIPITATION (INCHES)

STATION	TOTAL	DAY OF MONTH																																	
		01	02	03	04	05	06	07	08	09	10	11	12	13	14	15	16	17	18	19	20	21	22	23	24	25	26	27	28	29	30	31			
MOUNTAIN 07																																			
CUMBERLAND 2	1.45	.08	.01		.08	.01	.11	.06		.09	.49				.07	.40								.01	T	.04						T			
FROSTBURG 2	5.15	.05			1.60	T	1.90	.20	.01	.11	.57	.01		T	.01	.05	.27	.10					.05		.01	.03	.09						T	.09	
SHARPSBURG 5 S	2.73				.17		.12	.03	T	.03	.54			.98		.19	*	*	*	*	*	*	*	*	*	*									
WILLIAMSPORT	1.54						.07	.02			.58			.57		.07	.23																		
ALLEGHENY PLATEAU 08																																			
OAKLAND 1 SE	6.26	.34		.07	.09		1.27	1.30		.18	.80			.10	.20	.14	.30							.23	.35	.69			.12				.08		
SAVAGE RIVER DAM	2.89	.40	.02		T	T	.55	.85		.19	.28			.05	.05	.15	T						T	.10	.22			.03							
DELAWARE																																			
NORTHERN 01																																			
BEAR 2 SW	1.15	T		T			T			.43				.02	T	.02							.19		T							.49			
WILMINGTON NEW CASTLE R	1.83	T				T	T			.36				T		T							.32		.71			T				.44			
WILMINGTON PORTER RES	1.40									.45				.06		.02							.17	.13	.17							.40			
SOUTHERN 02																																			
DOVER	1.41	.21				.21								.03		.26							.22		.46							.02			
GREENWOOD 2NE	3.37		.72		.18			.13			.01				.03		.03							1.03		1.24						T			
LEWES	M	-	-	-	-	-	-	-	-	-	-	-	-	-	-	-	-	-	-	-	-	-	-	-	-	-	-	-	-	-	-	-	-		

MARYLAND AND DELAWARE
JUNE 2010

DAILY TEMPERATURES (°F)

STATION	OB. TIME	MAX/MIN	DAY OF MONTH																															AVERAGE			
			01	02	03	04	05	06	07	08	09	10	11	12	13	14	15	16	17	18	19	20	21	22	23	24	25	26	27	28	29	30	31				
MARYLAND SOUTHERN EASTERN SHORE 01																																					
ASSATEAGUE M	MID	MAX	84	87	81	83	93	94	76	76	71	88	77	78	93	82	80	82	92	82	82	90	89	88	95	90	85	87	98	86	95	80			85.5		
		MIN	65	66	64	64	67	67	65	58	59	66	64	64	69	68	68	68	71	60	63	71	75	67	70	73	70	67	73	71	69	57			66.6		
		OBS																																		68	
PRINCESS ANNE	17	MAX	84	88	87	88			76	79	78	88	86			89	90	84	88	88				90	94	94	98	95			96	98	92		88.6		
		MIN	68	68	67	67			60	51	54	70	63			70	66	68	70	53			68	66	69	73	70			75	71	61		65.8			
SALISBURY	16	MAX	89	88	88	88	88	90	87	76	77	87	87	87	91	91	86	83	87	86	88	93	91	92	93	96	96	90	94	95	94	87		88.8			
		MIN	74	69	71	68	75	76	62	59	61	69	64	64	74	70	69	68	74	61	63	73	71	71	69	76	74	71	74	82	75	67		69.8			
SALISBURY FAA AP M	MID	MAX	84	88	87	89	90	92	77	77	76	88	83	88	92	89	82	85	88	83	89	94	92	94	95	98	88	90	96	97	90	79		88.0			
		MIN	68	66	67	67	75	67	57	56	57	67	62	60	73	70	69	68	68	58	59	70	68	66	68	72	69	68	70	76	76	60		66.6			
SNOW HILL 4 N	17	MAX	91	91	90	92	93	91	93	80	78	90	88	87	93	91	88	85	90	88	90	95	92	94	96	100	98	92	97	97	96	90		91.2			
		MIN	72	68	70	68	76	75	58	54	57	64	62	62	73	70	72	70	74	57	58	74	67	61	68	71	71	67	70	81	72	69		67.7			
CENTRAL EASTERN SHORE 02																																					
ROYAL OAK 2 SSW	18	MAX	88	88	89	89	90	90	76	78	74	88	85	88	92	90	87	83	87	83	91	94	92	93	94	98	90	92	97	95	91	88		88.7			
		OBS																																	80		
		MIN	69	69	69	69	77	72	64	61	59	72	65	67	74	75	72	69	73	59	66	77	73	70	72	79	75	70	75	77	79	65		70.4			
VIENNA	18	MAX																																		M	
		MIN																																		M	
LOWER SOUTHERN 03																																					
MECHANICSVILLE 5 NE	07	MAX	89	85	86	87	86	88	88	74	75	75	85	82	88	88	87	80	81	84	81	87	91	88	92	89	94	87	89	94	95	87		86.1			
		MIN	70	66	67	67	68	72	57	54	56	61	62	62	64	70	67	70	69	58	60	69	68	66	68	68	68	65	66	72	74	66		65.7			
SOLOMONS	08	MAX	91	86	84	90	85	90	91	76	77	78	87	80	87	90	89	84	83	86	81	87	92	89	88	93	98	86	91	98	98	91		87.5			
		MIN	73	69	72	69	73	77	63	62	66	68	68	70	73	75	73	72	73	66	70	77	76	74	66	78	76	74	77	82	79	71		72.1			
UPPER SOUTHERN 04																																					
BALTIMORE WASH INTL APM	MID	MAX	88	90	89	89	88	91	78	80	71	88	83	92	94	90	82	80	88	87	93	95	94	96	97	100	93	94	100	99	92	83		89.5			
		MIN	71	66	70	69	71	64	56	56	62	66	66	67	73	73	68	70	69	59	63	74	71	68	71	76	71	67	72	75	76	65		68.2			
BELTSVILLE	08	MAX	90	85	89	89	90	87	89	75	77	87	83	93	91	89	81	82	83	85	92	91	90	95	94	98	89	92	98	95	89		88.2				
		MIN	72	64	70	68	68	69	57	56	60	64	62	67	71	72	69	68	70	57	63	72	70	67	69	73	72	66	68	79	74	64		67.4			
DALECARLIA RSVR	08	MAX	93	85	85	90	92	90	90	77	78	73	89	86	93	90	89	80	80	84	85	93	91	90	95	95	99	89	92	100	96	91		88.7			
		OBS																																	80		
		MIN	66	67	67	68	69	70	60	59	55	65	66	69	69	74	74	71	71	66	60	66	70	69	71	71	72	68	70	78	76	64		68.0			
		OBS																																			
LAUREL 3 W M	MID	MAX	87	89	90	90	87	89	77	79	71	88	86	92	93	89	84	79	85	86	91	92	91	94	94	97	89	92	97	95	89	80		88.1			
		MIN	71	70	72	68	70	70	58	57	63	65	63	67	73	74	73	67	70	61	64	74	72	70	71	77	71	70	73	75	62		68.8				
MD SCI CTR BALTIMORE M	MID	MAX	88	90	90	90	89	92	78	79	71	90	84	91	94	91	81	80	86	85	95	94	97	98	101	93	94	101	99	93	84		89.7				
		MIN	74	72	73	72	76	69	63	62	64	68	68	71	75	76	72	70	67	69	77	77	77	77	77	82	76	75	77	77	67		72.3				

DAILY TEMPERATURES (°F)

STATION	OB. TIME	MAX/MIN	DAY OF MONTH																															AVERAGE
			01	02	03	04	05	06	07	08	09	10	11	12	13	14	15	16	17	18	19	20	21	22	23	24	25	26	27	28	29	30	31	
NATL ARBORETUM DC	07	MAX	92	86	89	90	89	92	89	78	80	72	89	86	92	82	82	86	86	92	92	91	94	96	97	90	93	97	94	91			88.9	
		MIN	72	67	73	69	72	73	61	59	61	63	65	67	73	73	69	70	68	60	66	73	73	69	71	78	75	69	71	81	74	65	69.3	
OXON HILL	08	MAX	91	84	89	89	89	89	88	77	78	75	87	85	92	91	87	80	82	85	85	91	92	91	95	94	98	91	93	96	93	91	88.3	
		MIN	68	67	70	68	72	73	61	60	62	65	66	65	69	73	70	69	69	60	61	66	73	70	70	72	75	69	71	73	73	66	68.2	
UPPER MARLBORO 3 NNW	08	MAX	92	87	90	91	89	90	89	77	79	74	88	83	91	92	88	81	82	85	85	91	93	92	94	95	98	92	93	98	95	91	88.8	
		MIN	72	67	70	67	71	72	57	54	60	63	62	65	70	72	68	69	68	57	61	71	69	66	69	75	72	65	67	78	73	65	67.2	
NORTHERN EASTERN SHORE 05																																		
CHESTERTOWN	23	MAX	84	86	88	87	88	86	76	76	68	87	81	87	91	87	77	77	84	83	88	93	90	91	93	97	89	90	95	96	91	76	86.1	
		MIN	70	66	69	68	72	72	59	59	50	65	60	63	73	70	66	66	69	59	61	74	70	67	71	76	70	67	73	75	76	65	67.4	
		OBS							***																									
NORTHERN CENTRAL 06																																		
ABERDEEN PHILLIPS FLD	07	MAX	89	86	87	88	87	85	88	77	76	70	87	79	87	90	86	79	77	83	83	87	93	90	92	95	96	86	90	96	94	90	86.4	
		MIN	66	65	67	70	68	69	56	57	60	64	61	63	67	71	69	69	69	59	62	65	73	69	72	75	73	64	69	72	75	64	66.8	
CATOCTIN MTN PARK	07	MAX	80	83	82	86	80	87	74	72	67	67	77	79	85	81	77	73	77	80	86	87	83	87	88	89	82	85	92	88	85	79	81.3	
		OBS									81		89																					
		MIN	66	60	68	66	69	65	53	49	54	59	56	64	70	64	64	62	64	63	56	67	61	65	70	74	62	61	67	72	68	51	63.0	
CONOWINGO DAM	07	MAX	91	87	90	92	89	89	90	80	80	68	88	85	89	92	88	84	81	86	88	92	94	95	93	96	98	92	94	99	96	92	89.3	
		MIN	64	59	69	68	68	69	61	52	58	60	57	59	64	69	68	67	68	56	60	64	68	68	68	68	72	64	68	75	71	65	64.9	
		OBS								65																								
CYLBURN	08	MAX		86	88	87	88				77	67	85	81											93	94	96	84	88	92	91	85	M	
		MIN		45	68	69	68					58	60	59	63									69	76	69	64	68	77	74	61	M		
DAMASCUS 3 SSW	22	MAX	82	85	86	87	82	84	73	75	70	84	81	90	88	82	74	76	80	82	90	87	86	91	91	92	85	88	95	89	86	78	84.0	
		MIN	65	62	68	65	66	69	55	50	59	61	60	65	70	69	67	66	65	56	64	69	64	71	69	73	67	64	68	75	70	58	65.0	
EMMITSBURG 2 SE	07	MAX	87	81	83	83	85	81	80	72	74	66	82	78	87	85	82	76	77	79	80	86	85	84	88	89	91	84	86	93	88	85	82.6	
		MIN	69	62	63	66	66	70	57	52	55	58	59	60	68	68	65	66	66	56	57	63	65	65	67	75	68	62	65	71	71	58	63.8	
FREDERICK 2 NNE	07	MAX	92	86	89	87	89	86	83	77	78	68	86	85	92	90	87	76	79	83	87	91	90	89	92	94	95	88	91	98	93	89	87.0	
		MIN	65	63	67	69	68	70	60	54	59	61	59	63	68	70	67	68	68	58	62	66	66	68	70	76	68	65	68	71	75	60	65.7	
MILLERS 4 NE	18	MAX	81	83	83	84	82	81	76	72	69	82	80	87	86	83	77	74	78	80	87	86	85	87	90	91	85	88	94	93	86	80	83.0	
		MIN	66	61	66	65	62	67	54	50	52	60	54	62	69	66	64	63	62	53	59	67	64	63	68	73	66	61	64	71	69	56	62.6	
SMITHSBURG 2NW	08	MAX	88	81	86	84	86	81	78	79	73	75	76	83	90	89	85	70	81	82	81	88	85	86	90	91	90	88	85	99	88	84	84.1	
		MIN	62	59	60	64	65	67	56	44	48	60	59	56	69	63	62	62	65	59	57	63	61	68	68	69	60	60	65	65	69	53	61.3	
		OBS																																
APPALACHIAN MOUNTAIN 07																																		
CUMBERLAND 2	18	MAX	86	88	86	91	87	80	76	78	78	85	87	92	88	90	81	88	85	85	94	90	92	90	94	90	88	91	96	93	86	82	87.2	
		MIN	65	59	67	65	70	66	57	47	56	59	57	64	73	70	67	68	67	55	61	67	64	66	70	69	62	61	67	77	69	55	64.0	
FROSTBURG 2	07	MAX	83	78	82	77	83	79	73	66	69	68	75	76	85	80	80	65	80	71	79	85	80	82	83	85	80	79	82	87	81	76	78.3	
		MIN	62	57	62	62	64	63	52	44	44	53	53	55	63	65	64	62	60	51	52	59	60	64	66	57	58	58	70	62	49	58.4		
SHARPSBURG 5 S	07	MAX	89	85	87	86	87	81	80	73	76	69	84	83	89	87	86	73	80	79	82	89	88	87	90	92	85	89	95	91	86	84.7		
		MIN	63	59	60	65	65	65	54	45	46	57	55	58	66	67	63	66	61	54	55	63	62	63	66	67	62	61	64	67	66	52	60.6	

DAILY TEMPERATURES (°F)

STATION	OB. TIME	MAX/MIN	DAY OF MONTH																															AVERAGE	
			01	02	03	04	05	06	07	08	09	10	11	12	13	14	15	16	17	18	19	20	21	22	23	24	25	26	27	28	29	30	31		
WILLIAMSPORT	06	MAX MIN			87 66	86 65	87 66	82 66	82 57		78 49	69 58	85 56	82 56	89 63	88 69	86 66	73 66	80 63		82 57		89 64	88 64	91 67	94 71	92 65	87 64			90 73	91 56	85.1 62.9		
ALLEGHENY PLATEAU 08																																			
OAKLAND 1 SE	07	MAX MIN	81 58	77 54	81 55	77 62	83 66	74 63	72 54	67 39	70 46	69 60	77 50	80 53	82 60	79 67	79 64	73 63	79 60	73 50	81 53	84 61	81 56	83 58	85 63	85 55	79 52	82 58	86 68	81 65	76 48	78.6 57.6			
SAVAGE RIVER DAM	08	MAX MIN	82 58	78 57	82 58	79 64	83 64	78 63	75 55	69 44	72 47	76 55	76 54	79 58	84 62	82 68	81 66	81 66	81 64	75 54	78 54	84 61	83 60	83 62	85 65	87 58	83 57	82 58	88 72	83 65	81 51	80.3 59.5			
DELAWARE NORTHERN 01																																			
BEAR 2 SW M	MID	MAX MIN	86 69	88 65	89 69	90 68	88 69	90 67	77 54	77 53	67 52	87 63	81 56	89 60	91 72	88 69	80 64	78 67	84 63	85 54	90 57	94 70	92 65	94 64	95 70	99 75	89 67	91 63	97 70	97 76	91 74	80 62	87.5 64.9		
WILMINGTON NEW CASTLE M	MID	MAX MIN	86 71	88 66	90 70	87 69	90 71	91 66	77 53	78 54	68 55	87 63	79 59	86 64	92 73	88 69	80 67	77 61	86 59	85 64	86 73	96 68	92 67	91 71	95 73	98 70	88 66	90 73	96 66	94 73	91 70	79 62	87.0 66.3		
WILMINGTON PORTER RES M	MID	MAX MIN OBS MIN OBS	84 72	88 68	88 70	88 69	87 71	90 67	75 56	73 58	73 58	83 61	78 61	87 61	91 61	91 61		79 62	78 61	91 61	91 61	91 61	92 71	92 61	91 71	92 70	91 75	92 70	91 68	92 68	95 68	95 68	88 75	79 63	86.8 65.3
SOUTHERN 02																																			
DOVER	16	MAX MIN	92 71	85 70	88 70	88 69	91 67	91 71	87 58	78 60	77 58	87 65	87 63	90 64	93 72	92 70	88 68	80 67	85 63	85 60	87 62	94 74	93 71	92 67	96 71	98 74	95 69	91 69	96 74	97 79	96 74	92 65	89.7 67.8		
GREENWOOD 2NE	07	MAX MIN	91 69	85 67	88 69	88 66	89 70	89 74	90 58	75 55	77 55	72 64	86 60	80 61	87 65	91 69	88 67	78 66	82 68	86 58	83 59	89 68	93 68	91 66	93 67	91 70	94 70	87 67	88 71	94 74	89 77	89 67	86.9 66.2		
LEWES	17	MAX MIN																																	M M

PAN EVAPORATION AND WIND

STATION		DAY OF MONTH																															TOTAL OR AVERAGE
		01	02	03	04	05	06	07	08	09	10	11	12	13	14	15	16	17	18	19	20	21	22	23	24	25	26	27	28	29	30	31	
MARYLAND UPPER SOUTHERN 04 BELTSVILLE	WIND	-	45	32	36	32	32	63	64	52	27	62	*	79	59	47	39	28	73	*	*	130	41	*	89	78	40	32	64	49	75	1415	
	EVAP	-	23	26	22	20	17	27	26	27	1	31	*	47	29	22	14	5	33	*	*	83	28	*	65	39	29	26	33	26	35	7.59	
	MAX	91	86	91	90	87	82	80	78	78	64	83	-	91	88	87	78	74	84	-	-	90	89	-	91	92	90	89	93	90	88	85.5	
	MIN	65	63	66	64	61	67	56	53	53	58	59	-	63	68	65	64	64	58	-	-	58	64	-	67	65	64	65	68	69	60	62.6	

Evaporation: Is measured in hundreths of inches.

Wind: Is measured in miles.

Max and Min: The maximum and minimum temperatures (Fahreheit) of the water in the evaporation pan.

STATION INDEX

STATION	INDEX NO.	DIVISION	COUNTY	LATITUDE	LONGITUDE	ELEVATION (IN FEET)	OBSERVATION TIME AND TABLES				OBSERVER
							LOCAL STD TIME				
							TEMP	PRECIP	EVAP	SPECIAL SEE (NOTES)	
MARYLAND											
ABERDEEN PHILLIPS FLD	0015	06	HARFORD	39 28	76 10W	57	07	07		C H	US ARMY ABERDEEN TST CTR
ASSATEAGUE	0335	01	WORCESTER	38 4	75 13W	10	MID	MID		H	ASSATEAGUE IS NATL SEA
BALTIMORE WASH INTL AP R	0465	04	ANNE ARUNDEL	39 10	76 41W	156	MID	MID		C HJ	ASOS - FAA
BELTSVILLE	0700	04	PRINCE GEORG	39 2	76 56W	145	08	08	08	C H	USDA AG RESEARCH SVC
BRIGHTON DAM	1125	06	MONTGOMERY	39 11	77 0W	330		07		H	WA SUBURB SANIT COMM
CATOCTIN MTN PARK	1530	06	FREDERICK	39 39	77 29W	1610	07	07		H	CATOCTIN MOUNTAIN PK
CHESTERTOWN	1750	05	KENT	39 13	76 3W	40	23	23		H	THOMAS W ELIASON JR
CONOWINGO DAM	2060	06	HARFORD	39 39	76 11W	40	07	07		H	SUSQUEHANNA ELECTRIC CO
CUMBERLAND 2	2282	07	ALLEGANY	39 39	78 45W	730	18	18		H	TIMOTHY B THOMAS
CYLBURN	2308	06	BALTIMORE	39 22	76 38W	400	08	08		H	CYLBURN ARBORETUM
DALLECARLIA RSVR	2325	04	PRINCE GEORG	38 56	77 7W	150	08	08		H	USA CORPS OF ENGINEERS
DAMASCUS 3 SSW	2336	06	MONTGOMERY	39 16	77 14W	697	22	22		H	ROBERT J LEFFLER
EMMITSBURG 2 SE	2906	06	FREDERICK	39 41	77 17W	403	07	07		H	ERIC E GLASS
FREDERICK 2 NNE	3353	06	FREDERICK	39 26	77 24W	280	07	07		H	DIR PUBLIC WORK WTP
FROSTBURG 2	3415	07	ALLEGANY	39 40	78 56W	2170	07	07		H	GREGORY P LATTA
LAUREL 3 W	5111	04	PRINCE GEORG	39 5	76 54W	400	MID	MID		H	WA SUBURBAN SANITARY COM
MD SCI CTR BALTIMORE R	5718	04	BALTIMORE (C	39 17	76 37W	20	MID	MID		C H	ASOS - NWS
MECHANICVILLE 5 NE	5865	03	ST. MARY'S	38 28	76 42W	100	07	07		H	SANDRA J HASTINGS
MILLERS 4 NE	5934	06	CARROLL	39 43	76 48W	860	18	18		C H	ROBERT MILLER
NATL ARBORETUM DC	6350	04	PRINCE GEORG	38 55	76 58W	50	07	07		H	US NATIONAL ARBORETUM
OAKLAND 1 SE	6620	08	GARRETT	39 25	79 24W	2420	07	07		H	GARRETT CO MEM HOSPITAL
OXON HILL	6800	04	PRINCE GEORG	38 48	77 0W	120	08	08		H	BRIAN SMITH
POTOMAC FLTR PLT	7272	06	MONTGOMERY	39 2	77 15W	270		08		H	POTOMAC WATER FILT PLANT
PRINCESS ANNE	7330	01	SOMERSET	38 13	75 41W	20	17	17		H	UNIV OF MD EASTERN SHORE
ROYAL OAK 2 SSW	7806	02	TALBOT	38 43	76 11W	10	18	18		H	JOHN L SWAINE JR
SALISBURY	8000	01	WICOMICO	38 22	75 35W	10	16	16		H	CITY OF SALISBURY
SALISBURY FAA AP	8005	01	WICOMICO	38 20	75 31W	48	MID	MID		H	FAA
SAVAGE RIVER DAM	8065	08	GARRETT	39 31	79 8W	1495	08	08	08	C H	USA CORPS OF ENGINEERS
SHARPSBURG 5 S	8207	07	WASHINGTON	39 24	77 43W	500	07	07		H	DAVID DOWNIN
SMITHSBURG 2NW	8371	06	WASHINGTON	39 40	77 35W	670	08	08		H	SMITHSBURG WWTP
SNOW HILL 4 N	8380	01	WORCESTER	38 14	75 23W	30	17	17		H	CURTIS E SHOCKLEY
SOLOMONS	8405	03	CALVERT	38 19	76 27W	12	08	08		H	CHESAPEAKE BIOLOGIC LAB
UPPER MARLBORO 3 NNW	9070	04	PRINCE GEORG	38 52	76 47W	100	08	08	08	H	UNIVERSITY OF MARYLAND
VIENNA	9140	02	DORCHESTER	38 29	75 49W	10	18	18		H	DELMARVA POWER AND LIGHT
WILLIAMSPORT	9570	07	WASHINGTON	39 36	77 50W	360	06	06		H	R C WILSON TREATMENT PLT
DELAWARE											
BEAR 2 SW	1200	01	NEW CASTLE	39 36	75 44W	80	MID	MID		H	R GARY GALLAHER
DOVER	2730	02	KENT	39 16	75 31W	30	16	16		H	DEPT OF TRANSPORTATION
GREENWOOD 2NE	3595	02	SUSSEX	38 49	75 35W	45	07	07		H	CONNIE HOLMBERG
LEWES	5320	02	SUSSEX	38 47	75 8W	15	17	17		H	BOARD OF PUBLIC WORKS
WILMINGTON NEW CASTLE R	9595	01	NEW CASTLE	39 40	75 36W	79	MID	MID		C HJ	ASOS - FAA
WILMINGTON PORTER RES	9605	01	NEW CASTLE	39 46	75 32W	270	MID	MID		H	WILMINGTON WATER DEPT

REFERENCE NOTES

DEFINITIONS

STATION NAMES: Name of the city, town or locality. Figures and letters following the station names indicate the distance in miles and direction from the post office or town community center.

DIVISIONS: Areas within a state of similar climatological characteristics. Division averages are calculated using data from stations that record both temperature and precipitation (i.e. not precipitation alone).

NORMALS: The average value of the meteorological element over a time period. Effective 1 January 2002, the averaging period is 1971 to 2000. The normals for National Weather Service localities have been adjusted so as to be representative for the current observation site.

MONTHLY DEGREE DAY TOTALS: One heating (cooling) degree day is accumulated for each whole degree that the daily mean temperature is below (above) 65 degrees Fahrenheit.

PRECIPITATION: Values shown in hundredths of inches are water equivalent totals, i.e., total of liquid and melted frozen precipitation. In the "Monthly Summarized Data" table the total snow and sleet values shown in tenths of inches are unmelted amounts. The max depth on ground values of snow and sleet shown in whole inches are cumulative unmelted amounts. The number of days with .10, .50, 1.00 or more refers to water equivalents.

PRECIPITATION QUALITY CONTROL: The NCDC quality control process may delete precipitation data that are spatially inconsistent; exceed climatological limits, or are inconsistent with prevailing weather patterns.

TEMPERATURE: Original and edited temperature values are given in the "Daily Temperature" table. Edited values are produced when an original value is missing or when surrounding stations indicated a suspect original value. When a line labeled OBS is present and contains either a daily temperature (suspect) or *** (missing), the temperature appearing directly above, on the line labeled MAX or MIN, is an edited value. Summary temperature information (averages, departures, extremes, monthly degree day totals) is based on the values labeled MAX/MIN.

WIND: (As shown in the "Evaporation and Wind" table) the total wind movement in miles over the evaporation pan as determined by an anemometer recorder located 6-8 inches above the pan.

SYMBOLS AND LETTERS USED IN THE STATION INDEX TABLE

Thermometers located in a rooftop shelter.
// Rain gage equipped with a windshield
AR Observation made "after rain" has occurred.
C Station is equipped with recording rain gage (R) but values in this bulletin are from a non-recording rain gage unless indicated by an R.
G Observations appear in the "Soil Temperatures" table.
H Observations appear in the "Snowfall and Snow on the Ground" table.
J Station also published as a Local Climatological Data publication.
MID Observation time is midnight.
MO Rain gage read once monthly, usually the last day.
OC Rain gage readings vary from a few weeks to several months.
R Amounts from recording rain gage.
SR Observation time near sunrise.

SS Observation time near sunset.
VAR Observation time varies.
WI Rain gage read weekly or irregularly.
WM Rain gage read weekly and last day of the month.

SYMBOLS AND LETTERS USED IN THE DATA TABLES

(DAILY DATA ARE FOR THE 24 HOURS IMMEDIATELY PRECEDING OBSERVATION TIME.)

BLANK Entries in the "Monthly Summarized Data" table indicate no record.

BLANK Entries in the "Daily Precipitation" and "Snowfall and Snow on the Ground" tables indicate zero.

BLANK Entries in the "Daily Temperature" table indicate a missing record where an edited value could not be determined. (See *** below)

- No record. Data not recorded, determined unreliable by quality control check, or not received in time for publication.

+ Precipitation or temperature extremes occurred on one or more previous dates during the month.

*** Missing original temperature which has been estimated during edit.

* Rain gage not read. Precipitation is included in the amount following the asterisks. Time distribution not known. A * preceding the monthly total indicates precipitation amount is being carried forward to next months total, and may include amounts from the previous month(s).
// Rain gage equipped with a windshield.

A Amount of precipitation is the total of observer's entries for the current month. It may include precipitation that occurred during the previous month. Refer to earlier bulletin to determine date of last reading. (Hawaii stations)

B Adjusted monthly value (estimated), (1-7 missing values for wind and evaporation).

M Insufficient or partial data. M is appended to average and/or total values computed with 1-9 daily values missing. M appears alone if 10 or more daily values are missing, (8 or more for wind and evaporation).

R Amounts from recording rain gage.

T Trace. An amount too small to measure.

V Includes total for previous month(s). (See * above)

SEASONAL TABLES: Monthly and seasonal snowfall and heating degree days for the 12 months ending with the June data are published in the July issue of this bulletin. Cooling degree days for the calendar year are published in the "Climatological Data Annual Summary."

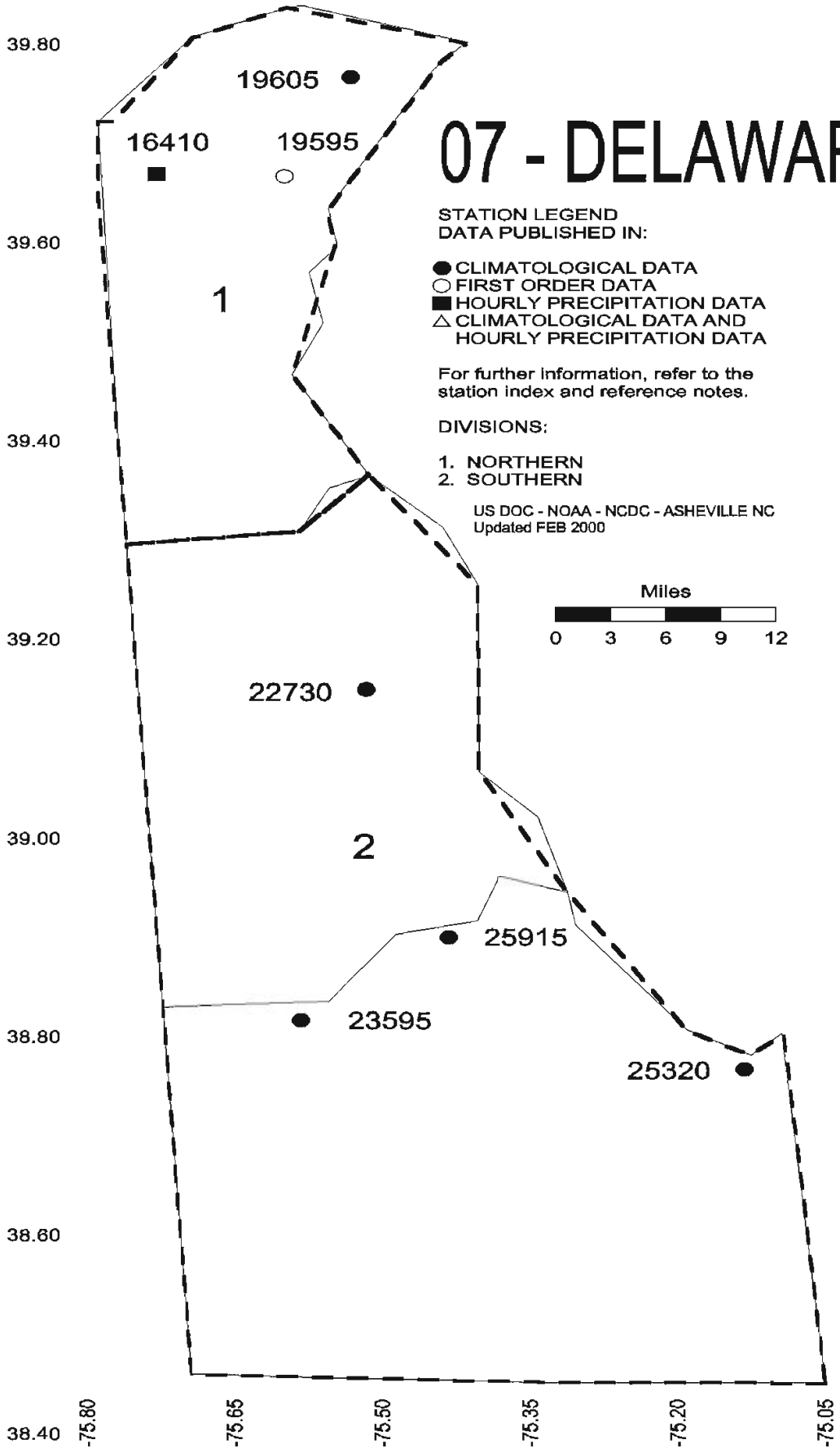
Information concerning the history of changes in locations, exposure, etc. of substations is kept on file at the National Climatic Data Center. Historical information of regular National Weather Service Offices may be obtained from the "Local Climatological Data" annual publication. The contents of this publication may be reprinted or otherwise used freely, with proper credit to the National Climatic Data Center. The data are also available in digital form on magnetic tape and diskette.

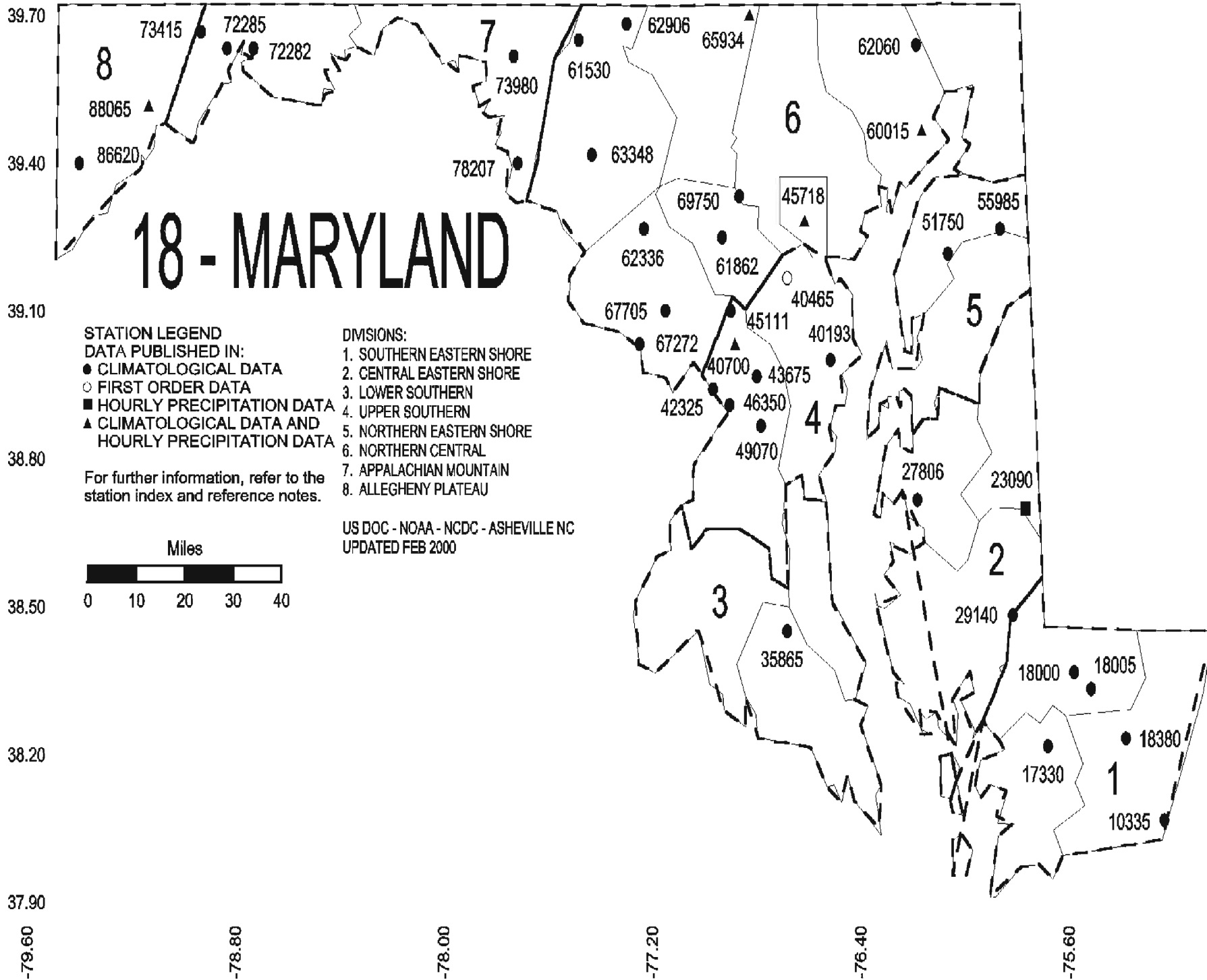
SUBSCRIPTION, PRICE, AND ORDERING INFORMATION AVAILABLE FROM:

NCDC Subscription Services Center
310 State Route 956
Building 300
Rocket Center, WV 26726

Toll free number: (866) 742-3322
Fax number: (304) 726-4409

07 - DELAWARE





These and other publications are available from the National Climatic Data Center

Hourly Precipitation Data

This publication contains hourly precipitation amounts obtained from recording rain gages located at National Weather Service, Federal Aviation Administration, and cooperative observer stations. Published data are displayed in inches and tenths or inches and hundredths at local standard time. HPD includes maximum precipitation for nine (9) time periods from 15 minutes to 24 hours, for selected stations.

Climatological Data

Monthly editions contain station daily maximum and minimum temperatures and precipitation. Some Stations provide daily snowfall, snow depth, evaporation, and soil temperature data. Each edition also contains monthly summaries for heating and cooling degree days (65 degree F base). The July issue contains a recap of monthly heating degree days and snow data for the preceding July through June.

The Annual issue contains monthly and annual averages of temperature, precipitation, temperature extremes, freeze data, soil temperatures, evaporation, and a recap of monthly cooling degree days.

Storm Data

Monthly issues contain a chronological listing, by states, of occurrences of storms and unusual weather phenomena. Reports contain information on storm paths, deaths, injuries, and property damage. An "Outstanding storms of the month" section highlights severe weather events with photographs, illustrations, and narratives. The December issue includes annual tornado, lightning, flash flood, and tropical cyclone summaries.

Monthly Climatic Data for the World

This publication contains monthly means for temperature, pressure, precipitation, vapor pressure, and sunshine for approximately 2,000 surface data collection stations worldwide and monthly mean upper air temperatures, dew point depressions, and wind velocities for approximately 500 observing sites.

Local Climatological Data

LCD publications summarize temperature, relative humidity, precipitation, cloudiness, wind speed and direction observations for several hundred cities in the U.S. and its territories. Each monthly publication also contains 3 hourly weather observations for that month and a hourly summary of precipitation. Annual LCD publications contain a summary of the past calendar year as well as historical averages and extremes.

For Information Call:

(866) 742-3322 (Toll free)

(828) 271-4010 (TDD)

(304) 726-4409 (Fax)

Subscription Service Center
310 State Route 956
Building 300
Rocket Center, WV 26726

PRSRT STD
POSTAGE & FEES PAID
United States Department of Commerce
NOAA Permit No. G-19

OFFICIAL BUSINESS
PENALTY FOR PRIVATE USE \$300
ADDRESS CORRECTION REQUESTED

To change your address, please return a copy of the mailing label along with your new address to:

NCDC Subscription Services Center
310 State Route 956
Building 300
Rocket Center, WV 26726

Toll free number : (866) 742-3322
TDD : (828) 271-4010
Fax number : (304) 726-4409

NCDC now offers an annual online subscription for the *Climatological Data* publication. When you purchase this subscription service, you will have **immediate online access** to all previous publications back to October 1997 and all publications thereafter until the expiration of the subscription. Your subscription is valid for one year after purchase. **The total cost is \$36 for online delivery (including back issues) compared to \$52 for offline delivery.** To order this and other subscriptions online with your credit card, go to: www.ncdc.noaa.gov/mpp.html and choose subscription.