

*The Blue Hen*

1917



M.C.C.

Geo. Hudson



















# The Blue Hen

*published by the Class of  
1918, of Delaware College  
at Newark, Delaware  
Nineteen Seventeen ❀ ❀*



DELAWARE COLLEGE  
LIBRARY



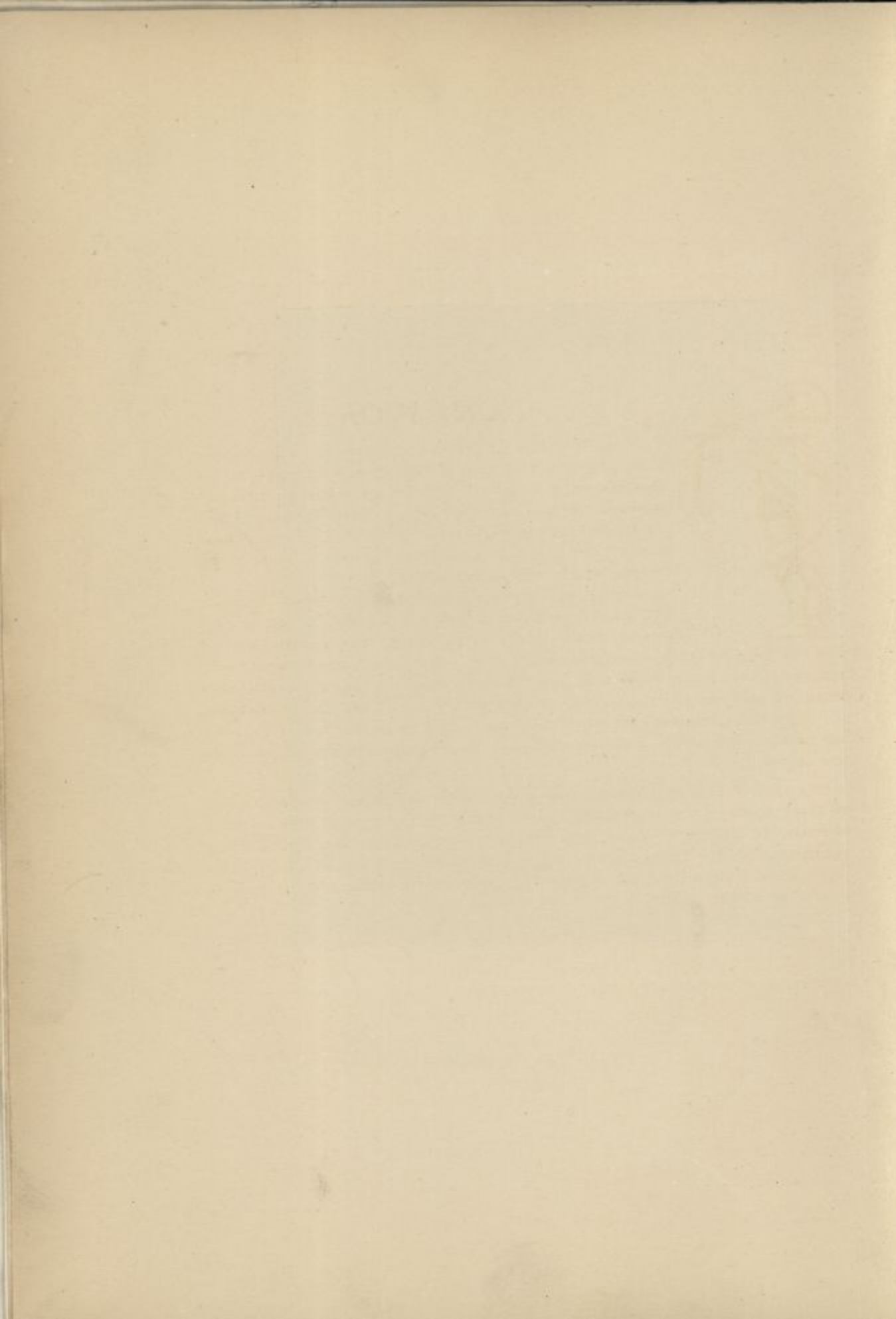
TO MR. H. RODNEY SHARP  
IN APPRECIATION OF HIS PROPHETIC WISDOM  
AND  
GENEROUS ENTHUSIASM  
IN  
LOYALTY TO DELAWARE  
WE DEDICATE THIS BOOK

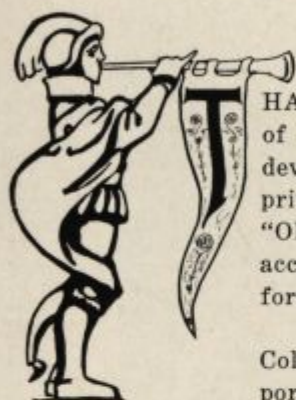
DELAWARE COLLEGE  
LIBRARY





W. M. Rodney Phelps





## FOREWORD

HAT we, the class of 1918, should have the good fortune of editing the Blue Hen at this particular stage in the development of Delaware College, we esteem an exclusive privilege. For in our short college career we have known "Old Delaware" in her days of struggle and are, on that account, better able to appreciate her days of more happy fortune which now seem assured.

We spent two years within her walls when Delaware College was wealthy in love and loyalty far out of proportion to her wealth of equipment and material means.

For one year we have known her in the day of transition, when the old was not usable as old nor the new as new. And we now look forward to one year when we may see her fairly launched on her career of greatest usefulness.

We count ourselves happy that to us should be given the task of presenting through the college annual the remarkable changes and growth of these few years.

In editing this book we wish to acknowledge the hearty co-operation of all those on whom we have called for aid of any kind. Especially do we wish to thank Mr. Charles G. Meier, who did the two color plates, Mr. Blair for the headings, Mr. Otto Thomas for cartoons, Miss Gertrude Brady and Professors Sypherd and Dutton for criticism, and The Craftsmen at Kells for their interest as well as technical skill.



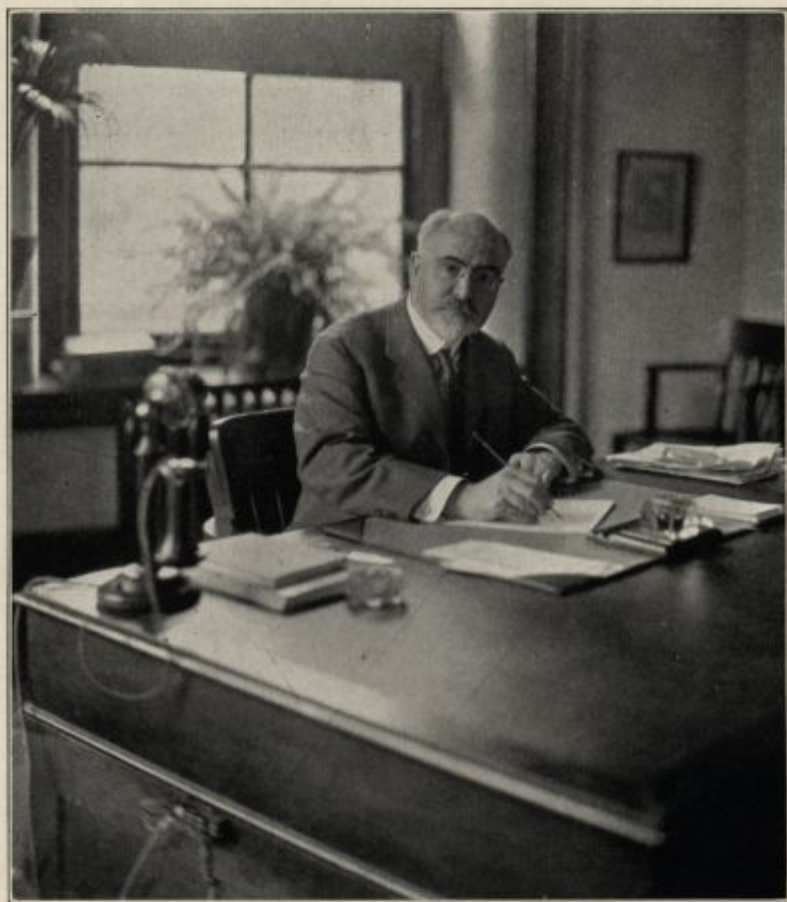




## Greetings

*In the evening of your lifetime when your youth has passed away,  
Seated by old age's fireside as the fitful shadows play,  
As you gaze with eyes unseeing, deep into the dying fire,  
While the soft light and the silence memories in your heart inspire;  
May this book a fairy bridge be, over which your dreams may glide  
To that happy land of boyhood gleaming on the other side,  
Where your tireless thoughts may wander 'mid the sorrows and the joys  
Of those carefree boyhood friendships which not even time destroys.  
May your youth once more be with you; may your fancy see you there  
In the school of old traditions—ancient, mighty Delaware.*

—L. R. Witsil, '18.



*Samuel Chiles Mitchell.*





A. Blair '20

SAMUEL CHILES MITCHELL, PH. D., *President.*

GEORGE A. HARTER, PH. D., *Professor of Mathematics and Physics.*

ELISHA CONOVER, M. A., *Professor of Latin and Greek.*

EDWARD LAURENCE SMITH, M. A., *Professor of Modern Languages.*

MERRILL VAN GIESEN SMITH, M. E., *Professor of Mechanical Engineering.*

CLINTON O. HOUGHTON, B. A., *Professor of Zoology and Botany.*

W. OWEN SYMPHERD, PH. D., *Professor of English.*

HARRY HAYWARD, M. S., *Dean of Agricultural Department and Professor of Animal Husbandry.*

CLARENCE A. SHORT, M. S., *Professor of Mathematics and Engineering.*

CHARLES A. McCUE, B. S., *Professor of Horticulture.*

ARTHUR E. GRANTHAM, B. S. A., *Professor Agronomy.*

CHARLES L. PENNY, M. A., *Professor of Chemistry, Mineralogy, and Geology.*

EARNEST VANCOURT VAUGHN, PH. D., *Professor of History and Economics, State of Delaware Chair of History.*

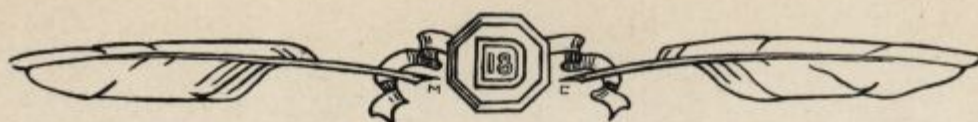
RAYMOND C. REED, PH. D., D. V. M., *Professor of Bacteriology, Hygiene and Veterinary Science.*

FIRMAN THOMPSON, B. S., *Professor of Agricultural Chemistry.*

THOMAS F. MANNS, PH. D., *Professor of Plant Pathology and Soil Bacteriology.*

GEORGE A. KOERBER, E. E., *Professor of Electrical Engineering.*

GEORGE S. COUNTS, PH. D., *Professor of Psychology and Education.*



ALLAN R. CULLIMORE, C. E., *Dean of Engineering and Professor of Civil Engineering.*

WILLIAM F. HOEY, JR., *First Lieutenant, 12th Infantry, Professor of Military Science and Tactics and Commandant of Cadets.*

HAROLD E. TIFFANY, M. S., *Assistant Professor of Chemistry.*

ZACHARYA H. SRAGER, B. S., *Assistant Professor of Mechanical and Electrical Engineering.*

GEORGE ELLIOTT DUTTON, M. A., *Assistant Professor of English.*

ARTHUR CRAIG WHITTIER, B. S., *Assistant Professor of Agricultural Chemistry.*

HOWARD K. PRESTON, C. E., *Assistant Professor of Mathematics and Engineering.*

RAYMOND R. PAILTHORP, B. S. *Assistant Professor of Horticulture.*

WILLIAM J. MCAVOY, C. E., *Physical Director and Assistant Professor of Mathematics.*

KENT ROBERTS GREENFIELD, PH. D., *Assistant Professor of History and Economics.*

HORACE V. CORY, B. S., *Instructor in Poultry Husbandry.*

MARK L. NICHOLS, B. S., *Assistant Professor of Agronomy.*

MANSEL F. GRIMES, B. S., *Assistant Professor of Animal Husbandry.*

LEWIS A. BELDING, M. E., *Assistant Professor of Mechanical and Electrical Engineering.*

REEVES DYER STRING, *Instructor in Shop Work.*

FREDERICK J. POHL, M. A., *Instructor in English.*

C. H. RAWLINS, JR., PH. D., *Instructor in Mathematics.*

PAUL W. BOUTWELL, PH. D., *Instructor in Chemistry.*

CLAUDE C. SPIKER, M. A., *Instructor in Modern Languages.*

A. W. BERNHARDT, B. A., *Instructor in Modern Languages.*





*The Faculty*



**EDWARD LAURENCE SMITH**

Dean Smith was born on March 19, 1877, at Newark, Delaware. When fifteen years of age he entered Delaware College, and won his B. A. degree in 1896. The following two years he was a post-graduate student here, taking Latin, French, German and Spanish. He studied at Columbia from 1898 to 1900, taking work in Romance and Germanic languages. The first of these years he won a scholarship and the second became University Fellow in Romance Philology. He was given the M. A. degree by Delaware College in 1899. Prof. Smith went abroad the next year and continued his research in Romance Literatures at L'Université de Paris, Le Collège de France, and L'Ecole des Hautes Etudes, at Paris. Returning to America, he taught modern languages at the Brooklyn Polytechnic Institute, and was a student of old Provençal, at Columbia. In 1902 he was chosen instructor in German, French and Spanish at his Alma Mater, later being advanced to Professor. He became Dean of the College and the Arts and Science Department last year, and in 1916 was elected secretary to the faculty.

Dean Smith is a member of the Kappa Alpha Fraternity, the Modern Language Association of America, and the Phi Kappa Phi Fraternity.

By his activity in student affairs and by his genial influence as Dean of the College, Prof. Smith has made every man at Delaware his warm friend. A man of most attractive personality, and a thorough scholar, he is the model type of a gentleman.





*HARRY HAYWARD*

Dean Hayward was born near Lewistown, N. Y., in 1869. After preparing at the Mount Hermon School, in Massachusetts, he entered the College of Agriculture at Cornell in 1890. After graduating he was a land agent in northern Delaware, and later went to State College, Pa., where he acted as head of the Department of Dairying. He then accepted a position as Professor of Dairying and Animal Husbandry at New Hampshire College. From there he went to the Department of Agriculture at Washington, and was chief of the Dairy Division. He was engaged in organizing and managing the agricultural work at the Mount Hermon School for three years, and came to Delaware in 1906 as Director of the Experiment Station, and professor of Agriculture.

He has done special work at Harvard, the University of Minnesota, and some of the agricultural institutions of England and Germany. He is a member of the Kappa Sigma Fraternity and the honorary Fraternities of Sigma and Phi Kappa Phi.

Dean Hayward is a man of great energy and constructive ability, a leader in every sense of the word. His social spirit and the splendid character of his work at Delaware are appreciated by all.



**ALLAN REGINALD CULLIMORE**

Prof. Cullimore was born at Jacksonville, Ill., in March, 1884. He attended the Belmont School, Belmont, Cal., and took his scientific training at the Massachusetts Institute of Technology, graduating in 1907 with the B. S. degree. The next year he was Assistant in Civil Engineering there. Afterward he did practical work with the U. S. Coast and Geodetic Survey on the Columbia River, Washington; was engaged by the American Bridge Co., at their New York office; was appointed Assistant Superintendent of Construction for the city of St. Louis, serving for two years; and he was designing Engineer for the Spuck Iron Foundry Co. of St. Louis. He has been Dean of the College of Industrial Science at Toledo University, in Ohio, and for the past three summers taught railroad and topographical fieldwork at the summer Engineering Camps of the Massachusetts Institute of Technology, in eastern Maine. He was elected Dean of Engineering at Delaware this year.

Prof. Cullimore is a member of the Beta Theta Phi Fraternity, the Ohio Society of Steam, Mechanical and Electrical Engineers, and the Society for the Promotion of Engineering Education.

He has brought to the engineers here a genuine interest in their work, and a spirit of animation which grows as time passes. With his wide experience and well deserved popularity among the students, he is forming a technical school of the first order at Delaware College.