

UP FRONT

Would auto bailout postpone the inevitable

By DOUG RAINEY

SPECIAL TO THE NEWARK POST

Last week, I drove my 1996 Ford Ranger to work as I weighed the issue of bailing out the auto industry.

The Ranger has been a faithful beast. Its duties are now confined to hauling propane cylinders and yard waste.

Ford has sold a ton of Rangers over the years and the little guys have performed well. My beige model has a massive four-cylinder engine that gets 25 miles a gallon on the highway. It's a little slow, but gets the job done on I-95.



Rainey

Here's the problem. In the last couple of decades, Ford has allocated resources to more profitable product lines and basically left the Ranger alone. Yes, we did see updates, but the big money went to the Explorer and the nice-riding F series. The Ranger still has a 1980s look that has allowed the Toyota Tacoma, and to a lesser extent, the Nissan Frontier to make inroads.

Meanwhile, General Motors and Chrysler came up with upgrades but in Chrysler's case, the compact pickup got too large. As for the GM model, it looks nice, but does the world need a five-cylinder engine?

Granted, Ford was not making much money from the Ranger, particularly stripped-down versions like mine. But when the profits were rolling in, did it ever occur to anyone that this little pickup might be an ace in the hole, particularly if more was done on the fuel economy front?

Multiply this mistake and many others over three

See UPFRONT, 18

Sonnenberg digs in to new job as city manager



PHOTO BY SCOTT GOSS

Newark City Manager Kyle A. Sonnenberg started his job earlier this month. Sonnenberg previously worked as an assistant city manager for Fayetteville, N.C.

By SCOTT GOSS

POSTNEWS@CHES PUB.COM

New city manager Kyle A. Sonnenberg was hired to help city council take a more creative, forward-thinking approach to the way Newark is governed.

Yet the 51-year-old North Carolina transplant says it will likely take some time before he's ready to initiate any major changes.

"Mostly, I've just been trying to meet people and find out how things work here," Sonnenberg said last Friday, which marked only his third week on the job. "As things come up, I'll investigate them and try to understand how it all fits together, but for now I've just been trying to get out into the community and observe how the staff operates."

In September, City Council chose Sonnenberg to fill the city's highest-ranking, non-elected position over two other finalists, including city planning director Roy Lopata, who had been tapped to fill the position on an interim basis following the retirement of former city manager Carl Luft in February.

In hiring Sonnenberg, council also agreed to start him off with an annual salary of \$140,000, making him the highest paid municipal employee in city history.

Although his salary is about \$37,000 more than the next highest paid city employee, Sonnenberg said doesn't feel any extra pressure to work miracles, even though he takes the helm at the start of what is expected to be a lean fiscal year.

"I'm not motivated by that kind of thing," Sonnenberg said referring to his paycheck. "What motivates me is a desire to make things better for the community, and as a municipal government, we're in a unique position to impact the physical environment and the quality of life that all of us live in. That's what's important to me."

Although Sonnenberg has an extensive background in municipal government — including his last job as the assistant city manager for a town nearly seven times the size of Newark — he acknowledged it would take some time before he is completely comfortable in his new post.

"There is far less reliance on property taxes and a much greater reliance on utility revenues here than I've experienced before," he said. "The fact that the property tax rates are adjusted versus the additional revenue you would otherwise see from re-assessments is also something I'm still trying to figure out."

For at least a few months, Sonnenberg will have to make those adjustments without his most trusted advisor.

Sonnenberg said his wife, Mary, will remain in Fayetteville, N.C. until at least June, where she will finish out the school year at the Sandhills Children's Center — a preschool for children with developmental disabilities — where she works as the services director.

In the meantime, Sonnenberg will be renting a one-bedroom apartment in Newark.

See SONNENBERG, 16

Sallie Mae to open in Christiana

By SCOTT GOSS

POSTNEWS@CHES PUB.COM

Gov. Ruth Ann Minner announced on Thursday that Sallie Mae, the nation's largest student loan company, plans to open a new credit operations center in Christiana that will add 1,100 jobs to the state's workforce.

"As the world's leading provider of student loans, Sallie Mae is known for its commitment to making education accessible and affordable for all students," Minner during a press conference. "We are very proud Sallie Mae has chosen Delaware as its newest location to expand operations and continue to achieve its strategic goals."

The Delaware Economic Development Office (DEDO) and the New Castle County Executive Office worked to recruit the financial services firm to Delaware, state officials said.

Sallie Mae expects to hire approxi-

See SALLIE MAE, 20

DAP principal defends decision

Learning needs of youngest cluster come before developing recreation skills in community

BY MARY E. PETZAK

MPETZAK@CHES PUB.COM

Parental objections will not reverse a unilateral decision by school administrators to eliminate a recreation skills program for autistic students under age 7 at the Brennen School.

The recreation skills program has traditionally included roller-skating, bowling and swimming in community-based facilities that are open to the public.

At the request of Christina District School Superintendent Lillian Lowery, Brennen School principal John Dewey explained the reasons for the change.

See SCHOOLS, 15

Can we help?

Offices: The paper's offices are located conveniently in Suite 109, Pomeroy Station, 218 E. Main St., Newark, DE 19711. Office hours are 8:30 a.m. to 5 p.m. weekdays.

Phone: (302) 737-0724

Facsimile: (302) 737-9019

E-mail: postnews@chespub.com

To subscribe: To begin a convenient home-delivery subscription, call 1-800-220-3311.

To place a classified ad: Call 1-800-220-3311.

To place a display ad: Call 737-0724.

THE STAFF of the *Newark Post* is eager to assist readers and advertisers. Reporters, writers, editors and salespeople can be contacted as listed:

Marty Valania is the General Manager of the Newark Post. He sets policies and manages all departments in the Newark office. Call him at **737-0724**.

Scott Goss is the news editor. He leads the day-to-day operation of the newsroom. Call him at **737-0724**.

Mary E. Petzak is a staff reporter and specializes in education coverage. Reach her at **737-0724**.

Other contributing writers include Ruth Kelly, Alfred Gruber, Elbert Chance, Marvin Hummel and Mark Sisk. Leave messages for them at **737-0724**.

Sandra McKeever is our Office Manager/Editorial Assistant. She can be reached at **737-0724**.

Novalee Woodruff is our Graphic Designer. She handles the advertisement designs.

Jonathan Waddell is our Visual Design Director. He designs the pages.

Ed Hoffman is the Newark Post's advertising director and manages the local sales team. He can be reached at **1-800-220-3311**.

Jim Galoff is the advertising sales manager. He handles accounts in the New Castle area and is an automotive account specialist. Call him at **1-302-737-0724**.

Betty Jo Trexler sells real estate advertising. She can be reached by calling **1-800-220-3311, ext. 3090**.

Nancy Beaudet and Mike Adams sell ads in the downtown Newark area. They can be reached by calling **1-302-737-0724**.

Our circulation manager is **Mary Ferguson**. For information regarding subscriptions, call **1-800-220-3311**.

The Newark Post is published Friday by Chesapeake Publishing & Printing. News and local sales offices are located in Pomeroy Station, Suite 109, 218 E. Main St., Newark, DE 19711. All advertising and news are accepted and printed only at the sole discretion of the publisher. The Newark Post is a member of the Maryland-Delaware-D.C. Press Association, Suburban Newspapers of America and the National Newspaper Association.

POSTMASTER: Send address changes to: Newark Post, Suite 109, 218 E. Main Street, Newark, DE 19711. Periodicals postage paid at Newark, Del., and additional offices. (USPS #6465) Known office of publication 218 E. Main Street, Newark, DE 19711.

POLICE BLOTTER

■ *Police Blotter is compiled each week from the files of the Newark Police Department, New Castle County Police and the Delaware State Police.*

Thefts and Robberies

A purchasing agent for the International Reading Association in the **800 block of Barksdale Road** told police that someone had stolen two laptop computers and a flat screen monitor, collectively valued at \$3,139, between Oct. 22 and Nov. 10.

An unknown suspect stole a 2006 Honda Accord valued at \$19,000 from the service lot of Martin's Honda in the **200 block of East Cleveland Avenue** between noon on Nov. 4 and 9 a.m. on Nov. 17.

An unknown suspect stole textbooks valued at \$160 from the Delaware Book Exchange in the **unit block of East Main Street** at about 11:42 a.m. on Nov. 17.

Police charged 26-year-old Teddy L. Taylor of Bear, Del. with shoplifting and conspiracy at 5:26 p.m. on Nov. 17, after he allegedly attempted to steal four DVDs collectively valued at \$84 from the K-Mart in the **College Square Shopping Center**.

A 32-year-old man from Flagstaff, Ariz. told police that someone stole his backpack from the lobby of the Embassy Suites in the **600 block of South College Avenue** between 7 a.m. and 7:30 a.m. on Nov. 18. The backpack reportedly contained items valued at \$3,010.

A 21-year-old Newark woman told police that someone stole her cell phone, valued at \$100, during a training session at Innovative Consultants in the **100 block of East Main Street** between 8 p.m. and 9:45 p.m. on Nov. 18.

A 17-year-old Newark resident told police someone stole his cell phone, valued at \$100, from the in-school suspension room at **Newark High School** between 8:30 a.m. and

8:35 a.m. on Nov. 19.

An unknown suspect stole a motorized scooter valued at \$600 from a porch in the **100 block of West Main Street** between 10 p.m. on Nov. 21 and noon on Nov. 22.

Police charged 34-year-old Gustavo C. Colazo of Newark with shoplifting at 2:58 p.m. on Nov. 22 after he allegedly attempted to steal nine DVDs valued at \$87 from Pathmark in the **College Square Shopping Center**.

Vehicles Targeted

An unknown suspect stole items collectively valued at \$2,090 from a 2001 Chevrolet Blazer parked in the **100 block of South Chapel Street** between 10:30 p.m. on Nov. 16 and 10:38 p.m. on Nov. 18.

An unknown suspect damaged a window and the glove box of an unidentified vehicle parked in the **200 block of Haines Street** between 8:30 p.m. on Nov. 17 and 11 a.m. on Nov. 18. Damages were estimated at \$300.

An unknown suspect broke into a 2004 Infiniti G35 parked in the **700 block of Scholar Drive** and stole a GPS unit valued at \$400 between 9 p.m. on Nov. 18 and 4 p.m. on Nov. 19. Damages were estimated at \$200.

An unknown suspect broke into a home in the **unit block of Annabelle Street** and stole items collectively valued at \$931 between 11:45 a.m. and 2:30 p.m. on Nov. 19. Damages were estimated at \$150.

An unknown suspect broke into a Toyota Corolla parked in the **200 block of East Park Place** and stole a basket of laundry between 6 p.m. on Nov. 21 and 10:30 a.m. on Nov. 22.

An unknown suspect broke into a Ford Focus parked near the **intersection of Chickory Way and Barksdale Road** and stole items collectively valued at \$150 between 6 p.m. on Nov. 22 and 11 a.m. on Nov. 23.

An unknown suspect broke into a 2004 Jeep Liberty parked in the **unit block of Country Hills Drive** and stole change valued at \$1 between 12:30 a.m. and 4:57 p.m. on Nov. 23. Damages were estimated at \$300.

Fights and Assaults

Police charged a 15-year-old Newark High School student with third-degree assault at 2:42 p.m. on Nov. 12, after he allegedly punched another student in the school's cafeteria.

A 61-year-old man from Elkton, Md. told police that a man driving a Chrysler PT Cruiser harassed him in a road rage incident that began on **Casho Mill Road** at 1:15 p.m. on Nov. 19.

A 21-year-old man from Yorktown, N.Y. told police he had been punched during a fight outside of Margherita's Pizza in the **100 block of E Main St.** at about 2:26 a.m. on Nov. 22. The victim was treated for injuries at Christiana Hospital.

A 20-year-old man from Lewes, Del. told police that two men attacked him in the **unit block of Chapel Street** at about 2:30 a.m. on Nov. 22. The victim was treated for injuries at Christiana Hospital.

A 31-year-old Newark man told police that three men punched him and stole his prescription medication near the intersection of **Barksdale Road and Blue Hen Ridge** at about 1:30 p.m. on Nov. 22.

A 21-year-old woman from Wilmington told police she had been attacked by woman at Kildare's Pub in the **unit block of East Main Street** at 12:38 a.m. on Nov. 23.

Other Incidents

Police charged a 15-year-old Newark High School student with resisting arrest and disorderly conduct at 1:02 p.m. on Nov. 14, after he allegedly attempted to flee from

school administrators and a police officer during an incident at **Newark High School**.

An unknown suspect kicked holes in hallway wall and damaged an exit sign, light fixtures and an equipment access door at the Courtyard Apartments in the **200 block of East Main Street** between 5 p.m. on Nov. 15 and 2 p.m. on Nov. 16. Damages were estimated at \$300.

A Newark police officer shot and killed an injured deer in the **200 block of Capitol Trail** at 7:29 a.m. on Nov. 17.

Police charged 25-year-old Candace M. Stevenson of Newark with burglary, third-degree assault, criminal mischief and stalking at 4 p.m. on Nov. 17, after she reportedly harassed a man in the **1100 block of Wharton Drive**.

Police charged 19-year-old Timothy J. Robinson and 18-year-old Whitney N. Stewart, both of Newark, with trespassing at 8:30 a.m. on Nov. 19, after reportedly finding the teens asleep on the back porch of a home in the **unit block of South Chapel Street**.

An unknown suspect drove through some shrubbery at the Delaware Engineering and Design Corp. in the **300 block of South Chapel Street**, causing an estimated \$100 in damages, between 6 p.m. on Nov. 22 and 8 a.m. on Nov. 23.

Police charged 23-year-old Michael A. Maczynski of Hockessin, Del. with disorderly conduct at 1:37 p.m. on Nov. 24, after he allegedly gave an officer in an unmarked car the middle finger at the intersection of **Elkton Road and Delaware Avenue**.

Noise and Alcohol

Police charged a 16-year-old girl and a 15-year-old boy with underage consumption at 10:55 p.m. on Nov. 14, after reportedly finding them in possession of alcohol at Newark High School.

Police charged 18-year-old UD student **Robert J.J. Bukowski**, of Bear, Del., with underage consumption at 11:13 p.m. on Nov. 22 after receiving a call regarding a possible alcohol overdose at Margherita's Pizza in the 100 block of East Main Street.

Christopher Gentile, 19, of Marlboro, N.J., underage consumption and noise violation, 7100 block of Scholar Drive, 1:16 a.m. on Nov. 23.

James F. Morgera, 22, of Wilmington, Del., open container, 800 block of Liberty Avenue, 2:05 a.m. on Nov. 23.

Stuart K.J. Robinson, 19, of Abington, Pa., driving under the influence and driving the wrong way on a one-way street, Delaware Avenue and Haines Street, 2:23 a.m. on Nov. 23.

Brian F. Thomas, 20, of Newark, underage consumption, unit block of Kells Avenue, 3:40 a.m. on Nov. 23.

Police found 20-year-old UD student **Sean Burke**, of Pleasantville, N.J., passed out near the intersection of Wyoming Road and South Chapel Street at 4:28 a.m. on Nov. 23. Burke was transported to Christiana Hospital where he was charged with underage consumption.

SIMON EYE ASSOCIATES

Eye Care For Life

- ✓ Adult and Pediatric Eye Care
- ✓ Experienced Doctors
- ✓ Professional and Caring Staff
- ✓ Clear Explanations of Procedures
- ✓ Most Insurances/HMO's Accepted
- ✓ Designer Eyewear/Contact Lenses
- ✓ Treatment of Eye Disease
- ✓ Lasik Vision Correction

Call Today...

(302) 239-1933 | 19 Haines Street, Newark

www.simoneye.com

Additional locations: Bear • Middletown • Pike Creek • Concord Pike • Union Street

New Patients and
Outside Prescriptions Welcome!

Newark resident named outstanding older worker

By **MATTHEW BASHAM**

NEWARK POST CONTRIBUTING WRITER

Burnaby Munson, a Newark resident and a 40-year faculty member at the University of Delaware, was recently named the 2008 Outstanding Older Worker for Delaware.

"Burnaby Munson is a wonderful example of how seniors who stay active, both mentally and physically, can continue to make valuable contributions to the workplace and to their communities," said Cynthia Metzler, the CEO of Experience Works, which awarded the honor.

The Experience Works Prime Time Awards Program is a national, yearlong effort to salute older workers.

Each year, the organization recognizes older workers from each of the 50 states, the District of Columbia and Puerto Rico as a way of encouraging more employers to hire older workers.

Munson said he felt middle-aged while attending the 2008 Experience Works Prime Time Awards in Washington D.C.

"I appreciate that those honored with this award were referred to as 'older' and not 'old,'" he said.

The American Institute of Chemists previously named Munson a 2008 Chemical Pioneer. He has also served as president of the American Society of Mass Spectrometry, had his work cited in the 2002 Nobel Prize for Chemistry and also received the Excellence-in-Teaching Award at the University of Delaware.

"Teaching is all I ever really wanted to do," he said.

After eight years as a research chemist at Esso (now Exxon), he left to teach chemistry at the University of Delaware in 1967. He is known to his students – one of whom nominated Munson for the older worker award – as a caring and humorous professor.

When asked about himself, he quoted Mark Twain:

"I am an old man and have known a great many troubles, but most of them never happened," he said.

Munson said he was glad to have been recognized.

"The people involved (in the awards program) were very good," he said. "The staff made an excellent effort to make people feel special."

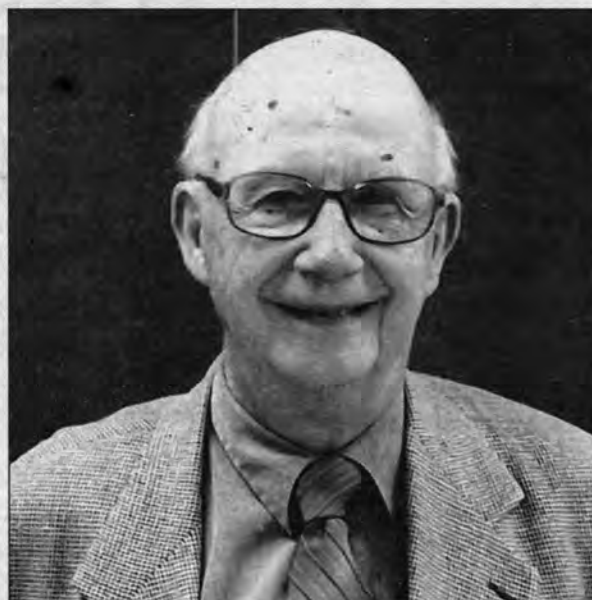


PHOTO BY MATTHEW BASHAM

Five charged in connection with rash of burglaries



Jennifer Hamm



Kimberly Hamm



Rodney Hamm



Danielle Rau



Roger Sheetz

Three of those charged from the same family

By **SCOTT GOSS**

POSTNEWS@CHESPUB.COM

Three members of the same Maryland family and two of their associates have been charged in connection with a slew of burglaries in Newark between August and November.

Newark Police Lt. Brian Henry said investigators believe twin sisters Kimberly and Jennifer Hamm, 23, their brother Rodney Hamm, 27, and associates Danielle Rau,

31, and Roger Sheetz, 29, are responsible for as many as eight burglaries in Newark.

The Hamm twins, their brother and Rau – who police described as Rodney Hamm's girlfriend – are all from Elkton, Md. Sheetz, who is reportedly a friend of the twins, is a resident of Queen Circle in Newark.

According to Henry, investigators determined that an organized group had been committing the burglaries. An investigation and unidentified evidence reportedly led police to the Hamm family and their associates.

"In some instances, they entered through unlocked doors or windows, in others, entry was forced," Henry said. "Their pri-

mary targets ... were cash, jewelry and electronics, although other items were also stolen."

Henry said the five-some is believed to have been involved in burglaries on Patrick Henry Court, Country Club Drive, Vassar Drive, Pennwood Street, Saw Mill Drive, Wrangler Road, Wynwyd Drive and Minquil Drive.

Henry said an investigation is ongoing and additional charges could be forthcoming.

The same defendants are also under investigation by Maryland police agencies for similar burglaries in Cecil and Harford counties.

Kimberly Hamm has been charged with two counts of burglary, three counts of con-

spiracy, two counts of theft, unlawful use of a credit card and two counts of criminal mischief. She has been released on an unsecured bail.

Rodney Hamm has been charged with six counts of burglary, five counts of conspiracy and six counts of theft. He was committed to the Howard Young Correctional Facility in default of a \$41,500 bail.

Danielle Rau has been charged with four counts of burglary, three counts of conspiracy, five counts of theft and three counts of criminal mischief. She was committed to the Baylor Women's Correctional Facility in default of a \$29,000 bail.

Roger Sheetz has been charged with burglary, two counts of conspiracy, theft, unlawful use of a credit card and criminal mischief. He has been released after posting a \$6,000 bail.

Jennifer Hamm was arrested in Cecil County, Maryland on Nov. 18 and will be charged with the same offenses as her co-conspirators upon her extradition to Delaware, Henry said.

Information related to the investigation can be reported to Detective Greg D'Elia at 366-7110 ext. 132 or via e-mail at Greg.Delia@cj.state.de.us.

Information also may be left anonymously at 1-800-TIP-3333.

CORRECTION

The wrong date and movie was printed in the Merchants of Newark advertisement in the Nov. 21 issue of the Newark Post. Please see this week's advertisement for the correct dates and movies.

BACK PAIN?

NEWARK – According to a free report that has gotten a lot of exposure in the media lately, most back pain sufferers have no idea how to eliminate their pain. Some use heat, while others use ice. From sleeping on the floor, to pillows underneath the knees, back pain relief techniques vary. Thanks to a **CONTROVERSIAL, FREE** report, local back pain sufferers finally know exactly what to do! To get your free copy of this 8 page, **controversial** report that has helped thousands of patients, call 1-888-821-2403 and listen to the 24 hour toll-free recorded message.

ADVERTISEMENT

In Our Schools

EDUCATION NEWS FOR NEWARK FROM LOCAL SCHOOLS

NOTE PAD

Choice Open Houses

Newark and Glasgow high schools will be holding open houses for parents and other interested community members on Dec. 2, from 6:30 p.m. to 8 p.m. in the Newark High Auditorium on Delaware Avenue and on Dec. 4, from 6 p.m. to 7 p.m. at Glasgow High on Route 896. For more information visit www.Christina.k12.de.us.

Santa & Kids Shopping

The Christina High School Music Boosters are sponsoring "Milk and Cookies with Santa" from 5 p.m. to 8 p.m. in the school's "G" cafeteria. The \$5 tickets cover milk, cookies and a photo with Santa. Little ones also can shop in the Kids Holiday Shop where gifts cost \$1-\$5 each.



Winter Craft Show

The Glasgow High School Swim Team will be hosting their annual Winter Craft Show on Dec. 13, from 9 a.m. to 3 p.m. at the school. Interested vendors can visit <http://www.christina.k12.de.us/glasgow/> for applications.

Save the Date



A Financial Aid Night will be held on Jan. 8, 2009, from 7 p.m. to 8:30 p.m. in the Newark High School Auditorium. Snow date is Jan. 22. This presentation by college aid professionals is open to the community.

Delaware siblings in Macy's Thanksgiving Parade

Beth Fuller is the justifiably proud mom of two Middletown Marching Band students who have been invited to represent Delaware in the Macy's Great American Marching Band on Thanksgiving Day.



"My son, Andrew is an 11th grader," Fuller said. "He plays saxophone and will be playing the tenor sax in the New York City parade. My daughter, Cathleen, is in 10th grade and is in her second year in color guard and will be doing so in the parade."

Fuller thought the Middletown Flier's front-page story about the Middletown Marching Band, even though it did not have her children's names, was "very nice and brought attention



to the great accomplishments" of Middletown High's band. "They really are phenomenal!" Fuller said. "Mr. Harris and Mr. Tanner have taken this band to a new level and what they achieve is amazing. You have to get to one of the competitions to really appreciate the hard work, time and effort these kids com-

mit. And the majority of them are in honors or AP [Advanced Placement] classes, too." The Fuller siblings left for New York to start rehearsing for the parade on Nov. 22, and will return home the day after Thanksgiving. They also will be doing some sightseeing and attending a leadership semi-

nar facilitated by Scott Lang. "After that long week they will report for the parade on Thursday, rain or shine, at 1 a.m.," their mother said. "During the parade they will be accompanying Santa and they will have a performance at Herald Square which will only be televised by CBS"



Newark High grad named to All-American Swim team

Team Delaware Swim announced that Scott Shinton and Katie Rechsteiner were named to the USA Scholastic All American Swim Team for the 2007-2008 swim season. To be selected for this prestigious honor, swimmers must have completed 10th, 11th or 12th grades, be a USA swimming member athlete, participated in an individual event that met the Junior National Bonus time standard for the qualifying period of July 1, 2007 through June 30, 2008, and achieved a 3.5 grade point average or above in high school.

Shinton is the son of Dave and Sue Shinton of Newark and is a 2008 graduate of Newark

High School. He is currently a freshman at Yale University.

Rechsteiner is the daughter of Bruce and Cindy Rechsteiner of Middletown and is currently a junior at the Charter School of Wilmington.



Katie Rechsteiner



Scott Shinton in a Newark High School swim meet.

Former Gauger student hosting youth film festival

Hollywood filmmaker Ben Lee Foster is hosting his first film festival for teens in his former home state of Delaware. The Ben Lee Foster Film Festival will be held in

Wilmington in January. All submissions are due by Nov. 30.

The 16-year-old, who attended Gauger-Cobbs

See FILM, 5 ►



Teen film festival in Del.

FILM, from 4

Middle School in the Christina School District, came up with the concept of a film festival that allows teens under the age of 18 an opportunity to try their hands at making fun and inspiring short movies, Public Service Announcements and music videos.

Foster created and directed his first of 13 films at the age of 9 and shares his projects with friends at schools, libraries, youth centers, churches, conventions and other venues. He has visited students at schools nationwide about making better decisions in life. Many teens struggle with peer pressure, but, at least 60 out of 100 make bad decisions by choosing drugs, guns, alcohol, stealing, etc.

Foster believes that youth are faced with too many mov-

ies, music videos and television shows that send out negative messages. "More inspiring projects need to be created to help the young generation, and generations to come, make better decisions in life so we can have a healthier future," he said. The festival is open to anyone ages 8 to 17 who are creative and willing to challenge themselves to send out positive messages through their projects. Foster wants to showcase projects that help resolve peer pressure issues, make life more positive, and of course, make people laugh. "It's always good to laugh, but not degrade others," he said. Foster is also seeking sponsors for the event. For information on how to participate in the festival or to be a sponsor, visit www.myspace.com/blffilmfestival or e-mail blffilmfestival@yahoo.com.

WILMINGTON & WESTERN RAILROAD

Train Events

Come ride with us in one or more of our seasonal excursions!

Hunter's Den Dinner Trains

December 9th at 7:00 pm - \$50 per person
Reservations Required

Santa Claus Express Trains

Visit with Santa aboard our train!
November 29th & 30th, December 6th, 7th, 13th, 14th, 20th & 21st

Holiday Night Express Trains

December 15th thru 19th, 22nd, 23rd, 26th thru 30th at 5:00, 6:00, 7:00 & 8:00 pm
Enjoy an evening ride to see the Christmas Lights along our right of way!



302-998-1930

THE WILMINGTON & WESTERN IS OPERATED BY VOLUNTEERS.

Greenbank Station is on Newport-Gap Pike, Rt. 41N - 1/4 mile from intersection Kirkwood Hwy. Rt. 2

Website: www.wvrr.com

Email: schedule@wvrr.com

DOORBUSTER DEALS

STARTS FRIDAY 6 AM



FREE \$10 GIFT CARD

FRIDAY & SATURDAY

FIRST 25 CUSTOMERS, WITH \$100 PURCHASE. 1 PER CUSTOMER

JUNIORS' FAMOUS NAME CARDIGANS

7.99

DESIGNER TURTLE NECKS 2.99

COMPETITORS' PRICE 14.99

LADIES NAME BRAND DRESS SHIRTS

3.99

COMPETITORS' PRICE 19.99

GUY'S LONG SLEEVE POLOS

7.99

COMPETITORS' PRICE \$46 - \$54

BOY'S FLEECE JACKETS

9.99

COMPETITORS' PRICE \$42

GIRL'S NAME BRAND DENIM

6.99

COMPETITORS' PRICE \$16-19.99

WOMEN'S LOUNGEWEAR SEPARATES

1.99 TO \$3.99

COMPETITORS' PRICE 9.99 - \$14

FAMOUS MAKER LUGGAGE

STARTING AT 19.99

COMPETITORS' PRICE \$99 - \$350

SLIPPERS FOR THE FAMILY

STARTING AT 2.99

COMPETITORS' PRICE 7.99 - 29.95

BOXED DESIGNER JEWELRY

4.99

COMPETITORS' PRICE \$19 - 29.99

SHOP EARLY AND SAVE BIG!

PLUS A HUGE SELECTION OF OTHER DEALS AT SIMILAR SAVINGS!

GOING ON NOW!
FOR A LOCATION NEAR YOU
VISIT RUGGEDWEARHOUSE.COM

RUGGED WEARHOUSE
Outfitting America For Less

Savings compared to Specialty and Department Store prices. While supplies last. Select styles and brands only. Quantities are limited. Exact styles may vary from store to store. Savings cannot be combined with other offers. Rugged Wearhouse reserves the right to limit quantities. No rain checks.

Use our convenient, time-saving e-mail address today!

postnews@chespub.com

FOR INFO, CALL 737-0724



TIME WELL SPENT.

Affordable Assisted Living in Northeastern Maryland
Suites Now Available for Individuals and Couples

Abbey Manor at Elkton
One Colonial Manor Court
Elkton, Maryland 21921
Call us at 410/620-4126 or
visit www.abbeymanorelkton.com



278681-013008

Opinion

EDITORIALS • COLUMNS • PAGES FROM THE PAST • LETTERS

POST COLUMNIST

Post-election reflections

By **RUTH KELLY**

NEWARK POST COLUMNIST

It is finally over. No more TV ads by candidates. No more phone calls. And the literature drops are now behind us.

This has been an election that I will never forget.

This year I was happy for two reasons. One reason is that my daughter Kim will be following a family tradition of being an election officer. She worked for the first time as a clerk at during the primary election and enjoyed the day and especially the extra money, which helped her to buy a new computer.

She was assigned as an inspector for the general election and I was shocked that she would be placed in charge of a polling place after only working one time.

The responsibility of the position of inspector is very important and Kim was very apprehensive because she would be in charge of managing workers who were old enough to be her mother and grandmother.

I coached her daily but in the end my biggest piece of advice was simply to treat her workers and the public the way that she would want to be treated.

I was very proud of her. She was organized and assertive when she needed to be. She showed respect to all of her workers, those older than her and to the two high school workers assigned to work with her.

When Kim and I arrived at the polling place at 5:45 a.m. there was already a line snaking around the school building and I was stunned.

At 7 a.m. I announced that the polls were open and there was a cheer as folks starting making their way into the building to vote.

There were many first time voters. Mothers proudly brought their daughters and fathers came with their sons. Some wanted to take a photo of that proud, historic moment, but unfortunately you cannot take pictures inside of a polling site.

I was beaming with the same pride I had working the polls in 2000 and 2004 when both times I processed an unprecedented number of black voters. This year the black voters were also young and I was truly overwhelmed.

The 2008 election will go down in the annals of history and I was thrilled to be a part of it.



Kelly

Barack Obama will take office in January and he goes there with my prayers.

I pray first and foremost that he be kept safe and that he makes the transition from Chicago to Washington, D.C. with little stress, especially for his young children.

I pray that God gives him the gift of revelation knowledge and that he chooses an inner circle that will guide, advise and protect him from those, who, in his words, "did not vote for me and whose support I will have to earn."

I pray that the nation not have unrealistic expectations of him. Unfortunately he does not have a magic wand to fix the mess left for him by the past administration. It will take years to undo all the damage done.

We, as a nation that he will be trying to unite, will have to help him achieve lofty goals he sets as he begins his term at 1600 Pennsylvania Ave. in January.

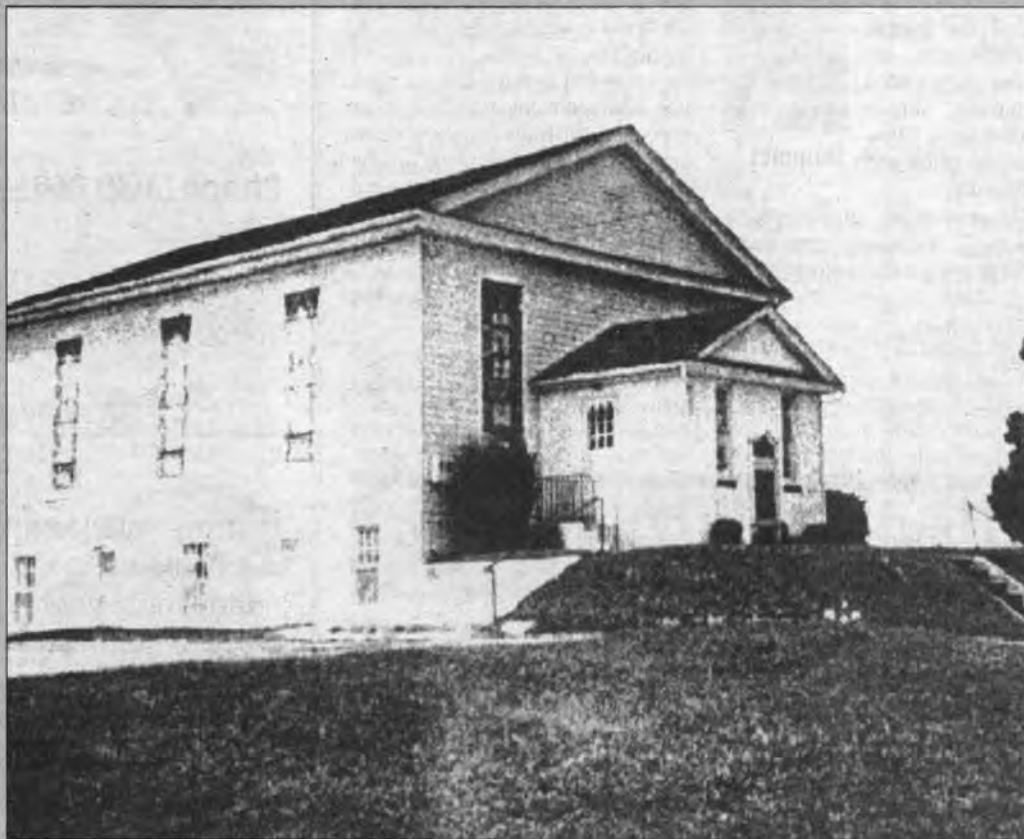
On the other hand, all of us on the Main Streets of America will have to support him by becoming more involved in our neighborhoods. We need to help our neighbors who are struggling and who may have lost their jobs. We must reach out to those who are homeless, sick and shut in. All of us have something that we can share, be it food, money, clothing or just a phone call or visit to an individual or a family in need through no fault of their own. We absolutely must mentor both adults and children who need positive role models in their lives.

We enable folks to remain in their conditions by just continuing to give to them. When I give, I want something in return. I want them to go to a function at their child's school or attend a parent conference. I want them to make sure their child goes to school everyday with what I provided to help them do that. If they can't get to the school building, I want them to call the school when they are asked, or send a note in to let their teacher know their situation, ask for their help and that they sincerely want to do all they can to help their children to succeed academically.

These are simple things that are a "can do." Once I see evidence of that, I will continue to help them.

As for President-Elect Barack Obama, he needs our help for him to achieve success and leave a legacy of restoring a broken nation, regain worldwide respect and bring America back to its greatness. He cannot do it alone. We should not and cannot just sit back and watch what happens.

OUT OF THE ATTIC



This week's Out of the Attic features a view of Ebenezer Methodist Church at 525 Polly Drummond Road and is believed to have been around 1859. The Church was erected in 1824. The photo is on loan to the Newark Post from the Newark Historical Society collection, courtesy of David C. Rodeheaver. Readers are invited to share additional information about the photo with the Newark Historical Society.

Visit the Newark History Museum at 148 E. Main St. (between Choate and Haines streets). Hours are Thursday 5 – 8 p.m., Friday Noon – 3 p.m., and Saturday and Sunday, 2 – 5 p.m. Admission is free.

Contact the Historical Society by phone at 224-2408 or by e-mailing newarkdehistoricalsoociety@yahoo.com.

Don't wonder how your turkey lived

Neil Askins
Newark

Barack Obama has risen from humble beginnings to the power of the presidency.

But every one of us has the presidential power to pardon a turkey on Thanksgiving.

In fact, here are some reasons to skip the turkey this Thanksgiving:

You are what you eat. Who wants to be a butterball?

You won't have to call the poultry hotline to keep your family alive.

You won't sweat the guilt trip caused by the environment and food resources devastation you are causing.

You won't spend a sleepless night wondering how the turkey lived and died.



Your body will appreciate a holiday from saturated fat, cholesterol and hormones.

My family's Thanksgiving dinner will include a Tofurky, lentil roast, mashed potatoes, corn stuffing, stuffed squash, chestnut soup, candied yams, cranberry sauce, pumpkin pie and carrot cake.

An Internet search on

vegetarian Thanksgiving got us lots of recipes and other information.

No new police for Newark

Joe McCullough
Newark

They must be kidding. The county just turned down a request for more police officers due to deficit funds. How is it that the city now thinks that they can make this request?

The city finance director should take a hard look at reality. Tell him to find out the pulse of the locals. He will see that this tax increase for police is not doable during this crisis meltdown.

It's a strange world in that funny little box

By **MARVIN HUMMEL**

NEWARK POST COLUMNIST

The conversation at a luncheon I attended was about TV commercials and "promos" for new shows.

We, of course, did a lot of deploring the current fare offered the public. As older men, we are not accustomed to having human "plumbing" discussed so often and so blatantly.

"Is your colon giving you a message," is among the more printable ones. Others stress a pill, which seems to allow you to eat or do whatever you want without fear of reprisal or explosions. That is, if you are not daunted by the accompanying warnings that suggest what "might" happen if you take their pills. In many cases, the "possible side-effects" sound worse than the physical problems they may – or may not – "cure."

Two retired bankers in our group sneered at another commercial selling videotapes that tells the public the only reason they are not millionaires is because "you do not want to be!"

How could anybody be stupid enough to 'buy' that, they asked.

I reminded the bankers that every cardboard sunscreen for your car windshield warns you to

remove it before you start driving. And many Styrofoam coffee cups feel obliged to warn you that the contents are hot.

Yes, there are people who will buy the hustler's tape, then do research on what banks to put their newfound millions in, if only they remember to take the sunscreen off their windshield before driving. The bankers shook their heads but could not disagree.

Somebody mentioned the ads for a new test to determine whether you really are the father of your expectant girlfriend's fetus. I disagreed with their complaints. The value is quite obvious. Why should a guy have to drop out of junior high school if it's somebody else's kid? He shouldn't!

Somebody else cited the Brooke Shields commercials for a Volkswagen product, which has American wives getting pregnant "by the thousands" so their husbands will buy them a new and bigger car. Ms. Shields then simpers, "American women have been seduced by West German engineering." I have a question: Does "seductive" West German engineering also construct limousines and minibuses? In our strained economy, these families could quickly be seductioed ad absurdum!

We then turned our jaundiced attention to some of the new TV shows, marketing to teenagers and "tweeners."

At 15, an already world-weary

girl is counseling her less experienced friends, one of whom had been bragging about a recent liaison with a lifeguard. The wise one tersely tells her: "A lifeguard is

like a Kleenex – use him once and throw him away."

The audience is then admonished to watch the new show, which presumably gives weekly

lessons to youngsters on the "cool" life.

I have not watched the show, but if I do, I will see it once and Kleenex-like, throw it away!



Hummel

Bruce E. Hubbard
ATTORNEY AT LAW
224 E. Delaware Avenue
Newark, DE 19711
lawoffice224@comcast.net

Phone (302) 368 – 8594

Fax (302) 368 – 8597

To my Clients and Friends,

I am happy to announce that I am joining my wife in retirement at the end of the year, ending thirty-two years of involvement in the practice of law here in Newark. It gives me great pleasure to announce that my relationship with you will not end, but with your permission will continue in the capable hands of John E. Sullivan, Esq. John has nearly thirty years of experience practicing law in Delaware and has an office on Limestone Road at Stoney Batter Road. He will see clients at either location, utilizing my staff as long as is practicable. My son, Reid, will be the lead contact there in Newark, and more likely you will find me in the office, practicing retirement. I will become an inactive member of the Delaware State Bar Association.

I have enjoyed being a part of the Newark legal community and treasure the relationships established with clients, friends, colleagues and City of Newark staff. Thank you for your part in making my career one that I can say could easily have lasted longer, but now is the time.

FROM YOUR MIND * TO DESIGN!

WE SPECIALIZE IN
FLATTERING CUSTOM MASTERPIECES

Jewelry Need Fixed?!

All About Jewelry offers expert,
affordable jewelry repairs!

Custom Jewelry On Sale
for your holiday needs.

All About Jewelry

4538 Kirkwood Highway • Wilmington, DE 19808
Intersection of Limestone Road, next to Shell Station
302-996-9350
www.AllAboutJewelryInc.com

Chesapeake
Classified.com

Find a home, a car, a job
and more online!



Complete Eye Care

DELAWARE
EYE CARE
CENTER

(302) 368-9105

Specializing in:

- Comprehensive Eye Exams and Diagnostic Evaluations
- No-stitch, No patch Cataract Surgery
- Retina Evaluation and Treatment
- Eyeglasses and Contacts
- Glaucoma Evaluation and Treatment
- Visx Custom-Vue LASIK & Epi-LASIK
- Treatment of Diabetic Eye Diseases

5 convenient locations to serve your eye care needs

Dover
833 S. Governors Ave.
(302) 674-1121

Milford
110 N.E. Front Street
(302) 422-5155

Newark
333 E. Main Street
(302) 368-9105

Smyrna
10 S. Market Street
(302) 653-9200

Bear
1721 Pulaski Hwy.
(302) 836-5410

We accept Superior Vision,
VSP, VBA, Davis and most
other insurance plans.



www.delawareeyecare.com

Lifestyle

RELIGION • PEOPLE • DIVERSIONS • THE ARTS

OUTLOOK

Become a New Castle County, Delaware Master Gardener

By **CARRIE MURPHY**

SPECIAL TO THE NEWARK POST

Who are New Castle County Master Gardeners?

New Castle County Master Gardeners play a key role in distributing information about environmentally friendly practices for the home gardener. Topics include integrated pest and disease management, plant identification, plant cultivation and turf management, in addition to landscape design, water conservation, and wildlife habitat development.

New Castle County Master Gardeners are vital links in an educational chain that begins with research from the University of Delaware and the horticultural industry.

Education is at the heart of all Master Gardener activities, which can take many forms, including teaching by example and demonstration, and hands-on work with people of all ages.

Master Gardener volunteer educators have undergone training in a wide variety of horticultural and environmental topics coupled with training in educational methods and program evaluation. Monthly meetings bring all volunteers together to continue the learning process. The result is volunteers committed to reaching into the community to help county residents improve the quality of their lives.

New Castle County Master Gardeners' outreach efforts are organized and carried out by distinct committees. For instance, See **OUTLOOK**, 9 ►



Aetna helps Cub Scouts earn their fire safety badges

PHOTOS BY MATTHEW BASHAM

Left: University of Delaware junior and Aetna Hose, Hook & Ladder Co. volunteer Chris Abbott donned full gear for a fire safety presentation for the Cub Scouts Pack 205 at Holy Angels School on Possom Park Road last week. Below: University of Delaware senior and Aetna volunteer Chuck Marshall discussed smoke alarms with the cub scouts, who received their fire safety badges during the event.



Turkey Trot 2008

PHOTOS BY MATTHEW BASHAM

Hundreds of runners braved the cold weather on Saturday for to compete in Newark's 35th annual Turkey Trot. The 10k race and 5k race/walk attracted more than 700 runners and walkers this year.



SMITH PAVING, INC. Since 1955

ASPHALT PAVING CONTRACTORS

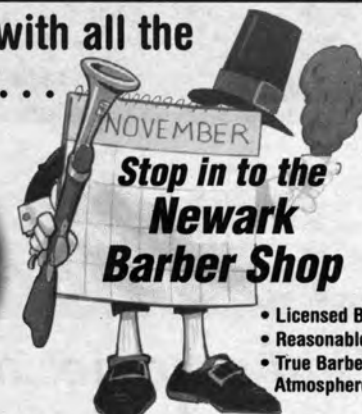
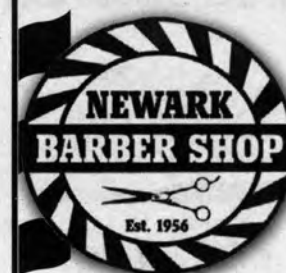
- Small Cement Repairs
- Loose Brick Reset
- Patio's Repointed
- Roof Coating, Painting & Water Proofing
- Asphalt Driveway Repairs & Repaved



Call for
FREE ESTIMATES
at Winter Rates!

3507 Wrangle Hill Road, Bear, DE 19701
302.328.1761

A Hair Cut with all the Trimmings...



- Licensed Barbers
- Reasonable Cost
- True Barber Shop Atmosphere

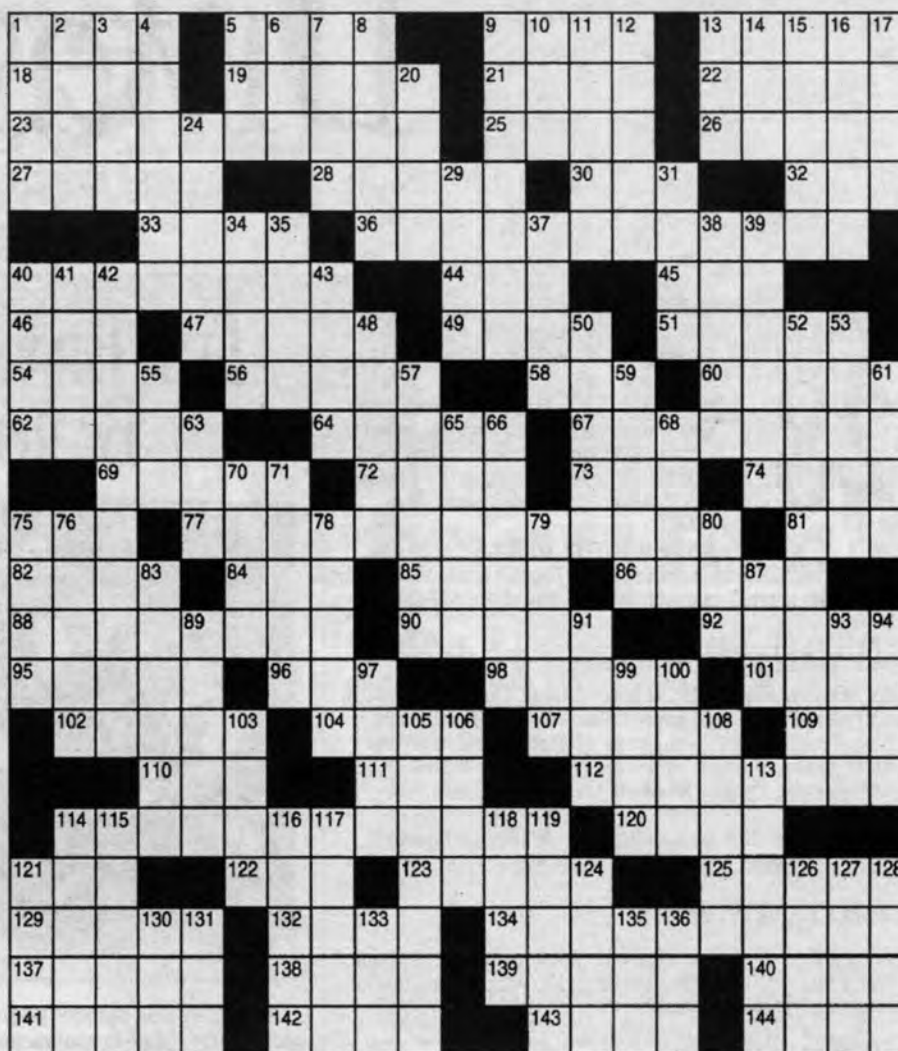
Mon. 9:00 - 3:00
Tues. 9:00 - 5:30
Wed. 9:00 - 5:30
Thurs. 9:00 - 6:30
Fri. 9:00 - 5:30
Sat. 8:00 - 12:00
Sun. - Closed

241 Elkton Road • Newark, DE
(Located across from City Hall)

www.newarkbarbershop.com

302-368-5666

- ACROSS**
- 1 Not quite closed
5 "Song of the South" title
9 Perched on
13 Tom of "Baretta"
18 — Linda, CA
19 Snorkel and straw
21 Capital of American Samoa?
22 — Lama
23 "The Flintstones" kid?
25 Word on a door
26 Dumbstruck
27 Hacienda material
28 New Archangel, now
30 Devour
32 Summer shade
33 "The — Hurrah" ('58 film)
36 Golfing legend?
40 Crestfallen
44 Volleyball divider
45 Bar supply
46 — Jima
47 Bittern kin
49 Limber with language
51 Dislodge
- 54 Enormous
56 Mideastern "pockets"
58 Sea plea
60 Cultural character
62 Composer
64 Lloyd Webber musical
67 Leslie Charteris creation
69 Overflowing
72 — impasse
73 Toody or Muldoon
74 Eye problem
75 NYC division
77 Robert Conrad series?
81 Flat hat
82 Broccoli —
84 Nutritional abbr.
85 Tabriz currency
86 Sordid
88 South American capital
90 Subway feature
92 22 Across' home
95 Proclamations
96 "Platoon" setting
98 — -garde
- 101 Stromboli spew
102 Gown part
104 Temporary calm
107 Girl George?
109 Tuck's mate
110 Dovecote sound
111 "— Rita" ('42 film)
112 Contend
114 Eddie Cantor song?
120 Pay to play
121 TV's "People — Funny"
122 Pair
123 Harden
125 Brando's birthplace
129 "Gladiator" extra
132 Southern st.
134 NY correctional facility?
137 "The Jungle Book" character
138 Martin Balsam film?
139 Passover meal
140 Pkg. abbr.
141 Stephen Vincent —
142 Cruise
143 Major- —
144 Kansas city
- DOWN**
- 1 Jessica of "Dark Angel"
2 "The Grapes of Wrath" surname
3 Snowballs, sometimes
4 Wander
5 A/C measure
6 Massage
7 Peters out
8 Antique
9 Garments
10 Homeric character
11 Looked like Lothario?
12 — bear
13 Author LeShan
14 Greyhound's greeting
15 Make merry
16 South American capital
17 Jennifer of "Star Trek: Voyager"
20 Son of Adam
24 Attain
29 Sergeant Preston's dog
31 Buster Brown's dog
34 Tread
35 Actress Hatcher
- 37 Singer Redding
38 Donates
39 Legendary Colt Johnny
40 Callas or Caballe
41 Actor McGregor
42 Olympic skater?
43 Act like grandma
48 Maritime
50 Mess (up)
52 Dick Van Dyke film?
53 Mrs. Zhivago
55 Haul a heap
57 Lucknow lutes
59 Sole mates?
61 Petunia part
63 Apprehend
65 Implied
66 Turkish city
68 Duel tool
70 Darjeeling dress
71 Wore
75 Pitt of "The Mexican"
76 Desert refuge
78 Trite
79 "Gladiator" extra
80 Boone or Benatar
83 Lure
87 Part of MP
- 89 Chocolate substitute
91 Damon and Pythias
93 Wicked
94 Use the VCR
97 Darkness
99 Talbot or Naldi
100 Ripped
103 Spilled the beans
105 Progressive
106 Meat cut
108 Teach on the side
113 Sign of spring
114 Shattered
115 Neighbor of Oman
116 Bee and Em
117 Apres-ski quaff
118 Entertainer Tambylyn
119 Like a raisin
121 Spirited steed
124 Word form for "within"
126 About
127 Salute the moon?
128 Cultural grp.
130 Pub order
131 Basketball's Holman
133 "Exodus" protagonist
135 Tiffany treasure
136 Paid player



Master Gardeners important for communities

► OUTLOOK, from 8

the workshops and speaker's bureau committee develops and delivers a wide variety of workshops and lectures for adults — including several workshops devoted to environmentally-sensitive landscape techniques and garden design. The youth education committee provides educational outreach to public and private institutions serving children and teens, while the telephone and diagnostics committee responds to queries left on the "Garden Line" via telephone, mail and e-mail.

Additional committees create and maintain gardens to teach good horticultural practices, offer educational enrichment opportunities to our volunteers, and seek ways in which to increase

Master Gardener visibility and involvement in the community.

Meeting the educational needs of thousands of citizens requires the dedication, creativity and hard work of many volunteers.

So, are you interested in becoming a Delaware Master Gardener?

University of Delaware New Castle County Cooperative Extension will offer training in the spring of 2009. Training begins on March 3 and runs through May 21, every Tuesday and Thursday from 9:00 a.m. to 12:30 p.m. The application deadline is Feb. 2, 2009.

For more information and a printable application form, please visit the New Castle County Master Gardener Web site at <http://ag.ude.edu/nccmg>.

For more information on becoming a Master Gardener in New Castle County, please contact Carrie Murphy the New Castle County Master Gardener coordinator.

Additionally, the follow-

ing Master Gardener information sessions have been scheduled from 7 p.m. to 8 p.m. at the following sites: Newark Library on Jan. 6, Appoquinimink Library on Jan. 12 and Brandywine

Library on Jan. 13. These sessions have been designed to answer your questions and provide you with an opportunity to meet our Master Gardeners.

OPEN HOUSE AND HOME BUSINESS EXPO SUNDAY, 12/7, 1-5

Please stop by to tour the Conservatory AND to patronize our vendors.
Vendor Openings still available.



Delaware *Arts* Conservatory

A PERFORMING AND VISUAL ARTS SCHOOL

Offering classes for all ages in Dance, Pilates, Yoga, Aerobics, Ballroom, Musical Theatre, Acting, Drawing, Photography, Jewelry Making, Voice, Piano, Drums, Guitar and more!

723 Rue Madora • Rickey Commerce Center • Suite 4
Bear, DE 19701 (behind Fox Run Shopping Center)
302-595-4160

www.delarts.com

Give the Gift
of the Arts

Take Control Of Your Utility Bills!

Power Off? We Sell Generators!

Hentkowski, Inc.
"Your Key To Comfort!"
Heating & Air Conditioning

302-998-2257

ServAssure DEALERS

www.hentkowski.com

Carrier
Turn to the Experts

Celebrating Our 40th Anniversary in Business!

Diversions

THEATRE • EVENTS • EXHIBITS • NIGHTLIFE • MEETINGS

FRIDAY

28

DANCE PARTY – 9:30 p.m. Awesome 80's. No cover charge. Deer Park Tavern, 108 W. Main St., Newark. Info, 369-9414.

HOLIDAY ART MARKET 6 – 9 p.m. Featuring locally made jewelry, ceramics, handweaving and more. Show runs through Dec. 31. Newark Arts Alliance, 276 E. Main St., Newark. Info, 266-7266.

ANTIQUE TOY DISPLAY 9:30 a.m.

– 4:30 p.m. "Christmas at Hagley." Through Jan. 1, 2009. Hagley Museum, Route 141, Wilmington. Info, 658-2400.

SATURDAY, NOV. 29

LOIS YOUNG SHOW 10:30 p.m. "Giving Thanks for Family and Friends." Life-size puppets, songs and stories that celebrate Thanksgiving. Bring your stuffed animal, a picture you've drawn of family and wear fall colors. \$7. New Century Club, 201 E. Delaware Ave., Newark. Info, 456-9227.

LIVE MUSIC 9:30 p.m. Featuring Lovin Touchin Squeezin. Deer Park Tavern, 108 W. Main St., Newark. Info, 369-9414.

SUNDAY, NOV. 30

CONCERT 6 – 7:45 p.m. Featuring the Brandywine Baroque. "Good eating in songs and music." \$25. Winterthur Museum, Wilmington. Info, 888-4600.

MONDAY, DEC. 1

FACULTY LECTURE 12:20 – 1:10 p.m. Research in Political Communication features Lindsay Hoffman, with the Department of Communication. University of Delaware, Smith Hall, Room 140. Newark. Info, 831-8041.

THE BRANDYWINE BAROQUE



The Brandywine Baroque performs at Winterthur Museum & Country Estate in conjunction with the exhibit "Feeding Desire" on Nov. 30, from 6 p.m.-7:45 p.m.

Tickets are \$25, Winterthur members \$20. Admission includes concert and tour of the exhibit. For more information, please call 888-4600 or visit www.winterthur.org.

PRESENTATION 7 p.m. Friends of White Clay creek sponsor "Millers, Miners and American Indian Farmers along White Clay Creek", presented by Dr. Cara Lee Blume. Deerfield Golf & Tennis Club, 507 Thompson Station Road, Newark. Info, 239-2471.

CONCERT 7 p.m. Featuring the Wilmington Handbell Ensemble. Mary Campbell Center, 4641 Weldin Road, Wilmington. Info, 798-4779.

TUESDAY, DEC. 2

BUSINESS WORKSHOP 5:45 – 8:45 p.m. Score presents Small Business Startup Series. Workshop I: "How to Succeed in Business." \$35. Newark Senior Center, 200 White Chapel Road, Newark. Info, 573-6552.

WEDNESDAY, DEC. 3

SHOWTIME TRIVIA NIGHT 9:30 p.m. No cover charge.

Deer Park Tavern, 108 W. Main St., Newark. Info, 369-9414.

LIVE MUSIC 10 p.m. Featuring soulful jazz with Bruce Anthony. Home Grown Café, 126 E. Main St., Newark. Info, 266-6993.

WOMAN'S LUNCHEON Noon. The Woman's Club of Cecil County will have lunch followed by a concert featuring the North East High School Chorus. Free. Elkton Town Hall, Elkton, Md.

THEATRE Through Dec. 21. Presenting Steve Martin's "Picasso at the Lapin Agile." \$36 - \$49, performance times vary. Delaware Theatre Company, 200 Water St., Wilmington. Info, 594-1100.

THURSDAY, DEC. 4

CHRISTMAS BALL Featuring Kristen & The Noise. Deer Park Tavern, 108 W. Main St., Newark. Info, 369-9414.



DELAWARE
TECH

GENERAL INFORMATION SESSION

FEATURING

Criminal Justice • Homeland Defense and Emergency Management • Culinary Arts

TUESDAY, DECEMBER 2, 2008

STARTING 5:30 PM

Delaware Tech, Stanton Campus • 400 Stanton-Christiana Road

For information call 302 888-5288

Following the General Information Session, you'll have the opportunity to meet with faculty, learn about our programs and your career options, and discover financial aid opportunities including SEED.

- Criminal Justice
- Homeland Defense and Emergency Management
- Culinary Arts
- Food Service Management

- Baking and Pastry Skills Diploma
- Food Service Management Diploma
- Kitchen Skills Diploma
- Baking and Pastry Cook's Certificate
- Cook's Certificate

Delaware Technical & Community College

www.dtcc.edu



- No security deposit or administration fee
- Armed/24 hour surveillance • Month to month leases available
- Located just minutes from I95 and the University of Delaware

960 S. Chapel Road, Newark, DE 19713 • 302-731-7500

www.Route72SelfStorage.com
Route72SelfStorage@verizon.net

Pure Soles Wellness Studio

30 - 60 minutes will

Improve the Quality of Your Life

- Ionic Cleansing • Energy Balancing (Chi)
- Far-Infrared Rejuvenation

"We take the Bad out and put the Good in"

280 E. Main Street, Suite 116, Newark, DE 19711
(Behind Newark Natural Foods)

302-731-7733

Tues. - Thur.:
12 p.m. - 7 p.m.
Fri.: 12 p.m. - 8 p.m.
Sat.: 10 a.m. - 8 p.m.
Closed Sun. & Mon.

E-mail - puresoles@verizon.net

FRIDAY, NOV. 28

JAZZERCISE LITE 8:30 - 9:30 a.m.
Low impact, modified version for seniors. Newark Senior Center, 200 White Chapel Drive. Info, 737-2336.

SATURDAY, NOV. 29

MEN'S BREAKFAST 7:30 a.m. \$5 donation goes to missions. Life Community Church, 750 Otts Chapel Road, Newark. Info, 738-1530.

JAZZERCISE 8:45 - 9:45 a.m. Certified instructor Nadine Weisenbach. George Wilson Center, 303 New London Road, Newark. Info, 366-7060 or www.newarkjazz.net.

CHRISTIAN MOTORCYCLE

ASSOCIATION 8:30 a.m. First Sat. Denny's, Route 13, New Castle. Info, 322-1121.

SUNDAY, NOV. 30

OVEREATERS ANONYMOUS 1 - 2 p.m. Westminster House, 292 W. Main St., Newark. Info, 453-9075.

MONDAY, DEC. 1

MHA DEPRESSION SUPPORT GROUP 7 - 9 p.m. Sponsored by Mental Health Association in Delaware. To protect privacy of members, meeting locations provided only with registration. Info, 654-6833.

OVEREATERS ANONYMOUS 7:30 - 8:30 p.m. Newark United Church of Christ, 300 E. Main St., Newark. Info, 377-6746.

NEWARK ROTARY CLUB 6:15 - 7:30 p.m. Timothy's, 100 Creek View Road, Newark. Info, 453-8853.

SCOTTISH DANCING 7:30 p.m. St. Thomas Episcopal Church, 276 S. College Ave., Newark. Info, 368-2318

ENGLISH CLASSES 1 p.m. and 7 p.m. English conversational classes. Free. Newark United Methodist Church, 69 E. Main St., Newark. Info, 368-8774 or esl-numc@hotmail.com.

TAI CHI 3 - 4 p.m. Mon. (Advanced) or Wed., 4 - 5 p.m. (Beg/Intermediate). \$20 per month. Newark Senior Center, 200 White Chapel Drive. Info, 737-2336.

TAI CHI 10 - 11 a.m. and 11:45 a.m. - 12:30 p.m. Mon. through Fri. \$70/month. Shaolin Martial Monks School, 181 E. Main St., Newark. Info, 373-2918.

JAZZERCISE LITE 9 - 10 a.m. Low impact, modified version for seniors. Newark Senior Center, 200 White Chapel Drive. Info, 737-2336.

JAZZERCISE 5:45 - 6:45 p.m. Certified instructor Nadine Weisenbach. George Wilson Center, 303 New London Road, Newark. Info, 366-7060 or www.newarkjazz.net.

PILATES 11:30 a.m. - 12:30 p.m. Mon., 9 - 10 a.m. Tues., 6:45 - 7:45 p.m. Wed., 10:15 - 11:15 a.m. Thurs. Newark Senior Center, 200 White Chapel Drive, Newark. Info, 737-2336.

STRENGTH TRAINING 10:15 - 11:15 a.m. Mon., Wed. and Fri.; 6:45 - 7:45 p.m. Tues. and Thurs. Newark Senior Center, 200 White Chapel Drive. Info, 737-2336.

STRENGTH & FLEXIBILITY CLASS 9:30 - 10:30 a.m. Mon. Wed., and Fri.; \$4 per session/\$50 for 6 weeks. First Presbyterian Church, 292 W. Main St., Newark. Info, 731-5644.

KUNG FU 6 - 7 p.m. and 7 - 8 p.m. Mon., Wed., and Fri. \$70/month. Shaolin Martial Monks School, 181 E. Main St., Newark. Info, 373-2918.

KUNG FU 6:30 p.m. Mon., Wed., and Fri.; 10 a.m. Sat. \$100/month, unlimited sessions. Shao Lin Tiger and Crane Kung Fu Academy, Market East Plaza, 280 E. Main St., Newark. Info, 737-4696.

PANIC RELIEF 7 p.m. Mon. and Wed. Phone workshop. Programs available. Overcome fears, anxiety and agoraphobia, and achieve positive self-image. Info, 732-940-9658.

DIVORCECARE 6:30 - 8:30 p.m. Berea Presbyterian Church, 957 Old Lancaster Pike, Hockessin. Info, 737-7239.

TUESDAY, DEC. 2

OVEREATERS ANONYMOUS 6 - 7 p.m. Newcomers meeting follows at 7 p.m. Aletheia School, 91 Salem Church Road, Newark. Info, 824-6317.

CONSTITUENT BREAKFAST 7 - 8 a.m. Join state Rep. John Kowalko for coffee and conversation. Friendly's Restaurant, 1115 S. College Ave., Newark. Info, 577-8342.

NEWARK DELTONES 7:45 p.m. For men who like to sing. New Ark United Church of Christ, 300 E. Main St., Newark. Info, 376-8934.

DIAMOND STATE CHORUS OF SWEET ADELINES 7:30 - 10 p.m. Women's acapella singing group. Curious and enthusiastic singers welcome. Limestone Presbyterian Church, 3201 Limestone Road, Wilmington. Info, 731-5981.

PARKINSON'S STRENGTH TRAINING 10:30 a.m. Newark Senior Center, 200 White Chapel Drive, Newark. Info, 737-2336.

OPEN SWIM 4:30 - 7 p.m. Tues. and Thurs. Gore Aquatic Center, Newark

MEETINGS

Senior Center, 200 White Chapel Drive, Newark. Info, 737-2336.

YOGA 2 - 3:30 p.m. Tues.; 9 - 10 a.m. Thurs. Newark Senior Center, 200 White Chapel Drive, Newark. Info, 737-2336.

JAZZERCISE LITE 5:30 - 6:30 p.m. Low impact, modified version for seniors. Newark Senior Center, 200 White Chapel Drive. Info, 737-2336.

JAZZERCISE 8:45 - 9:45 a.m. and 4:30 - 5:30 p.m. Certified instructor Nadine Weisenbach. George Wilson Center, 303 New London Road, Newark. Info, 366-7060 or www.newarkjazz.net.

TAI CHI 6 - 7 p.m. and 7 - 8 p.m. \$70/month; Shaolin Martial Monks School, 181 E. Main St., Newark. Info, 373-2918.

TAI CHI 6:30 p.m. Tues. and Thurs. \$70/month, unlimited sessions. Shao Lin Tiger and Crane Kung Fu Academy, Market East Plaza, 280 E. Main St., Newark. Info, 737-4696.

CREATIONIST MEETING 7 p.m. Scientific and Biblical Creationist Fellowship meeting featuring Sean Smith, a radiographer, on "A Biblical Perspective of a Multi-Dimensional God." Open to the public. Bible Fellowship Church, 808 Old Baltimore Pike, Newark. Info, 731-5395.

MOMS CLUB/NEWARK 9:30 a.m. New Ark United Church of Christ, 300 E. Main St., Newark. Info, 454-1431.

COPING WITH LIFE & MS 4 - 5:30 p.m. St. Paul's United Methodist Church, 1314 Foulk Road, Wilmington. Info, 478-3135.

STAMP GROUP 1 p.m. Newark Senior Center, 200 White Chapel Drive. Info, 737-2336.

NEWARK LIONS 6:30 p.m. Lions meeting with program. Deerfield Country Club, Thompson Station Road, Newark. Info, 731-1972.

WEDNESDAY, DEC. 3

CONSTITUENT BREAKFAST 7:30 - 8:30 a.m. State Rep. Terry Schooley will attend to field questions and concerns. Eagle Diner, Elkton Road, Newark. Info, 577-8476.

OVEREATERS ANONYMOUS 7:30 - 8:30 p.m. Asbury United Methodist Church, 300 E. Basin Road, New Castle. Info, 610-444-5194.

BINGO 12:45 p.m. Lunch available for \$2.25 a platter at 11:45 a.m. Newark Senior Center, 200 White Chapel Drive. Info, 737-2336.

EVENING YOGA 5:30 - 7 and 7 - 8:30 p.m. Sponsored by Newark Parks & Rec. \$65, Newark resident \$55. Newark Senior Center, 200 White Chapel Drive, Newark. Info, 366-7060.

JAZZERCISE LITE 9 - 10 a.m. Low impact, modified version for seniors. Newark Senior Center, 200 White Chapel Drive. Info, 737-2336.

JAZZERCISE 5:45 - 6:45 p.m. Certified instructor Nadine Weisenbach. George Wilson Center, 303 New London Road, Newark. Info, 366-7060 or www.newarkjazz.net.

TAI CHI 9:30 a.m. and 5:30 p.m. Free for people touched by cancer. The Wellness Community in New Castle, 4810 Lancaster Pike, Wilmington. Info, 995-2850.

DIVORCECARE 6:30 - 8:30 p.m. Support group meeting. Evangelical Presbyterian Church, 308 Possum Park Road. Info, 737-2300.

GRIEFSHARE 7 p.m. Seminar and support group for those who have lost someone close to them. Praise Assembly, 1421 Old Baltimore Pike. Info, 737-5040.

RELIGIOUS DISCUSSION GROUP 7 - 8:30 p.m. Current events and religious discussions led by the Rev. Bruce Gillette. Limestone Presbyterian Church, 2301 Limestone Road, Wilmington. Info, 994-5646.

PROSTATE CANCER SUPPORT GROUP 6:30 p.m. The American

Cancer Society Office, 92 Reads Way, Suite 205, New Castle. Info, 324-4227.

MOM'S CLUB/NEWARK SOUTH 9:30 a.m. The Bible Fellowship Church, Old Baltimore Pike, Newark. Info, 369-3461.

AT HOME MOTHERS CONNECTION 7:30 p.m. Meeting for moms only. Unitarian Universalist Society, 579 Polly Drummond Hill Road, Newark. Info, 388-6469.

PARENTS WITHOUT PARTNERS 7 p.m. Orientation for the Wilmington chapter. Panera Bread, 3650 Kirkwood Highway, Wilmington. Info, 998-3115.

WILMINGTON SKI CLUB 7:30 p.m. Hockessin Memorial Hall, 1225 Old Lancaster Pike, Hockessin. Info, 792-0656.

MS SUPPORT GROUP 5 - 7 p.m. Main Street Circle of Friends. Newark Senior Center, 200 White Chapel Drive, Newark. Info, 737-4694.

ANXIETY DISORDER 6:30 - 8 p.m. Support group sponsored by Mental Health Association in Delaware for Newark area. To maintain the privacy of members, support group locations not published. Info, 654-6833.

CROHN'S AND COLITIS FOUNDATION 7:30 p.m. Wilmington Satellite Group. Christiana Hospital, Room 1100. Info, 478-9206.

THURSDAY, DEC. 4

YOGA 6:30 - 8 p.m. Mixed level, Iyengar style. Min. three months experience required. Drop-ins welcome. Awareness Center, 280 E. Main St., Suite 109, Newark. \$15/class. Info, 792-7230.

JAZZERCISE LITE 5:30 - 6:30 p.m. Low Impact, modified version for seniors. Newark Senior Center, 200 White Chapel Drive. Info, 737-2336.

JAZZERCISE 8:45 - 9:45 a.m. and 4:30 - 5:30 p.m. Certified instructor Nadine Weisenbach. George Wilson Center, 303 New London Road, Newark. Info, 366-7060 or www.newarkjazz.net.

THE NUTCRACKER

A Holiday Treat for the Entire Family

Presented by

Mid-Atlantic Ballet

December 12th, 7pm
December 13th, 1pm & 4pm

Mitchell Hall Theater
University of Delaware

Order tickets online: www.ticketmaster.com
By phone: 302-984-2000 or
At the UD Box Offices located at the
Bob Carpenter Center & Trabant Center
Tickets: \$15, \$22 or \$27

Photo by
Tisa Della-Volpe

For information call the MAB Studios 302-266-6362 or visit
www.midatlanticballet.org

E

scape completely.



7-day Alaska cruise.
Discover the definition of "escape."

FARES FROM

\$809

- Unequaled dining - Choose traditional or flexible Anytime Dining™
- Unsurpassed Service - Providing an unforgettable escape
- Unparalleled fleet - Big Ship variety with a Small Ship Feel™
- Unforgettable views - More affordable balconies



PRINCESS CRUISES
escape completely.

The Cruise Shoppe
250 E. Chesnut Hill Road, Suite 2, Newark DE 19713
302.737.7220 www.cruiseshoppe.us

A Fuel Supplement of \$9 per person per day, up to a maximum of \$126 per person, is included in fares shown, and subject to change. Please contact Princess Cruises for third-fourth birth fares and fuel supplements. Government fees and taxes are additional. Air add-ons are available. See applicable Princess brochure for terms, conditions and definitions that will apply to your booking. Offer available to residents of U.S. and Canada. ©2008 Princess Cruises. Ships of Bermuda registry.

OBITUARIES

■ *Obituaries are printed free of charge as space permits. Information is usually supplied to the newspaper by the funeral director. Additional local obituaries are posted each week on the Newark Post Web site.*

Carol Muench Cashin

Carol Muench Cashin, 86, of Newark, died at home on Nov. 16.

Born in Chicago, Ill., on July 14, 1922, daughter of the late John Muench and Martha

(Eberler) Muench, Cashin lived in Wheaton, Ill., for 30 years.

After living in a few other locations, she made her home for the last 40 years in Wilmington and Newark. Cashin was a longtime, active member of Holy Child Church in Wilmington, where she volunteered for many years.

Cashin leaves behind her husband of 64 years, William D. Cashin; her son Robert Cashin (Connie) of Russiaville, Ind.; her daughters Elizabeth Tosi (A. Michael) of Hockessin, Susan McLaughlin (Martin) of

Newark, and Kathleen Perrott (Ronald) of Belleair, Fla.; her grandchildren Erin Shepherd (Charles), Jordan McLaughlin (Rachel), Lauren and Michael Tosi, Cameron and Dana Perrott, Shawn, Joy, Cory and William Cashin; and her great-grandson Colin Shepherd.

She is also survived by her brother John Muench of Grand Rapids, Mich.; and her sisters Virginia Bjorn of Wauwatosa, Wis. and Patricia Hyde of Orlando, Fla.

A Mass of Christian Burial was offered on Nov. 19 at Holy

Family RC Church in Newark. Interment followed at All Saints Cemetery in Wilmington.

Contributions may be sent to the Ministry of Caring, 506 N. Church St., Wilmington, DE 19801.

Victor D. Cresto

Victor D. Cresto, 54, of Newark, died at home on Nov. 14. He was the husband of the late Jeanne Heath Cresto.

Born in Wilmington, he was the son of Irene and the late Frank Cresto Jr.

He was employed as a maintenance worker for the state.

In addition to his mother, Cresto is survived by his children Lauren Cresto and John Tait; grandchildren Ervin Phillips III, Alexis Adams and Haley Tait; brothers Joseph, Richard and his wife Cathy, and John and his wife Terri.

A funeral service was held on Nov. 20 at the Beeson Funeral Home in Newark. Interment was private.

Ernest Demonia

Ernest Demonia, 68, of Newark, died on Nov. 14.

He was the husband of Louise Demonia. He also leaves his children Nadine, Ernestine, Annette, Janel, Ernest Jr. and Margarite; 18 grandchildren; brothers and sis-

ters Tennie Brunson, Claudette Sherwood, Claudia Harris, Rosemary Lowther, Marcia Cole, Chanelle and Gregory Douglas; and a host of other family and friends.

A funeral service was held on Nov. 20 at Bethel AME Church in Wilmington. Burial followed at Gracelawn Memorial Park.

Bernard M. Farrell

Bernard M. Farrell, 88, died at Millcroft Health Center in Newark on Nov. 19.

Born in Tuxedo, N.Y., Farrell was the son of Christopher J. Farrell and Bridget (O'Connor) Farrell.

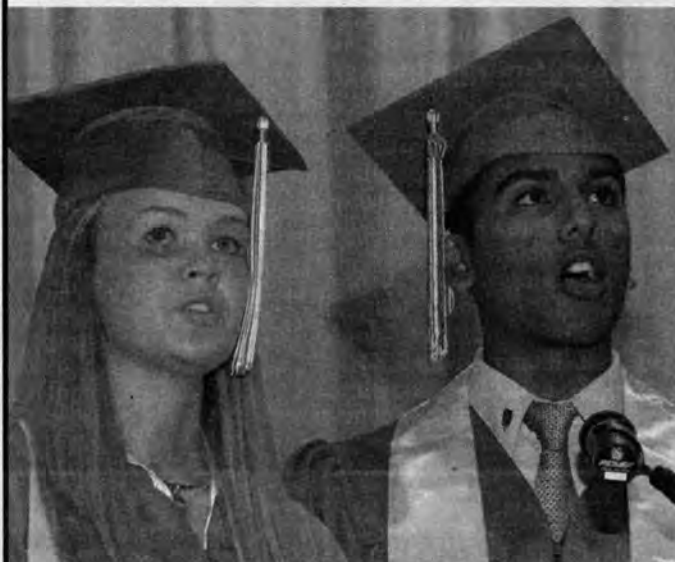
A veteran of World War II, he also worked for Greyhound Bus Lines, retiring in 1982 after over 30 years of service. He lived in Wantagh, N.Y., with his brother for 30 years before moving to Newark in 1999.

He was predeceased by all of his nine siblings.

A private Mass of Christian Burial was held at Holy Angels Roman Catholic Church in Newark with interment at St. Anastasia Cemetery in Harriman, N.Y.

Donations may be made to the Little Sisters of the Poor at 185 Salem Church Road, Newark, DE 19713-2997.

See OBITs, 14 ►

Saint Mark's: Educating Tomorrow's Leaders Today**ENTRANCE TEST**
Saturday, December 6

- Best value in Catholic or private education
- Academic levels to meet the needs of each student
- Largest Advanced Placement Program in Delaware
- 97% of graduates go to college with millions in scholarships each year
- Arts, athletics, clubs and service organizations
- Scholarships and Financial Aid



www.stmarkshs.net • 302.757.8721

Wish upon a Star

at Minster's of Newark
2008

Shooting Star Pendant

Christmas will be here in a Blink
of an Eye

There is still time to add
your wish in

Minster's **Wish Book**

20% savings when

Your Wish

is purchased for you

Don't forget about our
layaway plan

Minster's
of Newark
jewelers since 1895

Newark Shopping Center,
Newark, DE 302-737-5947
Email: info@minstersjewelers.com
www.minstersjewelers.com

got scrap?

ELKTON RECYCLING

Top Dollar Paid For Scrap! "Cash for all types of metals and cars!"

We buy batteries, copper, brass,
aluminum, stainless & electric motors!

We buy old farm equipment!

We buy complete junk vehicles!

UP TO **\$350**

410-392-2980

53 Dogwood Road, Elkton, MD
(Corner of Blueball & Dogwood Road)

Largest Selection of Christmas Design Materials

**NATIONAL DECORATIVE
DISTRIBUTORS**

Must present coupon for

30% OFF + regular **50% OFF**

All Merchandise including
Floral and Home Decor

Offer Expires: 12/1/08

302-366-1722

www.nationaldec.com

Where ya gonna eat?

13

November 28, 2008 • The Newark Post

ASK ABOUT OUR DAILY SPECIALS

WE DELIVER! Ask Your Server About Our Catering Menu

NICK & JOE'S
Family Owned & Operated Since 1975

EXTENDED DELIVERY AREA Ask For Details

CHECK OUT OUR NEW ITEMS INSIDE

OPEN 7 DAYS DINE-IN • TAKE OUT

413B NEW LONDON RD. (RT 896) • NEWARK, DE

COUPON 2 LARGE CHEESE PIZZAS 1 TOPPING EACH \$18.95
Limited time offer. Plus Delivery. Not to be combined with any other offer. Please mention coupon when ordering. NICK & JOE'S (302) 292-3736

FAIRFIELD SHOPPING CENTER (NEXT TO SUPER FRESH)

(302) 292-3736

COUPON 1 LARGE CHEESE PIZZAS WITH 3 TOPPINGS \$12.00
Limited time offer. Plus Delivery. Not to be combined with any other offer. Please mention coupon when ordering. NICK & JOE'S (302) 292-3736

The Cereal Bowl

181 East Main Street
Newark, DE 19711
302-737-4001

WiFi FREE ZONE

\$1.00 OFF
when you present this coupon

WWW.THECEREALBOWL.COM

OPEN 24 HOURS

IronSkillet
SINCE 1975
AMERICA'S CHOICE FOR HOMESTYLE COOKING

Breakfast, Lunch & Dinner Buffet Served Daily

Purchase One Dinner Entree & Get One 1/2 Price
One coupon per customer
Excludes any manager specials or in house promotions
Coupon expires November 30, 2008

I-95 & MD 279, ELKTON, MD **PETRO** • Full kids meal • Senior discount
410-392-3052

Kids eat FREE Mon-Fri 1pm-5pm

Rudy's Italian Family Restaurant
Beautiful NEW Dining Room • Take Out & Catering

Online ordering now available
www.rudyspizzaitalian.com
\$5 off w/ any online purchase of \$20 or more
QUICK DELIVERY

COCKTAILS WINE • BEER

Four Seasons Plaza
Newark, DE
(612 Plaza Drive near Super Fresh)
Hours: Mon.-Thurs. 10 a.m.-10 p.m.
Fri. & Sat. 10 a.m.-2 a.m.
Sunday 11 a.m.-10 p.m.
Ph: (302) 737-4150
Fax: (302) 737-4140

50% OFF
Any meal with purchase of equal or greater value
Coupons May Not Be Combined

GRAND OPENING!

Little Leo's
Subs & Steaks

Buy One Sub/Steak And Get 2nd 1/2 OFF
Offer Expires 11/30/08

Party Platters 10% OFF
Orders Over \$50.00

Mon. - Fri.: 10 a.m. - 8 p.m. • Sat. 10 a.m. - 6 p.m. • Sun. 11 a.m. - 6 p.m.

700 Kirkwood Highway
8 Liberty Plaza/Possum Park Mall
Newark, DE 19711
Fax: 302-533-7265

Mention this ad for above discounts

(302) 533 - 7249

Home Grown Cafe
Local Flavor

App. and a Wrap
2 People Eat for \$15
Monday - Thursday 11 AM - 4 PM
November 12 - December 31, 2008
Bring a friend and share any one appetizer and any one salad-wrap from our menu for only \$15.
No other coupons or discounts may be used; Dine in only; Orders must be placed by 4 PM. No substitutions.

Weekend Brunch
Saturdays & Sundays 10 AM - 2 PM
(Starting December 2008)

126 E. Main Street, Newark • 302.266.6993
www.homegrowncafe.com

Amici's
Fine Dining & Spirits
Minutes from Newark

Wonderful Wednesday Wines
\$20 Bottle of Wine

Live Jazz Friday Nights
9:30 P.M. - 12:30 A.M.

Mon. - Thurs. 4 P.M. - 10 P.M.
Fri. - Sat. 4 P.M. - 11 P.M.
Reservations Recommended
(610) 255-5777

1215 New London Road (Route 896)
Landenberg, PA 19350
www.amicislandenberg.com

Visit us online at www.newarkpostonline.com

To place an ad on our restaurant page,
please call (302) 737-0724
to speak with an account executive.

NEWARK POST
Greater Newark's Hometown Newspaper Since 1910

www.newarkpostonline.com • 737-0724 • Fax 737-9019

OBITUARIES

► OBITS, from 12

Carolyn Ellen Glover

Carolyn Ellen Glover, 52, of Newark, died at home on Nov. 13.

Born in Wilmington, she was the daughter of the late James and Ella (Sutliff) Masters. She graduated in 1974 from Thomas McKean High School. She was retired at the time of her death, having been a legal administrative assistant with Young, Conaway, Stargatt and Taylor in Wilmington for 29 years.

In addition to her parents, she was preceded in death by her husband of 23 years, Erick Glover; father-in-law Julian Glover; brother-in-law Terry Glover and sister-in-law Carolyn Taylor.

Survivors include her sister Marilyn Hoban, and her hus-

band James, of Townsend, Del.; mother-in-law Liv Glover of Allentown, N.J.; brother-in-law William Glover, and his wife Connie, of Allentown, N.J.; sister-in-law Diane Kifer, and her husband Frank, of Milltown; several nieces and one nephew.

Burial was private. Contributions may be made to The Delaware Humane Society, 701 A St., Wilmington, DE 19801.

Frank A. Hoagey

Frank A. Hoagey, 79, of Newark, died on Nov. 16 at Christiana Hospital.

Hoagey was born in Bethlehem, Pa., son of the late Arthur and Bertha Hoagey. He graduated from Lehigh University in Bethlehem, Pa. in 1952 with a degree in mechanical engineering and from graduate school at the University of Pittsburgh.

He was a member of Pi Tau Sigma, Alpha Phi Omega and Alpha Lambda Omega fraternities. He was also a member of ASME, NACE, AMIHE, and MTI, where he served on the board of directors. Hoagey served in the U.S.N.R. and later in the U.S. Army Ordnance Corps as an ordnance engineer at Aberdeen Proving Ground.

He retired from the DuPont Co. as a consultant manager in materials engineering after 28 years of service. During his career with DuPont, he worked in Delaware, Tennessee and Connecticut in a variety of consulting engineering assignments. He had previously been employed as a principal mechanical design engineer at Dravo Corp. in Pittsburgh, Pa.

A talented trumpet player, Hoagey was a member of various concert bands, churches, symphony orchestras, big bands, stage shows and combos

in every area where he lived. Active in his community, he was a member of the Newark Lions Club, the American Legion, the First Presbyterian Church of Newark, and, for 40 years, the Boy Scouts of America.

His first wife June Elizabeth (Nixon) Hoagey died on Sept. 25, 1980. He is survived by his second wife Elizabeth (Klock) Hoagey; children Carol Hughes, Carl Hoagey, David Hoagey and Susie Pemerton, all of Tennessee; stepchildren Gregory Smith, Christopher Smith, Susan Smith-Spydell and Elizabeth Adrian; and 15 grandchildren.

A funeral service was held on Nov. 21 at First Presbyterian

Church of Newark, 292 W. Main St., Newark, DE, 19711. Interment followed at Head of Christiana Cemetery in Newark.

Contributions may be made to First Presbyterian Church of Newark at the address above.

■ *Additional local obituaries are posted each week on the Newark Post Web site. Obituaries of the following persons will be posted on the web this week:*

Carol Muench Cashin
Victor D. Cresto
Ernest Demonio
Bernard M. Farrell
Carolyn Ellen Glover
Frank A. Hoagey

KEEP A LITTLE MORE OF WHAT YOU'VE EARNED.

Delaware River & Bay municipal bonds are 100% free of federal and sometimes state income tax for Delaware & NJ residents.

*Yield effective 11/20/2008, subject to availability. Yield and market value may fluctuate if sold prior to maturity, and the amount you receive from the sale of these securities may be more than, less than or equal to the amount originally invested. Bond investments are subject to interest rate risk such that when interest rates rise, the prices of bonds can decrease and the investor can lose principal value. Any bond called prior to maturity may result in reinvestment risk for the bond owner. May be subject to alternative minimum tax (AMT). Municipal bonds may have original issue discount.

Mike Laur
Financial Advisor
364 E. Main St.
Newark, DE 19711
302-368-2352

To invest in tax-free bonds, call or visit your local financial advisor today.

www.edwardjones.com
Member SIPC

Municipal Bond

4.9%*

Yield to Maturity
Callable on: 01/01/2015@100.00
Next Call: 01/01/2015@100.00
Final Maturity: 01/01/2025
Insured by:

Edward Jones
MAKING SENSE OF INVESTING



Don't forget the wine
this Thanksgiving!
State Line Liquors
voted areas favorite &
largest wine selection.

1610 Elkton Road, Elkton, MD
1.800.446.9463
www.statelineliqors.com

CB JOE
TELEVISION & APPLIANCES
Delaware's **LOWEST PRICE**
OR We'll Change It!
348 Churchmans's Rd. (Rt. 58E)
I-95 Exit 4B • New Castle, DE
302-322-7600 www.cbjoetv.com 800-225-6388

Women Medical Care Obstetrics and Gynecology *Inspiring Women to Wellness*

Board Certified Physicians Accepting New Ob & Gyn Patients

- 3D Ultrasound in Office
- Normal Pregnancies
- High Risk Pregnancies
- Infertility
- Gynecologic Surgery
- Laparoscopy
- Menopause
- Urinary Incontinence
- Pelvic Pain
- Accept Most Insurances



Maryam Awan, MD & Zahid Aslam, MD

410-398-0590

111 West High Street, Suite 207, Elkton, Maryland 21921
266 South College Avenue, Newark, Delaware 19711



SMILE BRITE Dental Care

**NEW & EMERGENCY
PATIENTS WELCOME!**

(Rt. 40, near Peoples Plaza & Rt. 896)

302-838-8306
www.smilebrite-dentalcare.com

Taurance N. Bishop, DDS



"Be true to your teeth or they
will be false to you"

Pacientes Nuevos Bienvenidos

Education deemed more valuable than recreation

► SCHOOLS, from 1

"[The staff at Brennen School] believe that autistic children ages birth to 6 years need more time for direct instruction on-site, including language and social skills, and the community recreational component must defer to those needs for the youngest cluster."

The statewide Delaware Autistic Program (DAP) currently serves 362 students from birth to 21 years with autism.

In New Castle County, these students come from the Appoquinimink, Christina, Colonial and Red Clay school districts. The Brandywine District has established its own program that serves autistic students from birth to 11 years old and will eventually serve students to age 18.

"DAP is the oldest program for autistic children in the country," Dewey said. "It has no peer in the nation and is unique to the Christina District in providing free, appropriate education for these students."

Dewey also noted that the Picture Exchange Communication System (PECS) was partially developed at Brennen in the late 1980s and early 1990s with the direct participation of staff

members, some of whom are still with the school.

"PECS is recognized as a leading strategy for developing language," Dewey said, "and greatly facilitates communication skills at any age level for these children."

With use of the PECS, the child is given a set of pictures that include favorite foods or toys. When the child wants one of these items, he gives the picture to a parent, therapist, caregiver or even another child, who then hands the child the food or toy.

PECS also can be used to make comments about things seen or heard. For example,

a child might see an airplane overhead and hand a picture of an airplane to his or her parent. As the child begins to understand the usefulness of this communication, the hope is that he or she will then begin to use natural speech.

In response to questions from board members, Dewey stated that students in the youngest cluster could still participate in a recreation skills program outside the school, if the students' IEP (Individualized Education Program) teams deem it necessary.

In addition to curriculum, the IEP team for each autistic student directs:

- Physical education
- Music therapy
- Art
- Vocational specialists and training
- Community training
- Occupational therapy
- Physical therapy
- Residential services
- Parent training
- Community and recreational access

Dewey and Lowery told the

school board that the parental concerns for DAP's youngest cluster members have resulted in a more collaborative relationship with the school.

"We're looking more at the need to generalize social skills and will include parents and caregivers in meetings to develop activities for these students that reflect community-skills learning," Dewey said.



Mariner Financial Services

"since 1996"

"Dan was able to save us over \$400 per month on our Health Insurance premium."

Walt, Newark, DE

"Working with Dan I was able to purchase good Health Insurance, Disability Income Insurance, and Term Life Insurance for what I used to pay for Health Insurance alone."

Tony, Oxford, PA

"We have worked with Dan for over 15 years and he has always been responsive and has looked out for our best interest. I recommend his services to a lot of my friends and co-workers."

Frank, Collingdale, PA



Daniel Reisinger, CLU, ChFC
Registered Employee Benefits Consultant
610.389.1231
Email: finsrv@comcast.net • www.marinerfinancialservices.com

• HEALTH INSURANCE • DISABILITY INSURANCE • ANNUITY PROGRAMS • LIFE INSURANCE



HARDCASTLE'S NEWARK

SINCE 1888

- Custom Framing
- Paintings
- Reproductions
- Sculpture
- Ceramics
- Consulting
- Commissions
- Appraisals
- Restorations

www.hardcastlesince1888.com
hardcastlesnewark@yahoo.com

738-5003

The Newark Post wants you to donate food and win prizes

The Newark Post wants to team up with its readers to help support Delaware Does More, a food and charity drive sponsored by the United Way and the Food Bank of Delaware.

Donating three cans of non-perishable food at the Newark Post's office on East Main Street between now and February will earn readers entry into one of two drawings for Downtown Newark

Partnership gift certificates.

The first drawing will take place on Dec. 18, while the second drawing will take place on Feb. 5.

At each drawing, three winners

will be chosen to receive a gift certificate worth \$100, \$50 or \$25. Downtown Newark Partnership gift certificates are redeemable at more than 70 local businesses.

Readers are encouraged to

enter as often as they like.

The Newark Post is located in the Pomeroy Station at 218 E. Main Street, Suite 109. Hours are from 8:30 a.m. to 5 p.m. Monday through Friday.

Happy Holidays

From all of us here at

DAFFY DELI

111 Elkton Rd

302.737.8848

OPEN 11AM-11PM DAILY
DELIVERY UNTIL 10:30 PM

READING FUN AND GIFTS THE WHOLE FAMILY CAN ENJOY



Bring in this ad for a free comic book & 10% off your graphic novel purchase.

Captain Blue Hen Comics

Market East Plaza at 280 E. Main Street & Tyre Ave
www.captainbluehen.com 302-737-3434

Happy Holidays from

McGlynns Pub & Tavern



8 Polly Drummond Ctr.
Newark
302-738-7814

108 W. Main St.
Newark
302-674-0144

800 N. State St.
Dover
302-674-0144

People's Plaza
Glasgow
302-834-6661



DELAWARE EYE CARE CENTER

PROFESSIONAL ASSOCIATION

GARY I. MARKOWITZ, M.D.
Board Certified Ophthalmologist

EDWARD H. HU, M.D.

JASON MOYER, O.D.

HOLLY SALLOGA, O.D.

KRISTEN M. SEMENICK, O.D.

WILLIAM VELARDI, JR., O.D.

(302) 674-1995 or (800) 900-2020
DOVER • NEWARK • BEAR • SMYRNA • MILFORD
WWW.DELAWAREEYECARE.COM



Grotto Pizza

the legendary taste

FIVE DECADES ... ONE TRADITION

of caring in our Delaware community



NEWARK NATURAL FOODS

Your Co-op Since 1975

Shop Green this Holiday!

Local | Organic | Fair Trade

302-368-5894 • newarknaturalfoods.com

28 Peoples Plaza



www.heardelaware.com

A black and white photograph of a dark, rectangular suitcase. The suitcase has a telescopic handle extended upwards. It features a front pocket with a horizontal zipper and a small, light-colored rectangular label in the center. The suitcase is standing on two small wheels at the bottom. The background is a plain, light-colored surface.



Delaware National
Bank

A MEMBER OF THE FULTON FINANCIAL FAMILY

888.291.2400 • delawarenational.com

Member FDIC. Offers and terms subject to change and may be withdrawn without notice. May not be combined with any other offer. *Offer applies to new personal checking accounts only. One airline certificate per new checking account while supplies last. Companion Fare Certificate: Receive one coach class, roundtrip companion airline ticket with the purchase of the first coach, roundtrip, airline ticket. Blackout dates will apply. 14-day advance purchase will be required. Fares subject to change without notice. Selection of airline varies by market. Airline service is not available in all markets. The free companion ticket applies to the base fare only. Normal taxes and fees charged by the airline will apply to both tickets, plus a \$9.95 processing fee will apply to each ticket issued. See complete Terms and Conditions. Delaware National Bank does not provide travel services and is not affiliated with Promotions in Travel. Additional restrictions may apply. **Offer applies to a new personal statement savings or money market account. One card per new personal statement savings or money market account while supplies last. Certain restrictions apply.

"Downtown Newark has

The city will sponsor a welcome reception prior to the City Council meeting on Dec. 8 where city residents can meet Sonnenberg. The reception will begin at 5:30 p.m. The council meeting will start at 7:30 p.m.

A	J	A	R		B	R	E	R		A	T	O	P		E	W	E	L	L
L	O	M	A		T	I	B	E	S		P	A	G	O		D	A	L	A
B	A	M	M		R	U	B	B	L	E		P	U	L	L		A	G	A
A	D	O	B	E		S	I	T	K	A		E	A	T		T	A		
					L	A	S	T		C	H	I	R	O	D	R	I	G	U
					D	E	J	E	C	T		N	E	T		G	I	N	
					I	W	O		H	E	R	O	N		G	L	I	B	
V	A	S	T		P	I	T	A	S		S	O	S		E	T	H	O	S
A	N	T	O	N		E	V	I	T	A		T	H	E	S	A	I	N	T
					A	W	A	S	H		A	T	A	N		C	O	P	
B	O	R			B	A	A	B	L	A	C	K	S	H	E	E	P		
R	A	B	E		R	D	A		R	I	A	L		S	E	A	M	Y	
A	S	U	N		C	I	O	N		S	T	R	A	P		T	I	B	E
					D	I	C	T	A		N	A	M		A	V	A	N	T
					S	K	I	R	T		L	U	L	L		E	L	I	O
					C	O	O		R	O		S	T	R	U	G	G	L	E
					B	Y	E	B	L	A	C	K	B	I	R	D		A	N
A	R	E			D	U	O		E	N	U	R	E		O	M	A	H	A
R	O	M	A	N		N	C	A	R		S	I	N	G	P	R	I	S	O
A	K	E	L	A		T	O	R	A		S	E	D	E	R		N	T	W
B	E	N	E	T		S	A	I	L		D	O	M	O		I	O	L	A

Visit us
online at
[www.
newarkpost
online.com](http://www.newarkpostonline.com)

50% to 60% OFF
Retail

**For a special gift, Baldwin Holiday Ornaments
Lampshades and Baldwin Outdoor Excluded.**

Storewide Sale



The Light House, Inc.
YOUR HOME LIGHTING CENTER
 604 Yorklyn Road, Hockessin, DE 19707
 Ph: 302-239-8290 • Fax: 302-239-5060
 Hours: M-F: 10-6; W: 10-8; Sat: 10-5; Sun 11-4
www.thelighthousede.com

Annual Holiday! One Day Sale!

25% OFF EVERYTHING

Saturday, December 6th, 2008

9am - 9pm

Wide selection of puppies, kittens,
reptiles, birds, rabbits, hamsters, fish
and other small animals.

Supplies and food for all
your pets' needs

Pet Kare
We Care About Pets

PET KARE I

302-832-8775

Route 40 just west of Route 7
201 Governor's Square Shopping Cnr., Bear

*2 Convenient
locations
to serve you!*

PET KARE II

302-733-0740

Route 72 just south of Route 4
250 Pencader Plaza, Newark

Little optimism bail out will fix Big 3 auto makers

► UPFRONT, from 1

decades and one has a little less sympathy.

Let's take the men and women on the assembly line out of the discussion for now. Yes, bloated legacy costs are a big part of the problem, but did the auto companies ever draw a line in the sand

in holding costs for marginally profitable models like a base Ranger? Not as far as I can tell.

Based on various reports, the next Ranger may be built in Thailand, the United States, or perhaps not at all. Any big changes would take until 2010.

Closer to home, it should be noted that the bailout

would probably do nothing to halt the demise of auto industry in Delaware. Contracts in place at GM and Chrysler will likely end production here in a couple of years, regardless. Even with a modest recovery, the Big 3 will still have too much production capacity.

What we have is a plan that could provide help to dealers (not a bad thing in the current

credit crunch) and the mid-section of the country, without any modifications in labor contracts to add extra breathing room to the bottom line. If the focus is to save jobs at dealerships, the emphasis should be on the credit side of the business.

The dilemma is that once we bailed out Wall Street firms, it is hard to say no to

hundreds of thousands, and perhaps millions, of people who will lose jobs that pay a living wage.

The question that can't be answered is whether that \$25 billion or so will do any good at all, or merely postpone the inevitable.

Based on the history of the Ford Ranger, there is little reason to be optimistic.



Stockings

**GIFT
CERTIFICATES
2009**

Hand-wrapped gifts show
loved ones you care.
We'll make sure they get there!

10% OFF

(Except USPS)
with this ad thru 12/31/08.

DRIVE-THRU

Mon-Fri 8:30-6 • Sat 9-2

Call for Extended Holiday Hours!

MAILDEPOT

Elkton - Next to Jake's on Bridge Street

410-620-2021

Fax: 410-620-2024

MAILBAG *plus*

North East - Across from Pat's on Rt 40

410-287-5020

Fax: 410-287-5135

www.mailbagplus.com

Chris Sutton's &
Will Muller's

Pampered Pet

DOG WASH

Full- or Self-serve
Pet Wash
Full-Service
Grooming

**GIFT
CERTIFICATES
AVAILABLE**

M, T, W, F, Sat. 9-7
Sun 9-5
Closed Thursday

229 S. Bridge Street
Elkton

410-392-5588

www.pamperedpetofelkton.com

Village Imports Fair Trade Stores

Shopping With a Social Conscience

- Gifts • Clothing • Jewelry
- Fair Trade Chocolate • Coffee • Tea
- Home Décor

Mon. - Sat. 10-8, Sun. 12-5 with extended Holiday Hours
165 East Main Street, Newark, DE (down Trader's Alley)

FREE PARKING



302-368-9923

www.villageimports.com



Unique Gifts • Christmas Items
Religious Articles • Knick Knacks
Holiday Greeting Cards • Jewelry

Can't make up your mind?

Get a City Pharmacy Gift Certificate!

City PHARMACY
OF ELKTON, INC.

723 Bridge St., Elkton, MD
410-398-4383

Open Weekdays 9am-9:30pm,
Saturday 9am-9pm • Sunday 9am-6pm



**European
Wellness Center™**
A Health Spa

Cecil County's Original Spa

Services include:

- Hydrotherapy
- Facial Treatments
- Massage
- Body Treatments
- Manicures & Pedicures
- Reflexology & Reiki
- Full Service Hair Salon
- Make Up Services Including Custom Blended Makeup
- Airbrush Tanning
- AquaVida Detoxification Treatments

Voted #1 - Best Spa - since 1999

Facials & Skin Rejuvenation

Gift Certificates
Available

243 S. BRIDGE ST. ELKTON
410-392-3535

MON: BY APPOINTMENT;

TUES-FRI: 10AM-8PM; SAT: 9AM-5PM

www.europeanwellness.com

Gift Certificates are always the right color and fit!

CHRISTIANA SKATING CENTER

801 CHRISTIANA RD
NEWARK, DE 19713
302-366-0473
www.christianskatingcenter.biz

Happy Holidays

Home of The Best
Private Birthday Parties



Holiday Skating Special
Buy 1 Admission
Get 1 Admission FREE
Any Special Holiday Skate Times
12:00 to 3:00
Dec. 26, 29, 30, 31 & Jan. 1 & 2
With this coupon Only

Learn to Skate
Classes Every Saturday
9:00 - 9:45
Beginner to Advanced
Includes Morning Public
Session 10:00 - 1:00

FULLY STOCKED PRO SHOP - SKATING LESSONS
BIRTHDAY PARTIES - FUND RAISERS
PRIVATE BIRTHDAY PARTIES

Voted Best Birthday Party In Delaware Today Magazine





Stocking Stuffers

GIFT CERTIFICATES



Give the gift of the YMCA!

- Available in any denomination
- Use them for membership, classes, camp, youth sports, child care, swim lessons ...

YMCA
DELAWARE

Stop by any branch to purchase yours!

Bear-Glasgow Family YMCA Bear 836-YMCA
Brandywine YMCA Talleyville 478-YMCA
Central YMCA Wilmington 254-YMCA
Central Delaware YMCA Dover 346-YMCA
Sussex Family YMCA Rehoboth 296-YMCA
Walnut Street YMCA Wilmington 472-YMCA
Western Family YMCA Newark 709-YMCA

ELKTON DINER
RESTAURANT

OPEN 24 HOURS • 7 DAYS
"Breakfast Anytime"
Take Out Available
Serving Beer & Wine

410-620-0500 • Rt. 40 • Big Elk Mall

Give the Gift of...
FOOD!
Everybody Eats!

Gift Certificates
Available in any
Denomination



HOLIDAY SPARKLE!

40% Off

all fine jewelry
with this ad.

WE BUY GOLD!

Del Haven Jewelers
"The Jewelry Experts"

302-834-8500 • 140 Peoples Plaza, Newark, DE

296658-CW112508

COMMUNITY BRIEFS

Newark History Museum to stay open

The Newark History Museum will remain open at its Main Street location through June 2009 announced Newark Historical Society President William McLain this week. The museum was established at the 148 East Main Street site for the celebration of the 250th anniversary of the market charter penned by King George II on April 13, 1758.

Community leaders secured the financial resources and asked the Newark Historical Society to create the museum. 2,075 guests have visited the museum from February through October.

This means businesses, organizations and individuals can support the Newark History Museum by sending their tax-deductible contributions to the Newark Historical Society, P.O. Box 711, Newark, DE 19715-0711 marked "Museum." The decision of whether to extend the museum's lease beyond June must be made by April.

Contact the Newark Historical Society at 224-2408 or by emailing newarkdehistoricalsociety@yahoo.com.

Friendly's just got friendlier

Friendly's is making sure their customers' dining experience is even friendlier – for

their health! The entire chain of family restaurants are taking proactive steps and setting an example for the restaurant industry by officially banning artificial trans fat from their menu.

According to the U.S. Food and Drug Administration, artificial trans fat is produced when manufacturers add hydrogen to vegetable oil – a process called hydrogenation that turns liquid oils into solid fats. Trans fat raises the low-density lipoprotein (LDL), or "bad" cholesterol, that increases your risk for coronary heart disease.

Reindeer Run & Romp

Special Olympics Delaware invites families and friends to come out for the 3rd annual Reindeer Run and Romp to benefit Special Olympics Delaware on Friday, Dec. 5. Race time is 6:30 p.m. on the University of Delaware campus. The 5k run and 3k walk will take place on luminary-lit courses beginning on Academy Street. Runners will race on the James F. Hall trail while walkers will enjoy a stroll though the campus commonly referred to as the Green.

The entry fee for pre-registered runners and rompers is \$20 (\$25 day of) and includes a long-sleeve event T-shirt, discount coupons for Main Street merchants and post-event refreshments.

This event is held in conjunction with the City of Newark's annual Winterfest. For more information or to register, go to www.sode.org or call 831-4653.

Fulfill a Holiday Wish become a Host Family

Foreign high school students are scheduled to arrive soon for academic semester and the sponsoring organization needs a few more local host families.

According to Pacific Intercultural Exchange (P.I.E.) President John Doty, the students are all between the age of 15 and 18, speak English, have their own spending money, carry accident and health insurance, and are anxious to share their cultural with American families.

Prospective host families are able to review student applications and select the perfect match.

Family who host for exchanges students are eligible to claim a monthly charitable contribution deduction on their itemized tax returns. For the upcoming programs, P.I.E. has students from Germany, the Former Soviet Union, Venezuela, Argentina, Brazil, Hungary, Korea, Mexico, Australia, China, and many other countries.

New Castle County families interested in learning more about student exchange are asked to call 1-866-546-1402.

Brookside Lions Club to start tree sales



The Brookside Lions Club will begin its annual Christmas tree sales on Dec. 1.

Trees will be available for purchase at 390 E. Chestnut Hill Road from noon to 9 p.m. on weekdays and 9 a.m. to 9 p.m. on weekends.

Andrew Gallagher
JEWELERS
Quality is the difference

Best time to SELL Your GOLD

Class Rings, Wedding Bands, Chains, Bracelets, Old Mountings, Charms, "Old Broken Jewelry"

CASH PAID ON THE SPOT!

Bring This Coupon With You & Receive An Additional **10% CASH**

410 Suburban Plaza
Elkton Road
Newark, DE 19711

302-368-3380

Cash for the holidays

Sallie Mae to add 1,100 new jobs in Delaware

► SALLIE MAE, from 1

mately 750 employees for its new operations center by the end of 2010 and an additional 350 more employees in 2011.

The new center will perform specialized credit management, collection and compliance functions in support of the company's education lending and servicing business.

The new operations center will have a \$173.7 million impact on Delaware's economy in the first year and \$262 million annually when fully

staffed, state officials said.

"We are proud to welcome Sallie Mae to Delaware," DEDO Director Judy McKinney-Cherry said. "The addition of Sallie Mae provides a diversification within our financial services sector that will add tremendous benefit in the years to come. While not immune to the downturns nationally, the financial services industry continues to be a powerful contributor to our state."

Sallie Mae is eligible for up to \$1 million in company-match workforce training

grants associated with the start-up and relocation of operations at the center through the Blue Collar Training Fund program, administered by the Delaware Economic Development Office.

During the Minner Administration, the state has invested more than \$11.7 million in workforce training statewide. The program has assisted more than 460 companies train nearly 33,000 employees and leveraged \$47.7 million in company investment.

"Sallie Mae's announce-

ment to bring their new Credit Operations Center to New Castle County is the right medicine for this ailing local economy," County Executive Chris Coons said. "We are proud to assist Sallie Mae in locating their new center in New Castle County, which will result in hundreds of competitive jobs being created in the years ahead."

Sallie Mae plans to invest an estimated \$10 million in capital expenditures at 300 Continental Drive, which was formerly owned by Nationwide Financial Services Inc.

Nationwide announced the consolidation of its information technology business earlier this month and Sallie Mae will lease a portion of the 159,000-square-foot building to the insurance company.

"The efforts of Gov. Minner and the Delaware Economic Development Office made our decision to locate in Delaware an easy one," said Albert L. (Al) Lord, chief executive officer of Sallie Mae. "Delaware offers a talented labor pool, and I am confident that our move to one of the nation's premier centers for financial services will help position our company for future growth and continued industry leadership."

As part of the announcement, Sallie Mae's philanthropic organization, The Sallie Mae Fund, contributed \$25,000 to the United Way of Delaware.

The contribution will support the Delaware Does More initiative, which supports food banks and other community groups throughout the state. The donation is the largest corporate commitment to this initiative to date.

For more information on how to apply for a job with Sallie Mae, please visit www.salliemae.com/delaware or call 1-866-833-3847.

Holiday Specials
DOVE VALLEY
 VINEYARD & WINERY

Buy One Bottle
 Get the Second for
HALF PRICE
 Excludes DVRed & DVPinot

Case
 Discounts
 on all wines

December Entertainment

Saturday Dec. 6 & 20 5:00-8:00pm
 Gary Yoder
 Rock/Country/Blues Guitar

Sunday Dec. 14 & 21 3:00-6:00pm
 Theatrical presentation of
 Ebenezer Scrooge

All Events: Adults \$5.00 including wine tasting. Children free.
 Food available for purchase from Blue Marlin Catering. Limited Seating.
 Please call for reservations 410-658-8388

645 Harrington Road, Rising Sun, MD
www.dovevalleywine.com
dovevalleyvineyard@zoominternet.net

Open Fri., Sat., and Sun. 11am-7pm • Wine Tastings & Tours Available

The Baltazar Women's Medical Center

and Dr. Rodney Baltazar
 proudly announce
 the affiliation of

Dr. Milan Baltazar
 She will practice GYNECOLOGY
 at her new location in the
 Weight Loss M.D. office.

1269 Quintillio Drive
 Governor's Square II Shopping Ctr, Bear, DE 19701
(302) 595-2987 • (410) 398-6925
 Cell: 443-350-1554

Gynecology
 Since 1978



Why pay more than you have to!

Your Community Credit Union Filling the community's needs

- Low Rates on Home & Auto Loans
- Free Phone Teller
- Free Bill Payer
- Free Online Banking
- Free Website
- Free Financial Counseling
- Free Notary Service
- Free Financial Planner
- No Fee Checking
- Free Direct Deposit
- Free ATM Transactions
- Free Loan Pre-Approval
- Free E-Statement
- Over 25,000 Surcharge-free ATMs
- Over 3,000 Shared Branches Nationwide
- Personal Loans
- No Fee Youth Accounts

We now have
First Mortgages
 apply online at
www.americanspirit.org

Ask us about our youth
 accounts & programs
 for young adults.



American Spirit
 Federal Credit Union

1110 Elkton Road, Newark, DE 19711

(302) 738-4515

Membership is open to anyone who:

- lives • works • worships • goes to school or
- belongs to any association in the City of Newark

www.americanspirit.org



Gina Papili

Junior savors season as a Phillies ball girl

UD junior Gina Papili almost missed out on the honor of being a ball girl when the Phillies finally broke through and captured their first World Series championship in 28 years.

Papili, a Newark native heard about the opportunity at the last minute and sent her resume in on the last day they were accepting applications.

That resume was good enough to earn Papili, along with about 100 other young women, a call back to try out at Citizens Bank Park. After the tryout, Papili was invited back for a sit down interview and later received a phone call from her future manager, Michele DeVicaris, informing her that she had been chosen to be a Phillies ball girl for the 2008 season.

The job was especially intense when Papili had the honor of being a ball girl for

Game 2 of the National League Championship Series when the Phillies hosted Manny Ramirez and the Los Angeles Dodgers. Papili was ecstatic that she got to be seated in left field for the game not only because she got the "best seat in the entire stadium to watch the game," but also because of the fans.

One of Papili's lasting memories of the World Series is getting to stand with the Phillie Phanatic behind home plate for the National Anthem before a home game against the Tampa Bay Rays.

UD delegation visits South Korea to build partnerships

A delegation from UD vis-

ited South Korea last month to explore academic partnerships with the Korean government and private industries.

The visit to South Korea was sponsored and organized by the Asia Development Institute (ADI), which is coordinating with the city of Incheon and the central government in a \$202 billion development and expansion of the Incheon Free Economic Zone (IFEZ).

The delegation included Michael Chajes, dean of the College of Engineering; Havidán Rodríguez, vice provost for academic affairs and international programs; Tom Apple, dean of the College of Arts and Sciences; and Conrado "Bobby" M. Gempesaw, dean of the

Lerner College of Business and Economics.

IFEZ, in coordination with ADI, plans to create an international institution that will provide a unique setting for students from around the world to get a first rate global education. IFEZ will be a critical project for the social and economic development of South Korea with important ramifications throughout Asia.

Apple said connections with ADI and IFEZ provide an ideal opportunity for UD to increase its global reach and impact in line with UD's Path to Prominence.

The delegation also visited Korea University and Yonsei University, the oldest private university in Korea, established in 1885.

UD Bookstore offers Football Mondays discounts

The UD Bookstore is celebrating each Fightin' Blue Hen victory with its traditional "Football Mondays" discounts of 20 percent off UD logo merchandise after each winning game. Football Monday is a great opportunity to show your school spirit and stock up on



See UD BRIEFS, 25 ►

Dr. Yvonne Kneisley
OPTOMETRIST

• Clear Explanations of Procedures
 • Professional & Caring Staff
 • Most Insurances & HMO's Accepted

KNEISLEY
EYE CARE

(302)224-3000

The Main Street Galleria
45 East Main Street, Suite 201 • Newark
www.kneisleyeyecare.optometry.net

Eye Examinations • Contact Lenses • Fashion Eyewear • Treatment of Ocular Diseases

Winter Registration at...

First State Gymnastics

- Fully air-conditioned state of the art Facility with in ground pits and trampolines
- Pre-school classes
- Girls & Boys
- Competitive Teams
- Birthday Parties & Field Trips
- Summer camps

U of D Cheerleading Training Site



**Winter semester
will run
December 1st -
March 7th.
Stop by or
register online.**

302-368-7107

131 John F. Campbell Drive
Newark, DE 19711

(Off Marrows Road, across from
College Square Shopping Center)

www.firststategymnastics.com

Christmas Bazaar & Craft Show

St. Thomas Episcopal Church

276 South College Avenue - Newark

(Across from the University of Delaware)

Friday, December 5th 12pm - 7pm

Saturday, December 6th 9am-5pm

Sunday, December 7th 12pm-4pm

Hand Crafted Items • Basket Raffles
Christmas Resale • Freshly Baked Goods
Cafe serving homemade soup, bread & hotdogs

St. Thomas' Antique Road Show

Pay a small fee to get your items appraised
by Wilson's Auction & Appraisers All 3 Days

Saturday only:

Top \$\$ Paid For Jewelry

Bring single earrings, damaged chains or unused gold
or silver and get paid on the spot by our reputable jeweler

Breakfast with Santa 9-11am - Saturday only

Pictures with Santa 9am-2pm - Saturday only



Sports

HIGH SCHOOLS UNIVERSITY OF DELAWARE • LEAGUES

HENS FALL TO NOVA IN FINALE



PHOTO BY MATT BASHAM

Running back Aaron Ball and quarterback Chris Whitney combined for 207 of Villanova's 317 total yards rushing and scored all three touchdowns as the No. 6 Wildcats ran past host University of Delaware for a 21-7 Colonial Athletic Association football victory at chilly Delaware Stadium Saturday afternoon.

The Blue Hens, who lost their second straight game, got another spirited defensive effort but could manage just nine first downs and 175 yards of total offense on the day and finished the season with a mark of 4-8 (2-6 CAA). The eight losses are the most in 117 seasons of Blue Hen football.

Brookside Soccer League and CAA to get new fields

Play Ball! Nearly 1,600 Newark youths who play baseball, basketball or soccer in the Community Athletic Association and Brookside Soccer League will have new home athletic fields with help from a \$30,000 Community Partnership (CPI) grant from Rohm and Haas Electronic Materials in Newark.

The grant was awarded to the Community Athletic Association and Community Hope of Delaware, who have partnered to build baseball/softball fields and basketball courts at a leased eight-acre site at 750 Otts Chapel Road in Newark. Soccer fields and

a walking track have already been built at the site.

"There is an acute shortage of land for athletic fields in New Castle County, and with rising land values, development for athletic use is near impossible," said Jerry Summers, president of Community Hope of Delaware. "The Rohm and Haas CPI grant will help us to build athletic fields on our site, which will enable more kids to participate, help relieve scheduling problems, and reduce operating costs for the leagues."

The Rohm and Haas Electronic Materials Community Advisory

Committee, which is made up of volunteer representatives from the Newark area, chose the Community Hope/Community Athletic Association proposal to receive the 2008 grant award. The committee helps identify the most pressing needs in the Newark community, issues requests for proposals to non-profits, reviews the proposals and ultimately, selects which organization is best suited to deliver solutions.

"We are proud to support Community Hope's and the Community Athletic Association's goal of providing a safe place in greater Newark for thousands of young people

Local swim team preps for big meet

By JON BUZBY

JONBUZBY@HOTMAIL.COM

This holiday weekend, while most people will still be digesting their Thanksgiving dinners, Team Delaware Swimming will host over 600 swimmers from across the state and surrounding area at the annual Delaware State Swimming Championships at the University of Delaware's Harry Rawstrum Natatorium.

"The meet brings the Delaware swimming community together to promote the many positive aspects of team and individual competition and allows the athletes to display their abilities and sportsmanship in the heat of competition," said Rob Marsh, president of Team Delaware Swimming. "The swimmers will be shooting for individual goals, including qualifying for the Junior Olympics and other regional and national level meets."

What makes this year's meet even more special is that the host team is celebrating its 30th anniversary.

Team Delaware Swimming, based in Newark and boasting the longest running United States Swim program in the state, was first established in 1978 when a group of parents decided they wanted their children to be part of a competitive swim team. The team has grown to over 150 kids currently enrolled in various levels of swimming.

In the beginning the team trained at P.S. duPont School in

Wilmington, but now the swimmers enjoy the use of a variety of facilities in Wilmington and Newark, including Rawstrum Natatorium, the same pool that the University of Delaware's Division I swim teams use.

The coaching staff, the most experienced in the state with three coaches having over 20 years experience, establishes individualized programs for each swimmer, regardless of ability. Their hope is that by doing this, along with providing expert technical training and exposure to competitive swim meets, each swimmer will enjoy and continue their commitment to the sport.

"We begin working on technique at a very young age to promote long term success," said head coach Dan Sullivan, who has coached several nationally-ranked swimmers. "We offer our age group swimmers free clinics on several weekends where their strokes and turns are videotaped and analyzed by our professional coaching staff."

Team Delaware Swimming boasts a long list of alumni who have achieved state and national recognition, but at the same time, is just as proud of their swimmers who find success from personal improvement, regardless of the number of medals won.

"We are not focused on how fast the swimmer is now, but rather we work with each swimmer so he can reach his potential," Sullivan said.

to have fun and build positive character through athletics," said Peter Freeman, director of manufacturing for Rohm and Haas Electronic Materials in Newark.

This grant marks the fourth Community Partnership Initiative grant awarded by Rohm and Haas Electronic Materials in Newark. Past CPI grant recipients include: Junior Achievement of Delaware, the Boys and Girls Club of Greater Newark, and the Iron Hill Museum.

Seven Rohm and Haas facilities in the United States serve as host communities conducting the CPI program.

Nationally, Rohm and Haas has contributed \$2.1 million to approximately 46 community organizations over the past 10 years through the program.

The Community Partnership Initiative grant is part of Rohm and Haas Company's Responsible Neighbor Community Programs. These programs work to advance the economic, social, and environmental quality of life in the communities where Rohm and Haas operates and its employees live through giving, volunteerism and community dialogue.

UD men top Marist in OT

Jawan Carter scored 30 points and had a key steal in the final minute of regulation to lead the University of Delaware men's basketball team to an 88-83 overtime victory over Marist Sunday afternoon at Rutgers University's Louis Brown Athletic Center in the final game of the Garden State Challenge.

Delaware, which won its second straight game to improve to 2-2 on the season, trailed the Red Foxes 72-70 in the final minute, but Carter stole the ball from Marist's Ryan Schneider near midcourt and fed Alphonso Dawson for a layup to tie the game with 34 seconds on the clock. The Red Foxes then missed two baseline jumpers in the final seconds, forcing overtime.

The Blue Hens led 76-75 in the extra session before Marc Egerson drained two free

throws with 2:23 to play, and after a few empty possessions by both teams, D.J. Boney drained a three-pointer from the wing to put Delaware up 81-75 with 47 seconds on the clock. Carter then hit all six of his free throw attempts down the stretch as the Blue Hens held on for the victory.

Carter finished 5 of 12 from the field, drained four three-pointers and went 16 of 18 from the free throw line as he became the first Blue Hen to reach the 30-point plateau since Zaire Taylor scored 30 against Loyola (Md.) on November 29, 2006. Dawson finished with 25 points, his third 20-point game of the season, while Egerson posted 23 points and a team-high 10 rebounds to record his third double-double of the year.

David Devezin scored 21 points for Marist, which fell

to 1-3 on the season, while Schneider chipped in 17 points and nine rebounds. R.J. Hall added 14 points and Corey Bauer had 13 off the bench for the Red Foxes, while Lawrence Williams pulled down a game-high 11 rebounds.

Marist, which had defeated Delaware in each of the last three seasons, took a six-point lead into the half, and a three-pointer by DeJuan Goodwin increased the Red Foxes advantage to 36-29 in the first minute of the second period. However, Dawson nailed consecutive jumpers and Carter knocked home a three-pointer to pull the Blue Hens even two a half minutes into the stanza. Carter then hit another three-pointer in transition and added two free throws to extend the run to 12-0 and put Delaware up 41-36 with 16:37 to play.

QUALITY SERVICE YOU CAN DEPEND ON

- Brakes • Auto Inspection • Electrical
- Suspension Systems • Transmissions
- Differential 4x4 • Fuel Injection • Engine Repairs

PETE'S GARAGE

FLEET & DIESEL REPAIR

302-286-6069

SERVICING THE BEAR & NEWARK AREAS

Chrysler • Jeep • Dodge Specialist

707 Dawson Dr., Newark, DE

www.fixyourcarnow.com



Mark your calendars for...

Peoples Plaza
CHRISTMAS CELEBRATION

Saturday, December 6
10am to 4pm
Fun for all ages!

Okura Imaginative Japanese Cuisine

Tatami Room • Sushi Bar • Cocktails
Catering • Private Parties • Take-Out

Wellington Plaza
703 Ace Memorial Drive
Hockessin
302.239.8486
Fax 302.239.6892

(On Rt. 41 N. 1/2 mile from Wawa, next to Toadstool)

Lunch: Mon. - Sat. 11 a.m. - 2:30 p.m.
Dinner: Mon. - Thurs. 4 p.m. - 10 p.m. • Fri. & Sat. 4 p.m. - 11 p.m.
Sun. 3 p.m. - 10 p.m.

Open 7 Days A Week
www.okurarestaurant.net

BEST Delaware 2005-2008

Get in.
Get smart.
Get going.

Dover 857-1000
Georgetown 856-5400
Stanton 888-5288
Wilmington 888-5288

APPLY NOW
Spring classes begin Jan. 12

Marysol Lavander
Biotechnology '06

DELAWARE TECH

Delaware Technical & Community College www.dtcc.edu

ALETHEIA CHRISTIAN SCHOOL
91 Salem Church Road
Newark, DE
Accredited by N.C.S.A.

- Pre-K through 8th grade
- Quality Christian education since 1974
- Small classes
- Affordable rates; generous family discounts
- Non-denominational teaching of Bible & Christian values
- Small school "family" learning environment
- Enrichment classes
- State-of-the-art computer lab
- Before and after school programs
- Summer camp
- Childcare center for 18 months through 4 years (family Discounts and Purchase of Care Plus available)

302-737-7048
www.aletheia.org

Advertise Your Church in the Christmas Church Services Page

This Special Section will appear with spot color and appear in the paper on Dec 12th & Dec 19th.

Deadline is Dec 5th.

Call Nancy Tokar for any questions or details at 1-800-220-1230

OGLETOWN BAPTIST CHURCH
316 Red Mill Rd., Newark, DE 19713
Phone: 302-737-2511 • Fax: 302-737-4356
www.ogletown.org

Sunday Services:
10:30am - Traditional
9:00am - Contemporary
Sunday School at both service times
Dr. Curtis Hill
Associate Pastor: Stan Gibson
Director of Collegiate Ministry: Emily Troutman
Minister of Preschool & Children: Connie Zinn
302-738-7630

PIKE CREEK BIBLE CHURCH

SUNDAY MINISTRIES:
• First Service 8:30 am
• Christian Education 10:00 am
• Second Service 11:15 am
• Awana 5:30 pm
• Youth Ministries 5:30 pm

Small Groups throughout the week
www.PikeCreekBibleChurch.org
199 Polly Drummond Hill Rd.
Newark • 302-731-7770

Evangelical Presbyterian Church (PCA)
Christ Centered • Biblically Based
Sunday Worship 10:45am & 6pm
9:30 Sunday School
308 Possum Park Rd., Newark
302-737-2300
www.epcnewark.org

LIVE NATIVITY PROGRAM
December 14, 3:30-4:30
BOHEMIA REFORMED EPISCOPAL CHURCH
284 Great House Farm
Log Cabin Church
Chesapeake City, Maryland
Music, Refreshments, and Animals Supplied
Children Wanted
410 885 2326
bigrabbit@atlanticbb.net

"We get more hits from this one ad than any other advertising we do."
- Rev. Jay - Good Shepherd Episcopal Church
Call Nancy Tokar to place your ad at
1-800-220-1230

The Birthday Celebration of the Year!
And You're Invited!
good shepherd EPISCOPAL CHURCH
Christmas Eve Service
Wednesday, December 24, 5:00pm
Keene Elementary School
302 547-7849
www.GoodShepherdDE.org
Sponsored by the Diocese of Delaware

The Way Ministries
(an extension of Highway Gospel Community Temple, West Chester PA)
Highway Word of Faith Ministries is presently worshipping @ The George Wilson Community Center
303 New London Rd., Newark, DE
Sunday:
8:00-9:00am Christian Education classes for all ages
9:00am Sunday Morning Celebration
Wednesday: Location
7:00-8:00pm Bible Enrichment Class at Prayer Temple
49 New London Rd.
Newark, DE 19711
Mailing Address: P.O. Box 220
Bear, Delaware 19701-0220
Visit us online @ www.theway.ws or send us a note at...theway238@aol.com



Pastor Carl A. Turner Sr. & Lady Karen B. Turner
For further information or directions please call:
302-834-9003

Wisdom from many sources
Sunday Service 10am
This Week: *Wicca* by Sharon Fisher
Childcare and Sunday School
Unitarian Universalist Fellowship
420 Willa Road, Newark
302.368.2984 uufn.org
Topic: "Following Your Bliss, Creating the Life You Love"
Speaker: Rev. Greg Chute

Our Redeemer Lutheran Church
Friend to Friend
Adult Bible Class 8:45 am
Divine Worship 10:00 am
Children's Sun. School 10:00 am
Pastor Jeremy Loesch
www.orlcde.org LCMS
10 Johnson Rd., Newark (near Rts. 4 & 273)
302-737-6176

NEW LIFE CHRISTIAN FELLOWSHIP
Sunday Service 9:30 AM
Multimedia Children's Ministry!
Contemporary Worship!
Relevant messages!
Church Office: 999-1800
Check out our web page:
www.NewLifeDE.org
2712 Old Milltown Rd.
Wilmington, DE
(near Kirkwood Hwy & Milltown Rd)

SANCTUARY BAPTIST FELLOWSHIP CHURCH
"The Church Where God Meets Man"
Pastor Anthony Lester
60 Fir Avenue • Bear, DE
(302) 832-8005
Powerhouse Sunday School for all ages at 9:45a.m.
Sunday Worship at 11:00 a.m.
Wednesday & Friday Bible Study at 7:00 p.m.
Morning Prayer Tuesday & Thursday at 6:00 a.m.
Visit our web site: www.sanctuarybaptist.com
(Located between Rt. 40 & School Bell Rd.)

St. Barnabas' Episcopal Church
Serving Hockessin, Pike & Mill Creek
Worship Services: Saturday 5:30 pm
Sunday 7:30, 9:00, 11:15 am
302-994-6607
www.stbarnabasde.org
2800 Duncan Road, Wilmington, DE 19808

Newark Church of Christ
91 Salem Church Road
(near Christiana High School)
302-737-3781
www.newarkchurch.com
10:30AM Sunday Worship
Come Join Us!



Steve Mahoney, Minister

TRINITY PRESBYTERIAN CHURCH (PCA)
SUNDAY WORSHIP 9:30 AM
Meeting at: First Church of the Nazarene
357 Papermill Road, Newark, DE
For more information please call
302-233-6995

ST. MARY'S ANGLICAN CHURCH
"Offering An unchanging faith to all in a changing world"
Traditional Holy Communion, Sundays 10am
Children's Sunday School, Sun. 10am
Evening Prayer, Tuesdays 7pm
Morning Prayer, Thursdays 10am
The Reverend Ken Gunn-Walberg.
www.anglican catholic.org
Corner, Washington St. & Lea Blvd
Wilmington, DE (302) 764-9080
Wheelchair Accessible



GLORIOUS PRESENCE CHURCH
Sunday 8:30 a.m.
Acoustic Worship
Sunday 10:30 a.m.
Electric Worship
Saturday 5:00 p.m.
Traditional Liturgy
Pastoral Team
Curtis E. Leins, Ph.D.
Robert F. McKnight
Theodore Lambert, III
James L. Ford
Located 1 1/2 miles North of Elkton on Rt. 213
(410) 392 3456

First Presbyterian Church
292 W. Main Street • Newark, DE 19711
302-731-5644 • www.firstpresnewark.org
A Stephen Ministry Congregation
• Worship with us:
9:00 a.m. Contemporary Service with Praise Team
10:30 a.m. Traditional Service with Chancel Choir & Organ
Child Care Provided • Handicapped Accessible • Sign Interpreter
• Learn with us: Classes Begin Sept. 7th
9:00 a.m. Sunday School for Children and Youth
9:00 a.m. Academy of Christian Studies • Exciting classes for Adults with guest speakers
UPY Program - Sunday Nights
• Hearts, Hands and Voices Music Program:
Ring with your hands in our Adult Bell Choir
Sing with your voice in our children's and adult choirs
All from the heart!
• A Mission Outreach Church
Supporting Westminster House Recovering Community
Local Area Outreach to the Newark Community
Word Wide to Congo, India, Guatemala, Korea, Kazakhstan



► UD BRIEFS, from 21

Delaware Yellow.

Locations are the main store at the Perkins Student Center, the YoUDEe Shop in the Trabant University Center and HenEssentials in the Rust Ice Arena.



UD-led deep-sea expedition sets sail

Setting sail on the Pacific, a UD-led research team has embarked on an extreme adventure that will find several of its members plunging deep into the sea to study hydrothermal vents on the ocean floor.

The team, which will be conducting research in environments that include scald-

ing heat, high pressure, toxic chemicals and total darkness, is part of the National Science Foundation-funded "Extreme 2008: A Deep-Sea Adventure."

The scientists are being joined by students from around the world for an exciting virtual field trip. More than 20,000 students from 350 schools in the United States, Aruba, Australia, Canada, Costa Rica, Great Britain and New Zealand are participating.

The expedition, led by Craig Cary, professor of marine biosciences in UD's College of Marine and Earth Studies, left Nov. 10, aboard the research ship Atlantis from a port in Manzanillo, Mexico, with an expected return date of Dec. 1. For those interested in following the scientists, they will blog regularly about the voyage at the Extreme 2008 Web site www.expeditions.udel.edu/.

UD and the National Science Foundation are sponsoring the expedition. Additional support is being provided by Olympus and by MO BIO Laboratories.

The program, coordinated by UD's Office of Communications & Marketing, is the sixth in UD's popular

"Extreme" series, which has won state and national awards for public education.

UD's Disaster Research Center seeks undergrads

UD's Disaster Research Center (DRC) is now looking to recruit 10 undergraduate research interns for this summer's nine-week Research Experience for Undergraduates (REU) program.

Now heading into its fifth summer, the program is run from the DRC, where the necessary training, background, mentoring and research experiences prepare select undergraduates to become the next generation of social science disaster scholars. A stipend, as well as all transportation and lodging expenses, are included in the REU program.

Trainees work with leading scholars and researchers on state-of-the-art projects that focus on issues, such as disaster mitigation, preparedness, response and recovery, warnings and technology, environmental issues in disaster and disaster vulnerability and resili-

ence.

Trainees also participate in various excursions that promote education in the disaster field, including a trip to the National Hazards Conference in Boulder, Colo.; a tour of the Emergency Operations Center and Ground Zero; and a visit to the Disaster Roundtable in Washington, D.C.

Applicants should have declared a social science major and/or have completed at least 12 credits in the social sciences, and students traditionally underrepresented in graduate schools are strongly encouraged to apply.

The application deadline is Feb. 13. For more information, visit www.udel.edu/DRC/ or e-mail bscott@udel.edu.

UD figure skaters to perform at Longwood

Competitors and coaches from UD's Ice Skating Science Development Center will join an array of figure skaters from throughout the region in live shows at Longwood Gardens beginning Nov. 27, and continuing through Jan. 11.

The performances are part of Longwood's annual Christmas



season, which features dazzling floral displays, elaborately decorated trees, holiday music, 500,000 outdoor lights, dancing fountains and ice skating shows under the stars.

Each 20-minute skating show will take place at Longwood's outdoor skating venue. Shows are scheduled at 5 and 6:30 p.m. Monday through Thursday; at 5, 6:30 and 8 p.m. on Fridays; and at 3:30, 5, 6:30 and 8 p.m. on Saturdays and Sundays.

See UD BRIEFS, 26 ►



**First Church
of Christ,
Scientist**

48 West Park Place, Newark

Sunday Service & Sunday School 10:00am
Wednesday Testimony Meetings 7:30pm
Childcare available during services.

302-456-5808
ALL ARE WELCOME
www.fccsnewark.org

CROSSROADS BIBLE CHURCH
Home of Elkton Christian Academy
144 Appleton Road, Elkton, MD
410-398-2688
Rev. Timothy W. Britton

Sunday
Bible Study, 10:00 am
Contemporary Service, 11:00 am
Small Groups, 6:00 pm
Wednesday, 6-8 pm
Dinner, Awana, Student
& Adult Ministries

Enjoy a cup of gourmet coffee
or cappuccino in our
Common Grounds Cafe



NEWARK WESLEYAN CHURCH

708 West Church Rd.
Newark, DE
(302) 737-5190

Pastor James E. Yoder, III
Sunday School for all ages.....9:30am
Morning Worship.....10:30am
Children's Church & Nursery Provided
Choir - Sunday.....5:30pm
Youth Meeting - Sunday.....6:00pm
Mid-Week Bible Study
"A Family Church with a Friendly Heart"

You are welcome at
Ebenezer
United Methodist Church

SUN SERVICES 8:30 & 11:00am
SUNDAY SCHOOL 9:45am

525 Polly Drummond Road
Newark 302-731-9494
Handicapped Accessible • Child Care
TED DAY, PASTOR



The Episcopal Church Welcomes You

St. Thomas's Parish

276 S. College Ave. at Park Place, Newark, DE 19711
(302) 368-4644 Church Office: (9:00-1:00 Mon-Fri)
www.stthomasparish.org

Sunday Worship

Sunday Service times: 8am, 10:30am & 5:30pm
Sunday School begins at 9:30am
Sunday Adult Education Programs 9:30-10:15am
Fr. Paul Gennett
Rev. Sarah Brockmann, Associate Campus Minister
Marc F. Cheban, Organist & Choir Master

**Holiday
Craft Show**

Friday, Dec. 5: Noon-7pm
Saturday, Dec. 6: 9am-5pm
Sunday, Dec. 7: Noon-4pm

featuring an
Antique "roadshow"
each day!

Advertise Your Church in the Christmas Church Services Page

This Special Section will appear with spot color and
appear in the paper on Dec 12th & Dec 19th.

Deadline is Dec 5th.

Call Nancy Tokar for any questions
or details at 1-800-220-1230

Glasgow High School Annual Christmas CRAFT FAIR

Saturday, December 13th, 2008
9:00 am to 3:00 pm

Located on Route 896, south of
Route 95 Glasgow, DE

GrassRoots

Extraordinary items for unique people

**Black Friday
Early Morning Sale**
25% OFF
any purchase over \$10.00

Newark location 6-9 AM
Other locations 7-9 AM
(Sale ends at 9:00 AM)

Four Locations

Main Street, Newark (302) 453-9751
Old Lan Pk, Hockessin (302) 489-2501
Foulk Rd, Wilmgtm (302) 529-0553
Trolley Sq, Wilmgtm (302) 777-2050



► UD BRIEFS, from 25

Special tickets are required to view the shows and can be purchased online at www.longwoodgardens.org or by calling (610) 388-1000, ext. 100.

Palley visits Korea University as Fulbright Specialist

Marian Lief Palley, a professor of political science and international relations



Marian Lief Palley (center), professor of political science and international relations at UD, takes part in a panel discussion with Prof. Sehoon Ko (left), of the School of Public Affairs, Korea University; and Prof. Dae Shik Park (right), dean of the graduate school of public administration, Chungnam National University.

at UD, recently spent two weeks as a Fulbright Senior Specialist lecturing at Korea University and at the 2008 Korean Association for Public Administration (KAPA) conference in Seoul.


Palley prepared three lectures for her visit, which she delivered to other public policy and administration scholars during her stay, as well as to graduate and undergraduate students at the university.

Palley lectured on "The Effect of Gender on Governance in the United States: Does it Matter?" "The Impact of Women's Voting

and Women Candidates on American Elections" and "Perspectives on Public Sector Responses to Women's Rights and Opportunities in a Globalized World."

Additionally, Palley said that the visit to Korea offered her a renewed perspective on the rapid rate of change that affects all industrialized nations.

Palley has received several awards, grants and fellowships, including UD's Graduate Advising and Mentoring Award in 2006 and the Trabant Award for Women's Equity, also in 2006.



DELAWARE EYE CARE CENTER

Complete Eye Care
1-800-900-2020

5 Locations throughout Delaware

www.delawareeyecare.com

WILMINGTON UNIVERSITY

Wherever You Want to Be...

Nelly Savinon
B.S. in Psychology, 2009

Start Here.

CELEBRATING
40
YEARS
1968 ~ 2008

Affordable Tuition
Career-Oriented Degrees
Undergraduate, Graduate and Doctoral Programs
Convenient Locations
in Delaware and Southern New Jersey
Flexible Schedules
Day, Evening, Weekend and Online Courses



DELAWARE • NEW JERSEY • ONLINE
WILMU.EDU 1-877-967-5464

Follow me to
great rates on
car insurance.



There's a GEICO office in your neighborhood! With low down payments and convenient payment plans, saving on auto and motorcycle insurance is easy.

GEICO
Local Office

AUTO • HOME • RENTERS • MOTORCYCLE • BOAT

Call Now!
410-620-0022
M-F 9-6, Sat 9-1

Home, renters, and boat coverages are written through non-affiliated insurance companies and are secured through Insurance Counselors Inc., the GEICO Property Agency. Some discounts, coverages, payment plans, and features are not available in all states or in all GEICO companies. © 2007 GEICO. The GEICO gecko image © GEICO 1999-2007

• A SOLID CHOICE • A SOLID CHOICE • A SOLID CHOICE •

C & D Furniture
Quality Furniture by
Amish Craftsmen

Playsets • Lawn Furniture • Bedrooms • Dining Rooms
Desks • Tables & Chairs • Hutches



291497-NP110708

OUTDOOR
DISPLAY MODEL
CLEARANCE



1-866-386-2572

Rt 213, Chesapeake City, MD

3 miles So. of the Chesapeake City Bridge at the 2nd Light

• A SOLID CHOICE • A SOLID CHOICE • A SOLID CHOICE •

DENTAL ASSOCIATES
OF DELAWARE

DENTISTRY WITH DISTINCTION

We Process your
Insurance and help you
Maximize your
Dental Benefit!

NEW PATIENTS
ALWAYS
WELCOME.

Four Convenient
Office Locations!

BRANDYWINE OFFICE - 302.477.4900
MIDDLETOWN OFFICE - 302.378.8600
GREENVILLE OFFICE - 302.656.8219
HOCKESSIN OFFICE - 239.5917
WWW.DELAWARESMILES.COM



PRIVÉ
formule aux herbes

ELAYNE
JAMES SALONS

Black Friday Spectacular!

**Friday, November 28th
and Saturday, November 29th
ONLY!**

**Buy One
Get One 1/2 price!
Facial & Massages**



**Buy One
Get One 1/2 price!
Any Waxing Service**



PROFESSIONAL
SEBASTIAN®



**Stock up on your
favorite items!**

**Buy 3
Get 1 Free!**



Elayne James Salon & Spa of Middletown
462 W. Main St.
Middletown, DE 19709
302.376.5290



Elayne James Salon of Greenville
Powdermill Square Shopping Center
3826 Kennet Pike
Wilmington, DE 19807
302.777.4700

www.elaynejamessalon.com

**NOW
OPEN
TUESDAY AND
THURSDAY
UNTIL 8:00PM
SATURDAY
8:00AM-12:00PM**

WILLIS MIDDLETOWN CHEVROLET

GM
Goodwrench
**AN AMERICAN
REVOLUTION**

**Is Pleased to Welcome
DAX HAAK**

**as our new
Service and Parts Director**

Dax brings years of customer service experience with him.

**WE SERVICE ALL MAKES & MODELS
DOMESTIC & IMPORTS**

**ALL REPAIRS - FROM MINOR TO MAJOR
HUGE STATE-OF-THE-ART FACILITY**

**DON'T MISS OUR LARGE SELECTIONS
OF NEW & USED VEHICLES**



2008 Chevrolet Impala



2008 Chevrolet HHR LT



Pick Any Service & Receive a

\$9.95*
OIL CHANGE

*Includes up to 5 quarts oil. Excludes diesel and synthetic oil. Coupon expires 12/5/08.

Shop while
we service your
vehicle! **FREE**
shuttle on Tuesdays
and Thursdays to
and from the new
Wal-Mart and
other local
businesses!

Service:

Monday 7-5:30
Tuesday 7-8
Wednesday 7-5:30
Thursday 7-8
Friday 7-5:30
Saturday 8-12

Sales:

Monday 8:30-8
Tuesday 8:30-8
Wednesday 8:30-8
Thursday 8:30-8
Friday 8:30-6
Saturday 8:30-5

**Tire
Rotation
\$17.95***

Coupon Expires 12/5/08

**Replace
Engine
Air Filter
\$8 Off***

Parts & Labor
Coupon Expires 12/5/08

**\$11 Off*
Brake Pads
and/or Rotor
Replacement**

Coupon Expires 12/5/08

**\$15 Off*
Any Service
Over \$150**

Coupon Expires 12/5/08

**Balance
& Rotate
4 Tires
\$34.95***

Coupon Expires 12/5/08

**Transmission
Service
Fluid Exchange and
Exterior Inspection
\$125***

Coupon Expires 12/5/08

**Coolant
System
Service
\$125***

Coupon Expires 12/5/08

**10% Off*
Any Over
the Counter
Parts**

Coupon Expires 12/5/08

**WILLIS
MIDDLETOWN
CHEVROLET**

**No Appointment Necessary
Call Dax or Carl**

Toll Free 888-426-8227

**5221 Summit Bridge
Rd., Middletown, DE**

www.midchev.com

Dax Haak dhaak@midchev.com
*Must present coupon. Coupon
expires 12/5/08. Call or see Service
Department for complete details.
Offers not good in conjunction with
any other discounts.

Posted

8 AM
5 PM **800-220-3311** 410-398-1230 Fax us 24/7: 410-398-4044



LEGAL NOTICE

LEGAL NOTICE
RE: DEADLY WEAPON
I, William Hansel Ross II, residing at, 213 N. Brownleaf Rd., Newark, Delaware 19713 will make application to the judges of the Superior Court of the State of Delaware in and for New Castle County at Wilmington for the next term for a license to carry a concealed deadly weapon, or weapons, for the protection of my person(s), or property, or both.

William H. Ross II
November 20, 2008
np 11/28

CHECK OUT
OUR WEBSITE AT
WWW.CHEESAPEAKECLASSIFIED.COM



EMPLOYMENT

110 HELP WANTED FULL TIME

BABY SITTER
NEEDED immediately
in Newark \$700/wk
Must love children!
Call 678-318-3650



**ANY WAY YOU
LOOK AT IT,
CHESAPEAKE
CLASSIFIED
CAN WORK
FOR YOU!**

110 HELP WANTED FULL TIME

New Today

DRIVERS - Class A, OTR flatbed, Earning potentials of 65K per year - min 2 years exp. Home weekends, BCBS ins, 401K, life ins. pd holidays /vaca. 410-620-4911

Post Office Now Hiring!

Avg. pay \$20hr., \$57k yr. incl. Fed. benefits, OT. Placed by adSource, not affiliated w/USPS who hires.
1-866-475-2907



RENTALS

305 APARTMENTS UNFURNISHED

New Today

ELKTON 1 & 2 br apt \$500 - \$700 + sec hot water incl no pets Call 302-463-6862

New Today

Victoria Mews Apartments

Offering 1 and 2 Bedroom Market & Affordable Housing Units

Income Guidelines Apply

13-D O'Daniel Avenue Newark, DE 19702

For rental information please call:

302-368-2357
Proudly Managed By Fairville Management Company, LLC



LEGAL NOTICE

THE COURT OF COMMON PLEAS FOR THE STATE OF DELAWARE IN AND FOR NEW CASTLE COUNTY

IN RE: CHANGE OF NAME OF
Timothy Earl Histen
PETITIONER(S)
TO
Timothy Earl Dukes-Histen
NOTICE IS HEREBY GIVEN that Timothy Earl Histen intends to present a Petition to the Court of Common Pleas for the State of Delaware in and for New Castle County, to change his/her name to Timothy Earl Dukes-Histen.

Timothy Earl Histen
Petitioner

Dated: Nov. 20, 2008
np 11/28,12/5,12

LEGAL NOTICE

THE COURT OF COMMON PLEAS FOR THE STATE OF DELAWARE IN AND FOR NEW CASTLE COUNTY

IN RE: CHANGE OF NAME OF
Nelyse Aleksandria Patrick
PETITIONER(S)
TO
Barin Nelyse A. Kardashian
NOTICE IS HEREBY GIVEN that Nelyse Aleksandria Patrick intends to present a Petition to the Court of Common Pleas for the State of Delaware in and for New Castle County, to change his/her name to Barin Nelyse A. Kardashian.

Nelyse A. Patrick
Petitioner

Dated: Nov. 12, 2008
np 11/21,28,12/5

LEGAL NOTICE

THE COURT OF COMMON PLEAS FOR THE STATE OF DELAWARE IN AND FOR NEW CASTLE COUNTY

IN RE: CHANGE OF NAME OF
Melody Sue Brown-Plonkette
PETITIONER(S)
TO
Melody Sue Brown
NOTICE IS HEREBY GIVEN that Melody Sue Brown-Plonkette intends to present a Petition to the Court of Common Pleas for the State of Delaware in and for New Castle County, to change her name to Melody Sue Brown.

Melody Sue Brown-Plonkette
Petitioner

Dated: 11/10/08
np 11/14,21,28

LEGAL NOTICE

The Newark Housing Authority 2009 Annual Plan is available for review by the public. It can be reviewed during business hours from 8:30 a.m. - 12:00 p.m. and from 1:00 p.m. to 4:30 p.m., Monday through Friday from **November 17 - January 2, 2009**. All comments must be in writing and submitted within the review period. A public hearing is scheduled for **January 5** at 5:00 p.m.
np 11/14,21,28,12/5,12,19,26,1/2

CITY OF NEWARK DELAWARE CITY COUNCIL PUBLIC HEARING NOTICE

December 8, 2008 - 7:30 p.m.

Pursuant to Section 402.2 of the City Charter, Code of the City of Newark, Delaware, notice is hereby given of a public hearing at a regular meeting of the Council in the Council Chamber at the Municipal Building, 220 Elkton Road, Newark, Delaware, on Monday, December 8, 2008 at 7:30 p.m., at which time the Council will consider for Second Reading and Final Passage the following proposed Ordinance:

Bill 08-30 - An Ordinance Amending Ch. 20, Motor Vehicles & Traffic, Schedule IV, By Providing for Stop Signs in Both Directions at the Intersection of Devon and Shull Drives and Amending Schedule VI, By Prohibiting Parking During Certain Times at the Apple Road Cul-de-sac

Patricia M. Fogg, CMC
City Secretary

np 11/28

DRIVERS

CONTRACT DRIVERS

Put your vehicle to work and earn extra income delivering packages to nursing homes using your own vehicle on a part-time basis.

**Great supplemental income.
Great tax benefits.**

Great company to work for!

Fuel-Surcharge protection as fuel costs rise. Routes are round trip from **Newark De.** You must have a winning attitude, appearance and a fuel efficient mini-van, SUV, small p/u w/cap.

Call 800-818-7958 for a personal interview
www.networkexpressinc.com

Here's My Card

Local Businesses At A Glance



TREE PLANTING

LEYLAND CYPRESS TREES

FREE Delivery And Planting

6 Month Warranty

Trees 2 ft. each \$15.00
Trees 3 1/2 to 4 ft. each \$25.00
Trees 4 1/2 to 5 ft. each \$40.00

Other Trees Available

302-344-3696

CONSTRUCTION

Free Estimates Voice Mail 717-786-0271

Double E Construction Ltd.
Quarryville, PA

• New Construction
• Roofing & Siding
• Barns & Garages
• Additions
• Decks

Custom Built To Fit Your Needs

Ephraim Smucker

Customer Satisfaction
Keeps Us In Business

FREE LAND LIST!

CALL NOW for list of land bargains with woods, meadows, streams, springs, mountain views & wildlife galore.

Perfect for weekend getaway.

SPECIAL YEAR-END SAVINGS ★ EXCELLENT FINANCING!

Call Now 1-866-685-2720

Get your NEW POWER WHEELCHAIRS SCOOTERS and HOSPITAL BEDS



Absolutely no cost to you if qualified.

New lift chairs starting at \$699.00.

Fastest Delivery Available

Call Toll Free to Qualify

Toll free 1-800-470-7562



LEGAL NOTICE LEGAL NOTICE LEGAL NOTICE LEGAL NOTICE LEGAL NOTICE LEGAL NOTICE LEGAL NOTICE LEGAL NOTICE

SHERIFF'S SALE

The following Real Estate will be exposed for Public Sale at the CITY/COUNTY BLDG., 800 N. French Street, City of Wilmington, New Castle County, Delaware, by Michael P. Walsh, Sheriff, on **WEDNESDAY the 19th day of DECEMBER, 2008 at 10:00 a.m.** The legal limit of 152 persons in Council Chambers will be enforced.

SHERIFF'S SALE

By virtue of a writ of LEV FAC #15 OC, AD., 2008. PARCEL NO. 08-042.30-055
PROPERTY ADDRESS: 24 White Clay Crescent Newark, Delaware

ALL that certain lot, piece or parcel of land with the buildings thereon erected, situate in Mill Creek Hundred, New Castle County and State of Delaware, known as 24 White Clay Crescent, being Lot No. 29 on the Recorded Plan for Village of Meeting House Hill in Pike Creek Valley as said Plan is of record in the Office of the Recorder of Deeds, in and for New Castle County, Delaware in Microfilm Record No. 913, and being more particularly bounded and described in accordance with a recent survey by Zebley & Associates, Inc., Professional Land Surveyors of Wilmington, Delaware, dated October 28, 2005, as follows, to-wit:

BEING the same lands and premises which John E. Tarburton and Connie S. Tarburton, husband and wife, by Deed dated November 15, 2005 and recorded in the Office of the Recorder of Deeds, in and for New Castle County and State of Delaware, in Instrument # 20051129-0122099, did grant and convey unto Chin C. Wei, in fee.
SEIZED AND TAKEN IN EXECUTION AS THE PROPERTY OF CHIN C. WEI.

TERMS OF SALE: 10% DOWN AT TIME OF SALE.
BALANCE DUE ON OR BEFORE JANUARY 5, 2009.

OCTOBER 31, 2008

SHERIFF'S SALE

By virtue of a writ of LEV FAC #16 OC, AD., 2008. PARCEL NO. 09-038.30-409
PROPERTY ADDRESS: 35 Glenwood Drive, Newark, DE

ALL that certain piece, parcel or tract of land with the buildings thereon erected situate in White Clay Creek Hundred, New Castle County and State of Delaware, being Lot No. 57, on the Record Major Subdivision Plan of Glenwood Station, as recorded in the Office of the Recorder of Deeds in and for New Castle County, on Instrument Number 20021022-0101565 and being more particularly bounded and described in accordance with a recent Mortgage Inspection Plan prepared by East Coast Survey, Professional Land Surveyors, dated April 21, 2006.

AND BEING the same lands and premises which Modupeola O. Famuyide by deed dated April 28, 2006 and recorded in the Office of the Recorder of Deeds in and for New Castle County, Delaware as Instrument No. 20060504-0043295 did grant and convey unto Michael G. Hammond, in fee.

SEIZED AND TAKEN IN EXECUTION AS THE PROPERTY OF MICHAEL G. HAMMOND.

TERMS OF SALE: 10% DOWN AT TIME OF SALE.
BALANCE DUE ON OR BEFORE JANUARY 5, 2009.

OCTOBER 31, 2008

SHERIFF'S SALE

By virtue of a writ of LEV FAC #17 OC, AD., 2008. PARCEL NO. 08-045.30-139
PROPERTY ADDRESS: 2212 Henlopen Avenue, Wilmington, Delaware 19804

ALL that certain lot, piece or parcel of land, with the buildings thereon erected, situate in Millcreek Hundred, New Castle County, Delaware, known as Lot No. 3, Block K, on the plot of Kiamensi Gardens, as said plot is recorded in the Office of the Recorder of Deeds, New Castle County, in Deed Record S. Volume 29, Page 600, and described in accordance with a survey prepared by East Coast Survey, Inc., dated August 24, 2005.

BEING the same lands and premises that Sherry Tabor by deed dated September 28, 2005 and recorded in the Office of the Recorder of Deeds in and for New Castle County, Delaware, in Deed book, 20051005-0101834, did grant and convey unto Michael Molitor, in fee.

SEIZED AND TAKEN IN EXECUTION AS THE PROPERTY OF MICHAEL MOLITOR.

TERMS OF SALE: 10% DOWN AT TIME OF SALE.
BALANCE DUE ON OR BEFORE JANUARY 5, 2009.

OCTOBER 31, 2008

SHERIFF'S SALE

By virtue of a writ of ALIAS LEV FAC #20 OC, AD., 2008. TAX PARCEL NO. 11-021.10-101
PROPERTY ADDRESS: 191 McCormick Boulevard, Newark, Delaware 19702

All that certain lot, piece or parcel of land with the improvements erected thereon situate in Pencader Hundred, New Castle County, Delaware being designated Lot 130 as shown on the Record Major Subdivision Plan of Woodland Village, or record in the Office of the Recorder of Deeds in and for New Castle County, Delaware in Microfilm No. 12641, said lot also known as 191 McCormick Boulevard and being more particularly bounded and de-

scribed in accordance with a recent mortgage inspection plan by A.E.S. Surveyor dated June 7, 1999, as follow to wit:

BEING the same lands conveyed to Darby D. Ford and Chris D. Ford by Deed from Darby D. Ford and Chris D. Lloyd, n/k/a Chris D. Ford, dated March 25, 2004, and recorded in the Office of the Recorder of Deeds in and for New Castle County in Instrument No. 20040527-0058258.

SEIZED AND TAKEN IN EXECUTION AS THE PROPERTY OF DARBY D. FORD AND CHRIS D. LLOYD.

TERMS OF SALE: 10% DOWN AT TIME OF SALE.
BALANCE DUE ON OR BEFORE JANUARY 5, 2009.

OCTOBER 31, 2008

SHERIFF'S SALE

By virtue of a writ of FIRST PLURIES LEV FAC #27 OC, AD., 2008.

TAX PARCEL NO. 11-026.30-257

PROPERTY ADDRESS: 24 Red Sunset Drive, Newark, DE 19702

ALL that certain land situate in New Castle County, Delaware: Being known as designated as Lot numbered twelve (112) as shown on the Record Major Subdivision Plan of Perch Creek 111, said plan being recorded in the Office of the Recorder of Deeds in and for New Castle County, State of Delaware in Microfilm N. 12819. The improvements thereon being known as 24 Red Sunset Drive, Newark, DE 19702. Being also one of the lots of ground which by Deed recorded among the Land Records of New Castle County, State of Delaware in Book 2237, Page 143 as granted and conveyed by Nicholas Development unto Pulte Home Corporation, the Grantor herein. Subject to all declarations, easements, rights-of-way, restrictions, declarations, agreements, covenants and plans of record.

TOGETHER with the buildings and improvements thereon erected, made or being; and all and every, the rights, alleys, ways, waters, privileges, appurtenances and advantages, to the same belonging, or in any wise appertaining.

BEING the same lands and premises which Pulte Home Corporation, by their Attorney-in-Fact, Stephen E. Anderson, by corrective deed dated February 18, 1998 and recorded in the Office of the Recorder of Deeds in and for New Castle County, State of Delaware in Deed Book 2407, Page 67, in fee.

SEIZED AND TAKEN IN EXECUTION AS THE PROPERTY OF DONALD W. AND ANGELA WILSON.

TERMS OF SALE: 10% DOWN AT TIME OF SALE.
BALANCE DUE ON OR BEFORE DECEMBER 7, 2008.

OCTOBER 31, 2008

SHERIFF'S SALE

By virtue of a writ of LEV FAC #35 OC, AD., 2008. PARCEL NO. 11-026.30-207

PROPERTY ADDRESS: 3 West Hawthorne Court, Newark, DE

ALL that certain lot, piece or parcel of land with the buildings thereon erected, situate in Pencader Hundred, New Castle County and State of Delaware, known as 3 West Hawthorne Court, being Lot No. 6 on the Record major Subdivision Plan for Perch Creek II, as said plan is of record in the Office of the Recording of Deeds in and for New Castle County, Delaware, in Microfilm Record No. 11,809 and being more particularly bounded and described in accordance with a recent survey by Zebley and Associates, Inc., dated April 20, 1995.

AND BEING the same lands and premises which Jennifer L. Chamberlain by deed dated November 30, 2007 and recorded in the Office of the Recorder of Deeds in and for New Castle County, Delaware as Instrument No. 20071207-0104353 did grant and convey unto Jacquelyn L. Herbert.

SEIZED AND TAKEN IN EXECUTION AS THE PROPERTY OF JENNIFER L. CHAMBERLAIN AND JACQUELYN L. HERBERT.

TERMS OF SALE: 10% DOWN AT TIME OF SALE.
BALANCE DUE ON OR BEFORE JANUARY 5, 2009.

OCTOBER 31, 2008

SHERIFF'S SALE

By virtue of a writ of LEV FAC #37 OC, AD., 2008. PARCEL NO. 09-017.10-232

PROPERTY ADDRESS: 516 Tamara Circle, Newark, DE

ALL that certain lot, piece or parcel of land with the dwelling thereon erected, situate in White Clay Hundred, New Castle County and State of Delaware, and known as 516 Tamara Circle and Lot No. 28, block M, on the Plan of Harmony Hills, Section III, as said Plan is of record in the Office for the Recording of Deeds in and for New Castle County, Delaware in Plat Record 4, Page 70, and being more particularly bounded and described in accordance with a survey by A.E.S. Surveyors, dated January 11, 2007.

AND BEING the same lands and premises which Richard L. Burton and Catherine E. Burton by deed dated January 29, 2007 and recorded in the Office of the Recorder of Deeds in and for New Castle County, Delaware as Instrument No. 20070130-0010121 did grant and convey unto Kenneth Dryden.

SEIZED AND TAKEN IN EXECUTION AS THE PROPERTY OF KENNETH DRYDEN.

TERMS OF SALE: 10% DOWN AT TIME OF SALE.
BALANCE DUE ON OR BEFORE JANUARY 5, 2009.

OCTOBER 31, 2008

SHERIFF'S SALE

By virtue of a writ of LEV FAC #46 OC, AD., 2008. PARCEL NO. 11-013.40-081
PROPERTY ADDRESS: 2 Lynam Lookout Drive, Newark, DE 19702

All that certain lot, piece or parcel of land with the building thereon erected, situate in Pencader Hundred, New Castle County, and State of Delaware, known as 2 Lynam Lookout Drive, and being Lot No. 2, as shown on the Plan of The Preserve at Lafayette Hill, as said Plan is of record in the Office of the Recorder of Deeds in and for New Castle County, Delaware in Microfilm No. 11738, and being more particularly bounded and described in accordance with a survey prepared by A.E.S. Surveyors, dated August 15, 2005, as follows, to-wit:

BEING the same lands and premises which Craig W. Colby and Krista D. Romanczak n/k/a Krista D. Colby did grant and convey unto Richard H. Shorter and Michelle E. Shorter by deed dated August 25, 2005 and recorded on September 6, 2005 in the Office of the Recorder of Deeds, in and for New Castle County, State of Delaware, in Deed Instrument 20050906-0089838.

SEIZED AND TAKEN IN EXECUTION AS THE PROPERTY OF RECHARD H. SHORTER AND MICHELLE E. SHORTER.

TERMS OF SALE: 10% DOWN AT TIME OF SALE.
BALANCE DUE ON OR BEFORE JANUARY 5, 2009.

OCTOBER 31, 2008

SHERIFF'S SALE

By virtue of a writ of LEV FAC #47 OC, AD., 2008. PARCEL NO. 08-026.30-185
PROPERTY ADDRESS: 321 Mitchell Drive, Wilmington, DE 19808

ALL that certain lot, piece or parcel of land with the building thereon erected, known as 321 Mitchell Drive, situate in Mill Creek Hundred, New Castle County and State of Delaware, being Lot No. 23, as shown on the Record Major Subdivision Plan of Mitchell Estates, of record in the Office of the Recorder of Deeds in and for New Castle County, Delaware, on Microfilm No. 4486, and being more particularly bounded and described in accordance with a survey made by A.E.S. Surveyors, dated February 09, 2006, as follows, to-wit:

BEING the same lands and premises which Frances a. Vaughn did grant and convey unto Christine M. Menser and Patrick E. Menser by deed dated February 28, 2006 and recorded on March 2, 2006 in the Office of the Recorder of Deeds, in and for New Castle County, State of Delaware, in Deed Instrument 20060302-0020802.

SEIZED AND TAKEN IN EXECUTION AS THE PROPERTY OF CHRISTINE M. MENSER AND PATRICK E. MENSER.

TERMS OF SALE: 10% DOWN AT TIME OF SALE.
BALANCE DUE ON OR BEFORE JANUARY 5, 2009.

OCTOBER 31, 2008

SHERIFF'S SALE

By virtue of a writ of ALIAS LEV FAC #48 OC, AD., 2008.

PARCEL NO. 11-017.00-048-c0244

PROPERTY ADDRESS: 2609 Waters Edge Drive Newark, DE 19702

ALL that certain unit of real property, existing under and by virtue of the Unit Property Act of the State of Delaware, known as Unit No. 2609 in the Waters Edge Condominiums, an apartment condominium, situate in the County of New Castle, State of Delaware, such Unit being more particularly bounded and described in (1) the Enabling Declaration Establishing a Plan for Condominium Ownership of Waters Edge Condominiums, dated December 3, 1990 and recorded in the Office of the Recorder of Deeds in and for New Castle County, Delaware, in Deed book 1116, Page 282, as amended by that certain First Amendment dated March 28, 1991 and recorded in Deed Book 1158, Page 37 and Second Amendment dated June 20, 1991 and recorded in Deed Book 1191, Page 136 and third Amendment dated November 30, 1992 of record in Deed Book 1445, Page 49 and Fourth Amendment dated August 25, 1993 and of record in Deed Book 1584, Page 58; Fifth Amendment dated October 14, 1997 and of record in Deed Book 2343, Page 319; Sixth Amendment dated September 22, 2000 and of record in Deed book 2714, page 162 and (2) the Declaration Plan of Waters Edge Condominiums, prepared by Kidde Consultants, Inc., Engineers and Edward C. Derby AIA-Architects, Inc., and recorded in the Office aforesaid at Microfilm, No. 10681, such Plan being amended, in part, by that certain Plan Amendment recorded in the Office of the Recorder of Deeds as aforesaid in Microfilm No. 10835; 10910, 11503 and 11783.

TOGETHER WITH a proportionate undivided interest in the Common Elements of Waters Edge Condominiums, as the same are more particularly bounded and described in the aforesaid Enabling Declaration and Declaration Plan, (Continued)

LEGAL NOTICE LEGAL NOTICE LEGAL NOTICE LEGAL NOTICE LEGAL NOTICE LEGAL NOTICE LEGAL NOTICE LEGAL NOTICE LEGAL NOTICE

(Continued)

such proportionate interests expressed in terms of a percentage of the Common Elements as a whole being .003800 percent.

BEING the same lands and premises which Lian Sun did grant and convey unto Robert Love by deed dated October 27, 2005 and recorded on October 31, 2005 in the Office of the Recorder of Deeds, in and for New Castle County, State of Delaware, in Deed Instrument 20051031-0110962.

SEIZED AND TAKEN IN EXECUTION AS THE PROPERTY OF ROBERT LOVE.

TERMS OF SALE: 10% DOWN AT TIME OF SALE. BALANCE DUE ON OR BEFORE JANUARY 5, 2009.

OCTOBER 31, 2008

SHERIFF'S SALE

By virtue of a writ of LEV FAC #49 OC, AD., 2008.

PARCEL NO. 18-002.00-025

PROPERTY ADDRESS: 4 Hearn Place, Newark, DE 19711

ALL that certain lot, piece or parcel of land with the buildings thereon erected, situate in the City of Newark, New Castle County and State of Delaware, known as 4 Hearn Place, being Lot No. 491, as shown on the Plan of Fairfield, section 4, as said plan is of Record in the Office of the Recorder of Deeds in and for New Castle County, Delaware, in Microfilm Record No. 1409 and being more particularly bounded and described in accordance with a recent survey by Zebbley and Associates, Inc., Professional Land Surveyors of Wilmington, Delaware, dated October 11, 2005, as follows, to-wit:

BEING the same lands and premises which Norman C. Barnes did grant and convey unto Norman C. Barnes and Margaret N. Toscano by deed dated November 1, 2005 and recorded on December 16, 2005 in the Office of the Recorder of Deeds, in and for New Castle County, State of Delaware, in deed Instrument 20051216-0129892.

SEIZED AND TAKEN IN EXECUTION AS THE PROPERTY OF NORMAN C. BARNES AND MARGARET N. TOSCANO.

TERMS OF SALE: 10% DOWN AT TIME OF SALE. BALANCE DUE ON OR BEFORE JANUARY 5, 2009.

OCTOBER 31, 2008

SHERIFF'S SALE

By virtue of a writ of LEV FAC #51 OC, AD., 2008.

PARCEL NO. 10-043.10-830

PROPERTY ADDRESS: 6 Sir Thomas Lane, Newark, Delaware 19702

ALL that lot of ground situate in New Castle County, Delaware, and described as follows, that is to say:

BEING known and designated as Lot Numbered Thirty Six (36), situate in New Castle County and State of Delaware, as shown on the Recorded Major Subdivision Plan of Wallington Meadows and prepared by Landmark Engineering, Inc., dated August 26, 1994 as recorded in the Office of the Recorder of Deeds in and for New Castle County, State of Delaware in Microfilm Number 12225. The improvements thereon being known as 6 Sir Thomas Lane, Newark, Delaware 19702.

BEING also one of the lots of ground which by Deed dated July 17, 1996 and recorded in New Castle County, State of Delaware is Book Numbered 2150, page 100, was granted and conveyed by Pulte Home Corporation, by their Attorney-in-Fact, Paul S. Kotsheer to Jimmy L. Ruff and Deborah M. Ruff.

SEIZED AND TAKEN IN EXECUTION AS THE PROPERTY OF JIMMY L. RUFF AND DEBORAH M. RUFF.

TERMS OF SALE: 10% DOWN AT TIME OF SALE. BALANCE DUE ON OR BEFORE JANUARY 5, 2009.

OCTOBER 31, 2008

SHERIFF'S SALE

By virtue of a writ of LEV FAC #52 OC, AD., 2008.

TAX PARCEL NO. 10-033.30-054

PROPERTY ADDRESS: 13 Ross Court, Newark, Delaware 19702

ALL that certain lot, piece or parcel of land, with the building thereon erected, situate in New Castle Hundred, New Castle County and State of Delaware, known as 13 Ross Court, being Lot No. 34 on the record resubdivision plan Centennial Village, Section B, as said plan is of record in the Office of the Recording of Deeds in and for New Castle County and State of Delaware, in Microfilm Record No. 6557 and being more particularly bounded and described in accordance with a survey prepared by East Coast Survey dated October, 2005, as follows, to-wit:

BEING the same lands and premises which previous grantor Donna Schoerbeck, Esq. Trustee for the Mackley Family Trust dated June 30, 2004 by deed dated February 10, 2005 and recorded in the Office of the Recorder of Deeds, in and for New Castle County and State of Delaware, in deed Instrument #1 200502140015310, did grant and convey unto Gerald K. Maxwell in fee.

AND BEING the same lands and premises which Gerald K. Maxwell by Deed dated October 31, 2005 and recorded in the Office of the Recorder of Deeds in and for New Castle County, Delaware, in deed Instrument Number 20051104-0113350 did grant and convey unto Eric W. Porter.

SEIZED AND TAKEN IN EXECUTION AS THE PROPERTY OF ERIC W. PORTER.

TERMS OF SALE: 10% DOWN AT TIME OF SALE. BALANCE DUE ON OR BEFORE JANUARY 5, 2009.

OCTOBER 31, 2008

SHERIFF'S SALE

By virtue of a writ of ALIAS LEV FAC #66 OC, AD., 2008.

PARCEL NO. 11-009.20-009

PROPERTY ADDRESS: 13 Kitty Lane, Newark, DE 19713

ALL that certain lot, piece or parcel of land with the buildings thereon erected, situate in Pencader Hundred, New Castle County and State of Delaware, known as 13 Kitty Lane, being Lot No. 11, on the Plan of Cataline Gardens, as the Plan thereof is of Record in the Office of the Recorder of Deeds, in and for New Castle County in Plat Record 4, Page 73, and being more particularly bounded and described in accordance with a survey prepared by A.E.S. Surveyors, Professional Land Surveyors, dated June 7, 2002, as follows, to-wit:

BEING the same lands and premises which Franklin D. Sheets and Douglas A. Sheets did grant and convey unto Douglas A. Sheets and Belinda J. Sheets by deed dated May 24, 2004 and recorded on June 4, 2004 in the Office of the Recorder of Deeds, in and for New Castle County, State of Delaware, in Deed Instrument 20040604-0060920.

SEIZED AND TAKEN IN EXECUTION AS THE PROPERTY OF DOUGLAS A. SHEETS AND BELINDA J. SHEETS.

TERMS OF SALE: 10% DOWN AT TIME OF SALE. BALANCE DUE ON OR BEFORE JANUARY 5, 2009.

OCTOBER 31, 2008

SHERIFF'S SALE

By virtue of a writ of LEV FAC #69 OC, AD., 2008.

PARCEL NO. 09-013.10-028

PROPERTY ADDRESS: 1014 Nottingham Road, Newark, DE 19711

ALL that certain lot, piece or parcel of land situated in White Clay Creek Hundred, New Castle County and State of Delaware, and being Lot No. 15, Tip Top Farms (f/k/a the plot plan of John P. and Virginia M. Diehl dated June 30, 1952), on the northeasterly side of Nottingham Road, (at 60 feet wide), and more particularly bounded and described according to a Mortgagee's Inspection Plan prepared by Raymond F. Christian & Associates, Inc., dated November 10, 1995, as follows, to-wit:

BEING the same lands and premises which E. David Bailey and Kelly A. Bailey, husband and wife, by Deed dated June 16, 2003, and recorded in the Office of the Recorder of Deeds, in and for New Castle County, Delaware, at Instrument No. 20030619-0074074, did grant and convey unto Betty J. Fox, as sole owner.

SEIZED AND TAKEN IN EXECUTION AS THE PROPERTY OF BETTY J. FOX.

TERMS OF SALE: 10% DOWN AT TIME OF SALE. BALANCE DUE ON OR BEFORE JANUARY 5, 2009.

OCTOBER 31, 2008

SHERIFF'S SALE

By virtue of a writ of ALIAS LEV FAC #71 OC, AD., 2008.

PARCEL NO. 09-028.10-086

PROPERTY ADDRESS: 135 Brennan Drive, Newark, DE

ALL that certain piece or parcel of land with the dwelling thereon erected, situate in White Clay Creek Hundred, New Castle County and State of Delaware and known as Lot No. 2, Block B on the Plan of Todd Estates Section 1, as said plan is of record in the Office of the Recorder of Deeds, New Castle County, Delaware, in Plat Book 4 Page 35, and being more particularly bounded and described in accordance with a survey by A.E.S. Surveyors, dated November 5, 1998.

BEING the same lands and premises which Marshall K. Welden Jr. and Jennifer L. Welden did by deed dated August 2004 and recorded in Instrument 20040831-00968867 did grant and convey unto Marshall K. Welden Jr. and Jennifer L. Welden.

SEIZED AND TAKEN IN EXECUTION AS THE PROPERTY OF MARSHALL K. WELDEN JR. AND JENNIFER L. WELDEN.

TERMS OF SALE: 10% DOWN AT TIME OF SALE. BALANCE DUE ON OR BEFORE JANUARY 5, 2009.

OCTOBER 31, 2008

SHERIFF'S SALE

By virtue of a writ of LEV FAC #73 OC, AD., 2008.

PARCEL NO. 10-032.20-047

PROPERTY ADDRESS: 11 Verdi Circle, Newark, DE 19702

ALL that certain lot, piece or parcel of land, with the dwelling thereon erected, situate in New Castle Hundred, New Castle County and State of Delaware, known as 11 Verdi Circle and being Lot No. 381, Christiana Falls, as shown on the Record Re-subdivision Plan of Taylortowne, as said Plan is of record in the Office of Recorder of Deeds in and for New Castle County, Delaware, in Microfilm No. 6398, and being more particularly bounded and described in accordance with a recent survey by Merestone Consultants, Inc., dated April 8, 2004, as follows, to-wit:

AND BEING the same lands and premises conveyed unto Roberta Crumley, by deed of Empire LLC., dated April 29, 2004 and of record in the Office of the Recorder of Deeds in and for New Castle County and State of Delaware in deed Instrument No. 20040503-0048860.

SEIZED AND TAKEN IN EXECUTION AS THE PROPERTY OF ROBERTA CRUMLEY.

TERMS OF SALE: 10% DOWN AT TIME OF SALE. BALANCE DUE ON OR BEFORE JANUARY 5, 2009.

OCTOBER 31, 2008

SHERIFF'S SALE

By virtue of a writ of LEV FAC #76 OC, AD., 2008.

PARCEL NO. 10-032.20-240

PROPERTY ADDRESS: 9 Mozart Way, Newark, DE

ALL that certain lot piece or parcel of land with the buildings thereon erected, known as 9 Mozart Way, situate in New Castle Hundred New Castle County and State of Delaware being Lot No. 325 on the record Major Land Development Plan of Taylor Towne as said plan is of record in the Office of the Recorder of Deeds, New Castle County Delaware in Microfilm No. 4188 and being more particularly bounded and described in accordance with a recent survey by East Coast Survey, dated May 12, 2004, as follows, to wit:

BEING the same lands and premises which Eugene C. Plummer did by deed dated May 27, 2004 and recorded in the office of the Recorder of Deeds, New Castle County, Delaware, in Instrument No. 20040528-0059120 did grant and convey unto Pamela L. Miller.

SEIZED AND TAKEN IN EXECUTION AS THE PROPERTY OF PAMALA L. MILLER.

TERMS OF SALE: 10% DOWN AT TIME OF SALE. BALANCE DUE ON OR BEFORE JANUARY 5, 2009.

OCTOBER 31, 2008

SHERIFF'S SALE

By virtue of a writ of ALIAS LEV FAC #79 OC, AD., 2008.

PARCEL NO. 09-040.20-292

PROPERTY ADDRESS: 47 Sherin Drive, Newark, DE

ALL that certain lot, piece or parcel of land with all improvements thereon erected, situate in White Clay Creek Hundred, New Castle County and State of Delaware, known as Lot 578 on the plan of Salem Woods, Phase III, as recorded in, Microfilm No. 10150, Further known as 47 Sherin Drive, and as shown on a Mortgagee's inspection plan prepared by Raymond F. Christian & Associates, Inc., Lands Surveyors, dated July 6, 1994 and being more particularly bounded and described in accordance with a survey prepared by Pelsa Company, dated September 8, 2006, as follows, to-wit:

BEGINNING at a point, on the Southwesterly side of Sherin Drive 50 feet wide at a corner or Lot No. 578 said point being located the following 2 courses and distances from the Northerly end of a junction curve R=25.00 feet joining the Northwesterly side of Warren Drive 50 feet wide with the aforesaid side of Sherin Drive 50 feet wide 1) with a curve to the left R= 116.82 feet an arc distance of 99.98 feet to a point and 2) North 65 degrees 2 minutes 57 seconds West 283.92 feet to the point of beginning thence from the point of beginning and along the line of Lot 578 South 24 degrees 38 minutes 3 seconds West 115.00 feet to a point on the line of Lot 584 thence by the same and in part along the line of lot 158 and 585 North 65 degrees 26 minutes 57 seconds West 73.50 feet to a point a corner of lot 576 thence by the same North 24 degrees 33 minutes 3 seconds East 123.13 feet to a point on the Southwesterly side of Sherin Court thence by the same the following 2 courses and distances 1) with a curve to the left R=80.00 feet an arc distance of 54.32 feet to the point and place 2) South 65 degrees 26 minutes 57 seconds East 20.00 feet to the point and place of beginning

AND BEING the same lands and premises conveyed unto Andrew Curry, by deed of Robert S. Aellis and Marliese Aellis dated January 10, 2007 and of record in the Office of the Recorder of Deeds in and for New Castle County and State of Delaware in deed Instrument No. 20070110-0002896.

SEIZED AND TAKEN IN EXECUTION AS THE PROPERTY OF ANDREW CURRY.

TERMS OF SALE: 10% DOWN AT TIME OF SALE. BALANCE DUE ON OR BEFORE JANUARY 5, 2009.

OCTOBER 31, 2008

SHERIFF'S SALE

By virtue of a writ of LEV FAC #87 OC, AD., 2008.

PARCEL NO. 09-029.10-367

PROPERTY ADDRESS: 20 Spinnet Road, Newark, Delaware 19713

ALL that certain lot, piece or parcel of land, situated in White Clay Creek Hundred, New Castle County and State of Delaware, being known as Lot No. 28, Block D, Section 2, on a certain plat known as Section 2, Sherwood Forest, also known as 20 Spinnet Road, prepared by Edward H. Richardson & Associates, Inc., Civil Engineers and Surveyors, dated December 14, 1972, of record in the Office of the Recorder of Deeds, in and for New Castle County, State of Delaware, in Microfilm No. 1900, and being more particularly bounded and described in accordance with a mortgage inspection plan, prepared by East Coast Surveyors, of Wilmington, Delaware, dated March 22, 2000, as follows, to wit:

BEING the same lands and premises which Jeffrey Hobbs Carey and Elissa C. Carey, by Deed dated April 21, 2006 and recorded in the Office of the Recorder of Deeds, in and for New Castle County and State of Delaware, in Instrument #20060515-0046576, did grant and convey unto Jeffrey Hobbs Carey.

SEIZED AND TAKEN IN EXECUTION AS THE PROPERTY OF JEFFREY HOBBS CAREY.

TERMS OF SALE: 10% DOWN AT TIME OF SALE. BALANCE DUE ON OR BEFORE JANUARY 5, 2009.

OCTOBER 31, 2008

SHERIFF'S SALE

By virtue of a writ of SECOND PLURIES LEV FAC #94 OC, AD., 2008.

PARCEL NO. 11-017.40-138

PROPERTY ADDRESS: 29 Sunny Bend, Newark, Delaware 19702

ALL THAT certain lot, piece or parcel of land with the buildings thereon, situate in Pencader Hundred, New Castle County, Delaware, being designated Lot 305, Block L, as

(Continued)

LEGAL NOTICE LEGAL NOTICE LEGAL NOTICE LEGAL NOTICE LEGAL NOTICE LEGAL NOTICE LEGAL NOTICE LEGAL NOTICE LEGAL NOTICE

(Continued)

shown on the Record Subdivision Plan of Strawberry Run, in Four Seasons, of record in the Office of the Recorder of Deeds, New Castle County, Delaware, on Microfilm No. 3081, said lot also known as 29 Sunny Bend Drive and being described according to a survey by First State Mortgage Surveys, Inc., dated July 10, 1985.

BEING the same lands and premises that Robert D. Allen and Maryellen Allen, by Deed dated May 13, 1996 and recorded in the Office of the Recorder of Deeds, in and for New Castle County, State of Delaware, in Deed Book 2111, Page 88, did grant and convey unto Maryellen Allen, in fee.

SEIZED AND TAKEN IN EXECUTION AS THE PROPERTY OF MARYELLEN ALLEN.

TERMS OF SALE: 10% DOWN AT TIME OF SALE. BALANCE DUE ON OR BEFORE JANUARY 5, 2009.

OCTOBER 31, 2008

SHERIFF'S SALE

By virtue of a writ of ALIAS LEV FAC #95 OC, AD., 2008. PARCEL ID: 11-006.20-385

PROPERTY ADDRESS: 114 Eastfield Road, Newark, DE 19713

ALL that certain lot, piece or parcel of land, with the buildings thereon erected, situate in Pencader Hundred, New Castle County, Delaware, being designated as Lot 561, Block T, on the Plan of Scottfield, Section Four, as said plan appears of record in the Office of the Recorder of Deeds in and for New Castle County, Delaware, on Microfilm No. 1540, said lot also known as 114 Eastfield Road, and described in accordance with a survey by Edward H. Richardson Associates, Inc., dated December 2, 1970.

BEING the same lands and premises which Calvin L. Mathis and Bessie D. Mathis, formerly husband and wife, by Deed dated October 21, 2002 and recorded in the Office aforesaid in Deed Instrument 2002 1029-0104325, did grant and convey unto Bessie D. Mathis, in fee.

SEIZED AND TAKEN IN EXECUTION AS THE PROPERTY OF BESSIE D. MATHIS.

TERMS OF SALE: 10% DOWN AT TIME OF SALE. BALANCE DUE ON OR BEFORE JANUARY 5, 2009.

OCTOBER 31, 2008

SHERIFF'S SALE

By virtue of a writ of LEV FAC #96 OC, AD., 2008.

PARCEL NO. 09-037.40-171

PROPERTY ADDRESS: 206 Tinsley Court, Newark, Delaware 19702

ALL that certain lot, piece or parcel of land with dwelling thereon erected situate in White Clay Creek Hundred, New Castle County, known as 206 Tinsley Court, Lot No. 23 as shown on the Plan of Salem Woods as said Plan is recorded in the Office of the Recorder of Deeds in and for New Castle County, Delaware in Microfilm No. 7018.

BEING the same lands and premises that Brandon Jones and Donna Baur-Jones by deed dated February 29, 2006 and recorded in the Office of the Recorder of Deeds in and for New Castle County, Delaware, in Deed Instrument 20060314-0025212, did grant and convey unto Donna Baur-Jones, in fee.

SEIZED AND TAKEN IN EXECUTION AS THE PROPERTY OF BRANDON JONES AND DONNA BAUR-JONES.

TERMS OF SALE: 10% DOWN AT TIME OF SALE. BALANCE DUE ON OR BEFORE JANUARY 5, 2009.

OCTOBER 31, 2008

SHERIFF'S SALE

By virtue of a writ of LEV FAC #99 OC, AD., 2008.

PARCEL NO. 09-021.40-218

PROPERTY ADDRESS: 10 Westerly Street, Newark, Delaware 19713.

ALL that certain piece, parcel or lot of land with the dwelling thereon erected, situate in White Clay Creek Hundred, New Castle County, Delaware, being known as 10 Westerly Street, Being Lot No. 192, Block A, as shown on the record major subdivision plan, Section 2-A, Kimberton, as said plan is of record in the Office of the Recorder of Deeds in and for New Castle County, Delaware, in Microfilm No. 2891, recorded on April 9, 1975, and described in accordance with a survey and legal description by David G. Williams, Professional Land Surveyors, dated March 15, 1988.

BEING the same lands and premises that Stephen R. Davis, by deed dated November 6, 2006 and recorded in the Office of the Recorder of Deeds in and for New Castle County, Delaware, in Deed Instrument 20070508-0041472, did grant and convey unto Stephen R. Davis and June Davis, in fee.

SEIZED AND TAKEN IN EXECUTION AS THE PROPERTY OF STEPHEN R. DAVIS AND JUNE DAVIS.

TERMS OF SALE: 10% DOWN AT TIME OF SALE. BALANCE DUE ON OR BEFORE JANUARY 5, 2009.

OCTOBER 31, 2008

SHERIFF'S SALE

By virtue of a writ of FIRST PLURIES LEV FAC #107 OC, AD., 2008.

PARCEL NO. 11-017.20-144

PROPERTY ADDRESS: 213 Edgewater Way, Newark, Delaware

ALL that certain piece, parcel or lot of land with the dwelling thereon erected, situate in Pencader Hundred, New Castle County and State of Delaware, being known as Lot 236, Block H as shown on the Resubdivision Plan of Four Seasons prepared by Edward M. Richardson Associates, dated April 16, 1971 and revised on October 30, 1972 and recorded in

the Office of the Recorder of Deeds in and for New Castle County, Delaware in Microfilm No. 2200 and more particularly bounded and described according to a survey by Zebley & Associates, dated October 10, 1988, to-wit.

AND BEING the same lands and premises which Lillian J. Burnett and Thomas H. Burnett by deed dated October 24, 1988 and recorded in the office aforesaid in Deed Record 778, Page 216, granted and conveyed to Dante A. Giardina and Angen M. Giardina, herein in fee.

SEIZED AND TAKEN IN EXECUTION AS THE PROPERTY OF DANTE A. GIARDINA AND ANGEN M. GIARDINA.

TERMS OF SALE: 10% DOWN AT TIME OF SALE. BALANCE DUE ON OR BEFORE JANUARY 5, 2009.

OCTOBER 31, 2008

SHERIFF'S SALE

By virtue of a writ of LEV FAC #113 OC, AD., 2008.

PARCEL NO. 09-029.10-224

PROPERTY ADDRESS: 307 S. Gerald Drive, Newark, Delaware 19713

ALL that certain lot, piece or parcel or lot of land with the buildings thereon erected, situate in White Clay Creek Hundred, New Castle County and State of Delaware, and known as Lot No. 71, Block D, on the Plan of Birchwood Park, Section 1, as said Plan is of record in the Office for the Recording of Deeds, in and for New Castle County, Delaware, in Microfilm Record 694, and more particularly bounded and described in accordance with a survey by Howard L. Robertson, Inc., Professional Engineers and Land Surveyors of Wilmington, Delaware dated September 8, 2003, as follows, to wit:

BEING the same lands and premises which Viscount P Sherwood-Saul did by deed dated September 15, 2003 and recorded in the office aforesaid in Instrument No. 20030916-0118746 did grant and convey unto Jeffrey D. Edwards.

SEIZED AND TAKEN IN EXECUTION AS THE PROPERTY OF JEFFREY D. EDWARDS.

TERMS OF SALE: 10% DOWN AT TIME OF SALE. BALANCE DUE ON OR BEFORE JANUARY 5, 2009.

OCTOBER 31, 2008

SHERIFF'S SALE

By virtue of a writ of ALIAS LEV FAC #126 OC, AD., 2008.

PARCEL NO. 08-024.40-064

PROPERTY ADDRESS: 48 Quail Hollow Drive, Hockessin, Delaware 19707

ALL that certain lot, piece or parcel or lot of land, situate in Mill Creek Hundred, New Castle County, and State of Delaware, being Lot 64, Block B, as shown on Record Resubdivision on Plan of Mendenhall Village prepared by Karins and Associates, Inc., Professional Engineers and Land Surveyors, dated November 2, 1978.

BEING the same lands and premises which William B. McCready and Sharon B. McCready by Deed dated May 27, 1988, and recorded in the Office of the Recorder of Deeds in and for New Castle County, in Deed Book 708, Page 299, did grant and convey unto Kaki Rick Ling and Arlene M. Nikaido-Lung, in fee.

BEING the same land and premises that Kaki Rick Ling and Arlene M. Nikaido-Lung by deed dated December 30, 2004 and recorded in the Office of the Recorder of Deeds in and for New Castle County, State of Delaware, in Instrument Number 20050104-0000647, did grant and convey unto Kristina L. Boyd, in fee.

SEIZED AND TAKEN IN EXECUTION AS THE PROPERTY OF KRISTINA L. BOYD.

TERMS OF SALE: 10% DOWN AT TIME OF SALE. BALANCE DUE ON OR BEFORE JANUARY 5, 2009.

OCTOBER 31, 2008

SHERIFF'S SALE

By virtue of a writ of LEV FAC #133 OC, AD., 2008.

PARCEL NO. 08-037.10-047

PROPERTY ADDRESS: Four Gregg Court Wilmington, Delaware, 19808

ALL that certain lot, piece or parcel of land with the dwelling thereon erected, situate in Mill Creek Hundred, New Castle County, State of Delaware, being Lot No. 255, as shown on the Record Major Subdivision Plan of Wood Creek, Section Three, prepared by Edward H. Richardson Associates, Inc., and being more particularly bounded and described according to a recent survey by Franco R. Bellafante, Inc., Professional Land Surveyor, dated July 24, 1987.

SUBJECT to the Declaration of Restrictions dated May 7, 1979, between Village of Greenwood, Inc. and New Castle Council, and recording in the Office of the Recorder of Deeds in and for New Castle County, State of Delaware, in Deed Record T, Volume 105, Page 192.

SUBJECT ALSO to the Declaration of Restrictions dated November 7, 1979, by Village of Greenwood, Inc. and recorded in the Office of the Recorder of Deeds in and for New Castle County, State of Delaware, in Deed Record B, Volume 108, Page 100.

SUBJECT FURTHER to the Declaration of Restrictions dated January 9, 1987, by Glasgow Pines Construction Company, a Delaware corporation, and recorded in the Office of the Recorder of Deeds, in and for New Castle County, State of Delaware, in Deed Book 492, page 233

TOGETHER with the covenant of the party of the first party to pay when invoiced any "roll back" taxes which may

be assessed against the lands herein conveyed.

BEING the same lands and premises conveyed to Henry C. Warren and Mary Ann E. Warren, by Deed from Glasgow Pines Construction Company, dated August 31, 1987, and recorded September 14, 1987, in the Office of the Recorder of Deeds, in and for New Castle County and State of Delaware, in Deed Book 595, Page 174.

SEIZED AND TAKEN IN EXECUTION AS THE PROPERTY OF HENRY C. WARREN AND MARY ANN E. WARREN.

TERMS OF SALE: 10% DOWN AT TIME OF SALE. BALANCE DUE ON OR BEFORE JANUARY 5, 2009.

OCTOBER 31, 2008

SHERIFF'S SALE

By virtue of a writ of ALIAS LEV FAC #137 OC, AD., 2008.

TAX PARCEL NO. 11-036-053

PROPERTY ADDRESS: 18 Berkley Avenue, Newark, Delaware 19702

ALL that certain piece, parcel or lot of land, with the building thereon erected, situate in Pencader Hundred, New Castle County and State of Delaware, known as 18 Berkley Drive, and being Lot No. 151, as shown on the Plan of Farmington, as said Plan is of record in the Office of the Recorder of Deeds in and for New Castle County, Delaware, and being more particularly bounded and described in accordance with a survey prepared by A.E.S. Surveyors, dated July __, 2005.

BEING the same lands and premises which Rechar H. Shorter and Michelle E. Shorter by Deed dated February 1, 2006, and of record in the Office of the Recorder of Deeds, in and for New Castle County and State of Delaware, in Instrument No. 20060202-0012081, did grant and convey unto Rechar H. Short, in fee.

SEIZED AND TAKEN IN EXECUTION AS THE PROPERTY OF RECHAR H. SHORTER AND MICHELLE E. SHORTER.

TERMS OF SALE: 10% DOWN AT TIME OF SALE. BALANCE DUE ON OR BEFORE JANUARY 5, 2009.

OCTOBER 31, 2008

SHERIFF'S SALE

By virtue of a writ of LEV FAC #140 OC, AD., 2008.

TAX PARCEL NO. 110143000c-503A

PROPERTY ADDRESS: 503 Cobble Creek Curve, Newark, Delaware 19702

ALL that certain unit of real property existing under and by virtue of the Unit Property Act of Delaware, known as Unit o. 503-A, Stone Throw, a condominium situate in Pencader Hundred, New Castle County, Delaware, as said unit is more particularly bounded and described in (1) Declaration of F.A.A.M. Inc., dated April 16, 1975, and recorded in the Office for the Recording of Deeds in and for New Castle County, Delaware, in Deed Record I, Volume 90, Page 564, and (2) the Declaration Plan of Stones Throw prepared by Edward H. Richardson Associates, Inc., Consulting Engineers, dated March 20, 1975, and recorded in the Office for the Recording of Deeds aforesaid in Microfilm No. 2904.

BEING the same lands and premises which Carl Chen and Pauline Chen, Martin J. Severin and Marie C. Severin, by Deed dated May 6, 1988, and recorded in the Office of the Recorder of Deeds in and for New Castle County, Delaware, in Deed Book 699, Page 48, did grant and convey unto Boo Hoe Kwa and Kuo Fan Tze, in fee.

BEING the same lands and premises that Boo Hoe Kwa and Kuo Fan Tze by deed dated May 30, 2006 and recorded on June 7, 2006 in the Office of the Recorder of Deeds in and for New Castle County, State of Delaware, with Instrument No. 20060607-0054478, did grant and convey unto Eric Kingara, in fee.

SEIZED AND TAKEN IN EXECUTION AS THE PROPERTY OF ERIC KINGARA.

TERMS OF SALE: 10% DOWN AT TIME OF SALE. BALANCE DUE ON OR BEFORE JANUARY 5, 2009.

OCTOBER 31, 2008

SHERIFF'S SALE

By virtue of a writ of LEV FAC #143 OC, AD., 2008.

PARCEL NO. 10-048.20-009

PROPERTY ADDRESS: 148 S. King's Croft Drive, Bear, DE 19701

ALL that certain lot, piece or parcel of land with the improvements thereon erected, situate in New Castle Hundred, New Castle County and State of Delaware, known as #148 South King's Croft Drive (a/k/a 148 South Kingscroft Drive), Scarborough Manor being Lot 29, Block A, on the Record Major Subdivision Plan of King's Croft as said plan is of record in the Office of the Recorder of Deeds in and for New Castle County, Delaware, in Microfilm No. 4637 and being more particularly bounded and described in accordance with a survey prepared by Merestone Consultants, Inc.

BEING the same lands and premises which Cartus Financial Corporation did by deed dated November 7, 2006 and recorded in the Office of the Recorder of Deeds, New Castle County, Delaware in Instrument No. 20061207-0115391 did grant and convey unto Timothy Campbell.

SEIZED AND TAKEN IN EXECUTION AS THE PROPERTY OF TIMOTHY CAMPBELL.

TERMS OF SALE: 10% DOWN AT TIME OF SALE. BALANCE DUE ON OR BEFORE JANUARY 5, 2009.

OCTOBER 31, 2008

(Continued)

315 HOUSES FOR RENT

New Today
ELKTON 1/2 h's end unit 2-3br's 1.5 ba off st parking, no pets. \$940/mo + sec 410-398-4781 Rent to own!

365 COMMERCIAL RENTALS

New Today
ELKTON Main St 2000 sq ft retail/office avail immed \$1200/mo + util's 443-309-1781

New Today
ELKTON Office Space 700 S.F. to 2200 S.F. Available immed. Call Gene 443-350-7426.

New Today
ELKTON- Office Bldg 3,523 sq. ft., close to Rt 40 & I-95. Ample parking. 443-553-1517



SERVICES

520 HOME IMPROVEMENT SERVICES

A-A-A PAINTING
Professional painting. 25 yrs exp. No job too large or too small. Free estimates, senior discount. 410-392-6906



HELP WANTED

CHECK OUT CHESAPEAKE CLASSIFIEDS EVERYDAY FOR THAT NEW JOB!

OR PLACE AN AD TO FIND NEW EMPLOYEES!
www.chesapeake-classified.com
410-398-1230
800-220-1230

520 HOME IMPROVEMENT SERVICES

New Today
A-1 HANDYMAN-
All Home repairs, remodeling, decks, siding, snow removal 302-218-1313 or 443-951-5074

Handcraft Homes & Improvements, Inc.

• Custom Homes
• Additions
• Garages

All Phases of Home Improvement, Repair, and Remodeling

MHIC# 27702

410-472-2780

WE BUY JUNK CARS, TRACTOR TRAILERS, Dump Trucks or any heavy equipment machinery.
Cash paid.
302-650-4579

555 FIREWOOD SERVICES

FIREWOOD 1 year seasoned oak & others **MD \$185, DE \$200/ cord. MD \$115, DE \$125 1/2 cord.** Wholesale also. Lic# 00-3352 **410-392-5175**



MERCHANDISE

502 ANIMALS/PETS

CHAMP BLOOD-LINE LAB PUPS - AKC Shots & wrmd. \$200. 410-275-9267



CATS (2) "Oscar" 4 yrs old, he's a grey tabby, 1 orange tabby 2 yrs old named "Ollie" both males, both neutered, shots up to date, moving can't keep. Free to good home Call 443-207-1217

602 ANIMALS/PETS

GERMAN SHEP-HERD PUPS, Shots, wormed, vet checked, \$200 ea. Ready Dec.1, 717-548-4644 ext 1



KITTEN
All black male
Friendly, litter trained, wormed. Born August 3. Earleville. 410-275-2645 leave message.

OUTSIDE CAT
Black & white male. **BLACK KITTEN.** Big, beautiful male, Free to good homes. Both social and free of fleas & worms. **302-690-1169 lv msg**

New Today

POODLE & POODLE MIXES raised in the home. Some young adults. Guar. \$300 & up. 717-529-3785

602 ANIMALS/PETS

New Today
TOY POODLES AKC white, m/f, taking deposits, ready 12/12 call 410-322-9440

New Today

WHAT BETTER FOR A LOVED ONE THAN A PUPPY UNDER THE CHRISTMAS TREE!
German Shepherd pups \$475 each AKC Reg. 3 males, 4 females, 1st shots & wormed. Taking deposits now. Ready for pick up Christmas Eve 443-553-6776



RECLINE, RELAX & RESELL

620 COMPUTERS & ACCESSORIES

New Today
Dell Dimension 2400 Series, 2.66Ghz, 80GB hard drive, 19 in. monitor, speakers, mouse, keyboard incl. \$250 O.B.O. Call after 5pm 410-398-7089

620 ELECTRONICS

BARGAIN
TV. RCA 26" console, oak cabinet, cable ready. Exc cond. \$75. 410-658-1883

CALL OR EMAIL CHESAPEAKE CLASSIFIED
410-398-1230
800-220-1230
www.chesapeake-classified.com

640 GENERAL MERCHANDISE

CASH PAID FOR jewelry of any kind. **302-373-2319**

SLOT MACHINES real one armed bandits, \$275 & up. **610-687-2282**

Used Canoe & Kayack for sale **302-654-2227**

642 SPORTING GOODS

LIBERTY GUN SAFE. Still new in box. Holds long guns. **CHEAP! \$650.** Call 302-834-3192

670 MACHINERY & HEAVY EQUIP.

FORD L8000 '97. Single axil dump truck, Cummings diesel, air brakes, air seat, 6 speed. Like new cond. \$17,000. 410-808-9513

Real Services Estate

To reserve your space call: **Betty Jo Trexler**
410-398-3311 Ext. 3090 • 800-220-3311 Ext. 3090



CHESAPEAKE BAY
349 E. Pulaski Hwy.
Elkton, MD 21921

Direct: (443)553-6726
Office: (410) 398-9000
E-mail: 511bill@mrisc.com



BILL STANDIFORD
Associate Broker, GRI
Cecil County Specialist

CecilBANK
www.cecilbank.com



410-392-LEND
Call Sandy Feltman or John Ness for all your financing needs
Local Lending with Local Servicing • Fixed and adjustable Rate Mortgages
• Construction to Permanent • Lot Loans • Bridge Loans
40 YEAR TERM AVAILABLE • FREE PRE-QUALIFICATION • NO APPLICATION FEES

SUBSTITUTE TRUSTEES' SALE
2-STORY HOME AND
4 UNIMPROVED LOTS
IN THE NEW BRIDGE FARM
SUBDIVISION IN "RISING SUN"

Sale To Be Held At
27 SPRING MEADOW LA.



LOT 2, ON NEW BRIDGE RD. & LOTS 7, 9 & 10 ON SPRING MEADOW LA., CECIL COUNTY, MD 21911

FRI., DECEMBER 12TH AT 10:00 AM

27 Spring Meadow La. is improved by a 2-story, approx. 3,100 sq. ft. home containing 4 bedrooms, 2.5 baths, hardwood floors, gas fireplace and 2 car attached garage. Lot size approx. 1.29 acres. Lot Nos. 2, 7, 9 & 10 are unimproved lots ranging in size from 1.076+/- to 2.61+/- acres. **Financing may be available to qualified purchasers.** For full terms and conditions see **www.alexcooper.com.**

ALEX COOPER AUCTIONEERS, INC.
908 YORK RD., TOWSON, MD 21204
410-828-4838 • 800-272-3145

LEGAL NOTICE LEGAL NOTICE LEGAL NOTICE LEGAL NOTICE LEGAL NOTICE LEGAL NOTICE LEGAL NOTICE LEGAL NOTICE

(Continued)
SHERIFF'S SALE

By virtue of a writ of LEV FAC #151 OC, AD., 2008.
PARCEL NO. 11-046.20-216
PROPERTY ADDRESS: 9 Kerrin Road, Bear, Delaware 19701

ALL that certain lot, piece or parcel of land with the buildings thereon erected, situate in Pencader Hundred, New Castle County, Delaware, being Lot No. 461, also known as 9 Kerrin Road, as shown on the Record Resubdivision Plan of Brennan Estates, prepared by Karins and Associates, and recorded in the Office of the Recorder of Deeds in and for New Castle County, Delaware in Microfilm No. 13274, and being more particularly bounded and described in accordance with a survey prepared by Merestone Consultants, Inc., dated June 5, 2000, as follows, to-wit:

BEING the same lands and premises that Blenheim Brennan, L.L.C. and Blenheim Homes, L.P. by deed dated June 16, 2000 and recorded in the Office of the Recorder of Deeds in and for New Castle County, State of Delaware, in Deed

book 2847 Page 78, did grant and convey unto Christopher L. McCuen and Brandi L. McCuen and Brandi L. McCuen, in fee.

SEIZED AND TAKEN IN EXECUTION AS THE PROPERTY OF CHRISTOPHER L. MCCUEN AND BRANDI L. MCCUEN.

TERMS OF SALE: 10% DOWN AT TIME OF SALE. BALANCE DUE ON OR BEFORE JANUARY 5, 2009.

OCTOBER 31, 2008

SHERIFF'S SALE

By virtue of a writ of LEV FAC #153 OC, AD., 2008.
PARCEL NO. 08-038 20-306
PROPERTY ADDRESS: 25 St. John Drive, Wilmington, DE 19808

ALL that lot, piece of land with building thereon, situate in Mill Creek Hundred, New Castle County, Delaware being designated as Lot 19, Block H, as shown on the Plan of Dunlinden Acres, 25 St. John Drive, of record in the Office of the Recorder of Deeds in and for New Castle County, Delaware

in Instrument No. 20050811-0079728, said lot also known as 25 St. John Drive and now more particularly described by The Pelsa Company as follows, to-wit:

AND BEING the same lands and premises which Charles A. Jefferson and Diane R. Jefferson by Deed dated September 30, 1993 and recorded in the Office of the Recorder of Deeds in and for New Castle County, Delaware in Deed Book 1598 Page 0278 did grant and convey unto Clifton L. Sykes, Jr. and Lisa N. Duphily, in fee.

SEIZED AND TAKEN IN EXECUTION AS THE PROPERTY OF CLIFTON L. SYKES, JR. AND LISA N. DUPHILY.

TERMS OF SALE: 10% DOWN AT TIME OF SALE. BALANCE DUE ON OR BEFORE JANUARY 5, 2009.

OCTOBER 31, 2008

Michael P. Walsh, Sheriff
Sheriff's Office
Wilmington, Delaware

**740 FARM SUPPLIES
& EQUIPMENT**

New Today
TRACTOR 1970
Massey - Ferguson
165 front end loader.
\$3500 610-716-0143



TRANSPORTATION

**845 CAMPERS
/POP-UPS**

AIR STREAM
Overlander land yacht.
1972, 27', clean, origi-
nal interior, double bed,
rear bath. \$5000. Call
410-652-9108

**850 MOTORCYCLES
& ATVs**

HONDA 750 VR7 V4
'97. Low miles, very
fast bike. Good cond.
Clean. \$2800.
Scorpion helmet, lim-
ited ed., \$200. 443-
350-9114

KUBOTA RTV Camo
Model, hardtop, lug-
gage rack, hydraulic
dump bed, only 50 hrs.
\$9,995 or best offer.
302-530-1034

YAMATI STRADA
'07 150 cc motor scoot-
er. Driven less than 80
miles. Over 70mpg.
\$589 b/o 443-243-4005

WWW.CHESAPEAKE
CLASSIFIED.COM

**860 AUTO PARTS
& ACCESSORIES**

ATTENTION Show
quality 350 GM motor
complete with all
motor chrome &
dress up hose acces-
sories. Very low
miles. \$1650. Call
Willie 302-276-9083

**870 TRUCKS
/SUVs**

JEEP GRAND
CHEROKEE LTD '99,
122K, heated seats,
loaded, inspected. Exc
cond. \$5500. Call 443-
807-1060

SUBARU LEGACY
L STATION WAGON
'97. CLEAN 167K.
\$2890 OBO. 410-
569-2151

**875 VANS
/MINI VANS**

CHEVY ASTRO
cargo '97. V6 4.3,
163k. Very clean. Exc.
work van. \$1500 OBO.
443-807-9571

**878 ANTIQUE
AUTOS**

New Today
CHEVY 2 DOOR
HARDTOP 1941 all
original. Call for details
b/o 717-598-1554

**RECLINE,
RELAX &
RESELL**

**878 ANTIQUE
AUTOS**

New Today
FORD COUPE 1942
Reduced must sell for
\$7000 or b/o Call
410-392-9204

880 AUTOS

BENZ-MERCEDES
S320, only 75K mi.
Exc. cond. Just \$7500.
Call 410-459-2550

NISSAN 300 ZX '91
Maroon w/ blk leather
interior. Good shape.
Needs eng. Best offer.
Call 410-398-5765

VW GLS '99 5 spd,
fully loaded, exc cond,
blk/tan inspect 91k mi's
\$6200 410-459-6246

**890 WANTED
To Buy**

**I BUY ANY CAR,
ANY CONDITION**
410-398-5888 /
443-350-4541

WE BUY JUNK cars,
trucks & vans. \$100
and up. Call 302-420-
7411 or 302-650-4579

WE BUY SCRAP
METAL! Call for free
pick up and appraisal.
We buy from small
matchbox cars to large
industrial buildings!
302-650-4579

CLASSIFIEDS
410-398-1230
800-220-1230

**Visit one of these local dealers
and drive home happy!**

**Contact
Laurie To
Advertise
HERE**
410-398-1230
800-220-1230
Lamici@
chespub.com

**STAPLEFORD'S
CHEVROLET
OLDSMOBILE**
302-834-4568


ST. GEORGES, DE

TOYOTA

**NEWARK
TOYOTA WORLD**
400 Ogletown Rd.
Newark DE, 19711
**CECIL COUNTY
MARYLAND**
*Why come to us?
We'll come to you!*
**FREE PICK-UP and
DELIVERY SERVICE**
1-302-368-6262
1-888-237-8434
CALL FOR A BROCHURE
ASK FOR NICOLE EXT. 146
visit us at
newarktoyotaworld.com

VOLKSWAGEN

Smith
VOLKSWAGEN, LTD.
4304 Kirkwood Highway,
WILMINGTON, DE
302-998-0131
Drivers wanted™ 

**Call Laurie
To Advertise
HERE**

REACH OVER 50,000 READERS WEEKLY!
Call Laurie at 800-220-3311 to Advertise Here!



ARDENT TITLE COMPANY

Susan M. Knight • Settlement Agent

149-151 E. Main Street, Elkton, MD 21921

(410) 996-9780 • Fax (410) 996-9784 • info@ardenttitle.com

LENDER	Phone Number	15 YEAR Fixed % PTS. APR	30 YEAR Fixed % PTS. APR	1 YEAR ARM % PTS. APR	3 YEAR ARM % PTS. APR	5 YEAR ARM % PTS. APR
APGFCU	1-888-LOAN-391	5.625/1.250/5.893	6.000/1.250/6.162	5.625/1.000/4.373	5.250/1.000/4.417	5.500/1.000/4.684
CECIL BANK	(410) 398-1650	*PLEASE CALL FOR RATES				
CECIL TRUST MORTGAGE & LOAN	(410) 287-1515	5.875/0/5.977	6.375/0/6.437	*PLEASE CALL FOR RATES		
CLASSIC MORTGAGE CORP	(302) 366-1661	5.875/0/6.10	6.125/0/6.38	CALL FOR MORE RATES		
DESTINY HOME MORTGAGE	(410) 620-4197	*PLEASE CALL FOR RATES destinyhomemortgage.com				
HARFORD BANK	(410) 642-9160	6.25/0/6.432	6.5/0/6.697	*PLEASE CALL FOR RATES		
MBA FINANCIAL SERVICES	(410) 287-5600	Please call for quotes. Many programs. All credit considered.		100% financing available-Interest only options! 1st time home buyers, 2nd homes & investment properties.		
PEOPLES BANK OF ELKTON	(410) 996-2265	6.00/0/6.14	6.25/0/6.34	6.375/0/4.526	6.00/0/4.754	6.375/0/5.146
WILMINGTON MORTGAGE	(410) 398-5607	PLEASE CALL FOR RATES.		FREE PRE-APPROVAL - NO APPLICATION FEE		

These rates, effective 11/4/08, were provided by the lenders and are subject to change. Other terms may be available. These rates are for existing first mortgages. Points may vary on refinances. Down payment requirements may vary. *Caps and length may vary on adjustable rates. The APR is based on a \$100,000 mortgage with a 20% down payment and is in addition to interest included points fees & other credit costs. To list your mortgage rates, call our Real Estate Sales Division at 410 398-3311 or 1-800-220-3311. These mortgage rates are a paid advertising feature of the Cecil Whig

**WILMINGTON
MORTGAGE**

205 East Main Street, Elkton, MD 21921

Office: 410-398-5607

TOLL FREE: 800-607-5607



Phil Davis
Loan Officer



Kim Pettitt
Loan Officer



Bruce Fink
Loan Officer

- 100% Financing
- FHA, VA, and Rural Development
- Self Employed
- Bridge Loans
- Reverse Mortgages

Godlbauer's

The furniture people,
Rt. 40, 2 miles West of
DE/MD Line

HOLIDAY COUNT-DOWN DISCOUNT



OPEN  EARLY BLACK FRIDAY AT 8AM

**FOR LARGEST DISCOUNTS ON ALL OUR HOLIDAY
FURNITURE AND ACCESSORIES**

8AM-10AM	GET AN EXTRA	30% OFF
10AM-12NOON		20% OFF
12NOON-2PM		15% OFF
2PM-7PM		10% OFF

FREE GIFT W/EVERY PURCHASE

FREE CONTINENTAL BREAKFAST

FREE DELIVERY

FREE FINANCING TIL 2010

HURRY
THE EARLIER YOU
GET HERE THE HIGHER
THE DISCOUNT



901 E. Pulaski Hwy.,
Rt. 40, Elkton
410-398-6201

**SPECIAL STORE HOURS
TODAY 8AM-7PM**

**DON'T MISS
THIS SALE
ONE DAY ONLY**

**NO INTEREST
NO PAYMENTS UNTIL 2010**



**EVERYTHING
IS ALREADY
MARKED
ON SALE!**



701 E. Pulaski Hwy.,
Rt. 40, Elkton
410-398-5402

eatdowntownnewark.com shopdowntownnewark.com enjoydowntownnewark.com

EatShopEnjoy!

★ **WINTERFEST** – Friday, December 5, 2008 6-9 PM - Academy Lawn,
including the 5 K Reindeer Run benefiting Special Olympics Delaware
Visit www.SODE.org for race registration and information.

LOOK
FOR OUR
REUSABLE
TOTE BAG!

★ Wonderful Winter Wednesdays – 12/3, 12/10 & 12/17.
FREE Parking after 3 PM, Restaurant and Retail Specials.

★ **FREE Holiday Movie Matinees**
Saturdays 11 AM

Cinema Center 3 – Newark Shopping Center. Free admission with a
non-perishable food donation for the Newark Area Welfare Committee.

12/6 - Prancer 12/13 - A Christmas Story
12/20 - Miracle on 34th Street 12/27 - Polar Express

★ Newark's Window Decorating Contest! 3 ways to vote for your favorite Window Display
• at Winterfest • at the Newark Parking Office or • by e-mailing your selection to
dnp@newark.de.us. All votes must be received by Dec. 10th.

All In One!

Downtown Newark

FREE PARKING ALL DAY EVERY DAY – DEC. 15 – JAN. 1

Sots of Fun!

eatdowntownnewark.com shopdowntownnewark.com enjoydowntownnewark.com

Where every little detail counts!



INTERIOR & EXTERIOR CAR WASH SERVICES

WHITE GLOVE

CAR WASH & DETAIL CENTER

NOW CERTIFIED GREEN! ALL OUR CHEMICALS ARE ENVIRONMENTALLY SAFE

Newark

302-731-1786

Wilmington

302-762-3744

FREE Wawa Coffee
while you wait!

ALL MAJOR CREDIT CARDS ACCEPTED
WE ACCEPT COMPETITORS COUPONS
Coupons are not valid with any other sale or discount

\$5⁰⁰ OFF Ultimate Car Wash

Includes: Blue Coral Triple Foam Polish,
Rain X Total Treatment, Tire Dressing & Wheel Treatment,
Sealer Wax, Undercarriage Wash & Exterior Car Wash.
Hand Towel Dried.

Save \$5 with this coupon. Not valid with other offers.
Available at any Delaware **WHITE GLOVE CAR WASH**
Expires - December 28, 2008 Barcode 969-2000

\$25 Hand Wax Special

30 minutes or less.
Includes: WHITE GLOVE'S Hand Wax PLUS
a Full Interior & Exterior Cleaning/Wash

Reg. \$40 - SAVE \$15 with this coupon. Not valid with other offers.
Available at any Delaware **WHITE GLOVE CAR WASH**
No appointment necessary
Expires - December 28, 2008 Barcode 945-2000

Can be
purchased
as a GIFT
Certificate

Holiday Special \$200 Exterior Car Wash Only

LIMITED TIME OFFER!

Offer good with this coupon. Not valid with other offers.
Available only at our 1006 S. College Avenue
WHITE GLOVE Location

Expires - December 28, 2008

Barcode 976-2000



Wash Books &
Detail Gift Certificates
Always Available