

Drive Carefully
Be Sure That YOU
Avoid An Accident

THE NEWARK POST

The Newark Post, Newark, Delaware, Thursday, May 22, 1958

For News
Of People You Know
Read The Post

PRICE FIVE CENTS

Parade Of 2000 To Feature Newark Memorial Day Event

Chairman C. Vernon Steele Announces Plans For City Observance With Military, Fire, Scout, School Units, 15 Bands; Wreath-Laying To Open Program At 2 P.M.

About 2,000 persons, including a military division of 1,000 soldiers, sailors, guardsmen and reservists, will march in tribute to Delaware's war dead in Newark Memorial Day ceremonies starting at 2 p.m. this Sunday.

The complete line of march, promising one of the largest and most colorful parades in this community's long history of Memorial Day observances, was announced today by C. Vernon Steele, chairman.

Main date is Monday with the program opening at 10:30 a.m. and continuing through the day. Steele hopes that such a date will not have to be met.

Fifteen bands and drum and pipe corps will furnish music for the parade. Among them will be the 15th Air Band, official music for the Second U.S. Army, headquartered at Fort Meade, Md. The band will lead the parade and give a concert on the university campus at 1:40 p.m. before marching to the parade grounds.

In addition to the armed forces in the parade line-up will include war veterans, volunteer firemen, scouts and school groups.

A highlight will be a "fly-over" by the Air National Guard's 101st Air Division, which will fly over the parade line-up.

The day's observance will open with a solemn wreath laying services at the Memorial Library. Afterward the parade units will leave the campus, move west on Delaware Avenue to Elton Road, north on Main Street east to the city war memorial for another brief service.

The parade units will be headed by the 15th Air Band, followed by the 101st Air Division, the 15th Air Band, followed by the 101st Air Division, the 15th Air Band, followed by the 101st Air Division.

The first division, under Lt. Col. W. Snow, Jr., USA, will include the 34th Army Band, the 15th Air Band, followed by the 101st Air Division, the 15th Air Band, followed by the 101st Air Division.

The second division, headed by Commander Ivan Parsons, USNR, will include the following war veterans: Sons of Union Veterans, VFW, Diamond State Post, American Legion, and others.

The third division, headed by Commander Ivan Parsons, USNR, will include the following war veterans: Sons of Union Veterans, VFW, Diamond State Post, American Legion, and others.

The fourth division, headed by Commander Ivan Parsons, USNR, will include the following war veterans: Sons of Union Veterans, VFW, Diamond State Post, American Legion, and others.

The fifth division, headed by Commander Ivan Parsons, USNR, will include the following war veterans: Sons of Union Veterans, VFW, Diamond State Post, American Legion, and others.

The sixth division, headed by Commander Ivan Parsons, USNR, will include the following war veterans: Sons of Union Veterans, VFW, Diamond State Post, American Legion, and others.

The seventh division, headed by Commander Ivan Parsons, USNR, will include the following war veterans: Sons of Union Veterans, VFW, Diamond State Post, American Legion, and others.

The eighth division, headed by Commander Ivan Parsons, USNR, will include the following war veterans: Sons of Union Veterans, VFW, Diamond State Post, American Legion, and others.

The ninth division, headed by Commander Ivan Parsons, USNR, will include the following war veterans: Sons of Union Veterans, VFW, Diamond State Post, American Legion, and others.

The tenth division, headed by Commander Ivan Parsons, USNR, will include the following war veterans: Sons of Union Veterans, VFW, Diamond State Post, American Legion, and others.

The eleventh division, headed by Commander Ivan Parsons, USNR, will include the following war veterans: Sons of Union Veterans, VFW, Diamond State Post, American Legion, and others.

The twelfth division, headed by Commander Ivan Parsons, USNR, will include the following war veterans: Sons of Union Veterans, VFW, Diamond State Post, American Legion, and others.

The thirteenth division, headed by Commander Ivan Parsons, USNR, will include the following war veterans: Sons of Union Veterans, VFW, Diamond State Post, American Legion, and others.

The fourteenth division, headed by Commander Ivan Parsons, USNR, will include the following war veterans: Sons of Union Veterans, VFW, Diamond State Post, American Legion, and others.

The fifteenth division, headed by Commander Ivan Parsons, USNR, will include the following war veterans: Sons of Union Veterans, VFW, Diamond State Post, American Legion, and others.

The sixteenth division, headed by Commander Ivan Parsons, USNR, will include the following war veterans: Sons of Union Veterans, VFW, Diamond State Post, American Legion, and others.

The seventeenth division, headed by Commander Ivan Parsons, USNR, will include the following war veterans: Sons of Union Veterans, VFW, Diamond State Post, American Legion, and others.

The eighteenth division, headed by Commander Ivan Parsons, USNR, will include the following war veterans: Sons of Union Veterans, VFW, Diamond State Post, American Legion, and others.

The nineteenth division, headed by Commander Ivan Parsons, USNR, will include the following war veterans: Sons of Union Veterans, VFW, Diamond State Post, American Legion, and others.

Five-Week Swim Program Planned By Newark YMCA

Swimming Instruction To Be Offered June 23 By UD, NRA, Local "Y"

The Newark Recreation Association and the Newark YMCA, in cooperation with the University of Delaware, will offer a five-week instructional swimming course this summer beginning June 23.

In making this joint announcement, Frank Mullen, Newark YMCA and Stanley Francis, Recreation Association, stressed that this program is presented as a service to youth of this area, and is open to youth and girls over six years of age, with a minimum height of 46-inches and physical examinations required.

The program will be under the direction of Leonard Hampton, a qualified YMCA aquatic director and a member of the faculty at the Governor Bacon Health Center.

Roy Rylander from the University of Delaware faculty again will be a staff member, and Joan McDowell and Beatrice Derickson from the Newark Recreation Association will round out the qualified group of instructors. Stan Francis will assist with advanced instruction.

Courses will start Monday, June 23, at the university women's pool. No classes will be held July 4. Both Red Cross and YMCA certificates will be given to those who pass required tests.

Application blanks are available at the Newark Recreation Association offices in the American Legion Home, and at the YMCA, 66 East Main Street. Forms will be mailed upon request, and all registrations will be processed at the YMCA.

Parents are urged to enroll their children as soon as possible to insure full participation in this program.

Lieut. James T. Edmanson, Son of Mr. and Mrs. William Edmanson, 50 Cleveland Avenue, Newark, Lieut. James T. Edmanson recently completed training with F-84-F Jet Fighters at Luke Air Force Base, Ariz.

Lieut. Edmanson, a Newark High School graduate and former Yellowjacket athlete, is stationed at Nellis AFB, Las Vegas, Nev., for transition and training in the F-100's.

Police Announce Parking Planning In Sunday Parade

Parking regulations during the Memorial Day parade have been announced by Newark Police Chief William H. Cunningham.

Beginning at 2 p.m., no parking will be permitted on the north side of East Main from Center Street to the Wilmington Trust Building; on the south side of East Main from the Farmers Bank to Newark Farm & Home Supply; and on the east side of Academy Street from Main to Lovett Avenue.

Parking will be prohibited on the west side of Academy Street from Delaware to Lovett; from the city jail driveway to Main; and on both sides of South College from Main to Delaware Avenue.

These and other areas will be posted with "No Parking" signs prepared by Newark High School students, and some 75 special fire-police will assist the local police force in directing traffic.

NHS Alumni Reservations Due Monday For Banquet

Deadline for dinner reservations for the annual banquet of the Newark High School Alumni Association is Monday, May 26, and Robert K. Kennard, 712 Susannah Circle is in charge of reservations.

The banquet will be held at Newark High School on Saturday, June 7, at 6:30 p.m., followed by an after-dinner coffee hour in the new library.

Alumni contributions for a university scholarship to be awarded to a member of the senior class of 1958 are requested.

Polio Clinic Scheduled Monday at Brookside

A public polio preventive clinic will be conducted at the Brookside Elementary School next Monday from 5 to 7 p.m.

Sponsored by the Medical Society of Delaware and the Delaware chapter of the National Foundation for Infantile Paralysis, the clinics offer free Salk vaccine in a series of three inoculations.

Rittenhouse Park To Open Memorial Day For Public Outings Throughout Summer

The Newark Recreation Association announced today that Rittenhouse Park will be open for public use on Memorial Day, May 30. Located behind the Silverbrook development, the area contains 45 acres of scenic woodland, partially developed for picnics, informal games and general outings.

The park will be open on a full-time basis during the summer for public use. Established hours are from 1 to 10 p.m., Monday through Saturdays, and from 11 a.m. to 10 p.m. Sundays. The park closes Labor Day.

Two qualified lifeguards will be on duty from the opening hour until 6:30 p.m. at the park's "swimming hole" on weekends and other busy periods. There will be one guard on duty every day during swimming hours.

The swimming facility in Rittenhouse Park is approximately 60x150 ft., varying in depth from a few inches to more than six feet. The Newark Recreation Association chemically treats the water to insure safe bathing conditions; daily tests are made of the water in accordance with health standards, and beginners' and swimming areas are defined by red and white floats on lifelines.

The Newark Recreation Association emphasizes that this is a public park, and that large group picnics are welcome. It is requested that such groups place reservations with the association office to prevent duplication, conflict and disappointment.

Operated and maintained by the Newark Recreation Association, a Red Feather agency, Rittenhouse Park is the only public park in Newark.

Prize-Winning Artist



Gladys Man (right) holds her oil painting which won the Curtis Paper Company Award, top prize in the Newark Festival of the Arts exhibition in the Newark Room of the Newark Department Store. Examining the painting with the winning artist is Mrs. Gina Plungian, chairman of the art festival.

Pony League Diamonds Polished By Dads As 85 Turn Out For Reconditioning Work

Eighty-five Dads opened the Reconditioning Pony League practice session during the past week despite the rains. Armed with hammers, saws, shovels and rakes, instead of the usual baseball equipment, the fathers and their ball-playing sons turned out to ready the three established diamonds and construct a fourth for the coming season.

At three established diamonds, base paths were cut and cleaned, backstops repaired and repainted, and outfield fences were erected by the Dads as their sons performed the clean-up detail of off-season debris. During the week's labors, all three diamonds were prepared for pre-season practice by the four teams in each league.

Starting from scratch, in the middle of a rainstorm, over a dozen soaked Dads and coaches built and erected the backstop at the fourth and newest league field. Gathering around on Kolls Avenue, and the West Park Place School, required minor repairs.

Within the next week all diamonds will be scraped and graded in final preparation for league play by the Junior League supporters. Stanley E. Francis, executive director of the Newark Recreation Association said: "The number of fathers who turned out was gratifying. We certainly appreciate their interest and help. Without it, the diamonds could not have been ready in time."

Dover Youth Wins Jaycee Road-E-O As Best In State

Teen-Age Driving Tests Conducted At Tank Plant By State Jaycee Group

William Hufnagel, 17-year-old Dover youth won the 6th Annual Delaware State Driving Road-E-O sponsored by the Junior Chamber of Commerce last Sunday at the Chrysler plant parking lot in Newark. By his mastery of a written quiz, and behind-the-wheel driving skill, Bill was named the best teen-age driver in the state.

At a banquet at the College Inn after the contest, H. E. Russell of Seaford presented the winner with a \$500 scholarship on behalf of the Pure Oil Company, and a plaque from the Delaware Junior Chamber of Commerce.

On Saturday, Robert Southard, son of Mr. and Mrs. Ward A. Southard of Silverbrook, was picked from 16 applicants as Newark's outstanding young driver. Bob was selected by a committee of judges composed of Chief Wm. H. Cunningham of the Newark Police; Wilmer E. Shue, Frederick B. Kutz, and Andrew Marcantonio of the Newark public schools; and Herbert Wright of the Chrysler assembly plant.

Dennis Absher, Jr., son of Mr. and Mrs. W. D. Absher of College Park, was awarded second place, and David Moore, son of Mr. and Mrs. George Moore, Bear, won third place.

Prizes donated by the Newark Jaycees and the auto dealers and insurance agents of Newark, were awarded by City Manager J. J. Salvoara.

Central PTA Fun Fair Returns Gross \$699.91

The Central School PTA Fun Fair last Friday night resulted in a gross take of \$699.91—and a lot of fun and work for all concerned as eager youngsters stormed the booths to try their skill and luck for the hundreds of prizes awarded.

Stanley Francis and the Newark Recreation Association eased the task of PTA Chairman Rowan Perkins by providing easily assembled booths and game equipment. Practically everyone went home tired but happy—and most of the little folks won prizes.

No Replies From 5,500 In Ambulance Campaign

In an appeal for subscribers to the Aetna Ambulance Association fund drive, Secretary John List reports that no replies have been received from 5,500 persons in the area to whom campaign brochures have been sent.

Those who have not contributed to support Newark ambulance service, are asked to send their donations to Mr. List in care of the Association, so that local ambulance service provided by volunteer aides may be maintained.

The campaign is being conducted this year for operational expenses only, with two vehicles in service.

High School Wins Evaluation Group Praise In Report

Newark School Program Lauded For Standards With Committee Survey

Dr. Frederick B. Kutz, Newark High School principal, has announced that a favorable report on the local school program has been received from the evaluation committee on secondary school standards.

The committee, under the leadership of Dr. Wilbur Devillish, president of Salisbury State Teachers College, consists of 15 members from three states.

With the primary purpose of evaluating the school program, the committee spent three days in reviewing the school program of facilities, subject offerings, physical facilities, instructional staff activities and instructional materials; pupil activity program, library and guidance services, and the administrative staff.

Dr. Devillish stated in his general commendations that "it was the impression of members of the evaluation committee that we were visiting a school in which the professional staff was conscientious and sincerely attempting to do a good job in meeting the needs of the pupils enrolled in the school."

"It was our further impression that the pupils are interested in learning, and that the facilities of the school and that they appreciate the encouragement they receive from their homes and teachers."

"It was the general impression of the committee that the attitude of the people in the community is that of wholesome respect for, and appreciation of what the school stands for, and what the staff and administration are attempting to do for their children."

In commendation, Dr. Devillish said: "members of the visiting committee viewed the school as an enterprise which reflects credit upon the school board, the superintendent and his staff, the principal and his staff, the pupils, and patrons of the school."

The memorial service will be in honor of Mrs. Ida Marlarkey, a former president of the Seaford Club, Mrs. Mary Ann Sullivan, Rehoboth, and Mrs. Anna Wilker, Laurel.

Mrs. Boydson is a candidate for reelection to the presidency of the federation.

Miss Margarette Rawalt, of Washington, D. C., immediate past president, National Federation of Business and Professional Women's Clubs, will visit the Delaware Federation during the annual state convention at Dover.

Jaycees To Offer Week's Carnival Starting Monday

Beginning Monday, May 26, for the entire week, the Newark Junior Chamber of Commerce will present the VFW Junior Chamber Shows of Suffolk, Va.

Many civic organizations on the Eastern Shore of Maryland, this company will furnish carnival midway attractions for the Newark Jaycee Festival.

The midway will offer 10 rides, including four specials for the children.

Among the tented side show attractions will be Jungleland, and the Big Circus.

There will be plenty of prize-winning games for everyone, including apple, cotton candy, hot peanuts, popcorn, and crackerjack, and hot dogs.

On Saturday from 1 to 5 p.m., a special children's bargain matinee will be held when all rides and tent side shows will offer a special price.

There will be plenty of free auto parking space at the carnival grounds located at the Mayer farm on the Newark-Elkton Road.

Hd. of Christiana Receives Charter For Men's Group

James Stewart, president of the Presbyterian Men's Group of the New Castle Presbytery, was honored guest and speaker for charter night of the Men's Association of the Head of Christiana Presbyterian Church, at a dinner meeting and ladies' night held last Tuesday at the Glass Kitchen, Glasgow.

Mrs. Stewart presented the charter to President Fred Martens and the Rev. Robert W. Tull, pastor.

Mr. Stewart emphasized the men's responsibility for church and community, and stated that this was the 30th charter to be presented in this Presbytery in the 10 years of the Association.

There were 45 members and guests present with Larry W. Timmons as toastmaster, Roger P. Watkins gave the invocation.

Mort Golby Opens New Main Street Remnants Store

A new business has been opened on Newark's Main Street with Mort's Remnants Shop at 92 East Main—as Mort Golby moves westward to extend activities of the firm he conducts at 416 King Street in Wilmington.

The new store in Newark offers dress goods, draperies, slip covers, and upholstery material, and Mrs. Doris Lucas of Newark is employed with Mr. Golby in the operation of the local outlet.

A former executive with Macy's, Mort Golby has had extensive experience with fabrics as a buyer for Ohrbach's in New York. He purchased the Lebowitz Store in Wilmington upon his arrival in Newark, and opened his King Street remnants store last November.

"I like Newark and its people," Mr. Golby said, "and have a great deal of faith in Newark's future. It's good to be in business here."

SPECIAL BUS TRIPS

Governor Boggs to Inaugurate Newark Little League Schedule

Saturday Ceremonies Scheduled With Parade To Begin At 11:30; Governor To Pitch First Ball With Double Headers To Start At 1 O'Clock On Adjoining Fields

Governor J. Caleb Boggs—former University of Delaware athlete—will inaugurate the 1958 season of the Greater Newark Little League this Saturday at the league diamonds on Barksdale Road by tossing out the first ball.

Opening ceremonies will be preceded by a parade to begin at 11:30 a.m. The parade will form at the Newark Shopping Center and the line of march will be west on Main Street to South College Avenue where the Little League fields are located.

Participating in the parade will be the current Miss Little League, Janette Zimmer, and her attendants representing each team.

This year, Opening Day ceremonies will be held on the American League field. Master of ceremonies will be Nat Morse, president of the American League.

Players and managers of the National League will be lined up along the first base line, while players and managers of the American League will be stationed along the third base line. Mayor Frank M. Durnall and City Manager, J. J. Salvoara, along with other honored guests, will form a semi-circle at the pitcher's mound, and a color guard will conduct flag-raising ceremonies.

Invocation

The invocation will be given by the Rev. John J. Bunting, Jr., pastor of the Newark Methodist Church, and after Dr. Bunting's invocation, the Little League players will recite their pledge.

Nat Morse will introduce the guests of honor, with speeches to be given by Governor Boggs and Mayor Durnall.

The 1957 trophy will be presented to W. Paul Gainer, president of the National League, for the 1957 Delaware State Champions.

After the flag-raising ceremony, will come the call to "play ball," and the Governor's toss will officially get the league schedule underway.

A large turnout is expected and plenty of seating space in the bleachers of each field will be available. Each league will play a double header on the adjoining fields, and all team members and managers in both leagues will be served lunch by the Little League Ladies Auxiliary. Two refreshment stands will be open to the public.

Opening Day Contests

The Chryslers Square Club Tigers will meet the Avon Yankees in the National League opener at 1 p.m., and the state champion Avon Pirates will play the CIO Giants at 3 o'clock.

The VFW American League Phillies champions will meet a new entry in the Indians at 1 o'clock, and the Optimist Club Braves will play the Chrysler Dodgers at 3 p.m.

W. Paul Gainer is president of the National League, and Nathaniel C. Morse is American Little League president.

Other National League officials are Dave Roderick, vice-president; Cornelius Morgan, secretary-treasurer; and Rip Hopkins, umpire-in-chief.

American League officials are Pat Joyce, vice-president and player agent; Bill Hagerty, vice-president; Mrs. C. V. Roselle, Jr., secretary-treasurer; and Franklin Scheeler, umpire-in-chief.

In the National League, Robert E. Young is manager of the Aetna Pirates; John S. McCoy is manager of the CIO Giants; the Chrysler Tigers are currently without a manager; and Charles Tulka is manager for the Avon Yankees.

In the American League, James Ochs is manager of Jackson's Cubs; Bill Morgan is manager of the VFW Phils; Albert Dager is manager of the Chrysler Dodgers; and Harry McKenry heads the Optimist Braves; and Paul Schlosser is manager of the new, fifth team Indians.

New Day Camp For Boys, Girls Planned By YMCA

Frank Mullen, Newark YMCA, announced today that a new day camp will be conducted by the "Y" this summer for boys and girls 5½ through 13 years of age, at Rittenhouse Park.

The day camp will open Monday, June 23, for three nine-day periods ending July 31.

The camp will be divided into three units by age groups. The youngest unit (5½-7) will have a program geared to their needs while middle-age campers (8-10) will be further advanced. The oldest unit (11-13) will emphasize camp crafts and skills.

The camp will be directed by Frank Mullen, a Yale University graduate and formerly on the Camp Hazen staff in Connecticut, with William Bresline, University of Delaware. A sleep-out is also on the schedule for older units.

The camp provides free milk and insurance as part of the overall cost. For information about day camp, call the Newark YMCA.

BAND FEATURE

Music featured last week's assembly at Newark High School with band music directed by Robert Maull in such varied offerings as "Curtain at Eight," "Fandango," "Moonrise," and "Tantarella." Nancy Weinberg was featured as flute soloist, and David Reichard as saxophone soloist.

Drive Carefully

Be Sure That YOU

Avoid An Accident

May Day Party Given At Bacon Health Center

Nine members of Brookside Girl Scout Troop 420 took a May Day party to Cottage No. 3 at Governor Bacon Health Center, making their own refreshments and games in connection with Second Class badge work.

Girls attending were Valerie Coulter, Virginia Hatfield, Cheryl Wallace, Shirley Foster, Shirley Gerhart, Judy Sanders, Donna

Phipps, Susan Peterson, and Linda Rodgers. Mrs. Roy Peterson and Mrs. Ernest Coulter accompanied the girls.

Mothers of girls in the troop attended a meeting on May 13 at the home of Mrs. Henry Lawrence to make final plans for the troop camping weekend, June 6-8 at the Girl Scout Camp, Grove Point, Md.

Auctioneering
HAROLD S. HILL
Kemblesville, Pa.
Call Clinton 5-4310

**Robt. T. Jones
and Son**

**FUNERAL
DIRECTORS**

PHONE EN 8-1627

122 West Main Street
NEWARK, DELAWARE

STATE OF DELAWARE
Office of Secretary of State
CERTIFICATE OF DISSOLUTION
To All To Whom These Presents May Come, Greeting:

WHEREAS, It appears to my satisfaction by a duly authenticated certificate of the NATIONAL UNDERWRITERS, INC., a Delaware corporation whose principal office is located at The Corporation Trust Company, No. 100 West Tenth Street or the City of Wilmington has been authorized in accordance with the provisions of Section 275 of the General Corporation Law of Delaware, (Chapter 1, Title 8, Delaware Code), as amended, which certificate has been executed, sealed and acknowledged in accordance with the provisions of said Section 275.

Now, therefore, I, JOHN N. McDOWELL, Secretary of State of the State of Delaware, do hereby certify that the said corporation did on the twentieth day of May, 1958, file in this office a Certificate of Dissolution, duly executed, sealed and acknowledged, which certificate is now on file in my office as provided by law.

IN TESTIMONY WHEREOF, I have hereunto set my hand and official seal, at Dover, this twentieth day of May, 1958.

(OFFICIAL SEAL)
JOHN N. McDOWELL,
Secretary of State
M. D. TOMLINSON,
Asst. Secretary of State

May 22

FOR SALE

PLEASURE

Is a requirement of gracious living. To own this fine home will be a real pleasure. All brick two-story with spacious living room and fireplace. A real dining room and lovely lot with shade trees. \$18,100

CONVENIENCE

Is almost a necessity of modern living. You will appreciate the kitchen facilities, large finished recreation room and separate utility room with plenty of space for a workshop. Three bedrooms and 1½ baths. G. I. Mortgage can be taken over. \$13,900

ECONOMY

With additional features that insure good living are yours with this Brookside ranch. A screened-in porch plus an enclosed patio, plus a fourth bedroom—plus an extended kitchen. All for only \$11,900

FOR RENT

We have complete listings of rental properties. Call us to help you find a home to suit your needs.

NEWARK REAL ESTATE & INSURANCE CO.

ACADEMY STREET BROOKSIDE CENTER
EN 8-8546 EN 8-8797

PROTECT



**your wisest investment—
your home**

PAINT • REPAIR • REMODEL—NOW

with a

BANK of DELAWARE

LOAN

Up to 36 months to pay. Any one of our nine offices is the place to go to get the money you need for home improvements. Fast and easy, your loan at Bank of Delaware is planned to suit you. Your family is protected; low rates include life insurance on your loan up to \$7,500.

You Get	12 Payments	24 Payments	36 Payments
\$ 300	\$27.00	\$14.25	—
500	44.58	23.75	\$16.66
1000	88.33	46.66	32.77

Loans by phone. Many customers use this fast service. Consult directory for the telephone number of the Bank of Delaware office handy for you.

BANK of DELAWARE

formerly Equitable Security Trust Company
WILMINGTON, DELAWARE
Ninth and Market
South Brantford • Second & Union • Merchants Hall
Duffee Experimental Station, Hagitt
Clinton to DuPont Parkway
Newark • Odessa • Seaford • Dover
Atlantic City, N. J. •
Federal Reserve Bank

Extra Banking Hours on Friday

SHOP AT MILLER BROTHERS FRIDAY FROM 9 AM TO 9 PM



WAS
\$25.

6-FOOT GARDEN UMBRELLA

\$1788

King size garden and lawn umbrella . . . 6 foot diameter. Has all around decorative fringe. With 2-piece aluminum pole, safety catch, 6 sturdy ribs. Heavy sailcloth in red and white or green and white.



ROWE 3-PIECE CURVED AIRFOAM SECTIONAL SOFA

WAS
\$269.

\$188

A complete curved sectional sofa in a handsome modern tweed fabric. With full crown, 6 inches thick, reversible foam rubber cushions. You save \$80 if you act quickly. Nobody can beat our quality and low, low prices.

MODERN BLOND 7-PIECE COMPLETE BEDROOM SUITE

WAS
\$239.

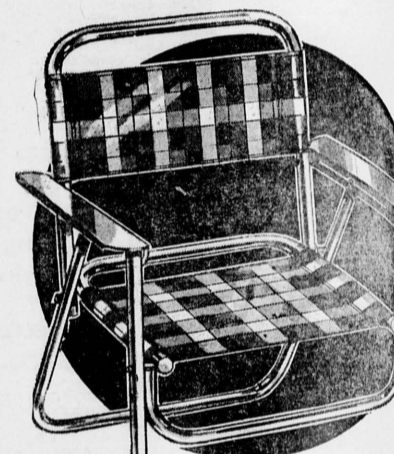
\$139



You get this complete modern bedroom outfit . . . 3-piece AMERICAN modern bedroom with double dresser and mirror, chest and full size bookcase bed, HONOR-BILT innerspring mattress and matching box spring, plus two plump pillows. SAVE \$100. while 4 complete outfits last!

MATTRESS AND
SPRING INCLUDED

Folding Aluminum & Saran Chair



NOW
PRICED
BELOW
COST!

3.50
REGULARLY
6.95

Lowest price anywhere . . . all aluminum folding chairs, saran seat and back rest. Light-weight and sturdy. Additional fine quality. Limited quantity, priced below cost. Only two per customer. NO MAIL OR PHONE ORDERS PLEASE!



INNERSPRING
MATTRESS

SIMMONS CHAISE

WAS
\$39.50

\$27.50

Genuine SIMMONS outdoor chaise lounge. With sturdy aluminum frame, 8 inch semi-pneumatic tires, 4 position adjustment. Has weatherproof SIMMONS innerspring mattress. Light-weight. SAVE \$12.



10-PC. BUNK BEDS

WAS
\$149.

\$88

A complete maple bunk bed outfit. Has two 39" wide twin style bunks, two HONOR-BILT innerspring mattresses, two SIMMONS springs, step ladder, guard rail and two pillows. Nothing more to buy!

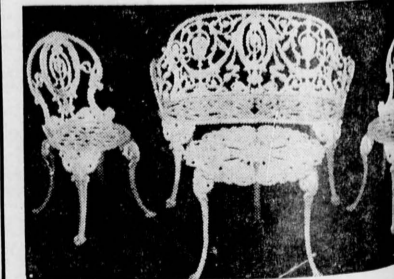


ROLLAWAY COT

WAS
\$39.

\$22.50

Perfect for summer cottages . . . an all metal construction rollaway cot complete with innerspring mattress. Folds compactly, has roller casters for easy mobility. Specially sale priced, buy now!



CAST IRON LAWN FURNITURE

39.00 SETTEE 28.00 39. UMBRELL CHAIR
29.00 CHAIR 18.00 17. COFFEE TABLE

Solid cast iron lawn furniture . . . last a lifetime. weather white enamel finish. With handsome French design. Fine quality lawn furniture priced less than expensive makes! Supply is limited, shop early!

10% DOWN . . . NO CHARGE FOR CREDIT !!
Miller Brothers
56 EAST MAIN STREET, NEWARK

LICENSE APPLICATION
I, Larry Stellini, trading as Brookside Cocktail Lounge, Inc., intend to file an application with the Delaware Alcoholic Beverage Control Commission for a restaurant license to sell alcoholic beverages for consumption on the premises where sold at Brookside Shopping Center, Pencader Hundred, New Castle County, Delaware.
s-8-3tp 5-15-3tc

CITY OF NEWARK

CITY ORDINANCE

WEED CUTTING

Adopted Nov. 15, 1955

THE COUNCIL OF THE CITY OF NEWARK HEREBY ORDAINS:

SECTION 1. No owner of any lot, place or area within the City of Newark, or the agent of such owner, shall permit on such lot, place or area, or upon any sidewalk abutting the same, any weeds or deleterious or noxious matter, or other noxious matter that may be growing, lying or located thereon.

SECTION 2. The City of Newark is hereby authorized, by its City Manager, its City Secretary, or its Building Inspector, to notify in writing the owner of any such lot, place or area within the City, or the agent of such owner, to cut, destroy and/or remove any such weeds or deleterious or noxious matter, or other noxious matter found growing, lying or located on such owner's property or upon the sidewalk abutting same. Such notice shall be by registered mail addressed to said owner, or agent of such owner, at his last known address.

SECTION 3. Upon the failure, neglect or refusal of any owner or agent so notified to cut, destroy and/or remove weeds or deleterious or noxious matter, or other noxious matter growing, lying or located on such owner's property, or upon the sidewalk abutting the same, within ten days after receipt of the written notice provided for in Section 2 above, or within fifteen days of such notice in the event the same is returned to the City Post Office Department because of its inability to make delivery thereof, the City of Newark is hereby authorized and empowered to remove or to pay for the cutting, destroying and/or removal of such weeds or deleterious or noxious matter, or other noxious matters.

SECTION 4. When the City has effected the removal of such noxious growths or has paid for its removal, the actual cost thereof plus accrued interest at the rate of six per cent per annum from the date of the completion of the work, if not paid by such owner prior thereto, shall be charged to the owner of such property on the next regular tax bill forwarded to such owner by the City, and said charge shall be due and payable by said owner at the time of payment of such tax bill.

SECTION 5. Where the full amount due the City is not paid by such owner within thirty days after the cutting, destroying and/or removal of such weeds and deleterious or noxious growths, or other noxious matter, the City Secretary shall cause to be recorded in the City Lien Docket a statement showing the cost and expense incurred for the work and the date, place or property on which said work was done and the recording of such statement shall constitute a lien on the property and shall remain in full force and effect for the amount due in principal and interest until final payment has been made.

SECTION 6. Nothing herein shall be deemed to apply to pasture-land, woodland, or land under cultivation.

SECTION 7. All ordinances and parts of ordinances in conflict with the provisions of this ordinance are hereby repealed.

May 15, 22, 29

News Of Bear

Mrs. J. Leslie Ford
Phone EA 8-6484

Preston Dasher is confined to his home with illness.

The Wright Club of Glasgow Methodist Church will hold a strawberry festival on Saturday, June 7.

The Ladies Aid of Pencader Presbyterian Church held their May meeting on Thursday evening.

Final plans were made for their annual ham and chicken salad supper this Saturday evening, May 24.

The June meeting will be held on the 11th. Devotions will be read by Mrs. Mamie Palmer and refreshments will be served by Mrs. Myrna McElwee and Mrs. Chester Harden.

Wilkin L. McElwee is confined to his bed with the virus.

Miss Bessie Davis returned to Bear on Friday after spending two months with her sister, Mrs. George Messick, of Rehoboth Beach.

Mr. and Mrs. P. Lee Reynolds and Miss Elizabeth Reynolds spent Sunday with their son and his wife, Mr. and Mrs. Norman Reynolds, of Bridgeville.

Some 125 students in the school of education at the University of Delaware have received their student teaching assignments for next year and are making contacts with principals and teachers in the schools in which they have been placed, Dean William O. Penrose has announced.

CITY OF NEWARK
CITY ORDINANCE NO. 58
Proposed for
FINAL PASSAGE
May 27, 1958
"AN ORDINANCE AMENDING AN ORDINANCE RELATING TO VACATION AND HOLIDAYS FOR TOWN EMPLOYEES."
Charles D. Long
Secretary of the Council of the City of Newark
May 15, 22

CITY OF NEWARK
CITY ORDINANCE NO. 58
Proposed for
FINAL PASSAGE
June 10, 1958
"AN ORDINANCE CHANGING FROM 'BE TO RY' THE ZONING CLASSIFICATION OF A CERTAIN TRACT OF LAND CONSISTING OF APPROXIMATELY SEVEN ACRES IN THE DEVELOPMENT KNOWN OR TO BE KNOWN AS 'NORTHGATE KNOLLS'."
Charles D. Long
Secretary of the Council of the City of Newark
May 15, 22

LETTERS TESTAMENTARY
Estate of Bertha Miller Deceased.
Notice is hereby given that Letters of Administration upon the Estate of Bertha Miller late of Christiana Hundred, Delaware, were duly granted unto Louis L. Redding on the Eighth day of May A. D. 1958 and all persons indebted to the said deceased are requested to make payments to the Administrator without delay, and all persons having demands against the deceased are required to exhibit and present the same duly probated to the said Administrator on or before the Eighth day of February A. D. 1969 or abide by the law in this behalf.
Address: Louis L. Redding, Attorney-at-law, 923 Market Street, Wilmington, Delaware.
Louis L. Redding,
Administrator
May 15, 22, 29

POT STRAWBERRY . . . fresh new flavor by Schrank's

Rise and Shine in Schrank's luscious Strawberry fluff dreamwear. Yours, in a collection of drip-dry, "Satin-Set" a cool combed cotton bastiste that shuns the iron. Pink, white, with red, red berries.



Baby doll chemise with a hemline of flapper frill permanent pleats. Matching bloomers. Small, medium, large.
\$3.98

BABY DOLLS AND GOWNS

Full doll shift with matching bloomers. Dainty lattice-effect bodice. Flattering squared off neckline. Small, medium, large.

Chemise gown in flapper frill permanent pleats. Small, medium, large.

Strawberry Shortcake Group with appliqued queen-size berries. (Look! on's a pocket)

Newark DEPARTMENT Store

Newark Shopping Center

Open Wed., Fri. 9-9

SEE WHY MORE PEOPLE

SHOP ACME

for **GREATER**

FOOD VALUES!

Last 3 Days! Stock Up in Acme's Big

DOLLAR SALE

TOMATO JUICE	Ideal Fancy	4	46-oz cans	\$1
APPLE SAUCE	Glenside Prepared	8	16-oz cans	\$1
HAWAIIAN PUNCH	or Golden	3	46-oz cans	\$1
STAR-KIST TUNA	Solid Pack	3	7-oz cans	\$1
GLENWOOD JELLIES		5	12-oz gals	\$1
PORK & BEANS	Ideal Brand	9	16-oz cans	\$1
TOMATO SOUP	Ideal Cond.	11	cans	\$1
FARMDALE PEAS		8	17-oz cans	\$1
WHITE POTATOES	Ideal or Phillip's	10	16-oz cans	\$1
KIDNEY BEANS	Ideal Red	8	16-oz cans	\$1
FRUIT JUICES	Round-the-Clock Apricot & Orange or Pineapple and Orange	3	46-oz cans	\$1
ELBERTA PEACHES	Ideal Home-Style	3	No 2 1/2 cans	\$1
TOILET TISSUE	Stallor White or Colored	9	rolls	\$1

Smaller Quantities at regular prices.



Rainy Day or Sunny,
Acme Saves You Money

Get Cash Savings PLUS S&H GREEN STAMPS



You Never Had It So Fresh!
FARMDALE BREAD

Dated and sealed for your protection
1 1/2 lb loaf **17c**

HOME-STYLE BREAD 1 1/2 lb loaf **24c**

Reg. 39c Virginia Lee Louisiana Rings **ea 35c**

Acme Frozen Food Savings IDEAL SLICED

STRAWBERRIES

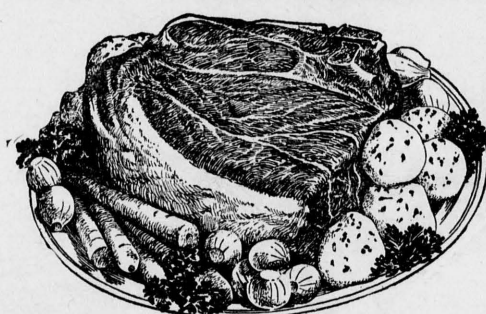
4 10-oz pkgs **89c**

Ideal Fancy

CALIF. PEAS 2 10-oz pkgs **29c**

Seabrook Farms

BUTTER BEANS 2 10-oz pkgs **49c**



Buy Quality -- Lancaster Meat is a Treat to Eat
LANCASTER BRAND TENDER U. S. CHOICE BEEF

POT ROAST

Lancaster Brand lb **59c**

LEAN SLICED BACON lb **59c**

Famous Lancaster Ready-to-Eat

SHANKLESS CUT --

BUTT CUT --

HAMS lb **54c** lb **64c**

FRYING CHICKENS Pan-Ready lb **35c**

Armour's Star Canned, Boneless, Ready-to-Eat Picnics 5 lb can **\$3.39**

FANCY BACK-FIN LUMP CRAB MEAT Extra Special! **\$1.59**

FRESH MADE ASSORTED Lancaster Salads 1 lb plastic cup **33c**

YOU NEVER HAD IT SO FRESH!

FANCY SELECTED SLICING



TOMATOES ctn **25c**

Extra Fancy Hot House Tomatoes lb **45c**

LEMONS Juicy Calif. Sunkist doz **29c**

CRISP RADISHES

SPRING ONIONS

FRESH CUCUMBERS

Your Choice
3 for **19c**

Prices effective thru Sat., May 24, 1958. Quantity rights.

SAVE 2 WAYS...CASH SAVINGS + S&H GREEN STAMPS

NEWARK SHOPPING CENTER

-ACRES OF PARKING-

ABOVE PRICES EFFECTIVE AT ALL ACME MARKETS ON THE EASTERN SHORE

PARK 'N' SHOP CENTER

263 ELKTON ROAD

Fertilize Now With

5-10-5 PLANT FOOD 50 lb bag **\$1.39**

25 lb bag **79c**

TASTY LONGHORN CHEESE

Special! lb **49c**

America's Prize-Winning

Loella Butter

Get the best. (1/4's) lb **69c**

SUNNYDELL

ICE CREAM

Holiday Special! 1/2 gal ctn **79c**

Va. Lee Luxury

NYLONS 2 pr bx **\$1.29**

Tanglewood

... brings you more from LIFE—to offer the greatest home buy in Delaware

From the very first glance you'll see these homes are bigger and better in every way; you'll sense the elegance and joyous flair for living which the clever design and 8 spacious rooms provide. Best of all — all the best of today's building products as featured in LIFE magazine highlight these Tanglewood homes . . . your assurance of superior quality, unmatched anywhere in the state.

Last week more than 15,000 people acclaimed the value!
They all agree . . .

Life is GREAT in the TANGLEWOOD eight!

THE MOST TREMENDOUS VALUE DELAWARE HAS EVER KNOWN!

Tanglewood's exciting new models built with these great LIFE advertised products, offer 1958's most spectacular value—priced thousands of dollars under today's market.

★ CRANE

bathroom and kitchen fixtures, water heater and forced air furnace.

★ GENERAL ELECTRIC

garbage disposals.

★ CHASE

copper tube plumbing.

★ KENTILE

asphalt tile flooring.

★ PONDEROSA PINE

woodwork trim.

★ OWENS-CORNING

fiberglass appliance insulation, foundation insulation and air filters.

★ REYNOLDS

aluminum windows and building materials.

★ JOHNS-MANVILLE

spintex insulation, asphalt shingles, colorbestos sidewalls, asbestos flexboard, transite pipe water mains.

★ A.G.A. APPROVED

(American Gas Association) forced air furnaces, water heaters and built-in gas ranges and ovens.



Tanglewood

ROUTE 273 AT HARMONY RD., NEWARK, DELAWARE



Featuring Products
ADVERTISED IN
LIFE

8 ROOMS — 1½ BATHS — GARAGE
\$390 DOWN
NO SETTLEMENT COSTS

\$83 Monthly Pays All
30 year FHA Mortgages
\$12,590

NOTE: Our monthly payments include everything — principal, interest, taxes and insurance. Don't be fooled by those that only tell half the story when advertising monthly payments.

HOME BUILDERS ASSOCIATION OF DELAWARE

Tanglewood is everything you could hope for . . . and lots more—from the handsomely paneled recreation room, the spacious picture windowed living room, the convenience of the automatic kitchen, and the roominess of the 4 bedrooms—these 8-room, 1½-bath split-levels set a new standard for comfort and convenience.

Each Tanglewood home has an abundance of wide views. Each is well spaced from its neighbor . . . giving the impression of a village countryside rather than hemmed-in homes.

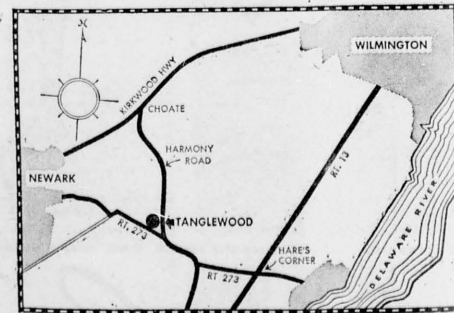
Tanglewood homes can't be beat for value . . . each is built and equipped with the materials and products which have earned the confidence of the millions of Americans who read LIFE magazine.

TRULY! Tanglewood lives up to your dreams and down to your budget

DIRECTIONS

From Newark: Drive east on Rt. 273 to TANGLEWOOD.

From Wilmington: Route 13 to Hare's Corner. Turn right on Rt. 273 and stay on 273 to TANGLEWOOD. Or, drive toward Newark on Kirkwood Highway. Turn left on Harmony Rd. and follow signs to TANGLEWOOD.



MODEL HOME OPEN DAILY AND SUNDAY, 10 A.M. TO 9 P.M.

Exclusive Sales Agents **YOUNG & WILLIAMS** 92 East Main Street, Newark, Delaware

THE

Founde

Publis

Loc

Legal

In Men

R. T. WARE
WM. H. WAGG

Entered as second
class, May 22, 1958.
The subscription
price in advance.
Single copies 10c.

Ne

Cham

Ne

Cham

Cham

Cham

Cham

Cham

Cham

Cham

Cham

Cham

Cham

Cham

Cham

Cham

Cham

Cham

Cham

Cham

Cham

Cham

Cham

Cham

Cham

Cham

Cham

Cham

Cham

Cham

Cham

Cham

Cham

Cham

Cham

Cham

Cham

Cham

Cham

Cham

Cham

Cham

Cham

Cham

Cham

Cham

Cham

Cham

Cham

Cham

Cham

Cham

Cham

Cham

Cham

Cham

Cham

Cham

Cham

Cham

Cham

Cham

Cham

Cham

Cham

Cham

Cham

Cham

Cham

Cham

Cham

Cham

Cham

Cham

Cham

Cham

Cham

Cham

Cham

Cham

Cham

Cham

THE NEWARK POST

Founded January 26, 1910, by the late Everett C. Johnson

An Independent Newspaper
Published Every Thursday by The Newark Post, Inc.
14-16 Thompson Lane, Newark, Delaware
Locally and Independently Owned and Operated

Legal and Display Advertising rates furnished on request.
In Memoriam and Cards of Thanks 7 cents per agate line.

PUBLISHER
H. WAGGAMAN, JR.
EDITOR
W. H. WAGGAMAN, JR.

Entered as second class matter, March 10, 1910, at the Postoffice at Newark, Delaware, under the Act of March 3, 1879.

The subscription price of this paper in the United States is \$2.00 per year in advance. Canadian and Foreign subscriptions \$3.00 per year in advance. Single copies 5 cents. Make all checks payable to The Newark Post.

NATIONAL EDITORIAL
ASSOCIATION
SUSTAINING MEMBER

Newark, Delaware, Thursday, May 22, 1958

MEMORIAL DAY



WE HONOR THEIR MEMORY

Not long after the end of the Civil War, the women of the North began visiting the graves of the soldier dead in their communities and decorating them with the first flowers of spring. Many Northern soldiers had been buried where they fell, and the Southern women placed memorial bouquets and wreaths on their graves as well as upon those of the troops of the Confederacy.

It was not until May 30, 1868, however, that Memorial Day became a formal observance, under the auspices of the Grand Army of the Republic, organization of the Union veterans. Over the years, the day has become one for the honoring of all of America's military dead.

And Newark will pay special tribute to its war heroes this Sunday. They are not forgotten!

Activities Groups for St. Michael's of C. Appointed

The St. Michael's Knights of Columbus Council has announced formation of six activities groups:

Praternal activities, L. Kainz, chairman; W. Barbazette, T. Guyer, J. Kowal, J. McNelis, C. Moore, and J. Palko; Catholic activities, R. Mahoney, chairman; Grant, A. Lowell, J. Murphy, and J. J. Palko; council activities, P. Keatney, chairman; S. Barczewski, Jr., chairman; S. deCourcy, Jr., B. Freese, G. Kochins, C. Markwood, W. Slesinski, P. Price, and L. Steslow.

Public relations, R. Gorski, chairman; E. Derby, and F. Sczubele; youth activities, A. O'Neill, chairman; E. Biniewicz, T. Cowan, W. J. McCormack, E. Repetti, S. Sullardo, and F. Stanitski; membership insurance, A. Tibbetts.

chairman; J. Carr, C. Erickson, L. Kainz, G. McDermott, and R. Quinn.

GEORGE E. MOLITOR
Painting
Floor Sanding & Refinishing
Interior - Exterior
PHONE ELKTON 1128-R

**Claudius, Nichols Win
Brookside Bridge Play**
Carl Claudius and James Nichols won first place in recent Brookside Duplicate Bridge Club play, while Carl Kaufmann and Mrs. Virginia Mayer won second place honors.

Edward Knight and William Pemberton finished in third place, and Harry Long and Earl Stiner won fourth place laurels.

The final session of the summer season will be conducted next Monday, Mrs. Herbert Hartman reports.

Wesley Mennonite Chapel

Route 896 N.W. of Newark, Del.

SUNDAY SCHOOL—10 a.m. MORNING WORSHIP—11 a.m.
EVENING SERVICES—First Sunday of each month—7:30 p.m.

Pastor Herman N. Glick, Atglen, Pa.
Phone LY 3-5757

Worship The Risen Lord

OUR
REDEEMER
(Mo. Synod)



ST.
PAUL'S
(ULCA)

LUTHERAN CHURCHES

Sunday School . . . 9:15
Holy Communion . . . 10:30
Augusta & Malvern Rd.
CHESTNUT HILL ESTATES

Sunday School . . . 9:30
The Service . . . 8:30
Masonic Temple
EAST DELAWARE AVENUE

**USED
SINGER
SEWING MACHINES**

SALE

LOW DOWN PAYMENT
BUDGET TERMS

PRICES START AT

\$ 4.95 for TREADLES
\$ 9.95 for ELECTRIC PORTABLES
\$14.95 for CABINET MODELS

FOR TOPS IN TV—See SINGER 4-Star Playhouse

A Trade Mark of THE SINGER MFG. CO.

SINGER SEWING CENTER
Listed in your telephone book only under SINGER SEWING MACHINES CO.

Newark Shopping Center EN 8-4451



Jantzen ultra vibrant rays 12.95

We think the sun rises and sets in this gay knit swim suit! Mad, bold strokes of pink and red running up and down to narrow the figure (and foam bra shaping to fill it out). Striking stripes and a stunning, sunning low back. See this "Gay 90's" cotton knit, featured in Life Magazine, 12.95. Fashion revolution — matching waterproof swim cap 4.98.

**Newark
DEPARTMENT
Store**
Newark Shopping Center

Delaware H. Gregg Funeral Services Conducted Monday

Funeral services for Delaware H. Gregg, 89, a retired machinist of the Continental Diamond Fibre Company of Newark, were held Monday at 2 p.m. in the R. T. Jones Funeral Home, with interment in Newark Cemetery.

Mr. Gregg died last Friday in the Memorial Hospital, where he had been a patient for two weeks.

Born in Maryland on Feb. 10, 1869, he came to Delaware as a young man and had lived in the Newark vicinity for about 50 years. Since the death of his wife, Mrs. Leonora Gregg, in February, 1957, he had made his home with a son, Joseph H. Gregg, 33 Continental Street, Newark.

Mr. Gregg was a lifelong Democrat and belonged to several lodges. In addition to his son, Joseph, he is survived by another son, Otis H. Gregg, also of Newark; a daughter, Mrs. Lillian Null, Providence, Md.; a half-brother, Bayard Perry, Wilmington; a half-sister, Mrs. Eva Wallaston, Los Angeles; four grandchildren, and two great-grandchildren.

Former Resident Otto E. Thomas Dies On May 10

Otto E. Thomas, 66, of Falls, Pa., a former resident of Newark, died May 10, following a fall while visiting his nephew in Wilmington.

The son of the late Mr. and Mrs. Jacob Thomas, he attended school in Newark, was a member of the Class of 1912 at the University of Delaware, and studied art in Cologne, Germany.

Mr. Thomas had been associated with his father for many years in the manufacture of wallpaper at the Jacob Thomas Wallpaper Company until the plant in Newark was destroyed by fire in 1918.

In recent years, he operated a restaurant and tourist court, was justice of the peace at Falls, and tax collector for Exeter Township, Pennsylvania.

He is survived by a nephew, Richard J. Thomas of Wilmington, and a niece, Mrs. George C. Price, of Newark. His wife died in 1956.

Services were held May 14 at the Ray W. Greenwood Memorial Chapel in Tunkhannock, Pa., with interment in Mountain View Cemetery at Falls.

Newark Co-Eds Honored As Dormitory Leaders

Two Newark co-eds have been elected as dormitory leaders at the University of Delaware.

Winnie Hall, daughter of Mr. and Mrs. R. C. Hall was named honor court chairman of Smyth Hall, and Norma Gray, daughter of Mr. and Mrs. Thomas Gray, has been named to the honor court for Kent Hall.

STATE OF DELAWARE
OFFICE OF SECRETARY OF STATE
CERTIFICATE OF DISSOLUTION
To All To Whom These Presents May Come, Greeting:

WHEREAS, it appears to my satisfaction by a duly authenticated certificate certifying that the dissolution of TACNA THEATRE COMPANY, a Delaware corporation whose principal office is located at No. 100 West Tenth Street, of the City of Wilmington has been authorized in accordance with the provisions of Section 275 of the General Corporation Law of Delaware, (Chapter 1, Title 8, Delaware Code), as amended, which certificate has been executed, sealed and acknowledged in accordance with the provisions of said Section 275.

Now, therefore, I, JOHN N. McDOWELL, Secretary of State of the State of Delaware, do hereby certify that the said corporation did on the sixteenth day of May, 1958, file in this office a Certificate of Dissolution, duly executed, sealed and acknowledged, which certificate is now on file in my office as provided by law.

IN TESTIMONY WHEREOF, I have hereunto set my hand and official seal, at Dover, this sixteenth day of May, 1958.

(OFFICIAL SEAL)
JOHN N. McDOWELL,
Secretary of State
M. D. TOMLINSON,
Asst. Secretary of State

May 22

Tupin Named President Of St. Paul Brotherhood

Parker E. Tupin of Silverbrook was elected president of the Bro-

therhood of St. Paul's Lutheran Church Monday night, while other officers include Edward J. Richter, vice president; Charles Baker, secretary, and William Burke, treasurer.

INFANTRYMAN
Private George C. Saylor, son of Mr. and Mrs. George I. Saylor, Newark, has been assigned to Fort Jackson, S. C., for his basic infantry training.

BOULDEN BROS. KIDS

JUST LIFT THE 'PHONE
AND GIVE A YELL!
WE'LL SERVE YOU ALL,
WE'LL SERVE YOU WELL



Phone EN 8-1303 and see how convenient and economical our fuel oil service is. It relieves you of all troubles and assures all-weather comfort.

BOULDEN BROS.
FUEL OIL
KEROSENE
540 BARKSDALE RD.
NEWARK, DELAWARE

During The Months of
JUNE - JULY - AUGUST

Our Service Department
Will Close on Saturdays

THERE WILL BE SALES AND PARTS SERVICE
FROM 8 TO 12 ON SATURDAYS DURING THESE
MONTHS.

RITTENHOSE MOTOR CO.

120-128 Academy St.

Phone EN 8-4381

LET'S ALL GO TO THE . . .
GIGANTIC JAYCEES'

ALL NEXT WEEK

STARTING MONDAY, MAY 26

ENDING SATURDAY, MAY 31

Sponsored by Newark Jr. Chamber of Commerce

CARNIVAL GROUNDS AT MAYER FARM, Newark — Elkton Road
Introducing — VIRGINIA GREATER SHOWS

One of America's large traveling Carnival-Midways and featuring the most desired form of family carnival entertainment. Clean Fun for Everyone!
10 RIDES including 4 children's rides. Pleasing and entertaining tent side shows . . . Plenty of prize-winning games for everyone.
SHOW'S MIDWAY opens at Noon, Memorial Day, May 30th. Plenty of free parking space at the carnival grounds for the family. On Saturday from 1 to 5 p.m. a special children's bargain 10c Matinee on all rides and tent shows will be held.



OAKLANDS



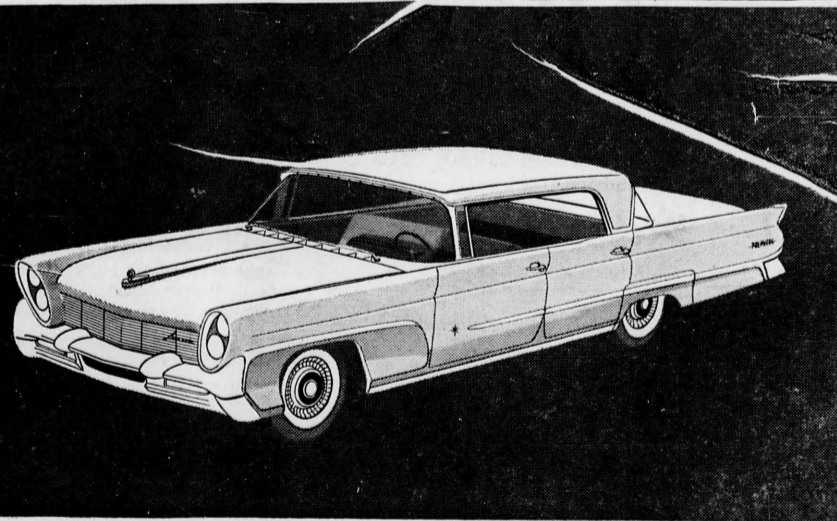
Custom-Built

**HOMES
for
YOU**

Call
8-8315
for Information

HUGH F. GALLAGHER, Jr.

Developer and Builder



THE NEW LINCOLN

Unprecedented acclaim! The approval that has greeted the Continental Mark III and the new Lincolns for 1958 is truly without precedent. Because they will never be produced in numbers that will make them commonplace, an early inquiry is suggested.

Don't miss the big television hit, "THE ED SULLIVAN SHOW," Sunday evening, 9:00 to 9:30, Station WCAU, Channel 10

TOM LAWRIE MOTORS INC.

164 E. MAIN STREET

PHONE EN 8-8751

Six

PERSONALS

Miss Dora Gibb, president of J. A. O'Daniel Unit No. 10, Mrs.

H. DuVal Cleaves and Mrs. Conrad Lewis attended the Department of Delaware, American Legion executive meeting held on Saturday at Elsmere, Delaware.

Mrs. J. Harvey Dickey of 240 South College Avenue will be the guest of Mr. and Mrs. George Ehinger in Dover, May 26 and 27. Mrs. Dickey will attend the Delaware State Federation meetings as Community affairs chairman.

Mr. Richardson Hodgson served as best man at the wedding on Saturday, May 10, of Miss Joan Alice Case of Middletown and Mr. John Francis Rybak, US Air Force in the Chapel of the Dover Air Force Base.

Miss N. Jane Milliken served as a bridesmaid on Saturday at the wedding of Miss Roberta Ann Bebout and Mr. Alfred H. Burns, in the McCabe Memorial Methodist Church, Wilmington.

Mr. and Mrs. Frank H. Balling of Arlington, Va., former residents of Newark are spending some time with their son Frank Jr., and family in Vestal, N. Y., before sailing to Bermuda for a brief holiday.

The committees in charge are as follows: Chairwomen — Mrs. Raymond Benson, Mrs. Alice Hammell, and Mrs. John Murray; Publicity — Mrs. John Murray and Mr. Thomas Davis, Jr.; Decorations — Mrs. David Eastburn; Hosts — Mrs. David Eastburn, Mrs. Willard Johnston, Mrs. John Peach; Supper Committee — Mrs. Benson, Mrs. Hammell, Mrs. Elizabeth Brown, Mrs. Ernest Reed, Mrs. Ralph Larson and Mrs. Paul Lynam.

Cake, Candy and Fancy Table — Miss Elizabeth Brown, Mrs. Howard Bradley, Mrs. Maskie Johnston, Mrs. William Victor and Mrs. Elmer Galaher; Ice Cream — Mr. Raymond Benson, Mr. Pusey McCormick and Mr. Clifford Lynam; Table Hostess — Miss Henrietta Brown, Mrs. Paul Peach, Mrs. Ernest Reed, Mrs.

The wedding of Miss Barbara Ann Oberholtzer, daughter of Mr. and Mrs. C. M. Oberholtzer of 37 Madison Drive, College Park, Newark, and Mr. Rodney Reed, son of the late Mr. and Mrs. Allan P. Reed of Newark, took place recently in St. Paul's United Church of Christ, Lancaster, Pa. Mr. George Reed, served as an usher.

The bride, a graduate of McCaskey High School, Lancaster, is secretary to the dean of women at the University of Delaware. Mr. Reed was graduated from Newark High School and is employed at the General Motors Assembly Plant on Boxwood Road.

The Misses M. Katherine Steel, Florence L. Steel and Helen L. Steel spent last week at the Washington Hotel, Washington, D. C., visiting many places of interest and welcome the return of Vice-President and Mrs. Nixon. They also visited the Mayflower now anchored in the Washington Channel. Mrs. H. DuVal Cleaves will head the Girls' State Sessions at Wesley Thomas Davis, Mrs. William Grieg, Miss Hazel Johnston and Miss Romney McCormick.

Licensed ELECTRICAL CONTRACTOR All Kinds of Work LEON A. POTTS 281 E. Main EN 8-4381

FAST APPLIANCE SERVICE

By Expert Mechanics
IN RADIO CONTROLLED TRUCKS

Washers Dryers Electric Stoves Electric Water Heaters Garbage Disposals Dishwashers Refrigerators Commercial Refrigeration Freezers Air Conditioners Milk Coolers Store Refrigeration

Commercial Refrigeration & Carrier Air Conditioning Sales
HARVEY REFRIGERATION CO.
27 Tyre Ave. Newark, Del.
PHONE ENDICOTT 8-8579

Love

that

M&M!



It's just wonderful to know that my family's winter clothing is safe in M&M's storage vaults, the most modern and efficient in Delaware! Our furs and woens are completely protected against heat and dust, and insured against moths, fire and theft!

FREE!

S&H

GREEN STAMPS!

Don't wait... the cost is so little... bring them now, or call EN 8-2249.



M & M DRIVE-IN CLEANERS
11 N. CHAPEL ST.
SHIRT LAUNDRY • STORAGE VAULT

IT WILL PAY YOU TO CHECK NATIONWIDE LIFE INSURANCE FIRST
For Full details—No obligation—Call—or drop a card

R. S. JARMON 14 KILLS AVE. EN 8-2232
HARRY B. CRISSMAN 424 S. COLLEGE AVE. EN 8-3685

NATIONWIDE LIFE INSURANCE COMPANY
HOME OFFICE • COLUMBUS, OHIO

Your Health Is First
Your NEIGHBORS PHARMACIES provide prompt prescription service by a staff of carefully trained, skilled pharmacists working with the best in modern drugs. "Your Health is First" at NEIGHBORS. Stop in at either of NEIGHBORS two drug stores—at 72 East Main, or at the Park 'N' Shop on Elkton Road—for prescriptions, sundries, and modern soda fountain service.
NEIGHBORS PHARMACIES
Our Experience is Your Protection
EN 8-4444 EN 8-2213
ELKTON ROAD 72 E. MAIN

HANBY, PATTERSON & SCHWARTZ Offers

SCENIC VIEW — 3-Bedroom ranch, 2.6 acres. So many features and fine appointments throughout 28 OLD OAK ROAD — \$16,500. Center entrance hall, separate dining room, bedrooms, country HUNGALOW—Garden—er's delight. Living room 14x16; kitchen 9x12; 2-bedrooms—\$9,500. PROSPECT AVE. — Double property. Rent one side, live in other. LUMBROOK RD. — Near bus line. 2-bedrooms, dining room, aluminum storm sash and screen, new awnings, range. NOTTINGHAM RD. — 4 b.r., 2½ baths, split level, new. 141 TOWNSEND ROAD — 4 b.r. ranch, basement, corner lot. 36 PARK DR. — 3 b.r. split level, den, patio. Four bedroom potential. 5 ACRES — 3 b.r. 1½ bath, home, 3-car garage, \$18,500. 21 LAUREL AVE. — 1½ story, 3 b.r., den, basement. 24 N. CHAPEL ST. — 3 bedrooms, plus 3rd floor. 73 E. CLEVELAND AVE. — Det. 3 b.r., oil h. w. heat. 326 ORCHARD ROAD — 3 bedrooms, 1½ baths, extra room off kitchen, full basement. 728 ACADEMY STREET — Detached two-story, \$7,000. CHESTNUT HILL ESTATES: 15 E. Stephen Dr. \$17,750 3019 Ogletown Rd. 13,975 2 Roberts Rd. 13,500 5 Malvern Dr. 13,500 BROOKSIDE: 11 Kress Rd. 11,300 56 Chaucer Dr. 11,600 11 Kensington La. 16,000 16 McCord Dr. 14,900 7 Morris Lane. 16,500 COLLEGE PARK 138 Madison Dr. \$10,200 43 Madison Dr. \$ 9,500 Easy Financing as Low as \$300.00 Including Settlement.
CALL US TODAY EN 8-8748
HANBY, PATTERSON & SCHWARTZ
—REALTORS—
71 E. MAIN
Newark, Del.

Newark Plumbing Heating Supply Co

Chas. S. W. Buchanan, Pres.
RESIDENTIAL — INDUSTRIAL
PLUMBING SUPPLIES
East Cleveland Ave.
Phone EN 8-3345



BROOKSIDE SHOPPING CENTER — 55 MARROWS ROAD
Thursday 'til 9 — Fri. 'til 10 — Sat. 8 to 6

Farmer Gray Fresh-Killed Gov't Grade 'A' Whole or Split

BROILING CHICKENS 35¢ lb.

P.S.G. Top Quality Boneless Top
ROUND STEAK lb. 89¢

Golden Star White or Rainbow
FACIAL TISSUES . . 3 boxes of 400 49¢

Hunt's
TOMATO PASTE . . 3 6-oz. cans 23¢

Marianni Fresh Frozen Sliced
STRAWBERRIES . . 3 10-oz. pkgs. 49¢

Fancy Domestic "Chock Full O' Holes"
SWISS CHEESE In the Piece lb. 49¢

Tasty
LIVERWURST In the Piece lb. 49¢

New Crop U. S. No. 1 Florida White
POTATOES "B" Size 5 lb. bag 25¢

Genuine South African Rock
LOBSTER TAILS Reg. \$1.39 per lb. lb. \$1.09

F.R.E.S.H. Luscious, Sweet Eating California
STRAWBERRIES pint box 23¢

See The
MUMMERS SUMMER SPECTACLE
FRIDAY, JUNE 6th (RAIN DATE, JUNE 13th) at PHILADELPHIA MUNICIPAL STADIUM—SHOW TIME IS 8:30 P.M.

REG. \$1.50
TICKETS for **50¢ ONLY AT FOOD FAIR**

Food Fair Stores are exclusive agents for tickets. Tickets will be on sale at Food Fair through June 4, after that date will be available at Municipal Stadium for \$1.50. Show is for the benefit of Mummars Welfare Fund.

YOUR CHOICE FREE! FOR ONLY ONE BOOK of MERCHANTS GREEN STAMPS
★ Thermos Jug ★ Picnic Basket ★ Picnic Grill

Now at Merchants Green Stamp Redemption Centers

Take the wheel... get the Swept-Wing feel!



You spend a lot of time in your car—driving to work, shopping, taking trips. How your car rates on the road is important to you. So all we ask before you invest in a new car is this: Come in and take a "road rate" drive in a Swept-Wing 58

Dodge. Really compare it thoroughly on every count. We honestly believe it rides better, handles easier, responds quicker than any other car you've ever driven. But we'll leave the verdict entirely up to you. You be the judge.

YOU BE THE JUDGE! THINGS TO NOTICE IN THE SWEPT-WING 58:

The feel behind the wheel—You feel different because you sit differently. Low and snug and secure, completely in control, almost a part of the car.

The view around you—The glass area is tremendous. The visibility is outstanding in every direction—front, sides, rear.

The ease of push-button driving—Once you try Dodge Push-Button TorqueFlite you'll never be happy with outmoded lever types. Ladies love it.

A ride that's a glide—There's no sway on curves, no dip at stops. Torsion-Air is standard equipment, too.

This power steering is different—No power steering is like Dodge power steering. It works full time, yet leaves you the feel of the road.

Horsepower and stopping power—You get up to 320 hp. You get new-design Total-Contact Brakes.

SWEPT-WING 58

Dodge

RITTENHOUSE MOTOR COMPANY

120-128 ACADEMY ST., NEWARK

PHONE EN 8-4381

Social Events

KELLY-PRICKETT

The marriage of Miss George C. Kelly and Mr. Robert C. Prickett, son of Mr. and Mrs. George H. Prickett, was celebrated at the home of the bride's parents, Mr. and Mrs. George H. Prickett, 100 Tanglewood Lane, Newark, on Wednesday, May 21, 1958. The ceremony was performed by the Rev. Charles Gormley, pastor of the Episcopal Church of the Holy Trinity, Newark. The bride wore a gown designed by the famous fashion designer, Vera Wang. The wedding party consisted of the bride, groom, best man, maid of honor, bridesmaids, flower girls, ring bearers, and ushers. The reception was held at the home of the bride's parents. The couple will reside at 100 Tanglewood Lane, Newark.

NOCTON-HANEY

The marriage of Miss Jane Catherine Nocton and Mr. Alton Pyle Haney, took place on April 26, in St. Patrick's Church, Norristown, Pa., with the Rev. Charles Gormley performing the ceremony.

Mrs. Haney is the daughter of Mr. and Mrs. Gerald R. Nocton of Norristown and Mr. Haney is the son of Mr. and Mrs. George M. Haney of Newark.

A reception at the General De Kaib Inn followed the ceremony. The couple have returned from a wedding trip through the Southern States and are residing in Norristown where Mr. Haney is associated with the Continental Diamond Fibre Corporation.

Mr. Robert C. Prickett, son of Mr. and Mrs. Cavett O. Prickett, 100 Tanglewood Lane, Newark.

CHANDLER-BROWN

The marriage of Miss Dolores L. Chandler, daughter of Mr. and Mrs. Pike, Woodcrest of 1213 Newport Pike, Woodcrest and Mr. Joseph M. Brown, Jr., son of Mr. and Mrs. Joseph M. Brown, Sr., of 297 West Main Street, Newark will take place Saturday afternoon, May 31, at 2 o'clock in the Newport Methodist Church.

Rev. Richard M. Green, pastor of the Newport Methodist Church, will perform the ceremony assisted by the Rev. Willard Robinson, Jr., pastor of the Ebenezer Methodist Church, near Newark. Mrs. Florence Seely will play the wedding music and accompany Dr. Carl Schweitzer, soloist.

The bride, who will be given in marriage by her father, will have Mrs. Ronald Boyce of Newport as matron of honor and her bridesmaids will be Miss Elaine George of Georgetown, Md., cousin of the bride and Miss Joan Brown of Newark, sister of the groom.

Mr. Donald Knauss of Martinsburg, W. Va., will be best man and Mr. Joseph E. McCormick and Mr. Barry Norton, cousin of the groom, both of Newark, will be ushers.

A reception will follow in the Gold Ballroom, Hotel DuPont. Miss Chandler is a graduate of the Henry C. Conrad High School and is presently employed by the Elastomers Department of the DuPont Company. She has been organist at the Ebenezer Methodist Church.

Instruction

WORK FOR U.S. GOV'T - Men - Women, 18 to 50. Prepare now for coming Civil Service Exams. For information, write: Box 90, Ext. 10, Newark, N.J. 07102. 5-8-10tc

Found

A BETTER WAY TO WASH YOUR CLOTHES - Use a new Electric Automatic Washer from Newark Electric. Price \$179.95 with trade. 2-9-5tc

Wanted

1000 BUGS TO CLEAN - Geo. F. Lang Co., Rug Cleaners, 407 N. Adams St. Phone Wilmington OL 5-1533. 5-20-5tc

BABY SITTING

IN MY HOME - Chestnut Hill Estates, EN 8-6445. 4-3-9tc

SMALL RADIOS

As charity gifts for hospital patients. Call Bill Durham, EN 8-1691. 4-17-5tc

LAWNS TO MOW

Cars and windows to wash. Other jobs around Brookside. EN 8-7652. 5-22-1tp

Instruction

WORK FOR U.S. GOV'T - Men - Women, 18 to 50. Prepare now for coming Civil Service Exams. For information, write: Box 90, Ext. 10, Newark, N.J. 07102. 5-8-10tc

Found

A BETTER WAY TO WASH YOUR CLOTHES - Use a new Electric Automatic Washer from Newark Electric. Price \$179.95 with trade. 2-9-5tc

Wanted

1000 BUGS TO CLEAN - Geo. F. Lang Co., Rug Cleaners, 407 N. Adams St. Phone Wilmington OL 5-1533. 5-20-5tc

BABY SITTING

IN MY HOME - Chestnut Hill Estates, EN 8-6445. 4-3-9tc

SMALL RADIOS

As charity gifts for hospital patients. Call Bill Durham, EN 8-1691. 4-17-5tc

LAWNS TO MOW

Cars and windows to wash. Other jobs around Brookside. EN 8-7652. 5-22-1tp

LADY DESIRES RIDE

to Brookside and return. 8:30-5:30 p.m. EN 8-3554. 5-22-1tp

ATTRACTIVELY FURNISHED HOUSE

2 or 3 Bedrooms beginning June 1st. Can give references. Call John Roach, Elktion 1190, daytime. 5-22-2tp

Situation Wanted

BABY SITTING IN YOUR HOME - references. Phone EN 8-6382. 5-15-5tc

WILL CARE FOR CHILDREN

5 and 7 through the summer months in my home. Call EN 8-1586 after 4:30 p.m. 5-15-5tc

LICENSED CHILD CARE

Supervision by experienced women. Hour, day, weekly rates. Some transportation provided. Larged, fenced play yard. EN 8-8053. 5-22-1tp

Help Wanted

MALE - NO RECEPTION HERE! National well established financial concern has 2 openings. Newark area for two men, age 25-40, neat appearing with some sales experience. Introduce yourself to Business-Professional men. No down payments. Plenty opportunity to State or District Manager. Write Sales Manager, Box 549, Painesville, Ohio, immediately. 5-22-2tp

SALES-RESIDENTS OF

Newark and Wilmington. Adult up insurance. Superior service, affiliate of Sears, plus high starting salary. Progressive benefits program. Paid while training, profit sharing, equalize, growth company. Do you qualify? We need two aggressive salesmen. Presently residing in Newark or Wilmington. Write immediately to Allstate Insurance Co., 300 N. 17th St., Philadelphia 7, Pa., or telephone me Tuesday, 47, Allstate Ins. Co., District Service Claim Office, 104 West 24th Street, Wilmington, Del. 01. 5-22-1tp

Ruby's BEAUTY SHOP
Next to Shep's Lunch
Oglethorpe Rd., Newark, Del.
Open 6 days a week and any evening by appointment.
FOR EVENING APPOINTMENTS
CALL EN 8-3219
Before 5:00

JADEN'S FOR YOUNG FOLKS
See Our NEW
PRE-TEEN DEPT.
50 E. MAIN ST.
in NEWARK
STATE THEATRE
2 Shows 7-9 p.m.
Saturday Continuous from 2 p.m.
Sunday Eve 8 p.m.
THUR., FRI., MAY 22, 23
Clark Gable
"Teacher's Pet"
SATURDAY MAY 24
Sterling Hayden
"The Iron Sheriff"
and
Tony Martin
"Let's Be Happy"
SUN., MON., TUES.
MAY 25, 26, 27
Mario Lanza
"The Seven Hills of Rome"
WED., THUR., FRI.
MAY 28, 29, 30
Walt Disney's
"Old Yeller"
Decoration Day
Continuous From 2 P.M.

DAVIS PAINT SPECIALS
and VARNISH
OUTSIDE WHITE
Reg. \$6.93 Gal. Special \$5.28 - 2-Gal. \$9.97
CLEAR VARNISH
Reg. 67c 1/2-Pt. Special 48c - 2 for 62c
VARNISH
Reg. \$1.97 Qt. Special \$1.44 - 2 Qts. \$1.99
KEENE HARDWARE
Newark Shopping Center

WITH OR WITHOUT APPOINTMENTS
NOW OPEN FOR BUSINESS
3 Experienced Operators - All Modern Equipment
Opening Special
\$15 Lanolin
COLD WAVE
only \$10 Complete
• Cold Waves \$7.50 up
• Machineless \$7.50 up
• Shampoo Set \$1.75
• Male Barbers

BROOKSIDE BEAUTY SHOPPE
BROOKSIDE SHOPPING CENTER
Open Mon. thru Fri. - 9 'til 8; Sat. 9 to 5 Phone EN 8-1741

SHARRAH'S
Call for Free Estimate
EN 8-3624
157 E. Main
Vast selection of
fabrics for
Homes, Offices,
Banks, Hotels,
and Showrooms

DAVIS PAINT SPECIALS
and VARNISH
OUTSIDE WHITE
Reg. \$6.93 Gal. Special \$5.28 - 2-Gal. \$9.97
CLEAR VARNISH
Reg. 67c 1/2-Pt. Special 48c - 2 for 62c
VARNISH
Reg. \$1.97 Qt. Special \$1.44 - 2 Qts. \$1.99
KEENE HARDWARE
Newark Shopping Center

DAVIS PAINT SPECIALS
and VARNISH
OUTSIDE WHITE
Reg. \$6.93 Gal. Special \$5.28 - 2-Gal. \$9.97
CLEAR VARNISH
Reg. 67c 1/2-Pt. Special 48c - 2 for 62c
VARNISH
Reg. \$1.97 Qt. Special \$1.44 - 2 Qts. \$1.99
KEENE HARDWARE
Newark Shopping Center

DAVIS PAINT SPECIALS
and VARNISH
OUTSIDE WHITE
Reg. \$6.93 Gal. Special \$5.28 - 2-Gal. \$9.97
CLEAR VARNISH
Reg. 67c 1/2-Pt. Special 48c - 2 for 62c
VARNISH
Reg. \$1.97 Qt. Special \$1.44 - 2 Qts. \$1.99
KEENE HARDWARE
Newark Shopping Center

DAVIS PAINT SPECIALS
and VARNISH
OUTSIDE WHITE
Reg. \$6.93 Gal. Special \$5.28 - 2-Gal. \$9.97
CLEAR VARNISH
Reg. 67c 1/2-Pt. Special 48c - 2 for 62c
VARNISH
Reg. \$1.97 Qt. Special \$1.44 - 2 Qts. \$1.99
KEENE HARDWARE
Newark Shopping Center

DAVIS PAINT SPECIALS
and VARNISH
OUTSIDE WHITE
Reg. \$6.93 Gal. Special \$5.28 - 2-Gal. \$9.97
CLEAR VARNISH
Reg. 67c 1/2-Pt. Special 48c - 2 for 62c
VARNISH
Reg. \$1.97 Qt. Special \$1.44 - 2 Qts. \$1.99
KEENE HARDWARE
Newark Shopping Center

DAVIS PAINT SPECIALS
and VARNISH
OUTSIDE WHITE
Reg. \$6.93 Gal. Special \$5.28 - 2-Gal. \$9.97
CLEAR VARNISH
Reg. 67c 1/2-Pt. Special 48c - 2 for 62c
VARNISH
Reg. \$1.97 Qt. Special \$1.44 - 2 Qts. \$1.99
KEENE HARDWARE
Newark Shopping Center

DAVIS PAINT SPECIALS
and VARNISH
OUTSIDE WHITE
Reg. \$6.93 Gal. Special \$5.28 - 2-Gal. \$9.97
CLEAR VARNISH
Reg. 67c 1/2-Pt. Special 48c - 2 for 62c
VARNISH
Reg. \$1.97 Qt. Special \$1.44 - 2 Qts. \$1.99
KEENE HARDWARE
Newark Shopping Center

DAVIS PAINT SPECIALS
and VARNISH
OUTSIDE WHITE
Reg. \$6.93 Gal. Special \$5.28 - 2-Gal. \$9.97
CLEAR VARNISH
Reg. 67c 1/2-Pt. Special 48c - 2 for 62c
VARNISH
Reg. \$1.97 Qt. Special \$1.44 - 2 Qts. \$1.99
KEENE HARDWARE
Newark Shopping Center

DAVIS PAINT SPECIALS
and VARNISH
OUTSIDE WHITE
Reg. \$6.93 Gal. Special \$5.28 - 2-Gal. \$9.97
CLEAR VARNISH
Reg. 67c 1/2-Pt. Special 48c - 2 for 62c
VARNISH
Reg. \$1.97 Qt. Special \$1.44 - 2 Qts. \$1.99
KEENE HARDWARE
Newark Shopping Center

DAVIS PAINT SPECIALS
and VARNISH
OUTSIDE WHITE
Reg. \$6.93 Gal. Special \$5.28 - 2-Gal. \$9.97
CLEAR VARNISH
Reg. 67c 1/2-Pt. Special 48c - 2 for 62c
VARNISH
Reg. \$1.97 Qt. Special \$1.44 - 2 Qts. \$1.99
KEENE HARDWARE
Newark Shopping Center

DAVIS PAINT SPECIALS
and VARNISH
OUTSIDE WHITE
Reg. \$6.93 Gal. Special \$5.28 - 2-Gal. \$9.97
CLEAR VARNISH
Reg. 67c 1/2-Pt. Special 48c - 2 for 62c
VARNISH
Reg. \$1.97 Qt. Special \$1.44 - 2 Qts. \$1.99
KEENE HARDWARE
Newark Shopping Center

DAVIS PAINT SPECIALS
and VARNISH
OUTSIDE WHITE
Reg. \$6.93 Gal. Special \$5.28 - 2-Gal. \$9.97
CLEAR VARNISH
Reg. 67c 1/2-Pt. Special 48c - 2 for 62c
VARNISH
Reg. \$1.97 Qt. Special \$1.44 - 2 Qts. \$1.99
KEENE HARDWARE
Newark Shopping Center

DAVIS PAINT SPECIALS
and VARNISH
OUTSIDE WHITE
Reg. \$6.93 Gal. Special \$5.28 - 2-Gal. \$9.97
CLEAR VARNISH
Reg. 67c 1/2-Pt. Special 48c - 2 for 62c
VARNISH
Reg. \$1.97 Qt. Special \$1.44 - 2 Qts. \$1.99
KEENE HARDWARE
Newark Shopping Center

DAVIS PAINT SPECIALS
and VARNISH
OUTSIDE WHITE
Reg. \$6.93 Gal. Special \$5.28 - 2-Gal. \$9.97
CLEAR VARNISH
Reg. 67c 1/2-Pt. Special 48c - 2 for 62c
VARNISH
Reg. \$1.97 Qt. Special \$1.44 - 2 Qts. \$1.99
KEENE HARDWARE
Newark Shopping Center

DAVIS PAINT SPECIALS
and VARNISH
OUTSIDE WHITE
Reg. \$6.93 Gal. Special \$5.28 - 2-Gal. \$9.97
CLEAR VARNISH
Reg. 67c 1/2-Pt. Special 48c - 2 for 62c
VARNISH
Reg. \$1.97 Qt. Special \$1.44 - 2 Qts. \$1.99
KEENE HARDWARE
Newark Shopping Center

DAVIS PAINT SPECIALS
and VARNISH
OUTSIDE WHITE
Reg. \$6.93 Gal. Special \$5.28 - 2-Gal. \$9.97
CLEAR VARNISH
Reg. 67c 1/2-Pt. Special 48c - 2 for 62c
VARNISH
Reg. \$1.97 Qt. Special \$1.44 - 2 Qts. \$1.99
KEENE HARDWARE
Newark Shopping Center

DAVIS PAINT SPECIALS
and VARNISH
OUTSIDE WHITE
Reg. \$6.93 Gal. Special \$5.28 - 2-Gal. \$9.97
CLEAR VARNISH
Reg. 67c 1/2-Pt. Special 48c - 2 for 62c
VARNISH
Reg. \$1.97 Qt. Special \$1.44 - 2 Qts. \$1.99
KEENE HARDWARE
Newark Shopping Center

DAVIS PAINT SPECIALS
and VARNISH
OUTSIDE WHITE
Reg. \$6.93 Gal. Special \$5.28 - 2-Gal. \$9.97
CLEAR VARNISH
Reg. 67c 1/2-Pt. Special 48c - 2 for 62c
VARNISH
Reg. \$1.97 Qt. Special \$1.44 - 2 Qts. \$1.99
KEENE HARDWARE
Newark Shopping Center

Manor Park Apartments
1 & 2 Bedrooms
FURNISHED
UNFURNISHED
Check These Advantages
School on Premises
Bus 10 min. to Wilm., at door
Convenient to all churches
Beautiful surroundings
Immediate occupancy
Located on west side of DuPont Hwy.
on Route 133, 3 mi. south of Wilm.
1 mi. north of New Castle Airport.
Rental office on premises open daily
9 A.M. to 6 P.M. Sundays by appointment.
Office 1501 Bassett Ave.
PH. EA 8-2828

Manor Park Apartments
1 & 2 Bedrooms
FURNISHED
UNFURNISHED
Check These Advantages
School on Premises
Bus 10 min. to Wilm., at door
Convenient to all churches
Beautiful surroundings
Immediate occupancy
Located on west side of DuPont Hwy.
on Route 133, 3 mi. south of Wilm.
1 mi. north of New Castle Airport.
Rental office on premises open daily
9 A.M. to 6 P.M. Sundays by appointment.
Office 1501 Bassett Ave.
PH. EA 8-2828

Manor Park Apartments
1 & 2 Bedrooms
FURNISHED
UNFURNISHED
Check These Advantages
School on Premises
Bus 10 min. to Wilm., at door
Convenient to all churches
Beautiful surroundings
Immediate occupancy
Located on west side of DuPont Hwy.
on Route 133, 3 mi. south of Wilm.
1 mi. north of New Castle Airport.
Rental office on premises open daily
9 A.M. to 6 P.M. Sundays by appointment.
Office 1501 Bassett Ave.
PH. EA 8-2828

Manor Park Apartments
1 & 2 Bedrooms
FURNISHED
UNFURNISHED
Check These Advantages
School on Premises
Bus 10 min. to Wilm., at door
Convenient to all churches
Beautiful surroundings
Immediate occupancy
Located on west side of DuPont Hwy.
on Route 133, 3 mi. south of Wilm.
1 mi. north of New Castle Airport.
Rental office on premises open daily
9 A.M. to 6 P.M. Sundays by appointment.
Office 1501 Bassett Ave.
PH. EA 8-2828

Manor Park Apartments
1 & 2 Bedrooms
FURNISHED
UNFURNISHED
Check These Advantages
School on Premises
Bus 10 min. to Wilm., at door
Convenient to all churches
Beautiful surroundings
Immediate occupancy
Located on west side of DuPont Hwy.
on Route 133, 3 mi. south of Wilm.
1 mi. north of New Castle Airport.
Rental office on premises open daily
9 A.M. to 6 P.M. Sundays by appointment.
Office 1501 Bassett Ave.
PH. EA 8-2828

Manor Park Apartments
1 & 2 Bedrooms
FURNISHED
UNFURNISHED
Check These Advantages
School on Premises
Bus 10 min. to Wilm., at door
Convenient to all churches
Beautiful surroundings
Immediate occupancy
Located on west side of DuPont Hwy.
on Route 133, 3 mi. south of Wilm.
1 mi. north of New Castle Airport.
Rental office on premises open daily
9 A.M. to 6 P.M. Sundays by appointment.
Office 1501 Bassett Ave.
PH. EA 8-2828

Manor Park Apartments
1 & 2 Bedrooms
FURNISHED
UNFURNISHED
Check These Advantages
School on Premises
Bus 10 min. to Wilm., at door
Convenient to all churches
Beautiful surroundings
Immediate occupancy
Located on west side of DuPont Hwy.
on Route 133, 3 mi. south of Wilm.
1 mi. north of New Castle Airport.
Rental office on premises open daily
9 A.M. to 6 P.M. Sundays by appointment.
Office 1501 Bassett Ave.
PH. EA 8-2828

Manor Park Apartments
1 & 2 Bedrooms
FURNISHED
UNFURNISHED
Check These Advantages
School on Premises
Bus 10 min. to Wilm., at door
Convenient to all churches
Beautiful surroundings
Immediate occupancy
Located on west side of DuPont Hwy.
on Route 133, 3 mi. south of Wilm.
1 mi. north of New Castle Airport.
Rental office on premises open daily
9 A.M. to 6 P.M. Sundays by appointment.
Office 1501 Bassett Ave.
PH. EA 8-2828

Manor Park Apartments
1 & 2 Bedrooms
FURNISHED
UNFURNISHED
Check These Advantages
School on Premises
Bus 10 min. to Wilm., at door
Convenient to all churches
Beautiful surroundings
Immediate occupancy
Located on west side of DuPont Hwy.
on Route 133, 3 mi. south of Wilm.
1 mi. north of New Castle Airport.
Rental office on premises open daily
9 A.M. to 6 P.M. Sundays by appointment.
Office 1501 Bassett Ave.
PH. EA 8-2828

Manor Park Apartments
1 & 2 Bedrooms
FURNISHED
UNFURNISHED
Check These Advantages
School on Premises
Bus 10 min. to Wilm., at door
Convenient to all churches
Beautiful surroundings
Immediate occupancy
Located on west side of DuPont Hwy.
on Route 133, 3 mi. south of Wilm.
1 mi. north of New Castle Airport.
Rental office on premises open daily
9 A.M. to 6 P.M. Sundays by appointment.
Office 1501 Bassett Ave.
PH. EA 8-2828

Manor Park Apartments
1 & 2 Bedrooms
FURNISHED
UNFURNISHED
Check These Advantages
School on Premises
Bus 10 min. to Wilm., at door
Convenient to all churches
Beautiful surroundings
Immediate occupancy
Located on west side of DuPont Hwy.
on Route 133, 3 mi. south of Wilm.
1 mi. north of New Castle Airport.
Rental office on premises open daily
9 A.M. to 6 P.M. Sundays by appointment.
Office 1501 Bassett Ave.
PH. EA 8-2828

Manor Park Apartments
1 & 2 Bedrooms
FURNISHED
UNFURNISHED
Check These Advantages
School on Premises
Bus 10 min. to Wilm., at door
Convenient to all churches
Beautiful surroundings
Immediate occupancy
Located on west side of DuPont Hwy.
on Route 133, 3 mi. south of Wilm.
1 mi. north of New Castle Airport.
Rental office on premises open daily
9 A.M. to 6 P.M. Sundays by appointment.
Office 1501 Bassett Ave.
PH. EA 8-2828

Manor Park Apartments
1 & 2 Bedrooms
FURNISHED
UNFURNISHED
Check These Advantages
School on Premises
Bus 10 min. to Wilm., at door
Convenient to all churches
Beautiful surroundings
Immediate occupancy
Located on west side of DuPont Hwy.
on Route 133, 3 mi. south of Wilm.
1 mi. north of New Castle Airport.
Rental office on premises open daily
9 A.M. to 6 P.M. Sundays by appointment.
Office 1501 Bassett Ave.
PH. EA 8-2828

Manor Park Apartments
1 & 2 Bedrooms
FURNISHED
UNFURNISHED
Check These Advantages
School on Premises
Bus 10 min. to Wilm., at door
Convenient to all churches
Beautiful surroundings
Immediate occupancy
Located on west side of DuPont Hwy.
on Route 133, 3 mi. south of Wilm.
1 mi. north of New Castle Airport.
Rental office on premises open daily
9 A.M. to 6 P.M. Sundays by appointment.
Office 1501 Bassett Ave.
PH. EA 8-2828

Manor Park Apartments
1 & 2 Bedrooms
FURNISHED
UNFURNISHED
Check These Advantages
School on Premises
Bus 10 min. to Wilm., at door
Convenient to all churches
Beautiful surroundings
Immediate occupancy
Located on west side of DuPont Hwy.
on Route 133, 3 mi. south of Wilm.
1 mi. north of New Castle Airport.
Rental office on premises open daily
9 A.M. to 6 P.M. Sundays by appointment.
Office 1501 Bassett Ave.
PH. EA 8-2828

Manor Park Apartments
1 & 2 Bedrooms
FURNISHED
UNFURNISHED
Check These Advantages
School on Premises
Bus 10 min. to Wilm., at door
Convenient to all churches
Beautiful surroundings
Immediate occupancy
Located on west side of DuPont Hwy.
on Route 133, 3 mi. south of Wilm.
1 mi. north of New Castle Airport.
Rental office on premises open daily
9 A.M. to 6 P.M. Sundays by appointment.
Office 1501 Bassett Ave.
PH. EA 8-2828

Manor Park Apartments
1 & 2 Bedrooms
FURNISHED
UNFURNISHED
Check These Advantages
School on Premises
Bus 10 min. to Wilm., at door
Convenient to all churches
Beautiful surroundings
Immediate occupancy
Located on west side of DuPont Hwy.
on Route 133, 3 mi. south of Wilm.
1 mi. north of New Castle Airport.
Rental office on premises open daily
9 A.M. to 6 P.M. Sundays by appointment.
Office 1501 Bassett Ave.
PH. EA 8-2828

Manor Park Apartments
1 & 2 Bedrooms
FURNISHED
UNFURNISHED
Check These Advantages
School on Premises
Bus 10 min. to Wilm., at door
Convenient to all churches
Beautiful surroundings
Immediate occupancy
Located on west side of DuPont Hwy.
on Route 133, 3 mi. south of Wilm.
1 mi. north of New Castle Airport.
Rental office on premises open daily
9 A.M. to 6 P.M. Sundays by appointment.
Office 1501 Bassett Ave.
PH. EA 8-2828

Manor Park Apartments
1 & 2 Bedrooms
FURNISHED
UNFURNISHED
Check These Advantages
School on Premises
Bus 10 min. to Wilm., at door
Convenient to all churches
Beautiful surroundings
Immediate occupancy
Located on west side of DuPont Hwy.
on Route 133, 3 mi. south of Wilm.
1 mi. north of New Castle Airport.
Rental office on premises open daily
9 A.M. to 6 P.M. Sundays by appointment.
Office 1501 Bassett Ave.
PH. EA 8-2828

Manor Park Apartments
1 & 2 Bedrooms
FURNISHED
UNFURNISHED
Check These Advantages
School on Premises
Bus 10 min. to Wilm., at door
Convenient to all churches
Beautiful surroundings
Immediate occupancy
Located on west side of DuPont Hwy.
on Route 133, 3 mi. south of Wilm.
1 mi. north of New Castle Airport.
Rental office on premises open daily
9 A.M. to 6 P.M. Sundays by appointment.
Office 1501 Bassett Ave.
PH. EA 8-2828

WOMAN FOR KITCHEN WORK

Nothing shift. Apply 9 a.m. to 1 p.m. Post House Restaurant, 148 E. Main St. EN 8-1322. 5-22-1tp

MALE SHORT ORDER COOK

Evening shift. Apply in person, 9 a.m. to 1 p.m. Post House Restaurant, 148 E. Main St. EN 8-1322. 5-22-1tp

WOMAN - For full time work

and commission. Canvassing and telephone soliciting. For interview write Mr. J. F. Moore, 10 Maryland Ave., Wilmington 4, Delaware. 5-22-1tp

For Rent

Private entrance, private lavatory, 47 E. Park Place, EN 8-1146. 5-15-5tc

APARTMENT - Unfurnished, 4 room

bath and garage. Heat & Hot water. Vacant June 1. EN 8-2517. 5-22-1tp

TO FAMILY OF 3 MAXIMUM - Furnished

7 Rooms, 2 baths split-level in Newark. Washer, dryer, air conditioning. Occupancy September to August. EN 8-2517. 5-22-1tp

COTTAGES - Dewey Beach, Vacations

June, July & August. For reservations call EN 8-7672. 5-15-5tc

DOUBLE ROOM FOR RENT

Call EN 8-3401. 5-15-5tc

ROOMS - By day or week, Newark

Hotel, 115 East Main St. EN 8-8-5tc

HOUSE - Opposite University, 3 bedrooms

rooms, 1 1/2 baths, kitchen, dining room, living room. All hardwood floors. Fireplace & garage.

SPORT



Newark Nine Beats Wm. Penn For Balanced Season At 4-4

Yellowjackets Withstand Colonials' 7th Inning Rally With 3-Run Homer To Win 10-9 At New Castle; Newark Faces Conrad Today, Ends Season Tuesday With Dynahs

Coach Joe Talarowski's Yellowjackets balanced the baseball book yesterday at 4-4 for the season by whipping William Penn's Colonials in a thrilling 10-9 contest at New Castle. Newark plays a postponed game with Conrad's Redskins this afternoon at Woodcrest; the Jayvees of Coach Grant Ewell meet Brandywine's new varsity nine tomorrow at home after losing a 5-2 test in an earlier meeting; and the Yellowjackets wind up the season at home next Tuesday against the Dynahs of P. S. du Pont.

John Muller started, but Byrd Gray was the winning pitcher, although he needed help from Ace Jaquette when the Colonials rallied in the seventh with Catcher Vandergriff's three-run homer.

Gray and Centerfielder Herm Hubbard led the Yellowjackets 12-hit parade with two hits in three trips.

Hubbard has attracted the interest of major league scouts, incidentally, and Jocko Thompson recently visited Coach Joe Talarowski with regard to the All-State halfback of last year and current centerfielder for the Yellowjackets.

Touch and Go

It was touch and go from the beginning yesterday, with the Yellowjackets and Colonials matching two runs each in the first inning. William Penn scored three big ones in the second for a 5-2 advantage, but Talarowski's team nullified this with three of their own in the top of the third.

The Colonials added another in their half of the third, and then Newark unloaded on May for three runs and what appeared to be the

game in the top of the fourth. Adding another pair in the seventh for insurance, the Yellowjackets discovered they needed such insurance badly when William Penn rallied with Vandergriff's three-run homer. Jaquette put out the fire and that was all for the Colonials as Newark headed home on top of the 10-9 final count.



To say that "one would rather fish than eat" is exaggeration in most instances, but not so with young Danny Herrman who accompanied his father and Herman Klahr on an angling expedition to Lumm's Pond last Sunday.

The fishing was nothing to shout about insofar as the two adults were concerned, although they caught some nice white perch and crappie on live minnows, along with a couple of catfish. Without lunch, two members of the party prepared to head for home at noon—and met with strong protest from young Dan. And he was probably the hungriest fisherman of the trio.

Last Saturday morning, after two previous Saturday outings on the river, we looked down upon the Susquehanna from atop the lofty highway bridge. On the preceding two weekends, the river had been a wind-tossed, swollen, cloudy torrent, and boats were few and far between—the shad, too.

But last Saturday, the Susquehanna was calm, clear, and inviting—and if there were as many shad on the surface, the shad fishing was all right.

Enroute to Pimlico to see Silky Sullivan star in the Preakness, we should have stayed for shad at the Susquehanna.

Preakness Prize

Tim Tam provided most of his backers with a little better than even money payoff, but young Lloyd Rhodes cashed in on the Preakness prize at 40 to 1 odds.

Grover Surratt, accompanying a busload of Newark Boy Scouts on a Saturday outing, proposed a five-cent Preakness pool, and with 40 slips in the hat, Lloyd drew the winner—Tim Tam.

In justice to Grover, who may be criticized for stimulating juvenile interest in horse-playing, let it be said that for one younger who may have been encouraged, 39 regard the Sport of Kings with a dim view indeed.

NEWARK BICYCLE SHOP

BICYCLE REPAIRS

New & Used Bicycles
26½ N. Chapel St. EN 8-6021

BEL AIR RACES

BEL AIR, MD. on U.S. Route #1
12 DAYS OF
THOROUGHBRED RACING
MAY 19 thru 31

POST TIME 2:00 P.M. E.D.S.T.
DAILY DOUBLE CLOSING 1:45 P.M.

Grants
KNOWN BY VALUES

NO DOWN MONEY

GRANTS Slices Prices on famous make
POWER MOWER
SPECIAL PURCHASE — SAVE UP TO 50%
Full 21-inch — 2½ h.p. ROTARY MOWER

4-Cycle BRIGGS & STRATTON ENGINE
Throttle Control
4788

LIMITED QUANTITIES — No Mail Orders

Full 24-inch Famous Make 3-h.p.
4-Cycle ROTARY MOWER

- Clinton Engine
- Steel Deck
- Stand Up Recoil Starter
- Touch & Go Control
- 1 to 3-inch Height Adjustment
- 90-Day Warranty

\$5700

W. T. GRANT CO.
108 E. Main St., Newark, Del.

Track-Field Meet Planned Saturday For Frazer Field

The 43rd annual University of Delaware Interscholastic Track and Field Meet will be held on Frazer Field this Saturday, when some 30 junior and senior high schools in Delaware will participate. Howard High School, of Wilmington, won the senior high division last year with 41 points, a full 21 more than runner-up Redding of Middletown. William Penn is defending champion in the junior high section.

Blue Hen track Coach Ken Steers said most of the schools that competed last year are expected to return, with possibly a few additions. Several schools, he said, have begun interscholastic competition this year.

The only change in the senior high events will be the elimination of the 110 yard low hurdles and the addition of the 120 yard high hurdles and the 180 yard low hurdles. The 50 yard dash will also be dropped from the junior high schedule.

Activities will begin with trials scheduled at 10 a.m. Finals will get underway at 1 p.m.

After a gray, thoroughly rainy Saturday with Lyt Patterson on the Susquehanna in a futile bid of shad fishing, we returned the following week with Damon Tomlinson and young Tommy for another round, and although we caught no more shad than on the previous occasion, we did find white perch in abundance.

Young Tommy Tomlinson shaded his adult companions in the perch department, but all hands caught enough white perch, along with a trio of yellow neds, for some serious fish scaling operations back in Newark that night.

Baby Cottontails

Some hunting pressure on the Diamond State cottontails may be relieved next fall as the result of Bill Larsen's contribution of three baby cottontails to Little Bill's menagerie at home.

A nest of baby rabbits was disturbed by a mowing machine on the university farm—Bill Larsen left three bunnies in the nest in hopes the mother rabbit would re-

Thoroughbreds Return To Delaware Park For Record Length Card Next Thursday

Thoroughbred horse racing at Delaware Park returns next Thursday for the longest meeting in the track's history—51 days through July 26—with horsemen slated to share in approximately \$2,000,000 in stakes, purses and awards.

The newly lengthened season starts off with three stakes events in as many days. The \$10,000 Wilmington Handicap again tops the initial program on Thursday; the equally endowed Polly Drummond features the Friday Memorial Day card, and the \$20,000 Brandywine Turf Handicap is the first Saturday's piece de resistance.

As in recent years, the meeting will be highlighted by the quarter-million-dollar Distaff Big Three on the final three Saturdays—the \$50,000 Oaks, \$40,000 New Castle, and the world's richest race for fillies and mares, the Delaware Handicap, which last season grossed a record \$164,625. Among nominations already made for these rich stakes are America's champion female racers of 1957—Pucker Up, Indun and Bayou.

In accordance with the longer dates, three new stakes were added this year to boost the total of major feature races to 18. Jumping events begin June 9, and excepting Satur-

day—and gave three to his Academy Street neighbors for fear that she wouldn't.

Happily for nearly all concerned, the three adopted babies thrived on a special formula obtained from Milton Altshuler and applied by eye dropper; the baby bunnies graduated to pablum and then to greens—and Beagle Bob Connell came around last Sunday night to pick up the now much bigger rabbits to turn them loose after Sunday's field trial on Hallowell du Pont's gun-free estate.

Ernie Scarborough reports that the mother rabbit returned to care for the babies left in the original nest, so all six little cottontails are thriving.

And several Nimrods have lost a lot of zest for looking down a smooth-bored barrel in the fall at what may be one of these little fellows.

days, carry through June 27. Steeplechases and hurdles are included.

Delaware Park again faces severe competition, particularly from New Jersey tracks. There'll be competition from Garden State Park (and also Bel Air in Maryland) the first three days.

Then follow the only seven non-competitive days before Monmouth Park opens June 10 and continues through and beyond the Stanton track's July 26 finale. However, Delaware's longest meeting assures the state of more revenue, the public of continued high class racing, and horsemen the advantage of filling a gap which existed before.

Opening day will again be "Fraternal Civic Day" with races honoring the Nur Shrine Temple, Knights of Columbus, New Castle County Volunteer Firemen's Association, and the Wilmington Junior C. of C.

First race post time is 2 p.m., with eight races every day except Sundays.

Brandywine Polo Season To Begin Sunday, May 25th

George A. (Frolic) Weymouth, president of Brandywine Polo, has announced that the 1958 polo season in the local area will open Sunday, May 25, at the Toughkenamon, Pa. field near Kennett Square. Weymouth, in the winter months, captained Yale's successful polo team. Ray Harrington will be back at the helm of the Brandywine mallet men as manager, coach and team captain.

Newark will be represented by former FBI Agent Harley Williams and by former pro pitcher Deryl "Doc" Calder.

NETMEN WIN FINALE

Coach Roy Rylander's Delaware tennis team swept all but one set in wrapping up a successful season with a 7-0 triumph over Ursinus here Monday, the 11th win in 12 starts for the Blue Hens.

Recreation League Leaders Unbeaten In Softball Games

Unbeaten Crichton's and Tom Lee share the lead in the Newark Recreation Softball Leagues. Crichton's downed their first game opponents 9-6, and 7-1 in the American League, while Tom Lee Buick has three wins, 10-5, 14-4, and 3-2 in the National loop.

Crichton's dark horse of the season, is off to a runaway start by defeating Avon 9-6 after Avon jumped to an early four run lead on four hits in the first inning. Crichton's scored one run during the first, then held Avon to three hits for the rest of the game behind Wara's pitching. Crichton's tagged 17 hits for eight more runs from Bova and Grace of the Avon squad.

The other victory was over Graybeal's Atlantic 7-1, with Wara hurling. In the National League, Tom Lee Buick—another dark horse—had its closest contest with Continental Diamond. Scoring three runs in the first inning, Lee was held scoreless for the remainder of the game, collecting only a single in the third. Continental Diamond scored single runs in the first and third innings and threatened in the seventh with the bases loaded. Other wins for Tom Lee were over Neighbor's Pharmacy, 10-5, and UAW Local 1183, 14-4.

In other games, Neighbor's scored eight runs in the second inning to

scored eight runs in the second inning to coast to a 9-3 victory over Local 1183; Continental Diamond poured in on Mill Creek Trailer Park in a 13-2 contest, and will Creek downed Local 1183 by 13-10.

IT'S YOUR FAULT . . .

If you haven't tried our subs, hamburgers, cheese steaks, milkshakes, etc.

ORDERS TO GO
Platters, too
SHEP'S
Ogletown Rd., Newark
Next to Ruby's Beauty Shop
PHONE EN 8-9994

Undefeated Bacher Wins 10th As Hens Cop Divisional Title

Ace Lefthander Jerry Bacher Hurls As Coach Raymond's Blue Hens Blasted 20-5, at Lewisburg, Pa., to close a glorious campaign of regular season play with a 17-3 record. As champions of Middle Atlantic Conference southern division, Bacher's red hot Hens face a tentatively scheduled playoff

Lafayette tomorrow at the neutral Temple University diamond. The Leopards of Coach Charley Gelbert are champions of the MAC northern division despite the fact that Delaware stopped Lafayette this season during the Hens' great victory march. The winner of this meeting will be an automatic entry in the four-team NCAA District II tournament to be held in June at Ebbetts Field, Brooklyn.

Saturday's victory was fashioned with a patch-work lineup. Four regulars were ailing after a Friday night fish dinner brought about a touch of food poisoning; Jimmy Smith was hampered by an aggravated ankle and left the game in

the second inning and Bacher was called home due to injury.

Still, Jerry Bacher pitched his 10th victory without defeat. Hens' ace lefty fanning 14 and allowing no earned runs before retiring in the ninth.

Fred Walters knocked in runs on a homer and four other hits, including a triple, in the 11-2, at Chester last Tuesday.

Fred Walters with a pair of runs, a triple and a single. Blue Hens' 16-hit assault. PNC hurlers Dr. drove and runs and scored three hits.

Delaware used two bats. Neiger started and left with a 5-0 lead after four innings and Tony DeLucas took over that point to gain credit for first victory of the campaign. Each of the Delaware players counted for six strikeouts and ed a combined total of only six as the Cadets went down for the seventh time this

NCC Women Golfers Visit Kennett Square

Women golfers from Newark and Hercules Country Clubs were entertained Tuesday at the Kennett Square Golf Club.

Mrs. Mary McDowell and Mrs. Mary Hagerty were the Newark victors.

ANGIE'S SUB SHOP
Subs - Spaghetti - Pies - Steaks
Homemade SPAGHETTI Sauce by the quart or plus
ORDERS TO TAKE OUT

97 WILBUR ST., IN NEWARK
Call EN 8-2408 for Directions or For Orders

Wheel Alignment and Brake Service

BUCK'S TEXACO
140 E. Cleveland Ave.
PHONES EN 8-9987 . . . or EN 8-5741

CARLOAD TIRE SALE

LEE TIRES

WE BUY IN QUANTITY . . .
YOU BENEFIT WITH BIG SAVINGS

Advanced Super Deluxe			
TUBE TYPE	SALE PRICE	SALE PRICE	SALE PRICE
Size	Tax	Blackwall	Whitewall
670x15	1.67	15.65	19.95
710x15	1.79	17.95	22.95
760x15	1.98	19.95	25.95
800x15	2.17	22.95	28.65

Plus tax and recappable tire

Advanced Super Deluxe			
TUBELESS	SALE PRICE	SALE PRICE	SALE PRICE
Size	Tax	Blackwall	Whitewall
670x15	1.94	18.65	22.95
710x15	2.07	20.65	25.95
760x15	2.25	22.95	28.95
800x15	2.45	25.95	32.95

Plus Tax and Recappable Tire .

Above Tires Guaranteed 18 Mos. Against All Road Hazards.

670 X 15 FACTORY NUTREADS (BLACKWALL)
\$9.95
Plus tax and recappable tire
Guaranteed — Mounted Free

750 X 14 FACTORY NYLON NUTREADS (BLACKWALL)
\$15.95
Plus tax and recappable tire
GUARANTEED
Plus tax and recappable tire

JACKSON'S HARDWARE AND AUTOMOTIVE SUPPLIES
Newark
Open Wed. - Thurs. - Fri. Nights Till 9:00
EASY TERMS

DELAWARE PARK

Opens Thursday, May 29

with Civic-Fraternal Day, honoring the Shriners, Knights of Columbus, The Junior Chamber of Commerce and The New Castle Volunteer Firemen's Association

POST TIME 2:00 P.M.
DAILY DOUBLE CLOSING 1:45 P.M. DAYLIGHT

Fashion Show by John Wanamaker—Wilmington at 1 P.M. before the races

OPENING DAY FEATURE

THE WILMINGTON HANDICAP

REGULAR PARKING—25c VALET PARKING—50c ADDITIONAL
There is no tipping

SUNDAY, MAY 25 VISITORS' DAY
Drive in and look around • Everyone is welcome

THE DELAWARE STEEPLECHASE AND RACE ASSOCIATION

DONALD P. ROSS, Pres.
LEWIS S. MUNSON, Jr., Treas.
JOHN W. ROONEY, Ass't Treas.

BRYAN FIELD, Vice Pres. and Gen. Mgr.
B. H. WOOD, Sec'y and Ass't Treas.
HELEN E. STAIRWALT, Ass't Sec'y

Newberrys DISCOUNT SALE

3 B-I-G

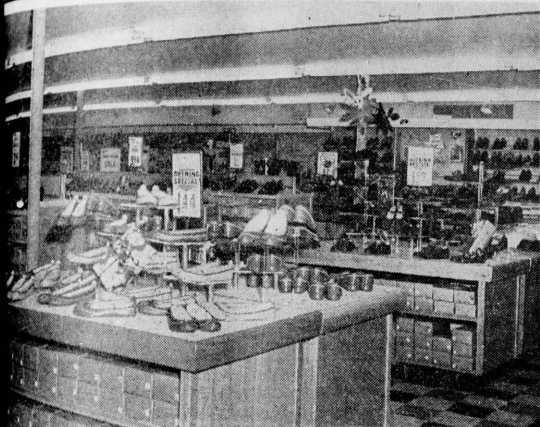
BARGAIN DAYS

THURSDAY 9-5:30

FRIDAY 9-9

SATURDAY 9-9

FREE PARKING
on
NEWBERRYS LOT



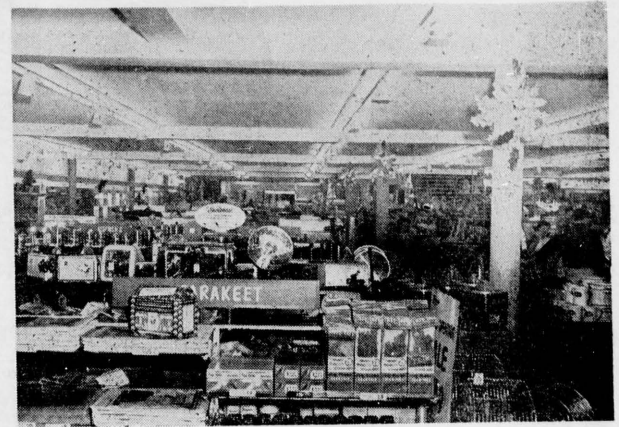
CHILDRENS
Sleeveless
**COTTON
DRESSES**
DISCOUNT PRICE
77c
Sizes 3-6x

Sizes 3-6x
Special
**Electric Vibrator
PILLOW**
DISCOUNT PRICE
\$4.77
U.L. Approved

CHILDRENS
PLAY SHORTS

DISCOUNT PRICE
3 prs. \$1.00
Reg. Price 39c pr.

ROSE BUSHES
FRUIT TREES
FLOWERING SHRUBS
**BUY ONE
GET ONE
FREE**



LIGHT STURDY
Folding
ALUMINUM

**LAWN
CHAIR**
DISCOUNT PRICE
\$3.27

24 INCH
2-Wheel
**BARBECUE
GRILL**
Reg. \$9.59
ONLY
\$7.88

**SPECIAL
RUST PROOF
LEAK PROOF
ICE CHEST**
Discount
Price
\$8.27
Top Handle

**PINK - WHITE - DIXIE
COCOANUT MALLOWS**
Oven Fresh
31c pound
**Tasty Animal
CRACKERS**
24c pound

Ladies Capri
SLACKS
Size 10-18
Newberrys
Discount Price
\$1.87
Mint - Red - Orange - Lemon
Blue - Black
Reg. \$2.97

LADIES
**SPORTSWEAR
CAPS**
Assorted Sizes
& Colors
NEWBERRYS
DISCOUNT PRICE
22c

LADIES
BEACH BAGS
Regularly \$1.00
Newberrys
Discount
Price
84c

DISCOUNT
SPECIAL
**750
TABLE
NAPKINS**
\$1.00

20 inch
**PORTABLE
FAN**
\$25.99
MANUALLY
REVERSIBLE
Save
\$13.96

**50 FOOT
GARDEN HOSE**
Discount Price
\$1.99 Save 96c
**PORTABLE
AIR CONDITIONER**
Discount Price
\$26.99
REGULARLY \$39.95

ALUMINUM
FRAME
Single
GLIDER
Discount
Price
\$10.95

PLASTIC SCARFS
Size 17x43
2 for 27c
PROTECT YOUR FURNITURE
**DISCOUNT SPECIAL
5 FOOT WADING POOL**
\$3.33 Save \$2.65



FOLDING STROLLER
DISCOUNT PRICE
\$3.99
Regularly \$6.98
**BABY'S SIT & STAND
CAR SEAT**
WITH STEERING WHEEL
\$2.47 Save \$1.51

LADIES! LADIES!
**COOL WASHABLE
COTTON
SLEEVELESS
DRESSES**
Newberrys Discount
Price
\$1.97 Sizes 12-20
14 1/2 - 24 1/2
Regularly \$2.98 & \$3.98

LADIES
White Clutch
BAGS
With
Matching Wallets
87c
REGULARLY
\$1.27 and \$1.44

LADIES
Sleeveless
BLOUSES
ONLY
84c
Sizes 32 - 38
LADIES
Gleaming
White
HANDBAGS
99c
VALUES
TO
\$1.33



Infants Receiving
BLANKETS
NEWBERRYS DISCOUNT
PRICE
2 for 87c

Reclining Back
Canopied
STROLLER
DISCOUNT PRICE
\$8.77
Regularly 11.98

Riegel Birdseye
DIAPERS
Package of 6
99c

Childrens Cotton
**TRAINING
PANTS**
DISCOUNT PRICE
5 prs 97c



J. Newberry CO. ELKTON, MARYLAND

Largest Variety Department Store in Eastern Maryland

Ten

Pvt. Sweetman Completes Reserve Army Training

Pvt. Robert G. Sweetman, 21, son of Mrs. Julia M. Sweetman, Newark, recently completed the final phase of six months active military training under the Reserve Forces Act program at Fort Bliss, Tex.

Sweetman was employed by the Delaware Fastener Corporation, Wilmington, before starting his RFA training. He is a 1954 graduate of Newark High School.

High School German Club Visits Amish Community

Members of the Newark High School German Club traveled to Lancaster, Pa., recently, where they visited two Amish one-room schools, conversing in English and German with the pupils.

Sealed proposals will be received by the State Highway Department of the State of Delaware at the office of the Chief Engineer (Room 202) in the Highway Administration Building in Dover, Delaware, until 2:30 P.M. (E.D.S.T.) May 23, 1958, and thereafter shall be publicly opened for contracts involving the following approximate quantities:

CONTRACT 1532
Federal-aid Project DS-205 (2)
SHIPLEY ROAD
WILSON ROAD TO NAAMANS ROAD
New Castle County
2.659 Miles
3" Hot Mix Hot Laid Asphaltic Concrete on 6" Waterbound Macadam Base Course, 32' Width
22,000 L. S. Clearing and Grubbing
200 C. Y. Excavation of Existing Masonry
200 C. Y. Rock Excavation for Roadway
100 C. Y. Rock Excavation for Structures and Trenches
600 C. Y. Excavation for Structures
50 C. Y. Borrow Pit Stripping
30,000 C. Y. Select Borrow
20,000 Tons Waterbound Macadam Base Course
10,200 Tons Hot Mix Hot Laid Asphaltic Concrete Pavement
230 Gal. RC-1 Asphalt
230 Gal. RC-3 Asphalt
24 Tons Slag Chips
24 Tons Crushed Stone or Crushed Gravel
200 C. Y. Portland Cement Concrete
310 S. Y. Superficial Waterproofing Lbs. Bar Reinforcement
26,000 C. Y. Portland Cement Rubble Masonry
8,000 L. F. 15" R. C. Pipe
2,300 L. F. 18" R. C. Pipe
2,350 L. F. 24" R. C. Pipe
50 L. F. 36" R. C. Pipe
200 L. F. 6" C. M. Pipe
200 L. F. 6" ACCM Pipe, 25% Paved (16 Gage)
500 L. F. 18"x11" ACCM Pipe, 40% Paved (16 Gage)
90 L. F. 50"x31" ACCM Pipe, 40% Paved (12 Gage)
200 L. F. 30"x30" ACCM Pipe, 40% Paved (10 Gage)
200 L. F. 72"x44" ACCM Pipe, 40% Paved (8 Gage)
110 L. F. 72"x44" ACCM Pipe, 40% Paved (10 Gage)
200 L. F. 4" V. C. Pipe
100 L. F. 6" V. C. Pipe
200 L. F. 6" V. C. Pipe
200 L. F. 6" Perf. C. M. Pipe Underdrain
325 L. F. Portland Cement Concrete Curb, Type 1
420 L. F. Portland Cement Concrete Curb, Type 3
28,550 L. F. Integral Portland Cement Concrete Curb & Gutter, Type 2
1,500 S. F. 4" Portland Cement Concrete Sidewalk
750 S. F. 6" Portland Cement Concrete Sidewalk
2 Each Type "A" Catch Basins
2 Each Type "B" Catch Basins
95 Each Type "SD-1" Catch Basins
5 Each Type "SD-2A" Catch Basins
1 Each Manhole
10 Each Adjusting & Repairing Minor Installations
44,930 Lbs. Castings
4.4 Acres Seeding
21,200 S. Y. Mulching
9,000 S. Y. Sodding
290 Tons Sand
1,100 L. F. Lateral Ditching
5 Tons Calcium Chloride
150 Gal. RC-1 Asphalt Tack Coat
11,700 Gal. RC-1 Asphalt Tack Coat
8 S. Removal of Existing Structures
500 2" Galvanized Conduit Under New Pavement
72 L. F. Aluminum Bridge Railing
50 C. Y. Select Borrow (TRM)
50 Tons Hot Mix Asphaltic Concrete (TRM)
50 Tons Cold Laid Bituminous Concrete (TRM)
50 C. Y. Quarry Waste (TRM)
50 L. S. Maintenance of Traffic

CONTRACT 1601
Federal-aid Project DS-61 (5)
ROUTE 16 (MILTON) TO ROUTE 14
Sussex County
2.694 Miles
6" Cement Concrete Widening and Resurfacing 24' Travelway with 3" Hot Mix Asphaltic Conc.
5,000 L. S. Clearing and Grubbing
5,000 C. Y. Excavation
32 C. Y. Removal of Existing Concrete Masonry
1,750 C. Y. Borrow
3,700 C. Y. Borrow Pit Stripping
2,200 C. Y. Select Borrow
9,000 Tons Hot Mix Asphaltic Concrete
4,000 Gal. RC-1 Asphalt
4,000 Gal. RC-3 Asphalt
165 Tons Crushed Slag
165 Tons Crushed Chips, Stone or Gravel
300 S. Y. Patching Cement Concrete Pavement
2 C. Y. Portland Cement Concrete Masonry
650 L. F. 12" R. C. Pipe
1,300 L. F. 15" R. C. Pipe
950 L. F. 18" R. C. Pipe
420 L. F. 21" R. C. Pipe
2,100 L. F. 24" R. C. Pipe
50 S. Y. 4" Concrete Gutter
50 S. Y. 6" Concrete Gutter
100 S. F. 4" Cement Concrete Sidewalk
10 Each Type "PW-BD-1" Catch Basins
5 Each Type "PW-BD-4" Catch Basins
15 Each Standard Manhole
5 Each Adjusting & Repairing Minor Installations
7,500 Lbs. Castings
162 S. F. Gratings "PW-BD"
4 A. Seeding
20,000 S. Y. Mulching
300 L. F. Lateral Ditching
5 Tons Calcium Chloride
6 S. Y. Grouted Riprap
4,200 Gal. RC-1 Asphalt Tack Coat
4 Each Special Junction Box
4 L. S. Maintenance of Traffic

CONTRACT I-1 (5)
Federal-aid Project I-01 (5)
INTERSTATE ROUTE 91 FROM US 12
TO LANDER'S LANE
New Castle County
4.4 Miles
Constructing Eastbound and Westbound Lanes with 10" Reinforced Cement Concrete
61,000 L. S. Clearing and Grubbing
6 C. Y. Excavation
6 C. Y. Removal of Existing Masonry
6 C. Y. Excavation for Structures
167,500 C. Y. Borrow
100 C. Y. Borrow Pit Stripping
18,200 C. Y. Select Borrow
350 C. Y. Portland C. C. Base Course with Crack Control
2,400 Tons Hot Mix Hot Laid Asphaltic Concrete Pavement
6 C. Y. Portland Cement Concrete Pavement
100 S. Y. Patching Cement Pavement
1,820 S. Y. Portland Cement Concrete Masonry
1,320 S. Y. Superficial Waterproofing
149,000 Lbs. Bar Reinforcement
2,000 Sq. Wire Mesh Reinforcement (34 Lbs. Per Sq.)
1,380 L. F. 15" R. C. Pipe
268 L. F. 24" R. C. Pipe
272 L. F. 30" R. C. Pipe
144 L. F. 36" R. C. Pipe
1,080 L. F. 42" R. C. Pipe
492 L. F. 48" R. C. Pipe
370 L. F. 48" R. C. Pipe, Extra Strength (Jacked in Place)
200 L. F. 6" C. M. Pipe
88 L. F. 12" C. M. Pipe
200 L. F. 6" Perf. C. M. Pipe Underdrains
900 L. F. Cast in Place Concrete Piles

5 Tons Calcium Chloride for Dust Control
5,700 S. Y. Removal of Ex. Pavement
Curbs, Gutters, etc.
250 Gal. RC-1 Asphalt Tack Coat
1,300 L. F. Deep Beam Guard Fence (Wood Post)
460 S. Y. Jiggle Bar Dividers
515 L. F. 72" Chain Link Fence
365 S. Y. Slope Paving with Mortared Belgian Block
710 L. F. 8" Galv. Conduit under New Pavement
L. S. Salvaging Existing Lighting Standards & Appurten.
50 Tons Cold Laid Bituminous Concrete (TRM)
L. S. Maintenance of Traffic

Attention is called to the Special Provisions in the proposals, the specifications and the Contract Agreement. The provisions of the Federal-aid Highway Act as amended are applicable to Federal-aid Projects. Minimum wage rates for this project have been predetermined by the Secretary of Labor and are set forth in the advertised specifications.

The employment agency for these contracts shall be the Delaware State Employment Service whose offices are located at 601 Shipley Street, Wilmington, 133 South Bradford Street, Dover, and North Race Street, Georgetown. Performance of contract shall commence within ten (10) days after execution of the contract and be completed as specified. Monthly payments will be made for ninety (90) percent of the construction completed each month. Each proposal must be accompanied by a surety bond, certified check, or money to the amount of at least ten (10) percent of the total amount of the proposal. The envelope containing the proposal must be marked "Proposal for the construction of State Highway Contract No. . . .". The contract will be awarded or rejected within thirty (30) days from the date of opening proposals. The right is reserved to reject any or all bids. Prospective bidders who have been

prequalified in accordance with the requirements of the Standard Specifications for Highway Construction, from the Highway Department office, Room 202, Arden Building, 11 E. North Street, upon payment of five dollars (\$5.00) for each set. Contract documents need not be returned and the above payment will not be refunded. Make checks payable to the Delaware State Highway Department. By: J. Gordon Smith, Chairman R. A. Haber, Chief Engineer May 7, 1958 Dover, Delaware

He is the happiest, be he king or peasant, who finds peace in his home. —Goethe

NEWARK STATIONERS
STATIONERY—BOOKS
Office Machines **SALES SERVICE**
44 E. Main EN 8-4030

There is nothing so fatal to character as half finished tasks. —David Lloyd George

Christian Science Services
and Sunday School
In Newark, Sundays, 11 A.M.
NEW CENTURY CLUB
141 E. Delaware Ave.
— ALL ARE WELCOME —

You can completely conquer your enemies — by making your friends.

NARDE'S
Delaware Shoe Repair
16 Academy St.
PHONE EN 8-9888

Act Now.



To Beat Next Winter's "FUEL OIL BLUES"

That's right—you can start right now on Southern States convenient budget plan and avoid those staggering heating bills that seem to hit you "all at once" in the winter. Small, easy, monthly payments—started now—will do away with the bills that come when you're swamped with Christmas expenses. Note carefully these advantages:

- No Big, Peak-Season Bills
- Small Monthly Payments
- No Carrying Charges

Simply see us now we'll estimate your bill for the season ahead—based on previous records—and divide the total into eleven equal monthly payments which you can start making in June. Don't delay. All applications should be in before May 31. Sign up now . . . Christmas you'll be glad you did!

SOUTHERN STATES ELKTON PETROLEUM CO-OP, INC.
Phone Elkton 763, Elkton, Md.



YOUR SOUTHERN STATES COOPERATIVE SERVICE AGENCY

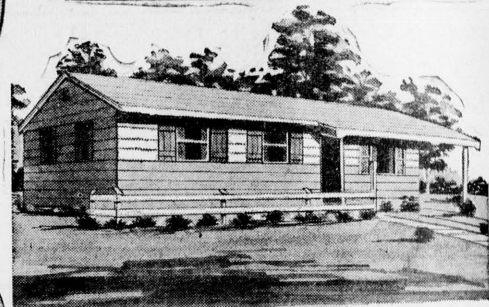
MEADOWVIEW

ON ELKTON ROAD . . . 2 1/2 MILES SOUTH OF NEWARK

3 Bedroom . . . 40 ft. Rancher
With These Amazing Features

- 3 SPACIOUS BEDROOMS
- GENEROUS DINING AREA
- LARGE LIVING ROOM
- TILE BATH WITH COMBINATION TUB & SHOWER
- STEP-SAVER KITCHEN
- ABUNDANT CLOSET AND STORAGE SPACE
- AUTOMATIC NATURAL GAS HEAT AND HOT WATER
- ALL HARDWOOD FLOORS
- FULLY INSULATED SIDEWALLS AND CEILINGS
- WEATHERSTRIPPED WINDOWS
- COMMUNITY WATER AND SEWER SYSTEMS
- 27 ACRES RESERVED FOR PARK & PLAYGROUND
- PAVED AND CURBED STREETS
- PROPOSED SHOPPING CENTER

Sales Agents
YOUNG & WILLIAMS, Realtors
Newark, Del.



DIRECTIONS . . . FROM WILMINGTON: South on Capital Trail (Route 2) to Newark. Proceed along E. Main St. to B. & O. tracks. Turn left on Elkton Road and continue along Route 2 to Meadowview signs.

\$59. MONTHLY CARRYING CHARGES
(Approx.) INCLUDES TAXES & INSURANCE

SAMPLE HOUSE OPEN . . . 10 A.M. TO 9 P.M. DAILY, INCLUDING SUNDAYS.

Confidence in the peninsula and you . . . \$90-millions worth

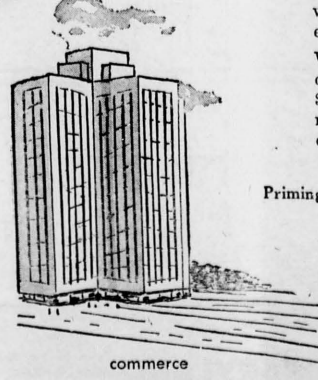
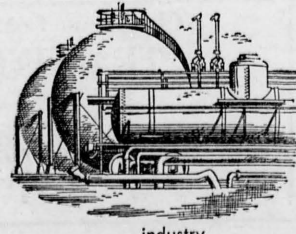
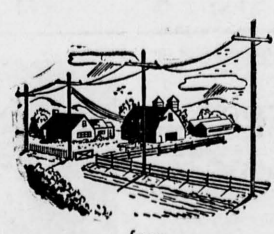
Plans to spend some \$90-million during the next five years is our way of expressing confidence in the future growth and expansion of the Delmarva Peninsula. Confidence . . . expressed in additional gas and electrical facilities to meet the anticipated future growth . . . tangible evidence of our optimism for the long term future of this area.

We feel expenditures for construction of new generating units, additions to present offices, service and operations buildings, new substations, new lines, gas mains, etc., will provide additional employment. Payrolls for those employed, not only on the actual construction project, but for employees of local suppliers from whom we will be purchasing materials, will find their way to all segments of our local economy.

We continue to look at Delmarva Peninsula's future optimistically as we confidently go forward with our \$90-million expansion program . . . preparing to meet the ever-increasing demands of the Peninsula—one of the fastest growing areas in the United States.

Priming Progress . . . with Power . . . on the Delmarva Peninsula

DELAWARE Power & Light COMPANY



YMC&A Delegates To Youth Conference
The Newark YMC&A program chairman, Frank Mullen, Newark YMC&A executive director, recently to Green, Wis., to attend the 11th American assembly on YMC&A.

Newark delegates will report to the YMC&A committee of management in June. Mr. Mullen, 24, is a member of the national committee of the YMC&A and is a member of the high school youth council of the Newark YMC&A and the Y-H-Y Council.

Hails Memory Of Delaware War Dead
Newark YMC&A members were urged to pause for a moment on Memorial Day and "pay tribute to the memory of our war dead, and to honor the men who served the nation's cause since gone on to glory," by Governor J. Caleb Wallace in his proclamation May 20th as Memorial Day in Delaware.

Ebenezer Men Travel With Stanley Steamer
The Methodist Men and their guests of Ebenezer Methodist Church visited Thomas Marshall of Yorklyn to see his collection of antique cars last week, and the evening was highlighted by a ride in a 15-passenger 1915 Stanley Steamer Mountain Wagon.

Paul McClean, president of the Methodist Men, announced committee for the coming year: Kinsey Whitman, Leonard Nelson; Nelson, Robert Woodworth; project, Paul Nelson, Ralph Whitman, Carl Nelson, the Rev. Willard Robinson and A. D. Fisher.

Weather Report Or No, Girl Scouts Go Camping
Indecisive weather reports did not prevent Girl Scouts of Brookside Troops 272 and 290 from enjoying last weekend at Grove Point, Md.

Girl Scouts Lee Barr, Ronnie Dutton, Joan Gill, Allida Morrison, Chere Nelson, Susan Reed, Gayle Seaver, Marjorie Wiser, Sally Cooper, Judy Pocalyko, Martha Steffee, Sharon Briggs, Claire Manly, Mary Dutton, Margo Bell, Pamela Lawrence, Robin Powell and Pat Dean were accompanied by Mr. and Mrs. Donald Acker, Mrs. E. W. Steffee.

Mrs. William Barr, and Mrs. Bernard Fremont — and the weather-man smiled.

In love of home, the love of country has its rise.
—Charles Dickens

NO WAITING!
Seven Expert Barbers
Two Ladies Hair Experts
CENTER BARBER SHOP
Special Low Price For Children's Haircuts
NEWARK SHOPPING CENTER
Mon. to Thurs. 9-7
Friday 9-8
Saturday 9-5:30
JACK VINTEMI, PROP.

PAINTING
Interior & Exterior
SPRAY PAINTING
Phone EN 8-3339
EVES — EN 8-7008
ANDREW ROWINSKI

PAINTING & DECORATING
JAMES E. TYLER
INTERIOR — EXTERIOR
PAPER HANGING & FLOOR SANDING
EN 8-8791

BREAKFAST SERVED IN A JIFFY
And We Know How You Like Your Eggs
Whether they are fried, sunny side up, turned over, scrambled or poached we know you like them FRESH . . . and fresh they are when you get them at the POST-HOUSE Restaurants because we are supplied direct from local farms.

EGG ITEMS SERVED

From Our BREAKFAST MENU

2 Eggs Scrambled, Fried or Boiled	.35
2 Eggs and Grilled Bacon	.55
2 Eggs and Famous Taylor Pork Roll	.55
2 Eggs and Country Sausage	.60
2 Eggs and Country Ham	.60
2 Eggs and Canadian Bacon	.60

Buttered Toast and Jelly Served with Above Orders

JUST OPENED
Mort's Remnants
92 E. MAIN STREET
DOWNTOWN NEWARK'S ONLY "ALL REMNANT" STORE
DIRECT FROM MILL TO YOU — OPEN FRIDAY 'TIL 9 P.M.

<ul style="list-style-type: none"> CUPIONI PERCALE MIRACLE BLENDS 	<p>Lengths to 5 Yards</p> <p>36 to 45 INCHES WIDE</p> <p>28¢ yd.</p>
<ul style="list-style-type: none"> LINENS SHANTUNG DRIP-DRYS 	<p>Lengths to 20 Yards</p> <p>36 to 48 INCHES WIDE</p> <p>48¢ yd.</p>
<ul style="list-style-type: none"> NYLONS FULLER FABRICS RAYONS 	<p>Lengths to 10 Yards</p> <p>36 to 45 INCHES WIDE</p> <p>68¢ yd.</p>

FIBERGLAS DRAPERY FABRIC

The minor irregularities consist of only slight misweaves that many manufacturers would pass as perfect quality. Heavy boucle type.

<ul style="list-style-type: none"> BIEGE WHITE <p>Many Other Colors</p>	<p>Lengths to 20 Yards</p> <p>78¢ yd.</p>
---	--

STATE OF DELAWARE
Office of Secretary of State
CERTIFICATE OF DISSOLUTION
To All To Whom These Presents May Come, Greeting:
WHEREAS, it appears to my satisfaction by a duly authenticated certificate certifying that the dissolution of THOMAS CHEMICALS, INC. a Delaware corporation whose principal office is located at The Corporation Trust Company, No. 100 West Tenth Street of the City of Wilmington has been authorized in accordance with the provisions of Section 275 of the General Corporation Law of Delaware, (Chapter 1, Title 8, Delaware Code), as amended, which certificate has been executed, sealed and acknowledged in accordance with the provisions of said Section 275. Now, therefore, I, JOHN N. McDOWELL, Secretary of State of the State of Delaware, do hereby certify that the said corporation has been dissolved, duly executed, sealed and acknowledged, which certificate is now on file in my office as provided by law. IN TESTIMONY WHEREOF, I have hereunto set my hand and official seal, at Dover, this sixteenth day of May, 1958.

(OFFICIAL SEAL)
JOHN N. McDOWELL, Secretary of State
M. D. TOMLINSON, Asst. Secretary of State
May 22

STATE OF DELAWARE
Office of Secretary of State
CERTIFICATE OF DISSOLUTION
To All To Whom These Presents May Come, Greeting:
WHEREAS, it appears to my satisfaction by a duly authenticated certificate certifying that the dissolution of CHROME FURNITURE INSTITUTE a Delaware corporation whose principal office is located at Clair John Killoran, No. 925 Market Street of the City of Wilmington has been authorized in accordance with the provisions of Section 275 of the General Corporation Law of Delaware, (Chapter 1, Title 8, Delaware Code), as amended, which certificate has been executed, sealed and acknowledged in accordance with the provisions of said Section 275. Now, therefore, I, JOHN N. McDOWELL, Secretary of State of the State of Delaware, do hereby certify that the said corporation did on the sixteenth day of May, 1958, file in this office a Certificate of Dissolution, duly executed, sealed and acknowledged, which certificate is now on file in my office as provided by law. IN TESTIMONY WHEREOF, I have hereunto set my hand and official seal, at Dover, this sixteenth day of May, 1958.

(OFFICIAL SEAL)
JOHN N. McDOWELL, Secretary of State
M. D. TOMLINSON, Asst. Secretary of State
May 22

LEGAL NOTICE
Stanton School District No. 38
SCHOOL BUILDING BONDS
In accordance with the provisions of Code Section 213, Title 14, Delaware Code, 1953, and the Acts amendatory and supplementary hereto, the State Board of Education hereby gives notice that it has canvassed the vote of the Stanton School District No. 38 School Building Bonds, held in the Stanton School, Telegraph Road, Stanton, Delaware, in the Stanton School District No. 38, on Saturday, May 10, 1958, between the hours of one o'clock p.m., EST, and eight o'clock p.m., EST, and hereby declares the result of said special election to be as follows:
FOR THE BOND ISSUE 233 votes were cast
AGAINST THE BOND ISSUE 318 votes were cast
In Witness Whereof the State Board of Education has caused this certificate to be executed by its Vice President and its Secretary this 15th day of May, A.D. 1958.

(OFFICIAL SEAL)
By: Marvel O. Warson, Vice President
Attest: George R. Miller, Jr., Secretary
May 22

AT NEWARK'S ONLY COMPLETE WALLPAPER & PAINT STORE

NEW SHINGLE AND SHAKE FINISH
Endurance VELVET

At last, a dependable finish specially made for shingles and shakes. Not a shingle stain, but a true house paint. Heavy-bodied, high-hiding, with long oil vehicle for longer life. Contains zinc oxide to resist mildew. Breather-type paint allows moisture to escape from inside. Combats curling, splitting and cracking. May be tinted with Dramatone colors for additional hues.

- Easily rolled or brushed
- Dries Dust-Free in One Hour
- White and 12 Modern Colors

Made By The Makers of SPRED SATIN

Venetian Blinds — Window Shades — Traverse Rods

Sheaffer's
(Opposite Wilmington Trust Co.)
Paint is a Specialty with us — Not a Sideline!
GET THE RIGHT PAINT FOR YOUR JOB
77 E. Main St. EN 8-6507

POST-HOUSE COFFEE
made fresh every hour
10¢
— Air Conditioned —
Open 7:00 A.M. to Midnight 7 Days a Week

POSTHOUSE
145 E. Main Street, NEWARK
Phone EN 8-3459
PARKING SPACE — 20 CARS
105 UNION ST. 43rd & MARKET STS.
Phone OL 4-4414 Phone FO 4-1248
WILMINGTON

"SPECIAL SALE" . . . FOR 8 DAYS ONLY

Seamprufe's
SHADOW-PANEL SLIP IN SUMMER-COOL DACRON-COTTON-NYLON
regularly \$3.98
now \$3.39

- Available in your own fashion length — short, average and tall.
- Full seam-to-seam shadow-proof panel for under summer sheers.
- Cool, absorbent, comfortable . . . and of course, no ironing.

For a limited time only! Save and buy several to complete your summer lingerie wardrobe. Frosted rows of nylon lace at bodice and hemline . . . styled in the finest blend of Dacron-Cotton-Nylon . . . just for you. White only in short, average and tall lengths, sizes 32 to 44.

Newark DEPARTMENT Store
Newark Shopping Center
Open Wed., Fri. 9—9

Elk Theatre

FRI., SAT. MAY 23, 24
DOUBLE FEATURE
FEATURE NO. 1
Escapade in Japan
with
Teresa Wright
Cameron Mitchell
TECHNICOLOR
FEATURE NO. 2
Slim Carter
with
Jock Mahoney
COLOR

SUN., MON. MAY 25, 26
Band of Angels
with
Clark Gable
Yvonne De Carlo
TECHNICOLOR

MAY 27, 28, 29
TUES., WED., THUR.
DOUBLE FEATURE
Feature No. 1
The Curse of Frankenstein
with
An All Star Cast
FEATURE NO. 2
X the Unknown
with
An All Star Cast

MAY 30—31, JUNE 1st—5th
ONE WEEK
The Bridge of the River Kwai
with
William Holden
Alec Guinness
Cinemascope
TECHNICOLOR
For This Show Only — 35
ADULTS — 75 CHILDREN — 35
FIRST EVENING SHOW at 6 P.M.

How to save money on your banking

You save money when you have a Personal Checking Account at Wilmington Trust Company. For over half of our Personal Checking customers bank free. And none of them ever pays more than a dollar a month for regular banking services.

At Wilmington Trust, you do not pay when you get checks. You do not mark a service charge against yourself every time you write a check. Your Personal Checking Account balance determines your banking cost—if any.

You bank free at Wilmington Trust when the monthly balance in your Personal Checking Account averages* \$300 or more. Over half of our Personal Checking customers, let us repeat, do bank free. The others pay us a little — never more than a dollar — for months when their average* balances are under \$300.

Wilmington Trust cordially invites you to try this easy inexpensive plan. Low-cost or even no-cost banking at Delaware's largest bank. Make your banking no-cost by keeping an average* monthly balance of \$300 in your Personal Checking Account.

Even though a customer's balance falls below \$300 at certain times each month, he still banks free if his average monthly balance is \$300 or more.

Extras for You
When you have a Personal Checking Account at Wilmington Trust—

- You are given a liberal supply of checks bearing your printed name and consecutively numbered for easier record-keeping — pay nothing when you get them;
- You are given an attractive check container stamped with your name in gold;
- You have the privilege and the convenience of making deposits in and withdrawals from all ten Wilmington Trust offices;
- You incur no banking charge when you use a check. Write all that your needs require.

These extras, remember, are yours when you have a Wilmington Trust Personal Checking Account of any size. They are among the reasons why so many persons have selected Wilmington Trust as their bank.

Wilmington Trust Company
Wilmington, Delaware

Tenth and Shipley
CLAYMONT
NEWARK

TENTH AND MARKET
2120 Market
DELAWARE CITY
NEW CASTLE

3605 Market
GREENVILLE
NEWPORT

All Offices Open Friday Nights

MEMBER FEDERAL DEPOSIT INSURANCE CORPORATION

Governor Boggs Visits Brookside Toastmasters

The Brookside Toastmasters Club was honored with a visit from Governor J. Caleb Boggs at their

Cesspools and Septic TANKS CLEANED
Odorless Excavating Anywhere
For Guaranteed Lowest Prices
Call
William S. Hickman
West Chester OW 6-3080
or
Wilmington OL 4-2455

THIS BRAND NEW . . . never occupied spacious 4 bedroom home is a bargain without comparison in the Newark area. This home offers you a living room, dining area, recreation room, utility room, attached garage, a complete modern electric kitchen, 2 ceramic tile baths & a powder room. This home is offered at less than the FHA appraised value. Owner will pay closing costs. FHA, or conventional financing available. \$18,600.

CHESTNUT HILL ESTATES—Living room with dining area, kitchen, 4 bedrooms, 1 1/2 baths, recreation room, 12x12 carpet on a beautiful lot. \$900 down.

BROOKSIDE—Living room with fireplace, kitchen with dining area, 3 bedrooms, bath, utility room, carpet, stove & screens. \$400 down.

NEAR THE UNIVERSITY—Living room, dinette, 3 bedrooms, bath. (Sold)

\$11,500.

LUMBROOK—28 Woodlawn Ave., 2 1/2 story frame, living room, dining room, kitchen, shed; 2nd floor, 3 bedrooms, bath. Garage—\$10,000.

RENTALS?

CALL . . .

T. B. O'Toole

Inc.

REALTORS

Francis E. B. McCann, manager
61 E. Main St.
Newark EN 8-7116, 8-2538

HERE'S THE EASY WAY TO BUY HEAT!

You can buy your heating oil on our special budget plan. Payments are spread over the months so that your heating bill is as low in January as it is in April.

We make prompt delivery of Atlantic's famous triple-refined heating oil. It now has a new additive that helps prevent harmful sediment, which means built-in economy for you.

Buy clean, uniform, automatic heat on our low monthly payment plan. For complete details, please write or call us today.



HOLLINGSWORTH SUPPLY CO.

Fuel Oil — Coal — Lumber
Building Supplies — Paint
Hardware
65 N. College Ave.
PHONE EN 8-8507

recent dinner meeting in the New Castle Airport Building. The impromptu visit was in connection with the Toastmasters Speakers Bureau, an agency designed to assist the Governor with his program on highway safety in Delaware.

RCA-VICTOR

- Color TV
- Radios
- Record Players
- Hi-Fi Recorders

RCA WHIRLPOOL

- Washers
- Dryers
- Washer-Dryer Combinations
- Refrigerators
- Freezers
- Ranges
- Ironers
- Wringer Washers

Scott & Jones

Newark Shopping Center
PHONE EN 8-5378

Mrs. Armstrong Competes In National Sewing Test

Mrs. Howard G. Armstrong of Newark was among 46 women from all parts of the country whose sewing talents put them in the final judging of the General Federation

of Women's Clubs' first national Fashion-Sewing Contest, held May 14 in New York City. To compete in the final judging, each contestant had scored earlier victories in preliminary contests at local, district and state levels of the Federation.

ARNOLD LEE HONORED

Arnold Lee, son of Mr. and Mrs. Walter S. Lee, Jr., Newark, recently was elected treasurer of Beta Sigma chapter of Alpha Phi Omega service fraternity at the University of Delaware.



Travel-test an Oldsmobile today! Take your choice of 16 beautiful models . . . three distinguished series. There's a Rocket for every pocket!

NOW! SEE THE FEATURES OF THE FUTURE AT YOUR AUTHORIZED OLDSMOBILE QUALITY DEALER'S!

ED FINE OLDSMOBILE, NEW LONDON AVENUE

PH. EN 8-8556

MEMORIAL DAY OBSERVANCE NEXT SUNDAY

Preparations are being made for Newark's biggest day of the year. Many out-of-town visitors will be here.

Nothing is more impressive than cleanliness: See that your home is SPIC & SPAN. We have a BEAUTIFUL CITY! . . . HELP KEEP IT THAT WAY.

CHURCHMAN'S ROAD

Near Christiana River. Bungalow style, L.R. with brick fireplace. Modern kitchen, three bedrooms, full-size playroom basement, oil heat, city water. Many fine-bearing fruit trees, plenty shade and shrubbery, attractively landscaped, with many possibilities. Some finishing to be done.

Exceptional buy at \$13,500.00. Shown by appointment only.

BENNY STREET

Bungalow—Five rooms and bath. Lot 88x195 feet. Plenty of shade and shrubbery. Close to Junior High and Elementary school.

A Bargain at \$6,350.

CHRISTIANA

Bungalow—six rooms, glass enclosed front porch heated, tiled bath, oil hot water heat, full basement, new roof, city water. Beautiful condition inside and out. In setting of old shade, with well landscaped lawn 150x100 ft. With 2 acres, with orchard. \$16,000.00.

9 Additional Acres, beautiful building high ground can be bought at a fair price or will sell separately.

SILVERBROOK

Beautiful modern brick & frame home, on corner lot, with old shade, shrubbery and stream. 3 attractive bedrooms, L.R., D.R., dream kitchen, attached garage, H.W. Floors. Gallagher-built means modern, good construction and designing for gracious living.

This is a very attractive home, and the location is tops. Newark School bus at door. City water and sewer.

Long term, low interest rate mortgage can be assumed, saving you a large amount of money.

Shown by appointment only.

NORFOLK MANOR

Chestnut Hill, Newark's most attractive Suburban Home Sites—High elevation with Grand View. Good black-topped road. Newark School Bus. Lots 100x200 ft. \$20.00 per front foot. Restricted for your protection.

LUMBROOK—ORCHARD AVENUE

Fine home in a delightful location. 1st Floor—modern kitchen, dining room, living room, glassed-in front porch; 2nd Floor—three corner bedrooms and bath. Full cemented basement. Completely redecorated inside and out. New roof. Garage—amiable drive. City water, sewer and newly paved street. Beautiful lot 50x200 feet. Lots of shade and shrubbery. One-half block to Wilmington Bus. An exceptional buy at \$16,000. Oil hot water heat.

ATTENTION HOME BUILDERS

Here is an opportunity to buy 20 Building Lots, Regional Planning Board Approved. All platting, streets, partially graded. City water to property. Sewer available. Fine blacktop road.

One of the best suburban residential areas around Newark. Homes built there will sell QUICK. Can be bought at a bargain, for quick sale. Call for full particulars.

We have some unusual buys in Investment Properties—Large and small apartment buildings full of tenants.

BROOKSIDE

Solit Level, Matthews Road—Excellent condition—can be purchased with small amount of cash and subject to long-term 4 1/2% mortgage. Malvern Drive—Same kind of home, same terms—Both in excellent neighborhoods. You save a lot of money under this plan.

We call your attention to some of the rare opportunities to buy fine homes with a small amount of money, take over long-term, low interest rate mortgages, and save you many hundreds of dollars in settlement costs and interest.

We do not know of any place that you can get 4 1/2% mortgage money these days—most places, it is 6% . . . Call us for further information.

BROOKSIDE PARK

Matthews Road—Fine split-level, 3 bedrooms, living room, dining room, dream kitchen, hardwood floors, basement, aluminum storm doors and windows. Excellent condition.

Beautiful Area—Close to Shopping Center, school and churches. Big money saving 4 1/2% mortgage can be assumed. This is one of our finest buys. If you need a delightful home, give us a call for inspection.

COUNTRY HOME—A BEAUTY

Cape Cod—1st Floor—Den, large living room, D.R., Dream Kitchen, very large; Bath. 2nd floor—two fine bedrooms; full-size playroom basement, cemented high and dry. New oil furnace. 2-car garage, and other outbuildings; large front lawn beautifully shrubbed and trees, 30 fine selected fruit trees many bearing and several varieties, grape arbor, 4 1/2 acres level ground, very productive; 1/2 acre woods. All buildings in excellent condition.

This is a very attractive home, located between Christiana and Bear. Shown by appointment only—\$18,000.00.

WOLLASTON AVENUE

Masonry—4 bedrooms, 2 baths, dream kitchen, dining room, large living room with big fireplace. Many roomy closets, all oak floors, full club basement, cemented, high dry. Aluminum storm doors and windows. In pink of condition inside and out, very up-to-date. Large corner lot. One of the most attractive homes in this fine residential area, priced to sell. Shown by appointment only.

OGLETOWN ROAD

Attractive Cape Cod—1st floor very large living room, dining room, knotty pine den, 1/2-bath, kitchen. Hardwood floors. 2nd floor two large bedrooms, and bath. Full size cemented basement, oil hot water heat, baseboard radiators. Exceptionally well built—only four years old. Lot 100x200. City water and sewer available. For only \$13,750.

BRICK COUNTRY RANCH HOME

First floor, large L. R. with brick fireplace, large dining room, tiled kitchen, large and modern. Ceramic tiled bath, two spacious bedrooms, all hard floors. 2nd floor subfloored would make two large bedrooms. Full size club basement approx. 28x40 ft. with laundry, inside and outside entrance. Aluminum storm doors and windows, two-car brick garage to match home. Large patio under trees. Approx. 2 acres with 172 ft. frontage on good blacktop road, many large trees, beautifully landscaped. One of our better buys at \$25,500.00. Only three years old, and one of the best built homes around Newark.

Shown by appointment only.

If you are interested in buying a home or in a lot on which to build, it will pay you to call us before buying.

Come to Newark and be happy
SELLING IS OUR BUSINESS

LAWSON STARCHER

RONALD MAYER — Salesman

Phone Newark EN 8-6510

267 E. Main Street



I LIKE TO SAVE, TOO

Cut from "Super-Right" Top Quality, Corn-fed Steer Beef

STEAKS
(NONE PRICED HIGHER)

PORTERHOUSE or SIRLOIN

BONELESS ROUND STEAKS or ROAST

Fresh, Frozen Cut-up (Sold in 5-pound boxes only)
CHICKENS Legs 5-lb. box \$2.95 Breasts 5-lb. box \$3.39
Smoked Boneless Butts "Super-Right" 1 1/2 to 3-lb. Butts lb. 69c
Allgood Sliced Bacon 1-lb. pkg. 59c
Crab Meat Fresh Chesapeake 1/2-lb. can 59c Regular White 1-lb. can \$1.09

California Fresh

STRAWBERRIES

Full Pint box **29c** None Priced Higher

Jane Parker Dessert Shells pkg. 25c

ICEBERG LETTUCE None Priced Higher Extra Large head 17c

FRESH TOMATOES None Priced Higher cello. carton 29c

ASPARAGUS Fresh Extra Fancy large original bunch 29c Colossal size large original bunch 35c

Continuing our Big Sale of Fine Frozen Foods!

A&P Peas and Carrots A&P French Fried Potatoes A&P Cut Corn

Your Choice . . . 3 Pkgs. **44c**

A&P Green Beans A&P Fordhook Lima Beans A&P Broccoli Spears

Your Choice . . . 3 Pkgs. **55c**

Snow Crop Broccoli Cuts Snow Crop Succotash Snow Crop Cauliflower

Your Choice . . . 4 Pkgs. **85c**

Realgold Lemonade C&B Limeade

Your Choice . . . 6 6-oz. cans **59c**

Asparagus Fine Line Frozen All Green Spears 2 pkg. 49c

Banquet Pies Frozen Beef, Chicken or Turkey 5 pkg. 99c

Sylvan Seal Cream Cheese 3-oz. pkg. 10c
A & P Sliced Swiss Cheese 8-oz. pkg. 35c
A & P Crushed Pineapple 2 20-oz. cans 39c
Sharp Cheddar Cheese Aged for over one year lb. 55c
Pickles Portage Sweet quart jar 35c Dolly Madison Hamburger Slices 1-lb. jar 19c

FANCY CREAMERY

SUNNYFIELD BUTTER

1-lb. Solid **63c** In 1/4-lb. Prints **65c**

NO SUNNYFIELD BUTTER PRICED HIGHER

Del Monte Drink 2 48-oz. cans 53c
Nabisco Thin Pretzels Also Wheat Thins or Triangle Thins 3 pkg. \$1.00
A & P Peas Our Finest Quality 2 16-oz. cans 39c
Eight O'Clock Coffee 3 1-lb. bag \$2.13 73c
White Bread Jane Parker Sliced Bread 1-lb. loaf 17c 1 1/2-lb. loaf 24c
Jane Parker Apple Pie Special Price! Large 8-inch Pie 45c

All Prices in this Advertisement Effective through Saturday, May 24th

Old Dutch Cleanser 2 14-oz. 29c 2 giant 43c	Wesson Oil pint 41c quart 79c bottle 41c gallon can \$2.29	20 Mule Team Borax 1-lb. 23c 2-lb. 41c
Palmolive Soap (with 6c coupon) 3 regular 24c 2 bath 23c	Fab Detergent (with 10c coupon) 2 large 54c giant 67c	Rinso Granulated Soap large 36c giant 85c
Spry Shortening 1-lb. can 37c 3-lb. can 99c	Vel Detergent (with 10c coupon) 2 large 60c giant 73c	Ad Detergent (with 10c coupon) 2 large 58c giant 69c