

NEWARK POST

❖ Greater Newark's Hometown Newspaper Since 1910 ❖

100th Year, 33rd Issue © 2009

September 4, 2009

www.newarkpostonline.com

Newark, Del.

BACK TO SCHOOL

Parents and students came to Downes Elementary, Newark, for their first day of school on Monday, August 31. Principal Denise Schwartz welcomed everyone in the front hallway. For some new students and parents, the morning started with a teary goodbye and a hug to wish their children well on their first day. For additional photos, log on to newarkpostonline.com. Registration is free of charge.

PHOTOS BY MARK CORRIGAN



Newark jobless rate still lowest in state

Newark continues to have the lowest unemployment rate among the state's cities and counties.

Figures from the Delaware Department of Labor showed an unadjusted jobless rate of 6.3 percent in July for Newark. That was below 7.8 percent for June, but far higher than the 4.3 percent rate recorded in July of 2008.

By contrast, the unemployment rate for Wilmington rose to 12.9 percent, from 12.7 percent in June and 7.9 percent in July 2008.

The Newark jobless rate was even lower than the 6.9 percent figure for Sussex County, which

has a strong seasonal economy in the summer months.

Meanwhile, Delaware's July seasonally adjusted unemployment rate remained below the national average, although the rate of job losses outpaced the U.S.

While the Newark area continues to lose industrial jobs, with the closing of Chrysler and the expected loss of Avon, the largest employer, the University of Delaware, has not seen any major staff reductions.

Delaware's seasonally adjusted rate for July was 8.2

See **JOBLESS**, 2 ►

Author, winemaker headlines Taste of Newark

Taste of Newark announces special guest Deborah Brenner, author of *Women of the Vine* and prominent California winemaker. Brenner is the winner of both the University of Delaware Presidential Citation Award for Outstanding Achievement and the "Rising Star" Award by

Women for WineSense.

Brenner's passion for food and wine led her to create a unique winery that brings together renowned women winemakers from around the world under one brand. Brenner will share insights from her book and share wine from her Women of the Vine Cellars label.

Brenner's background includes

marketing and public relations and more than 16 years in the film and television industries. She has worked with companies such as Quantel, NBC and CNBC and was involved in establishing several successful startup technology companies.

A trip to the Napa Valley and

See **TASTE**, 2 ►

Welcome to UD



PHOTO BY MARK CORRIGAN

More than 3,000 University of Delaware's incoming freshmen gathered at the Carpenter Center for the Freshman Convocation to hear remarks from President Patrick Harker and other UD leaders. It is the only time the entire class will gather, prior to graduation.

INSIDE

Finding the right child care provider..... Page 2

Blue Hens kick off season on Friday Page 16



IN THE NEWS

Can we help?

Offices: The paper's offices are located conveniently in Suite 109, Pomeroy Station, 218 E. Main St., Newark, DE 19711. Office hours are 8:30 a.m. to 5 p.m. weekdays.

Phone: (302) 737-0724

Facsimile: (302) 737-9019

E-mail: postnews@chespub.com

To subscribe: To begin a convenient home-delivery subscription, call 1-800-220-3311.

To place a classified ad: Call 1-800-220-3311.

To place a display ad: Call 737-0724.

THE STAFF of the *Newark Post* is eager to assist readers and advertisers. Reporters, writers, editors and salespeople can be contacted as listed:

Doug Rainey is the Editor of the *Newark Post*. He leads the day-to-day operation of the newsroom. Call him at 737-0724.

Mark Corrigan serves as Assistant Editor and can be reached at 737-0724.

Jonathan Waddell is our Design Director. He handles design and composition of our pages.

Renee Quietmeyer is the *Newark Post's* advertising manager who manages the local sales team. She can be reached at 1-443-245-5003.

Jim Galoff handles accounts in the New Castle County area and is an automotive account specialist. Call him at 737-0724.

Mike Adams sells real estate advertising. He can be reached by calling 1-443-245-5031.

Robin Burgess sells ads in the downtown Newark, Middletown and surrounding area. She can be reached by calling 737-0724.

Our circulation manager is **Mary Ferguson**. For information regarding subscriptions, call 1-800-220-3311.

The *Newark Post* is published Friday by Chesapeake Publishing & Printing. News and local sales offices are located in Pomeroy Station, Suite 109, 218 E. Main St., Newark, DE 19711. All advertising and news are accepted and printed only at the sole discretion of the publisher. The *Newark Post* is a member of the Maryland-Delaware-D.C. Press Association, Suburban Newspapers of America and the National Newspaper Association.

POSTMASTER: Send address changes to: *Newark Post*, Suite 109, 218 E. Main Street, Newark, DE 19711. Periodicals postage paid at Newark, Del., and additional offices. (USPS #6465) Known office of publication 218 E. Main Street, Newark, DE 19711.

Tips offered on finding quality child care

Last week, a toddler wandered away from a day care center south of Newark, with a child care worker arrested in the case.

Following news of the incident, the Delaware State Police and the Delaware Department of Services for Children, Youth and their Families (DSCYF) offered tips and ideas for parents to consider when it comes to child care.

Kelly Bachman, Community Relations Coordinator for DSCYF, has provided the following indicators of high quality child care. She adds that several research studies have found that high quality child care programs have certain characteristics in common. These characteristics can help parents make better child care choices for their children because they indicate a much greater likelihood of high quality care. Quality indicators measure the conditions that generally foster a safe, nurturing and stimulating environment for children and include:

- Low child to teacher ratios
- Low teacher turnover
- Staff with higher education
- Prior experience and education of the director



The Little Scholars Center, south of Newark. Police say a toddler walked out of the building undetected.

- Well-compensated teachers who receive good benefits
 - Accreditation or a higher-than-minimum license
- Cpl. Jeff Whitmarsh of the Delaware State Police suggested the following questions parents should ask on an ongoing basis of their child's day care facility:
- "How often is a head count taken of children in the facility?"
 - "What steps are taken if a child is found missing?"

- "What safety procedures have changed since I first enrolled my child at this day care facility?"
- "Does the child to teacher ratio change throughout the day? And if so, to what degree?"
- "Is my emergency contact information up to date?"
- "Is this center currently under investigation by the State of Delaware? Has it been since I enrolled my child?"

- "Does this facility participate in a child identification program of sorts and is my child's photograph on file should they go missing?"
- "Is there a process of an ongoing background check of my child's teachers?"

More information can be found at the following link: <http://kids.delaware.gov>.

Concern over the quality of child care intensified, after Delaware State Police arrested a child care worker, after a three-year-old walked away from the Little Scholar's Daycare, in the Four Seasons area. She was identified as Evelyn Devonshire, 40, of Brookside, a neighborhood near Newark. Devonshire was charged with endangering the welfare of a child.

Devonshire was on duty at the day care center when the boy left the center undetected and wandered dangerously close to Route 896. Several passing motorists stopped and took care of the child until the State Police arrived and traced the boy to the day care center. Devonshire will have an appearance in Family Court this month.

Taste of Newark Sept. 27th

► TASTE, from 1

a lunch with Karen Cakebread, from Cakebread Cellars, instituted a life change. Thanks to her journalism background, Brenner's curiosity led her to research women in the wine-making business. The idea for Women of the Vine was born, and Brenner was soon trekking to California to interview passionate (and famous) winemak-

ing women entrepreneurs.

Some of the unique winemakers under her brand include Heidi Barrett, named "The Wine Diva of Napa" by TIME magazine; Carol Shelton, winner of the title "More Awarded Winemaker in America" for 12 of the last 15 years; and Signe Zoller, named "Winemaker of the Year" by both Paso Robles Wine Country Alliance and the Central Coast Winegrowers Association.

This year's Taste of Newark takes place on Sunday, September 27th from 12:00 - 3:00 p.m. on the picturesque Old College Lawn, UD Main Campus. It promises to be even bigger and better than last year's record-breaking event! The very special and popular event will host more than 1,000 attendees under its white tents. Each person will receive a commemorative wine glass and menu book contain-

ing the chefs' menus!

Tickets are now on sale for \$40 and can be purchased at the Taste of Newark office, 273 East Main Street and in the City's Planning and Development Department, 220 Elkton Road. On the day of the event there will be a limited number of tickets available for \$50. For more information call 368-2561 x 12 or visit the Downtown Newark Partnership web page at www.eatdowntownnewark.com.

Newark's jobless rate

► JOBLESS, from 1

percent, compared to 8.3 percent a month earlier, according to the Department of Labor.

The U.S. jobless rate for July came in at 9.4 percent, compared to 9.5 percent in June.

Delaware suffered from the loss of 23,200 jobs over the past year, with only information, health and education posting gains.

The rate of job losses over the past year in Delaware stands at 5.3 percent, higher than the 4.2 percent reported nationally.

Construction may have been the weakest performer on the Delaware job front, with the loss of 4,200 jobs in the year-long period. The category employed 25,400 in July 2008. Professional and business services, a broad category that includes temporary workers, saw a loss of 5,700 jobs. However, those losses came from a much larger July 2008 job total of 59,500 jobs.

State government cuts also began to show up in the July job loss column, with employment down 2,500 from a year ago during the same month.

126 E. Main St.; Newark. (302)266-6993
www.homegrowncafe.com

FREE DESSERT W/ ENTREE PURCHASE.
 Valid through Sept 24th, 2009.
 Monday - Thursday 11 am - 10 pm. Present coupon when ordering.
 Cannot be combined w/ any other offers or discounts. Dine in only.

QUALITY SERVICE YOU CAN DEPEND ON

- Brakes • Auto Inspection • Electrical
- Suspension Systems • Transmissions
- Differential 4x4 • Fuel Injection • Engine Repairs

PETE'S GARAGE

FLEET & DIESEL REPAIR

302-286-6069

SERVICING THE BEAR & NEWARK AREAS

Chrysler • Jeep • Dodge Specialist
 78 Albe Dr., Newark, DE
www.fixyourcarnow.com

\$10 OFF
 with this coupon
 Expires 10/2/09

POLICE BLOTTER

UD Police arrest man in stalking probe

(Police Blotter items are based on reports from area police departments. For the latest police news, log on to newarkpostonline.com. Registration is required, but is free of charge).

University of Delaware Police arrested Daniel E. Shaffer, 40, of Lebanon, Pa., on Aug. 27, in connection with a stalking investigation.

Last May, he is alleged to have engaged in a pattern of harassing a UD student by telephone and text messages. The victim was a former student of Shaffer's when he was an associate professor at a community college in the Lancaster, Pa., area.

Suspect steals bike

Last Saturday, employees at Bike Line, located at 212 E. Main St., reported that an Obrea 53cm Aletta Dama bicycle was taken from the store, out of a window display rack. Employees stated that the store was very busy that day and that the bike was taken somewhere between 11 am and 2 p.m. No one could give a description of the suspect. The bike, valued at \$1,999 is white with violet trim and has aero bars, but no pedals.

Person found on bench

Police responded to a criminal trespassing call at the Galleria at 45 E. Main St. A white male, Todd Krug, 37, of Newark, was found sleeping on the center atrium bench. When police arrived, Krug had unbuckled his pants and was urinating on the hallway floor. Krug was issued a summons for disorderly conduct and told that if he returned to the Galleria after hours, he would be arrested.

Main St. employee assaulted nearby

Newark Police are investigating an assault call that happened on Tuesday, August 25 to an employee at the Iron Hill Brewery on Main Street.

Witnesses reported that Robert Douglass, 26, of Newark, had been the victim of an assault that occurred on the corner of New St. and Choate Street. Douglass stated that he had been walking with some friends and was lagging behind. When he turned onto New St. from Choate St., a silver Dodge Neon whipped around the corner and bumped him with the driver's side mirror.

The driver stopped the car and got out to confront Douglass. Douglass backed down, but the driver started hitting him in the head and face. When Douglass' friends heard the commotion and tried to help him out, the driver drove away. Douglass received a 1 inch laceration under his left eye and a bleeding cut on his left ear.

The suspect is described as 18-25 years old, 5'09 to 5'11, 170-180 lbs., with short, dark hair, wearing shorts and a black "wife beater style" t-shirt. A check of the vehicle registration showed an owner that did not match the description given by Douglass and witnesses. Police are contacting the owner to help open new leads.

Couple pays bill with bogus \$50

Employees at TGIFriday's Restaurant at 650 College Ave. reported that a black male and black female paid for their bill with a counterfeit \$50 bill. The couple ordered food and drinks totaling \$46.95, placed the fake bill on the bar, along with their

check, and left the restaurant.

The bartender who discovered the counterfeit bill described the male as 23-24 years old, thin build, 5'08 with close cropped hair. The female was 23-24 years old, 5'09, approximately 140-150 lbs. with shoulder length hair.

Suspect wrestled with officer

A man accused of driving while intoxicated wrestled with a Delaware State Trooper, following a traffic stop.

Thursday night, a patrol officer conducted a traffic stop on a blue Chevrolet pickup truck that was observed changing lanes without signaling on Old Baltimore Pike and Route 273. The driver of the truck was identified as Daniel J. Newman, 30, who resides nearby.

A DUI investigation was launched and the investigator established probable cause to take Newman into custody. The officer summoned a second unit to assist with towing Newman's truck. While waiting for back up, Newman became unruly. He tried to make his way back to his truck and did not comply with commands to place his hands behind his back.

A struggle ensued and Newman pushed the officer. Eventually, Newman was taken into custody. He was then treated and released at Christiana Hospital for an injury to his nose. Upon his release, he was transported back to Troop 2 where he was formally charged with the following misdemeanor offenses: Offensive Touching of a Law Enforcement Officer, Resisting Arrest, DUI, Menacing, Following Too Closely and Improper Lane Change.

The trooper was not injured.

Newman was released on a \$1,950.00 unsecured bond.

Drug store robbery suspects arrested

Work by detectives and the involvement of the public led to two brothers - William and Stephen Satterfield - being taken into custody for a series of drug store robberies.

On Wednesday, several photographs of the bandits in action were released to the media and tipsters began to call in with information identifying the suspects.

On Thursday, officers scoured the area and located William Satterfield, 32, of Mansion Farms in Bear, at an undisclosed motel on Pulaski Highway. Word of William's arrest soon spread and his brother Stephen Satterfield, 27, also of Mansion Farms, surrendered to authorities later in the evening.

The charges, applied by both the Newark Police Department and the Delaware State Police for their respective investigations, are as follows for each suspect. The breakdown for the cases they were linked to is also included below: William Satterfield (committed to the Howard Young Correctional Institute in lieu of \$154,000.00 cash bond):

- Five counts of Robbery 1st (felony)
- Four counts of Conspiracy (felony)

Stephen Satterfield (committed to the Howard Young Correctional Institute in lieu of \$124,000.00 cash bond):

- Four counts of Robbery 1st (felony)
- Four counts of Conspiracy (felony)

The Delaware State Police, Newark Police Department and the New Garden Township Police

Department had been investigating multiple pharmacy robberies.

In these incidents, the suspects entered the stores, threatened the pharmacy clerks with a firearm (they either implied they had one or displayed the weapon), and demanded prescription drugs - primarily Oxycodone and Oxycontin.

- Robberies listed were:
- CVS Pharmacy - Route 41 in New Garden Township (PA) - 7/13/09 - 9:09 a.m.
 - CVS Pharmacy - Route 41 in New Garden Township (PA)

- 7/24/09 - 9:05 a.m.

- Rite Aid Pharmacy - Peoples Plaza, Glasgow - 7/27/09 - 2:30 p.m.
- Rite Aid Pharmacy - New London Rd, Newark - 7/31/09 - 9:08 a.m.
- Rite Aid Pharmacy - Peoples Plaza, Newark - 8/11/09 - 9:15 a.m.
- Rite Aid Pharmacy - Kirkwood Highway, Newark - 8/14/09 @ 9:28 a.m.
- Rite Aid Pharmacy - New London Road, Newark - 8/15/09 @ 9:08 a.m.



Get a free rate quote today.

GEICO

Local Office


• Auto • Home • Cycle • Boat • RV
Licensed in DE, MD, PA and NJ

302-998-9192

4565 Kirkwood Hwy • Wilmington, DE 19808


M-F 9-6, Sat. 9-1

Some discounts, coverages, payment plans and features are not available in all states or in all GEICO companies. Motorcycle, ATV and RV insurance are currently not available in some states. Boat and PWC coverages are written through non-affiliated insurance companies and are secured through Insurance Counselors Inc., the GEICO Property Agency, doing business as GEICO Insurance Agency in CA, MA, MI, NJ, NY, OK, SD, UT. Government Employees Insurance Co. • GEICO General Insurance Co. • GEICO Indemnity Co. • GEICO Casualty Co. These companies are subsidiaries of Berkshire Hathaway Inc. GEICO: Washington, DC 20076. ©2009 GEICO



Eyecare Facts

by Dr. Yvonne Kneisley
Optometrist



Age-Related Eye Changes

As we enter middle age, hardening of the eye lens makes it increasingly difficult to read print, necessitating the use of the reading glasses. Another age-related change involves the loss of strength by muscles that control pupil size and our reaction to light. As a result, our pupils grow smaller and do not respond as well to changes in ambient light. In fact, people in their 60s are likely to need three times the amount of illumination that they needed when they were in their 20s in order to read comfortably. Mature adults are also more likely to be bothered by bright sunlight and glare when transitioning from darkened to light environments. Eyeglasses with photochromic and anti-reflective coatings can help.

Eyewear styles and lens treatments have changed dramatically over the past few years, giving people a wide range of options to see clearly at all distances. Please call **KNEISLEY EYE CARE** at **302-224-3000** to schedule a comprehensive eye exam that includes thorough examination of the eyes and prescription determination. We feature a wide selection of stylish frames in a variety of materials, including wire-thin titanium, stainless steel, bold metals, and sleek-colored laminated plastics. We are the exclusive dispenser for **COACH** in Newark. Photochromatic and anti-reflective coatings are available for all lenses. Visit us at 45 East Main St., on the 2nd floor of the Main Street Galleria.

P.S. Photochromic lenses lighten and darken in response to exposure to ultraviolet light. They can relieve the need for a separate pair of prescription sunglasses.

Kneisley Eye Care
302-224-3000 • 45 East Main St., Newark DE

Do You Have Indoor Air Pollution?

STANLEY STEEMER.
CLEANS AIR DUCTS



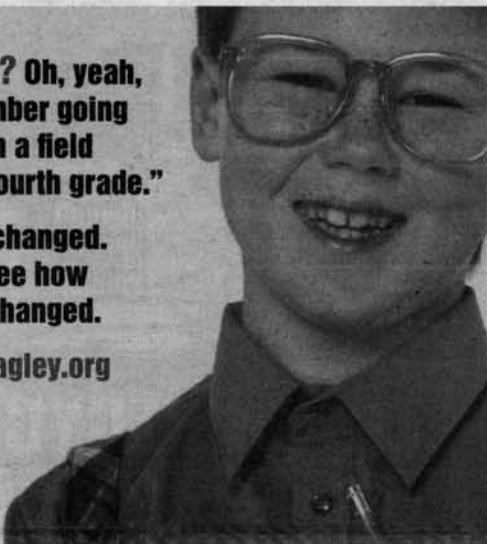
Trained &
Certified by
NADCA

STANLEY STEEMER.
302.322.5511

"Hagley? Oh, yeah,
I remember going
there on a field
trip in fourth grade."

You've changed.
Come see how
we've changed.

www.hagley.org



COMMUNITY BRIEFS

Something to Smile About!**Implant Dentistry**

An exciting alternative to bridges or dentures. Laugh, talk and eat confidently with teeth that feel and look like your own

Dr. Barry Kayne, D.D.S.

Specialist with over 25 years experience

Omega Professional Center
Suite F-58 • Newark, DE 19713

Across from Christiana Hospital

302-456-0400

Fax: 302-456-0396

www.delawareperio.com

**Ceremony honors Michael Jones**

Psychotherapeutic Services, Newark, announced the renaming and dedication ceremony of its facility in honor of Michael Robertson Jones (Mikee).

The dedication ceremony was held at the Newark Group Home, at 5 Kensington Lane, Newark.

Michael Robertson Jones, known to his friends as Mikee, died unexpectedly on February 14, 2009 at the age of 23. He is a 2008 graduate of Loyola University of New Orleans with a degree in Music Industry Studies and also pursued a degree in architecture at Northeastern

University in Boston.

Mikee loved music and was a guitarist, composer and sound engineer and the lead guitarist for Energy Field Band. Mikee was a licensed aircraft pilot, certified scuba diver and certified bartender.

He enjoyed boating, snowboarding, and jet skiing. He intended to begin work at Dolphin Research Center, Grassy Key Florida and also attend the University of Texas, McCombs School of Business to start his MBA.

In honor of Mikee's love of music, the group home will have a music area to enhance the awareness and enjoyment of music with the residents.

Sephora opening store

Sephora is opening its first store in Delaware at Christiana Mall on Friday. The new 5,888 square foot store features 13,000 products from more than 200 brands, including makeup, skin-care, tools, accessories, hair products, and bath and body products.

Sephora was the first beauty retailer to employ the unique open-sell philosophy, allowing clients to shop and test products.

Sephora stores are energy efficient and environmentally friendly, according to the retailer. The new store will use LED lighting on fixtures to reduce overall energy consumption and wood floors from sustainable forests. Sephora also recycles materials for all fixtures.

The store is the latest to open at the mall, which is undergoing a major renovation that will include the opening of a Nordstrom store.

Also slated to open are bookseller Barnes and Noble and popular restaurant, Cheese Cake Factory.

Harvest festival slated

A harvest festival is slated for Sunday, September 13th at the Co-op Farmers Market, sponsored by area farmers and the Newark Natural Foods Co-op. This family and pet friendly, rain-or-shine outdoor event runs from 10 a.m. - 2 p.m. at the Newark Natural Foods Co-op on Main Street.

In addition to the usual variety of fresh local foods, organic breads and pastries, plants, and crafts available at the Co-op Farmers Market, the festival will include live music from local artists, children's activities, health counseling, and raffles with great prizes. Highlights to this year's event include a local dish prepared by HomeGrown Café with produce donated by local farmers and a sampling of the Farmer Market vendors' jams, jellies, relishes, salsas, breads, fruits, vegetables, ethnic dishes, more.

Rotary Club hosts guest speaker

Lloyd King, a long-time English teacher in the Christina School District and now a speaker for the Delaware Humanities Forum, was the guest speaker at the Newark Rotary Club's meeting at Timothy's Restaurant.

The speech, entitled "The Shakespeare That Nobody Knows", was received by the club membership and three families whose daughter and sons received tuition scholarships from the Rotary Club on that night.

ON TIME EVERYTIME
STANLEY STEEMER®

**5 ROOMS, 1 HALL
& STAIRCASE FOR \$175**



CALL FOR DETAILS
302-322-5511
Valid at participating locations only

Enjoy the latest Fashion
with a
**Minster
Design**


Minster Designs
Crafted in our shop
Made in America
Starting at \$100.00



Minster's
of Newark
jewelers since 1895

Newark Shopping Center, Newark, DE
302-737-5947
Email: info@minstersjewelers.com Web: www.minstersjewelers.com

got scrap?
TOP DOLLAR PAID FOR SCRAP!



ELKTON RECYCLING
410-392-2980

Back to School
New Year, New You!

Let Mr. Anthony
give you a new look!

**Shampoo, Cut &
Style Make-Over \$39.00**

SALON BY ANTHONY, INC.

321 Newark Shopping Center, Newark, DE 19711

(302) 737-5869

Daily: 10-7, Sat 8-3, Closed Sun & Mon

Anthony Barcola Jr.,
Owner & Operator

C & D Furniture
Quality Furniture
by Amish Craftsmen

Mission Style Chairs & Sofas
Available in a variety of fabric, leather and stain colors



See our Selection of Dining Room Furniture!

SHEDS & STORAGE BUILDINGS
Custom Built to fit your needs. You choose the style, size and color from our "Amish Built" catalogs.
Give us a try—our prices are right.

Lawn Furniture
Chairs, Rockers, Swings, Gliders,
Picnic Tables and much more.

SPECIAL PRICES ON DISPLAY PLAYSETS!

Rt 213, Chesapeake City, MD • 410-885-2572
3 miles So. of the Chesapeake City Bridge at the 2nd Light

IN THE NEWS

Traffic main concern at proposed Wawa

By MARK CORRIGAN

MCCORRIGAN@CHES PUB.COM

The Newark Planning Commission voted unanimously to approve a rezoning of the property located at 601 Ogletown Road, the site of the now-closed Bennigan's Restaurant.

The 1.9959 acre site is proposed to be the location of a 5,589 square foot Wawa convenience store that will feature 2,300 square feet of retail space and a bay for 12 gas pumps. The rezoning will change from a designation of BB (central business district) to BC (general business), which will allow the store to sell fuel.

Of greatest concern is the increased traffic on and off Ogletown and Marrows Roads. Vehicles wanting to exit and travel westbound on Ogletown Road will have to circle the store, turn left onto Marrows Road, and make a left turn onto Ogletown Road. Many on the commission stressed the need for preventive measures to force drivers to not attempt a left turn out of the Ogletown Road entrance, thus causing possible accidents.

A secondary issue is the maintenance of the access road



An overhead view of the proposed Wawa store at 601 Ogletown Road. Drawing provided by Landscape Architectural Services, LLC.

between the site and the Floyd I. Hudson State Center. At present, the property owners are unsure who has ownership of the road. Since it is a private access road, the City of Newark has no responsibility in maintaining it.

The final recommendation is for the implementation of a traffic analysis study by DelDOT to suggest improvements for the increased traffic flow, especially for the Marrows Road side of the store, with the possibility of adding a traffic light at the intersection.

The commission will pass their recommendations onto the Newark Town Council, which will vote on approval for building at a future meeting.



THE ACADEMY FOR CHRISTIAN STUDIES
OF FIRST PRESBYTERIAN CHURCH
PRESENTS

FOUNDATIONS OF JUDAISM

with Dr. Alan Fox

Sundays September 13 to October 11, 9:00 - 10:00am

At First Presbyterian Church

Cost: \$10 members / \$15 non-members

Christianity has its origin in Judaism. Dr. Fox, Assistant Professor of Philosophy at UD, returns to make history come alive in this interesting informative exploration of Christianity from its origin to the present.

HAIR APPARENT - THE STORY OF SAMSON

with Dr. David Berkebile

Wednesdays September 16 to October 14, 7:00 - 8:30pm

At First Presbyterian Church

Cost: \$10 members / \$15 non-members • Book Fee: \$5

Examine the Old Testament story of Samson with a fresh perspective including how oral traditions and symbolic language are used to deliver a message.

Register in person or view the full Academy for Christian Studies brochure online.

First Presbyterian Church

292 West Main Street, Newark, DE 19711
(302)731-5644 • www.firstpresnewark.org



WHO WOULD BE OUT ON A NIGHT LIKE THIS?

I'm Tony Pini, a lineman for Delmarva Power.

Whenever bad weather strikes, regardless of the hour, Delmarva Power professionals like me are on the job. We know a power outage can mean inconvenience and hardship. While we can't prevent every outage, we are always working to be better prepared, respond faster and provide better information when an outage occurs.

And you can prepare too. Have a flashlight and extra batteries on hand. Keep an emergency kit nearby. And make arrangements for an alternate power supply or alternate location if you rely on electricity for medical reasons.

To report an outage in your area, call Delmarva Power at 1-800-898-8042.



I WOULD.

delmarva
power

Your life. Plugged in.™

Something terrible happens when you don't advertise...Nothing!
Call 737-0724 to place an ad.

SPORTS

Caravel Academy football faces tough schedule

By JON BUZBY

JONBUZBY@HOTMAIL.COM

When Caravel Academy's 2009 season (9-3) ended with a loss to Laurel in the semi-finals of the Division II State Tournament, not only did the Buccaneers lose that game, but when the final horn sounded lost several key players to graduation.

Caravel does return several two-way starters, including Brandon Cheaton, Jordan Hutchinson, Lariffe Seeny and Mark Williams.

"We are looking for a very challenging season," Caravel coach Mike Aruanno said. "The schedule is incredibly tough this year."

Caravel opens its schedule at Sussex Central on Sept. 11 at 7:30 p.m. Other Division I opponents include St. Mark's and Salesianum, and the Bucs will travel across the border to face Octara (Pa.) and Chesapeake (Md.) High Schools.

"We would be considered small in size and in numbers but we are loaded with heart and

desire," Aruanno said. "We will not depend on any star players to succeed, but rather our successes will truly come from a team effort."

A new era begins for St. Mark's running program

For the first time in 40 years the Spartans' cross country teams will begin a season without longtime coach Joe O'Neill, who passed away last spring.

"This is the first season in school history without Joe O'Neill at the helm," said boys' coach Tom McCartan, who ran for and had been O'Neill's assistant since 2002. "We miss him but are honored to carry on his legacy."

The boys' team also has to fill the shoes of 2008 state champion Greg Morrin, but McCartan is confident the winning tradition can continue.

"Our team goal is always to win a state championship," McCartan said of his harriers, who finished third in the state meet last year. "But right now

there are too many questions to project our finish."

Mike DiGennaro, also O'Neill's former assistant, takes over the helm for the girls'

team and will welcome back last year's varsity letter winners Emily Frydrych, Beth Sowden, Natalie Fogarty, Amanda Settle, Izzy King and Jill Allen.

"We have some experienced runners returning and so I expect us to be very competitive at the county and state meets in November," DiGennaro said.

"The team is working very hard, and they have dedicated this season to Coach O'Neill. It's an honor to carry on his tradition."

Blue Hens to face West Chester Friday

After nine long months of waiting, the University of Delaware football team finally gets an opportunity to start avenging one of the worst seasons in its history.

The Blue Hens, who finished a dismal 4-8 last season, open the season Friday night at 7 against West Chester at Delaware Stadium in the 51st renewal of this neighborhood rivalry.

The Golden Rams, ranked No. 20 in Division II, actually began their season last Thursday with a 43-0 victory at Lock Haven. That follows a season in which they went 9-3, won their Pennsylvania State Athletic Conference and got to the second round of the NCAA Division II playoffs.

"This may be their best

team," said Delaware coach K.C. Keeler. "And the wild card may be their fifth year quarterback who is from right down the street here."

That fifth year quarterback is Joey Wright, who had a standout career at St. Mark's. Wright threw for 3,336 yards and 28 touchdowns last season in leading the Rams to the playoffs.

"Wright is as close to a seasoned veteran as you will find in college football," said West Chester coach Bill Zwaan. "He has a lot of time in with our system and he runs the offense very well. His personality is a calming influence in the huddle. He knows how to spread the ball around and he always makes the right read."

Despite West Chester's good record and high potential for

this season, Keeler acknowledges that it will be easier opening against the Rams than it was opening at Maryland last season.

"There's a reason that Penn State opens with Coastal Carolina (last year) and Florida plays Charleston Southern," said the coach. "You'd like to open with a game that the high majority of time you're going to win."

And that the Hens have against West Chester. They hold a 43-6-1 advantage in the long-standing series.

"This is a game where it's all about us and not about them," Keeler said. "It's about what we do. From where we were and where we want to go, it's about us."

Keeler and fans alike are

eager to see improvement from the offense this season. Delaware had one of the top defenses in the CAA last year but it wasn't enough to overcome such a woeful offense.

Judging from preseason practice it looks like that improvement has come in the name of Pat Devlin.

Devlin is a junior transfer quarterback from Penn State that will have more speed and skill at his disposal this season than Ohio State transfer Robby Schoenhof had last season.

"From the first day he stepped on campus, I could tell he was the right fit," Keeler said of Devlin. "I've said this before but this is just in his DNA. This is what he was meant to do. He was meant to lead a football team."

GOOD Friends! GOOD Times! GOOD Beer!



A STATE LINE
State of mind!

State Line Liquors

Low Prices! Great Selection! Best Service!

Elkton-Newark Rd., Elkton, MD
1(800) 446-WINE • 1(410) 398-3838

More coupons online at
www.statelineliquors.com

Coupons Good For Advertised Limits Only

COUPONS

Budweiser: Regular, Light, Select	\$13.99 cs 24 pack bottles	Limit 5 cases
Coors: Light & Original	\$14.99 cs 2/12 pack bottles	Limit 5 cases
Miller: Lite, MGD, MGD Light 64	\$14.99 cs 2/12 pack bottles	Limit 5 cases
Keystone Light	\$11.49 cs 30 pack cans	Limit 5 cases
Blue Moon Belgian White	\$22.99 cs 2/12 pack bottles	Limit 5 cases
Yuengling: Lager & Light Lager	\$13.99 cs 24 pack bottles	Limit 5 cases
Landshark Lager	\$20.99 cs 2/12 pack bottles	Limit 5 cases
Woodbridge Chardonnay	\$9.69 1.5 Liter	Limit 6 Bottles
Adelsheim Pinot Gris	\$12.99 750ml	Limit 12 Bottles

Above coupons good thru 9/17/09

Cutty Sark Scotch	\$22.99 1.75L	Limit 6 Bottles
Smirnoff Vodka	\$16.99 1.75L	Limit 6 Bottles
Barton's Vodka	\$8.99 1.75L	Limit 6 Bottles
Bombay Sapphire Gin	\$28.49 1.75L	Limit 6 Bottles
Grant's Scotch	\$17.99 1.75L	Limit 6 Bottles
Burnett's Gin	\$10.49 1.75L	Limit 6 Bottles
Early Times Bourbon	\$13.49 1.75L	Limit 6 Bottles
Canadian Club	\$16.69 1.75L	Limit 6 Bottles
Parrot Bay Rum	\$18.99 1.75L	Limit 6 Bottles
Ronrico Rum	\$11.99 1.75L	Limit 6 Bottles

Perrin Reserve Cotes duRhône Red & White ...	\$7.49 750ml	Limit 12 Bottles
Campo de Luz Garnacha	\$5.99 750ml	Limit 12 Bottles
Danzante Pinot Grigio	\$7.49 750ml	Limit 12 Bottles
Di Majo Norante Sangiovese	\$7.49 750ml	Limit 12 Bottles
Oxford Landing Aussie Wines	\$5.49 750ml	Limit 12 Bottles
Almaden Chardonnay, Cabernet, Merlot	\$11.35 5 Liter	Limit 4 Boxes
Thumbprint Chardonnay	\$11.99 750ml	Limit 12 Bottles
Sutter Home White Zinfandel	\$5.99 1.5 Liter	Limit 6 Bottles

Corona: Regular & Light	\$19.99cs 24 pack bottles	Limit 5 cases
Heineken: Regular & Light	\$21.99cs 24 pack bottles	Limit 5 cases
Guinness Pub Draught	\$24.99cs 3/8 pack cans	Limit 5 cases

Above coupons good thru 10/01/09



Back-to-School SAVINGS! 10% OFF EVERYTHING on Friday, SEPTEMBER 4th!

CO-OP Farmers Market

FALL HARVEST FESTIVAL

Sunday **SEPT. 13TH** 10 AM - 2 PM

FOOD! * Fun! * Fellowship!

HARVEST FESTIVAL HIGHLIGHTS

CHILDREN'S ACTIVITIES

"ART TO GO" WITH NEWARK ARTS ALLIANCE
CORN HUSK DOLL MAKING WITH THE CO-OP
FACE PAINTING WITH MR. BRADY
GYPSY JUGGLING ACTS

FOOD & FELLOWSHIP

HOME GROWN CAFE PREPARES A LOCAL DISH
FARMERS MARKET VENDOR SAMPLING AND PRIZES!
SLOW FOOD USA POTLUCK LUNCH * 11 AM - 1 PM
• *Bring a Dish to Share with List of Ingredients **
Co-Hosted by the Co-op and Harvest Market
• *Meet fellow community members*
• *Learn about the Slow Food Time For Lunch Campaign to get real food in schools*
• *Find out what others are doing to make healthy, green lunches for their children*
FOOD, INC. SHOWING AT NEWARK CINEMA * 1 PM
Sponsored by Harvest Market Natural Foods
(Regular ticket prices apply)

NATURAL HEALTH

SARAH DICKINSON MURRAY, *Naturopathic Practitioner*
KIM LEMBERG, *Certified Holistic Health Counselor*
NATURE LOVE, *Raw Foodist & Co-op Employee*
BE TRULY WELL CHIROPRACTIC AND DAY SPA

LIVE MUSIC SCHEDULE

10 AM - 11:45 AM * CHAIN REACTION * *Bluegrass*
11 AM - 12 PM * GANG OF TWO * *Rock & Roll*
12:15 PM - 1 PM * ZACH LADIN * *Funk, Folk*
1:15 PM - 2 PM * MELISSA COX * *Folk, Celtic*

FREE AND OPEN TO THE PUBLIC

All Activities are scheduled for 10 a.m. - 2 p.m. unless otherwise noted. Some activity fees apply.



**NEWARK
NATURAL FOODS**
Your Co-op Since 1975

OPEN EVERY DAY: MONDAY - SATURDAY 9 AM - 8 PM AND SUNDAY 10 AM - 5 PM
280 E. Main Street • Market East Plaza • Newark, DE 19711
302-368-5894 • www.newarknaturalfoods.coop

Opinion

editorials • columns • letters to the editor • out of the attic

GET HOOKED ON.....

Taylor & Son's Rides & Amusements
Thurs & Fri 6pm-10pm
Ride all night with \$16 wristbands

RIVERFEST

RAIN OR SHINE

VISIT THE TOWN OF CHARLESTOWN, MARYLAND

SEPTEMBER 12 & 13, 2009

WEEKEND ACTIVITIES

THURSDAY, SEPTEMBER 10 - Ms. RiverFest Pageant, 7PM - Wellwood Tent • Taylor & Son's Rides and Amusements 6PM - 10PM

FRIDAY, SEPTEMBER 11 - Taylor & Son's Rides and Amusements 6PM - 10PM

SATURDAY, SEPTEMBER 12 - Children's Fishing Tournament 9-11am sponsored by The Mariner and The Maryland Saltwater Sports Fisherman's Assoc.-Limited to the first 60 children, call 410-982-2392 for more info. Parade beginning at Noon • Taylor & Son's Rides & Amusements • Live Entertainment • Food & Craft Vendors • Free Children's Games & Activities • Antique, Hot Rod & Classic Car Show • Sailing Regatta • Renaissance Group • Fireworks at Dusk

SUNDAY, SEPTEMBER 13 - Taylor & Son's Rides & Amusements • Live Entertainment • Food & Craft Vendors • Free Children's Games & Activities • Renaissance Group • Pretty Baby Contest 11am • 5K Run • Scott Wells and The Muddy River Blues 1pm

Fireworks at Dusk on Sat., Sept. 12

Docking Available through The Wellwood • 410-287-6666 and North East River Marina • 410-287-5298
Boat Ramp Open & Slips Also Available at North East River Marina Call 410-287-5298

NO PETS, SKATEBOARDS OR BIKES ALLOWED
All applications can be downloaded at www.CharlestownRiverfest.org
Parking for handicapped available. General & permit parking available. Any unauthorized vehicles in restricted parking areas will be towed at the owner's expense.

PIRATE PONTOON RIDES Saturday & Sunday

Platinum Sponsors
The Mariner
Town of Charlestown

Gold Sponsors
Mail Bag
The Wellwood
North East River Marina

Silver Sponsors
Plus PNC

298920 NPO91109

Proceeds to benefit Charlestown Children's Organizations for more information, call 443-303-4088

OUT OF THE ATTIC



This week's Out of the Attic features the grand house that stood for decades on the NE corner of Main and Center Streets. Nearly a century ago, Dr. G. M. Kollock, a busy family doctor known as "Doc Colic", lived in half of this house and practiced medicine in the other half. He made his house calls in a horse-drawn buggy and later in a Model T, and charged 50 cents for office visits. At the time of this picture, the building housed a laundromat and rentals. It was razed in the 1970's for construction

of a bank that was later razed to build the present building that houses Happy Harry's (Walgreen's) Pharmacy and Home Grown Café.

The picture is on loan to the Newark Post from the Newark Historical Society collection. Can you add information about the history of this building or site? The

society is seeking pictures and other artifacts of places, activities, and life styles in the Greater Newark area.

Contact the Newark Historical Society by voice mail at 302-224-2408, by postal mail to P.O. Box 711, Newark, DE 19715, or by email to newarkdehistorical.society@yahoo.com.

Okura Imaginative Japanese Cuisine

Wellington Plaza
703 Ace Memorial Drive • Hockessin
302.239.8486
Fax 302.239.6892
(On Rt. 41 N. 1/2 mile from Wawa, Next to Toadstool)

Open 7 Days A Week
www.okurarestaurant.net

Tatami Room • Sushi Bar • Cocktails
Catering • Private Parties • Take-Out

BEST OF DELAWARE 2005-2008

Lunch: Mon. - Sat. 11a.m. - 2:30 p.m.
Dinner: Mon. - Thurs. 4p.m. - 10p.m. • Fri. & Sat. 4p.m. - 11p.m.
Sun. 3p.m. - 10p.m.

got scrap?

TOP DOLLAR PAID FOR SCRAP!

"CASH FOR ALL TYPES OF METALS AND CARS!"

#1 STEEL

LITE IRON

WE BUY BATTERIES, COPPER, BRASS, ALUMINUM, STAINLESS, ELECTRIC MOTORS, OLD FARM EQUIPMENT, & COMPLETE JUNK VEHICLES!

ELKTON RECYCLING

410-392-2980

First for Middletown....

OPERA DELAWARE at **THE EVERETT**

47 West Main St., Middletown
302.378.7038

Sunday, September 13 - 3 p.m.
Opera Delaware Quintet presents

Lynn Claire Morse, soprano
Joanna Gates, mezzo-soprano
Aurelio Dominguez, tenor
Christian Bowers, baritone
Martin Hargrove, bass

Jeff Miller, Music Director

Guest Appearance
Leland Kimball, tenor
Opera Delaware's General Director

An unforgettable concert at The Everett!!

First Main Stage performance in Southern Delaware!

Favorite opera arias to be performed:

- Mozart
- Rossini
- Verdi
- Johann Strauss
- Puccini
- Sorozabal
- Donizetti

Tickets: Adults - \$20, A.C.T. Members - \$18

For more information: everetttheatre.com or thegibby.com

Owned and Operated by A.C.T., Inc. - A 501(c)(3) Corporation.

Change careers • Upgrade your credentials • Advance in your career

EARN A UD CERTIFICATE

Results-oriented programs that suit
your busy schedule

- Clinical Trials Management
- Finance for Non-Financial Managers
- Financial Planning
- Health Care Risk Management and Patient Safety
- Legal Nurse Consultant
- Professional Practice Management
- Project Management
- Strategic Human Capital Management

UD certificates are...

- practical
- designed for adults
- targeted to jobs in the new economy

*You can earn a certificate in
less than a year!*



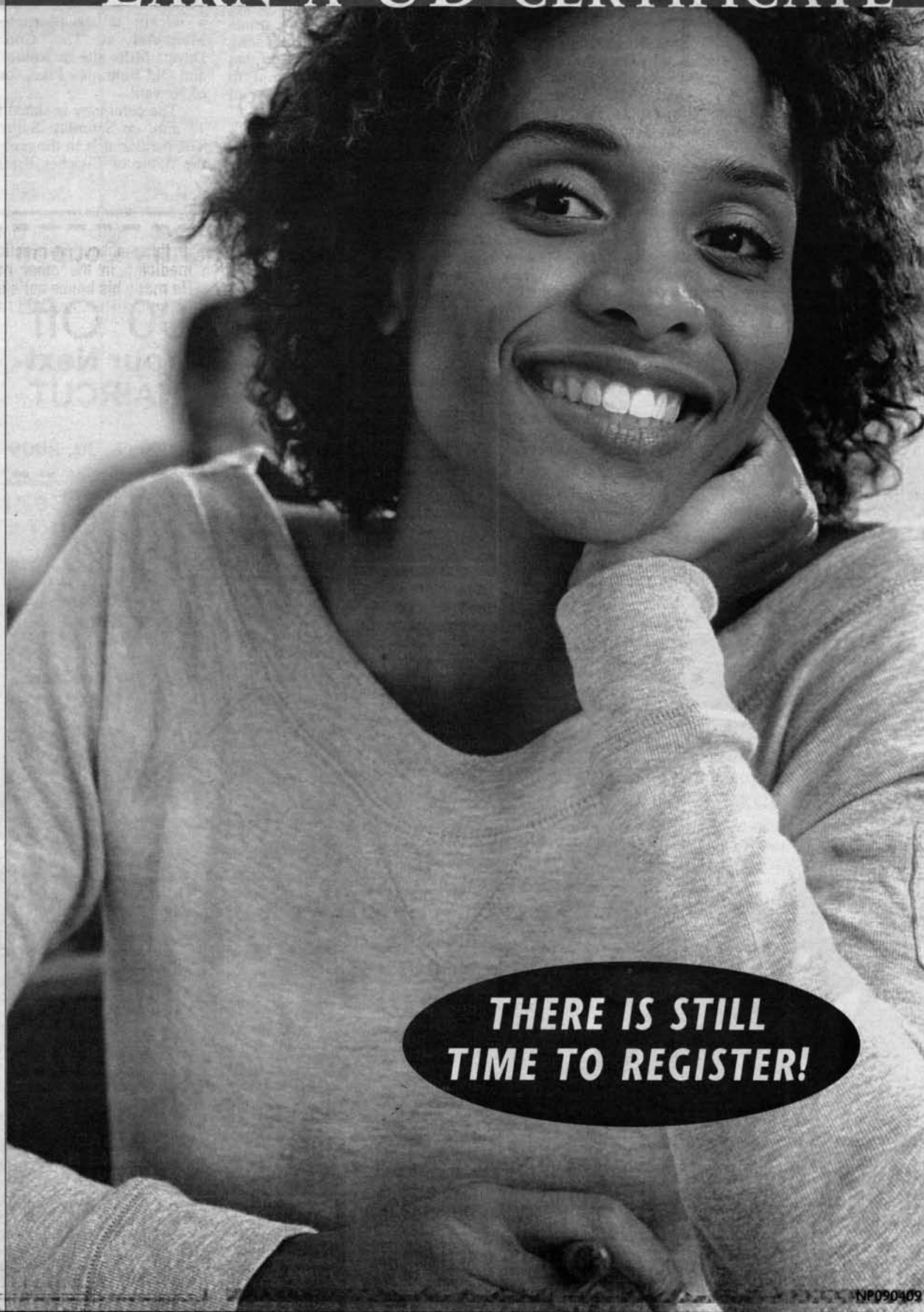
Professional and Continuing Studies

Contact us today for more information—

302/831-7600 • continuing-ed@udel.edu

www.pcs.udel.edu/certificate/

The University of Delaware is an Equal Opportunity University.



**THERE IS STILL
TIME TO REGISTER!**

NP090409

COMMUNITY NEWS

Newark Girl Scout completes Gold Award project



(Editor's note: E mail your items to postnews@chespub.com)

Brittany Kozlowski, daughter of Steven and Tammy Kozlowski of Newark, completed her Girl Scout Gold Award Service Project at Faithful Friends Animal Shelter. With the help of family & friends she was able to build physical therapy

and exercise equipment for the dogs as well as a shelving loft for cage storage. She also decorated the warehouse walls with painted paw prints and bones along with creating "Happy Endings" binders that will be extremely helpful to shelter on adoption days for all to enjoy.

French ambassador

to speak at event

French Ambassador Pierre Vimont is scheduled to place a wreath at the Battlefield Memorial at The Cooch-Dayett Mills site at Route 72 and Old Baltimore Pike, south of Newark.

The ceremony is slated for 11 a.m. on Saturday, Sept. 5. The memorial is in the area of the Battle of Cooches Bridge.

It was the only Revolutionary War battle fought in Delaware. The third annual ceremony honors veterans from United States wars and conflicts. The ceremony is free and open to the public and will feature invited re-enactors, the Glasgow High School Band and color guard units. Sponsor is the Pencader Heritage Area Association, PencaderHeritage.com.

Please call the Nature Center at 302-368-6900 for updates or weather delays. September 7 – Almost Fab (Beatles tribute).

WILMAPCO Invites Public Comments

The Wilmington Areas Planning Council (WILMAPCO) released proposed amendments to its Transportation Improvement Program (TIP) for FY 2010-2013 for public comment. The FY 2010-2013 TIP contains federally funded transportation projects for New Castle County, Delaware and Cecil County, Maryland. WILMAPCO seeks community input about transportation projects proposed for the next four years.

The public may review and comment on the proposed TIP at a public workshop scheduled for Wednesday, September 9, from

See **NEWS, 11** ►

Summer concert series

Join us for a lively and diverse outdoor concert at the band stage in Carpenter Recreation Area in the White Clay Creek State Park at 425 Wedgewood Rd., Newark. Bring your picnic supper, blanket, or lawn chairs and don't forget to visit the Friends of White Clay Creek State Park's booth where they will be selling water ice. Concerts generally last from 6:30-8 p.m.

Back to School Special

Town & Country Coupon

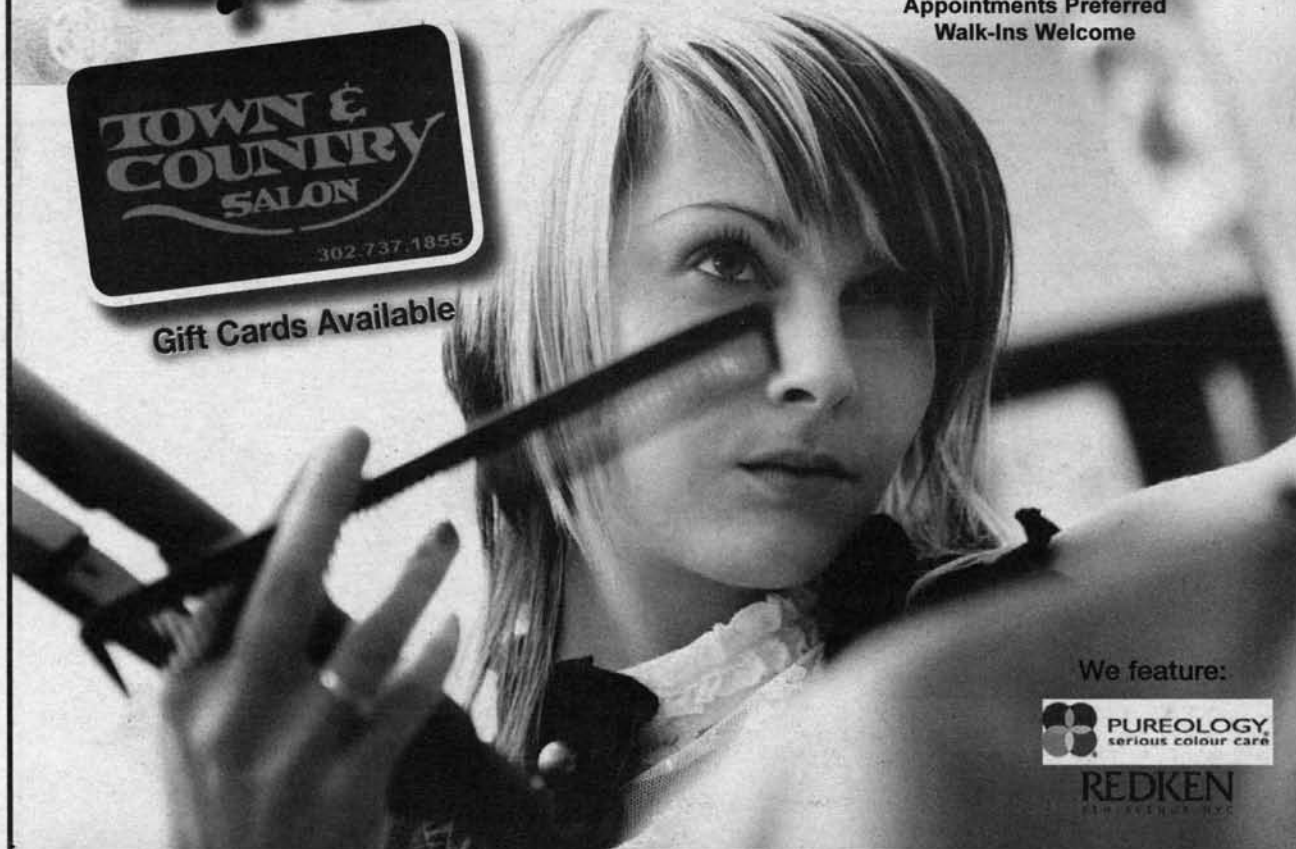
\$5⁰⁰ Off Your Next HAIRCUT

Offer Good Through Sept. 30, 2009

Offer Available to All Customers.
Appointments Preferred
Walk-Ins Welcome



Gift Cards Available



We feature:



TOWN & COUNTRY SALON

1923 Kirkwood Highway, Newark, DE

(302) 737-1855

HOURS: Monday, Thursday, Friday 8:30 to 8, Tuesday & Wednesday 8:30 to 8:30, Saturday 8 to 4

*Large enough to offer a great selection,
small enough for friendly customer service!*

CONTRACT LIQUIDATORS

The Furniture Store



Family Owned and Operated Since 1990!

312 South DuPont Hwy

New Castle, Delaware 19720

We're located just 1/4 mile south of the Route 13 & 40 Split!

302-328-8888

Monday-Thursday

11am - 7:30pm

Friday 11am - 8pm

Saturday 10am - 6pm

Sunday 12pm - 4pm

Immediate Pick up or Delivery Available on Most Items!

Layaway Available

90 Days Same as Cash

All Ashley Products Available

www.contractliquidatorsfurniture.com

Take Control Of Your Utility Bills!

2008 PRESIDENTS AWARD

Power Off? We Sell Generators!

Hentkowski, Inc.
"Your Key To Comfort"
Heating, Air Conditioning & Electrical

INFINITY SYSTEM

SealAssure DEALERS

302-998-2257

"Doing Business since 1968"

www.hentkowski.com

COMMUNITY NEWS

► NEWS, from 10

at hdunigan@wilmapco.org, or 302-737-6205 ext. 118.

Free Outdoor Concert at the Newark Senior Center

Thursday, September 10th – 6:00pm to 7:30pm. Performance by Swing City Band. Food will be sold starting at 6pm, includes hot dogs, ice cream & drinks, etc. Please bring your own lawn chair. Please call 302-737-2336 for more information. Newark Senior Center is at 200 White Chapel Dr. (off of Marrows Rd.).

4 to 7 p.m. at WILMAPCO, 850 Library Avenue, Newark, DE. The draft TIP is also available for comment at www.wilmapco.org/tip; print versions are available at WILMAPCO's office or can be mailed upon request.

Comments about the TIP may be submitted online at www.wilmapco.org/tip, in writing to Wilmington Area Planning Council, 850 Library Avenue, Suite 100, Newark, DE 19703, by fax to 302-737-9584, or by e-mail to wilmapco@wilmapco.org. For more information on the TIP, contact Heather Dunigan

Career Information Session

Cecil College will hold a Career Information Session from 6 p.m. to 8 p.m. Tuesday, Sept. 8, at Cecil's Elkton Station, 107 Railroad Ave. This free workshop is open to the public. Advisors from the college's credit and non-credit programs will be on hand to talk to prospective students about workforce training classes, degree and certificate programs, career development services, financial aid, and student support services. For more information, contact Chrys Ellerton

at 410-287-6060, ext. 641 or cellerton@cecil.edu.

Caring Ministry Workshop Offered

Want to learn how to reach out to others in a distinctively Christian way? On Saturday, September 12, Life Community Church will host a Stephen Series Caring Ministry Workshop from 9:00am to 1:00pm.

The half-day workshop consists of three sessions designed to enhance participants' caregiving skills and help congregations explore ways to expand caring ministries. The work-

shop is sponsored and led by Stephen Ministries, a St. Louis based organization that has trained leaders in more than 10,000 church congregations representing 150 denominations since 1975.

The cost of the workshop is \$15/person or \$50 for a group of four or more from the same congregation. For more information, or to register to attend the Stephen Series Caring Ministry Workshop at Life Community Church, please contact Stephen Ministries at (314) 428-2600, or register online at www.caringministry.org. Life Community Church is located at 750 Otts Chapel Road, Newark, DE.

ESOL classes in Elkton

Cecil College, located at 107 Railroad Ave., Elkton, MD 21921, will be holding English for Speakers of Other Languages classes. Both basic and advanced classes are available. Evening classes are from September 15-December 10, Tuesdays and Thursdays, 7-9 p.m., Room 328. Morning classes are from September 21-November 25, Mondays and Wednesdays, 9-11:30am, Room 328. Please call 410-392-3366 for pricing and availability.

Don't be left out in the COLD!

Schedule Service Now! Oil, Gas & Electric

410-398-1530 www.CrouseBrothersHVAC.com

CROUSE BROTHERS HVAC



Join the Y in September & pay no joiner fee!

A great choice for your family.

One Month at the Y

- Fully-equipped fitness centers
- Unlimited fitness classes
- FREE babysitting
- "Smart Start" goal session
- Fun nights & family swims
- Membership at all 7 Delaware Ys
- Reduced rates on youth programs

1-month Family Membership = \$78

Single-Parent Families = \$65

OR

One Night at the Movies

- Dinner = \$35.00
- Tickets = \$34.00
- Popcorn = \$ 6.75
- Candy = \$11.40
- Sodas = \$12.80

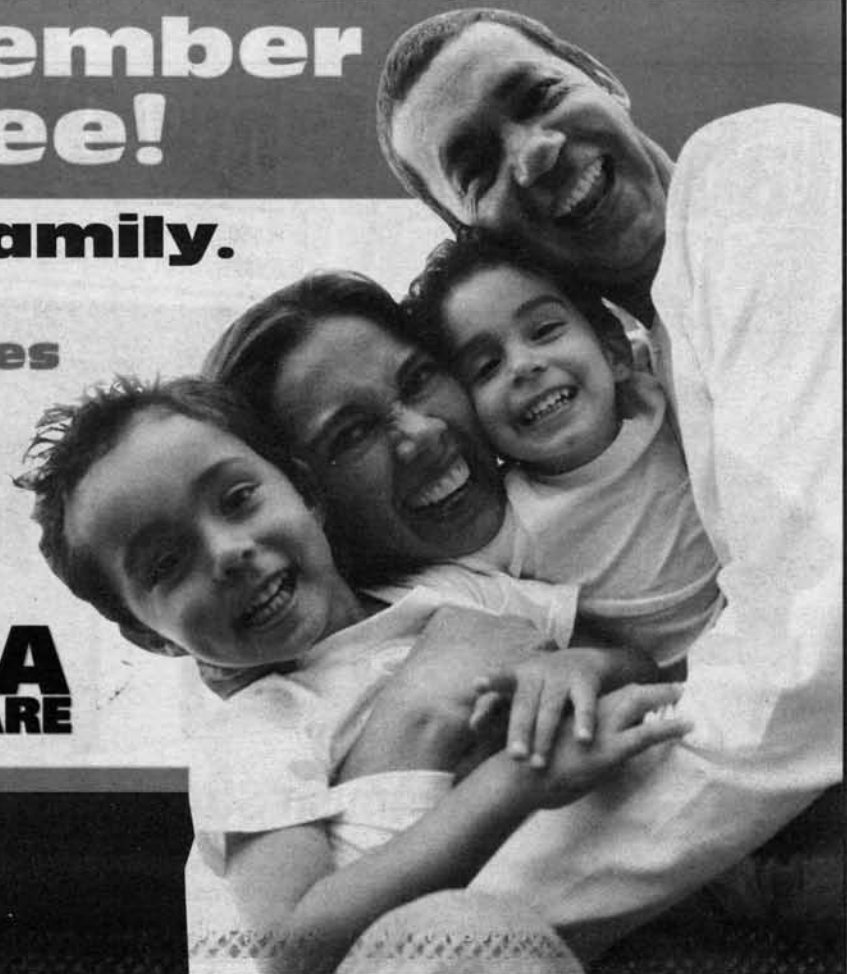
1 night out = \$99.95
(Based on a family of 4)



Western Family YMCA

2600 Kirkwood Highway, Newark, 302-709-YMCA

www.ymcade.org



OBITUARIES

■ *Obituaries are printed free of charge as space permits. Information is usually supplied to the newspaper by the funeral director.*

Melvin Bolen

Melvin R. Bolen, 41, of Newark, DE, died on Thursday, August 27.

Mel worked in security at Delaware Park.

He was preceded in death by his daughter Denise, in 1994. Survivors include his wife, of 15 years, Hilda; daughter, Eunice Rogers; grandchildren, Paul Chestnut-Allen; Patric Chestnut-Smith and Angel Chestnut-Allen; his parents, Dallas and Dorothy Bolen; paternal grandmother, Eva Bolen; his brother Dallas, Jr. (Vanette); his sister, Jeannie Heverin; nephews, Dallas, III, Jordon, Cody and Zach and his niece, Jacqueline and several aunts and uncles.

A celebration of life service was held at 7:30pm, Monday, August 31, at the Church of Jesus Christ of Latter Day Saints, 500 W. Chestnut Hill Rd., Newark. Interment was private.

The family suggests contributions in Melvin's memory to American Cancer Society, 92 Read's Way, Ste. 205, New Castle, DE 19720; American Diabetes Assoc. or Juvenile

Diabetes Assoc., 100 W. 10th St., Wilm., DE 19801.

Christopher Brady

Christopher Brady, 34, of Newark, DE, died suddenly on Friday, August 28.

Chris was born on November 1, 1974 in Wilmington, DE. He was a graduate of St. Mark's High School and a talented florist and creative designer.

He was preceded in death by his maternal grandmother, Frances Giacomelli Paoletti, his paternal grandparents, Martin and Helen Brady, and his uncle, Mark Paoletti. He is survived by his loving partner of 15 years, Shawn Hanshew; his parents, Mary and Kevin Brady; his paternal grandfather, Anthony R. Paoletti; his sister, Kelly Ann McGovern and her husband Damien; his nephews, Brady, Griffin, Zach and Pierce, and his nieces, Reagan and Isabel. He will be dearly missed by a host of aunts, uncles, cousins, extended family and many friends.

Relatives and friends were invited to the Mass of Christian Burial on Wednesday, September 2, at 10:30 am at Corpus Christi Church, 903 New Road, Elsmere. Burial was in All Saints Cemetery.

In lieu of flowers, the family suggests contributions to

Dawn Farm, 502 West Huron Street, Ann Arbor, Michigan 48103 to help others who are struggling with addictions.

Leila Broughton

Leila C. "Lee" Broughton, 91, of Newark, Delaware, died on August 25, at Christiana Hospital.

Born in Granville, NY, Lee received her degree as a registered nurse at the Pennsylvania Hospital in Philadelphia, Pennsylvania in 1946. After moving to Delaware in 1954, she began work as a stenographer/secretary for the E.I. DuPont Co. in Wilmington, where she worked for 30 years. After her retirement she worked part-time as a secretary at the University of Delaware in Newark, Delaware.

Lee was active a life-long supporter of civil rights for all peoples, economic equality, and peace with justice, both nationally and throughout the world. She participated in Wilmington United Neighborhoods (WUN), Pacem in Terris, and other organizations to help improve the life of all people.

Lee is survived by her daughter, Beverly G. Medcalf and husband John Medcalf

as well as her grandchildren, Joshua Medcalf and

Sarah Medcalf and her partner Mordacai Diamant.

Services and burial were private.

In lieu of flowers, contributions may be made to your favorite charity. To send condolences, visit: www.mccreryfuneralhome.com.

Mattie Dixon

Mattie Maxine Dixon, 77, of Glasgow, DE, died Sunday, August 23. Funeral services, 11 am, Saturday, August 29, at the Edward L. Collins FH, Inc., 86 Pine St., Oxford, PA. Interment, Oxford Cemetery.

Dallas S. Hernandez

Mr. Dallas S. Hernandez, 47, of Newark, DE, died on Friday, August 21, at Christiana Hospital.

He was preceded in death by his father, Nicholas Hammond. He is survived by his mother, Alice Pajich (Richard); brothers, Dwight Hernandez (Sandi), Darrin Pajich, and Miguel Mendoza; sisters, April Starkey (Steve) and Nicole Hammond; uncle, Jesus Valenzuela (Ophelia); companion, Dawn Bachman; seven nephews; and two nieces.

A memorial service was held at 12 noon, on Friday, August 28, at the Spicer-Mullikin Funeral Home, 121 West Park Place, Newark, DE.

Interment was held privately.

In lieu of flowers, contributions may be made to the charity of the donor's choice.

Julie Lotz

Julie L. Lotz, 41, of Newark, DE, died on August 22, at Christiana Hospital.

Julie worked as a general manager for Account Recovery Specialists. She was an online DJ and enjoyed dancing at Stage Lights Dance Studio.

She was preceded in death by her brother, Michael McKinster. Julie is survived by her children, Rachel Drake and Derrick Foraker; her mother, Patricia McKinster; father, Darrel McKinster; her sister, Tina Hafer, and her fiancé, Daniel Staubus.

A celebration of Julie's life was on Friday, August 28, 1 pm, McCrery Memorial Chapel Kirkwood Highway & Duncan Rd. Burial was in All Saints Cemetery.

John Sikorski

John J. "Popsie" Sikorski, 91, of Newark, DE, died on Friday, August 28.

John originally worked at the Greenhill Dairy and later for the North American Smelting Co. He retired in 1979 from NASCO. He also was an Army veteran. While serving in WWII, John

received a Bronze Star Medal for his bravery under fire and for critically aiding in the breaching of the Siegfried Line.

His wife, Sophie (Zaborowski) Sikorski passed away in 1990. He is survived by his daughter; Irene Poccynnek of Newark, DE; two granddaughters, Angie Knoll and Donna Evans; and four great grandchildren, Jenny and Tommy Knoll and Blake and Logan Evans.

A Mass of Christian Burial was offered on Monday, August 31, in St. Hedwig Church, Linden and S. Harrison St. at 9am. Burial followed in All Saints Cemetery.

In lieu of flowers, the family requests memorial contributions be sent to the Blood Bank of Delmarva, 100 Hygeia Dr., Newark, DE 19713.

■ *Additional local obituaries are posted each week on the Newark Post Web site. Obituaries of the following persons will be posted on the web this week:*

Melvin Bolen
Christopher Brady
Leila Broughton
Mattie Dixon
Dallas S. Hernandez
Julie Lotz
John Sikorski
William Smith
Charles Wilcox


Labor Day Blow Out!!!
4 Days Only!
Thursday, Sept 4th, Friday, Sept 5th
Monday, Sept 7th & Tuesday, Sept 8th



Way more than you can see from Rt. 40!!

F&C Amish Structures, Inc.
1967 Pulaski Hwy. • Bear, DE 19701
(across from Fox Run Shopping Center)
302-836-1976 • www.fcamishstructures.com
Hours: M & F 8:30 - 6 • T, W, Th 8:30 - 5 • Sat 8:30 - 4:30

310265-CV000209



We're focused on
eyeCare.
COMPETENT, EXPERIENCED DOCTORS
CERTIFIED OPTICIANS & STAFF

EYE EXAMS
ALL MAJOR INSURANCES/HMO'S ACCEPTED
1000'S OF AFFORDABLE AND DESIGNER EYEWEAR
WIDE SELECTION OF CONTACT LENSES
LASIK

WELCOMING NEW PATIENTS
OUTSIDE PRESCRIPTIONS FILLED
STATE-OF-THE-ART TECHNOLOGY
EVENING AND SATURDAY HOURS
TREATMENT OF EYE DISEASES
SE HABLA ESPANOL

SIMON EYE ASSOCIATES
"Eye Care for Life"
302.239.1933 | www.simoneye.com

Bear | Middletown | Newark | Pike Creek | Concord Pike | Union Street

IN THE NEWS

Delaware developer pulls Barksdale construction plan

Delaware developer Bangalore Lakshman has withdrawn his plan that sought to rezone 13 acres on the Maryland side of Barksdale Road for commercial use.

Newark City Councilman Paul Pomeroy reported in his newsletter that a group of

residents arrived to attend a hearing before Cecil County Commissioners on the proposal, only to find that the plan had been drawn.

Pomeroy noted that the developer can come back with a revised plan and would have to start at the beginning of the plan-

ning process in Cecil County, Md.

The land is currently zoned for one home per acre.

Earlier, 20 people spoke against the rezoning request submitted by Lakshman at a Cecil County planning commission meeting

Eric Sennstrom, the county's director of planning and zoning, said no one spoke in favor of the request, which seeks to rezone the property from suburban residential to general business.

Lakshman earlier argued that a mistake was made in the 1993 comprehensive rezoning of

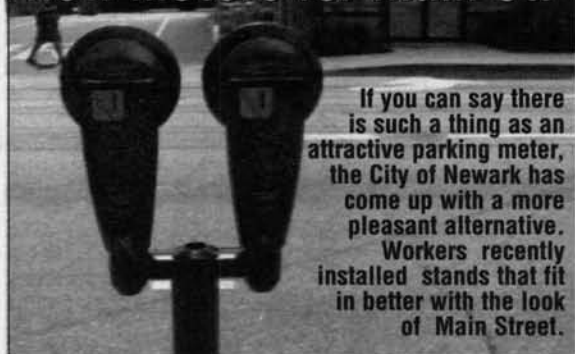
Cecil County because land on the other side of Barksdale Road is zoned for light industrial and W. L. Gore has a building on an adjacent parcel in Delaware.

The planning commission went on to recommend that county commissioners vote against the plan.

Lakshman, had hoped to begin construction next year on plans for his seven-building office and retail center.

Several residents from nearby Delaware neighborhoods and Pomeroy attended the earlier planning commission meeting.

New meters for Main St.



If you can say there is such a thing as an attractive parking meter, the City of Newark has come up with a more pleasant alternative. Workers recently installed stands that fit in better with the look of Main Street.

The case for life insurance coverage

By BRIAN HARTLE

SPECIAL TO THE NEWARK POST

Editor's note: Hartle, brianhartle.com, is a State Farm agent

For the last several years, Presidents and governors have issued declarations about life insurance awareness; designating September as Life Insurance Awareness Month. But why devote an entire month?

The need for life insurance is that important.

Having one month dedicated to life insurance provides opportunities to inform people about the need for life insurance and the consequences of having inadequate or no coverage. Recent studies by Life Insurance Marketing and Research Association (LIMRA) International revealed 68 million adult Americans have no life insurance. Many Americans with life insurance coverage have far less than amounts

recommended by experts.

Working with State Farm, the Life and Health Foundation for Education (LIFE) designated September as Life Insurance Awareness Month six years ago. Now, more than 100 companies, including State Farm, use this time to actively promote the need for life insurance.

If a primary bread winner dies without life insurance, there is no guarantee that loved ones will be able to realize their dreams or con-

tinue living as to which they are accustomed. Life insurance is an important part of a sound financial plan which helps ensure that college, mortgages and bills won't be neglected.

Make a call today and talk to an insurance professional who can answer questions and help meet your life insurance needs. There are different policies to fit a variety of budgets.

The need for life insurance is that important.



GRAND OPENING

christiana mall

SEPHORA

THE BEAUTY AUTHORITY



Godlbauers

Labor Day Weekend

FREE FURNITURE SALE



3 DAYS ONLY

Sat. Sept. 5, Sun. Sept. 6, Mon. Labor Day Sept 7th

- Buy Any 7 Piece Dining Room Set
Get 2 Arm Chairs **FREE**
- Buy Any 4 Piece Bedroom Suite
Get The Nightstand For **FREE**

Mention This Ad And
Delivery Is **FREE** Too

Buy Any Sofa, Loveseat
Combination Get The
Matching Chair
FREE*



**FREE
DELIVERY**

PLUS ADDITIONAL STOREWIDE MARK DOWNS

Labor Day Monday 10am - 5pm • M-F 10am - 9pm • Sat 10am - 6pm • Sun 12pm - 5pm



901 E. Pulaski Hwy., Rt. 40, Elkton
410-398-6201



Business Office: 410-398-6200
*Prior Sales Excluded



701 E. Pulaski Hwy., Rt. 40, Elkton
410-398-5402

Church Directory

To Advertise or make changes call

Nancy Tokar at 1-800-220-1230 or voice mail 443-245-5072

Prices starting as low as \$12.00 a week!

Changes can be made by Friday, 4:30 p.m. for the following Friday's edition.



**Evangelical
Presbyterian Church (PCA)**
Christ Centered • Biblically Based

Sunday Worship 10:45am & 6pm
9:30 Sunday School
308 Possum Park Rd., Newark
302-737-2300
www.epcnewark.org

The Way Ministries

(an extension of Highway Gospel Community Temple, West Chester PA)

Highway Word of Faith Ministries is presently worshipping @ The George Wilson Community Center 303 New London Rd., Newark, DE

Sunday:

8:00-9:00am Christian Education classes for all ages
9:00am Sunday Morning Celebration

Wednesday: Location

7:00-8:00pm Bible Enrichment Class at Prayer Temple
49 New London Rd.
Newark, DE 19711

Mailing Address: P.O. Box 220
Bear, Delaware 19701-0220

Visit us online @ www.theway.ws or send us a note at theway238@aol.com



Pastor Carl A. Turner Sr. and Lady Karen B. Turner
For further information or directions please call:
302-834-9003



The Episcopal Church
Welcomes You

St. Thomas's Parish

276 S. College Ave. at Park Place,
Newark, DE 19711
Across from UD Health Center
(302) 368-4644
Church Office: (9:00-1:00 Mon-Fri)
www.stthomasparish.org

Sunday Worship

8am, 10:30am & 5:30pm
Sunday Adult Education Programs
9:30-10:15am

The Rev. Paul Gennett
Marc F. Cheban,

Organist & Choir Master

Wandering? Wondering? Wounded?
God meets you where you are!
And So do we.
Come and see...

GLORYLAND GOSPEL MINISTRIES

"We've Re-located"

Pastor Tweed invites you to
Join us for worship in the
CHAPEL at Christ Center
Gospel Missions

4365 Telegraph Road -Route 273 W
3rd driveway on R past Fair Hill red light

Sunday's at 10AM

Non-denominational ~ Full Gospel

"We get more hits
from this one
ad than any
other advertising
we do."

-Good Shepherd
Episcopal Church
Call Nancy Tokar to place
your ad at
1-800-220-1230



Sunday Service 10am
Childcare and Sunday School

Unitarian Universalist Fellowship
420 Willa Road, Newark
302.368.2984 uufn.org

Come Join Us!

Speaker: Rev. Greg Chute



Sunday 8:30 a.m.
Acoustic Worship
Sunday 10:30 a.m.
Electric Worship

Pastoral Team

Curtis E. Leins, Ph.D
Robert F. McKnight
Theodore Lambert, III
James L. Ford

Located 1 1/2 miles N. of Elkton
on Rt.213

(410) 392-3456

NEW LIFE CHRISTIAN FELLOWSHIP

Sunday Service 9:30 AM
Multimedia Children's Ministry!
Contemporary Worship!
Relevant messages!
Church Office: 999-1800

Check out our web page:

www.NewLifeDE.org

2712 Old Milltown Rd.

Wilmington, DE

(near Kirkwood Hwy & Milltown Rd)



Episcopal tradition,
contemporary music

Join us for
weekly worship on
Sundays at 11am
at St. Nicholas Church,
10 Old Newark Road

Brightening lives, nourishing souls, connecting to God

302 547-7849 • www.GoodShepherdDE.org

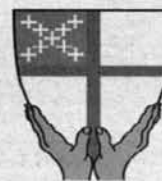
Sponsored by the Diocese of Delaware

TRINITY

PRESBYTERIAN CHURCH (PCA)
SUNDAY WORSHIP 9:30 AM

Meeting at: First Church of the Nazarene
357 Papermill Road, Newark, DE

For more information please call
302-233-6995



St. Barnabas' Episcopal Church

Serving Hockessin, Pike Creek, Mill Creek & Newark

Worship Services:

Saturday 5:30pm & Sunday 7:30, 10:00 am

Child Care (0-3) - Children's Chapel (4-11)

302-994-6607 www.stbarnabasde.org

2800 Duncan Road, Wilmington, DE 19808



**First Church
of Christ,
Scientist**

48 West Park Place, Newark

Sunday Service & Sunday School 10:00am
Wednesday Testimony Meetings 7:30pm

Childcare available during services.

302-456-5808

ALL ARE WELCOME

www.fccsnewark.org

NEWARK WESLEYAN CHURCH

708 West Church Rd
Newark, DE
(302)737-5190

Pastor James E. Yoder, III

Sunday School for all ages.....9:30am

Morning Worship.....10:30am

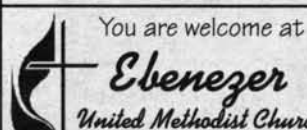
Children's Church & Nursery Provided

Choir - Sunday.....5:30pm

Youth Meeting - Sunday.....6:00pm

Mid-Week Bible Study

"A Family Church with a Friendly Heart"



You are welcome at

Ebenezer
United Methodist Church

SUN SERVICES 8:30 & 11:00am
SUNDAY SCHOOL 9:45am

525 Polly Drummond Road
Newark 302-731-9494
Handicapped Accessible • Child Care
TED DAY, PASTOR

Need A Church?
Come Worship with us!

First Presbyterian Church

Contemporary Worship - Sundays at 9:00 a.m.
Traditional Worship - Sundays at 10:30 a.m.

292 West Main Street, Newark, De 19711
302.731.5644 ~ www.firstpresnewark.org

Rev. Steve Brundage, Pastor

Children and Adult
Sunday School Begins!
Rally Day "PARTY"
Sunday, September 13 at 9:00 a.m.
with Ice Cream Sundaes to celebrate
the beginning of Sunday School

Balloon Release
at Noon



Posted

8 AM
5 PM **800-220-3311** 410-398-1230

• Real Estate
• Automotive
• Help Wanted
• Services
• Merchandise

See More on
chESAPEAKE
classified.com

• YARD
SALES
• Auctions
• Appliances
• Furniture

Fax us 24/7: 410-398-4044



ANNOUNCEMENT

10 PUBLIC NOTICES

PUBLIC NOTICE



View Public Notices from around the State of Maryland, visit:

www.publicnoticeads.com/md



EMPLOYMENT

110 HELP WANTED FULL-TIME

MODELS

Open call all ages. No exp. nec. Selections at 5 or 7pm Tues. 9/8 Hilton Wilm Christiana 100 Continental Dr., 570-346-9410 ext. #558 www.highline.com/wilm



ANY WAY YOU LOOK AT IT, CHESAPEAKE CLASSIFIED CAN WORK FOR YOU!

110 HELP WANTED FULL-TIME

Sales Professionals Wanted Recession proof industry, pre-qualified leads helping Seniors. Positive attitude and communication skills required. Excellent Benefits, Growth Potential. \$75,000 plus. Call Mr. Holland toll-free 1-866-229-8447



RENTALS

305 APARTMENTS UNFURNISHED

\$213/mo! 4 bed 2 ba HUD home! (5% down, 15 years, 8% apr) For Listings 1-800-585-3617 Ext T181

New Today

Cecil County - Warwick - Middletown area 2br. Elec incl. c/ ac. Avail now \$950/mo. **410-755-6129**

ELKTON room for rent in house. Full privs. \$500 per mo. Lv msg 443-207-1378

New Today

ELK NECK, quiet area, 3br, 2ba, full bsmt. \$1250 month. Pets are negotiable **410-287-7054**

CALL OR EMAIL CHESAPEAKE CLASSIFIED
800-220-1230
410-398-1230
www.chESAPEAKEclassified.com

305 APARTMENTS UNFURNISHED

New Today

FAIR HILL AREA Efficiency apartment. All utilities included. Private entrance. No pets. \$650 per month. **443-553-2373**

NORTH EAST clean, quiet, private 2Br, 2nd flr. deck, \$750/ mo + 1 mo sec no pets **443-553-0581**

New Today

RISING SUN AREA 2Br, 1Ba, 2nd floor apt. \$900/mo + utils. Non smkg environ, no pets. Interested parties email rbrooksmech@zoominternet.net w/ contact information and references.

315 HOUSES FOR RENT

New Today

ALMOST NEW 3br, 3ba home w/den & gar. in water oriented comm. Hdwdflrs. Near Chesapeake City. \$1200/ 410-885-5100

New Today

CECILTON nearly new cape cod, 4br, 3ba. Nice lot. \$1500/mo **410-275-1838**

New Today

Elkton- Hollingsworth Manor Like new 2br \$650+ sec dep **410-398-3447**

New Today

ELKTON Leeds area. 3Br, 1.5ba, hard wood floors, w/d. On 7 acres \$1400 per mo + utils & sec dep. **443-553-4495**

New Today

ELKTON totally renovated 1Br, 1Ba. W/D incl. Cntrl a/c. Secluded rural setting. Non smk env, no pets. Avail now. \$790/mo **443-553-9569**

New Today

ELKTON, MD- 3BR, 2 BA, all amenities, 15 secluded acres, hunting allowed. Some pets allowed, no cats. \$2200/mo + sec dep. Call **410-703-8709**

315 HOUSES FOR RENT

HUD Homes! 3 bd. 2 ba. Home only \$201/mo! 4 bd. 2 ba. Only \$350/mo! 5% dn, 30 yrs @ 8% apr! Listings 800-585-3617 ext. T296.

NE 2br home, fenced yd, garage, \$900 per mnth, \$900 sec dep. Call **443-350-1260**

P.VILLE- 3br, 1.5 ba, TH, \$1250/mo + sec. Fenced yard. Call Kim **302-545-8608**

325 VACATION/ RESORT RENTALS

Art & Wine Festival Packages! Deep Creek Lake, MD. - Long & Foster Resort Rentals 5th Annual Art & Wine Fest, Sept. 11-13. Special lodging packages available. A great time to see the beautiful fall colors! **800.336.7303** www.DeepCreekResort.com

Lake Somerset Camp Ground, Maryland Eastern Shore. Leave your RV on site all year. \$1300 includes water, electric & sewage. Call for brochure **410-957-1866** or **410-957-9897**.

OCEAN CITY, MARYLAND. Best selection of affordable rentals. Full/ partial weeks. Call for FREE brochure. Open daily. Holiday Real Estate. **1-800-638-2102.** Online reservations: www.holidayoc.com

335 DUPLEXES FOR RENT

HOLLINGSWORTH 2br, 1ba, cen ac, w/d, no pets \$650/m sec & refs **443-553-3459**

340 MANUFACTURED HOMES FOR RENT

RISING SUN AREA 3Br, 2Ba modular home on private lot. \$900/mo + utils. No pets, non smkg env. Interested parties email rbrooksmech@zoominternet.net w/ contact info & ref's.

CHESAPEAKE CLASSIFIED HAS IT ALL
410-398-1230
800-220-1230
www.chESAPEAKECLASSIFIED.COM

348 ROOM MATES WANTED

New Today

ELKTON. Patriots Glen, full home use. Must like pets. Employment req'd. \$600/mo. Incl'd's utils. **302-420-5191**

355 LOTS/ACREAGE FOR RENT

Labor Day Land Sale! Mtn & Valley Views 20+ Acres - \$89,900* Driveway In! SAVE \$10,000 9/5/09 Only! Beautifully wooded, mtn stream, nature trails throughout. Walk to recreational waterfront park! State rd frontage, perc done. www.landinwv.com Under 2 hrs - DC/Balt. Excellent financing. BONUS: PAY NO CLOSING COSTS! Call now **1-800-888-1262** *includes discount

365 COMMERCIAL RENTALS

ELKTON- NEW SPACE best location on Rt 40, 1250 sq ft call **410-392-3676**

RT 40 / ELKTON 3000 SQ FT OFFICE SPACE great parking & loc **410-392-3676**

370 WANTED TO RENT

New Today

RETIRED non smoking male gov't employee seeks rm w/ bath or off in City of Newark, pref Old Newark or Nottingham Green area. **302-593-6630**



REAL ESTATE

405 HOUSES FOR SALE

\$213/mo! 4 bed 2 ba HUD home! (5% down, 15 years, 8% apr) For Listings **1-800-585-3617** Ext T689

RECLINE, RELAX & RESELL

405 HOUSES FOR SALE

3 bed 2 bath only \$25,900 or \$238/mo! More 1-4 bd. Homes from \$99/mo! (5% dn, 15 yrs @ 8% apr.) For Listings **800-585-3617** ext. 8414

4 bd. 2 ba. Home only \$205/mo! More foreclosures from \$199/mo! Never rent Against 5% dn, 15 yrs @ 8% apr! For Listings **800-585-3617** ext. T297.

New Today

ELKTON HEIGHTS 2br, 1ba. Poss own fin., to qualified buyer. Cr Ref's & substantial down payment req'd. **410-398-5471**

FORECLOSED HOME AUCTION 200+ DC/DE/MD/VA Homes Auction starts Oct. 3 REDC/Free Brochure www.Auction.com

New Today

SELLER WILL PAY CLOSING COSTS 4Br Rancher, 2 full ba, office / den, fam rm w/ pellet stove, country kitch, slider to patio & pool, .96 acre. No HOA, only \$240,000 **Deb Price, Remax Elite 410-893-9000**

415 WATERFRONT FOR SALE

OCEAN VIEW Waterfront community on Atlantic side of Virginia's Eastern Shore. Lots from \$99k or lot/ home pkgs from \$299k. Model homes available. Amenities include a first class community center with exercise room, guest suite and proposed swimming pool and spa. Condo-style, worry-free living. 1-4 acre lots and natural open spaces, minutes from the main north/south highway. Spectacular ocean views, maintenance pkgs, mild climate, low taxes. 3 other waterfront communities available. **877-600-6525** or visit www.visitoceanview.com

CALL OR EMAIL CHESAPEAKE CLASSIFIED
410-398-1230
800-220-1230
www.chESAPEAKEclassified.com

430 MANUFACTURED HOMES FOR SALE

New Today

PORT DEPOSIT '02 Skyline 2Br, 1Ba, LR, country kitchen. All app'l's incl. A/C, vinyl siding. Move or keep on lot. \$300/mo ground rent. \$20,500 **410-557-9567**

432 MOBILE HOMES FOR SALE

CONOWINGO. 2br, 2ba w/new appls, AC & heat. \$18,000 obo. **410-500-0693**

440 LOTS/ACREAGE FOR SALE

257 Ft Sandy Beach! JAMES RIVER-FRONT 5 AC- \$179,900 Beautiful deep riverfront estate w/ over 250 ft of sandy beach. Gorgeous private building site nestled amid trees. Paved rd frontage, water & sewer, more. Excellent financing. Call Patty **1-866-764-5238** www.VAriver.com

Historic James River! 2+ Acres Just \$89,900. Beautifully wooded, private James River access, awesome views. Paved roads, water, sewer. Perfect for vacation/ retirement. Easy financing. Call now **866-764-5238** www.variver.com

Timber Co. Liquidation! Pond/ Mountain Spring/ Views 22 acres- \$37,821. Timber Co. liquidating perfect parcel: Open & wooded, unique acreage. Paved road frontage, electric, wvtimberland.com. Will finance. CALL NOW **1-877-526-3764** Participating with Cabela's Trophy Properties

445 COMMERCIAL/ INVESTMENT FOR SALE

EASTON- Cigar/ Smoke Shop. 9 yrs estbl'd. Big city humidity. **410-924-1789**



SERVICES

520 HOME IMPROVEMENT SERVICES

DON'S Pressure Washing & Gutter Services - no job too small **302-887-6251**

520 HOME IMPROVEMENT SERVICES

J&J Home Improvement Roofing, siding gutters & trim. All ext. renovations Free estimates & ref's **410-620-4980** or **443-207-1280**

ROOFING need a new roof? Free estimate, tri-state area **410-392-6906** **302-354-1936**

WE BUY JUNK CARS, TRACTOR TRAILERS, Dump Trucks or any heavy equipment machinery. Cash paid. **302-650-4579**

550 LAWN & GARDEN SERVICES

LARSON'S TREE & LANDSCAPING
• Tree Take Downs
• Stump Grinding
• Clearing
• Topsoil Spread
• Mulching
• Landscape Pkgs
• Hardscaping
• Bulk Mulch Deliveries
License # 00-3352
Quick Estimates 410-392-5175
MHIC 73455 Since 1978

560 FINANCIAL/ MONEY TO LEND

IRS TAX DEBT KEEPING YOU AWAKE? Local CPA firm resolves all Federal and State tax problems for individuals and businesses. US Tax Resolutions, P.A. **877-477-1108**.

570 Instruction

MASSAGE THERAPY- Train in months, not years. Financial aid if qualified. A new career is at your fingertips. Call Centura College **877-206-3353**

580 MISC. SERVICES

HAS YOUR BUILDING SHIFTED OR SETTLED? Contact Woodford Brothers Inc, for straightening, leveling, foundation and wood frame repairs at **1-800-OLD-BARN.** www.woodfordbros.com, license # 121861

CALL OR EMAIL CHESAPEAKE CLASSIFIED
800-220-1230
410-398-1230
www.chESAPEAKEclassified.com



MERCHANDISE

602 ANIMALS/ PETS

New Today

AKC YELLOW LAB PUPS male/female, 1st & 2nd shots. \$500. Ready now. Call **410-310-4787**

AMERICAN Bull-dog pups. 12 weeks Johnson bldline NKC reg. \$350. **302-565-9429** / **302-275-9289**

AKC Pomeranian Pups, Adorable Ready 9-1-09 Female Charcoal & Black \$600. Male Brown and Black \$500. Father is Mini. Taking Deposits. First come, First Serve **717-586-7492** or alc090088@yahoo.com

New Today

BEAGLE PUPS AKC, champion bloodlines, 8 wks old. Shots & wormed. F \$300, M \$250. **410-392-4409**

CATS! Male, female all ages & colors. In & outdoors, fixes w/ current shots & papers. **410-920-6929**

New Today

GERMAN SHEP-HERDS AKC reg. White. Ready 9/14. 1st shots, wormed, vet checked. 6M, 3Fem. **\$550 443-466-6942**

New Today

PEKINGESE PUPPIES white. \$400 **410-620-5511**

603 PET SERVICES / SUPPLIES

HAPPY JACK® FLEA BEACON® controls fleas in the home without expensive pesticides! Results overnight! At Southern States. www.happyjackinc.com

615 APPLIANCES

FRIDGIDAIRE wall oven, Model FEB2 4S2AFB, Make offer. Call 410-398-5888

617 BUILDING MATERIALS

New Today

BUILD OR RE-BUILD with reclaimed timber flooring and den siding. Very unique. Oak / hard pine / yellow pine and more. Contractor Quantity Discount. 717-464-4461

STEEL BUILDINGS, Big Disc. avail 30x40 - 105x105 Call for deal! Erection avail. www.scg-grp.com Source#1A9 410-630-4418

625 FURNITURE / FURNISHINGS

New Today

BROWN loveseat, oversize & ottoman in bomber jacket leather. Only 3 yrs. old in exc. cond. Pd. over \$2000 will sac. at \$1000 Futon w/upgraded cushion. Exc. cond. \$150. 302-454-8433

BURGUNDY LEATHER SOFA \$250. Computer desk \$30. 4 drawer dresser \$40. 3 Shelf storage cabinet, \$40. Ikea TV stand. \$50. Ikea Futon \$50. OBO. Call 410-658-6121

Cherry Bedroom Set. Solid Wood, never used, brand new in factory boxes. English Dovetail. Original cost \$4500. Sell for \$795. Can deliver. 240-482-8721

New Today

DESK. Solid oak rolltop. Very good condition. \$480 OBO. 410-398-6525

New Today

WOW!

KG size bed, dresser & 2 end tables, headboard brand new doesn't fit in rm \$300 or b/o 302-322-4724

627 CHILDREN / BABY ITEMS

HUGE BARGAINS!

Kids Resale Event Toys, clothes & more coastal-kids.com Wico Civic Center Sept 11 & 12

640 GENERAL MERCHANDISE

New Today

DIAMOND SOLITAIRE RING - New, ladies sz 7. Half carot plus. 14K yellow gold. Appraised at \$1200, sacrifice for \$625 443-907-5424

GET YOUR NEW POWER WHEEL-CHAIRS, POWER SCOOTERS AND HOSPITAL BEDS AT ABSOLUTELY NO COST IF YOU QUALIFY!! FASTEST DELIVERY AVAILABLE!! CALL TOLL FREE 1-800-470-7562

HORIZON FITNESS TREADMILL

Model T95 2 years old. Excellent condition. Has: LCD displays, Up to 10% incline, Goes up to 10 MPH. \$500. Call: 443-466-4196

ITEMS FOR SALE UNDER \$50 ARE FREE!

If you would like to place an ad for an item under \$50, or you are giving something away for free, please email the information to classes@chespub.com or fax them to: 410-398-8192 Please, no phone calls. Please include your name, address and phone number

JET 7 power chair "like the Scooter Store ad". \$900. Like new. Call 410-378-2661

642 SPORTING GOODS

Benelli SBE LH 28" 12 ga 3.5 mag best offer 717-529-2998

646 MUSICAL

BABY GRAND PIANO - '07 Vivace w/ player / CD's. Polished mahogany. Exc cond. Must see! \$8,000 410-996-8826 after 5pm

WWW.CHEESAPEAKECLASSIFIED.COM

660 YARD SALES

BARGAIN BAZAAR Sat 9/12, 9-2 \$15/ space. 302-750-0930 Kirk Middle Sch., Chestnut Hill Rd, Newark. RD 9/13

CHARLESTOWN 82 Cecil St. In Holloway Beach. (off Rt 7 in Charlestown - look for signs) Sat, Sun, Mon Sept 5, 6, 7, 8am-?. Everything under the sun! 3 day sale!

ELKTON. 105 Castlestone Dr on Sat Sept. 5th 8am - ?

ELKTON. 408 Big Elk Chapel Rd. Sat. Sept. 5th 7am. Rain or Shine. Boat & gear, mountain bike & more

ELKTON. 252 Mike Dr, Walnut Hill Sat. 9/5 8am. Furniture & TONS of QUALITY home decor items at bargain prices!

New Today

ELKTON 135 Mike Court (213 towards Fair Hill right in Falcon Crossing) Sat, Sept 5, 7am-1pm. Kitchen tables, futon, shelving and much more

ELKTON 213 Gilpin Ave. Across from Library next to Singlerly Firehall. Sat, Sept 5, 8am-1pm. Boys & girls clothes sz 4T & 5T, misc items.

ELKTON- 231 Sycamore Rd. off Fletchwood. Fri & Sat, 9/4, 9/5, 8a-3p. New gas dryer, boys & girls 2T-4T, teen clothes & more.

Multi Family

ELKTON. 121 W. Village Rd in Thompson Estates Sat 9/5 from 8a-2p.

Community Wide

ELKTON- WALNUT HILL Development off 213 towards Fairhill. Sat Aug 29th, 7-2.

New Today

YARD SALE

ELKTON- Saturday Sept 5th, 9am-? Shoup Pavillion in Woodlands Camping resort, Starkey Lane.

660 YARD SALES

ELKTON. 165 Augustine Herman Hwy, off 213, (turn right at the Air Mail Box side yard. Fri & Sat 9/4 & 9/5, 8am-? Some antiques, furn, clothing, HH items, bunkbeds, 60" Phillips TV, sofa sectional, wedding dress, this and that.

Multi Family

ELKTON. Palomino Place in West Creek Village on Sat Sept. 5th & Sun Sept. 6th 8a-2pm. HH items, toys, books, adult & boys clothing, baby items, free items & more.

Wow!

ELKTON 216 W High St., Saturday 9/5, 9-? Collectibles, records, record players, tapes, cd's, clothing - assorted sizes & styles including maternity & nursing, furniture, car parts, assorted household items & much more!

New Today

FLEA MARKET North East VFW, 815 Turkey Point Rd. September 12 8am-3pm. Vendors needed. Outside only 45 Tables available. \$15 per table. 410-287-7817

Flea Market

Flea Market & Lunch Chesapeake City VFW Sat. 9/12 8a-1pm, Vendors Wanted mrsleah@yahoo.com or 443-907-3736

NORTH EAST. 1140 Mechanics Valley Rd. Sat 9/5 & Sun 9/6, 9am-? Lawn mowers, baby clothes, HH items & more. Hot dogs & soda available

New Today

ANY WAY YOU LOOK AT IT, CHESAPEAKE CLASSIFIED CAN WORK FOR YOU!

CLASSIFIEDS 410-398-1230 800-220-1230

660 YARD SALES

Multi Family

NORTH EAST 7 Beech St off Main St. Friday, September 4, 7am till ?

NORTH EAST- Multi-family. Saturday Sept 5th, 7:am til ?. Antiques, household items, exercise equip, clothes and too many others to list. Schoolhouse Lane—Delaplaine Manor. Outside of town off RTE 272.

Multi Family

NORTH EAST- 108 1/2 W. High St. Setp 4th & 5th, Fri & Sat 8-4. Home Interior, party lite, dvd's, knick knacks, rugs, crib, play pen, changing table.

Multi Family

PORT DEPOSIT 755 Rock Run Rd. Sat, Sept 5, 7:00-Noon. Items include TV's, crib, highchair, jacuzzi tub, baby and adult clothing and other odds and ends.

Multi Family

RISEING SUN. 2100 Biggs Hwy on Thurs 9/3, Fri 9/4 Sat 9/5 at 8am. HH items, furniture, tools, appliances, building material, etc

New Today

HUGE SALE

RISEING SUN - HUGE YARD SALE!! 328 McGrady Rd (off of Joseph Biggs Hwy & Ebenezer Church Rd.) Sat & Sun, Sept 5 & Sept 6, 9am-3pm. ANYTHING & EVERYTHING! Lg selection of baby items & essentials. Girl clothes NB-5T, toys, boy clothes NB-3M+, furniture & so much more to name!!! MUST COME & SEE FOR YOURSELF!! No early birds, please

New Today

BLACK WALNUT TREE 40' tall, 72" circumference at 6'. You cut. \$750 b/o Call 410-398-2403

670 MACHINERY & HEAVY EQUIPMENT

New Today

'98 MACK heavy lowboy tractor with hydraulics. \$15,000. 410-557-2845 or 410-652-6324

New Today

GRIZZLY MACHINE SHOP SET Exc cond. \$3850 or best acceptable offer. Buyer must remove. 410-272-1389

New Today

PAVING & TAR/CHIP equipment for sale. 410-822-0272

PETTIBONE forklifts. Various models & prices. All in exc. cond. 302-834-9093 or 410-755-6060

YALE FORK LIFT

4200 lb, propane, runs good. Call 443-553-9513

672 TOOLS

New Today

GLASS CUTTER Fletcher 3000. New, never used. Wholesale \$1600 sell for \$1,000 410-836-0466 Ask for Richard

680 WANTED TO BUY

New Today

STONE SLEEPER OR RAILROAD TIE WANTED from the old New Castle and Frenchtown railroad, New Castle De to Frenchtown Wharf in Cecil Co, MD near 213. This blue / grey stone is about 16" x 14" x 14" thick and has two holes on one side 302-629-3200

670 PLANTS / TREES

New Today

BLACK WALNUT TREE 40' tall, 72" circumference at 6'. You cut. \$750 b/o Call 410-398-2403

740 FARM SUPPLIES / EQUIPMENT

OLIVER 1950T new back tires, new injection pump, runs great. Call 443-553-9513



TRANSPORTATION

815 POWER BOATS

17' BASS BOAT '92 Great shape, ready to launch. Many extras, new items. \$4,000 b/o 443-553-2423

26' PENN YAN Sport Fish. Sleeps 4. Exc. cond. New motor, Jasper Marine 454 w/warr. \$12,500. Possible trade for smaller boat. 410-808-3954

820 SAILBOATS

New Today

30' CATALINA TALL RIG: '84, Exc cond. Lots of Extras. Great Deal \$15K/bo. Please call: 410-822-0534

825 BOATS / OTHER

21' KENCRAFT '88. CC, Sukuski 200 2-stroke, dual axle Loadrite trlr. Nice fishing boat! \$8000. 410-658-8040

845 CAMPERS / POP-UPS

23' SUNLINE '02 Camper trailer. Good cond. \$7,000. Call 410-398-4794 aft 2pm

860 AUTO PARTS & ACCESSORIES

1992 FORD EXPLORER for parts: features include 4.0L V6 Remanufactured Jasper engine. 16,000 miles, 2 years left on Jasper warranty. 4 FIRESTONE DESTINATION TIRES 235/65R15 5-lug pattern on steel alloy rims plus full size spare. Only a few months on the road \$2,000 OBO. Call 443-466-5978

'90-'95 CHEVY TRUCK REAR BUMPER, exc cond. Make offer 410-398-5888 or 443-350-4541

Classified is the key to more sales.

TOYOTA EXTRA CAB P/U '91 4 whl dr, auto, 4 cyl. As is. Bad motor \$1,000. Call 410-378-4496

860 AUTO PARTS & ACCESSORIES

ROLLING BIG POWER FORD PROGRAMMER.

Used for Ford 2003 - 2008 diesel trucks, for F250 and F350 models with 6.0L and 6.4L. Has 10 different power settings. \$500 443-466-4196

New Today

TONEAU COVER for '99 Ford Ranger w/ 6ft bed. Excellent condition. Locks, all hardware included. \$400 b/o 302-690-3030

865 TRAILERS

'07 CAR TRAILER 16' solid deck w/ tool box & tie straps. Exc condition. \$1500. Call 443-610-3308

870 TRUCKS / SPORT UTILITY VEHICLES

New Today

2005 TOYOTA SR5 4 runner, auto 103,500 miles, exc cond. \$18k. 410-758-8451

'88 F-350 2 wheel drive diesel, runs great, auto. Call for info 443-553-9513

New Today

CHEVY 2500 '07. White w/Stahl util. body, PS, PB, AC, tow pkg., 41k. \$15,500. 410-310-2676

New Today

CHEVY C1500 '88 New ZZ4 motor, trans, front end, rear and much more!! \$4500 443-350-6621

CHEVY S 10 PU '03 ext cab, AM/FM/CD, pw, pl, pb, bedliner. Runs and looks good. 110K. \$6500. Call 410-398-3395

GMC YUKON Denali '05, 49k, loaded Puter, exc cond. \$25,000. 410-392-4712

New Today

WE BUY SCRAP METAL! Call for free pick up and appraisal. We buy from small matchbox cars to large industrial buildings! 302-650-4579

878 ANTIQUE AUTOS

1930 MODEL A FORD 4 passenger coupe with rumble seat. \$15,900. Call 410-893-9725

1930 MODEL A Ford sedan. 2 door, steel body, many updates. New 350 crate motor. 350 auto turbo trans, \$30,000 410-398-6242

1966 Studebaker Daytona 355 small block Chevy, 350 trans, 9" Ford rear. \$6500 FIRM. After 4pm 410-939-2019

880 AUTOS

DONATE VEHICLE: Receive \$1000 GROCERY COUPONS, Your Choice. NOAH'S ARC, NO KILL Animal Shelters. Advanced Veterinary Treatments. Free Towing, IRS TAX DEDUCTION. Non-runners 1-866-912-GIVE

DONATE YOUR VEHICLE RECEIVE FREE VACATION VOUCHER UNITED BREAST CANCER FOUNDATION Free Mammograms, Breast Cancer Info www.ubcf.info FREE Towing, Tax Deductible, Non-Runners Accepted, 1-888-468-5964

FORD TAURUS WAGON '92. Good car, needs front end work. Needs new axil, boots, tires etc. AC is good. Seats fold down. Auto. ONLY 84k original miles. 2nd owner. Car sat for a while. \$800 OBO. 443-207-2819

New Today

PONTIAC GRAND PRIX '02. Silver. AC, cruise, auto, all power, 89K. Will inspect. Exc cond. \$5000. 410-734-7358

MUSTANG GT '06. Gar. kept, 5sp man, 14k, leather. \$20,000. 410-639-2008

WE BUY JUNK cars, trucks & vans. \$100 & up. 302-420-7411 or 302-650-4579

WANTED TO BUY

WE BUY JUNK cars, trucks & vans. \$100 & up. 302-420-7411 or 302-650-4579

New Today

WE BUY SCRAP METAL! Call for free pick up and appraisal. We buy from small matchbox cars to large industrial buildings! 302-650-4579

SHERIFF'S SALE

The following Real Estate will be exposed for Public Sale at the CITY/COUNTY BLDG., 800 N. French Street, City of Wilmington, New Castle County, Delaware, by Michael P. Walsh, Sheriff, on **TUESDAY the 8th day of SEPTEMBER, 2009 at 10:00 a.m. The legal limit of 152 persons in Council Chambers will be enforced.**

SHERIFF'S SALE

By virtue of a writ of LEV FAC #2 JL, AD., 2009.

PARCEL ID: 08-044.20-059

PROPERTY ADDRESS: 1224 Gilbert Avenue, Wilmington, DE 19808

ALL that certain lot, piece or parcel of land, with the buildings thereon erected, situate in Mill Creek Hundred, New Castle County and State of Delaware being Lot No. 2, on the plan of Capitol Trail Farm, as recorded in the Office of the Recorder of Deeds in and for New Castle County, on Microfilm No. 154, and being more particularly bounded and described with a recent mortgage inspection plan by East Coast Survey, Professional Land Surveyors, dated March 22, 2006, as follows, to-wit:

BEING the same lands and premises which Donald N. Kampmann, correctly known as Donald J. Kampmann, and Arbedella Kampmann, did grant and convey unto Daniel F. Peter and Angela R. Segree, by deed dated March 31, 2006 and recorded on April 4, 2006 in the Office of the Recorder of Deeds, in and for New Castle County, State of Delaware, in Deed Instrument 20060404-0031806.

SEIZED AND TAKEN IN EXECUTION AS THE PROPERTY OF KANIEL F. PETER AND ANGELA R. SEGREE.

TERMS OF SALE: 10% DOWN AT TIME OF SALE. BALANCE DUE ON OR BEFORE OCTOBER 19, 2009.

JULY 31, 2009

SHERIFF'S SALE

By virtue of a writ of LEV FAC #8 JL, AD., 2009.

PARCEL NO. 11-013.00-063

PROPERTY ADDRESS: 1608 S. College Avenue, Newark, DE 19702

ALL that certain tract, piece or parcel of land situated in Pencader Hundred, New Castle County, State of Delaware, being a portion of the lands no longer required for the construction of a public road known as SR 896 which leads from SR 40 to I-95, the said tract being part of the County Tax Parcel No. 11-013.00-063 (part) and being more particularly bounded and described as follows to wit:

d bounds 1998.4 square feet (0.4591 acres) of land be the same more or less.

BEING the same lands and premises which Topline Realty Corp. did grant and convey unto Donald M. Payne, Sr. by deed dated May 15, 2002 and recorded on May 20, 2002 in the Office of the Recorder of Deeds, in and for New Castle County, State of Delaware n Deed Instrument 20020520-0047250.

SEIZED AND TAKEN IN EXECUTION AS THE PROPERTY OF DONALD M. PAYNE.

TERMS OF SALE: 10% DOWN AT TIME OF SALE. BALANCE DUE ON OR BEFORE OCTOBER 19, 2009.

JULY 31, 2009

SHERIFF'S SALE

By virtue of a writ of LEV FAC #15 JL, AD., 2009.

PARCEL ID #1004820020

PROPERTY ADDRESS: 153 South King's Croft Drive, Bear, Delaware 19701

ALL that certain lot, piece or parcel of land, with the building thereon erected, known as 153 South King's Croft Drive, situate in New Castle Hundred, New Castle County and State of Delaware, and being Lot No. 20, Block F, of the subdivision of King's Croft, Microfilm No. 4637, and being more particularly bounded and described in accordance with a survey by East Cost Survey, Inc., dated July 26, 2005.

BEING the same lands and premises conveyed to Leesa A. Keys, by deed from Michael P. Longo and Renee L. Longo, husband and wife, dated August 17, 2005, and recorded on September 6, 2005, in the Office of the Recorder of Deeds, in and for New Castle County, Delaware, as instrument No. 20050906-0090312.

SEIZED AND TAKEN IN EXECUTION AS THE PROPERTY OF LEESA A. KEYS.

TERMS OF SALE: 10% DOWN AT TIME OF SALE. BALANCE DUE ON OR BEFORE OCTOBER 19, 2009.

JULY 31, 2009

SHERIFF'S SALE

By virtue of a writ of LEV FAC #20 JL, AD., 2009.

PARCEL NO. 10-034.40-241

PROPERTY ADDRESS: 905 Eider Court, New Castle, DE 19720

ALL that certain lot, piece or parcel of land with the buildings thereon erected, situate in New Castle Hundred, New Castle County and State of Delaware, known as 905 Eider Court, being Lot No. 38

on the Plat of Mallard Pointe, as the Plan thereof is of record in the Office of the Recorder of Deeds in and for New Castle County, Delaware in Instrument No. 2030205-0015128, and being more particularly bounded and described in accordance with a survey prepared by East Coast Survey, Professional Land Surveyors, dated July 6, 2006.

BEING part of the same lands and premises which Linden Hill Corporation, a Delaware Corporation, by Deed dated July 28, 2006, and recorded in the Office of the Recorder of Deeds in and for New Castle County and State of Delaware, in Document No. 20060801-0072786, did grant and convey unto Henry J. Toscano and Leyda P. Toscano, in fee.

SEIZED AND TAKEN IN EXECUTION AS THE PROPERTY OF HENRY J. TOSCANO AND LEYDA P. TOSCANO.

TERMS OF SALE: 10% DOWN AT TIME OF SALE. BALANCE DUE ON OR BEFORE OCTOBER 19, 2009.

JULY 31, 2009

SHERIFF'S SALE

By virtue of a writ of ALIAS LEV FAC #28 JL, AD., 2009.

TAX PARCEL NO. 11-031.30-120

PROPERTY ADDRESS: 9 Latour Lane, Newark, DE 19702

ALL that lot, piece or parcel of land with the buildings thereon, situate in Pencader Hundred, New Castle County, Delaware being designated Lot 74, as shown on the Record Major Subdivision Plan of Meritage, of record in the Office of the Recorder of Deeds in and for New Castle County, Delaware in Microfilm No. 13872, said lot also known as 9 Latour Lane and being now more particularly described by A.E.S. Surveyors.

SUBJECT TO ALL DECLARATIONS, EASEMENTS, RIGHT-OF-WAY, RESTRICTIONS, DEDICATIONS, AGREEMENTS AND PLANS OF RECORD, INCLUDING THE FOLLOWING:

1. Declarations of Restrictions as set forth in Deed Record 200203250028461.

2. Agreements as set forth in Deed Record 200307230087151.

3. Assignment of Agreements as set forth in Deed Record 20010330002080; Deed Record 200103300022084; Deed Record 200207220070562.

4. Assignments of Rents, leases, etc. as set forth in Deed Record 200103300022079; 200103300022083; 200207220070561.

5. Utility Agreement as set forth in Deed Record 200204120034794.

6. Maintenance Declaration as set forth in Deed Record 2639, page 153.

7. Sewer Agreements as set forth in Deed Record 2647, page 306 and Deed Record 2647, page 310.

8. Easements and conditions as shown in Microfilm Nos. 12444 and 13872.

BEING the same land and premises which were conveyed to Bryan K. Wilkerson and Gertrude J. Raikes-Wilkerson by deed of Meritage Development, LLC dated March 10, 2006, and recorded in the Office of the Recorder of Deeds in and for New Castle County and State of Delaware in Deed Instrument 20060327-0029034.

SEIZED AND TAKEN IN EXECUTION AS THE PROPERTY OF BRYAN K. WILKERSON AND GERTRUDE J. RAIKES-WILKERSON.

TERMS OF SALE: 10% DOWN AT TIME OF SALE. BALANCE DUE ON OR BEFORE OCTOBER 19, 2009.

JULY 31, 2009

SHERIFF'S SALE

By virtue of a writ of FIRST PLURIES LEV FAC #29 JL, AD., 2009.

TAX PARCEL NO. 08-055.30-218-C0049

PROPERTY ADDRESS: 2401 Creekside Drive, Newark, Delaware 19711

ALL that certain unit of real property existing under and by virtue of the Unit Property Act of the State of Delaware, known as Unit 240 Creekside Drive, in Creekside at Green Valley, a condominium situated in Mill Creek Hundred, New Castle County, Delaware, as said Unit is more particularly bounded and described in (1) that certain Enabling Declaration of Reston Corporation, dated October 21, 1986, and recorded in Deed Book 483, Page 166, and (2) the Condominium Declaration Plan of Creekside at Green Valley, prepared by Ramesh C. Batta Associates, dated October 21, 1986 and recorded in the Office of the Recorder of Deeds, aforesaid, in Microfilm No. 8467.

BEING the same lands and premises which Dennis J. Swarbrick, by Deed dated February 8, 2006 and recorded on February 13, 2006, in the Office of the Recorder of Deeds, in and for New Castle County and the State of Delaware, in Deed Instrument #20060213-0015118, did grant and convey unto Lashonda L. Roberts, in fee.

SEIZED AND TAKEN IN EXECUTION AS THE PROPERTY OF LASHONDA L. ROBERTS.

TERMS OF SALE: 10% DOWN AT TIME OF SALE. BALANCE DUE ON OR BEFORE OCTOBER 19, 2009.

JULY 31, 2009

SHERIFF'S SALE

By virtue of a writ of SECOND PLURIES LEV FAC #33 JL, AD.,

2009.

PARCEL NO. 09-041.10-266

PROPERTY ADDRESS: 24 Birchgrove Road, Newark, DE 19702

ALL that certain lot, piece or parcel of land, with the buildings thereon erected, situate in White Clay Creek Hundred, New Castle County and State of Delaware, known as 24 Birchgrove Road, being Lot No. 16 on the Record Major Subdivision Plan for Christina Hol-low, as said plan is of record in the Office of the Recorder of Deeds in and for New Castle County, Delaware, in Microfilm No. 12661, and being more particularly bounded and described in accordance with a recent survey by East Coast Survey, Professional Land Surveyors, dated November 17, 1999 as follows, to-wit:

BEING the same lands and premises which Herman Rodriguez, Jr. and Robin A. Marandola did grant and convey unto Michael C. Williams and Carolyn Williams by deed dated December 10, 1999 and recorded on December 13, 1999 in the Office of the Recorder of Deeds, in and for New Castle County, State of Delaware, in Deed Book 2754 Page 0166.

SEIZED AND TAKEN IN EXECUTION AS THE PROPERTY OF MICHAEL C. WILLIAMS AND CAROLYN WILLIAMS.

TERMS OF SALE: 10% DOWN AT TIME OF SALE. BALANCE DUE ON OR BEFORE OCTOBER 19, 2009.

JULY 31, 2009

SHERIFF'S SALE

By virtue of a writ of ALIAS LEV FAC #34 JL, AD., 2009.

PARCEL NO. 11-006.20-173

PROPERTY ADDRESS: 129 Scottfield Drive, Newark, DE 19713

ALL that certain lot, piece or parcel of land with the buildings thereon erected, situate in Pencader Hundred, New Castle County and State of Delaware, known as 129 Scottfield Drive, being Lot No. 39, Block A, Section 2, on the plan of Scottfield, as the Plan thereof is of record in the Office of the Recorder of Deeds, in and for New Castle County in Microfilm No. 1702, and being more particularly bounded and described in accordance with a survey prepared by AES Surveyors, Professional Land Surveyors, dated October 28, 2005, as follows, to-wit:

BEING the same lands and premises which Brian J. Downey, Sr. did grant and convey unto Phillip J. Meehan and Alecia A. Meehan by deed dated November 18, 2005 and recorded on November 23, 2005 in the Office of the Recorder of Deeds, in and for New Castle County, State of Delaware, in Deed Instrument 20051123-0120527.

SEIZED AND TAKEN IN EXECUTION AS THE PROPERTY OF PHILLIP J. MEEHAN AND ALECIA A. MEEHAN.

TERMS OF SALE: 10% DOWN AT TIME OF SALE. BALANCE DUE ON OR BEFORE OCTOBER 19, 2009.

JULY 31, 2009

SHERIFF'S SALE

By virtue of a writ of ALIAS LEV FAC #37 JL, AD., 2009.

PARCEL NO. 11-031.00-057

PROPERTY ADDRESS: 2526 Old County Road, Newark, DE 19702

ALL that certain lot, piece or parcel of land, a portion of the land of Henri V. Dorman, situated int he Southehrlly side of the road runing between Fraizers Corner and the Glasgow Summit Bridge Road in Pencader Hundre, New Castle County and State of Delaware, and being more particularly bounded and described in accordance with a recent survey prepared by the East Coast Survey, Inc., dated November 25, 2004.

AND BEING the same lands and premises conveyed unto April N. Pruitt and Sharon Morris by deed of April N. Pruitt, dated September 16, 2004 and of record in the Office of the Recorder of Deeds in and for New Castle County and State of Delaware at Instrument Number _____.

SEIZED AND TAKEN IN EXECUTION AS THE PROPERTY OF APRIL N. PRUITT AND SHARON MORRIS.

TERMS OF SALE: 10% DOWN AT TIME OF SALE. BALANCE DUE ON OR BEFORE OCTOBER 19, 2009.

JULY 31, 2009

SHERIFF'S SALE

By virtue of a writ of LEV FAC #47 JL, AD., 2009.

PARCEL NO. 08-050.10-186

PROPERTY ADDRESS: 2007 S. Woodmill Drive, Wilmington, DE 19808

ALL that certain lot, piece or parcel of land with the buildings thereon erected, situate in Mill Creek Hundred, New Castle County and State of Delaware, known as 207 South Woodmill Drive, being Lot No. 6 on the Record Major Subdivision Plan of Woodmill, Section 3, as said plan is of record in the Recording of Deeds in and for New Castle County, Delaware, in Microfilm, No. 7779 and being more particularly bounded and described in accordance with a recent survey prepared by Zebley & Associates, Inc., dated June 20, 2005, as follows, to wit:

(Continued)

LEGAL NOTICE LEGAL NOTICE LEGAL NOTICE LEGAL NOTICE LEGAL NOTICE LEGAL NOTICE LEGAL NOTICE LEGAL NOTICE LEGAL NOTICE LEGAL NOTICE

(Continued)

BEING the same lands and premises which Cedant Mobility Financial Corporation did grant and convey unto Seongho Jeon by deed dated June 22, 2005 and recorded on July 25, 2005 in the Office of the Recorder of Deeds, in and for New Castle County, State of Delaware, in Deed Instrument 20050726-0073534.

SEIZED AND TAKEN IN EXECUTION AS THE PROPERTY OF SEONGHO JEON.

TERMS OF SALE: 10% DOWN AT TIME OF SALE. BALANCE DUE ON OR BEFORE OCTOBER 19, 2009.

JULY 31, 2009

SHERIFF'S SALE

By virtue of a writ of LEV FAC #53 JL, AD., 2009.

PARCEL NO. 10-023.30-300

PROPERTY ADDRESS: 21 Skyline Drive, New Castle, DE 19720

All that certain lot, piece or parcel of land with the dwelling thereon erected, known as 21 Skyline Drive, situate in New Castle Hundred, New Castle County and State of Delaware, being Lot No. 11, Block F, as shown on the plat of Stratford, formerly Section III, Coventry, as prepared by Edward M. Richardson Associates, Inc., Civil Engineers and Surveyors, Newark, Delaware, dated April 7, 1960 and recorded in the Office for the Recording of Deeds in and for New Castle County, Delaware, in Microfilm Record 770, and being more particularly bounded and described in accordance with a recent mortgage inspection plan prepared by Zebley and Associates, Inc. dated May 2, 1996.

BEING the same lands and premises which John Denkins, by Deed dated May 9, 1996 and recorded in the Office of the Recorder of Deeds, in and for New Castle County and State of Delaware, in Deed Book 2099 Page 23, did grant and convey unto Ronald Hardy.

SEIZED AND TAKEN IN EXECUTION AS THE PROPERTY OF RONALD HARDY.

TERMS OF SALE: 10% DOWN AT TIME OF SALE. BALANCE DUE ON OR BEFORE OCTOBER 19, 2009.

JULY 31, 2009

SHERIFF'S SALE

By virtue of a writ of LEV FAC #67 JL, AD., 2009.

PARCEL NO. 11-023.20-161

PROPERTY ADDRESS: 209 Lake Ozark Drive, Bear, Delaware 19701

ALL that certain lot, place or parcel of land, with the improvements thereon erected, situate in Pencader Hundred, New Castle County, Delaware, being Lot No. 145, as shown on the Record Re subdivision Plan of Becks Woods, as said Plan is recorded in the Office for the Recording of Deeds, in and for New Castle County, in Microfilm No. 10869, and described in accordance with a survey by East Coast Survey Professional Land Surveying, Wilmington, Delaware, dated November 30, 2000.

BEING the same lands and premises that Michael A. Grossberg and Susan L. Grossberg by deed dated December 1, 2000 and recorded in the Office of the Recorder of Deeds in and for New Castle County, Delaware, in Deed Book 2942, Page 66, did grant and convey unto Mary A. Hoffecker and Husnu Sahin, in fee.

SEIZED AND TAKEN IN EXECUTION AS THE PROPERTY OF MARY A. HOFFECKER AND HUSNU SAHIN.

TERMS OF SALE: 10% DOWN AT TIME OF SALE. BALANCE DUE ON OR BEFORE OCTOBER 19, 2009.

JULY 31, 2009

SHERIFF'S SALE

By virtue of a writ of SECOND PLURIES LEV FAC #68 JL, AD., 2009.

PARCEL ID: 11-032.10-170

PROPERTY ADDRESS: 452 Shai Circle, Bear, Delaware 19701

ALL that certain lot, piece or parcel of land with the buildings thereon erected, situate in Pencader Hundred, New Castle County, Delaware, being Lot No. 93, on the Plan of Springwood at Porter Square, as the plan thereof is of record in the Office of the Recorder of Deeds, New Castle County, Delaware, in Microfilm No. 8739, and being described in accordance with a survey by A.E.S. Surveyors, dated January 12, 2006.

BEING the same lands and premises conveyed to Theresa Nemeth by Deed of Secretary of Housing & Urban Development dated February 06, 2006, and recorded in the Office of the Recorder of Deeds, in and for New Castle County, in Instrument 20060207-0012996.

SEIZED AND TAKEN IN EXECUTION AS THE PROPERTY OF THERESA NEMETH.

TERMS OF SALE: 10% DOWN AT TIME OF SALE. BALANCE DUE ON OR BEFORE OCTOBER 19, 2009.

JULY 31, 2009

SHERIFF'S SALE

By virtue of a writ of LEV FAC #70 JL, AD., 2009.

TAX PARCEL NO. 08-018.20-098

PROPERTY ADDRESS: 611 Oriole Place, Hockessin, DE 19707

ALL that certain lot, piece or parcel of land, with the dwelling

thereon erected, known as 611 Oriole Place, situate in Mill Creek Hundred, New Castle County and State of Delaware, being Lot No. 149, as shown on the Record Major Subdivision Plan of Westwoods, of record in the Office of the Recorder of Deeds in and for New Castle County, Delaware, in Microfilm No. 9302, and being more particularly bounded and described in accordance with a recent survey prepared by AES Surveyors, dated August 6, 1997.

SUBJECT to restrictive covenants imposed by Declarations recorded in the Office of the Recorder of Deeds in and for New Castle County, Delaware, in Deed Book 783, Page 327 and Deed Book 519, Page 66; as amended in Deed Book 873, Page 206 and Deed Book 919, Page 120.

SUBJECT to a Maintenance Agreement recorder in the Office aforesaid, in Deed Book 733, page 329.

SUBJECT to Water Agreement recorded in the Office aforesaid, in Deed Book 980, Page 119

SUBJECT to Easement Agreements recorded in the Office aforesaid, in Deed Book 1136, Page 119, Deed Book 662, Page 3 and Deed Record U, Volume 76, Page 429, SUBJECT to Utility Agreement recorded in the Office aforesaid, in Deed Book 935, Page 105 SUBJECT to Sewer Agreement recorded in the Office aforesaid in Deed Book 914, Page 13.

SUBJECT to restrictions, setbacks and easements as shown on the Record Major Subdivision Plan of Westwoods, Microfilm No. 9302.

BEING a part of the same lands and premises which Westwoods Associates, a Dissolved General Partnership, by Deed dated October 26, 1992, and of record in the Office of the Recorder of Deeds in and for New Castle County, Delaware, in Deed Book 1418, page 208, granted and conveyed unto Westwoods Development, Inc. a corporation of the State of Delaware, in fee. Being the same lands and premises which Westwoods Development, Inc., a corporation of the State of Delaware, by Deed dated October 17, 1997, and of record in the Office of the Recorder of Deeds in and for New Castle County, Delaware, in Deed book 2345, page 260, granted and conveyed unto Michael J. Pijuan and Michelle N. Pijuan, in fee.

SEIZED AND TAKEN IN EXECUTION AS THE PROPERTY OF MICHAEL J. PIJUAN AND MICHELLE N. PIJUAN.

TERMS OF SALE: 10% DOWN AT TIME OF SALE. BALANCE DUE ON OR BEFORE OCTOBER 19, 2009.

JULY 31, 2009

SHERIFF'S SALE

By virtue of a writ of LEV FAC #72 JL, AD., 2009.

TAX PARCEL NO. 10-042.20-037

PROPERTY ADDRESS: 346 Kemper Drive, Newark, DE 19702

ALL that certain lot, piece or parcel of land known as Lot No. 355, Block B, Section Two, Brookmont Farms, New Castle County, State of Delaware, and being more particularly bounded and described in accordance with a recent survey prepared by Site Dimensions dated May 9, 2007.

BEING the same lands and premises which by Deed dated July 20, 2007 and recorded July 27, 2007 in Document No. 20070727-0066680 was granted and conveyed by Donald F. Johnson and Margaret P. Johnson unto Richard A. Johnson.

SEIZED AND TAKEN IN EXECUTION AS THE PROPERTY OF RICHARD A. JOHNSON.

TERMS OF SALE: 10% DOWN AT TIME OF SALE. BALANCE DUE ON OR BEFORE OCTOBER 19, 2009.

JULY 31, 2009

SHERIFF'S SALE

By virtue of a writ of LEV FAC #75 JL, AD., 2009.

PARCEL NO. 08-023.30-003

PROPERTY ADDRESS: 10 Lamatan Rd., Newark, DE 19711

ALL that certain lot, piece or parcel of land, with the improvements thereon erected, situate in Mill Creek Hundred, New Castle County and State of Delaware, known as RD. 3, Lamatan, Newark, Delaware and being Lot No. 9 as shown on an unrecorded Plan of Lamatan and being more particularly bounded and described in accordance with a recent mortgage inspection plan prepared by AES Surveyors dated August 2007.

BEING the same lands and premises which Thomas G. Majewicz and Paquita E. Barnum, did by deed dated August 15, 2007 and recorded in the Office of the Recorder of Deeds, in Instrument No. 20070821-0074257 did grant and convey unto Ronald J. Strickler, Jr.

SEIZED AND TAKEN IN EXECUTION AS THE PROPERTY OF RONALD J. STRICKLER, JR.

TERMS OF SALE: 10% DOWN AT TIME OF SALE. BALANCE DUE ON OR BEFORE OCTOBER 19, 2009.

JULY 31, 2009

SHERIFF'S SALE

By virtue of a writ of LEV FAC #80 JL, AD., 2009.

PARCEL NO. 08-036.10-078

PROPERTY ADDRESS: 4944 Tupelo Turn, Wilmington, DE 19808

ALL that certain lot, piece or parcel of land, with the building thereon erected, situate in Mill Creek Hundred, New Castle County and State of Delaware, being Lot No. 95, (also known as 4944 South Tupelo Turn) as shown on the Record Major Subdivision Plan of Pepper Ridge dated September 23, 1975 revised April 1, 1976 and of record in the Office of the Recorder of Deeds in and

for New Castle County, Delaware in Microfilm Number 4114 and being more particularly bounded and described in accordance with a recent survey prepared by East Coast Survey Inc., Professional Land Surveyors, dated February 1, 2007.

BEING the same lands and premises which Michael J. Santora did by deed dated February 28, 2007 and recorded in the Office of the Recorder of Deeds, in Instrument No. 20070305-0020620 did grant and convey unto Kathleen Stepnowski.

SEIZED AND TAKEN IN EXECUTION AS THE PROPERTY OF KATHLEEN STEPNOWSKI.

TERMS OF SALE: 10% DOWN AT TIME OF SALE. BALANCE DUE ON OR BEFORE OCTOBER 19, 2009.

JULY 31, 2009

SHERIFF'S SALE

By virtue of a writ of LEV FAC #94 JL, AD., 2009.

PARCEL ID: 11-038.00-048

PROPERTY ADDRESS: 118 Lums Pond Road, Bear, DE 19701

ALL that certain lot, piece or parcel of land, situate in Pencader Hundred, New Castle County, State of Delaware, and shown as Lot 43 on a Record Major Subdivision Plan of Lums Pond Estates II, consisting of two sheets, Drawing No. 77-1355-2377, dated August 31, 1983, prepared by McBride and Ziegler, Inc. Professional Land Surveyors, and recorded November 9, 1983 in the Office of the Recorder of Deeds in and for New Castle County as Microfilm No. 6951, and more particularly described in accordance with II recent survey prepared by Zebley & Associates, Inc., Professional Land Surveyors of Wilmington, Delaware, dated April 12, 2002, as follows, to wit:

BEING the same lands and premises which Marck C. Willey and Jeannette K. Cheeseman, did grant and convey unto William Thomas Smith, Jr., by deed dated April 19, 2002 and recorded on April 30, 2002 in the Office of the Recorder of Deeds, in and for New Castle County, State of Delaware, in Deed Instrument 20020430-0039954.

SEIZED AND TAKEN IN EXECUTION AS THE PROPERTY OF WILLIAM THOMAS SMITH JR.

TERMS OF SALE: 10% DOWN AT TIME OF SALE. BALANCE DUE ON OR BEFORE OCTOBER 19, 2009.

JULY 31, 2009

SHERIFF'S SALE

By virtue of a writ of ALIAS LEV FAC #101 JL, AD., 2009.

PARCEL NO: 11-015.30-063

PROPERTY ADDRESS: 39 Cedar Farms Drive, Newark, DE 19702

ALL that certain lot, piece or parcel of land, with the buildings thereon erected, known as 39 Cedar Farm Drive, situate in Pencader Hundred, New Castle County and State of Delaware and being Lot No. 19 on the Record resubdivision Plan of Cedar Farms, as said Plan is of record in the Office of the Recorder of Deeds in and for a New Castle County, in Microfilm No. 8373 and being more particularly bounded and described in accordance with a recent survey by A.E.S. Surveyors, dated June 13, 2006, as follows, to-wit:

BEING the same lands and premises which James W. Siejk and Stephine L. Siejk did grant and convey unto Chitpraseuth Vilayvong and Vilayvone Vilayvong by deed dated June 22, 2006 and recorded on June 26, 2006 in the Office of the Recorder of Deeds, in and for New Castle County, State of Delaware, in Deed Instrument 20060626-0060494.

SEIZED AND TAKEN IN EXECUTION AS THE PROPERTY OF CHITPRASEUTH VILAYVONG AND VILAYVONE VILAYVONG.

TERMS OF SALE: 10% DOWN AT TIME OF SALE. BALANCE DUE ON OR BEFORE OCTOBER 19, 2009.

JULY 31, 2009

SHERIFF'S SALE

By virtue of a writ of LEV FAC #103 JL, AD., 2009.

PARCEL ID: 11

PROPERTY ADDRESS: 44 Belfort Loop, Newark, DE 19702

ALL that certain lot, piece or parcel of land with the dwelling thereon erected, situate in Pencader Hundred, New Castle County and State of Delaware, being Lot No. 294, as shown on the Record Resubdivision Plan of French Town Woods, as said Plan is of record in the Office of the Recorder of Deeds, in and for New Castle County and State of Delaware, in Microfilm No. 9990, said lot is also known as 44 Belfort Loop, and being more particularly bounded and described in accordance with a more recent survey prepared by The Pelsa Company, Consultants & Surveyors, dated January 20, 2005, as follows, to wit:

BEING the same lands and premises which Thomas Agnetti and Kimberly C. Agnetti, did grant and convey unto Ira Washington and Laeia C. Washington, by deed dated January 28, 2005 and recorded on February 1, 2005 in the Office of the Recorder of Deeds, in and for New Castle County, State of Delaware, in Deed Instrument 20050201-0011310.

SEIZED AND TAKEN IN EXECUTION AS THE PROPERTY OF IRA WASHINGTON AND LAEIA C. WASHINGTON.

TERMS OF SALE: 10% DOWN AT TIME OF SALE. BALANCE DUE ON OR BEFORE OCTOBER 19, 2009.

JULY 31, 2009

(Continued)

(Continued)

SHERIFF'S SALE

By virtue of a writ of ALAS LEV FAC #105 JL, AD., 2009.

PARCEL NO. 09-023.30-024

PROPERTY ADDRESS: 111 Coral Reef Drive, Newark, DE 19713

ALL that certain lot, piece or parcel of land with the improvements thereon erected, known as 111 Coral Reef Drive, situate in White Clay Creek Hundred, New Castle County, State of Delaware, being Lot No. 8, Block C, on a Plan of Hillside Heights, Section 1, dated April 30, 1956, prepared by Edward H. Richardson Associates, Inc., Consulting Engineers and recorded in the Office of the Recorder of Deeds, in and for New Castle County, State of Delaware, in Flat record 4, Page 9, and being more particularly bounded and described in accordance with a recent survey by Zebley & Associates, Professional Land Surveyors and Site Planners of Wilmington, Delaware, dated July 22, 1998, as follows, to-wit:

BEING the same lands and premises which Michael R. Cudd and Sheriff L. Cudd did grant and convey unto Katie L. Zanes by deed dated April 15, 2005 and recorded on May 3, 2005 in the Office of the Recorder of Deeds, in and for New Castle County, State of Delaware, in Deed Instrument 20050503-0041412.

SEIZED AND TAKEN IN EXECUTION AS THE PROPERTY OF KATIE L. ZANES.

TERMS OF SALE: 10% DOWN AT TIME OF SALE. BALANCE DUE ON OR BEFORE OCTOBER 19, 2009.

JULY 31, 2009

SHERIFF'S SALE

By virtue of a writ of ALIAS LEV FAC #108 JL, AD., 2009.

PARCEL ID: 10-010.20-193

PROPERTY ADDRESS: 3096 North New Castle Avenue, New Castle, DE 19720

ALL that certain lot, piece or parcel of land with the buildings thereon erected, situate in New Castle Hundred, New Castle County and State of Delaware, known as 3096 New Castle Avenue, and more particularly bounded and described in accordance with a survey by Marvin S. Smith, Civil Engineer and Surveyor of Wilmington, Delaware, dated January, 1966, as follows to-wit:

BEING the same lands and premises which Roger J. Woodard, Sr., did grant and convey unto Eric H. Sheppard by deed dated 6/9/2006 and recorded 6/14/2006 Office of the Recorder of Deeds, in and for New Castle County, State of Delaware, in Deed Record 20060614-0056924.

SEIZED AND TAKEN IN EXECUTION AS THE PROPERTY OF ERIC H. SHEPARD.

TERMS OF SALE: 10% DOWN AT TIME OF SALE. BALANCE DUE ON OR BEFORE OCTOBER 19, 2009.

JULY 31, 2009

SHERIFF'S SALE

By virtue of a writ of LEV FAC #115 JL, AD., 2009.

PARCEL NO: 08-060.20-123

PROPERTY ADDRESS: 4 Flora Circle, Newark, DE 19711

ALL that certain lot of land with the improvements thereon erected, situate in Mill Creek Hundred, New Castle County and State of Delaware, comprising Lot No. 23, Block F, of a Plan of Newkirk Estates, Section II, as the same is of record in the Office of the Recorder of Deeds in and for New Castle County, Delaware in Microfilm Record 687, and being more particularly bounded and described as follows, to-wit:

BEING the same lands and premises which Jennifer L. Higgins did grant and convey unto Virginia Wilkins by deed dated February 28, 2006 and recorded on March 6, 2006 in the Office of the Recorder of Deeds, in and for New Castle County, State of Delaware, in Deed Instrument 20060306-0021989.

SEIZED AND TAKEN IN EXECUTION AS THE PROPERTY OF VIRGINIA WILKINS.

TERMS OF SALE: 10% DOWN AT TIME OF SALE. BALANCE DUE ON OR BEFORE OCTOBER 19, 2009.

JULY 31, 2009

SHERIFF'S SALE

By virtue of a writ of LEV FAC #117 JL, AD., 2009.

PARCEL NO. 11-028.40-367

PROPERTY ADDRESS: 33 White Birch Boulevard, Bear, DE 19701

ALL that certain lot, piece or parcel of land, with the building thereon erected, situate in Pencader Hundred, New Castle County and State of Delaware, and being Lot No. 113 of the subdivision of Sylvan Park, Microfilm No. 13260, and being more particularly bounded and described in accordance with a survey prepared by East Coast Surveys, dated December, 2002, as follows, to-wit:

BEING the same lands and premises which Gregory L. Julius did grant and convey unto John Teoli and Melanie Teoli by deed dated December 19, 2002 and recorded on December 20, 2002 in the Office of the Recorder of Deeds, in and for New Castle County, State of Delaware, in Deed Instrument 20021220-0121935.

SEIZED AND TAKEN IN EXECUTION AS THE PROPERTY OF JULIA PANTOJA.

TERMS OF SALE: 10% DOWN AT TIME OF SALE. BALANCE DUE ON OR BEFORE OCTOBER 19, 2009.

JULY 31, 2009

SHERIFF'S SALE

By virtue of a writ of LEV FAC #118 JL, AD., 2009.

PARCEL NO. 11-006.20-212

PROPERTY ADDRESS: 810 Broadfield Drive, Newark, DE 19713

ALL that certain lot, piece or parcel of land with the buildings thereon erected, known as 810 Broadfield Drive, situate in Pencader Hundred, New Castle County and State of Delaware, and being Lot No. 382, Block N, on the Plan of Scottfield, Section Three, as said Plan is of record in the Office for the Recording of Deeds, in and for New Castle County, Delaware, in Microfilm Record 2217, and being more particularly bounded and described as follows, to-wit:

BEING the same lands and premises which William W. Farrow and Sharon H. Farrow did grant and convey unto Clifton M. Whittake and Dawn E. Brannon by deed dated July 30, 1985 and recorded on July 3, 1985 in the Office of the Recorder of Deeds, in and for Kent County, State of Delaware, in Deed Book 263 Page 106.

SEIZED AND TAKEN IN EXECUTION AS THE PROPERTY OF DAWN E. BRANNON.

TERMS OF SALE: 10% DOWN AT TIME OF SALE. BALANCE DUE ON OR BEFORE OCTOBER 19, 2009.

JULY 31, 2009

SHERIFF'S SALE

By virtue of a writ of FIRST PLURIES LEV FAC #119 JL, AD., 2009.

PARCEL NO. 08-02510-066

PROPERTY ADDRESS: 5 Lock Meade Circle, Hockessin, Delaware

ALL that certain lot, piece or parcel of land with the dwelling thereon erected, situate in Mill Creek Hundred, New Castle County and State of Delaware, known as Lot 242, Block U as shown on the Record Resubdivision Plan of Mendenhall Village, as said plan is of record in the Office of the Recorder of Deeds in and for New Castle County, Delaware in Microfilm No. 5612 and being more particularly bounded and described according to a survey by East Coast Survey, dated November 12, 1996.

AND BEING the same lands and premises which Dennis R. Wilczek and Lisa M. Wilczek by deed dated November 29, 1996 and recorded in the office aforesaid in Deed Record 2205, Page 71, granted and conveyed to James R. Gordon, Jr. and Annette L. Gordon, herein in fee.

SEIZED AND TAKEN IN EXECUTION AS THE PROPERTY OF JAMES R. GORDON, JR. AND ANNETTE L. GORDON.

TERMS OF SALE: 10% DOWN AT TIME OF SALE. BALANCE DUE ON OR BEFORE OCTOBER 19, 2009.

JULY 31, 2009

SHERIFF'S SALE

By virtue of a writ of FIRST PLURIES LEV FAC #120 JL, AD., 2009.

PARCEL ID: 11-017.20-302

PROPERTY ADDRESS: 1 Clipper Court, Newark, DE 19702

ALL that certain lot, piece or parcel of land with all improvements thereon erected, situate in Pencader Hundred, New Castle County and State of Delaware, known as 1 Clipper Court being Lob No. 216, Block G, as shown on the re-subdivision Plan of Four Season, prepared by Edward H. Richardson Associates, Inc., Consulting Engineers of Newark, Delaware dated April 6, 1971, and revised October 30, 1972, recorded in the Office of the Recorder of Deeds, in and for New Castle County aforesaid, in Microfilm No. 2200 and being more particularly bounded and described in accordance with a survey prepared by Pelsa Company, Newark, Delaware dated April 12, 2004.

AND BEING the same lands and premises conveyed unto Amy R. Vincent, by deed of James O. Vincent and Roberta G. Vincent dated April 22, 2004, and of record in the Office of the Recorder of Deeds in and for New Castle County and State of Delaware in deed Instrument No. 20040427-0046579.

SEIZED AND TAKEN IN EXECUTION AS THE PROPERTY OF AMY R. VINCENT.

TERMS OF SALE: 10% DOWN AT TIME OF SALE. BALANCE DUE ON OR BEFORE OCTOBER 19, 2009.

JULY 31, 2009

SHERIFF'S SALE

By virtue of a writ of FIRST PLURIES LEV FAC #124 JL, AD., 2009.

PARCEL NO. 09-022.40-119

PROPERTY ADDRESS: 5 Merion Road, Newark, Delaware 19713

ALL that certain lot, piece or parcel of land, with the buildings thereon erected situate in White Clay Creek Hundred, New Castle County and State of Delaware, known as 5 Merion Road, being Lot No. 32, on the Plan of Chestnut Hill Estates, as the Plan thereof is of record in the Office of the Recorder of Deeds, in and for New Castle County in Microfilm No. 162, and being more particularly bounded and described in accordance with a survey prepared by East Coast Survey, Professional Land Surveyors, dated November 10, 1998.

BEING the same lands and premises which Dorothy B. Menkiewicz, by Deed dated November 17, 1998 and recorded in the Office of the Recorder of Deeds, in and for New Castle County and State of Delaware, in Deed Book 2543 Page 190, did grant and convey unto Terry E. DeGroat.

SEIZED AND TAKEN IN EXECUTION AS THE PROPERTY OF TERRY E. DEGROAT.

TERMS OF SALE: 10% DOWN AT TIME OF SALE. BALANCE DUE ON OR BEFORE OCTOBER 19, 2009.

JULY 31, 2009

SHERIFF'S SALE

By virtue of a writ of ALIAS LEV FAC #126 JL, AD., 2009.

PARCEL NO. 11-022.40-001

PROPERTY ADDRESS: 4029 Rosetree Lane, Newark, DE 19702

ALL that certain tract, piece or parcel of land situate in Pencader Hundred, New Castle County, Delaware being Lot 96 according to the Record Major Subdivision Plan of Rosetree Hunt as recorded in the Office of the Recorder of Deeds, New Castle County, Delaware in Microfilm 10658 and more particularly described per a plan prepared by Ramesh C. Batta Associates, PA Consulting Engineers and Surveyor, plan No.66320-A-10156.

BEING the same lands and premises which Rose Heart, Inc. did by deed dated March 3, 1995 and recorded in the office aforesaid in Deed Book 1889 Page 319 did grant and convey unto Rosalind R. Jordan.

SEIZED AND TAKEN IN EXECUTION AS THE PROPERTY OF ROSALIND R. JORDAN.

TERMS OF SALE: 10% DOWN AT TIME OF SALE. BALANCE DUE ON OR BEFORE OCTOBER 19, 2009.

JULY 31, 2009

SHERIFF'S SALE

By virtue of a writ of ALIAS LEV FAC #128 JL, AD., 2009.

PARCEL NO. 11-026.30-207

PROPERTY ADDRESS: 3 West Hawthorne Court, Newark, DE

ALL that certain lot, piece or parcel of land with the buildings thereon erected, situate in Pencader Hundred, New Castle County and State of Delaware, known as 3 West Hawthorne Court, being Lot No. 6 on the Record Major Subdivision Plan for Perch Creek II, as said plan is of record in the Office for the Recording of Deeds in and for New Castle County, Delaware, in Microfilm Record No. 11,809 and being more particularly bounded and described in accordance with a recent survey by Zebley and Associates, Inc., dated April 20, 1995.

AND BEING the same lands and premises which Jennifer L. Chamberlain by deed dated November 30, 2007 and recorded in the Office of the Recorder of Deeds in and for New Castle County, Delaware as Instrument No. 20071207-0104353 did grant and convey unto Jacquelyn L. Herbert.

SEIZED AND TAKEN IN EXECUTION AS THE PROPERTY OF JENNIFER L. CHAMBERLAIN, JACQUELYN L. HERBERT.

TERMS OF SALE: 10% DOWN AT TIME OF SALE. BALANCE DUE ON OR BEFORE OCTOBER 19, 2009.

JULY 31, 2009

SHERIFF'S SALE

By virtue of a writ of ALIAS LEV FAC #145 JL, AD., 2009.

PARCEL ID: 08-043.40-266

PROPERTY ADDRESS: 32 N. Sherman Dr., Bear, DE 19701

ALL that certain lot, piece or parcel of land with the Buildings thereon erected known as 2617 Grendon Drive, situate in Mill Creek hundred, New Castle County and State of Delaware, being Lot Nos. 200 and 201 on the Plan of Grendon Farms as said Plan is of record in the Office of the Recorder of Deeds, in and for New Castle County and New Castle County, on Microfilm No. 722 and being more particularly bounded and described in accordance with a recent survey prepared by The Pelsa Company, dated April 2005, as follows, to-wit:

BEING the same lands and premises which Albert C. Leifheit, III and Jennifer A. Leifheit, did grant and convey unto Jennifer L. Allen, by deed dated April 13, 2005 and recorded on April 14, 2005 in the Office of the Recorder of Deeds, in and for New Castle County, State of Delaware, in Deed Instrument 20050414-0035324.

SEIZED AND TAKEN IN EXECUTION AS THE PROPERTY OF JENNIFER L. ALLEN.

TERMS OF SALE: 10% DOWN AT TIME OF SALE. BALANCE DUE ON OR BEFORE OCTOBER 19, 2009.

JULY 31, 2009

SHERIFF'S SALE

By virtue of a writ of LEV FAC #153 JL, AD., 2009.

TAX PARCEL NO. 08-043.40-003

PROPERTY ADDRESS: 2711 E. Riding Drive, Wilmington, DE 19808

ALL that certain lot, piece or parcel of land with the dwelling thereon erected, known as 2711 East Riding Drive, situate in Mill Creek Hundred, New Castle County and State of Delaware, and being Lot No. 8 on the Plan of Highlands of Heritage Park in Pike Creek Valley, and being more particularly bounded and described in accordance with a recent survey prepared by Zebley and Associates, Inc., professional land surveyors of Wilmington, Delaware, dated April 8, 1988.

BEING the same lands and premises which Robert P. Sheehan and Helen B. Sheehan, his wife, by deed dated April 29, 1988 and of record in the Office of the Recorder of Deeds of New Castle County, in Deed Book 692, page 249, did grant and convey unto Charles J. McGonigal and Mary Ann McGonigal, his wife, in fee.

SEIZED AND TAKEN IN EXECUTION AS THE PROPERTY OF CHARLES J. MCGONIGAL AND MARY ANN MCGONIGAL.

TERMS OF SALE: 10% DOWN AT TIME OF SALE. BALANCE DUE ON OR BEFORE OCTOBER 19, 2009.

JULY 31, 2009

(Continued)

LEGAL NOTICE LEGAL NOTICE LEGAL NOTICE LEGAL NOTICE LEGAL NOTICE LEGAL NOTICE LEGAL NOTICE LEGAL NOTICE LEGAL NOTICE LEGAL NOTICE

(Continued)

SHERIFF'S SALE

By virtue of a writ of LEV FAC #157 JL, AD., 2009.
PARCEL NO. 11-002.040-056

ALL that certain lot, piece or parcel of land, with the buildings thereon erected, situate in Pencader Hundred, New Castle County, and State of Delaware, known as 26 Metten Road, being Lot No. 198, on the Plan of Brookside Park Section M, as the Plan thereof is of record in the Office of the Recorder of Deeds, in and for New Castle County in Microfilm No. 63, and being more particularly bounded and described in accordance with a survey prepared by East Coast survey, professional Land Surveyors, dated as follows, to-wit:

BEING the same lands and premises which James T. Hailstone, by Deed dated August 15, 2007, and recorded August 20, 2007, in the Office of the Recorder of Deeds in and for New Castle County, Delaware, in Deed Instrument Number 20070820-0073995, did grant and convey unto Matthew W. Peace, in fee.

SEIZED AND TAKEN IN EXECUTION AS THE PROPERTY OF MATTHEW W. PEACE.

TERMS OF SALE: 10% DOWN AT TIME OF SALE. BALANCE DUE ON OR BEFORE OCTOBER 19, 2009.

JULY 31, 2009

SHERIFF'S SALE

By virtue of a writ of ALIAS LEV FAC #161 JL, AD., 2009.
TAX PARCEL ID: 08-025.30-158

PROPERTY ADDRESS: 126 Fairhill Drive, Wilmington, Delaware
ALL that certain lot, piece or parcel of land with the buildings thereon erected, commonly known as 126 Fairhill Drive, Wilmington, Delaware.

BEING the same lands and premises which Eugene F. Palecki and Patricia a. Palecki, h/w, by deed dated August 27, 1998, and recorded August 28, 1998, in the Office of the Recorder of Deeds, in and for New Castle County, State of Delaware, in Deed Record 2500, Page 100, granted and conveyed unto Robert P. Ruggerio, Jr. and Carol P. Ruggerio, husband and wife, in fee.

SEIZED AND TAKEN IN EXECUTION AS THE PROPERTY OF ROBERT P. RUGGERIO, JR. AND CAROL P. RUGGERIO.

TERMS OF SALE: 10% DOWN AT TIME OF SALE. BALANCE DUE ON OR BEFORE OCTOBER 19, 2009.

JULY 31, 2009

SHERIFF'S SALE

By virtue of a writ of LEV FAC #162 JL, AD., 2009.
PARCEL ID: 08-017.30-038

PROPERTY ADDRESS: 32 Harris Circle, Newark, DE 19711

ALL that certain lot, piece or parcel of land, with the buildings thereon erected, situate n mill Creek Hundred, New Castle County and State of Delaware, known as 32 Harris Circle being Lot No. 64B on the record re-subdivision plan of Penn Manor so said plan is of record in the Office for the Recording of Deeds in and for New Castle County, Delaware in Microfilm Record No. 5985 and being more particularly bounded and described in accordance with a recent survey by Zebley & Associates, Inc., Professional Land Surveyors of Wilmington, Delaware, dated May 18, 1987, as follows, to wit:

BEING the same lands and premises which Barbara J. O'Connor, by Deed dated March 29, 1989, and Recorded December 5, 1989, in the Office of the Recorder of Deeds, in and for New Castle County, Delaware, in Deed Book 964, Page 290, did grant and convey unto David A. O'Connor.

SEIZED AND TAKEN IN EXECUTION AS THE PROPERTY OF DAVID A. O'CONNOR.

TERMS OF SALE: 10% DOWN AT TIME OF SALE. BALANCE DUE ON OR BEFORE OCTOBER 19, 2009.

JULY 31, 2009

SHERIFF'S SALE

By virtue of a writ of LEV FAC #164 JL, AD., 2009.
PARCEL NO. 11-003.10-040

PROPERTY ADDRESS: 14 McCord Drive, Newark, DE 19711

ALL that certain lot, piece or parcel of land with the buildings thereon erected, known as 14 McCord Drive, situate in Pencader Hundred, New Castle County, Delaware, being Lot 200, on a certain plat entitle Brookside Park, Section M-2, prepared by Whitman, Requardt and Associates, Consulting Engineers, dated August 16, 1954, and recorded in the Office of the Recorder of Deeds in and for New Castle County in Plat Book 3, Page 52, on September 14, 1954, and more particularly bounded and described in accordance with a survey made by East Coast Survey, Professional Land Surveyors of Yorklyn, Delaware dated January 2000.

BEING the same lands and premises which were conveyed unto Michael McEntaffer and Kristyn Hart from Alfred Loveless and Mary Loveless by Deed dated January 31, 2000 and recorded in the Office of the Recorder of Deeds in and for New Castle County, Delaware in Deed Book 2778, Page 40.

SEIZED AND TAKEN IN EXECUTION AS THE PROPERTY OF MICHAEL MCENTAFFER AND KRISTYN HART.

TERMS OF SALE: 10% DOWN AT TIME OF SALE. BALANCE DUE ON OR BEFORE OCTOBER 19, 2009.

JULY 31, 2009

SHERIFF'S SALE

By virtue of a writ of LEV FAC #182 JL, AD., 2009.
TAX PARCEL NO. 11-026.30-174

PROPERTY ADDRESS: 14 Nandina Drive, Newark, DE 19702

ALL that certain lot, piece or parcel of land with the improvements thereon, situate in Pencader Hundred, New Castle County and State of Delaware, said lot known as Lot No. 7, Block A, as shown on the Record Major Subdivision Plan of Perch Creek, said Plan being of record in the Office of the Recorder of Deeds, in and for New Castle County and State of Delaware in Microfilm No. 11730, said Lot also known as 14 Nandina Drive and being more particularly bounded and described according to a survey prepared by "EL" ROD, Surveying & Site Design, dated October 1, 1994.

BEING the same property to Raymond Mangold and Wendy J. Mangold from NVR Homes, Inc., by Deed dated October 26, 1994, and recorded in October 27, 1994, in Book 1829, page 055, as Instrument No. 115417, among the Land Records of New Castle County, Delaware.

SEIZED AND TAKEN IN EXECUTION AS THE PROPERTY OF RAYMOND MANGOLD AND WENDY J. MANGOLD.

TERMS OF SALE: 10% DOWN AT TIME OF SALE. BALANCE DUE ON OR BEFORE OCTOBER 19, 2009.

JULY 31, 2009

SHERIFF'S SALE

By virtue of a writ of LEV FAC #184 JL, AD., 2009.
TAX PARCEL NO. 08-055.10-341

PROPERTY ADDRESS: 223 E. Green Valley Circle, Newark, DE 19702

ALL that certain lot, piece or parcel of land with the buildings thereon erected, situate in Mill Creek Hundred, New Castle County and State of Delaware, known as 223 E. Green Valley Circle, being Lot No. 268, on the Plan of Green Valley, as said Plan is recorded in the Office of the Recorder of Deeds, in and for New Castle County in Microfilm No. 8176, and being more particularly bounded and described in accordance with a survey prepared by East Coast Survey, Professional Land Surveyors, dated July 25, 2006.

BEING the same lands and premises conveyed unto John McKinney and racy McKinney by deed of Richard Lofink, dated July 31, 2006 and recorded in the Office of the Recorder of Deeds in and for New Castle County and State of Delaware in Instrument Number 20060802-0073601.

SEIZED AND TAKEN IN EXECUTION AS THE PROPERTY OF JOHN MCKINNEY AND TRACY MCKINNEY.

TERMS OF SALE: 10% DOWN AT TIME OF SALE. BALANCE DUE ON OR BEFORE OCTOBER 19, 2009.

JULY 31, 2009

SHERIFF'S SALE

By virtue of a writ of LEV FAC #185 JL, AD., 2009.
TAX PARCEL NO. 11-002.20-259

PROPERTY ADDRESS: 27 Matthews Road, Newark, DE 19713

ALL that certain lot, piece or parcel of land with the buildings and improvements thereon erected, situate, lying and being in Pencader Hundred, New Castle County and State of Delaware, and known as Lot 277 on a Plan of Brookside Park, Section M-2 prepared by Whitman Requardt and Associates, Consulting Engineers dated August 16, 1954 and of record in the Office of the Recorder of Deeds, in and for New Castle County and State of Delaware, in Plat Book 3, Page 52, on September 14, 1954 and more particularly bounded and described a survey of On Point, Inc., dated 11/22/2004.

BEING the same lands and premises which Alison Davey, by Deed dated March 8, 2007, and recorded in the Office of the Recorder of Deeds in and for New Castle County and State of Delaware, in Document Number 20070308-0022310, did grant and convey unto James Arthur Stafford and Wanda T. Stafford.

SEIZED AND TAKEN IN EXECUTION AS THE PROPERTY OF JAMES ARTHUR STAFFORD AND WANDA T. STAFFORD.

TERMS OF SALE: 10% DOWN AT TIME OF SALE. BALANCE DUE ON OR BEFORE OCTOBER 19, 2009.

JULY 31, 2009

SHERIFF'S SALE

By virtue of a writ of LEV FAC #189 JL, AD., 2009.
TAX PARCEL NO. 10-038.30-109

PROPERTY ADDRESS: 31 Wellington Drive, Newark, DE 19702

The following is a description of property situate in New Castle Hundred, New Castle County, State of Delaware, known as Lot No. 108, also known as 31 Wellington Drive, Wellington Woods as shown on the Record Major Land Development Plan of Wellington Woods, Section One as said plan is of record in the Office of the Recorder of Deeds in and for New Castle County, State of Delaware, under Microfilm No. 4115.

BEING the same lands and premises which Frederick O. Emanuel, by Deed dated March 29, 2007, and of record in the Office of the Recorder of Deeds, in and for New Castle County and State of Delaware, in Instrument No. 20070402-0030099, did grant and convey unto Orlando A. Fletcher, in fee.

SEIZED AND TAKEN IN EXECUTION AS THE PROPERTY OF ORLANDO A. FLETCHER.

TERMS OF SALE: 10% DOWN AT TIME OF SALE. BALANCE

DUE ON OR BEFORE OCTOBER 19, 2009.

JULY 31, 2009

SHERIFF'S SALE

By virtue of a writ of LEV FAC #190 JL, AD., 2009.
TAX PARCEL NO. 11-013.40-035

PROPERTY ADDRESS: 14 Locke Court, Newark, Delaware 19702

ALL that certain lot, piece or parcel of land, with the buildings thereon erected, situate in Pencader Hundred, New Castle County, and State of Delaware, known as 14 Locke Court, and being Lot No. 85, as shown on the Plan of Pencader Village, as said Plan is of record in the Office of the Recorder of Deeds in and for New Castle County, Delaware in Microfilm No. 8672, and being more particularly bounded and described in accordance with a survey prepared by A.E.S. Surveyors, dated July 22, 2004.

BEING the same lands and premises which Patrick A. Kavanagh and Catherine Kavanagh, by Deed dated November 30, 1992, and of record in the Office of the Recorder of Deeds, in and for New Castle County and State of Delaware, in Deed Book 1434, Page 181, did grant and convey unto Robert H. Trala and Janice M. Trala, in fee.

BEING the same lands and premises which Robert H. Trala and Janice M. Trala, by Deed dated August 4, 2004 and of record in the Office of the Recorder of Deeds, in and for New Castle County and State of Delaware, in Deed Book 20040804-0084858, did grant and convey unto Miguel A. Hernandez, in fee.

SEIZED AND TAKEN IN EXECUTION AS THE PROPERTY OF MIGUEL A. HERNANDEZ.

TERMS OF SALE: 10% DOWN AT TIME OF SALE. BALANCE DUE ON OR BEFORE OCTOBER 19, 2009.

JULY 31, 2009

SHERIFF'S SALE

By virtue of a writ of LEV FAC #199 JL, AD., 2009.
PARCEL ID: 18-004.090-1059

PROPERTY ADDRESS: 312 Lynley Lane, Newark, DE 19711

ALL that certain lot, piece or parcel of land with the buildings thereon erected, situate in the City of Newark, New Castle County and State of Delaware, known as 312 Lynley Lane, being Lot No. 38 on the plan of Jenney's Run, as the plan thereof is of record in the Office of the Recorder of Deeds in and for New Castle County, Delaware in Microfilm No. 1 1486, and being more particularly bounded and described in accordance with a survey prepared by East Coast Survey, Professional Land Surveyors, dated January 8, 2001, as follows, to-wit:

BEING the same lands and premises which Dominic J. Kayatta and Lynne E. Kayatta, did grant and convey unto Hyang Suk An, dated January 19, 2001 and recorded on January 26, 2001 in the Office of the Recorder of Deeds, in and for New Castle County, State of Delaware, in Deed Instrument 20010126-0005796.

SEIZED AND TAKEN IN EXECUTION AS THE PROPERTY OF HYANG SUK AN.

TERMS OF SALE: 10% DOWN AT TIME OF SALE. BALANCE DUE ON OR BEFORE OCTOBER 19, 2009.

JULY 31, 2009

SHERIFF'S SALE

By virtue of a writ of LEV FAC #205 JL, AD., 2009.
TAX PARCEL NO. 10-032.40-033

PROPERTY ADDRESS: 18 Reubens Circle, Newark, DE 19702

ALL that certain lot, piece or parcel of land, with the buildings thereon erected situated in New Castle Hundred, New Castle County and State of Delaware being designated Lot 273, as shown on the Record Major Subdivision Plan of Taylortowne, of record in the he Office of the Recorder of Deeds in and for New Castle County and State of Delaware on Microfilm No. 6398, said lot also known as 18 Reuben Circle and being more particularly bounded and described in accordance with a recent survey by A.E.S. Surveyors dated December 15, 2005.

BEING the same lands and premises which Melinda Ellis and Michael Andreoli, by Deed dated January 23, 2007 and recorded in the Office of the Recorder of Deeds in and for New Castle County, in Instrument #20070216-0015328, did grant and convey unto Michael Andreoli, in fee.

SEIZED AND TAKEN IN EXECUTION AS THE PROPERTY OF MICHAEL ANDREOLI.

TERMS OF SALE: 10% DOWN AT TIME OF SALE. BALANCE DUE ON OR BEFORE OCTOBER 19, 2009.

JULY 31, 2009

SHERIFF'S SALE

By virtue of a writ of LEV FAC #210 JL, AD., 2009.
PARCEL ID: 09-030.30-155

PROPERTY ADDRESS: 1403 Flanders Way, Newark, DE 19702

ALL that lot or parcel of land known as Lot 100 in Christiana Village, Clay Creek Hundred, New Castle County, State of Delaware, as recorded on microfilm 4260, and as shown on a mortgage inspection plan prepared by Raymond f. Christian and Associates, Inc., Land Surveyors, dated August 23, 2004, described to wit:

BEING the same lands and premises which Kathleen L. Shifflett, f/k/a Kathleen L. Barks, did grant and convey unto Paulette

(Continued)

(Continued)

E. Dickerson, by deed dated August 30, 2004 and recorded on September 2, 2004 in the Office of the Recorder of Deeds, in and for New Castle County, State of Delaware, in Deed Instrument 20040902-00998162.

SEIZED AND TAKEN IN EXECUTION AS THE PROPERTY OF PAULETTE E. DICKERSON.

TERMS OF SALE: 10% DOWN AT TIME OF SALE. BALANCE DUE ON OR BEFORE OCTOBER 19, 2009.
JULY 31, 2009

SHERIFF'S SALE

By virtue of a writ of LEV FAC #215 JL, AD., 2009.

PARCEL ID: 11-037.10-014

PROPERTY ADDRESS: 122 Brittany Way, Bear, DE 19701

ALL that certain lot, piece or parcel of land with the buildings thereon, situate in Pencader Hundred, New Castle County and State of Delaware and being designated as Lot 11 as shown on the Record Resubdivision Plan of Mansion Farm, Phase 2 as recorded in the Office of the Recorder of Deeds in and for New Castle County, Delaware on Microfilm No. 13835, said lot also being known as No. 122 Brittany Way and being shown on a Mortgage Inspection Plan by On Point, Inc., Job Number 22234, dated November 12, 2002 and being more particularly described as follows:

BEING the same lands and premises which D. M. Peoples Investments Corp., did grant and convey unto Andrew B. Schofield and Mary Ellen Schofield, by deed dated November 21, 2002 and recorded on November 26, 2002 in the Office of the Recorder of Deeds, in and for New Castle County, State of Delaware, in Deed Instrument 20021126-0115156.

SEIZED AND TAKEN IN EXECUTION AS THE PROPERTY OF ANDREW B. SCHOFIELD AND MARY ELLEN SCHOFIELD.

TERMS OF SALE: 10% DOWN AT TIME OF SALE. BALANCE DUE ON OR BEFORE OCTOBER 19, 2009.

JULY 31, 2009

SHERIFF'S SALE

By virtue of a writ of ALIAS LEV FAC #216 JL, AD., 2009.

PARCEL ID: 11-004.40-048

PROPERTY ADDRESS: 126 North Hunter Forge Road, Newark, DE 19713

ALL that certain lot, piece or parcel of land, with the building thereon erected, known as 126 N. Hunter forge Road, situate in Pencader Hundred, New Castle County and State of Delaware, and being Lot No. 53, Block B of the subdivision or Anvil Park (formerly known as Village of Sandy Brae), Microfilm Number 1719, and being more particularly bounded and described in accordance with a survey by The Pelsa Company dated July 17, 1995 as follows, to wit:

BEING the same lands and premises which John E. Pryor and Barbara J. Pryor, did grant and convey unto Barbara J. Pryor, by deed dated February 1, 2005 and recorded on February 9, 2005 in the Office of the Recorder of Deeds, in and for New Castle County, State of Delaware, in Deed Instrument 20050209-0013618.

SEIZED AND TAKEN IN EXECUTION AS THE PROPERTY OF BARBARA J. PRYOR.

TERMS OF SALE: 10% DOWN AT TIME OF SALE. BALANCE DUE ON OR BEFORE OCTOBER 19, 2009.

JULY 31, 2009

SHERIFF'S SALE

By virtue of a writ of LEV FAC #219 JL, AD., 2009.

PARCEL ID: 11-028.40-269

PROPERTY ADDRESS: 111 Armerina Drive, Bear, DE 19701

ALL that certain lot, piece or parcel of land, with the buildings thereon erected, situate in Pencader Hundred, New Castle County, State of Delaware, known as 111 Armerina Drive, being Lot No. 413, as shown on the plan of Pine Woods, and as said plan is recorded in the Office of the Recorder of Deeds in and for New Castle County, Delaware in No. 10144, and being more particularly bounded and described in accordance with a recent survey by Ashley and Associates, Inc., dated November 13, 1997, as follows, to-wit:

BEING the same lands and premises which John Jordan, did grant

and convey unto Mark A. Johnson, by deed dated November 26, 1997 and recorded on December 2, 1997 in the Office of the Recorder of Deeds, in and for New Castle County, State of Delaware, in Deed Book 2364 at Page 7266.

SEIZED AND TAKEN IN EXECUTION AS THE PROPERTY OF MARK A. JOHNSON.

TERMS OF SALE: 10% DOWN AT TIME OF SALE. BALANCE DUE ON OR BEFORE OCTOBER 19, 2009.

JULY 31, 2009

SHERIFF'S SALE

By virtue of a writ of LEV FAC #220 JL, AD., 2009.

PARCEL ID: 10-043.10-417

PROPERTY ADDRESS: 54 Three Rivers Drive, Newark, DE 19702

ALL that certain lot or piece of land, with the building thereon, situate in New Castle Hundred, New Castle County, Delaware, being designated Lot 282, as shown on the Record Major Subdivision Plan of Wellington Woods, of record in the Office of the Recorder of Deeds in and for New Castle County, Delaware, in Microfilm No. 4524, said lot also known as 54 Three Rivers Drive, being more particularly described, according to a survey by First State Mortgage Surveys, Inc., dated December 5 1988, as follows, to wit:

BEING the same lands and premises which Kimberlee C. Arnold, did grant and convey unto Devin Arnold and Kimberlee C. Arnold, by deed dated November 16, 2005 and recorded on November 23, 2005 in the Office of the Recorder of Deeds, in and for New Castle County, State of Delaware, in Deed Instrument 20051123-0120736.

SEIZED AND TAKEN IN EXECUTION AS THE PROPERTY OF DEVIN ARNOLD AND KIMBERLEE C. ARNOLD.

TERMS OF SALE: 10% DOWN AT TIME OF SALE. BALANCE DUE ON OR BEFORE OCTOBER 19, 2009.

JULY 31, 2009

Michael P. Walsh, Sheriff
Sheriff's Office
Wilmington, Delaware

np 8/28,9,4



ChesapeakeJobSource.com

YOUR DelMarVa online JOB NETWORK



- ~ Post locally, regionally, or nationally
- ~ Real time profile matching
- ~ Employer created qualifying questions for better matching
- ~ Receive pre-screened, matched candidates sent to your email



ARDENT TITLE COMPANY

Susan M. Knight • Settlement Agent

149-151 E. Main Street, Elkton, MD 21921

(410) 996-9780 • Fax (410) 996-9784 • info@ardenttitle.com

LENDER	Phone Number	15 YEAR Fixed % PTS. APR	30 YEAR Fixed % PTS. APR	1 YEAR ARM % PTS. APR	3 YEAR ARM % PTS. APR	5 YEAR ARM % PTS. APR
APGFCU	1-888-LOAN-391	5.375/0/5.51	5.375/0/5.8	6.50/0/4.016	5.875/0/4.253	6.375/0/4.744
CECIL BANK	(410) 398-1650	*PLEASE CALL FOR RATES				
CLASSIC MORTGAGE	(302) 366-1661	4.625/0/4.86	5.25/0/5.48		4.0/0/4.24	4.125/0/4.34
MBA FINANCIAL SERVICES	(410) 287-5600	Please call for quotes. Many programs. All credit considered.		100% financing available-Interest only options! 1st time home buyers, 2nd homes & investment properties.		
PEOPLES BANK OF ELKTON	(410) 996-2265	4.875/0/5.00	5.50/0/5.58	5.625/3.75/3.586	5.375/0/3.83	5.875/1.25/4.315
WILMINGTON MORTGAGE	(410) 398-5607	PLEASE CALL FOR RATES.		FREE PRE-APPROVAL - NO APPLICATION FEE		

These rates, effective 9/01/09, were provided by the lenders and are subject to change. Other terms may be available. These rates are for existing first mortgages. Points may vary on refinances. Down payment requirements may vary. *Caps and length may vary on adjustable rates. The APR is based on a \$100,000 mortgage with a 20% down payment and is in addition to interest included points fees & other credit costs. To list your mortgage rates, call our Real Estate Sales Division at 410 398-3311 or 1-800-220-3311. These mortgage rates are a paid advertising feature of the Cecil Whig



WILMINGTON MORTGAGE

205 East Main Street, Elkton, MD 21921

Office: 410-398-5607 • TOLL FREE: 800-607-5607



Phil Davis
Loan Officer



Kim Pettitt
Loan Officer



Bruce Fink
Loan Officer

- 100% Financing
- FHA, VA, and Rural Development
- Self Employed
- Bridge Loans
- Reverse Mortgages

Visit one of these local dealers
and drive home happy!

VOLKSWAGEN

Smith
VOLKSWAGEN LTD.
4304 Kirkwood Highway,
WILMINGTON, DE
302-998-0131
Drivers wanted

STAPLEFORD'S CHEVROLET OLDSMOBILE

302-834-4568



ST. GEORGES, DE

LEGAL NOTICE

THE COURT OF COMMON PLEAS FOR THE STATE OF DELAWARE IN AND FOR NEW CASTLE COUNTY

IN RE: CHANGE OF
NAME OF

Mary O. Bruce-Tagoe
PETITIONER(S)
TO

Mary Bruce-Obour
NOTICE IS HEREBY
GIVEN THAT Mary O.
Bruce-Tagoe intends
to present a Petition to
the Court of Common
Pleas for the State of
Delaware in and for
New Castle County, to
change his/her name to
Mary Bruce-Obour.
Mary O. Bruce-Tagoe
Petitioner

Dated: 8/30/09

np 9/4,11,18 2089619

THE COURT OF COMMON PLEAS FOR THE STATE OF DELAWARE IN AND FOR NEW CASTLE COUNTY

IN RE: CHANGE OF
NAME OF

Grace Lartey
PETITIONER(S)
TO

Grace Fosu-Laryea
NOTICE IS HEREBY
GIVEN THAT Grace
Lartey intends to
present a Petition to
the Court of Common
Pleas for the State of
Delaware in and for
New Castle County, to
change his/her name to
Grace Fosu-Laryea.
Grace Lartey
Petitioner

Dated: 8/26/09

np 9/4,11,18 2089139

LEGAL NOTICE

LEGAL NOTICE

Gerjoe Inc, trading as Catherine Rooney's Irish Pub & Restaurant, Newark, has on August 10th applied with the Alcoholic Beverage Control Commissioner for Restaurant-On, Sunday and Patio license for a premises located at 102 East Main Street, Newark, De. 19711. Persons who are against this application should provide written notice of their objections to the Commissioner. For the Commissioner to be required to hold a hearing to consider additional input from persons against this application, the Commissioner must receive one or more documents containing a total of 10 signatures of residents or property owners living within 1 mile of the premises or in any incorporated areas within 1 mile of the premises. The protest(s) must be filed with the Alcoholic Beverage Control Commissioner at the 3rd Floor, Carvel State Office Building, 820 North French Street, Wilmington, DE 19801. The protest(s) must be received by the Commissioner's office on or before **September 9th, 2009**. Failure to file such a protest may result in the Commissioner considering the application without further notice, input, or hearing. If you have questions regarding this matter please contact the Commissioner's Office.

np 8/21,28,9/4

CITY OF NEWARK NEWARK, DELAWARE TRAFFIC COMMITTEE MEETING NOTICE

The Traffic Committee will meet on **Tuesday, September 15, 2009, at 5:00 p.m.** in the Police Department upper level conference room to discuss the following:

1. Request for a stop sign at Rahway Drive and Casho Mill Road.
2. Discuss potential solutions to address speeding on Madison Drive.

The Traffic Committee may add items to the agenda at the time of the meeting and make recommendations to the City Manager on all issues discussed.

Any questions regarding the above topics may be directed to Chief Paul Tiernan of Newark, Police Department, at 366-7104, prior to the meeting.

np 9/4

2089135

CITY OF NEWARK DELAWARE BOARD OF ADJUSTMENT PUBLIC HEARING

SEPTEMBER 17, 2009 - 7:30 P.M.

Pursuant to Chapter 32, Article XIX of the Code of the City of Newark, Delaware, notice is hereby given of a public hearing at a regular meeting of the Board of Adjustment on **Thursday, September 17, 2009 at 7:30 p.m.** in the Council Chamber, Newark Municipal Building, 220 Elkton Road, Newark, Delaware, to hear the following application:

1. Appeal of Kristen and Victoria Tosh-Morelli, for the property at 500 Church Road, for the following variances to permit a 6 foot high privacy fence:

- a) Ch. 32, Sec. 56.6 - fences installed in the front yard in a single-family residential district shall not exceed 3 feet in height. Proposed fence is 6 foot high facing Old Casho Mill Road.
- b) Ch. 32, Sec. 56.2 (d) (3) - solid fences greater than 3 feet in height installed on a corner lot must honor a 25 foot setback when facing a street and meet the visibility requirements of this section.

ZONING CLASSIFICATION: RS

The applications and related materials may be examined at the City Secretary's Office, 366-7070, prior to the meeting.

Clayton S. Foster
Chairman

np 9/4

2089766

PUBLIC HEARING NOTICE The Delaware Alcoholic Beverage Control Commissioner

The Commissioner will hold a Public Protest Hearing on **September 24, 2009** at the Carvel State Office Building, 820 N. French Street, 3rd Floor Conference Room, Wilmington, DE 19801. This hearing is being held for the purpose of reviewing the protested applications of: #1 SSM Retail, LLC, T/A Liquor Zone, 1945 Capitol Trail, Newark, DE 19711, who has applied for a license to sell alcoholic beverages in a store for consumption off the premises where sold. **Time: 5:00 p.m. AND #2 The Cube Restaurant and Bar, Inc., T/A The Cube Restaurant and Bar, 16-B Marrows Road, Newark, DE 19713, who has applied for Restaurant On and Sunday liquor licenses that permit the sales, service and consumption of alcoholic beverages on the premise where sold. Time: 6:00 p.m.**

np 9/4,11

2089138

LEGAL NOTICE

PUBLIC SALE

Notice is hereby given that the undersigned will sell at public sale on **OCTOBER 16, 2009 at PS ORANGE CO INC./PUBLIC STORAGE, 201 Bellevue Rd., Newark, DE 19713 at 12:00 p.m.**, the personal property heretofore stored with the undersigned by:

- A021 - Peter Waite - boxes, bags, totes
- A030 - Richard Lewis - boxes, bags, totes
- A035 - Domenic Bartlett - boxes, bags, totes
- A048 - Danyle Bartlett - boxes, bags, totes
- A059 - Wendy McGinnis - boxes, bags, totes
- A091 - Caryn Bennett - furniture, boxes
- B080 - Burrell Bryant - boxes, bags, totes
- B094 - Stephanie Walker - furniture, boxes
- C010 - Karen Deloatch - boxes, bags, totes
- E022 - Michael Cummings - furniture, boxes
- E039 - James Hutchinson - furniture, boxes
- E109 - Brittany Fortune - boxes, bags, totes
- F027 - Brandon Mason - boxes, bags, totes
- F085 - Vanessa Harper - furniture, boxes
- F103 - Denise Grace - boxes, totes
- H031 - Craig Biggers - furniture, boxes
- H038 - Lee Woodall - furniture, boxes

np 9/4,11

2089144

LEGAL NOTICE

RE: DEADLY WEAPON

I, Denis Harrigan residing at, 100 Harmony Crest Dr., Newark, DE 19713, will make application to the judges of the Superior Court of the State of Delaware in and for New Castle County at Wilmington for the next term for a license to carry a concealed deadly weapon, or weapons, for the protection of my person(s), or property, or both.

Denis Harrigan
8/28/09

np 9/4

2089123

THE COURT OF COMMON PLEAS FOR THE STATE OF DELAWARE IN AND FOR NEW CASTLE COUNTY

IN RE: CHANGE OF
NAME OF

Tyrone Kiernan
Carman
PETITIONER(S)
TO

Tyrone Wendell
Baines
Sherry Marie Baines
(mother)

NOTICE IS HEREBY
GIVEN THAT Sherry
Marie Baines and Tyrone
Kiernan Carman intends to present a
Petition to the Court of
Common Pleas for the
State of Delaware in
and for New Castle
County, to change his/
her name to Tyrone
Wendell Baines.

Sherry M. Baines
Petitioner

Dated: 8/17/09

np 8/28, 9/4,1 2086674

THE COURT OF COMMON PLEAS FOR THE STATE OF DELAWARE IN AND FOR NEW CASTLE COUNTY

IN RE: CHANGE OF
NAME OF

Amanda Leigh Wood
PETITIONER(S)
TO

Amanda Leigh
Gildersleeve
NOTICE IS HEREBY
GIVEN THAT Amanda
Leigh Wood intends to
present a Petition to
the Court of Common
Pleas for the State of
Delaware in and for
New Castle County, to
change his/her name to
Amanda Leigh
Gildersleeve.

Amanda Wood
Petitioner

Dated: 8/20/09

np 8/28,9/4,11 2086920

LEGAL NOTICE

RE: DEADLY WEAPON

I, Charles E. Doran residing at, 509 Ponderosa Dr., Bear, DE 19701, will make application to the judges of the Superior Court of the State of Delaware in and for New Castle County at Wilmington for the next term for a license to carry a concealed deadly weapon, or weapons, for the protection of my person(s), or property, or both.

Charles E. Doran
August 31, 2009

np 9/4

2089614

The following Sentinel Self Storage sites will be holding public auctions on **October 14, 2009**. All sales are cash only and final. A \$100 cash deposit is required to purchase a unit.

SENTINEL SELF STORAGE

200 First State Boulevard
Wilmington DE, 19804
302-999-0704

Public auction to be held on **October 14, 2009 at 11:00 a.m.** The following units will be auctioned:

- #9202 - Mary Arthurs - baby seat, 3 bags, 1 tote
- #1303 - Victoria Geiger - 7 bags, 40+ boxes, china cabinet, dresser, Christmas items, duffel bag, stuffed animals
- #1130 - Janean Folks - baby chair, baby crib, 3 bags, 5 boxes, 4 totes, toys, stuffed animals
- #9309 - J.D. Ahliah - 100+ tires
- #9250 - Timothy L. Davis - 2 bags, 4 boxes, clothing, freezer, stereo, end table, 3 totes, 25 egg crates, wooden airplane
- #1202 - Dorine Houston - 4 bags, 2 boxes, cabinet, folding chairs, kitchen chairs, shelving, kitchen table, bench

SENTINEL SELF STORAGE

1100 Elkton Road
Newark, DE 19711
302-731-8108

A public auction will be held on **Wednesday, October 14, 2009 at 10:00 a.m.** The contents of the following storage units will be auctioned:

- #2006 - Roy A. Downs, Jr. - mattresses, bicycle, desk, floor lamps, microwave, vacuum, boxes, duffel bag, misc. household items
- #6020 - Nadine A. Slack - boxes, kitchen chairs, sofa, entertainment center, totes, tires, tool box, dolly, baskets, misc. household items
- #1128 - Michael L. Nelson - boxes, sofa, dressers, pictures, stereo, BBQ, vacuum, artificial plants, misc. household goods

SENTINEL SELF STORAGE

465 Pulaski Hwy.
New Castle, DE 19720
302-328-5810

A public auction will be held on **Wednesday, October 14, 2009 at 1:00 p.m.** The contents of the following storage units will be auctioned.

- #7001 - Montgomery Byrd - boxes, dresser, fan, love seat, microwave, pictures, shelving, stool, DVD's
- #3053 - Howard Johnson - boxes, filing cabinet, kitchen cabinet, couch, entertainment center, suitcase, night table, toys
- #2029 - Tashel Berry - bags, 2 bicycles, rocking chair, chest of drawers, dresser, love seat, coffee table, kitchen table
- #2026 - Dan MacNamara - bags, boxes, kitchen chairs, dresser, suitcase, totes

SENTINEL SELF STORAGE

333 E. Lea Blvd.
Wilmington, DE 19802
302-764-6300

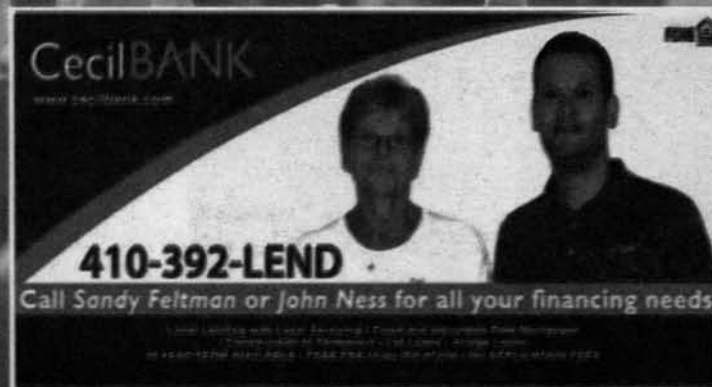
Public auction to be held on **October 14, 2009 at 12:00 p.m.** at the above address. All sales are cash only. All sales are final. The units to be auctioned are as follows:

- #88 - Celeste Wilcher - air conditioner, bags, bed, mattress, bicycle, boxes, clothing, fan, ice chest, table lamp, record albums, water cooler
- #400 - Tashi Henry - bed, box-spring, mattress, kitchen chair, table lamp, ironing board, dining table, totes, toys
- #420 - Alfred L. Showell - bed, mattress, boxes, love seat, totes, TV, handtruck
- #510 - Christian S. Dougherty - bed, box-spring, mattress, boxes, filing cabinet, floor lamp, coffee table, end table, TV
- #512 - Delano Slater - boxes, tool box, heater

np 9/4,11

2089155

Real Services Estate



To reserve your space call: **Michael Adams**
443-245-5031 • 800-220-3311

NP070309

TWICE AS FUNNY!

LAFF LOUNGE AT THE SUSKY IS BACK!
THIS SEASON, THE FUN ALMOST NEVER ENDS
FRIDAYS & SATURDAYS STARTING SEPT. 11!

IT'S ALL ABOUT
HAVING FUN!

WATCH
FOR THEM!

WARD ANDERSON

BILL HEROLD
PRESENTS

Laff Lounge at the Susky!



ALEX POWERS



& MANY MORE!

LAFFS THIS MONTH!

- SEPT 11-12 Freddy Stone & Paul Murphy
- SEPT 17 Susky Open Mike Night
- SEPT 18-19 Mike Gardner & Larry XL
- SEPT 24 Susky Open Mike Night
- SEPT 25-26 The Disgruntled Clown
& Traci Kanaan

LAFFS FROM NOW 'TIL SPRING!

Laff & Live It Up!
Your First Drink
is on the house!
with this coupon at the
Susky Laff Lounge!
INCLUDES SOFT DRINKS, DOMESTIC DRAFT OR
RAIL COCKTAILS - ONE COUPON PER GUEST



COME WATCH FOOTBALL AT
CECIL'S ONLY RAVENS ROOST
SUSQUEHANNA #104

TIKI BAR
& BEACH
STILL OPEN!

the
SUSKY 410.378.4600

600 ROWLAND DRIVE, PORT DEPOSIT, MD

RESTAURANT & WATERFRONT BAR

MON.-THURS. 11:30AM-11PM / FRI. & SAT. 11:30AM-2AM / SUN. 10AM-11PM

**THIS
WEEK
& More at
The SUSKY!**

LIVE MUSIC
SATURDAY & SUNDAY!

EVERY SUNDAY 10AM - 1PM

SUNDAY BRUNCH!

COME DOWN AND SEE WHAT
EVERYONE'S RAVING ABOUT!

WEEKLY DINNER SPECIALS!
ON THE DECK OR INSIDE
IT'S A GREAT VIEW!

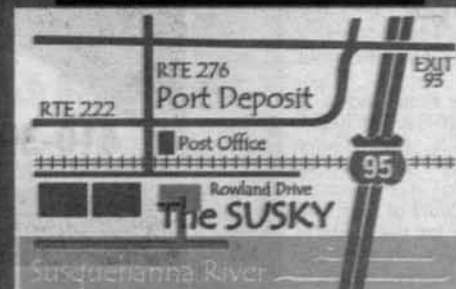
SO.. YOU
THINK
YOU'RE
FUNNY?

THURSDAY
NIGHTS ARE

**OPEN
MIKE
NIGHT!**

START SEPT. 17TH! CALL US
TO REGISTER NOW!

410.378.4600



BOATS WELCOME!
320 FT. DOCK!