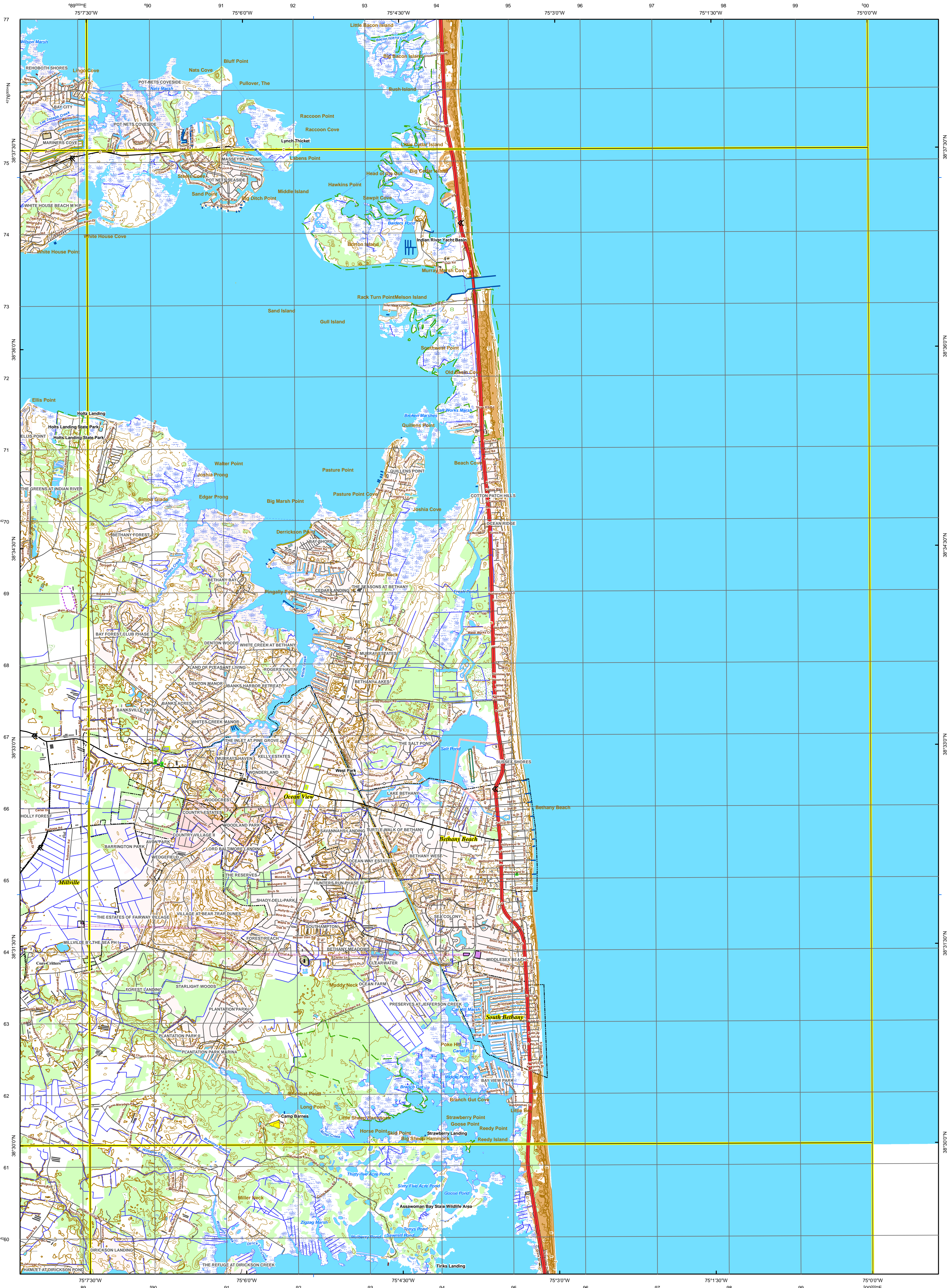




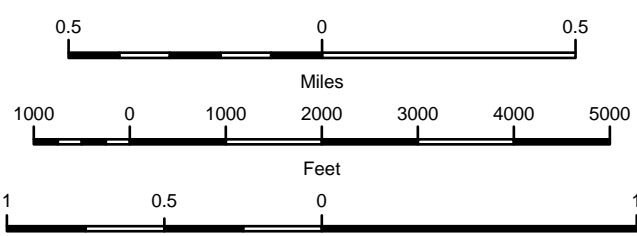
Delaware DataMIL
7.5 Minute Series (Topographic)
Quadrangle



- Legend**

S Boundary Monument	Boardwalk	Municipality	Power Site
V Boat Ramp	Boat Ramp	Airport	Raceway
Y Campground	Embankment	Athletic Field	Railroad Yard
U Church	Fence Line	Building	Refinery/Industrial Site
W Gaging Station	Landing Strip	Cemetery	Rest Site
X Gate	Pier/Breakwater/Jetty	Landmark Site	Substation
Z Helipad	Pipeline	Oil Sump/Sludge Pit	Tank
1 Sand/Gravel Pit	Power Transmission Line	Pier/Breakwater/Jetty	Water Treatment Site
2 Picnic Area	Railroad	Pipeline Regulation Station	Federally Administered Area
3 Tank	Sea Wall	Park	State Lands
4 Tower	Railroad or Siding (Underpassing)	Rapids	
5 Well	Railroad or Siding		

SCALE 1:24,000



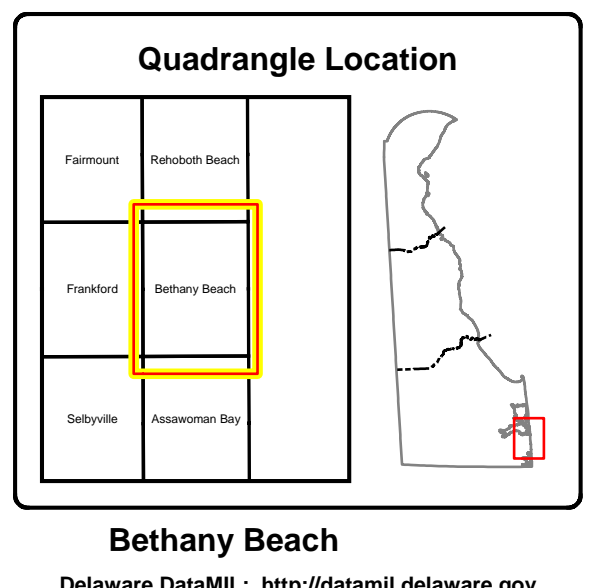
CONTOUR INTERVALS: 0-10 Feet / 2-foot Contour Interval; 10-100 Feet / 10-foot Index with a 6-foot Intermediate Contour Interval;
Greater than 100 Feet / 10-foot Contour Interval

VERTICAL REFERENCE:
NORTH AMERICAN VERTICAL DATUM OF 1988 (NAVD88)
DEPTH CURVE DATA COMPILED FROM NOS CHARTS IN FEET
SHORELINE SHOWN REPRESENTS THE APPROXIMATE LINE OF MEAN HIGH WATER
D NJ BORDER QUADRANGLES SHOW USGS DRC IMAGES OUTSIDE OF DELAWARE BORDER WITHIN QUAD

HORIZONTAL REFERENCE:
NORTH AMERICAN DATUM OF 1983 (NAD83) REFERENCE NETWORK 1991 (HARN 91)
MAP PROJECTION IS NAD83 DELAWARE STATE PLANE METERS
1,000-meter grid: Universal Transverse Mercator, zone 18
10,000-foot tick: Delaware Coordinate System of 1983
Latitude/Longitude grid ticks: NAD83 (HARN91)

Map Produced by the Delaware DataMIL
Using the following Data Sources:

USGS Delaware Geographic Names 2006
USGS Delaware Boundaries – County Boundary [lines] 1993
USGS Federal/State Lands/Parks [areas] 1993
USGS Delaware Land Use Land Cover [polygons] 1993
USGS Delaware Miscellaneous Features [lines] 1993
USGS Delaware Miscellaneous Features [areas] 1993
USGS Delaware Land Use Land Cover [polygons] 2002
USGS 7.5-minute Digital Raster Graphics 1992-93 (DRG)
USGS National Hydrography Dataset (NHD) – High Resolution –
USGS National Hydrography Dataset (NHD) – High Resolution –
USGS Delaware County Boundaries 2006
Delaware 7.5-minute Quadrangle Index 2002
Delaware Boundary Monuments 2002
Delaware State Boundaries 2002
Delaware Counties 2005 (Sussex) and 2007 (New Castle and Kent)
Delaware Municipal Boundaries 2011
Delaware Land Use and Land Cover 2007
Delaware Private Schools 2010
Delaware Public Schools 2010
Delaware Road Centerline (DataOT) 2009
New Castle County Communities 2009
Kent Communities 2009
Sussex County Communities 2009



Disclaimer
This Delaware DataMIL 7.5-minute topographic map replaces the USGS 7.5-minute Primary Map Series for the State of Delaware. Reasonable efforts have been made by Delaware DataMIL staff to verify that this map and the digital data provided herein accurately portray the source data used in its preparation; however, this map may contain omissions and errors in scale, resolution, rectification, positional accuracy, development methodology, and other circumstances. This map is also date specific. Date information on the individual layers comprising this map are given as part of the marginalla of this map. This map was prepared for a scale of 1:24,000 and should not be used at larger scales, nor should this map should be used for navigational, engineering, legal, or any other site-specific use. Nothing contained herein shall be deemed an expressed or implied waiver of the sovereign immunity of the State of Delaware or its duly authorized representatives, agents, or employees.

Created: 1/30/2011