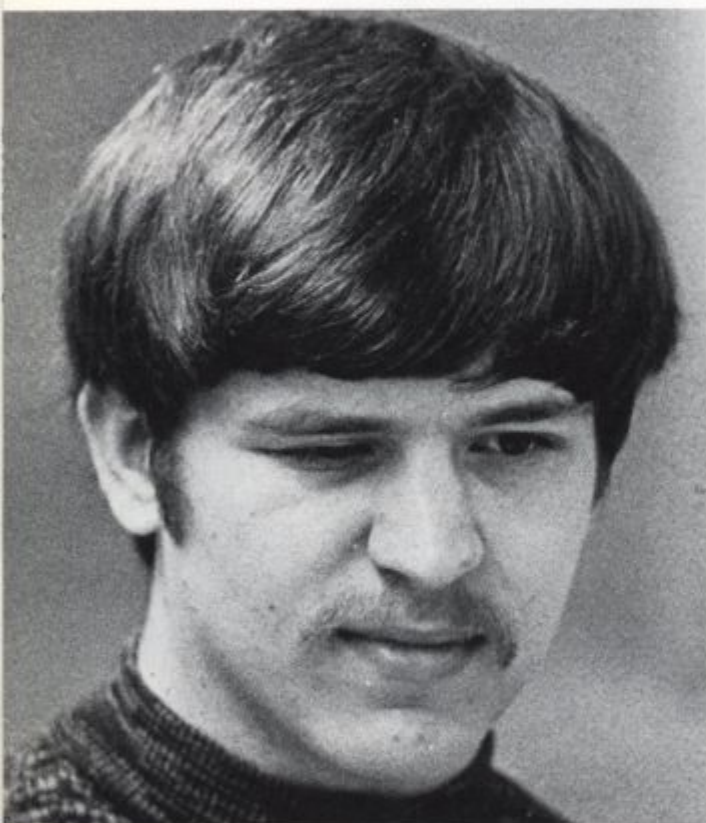




ORGANIZATIONS



**UNIVERSITY OF
DELAWARE
COORDINATING
COUNCIL**



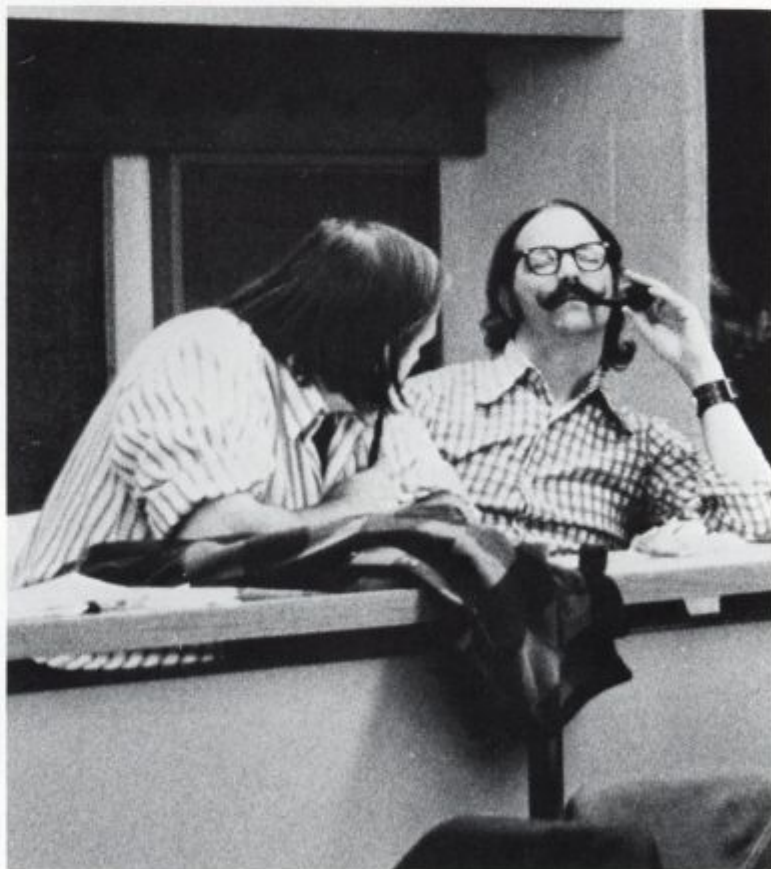


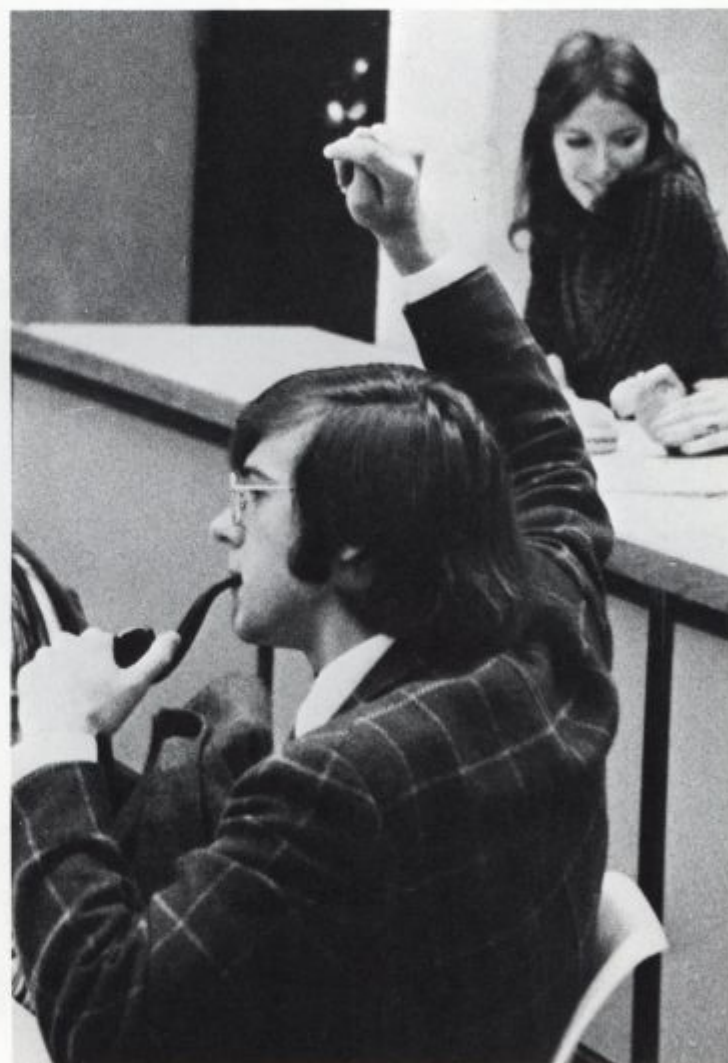
**ARTS and
SCIENCE
COLLEGE
COUNCIL**



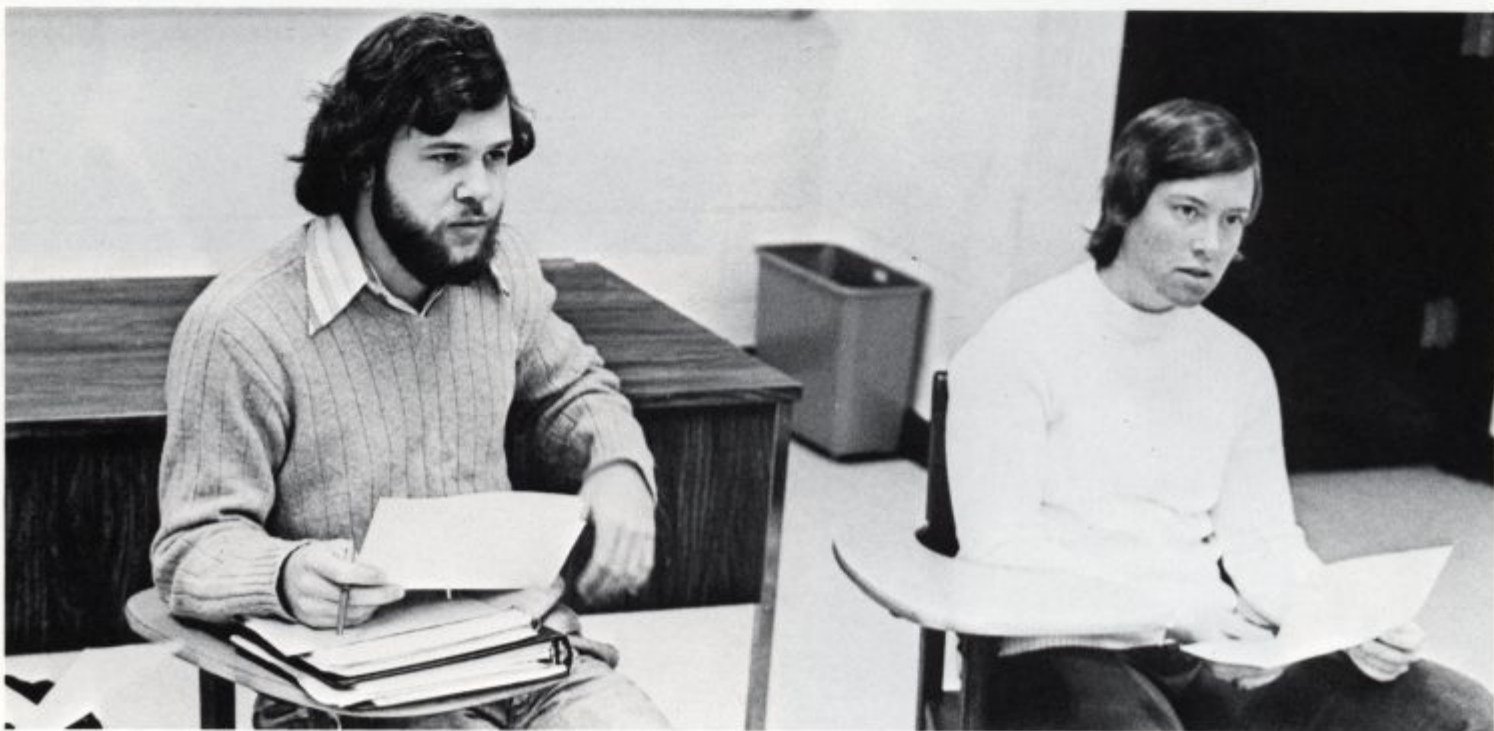
RESIDENT STUDENT ASSOCIATION

The RSA experienced a tremendous increase in both student awareness and involvement. Led by President Doug Brown and Vice-President Sally London, the members of the inter-hall assembly were able to note some tangible results of their work. Attendance at meetings rose drastically. New committees of security, food and housing were formed, and much-needed constitutional legislation was passed. Although the room assignment investigation committee was unable to have its program implemented, other committees had better success. More lighting in the right areas, increased safety on campus; Food Service personnel began working with students to improve their situation, and a room decoration policy was tentatively approved by the administration. With more input through increased student involvement, the next year's work was looked forward to by the new officers, Rick Hague and John Barth.





BUSINESS and ECONOMICS COLLEGE COUNCIL

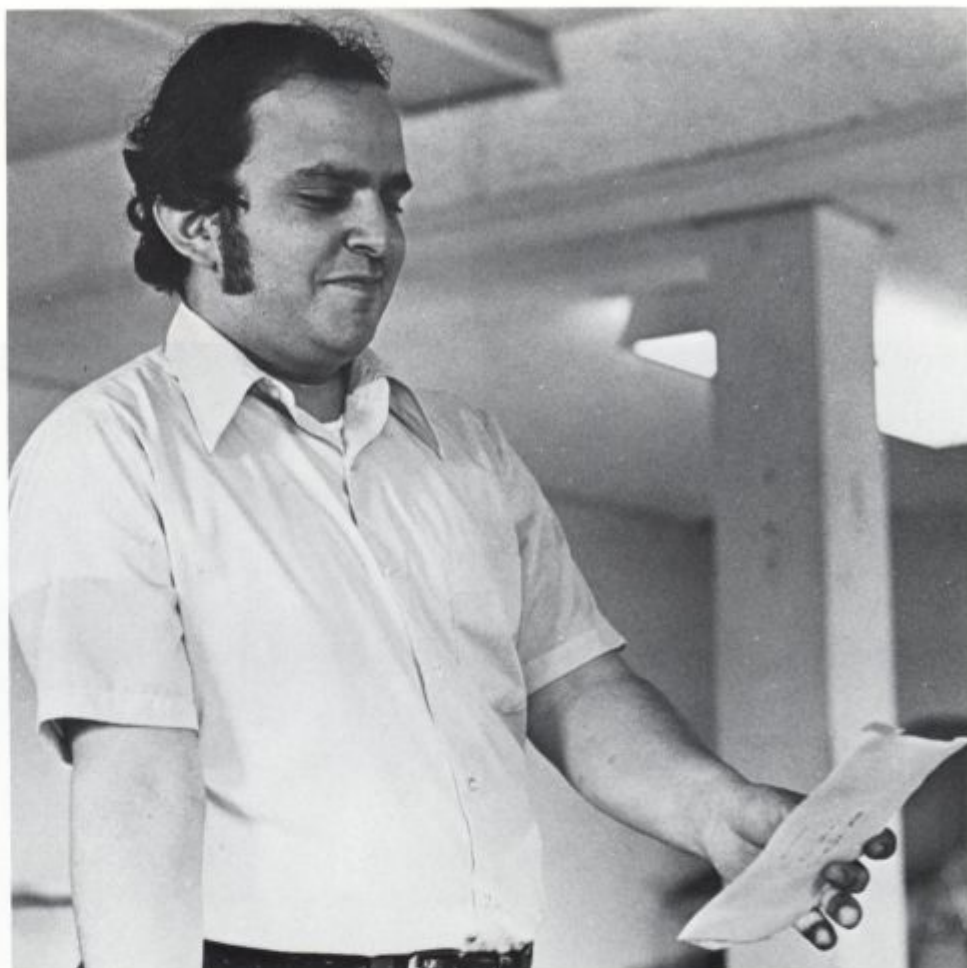




AGRICULTURE COLLEGE COUNCIL

EDUCATION COLLEGE COUNCIL

AMERICAN HOME ECONOMICS ASSOCIATION





AMERICAN FIELD SERVICE



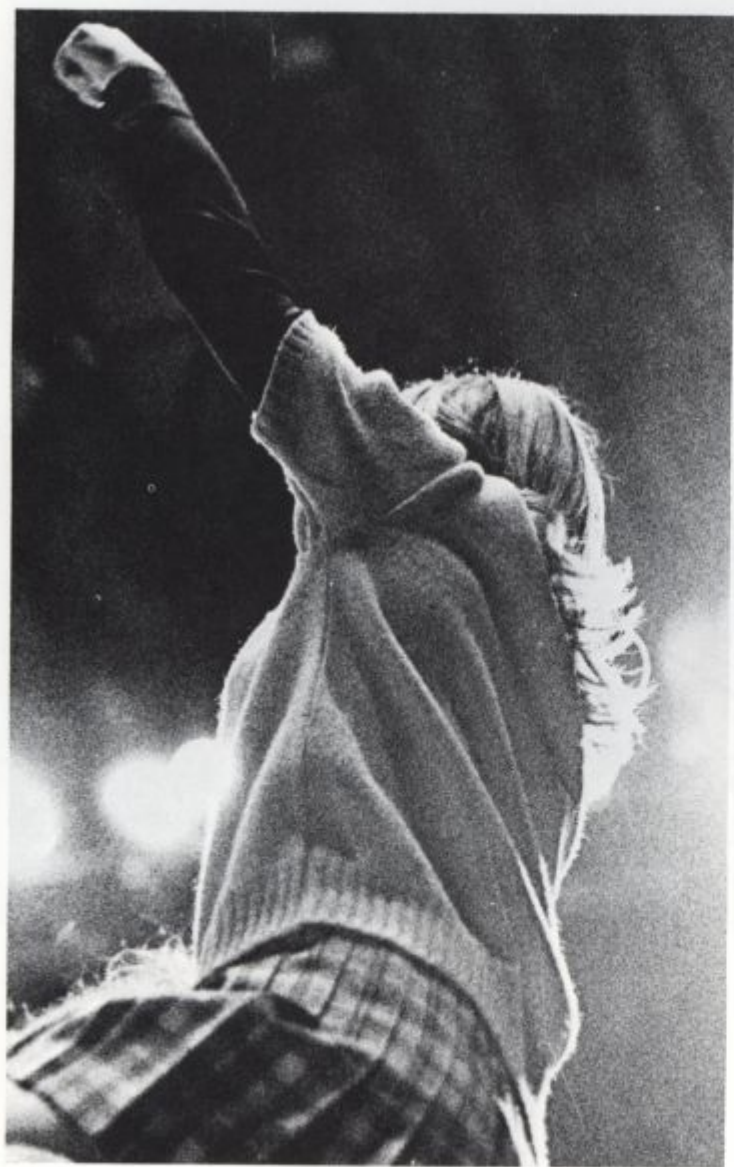
MARCHING BAND





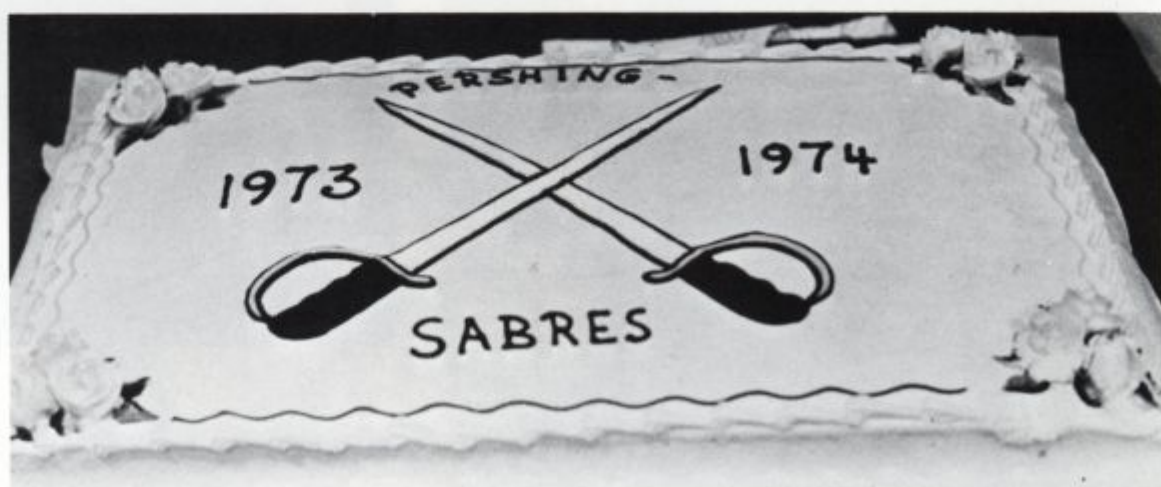


CHEERLEADERS





PERSHING SABRES







DELAWARE RIFLE TEAM



