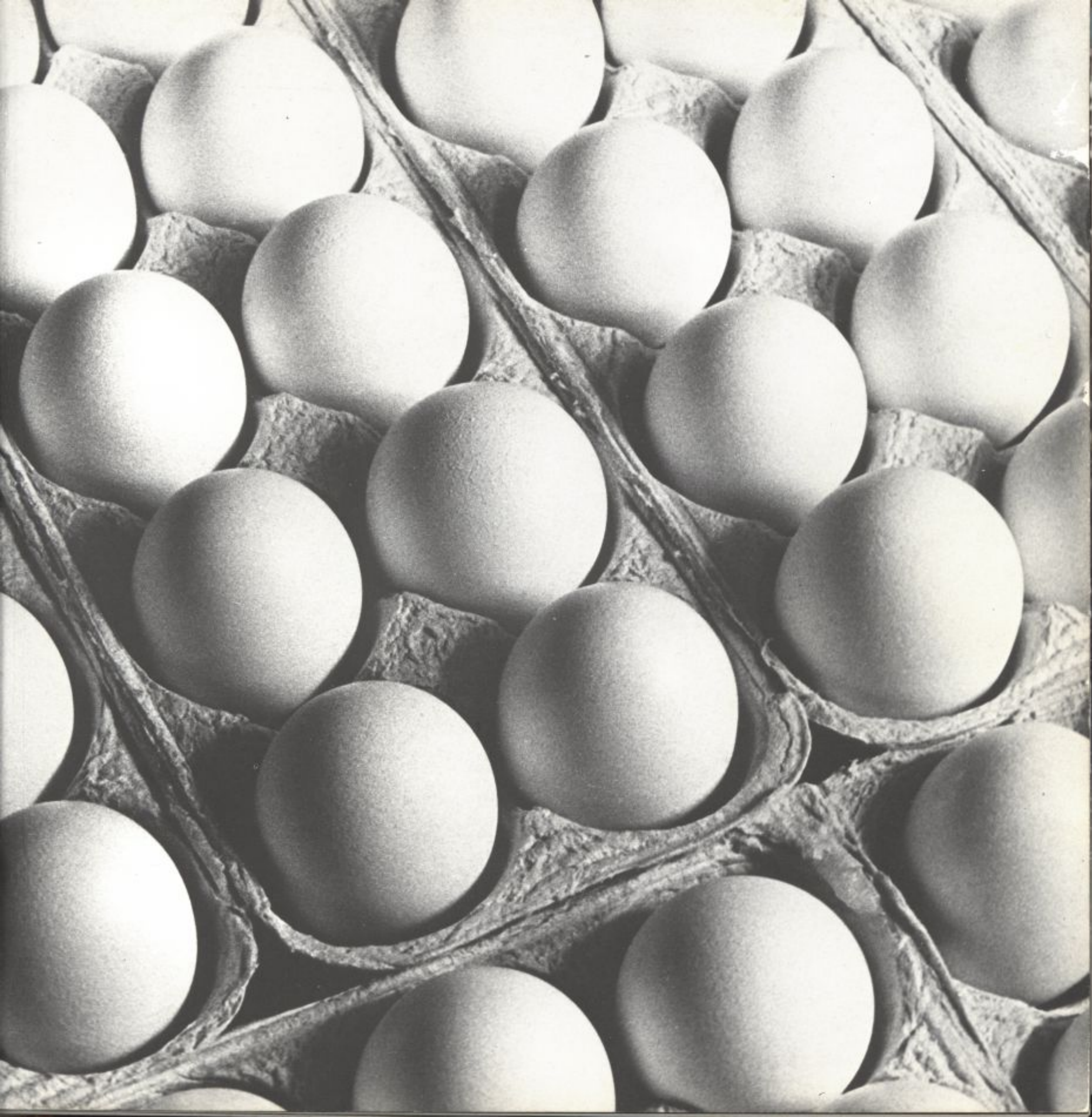


BLUE HEN







UNIVERSITY OF DELAWARE LIBRARY

there
is
absolutely
no
inevitability
as
long
as
there
is
a
willingness
to
contemplate
what
is
happening

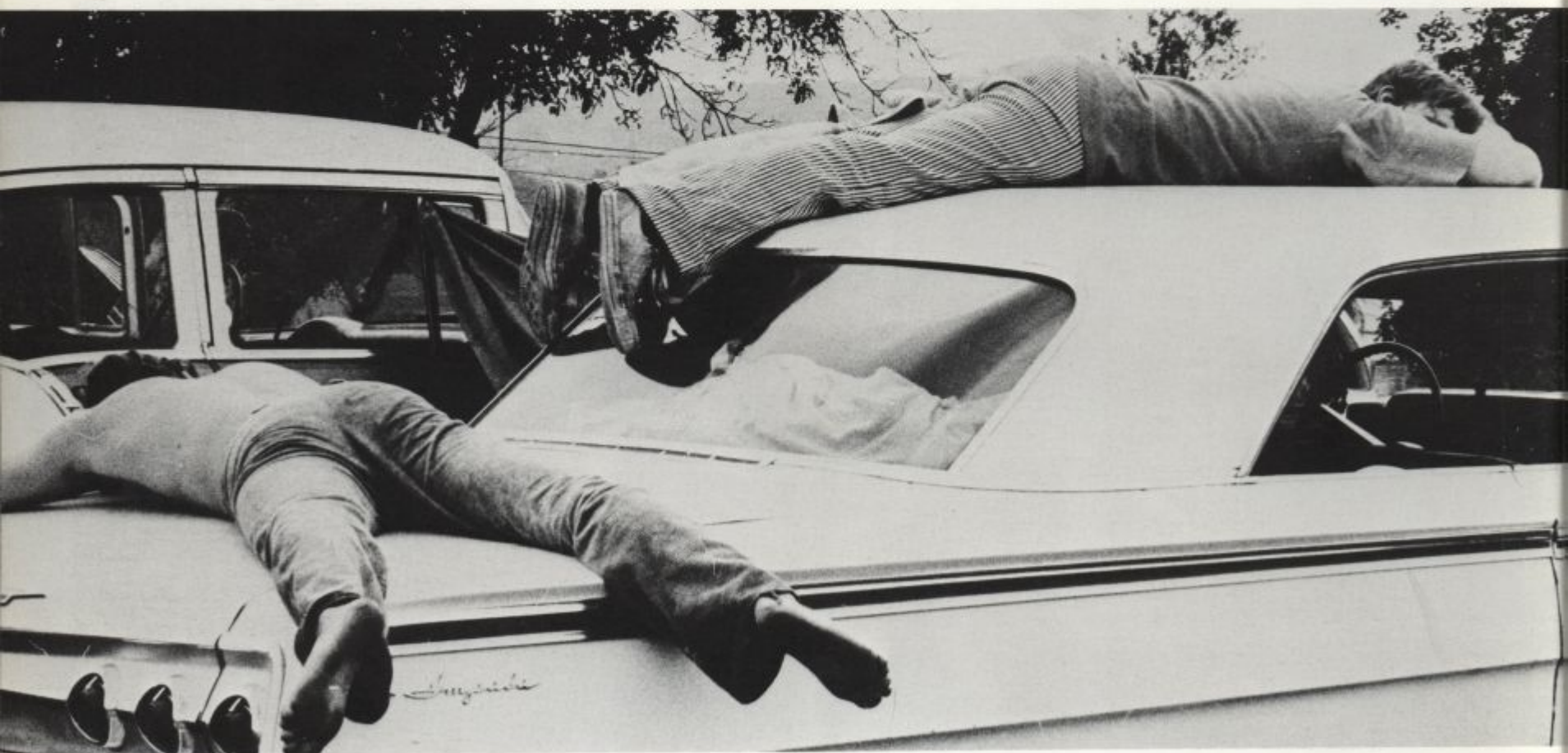
Marshall McLuhan



LD
1488
.B58
1970
C.2

06/10/2 4114





Lindsay VanBrunt

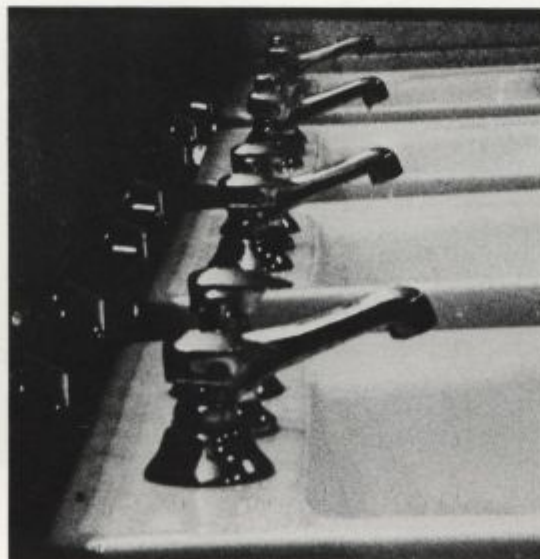


Susan Smith



Scott Goldberg

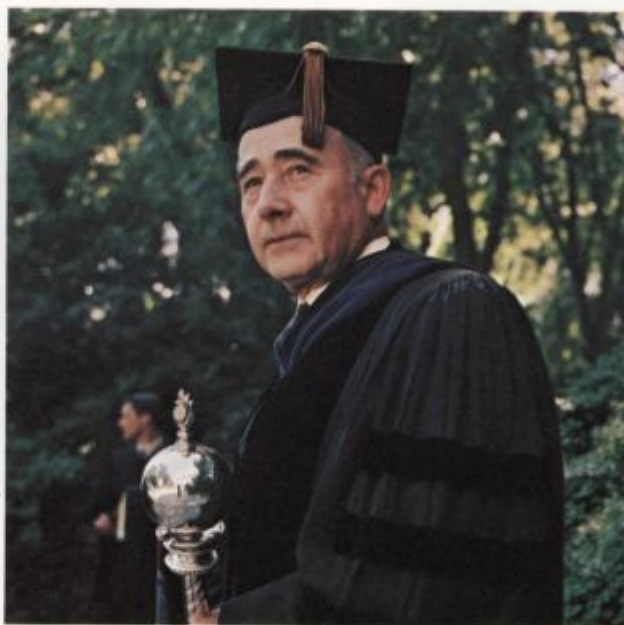
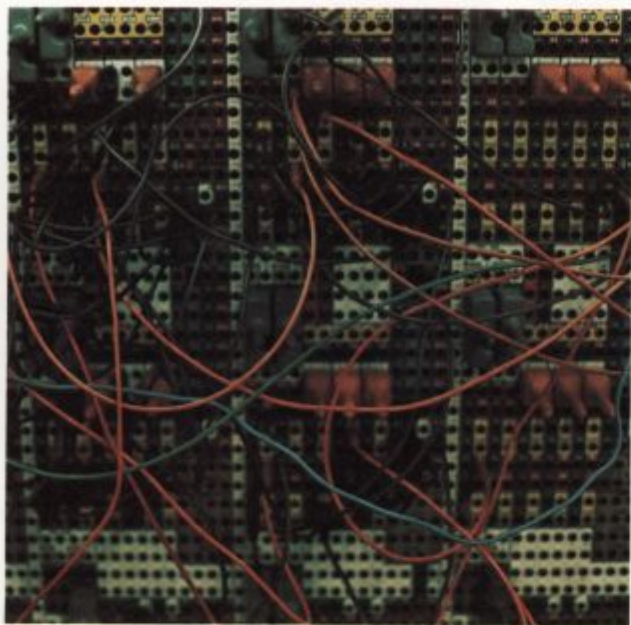
"Environments are invisible. Their ground-rules, pervasive structure, and overall patterns elude easy perception."



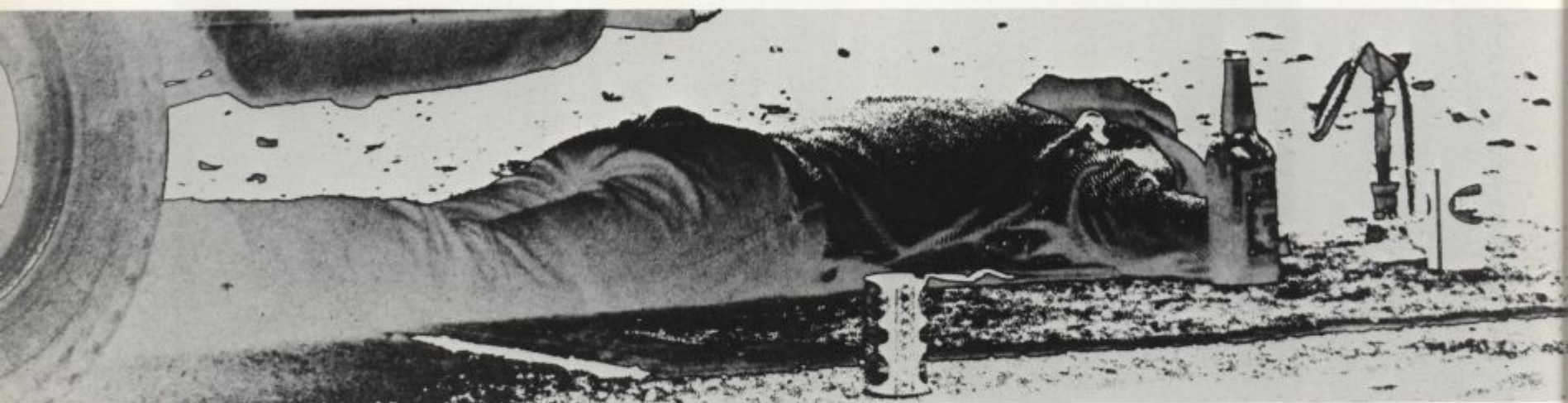
Scott Goldberg



Alan Hendel







Lindsay VanBrunt



Scott Goldberg

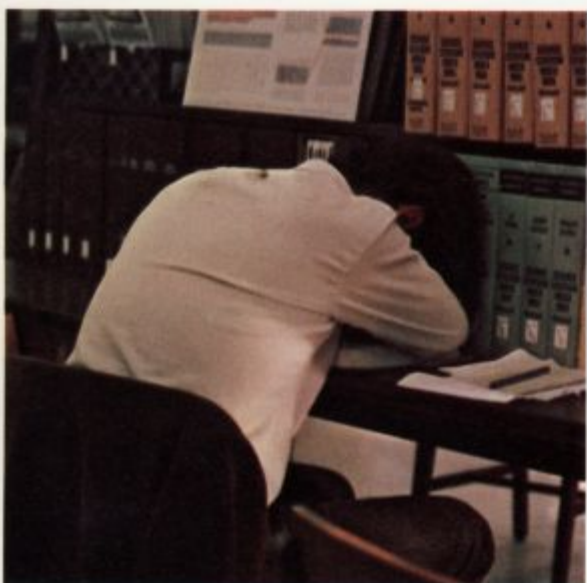


Zamsky



Sue McMahan

"The family circle has widened. The worldpool of information...far surpasses any possible influence mom and dad can now bring to bear."





"The true university of these days is a collection of books."



Zamsky



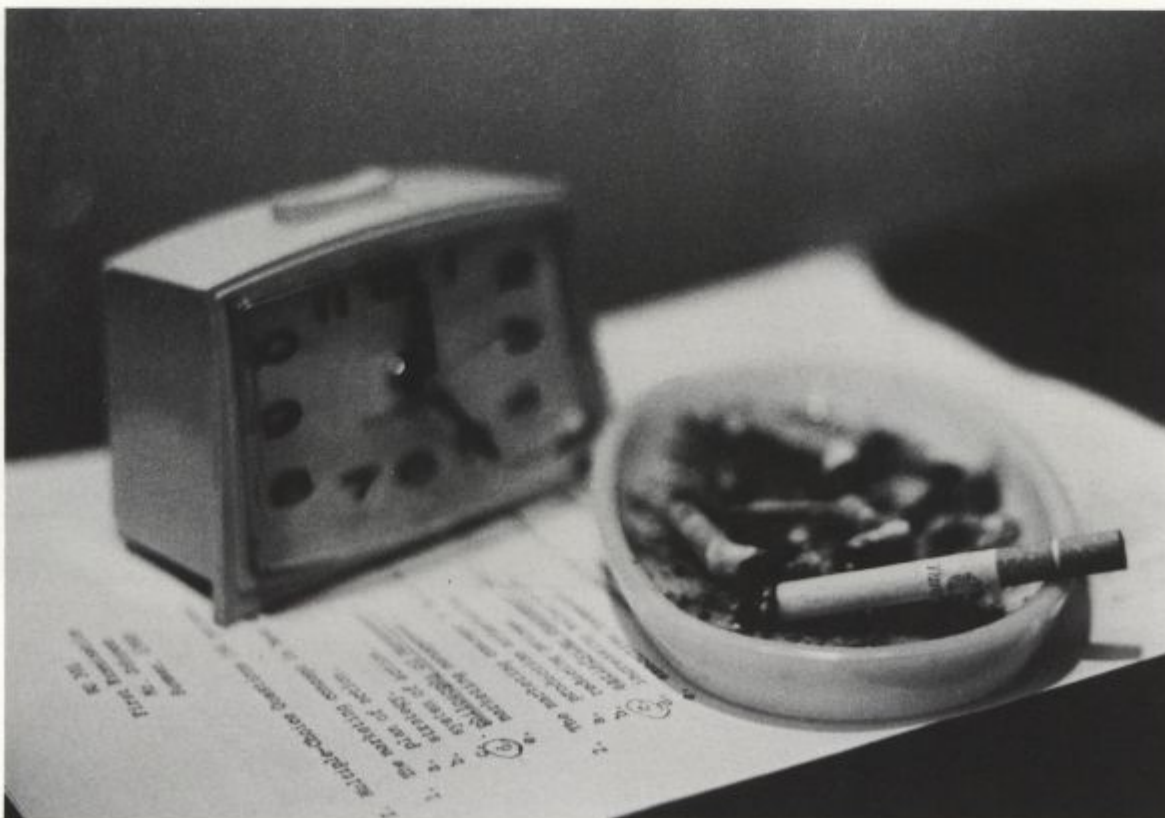
Zamsky



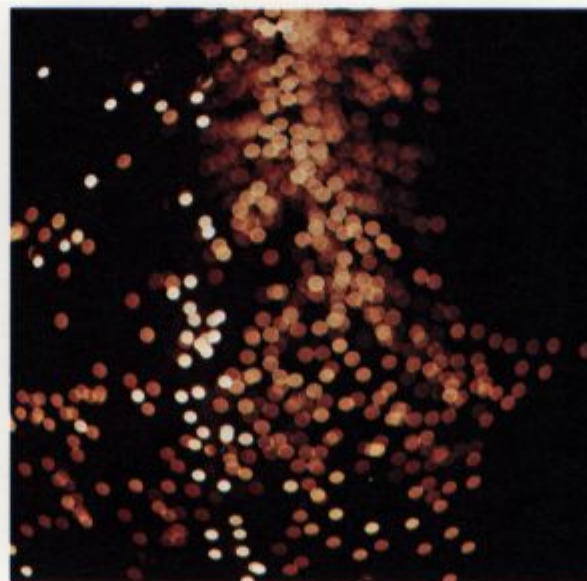
Alan Hendel

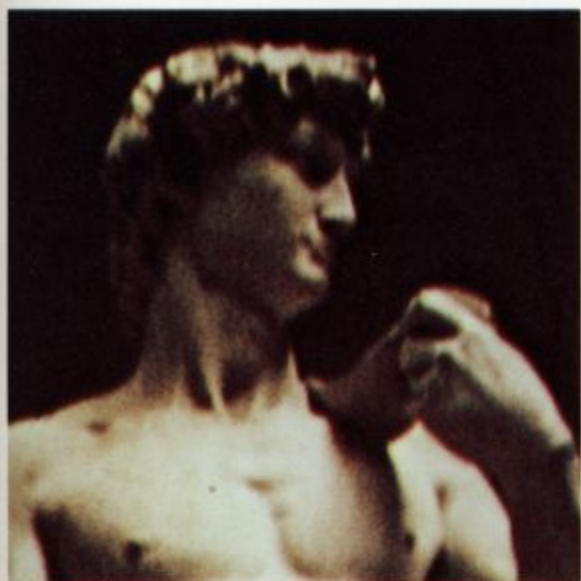


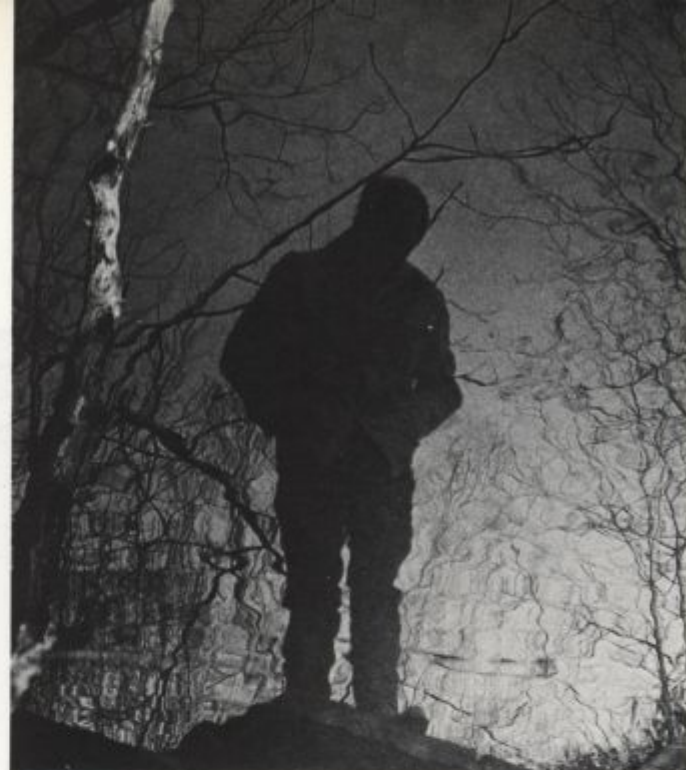
Alan Hendel



Andi Lose



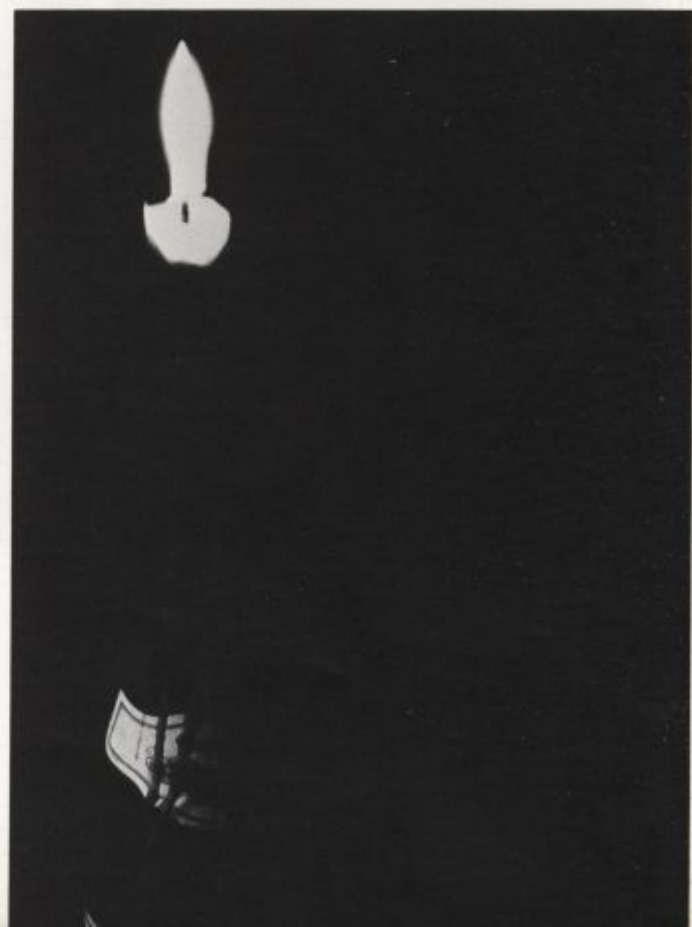




Kevin Sullivan

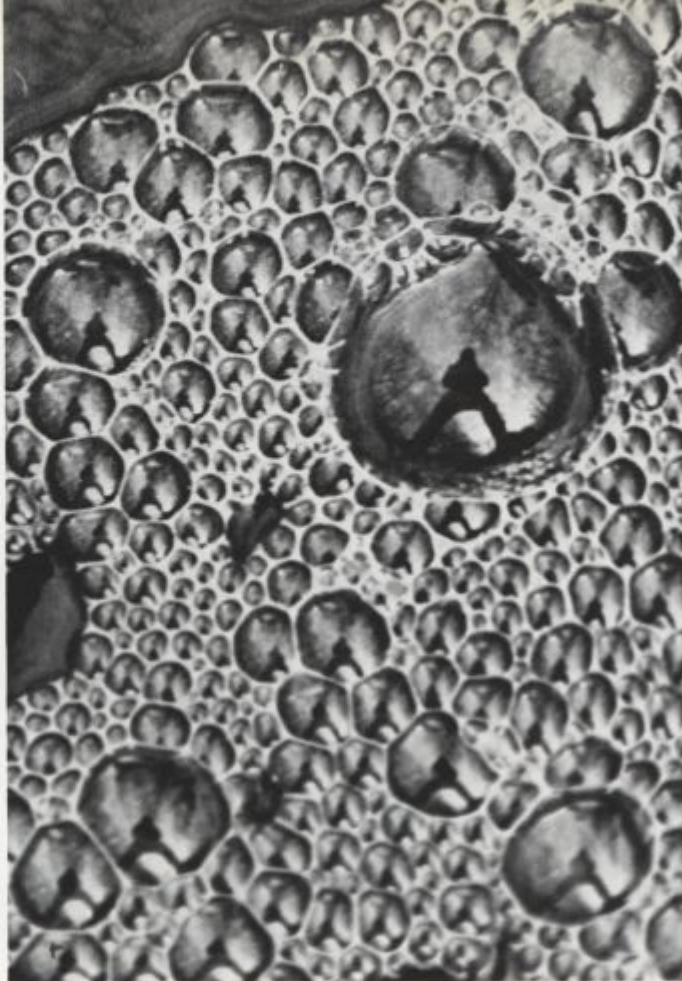
"...and who are you? I—I hardly know sir, just at present—at least I know who I was when I got up this morning, but I think I must have been changed several times since then."

Scott Goldberg





Susan Smith



Alan Hendel

Barbara Duer





Tom Frederick



Carol Jenkins



Kathleen Berotti



Kristi Eisenberg

"Now that the environment itself has become a major teaching machine, the image of learning has been reversed. The learner becomes a hunter, explorer, not consumer."



Susan Smith



Alan Hendel



Zamsky



Alan Hendel

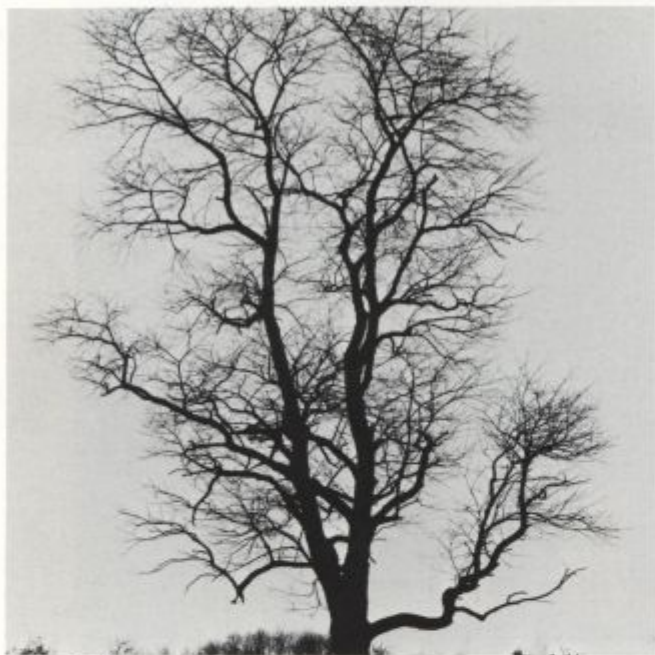
"The pleasure of being among the masses is the sense of the joys in the multiplication of numbers, which has long been suspect among the literate members of Western society."



Lindsay VanBrunt



"Survival is not possible if one approaches his environment, the social drama, with a fixed, unchangeable point of view — the witless repetitive response to the unperceived."



Kevin Sullivan



Valerie Vogel



Valarie Vogel



Zamsky



Randy Smith



Alan Hendel

"Our new environment compels commitment and participation."



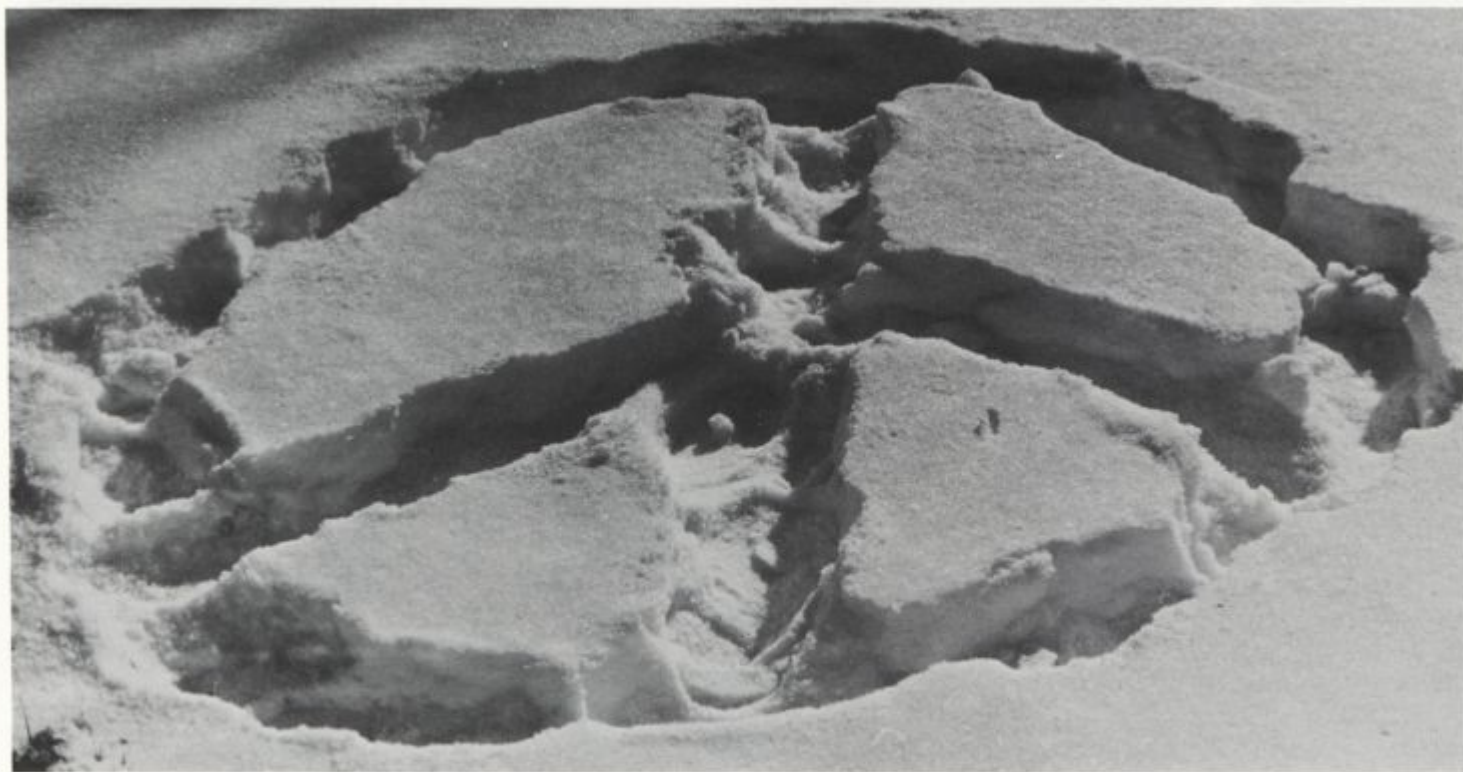
Alan Hendel



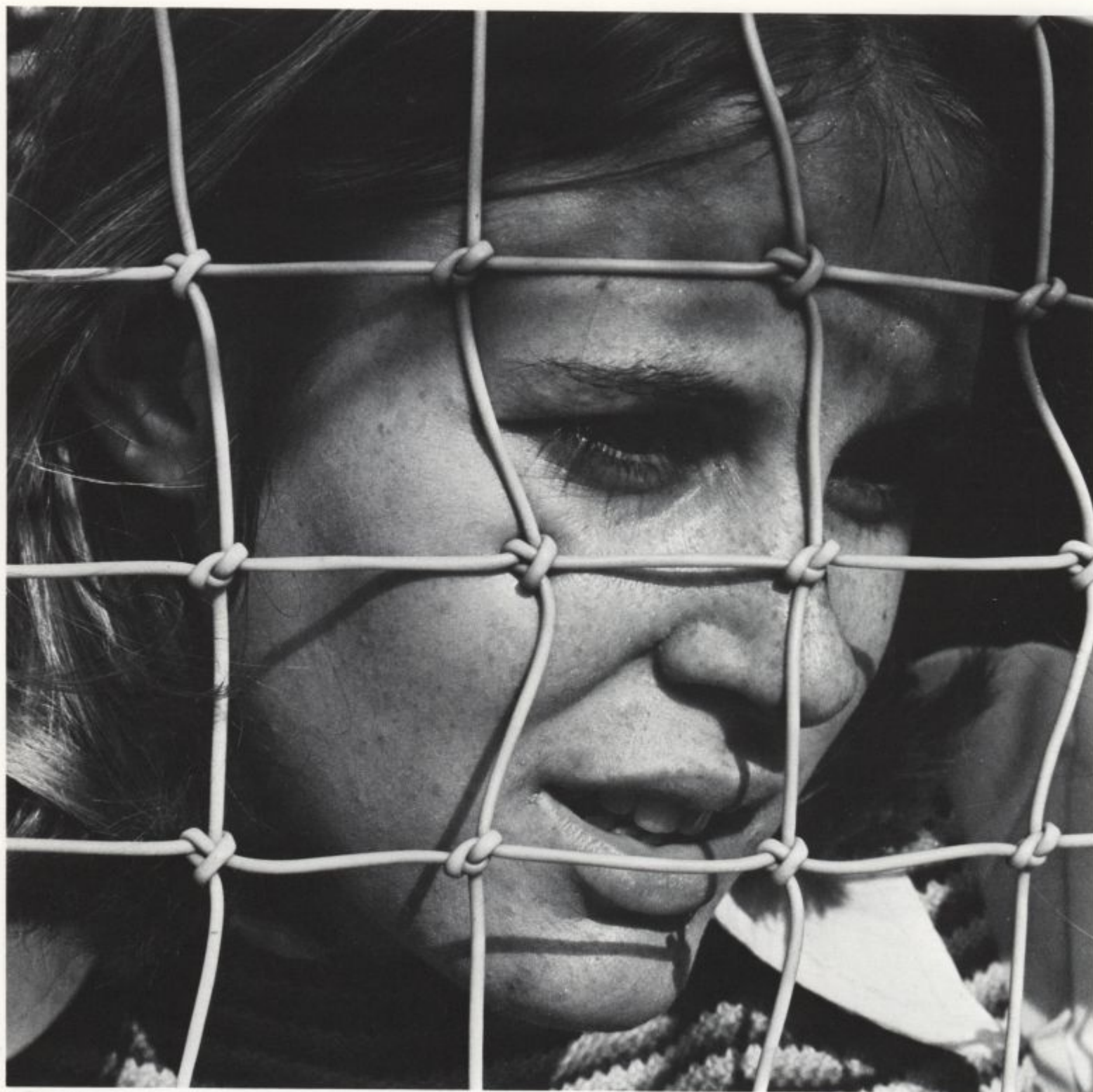
Alan Hendel



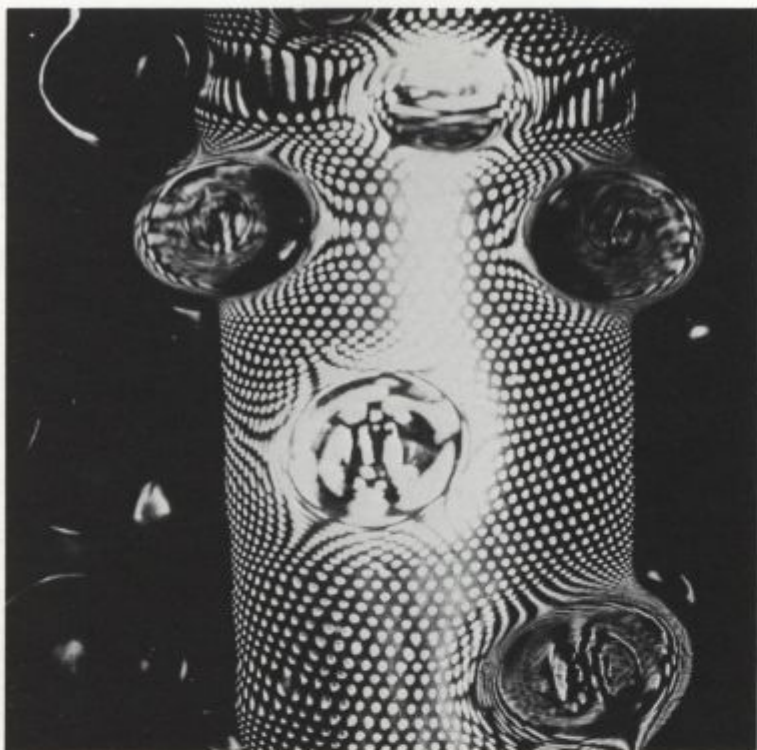
Susan Smith



Alan Hendel



Andi Lose



Beverly Robertson

"Media, by altering the environment, evokes in us unique ratios of sense perceptions. The extension of any one sense alters the way we think and act — the way we perceive the world.

When
these
ratios
change
MEN CHANGE."



MaryJo Haverbeck



Alan Hendel

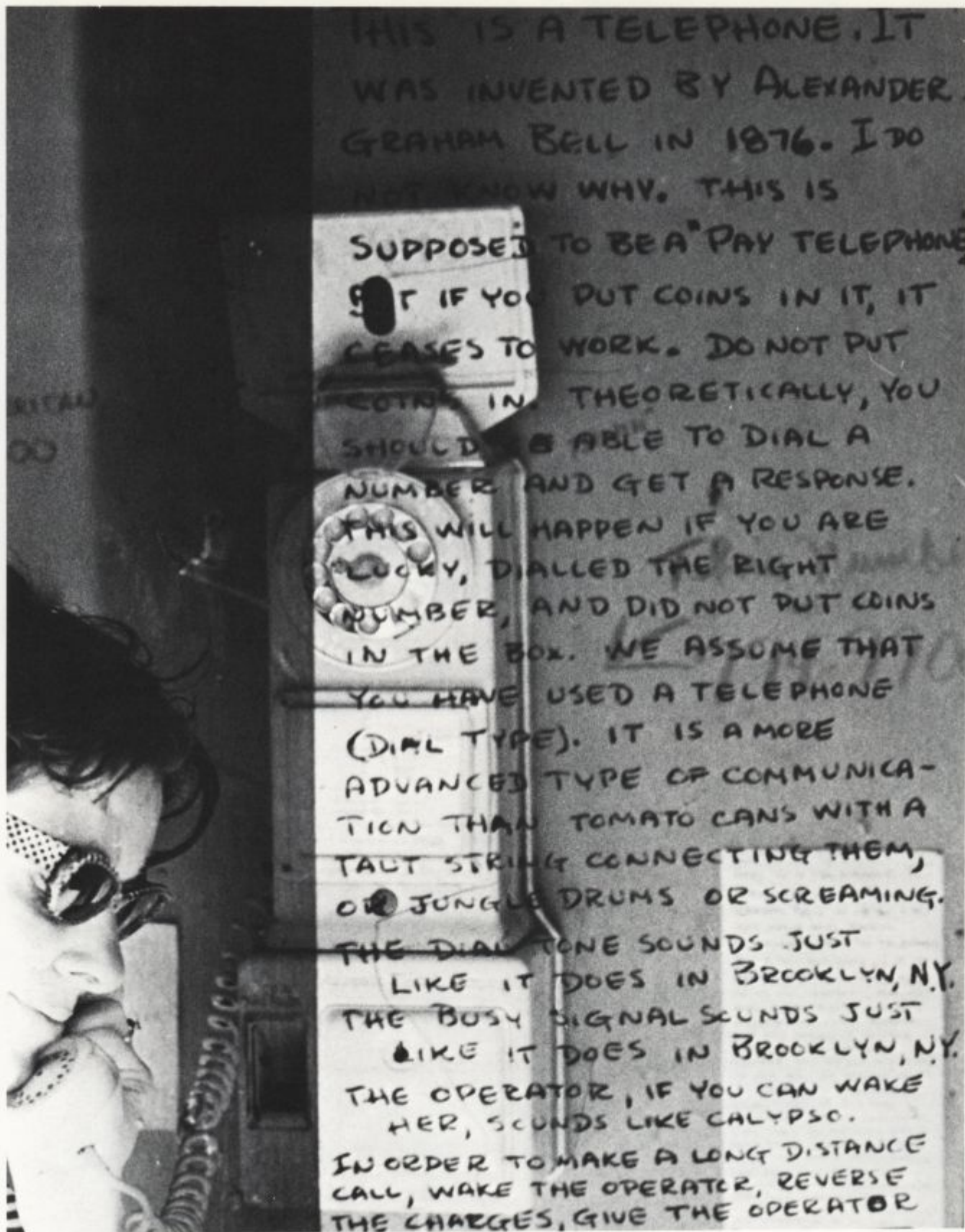


Tory Gibb

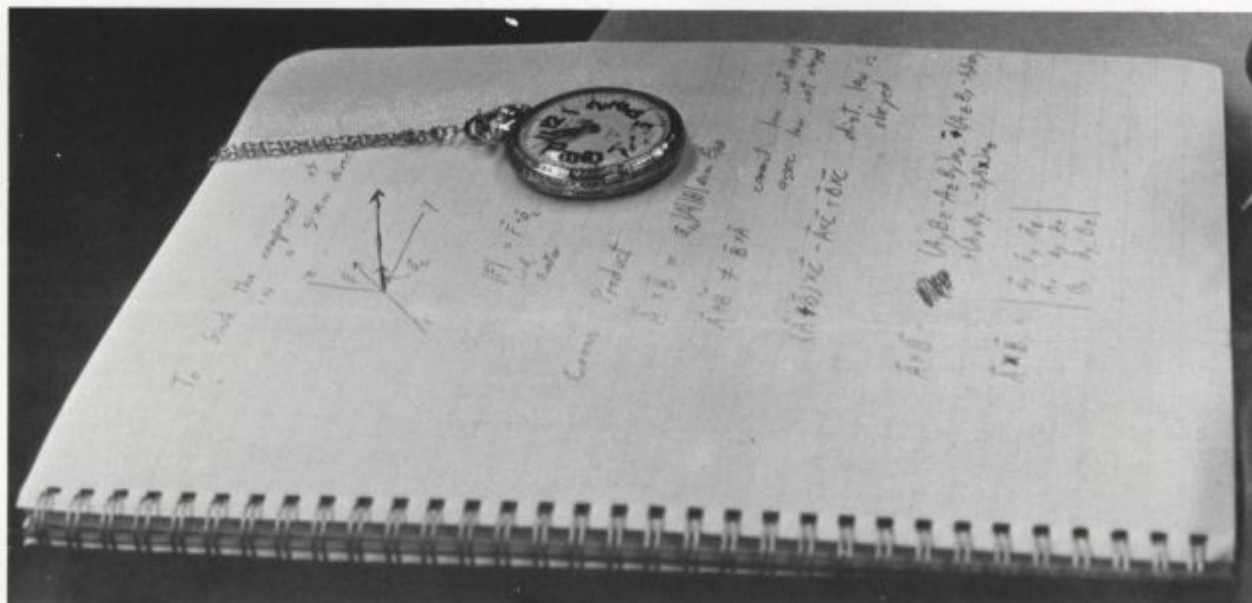


Kendra Olson





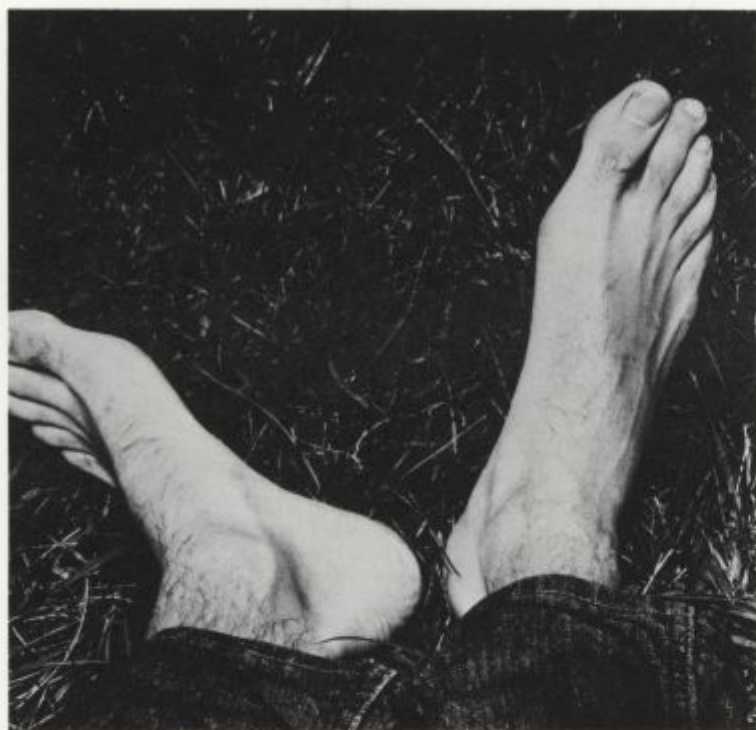
Leanne Mitchell



Alan Hendel



Valarie Vogel



Walter Smith



Carol Butler



Scott Goldberg



Scott Goldberg





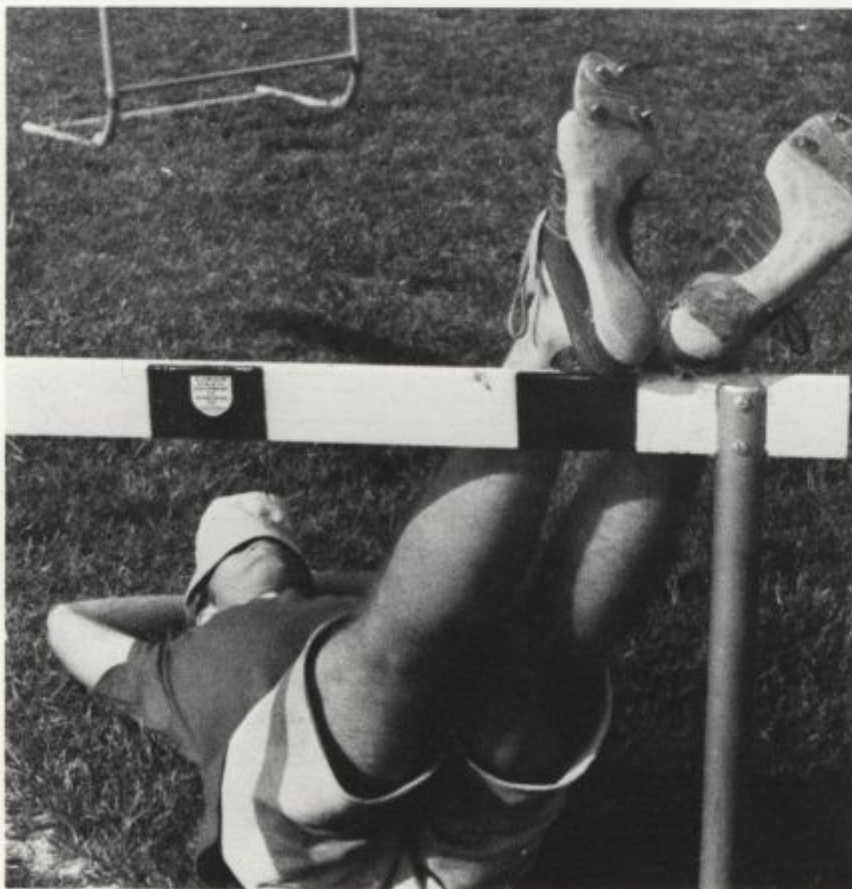


Zamsky



Alan Hendel

"We think of humor as a mark of sanity for a good reason: in fun and play we recover the integral person, who in the workaday world or in professional life can use only a small sector of his being."



Alan Hendel



Review







Alan Hendel



Alan Hendel



Zamsky



Zamsky



Alan Hendel



Alan Hendel



John LaCosta



Alan Hendel



Alan Hendel



Tory Gibb



DONUTS - 100% FINE



BEEFEATER

IMPORTED FROM ENGLAND

GIN

BOOKS

SPINE
DRINKS



MAXIE'S

Maxie's
HATS

FOURTEENS - FRUIT DRINK

DOON
WALA



Diane Butler



Zamsky

"We have become irrevocably involved with, and responsible for, each other."



John LaCosta



Zamsky



Zamsky



Zamsky



Stevenson







Ted Muterspaw

The Blue Hen staff would like to express our sincere appreciation to Mr. Shurtleff and the photography classes of the Art Department for contributing their pictures for this photographic essay and to Chris Kieffer for his help on the graphic design of the divider pages.



DEDICATION	52
ADMINISTRATION	54
GREEKS	74
ORGANIZATIONS	108
HONORARIES	170
SPORTS	180
SENIORS	230
SENIOR DIRECTORY	328
INDEX	342

**PROFESSIONAL PHOTOGRAPHY BY
ZAMSKY STUDIOS**

**ALL QUOTES HAVE BEEN CLEARED AND
AUTHORIZED BY BANTAM AND MCGRAW
HILL PUBLISHERS.**

Marshall McLuhan

author/professor/major intellectual theorist
of our time/observes our new and changing
world/concerns himself with environmental
relevance/explores into the realm of the in-
dividual—his development and his motivation,
looks searches, probes into environments,
probes into minds, awareness. this year's
publication is dedicated to mr. Marshall
McLuhan.

