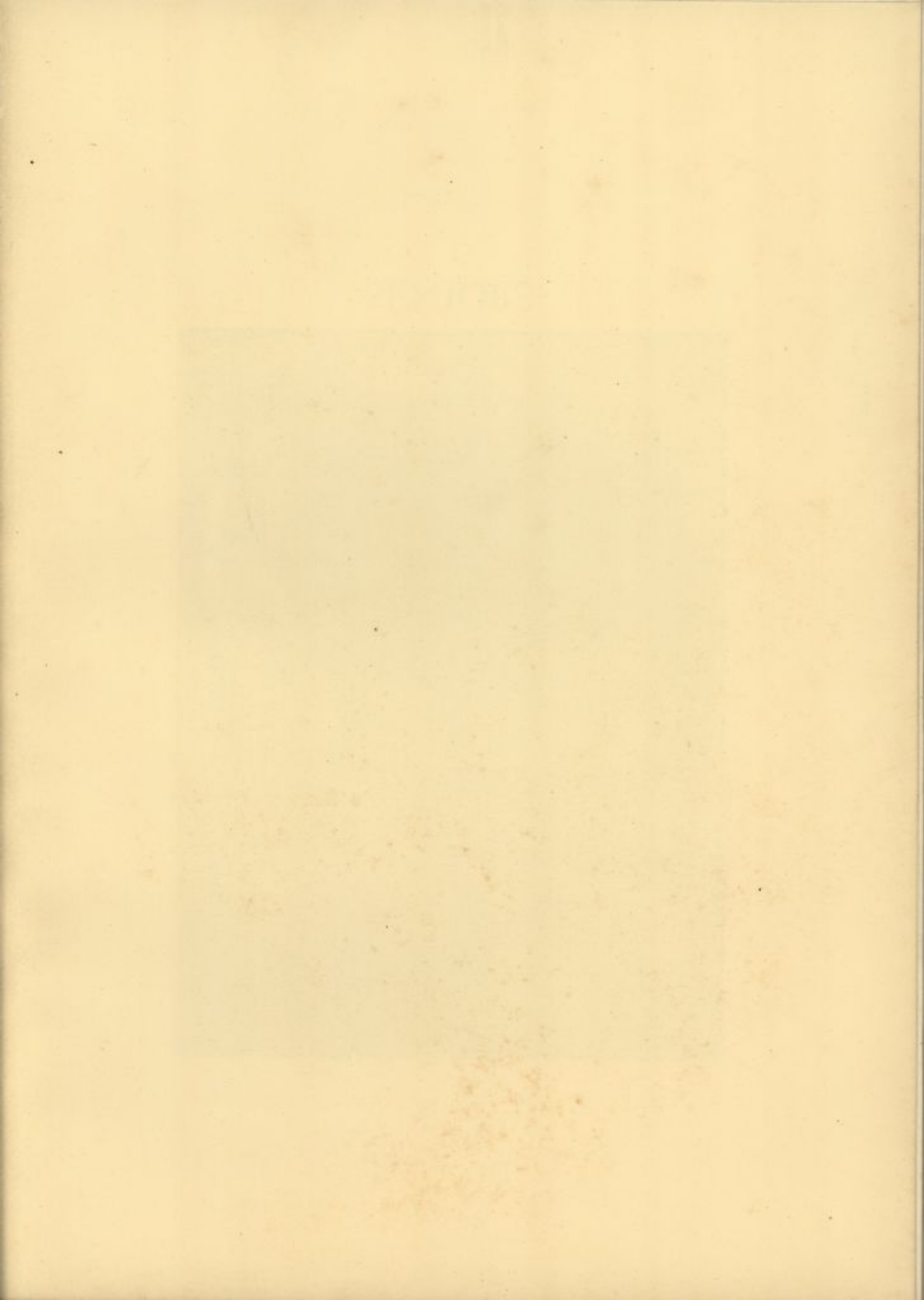




SENIORS







### OFFICERS OF THE CLASS OF 1930

MARGARET GLENN MIDDLETON .....	<i>President</i>
DOROTHY STANLEY .....	<i>Vice-President</i>
MARTHA WELDON .....	<i>Secretary</i>
CHARLOTTE EDA RAMBO .....	<i>Treasurer</i>
SERENE TEMPLEMAN .....	<i>Faculty Advisor</i>



### *Remember . . .*

when we were freshmen—

Remember the newspaper syndicate that was composed of Tene Turner, Grace Ellison and Lin Bassett?

Remember our Freshman Week picnic when Romaine dropped Becky Cann in the creek?

Remember when the "Pot-Boilers" was given in the dining-room, and Gladys Fleming's black mustache and tragic death as the villain?

Remember the night of the clash with the Sophomores, and the tricky attire that Em Huff wore? Remember the excitement in New Castle that lasted into the wee sma' hours?

Remember how Mike Milligan and Carmen Thomaschewski put the fear of the Lord into our Freshmen hearts?

Remember the night Carrie Lecates, Bobbie Robbins, Terry Tehan and a couple of others hung out those beastly baby caps?

Remember the splendid performance of *Will-o'-the-Wisp* that the Seniors gave, and how stunning Angela Wisneski was with her orange hair and silvery dress?

Remember how good Romaine Robinson, Ann Barclay and Adeline Downs were in our own play of "Rosalind?"



Remember how shy and unsophisticated Helen Baker and Martha Weldon were when they first came to college?

Remember Ann Walker as Shylock, and how Agnes Thomas' hair caught fire just as Ann Barclay spoke her one line?

Remember when Jean and Brooksie and Pete dispensed justice between trips up town?

Remember the time we took our Big Sister class to movies in the old Opera House, and ate peanuts and oranges with lemon sticks? And then went to Marge Johnson's house for a hot-dog roast?

Remember athletic picnics, and long, long hikes to the most out-of-the-world churches, and then the long, long themes we had to write on our experiences?

Remember how we won some championships in hockey or baseball or something?

#### AND THEN—we became *Sophomores*

Remember the time Em deHuff felt the inner urge to express herself on the saxophone, and they took it away from her just when she had "Blue Skies" down pat?

Remember the time we gave the "Feitlebaums," with Lois Simmons as Louie, Dot Dope, and Irene Dill as the baby, and Ann Barclay as Mrs. Feitlebaum, and how careful she was of Isidore's head, perhaps because that part was taken by Adeline Downs?

Remember when we presented "The Eldest," with Timmie as the much abused Rose?

Remember when we had a real circus, with a parade in the dining room and everything? Will you ever forget Ann Barclay and Carrie Atkinson as the Elephant, or Tulla Hagen as the Bearded Lady, or Sallie Crossan as the Three-Legged Girl? And later on in the freak tent, where we found Lou Mayer, as Harry-All-Over, and Mil Phillips as the Woman Who Could Drink a Gallon of Water, and the Faculty and students coming dressed as youngsters? Remember Miss Robinson as the nurse-maid to the infant member of the Faculty, Agnes Thoms, and the flirtations she carried on with Louie Marshall who came as a cop? Remember what naughty looking little boys the chemistry department turned out to be, when Becky Gallagher and Miss Drake came dressed to the part?

Remember the thrill we got out of helping our Big Sisters don cap and gown?

Remember how we made the Freshmen toe the mark, and how much of our success was due Ella Belle Warrington?

Remember Timmie's return to be Duchess in May Day?

#### AND THEN—We Became Juniors

Remember what a splendid President Bob King made, and the big success our Prom was under her leadership?

Remember the competitive play *Pierre*? It was the third successful play that Ann Walker coached for us.

Remember how Lou Mayer, Em deHuff, and Annie Gow took this year as the one to spend in France?

Remember "Sherwood" and the real live horse we used?

Remember when Alma Mater presented us with our Little Sisters?

Remember the first issue of *Pambo*?

Remember the skit in the dining-room that gave an idea of the Gay Nineties at its worst?

#### AND THEN—WE BECAME SENIORS

Remember getting invested with cap and gown?

Remember the trials and tribulations of Practice Teaching?

Remember the thrill of attending a Junior Prom free?

Remember Terry Tehan's date to go horseback riding at five o'clock in the morning?

Remember when Mitchell Hall was a hole in the ground?

Remember the old-fashioned Christmas Dinner and how we managed to eat peas with our knives?

Remember when Timmie and her young son returned, and we got to see the first god-son of our class?

Remember the moist gray day that we selected to be Senior Day, and the good time we had in spite of it? Remember the rescue party that Tulla Hagen headed, and the ingratitude of the would-be rescued?

Remember the sad, sad story of Lib Conard's gown? If you don't, ask Terry!

REMEMBER-



## FLORENCE VIRGINIA ARNOLD

*Arts and Science*      Wilmington, Delaware

*Class Hockey Team II; Class Baseball II*

Gin is a typically happy-go-lucky collegiate whose good disposition has remained undaunted after a four-year siege of exams. She is one of the free souls on campus who can find time to support all dramatic enterprises, all musical events, and still have time to participate in an inter-class poker game. Gin certainly merits a life of ease her last year in college, for she has been exposed to the trials and tribulations that are the share of the untiring, sturdy, collegiate train-chasers. She is a likeable girl and the campus students consider themselves fortunate to have had the opportunity of knowing her better.



## CARRIE EMMA ATKINSON

*Arts and Science*      New Castle, Delaware

*Baseball Team I, II; Honor Baseball Team II; Baseball Manager III; Volley Ball Team I; Outing Club I, III; Math Club I; Secretary of Class II; Y. W. C. A. Cabinet III; Hockey Team III; Basketball Team II; College Hockey Manager IV.*

Carrie is one of the few perfectly sincere people on campus. She is always frank, always wholly herself in every situation. For four years she has played around the Chemistry Lab and served as Fudge-maker Extraordinary in her spare moments. Her room is the Mecca for the hungry. We feel rather sorry for the one who is in France, since the one who brings the cakes seems to be getting all the attention just now.



## ELSIE MAE BAKER

*Home Economics*      Laurel, Delaware

*Home Ec Club I, II, III, IV; Corresponding Secretary of Home Ec IV.*

Elsie has the demureness of a Priscilla Alden, as well as unexpected vigor at times. She lends a sympathetic ear to those who bring their problems to her whether they involve flunking a course, or the unpleasantness of death by starvation and she invariably helps to remedy the situation. The ardor with which she pursues her Home Ec Course arouses our strong suspicions. We can guess what the result will be if the right man comes up the path and asks for whom he wants often enough!







## HELEN LYDIA BAKER

Arts and Science

Avondale, Penna.

*French Club I, II; Ring Committee III; Freshman Dance Committee I; Blue and Gold Subscription Committee IV; Prom Committee III; Basketball Team II; Outing Club I, II; Shakespearean Play Property Committee III.*

Bake's enthusiasm was so great when she first came to Delaware that she organized a club the second day. But her attentions were diverted very soon from campus activities. And now she spends her free periods watching her mail box and her class periods writing long treatises to another mail box. Bake is one of those well-meaning persons who always does the wrong thing, but somehow one never minds.



## ANN WALSH BARCLAY

Arts and Science

Narberth, Penna.

*Glee Club I, II, III, IV; Puppets; Merchant of Venice, Mistress of the Inn, Twelfth Night, Sherwood, Competitive Plays I, II, III, IV; Class Song Leader III; Assistant College Song Leader III; Honor Archery Team I; Honor Baseball Team I, II, III; Honor Hockey Team I, III; Class Vice-President I; Class President II; Class Archery Manager I; Class Hockey Manager II; Curriculum Committee III; Associate Editor Blue and Gold IV; Student Board II; Third Vice-President Council III; Second Vice-President IV; Phi Kappa Phi.*

The chubby Bryn Mawr baby\* with her coat of many colors is one of the most vivid memories of our Freshman year. It was when the glorious coat, dimmed to pastel shades, had been honorably discharged that we first realized that our childish days were over. Ann has delighted us with her interpretations of handsome heroes and Mrs. Feitlbaum to such an extent that it has been impossible to answer the mute pleas of many permanents and let her tread the boards as an ingenue. Ann's eagerness to listen and her charming naiveté make her the best of companions under any circumstances.

\* NOTE: Every Bryn Mawr graduate averages 9/10 of a baby.



## ROSALIE DUBOIS BERMAN

Arts and Science

Wilmington, Delaware

*Ring Committee III; Prom Committee III; Class Editor Blue and Gold IV; Phi Kappa Phi.*

Rosalie's dusky beauty reminds us of the golden-skinned Egyptians. Perhaps it is an instinctive reason that makes her find her chief interest in the study of ancient civilizations; for she finds reflected in them her own love of study and contemplation. Although she is one of the ever-going-and-coming commuters, we are sure to find Rosalie at every college activity, a dependable supporter.



## SARA HAMILTON CHAMBERS

*Arts and Science*

Lewes, Delaware

*Glee Club IV*

Sara is the most paradoxical girl on campus. One of those rare people who is utterly indifferent to the opinion of the rest of the world and quite content to be alone, she is in no sense egotistical or overbearing. It is very hard to make her acquaintance, but most people find it well worth the trouble. One is fascinated by her remoteness, she seems as unfathomable and intriguingly sullen as the brooding sea before the storm. And then her mood changes and she is as gay as the gayest in the world, and yet underneath her laughter one can feel her brooding. Her sense of humor is an erratic one, she does not laugh so easily as some when life makes a jest, yet she is a good pal. She has a capacity for a deep and lasting devotion for those whom she has chosen as her friends. Sara's life has been spent by the sea and her skin has been tanned from its winds. She has good taste in books, is well read. One feels that she would be happier, less a victim of moods, if she would learn to take life more lightly.



## ELIZABETH DAWES CONARD

*Arts and Science*

Wyoming, Delaware

*Basketball I, II, III; Tennis III*

Lib has kept her end of second floor Residence in constant apprehension the whole year. Despite her dignified air, her neighbors suspect her of setting the clocks that go off at odd intervals during the night and of fixing the pie beds that appear every once in a while. They wouldn't think of accusing her, but they suspect the twinkle that sometimes sharpens her placid gaze. Lib is everyone's friend but she is especially interested in artists and such like. Her ambition, she tells us, is to attain the rank of buyer and, incidentally, a trip abroad each year.



## SARA ELIZABETH CREWE

*Arts and Science*

Wilmington, Delaware

*Hockey Team III, IV; Volley Ball Team II, III, IV; Baseball Team III; French Club I.*

Sara is "la gamine" type with her dancing blue-green eyes and wind-blown bob. Her infectious laugh is safe insurance against a crepe-draped Commuters' Room, but faces lengthen when their owners see her on an opposing hockey team. She is as agile on the hockey field as she is quick at repartee. Sara is assured a welcome wherever she goes. We wonder how long she will teach?







## EMME GREENAWALT DEHUFF

Arts and Science

Cynwyd, Penna.

*French Club I, II, IV; Hockey Team, I, II, IV; Basketball Team I, II; President of the Athletic Association IV; Foreign Study Group III; Rifle Team I.*

Em came back from France last June with a pair of sophisticated glasses and a greater degree of sociability. Her dry, subtle humor becomes painfully apparent whenever her friends make dismal blunders, but the reproofs are so clever that she is always forgiven for their pointedness. Em is the typical sportswoman—love of games of all kinds has made her one of our most dependable athletes. But where you are most likely to find Em is tied up in a knot on her bed, digging at Romanticism and Nineteenth Century French.



## ADELINE DOROTHEA DOWNS

Arts and Science

Wilmington, Delaware

*Glee Club I, II, III, IV; Press Club II, III, IV; Competitive Class Plays I, II, III, IV; Dramatic Board II, III, IV; President IV; Student Coach of "Mistress of the Inn" and "Sherwood." Chairman of Costumes for "Twelfth Night," assistant for "The Merchant of Venice." Puppets II, III, IV; vice-president IV; Junior Prom Committee III; Y. W. C. A. Cabinet III; Chairman of Decorations on Social Committee IV; Art Editor of Blue and Gold IV.*

When Adeline came to Delaware she "shortened her skirts and bobbed her hair." Her artistic ability is always in demand, whether for the charming and original posters which she can turn out with such ease, or for novel and effective schemes of decoration. These same tastes and talents make her room one of the most attractive and colorful on campus and it seems almost an expression of the personality of Adeline herself. She is one of the important halves of the newspaper syndicate which has been turned loose on the campus. On the stage, it is possible for her to enact the role of a frumpish, frowsy blond, but she is really one of our most chic.



## MARIAN HITCHENS ELLIOTT

Arts and Science

Laurel, Delaware

*Hockey Team I; Baseball Team I, II; Honor Baseball Team III*

Marian, like Doris, is one of the class of '30's Ancient Language enthusiasts. She is so quiet and self-contained that she has few acquaintances, but those she has are friends. Serious and careful in everything she does, Marian accomplishes things while most of us are still getting ready for the attempt. She is a strong dependable fullback on the hockey field and a great comfort on the diamond. Perhaps you have heard the legend of the ball Marian batted to the Library!



## FLORENCE VELMA FISHER

*Arts and Science*

Elkview, Penna.

The class of thirty has one math major, Velma. While the rest of us struggled with the terrors of Freshman Math, Velma always had her problems worked out and we could always depend on her if our professors questioned us too closely. But she manages to get her mind off the fourth dimension often enough to indulge in her love for dancing. Velma and Marian prove the fact that alphabetical seating in the classroom has some advantages; for they have been so often placed in adjacent seats that they have developed a close friendship.



## DORIS ADELLA FRIEDEL

*Arts and Science*

Felton, Delaware

*French Club II, III, IV; Y. W. C. A. I, II, III, IV; Dramatic Club II, III, IV.*

Doris' talents are of the more silent type. She is one of the most dependable girls in our class. Her patience and perseverance surmount all obstacles and convince us that she will be a successful teacher. She is sincere in everything and pursues her work quietly and efficiently. The Ancient Classics appeal to her especially, and she enjoys all of her work in Latin. Doris makes no secret of the fact that nursing is her real ambition and in a few years will be her sole interest.



## SARAH FRANCES GOLDSTEIN

*Arts and Science*

Wilmington, Delaware

*Glee Club I, II, III, IV*

Impressions of Sarah dancing with the grace and abandon of a wood nymph, or of Sarah, demure again in street clothes, exquisitely dressed, faultlessly shod, will last as long as our memories of college. She is not only a dancer but a linguist and when her soft voice is heard in French or German classes, one feels that she speaks with authority. Sarah is another of our commuters and one can see her almost any Spring morning flying down the fourteen-mile stretch between Wilmington and Newark in her new Nash.







## ANNIE ISABEL GOW

*Arts and Science*

Felton, Delaware

*Hockey Team I, II, IV; Baseball Team I, II, IV; Foreign Study Group III; French Club III, IV; President IV; Phi Kappa Phi.*

Annie has a single-mindedness that is splendid; she sees what she wants in life and goes straight for it, regardless of the obstacles that may be in the way. We admire in Annie the courage that will give up the comfort of a settled existence for the hectic paths of study; to her may be given the tribute which was accorded the clerk of Oxenford, "gladly would he learne and gladly teche."



## AGATHA MAGNIHILD HAGEN

*Arts and Science*

Lancaster, Penna.

*Glee Club I, II, III; President III; "Merchant of Venice" I; Sherwood III; Social Committee II, III; Chairman IV; Junior Prom Committee III; May Day Committee III.*

Tulla is our little Viking maid. Reserved and even-tempered as a rule, she is still capable of quite effective explosions when that hot, Nordic blood is aroused! She is the most comfortable person that we know of to live around; always willing to go places and do things, and while she never seems to be busy, she always has her work done. Tulla is a good fellow: beer and pretzels, a good story or a little harmonizing, are all equally welcomed by her. But her interest in music is deeper than merely humming a tune as most of us do, for she plays the piano as no one else can. College has changed Tulla very little, she would be the same anywhere, one of the sanest people we have ever known.



## DOROTHY HAYES

*Arts and Science*

Newark, Delaware

We sincerely believe that our Newark Dot believes in the greatest happiness to the greatest number; she simply can't keep a joke to herself. She is generally disposed to mirth and not infrequently giggles out in the most unexpected places. Dot's temper is a mystery to Freshmen, but to her friends it's the quality which makes her the delightful Dot who's different. We thank heaven that little Dot lives on the way to church, for it is such a convenient place to stop if we wish to borrow a handkerchief on our way, or if we want to skim through the Sunday papers after church. It's swell to have a friend by the side of the road.



## DOROTHY MAE HAYES

*Arts and Science*

Dover, Delaware

*May Day Committee III; Junior Prom Committee III; Social Committee II; French Club I, II, III, IV; Basketball I, II, III, IV; Chairman Radio Committee III, IV.*

Dot's four years in college are represented by four strings of dance programmes that hang from her walls. She is the Hilarium's "haunt," listening to the radio when she's not hot-stepping it around, trying out a new dance. One can't think of Dot without radios and dances any more than one can of Harrington without his little book or the Heavenly Twins without their baskets.



## GRACE EVANGELINE HOLDEN

*Arts and Science*

Newark, Delaware

*V. W. C. A. I, II; Math Club I; Student Volunteer Tri-State Club III, IV; Class Manager of Track II, III; Class Volley Ball Team I, II, III; Manager III; Outing Club II; Class Hockey Team IV; Phi Kappa Phi.*

Sincerity in everything she does and a great desire to help people, characterize Grace. Her great ambition in life is to do social and missionary work. She is interested in sports, especially volley ball. Grace's ability to judge people makes her want to be friends with everyone. She never harshly criticizes or admonishes, just sympathizes. Grace reminds us of the proverbial absent-minded professor, because she is always asking where her hat, bag, or books aren't, but that makes her that much more likeable and human.



## RUTH IRENE KASTENHUBER

*Arts and Science*

Easton, Maryland

*Press Club II, III, IV; Archery Team I; Manager III; Hockey Team IV; Class Competitive Play IV; Book Committee III, IV.*

Ruth is the true Oriental, nothing disturbs her equanimity. She is a firm believer that all things come to him who waits. For she serenely goes her way, disregarding all except what she likes and really wants to do. Her keen sense of humor and lazy acceptance of things carry her along gently with seldom a bump. Ruth is one of those rare people who can sit down and write, seemingly with no effort. The things she writes have a savor of her conversation, but even they cannot quite reproduce the little incredulous air with which she presages the most amusing statements.







### EDYTHER MAE KIMES

*Arts and Science*

Coatesville, Penna.

*Freshman Dance Committee I; Junior Prom Committee III; Footlights Play I, II; Competitive Plays II, III, V; Math Club I; Christmas Play I.*

Edie didn't have to take the Home Ec Course, even though she is the type gentlemen prefer. She is very clever with her hands and can sew and take care of clothes beautifully. The fact that she grasps her work easily makes studying almost unnecessary for Edie. She is pleasure bent, always on the go, looking for some way in which to use up her boundless energy. She has a talent for making the best of her good points and she will undoubtedly make a success of whatever she attempts.



### LILLIAN BARBARA KING

*Arts and Science*

New Castle, Delaware

*Glee Club I, II, III; Student Board I, III; First Vice-President of the Student Council IV; Competitive Play III; Twelfth Night, Sherwood, Christmas Play III; Class President III.*

Whoever started calling Bob "Lily" must have had Tiger Lilies in mind. Bob and the bird-bath are the decorative pieces on this campus. But like all worth-while things, she has shown us time and again that she is useful as well as ornamental. She has played an important part in the student government affairs during her four years in college, but she has judiciously mixed it with much social life. Her coloring is unusually attractive and Bob gives an Italian grandfather most of the credit. We believe her, for we recognize her as one girl who certainly knows her onions. To the dismay of a surprisingly large number of gentlemen who reside at the other end of the campus, one of their more enterprising young members took Bob out of circulation during her last semester in school.



### CARRIE ELIZABETH LECATES

*Education*

Delmar, Delaware

*Club III, IV; Basketball Team V; Outing Club, II, III, IV; Glee Athletic Association I, II, III, Im III; Phi Kappa Phi.*

Carrie liked Women's College so well that she came back to be graduated with her own class of '30. Her steady work and efforts have not been spectacular, but the results are recognized by all of us. Rumors come to us of her fine record in a New England summer school, where she outshone the Ph. D.'s in her biology work. One might think her uninterested in her class but some of us remember how she helped us get rid of our caps at the end of our Freshman rules. In short, Carrie is a patient, loyal person, ready to help those who need her.



## EUNICE HELENA LOWE

*Arts and Science*

Wilmington, Delaware

*Class Hockey Team I, II, III, IV; Class Volley Ball I, II, III;  
Class Baseball II, III.*

If cheerfulness is the root of wisdom, then Eunice must be exceedingly wise, for her giggles are inspiring the Freshmen to renewed efforts. The wrinkle in her forehead is the result of her ever-present solicitude for the campus children. Seriously, Eunice's ambition and perseverance are her outstanding qualities. Behind the mask of effervescent laughter lies the set purpose of attaining success. She has been one of Miss Hartshorn's leading danseuses for several years.



## CECILIA MALISZEWSKI

*Arts and Science*

Wilmington, Delaware

*Hockey Team II, III, IV; Baseball Team I, II; Volley Ball II*

Celia's strength and staying power in sports seem to carry over into everything she does. She never worries or talks much about her lessons, yet, the honor points come flocking in just the same. We feel that we can depend on Celia's friendship just as her teammates do on her drive in hockey season. Celia's sense of humor is one of the surprising things about her. She can make amazing changes from seriousness to smiles. Sometimes when the commuter's laughter shakes the test tubes in Chemistry Lab, Celia is found to be the innocent-looking cause.



## MARY LOUISE MAYER

*Arts and Science*

Dover, Delaware

*Class Sub-Captain I; French Club I, II; Secretary and Treasurer IV; Honor Basketball Team I; Dramatic Board I, II; Shakespearean Play I, II; Fire Captain II; May Day Court I; Blue and Gold Staff IV; Foreign Study Group III.*

"Charming" might have been coined especially for Lou. She has a personality that seems to hit just the right note. Her poise and apparent sophistication are tempered with a frankness and naiveté that we all enjoy. Although Lou is one of the most sociable girls on the campus, one feels that, left to herself, she would never be solitary. She has resources within herself that assure her a full and interesting life.







## MARIAN WILLARD McCABE

*Home Economics*

Millsboro, Delaware

*Home Economics Club I, II, III, IV; Basketball Team I, II; Baseball Team I; Hockey Team II, III, IV; Volley Ball Team II; Track Team II; Rifle Team II; Outing Club II.*

Marian's jolly disposition and her ready conversation on anything or nothing at all, endear her to her friends. Everyone knows her short, clipped sentences with the suppressed giggles at the end, just as everyone knows her aura of flame-red hair. She is a voracious reader and has autographs scattered over half the slips in the library. Marian goes in for athletics with the same irrepressible energy that accompanies everything else. When not engaged in sports, she is out making her reputation as one of the hikers of the college. One just can't imagine Marion ever bored with life.



## MARY EMMA MENDENHALL

*Home Economics*

Nottingham, Penna.

*Home Economics Club I, II, III, IV; Vice-President III; Junior Prom Committee III.*

Mary claims that there are two advantages in commuting: it is easier to see Tex, and she is losing weight. We hope that she won't go too far in that direction, however, for who would want to see our pleasantly plump Mary turned into a sylphlike stranger? Mary should start having hours for consultations, for she has such original and attractive ideas for dress design that she is constantly being pestered for advice. She always knows when things look right and when they match.



## ETHEL LOUISE MERRITT

*Arts and Science*

Wilmington, Delaware

*Honor Hockey Team I, II, III; Class Team IV; Baseball Team I, II, III; Representative to Y. W. C. A.; Chairman of Vespers II; Vice-President III; President IV; "Twelfth Night"; "Sherwood"; Glee Club I, II, III, IV; French Club I; Math Club I; Press Club I, II, III, IV; Business Manager Pambo III; Blue and Gold Staff IV; Phi Kappa Phi.*

From charming frankness to extreme sophistication, Ethel traveled during her four years. To this sophistication she has added many skills—both scientific and otherwise. She can be expected to lend her whole-hearted support to anything in which she is interested. Impulsive, clever, efficient, frank—Ethel has a charm and individuality all her own.



## MARGARET GLENN MIDDLETON

### Arts and Science

Wilmington, Delaware

*Class President I, IV; Class Vice-President II, III; Glee Club I, II, III; Treasurer Glee Club III; Press Club II, III, IV; Competitive Plays II; Math Club II; Student Council II; Representative Board II, IV; Dramatic Board III; Sherwood, Twelfth Night; Advertising Manager "Pambo" III; Advertising Manager Blue and Gold IV.*

Peggy has the precious ability to get along with people some way or another, and the more positive quality of leadership. Although she has the passion of a schoolboy for sleep and sandwiches, she finds time to be her friends' chief source of amusement. When she takes out her flageolet, the Sussex ants troop forth from their haunts; and wherever a group is lost in the harmonies (or discords) of song, one is pretty sure of hearing Peggy's uke. We wonder whether her academic costume of beret, fur coat and white shoes will outlast graduation.



## ETHEL MARIE MOORE

### Home Economics

Milford, Delaware

*Home Economics Club II, III, IV; Glee Club I, II, III; Representative Board II; Freshman Dance Committee I.*

Freshmen know Marie as the cause of the other man on campus. Her nightly dates make New Castle a bright spot on the social calendar. But despite her evenings off, Marie is capable of a fierce application to work that is the envy of her friends. Marie has character insight that spices her conversation, and a flash of a smile that lightens her darkest prophecies. She is always ready to talk, but sometimes she conveys a whole amusing idea in one expressive gesture.



## NELLIE EURATH MOORE

### Home Economics

Laurel, Delaware

*Rifle Team I, II; Hockey Team I, II; Basketball Team I, II, III; Secretary Athletic Council II; Home Ec Club I, II, III, IV; Secretary Home Ec Club II; Chairman Program Committee III; President Program Committee IV; Footlights Play III; Costume Committee for Shakespearean Play II; Chairman III; Costumes for Class Play II, III; Dramatic Board, Costumes IV; Ring Committee III; Phi Kappa Phi.*

Although Nellie looks S. S. & G., she is really very sophisticated. We know her best for a quiet efficiency that one can always depend on. Her originality in dress design makes us wonder if Nellie will follow that for a career. She has proven herself an invaluable addition to costume committees. Nellie's social popularity seems to have no effect on her ability to bring in the honor points. We could never imagine Nellie in an aimless action or an illogical bit of reasoning. She is sweet but purposeful, soft-voiced, but very, very sure of reaching her goal.







### CATHERINE CARROLL NOONAN

*Arts and Science* Wilmington, Delaware

*Hockey Team I, II, III; Volley Ball Team II; French Club II*

Sure and the Irish are the salt of the earth! And it's Kitty will tell you so! Kitty's Irish wit is the joy of the south end of third floor Science. She is one of the great army that descends daily on Newark from all points and nightly wends its weary way home. She brings her dimples more to history classes than anywhere else. But her interest in athletics has brought her out for many a battle between New Castle and Science. Kitty is often quiet but when she does speak, we're sure St. Patrick is proud of her.



### ANN EVANS NUTTER

*Arts and Science* Philadelphia, Penna.

*This Club I; Social Committee II, IV; Glee Club III*

Ann "eat" Nutter, the kids in Residence call her. She is Carrie's constant companion and adds her giggles to Carrie's wise cracks. Ann's positive nature will be of great value to her if she carries out her ambition of owning and running a gift shop. She is very much interested in art, particularly in working out the most intricate details of design, but fortunately she lacks the temperamental quirks of most artists.



### ESTHER LAVINA PEARSON

*Arts and Science* Cheswold, Delaware

*Glee Club I, II, III, IV; French Club II; Junior Class Play; Honor Basketball Team III; "Sherwood" III; May Day Court III.*

Dates and dances seem to be the sum total of Es's ambitions; but she apparently has another, because she trots over to the town school every day. Es, too, participates in the second floor Residence merry-making, and her gay laughter re-echoes down the hall. Now that spring has come, one wonders whether Es will resume her walking tours. In Es we find the vivid coloring of the Gypsy combined with the sweetness of a Madonna.



## CHARLOTTE RAMBO

### Arts and Science

Wilmington, Delaware

*Sec. of Class I, III; Delegate to "Y" conference; Volley Ball Team I, II; Manager II; Tennis Team I, II, III; Manager I, II, III; French Club III; Chairman of Radio Committee III, IV; Treasurer of Class IV; "Y" Cabinet II, III; Treasurer of A. A. III; Hockey IV; Editor of "Pambo" IV.*

The collector's instinct is strong in Charlotte, for she collects everything from men to cart-wheels from the Freshman Bonfire. Charlotte's interests are varied and scattered; and many trips to Haverford and Wilmington are involved. For three years Charlotte trod the primrose path, but she has felt the cares of the world a whole year before the rest of us. "Pambo" may be a darkling that has a sunrise aim, but Charlotte is the one who holds the gun straight!



## MIRIAM ELIZABETH SCARBOROUGH

### Education

Elkton, Maryland

Miriam is one of those rare girls who realize the value of silence. But when she does overcome her shyness, we find that she dimples when she smiles. She is one of those sympathetic people who share the trials of others, for it is she to whom the struggling practice teachers pour out their troubles.



## DOROTHY EASTBURN SHARPLESS

### Education

Newark, Delaware

*Honor Rifle Team I, II; Honor Hockey Team II, III; Class Hockey Team II, III, IV; Basketball Team II, III; Tennis Manager III.*

Dot is the type who never comes to classes when she is not prepared; and we never hear of her over-cutting. She is always sincere and efficient in whatever she attempts and we are not running any risks in prophesying that she will be a successful teacher next year. Just before class—JUST before—Dot may be seen coming down Depot Road at break-neck speed. Some icy mornings Dot would come in Shakespeare Class looking as if she had skidded the whole way. She never told us, but we knew it for the same grim look with which she charged up the hockey field or whammed away at a baseball. Unassuming as Dot is, one never hears her speaking of her own plans and thoughts, we know that anything she attempts will be successful.







**ALICE SPENCER**

*Education*

Kelton, Penna.

Alice is a very unassuming little person. Only her intimate friends know just how efficient and how lovable she is. She works quietly, but steadily and never fails to accomplish her task. Dependability and loyalty are her outstanding characteristics. No matter how busy she thinks she ought to be, she always has time for a chat when her more frivolous classmates drop in. In spite of her serious and conscientious attitude toward life we are sure she will never be able to suppress the mischievous twinkle of her eye or the infectious music of her ringing laughter.



**MARY DOROTHY STANLEY**

*Arts and Science*

Delaware City, Delaware

*May Day Court I, III; Press Club I, II, III, IV; Vice-President of Forum II; President III; Hostess IV; Class Treasurer III; Vice-President IV; Chairman of May Day Committee IV.*

We'll always remember the girl from Delaware City sauntering into class a few minutes after the bell with a fistfull of crackers and a face full of grin. Dot is always interested in what is going on in the world and her keen interest in history and public affairs has been a valuable addition to Forum. Stanley can be quiet or voluble as she prefers, for her numerous week-end festivities, dances and parties attest that she is cute either way.



**THERESA GRINDEL TEHAN**

*Arts and Science*

Rockland, Maine

*Press Club II, III, IV; French Club I, II, III, IV; "Merchant of Venice"; "Twelfth Night"; "Sherwood"; "Mistress of the Inn"; "Mary the Third"; "Windows"; Class Competitive Play III, IV; "Sun-up"; Puppets II, III, IV; President IV; Rifle Team I, II; Class Hockey Team III; Secretary of Forum III; Outing Club I, II; Editor-in-chief of Blue and Gold III, IV; Phi Kappa Phi.*

Terry is the logical result of a marriage between an Irishman and a hard-shelled Baptist. She has the Irish wit and knack of spinning a good yarn, coupled with a New England conscience. She adds a touch of the cosmopolitan to the campus by her weird admixture of Franco-Spanish oaths. Paul Revere had nothing on Terry despite the fact that she hasn't been able to mix horseback riding with acting. Students and faculty alike can recall vividly the harum-scarum ride she took at crack of dawn. Terry is one of the most interesting girls on campus and answers to the call for artist, actress, editor—and—according to one man—a singer! Get that man!



## AGNES KEMMER THOMS

### Education

Wilmington, Delaware

*Puppets I, II, III, IV; Footlights Club Plays II, III, IV; "Lady Windermere's Fan."*

Whenever we are looking for someone to fill a dramatic role, whether it be that of a dignified society woman or a dusky Gypsy, we get Tommy. She has turned the dignity that carries her through dramatics to good use, for it is one of her most effective means of checking the over exuberant Freshmen. Agnes has taken up the work of teaching our crude, awkward Freshmen the Troika, the Mazurka, the Reindeer Hop, and she makes 'em like it!



## PAULINE ESTHER THORNLEY

### Home Economics

Smyrna, Delaware

*Home Economics Club I, II, III, IV; May Day Court II, III, IV*

Sophisticated looking Pat is really our prize ingénue. Sportsmanship is needed to good naturedly laugh off the tricks on the "Mutt." Probably Pat's Home Ec course will soon be put to use, and not in teaching. The Class of '30 is always proud of Pat on May Day because her quiet dignity and calm poise make her a fine representative. Whatever else she may forget, we are sure Pat will carry away from W. C. D. sweet memories of Cafusalem.



## MARGARET STRICKLAND VINSINGER

### Arts and Science

Newark, Delaware

*French Club I, II, III, IV; Class Hockey Team III; Honor Hockey Team III; Social Committee IV; Baseball Team III; Math Club I.*

Marg saves us the trouble of reading the latest book reviews, for she has always just finished or is just beginning some new production and can give us pointers on it. Many and varied have been the prophecies concerning Marg's future, but the one in which we would put the most faith has her develop her possibilities in the business world. For her clear-headedness, poise and dignity would carry her through any crises. Marg is a person who always dresses in the right way and she will probably carry out the conventionality which is one of her outstanding characteristics, by always doing the right thing.







## ANN PHOEBE WALKER

*Arts and Science*

Wilmington, Delaware

*Puppets I, II, III, IV; Secretary Dramatic Board II; Vice President III; "Merchant of Venice"; "Twelfth Night"; "Sherwood"; Director of class play I, II, III, IV; Secretary of Press Club II; Vice-President III; Secretary of Student Board III; Vice-President IV; Class Editor of Pambo III; May Day Committee III; Phi Kappa Phi.*

Every campus needs one clear-headed, really intelligent person to give shape to the scattered impulses of campus activity, and so we have Anna Phoebe. When her eyebrows begin to soar and her deep voice gathers momentum, we know that camp is coming into the conversation. In class, no one is so bored as Anna Phoebe. We feel sure that she loses the twenty pounds gained each summer in camp, squirming around in her seat; and her professors are often startled from the somnolent course of their lectures by Ann Phoebe's impeccable chortle. She has a directing ability that turns us from dolts into actors and a poise that the most disturbing events fail to shake.



## MARTHA ELLEN WELDON

*Arts and Science*

Middletown, Delaware

*Math Club I, II; Ring Committee III; Junior Prom Committee III; Employment Committee IV; Commencement Committee IV; Blue and Gold Subscription Committee IV; Radio Committee IV; Curriculum Committee IV; Class Secretary IV; Basketball I, II; Baseball Team I, II, III; Phi Kappa Phi.*

Chemistry lab has never succeeded in putting a damper on Martha's high spirits. She is in her glory and is never so happy as when she has attained the solution of some intricate chemical problem. When you first meet Martha strutting around the campus, you would think she had a poker for a backbone, but she unbends sometimes and for some people! Anyone would think men were puppets the way Marty strings 'em along and more than one gallant has hung himself on her line. She is most emphatic for such a small person and expresses her opinions in italics punctuated by a toss of her head.



## SIBYL GORDON YOUNG

*Arts and Science*

Wilmington, Delaware

*Hockey Team I, II, IV; French Club I, II, III, IV; Secretary French Club III; Press Club II, III, IV; Committee on Entertainment French Club IV.*

A second Mme. Rambouillet in a twentieth century salon is where we expect to find Sibyl a few years from now, for she has the charming manner and conversational ability that make up the social leader. One of her favorite diversions is making acquaintances and poking sly fun at them to their faces. With the exception of sociology and particularly that which pertains to the lower part of Delaware, academic activities take very little of Sibyl's time, though when she does put her mind on her work, she shows us she is very capable of outstanding scholarship.