



### SENIOR CLASS OFFICERS

President .....	HARVEY DAY
Vice-President .....	ROSALIE SHAFER
Secretary .....	NANCY PETER
Treasurer .....	BOB PAULES





## SCHOOL OF ARTS & SCIENCES

Francis Hagar Squire  
Dean



In an era of educational endeavor key-noted by specialization, it is of primary importance that students be introduced to the broader aspects of their traditional culture. The School of Arts and Sciences, with curricula extending from the Fine Arts to mathematics and physics, strives to provide a background of combined aesthetic and intellectual interest in which individual specialization may be supplemented by related work. Four general fields of knowledge, embracing Literature, Languages, Natural and Social Sciences, Philosophy, Mathematics, and the Arts, are designed to give the maximum training for a liberal education. The Arts and Sciences student is encouraged to take a deep interest not only in contemporary problems and developments through a general effort on the part of the faculty to bring many courses up to date, but he is also guided in the study of the classics and the humanities. He is thus introduced to study which should round out his education in whatever field he concentrates his attention as well as give him

a deeper understanding of the life which he sees going on about him.

Patterns work themselves out in the history of ideas and in the progress of thought which provides meaning to the ages of progress that have preceded, and to comprehend this meaning and to determine on a basis of an understanding of it the value of modern institutions, it is necessary to go back. A Liberal Arts education is essentially a process of going back, in its first stages of importance. But it makes, further, a supreme demand: It requires that the mind and intelligence expand to give facts acquired place in a system; it requires that a broad understanding of the present be sought in terms of the past and on the basis of an intelligent comprehension of the thought of the past. It should be, in the fullest sense of the word, a rounding-out. Students who have dipped deeply into the Arts and Sciences may meet their worlds strengthened—and, intoxicated, but with an Attic dignity.

# SCHOOL OF ARTS AND SCIENCES

## PROFESSORS

NED BLISS ALLEN, Ph.D.	ANTHONY J. LOUDIS, M.A.
HARRIET THORPE BAILY, M.A.	CECIL CAMERON LYNCH, Ph.D.
EDWIN COLBY BYAM, Ph.D.	HALSEY M. MacPHEE, Ph.D.
JOHN FENTON DAUGHERTY, Ph.D.	WILLIAM ALLISON MOSHER, Ph.D.
CYRUS LAWRENCE DAY, Ph.D.	CHARLES CONGER PALMER, D.V.M.
HERBERT DORN, Ph.D.	HENRY CLAY REED, Ph.D.
QUAESITA CROMWELL DRAKE, Ph.D.	CARL JOHN REES, Ph.D.
EARL PARKER HANSON, B.S. in M.E.	GLENN S. SKINNER, Ph.D.
JAMES CHRISTOS KAKAVAS, Ph.D.	G. CUTHBERT WEBBER, Ph.D.
CHARLES ROBERT KASE, Ph.D.	CLINTON OSBORNE HOUGHTON, B.A., Emeritus
CHARLES N. LANIER, Ph.D.	

## ASSOCIATE PROFESSORS

AUGUSTAS HENRY ABLE, III, Ph.D.	EDNA CAROLINE FREDERICK, Ph.D.
HAROLD CHARLES BEACHELL, Ph.D.	JANE LESTER GARDNER, M.A.
GEORGE ELDER BRINTON, Ph.B.	JEANNETTE ELIZABETH GRAUSTEIN, Ph.D.
EVELYN HOLST CLIFT, Ph.D.	WALTHER KIRCHNER, Ph.D.
ANNA JANNEY De ARMOND, Ph.D.	JOHN A. MONROE, Ph.D.
ARTHUR RAY DUNLAP, Ph.D.	HERBERT E. NEWMAN, Ph.D.
ELIZABETH DYER, Ph.D.	FELIX E. OPPENHEIM, Ph.D.
HAROLD FEENY, Ph.D.	BERNARD PHILLIPS, Ph.D.
WILLIAM GEORGE FLETCHER, Ph.D.	

## ASSISTANT PROFESSORS

MARGARET PROSSER ALLEN, M.F.A.	ROBERT F. JACKSON, Ph.D.
ELIZABETH EDROP BOHNING, Ph.D.	JAMES B. KRAUSE, Ph.D.
ARNOLD M. CLARK, Ph.D.	GEORGE GORHAM LANE, Ph.D.
PAUL DOLAN, M.A.	RICHARD N. LEWIS, Ph.D.
EMMA CHARLOTTE EHLERS, M.A.	RAPHAEL ROOSER RONKIN, Ph.D.
WILLIAM HALDER FISHER, Ph.D.	FRANK LOREN SMITH, Ph.D.
BERNITA SHORT GERSTER, M.A.	ELBERT DAYMOND TURNER, JR., Ph.D.
JEROME MAYO GREENBERG, Ph.D.	ANN M. WEYGANDT, Ph.D.
FREDERIC COURTLAND HOUGHTON, M.A.	



## INSTRUCTORS

LINCOLN ARMSTRONG, M.A.	EDITH AUGUSTA McDOUGLE, B.A.
EDITH MIRIAM LEWIS AYARS, M.A.	JAMES H. McNEAL, M.A.
HARRY RHIND BIDLAK, JR., B.A.	JOHN H. MEISTER, M.A.
JOHN EMANUEL BULETTE, M.A.	ERNEST JOHN MOYNE, Ph.D.
DAVID BUSHNELL, M.A.	AUGUST C. NELSON, M.S.
HAROLD WILLIAM CHASE, M.A.	MORRIS NEWMAN, M.A.
BERNARD CLYMAN, B.S.	THOMAS BENTON PEGG, M.A.
GRACE BERRY DAVIS, B.U., B.M.	HAROLD BRADFORD RAYMOND, M.A.
MARGARET WAPLES DOLLINS, B.A.	ELEANOR K. REES, M.S.
HERBERT HERMAN FINCH, M.A.	RUSSELL REMAGE, JR., M.S.
MILDRED GADDIS, M.A.	SARAH BALDWIN ROGERS, M.A.
ROBERT LEE GALE, M.A.	MARY ANNA RUSSELL, Ph.D.
MARIE BERTHE ELIZABETH GIESBERT	MARY LOUISE SAUER SHERWOOD, M.A.
ALBERT BROWNING HALLEY, M.A.	ABRAHAM SHUCKMAN, M.S.
DANIEL HAMBURG, M.A.	ERSKINE WAKEFIELD SMITH, M.B.A., C.P.A.
EDWIN C. HEINLE, M.A.	HILDA SOMER EWING, B.M.
MARTIN A. KIRSHFELD, B.S.	FRANK H. SOMER, III, B.A.
GILBERT KASKEY, M.A.	LAWRENCE J. STARKEY, Ph.D.
GEORGE EMMETT CLARENCE KAUFFMAN, M.S.	CECILIA V. TIERNEY, B.A.
JOHN ROBERT KING, M.M.	MOISES TIRADO, M.A.
THEODORE LANDSMAN, N.A.	MILTON A. VALENTINE, B.A.
BRUCE C. LUTZ, M.A.	RUSSEL WILLEY, B.S., C.P.A.
JOHN FAIRBANKS LYNEN, B.A.	GEORGE GORDON WINDELL, M.A.
RICHARD MacGRATH MAJOR, M.A.	ELIZABETH L. BEARDSLEY, Ph.D.

## PART TIME INSTRUCTORS

EDWARD S. BIDDLE, M.S.	NANCY NICHOLS, M.A.
ZONA K. MacPHEE, M.A.	FRANCES M. PATNOVIC, B.A.
MARY AUGUSTA MEDILL, M.A.	ELLEN FOSTER WOOD, B.A.
CONSTANCE MITCHELL, M.S.	LEON WENDELL WRIGHT, M.S.



**Herbert David Albaugh, Jr.**  
Business Administration  
Wilmington, Delaware



**Jayne Reybold Bailey**  
History  
New Castle, Delaware



**Harold William Aldridge**  
Chemistry  
Pennington, New Jersey



**Johnson W. Bair, Jr.**  
Biology  
Wilmington, Delaware



**Evelyn Parker Atkins**  
Music  
Millsboro, Delaware



**Charles Anthony Baldo**  
Political Science  
Wilmington, Delaware



**Richard A. Austin**  
Business Administration  
Wilmington, Delaware



**Joseph F. Baldwin**  
Business Administration  
Yorklyn, Delaware



**Sidney Bader**  
Political Science  
Wilmington, Delaware



**Spofford J. Beadle**  
Dramatic Arts  
Wilmington, Delaware





**William C. Beiser, Jr.**  
Biology  
Seaford, Delaware



**Robert L. Brody**  
Business Administration  
Laurel, Delaware



**Robert Paul Billingsley**  
Economics  
Claymont, Delaware



**Margaret Ann Brosius**  
History  
West Grove, Pennsylvania



**John F. Bishop**  
Business Administration  
Wilmington, Delaware



**George C. Brown**  
Mathematics  
Wilmington, Delaware



**Richard J. Boyle**  
Chemistry  
Westport, New York



**Frank H. Buck, Jr.**  
Dramatic Arts  
Newark, Delaware



**Woodrow W. Branner**  
Business Administration  
Middletown, Delaware



**Stanley Gordon Budner**  
Business Administration  
Wilmington, Delaware





**William Brantley Budnick**  
History  
Townsend, Delaware



**June Herbst Campbell**  
History  
Wilmington, Delaware



**David T. Bunin**  
Mathematics  
St. Petersburg, Florida



**Ross Lyon Campbell**  
Physics  
Wilmington, Delaware



**Bertil V. Bystrom**  
Business Administration  
Wilmington, Delaware



**William Ferris Cann**  
Biology  
Delaware City, Delaware



**Lawrence G. Campanelli**  
Business Administration  
Wilmington, Delaware



**Paul C. Capodanno**  
German  
Richardson Park, Delaware



**Charles Campbell**  
Biology  
New Castle, Delaware



**Barbara Leonice Carothers**  
Music  
Roaring Spring, Pennsylvania



**Ralph J. Carrington**  
Business Administration  
Wilmington, Delaware



**Ruth-Ellen Cohen**  
Biology  
Wilmington, Delaware



**Gabriel Chuchani**  
Chemistry  
Caracas, Venezuela  
South America



**James A. Collins**  
Psychology  
Wilmington, Delaware



**Donald Otis Clendaniel**  
Political Science  
Milton, Delaware



**Joseph A. Connell**  
Sociology  
Wilmington, Delaware



**Joseph E. Clough**  
English  
Wilmington, Delaware



**William B. Counselman**  
Business Administration  
Houston, Delaware



**Robert N. Cohee**  
English  
Greenwood, Delaware



**Robert L. Coxe**  
Political Science  
Newark, Delaware





Frank S. Craig, Jr.  
Business Administration  
Wilmington, Delaware



James Edwin Dedman, III  
Business Administration  
New Castle, Delaware



James Joseph Crumlish  
Psychology  
Wilmington, Delaware



Eleanor Marvel Deverell  
Biology  
Newark, Delaware



Frank Davis, Jr.  
Political Science  
Wilmington, Delaware



Jay W. Disbrow  
Business Administration  
Wilmington, Delaware



Harvey C. Day, Jr.  
Business Administration  
W. Brighton  
Staten Island, New York



Robert James Donaghy, Jr.  
Business Administration  
Wilmington, Delaware



Walter C. Deakyne, Jr.  
Biology  
Smyrna, Delaware



John J. Donovan  
History  
Wilmington, Delaware



**Eugene Paul Dougherty**  
Business Administration  
Wilmington, Delaware



**Joseph M. Ennis**  
Economics  
Smyrna, Delaware



**Doris A. Dowie**  
Chemistry  
Great Neck, Long Island, N. Y.



**Anthony F. Fauerbach**  
Psychology  
Wilmington, Delaware



**Francis J. Dugan**  
Business Administration  
Wilmington, Delaware



**H. Eugene Fielder**  
Economics  
Middletown, Delaware



**Walter J. Durham**  
Business Administration  
Laurel, Delaware



**C. Alexander Firmani**  
Art  
Wilmington, Delaware



**Edward I. Engel**  
Business Administration  
Wilmington, Delaware



**Willard Merrill Fisher, Jr.**  
History  
Wilmington, Delaware





Eugene Paul Fisler, Jr.  
Chemistry  
Elizabeth, New Jersey



Jack Friedlander  
English  
Wilmington, Delaware



Francis E. Flood  
Chemistry  
Silview, Delaware



Henry Galperin  
Political Science  
Wilmington, Delaware



Jane Wingate Forman  
Spanish  
Wilmington, Delaware



Paul Buckland Gardner  
Agriculture  
Millsboro, Delaware



Berwyn Fragner  
History  
Bronx, New York



Philip C. Genthner  
History  
Glen Mills, Pennsylvania



Arnold Freedman  
Psychology  
Wilmington, Delaware



Frank J. Gentile, Jr.  
Business Administration  
Wilmington, Delaware



**Norman Glassman**  
Business Administration  
Penns Grove, New Jersey



**Mary Aveline Grant**  
Spanish  
Wilmington, Delaware



**Melvin Seymour Goldberg**  
History  
Wilmington, Delaware



**Arnold Greenhouse**  
Business Administration  
Brooklyn, New York



**James Mearns Goldey**  
Physics  
Wilmington, Delaware



**Paul M. Gratz**  
Psychology  
Philadelphia, Pennsylvania



**Mark Harris Goldman**  
Business Administration  
Wilmington, Delaware



**Kenneth E. Hadfield**  
Biology  
Claymont, Delaware



**Manfred L. Goldwein**  
Chemistry  
Newark, Delaware



**Marian Patricia Hall**  
History  
Wilmington, Delaware





Howard Morton Handelman  
Political Science  
Wilmington, Delaware



Margaret A. Humphreys  
English  
Newark, Delaware



Brice M. Hickman  
Business Administration  
Bethany Beach, Delaware



Wray Stephen Hushebeck  
Political Science  
Wilmington, Delaware



Paul Thomas Hitchens  
Biology  
Wilmington, Delaware



Stewart B. Jackson  
Business Administration  
Wilmington, Delaware



Frank Hill Horner, Jr.  
Business Administration  
Wilmington, Delaware



Harry Lewis Jacobs  
Psychology  
Wilmington, Delaware



Mary V. Howell  
History  
Wilmington, Delaware



Robert W. Johnson  
Business Administration  
Wilmington, Delaware



**George Herbert Jonas**  
Mathematics  
Bay City, Michigan



**Robert Kirkland, Jr.**  
Business Administration  
Wilmington, Delaware



**Joseph Karpinski**  
Business Administration  
Wilmington, Delaware



**Isabella Clara Kish**  
Chemistry  
Harrington, Delaware



**George W. Kalinowski**  
Business Administration  
Wilmington, Delaware



**Eugene Robert Kohrumel**  
Business Administration  
Wilmington, Delaware



**Robert F. Kelleher**  
Psychology  
Wilmington, Delaware



**Henry R. Krysiak**  
Chemistry  
Wilmington, Delaware



**Charles Henry Keyes**  
Business Administration  
Wilmington, Delaware



**Peter A. Landskroener**  
Chemistry  
Newark, Delaware





**Frank Anthony Lanza**  
Business Administration  
Englewood, New Jersey



**Sherman C. Longacre**  
Accounting  
Wilmington, Delaware



**Charles Howard Lebegern, Jr.**  
Mathematics  
Wilmington, Delaware



**Leah Reybold MacAllister**  
Spanish  
Haddonfield, New Jersey



**Robert R. Lemon**  
History  
Wilmington, Delaware



**Ronald B. Macturk, Jr.**  
Chemistry  
Claymont, Delaware



**Doris Margaretta Logan**  
Mathematics  
Wilmington, Delaware



**William C. Mammarella**  
English  
Wilmington, Delaware



**Katherine L. Logue**  
Chemistry  
Wilmington, Delaware



**Leroy Manlove**  
Biology  
Milford, Delaware



**Susanne Cecil Marshall**  
Medical Technology  
Wilmington, Delaware



**William M. McGovern**  
Business Administration  
Wilmington, Delaware



**Beatrice Mathewson**  
Mathematics  
Woodcrest, Delaware



**Helen McGready**  
English  
Wilmington, Delaware



**Francis J. McAllister**  
Civil  
Wilmington, Delaware



**Jacqueline Gay McSwain**  
Chemistry  
Richmond, Virginia



**Raymond Jerome McCarthy**  
Business Administration  
Baldwin, New York



**William McGee**  
Business Administration  
Rehoboth Beach, Delaware



**Mary Roberta McCleary**  
Chemistry  
East Petersburg, Pennsylvania



**Alfred Louis Meli**  
Biology  
Wilmington, Delaware





Merwyn W. Merhige  
History  
Freeport, New York



Herbert Morris  
History  
Wilmington, Delaware



John A. Millington  
English  
Gwynedd Valley,  
Pennsylvania



William E. Morris  
English  
Wilmington, Delaware



David E. Mills  
History  
Wilmington, Delaware



Richard E. Murray  
Biology  
Media, Pennsylvania



Francis J. Mooney  
Business Administration  
Newark, Delaware



Daniel Nathans  
Chemistry  
Wilmington, Delaware



Donald Ross Moore  
Political Science  
Wilmington, Delaware



Roy F. Nichols, Jr.  
Chemistry  
Newark, Delaware



Robert P. Niemeyer  
Dramatics  
Portsmouth, Virginia



William R. Owen  
Business Administration  
Freeport, New York



Marjorie E. Nuding  
Spanish  
Bellmore, Long Island, N. Y.



John Henry Paris  
Business Administration  
Freeport, New York



Adele Olga Nurock  
Dramatic Arts  
Dover, Delaware



Nancy Meredith Peter  
Mathematics  
Norristown, Pennsylvania



Charles Armel Nutter  
History  
Moorestown, New Jersey



Mary Elizabeth Pettit  
Biology  
Newark, Delaware



Mary O'Conner  
English  
Wilmington, Delaware



Margaret E. Phillips  
French  
Wilmington, Delaware





Gordon Pirnie  
Political Science  
Truro, Massachusetts



Barbara Ellen Purse  
Fine Arts  
Seaford, Delaware



Leah Plum  
English  
Wilmington, Delaware



Jane Ruth Raymond  
English  
Havertown, Pennsylvania



Wayne John Pollari  
History  
Newark, Delaware



John A. Reburn  
Business Administration  
Wilmington, Delaware



Barbara Ann Potter  
English  
Wilmington, Delaware



William Foster Reinicker  
Business Administration  
Haddonfield, New Jersey



Milman Edward Prettyman, Jr.  
History  
Seaford, Delaware



Sandra Claire Reiss  
Psychology  
West Orange, New Jersey



A. H. Rittenhouse, Jr.  
Psychology  
Wilmington, Delaware



Marcia Salkind  
Psychology  
Dover, Delaware



Adelmo Romagnoli  
Business Administration  
Wilmington, Delaware



Ray M. Sammons, Jr.  
Biology  
Townsend, Delaware



Richard A. Rowe  
Chemistry  
Wilmington, Delaware



Guido R. Schiavi  
Business Administration  
Wilmington, Delaware



John William Royal  
English  
Georgetown, Delaware



Virginia Lee Scott  
History  
Havre de Grace, Maryland



Thomas Edward Runk  
Sociology  
Newark, Delaware



Leroy Seiden  
Mathematics  
Wilmington, Delaware





**Frederick Austen Seward**  
Physics  
Marshallton, Delaware



**George Skovran**  
Chemistry  
Summit Hill, Pennsylvania



**John T. Shannon**  
Business Administration  
Wilmington, Delaware



**Albert Bernard Smith**  
Political Science  
Newark, Delaware



**John A. Shinn, Jr.**  
Business Administration  
Wilmington, Delaware



**Everitt Burns Smith, Jr.**  
Physics  
Newark, Delaware



**Robert Leonard Silverman**  
Political Science  
Philadelphia, Pennsylvania



**Samuel Spiller**  
Business Administration  
Wilmington, Delaware



**Richard Sincook**  
Economics  
Wilmington, Delaware



**Lewis A. Staats**  
Art  
Wilmington, Delaware



**Mariano Stalloni**  
Business Administration  
Chester, Pennsylvania



**Leon Tabb**  
Music  
Wilmington, Delaware



**Richard Stoeffel**  
Business Administration  
Wilmington, Delaware



**George M. Taylor**  
Chemistry  
Elkton, Maryland



**Arthur Joseph Sullivan**  
History  
Wilmington, Delaware



**Sally Thomas**  
Medical Technician  
Georgetown, Delaware



**Albert E. Symonds, Jr.**  
Chemistry  
Wilmington, Delaware



**Richard Tyler**  
Dramatic Arts  
Wilmington, Delaware



**Henry Edward Szatkowski**  
Biology  
Wilmington, Delaware



**Donald Van Brunt, Jr.**  
History  
Long Branch, New Jersey





Evelyn W. Van Devander  
Political Science  
Washington, D. C.



John L. Ware  
Business Administration  
Arden, Delaware



Wm. Bradway Vanneman, Jr.  
Psychology  
Wilmington, Delaware



Constance Anne Warren  
English  
Elizabeth, New Jersey



Hartwell Vannoy, Jr.  
Biology  
Hopewell, New Jersey



Francis Wasik  
Physics  
Wilmington, Delaware



John W. Veale, Jr.  
Chemistry  
Newark, New Jersey



Dwain J. Watkins  
Business Administration  
West Chester, Pennsylvania



William Henry Waitz, Jr.  
Chemistry  
Burlington, New Jersey



Jefferson C. Weekley, Jr.  
Business Administration  
Wilmington, Delaware



Richard A. Whipple  
Accounting  
Merchantville, New Jersey



Barbara Ann Wood  
History  
Haddon Heights, New Jersey



William G. White  
Economics  
Wilmington, Delaware



Eleanor Frances Woodward  
History  
Wilmington, Delaware



Willard Grafton Wilson, Jr.  
History  
Perryville, Maryland



Glenn W. Wright  
Business Administration  
Wilmington, Delaware



Dorothy Clare Winter  
Psychology  
Wilmington, Delaware



Samuel I. Wright  
Chemistry  
Newark, Delaware



Gene Wolfe  
History  
St. Georges, Delaware



Theodore Webster Youngling  
History  
Freeport, New York

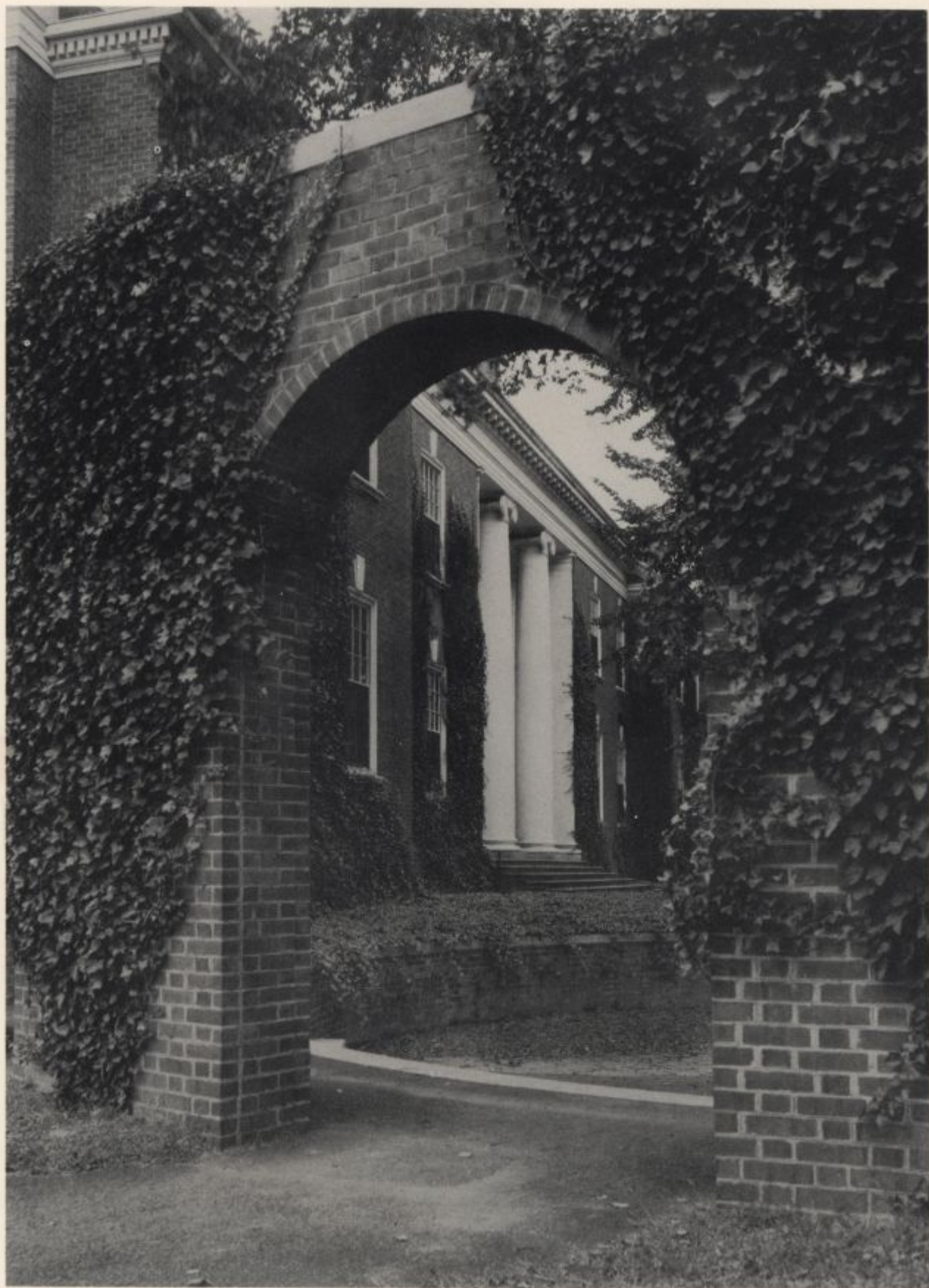




**Lorentz Eric Zwilmeyer**  
Chemistry  
Wilmington, Delaware

..(Not Photographed)

<b>Francis J. Bailey</b> History New Castle, Delaware	<b>Frances Z. Dukler</b> Sociology Newark, Delaware	<b>James F. Kelly</b> English Wilmington, Delaware
<b>Stanley W. Bilski</b> Biology Wilkes-Barre, Pennsylvania	<b>Robert P. Dunlap</b> Business Administration Wilmington, Delaware	<b>Frank G. Lentini</b> Psychology Wilmington, Delaware
<b>John C. Bockius</b> Economics Wilmington, Delaware	<b>Walter J. Ellis</b> Business Administration	<b>Victor Lewis</b> Business Administration Bridgeville, Delaware
<b>William R. Bradley</b> Business Administration	<b>C. Preston Ferguson</b> Chemistry Bellefonte, Delaware	<b>Trifton Livizos</b> History Wilmington, Delaware
<b>John F. Campbell</b> History New Castle, Delaware	<b>Eugene J. Gallagher</b> Business Administration	<b>John B. MacFarlane</b> History
<b>Charles J. Cannon</b> Biology	<b>Nicholas Charles Ganoudis</b> Biology Wilmington, Delaware	<b>Clarence G. Mattison</b> Chemistry
<b>Shirley Mittleman Clifford</b> Psychology Chicago, Illinois	<b>Eleanor A. Geyer</b> Biology	<b>Robert Boecking McHenry</b> Business Administration Newark, Delaware
<b>Susan A. Carter</b> English	<b>William S. Hamilton</b> English Newark, Delaware	<b>Robert Francis Miller</b> Business Administration New Castle, Delaware
<b>William J. Cross</b> Business Administration	<b>Charlotte Mae Hedlicka</b> Biology Stanton, Delaware	<b>Richard B. Miller</b> Psychology
<b>John Patrick Daley</b> Economics Wilmington, Delaware	<b>Howard B. Hitchens</b> Dramatic Arts Milford, Delaware	<b>Giacano Monaco</b> Chemistry Wilmington, Delaware
<b>Dorothy Damon</b> Medical Technician	<b>Robert E. Howell</b> History Arden, Delaware	<b>Raymond Allen Moore</b> History
<b>Stanley W. Deal</b> Business Administration	<b>Donald Lee Huston</b> English Newark, Delaware	<b>James T. Mullin</b> Business Administration
<b>Hugh Francis Dougherty</b> Political Science Wilmington, Delaware	<b>Maximilian C. Jaworowski</b> Economics Wilmington, Delaware	<b>William H. Norton</b> Biology Wilmington, Delaware

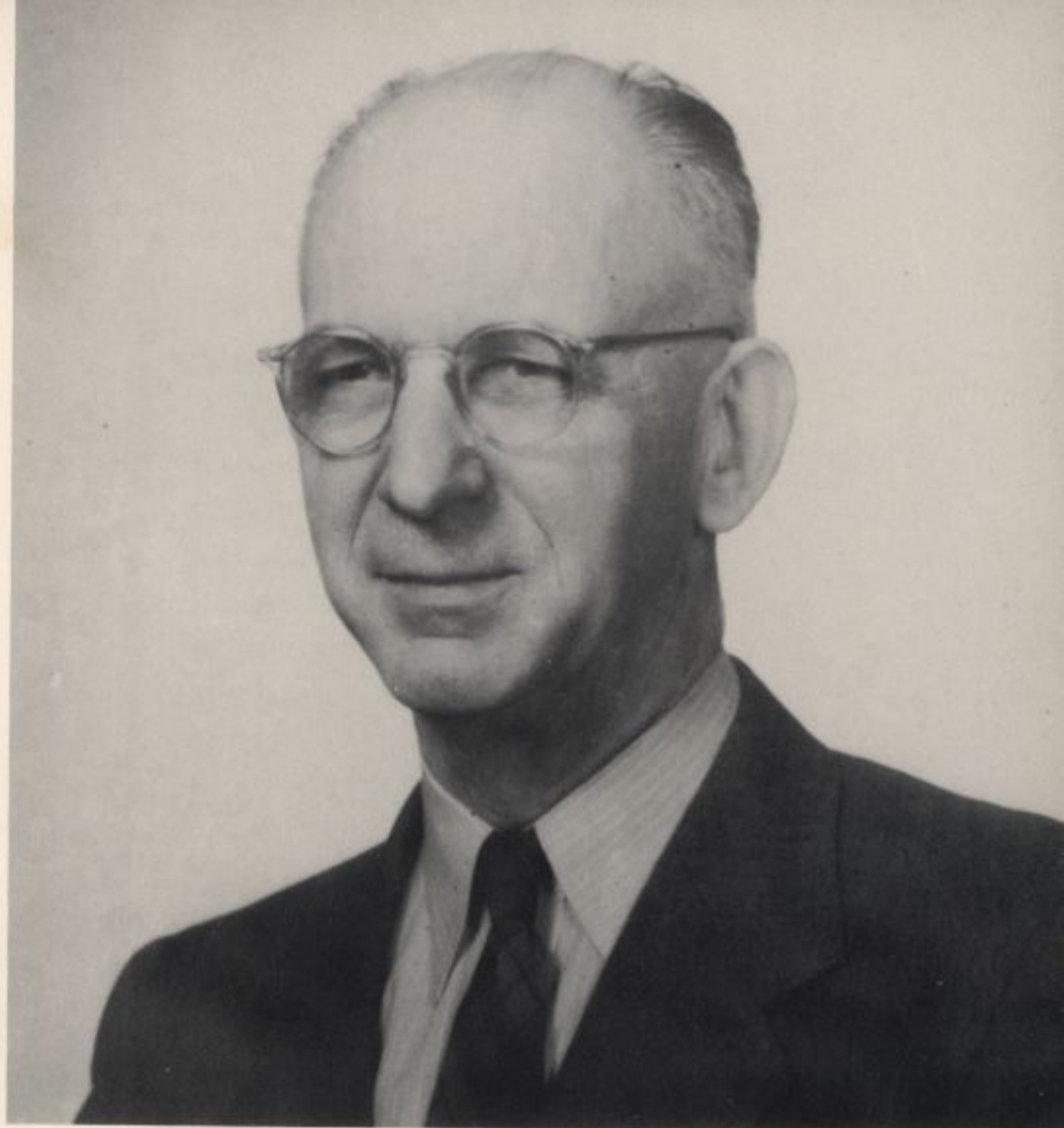






## SCHOOL OF AGRICULTURE

George Lee Shuster  
Dean



A Progressive School of Agriculture as developed within a state university is an important link between the state's economic potentialities and the men educated to realize those potentialities in its capacity to produce. Of even greater importance to the people as a whole is their ability to train and assimilate, after training, men familiar with particular or local aspects of crop production or animal husbandry, so that a School of Agriculture represents a vital institution which is directly beneficial and generally profitable.

The School of Agriculture at the University of Delaware offers specialized training in six vocational fields to students whose interests may range from general Agricultural curricula to such specific fields as Horticulture or Poultry Industry. Lower Delaware is known as an outstanding poultry-producing area and through the University, facilities have been open for research and laboratory work which have proved invaluable to poultrymen. In relative terms, the same may be applied to

Horticulture; Delaware is as famous for peach production as for the hatchery and broiler industries.

There is need, further, to educate the state's farmers on a broad, fundamental basis and to give them a general, yet thorough understanding of the fields of science, as applied to Agriculture on the whole. Having been thus familiarized with present methods of investigations, emphasis in farming may be shifted from accepting old standards to understanding new ones as they come into focus and are applied.

The effort is being made to modernize Agriculture in the sense that men trained practically and theoretically in specific fields may take the jobs that require thorough understanding of economic problems in relation to a state's production capacity, and yet men who will be familiar, too, with the actual production and the productive areas and their problems.



# SCHOOL OF AGRICULTURE

## PROFESSORS

THOMAS ALEXANDER BAKER, Ph.D.  
ROBERT OTIS BAUSMAN, Ph.D.  
EUGENE P. BRASHER, M.S.  
JOHN W. HEUBERGER, Ph.D.  
CLAUDE ELLIS PHILLIPS, M.S.  
LOUIS A. STEARNS, Ph.D.  
ARTHUR EDWARD TOMHAVE, M.S.  
ERNEST F. WALKER, M.S.

## ASSOCIATE PROFESSORS

WALTER A. CONNELL, M.S.  
ROBERT SIDNEY COX, Ph.D.  
JOHN LINTON COYLE  
SAMUEL A. DUM, Ph.D.  
CHESTER W. HITZ, Ph.D.  
TOM DOYLE RUNNELS, M.S.  
WINTHROP C. SKOGLUND, S.M.

## ASSISTANT PROFESSORS

LEO J. COTNOIR, JR., M.S.  
HENRY WILLIAM CRITTENDEN, M.S.  
PAUL M. HODGSON, M.A.  
ELISHA M. RAHN, M.S.

## INSTRUCTORS

ROBERT J. BACON, M.S.  
DALE FRANK BRAY, M.S.  
F. BURTON COLLINS, M.S.  
CARL W. HALL, B.S., B.A.E.  
ALADAR F. KISH, B.S.



Eugene D. Anderson  
Education  
Wyoming, Delaware



William R. Conaway  
Poultry Industry  
Greenwood, Delaware



Ralph P. Barwick  
Education  
Greenwood, Delaware



Donald F. Crossan  
Entomology & Plant Pathology  
Wilmington, Delaware



Gordon Sharpless Bierman  
Animal Industry  
Wilmington, Delaware



Edward James Davis  
Entomology & Plant Pathology  
Newark, Delaware



Richard G. Buckingham  
Agronomy  
Newark, Delaware



Samuel DeBoer  
Animal Industry  
Fair Lawn, New Jersey



Harry W. Cannon  
Animal Industry  
Bridgeville, Delaware



William I. Dolby  
Animal Industry  
Georgetown, Delaware





Edwin S. Ely  
Animal Industry  
Greenville, Delaware



James Scully Kee  
Animal Industry



C. George Green  
Agronomy  
Roselle, Delaware



William John Kuhn, Jr.  
Agronomy  
Mt. Cuba, Delaware



John W. Hart  
Horticulture  
Ridley Park, Pennsylvania



William W. Kutz  
Entomology & Plant Pathology  
Harrisburg, Pennsylvania



Leonard E. Hitch  
Education  
Laurel, Delaware



Jesse Eugene Lair  
Animal Industry  
Landenberg, Pennsylvania



Richard M. Huff  
Animal Industry  
Wilmington, Delaware



Robert B. Lind  
Entomology & Plant Pathology  
Bellmoor, Delaware



Melvin C. Luff  
Agronomy  
Camden, Delaware



Charles Richard Steinke  
Agronomy  
Newark, Delaware



Joseph P. Lynch  
Horticulture



Robert A. Stevenson  
Entomology & Plant Pathology  
Wilmington, Delaware



William Grier Murray, II  
Entomology & Plant Pathology  
Cranston Heights, Delaware



Kenneth C. Walls  
Animal Husbandry  
Greenwood, Delaware



John William Reynolds  
Poultry Industry  
Greenwood, Delaware



James Robert Wheatley  
Horticulture  
Claymont, Delaware



James L. Sease, Jr.  
Agronomy  
Wilmington, Delaware



Dawson F. Warrington  
Animal Industry  
Wilmington, Delaware



..(Not Photographed)..

Wallace R. Comegys  
Animal Industry  
Wilmington, Delaware

John A. Dantine  
Entomology & Plant Pathology  
Carneys Point, New Jersey

Willard R. Ewing  
Poultry Industry

Albert H. Hammond, Jr.  
Poultry Industry  
Newark, Delaware

James A. Mearns  
Entomology  
Wilmington, Delaware

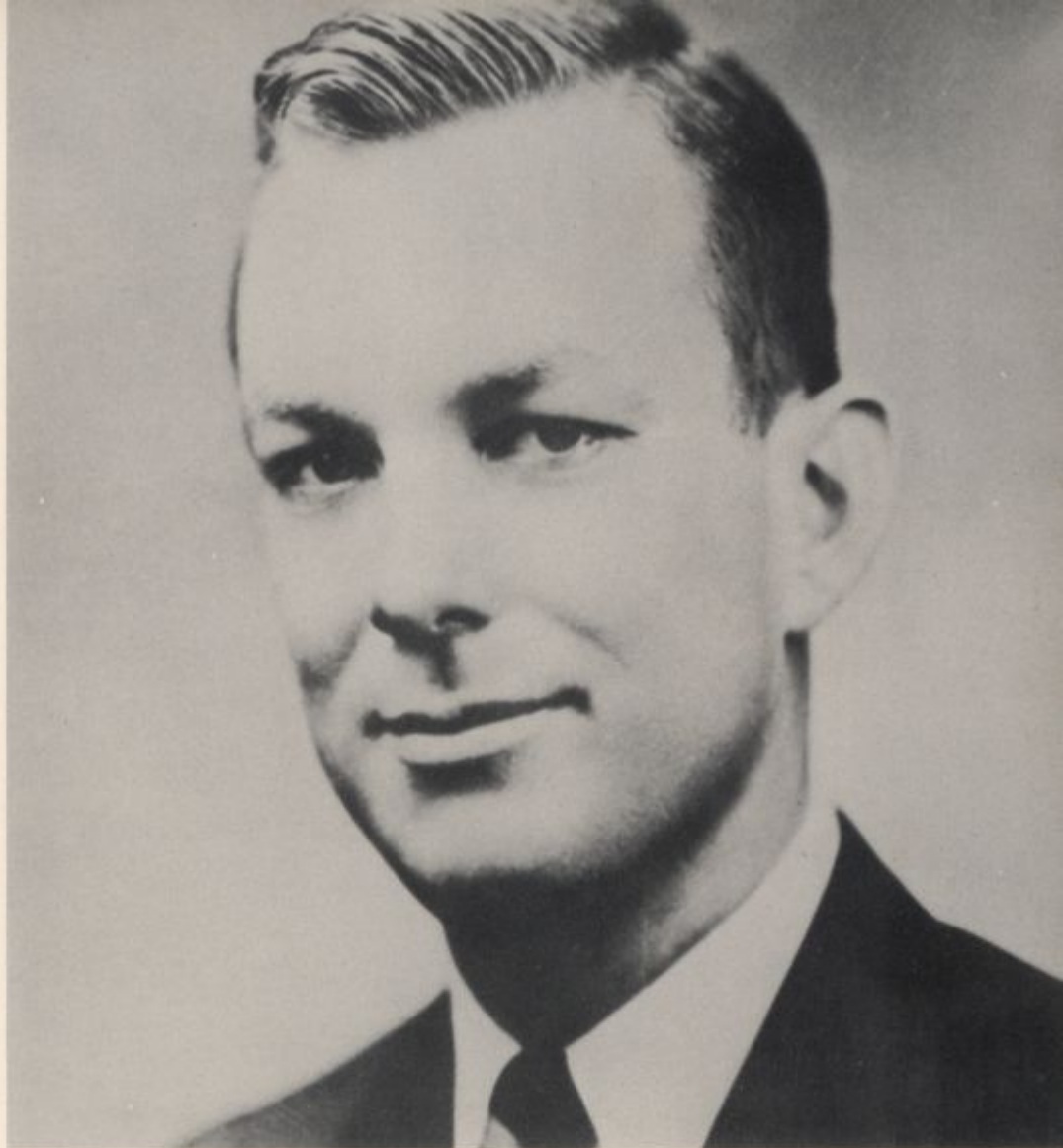






## SCHOOL OF EDUCATION

William O. Penrose  
Dean



At the present time one of the gravest problems facing the American public has to do with the inadequacy of certain aspects of prevailing educational systems. In an attempt to meet these problems and to provide solutions which will benefit the educational system as a whole, educators are theorizing and experimenting with the result that major changes can be seen taking place within this field. Following the war, it became evident that there was a growing need for more specialized training among teachers on primary and secondary levels and that to meet this need, those trained must be acquainted with the latest developments in educational theory and practice. Experience gained during the undergraduate career of a student has proved invaluable in that it enables him to apply firsthand, yet experimentally, the results gained by modern research and development, especially in reference to psychological methods now considered to be of extreme importance in comprehending a growing child's needs.

The School of Education at the University, due to the nature of its internal organization and to its cooperation with the State Board

of Education, has made a great deal of progress in the attempt to better educate its students in preparation for a teaching career in the state. Close contact is maintained between the University and the schools of the state and those who are to enter a teaching career receive initial experience in those schools where their interests are most direct and their own academic practices most applicable. A further advantage is offered in the encouragement offered a teacher in the State of Delaware to continue on to work for a Master's Degree, to concentrate on one specific branch of work in the field and follow that up with experience in the state schools. The immediate concern of the University's School of Education is the improvement of the Delaware schools through education—careful and thoughtful training of those men and women who will teach. The ultimate purpose is, however, the general improvement of the entire system, which can only be initiated in and developed through a progressive School of Education, with roots deep both in the University and in the area it represents.



# SCHOOL OF EDUCATION

## PROFESSORS

RAYMOND WALTER HEIM, M.A.

WILLIAM DAVID MURRAY, B.A.

ALICE VAN de VOORT, Ph.D.

## ASSISTANT PROFESSORS

ARDWIN JOSEPH DOLIO, Ed.D.

BEATRICE PEARL HARTSHORN, M.A.

WILLIAM SOUTHGATE MARTIN, B.A.

D. KENNETH STEERS, M.A.

## INSTRUCTORS

JOSEPH L. BRUNANSKY, B.A.

ALDEN H. BURNHAM, M.S.

FRED EMMERSON, M.S.

CHARLOTTE L. HANSON, M.A.

ELEANOR JORDAN MASON, B.S.

MARTIN T. PIERSON, B.S.

HARRY W. RAWSTROM, B.S.

CURTIS R. RYLANDER, B.S.

ROBERT F. SIEMEN, B.A.

MARYANN WALTZ, M.A.

DANIEL WESLEY WOOD, M.A.

## PART TIME INSTRUCTOR

BEATRICE LINK HOOD, B.S.



Thurman Adams, Jr.  
Agriculture  
Bridgeville, Delaware



Elizabeth Ann Coffin  
Elementary Education  
Goldsboro, Maryland



L. Gertrude Baynard  
Elementary Education  
Harrington, Delaware



Helen Marie Dougherty  
Elementary Education  
Wilmington, Delaware



John S. Bishop, Jr.  
Physical Education  
Wilmington, Delaware



Shirley Day  
History  
Newark, Delaware



Joseph Anthony Bradley  
Secondary Education  
Wilmington, Delaware



Eleanor P. Durney  
Elementary Education  
Wilmington, Delaware



Roberta Ann Carothers  
Music  
Roaring Spring, Pennsylvania



Earle E. Ewing, Jr.  
Physical Education  
Rising Sun, Maryland





Harvey E. Ewing, Jr.  
Physical Education  
Wilmington, Delaware



Mary Frances Gordy  
Physical Education  
Laurel, Delaware



Robert Vincent deFiore  
Physical Education  
Wilmington, Delaware



Marion Leon Hart  
Physical Education  
Dover, Delaware



John Leo Gallagher  
Physical Education  
Athens, Pennsylvania



Jules Hoffstein  
Physical Education  
Wilmington, Delaware



Robert H. George  
Physical Education  
Dover, Delaware



Edward Hilbert Horney  
Physical Education  
Wilmington, Delaware



William John Gordon  
History  
Ocean City, New Jersey



Phyllis Ann Jones  
Elementary Education  
Bridgeville, Delaware



**Judith Rubidge Koller**  
Physical Education  
Wilmington, Delaware



**Mary Agnes McCarville**  
Elementary Education  
Wilmington, Delaware



**Ann M. Kuhn**  
Elementary Education  
Salisbury, Maryland



**Ann McCorkle**  
Elementary Education  
Wilmington, Delaware



**Gordon H. Lang**  
Physical Education  
Wilmington, Delaware



**Robert B. McKenry**  
Business Administration  
Newark, Delaware



**Laura Jane Lange**  
Physical Education  
Wilmington, Delaware



**Eloise Ann Moore**  
Elementary Education  
Delmar, Delaware



**Marilyn Muhlbauer**  
English Education  
Wilmington, Delaware



**Rosalie Farrell Schafer**  
Elementary Education  
Wilmington, Delaware





Peirre Schiltz  
Civil Engineering  
Bronxville, New York



Thelma Gertrude Thompson  
Physical Education  
Newark, Delaware



Thomas R. Silk  
Physical Education  
Newark, Delaware



Keith M. Tracy  
Physical Education  
Wilmington, Delaware



Margaret Jane Simon  
Mathematics  
Wilmington, Delaware



Margaret A. Vaklyes  
Elementary Education  
Wilmington, Delaware



Earl Smith  
Physical Education  
New Castle, Delaware



Carol Lynn Ward  
Elementary Education  
Wilmington, Delaware



Wilfred Smith  
Economics  
Claymont, Delaware



Nancy H. Wills  
Elementary Education  
Bristol, Pennsylvania



**Kenneth E. Wood**  
Physical Education  
Wilmington, Delaware

..(Not Photographed)..

**Roland F. Anderson**  
Physical Education  
Elkton, Maryland

**Florence Katharyn Boehmler**  
Elementary Education  
Smyrna, Delaware

**Marie A. DiSabatino**  
Elementary Education  
Wilmington, Delaware

**Margaret Ewing Dukes**  
Elementary Education  
Newark, Delaware

**Doris Ann Evans**  
Elementary Education  
Richardson Park, Delaware

**George E. Glynn**  
Elementary Education  
Wilmington, Delaware

**Bette Louise Gordy**  
Elementary Education  
Georgetown, Delaware

**Henry J. Matuszewski**  
Physical Education  
Wilmington, Delaware

**Dorothy Ann Morris**  
Elementary Education  
Delmar, Delaware

**Margaret J. O'Neill**  
Elementary Education  
Smyrna, Delaware

**Jeanne C. Potts**  
Elementary Education  
Wilmington, Delaware

**George J. Schaeen**  
Physical Education  
Newark, Delaware

**Harold C. Thompson**  
Physical Education  
Manasquan, New Jersey

**Martha Yerkes**  
Elementary Education











## SCHOOL OF ENGINEERING

David L. Arm  
Dean



Working in close cooperation with industry, the School of Engineering surveys basic problems and developments with the purpose of training students for successful careers in the engineering professions. Courses are offered in four major divisions: Chemical Engineering, Electrical Engineering, Mechanical Engineering, and Civil Engineering. Contact with contemporary industrial progress is provided through lectures by visiting engineers, field trips, films on engineering subjects, and panel discussions of student problems. Familiarity with the social and economic aspects of engineering is required, and an understanding of the fundamentals of economics and business, as well as of the humanities, is encouraged.

Research programs are currently being conducted in conjunction with local and national industries, and with various agencies of the United States Government. Because certain departments have been expanded to accomplish fundamental research projects, the University's School of Engineering includes departments specializing in research in such fields as

combustion, heat transfer, and plastics. The original work being done in these fields stimulates the growth of the various departments concerned and as a result, increasingly expanding facilities are made available to the undergraduates, as well as to the graduate students. There is also emphasis placed on undergraduate programs providing for original research—a policy that is becoming more prevalent throughout the entire University. The privilege of doing independent work is granted to outstanding students who wish to concentrate on projects or problems which they themselves originated, providing they meet with the approval of an advisor qualified to judge whether or not the problem in question is adequate for such advanced study. Thus the student's opportunities in the School of Engineering are greatly broadened and his chances of becoming a well trained and outstanding engineer in the best engineering tradition are excellent in a system providing professional guidance and contact with the real problems and developments in the field.



# SCHOOL OF ENGINEERING

## PROFESSORS

JAMES I. CLOWER, M.E.  
CHARLES NELSON GAYLORD, M.S. in Eng.  
ROBERT LAMAR PIGFORD, Ph.D.  
KURT WOHL, Ph.D.  
MILTON GABRIEL YOUNG, M.S.

## ASSOCIATE PROFESSORS

OLAF P. BERGELIN, Sc.D.  
HAROLD A. BIRKNESS, M.S. in M.E.  
HARRY S. BUECHE, M.S. in E.E.  
JACK A. GERSTER, Ph.D.  
RALPH WILLIAM JONES, M.S., M.A.  
THOMAS DARMON SMITH, C.E.  
FRANK ZOZZORA, B.F.A., B.S.

## ASSISTANT PROFESSORS

JAMES MARTIN ALLMAN, B.S. in M.E.  
LOUIS WOLFE GLEEKMAN, Ph.D.  
C. R. GOTTSCHALL, B.S. in M.E.  
SALVATORE ALBERT GUERRIERI, M.S. in Ch.E.  
ALFRED RICHARDS JUMIKIS, Eng.D.  
RALPH E. KUEHN, M.S. in E.E.  
CLYDE NEELY LAUGHTER, M.S. in C.E.  
EDWARD CHARLES LAWSON, JR., M.M.E.  
WILLIAM FRANCIS LINDELL, B.M.E., E.E.  
WILLIAM EUGENE PIPER, C.E., M.E.

## INSTRUCTORS

WILLIAM JOSEPH BROWN, B.S. in C.E.  
ROBERT VINCENT CANNING, B.E.  
LEON W. CASE  
DONALD F. CLEMENTS, M.E.E.  
WILLIAM BERNARD CLEMENTS, B.M.E.  
FRANK S. DRECHSLER, M.M.E.  
VINCENT A. FORSS, B.S. in C.E.  
JAMES LA PENNE GUENVEUR, B.E.  
ARTHUR LINCOLN KAPLAN, B.S.E.E.  
MORRIS SOLOMON OJALVO, M.M.E.  
EDWARD J. OLOWINSKI, M.S. in M.E.  
CHARLES D. TAYLOR, B.C.E.



James H. Alexander  
Civil  
Perryville, Maryland



Howard Dudley Barton  
Mechanical  
Wilmington, Delaware



Joseph J. Alexander  
Electrical  
Wilmington, Delaware



Stanley A. Bazela  
Mechanical  
Wilmington, Delaware



William Harold Bodnaruk  
Electrical  
Irvington, New Jersey



Earl R. Bennett  
Mechanical  
Wilmington, Delaware



George N. Bailey, II  
Chemical  
New Castle, Delaware



Paul F. Berry  
Mechanical  
Wilmington, Delaware



James E. Baird  
Electrical  
Wilmington, Delaware



Julian Wayne Blake  
Mechanical  
Wilmington, Delaware





Clair Wayland Blatchford  
Electrical  
Wilmington, Delaware



William H. Burnett  
Mechanical  
Newark, Delaware



Marco T. Bonfitto  
Electrical  
Chester, Pennsylvania



John David Byam  
Chemical  
Lowell, Massachusetts



Frank Joseph Brotschal  
Chemical  
Newark, New Jersey



Ronald M. Bykowski  
Mechanical



John T. Budd  
Chemical



William B. Callahan  
Mechanical  
Greenville, Delaware



Harold H. Burke  
Mechanical  
Perryville, Maryland



William Murray Campbell  
Mechanical  
Wilmington, Delaware



Joseph Anthony Cassidy  
Civil  
Audubon, New Jersey



Allan Cooper Cowan, Jr.  
Chemical  
Wilmington, Delaware



Bernard Beano Chasens  
Electrical  
Woodbine, New Jersey



Everett Wilson Cranmer  
Electrical  
Beach Haven, New Jersey



Richard J. Clarke  
Chemical  
Downingtown, Pennsylvania



John Edward Cronin  
Mechanical  
Erie, Pennsylvania



John David Clemens  
Mechanical  
West Chester, Pennsylvania



Joseph M. Danes  
Electrical  
Hartly, Delaware



Harry G. Conner  
Electrical



Ernest A. DiPasquantonio  
Mechanical  
Wilmington, Delaware





Harry E. Downs  
Electrical  
Newark, Delaware



Allen C. Evans  
Electrical  
Wilmington, Delaware



Robert R. Dukes  
Chemical  
East Lansdowne, Pennsylvania



Carl Fink  
Civil  
Dover, Pennsylvania



James N. Edmondson  
Chemical  
Smyrna, Delaware



Lloyd Fox  
Mechanical  
Perryville, Maryland



Edward H. Elliott  
Mechanical  
Newark, Delaware



Vincent Frampton  
Chemical  
Claymont, Delaware



Francis Edward Erdle  
Electrical  
Dover, Delaware



Colvin Franklin  
Mechanical  
Claymont, Delaware



Marion Meredith Frasher  
Electrical  
Wyoming, Delaware



Donald A. Gregg  
Civil  
Hockessin, Delaware



George Weldon Frederick  
Mechanical  
Bellefonte, Delaware



Rodman Irvin Gregg  
Civil  
Marshalltown, Delaware



Robert Louis Gammache  
Chemical  
Wilmington, Delaware



Bauduy Robert Grier  
Mechanical  
Wilmington, Delaware



Lawrence Henry Gillespie, Jr.  
Mechanical  
Drexel Hill, Pennsylvania



Floyd E. Gross  
Electrical  
York, Pennsylvania



Robert A. Gravell  
Mechanical  
New Castle, Delaware



Robert Charles Grubbs  
Electrical  
Audubon, New Jersey





Francis W. Haley  
Electrical  
Wilmington, Delaware



Ernest Justos Henley  
Chemical  
Bloomfield, New Jersey



John Frederick Hopkins  
Civil  
Wilmington, Delaware



Benjamin Edward Herring  
Mechanical  
New Castle, Delaware



John W. Harrington  
Mechanical  
Wilmington, Delaware



Harry Keller Heyl  
Electrical  
Jenkintown, Pennsylvania



Fred G. Harvey, Jr.  
Mechanical  
Hockessin, Delaware



Richard C. Higgins  
Mechanical  
Seaford, Delaware



Carroll D. Hauptle  
Mechanical  
Lansdowne, Pennsylvania



Charles A. Hill  
Electrical  
Wilmington, Delaware



Robert Irwin  
Mechanical  
Newark, Delaware



James F. Kearns  
Chemical  
Wilmington, Delaware



Alex Jackson  
Electrical  
Newark, Delaware



Andrew J. Kelleher  
Electrical  
Wilmington, Delaware



Ernest Thomas Ianni  
Civil  
Wilmington, Delaware



Raymond S. Kennard  
Civil  
Wilmington, Delaware



Charles S. Ioanedis  
Chemical  
Elsmere, Delaware



Francis Klein  
Chemical  
Wilmington, Delaware



Carl H. Jahn  
Mechanical  
Newark, Delaware



Audre William Korenyi  
Chemical  
Bronx, New York





**Roscoe M. Lewis, Jr.**  
Electrical  
Wilmington, Delaware



**Robert H. Logan, Jr.**  
Mechanical  
Newark, Delaware



**Charles Allen Liddicoat**  
Electrical  
Wilmington, Delaware



**Samuel C. Lukens, III**  
Mechanical  
Wilmington, Delaware



**Curtis D. Liddicoat**  
Mechanical  
Reading, Pennsylvania



**William Saxton Lynch**  
Electrical  
Wilmington, Delaware



**George A. Lindenkohl**  
Electrical and Mechanical  
Milford, Delaware



**William S. Lynch**  
Electrical  
Wilmington, Delaware



**Trifton Livizos**  
Wilmington, Delaware



**Samuel H. Macrum**  
Mechanical  
Connellsville, Pennsylvania



John A. Malinowski  
Mechanical  
Wilmington, Delaware



Albert G. McCauley, Jr.  
Mechanical  
Wilmington, Delaware



Thomas Carmello Marando  
Civil  
Delmar, Delaware



James Patrick McFadden  
Mechanical  
Wilmington, Delaware



Charles Norman Masten  
Chemical  
Pennsgrove, New Jersey



Wallace Francis McFaul, Jr.  
Civil  
Milford, Delaware



Harry L. Masten  
Electrical  
Pennsgrove, New Jersey



Ben W. Melvin, Jr.  
Chemical  
Wilmington, Delaware



Harry A. Mayer  
Electrical  
Wilmington, Delaware



John E. Miller  
Chemical  
Chester, Pennsylvania





Joseph Y. Miller  
Civil  
Wilmington, Delaware



George L. New  
Chemical  
Wilmington, Delaware



William J. Mooney  
Chemical  
Wilmington, Delaware



Richard T. Onley  
Mechanical  
Claymont, Delaware



Ralph Leslie Moore  
Mechanical  
Wilmington, Delaware



Robert H. Overdeer  
Electrical  
Newark, Delaware



Leo Joseph Mullin, Jr.  
Electrical  
Wilkes-Barre, Pennsylvania



Robert R. Paules  
Chemical  
Columbia, Pennsylvania



Paul E. Mullins  
Electrical  
Marshallton, Delaware



Joseph T. Pennock  
Mechanical  
Kennett Square, Penna.



Miles Powell, Jr.  
Chemical  
Mt. Holly, New Jersey



Robert L. Richards  
Chemical  
Wilmington, Delaware



Stuart W. Pratt, Jr.  
Chemical  
Wilmington, Delaware



Julian W. Rittenhouse  
Mechanical  
Newark, Delaware



Isidore J. Previtera  
Civil  
Philadelphia, Pennsylvania



George Rouvalis  
Electrical  
Newark, Delaware



William H. Reign  
Electrical  
Wilmington, Delaware



James O. Russell  
Mechanical  
Bridgeville, Delaware



Richard C. Rhodes, Jr.  
Mechanical  
Claymont, Delaware



Earl F. Rust  
Civil  
Georgetown, Delaware





**Kenneth Y. Ryan**  
Mechanical  
Frankford, Delaware



**Francis J. Sarapulski**  
Mechanical  
Newark, Delaware



**Louis M. Sala**  
Chemical  
Wilmington, Delaware



**Daniel Scannel**  
Electrical  
Wilmington, Delaware



**Frank R. Sale**  
Electrical  
Dover, Delaware



**Andrew J. Scari**  
Mechanical  
Wilmington, Delaware



**H. Irvin Salmons, Jr.**  
Mechanical  
Wilmington, Delaware



**Emil J. Selvaggi**  
Chemical  
Wilmington, Delaware



**Bruce A. Samson**  
Electrical  
New York, New York



**William Paul Selvaggi**  
Mechanical  
Wilmington, Delaware



James L. Shqrt  
Chemical  
Lewes, Delaware



Harry Seel Stanton, Jr.  
Civil  
Wilmington, Delaware



John A. Skibicki  
Civil  
Wilmington, Delaware



Edgar Henshaw Steedle  
Mechanical  
Delaware City, Delaware



Kenneth Dodge Smalling  
Electrical  
Fort Totten, Long Island, N. Y.



Clarence Steelman, Jr.  
Chemical  
Camden, New Jersey



Robert Ely Stabler  
Chemical  
Chadds Ford, Pennsylvania



Robert R. Stewart, Jr.  
Electrical  
Harrington, Delaware



Louis T. Staats  
Mechanical  
Lewisville, Pennsylvania



Frank Tamberrino  
Electrical  
Delmar, Delaware





William Stanley Tawes  
Mechanical  
Claymont, Delaware



Philip E. Touhey  
Mechanical  
Yorklyn, Delaware



John S. Taylor  
Chemical  
Wilmington, Delaware



William W. Trainer  
Civil  
Wilmington, Delaware



Albert A. Thorp  
Mechanical  
Christiana, Delaware



Robert T. Van Ness  
Chemical  
Wilmington, Delaware



David Cornbrooks Trimble  
Mechanical  
Yorklyn, Delaware



James A. Vest, Jr.  
Chemical  
Huntington, West Virginia



Daniel Gregory Tynan  
Mechanical  
New Rochelle, New York



John C. Volk  
Civil  
Wilmington, Delaware



Jerome Walsh  
Mechanical  
Wilmington, Delaware



Charles Coulter Widdis  
Civil  
Long Branch, New Jersey



John Michael Ward  
Chemical  
Chester, Pennsylvania



John Palmer Work  
Mechanical  
Wilmington, Delaware



Preston Harry Webb  
Civil  
Milton, Delaware



Gilbert L. Workman  
Electrical  
Delmar, Delaware



Robert J. Weishapl  
Mechanical  
Hillside, New Jersey



George H. Wright, Jr.  
Civil  
Wilmington, Delaware



William Anthony Welsh, Jr.  
Chemical  
Wilmington, Delaware



Robert Wilson Wright  
Electrical  
Delmar, Delaware



..(Not Photographed)..

Frank H. Balling, III  
Electrical  
Newark, Delaware

Matthew C. Bauman  
Electrical  
Wilmington, Delaware

William H. Bave  
Chemical  
Wilmington, Delaware

John T. Grabowski  
Mechanical  
Wilmington, Delaware

Louis J. Grunfelder  
Electrical

Maxwell P. Harrington  
Civil  
New Castle, Delaware

John Frederick Hopkins  
Civil  
Wilmington, Delaware

Richard I. Hough  
Chemical

Lionel J. Keyser, III  
Civil

Edward J. Klaczkiewicz  
Mechanical  
Wilmington, Delaware

Walter S. Leipold  
Mechanical  
Wilmington, Delaware

John Macadam, III  
Mechanical  
Hockessin, Delaware

Walter A. Macusa  
Civil

James P. Mays  
Chemical

Francis J. McAllister  
Civil  
Wilmington, Delaware

Benjamin D. Myers, Jr.  
Electrical  
Milford, Delaware

Lawrence M. Phillips  
Mechanical  
Marshallton, Delaware

Andrew J. Scaricaciottoli  
Mechanical

Milne J. Schmid  
Civil  
Wilmington, Delaware

Price K. Snyder  
Mechanical  
Milton, Delaware

Joseph E. Thompson, Jr.  
Mechanical

Donald J. Volk  
Mechanical  
Wilmington, Delaware

Lester D. Wilkes  
Electrical  
Seaford, Delaware







## SCHOOL OF HOME ECONOMICS

Irma Ayars  
Dean



One of the institutions most vital to the welfare of this country under present national and international conditions is a stable society, the basic cell of which is the family unit. There has never been a greater nor a more provocative demand for good homemakers than there is today. The security that the American way of life rests on depends upon the solidarity of the family relationship; and this in turn depends upon the general preparedness of our men and women in assuming the responsibilities of family life.

A home economics curriculum is purposely outlined to provide those elements basic to general preparedness, not only in reference actually to the making of a home, but in many other respects as well. There are a number of science courses included to provide technical training, as well as related Arts

and Sciences subjects which students are encouraged to take as a means of securing a firmer and richer background for more fundamental requirements. In addition, courses for specialization in professional fields may be also taken.

In all cases, emphasis is placed on such preparation that students may take their positions as vital parts of the family with confidence and perform their duties with competence and grace. The role of hostess, mother, wife, and buyer is a complicated one making infinite demands on any woman playing it. The increasing complexity of living in the modern world is reflected back finally to the home, and there it is the part of the wife and mother to stabilize conditions as they affect the family and provide emotional and psychological security so important to the health of this basic cell — the family unit.



# SCHOOL OF HOME ECONOMICS

## Assistant Professors

Nell Howery Griffin, M.A.  
Elizabeth Gamble Kelly, M.A.

## Instructor

Anne M. Murphy, B.S.

## Part Time Instructors

Betty Faulconer, B.S.  
Frances D. Sweet, B.A.





Jeannette Bostwick  
General  
Felton, Delaware



Betty France DeBoer  
Foods  
Montclair, New Jersey



Catherine L. Bilderback  
Textiles  
Wilmington, Delaware



Anna Florence Fogelman  
Foods and Nutrition  
Wilmington, Delaware



Evelyn Laura Carothers  
Education  
Roaring Spring, Pennsylvania



Jean Sines Hemphill  
Education  
Penfield, Pennsylvania



Milene Mae Clark  
Textiles  
Wilmington, Delaware



Mary Lou Kelley  
Textiles  
Silview, Newport, Delaware



Mary Jane Day  
Foods  
Newport, Delaware



Collista McKelvey  
Foods  
Upper Montclair, New Jersey





Jean Ray Meredith  
Education  
Greenwood, Delaware



Janet Louise Myers  
Foods  
Prospect Park, Pennsylvania



Barbara B. Thompson  
Foods  
Hockessin, Delaware



Mary Phyllis Nelson  
Foods  
St. Georges, Delaware



Frances Sarapulski  
Foods  
Newark, Delaware



Barbara Ann Shafer  
Education  
Allentown, Pennsylvania







*Underclassmen . . .*







#### JUNIOR CLASS OFFICERS

President .....	RICHARD WELLS
Vice-President .....	DORIS GOODLEY
Secretary .....	LOIS STREITHOF







#### SOPHOMORE CLASS OFFICERS

President .....	JOHN BUECHELE
Vice-President .....	BETTY BOYCE
Secretary .....	ELLEN MC QUAID
Treasurer .....	JOE LANK







#### FRESHMAN CLASS OFFICERS

President .....	ROBERT I. WRIGHT
Vice-President .....	MARTY FORSYTH
Secretary .....	BARBARA MARTIN
Treasurer .....	RICHARD HARPER