



F RATERNITIES

Art Paul



ΕΛΛΗΝΙΚΗ ΔΗΜΟΚΡΑΤΙΑ





SIGMA PHI EPSILON FRATERNITY



SIGMA PHI EPSILON FRATERNITY

Fratres in Facultate

Dr. W. Owen Sypherd
Prof. Harold E. Tiffany
Dr. Charles C. Palmer

Fratres in Urbe

George L. Townsend, Jr.
Robert Levis

Fratres in Collegia

1921

Joseph H. Fairbanks
James A. Horty
William H. Frederick
Hugh McCaughan, Jr.
E. George Tonkin
Arthur F. Spaid
C. Thomas Attix
William T. Broughall
Richard H. McMullen
Joseph C. Wise

1922

H. P. Young
R. N. Foulk
W. D. Smith
G. G. Carter
W. R. Triggs
J. H. Harper
R. Stewart
D. R. Allmond
W. F. P. Jacobs
R. H. Carll
B. R. Challenger
L. Roemer

S. P. Maroney
W. D. Holton

1923

J. P. Wintrup
J. M. Baxter
C. T. Wise
J. P. Robbins
H. W. Gray
T. J. Rowan
J. E. Tilghman
J. B. France
J. F. Challenger
F. D. Strickler
R. Murray
H. M. Lund

1924

J. H. Donaldson
F. B. Smith
C. W. Murray
M. A. Aiken
H. L. Corkran
J. R. Fader

PLEDGES

F. Roemer
P. A. Armstrong
H. Betzmer



.1920. BLUE HEN .1921.

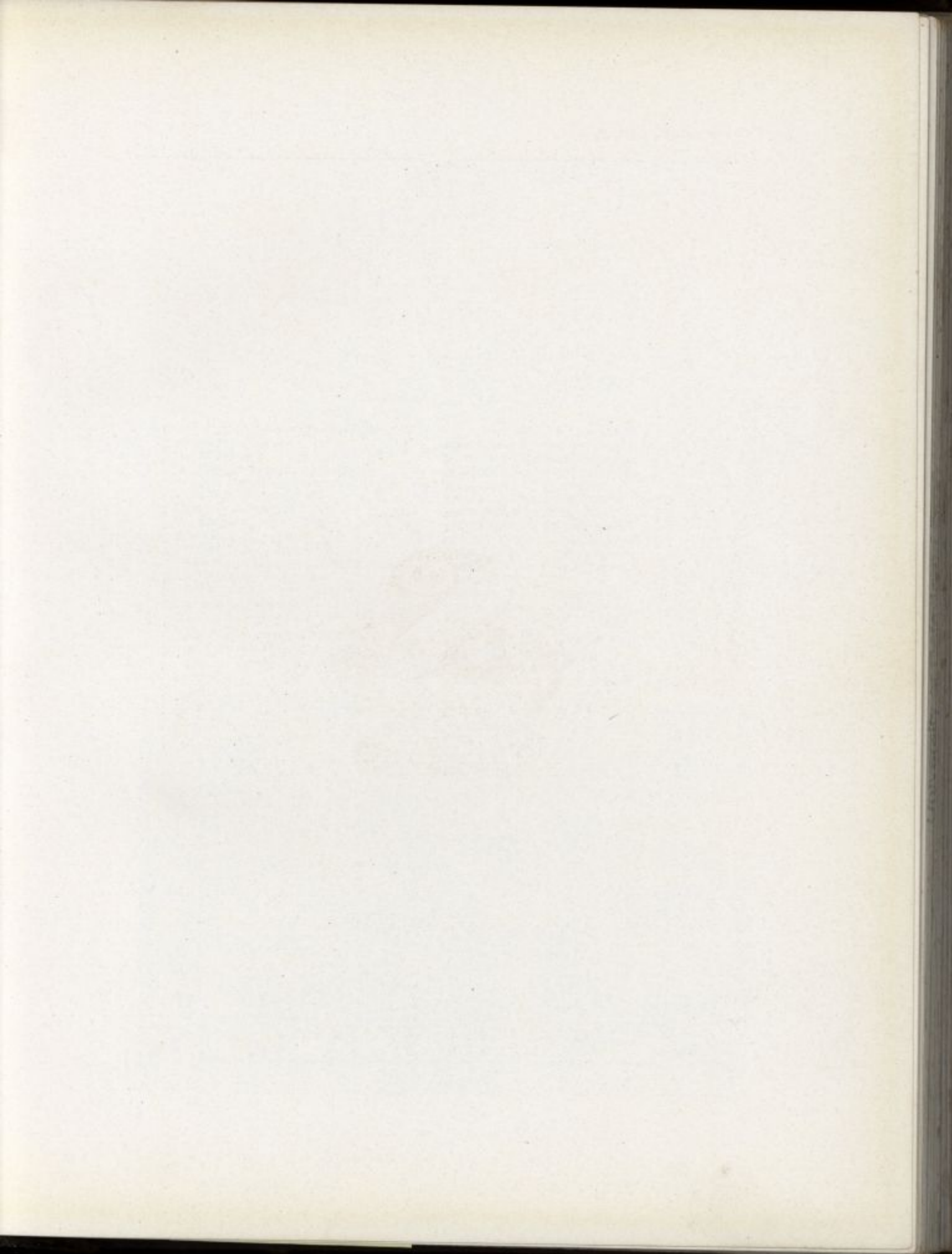


SIGMA PHI EPSILON CHAPTER ROLL

University of Richmond
West Virginia University
University of Illinois
University of Colorado
University of Pennsylvania
College of William and Mary
North Carolina State College
Ohio Northern University
Purdue University
Syracuse University
Washington and Lee University
Randolph Macon College
Georgia School of Technology
University of Delaware
University of Virginia
University of Arkansas
Lehigh University
Ohio State University
Norwich University
Alabama Polytechnic Institute
Trinity College
Dartmouth College
George Washington University

Baker University
University of California
University of Nebraska
Washington State College
Massachusetts Agricultural College
Cornell University
University of Michigan
Iowa Wesleyan College
Denver University
University of Tennessee
University of Missouri
Lawrence College
Pennsylvania State College
Ohio Wesleyan University
Colorado Agricultural College
University of Minnesota
Iowa State College
University of Iowa
University of Montana
Oregon Agricultural College
Kansas Agricultural College
Oklahoma A. and M. College







ENETT FOUNDRY





SIGMA NU FRATERNITY



SIGMA NU FRATERNITY

Fratres in Facultate

Dr. George A. Harter
Prof. George A. Koerber

Fratres in Collegia

1921

Howard B. Alexander	William A. Hemphill
William T. Anderson	Harry H. Jones
J. Arnold Barnard	Walter D. Lindsay
Irving H. Boggs	J. Woodrow Olcott
F. Allyn Cooch, Jr.	J. Willard McMullen

1922

Albert D. Ayerst	Milton L. Draper
J. Gilbert Christfield, Jr.	John J. DeLucca
Leonard B. Daly	Robert P. Fletcher
C. Rowland Dare	Fred Harmer

1923

Theodore Collins	W. Humes Grier
Howard Crawford	John M. Lynch
Eric S. Dixon	J. Edward Murphy
Walter M. Gilbert	E. Lyman Stewart

1924

Granville P. Alexander	Haywood E. Johnson
J. Allan Frear	Herbert P. Kirk
James H. Humes	J. Frank Leamy

J. Fletcher Price
G. Franklin Waples
Joseph S. Wilson
Melvin F. Wood

William S. Lilly, 3d
Joseph J. Rothrock
Benjamin R. Sackett
Franklin K. Wills

Clarence R. Underwood
John Williams
Everett L. Magaw
Verne Booth

Harvey F. MacDonald
John H. Shaefer





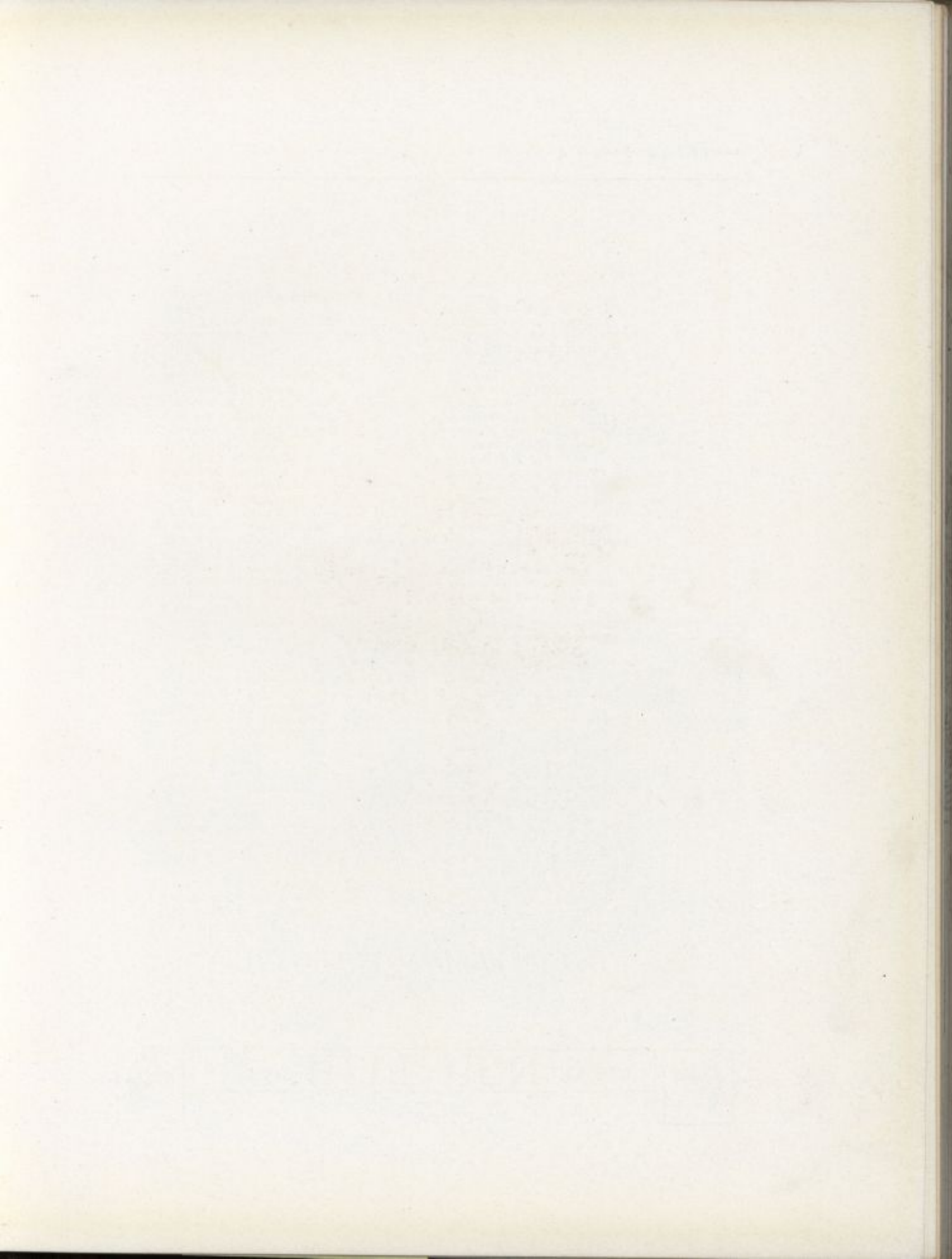
.1920. BLUE HEN .1921.



SIGMA NU CHAPTER ROLL

Virginia Military Institute	University of Washington
University of Virginia	Northwestern University
University of Georgia	University of Vermont
University of Alabama	Stevens Institute of Technology
Howard College	Lafayette College
North Georgia Agricultural College	University of Oregon
Washington and Lee University	Colorado School of Mines
Central University	Cornell University
Bethany College	Kentucky State University
Mercer University	University of Colorado
University of Kansas	University of Wisconsin
Emory College	University of Illinois
Bethel College	University of Michigan
Lehigh University	Missouri School of Mines
South Carolina University	Washington University, Mo.
University of Missouri	West Virginia University
Vanderbilt University	Iowa State College
University of Texas	University of Minnesota
South Carolina Military Academy	University of Arkansas
Louisiana State University	University of Montana
Cornell College, Iowa	Syracuse University
University of North Carolina	Case School of Applied Science
Tulane University	Dartmouth College
Yale University	Columbia University
University of the South	Pennsylvania State College
De Pauw University	University of Oklahoma
Alabama Polytechnic College	Western Reserve University
Missouri Valley College	University of Nebraska
Drake University	Washington State College
Upper Iowa University	University of Delaware
Purdue University	Brown University
Ohio State University	Kansas State Agricultural College
Stanford University	University of Maine
Lombard College	University of Nevada
Indiana University	University of Idaho
Mt. Union College	Colorado State College
Southwest Kansas College	George Washington University
Central College, Missouri	Carnegie Institute of Technology
University of California	Oregon State College
University of Iowa	Colgate University
William Jewell College	Trinity College
University of Pennsylvania	University of Maryland
University of Chicago	University of Florida
North Carolina A. & M. College	University of New Mexico
Rose Polytechnic Institute	University of Wyoming
Albion College	Oklahoma A. & M. College
Georgia School of Technology	







ELIOTT & FROST



KAPPA ALPHA FRATERNITY



KAPPA ALPHA (SOUTHERN)

<i>Fratres in Facultate</i>	
Edward Laurence Smith	George Elliott Dutton
<i>Fratres in Urbe</i>	
Walter Hossinger Steele	Norris Nathan Wright
<i>Fratres in Collegia</i>	
1921	
George Harney Madden	George Massey Sipple
Leon Hackett Gordy	Rudolph York Taggart
William Claggett Dorsey Donoho	Charles Stewart Lynch
Roland Cookman Handy	John Francis McWhorter
1922	
Theodore Roosevelt Dantz	Thomas Muncy Keith
William Emerson Hallett	Arley Benjamin Magee
Melvin Hopkins	John Edwin Wilson
Albert Chrisman Reed	Charles Whitney Woodrow
1923	
Edward Reynolds Barnard	Harlan Fisher Haines
Willard Davis Boyce	Charles Wooster Howard
Harry Richardson Cole	George Bright McMannus
Henry Carlton Draper	George Dwight Tebo
James Grayson Elliott	Charles Armel Nutter
1924	
William Edwards Howard, Jr.	Arthur Claude Fouracre
Edwin Spencer McDowell	Purnal Lynch McWhorter, Jr.
Robert Bell Pierce	Edward Thomas Records

PLEDGES

James Hudson Deputy	Charles Everett
---------------------	-----------------



.1920. BLUE HEN .1921.

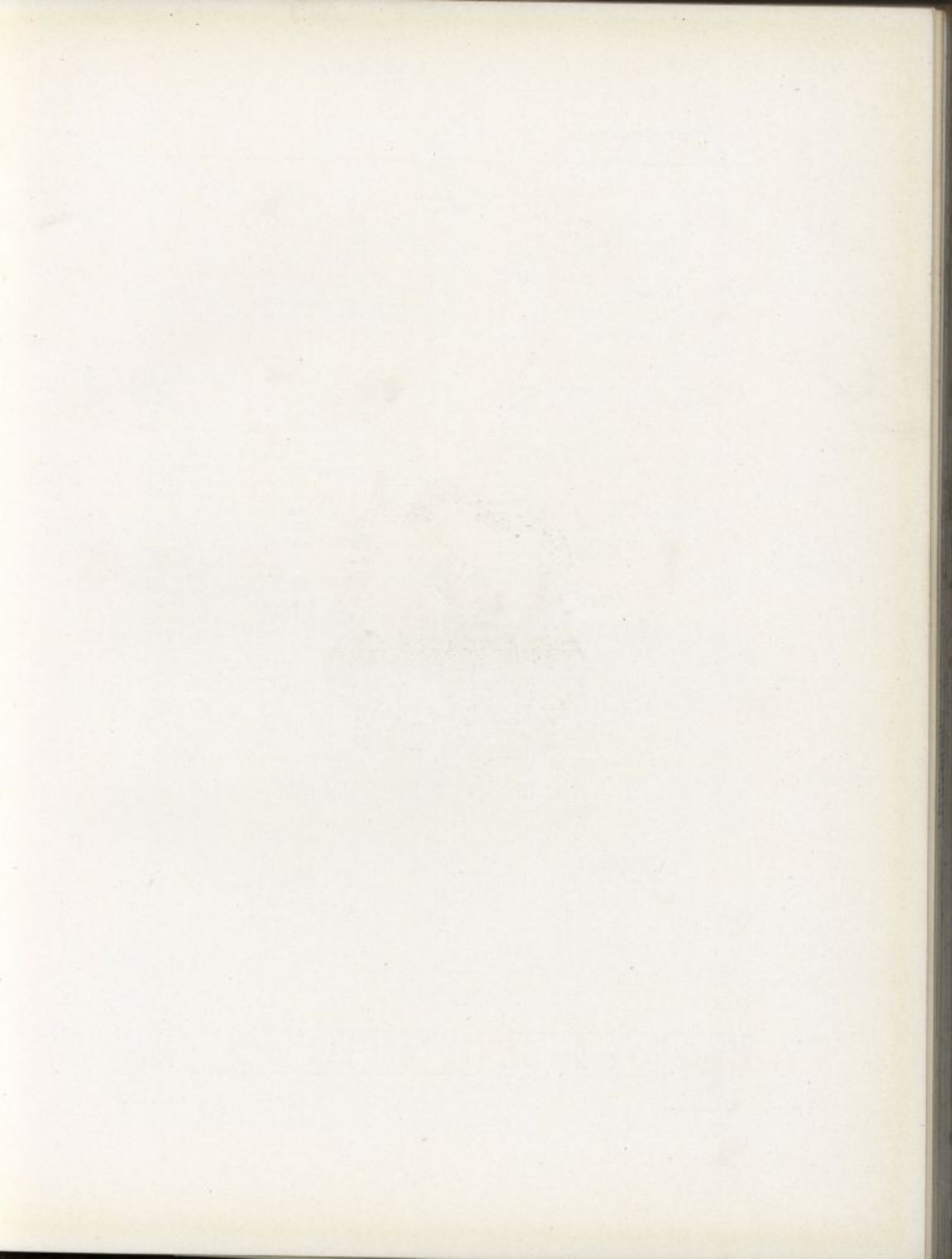


KAPPA ALPHA CHAPTER ROLL

Washington and Lee University
University of Georgia
Emory College
Randolph Macon College
Richmond College
University of Kentucky
Mercer University
University of Virginia
Alabama Polytechnic Institute
Southwestern University
University of Texas
University of Tennessee
Davidson College
University of North Carolina
Vanderbilt University
Tulane University
Central University of Kentucky
University of the South
University of Alabama
Louisiana State University
William Jewell College
William and Mary College
Westminster College
Transylvania University
Centenary College

University of Missouri
Millsaps College
The George Washington University
University of California
University of Arkansas
Leland Stanford University
West Virginia University
Georgia School of Technology
Johns Hopkins University
Hampden-Sidney College
University of Mississippi
Trinity College
N. C. A. & M. College
Missouri School of Mines
Bethany College
College of Charleston
Georgetown College
Delaware College
University of Florida
University of Oklahoma
Washington College
Drury College
Maryland State College
St. John's College











OMEGA ALPHA FRATERNITY



OMEGA ALPHA FRATERNITY

Fratres in Facultate

Dr. Finley M. K. Foster

Fratres in Collegia

1921

George Holton Aikens
Harvey Newton Brown
Vaughan Archelus Hastings

Thomas Wilmer Holland
Arrigo Eugene Marconnetti
Philip Henry Marvel

1922

Maynard Hildreth Carter
Florian Rudolph Deppe
Henry Barwick Geoghegan
Harry Sauderman Ivory

Thomas Joseph McDonnell
Harold Colbert Repp
Gerald Camille Smith
Stanley French Twoes

Harry Franklin Zimmerman

1923

Robert Betty, Jr.
Earl DeWitt Brandt
John Wilmot Brown
Herbert Hilder Carter
Harold Burns Dorsey

Charles Lester Owens
Edwin Price Pitman
Granville Stott Robinson
Charles Norman Wade
John Murphy Wells

Howard Beidelman Yost

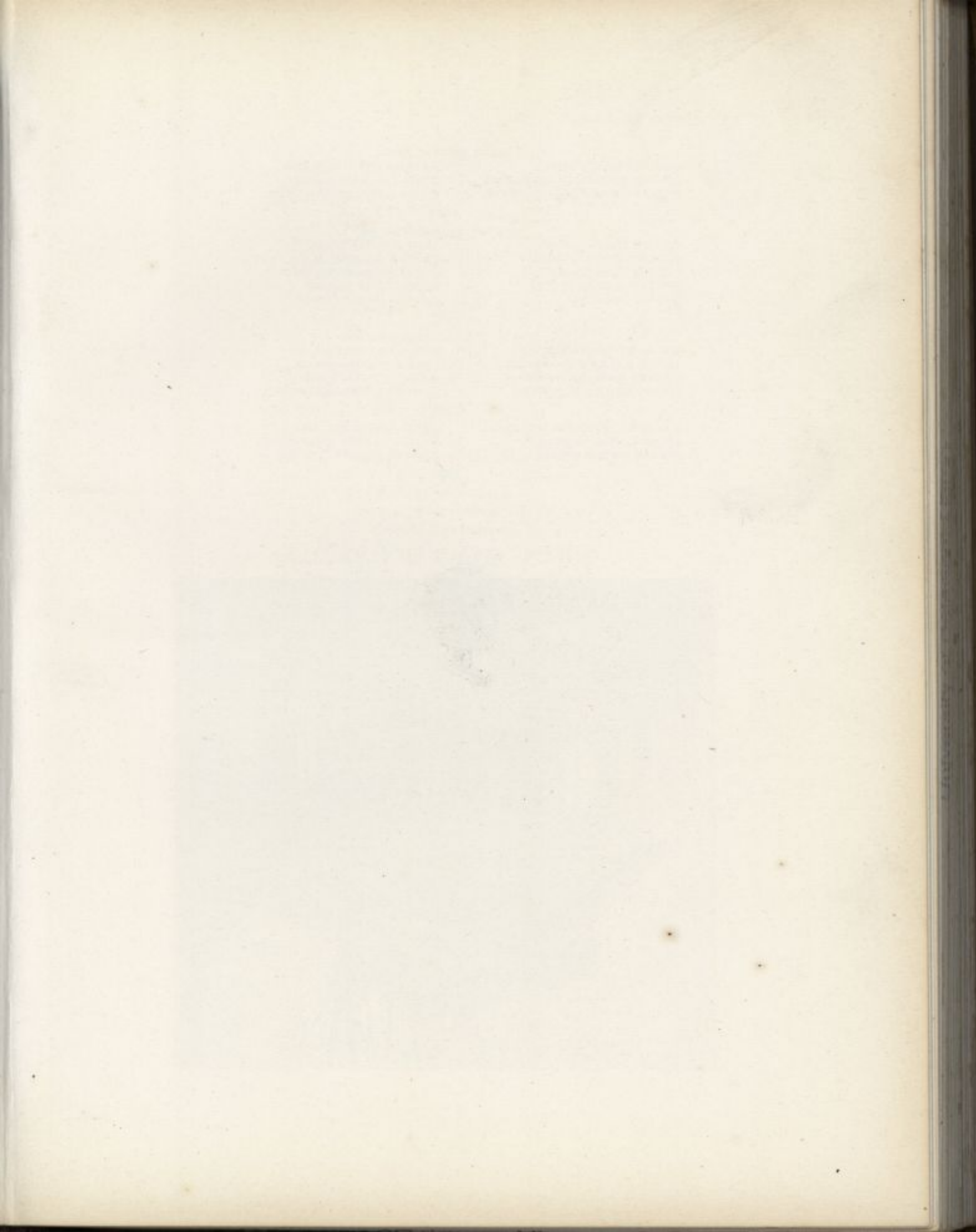
1924

Geoffery Van Clief Hougland
Newell Melbourne Middleton
Richard Earl Ramsey

Ralph Smith Siegrist
Milton Willard Terrill
Francis Reybold Warner

Paul Richard Seery







GAMMA DELTA RHO FRATERNITY



-1920. BLUE HEN -1921.



GAMMA DELTA RHO FRATERNITY

Fratres in Facultate

Dr. Carleton F. Miller

Ralph B. Harris

UNDERGRADUATES

1921

John A. Levandis
Allen J. Johnson
Clarence W. Evans

Ira K. Steele
Claude E. Phillips
Welton F. Elzey

James D. Craig
Marion P. Boulden
John F. O'Neill

1922

Leland Hurff

William C. Baumgardt

1923

Hix Long, Jr.
Albert O. Humphreys
H. Wallace Cook

Gordon L. E. Linn
Albert E. Carr
J. Leslie Patton
Clifford A. Betty

Courtney H. Cummings
John J. McGovern
Charles W. Reynolds

1924

Eugene M. Smith

Ralph Winters

PLEDGES

Frank Else
A. O. H. Grier

John C. Tripolitis
Franklin T. Van Sant
J. Edwin Mortimer





PHI KAPPA PHI FRATERNITY

Fratres in Facultate

Geo. A. Harter, M.A., Ph.D.	W. O. Sypherd, Ph.D.
Elisha Conover, M.A.	G. E. Dutton, A.M.
Edward Laurence Smith, M.A.	Clinton O. Houghton, B.A.
Merrill Van G. Smith, M.E.	Arthur E. Grantham, B.A., B.S.A.
Chas. L. Penny, M.A., Sc.D.	Charles A. McCue, B.S.
Ernest V. Vaughan, M.A., Ph.D.	

Fratres in Urbe

Clarence A. Short, M.S.

UNDERGRADUATES

Richard H. McMullen	Marion P. Boulden
William T. Broughall	T. Wilmer Holland
J. Fletcher Price	Melvin F. Wood
Roland C. Handy	

Phi Kappa Phi is an honor fraternity based upon scholarship. Its prime object is to emphasize scholarships and character in the thought of college students, to hold fast to the original purpose for which institutions of learning were founded, and to stimulate mental achievement by the prize of membership. It stands for union and democracy of education and receives the engineer, the agriculturist, the architect, or the chemist, as heartily as it does the classicist or man of letters.

The chapters of Phi Kappa Phi are located as follows:

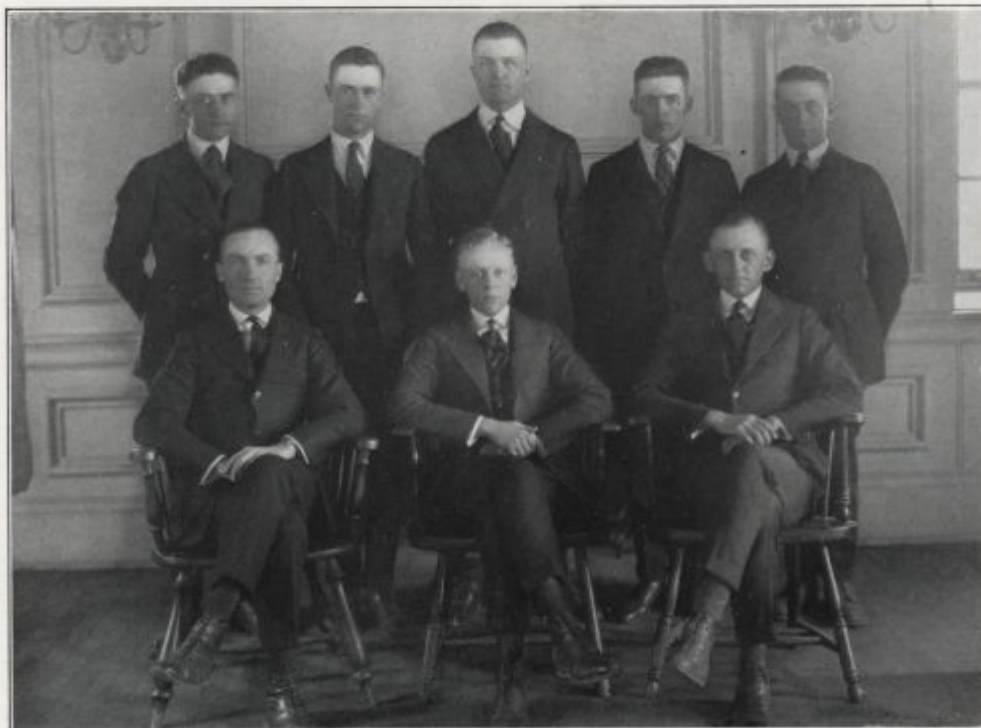
University of Maine
University of Tennessee
Pennsylvania State College
Massachusetts Agricultural College
Delaware College
University of Florida
University of Nevada
Rhode Island State College
North Dakota Agricultural College
Nebraska Wesleyan University
Georgia School of Technology

Alabama Polytechnic Institute
Kansas State Agricultural College
University of Arizona
Syracuse University
University of New Mexico
State College of Washington
Utah Agricultural College
Oklahoma Agricult. and Mech. College
University of Wisconsin
Cornell University
University of Maryland

Two Hundred Sixty-seven



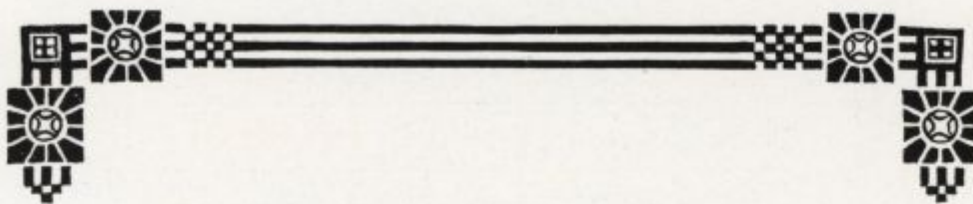
.1920. BLUE HEN .1921.



THE DERELICTS

The Derelicts is a Senior fraternity, the purpose of which is to create a spirit of good fellowship throughout the Senior class and the student body. The fraternity was founded in the spring of 1919, and its ideals have been carried on by each succeeding Senior class. Its membership is limited each year to thirteen men, chosen from the Junior class. The Juniors who are elected as members are informed of their election on the day of the annual Inter-Scholastic Track and Field Meet on Joe Frazer Field. The members are elected strictly on their merit and are judged by their general attitude toward all college affairs. Although still a young fraternity, the Derelicts has taken its place among the other college organizations and promises to play a large part in the spirit of the future Delaware. Its place of meeting and the details of its organization are known only to the members. The Derelicts seeks no recognition of its work, but is content to do its best toward the furtherance of a good feeling in the College.





THE LAST WORD

THE task is finished. The work, though tedious at times, has been a pleasure. Although we have done our best, the Annual is not a masterpiece, but represents the ability of a few college students who have attempted to preserve precious memories of the many blessings, trials and victories enjoyed at the expense of our "Dear Alma Mater." Like all great works, the lot fell on a very few and the cross has been borne without a murmur.

To William T. Anderson we owe thanks for his service on the editorial staff and for the successful advertising campaign. We are indebted to Ira K. Steele for his many hours of work on detail, and to Arthur Spaid and Florian Deppe for their fine art sketches. To T. W. Holland we are also indebted for his untiring efforts in assisting with the editorial work.

This dissertation would not be complete if we did not mention the excellent workmanship of the engravers, Gatchell and Manning, the fine craftsmanship of the Central Press, and the photographic work of Gilbert and Bacon.

Last but not least, we wish to thank the many advertisers and subscribers who have helped us to perpetuate the reminiscences of our four years of college and university life by their financial support.

—*The Editors.*



