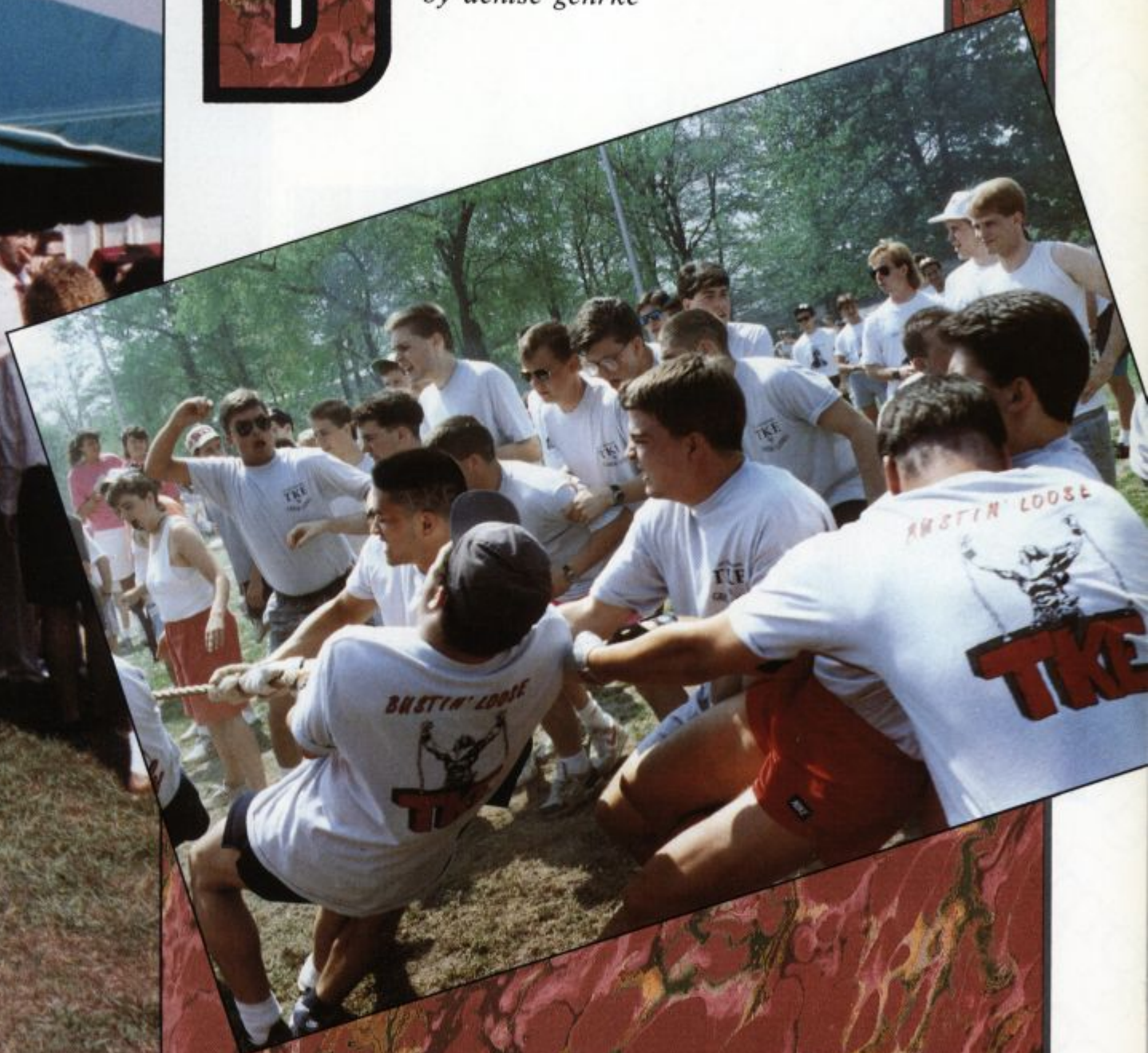




BECOMING A MEMBER

by denise gehrke



homecoming







homecoming



tailgating





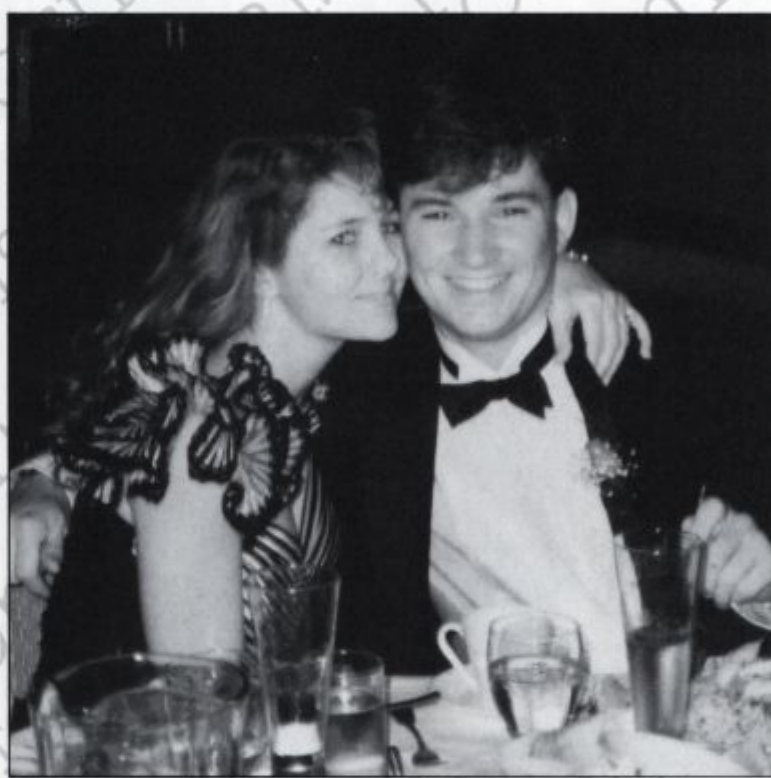


tailgating



formals





fraternity life



alpha epsilon pi



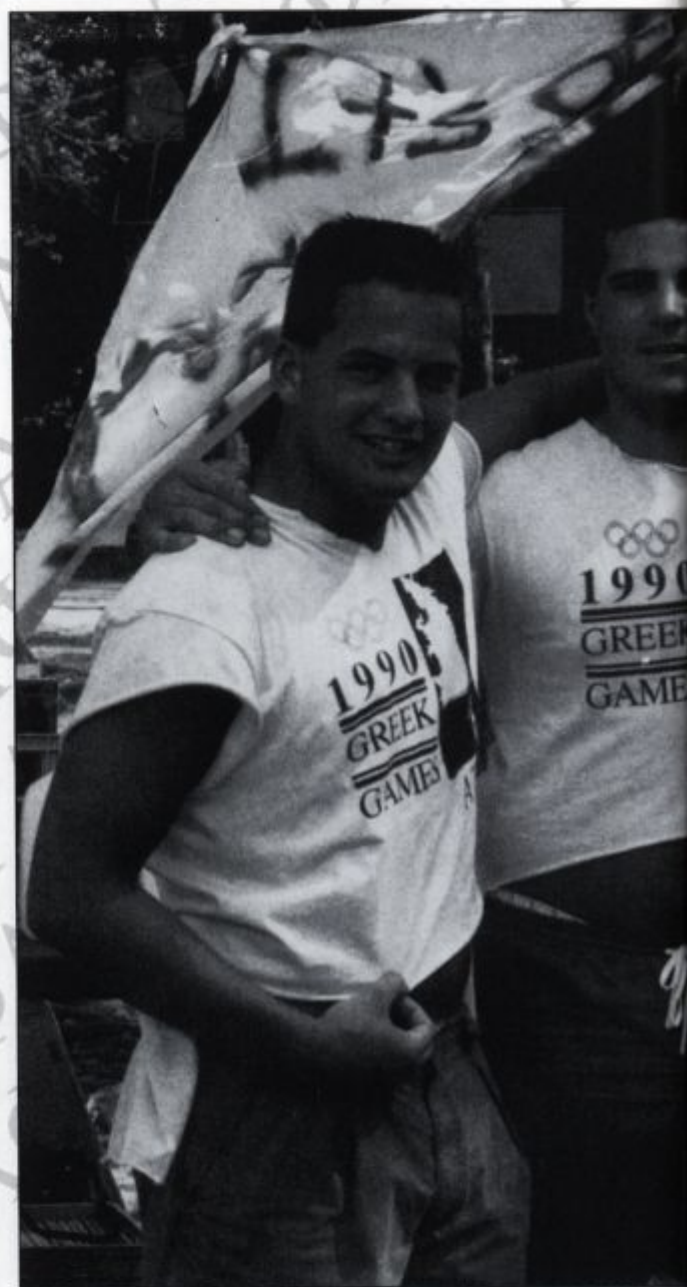
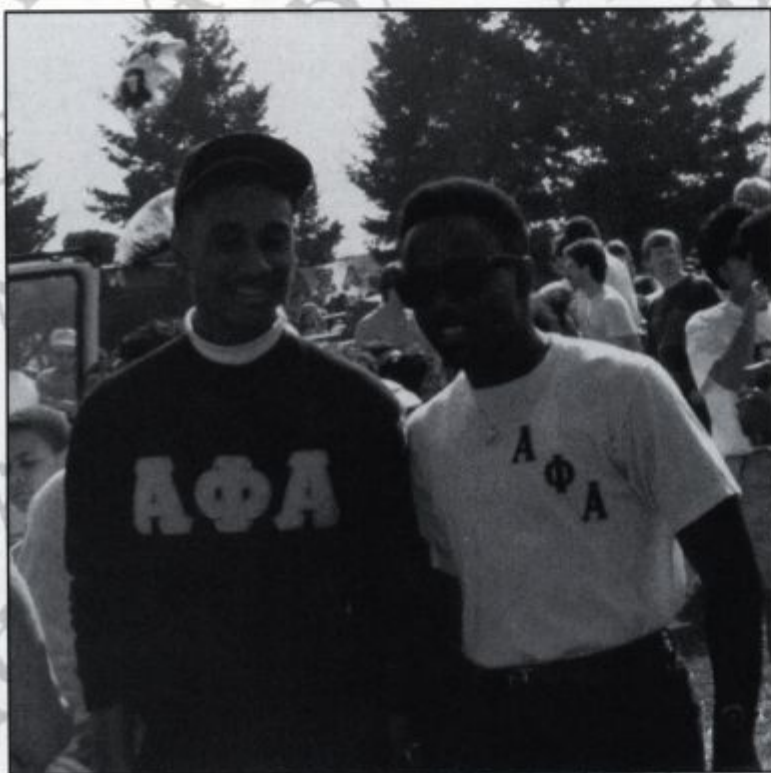
Alpha Epsilon Pi fraternity is a dedicated brotherhood consisting of 80 active members. The AEPi house is located on Wyoming Road.

Alpha Epsilon Pi supports the American Cancer Society, which is its philanthropy, and Easter Seals. AEPi holds fundraisers throughout the year to support these charities.

AEPi brothers are very active in the Greek community, participating in intramural sports and Greek events. Their social calendar is very active including parties, mixers, tailgates, hayrides and formals. AEPi also maintains a strong academic tradition.



alpha phi alpha



The first black fraternity was founded in 1906 at Cornell University. Alpha Phi Alpha at the University of Delaware has maintained the beacon of service and enlightenment since April 11, 1980, when eight young men revealed Alpha to the University community. The Xi Omicron chapter at Delaware currently consists of five brothers: Henry Timothy Foxx III, Kendall Hayma, T. Eugene Munson, Hampton Trigg II, and Philip J. Ward.

Some programs that we have done locally include tutorial services to the youth of Simpson United Methodist Church, voter registration efforts and food drives.

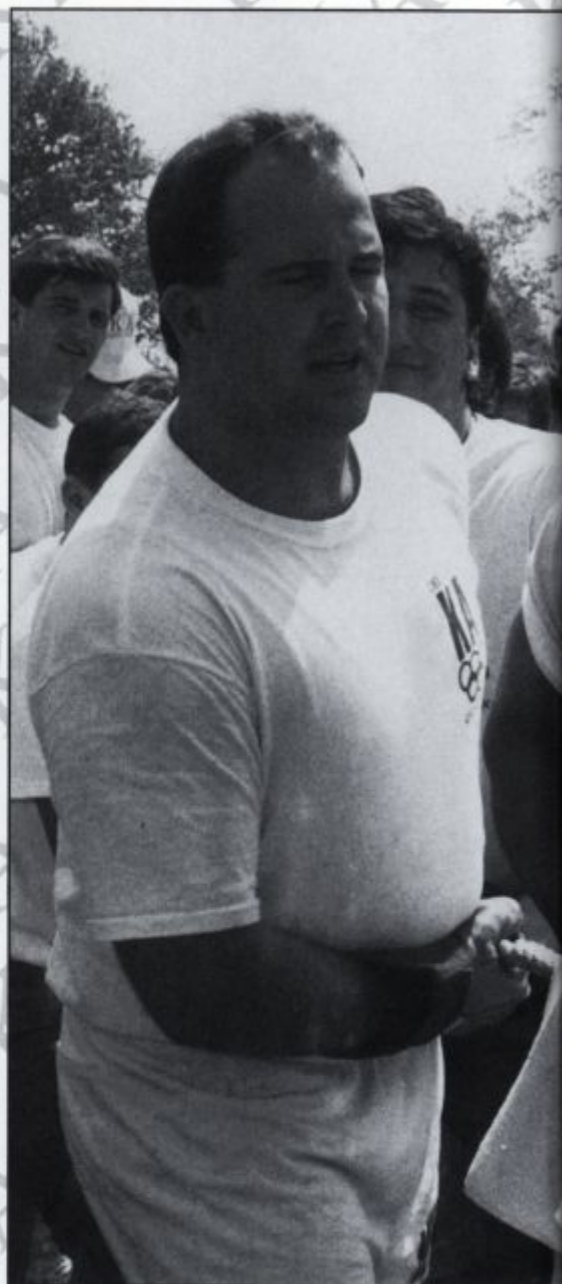
alpha tau omega



The Alpha Tau Omega fraternity was founded in 1965 at the Virginia Military Institute. The Epsilon Rho chapter came to the University of Delaware in 1969. ATO, along with being very academically minded, has a full social calendar. Their activities include tailgates, mixers, and theme parties. ATO brothers participate in several varsity sports, and are big contenders in Greek Games. With regards to philanthropic events, the brothers are involved in the American Cancer Society, Big Brothers of Delaware, and Delaware Wheelers.



kappa alpha



Kappa Alpha Order was the first fraternity at the University of Delaware, arriving in 1904. Presently, KA has 85 active members, with 50 living in the Kastle.

Kappa Alpha holds fundraisers for muscular dystrophy every semester. KA also has kept an extensive social calendar, featuring mixers, date parties, semi formals, the Old South Ball, canoe trips, survival trips, baseball games and parties.

Intramural sports have been a strong area for KA, consistently placing at the top of the standings, and placing first in the 1990 Greek Games.

kappa delta rho

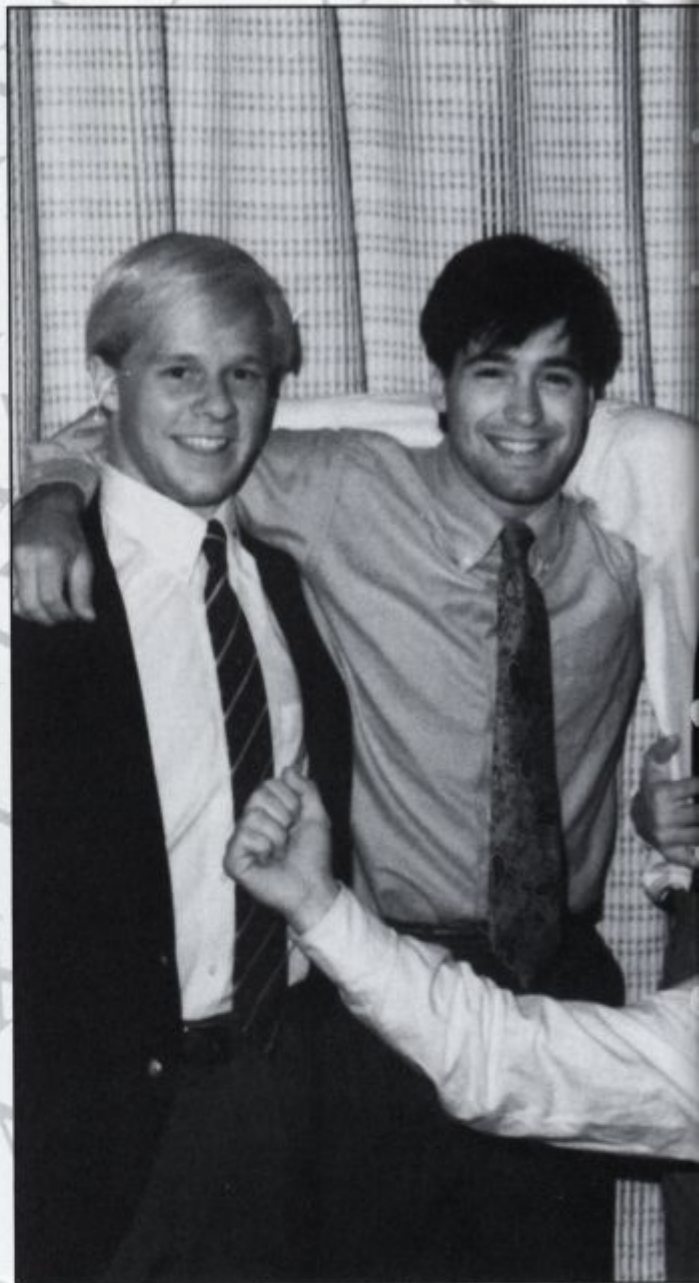


This year was one of our best, as we not only entered our fifth year as a chapter at UD, but stepped into a new decade as well. Besides our regular parties in the fall, we had a big tailgate with our alumni for Homecoming as well as a Halloween costume party. Our community service events included a charity haunted house, the Kidstown playground and repairing roofs during our retreat at Broad Creek scout camp. Our Winter Semi-formal was held in December.

Highlights in the spring included winning most unusual trash during Greek Week's "Clean and Green;" the March of Dimes, and the Rose Formal.



lambda chi alpha



The Lambda Chi Alpha Fraternity is a group of men dedicated to excellence. We foster high ideals for our community, our chapter and ourselves. This year we raised over \$1200 in our annual Spike For Life volleyball tournament benefiting Cystic Fibrosis. Brotherhood motivation and a positive attitude has brought nothing but good things to VXA. We took first place in PhiTau's 5K For Bruce (Greek Division), first place in Greek God and third place in Greek Games.

This spring we had the largest Rush attendance, and extended a warm welcome to 25 new associate members.

phi kappa psi



After only six years on campus, the Delaware Alpha Chapter of Phi Kappa Psi has much to be proud of. The annual Phi Psi 500 fundraiser is one of the largest events to raise money on campus, as we approach our first \$5,000 raised for Special Olympics.

Our social calendar includes events every weekend ranging from semi-formals to Graffiti parties to the Insanity Picnic. Phi Psi also boasts an impressive intramural record and a strong showing in Greek Games.



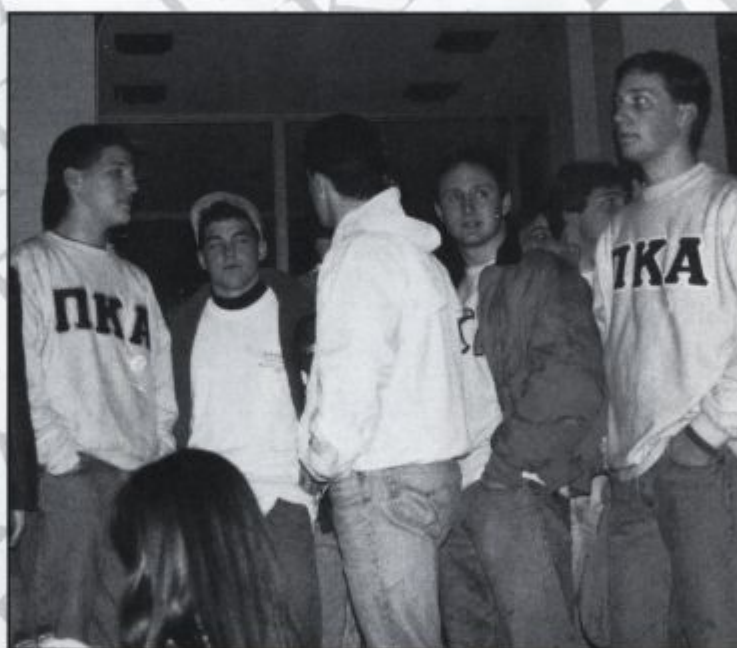
phi kappa tau



Phi Kappa Tau is a very diverse brotherhood consisting of over 100 energetic individuals. We pride our membership on its unity through diversity. After all, that's what it is all about; meeting all kinds of people, building lasting friendships, and getting the most out of your college experience.

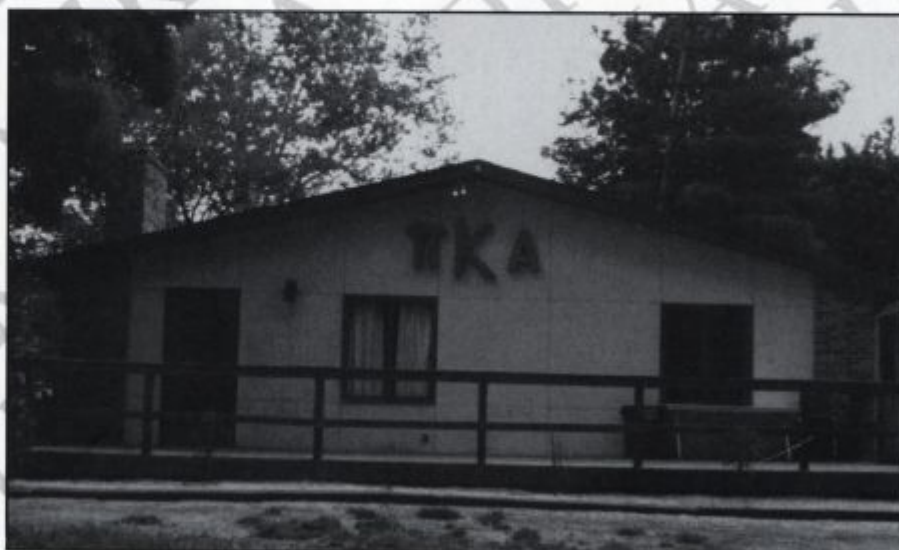
Phi Tau brothers are involved in many activities on campus, as well as Greek events. Highlights include formals, Founders Day, Homecoming, Room Parties, the Toga Party and porchgates. Every year, brothers work hard on events such as the 5K for Bruce and Wheelchair Basketball.

pi kappa alpha

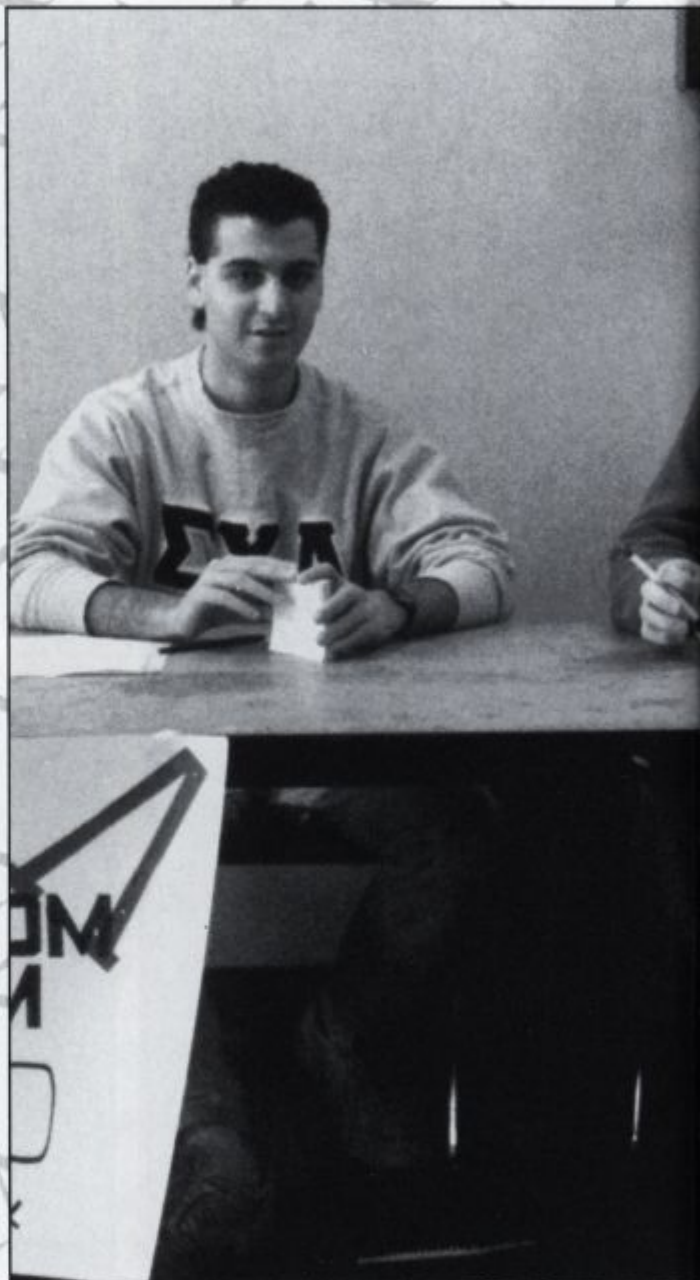
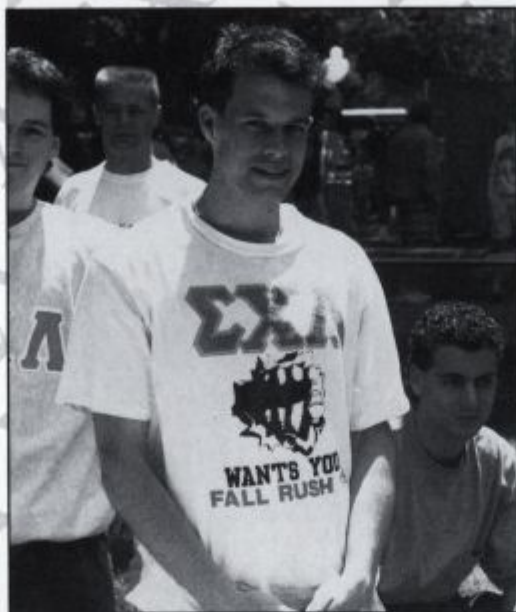


The Delta Eta chapter of Pi Kappa Alpha (PiKA) had a year for which they can be proud. In addition to being strong competitors in Greek Week and Greek Games, they were able to lend a helping hand to those in need by hosting their annual Haunted House which provided proceeds for Cystic Fibrosis.

Thirty of the approximately 100 brothers live at the PiKA house at 313 Wyoming Road and are well represented in group activities with brothers in IFC, ROTC, and intramural and varsity athletics.



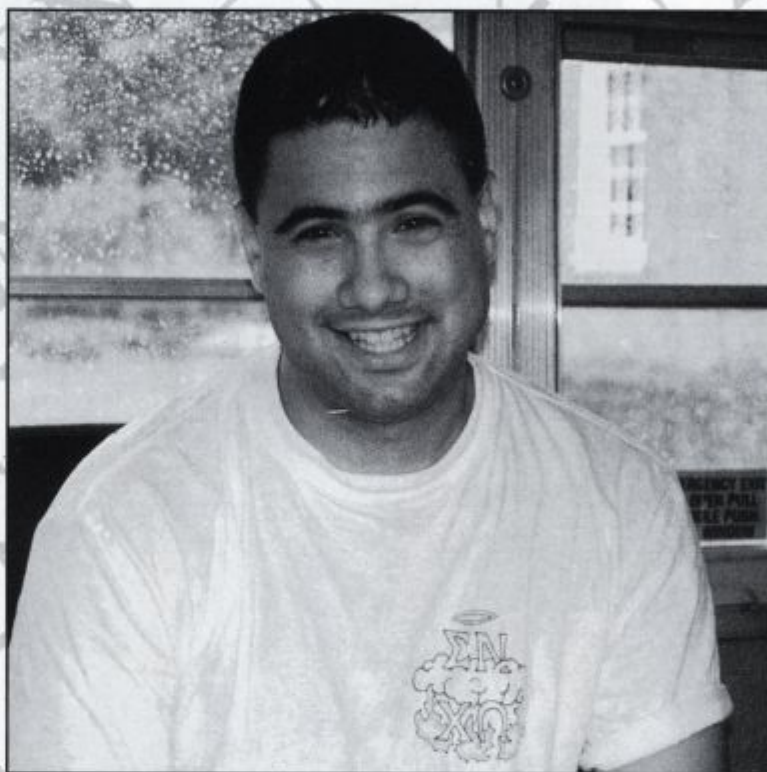
sigma chi lambda



Sigma Chi Lambda is a fraternity interest group aspiring to become the University of Delaware's Chapter of Sigma Chi National Fraternity.

The organization's membership has a commitment to academics and personal excellence. In addition to participating in various community projects, they also support numerous intramural sports teams during all seasons. Sigma Chi Lambda also offers a number of social functions including tailgates, mixers with other Greeks, traditional theme parties, and semi-formals, all providing lots of fun to its members.

sigma nu



The Delta Kappa Chapter of the Sigma Nu Fraternity, located at 20 East Main Street, consists of over 70 brothers. In the fall of 1989, the brotherhood expanded with the addition of several new pledges. The highlight of their community services included the annual week long Rock-for-Diabetes fundraiser where brothers rocked in rocking chairs to raise money for diabetes research.

Sigma Nu brothers participate in various intramural sports, social events and Greek functions.



sigma phi epsilon



The Delaware Alpha Chapter of Sigma Phi Epsilon (Sig Ep) has a lot to offer to the well-rounded college man. Founded in 1901 at Richmond College, Sig Ep has grown to be the largest fraternity in the nation with over 300 chapters and colonies. The Delaware Alpha Chapter was founded in 1907 and has a long and successful history here at the University of Delaware. Currently the largest fraternity on campus, the group continuously adds to its rich history by participating in community service events, various social events and numerous Greek activities.

tau kappa epsilon



Tau Kappa Epsilon was founded in 1899 and is the world's largest social fraternity. The Nu Pi Chapter of TKE was chartered in 1971 and has become a leading fraternity at the University of Delaware.

TKE brothers can be found holding leadership positions in every facet of University life. They are involved in DUSC, Residence Life, ROTC, and IFC, along with varsity and intermural athletics. Socially, TKE holds mixers, formals, blind date parties, happy hours, and "boxer short" parties. TKE also continues to raise money for St. Jude's Children's Hospital, its national charity.



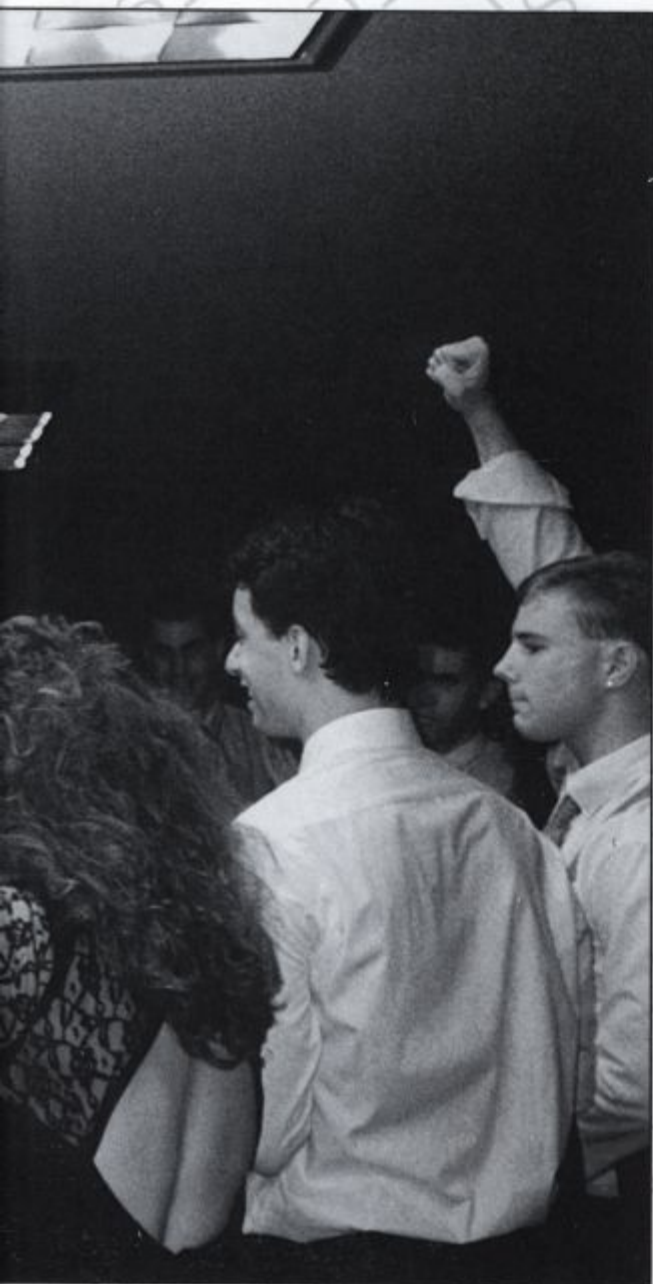
zeta beta tau



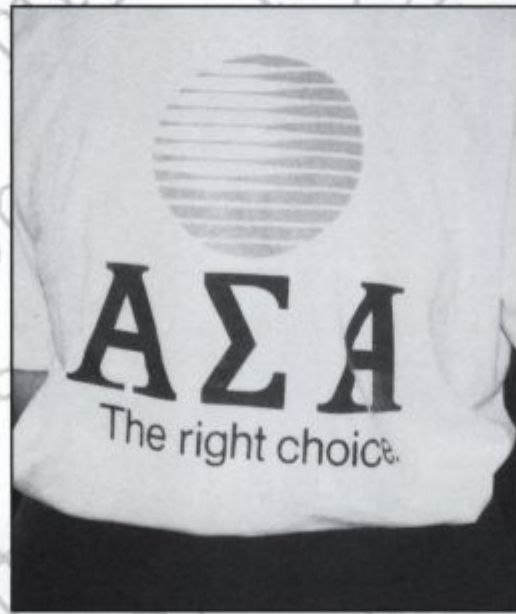
Formed in 1982, the Epsilon Theta Chapter of Zeta Beta Tau is celebrating its eight years on the campus of the University of Delaware. ZBT's house is located at 143 Courtney Street.

ZBT was busy this year with tailgates, mixers and parties. ZBT also kept itself busy through academia. ZBT's grade point average is one of the highest in the Greek community. Brothers are represented in many different campus organizations and athletics. The American Diabetes Foundation receives many contributions from ZBT and the philanthropic events.

candid



sorority life



alpha chi omega



Alpha Chi Omega continues its tradition, unity and growth since its establishment as the first sorority at Delaware in 1972. Friendships are strong and accompanied hand-in-hand is the addition of 60 new sisters to complete our 155 member sisterhood. We are especially proud of our house located at 30 W. Delaware Avenue.

Our calendar was filled with activities including co-sponsoring "Spike For Life," publishing The Blue Hen Men Calendar, and walking in the March of Dimes. Alpha Chi is not only fundraisers and formals, fun and friendship, but a common bond of sisterhood.



alpha epsilon phi



Alpha Epsilon Phi was colonized at the University of Delaware in the spring of 1989. AE-Phi's can be found participating in almost every aspect of campus life — athletics, academics and various clubs and organizations. Though we are a diverse group, we all share the common bond of sisterhood. AEPhi participates in many inter-fraternal activities with the Greek System at the University of Delaware ranging from Greek Games to mixers. Our national philanthropy is Chaim Sheba Medical Center and we also raise money for local charities.

alpha phi



The Epsilon Nu Chapter of Alpha Phi was established at Delaware in 1972 and has grown into a 171 member sorority. We have a wide variety of individuals who make up a strong sisterhood.

We have many sisters involved in campus activities ranging from varsity sports to various clubs. Our social calendar is filled with mixers, tailgates, parties and formals.

Our major fundraiser, the See Saw Marathon, is a very successful event which supports our philanthropy, the American Heart Association.



alpha sigma alpha



The Delta Iota Chapter of Alpha Sigma Alpha takes great pride in its 18 years as a member of the Greek community at the University of Delaware. Over 160 sisters keep our sisterhood strong and active.

An extensive social calendar brings us together with sisters and other Greeks at hayrides, mixers, tailgates and formals. We take great pride in our success at Greek Games and in Greek Week. Sister unity is fostered by special, sister-oriented events such as Inspiration Week.

Our National Philanthropy is to aid the mentally retarded where sisters volunteer at Special Olympics. ASA means lifelong sisterhood.

chi omega



Diverse, friendly, classy, well-rounded, considerate, respectful, and open-minded — this describes the sisters of Chi Omega. Though we've only been on campus for three years, the Rho Lambda Chapter has become an integral part of Greek life at the University of Delaware.

Members are involved in various sports, clubs, and honor societies on campus. Highlights include an active social calendar, winning Homecoming Queen and float, our pledges winning the Pledge Talent Show, and receiving the award for having the highest sorority GPA. We recently leased a house on W. Delaware Ave.



delta sigma theta



Delta Sigma Theta was founded January 13, 1913 at Howard University by 22 young women dedicated to the concepts of sisterhood, high scholastic achievement and public service.

Here at the University of Delaware, Mu Pi chapter of Delta Sigma Theta Sorority Inc. is dedicated to public service to our community. Annually we sponsor a memorial march in honor of Dr. Martin Luther King, Jr. We give workshops on resume writing and interviewing skills, as well as sexual responsibility and self esteem. We donate food to homeless shelters and churches, and adopt a family each Christmas season.

phi sigma sigma

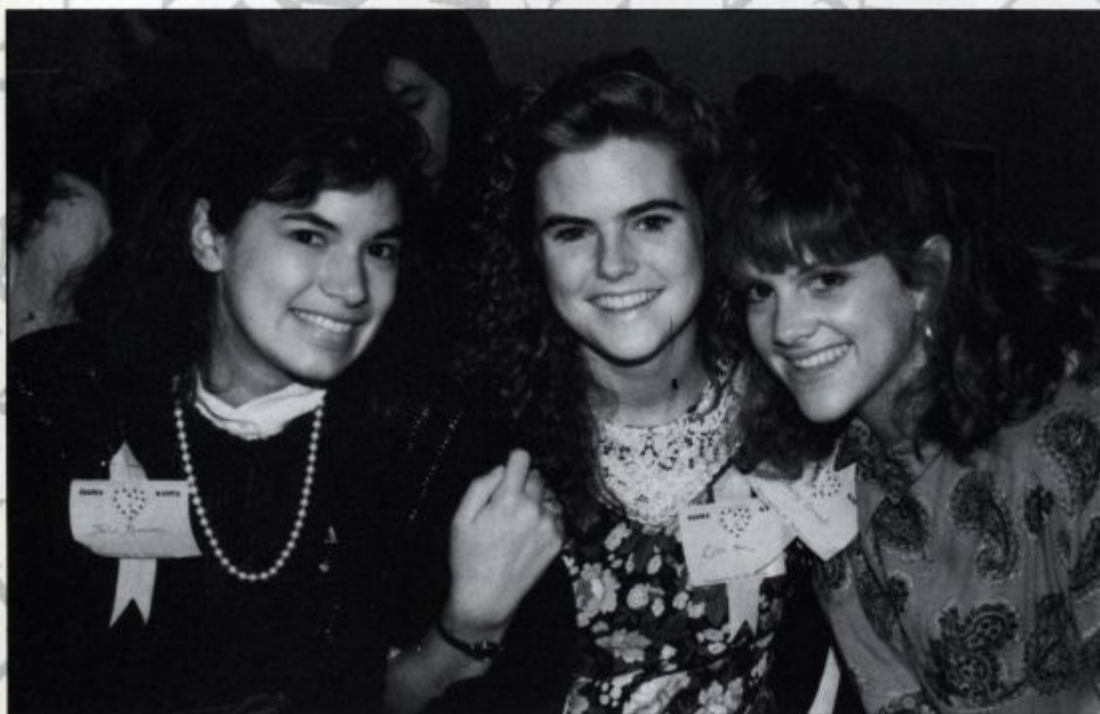


Since our arrival on Delaware's campus, Phi Sigma Sigma has been a strong sorority and is continually growing. For the past two years we have won Greek Week, this year capturing first place in events such as Name That Tune, Arm Wrestling and Swimming. We also maintain high academic standards and are active in community service work and philanthropic projects. In addition to sponsoring a Swing-A-Thon for the National Kidney Foundation, we co-sponsor Sigma Phi Epsilon's Twist-A-Thon for the homeless.

Sisters look forward to the many fraternity and sorority mixers, date parties, and the spring Sapphire Ball.



sigma kappa



*Sigma Kappa Convention
October 21, 1989*

Since joining the university's Greek community in 1986, Sigma Kappa has grown to be one of the largest and strongest sororities on campus. The sisters are always willing to share their talents and time with those who need it, whether it be reaching out to the community or supporting one of our philanthropies. Members not only participate in various Greek functions — such as mixers and Greek Week — but also holds formals and date parties, and participates in intramural sports.

Sigma Kappa brings girls with many different backgrounds and personalities to unite in a sisterhood bond.

zeta phi beta

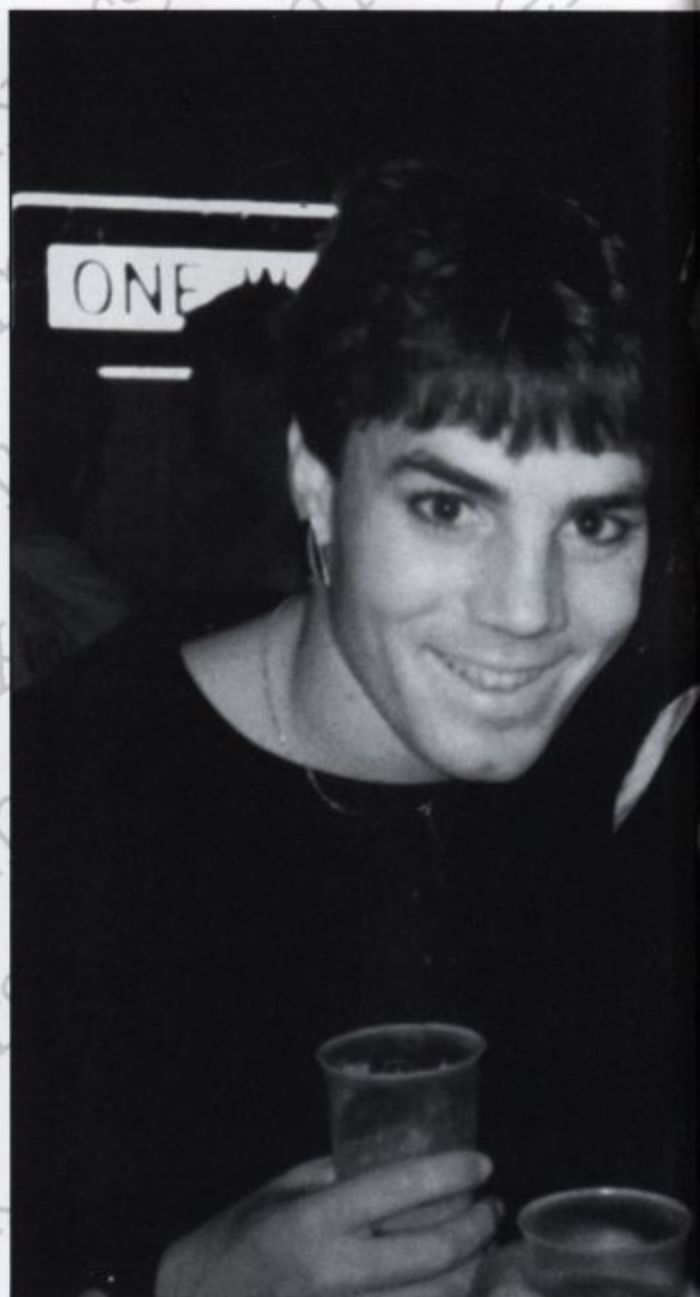


Zeta Phi Beta Sorority Inc. was organized at Howard University on January 18, 1920. It was the idea of the founders that the sorority would reach college women in all parts of the country who were sorority-minded and desired to follow the ideas of finer womanhood, scholarship, service, and sisterly love, the principles on which Zeta Phi Beta sorority was founded.

Locally, Zeta women at UD have given services by sponsoring Bingo, collecting canned food, and sponsoring a Tutorial Program and Career Planning and Placement Workshop.



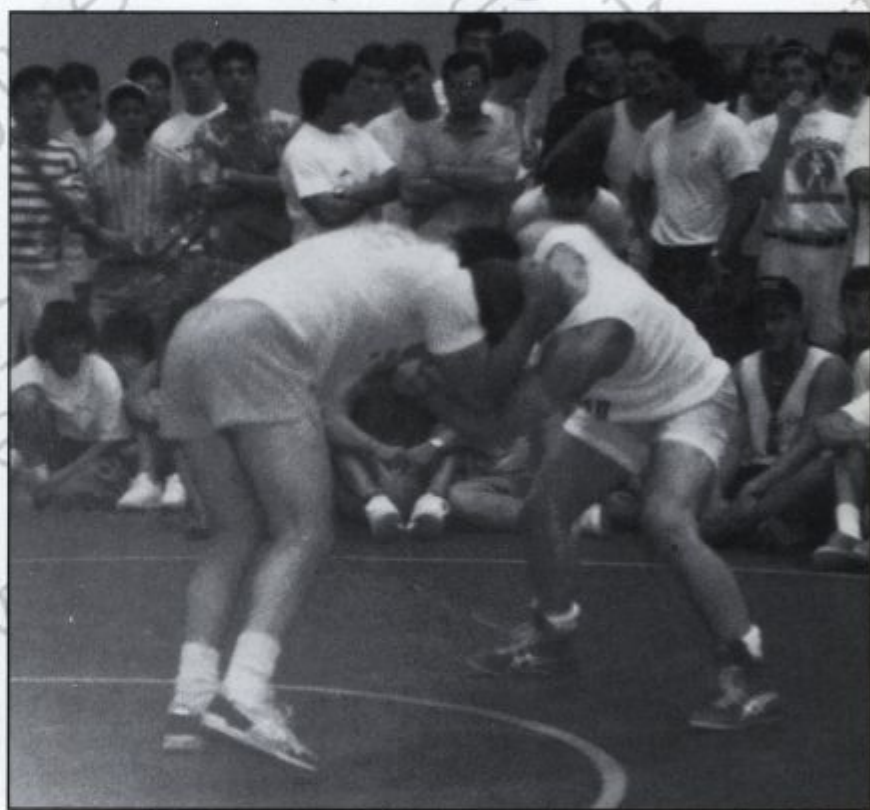
mixers





greek week





greek games





greek week





on the sidelines



