



The Organizations

The Student Self-Government Association
The Forum
The Young Women's Christian Association
The Press Club
The Dramatic Club
The University of Delaware Review
The Student Representative Board
The Social Committee
The French Club
The Glee Club
The Senior Board
The Athletic Association
The Blue and Gold Board
The Ukulele Club





The Student Self-Government Association



The Student Executive Council

President

ELIZABETH MACINTIRE

First Vice-President

EDNA CRANSTON

Second Vice-President

FLORENCE STIDHAM

Secretary

MARJORIE BROSIUS

Treasurer

MAY THOMPSON

Class Representatives

VIOLA ELTERS

CATHERINE WHITE

ERMINIE QUILLIN

JEAN MIDDLETON



THE STUDENT EXECUTIVE COUNCIL



The Student Self-Government Association



GOVERNMENT of the students, by the students, and for the students—such is the Student Self-Government Association of our college. The Association is of the students because its council is chosen at annual elections by the students; it is for the students by virtue of its twofold aims, to bring about desirable results in student life and to give training in business management and in the art of leadership.

The students of the Women's College have always evinced so keen an interest in honor that in Nineteen Hundred and Nineteen the Honor System was adopted. Among its regulations, the one pertaining to honor in college work and examinations is most noteworthy. By it, an instructor is enabled to leave the examination room and remain absent after giving instructions for the prescribed work. All infringements against the Honor System are tried by the Student Executive Council, and punishments are meted out according to the seriousness of the offence. This fact necessitates the electing of young women of executive ability, discretion, and conscientious effort. For upon their judgment depends the welfare of the student.

One of the duties of the President of the Student Self-Government Association is to explain to the newly-arrived, and not yet acclimated, Freshmen the Honor Resolutions, and to endeavor to secure their co-operation in the execution of all Honor Rules.

Two important changes in our campus life have been brought about through the legislation of the Student Executive Council. The first of these changes is the now established eleven o'clock rule. Heretofore all students were required to put out the lights, unless taking a time-honored "light-cut," at ten o'clock. This requirement had long been the source of so much discontent and discomfort on the part of those who, after spending long hours in class, did not have enough time for their evening labors, that a petition was finally presented to the Faculty of the Women's College. The other change is concerned with Chapel. Up to the present time Chapel has been an every-day affair with occasional entertainment. But under the new régime, Chapel is held three times a week and consists of devotional exercises and announcements. This modification of Chapel period came as a result of a petition granted by the Academic Council.

The increasing number of students and their broadening interest in college activities afford the Student Self-Government Association a splendid field for future development.



The Forum



The Officers

President

FRANCES WORTHINGTON

Vice-President

EUNITY JONES

Secretary-Treasurer

DOROTHY NUNN



ALTHOUGH the Forum is a comparatively new organization, it has already proved very beneficial and interesting. The purpose of the Forum is to bring persons together for the discussion of present-day problems and current events of national and international importance. No obligation of membership is placed upon the students. The Faculty, the Seniors, the Juniors, and the Sophomores may attend the meetings. Some student member who has charge of the meeting usually starts the discussion, which is continued by Faculty and Students. All opinions are gladly received. The arguments that sometimes ensue are stimulating, interesting, and at times amusing. Outside preparation of the topic is not forced on the students, but they do it voluntarily in order to be able to talk intelligently on any subject that is mentioned. Thus a profitable and pleasant means of instruction is brought about. The Faculty, especially those who are particularly interested in economic and political matters, are an invaluable aid to the Forum in that they interpret facts for the students, correct misconceptions, prove the significance of various phases of a topic, and point the way to further study.

There can be no doubt that participation in this organization will make our students think clearly and without prejudice; that it will give them an incentive to look below the mere surface of statements; that it will make them more able to bear their increasing duties as intelligent citizens of our country.



The Young Women's Christian Association



The Cabinet

President

JOSEPHINE BURNETT

Vice-President

DOROTHY NUNN

Secretary

HENRIETTA MARVEL

Treasurer

FRANCES RICHARDS

Chairman Publicity

LOUISE HARRIS

Chairman Finance

MARION SHARPLESS

Chairman Meetings

MARION NEIDE

Chairman Missions

NAOMI DAWSON

Chairman Bible Study

HAZEL ALLEN

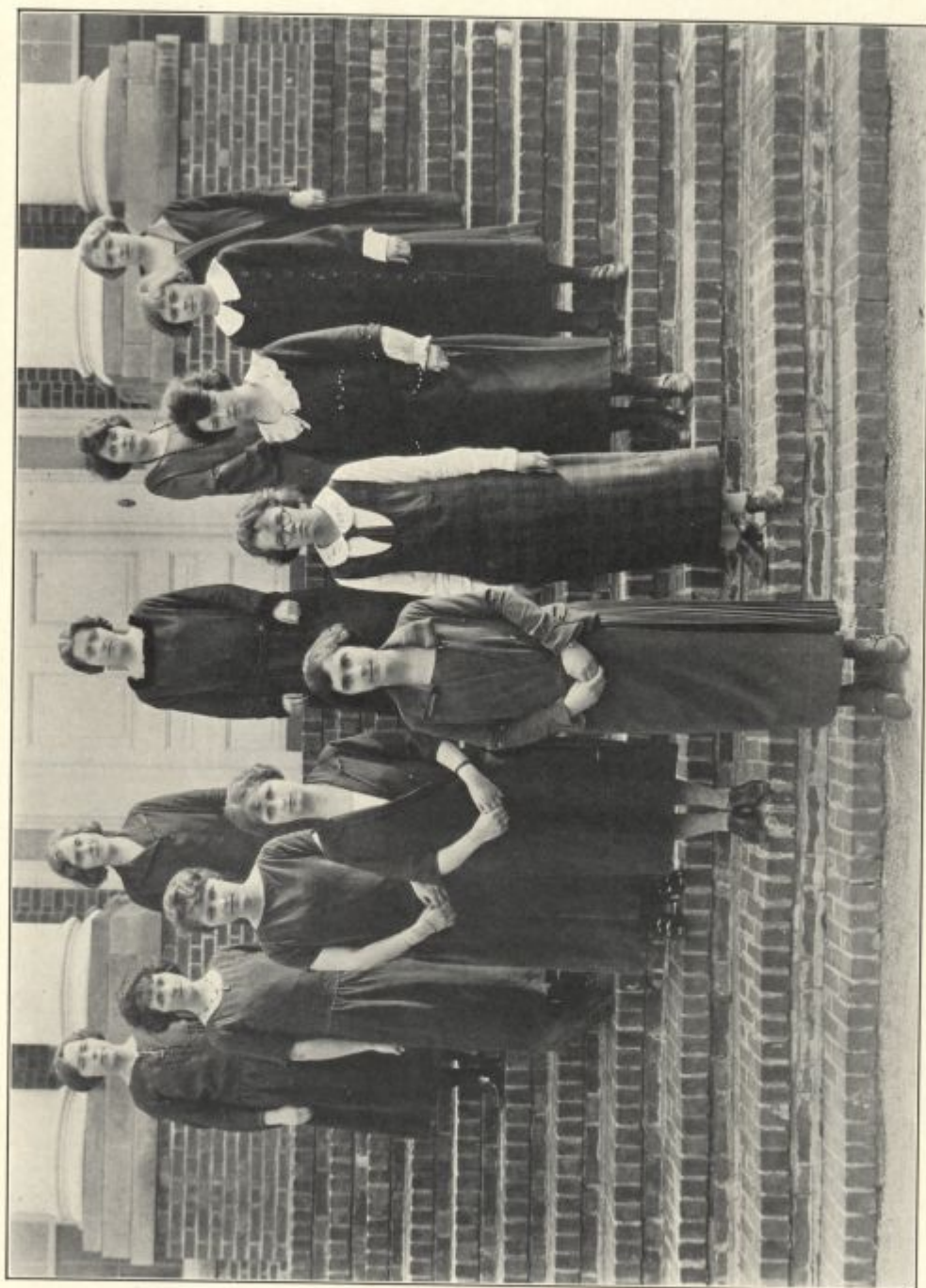
Chairman Social Service

ELIZABETH CROOKS

Undergraduate Field

Representative

EUNITY JONES



THE Y. W. C. A. CABINET



The Young Women's Christian Association



THE Young Women's Christian Association has a definite purpose and place in the life of the campus. Unlike other organizations, it appeals to every interest through its religious study, its social service work, its entertainments and good times, its publicity work, and its training for leadership. As well as being a great opportunity for work along these lines, it presents a source of satisfaction and contentment through closer contact with Christ and practical service to many girls. A feeling of good-will is established by it, for members of all classes are held together in the one organization on campus that has as its fundamental principle, service.

Many important changes have been accomplished since March, 1923, when the new cabinet went into office. A budget of the year's income and expenditures was worked out by the treasurer and finance chairman and was adopted by the cabinet. The organization is now on a sound business-like basis and is better able to see values in their true light. A Freshman cabinet has been created. Experience has shown that Freshmen who are impressed with the purpose of the Young Women's Christian Association and are early given an opportunity for service and responsibility are those girls who make leaders in all organizations later in college life. As soon as the Freshmen became accustomed to their new surroundings, the cabinet investigated to find those who were of strong character and who were inclined to work, and selected a group of girls to fill offices of exactly the same nature as those of the cabinet. This group makes up a miniature cabinet with its own officers, meetings, and responsibilities. The girls who were chosen are: President, Margaret Nunn; Vice-President, Eliza Cook; Secretary and Treasurer, Bertha Skrivan; Finance Chairman, Elizabeth Wiley; Publicity Chairman, Thelma Buell; Chairman of Meetings, Elizabeth Cook; Chairman of Bible Study, Elizabeth Elliott; Chairman of Missions, Dorothy Wood; Social Chairman, Elizabeth Hutt, and Undergraduate Field Representative, Grace Ellison.

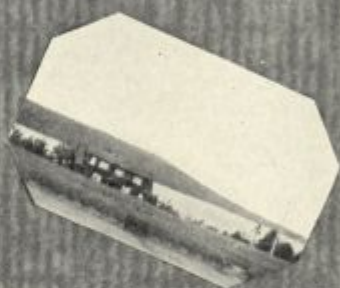
The local Association has kept in touch with the National Association through conferences. Frances Richards and Estella Kite attended the International Student Volunteer Conference at Indianapolis and received new ideas on the more up-to-date questions and methods. Eunity Jones, Estella Kite, Marion Neide, and Delma Danks went to the Tri-State Conference for Student Volunteers at Hood College.

Both the Vesper Services and the Bible Study classes have been characterized by student leaders and student discussions. Outside speakers and messages have been welcomed, but this year has marked a distinct growth from within the organization.

S
N
A
P
S



F
R
O
M



EAGLES MERE





Eagles Mere



HAT happy memories the name itself brings to us. In June, 1923, the Delaware Delegation composed of Dorothy Nunn, Eunity Jones, Greta McKinsey, Elizabeth Crooks, and Naomi Dawson joined the tired, dirty, but happy crowd at Muncey Valley and boarded the slow little "dinkey" that took us up the mountain to Eagles Mere.

We were fascinated by the beauty of the "Lake of the Eagles" and were somewhat surprised to find that the beautiful lake was almost surrounded by modern hotels and exclusive cottages. The place was a constant inspiration, an ideal spot for a Y. W. C. A. conference.

Fortunately the Delaware Delegation was registered to live at the Forest Inn for it was the center of activity. Very soon we were assigned to classes and we managed to attend some of each kind so that we might get every available help and suggestion for our own association. The Technical Councils were especially helpful, for there girls from seventy different colleges discussed the problems of their organizations and suggested plans for the coming year. We were particularly fortunate to be in Miss Margaret Lewis' Bible Study Group; we learned many things from the study of the prophets of the Old Testament. Our scope of understanding was broadened greatly by talks of the girls from China, Japan, Hawaii, Korea, and Poland, and we were stimulated by the discussions on the problem of "Race Prejudice."

The conference was not all such study, but was more a study of nature and of other people around us. We hired a boat and learned by experience that rowing, enjoyable as it is, is not as easy as it looks. We took advantage of the excellent opportunity for bathing and the water sports. The path around the lake close to the water's edge was lined with blooming laurel and we never regretted the sleep lost when we hiked around the lake before breakfast. We became well acquainted with the Bucknell Delegation because they lived across the hall from us and we met together daily in delegation meetings. On one afternoon, we invited the Bucknell girls and the delegates from industrial institutions and took our supper out in the woods. Contact with other college women like that was a source of pleasure and a benefit to us all.

All our lives the memory of those ten short days will exert its influence. We have brought back what we could and we have seen the good effects of our suggestions on the local association. In other years we hope that more girls can go and that they, too, will be inspired to work as we have been. If we accomplish our purpose, to be an association which promotes the principles of service and good-will, it is because we have caught the vision at Eagles Mere.



The Press Club



The Faculty Adviser
MISS NORA BEAN KEELY

THE OFFICERS

President

LOIS GARRETT

Vice-President

GRACE REED

Secretary-Treasurer

MERREL PYLE

THE MEMBERS

Marjorie Burns

Lois Garrett

Frances Jones

Lucile Petry

Catharine Dougherty

Kathryn Ladd

Helen Lucas

Dorothy Nunn

Grace Reed

Margaret Touhey

Elizabeth Fletcher

Mary Francis

Merrel Pyle

Beulah Thompson

Eliza Cook

Mary Wilmer Haines Margaret Nunn



THE Press Club is the youngest organization on the campus. It was established shortly before Christmas. For a long time, those of us who are interested in writing wished for some outlet for our literary ability. We also wished to know how and what to write. For this very definite purpose the Press Club came into being. The aims of the club are: to promote the principles of good journalism, to foster a regard for ethics in journalism, and to afford opportunity for practice in the writing of press articles.

One Hundred and Ten



The Dramatic Club



The Board

President

C. LOUISE JACKSON

Vice-President

MARY-BRAEME J. SEASHOLTZ

Secretary-Treasurer

MILDRED WOLFENDEN

Costumes

FRANCES RICHARDS

Scenery

ELEANOR RUSH

Property

CLARA BRADY

Membership

MERREL PYLE

Ten Minute Plays

MARY LOUISE MARVEL



THE DRAMATIC BOARD



The Dramatic Club



THE Dramatic Club has had a most busy and successful year. The largest play produced was Bernard Shaw's "Pygmalion," and it was an absolute triumph in every sense. It was given in Wolf Hall on December thirteen in conjunction with the Footlights Club of Delaware College.

The Playthings have been abandoned. This action was found necessary because of the overcrowded condition of the dining-room. The Playthings are being supplanted by ten-minute plays in the Hilarium after dinner. "The Diabolical Circle," "Three Pills in a Bottle," "Yesterday," and "Pandora's Box" have been given in this capacity.

Something in the nature of an innovation has been effected this year. A Drama Study Hour was instituted. Interesting speakers have been procured to discuss the different phases of dramatic art. The Study Hour is proving extremely helpful and enjoyable.

Another new feature of the Dramatic Club is the Class Contest which was inaugurated by Louise Jackson. Each class selected a one-act play, and a committee from the class coached, directed, and presented it. The plays were given in Wolf Hall on March twenty-eight. They were:

The Seniors.....	"The Stronger," by August Strindberg
The Juniors.....	"A Fan and Two Candlesticks," by Mary Macmillan
The Sophomores.....	"The Rim of the World," by Floyd Dell
The Freshmen, "The Wonder Hat," by Ben Hecht and Kennett S. Goodman	

The judges were Miss Pauline Vrooman of the Wilmington Aircastle Players, Miss Sallie Sharp of the Sharp School of Expression in Wilmington, Mr. E. G. Finney, the Manager of the Playhouse, Dean Robinson, Dr. Sypherd, Dr. Foster, Professor Van Keuren, Miss Keely. They rendered a unanimous decision in favor of the Juniors. The Seniors were awarded the second place.

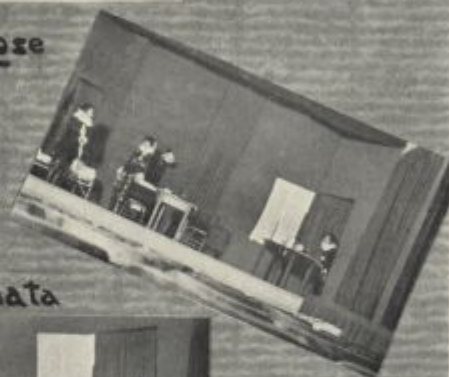
THE CAST OF "A FAN AND TWO CANDLESTICKS"

Nancy	Mary J. Krueger
Ralph	Marion Neide
Hugh	Kathryn Ladd

The Junior Committee consisted of Frances Richards, Kathryn Ladd, Alyce Watson, and Helen Baker.



The Rose



Matinata



Forbidden Fruit





The University of Delaware Review



The Staff

Editor-in-Chief

FREDERIC B. SMITH, '24

Women's College Editor

LOIS GARRETT, '24

Delaware College Editor

P. R. RINARD, '25

Assistant Editors

GRACE REED, '25

C. A. TILGHMAN, '25

General Staff

Marjorie Burns, '24

Lucile Petry, '24

Helen Lucas, '25

I. Bleiberg, '26

Elizabeth Fletcher, '26

Mary Francis, '26

J. W. Grant, '26

A. M. Hanson, '26

Kathryn Ladd, '25

J. C. King, '26

P. Leahy, '26

Merrel Pyle, '26

R. W. Robinson, '26

Business Manager

Vincent E. Tempone, '24

Assistant Business Managers

Miriam W. Carll, '24 W. M. Donaldson, '25

Circulation Managers

Edna Cranston, '24

Kathryn Moffitt, '24

Jean Rothrock, '24

Alyce Watson, '25

J. T. Ash, Jr., '26

E. B. Berry, '26

H. S. Murphy, '26

L. B. Truitt, '26

Katharine Ady, '27



THE UNIVERSITY OF DELAWARE REVIEW STAFF

**Women's College
Alumnae Dinner
Saturday Night**
Edith McDougall, President of the
Alumnae Association, Will Act
As Toastmaster
Tea Saturday Afternoon
at 4
CH 12

UNIVERSITY OF DELAWARE REVIEW

OPEN NIGHT
W. C.
SATURDAY

NEWARK, DELAWARE

NUMBER 13

**Library Foundation
Is Excavated Amidst
Novel Circumstances**
Students and Faculty Labor Side by
Side to Salvage Work on
the Foundation

Delaware
In

**R. O. T. C.
Supplanted By
Artillery Unit**
Wilmington Alumni
Appoints Command
Interiors

**HALLOWEEN DANCE
IN OLD COLLEGE
A PLEASANT AFFAIR**
By Large Crowd
The third
year class
will be
entertained
by the
Halloween
Dance on
Friday
Evening

**TY REVIEW
1923
LA 10**

**Pierre S. Du Pont
To Entertain Both
Faculty and Students**
Eminent Patrons of Delaware Education
to Give Theatre Party to
Students and Faculty

Playhouse on M. & 17th
du P

**FRESHMAN DANCE
AT WOMEN'S COLLEGE
SATURDAY NIGHT**

CALENDAR
November 10
W. C. D.
Many Games
on at West
Jan 11
Jan 20 P. to
at West
Club

**Many Students Enjoy
The Junior Bonfire
At Women's College**
The Junior Bonfire
at the Women's
College was
held on
Friday
Evening
and was
enjoyed
by a large
crowd of
students
and faculty

**FRESHMAN RUSH
ON FRIDAY AT FOUR**
The Freshman Rush
on Friday at four
was a success
and a large
number of
freshmen
were
enrolled

**THIRTEEN MEN
AWARDED
HONORARY
DEGREE**
The thirteen men
awarded the
honorary degree
were
present
at the
commencement
on Saturday

**Ninth Anniversary
of Women's College Student Body
And Faculty November 3**
The Ninth Anniversary
of the Women's
College Student
Body and Faculty
will be celebrated
on November 3
by a large
banquet at the
Old College

**DERELICTS
DANCE
MARCH 1**
The Derelicts
Dance will be
held on March 1
at the
Playhouse on
M. & 17th

**SUBSCRIPTION DRIVE
FOR "THE REVIEW AND GOLD"
OPENS NEXT MONDAY**
The subscription
drive for "The
Review and Gold"
will open on
Monday

**ERISIAN BOWS BEL
BLUE AND GOLD TO
OF FOOTBALL WARS**
The Erisian Bows
will bow to the
Blue and Gold
of the football
wars on Saturday

**Pygmalion
To Crowd Ho YOUR XMAS
IN WALL SHOPPING**
Pygmalion will
crowd the Ho
your Xmas in
the Wall Shopping

**THERE AINT
NO
SANTA CLAUS**
There aint no
Santa Claus
on the review

**FRESHMEN AT W. C.
E VALENTINE HOP**
The Freshmen at
W. C. E
Valentine Hop
will be held
on Saturday

**Trustees Told Cut
to Appropriations
Hamper University**
The trustees of
the University
were told to
cut the
appropriations
to hamper the
University

**Blue Hen
Campaign Opens Monday**
The Blue Hen
Campaign
will open on
Monday

**Pygmalion
To Crowd Ho YOUR XMAS
IN WALL SHOPPING**
Pygmalion will
crowd the Ho
your Xmas in
the Wall Shopping

**Blue Hen
Campaign Opens Monday**
The Blue Hen
Campaign
will open on
Monday

**Blue Hen
Campaign Opens Monday**
The Blue Hen
Campaign
will open on
Monday

**Blue Hen
Campaign Opens Monday**
The Blue Hen
Campaign
will open on
Monday

**Blue Hen
Campaign Opens Monday**
The Blue Hen
Campaign
will open on
Monday

**Blue Hen
Campaign Opens Monday**
The Blue Hen
Campaign
will open on
Monday

**Blue Hen
Campaign Opens Monday**
The Blue Hen
Campaign
will open on
Monday

**Blue Hen
Campaign Opens Monday**
The Blue Hen
Campaign
will open on
Monday

**Blue Hen
Campaign Opens Monday**
The Blue Hen
Campaign
will open on
Monday

**Blue Hen
Campaign Opens Monday**
The Blue Hen
Campaign
will open on
Monday

**Blue Hen
Campaign Opens Monday**
The Blue Hen
Campaign
will open on
Monday

**Blue Hen
Campaign Opens Monday**
The Blue Hen
Campaign
will open on
Monday

**Blue Hen
Campaign Opens Monday**
The Blue Hen
Campaign
will open on
Monday

**Blue Hen
Campaign Opens Monday**
The Blue Hen
Campaign
will open on
Monday

**Blue Hen
Campaign Opens Monday**
The Blue Hen
Campaign
will open on
Monday

**Blue Hen
Campaign Opens Monday**
The Blue Hen
Campaign
will open on
Monday

**Blue Hen
Campaign Opens Monday**
The Blue Hen
Campaign
will open on
Monday

**Blue Hen
Campaign Opens Monday**
The Blue Hen
Campaign
will open on
Monday

**Blue Hen
Campaign Opens Monday**
The Blue Hen
Campaign
will open on
Monday

**Blue Hen
Campaign Opens Monday**
The Blue Hen
Campaign
will open on
Monday

**Blue Hen
Campaign Opens Monday**
The Blue Hen
Campaign
will open on
Monday

**Blue Hen
Campaign Opens Monday**
The Blue Hen
Campaign
will open on
Monday

**Blue Hen
Campaign Opens Monday**
The Blue Hen
Campaign
will open on
Monday

**Blue Hen
Campaign Opens Monday**
The Blue Hen
Campaign
will open on
Monday

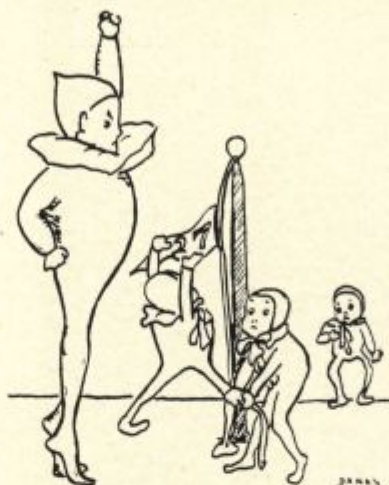
**Blue Hen
Campaign Opens Monday**
The Blue Hen
Campaign
will open on
Monday

**Blue Hen
Campaign Opens Monday**
The Blue Hen
Campaign
will open on
Monday

"THE REVIEW OF REVIEWS"



The Student Representative Board



The Members

<i>Chairman</i>	<i>Secretary</i>
EMILY PEALE ROE	IRENE WILKINSON
Miriam Carll	Margaret Touhey
Charlotte Dayett	Beulah Thompson
Savina Skewis	



HERETOFORE, matters pertaining to Freshmen as well as those pertaining to Seniors have been handled by the Senior Board. But the need of a separate board to deal with each of these classes was felt by the Student Self-Government Association; so the Student Representative Board was formed. This Board consists of seven members chosen in the following manner: the President of the Senior Class fills the position of chairman; the remaining Class Presidents are members; a representative is elected by the Senior, the Junior and the Sophomore classes, respectively. The Freshman Class has no representative other than its President.

The object of the Student Representative Board is to enact and enforce Freshman rules in accordance with the authority invested in it by the Student Executive Council. The Freshmen are held responsible for all rules set down in the Hand Book. Infringements of the rules are tried and punished by the Student Representative Board.



The Social Committee



The Members

Chairman

ELEANOR VINYARD

Miriam Carl
Frances Jones

Alyce Watson
Margaret Touhey

Louise Harris
Clara Brady



THE SOCIAL COMMITTEE

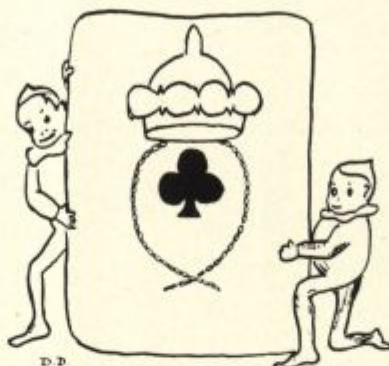


The Social Program

<i>September</i>	22—Freshman Stunt Night
<i>September</i>	29—Y. W. C. A. Party
<i>October</i>	13—Junior Bonfire
<i>October</i>	20—Closed Night (Seniors entertained)
<i>October</i>	27—Open Night (Dancing)
<i>November</i>	3—Hallowe'en Dance (Old College)
<i>November</i>	3—Founder's Day
<i>November</i>	10—Open Night (Governor Miller)
<i>November</i>	17—Closed Night (Juniors entertained)
<i>November</i>	24—Open Night (Dancing)
<i>December</i>	8—Open Night (Miss Abbott from New York)
<i>December</i>	15—Closed Night (Sophomores entertained)
<i>January</i>	5—Open Night (Dancing)
<i>January</i>	12—Junior Promenade (Women's College)
<i>January</i>	19—Closed Night (Freshmen entertained)
<i>February</i>	9—Open Night (Dancing)
<i>February</i>	14—Freshman Dance
<i>February</i>	23—Alumnae Banquet (Old College)
<i>March</i>	1—Closed Night
<i>March</i>	8—Open Night (Dancing)
<i>March</i>	15—Saint Patrick's Dance
<i>March</i>	22—Closed Night
<i>March</i>	29—Open Night
<i>April</i>	5—Glee Club Concert
<i>April</i>	12—Gym Meet
<i>April</i>	26—Closed Night
<i>May</i>	3—Open Night
<i>May</i>	10—Field Day
<i>May</i>	17—May Day
<i>May</i>	24—Open Night
<i>June</i>	6—Farewell Hop



The French Club



The Officers

President
FRANCES RICHARDS

Secretary-Treasurer
HAZEL COLLINS

The Executive Committee

DR. PATTERSON

FRANCES RICHARDS

HAZEL COLLINS

The Advisory Board

DR. PATTERSON
PROFESSOR BRINTON
MISS WEISS

MARTHE CHARBONNEAU
FRANCES RICHARDS
HAZEL COLLINS



THE French Club has for its chief end the stimulation of interest in French conversation. As a matter of fact, anything French is of vital interest to the club. The study of phonetics is of enormous value to the members who expect to become teachers of the French language. At the last meeting, which, by the way, was the initial one, records of French masterpieces read by contemporary French actors were played. These records are similar to the ones used at the Alliance Française in Paris; thus the students who are unable to go to France for a course of study may receive the same benefits as those at the Alliance Française. It is the intention of the French Club to hold at least three more meetings, the first of which has been planned as a tea. At this gathering, each member will be expected to have ready for use a number of sundry social expressions. By these additional assets, the phonetic study plan and the use of records, it is hoped that the French Club will be of immediate value to those persons who contemplate studying in France as well as to those who will not enjoy that opportunity.



The Glee Club



The Officers

Director

MISS DORA WILCOX

President

ELEANOR VINYARD



THE GLEE CLUB



The Glee Club



THE annual concert of the Glee Club which was held last spring surpassed by far any previous attempt. The members of the club also entertained with selections on May Day and at Commencement. This year membership in the club has increased, and its activities have become greater and more varied. One day this fall the program of the Wolf Hall chapel period included the appearance of the Glee Club. At the present time, the members are holding frequent practice in preparation for another concert at Wolf Hall on April twenty-two. It is expected that this affair will be even more successful than the preceding ones have been.

The Members

Hazel Allen	Sara Hatfield	Marie Parker
Marie Betts	Mary Hill	Anne Ralston
Louise Brooks	Tacy Hurst	Jean Rothrock
Helen Cobb	Eunity Jones	Eleanor Rush
Elizabeth Crooks	Estella Kite	Ruth Stoll
Aline Davis	Amy Lloyd	May Thompson
Mary Elias	Anna McSorley	Mildred Tolson
Margaret Ellis	Geraldine Messick	Eleanor Vinyard
Mary Francis	Marion Neide	Mildred Webb
Elizabeth Wiley	Frances Worthington	



The Senior Board



The Members

Chairman

EMILY PEALE ROE

Secretary

LOUISE BECK

Josephine Burnett
Miriam Carl

Mary Givison
Sara Hatfield



SENIORS are not subject to all of the rules set down for the members of the other three classes. And they are allowed unlimited privileges. Therefore, it is necessary to have a separate board to meet their peculiar needs. The Senior Board is similar to the Student Representative Board in that the same person, the President of the Senior Class, acts as chairman of both. But the Senior Board is different: it is characterized by the fact that its members are Seniors who are chosen by their class. The Senior Board possesses all of the powers of the Student Executive Council in regard to Seniors. Moreover, it has full privilege to ask information of and to receive suggestions from the Student Council in any matter. Important questions may be referred to the Student Council, and its advice will be extended. Such advice may or may not be acted upon—as the Senior Board sees fit. This separation of what was formerly the Senior Board into two independent units, the Senior Board and the Student Representative Board, has brought about desirable results. It is hoped that with each succeeding year the Senior Board will develop into a strong self-reliant executive body.



The Athletic Association



The Athletic Council

MISS PRUGGER

President
ANNA CARROLL

Vice-President
MARGARET TOUHEY

Secretary
CLARA BRADY

Treasurer
HELEN LUCAS

Custodian
RUTH EWING

Freshman Representative
MARGIE RECORDS



THE ATHLETIC COUNCIL



The Athletic Association



NCE again the constitution of the Athletic Association has been revised, and this time it has been changed radically. According to the new classification, there are no minor sports. Hockey, tennis, volleyball, baseball, rifle, track—all are major sports, rating the same in number of credit points. All these sports are competitive between classes; the class which wins the championship in the majority of sports each year has its name on the shield.

The winners in last spring's sports were: basketball, 1926; tennis, 1923; baseball, 1925. These final games were played on Field Day.

1927 won volleyball, and 1925, hockey in the inter-class games played last fall. Rifle, which has been at the college for only two years, has found great favor among the students. Matches were shot this year with the University of Maryland, the University of Syracuse, the University of Vermont, Drexel Institute, and other colleges. Training is observed for rifle as for other sports. At this writing, the inter-class matches have not been held. The Women's College team won all the inter-collegiate matches except the first one, which was played with the University of Maryland. The Athletic Association petitioned the Academic Council and the Trustees for the privilege of playing inter-collegiate games but this petition was not granted.

The Athletic Association holds a gymnastic meet each year in the Newark Armory. This meet, which is competitive between the Freshman and Sophomore classes, includes gymnastic drills and apparatus work. The meet this year will be held on April 12.

The latest development of the Athletic Association is the Outing Club, which was organized by Miss Prugger in March. Outdoor hikes and picnics and the acquisition of some knowledge of scouting and woodcraft are the program for this club. At the present time, about twenty-five students have joined the Outing Club.

Volleyball

HONOR TEAM

Middleton, '27
Rosa, '27
Nunn, '27

Skewis, '27
E. Butler, '27
R. Butler, '27

Danks, '25
Webb, '26
Knowles, '25

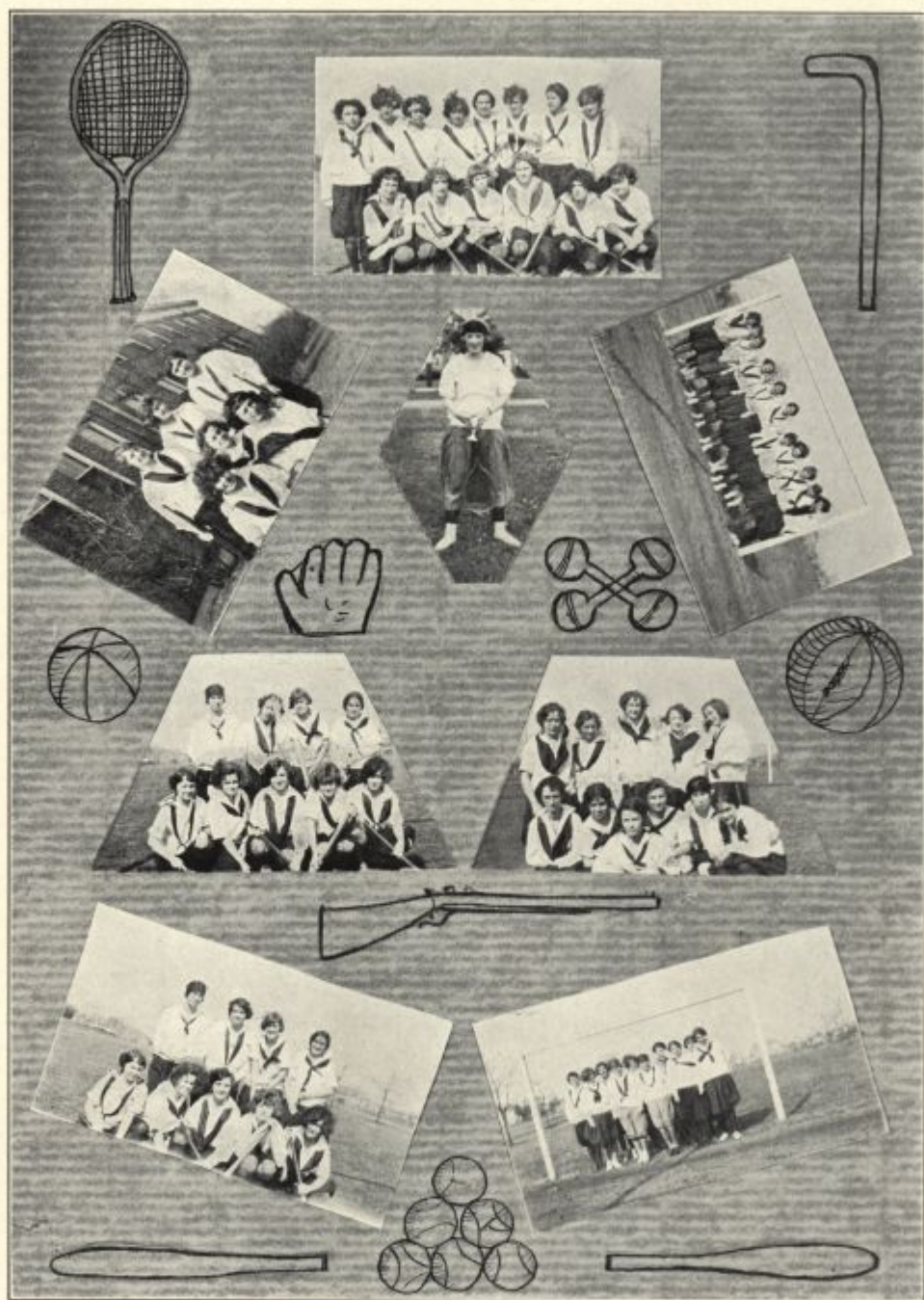
CLASS TEAMS

Sophomore

Dawson
Francis
Marvel
Webb

Wilkinson
Deen
McSorley

Kirova
Bullock
Cannon
Baker





Freshman

Skewis
Alexander
Rosa
Turner

Nunn
E. Butler
R. Butler

Cook
Wiley
Hastings
Skrivan

Hockey

HONOR TEAM

FORWARD LINE

Center Elias, '26
Left Inside Bradley, '25
Right Inside Bassett, '27
Left Wing Ewing, '26
Right Wing Penrose, '27
Substitute Wiggin, '26

BACKFIELD

Right Fullback .. Tyler, '26
Left Fullback..... Hurst, '27
Goal Goodman, '27
Substitute Neide, '25

HALFBACKS

Center Krueger, '25
Left Dayett, '25
Right Touhey, '25
Substitute Burnett, '24

CLASS TEAMS

	1924	1925	1926	1927
Center	Vinyard	LeFevre	Wiggin	Alexander
L. Inside	Cranston	Bradley	White	Records
R. Inside	Burns	Brosius	Ralston	Bassett
L. Wing	Petry	Lucas	Ewing	Brown
R. Wing	McKinsey	Nunn	Levy	Penrose
C. Halfback	Burnett	Krueger	O'Neill	Cobb
R. Halfback	Macintire	Touhey	Thompson	Brooks
L. Halfback	Black	Dayett	Stoll	Davis
R. Fullback	Wolfenden	Neide	Blackwell	Wilson
L. Fullback	Carll	Ladd	Tyler	Hurst
Goal	Beck	Buttles	Corleto	Goodman

Tennis

Honor Team

Kramer, '25 Rouse, '23

Class Teams

1923	1924	1925	1926
Roe	Wolfenden	Kramer	Brady
Rouse	Burnett	Krueger	Elias



Basketball

HONOR TEAM

<i>Center</i>	Smith, '23 Money, '26	<i>Side Center</i>	Webb, '26
<i>Guards</i>	Bradley, '25 Davis, '26 Rouse, '23	<i>Forwards</i>	Ayerst, '23 Cooke, '26 Ladd, '25

CLASS TEAMS

	1923	1924	1925	1926
<i>Center</i>	Smith	Black	Goodwin Workman	Davis
<i>Side Center</i>	Phillips Deakyne	Cranston	Dayett	Webb
<i>Forwards</i>	Roberts Rouse	Petry Rothrock	Ladd Neide Quillin	Deen Cooke
<i>Guards</i>	Ayerst Shorb	Carll Jackson	Touhey Bradley	White Money

Baseball

HONOR TEAM

<i>Pitcher</i>	S. Roe, '23 Wolfenden, '24	<i>Third Base</i>	Poole, '23 Bradley, '25
<i>Catcher</i>	Winner, '26	<i>Short Stop</i>	Bradley, '25
<i>First Base</i>	Ladd, '25	<i>Right Field</i>	McSorley, '26
<i>Second Base</i>	L. Roe, '23	<i>Center Field</i>	Dayett, '25
		<i>Left Field</i>	White, '26

CLASS TEAMS

	1923	1924	1925	1926
<i>Pitcher</i>	S. Roe	Wolfenden	Quillin	Ewing
<i>Catcher</i>	Roberts	Carroll	Kramer	Winner
<i>First Base</i>	Gentieu	Givison	Ladd	O'Neill
<i>Second Base</i>	L. Roe	Carll	Touhey	Ralston
<i>Third Base</i>	Poole	Burnett	Dayett	White
<i>Short Stop</i>	Deakyne	Worthington	Bradley	Gum
<i>Right Field</i>	Smith	Jackson	Knowles	Chandler
<i>Left Field</i>	Ayerst	E. Roe	Kite	Betts
<i>Center Field</i>	Lynch	Cranston	Moore	McSorley
<i>Substitutes</i>	King		Neide	



Field Day Program

1:30 Jockey Dance

1:40 Tennis

Winner—Rouse, '23

3.00—TRACK EVENTS

	<i>100-Yard Dash</i>	
Money, '26	Lucas, '25	Winner, '26

	<i>High Jump</i>	
Money, '26	Wolfenden, '24	Winner, '26

	<i>Standing Broad Jump</i>	
Loose, '26	Cooke, '26	Winner, '26

	<i>Running Broad Jump</i>	
Loose, '26	Winner, '26	Kramer, '25

	<i>Basketball Throw</i>	
White, '26	Davis, '26	Winner, '26

Relay Race
Class of '26,
1926 Won the Shield

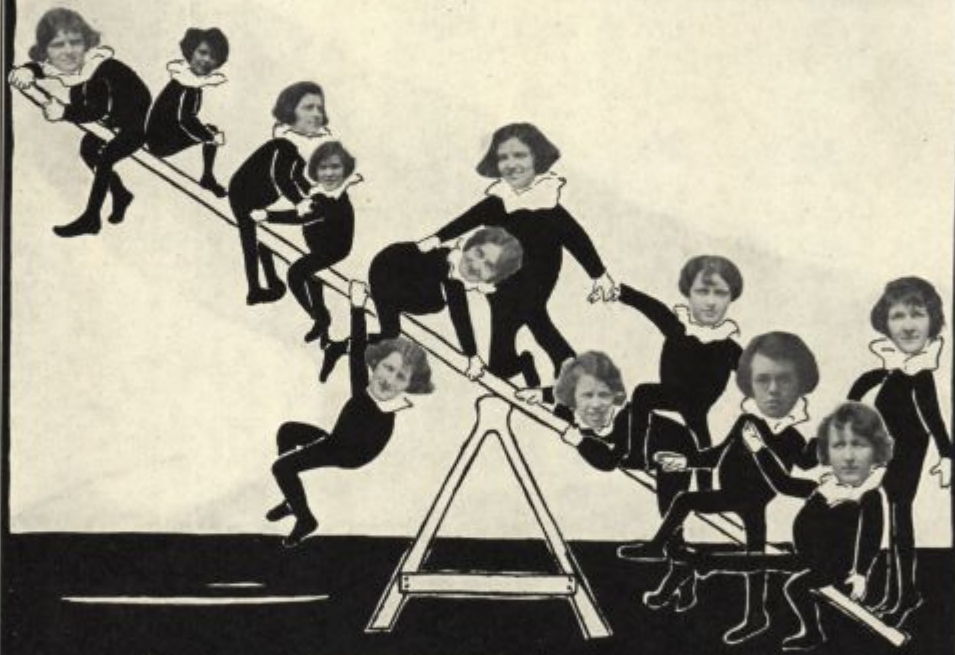
	<i>Basketball</i>	
Seniors 5		Freshmen 24

	<i>Baseball</i>	
Seniors 16		Sophomores 15

BASKETBALL LINEUP

SENIORS		FRESHMEN
Smith	<i>Center</i>	Money
Phillips	<i>Side Center</i>	Webb
Deakyne	<i>Side Center</i>	
Roberts	<i>Forwards</i>	Deen
Rouse	<i>Forwards</i>	Cooke
Ayerst	<i>Guards</i>	White
Shorb	<i>Guards</i>	Davis

BLUE^{AND} GOLD BOARD



DANKS

SEATED
ON
THE BLUE AND GOLD BOARD

ARE

EDITOR-IN-CHIEF

Catherine J. Dougherty

ASSISTANT EDITOR

Dorothy E. Nunn

ASSOCIATE EDITORS

Charlotte W. Dayett

Margaret Toukey

Grace Reed

Mary J. Krueger

ART EDITOR

Selma Sanks

ASSISTANT ART EDITOR

Kathryn V. Sade

BUSINESS MANAGER

Helen Baker

ASSISTANT MANAGER

Marion E. Neide

ADVERTISING MANAGER

Erinity H. Jones

ASSISTANT MANAGER

Frances Richards

FACULTY ADVISER

H. Owen Shepherd



The Ukulele Club



The Officers

Leader

MISS MARTHA BARROW

Vice-President

BEULAH THOMPSON

Secretary

GEORGIA WIGGIN

President
LILLIAN DEEN

The Members

Marie Betts
Alice Bierman
Edith Chandler
Lillian Deen
Margaret Edgell
Mary Elias

Margaret Ellis
Betty Fletcher
Caroline Fouracre
Mary Wilmer Haines
Tacy Hurst
Bertie Jefferson
Georgia Wiggin

Geraldine Messick
Margie Records
Leonora Rosania
Eleanor Rush
Buelah Thompson
Louise Turner



THE present Ukulele Club had its beginning in January of this year. A group of girls, under the direction of Miss Barrow, gave several selections on their ukuleles at chapel. The entertainment met with such hearty approval that it was decided to organize a Ukulele Club. A formal meeting was called in February at which meeting officers were elected and Tuesday nights were chosen as the time for weekly practice. The club made its first appearance as a club at the Alumnae Banquet on February twenty-three. At the present time, the members are preparing for more entertainments and for a concert which is to be given with the Glee Club at Wolf Hall in April.