

# ORGANIZATIONS







ELEANOR EDGE  
DOROTHY BAYLIS  
ALICE HOLLOWAY

VIRGINIA SMITH  
GENEVA LOBACH  
LAURA LEE CORLEY

DOROTHY BOND  
ANN BARCLAY  
MARGARET MIDDLETON

## THE STUDENT COUNCIL

### OFFICERS

GENEVA LOBACH.....	President
ALICE HOLLOWAY.....	First Vice-President
DOROTHY BOND.....	Second Vice-President
ELEANOR EDGE.....	Third Vice-President
VIRGINIA SMITH.....	Secretary
ANN BARCLAY.....	Treasurer

### Class Representatives

DOROTHY BAYLIS, '29

MARGARET MIDDLETON, '30

LAURA LEE CORLEY, '31

THE STUDENT SELF-GOVERNMENT ASSOCIATION of the Women's College has the supervision of practically all matters relating to the conduct of the student body. The Student Association aims to effect desirable results in student life and, at the same time, to furnish valuable training in the art of leadership. Each girl, on entering college, automatically becomes a member of this organization; and it is her duty to uphold its ideals, to obey its rules, and to do all that she can to make student government at the Women's College successful.

Just as towns are organized, so is this Association. The president, the first vice-president, who is head of Residence Hall, and second vice-president, who is head of New Castle Hall, are all elected from the Senior Class. The third vice-president, who is head of Sussex Hall, the secretary, and a representative are elected from the Junior Class. The treasurer and a representative are elected from the Sophomore

Class. These eight members make up the Student Council who in turn elect a Freshman member. The Student Council has all of the executive power, and it is the duty of the Council members to enforce the rules of the Association and to punish all offenders.

Since true Student Government can be attained only through coöperation with the faculty, a committee composed of the Dean of the Women's College and several faculty members works with the Student Council whenever necessary. Because of the inexperience of the Council members, all major cases including expulsions or suspensions must be referred to the Faculty Committee.

The Women's College has as the basis for Student Self-government the Honor System. Its code works not only in the classroom and on the athletic field but in social matters as well. In this way, the students try to make their government one of true gentlewomen.





GENEVA LOBACH  
HELEN MORTON  
ETHEL MERRITT  
VIRGINIA SMITH

HELEN ELLIOTT  
CHARLOTTE RAMBO  
NELLIE LAWTON  
BLANCHE MALCOM  
EDITH PASSMORE

LOIS SIMMONS  
VIRGINIA SPARKLIN  
REBECCA WILLIAMS  
CHRISTINE BAKER

#### Y. W. C. A. CABINET

##### OFFICERS

CHRISTINE BAKER.....	<i>President</i>
HELEN MORTON.....	<i>Vice-President</i>
HELEN ELLIOTT.....	<i>Secretary</i>
EDITH PASSMORE.....	<i>Treasurer</i>
CHARLOTTE RAMBO.....	<i>Chairman of Finance</i>
VIRGINIA SMITH.....	<i>Assistant Chairman of Finance</i>
ETHEL MERRITT.....	<i>Chairman of Meetings</i>
REBECCA WILLIAMS.....	<i>Freshman Representative</i>

**T**HE purpose of the Young Women's Christian Association at Women's College is to promote a spirit of democracy and Christian fellowship among the students and faculty. Through it the Delaware girls are brought in contact with organizations and ideas other than those on Women's College campus.

One way by which this is brought about is through the Vesper Service held in the Hilarium every Sunday evening. At these meetings, members of our own faculty or others who are interested in our organization are obtained as speakers.

In order to gain a more universal outlook and a better understanding of current problems, the association sends delegates to the various conferences

held throughout the year. Delaware has been well represented, indeed, at both the conferences of this section of the country, and at the national and international organizations. Within the last year, representatives have attended conferences at Milwaukee, Hood College, Sherwood Forest, Eaglesmere, Detroit, and our own conference here at Delaware.

The Y. W. C. A. also sponsors the Little Sister Movement by which each Freshman, on her entrance to college, is given a Big Sister who is a member of her sister class.

These and its many other functions make the Y. W. C. A. one of the most active and interesting organizations on campus.





#### MEMBERS

M. DICKERSON  
M. CULVER  
F. LONG  
D. DAVIES  
I. LANGRELL  
M. HOLT  
E. BIDDLE  
M. MAULL  
E. REEVES  
A. BARCLAY

L. BOOKER  
T. SHELENDER  
S. CROSSAN  
E. LONG  
L. STEELE  
A. HAGEN  
A. THOMS  
D. BOND  
S. GOLDSTEIN  
E. PEARSON

H. VINEYARD  
M. PHILLIPS  
S. REVELLE  
K. POINSETT  
V. SPARKLIN  
R. COVEY  
S. COFFIN  
E. EDGE  
H. LAMBORN  
A. DOWNS

B. MALCOM  
D. PIERSON  
K. SMITH  
L. SIMMONS  
E. MERRITT  
R. EASTBURN  
D. ROGERS  
M. SMITHERS  
E. STOLL  
F. LONG

D. HOBBS  
M. BURKE  
I. CARLL  
H. McCABE  
B. KING  
C. TOWNSEND  
C. PRETTYMAN  
M. LYSLE  
M. MIDDLETON  
F. BUTLER

#### GLEE CLUB

MARY E. GILLESPIE, *Director*

#### OFFICERS

LOIS SIMMONS.....*President*  
ETHEL MERRITT.....*Secretary-Treasurer*

#### CONCERT PROGRAM

MARCH 23, 1928

Now the Day is Over ( <i>Edward Ellsworth Hipsher</i> ).....	}.....GLEE CLUB
Oh Italia, Italia Beloved ( <i>Donizetti</i> ).....	
Mighty Lak' a Rose ( <i>Ethelbert Nevin</i> ).....	
Caprice Espagnol ( <i>Moritz Moszkowski</i> ).....	}.....LILLIAN STEELE
Hejre Kati ( <i>Genö Hubay</i> ).....	
Slavonic Dance No. 2 (E Minor) ( <i>Dvorák-Kreisler</i> ).....	
Still As the Night ( <i>Carl Bohm</i> ).....	}.....ANN BARCLAY
As Torrents in Summer ( <i>Edward Elgar</i> ).....	
Ave Maria ( <i>Franz Schubert</i> ).....	
Rockin in De Win' ( <i>W. H. Neidlinger</i> ).....	}.....GLEE CLUB
Concerto in G Minor ( <i>Felix Mendelssohn-Bartholdy</i> ).....	
Dawn's Awakening ( <i>Edward Grieg</i> ).....	
Mah Lindy Lou ( <i>Lilly Strickland</i> ).....	}.....GLEE CLUB
Un Bel Di (One Fine Day) ( <i>G. Puccini</i> ).....	
Soloist, LOIS SIMMONS	
A Dream Boat Passes By ( <i>Edwin H. Lemare</i> ).....	





#### MEMBERS

A. BJORNSON  
M. PHILLIPS  
M. VANDEVER  
A. BARCLAY  
E. MERRITT  
L. BENSON  
C. RAMBO  
M. MIDDLETON  
H. STAYTON

R. KASTENHUBER  
D. STANLEY  
T. TEHAN  
S. YOUNG  
M. SHALLCROSS  
M. STEELE  
D. KRAEMER  
M. STONE  
A. DOWNS

A. WALKER  
M. JOHNSON  
E. NUNN  
M. FABIAN  
D. DAVIES  
E. STOLL  
F. MALCOM  
N. LAWTON  
R. HOBSON

#### PRESS CLUB

##### OFFICERS

MARJORIE JOHNSON.....*President*  
EDITH NUNN.....*Vice-President*  
ANN WALKER.....*Secretary-Treasurer*

**T**HE Press Club is the only organization of its kind on campus. Its aims are to promote the principles of good journalism, to foster a regard for ethics in journalism, and to afford an opportunity for practice in the writing of press articles. The Club is now a member of the Eastern State Press Club Association.

Every year the Club is instrumental in securing speakers to present some phase of journalism to the

students, either at small group meetings, or at College Hour. Members of the Club submit articles weekly for the Review and for the down state newspapers.

The Press Club is restricted in membership to those who show interest and ability along journalistic lines. New members are chosen on a competitive basis, usually after mid-year examinations. The following were elected to membership in 1928:

ANN BJORNSON  
DOROTHY DAVIES

MILDRED FABIAN  
RUTH KASTENHUBER  
DOROTHY KRAEMER

MARGARET SHALLCROSS  
MARTHA STONE





BLANCHE MALCOM  
ANN WALKER

FRANCES ECKBERT  
MARY-LOUISE MAYER

DOROTHY BAYLIS  
ADELINE DOWNS

## THE DRAMATIC CLUB

### OFFICERS

FRANCES ECKBERT.....	<i>President</i>
DOROTHY BAYLIS.....	<i>Vice-President</i>
ANN WALKER.....	<i>Secretary</i>
MARY-LOUISE MAYER.....	<i>Advertising Manager</i>
DOROTHY CAULK.....	<i>Costume Manager</i>
ADELINE DOWNS.....	<i>Chairman of Play Reading Committee</i>
BLANCHE MALCOM.....	<i>Chairman of Properties</i>

THE DRAMATIC CLUB is one of the most important organizations on campus. Each spring, it sponsors the production of one-act plays by each of the four classes, the judges usually being members of our own faculty. In the spring of 1927, the Seniors carried off the first prize with their production of "The Will O' The Wisp." The other plays given at that time were: "My Lady Dreams" by the Junior Class, "Rim of the World" by the Sophomore Class, and "Rosalind" by the Freshman Class. It has become the custom for the club to sponsor also the production of a Shaksperian Play each May. Last year's excellent production of "The Merchant of Venice," which was coached by Miss Nora Bean Keely and Mr. Frank Stephens of Arden, was a fitting climax, indeed, for the work of the year.

This year, the Dramatic Club resumed its activities in a rather unusual way. It was hostess to the

Seventh Annual Conference of the Inter-Collegiate Dramatic Association held November 18 to November 20. Fourteen colleges were represented. For the entertainment of the delegates, the Dramatic Club presented a three-act play, "The Mistress of the Inn" by Goldini. Although this was the first time that Delaware was hostess to the conference, it proved a most successful undertaking.

In December of this year, there was given in the Hilarium a one act Christmas play entitled, "Santa Claus." The group of class plays presented this year included "Aria de Capo" by the Seniors, "The Old Lady Shows Her Medals" by the Juniors, "The Eldest" by the Sophomores, and "The Potboilers" by the Freshmen, the Sophomore production receiving the first prize. As usual, the work of the Club will be ended this year by another Shaksperian production, "Twelfth Night."





#### MEMBERS

GENEVA LOBACH  
LILLIAN BENSON  
MISS NORA BEAN KEELY

FRANCES ECKBERT  
ANN WALKER  
NELLIE LAWTON  
FRANCES GOLDSTEIN

THELMA SHELLENDER  
AGNES THOMS  
DOROTHY CAULK

#### THE PUPPETS

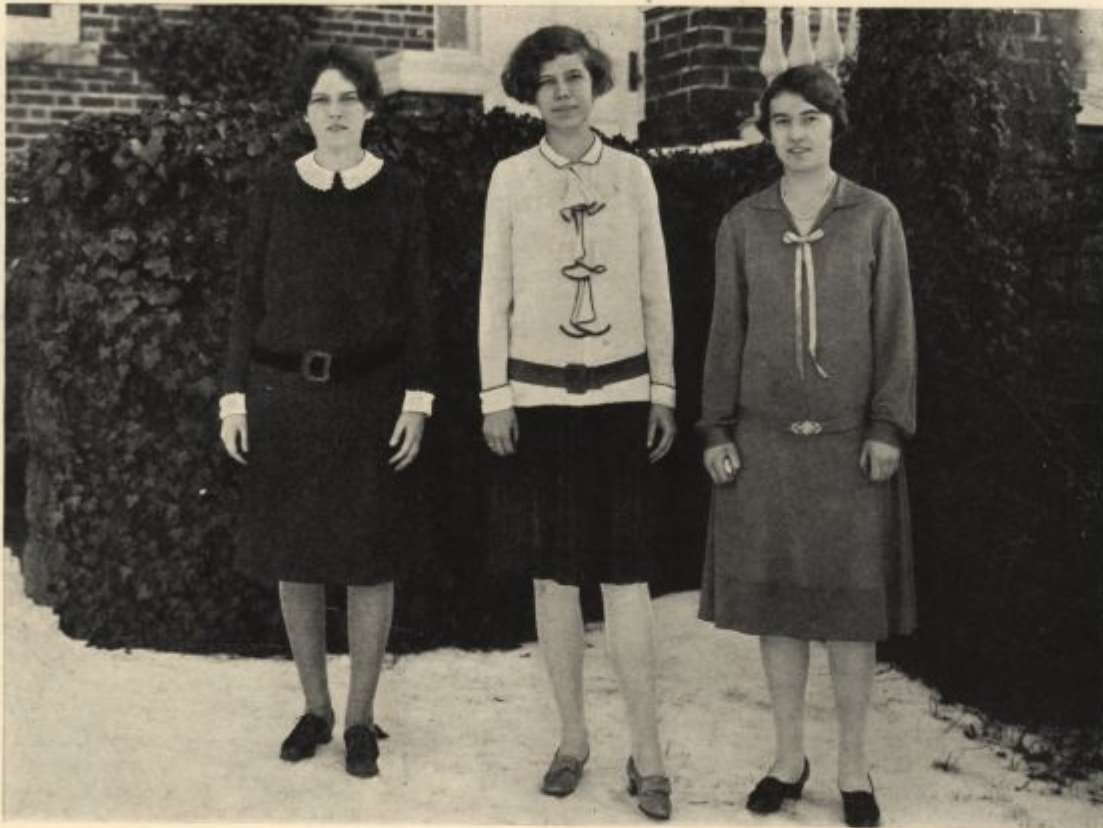
##### OFFICERS

THELMA SHELLENDER.....	<i>President</i>
AGNES THOMS.....	<i>Vice-President</i>
FRANCES GOLDSTEIN.....	<i>Secretary-Treasurer</i>

**I**N 1925, the members of the Dramatic Board felt a need for stimulating dramatic interest on campus, whereupon the organization known as The Puppets came into existence. The members of the Dramatic Board automatically become charter members. An insignia was chosen and a constitution was made. Every member of the student body is eligible to become a Puppet. For aiding in any way in the production of a play, a certain number of points is awarded. Any girl who makes five hundred points becomes a candidate for election.

The on-campus members of the Puppets meet regularly once a month for the purpose of reading and discussing current plays. Once a year there is a reunion of all the members of the organization, at which time the new members are initiated. A general business meeting is held at that time, and new suggestions are considered for the further promotion of dramatic activities. The best of these suggestions are passed on to the members of the Dramatic Board for their consideration.





DOROTHY STANLEY

MILDRED PHILLIPS

JULIA FRANCIS

## THE FORUM

### OFFICERS

MILDRED C. PHILLIPS.....	<i>President</i>
M. DOROTHY STANLEY.....	<i>Vice-President</i>
JULIA E. FRANCIS.....	<i>Chairman of Hostesses</i>

THE FORUM distinguishes itself from many other campus activities in that it has as its chief aim the extension of the students' interest from purely local affairs to the greater social, economic, and political situations of the world at large.

This interest is cultivated by securing a variety of competent speakers, representing different fields of activity, who voluntarily share their own observations and experiences with the students. In this way, such speakers awaken a keener insight into life itself and offer guidance in the making of plans for the future.

Because of the catholicity of their programs, the Forum meetings are attended by those faculty members and students who enjoy such an outlet from the routine of college life.

As college-trained girls are likely to be bewildered on entering a busy world by the multiplicity of occupations and interests open to them, it is most beneficial, therefore, that they have the opportunity to hear enthusiastic and well-informed speakers, who have the power to enlighten them in regard to the ups and downs of all types of life-work. For this reason, the Forum committee this year, with the splendid coöperation of Dr. Ryden, has endeavored to select persons who can summarize the scope and requirements of journalism, social service, cultural studies, political activity, club-work, and the like.

The interest displayed in promoting the work of the Forum would seem to indicate that this organization plays an important rôle in campus life.





#### MEMBERS

E. DeHUFF  
C. TYBURSKI  
D. DAVIES  
M. MAYER  
MISS L. RICHARDSON  
M. ELLIS  
D. HAYES  
M. MOODY  
A. BJORNSON

H. COX  
T. TEHAN  
T. SHELLENDER  
H. SWAIN  
E. McGOVERN  
E. REEVES  
A. GOW  
M. PUGH  
H. LAMBORN

E. PEARSON  
J. RUST  
D. FRIEDEL  
P. LYNCH  
T. TOUZOUR  
L. STEELE  
D. BAYLIS  
D. INDERLIED  
M. PHILLIPS

H. BAKER  
A. CAREY  
V. ENGLAND  
K. GRAY  
I. CARLL  
F. LONG  
F. MALCOM  
M. VINSINGER  
S. YOUNG

#### THE FRENCH CLUB

##### OFFICERS

DOROTHY INDERLIED.....*President*  
MILDRED PHILLIPS.....*Vice-President*  
DOROTHY BAYLIS.....*Secretary*  
LILLIAN STEELE.....*Treasurer*

THE Cercle Française is one of the most active student organizations on campus. It meets fortnightly from 7.30 until 9.00 p. m. in the Common Room of Sussex. Every meeting is conducted entirely in French, and a splendid opportunity is thereby afforded to the language students to develop their conversational French.

The Club has been singularly fortunate in being able to elect as president each year a returned member of the Foreign Study Group, who has an excellent command of the language and who knows how French Club meetings should be conducted "à la mode française."

A French Christmas banquet was held this year,

sponsored by Dorothy Inderlied and Miss Lula Richardson. An interesting feature was the "sabot," or wooden shoe, which contained a small gift for each member. The menu was composed of French dishes.

Miss Richardson, who is always present at the meetings, has given considerable aid to the organization this year by her helpful criticism and suggestions. Miss Fitzwater and Mme. Jusson of Wilmington have delivered interesting lectures upon France and the French people.

The French Club is constantly increasing its membership, and it is to be hoped that it will continue the splendid constructive work that it has accomplished in the past.





LILLIAN STEELE

DOROTHEA PIERSON

JANE WARNER

KATHERINE HORTON

#### SOCIAL COMMITTEE

JANE WARNER.....	<i>Chairman</i>
KATHERINE HORTON.....	<i>Chairman of Refreshments</i>
DOROTHY CAULK.....	<i>Chairman of Decorations</i>
HELEN STAYTON.....	<i>Assistant Chairman of Decorations</i>
DOROTHEA PIERSON.....	<i>Treasurer</i>
LILLIAN STEELE.....	<i>Chairman of Patronesses</i>

THE Social Committee instigates and supervises the Terpsichorean activities at the Women's College. Formerly, the dances were held in the Hilarium of Residence Hall; but as the student enrollment increased, Old College and the Armory became the centers of exultant gaiety.

Great credit is due the Social Committee chairman, Jane Warner, as it is no small task to arrange the social program to avoid conflict with the plans of Delaware College. However, this was accomplished most successfully this year with the happy result that almost every week-end has held a delightful possibility of entertainment.

The Hallowe'en dances are always memorable occasions. There is a charming informality about them resulting from the girls' gay costumes, which represent various degrees of self-expression. Capricious pierrettes, tantalizing gypsies, alluring señoritas, and demure maids of a past century cavort about with equal abandon. In fact, the Hallowe'en spirit seems to infect even the music-makers, with a most satisfying result.

The Christmas dances, too, are always delightful affairs, with their "Christmasy" decorations. Indeed, the joy of the moment is not unmixed with anticipation of the coming vacation, for, in reality, the Christmas



Dance seems to be the beginning of the holidays for the students.

Of course, it goes without saying, that the Junior Prom is the event of the year. Each Junior Class seems to do its best to outdo the efforts of the preceding class to make its Prom the "best ever." '28's Prom last year in Old College was a most delightful affair, the mere fact that it was held off the Women's College campus being considered a decided achievement. But the Class of '29 went one better this year when they succeeded in holding at the du Pont-Biltmore Hotel in Wilmington what was undoubtedly the most delightful Prom ever given in the history of the Women's College. Madden's

incomparable nine-piece orchestra furnished music. Another charming innovation was the wristlet of sweet peas and roses which each Junior wore.

By way of compensation for not being allowed to attend the Junior Prom, the Freshmen have their own delightful dance in February. This year's dance in the Hilarium was an affair long to be remembered in the hearts of "our youngest."

The Spring Formal in March and the May Day Dance on the night of the May Day Festival are always enjoyable dances, while the Farewell Hop in June closes the college year with a final gay gesture.



## THE SOCIAL CALENDAR

### 1927-1928

OCTOBER 3.....	<i>Freshman Stunt Night</i>
OCTOBER 29.....	<i>Hallowe'en Dance</i>
NOVEMBER 11.....	<i>Athletic Association Hick Party</i>
NOVEMBER 12.....	<i>Open Night</i>
DECEMBER 17.....	<i>Christmas Dance</i>
JANUARY 20.....	<i>Junior Prom</i>
FEBRUARY 25.....	<i>Freshman Dance</i>
MARCH 17.....	<i>Spring Dance</i>
MARCH 23.....	<i>Glee Club Concert</i>
MARCH 24-25.....	<i>All College Week-End</i>
APRIL 14.....	<i>Blue and Gold Dance</i>
MAY 19.....	<i>May Day Dance</i>
JUNE 8.....	<i>Farewell Hop</i>





#### MEMBERS

C. DOWNING  
D. DAVIES  
H. GIBNEY  
M. ELLIS  
A. BARCLAY  
E. MERRITT  
M. MOODY  
M. MAULL  
L. McCLELLAN  
H. MALCOM

M. THOMPSON  
M. FABIAN  
M. MIDDLETON  
S. REVELLE  
C. ATKINSON  
Z. TOUMARKINE  
M. STEELE  
M. COLLISON  
C. THOMASCHEWSKI  
J. MACKIE  
F. GOLDSTEIN

H. KIMBLE  
E. BIDDLE  
J. RUST  
E. WATTERS  
L. McCAFFERTY  
H. LAMBORN  
E. STROUD  
F. LONG  
H. SWAIN  
E. EDGE

#### IBIS CLUB

##### OFFICERS

FRANCES GOLDSTEIN.....*President*  
JEANETTE MACKIE.....*Secretary-Treasurer*  
EDITH BIDDLE.....*Chairman of Program Committee*

THE Ibis Club is an organization of those students in the Women's College whose ability and interest in mathematics are sufficient to enable them to take part in the discussions which the Club offers. An aim of the organization is to have everyone take part, no matter how small that part may be. By discussing questions not found in the ordinary curriculum of mathematics because of a lack of time, the Club hopes to arouse a desire among its members to venture forth and to think for themselves, accepting nothing until they are satisfied with

its truth. And though they can do little, they can attempt to make their work both correct and finished.

Not only does the Club have discussions among its members, but it also secures speakers from other colleges, who bring many new ideas. The Club has had also the interest, aid, and enthusiasm of some of the mathematics department faculty, which has done much to keep it alive and active.

May the Club continue to increase the enthusiasm of all those interested in the subject!





REBECCA HOBSON  
NELLIE LAWTON  
ANN BARCLAY  
HELEN STAYTON  
EDWARD RICKARDS

MARY-LOUISE MAYER  
MARGARET BURKE  
RAY CORLEY  
ANN WALKER  
ELIZABETH DONOHUE  
FRANCIS ROEMER

RALPH ROBINSON  
CHRISTINE BAKER  
LILLIAN BENSON  
EMERSON WILSON  
J. WILKINS COOCH

## THE REVIEW

### STAFF

RALPH ROBINSON.....	<i>Editor-in-Chief</i>
FRANCIS ROEMER.....	<i>Delaware College Editor</i>
LILLIAN BENSON.....	<i>Women's College Editor</i>
RALPH BAKER.....	<i>Business Manager</i>
CHRISTINE BAKER.....	<i>Assistant Business Manager</i>
PHILIP BLANK.....	<i>Assistant Business Manager</i>

**T**HE REVIEW is the joint student publication of Delaware College and Women's College of the University of Delaware. Its editorial and business staff is made up of representatives of both colleges. This staff is, in fact, one of the very few associations on campus joining the two colleges.

The paper makes its appearance every Friday evening. It contains announcements, news items,

personals, and "litterati" attempts—everything of necessity and interest to anyone connected with the University. As the present united association has not flourished for very many years and as the University is yet a small one, the REVIEW is a necessarily small and limited paper. Nevertheless, it has vast possibilities; and with student coöperation and an able staff, it should soon be in high ranking among college publications.





#### MEMBERS

V. SMITH  
R. BOYD  
F. GREENE  
P. CROTHERS  
E. ELLIS  
M. COLEMAN  
E. BAKER  
R. COVEY  
A. CULVER

E. WALLER  
E. REYNOLDS  
H. SKRIVAN  
T. SCOTT  
K. HORTON  
J. WARNER  
R. MELSON  
P. McCABE  
M. McNICOL

B. ROTHERMEL  
P. THORNLEY  
M. MOORE  
L. VREELAND  
V. PORTER  
E. DUNTON  
A. SPARKS  
J. EASTBURN  
M. LYSLE

N. MOORE  
E. ROBINSON  
N. RUSSELL  
C. BAKER  
M. McCABE  
V. SWAIN  
E. TIMMIS  
M. MENDENHALL

#### HOME ECONOMICS CLUB

##### OFFICERS

NORMA RUSSELL.....	<i>President</i>
VIRGINIA SMITH.....	<i>Vice-President</i>
RUTH MELSON.....	<i>Corresponding Secretary</i>
NELLIE MOORE.....	<i>Recording Secretary</i>
KATHERINE THAWLEY.....	<i>Treasurer</i>
CHRISTINE BAKER.....	<i>Chairman of Program Committee</i>
MYRTLE SIMPLER.....	<i>Chairman of Social Committee</i>

THE Home Economics Club might be called an outgrowth of the aim of the Home Economics Department to train the students to be leaders in home and community life. But the Club accomplishes other things: it promotes a feeling of good fellowship among the students of the Department, and it also furnishes an opportunity for social activity among them. All Senior, Junior, and Sophomore Home Economics students, together with those Freshmen who have successfully completed their first semester's work, are members of the Club.

Through the activities of this organization, the students learn of many movements and opportunities in the field of Home Economics. At each monthly meeting an attempt is made to have a speaker who discusses some phase of vocational work relating to Home Economics. In this way the students obtain a clear idea of the fields which are open to them.

The Club has not only proved itself an aid to the individual student, but has also aroused more interest in the work of the Department as a whole.