

NEWARK POST

❖ Greater Newark's Hometown Newspaper Since 1910 ❖

91st Year, Issue 29

© 2000

September 1, 2000

Newark, Delaware • 50¢



Blue Rocks help out at West Park.

PAGE 3



Delaware opens season Saturday.

PAGE 8



ark High s for title ise.

PAGE 8

THEY'RE BACK!!!

The population of New Castle County grew by nearly 15,000 last weekend when undergraduates returned to the University of Delaware campus in Newark. Our photo-

grapher John Llera toured around Saturday and Sunday and snapped this photo collage as Mom, Dad and their offspring parked and packed it in to the students' dorm rooms



City joins electric project

By JERRY RHODES

SPECIAL TO THE NEWARK POST

THE CITY OF NEWARK may soon be joining other municipalities in a venture to secure reasonably priced electric power in during peak usage hours.

A motion for the city to provide up to \$4 million in startup money for the construction and operation of a centrally located electric generating plant was approved unanimously by Newark City Council at its regular meeting on August 28.

Total project cost of the plant, which would be built in the Smyrna area, is around \$22 million, which if approved by other municipalities, would be funded by bond issues to be repaid over a 20-year period.

Start up money contributed by municipalities would be refunded within a year, and bond payments by municipalities would be made through revenue generated by the usage of the central power plant in times of peak demand. The action by council came after a presentation by Patrick E. McCullar, president of the Delaware Municipal Electric Corporation (DEMEC), of which Newark is a member.

"In the past, we have found it cheaper to buy from wholesale suppliers," McCullar said. "With deregulation, it has become increasingly more expensive to do so."

Other municipalities in the nine-member organization include New Castle, Milford, Smyrna, Lewis, Seaford, Dover, Clayton and Middletown.

Newark is the largest user of electric power among the group, accounting for about 43 percent of total DEMEC power usage.

See ELECTRIC, 3 ►

UD student treated for meningitis

A 19-year-old University of Delaware junior is improving after being treated in a hospital near her home in Maryland for possible meningococcal disease. State officials said this local incident is the only reported case in Delaware this year.

The attending physician reported Wednesday that the woman's health is improving since she was admitted to the intensive care unit Monday afternoon. She is now alert and communicating, the doctor said, but still is listed in critical condition.

The woman came to the Newark university's Student Health Services in the early afternoon of Aug. 28, with symptoms including fever, chills and body aches.

Later Monday afternoon, her parents came to the Newark campus and decided to take their daughter home. During the trip, the woman's condition worsened, and they took her directly to an area hospital.

About 50 students who had close contact with the student were treated early Tuesday morning with a one-time dose of

See OUTBREAK, 7 ►

INDEX

NEWS	1-3
POLICE BLOTTER	2
OPINION	4
LIFESTYLE	6
THE ARTS	7
DIVERSIONS	5
CROSSWORD PUZZLE	12
SPORTS	10-11
CLASSIFIEDS	B1-6



7 99462 00002 13

Durangos return home to Newark

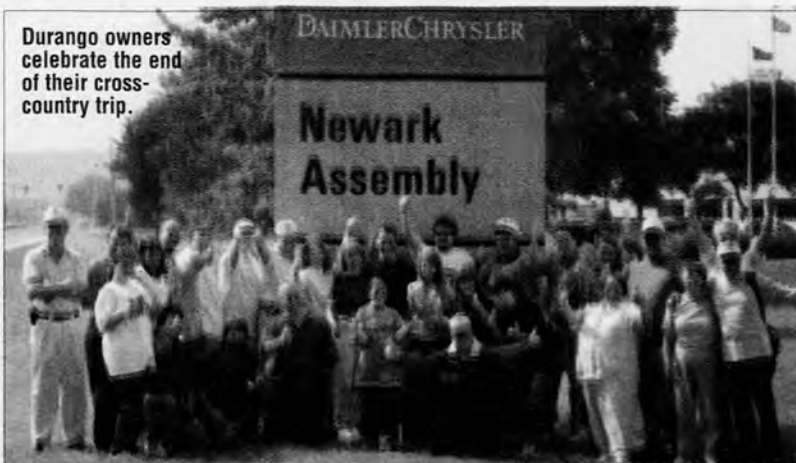
By KATY CIAMARICONE

NEWARK POST STAFF WRITER

THE ARRIVAL of 28 proud Dodge Durango owners at Newark's DaimlerChrysler plant - the only Durango assembly plant in the world - marked the end of a cross-country road trip that began one month ago.

The Durango Rally Across Greater America began in Pismo Beach, Calif., on Aug. 3. More than 100 Durango owners from all over the country joined their fellow enthusiasts in driving their beloved SUVs to various locations around the United States. They completed their journey at the Newark plant Tuesday, where DaimlerChrysler officials offered them a

Durango owners celebrate the end of their cross-country trip.



tour of the 244-acre facility.

As the long line of well-traveled Durangos arrived at the plant, which manufactures about 758 trucks every day, spectators marveled at the participants' freshly-painted blue, bright red and black vehicles - some featuring modified hoods and others decorated with "I survived" type bumper stickers boasting their owners' participation in the annual event.

Participants could enter the rally at any of its 20 featured stops, which included Phoenix, Dallas, New Orleans, Atlanta, Chicago and Boston, as well as a long and windy drive up Mount Washington in New Hampshire.

Although most of the drivers did travel the entire trip, several of them journeyed

See DURANGOS, 3 ►

Adams, Poynton receive scholarships

Rising Sun, Md. resident Joshua Adams and Newark resident Clare Poynton received scholarships from Avon Products Inc. toward the colleges of their choice. The Avon Scholarship for Children of Associates went to Adams who graduated from Rising Sun High School and plans to major in engineering at the University of Maryland, College Park, Md. He participated in a variety of band activities, including the All-County Band and All-County GT Jazz Ensemble, as well as the Math League and National Honor Society. He is the son of Donald and Darlene Adams. The 1999 Resident Scholarship Award went to Poynton who was valedictorian of the Class of 2000 at Newark High School. She was active in the National Honor Society, French National Honor Society, and the Amnesty International Club. Poynton was also captain of her soccer team, and participated on the cross country and track teams. She has won several academic awards and plans to attend Johns Hopkins University with a major in either engineering or biology. She is the daughter of Maureen Kamerick and the late Mark Poynton.



Poynton

Duszak attends Las Vegas conference

Martin J. Duszak of Duszak Appraisal Company recently attended the Valuation 2000 Conference in Las Vegas, Nev. The topics included seminars on FHA inspections, Historic Property Valuation, appraising rural properties and e-commerce appraisal.



Duszak

Duszak Appraisal, located on Main Street in Newark, is a residential appraisal firm specializing in relocation, FHA, Estate and PMI removal.

Binger competes in national veterans games

Larry Binger, a Newark disabled Navy veteran, competed in the 20th National Veterans Wheelchair Games held in San

PEOPLE

Antonio, Texas, in July. All athletes are military veterans who use wheelchairs due to spinal cord impairment, certain neurological conditions, orthopedic amputations, or other disabilities. Binger, a combat veteran of Vietnam, is a 54 year old paraplegic and is currently receiving care at the VA medical facility in Wilmington. He competed in the following events: bowling, shot put, discus and javelin. Binger competed as a Class V (paraplegic level) in the Open division.

Garrison graduates

Newark resident Benjamin L. Garrison received a bachelor of arts in political science from Lynchburg College in Lynchburg, Va. Garrison is the son of Edward and Clare Garrison.

Krueck leaves for six-month deployment

Navy Fireman Andrew R. Krueck recently departed on a six-month deployment to the Adriatic and Mediterranean seas and the Arabian Gulf while assigned to the destroyer USS Arthur W. Radford, home ported in Norfolk, Va. The 1998 Christiana High School graduate is the son of Carol A. and Richard W. Krueck of Newark. Krueck joined the Navy in November 1998.

Stackler returns home

Navy Chief Petty Officer Harry C. Stackler recently returned from a six-month deployment to the Mediterranean Sea and Arabian Gulf while assigned to the amphibious assault ship USS Bataan, home ported in Norfolk, Va. The 1984 William Penn High School graduate joined the Navy in August 1984.

Rigg appointed to Albright Commission

Newark resident Jeffrey T. Rigg has been appointed a member of the Albright College Commission on the Future, a comprehensive strategic visioning effort for Albright College.

Myers, Gennusa, Mills named to dean's list

Newark residents Jeffrey Justus Myers, Dana Marie Gennusa and Jessica Labruce Mills were named to the dean's list at Elon College in Elon, N.C. Myers is the son of

Vern and Linda Myers, Gennusa is the daughter of Mr. and Mrs. Joseph V. Gennusa Jr. and Mills is the daughter of Carolyn Mills.

Wells receives an honorable mention

Newark resident Shauna Wells received an honorable mention for the Marion Armstrong Award at Syracuse University in Syracuse, N.Y. The Marion Armstrong Award is presented annually by the Rose, Jules R. and Stanford S. Setnor School of Music in the college of visual and performing arts to recognize excellence in music. Wells is a senior majoring in wind instruments in the college of visual and performing arts.

Del-Mar-Va Council, BSA, elects officers

Two Newarkers were among officers elected to the Del-Mar-Va Council Inc. of Boy Scouts of America for the 2000-2001 term. Byron Y. Sellers Jr. was elected council president and David R. Short was elected council commissioner.

VonHouwen graduates

Newark resident Gina M. VonHouwen received a bachelor of art in communication from Rowan University in Glassboro, N.J.

Lloyd and Luft graduate

Newark residents Heather Elizabeth Lloyd received a bachelor of science in environmental science, with high honors and Jason Carl Luft received a bachelor of science in business and economics with a major in finance from Lehigh University in Lehigh Valley, Pa. Lloyd also was a college scholar in the College of Arts and Sciences and received departmental honors in earth and environmental sciences.

Bukowski, Rivera grads

Area students graduated from Johnson and Wales University in Providence, R.I.: Newark resident Amanda Bukowski graduated summa cum laude with a bachelor of science in travel-tourism management. Bukowski is the daughter of Joseph W. and Karen A. Bukowski.

Wilmington resident Rebecca Rivera earned a bachelor of science in marketing. Rivera is the daughter of Jose A. and Delza Rivera.

Vandalism, disorderly arrests increasing

Newark Police reported increased incidence of offenses related to criminal mischief, alcohol and noise and disorderly premises in recent weeks.

According to a report issued by the city, there were three times as many charges, 151 compared to 51, for criminal mischief during the first week of August as there were a year ago.

Officer Thomas LeMin said police have been targeting certain behaviors this summer which resulted in more charges, especially those related to vandalism. "We have been documenting and charging suspects in the graffiti and vandalism incidents," said LeMin. "And, we expect there will be more."

The other areas with significant increases are charges for alcohol violations up a third from 291 in 1999 to 405 in the same week in 2000 and disorderly premises which grew to 171 charges in one week, an increase of 65 charges over the same time in 1999.

Despite the arrests, vandalism of all kinds is continuing around Newark. Around midnight on Aug. 12, unknown persons spray-painted graffiti on a stop sign and curb on Mann's Avenue. Sometime between 10 p.m. on Aug. 11 and 7:45 a.m. on Aug.

12, unknown persons damaged lamp posts at residences on Old Oak Road and Meridian Drive. During the same period, unknown persons smashed a drivers side window in a vehicle on Kenilworth Avenue.

Unknown persons spraypainted the brickwall at Wilmington Trust Bank with black paint on two occasions during the first two weeks in August. Sometime between 2 and 7:30 a.m. on Aug. 9, unknown persons spraypainted graffiti on a wall behind Christina School District offices on Delaware Avenue. Unknown persons shattered a window at Cafe Gelato sometime between 1 and 3:30 a.m. on Aug. 8.

Sometime overnight on Aug. 18, unknown persons slashed the sunroof of a vehicle in a parking lot on Elkton Road. Around 11:15 p.m. on Aug. 19, an unknown person threw a beer bottle at a vehicle on Library Avenue. The bottle broke against the windshield on the passenger side causing an estimated \$500 in damage. Around 2 a.m. on Aug. 17, unknown persons damaged the windows of a vehicle parked in front of a residence on Hempstead Drive. Police reported the damage appeared to have been caused by a baseball bat.

Trash collection schedule for Labor Day holiday

The following changes will be in effect for the Labor Day Holiday in the City of Newark.

The Labor Day holiday will be celebrated on Monday, Sept. 4, therefore, trash normally collected on Monday, Sept. 4 will be collected on Tuesday, Sept. 5. Trash normally collected on Tuesday will be collected on Wednesday, Sept. 6. There will be no special bulk or large item pickups this week.

If you should have any questions regarding these changes, please call the Public Works Department at 366-7045.

Two UD students stabbed, police seek info

Newark police are asking the public for information that will lead them to the persons who stabbed two University of Delaware students Sunday morning.

According to Newark police, officers discovered the two victims around 1:40 a.m. August 27 as they investigated reports of a large crowd and fights in the first block of Prospect Avenue, near Cleveland Avenue.

Police said that Christopher McNeil, 21, and James Ellis, 20, each had been stabbed in the abdomen during one of the fights.

The two men were taken to Christiana Hospital, where they were treated and released.

Witnesses or persons with information about the incidents have been asked to contact Det. Andrew Markovitz at 366-7110, ext. 135, or 366-7120.

A Nursing Center With A Difference

"Superb care in a home-like atmosphere"



- Serving families for more than 35 years
- We're small and personal
- Short & Long-term stays
- 100% private pay
- All inclusive rates
- Alzheimer's care

302-731-5576

Newark Manor

254 West Main Street • Newark, DE 19711

Tell our advertisers you appreciate their support of your hometown paper!

THE BEST KEPT MUSICAL SECRET

Newark
Chorale

Time is Running Out!

Give blood or join the Blood Bank by September 5th and you can save a life while registering for a chance to win great prizes donated by local businesses!

7 night/6 day Cruise* for two to Bermuda courtesy of All Aboard Cruises and other great prizes!

To enter: Join the Blood Bank where you work or give blood by September 5th.

Call 1-888-8-BLOOD-8 for an appointment to give blood. Save a life this summer!



BLOOD BANK OF DELAWARE (EASTERN SHORE)
www.bloodbankofdelaware.org

*Must be 18 years or older

Now Enrolling for September!

OUR REDEEMER PRESCHOOL

Chestnut Hill Estates, Newark, DE • (302) 737-6176

\$5.00 off

registration until 9/10/00

BENTLEYS

RESTAURANT & BANQUET FACILITIES
SERVING LUNCH, DINNER & SUNDAY BRUNCH
RT. 40 ELKTON • 1/2 MILE OVER MD/DE LINE

SUNDAY CHAMPAGNE BRUNCH
9 AM - 1 PM \$7.95
Starting at.....
DJ Dancing - Thurs. 7 PM - 11 PM
Fri. & Sat. 9 PM - 1 AM

410-398-3252

Mon.-Thurs. 11AM - 11 PM • Fri. & Sat. 11 AM - 2 AM • Sun. 9AM - 11PM

Pools • Spas • Casualine Patio Furniture • Pools • Spas • Casualine Patio Furniture • Pools • Spas

Winterize your pool with On-Guard Winterizing Kits

USES NO CHLORINE



Prepare for winter now with...

Non-Toxic Antifreeze for Pools, Boots, RV's & Cottages
\$2.98/Gal

Above & Inground Covers and All Winterizing Needs Available

Remember...
NO SALES TAX
IN DE!!

Sum-R-Fun Pool Products, Inc.

1941 Kirkwood Hwy. • Newark, DE
302-368-7201

621 Naamans Rd. • Northtowne Plaza
Claymont, DE
302-792-2731

Pools • Spas • Casualine Patio Furniture • Pools • Spas • Casualine Patio Furniture • Pools • Spas

FOX RUN TOBACCO Outlet

Fox Run Shopping Center
Bear, DE 19701
302-836-3920

One Stop Shopping For:

- Lottery tickets
- Magazines
- Newspapers
- Cigarettes
- Cigars
- Books
- & much more

Mon. - Sat. 6:30 AM - 8:30 PM
Sun. 6:30 AM - 5:30 PM

Moving
Next Door
To
Newsbasket



BIRTHS

■ Tuesday, July 11

He - Yi and Liu Zhong, Bear, daughter

■ Wednesday, July 12

Beane - Stacia A. and John, Landenberg, Pa., daughter
Beasley - Kristy and Marcellus, Newark, daughter
Augustynowicz - MaryAnn and Charles, Hockessin, daughter
Armstrong - Kristin K. and Scot, Hockessin, son
Sandhu - Rupinder and Gurparkash, Bear, son
Webster - Kimberly, Newark, daughter
Bufano - Wendy and P.J., Middletown, son
Flowers - Mary Grace and Warren, Middletown, son

■ Thursday, July 13

Freeberry - Lisa and Patrick, Hockessin, daughter
McCracken - Holly and Martin Finocchiaro, Middletown, son
Akther - Shahin, Bma Belal Noor, Newark, daughter

■ Friday, July 14

Miller - Deborah and Paul, Elkton, Md., daughter
Bannow - Pamela and David, Oxford, Pa., son
Cox - Lydia and Gregg, Somerville, Hockessin, daughter
Haner - Kristine and Louis, Hockessin, daughter

■ Sunday, July 16

Sawicki - Michelle and Charles III, Bear, daughter

■ Monday, July 17

O'Quinn - Kirsten and J. Devon, Newark, daughter
Jones - Benita, Northeast, Md., daughter
Wood - Susan and Mark, Middletown, son
Swift - Nicole and Michael, Newark, son
Pitts - Kimberly and John Cooper, Newark, daughter
Sernyak - Corinne and Richard, Elkton, daughter

■ Tuesday, July 18

Manganello - Melanie and Anthony, Newark, son
Dowe - Latika M., Carneys Point, N.J., daughter
Marshall - Cheryl and William Frenzel, Bear, daughter
Kendle - Christine and Albert, Hockessin, daughter
Watson - Thomayne and Kayon, Bear, son

■ Wednesday, July 19

Wingfield - Grace E. and Theodore, Elkton, Md., daughter
Campbell - Gwendolyn and Adam, Bear, son
Gribo - Dianne E. and Christopher, Newark, daughter
Sturgis - Karen J. and James, Newark, son
Ains - Dawn Marie and Glenn, Bear, son
Wines - Carly and Sonny, Newark, son
Reel - Michelle and John, Middletown, daughter
Purse - Dorri and Steven, Newark, son
Hastings - Mary and Jonathan, Chadds Ford, Pa., son
Yun - Sun-Jin and Sun-Hoi Kim, Newark, daughter
Yuhas - Susan and Martin, Newark, son
Olsen - Suganya and Arthur, Newark, son

Capital improvement outlays slowing in Newark

By MARY E. PETZAK

NEWARK POST STAFF WRITER

NEWARK'S budget for capital improvements for 2001-2005 is \$2 million lower than last year's five-year program even though it includes significant funding for a reservoir and iron removal plant.

This was the message from city manager Carl Luft while presenting the more than \$29.861 million budget package to city council.

"We have committed \$24.5 million for six projects, including a water storage facility, a south wellfield iron removal plant, replacement of the public works warehouse building, replacement of the city's main computer system, a new 10-megawatt electric

substation and a 138 KV (kilovolt) substation facility," explained Luft.

These six projects were also in previous budgets, said Luft. Only four additional projects exceeding \$50,000 each were added this year: improvements at Folk Memorial Park, funding for demolition of the former Curtis paper mill, annual street repair and pole line relocations at the public works warehouse.

"The value of these (four) projects is \$1,864,000 over five years," said Luft.

Despite the lower spending projections, Luft stressed that the city has to be "more selective" with programs and improvements in the future. "Revenue projections are weaker than in the recent past years," said Luft. "Although utility sales remain

healthy, the increasing cost of power purchases is narrowing operating margins somewhat."

Luft also explained that the cost of operations was projected to increase faster than last year, with health care and pension costs for city workers going up.

In response to these pressures, Luft said city staff made every effort to keep capital outlays to a minimum by eliminating ineligible projects, preventing overlap and exploring the impact of each capital project on the operating budget and each department's needs.

"The six major projects are pretty massive investments for a city our size," Luft told council. "(But), these are large-scale investments which have been planned during the past four years to meet the demands of a

Newark likes DEMEC's proposal

► ELECTRIC, from 1

The DEMEC proposal to build its own electric power plant is viewed as a means of coping with the increasingly high cost of electricity that has resulted from federal and state deregulation of public utilities.

Newark city manager Carl Luft said the DEMEC proposal makes sense from an economic standpoint as municipalities struggle to provide reasonably priced electricity for sale to its customers.

"We have reached a consensus that deregulation has started to hit home with increased prices for power during peak hours," Luft said. "The DEMEC board asked for the opportunity to come to municipal governments and let them review plans for the project."

Power usage and pricing as explained by McCullar, consists of three basic stages or blocks, each determined by load usage and time of day when the usage occurs.

During times of relatively low demand, costs in the basic block area are fairly stable, with prices averaging about \$50 per kilowatt hour. As demand peaks, usually from 1 to 3 p.m., during hot summer days, prices rise accordingly, with cost reaching the \$1,000 per kilowatt hour range.

"DEMEC's proposal is to build an electric generating plant that would produce 45 megawatts per hour at peak hours," McCullar said. "It would be used by municipalities during areas of peak demand." Start-up time for such an operation would be in the range of 15 minutes, with the generator capable of running up to three days without serious impact on the system.

Start-up time for larger units used by major wholesale electric suppliers range from several

hours to nearly one 24-hour period. If the new plant successfully meets the expectations of member municipalities, plans are available to install another 45 megawatt system.

By choosing the smaller size for initial start-up, DEMEC will not have to deal with the more time-consuming regulatory process that comes with increased unit sizes.

The new generating plant would be powered by natural gas, with low-sulfur oil being used as a backup energy source.

Councilmember Karl F. Kallbacher (District 3) asked about the workforce that would be needed for such an installation. "This is a fairly low-maintenance operation," McCullar said. "Operating cost for the plant is estimated to run around \$200,000 annually."

By joining in such a venture, Newark could trim \$600,000 from its electric costs each year, based on current fuel prices.

Vote with ice cream

Petrucci's Ice Cream Co. has found a way to do its part to increase this year's election awareness and have fun all the same time.

At participating Petrucci's Ice Cream and Italian Ice stores including 211 Elkton Road in Newark, customers can vote for their favorite candidate by purchasing a special sundae.

Each week the store calculates the number of votes each candidate receives and a cumulative percentage is displayed on a poster. This poster displays a photo of George

Bush and Al Gore with a "meter" in between that shows the percentage of customers that voted for each candidate. Stores will call their numbers in to the Petrucci's Home Office each Monday so a total of all stores can be calculated.

Petrucci's is a fast growing franchise that has been featured on CNN, in Entrepreneur magazine, and in local newspapers. Petrucci's uniqueness is that it serves 50 flavors of frozen custard, hand-dipped ice cream, and Mick's fresh fruit Italian ices.

BLUE ROCKS AT WEST PARK



West Park School's top readers celebrated the end of school with a Reading Rocks Breakfast. Blue Rocks pitchers Corey Thurman and Matt Burch attended the breakfast and signed autographs for their student fans. They also spoke about how important reading is to them, especially on long bus trips to play other Carolina League teams.

The seventy five students who attended the breakfast led their classes in using West Park's new Reading Counts Program. Reading Counts is a computerized reading incentive program that motivates students to read books, take book quizzes on the computer, and earn reading points. The Reading Counts Program was purchased with a \$13,000 grant from MBNA's Partners in Excellence Program.

Holton leaving Christina

John Holton, who has served as a spokesman for Delaware's public schools since 1971, recently announced that he will be leaving his position as Christina School District's public information officer.

Holton said his last day will be Sept. 15, and there is no word yet as to who will take his place. He accepted an executive director position at the Claymont Community Center in Claymont, he said, because it is an opportunity to meet new and interesting people.

"I live in Wilmington, so working for 29 years in Delaware's public schools was a wonderful opportunity to learn about Newark," Holton said. "I

came here to appreciate the people. Now I have an opportunity to learn about Claymont and the people who live there."

Holton, who worked in the Red Clay Consolidated school district for 16 years before serving in the Christina School District for four years, said the future of Delaware's public schools lies within the public's relationship with them.

"I hope the people of the Christina School District will listen to what [Christina district Superintendent] Dr. Fischer once said: These are our students, our schools, our community. We all need to work together for excellence in education."

Durango owners end cross-country rally in Newark

► DURANGOS, from 1

to Newark from locations hundreds of miles away, including Denison, Texas; Minneapolis, Minn., and New Britain, Conn.

As they drove into the Newark Assembly Plant parking lot, rallyers traveled the final stretch of the event were escorted by a police officer and greeted by plant manager Jim Wolfe and others.

One rally participant, Debbie Royal, came to Newark from

Virginia with her husband, Marion, and their two children, Trisa, 12 and Chris, 14.

"The kids are starting school next week and we thought this road trip would be a great way for them to end their summer vacations," Debbie said. "We came from home and drove with the rest of the Durangos up Mount Washington; that was great. Now we're going to get a good night's rest and head back home tomorrow."

USE OUR CONVENIENT E-MAIL ADDRESS!
 newpost@dca.net

Need a speaker?

The staff of the Newark Post is always anxious to get out in their community and meet the members of local clubs and organizations. And we welcome the opportunity to provide a speaker for a program.

We could discuss the importance of community journalism today or share an entertaining 20-minute program of unintentional but nonetheless hilarious headlines.

Call publisher Jim Streit to set a date with our speakers bureau. Telephone 737-0724.

DURA-OAK DON'T REPLACE **REFACE!!!** *FREE INSTALLATION

1/2 the Cost of Expensive Replacement Cabinets

Unique way to have a Beautiful Kitchen!!!

*Installed in 3 to 5 days as compared to 2 to 6 weeks for replacement. Select from Dutch, Shaker, Square, Cathedral or Roman Designs. Solid Woods - Giazio Designs - Transferable Lifetime Limited Warranty

WE MAKE IT EASY. SAVE THOUSANDS! NO - MAJOR DEMOLITION • NO - FUSS NO - RIPPING OUT

FACE YOUR KITCHEN

"Kitchen Cabinets Refacing at it's Best"

TOLL FREE - 1-877-620-7444

AN EXCLUSIVE DURA - OAK DEALER

*Installation 3 to 5 days after fabrication has been completed and installation schedule set - Free installation with purchase

FREE INTERNET SERVICE

• NO Ads • NO Spam Mail • NO Banners

NO Kidding!!

GO TO www.delanet.com/free DE: 302.326.5800

Toll Free: 888.DELANET

DSL NOW AVAILABLE!

• FREE Setup! • FREE Hardware!

DELA/ET

Simply Deliteful

Incredibly Edible Delites, Inc.

Edible Floral Creations

Floral Fruit Design

Fabulous Fresh Fruit or Vegetable Bouquets Tastefully Arranged For Any Occasion Or No Occasion At All!

1900 Newport Gap Pike
 Wilmington, DE 19808

www.fruitflowers.com

302-636-0300

EXCLUSIVELY LOCATED IN PA, NJ, DE, NC, FL & IN

AUDIOVOX PHONE ON SALE FOR \$39.99

with 200 Minute Plans or Higher

New Activation Only

@Wireless

AUTHORIZED verizonwireless

www.verizonwireless.com

AGENT

1673 Pulaski Hwy. (Rt.40)
 (Behind the new Wawa Super Store)
 Salem Center • Bear, DE 19701

Phone: (302) 838-0240

Just Moved To Newark?

The Hospitality Basket has a warm welcome for new residents in the Newark area.

THIS IS A FREE SERVICE

The basket is full of gifts, maps, helpful local information, gift certificates and valuable coupons.

If you have moved into the Newark area within the last 30 days, please give me a call at 368-0363.

- Maryanne McAllister

Brought To You By These Caring Business People In Our Community:

Advantage Autoland	Friendly's Restaurant	Pampered Chef-Carmella Evans
Am. Express Fin. Advisors	Furniture Solution	Mary Kay-Jackie Hall
Bennigan's Restaurant	YMCA	Petracci's Ice Cream Co.
Loder's Sewing Center	Glasgow Medical Center	Uniglobe Tour & Travel
Newark Post	La Casa Pasta Restaurant	Welsh Family Dentistry
The News Journal	Boulden, Inc.	Chesapeake Inn
Southern States	Jackson, Hewitt	The Tile Center
Christiana Skating Center	U of D Ice Arena	Greely & Nista Orthodontics
Sala Salu Restaurant and Pub	Town Hair Salon	Authentic Chinese Restaurant
Newark Car Wash		

Opinion

EDITORIALS • COLUMNS • PAGES FROM THE PAST • LETTERS

Watching the show

IT HAS BEEN interesting to watch Newarkers adjust to what Delaware Department of Transportation officials might consider a routine traffic pattern change. With the city's population boost of 15,000 last weekend when the University of Delaware opened for the fall semester, the show has become somewhat of Newark's version of "Survivor."

In this column two weeks ago — citing the return of UD students and the opening of public schools this week — we urged special caution. In particular, we noted the danger at Barksdale and Apple roads, where DelDOT changed the rights-of-way with a stop-sign change. Because of the stop sign at Barksdale Road, during peak times traffic was backing up over the bridge and sometime blocking Elkton Road flow. The switch to give the Apple Road the right of way hopefully will alleviate the problem.

However, stopping formerly free-flowing traffic on Barksdale Road has created havoc, many near misses, and even an accident involving a Newark police vehicle within minutes after the new stop signs went up. Flashing sign boards, blinking red lights and occasional police presence have failed to keep inattentive drivers from sailing through the new stop signs. Several newspaper staff members frequently travel through the intersection and have watched in wonder as one, two, even three cars have whizzed past the new stop sign.

DelDOT said a traffic signal could be the next step. Maybe it's time already.

Support the MDA telethon

To: The editor

From: Mary Agnes Ondeczek

Labor Day weekend marks the end of summer for many people, but to me it means it's time for the Jerry Lewis MDA Telethon.

My family is among those facing the onslaught of challenges with muscular dystrophy, a disease caused by progressive muscle wasting, and we take great comfort in knowing that MDA funds hundred of the world's top scientists with contributions made to the Telethon. We also know that thanks to public support of the Telethon, MDA provides unparalleled help through a network of some 230 clinics from

coast to coast.

We can count on excellent doctors, nurses and therapists at the MDA clinics at the Alfred I. DuPont Institute and at Christiana Care Health Services, both in Wilmington. Their guidance has been a godsend.

Each summer, thanks to the Telethon, children with neuromuscular diseases spend a week of fun and freedom at MDA summer camp in Worcester, a welcome respite for families who otherwise provide year-round care.

Please tune in Labor Day weekend and make a pledge by calling 800-FIGHTMD, or by visiting MDA's website at www.mdausa.org.

Protecting young people

To: The editor

From: Rob Necarsulmer
American Heart Assn.

Tobacco control advocates, including the American Heart Association, made great strides in Delaware this year to protect our young people from Big Tobacco. Our efforts established a comprehensive tobacco control program from our share of the tobacco settlement dollars, established limitations on cigarette pack sizes to discourage trial packs, and restricted tobacco advertising around our schools. However, we need support and guidance at the Federal level to ensure that these provisions withstand the test of time and the tobacco industry's deep pockets.

The United States Department of Justice is currently pursuing a federal lawsuit alleging that tobacco companies have con-

spired for decades to mislead Americans on the risks and harmful effects of smoking. This suit aims to recoup the millions of Federal dollars spent treating tobacco related illnesses during this period of deceit and is not an attempt to enact policy by virtue of litigation.

Delaware's U.S. Senators Roth and Biden can play a key role in keeping tobacco away from Delaware's youth and preventing more deaths from tobacco use by opposing all efforts to restrict the Department of Justice from pursuing its current litigation against the tobacco industry. The American Heart Association urges both to assist in this important fight against heart disease and stroke, and on behalf of the citizens of Delaware, to oppose unwarranted immunity for the industry responsible for causing the deaths of over 400,000 Americans each year.

The ADA: Ten years of making a difference

By FRED J. MAAHS JR.

GUEST COLUMNIST

RECENTLY, Americans with disabilities celebrated the 10th anniversary of the Americans with Disabilities Act (ADA), signed by President George Bush in July 1990. For the first time, Americans with disabilities were "given" certain civil rights. These rights provide "equal" access to public transportation, public facilities and services, to telecommunications, and the right to hold jobs.

In a sense, Americans with disabilities felt liberated from the barriers facing them when trying to get on a bus or a train, from the barriers facing them when trying to get into the library to pull a book from a shelf, or to meet friends at a local restaurant.

Americans with disabilities felt liberated being "given the right" to hold a job. For the first time, it became against the law to discriminate against a person with a disability who is applying for a job or to deny a person with a disability access to a public building.

The ADA was signed with great intentions and was viewed by many with great expectations. Much progress has been made for people with disabilities in the

past ten years. Easter Seals recognizes how far we've come and realizes how much further we still need to go.

While efforts have been made to improve public transportation in Delaware for people with disabilities, many issues still face those trying to get from point A to point B. From the many bus stops that are still not wheelchair accessible, to the long waits or "no-shows" from special transit, our public transportation system still needs a lot of work to help people with disabilities be independent.

Housing continues to be a major issue for people with disabilities. Accessible and adapted housing concerns must be addressed in Delaware. A large percentage of people with disabilities want to live independently and not in an institutional setting.

Easter Seals fully supports the decision of those with disabilities to live independently in the community and offers programs that helps them develop the skills necessary to live on their own.

In order for many people with disabilities to live independently, they may need services from a personal attendant. Easter Seals introduced a Personal Attendant Services program in Delaware in the early '90's. Currently there are 33 people with

disabilities taking part in the program and approximately another 70 people on a waiting list. They are forced to be on the waiting list because funding for this program is minimal at best.

The cost savings to take part in the program are great, but more importantly, the person with the disability has a greater level of independence reaping all of the physical and psychological benefits. Programs such as the Personal Attendant Services program need to be properly funded and supported in the community.

Currently, healthcare reimbursement for rehabilitation including physical and occupational therapy, and speech pathology is based on acute care needs versus the needs of an individual with a chronic (long term) condition.

Until health care insurance can accommodate the appropriate levels of treatment for conditions resulting from chronic disease or accidental injury, the intent of the ADA cannot be fully realized nor will the community truly benefit.

We are on the right path with the signing of the Americans with Disabilities Act. The community must be responsible and comply with all that the ADA has outlined, ensure its enforcement — and more. It is one thing to install a ramp for access,

widen a doorway for a wheelchair, or to employ a person with a disability just because the law requires it. It is a much greater accomplishment to provide these opportunities because it's the right thing to do.

We must change the attitudes in our community to treat people as people, and not look down on someone or deny them equality because they have a disability. People with a disability comprise about 20% of our population. In an age where people are living longer with advances in science and medicine, this number will grow.

Easter Seals has been providing programs and services for people with disabilities in Delaware and on the Eastern Shore of Maryland for more than 50 years.

Easter Seals is committed to continue to provide these quality services to meet the needs of people with disabilities, and is committed to continue its interaction with government to bring the ADA to the level it must reach.

Maahs is director of communications and marketing for Easter Seals Delaware and Maryland's Eastern Shore.

OUT OF THE ATTIC



This artist's drawing of the tank plant under construction at the Chrysler site on South College Avenue appeared in the Newark Post in 1951. According to the information with the photo, the one million square-foot facility included parking for 1,300 cars and a one-mile test track. The building at right front of the photo is currently offices, while the tank plant spreading out behind it houses the current assembly line for DaimlerChrysler's Dodge Durango. "Out of the Attic" features historic photographs from Newark's history, recent and long ago. Readers who have a historic photo and would like to share it with other readers are invited to loan their photos for reprinting in this space. Special care will be taken. Send old photos to: *The Newark Post*, "Out of the Attic," 153 E. Chestnut Hill Rd., Newark 19713. For information, call the *Newark Post*, weekdays, 8:30 a.m. to 5 p.m., at 737-0724.

PAGES FROM THE PAST

News as it appeared in the *Newark Post* throughout the years

September 2, 1925

Temporary "Dorm" for girl students still undecided

As new students continue to send in their credits for registration at the Women's College, the need for an additional dormitory becomes acute. At present at least twenty girls now enrolled will be unable to find rooms on the campus.

Every effort made to decide on temporary quarters, so that they may be made ready for the opening of the college year.

With a Freshman class of 125 it would make a total enrollment at the Women's College of about 275.

Old Canal Bridge to be closed soon

The span over the Delaware and Chesapeake canal at Summit Bridge, between Newark and Middletown, will be closed to all traffic on September 15th next, it was stated yesterday by Engineer Brown, in charge of the canal work.

The road will be reopened upon the completion of the new bridge made necessary through the widening of the Chesapeake and Delaware Canal. Colonel Brown estimated that the new bridge, which is under construction, several hundred feet from the site of the old one will be ready for traffic about Christmas.

August 30, 1978

Connector start seen in spring

Construction on the Newark Connector Road, which will link Route 896 and Elkton Road, is scheduled to start in the spring of 1979.

The connector, designed to relieve traffic congestion on South College Avenue, will start slightly north of Park Drive in Silverbrook, cross Chrysler Corp. property, ascend over the Christina Creek and the B&O Railroad tracks, and join Elkton Road 2,000 feet north of its intersection with Otts Chapel Road. Construction of the connector will cost an estimated \$13.2 million.

Half-built tower irks Brookside

The "Brookside Tower" has again aroused the wrath of New Castle County officials.

The County complaints office has ordered the building's owner, Broad Management Inc., of Great Neck, N.Y., to secure the building, after two teenagers reportedly climbed onto the four-story structure one night last week and began swinging from the rafters.

The building's owner says a sale of the building may be in the offing, and that the transaction

could include Towers Department Store and Burger King.

The building has been unfinished since 1974, when the owner stopped construction, citing financial difficulties.

September 1, 1995

Sezna has big plans for landmark

A building once dedicated to farm and home supplies will soon enclose fun, food and shopping in one complex, according to new owner Davis Sezna.

Vacant since 1986, the old Farm and Home Building on Main Street will be the site of "a fun, family style Italian restaurant called Moma Spagetti," said Sezna who also owns Klondike Kate's Restaurant.

Conserve water! It could get worse

Mandatory water restrictions have been in effect in Newark for five days now. The bad news is water usage overall has risen. The good news is, thanks to the restrictions, it's only up 75 percent of what was anticipated with the return of university students.

Joseph Dombrowski, Newark director of water and waste water, said about two dozen customers have already received violation letters. "They all claim they did-

Can we help?

Offices: The paper's offices are located conveniently in the Robscott Building, 153 E. Chestnut Hill Rd., Newark, DE 19713. Office hours are 8:30 a.m. to 5 p.m. weekdays.

Phone: (302) 737-0724

Facsimile: (302) 737-9019

e-mail: newpost@dca.net

On Internet: www.ncbl.com/post/
To subscribe: Call 737-0724 or 1-800-220-3311. Cost is \$15.95 per year to New Castle County addresses. To begin a subscription, simply call.

To place a classified: Call 1-800-220-1230

To place a display ad: Call 737-0724.

THE STAFF of the *Newark Post* is anxious to assist readers and advertisers. Reporters, writers, editors and salespeople can be contacted as listed:

James B. Streit, Jr. is the publisher of the *Newark Post*. He sets policies and manages all departments in the Newark office. Call him at 737-0724.



Mary E. Petzak is the editor. She is responsible for all copy in the paper except sports and advertising. Contact her at 737-0724.



Marty Valania prepares the sports pages of this newspaper. Leave messages for Marty at 737-0724.



Katy Ciaramicone is a staff writer and general assignment reporter. Contact her at 737-0724.



Marla Bowens is the office manager and editorial assistant who processes most press releases. She prepares obituaries and People briefs. She is assisted by Kathy Burr. Contact them at 737-0724.



Other contributing writers include Meghan Attosmis, Jack Bartley, Peg Broadwater, Elbert Chance, Marvin Hummel, Ruth M. Kelly, and Laura Sankovich. Leave messages for them at 737-0724.

Bonnie Lietwiler is the *Newark Post's* advertising director and manages the local sales team. She can be reached at 1-800-220-3311.



Jim Galoff, local sales team leader, services advertising clients in the south Newark, Bear, Glasgow and Routes 40/13 area. Call him at 737-0724.



Betty Jo Trexler is our advertising sales representative in the downtown Newark area. She can be reached simply by calling 737-0724.



Perry Barr sells ads in the greater Newark and Kirkwood Highway area. He can be reached by calling 737-0724.



Jay Falstad services advertising clients in the greater Wilmington area. He can be reached by calling 737-0724.



Linda Streit is the advertising assistant. She can assist callers with questions about advertising rates, policies and deadlines. Call her at 737-0724. Other advertising reps include Kay P. McGlothlin, Jerry Rutt and Kim Spencer.



Shelley Dolar is the classifieds advertising manager. She leads the incoming and outgoing sales of classifieds and can be reached at 1-800-22-3311.



Our circulation manager is Mary Ferguson. For information about subscriptions, call 1-800-220-3311.



Marty Valania is our Director of Pagination. Jane Thomas manages the Composition Department.

The *Newark Post* is published Friday by Chesapeake Publishing Corporation. News and local sales offices are located in the Robscott Building, 153 E. Chestnut Hill Rd., Newark, DE 19713. All advertising and news are accepted and printed only at the sole discretion of the publisher.

The *Newark Post* is a proud member of the Maryland-Delaware-D.C. Press Association, the National Newspaper Association and the Downtown Newark Partnership.

POSTMASTER: Send address changes to: *Newark Post*, 153 East Chestnut Hill Road, Newark, DE 19713.

Diversions

THEATRE • EVENTS • EXHIBITS • NIGHTLIFE • MEETINGS

SEPTEMBER 1

SMOOTH JAZZ FESTIVAL Through Sept. 3 at Rodney Square, Wilmington. Performances by singer/guitarist Jonathan Butler, tenor saxophonist Richard Elliot, and guitarist Peter White. Free admission. 571-5899.

BLUEGRASS FESTIVAL Through Sept. 3 at Salem County Fair Grounds, Route 40, Woodstown, N.J. Performances by several bluegrass bands. \$65 for three days; single at gate, \$25/day. Senior discount available. For more information, call Walt Robbins at 475-3454 or John Lupton at 215-898-4172.

SEPTEMBER 2

HEALING SERVICE 6:30 p.m. at St. Paul's Evangelical Lutheran Church, 701 South College Avenue, Newark. 368-0064.

SOUTH JERSEY AREA WIND ENSEMBLE 7 p.m. at Longwood Gardens, Kennett Square, Pa. Adults, \$12; ages 16-20, \$6; ages 6-15, \$2 and free for under age 6. Performing symphonic pieces for the Festival of Fountains. 610-388-1000.

ARDEN TOWN FAIR AND ANTIQUES MARKET 10 a.m. to 6 p.m. on the grounds of Gild Hall, Harvey Road, Village of Arden. Hundreds of arts and crafts, antiques collectibles, etc. with a live band, Diamond state Band, performing. Special attractions during the Fair will also honor the Centennial. Raindate is Sept. 3. 475-3912.

STORYTIME 10:30 a.m. at Rainbow Books and Music, 58 East Main Street, Newark. Diane Walbel, elementary teacher and Kindermusik instructor, will entertain children at 11 a.m. 368-7738.

CRAFT FESTIVAL 10 a.m. today and tomorrow at Winterthur, Route 52, six miles northwest of Wilmington. Tickets are \$10 per day for adults and seniors; \$2 for ages 5-11; free for ages 4 and younger. Crafts, furniture, demonstrations, fireworks, music, etc. A 7:30 p.m. concert and four special guided tours. 888-4600.

SEPTEMBER 3

MAKE-IT-TAKE-IT Make a craft at the Delaware Museum of Natural History, Route 52. 658-9111.

SEPTEMBER 4

MONDAY FUNDAYS Special self-guided tours of the Delaware Museum of Natural History, Wilmington. \$5 for adults, \$4 for seniors and \$3 for children ages 3-17 and free for children under 3. 658-9111.

SEPTEMBER 5

OPEN MIKE 8:15 p.m. sign-up for poetry event every Tuesday at Jam'n & Java, Newark Shopping Center, Main Street. 266-6311.

SEPTEMBER 6

BINGO 12:45 p.m. Wednesdays at Newark Senior Center. Lunch available for \$2/platter at 11:45 a.m. 737-2336.

SEPTEMBER 7

READ & EXPLORE 2 p.m. Read a story and take related tour of Delaware Museum of Natural History, Route 52. 658-9111.

STARVING FOR ART 12:15-1:15 p.m. Thursday lunch tours at the Delaware Art Museum, Kentmere Parkway, Wilmington. Tour free with purchase of \$7 box lunch at Museum Cafe. Featured artist is Howard Pyle. Reservations requested at 571-9590, ext. 538.

CLOUD NINE 7:30 p.m. Jazz/vocals mix style music at the Riverfront's Dravo Plaza, Wilmington. Bring chairs. Free. For more information, call 425-5000.

EXHIBITS

DAVID HIGGINS Through Sept. 8. Ceramic work on display at University of Delaware, Room 102, Recitation Hall, Main Street. 831-2244.

PAUL BOWLES: 1910-1999 Through Dec. 15. Special Collections exhibit of newly-discovered manuscripts and papers of author and composer at Morris Library, University of Delaware campus, Newark. One of his best-known novels is "The Sheltering Sky," made into a movie in 1990 starring Debra Winger and John Malkovich. For information, call 831-2231.

CLASSICAL CLASSICAL STYLE Through July 2001. New York Furniture in classical style inspired archeological discoveries in early 19th century on display at Winterthur Museum, Route 52.

COMING TO AMERICA Through June 2001. Exhibit about Pierre Sammeul duPont de Nemours and his family during their early years in the United States at the Hagley Museum, Route 141, Wilmington. 658-2400.

BEYOND ILLUSTRATION Through Sept. 17. Landscapes of Delaware artist Frank E. Schoonover at Biggs Museum, Dover. 674-2111.

MONET TO MIRO Through Nov. 1. Masterworks of European Modernism at Delaware Art Museum, Wilmington. 571-9590.

YOU ARE WELCOME HITHER Through Nov. 10. Exhibit telling story of community of Arden, Del., in 20th century at Historical Society of Delaware. 655-7161.

HEAR WHAT I'M SEEING Through Oct. 1. Works from African American, African and Caribbean artists amassed over several decades by jazz legend Donald Byrd on display at the University Gallery, University of Delaware's Newark campus. For information, call 831-8242.

WYETH HOUSE & STUDIO Through Nov. 19 at Brandywine River Museum, Chadds Ford, Pa. (610)388-2700.

Need a speaker?

Are you a member of a Newark area club or organization that needs a speaker from time to time? If so, contact the *Newark Post's* speakers bureau.

Often, audience members are interested in learning about the newspaper's philosophy of community journalism and how its role in the Newark community is different from that of a daily newspaper.

Recently, a presentation of "hilarious headlines" has proved to be a crowd pleaser. Typos, misplaced modifiers and other unintentional mistakes are presented on overhead projections.

For more information, contact the *Newark Post* publisher Jim Streit weekdays at 737-0724.

MEETINGS

SEPTEMBER 1

CARDIO POWER 9 a.m. every Friday at Newark Senior Center. Increase endurance, strength and flexibility. \$11/month. 737-2336.

TAI CHI 11:15 a.m. every Friday and 2:30 p.m. Wednesdays at Newark Senior Center, White Chapel Drive. \$20/month. Call 737-2336 for information.

SEPTEMBER 2

RECYCLE ALUMINUM 9 a.m. to noon first Saturday each month at Center for Creative Arts, off Route 82, Yorklyn. Anything except foil. Remove non-metal portions like glass or chair webbing. Call for house siding and large pickups at 239-2690.

SEPTEMBER 3

WRITING WORKSHOP 2 to 4 p.m. at Art House, Delaware Avenue, Newark.

SEPTEMBER 4

SINGLES CIRCLE 7 p.m. every Monday at New London Presbyterian Church, 1986 Newark Road (Route 896) in New London, Pa. 610-869-2140.

NCCO STROKE CLUB noon on Mondays at the Jewish Community Center, Talleyville. For information, call Nancy Traub at 324-4444.

CARDIO POWER 9 a.m. every Monday at Newark Senior Center. \$11/month. 737-2336.

LINE DANCING 1 and 2:30 p.m. every Monday at Newark Senior Center. 737-2336.

CHORUS OF BRANDYWINE 7:30 p.m. Mondays. Men's barbershop singing at MBNA Bowman Conference Center, Ogletown. All welcome. For information, call 655-SING.

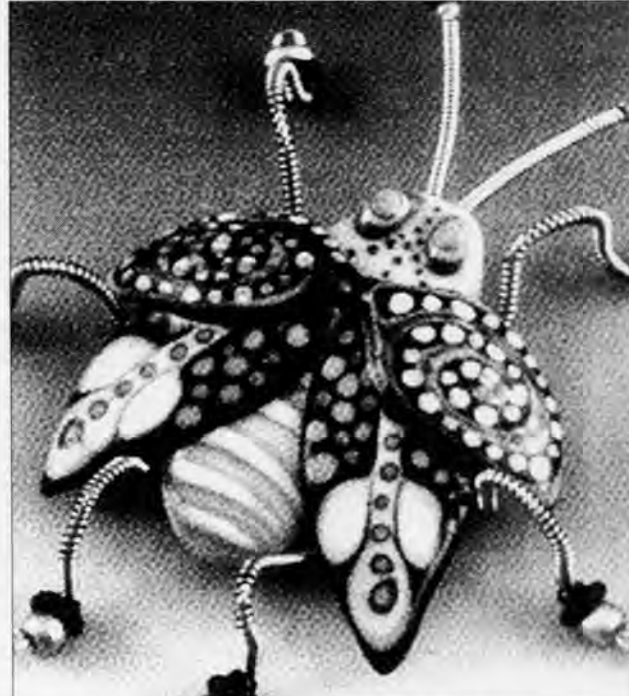
NEWARK ROTARY CLUB 6:15 to 7:30 p.m. Mondays at the Holiday Inn, Route 273. For information, call 368-7292.

SCOTTISH DANCING 8 p.m. Mondays at St. Thomas Episcopal Church, South College Avenue, Newark. For information, call 368-2318.

SEPTEMBER 5

MOMS CLUB/NEWARK 9:30 a.m. first Tuesday of month at First Church of the Nazarene, 357 Paper Mill Road. 369-3949.

NEWARK LIONS PROGRAM 6:30 p.m. First and third Tuesday of month. Lions meeting with program at the Holiday Inn, Newark. Call Jim Moore at 733-0500.



Original crafts, artwork and furniture by 200 juried artisans will be available for sale this weekend at the fifth annual Craft Festival at Winterthur, Route 52. The two-day event also includes demonstrations, fireworks, music, and entertainment for all ages. For information, call 888-4600.

SEPTEMBER 6

CECIL COUNTY STAMP CLUB 7 p.m. at Elkton Library, Route 279/Elkton-Newark Road. For more information, call Fran Lebrun at 410-398-3745 or Darlene Regan at 610-274-2165.

LA LECHE LEAGUE 9:45 a.m. first Wednesday of month. Mother-to-mother help with breastfeeding at the Bible Fellowship Church, 808 Old Baltimore Pike, Newark. For information, call 738-5055 or 731-3009.

MOTHERS & MORE 7:30 p.m. first and

third Wednesdays of month. Meeting for moms only at St. Barnabas Church, Duncan Road. For more information, call Fran Lebrun at 410-398-3745 or Darlene Regan at 610-274-2165.

SEPTEMBER 7

NEWARK CHARTER 7:30 p.m. School Board for proposed new school meets at Newark Senior Center.

READY WHEN YOU ARE

Classes begin every eight weeks.



Wilmington College

Wilmington • Dover • Dover Air Force Base • Georgetown • Rehoboth Beach • New Castle

At Wilmington College, we make it easy to continue your education. Our flexible schedule lets you start when you want. Our low tuition makes us affordable. Agreements with community colleges make credit transfer seamless.

We offer accelerated day, evening and weekend programs. Learn from professors who practice what they teach. With an average class size of just 16 students, you'll get individualized attention.

REGISTER NOW FOR FALL!



College on Your Terms
1-877-WORKING • www.wilmcoll.edu

White Glove Carpet Cleaning

Coupon \$10.00 off

2 ROOMS \$49.95

Call 559-9039-cell
488-0845-pager
WHITE GLOVE
Expires 11/30/00

Enjoy
Walter's Summertime Seafood Sensation!

Appetizers
• Steamed Clams
• Stuffed Shrimp
• Smoked Norwegian Salmon

Entrees
• Seafood Collage
• Shrimp & Scallop Penne
• Crusty Rockfish

WALTER'S STEAKHOUSE
LATE DINING
802 N. Union Street
Wilmington, DE
Outstanding Wine List
302-652-6780

BEST SEAFOOD RESTAURANT

STEAMED CRABS

CRAB CAKES IN CECIL COUNTY!
"Best of Cecil 2000"
-Cecil Whig

Serving Lunch & Dinner
6 Days A Week

Woody's CRAB HOUSE
Main Street
North East, MD
410-287-3541

Open Tues. - Thurs. 11:30-9
Fri. & Sat. 11:30-10
Sun. 11:30-8
Closed Monday

CASEY'S RIVERHOUSE RESTAURANT & RAWBAR

285 Plum Tr. Rd.
(Located in Pit Rd.)
Elkton, MD 21921
410-620-7503

Open 7 Days A Week, Year 'Round
11 A.M. for lunch
Dinner served until 10 p.m.

LABOR DAY WEEKEND

Friday
"ROCK THE RIVER" PIC ROAST
Live Reggae on the Deck 5-8 p.m.
"Bleech" - (Band) 10-2 a.m.

Saturday
Family Karaoke 12-3 p.m.
Chicken Wing Eating Contest 3-30 p.m.
Live Bands All Day
Shot 'n Beer - (Band) 10-2 a.m.

Sunday
PIC ROAST - 12 PM
Live Music All Day
Horseshoe Contest
\$2.00 Cooks Light Deals All weekend
Transit Slips Available

SUNSET CRUISES

NEW CATERER THIS YEAR
SHERATON

LANERN QUEEN CRUISE & DINE

PRIVATE CHARTERS
PRIVATE PARTIES
WEDDINGS
BUSINESS MEETINGS

SUNSET & MOONLIGHT CRUISES

THURSDAY SUNSET 6:30 PM TO 8:30 PM
FRIDAY SUNSET 6:30 PM TO 8:30 PM
FRIDAY MOONLIGHT 9:00 PM TO 11:00 PM
***\$30.00 Per Person**

WEDDING EXPO
Sun., Oct. 8, 2000 - 12PM - 4 PM
*10.00 Admission

Full Dinner Buffet
Reservations Required

MAY - SEPTEMBER
(DOCKED AT THE FOOT OF CONGRESS AVE. HAVRE DE GRACE, MD)
410-287-7217

Bridal Showcase

After Dark Novelties
Sensuous Lotions & Adult Novelties
*Couples * Ladies Only*
All Orders Confidential
Debbie Campbell
Cell-443-553-9107
Voice-410-620-8073
email debbiec@crosslink.net
Visa • MasterCard & Discover Accepted

Ambassador TRAVEL
For The Marriage Made In Heaven
And A Honeymoon To Match
Your Full Service Travel Agency
Call Us For All Your Travel Needs
Elkton Location Reopened For Your Convenience
410-398-1010 • 1-800-544-1010
203 E. MAIN ST., ELKTON, MD
IT'S NEVER TOO LATE TO TAKE A HONEYMOON!

Tailwinds Farm
(formerly Carousel Carriages)
Horse Drawn Carriage Service
Travel In Style
In One Of Our
Beautiful Antique Carriages
Ted & JoAnn Dawson
410-658-8187

Lifestyle

RELIGION • PEOPLE • DIVERSIONS • THE ARTS

NEWARK OUTLOOK Back to school safety important

THIS TIME OF YEAR, parents eagerly scan end-of-summer newspaper ads for the best prices on clothes, book bags, and notebooks. Parents should also add safety guidelines to their back-to-school checklists. Pedestrian injuries are the second leading cause of unintentional injury-related death for children 5 to 14. Children under 10 years old should never cross the street alone. The majority of pedestrian injuries occur to children ages 5 to 9 because they dart into traffic. Accurate judgement about the speed and distance of approaching vehicles is difficult for children.



By Cindy Genau

Teach children these "Walk Smart" rules: Obey all traffic signals; stop, look, listen and look again before crossing the street; don't walk between parked cars—where motorists cannot see you well; use available crosswalks; be alert in all weather—glare and inclement weather make it harder for drivers to see through the windshield; and use streets where crossing guards are on duty.

Another way children get to school is bicycling, for which a good bicycle helmet is a must! Head injuries are the most common type of bicycle injury, and research alone shows that helmets reduce these by 88 percent. Remind your children that when on their bikes, they are considered motor vehicles and are expected to follow the same rules of the road. While bicycle injuries are typically related to motor vehicles, most bicycle crashes are the fault of the bicyclist. Safe bicycling guidelines include riding on the right side of the road with traffic (on the sidewalk for children under 10); using hand signals to indicate turns and stops; obeying all traffic signs and signals, especially at intersections; and looking left, right and left again before crossing a street.

School bus safety starts at the bus stop. Remind children of these safe-bus-riding rules: Stay out of the street and don't play around at the bus stop; stand back until the bus comes to a complete stop; cross ten feet in front of the bus where the driver can see you; board the bus in single file; remain seated at all times; keep the aisles clear; don't throw objects; keep heads and arms inside the bus; and don't shout or distract the bus driver's attention from driving.

As the school year approaches, drivers also need to review their responsibilities. School buses add to traffic congestion, so be aware of them on your commute. Expect delays, especially in the first weeks of school. Watch for red flashing lights and extended STOP arms that indicate a bus is loading or unloading. Allow for quick stops by leaving plenty of room between your car and a school bus. Drivers must stop before reaching a stopped school bus from behind, and when approaching the bus on a two-lane highway.

Get your child off to the right start this school year and fill their backpacks with back-to-school safety. It is the best bargain of all.

Newark's on the laugh track



(Above) Posters advertising the movie are deliberately obscure to make locals curious. (Left) One of the locations in the film made by native Delawareans Gordon and Greg DelGiorno is at the Park Deli on Elkton Road. The movie premieres in Newark in October.

Story and
photo by
Katy
Ciamaricone

WHEN SOME out-of-staters hear about Delaware, they immediately ask, "Dela-where?"

So in order to erase the mystery of this small wonder, two local filmmakers decided to film their upcoming movie entirely in Delaware—home to the fightin' Blue Hens, the Blue Rocks, the DuPonts, ... Franks and Wieners?

Gordon and Greg DelGiorno, 30-something brothers who live in Wilmington and Newark respectively, are in the process of producing their first full-length feature film, "Franks and Wieners," which they also co-wrote and co-directed.

"We want this to be special to the community," said Gordon. "Our goal is to create a buzz around town."

In fact, advertisement posters that local residents will soon see hanging around town on telephone poles and storefront windows feature the back side of a man with a hot dog instead of a head. In bold white lettering, the posters read, "Come laugh at yourself!"

The film, expected to have an October worldwide premiere right here in Newark, outlines the journey of a guy named, appropriately, Frank, who is played by Newark native Paul Goodman.

According to Gordon, Frank meets an interesting bunch of people, or "wieners," during a road trip with a female bank robber

named Jackie Lazer after she takes him hostage.

Jim Rubright, also a northern Delawarean, plays another one of the movie's leading characters.

The robbery scene of the movie was filmed in Park Deli on Elkton Road in Newark. Penny and Keith Scheib, the deli's owners, allowed the cast and crew to shoot the scene there overnight, so as not to disturb their daily business. But some nearby residents were a bit shaken up by all of the action.

"While we were shooting the robbery scenes, people would see us out here waving guns around and they would call the cops," Gordon said. "The cops would come by all the time and ask what we were doing, which I guess is a good thing."

"Obviously, they didn't know we were shooting a movie."

Gordon said the idea for the film came after he returned home from working as a production assistant in Los Angeles. "I ran into some outrageous roommates—some real wackos—after I moved back to Newark, and everyone said (my brother and I) should write a book about our experiences," he said. "But we figured, 'why not make a movie?'"

So the brothers began writing the script about three years ago. They later placed an

advertisement in "Backstage," a New York magazine, hoping that some aspiring actors would respond. To their surprise, they received inquiries from about 1,800 people from all over the East Coast who wanted to star in their film.

They ended up choosing more than 85 actors, four of whom play leading roles in the movie. "The rest all play wackos—I guess you could say they're the wieners," Gordon said.

Which may explain why both Gordon and Greg admit that they no longer eat hot dogs. Later this year, the film will be shown at Wilmington's Grand Opera House, Gordon said.

The brothers are hoping that showings in their home state will generate a large response, and perhaps someday their film will be shown in theaters nationally.

They also hope to begin filming a few short films to submit at the Rehoboth Film Festival.

"Right now," Greg said, "We're just waiting to see what happens."

And once the interactive movie posters start going up around town, Newark residents will probably also be waiting to see what happens, in the movie that stars their home state and threatens to make fun of...well...them.

YWCA Adds Morning Care for Afternoon Kindergartners

For children attending West Park Place,
McVey and Brader Elementary Schools
Care begins at 7:00 a.m.
at the YWCA Newark Center
YWCA van transports children to schools

Before & After School Care...Just for 5th & 6th Graders
at the YWCA Newark Center!

Find out about our quality, affordable School Age Child Care.

Call (302) 368-9173.

The YWCA Newark Center
318 South College Avenue • Newark, DE 19711



YWCA
New Castle County
Delaware

A United Way Member Agency

Glasgow Medical Associates, P.A. Internal Medicine

Curt D. Blacklock, D.O., FACP
Stephanie L. Ciccarelli, M.D.
William L. Jaffee, M.D.
John H. O'Niell, Jr., D.O., FACP
Michael B. Peters, M.D.

Are Pleased To Welcome
Andrew P. Myers, M.D.

to Our Practice at Glasgow Office
effective: August 1, 2000

Primary Medical Care for Adolescent,
Adult and Geriatric Patients
Consultative Our Practice at Glasgow Office
effective: August 1, 2000

Glasgow Medical Center
Suite 126
2600 Glasgow Avenue
Newark, DE 19702

New Patients Are Welcome
Hours by Appointment
Telephone: 302-836-0100
Fax: 302-836-5244



HOURS:
MON.-SAT.
10 A.M. TO 9 P.M.
SUN 11 A.M. TO 5 P.M.

SHIPYARD SHOPS
RIVERFRONT
WILMINGTON
900 SO. MADISON ST.
(302) 425-5000 (INFO)

SHIPYARDSHOPSOUTLETS.COM

30 - 70% OFF Hurry Down to the Shipyard Shops for our LABOR DAY SIDEWALK SALE

Beginning Friday, September 1 through Monday, September 4

OPEN 11 AM TO 5 PM Labor day

Discover end-of-summer-clearance on brand name merchandise
& exciting fall fashions in great stores such as:

BLAIR • HABAND! • COLDWATER CREEK
• L'EGGS/HANES/BALI/PLAYTEX • DRESS BARN
• FREEPORT STUDIO • WEST POINT STEVENS

And check out our other great stores &
Timothy's Riverfront Restaurant!



Healing Mass

The Catholic Diocese of Wilmington will hold their monthly Healing Mass at St. Mary of the Assumption Church, Route 41 in Hockessin tonight, Sept. 1, at 8 p.m.

The presider and homilist will be Fr. Stanley A. Ianieri, associate pastor of St. John the beloved Parish, Wilmington and the music will be offered by Joanne Mackenzie and Annie Adams of St. John-Holy Angels Parish, Newark. For more information, call Jeanne Casey at 239-5982.

UD Choral group holding auditions

The University of Delaware Choral Union under the direction of Paul D. Head is holding auditions for the 2000-01 season. The fall program will include works commissioned for famous wedding ceremonies, including those by William Mathias, Daniel Pinkham and G.F. Handel. For more information, or to schedule an audition, please contact Head at 831-3397 or by email at

pdhead@udel.edu.

Concerts rescheduled

The outdoor free concert series, held on Wednesday evenings at the White Clay Creek State Park's Carpenter Recreation area, Route 896, was plagued by stormy conditions throughout June and part of July. Two rained-out concerts have been rescheduled for tonight, Sept. 1, with Heavenly Hash playing 70s-90s rock and roll and originals, and Labor Day, Sept. 4, with Sin City playing American honky tonk. These last concerts will begin at 6:30 and music lovers are invited to bring lawn chairs, a picnic supper, and the whole family. Refreshments will be available for purchase. \$2.50 per Delaware vehicle; \$5 per out-of-state vehicle. 368-6900.

Ghost tours set

Fort Delaware State Park will offer their ghost tours on Oct. 20, 21, 27, and 28. The children's activities will start at 4 p.m. on

Oct. 21 and 28 by offering scary make up sessions, and a spooky tour. They must be accompanied with an adult and the price is \$7 per person. On Oct. 20 and 28, the Chat with a Bat program and a dramatic reading of Edgar Allan Poe's "The Raven" will be featured at 6:30 p.m. and 8 p.m. A candle lit tour will follow. Tickets are \$20 per person. Reservations are required. For more information, call 834-7941.

Free bowling

Brunswick Indoor Recreation Group announced the first National Family Bowling Day to benefit the muscular dystrophy Association (MDA). Kids 12 and under can bowl free on Labor Day, Sept. 4. Donations for MDA will be accepted at all 112 Brunswick family bowling and recreation centers in the United States and Canada during this special family event, including Blue Hen Lanes, 501 Newark Shopping Center, Newark.

Kids must be accompanied by an adult to bowl free on National Family Bowling Day. Each Brunswick Center will offer spe-

cial events and give away prizes throughout the day, creating a festive, entertaining atmosphere that can be enjoyed by all family members.

Mobster-turned-minister speaks

On Sept. 9 at 7 p.m., former "Goodfella" Frank Minucci will tell his story of going from mobster to minister at Skyline United Methodist Church, 3100 Skyline Drive, the corner of Skyline Dr. and New Linden Hill Road, Pike Creek. Childcare and refreshments will be provided. For more information, call 737-9069.

Fall kick-off worship services

Skyline United Methodist Church, corner of Skyline Drive and New Linden Hill Road in Pike Creek will be starting their fall Sunday sermons at 9:30 and 11 a.m. on Sept. 10. The dress is casual and comfortable in attitude. For more information, call 737-9069.

Yard sale

Now until Sept. 16 from 8:30 a.m. to 6 p.m., there will be a yard sale at 2943 Frenchtown Road, Glasgow. Sale items are clothes, shoes, antiques, furniture, tapes, cds, jewelry, tools, etc. For more information, call Dave Yancey at 834-5109.

Howard '69 reunion

On Oct. 7 from 7 p.m. until, there will be a 31st class reunion at the Claymore Senior Center Hall, 504 S. Clayton Street, Wilmington for the Howard High School Class of 1969. The cost is \$50 per person which includes dinner, dancing and a program. Class Motto: 1969 Glass of Brilliant Black Minds. Music will be provided by Nazzband Productions. For more information and reservations, call 577-8929 or e-mail ghunter@state.de.us.

Little League awards banquet

There will be an awards banquet for baseball on Oct. 14 at 3 p.m. and for softball on Oct. 15 at 3 p.m. The cost is \$10 per person. Tickets need to be purchased in advance. Call Kathleen Lodge-Brannan at 456-3780 for more information.

Flu shots for seniors

The Newark Senior Center will be administering Flu shots on three days - Oct. 17 from 9 a.m. to 1 p.m., Oct. 31 from 2:30 to 6:30 p.m. and Nov. 2 from 9 a.m. to noon. They will take place at the Senior Center, 200 White Chapel Drive, Newark. Medicare will pay for your vaccine. For

more information, call 737-2336.

Jewels of South

Mid-County Senior Center is offering a trip to Fayetteville, Savannah, St. Simon's Island, Jekyll Island, and Charleston, South Carolina via motor coach from April 2 to 7, 2001. The cost is \$569 for double occupancy. If you are interested, stop by Mid-County, First Regiment, Sherwood Park II in the Delaware National Guard Building, or call 995-6728 or 995-6555.

Parade of Lights

Mid-County Center is offering a trip to Annapolis, Md. via motor coach to see the "Parade of Lights" on Dec. 10. The trip includes a full day of shopping, sight seeing and meals. The cost is \$155 for double occupancy. If you are interested, stop by Mid-County, First Regiment, Sherwood Park II in the Delaware National Guard Building, or call 995-6728 or 995-6555.

License required

The Delaware Division of Fish and Wildlife reminds dog owners outside the city of Wilmington that all dogs must be licensed. Wilmington issues its own license.

Licenses may be purchased at the Division's Dover office at 89 Kings Highway or at many vet-

UD student improving in Md.

► MENINGITIS, from 1

antibiotics as a precautionary measure at Student Health Services.

She has been positively diagnosed with bacterial meningitis, said Dr. Joseph Siebold, director of Student Health Services at the university, and all tests point to meningococcus as the cause.

Both Maryland and Delaware public health officials have been notified.

Symptoms of a meningococcal infection in the body include fever, headache, extreme weakness, neck stiffness and cough.

Meningococcal disease is very serious and can result in disability or death, Siebold said. The disease strikes about 2,600 Americans each year, leading to death in approximately 13 percent of the cases, which translates to more than 300 deaths annually.

"This is a totally curable disease, but individuals respond to the organism very differently," said Leroy Hathcock, an epidemiologist for the Delaware Division of Public Health. "Early detection and medication is a key factor here," he said.

Hathcock said any Newark resident who undergoes a sudden onset of fever or headache should visit his or her physician immediately.

In 1996, there was one case of meningococcal pneumonia in a UD student, who was treated in a timely manner and recovered. In September 1999, a male student was treated for aseptic, or viral, meningitis and recovered. In an unrelated case the same month, a UD custodial technician died of meningococemia, a serious blood-stream infection with the same bacteria that causes

meningococcal meningitis.

The incidence of meningitis outbreaks has risen on college campuses in the past five

years, and some investigations suggest that the risk of contracting the disease during these outbreaks is increased by lifestyle behaviors that are common for many college students, such as active and passive smoking, bar patronage and excessive alcohol consumption.

The disease is transmitted through the air via sneezing or coughing and direct contact with persons infected with the disease. Because college students often live in close quarters, such as residence halls or fraternity/sorority houses, they have an increased risk of meningococcal disease. Outbreaks tend to peak in late winter and early spring but can occur any time school is in session.

For the last several years, the University of Delaware has been providing information about meningococcal disease and recommending vaccinations against it to students and their parents, particularly during new student orientation.

Student Health Services is providing a vaccine against certain forms of meningococcal disease at cost for UD students. Vaccinations are available, by appointment, from 8 a.m. to noon and 1 to 4 p.m., Mondays, Tuesdays, Thursdays and Fridays, in Laurel Hall.

Any students with concerns or questions should feel free to contact Student Health Services at 831-2226.

Classes for the fall semester began Tuesday, Aug. 29.

The University of Delaware community was informed about

the situation in several ways:

Information was posted on the University's web site. Users who access several different entry points on the UD site get a special box, called a "Web Alert" that provides basic information on the situation, and that links them to a news item on the campus daily news page, UDaily. Information also was placed in the Announcements and Classified Ad sections, two popular sites.

All students received a voice-mail message telling them that a UD student is being treated for a possible meningococcal disease and advising them to contact Student Health Services if they have questions. They also were informed that more information is available on the World Wide Web at UDaily.

Information was posted on TV9, a daily calendar television screen accessible in all campus residence hall rooms on the closed-circuit cable TV system.

WATERFRONT DINING

Consistently Pleasing Our Customers For The Past 17 Years



- SPECIALS -

Black Angus 10 Oz. Prime	
New York Sirloin Steak	\$21.00
Loin Lamb Chops	\$21.00
Porter House Pork Chops	\$16.00
Bob White Quail	\$19.00
Prime 8 Oz. Ground	
Sirloin Burger	\$8.50
Tuna Loaf	\$19.00
Jumbo Louisiana Shrimp (5)	\$20.00



Historic Chesapeake City
410-885-5040
Toll Free 1-877-582-4049
www.bayardhouse.com

EARN CASH TODAY!

Donate Life Saving Plasma, a fast & easy way for people to earn up to \$145 in cash and win up to \$500 in prizes. Bring this ad in for an extra \$5.

SeraCare Plasma Center

Lower Level of Adama 4, Suite 102
Enter at the corner of 2nd & Adams across from the Dart Bus
(302) 425-5830

State Line Gourmet FEAST OF FLAVORS

EPICUREAN DELIGHTS

Specialty Food & Cheese Shoppe

- Marinades • Salad Dressings • Salsas & Chips • BBQ & Hot Sauces
- Mustards • Specialty & Gourmet Cheeses • Jellies • Pasta & Cheese
- Beer & Wine Tastings • Olive Oils & Vinaigrettes • Olives
- Gourmet Coffees • Soup Mixes • Seasonings & Dip Mixes

State Line Liquors

Serving You Since 1973

1610 Elkton-Newark Rd.
Elkton, MD
1-410-398-3838 or 1-800-446-9463

~ OPEN 7 DAYS ~



Custom Made Gift Baskets



CONVENIENTLY LOCATED WITHIN THE SOUND OF YOUR VOICE

Your home is probably your biggest investment. It may also be your best source of cash. To find out, call Travelers Bank & Trust, fsb. We're

offering Home Equity loans at preferred rates. Why Travelers? For starters, we're a federally-chartered thrift, focused entirely on helping you finance your dreams. Second, we're convenient - just a call away. And, we're 100 percent committed to meeting the credit needs of our community. Choosing the right home equity loan is a big decision. Choose Travelers... we're conveniently located within the sound of your voice.

At Travelers Bank and Trust, fsb, we are committed to helping one family at a time by offering a variety of home equity loans. We're

experienced and we are part of Citigroup, which serves over 100 million customers in 100 countries. As we go about our work each day, we never forget the impact we as an organization can have on your lives and those of your families. It's what our customers expect of us. It's what we will continue to do for you in Delaware.

rates as low as
7.9 % APR
Fixed rate loan.
No closing costs.

Call today (302) 737-0887 or stop by our College Square

Shopping Center office • 501 College Square, Newark, DE 19711

• Monday through Wednesday 8:30 am to 5:30 pm • Thursday 8:30 am until 6:30 pm • Friday 9:00 am until 5:00 pm

TravelersBank
A member of Citigroup

equal opportunity lender

Sports

HIGH SCHOOLS UNIVERSITY OF DELAWARE • LEAGUES

POST GAME

Jackets should be good again

By MARTY VALANIA

NEWARK POST STAFF WRITER

ANYBODY that missed the Newark-Middletown scrimmage Friday night, missed a spirited contest. The two teams, in their first putting against another squad, played with more intensity than you'll see most of the regular season games played with. Who got the better of it? While the first teams were on the field Newark scored two touchdowns to Middletown's one. Newark's offense scored twice while the Cavaliers got their lone score on an interception return.



Valania

I would think both Newark coach Butch Simpson and Middletown coach Bill DiNardo would be happy with many things that they saw from their teams. Being coaches, I'm sure they're also upset with some things. However, both teams clearly showed they will be forces again this season. Both defenses looked good — especially the run defenses. The two offenses had trouble running the ball but also had some success throwing it. Newark, with Eric Spiese at quarterback, looked especially good throwing the ball. Both of the Yellowjackets' touchdowns came on Spiese passes. Look for both of these teams to be contenders for a fourth straight state championship.

Other good teams

When fans talk about the best high school football teams in the state, nowadays they automatically start with Newark and Middletown.

That's certainly understandable since the two schools have each won three consecutive state championships. Both of those teams figure to be good again this season.

There are, however, some other good teams in the area.

Caravel should be an outstanding team this season and could challenge Middletown for a Division II state title.

Christiana is loaded with returning starters and are many people's pick to win the Flight A championship. Many times a Flight A title has turned into a Division I state title.

William Penn is always one of the better teams in the state. This year should be no exception.

Glasgow is also a team that appears on the rise. The Dragons are in the third year of coach Mark DelPercio's program. They have experienced success on the freshmen and junior varsity levels and DelPercio expects that success to translate into varsity victories this season.

Look for local teams among the various Top 10 rankings that are now available throughout the state.

Also look for the host of local players that were named to Rivals.com's preseason All-State team. That can be found at www.firststatesports.com.

Newark preps for title defense

New look Jackets have same goal

By MARTY VALANIA

NEWARK POST STAFF WRITER

IT WILL BE a different type of Newark High football team than most fans have been used to watching the past three years. Don't, however, look for the results to change all that much.

The Yellowjackets have used an explosive running attack to help lead them to five straight state championship games and three consecutive Division I crowns. This season Newark will throw the ball more than it has in the past and if the results of an early season scrimmage against Middletown are any indication, it can throw the ball with success.

The loss of Kwame Harris and Micah German from the offensive and defensive line can't be minimized. However, the cupboard is not completely bare.

Orien Harris, one of the most highly recruited linemen in the country, will anchor the line on both sides of the ball.

"We have a new team," said Harris, a 6-4, 268 pound senior co-captain. "It's the younger guys time to step up and be the tradition."

"We have expectations. Everyone wants to be the best. Our goal is to win another state championship. We all believe, if we work hard and keep getting better, we can do it."

Joining Harris on the offensive line will be senior co-captain Matt Savage (5-10, 197) at guard, senior Awet Estifanos (5-11, 251) at guard, senior Jason Schottin at one tackle and junior Greg Moore (6-3, 232) at center.

Other offensive linemen that could contribute include Mike White (jr., 5-8, 237), Mario Castelli (sr., 5-6, 285), Isaac Wolkowicz (sr., 6-1, 236), Joey White (jr., 5-8, 233), Tom Jacob (so., 6-2, 276), Antonio Gonzalez (jr., 5-8, 240), Quay Cobb (so., 5-9, 185), James Unsworth (jr., 5-8, 198), B.J. Roth (so., 6-0, 194), Tom Johnston (so., 5-9, 193), Darryl Harvey (so., 5-7, 187), Jason Mattucci (jr., 6-1, 259) and Anthony Owens (so., 5-10, 206).

The offense will be directed by junior quarterback Eric Spiese (6-4, 205). Spiese is a



NEWARK POST PHOTO BY SCOTT MCALLISTER

Newark linemen Orien Harris (left) and Michael White battle through a Tuesday afternoon practice drill.

good athlete that can both run and throw the ball effectively. Spiese will be backed up by senior James Vitek (5-8, 134). Sophomore Jamie Senkos (6-0, 151) will also play quarterback.

Junior Brandon Snow (6-2, 224) returns as a starter at running back. He will be joined by Caravel transfer Nelson Drew (sr., 6-0, 203) and fullback Kevin Wiggins (jr., 6-3, 261). Wiggins is a transfer from Brandywine.

"I don't normally play guys that big in the backfield," Newark coach Butch Simpson said. "But he was 205 last year and he can run. As far as Drew, we've been very pleased. He's got great speed, he's intense and has done a great job of picking up our offense."

Additional running backs include senior Alex Thomas (5-6, 153), junior Garth Spencer (5-6, 144), sophomore Reggie Harris (5-2, 124) and junior Tom Loeffler (5-11, 163). Spiese will be throwing the

ball to junior tight end Steve Selk (6-4, 222) and junior split end John Parkinson (6-2, 182). Other receivers in the mix include senior Kyle Eno (5-11, 168), sophomore Pete Callahan (5-10, 144), senior Chris Smith (6-1, 155), junior Andrew Ficarra (5-10, 160), junior Jones Devlin (6-2, 159), Kyle Walker (so., 5-11, 147) and Dave Holliday (sr., 6-1, 142).

The defensive side of the ball should be a strength of the Yellowjackets.

They will be led up front by Harris, Wiggins, Estifanos and Snow. Senior Jermaine Kelson (5-11, 245) and many of the same linemen in the offensive mix will also be competing for defensive time.

The linebacking corps will be solid with Selk, Parkinson (the team's third leading tackler last season despite not playing in the first three games) Nelson Drew and junior Austin Kisner (6-0, 177). Additional linebackers

include Smith, Thomas, Matt Angeloni (so., 6-1, 160) and junior James Unsworth (5-8, 198).

The defensive backfield will include senior captain Dennis Williams (6-0, 154) at one corner, sophomore Drew Kisner (5-10, 168) at the other corner and safeties Pat Ferris (sr., 5-11, 161) and Callahan. Other defensive backs include Quentin Guy (so., 6-1, 158), junior Art Steimer (5-8, 148), senior Ryan Bullen (5-10, 167), Brad Needham (jr., 5-4, 125) and Ryan Kirchenbauer (jr., 5-10, 147).

The three state championships have been a benefit to the Jackets. For the first time in memory, Newark has over 100 players out for the team — and that is before school starts.

"I would hope that's part of the reason," Simpson said of the state championships and high numbers. "It's a nice dilemma to have. We've been on the other side of that equation and not to

long ago."

But as far as a fourth straight state title, he doesn't feel it's fair to put those expectations on this group.

"We don't talk about it," he said. "We lost some good seniors. This is a different team. We don't have anybody here with long-term contracts. We have people graduate every season. While we like to emphasize our history and tradition, we don't want to live off it."

Simpson also feels his team is somewhat inexperienced. There are many juniors starting in key spots and many of the seniors are starting for the first time.

As far as the rest of the Division I picture is concerned, Simpson feels Christiana is the team to beat in Flight A, and also feels strongly about Caesar Rodney.

Newark opens its season Sept. 8 at home against Salesianum.

Hens open season Saturday at Rhode Island

By MARTY VALANIA

NEWARK POST STAFF WRITER

THE unexpected has always been something that coaches fear most. That's what makes an opening game against a team with a new coach all that much more worrisome to Delaware coach Tubby Raymond.

The Blue Hens open the 2000 season Saturday afternoon against Rhode Island. The Rams, who finished 1-10 last season, haven't had a whole lot of success in recent seasons but that does not make this opener any easier for Delaware.

Former Georgia Southern assistant coach Tim Stowers

begins his first season at Rhode Island. The Rams will have an entirely new offense, a new defense and presumably a new attitude as well.

All that scares Raymond as he readies for his 35th season as the Hens' head coach.

"It's frightening," Raymond said. "From a defensive standpoint, it's really scary. They can do anything."

"We've looked at film of some old Georgia Southern teams and we've looked at Air Force, Navy and Army — teams that run similar offenses. We expect them to run something like that."

The other unexpected, of course, is exactly how this year's Blue Hens will react under game

conditions.

"I'm reminded of the story about the lady and the tiger," Raymond said of one of his favorite preseason anecdotes. "You open the door and don't know which one you're going to get. I thought when I was a young coach it was because I was inexperienced. But I've found I don't know anymore now."

One thing that Raymond does sense in his Hens is a stronger commitment to winning.

"We sent out letters to every player in the summer," the coach said. "And we asked them to renew their passion for winning. I thought we'd lost that the last couple of years. In the eight ball games we've lost over the past

two seasons, I think at least five of them we could've won with a different attitude."

"The range of this team is substantial, both high and low. It depends on their attitude. The difference is so small, you can't measure it. The difference is the players making the commitment. I think we've made the commitment."

Rhode Island, which has only won five games in 19 tries against the Hens, does return a strong defense, led by middle linebacker Preston Letts and a good defensive line.

Like Raymond, Stowers doesn't quite know what to expect from his new team, but he does like what he has seen so far.

"We've had a lot of things to overcome," Stowers said. "But I'm surprised by how quickly they've picked up the offense. We're still light years away from where we want, but they've done a nice job so far."

As for Delaware, Stowers realizes he has a tough opening game chore.

"I have a lot of respect for Coach Raymond and the Delaware tradition," said Stowers sounding every bit the part of an ex-Auburn player and a southern coach steeped in the traditions of college football. "They're not real fancy, but they do the little things right. Tradition means a lot to a team and football program. You can win a lot of games just

Glasgow High hopes to ride strong offensive line, good attitude

THIS is the year that Glasgow coach Mark DelPercio feels his team needs to show some progress.

The Dragons, who have gone 4-6 and 3-7 in DelPercio's first two years at Glasgow, have some experience and unity among their squad. They also have players that got used to winning at the freshmen and junior varsity levels. Last season, the JV team posted a 7-3 record and the freshmen were 6-1. DelPercio hopes that those same players can transfer that success to the varsity level.

"It truly is an important year," DelPercio said. "We've taken our bumps and bruises and hopefully we've learned from that."

One advantage Glasgow will have this season over the previous two is the schedule. Last sea-

son the Dragons played their first five games against teams that were, arguably, among the six or seven best in the state. This year's schedule is tough, but not that tough.

"It's not easy," DelPercio said of the schedule. "But at least it's not numbers one, two and three back-to-back-to-back. Maybe we can build a little confidence and get going."

One of Glasgow's biggest strengths will be its offensive line.

Senior Steve Bowman is the leader of a group that has played together for a couple of years. Bowman, a 6-4, 265 pound tackle, is being recruited by numerous Division I-A schools including Maryland and West Virginia. He is joined by center Fran Clark

(jr., 6-0, 245), guards Steve Jewell (jr., 6-1, 245) and George Potts (jr., 6-1, 240) and tackle Chris Isaac (jr., 6-3, 240).

"This is a good group," DelPercio said. "All of them played last year. I think they'll do well."

Mike Richardson is a 6-4, 215 pound junior tight end that will also bolster the line play.

Senior David Ayers (6-1, 165) takes over the quarterback job.

"It's his turn," DelPercio said. "He has been waiting behind Matt Folke for a couple of years. Now he's ready to take over. He knows the offense very well and he's solid and we expect him to step up. I think it says a lot that he was voted one of our captains and he hasn't started yet." At halfback will be sophomore

Brandon Bazemore, who started at linebacker as a freshman. The fullback will be senior captain Brandon White (5-10, 205).

The receivers are expected to be senior Tom DeSanto (5-11, 160), senior Frank Lindsay (6-3, 200) and slot back Brandon Bailey (jr., 6-4, 225).

Up front defensively, senior defensive end Ray Wilson (6-0, 195) will team with Bowman on the other end. Inside will be a rotation of Jewell, Potts and Isaac.

The linebackers are expected to be Richardson, White, Bazemore and junior Frank Hauser (6-1, 170).

The Dragons' secondary will see senior E.J. Turner (6-0, 175) at safety; Dyshee Pierre (sr., 6-0, 185) at cornerback, Patryck Depa

(so., 5-8, 140) at corner and DeSanto also working some corner.

Senior Asa McLaurin (5-11, 180) is also expected to contribute in the secondary.

Senior Ryan Pringle (6-2, 225) will handle the kicking duties.

Glasgow opens the season against Dover in what should be a big game.

If the Dragons can get by what many are considering a good Senators' squad, they will have a week off before playing Christiana in a big Flight A game.

"It's important we get off to a good start," DelPercio said. "In the past, we've played well, but we still lost. We still got deflated. We need to get some wins and keep that great attitude that we have now."

Church Directory

For Changes or New Ads Call
Phoebe Harris at

410-398-1230 or 1-800-220-3311
Fax 410-398-4044

Ad deadline is Friday before the Friday run.

GLASGOW BAPTIST CHURCH



3021 OLD COUNTY RD., NEWARK, DE.
SUNDAY SCHOOL 10:00 AM
MORNING WORSHIP 11:00 AM
MID-WEEK SERVICE THURS. 7:00 PM

SOUTHERN GOSPEL CONCERT

"THE MILLER'S"

from North Carolina
SUNDAY, SEPT. 3 - 7:00 PM

FREE WILL OFFERING

Pastor Grant Nelson D.D. 410-398-2733

First Assembly of God

Christian Education - Sun. 9:30 am

Worship - Sun. 10:30 am & 6:00 pm

C.R.E.W. Youth - Sun. 6 pm

Family Night - Wednesdays at 7:00 pm



Rev. Alan Bosmeny

For More Information, Visit Our Web Site at: www.ElktonFirst.org

Or Call: 410-398-4234
290 Whitehall Road, Elkton, MD 21921

FIRST PRESBYTERIAN CHURCH

292 West Main St. • Newark
(302) 731-5644

9:00 AM Church School For All
10:30 AM Worship Service

Infant & children's Nursery Available
Ramp Access for Wheelchairs

Pastor: Rev. Dr. Stephen A. Hundley
Associate Pastor: Rev. D. Kerry Slinkard

Our Redeemer Lutheran Church



- Sunday School 8:45am
- Sunday Worship 10:00am
- Preschool for 3's & 4's

Rev. Carl Kruelle, Pastor

www.orlcn.org

10 Johnson Rd., Newark (near Rts. 4 & 273)

737-6176

Highway Word of Faith Ministries

(an extension of Highway Gospel Community Temple, West Chester PA)

Order of Weekly Services

Sunday: Altar Prayer

8:30-9:00 a.m.

Morning Worship

9:00 a.m.

Wednesday: Altar Prayer

6:30-7:00 p.m.

Bible Enrichment Class

7:00-8:00 p.m.

All services will be held at the
Best Western Hotel
260 Chapmans Rd., Newark, DE
(across from Burlington Coat Factory)

Mailing Address
P.O. Box 220
Bear, Delaware 19702-0220



Pastor Carl A. Turner Sr.
First Lady Karen B. Turner
For further information or
directions please call:
302-834-9003



St. Andrews
Presbyterian Church
200 Marrows Road
Newark, DE 19713
302-738-4331

Worship Sunday with a friendly congregation.

Worship Service 10:00 a.m.
(Nursery Provided)
Sunday School 10:00 a.m.
Youth Group 6:30 p.m.

Rev. Elizabeth Dick

NEWARK WESLEYAN CHURCH

706 West Church Rd., Newark

(302) 737-5190

Sunday School- all ages 9:30 a.m.
Morning Worship 10:30 a.m.
Sunday Evening Adult & Youth Activities 6:30 p.m.

Handicapped Accessible Nursery Provided
Small Group Bible Studies- throughout the week

= Pastor James E. Yoder III

NUMC is fully
accessible
to all



Newark United Methodist Church

69 East Main Street • Newark, DE 19711-4645
phone 302-368-8774 • www.newark-umc.org

Join a faith community with a
great past and an exciting future!

Sunday morning worship:
8:00 & 9:30 a.m.

with Church School for all ages
at 9:30 a.m. & nursery for 9:30 a.m.
worship service

Pastor Clifford A. Armour Jr.



Progressive Praise and Worship
with Communion 10:00 am

Rev. Curtis E. Leins, Ph.D.

located 1 1/2 miles north
of Elkton on Rt. 213

Children's classes provided
410-392-3456



First Church
of
Christ, Scientist

48 West Park Place, Newark

Sunday Service & Sunday School 10 AM
Wednesday Testimony Meeting 7:30 PM
Public Reading Room
Wednesday 6 PM - 7:20 PM
Saturday 10 AM - 1 PM

Care for young children during Wednesday and Sunday

All Are Welcome

www.fccsnewark.org



Newark 1st Church
of the Nazarene

302-737-1400

Pastor Bill Jarrell

Worship Service

&

Sunday School

9:30 a.m. & 10:45 a.m.

Unitarian Universalist

Service 10 a.m.
Child Care &
Sunday School



Fellowship of
Newark
420 Willa Rd.
Newark, DE

(302) 368-2984

Topic: Pilgrimages & Sacred Places
Speakers: Barbara Jezl & Joan Wheeler

Nueva Vida

Iglesia Metodista Unida

Pastor: Angel Marrero
"Alcanzando a la comunidad hispana
con el mensaje de Jesucristo."

DOMINGOS EN:

Iglesia Grace - Calle 9 Esq.

West, Wilmington, DE

10 AM - Escuela Dominical

11 AM - Servicio

MARTES EN:

Iglesia Red Lion-Esq. Ruta

7&71, Bear

7:30 PM - Oracion y Estudio

Biblico

JUEVES:

7:30 PM - Reunion de Celulas

SABADOS:

7:30 PM - Reunion de Jovenes

Para mas informacion

contactar:

Telefono - (302) 836-5442

Web site:

www.gbmg-umc.org/nuevavida/

E-mail - vidaumc@aol.com



Fairwinds
Baptist Church
"Lighting The Way To The Cross"

801 Seymour Road

Bear, Delaware 19701

1-302-322-1029

Pastor Carlo DeStefano

Schedule of Services

Sunday School 9:45a.m.

Morning Worship Service 11:00a.m.

Sunday Evening Service 6:00p.m.

Wednesday Prayer Meeting 7:00p.m.

(Nursery Provided for all services)

Home of the Fairwinds Christian School

The Episcopal Church Welcomes You

St. Thomas's Parish

276 S. College Ave. at Park Place, Newark, DE 19711

(302) 368-4644 Church Office (9:00-1:00 Mon.-Fri.)

(302) 366-0273 Parish Information Hotline

Sunday Worship and Education

8:00 a.m. Holy Eucharist, Rite One

9:15 a.m. Christian Education (all ages)

10:30 a.m. Holy Eucharist, Rite Two & Children's

Worship (Nursery Provided)

5:30 p.m. Holy Eucharist

Youth Groups: Jr. High at 4:00 p.m. & Sr. High at 7:30 p.m.

The Rev. Thomas B. Jensen, Rector

The Rev. John Brockman, Vicar for University Ministry

OGLETOWN BAPTIST CHURCH

316 Red Mill Rd. - Newark, DE.

(corner of 273 & Red Mill Rd.)

302-737-2511

Pastor: Dr. Drew Landrey

Sunday Services:

8:30a.m.- Contemporary service

11a.m.- Traditional Service

9:45a.m. Bible Study For All Ages

Wed. Evening Family Activities

5:15- 9p.m.

Senior Pastors:

Fredrick Purnell

Clara Purnell

Bible College Classes now available

The Words that I speak unto you, they are Spirit and they are

Life. John 6:63

Everyone Welcome!

For more information, 410-398-5529

Rev. and Mrs. James Forbes

Sunday

Worship & Bible Class 10:30 AM

"Super Church" for youth

(Sunday School for all ages)

Prayer 5:30 PM

Praise, Preaching 6:30 PM

(Prayer for sick)

Tuesday 10:00 AM

Teaching & Prayer

Wednesday 7:30 PM

Praise, Teaching

Jesus Is Coming Back.

WILL YOU BE READY?

Jesus Is Coming Like A Thief

In The Night.

WILL YOU BE READY?

WATCH THEREFORE: FOR YE KNOW NOT WHAT

HOUR YOUR LORD DOETH COME"

MATTHEW 24:42

"...AND THEY SHALL SEE THE SON OF MAN

COMING IN THE CLOUDS OF HEAVEN WITH

POWER AND GREAT GLORY." MATTHEW 24:30

JESUS IS COMING BACK

FELLOWSHIP CHURCH

Services every Sunday, 12:30 p.m.

YWCA

318 S. College Avenue

Newark, DE 19711

Pastor Rev., Denise Lee

For more information please

call: (302) 836-1969

CALVARY BAPTIST CHURCH

215 E. Del. Ave, Newark

Rev. Bruce Martin, Pastor

Phone: 302-368-4904

Sunday:

• Sunday School 9:30 AM

• Worship 10:30 AM

Come celebrate the life,

love, and joy of Jesus!

PRAISE ASSEMBLY

1421 Old Baltimore Pike • Newark

737-5040

Sunday School 9:15 a.m.

Sunday Worship 10:00 a.m. & 5:30 p.m.

Wednesday 7:00 p.m.

FAMILY NIGHT (YOUTH

GROUP,

ROYAL RANGERS,

MISSIONETTES & RAINBOWS)

Michael Petrucci, Pastor

www.praiseassemblyonline.org

FAITH BIBLE FELLOWSHIP

"Whom we preach warning

every man and teaching every

man in all wisdom that we

may present every man

perfect in Christ Jesus"

Colossians 1:28

Affiliate of Youth Spectacular Inc.

1-800-USA-TEEN

Marc Oden Pastor/Teacher

Expositing, Preaching &

Teaching of The Word of God.

Focus on Discipleship &

Missions & Youth Ministries.

Making the word of God

Applicable to every need of

life.

All Are Welcome

Sunday School 9:30 am

Sunday Morning Worship Service 10:45 am

Sunday Evening Worship Service 6:00 pm

Prayer & Bible Study- Wed. 11am 7pm

Behind the Bear Post Office

Next to the Fox Run Shopping

Center on Rt. 40

302-834-4751 Office

302-834-3072 Residence

RED LION UNITED

METHODIST CHURCH

At the corner of Rts. 7 & 71 in Bear

1.5 miles south of Rt. 40

1545 Church Road Bear, DE 19701

302-834-1599

Sunday School 9:00 a.m.

Sunday Worship 10:30 a.m.

www.forministry.com/19701rlumc

Rev. John M. Dunnack, Senior Pastor

Jesus Is Coming Back.

NEWARK POST ♦ OBITUARIES

William C. Barrow, life member Aetna fire company

Newark resident William C. (Bill) Barrow died on July 4, 2000, at Christiana Hospital.

Mr. Barrow, 86, retired from the Budd Company after 35 years of service. After that, he worked for W.L. Gore and Associates for four years. He was a life member of the Aetna Hose Hook and Ladder Company and the Wilmington Trapshooting Association. For 30 years, he was a member of the W.T.A. Board of Trustees. In 1959, he won the Delaware State Trapshooting Championship and was the New Castle County Champion seven times. He was inducted into the Delaware Trapshooting Hall of Fame in 1999. He was a key player on some of Newark High School's football and baseball teams that won Delaware DIIA Championships between 1929 and 1932. He later played baseball for the University of Delaware, the Newark Town team as well as others in New Castle Co. and the Susquehanna League.

He is survived by his wife of 59 years, Marion Barrow of Newark; brother, Ralph Barrow of Newark; sister, Dorothy Cage of Pinehurst, N.C.; nieces and nephews.

A service was held at Robert T. Jones and Foard Funeral Home.

Mary S. Townsend, accounts clerk for the VA Hospital

Newark resident Mary S. Townsend died on July 4, 2000, at home.

Mrs. Townsend, 96, was a graduate of Delaware City High School and attended Thompson Private Business School and Goldie College. She worked as a fiscal accounts clerk for the Veterans Administration Hospital in Elsmere until she retired in 1971 after 30 years of service. She was a member of Elsmere Presbyterian Church, the National Association of Retired Federal Employees Local Chapter #1922, and Oak Grove Senior Center in Elsmere.

She is survived by sister, Mildred R. Palmer of Wilmington; niece, Joan P. Fernald of Wilmington; nephews, John C. Rash of St. Augustine, Fla.; Thomas Rash of St. Charles, Mo.; and Franklin Rash of Egg Harbor, N.J.; great nieces and great nephews.

A service was held at Spicer-Mullikin Funeral Home.

William J. Ambrose, engineer for DuPont

Newark resident William J. Ambrose died on July 5, 2000, at Manor Care.

Mr. Ambrose, 76, was born in Roxboro, Pa. He graduated from Villanova with a degree in mechanical engineering. He retired from the DuPont Co.'s Glasgow site in 1985, where he was a development engineer in the Biomedical Department. He was awarded several patents at DuPont. He was a WWII Navy veteran where he served for three years on the submarine U.S.S. Becuna, which is now docked at Penn's Landing.

He is survived by his wife of 17 years, Doris Tew Ambrose; sons, Richard Ambrose of Newark and Mark Ambrose of Vienna, Va.; daughters, Mary Weiss and Susan

Barbara Loveland Avakian

HOCKESSIN resident Barbara L. Avakian died on July 6, 2000, at home.

Mrs. Avakian, 66, was the owner and operator of B. L. Avakian Oriental Rugs. Born in Hackensack, N.J., she graduated from Teaneck High School in 1951. She received her bachelor's degree from Wellesley College in 1955 and her master's degree from Northeastern in 1958. After a year of teaching English in Germany, she and her husband Peter came to Delaware in 1960. She taught at Dickinson High School until 1963 when she stayed home to raise two daughters. In the 1970s, she was involved with masters swimming, horseback riding and pottery. She was president of the Delaware Crafts Council and showed her pottery and weavings locally. In 1977 she started B.



L. Avakian Oriental Rugs, which will be continued by Lucille and Steve Turnavian. She gave courses and lectures about oriental rugs and was a member of the Oriental Rug Retailers of America.

She sang with an amateur choir, The Associates, and was active in the Delaware Wellesley Alumni Association. She was a founding member of the Unitarian Universalist Society of Millcreek and a member of the Building Design committee.

She is survived by husband, Peter Avakian; daughters, Helen Avakian and husband Terry Champlin of Pleasant Valley, N.Y. and Lucille Turnavian and husband Steve of Hockessin; and cousin, Marion Covitz of Old Tappan, N.J.

A memorial service was held at the First Unitarian Church.

Ambrose, both of Newark; stepchildren, David E. Tew of Potomac Falls, Va. and Susan Tew Stephenson of Hockessin; five grandchildren; two step grandchildren; sisters, Jean Atwood of Lansdale, Pa. and Teresa

Cole of Plantation, Fla.

A service was held at St. Mary of the Assumption Church.

James A. Teoli, 81, co-founder of the Ministry of Caring

Claymont resident James A. Teoli died on July 6, 2000, at Ingleside Care Center in Hockessin.

Mr. Teoli, 81, was co-founder of Ministry of Caring. He retired in 1999 after 23 years of service as its chief financial officer. He was an Acme Market manager for over 30 years, and previously worked for Pathmark and ShopRite. He was co-owner of Hearn's Corner Market on Concord Avenue. He was an active member of the Knights of Columbus, was the past State Deputy of the State Council, past Grand Knight of Santa Maria Council #195 and Fourth Degree member of Archbishop Fitzmaurice General Assembly. He was a 50-year member of the Men of Malvern, a member of the Third Order of St. Francis, a member of St. Helena's Catholic Church, a member of the Columbus Monument Committee. He was founder of the Bayard House. He served in the Army and was a veteran of World War II.

He is survived by son, James A. Jr. and wife Susan of Wilmington; daughters, Louisa M. Teoli of Claymont and Cathy Teoli-Lavallee and husband Alan of Newark; brothers, Anthony of Wilmington and John of Claymont; sister-in-law, Helen Teoli of Wilmington; grandchildren and great grandchildren.

Mass of Christian Burial was held at Sacred Heart Church.

Helen E. McLaren, 77, homemaker

Newark resident Helen E. McLaren died on July 7, 2000, in Rehoboth Beach.

Mrs. McLaren, 77, was a homemaker.

She was survived by children, Susan M. (Missy) Lewis of Ocean View, James P. (Jamie) McLaren of Santa Fe, N.M. and Arrie Kay of Baltimore, Md.; and two grandsons.

A service was held at Spicer-Mullikin Funeral Home.

Samuel Harry Kohler, engineer for Black and Decker

Bear resident Samuel Harry Kohler died on July 7, 2000, at home.

Mr. Kohler, 71, was born in Atlantic City, N.J. He was a mechanical engineer with Black and Decker, DeWalt and AT and T. He was a veteran of the U.S. Army, serving during the Korean conflict. He was a member of the Registered Professional Engineers of Pennsylvania, the Professional Engineering Society, the National Society of Engineers, a Life Member of the American Society of Engineers.

He is survived by wife, Elizabeth (Ely) Kohler; sons, Samuel H. Kohler Jr. of Damascus, Md., Paul R. Kohler of Lancaster, Pa. and John D. Kohler of Reston, Va.; sister, R. Kitchen of Haddon Heights, N.J.; and grandchildren.

A service was held at Tarring-Cargo Funeral Home.

ATTORNEYS**Mark D. Sisk**

- Criminal Defense
- Family Law
- Real Estate
- Defense of Traffic, Criminal & Building Code Charges
- Newark City Prosecutor, 1980-1994

Brian P. Glancy

- Personal Injury
- Real Estate
- Wills and Estates

229 E. Main St.
Newark, DE 19711

Hughes, Sisk and Glancy P.A.
368-1200

Listing of areas of practice does not represent official certification as a specialist in any area.

"If you want to get hooked on something, get hooked on drums. Drumming is such a positive thing."

Tony Royster Jr.

Coming to
Cecil Community College

Zildjian Cymbal, DW Drums, Us Lighting and Sound
and Cecil Community College Presents...

Tony Royster Jr., 15 year old drumming sensation

THE TONY ROYSTER, JR. DRUM FESTIVAL

"The #1 Up & Coming
Drummer for 2000"
Voted by Modern Drummer
Magazine
You've seen him perform at this year's
Grammy Award.
You've seen him on Nickelodeon as
the house drummer.

Special Guest Host
Cecil County's own Bernard "Pretty" Purdue
"The World's Most Recorded Drummer"

Also Performing...

- The Masters of Cecil County, featuring Justin Webb
- Cherry Hill Middle School's Jillian "Jill P" Jones
- Boulder Music's Roberts Washington



Saturday, September 8, 2000

Second Show Added!

September 9, 2000

1pm - 6pm
ONLY \$10.00

FOR TICKETS CALL:
410-287-1037

Cecil Community College
One Seahawk Drive
North East, MD
I-95, Exit 100, Route 272 North

All Proceeds Benefit the Mrs. Eva M. Muse
Memorial Scholarship Fund!

WATERFRONT DINING

Located in Historic
Port Deposit at
Tome's Landing



NOW OPEN!!

PORTSIDE
GRILLE

Hours:
Mon. - Sat. 11 AM - 10 PM
Sun. 11 AM - 9 PM
600 Rowland Dr., Port Deposit
(410) 378-4600



McGlynn's is Your Place
to Be This Fall!

18 TV's for Viewing Your Favorite Games

SUNDAY FOOTBALL**FREQUENT FAN CLUB**

Prizes include a trip to the Bahamas,
TV and DVD/CD Player
Bud & Bud Light Pints - \$2.00
20 oz. Score & Pour - \$2.50

MONDAY NIGHT FOOTBALL

Monday Night Mug Club - \$5.00

Play QB1

Frequent Fan Club - Prizes, trips, giveaways
Heineken Pints - \$2.00 • Miller Lite Pints - \$1.75
\$2.00 Off All Appetizers • Beef & Beer - \$4.95
Bucket of Wing Zings - \$7.95

108 Peoples Plaza
Newark DE 19702
302-834-6661

8 Polly Drummond SC
Newark DE 19711
302-738-7814

Labor Day Holiday Weekend**FLEISCHMANN'S GIN**

\$7.99 1.75 liter
Expires 9/4/00

FRANZIA CHARDONNAY

\$8.99 5 liter box
Expires 9/4/00

SEAGRAM'S V.O.

\$15.99 1.75 liter
Expires 9/4/00

BERINGER WHITE ZINFANDEL

\$7.49 1.5 liter
Expires 9/4/00

WOODBRIDGE CABERNET, MERLOT OR CHARDONNAY

\$8.99 1.5 Liter
Expires 9/4/00

BUSCH BEER

30 PK CANS
\$10.59 case
Expires 9/4/00

SEAGRAM'S COOLERS

\$12.99 case
Expires 9/4/00

FLEISCHMANN'S VODKA

\$7.49 1.75 liter
Expires 9/4/00

CORONA 12 OZ BOTTLES

\$17.99 case
Expires 9/4/00

JOSE CUERVO GOLD TEQUILA

\$21.99 1.75 liter
Expires 9/4/00

BACARDI RUM

\$13.49 1.75 liter
Expires 9/4/00

MILLER HIGH LIFE

30 PK CANS
\$10.59 case
Expires 9/4/00

GEORGES DUBOUF CABERNET, MERLOT OR CHARDONNAY

\$3.49 750 ml
Expires 9/4/00

CAVIT PINOT GRIGIO

\$7.69 1.5 liter
Expires 9/4/00

TANQUERAY GIN

\$24.99 1.75 liter
Expires 9/4/00

WINDSOR CANADIAN

\$9.99 1.75 liter
Expires 9/4/00

NEW CASTLE BROWN ALE

12 OZ BOTTLES
\$20.99 case
Expires 9/4/00

SIERRA NEVADA PALE ALE

12 OZ BOTTLES
\$21.99 case
Expires 9/4/00

BUDWEISER

12 OZ BOTTLES
\$11.99 case
Expires 9/4/00

KENDALL-JACKSON CHARDONNAY

\$8.99 750 ml
Expires 9/4/00

CAPTAIN MORGAN

\$17.49 1.75 liter
Expires 9/4/00

INGLENOOK WHITE ZINFANDEL

\$5.49 3 liter

MERIDIAN CHARDONNAY

\$6.99 750 ml
Expires 9/4/00

BECK'S BEER

12 OZ CANS
\$16.99 case
Expires 9/4/00

MIKE'S HARD LEMOADE

12 OZ BOTTLES
\$17.99 case
Expires 9/4/00

MOLSON GOLDEN & ICE

12 OZ BOTTLES
\$14.99 case
Expires 9/4/00

Prices Good Thru 9-4-00

JAYCO LIQUORS
1101 E. PULASKI HIGHWAY
ELKTON, MD 21921

1-800-528-9463
410-398-4744

PHONE 1-800-220-1230

FAX 410-398-4044

Tri-State Classified

WE'RE ON THE WEB AT www.chesapeakeclassified.com

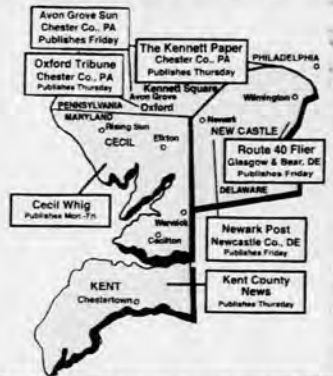
REACHING OVER 165,000 READERS WEEKLY!

Serving New Castle County, Delaware, Southern Chester County, Pennsylvania
and Cecil and Kent Counties in Maryland,

TRI-STATE CLASSIFIED DISPLAY DEADLINES Tuesday 3 p.m. LINE AD DEADLINES: Wednesday 3 p.m.

153 EAST CHESTNUT HILL ROAD, NEWARK, DE 19713

BUSINESS/OFFICE HOURS: 8 A.M. TO 5 P.M. MONDAY THROUGH FRIDAY



FIRST DAY ADS

FORD E 250 '90
Great work van, excellent cond \$3500.
Call 410-642-9330

PERSIAN KITTENS
shaded silver \$200.
Call 302-998-6564

It's our Finest Performance Ever!

When you sell it in the Tri-State Classifieds



NOTICES

ATTENTION
Christiana High School Class of

25 Year Reunion
November 18 For More Information Visit Our Website!
Hometown.aol.com/buysom1027
B. Wessel @ 302-378-4978
or R. Lloyd @ 302-378-7115

NOTICES

FREE CASH NOW!
Now Wealthy Families unloading Millions of Dollars to help minimize their taxes! Write Immediately: Triumph, 4542 East Tropicana Avenue, #207, Las Vegas, NV 89121 (SCA Network)

find what you're looking for in the Tri-State Classifieds

NOTICES

Now Hiring! Federal and Postal Jobs!
Call the Federal Trade Commission toll-free at 1-877-FTC-HELP to find out how to avoid job placement scams. Or visit www.ftc.gov.
A public service message from Chesapeake Publishing and the FTC

REAL ESTATE AUCTION
Saturday, September 9, 10 a.m. in Bolecourt County, Virginia. 264 +/- acres sold in 9 tracts. This beautiful historic farm has numerous building sites, large tracts of land, spectacular views, and a nice stream. Property is located on St. Rt. 799 convenient to I-81 Interchange #156. To receive fax on demand, call 1-540-344-7297 and request #352. For further information, call Quinn Thomas (VA#1815) Woltz & Associates, Inc. Brokers & Auctioneers.
1-800-551-3588.



HELP WANTED full-time

\$600.00 WEEKLY SALARY
processing our mail from home. No experience necessary. FT/PT. Genuine Opportunity. Free Supplies! Call 1-708-212-5400 (24 hours). (SCA Network)

HELP WANTED full-time

ADVANCE FEES SALES
Chesapeake Publishing has immediate openings for outside sales executives. Flexible schedule, health, dental and 401k. Competitive salary and commission bonus program. Media sales exp. preferred, but we will train the right person.

ALL PROFESSIONAL DRIVERS
want weekends off? We'll get you home most weekends with money in your pocket with your assigned conventional truck! Running regional. Heartland Express. Call today! EOE.
1-800-441-4953
www.heartlandexpress.com

HELP WANTED full-time

AVON. START YOUR BUSINESS
flexible hours. Enjoy unlimited earnings. Call toll free. 1-888-942-4053.

Bricklayers & Laborers
needed. Experience necessary. Please call 302-656-9612 Live msg

HELP WANTED full-time

Childcare or Housekeepers
2 positions live-in (drive) or live out (drive own car) NS ref's top salary 302-428-3750

Claims processor!
\$20-\$40/HR potential. Processing claims is easy! Training provided. MUST own PC. CALL NOW! 1-888-509-7809 ext.690. (SCA Network)



#1 Best Seller



How much house can you afford? Call 1-888-2GILPIN for a fast, free, automated mortgage pre-qualification! For other information call the PSA 24-Hour Real Estate HotLine (234-5200) or check our listings on the Internet: <http://pattersonschwartz.com>. (source code: 97)

NEW CASTLE & SOUTH	BRANDYWINE HUNDRED	GREATER NEWARK	HOCKESSIN & WEST	MARYLAND & PENNSYLVANIA	WILMINGTON
<p>MILLBRANCH AT GREENLAWN Stunning almost new townhome with finished lower level, deck, fenced yard. 733-7000 \$104,985 89525</p>	<p>WYNNWOOD End unit, brick, 2BR, townhouse condo; large rooms, gas heat, C/A, bsmt. 733-7000 \$86,500 78355</p>	<p>CAVALIERS 2BR, 1 1/2B end unit condo; fireplace, many updates, great price, near mall. 239-3000 \$67,500 81045</p>	<p>FOREST BROOK GLEN 3BR end unit, fenced yard, pool, updated kitchen & bath, C/A, fin. bsmt, warranty. 733-7000 \$85,000 85495</p>	<p>WASHINGTON WOODS Year old 3BR ranch, 2 car gar, 2 full baths, open floor plan, fireplace. 239-3000 \$148,900 85465</p>	<p>DENBIGH HALL Renovated 1BR efficiency. Condo fee includes everything but phone & cable. 239-3000 \$34,900 74995</p>
<p>MIDDLETOWN 2 unit duplex; 2BR each, well maintained, great investment opportunity. 239-3000 \$109,000 67835</p>	<p>STOCKDALE 4BR, 1 1/2B, updates galore, nice yard, garage; worth the trip. 475-0800 \$142,499 87695</p>	<p>FAIRFIELD CREST Below market price for 3BR, 1 1/2B ranch on 4/10 acre lot. 239-3000 \$120,000 89375</p>	<p>WINDERMERE 3BR, 1 1/2B split; maintenance-free exterior, gar, fenced yard. 239-3000 \$122,900 84575</p>	<p>N. CHESAPEAKE CITY View of C&D canal! Ranch, full bsmt, 2 car, screened porch, all appliances. 733-7000 \$149,900 81115</p>	<p>BROWNTOWN 2BR, new carpet and paint, move-in condition, possible owner financing. 475-0800 \$55,900 86225</p>
<p>BROOKFIELD 3BR, 2 1/2B, 4 years new, upgraded carpet, fin. daylight bsmt, oak kitchen. 239-3000 \$112,300 88135</p>	<p>LANCASHIRE 3BR ranch on large lot; updated systems & roof, gar, full bsmt, all appliances. 733-7000 \$152,900 87065</p>	<p>PORTER SQUARE 3BR ranch w/gar, newly finished bsmt, new windows & large fenced yard. 733-7000 \$134,900 87335</p>	<p>LIMESTONE HILLS WEST Outstanding end unit townhouse w/ garage & deck, 2BR, 2 1/2B. 733-7000 \$162,900 87235</p>	<p>KEMBSVILLE 1.4 acres of country, 4BR, 2B + a detached studio w/bedroom & bath. 733-7000 \$159,900 89395</p>	<p>N. TATNALL STREET 3BR townhome; full bsmt, fireplace, hardwood floors, near everything. 733-7000 \$64,900 86425</p>
<p>PENN ACRES 4BR colonial w/major system updates, large family room, enclosed porch. 733-7000 \$154,900 89065</p>	<p>OAK LANE MANOR Split, private yard, beautiful landscaping, eat-in kitchen, new systems, hardwood. 429-4500 \$174,900 89355</p>	<p>SALEM WOODS Opportunity awaits with this 4BR, 2 1/2B home in need of a little TLC. 239-3000 \$139,900 82175</p>	<p>VALLEY POINT 3BR townhome; 3 finished levels, gar, walk-out lower level, large deck. 239-3000 \$169,900 89085</p>	<p>HUNTERS CROSSING 4BR, 2 1/2B colonial situated on 2 acre lot with master suite. 239-3000 \$285,000 85705</p>	<p>S. FRANKLIN STREET 6BR 3 story; gleaming wood floors. 13 month Geiger home warranty. 672-9400 \$70,000 66435</p>
<p>RUTLEDGE Ryan-built, 4BR, 2 1/2B colonial; Pergo flooring, fresh paint, many upgrades. 733-7000 \$170,000 88895</p>	<p>CHALFONTE 3BR, 2B ranch; 2 car det. gar, hardwoods, fireplace, updated systems. 656-3141 \$174,900 88975</p>	<p>SUMMIT VIEW Custom contemporary; new heat, C/A & roof, kitchen opens to family room. 475-0800 \$198,618 84955</p>	<p>HERITAGE PARK 4BR colonial. Updated systems, screened porch, flat lot. 239-3000 \$169,900 89455</p>	<p>ELKTON Magnificent contemporary on 1 1/2 wooded Ac; 5BR, 3 1/2B, near marinas. 239-3000 \$429,900 78675</p>	<p>WEST STREET Remodeled townhome; kitchen addition, 4BR, garden terrace, space galore! 656-3141 \$129,900 87675</p>
<p>BRENNAN ESTATES 2 story, 1 1/2 years old, 4BR, 2 1/2B, 2 car gar; seller will pay 3 points! 733-7000 \$186,900 89025</p>	<p>HIGHLAND WOODS 3BR, 2 Ac w/trees, 2 car det. gar, porch, fireplace, wood flooring, updates. 239-3000 \$199,900 88945</p>	<p>CHRISTIANSTEAD 2 story, 3100 sq. ft. ceilings, 2 story foyer, 4BR, 2 1/2B, huge bsmt, .67 Ac. 733-7000 \$287,000 86045</p>	<p>HOCKESSIN Stucco ranch on 2 1/2 private acres; woods, stream, deck, pool, fin. bsmt. 656-3141 \$335,000 78655</p>	<p>COSSART CREEK Custom 4/5BR, 3B home on 2 Ac; 3 car gar, sun room, covered porch, deck. 656-3141 \$990,000 71455</p>	<p>BAYNARD BOULEVARD Baynard Blvd neo-classic 4+ BR home; gar, fireplace, porch, updated systems. 239-3000 \$249,900 86835</p>



Brandywine Dover Greenville Hockessin	475-0800 672-9400 429-4500 239-3000	Newark Willowdale From Maryland Toll Free MD	733-7000 610-347-6000 392-6500 800-220-7028	Wilmington General Info Gilpin Mortgage	656-3141 234-5250 656-5400	Gull Point HotLine Toll Free	945-5283 234-5200 800-220-5200	New Homes Property Mgmt Relocation Toll Free	234-3614 234-5240 234-3600 800-443-2295
--	--	---	--	---	----------------------------------	------------------------------------	--------------------------------------	---	--

HELP WANTED

COOK w/ experience for evenings. Apply in person **Howard House**, 101 W. Main St. Elton.

CREDIT/ COLLECTIONS

Immediate opening for a professional with 3+ years credit / collection experience in a commercial environment. Heavy phone contact, professional phone manner, good computer ability, and excellent communication skills required. Qualified applicants send resume, with salary requirements, to:

United Electric Supply
PO Box 10287
Wilmington, DE 19850
ATTN: Gayle Davis
V.P. H.R.

NO PHONE CALLS PLEASE.
EOE MF

HELP WANTED

DRIVER-COVENANT TRANSPORT. *Coast-to-coast runs. *Teams start up to 42-46. *1,000 sign-on bonus for exp. co. drivers. For experienced drivers 1-800-441-4394
Owner operators 1-877-848-6615
Graduate students 1-800-338-6428

DRIVER-NEW PAY PACKAGE! 83% of drivers home weekly, excellent benefits, late-model Conventions, 98% no-touch. Owner operators welcome! Cardinal Freight Carriers. 1-800-935-3131
www.cardlog.com EOE

DRIVERS-DEDICATED RUNS in your area! **EARN \$55,000/YEAR.** Guaranteed home weekly! Minimum weekly pay guaranteed. Assigned Conventions. M.S. Carriers. 1-800-231-5209. EOE

HELP WANTED

DRIVERS-EXPERIENCED drivers start at 34c/cpm, to 40c/cpm. Regional: 36c/cpm. Lease Program. New/Used! M.S. Carriers. 1-800-231-5209

Drivers OTR: No experience necessary. 14 day CDL training. Tuition reimbursement if qualified. Start \$38K 1st year. Must be 21. Lifetime job placement. Full benefits. Call 1-800-275-8179. Experienced drivers holding Class-A CDL call 1-800-9582353

DRIVERS WANTED! For Dedicated & Regional runs. CDL training available for as little as \$250.00. Ask about our \$1,000 sign-on bonus! 1-800-284-8785

DRIVER ♦ Transport hazardous material in **Havre de Grace**. Must have 3 years driving exp with CDL, class A Haz Mat / tanker endorsement. \$15.67/HR with o/t after 40 hrs benefit pkg. Call Greg 1-800-643-6226 M-F only.

DUMP TRUCK DRIVER CDL-B or better. F/T hourly rate w/ benefits. Steady work must pass DOT physical & drug test call 410-287-5662 for info.

EARN \$25,000-\$50,000/yr. Medical Insurance Billing Assistance needed immediately! Use your Home computer for great potential annual income. Call now! 1-800-291-4683 ext 407 (SCA Network)

HELP WANTED

EDITOR- Growing community newspaper seeks editor. Willing to train a reporter with experience. Candidates should be self-motivated and should be adept at spotting trends. Should be able to work in a team atmosphere. Computer skills preferred, but not required. Opportunity for advancement.
Send resumes to:
P.O. Box 311,
Quarryville, PA 17566.

EMERGENCY MEDICAL SERVICES

Jefferson Health System Ambulance Service has opportunities available in our growing EMS division. Positions are available for the following:

EMT's
(East Whiteland Fire Ambulance Company, Paoli, Philadelphia, Delaware)
Full-time days, part-time weekends. \$10.52/hour + shift differential for evening and night shifts.

BILLING REP (Paoli, PA based) \$11.31/hr

DISPATCHERS (Paoli, PA based) \$12.20/hr

We offer an excellent salary and benefits package including 4 weeks of earned leave / year, 100% tuition reimbursement (up to \$3000/year) and more. Interested candidates please fax your resume to (609) 443-8053 or forward to EMS Resume Resource Center, 447 South Street, Phoenixville, PA 19460. If you would like additional information please call (610) 416-9448. Resumes can be e-mailed to: EMSJOBS@SNIP.NET EOE M/F/D/V.

Great Valley Health
Jefferson Health System

Executive Director Newark Arts Alliance, a non-profit community arts organization (www.naa.wserv.com) seeks an inspired organizer with strong communication & delegation skills. Help us draw support from the local & corporate community. Min 20 hrs/week salary \$1040/mo. Send resume to: **NAA-ED Search P.O. BOX 1085, Newark, DE 19715**

Federal Postal Jobs** up to \$18.35 hour. Free call, application/examination information. Federal Hire-Full Benefits. 1-800-598-4504 extension 1605 (8-6pm e.s.t. 7 days) (SCA Network)

HELP WANTED

GOVT. POSTAL JOBS up to \$18.35 hour. Full Benefits. No experience required. For application and exam information. 1-888-726-9083 ext. 1700 7am-7pm CST (SCA Network)

HOMEWORKERS NEEDED \$635/wk processing mail. Easy! No experience needed. 1-888-940-0789 EXT. 7025 24 HRS.

JOB OPPORTUNITY

Chesapeake Publishing Corp.'s respected community newspapers-The Newark Post and The Route 40 Flier-has the following immediate full-time opening:

ASSISTANT EDITOR

Founded in 1994, The Route 40 Flier has become an important "house organ" to residents of the fast-growing, suburban Delaware communities of Bear and Glasgow. This is a beginning editor's position, where a qualified candidate can cut their editorial teeth in a safe, supportive newsroom environment. In addition to reporting and writing, this working editor is responsible for processing and making decisions involving processing of all copy, editorials, story selection and page design of the weekly. Works closely with the hands-on publisher and fellow editors in the busy Newark office. A perfect position for career growth for a journalist with "street smarts" and proven ability to write and report.

The best candidate must possess a keen interest in community journalism, and be able to work independently in a busy, but small and spirited newspaper office. The position offers a competitive salary and all Chesapeake Publishing Corporation benefits, including Blue Cross/Blue Shield group medical coverage and 401K.

The newspaper works out of offices that are conveniently located just off I-95 near the University of Delaware's Bob Carpenter Center.

Qualified applicants for this position should immediately forward a resume detailing their experience and clips to:

Publisher,
The Route 40 Flier,
153 E. Chestnut Hill Rd.
Newark, DE 19713;
facsimile 302-737-9019.

MECHANIC for heavy equipment-hydraulic excavators & trucks. Top wages & benefits. steady year round work. Apply in person to Diamond Recycling, 1600 Bowers Street, Wilmington, DE 19809. 302-655-1501. EOE

NEWSPAPER TRADE ASSOCIATION is seeking an energetic person with good computer (PC) skills to help run newspaper classified ad network and support advertising department. Will consider applications for F/T or P/T employment. Familiarity with newspapers a plus. Competitive salary, excellent benefits. Fax (410) 721-5909, or mail cover letter and resume with salary requirements to: MDDC Press Association, 2191 Defense Hwy., #300, Crofton, MD 21114. EOE

OFFICE WORKER for optometrist's office. Bear & Smyrna. CALL: 302-836-5410

OPTOMETRIC assistant 2/4 yr exp req. flex hrs/ exl pay for enthusiastic detail oriented person fax resume 410-778-9687.

PHOTO RETAIL Management training positions avail. for individuals w/ positive & professional attitude must have retail management exp. & some photo knowledge. Discounts, health care, & other benefits avail. P/t sales & photo lab positions also avail. Fax resume to 302-475-6735 or call 302-475-8820

THE BEST PLACE TO ADVERTISE YOUR

YARD SALE

IS THE TRI-STATE CLASSIFIEDS

HELP WANTED

Postal \$48,323.00 yr. Now Hiring-No experience-paid Training-great benefits. Call 7 days 800-429-3660 ext. J-3226 (SCA Network)

PRESSMAN TRAINEE

Local printing company seeking enthusiastic individual to join press crew, night shift. No experience necessary, will train. Sunday - Thursday one week; Monday - Thursday the following week.

*Full-time position
*Safe environment
*Good pay
*Chance for advancement
*BC/BS
*Dental
*401K with company contributions
*Quality incentives
*Paid sick & vaca pay

Apply in person:
Cecil Whig
601 Bridge Street
Elkton, MD 21921
Or send email to: gproctor@cpcc.chespub.com

CHESAPEAKE PUBLISHING & PRINTING

REAL ESTATE ADVERTISING SALES

Enthusiastic & ambitious person needed to sell print advertising for Cecil Whig, Newark Post, Route 40 Flier and other Chesapeake Publishing products in Cecil Co., MD and New Castle Co., DE. Health, dental, 401k, competitive salary and commission bonus program. Real Estate exp. helpful, but will train the right person.

Respond to:
Career Opportunities
PO Box 429
Elkton, MD
21922-0429
fax to: 410-398-4044
Attn: Bonnie Lietwiler

Buying a Mobile Home? Check on warranty coverage from the manufacturer, retailer transporter, and installer before you buy. A public service message from the Tri State Classifieds and the Federal Trade Commission.

HELP WANTED

RESTAURANT- Servers am/pm shift, p/t, with benefits. Apply in person Holiday Inn/Olivers 1203 Christiana Rd. Newark De. 19713

TYPIST & DATA PROCESSORS needed No exp Will train must own computer earn up to \$50/hr 800-990-9835 or 941-351-5514 or visit www.thelavclub.com

WAITRESS: Exp prfd, will train. **Middletown Family Restaurant** Rt 301 S. 302-376-1227

HELP WANTED part-time

An exciting and dynamic Christian community is seeking to hire a:

Director of Christian Education (PT, paid benefits)

to help us grow our program & ministry with **Children and Youth**. We have great staff and volunteers in place. Further information at: http://dol.net/~immanuel_church/index.htm Send resume by email or regular mail to: Personnel Ministry, Immanuel Episcopal Church 2400 W. 17th St., Wilm., DE 19806

HORSE FARM needs **WEEKEND HELP**. Must be experienced. References required 610-869-9535

JANITORIAL Responsible individual looking to be their own boss. Evening position 24 hrs / wk \$7.50/hr Newark area. 410-648-5528 lv mess

OFFICE ASST. Pleasant responsible Assistant wanted for Newark Financial Planning practice. No experience necessary, 15-20 hrs/wk. \$7+/hr. 302-366-1125

St. Mary's Early Education Preschool Program is now accepting applications for a P/T, mornings only teaching position working with children ages 2 thru 5 yrs. Competitive salary. Contact **Charmaine Campagna** 302-239-7100 ext. 34.

THERAPISTS wanted for P/T & PRN positions. Physical, Occupational, & Speech Therapists needed for growing outpatient rehab facility in Bel Air & Havre de Grace. Fax resume to 410-838-0350.

BUSINESS OPPORTUNITIES**

All Tune & Lube Be a part of a multi-billion \$\$\$ industry franchise opt. in Cecil Co. Free brochure 1-800-935-8863 Millersville, MD

DATA ENTRY. Need claim processors now! No experience needed. Will train. Computer required. Software \$350. Great income potential. 1-888-314-1033 www.emedbiller.com

Earn \$500-\$5,000 monthly! Gas/electric, long distance, pagers. Save & earn money! Let me show you how! Call too-free 1-888-248-7069

EARN \$\$\$ HELPING DOCTORS. Up to \$20-\$40/hr potential. Easy claims processing. We train! Computer w/modem req'd. 7 days. 1-888-303-4736 ext. 898. \$399 software cost.

EXPANDING COMPANY NEEDS PEOPLE...Work from home with our Mail-order/Internet system. \$1,500+/mo P.T. \$3,000-\$7,000 FT Free Information. (414) 290-6900 www.home-business-systems.com (SCA Network)

M&M MARS/NESTLE. Established vending route. Will sell by 9/11/2000. Under \$5K minimum investment required. Excellent monthly profit potential. Finance available/good credit. 1-800-637-7444

PRE-SECURED ROUTES features machines which vend Hershey's candy! Limited areas available! Minimum investment under \$5K. Potential earnings over \$95K one year. 1-888-745-5552, 24 hrs. Southwestern Business Investments

RENTALS

HOUSES FOR RENT

ELKTON area two house 2 br 2 1/2 ba \$650/mo + sec dep & 1st mo rent avail immed 410-287-5690 aftr 4pm

PERSIMMON CREEK FROM THE LOW \$90,000's

Now offering townhomes with 9' first floor ceilings, up to 3 bedrooms, 2 1/2 baths. Garage or full daylight basement. Plus \$4,000 settlement help! Models open 11-6 daily, Mon 12-6, Closed Wed. & Thurs.

Persimmon Creek
JIM RILEY
800-650-2727

CONSTRUCTION

J.T. Hardy & Son, Inc. has immediate job openings for:

- * Laborers w/CDL license
- * Backhoe Operators
- * Plumbers
- * Pump & Tank Mechanics

Top wages + benefits. Year round work. Experience required.

APPLY IN PERSON OR CALL
425 Old Airport Rd.
New Castle, DE
302-328-9457

TOWN OF RISING SUN

The Mayor and Commissioners of the Town of Rising Sun are accepting applications for the position of Police Officer. Applications can be picked up at the Town Hall at 114 S. Queen Street, Rising Sun, MD 21911-0456, Mon.-Fri. between 8:00 a.m. to 4:30 p.m. Applicants must be at least 21 years of age and will be required to undergo an extensive background investigation. Deadline for return of applications is September 15, 2000 at 4:30 p.m. Minimum salary \$25,000 for certified police officers plus benefits including healthcare & retirement. The Town is an E.O.E.

University of Delaware Community Music School

2000-2001 Classes

Early Childhood Classes
Family Music for Toddlers and Adults,
Cycle of Seasons, Music Makers I and II,
Keyboards for Kids and Beginning Recorder

Ensemble Classes
Bassoon Quartet, Brass Quintet, Clarinet Choir,
Flute Choir, Middle School Jazz Band,
Small Jazz Ensemble and Woodwind Quintet

Private Study Lessons For All Ages

To receive a brochure and for more information call 831-1548 or visit www.udel.edu/music/public/cms

DON'T PUT IT OUT IN THE TRASH

TURN THAT STUFF INTO CASH!

Advertise your yard sale in the Cecil Whig, Newark Post and The Route 40 Flier

4 LINES • 3 DAYS • 3 PAPERS - \$15.00

Includes FREE YARD SALE KIT!

Call Today! 410-398-1230

Deadline for all 3 Papers - Tuesday, NOON

DRIVE ONE HOME TODAY!

ROLL INTO SAVINGS WITH THESE AUTO DEALERS!

Chevrolet MIDDLETOWN 5221 Summit Bridge Rd. Middletown, DE 19709 (302) 378-9811 1-888-4-A-NUCAR	STAPLEFORD'S CHEVROLET OLDSMOBILE 302-834-4568 ST. GEORGES, DE	Volkswagen Smith VOLKSWAGEN, LTD. 4304 Kirkwood Highway, WILMINGTON, DE 302-998-0131 Drivers wanted	Ford ADVANTAGE AUTOLAND 560 E. PULASKI HWY. 1-800-899-FORD	Nissan CHAPMAN IF THIS EMBLEM ISN'T ON YOUR NEW NISSAN, YOU PROBABLY PAID TOO MUCH! 114 S. DuPont Highway Rt. #13 Btwn. I-295 & I-495 302-326-6100 Always 300 New Nissans in Stock 75 Used Cars!
Jeep ADVANTAGE AUTOLAND 601 E. Pulaski Hwy Elkton, MD 1-800-420-JEEP	Dodge ADVANTAGE AUTOLAND 410-392-4200 800-394-2277	Pontiac PINNO OXFORD, PA 610-932-2892	Honda Colonial HONDA 410-642-2433 5419 PULASKI HWY. RT 40 & 222 PERRYVILLE Mid-Atlantic Vehicle Buying Program Hondas Cost Less in Perryville. www.Colonial-Honda.com	Buick PINNO OXFORD, PA 610-932-2892
Williams USED CARS & TRUCKS Doing Business the Williams Way! (410) 398-7770 1-800-255-7770 www.williamsused.com	Williams CHEVROLET OLDSMOBILE (410) 398-4500 1-800-826-0580 #2 AUTOMOTIVE BLVD. ELKTON, MD "RT. 40 AT THE MD/DE LINE" www.williamschev.com	Kia NUCAR Newark, DE 738-6161 1-800-969-3325	BAYSHORE Ford 4003 N. DuPont Highway Route 13 at I-495 800-241-6644 NO HASSLE LOW PRICES LARGE SELECTION	Toyota NEWARK TOYOTA 4000 Ogletown Rd., Newark 302-368-6262 USED CARS No Credit Bad Credit No Problem! Newark Toyota Import Outlet
SCHAEFER STROMINGER HONDA 408 Baltimore Pike, Bel Air Over 200 New Hondas In Stock 838-9170 • 893-0600	DRIVE HOME IN ONE TODAY! CALL LAURIE AT 410-398-1230 OR 1-800-220-1230 TO ADVERTISE HERE!			

HOUSES FOR RENT

SOUTH OF ELKTON
3br/2ba, \$750/mo plus
util, pets xtra charge.
For info call 410-287-
5277.

ROOMS FOR RENT

NEWARK walking
distance to Univ DE
Campus. \$320/mo plus
shared util's Call
302-690-3680 live msg



REAL ESTATE

HOUSES FOR SALE

BUILD YOUR OWN HOME.
www.cobshomes.com
Complete Owner
Builder Services helps
you. 100% financing, in-
cluding land. Good in-
come & credit required.
Save \$ money.
1-888-839-6952

HOUSES FOR SALE

CRYSTAL BEACH
FSBO renovated 3 br
1 ba beautiful view of
bay. Serious inquiries
Reduced \$87,900
610-664-0697 lv msg

DID YOU KNOW?
You can list your real
estate ad in over 100
papers, reaching 2 +
million households,
throughout the MD,
DE, DC area for only
\$250. That's about \$2
per ad for regional cov-
erage! Call Janet at the
MMDC Press Service at
410-721-5115 for more
information!

Selling Property? Don't pay
any fees until it's sold. A
public service message from
the Tri State Classifieds and
the Federal Trade
Commission

Buying a Mobile Home?
Investigate zoning require-
ments in the community
where you want to live before
you buy a home. A public
service message from the Tri
State Classifieds

LOTS/ACREAGE FOR SALE

3 STATE VIEWS!
27+ acres-\$69,900. In-
credible value! Pristine
mountain property 90
mins. west of DC.
Paved rd. front w/utills.,
perc ok. Excellent fi-
nancing. Won't last, call
now HCV 1-800-888-
1262

ATLANTIC OCEAN ACCESS. 1.5 ac-
\$24,900. Spectacular
North Carolina coastal
acreage w/deeded ac-
cess to Albemarle
Sound, ICW & Atlantic.
Beautifully wooded, nice
views, private pier.
Paved rds., u/g utilities,
central water, more.
Must see! NC Timber-
line 1-800-732-6601, ext.
227

BORDERS TROUT STREAM and State
Forest. 12.5 acres
\$39,900. Financing
available! AALLC 1-800-
524-3064, ext. 1077M
www.americanacreage.
com

LOTS/ACREAGE FOR SALE

"KING OF THE WORLD." 12+ AC
mountain top estate.
Enjoy 60 mile Blue
Ridge Mtn. & Shenan-
doah Valley views from
this 12+ acre mtn. top
estate. Paved road
frontage w/utills.,
driveway & septic in.
\$103,900. Financing.
Only 2 available! Im-
press yourself! Call
HCV 1-800-888-1262.

LAND BARGAIN!
300' STREAM
/POND SITE 5+AC-
\$39,900. Gorgeous
woodlands surrounded
by mountain views!
Good road frontage,
utilities, perc ok. Easy
financing. Call now 1-
800-888-1262.

Land wanted. Lake-
front, riverfront, coastal,
farms, approved subdivi-
sions or timber. Suit-
able for development.
Investor to pay cash.
Call Dan toll-free 1-877-
280-5263

LOTS/ACREAGE FOR SALE

MOUNTAIN LAND BARGAIN. 7+
ac/stream/pond site
\$44,900. Pristine mix of
hardwoods & pines
w/secluded homesite.
Paved rd. front
w/utills., perc ok.
Ready to build or camp.
Excellent financing.
Only one. Call now 1-
800-888-1262.

OLD FARM WITH BARN, outbuildings + 3
streams on property.
Beautiful mountain &
valley views. Adjoins
State forest. 90 minutes
from beltway. Own a
piece of the past.
\$37,900. Call 1-888-
242-3676, ext. 1680M.

Pamlico Sound access 2+/-AC \$14,900.
Beautifully wooded es-
tate in gated community
w/deeded access to
boat ramp & dock.
Paved rd., w/g utills,
easy financing. NC
Timberline 1-800-732-
6601 ext. 282.

LOTS/ACREAGE FOR SALE

PRECONSTRUCTION SALE. LAKEFRONT
1.0 acre-\$59,900. 90
mins. DC. New! Beau-
tifully wooded lakefront
homesite on Virginia's
fabulous Lake Anna.
Private, secluded, ready
to build. Paved rd.
w/utills., soils tested,
surveyed. Excellent fi-
nancing. low down
payment. Won't last. VA
Timberline 1-877-280-
5263, ext 113. Open 7
days.

SC DREAM LAKE.
11,000 acre drinking
water lake. Pristine wa-
terfront community.
Beautiful POINT LOTS.
Heavily wooded, prime
waterfront 20% discount-
90% financing. Water-
front from \$39,900. 1-
800-715-5533. Water-
view Sales, Inc.

IF YOU FIND AN ITEM
Give us a call to place an
ad! There is NO CHARGE
to run a 3 line ad all week!

LOTS/ACREAGE FOR SALE

TN Lakefront Com-
munity \$39,900 barg-
ain! W/boat dock. View
property w/access to
30,000 acre lake. Close
to town & golf course!
Paved rds, underground
utilities. Excellent fi-
nancing. Won't last
long! Call toll-free 877-
505-1871



SERVICES

CHILD CARE SERVICES

NEW Castle childcare
openings for ages 6wks
to 5 for info call 302-
328-2539 lic # 28963

CLEANING SERVICES

Home Care
Specializing in quality
housecleaning/ handy-
man services. Licensed,
insured & bonded.
Please call Karley
610-274-3288

FINANCIAL/ MONEY TO LEND

ARE YOU BEHIND IN HOUSE payments?
Don't rush into bank-
ruptcy, numerous pro-
grams available to save
your home! No equity
needed-Call UCMA to-
day 301-386-8803, 1-
800-474-1407.
http://dc.555need.com/u
cma

SCASH NOWS WE
BUY mortgages, insur-
ance policies (seniors),
annuities, receivables,
structured settlements,
consumer installment
debt, real estate leases,
military pensions, in-
heritances, notes.
1-800-722-7472
Advance Funding.

Buying or Selling Property?
Seeing is believing. Don't buy
property based on pictures or
representations. A public
service message from the Tri
State Classifieds and the
Federal Trade Commission.

FINANCIAL/ MONEY TO LEND

CREDIT CARD
DEBT? Avoid bank-
ruptcy. *Stop collection
calls. *Cut finance
charges. *Cut payments
up to 50% debt consoli-
dations. FAST AP-
PROVAL! No credit
check. National Con-
solidators 1-800-270-
9894.

FEDERAL FUNDING GROUP LTD. Falling
behind on mortgage
payments? Call; let us
figure out what to do!
STOP FORECLOSURE.
BANKRUPTCY
OKAY. Cash for all
needs. 1-88-557-8880
or 202-478-2089. Apply
online
www.FederalFunding.com

Need cash? Instant
cash advance! \$200-
\$500 transferred into
your checking account.
We want your business!
Call 24 hours.
www.telecash.net or call
TeleCash: 1-888-264-
8803

SOVERDUE
BILLS!!!! Credit Prob-
lems? Consolidate
debts! Cut monthly
payments to 50%. Be-
come debt free. No ap-
plication fees!! 1-800-
8636-9006 ext.924.
www.help-pay-bills.com

INSTRUCTION

FREE BIBLE STUDY
COURSE BY MAIL.
Makes Bible easy to
understand. Suitable
for any denomination.
Beautifully illustrated.
KJV based. Please
call: 302-892-9961

MISC. SERVICES

BARTENDER'S
MAKE \$100-\$250 PER
NIGHT! NO EXPERI-
ENCE NEEDED! CALL
NOW! 1-800-981-8168
EXT. 3060 (SCA Net-
work)

TARGET 11 MILLION
HOMES WITH YOUR
AD. Advertise your
product or service to 11
million households in
North America's best
suburbs by placing your
classified ad in nearly
800 suburban newspa-
pers just like this one.
Only \$895 for a 25-work
ad. One phone call, one
invoice, one payment.
Call the Suburban
Classified Advertising
Network at 312-644-
6610 x 3639!



MERCHANDISE

ANTIQUES/ ART



Original Pen and Ink Artwork

"Stippling" technique

A Chesapeake City, MD, artist available to do orig. portraits of a person, pets or other favorite subjects. Reasonable rates with a 3 to 6 week turnaround.

Artwork is not computer generated!

All work is created by hand.

For more info, please call:
August Kiessling
410-885-5978
bossman@doi.net

Earn big \$\$\$ selling 'Net-
related products or services.
Get all promises in writing,
including earnings claims. A
public service message from
the Tri State Classifieds and
the Federal Trade
Commission

COMPUTERS & ACCESS.

◆◆◆◆◆
COMPUTER
Upgrade & Repair
PC and Macintosh
Computers.
FREE ESTIMATES!
On site service
available.
Call: 410-620-6696
◆◆◆◆◆

WANT A COM-PUTER? But No Cash?
No Credit OK! Slow
Credit OK! 0 Down!
Laptops, Available. Re-
establish Your Credit!
Call Now!!! 1-888-247-
3818 (SCA Network)

FURNITURE

SOFA 3pc. Contemp.
sectl., Exc. cond., will
deliver \$350 call 302-
475-9805

GENERAL MERCHANDISE

ANDERSEN SLIDING
glass doors, 5 feet 10
inches wide w/screens.
Low miles, \$300. Call:
410-287-3823

☆☆☆☆☆☆☆☆
"BODY BY JAKE"
AB ROCKER
Original price: \$99
Asking \$25
Call: 302-540-1555
Leave message

FACTORY CLEAR-ANCE! Arch Steel
Buildings-Factory Di-
rect Pricing! 24x26,
30x60, 40x50, 50x110
Below Cost! Perfect for
Workshops/Garages/Storage.
Call 1-800-341-7007
www.steelmasterusa.com

SAWMILL \$3,795.
Saws logs into boards,
planks, beams. Large
capacity. Best sawmill
values anywhere. Free
information. Norwood
Sawmills, 252 Sonwil
Drive, Buffalo, NY
14225. 1-800-578-1363

SLEEPER SOFA
and loveseat, 55 gal fish
tank with stand,
computer desk, washer
& dryer, daybed, 19" TV
410-398-3235

WOLFF TANNING
BEDS. Tan at home. Bu-
direct and save!
Commercial/Home uni-
form \$199.00. Low
monthly payments. Fre-
color catalog. Call toda
1-800-842-1310

PETS

ALASKAN HUSKY
female dog 5yrs old
Owner unable to care
for because of health
Free to good home call
410 658-4249

BLACK LAB MIX
PUPPY. Free to good
home. 6-7 months old
great with kids, very
friendly. 410-620-0282

CHESAPEAKE BAY
RETRIEVER, free to
good home. Beautiful,
playful 5 yr old female.
Spayed, shots to date.
302-234-2719

FOR SALE 6 month
old Ferret w/ cage. Cell
Phone 443-466-8990.
N.E. area

FREE LHASA APSO
& SHIH TZU mixed
puppies to good home 4
males 8 wks old.
410-378-9613

FREE TO GOOD HOME AKC Schipperke
7mos old. Loves kids,
house trained, free ken-
nel 410-642-3485

GREAT DANES 3
pure bred puppies, 1
male, 2 females, \$300.
Call 410-378-5834

Mini Schnauzer pups
reg shots done 80%
housebroken \$350. 302-
323-1634/302-753-1674

MIN TINS M/F 8
weeks Vet checked &
shot, home raised 302-
369-1873

PIT BULL DOG mix
male 9 mo old house
broken neutered all
shots good w/kids Must
get rid of because of
housing arrangements
Free to good home
please call
410-620-3495



DIABETICS!...
Declare your independence!
Have your diabetic supplies
delivered to your door for
little or no cost!
Medicare & Private Insurance welcome.
(Sorry HMO's Not accepted)

Call Now! Toll Free-888-722-7556
Independence Medical

Wet Basements Stink!
Every time it rains you dread going to your basement. You've got mold and mildew and if it rains enough, you actually get water. You know you need to get it fixed before your foundation is ruined. You wonder if anything can be done to fix the problem for good. What is the answer?
Allstate American Inc. Waterproofing. We are an honest, hardworking local company that will come to your home, give you a free evaluation/estimate and a fair price. We have repaired thousands of basements in the area, so we can provide local neighborhood references.
When the folks at Volunteers of America needed waterproofing done at a historical site, they called Allstate American. Why don't you? For a 20% discount on work completed in next 15 days...
Call Right Now: 1-800-420-7783 MHCH36672

SELLING A HOME?

FIZBOT.com
Real estate's new address.™

Tons of local listings. Easy. Free. www.fizbot.com

bestdressedkids.com

the very coolest, most comfortable clothing and shoes on the planet!

(gifts, toys and matching mommy, too!)

TIRES! TIRES! TIRES!
National Name Brands... Quality Service... Low Prices

BFGoodrich DUNLOP BRIDGESTONE GOODYEAR MICHELIN

SERVICE INSTALLATION CENTER

AIR CONDITIONING
ALIGNMENTS
ALTERNATORS
BATTERY INSTALLS
BELTS & HOSES
COOLING SYSTEMS
CV JOINTS
DISC BRAKES
DRUM BRAKES
EXHAUST
FRONT END REPAIR
OIL CHANGE
SHOCKS & STRUTS
STARTERS
TIRE REPAIRS
TRANS SERVICE
TUNE UP

BFGoodrich Plus
50,000 Mile Warranty*
Quiet Ride
Steel Belted Construction
The smart, dependable, all-season radial. The plus is value.

P155/80R13	26.99	P205/70R14	48.99
P175/70R13	42.99	P205/65R15	54.99
P185/75R14	41.99	P205/75R15	46.99
P185/65R14	51.99	P215/70R15	46.99
P195/75R14	42.99	P215/75R15	47.99
P205/75R14	46.99	P235/75R15	52.99

Sentry Sport RV
40,000 Mile Warranty*
Steel belted for strength, durability and puncture resistance.
Heavy gauge inner liner to help prevent road hazard damage.

P205/75R14	54.99	30X9.50R15	83.99
P205/75R15	60.99	31X10.50R15	85.99
P215/75R15	61.99	31X11.50R15	93.99
P235/75R15	63.99	33X12.50R15	102.99
P245/70R15	71.99	LT245/75R16	98.99
LT235/75R15	84.99	LT265/75R16	99.99

DUNLOP
D60-A2 Performance
45,000 Mile Warranty*
Advanced high performance tread compound for excellent all-season handling and traction.
Ser 17-8520 Starting at **\$49.99**

VIPER
Viper Performance
40,000 Mile Warranty*
Open tread design and all season tread compound provides superior traction and long tread life.
Ser 18-5000 Starting at **\$49.99**

DUNLOP
ResponseRST2000
60,000 Mile Warranty*
Advanced high performance tread compound for excellent all-season handling and traction
Ser 16-2800 Starting at **\$37.99**

DUNLOP
Rover Touring LT
60,000 Mile Warranty*
A ride that's passenger-car smooth, quiet and comfortable. Bigger, wider, sportier tires.
Ser 18-6300 Starting at **\$69.99**

BRIDGESTONE
Dueler APT II
50,000 Mile Warranty*
Four grooved advanced tread design provides sure-footed all terrain traction.
Ser 18-6800 Starting at **\$69.99**

Western Auto
LOCALLY OWNED, NATIONALLY KNOWN.
2414 Pulaski Hwy. Newark, DE

OPEN 7 DAYS A WEEK!
(302)834-8608
(800)613-8139

Western Auto
MasterCard
Discover
VISA
Credit cards shown above accepted at participating stores.

Still Driving That Old Klunker?
Find a new one in the Classifieds

410-398-1230
1-800-220-1230

SHERIFF'S SALE

The following Real Estate will be exposed the Public Sale at the Court House Southeast Corner of Eleventh and King Streets, City of Wilmington, New Castle County, DELAWARE, on Tuesday, the 12th day of September, 2000 at 10:00 AM By Virtue of Writ of

SHERIFF'S SALE

By virtue of a writ of LEV FAC #7, JL. A.D., 2000.

Parcel 1: NCC Tax Parcel No. 09-022.40-228. ALL that certain lot, piece or parcel of land, situated in White Clay Creek Hundred, New Castle County and State of Delaware, and known as Parcel Identification No. 09-022.40-228 on the plan of Wilmington Sports in Plaza Four, as said plan is of Record in the Office of the Recorder of Deeds, in and for New Castle County, Delaware in Microfilm Number 12082, recorded August 9, 1994, and being more particularly bounded and described in accordance with a survey by Clifton L. Baksh, Jr., Inc., Middletown, Delaware, dated 09-23-97.

BEING the same lands and premises which Jumbo Sports, Inc., successor in interest by merger to Sports & Recreation, Inc., a Delaware Office of the Recorder of Deeds, in and for New Castle County, Delaware, in Deed Book 2341, Page 161, did grant and convey unto Property Holdings Company I, a Florida Corporation, in fee.

SEIZED AND TAKEN IN EXECUTION AS THE PROPERTY OF PROPERTY HOLDINGS COMPANY I.

TERMS OF SALE: 10% DOWN AT TIME OF SALE. BALANCE DUE ON OR BEFORE OCTOBER 2, 2000.

JULY 31, 2000

SHERIFF'S SALE

By virtue of a writ of VEM #10, JL. A.D., 2000.

TAX PARCEL NO.: 09-030.30-034

ALL THAT CERTAIN lot, piece or parcel of land, with any buildings thereon erected, known as 20 Bayard Lane, White Clay Creek Hundred, New Castle County, and State of Delaware.

BEING PART OF THE SAME LAND AND PREMISES that Robert M. Carter and Mary, his wife, by certain Deed dated December 24, 1857, and recorded in the Office of the Recorder of Deeds in and for New Castle County, Delaware, in Deed Record B, Volume 7, Page 287, did grant and convey unto Jeremiah Waters, in fee.

SUBSEQUENTLY, Jeremiah Waters departed this life in 1899 leaving a Last Will and Testament dated December 9, 1898, wherein he left his real estate to his wife, Eliza Waters.

SUBSEQUENTLY, Eliza Jane Waters departed this life on May 1, 1920, and by her Last Will and Testament dated December, 1899, she left her estate to her four children, namely Charles E. Waters, Mary G. Daniels, Jeremiah Waters and Louis (Lewis) H. Waters, share and share alike.

SUBSEQUENTLY, Lewis H. (Louis H.) Waters departed this life on October 14, 1958, in testate, leaving to survive him, Annie F. (Anna) Waters. See File #93602 in the office of the Register of Wills, in and for New Castle County, Delaware.

SUBSEQUENTLY, Annie F. (Anna) Waters departed this life on July 11, 1973, intestate, leaving to survive her a son, Louis Waters, Jr., Annie F. (Anna) Waters also had 2 daughters, Mary Waters and Edith Waters, and in the Petition for Letters in the Estate of Annie Waters, File #93601, in the office aforesaid, the said two daughters are listed deceased.

SEIZED AND TAKEN IN EXECUTION AS THE PROPERTY OF ESTATE OF E. JANE WATERS.

TERMS OF SALE: FULL PURCHASE PRICE AT THE TIME OF THE SALE. "IN ACCORDANCE WITH 9 DEL. C. SS8726, THIS SALE IS SUBJECT TO THE APPROVAL OF THE CHIEF FINANCIAL OFFICER OF NEW CASTLE COUNTY."

JULY 31, 2000

SHERIFF'S SALE

By virtue of a writ of FIRST PLURIES LEV FAC #20 JL. A.D., 2000.

Tax Parcel #: 10-043.10-341
Property Address: 5 HOBKIRK COURT, NEWARK, DELAWARE 19702

All that certain lot, piece or parcel of land with the dwelling thereon erected, situate in New Castle Hundred, New Castle County and State of Delaware, and being Lot No. 218, as shown on the Record Major Land Development Plan of WALDEN GLEN AT WELLINGTON WOODS, as said Plan is recorded in the Office for the Recording of Deeds, in and for New Castle County, in Microfilm No. 4524, and being known as 5 HOBKIRK COURT, NEWARK, DELAWARE.

BEING the same lands and premises which HENRY A. WAGNER and LINDA A. WAGNER, husband and wife, of New Castle County, State of Delaware, by Deed dated December 31, 1992 and recorded in the Office of the Recorder of Deeds in and for New Castle County on December 31, 1992 in Deed Book 1451, Page 186 did grant and convey unto ALBERT M. BROWN, in fee.

SEIZED AND TAKEN IN EXECUTION AS THE PROPERTY OF ALBERT M. BROWN.

TERMS OF SALE: 10% DOWN AT TIME OF SALE. BALANCE DUE ON OR BEFORE OCTOBER 2, 2000.

JULY 31, 2000

SHERIFF'S SALE

By virtue of a writ of LEV FAC #23, JL., A.D., 2000.

Tax Parcel: 09-022.30-272
3 Carol Road
Newark, Delaware

ALL THAT CERTAIN lot, piece or parcel of land with the dwelling thereon erected, situate in White Clay Creek Hundred, New Castle County and State of Delaware, being Lot No. 2, Block 8, as shown on the Plan of CHESTNUT HILL ESTATES, Section 2, as said Plan is of record in the Office for the Recording of Deeds, in and for New Castle County, in Plat Book Volume 3, Page 58.

BEING the same lands and premises granted and conveyed, in fee, unto Allen J. Barnett and Regina H. Barnett, his wife, by deed of Harry T. Reynolds and Margaret I. Reynolds, his wife, dated July 1, 1979, and recorded in the Office of the Recorder of Deeds in and for New Castle County, Delaware, in Deed Book O, Volume 106, Page 34.

SEIZED AND TAKEN IN EXECUTION AS THE PROPERTY OF ALLEN J. BARNETT AND REGINA H. BARNETT.

TERMS OF SALE: 10% DOWN AT TIME OF SALE. BALANCE DUE ON OR BEFORE OCTOBER 2, 2000.

JULY 31, 2000

SHERIFF'S SALE

By virtue of a writ of ALIAS LEV FAC #24 MY. A.D., 2000.

PROPERTY DESCRIPTION

PARCEL NO. 11-002.20-245

STREET ADDRESS: 32 MERRY ROAD, BROOKSIDE PARK, NEWARK, DELAWARE

ALL THAT CERTAIN plot, piece or parcel of land, with the buildings and improvements thereon erected, situate, lying and being in Pencader Hundred, New Castle County and State of Delaware and being Lot No. 286, Brookside Park, Section M-2, also known as 32 Merry Road, as shown on the plan of Brookside Park recorded in the Office of the Recorder of Deeds in and for New Castle County in Plat Book 3 page 52 and more particularly bounded and described in accordance with a survey made by John J. Klekotka & Associates, Civil Engineers and Surveyors, Wilmington, Delaware, dated

May 9, 1967 and revised on August 14, 1970 as follows, to wit:

BEING the same lands and premises which TEDDY LEE TOLLIVER and SUSAN V. TOLLIVER, his wife, by Deed dated January 7, 1977 and recorded in the Office of the Recorder of Deeds in and for New Castle County, Delaware, in Deed Book T-95 page 108 did grant and convey unto CLIFFORD A. DRAPER, JR. and GENEVA I. DRAPER, his wife.

SEIZED AND TAKEN IN EXECUTION AS THE PROPERTY OF CLIFFORD A. DRAPER, JR. AND GENEVA I. DRAPER.

TERMS OF SALE: 10% DOWN AT TIME OF SALE. BALANCE DUE ON OR BEFORE OCTOBER 2, 2000.

JULY 31, 2000

SHERIFF'S SALE

By virtue of a writ of FIRST PLURIES LEV FAC #40, JL., A.D., 2000.

PROPERTY DESCRIPTION

PARCEL NO. 10-043.20-133

STREET ADDRESS: 144 THREE RIVERS CIRCLE, NEWARK, DELAWARE

ALL that certain lot, piece or parcel of land, with the buildings thereon erected, situate in New Castle Hundred, New Castle County and State of Delaware, known as 144 Three Rivers Circle, Amberfield and being Lot No. 144 on the Record Resubdivision Plan of Wellington Woods, Sections II and III, as said plan is of record in the Office of the Recorder of Deeds in and for New Castle County in Microfilm No. 10595 and being more particularly bounded and described in accordance with a recent survey by David G. Williams, Professional Land Surveyor, Wilmington, Delaware, dated September 10, 1995, as follows, to wit:

BEING the same lands and premises which RUTH NOEL MCGRORY, by Deed dated July 9, 1997, and recorded in the Office of the Recorder of Deeds in and for New Castle County, Delaware, in Deed Book 2298, Page 100, did grant and convey unto JOHN W. MCGRORY.

SEIZED AND TAKEN IN EXECUTION AS THE PROPERTY OF RUTH NOEL MCGRORY AND JOHN W. MCGRORY.

TERMS OF SALE: 10% DOWN AT TIME OF SALE. BALANCE DUE ON OR BEFORE OCTOBER 2, 2000.

JULY 31, 2000

SHERIFF'S SALE

By virtue of a writ of ALIAS LEV FAC #44 JL., A.D., 1999.

Tax Parcel 11-024.00-002

ALL THAT CERTAIN lot, piece or parcel of land with the buildings thereon erected, situate in Bear, New Castle County, and State of Delaware, known as 1083 Porter Road.

BEING the same lands and premises which JOHN E. WALTHER, SR. did grant and convey, in fee, unto CYNTHIA L. WALTHER, by deed dated October 28, 1996, and recorded in the Office of the Recorder of Deeds in and for New Castle County, Delaware, in Deed Book 2191, Page 0057.

SEIZED AND TAKEN IN EXECUTION AS THE PROPERTY OF CYNTHIA L. WALTHER.

TERMS OF SALE: 10% DOWN AT TIME OF SALE. BALANCE DUE ON OR BEFORE OCTOBER 2, 2000.

JULY 31, 2000

SHERIFF'S SALE

By virtue of a writ of LEV FAC #48 JL., A.D., 2000.

Parcel No.: 11-032.00-061

Address: 2427 Porter Rd.

Bear, DE 19701

Deed Record: 1961-322

PARCEL NO. 1

ALL those certain lots, pieces or parcels of land, with the dwelling thereon erected, situate in Pencader Hundred, New Castle County and State of Delaware, and being known as Lots No. 8 and 9, on a Plan of Lots to be known as "Woodside Manor", and being more particularly bounded and described by a recent survey of Zebley & Associates, Inc., Professional Land Surveyors, dated August 12, 1994, as follows to wit:

PARCEL NO. 2
ALL that certain lot, piece or parcel of land situate in Pencader Hundred, New Castle County and State of Delaware, and being a part of Lot No. 10 on the plan of lots to be known as Woodside Manor, and being more particularly bounded and described by a recent survey of Zebley & Associates, Inc., Professional Land Surveyors, dated August 12, 1994, as follows, to wit:

BEING the same lands and premises conveyed unto Cherrie Dixon by deed of William A. Jones, Jr. and Cherrie Dixon, dated August 2, 1995 and recorded in the Office of the Recorder of Deeds in Deed Record 1961, page 322.

SEIZED AND TAKEN IN EXECUTION AS THE PROPERTY OF CHERRIE DIXON.

TERMS OF SALE: 10% DOWN AT TIME OF SALE. BALANCE DUE ON OR BEFORE OCTOBER 2, 2000.

JULY 31, 2000

SHERIFF'S SALE

By virtue of a writ of LEV FAC #49 JL., A.D., 2000.

PARCEL NO. 09-038.10-235

STREET ADDRESS: 510 BLACKSMITH LANE, NEWARK, DELAWARE

ALL THAT CERTAIN lot, piece or parcel of land, situate in White Clay Creek Hundred, New Castle County, Delaware, being Lot 137, as shown on the Record Major Subdivision Plan Christiana Green - Phase Three Townhouses, of record in the Office of the Recorder of Deeds in and for New Castle County, Delaware, in Microfilm No. 10747, and being more particularly bounded and described according to a recent survey by First State Mortgage Surveys, dated January 5, 1994, as follows, to wit:

BEING the same lands and premises which JAMES A. PEAKE by Deed dated November 28, 1994 and recorded in the Office of the Recorder of Deeds in and for New Castle County, Delaware, in Deed Book 1849 page 27 did grant and convey unto JAMES A. PEAKE and LISA M. PEAKE.

SEIZED AND TAKEN IN EXECUTION AS THE PROPERTY OF JAMES A. PEAKE AND LISA M. PEAKE.

TERMS OF SALE: 10% DOWN AT TIME OF SALE. BALANCE DUE ON OR BEFORE OCTOBER 2, 2000.

JULY 31, 2000

SHERIFF'S SALE

By virtue of a writ of ALIAS LEV FAC #52, JL., A.D., 2000.

PROPERTY DESCRIPTION

PARCEL NO. 09-030.30-133

STREET ADDRESS: 1605 BARNABY STREET, CHRISTIANA VILLAGE, NEWARK, DELAWARE

ALL THAT CERTAIN lot, piece or parcel of land with the dwelling thereon erected, situate in White Clay Creek Hundred, New Castle County, State of Delaware, being Lot 79 (also known as 1605 Barnaby Street) as shown on the Record Resubdivision Plan of Christiana Village, prepared by MCA Engineering Corporation, recorded August 30, 1976 in the Office of the Recorder of Deeds in and for New Castle County, State of Delaware in Microfilm No. 4260 and being more particularly bounded and described in accordance with a survey prepared by Zebley & Associates, Inc., Professional Land Surveyors, dated June 22, 1988, as follows, to wit:

Village, Microfilm No. 3013.

BEING the same lands and premises which UNJU HWA PARK, by Deed dated August 29, 1989 and recorded in the Office of the Recorder of Deeds in and for New Castle County, Delaware, in Deed Book 919 page 238 did grant and convey

unto LAWRENCE C. HULTBERY, JR. and VICKI LYNN PARIS, as joint tenants with right of survivorship and not as tenants in common.

SEIZED AND TAKEN IN EXECUTION AS THE PROPERTY OF LAWRENCE C. HULTBERG, JR. AND VICKI LYNN PARIS.

TERMS OF SALE: 10% DOWN AT TIME OF SALE. BALANCE DUE ON OR BEFORE OCTOBER 2, 2000.

JULY 31, 2000

SHERIFF'S SALE

By virtue of a writ of LEV FAC #53, JL., A.D., 2000.

PARCEL NO. 08-035.20-061

STREET ADDRESS: 6 WREN COURT, NEWARK, DELAWARE

ALL THAT CERTAIN lot, piece or parcel of land with the buildings erected thereon, situate in Mill Creek Hundred, New Castle County, State of Delaware, known as 6 Wren Court, being Lot 65, Block A as shown on the Record Major Subdivision Plan of Middle Run Crossing as prepared by Tetra Tech Richardson, dated March 17, 1993, revised to July 14, 1993, recorded on July 30, 1993 in the Office of the Recorder of Deeds, in and for New Castle County, State of Delaware, at Microfilm No. 11762.

SUBJECT to all declarations easements, rights-of-way, restrictions, dedications agreements and plans of record.

BEING the same lands and premises which PULTE HOME CORPORATION by Deed dated December, 1994 and recorded in the Office of the Recorder of Deeds in and for New Castle County, Delaware, in Deed Book 1853 page 328 did grant and convey unto TOBY H. GUINN, SR. and VERONICA A. GUINN.

SEIZED AND TAKEN IN EXECUTION AS THE PROPERTY OF TOBY H. GUINN, SR. AND VERONICA A. GUINN.

TERMS OF SALE: 10% DOWN AT TIME OF SALE. BALANCE DUE ON OR BEFORE OCTOBER 2, 2000.

JULY 31, 2000

SHERIFF'S SALE

By virtue of a writ of LEV FAC #62, PL. A.D., 2000.

Parcel #11-019.30-076

Property Address: 67 Mahopac Drive, Bear, DE 19701

ALL THAT CERTAIN lot, piece or parcel of land with the buildings thereon erected, known as 67 Mahopac Drive, Bear, DE 19701.

BEING the same lands and premises which Blenheim Homes, L.P., a Delaware limited partnership, and Beck's Pond, L.L.C., a Delaware Corporation, by indenture dated December 17, 1997, and recorded in the Office of the Recorder of Deeds in and for New Castle County, State of Delaware, in Deed Book 2375, Page 44, did grant and convey unto James M. Santillo and Tanya E. Langstaff, in fee.

SEIZED AND TAKEN IN EXECUTION AS THE PROPERTY OF JAMES M. SANTILLO AND TANYA E. LANGSTAFF.

TERMS OF SALE: 10% DOWN AT TIME OF SALE. BALANCE DUE ON OR BEFORE OCTOBER 2, 2000.

JULY 31, 2000

Michael P. Walsh
Sheriff's Office
Wilmington, Delaware
np 9/1/98

IN THE COURT OF COMMON PLEAS FOR THE STATE OF DELAWARE IN AND FOR NEW CASTLE COUNTY
IN RE: CHANGE OF NAME OF
Michelle Renee Corridori
Petitioner(s)
TO
Michael J. Corridori
NOTICE IS HEREBY GIVEN that Michelle Renee Corridori intends to present a PETITION to the Court of Common Pleas for the State of Delaware in and for New Castle County, to change his/her name to Michael J. Corridori

Petition to the Court of Common Pleas for the State of Delaware in and for New Castle County, to change the name of her minor child to Brittany Ruth Briggs.
TOMAR O'BRIEN, KAPLAN, JACOBY & GRAZIANO
William L. O'Day, Jr., Esquire
Delaware State Bar
I.D. No. 2483
919 Market Street
1701 Mellon Bank Center
P.O. Box 955
Wilmington, DE 19899
(302) 661-3115
Attorney for Petitioner
np 9/1/98/9/15

CITY OF NEWARK DELAWARE CITY COUNCIL PUBLIC HEARING NOTICE
SEPTEMBER 11, 2000 - 7:30 PM
Pursuant to Section 402.2 of the City Charter of the Code of the City of Newark, Delaware, notice is hereby given of a public hearing at a regular meeting of the Council in the Council Chamber at the Municipal Building, 220 Elkton Road, Newark, Delaware, on Monday, September 11, 2000 at 7:30 p.m., at which time the Council will consider for Final Action and Passage the following proposed Ordinance:
BILL 00-30 - An Ordinance Amending Chapter 20, MV&T, By Moving Two Non-metered Parking Spaces from the West Side of Center Street to the East Side and By Installing Six 15-Minute Parking Metered Spaces on the East Side of Center Street
Susan A. Lamblock, MMC
City Secretary
np 9/1/98

PUBLIC AUCTION
SENTINEL SELF STORAGE
200 First State Blvd., Wilmington, DE 19804
302-999-0704
A Public Auction will be held on Wednesday, October 11, 2000 at 10:00 a.m. The following units will be sold:

#0207 - Oscar Lee Bundick, IV - household items, #0274 - Yolanda Hall - household items, #1265 Michael P. Phillips & Mark A. Hinte - household items, #3124 - Pam Caldwell - household items, #7103 - Jonathan & Pamela Dorsey - household items, #9100 - Charles Horgan - household items, #9410 - Gerald Gregg - household items.
SENTINEL SELF STORAGE
1100 Elkton Road, Newark, DE 19711
302-731-8108
A Public Auction will be held on Wednesday, October 11, 2000 at Noon. The units to be auctioned are as follows:

#123 - KiKi Campbell - mirror, misc. bags & boxes, #1027 - Carolyn Wall - crib, vacuum, baby carrier, high chair, bags & boxes, #1117 - James & Barbara Rogers, Jr. - office chair, drill, radiator, boxes, #2015 - Jovi Lee Gonzales - drywall equipment, misc. boxes, #2016 - James Olvey - hand truck, tool chest, bed, tire, #2029 - Lorie Principle - bed, loveseat, #2103 - Glen Wright - leather sofa, lounge chair, four dinette chairs, #3016 - Ryan Lemay - lounge chair, #3138-2 - Angela Edwards/Lenard Woods - vacuum, mattress, box springs, boxes, #4002 - Cynthia Schroth - sled, high chair, lamp, globe, misc. boxes, #4006 - Sharon Wheeler - propane gas tanks, wooden crib, misc. boxes, #4101 - Dawn Hieber - dining room chairs, love seat, boxes, #4211 - Benjamin McCormick - Thermos gas grill, #5108 - Valerie Foy - misc. bags & boxes, #7052 - tool box, saw horses, clock, too full to inventory, #9138 - Toynda Fussell - exercise bike, steamer trunk, tote bins, boxes, #9154 - Diana Scholl - boxes
np 9/1/8

PUBLIC AUCTION
SENTINEL SELF STORAGE
200 First State Blvd., Wilmington, DE 19804
302-999-0704
A Public Auction will be held on Wednesday, October 11, 2000 at 10:00 a.m. The following units will be sold:

#0207 - Oscar Lee Bundick, IV - household items, #0274 - Yolanda Hall - household items, #1265 Michael P. Phillips & Mark A. Hinte - household items, #3124 - Pam Caldwell - household items, #7103 - Jonathan & Pamela Dorsey - household items, #9100 - Charles Horgan - household items, #9410 - Gerald Gregg - household items.
SENTINEL SELF STORAGE
1100 Elkton Road, Newark, DE 19711
302-731-8108
A Public Auction will be held on Wednesday, October 11, 2000 at Noon. The units to be auctioned are as follows:

#123 - KiKi Campbell - mirror, misc. bags & boxes, #1027 - Carolyn Wall - crib, vacuum, baby carrier, high chair, bags & boxes, #1117 - James & Barbara Rogers, Jr. - office chair, drill, radiator, boxes, #2015 - Jovi Lee Gonzales - drywall equipment, misc. boxes, #2016 - James Olvey - hand truck, tool chest, bed, tire, #2029 - Lorie Principle - bed, loveseat, #2103 - Glen Wright - leather sofa, lounge chair, four dinette chairs, #3016 - Ryan Lemay - lounge chair, #3138-2 - Angela Edwards/Lenard Woods - vacuum, mattress, box springs, boxes, #4002 - Cynthia Schroth - sled, high chair, lamp, globe, misc. boxes, #4006 - Sharon Wheeler - propane gas tanks, wooden crib, misc. boxes, #4101 - Dawn Hieber - dining room chairs, love seat, boxes, #4211 - Benjamin McCormick - Thermos gas grill, #5108 - Valerie Foy - misc. bags & boxes, #7052 - tool box, saw horses, clock, too full to inventory, #9138 - Toynda Fussell - exercise bike, steamer trunk, tote bins, boxes, #9154 - Diana Scholl - boxes
np 9/1/8

PETS
SHIH-TUZ PUPPIES
Akc papers, 4 males, 1" shots & wormed parents on site, ready 8/18
\$300 410-658-6027

PET SERVICES/SUPPLIES
QUICK DIPS licensed service. Will groom your dog, your place or mine. Call 302-791-3803

YARD SALES
CHARLESTOWN 623 Water St. Moving sale Sat 9/2 9:30am to 5pm! Everything must go!

ELKTON 104 Winfield Dr. near Whitehall Rd & Rt 213. 9/2 8-12. Moving Sale, Furn, appl, bikes, kids' items, speakers. All reasonable offers accepted.

ELKTON 183 Casparus Way, (St Johns Manor) Sat 9/2 9am-4pm 1" Time Yard Sale

ELKTON, 35 Cimarron Circle, West Creek Village. 9/3, 8-5. Tools, clothes, furn & misc.

Elkton 56 Silchester Dr. 8-2 clothing household items rain or shine 9/1 & 9/2. 2 m) S Fairhill off 213.

IF YOU FIND AN ITEM Give us a call to place ad! There is NO CHARGE to run a 3 line ad all week!

IN THE COURT OF COMMON PLEAS FOR THE STATE OF DELAWARE IN AND FOR NEW CASTLE COUNTY
IN RE: CHANGE OF NAME OF
Michelle Renee Corridori
Petitioner(s)
TO
Michael J. Corridori
NOTICE IS HEREBY GIVEN that Michelle Renee Corridori intends to present a PETITION to the Court of Common Pleas for the State of Delaware in and for New Castle County, to change his/her name to Michael J. Corridori

Petitioner(s)
Dated: 8-8-00
np 8/18/25/9/1

IN THE COURT OF COMMON PLEAS FOR THE STATE OF DELAWARE IN AND FOR NEW CASTLE COUNTY
IN RE: CHANGE OF NAME OF
Michelle Renee Corridori
Petitioner(s)
TO
Michael J. Corridori
NOTICE IS HEREBY GIVEN that Michelle Renee Corridori intends to present a PETITION to the Court of Common Pleas for the State of Delaware in and for New Castle County, to change his/her name to Michael J. Corridori

Petitioner(s)
Dated: 8-8-00
np 8/18/25/9/1

IN THE COURT OF COMMON PLEAS FOR THE STATE OF DELAWARE IN AND FOR NEW CASTLE COUNTY
IN RE: CHANGE OF NAME OF
Michelle Renee Corridori
Petitioner(s)
TO
Michael J. Corridori
NOTICE IS HEREBY GIVEN that Michelle Renee Corridori intends to present a PETITION to the Court of Common Pleas for the State of Delaware in and for New Castle County, to change his/her name to Michael J. Corridori

Petitioner(s)
Dated: 8-8-00
np 8/18/25/9/1

IN THE COURT OF COMMON PLEAS FOR THE STATE OF DELAWARE IN AND FOR NEW CASTLE COUNTY
IN RE: CHANGE OF NAME OF
Michelle Renee Corridori
Petitioner(s)
TO
Michael J. Corridori
NOTICE IS HEREBY GIVEN that Michelle Renee Corridori intends to present a PETITION to the Court of Common Pleas for the State of Delaware in and for New Castle County, to change his/her name to Michael J. Corridori

PLANTS/ TREES

WATER GARDEN
plants and Gold fish for sale 392-6610.



TRANSPORTATION

POWER BOATS

30 FT ISLANDER
1981- Volvo diesel large wheel, bimini, Datamaine speed, distance and depth measurements. H/C pressure water, shower. Equipment updates: North full battery main, 135% jib, Gennaker, #1 Harkin RF system, lazy jacks system, Autohelm 4000T, electric bilge pump, battery charger, VHF radio. Meticulously maintained. Boat located at Cambridge MD. Marina. For complete list of extras please call: 302-629-8455 or email us at: geo-pat@intercom.net Sail away at \$35,900

BOATS/ OTHER

STINGRAY 1990 17'4" w/ trailer. Xtras. Asking \$5500. Call 410-392-3359 after 4pm.

RECREATIONAL VEHICLES

'93 SHASTA R.V. 30' Lots of extras! 10 X 20 screened in deck! \$6,500. 410-398-1297

MOTORCYCLES/ ATVs

Honda 110, 1983 ATV 3 wheeler, runs good, in good condition 410-398-5379 asking \$400.

KAWASAKI '98 KX
250 Rental Bars Factory Connection Forks exc cond \$3800 Call 410-755-6411 after 6pm

KAWASAKI KDX '92
250 + full riding suit like new \$2500 or b/o 410-398-8574 btm 6-10pm

AUTO PARTS & ACCESSORIES

Set of 4 '99 Dodge Ram Sport Polish alum wheels 16-8 \$500 call 410-398-9540

TRUCKS/ SPORT UTILITY VEHICLES

CHEVY '00 Silverado
1500 P/U, white, V6, 8k mi, auto, a/c, sprayed bedliner \$16,300. 410-275-8762

Chevy '88 10 wheel dump truck, good cond 13 spd \$13000 obo 302-335-4471/302-678-1791

Buying a Mobile Home? Check on warranty coverage from the manufacturer, retailer transporter, and installer before you buy. A public service message from the Tri State Classifieds and the Federal Trade Commission.

TRUCKS/ SPORT UTILITY VEHICLES

F150 '97 pb, ps/ ext cab, 8'bed, 2 tone, dual bags. AC. 40K. \$12,000. 410-287-0397

FORD 150 '81 116K, 351 cu. in. 2 gas tanks, auto trans, heavy duty springs, new tires, runs & looks good. \$2000 410-398-1251

FORD EXPLORER SPORT 2000
4x2, 5 speed, cruise, keyless entry, p/w, p/d, p/s, a/c, am/fm cassette, 5K. Asking \$17,995 302-834-2810

FORD RANGER '86
5spd, 4cyl, 2.3L eng, 2WD, 7ft bed, 118K miles, NEW block, clutch, camshaft, brakes, gaskets, belts, inspt'd thru Mar '01, exc. mechanical condition, Orig. owner, run on Mobil 1, \$1275. Call 302-475-9805 Bought new truck must sell!

FORD RANGER '93
Pick-up, ext cab auto V6 4.0 L 4wh dr a/c all pwr am/fm cass f/glass shell cap, low pkg alum whls fully loaded, MD inspect Runs great, well-maint \$6500 or b/o MUST SEE!!! 410-620-6216

JEEP CHEROKEE '92
Laredo dark burgundy, 5speed, new tires, full spare, new exhaust, Good cond. \$4999 obo. 302-832-2180

MAZDA PICKUP '91
auto, air, p/s, p/b, am/fm cassette, great truck! \$2,599 410-398-9115

PETERBILT 1974 like new rebuilt eng/ trans ready to work \$4000 call NJ 856-694-0067

SUBURAN '95 4 W/D
am/fm cass cd 3 seats towing pkg rear heat & a/c. \$16,800 410-658-5775

TOYOTA 4x4 Extra Cab '93 rare v6 auto a/c & more! Book value \$10,300 sacrifice \$8,950 302-994-1068

TOYOTA Tacoma '97
4x4 ext cab 124k a/c pwr win & locks \$11,500 or b/o 410-658-2231



WINTER'S COMING!

Don't get stuck in the snow and slush! This 1989 Ford Bronco II has four-wheel drive, V-6 automatic, power steering, locks, windows, brakes, AM/FM stereo cassette, tilt wheel, rear ABS, AC, cruise control, & 142,000 loving miles. BB value \$4,545. Asking \$3,500. Call: 410-392-6706

VANS

DODGE CARAVAN '90
new eng, great family car, insp., \$3500 obo Call 410-838-0077

FORD WINDSTAR LX, 1996
LOADED! Leather, quad seating, 56K, miles. Great Condition! \$12,000 Please call: 302-834-2810

MAZDA MPV '92 tan, loaded, 114K, great cond, new transmission \$5450 302-737-7223

VAN-TASTIC FAMILY TRANSPORTATION

DODGE CARAVAN '95
AUTO, FRNT WHL DR, P/S, P/B, REAR DEF, A/C, AM/FM STER/CASS, '93, '96, '97's PLENTY TO CHOOSE FROM! \$7,995

FORD WINDSTAR GL '95
V6, AUTO, P/S, P/B, P/W, P/L, A/C, ABS, AM/FM STER/CASS, TINTED GLASS, ALUM WHLS, GREAT FAMILY FUN! \$9,495

BUICK CENTURY S/W '89
V6, AUTO, P/S, P/B, P/W, P/L, REAR DEF, A/C, AM/FM STER/CASS, REAL CLEAN! MUST DRIVE! \$2,495

ASK FOR DAVE

NEWARK
Chrysler Jeep 244 East Cleveland Ave. 800-NJE-0535 www.newarkcpj.com

Buying a Mobile Home? Investigate zoning requirements in the community where you want to live before you buy a home. Advance Fee Loans and Credit Offers Easy Money... Just A Call Away. It's illegal for companies doing business by phone to promise you a loan and ask you to pay for it before they deliver. A public service message from The Tri State Classifieds

AUTOS

BACK TO SCHOOL SALE!

MAZDA 626 LX '94
4CYL, AUTO, P/S, P/B, P/W, P/L, A/C, TILT, CRUISE, AM/FM STER/CASS DEPENDABLE! \$6,995

CHEVROLET CAVALIER '96
4CYL, AUTO, P/S, P/B, A/C, AM/FM STEREO NICE COLLEGE CAR! \$6,995

PONTIAC GRAND AM SE CPE '95
V6, AUTO, P/S, P/B, P/L, A/C, CD PLAYER ALSO 2 GT's TO CHOOSE FROM! \$6,995

ASK FOR EDDIE

NEWARK
Chrysler Jeep 244 East Cleveland Ave. 800-NJE-0535 www.newarkcpj.com

BACK TO SCHOOL SALE!

SUZUKI X-90 '96
4CYL, P/S, P/B, P/W, P/L, A/C, AM/FM STER/CASS, T-TOP \$4,995

DODGE NEON '95
4CYL, P/S, P/B, A/C, DRIVER'S A/BAG, PASS A/BAG, AM/FM STER/CASS PERFECT PRICE!! \$4,995

FORD ESCORT LX '93
4CYL, AUTO, P/S, P/B, A/C, AM/FM STEREO EASY ON GAS! \$3,995

ASK FOR STACEY

NEWARK
Chrysler Jeep 244 East Cleveland Ave. 800-NJE-0535 www.newarkcpj.com

TRI-STATE CLASSIFIEDS

AUTOS

CHRYSLER LE BARON '94, convertible, black w/tan top, 20K original mi, new top, tires & stereo! \$10,500. Runs like brand new. Call Bob 410-392-0627.

DODGE RAM VAN
B150 1992 5.2L, runs great, Call for info 302-562-6201.

AUTOS

FORD CONTOUR
SVT, '98, 32,500 mi, 5 spd, V6, leather, maroon, fac wrnty, new tires & brakes, exc cond. \$16,500. 410-398-8913 aft 5:30 pm.

FORD F 150 '97 King Cab, 3" door, ac, cassette, tool box, bed liner, power windows, door locks, cruise, \$14,000 obo Call after 6pm 410-620-1481

AUTOS

IROC Z '89 Burgundy needs work \$1100 b/o 3.5 L eng. Lots of new parts. Must sell 410-642-2751

JEEP WRANGLER Sport '99 6cyl auto a/c soft top full door 12K \$17,500 410-658-1234

LINCOLN TOWN CAR 1992 fully loaded, low miles, a real beauty! \$7,999 410-398-9115

AUTOS

MERCURY SABLE WAGON '91 runs great. \$1,800 OBO 410-658-7269 or 410-378-5356

MONTE CARLO '87 SS Aero-coupe, mint condition Classic, T-top, fully loaded, garage kept, white/maroon, only 20K original miles, absolutely no ext or int flaws. Asking \$14K. Call Jim 410-398-0487.

AUTOS

MUSTANG GT 1966 replica 289 good cond must see \$4000 or b/o 410-398-8574 btm 6-10p

OLDSMOBILE CUTLASS SUPREME '91 81k, exc. cond. \$3500 Call 410-398-3595

PONTIAC SUNBIRD
LE coupe only 53,000mi runs great call for info 302-562-6201 \$3900.

PONTIAC SUPERSTORE

LARGEST SAVINGS OF THE YEAR!

240 PONTIACS AVAILABLE

2000 GRAND AM

\$1500 REBATE
OR Low GMAC Financing

2001 AZTEK

NOW AVAILABLE!

2000 SUNFIRE

\$2000 REBATE
OR Low GMAC Financing

2000 BONNEVILLE

\$1500 REBATE
OR Low GMAC Financing ALL MODELS

2000 GRAND PRIX

\$2000 REBATE
OR Low GMAC Financing

2000 MONTANA

\$2000 REBATE
OR Low GMAC Financing

Expires 9/7/00.

NUCAR PONTIAC KIA

250 E. CLEVELAND AVENUE • NEWARK, DE
(800) 969-3325 • (302) 738-6161
See Our Inventory on... www.nucarmotors.com

KIA AFFORDABLE FUN SUPERSTORE IN NEWARK

2000 KIA SEPHIA

\$9,999

All incentives applied. Tax & title extra.

2000 KIA SPORTAGE 4x4

\$14,999

All incentives applied. Tax & title extra.

2000 KIA SPORTAGE CONV.

\$14,699

All incentives applied. Tax & title extra.

2000 "ALL NEW" KIA SPECTRA

\$10,999

All incentives applied. Tax & title extra.

Introducing... **Kia's NEW Long-Haul Warranty Program™**

With the purchase of every new Kia, you're covered by a warranty package that covers you for the long haul!

- 10 YEARS/100,000 MILES Powertrain Limited Warranty
- 5 YEARS/60,000 MILES Basic Warranty Coverage
- 5 YEARS/60,000 MILES Roadside Assistance & Trip Interruption Benefits

*See your Kia Salesperson for more information. One Less Bump in the Road.

DON'T MISS YOUR CHANCE TO GET IN THE GAME DURING THE CHEVROLET U.S. OLYMPIC COUNTDOWN

2000 CHEVY TRACKER

Full steel ladder-type frame construction, standard easy opening, swing-out tailgate

\$2,500 REBATE

OR

3.9% - 36 Mos.
4.9% - 48 Mos.
5.9% - 60 Mos.

2000 CHEVY BLAZER 4DR

4-wheel anti-lock brakes, Insta-Trac™ push button 4WD, PASSlock™ theft deterrent system

\$2,500 REBATE

OR

0.9% - 36 Mos.
1.9% - 48 Mos.
2.9% - 60 Mos.

2000 CHEVY S-10

Available Survival pak equipped with A/C, automatic transmission, CD player and aluminum wheels

\$2,000 REBATE

OR

0.9% - 36 Mos.
1.9% - 48 Mos.
2.9% - 60 Mos.

2000 CHEVY SILVERADO

Standard 4-wheel ABS, available 4-wheel drive Autotrac™

\$1,000 REBATE

OR

3.9% - 36 Mos.
5.9% - 48 Mos.
6.9% - 60 Mos.

CHEVROLET WE'LL BE THERE

USA PROUD SPONSOR

U.S. OLYMPIC COUNTDOWN

CHEVROLET WE'LL BE THERE

OFFER GOOD UNTIL 10/2/00

TUNE-UP SAVINGS

SUMMER SERVICE SPECIAL

LUBE, OIL & FILTER CHANGE W/TIRE ROTATION

\$34.95

SAVE \$11.99

EXCLUDES DIESELS AND DUAL WHEEL RAM TRUCKS

Expires 9/30/00. Coupon must be presented at time of write-up. Not valid with any other advertised special. Valid on Chrysler Vehicles Only.

Be Prepared for Quick Stops...

Front or Rear Brake Special

\$89.95 \$99.95

Includes: Front or rear disc brake pad or shoe replacement with Mopar Parts (semi-metallic), Inspected rotor, drum and caliper (refinishing/machining extra), Check brake fluid level, Road-test vehicle.

Expires 9/30/00. Coupon must be presented at time of write-up. Not valid with any other advertised special. Valid on Chrysler Vehicles Only.

NEW CASTLE COUNTY'S NEWEST FIVE STAR DEALERSHIP

Extend Life Of Cooling System Components & Minimize Rust

Cooling System Service

INCLUDING FLUSH

\$59.95

Reg. \$78.99

Includes: Pressure test entire cooling system, Inspect all hoses & belts, Check & repair any leaks, Drain & flush cooling system, Refill with up to 1 gallon of antifreeze.

Expires 9/30/00. Coupon must be presented at time of write-up. Not valid with any other advertised special. Valid on Chrysler Vehicles Only.

For Smoother Performance And To Improve Gas Mileage, Factory Recommended Every 3000 Miles

Engine Tune-Up Special

4 Cylinder **\$48.95** Reg. \$61.95

6 Cylinder **\$52.95** Reg. \$79.95

Includes: Inspect spark plugs, Inspect throttle linkage, Inspect spark plug wires, Check die seal & valves, Ignition timing adjustment.

Expires 9/30/00. Coupon must be presented at time of write-up. Not valid with any other advertised special. Valid on Chrysler Vehicles Only.

Check Engine Light On? Get A

Mopar Diagnostic System Check

\$49.95

Reg. \$68.75

Includes: Check of Electronic Fuel Injection, Air Bag System, Charging System, Engine Control Comp., Instrument Cluster, Seat Belts, Security Alarm System if applicable, Body Computer (Traction & EVIC Modules), Brake System & ABS System if applicable.

Expires 9/30/00. Coupon must be presented at time of write-up. Not valid with any other advertised special. Valid on Chrysler Vehicles Only.

NEWARK DODGE NEWARK, DE

250 ELKTON ROAD
(302) 456-1600
TOLL FREE 1(800) 456-1073

"The Real Deal Is In Newark"

(302) 456-1600 • 1-800-456-1073 • Call Joe or Lee for an appointment
*While Supplies Last.

BACK TO SCHOOL SALE!

TOYOTA TERCEL '92
4CYL, AUTO, P/S, P/B, A/C, AM/FM STER/CASS REAL NICE! \$4,995

SATURN SL2 '95
4CYL, P/S, P/B, P/W, P/L, A/C, ALUM WHLS REAL SAFE BET! \$5,995

BUICK CENTURY LMT '95
V6, AUTO, P/S, P/B, P/W, P/L, REAR DEF, A/C, TILT, CRUISE, AM/FM STER/CASS EXCELLENT SHAPE! \$6,995

ASK FOR DOUG

NEWARK
Chrysler Jeep 244 East Cleveland Ave. 800-NJE-0535 www.newarkcpj.com

CHARITY CARS -
DONATE your vehicle, tax deductible, free towing. We provide vehicles to needy families. As seen on Oprah and People Magazine! 1-800-442-4451 www.charitycars.org

CHEVY LUMINA '90
4 door 4 cyl a/c auto 138K \$1500 or b/o call 410-658-1234

DOING BUSINESS THE WILLIAMS WAY!

WILLIAMS

CHEVROLET-OLDSMOBILE

#2 Automotive Blvd. • Elkton, MD • Rt. 40 at the MD/DE Line
(410) 398-4500 • 1-800-826-0580 • WWW.WILLIAMSCHEV.COM

NOW THROUGH SUNDAY AT NEWARK CHRYSLER, PLYMOUTH JEEP & NEWARK DODGE...

WE'RE OUT TO BURN THROUGH OUR INVENTORY IN JUST

30 DAYS!

IT'S A... FIRE SALE!

SAVE UP TO...

\$6000 OFF!

M.S.R.P.

WE ARE TURNING UP THE HEAT!



2000 JEEP CHEROKEE

\$10000
UP TO UNDER INVOICE



2000 CHRYSLER CONCORDE

\$5000
UP TO UNDER INVOICE



2000 CHRYSLER 300M

\$5000
UP TO UNDER INVOICE



2000 PLYMOUTH VOYAGER

\$10000
UP TO UNDER INVOICE

As Low As
0.9%
A.P.R.
FINANCING

\$3000
UP TO REBATE

\$5500
UP TO LEASE CASH

IF YOU NEED CREDIT,
DON'T SWEAT IT!
WITH A JOB AND MINIMUM
DOWN PAYMENT!

**EVERY DEAL!
EVERY CAR!
EVERY DAY!
PRE-APPROVED!**



2000 DODGE NEON

\$5000
UP TO UNDER INVOICE



2000 DODGE STRATUS

\$5000
UP TO UNDER INVOICE



2000 DODGE DURANGO

\$5000
UP TO UNDER INVOICE



2000 DODGE CARAVAN

\$10000
UP TO UNDER INVOICE

CHRYSLER Plymouth Jeep

244 EAST CLEVELAND AVE.

1-800-NJE-0535 (302) 731-0100

visit us online @ www.newarkcpj.com

NEWARK

TWO GREAT LOCATIONS!

Dodge Different.

250 ELKTON ROAD

1-800-456-1073 (302) 456-1600

visit us online @ www.newarkdodge.com

*On select models. †With the purchase of Jeep Grand Cherokee Limited with owner loyalty lease cash included. Expires 9/4/00