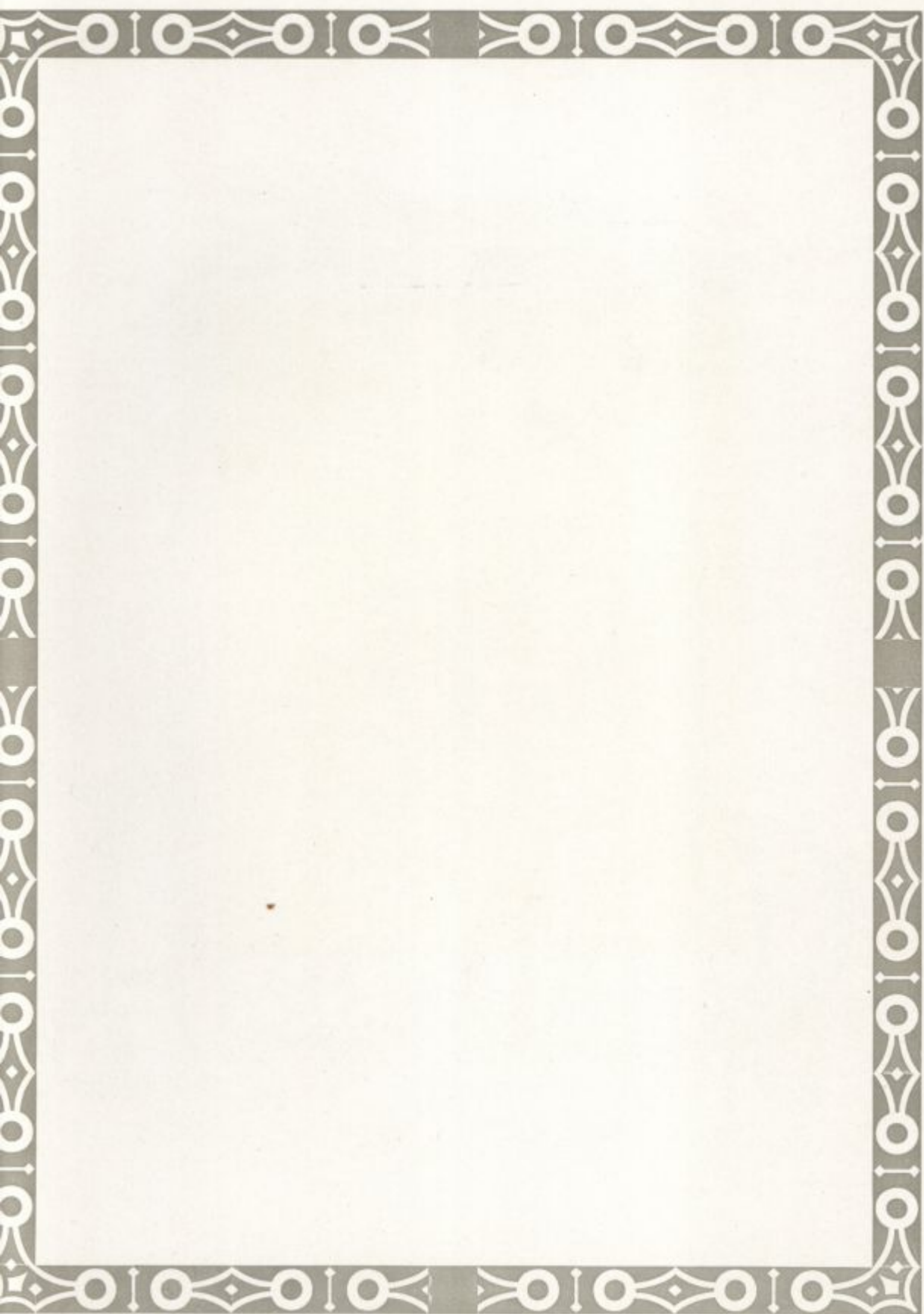


Fraternities







W. & A. G. P. 1840



KAPPA ALPHA



Kappa Alpha

(Southern)

FRATER IN FACULTATE

EDWARD LAURENCE SMITH

UNDERGRADUATES

Seniors

DUDLEY GASSAWAY FRAZIER

CHARLES THOMAS MCCHESNEY

JOHN HOUGH FISHER

FOSTER IRVING WALLS

ROBERT GEORGE DUNN

Juniors

WILLIAM ALEXANDER REYNOLDS

GEORGE PANCOAST MILLINGTON

RALPH CARMALT WILSON

GEORGE WALKER SAWIN

EDWARD LUFF RICE

Sophomores

GEORGE EDWIN CHAMBERS

PAUL RAYMOND DOUGHERTY

CARLTON BECK WALLS

Freshmen

ALFRED CHAMBERLAIN CONNELLEE

EDWARD ERECKSON SHALLCROSS

FREDERICK AYDELATT TOWNSEND

WARNER WILDS PRICE

WILLIAM FERRIS CANN

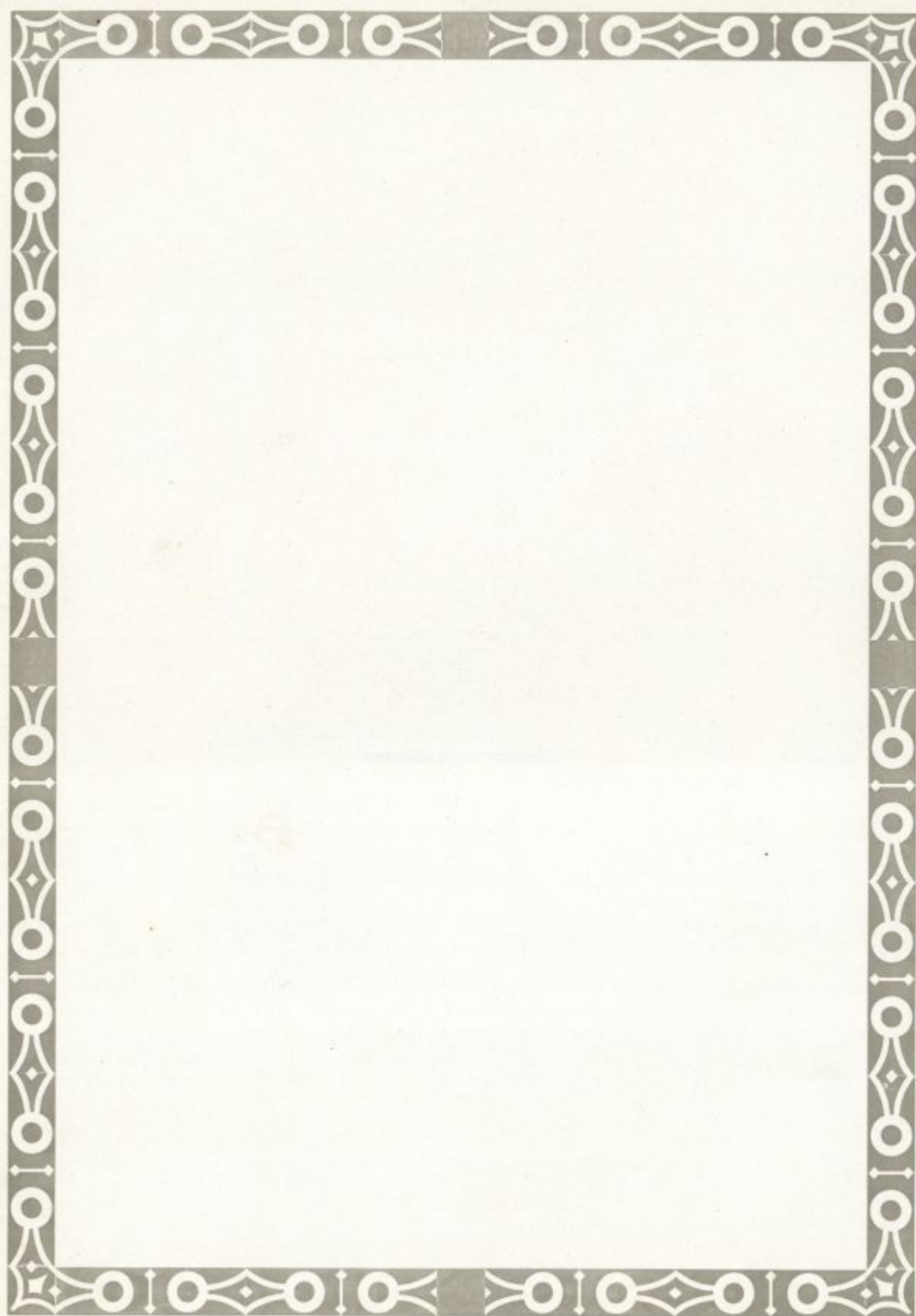
CHARLES HALL STAYTON

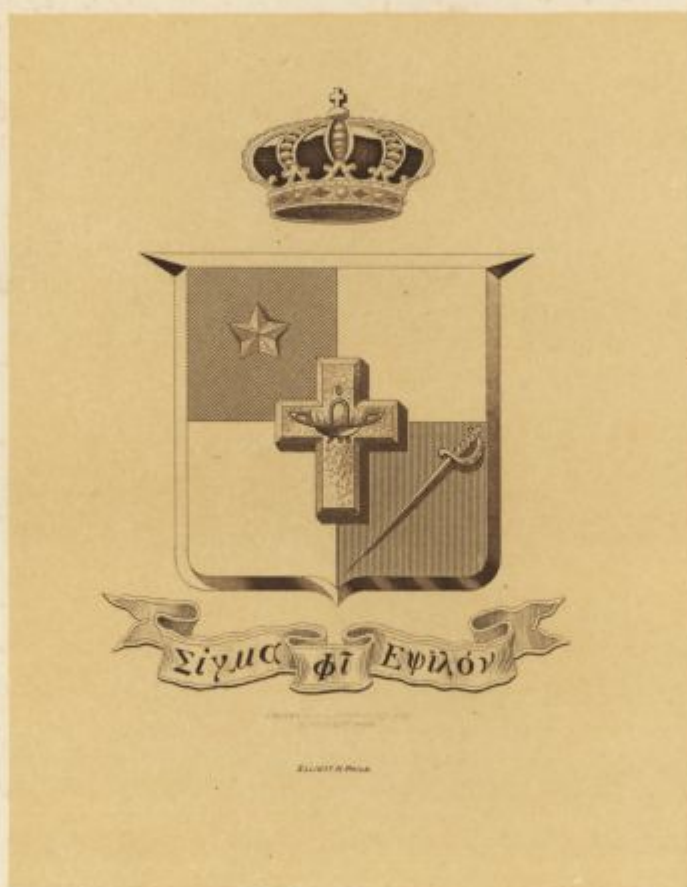
SAMUEL MILLER SHALLCROSS

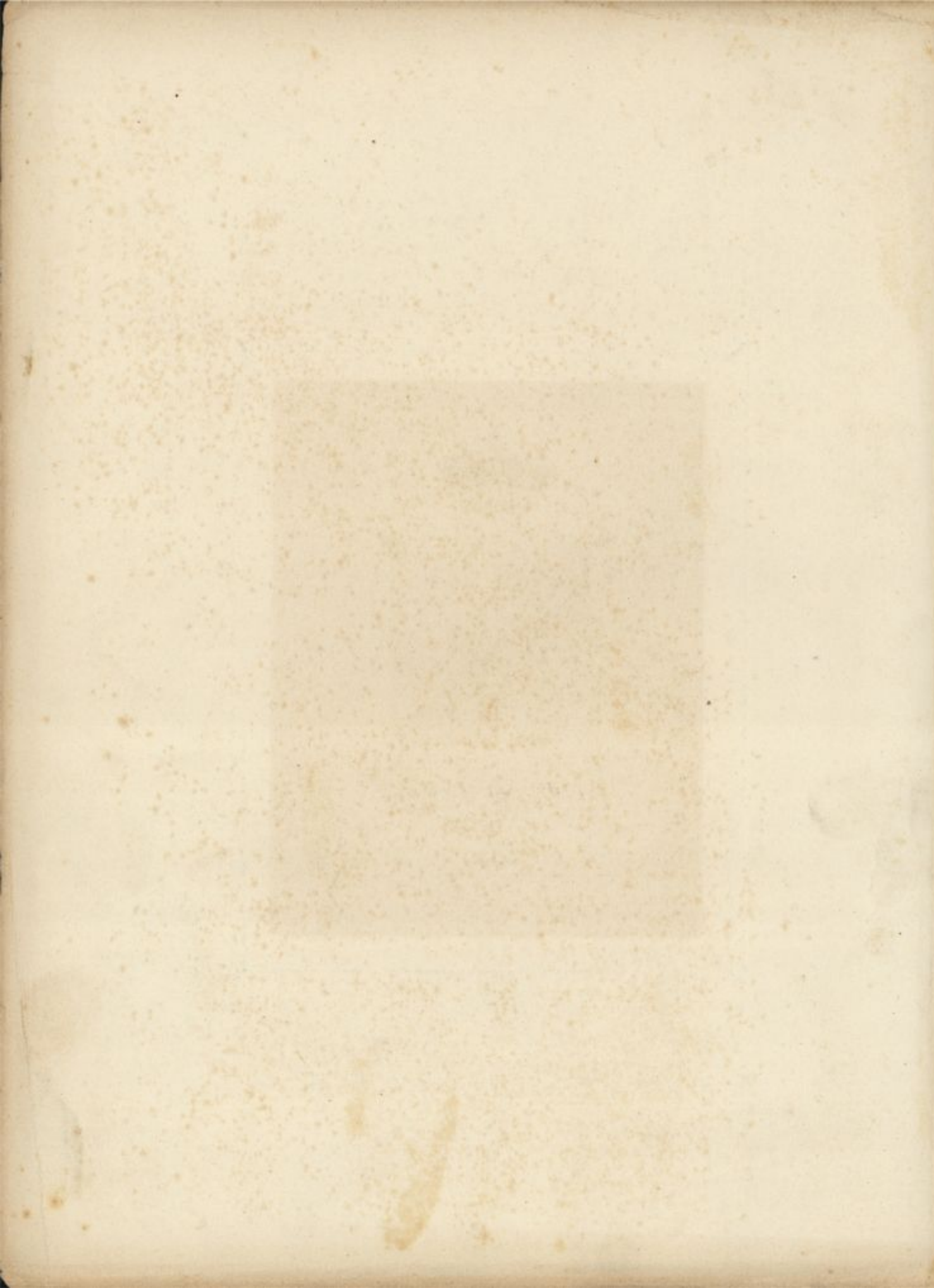
Kappa Alpha Directory

Active Chapters

Washington-Lee University	Transylvania University
University of Georgia	Centenary College
Emory College	University of Missouri
Randolph-Macon College	Millsaps College
Richmond College	The George Washington University
University of Kentucky	University of California
Mercer University	University of Arkansas
University of Virginia	Leland Stanford, Jr., University
Alabama Polytechnic Institute	West Virginia University
Southwestern University	Georgia School of Technology
University of Texas	Hampden-Sidney College
University of Tennessee	University of Mississippi
Davidson College	Trinity College
University of North Carolina	N. C. A. & M. College
Southwestern University	Missouri School of Mines
Vanderbilt University	Bethany College
Tulane University	College of Charleston
Central University of Kentucky	Georgetown College
University of the South	Delaware College
University of Alabama	University of Florida
Louisiana State University	University of Oklahoma
William Jewell College	Washington University
William and Mary College	Drury College
Westminster College	









SIGMA PHI EPSILON



SIGMA PHI EPSILON HOUSE

Sigma Phi Epsilon

FRATRES IN FACULTATE

W. OWEN SYPERD
HAROLD E. TIFFANY

UNDERGRADUATES

Seniors

HERBERT S. LEDENHAM
ROBERT F. RAUGHLEY
W. HART SCOTT

ROLAND W. TAYLOR
CHARLES I. VAN ARSDALEN
R. EMORY WILLEY

Juniors

J. GILBERT ATTIX
S. RANDALL CARSWELL
ROBERT C. LEVIS

WILLIAM BUTZ
ROBERT B. HARVEY
DAVID L. SLOAN

CARL A. TAYLOR

Sophomores

ELMER G. BROWN
GEORGE N. GROFF

EPHRIAM P. JOLLS
ARTISAN SMITH

Freshmen

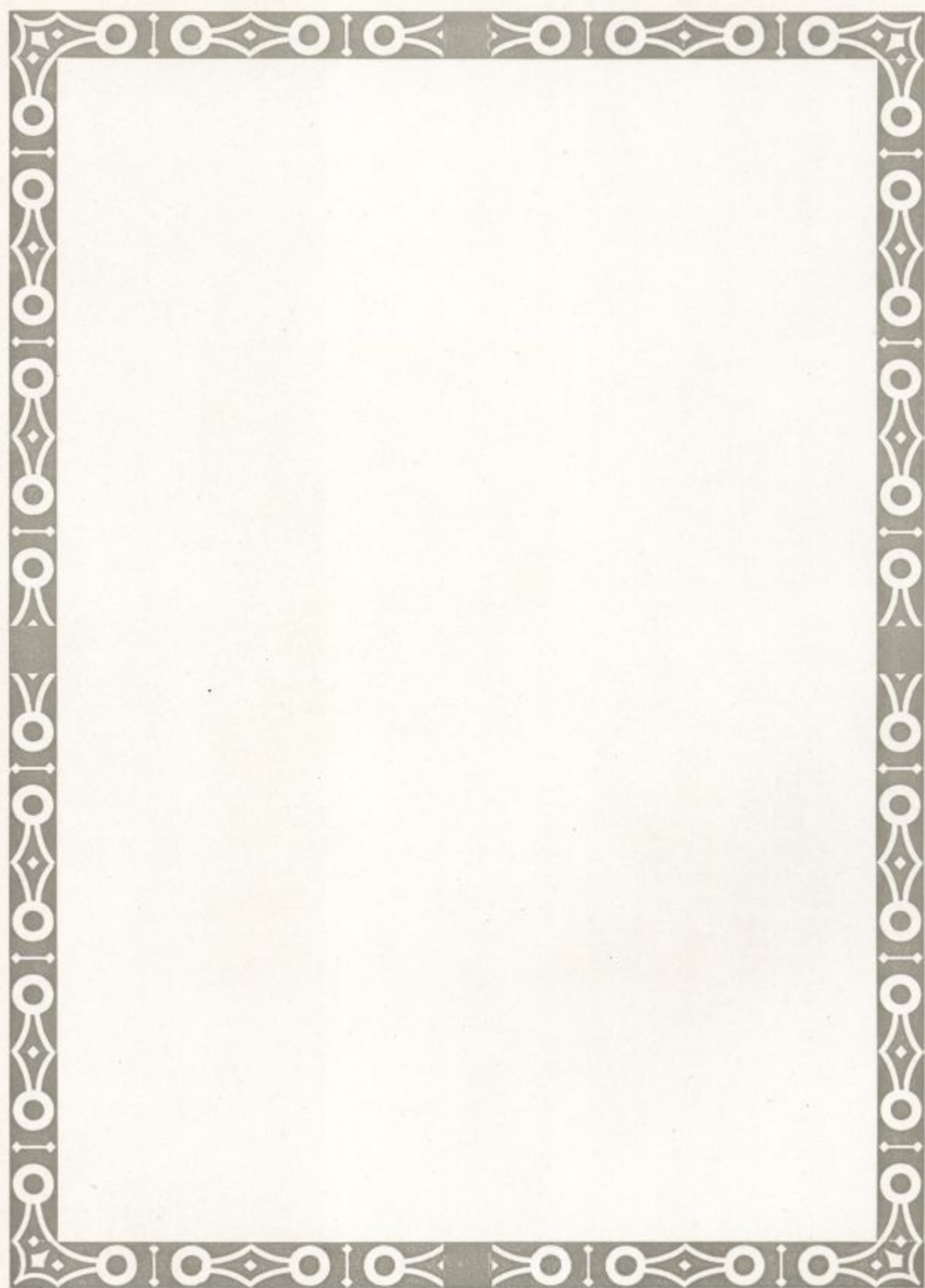
ROBERT W. CRANSTON
L. CHAUNCEY HAUGHEY, JR.

JOSEPH W. MCCAFFERTY
ROBERT G. TIPPETT

Chapter Roll

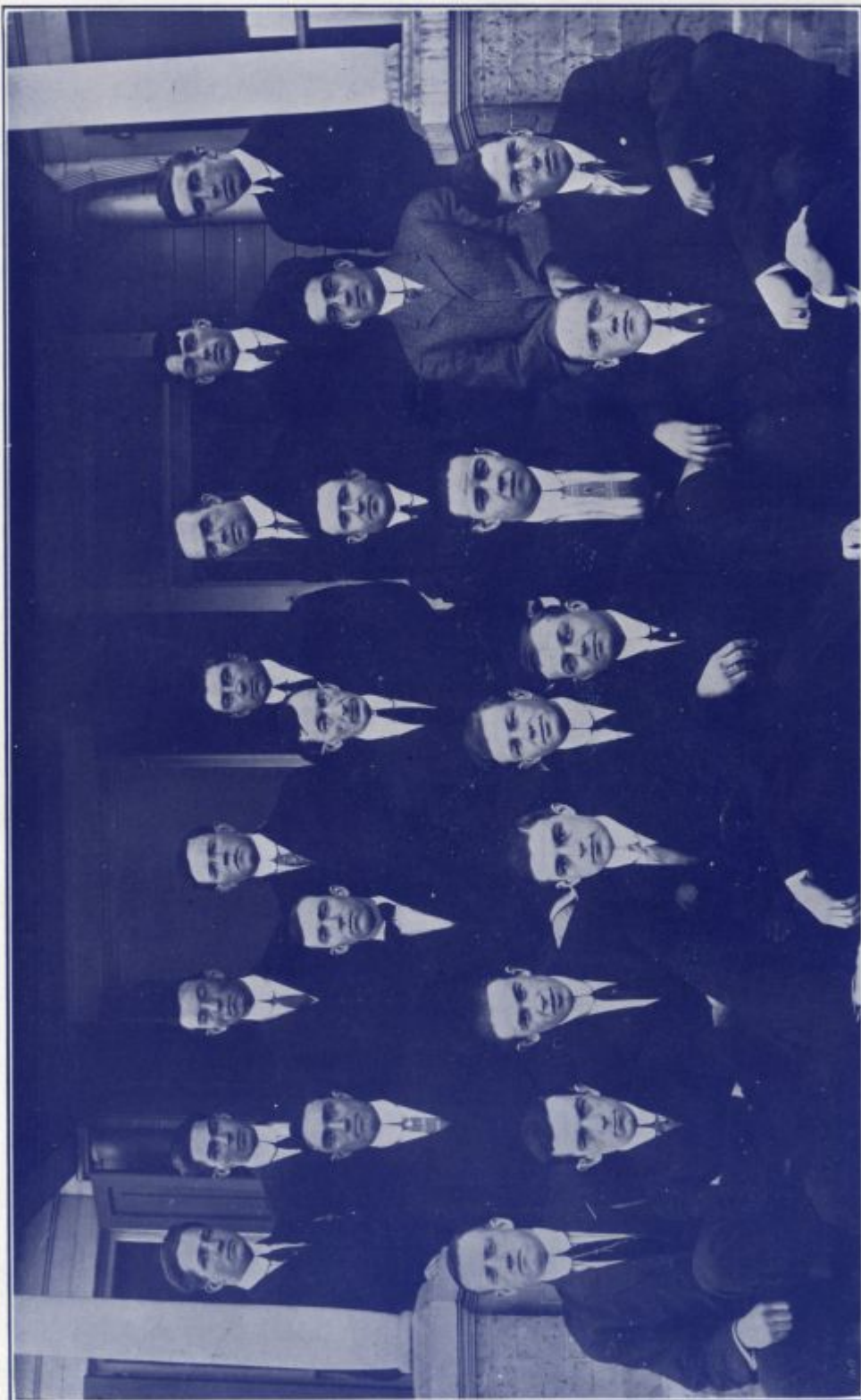
Sigma Phi Epsilon

Richmond College	Washington and Lee University
University College of Medicine	Randolph-Macon College
Roanoke College	Georgia School of Technology
Bethany College	Delaware College
University of West Virginia	University of Virginia
Washington and Jefferson College	University of Arkansas
Jefferson Medical College	Lehigh University
University of Pittsburg	Virginia Military Institute
University of Illinois	Ohio State University
University of Colorado	Norwich University
University of Pennsylvania	Allegheny College
University of South Carolina	Alabama College
College of William and Mary	Alabama Polytechnic Institute
N. C. Agricultural and Mech. College	Trinity College, N. C.
Ohio Northern University	Dartmouth College
Wittenburg College	George Washington University
Purdue University	Baker University
Syracuse University	University of California





ENETT PHILA.



SIGMA NU



Sigma Nu

FRATRES IN FACULTATE

GEO. A. HARTER
C. A. SHORT
J. M. McVEY
T. H. WADE

UNDERGRADUATES

Seniors

JOSEPH LAFETRA MARSHALL
JOHN SAYERS HAGNER
JAMES ORTON MARSHALL

LISTON ALEXANDER HOUSTON
CLARENCE EDWARD TAYLOR
CARL RICHARD LIND

Juniors

ELMER EVERETT TODD
DOUGLAS BAYNE AYERST

SAMUEL NICHOLS TAMMANY
LEO FRANCIS ROSSELL

HOWARD TAYLOR ENNIS

Sophomores

WILLIAM F. O'BRIEN
THOMAS J. McLOUGHRY
WALLACE A. SAWDON

CALVIN S. LENDERMAN
BYRON R. FOSTER
WILLIAM M. SCHLITTLER

Freshmen

NORMAN J. McDANIEL
D. RAYMOND McNEAL

ALFRED R. HAMEL
ARCHIE H. DEAN

Sigma Nu

Chapter Roll

Virginia Military Institute	Rose Polytechnic Institute
University of Virginia	Albion College
University of Georgia	Georgia School of Technology
University of Alabama	University of Washington
Howard College	Northwestern University
North Georgia Agricultural College	University of Vermont
Washington and Lee University	Stevens Institute of Technology
Bethany College	Lafayette College
Mercer University	University of Oregon
University of Kansas	Colorado School of Mines
Emory College	Cornell University
Lehigh University	State College of Kentucky
University of Missouri	University of Colorado
University of Texas	University of Wisconsin
Vanderbilt University	University of Illinois
Louisiana State University	University of Michigan
Cornell College (Ia.)	Missouri School of Mines
University of North Carolina	Washington University
Tulane University	West Virginia University
DePauw University	Iowa State College
Alabama Polytechnic College	University of Minnesota
Purdue University	University of Arkansas
Ohio State University	University of Montana
Leland Stanford University	Syracuse University
Lombard University	Case School of Applied Science
Indiana University	Dartmouth College
Mt. Vernon College	Western Reserve University
University of California	University of Oklahoma
University of Iowa	Columbia University
William Jewell College	Pennsylvania State College
University of Pennsylvania	University of Nebraska
University of Chicago	Washington State College
North Carolina A. and M. College	Delaware College

Phi Kappa Phi

Phi Kappa Phi is an honorary fraternity based upon scholarship and founded at the University of Maine in 1898. It stands for the unity and democracy of education and receives the engineer, the agriculturist, the architect or the chemist as heartily as it does the classicist or man of letters. The chapters of the Phi Kappa Phi are located as follows:

- 1898. University of Maine.
- 1899. Pennsylvania State College.
- 1900. University of Tennessee.
- 1901. Massachusetts Agricultural College.
- 1904. Delaware College.

The badge is an eight-rayed representation of the sun surrounding the earth, across which there is a band displaying the letters $\Phi \kappa \Phi$. The band represents union in a world of thoughtful men. The eight rays represent Arts, History, Literature, Philosophy, Religion, Science, Philology, and Sociology.

The Delaware College chapter of Phi Kappa Phi was installed January 13, 1905, by Professor Benjamin F. Gill, M. A. of State College, Pa., Treasurer-General of the fraternity.

The charter members were the following:

Representing Delaware College Faculty

- GEORGE A. HARTER, M. A., Ph. D.
- THEODORE R. WOLF, M. A., Ph. D., *deceased*
- FREDERIC H. ROBINSON, C. E.
- ELISHA CONOVER, M. A.
- EDGAR DAWSON, M. A., Ph. D.
- JAMES A. FOORD, B. S., M. S. A.
- EDW. LAURENCE SMITH, M. A.
- EDWARD W. MCCASKEY, Capt. 21st Infantry, U. S. A.
- MERRILL VAN G. SMITH, M. E.

Representing the Alumni

- CLARENCE ALBERT SHORT, C. E., '96.
- REGINALD CONSTABLE, B. A., 1900.
- PUSEY JONES, C. E., '02.
- JOSEPH M. McVEY, B. A., '04.

President, MERRILL VAN G. SMITH

Vice President, JOSEPH M. McVEY


Secretary and Treasurer, EDW. LAURENCE SMITH

Members of the Class of 1911

- | | |
|---------------|------------------|
| W. W. HUBBARD | H. S. GARRISON |
| A. B. EASTMAN | C. T. MCCHESENEY |
| C. E. TAYLOR | C. H. HEISLER |
| P. WAINER | |

The Story of The Blue Hen's Chicks



T was at that time in our nation's history when the war clouds were hiding the sun, when the American patriots were doing and dying, when women were thinking more about baking pies and mending stockings than they were about smoking or voting—in short, it was the time when the Man of Mt. Vernon was blazing the way for the American Republic, that Delawareans were given the name of **Blue Hen's** chicks. Captain Caldwell, of Kent county, Delaware, was extremely fond of cock fighting and he always kept in his camp some chickens of the **Blue Hen** stock. No chickens could fight so well as the **Blue Hen's** chickens. Soon the men of Captain Caldwell's company were jestingly designated in the army as the **Blue Hen's** chicks, and the name stayed with them throughout the war and has come down until today all Delawareans are known as the **Blue Hen's** chicks.



Alma

*Come ye forth all ye sons to greet her To your Al-ma Ma-ter sing.
True her blue as the stars of hea-ven Pu-ri-ty and worth her gold*

*Let our song rise to tell her glories Let each voice with glad-ness ring
They stand forth a banner em-blem-atic Truth and hon-or they un-fold.*

*Of her fame let us ne'er tire sing-ing, let her vic-tories be told
Raise this flag to the star-ry hea-rens All when they her folds be-hold*

*We can well be proud of dear old Del-a-ware so cheer the blue and gold
Off will come all hats and then just once a-gain we'll cheer the blue and gold*



Mater

Chorus

Rah! Rah! Rah! Hur - rah for Del-a - ware!

Rah! Rah! Rah! With name and fame so fair. Hurrah! rah!

Rah! May her glo-ries never grow old Boys let's cheer that

Ritard

name so dear. Hurrah for the blue and the gold.



Don't please mention this one!
Junior Girl
A study not mentioned in the catalogue.

*His G.
 Letter*

