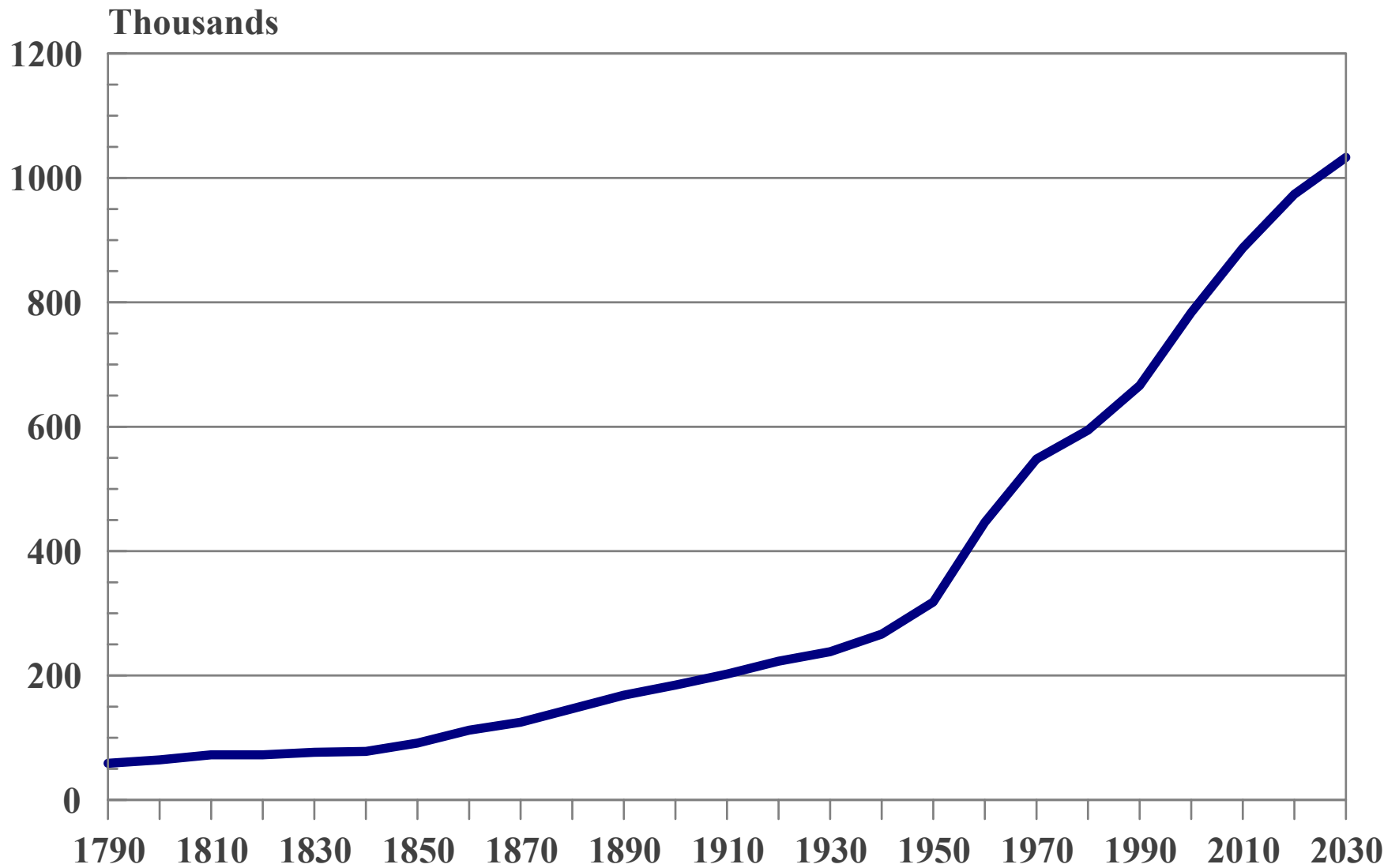


# **Land Use Change in Delaware: Historical Perspective and Future Trends**

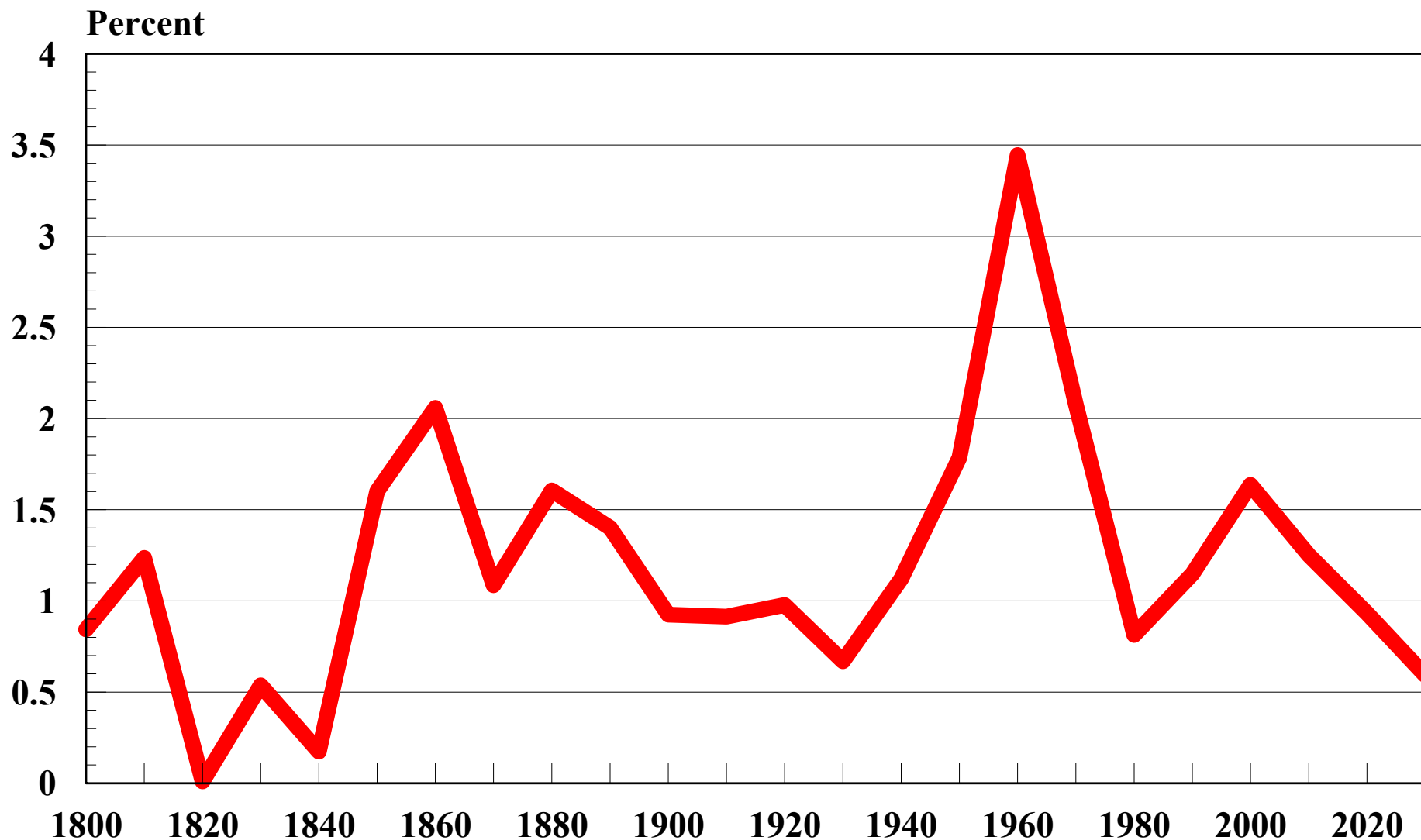
**presented by  
Ed Ratledge**

**Center for Applied Demography & Survey Research  
University of Delaware**

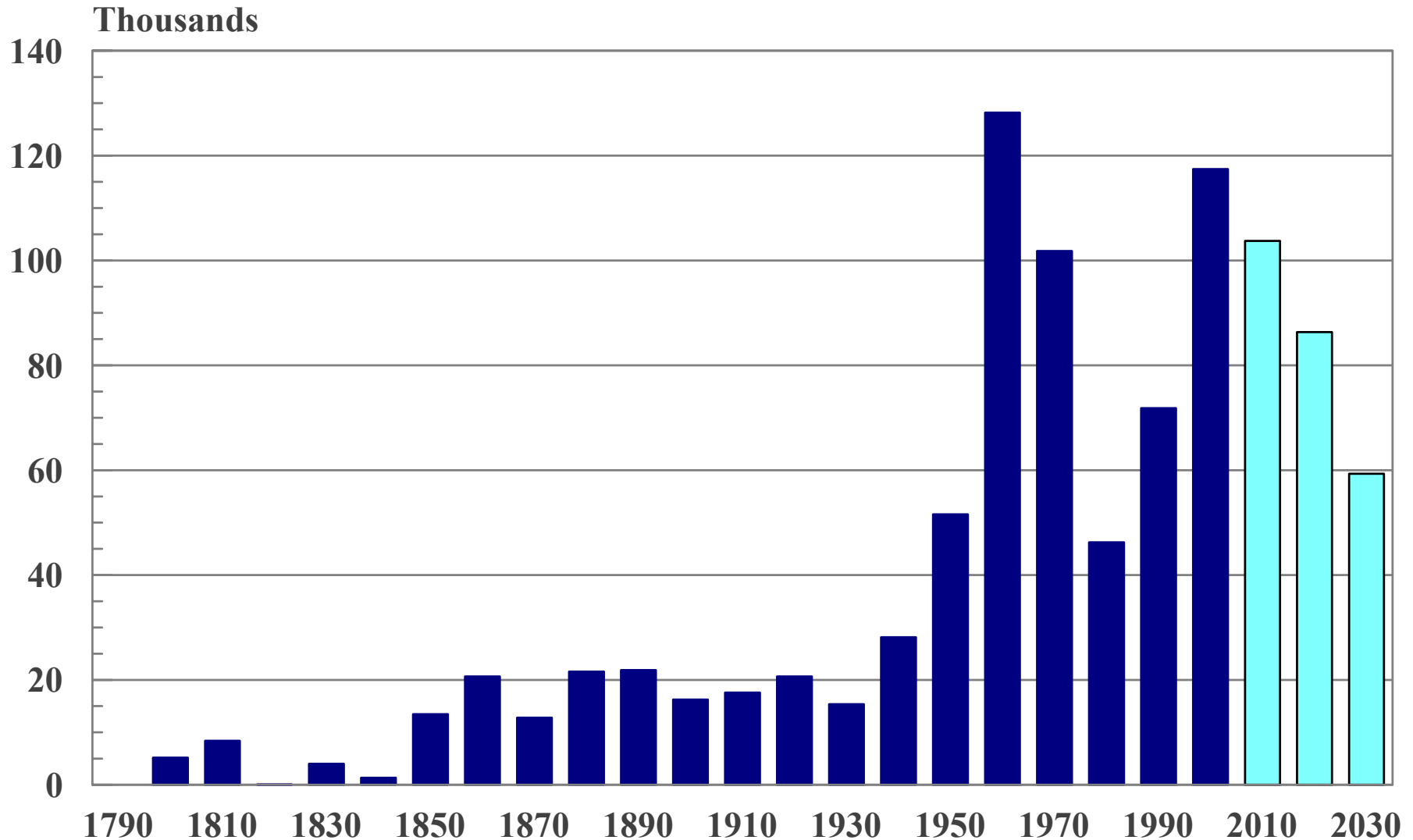
# Delaware Population 1790-2030



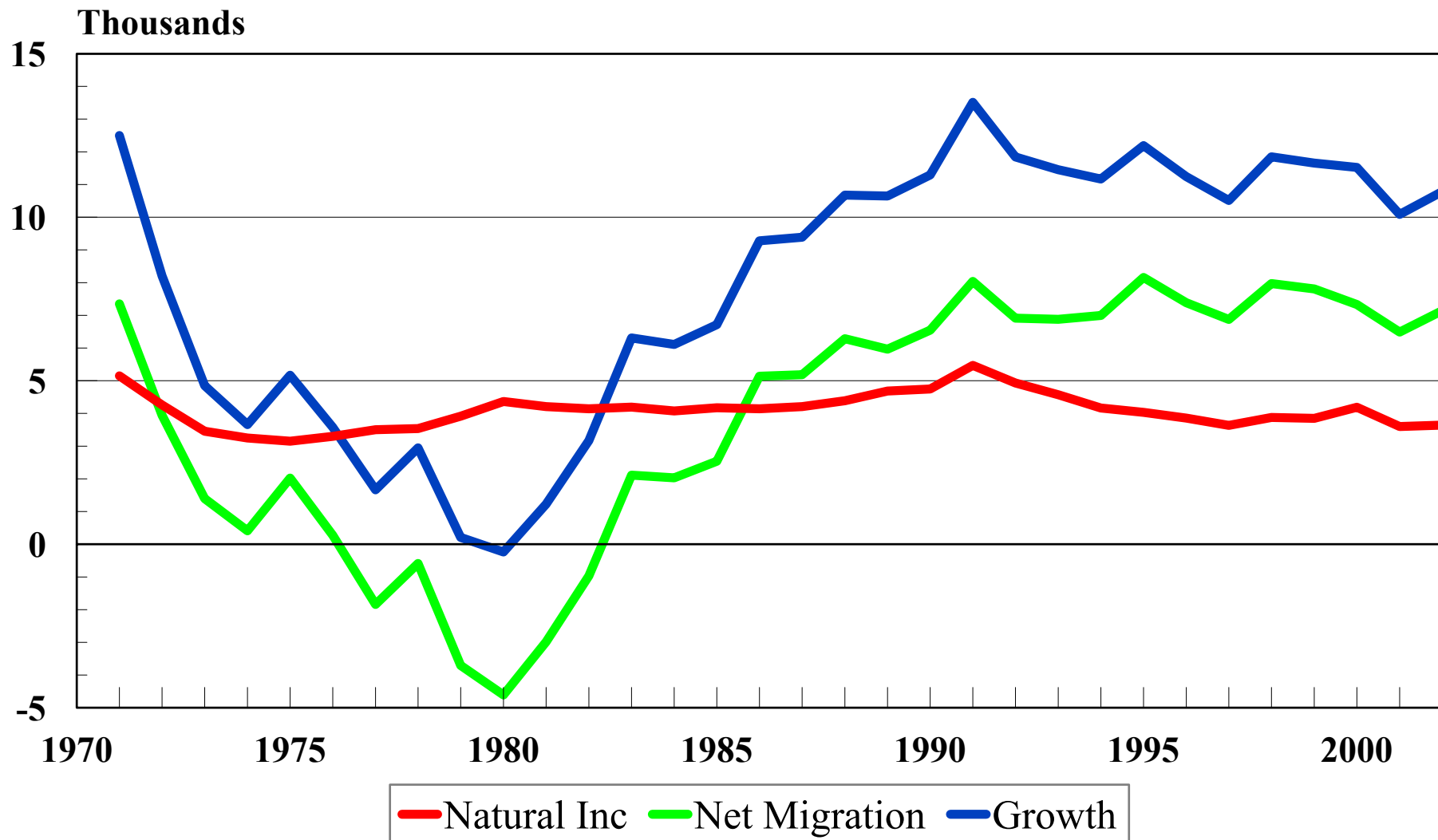
# Average Annual Population Growth Rates Delaware 1790-2003



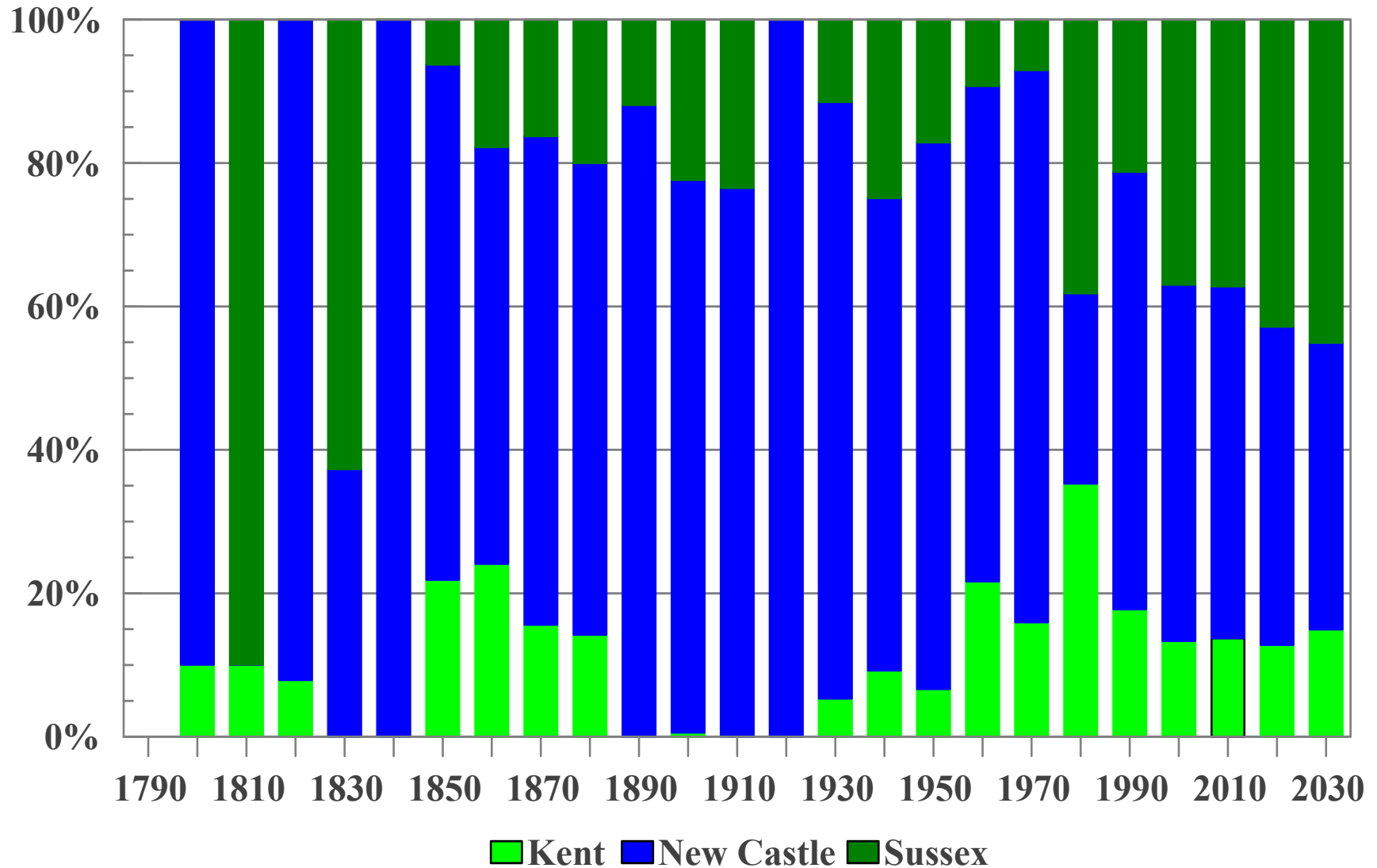
# Delaware Population Growth 1790-2030



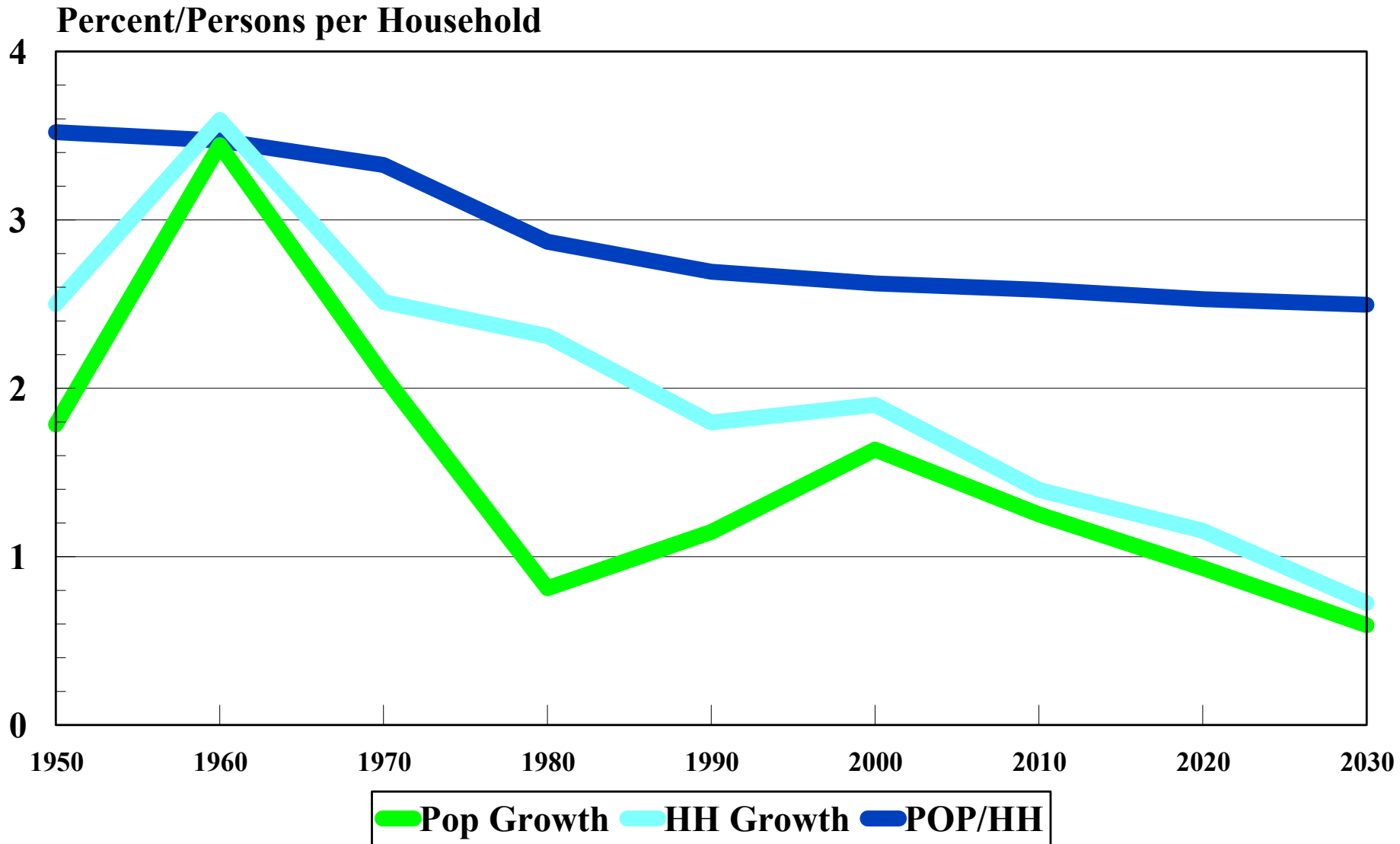
# Sources of Population Growth Delaware 1970-2002



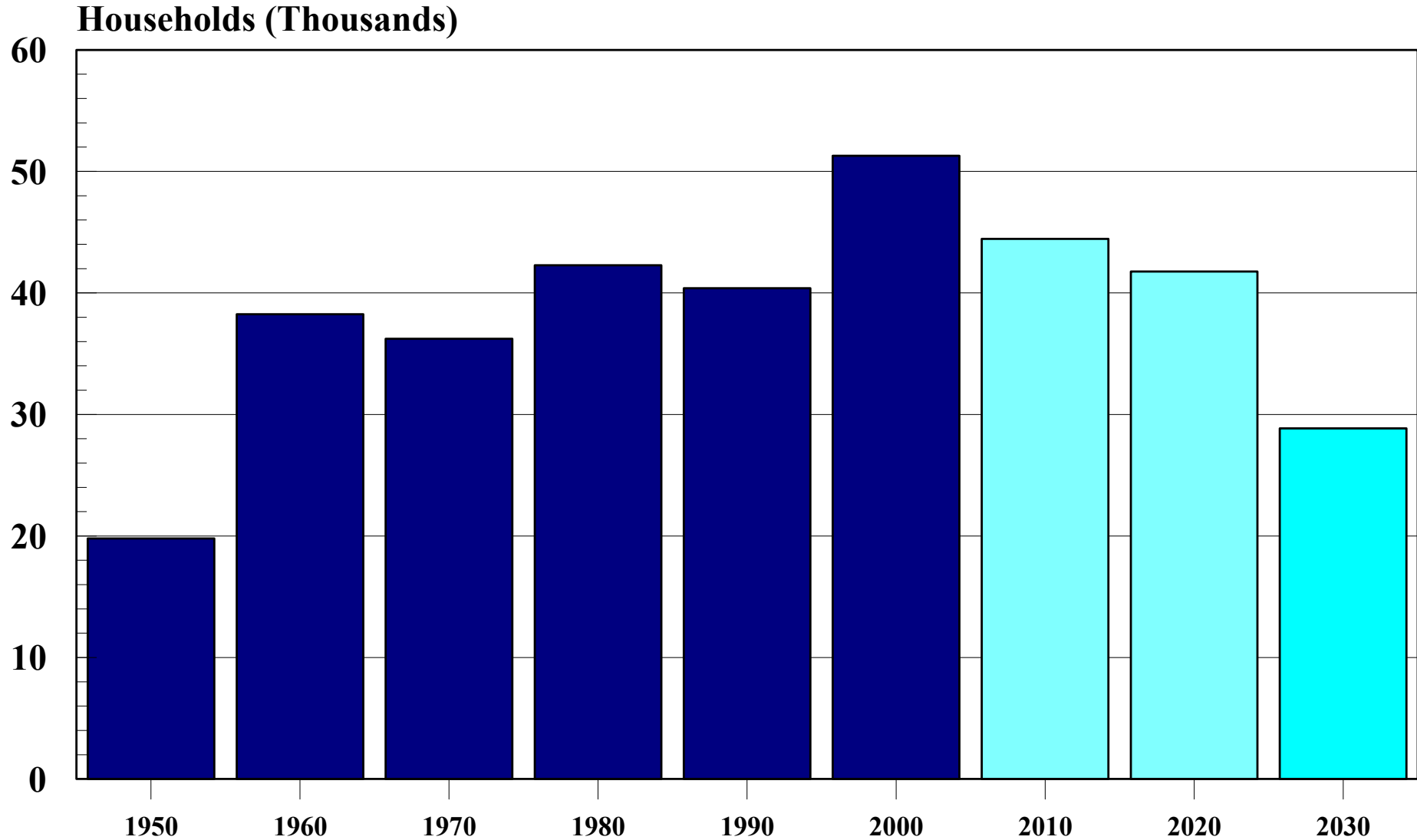
# County Share of Population Growth 1790-2030



# Growth Rates of Population and Households Delaware 1950-2030

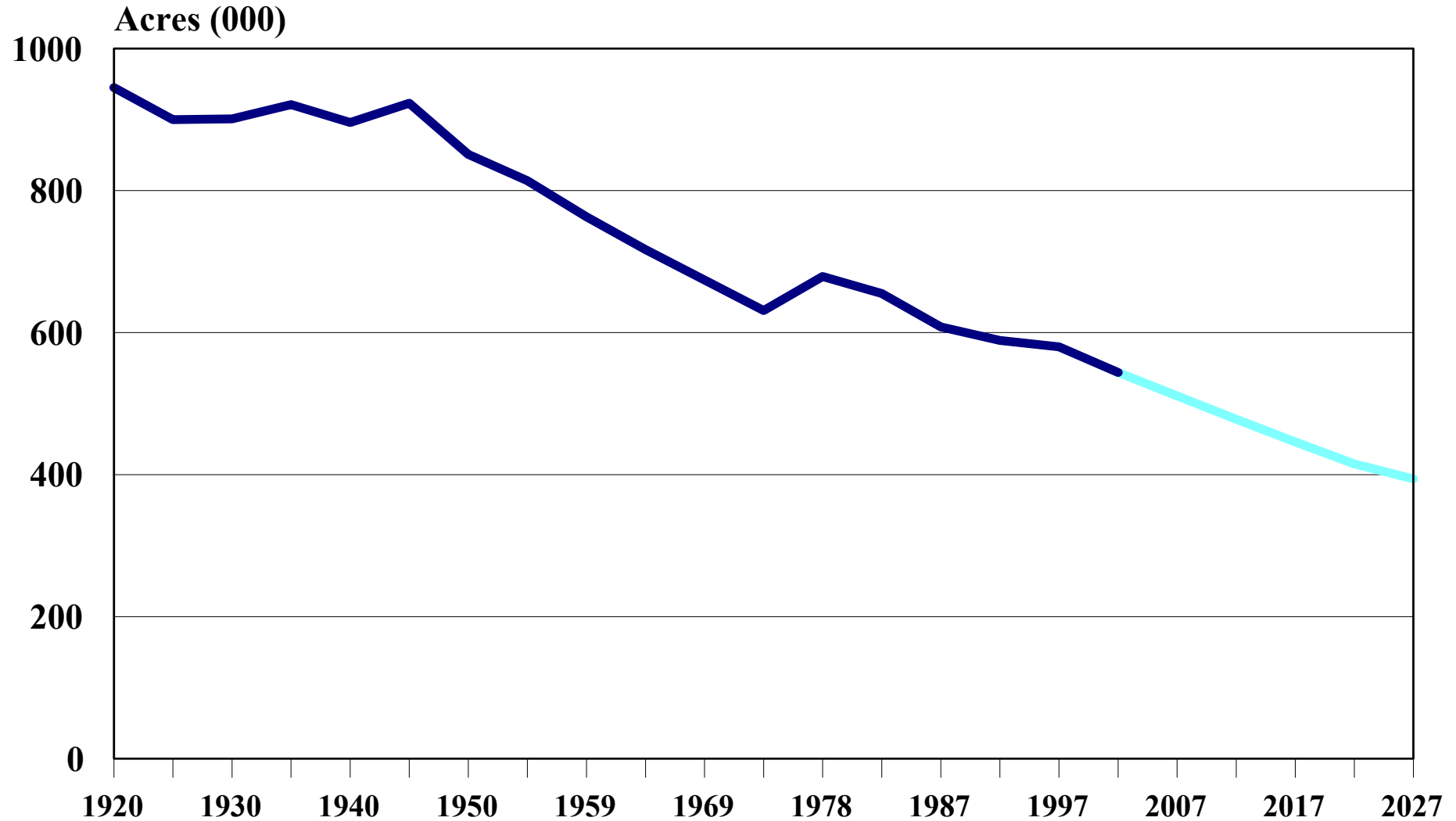


# Net New Households Delaware 1950-2030

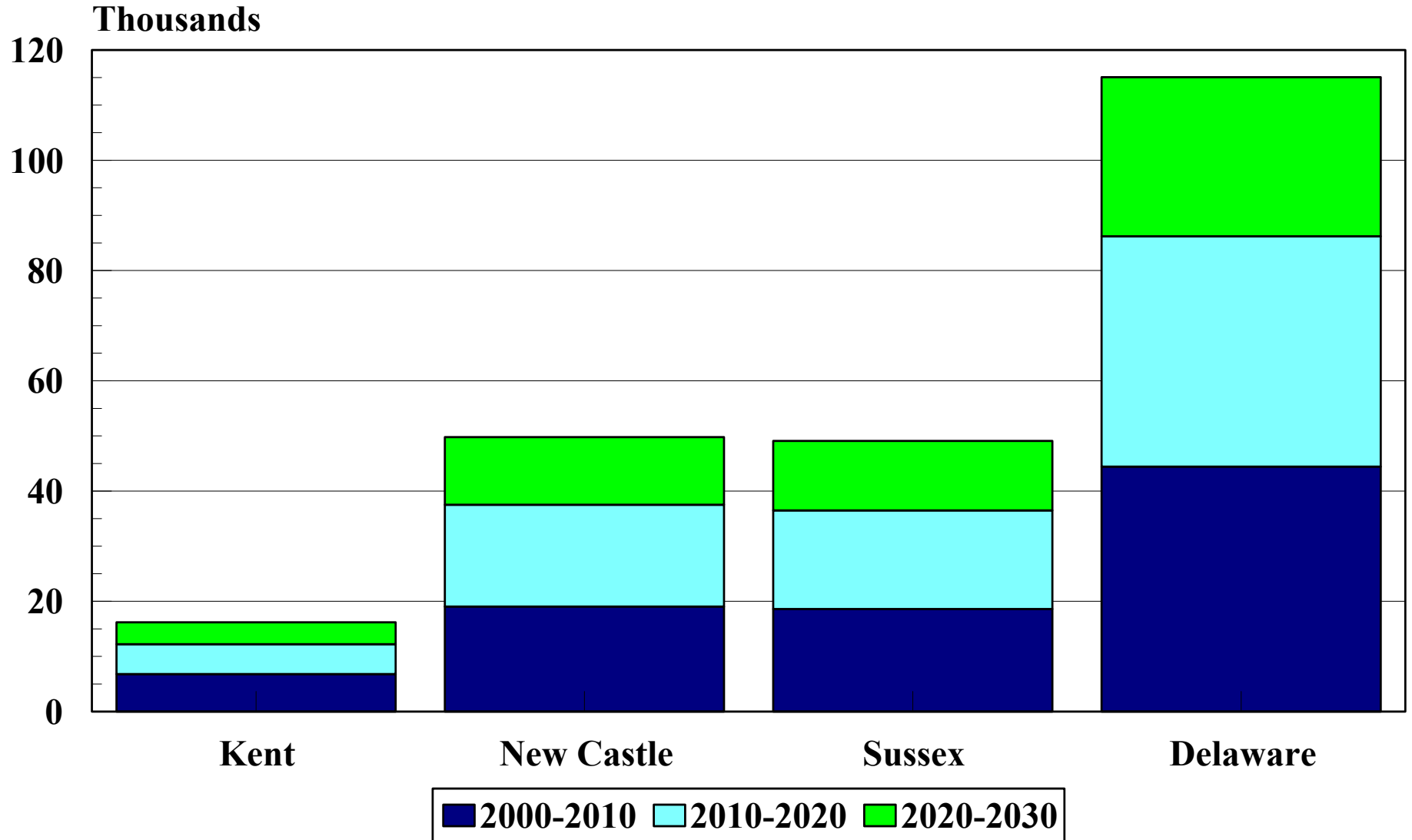




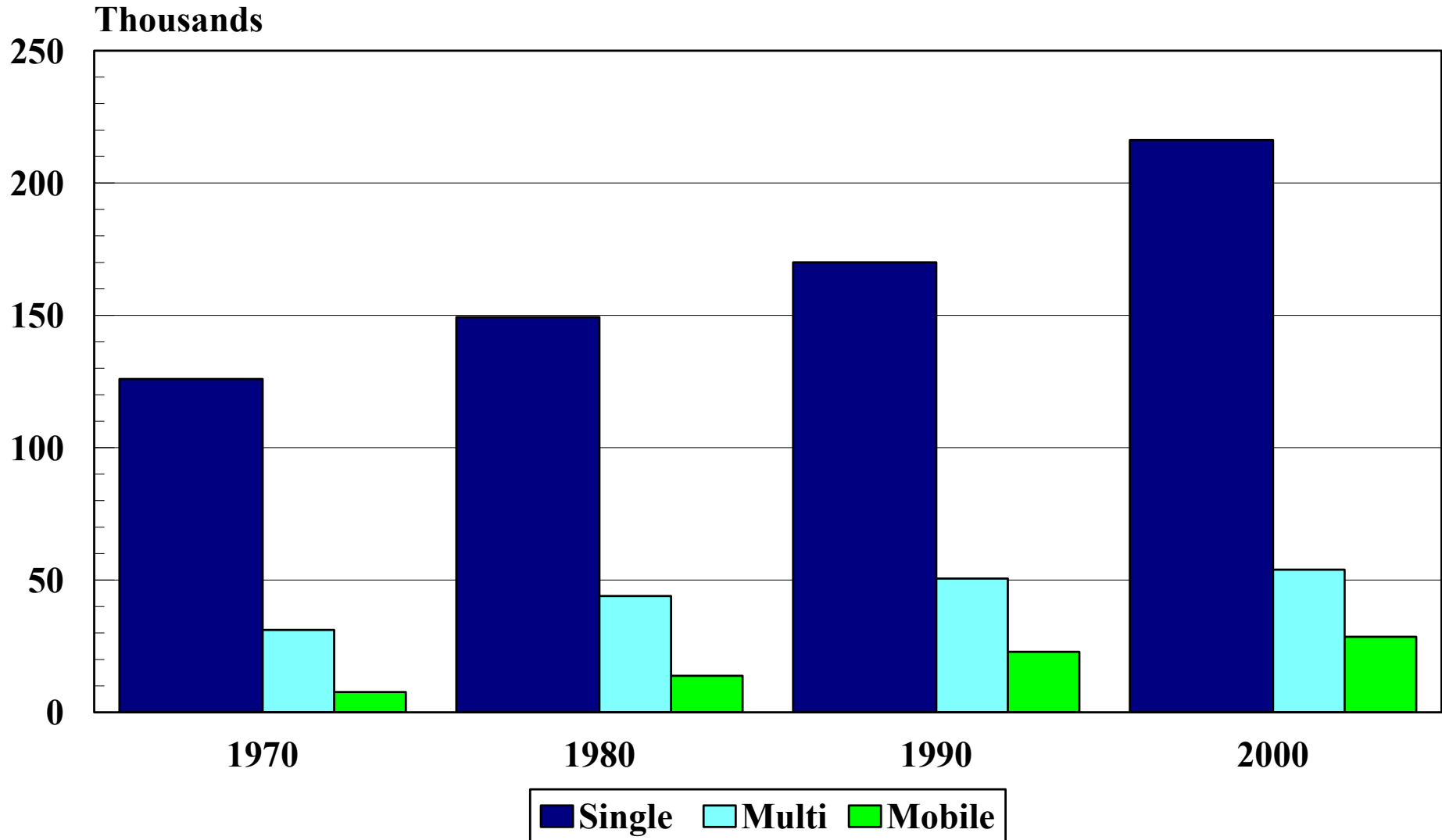
# Acres of Farmland Delaware 1920-2027



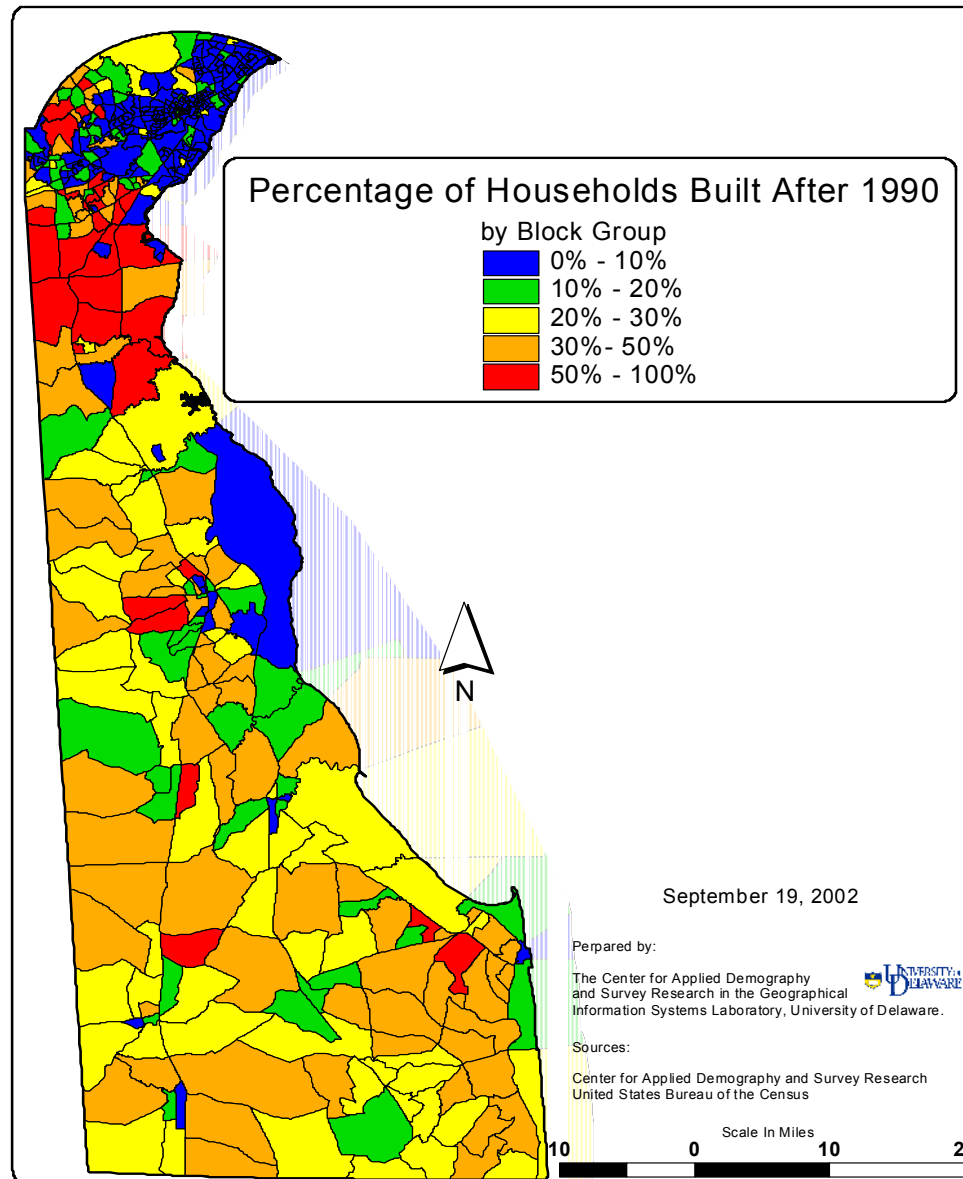
# Net New Households by County 2000-2030



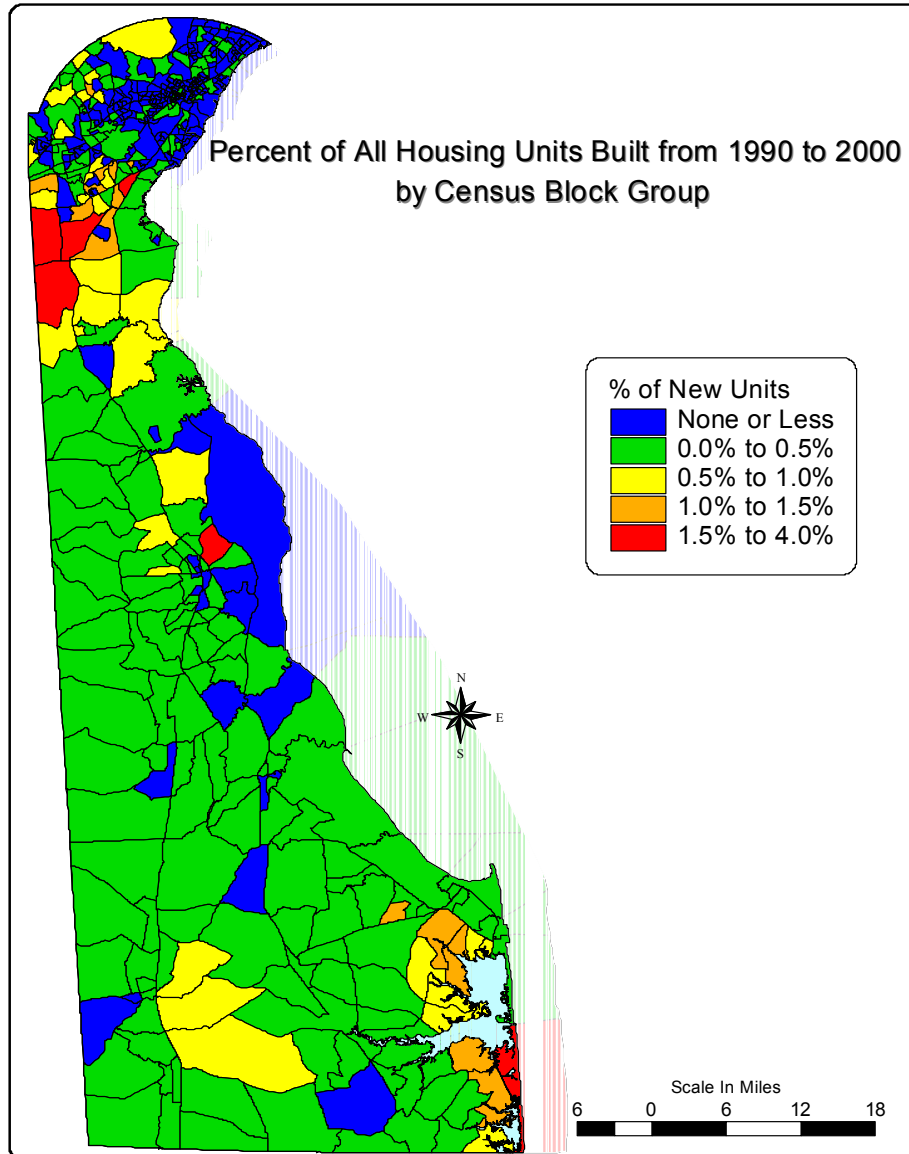
# Occupied Year-Round Housing Stock Delaware 1970-2000



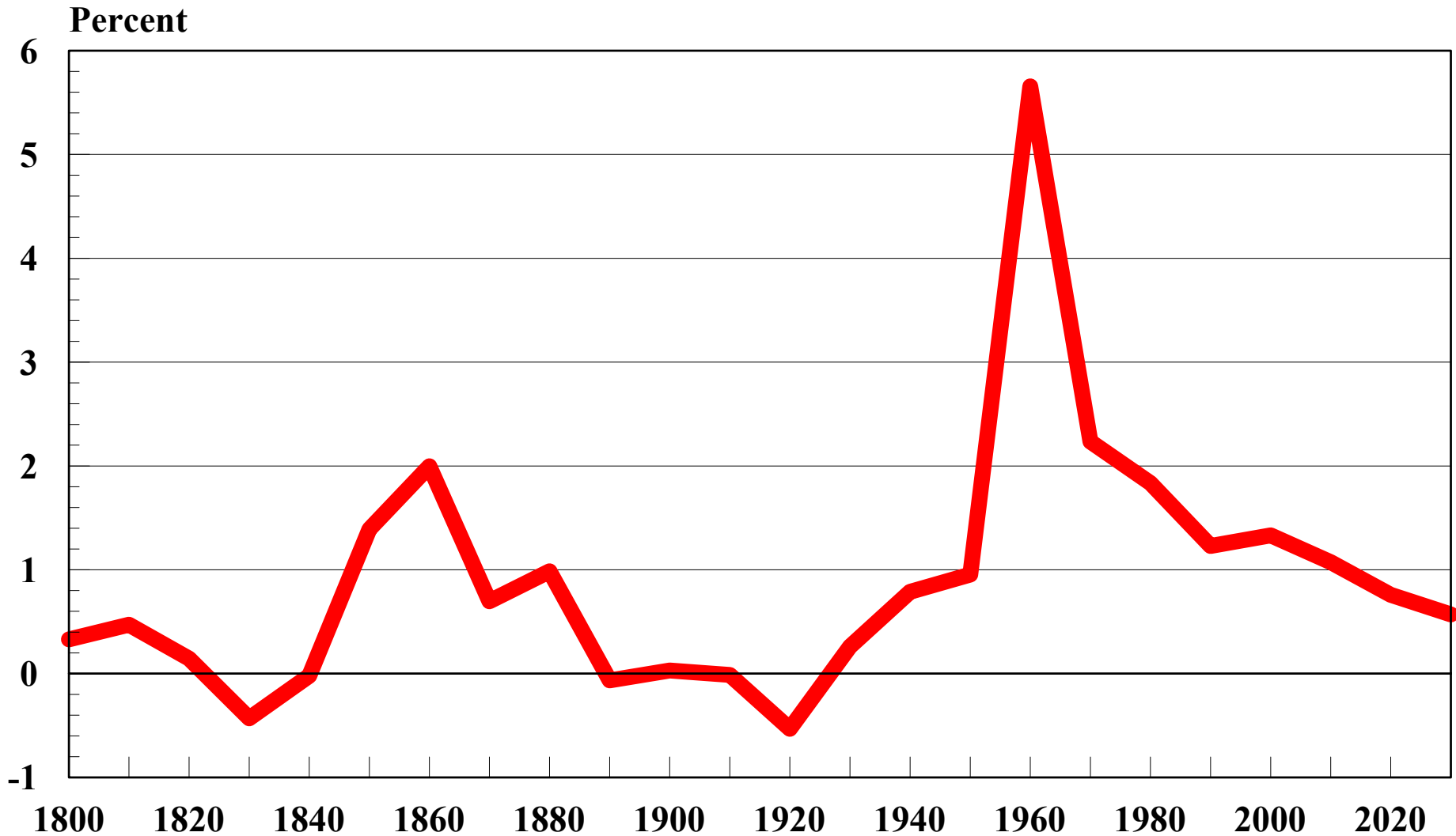
# Percentage of Housing Units Built After 1990



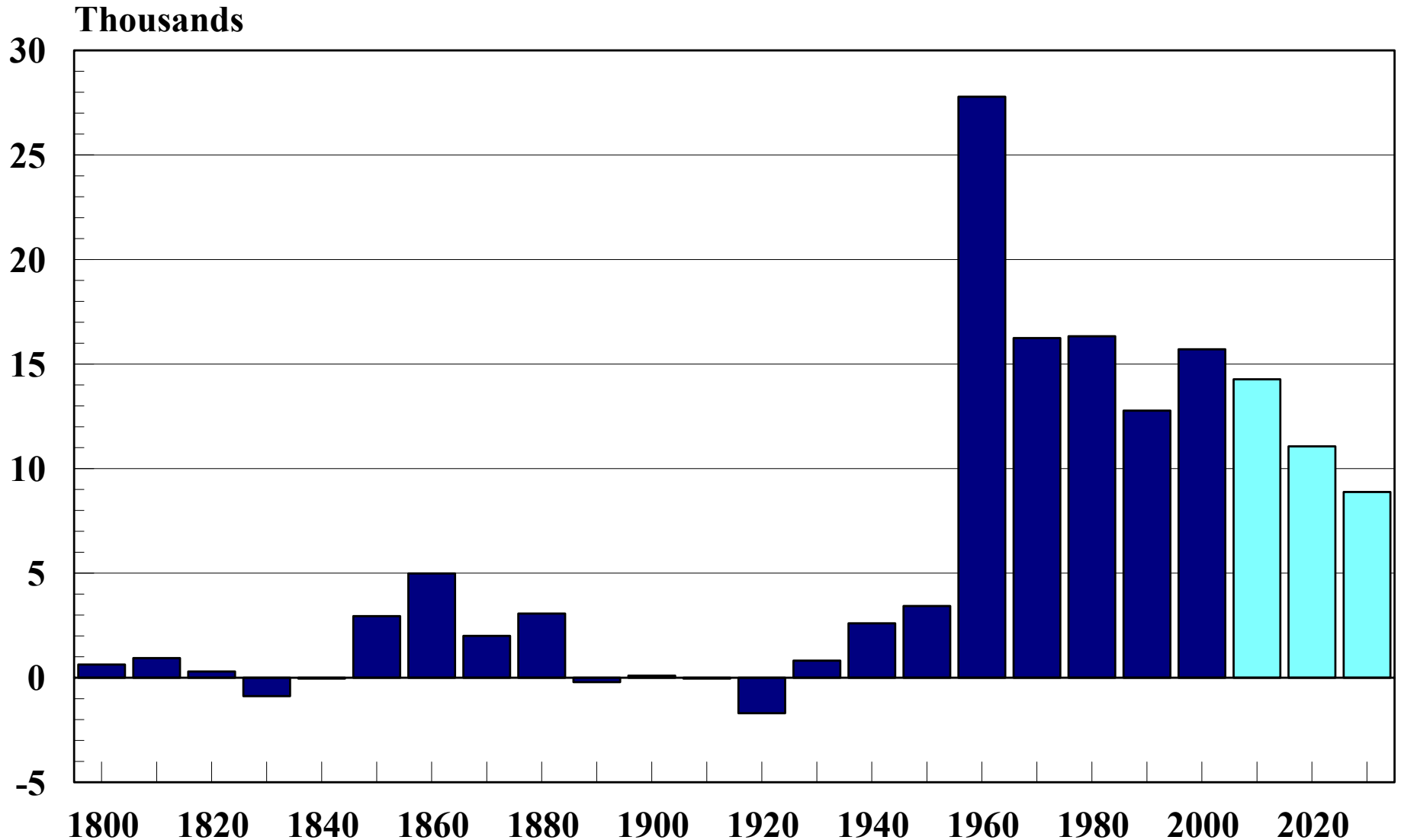
# Percentage of All Housing Units Built 1990-2000 Statewide



# Average Annual Population Growth Rates Kent County 1790-2030

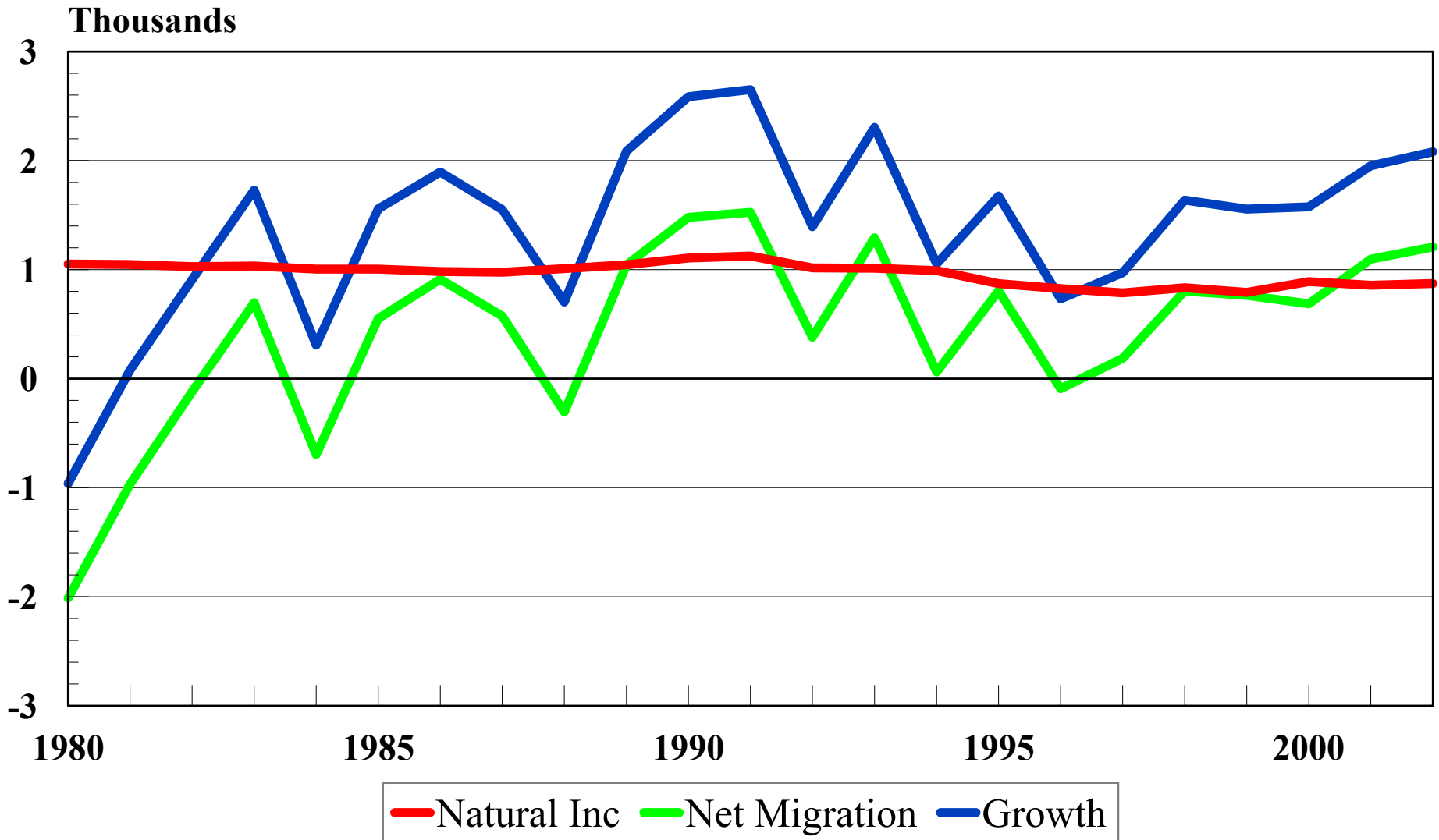


# Kent County Population Growth 1790-2030



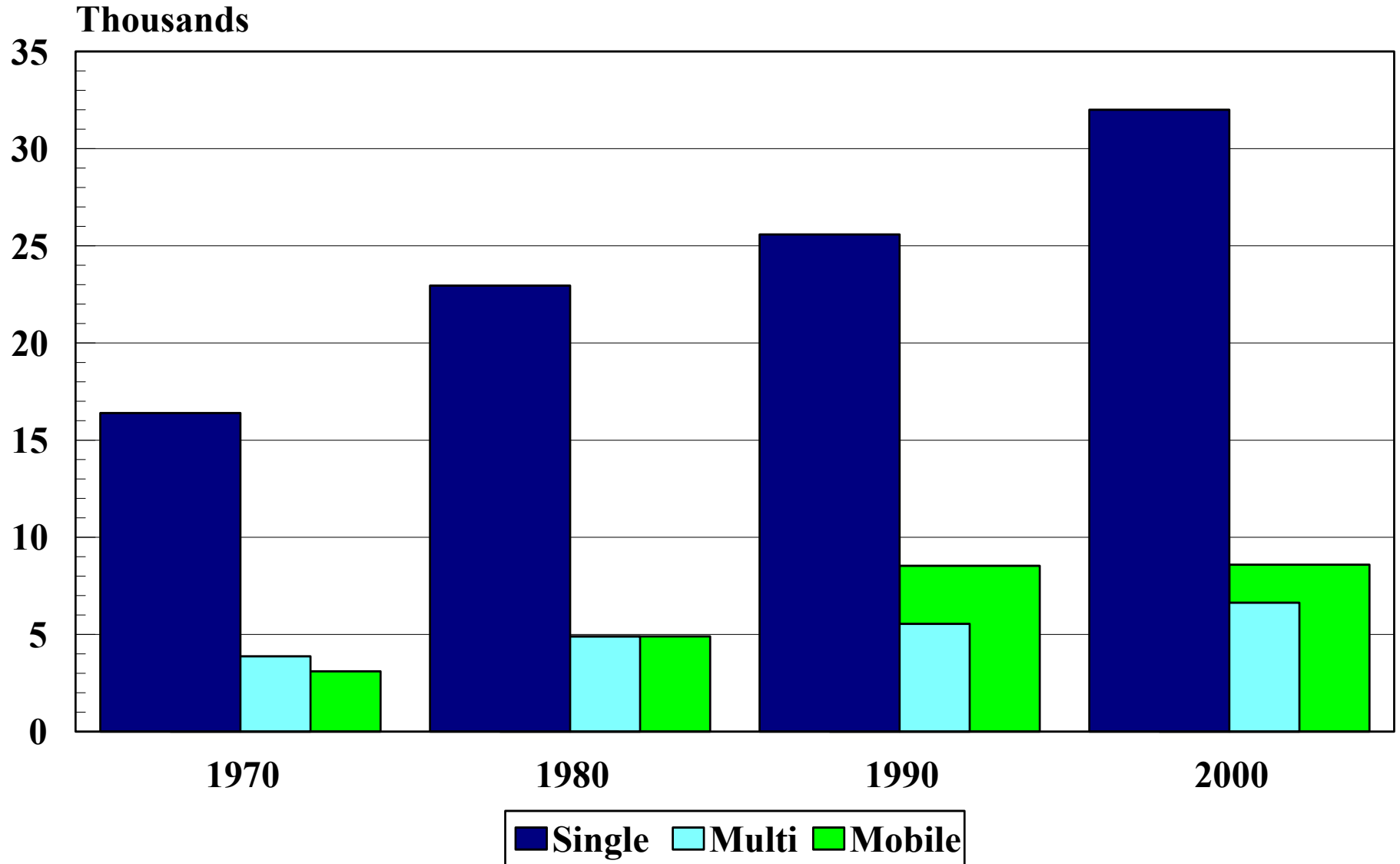
# Sources of Population Growth

## Kent County 1980-2002

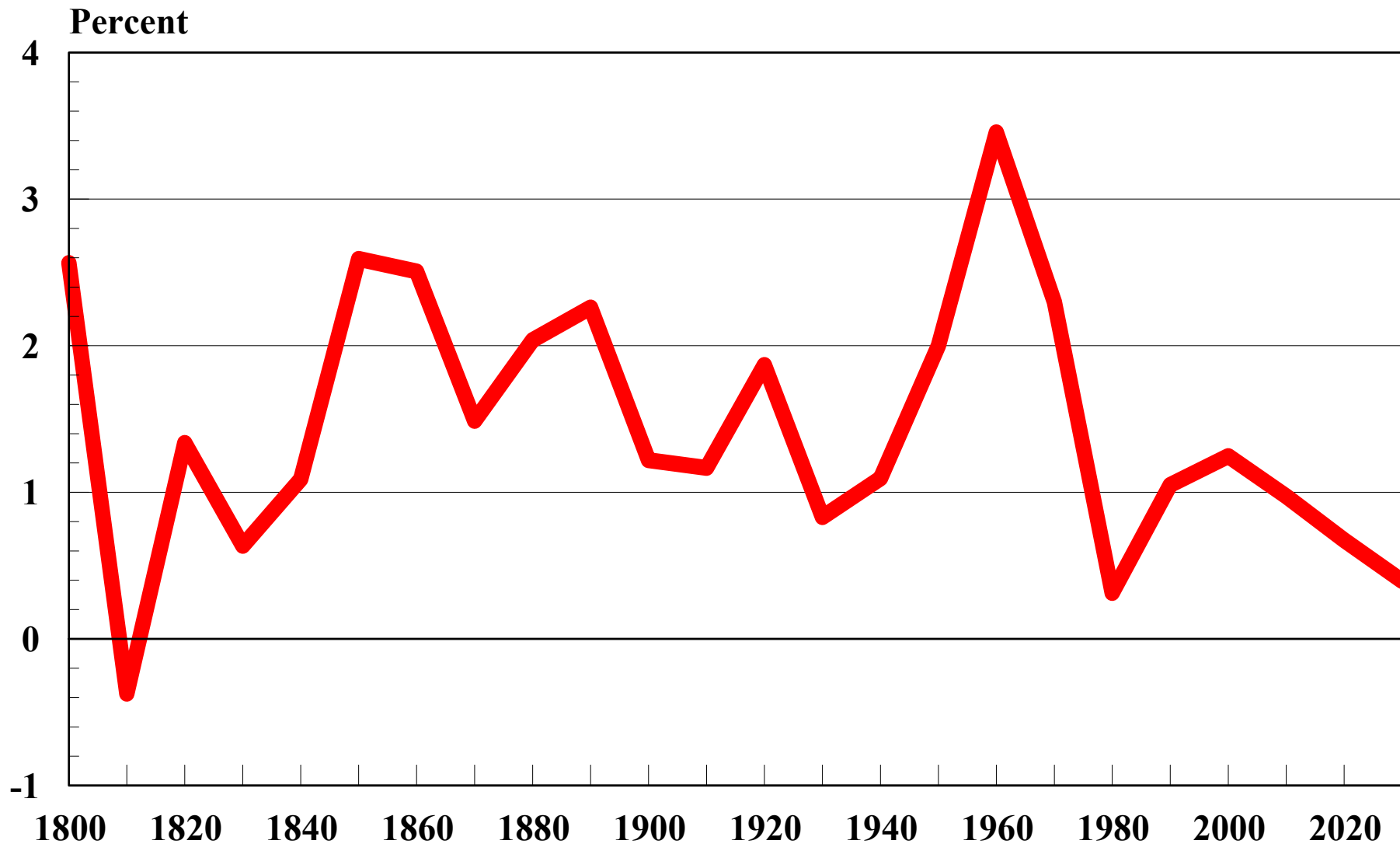




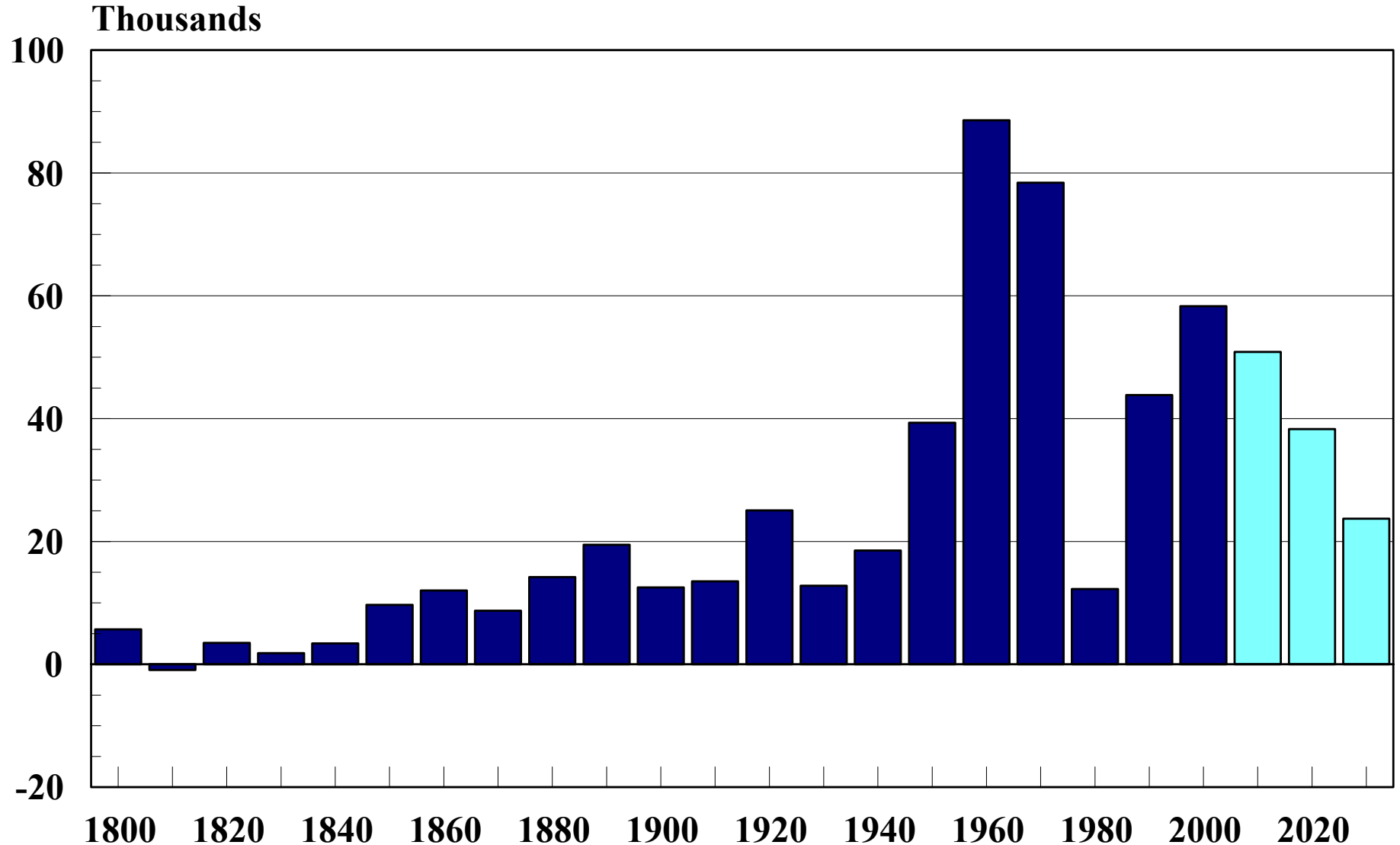
# Occupied Year-Round Housing Stock Kent County 1970-2000



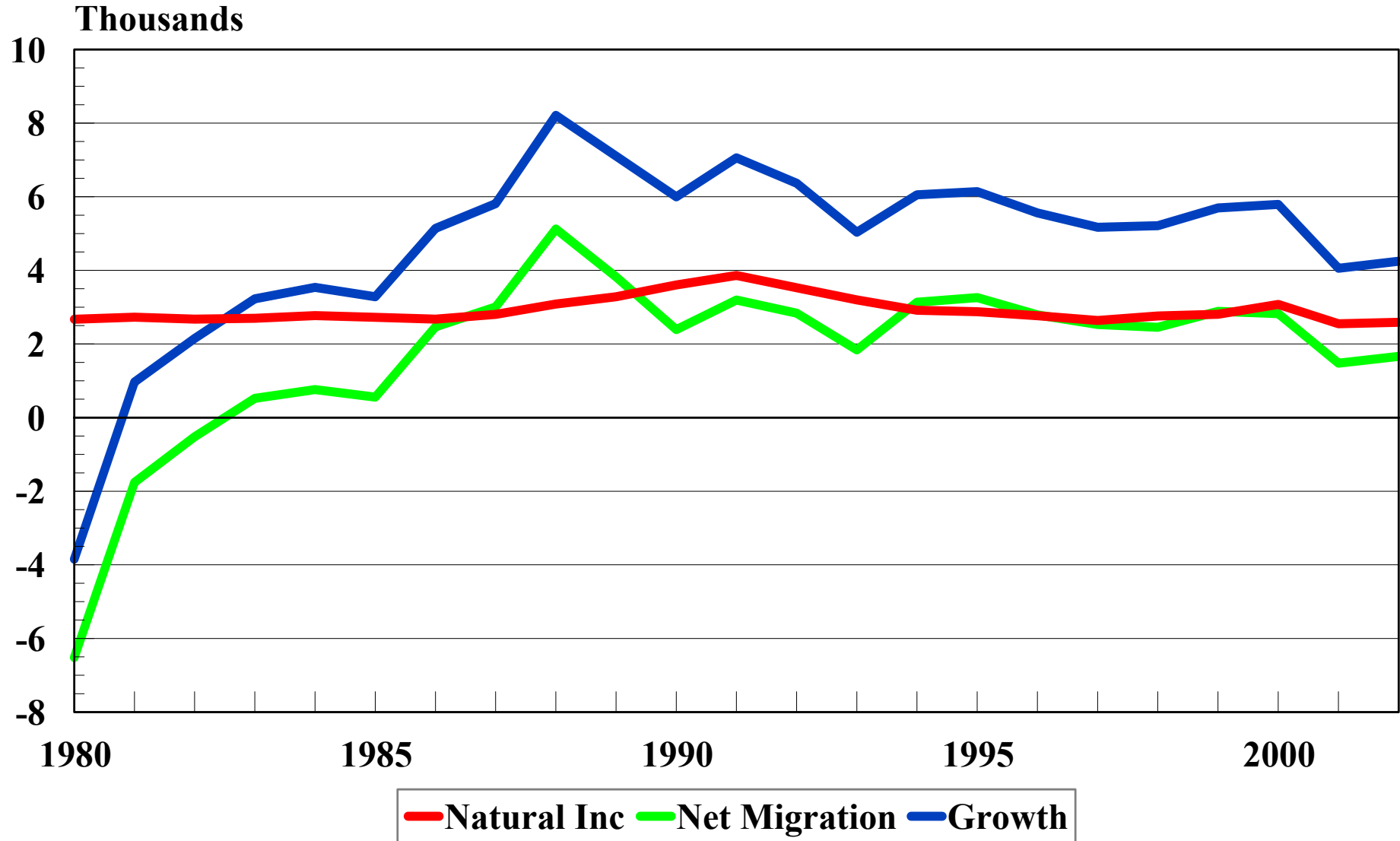
# Average Annual Population Growth Rates New Castle County 1790-2030



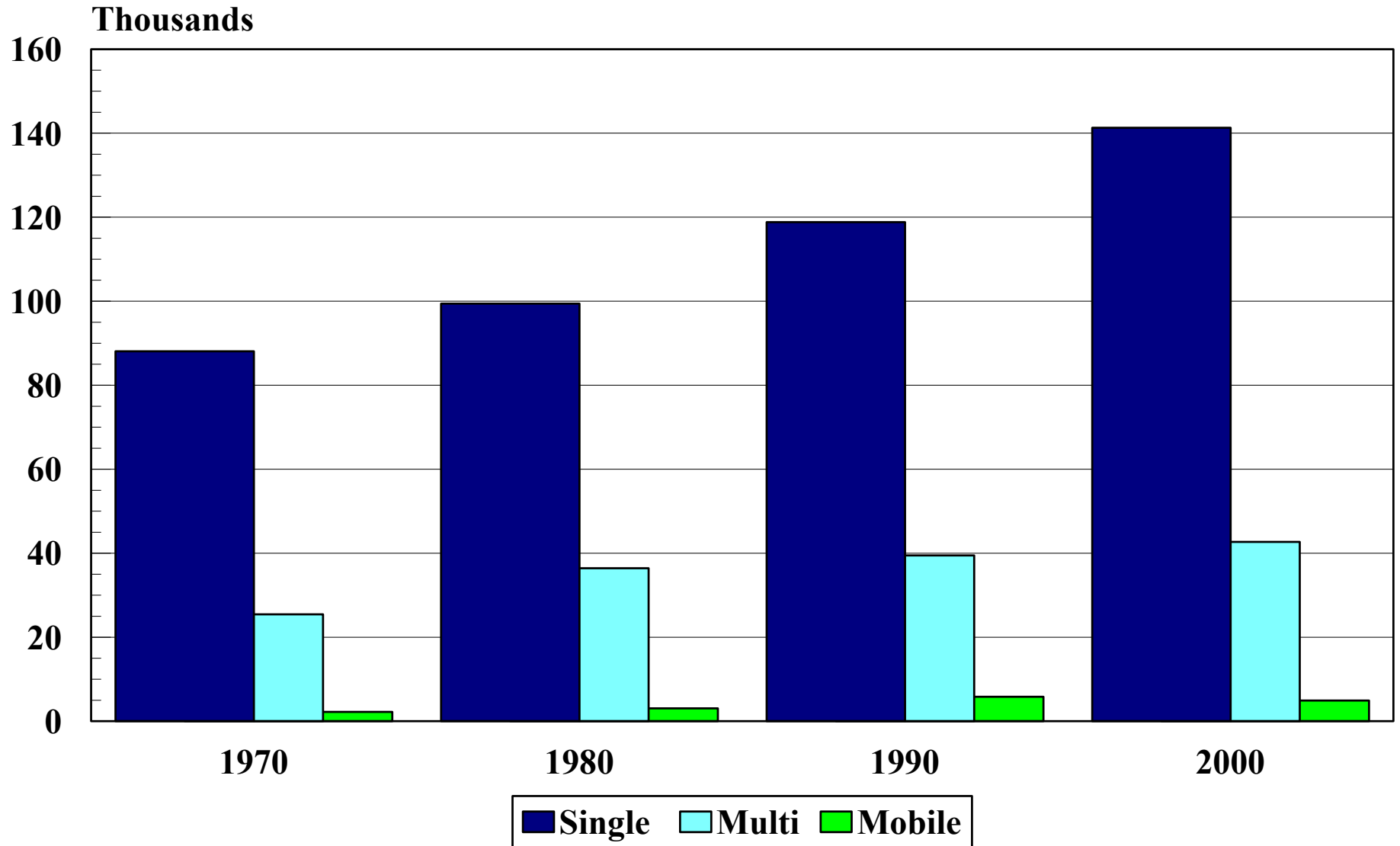
# New Castle County Population Growth 1790-2030



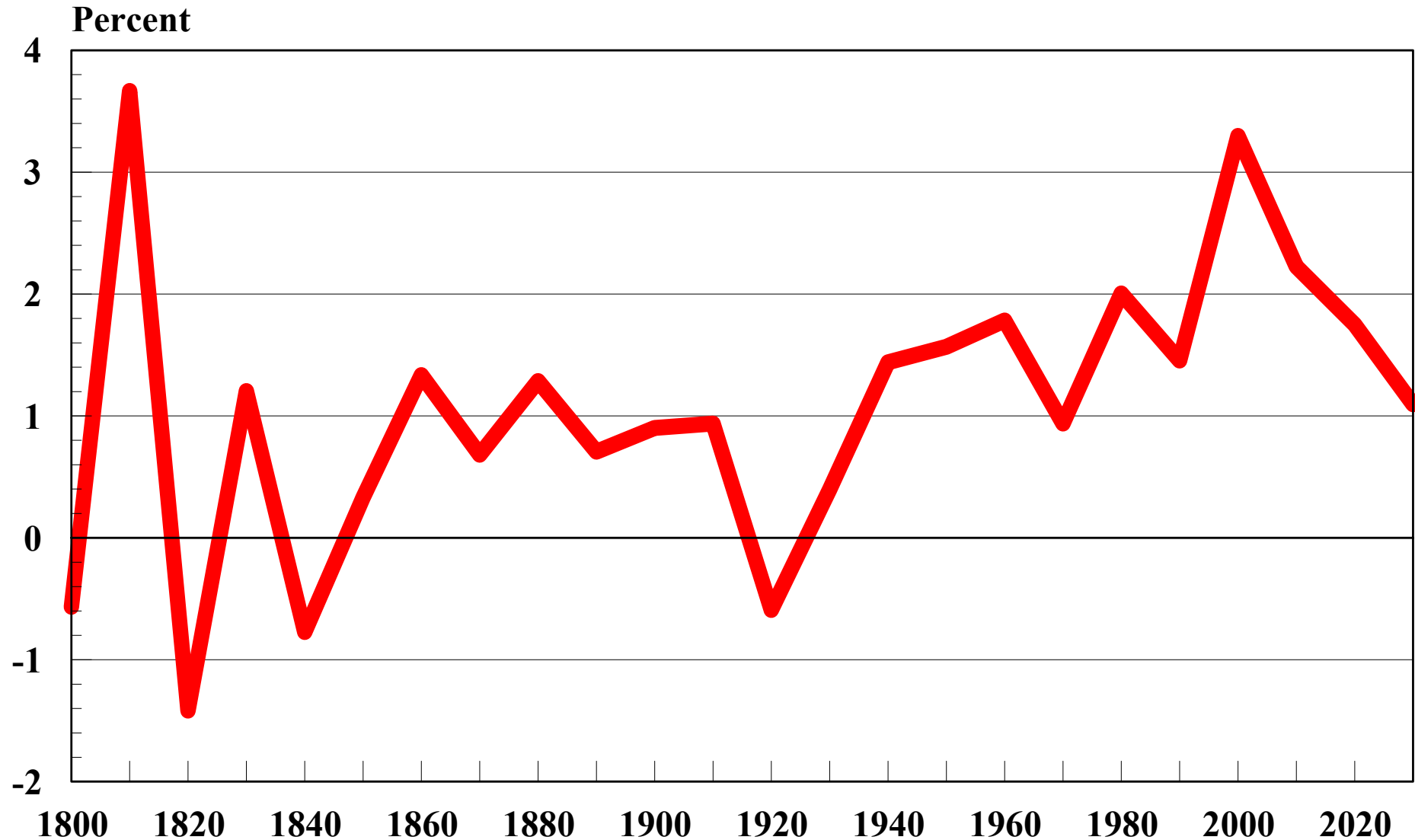
# Sources of Population Growth New Castle County 1980-2002



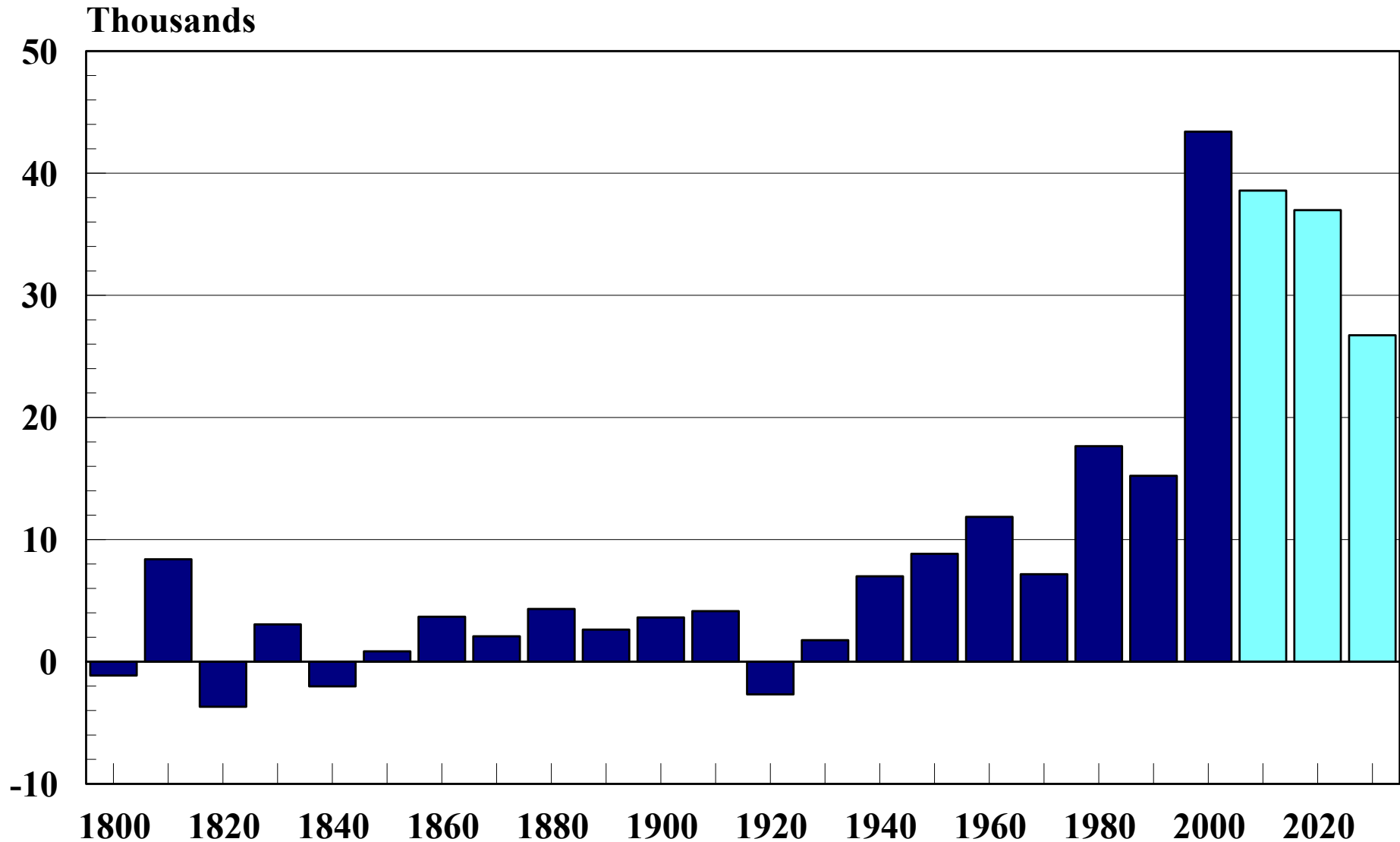
# Occupied Year-Round Housing Stock New Castle County 1970-2000



# Average Annual Population Growth Sussex County 1790-2030

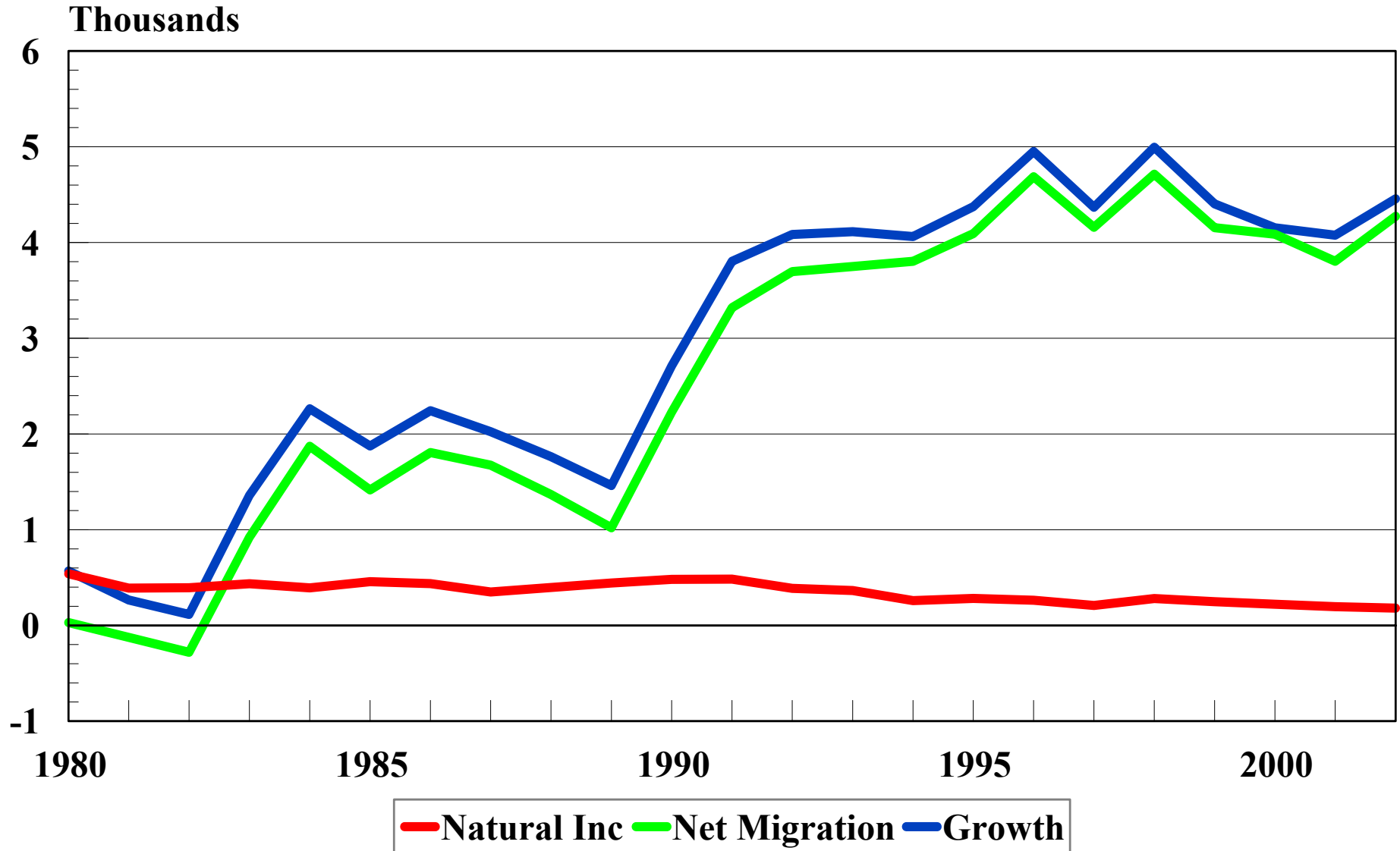


# Sussex County Population Growth 1790-2030



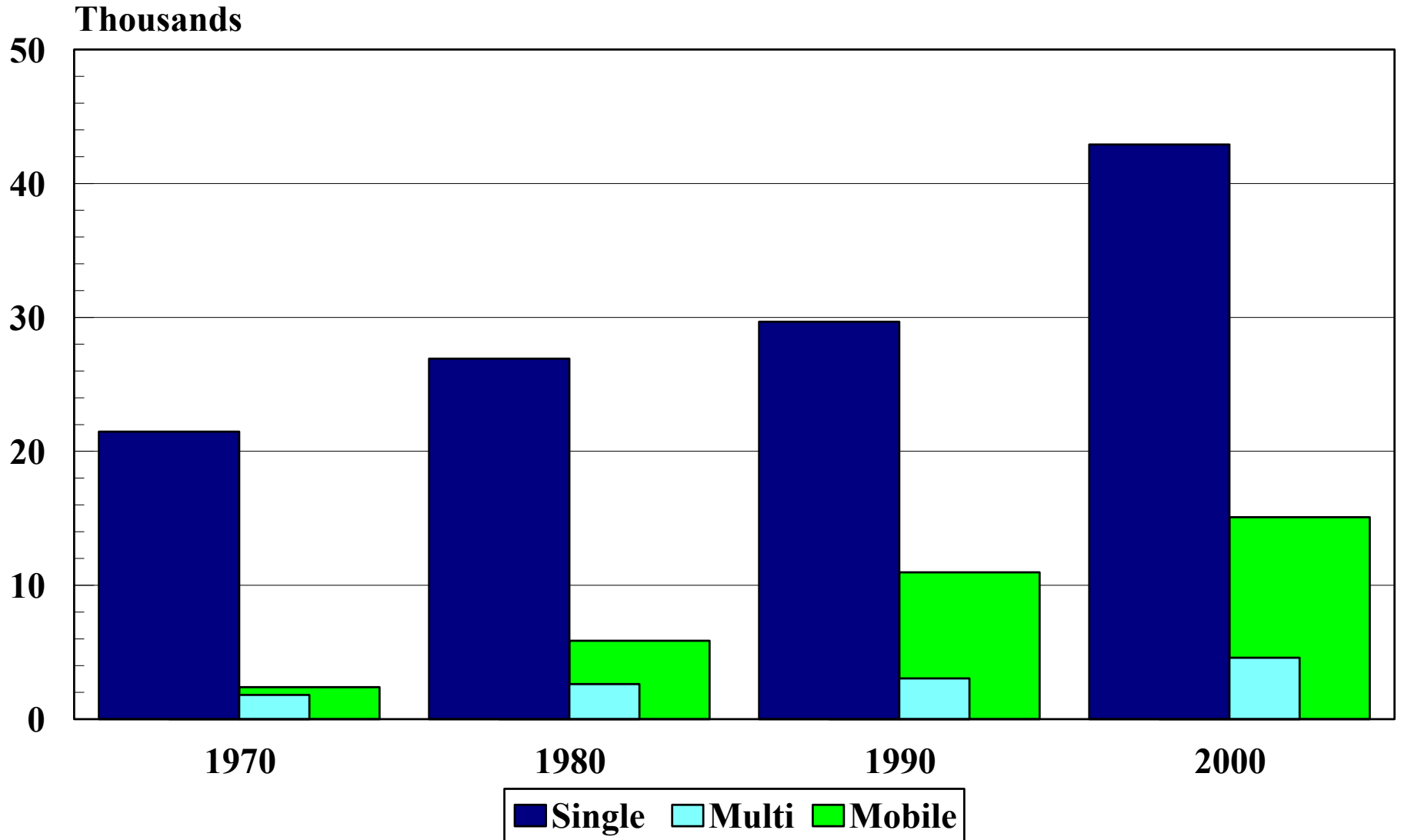
# Sources of Population Growth

## Sussex County 1980-2002



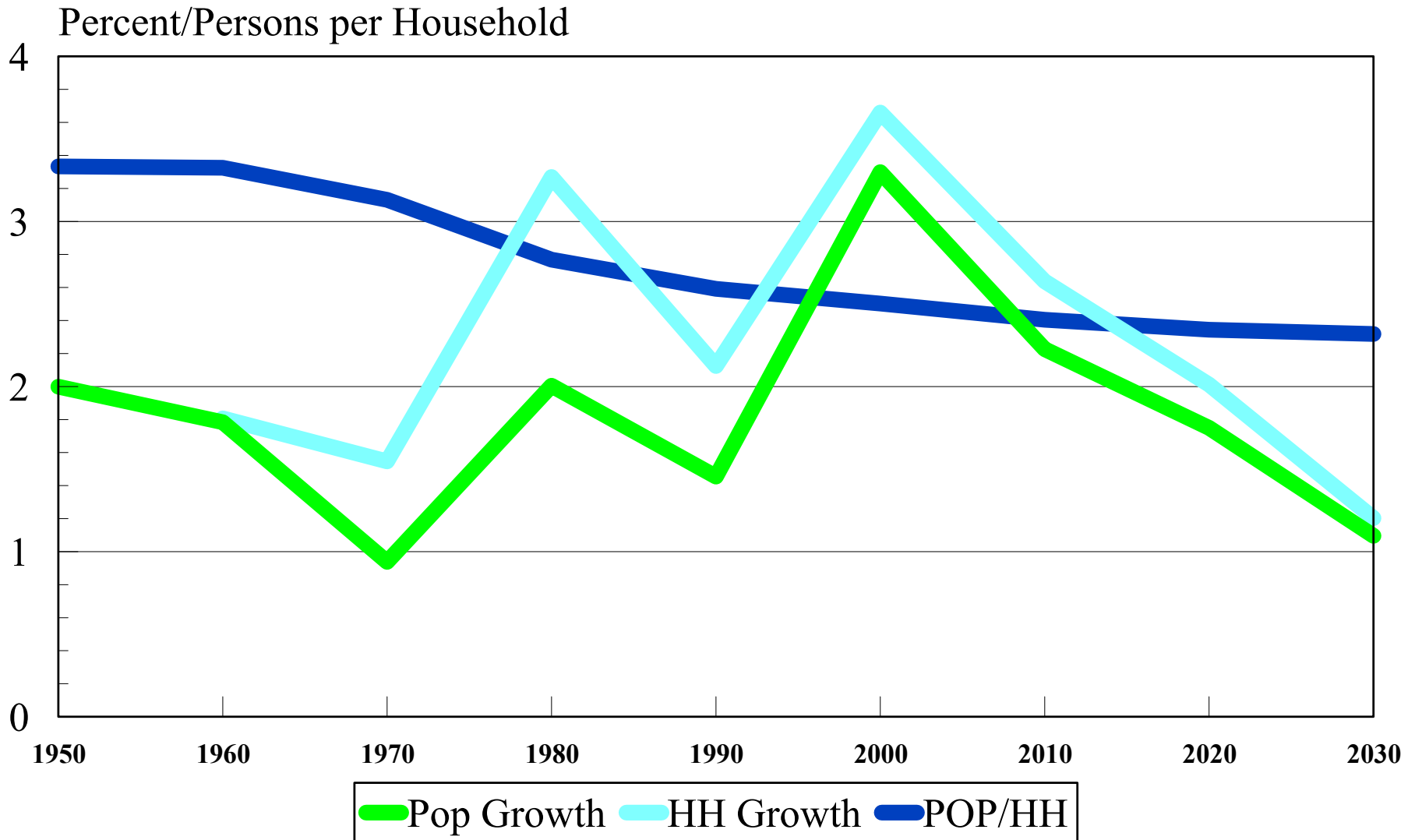


# Occupied Year-Round Housing Stock Sussex County 1970-2000



# Growth Rates of Population and Households

## Sussex County 1950-2030



# Vacant Units as a Percentage of all Housing Units Statewide

