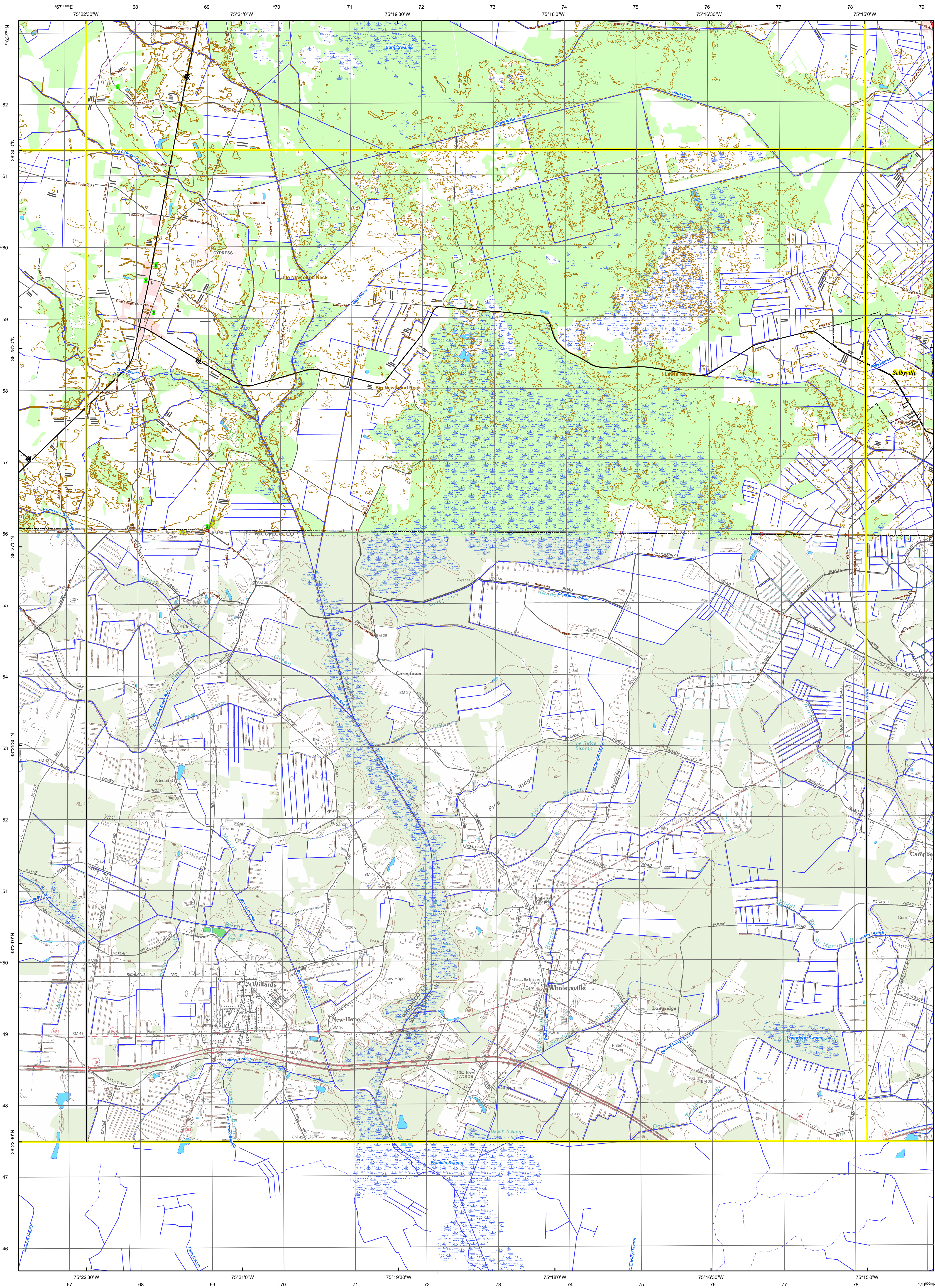


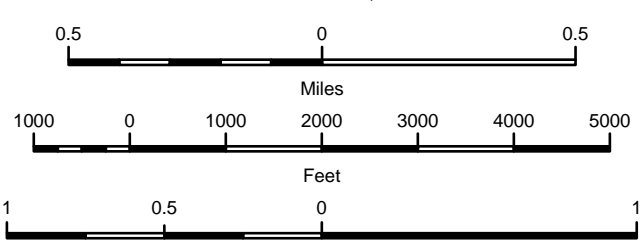


**Delaware DataMIL
7.5 Minute Series (Topographic,
Quadrangle**



Legend				
S	Boundary Monument	Boardwalk	Municipalities	Power Site
Y	Boat Ramp	Boat Ramp	Airport	Raceway
B	Campground	Embankment	Athletic Field	Railroad Yard
G	Church	Fence Line	Building	Refinery/Industrial Site
G	Gaging Station	Landing Strip	Cemetery	Rest Site
S	Gate	Pier/Breakwater/Jetty	Landmark Site	Substation
S	Gravel Pit	Pipeline	Oil Spill/Sludge Pit	Tank
S	Gravel Pit	Power Transmission Line	Pier/Breakwater/Jetty	Water Treatment Site
S	Gravel Pit	Racetrack	Pipeline Regulation Station	Federally Administered Area
S	Picnic Area	Sea Wall		State Lands
S	Picnic Area	Railroad or Siding (Underpassing)		Park
S	Tower	Railroad or Siding		Swamp
S	Tower			Rapids

SCALE 1:24,000

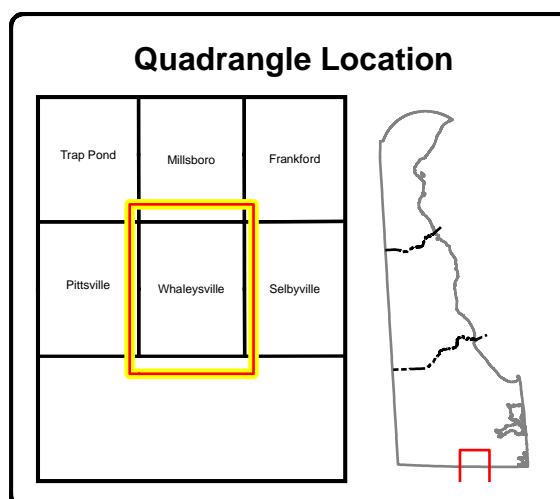


CONTOUR INTERVALS: 0-10 Feet / 2-foot Contour Interval; 10-100 Feet / 10-foot Index with a 6-foot Intermediate Contour Interval
Greater than 100 Feet / 10-foot Contour Interval

VERTICAL REFERENCE:
NORTH AMERICAN VERTICAL DATUM OF 1988 (NAVD88)
DEPTH CURVE DATA COMPILED FROM NOS CHARTS IN FEET
SHORELINE SHOWN REPRESENTS THE APPROXIMATE LINE OF MEAN HIGH WATER
MD, PA, AND NJ BORDER QUADRANGLES SHOW USGS DRG IMAGES OUTSIDE OF DELAWARE BORDER WITHIN QUADRANGLE

Map Produced by the Delaware DataMIL
Using the following Data Sources

USGS Delaware Geographic Names 2006
USGS Delaware Boundaries – County Boundary [lines] 1993
USGS Federal State Lands/Parks Areas 1993
USGS Delaware Land Use/Land Cover Features [points] 1993
USGS Delaware Miscellaneous Features [lines] 1993
USGS Delaware Miscellaneous Features [areas] 1993
USGS 7.5-minute Digital Raster Graphics 1992-93 (DRG)
USGS National Hydrography Dataset (NH) – High Resolution –
 Lake Pointe Pond 2008
USGS National Hydrography Dataset (NH) – High Resolution –
 Delaware River 2008
Delaware 7.5-minute Quadrangle Index 2002
Delaware Boundary Monuments 2002
Delaware State Index 2002
Delaware Contours 2005 (Sussex) and 2007 New Castle and Kent
Delaware Municipal Boundaries 2010
Delaware Road Centerline and Labels 2007
Delaware Private Schools 2010
Delaware Public Schools 2010
Delaware Local Office Locations (DeDOT) 2009
New Castle County Communities 2009
Kent County Communities 2009
Sussex County Communities 2009



Whaleysville
Delaware DataMIL: <http://datamil.delaware.gov>

Created: 1/30/2011

Disclaimer
This Delaware DataMIL 7.5-minute topographic map replaces the USGS 7.5-minute Primary Map Series for the State of Delaware. Reasonable efforts have been made by Delaware DataMIL staff to verify that this map and the digital data provided here accurately portray the source data used in its preparation; however, this map may contain omissions and errors in scale, resolution, rectification, positional accuracy, development methodology, and other circumstances. This map is also date specific. Date information on the individual layers comprising this map are given as part of the marginalla of this map. This map was prepared for a scale of 1:24,000 and should not be used at larger scales, nor should this map should be used for navigational, engineering, legal, or any other site-specific use. Nothing contained herein shall be deemed an expression or implied waiver of the sovereign immunity of the State of Delaware or its duly authorized representatives, agents, or employees.