

Delawareans and the Y2K Problem

Attitudes and Actions

Survey Background

Data collected from June-July 1999

Random Digit Dialing Methodology

random selection of one adult (18+) in each household

15 call-backs

daytime, nighttime, weekend segments

refusal conversion

935 telephone interviews completed

304 in Kent County

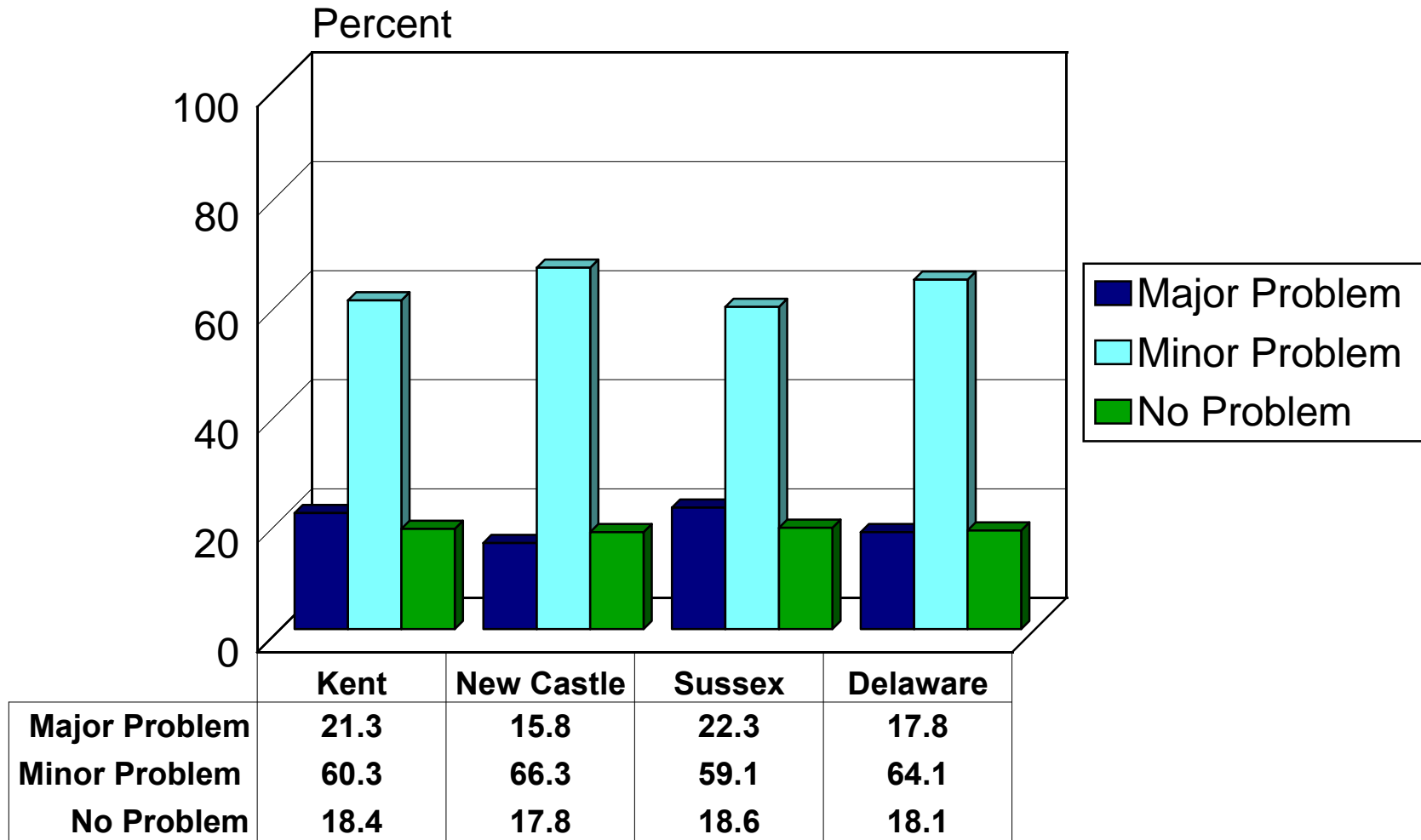
323 in New Castle County

308 in Sussex County

Data weighted for number of residential numbers and number of adults

Data reweighted to age-sex distribution in each county

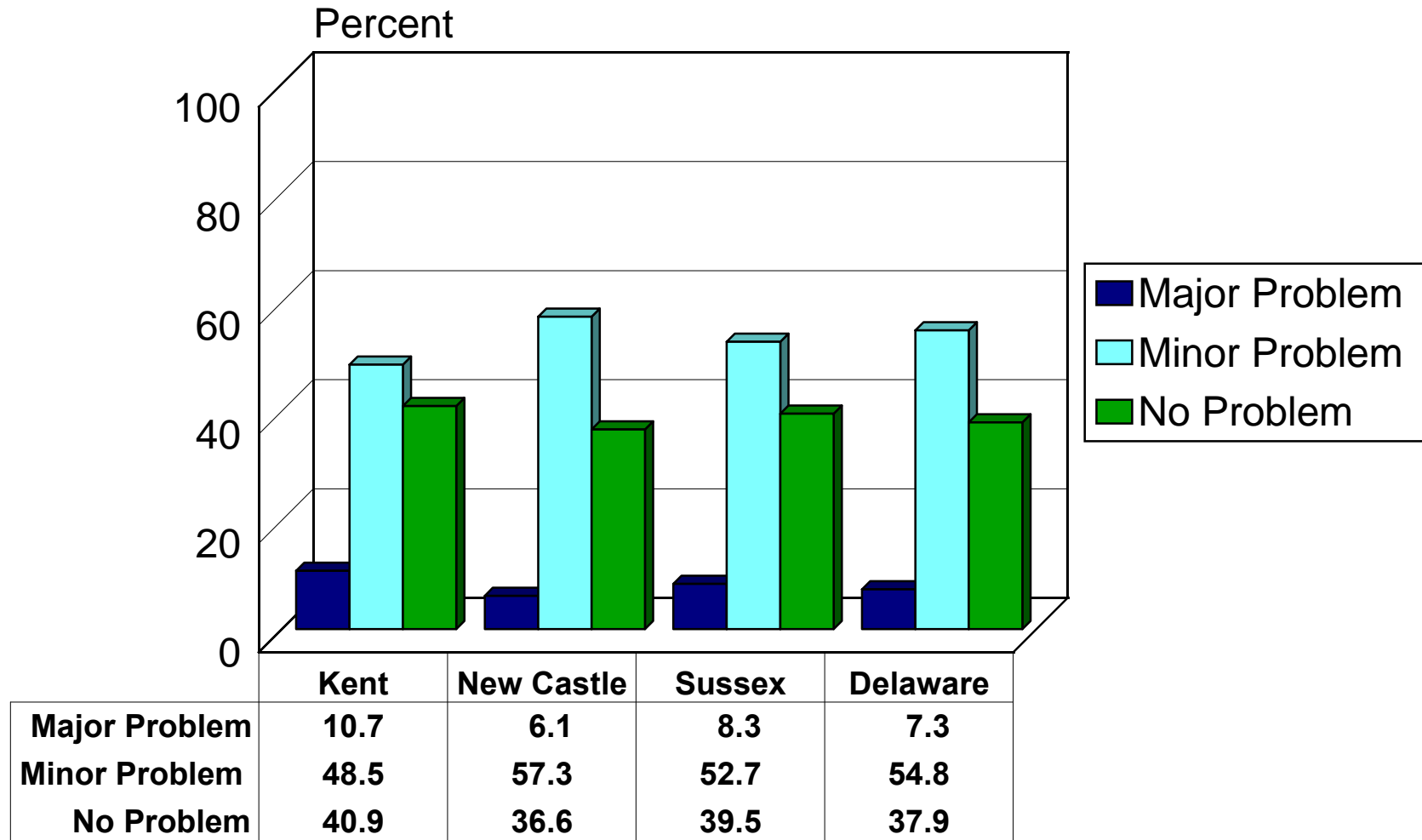
Will Y2K cause problems? by County



Source: Center for Applied Demography & Survey Research, University of Delaware

Will Y2K cause problems for you personally?

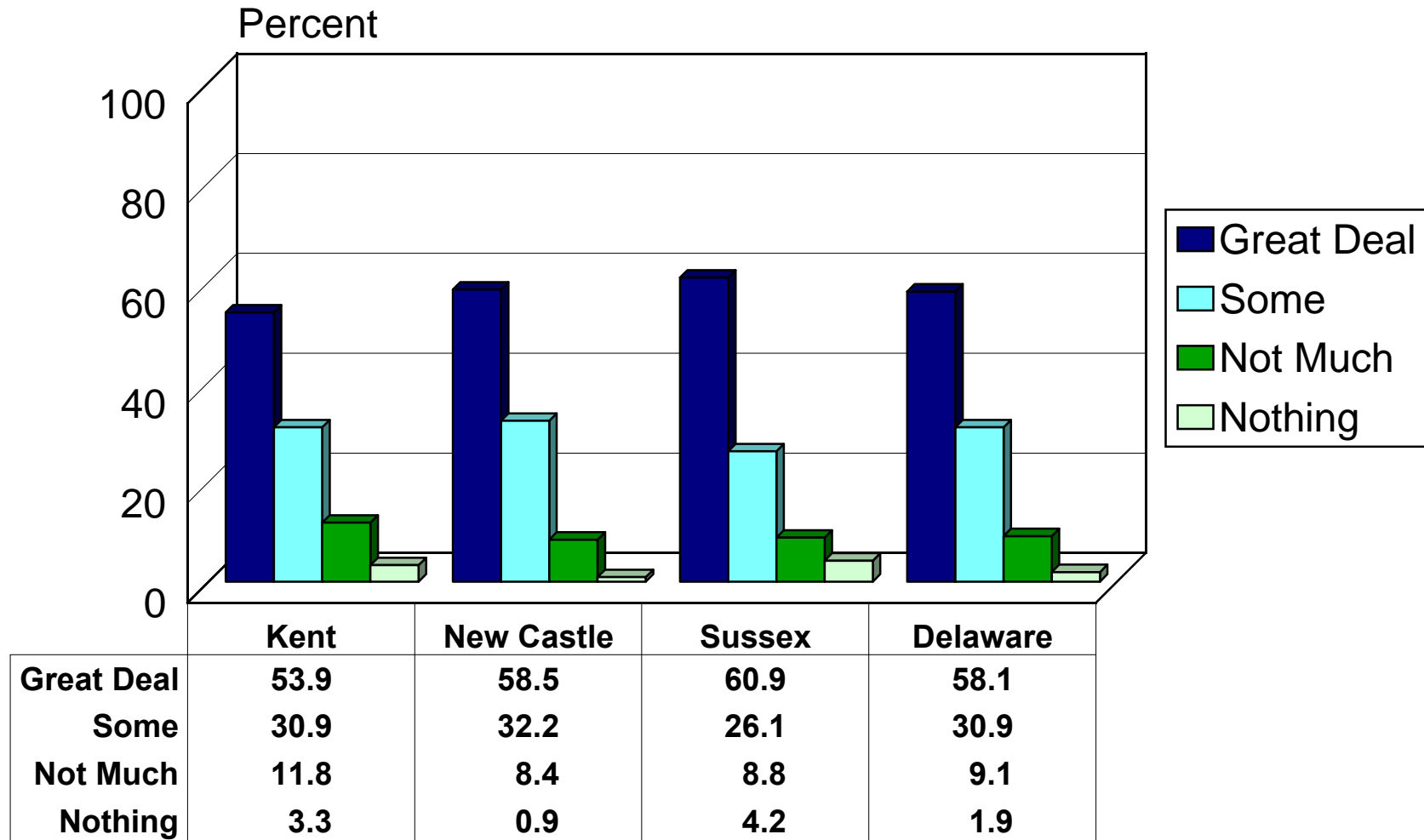
by County



Source: Center for Applied Demography & Survey Research, University of Delaware

How much have you heard about Y2K?

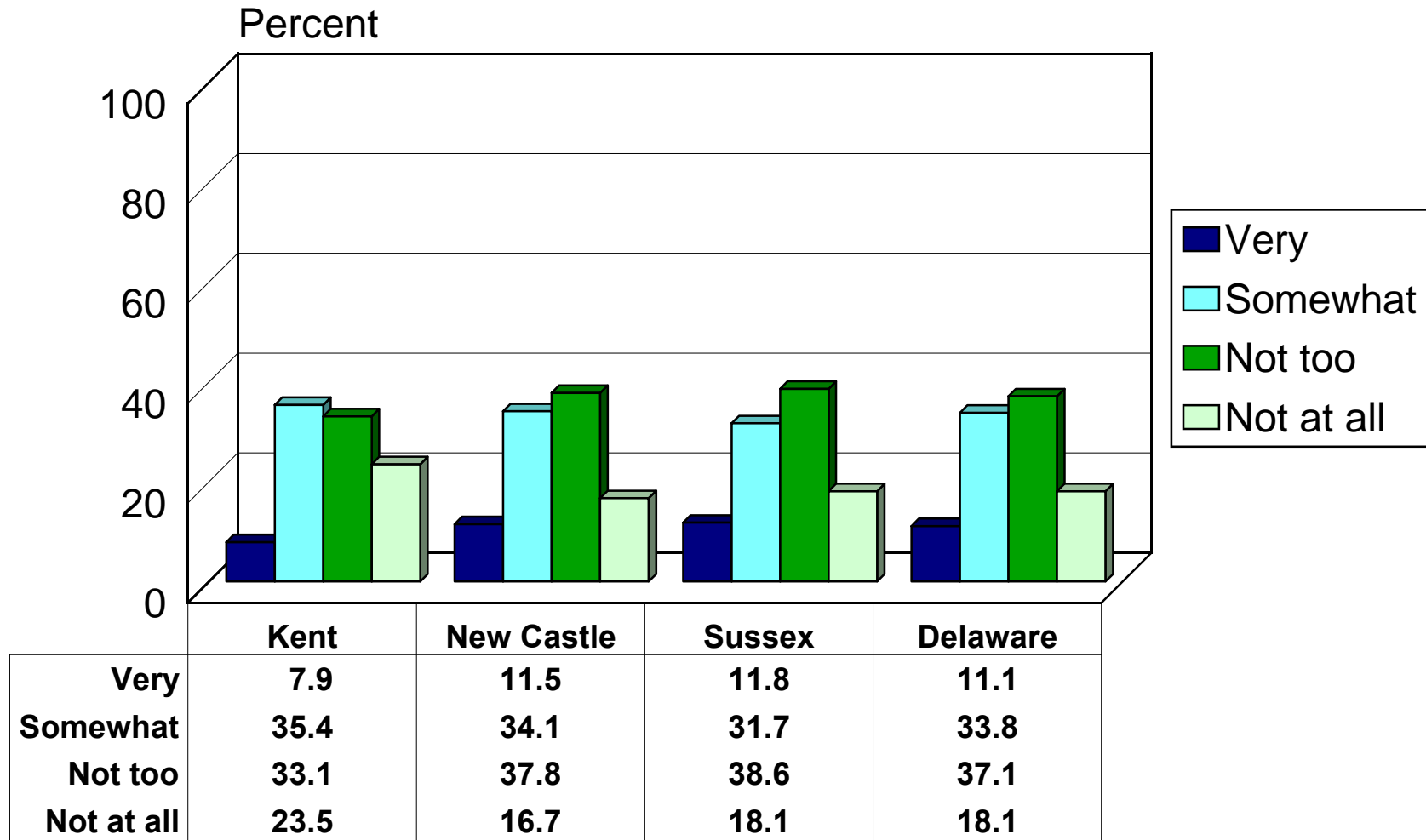
by County



Source: Center for Applied Demography & Survey Research, University of Delaware

Overall, how concerned are you?

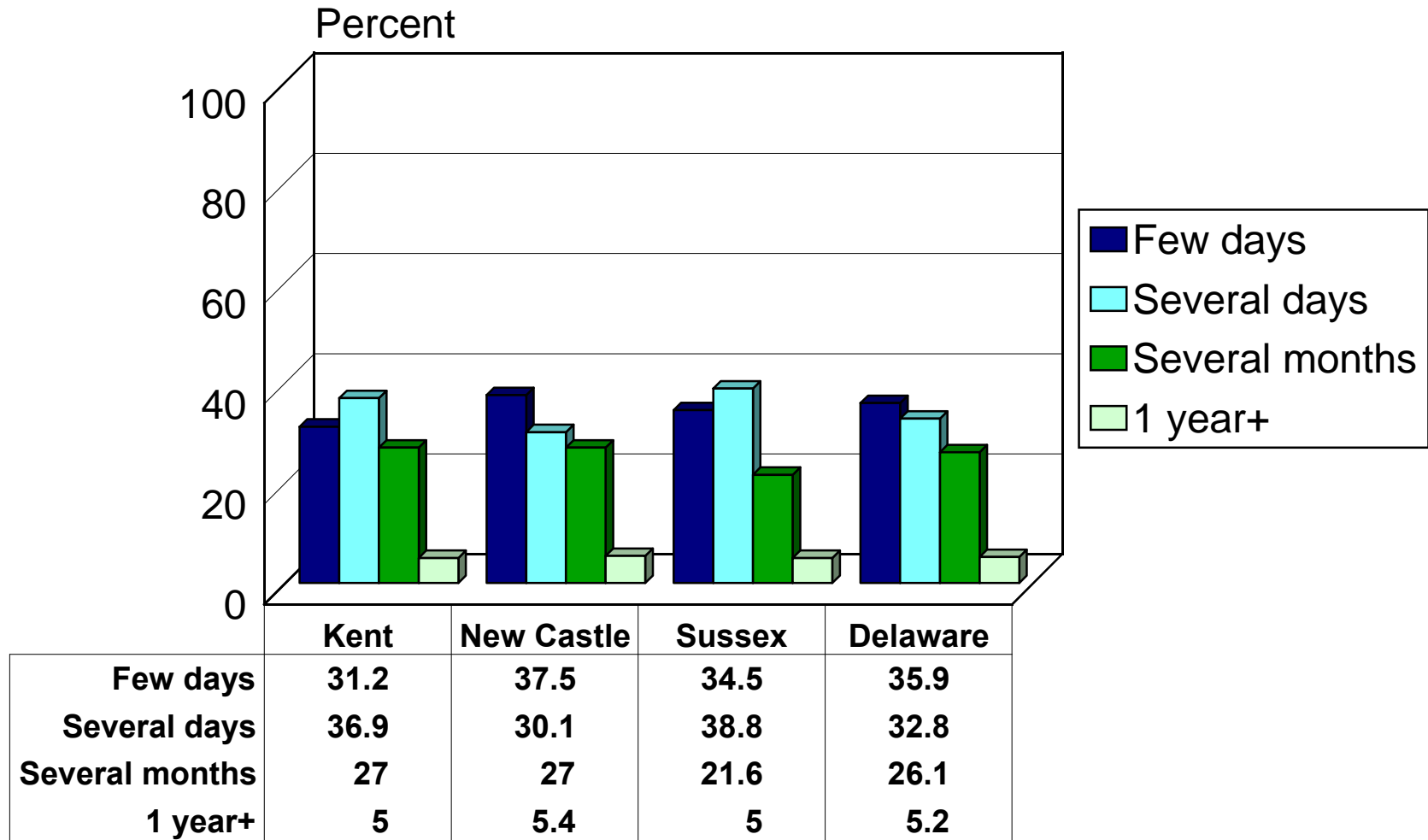
by County



Source: Center for Applied Demography & Survey Research, University of Delaware

How long will problems last?

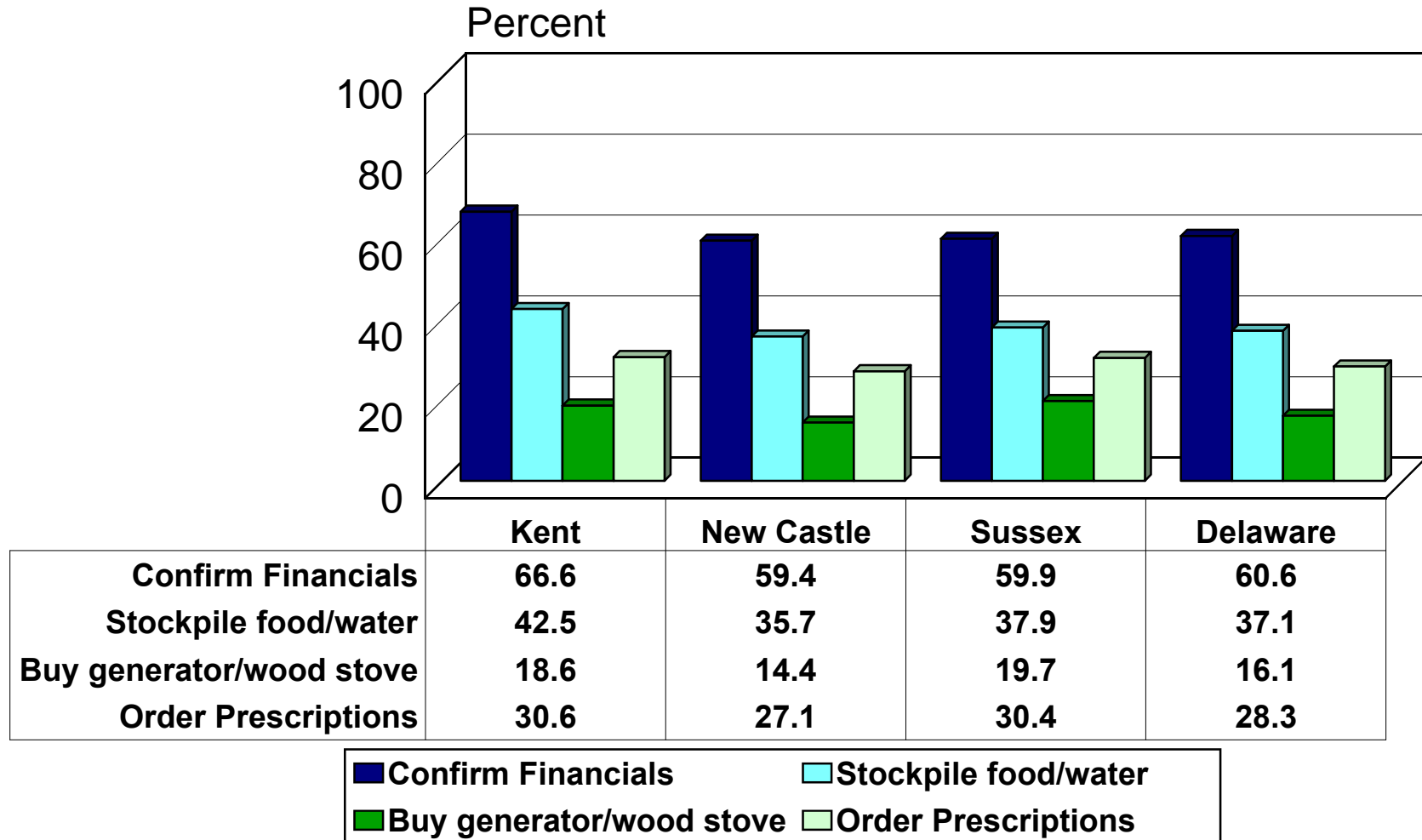
by County



Source: Center for Applied Demography & Survey Research, University of Delaware

Would you take these actions?

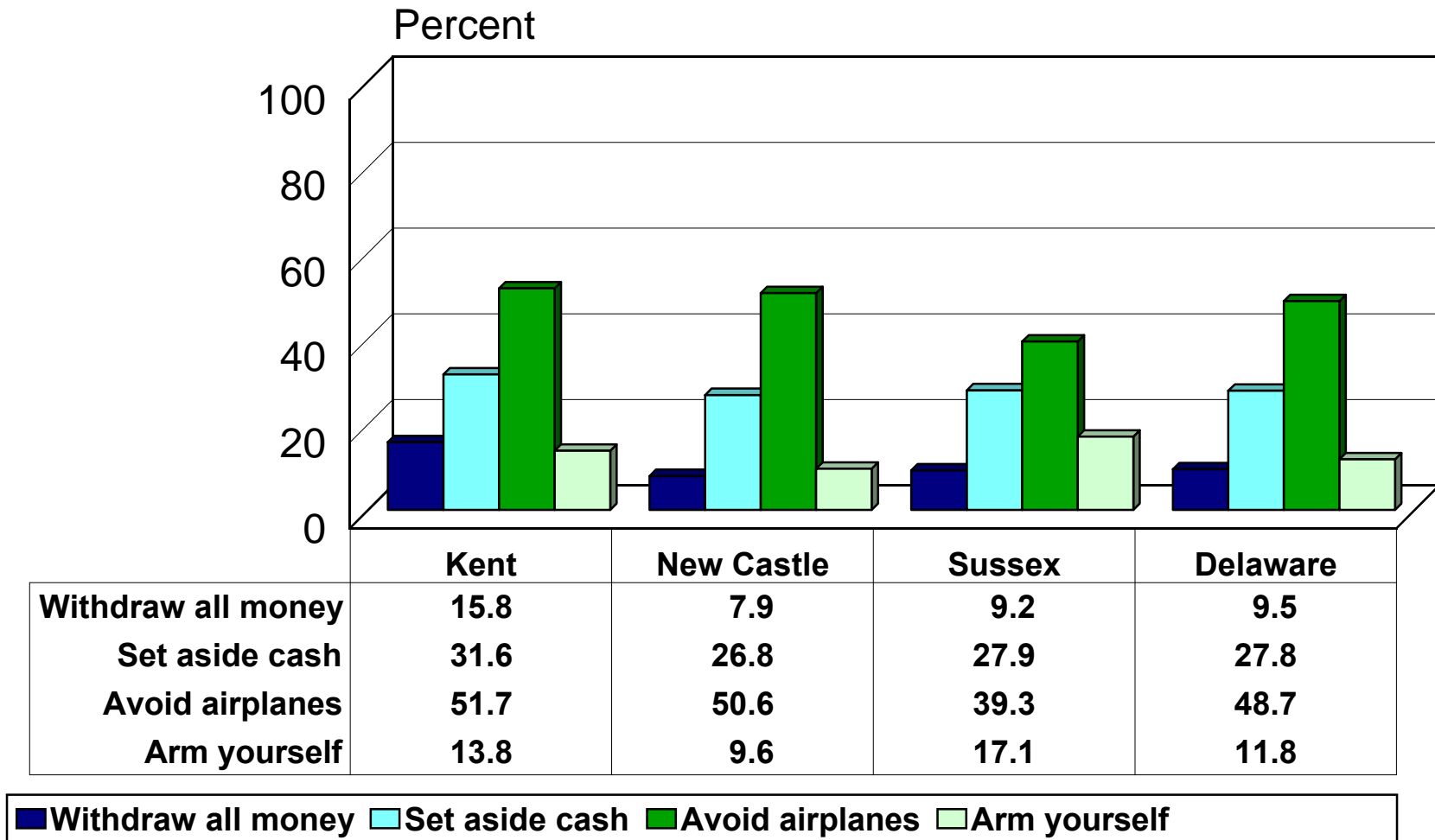
by County



Source: Center for Applied Demography & Survey Research, University of Delaware

Would you take these actions (continued)?

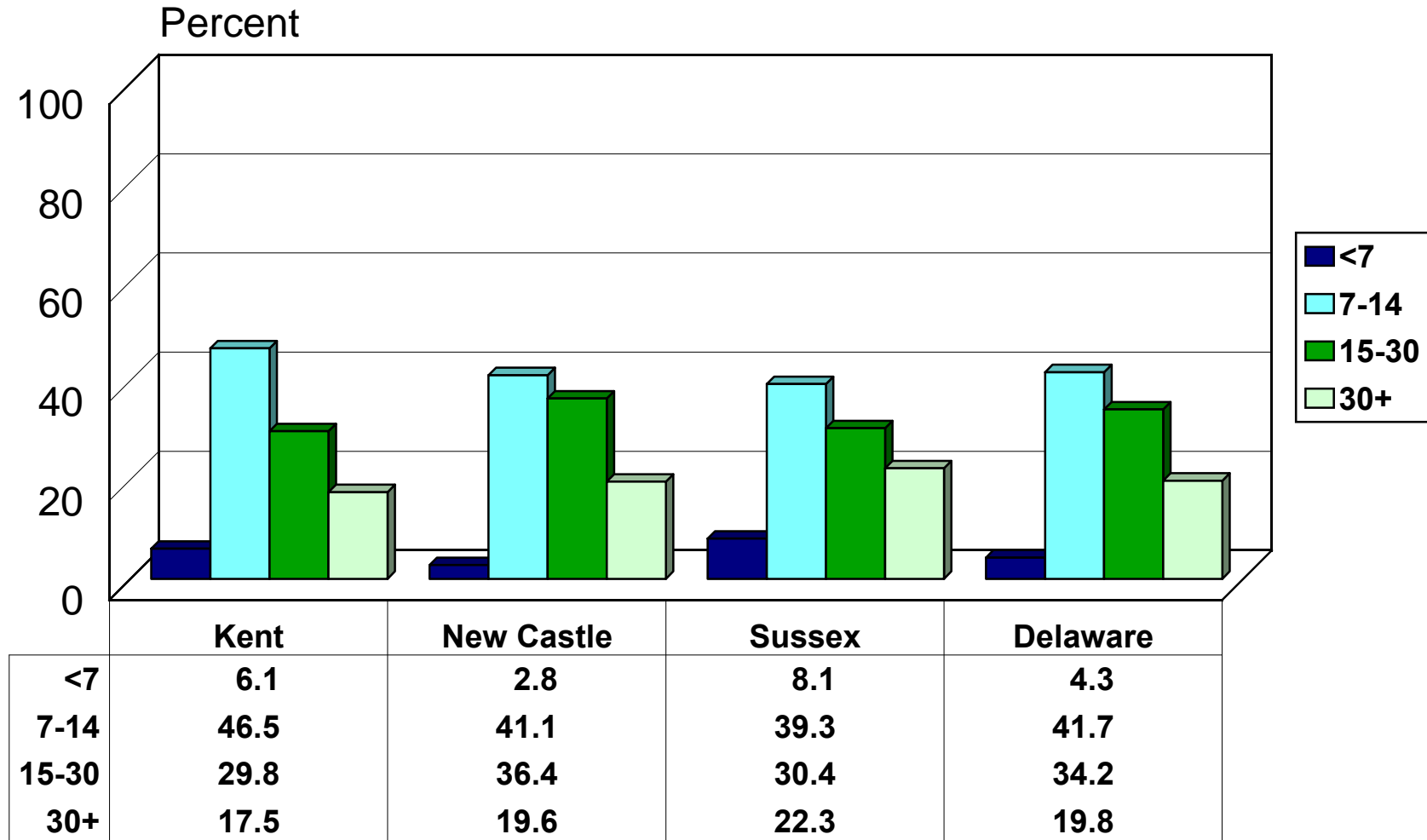
by County



Source: Center for Applied Demography & Survey Research, University of Delaware

How many days would you stockpile for?

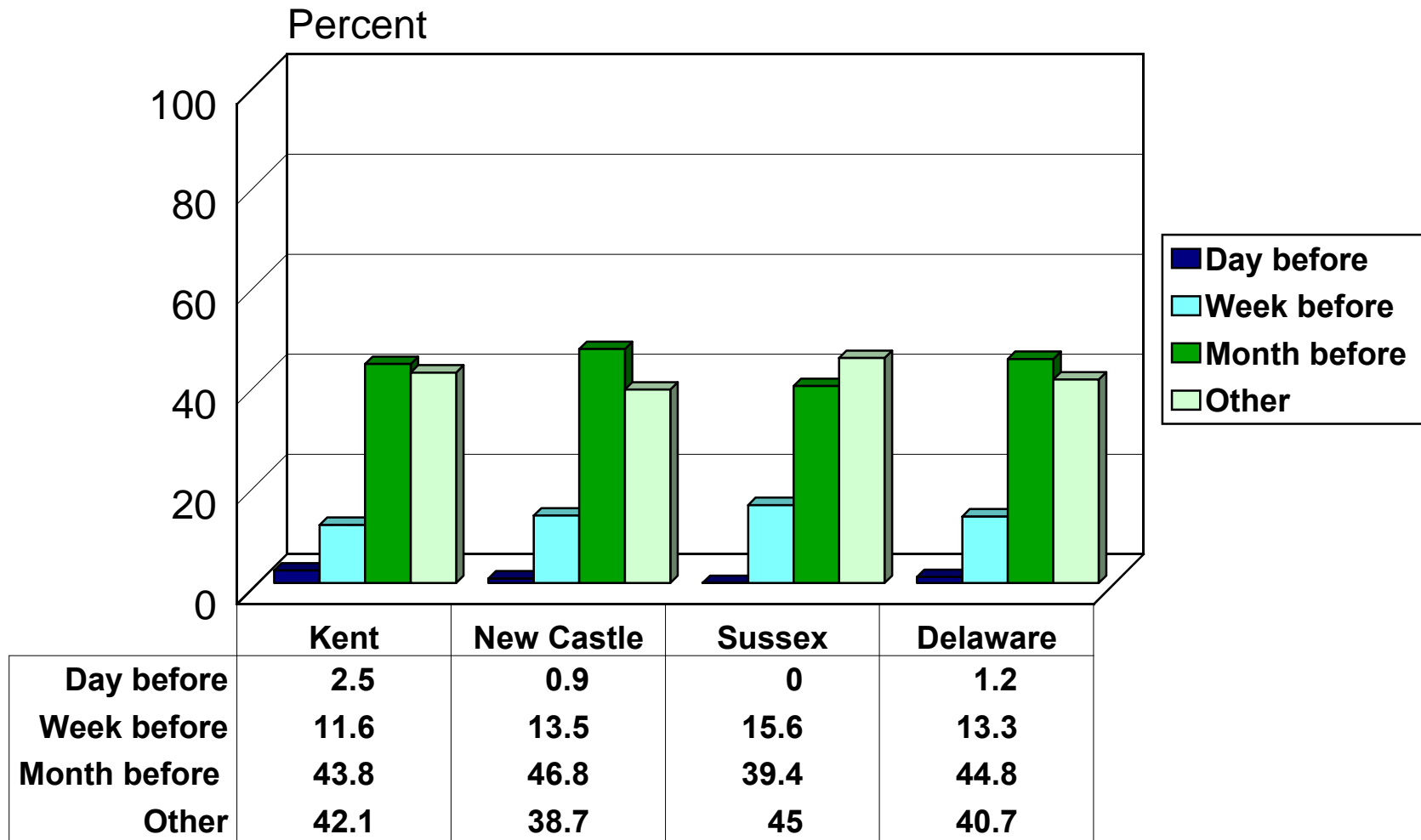
by County



Source: Center for Applied Demography & Survey Research, University of Delaware

When would you stockpile?

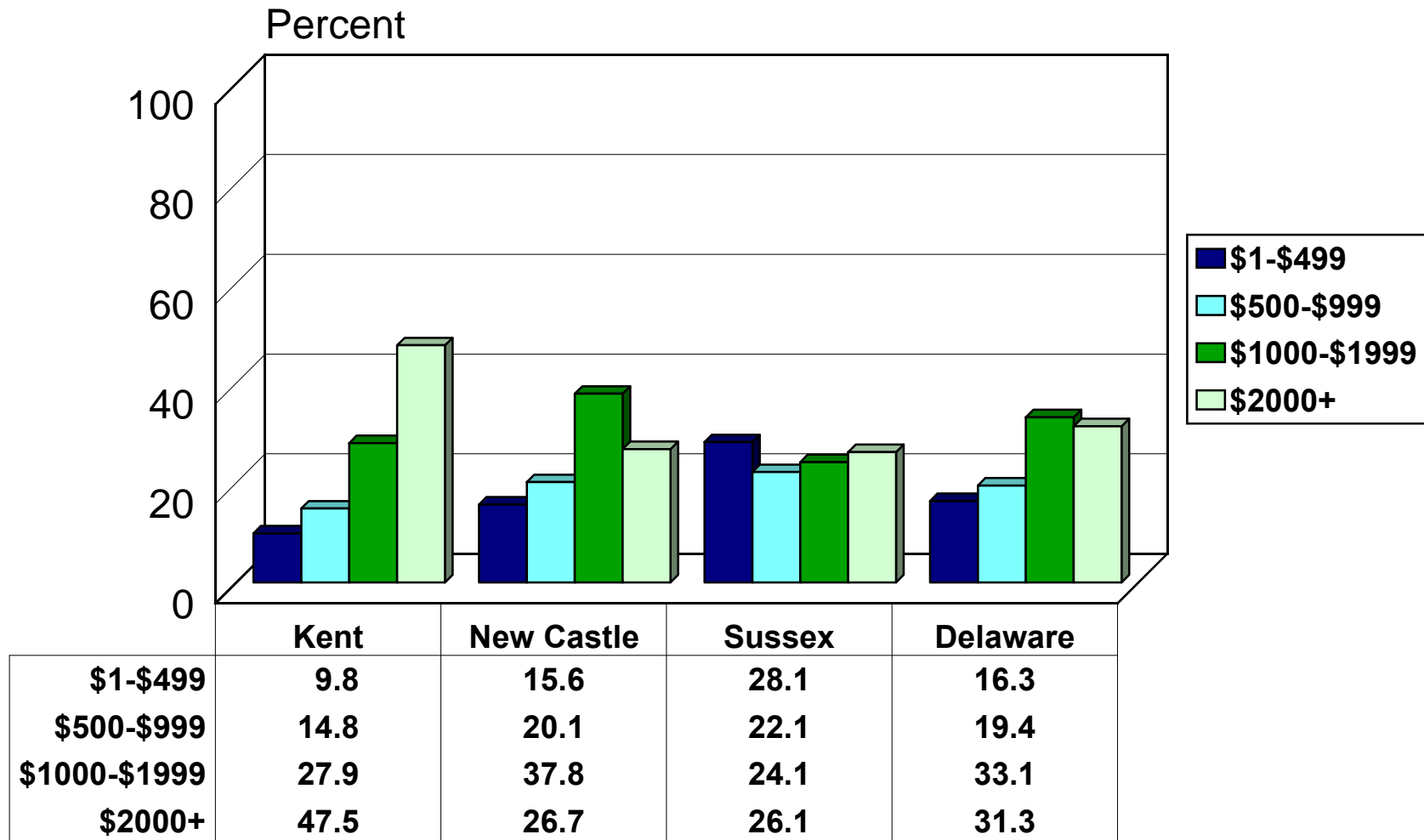
by County



Source: Center for Applied Demography & Survey Research, University of Delaware

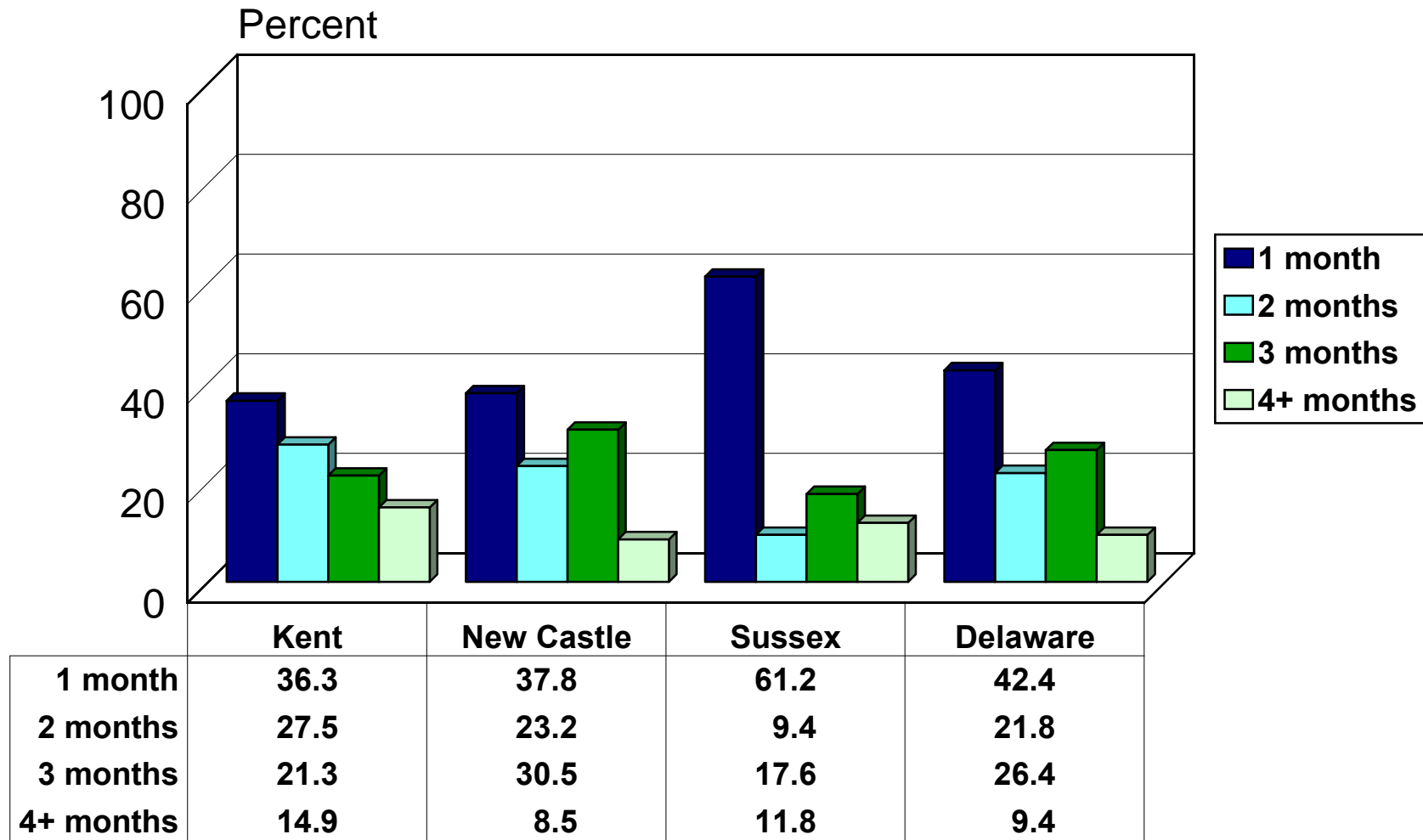
How much money would you withdraw?

by County



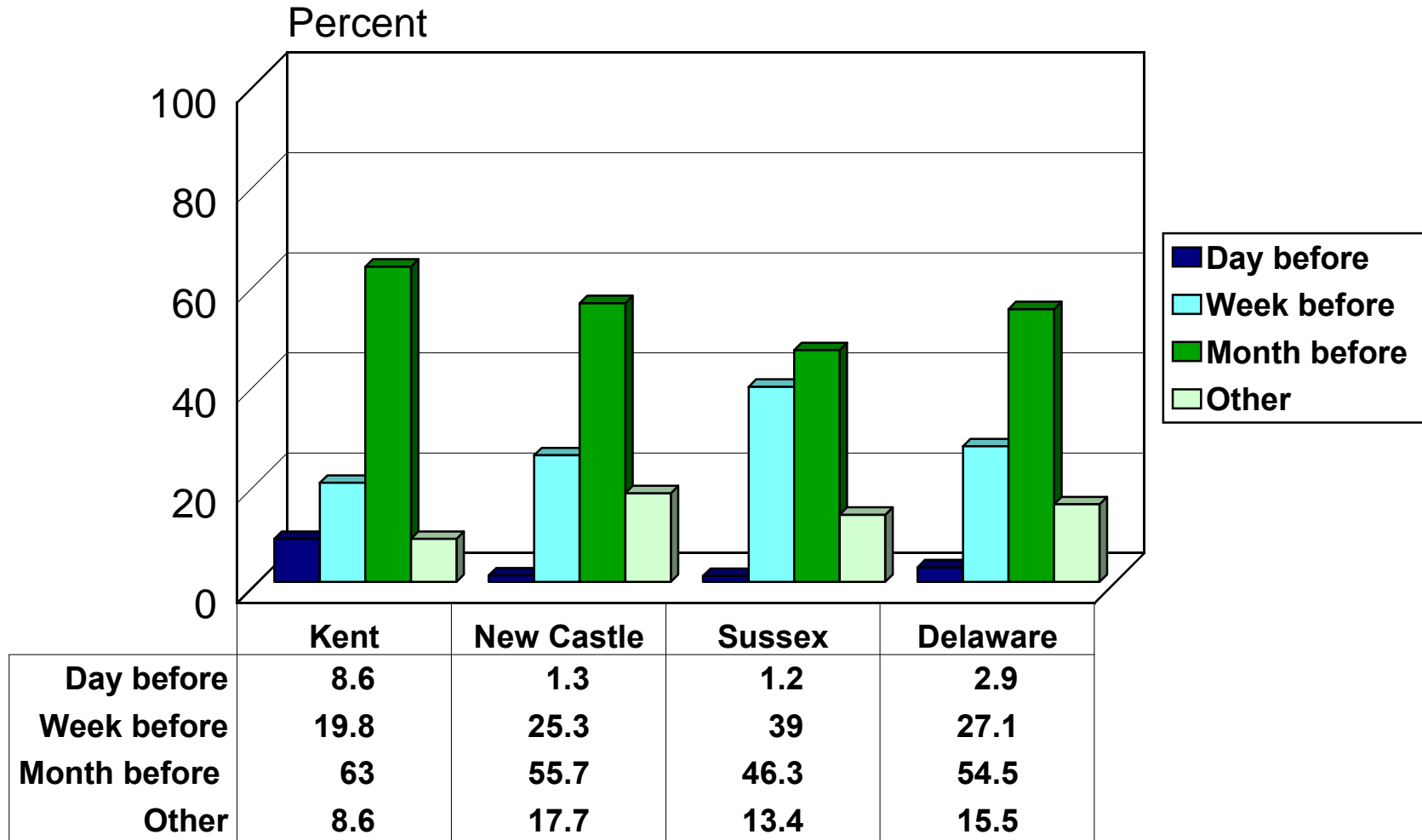
Source: Center for Applied Demography & Survey Research, University of Delaware

How many months of prescriptions? by County



Source: Center for Applied Demography & Survey Research, University of Delaware

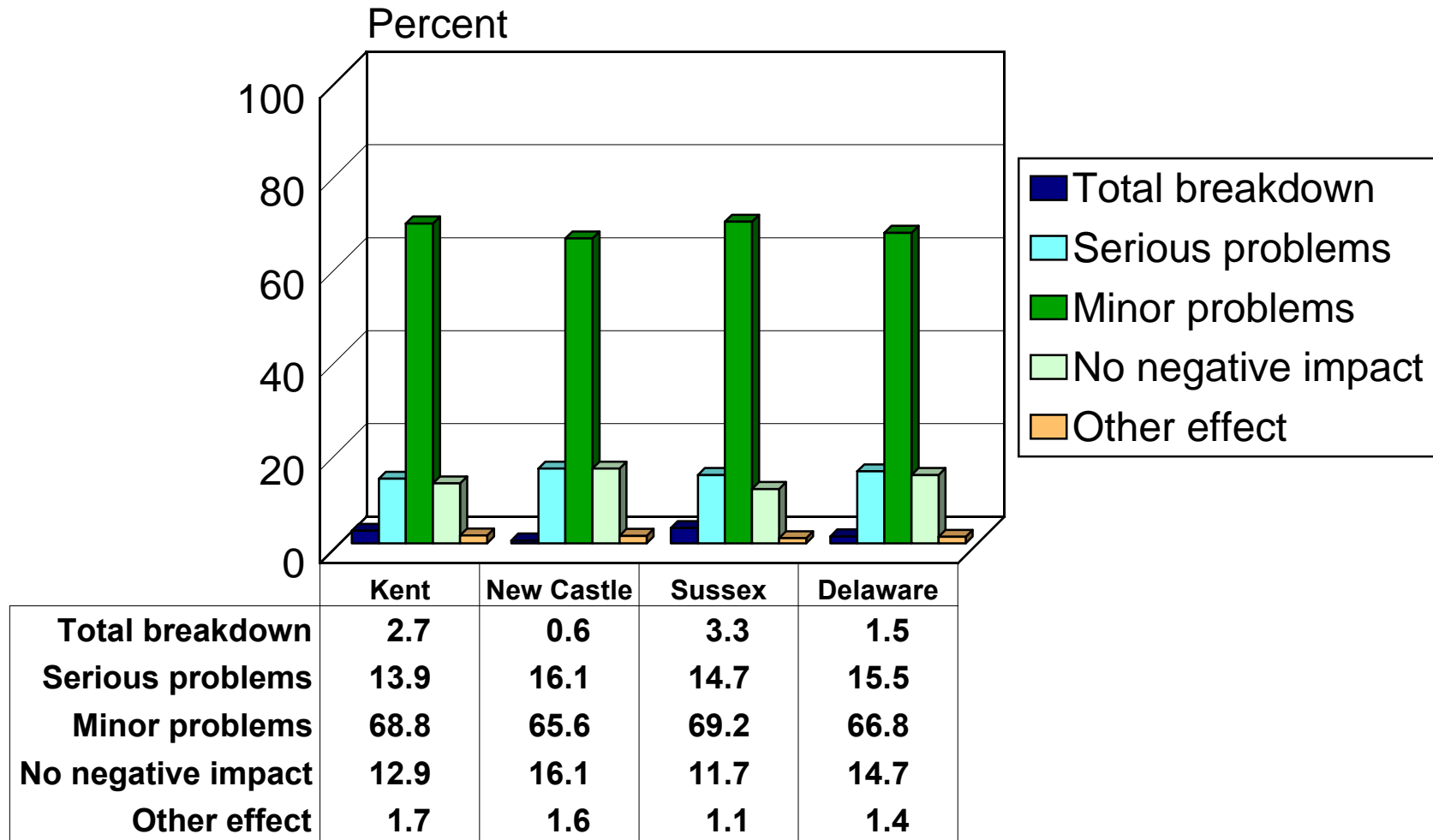
When would you renew prescription? by County



Source: Center for Applied Demography & Survey Research, University of Delaware

What will be the effect on the economy?

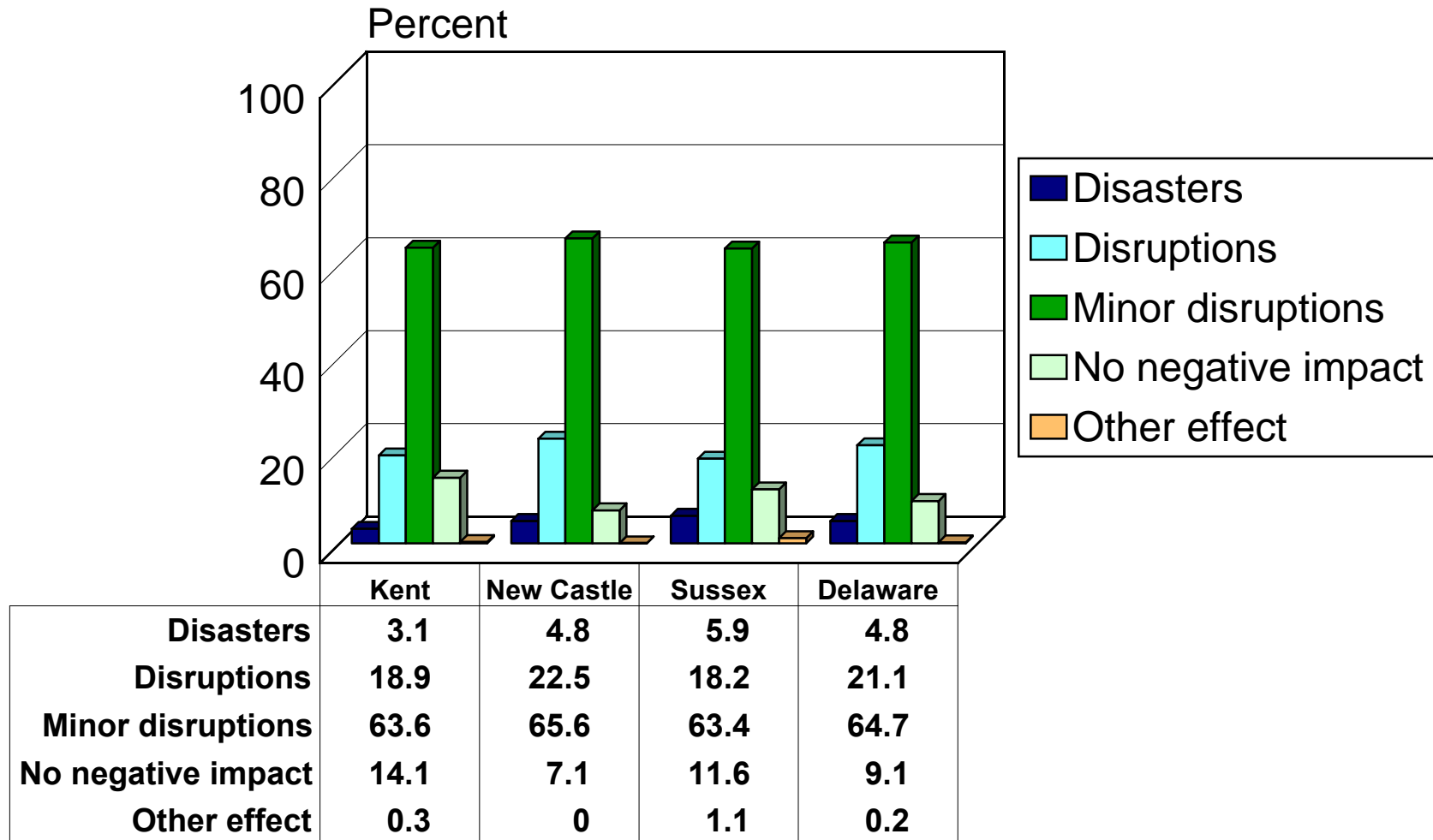
by County



Source: Center for Applied Demography & Survey Research, University of Delaware

How serious will the problems be in the US?

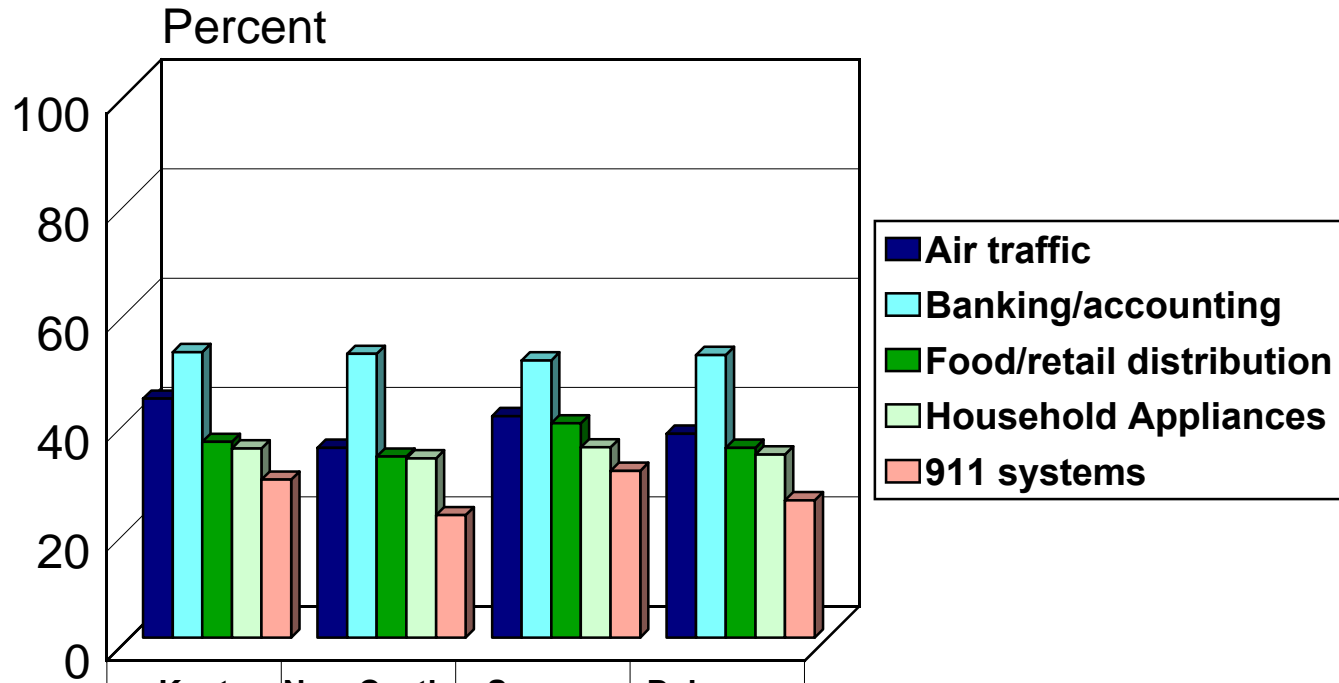
by County



Source: Center for Applied Demography & Survey Research, University of Delaware

What systems will likely fail?

by County

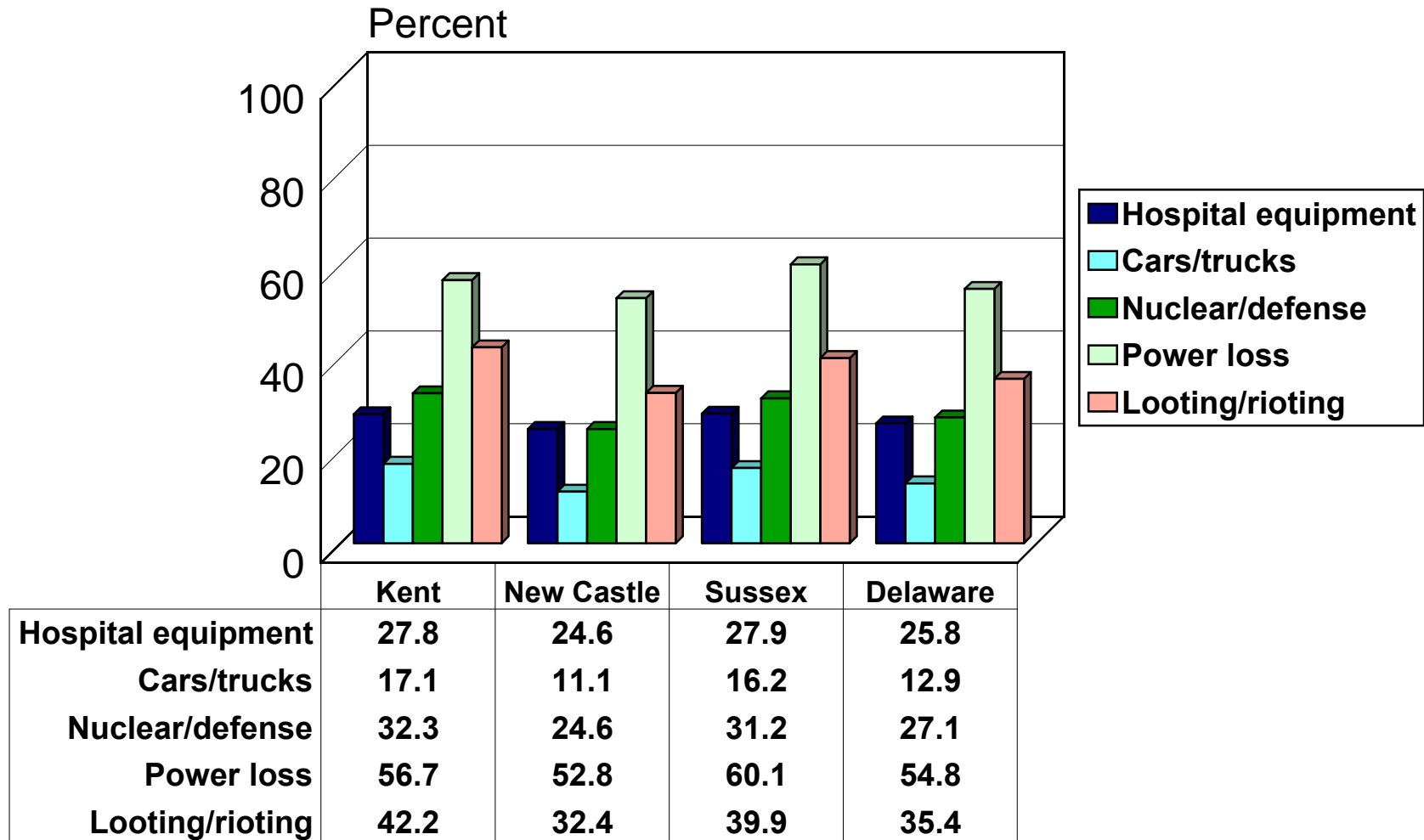


	Kent	New Castle	Sussex	Delaware
Air traffic	43.7	34.7	40.5	37.3
Banking/accounting	52.2	51.9	50.7	51.7
Food/retail distribution	35.8	33.1	39.2	34.7
Household Appliances	34.6	32.8	34.8	33.5
911 systems	28.9	22.4	30.5	25.1

Source: Center for Applied Demography & Survey Research, University of Delaware

What systems will likely fail (continued)?

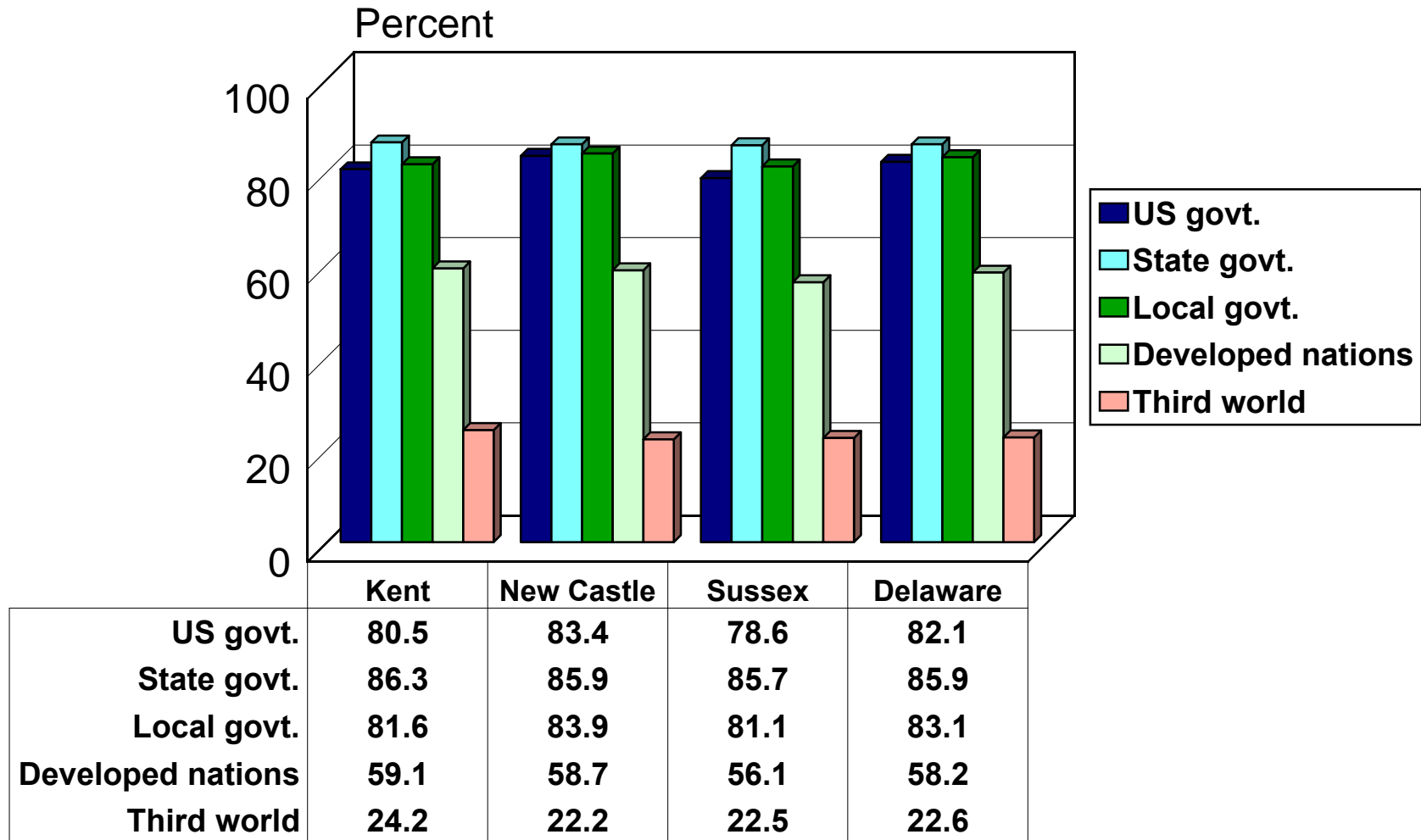
by County



Source: Center for Applied Demography & Survey Research, University of Delaware

Confidence that governments are prepared?

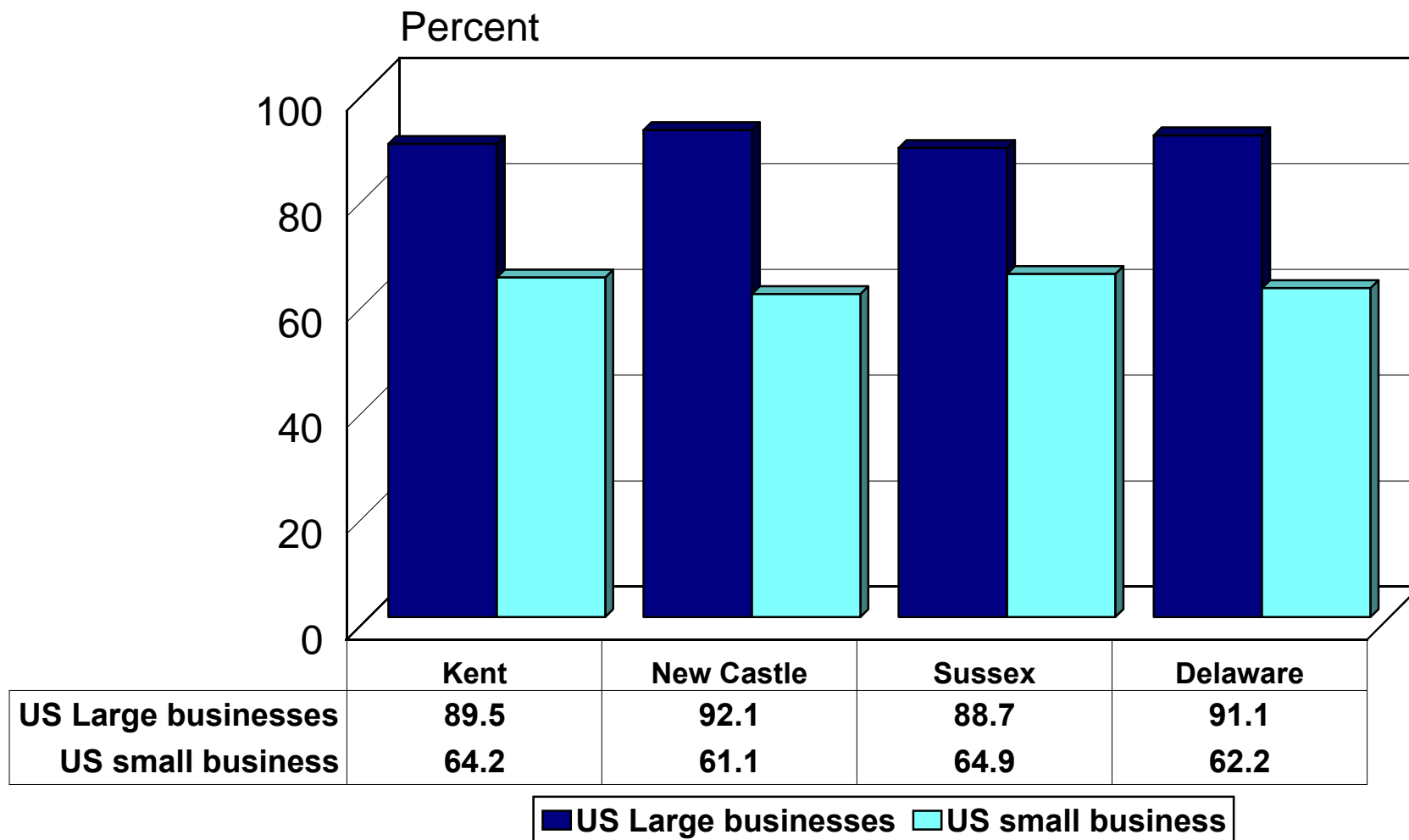
by County



Source: Center for Applied Demography & Survey Research, University of Delaware

Confidence that businesses are prepared?

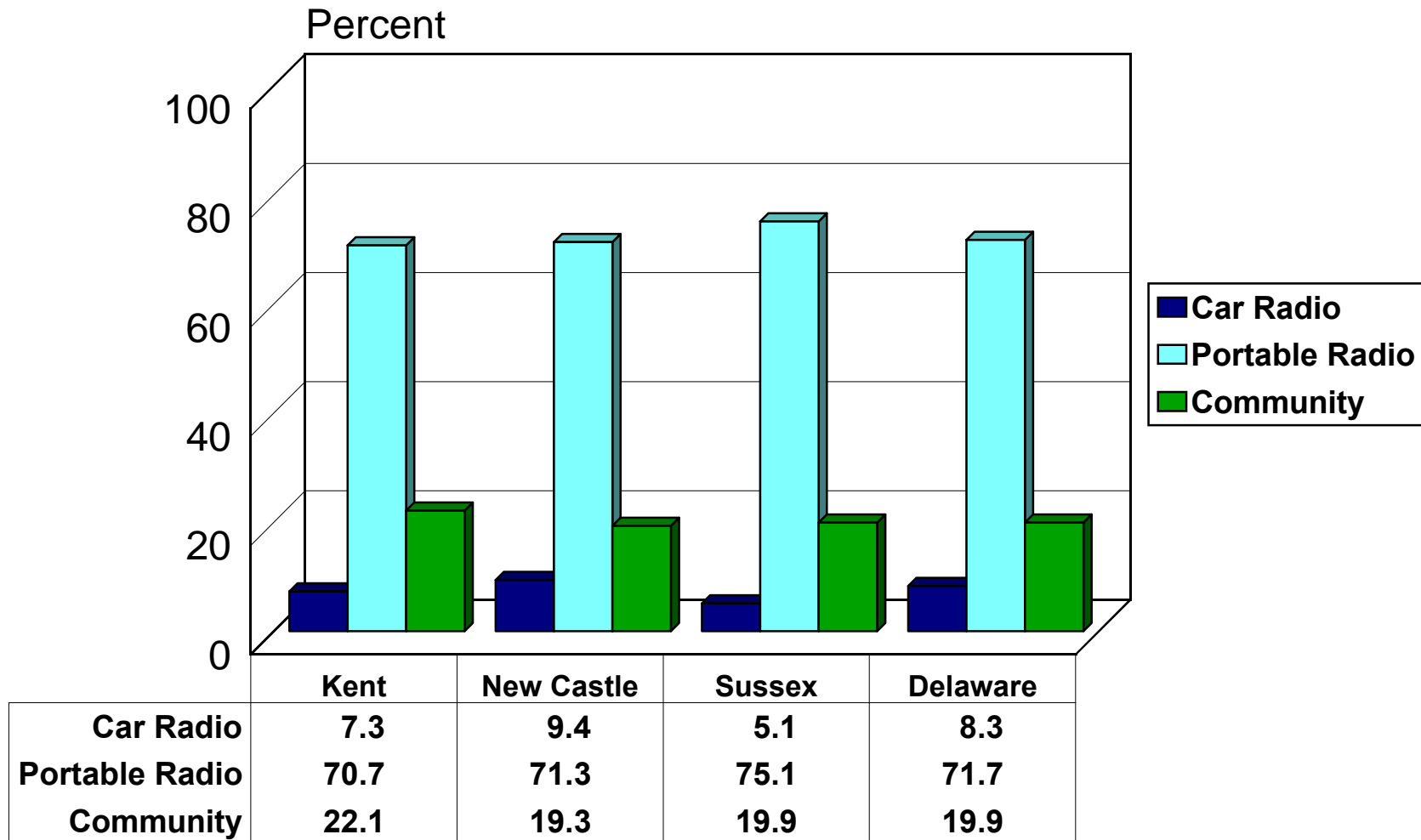
by County



Source: Center for Applied Demography & Survey Research, University of Delaware

If power loss, how would you stay informed?

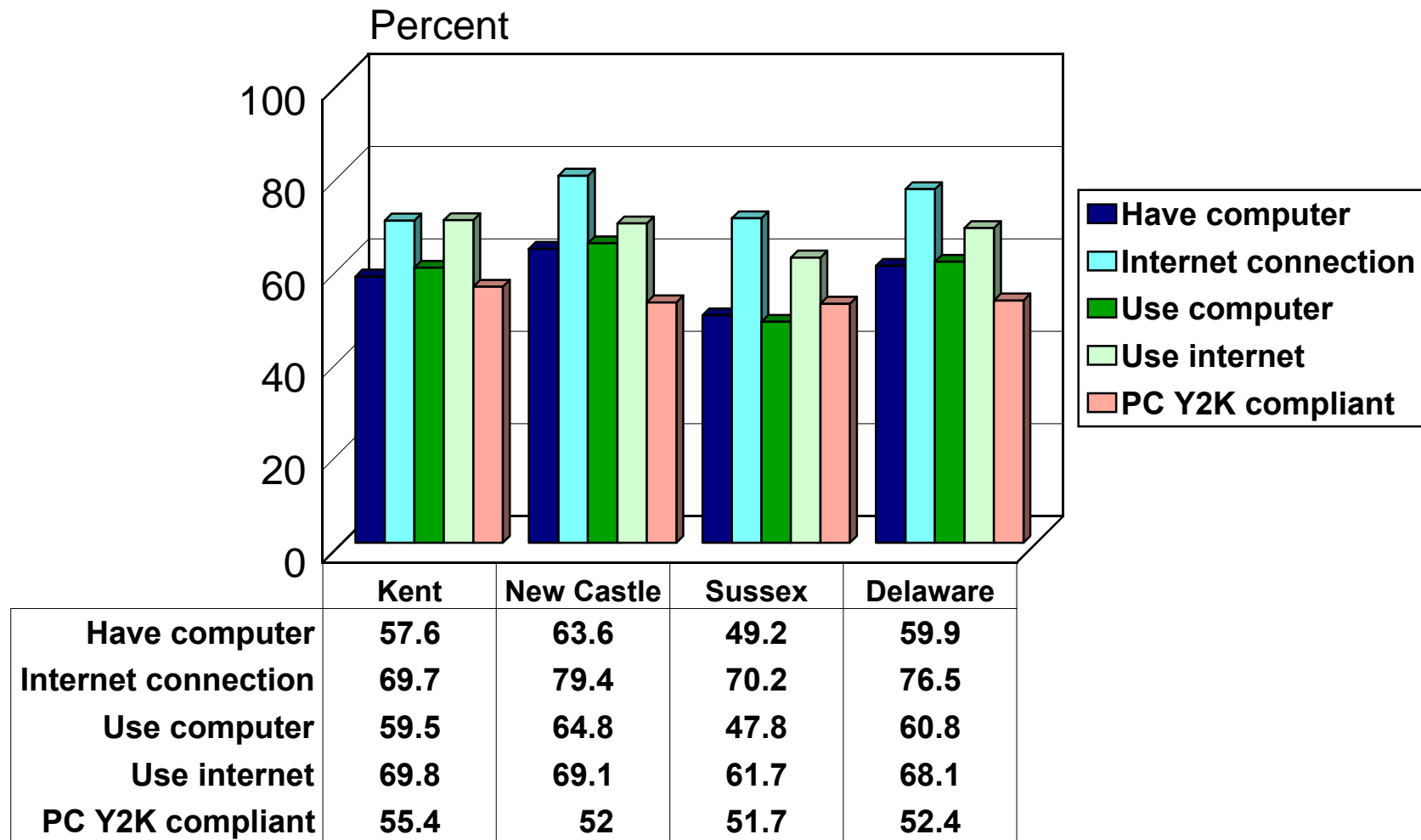
by County



Source: Center for Applied Demography & Survey Research, University of Delaware

Is there a personal computer in the household?

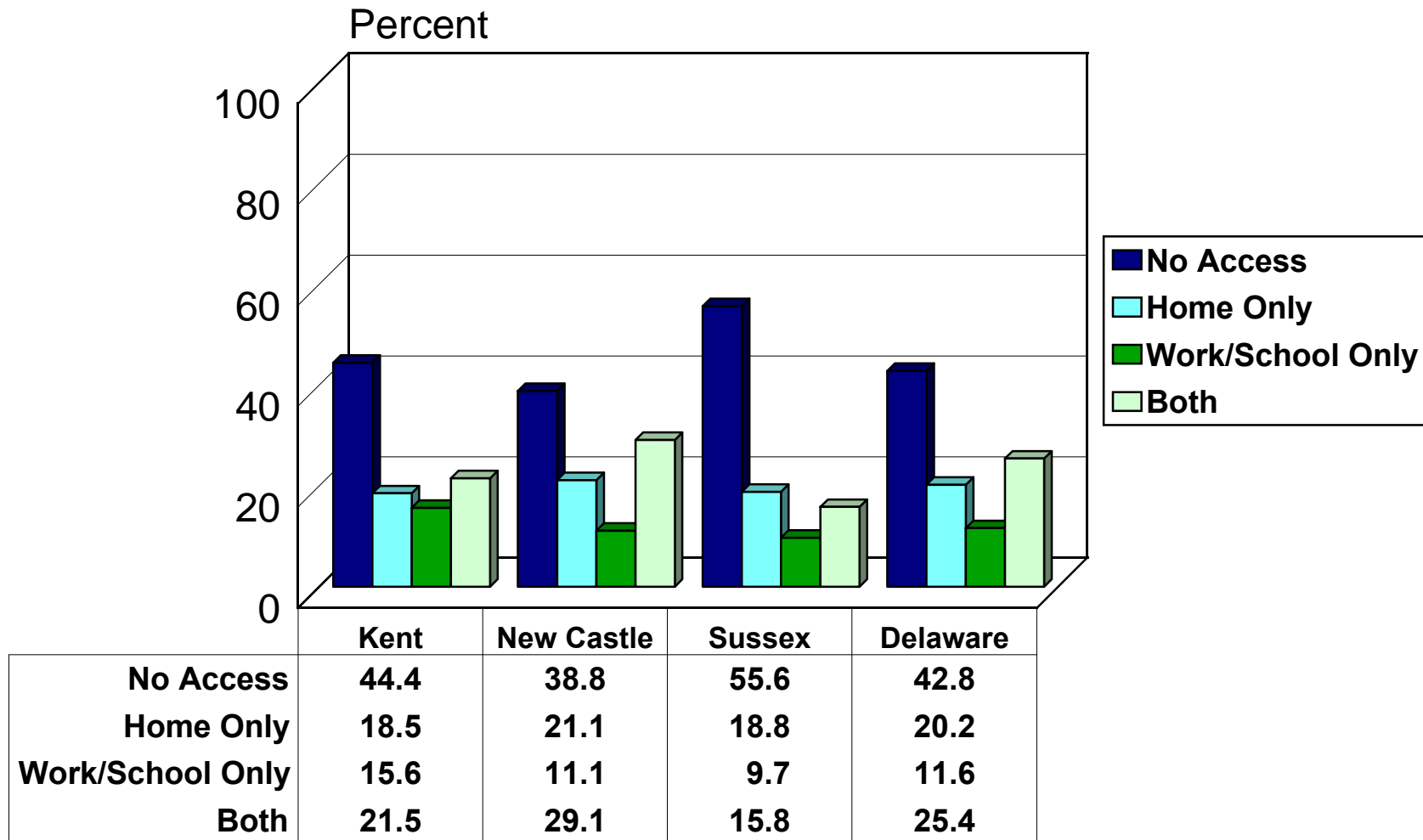
by County



Source: Center for Applied Demography & Survey Research, University of Delaware

Access to the Internet?

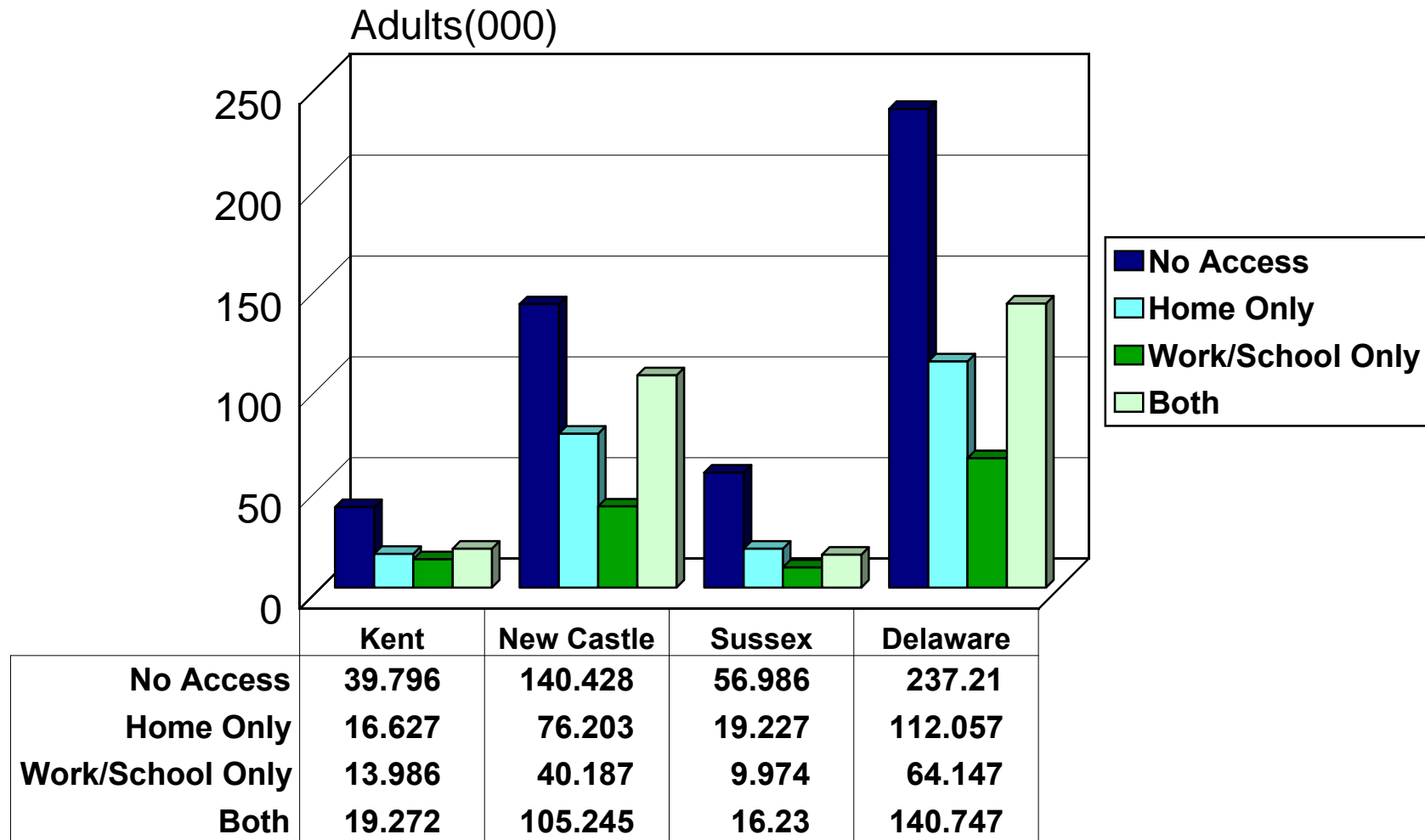
by County



Source: Center for Applied Demography & Survey Research, University of Delaware

Access to the Internet?

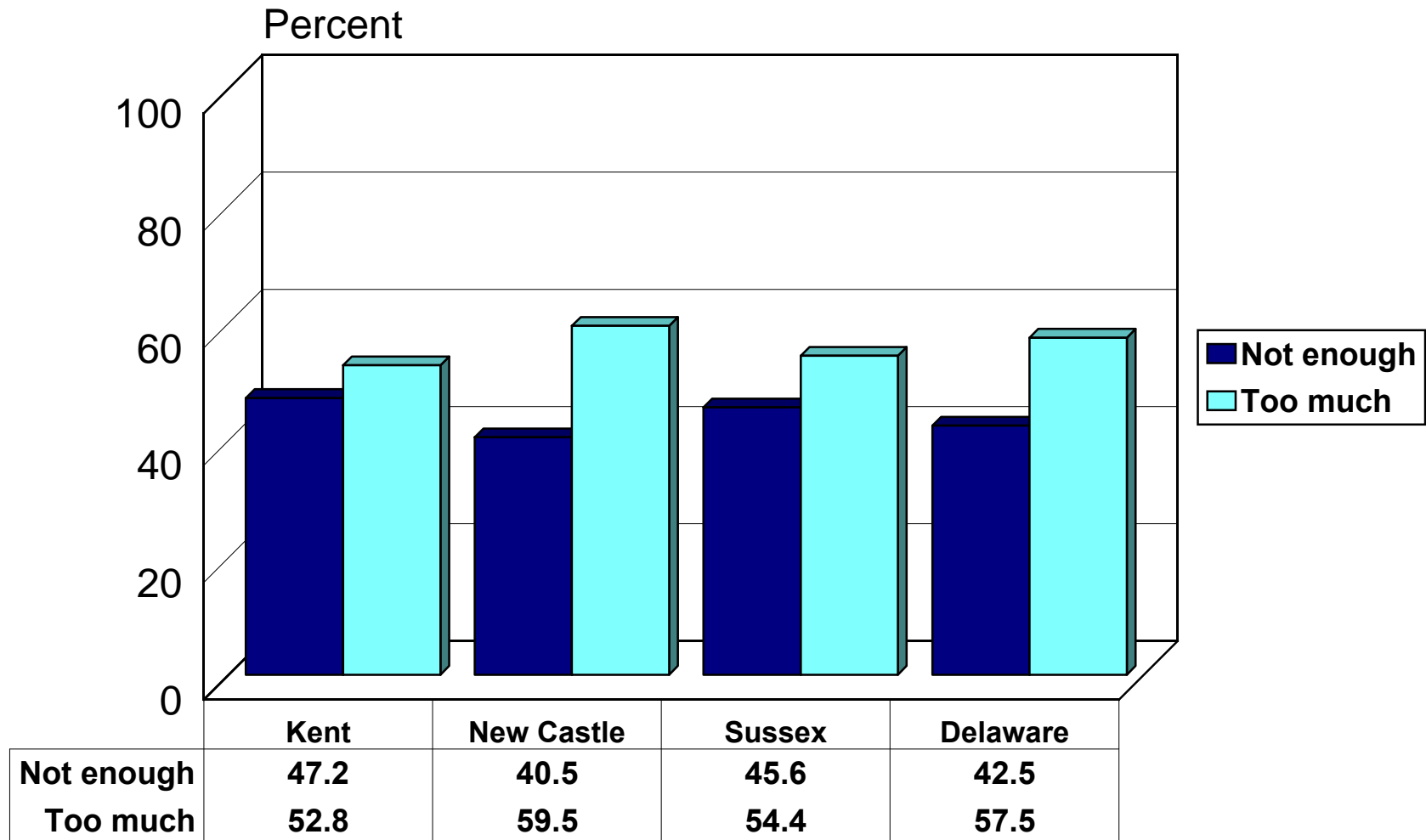
by County



Source: Center for Applied Demography & Survey Research, University of Delaware

Are you receiving enough Y2K information?

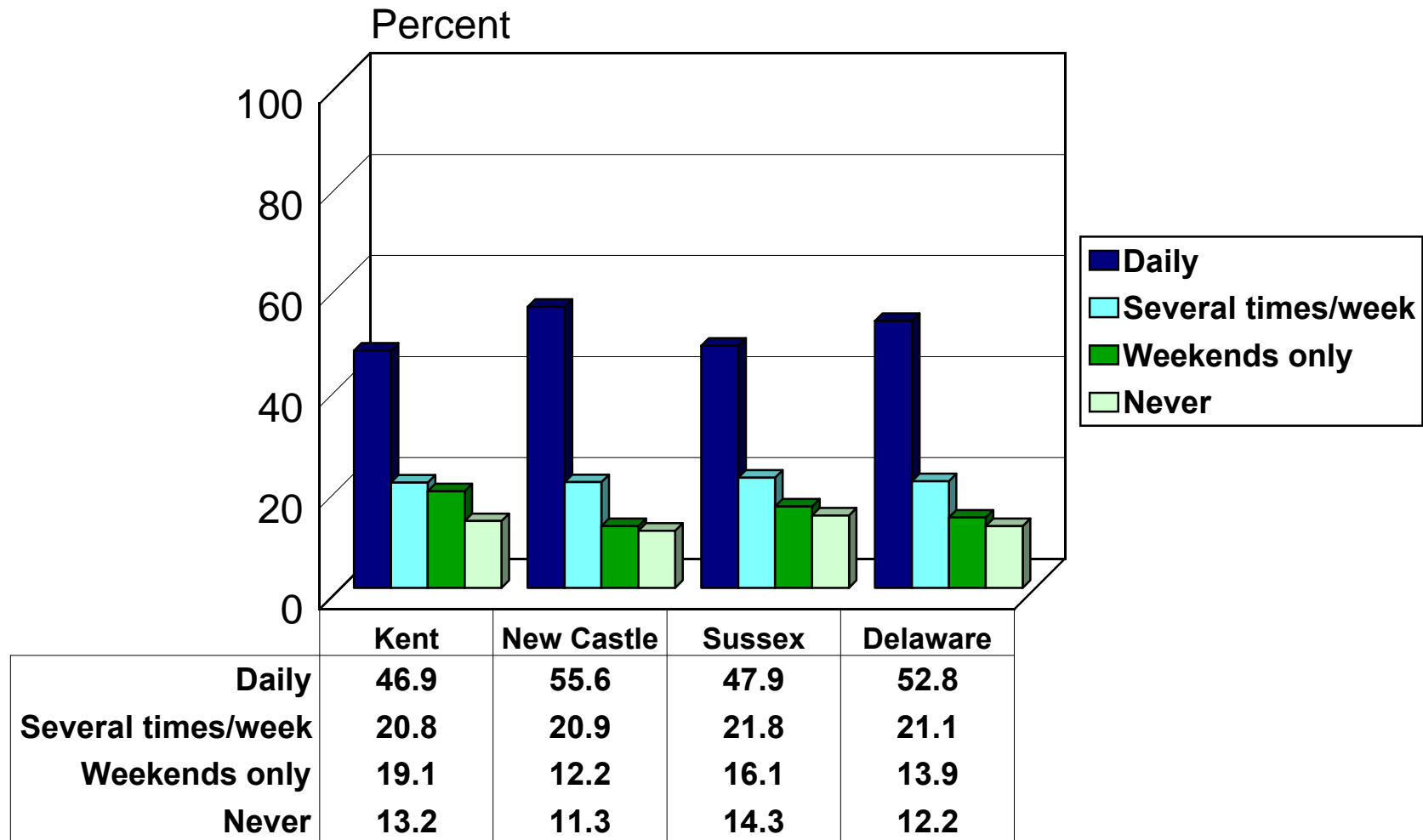
by County



Source: Center for Applied Demography & Survey Research, University of Delaware

How often do you read a newspaper?

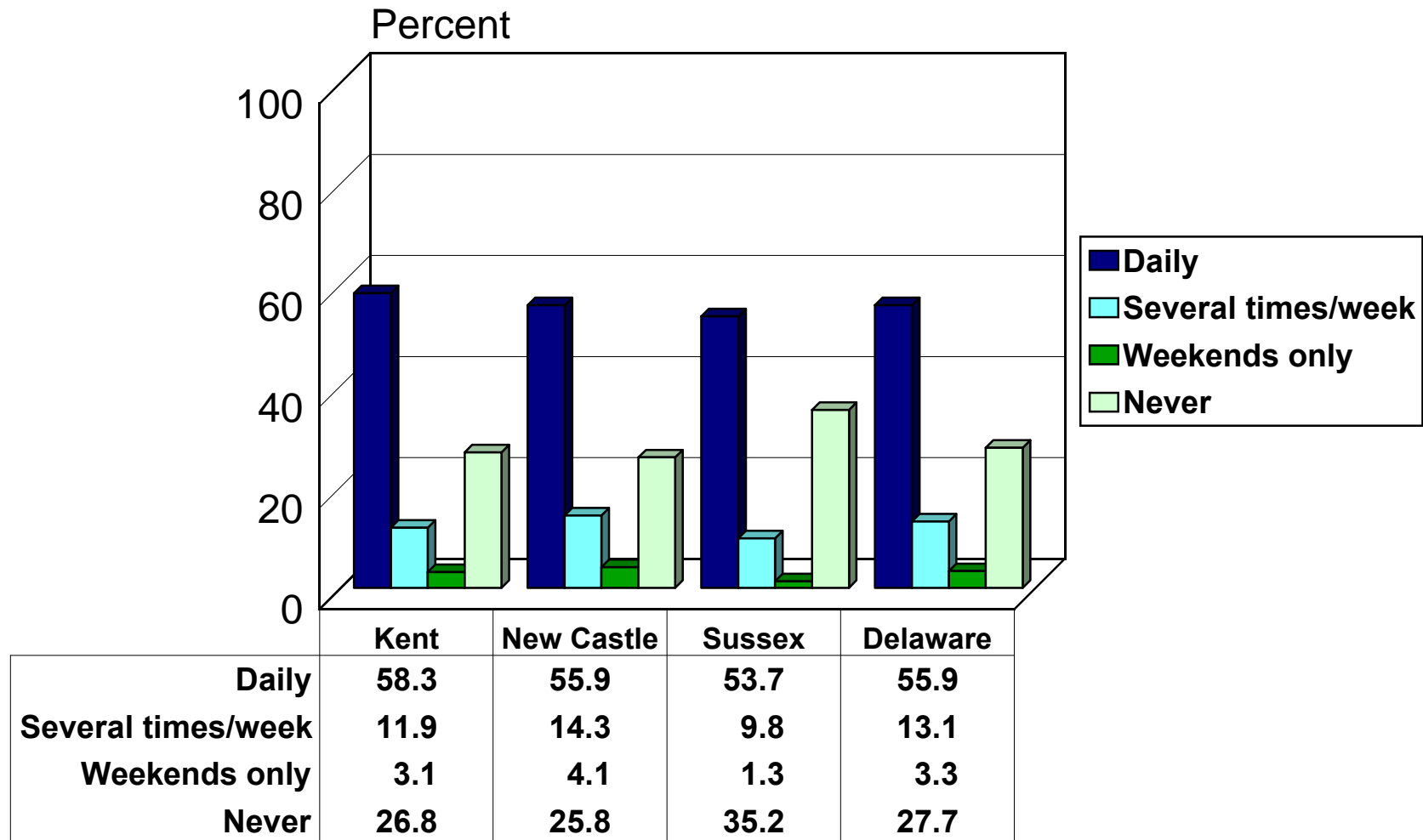
by County



Source: Center for Applied Demography & Survey Research, University of Delaware

How often do you listen to news on the radio?

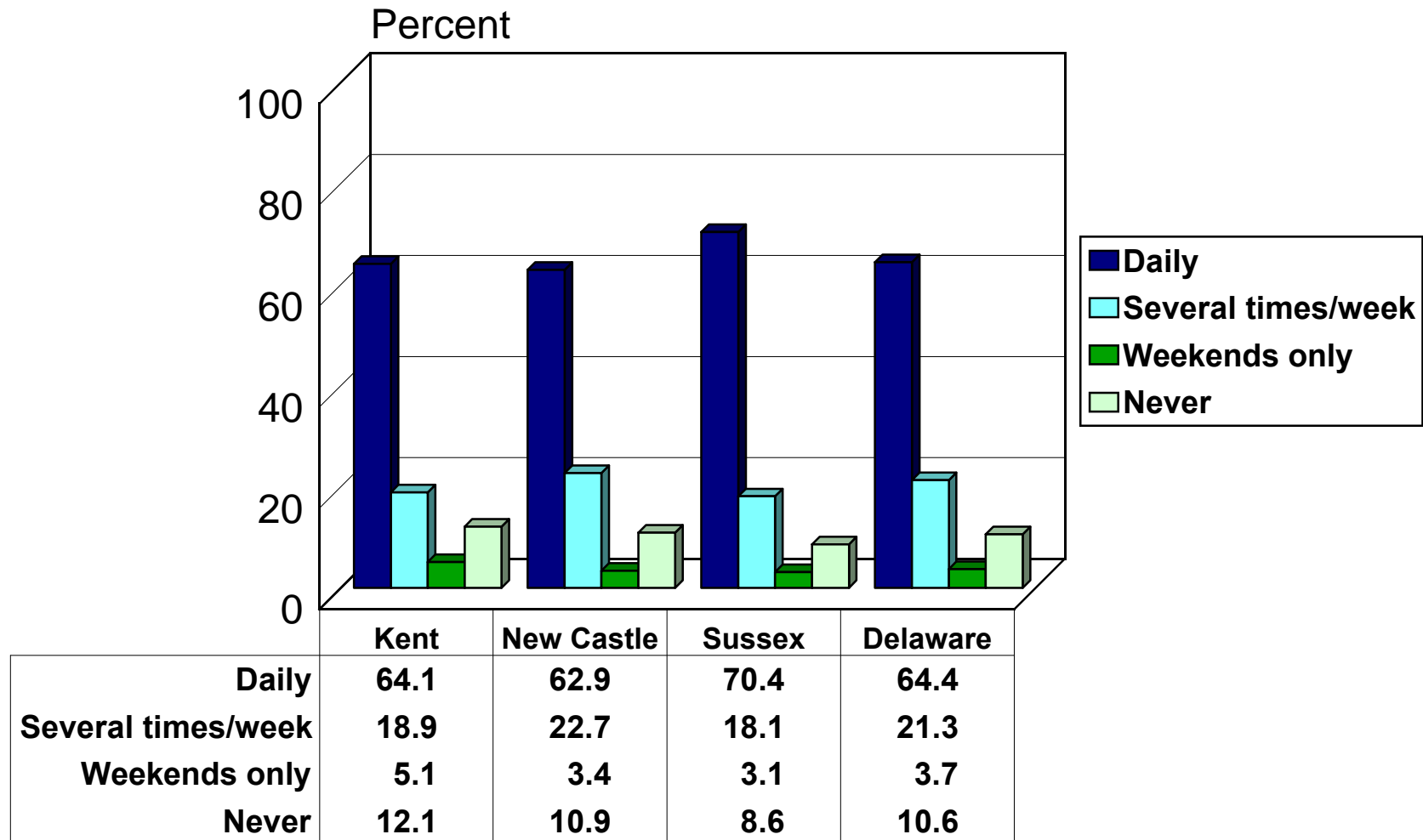
by County



Source: Center for Applied Demography & Survey Research, University of Delaware

How often do you watch tv network news?

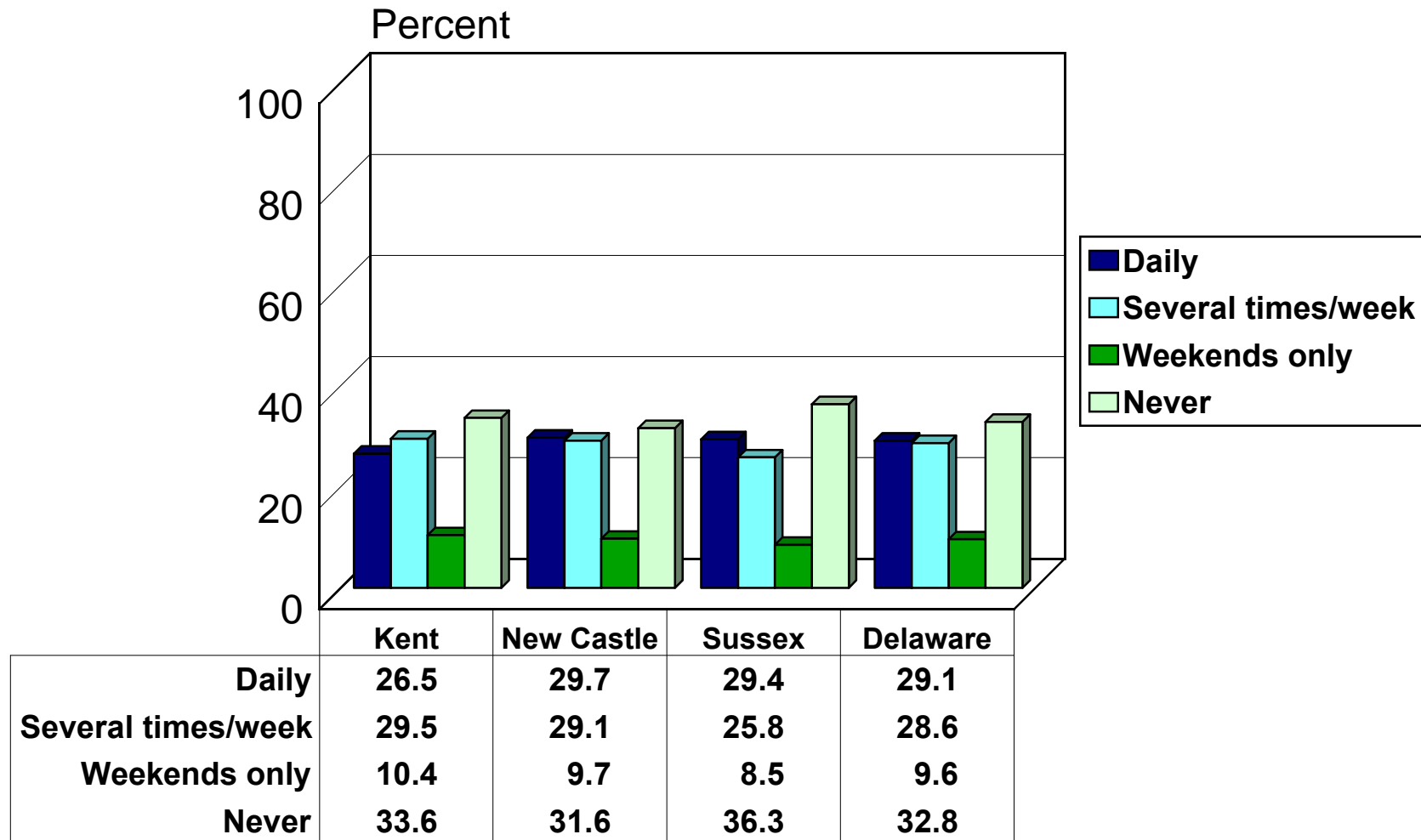
by County



Source: Center for Applied Demography & Survey Research, University of Delaware

How often do you watch the cable news?

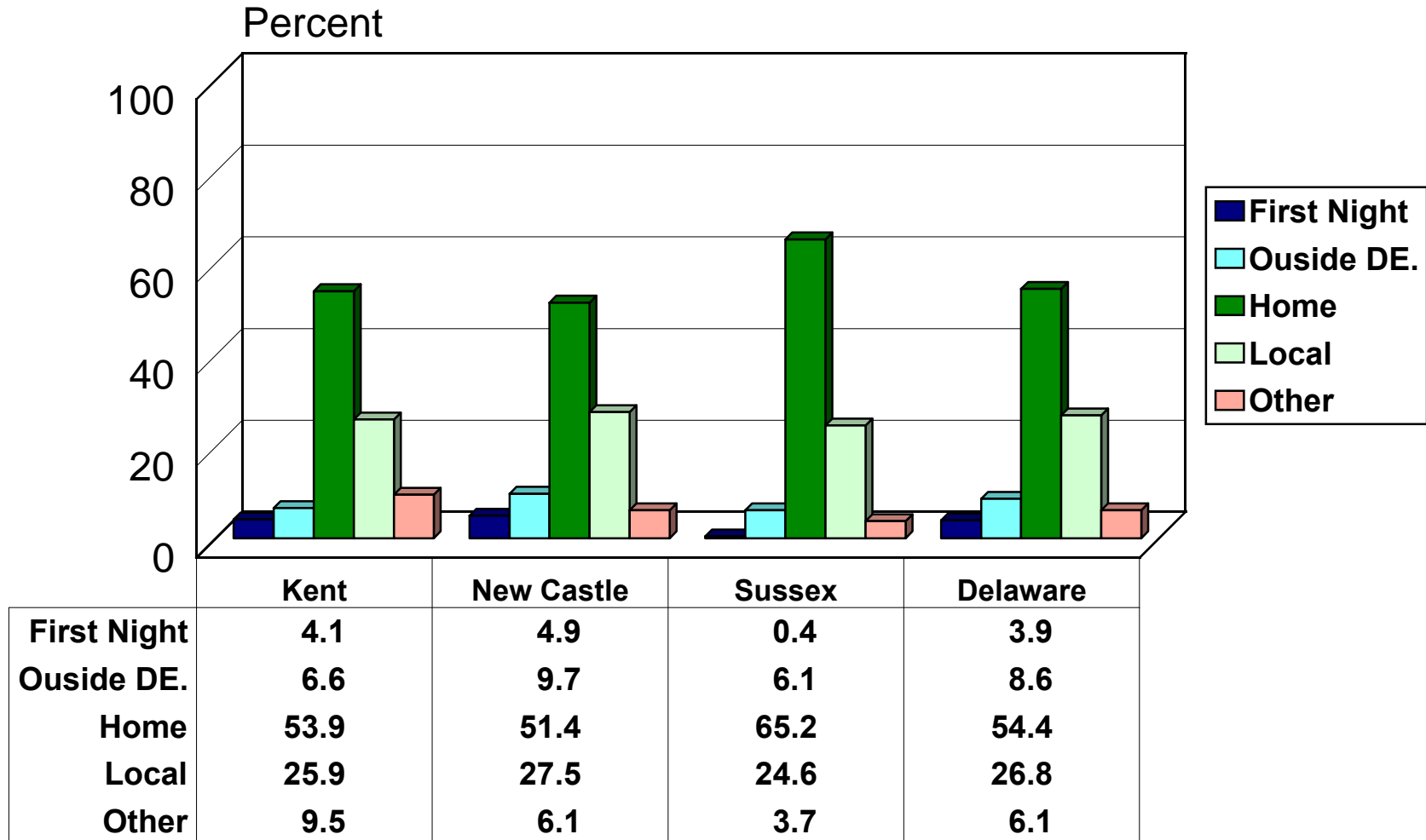
by County



Source: Center for Applied Demography & Survey Research, University of Delaware

Plans for New Years Eve?

by County



Source: Center for Applied Demography & Survey Research, University of Delaware