

NEWARK POST

❖ Greater Newark's Hometown Newspaper Since 1910 ❖

94th Year, Issue 5051

© 2004

January 9, 2004

Newark, Del. • 50¢

UP FRONT

Calendar reform?

By JIM STREIT

NEWARK POST STAFF WRITER

I AM venturing northward next week for a nostalgic tour of the Pine Tree State. I plan to visit friends and former newspaper acquaintances, read some books, relax, eat as many "lobstahs" as humanly possible, and generally take in the splendor of Downeast Maine in the winter.

In my final days as a Maine resident, I met one of the most interesting people. He was a Massachusetts newspaper editor who moved north, not southward, upon retirement.

His name was Sid McKen and he authored some of the funniest newspaper columns I've read. When I met him, he was beginning his fourth decade of authoring "Wry and Ginger," a weekly column in the *Worcester Sunday Telegram*.

Sid once suggested that it would be best to reorder the months of the year.

As I enjoyed a few days break during the holidays after the exhaustive Thanksgiving-to-Christmas rush, I must admit that I dreaded the return to work Monday. And I began to think about Sid's recommendation.

He may have been on to something. As this year's presidential campaign heats

See UP FRONT, 5 ►



Streit

Which came first...the free-range chicken or the organically-raised egg?

By DAVID WILLIAMS

SPECIAL TO THE NEWARK POST

JANEY BOWEN, general manager of member-owned Newark Natural Foods, seeks to dispel a common perception about her long-standing downtown establishment: "You don't have to be a health nut to shop here," she said.

"Though we do have a few exceptions..." said Bowen, "our product policy says that we have no white, refined flours, no white, refined sugars, no additives or preservatives, no artificial anything."

Adds marketing director Mary DeMare Stivers, "We cater to those who may have special diets due to allergies or a health condition like celiac disease."

In the small office space that is nestled between the walk-in refrigerator and the bulk foods warehouse behind the store, Bowen and Stivers agree that the focus of the food store is healthy, whole foods.

Shelves are lined with bulk spices, free-trade coffees, varieties of grains, and certified organic produce.

Whether you need special foods to deal with celiac disease, dairy or wheat allergies, diabetes, heart disease, high cholesterol or are a vegetarian, lacto-ovo-vegetarian, vegan, raw and live foodist, fruitarian, sproutarian, juicarian, you all have one thing in common: To live healthier lives through food choices.

Newark offers many dining and shopping choices for seekers of healthy foods.



Why the demand?

Stivers of Newark Natural Foods describes the store's clientele as diverse. Most are upper middle class and married and many are in college while Newark's international community makes a good showing.

The Main Squeeze Juice Bar and Café



Sinclair's restaurant customers Priscilla Collins, left, and daughter-in-law Christina Collins, right, enjoy their meal.

attracts professionals from nearby offices and the university as well as moms with their children looking for a healthy alternative to fast food.

The Sinclair's Café crowd is both older and younger, and like the juice bar's customers, many are professionals, and staff, faculty, and graduate students from the university.

So, which came first? The consumers of the free-range chicken, or the providers of the organically-raised brown egg?

Owners and managers agree that the cultural diversity of the Newark population coupled with the income and educational level of most of Newark's residents account for the high interest in health and healthy food. The University of Delaware is also a common denominator.

The establishments

Nature's Way Health Food Store has been in the Newark Shopping Center on Main Street for more than 15 years and has existed in Newark for twice that long. Flavia Cugini, who manages the small, brightly-lit store with her son Matthew, is busy with inventory in the neat aisles lined with vitamins, herbs, supplements, and books.

"The first health food store to open in Newark," she said.

Flavia Cugini and her husband, Jesse,

See HEALTHY, 11

Main Squeeze juice bar owner Debbie Johnson, right, chats with a customer. Her business offers a variety of healthy food choices.

PHOTO BY SCOTT MCALLISTER

New city court?

By DARREL W. COLE

NEWARK POST STAFF WRITER

WITH the state Legislature considering a proposal to abolish Alderman Courts statewide, Newark city officials are proposing the state create a new court specifically for Newark.

The Municipal Court proposal would allow the city to continue paying expenses of the court and retain the revenues generated from minor crimes such as those related to alcohol, traffic, noise and disorderly conduct.

The major change for the city and for the state would be that the Newark City Council would recommend three candidates, and the governor and state Senate would select one Municipal Court judge. Currently, the City Council appoints the

See COURT, 11 ►

Traffic causes concerns

By CARLY JUNO

NEWARK POST STAFF WRITER

AN intersection realignment or speed cushion, a version of a speed bump, are two ways residents near Old Cooch's Bridge Road might get relief from drivers who cause traffic nightmares in the area.

The Delaware Department of Transportation expects to put the matter to a vote of area residents. Ballots should be sent out by the end of the month to residents of Old Cooch's Bridge Road, Phoenix Avenue and Cobble Creek Curve.

At a Department of Transportation meeting on Monday, Jan. 5, representatives from DelDOT showed approxi-

See ROAD, 11 ►



7 99462 00002 3

IN SPORTS: Newark High School's girls swim team No. 1, page 9. • UD's Blue Hens knock off Hofstra, page 9.

Can we help?

Offices: The paper's offices are located conveniently in Suite 206, Madeline Crossing, 168 Elkton Rd., Newark, DE 19711. Office hours are 8:30 a.m. to 5 p.m. weekdays.

Phone: (302) 737-0724

Facsimile: (302) 737-9019

e-mail: newpost@dca.net

To subscribe: Call 737-0724 or 1-800-220-3311. To begin a convenient home-delivery subscription, simply call.

To place a classified: Call 737-0724 or 1-800-220-3311.

To place a display ad: Call 737-0724 or 1-800-220-3311.

THE STAFF of the *Newark Post* is eager to assist readers and advertisers. Reporters, writers, editors and salespeople can be contacted as listed:

James B. Streit, Jr. is the publisher of the *Newark Post*. He sets policies and manages all departments in the Newark office. Call him at 737-0724.

Darrel W. Cole is the news editor. He leads the day-to-day operation of the newsroom. Call him at 737-0724.

Marty Valania prepares the sports pages of this newspaper. The sports editor is seldom in the office, however, he checks in frequently. Leave messages for Marty at 1-800-220-3311.

Kathy Burr is the office manager and editorial assistant who processes most press releases. She prepares obituaries and People briefs. She is assisted by **Ginni Buongiovanni**. Contact them at 737-0724.

Robin Broomall is a staff reporter. Reach her at 737-0724.

Phil Toman has been the paper's arts editor since 1969. Well-known in the arts community, he writes his column from his Newark home. Leave messages for him at 737-0724.

Other contributing writers include Jack Bartley, Tracy Bachman, Elbert Chance, Marvin Hummel and Mark Sisk. Leave messages for them at 737-0724.

Ed Hoffman is the *Newark Post's* advertising director and manages the local sales team. He can be reached at 1-800-220-3311.

Jim Galoff services automotive advertising clients in the Newark, Bear, Glasgow and Routes 40/13 area. Call him at 1-800-220-3311.

Betty Jo Trexler sells real estate advertising. She can be reached simply by calling 1-800-220-3311.

Jennifer Evans sells ads in the downtown Newark area. She can be reached by calling 1-800-220-3311.

Shelley Evans sells ads in the Route 40 corridor. She can be reached by calling 1-800-220-3311.

Our circulation manager is **Mary Ferguson**. For information regarding subscriptions, call 1-800-220-3311.

The *Newark Post* is published Friday by Chesapeake Publishing Corporation. News and local sales offices are located in Madeline Crossing, Suite 206, 168 Elkton Rd., Newark, DE 19711. All advertising and news are accepted and printed only at the sole discretion of the publisher. The *Newark Post* is a proud member of the Maryland-Delaware-D.C. Press Association, Suburban Newspapers of America, the National Newspaper Association and the Downtown Newark Partnership.

POSTMASTER: Send address changes to: *Newark Post*, Suite 206, 168 Elkton Road, Newark, DE 19711. Periodicals postage paid at Newark, Del., and additional offices.

Police Blotter is compiled each week from the files of the *Newark Police Department*, *New Castle County Police* and the *Delaware State Police* by the newspaper staff.

Newark man charged with rape

ON Monday, Dec. 29, New Castle County Police arrested Leroy J. Sims, 41, of Newark for rape in the second degree.

He is accused of raping a male acquaintance early on that day, according to police.

Police reported that at 9 p.m. troopers responded to the Admiral Club Apartments. The 18-year-old male victim told police that he was sexually assaulted.

The investigation revealed the victim had invited several friends over to the residence during the early morning hours on Monday.

At approximately 3 a.m. all of the friends went home except for Sims. The victim went to bed in his bedroom and Sims allegedly fell asleep in the living room, police said.

Several hours later, the victim was awakened when Sims allegedly assaulted him, police said.

Sims was arraigned and committed to the Gander Hill Prison after failing to post \$30,000 secured bail.

NHS evacuated, but bomb threats false

Newark High School was evacuated Monday, Dec. 22 after receiving two bomb threats and a 15-year-old student was later arrested, according to Newark police. The caller said that a bomb would go off at 8 a.m. at the school. Faculty and students were evacuated at 7:40 a.m.

Foot chase ends with arrests

WHEN Newark police were called to the Sunoco Station on Elkton Road on Wednesday, Dec. 24, at 10:49 p.m. to investigate a report of a disorderly subject with a baseball bat, they were directed to the cemetery across the street.

There police reported they observed two men. Both men ignored the officer's verbal commands to stop and get on the ground. But when the men turned around, police observed one of them carrying a baseball bat by his side. After a brief foot chase, at gun point, both subjects were

taken into custody. Police seized the baseball bat, a bludgeon and a set of brass knuckles the men had with them at the time of arrest, according to police.

Arrested later were Andrew Boyle, 23, of Newark, and William Wessells, 19, of New Castle, for carrying a concealed deadly weapon and offensive touching. Wessells was also arrested for underage consumption of alcohol, police reported.

Due to their intoxication, arraignment was delayed until both men could sober up, police said.

K-9 bomb detection dogs and officers were brought to the building, conducted a search but found nothing. A second threat to the school was received around 9:15 a.m. but another search came up empty as well.

An investigation into the threats led to the arrest of a 15-year-old freshman at Newark High School for two counts of terroristic threatening. He was released on unsecured bail into the custody of a parent pending a Family Court appearance later this month.

DUI checks net arrests

On Friday, Jan. 2, the Newark Police Department and the New Castle County Strikeforce conducted a sobriety checkpoint on East Delaware Avenue.

Police said 412 vehicles passed through the checkpoint and 48 drivers were administered field sobriety tests. The following charges resulted: 10 DUI; five underage consumption of alcohol; two open container of alcoholic violations; four possession of marijuana; two persons wanted on outstanding warrants; two child restraint violations; seven seatbelt violations; 35 other traffic charges; and one possession of a concealed dangerous weapon.

Two arrested after home invasion

New Castle County Police have arrested two men who allegedly engaged in a fight with a Newark man, then chased him into his home while armed with a knife.

On Monday, Jan. 5 at 10:30 p.m., county police responded to a home in the unit block of Verdi Circle for a report of a home invasion. The 25-year-old male victim reported several subjects entered his home and attempted to assault him with a knife, police said.

The victim watched the attackers as they fled the area in a car and was able to obtain the tag number. Police discovered Benjamin Baffone, 20, of Newark, was operating the vehicle.

Investigators reported they quickly linked Baffone and Michael Hulse, 21, of Newark to the home invasion.

Both men were charged with burglary in the first degree, possession of a deadly weapon during the commission of a felony, aggravated menacing, and conspiracy. They have been arraigned and released after posting \$9,500 posted secured bail each, police said.

Carjack suspect jailed after Jan. 3 incident

The Delaware State Police arrested Shannon Willis, 33, of Newark on Saturday, Jan. 3 for a carjacking at a 7-Eleven store on Christiana Road.

Willis was charged with carjacking, two counts of reckless endangering, theft, criminal mischief, reckless driving and driving while suspended.

Willis was committed to Gander Hill in default of secured bail.

Apartment robbed during vacation

When members of the Sigma Alpha Mu Fraternity returned to their S. Chapel Street house on Sunday, Jan. 4, they found someone had stolen a large-screen TV, computer equipment, Playstation 2 and various clothing items, it was reported to Newark police. Value of the stolen items was \$2,770.

The thieves appeared to have entered the residence sometime after Tuesday, Dec. 23 through two basement windows, police said.

Damage was done to interior bedroom doors.

Happy New Year?

Unknown suspects were observed by neighbors in the 100 block of Kershaw Street throwing two champagne bottles through the front windows of a residence shattering both windows on Thursday, Jan. 1, at 3:34 a.m., according to Newark Police Department records.

Damage to the windows was reported at \$300.

Park equipment burned...again

On Wednesday, Dec. 31, at 7:54 a.m., Newark Police responded to Rittenhouse Park on W. Chestnut Hill Road for a report of a reckless burning.

When a city of Newark employee was emptying trash, he saw heavy smoke coming from the playground equipment, police said.

Aetna Fire personnel arrived on the scene and sprayed down the smoldering wood.

Police said they noted the plastic playground equipment had melted onto the wood and the wooden platform area had slowly burned. Damage was approximately \$900, according to police reports.

This is the third burning of playground equipment within the year, it was noted by police. Other fires took place at Devon and Stafford parks.

The case was turned over to the fire marshal for investigation.

China missing

Newark police responded to a call in the 200 block of Cheltenham Road on Monday, Dec. 29 at 11:15 p.m. when the owner found the garage door was opened. Six boxes of crystal, glass and china that had been stored there were missing, according to the police report.

UD student, 20, robbed

Newark police reported that on Sunday, Jan. 4, at 3 a.m., a 20-year-old male University of Delaware student was walking to his home on East Park Place when he was beaten and robbed.

Police said the victim reported the assailant, driving a blue Honda Civic, is a black male, 18-21 years old with short, close-cut hair, wearing an extremely large white T-shirt and dark blue jeans.

The assailant struck the student in the face with a closed fist, causing him to fall, then the suspect removed a cell phone, wallet, and an unknown amount of cash from the student's pockets, police said.

The man then fled the area in the Honda Civic, which was occupied by at least three other subjects. Any person with information is asked to contact Newark police.

WATERFRONT DINING

Consistently Pleasing
Our Customers
For The Past
20 Years



Best
of
Delaware

Readers
Choice

Open Year Round

Lunch & Dinner

Celebrate Your Next Event
With Us!!

Every Thursday is
LADIES NIGHT
at The Hole in the Wall
Ladies Drinks 1/2 price.

CONSISTENTLY PLEASING OUR
CUSTOMERS FOR 20 YEARS.



Historic Chesapeake City
410-885-5040
Toll Free 1-877-582-4049
www.bayardhouse.com

A Bayard House Gift Certificate is
Always in Good Taste

End of the Year Specials!

Under New Management

20% OFF of Full Set

Exp. 1/31/04 w/this coupon only

Always Low Prices

- Manicure/Pedicure.....\$30
- Refills.....\$15
- Waxing

Pink Nails

Professional Complete Nail Care

302-286-0307 • 215 E. Main St., Newark

Teacher and student reunited after 67 years

THE 1936 black-and-white photo captured former Newark High School English teacher John Munroe surrounded by admiring students.

Little did Munroe know that 67 years later Lou Staats, the student who snapped the photo, would track him down in Newark.

The two were brought together recently when John Llera, a photographer for the *Newark Post*, heard Staats asking if anyone at the Newark Senior Center knew how to get in touch with Munroe. Llera soon told Staats he'd drive him to Munroe's home if he was up to it.

Once there, Llera re-introduced the two and the teacher and student talked for a long while about the school, their lives and other students in the class.

The memories were so vivid in Munroe's mind that he was easily able to recall the six students pictured with him in the 1936 photo.

Munroe taught at Newark High School from 1936-1939, before leaving to teach at a college in Pennsylvania.

Staats graduated in 1938 and went on to work at DuPont.

Before Staats found Munroe, he wrote a letter that he planned to send him. In it he asks if Munroe remembers the photograph, but goes on to praise the teacher for his efforts.

"English wasn't my favorite subject but you instilled enough of it to get me by for 30 years as a mechanical engineer ... I can still recall, even recite, shreds of poetry that I was coerced to read

and report on."

Dr. John Munroe, seated, and his students, pictured left to right, Gus Smith, Andrew Tryens, Wilson Stevens, Edward Morgan, Bob Stuarts, Arthur Gifford.



Former student Lou Staats, left, shows Dr. John Munroe, his teacher from 67 years ago, the black-and-white photograph he took of Munroe and his English students at Newark High School, dated 1936. Staats hadn't seen Munroe since they were teacher and student, but the two were brought together by *Newark Post* photographer John Llera.



Newark man saved oppressed in WWII

THE stories about Jerzy Leon "George" Nowinski and his wife saving an unknown number of Nazi resisters in Poland during World War II are many. And while the "heroic" efforts by the couple are known by friends and colleagues, it seems not one person knows the couple's complete story.

Mr. Nowinski, a retired University of Delaware professor, left behind a lasting legacy when he died Saturday, Jan. 3, at Millcroft Health Care Center in Newark. He was 98.

Many knew him as an acclaimed researcher, adored teacher and beloved friend. His wife Marie,

whom he was married to for 67 years, died in 1997.

Aside from his numerous scientific accomplishments and the kindness and love he showed students, friends and colleagues, Mr. Nowinski and his wife were considered heroes of the Polish Resistance during World War II. Their home was engineered with secret safe rooms and operating rooms for Allied soldiers shot down in planes and Resistance members.

Friend Joan Liebura said there was a secret room below the Nowinski house and a makeshift operating room in the attic, where a surgeon stayed. She recalled one story she

heard about Nazi officers who suspected the home was operating as a safe house.

"Marie told the officers they could look around but that she was going downstairs because she was cold," Liebura said. "The officer then told her there must not be anything in the house because she acted so calmly."

Liebura said Marie and George didn't want to know the names of the people they helped for fear that if caught, they would be tortured and forced to name them.

Bryan Cheeseman, who was a UD student of Nowinski's, said everyone

See NOWINSKI, 16 ►

BRIEFLY

Presidential hopeful visits Newark

U.S. Sen. Joe Lieberman, D-Conn., made a brief stop in Newark Friday, Dec. 19 as part of a statewide visit to promote his campaign to earn the Democratic nomination for president.

He spent more than one hour at M Cubed Technologies. Later, he spent about 30 minutes visiting with UAW workers at their holiday party at Michael's Restaurant on Churchman's Road in Newark.

Getting into the act was downtown Newark restaurant owner Ryan German. Lieberman stopped by German's Caffé Gelato for a lunch of panini sandwiches and fresh vegetables and dip.

"It's important we feed Senator Lieberman well, after all we want him to come back," German said. "It also gave us a chance to highlight Delaware's independent small businesses."

German also hosted Rev. Al Sharpton, another presidential hopeful, when he visited in September 2003.

Lieberman is the second in his family to visit Newark. The senator's wife Haddasah Lieberman visited the *Newark Post* offices Nov. 24.

With new law in place, ban lifted

The Newark City Council at a special meeting Monday, Dec. 22 lifted its temporary ban on new rental permits for one and two family houses in the city because it has approved a new ordinance regarding student rentals.

The council voted 5-0 to lift the emergency ordinance adopted at a Nov. 20 special meeting. That moratorium was adopted because the city feared a rush of property owners would attempt to convert their homes into student rentals because of a Nov. 17 Chancery ruling that made part of the city's student housing laws invalid.

Meanwhile, on Dec. 8 the council adopted a revision of the student rental rules to comply with the Chancery ruling, which is to take effect this year.

Tow notice requirement abandoned

Because of last year's furor over cars being towed from the Newark Shopping Center parking lot with little notice given to the owners, the Newark City Council drafted a new ordinance that would have required the center's owners to first place a notice on vehicles, stating the car would be towed in two hours if not moved.

Center owners First Washington Realty said they towed cars because people were parking in their private lot but not doing business in the center. At the time, Mayor Hal Godwin said he would abandon the two-hour notice ordinance if First Washington agreed to move from a zero-tolerance policy of towing to giving non-customers a 30-minute courtesy parking policy.

At a Dec. 8 council meeting, Godwin said First Washington has complied with his request and that there was no need to pass the proposed two-hour notice ordinance, which died for lack of a vote.

Administrator gets new duties

City Parking Administrator Andrew Haines can also issue parking citations in city parking lots since the Newark City Council granted him expanded powers as parking enforcement officer.

The city believes the expanded authority for Haines will detract constant parking violators. As it is now, if Haines sees a vehicle parked illegally he can call police or issue a warning that the vehicle will be towed. Most times, the person leaves before the tow truck arrives.

The ability to issue tickets that will cost the driver a fine will help deter violators, Haines said.

Haines can issue tickets only in the city's five parking lots. He said the most use of his new powers will be in parking lots 2 and 5, where people often park in the areas reserved for monthly permits or in fire lanes.

Opinion

EDITORIALS COLUMNS • PAGES FROM THE PAST • LETTERS

ANOTHER BYLINE

More good than bad and ugly

By ROBIN BROOMALL

NEWARK POST STAFF WRITER

RECENTLY I was on assignment at Jennie Smith Elementary School. Principal Todd Harvey took me down the hall and introduced me to some of the teachers. As I walked down the corridor, past third graders' posters and second graders' math displays, my heart began to beat a little faster.

We approached Room 96 and I glanced in quickly. The desks and chairs were in a different position than I remembered, but it still had that same smell. Could it really be 27 years since I was blowing the chalk dust off my hands and waiting for my class to come in from recess?

For eight years I taught first graders at Smith, helping them learn to read, write, spell, add and subtract. When it was time to raise my own child, I opted to stay home with her. But that didn't keep me out of the classroom.

All through Kris' school years I did my "mom thing," volunteering to help with class projects, going on field trips, working in the library, listening to children read.

I found that the older she got, the fewer hours I was in the schools. We perceive there are fewer opportunities to volunteer once they hit high school - and, admit it or

"...Could it really be 27 years since I was blowing the chalk dust off my hands and waiting for my class to come in from recess?"

not, our kids probably wouldn't want us there anyway.

Except for what we hear from our own children, the rumors from the neighborhood and the newsletters that come home crumpled in the backpack, most parents don't really know what is happening in our schools today.

And if your children are grown and out of school, you really don't have a clue what's going on - except for what you read in the newspapers.

I know, from my own experiences, a lot of great things happen in our schools every day. But what do we hear in the media?

Regular readers of the *Newark Post* will recognize a new section that started in mid October. In Our Schools is designed to inform the community of what's going on in our classrooms. The weekly section has become "my baby."

The Student of the Week is selected by principals, nominating one student who might not be the top academically, but has shown good leadership, citizenship, or is just a good role model. We want to recognize kids who are going in the right direction.

But don't let my passion for delivering good news fool you. As any reporter knows, there are times when you need to cover the good, the bad and the ugly. Let's just hope there continues to be more good than ugly.



Broomall

■ Broomall has been a reporter at the *Newark Post* since May 2002 but has been involved in the community since moving here more than 35 years ago. She taught public school from 1968 to 1976 and is currently an instructor of Dale Carnegie courses, a member of Newark Morning Rotary Club and a volunteer for Junior Achievement.

From the beginning

"IF THIS PAPER can, with your help, pluck one thorn and plant one rose, as Lincoln tried and succeeded in doing, then I shall be glad; if this paper can be your help, be the means of suggesting and bringing about Good Roads, Flowers, Parks, Better Schools, Trees, Pure Water, Fresh Air and Sunshine for somebody and Work for everybody, then I shall have won."

EVERETT C. JOHNSON

PUBLISHER OF THE NEWARK POST
IN THE PAPER'S FIRST EDITION, JAN. 26, 1910

OUT OF THE ATTIC



This week's "Out of the Attic" photo features a post card from the collection of the University of Delaware library's Special Collections Department. It shows the National Bank of Newark and appears to have been printed after 1900 from a gelatin-silver negative. This interesting collection of postal memories is available to the public on the Web; go to <http://www.lib.udel.edu/digital/dpc/>. According to Bob Thomas, president of the Newark Historical Society, it was Newark's first bank. The building remains on Main Street behind the façade of TCBY. Thomas has a National Bank of Newark check that was written in 1882. "Out of the Attic" features historic photographs from Newark's past. Readers who have a historic photo and would like to share it with other readers are invited to loan their photos for reprinting in this space. Special care will be taken. For information, call the *Newark Post*, weekdays, 8:30 a.m. to 5 p.m., at 737-0724.

PAGES FROM THE PAST

News as it appeared in the *Newark Post* throughout the years

■ Jan. 10, 1929 Pneumonia proves fatal

Dr. James H. Frazer, aged 87 years, died at the home of his sister, Mrs. P.H. Cleaver, on East Main Street, Elkton, Tuesday night, following a ten-day attack of pneumonia which developed from influenza.

For years he practiced his profession in Cecil County. He was the founder of the *Cecil County News* in 1880 and for ten years was its editor.

In 1890, he sold the paper to the late Daniel Bratton. At the latter's death the paper was taken over by its present owner.

Fire scare in old school

Fire on the first floor of the old school building on Main street, where the fourth and fifth primary grades are housed, caused a scare and some excitement for a short time

Tuesday morning, but the teachers, with the aid of Ira S. Brinser, superintendent of the local schools, were able to get the fire out without the aid of the firemen.

Council gives \$50 to nurses

At the regular meeting of the Council, it was

voted to make a donation of \$50 to the Visiting Nurses Association. Association Councilman Hubert, in presenting the case of the Nurses Association to the Council, stated that the nurse cares for between 1800 and 2400 cases each year, and that she examines 60 school children each week.

■ Jan. 10, 1979 Retrospect

Reporter spends a day at her high school alma mater and finds it similar, yet different

It was a strange feeling walking down those hallowed halls of Newark High once again after graduating five years ago.

The school building is the same as it was in 1974, and some of my former teachers still are employed there. In fact, I sat in on some of their classes to see how much has changed. The subject matter is the

See PAGES, 5 ►



"Pages From The Past" is compiled from early editions of the *Newark Post* and its forerunners by staffers. Efforts are made to retain original headlines and style in the reprinting of these items.

'I'd add two weeks to June'

► UP FRONT, from 1

up, we often hear of election or tax reform. Maybe what we need is calendar reform.

Why did I dread realizing it's January? Primarily because the first of the year signals our daylight-starved entry into the coldest, bleakest time of the year. I hate gray days. They depress me from the moment I open my eyes each morning.

A better plan would be to open each year with a decent month. I'd suggest April. It's bright. It's colorful. It's warm but not humid. It's a "I feel great to be alive" kind of month.

Then I'd slash February in half. Four weeks of that awful

month is way too much. If it were shorter and followed April, I think I could endure February without fleeting thoughts of suicide. (You could keep that extra day of February every four years. I could take it.)

Next up should be July. After the chill of February, this month would be like walking into a nursing home (where room temperatures usually hover around 80 degrees) from a blustery single-digit wintry day.

Next, I'd give June one important change - I'd make it two weeks longer. This would replace the time lost in February but, more important, would allow us enough days to schedule all important happenings. Right now, graduations, end-of-school-

year awards ceremonies, anniversaries and Father's Day jam up everyone's June agenda. An extra two weeks might leave time for a weekend or two at the beach.

At mid-year, I'd place December. The halfway-point of the year is a good place for Christmas and all of its accompanying bustle.

I'd rest up from all the holiday hubbub in October. Still warm, not too cold, a perfect month in which to recover.

I have no real preferences for March, May, August, September or November. No matter where one would put March or September, you could not ruin them.

But I would end the year with

January. Imagine the thrill of partying the year out on Jan. 31, then awakening the next morning to birds chirping.

Now, I'm thinking about rearranging the days of the week. So many times, I've endured a "week of Mondays." Resequencing may be in order. Have any suggestions? I'd like to hear from you. Deadline is one month from now - April 9 on my calendar.

■ *When not stealing others' ideas and wasting time dreaming the impossible, the writer is publisher of this and two other Delaware newspapers headquartered in Newark. He and his family moved south in 1992 and live in the Cherry Hill neighborhood of Newark.*

Delaware schools all wired

► PAGES, from 4

same-grammar, vocabulary, current events- only the teaching methods have changed a bit.

The members of the classes of 1979 through 1982 seem to be more free and expressive than my former classmates.

Newark approves subdivision despite protests

A subdivision leading to the construction of 20 homes near White Clay Creek was approved unanimously by Newark City Council despite strong protests by environmentalists and nearby residents.

The 13.6 acre Creek Bend site, located at the end of Old Paper Mill Road north of White Clay Creek, is an area that will flood and erode if the single family

homes are built there, warned Dorothy Miller, spokesman for the Coalition of Natural Stream Valleys.

■ Jan. 8, 1999

Delaware schools all wired

Delaware recently became the first state in the country with access to the information super-highway in every public school classroom.

State education officials completed the wiring for World Wide Web, voice, video and fiber optic cable in December, according to a press release from Gov. Thomas R. Carper's office

Drug store drive-thru opposed

A new Eckard's Drug Store planned for the corner of New

London Road and Country Club Drive at Fairfield is unlikely to have drive thru windows for prescription dropoff and pickup.

The city Planning Commission voted 4-3 Tuesday night to oppose a recommendation for the Special Use Permit which would allow it.

Solution to The Post Stumper on Page 7.



Nothing can diminish the precious years you spent with your departed loved one. Let us help you through this difficult time with a caring hand, a comforting touch and the compassion of a family friend. You're not alone.

Spicer-Mullikin Funeral Homes
328-2213 or 368-9500

**YOU'RE
NOT
ALONE**

Starting Monday, February 2nd OPEN 7 DAYS A WEEK!

Woody's CRAB HOUSE

Only 15 Minutes From The Delaware Line

#1

Voted Favorite:
Seafood Restaurant
Crab Cakes
Steamed Crabs

Check Out Woody's Exciting New WINTER MENU

Family Dining
OPEN YEAR 'ROUND

THRU FEB. 1ST: OPEN TUES.-SUN. At 11:30 AM
Serving Lunch & Dinner

Main Street, North East, MD • 410-287-3541 • www.woodyscrabhouse.com

Lifestyle

RELIGION • PEOPLE • DIVERSIONS • THE ARTS

OUTLOOK

Seeking wildlife?

■ *Outlook is a weekly feature provided by the staff of the New Castle County Cooperative Extension Office.*

By AMY ESTEY

SPECIAL TO THE NEWARK POST

THE New Castle County 4-H Program is delving into Environmental Education (You thought I was talking about the other kind of Newark "wild life," right? They'll be back soon enough). The 4-H Program works with children and teens through local clubs, events, activities, the schools, and special emphasis groups like this one. We are fortunate to have Matt Webb, an AmeriCorp Public Ally, helping us build an Envirothon team made up of local teens.

What's an Envirothon? It is a national competition that draws environmentally-aware teens in grades 9-12. Here in Newark, Matt is organizing a team to participate in the state competition in May and, hopefully, at the national competition in West Virginia in late June. Team members will learn about forestry, land use, water management, and the urban environment. The only things needed are an enthusiasm for the outdoors and a desire to learn in a fun setting.

An Envirothon team is made up of five members plus two alternates. We can enter as many teams as we wish, so the more the merrier. The team will meet weekly through the spring for practice.

Matt comes to us with an Environmental Anthropology degree from the University of New Hampshire. He's experienced in working with kids and if you can't catch his enthusiasm for nature, check your pulse.

Matt will be hosting an informational meeting on Wednesday, Feb. 25 at the New Castle County Cooperative Extension Office, 910 S. Chapel St., across from Pencader Shopping Center and south of the Chapel St./Rt. 4 intersection. Contact Matt directly at 831-4974 or via 4-H@udel.edu.

Baseball legends here to inspire

BASEBALL GREATS Willie Mays, Hank Aaron and Sammy Sosa will be the featured speakers of the Walnut Street YMCA's 15th Annual Black Achievers in Business and Industry Awards Ceremony on Thursday evening, Jan. 22.

The ceremony at the Bank One Center on the Riverfront will honor nearly 40 professionals from the Delaware business community. The public is invited to attend this charitable event. A limited number of tickets are still available and can be obtained by calling the Walnut Street YMCA at 571-6935.

The speakers at the 2004 awards are in prominent company. Previous featured guests included Coretta Scott King, Secretary of State Colin Powell and basketball great Magic Johnson.

ESPN's baseball analyst Harold Reynolds will moderate the guests' presentations.

■ **Willie Howard Mays** played for the New York and San Francisco Giants and the New York Mets from 1951-1973. Known for his enthusiasm and exuberance, he excelled in all phases of the game. His staggering career

statistics include 3,283 hits and 660 home runs while garnering two MVP awards, 12 Gold Gloves and played in a record-tying 24 All-Star Games.

Mays was elected to the Baseball Hall of Fame in 1979.

■ **Henry Louis Aaron**, "Hammerin' Hank," earned his nickname by clubbing 755 home runs over his 23-year career. Not only did he set the record for career home runs, but he also established 12 other major league career records, including most games, at-bats, total bases and RBI's. Born in Mobile, Alabama, Aaron was the last Negro League player to also play in the major leagues. He played for the Milwaukee and Atlanta Braves, Milwaukee Brewers and was elected to Baseball Hall of Fame in 1982.

■ For 37 years, no one in the Major Leagues hit more home runs in a single season than Roger Maris when he hit 61 homers in 1961. In 1998, **Sammy Sosa** and Mark McGwire of the St. Louis Cardinals made history in their chase for the record, with Sosa hitting 66 home runs, just behind McGwire's total but by far the most by any Latin American baseball player.

Sosa was born November

12, 1968 in San Pedro De Macoris, Dominican Republic. After the 1998 season, Sosa played a major role in providing relief aid to the victims of Hurricane George on the ravaged Dominican Republic island, which left more than 100,000 homeless. Via the Red Cross, he sent 30 tons of rice and beans, as well as barrels of pure water to the Dominican Republic, and helped in the rebuilding of homes.

He also launched The Sammy Sosa Charitable Foundation (SSCF), which raised \$700,000 and helped several other Latin American countries with food and money through their crisis.

On September 18th, 1999, Sammy Sosa

became the only player to hit 60 home runs in two different Major League seasons.

The proceeds from the Jan. 22 event benefits the Black Achievers program, which sponsors education and career development programs, including SAT preparation, time awareness and the importance of supporting the community.

A special feature of the program is that it provides a free YMCA membership to each teen actively involved in the Black Achievers program.



Life options fair here

THE Life Options Fair for senior citizens will be held on Friday, Jan. 16 at the Newark Senior Center.

The free fair, scheduled from 9:30 a.m. to 2:30 p.m., will feature 25 exhibitors in five life option areas: Lifelong learning; community service; employment & entrepreneurship; recreation & leisure; and, wellness and spirituality. In addition, workshops will be presented to help participants identify life passions they want to pursue and wisdom they have to share.

The day will begin with a keynote address from Emily Kimball, who at 62 rode her bicycle across America and backpacked the 2,000-mile Appalachian Trail.

Now the owner of Make It Happen, a lifestyle planning business, she travels around the country to talk to others about how to lead fuller lives.

Exhibitors include the Newark Coin Club, Senior Employment Services, AARP, Delaware Senior Olympics, Academy of Lifelong Learning, SCORE, and Tri-State Bird Rescue & Research to name a few.

The closing celebration will feature Clem Bowen a local storyteller and entertainer.

The Life Options Fair is a celebration of the changing nature of retirement. In 1900, the average life expectancy was 47. Today it is 76. Retirement is no longer a relatively short period of one's life, characterized by disengagement from life, rest and leisure. Now lasting three decades or longer, retirement is a time for new beginnings and continued community involvement.

A snow date has been scheduled for Friday, Jan. 23 if needed.

For more information, call the 255-9878. The center is at 200 White Chapel Dr.



CARPER CHECKS IN

U.S. Sen. Thomas Carper, D-Del., left, visits with U.S. Air Force Academy Cadet Tyler Streit at the Streit family residence. Carper made the personal visit because he — along with other Delaware legislators — nominated Streit to the Academy last year, one of only a few in the state who receive such an honor each year. Streit, 19, a 2003 Newark High School graduate, has survived the Academy's basic training and first semester. Carper's visit attracted the media, too, with WDEL 1150, WILM 1450 and Channel 6 television (pictured left) doing segments. Streit, who hopes to become a fighter pilot, was home for the holidays.

Don Carlo: Just an hour away

HAPPY New Year. I know I am a little late but I do want to wish you a wonderful-filled year with the fine and performing arts.

My first topic of the new year is one of my favorites: Opera.

The Opera Company of Philadelphia's boss, Robert Driver, is a daring soul. For the first opera of 2004 he is offering us one of the most controversial operas of the 19th century, Verdi's "Don Carlo."

Countless treatises have been written on the French vs. Italian languages, the length, the ballet — or lack thereof — etc. I have heard the impassioned meanderings of "purists" (whatever they are) since I was in high school.

But just enjoy "Don Carlo" for what it is, a Verdi romantic masterpiece built around the Spanish Inquisition.

There is Catholic Spain vs. Protestant Flanders, Crown vs. Church, King Philip II vs. Don Carlo, his son. On and on it goes.

Holding all the stories together is the magnificent score of Giuseppe Verdi and that is what has kept interest in the work alive since its first performance in 1886.

This score together with the wonderful cast the Opera Company of Philadelphia has assembled will make this a favorite for you if you are seeing it for the first or tenth time.

This is an epic in every sense of the word. The psychological, political, ecclesiastical, romantic drama unfolds amid the turmoil

THE ARTS



By PHIL TOMAN

of the Spanish Inquisition. Verdi combined the orchestral and choral forces to create a true masterpiece. It is a difficult work to undertake and this will be its Opera Company of Philadelphia premiere.

Tenor Carl Turner, whose photo appears with my column today, will sing the title role. He is a leading tenor with the New York City Opera and has distinguished himself in houses throughout Europe. His recent roles have included Don Jose in "Carmen," Calaf in "Turandot," Cavaradossi in "Tosca" and Riccardo in "Un Ballo in Maschera."

The role of Don Carlo's father, King Philip II will be performed by the Ukrainian bass Vitalij Kowaljow who is making his OCP debut. In this country he is a frequent star with the Los Angeles Opera Company just having concluded a run as Raimondo in "Lucia di Lammermoor."

Presenting his interpretation of Rodrigo, Marquis of Posa, is baritone Franco Vassallo who did such a fine job here last season in "La Traviata." Since then he triumphed as Figaro in "Il Barbiere di Siviglia" with the Vienna State Opera.

Angela Brown who starred in the OCP production of "Porgy and Bess" in 2001 is back for the pivotal role of Elisabetta, a woman caught in the crossfire of the father,

King Philip, and the son, Don Carlo. A versatile soprano, she has assumed two last minute stand-ins for major roles in Philadelphia and at the Metropolitan Opera in New York both to critical acclaim.

Making her OCP debut is contralto Ewa Podles as Princess Eboli. She has performed with the Philadelphia Orchestra and with the Canadian Opera Company's "Julius Caesar" and "Oedipus Rex."

Holding the entire performance together from the pit, a job he does so very well, is my OCP favorite Maestro Maurizio Barbacini the company's principal conductor.

Conducting "Don Carlo" is not an easy job, but one this conductor does so very well.

This Verdi tour de force will be performed seven times, five evenings and two matinees. It opens on Jan. 30 and performances follow on Feb. 1, a matinee, Feb. 4, 7, 10, 13 and 15, the other matinee.

All performances are at The Academy of Music, Broad and Locust Streets in Philadelphia.

It is about an hour's drive from Newark via I-95 and I-76. That means no expensive rail fares and overnight hotel stays at exorbitant prices with meal prices to match.

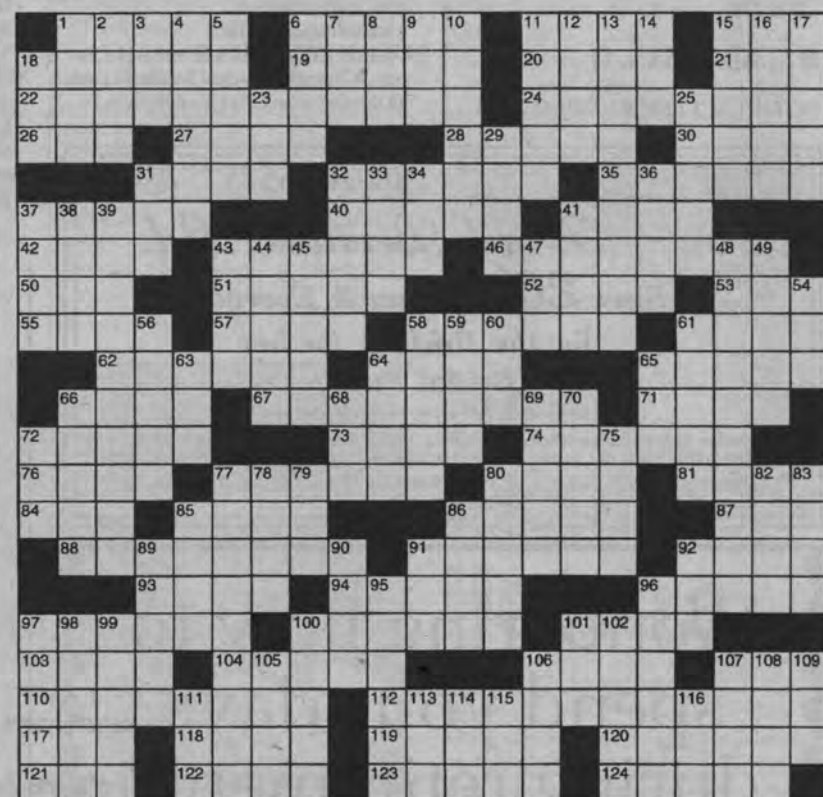
You can be back here the same evening or afternoon depending on the time of the performance you elect.

For information you may call 215-893-3600 or try www.operaphilly.com.

Enjoy.

■ The writer has authored this column for the Newark Post for more than four decades. A long-time Newark resident and arts enthusiast, he and his wife, Marie, live in Newark.

NEWARK POST ♦ THE STUMPER									
ACROSS	53 Start to snooze	96 Trier "Thanks!"	5 Varnish ingredient	39 Gene Chandler hit	80 Big-name Secretary, e.g.				
1 "Lil" actress	55 Colors	97 "Cafe" (88 film)	6 Tore	41 Barber Sweeney	83 Diminutive suffix				
6 Decorous	57 Gouda	100 Popped one's pecs	7 Pine product	43 Leander's love	85 Blue hue				
11 Jack of "Rio Lobo"	58 Schedule	101 Actress Verdon	8 Burro	44 Iniquities	86 Ire				
15 With 10 Down, "Cheers" star	61 Fluffy hairdo	103 Farm measure	9 Robert of "Quincy, M.E."	45 Crete's capital	89 Court cry				
18 Entice	62 Annette of "48HRS."	104 Swap	10 See	47 Dawson of football	90 Spilled the beans				
19 It's tossed with sauce	64 Privy to	106 Shopping center	15 Across	48 Gene Hackman film	91 Negligent				
20 Waiter's offering	65 Refuse	107 Zoo attraction	11 Roast host	49 Museum piece	92 Tenor				
21 Medical grp.	66 Out of range	110 Gene Roddenberry creation	12 Annealing oven	50 Computer acronym	95 Weak				
22 Gene Barry role	67 Gene Sarazen invention	112 Gene Krupa's bandleader	13 '56 Ingrid Bergman film	51 Play for time	96 Circuitous course				
24 Gene Autry's horse	71 Architect Saarinen	117 Sky light?	14 Silent	52 Statesman Sadat	97 Lowdown crooner?				
26 Maestro de Waart	72 "Die Fledermaus" maid	118 Part of NB	15 Use one's noodle	53 Departs	98 Behave like a brat				
27 Evened the score	73 "Oh, woe!"	119 Stalin's predecessor	16 Overact	54 Goal	99 Endowment				
28 Prophets	74 Irrational	120 Stereo components	17 Patron	55 Amphitheater feature	100 Pretended				
30 "So — You" ("77 song)	76 Stocking stuffer?	121 Choose, with "for"	18 Vigoda or Fortas	56 Neighbor	101 Berle bit				
31 Torrid or Frigid	77 Somewhat of your face?	122 Bird food	19 Placekicker's prop	57 Lexicographer	102 Knocked out a novel				
32 Bluesman James	80 Scenter of	123 "Maria —" (41 song)	25 It's spotted out West	58 Partridge	103 Artist				
35 Le Carre title start	81 — de-camp	124 Clear the slate	29 Actor	59 Cherish	104 Sociable stalling				
37 Zeal	84 Blunder	DOWN	30 African antelope	60 Uh-uh	105 The — Brothers				
40 Tea of "Deep Impact"	85 Top-notch	1 "— All Over" (64 hit)	31 Actress Wanamaker	61 Florida feature	106 Reduce, with "down"				
41 Diplomacy	86 Fido's friend	2 Choir member	32 Actor Calhoun	62 Blackboard support	107 USNA grad				
42 Liberine	87 Fido's physician	3 Cadge	33 "Why don't we?"	63 "Stroker —" (83 film)	108 Conger or moray				
43 "Macbeth" role	88 Silver-tongued	4 Wind instrument?	34 Berg or Drabowsky	64 "Shalt" star (daringly)	109 Compass pt.				
46 Kind of sale	91 Not long ago		35 "New Jack City" actor	65 Without — (daringly)	110 Palindromic diarist				
50 Vex	92 Kid		36 Saharan	66 Decimal base	111 "Jurassic Park" stuff				
51 Linda of "Dynasty"	93 Litter's littlest		37 Actor Calhoun						
52 Revise a manuscript	94 Mead's "Coming — in Samoa"								



Cooch's Bridge Industrial Park



1,200 Sq. Ft. Warehouse Units

From \$685.00 Month

Call: (302) 894-1394

JUMP-START

Join Weight Watchers now and get our Fast Track kit **free.**
Offer ends January 31. While supplies last.

YOUR WEIGHT LOSS WITHOUT GIVING UP CARBS.

Free registration for meetings.
Pay only the weekly fee.

1 800 651 6000 WeightWatchers.com

Meeting times are listed below. For your convenience, please arrive 30 minutes prior for registration and weigh-in.

Visit our locations in Bear, Middletown & Newark

Call 1-800-651-6000 for location information & meeting times.

WeightWatchers®

Valid until 1/31/04 at participating meeting locations. Fast Track not included in At Home kits. Free Registration not valid for At Work meetings or Online subscribers. ©2003 Weight Watchers International, Inc. owner of the WEIGHT WATCHERS trademark. All rights reserved.

Now Available!



12" w x 22" h

~Woodside Farm~
by Kathy Ruck

Newark Location Only!

Hardcastle Gallery
since 1888
302-738-5003
622 Newark Shopping Center, Newark, DE

10% OFF all framed prints from now until January 31st

NEWARK POST ❖ DIVERSIONS

■ FRIDAY, JAN. 9

FAMILY & COMMUNITY 1 p.m.

Continuing education to promote better way of life at County Extension Office, South Chapel Street, Newark. New members welcome. Info. 738-4419 or 831-1239.

STRENGTH TRAINING Fridays and Mondays at Newark Senior Center, 200 White Chapel Dr. Info., 737-2336.

■ SATURDAY, JAN. 10

MEN'S BREAKFAST 7:30 a.m. at Greater Grace Church, 30 Blue Hen Dr. \$5 donation goes to missions. Info., 738-1530.

LYME SUPPORT GROUP 10:30 a.m. second Saturday of each month at the Kirkwood Highway Library. Info. 996-9065 or e-mail TLizzy@snip.net.

DIVORCECARE Saturdays and Wednesdays. Separated/divorced persons meet at Praise Assembly, 1421 Old Baltimore Pike, Newark. Info. 737-5040.

WHITE TAILED DEER 4 p.m. indoor program and outdoor hike looking for a glimpse of the white tailed deer in White Clay Creek State Park. \$2 per person. Pre-registration required, 368-6900.

CASINO NIGHT 6 p.m. Poker and wheel at Newark Elks 2281, 42 Elks Trail, New Castle. Free admission for players. Info. 328-2281.

■ SUNDAY, JAN. 11

PATRIOT ACT PUBLIC FORUM will be

held noon to 2 p.m. at Unitarian Fellowship, 420 Willa Road, Newark. The meeting is for residents interested in learning more about how their civil liberties, freedom of association, and their First and Fourth Amendment rights are affected by present and future Patriot Act legislation, in addition to discussion about a pending resolution on the subject coming before Newark City Council. For information, 731-4076.

BEAR DANCERS Contra dancing from 2-5 p.m. No partner or experience needed. Dress comfortably and bring clean, soft-soled shoes. No smoking or alcohol. 208 Mariner's Way, Bear. \$6 Info., 838-0493, ext. 5.

LT. GOVERNOR'S FITNESS CHALLENGE 2-5 p.m. kick-off of a 12-week fitness challenge for all Delaware residents that will include daily physical activities. Meet at the Newark Boys and Girls Club's pool area, 1 Positive Place. For more information, call the club at 658-1870.

■ MONDAY, JAN. 12

TRANSPORTATION MEETING WILMAPCO seeks input about local transportation projects proposed for the next three years in an open house forum at 4:30-7 p.m. 850 Library Avenue. For more info., contact them at www.wilmapco.org/TIP

NEWARK CITY COUNCIL meets at 7:30 p.m. at Newark Municipal Building's council meeting room, 220 Elkton Road in

Newark. For information, 366-7070 or <http://newark.de.us/>.

ESL Afternoon and evening classes for English Conversation held every Monday at Newark United Methodist Church, 69 East Main Street. Registration required. 292-2091.

SCOTTISH DANCING 7:30 p.m. at St. Thomas Episcopal Church, South College Avenue, Newark. Info. 368-2318.

NCCo STROKE CLUB noon at the Jewish Community Center, Talleyville. For information, call Nancy Traub at 324-4444.

NEWARK ROTARY CLUB 6:15 to 7:30 p.m. every Monday at the Holiday Inn, Route 273, 453-8853.

■ TUESDAY, JAN. 13

CHRISTINA SCHOOL BOARD 7:30 p.m. second Tuesday of every month. For information and locations, call 454-2500, or visit www.christina.k12.de.us.

EPILEPSY SUPPORT 7 p.m. second Tuesday of month meets at the Easter Seal Center Conference Room, Corporate Circle, New Castle. 324-4455.

CANCER SUPPORT 6:30 p.m. second and fourth Tuesdays at Silverdale/Carr Executive Center, Building 405, Wilmington. Info. 733-3900.

SCRAPBOOKING 7-9 p.m. Tuesdays at Glasgow Reformed Presbyterian Church, Summit Bridge Road, Glasgow. Nursery, \$2/child. Info. 834-GRPC.

NEWARK DELTONES 7:45 p.m. For men who like to sing at NewArk Church of Christ, East Main Street. For more information, call Will at 368-3052.

SWEET ADELINES 7:30 -10 p.m. Singing group at MBNA Bowman Center, Route 4,

Newark. Listeners and new members welcome. Info. 999-8310.

■ WEDNESDAY, JAN. 14

ANXIETY DISORDER 2nd & 4th Wednesdays from 6:15-7:30 p.m. Support group sponsored by Mental Health Association in Delaware To maintain the privacy of members, support group locations not be published. To register, call 765-9740.

EAST END CIVIC ASS'N 7 p.m. second Wednesdays at Wesleyan Church, George Read Village. Info. 283-0571.

PAINTING GROUP 9:30 a.m.-noon second and fourth Wednesdays at Newark Arts Alliance, 132 E. Delaware Avenue. Bring own supplies. 266-7266.

BINGO 12:45 p.m. Wednesdays at Newark Senior Center. Lunch available for \$2.25/platter at 11:45 a.m. 737-2336.

GRIEFSHARE 7 p.m. seminar and support group every week for those who have lost someone close to them at Praise Assembly, 1421 Old Baltimore Pike. Info. 737-5040.

TAI CHI 2:30 p.m. Wednesday or Monday; 11:15 a.m. Friday, at Newark Senior Center. \$20/month. 737-2336.

FAMILY CIRCLES 5:30 p.m. Wednesdays at Newark Senior Center. 658-5177.

MICHAEL JONES-McKEAN Through Feb. 27. Eclectic drawings and sculpture on exhibit in the Mezzanine Gallery in the Carvel State Office Building, 820 N. French St., Wilmington. Info., 577-8278.

■ THURSDAY, JAN. 15

GIRL SCOUTS L.O.V.E CAMPAIGN, an anti-violence initiative by the Chesapeake

Bay Council of Girl Scouts, continues with a workshop called "When Dating Turns Dangerous" from 7-9 p.m. at the Newark Resource Center, 501 S. College Ave. For information, 456-7170.

NAMI-DE 7:30 p.m. support group meeting for family members of persons living with mental illness the second Thursday of every month at St. James Episcopal Church on Kirkwood Highway. Info. 427-0787.

DSI THUMBS UP 2nd & 4th Thursdays. Stroke support group meeting offering educational topics, peer support and guests who are experts in rehabilitative services at the Newark United Church of Christ, 300 E. Main St. Sponsored by Delaware Stroke Initiative. Free. Info., 633-9313.

TOASTMASTERS 7 p.m. second and fourth Thursday. Greater Elkton chapter meets at Cecil County Department of Aging to develop potential and overcome fear of public speaking. Info. 410-287-3290.

BRIGHT FUTURES 1 p.m. Breast cancer support group meets second and fourth Thursdays at Christiana Hospital in the Medical Arts Pavilion #2. Info. 733-3900.

WOMEN'S DEPRESSION 7-9 p.m. support group sponsored by Mental Health Association in Delaware. Free. To protect privacy of members, meeting locations provided only with registration at 765-9740.

EVENING YOGA 6:15 p.m. class to encourage relaxation and improve strength, balance, and peace of mind. \$15 per month at Newark Senior Center. Info., 737-2336.

NEWARK MORNING ROTARY 7-8:15 a.m. every Thursday at the Blue & Gold Club, Newark. For information, call 737-1711 or 737-0724.

Authorized Retailer Not affiliated with any other bridal salon.

Bridal Fashions by **Frank Bernard Ltd.**

Save 20% Today & Everyday for the Bride & for her Bridal Party

* No Sales Tax * Ticketed Prices Reflect 20% Discount

DIR: North or South I-95 to Marsh Rd Exit 9. Follow Rte. 3 South to Washington Street Ext. Turn left. Go 1 light to Philadelphia Pike. Turn left. We are 2 blocks down on the left hand corner. It's worth the drive!

725 Philadelphia Pike, Wilmington, DE 19809 ♦ Mon-Fri: 3PM to 9PM; Sat: 10AM to 5:30PM

www.delawarewoman.com

Wondering how to spend your days during retirement?

Visit the
LIFE OPTIONS FAIR

January 16, 2004

Newark Senior Center
200 White Chapel Drive

9:30 a.m. to 2:30 p.m.

Keynote Speaker
Emily Kimball- the Aging Adventure
"It's Never Too Late to Make it Happen"

For more information 302-255-9878 or 302-737-2336.
Free Admission - No Advance Registration required.

Twenty-seven exhibitors with ways to fill your leisure time and improve the quality of your life and the world around you. Exhibitors will represent Community Service, Employment, Wellness & Spirituality, Recreation & Leisure and Lifelong Learning.

Sponsored by RSVP of New Castle County, Newark Senior Center and AstraZeneca.

WILMINGTON CHRISTIAN SCHOOL



Building *CHRISTIAN*
character through *FAITH*
integrated with *LEARNING*

OPEN HOUSE

January 13th 2004

4:00 pm-7:00 pm

www.wilmingtonchristian.org



Sports

HIGH SCHOOLS UNIVERSITY OF DELAWARE • LEAGUES

Christiana falls to McKean

By JOE BACKER

NEWARK POST STAFF WRITER

Christiana's poor shooting throughout the game cost the Vikings a chance for victory in Tuesday night's 57-53 loss to McKean.

Th 2-4 Vikings wasted a good defensive effort against the Highlanders.

Viking coach Anthony Jefferson said his team has already had a lot of ups and downs this season.

"We have a lot of young players on the team, including several ninth graders," Jefferson said. "So we're going to have some good nights, and other nights we may have a struggle."

In the surprising first half, Christiana missed its first 10 shots, but only trailed 11-7 after the first quarter.

The Vikings made six of 16 shots in the second quarter and took a 23-22 lead to the locker room at halftime.

McKean's offense picked up in the second half, outscoring Christiana by five points in the third quarter to regain a 36-32 lead. Kevin Brown, Carlos Ayala and Luther Blackshear led the Highlander offense.

The fourth quarter saw both teams' offenses on fire. McKean's Matthew Dexter, though, scored nine points to help his team hold off the Vikings.

"We made some adjustments in the second half," Jefferson said. "But they also made some changes and they made some shots when they had to."

McKean is now 5-2 on the season and ranked among the top 10 in the state. Christiana has lost four straight games since winning its first two games of the season in the Kappa Klassic.

Newark girls swim team on top

Jackets' challenge now is to stay there the rest of the season

By MARTY VALANIA

NEWARK POST STAFF WRITER

The Newark High girls swim team picked up this year right where it left off last year — as the best team in the state. The Yellowjackets are undefeated this season and have already beaten St. Mark's — the team it displaced as the state's best.

The only problem is that it's early January and not late February.

Last year, the Jackets toppled St. Mark's in January and rode

that momentum through the state championship meet. This year, however, the biggest meet of the regular season took place Dec. 17. Then came the long Holiday break.

"We can't rest on our laurels," said Newark coach M.J. Polaski. "We're in the hot seat now. Everyone wants to knock off the No. 1 team. I've sensed a little bit of [a letdown] over break, but I also am lucky to have a group of seniors that will — in a nice way — speak up when they have to and not let that continue."

Newark's 109-76 win over Charter Monday improved the Yellowjackets to 4-0 on the season.

"That was a perfect example of what I'm talking about," Polaski said. "That was a tough meet. We fought for every point. It's tough when kids have two weeks off and some people were

able to get to practice and some people weren't. We didn't have time to really talk as a whole team. Now we do and I expect our seniors will really show their leadership."

Christy Williams, Amber Walker and Sarah Zomchick led the Jackets against Charter, each winning two individual events. Walker and Williams were also part of the winning 400 freestyle relay team while Zomchick and Williams were on the first-place 200 freestyle relay team. Cecily Connell won the 100 backstroke, was second in the 200 freestyle and was also part of the 400 free relay team and the second place 200 medley relay.

Other contributors to Newark's point total included Abby Grube, Lauren Beck, Lexie Donovan, Stephanie Harper, Andrea Grube, Becky Basner, Emily Maclary, Sarah

Johnston, Sarah Basner, Alicia Baddorf, Tessa Bates, Jayme Pieniaszek, Shelby Crawford, Katie Davis, Jen Baird, Melissa Kelly, Karen Mandrachia, Sarah Bell, Lauren Fischer, Megan Owens, Rachel Maclary, Sarah Black and Erin Callahan.

Becky Malley, Colleen Poynton and Olivia Botting finished second, third and fourth respectively in diving.

Newark came right back with another meet Thursday against Blue Hen conference foe Brandywine.

"We still have some tough meets to go," Polaski said. "It's hard when you have 11 conference meets to swim. It's going to be harder this year at states than it was last year. Last year we had one team to worry about. This year everybody is looking at us. It's going to be more difficult."



NEWARK POST PHOTO BY MIKE BIGGS

Delaware's Mike Ames drives to the basket for two of his game-high 21 points against Hofstra.

Hens handle Hofstra

Senior guard Mike Ames scored a game-high 21 points and backcourt mate, junior Mike Slattery, contributed 15 points and seven assists as the University of Delaware men's basketball team opened Colonial Athletic Association play with a 66-59 win over Hofstra Saturday afternoon at the Bob Carpenter Center.

Delaware's leading scorer at 15.9 points per game, Ames bounced back from six-point effort in Tuesday's 75-54 loss to No. 10 ranked Saint Joseph's as he connected on all 10 shots from the foul line and hit 5 of 13 shots from the field for 21 points, his 12th career 20-point effort.

Slattery hit on 6 of 12 shots from the field, including two three-pointers, for his 15 points, junior forward Robin Wentt added 10 points and eight rebounds, and sophomore Harding Nana came off the bench to pull down a game-high 13 rebounds as the Hens improved to 7-3, 1-0 CAA. The start is the Hens' best 10-game start in four seasons under head

See HENS, 10 ►

Diamond Gymnastic team wins in Maryland meets

Newark area gymnasts representing the State of Delaware and Diamond Gymnastics competed in Joppa, Maryland in the Harford Holiday Invitational and in Annapolis at the Christmas in Annapolis Tournament in December. Levels 4, 5, and 6 took first place in the Harford Holiday. In Christmas in Annapolis Level 7 took second place, and Levels 8 and 9 took first place.

In the Harford Holiday held December 6th-7th, Dominique Tee (Age 6-8) finished second all-around; Sarah Boothe (9-10) finished 4th all-around, and Teresa Manniso (11+) 3rd all-around for Level 4. In Level 5 Lindsay Prettyman (11) finished 1st all-around with a 35.9, Kasey Prettyman (11) was 3rd all-around with a 35.850, and Randi Dahms (12+) finished 4th all-around with a 35.050. For Level 6 Brittney Jones (9-11) came in 1st all-around with a 35.850. Alexandra Zimmermann (9-11) finished 3rd all-around and Stephanie Jones (13+) finished 3rd all-around.

Christmas in Annapolis was held the weekend of December

12th. Diamond competed against teams from Maryland, New Jersey, Virginia, West Virginia, and Pennsylvania in this 3-day holiday event. In Level 7 Patty Pierson (13+) won first place all-around with a score of 37.675. Patty placed first on vault (9.825), 1st on bars (9.35), 2nd on beam (9.0), and 1st on floor (9.5). Kelly Strickland (13+), Level 8, finished 4th all-around with a 2nd place finish on beam (9.05). Christina Jones (14-15), Level 9, won first place all-around with a 37.2. Christina took 3rd on vault (8.95), 1st on bars (9.65), 1st on beam (9.2), and 2nd on floor (9.4).

Diamond Gymnastics Levels 4-7 next compete in the Maryland Classic in Prince George County, Maryland, January 16th-18th. Patty Pierson (Level 8), Kelly Strickland (Level 8), and Christina Jones (Level 9) will represent the State of Delaware and Diamond Gymnastics in Tampa, Florida at the Tampa Bay Turners Invite January 16th-18th.

Harford Holiday

Level 4	Team score:
108.175	Place: 1st

Dominique Tee (Age 6-8) 3rd vault, 3rd bars, 3rd floor, 2nd all-around; Mariah Anderson (9-10); Sarah Boothe (9-10) 3rd bars, 4th beam, 4th floor, 4th AA; Amy Dill (9-10); Teresa Manniso (11+) 2nd vault, 2nd Bars, 3rd beam, 3rd AA

Level 5	Team score:
110.175	Place: 1st

Danielle Debevec (10); Verena Joerger (11); Kasey Prettyman (11) 2nd vault (9.25), 1st beam (9.1), 3rd floor (9.1), 3rd AA (35.85); Lindsay Prettyman (11) 1st vault (9.3), 2nd bars (8.9), 3rd beam (8.85), 4th floor (8.85), 1st AA (35.9); Randi Dahms (12+) 2nd vault (9.0), 3rd bars (9.0), 3rd floor (8.8), 4th AA (35.05)

Level 6	Team score:
108.0	Place: 1st

Brittney Jones (9-11) 3rd vault (9.15), 1st bars (8.9), 2nd beam (8.9), 3rd floor (8.9), 1st AA (35.85); Alexandra Zimmermann (9-11) 4th beam (8.725), 2nd floor (8.925), 3rd AA (34.825); Stephanie Jones (13+) 2nd vault (9.0), 3rd AA

Christmas in Annapolis

Level 7	Team score:
---------	-------------

110.175 Place: 2nd
Patty Pierson (13+) 1st vault (9.825), 1st bars (9.350), 2nd beam (9.0), 1st floor (9.5), 1st AA (37.675); Samantha Wirth 3rd Beam (9.15)

Level 8	Team score:
108.175	Place: 1st

Kelly Strickland (13+) 2nd Beam (9.05), 4th AA

Level 9	Team score:
110.525	Place: 1st

Christina Jones (14-15) 3rd Vault (8.95), 1st bars (9.65), 1st beam (9.2), 2nd floor (9.4), 1st AA (37.2)

Black Eyed Susan

Diamond gymnasts were also successful in 23rd Black-Eyed Susan Invitational in Landover, MD on November 22nd and 23rd. Over 500 gymnasts from 25 teams took part in this multi-state competition. Level 5 gymnast Sarah McCabe took first place all-around in the 13+ age group, Kasey Prettyman took 2nd all-around in the 11-12 yr. olds. In Level 6, Brittney Jones (10-11yrs.) finished 1st all-around. Sam Wirth (13+), finished 2nd all-around in Level 7.

Dennis and Lois Smith and

Mary Allison Bradley own Diamond Gymnastics Academy. Slava Glazunov, Gabby Ganesco, Mary Allison Bradley, and Erica Bates coach the team.

The Level 4 -6 teams next compete December 5th at the Harford Holiday in Joppa MD. Levels 7-10 compete at Christmas in Annapolis December 12-14th.

Level 5: 1st place Team Score: 109.875

Randi Dahms, Verena Joerger, Kasey Prettyman (11-12yr. 2nd AA, 2nd beam-9.7, 2nd bars), Lindsay Prettyman, Sarah McCabe (13+ 1stAA, 1st vault, 1st beam, 1st floor).

Level 6: 1st 107.3

Alexandra Zimmermann, Stephanie Jones, Brittney Jones (10-11 yr. 1st AA, 3rd bars, 1st floor).

Level 7: 2nd 110.850

Patty Pierson (1st vault 9.775), Sam Wirth (13+ yr. 2nd AA, 2nd vault, 3rd beam).

Level 8: 2nd 108

Kelly Strickland (2nd vault, 2nd floor)

Level 10

Christina Jones (2nd vault, 2nd floor).

Delaware basketball picks up first CAA win of the year against Hofstra

► HENS, from 9

coach David Henderson.

Hofstra, which owns a win over St. John's earlier this season, dropped its second straight to fall to 4-7, 0-1 CAA. Forwards Kenny Adeleke and Loren Stokes each led the Pride with 17 points with Adeleke pulling down 11

rebounds to notch his fourth double-double of the season and 28th of his career.

The Blue Hens, who have now won 15 straight conference home openers, including a perfect 12-0 mark at the BCC, won it on the boards as they held a 49-35 rebounding advantage behind the play of Nana, Wentt, and David

Lunn, who also pulled down six rebounds. Delaware also forced 20 turnovers by the Pride and committed just four of its own in the second half.

The first half featured five ties and neither team led by more than six points as the Hens jumped out to a slim 30-27 advantage going into intermis-

sion. Ames and Slattery combined for 22 of that total to lead the Hens and Adeleke led Hofstra with 10 points in a sloppily played half that saw neither team shoot better than 38 percent from the field.



Hofstra gained the lead early in the second half when Adeleke nailed a three-pointer for a 36-34 lead 2:18 into the stanza, but the Pride would never hold the advantage again the remainder of the game despite four more ties.

Delaware built the lead to seven points three times in the

first 15 minutes of the second stanza, but each time the Pride battled back. The Hens went up 49-42 with 11:34 remaining, but Hofstra used a three-pointer by Gibran Washington with 9:51 left to tie the game at 49-49.

The Hens rallied to take a seven-point advantage at 60-53 with 5:34 remaining, but Hofstra battled back to cut the lead to three at 60-57 on a layup by Stokes with 1:51 left. But Delaware controlled things from there as Nana hit a jumper with 47 seconds remaining.

Luxury Living Doesn't Have to be Expensive!

The VININGS

at CHRISTIANA

200 Vinings Way, Newark, DE 19702
(302) 737-4999

FEATURES - Rents from \$655

- Gas heat
- Washer and Dryer
- Multiple phone line capability
- Mini-blinds
- Ceiling fan
- Breakfast bar
- Dishwasher
- Private patio or balcony*
- Fitness center
- News and coffee bar
- Business services
- Pool with sundeck
- Clubhouse
- Video library
- Pet Walking area
- Resident activities program

*Select Apartments

C&D Furniture

A Solid Choice



222 S. Bridge St. Rt 213 Suite #10 (next to Pat's Pizza) Elkton 410-392-3515

A FULL LINE OF SOLID WOOD FURNITURE.

- All Styles of Desks
- Dining Room Sets
- Children's Furniture
- Bedroom Suites
- Hand-Crafted Mattresses
- Hutches
- Occasional Furniture
- Light Fixtures
- Lawn Furniture



POOLS & SPAS UNLIMITED

Enjoy Ultimate Comfort in a HOT SPRING® Spa

Enjoy ULTIMATE EASE
Discover ULTIMATE ENDURANCE
Experience ULTIMATE ENJOYMENT

New Castle (302) 324-1999 Milford (302) 424-1999
www.poolsandspasunlimited.com



HotSpring
Portable Spas
Built for a lifetime of relaxation

Proprietors can help uninformed consumers

► HEALTHY, from 1

bought Nature's Way from its original owner 20 years ago. They carry an array of products for Newark residents with special needs. Wheat and gluten-free, along with low-carbohydrate products are big draws.

Demand for healthy foods is high in the area, so new places are bound to spring up. One such newcomer is The Main Squeeze, co-owned by Debbie Johnson and Cindy Digennaro. They cele-

brated their first anniversary in Market East Plaza on Main Street in December 2003.

The Main Squeeze specializes in live/raw foods, wraps, salads, deserts, and, of course, juices.

Why juice? Debbie Johnson stands up to help a customer seated at the broad counter and explains that natural juices can both heal and rejuvenate.

"One of the highlights is our wheat grass juice," said Johnson, preparing a Yogi Hagi. "It's the most nutritious food known to man."

Why raw or live foods?

"We believe that live is the best that you can get — live food equals live body," Johnson said.

For those not quite ready for the wheat grass experience, there is Sinclair's Café. The menu has low fat and healthy foods with about a third of the menu for vegetarians. Everything is made from scratch with no red meat and no added salt.

"Years ago we had something on our sign that said: 'For the health-conscious gourmet,'" said Jeff Sinclair, co-owner of the restaurant that has been on Main Street for eighteen years.

The proprietors and customers of Sinclair's are health-conscious, but allow for the occasional indulgence in items like bacon or cheese. In fact, the coffeehouse-style eatery started out as a New York-style deli until Jeff and co-owner Lynn Sinclair turned the focus to healthy food in 1983.

"We have veggie burgers, turkey burgers, and salmon burgers for people who may want to have a hamburger but can't," Lynn Sinclair says with a grin.

Know the terms

- **Organic:** "Products produced under the authority of the Organic Foods Production Act...[using] materials and practices that enhance the ecological balance of natural systems."
- **Celiac disease:** "caused by an intolerance to gluten, a protein found in grains such as wheat, rye and oats (but not in rice or buckwheat)."
- **Vegetarian:** a person who eats mainly on plant product
- **Lacto-ovo-vegetarian:** a vegetarian who consumes dairy products and eggs.
- **Vegan:** vegetarians that do not use or consume any animal products.
- **Raw and live foodist:** a person that eats foods that is not cooked and still contains enzymes.
- **Fruitarian:** a person who eats fruit almost exclusively.
- **Sproutarian:** a person who eats sprouts almost exclusively.
- **Juicarian:** a person who consumes juice almost exclusively.

Sources: www.living-foods.com; www.vnn.org; Organic Trade Association at www.ota.com; and www.hyperdictionary.com.

aisle all say "healthy" and "natural." These are the products you should buy to eat more healthily, right?

Not necessarily say the folks at Newark's health food stores and restaurants. To eat healthy, consumers must be aware of ingredients and preparations, know what to look for and what to avoid. But neophyte consumers need not worry, because the proprietors of these establishments are prepared to help.

Jeff and Lynn Sinclair of Sinclair's Café have gathered their expertise about vegetarian and vegan diets through years of experience.

Jesse Cugini of Nature's Way is a trained pharmacist.

The Main Squeeze gets assistance from a nutrition expert and owner Debbie Johnson is eager to find the answers if she doesn't know it already.

Newark Natural Foods hosts educational seminars for the public and participates in health fairs. A nutritionist is on the premises to assist workers, members, and customers. An information kiosk is also available to help answer shoppers' questions.

As Bowen of Newark Natural Foods said, "We have the knowledge to back up why you should choose this product over a conventional product."

City lists criteria for replacement court

► COURT, from 1

Alderman and deputy Alderman while the governor and state Senate appoint and confirm judges in other state courts.

The city's Municipal Court bill will need a two-thirds approval from the legislators in the Senate and House of Representatives. State Sen. Liane M. Sorenson, R-Hockessin, was one of the several area legislators to receive the city's proposed bill and said she supports it and would introduce it.

"We are just starting with this so we'll see the reaction," said Sorenson, who also serves on the Senate Executive Committee that screens judicial candidates before they come to a full vote of the Senate.

The city of Newark Alderman Court handles more than double the cases of other municipal Alderman Courts.

Newark officials are taking the lead because House Bill 41, introduced in June 2003, created a task force that is expected to recommend ways to transfer jurisdiction of the eight municipal Alderman Courts in the state to the Justice of the Peace system. That bill was created because a state court commission found that the "constitutionality of the Alderman Courts is extremely questionable." That commission concurred with two previous state court-sanctioned studies which came to the same conclusions.

"We feel in Newark our Alderman Court works extremely well," said Newark City Manager Carl Luft.

In a letter to state legislators that was approved by City Council, Luft said Newark's need for a city-run court is unique in the state. He said the large university student population, and the many crimes related to alcohol, code violations and traffic make a local court a necessity. If Alderman Courts were transferred into Justice of the Peace Courts then it would mean a magistrate would not have to be

from the area and police would be required to drive outside city limits to testify or bring criminals for hearings.

Under the city's bill, the new judge must live within 15 miles of the city's municipal building.

According to the most recent Delaware Judiciary statistics, Newark is the busiest Alderman Court among seven others in Newport, Bethany Beach, Delmar, Dewey Beach, Laurel, Ocean View and Rehoboth Beach. The Newark Alderman Court recorded 10,413 case filings, compared to the runner-up in Newport with 4,817.

The city's 2004 budget expects the Newark Alderman Court to generate \$1.16 million in revenues from court and parking fines, and \$321,000 in expenses. The city alderman is a part-time judge for the court, making approximately \$33,000 a year.

While it may make sense to create a Municipal Court in Newark, its establishment as proposed would be significant.

■ It would create the first new state court since the state Supreme Court was formed in 1951.

■ It would be the only court where the finalists are not determined by the governor-appointed Judicial Nominating Commission. The JNC, made up of lawyers and citizens, accepts applications, interviews and investigates, and forwards a list of no more than four people for the governor to pick from. The state Senate must then confirm the governor's finalist.

■ It would be the only court where the judge must live within a specified mile radius of the court house. Now, judges are only required to live in the county where they preside.

■ Current state law requires an equal number of Republicans and Democrats to serve on the state judiciary, which includes the Supreme Court, Court of Chancery, Superior Court, Court of Common Pleas and Family Court. The Justice of the Peace Chief Magistrate is exempt.

■ Beware of labels

Not everyone in Newark is vegan or a sproutarian of course. Although you may not fit into one of those groups, you may

pick up a salad instead of a triple cheeseburger and a chocolate shake. These days you bypass the deli at the supermarket and check out the health foods aisle. The labels on the packages in that

Residents want traffic to slow down

► ROAD, from 1

mately 20 residents the two proposals.

Speed cushions do not cross the entire road width, therefore allowing emergency vehicles to straddle them. The intersection realignment at Cobble Creek Curve and Old Cooch's Bridge Road would include an island that juts out into Old Cooch's Bridge Road to slow traffic.

Residents and DelDOT offi-

cials said the proposals are an effort to slow down drivers that cut through Old Cooch's Bridge Road from Rt. 896 to Old Baltimore Pike. Many of the drivers speed because the road is long and straight.

Residents of the neighborhood simply want traffic to slow down.

When asked about the proposals at the meeting, resident Shirley Snapp said, "I like it. I want something done to calm traffic."

Resident Carol Griffith agreed. "We have people driving through our yards, knocking down mailboxes," she said.

This was the final meeting of the DelDOT workshops. After residents vote on the proposals, DelDOT expects to hold another meeting to discuss the results. Projects costs are unknown until a decision is made and what the work of changing the road will entail, said Mike Williams, DelDOT spokesperson.

Try Something New-- Take a Course with Christina School District Continuing Education

Choose From Classes in Many Areas & Topics

- Computers
- Arts & Crafts
- Dance, Music & Recreation
- Languages
- Personal & Family Finances
- Area Day Trips
- Exercise & Fitness
- Tutor An Adult
- Occupational & Recreational Safety
- Some Classes for Children & Youth

See the Catalog "Learning Is Forever"

Inserted in This Issue of the Newark Post

Catalogs are available at all Christina Schools and the Bear, Newark, and Kirkwood Highway Public Libraries. Mail and fax registration continues through January 20. In-person registration is January 27. Most classes start the week of February 2.

For more information call (302) 454-2101, Christina Adult Programs

REGISTER NOW! BRING A FRIEND!



In Our Schools

EDUCATION NEWS FOR NEWARK FROM LOCAL SCHOOLS

NOTEPAD

Learn sign language

RESIDENTS can attend American sign language classes at Sterck School for the Deaf, 620 E. Chestnut Hill Road. Classes will be held for 10 weeks, on Tuesdays or Thursdays, beginning Jan. 20 and 22, 6:30 to 8:30 p.m. Persons registering for the courses must be at least 14 years old or a freshman in high school. Cost of the program is \$60. To register, call the Sterck school office at 454-2301.

Be in contact

If you are unable to contact your child's teacher by phone during the day, you can still stay in touch by e-mail.

Most teachers and staff members addresses are their last name followed by first initial @christina.k12.de.us.

Check them out

For an in-depth look at the high schools in the Christina School District visit their redesigned Web sites at www.christina.k12.de.us/glasgow or [/newark](http://newark) or [/christiana](http://christiana).

STUDENT OF THE WEEK

SAMANTHA Tsu, a third grader at Maclary Elementary School, was selected by Principal Charles Haywood and staff as this week's Student of the Week. Samantha's first, second and third grade teachers describe her as caring, responsible, cooperative and a true problem solver. They say she is a joy to be around and a good role model for her classmates.



Samantha Tsu

Autism facility named for student

By ROBIN BROOMALL

NEWARK POST STAFF WRITER

When Mark Galle was a child, he loved to touch everything. But his greatest legacy was the way he touched others' hearts.

Although Galle was born autistic, deaf, had severe physical impairments, and functioned on the level of an 18 month old even as a teenager, he worked hard to learn the basic skills. It took years of training to learn how to put on his underwear or how to behave in a store or restaurant.

Galle was one the the first three graduates of the Delaware Autism Program in 1989. He died unexpectedly of a seizure in 1999 at the age of 32.

On Dec. 23, the newest facility of the Delaware Autism Program, on Johnson Road in Newark, was dedicated as the Mark Galle Residence. It will serve as a training facility where other teenagers and young adults with physical and mental impairments can get additional training.

Former teachers remember Galle for his smile and the way he laughed.

"He loved swimming,"



NEWARK POST PHOTO BY JOHN LLERA

Mark Galle's family was present for the dedication for the latest residence facility to help in educating autistic teenagers and young adults. From left, Mac and Ginger Galle (parents), Mary Shea (grandmother), Kathy Shea (aunt), and Selina Galle (sister).

Michael McNelis, resident advisor, said, "regardless of the season, any water, anywhere, anytime, even in the bathtub."

When Galle had a job opportunity at the now closed Rickels Hardware store, putting price

tags on items, his team of teachers and advisors was skeptical. But Galle surprised them all and pioneered the way for others with severe challenges to become productive members of their community.

"He inspired us to be good teachers and be patient," said Arlene DiSabatino, a paraprofessional who worked closely with Galle.

"Some students need more school in order to learn, more hours in the day, into evenings and weekends," said Dr. Peter Doehring, director of the program. For children with autism and severe physical impairments, basic self care learning, like tying their shoes, can take years. The residence program allows them to continue their education past the standard school day.

In the dedication ceremony, which was attended by Galle's family, former teachers and current staff members, Doehring described the Delaware program as being the largest specialized program of its type in the world and the only autism program in the country to run a residence program.

Much of that is due to the dedication of Galle's family.

Both Mary (Ginger) and Michael (Mac) Galle spent hours lobbying with Delaware legislatures for services when the students became adults and were no longer covered by the educational system. They even took Mark to Dover to visit with former Gov. Pete DuPont.

"The people in Dover had to

See GALLE, 13 ►

Students learn the greatest lesson

By ROBIN BROOMALL

NEWARK POST STAFF WRITER

SECOND graders at Wilson Elementary School combined their academic learning and creativity with community service in the weeks before the holiday vacation.

The classes of Beverly Jordan and Wendy Deppe began a language arts unit on quilts early in December, learning about their history, styles, construction and uses.

Then each student designed and created his own square with fabric crayons. When all the squares were finished they were stitched together into two lap quilts.

At a holiday celebration on Dec. 18 the students presented the quilts to residents of



NEWARK POST PHOTO BY ROBIN BROOMALL

Second graders at Wilson Elementary School presented two hand-made quilts to residents of Somerfield Assisted Living. Each student designed their own square.

See QUILTS, 13 ►

Christina students show they care about the community

► QUILT, from 12

Somerfield Assisted Living in Newark and entertained them with songs and dance.

Other school classes and staff members continued the spirit of the holiday season with projects of their own.

■ Seven large boxes of canned foods were collected by Jennie Smith Elementary School students for the Newark Area Welfare Committee and hats, mittens, scarves and socks were donated to the Neighborhood House of Wilmington's Southbridge area.

■ Junior Honor Society members at Kirk Middle School raised \$1,850 in one week by selling candy canes and accepting donations to a talent show. They presented six families with \$300 gift certificates to Kmart, ham and turkey dinner fixing (courtesy of the cafeteria staff), duffle bags and jackets.

■ Staff members of Delaware School for the Deaf participated in "Helping Hands" providing four DSD families with gifts, food and financial support, including paying one month of a

home mortgage. One anonymous donation was \$1,000.

■ First and second graders at Delaware School for the Deaf collected donations of seven boxes of school supplies for the Kedowa School for the Deaf in Kenya, Africa. Staff members paid the \$300 shipping fees.

Program will grow

► GALLE, from 12

put a face to the program and when they did, they supported it," Ginger Galle said. "Thank you. This means the world to me."

The 3,500-square-foot facility was constructed and furnished for \$500,000. It will allow the residential program to expand from the current enrollment of 20 to approximately 25. Doehring expects the facility to be staffed and functioning by spring 2004. The building was designed by Weymouth Architects and built by Vantresca Brothers, Inc.

Statewide there are 400 autistic students. There are 260 within the Christina School District.

Salter enrolls

Newark resident **Rachael Salter** has enrolled in the College of Visual and Performing arts majoring in environmental design at Syracuse University.

Hayward named in 'Who's Who'

Newark resident **Lee Hayward**

has recently been named to Who's Who Among Students in American Universities and Colleges at Wesley College.

Clark enters UTI

Newark resident **Taishia Clark** has recently been accepted to the Universal Technical Institute campus in Glendale Heights. Clark will train to become a professional automotive technician.

Pippidis new director of extension office

Maria Pippidis has been named director of New Castle County Cooperative Extension at the University of Delaware.

In this role, Pippidis is responsible for guiding the direction of Cooperative Extension programs and services throughout New Castle County.

WIN A 7-NIGHT ALL-INCLUSIVE TRIP TO THE RIVIERA MAYA



WIN A 7-NIGHT all-inclusive Apple Vacation to the Riviera Maya at the spectacular Bahia Principe Tulum! Located on a gorgeous stretch of white sandy beach, Bahia Principe Tulum features upscale accommodations, gourmet dining, exciting land and watersports and more! Your trip for 2 includes round-trip air, all meals, unlimited drinks and so much more! All courtesy of Apple Vacations, America's Favorite Vacation Company!

APPLE VACATIONS

RULES, REGULATIONS & BOOKING INSTRUCTIONS FOR ALL TRIPS: Subject to availability and blackout dates apply. Travel dates are final and will not be extended. No travel during the month of March and holiday periods including both 5 days prior and after. Trips are non-transferable and cannot be exchanged for cash. Apple Vacations reserves the right to substitute the vacation with another of equal value or equal Apple Rating should any unforeseen circumstance occur. Trips are valid for 2 adults only and do not include any special promotions. No room upgrades. Kids "stay and eat for free" specials are not included in this prize package. Trips are valid from time of issue through December 10, 2004. Employees of this newspaper, Apple Vacations and the Bahia Principe Tulum are not eligible to enter. No purchase required to enter.

* All departure/immigration taxes (approximately \$80-120.00 USD per person, subject to change) must be paid by the winners to Apple Vacations prior to departure.
* The passengers must possess valid passport or certified, state-issued birth certificate and picture ID/DL, and be at least 21 years old. Please note that married women using a passport or birth certificate in their maiden name must bring along a copy of their marriage certificate or risk being denied boarding.

To enter, fill out this form and mail or drop off to:

**The Newark Post
Attention: CPC Travel Contest
P.O. Box 429
Elkton, MD 21922-0429**

Name _____
Address _____
Home Phone () _____ Business Phone () _____
E-Mail _____

Entry Deadline: March 31, 2004

Winners will be notified
by April 30, 2004.

NEWARK POST

TIME IS RUNNING OUT!

ADULTS-ENROLL NOW
at the Newark Groves Center
to earn your high school diploma

ACT NOW!
Orientation is next week

**THE JAMES H. GROVES
HIGH SCHOOL**

**Is Delaware's Program for Adults
to Earn the High School Diploma**

The Newark Groves Center
Holds Classes at Newark High School
Monday Through Thursday Evenings

Get All The Facts. Check Out Your Skills.
Groves Can Help You Catch Up,
Earn Those Credits, and GRADUATE!

Call 454-2101 NOW
for Your Orientation Appointment.

It's Never Too Late To Move Your Life Ahead!

CHURCH DIRECTORY

**For Changes or New Ads Call Nancy Tokar at
410-398-1230 or 1-800-220-3311 Fax 410-398-4044**
Ad deadline is Monday 3pm before the Friday's run.



**Evangelical
Presbyterian Church (PCA)**
Christ Centered • Biblically Based
**Sunday Worship 10:45
9:30 Sunday School**
308 Possum Park Rd., Newark
302-737-2300
www.epcnewark.com

**RED LION UNITED
METHODIST CHURCH**
At the corner of Rts. 7 & 71 in Bear
1.5 miles south of Rt. 40
1545 Church Road Bear, DE 19701
302-834-1599
Sunday School 9:00 a.m.
Sunday Worship 10:30 a.m.
www.forministry.com/19701RLUMC
Rev. John M. Dunnack, Pastor

NEWARK WESLEYAN CHURCH
708 West Church Rd.
Newark, DE
(302) 737-5190
~ Pastor James E. Yoder III
Sunday School for all ages 9:30 a.m.
Morning Worship.....10:30 a.m.
Children's Church & Nursery Provided
Choir - Sunday.....5:30 p.m.
Youth Meeting Sunday.....6:00 p.m.
Mid-Week Bible Study
"A Family Church With A Friendly Heart"

**Head of Christiana
Presbyterian Church**
1100 Church Road
Newark, DE
302-731-4169
Rev. Christopher "Kit" Schooley, pastor
Church School - 9:30AM
Morning Worship - 11AM
Nursery Available



**Fairwinds
Baptist Church**
"Lighting The Way To The Cross"
801 Seymour Rd, Bear, DE 19701
(302) 322-1029



**Unitarian
Universalist**
Service 10 a.m.
Child Care &
Sunday School
Fellowship of
Newark
420 Willa Rd.
Newark, DE.
(302) 368-2984
Topic: Healing for the Soul
Speaker: Dr Dale Lantz

Our Redeemer Lutheran Church
Christ Invites You!
• Our Redeemer Divine Worship 10:00am
• Adult Bible Class & Sun School 8:45am
Rev. Carl Kruelle, Pastor www.orlcde.org
10 Johnson Rd., Newark (near Rts. 4 & 273)
737-6176

White Clay Creek Presbyterian Church
Polly Drummond Hill Road at Kirkwood Highway
SUNDAY SERVICES
8:30 am Traditional Worship
9:45 am, Sunday School
11:00 am, Contemporary Worship
(302) 737-2100
www.wccpc.org

Carlo DeStefano, Pastor
Schedule of Services
Sunday School 9:45 AM
Morning Worship 11:00 AM
Sunday Evening 6:00 PM
Wednesday Prayer Meeting 7:00 PM
(Nursery Provided for all Services)
www.fairwindsbaptist.com
Home of the Fairwinds Christian School
"Pioneer Gospel Hour"
COMCAST CABLE CHANNEL 28
THURSDAY 8:00PM
"He Keeps Me Singing"
Comcast Cable Channel 28
Thursday 8:30PM

Redeeming Grace
Worldwide Ministries, Inc.
129 Lovett Ave, Newark, DE 19711
(302) 286-6862 Fax (302) 268-6748
Bishop Marian L. Rudd, Pastor & Founder
Prayer Tues. & Fri 12 noon - Sun. School 8:30 am
Morning Worship 10:00 am
Tues. Bible Study 7:00-8:30 pm
Christian Enrichment Class: Tues 7:00-8:30 pm, For All Ages

**Highway Word of
Faith Ministries**
(an extension of Highway Gospel
Community Temple, West Chester PA)
New Order of Services
Sunday: 8:00 a.m.
Morning Worship: 9:00 a.m.
Sunday evening worship: 1st
& 3rd Sundays @ 4:00pm
Bible Enrichment Class:
Wednesday @ 7:00pm
The Way Bible Institute:
Saturday 9:00am - 1:00pm
All services will be held at the
Best Western Hotel
260 Chapmans Rd., Newark, DE
(across from Burlington Coat Factory)
Mailing Address
P.O. Box 220
Bear, Delaware 19702-0220

**PRAISE
assembly**
1421 Old Baltimore Pike
Newark, DE
(302) 737-5040
Sunday School.....9:15 a.m.
Sunday Worship. 10:00 a.m. & 5:30 p.m.
Wednesday Family Night.....7:00 p.m.
Adult Bible Study, Royal Rangers, Youth & Missionettes
Safe & Fun Children's Ministry at each service.
Quality Nursery provided.
Michael Petrucci, Pastor
Ben Rivera, Assistant Pastor
Bert Flagstad, Visitation/Assoc.
Pastor
Lucie Hale, Children's Ministries
Director
Visit us online at
www.praiseassemblyonline.org

**Highway Word of
Faith Ministries**
(an extension of Highway Gospel
Community Temple, West Chester PA)
New Order of Services
Sunday: 8:00 a.m.
Morning Worship: 9:00 a.m.
Sunday evening worship: 1st
& 3rd Sundays @ 4:00pm
Bible Enrichment Class:
Wednesday @ 7:00pm
The Way Bible Institute:
Saturday 9:00am - 1:00pm
All services will be held at the
Best Western Hotel
260 Chapmans Rd., Newark, DE
(across from Burlington Coat Factory)
Mailing Address
P.O. Box 220
Bear, Delaware 19702-0220



Pastor Carl A. Turner Sr. First Lady Karen B. Turner
For further information or directions please call:
302-834-9003

Pastor Carl A. Turner Sr. First Lady Karen B. Turner
For further information or directions please call:
302-834-9003

Pastor Carl A. Turner Sr. First Lady Karen B. Turner
For further information or directions please call:
302-834-9003

Pastor Carl A. Turner Sr. First Lady Karen B. Turner
For further information or directions please call:
302-834-9003

CHURCH DIRECTORY

Advertise Your Church Holiday Services

Happy Holidays!

For more information call Nancy Tokar at 1-800-220-3311

First Assembly of God

Reverend Alan Bosmeny

Christian Education—Sunday 9:30 a.m. • Sunday Worship 8:00 a.m., 10:30 a.m., 6:00 p.m. •
FUSION Youth—Sunday 6:00 p.m. • Family Night—Wednesday 7:00 p.m.

WHAT IF...

there was a church that took the time to find out what was relevant in your life?

SUPPOSE...

there was a church that made the effort to bring the timeless truths of God alive in new and exciting ways?

IMAGINE...

if there was a church that used fresh new music for a new millennium and you could come in casual clothes?

JUST PICTURE...

a church that modeled care and compassion, where you were important just because you were you.



290 Whitehall Road • Elkton, MD 21921 • 410.398.4234 • www.ElktonFirst.org

Order of Service for SOLID FOUNDATION WORD OF KNOWLEDGE MINISTRIES, INC.

FAMILY WORSHIP-CENTER
Located on Rt. 40 (Pulaski Hwy.)

Motto: Achieving Excellence

Through Integrity

Theme: A Church After The Heart of God!

SUNDAY

Morning Worship 11am
(Children's Church provided during Sunday Worship; 4th & 5th Sundays casual dress)
Evening 1st & 3rd Sunday 6pm

TUESDAY

Prayer 7pm
Bible Advance (Sword of the Spirit)
7:30-9:30pm
(Bible Study for Children 2 yrs of age plus)

FRIDAY

Wholeness Ministry 8pm
(Special ministries support group)
Men's Ministries 1st Friday
Women's Ministries 2nd Friday
Singles Ministries/Divorce Care 3rd Friday
Marriage Ministry 4th Friday

SATURDAY

Boyz 2 Men/Girlz 2 Women-2nd Sats
12pm-4pm Youth Mentor Program for ages 12-19
Visit our Web Site at: www.fapministries.org
Email: solidfoundationwom@msn.com
For more info. or directions please call
Office: (302)-838-0355



69 East Main Street
Newark, DE 19711
302.368.8774
www.newark-umc.org

Share God's power and love through worship, service, education and community

Rev. Bernard "Skip" Keels, Senior Pastor
Rev. Cindy Burlert, Associate Pastor
Rev. Laura Lee Wilson, Campus Pastor/Ex. Dir. Wesley Foundation

Sunday Morning Worship

8:00, 9:30 and 11:00 am Services
9:30 am Sunday School for all ages
Infant/Toddler nurseries at 9:30 & 11:00
9:30 service broadcast WAMS 1260 AM

Puritan Reformed Fellowship

"Seeking to be Reformed in Preaching & Practice"

We meet in the Iron Hill room at Howard Johnson on Rt.896 South of Newark. Sunday afternoon 1pm & 7pm in the Iron Hill Room for info or directions call 302-832-2952 ask for Richard or email inquires pilgrim19701@yahoo.com

Bible Doctrine Classes monthly prayer meeting and psalm sing.

St. John the Baptist Catholic Church

E. Main & N. Chapel Streets

Daily Mass: Mon - Sat 8 a.m.
Sunday Mass: 7:30, 9, 10:30 a.m.

Holy Angels' Catholic Church

82 Possum Park Road
Weekend Masses: Saturday 5 p.m.
Sunday 9, 10:30, 12:00 noon
2 p.m. (Spanish)

Pastor: Father Richard Reissmann
Rector: Office: 731-2200

SPIRIT & LIFE BIBLE CHURCH

Pastor Rev. Jonnie
& Barbara Nickles

Sunday 10:30 AM & 6 PM
Wednesday - 7:00 PM
Worship, Prayer & Teaching

32 Hilltop Rd. Elkton, Maryland
Phone (410) 398-5529 • (410) 398-1626

OGLETOWN BAPTIST CHURCH

316 Red Mill Rd. - Newark, DE.
(corner of 273 & Red Mill Rd.)

302-737-2511

Pastor: Dr. Drew Landrey

Sunday Services:

9a.m. -10a.m.- Contemporary service
10:30a.m.-11:30a.m.- Traditional Service
Sun Sch 9a.m.-10a.m., 2nd Sun Sch 10:30a.m.-11:30am
Wed. Evening Family Activities 5:15-9p.m.



SUNDAY

Sunday School 9:15 a.m.
Worship Service 10:30 a.m.
AWANA Club 5:30 pm
Evening Service 6:00 p.m.
Solid Rock Teen Ministry 6:00 p.m.

WEDNESDAY

Mid Week Bible Study & Prayer
7:00p.m.

Nursery Provided for all Services

The Voice of Liberty TV Channel 28
Broadcast every Sat 5:30pm

We are located at
2744 Red Lion Road (Route 71)
in Bear, Delaware 19701.
For more information about the Church,
Please call (302) 838-2060

George W. Tuten III, Pastor

Liberty Little Lamb Preschool now
accepting applications www.libertybaptist.net



Living the Best Life

Relevant, Fulfilling, Fun

Enjoy worship with us
Sundays, 10:30am

"The Presence Driven Church"

- 1/4 State of the Church Address
(Truth Chapel's Vision for 2004)
- 1/11 Understanding the 3 Fold Presence of God
- 1/18 Finding God's Presence Through the Trials of Life
- 1/25 Responding to God's Presence

Meeting at:

Hodgson Vo-Tech School
Old 896 just south of Rt. 40,
near Peoples Plaza, Glasgow

Richard Berry, Pastor
Ministry Center: 410-392-6374

Impacting Your World Christian Center

Pastors: Ray and Susan Smith
10 Chestnut Road (West Creek Shoppes)
Elkton, MD 21921

Sunday Worship Service 11:00am
Nursery Available
Thursday Bible Study 7:00pm
Saturday Teen Ministry 10:00am

FOR MORE INFORMATION CALL:
410-996-8986

The Episcopal Church Welcomes You

St. Thomas's Parish

276 S. College Ave. at Park Place, Newark, DE 19711
(302) 368-4644 Church Office (9:00-1:00 Mon.-Fri.)
(302) 366-0273 Parish Information Hotline
www.stthomasparish.org

Sunday Worship
8:00am Holy Eucharist, Rite One
10:30am Family Worship-Holy Eucharist
5:30pm Holy Eucharist, Inclusive Language

The Rev. Thomas B. Jensen, Rector
The Rev. Jay Angerer, Assistant & Episcopal
Campus Minister
Ms. Lynne Turner, Director of Children's Ministries
Ms. Kay Leventry, Head Preschool Teacher



First Church
of
Christ, Scientist

48 West Park Place, Newark

Sunday Service & Sunday School 10:00 AM
Wednesday Testimony Meetings 7:30 PM
Public Reading Room - 92 E. Main St., Newark
Mon. - Fri. 12:00 - 5:00 PM
Sat. & Sun. 12:00 - 4:00 PM
Childcare available during services.

302-456-5808
ALL ARE WELCOME
www.fccsnewark.org



FIRST PRESBYTERIAN CHURCH

292 West Main St. • Newark
(302) 731-5644

Sun 8:00 AM... Contemporary Worship Service
Sun 9:00 AM... Christian Education
Sun 10:30 AM... Traditional Worship Service
Sun 7:00 PM... Jr & Sr Youth Group

Infant & Children's Nursery Provided
Ramp Access for Wheelchairs
Pastor: Rev. Dr. Stephen A. Hundley
Associate Pastor: Rev. D. Kerry Slinkard



Progressive Praise and Worship

8:30 a.m.
-Acoustic Worship-

10:30 a.m.
-Electric Worship-

Rev. Curtis E. Leins, Ph.D.

located 1 1/2 miles north
of Elkton on Rt. 213

410-392-3456



Nowinski 'great friend' of Newark police

► NOWINSKI, from 3

knows bits and pieces of the Nowinski's story but he's not sure if one person knows everything.

"He was a special man and

incredibly humble," Cheeseman said. "You could tell he carried those memories with him and that he saw so much, but he always said that Marie was the hero."

George was born in Poland on March 2, 1905, and received his

Master of Civil Engineering and Doctor of Technical Sciences from the Polytechnic Institute of Warsaw.

In the years before World War II, he was a senior researcher in the Polish Aeronautical Institute

and later held the positions of Extraordinary Professor of Applied Mechanics in the Mathematical Institute of the Polish Academy of Sciences and Research Professor in the Institute of Fundamental Problems of Technology.

After the war, George was one of the lead engineers whose efforts were instrumental in the reconstruction of the city of Warsaw.

For his scientific contributions in Poland, he was awarded an Officer Cross of Polonia Restituta, a Gold Medal of Merit, a Government Scientific Award, Silver and Gold Awards for the reconstruction of Warsaw and a M.T. Huber Scientific Prize.

In 1957, he was invited to become a visiting lecturer at the Johns Hopkins University, and after his family escaped from Poland to join him, he defected to the United States, where he went on to become a professor at the universities of Wisconsin and Texas, before joining the faculty at the University of Delaware in 1961.

Before retiring in 1973, George earned a long list of awards from organizations in the United States and served as a reviewer for several professional periodicals, journals and scientific societies.

He also edited and authored a number of books and published more than 240 articles in a variety of scientific fields.

George was still active after his retirement, publishing scientific papers until he was 88 years old and mentoring graduate stu-

dents into his 90s, through the Nowinski Fellowship.

Newark Police Department Lt. Thomas LeMin said Mr. and Mrs. Nowinski were "great friends" of the department, and showed their appreciation by donating money to various police causes. The NPD's Nowinski Award for meritorious service is given to an officer each year and was named in the couple's honor, LeMin said.

Memories of his kindness, humility and gentle spirit will be treasured by his friends, colleagues and everyone he has touched.

Cheeseman, a Nowinski Fellow in 1992, said he remembers meeting the legendary professor for the first time that year.

"I said, 'It's an honor to meet you Professor Nowinski,'" Cheeseman said. "He just smiled and said, 'Call me George.'"

"You can read all the accolades, but it's only part of the story," Cheeseman said. "He treated everyone wonderfully and it didn't matter who you were."

Mass of Christian Burial will be offered at 10 a.m. on Thursday, Jan. 8, 2004, at Holy Angels R.C. Church, 82 Possum Park Road, Newark.

Interment will follow in All Saints Cemetery.

In lieu of flowers, donations to the Marie and Jerzy L. Nowinski Fund for the Newark Police, c/o PNC Bank, 1 Penn Mart Center, New Castle, DE 19720. Arrangements are by Spicer-Mullikin Funeral Homes and Crematory.

Slicer's Camping Trailers

4th Annual HOLD and SOLD SALE

Jan 15-17th

HUGE
SAVINGS

2003 JAYCO
MOTOR HOMES,
TRAVEL TRAILERS,
FIFTH WHEELS
AND POP-UPS

MUST REDUCE
INVENTORY
TO MAKE ROOM
FOR 2004'S

UP TO 10% TO
50% OFF ON
SELECTED ITEMS

ALL IN STOCK
TRUCKS &
ACCESSORIES
BLOW OUT
SALE
AT LOWEST
PRICES EVER

773 S. Dupont Hwy
New Castle, DE 302-836-4110
TOLL FREE 888-398-2267
www.slicersonline.com

Varicose veins? Hemorrhoids?

Now there's a safe, effective
alternative to surgery...

Our new breakthrough treatment can eliminate painful and embarrassing varicose veins or hemorrhoids without surgery, pain, downtime or hospitalization. Treatment is covered by Medicare and most health insurance plans.

Visit us at www.GoVeinless.com and call to schedule a FREE consultation.

Call (302) 449.1988 or (410) 398.6660

Baltazar
Women's
Medical Center
Advanced Vein Care Division
Dr. Rodney Baltazar - Board Certified

721 Bridge St. • Elkton, MD / 120 Sand Hill Dr. • Bunker Hill Ctr. • Middletown, DE

DELAWARE CLASSIFIED & **AUTOMOTIVE RIDE GUIDE**

NEWARK POST AND ROUTE 40 FLIER

PAYDAY ADVANCE**CAR TITLE
LOANS**7 Days a Week • Weekend Cash
No Credit Check • 7 Locations**Absolute Lending****302-421-9933**

These specially branded Olds shifted with the times

By **MALCOLM GUNN**
WHEELBASE COMMUNICATIONS

A car named after its gear shifter? Actually, the nearly 16,000 Hurst/Olds Cutlass models that were built over a 20-year span were much more. They were one of the first real signs of an aftermarket supplier joining with an automaker to enforce a market position and sell cars, a trend that became commonplace over the years.

Examples include: Ford/Eddie Bower; Lexus/Mark Levinson; Ford/Harley Davidson; Lincoln/Cartier (as in diamonds); Plymouth/Warner Brothers (the Road Runner); MazdaSpeed/Kenwood; Tokico; Garrett; Brembo and assorted other aftermarket suppliers.

In the case of George Hurst, a drag racer who began his own specialty parts company, it was a little different. It just might be the only instance where an aftermarket supplier got top billing in the vehicle's name. Why? Because way back in the 1960s, the Hurst name was hot stuff. More importantly, hotter than Oldsmobile's.

At that time, nearly every drag racer was familiar with Hurst's products. He also hired beauty queen Linda Vaughan to represent the company at major National Hot Rod Association (NHRA) drag-race events, further enhancing his company's hip image with its predominantly youthful — and male — audience.

General Motors' collaboration with Hurst actually began with the 1964 Pontiac GTO. At the time, GM corporate policy dictated that logos on products supplied from outside the company could only appear on tires. The rule was rescinded in 1965 and the Hurst name was stamped on the side of the shifter handle for all to see.

It was a big hit.

Hurst pushed the supplier concept to a whole new level in 1968 when he teamed

Perhaps not anticipating the demand, Oldsmobile built just 515 first-year H/O's, a mere trickle compared to the thousands of orders sent in by dealers. This despite the \$1,161 over and above the price of a 4-4-2.

For 1969, the Hurst/Olds returned in spectacular fashion. Although horsepower had been trimmed to 380, the car had dropped its conservative paint scheme in favor of a more visible all-white body with gold striping. It also featured a new rear spoiler and a pair of giant hood scoops that helped direct cool air to the 455's four-barrel carburetor.

By the end its sophomore year, slightly more than 900 Hurst/Olds were produced, less than one per-cent of that year's 4-4-2 production.

With the musclecar wars steadily escalating and GM's 400-cubic-inch rule for mid-size vehicles aborted, the 1970 version of the 4-4-2 could be ordered with the 455-cube engine. With that change, the limited run of Hurst/Olds cars was cancelled.

The partnership was revived for 1972, but as a special option group for the larger and more luxurious Cutlass Supreme. That year, a Hurst/Olds was the pace car at the Indianapolis 500, giving Oldsmobile's new-found sportier image an even bigger boost.

The Hurst/Olds equipment package, including the 455 powerplant, continued until 1975. By then, the adrenaline-rush musclecar era had come to an end and the car had lost much of its punch.

Olds attempted to revive the Hurst/Olds magic on a few occasions in the late 1970s and 1980s, but these models tended to be little more than dressy derivatives with special aero kits, noisier mufflers and fancy paint and decals.

Today, those fire-breathing Hurst/Olds of long ago remain a mere footnote in the history of the musclecar. Despite the miniscule numbers, however, they did more than their fair share to bring power, respectability and a youthful image to the Oldsmobile label.

HURST OLDS





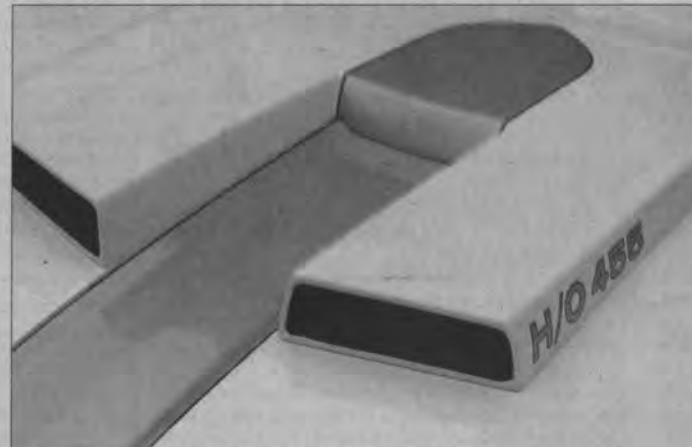
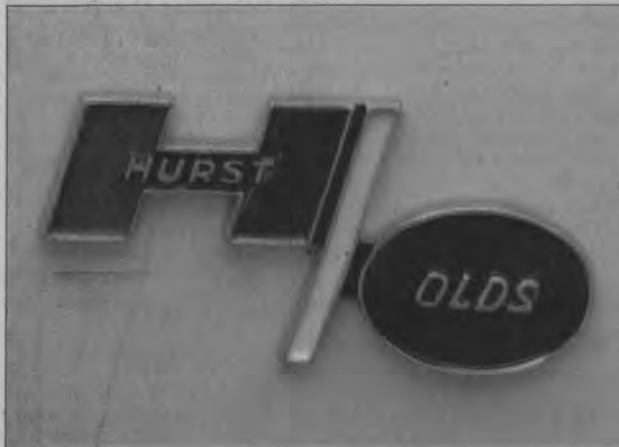
youth-oriented muscle car, the Hurst/Olds. The idea was to add sizzle to a brand that was considered anything but youthful.

As you might guess from the name, Hurst's involvement went well beyond merely supplying the shifter.

Based on the new-for-that year Cutlass 4-4-2, the Hurst/Olds borrowed the king-size 390-horsepower 455-cubic-inch V8, an engine that was found in the division's full-size cars. Also added were numerous heavy-duty suspension pieces, a fiberglass hood with functioning scoops and special gray-and-black paint job.

Since building the car in an Olds facility ran counter to GM's edict that big motors were to be fitted only in big sedans, the project was farmed out to an engineering company in Lansing, Mich.

Despite minimal publicity, word quickly spread to enthusiasts everywhere that the Hurst/Olds was one of the toughest street fighters around.



Dodge Durango part II: Keeping the heritage, broadening the appeal

By Bob Hall
Cars at Carlisle

Last week we gave you some background on the all-new Durango, along with its mechanical features and some other tidbits. Here's the rest of Durango's story:

AUSTIN, Texas – You won't have any trouble recognizing the new Dodge Durango as a Durango, but you also realize that it is new. This proves that Senior Design Manager Dennis Myles and the rest of the folks at Dodge's truck studios did their job well. "It was a critical factor to have our Dodge brand identity really stand out," he told us. "We rely on our tradition and heritage, plus we started to think about this truck once the original generation came out (1997)."

On this second-generation Durango, as they'd done with the latest generation Ram pickup, Dodge reached back "to channel the design DNA of the original 1946 Power Wagon through its drop fender design and powerful grille." Those forms received their first modern iteration with 1999's Power Wagon Pickup Concept. The translation moved closer to Durango with 2001's Power Box Concept and last January's thinly disguised Durango Hemi RT Concept. The huge Dodge signature crosshair grille, flared wheel arches, a "faster" windshield (less upright) and standard 17-inch tires are among the important Durango style elements, according to Myles. They weren't just for styling's

sake either.

"Air and water management were very important; we spent a lot of time in the wind tunnel," Myles said. Particular attention was paid to the design of, and mounting points for the outside rearview mirrors to reduce noise levels. The roofline's slight dip at the rear not only "distinguishes the silhouette," but also "softens the boldness and massiveness of the lower body. There's 20 percent more 'greenhouse' (glass area) than the outgoing Durango, and we paid attention to the

H-point, all for better visibility,"

Myles concluded. One more styling benefit was the "stiffened backlight" (more upright tailgate), that translated into 15 percent more interior space, 102.4 cubic feet total. The same folks that did its exterior designed Durango's interior. "We were anxious to provide emotional appeal, not digitally (by computer), but through customer emotions," said Myles.

Getting into what Durango Brand Manager Marc Seguin calls "the big new space," is much easier thanks to

rear doors that open 84 degrees.

There's seating for seven, and both the second- and third-row seats have more leg, shoulder and hip room than the old Durango. Plus the second row now reclines and has a "fold and tumble" feature that requires just one hand to operate and allows easy access to the third row. It's a one-piece unit unless you opt for leather seating, in which case it's split 50/50. Both types fold flat into the floor with their headrests in place, which not only simplifies things, but also improves safety. Another very important point: there's now 48.5 inches between Durango's wheel wells. So now the ubiquitous 4-by-8 sheets of whatever will fit, although lengthwise they'll be sticking out the back.

These seemingly minor points aren't, since people buy a Durango because it does so many things – serving as daily driver, tow vehicle, work truck, kid transporter, et al. Knowing those customers, Dodge will advertise the new Durango as "the optimum combination of utility and ride quality," providing "real SUV capability with refinement and features." You'll soon see television commercials where one spouse figures he got his way because the family's Durango has the Hemi V-8; while his wife smugly knows they've bought a quiet refined vehicle with lots of comfort, convenience and safety features. Isn't marketing wonderful?

Among those features are a new, factory-installed DVD system that can play MP3s and various game systems

and has wireless headphones.

Optional are a 384-watt audio system, Sirius satellite radio, and for the first time in Durango, a sunroof. The new center console has a storage bin designed primarily to hold fast food bags. That sure sounds like vehicle design to match modern lifestyles. Durango's entire interior is very user friendly, and on top-of-the-line Limited models, quite luxurious.

Durango prices start at \$26,565 for a two-wheel-drive ST. (All 4-by-2s have the 3.7-liter V-6. We covered engine choices last week.) A 4-by-4 Limited starts at \$34,900. Dodge expects the highest-volume model to be an SLT 4-by-4 with its standard engine, the 4.7-liter/230-horsepower V-8. All those prices are before options (such as the 335-horsepower Hemi V-8), either stand-alone or packages. According to Dodge, a Durango with whatever combination of accessories should cost "about \$2,000 less than a Chevy Trailblazer."

As always, the buyer has to be the judge, and your relationship with your dealer can effect your final price. I judge the new Durango to be a much improved and very capable sport utility. It does many things well and provides many choices of trim and levels of equipment. It should provide some welcome good news to the folks at DaimlerChrysler.

For more on the automotive hobby, including the Carlisle All-Truck Nationals on Aug. 6-8, 2004, visit Carlisle Events at www.carsat-carlisle.com.



Durango's entire interior is very user friendly, and on top-of-the-line Limited models, quite luxurious.

OUT OF THIS WORLD CLASSIFIEDS



**REACHING OVER
325,000 READERS WEEKLY**

410-398-1230
800-220-1230
Or Fax Us - 24 Hours 7 Days a week
410-398-4044

Call us to place an ad Mon - Fri 8 AM - 5 PM
WE SUPPORT OUR ARMED FORCES

Office Open Monday - Friday 8 AM - 5 PM
601 Bridge Street, Elkton, MD

SHERIFF'S SALE

The following Real Estate will be exposed for Public Sale at the CITY/COUNTY BLDG., 800 N. French Street, City of Wilmington, New Castle County, Delaware, on Tuesday, the 13th day of JANUARY, 2004 at 10:00 AM.

SHERIFF'S SALE

By virtue of a writ of ALIAS LEV FAC#9 NO. A.D., 2003.
Tax Parcel No. 11-014.00-053
Property Address: 2090 Sunset Lake Rd, Newark, DE.

ALL that certain lot, piece or parcel of land, with the buildings thereon erected, situate in Pencader Hundred, New Castle County and State of Delaware, also known as 2090 Sunset Lake Road, and being more particularly bounded and described, as follows, to wit:

BEING the same lands and premises which Juanita Wilkinson, by Deed dated February 26, 1999 and recorded March 5, 1999 in the Office of the Recorder of Deeds, in and for New Castle County and State of Delaware, in Deed Book 2602, Page 171, did grant and convey unto Robert J. Presley, Jr. and Stephanie L. Presley, in fee.

SEIZED AND TAKEN IN EXECUTION AS THE PROPERTY OF ROBERT J. PRESLEY, JR. AND STEPHANIE L. PRESLEY.

TERMS OF SALE: 10% DOWN AT TIME OF SALE. BALANCE DUE ON OR BEFORE FEBRUARY 2, 2004.

NOVEMBER 30, 2003

SHERIFF'S SALE

By virtue of a writ of ALIAS LEV FAC #12 NO. A.D., 2003.

PARCEL NO. 11-002.10-023
PROPERTY ADDRESS: 24 Mallboro Drive, Newark, DE 19713.

ALL that certain lot, piece or parcel of land with the buildings thereon erected, situate in Pencader Hundred, New Castle County, State of Delaware, known as Lot No. 167, on the Plan of Brookside Park, Section M, as said plan is of record in the Office of the Recorder of Deeds, in and for New Castle County, Delaware, in Plat Book 3, Page 10, also being known as 24 Mallboro Drive and being more particularly bounded and described in accordance with a recent survey by A.E.S. Surveyors, dated July 29, 1997, as follows, to-wit:

BEING the same lands and premises which Andrew A. Consiglio and Diane M. Consiglio, did grant and convey unto Stephen L. Potts and Joanne S. Potts, by deed dated August 22, 1997 and recorded on August 22, 1997 in the Office of the Recorder of Deeds, in and for New Castle County, State of Delaware, in Deed Book 2317, Page 105.

SEIZED AND TAKEN IN EXECUTION AS THE PROPERTY OF STEPHEN L. POTTS

which Randall T. Hollingsworth did grant and convey, in fee, unto Randall T. Hollingsworth and Jaffrey C. Hollingsworth, by deed dated June 8, 1999, and recorded in the Office of the Recorder of Deeds in and for Deed Book 2660, Page 0104.

SEIZED AND TAKEN IN EXECUTION AS THE PROPERTY OF RANDALL T. HOLLINGSWORTH AND JAFFREY C. HOLLINGSWORTH.

TERMS OF SALE: 10% DOWN AT TIME OF SALE. BALANCE DUE ON OR BEFORE FEBRUARY 2, 2004.

NOVEMBER 30, 2003

SHERIFF'S SALE

By virtue of a writ of FIFTH PLURIES LEV FAC #36 NO. A.D., 2003.

Tax Parcel No. 10-043.30-293
Property Address: 309 Wren Court, Newark DE.

ALL that certain lot, piece or parcel of land with the buildings thereon erected situate in New Castle Hundred, New Castle County and State of Delaware, known as 39 Wren Court, being Lot No. 124 on the Record Major Subdivision Plan of Raven Glen at Wellington Woods as said plan is of record in the office of the Recorder of Deeds, in and for New Castle County, Delaware in Microfilm No. 11,345 and being more particularly bounded and described in accordance with a recent survey by Zebley and Associates, Inc., dated December 18, 1995.

BEING the same lands and premises which David L. Nagengast and Alexis A. Shaulis n/k/a Alexis A. Nagengast did by deed dated February 1, 1996 and recorded in the office of the Recorder of Deeds in and for New Castle County, in Deed Book 2053 Page 136 did grant and convey unto Paul L. Griffin, Jr. and Antoinette D. Griffin.

SEIZED AND TAKEN IN EXECUTION AS THE PROPERTY OF PAUL L. GRIFFIN, JR. AND ANTOINETTE D. GRIFFIN.

TERMS OF SALE: 10% DOWN AT TIME OF SALE. BALANCE DUE ON OR BEFORE FEBRUARY 2, 2004.

NOVEMBER 30, 2003

SHERIFF'S SALE

By virtue of a writ of ALIAS LEV FAC #37, NO. A.D., 2003.

Parcel No. 10-043.10-278
Property Address: 43 Raven Turn, Newark, DE.

ALL that certain lot, piece and parcel of land situate in New Castle Hundred, New Castle County, Delaware, known as 43 Raven Turn, and being Lot 237, Block B, on the Plan of Brookmont Farms, as said plan is of record in the office of the Recorder of Deeds, in and for New Castle County, Delaware, in Microfilm No. 2921, and is now more particularly bounded and described according to a recent survey by Raymond F.

unit is more particularly bounded and described in (1) the Enabling Declaration Establishing a Plan for Condominium Ownership of the villa Belmont Condominium Apartments, by Arbern Belmont, Inc., dated January 25, 1984, of record in the Office of the Recorder of Deeds in and for New Castle County, Delaware, in Deed Record K, volume 126, Page 23, and (2) the Declaration Plan of the Villa Belmont Condominium apartments of record in Microfilm No. 7028, as amended by Microfilm No. 7085.

BEING the same lands and premises which Curtis C. Smith did by deed dated February 25, 1998 and recorded in the Office of the Recorder of Deeds, New Castle County in Deed Book 2402 Page 0177 did grant and convey unto Lisa D. Hoberg.

SEIZED AND TAKEN IN EXECUTION AS THE PROPERTY OF LISA D. HOBERG.

TERMS OF SALE: 10% DOWN AT TIME OF SALE. BALANCE DUE ON OR BEFORE FEBRUARY 2, 2004.

NOVEMBER 30, 2003

SHERIFF'S SALE

By virtue of a writ of SECOND PLURIES LEV FAC #46 NO. A.D. 2003.

PARCEL NO. 11-025.20-113
PROPERTY ADDRESS: 46 Versailles Court, Newark, DE.

ALL that certain lot, piece or parcel of land with the improvements thereon erected, situate in Pencader Hundred, New Castle County and State of Delaware, known as Lot 146 as shown on the Record Resubdivision Plan of Frenchtown Woods, as said plan is recorded in the Office of the Recorder of Deeds in and for New Castle County, Delaware in Microfilm No. 11707 and more particularly bounded according to a survey by North Star Surveys dated December, 1999, to-wit:

BEING the same lands and premises which Donald C. Easterling and Kimberly M. Easterling by deed dated December 30, 1999 and recorded in the Office aforesaid in Deed Record 2769, Page 1, granted and conveyed to Nathaniel Austin, herein in fee.

SEIZED AND TAKEN IN EXECUTION AS THE PROPERTY OF NATHANIEL AUSTIN.

TERMS OF SALE: 10% DOWN AT TIME OF SALE. BALANCE DUE ON OR BEFORE FEBRUARY 2, 2004.

NOVEMBER 30, 2003

SHERIFF'S SALE

By virtue of a writ of FIRST PLURIES LEV FAC #49, NO. A.D., 2003.

Tax Parcel No. 10-043.30-245
PROPERTY ADDRESS: 417 Feather Dr., Newark, DE.

ALL that certain piece, parcel or tract of land situate in New Castle Hundred, New Castle County, State of Delaware, being Lot 76 accord-

**LEGAL NOTICE
RE: DEADLY
WEAPON**

I Timothy Richard Niekamp residing at 100 Edjil Drive, Newark, Delaware 19713 will make application to the judges of the Superior Court of the State of Delaware in and for New Castle County at Wilmington for the next term for a license to carry a concealed deadly weapon, or weapons, for the protection of my person(s), or property, or both.

Timothy R. Niekamp
Dec. 29, 2003

np 1/9

LEGAL NOTICE

Notice is hereby given that the properties listed below were seized for violation of Title 16 of the Delaware Code. Owners or lienholders who can establish that the property was forfeited by an act or omission committed or omitted without their consent may apply for remission at the office of the Attorney General, Forfeiture Division, Wilmington, Delaware. Persons desiring to contest the forfeiture of assets seized pursuant to Title 16 of the Delaware Code, Section 4784, may protect their interest by filing a civil petition in Superior Court within 45 days after the date of this notice, or mailed notice, whichever is later. Superior Court Civil Rule 71.3 sets out the requirements for filing a civil forfeiture petition.

FROM: Fred Casimir
AGENCY: DRBA Police Dept.
WHERE: Interstate 295, New Castle
DATE SEIZED: 12/05/03
ARTICLE: \$33,091.00 US Currency
np 1/9

Throw, a condominium, situate in Pencader Hundred, New Castle County and State of Delaware, as said unit is more particularly bounded and described in (1) the declaration of F.A.A.M., Inc., a corporation of the State of Delaware dated April 16, 1975, of record in the Office of the Recorder of Deeds, in and for New Castle County, State of Delaware, in Deed Record 1, Volume 90, Page 564, and (2) the Declaration Plan of Stones Throw, prepared by Edward H. Richardson, Associates, Inc., Consulting Engineers, dated March 20, 1975, of record in the Office of the Recorder of Deeds aforesaid in Microfilm No. 2094.

AND BEING the same lands and premises which Daniel J. Huber did grant and convey unto Brenda L. Figueroa, by deed dated May 5, 2000 and recorded on May 8, 2000 in the Office of the Recorder of Deeds, in and for New Castle County, State of Delaware, in Deed Book 2824, Page 0007.

SEIZED AND TAKEN IN EXECUTION AS THE PROPERTY OF BRENDA L. FIGUEROA.

TERMS OF SALE: 10% DOWN AT TIME OF SALE. BALANCE DUE ON OR BEFORE FEBRUARY 2, 2004.

NOVEMBER 30, 2003

SHERIFF'S SALE

By virtue of a writ of LEV FAC #70 NO. A.D., 2003.

PARCEL NO.: 11-023.10-073

ALL that certain lot, piece or parcel of land with the building thereon erected, situate in Pencader Hundred, New Castle County and State of Delaware, being Lot No. 222, Glasgow Pines, known as 805 Hastings Court, and being more particularly bounded and described in accordance with a recent survey prepared by East Coast Survey, Inc. Professional Land Surveyors, dated April 13, 2000, as follows, to-wit:

BEING the same lands and premises which Eugene A. Burgess and Wilma J. Burgess, husband and wife, by Deed dated April 28, 2000 and recorded May 1, 2000 in the Office of the Recorder of Deeds, in and for New Castle County, Delaware, in Deed Book 2819, Page 36, did grant and convey unto Angela M. Maloney, in fee.

SEIZED AND TAKEN IN EXECUTION AS THE PROPERTY OF ANGELA M. MALONEY.

TERMS OF SALE: 10% DOWN AT TIME OF SALE. BALANCE DUE ON OR BEFORE FEBRUARY 2, 2004.

NOVEMBER 30, 2003

SHERIFF'S SALE

By virtue of a writ of SECOND PLURIES LEV FAC #73 NO. A.D., 2003.

PARCEL NO. 09-022.40-150
PROPERTY ADDRESS: 714 East Chestnut Hill Road, Newark, DE 19713.

ALL that certain lot, piece or parcel of land

**ANNOUNCEMENT****NOTICES**

**ATTENTION
BOAT DEALERS!**
Need to advertise new
& used boats?

Call Erin to find out
how to advertise those
boats for pennies
on the
\$\$\$



410-398-1230
800-220-1230
emoretz@chespub.com

DC BIG FLEA! 3-day
Extravaganza - January
9-10-11, 1100 Booths.
Dulles Expo, Chantilly,
VA, Friday, 12:00-7pm;
Saturday, 9am-6pm,
Sunday, 11am-5pm.
757-430-4735

**FISHING EXPO &
BOAT SHOW** January 8-
11. MD State Fair-
grounds. Bass-Saltwater
- Tackle & gear at
blowout prices. Over 350
bass and saltwater
boats. Seminars by Nat'l
Pros: Mike Iaconelli,
Curly Lytle, Ken Penrod,
Mike DelVisco, Dr. Jim
Wright, Bill Burton, Keith
Kaufman, Blair Wiggins
and many more!! Info
410-833-8687
www.fishingexpo.com

ADOPTIONS

**PREGNANT? CON-
SIDERING ADOPTION?**
We can help! We spe-
cialize in matching fami-
lies with birthmothers
nationwide. TOLL FREE
24 hours a day 866-921-
0565. ONE TRUE GIFT
ADOPTIONS

**EMPLOYMENT**

**Help Wanted
full-time**

**ANNOUNCEMENT:
NOW HIRING** For 2004

SALE. BALANCE DUE ON OR BEFORE
FEBRUARY 2, 2004.

NOVEMBER 30, 2003

SHERIFF'S SALE

By virtue of a writ of LEV FAC #22 NO. A.D., 2003.

PARCEL NO.: 09-030.30-147

PROPERTY ADDRESS: 1301 Flanders Way, Newark, DE 19702.

ALL that certain lot, piece or parcel of land with the buildings thereon, situate in White Clay Creek Hundred, New Castle County, Delaware being designated Lot 92, as shown on the Record ReSubdivision Plan of Christiana Village, of record in the Office of the Recorder of Deeds in and for New Castle County, Delaware on Microfilm No. 4260, said lot also known as 1301 Flanders Way and being more particularly bounded and described according to a survey by A.E.S. Surveyors, Inc., Professional Land Surveyors dated April 7, 1997, as follows.

BEING the same lands and premises which Sang William Tam and Coretta C. Tam, husband and wife, did grant and convey unto Marlene Tucker, by deed dated June 26, 1997 and recorded on September 15, 1997 in the Office of the Recorder of Deeds, in and for New Castle County, State of Delaware, in Deed Book 2328, Page 0173.

SEIZED AND TAKEN IN EXECUTION AS THE PROPERTY OF MARLENE TUCKER.

TERMS OF SALE: 10% DOWN AT TIME OF SALE. BALANCE DUE ON OR BEFORE FEBRUARY 2, 2004.

NOVEMBER 30, 2003

SHERIFF'S SALE

By virtue of a writ of SECOND PLURIES LEV FAC #29, NO. A.D., 2003.

PARCEL NO.: 11-019.20-019

STREET ADDRESS: 7 Cedar Court, Newark DE.

ALL that certain lot, piece or parcel or tract of land situate in White Clay Creek Hundred, New Castle County, State of Delaware, on the easterly side of Cedar Court (50' wide) being Lot 65 according to the Record Resubdivision Plan of Heather Woods as prepared by Karins and Associates, Civil Engineers and Land Surveyors, dated December 7, 1977, drawing no. 181-853-F and recorded on microfilm no. 4758 in the office of the Recorder of Deeds in and for New Castle County, Delaware and being more particularly bounded according to a survey prepared by Karins & Associates, Inc., dated November 7, 1978, to-wit.

BEING the same lands and premises which Dominic J. Marino and Karen M. Marino by deed dated January 30, 1987 and recorded in the office aforesaid in Deed Record 497, Page 265, granted and conveyed to Gary J. Maddox and Arnetta Maddox, herein in fee.

SEIZED AND TAKEN IN EXECUTION AS THE PROPERTY OF GARY J. MADDOX AND ARNETTA MADDOX

TERMS OF SALE: 10% DOWN AT TIME OF SALE. BALANCE DUE ON OR BEFORE FEBRUARY 2, 2004.

NOVEMBER 30, 2003

SHERIFF'S SALE

By virtue of a writ of THIRD PLURIES LEV FAC #34, NO. A.D., 2003.

PARCEL NO.: 09-015.40-092

PROPERTY ADDRESS: 19 Newbrook Road, Newark, DE 19711.

ALL THAT CERTAIN lot, piece or parcel of land with the improvements thereon erected, situate in White Clay Creek Hundred, New Castle County and State of Delaware, being sixty (60) feet of Lot 177 and five (5) feet of Lot 178, Block J, on the Plan of Windy Hills, Section 1, as recorded in Plat Record 4, Page 38, also known as 19 Newbrook Road.

AND BEING the same lands and premises

Timothy W. Lipscomb and Chi Hui Lipscomb did by deed dated April 21, 1995, and recorded in the office of the Recorder of Deeds, in and for New Castle County, Delaware, in Deed Book 1913 Page 63 did grant and convey unto Zeppora L. Taylor.

SEIZED AND TAKEN IN EXECUTION AS THE PROPERTY OF ZEPPORA L. TAYLOR

TERMS OF SALE: 10% DOWN AT TIME OF SALE. BALANCE DUE ON OR BEFORE FEBRUARY 2, 2004.

NOVEMBER 30, 2003

SHERIFF'S SALE

By virtue of a writ of LEV FAC #40, NO. A.D., 2003.

Parcel No: 08-060.10-161

Property Address: 31 Red Mill Road, Newark, DE 19711.

ALL that certain lot, piece or parcel of land, situate, lying and being in Mill Creek Hundred, New Castle County and State of Delaware, and being known as Lot No. 8 (also known as 31 Red Mill Road) on the subdivision of land of Francis E.B. McCann, being more particularly bounded and described in accordance with a survey by A.E.S. Surveyors, dated June 28, 1995, as follows, to-wit.

BEING the same lands and premises which Thomas L. Guyer and Helen Guyer did grant and convey unto David M. Cernos, Sr. and Sherry M. Cernos, by deed dated July 28, 1995 and recorded on July 28, 1995 in the Office of the Recorder of Deeds, in and for New Castle County, State of Delaware, in Deed Book 1955, Page 229.

SEIZED AND TAKEN IN EXECUTION AS THE PROPERTY OF DAVID M. CERNOS, SR. AND SHERRY M. CERNOS.

TERMS OF SALE: 10% DOWN AT TIME OF SALE. BALANCE DUE ON OR BEFORE FEBRUARY 2, 2004.

NOVEMBER 30, 2003

SHERIFF'S SALE

By virtue of a writ of LEV FAC #41, NO. A.D., 2003.

PARCEL NO. 11-006.30-221

PROPERTY ADDRESS: 1225 Pinefield Rd., Newark, DE 19713.

ALL that certain lot, piece or parcel of land with the dwelling thereon erected, situate in Pencader Hundred, New Castle County and State of Delaware, being known as Lot No. 233, Block B, on the Plan of SCOTTFIELD, Section 1, as said Plan is of record in the Office of the Recorder of Deeds, in and for New Castle County and State of Delaware, in Microfilm No. 1843, said lot is also known as East Coast Survey, Professional Land Surveyors, dated April 14, 2000.

AND BEING the same lands and premises which Margaret Chaffee did by deed dated May 30, 2000, and recorded in the office of the Recorder of Deeds, New Castle County in Deed Book 2834 Page 0169 did grant and convey unto John A. Walker and Sherry L. Walker.

SEIZED AND TAKEN IN EXECUTION AS THE PROPERTY OF JOHN A. WALKER AND SHERRY L. WALKER.

TERMS OF SALE: 10% DOWN AT TIME OF SALE. BALANCE DUE ON OR BEFORE FEBRUARY 2, 2004.

NOVEMBER 30, 2003

SHERIFF'S SALE

By virtue of a writ of LEV FAC #44, NO. A.D., 2003.

Tax Parcel No. 18-046.00-001CA104

Property Address: 56-104 Welsh Tract Rd., Newark, DE.

ALL that certain unit of real property existing under and by virtue of the Unit Property act of the State of Delaware, known as Unit No. 104, Building No. 56, in the Villa Belmont Condominium apartments, a condominium apartment situated in the City of Newark, New Castle County and State of Delaware, as said

the same lands and premises which Raven Glen at Wellington Woods as recorded in the Recorder of Deeds office in and for the State and County aforesaid in Microfilm No. 11345 and as more particularly bounded and described as follows, to-wit.

BEING the same lands and premises which Pulte Home Corporation by deed dated September 23, 1994 and recorded in the office aforesaid in Deed Record 1814, Page 203, granted and conveyed to Charles T. Monroe, herein in fee.

SEIZED AND TAKEN IN EXECUTION AS THE PROPERTY OF CHARLES T. MONROE.

TERMS OF SALE: 10% DOWN AT TIME OF SALE. BALANCE DUE ON OR BEFORE FEBRUARY 2, 2004.

NOVEMBER 30, 2003

SHERIFF'S SALE

By virtue of a writ of ALIAS LEV FAC #52 NO. A.D., 2003.

PARCEL NO. 09-038.10-295

PROPERTY ADDRESS: 203 Bell Ringer Court, Newark, DE.

ALL that certain lot, piece or parcel of land with the buildings thereon situate in White Clay Creek Hundred, New Castle County and State of Delaware and being designated Lot 72 as shown on the record major subdivision plan of Christiana green of record in the office of the Recorder of Deeds in and for New Castle County, Delaware in Microfilm Record 10747, said lot being more particularly bounded and described according to a survey by Associated Engineers & surveyors, dated February 1, 1993, to-wit.

AND BEING the same lands and premises which Woodshade South, Inc. by deed dated February, 1993 and recorded in the office aforesaid in Deed Record 1474, Page 146, granted and conveyed to Kerensa A. Boates and Cynthia A. Boates, herein in fee.

SEIZED AND TAKEN IN EXECUTION AS THE PROPERTY OF KERENSA A. BOATES AND CYNTHIA A. BOATES.

TERMS OF SALE: 10% DOWN AT TIME OF SALE. BALANCE DUE ON OR BEFORE FEBRUARY 2, 2004.

NOVEMBER 30, 2003

SHERIFF'S SALE

By virtue of a writ of ALIAS LEV FAC #56, NO. A.D., 2003.

Parcel No.: 11-014.10-034

Property Address: 6 Battle Drive, Newark, Delaware 19702.

ALL that certain lot, piece or parcel of land situate in Pencader Hundred, New Castle County and State of Delaware, known as 6 Battle Drive, Newark, Delaware 19702, also known as Lot 3, on the Plan of Cannonshire as said Plan is recorded in the Office of the Recorder of Deeds in and for New Castle County in Microfilm No. 9330 prepared by Franco Bellafante and Associates and being more particularly bounded and described as follows, to wit.

BEING the same lands and premises which Karla Kyrtsis, by Deed dated December 20, 2002 and recorded December 31, 2002 in the Office of the Recorder of Deeds in and for New Castle County, Delaware in Instrument 20021231-0124147, did grant and convey unto Adrian S. Wilson, in fee.

SEIZED AND TAKEN IN EXECUTION AS THE PROPERTY OF ADRIAN S. WILSON.

TERMS OF SALE: 10% DOWN AT TIME OF SALE. BALANCE DUE ON OR BEFORE FEBRUARY 2, 2004.

NOVEMBER 30, 2003

SHERIFF'S SALE

By virtue of a writ of ALIAS LEV FAC #66, NO. A.D., 2003

Tax Parcel No. 11-014.30-001C720-A

Property Address: 720 Cobble Creek Curve, Newark, DE 19702.

ALL that certain unit of real property existing under and by virtue of the Unit Property Act of Delaware, known as Unit No. 720-A, Stones

White Clay Creek Hundred, New Castle County and State of Delaware known as 714 East Chestnut Hill Road, and being known as Lot No. 54, Block 12, Section 3 on the Plan of Chestnut Hill Estates, as said Plat is of record in the Office of the Recorder of Deeds, in and for New Castle County, State of Delaware, in Plat Book 3, Page 81, and being more particularly bounded and described in accordance with a survey prepared by East Coast Survey, Professional Land Surveyors, date September, 2000 as follows, to-wit.

BEING the same lands and premises which William Edward Moran and Jeanette E. Moran, did grant and convey unto Grant Keller, by deed dated September 15, 2000 and recorded on September 18, 2000 in the Office of the Recorder of Deeds, in and for New Castle County, State of Delaware, in Deed Book 2895, Page 94.

SEIZED AND TAKEN IN EXECUTION AS THE PROPERTY OF GRANT KELLER.

TERMS OF SALE: 10% DOWN AT TIME OF SALE BALANCE DUE ON OR BEFORE FEBRUARY 2, 2004.

NOVEMBER 30, 2003

SHERIFF'S SALE

By virtue of a writ of LEV FAC #82 NO. A.D., 2003.

Parcel No. 08-038.40-012

Property Address: 2451 Hammond Place, Wilmington, DE 19808.

ALL that certain tract of land with the improvements thereon erected situate in Mill Creek hundred, New Castle County and State of Delaware comprising lot no. 20 Block 7 section 3 on a plan of Kirkwood Gardens as the Plan of same is of record in the Office of the Recorder of Deeds in and for New Castle County in Plat Record Volume 3, Page 76.

BEING the same lands and premises which Richard D. Dodson and Lucy D. Dodson, did grant and convey unto David L. Weatherby and Pauline Weatherby, by deed dated March 6, 1970 and recorded on March 6, 1970 in the Office of the Recorder of Deeds, in and for New Castle County, State of Delaware, in Deed Book M-83, Page 23.

SEIZED AND TAKEN IN EXECUTION AS THE PROPERTY OF DAVID L. WEATHERBY AND PAULINE WEATHERBY.

TERMS OF SALE: 10% DOWN AT TIME OF SALE BALANCE DUE ON OR BEFORE FEBRUARY 2, 2004.

NOVEMBER 30, 2003

SHERIFF'S SALE

By virtue of a writ of ALIAS LEV FAC #86 NO. A.D., 2003.

Parcel No. 10-043.10-633

Property Address: 16 Auckland Drive, Newark, DE 19702.

ALL that certain lot, piece or parcel of land with the building thereon erected, situate in New Castle Hundred, New Castle County and State of Delaware, being designated as Lot 208, on the Record Resubdivision Plan of Wellington Woods, as said plan appears of record in the Office of the Recorder of Deeds in and for New Castle County, Delaware on Microfilm No. 10595, said lot also known as 16 Auckland Drive, and being more particularly bounded and described in accordance with a recent survey by A.E.S. Surveyors, dated July 25, 2002, as follows, to-wit.

BEING the same lands and premises which Robert T. Daws, did grant and convey unto Almika J. Pernsley, by deed dated August 1, 2002 and recorded on August 7, 2002 in the Office of the Recorder of Deeds, in and for New Castle County, State of Delaware, in Deed Instrument 20020807-0076250.

SEIZED AND TAKEN IN EXECUTION AS THE PROPERTY OF ALIMIKA J. PERNSLEY.

TERMS OF SALE: 10% DOWN AT TIME OF SALE BALANCE DUE ON OR BEFORE FEBRUARY 2, 2004.

NOVEMBER 30, 2003

AUTO DETAILER

Busy location in Elkton looking for experienced detailer, full time, am & pm shifts Must be 18 with valid drivers license. 800-531-0164.

COMPANY EXPAND-

ING in your area \$1380 WEEKLY at home FT/PT No Experience Necessary! \$50 Cash Hiring Bonus!! Guaranteed in Writing!! Call now 888-225-8917

CONCRETE PUMP

Operator. Comp. salary + benefits. Contact Newark Concrete; 410-398-0096 302-368-0200

COUNTER STAFF

Accepting applications for the newly remodeled Dunkin Donuts. Apply in person at : 2462 Pulaski Hwy (Rt's 40 & 896) Glasgow, Delaware

DATA ENTRY could earn \$15/hour and up! Medical billing, training provided. PC required. Call 7 days 1-800-935-1311 ext. 308

Discover Gregg Bus Service MECHANIC

Gregg Bus Service, a premier provider of passenger transportation in Delaware seeks FT Mechanic to perform basic & preventative main., system diagnosis / repairs, for coach, paratransit, transit and school bus vehicles. Min 3 yrs exp auto mechanics. Knowledge of Cummins or Detroit diesel engines and Allison Trans a plus. We offer a friendly work environment, benefit pkg and comp wage. Call 610-594-2664 for info. Send resume to HR Dept 495 Thomas Jones Way, Exton, PA 19341 Fax 610-594-2651 or email shorrex@krapfbus.com EOE

When you are looking for something, look to the classifieds first!

110 Help Wanted full-time

DRIVER CDL, Class A, experienced for residential excavation company. Benefits. 302-832-9072

DRIVER Happy Holidays & best wishes in Year 2004! Increase in pay, more miles, great home times. Call Travis, Amy, or Jay 888-346-4639
www.knighttrans.com

DRIVER: OTR DRIVERS \$1,100 average weekly! 100% conventional fleet, comprehensive benefit package, passenger program, some regional opportunities available. Class-A CDL required. For more information, call Smith Transport Inc at 888-467-6484

DRIVERS: Accepting driver trainees! 16 day class-A (CDL) & refresher training! Companies now hiring nationwide job placement assistance. Monday-Sunday 8:00-5:00. 800-883-0171 ext A-15

DRIVERS: Best gets better! Company up to .45 cents. Teams to .53 cents. O/O to .93 cents per mile! New lease purchase plan w/ \$0 down. Call 800-CFI-DRIVE, www.cfidrive.com

New Today

EXP. RECEPTIONIST Competitive salary & benefits. *Fax resume to: 410-392-5052*

GET PAID \$25 TO SHOP! Pose as customers in local stores, restaurants, & theaters. No experience req'd. Search4Shoppers.com/job

****GOVERNMENT AND POSTAL JOBS**** Public announcement. Now hiring up to \$47,578. Full, Part positions. Benefits and training for applications and info. 800-573-8555 Dep. P363, 8am-11pm / 7days.

GOVERNMENT JOBS Earn \$12-\$48.00 an hour. Full benefits, paid training on Homeland Security, law enforcement, wildlife, clerical, administrative and more. 1-800-320-9353 x 2200

HIRING FOR 2004 postal positions. \$14.80-\$36.00 +HR *Federal Hire with Full Benefits *No Experience Necessary *Paid Training and Vacations *Green Card O.K. Call 1-866-317-0558 x 4001

HOMEWORKERS Earn extra cash\$!! Pro-

110 Help Wanted full-time

PROFESSIONAL SALES PERSON Immediate opening for goal oriented energetic person \$25-\$40K per year potential. Previous sales exp preferred. Apply in person Furniture & Freight, 141 The Village of Elkton.

SALES-OUTSIDE Full time position available. Will train. Must have positive attitude with strong communication skills. Excellent benefits including 401(k) and company vehicle for immediate consideration. Call: Bob Earl at 302-584-3661 B. Frank Shinn Paint Company

Classified is the **key** to more sales.
410-398-1230

**CITY OF NEWARK, DELAWARE
CITY COUNCIL
PUBLIC HEARING NOTICE
JANUARY 12, 2004 - 7:30 PM**

Pursuant to Section 402.2 of the City Charter and Section 27-13 of the Code of the City of Newark, Delaware, notice is hereby given of a public hearing at a regular meeting of the Council in the Council Chamber at the Municipal Building, 220 Elkton Road, Newark, Delaware, on Monday, January 12, 2004 at 7:30 p.m., at which time the Council will consider for Final Action and Passage the following proposed Ordinance:

BILL 03-39 - An Ordinance Amending Ch. 7, Building, By Revising the Qualifications of Members of the Board of Building Appeals
Susan A. Lamblack, MMC
City Secretary

np 12/19, 1/9

**CITY OF NEWARK, DELAWARE
CITY COUNCIL
PUBLIC HEARING NOTICE
JANUARY 12, 2004 - 7:30 PM**

Pursuant to Section 402.2 of the City Charter and Section 32-79 of the Code of the City of Newark, Delaware, notice is hereby given of a public hearing at a regular meeting of the Council in the Council Chamber at the Municipal Building, 220 Elkton Road, Newark, Delaware, on Monday, January 12, 2004 at 7:30 p.m., at which time the Council will consider for Final Action and Passage the following proposed Ordinance:

BILL 03-38 - An Ordinance Amending the Official Map of the City By Adding Thereto the Bed of Farmer Lane
Susan A. Lamblack, MMC
City Secretary

np 12/19, 1/9

**LEGAL NOTICE
JANUARY QUARTER
SUPPLEMENTAL ASSESSMENT**
The Supplemental Assessment Roll for New

110 Help Wanted full-time

SALES \$5,500 WEEKLY goal potential! If someone did it, so can you! Over 28 million customer inquiries to date! 2-3 confirmed appointments daily! 888-566-9144

STAR TRANSPORT needs inexperienced drivers. Home most weekends. Peterbilt Trucks, shared tuition. Food and lodging provided. Star Training provided through MTC Driver Training. 1-800-455-4682 www.mtcdriver-training.com

WINDOW FABRICATOR / ASSEMBLER: Multi openings. Install glass in windows. Mark & cut glass using glass cutter. Fasten glass panels into carch. Install window frames. Other related duties. Requires 2 years in job or 2 years any window fabrication exp. Prevailing wage. OT & time and 1/2. Reply: Slocumb Industries 801 Pencader Plaza Newark De 19702

WORK FROM HOME flexible hours! Great pay, computer required. 1-800-382-4282 ext. 63

115 Help Wanted part-time

ADVANCED STUDENT TRANSPORTATION SCHOOL BUS DRIVERS

Experience the most desirable part time job available!

Advanced student transportation currently has openings for school bus drivers in the Newport / Stanton area. Onsite training provided in a relaxed atmosphere by our certified instructors. Work 4-5 hours daily. Spend summers and holidays at home with your family. Starting rate is \$11.95/hr. We offer a pleasant working environment and great benefits! Get into the driver's seat by calling the transportation specialists at 302-998-6726. Ask about full time positions with Greg Bus Service. EOE

SHOWROOM COUNTER HELP
Arrow Electric Supply, Elkton. 410-620-9600

200 BUSINESS OPP. FOR SALE

A+ MARS / NESTLE Vending route. Unique Machine, great opportunity! Prime locations available now! Excellent profit potential, investment required \$10K and under. Toll free (24/7) 800-637-7444

A+ MARS/NESTLE vending route. Unique machine, great opportunity. Prime locations available. Excellent profit potential, investment required \$10K and under. Toll free (24-7) 888-737-7133

SHERIFF'S SALE

By virtue of a writ of LEV FAC #97 NO. A.D., 2003.

Tax Parcel No. 18-013.00-064
Property Address: 61 Kennard Drive, Newark, DE 19711.

ALL that certain lot, piece or parcel of land with the buildings thereon erected, situate in the Town of Newark, White Clay Creek Hundred, New Castle County and State of Delaware, known as Lot 12, Block 1, as shown on a survey or plan of Terry Manor by Myers Richardson Associates, dated December 20, 1954, as revised October 6, 1955, and being more particularly bounded and described in a recent mortgage inspection plan prepared by Zebbley and Associates, Inc., dated May 2, 1997 as follows, to-wit.

BEING the same lands and premises which Gwendolyn V. Lane did by deed dated May 2, 1997, and recorded in the office of the Recorder of Deeds, in and for New Castle County, Delaware, in Deed Book 2268 Page 44 did grant and convey unto Stephanie D. Lane

particularly bounded and described as follows, to wit.

BEING the same lands and premises which Jeffrey P. Brown and JoAnne Brown, did by deed dated September 6, 1997 and recorded in the office of the Recorder of Deeds, New Castle County in Deed Book 2377 Page 0238, did grant and convey unto Kenneth W. DuBois and Linda M. DuBois.

SEIZED AND TAKEN IN EXECUTION AS THE PROPERTY OF KENNETH W. DUBOIS AND LINDA M. DUBOIS.

TERMS OF SALE: 10% DOWN AT TIME OF SALE. BALANCE DUE ON OR BEFORE FEBRUARY 2, 2004.

NOVEMBER 30, 2003

SHERIFF'S SALE

By virtue of a writ of LEV FAC. #105 NO. A.D., 2003.

PARCEL #11-038.00-138
PROPERTY ADDRESS: 522 Ponderosa Drive, Bear, DE.

ALL that certain lot, piece or parcel of land

Business Directory

HOME IMPROVEMENT

HOME REPAIRS

& Property Maintenance

Commercial & Residential

Over 20 Yrs. Exp. • Licensed & Insured

Pressure Washing
& Deck Repairs

DIAMOND STATE MAINTENANCE

If the other guy is too high, give us a try.



302-834-0589

WE BUY HOMES

WE BUY HOMES

★ CASH ★

ANY PRICE • ANY CONDITION

Making Double Payments? Divorced?
No Equity? Seeking Debt Relief?
Job Loss? Need To Sell Quickly?
House Too Big, Too Small, Relocating?

We'll make your mortgage payments, be responsible for repairs and maintenance, pay cash when we buy and handle all of the paperwork at no expense or hassle to you. Call to see how we can solve your problem.



(302) 521-1400 • Visit us at
DelawareHouseBuyers.com
Call now to receive a FREE report on
how to sell your house in 9 days!



FREE WRITING SERVICES

Freelance Writing Services

By Apryl F. Parcher

Award-Winning Creative Writer

Journalism, Webcopy, Newsletters,
Brochures and more...

Turn Dull, Dry Copy Into
Sparkling, Promotional Prose

Attract More Clients
Promote Your Product
GET VISIBILITY!

Call Toll-Free: 888-859-1135
www.chesapeakecity.com/apryl



**To Advertise
In This
Directory
Please Call
410-398-1230**

TERMS OF SALE: 10% DOWN AT TIME OF SALE. BALANCE DUE ON OR BEFORE FEBRUARY 2, 2004.

NOVEMBER 30, 2003

SHERIFF'S SALE

By virtue of a writ of LEV FAC # 111 NO. A.D., 2003.

PARCEL NO. 09-040.20-055
PROPERTY ADDRESS: 108 Boyer Drive, Newark, DE.

ALL that certain lot piece or parcel of land with the dwelling thereon erected situate in White Clay Creek Hundred, New Castle County and State of Delaware and being Lot 361 on the record Resubdivision Plan of Salem Woods, Phase II as said Plan is of record in the Office of the Recorder of Deeds in and for New Castle County, Delaware in Microfilm No. 8393 and being more particularly bounded and described according to a survey by Ramesh C. Batta, dated October 12, 1987, to-wit.

BEING the same lands and premises which Associates, Inc. by deed dated October 20, 1987

and mailing brochures! Free supplies & postage! Genuine opportunity. Call toll free 1-800-749-5782 (24 hrs)

MANUFACTURING ASSOCIATE

Company in Newark is need of individuals who have at least 1 to 2 years of manufacturing experience, mechanically inclined, stable work history, high school diploma/GED, ability to pass a drug test, background check and strong desire to succeed. Call: 800-922-3080 for immediate consideration.

STRATEGIC EDGE SOLUTIONS

www.ses-staffing.com

MECHANIC: Truck & crane mechanic. Structural steel fabricator / erector is looking for self motivated mechanic to join our team. Min 5 year exp w/ all types diesel gas, motors & hydraulic equip. Benefits include company truck, paid health insurance, dental, eye care and holidays, 401K plan w/ company contribution and AFLAC.

Send resume and salary req's to RC Fab, Attn Human Resources, 824 Locust Street Wilmington DE 19801 or fax to 302-573-8984

R C

Fabricators, Inc.

MEDICAL BILLER f/t. Exp'd. w/benefits. Elkton allergist, Fax resume to: 410-392-2645

MOVIE EXTRAS \$200-\$600/day all looks types & ages. No experience required. TV, music videos, film, commercials. Work with the best @ 800-260-3949 ext. 3244

POSTAL JOBS- Announcement # USPS2475** Up to \$29.16 hour. Application/ information. Free call. Now hiring 2004! Federal hire-full benefits. 1-800-892-5144 ext. 97 ntaflwusps

PRODUCTION TECHNICIAN

Company in Newark is in need of individuals with an Associate Degree, 2 to 4 years experience in manufacturing. Ability to use standard hand tools, perform minor repairs, good Communication skills, pass a drug test and background check. Call: 800-922-3080 for immediate consideration.

STRATEGIC EDGE SOLUTIONS

www.ses-staffing.com

Castle County and the City of Wilmington property and school taxes for the January Quarter of the 2003/2004 tax year may be inspected in the offices of the Assessment Division of the New Castle County Department of Land Use, New Castle County Government Service Center, 87 Reads Way, Corporate Commons, New Castle, DE, from 8:00 a.m. to 5:00 p.m., Monday through Friday.

These Supplemental Assessments will become effective January 1, 2004. Forms to appeal these Supplemental Assessments may be obtained from the Assessment Division at the address aforesaid and must be filed with the Assessment Division no later than 5:00 p.m. on January 31, 2004. The Board of Assessment Review of New Castle County will sit in the New Castle County Government Center, or some other public place to be announced, to hear appeals from these Supplemental Assessments between February 1, 2004 and February 29, 2004, unless the Board continues the hearings. The exact dates and times of such hearings will be provided to the appellants in accordance with 9 Del. C. Sec. 8311. np 1/2,9

PUBLIC AUCTION

SENTINEL SELF STORAGE
333 E. LEA BLVD., WILMINGTON, DE 19802
302-764-6300

A public auction will be held on February 18, 2004 at 2:00 p.m. at the above address. A \$50.00 cash deposit is required to participate in the auction. All sales are cash only. All sales are final. The units to be auctioned are as follows:

- #18 - Spencer's Cleaning - household
- #21 - Carlinda Tarney - household
- #65 - Cecil Carter - household
- #78 - Dorothy Shatamon - household
- #127 - James B. Carn - household
- #211 - Tonja Townsend - household
- #234 - Angela Wilson - boxes
- #241 - Vanessa D. Mills - household
- #291 - Carl & Sandra Lash - household
- #325 - Ronald S. Park - household
- #330 - Ronald S. Park - household
- #338 - Troy Dennis - household

np 1/9,16

unto Stephanie D. Lane.
SEIZED AND TAKEN IN EXECUTION AS THE PROPERTY OF STEPHANIE D. LANE.

TERMS OF SALE: 10% DOWN AT TIME OF SALE. BALANCE DUE ON OR BEFORE FEBRUARY 2, 2004.

NOVEMBER 30, 2003

SHERIFF'S SALE

By virtue of a writ of ALIAS LEV FAC #102 NO. A.D., 2003.

Parcel No.: 09-038.30-333

Address: 103 West Newton Place, Newark, DE.

ALL that certain lot, piece or parcel of land situate in White Clay Creek Hundred, New Castle County and State of Delaware, being Lot 141 as shown on the record Resubdivision plan for Barrett Run, prepared by Karins & Associates, Drawing No. 769-A04, Sheet 4 of 4, dated June 14, 1996 and recorded in the office of the Recorder of Deeds in and for New Castle County, Delaware in Microfilm record 13847, to-wit.

BEING the same lands and premises which NVR, Inc. by deed dated January 31, 2000 and recorded in the office aforesaid in Deed Record 2790, Page 1, granted and conveyed to James I. Barnes.

SEIZED AND TAKEN IN EXECUTION AS THE PROPERTY OF JAMES I. BARNES.

TERMS OF SALE: 10% DOWN AT TIME OF SALE. BALANCE DUE ON OR BEFORE FEBRUARY 2, 2004.

NOVEMBER 30, 2003

SHERIFF'S SALE

By virtue of a writ of LEV FAC #103 NO. A.D., 2003.

Tax Parcel No. 11-032.00-096

Property Address: 30 East Savannah Drive, Bear, DE.

ALL that certain lot, piece or parcel of land situate in Pencader Hundred, New Castle County, State of Delaware, being Lot No. 97, as shown on the Record Major Subdivision Plan of Caravel Farms II, prepared by Clifton L. Bakhsh, Jr., Professional Land Surveyor and recorded November 28, 1977 in the Office of the Recorder of Deeds in and for New Castle County, Delaware, at Microfilm No. 4660, and being more

ALL that certain lot, piece or parcel of land, situated in Pencader Hundred, New Castle County and State of Delaware, and being known as Lot 213, on the Plan of Hickory Woods, Section 4, and being more particularly bounded and described in accordance with a recent survey by David G. Williams, dated April 22, 1992, as follows, to-wit.

BEING the same lands and premises which William Brent Jones, did by deed dated January 27, 2000 and recorded in the office of the Recorder of Deeds, New Castle County in Deed Book 2791 Page 0057, did grant and convey unto Gerald A. Chavis and Cheryl K. Chavis.

SEIZED AND TAKEN IN EXECUTION AS THE PROPERTY OF GERALD A. CHAVIS AND CHERYL K. CHAVIS.

TERMS OF SALE: 10% DOWN AT TIME OF SALE. BALANCE DUE ON OR BEFORE FEBRUARY 2, 2004.

NOVEMBER 30, 2003

SHERIFF'S SALE

By virtue of a writ of ALIAS LEV FAC #110 NO. A.D., 2003.

Parcel #09-040.20-027

Property Address: 125 Boyer Drive, Newark, DE.

ALL that certain lot, piece or parcel of land with the dwelling thereon erected, situate in White Clay Creek Hundred, New Castle County and State of Delaware and being Lot 331 as shown on the Record Resubdivision Plan of Salem Woods, Phase II, prepared by Karins & Associates, Inc., Drawing No. 512-2036, sheet 4 of 6, and recorded in the office of the Recorder of Deeds in and for New Castle County, Delaware and more particularly bounded and described according to a survey by Franco R. Bellafante, dated July 15, 1991, to-wit.

BEING the same lands and premises which Susan M. Gauden by deed dated April 9, 1992 and recorded in the office aforesaid in Deed Record 135, Page 125, granted and conveyed to Jack G. Gauden, herein in fee. Subsequently, Jack G. Gauden departed this life on August 29, 1998. Said property passing to Gary G. Gauden as administrator and heir to the Estate.

SEIZED AND TAKEN IN EXECUTION AS THE PROPERTY OF SUSAN M. GAULDEN, JACK G. GAULDEN AND GARY G. GAULDEN.

Associates, Inc. by deed dated October 30, 1987 and recorded in the office aforesaid in Deed Record 619, Page 227, granted and conveyed to Ronald J. Deemedio and Felicia R. Deemedio, herein in fee.

SEIZED AND TAKEN IN EXECUTION AS THE PROPERTY OF RONALD J. DEEMEDIO AND FELICIA R. DEEMEDIO.

TERMS OF SALE: 10% DOWN AT TIME OF SALE. BALANCE DUE ON OR BEFORE FEBRUARY 2, 2004.

NOVEMBER 30, 2003

SHERIFF'S SALE

By virtue of a writ of LEV FAC # 114 NO. A.D., 2003.

PARCEL NO. 09-033.10-095

PROPERTY ADDRESS: 322 North Skyward Drive, Newark, DE.

ALL that certain lot, piece or parcel of land with the buildings thereon erected situate in White Clay Creek Hundred, New Castle County and State of Delaware, known as 22 N. Skyward Drive, being Lot No. 23, on the Plan of Breezewood, as the Plan thereof is of record in the Office of the Recorder of Deeds, in and for New Castle County in Microfilm No. 1920, and being more particularly bounded and described in accordance with a survey prepared by First State Mortgage Survey, Inc., Professional Land Surveyors, dated October 18, 2001, as follows, to-wit.

AND BEING the same lands and premises which Paul Z. Zaloga and Joann F. Zaloga did by deed dated October 29, 2001 and recorded in the office of the Recorder of Deeds, New Castle County, Instrument No. 20011101-0090344, did grant and convey unto Stanley T. Markowski and Amy M. Callahan.

SEIZED AND TAKEN IN EXECUTION AS THE PROPERTY OF STANLEY T. MARKOWSKI AND AMY M. CALLAHAN.

TERMS OF SALE: 10% DOWN AT TIME OF SALE. BALANCE DUE ON OR BEFORE FEBRUARY 2, 2004.

NOVEMBER 30, 2003

Michael P. Walsh, Sheriff
Sheriff's Office
Wilmington, Delaware
np 1/2,9

YOUR LICENSE FOR BIG SAVINGS!

THE FIRST STATE

Call Laurie To Advertise HERE

STAPLEFORD'S CHEVROLET OLDSMOBILE
302-834-4568

CHEVROLET



ST. GEORGES, DE

VOLKSWAGEN
Smith
VOLKSWAGEN, LTD.
4304 Kirkwood Highway,
WILMINGTON, DE
302-998-0131
Drivers wanted

CHEVROLET
MIDDLETOWN
5221 Summit Bridge Rd.
Middletown, DE 19709
(302) 378-9811
1-888-4-A-NUCAR

GMC
NUCAR
Newark, DE
738-6161
1-800-969-3325
See Our Inventory at:
www.nucarmotors.com

BAYSHORE
Ford
4003 N. DuPont Highway
Route 13 at I-495
800-241-6644
NO HASSLE LOW PRICES
LARGE SELECTION

FORD
www.ramseyford.com
Ramsey
We put the Ford in affordable
Rt. 273 • Rising Sun, MD
410-658-4801
1-800-622-6957

HONDA
Colonial HONDA
410-642-2433
5439 PULASKI HWY.
RT 40 & 222 PERRYVILLE
AAA Mid-Atlantic
Vehicle Buying Program
AUTHORIZED DEALER
Hondas Cost Less in Perryville.
www.Colonial-Honda.com

DODGE
ADVANTAGE
410-392-4200
800-394-2277

ADVANTAGE
560 E. PULASKI HWY.
410-398-3600
1-800-899-FORD
Ford

PONTIAC
NUCAR
Newark, DE
738-6161
1-800-969-3325
See Our Inventory at:
www.nucarmotors.com

TOYOTA
NEWARK TOYOTA
4000 Ogletown Rd.,
Newark
302-368-6262
USED CARS
No Credit
Bad Credit
No Problem!
Newark Toyota
Import Outlet

JEEP
ADVANTAGE
601 E. Pulaski Hwy
Elkton, MD
1-800-420-JEEP

NEW & USED
AUTOMOBILES
CHECK OUT OUR Website at
www.advantageautoland.com
ADVANTAGE
AUTOLAND
Jeep
ROUTE 40 • ELKTON, MD

Visit one of these local dealers and drive home happy!

REACH OVER 325,000 READERS WEEKLY! CALL LAURIE AT 800-220-3311 TO ADVERTISE HERE!

200 BUSINESS OPP. FOR SALE

AIR, WATER, & WELLNESS BUSINESS
Add \$15,800 or more to your income part time. Proven system. Will train. 888-276-9038

EARN \$1000-\$3500 weekly! Taking simple surveys online! \$75.00 per survey! Free registration! Guaranteed paychecks. Free government grants! \$10,000-\$250,000 never repay. Everyone qualifies. Incredible opportunities. www.fastcash.com

OUT OF THIS WORLD CLASSIFIEDS
410-398-1230

200 BUSINESS OPP. FOR SALE

OWN 5-10 ATM
machines in prime high traffic locations. Continuous residual income. \$10K minimum investment required. 800-388-1785

WORK FROM HOME
Great income. Travel benefits. No exp. nec. FT/PT training provided. Only \$49.95 to start making money today. 1-866-462-7827 x 212.

OUT OF THIS WORLD CLASSIFIEDS
410-398-1230 OR TOLL FREE 800-220-1230

200 BUSINESS OPP. FOR SALE

eBAY OPPORTUNITY
\$11-\$33/hour possible. Training provided. Please Call: 866-622-9983 Ext. 2143

**RENTALS****305 APARTMENTS UNFURNISHED**

FEDERALSBURG:
3BR, \$700/mo. + utilities, sec. dep. required. Call 410-754-9132

305 APARTMENTS FURNISHED

AFFORDABLE Motel
Rooms & Efficiency apartments. \$165 Weekly. 410-392-9623 or 410-287-9877

315 HOUSES FOR RENT

KENT ISLAND 3 BR, 2 BA, CAC, large shed. In Harbor View. Avail. now! \$1150/mo.
410-353-3404

NO RENT! \$0 down homes! Gov't & bank foreclosures! No credit O.K. \$0 to low down! For listings now! 800-501-1777 ext 2093

325 VACATION/ RESORT RENTALS

FREE VIDEO of spectacular new homes & land bargains on 18 hole course in Carolina Mountains near Asheville, NC. Enjoy mild climate, great golf, low taxes & low cost of living. New golf front home \$199,900. Huge savings going on now. For video, call toll-free 866-334-3253 x 598

**REAL ESTATE****405 HOUSES FOR SALE**

FORECLOSED GOV'T HOMES \$0 or low down! Tax repos and bankruptcies! No credit O.K. \$0 to low down. For listings: 800-501-1777 ext 2099

450 REAL ESTATE SERVICES

HOMEOWNERS! Lim-

520 HOME IMPROVEMENT SERVICES

GRAMPS CAN FIX any thing but Congress!! All your "to-do's": big, small or urgent. He's careful, he's prompt, and he LISTENS!! 800-662-6231

RELIABLE HANDY-MAN over 20 yrs exp. Lic & Ins'd. Comm & res. 302-834-0589

550 LAWN & GARDEN SERVICES**FIREWOOD**

2 YEAR SEASONED HARDWOOD MOSTLY OAK

\$150. Per cord
\$85. Per 1/2 cord

DELIVERED
410-392-5175

LARSON'S
Tree Service & Landscaping, L.L.C.
741 Leeds Rd.
Elkton, MD 21921
410-392-5175

Tree Care Time is Here

Hazardous Takedowns
Tree Takedowns
Stump Grinding
Brush Chipping

FIREWOOD
License & Insured
MHIC # 73466

Major Credit Cards Accepted

560 FINANCIAL/ MONEY TO LEND

\$25,000 CASH grants guaranteed! All US residents qualify. Use your \$ for personal bills, school, business, etc. Don't miss out! Call 1-800-363-5222 x 807.

\$\$\$CASH\$\$\$ Cash now for structured settlements, annuities and insurance payouts. 800-794-7310. JG Wentworth... JGWENTWORTH MEANS CASH NOW FOR STRUCTURED SETTLEMENTS

CUT YOUR DEBT in half. Over \$7000 in credit card debt? Call us! Eliminate late fees & interest. We do all the work. 888-472-9332

STOP FORECLOSURE! Save your home! Our guaranteed professional service and unique, low cost system can help. Call 888-867-9840. Real actual case results online at www.UnitedFreshStart.com

625 FURNITURE/ FURNISHINGS

MATTRESS - QUEEN
Ortho/Plush set, new in plastic w/warr \$125. Can deliver 410-392-6515

SOFA & LOVESEAT
brand new in plastic. \$750. 100% leather. Can deliver. 410-392-6515



TABLE: 6' white vinyl folding table, with 8 chairs. New, \$150. Cannon ball style King sz bed frame. Dark honey pine, solid wood. \$300. 410-392-2488

640 GENERAL MERCHANDISE

FREE 4 room Direct TV system including installation! FREE 3 months HBO (7 movie channels) w/subscription. Access 225+TV channels. Digital quality picture / sound. Limited offer. Restrictions apply 1-800-963-2904

640 GENERAL MERCHANDISE

FREE 4 ROOM Direct TV System including installation! Free 3 months HBO (7 movie channels) w/ subscription. Access 225+ TV channels, digital quality! Limited offer. Restrictions apply 800-976-4229

FREE GRANTS Never repay. Results guaranteed \$500-500,000. Homes, repairs, education, business, emergencies, nonprofits, writers. Live operators. 9am-9pm 1-800-613-5447 extension 9007.

HOT TUB. Brand new. 6 person, 30 jets, full warranty. Still in wrapper. Cost \$6200. Sell \$3500 302-456-9978

SAVE ON CANADIAN MEDS! Save 40-80% NOW! Fast easy ordering! Your best choice for high quality Canadian Medications!!! Call us Today 1-800-511-MEDS (6337) www.saveon-canadianmeds.com

642 SPORTING GOODS

GUN & KNIFE SHOW
Agricultural Center, Westminster MD, Jan 10th & 11th. Sat 9-5, Sun 9-3. 250 trade tables, admission \$5. Preston 410-391-8883

670 MACHINERY & HEAVY EQUIPMENT

PORTABLE ECHO GENERATOR 80 kw, Volvo Pentenna, diesel power. Ph. 123 Elec. New, asking \$18,900. 410-658-6400

**TRANSPORTATION****815 POWER BOATS**

30X SILVERTON EXPRESS '88. T/270 Crusaders, new canvas slps 6, lots of extras! \$36,900. 410-371-0312

830 MARINE ACCESS./ STORAGE

TFL FISHING LICENSE: With Rockfish allocation. Best offer over \$13,000. 410-745-5117

840 RECREATIONAL VEHICLES

HOLIDAY RAMBLER
24' Class C, fully equip., 6.9 diesel eng. Sacrifice \$11,400. 410-398-8742

850 MOTORCYCLES/ ATVS

HARLEYS WANTED:
Any year or condition, CASH PAID!
301-938-2218

PRAIRE 650 '02, 4 whl. dr., like new \$5000, '01 Polaris 500 Scrambler 4 whl. dr., good shape \$3000 410-620-4083 or 443-466-9022

SELL YOUR MOTORCYCLE FAST IN THE OUT OF THIS WORLD CLASSIFIEDS!
410-398-1230 OR TOLL FREE 800-220-1230

880 AUTOS

CAMARO Z 28 '97 red with T-Tops fully loaded, leather interior, pw, pl, c/c, cd player, keyless entry asking \$7500 call 410-398-5283



CHEVY CAMARO '94
excellent cond, 121K, all power, CD, alarm \$3,100 b/o 410-620-9323

HONDA CIVIC EX '97
red, 2 dr., auto., cass., 6 disk cd, pwr sun roof, pl, pw, keyless entry, a/c, 120k mi., exc. cond. \$5000 call 302-836-5490



MITSUBISHI Eclipse, '03, Lt blue, auto, low miles, gar kept, warr, \$15,300. 610-656-8650

SATURN SL2 '98, cruise, pd, pw, sunroof, ac, 5 spd, exc cond. 61k mi, \$4,900. Call 410-620-9117

NUCAR NEWARK



Norman Cooper - Special Finance Manager



PROUDLY ANNOUNCES
the Addition of
NORMAN COOPER
to Our Pre-Owned Sales Staff...
Norman will Head up Our Special Finance Dept. and Offer Excellent Opportunities to Upgrade Your Transportation!

Featuring
GM Certified Pre-Owned
Vehicles & All Other Makes of
Quality Cars & Trucks

250 East Cleveland Avenue, Newark, DE
302-738-6161 1-888-527-9914
See Our Inventory on Line @ www.nucarmotors.com

SERVICED

The above agenda is intended to be followed, but is subject to changes, deletions, additions & modifications, as permitted under the Freedom of Information Act of the State of Delaware. Copies may be obtained at the City Secretary's Office, 220 Elkton Road.
np1/9

PUBLIC AUCTION

SENTINEL SELF STORAGE
200 First State Blvd., Wilmington, DE 19804
302-999-0704

A public auction will be held at the above address on Feb. 11, 2004. Sale time is 10:00 a.m. starting at Middletown Sentinel Storage site. The following units will be sold:

#0237 - Robert J. Foltz - household items
#0447 - Clinton R. Kinderman - household items
#0315 - Reynardo Ortiz - household items
#3107 - Carol Marsh - household items
#4102 - Judy Zaal - household items
#5107 - Maria A. & Lance W. Bruce - household items
#6153 - Lori White - household items
#6212 - Joaquin E. Ponzo - household items
#6279 - Amy M. Sellers - household items
#9402 - Judy Zaal - household items

SENTINEL SELF STORAGE
1100 Elkton Road, Newark, DE 19711
302-731-8108

A Public Auction will be held on Wednesday, February 11, 2004, at 10:00 a.m. The units to be auctioned are as follows:

2135 - Johnny Van - household items
4033 - Linda Cannon Morrison - household items
4110 - Patricia J. Novak - household items
4118 - George M. Scantick, Jr. - household items
5013 - Marlene Wade - household items
5037 - Jay O'Bryan - household items
7020 - Christopher Kane - household items
8004 - Fabian Cintron - household items
8005 - Valerie Gentry - household items
8034 - Pamela & Samuel Boston - household items
9000 - Heather Manning - household items

SENTINEL SELF STORAGE
465 Pulaski Hwy, New Castle, DE 19720
302-328-5810

A public auction will be held on 2/11/04 at 2:00 p.m. at the above address. A \$50.00 cash deposit is required to participate in the auction. All sales are cash only. All sales are final. The units to be auctioned are as follows:

Unit #: 3044 - Damian Wittekind
2032 - Nezar Shehady
3013 - Lynne Milton
4019 - Deadra Caple
3019 - Sharon L. Hutchinson
4014 - Walter K. Stranahan
1120 - Patrick Ward

np 1/2,9

MORTGAGES refinance or purchase. No money down. No income check, low rates, all credit considered. No mobile homes. 888-874-4829 or www.Accent-Capital.com Licensed mortgage broker MD, VA. Not in DC or DE



SERVICES

510 CHILD CARE SERVICES

New Today

**NOW ENROLLING
SUN BLOSSOMS
ACADEMY &
CHILDCARE.**

Located near downtown Newark. lic # 181429. 302-738-6430

515 HEALTH CARE SERVICES

LOW CARB FOODS-
www.lowcarbouthet.com
For largest selection, low prices & free shipping on orders over \$75. Use coupon code SNP777 for additional 10% off until 3/1/04

ONLINE PRESCRIPTION DRUGS Phentermine, Soma, Floricet, Ambien, Tramadol & More! US licensed pharmacist & free doctor consultation. Discreet FedEx delivery! \$10 off all orders with Promo Code "SAVINGS" www.legalpharmacy.com 1-866-278-7082

580 Misc. SERVICES

FREE CELL PHONES
Free pagers. Free unlimited calling from home phone to anywhere in US, Canada, or Puerto Rico! Free Free Call now 1-800-561-0174



MERCHANDISE

602 ANIMALS/PETS

BEAGLE PUPS. AKC, 1st shot & wormed, 13 inch tri-colored. \$200 each. 717-862-1089

KITTENS 4 cute and cuddly, just in time for the New Year! Free to good home. Call 410-620-4534

KITTENS bullseye classic & brown classic Both very friendly & good with dogs. Free to good home. Sharpei mix also free to good-home. 410-620-0548

620 COMPUTERS & ACCESSORIES

New Today

COMPUTER SYSTEM (Gateway 450) complete w/ printer and scanner, lge desk, filing cabinet & 2 chairs & many extra's. \$600 obo. 443-967-0313

625 FURNITURE/ FURNISHINGS

BED 2 piece QUEEN PILLOW TOP in plastic w/ warr. NEW. Can deliver. \$149 410-392-6515

BEDRM Brand new 5 pc set. \$550 Complete, unopened, orig boxes. Can deliver 410-392-6515

BEDROOM SET 8 pc w/ 2 n stands, dresser, mirror, bed, chest. \$1490 New, in boxes. Can deliver 410-392-6515

BR SET 7 pc cherry w/ bed, drsr, mirr, chest, n/ stand. \$998 Still boxed. Can deliver 410-392-6515

DR SET Beaut cherry tbl, lighted hutch, 6 chrs, new in crates. \$950. Can deliver 410-392-6515

MATTRESS - KING pillow top set. In plastic w/ warr, sacrifice \$225. Can deliver. 410-392-6515

YEARS BUSINESS!



2000 HONDA PASSPORT
AUTO, LOW MILES, VERY CLEAN
\$14,990



1999 DODGE DURANGO SLT
REM. START, CD, ALLOYS
\$17,990



1999 CHEVY SUBURBAN
2 TO CHOOSE, STARTING AT
\$13,990



2001 DODGE RAM SLT
QUAD CAB, 29K MILES
\$16,990



1998 FORD RANGER
EXT. CAB, 31K MILES, CAP
\$8,990



1997 DODGE RAM SPORT
FULL PWR, V8, AUTO
\$9,490



1998 CHEVY CAMARO
T-TOPS, ALLOYS, FULL PWR
\$7,990



2000 FORD MUSTANG
CONV., ALLOYS, LOW MILES
\$12,990



1997 HONDA ACCORD EX
ALLOYS, LTHR, CD
\$7,990



2001 MITSUBISHI GALANT
FULL PWR, CD, CLEAN
\$7,490



1999 PONTIAC GR. AM
2DR, ALLOYS, FULL PWR
\$6,990



2001 TOYOTA COROLLA
AUTO, AC, CASS, CLEAN
\$10,990



2545 Pulaski Hwy., Newark, DE 19701

Phone: 302-266-9400
1-877-COX-3600
(269)

coxautogroup@
hotmail.com

**HAVE CREDIT PROBLEMS?
NEED A CAR OR TRUCK?**

WE CAN HELP!



**Call our New
Automated Credit Hotline**
from your touch-tone Phone
**24 Hours • No Paperwork
No Embarassment**

1-800-311-4775

DOING
BUSINESS
THE WILLIAMS
WAY!

**WILLIAMS
USED CARS & TRUCKS**

//3 Automotive Blvd., Elkton, MD • Rt. 40 at the MD/DE Line
www.williamsused.com • (410) 398-7770 • 1-800-255-7770

HOME BUYER'S GUIDE • SUPPLEMENT TO NEWARK POST AND ROUTE 40 FLIER

REAL ESTATE *today*

WEEK OF JANUARY 9, 2004



THE GREGG TEAM

CHUCK & LINDA GREGG
ASSOCIATE BROKERS MD & DE

800-398-8175

Nicole Lee: 410-920-1333

Russ Johnson: 443-907-7000

John Rogers: 410-920-6468



Email: greggs@chuckandlindagregg.com

Visit our Web site at: www.chuckandlindagregg.com



GEMCRAFT HOMES

SETTING A STANDARD OF EXCELLENCE IN HOME BUILDING



MHBR
#767

FAIR HILL WEST

OPEN DAILY 11-6 or by appointment anytime

800-398-8175

- Prices starting in the \$280's (including standard lot)



- Calvert Elementary
- Rising Sun Middle • Rising Sun High

Directions to Fair Hill West: From 213 take 273W to right on Blue Ball Road to 1st left on Nellie's Corner Road. Subdivision on left. Approximately 1 mile.



FOREST KNOLL SECTION 2

Now Available and selling quickly.

Wooded lots .6-2.0 acre lots

Elk Neck Elementary

North East Middle School

North East High

House Packages starting in the high \$290's

Thinking of Moving?

Why not consider building a new home in one of these great Cecil County communities!!

We are now accepting contracts for the following communities.

Presenting The Estates of Walnut Lane



located near the Elkton High School off of Walnut Lane. Hurry! Pre-construction pricing won't last long! Only 23 homesites ranging from .6 to 1.4 acres. Public water and sewer, natural gas heat and hot water. Starting in the \$350's.

- Minutes to I-95, Route 40, Route 213, Route 279, and Delaware
- Minutes to town, fire company, library, schools, doctors, pharmacies, etc.
- Lots of floor plans and options
- Many standard options included in price

We are selling the Estates of Walnut Lane from the Fair Hill West model. Open daily from 11-6 or by appointment anytime. Full brochure packages available at Fair Hill West or by calling 800-398-8175.

Directions to Fair Hill West: Take Rt 273 to Blue Ball Road North to 1st left on Nellies Corner Rd. Subdivision is 1 mile on left.

Coming Soon! SUNNYBROOK

- Last 11 Lots • Some overlooking pond
- Close to DE • Close to Brantwood Golf Course

Directions to Sunnybrook. From Route 40 & 213 in Elkton take 213 South to left on Williams Road (at Baker's Restaurant) to 3rd right into Sunnybrook Subdivision. Lots will be on Left once subdivision is complete. Call 800-398-8175.

****We are taking names to call when the last 11 home sites in Sunnybrook Subdivision become available. Estimated date is March 2004. Call Chuck Gregg at 800-398-8175 or John Rogers at 410-392-5825 to add your name to the list.**

NO ONE HAS MORE NEW COMMUNITIES THAN RYLAND HOMES!



HALF OFF OPTIONS UP TO \$30,000*



The Club at Patriot's Glen in Elkton

A Resort Golf Course Community
One-Story Ranch Homes Available
Luxury Two-Story Single Family Homes from the \$200's

Directions: Take 95 South to 896 South (Exit 1A). Go to first light and make a right onto Old Baltimore Pike. Follow for 2 1/2 miles. Community on right side.

410.392.5705



The Enclave at Patriot's Glen in Elkton

Luxury Single Family Homes from the high \$200's
Up to 3-Car Garages! 3 New Models Now Open! A Resort Golf Course Community!

Directions: Take 95 South to 896 South (Exit 1A). Go to first light and make a right onto Old Baltimore Pike. Follow for 2 1/2 miles. Community on right side; drive into community. Pass clubhouse and tennis courts to find 3 new models.

410.398.4967



The Estates at Dove Run in Middletown, DE

Luxury Single Family Homes with up to 3-car garages from the \$260's

Directions: Rt. 1 to Exit 136 - Middletown Odessa Road West (299) to a right on Brick Mill Rd. Sales center on right. For more information, call

302.449.2037



Bombay Woods in Smyrna, DE

Single Family Homes with up to 2-car garages from the \$180's
3 New Models Now Open!

Directions: From I-95, take Rt. 1 to exit 114 Rt. 13 north. Right on Smyrna-Leipsic to a right on White Rabbit Drive. For more information, call

302.659.1500



Newell's Creek in Camden, DE

Luxury Single Family Homes from the \$180's
Camden's Premier Community! First Floor Owner's Suites Available!

Directions: Route 1 south to exit 95 (Route 10). Follow Route 10 west. Left onto Alt. 13 south. Sales center on left.

302.698.5015

Sales Centers Open Daily
10am-6pm. Brokers Welcome.
MHBR No. 128

*Total options up to \$30,000. Total savings of \$15,000. Offer does not apply to all communities. Prices and terms subject to change without notice. Not to be used in conjunction with any other offer. See sales rep. for details.

RYLAND HOMES®

America's Home Builder

ryland.com

RYLAND
10 YEAR
WARRANTY



EQUAL HOUSING
OPPORTUNITY
MHBR No. 128

Homes with the *WORKS* ...without the work!

All you have to do is enjoy life!

No lawns to mow, leaves to rake or snow to shovel.
Just enjoy the luxury and convenience
of your new home.



Presenting four vibrant communities in Delaware for those 55 and better.

- All grounds maintenance is performed for you.
- Six spacious floor plans with abundant living and storage space
- Single-level living with an additional bedroom, bath, sitting area and loft on the second floor
- Huge owner's suite with large, private bath
- One- or two-car garages
- Benchmark Builders is industry-recognized for quality construction and customer service

CROSSINGS AT CHRISTIANA

302-325-1040

From \$180,900

Located in the Newark/Bear area, Delaware. Clubhouse under construction.

DIRECTIONS: From I-95, take Rt. 1 South to Rt. 273 West and turn right. Follow Rt. 273 and turn left onto Rt. 7. Follow for 1/2 mile to Rivers End Drive.

Models open daily 11 am to 5 pm or by appointment.

VILLAGE OF RED LION CREEK

302-834-2480

From \$205,900

Located in the Newark/Bear area, Delaware. Clubhouse under construction.

DIRECTIONS: From I-95 take Rt. 1; turn right on Ext 152 (Rt. 72). Located 1 1/2 miles on left.

Models open daily 11 am to 5 pm or by appointment.

ADARE VILLAGE

302-234-4520

From \$255,985

Located in the Pike Creek/Hockessin area, Delaware. Clubhouse amenities complete.

DIRECTIONS: From I-95, take Route 7 North. Located on Rt. 7 (Limestone Road), 1/2 mile north of Paper Mill Road.

Models open Friday through Tuesday 11 am to 5 pm or by appointment. Closed Wednesday and Thursday.

LITTLE FALLS VILLAGE

302-996-9007

From \$303,500

Located in the Hockessin/Greenville area, Delaware. Clubhouse amenities complete.

DIRECTIONS: From I-95 take Rt. 141 North, turn left on Rt. 48 (Lancaster Pike), left at Centreville Rd. and turn right at Red Clay Creek Drive West.

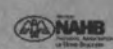
Models open daily 11 am to 5 pm or by appointment.



Delaware's leader in communities for active adults 55 and better

For additional details and directions, visit our website:
www.benchmarkbuilders.com

Prices subject to change without notice. Federal law requires that 80% of the homes be occupied by a resident 55 or older, and have no permanent resident under the age of 19.



Care for aging parents has Boomers looking in their mirrors

By David Bradley
AP Weekly Features

To paraphrase Pogo, "We have seen our aging parents, and they is us."

It's a fact of life for Baby Boomers, especially those who assume caretaker roles for homes of aging parents. The same problems they see in the home they may have grown up in — poor lighting, slick floors and a host of other safety issues they need to help their parents resolve — are concerns they will face sooner rather than later.

For Melissa Birdsong, design director for Lowe's, it's a take-care-of-two-birds-with-one-stone phenomenon. "When Boomers step away from their fast lifestyle and see their parents age, it dawns on them perhaps these fixes would work in their home, too," says Birdsong. "They realize their golden years are just down the road."

Birdsong suggests an assessment of parental homes in four distinct areas: lighting, space, accessibility and comfort. Safety is a common thread through the categories.

Diminished eyesight welcomes brighter lights for general illumination and close-up tasks such as cooking and reading. Lights should be installed where once there were

none. "It's OK to walk down a dark hallway or stairs when you're 50, but not when you're 75," says Birdsong. Motion detectors bring instant light to a room without elderly hands groping for wall switches. Cushy carpets and high thresholds once suited to a lively gait are no longer kind to legs and feet that aren't as spry or can't be lifted as high. Firm pads and tighter weaves with harder finishes are best, and are better, too, for walkers, canes and wheelchair assistance. Room-to-room transitions should have low or zero thresholds.

Mobility is paramount for many seniors insistent on living at home. Many find it trying to navigate narrow spaces between furniture. Create wider paths around and between objects. Remove trip hazards such as cords and loose carpets or throw rugs. "It doesn't mean you strip a room down, you're just mindful of opening the space a bit," says Birdsong.

Grab bars are de rigueur in bathrooms but need broader use in hallways or next to beds where a steady grip is reassuring. Another suggestion: it's less of a strain for aging arms to push a lever than twist a door knob.

Look into restyled appliances and fixtures to reduce the need to stoop or bend. Taller commodes work well

in bathrooms, and both washers and dryers come in versions atop pedestals. Pedestal sinks with lower lips, even in the kitchen, are easier to reach, as are side-mounted lever faucets.

But products considered as concessions to age don't need to be bland. Birdsong says stores such as Lowe's see more products once slotted for users in need now attractively designed for general market. For instance, taller toilets are marketed as "comfort height" devices for all age

groups. "What consumers will see much more frequently is mainstream aesthetics with maximum functionality," says Birdsong.

Still, adult children should tread lightly when talking to their parents about necessary changes. "I would silently scout the house, then couch your suggestions in the name of safety and convenience," says Birdsong. "It's important not to patronize them, because your parents want to maintain their dignity without being lectured to." ■

MORTGAGE PAYMENT CHART

(monthly payment for each \$1,000 borrowed)

interest rate	15 years	20 years	30 years
5.0	\$7.91	\$6.60	\$5.37
5.5	\$8.17	\$6.88	\$5.68
6.0	\$8.44	\$7.16	\$6.00
6.5	\$8.71	\$7.46	\$6.32
7.0	\$8.99	\$7.75	\$6.65
7.5	\$9.27	\$8.06	\$6.99
8.0	\$9.56	\$8.36	\$7.34

Use the figures above to calculate the principal and interest on your monthly mortgage payment (does not include taxes and insurance). Example: a 30-year mortgage at 8 percent interest would use a multiplier of \$7.34 per thousand borrowed. If the mortgage amount is \$75,000, you would multiply 75 by \$7.34, which equals \$550.50 per month.

Live where luxury comes standard.

ST. ANDREWS
REDEFINE THE WAY YOU LIVE

*After all,
life is in the amenities.*

LEASES AVAILABLE ON
Single Family Homes, Apartments
& Townhomes

www.standrewspts.com



50 Turnberry Court | Bear, Delaware 19701

Managed by:
Lincoln Property Company

Call Us Today at 302-834-8600



MHBR#1071

Davitt-Simmons, LLC

CUSTOM HOME BUILDER

Premium Locations - Magnificent Homes - Build on Your Lot or Ours - Use Your Plans or Ours

410-620-9411



NEW SINGLE FAMILY HOMES

NEW ALL BRICK TOWNHOMES

Similar Home



MOVE IN NOW!



Elkton, MD

4 Bedrooms, 2.5 Baths, Family Room, Formal Dining Room, Full Basement & 1 Car Garage.

\$219,000

Elkton, MD

3BR 1.5BA.....\$135,990

2BR 2.5BA.....\$136,990

3BR 1.5BA.....\$136,990

(Front Box Window)

AVAILABLE NOW! TIMBERBROOK HOMES - NORTH EAST



27 North Court, Timberbrook

3-4 bedrooms, 2 full baths, brick front.

Only one like this available now. **\$168,420**



47 North Court, Timberbrook

3-4 bedrooms, 2 full baths, garage.

Only one available now! **\$169,050**



49 North Court, Timberbrook

Beautiful 3-4 bedrooms, 2 full baths, brick front, garage.

Only one of this model available now. **\$172,200**

Co-Broke-Yes!

Call Now for Immediate Showing! (410)287-8051 (443) 466-3763

E-mail: PeterSauerbrey@yahoo.com

Visit our Timberbrook Sales and Rental office at 49 North Court - open Wed. thru Sun. 12-5pm. Dir: Enter from US40, two-tenths mile east of MD272; go left at North Court to model home. Or enter from MD 272 just north of US40: Right on Rogers Road, enter Timberbrook to first left (Mohagany) to left at Sycamore to first left on North Court.



READY FOR SPRING BREAK?!

Dreaming of a place to get away and have a little fun, but short on funds.

Lease an apartment in January and be entered to win 3 days/2 nights stay at one of the Best Resort Areas in North America.

- 9 Different Floor Plans
- On U of DE Bus Route
- New Laundry Facilities
- 24-Hour Maintenance
- Fitness Center
- Renovated Apartments

Prices Starting as Low as \$575!



Towne Court Apartments

Under New Ownership

Rental Office Located off Elkton Rd.
At 91-2 Thorn Lane

Phone: 302-368-7000 • Fax: 302-368-9520



An Updated Look at MORTGAGE RATES

Lender	15 YEAR			30 YEAR			1 YEAR			3 YEAR			5 YEAR		
	Fixed			Fixed			ARM			ARM			ARM		
	%	PTS.	APR.	%	PTS.	APR.	%	PTS.	APR.	%	PTS.	APR.	%	PTS.	APR.
APGFCU 1-888-LOAN-391	4.875	1.168	5.179	5.625	.931	5.789	3.125	1.000	4.130	More Rates Available At www.apgfcu.com					
BAYNET (410) 996-0000	*PLEASE CALL FOR RATES														
CECIL FEDERAL BANK (410) 398-1650	5.5	2.0	5.875	6.25	2.0	6.5	4.625	1.25	4.13	5.625	1.5	5.64	6.625	1.5	6.62
CHASE MANHATTAN MORT. CORP. (800) 780-6962	4 1/2	3	5.06	5 1/4	3	5.54	2 7/8	2 3/4	3.93	3 3/4	1 3/4	3.92	4.0	2 3/4	4.09
CHRISTIANA HOME LOAN (877)-777-0795	4.5	3	4.99	5.125	3	5.59	Visit us at: www.christianahomeloan.com CHL Helping You Move Forward!								
EQUITABLE TRUST MORTGAGE (800) 973-8890	4.75	0	4.83	5.5	0	5.63	RE-HAB: \$\$ to buy, \$\$ to fix-it, all in one loan www.equitabletrustmortgage.com								
FIRST NATIONAL BANK OF N.E. (410) 392-4000	5.20	0	5.2176	5.35	3	5.6363	*PLEASE CALL FOR RATES								
HARFORD BANK (410-838-7001)	5.375	0	5.509	5.875	0	6.036	*PLEASE CALL FOR RATES								
MID-ATLANTIC MORT. BANKERS, LLC (410) 996-9725	*PLEASE CALL FOR RATES														
PEOPLES BANK OF ELKTON (410) 996-2265	*PLEASE CALL FOR RATES														
PRIME RATE FUNDING GROUP (800) 990-7930	*PLEASE CALL FOR RATES														
WAYPOINT BANK (877) 840-1998	5.25	.375	5.439	5.875	0	5.934	3.500	.750	4.605	4.750	.125	4.729	4.875	.125	4.821
WILMINGTON MORTGAGE (410) 398-5607	5.0	0	5.25	5.625	0	5.875	3.0	1	3.125	3.625	1	3.75	4.375	1	4.50

These rates, effective 1/2/04, were provided by the lenders and are subject to change. Other terms may be available. These rates are for existing first mortgages. Points may vary on refinances. Down payment requirements may vary. *Caps and length may vary on adjustable rates. The APR is based on a \$100,000 mortgage with a 20% down payment and is in addition to interest, included points, fees & other credit costs. To list your mortgage rates, call our Real Estate Sales Division at (410)398-3311 or 1-800-220-3311. These mortgage rates are a paid advertising feature of The Cecil Whig.

Your Local-Mortgage Solution

We Make It Easier To Come Home

We've worked hard to provide mortgages to those with good and less than perfect credit.

For Your Convenience We Offer Free Pre-Qualification and Professional Advice On How To Become A Successful Homeowner.

Call Rhonda Parrett with that tough mortgage...
she will get it approved!

We offer a full array of programs to best suit your buyer's needs.

- Conventional
- FHA
- VA
- Construction-Perm
- No DOC
- Stated Income



**MID-ATLANTIC
MORTGAGE BANKERS, L.L.C.**

Phone 410-996-9725 • Fax 410-996-9726

216 East Pulaski Highway • Elkton, Maryland 21921

For your next home Consider Cecil County

LOW TAXES • WATER RECREATION • COUNTRY VISTAS • COMMUTER CONVENIENCE



\$299,900



**28 Vanderlyn Drive,
Chesapeake City**

Located on MD's Eastern Shore. Marinas, fishing, hunting all readily available from this spectacular contemporary. CC4700453



\$574,900

17 Open Meadow Ct., Elkton

Built by Gary Slagle this stunning home located in The Villages of Elk Neck provides an opportunity for gracious living. CC4539888



\$299,900

36 Hazelette Dr., Conowingo

Near the Susquehanna River with its many recreation possibilities. Home is in excellent condition, features five bedrooms and much more. CC4710280



\$389,900

OPEN HOUSE Sunday, 1-4pm

87 Star Route Rd., Elkton

Seventeen acres. Wooded lot on country road Very convenient to Delaware. Built for the builder's own home. Many upgrades. CC4536471



\$289,900

OPEN HOUSE Sunday, 1-4pm

639 Harrington Rd., Rising Sun

Adjacent to a vineyard. Now completed occupancy can be immediate. Four bedrooms, 2½ bath. Built by Lee Larson, quality builder. CC4529240



Each office is
independently
owned & operated.

**RE/MAX[®]
CHESAPEAKE**

111 S. Main St., North East, MD

410-287-8323

800-565-8973

410-996-8668



John Kilby
410-937-3700



Debra Loux
443-309-3195



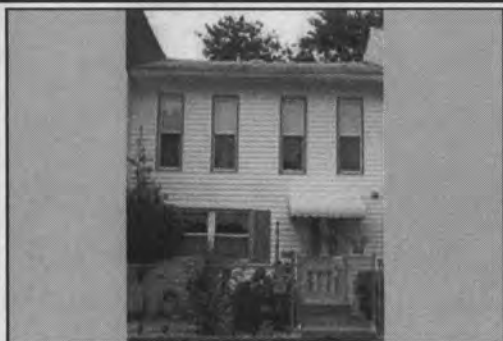
Lori Davis
443-309-0848

Thinking of Listing Your Property?? Call Us
www.baysideproperties.net • e-mail: johnkilby@dol.net



EXPERIENCE. VALUE. COMMITMENT.

Cobblestones



This 4 bedroom townhome boasts 1 full bath and 2 powder rooms. It is in excellent condition, featuring new vinyl siding, new vinyl windows, new air conditioning, a large wood deck, and a private lot w/a fenced yard. There is a security system and so much more. All the work has been done—move right in!

\$116,900

#51065



MaryBeth Tribbitt

Direct: 302-234-6029

Office: 302-239-3000

mbt@psre.com

Frenchtown Woods



This Colonial has been totally upgraded & features 4 bedrooms & 2½ baths. The LR, halls & stairs have new carpet with upgraded padding; master bathroom totally remodeled w/shower, ceramic tile on floor & walls and ceramic sinks. The main bath has a hardwood floor, new shower doors & ceramic tile. Large deck; basement is partially completed with a rec room. A 1 yr home trust warranty is offered.

\$227,000

#52765



Larry Coaxum

Direct: 302-234-6050

Office: 302-239-3000

lcoaxum@psre.com

Timber Creek



Great Colonial w/many upgrades. Remodeled kitchen has beautiful solid cherry cabinets w/ breakfast area & large pantry. Family room w/ fireplace & new carpets. Screened porch off the dining room overlooks built-in pool. New windows & all-brick maintenance-free exterior. The master bedroom has walk-in closet & full bath w/tub. Poured concrete walls in basement & 2 year old gas heater & central air. Sellers are offering a home trust warranty.

\$239,900

#53455



Trudy Molitor

Direct: 302-429-7342

Office: 302-656-3141

tmolitor@psre.com

Heather Knoll



This is a well-maintained 4 bedroom, 2 1/2 bath builder's model with open space behind it and on the garage side of property. The rear deck is 48'x14' and offers easy enjoyment of the fish pond and woodland stream behind the property. French doors provide a formal entrance to the living room which features a negotiable, hand-painted Capadino chandelier. Upgraded wall-to-wall carpeting makes this a cozy home, especially with the family room fireplace in cold weather.

\$259,900

#47485



Bob Cronin

Direct: 302-733-7072

Office: 302-733-7000

rcronin@psre.com

Oakwood



This beautiful brickfront home has 4 bedrooms; 2 1/2 baths; a huge master suite with a sitting room, garden bath, a stall shower and a walk-in closet. There is also a library, extended deck, gas fireplace, 2-car garage, eat-in kitchen, and professional landscaping. Quick settlement is possible and there is a \$5000 carpet allowance.

\$294,900

#51575



Sarah Yoo

Direct: 302-429-4595

Office: 302-656-3141

syoo@psre.com

Academy Hill



Start outside with the beautiful landscaped pond across the street. Note the front brick elevation with dramatic Victorian trim over the windows and the wraparound porch. Step inside into a 2-story foyer and enjoy the hardwood flooring through to a wonderful kitchen/breakfast room. There are more goodies here and you haven't even started upstairs. This home has upgrades throughout; pick up a brochure as you tour this fine home.

\$390,000

#52145



Barb & Bob Aiken

Direct: 302-733-7061

Office: 302-733-7000

baiken@psre.com



FOR THE MOST UP-TO-DATE INFORMATION ON CURRENT LISTINGS VISIT PATTERSONSCHWARTZ.COM