

NEWARK POST

❖ Greater Newark's Hometown Newspaper Since 1910 ❖

100th Year, 50th Issue © 2009

January 1, 2010

www.newarkpostonline.com

Newark, Del.

2009 Year in Review

Newark entered the New Year without the Chrysler assembly plant, which closed for good at the end of December.

As Chrysler continued to hemorrhage money, it was clear that the half-century-old plant would never reopen and the city would have to live with the loss of a key part of its tax base. Never mind that the auto company got a \$4 billion loan in the waning days of the Bush administration. Late in the year, we would learn that none of that

money would be returned, even though some assets have been sold, including the Newark plant. (More on that later). It was that economic downturn that helped elect Barack Obama. On his way to his inauguration, the president-elect picked up his vice presidential running-mate and University of Delaware graduate Joe Biden in Wilmington. The train slowed only slightly when passing by the Newark as it passed near the shuttered Chrysler plant. The plant closing was more evidence

of a tough economy that would bedevil the Newark area in 2009 and by most predictions will plague the area in 2010.

But Newark had plenty of additional news throughout 2009. Here's a sampling:

January

Violence visited the Newark Senior Center when a teenager was shot and a number of people were beaten at at

a Sweet 16 Party. A group had rented the center.

Later in the month, Jack Markell, who grew up in Newark and Lt. Gov. Matt Denn, who lives near Newark, were sworn in in a low-key ceremony at the University of Delaware. A poor economy and the inauguration of Vice President and UD grad Joe Biden and President Barack Obama led to a low-key inauguration that included community service, rather than lavish events.

Meanwhile, the University of

Delaware gained national renown for help honing the skills of not only Joe Biden, but two other key figures in the presidential campaign, Steve Schmidt, who headed the campaign of Republican U.S. Sen. John McCain, and David Plouffe, mastermind behind the campaign of Barack Obama.

Gov. Markell also tapped Christina School District Superintendent Lillian Lowery as Education Secretary, once

See **REVIEW, 3** ▶



PHOTO BY MARK CORRIGAN

Former Secretary of State and commanding general of the first Iraq war, Colin Powell, spoke at the University of Delaware in the fall.



PHOTO BY MARK CORRIGAN

Newark-area residents welcome city children to the area as part of the Fresh Air Fund's long-time program.



PHOTO BY MARK CORRIGAN

Debbie Christie, right, talks with Dodi Hebert at the Christina School Board meeting that, in effect, ended the suspension of her son for carrying a piece of camping gear, containing a knife, to school.



PHOTO BY DOUG RAINEY

Residents and businesses struggled with a foot and a half of snow that departed as suddenly as it came when rain melted the blanket of white in the city.

Our 100th anniversary

The Newark Post will soon be 100 years old! We, at the Newark Post, would like to thank our readers for their loyal support over the past century. On January 20, we will print our 100th anniversary edition, which will feature re-printed articles from the first issue of the Newark Post (January 26, 1910) and articles from each decade, covering the most important news and events from the past 100 years. Please submit your suggestions on our website, www.newarkpostonline.com or to postnews@chespub.com. Final date for submissions is January 10, 2010.

Happy New Year
from your friends at the Newark Post

NEWARK DE 1971
181 S COLLEGE AVE SERIALS UNIT
UNIVERSITY OF DELAWARE LIBRARY
KAREN DIAS
000054 07/24/2
*****3-DIGIT 197

IN THE NEWS

Prostitution tip nets suspects, gun, traces of drugs

Editor's note: Police blotter items are compiled from reports from area police departments

Responding to a tip from an informant, Newark Police staked out the Quality Inn, at 1120 S. College Ave., in response to a tip of alleged prostitution. Police were told that two males, known as "Berto" and "Escobar", were advertising online. The informant stated that the males took all the proceeds and that the girls were rewarded with crack cocaine.

An investigation by police showed that the renter of Room 250 was Alberto Andrews, who is currently wanted on probation violations for DUI and other charges in Delaware

County, PA. The renter of Room 251 was identified as Edward Zeigler, who has arrests in New York and New Jersey.

Police observed the two males with two females, Stephanie Hahnel, 29, and Paige Carlson, 18, as they left the hotel. They stopped at the Best Buy on Churchmans Rd. and were detained by police as they left the store. Zeigler was in possession of over \$1,900 in cash, claiming it was his life's savings.

Police obtained a warrant to search the hotel rooms, where they found a loaded, silver .25 caliber Phoenix Arms hand gun in Zeigler's room, wrapped in a towel under the bed. Various drug and sex

paraphernalia were found in both rooms. Due to his arrest in New Jersey, Zeigler is prohibited from possessing a firearm. A K-9 search of the seized money showed traces of drugs on the bills. A sample of Zeigler's DNA was obtained for residue found on the firearm.

Zeigler was transported to the Howard Young Correctional Institution in lieu of a \$16,000 cash bond.

Musical equipment stolen from apartment

A burglary report was filed from a residence on North Street in Newark. Two of

the roommates at the house stated that several thousands of dollars worth of musical equipment, that was stored in a closet, was taken along with an iPod and a digital camera. The point of entry was a first-floor window located on a narrow walkway between houses. The only physical evidence recovered, so far, is a screen that was removed from the window and an impression of a boot tread found near the window.

Train hits unoccupied car

Police responded to a vehicle collision on the CSX train tracks at 52 N. College Ave., where a tan, Chevrolet

Avalanche pickup truck had been struck by a passing train. The vehicle was found 200 feet from the north side of the crossing and was empty at the time of the collision.

Investigators discovered the vehicle's owner, who said that his son is the driver of the truck. The son stated that he was not the driver of the vehicle at the time and that his keys were taken out of his jacket when he was at a party. He provided a list of the party guests for the investigators.

The next day, the son left a voice mail at police headquarters that stated he had forgotten the name of one of the partygoers. That person was immediately contacted about the accident. This person told officers that he had taken the keys to go to 7-11, but had taken a wrong turn and got the truck stuck on the tracks. Police are requesting an interview with this individual.

Unknown person breaks post office door

Newark Police are investigating a criminal mischief incident where an unknown

person damaged a glass door at the U.S. Post Office building at 401 Ogletown Rd. Employees reported that an interior glass door had been either kicked in or had had an object thrown at it. The door always remains unlocked and postal employees are baffled as to why the door would be damaged. No other damage was found at the site and no other objects were found near the door.

TV stolen

On Thursday, December 24, police responded to a burglary call from the leasing office of Korman Residential, located at 100 Christina Mill Dr., Newark. A janitorial employee stated that he had been mopping the office when he noticed that the television over the fireplace was missing.

Employees told the officers that the TV was a 40" Samsung flat screen model. A search showed that all doors were secured and locked, but also revealed a small bolt from the mount that was near a rear door, leading police to believe that that was the means of exit. No other items were taken, though there are other valuables located in the office.

Tired of high costs and low returns?

- ▶ Home Insurance
- ▶ Life Insurance
- ▶ Auto Insurance
- ▶ Investments

Save Money Now.
Call Dan at 455-9520.



Daniel DeFoe

DeFoe-Insurance@Comcast.net
302-455-9520



Discounts for Delaware State Employees and U of D Alumni

Walk In...Float Out.

"Quality Service At Affordable Prices"

1 Hour Foot Reflexology
\$35.00

1 Hour Body Massage
\$45

New
Massage
Center
For Men &
Women

Wellness Center

501 Capitol Trail (Kirkwood Hwy)
Capitol Plaza (across from Windy Hills)
Newark, DE • 302-256-8485
Mon.-Sun. 9am-11pm.



Do You Have Indoor Air Pollution?

STANLEY STEEMER.
CLEANS AIR DUCTS



Trained &
Certified by



STANLEY STEEMER.
302.322.5511

Something to Smile About!

Implant Dentistry

An exciting alternative to bridges or dentures. Laugh, talk and eat confidently with teeth that feel and look like your own

Dr. Barry Kayne, D.D.S.
Specialist with over
25 years experience

Omega Professional Center
Suite F-58 • Newark, DE 19713
Across from Christiana Hospital

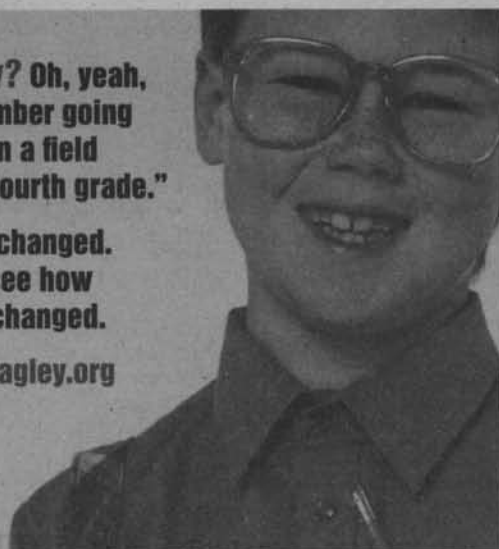
302-456-0400
Fax: 302-456-0396
www.delawareperio.com



"Hagley? Oh, yeah,
I remember going
there on a field
trip in fourth grade."

You've changed.
Come see how
we've changed.

www.hagley.org



Chesapeake
Classified.com

Find a home, a car, a job and more online!



2009 YEAR IN REVIEW

► REVIEW, from 1

again leading the district to look for a new chief.

In meantime, the City of Newark struggled with rising costs and a tough economy, and raised parking fees.

The month ended with UD student Galen Galen Giaccone finishing in the top 15 in the Miss America Pageant.

February

Newark High School football standout Malcolm Bunche opted to go to the University of Miami in Florida. Bunche is six-foot six and 322 pounds.

Newark City Councilman Ezra Temko declared he is bisexual. He spent the year championing insurance coverage for life partners.

At the Christina School District Assistant Superintendent Freeman Williams was named

Interim Superintendent.

Just outside Newark, there was a piece of good economic news when Barclaycard opted to open a service center at the former MBNA-Bank of America complex in Ogletown. The center will add 300 jobs.

March

A storm dumped four inches of snow on the Newark area, only a fraction of the number we would see late in the year.

The Newark City Council approved a water rate hike as the city coped with a growing budget gap.

UD Provost Dan Rich resigned to return to teaching. William Markell - father of the governor, a retired UD administrator and professor - passed away.

Delaware Does More successfully collected 340,000 pounds of food as demand for help rose during the economic

downturn. Delaware Does More is a joint of the United Way and Food Bank of Delaware.

The month ended with a University of Delaware lecture series on the economy. The news was not good. While government spending may have taken the economy out of a tailspin, job growth will not occur in the near future. That proved to be the case as the year went on.

Sidewalk vendor Bennie Dollard successfully pleaded with the City Council to reduce a proposed tripling in license fees.

To the south of Newark, Pathmark reopened a store at the former SuperFresh location off Route 896.

Members of the Lambda Chi Alpha fraternity made national news when members rescued a woman whose car had been wedged on railroad tracks. Moving quickly, as the train approached, the UD students got the woman out of the vehicle before the locomotive slammed into the vehicle.

April

The University of Delaware announced it would close the Blue & Gold Club on the Newark campus, citing financial losses and a need for major renovations at the building. Contrary to popular belief, the club had only been in existence since the early 1970s. It was established when Newark had a lack of higher-end dining options.

There was more bad news on the economic front when General Electric announced plans to reduce employment at its solar plant by nearly 90. Later in the year, the company announced it would eventually

close the plant in Glasgow. The operation was comprised of some of the assets of the now-defunct AstroPower, a spin-off of University of Delaware research. Hurting GE was overseas competition and new technology.

Newark grieved over the loss of Philadelphia Phillies announcer Harry Kalas, who died as the Phillies started their 2009 season as World Series Champions.

On the arts front, Roman Pawlowski announced he will retire as conductor of the Newark Symphony. He had held the post since 1983 and elevated the performance level of the non-professional orchestra.

As the month ended, the focus was on the BRAC-related relocation of military research to the Aberdeen Proving Grounds in Maryland. As the closest research university to the base, UD plans to be a major player in a BRAC corridor that will bring thousands of jobs to the region. The State of Delaware and New Castle were also working hard to attract employers tied to military research.

May

The University of Delaware ended up in the national news when H1N1 (swine flu) was detected among students. UD set up a screening clinic, with mask-wearing police at the entrance.

Norma Adams was honored for her 54 years of working on Main Street and calling in sick only three times. She spent 47 of those years at Bing's Bakery. She was named honorary mayor for a day.

Vice President Joe Biden returned to his alma mater to

discuss wind power and energy independence, bringing along Energy Secretary Ken Salazar.

Newark High School's Class of 1949 held its 60th anniversary. Remarkably, 42 of the 57 living graduates attended the event.

Former Newark Post staffer Robin Broomall was named top

district Rotarian.

In the meantime, the Newark City Council cast a wary eye on Dover as the Delaware General Assembly wrestled with a budget gap and the possibility that the city could lose its alderman's court. That did not happen.

See REVIEW, 4 ►



PHOTO BY MARK CORRIGAN

University of Delaware Police stand guard outside a treatment center as the campus saw an outbreak of Swine flu last spring.



PHOTO BY MARK CORRIGAN

Baltimore Ravens and former UD quarterback Joe Flacco returned to Newark to sign autographs to hundreds in attendance.

BLACKSTONES

An Olde World Restaurant and Pub

Reserve Your Party
Now for the Holidays and
Don't Forget to Make
New Year's Reservations
Seating is Limited

401 Louviers Dr. • Newark, DE. 19711
Located in the shops of Louviers • 302-266-0880

Hours:
11AM - 10PM Sunday - Wednesday • 11AM - 11PM Thursday • 11AM - 12PM Friday & Saturday

www.BLACKSTONESpub.com

Use our
Convenient,
Time-saving
e-mail address
today!
postnews@
chespub.com
For info,
call 737-0724



DuPont THEATRE
AT THE HOTEL DU PONT

DELAWARE'S
BROADWAY
EXPERIENCE

Ballroom

WITH a TWIST!



CHOREOGRAPHED BY
LOUIS VAN AMSTEL



HOSTED BY
BARBARA EDEN



DIRECT FROM DANCING WITH THE STARS!



JONATHAN & ANNA



DMITRY CHAPLIN



CHELSE HIGHTOWER

JANUARY 19-24, 2010

302-656-4401 • WWW.DUPONTTHEATRE.COM

2009 YEAR IN REVIEW

▶ REVIEW, from 3

The state Medical Examiner's Office ruled the death of Shirley June Hollins, Newark, was a homicide. She died in late 2008. No arrests have been made in the case, as of press time. The Newark Police Department said the death was not a random act.

In the meantime, Chrysler sharply reduced the size of its dealership network, briefly mentioning Newark Dodge as on the closing list. As it turned out, Chrysler combined the Dodge and Plymouth dealerships owned by the same family. The bulk of operations of Newark Dodge on Elkton Road have been moved to the Chrysler-Jeep dealership on Cleveland Avenue.

The University of Delaware trustees gave an ad hoc committee the power to negotiate a deal to purchase the Chrysler plant in Newark.

The Christina School Board named Marcia Lyles as the new superintendent. She was an administrator in the New York City school system.

The Newark City Council approved the redevelopment of the former CVS store on Main Street into a mixed use project. Unlike previous projects, the building will include office space as well as student apartments and retail space.

The council looked at a parking waiver and special use permit for Chipotle Grill, a fresh Mex restaurant planned at the long-vacant Copy Maven store on Main Street. As it turned out, the project fell through, for reasons that remain unclear, although the parking waiver was blamed in some quarters for the decision to not locate at the site. Funds from the waiver are used for maintenance and expansion of parking in downtown Newark.

June

It may have been the local sports story of the year and one of the top stories period. Elena DelleDonne joins the University of Delaware basketball team, putting the UD women's program in the national spotlight. DelleDonne came to UD after deciding against joining the legendary University of Connecticut program, after a brief time on that campus.

The University of Delaware holds its spring graduation and students express their appreciation to their parents for their time in Newark.

Newark expresses its appreciation for a quieter Main Street by holding Newark Nite, a giant stroll down through Main Street, featuring local stores and food vendors. Held on a beautiful night, it lived up to its traditional billing of again being the best ever. In the vast crowds were a few people getting into fights and other incidents after the event ended, leading to talk of shortening the operating hours for the event that shuts down Main Street for a few hours in June.

Still, Newark Nite more than accomplished its goal of increasing awareness of the retail and food offerings on Main Street, which, on the whole, has held up fairly well during a deep economic downturn.

Curbside recycling arrives in Newark, with the vast majority of residents signing on to the program. City residents signing up have refuse pickup one day a week, with recycling materials on the other days.

Newark and New Castle County struggled with a wave



PHOTO BY MARK CORRIGAN

A member of the color guard marks opening day for one of the area's youth baseball programs.

of graffiti that has scarred walls, overpasses and buildings in Newark and elsewhere. Law enforcement agencies formed a task force, contributing to a wave of arrests in Newark and elsewhere.

Newark Police were also credited with helping to save the life of a UD professor who went into cardiac arrest. State-of-the-art medical treatment also helped save the life of Lee Anderson. Typically under 10 percent of those who go into cardiac arrest survive.

Police agencies were also busy dealing with scam artists targeting the elderly in areas such as home improvement and the oft-used missing grandson story that results in the victim turning over money to the criminal, after being told that his grandchild needs to make bail or has run into other problems.

A high rise hotel was proposed on Route 896 (College Avenue), adjacent to the Howard Johnson's hotel.

UD student Heather Lehman, of Magnolia, was crowned Miss Delaware. She was crowned by another UD student Galen Giaccone, and reigning Miss America Katie Stram of Indiana.

July

It wasn't a slow month as the city held its annual July 4th Fireworks and the Downtown Newark Partnership held its annual Food & Brew Fest. The event featured \$1 samples of brews and tapas menus. It drew a large crowd.

At Christiana Mall, The Cheese Cake Factory, a well-known restaurant chain announced plans to open a restaurant in 2010. The mall is undergoing a major expansion and renovation, leading up to the 2011 opening of a Nordstrom fashion department store.

Meanwhile, a UD researcher is exploring whether carbonized chicken feathers are capable of holding vast amounts of hydrogen. Any breakthrough of that sort would improve the feasibility of hydrogen-fueled vehicles and other systems.

The Newark area also saw a number of traffic delays as paving projects hit their peak during the summer months. Many projects are being funded by the Recovery Act, or federal stimulus bill.

A traffic crash claimed the life of Civil Rights pioneer and Tuskegee Airman Littleton Mitchell, 90. A tribute to Mitchell was held at the University of Delaware, with Vice President Biden in attendance. Years ago, UD had barred Mitchell from speaking

See REVIEW, 10 ▶



PHOTO BY MARK CORRIGAN

University of Delaware President Patrick Harker at a tribute to civil rights pioneer Littleton Mitchell.

DELAWARE EYE CARE CENTER

Complete Eye Care
 Schedule your appointment today!
800-900-2020

Gary I. Markowitz, M.D.
 Board Certified Ophthalmologist

Edward H. Hu, M.D.
 Board Eligible Ophthalmologist

Specializing in:

- Cataract and LASIK surgery
- Diabetic and Ocular Disease Management
- Glaucoma and Retina Evaluation and Treatment
- Eyeglasses and Contact Lenses

Accepting Most Insurances
5 convenient locations to serve you!

DOVER	MILFORD	NEWARK	SMYRNA	BEAR
833 S. Governors Ave. 674-1121	110 N.E. Front St. 422-5155	333 E. Main St. 368-9105	10 S. Market St. 653-9200	1721 Pulaski Hwy. 836-5410

www.delawareeyecare.com

Dr. Yvonne Kneisley
OPTOMETRIST

- Clear Explanations of Procedures
- Professional & Caring Staff
- Most Insurances & HMO's Accepted

KNEISLEY EYE CARE

(302)224-3000
 The Main Street Galleria
 45 East Main Street, Suite 201 • Newark
www.kneisleyeyecare.optometry.net

Eye Examinations • Contact Lenses • Fashion Eyewear • Treatment of Ocular Diseases

Can we help?

Offices: The paper's offices are located conveniently in Suite 109, Pomeroy Station, 218 E. Main St., Newark, DE 19711. Office hours are 8:30 a.m. to 5 p.m. weekdays.

Phone: (302) 737-0724

Facsimile: (302) 737-9019

E-mail: postnews@chespub.com

To subscribe: To begin a convenient home-delivery subscription, call 1-800-220-3311.

To place a classified ad: Call 1-800-220-3311.

To place a display ad: Call 737-0724.

THE STAFF of the *Newark Post* is eager to assist readers and advertisers. Reporters, writers, editors and salespeople can be contacted as listed:

Doug Rainey is the Editor of the *Newark Post*. He leads the day-to-day operation of the newsroom. Call him at 737-0724.

Mark Corrigan serves as Assistant Editor and can be reached at 737-0724.

Jonathan Waddell is our Design Director. He handles design and composition of our pages.

Harry Porter is the *Newark Post's* advertising manager who manages the local sales team. He can be reached at 1-443-245-5011.

Jim Galoff handles accounts in the New Castle County area and is an automotive account specialist. Call him at 737-0724.

Mike Adams sells real estate advertising. He can be reached by calling 1-443-245-5031.

Robin Burgess sells ads in the downtown Newark, Middletown and surrounding area. She can be reached by calling 737-0724.

Our circulation manager is **Mary Ferguson**. For information regarding subscriptions, call 1-800-220-3311.

The *Newark Post* is published Friday by Chesapeake Publishing & Printing. News and local sales offices are located in Pomeroy Station, Suite 109, 218 E. Main St., Newark, DE 19711. All advertising and news are accepted and printed only at the sole discretion of the publisher. The *Newark Post* is a member of the Maryland-Delaware-D.C. Press Association, Suburban Newspapers of America and the National Newspaper Association.

POSTMASTER: Send address changes to: *Newark Post*, Suite 109, 218 E. Main Street, Newark, DE 19711. Periodicals postage paid at Newark, Del., and additional offices. (USPS #6465) Known office of publication 218 E. Main Street, Newark, DE 19711.

Godlbauer's

The furniture people,
Rt. 40, 2 miles West
of DE/MD line

NEW FURNITURE FOR THE NEW YEAR !!! OPEN NEW YEARS DAY

We want you to enjoy your New Years Eve

- So go ahead and sleep in -

We don't open until 11:00 AM

BROYHILL

\$200 rebate

with Dining Room Purchase
see store for details

**WE PAY FOR
EVERYTHING!**

Tax FREE!

Interest FREE!

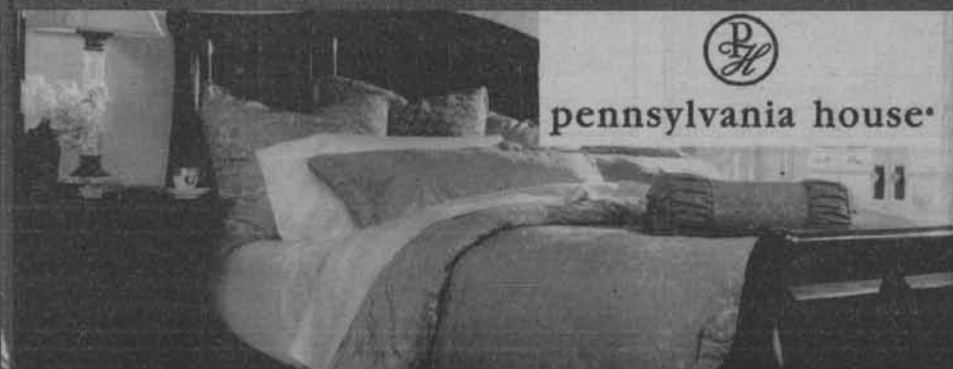
Delivery FREE!

Hassel FREE!



Flexsteel
America's Seating Specialist

EVERY LIVING ROOM - ON SALE



pennsylvania house

EVERY BEDROOM - ON SALE



Broyhill

EVERY DINING ROOM - ON SALE



**HOWARD
MILLER**
Enhancing life at home

EVERY CLOCK - ON SALE

BUY NOW...SAVE NOW...ENJOY NOW...NO INTEREST CHARGE FOR 1 YEAR



901 E. Pulaski Hwy., Rt. 40, Elkton
410-398-6201



Sat. Hours 10 AM-6 PM Sun. 12 noon-5 PM
New Years Day 11 AM - 5 PM



701 E. Pulaski Hwy., Rt. 40, Elkton
410-398-5402

Sports

YEAR IN REVIEW

And what a sports year it was in Newark area

By JON BUZBY

JONBUZBY@HOTMAIL.COM

As is always the case, it was an up and down year in sports here locally. But rather than harp on the bad, let's ring in 2010 by looking back at the bright side of 2009. And while these stories might not be ones many consider to be the best because they don't always involve championships or record-setting performances, each was special in its own way. In no particular rank or order, some great local sports stories from 2009...

We saw Dara Taylor perform on the hardwood at Caravel Academy one final time before taking her talents south to the University of Maryland and fulfilling her childhood dream of playing Division I basket-

ball. We also enjoyed watching her classmate, Eric Buckland, pitch and hit his talents to the University of Delaware on a baseball scholarship.

We watched in amazement as Christiana High School athletes Jaiquann Beckham, Elijah Williams and twin brothers Barien and Darien White were rewarded for their excellence on the track and in the classroom with an appearance on the Oprah Winfrey show. Each received a full college scholarship as part of the newly created "I am" scholarship started by Black Eyed Peas star will.i.am, and then the foursome returned to anchor Christiana to a state track and field championship.

St. Mark's senior Courtney Schweizer finished her illustrious lacrosse career with a

state-record 329 goals before hopping on a full ride to Johns Hopkins.

Despite winning just one game, we saw glimpses of fundamental, well-disciplined baseball being played on the diamond at Glasgow High School, where coach Antwain "Mack" Haman hopes to turn his alma mater's baseball program around.

The Christiana girls' lacrosse team won its first game since 2006, and finished the season with three victories.

He wasn't really local, but to most of us Harry Kalas was like one of the neighborhood gang, and we'll miss him.

Six was the magic number at St. Mark's as that many wrestlers won state championships and the school's baseball team won its sixth state title

under coach Matt Smith.

After accepting the head football position at Brandywine High School only to have the offer suddenly retracted, former Glasgow defensive coordinator Barry Zehnder happily landed on his feet at his alma mater, Newark High.

St. Mark's running coach Joe O'Neill passed away after a courageous battle with cancer, and then looked down from above as 2008 state cross-country champion, Greg Morrin, won the 3,200-meter race at the Meet of Champions the afternoon of his passing.

Elena Della Donne returned to the hardwood floor, giving Blue Hen fans an excitement for women's basketball never before seen in Newark.

Newark resident Bryan Townsend attempted to become

just the fourth Delawarean to swim the English Channel, all to benefit Special Olympics Delaware. And although his effort came up short due to a horrific storm, he displayed the type of courage which would make any coach proud.

Following its worst season ever in 2008, the excitement of Blue Hen football returned with the arrival of Penn State transfer Pat Devlin. The dynamic quarterback lived up to his billing and despite the team's 6-5 record this season, left fans feeling optimistic about 2010.

Canal Little League put together several miraculous comeback wins and advanced all the way to the Majors Division state finals before losing to Middletown.

Caravel senior Charnelle Bacon, a bone cancer survivor,

was selected to play in the Blue-Gold senior all-star basketball game.

Newark basketball brought back one of its own in hiring former point guard Shannon McCants to run the program.

The University of Delaware and Delaware State University played in the first regular-season game ever between the two schools, and although the Blue Hens won, it wasn't by the wide margin many predicted, setting the stage for a future rivalry.

Newark senior captain Carmen Caserta's leadership ensured that despite its worst season in the Butch Simpson era, each player on the Yellowjackets conducted himself with the class and dig-

See SPORTS, 11 ►

"Uncle Bob's"
New Year's Party!
Tickets are on sale NOW!
Get Your Table Early
we sell out every year!
One band this year on bar side
Featuring: Hung Jury
Doors open 6:00 PM
Full course dinner with two meats.
Only \$25⁰⁰ per person
For tickets call: Marvin at 410-398-1381
565 Kirk Road, Elkton, MD

Supporting you from
HOSPITAL TO HOME
You want to get home quickly, and through the intensive therapy program in our Rehab Recovery Suites*, we can help you reach your goal. Ask about our concierge assistance, enhanced dining menus and more.

 **ELKTON**
CARE & REHABILITATION CENTER
Caring is the Key in Life

www.sunbridgehealthcare.com
(410) 398-6474 • 1 Price Drive • Elkton, MD

EDUCATION—a GIFT
that lasts a lifetime!



- ✓ READING, WRITING
- ✓ MATH, SPELLING
- ✓ PHONICS, STUDY SKILLS
- ✓ STATE TESTING PREP
- ✓ CONFIDENCE, MOTIVATION, SELF-ESTEEM
- ✓ SAT & ACT PREP

Call Huntington today, and we'll help give your child the skills essential for success at school - and success in life.

Huntington
LEARNING CENTER®
Newark • 34 Liberty Plaza • Kirkwood Hwy. • 302-737-1050
Independently owned and operated. ©2007. Huntington Learning Centers, Inc.

 **APM**
Advanced Pest Management

Winter's Here!
Leave It To APM to Solve Your Gutter Cleaning Problems!

 • Save 50% vs other gutter systems
• 25 Year Guarantee
• Gutter cleaning included!

For more information call **800.5NO.Bugs**
www.apmservices.com
Family owned & operated for over 45 years

Don't waste time and money on that same old DO?
Let Mr. Anthony give you a new look!
Complete Color & Cut Make-Over \$95⁰⁰



SALON BY ANTHONY, INC.
321 Newark Shopping Center, Newark, DE 19711
(302) 737-5869
Daily: 10-7, Sat 8-3, Closed Sun & Mon
Anthony Barcola Jr.,
Owner & Operator

It's right here. It's easy.
302-998-9192
4565 Kirkwood HWY | Wilmington

GEICO
Local Office



Church Directory

To Advertise or make changes call Nancy Tokar 1-800-220-1230 or voice mail 443-245-5072. Prices starting as low as \$12.00 a week. Deadline for changes Friday 4:30pm for the following edition



**Evangelical
Presbyterian Church (PCA)**
Christ Centered • Biblically Based

Sunday Worship 10:45am & 6pm
9:30 Sunday School
308 Possum Park Rd., Newark
302-737-2300
www.epcnewark.org

The Way Ministries

(an extension of Highway Gospel Community Temple, West Chester PA)

Highway Word of Faith Ministries is presently worshipping @ The George Wilson Community Center 303 New London Rd., Newark, DE

Sunday:

8:00-9:00am Christian Education classes for all ages
9:00am Sunday Morning Celebration
Wednesday: Location

7:00-8:00pm Bible Enrichment Class at Prayer Temple
49 New London Rd.
Newark, DE 19711
Mailing Address: P.O. Box 220
Bear, Delaware 19701-0220
Visit us online @ www.theway.ws or send us a note at...theway238@aol.com



Pastor Carl A. Turner Sr. & Lady Karen B. Turner
For further information or directions please call:
302-834-9003



**First Church
of Christ,
Scientist**

48 West Park Place, Newark

Sunday Service & Sunday School 10:00am
Wednesday Testimony Meetings 7:30pm
Childcare available during services.

302-456-5808
ALL ARE WELCOME
www.fccsnewark.org



The Episcopal Church
Welcomes You

St. Thomas's Parish

276 S. College Ave. at Park Place,
Newark, DE 19711

Across from UD Health Center
(302) 368-4644

Church Office: (9:00-1:00 Mon-Fri)
www.stthomasparish.org

Sunday Worship

8am, 10:30am & 5:30pm

Join us Sundays at 9:30am for Sunday School and Adult Education classes
Sunday Adult Education Programs
9:30-10:15am

The Rev. Paul Gennett
Marc F. Cheban,

Organist & Choir Master

Wandering? Wondering? Wounded?
God meets you where you are!
And So do we.
Come and see...



**"We get more hits
from this one
ad than any
other advertising
we do."**

-Good Shepherd
Episcopal Church

Call Nancy Tokar to place
your ad at

1-800-220-1230



Sunday Service 10am
Childcare and Sunday School

Unitarian Universalist Fellowship
420 Willa Road, Newark
302.368.2984 uufn.org

Come Join Us!
Speaker: Rev. Greg Chute



Sunday 8:30 a.m.
Acoustic Worship
Sunday 10:30 a.m.
Electric Worship

Pastoral Team
Curtis E. Leins, Ph.D
Robert F. McKnight
Theodore Lambert, III
James L. Ford

Located 1 1/2 miles N. of Elkton
on Rt.213

(410) 392-3456

NEW LIFE CHRISTIAN FELLOWSHIP

Sunday Service 9:30 AM
Multimedia Children's Ministry!
Contemporary Worship!
Relevant messages!
Church Office: 999-1800
Check out our web page:
www.NewLifeDE.org
2712 Old Milltown Rd.
Wilmington, DE
(near Kirkwood Hwy & Milltown Rd)



Episcopal tradition,
contemporary music

Join us for
weekly worship on
Sundays at 11am
at St. Nicholas Church,
10 Old Newark Road

Brightening lives, nourishing souls, connecting to God

Christmas Eve Service 5 p.m.
& includes Eucharist and Caroles

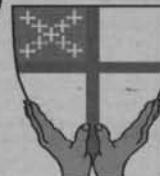
302 547-7849 • www.GoodShepherdDE.org
Sponsored by the Diocese of Delaware

TRINITY

PRESBYTERIAN CHURCH (PCA)
SUNDAY WORSHIP 9:30 AM

Meeting at: First Church of the Nazarene
357 Papermill Road, Newark, DE
Pastor Mark Bolze

For more information please call 302-233-6995
www.trinity-pca.info.org



St. Barnabas'
Episcopal Church

Serving Hockessin, Pike Creek, Mill Creek & Newark

JAN. 3, 2010 at 10:00 a.m.
CHILDREN'S EPIPHANY PAGEANT

Worship Saturday 5:30 pm
Services: Sunday 7:30, 10:00 am
302-994-6607

www.stbarnabasde.org

2800 Duncan Road, Wilmington, DE 19808



You are welcome at
Ebenezer
United Methodist Church

SUN SERVICES 8:30 & 11:00am
SUNDAY SCHOOL 9:45am
525 Polly Drummond Road
Newark 302-731-9494
Handicapped Accessible
Child Care
TED DAY, PASTOR





You're Over Fifty
Want to add more excitement
to your life?

Join the Academy of
Lifelong Learning!

No exams or grades...

Learning for the fun and stimulation of it...

Affordable and convenient

More than 200 courses in art, music, computers, investing, history, yoga, travel, current events, and much more.

Enjoy the friendship of other members, special activities, and University library, fitness center, and course audit privileges.

CALL NOW for the spring catalog or more information:

302/573-4417, Academy-LL@udel.edu

Visit the Academy at www.academy.udel.edu

Join us for our OPEN HOUSE

Tuesday, January 5 • 9:00 a.m. - noon

UNIVERSITY OF
DELAWARE



Academy of Lifelong Learning
 Arsht Hall, 2700 Pennsylvania Ave., Wilmington
 302/573-4417 • www.academy.udel.edu

NP122409

A Professional and Continuing Studies program of the University of Delaware

OBITUARIES

■ *Obituaries are printed free of charge as space permits. Information is usually supplied to the newspaper by the funeral director.*

Bruce Andress

Age 82, of New Castle, went home to be with his Lord and Savior on Tuesday, December 22, 2009. Mr. Andress attended Lighthouse Baptist Church, and previously was a member at First Baptist Church of New Castle for 43 years. In addition to being a big sports fan, he enjoyed hunting, fishing, gardening, and was a "Fisher of Men."

Mr. Andress is survived by his loving wife of 55 years, June Andress; sons, Jonathan Andress & wife Patricia, Mark Andress & wife Kimberly; sister, Marilyn Race & husband Walter; 8 grandchildren; and 1 great grandchild.

A visitation for family and friends was held on

Monday, December 28, 2009 in Lighthouse Baptist Church, 1842 Otts Chapel Road, Newark, from 6pm-7pm followed by a service in celebration of Bruce's life at 7 pm. Burial was private.

In lieu of flowers, contributions may be sent to: Lighthouse Baptist Church "Building Fund."

Heather Lynne Bowman

Heather Lynne (nee Culley) Bowman went to glory Friday, Dec. 18, 2009, after winning her battle over pancreatic cancer.

This artist and teacher at Rampello School, Tampa, FL is survived by her devoted husband, H. Lee Bowman of Tampa, her sons Lee Bowman II of DE and Nicholas Bowman and granddaughter Madison Bowman of Md., her parents Dr. Gerald R. and Betty Culley of Newark and moth-

er-in-law Pauline Bowman of Lockhaven, PA, sisters Allison Thorp and Sabrina Justison, nieces and nephews Kaitlyn, Kyle, Hannah Thorp and Samuel, Rebekah, Jacob, Jonah White.

A memorial service was held on Tuesday, Dec. 29, 2009 at 7 pm at Parkview Assembly of God, 235 Polly Drummond Hill Rd, Newark..

Donations in celebration of Heather's life may be made to cancer research at H. Lee Moffitt Cancer Center, 12902 Magnolia Drive, Tampa, Florida 33612.

To express an online condolence, visit: www.stranofeeley.com.

Elizabeth S. Brown

Mrs. Elizabeth "Betzy" S. Brown, age 92, of Annapolis, Md., formerly of Punta Gorda, Florida and Newark died peacefully on Thursday, December 10, 2009.

Born in Bethlehem, Pa. on November 18, 1917. Betzy spent the majority of her life as a loving homemaker. In her early years, she worked in the banking industry. Throughout her life she enjoyed various hobbies like spending time at the beach, fishing, and gardening. She always enjoyed education and took numerous advanced learning classes.

She is preceded in death by her husband Joseph M. Brown Sr. and son Joseph M. Brown Jr. She is survived by her daughter-in-law, Dolores C. Brown; step daughter Joan Wolosenko; and grandchildren Dennis Brown, Susan Ogle, Nancy Graham, and Doris Begansky. Betzy had

See **OBITS**, 9 ►

Amputee Services

We Are Certified and Experienced for All Amputation Levels

We Build & Design In-House:

- Lifelike Restorations & Specialty Designs
- Complete Prosthetic Limbs
- Routine Maintenance
- Insurance Verifications
- Warranty Service

Call for a Free Consultation:

Glasgow, DE (302) 392-1947

MD Offices, (410) 569-0606

MD Eastern Shore, (410) 810-1370

~Appearance~Mobility~Comfort
 ~Experience~Devotion & Care

www.RealLifeProsthetics.com



Michael Spinn R.Ph., Becky Marshall R.Ph.,
 Chai Gadde R.Ph., David Ayres R.Ph.

REMEDY HEADQUARTERS

Get Immunized against
H1N1 Flu Here

Your needs! Your pharmacy!
Fast, friendly, courteous service.

Northside Pharmacy

707 Bridge St., Suite B, Elkton, MD 21921 • **410-398-DRUG (3784)**

OBITUARIES

OBITS, from 8

Emilie Wildman Huebner

Emilie Wildman Huebner, 96 of Harbor Healthcare, Lewes DE. Died December 21, 2009.

She graduated from the University of Pennsylvania in 1935 and was a homemaker in Philadelphia and Bucks County until moving to Newark DE in 1949. She taught in the Newark Elementary schools for 20 years until retiring in the early 70's. She and her husband then traveled in their Airstream though out North America, until settling in Melbourne, FL, and Port Del Mar Va in Rehoboth Beach, DE. She was a birthright and lifelong member of Byberry Monthly Meeting, Society of Friends, Philadelphia, PA.

She was predeceased by her husband of 65 years, William J. Huebner, her brother George Franklin Wildman and sister Winifred Jarvis. She is survived by son, W. Alan and his wife Diane S., of Bethany Beach, son John L and his wife Mary P., of Newark and daughter Marilyn Ann of Newark. Also 7 grandchildren: David (deceased), Bruce, Cindy, Brian, Mark, Spencer Popejoy, Stefanie Popejoy. Also 14 great grandchildren: Andrew, Meghan, Eric, Will, Geoffrey, Katie, Paige, Brad, Mark, Shaun, Chase, Kayla, Emilie, Allyson Also survived by a sister, Avyrl Richardson, of Harrisburg and numerous nieces and nephews.

A private service will be held at Byberry Meeting later in 2010.

Shirley Cresto

Shirley E. Cresto, age 70, of Wilmington, passed away on December 25, 2009 at Christiana Hospital.

Shirley was born in Robson, WV, the daughter of the late Virginia (James) and Wilbur Bandy. She worked for over 20 years in the shipping and receiving department of Lowes. Shirley enjoyed spending time with her family and friends, especially her extended family from Lowes.

She was predeceased by her husband, Vincent Cresto in 1984 and her brother, Wilbert.

Shirley will be missed by her sons, Ricky of Newark and Roger and his wife, Donna of Wilmington; her brother, Guy Bandy and his wife, Barbara of Elkton, MD; her sister, Nancy Jenkins and her husband, Kit of West Virginia and her sister-in-law, Jean Bandy also of West Virginia.

Funeral services were held at Mealey Funeral Home, Limestone and Milltown Roads. Burial was in All Saints Cemetery, Wilmington.

In lieu of flowers, contributions may be sent to the American Heart Association, 1501 Casho Mill Road, Newark, DE 19711.

■ Additional local obituaries are posted each week on the Newark Post Web site. Obituaries of the following persons will be posted on the web this week:

Bruce Address
Heather Lynne Bowman
Elizabeth S. Brown
Florence Clark
Shirley Cresto
Blanche Neal Edwards
Emilie Wildman Huebner
William T. "Bill" Howell, Sr.
John David Kaess
James T. Moore, Sr.
Richard L. Rishel
Margaret M. Weber
Sidney F. "Woody" Wood

City newsletter goes paperless

The City of Newark is no longer producing a printed copy of the Municipal Newsletter and Parks and Recreation Activity Schedule. The City is asking residents and members of surrounding communities who wish to receive the City's Municipal Newsletter and Parks and Recreation information to visit www.cityofnewarkde.us and add their e-mail address to the e-newsletter recipient list. Residents will also be able to sign up for service reminders related to holiday trash and recycling collection, leaf collection and other similar services. Parks and Recreation program and activity information will continue to be available on the City's web site at www.cityofnewarkde.us/parksrecreation and, as always, a pdf file is available on the homepage of the City's web site for easy printing.

A very limited number of printed copies will be made available at the Municipal Building and Newark Senior Center for those who do not have access to a computer. Recipients of the e-newsletter can expect the inaugural e-newsletter in their inboxes on January 4, 2010.

The Parks and Recreation activity registration process has changed to accommodate the e-newsletter. The registration is as follows:

Resident Registration - Registration will be taken upon receipt of the e-newsletter on Monday, January 4th. You may mail, walk in or fax your registration form at any. Registrations will be processed

in the order in which they are received beginning January 4th.

Non-Resident Registration - Non-Residents may begin sending in registrations upon receipt of the e-newsletter; however, registrations will not be processed

until Friday, January 8th in the order in which they were received.

For questions or concerns, please call the Parks and Recreation Department at (302)366-7060.

Goodwill needs your donations

of household goods, clothing, furniture, toys, books, non-perishable food items and cars!



This year, the number of people requesting Goodwill's job training and support services is at an all-time high. You can help us provide much needed services to individuals with barriers to employment by **making donations** at one of our 17 donation centers, open 7 days a week.

For a list of locations and our new convenient hours, visit our web site at www.goodwillde.org.

Open for shopping and donations New Year's Eve and New Year's Day 8 a.m. to 5 p.m.

Goodwill
Delaware & Delaware County

For questions about donations call 302-252-3210.

WILMINGTON UNIVERSITY

Wherever You Want to Be...

Start Here.

Graduate Degrees

Business Administration, Community Counseling, Education, Nursing, Technology

Affordable Tuition

In-state tuition for all students. Financial aid available.

Flexibility

Choose from day, evening, weekend and online courses.

Register Anytime

Classes start every 8 weeks!



WILMINGTON
UNIVERSITY

DELAWARE • NEW JERSEY • ONLINE

WILMU.EDU

1-877-967-5464

2009 YEAR IN REVIEW

► REVIEW, from 4

at the university, along with a number of other prominent national figures, claiming they were too controversial. Mitchell was later honored by UD and the story of his remarkable life was archived by the university.

St. Mark's High School graduate Robert M. Coupe was

Office erred in entering a guilty but mentally ill verdict for their uncooperative client. Cooke had been sentenced to death for the slaying at an off-campus apartment complex. The slaying did prompt a greater emphasis on security at apartment complexes in the city.

Saxby's Coffee opened a store at Amstel Square, a new apartment and retail complex

a 35 percent water rate hike on top of another increase earlier in the year. A wet year, the need to improve a system that is seeing more main breaks and a decision to improve the profitability of the utility were cited as reasons for the decision. The water rate remains below the figure for Artesian, a private utility with nearly double the city's rate. Council members approved a special use permit and liquor license for Catherine Rooney's, a restaurant-pub planned at the old Bank of Newark site on Main Street.

They also approved funeral and emergency leave benefits for city workers with domestic partners. Dogged police work cracked the case of a man police believe was murdered in May in a Newark motel room, with his body dumped in Carney's Point, N.J., just across the river from Delaware. Leonard Michael Taylor is accused of slaying New York City resident Steven Hinds.

Towing of cars from the Newark Shopping Center emerged as an issue, with complaints of spotters being used to tow the cars of those who left the shopping center area, even if they had previously patronized the center. Center management later issued an apology, blaming tow truck companies they had hired for the problem. Towing companies denied the charges.

The term "visiting firemen" applied when the Cumberland Valley Fireman's Association held its convention in Newark, complete with parade. Newark's Aetna Fire Co. is a member of the regional group that promotes fire safety.

A bit of Hollywood came to Main Street, when a television pilot show was filmed. The show featured the antics of department store detectives.

As UD students returned for the fall, Studio Green was

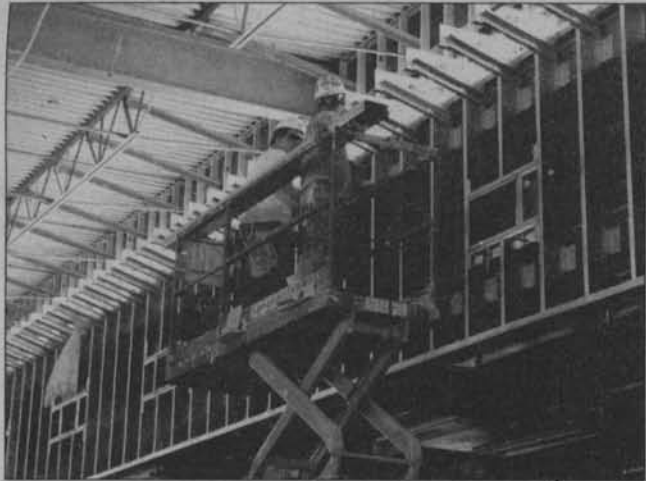


PHOTO BY MARK CORRIGAN

The expansion and renovation of Christiana Mall brought stores and restaurants to the regional shopping hub.

named superintendent of the Delaware State Police by Gov. Jack Markell.

Throughout the year, the City of Newark struggled with the issue of a looming budget gap and a need to begin to rebuild depleted financial reserves.

The possibility of hefty increases in parks and recreation fees brought a case of sticker shock to members of the City Council. Another shock for the city came when a half a million dollars in state funding that traditionally went to Newark for paving projects was taken out of the recently adopted state budget. The decision came with no warning at a time when some legislators were championing the concept of open government.

University of Delaware graduate Brian Townsend could not complete a swim across the English Channel. The Yale law grad used the swim to raise funds for Special Olympics in Delaware.

Newark again posted the lowest unemployment rate among cities and counties in the state. Aiding Newark was a college-based economy that lacks the layoffs seen in other areas.

In a controversial decision, the Delaware Supreme Court ordered a new trial for James Cooke, who was convicted of raping and killing UD student Lindsay Bonistall. In a divided high court ruling, the majority ruled that the Public Defender's

on Elkton Road, an area that is seeing redevelopment.

August

The Newark City Council approves an average 25 percent increase in recreation fees, agreeing to trim back a near-tripling of fees for some programs. The council indicated it will phase in fee increases to reflect the actual cost of providing the programs.

There were fears that even the current increase in fees might end up killing some programs if parents and participants find the cost to be prohibitive.

The council also approved



PHOTO BY MARK CORRIGAN

Vice President Joe Biden during a visit to an event in Newark.



PHOTO BY MARK CORRIGAN

Thousands came to Main Street, on a beautiful afternoon and evening, to celebrate Newark Nite.

unveiled off Elkton Road. The former Towne Court/Place Place apartment complex received a \$6 million overhaul that includes a recreation center.

September

Just to the east of Newark, Delaware's travel plaza on I-95 was closed and demolished to make way for a new building with more upscale food offerings and a more environmentally friendly footprint. The center, with its modern design that drew fire from those who wanted a Colonial-style building on I-95, will reopen in 2010. Speaking of controversial architecture, the new Kirkwood Library was opened to rave reviews, although the design of the county library building did generate criticism.

To the south of Newark, The Little Scholars Center saw the arrest of one of its workers when a toddler wandered away from the facility and came perilously close to busy Route 896. Alert motorists spotted the child and took care of him before police arrived.

A Wawa market and gas station was proposed at the former Bennigan's restaurant on Ogletown Road. There were concerns about traffic in the busy area.

The Pencader Heritage Area Association again paid respect to fallen Revolutionary War heroes and the French contribution to America's independence. In attendance was the French Ambassador to the U.S. Pierre Vimont, who placed a wreath at the Battle of Cooch's Bridge Memorial south of Newark. It was the only battle of the Revolutionary War fought in Delaware. The ceremony took place off Old Baltimore Pike, the route where French commanders Lafayette and Rochambeau led troops to

Yorktown, Va., where the surrounded British forces surrendered.

The Newark Film Festival enjoyed another successful year, offering a broad selection of independent films at the Cinema Center 3 in Newark Shopping Center.

Talk of a ban on the use of cell phones while driving in Newark did not turn into an ordinance to be considered by the Newark City Council. Council members cited the costs of posting signs and being out of step with the rest of New Castle County. Wilmington and Elsmere approved the bans and the issue is expected to go before the General Assembly in 2010.

Police remained busy in the fall, with one disorderly conduct suspect eating the summons issued by officer.

At the International Reading Association, William Harvey was named executive director of the group. He announced the

organization, known for keeping a low profile, locally will become more active in the community. Once again, Community Day was celebrated in Newark. The event welcomes back students to the city.

Despite a tough economy, the Taste of Newark was a sellout, with 1,000 tickets sold at the event sponsored by the University of Delaware and the Downtown Newark Partnership. The event was moved to Clayton Hall on the University of Delaware, due to wet weather.

October

City Council approved a mixed use retail and apartment project for the site of Formal Affairs on Main Street.

More activity is in store on Main Street when the UD announced plans to relocate the University Book Store at the site of the former Christina School District headquarters building on Main Street. The university plans to preserve the historic building on the site. The book store will bring more traffic to Main Street and also reflects the expansion of the UD campus to the north. The store is now at the Perkins Student Center on the southern end of the campus.

Main Street joined in the effort to fight breast cancer with fund-raising efforts and store windows.

A Delaware City woman died when she ended up in the path of a CSX train. Such mishaps are a nearly yearly occurrence in the city and led to a stepped up effort to inform students and residents not to trespass on the tracks.

Ground was broken for a new Delaware School for the

See REVIEW, 11 ►



PHOTO BY MARK CORRIGAN

Members of the University of Delaware and Delaware State University football teams shake hands after the historic first regular season game between the two schools. The Blue Hens won the contest against a determined Hornet squad.

2009 YEAR IN REVIEW

► REVIEW, from 10

Deaf, south of Newark. The new school is expected to open in 2011.

But out of nowhere came a situation at a Newark school that drew national and even international attention to Newark.

Young Zachary Christie brought a camping utensil containing a knife to Downes school and under the Christina District's zero tolerance policy was suspended and ordered to an alternative school. The policy had drawn fire in the past, but had not popped up on anyone's radar screen.

Zachary's mother Debbie Christie and her fiancé Lee Irving set up a website helpzachary.com, rather than take their case to the local newspaper. His story made its way to the New York Times and the story spread like wildfire, tying up phone lines at the school district's office from those angered by the district's policy.

A school board meeting in Bear drew a large crowd that not only included Debbie Christie, but also Dodi Hebert, whose son was also suspended after being bullied and allegedly having a knife dropped in his lap.

The board voted, to effectively end Zachary's suspension and vowed to examine the widely despised code.

The Catholic Diocese of Wilmington filed for Chapter 11 bankruptcy protection, citing a wave of cases involving sexual abuse suits by priests. The diocese said the filing would not affect individual parishes or schools.

After a lengthy effort, the University of Delaware reached an agreement to purchase the Chrysler plant. Seen as a once-in-a-lifetime opportunity, the university plans to use the site for expansion that could include medical research and the BRAC expansion at the Aberdeen Proving Grounds in Maryland.

November

► SPORTS, from 6

nity that is the true tradition of Newark football.

In an event which displays sportsmanship in its truest form, Newark swam to victory over rivals Glasgow and Christiana to capture the Christina Cup.

Bear residents Jerome Smith (Syracuse) and Gifford Timothy (Clemson) accepted football scholarships to Division I schools, while St. Mark's senior Bobby Telford



PHOTO BY MARK CORRIGAN

A University of Delaware banner welcomes new students in the fall, in a reflection of its efforts to become a bigger part of the global education community.

Newark landlords filed suit against the city claiming the city's rental fees were excessive and did not fall under the city's charter. The landlords were buoyed by a victory in a similar dispute in West Chester, Pa.

Facing a budget gap throughout 2009 and dwindling financial reserves the Newark City Council began looking at an increase in the property tax that would average out to about \$90 a year for the average home in the city. The increase reflected a budget gap aggravated by the closing of the Chrysler plant. That property ended up off the tax rolls with its purchase by the University of Delaware. The city does hope to realize electric utility revenues as the Chrysler site is redeveloped. Chrysler did not buy electricity from the city utility.

The city also proposed an increase in sewer fees, citing higher operating costs and the need for maintenance in the aging system.

Moving into its 40th year, Val's Needy Family Fund faced a major challenge, due to a tough economy that increased demand for food donations. The fund provides food to emergency pantries on a year around basis as well as holiday gift baskets. The fund operates in partnership with the Newark

Welfare Committee.

Evelyn "Ommie" Williams, who died at age 95, was a witness to history. A longtime employee of the Newark Department Store, the farm she owned with her husband, was the site of the dedication ceremony for I-95 that proved to be the last public appearance for President John F. Kennedy.

Stefania Panza, co-owner of Soffritto Italian Grill near Newark, was named the 2009 Entrepreneurial Woman of the Year. The award is sponsored by the New Castle County Chamber of Commerce and the Delaware Business Ledger, sister publication to the Newark Post.

The University of Delaware announced the formation of the Center for Political Communication. The center reflected the status of the university as an "epicenter" for the 2008 election that included the election of Vice President and Delaware grad Joe Biden and the fact that campaign strategists for both Sen. John McCain and President Barack Obama attended the university.

December

The city proposed a utility as a way to pay for the costs of handling stormwater

drainage. The utility proved to be controversial with nonprofit groups unhappy with the possibility of facing bills and a City Council concerned about including more than \$300,000 in revenue from the utility in the city budget even though details of the district have not yet been worked out.

The Newark City Council went on to approve a city budget with a \$90-a year average property tax increase. That tax levy remains below numbers for unincorporated areas of New Castle County. As for the stormwater utility revenue, the Council agreed to move forward with the proposal, but did not plug in anticipated revenue. Instead, it will temporarily dip into reserves.

The council approved a 1 a.m. closing time for Blackstone's, a highly regarded restaurant-pub near the Bank of America complex, formerly the Louviers, DuPont site.

Newark Councilman Ezra Temko announced he would run again for his seat.

Legislation that would expand the Wild and Scenic River designation of White Clay Creek in Delaware and Pennsylvania is now slated to move to the floor of the U.S. Senate. U.S. Sen. Ted Kaufman introduced the bill in April.

The bill would presumably end any plans to build a dam on the creek, an idea that was pro-

posed more than a decade ago as northern Delaware struggled with water supply issues.

Newark responded with a reservoir that ended up being costly when a contractor stopped work and sued the city. The project was later completed by another company, with the city paying a financial settlement to deal with a judgment that did not go in its favor.

Newark continued to build on its reputation as a technology center when the Fraunhofer USA Center for Molecular Biotechnology announced it had received a \$9.85 million grant from the Bill and Melinda

Gates Foundation for research into vaccine that would combat malaria. The center is working on vaccines that would take less time to commercialize than egg-based technologies.

The biggest news in December was a snowstorm that dumped at least 17.5 inches on Newark and the Mid-Atlantic region on the busiest holiday shopping weekend. The storm meant that the region would see, at least briefly, a white Christmas, although rain in the forecast was expected to reduce the snow to a few large snow piles and forelorn snowmen.

-Compiled by Doug Rainey

C & D Furniture
A Solid Choice

Amish Crafted Furniture
Tables & Chairs, Hutches
Cedar Chests, Desks, Children's
Furniture, Framed Prints,
Lamps, Bedroom Suites,
Gliding Rockers

**Huge Year-End
Clearance
Dec. 26 to 31**

**Free Chairs-
Ask for Details**

**Sheds & Storage
Buildings
Children's Playsets
Lawn & Patio Furniture**

Rt. 213, Chesapeake City, MD • 1-866-885-2572
3 miles So. of the Chesapeake City Bridge at the 2nd Light

IN PAIN?
STRESSED?

- CHIROPRACTIC
- ACUPUNCTURE
- MASSAGE
- MANI/PEDI
- FACIALS
- HAIR REMOVAL
- ONE NAME...

**ALMOST ALL
INSURANCES ACCEPTED
FREE PARKING!**

be truly well
CHIROPRACTIC & DAY SPA

**FREE CHIROPRACTIC
CONSULTATION
30% OFF SPA SERVICES
EVERY THURSDAY**

**19A HAINES ST
NEWARK, DE 19711
302-525-4343
WWW.BETRULYWELL.COM**

will wrestle at powerhouse Iowa. And we await Hodgson running back Jamaal Jackson's decision as to where he'll run with his talents.

St. Mark's senior Zach Kaminski became the school's second consecutive cross-country champion, sprinting to the finish line in a time of 16:26.33 to capture the Division I state title.

Red Lion Christian Academy made the football state tournament for the first time in school history, while St. Mark's

and Hodgson Vo-Tech reached the state championship game. Caravel Academy's soccer team won it all.

To close out 2009, St. Mark's senior Nick Schenk was the lone Delaware wrestling champion at the Beast of the East.

What a great year it was. Thanks to all the players and coaches who made the local sports scene special; and to you, the readers, who made it worth reporting.

Send sports stories to jonbuzby@hotmail.com.

IN THE NEWS

Handbell concert in Newark

Wilmington Handbell Ensemble to perform at First Presbyterian Church Newark ~ A community based handbell ensemble will perform "Twelfth Night" on Sunday, January 3, 2010 at 4:00pm in the Sanctuary of First Presbyterian Church Newark, 292 West Main Street, Newark, DE 19711, ½ west of the University of Delaware on state route 273. Parking is available, and the church is handicapped accessible. The public is invited to attend; a free-will offering will be taken. For questions see our website:

www.firstpresnewark.org or call (302) 731-5644.

POST STUMPER SOLVED**Dance Classes**

Stage Lights Dance Studio and Performing Arts Center, located at 25 S Old Baltimore Road Suite 300, Newark, DE 19702, is still registering for ALL Classes! Classes run now until June 2010. Ballet, Tap, Jazz, Modern, Pointe, Lyrical, Hip-Hop, Krump, Musical Theater/Drama, Toddler Movement, Tiny and Kinder Classes, Adult Classes. Home of ArtSmarts After School. For more information, please call 302-453-0714, visit stagelightsdancestudio.com, or email stagelights2@aol.com.

Learn to Play Ice Hockey

A hockey program designed for the beginner player with very basic skating skills. Run in conjunction with the University of Delaware Community Youth Hockey program, the course will focus on proper skating and an introduction to stick handling. All equipment and skates provided. The winter session will be held on Saturdays beginning January 9th- March 6th at the Gold Ice Arena from 10-10:45am. Registration fees for all sessions are \$166 and the Newark resident discount fees

are \$144. For more information contact the Recreation office at 302-366-7060, visit www.cityofnewarkde.us or register at 220 Elkton Road, Newark, DE.

Pint Size Basketball

Fun, teamwork, sportsmanship, and learning the fundamentals of dribbling, passing and shooting using mini balls are the goals of this program. Boys and Girls ages 4-7 are welcome! This program is held at West Park Elementary School beginning January 9th -March 13th on Saturday mornings (no class January 16th or February 13th). Class for ages 4-5 is held from 11-11:45am and the class for ages 6-7 is held from 10-10:45am. Fee is \$61 and the Newark resident discounted fee is \$45. For more information contact the Recreation office at 302-366-7060, visit www.cityofnewarkde.us or register at 220 Elkton Road, Newark, DE.

Scientific & Biblical Creationist Fellowship presentation

Already Gone, a DVD produced by Answers in Genesis, will address the situation with

young people in regard to church membership. This is a DVD presentation with Ken Ham, President and Founder of Answers in Genesis who has studied the problem of Church membership. The presentation will occur on Tuesday January 5, 2010 @ 7:00 pm, at Bible Fellowship Church of Newark, 808 Old Baltimore Pike, Newark, DE 19702. For more information call Harry Wolfe at (302) 737-5149 (e-mail flymar45@juno.com or Preston Coker, at (302) 731-5395. Check out our revised website, www.BackToGenesis.Info.

Cecil College hosts free "Ready to Work Week"

Cecil College is helping people age 16 and older prepare to get the job they love by hosting a free "Ready to Work" Week Jan. 11-14 at Elkton Station, 107 Railroad Ave.

Beginning at 5 p.m. Jan. 11 and 6 p.m. the next three nights, energizing presentations and information filled sessions on a wide variety of careers and topics will take place. Guests are encouraged to come all four nights to gain the best advantage in today's economy.

Attendees will receive an orientation to the college's Career Resource Center, view demonstrations of an online career planning system, and learn about the funding options available through the Cecil County Workforce Center. In addition, advisors will be available to discuss options, and registration technicians will be onsite for those who are ready to sign up for a class or program to start themselves on the path to their next career move.

Pre-registration for "Ready to Work" Week is requested by e-mailing information@cecil.edu or calling 410-287-1000 and providing your name, home address, e-mail address, and phone number. For more information, visit www.cecil.edu/jobyoulove or call 410-287-1000.

Co-Rec Volleyball

Newark Parks and Recreation is offering co-rec volleyball. Bump, set and spike your way into fitness! Join other men and women who enjoy the game of volleyball on Tuesday and Thursday evenings from 8-9:30pm beginning Jan 12-Mar 18 for the winter session. Teams are formed nightly for informal games at West Park

Elementary School. All equipment is provided. Pre-registration is required. Fee is \$70 and the Newark resident discount is \$54 for the winter session. For more information contact the Recreation office at 302-366-7060, visit www.cityofnewarkde.us or register at 220 Elkton Road, Newark, DE.

N.B.A. (Newark Basketball in Action)

Looking for a great way to have fun and stay in shape during the winter months. Join Newark Parks and Recreation Department's drop in basketball programs on Monday & Wednesday evenings from 8-9:30pm at West Park School beginning Jan 11-Mar 24 and Jan 10-Mar 28 at Pearson Hall from 10am-12pm for the Winter sessions. Teams are formed each day for informal games. All participants must register in advance. Fee is \$70 and the Newark resident discount fee is \$54 for the Monday/Wednesday program and the fee is \$69 and the Newark resident discount fee is \$53 for the Sunday program. For more information contact the Recreation office at 302-366-7060, visit www.cityofnewarkde.us or register at 220 Elkton Road, Newark.




Be Happy. Be Healthy.
BELONG
to the **YMCA.**

**JOIN IN
JANUARY
& pay no
joiner fee!**

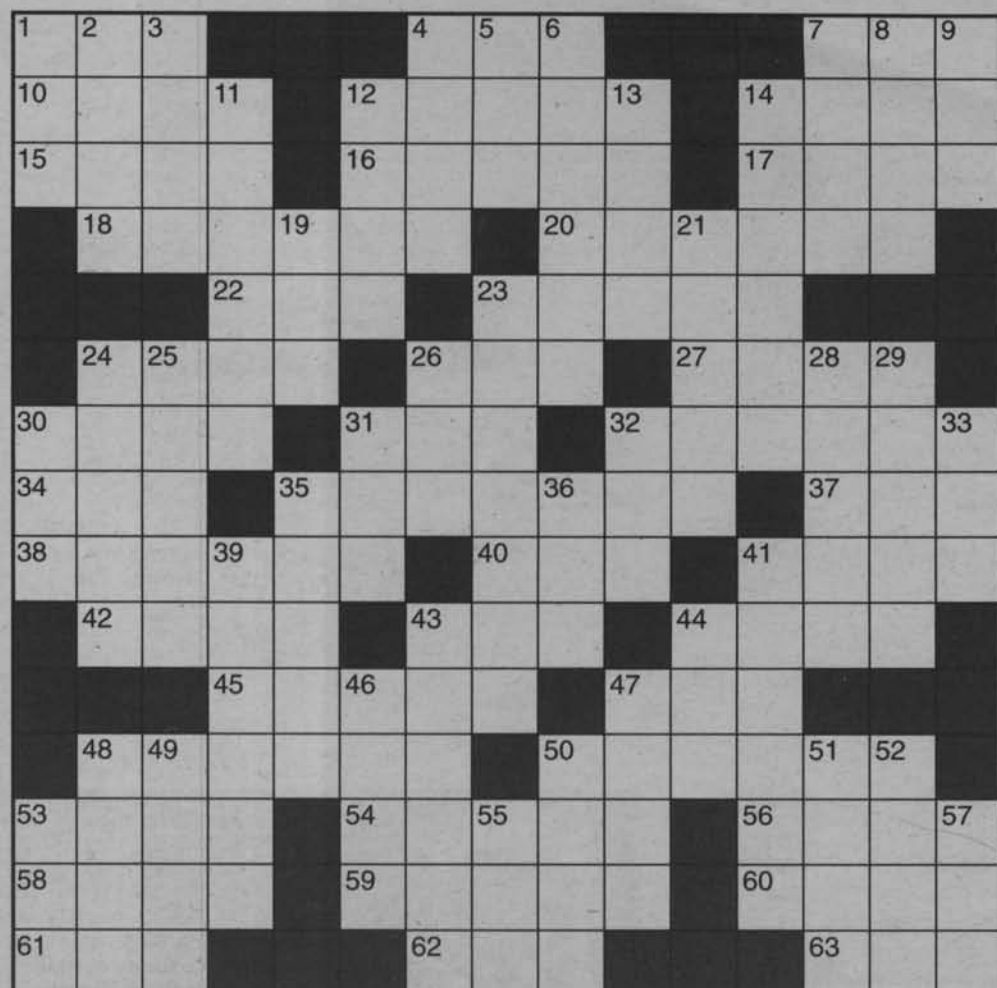
**Western
Family
YMCA**

2600 Kirkwood Highway, Newark,
302-709-YMCA

www.ymcade.org

**Programs & Activities
for all ages
including our
"Seasoned
Citizens!"**

- State-of-the-art fitness/wellness centers
- Indoor pools
- Personal training
- 100s of different classes including yoga, pilates, spinning & body pump!
- FREE on-site babysitting
- No contracts
- Financial Assistance Available



THE POST STUMPER

ACROSS

1. Red-carpet treader
4. Cask
7. Zuider ____
10. Dart
12. Have a yen for
14. '20s icon Betty
15. Skid row resident
16. Imitators
17. Limb bone
18. Atelier apparati
20. Cotton fabric
22. Statesman Ervin
23. Opened to view
24. Always
26. Ghostly
27. Merge
30. Flew
31. *Peter* ____
32. Introverts
34. Scale notes
35. Forbear
37. Goat's sound
38. ____ Equity
40. Wool source
41. Splendid display
42. Speedy jets
43. Prior, to the Bard
44. California rockfish
45. Coyote cries
47. Chinese restaurant item

48. Made flush

50. Lamp spirits

53. Allen's replacement

54. Valid

56. Jodie Foster film

58. Deviates

59. Under-bridge dweller of fable

60. Mucilage

61. Bogie's *Knock on* ____ Door

62. It follows fa

63. Mister, in India

DOWN

1. Ex-GIs' gp.
2. Nastase of the court
3. ____ cloth (lingerie fabric)
4. Keystone ____
5. She raised Cain
6. ____ shepherd
7. Author Emile
8. Seeming eternities
9. Conservationist gp.
11. Like some salads
12. Serenity
13. Old Russian autocrat
14. Onus
19. Whisperer's target
21. ____ rum (booze, to Carry Nation)

23. Joshes

24. Narratives

25. Endows

26. Used to be

28. Cleanser scent

29. Stage play

30. Depot: abbr.

31. *American Masters* network32. *The Great* ____

33. Victim of many a practical joke

35. Fiery crime

36. Dazzle

39. Golden rule word

41. Chinese city

43. Church officials

44. Director Shelton (*Tin Cup*)

46. Wale

47. Water source

48. Realize

49. Differ

50. Brashness

51. Congers

52. Cast aspersions on

53. Legume

55. Sentimentality

57. Hawaiian wreath

ANSWERS ON PAGE 12



ARDENT TITLE COMPANY

Susan M. Knight • Settlement Agent

149-151 E. Main Street, Elkton, MD 21921

(410) 996-9780 • Fax (410) 996-9784 • info@ardenttitle.com

LENDER	Phone Number	15 YEAR Fixed % PTS. APR	30 YEAR Fixed % PTS. APR	1 YEAR ARM % PTS. APR	3 YEAR ARM % PTS. APR	5 YEAR ARM % PTS. APR
APGFCU	1-888-LOAN-391	5.375/0/5.51	5.375/0/5.8	6.50/0/4.016	5.875/0/4.253	6.375/0/4.744
CECIL BANK	(410) 398-1650	*PLEASE CALL FOR RATES				
CLASSIC MORTGAGE	(302) 366-1661	4.50/0/4.73	5.0/0/5.24		3.875/0/4.11	4.0/0/4.24
MBA FINANCIAL SERVICES	(410) 287-5600	Please call for quotes. Many programs. All credit considered.		100% financing available-Interest only options! 1st time home buyers, 2nd homes & investment properties.		
PEOPLES BANK OF ELKTON	(410) 996-2265	4.875/0/5.00	5.50/0/5.58	5.625/3.75/3.586	5.375/0/3.83	5.875/1.25/4.315
WILMINGTON MORTGAGE	(410) 398-5607	PLEASE CALL FOR RATES.		FREE PRE-APPROVAL - NO APPLICATION FEE		

These rates, effective 12/29/09, were provided by the lenders and are subject to change. Other terms may be available. These rates are for existing first mortgages. Points may vary on refinances. Down payment requirements may vary. *Caps and length may vary on adjustable rates. The APR is based on a \$100,000 mortgage with a 20% down payment and is in addition to interest included points fees & other credit costs. To list your mortgage rates, call our Real Estate Sales Division at 410 398-3311 or 1-800-220-3311. These mortgage rates are a paid advertising feature of the Cecil Whig.



WILMINGTON MORTGAGE

205 East Main Street, Elkton, MD 21921

Office: 410-398-5607 • TOLL FREE: 800-607-5607



Phil Davis
Loan Officer



Kim Pettitt
Loan Officer



Bruce Fink
Loan Officer

- 100% Financing
- USDA Rural Housing
- FHA
- VA
- Reverse Mortgages

Posted

8 AM
5 PM

800-220-3311 • 410-398-1230 Fax us 24/7: 410-398-4044



ANNOUNCEMENT



ANNOUNCEMENT



EMPLOYMENT



EMPLOYMENT



EMPLOYMENT



RENTALS

10 PUBLIC NOTICES

PUBLIC NOTICE



View Public Notices from around the State of Maryland, visit:

www.publicnoticeads.com/md

20 NOTICES

GUN & KNIFE SHOW

Timonium Fair Grounds
Jan 14th 3-8p
Jan 15th 12-8p
Jan 16th 9-8p
Jan 17th 9-3p
500 trade tables
Admission \$7
717-697-3088
(in conjunction with one of the largest fishing shows on the East Coast)

110 HELP WANTED FULL-TIME

New Today

Medical Social Worker

Medicare Certified Home Care Agency seeking part time LCSW to make home visits in Cecil County/Harford County. Contact Debbie Rokicki at d.rokicki@vnamd.com or 410-371-3723.

New Today

Occupational Therapist -

Medicare Certified Home Care Agency seeking part time Occupational Therapist to make home visits in Cecil County/Harford County. Contact Debbie Rokicki at d.rokicki@vnamd.com or 410-371-3723.

WWW.CHESAPEAKECLASSIFIED.COM

New Today

Physical Therapist -

Medicare Certified Home Care Agency seeking full time/part time Physical Therapist to make home visits in Cecil County/Harford County. Contact Debbie Rokicki at d.rokicki@vnamd.com or 410-371-3723.

New Today

Speech Language Pathologist

Medicare Certified Home Care Agency seeking SLP with a minimum of one year experience to make home visits in Cecil County. Contact Debbie Rokicki at d.rokicki@vnamd.com or 410-371-3723.

305 APARTMENTS UNFURNISHED

New Today

RISE SUN-
Meadowside TH's. Immediate occupancy for 1 & 2 BR's. Close to schools & shopping. Country setting. Handicap accessible. Please call: 410-658-2798 Mon-Fri. 9am-4pm. Equal Housing Opportunity. TDD#1-800-735-2258

New Today

S. CHES CITY 1br, waterfront. Off st prk, \$750/mo. Water incl, 410-392-9173

310 APARTMENTS FURNISHED

Perryville sm furn studio. Credit & prf of inc req. No pets \$475mo 410-708-1362

315 HOUSES FOR RENT

\$500 Gift Certificate CALL FOR DETAILS 443-309-1602 1, 2, 3 & 4 br's Elkton & NE Homes for rent Town Homes starting at \$825/mo Avail. now! NO PETS www.thehomesforlife.com



Boring People NEED NOT Apply.

Do you scoff at the status quo? Are you drowning in your own creative juices?

If so, we'd like to hear from you. We're scouring the shore for top-shelf cover letters and rock-our-world resumes.

Got'em? Send'em our way.

Don't got'em?

There are plenty of other jobs in this section.

We're seeking applications for this full-time position: Advertising Sales Executives

Responsible for exceeding budget through the development of new business and securing additional business from existing customers. Proven track record of excellence in sales, strong persuasive oral and written communication skills with attention to detail and accuracy a must. Ability to meet deadlines and work under pressure is key. Excellent presentation, interpersonal, problem solving and customer service skills required.

NEWARK POST

Send resume to: klaprade@chespub.com

Here's My Card

Local Businesses At A Glance

Susie Moore
302-650-0212

CONSTRUCTION

Free Estimates Voice Mail 717-786-0271
Double E Construction Ltd.
Quarryville, PA

- New Construction
- Roofing & Siding
- Barns & Garages
- Additions
- Decks

Custom Built To Fit Your Needs

Ephraim Smucker

Customer Satisfaction Keeps Us In Business



To advertise your services in Here's My Card

Call Susie Moore
410-398-3311 ext. 3004
Cell: 302-650-0212



ANY WAY YOU LOOK AT IT, CHESAPEAKE CLASSIFIED CAN WORK FOR YOU!

410-398-1230
800-220-1230
www.chesapeakeclassified.com

LEGAL NOTICE

SHERIFF'S SALE

By virtue of a writ of Alias Lev Fac#306 NO. AD., 2009.

Property Address: 27 Matthews Road, Newark, DE 19713

Parcel No. 11-002.20-259

ALL that certain lot, piece or parcel of land with the buildings and improvements thereon erected, situate, lying and being in Pencader Hundred, New Castle County and State of Delaware, and known as Lot 277 on a Plan of Brookside Park, Section M-2 prepared by Whitman Requardt and Associates, Consulting Engineers dated August 16, 1954 and of record in the Office of the Recorder of Deeds, in and for New Castle County and State of Delaware, in Plat Book 3, Page 52, on September 14, 1954 and more particularly bounded and described in a survey of On Point, Inc., dated 11/22/2004.

BEING the same lands and premises which Alison Davey, by Deed dated March 8, 2007, and recorded in the Office of the recorder of Deeds in and for New Castle County and State of Delaware, in Document Number 20070308-0022310, did grant and convey unto James Arthur Stafford and Wanda T. Stafford.

SEIZED AND TAKEN IN EXECUTION AS THE PROPERTY OF JAMES ARTHUR STAFFORD AND WANDA T. STAFFORD. TERMS OF SALE: 10% DOWN AT TIME OF SALE. BALANCE DUE ON OR BEFORE FEBRUARY 15, 2010.

NOVEMBER 3, 2009
2121790

Public Auction

Notice is hereby given that the undersigned will sell at a public auction on 1/29/10 at 12:00 P.M. at:

**PS ORANGE CO INC./PUBLIC STORAGE
201 BELLEVUE ROAD
NEWARK, DE 19713**

the personal property heretofore stored with the undersigned by:

A006 - WESLEY ESTELL - BOXES, FURNITURE, ELECTRONICS
A027 - TORIAN HAMILTON - BOXES, BAGS, TOTES
A029 - ANNACURRAN - BOXES, TOTES, FURNITURE
A041 - YOLANDA BRATTEN - BOXES, TOTES
A042 - CRYSTAL AQUILERA - BOXES, BAGS, TOTES
A046 - LEMUEL CRADLE - BOXES, TOTES
A048 - DANYL BARTLETT - BOXES, BAGS, FURNITURE
A082 - GRACE COOKWATERS - BOXES, BAGS, FURNITURE
B006 - EVERTT ROY - BOXES, BAGS
B051 - PHILIP SKAYHAN - BOXES, TOTES, BAGS
C013 - CLYDETTE CURTIS - BOXES, FURNITURE
C050 - LINDA BURLISON - BOXES, BAGS, FURNITURE
E013 - TIFFANY BERRY - BOXES, BAGS
E077 - ALPHONSO SMITH - BOXES, BAGS
F126 - PAUL DIEFFENBACH - BOXES, BAGS
F134 - SEAN SIMON - BOXES, BAGS
G022 - BEATRIX BUTTON - BOXES, BAGS, TOTES
H038 - LEE WOODALL - BOXES, BAGS, TOTES

np 1/1,8 2122293

LEGAL NOTICE

JANUARY QUARTER SUPPLEMENTAL ASSESSMENT

The Supplemental Assessment Roll for New Castle County and the City of Wilmington property and school taxes for the January Quarter of the 2009/10 tax year may be inspected in the offices of the Assessment Division of the New Castle County Department of Land Use, New Castle County Government Service Center, 87 Reads Way, Corporate Commons, New Castle, DE, from 8:00 a.m. to 4:00 p.m., Monday through Friday.

These Supplemental Assessments will become effective January 1, 2010. Forms to appeal these Supplemental Assessments may be obtained from the Assessment Division at the address aforesaid and must be filed with the Assessment Division no later than 4:00 p.m. on Monday, February 1, 2010. The Board of Assessment Review of New Castle County will sit in the New Castle County Government Center, or some other public place to be announced, to hear appeals from these Supplemental Assessments between February 1, 2010 and March 31, 2010, unless the Board continues the hearings. The exact dates and times of such hearings will be provided to the appellants in accordance with 9 Del. C. Sec. 8311.

np 1/1,8

2122322

CLS Group, on behalf of Pegasus Tower LLC, proposes to construct a 160-foot overall height monopole telecommunications structure. The structure would be located at 512 Belmont Ave, Wilmington, New Castle County, Delaware. CLS Group, on behalf of Pegasus Tower LLC, invites comments from any interested party on the impact the tower may have on any Historic Properties. Comments may be sent to Environmental Corporation of America, ATTN: Dina Bazzill, 1375 Union Hill Industrial Court, Suite A, Alpharetta, Georgia 30004. Comments must be received within 30 days. For questions please call Dina Bazzill: 770-667-2040 x111.

np 1/1

2122417

PUBLIC AUCTION

Notice is hereby given that the undersigned will sell at public sale on 1/29/10 at 1:00 PM at:

**PSORANGE CO INC./PUBLIC STORAGE,
3800 Kirkwood Hwy.,
Wilmington DE 19808.**

302-998-0125

The personal property heretofore stored with the undersigned by:

1100 - Evelyn Martinez - boxes, totes, electronics
1171 - Staci Roper - bags, bedding, electronics
2044 - Fred Caldwell - furniture
3021 - John M. Bentick - boxes, bags, tools, commercial equipment
4022 - Joseph Owens - furniture, bedding, electronics
4083 - Marycecilia Torres - boxes, totes
4121 - Jonathan Fuentes - boxes, electronics, toys
5017 - Erin J. Walmer - 10 bags, 10 totes, furniture
5105 - Kenyetta Williams - boxes, totes

np 1/1,8

2122324



RENTALS

New Today

CECILTON- Duplex, like new., W/d \$975/mo + util's. pets neg. 410-275-6101

CHESAPEAKE CLASSIFIEDS

410-398-1230 800-220-1230

www.chesapeakeclassified.com



RENTALS

New Today

ELKTON HEIGHTS Hollingsworth St 2 br, 1 ba. LR, kitchen / dining combo \$750 per mo & sec dep. No pets. 302-383-5000



RENTALS

New Today

ELKTON Friendship Heights, 2br, 1ba, LR, kit/dining rm. combo \$725/mo. + sec. dep. no pets 302-383-5000

New Today

ELKTON / Fairhill home. New 4br 3ba, \$1575 avail immediately. 410-398-6023

LEGAL NOTICE

SHERIFF'S SALE

By virtue of a writ of Second Pluries Lev Fac# 50 NO. AD., 2009.

PARCEL NO. 09-040.20-282

PROPERTY ADDRESS: 48 SHERIN DRIVE, NEWARK, DELAWARE 19702

ALL that certain lot, piece or parcel of land, with the buildings thereon, situate in White Clay Creek Hundred, New Castle County, Delaware, being designated Lot 607, as shown on the record major subdivision plan of Salem Woods, Phase III, of record in the Office of the Recorder of Deeds in and for New Castle County, Delaware on Microfilm No. 10150, said lot also known as 48 Sherin Drive, and being now more particularly described by First State Mortgage Surveys by a survey dated July 6, 1994, as follows, to wit:

BEING the same lands and premises which Richard Barnaby Castro, by Deed dated December 27, 2006 and recorded in the Office of the Recorder of Deeds, in and for New Castle County and State of Delaware, in Instrument # 20070731-0067434, did grant and convey unto Aaliyah Misty Castro. SEIZED AND TAKEN IN EXECUTION AS THE PROPERTY OF AALIYAH MISTY CASTRO. TERMS OF SALE: 10% DOWN AT TIME OF SALE. BALANCE DUE ON OR BEFORE FEBRUARY 15, 2010.

NOVEMBER 3, 2009
2120993

SHERIFF'S SALE

By virtue of a writ of Lev Fac#282 NO. AD., 2009.

Parcel No. 09-038.10-180

Property Address: 22 N Valley Stream Cir Newark, DE 19702

ALL that certain lot, piece or parcel of land, with the buildings thereon erected, situate in White Clay Creek Hundred, New Castle County and State of Delaware, being designated Lot No. 116, on the Record Major Subdivision Plan of Valley Stream Village, Phase 3, in the Office of the Recorder of Deeds, in and for New Castle County and State of Delaware, in Microfilm No. 12894, said lot is also known as 22 North Valley Stream Circle, and being more particularly bounded and described in accordance with a recent survey prepared by A.E.S. Surveyors, dated October 12, 2005, as follows, to wit:

Being the same lands and premises which David Shaw and Rosalie Shaw, did grant and convey unto Howard Karten and Susan Karten, by deed dated October 27, 2005 and recorded on November 1, 2005 in the Office of the Recorder of Deeds, in and for New Castle County, State of Delaware, in Deed Instrument 20051101-0111331. SEIZED AND TAKEN IN EXECUTION AS THE PROPERTY OF HOWARD KARTEN AND SUSAN KARTEN. TERMS OF SALE: 10% DOWN AT TIME OF SALE. BALANCE DUE ON OR BEFORE FEBRUARY 15, 2010.

NOVEMBER 3, 2009
2121771



SERVICES

520 HOME IMPROVEMENT SERVICES

Ever thought of doing a video commercial for your business, but was afraid the price was too high?

If so, call Chesapeake Classified TODAY to see just how inexpensive it can be!

We can offer more coverage and new technology than any other local paper!

410-398-1230 or toll free 800-220-1230



MERCHANDISE

602 ANIMALS/PETS

New Today

ENGLISH SPRINGER SPANIEL PUPS AKC, males & females, liver and white. Field trial & hunting stock. 410-734-4102



MERCHANDISE

FREE TO GOOD HOME owner abandoned them. Black & cat, very friendly & affectionate. looking for a home Will pay to get cat fixed if need be please call 443-350-9074

YELLOW LABS, AKC S&W, ready go January 1st. \$350. Call 443-553-0638

615 APPLIANCES

STOVE Gas GE 4 burner. Almond & black. Kenmore dish washer \$150 for both or b/o 410-287-9851

630 FIREWOOD

Firewood 1 yr seasoned oak & others \$175/cord \$105- 1/2 cord wholesale lic# 00 -3352 410-392-5175 410-398-5445 eve

640 GENERAL MERCHANDISE

6 VIDEO GAMES for Playstation II. \$15 each or \$40 for all 410-378-3605

AB CIRCLE PRO used. \$100 b/o. Memorex sing stand microphone / MP3 player. \$50 410-924-9982

680 WANTED TO BUY

TRAINS WANTED. Buying Lionel, Ives, Voltamp. 410-913-9484. Save this ad!

New Today

LOOK

WANTED: DIABETIC TEST STRIPS up to \$18/ box. Cash on the spot. Any kind/ any brand. Unopened will pick up. Debbie 410-820-6540



TRANSPORTATION

840 RECREATIONAL VEHICLES

★WANTED★ Clean, Pre-Owned RV's Alexander RV Toll Free 888-674-2267

Cecil Whig, providing all the local news and events since 1841. The "go to" news source for Cecil County.

CHESAPEAKE CLASSIFIED

410-398-1230

800-220-1230

www.chesapeakeclassified.com

VOLKSWAGEN

Smith

VOLKSWAGEN, LTD.

4304 Kirkwood Highway,

WILMINGTON, DE

302-998-0131

Drivers wanted™

Contact Laurie To Advertise

HERE

410-398-1230

800-220-1230

Lamici@chespub.com

REACH OVER 50,000 READERS WEEKLY!

Call Laurie at 800-220-3311 to Advertise Here!



TRANSPORTATION



TRANSPORTATION



TRANSPORTATION



TRANSPORTATION



TRANSPORTATION

850 MOTORCYCLES/ATVs
ATV- Kawasaki Prairie 360 '04. Exc cond, less than 50 hrs \$3,000 443-309-6374

HARLEY DAVIDSON SPORTSTER '94 1200cc. Deep red. Side bags, windshield, lots of chrome. \$5500 301-651-0768, lv msg

850 AUTO PARTS & ACCESSORIES
New Today
40 CHEROKEE motor w/ 67k orig miles. '94. Complete. \$450 obo. 410-920-0266

JASPER REMANUFACTURED FORD 4.0 litre V6 out of a 1992 Ford Explorer. Only 16K miles on it. Has been regularly maintained. \$1000 OBO. Call 443-466-5978.

850 AUTOS
MUSTANG '04 40TH ANNIV. 6 cyl. auto, 34K Red. \$9,000. 410-658-2629

CHESAPEAKE CLASSIFIEDS
410-398-1230 800-220-1230
www.chesapeakeclassified.com

CECIL WHIG CLASSIFIEDS
410-398-1230 or 800-220-1230
WEBSITE AT
WWW.CHESAPEAKECLASSIFIED.COM

LOST AN ITEM? FOUND AN ITEM?

It's FREE to run an ad in
Chesapeake Classified!

We have great success in returning lost animals and items to their true owners.

Call and place your ad today!

410-398-1230 or
toll free **800-220-1230** email to
classads@chespub.com


LEGAL NOTICE

SHERIFF'S SALE

By virtue of a writ of Second Pluries Lev Fac#89 NO., AD., 2009.
PARCEL NO. 11-025.40-095
PROPERTY ADDRESS: 39 Montceau Drive, Newark, DE 19702

ALL that certain lot, piece or parcel of land with the building thereon erected, situate in Pencader Hundred, New Castle County and State of Delaware, being Lot 217 of the subdivision of Frenchtown Woods, and more particularly bounded and described according to a survey by the AES Surveyors dated July 22, 2004.

AND BEING the same lands and premises conveyed unto Ifeanyi Phil and Amaka C. Ebosie, by deed of Federal National Mortgage Association dated July, 2004, and of record in the Office of the Recorder of Deeds in and for New Castle County and State of Delaware in deed Instrument No. 20040804-0085017.

SEIZED AND TAKEN IN EXECUTION AS THE PROPERTY OF IFEANYI PHIL AND AMAKA C. EBOSIE.
TERMS OF SALE: 10% DOWN AT TIME OF SALE. BALANCE DUE ON OR BEFORE FEBRUARY 15, 2010.

NOVEMBER 3, 2009
2121021

CHECK OUT OUR WEBSITE AT
WWW.CHESAPEAKECLASSIFIED.COM

LEGAL NOTICE

SHERIFF'S SALE

By virtue of a writ of Lev Fac#137 NO., AD., 2009.
Parcel No. 18-024.00-123
Property Address: 43 Julie Lane, Newark, DE 19711

ALL that certain lot, piece or parcel of land with the dwelling thereon erected, situate in City of Newark, New Castle County and State of Delaware, being Lot No. 16, Block B, as shown on the Final Street and Lot Plan of BARKSDALE ESTATES, as said plan is recorded in the Office of the Recording of Deeds in and for New Castle County, in Microfilm No. 6808, and being more particularly bounded and described in a recent mortgage inspection survey prepared by Raymond F. Christian & Associates, Inc., dated November 7, 2006, as follows, to-wit: Being the same lands and premises which David Connell and Jill Connell did grant and convey unto Andrew P. Pagnotti and Lydia D. Pagnotti by deed dated December 15, 2006 and recorded on December 29, 2006 in the Office of the Recorder of Deeds, in and for New Castle County, State of Delaware, in Deed Instrument 20061229-0121037.

SEIZED AND TAKEN IN EXECUTION AS THE PROPERTY OF ANDREW P. PAGNOTTI AND LYDIA D. PAGNOTTI.
TERMS OF SALE: 10% DOWN AT TIME OF SALE. BALANCE DUE ON OR BEFORE FEBRUARY 15, 2010.

NOVEMBER 3, 2009
2121096

LEGAL NOTICE

SHERIFF'S SALE

By virtue of a writ of Lev Fac#80 NO., AD., 2009.
PARCEL # 09-028.20-097
PROPERTY: 451 STANLEY PLAZA BLVD., NEWARK, DE.

ALL THAT certain lot, piece or parcel of land with the dwelling thereon erected situate in White Clay Creek Hundred, New Castle County and State of Delaware known as 451 Stanley Plaza Boulevard, Lot No. 66 as shown on the Plan of Red House Plantation as said Plan is recorded in the Office of the Recorder of Deeds in and for New Castle County, Delaware in Microfilm No. 10255 and being more particularly bounded and described according to a survey prepared by Kerestone Consultants, Inc., Professional Land Surveyors, dated September 10, 1998, as follows to wit:

AND BEING the same lands and premises which John Song, Na K. Song and Since Song by Deed dated September 2S: 1998 and recorded in the office of the Recorder of Deeds in and for New Castle County on October 27, 1998, Delaware in Deed Record Book 2529 Page 129 granted and conveyed to Jason L. Sexton herein in fee.

SEIZED AND TAKEN IN EXECUTION AS THE PROPERTY OF JASON L. SEXTON
TERMS OF SALE: 10% DOWN AT TIME OF SALE. BALANCE DUE ON OR BEFORE FEBRUARY 15, 2010.

NOVEMBER 3, 2009
2121016

Call Susie
and place
your ad in

"Here is
My Card"!

A Business directory
that runs every
Thursday in the
Accent Section of the
paper. Send her your
card and she can turn
it into an ad for as little
as \$28 per week!
Call and get more
customers today!

302-650-0212
or email to
smoore@chespub.com

LEGAL NOTICE

SHERIFF'S SALE

By virtue of a writ of Alias Lev Fac#93 NO., AD., 2009.
PARCEL NO.: 10-039.10-342
PROPERTY ADDRESS: 2 ROSE TERRACE, NEWARK, DE

ALL that certain lot, piece or parcel of land with improvements thereon erected, situate in New Castle Hundred, New Castle County and State of Delaware, being Lot No. 11, as shown on the Record Major Land Development Plan of SPRING MILL AT TAYLOR-TOWNE, as said Plan is recorded in the Office of the Recorder of Deeds, in and for New Castle County, in Microfilm No. 7401, and being more particularly bounded and described in accordance with a survey by Zebley & Associates, Inc., Professional Land Surveyors and Site Planners, Wilmington, Delaware, dated December 9, 1993.

AND BEING the same lands and premises which William Camacho by deed dated April 29, 2005 and recorded in the Office of the Recorder of Deeds in and for New Castle County, Delaware as Instrument No. 20050513-0046056 did grant and convey unto RAYMOND E. MYERS and KRISTA M. DEMAIO, in fee.

SEIZED AND TAKEN IN EXECUTION AS THE PROPERTY OF RAYMOND E. MYERS AND KRISTA M. DEMAIO.
TERMS OF SALE: 10% DOWN AT TIME OF SALE. BALANCE DUE ON OR BEFORE FEBRUARY 15, 2010.

NOVEMBER 3, 2009
2121041

SHERIFF'S SALE

By virtue of a writ of Lev Fac#87 NO., AD., 2009
Parcel ED: 09-029.10-301
Property Address: 34 Stallion Drive Newark, DE 19713

All that certain lot, piece or parcel of land, with the buildings thereon erected, situate in White Clay Creek Hundred, New Castle County and State of Delaware, being known as Lot No. 14, Block J, on the Record Major Subdivision Plan of Sherwood Forest, Section 3, as said plan is of record in the Office of the Recorder of Deeds, in and for New Castle County and State of Delaware in Microfilm No. 1983, said lot is also known as 34 Stallion Drive, and being more particularly bounded and described in accordance to a recent survey prepared by East Coast Survey, Professional Land Surveyors, dated June 22, 2004, as follows, to wit:

Being the same lands and premises which Samuel T. Cahall did grant and convey unto Samuel T. Cahall and Damian Tuazon by deed dated 5/4/2006 and recorded 5/15/2006 Office of the Recorder of Deeds, in and for New Castle County, State of Delaware, in Deed Record 20060515-0046525.

SEIZED AND TAKEN IN EXECUTION AS THE PROPERTY OF SAMUEL T. CAHALL AND DAMIAN TUAZON
TERMS OF SALE: 10% DOWN AT TIME OF SALE. BALANCE DUE ON OR BEFORE FEBRUARY 15, 2010!

NOVEMBER 3, 2009
2121019

SHERIFF'S SALE

By virtue of a writ of Alias Lev Fac#78 NO., AD., 2009.
Parcel No. 09-021.40-202
Property Address: 50 Greenbridge Dr, Newark, DE 19713 Tax

ALL that certain lot, piece or parcel of land with the improvements thereon, situate in White Clay Creek Hundred, New Castle County and State of Delaware, being Lot Number 37B as shown on the Record Major Subdivision Plan of Greenbridge of record in the Office of the Recorder of Deeds in and for New Castle County, Delaware in Microfilm No. 2415, said lot also known as 50 Greenbridge Drive and being more particularly bounded and described in accordance with a survey prepared by A.E.S. Surveyors, dated June 10, 2002.

Being the same lands and premises conveyed unto Shane B. Faulkner and Deborah L. Faulkner from Shane B. Faulkner and Deborah L. Franklin n/k/a Deborah L. Faulkner, in a Deed dated February 25, 2008 and recorded in the Office of the Recorder of the Deeds in and for New Castle County, State of Delaware, in Instrument No. 20080530-0037229.

SEIZED AND TAKEN IN EXECUTION AS THE PROPERTY OF DEBORAH L. FAULKNER FROM SHANE B. FAULKNER
TERMS OF SALE: 10% DOWN AT TIME OF SALE. BALANCE DUE ON OR BEFORE FEBRUARY 15, 2010.

NOVEMBER 3, 2009
2121009

SHERIFF'S SALE

By virtue of a writ of Lev Fac#31 NO., AD., 2009.
Parcel No. 09-022.40-051
Property Address: 14 Davies Road Newark, DE 19713

ALL that certain lot, piece or parcel of land, with the buildings thereon erected, situate in White Clay Creek Hundred, New Castle County and State of Delaware, known as 14 Davies Road, being Lot No. 9, on the Plan of Chestnut Hill Estates, as the Plan thereof is of record in the Office of the Recorder of Deeds, in and for New Castle County, Delaware, in Plat Book 3, Page 81, and being more particularly bounded and described in accordance with a survey prepared by A.E.S. Surveyors, Professional Land Surveyors, dated September 11, 2006, as follows, to-wit:

Being the same lands and premises which Kerry W. Taylor did grant and convey unto Omar C. Turner and Kelly J. McVay-Turner by deed dated September 29, 2006 and recorded on October 3, 2006 in the Office of the Recorder of Deeds, in and for New Castle County, State of Delaware, in Deed Instrument 20061003-0094371.

SEIZED AND TAKEN IN EXECUTION AS THE PROPERTY OF OMAR C. TURNER AND KELLY J. MCVAY-TURNER
TERMS OF SALE: 10% DOWN AT TIME OF SALE. BALANCE DUE ON OR BEFORE FEBRUARY 15, 2010.

NOVEMBER 3, 2009
2120989

Go
ahead,
be

FRUGAL!

Take
advantage of
the garage
sales listed in
the Classifieds
and pinch a
few pennies.
To learn more
or to place an
ad, call
410-398-1230
or
800-220-1230
24 hours a
day
7 days a week

LEGAL NOTICE

SHERIFF'S SALE

By virtue of a writ of Lev Fac#229 NO, AD., 2009.
Parcel No.: 10-028.40-033:
Address: 224 Landau Way, Bear, Delaware 19701

ALL that certain lot, piece and parcel of land, with the buildings thereon erected, know as 224 Landau Way, situate in New Castle Hundred, New Castle County, Delaware, and being tot. No. 28 of the subdivision of Christiana Meadows, and described in accordance with a mortgage inspection plan by Hast Coast Survey, dated May 23, 2006.

BEING the same land a premises that Jerry Ball and Barbara Ball, by deed dated October 18, 2006, and recorded in the Office of the Recorder of Deeds in and for New Castle County in Deed Instrument 20061027-0102332, did grant and convey unto Sunday Peter Aina, in fee.

SEIZED AND TAKEN IN EXECUTION AS THE PROPERTY OF SUNDAY PETER AINA.

TERMS OF SALE: 10% DOWN AT TIME OF SALE. BALANCE DUE ON OR BEFORE FEBRUARY 15, 2010.

NOVEMBER 3, 2009
2121698

SHERIFF'S SALE

By virtue of a writ of Lev Fac#166 NO, AD., 2009.

Parcel No.: 09-023.30-365
Property Address: 1001 Birchwood Drive, Newark, DE 19713

ALL that certain lot, piece or parcel of land, with the buildings thereon erected, situate in White Clay Creek Hundred, New Castle County and State of Delaware known as Lot no. 299, Block J, on the Plan of BIRCHWOOD PARK, SECTION 2, as said Plan is of record in the Office of the Recorder of Deeds, in and for New Castle County afore-said, in Plat Record 4, Page 24, and more particularly bounded and described in accordance with a survey by Edward H. Ricardson Associates, Inc., Consulting Engineers, Newark, Delaware, dated June 27, 1957, and in accordance with a more recent survey prepared by Zebley & Associates Inc., Professional Land Surveyors and Site Planners of Wilmington, Delaware, dated December 15, 1976, as follows, to-wit:

Being the same lands and premises which Eugene Williams, Jr., did grant and convey unto Eugene Williams and Eliza B. Williams, by deed dated July 17, 1986 and recorded on July 18, 1986 in the Office of the Recorder of Deeds, in and for New Castle County, State of Delaware, in Deed Book 481 at Page 58.

SEIZED AND TAKEN IN EXECUTION AS THE PROPERTY OF ELIZA B. WILLIAMS.

TERMS OF SALE: 10% DOWN AT TIME OF SALE. BALANCE DUE ON OR BEFORE FEBRUARY 15, 2010.

NOVEMBER 3, 2009
2121609

LEGAL NOTICE

SHERIFF'S SALE

By virtue of a writ of Lev Fac#155 NO, AD., 2009.
Parcel No. 11-006.30-002 Property Address: 8 Bobby Drive
Newark, DE 19713

ALL that certain lot piece or parcel of land with the dwelling thereon erected, situate in the Pencader Hundred, new Castle County and State of Delaware, and known as Lot No.4 Block L on the Plan of Robescott Manor, Section One, as said Plan in/of Record in the Office of the Recorder of Deeds in and for New Castle County and State of Delaware in Microfilm Record 797.

Being the same lands and premises which Alexia Krusko did grant and convey unto John T. Grinnage by deed dated May 26, 2000 and recorded on May 31, 2000 in the Office of the Recorder of Deeds, in and for New Castle County, State of Delaware, in Deed Book 2835 Page 038.

SEIZED AND TAKEN IN EXECUTION AS THE PROPERTY OF JOHN T. GRINNAGE

TERMS OF SALE: 10% DOWN AT TIME OF SALE. BALANCE DUE ON OR BEFORE FEBRUARY 15, 2010.

NOVEMBER 3, 2009
2121591

SHERIFF'S SALE

By virtue of a writ of Lev Fac#99 NO, AD., 2009.

ALL that certain lot piece or parcel of land with the buildings thereon erected, situate in Mill Creek Hundred, New Castle County and State of Delaware, known as 313 Laurel Avenue, being Lot No. 10 on the record major subdivision plan of Roseville Park, as said plan is of record in the Office of the Recorder of Deeds in and for New Castle County, Delaware in Microfilm No. 2583 and more particularly bounded and described in a recent survey by Site Dimensions, LLC, Land Surveying, dated January 31, 2007

SUBJECT to all restrictions, easements, and agreements of record.

BEING the same lands and premises in which Andrew M. Larmore, by Deed dated July 24, 2000 and recorded in the Office of the Recorder of Deeds, in and for New Castle County, State of Delaware in Deed Book 2269, Page 213, did grant and convey unto Marilyn C. Grush, in fee.

BEING the same lands and premises in which Marilyn C. Grush, by Deed dated February 5, 2007 and recorded in the Office of the Recorder of Deeds, in and for New Castle County, State of Delaware in Deed Instrument 20070213-0014302, did grant and convey unto Jennifer M. Scanlon, in fee.

SEIZED AND TAKEN IN EXECUTION AS THE PROPERTY OF JENNIFER M. SCANLON

TERMS OF SALE: 10% DOWN AT TIME OF SALE. BALANCE DUE ON OR BEFORE FEBRUARY 15, 2010.

NOVEMBER 3, 2009
2121048

SHERIFF'S SALE

By virtue of a writ of Lev Fac#218 NO, AD., 2009.
Parcel No. 09-017.30-219
Property Address: 124 Medley Drive
Newark, DE 19713

ALL THAT CERTAIN lot, piece or pared of land, known as 124 Medley Drive, being Lot 251, Section III, Phase I, of the subdivision of Harmony Crest (Microfilm No. 8099), situate in White Clay Creek Hundred, New Castle County and State of Delaware and being more particularly bounded and described in accordance with a survey by Raymond F. Christian & Associates, Inc., dated December 17, 1996, as follows, to wit:

Being the same lands and premises which Dana M. Brookings and John W. Brookings, Jr did grant and convey unto John W. Brookings, Jr. by deed dated March 15, 2005 and recorded on June 6, 2005 in the Office of the Recorder of Deeds, in and for New Castle County, State of Delaware, in Deed Instrument 20050606-0053715.

SEIZED AND TAKEN IN EXECUTION AS THE PROPERTY OF JOHN W. BROOKINGS, JR.

TERMS OF SALE: 10% DOWN AT TIME OF SALE. BALANCE DUE ON OR BEFORE FEBRUARY 15, 2010.

NOVEMBER 3, 2009
2121674

SHERIFF'S SALE

By virtue of a writ of Lev Fac#276 NO, AD., 2009.

Parcel No. 10-039.10-282
Property Address: 32 Valley Forge Court
Newark, DE 19702

ALL that certain lot, piece or parcel of land with the buildings thereon erected, known as 32 Valley Forge Court, Valley Woods, situate in New Castle Hundred, New Castle County and State of Delaware, being Lot No. 32 on the record major land development plan of Centennial Village as said plan is of record in the Office of the Recorder of Deeds in and for New Castle County, Delaware in Microfilm Record No. 2848 and being more particularly bounded and described in accordance with a recent survey by Zebley and Associates, Inc., Professional Land Surveyors of Wilmington, Delaware dated August 12, 1985, as follows, to-wit:

Being the same lands and premises Barbara S. Kelly, did grant and convey unto Barbara S. Kelly and Ronald Kelly, Jr., by deed dated October 27, 2005 and recorded on November 2, 2005 in the Office of the Recorder of Deeds, in and for New Castle County, State of Delaware, in Deed Instrument 20051102-0112605.

SEIZED AND TAKEN IN EXECUTION AS THE PROPERTY OF BARBARA S. KELLY AND RONALD KELLY, JR.

TERMS OF SALE: 10% DOWN AT TIME OF SALE. BALANCE DUE ON OR BEFORE FEBRUARY 15, 2010.

NOVEMBER 3, 2009
2121761

LEGAL NOTICE

SHERIFF'S SALE

By virtue of a writ of Lev Fac#156 NO, AD., 2009.
Parcel No. 18-059.00-014
Property Address: 200 Odessa Way
Newark, DE 19711

ALL that certain lot, piece or parcel of land, with the buildings thereon, situate in the City of Newark, New Castle County, Delaware being designated Lot 81, as shown on the Administrative Subdivision Plan of THE WOODS AT LOUVIERS, of record in the Office of the Recorder of Deeds in and for New Castle County, Delaware on Microfilm No. 12796 said lot also known as 200 ODESSA WAY and being more particularly described by A.E.S Surveyors as follows, to wit:

Being the same lands and premises which Realen Limited Partner, Inc did grant and convey unto Karla Page by deed dated March 31, 1998 and recorded on April 6, 1998 in the Office of the Recorder of Deeds, in and for New Castle County, State of Delaware, in Deed Book 2423 Page 202.

SEIZED AND TAKEN IN EXECUTION AS THE PROPERTY OF KARLA PAGE

TERMS OF SALE: 10% DOWN AT TIME OF SALE. BALANCE DUE ON OR BEFORE FEBRUARY 15, 2010.

NOVEMBER 3, 2009
2121594

SHERIFF'S SALE

By virtue of a writ of Lev Fac#271 NO, AD., 2009.

Parcel No. 10-033.10-053
Property Address: 622 Pine Creek Lane
Bear, DE 19701

ALL that certain lot, piece or parcel of land, with the buildings thereon erected, situate in New Castle Hundred, New Castle County, State of Delaware, and known as 622 Pine Creek Lane, being Lot No. 18 a shown on the Record Resubdivision Plan of River End, Village of Woodbridge as said Plan is of record in the Office of the Recorder of Deeds in and for New Castle County, Delaware in Microfilm Record No. 6032 and being more particularly bounded and described in accordance with a recent survey by Site Dimensions, LLC dated April 19, 2006, as follows to-wit:

Being the same lands and premises which Michelle F. Mitchell-Scarborough did grant and convey unto Richard A. Pedicone by deed dated April 27, 2006 and recorded on May 1, 2006 in the Office of the Recorder of Deeds, in and for New Castle County, State of Delaware, as Instrument No. 20060501-0041211

SEIZED AND TAKEN IN EXECUTION AS THE PROPERTY OF RICHARD A. PEDICONE.

TERMS OF SALE: 10% DOWN AT TIME OF SALE. BALANCE DUE ON OR BEFORE FEBRUARY 15, 2010.

NOVEMBER 3, 2009
2121751



ANY WAY YOU
LOOK AT IT,
CHESAPEAKE
CLASSIFIED
CAN WORK
FOR YOU!

410-398-1230
800-220-1230
www.chesapeakeclassified.com



CHECK OUT
CHESAPEAKE
CLASSIFIEDS
EVERYDAY FOR
THAT NEW JOB!

OR PLACE AN
AD TO FIND NEW
EMPLOYEES!

www.chesapeakeclassified.com
410-398-1230
800-220-1230

Knickknack Paddywack

Give a dog a home

If you have the time and love to give check out the
Cecil Whig Classifieds today! 800-220-1230 or 410-398-1230

CHECK OUT OUR WEBSITE AT WWW.CHESAPEAKECLASSIFIED.COM



LEGAL NOTICE

SHERIFF'S SALE

By virtue of a writ of Lev Fac#118 NO, AD., 2009.

Parcel No.: 09-021.40-280
PROPERTY ADDRESS: 69 LEADER DRIVE, NEWARK, DE 19713

ALL that certain lot, piece or parcel of land, with the building thereon erected, known as 69 Leader Drive, situate in White Clay Creek Hundred, New Castle County and State of Delaware, and being Lot No. 29 of the subdivision of Newark Oaks, Microfilm No. 4370, and being more particularly bounded and described in accordance with a recent survey prepared by Ramesh C. Bette Associates, P.A., Professional Land Surveyors dated August 22, 2005.

BEING the same lands and premises which Tyrone Mathis and Chris L. Mathis, husband and wife, by Deed dated August 30, 2005 and recorded September 23, 2005, in the Office of the Recorder of Deeds, in and for New Castle County, State of Delaware, in Instrument # 20050923-0097090, did grant and convey unto Danielle Grenier.

SEIZED AND TAKEN IN EXECUTION AS THE PROPERTY OF DANIELLE GRENIER.
TERMS OF SALE: 10% DOWN AT TIME OF SALE. BALANCE DUE ON OR BEFORE FEBRUARY 15, 2010.

NOVEMBER 3, 2009
2121068

LEGAL NOTICE

SHERIFF'S SALE

By virtue of a writ of Lev Fac#95 NO, AD., 2009.

Parcel No.: 11-020.30-037
Property Address: 6002 Rose Tree Lane, Newark, DE 19702

ALL that property known as 6002 Rosetree Lane and being lot 53 of the subdivision of Rosetree Hunt (MF#10658), situate in Pencader Hundred, New Castle County, Delaware, and being more particularly described by the aforementioned plan and a recent survey prepared by PELSA Company, Inc., dated March 12, 1992:

BEING a part of the same lands and premises which ROSE HEART, INC., a Delaware Corporation, by Deed bearing the date of the 17th day of March 1992 and recorded in the Office of the Recorder of Deeds in and for New Castle County in Deed Record Book 1304 Page 0106 did grant and convey unto David T. Ferguson and Francine Ferguson in fee.

SEIZED AND TAKEN IN EXECUTION AS THE PROPERTY OF DAVID T. FERGUSON AND FRANCINE FERGUSON.

TERMS OF SALE: 10% DOWN AT TIME OF SALE. BALANCE DUE ON OR BEFORE FEBRUARY 15, 2010.

NOVEMBER 3, 2009
2121043

LEGAL NOTICE

SHERIFF'S SALE

By virtue of a writ of Lev Fac#91 NO, AD., 2009.

Parcel No. 10-033.30-297
Property Address: 17 Victoria Boulevard, Newark, DE 19702 Tax

ALL that certain lot, piece or parcel of land with the buildings thereon erected, situate in New Castle Hundred, New Castle County and State of Delaware, known as 17 Victoria Boulevard, being Lot No. 9 on the Plan of Newton Village as the plan thereof is of record in the Office of the Recorder of Deeds in and for New Castle County in Microfilm No. 9855, and being more particularly bounded and described in accordance with a survey by East Coast Survey, dated November 20, 1998:

BEING the same premises which was conveyed unto the April Desai in Instrument No. 20040830-0096806 from the Secretary of Housing and Urban Development.

SEIZED AND TAKEN IN EXECUTION AS THE PROPERTY OF APRIL DESAI

TERMS OF SALE: 10% DOWN AT TIME OF SALE. BALANCE DUE ON OR BEFORE FEBRUARY 15, 2010.

NOVEMBER 3, 2009
2121023

SHERIFF'S SALE

By virtue of a writ of Lev Fac#262 NO, AD., 2009.

LEV FAC # 262
Parcel No. 11-046.40-213
Property Address: 9 Dunleary Drive Bear, DE 19701

ALL that certain lot, piece or parcel of land, situate in Pencader Hundred, New Castle County, State of Delaware, being Lot No. 360, also known as 9 Dunleary Drive as shown on the Record Resubdivision Plan of a portion of Brennan Estates, prepared by Karins and Associates, recorded in the Office of the Recorder of Deeds in and for New Castle County, State of Delaware, in Microfilm No. 13651. The said lot being more particularly bounded and described in a recent mortgage inspection plan by East Coast Survey, Professional Land Surveyors, dated July 25, 2006, as follows, to-wit:

Being the same lands and premises which Weichert Relocation Resources, Inc. did grant and convey unto Waheed I. Rattoo by deed dated July 26, 2006 and recorded on August 10, 2006 in the Office of the Recorder of Deeds, in and for New Castle County, State of Delaware, as Instrument No. 20060810-0076431.

SEIZED AND TAKEN IN EXECUTION AS THE PROPERTY OF WAHEED I. RATTOO.
TERMS OF SALE: 10% DOWN AT TIME OF SALE. BALANCE DUE ON OR BEFORE FEBRUARY 15, 2010.

NOVEMBER 3, 2009
2121734

SHERIFF'S SALE

By virtue of a writ of Lev Fac#157 NO, AD., 2009.

Parcel No.: 11-039.10-001
Property Address: 2 Rice Drive, Bear, DE 19701

ALL that certain lot, piece or parcel of land with the buildings thereon erected, situate in Pencader Hundred, New Castle County and State of Delaware, known as 2 Rice Drive, being Lot No. 86 on the Record Major Subdivision Plan for Caravel Hunt as said Plan is of record in the Office of the Recorder of Deeds, in and for New Castle County and State of Delaware in Microfilm Record No. 9852, and being more particularly bounded and described in accordance with a recent survey by Zebbley & Associates, Inc., Professional Land Surveyors of Wilmington, Delaware, dated September 4, 1998, as follows, to-wit:

Being the same lands and premises which D. M. Peoples Investment Corporation did grant and convey unto Ernest D. Sudler and Helen Sudler, by deed dated September 10, 1998 and recorded on September 11, 1998 in the Office of the Recorder of Deeds, in and for New Castle County, State of Delaware, in Deed Book 2507 at Page 68.

SEIZED AND TAKEN IN EXECUTION AS THE PROPERTY OF ERNEST D. SUDLER AND HELEN SUDLER.
TERMS OF SALE: 10% DOWN AT TIME OF SALE. BALANCE DUE ON OR BEFORE FEBRUARY 15, 2010.

NOVEMBER 3, 2009
2121598

SHERIFF'S SALE

By virtue of a writ of Lev Fac#148 NO, AD., 2009.

Parcel No. 09-017.20-038
Property Address: 202 Durso Drive, Newark, DE 19711

ALL that certain lot, piece or parcel of land with the buildings thereon erected, situate in White Clay Creek Hundred, New Castle County and State of Delaware, known as 202 DURSO DRIVE, being Lot No. 22, Block E, on the Plan of Harmony Hills, Section II, as the Plan thereof is of record in the Office of the Recorder of Deeds in and for New Castle County, Delaware in Plat Record 4, Page 32, and being more particularly bounded and described in accordance with a survey prepared by East Coast Survey, Professional Land Surveyors, dated August 3, 2006, as follows, to-wit:

Being the same lands and premises which Nancy Sutherland, Ann Convery, Patricia Wright, Michael Jaffe, Sheila Mattucci, and Donna Curtis, did grant and convey unto Tabatha A. Deery, by deed dated August 16, 2006 and recorded on August 17, 2006 in the Office of the Recorder of Deeds, in and for New Castle County, State of Delaware, in Deed Instrument 20060817-0079226.

SEIZED AND TAKEN IN EXECUTION AS THE PROPERTY OF TABATHA A. DEERY.
TERMS OF SALE: 10% DOWN AT TIME OF SALE. BALANCE DUE ON OR BEFORE FEBRUARY 15, 2010.

NOVEMBER 3, 2009
2121100

SHERIFF'S SALE

By virtue of a writ of Lev Fac#104 NO, AD., 2009.

Parcel No.: 08-023.20-05136669
Address: 237 North Star Road, Newark, Delaware 19711

ALL that certain lot, piece or parcel of land, with the buildings thereon erected, situate ... Mill Creek Hundred, New Castle County, Delaware, known as 237 North Star Road, being Lot No. ISA, on the Plan of North Star, as the Plan thereof is of record in the Office of the Recorder of Deeds, in and for New Castle County in Microfilm No. 790, and described in accordance with a survey prepared by Zebbley & Associates, Inc., Professional Land Surveyors, dated April 24, 1990.

BEING the same land and premises that Florence I. Perkins by deed dated April 26, 1990 and recorded in the Office of the Recorder of Deeds in and for New Castle County, Delaware, in Deed Book 1022, Page 223, did grant and convey unto Keith J. Quesenberry and Use A. Quesenberry, his wife, in fee. Keith J. Quesenberry departed this life on July 16, 2004, leaving Lise A. Quesenberry sole tenant.

SEIZED AND TAKEN IN EXECUTION AS THE PROPERTY OF LISE A. QUESENBERRY.

TERMS OF SALE: 10% DOWN AT TIME OF SALE. BALANCE DUE ON OR BEFORE FEBRUARY 15, 2010.

NOVEMBER 3, 2009
2121058

SELLING YOUR CAR?

WE HAVE GREAT PACKAGES FOR AUTOS
WITH COVERAGE NO ONE ELSE CAN GIVE YOU!

GET YOUR AD IN FRONT OF MORE EYES THAN WITH ANY
OTHER LOCAL PUBLICATION.

CALL TODAY! 410-398-1230 or

TOLL FREE 800-220-1230

EMAIL TO CLASSADS@CHESPUB.COM



Take
advantage of
the garage
sales listed in
the Classifieds
and pinch a
few pennies.
To learn more
or to place an
ad, call
410-398-1230
or
800-220-1230
24 hours a
day
7 days a week

Are You Ready To
Fill These Shoes?



Check Our
Classified Pages
Everyday For The
Latest Job Opportunities
Let Chesapeake Classifieds
Work For You!

NEED A HANDYMAN?
OR SOMEONE TO
CLEAN YOUR HOME?

HOW ABOUT
CHILD CARE?

CHECK OUT OUR
SERVICE DIRECTORY
EVERYDAY

LEGAL NOTICE

SHERIFF'S SALE

By virtue of a writ of VEM#2 NO. AD., 2009.

ALL THAT CERTAIN lot, piece or parcel of land, with the buildings thereon erected, known as 390 Mitch Road, situate in Wilmington, New Castle County, Delaware 19804.

SUBJECT TO all covenants, obligations, restrictions and easements of record.

BEING the same lands and premises which were conveyed unto BDPH Associates LLC, by deed of Mitch Road Medical Associates, Inc. dated April 27, 2004, and recorded in the Office of the Recorder of Deeds in and for New Castle County, Delaware, on May 5, 2004, as Instrument No. 20040505-0049953.

SEIZED AND TAKEN IN EXECUTION AS THE PROPERTY OF BDPH ASSOCIATES LLC.

TERMS OF SALE: FULL PURCHASE PRICE AT THE TIME OF THE SALE. IN ACCORDANCE WITH 9DEL.C. SS8726, THIS SALE IS SUBJECT TO THE APPROVAL OF THE CHIEF FINANCIAL OFFICER OF NEW CASTLE COUNTY.

NOVEMBER 30, 2009
2121797

SHERIFF'S SALE

By virtue of Lev Fac#77 NO. AD., 2009. Property Address: 118 N. Gabriel Drive, Bear, DE 19701 Tax Parcel No. 12-006.00-083

ALL that certain lot, piece or parcel of land with the buildings thereon erected, situate in Red Lion Hundred, New Castle County and State of Delaware, known as 118 North Gabriel Drive, being Lot No. 30 on the Plan of Estates of Red Lion, as the Plan thereof is of record in the Office of the Recorder of Deeds in and for the New Castle County, Delaware in Microfilm No. 14338, and being more particularly bounded and described in accordance with a survey prepared by EAST COAST SURVEY, INC., Professional Land Surveyors, dated February 10, 2006.

Being a part of the same lands and premises which William L. David and Helen M. David, by Deed dated September 2, 1988 and recorded in the Office of the Recorder of Deeds in and for New Castle County and State of Delaware, in Deed Book 755, Page 63, did grant and convey unto D.M. Peoples Investment Corp., a corporation of the State of Delaware, in fee.

Being the same lands and premises by which D.M. Peoples Investment Corp., by Deed dated February 17, 2006 and record in the Office of the Recorder of Deeds in and for New Castle County, Delaware as Instrument Number 20060217-0017109, did grant and convey to Lee Obey.

SEIZED AND TAKEN IN EXECUTION AS THE PROPERTY OF LEE OBEY
TERMS OF SALE: 10% DOWN AT TIME OF SALE. BALANCE DUE ON OR BEFORE FEBRUARY 15, 2010.

NOVEMBER 3, 2009
2121005

Need Extra Cash?

Why not sell those
unused golf clubs?

Place your ad with us!

Call us at
410-398-1230
800-220-1230

or visit our website at
www.chesapeakeclassified.com



LEGAL NOTICE

SHERIFF'S SALE

By virtue of a writ of Alias Lev Fac#151 NO. AD., 2009.

PARCEL NO. 11-055.00-133
PROPERTY ADDRESS: 402 Maplewood Drive, Middletown, Delaware 19709

ALL THAT CERTAIN LOT, PIECE, OR PARCEL OF LAND WITH THE BUILDINGS THEREON ERECTED, SITUATE IN PENCADER HUNDRED, NEWCASTLE COUNTY AND STATE OF DELAWARE, KNOWN AS 402 MAPLEWOOD LANE DRIVE BEING LOT NO. 114 ON THE RECORD RESUBDIVISION PLAT FOR LEA EARA FARMS, PHASE III, AS SAID PLAN IS OF RECORD IN THE OFFICE OF THE RECORDER OF DEEDS IN AND FOR THE NEW CASTLE COUNTY, DELAWARE, IN MICROFILM NO. 13,070, AND BEING MORE PARTICULARLY BOUNDED AND DESCRIBED IN ACCORDANCE WITH A SURVEY PREPARED BY ZEBLEY AND ASSOCIATES, INC., DATED MARCH 20, 2000.

BEING the same lands and premises which Empire Construction Co., a corporation of the State of Delaware, by Deed dated March 24, 2000 and recorded in the Office of the Recorder of Deeds, in and for New Castle County and State of Delaware, in Deed Book 2803 Page 216, did grant and convey unto Donald C. Matthews and Gwendolyn Y. Matthews.

SEIZED AND TAKEN IN EXECUTION AS THE PROPERTY OF DONALD C. MATTHEWS AND GWENDOLYN Y. MATTHEWS.

TERMS OF SALE: 10% DOWN AT TIME OF SALE. BALANCE DUE ON OR BEFORE FEBRUARY 15, 2010.

NOVEMBER 3, 2009
2121574

SHERIFF'S SALE

The following Real Estate will be exposed for Public Sale at the CITY/COUNTY BLDG. 800 N. French Street, City of Wilmington, New Castle County, Delaware, by Michael P. Walsh, Sheriff, on **TUESDAY the 12th day of JANUARY, 2010 at 10:00 A.M.**

By virtue of a writ of First Pluries Lev Fac # 14 NO. AD., 2009.

PARCEL NO: 08-038.20-269
PROPERTY ADDRESS: 508 Mill town Road, Wilmington, DE 19808

ALL THAT CERTAIN lot, piece or parcel of land with the improvements thereon erected, situate in Mill Creek Hundred, New Castle County, Delaware, being Parcel A, as shown on the record Minor Subdivision Plan of PROPERTY OF WILLIAM G. OTT, as said Plan is recorded in the Office for the Recording of Deeds, in and for New Castle County, in Microfilm No. 5982, and being more particularly bounded and described in accordance with a mortgage inspection survey by East Coast Survey, Professional Land Surveying, Wilmington, Delaware, dated September 18, 2001, as follows, to-wit:

BEING the same lands and premises conveyed unto Mark R. Rossi by deed of Donald Redmond, dated December 12, 2003 and of record in the office of the Recorder of Deeds in and for New Castle County and State of Delaware at Instrument Number 20031222-0167356.

SEIZED AND TAKEN IN EXECUTION AS THE PROPERTY OF MARK R. ROSSI
TERMS OF SALE: 10% DOWN AT TIME OF SALE. BALANCE DUE ON OR BEFORE FEBRUARY 15, 2010.

November 30, 2009

np 1/1,8

2119186

SHERIFF'S SALE

By virtue of Lev Fac#123 NO. AD., 2009. Property Address: 1010 Marrows Road, Newark, DE 19713 TaxParcelNo. 11-002.20-064

ALL that certain lot, piece or parcel of land with the buildings thereon erected, situate in Pencader Hundred, New Cas County and State of Delaware, known as 1010 Marrows Road, being Lot No. 37 on the Plan of Brookside Park, Sectii C, a Plan thereof is of record in the Office of the Recorder of Deeds in and for New Castle County, Delaware, in Plat Book Volume 2, Page 65, and being more particularly bounded and described in accordance with a survey prepared by East Coast Survey, Professional Land Surveyors, dated June 20, 2001.

Being the same lands and premises which Donald Clarence Hasson, Individually and as Executor of the Estate of Clarence J. Hasson, by Deed dated September 18, 1992, and recorded in the Office of the Recorder of Deeds in and for New Castle County and State of Delaware, in book 1400, Page 153, did grant and convey unto John W. Richter, in fee.

Being the same lands and premises by which John W. Richter by Deed dated September 5, 2001 and recorded in the Office of the Recorder of Deeds in and for New Castle County, Delaware as Instrument # 20010905-0073203, did gn and convey to Diane M. Skaggs.

SEIZED AND TAKEN IN EXECUTION AS THE PROPERTY OF DIANE M. SKAGGS
TERMS OF SALE: 10% DOWN AT TIME OF SALE. BALANCE DUE ON OR BEFORE FEBRUARY 15, 2010.

NOVEMBER 3, 2009
2121087

SHERIFF'S SALE

By virtue of a writ of Lev Fac#124 NO. AD., 2009.

Property Address: 2503 Olden Avenue, Newark, DE 19702 Tax Parcel No. 090303197

ALL that certain lot, piece or parcel of land with the buildings thereon erected, situate in White Clay Creek Hundred, New Castle County and State of Delaware, known as 2503 Olden Avenue, being Lot No. 3, Section 1, as shown on the Plan of Christiana Village, as said plan is of record in the Office of the Recorder of Deeds, in and for New Castle County Delaware, in Microfilm No. 2856, more particularly bounded and described according to a survey by The Pelsa Company, Professional Land Surveyor, dated November 7, 1990.

Being the same lands and premises which Jeffrey B. Walker and LisaMarie Walker, by deed dated June 11, 1993 and recorded July 16, 1993, in the Office of the Recorder of Deed, in and for New Castle County and State of Delaware, in Deed Book 1556, Page 112, did grant and convey unto Jeffrey B. Walker, in fee.

Being the same lands and premises by which Jeffrey B. Walker by Deed dated June 30, 1998 and recorded in the Office of the Recorder of Deeds in and for New Castle County, Delaware as Book 2469, Page 253, did grant and convey to Dawn Yvette Cam. SEIZED AND TAKEN IN EXECUTION AS THE PROPERTY OF DAWN YVETTE CARN.
TERMS OF SALE: 10% DOWN AT TIME OF SALE. BALANCE DUE ON OR BEFORE FEBRUARY 15, 2010.

NOVEMBER 3, 2009
2121091

LEGAL NOTICE

SHERIFF'S SALE

By virtue of a writ of Lev Fac#110 NO. AD., 2009.

PARCEL NO. 11-043.00-006
PROPERTY ADDRESS: 619 Howell School Road, Bear, DE 19701

All that certain lot, piece or parcel of land with the building thereon erected, situate in Pencader Hundred, New Castle County, State of Delaware as shown on a property survey plan prepared for William P. Chambers and Mary A. Chambers, husband and wife, dated October 16, 1980, prepared by Burnie R. Waski Associates. The said property being more particularly bounded and described as follows, to-wit:

BEING the same lands and premises which Beneficiaries of the Estate of Mary A. Chambers by Deed dated March 26, 2007 and recorded in the Office of the Recorder of Deeds, in and for New Castle County and State of Delaware, in Instrument Number 20070328-0028745, did grant and convey unto Francis Mondzelewski and Shirley Blackburn.

SEIZED AND TAKEN IN EXECUTION AS THE PROPERTY OF FRANCIS MONDZELEWSKI AND SHIRLEY BLACKBURN

TERMS OF SALE: 10% DOWN AT TIME OF SALE. BALANCE DUE ON OR BEFORE FEBRUARY 15, 2010.

NOVEMBER 3, 2009
2121064

SHERIFF'S SALE

By virtue of a writ of Lev Fac#179 NO. AD., 2009.

Parcel No.: 1201200160
Property Address: 1906 Old Kirkwood Road Bear, DE 19701

ALL that certain lot, piece or parcel of land situate in Red Lion Hundred, New Castle County, Delaware, being known as Lot No. 2 of the subdivision for Lottie Roeper as shown on a Record Plan prepared by Govatos and Paraskewich, Inc., Consulting Engineers and Surveyors, Montchanin, Delaware, as follows, to-wit:

Being the same lands and premises which Helga Gertraud Hamilton did grant and convey unto Karen Riehm by deed dated June 23, 2003 and recorded on June 30, 2006 in the Office of the Recorder of Deeds, in and for New Castle County, State of Delaware, in Deed Instrument 20060630-0062737.

SEIZED AND TAKEN IN EXECUTION AS THE PROPERTY OF KAREN RIEHM.

TERMS OF SALE: 10% DOWN AT TIME OF SALE. BALANCE DUE ON OR BEFORE FEBRUARY 15, 2010.

NOVEMBER 3, 2009
2121612

SHERIFF'S SALE

By virtue of a writ of VEM#1 AD., 2009. TAX PARCEL NO.: 11-028.20-310

ALL THAT CERTAIN lot, piece or parcel of land, with the buildings thereon erected, known as 962 Rue Madora, situate in Bear, New Castle County, Delaware 19701.

SUBJECT TO all covenants, obligations, restrictions and easements of record.

BEING part of the same lands and premises which were conveyed unto Kevin J. Hill, by deed of Robino Group LLC dated December 2, 1994, and recorded in the Office of the Recorder of Deeds in and for New Castle County, Delaware, on December 5, 1994 in Deed Book 1848, Page 155.

SEIZED AND TAKEN IN EXECUTION AS THE PROPERTY OF KEVIN J. HILL.

TERMS OF SALE: FULL PURCHASE PRICE AT THE TIME OF THE SALE. IN ACCORDANCE WITH 9DEL.C. SS8726, THIS SALE IS SUBJECT TO THE APPROVAL OF THE CHIEF FINANCIAL OFFICER OF NEW CASTLE COUNTY.

NOVEMBER 30, 2009
2121794

Cecil Whig, providing all the local news and events since 1841.

The "go to" news source for Cecil County.

CHESAPEAKE CLASSIFIED
410-398-1230 Or 800-220-1230
www.chesapeakeclassified.com

Go ahead,
be

FRUGAL!



Take advantage of the garage sales listed in the Classifieds and pinch a few pennies. To learn more or to place an ad, call 410-398-1230 or 800-220-1230 24 hours a day 7 days a week

LEGAL NOTICE

SHERIFF'S SALE

By virtue of a writ of Lev Fac#199 NO., AD., 2009.
Parcel No.: 10-033.10-632
Property Address: 29 Pepperwood Lane
Bear, DE 19701

ALL that certain lot, piece or parcel of land, with the building thereon erected, known as 29 Pepperwood Lane, situate in New Castle Hundred, New Castle County and State of Delaware, and being Lot No. 46 of the subdivision of Treelane Terrace, Phase 2, Microfilm No. 11,143 and being more particularly bounded and described in accordance to a recent Mortgage Inspection Plan prepared by A.B.S. Surveyors, Professional Land Surveyors, dated June 2, 2005, as follows, to-wit:

Being the same lands and premises which Deborah L. Chudzik, did grant and convey unto which Christian Lorca and Maria Azocar, by deed dated June 15, 2005 and recorded on June 17, 2005 in the Office of the Recorder of Deeds, in and for New Castle County, State of Delaware, in Deed Instrument 20050617-0058976.

SEIZED AND TAKEN IN EXECUTION AS THE PROPERTY OF CHRISTIAN LORCA AND MARIA AZOCAR.

TERMS OF SALE: 10% DOWN AT TIME OF SALE. BALANCE DUE ON OR BEFORE FEBRUARY 15, 2010.

NOVEMBER 3, 2009
2121653

SHERIFF'S SALE

By virtue of a writ of Lev Fac#200 NO., AD., 2009.
Parcel No.: 11-023.20-191
Property Address: 230 Lake Arrowhead Circle
Bear, DE 19701

BEING ALL THAT certain lot, piece or parcel of land, with the buildings thereon, situate in Pencader Hundred, New Castle County, Delaware being designated as Lot Q, as shown on the Record Resubdivision Plan of Becks Woods, of record in the Office at the Recorder of Deeds in and being for New Castle County, Delaware on Microfilm No. 10869, said lot also known as 230 Lake Arrowhead Circle and now more particularly described by A.E.S. Surveyors as follows, to wit:

Being the same lands and premises which Intergroup Builders, Inc., did grant and convey unto Marijane R. Rozet Mattero, by deed dated June 9, 1995 and recorded on June 14, 1995 in the Office of the Recorder of Deeds, in and for New Castle County, State of Delaware, in Deed Book 1935 at Page 91. SEIZED AND TAKEN IN EXECUTION AS THE PROPERTY OF MARIJANE R. ROZET MATTERO.

TERMS OF SALE: 10% DOWN AT TIME OF SALE. BALANCE DUE ON OR BEFORE FEBRUARY 15, 2010.

NOVEMBER 3, 2009
2121659

LEGAL NOTICE

SHERIFF'S OF NCC

By virtue of writ of Lev Fac#236 NO., AD., 2009.
PARCEL NO. 11-028.30-037
PROPERTY ADDRESS: 70 RINGNECK PLACE BEAR, DE 19701

ALL that certain lot, piece or parcel of land known as 70 Ringneck Place, being Lot 172 of the subdivision of Fox Run, Phase 1 (said subdivision of record is in the Office of the Recorder of Deeds in and for New Castle County, Delaware Microfilm No. 8886), situate in Pencader Hundred, New Castle County and State of Delaware and being more particularly bounded and described in accordance with a survey prepared by the Pelsa Company, dated January 5, 1989, as follows, to-wit:

BEING the same lands and premises which Stephen W. Maciag and Carla M. Maciag, by Deed dated January 24, 2001 and recorded in the Office of the Recorder of Deeds, in and for New Castle County and State of Delaware, in Instrument # 20010129-0005917, did grant and convey unto Stephen W. Maciag.

SEIZED AND TAKEN IN EXECUTION AS THE PROPERTY OF STEPHEN W. MACIAG.

TERMS OF SALE: 10% DOWN AT TIME OF SALE. BALANCE DUE ON OR BEFORE FEBRUARY 15, 2010.

NOVEMBER 3, 2009
2121701

SHERIFF'S SALE

By virtue of a writ of Alias Lev Fac#300 NO., AD., 2009.
Property address: 2 Hillcroft Road, Newark, Delaware 19711
Parcel No. 09-015.40-034

All that certain lot, piece or parcel of land situate in Windy Hills, White Clay Creek Hundred, New Castle County, Delaware, being part of Lot No. 126, Block G, as shown on the Final Plan of Windy Hills dated March, 1956, and revised December 10, 1956; and more particularly bounded and described according to a recent survey prepared by North Star Surveys, Professional Land Surveyors.

Being the same lands and premises which Garfield Bratcher and Sheila L. Bratcher, by Deed dated January 8, 1999 and recorded January 19, 1999 in the Office of the Recorder of Deeds in and for New Castle County, Delaware in Deed Book 2574, Page 74, did grant and convey unto Harry Benson and Anita Benson.

SEIZED AND TAKEN IN EXECUTION AS THE PROPERTY OF HARRY BENSON AND ANITA BENSON.

TERMS OF SALE: 10% DOWN AT TIME OF SALE. BALANCE DUE ON OR BEFORE FEBRUARY 15, 2010.

NOVEMBER 3, 2009
2121778

SHERIFF'S SALE

By virtue of writ of Lev Fac#206 NO., AD., 2009.
Parcel No.: 11-017.10-044
Property Address: 2 Oak View Drive, Newark, DE 19702

ALL that certain lot, piece or parcel of land with the buildings thereon erected, situate in Pencader Hundred, New Castle County and State of Delaware, known as 2 Oak View Drive, being Lot No. 73 on the Revised Record Major Subdivision Plan of Thornwood, as recorded in the Office of the Recorder of Deeds, in and for New Castle County, Delaware, on Microfilm No. 11599, and being more particularly bounded and described in accordance with a Mortgage Inspection Plan by Zebbley & Associates, Inc., dated July 19, 2001, as follows, to-wit:

Being the same lands and premises which Richard T. Cheung and Erin T. Cheung, did grant and convey unto Erin T. Cheung, by deed dated June 2, 2003 and recorded on June 6, 2003 in the Office of the Recorder of Deeds, in and for New Castle County, State of Delaware, in Deed Instrument 20030606-0068198.

SEIZED AND TAKEN IN EXECUTION AS THE PROPERTY OF ERIN T. CHEUNG.

TERMS OF SALE: 10% DOWN AT TIME OF SALE. BALANCE DUE ON OR BEFORE FEBRUARY 15, 2010.

NOVEMBER 3, 2009
2121662

SHERIFF'S SALE

By virtue of a writ of Lev Fac#210 NO., AD., 2009.
Parcel No.: 11-023.30-047
Property Address: 4 Kildoon Drive, Newark, DE 19702

ALL that certain lot, piece or parcel of land with the buildings thereon, situate in Pencader Hundred, New Castle County and State of Delaware, known as 4 Kildoon Drive, being Lot No. 69, on the Record Major Land Development Plan of Glasgow Pines, as said Plan is of record in the Office of the Recorder of Deeds, &c., in and for New Castle County and State of Delaware, at Wilmington, in Microfilm Record No. 4817, being more particularly bounded and described in accordance with a recent survey prepared by A.E.S. Surveyors, dated April 11, 2001, as follows, to wit:

Being the same lands and premises Frank Isaacs, did grant and convey unto Lesley E. Chung, by deed dated March 27, 2008 and recorded on April 4, 2008 in the Office of the Recorder of Deeds, in and for New Castle County, State of Delaware, in Deed Instrument 20080408-0023152.

SEIZED AND TAKEN IN EXECUTION AS THE PROPERTY OF LESLEY E. CHUNG.

TERMS OF SALE: 10% DOWN AT TIME OF SALE. BALANCE DUE ON OR BEFORE FEBRUARY 15, 2010.

NOVEMBER 3, 2009
2121670

LEGAL NOTICE

SHERIFF'S SALE

By virtue of a Alias Lev Fac#188 NO., AD., 2009.
Parcel ID: 09-023.30-328
Property Address: 120 Kingswood Road, Newark DE 19713

ALL THAT CERTAIN LOT, PIECE OR PARCEL OF LAND, WITH THE BUILDINGS THEREON ERRECTED, SITUATE IN WHITE CLAY CREEK HUNDRED, NEW CASTLE COUNTY AND STATE OF DELAWARE, KNOWN AS 120 KINGSWOOD ROAD, BEING PART OF LOT 337, BLOCK L, ON THE PLAN OF BIRCHWOOD PARK, SECTION 2, AS SAID PLAN IS OF RECORD IN THE OFFICE FOR THE RECORDING OF DEEDS, IN AND FOR NEW CASTLE COUNTY AFORESAID. IN PLAT RECORD 4, PARCEL 24, AND BEING MORE PARTICULARLY BOUNDED AND DESCRIBED IN CORDANCE WITH A SURVEY PREPARED BY MERESTONE CONSULTANTS INC'. DATED JULY 15, 1997, AS FOLLOWS, TO-WIT:

Being the same lands and premises which Nancy clevenger and F/K/A Nancy Dicarlantonio, did grant and convey unto Elaine V. Davis and Rosabell Davis, by deed dated July 31, 1997 and recorded on August 19, 1997 in the Office of Recorder of Deeds, in and for New Castle County, State of Delaware, in Deed Book 2315 at Page 231. SEIZED AND TAKEN IN EXECUTION AS THE PROPERTY OF ELAINE V. DAVIS.

TERMS OF SALE: 10% DOWN AT TIME OF SALE. BALANCE DUE ON OR BEFORE FEBRUARY 15, 2010.

NOVEMBER 3, 2009
2121635

SHERIFF'S SALE

By virtue of a writ of Second Pluries Lev Fac#23 NO., AD., 2009.

LEV FAC #23
PARCEL NO. 09-040.20-292
PROPERTY ADDRESS: 47 SHERIN DRIVE, NEWARK, DE

ALL THAT certain lot, piece or parcel of land with all improvements thereon erected, situate in White Clay Creek Hundred, New Castle County and State of Delaware, known as Lot 578 on the plan of Salem Woods, Phase III, as recorded in, Microfilm No. 10150, Further known as 47 Sherin Drive, and as shown on a Mortgagee's inspection plan prepared by Raymond F. Christian & Associates, Inc., Lands Surveyors, dated July 6, 1994 and being more particularly bounded and described in accordance with a survey prepared by Pelsa Company, dated September 8, 2006, as follows, to-wit:

AND BEING the same lands and premises conveyed unto Andrew Curry, by deed of Robert S. Aellis and Marliese Aellis dated January 10, 2007 and of record in the Office of the Recorder of Deeds in and for New Castle County and State of Delaware in deed Instrument No. 20070110-0002896.

SEIZED AND TAKEN IN EXECUTION AS THE PROPERTY OF ANDREW CURRY

TERMS OF SALE: 10% DOWN AT TIME OF SALE. BALANCE DUE ON OR BEFORE FEBRUARY 15, 2010.

NOVEMBER 3, 2009
2120988

LOST AN ITEM? FOUND AN ITEM?

It's FREE to run an ad in **Chesapeake Classified!** We have great success in returning lost animals and items to their true owners. Call and place your ad today! 410-398-1230 or toll free 800-220-1230 email to classads@chespub.com

Knickknack Paddywack

Give a dog a home

If you have the time and love to give check out the
Cecil Whig Classifieds today! 800-220-1230 or 410-398-1230

CHECK OUT OUR WEBSITE AT WWW.CHEESAPEAKECLASSIFIED.COM



LEGAL NOTICE

SHERIFF'S SALE

By virtue of a writ of Alias Lev Fac#305 NO, AD., 2009.
Property Address: 515 Laurel Lane, Newark, DE 19702
Parcel No. 11-020.30-114

ALL that certain lot, piece or parcel of land with the buildings thereon erected, situate in Pencader Hundred, New Castle County and State of Delaware, known as 515 Laurel Lane, being Lot No. 77 on the Plan of Barrington, as the Plan thereof is of record in the Office of the Recorder of Deeds in and for New Castle County, Delaware in Deed Book 2324, Page 238.

SUBJECT to restrictions of record in the Office of the Recorder of Deeds in and for New Castle County, Delaware in Deed Book 2324, Page 238.

SUBJECT to a maintenance declaration of record in the Office aforesaid in deed Book 2324, Page 227.

SUBJECT to a sewer agreement of record in the Office aforesaid in Deed Book 2261, Page 148; utility agreements of record in Deed Record X, Volume 85, Page 371; Deed Book 2134, Page 99; Deed Book 2197, page 294; and Deed Book 2275, Page 182. Subject, further, to easements and conditions as shown in Microfilm Nos. 12004 and 12961.

BEING the same lands and premises which DAREN A. RICHARDS, by Deed dated November 16, 2007, and recorded in the Office of the Recorder of Deeds in and for New Castle County and State of Delaware, as instrument 20071120-0099900, did grant and convey unto JOSEPH R. MORALES and SAMANTHA MORALES, his wife, in fee. SEIZED AND TAKEN IN EXECUTION AS THE PROPERTY OF JOSEPH R. MORALES AND SAMANTHA MORALES.

TERMS OF SALE: 10% DOWN AT TIME OF SALE. BALANCE DUE ON OR BEFORE FEBRUARY 15, 2010.

NOVEMBER 3, 2009
2121789

SHERIFF'S SALE

By virtue of a writ of Lev Fac#302 NO, AD., 2009.
Property Address: 254 East Flagstone Drive, Newark, DE 19702 Tax Parcel No. 11-015.30-106

ALL that certain lot, piece or parcel of land with the buildings thereon erected, situate in Pencader Hundred, New Castle County and State of Delaware, known as 254 East Flagstone Drive, being Lot No. 106 on the Record Major Subdivis: Plan of Gray Acres, Phase I, as the Plan thereof is of record in the Office of the Recorder of Deeds in and for New Castle County, Delaware in Microfilm No. 10952, and being more particularly bounded and described in accordance with a survey prepared by A.E.S.

Being the same lands and premises which Stephanie Branigin Fried, (formerly known as Stephanie Branigin), by deed dated June 30, 2000, and recorded June 30, 2000, in the Office of the Recorder of Deeds, in and for New Castle County State of Delaware, in Deed Record 2854, Page 172, granted and conveyed unto Pranit K. Pan and Rena M. Pan, in fee.

Being the same lands and premises by which Pranit K. Pan and Rena M. Pan by Deed dated November 30, 2005 and recorded in the office of the recorder of Deeds in and for New Castle County, Delaware as Instrument #20051205-0125749, did grant and convey to Stanley Bak, SEIZED AND TAKEN IN EXECUTION AS THE PROPERTY OF STANLEY BAK.

TERMS OF SALE: 10% DOWN AT TIME OF SALE. BALANCE DUE ON OR BEFORE FEBRUARY 15, 2010.

NOVEMBER 3, 2009
2121783

LEGAL NOTICE

SHERIFF'S SALE

By virtue of a writ of Lev Fac#33 NO, AD., 2009.
Property Address: 13 East Stephen Drive, Newark, DE 19713 Tax Parcel No. 09-022.30-297

ALL that certain lot, piece or parcel of land with the dwelling thereon erected, situate in White Clay Hundred, New Castle County and State of Delaware, and being Lot No. 7, Block 4, on the Plan of Chestnut Hill Estate, as said Plan is recd in the Office for the Recording of Deeds in and for New Castle County, in Plat Records 1, page 13, and being more particularly bounded and described in accordance with a recent survey by The Pelsa Company, dated August 12, 1999

SUBJECT borrower, to covenants, conditions, easements, reservations, restrictions and limitations of record.

SUBJECT FURTHER, however, to the payment of such manual sewer service charges as they may be established by New Castle County, from time to time.

BEING the same lands and premises which Lawrence A. Peischi and Denise M. Peischi, husband and wife, by Deed dated August 31, 1999 and recorded in the Office of the Recorder of Deeds, in and for New Castle County, Delaware Deed Book 2705, Page 90, did grant and convey unto Ralph E. Grant, in fee.

BEING the same lands and premises which Ralph E. Grant, by Deed dated June 23, 2005 and recorded in the Office of the Recorder of Deeds, in and for New Castle County, Delaware, as Deed Instrument 20050916-0095118, did grant convey unto Ralph E. Grant and Deona Grant, husband and wife, in fee.

SEIZED AND TAKEN IN EXECUTION AS THE PROPERTY OF RALPH E. GRANT AND DONNA GRANT

TERMS OF SALE: 10% DOWN AT TIME OF SALE. BALANCE DUE ON OR BEFORE FEBRUARY 15, 2010.

NOVEMBER 3, 2009
2120990

SHERIFF'S SALE

By virtue of a writ of Lev Fac#260 NO, AD., 2009.
Tax Parcel No. 10-039.10-574
Property Address: Eight Spring Drive, Newark, Delaware

BEING KNOWN AND DESIGNATED as all those certain lots, pieces, or parcels of land situate in New Castle Hundred, New Castle County, State of Delaware, Number One Hundred Thirteen Brookfield in Taylortowne, as shown on the Recorded Major Subdivision Plan of Brookfield, said being recorded in the Office of the Recorder of Deeds, in and for New Castle County, State of Delaware in Microfilm Number 12071.

THE improvements thereon being known as 8 Spring Drive, Newark, DE 19702.

BEING the same lands and premises conveyed to Juliet Tabannor, by Deed from Pulte Home Corporation, a body corporate under the State of Michigan, by their Attorney-in-Fact, Paul S. Kotsher (Under Power of Attorney as recorded among the Land Records of New Castle County, Delaware), dated June 29, 1996, and recorded July 31, 1996, in the Office of the Recorder of Deeds, in and for New Castle County, and State of Delaware, as Deed Book 2144, Page 0231.

THE SAID Juliet Tabannor is now known as Juliet Tabannor Williams.

SEIZED AND TAKEN IN EXECUTION AS THE PROPERTY OF JULIET TABANNOR IS NOW KNOWN AS JULIET TABANNOR WILLIAMS.

TERMS OF SALE: 10% DOWN AT TIME OF SALE. BALANCE DUE ON OR BEFORE FEBRUARY 15, 2010.

NOVEMBER 3, 2009
2121716

SHERIFF'S SALE

By virtue of a writ of Alias Lev Fac#220 NO, AD., 2009.
Parcel No.: 10-044.10-033
Property Address: 6 Cynthia Rd, Newark, DE 19702

BEGINNING for the same at a point on the southwesterly right of way line of Cynthia Road, 50 feet wide, said point being a common corner for this Lot and Lot No. 52, and further said point being distant North 23 degrees 04 minutes. West 396.99 feet from the northwesterly end of a 20 foot radius junction curve connecting said southwesterly right of way line of Cynthia Road with the northwesterly right of way line of Clairmont Drive, 60 feet wide; thence fro Lot No. 53, by the common line with Lot No. 52: (1) South 66 degrees 56 minutes 00 seconds West 135.00 feet to a point on the common line with Lot No. 61 thence thereby: (2) North 23 degrees 04 minutes West, 80 feet to a common corner with Lot no. 54 thence by the common line with Lot no. 54: (3) North 66 degrees 56 minutes 00 seconds East, 135 feet to a point on the aforesaid southwesterly eight of way line of Cynthia Road, thence thereby: (4) South 23 degrees 04 minutes East, 80 feet to the point and place of Beginning. Be the contents thereof what they may

Being the same lands and premises which Deutsche Bank National Trust Company as Trustee formerly known as Bankers Trust Company of California, N.A., did grant and convey unto Lonnie M. Prazzo and Roberta A. Prazzo, by deed dated July 9, 2002 and recorded on August 13, 2002 in the Office of the Recorder of Deeds, in and for New Castle County, State of Delaware, in Deed Instrument 20020813-0078364.

SEIZED AND TAKEN IN EXECUTION AS THE PROPERTY OF LONNIE M. PRAZZO AND ROBERTA A. PRAZZO.

TERMS OF SALE: 10% DOWN AT TIME OF SALE. BALANCE DUE ON OR BEFORE FEBRUARY 15, 2010.

NOVEMBER 3, 2009
2121682

SHERIFF'S SALE

By virtue of a writ of Lev Fac#120 NO, AD., 2009.
Property Address: 95 Nursery Drive, Bear, DE 19701 Tax Parcel No. 10-034.10-271

ALL certain piece, parcel or tract of land situate in New Castle Hundred, New Castle County, State of Delaware, be Lot 36, according to the Record Minor Subdivision Plan of Schoolbell Gardens, Section Two as recorded in the Rec of Deeds Office in and for New Castle County, in Microfilm No. 11093 and as per a more recent plan prepared by Ramesh C Batta Associates, P.A., Consulting Engineer and Land Surveyors, Plan No. S6500-A-10524 and more particularly bounded and described in accordance with a survey by East Coast Survey, Professional Land Surveying dated March 19, 1998.

Being the same lands and premises which Difelice, Inc., a Delaware corporation, by Deed dated July 28, 1995, and recorded on July 31, 1995, in the Office of the Recorder of Deeds in and for New Castle County, Delaware, in Deed Book 1956, Page 92, did grant and convey unto Curtis L. Howard and Karen D. Howard, his wife, in fee.

Being the same lands and premises by which Curtis L. Howard and Karen D. Howard by Deed dated March 30, 1997 recorded in the Office of the Recorder of Deeds in and for New Castle County, Delaware as Book 2420, Page 226, c grant and convey to Kdwad A. Wright and Donna R. Wright, husband and wife.

SEIZED AND TAKEN IN EXECUTION AS THE PROPERTY OF EDWARD A. WRIGHT AND DONNA R. WRIGHT.

TERMS OF SALE: 10% DOWN AT TIME OF SALE. BALANCE DUE ON OR BEFORE FEBRUARY 15, 2010.

NOVEMBER 3, 2009
2121086

LEGAL NOTICE

SHERIFF'S SALE

By virtue of a writ of Lev Fac#54 NO, AD., 2009.
PARCEL NO. 09-028-40-093C2202
PROPERTY ADDRESS: 2202 Chelmsford Circle, Newark, DE 19713

All that certain unt of real property existing under an by virtue of the Unit Property Act of the State of Delaware, known as Unit No. 2202 Chelmsford Circle, in Chelmsford, a condominium situate in White Clay Creek Hundred, New Castle County and State of Delaware, as said Unit is more particularly bounded and described in (1) the Declaration of Country Village Apartment,s Inc., a Delaware Corporation, trading as Chelmsford Condominium, dated December 4, 1973, and recorded in the Office of the Recorder of Deeds in and for New Castle County, Delaware, in Deed Record P, Volume 88, page 886; and (1) The Declaration Plan of Chelmsford, prepared by Mann-Talley, Inc. dated August 13, 1973, and recorded in the Office aforesaid on Microfilm No. 2447.

Being the same property conveyed to Joseph W. Brown from Mildred C. Sapp, surviving spouse of armond E. Sapp, and Joseph W. Brown, by Deed dated August 30, 2004, and recorded on September 7, 2004, as Instrument No. 20040907-0099543.

Being the same lands and premises by which Joseph W. Brown by Deed dated February 28, 2008 and recorded in the Office of the Recorder of Deeds in and for New Castle County, Delaware as Instrument No. 20060616-0041505, did grant and convey to Joseph W. Brown and Mildred Sapp.

SEIZED AND TAKEN IN EXECUTION AS THE PROPERTY OF JOSEPH W. BROWN AND MILDRED SAPP

TERMS OF SALE: 10% DOWN AT TIME OF SALE. BALANCE DUE ON OR BEFORE FEBRUARY 15, 2010.

NOVEMBER 3, 2009
2120994

SHERIFF'S SALE

By virtue of a writ of Lev Fac#248 NO, AD., 2009.
Tax Parcel No. 09-023.30-370
Property Address: 109 Flintlock Road, Newark, Delaware 19713

ALL THAT CERTAIN LOT, PIECE OR PARCEL OF LAND WITH THE BUILDINGS THEREON ERECTED, BEING 109 FLINTLOCK ROAD, SITUATE IN WHITE CLAY CREEK HUNDRED, NEW CASTLE COUNTY AND STATE OF DELAWARE, AND KNOWN AS LOT NO. 294, BLOCK J ON THE PLAN OF BIRCHWOOD PARK II, AS SAID PLAN IS OF RECORD IN THE OFFICE FOR THE RECORDING OF DEEDS, IN AND FOR NEW CASTLE COUNTY AFORESAID, IN PLAT RECORD 4, PAGE 24, AND BEING MORE PARTICULARLY BOUNDED AND DESCRIBED IN ACCORDANCE WITH A RECENT SURVEY PREPARED BY EAST COAST SURVEY, PROFESSIONAL LAND SURVEYING OF WILMINGTON, DELAWARE, DATED JUNE 17, 1994.

BEING THE SAME LANDS AND PREMISES CONVEYED TO ELISABEL FOLK BY DEED FROM JESSE L. DIGSBY, EVELYN J. MCMULLEN, HIS ATTORNEY-IN-FACT, DATED JULY 7, 1994, AND RECORDED ON JULY 18, 1994, IN THE OFFICE OF THE RECORDER OF DEEDS, IN AND FOR NEWCASTLE COUNTY, AND STATE OF DELAWARE, IN DEED BOOK 171, PAGE 285.

SEIZED AND TAKEN IN EXECUTION AS THE PROPERTY OF ELISABEL FOLK.

TERMS OF SALE: 10% DOWN AT TIME OF SALE. BALANCE DUE ON OR BEFORE FEBRUARY 15, 2010.

NOVEMBER 3, 2009
2121714

NEED A
HANDYMAN?

OR SOMEONE
TO CLEAN
YOUR HOME?

HOW ABOUT
CHILD CARE?

OR LAWN
SERVICES?

CHECK
OUT OUR
SERVICE
DIRECTORY
EVERYDAY



HELP

WANTED

CHECK OUT
CHESAPEAKE
CLASSIFIEDS
EVERYDAY FOR
THAT NEW
JOB!

Are You Ready To
Fill These Shoes?



Check Our
Classified Pages
Everyday For The
Latest Job Opportunities
Let Chesapeake Classifieds
Work For You!

LEGAL NOTICE

SHERIFF'S SALE

By virtue of a writ of Lev Fac#239 NO. AD., 2009.

PARCEL NO. 11-019.30-055
PROPERTY ADDRESS: 159 TUCKAHOE LANE, BEAR, DE 19701

ALL that certain lot, piece or parcel of land, with the buildings thereon, situate in Pencader Hundred, New Castle County, Delaware being designated Lot 72, as shown on the Record Major Subdivision Plan of The Village of Becks Pond of record in the Office of the Recorder of Deeds in and for New Castle County, Delaware on Microfilm No. 11614 said lot also known as 159 Tuckahoe Lane and being more particularly described by A.E.S. Surveyors.

BEING the same lands and premises which Blenheim Homes, L.P., a Delaware Limited Partnership and Beck's Pond L.L.C., a Delaware corporation, by Deed dated February 26, 1999 and recorded in the Office of the Recorder of Deeds, in and for New Castle County and State of Delaware, in Deed Book 2601 Page 265, did grant and convey unto Dennis R. Thomas and Carleen McConneaughey, in fee.

SUBSEQUENTLY, the said Carleen McConneaughey departed this life on or about April 16, 2004 (Intestate) leaving said property to Dennis Thomas, husband, Walter McConneaughey, her son, Stephanie McConneaughey, her daughter and Craig McConneaughey, her son. (WR 132394) SEIZED AND TAKEN IN EXECUTION AS THE PROPERTY OF CARLEEN MCCONNEAUGHEY, DENNIS THOMAS, WALTER MCCONNEAUGHEY, STEPHANIE MCCONNEAUGHEY, CRAIG MCCONNEAUGHEY.

TERMS OF SALE: 10% DOWN AT TIME OF SALE. BALANCE DUE ON OR BEFORE FEBRUARY 15, 2010.

NOVEMBER 3, 2009
2121704

SHERIFF'S SALE

By virtue of Lev Fac#75 NO. AD., 2009.

Parcel No. 09-030.30-125
Property Address: 1707 Barnaby Street, Newark, DE 19702 Tax

ALL that certain lot, piece or parcel of land with the building thereon erected, situate in White Clay Creek Hundred, New Castle County and State of Delaware, being designated as Lot 71 on the Record Resubdivision Plan of Christiana Village, as the same appears of record in the Office of the Recorder of Deeds in and for New Castle County, Delaware, on Microfilm No. 4260, said lot also known as 1707 Barnaby Street, and being more particularly bounded and described in accordance with a recent survey by AES Surveyors, dated February 6, 2008.

SUBJECT to any and all existing easements, restrictions, limitations, reservations, covenants, and agreements of record, to the extent valid and enforceable.

BEING the same lands and premises which Thomas P. Reilly and Margaret R. Reilly, his wife, by Deed dated March 30, 1981, and recorded in the Office aforesaid in Deed Record D, volume 114, page 77, did grant and convey unto Donald J. Napolin and Laurie Napolin, husband and wife, the party of the first part, in fee.

BEING the same lands and premises which Donald J. Napolin and Laurie Napolin, husband and wife, by Deed dated February 29, 2008, and recorded in the Office aforesaid in Deed Record 20080304-0014718, did grant and convey unto Maurice T. Woody and Jessica M. Woody, husband and wife, the party of the second part, in fee.

SEIZED AND TAKEN IN EXECUTION AS THE PROPERTY OF MAURICE T. WOODY AND JESSICA M. WOODY

TERMS OF SALE: 10% DOWN AT TIME OF SALE. BALANCE DUE ON OR BEFORE FEBRUARY 15, 2010.

NOVEMBER 3, 2009
2121003

SHERIFF'S SALE

By virtue of a writ of Lev Fac#66 NO. AD., 2009.

LEV FAC #66
Parcel No. 08-019.10-048
Property Address: 171 Ramunno Circle Hockessin, DE 19707

ALL that certain piece, parcel or lot of land situate in Mill Creek Hundred, New Castle County and State of Delaware, being Lot 58, as shown on the Record Resubdivision Plan, Belle Terre, as recorded August 27, 1987, in the Office of the Recorder of Deeds in and for New Castle County, State of Delaware in Microfilm 8809.

Being the same lands and premises which Bernard C. Armstrong, Patrick L. Armstrong and Christine S. Armstrong, did grant and convey unto Patrick L. Armstrong and Christine S. Armstrong, by deed dated December 31, 1991 and recorded on January 2, 1992 in the Office of the Recorder of Deeds, in and for New Castle County, State of Delaware, in Deed Book 1272 at Page 40.

SEIZED AND TAKEN IN EXECUTION AS THE PROPERTY OF PATRICK L. ARMSTRONG AND CHRISTINE S. ARMSTRONG

TERMS OF SALE: 10% DOWN AT TIME OF SALE. BALANCE DUE ON OR BEFORE FEBRUARY 15, 2010.

NOVEMBER 3, 2009
2121001

SHERIFF'S SALE

By virtue of a writ of Second Pluries Lev Fac#17 NO. AD., 2009.

PARCEL NO.: 09-028.10-123
PROPERTY ADDRESS: 134 Lynch Farm Drive, Newark, DE

ALL that certain lot, piece or parcel of land with the dwelling thereon erected, situate in White Clay Creek Hundred, New Castle County and State of Delaware, and known as Lot No. 18, Block X, on the Plan of TODD ESTATES, SECTION 4, as said Plan is of record in the Office of the Recorder of Deeds in and for New Castle County, Delaware, in Microfilm Record 723, and being more of particularly bounded and described in accordance with a recent survey by Howard L. Robertson, Inc., Professional Land Surveyors of Wilmington, Delaware dated March 1, 2005.

AND BEING the same lands and premises which Richard Nitto and Nicholas Tsistinas by deed dated March 15, 2005 and recorded in the Office of the Recorder of Deeds in and for New Castle County, Delaware as Instrument No. 20050316-0024886 did grant and convey unto Melissa D. Dougherty, in fee.

SEIZED AND TAKEN IN EXECUTION AS THE PROPERTY OF MELISSA D. DOUGHERTY

TERMS OF SALE: 10% DOWN AT TIME OF SALE. BALANCE DUE ON OR BEFORE FEBRUARY 15, 2010.

NOVEMBER 3, 2009
2120987

PLACE YOUR CLASSIFIED AD
24 HOURS A DAY * 7 DAYS A WEEK
CALL OR EMAIL CHESAPEAKE CLASSIFIED
410-398-1230 or 800-220-1230
www.chesapeakeclassified.com

Boss just step out of the office? Now is the perfect time to check out what is in the **Chesapeake Classifieds** section of your paper or go to **www.chesapeakeclassified.com**



LEGAL NOTICE

SHERIFF'S SALE

By virtue of a writ of Lev Fac#194 NO. AD., 2009.

Parcel No.: 11-02110-022
Property Address: 147 Coopers Drive, Newark, DE 19702.

ALL that certain lot, piece or parcel of land, with the building thereon, situate in Pencader Hundred, New Castle County, Delaware being designated Lot 60, as shown on the Record Major Subdivision Plan of Cooper's Run, of record in the Office of the Recorder of Deeds in and for New Castle County, Delaware on Microfilm No. 9857, said lot also known as 147 Cooper's Drive and being now more particularly described in accordance with a mortgage inspection plan by Zebley & Associates, Professional Land Surveyors dated October 30, 2002, as follows, to-wit:

Being the same lands and premises which Bonnie B. Simpkins, n/k/a Bonnie Sayers, did grant and convey unto Mark A. Mutton, by deed dated March 12, 2002 and recorded on November 13, 2002 in the Office of the Recorder of Deeds, in and for New Castle County, State of Delaware, in Deed Instrument 20021113-0109510.

SEIZED AND TAKEN IN EXECUTION AS THE PROPERTY OF MARK A. HUTTON.

TERMS OF SALE: 10% DOWN AT TIME OF SALE. BALANCE DUE ON OR BEFORE FEBRUARY 15, 2010.

NOVEMBER 3, 2009
2121644

SHERIFF'S SALE

By virtue of a writ of Lev Fac#197 NO. AD., 2009.

Parcel No.: 0805440059
Property Address: 15 LONGVIEW DR

ALL that certain lot or parcel of land with the buildings thereon erected, situate in Mill Creek Hundred, New Castle County and State of Delaware known as lot no. 19, Block C, section I, on the plan of Newkirk Estates prepared by Barnes & McLaughlin Consulting Engineers, and now being or record in the office of the recorder of deeds in and for new Castle County in plat book no. 3, pgs 34 and being more particularly bounded and described in accordance with a recent survey by David G. Williams, professional land survey, dated, July 4, 1988 as follows, to wit:

Being the same lands and premises which Christopher C. Dippel, III and Alison R. Duff, did grant and convey unto Christopher C. Dippel, III, by deed dated October 26, 1998 and recorded on November 12, 1998 in the Office of the Recorder of Deeds, in and for New Castle County, State of Delaware, in Deed Book 2538 AT Page 276.

SEIZED AND TAKEN IN EXECUTION AS THE PROPERTY OF CHRISTOPHER C. DIPPEL, III.

TERMS OF SALE: 10% DOWN AT TIME OF SALE. BALANCE DUE ON OR BEFORE FEBRUARY 15, 2010.

NOVEMBER 3, 2009
2121649

SHERIFF'S SALE

By virtue of a writ of Fourth Pluries NO. AD., 2009.

PARCEL NO.: 11-02630-257
PROPERTY ADDRESS: 24 RED SUNSET DRIVE, NEWARK, DE 19702

ALL that certain land situate in New Castle County, Delaware being known as designated as Lot number twelve (12) as shown on the Record Major Subdivision Plan of Perch Creek 111, said plan being recorded in the Office of the Recorder of Deeds in and for New Castle County, State of Delaware in Microfilm N. 12819. The improvements thereon being known as 24 Red Sunset Drive, Newark, DE. 19702.

BEING the same lands and premises which Pulte Home Corporation, by their Attorney-in-Fact, Stephen E. Anderson, by corrective deed dated February 18, 1998 and recorded in the Office of the Recorder of Deeds in and for New Castle County, State of Delaware in Deed Book 2407, Page 67, did grant and convey unto Donald W. Wilson, Jr. and Angela Wilson.

SEIZED AND TAKEN IN EXECUTION AS THE PROPERTY OF DONALD W. WILSON, JR AND ANGELA WILSON.

TERMS OF SALE: 10% DOWN AT TIME OF SALE. BALANCE DUE ON OR BEFORE FEBRUARY 15, 2010.

NOVEMBER 3, 2009
2121117

SHERIFF'S SALE

By virtue of a writ of Lev Fac#196 NO. AD., 2009.

Parcel No.: 11-042.10-045
Property Address: 209 Pebble Creek Place Bear, DE 19701

ALL that certain lot, piece or parcel of land, with the buildings thereon erected, situate in Pencader Hundred, New Castle County and State of Delaware, known as 209 Pebble Creek Place, being Lot No. 209, on the Plan of Pebblecreek Place, as the Plan thereof is of record in the Office of the Recorder of Deeds, in and for New Castle County in Microfilm No. 11949, and being more particularly bounded and described in accordance with a survey prepared by East Coast Surveys, Professional Land Surveyors, as follows, to-wit:

Being the same lands and premises which Rodney E. McNair and Delessa A. McNair, did grant and convey unto Zaher I. Rattoo, by deed dated September 29, 2006 and recorded on October 3, 2006 in the Office of the Recorder of Deeds, in and for New Castle County, State of Delaware, in Deed Instrument 20061003-0094365.

SEIZED AND TAKEN IN EXECUTION AS THE PROPERTY OF ZAHER I. RATTOO.

TERMS OF SALE: 10% DOWN AT TIME OF SALE. BALANCE DUE ON OR BEFORE FEBRUARY 15, 2010.

NOVEMBER 3, 2009
2121645

NEED A HANDYMAN?

OR SOMEONE TO CLEAN YOUR HOME?

HOW ABOUT CHILD CARE?

CHECK OUT OUR SERVICE DIRECTORY EVERYDAY



LEGAL NOTICE

The following Sentinel Self Storage units will be holding public auctions on Wednesday, February 10, 2010. All sales are cash and final. A \$100.00 cash deposit is required when purchasing a unit.

SENTINEL SELF STORAGE
1919 Clinton Road
Newark, DE 19711
(302) 731-4100

A Public Auction will be held on Wednesday, February 10, 2010 at 10:00 AM. The contents of the following storage units will be auctioned:

Unit 1016: Stuffed chairs, fish tank and stand, fishing equipment, crates, etc.
Unit 1017: Stuffed chairs, fish tank and stand, fishing equipment, crates, etc.
Unit 1018: Stuffed chairs, fish tank and stand, fishing equipment, crates, etc.
Unit 1019: Stuffed chairs, fish tank and stand, fishing equipment, crates, etc.
Unit 1020: Stuffed chairs, fish tank and stand, fishing equipment, crates, etc.
Unit 1021: Stuffed chairs, fish tank and stand, fishing equipment, crates, etc.
Unit 1022: Stuffed chairs, fish tank and stand, fishing equipment, crates, etc.
Unit 1023: Stuffed chairs, fish tank and stand, fishing equipment, crates, etc.
Unit 1024: Stuffed chairs, fish tank and stand, fishing equipment, crates, etc.
Unit 1025: Stuffed chairs, fish tank and stand, fishing equipment, crates, etc.

SENTINEL SELF STORAGE
485 Pulaski Hwy
New Castle, DE 19705
(302) 328-6810

A Public Auction will be held on Wednesday, February 10, 2010 at 1:00 PM. The contents of the following storage units will be auctioned:

Unit #112: Adult Bed-in-a-Bag, Boxes, Pictures, End Table, Record Albums
Unit #113: Adult Bed-in-a-Bag, Boxes, Pictures, End Table, Record Albums

SENTINEL SELF STORAGE
333 E. Lee Blvd
Wilmington, DE 19802
(302) 784-6300

A Public Auction will be held on 2-10-10 at 12:00PM at the above address.

All sales are cash only. All sales are final. The units to be auctioned are as follows:
#101 Jennifer Dyer - Bags, Bed, Box Spring, Mattress, Clothing, Kitchen, TV, Microwave, End Table, Table, Lamp, etc.
#102 Jennifer Dyer - Bags, Bed, Box Spring, Mattress, Clothing, Kitchen, TV, Microwave, End Table, Table, Lamp, etc.
#103 Jennifer Dyer - Bags, Bed, Box Spring, Mattress, Clothing, Kitchen, TV, Microwave, End Table, Table, Lamp, etc.
#104 Jennifer Dyer - Bags, Bed, Box Spring, Mattress, Clothing, Kitchen, TV, Microwave, End Table, Table, Lamp, etc.
#105 Jennifer Dyer - Bags, Bed, Box Spring, Mattress, Clothing, Kitchen, TV, Microwave, End Table, Table, Lamp, etc.
#106 Jennifer Dyer - Bags, Bed, Box Spring, Mattress, Clothing, Kitchen, TV, Microwave, End Table, Table, Lamp, etc.
#107 Jennifer Dyer - Bags, Bed, Box Spring, Mattress, Clothing, Kitchen, TV, Microwave, End Table, Table, Lamp, etc.
#108 Jennifer Dyer - Bags, Bed, Box Spring, Mattress, Clothing, Kitchen, TV, Microwave, End Table, Table, Lamp, etc.
#109 Jennifer Dyer - Bags, Bed, Box Spring, Mattress, Clothing, Kitchen, TV, Microwave, End Table, Table, Lamp, etc.
#110 Jennifer Dyer - Bags, Bed, Box Spring, Mattress, Clothing, Kitchen, TV, Microwave, End Table, Table, Lamp, etc.

SENTINEL SELF STORAGE
200 FIRST STATE BOULEVARD
WILMINGTON, DE 19804
(302) 999-6704

Public auction to be held January 13, 2010 at 11:00 am. The following storage units will be auctioned:

#101 Margaret Nichols Air conditioner, boxes, boxes, fan, hamper, lamp, antiques, etc.
#102 Margaret Nichols Air conditioner, boxes, boxes, fan, hamper, lamp, antiques, etc.
#103 Margaret Nichols Air conditioner, boxes, boxes, fan, hamper, lamp, antiques, etc.
#104 Margaret Nichols Air conditioner, boxes, boxes, fan, hamper, lamp, antiques, etc.
#105 Margaret Nichols Air conditioner, boxes, boxes, fan, hamper, lamp, antiques, etc.
#106 Margaret Nichols Air conditioner, boxes, boxes, fan, hamper, lamp, antiques, etc.
#107 Margaret Nichols Air conditioner, boxes, boxes, fan, hamper, lamp, antiques, etc.
#108 Margaret Nichols Air conditioner, boxes, boxes, fan, hamper, lamp, antiques, etc.
#109 Margaret Nichols Air conditioner, boxes, boxes, fan, hamper, lamp, antiques, etc.
#110 Margaret Nichols Air conditioner, boxes, boxes, fan, hamper, lamp, antiques, etc.

It's Easy!

It's Fast!

It's Local!

Chesapeake Classified,
get fast results!Call and place your ad today!
410-398-1230 or toll free 800-220-1230
email to classads@chespub.com

LEGAL NOTICE

SHERIFF'S SALE

By virtue of a writ of Lev Fac#247 NO, AD., 2009.
Tax Parcel No. 11-033.40-169
Street Address: 17 East Moyer Drive, Bear, Delaware 19701

ALL THAT CERTAIN lot, piece or parcel of land with the dwelling thereon erected, situate in Pencader Hundred, New Castle County, Delaware, being Lot No. 26, (a/k/a No. 17 East Moyer Drive), as shown on the Record Resubdivision Plan of Oakwood, recorded June 29, 1992, in the Office of the Recorder of Deeds, in and for New Castle County, Delaware, on Microfilm No. 11300, and being more particularly bounded and described in accordance with said plan and a survey by B. Michael Cartolano, Inc., Professional Land Surveyor, dated August 13, 1994, as follows, to-wit:

SUBJECT TO Declaration of Restrictions as recorded in the Office of the Recorder of Deeds, in and for New Castle County, Delaware, in Deed Record Z, Volume 90, Page 461; Deed Book 832, Page 146; Deed Book 1309, Page 17.

SUBJECT FURTHER to Amendments of the Declarations of Restrictions as recorded in the Office of the Recorder of Deeds, in and for New Castle County, Delaware, in Deed Record 1170, Page 135 and Deed 1172, Page 149.

SUBJECT FURTHER to a Maintenance Agreement as recorded in the Office of the Recorder of Deeds, in and for New Castle County, Delaware, in Deed Book 1245, Page 248.

SUBJECT FURTHER to an Agreement with Delmarva Power & Light Co. As recorded in the Office of the Recorder of Deeds, in and for New Castle County, Delaware, in Deed Book 1032, Page 304.

SUBJECT FURTHER to an Agreement with Diamond State Telephone Company as recorded in the Office of the Recorder of Deeds, in and for New Castle County, Delaware, in Deed Book 1329, Page 17.

SUBJECT FURTHER to a water agreement as recorded in the Office of the Recorder of Deeds, in and for New Castle County, Delaware, in Deed Book 1509, Page 297.

SUBJECT FURTHER to all restrictions, reservations, covenants, conditions, easements, and agreements of record.

BEING the same lands and premises conveyed to Timothy L. Brown, Sr. and Carmella B. Brown, husband and wife, by Deed from Richard M. Davidson and Mary F. Welch-Davidson, husband and wife, dated March 27, 1998, and recorded in the Office of the Recorder of Deeds, in and for New Castle County, State of Delaware, on March 31, 1998, in Deed Book 2419, Page 146.

SEIZED AND TAKEN IN EXECUTION AS THE PROPERTY OF TIMOTHY L. BROWN, SR AND CARMELLA B. BROWN.

TERMS OF SALE: 10% DOWN AT TIME OF SALE. BALANCE DUE ON OR BEFORE FEBRUARY 15, 2010.

NOVEMBER 3, 2009
2121711

LEGAL NOTICE

SHERIFF'S SALE

By virtue of a writ of Lev Fac#158 NO, AD., 2009.
Parcel No.: 23-003.00-029
Property Address: 316 Vincent Circle, Middletown, DE 19709

All that certain lot, piece or parcel of land situate in the Town of Middletown, New Castle County and State of Delaware, known as Lot 5 as shown on a Record Major Subdivision/Land Development Plan of Middletown Village as recorded on Microfilm No. 13443, and being more particularly bounded and described in accordance With a recent Mortgage Inspection Plan prepared by East Coast Survey, Professional Land & Surveyors, dated August 11, 2004, as follows, to wit:

Being the same lands and premises which Roy E. Dowell and Edie S. Dowell did grant and convey unto Leonard G. Hurtt, Jr., by deed dated August 25, 2004 and recorded on August 27, 2004 in the Office of the Recorder of Deeds, in and for New Castle County, State of Delaware, in Deed Instrument 20040827-0096253.

SEIZED AND TAKEN IN EXECUTION AS THE PROPERTY OF LEONARD G HURTT, JR.

TERMS OF SALE: 10% DOWN AT TIME OF SALE. BALANCE DUE ON OR BEFORE FEBRUARY 15, 2010.

NOVEMBER 3, 2009
2121607

SHERIFF'S SALE

By virtue of a writ of Lev Fac#224 NO, AD., 2009.
PARCEL NO: 1201900188
PROPERTY ADDRESS: 116 Portside Court, Bear DE 19701

ALL that certain lot, piece or parcel of land, with the buildings thereon erected, situate in Red Lion Hundred, New Castle County and State of Delaware, known as 116 Portside Court, and being Lot No 15 as shown on the Plan of Mariner Watch, as said Plan is of record in the Office of the Recorder of Deeds in and for New Castle County and State of Delaware in Microfilm ljto. 12492, and being more particularly bounded and described in accordance with a survey prepared by The PELSA Company, dated September 24, 2008.

BEGINNING at a point on the southeasterly side of Portside Court, at 60.00 feet wide, said point being a common corner for this Lot and lands designated as Private Open Space, and further located the following two courses and distances along the southeasterly side of Portside Court from the southwesterly end of a 25.00 feet radius junction curve joining the southwesterly side of Captains Court, at 50.00 feet wide, and the southeasterly side of Portside Court: (1) along a curve to the right having a radius of 280.00 feet, an arc distance of 93.78 feet to a point of tangency; (2) South 32 degrees 04 minutes 31 seconds West, 20.00 feet to the place of Beginning; thence from said place of Beginning, along lands designated as Private Open Space, South 57 degrees 55 minutes 29 seconds East, 150.00 feet to a point; thence thereby North 32 degrees 04 minutes 31 seconds East, 100.00 feet to the point and place of Beginning, containing within said metes and bounds, 0.3444 acres of land, be the same, more or less.

BEING the same lands and premises which Scan C. Zamerowski and Linda A. Zamerowski, by Deed dated June 9, 2004, and recorded at the Office of the Recorder of Deeds, in and for New Castle County, Delaware, as Instrument No. 20040709-0075929, did grant and convey unto Mary Jen Beach, Grantor herein, in fee.

SEIZED AND TAKEN IN EXECUTION AS THE PROPERTY OF NICOLE GOODWINE & ANGA GOODWIN.

TERMS OF SALE: 10% DOWN AT TIME OF SALE. BALANCE DUE ON OR BEFORE FEBRUARY 15, 2010.

NOVEMBER 3, 2009
2121687

LEGAL NOTICE

SHERIFF'S SALE

By virtue of a writ of Lev Fac#37, NO, AD., 2009.
Property Address: 742 Parkman Drive, Bear, DE 19701 Tax
Parcel No. 12-020.00-164

All that certain lot or parcel of land situated in the Red Lion Hundred, New Castle County, State of Delaware, as shown on a plan entitled "Record Major Subdivision Plan, Red Lion Chase-Phase 2", sheet nos. RP50.01 through RV50.22 prepared by Eastern States Engineering, Inc., Horsham, Pa. 19044, dated December 1, 2004, last revised August 18, 2005, and filed in the New Castle County Clerk's Office on September 29, 2005, Microfilm #200509290099821.

Subject to a 20' Surface Drainage Easement as shown on the above referenced plan.

TOGETHER WITH AND UNDER AND SUBJECT to any rights, restrictions, easements, covenants, reservations, or agreements as described in the Record Major Subdivision Plans of Red Lion Chase, Phase 2, Sheet Nos. RP50.01 through RP50.22, prepared by Eastern States Engineering, Inc., Horsham, PA, 19044, dated December 1, 2004, last revised August 18, 2005 and filed in the New Castle County Recorder of Deeds office on September 29, 2005, Microfilm No 20050929-0099821.

FURTHER UNDER AND SUBJECT to any rights, restrictions, covenants, reservations, utility easements or other easements of record.

BEING part of the same lands and premises which were conveyed unto Hockessin Chase, L.P., by Deed of Dragon Group, LLC, a Delaware limited liability company, also known as Dragon Run Group, LLC, dated September 6, 2006 and recorded September 11, 2006 at Instrument Number 20060911-0086476.

BEING part of the same lands and premises which were conveyed unto Petra Taylor by Hockessin Chase, L.P., dated April 20, 2007 and recorded April 25, 2007 at Instrument Number 20070425-0037304.

SEIZED AND TAKEN IN EXECUTION AS THE PROPERTY OF PETRA TAYLOR

TERMS OF SALE: 10% DOWN AT TIME OF SALE. BALANCE DUE ON OR BEFORE FEBRUARY 15, 2010.

NOVEMBER 3, 2009
2120991

LEGAL NOTICE

SHERIFF'S SALE

By virtue of a writ of Lev Fac#100 NO. AD., 2009.
Parcel No. 11 -006.20-037
Property Address: 109 Kenmar Drive, Newark, DE 19713 Tax

ALL that certain lot, piece or parcel of land with the buildings thereon erected, situate in Pencader Hundred, New C County and State of Delaware, known as 109 Kenmar Drive, being Lot No. 241 on the Plan of Brookside Park, as t) Plan thereof is of record in the Office of the Recorder of Deeds in and for New Castle County, Delaware in Plat Rec Page 79, and being more particularly bounded and described in accordance with a survey prepared by East Coast Sv Professional Land Surveyors.

SUBJECT to restrictions of record in the Office of the Recorder of Deeds in and for New Castle County, Delaware Deed Record W, Volume 52, Page 371 and Deed Record L, Volume 52, Page 447.

SUBJECT to a sewer agreement of record in the Office aforesaid in Deed Record P, Volume 53, Page 115; an utility agreement in Deed Record W, Volume 52, Page 442; and easements and conditions as shown in Microfilm No. 664 Plat Book 2, Page 79.

BEING the same lands and premises which CHRISTOPHER S. VALENTINE and JENNIFER L. VALENTINE, hi: wife, by Deed dated November 11, 2004, and recorded in the Office of the Recorder of Deeds in and for New Castit County and State of Delaware, in Document Number 20041317-0124334, did grant and convey unto CLIFFORD J. ZIMMERMAN and JOY ZIMMERMAN, in fee.

BEING the same lands and premises which CLIFFORD J. ZIMMERMAN and IOY ZIMMERMAN, by Deed date September 28, 2005, and recorded in the Office of the Recorder of Deeds in and for New Castle County and State of Delaware, in Document Number 20050928-0099344, did grant and convey unto Robert L. Usher, in fee.

SEIZED AND TAKEN IN EXECUTION AS THE PROPERTY OF ROBERT L. USHER

TERMS OF SALE: 10% DOWN AT TIME OF SALE. BALANCE DUE ON OR BEFORE FEBRUARY 15, 2010.

NOVEMBER 3, 2009
2121056THE COURT OF
COMMONPLEAS
FOR THE STATE
OF DELAWARE IN
AND FOR NEW
CASTLE COUNTY
IN RE: CHANGE OF
NAME OF
Christian M. Hackett
Petitioner(s)TO
Christian M. Mack
NOTICE IS HERE-
BY GIVEN that
Christian Monyah
Hackett intends to
present a petition to
the Court of Com-
mon Pleas for the
State of Delaware in
and for New Castle
County, to change-
his/her name to
Christian Monyah
MackAlvin Mack
PetitionerDated 12-10-09
np
12/18,25/09/14/10
2119132CHECK OUT
CHESAPEAKE
CLASSIFIEDS
EVERYDAY FOR
THAT NEW
JOB!

WWW.CHESAPEAKECLASSIFIED.COM

Real Services Estate

www.cecilbank.com

410-392-LEND

Call Sandy Feltman or John Ness for all your financing needs

APR 15, 2009

To reserve your space call: Michael Adams

443-245-5031 • 800-220-3311

APR 15, 2009

NOW OFFERING
H1N1 VACCINES
FOR JUST
\$18*

SHE UNDERSTOOD
THERE'S NOTHING TEXTBOOK
ABOUT MY CHILD.

At Take Care Clinics,SM our board-certified Family Nurse Practitioners understand that even though their symptoms might be the same, every patient is different. We take the time to listen and answer your questions to ensure we're treating more than just the illness, we're treating the person who has it. From everyday illnesses to prevention and everything in between, we can take care of that.



Open 7 days a week • No appointment necessary • Most insurance welcome



take care clinic
at select *Walgreens*

BROOKHAVEN
4098 Edgemont Ave

DEPTFORD
1408 Delsea Dr

KING OF PRUSSIA
119 E Dekalb Pike

NEWARK
216 Suburban Dr

NORRISTOWN
699 W Germantown Pike

NORTH WALES
710 North Wales Rd

PHILADELPHIA
7001 Frankford Ave #7027

SICKLERVILLE
590 Cross Keys

WESTMONT
8 Haddon Ave

WILLIAMSTOWN
13 N Black Horse Pike

WILMINGTON
1710 Faulkland Rd

M-F 8am - 7:30pm • Sat and Sun 9:30am - 5:00pm • To see what else we can take care of visit us at TakeCareHealth.com

Patient care services provided by Take Care Health Services,SM an independently owned professional corporation whose licensed healthcare professionals are not employed by or agents of Walgreen Co., or its subsidiaries, including Take Care Health Systems,SM LLC. *Available for patients ages 2+ while supplies last.