



Activities . . .



INTER-FRATERNITY COUNCIL

The Inter-Fraternity Council is the representative regulatory body of the nine national fraternities on campus. Besides its legislative function, the Council initiates and coordinates campus and civic activities designed to give the fraternity man a broad penetration in extra-curricular activities. Among the projects sponsored by the Council are: adoption of a Dutch war orphan, sponsorship of orphans at University athletic contests, promotion of Inter-Fraternity weekend, the Inter-Fraternity Play Bill and Song Festival, and sponsorship of an Orpheus Club concert at Mitchell Hall.

OFFICERS

President	HUGH F. DOUGHERTY
Vice-President	WRAY HUSHEBECK
Secretary	ANDRE KORENYI
Treasurer	GARY GREENSTEIN



Alpha Epsilon Pi

1950; Austin, Budner, Bunin, Engel, Freedman, Galperin, Glassman, Goldman, Greenhouse, Silverman, Spiller. 1951; Chavin, Greenstein, Herold, Guberman, Keller, Kugler, Rosen, Rosen, Slutsky, Stutman, Yucht. 1952; Chamlin, Cherr, Fink, Lagowitz, Lipstein, Rothman. Pledges; Ackerman, Balick, Brett, Cooperman, Cohen, Eisenman, Flamm, Frankfurt, Glick, Goodman, Gross, Isaacs, Jacobs, Keil, Landau, Levy, Lieberman, Nord, Okonow, Pack, Rosenson, Seidel.

The past year has been one of great activity and improvement for the Rho Deuteron Chapter of Alpha Epsilon Pi Fraternity under the capable leadership of Master David T. Bunin.

Improvements to the house got under way as soon as school started in September, when the entire first floor of the house was repainted and redecorated; at the same time the fall pledge class scraped and painted the three-story fire escape. With the beginning of the spring semester a television set was purchased along with a much needed new piano.

In scholarship the Delaware Chapter of A. E. Pi lead all fraternities on the campus for the fifth consecutive semester and received the Alpha Epsilon Pi National Scholarship Award for the second straight year.

A busy two weeks of rushing resulted in the pledging of eighteen men, the largest pledge class in the history of the chapter. Principal pledge tasks were the renovating of the basement, landscaping the lawn and con-

ALPHA EPSILON PI OFFICERS

Master	DAVID BUNIN
Lt. Master	ARNOLD GREENHOUSE
Scribe	ROBERT HEROLD
Exchequer	MARK GOLDMAN

ducting the annual Pledge-Active house party.

The men of the Lion had a very enjoyable social season high-lighted by Inter-Fraternity Weekend, the Fraternity Formal held at the Brandywine Country Club and the Buccaneer's Ball, an annual costume party. Among the other events on the social calendar were nine house parties, the Parent and Son Banquet, a Sunday open house and two picnics.

As usual the men of A. E. Pi were active in all phases of extra-curricular activities, among which were student publications, varsity wrestling and lacrosse, freshman golf, tennis and basketball, baseball managers, various clubs and organizations, and all intramural sports.



1950; Franklin, Hammond, Irwin, Macadam, Rittenhouse, Montague, Symonds, Tynam. 1951; Carter, Edge, Ferry, George, Hoch, Hopkins, Lockerman, Matthews, Mills, Porteus, Soukup, Wollaston, Veazey. 1952; Cranston, Griffin, Long, Taylor, Stewart, MacWright, Williams. Pledges; Baker, Bauerband, Betts, Chance, Chapell, Croney, Duffy, Florino, Gisson, Hammond, Harris, Hess, Hughes, Jones, Myers, Renshaw, Renshaw, Rogers, Russell, Schupp, Scotton, Siegrist, Vansant, Weaver, Wilkes, Wilson, Walker.

Alpha Tau Omega

OFFICERS

Worthy Master	ROLAND M. MILLS
Worthy Chaplain	R. ALAN STEWART
Worthy Keeper of the Exchequer	H. PALMER CARTER
Worthy Keeper of Annals	H. CLARK MacWRIGHT
Worthy Scribe	ROY SOUKUP
Worthy Usher	L. ROBERT HOPKINS
Worthy Sentinel	JAMES O. PORTEUS
Palm Reporter	H. CLARK MacWRIGHT

Epsilon Rho became an active chapter of Alpha Tau Omega, on February 27, 1949, one of the oldest and largest fraternities in the country. The chapter was installed after being a local fraternity, Alpha Sigma Delta, which was originally founded in the Fall of 1949 by James O. Porteus, John R. Symonds, and Burnie R. Waski.

Installed into Alpha Tau Omega on February 27, 1949, were thirty-seven members. Three of the charter members hold advisory capacity: Dr. William Mosher, head of the Chemistry Department; Mr. George Worriow, Director of the University Extension Service; and Mr. Paul Lovett, prominent Wilmington businessman.

Another stride forward was made by the Epsilon Rho Chapter during the Fall semester in the formation of an Alumni Association of Alpha Tau Omega in the State of Delaware. Mr. George Loving, of Wilmington, was elected president of this organization and is

largely responsible for the institution of Alpha Tau Omega on the University of Delaware campus. The Association has grown from a charter membership of one hundred twenty-five members and is very active, participating frequently in chapter functions.

In January, Alpha Tau Omega leased the Evans House, located at the corner of Main Street and South College Avenue, from the University. After necessary renovations and redecorations were made, official open house was held, concurrently with the national Alpha Tau Omega Founders' Day ceremonies.

In April of 1949, the Alpha Taus won the coveted Inter-Fraternity Playbill and Songfest Trophy. There is always a heated battle for this trophy and it never fails to bring an excellent show and a record crowd to Mitchell Hall. During the past semester, the Alpha Taus came back to win the number two trophy: the Cheerleaders' Perpetual Decoration Trophy presented to the fraternity house or dormitory having the best display before the Homecoming Football game of each season.

However, the Alpha Taus have never won any first places in intramural sports, but they participate in practically all. They placed second in the 1950 ATO Inter-Province Basketball League and garnered another second in the University of Delaware Inter-Fraternity Bowling League. The ATO's have just been "also rans" in other leagues, but have profited from the competition.



Delta Tau Delta

1950; Billingsley, Day, Donaghy, Fauerbach, Johnson, Masten, Weekly, Reinicker, Russell, Stevenson. 1951; Burton, Christfield, Conner, Dickerson, Diver, Haley, Morris, Harold, Keithly, Locke, Warner. 1952; Anderson, Hoch, Howell, Milligan, Morton.
Pledges: Allen, Byam, Eglington, Gardner, Hann, Hardesty, Harper, Hartnett, Johnson, Kinnikin, McCauley, McFarlin, Moore, Mueller, Nagy, O'Donnell, Phillips, Pepper, Starks, Van Beek, Zucco.

Delta Tau Delta Fraternity was founded ninety-one years ago at Bethany College, Virginia, by men who felt a need to enrich college life through the companionship of congenial friends, not only because it is instinctive with men to want to associate with those whom they like, but because men develop best in the midst of friends and stimulating surroundings. Today the Fraternity embraces eighty-two chapters located in thirty-nine states, the District of Columbia, and Canada.

The groundwork for the Delta Upsilon Chapter here at Delaware was begun in the fall of 1947, and on October 24, 1948, the local group received its charter from Delta Tau Delta at the impressive installation ceremony held on the campus.

Only three months after this memorable occasion the Delts moved into their new home at 230 East Main Street, which has been the scene of much activity during the past year and a half. Outstanding social events have

DELTA TAU DELTA

President	JEFFERSON WEEKLY
Vice-President	ARTHUR DIVER
Secretary	WILLIAM REINICKER
Treasurer	RICHARD HAROLD
Corresponding Secretary	WALTER KEITHLY

been the Delta Tau formal, the senior sendoff, the Christmas party, and the Inter-Fraternity week-end house party. One of the most enjoyable events of the year was the entertainment of a group of boys from the Ferris School at a basketball game and an ice-cream party held at the house after the game.

Men of Delta Tau Delta are to be found in almost all walks of life here at the university; our membership includes scholars, class officers, athletes, campus leaders, and others whose participation in campus activities makes Delta Tau Delta a constructive adjunct to the University of Delaware.



1950: Adams, Bazela, Bishop, Cannon, Cann, Cassidy, Clower, Cowan, Cranmer, Daley, Dunlap, Fisher, Frederick, Hamilton, Harrington, Harvey, Huff, Kearns, Kelleher, Kuhn, Lukens, Masten, Melvin, Norton, Nutter, Paules, Richards, Vanneman. 1951: Armour, Boyce, Bradford, Cann, Carpenter, Fidler, Gause, Hughes, Leahy, Lezenbey, McNeal, Reardon, Ridings, Schechinger, Schneider, Scotton, Vernon, Wadsworth, Walbeck, Warren, Winter, Withelord, Wright, Wright, Young. 1952: Burch, Carney, Cecil, Davis, Draper, Eggert, Genetta, Harris, Kirkby, Miller, George, Cunningham. Pledges: Anderson, Barrell, Boorse, Buckson, Gordon, Gorman, Hall, Haller, Hearne, Hoffman, Kee, Kinkler, Kruzinski, Martin, Martin, McWhorter, Robbins, Shockley, Smith, Tempone, Utt, Wright.

Kappa Alpha Order

KAPPA ALPHA OFFICERS

President	CHARLES N. MASTEN
Vice-President	ALLAN C. COWAN
Secretary	JAMES F. KEARNS
Treasurer	ROBERT E. YOUNG

In April, 1904, a group of students at Delaware College received the charter which created the Beta Epsilon chapter of the Kappa Alpha Order. This is the northernmost chapter of a fraternity which has confined itself to southern schools, and it was the first Greek letter fraternity to be established on the Delaware campus.

The Kappa Alpha Order was founded at what is now Washington and Lee University in 1865 and under the full approval of General Robert E. Lee, then the president of that university. It is because of his assistance in the formation of the Order that the name of

General Lee is honored today by all men of Kappa Alpha.

The ideals of the fraternity are based on the standards of knighthood, from which the motto "Dieu et les Dames" was adopted. In addition, great stress is placed on the inherent principles of the college fraternity, brotherhood and social and academic development.

At the time of the founding of the Beta Epsilon chapter, the house was located on the northern campus in what is now Purnell Hall. These quarters were relinquished in 1910 for larger accommodations on West Main Street where the chapter remained until 1946, when the present house on Amstel Avenue was acquired.

The members and pledges of Kappa Alpha are active in every phase of life at the University of Delaware. They play a key part in the social life of the University; and they include prominent scholars, athletes, officers of campus organizations, and campus leaders.



Phi Kappa Tau

1950; Anderson, Barwick, Beale, Conway, Green, Jahn, Keyes, Korenyi, Krysiak, Lebegern, Macrum, Megee, Workman, Moore, Reynolds, Runk, Schiltz, Snyder, Wasik. 1951; Bass, Cummings, Davis, Hammond, Lehman, Loomis, McGee, Sauter, Springer, Streithof, Tull, Unangst, Watson, Workman. 1952; Cook, Crothers, Lent, Lytle, Maxwell, O'Day, Scott, Short, Webb, Williams. Pledges; Burpulis, Carey, Clendaniel, Clerc, Coddling, Dickey, Hirt, Hoidal, Howlett, Hoyer, Jones, Kane, Layfield, Leipold, Menser, Moore, Pajerowski, Pirnie, Rashti, Redden, Silva, Vitale, Watson, West, Zappo.

One of 62 chapters of Phi Kappa Tau is Alpha Gamma chapter located at Delaware. The national fraternity was founded forty-four years ago at the University of Miami and the Alpha Gamma Chapter was installed at Delaware in 1924.

This year's most important events, in the way of house improvements, have been the transformation of an ordinary basement to an attractive and atmospheric club room, the addition of television, the purchase of a radio-console, and the reflooring of the first floor.

Phi Kappa Tau strives to broaden the college life of the members by maintaining the traditions of high scholarship, genuine culture, and wholesome fellowship. Scholarship is emphasized strongly, but the members are encouraged, at the same time, to participate in extra-curricular activities, for it is well understood that a well-rounded program and diversified interests promote both the welfare of the individual and of the university. The chapter tries at all times to cooperate with the university of which it is an integral part and to promote the interests of the school.

Members of the fraternity have participated in many campus organizations and activities during the year. Phi Taus have been active in all phases of university sports, whether Varsity, Intramural, or Inter-Fraternity. Organizations such as: Military, Student Government, honor societies, musical groups, and hobby clubs all have their Phi Tau members.

Phi Kappa Tau feels that social activities are also an important part of college life. The big events of the year for the chapter in this line were the Inter-Fraternity formal and Phi Tau weekend. These affairs were supplemented by numerous house parties, the

PHI KAPPA TAU OFFICERS

President	FRANCIS WASIK
Vice-President	EARL B. TULL
Secretary	RALPH BARWICK
Treasurer	COURTNEY CUMMINGS

annual Mardi Gras, the Founder's Day Banquet, and the Alumni Homecoming.

MEMBERS

Eugene Anderson, Ralph Barwick, William Conaway, Courtney Cummings, George Green, Francis Hammond, Carl Jahn, Charles Keys, Andre Korenyi, Henry Krysiak, Charles Lebegern, Allen Loomis, Samuel Macrum, George McGee, William Megee, Donald Moore, John Reynolds, Thomas Runk, Pierre Schiltz, Price Snyder, Charles Streithof, Earl Tull, Harvey Unangst, Francis Wasik, William Webb, Gilbert Workman, Samuel Workman, Gifford Crothers, Boyd Cook, Eugene Lent, James Maxwell, Carl Sautter, John Scott, James Short, Edmund Watson, Richard Williams, William Lehman, Robert Lytle, Frank Springer, George Collins Davis Jr., William Hamilton, John Burpulis, Robert Hirt, Robert Kane, Harry Menser, James Silva, Nicholas Vitale, William West, Arthur Coddling, Robert Clerc.

PLEDGES

Joseph Cann, Robert Lee Carey, Richard Clendaniel, William Dickey, Pat Diodato, Ronald Hoidal, William Howlett, Dave Hoyer, William Hufford, Allen Jones, Walter Leipold, Robert Moore, Richard Nye, William Pajerowski, Joseph Rashti, Robert Redden, Ronald Watson, Joseph Zappo.



1950; Bauer, Bodnaruk, Bonfitto, Coxe, DeBoer, Dukes, Durham, Edmonson, Grubbs, Heyl, Joanedis, Miller, Neal, Overdeer, Sala, Scari, Short, Steinke, Veale, Ward, Welsh. 1951; Burford, Dickens, Dolby, Lewis, Thawley, Torkelson, Wood. 1952; Isaacs, Shannon, Thomson, Wilson.
Pledges; Annett, Arnell, Crompton, Dexter, Hoffecker, Lane, Lockerman, Mundy, Peffer, Prettyman, Rash, Rockwell, Saunders, Schobelock, Ware, Waters, Wheedon.

Pi Kappa Alpha

OFFICERS

President ROBERT COXE
Vice-President HAROLD ISAACS
Secretary GEORGE WOOD
Treasurer WILLIAM WELSH

Pi Kappa Alpha completes another growing year on the campus of the University of Delaware. Delta Eta Chapter is about to acquire its ambition of three years, that of acquiring a house for its members. The new Pi Kappa Alpha house should be ready by the Spring Semester of 1950.

This acquisition of a fraternity dwelling culminates the drive of determined men, men striving to place the name Pi Kappa Alpha up with the other leading campus fraternities. Under the guidance of "Walt" Durham,

S.M.C., "Bob" Cox, I.M.C., Jim Dedman, S.C., and Harold "Shylock" Isaacs, the fraternity has grown from small stature to a position of a leading nature.

Pi Kappa Alpha is very proud of its many engineers. Some fraternities are noted for swimmers, football players, basketball players, but Delta Eta Chapter is the house of engineers. This might account for the high scholastic standing of Pi Kappa Alpha on the campus.

Delta Eta looks forward to succeeding years on the University of Delaware campus. With anticipation and expectation do the members await the day when Pi Kappa Alpha fulfills its dreams of being first in scholastics on the campus faculty lists and first in good fellowship in the hearts of the school's students.



Sigma Nu

1950; Bair, Baird, Berl, Bierman, Budd, Clemens, Craig, Deakyne, Dougherty, Dougherty, duBell, Gallagher, Goldey, Gordon, Grier, Higgins, Hitchens, Karpinski, Mays, McFaul, Peoples, Prettyman, Reburn, Stabler, Van Ness, Watkins. 1951; Ayars, Beiriger, Berl, Carpenter, Carr, Cavanaugh, Cording, Harrison, Higgins, Kumler, Mearns, Moore, Murphy, Norton, Talucci, Tammany, Thomas, Turner. 1952; Baker, Catts, Haines, Jones, Lank, Lloyd, Minehan, Patterson, Ponton, Raidy, Thompson. Pledges; Berl, Brown, Covey, Ester, Evans, Fahey, Forster, Foster, Gove, Guequerr, Haley, Higgins, Hopkins, Kumler, Loose, Mayer, Mayhew, Potocki, Rumer, Runkle, Schultz, Salamone, Sliwinski, Trivits, Truitt, VandePoele, Vane, Wilcox, Willenburg, Wolf.

Sigma Nu Fraternity was founded by three men at the Virginia Military Institute in Lexington, Virginia, in 1869. Since that time the white star has spread out to colleges and universities all over the United States, and it has recently become internationalized with the establishment of a chapter at the University of Toronto. Sigma Nu is now a powerful, deep-rooted organization of over forty-five thousand living members joined together for self improvement and wholesome fellowship.

Since its formation in 1911, the Delta Kappa chapter has held a strong position on the Delaware campus and in the national framework of the Fraternity. The capacious chapter house, erected in 1928 on the northern part of the campus grounds, provides comfortable living quarters for thirty-seven men and a home for all the chapter's activities.

In the past year, members have participated in a large variety of campus activities. Enthusiastic participation in intramural athletics has won for the fraternity trophies for

OFFICERS

Commander	JAMES M. GOLDEY
Lt. Commander	WILLIAM J. GORDON
Recorder	GEORGE H. KUMLER
Treasurer	W. LAWSON CORDING
House Manager	MILMAN E. PRETTYMAN, JR.
Chaplain	SAMUEL J. TALUCCI
Sentinel	WAYNE D. PEOPLES
Marshall	ROBERT K. AYARS
Inter-Fraternity Council Representative	HUGH F. DOUGHERTY
Inter-Fraternity Council Alternate	VICTOR P. BEIRIGER

baseball, track, cross country, and swimming. Among the members are some who have been active in varsity sports with co-captaincies in football and swimming, and members of several honorary organizations on campus.

The chapter attributes much of its strength to unification of spirit and diversification of interests.



1950; Anderson, Baldwin, Beadle, Benzel, Bradley, Burk, Burnett, Deal, DeFiore, Hushebeck, Huston, Miller, Mullin, Pollari, Stoefel, Tyler, Wright, Wolfe. 1951; Barton, Croswell, DiSabatino, DiSabatino, Diver, Fossett, Fouracre, Graves, Hewlett, Groetzinger, Lynan, Kaiser, MacIver, Miller, Pie, Rayner, Riggs, Stewart, Stringer, Walker, Zachow. 1952; Baylis, Browning, Buechele, Gessel, Grier, Lingo, Schlenszig, Shockley, Thompson, Warren. Pledges; Baldwin, Betty, Butler, Byrne, Dalton, Dare, Drazek, Evans, Fisher, Hirst, Joy, Kaiser, Levis, McCarthy, McCurdy, McKibbin, Mitten, Nowland, Rieth, Roseberry, Vallar.

Sigma Phi Epsilon

OFFICERS

President JOSEPH FRANCIS BALDWIN
 Vice-President WRAY STEVEN HUSHEBECK
 Treasurer SPOFFORD JAY BEADLE
 Historian ROGER ALAN GRAVES
 Secretary JOSEPH ANTHONY BRADLEY

Sigma Phi Epsilon has been well represented in campus affairs during the 1949-50 season. Brothers have held leading positions in the Student Government Association, actively participated in Varsity and Inter-Fraternity athletics, and contributed to the publication of the "Review" and "Cauldron".

Sig Ep's again won the Inter-Fraternity Touch Football Cup, after stretching their

winning season to nineteen games. This included a game, which we hope to make an annual event, with our chapter at Muhlenburg.

The Delaphan is again being published monthly by the Brothers to over five hundred alumni of the Delaware Alpha Chapter. It is also distributed around campus relaying news of campus activities and house doings.

The social season includes the Inter-Fraternity Dance, Sig Ep Formal, and many house parties. The Brothers are now working on choral singing, offering entertainment at house parties and preparing for the Inter-Fraternity Play Fest.

The annual Christmas party was held this year for forty-five Newark children. Being greatly aided by the townspeople, the party was a success.



Theta Chi

1950; Thomson, Aldridge, Livizos, Reynolds, Ellis, Owen, Beiser, Bilski, Paris, Lanza, McCarthy, Gillespie, Wood, Gallagher, Mullin, Hauptle, Murray, Silk, Genthner, Stalloni, Salmons, McKenry, Murray, Kirkland, Campbell, Lindenkoll. 1951; Wright, Mattis, Middleton, Williams, Guenveur, Stewart, Perine, Cameron, Tebo, Milner, Laughlin, Webb, Gutheridge, Wells, Dowham, Schenck, Schenck, Miller, Toda, Monahan, Gorman, Grossman, Carzo, Swan, Rosenthal, Kwiatkowski. 1952; Brodhag, Cotoia, Hill, Kedda, Hill, Hughes, Dunn, McWilliams, Miller, Hearn, Kiddoo, McKenna, De Gasperis, Hartman, Butler, Keene, Tease, Waller, Shanon. Pledges: Allen, Barnes, Bonelli, Borton, Carbonetti, Clements, Craber, Cunningham, Czarniecki, Dempsey, DeMuro, Goldberg, Guenveur, Gunther, Heilig, Kenderine, McCarthy, McMullen, McWilliams, Messick, Mueller, Murphy, Owen, Pitman, Schnell, Sherwood, Voegeli, Walter, Zeise.

Founded at Norwich University in 1856, Theta Chi has grown until it is one of the largest and best known fraternities in the nation. Thirty thousand men and eighty-three chapters have, from the time of its inception, proudly fostered the high ideals and traditions of the fraternity. Alpha X's Chapter, which was installed at the University of Delaware in 1923, has paralleled the growth of the National Organization and now boasts sixty-eight active members and five pledges.

With its motto, "Alma Mater first, and Theta Chi for Alma Mater," constantly in mind, the fraternity is striving, with the other fraternities on campus, to bolster school spirit and increase active participation in school activities. Theta Chi is represented on the "Review", in the E-52 Players, in the S.G.A., and on the baseball, basketball, swimming, track, soccer, wrestling, lacrosse, and football teams, plus having members in the religious clubs

THETA CHI OFFICERS

President	WILLIAM D. DOLBY
Vice-President	JOHN E. MILLER
Secretary	STEWART B. JACKSON
Treasurer	WOODROW WILSON BRANNER

and various honorary fraternities. Virtually every brother is actively engaged in some school activity. By encouraging a wholesome and helpful chapter life, Theta Chi hopes to build a series of happy experiences which will become a part of one's memories of college days at the University of Delaware. In addition to many functions, the Bowery Ball and Fraternity Formal are outstanding traditions that help to form those happy memories.

Theta Chi is planning and looking forward to the day when the ground will be broken for its new house; the largest and best equipped on the campus.



Blue Hen Editorial Staff

ALBERT SMITH, Editor-In-Chief

MARGARET HUMPHREYS, Managing Editor

EVERITT SMITH, Photography Editor

ROBERT DONAGHY, Men's Sports

THELMA THOMPSON, Women's Sports

Photography

Jerry Spheen
Ed Howell

Literary

Robert Cohee
Betty Davies
Peggy McGrath
John Millington
Nancy Mustard
Evelyn Van Devander

Features

Henry Galperin
Anne Smith
Beverly Startt
Esther Walls

Sports

Hugh Dougherty
Bill Kutz
Don Kiddoo
Neal Robbins
Tom Runk
Bob Wagner





Blue Hen Business Staff

MARK GOLDMAN, Business Manager
 MARVIN GUBERMAN, Advertising Manager
 ROBERT HEROLD, Sales and Circulation Manager

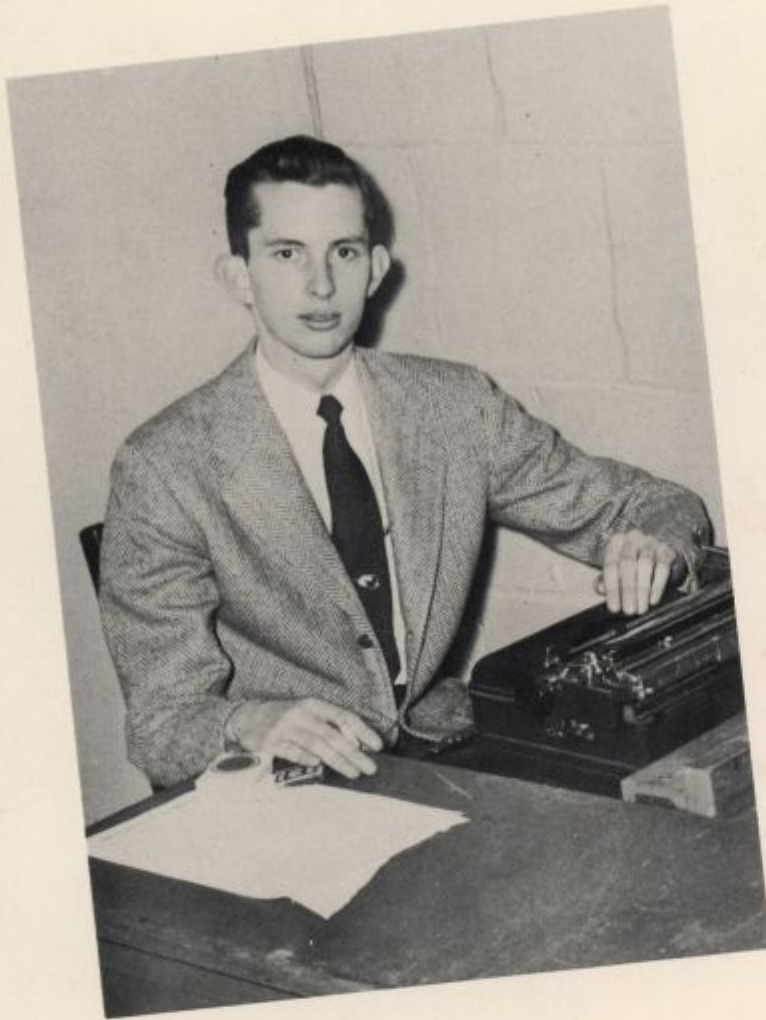
STAFF

KAY ALSTON
 ROSS CAMPBELL
 MANFRED GOLDWEIN
 GARRY GREENSTEIN
 ROBERTA McCLEARY

WILLIAM MAMMARELLA
 BILL MOONEY
 ELEANOR PEARCE
 NANCY PETER

GORDEN PIRNIE
 MARY SAGAN
 BUD STEELMAN
 MARJORIE TEMEN
 CONSTANCE WARREN





Editor-in-Chief—WILLIAM A. HUGHES, JR.
Business Manager—EDWARD ENGEL

Managing Editors Dick Wells and Leslie C. Riggs
Associate Managing Editor B. J. Kinder
News Editor Don Miller
Feature Editor Sue Conway
Sports Editors Fred Harbmann and Ariens McGee
Copy and Headline Editors Molly Bechtel and Bill Vanneman
Exchange Editor Bob Donaghy
Head Typist Bobby Gilliam
Assistant Business Manager Mark Goldman
Advertising Manager Joe Yucht
National Advertising Manager Fred Chavira
Circulation Manager Bob Herold

NEWS STAFF: GI Corrin, Kitty Murphy, Dick Prettyman, Verna Lair, Martha Bevis, Henry Galperin, Bob Cunningham, Jerry Buckson, Will Fisher, Frances Evans.

FEATURE STAFF: Neal Robbins, Don Kiddoo, Jack Jamieson, Eleanor Brown, Diane Kipp, Sally Schwartz, Ginny McQuaid, Edie Lupton.

SPORTS STAFF: Betsy Simon, Carla Glaeser, Alice Gorney, Mary Ann Rehtuss, Mary Keetz, Lois Deiss, Jane Adair, Nancy Thomas, Nancy Mustard.

COPY AND HEADLINE STAFF: Mariene Feinglass, Peggy Joyce McGrath.

REWRITE STAFF: Janet Vinson, Mary Lewis, Polly Sutcliffe.

BUSINESS STAFF: Helen Hnida, Bill Norton, Garry Greenstein, William Mammaricola, Dave Allen, Don Zepp, Dick Armour.

CIRCULATION STAFF: Helen Hnida, Bill Norton, Garry Greenstein, William Mammaricola, Dave Allen, Don Zepp, Dick Armour.

EDITORIAL

In last week's REVIEW a letter from a Delaware student appeared condemning the proposed "University of Delaware development" of the stadium as a detriment to the university students.







The Glass Menagerie

E-52 PLAYERS

The E-52 Players is one of the most active student organizations on the campus. Operating on a basic grant from the Student Government Association, and in cooperation with the Department of Dramatic Arts and Speech, their function is to promote and encourage dramatics at the University.

The season of 1949-1950 constitutes the Player's eighteenth season of dramatic productions. Their work today is a far cry from that of the original group which had its beginning in an English course with the title of E-52.

Mitchell Hall, the home of the Players, has been a virtual bee-hive of activity this season. Last season the Players' final production was Tennessee Williams' "The Glass Menagerie", under the direction of Dr. C. Robert Kase and well-acted by a cast which included Margaret



The Show-Off

Guenveur, Verda Vane, Howard Hitchens, and Robert Niemeyer. During Freshman Week, this year, the Players opened the season with "The Potboilers", under the direction of Robert Niemeyer. For their first major production of the season they presented a modernized version of George Kelly's "The Show-Off", directed by Dr. Kase and with Howard Hitchens heading the cast. Following this production, the Lab Theatre presented its first playbill with "Fixin's", "Minnie Fields", and "The Women", under the direction, respectively, of John Sedwick, Robert Niemeyer, and Adele Nurock. For their second major production of the season, the Players turned to the last of the Restoration dramatists, and, under the direction of Mr. Thomas B. Pegg, presented a memorable production of Sheridan's "The Rivals", with Robert Niemeyer as Bob Acres, Audrey Legge as Mrs. Malaprop, and Elbert Chance as Captain Absolute. The University also had the privilege of meeting Mrs. Delaware Clark, the Lydia Languish of the original performance of the play when it was given, years ago, on this campus. Mrs. Clark, still an active person for her age, came to one of the performances and was made an honorary member of the E-52 Players. After the Christmas Holidays, the Lab Theatre, under the direction of John Sedwick and Robert Niemeyer, presented Josephine Niggli's "Sunday Costs Five Pesos" and Tennessee Williams' "The Case of the Crushed Petunias". Following this production came the high point of the season. After having presented "Again



Hansel and Gretel



It's Yesterday", a musical play by Al Dumaïs, last year, the Players felt that musical comedies had a definite draw at the University. It was with this idea in mind that they made the wise choice to present Bruce Laird's "Party Line", a musical comedy with politics as its central theme. Using the best dramatic and musical talent on the campus, the cast boasted such names as Alan Stewart, Elbert Chance, Vivian Woodrow, Parke Perine, Mae Jane Singer, and Betty Jean Kinder, a performance was given which made both the campus and neighboring cities sit up and take notice. A personal triumph was achieved by Jane Good as the negress bar-fly in the moving Harlem scene. The direction of Dr. Kase, and Frank Buck, the sets and lighting of Spofford Beadle, and the music and lyrics of graduate student Laird received rave notices in the local papers. For the first time in the history of Mitchell Hall the S.R.O. sign was hung out and the people came in spite of it. Following this production came the Annual Children's Theatre presentation, "The Princess and the Swineherd" under the direction of Mr. Pegg. In the cast were Audrey Legge, Robert Niemeyer, and Vivian Woodrow. This year the Players presented ten performances in their three and one half days on the road. For their final production, as was the case last year, the Players have turned to Tennessee Williams and will present his latest play, "Summer and Smoke".

The Players are very enthusiastically looking forward to the '50-'51 season since Mitchell Hall will undergo a \$50,000 face lifting this summer. Various improvements of the building will be undertaken. Of these, the most outstanding will be the installation of a new \$22,000 electronic switchboard, designed by George C. Izenour of Yale. This instrument is the latest and last word in lighting equipment. Mitchell Hall will be the fourth theatre in the country to have so modern a system. The others are in the Theatres of Yale University, Carnegie Tech, and the Goodman Memorial Theatre, Chicago.



E-52 PLAYERS OFFICERS

President	FRANK BUCK, JR.
Secretary	POLLY SUTLIFF
Treasurer	JOHN B. MACFARLAND

PRODUCTION STAFF FOR E-52 PLAYERS

Play Selection and Casting	John Sedwick
Business	Dick Harold
Publicity	Kay Alston
Stage Manager	Bill Hill
Properties	Adele Nurock
Costumes	Polly Sutliff

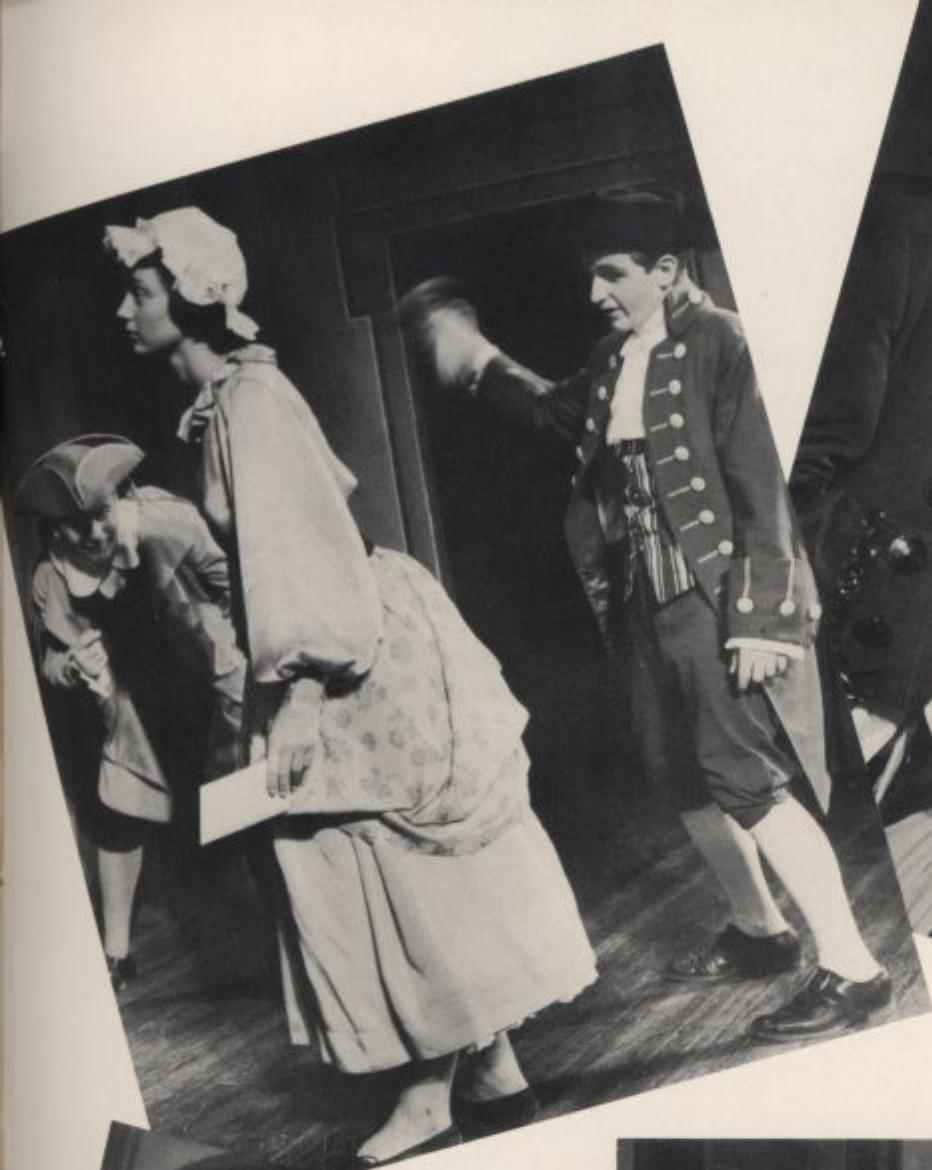
Scene Construction	George Knighton
Lighting	Bob MacFarland Ted Marshall
Sound	Bill Hearn
Make-up	Mary-Kit Reis
Scene Painting	Edith Branin
Prompting	Jill Myers
House Manager	Tom O'Donnell



Party Line







The Rivals



AMERICAN CHEMICAL SOCIETY

The University of Delaware chapter of the Student Affiliates of the American Chemical Society was organized in 1940 for undergraduate students majoring in chemistry or chemical engineering. The organization offers students anticipating a career in chemistry an opportunity to become familiar with the chemical world by hearing expert lecturers in various phases of chemistry, by making field trips to chemical plants, by attending meetings of the local Society section, and by subscription to chemical magazines and journals.

This spring the Delaware chapter will be host for the Intercollegiate Student Chemists Convention.

Officers: President, Daniel Nathans; Vice-President, Peter Landskroener; Recording Secretary, Doris Dowie; Corresponding Secretary, Lois Streithof; Treasurer, Roberta McCleary.

AMERICAN INSTITUTE OF CHEMICAL ENGINEERS

To promote understanding of industrial practices on the part of engineering students, the American Institute of Chemical

Engineers has authorized the foundation of student Chapters at universities throughout the nation. These men impart to the embryo engineers their experiences in the present chemical world. Following their lecture the speakers hold open forum and the students question them on various aspects of the particular fields the young engineers are interested in. Delaware is fortunate in having one of the leading schools of Chemical Engineering in the world and it has taken quick advantage of the opportunity to form a Student Chapter of the American Institute of Chemical Engineers.

Monthly meetings are held for the student members and leading industrial men are obtained as speakers at these meetings. Membership in these Chapters enables a student, thus, not only to become more familiar with the practical aspects of Chemical Engineering, but he may acquire a sense of fellowship, ethics, and professional pride from his associates, all of which are great attributes to the Chemical Engineer.

Officers: President, John Ward; Vice-President, Henry Holmes; Secretary, Louis Sala; Treasurer, Clarence Skeeter.





A. I. OF ELECTRICAL ENGINEERS AND INSTITUTE OF RADIO ENGINEERS

During the past year the student branch of the American Institute of Electrical Engineers formed a joint organization with the Institute of Radio Engineers so that its members might have more ample opportunities to develop their potential abilities in the expanding fields of electrical engineering. The joint student branch functions under the auspices of its parent organizations, and follows similar procedures in the fulfillment of its objectives.

It is the purpose of the organization to supplement the student's classroom work with further mental and spiritual development and inspiration, and to prepare him for entering into active participation with the parent society following graduation.

These objectives are fulfilled by such activities as technical meetings, at which eminent men of the engineering profession speak, inspection trips to points of engineering interest, student paper presentations, social functions, and providing the opportunities for the development of a cooperative spirit of fellowship with colleagues and society.

Officers: Chairman, Joseph J. Alexander; Vice-Chairman, Everett W. Cranmer; Secretary, A.I.E.E., Robert H. Overdeer; Secretary,

I.R.E., Charles A. Hill; Treasurer, Robert R. Steward, Jr.; Counselor, Prof. Harry S. Bueche.

AMERICAN SOCIETY OF CIVIL ENGINEERS

The Student Chapter of the American Society of Civil Engineers is serving the purpose of acquainting students, who have chosen this field of endeavor, with the job opportunities and the duties they will involve, through the medium of speakers, and movies, and field trips to various industrial activities.

Speakers of interest during the last year have been Mr. Homer Seely, Engineer in charge of construction of the Delaware Memorial Bridge, Mr. Topping of the DuPont Company, and Prof. Hanson of the University of Delaware staff. Movies we have enjoyed have been provided by Bethlehem Steel Company and those brought by Mr. Seely and Mr. Topping. Our field trips have been to the Delaware Memorial Bridge and to Bethlehem Steel Plants.

This spring the University of Delaware chapter will be host to the regional spring conference.

Officers: President, Harry S. Stanton, Jr.; Vice-President, Milne Schmid; Secretary, Wallace McFaul, Jr.; Treasurer, James Alexander.





TAU BETA PI

The present chapter of Tau Beta Pi consists of thirty-four undergraduates among whom are represented all branches of engineering.

The most recent major activity of Tau Beta Pi was the organization and administration of a faculty rating poll through which all engineering faculty members were evaluated by the students. A code system was used to tabulate the results so that the rating of any particular teacher relative to the entire engineering staff remained unknown to everyone except the teacher himself.

The chapter holds regular monthly meetings which encourage the presentation and discussion of plans designed to aid and promote engineering education.

Among the other activities of the fraternity during the past year were a spring picnic outing and the annual spring and fall initiation banquets which are held at the Commons and Hob Tea Room respectively.

Officers: President, Robert T. Van Ness; Vice-President, Ronald N. Bykowski; Corresponding Secretary, Robert I. Richards; Recording Secretary, James S. Kline; Cataloguer, Ernest J. Henley.

AMERICAN SOCIETY OF MECHANICAL ENGINEERS

The Student Branch, which now has a membership of 158, was established at the University of Delaware by the American Society of Mechanical Engineers Council on March 29, 1929.

The years' program consisted of monthly meetings and a field trip each semester. The meetings included talks by practicing engineers, films on engineering subjects, papers by student members, open panel discussion of student problems, and a joint meeting with the Wilmington Sub-section. The field trips were to industrial plants in the Pennsylvania, Delaware, and Maryland area.

Together with the AICHE, AIEE, and ASCE, the ASME sponsors the Engineers' Ball.

Officers: Chairman, Edward H. Elliott; Vice-Chairman, Albert G. McCauley; Treasurer, Benjamin E. Herring; Secretary, Richard C. Higgins; Honorary Chairman, Edward C. Lawson, Jr.





UNIVERSITY RELIGIOUS COUNCIL

The University Religious Council is composed of representatives from all religious organizations on campus. The council considers problems common to all clubs and encourages cooperation wherever desirable among the clubs.

Member organizations are: Alison Associates, Canterbury Club, Hillel Foundation, Inter-Varsity Christian Fellowship, Newman Club, and Wesley Club.

Officers: Chairman, Dr. Vincent E. Parker; Co-Chairman, Berwyn Fragner; Secretary, Earl B. Tull; Executive Secretary, Herbert Finch.

INTER-VARSITY CHRISTIAN FELLOWSHIP

The Delaware Inter-Varsity Christian Fellowship is an interdenominational organization of Christian college students who are seeking to witness the reality of the Lord Jesus Christ. It is one of the many chapters of the international organizations whose student movement is located on the campuses of colleges in fifteen different nations.

The three-fold emphasis of the Inter-Varsity Christian Fellowship is aimed to help the student spiritually through a personal relationship with Jesus Christ; through prayer; and through a well-directed study of the Word of God.

Officers: President, John Macadam; Vice-President, Tom Newman; Secretary, Barbara Thompson; Treasurer, Jim Kline.





THE ALISON ASSOCIATES

The aim of the Club is to study Presbyterian beliefs and doctrine and other subjects pertaining to Presbyterianism. During the past year, the Club has had many interesting speakers, including a missionary to China. The program committee also showed motion pictures obtained from the National Board of Missions in New York concerning restoration in Europe.

The social activities include such "get-togethers" as skating parties, a Halloween party, and a Christmas party. We are looking forward to many new activities in the Spring, especially our big Spring picnic which will be held sometime in May.

Officers: President, Arlene McGee; Vice-President, Joe Lank; Secretary-Treasurer, Richard Foster.

THE CANTERBURY CLUB

The Canterbury Club is composed of all Episcopal students at the University of Delaware. The club usually meets at the Rectory on Amstel Avenue for its meetings on every other Tuesday.

This year the Canterbury Club has embarked on a new type of program, the Supper meeting. A series of supper meetings held in the fall proved highly successful in promoting congeniality, and, startling as it seems, intellectual thought. The latter is due mostly to the excellent series of discussions on Christian Psychology led by Dean Mosley of the Cathedral of St. John.

Other programs included an inside scoop on the European D.P. problem by Mr. John Hensing, a Dutch interpreter with the U.S. Army, and an eye witness report of the Episcopal General Convention by Mr. Robert Downs, a delegate to the convention, and a vestryman of Christ Church, Greenville. The usual week-day Eucharist, inaugurated last year is continuing and proving an invaluable devotional aid.

The group is deeply indebted to Bishop McKinstry for his gracious support, and to the Rev. Theodore L. Ludlow for his untiring work and faithful guidance.

Officers: President, Jim Short; Vice-President, Jane Kitchen; Secretary, Dottie Keon, Treasurer, Bill Hearn; Chaplain, Rev. Theodore L. Ludlow.





NEWMAN CLUB

The mantle of the illustrious Cardinal Newman reaches the University of Delaware campus through the religious club for Catholic students which bears his name. The purpose of the club is threefold: religious, intellectual, and social. The club is under the direction of the officers, the executive committee, and a faculty advisor—a position which for the last three years has been held by Miss Cecilia Tierney.

In addition to regular weekly meetings, which alternate between religious discussion and combined business and social gatherings, the Club sponsors the Harvest Hop, two Communion breakfasts, a mission, two picnics, and was represented in intramural sports in both girls' and boys' basketball. The Club's Christmas and St. Patrick's Day gatherings are campus events.

Leadership is developed here on the campus and is then displayed in the Middle Atlantic Province, which extends from Pennsylvania to Virginia, and at the National Federation Conventions, which are generally held in the mid-West. An office is maintained by the Club which serves as a gathering place during the week and as an office for the chaplain.

The Newman Club is a living testimony to its great patron, Cardinal Newman, in developing spiritually strong and mentally aware Catholics.

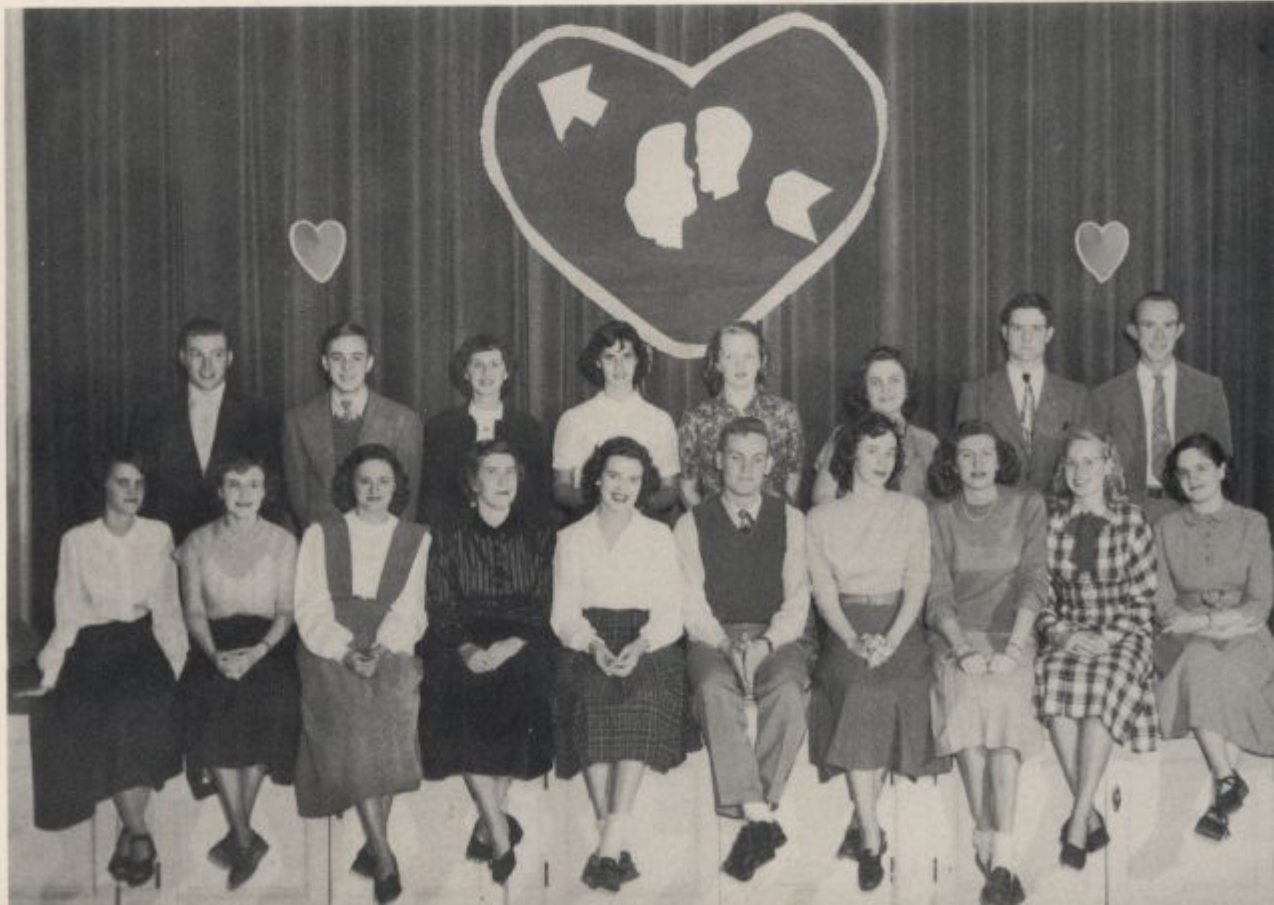
Officers: President, Stan Bilski; Vice-President, Eugene Daugherty; Recording Secretary, Marjorie Nuding; Corresponding Secretary, Marie Therese Hutchinson; Treasurer, James McFadden; Faculty Moderator, Cecilia V. Tierney.

WESLEY CLUB

The Wesley Club is the organization on campus of Methodist students and their friends. The purpose of the organization is to continue and strengthen the students' contact with the church and to bring a deeper realization of its importance.

This year marked the fourth year of the club as a functioning group. There is an active membership of about fifty-five and this number is increasing rapidly. Some of the club programs and activities include an annual Christmas Play and Party, a Third Annual Spring Bouquet and numerous seasonal parties. Weekly programs included guest speakers, religious movies, debates and panel discussions on pertinent contemporary matters.

Officers: President, Mary Beth Williams; Secretary, Teel Dunn; Treasurer, Alex Zabenko.





DELAWARE STUDENT TEACHERS ASSOCIATION

The Delaware Student Teachers Association is made up of undergraduates from several schools of the University. Membership, which now totals higher than at any previous time, is open to anyone who is interested in teaching.

Two of the highlights of this year's Chapter were an invitation to participate in the State Education

Convention and a panel discussion at which student teachers considered the different problems which members would meet. In addition, plans were also made to have exchange programs with neighboring colleges.

Officers: President, George Glynn; Vice-President, Barbara Wood; Secretary, Ursula deMarie; Treasurer, Grace Walker; Librarian, Nancy Wills; Class Representatives, Herb Morris, Jane Hock, Betsy Simon.



THE HILLEL COUNSELORSHIP

The Hillel Counselorship of the University of Delaware represents the Jewish community within the college community. Its program, which is under professional direction for the guidance of Jewish students, is rounded out to provide cultural and social as well as educational and academic development. Its aim is to prepare Jewish youth for participation in Jewish life.

Hillel, as the Jewish college community, is, therefore, a volunteer organization open to all—for the benefit of the college community, the American community, and Judaism as a whole.

Officers: President, Marcia Salkind; Vice-President, Norman Glassman; Treasurer, Berwyn Fragner.



HOME ECONOMICS CLUB

All Home Economic students are members of the Home Economics Club and all Home Economic faculty members are honorary members. Our activities are planned around the purposes of the club which are: (1) to promote the feeling of fellowship and unity among the students of the School of Home Economics; (2) to furnish an opportunity to participate in social functions, such as programs, teas, picnics for club members; (3) to keep the students in touch with recent developments in the field; (4) to acquaint members with professional opportunities; (5) to promote foreign fellowship; and (6) for a better understanding between students and faculty.

An outstanding event of the year was an Open House for interested high school girls of Delaware. The Home Economics and Agriculture Clubs have held several joint meetings in order to become better acquainted; we also have annually a picnic in the spring at the College Farm. The two clubs published a magazine entitled "The Needle and Haystack".

Officers: President, Jean Meredith; Vice-President, Janet Fisher; Secretary, Charlotte Swanson; Treasurer, Collie McKelvey; Program Chairmen, Barbara Shaler, Betty France; Publicity, Milene Clark; Colhecon Reporter, Ann Fogelman; S.G.A. Representative, Barbara Thompson; Faculty Advisor, Miss Anne Murphy.

THE AGRICULTURAL CLUB

The Agricultural Club is proud of claiming the distinction of being the oldest and largest student organization of the Delaware campus. It is the endeavor of the club to stimulate a close relationship among the faculty and students, to present to the student a broad view of the field of agriculture, and to introduce prominent personages of the agricultural profession.

Social events held annually include a formal dance and picnic held in cooperation with the Home Economics Club, and a Father and Son Banquet. In the future, plans call for greater cooperation with the Home Economics Club along with a joint publication of a monthly magazine, "The Needle and Haystack".

Officers: President, Eugene Anderson; 1st Vice-President, George McGee; 2nd Vice-President, James Maxwell; Secretary, Frank B. Springer, Jr.; Treasurer, Edwin Ely; Editor, Melvin Luff; Senior Representative, Charles Steinke; Junior Representative, Charles Wesley Webb; Sophomore Representative, Joseph Mitchell; Freshmen Representative, William Luff; Social Chairman, Frank Miller.





VARSITY CLUB

The Varsity Club of the University of Delaware is an organization of lettermen from among the eleven varsity teams on campus. Aimed at the promotion of sports and sportsmanship among both varsity and intra-mural teams and the overall promotion of school spirit, the Varsity Club was founded on campus in 1946.

An annual feature of the Club's activities centers around the mid-winter banquet, and this year Mr. Robert Geasey, Director of Public Relations at Temple University, was the guest speaker. An annual variety show and a colorful initiation are among other highlights of the Varsity Club activities.

Officers: President: Leo Mullin; Vice-President, Bill Gordon; Sec-

retary, Jack Miller; Treasurer, Frank Lanza; Sergeant-at-Arms, Bill Murray.

THE SOCIETY OF SCABBARD AND BLADE

The Society of Scabbard and Blade is the local chapter of the national honorary military society. It is composed of advanced R.O.T.C. students and staff members of the Department of Military Science.

The Society sponsors the annual Military Ball, a highlight of the spring social season.

Officers: President, James McFadden; 1st Lieutenant, Tom Silk; 2nd Lieutenant, Dick Prettyman; 1st Sergeant, Sam DeBoer.





STUDENT GOVERNMENT ASSOCIATION

The Student Government accomplished much this year due to its energetic membership and through the encouragement and efforts of the following: President Carlson, who always displayed a genuine concern for students and their problems; Mr. Milton Roberts, the Coordinator of Student Affairs; Mr. Charles Grubb, the Business Administrator; Mr. Harold Chase, Faculty Advisor to the Student Government Association.

The installation of the soda fountain in the basement of the Library represents the greatest accomplishment of the year. This has been one of the outstanding needs of the campus, and has been an enterprise which is at present entirely under the responsibility of students. Another innovation during the past year was the institution of Freshmen-Sophomore Day, on which the Freshmen, if successful in overcoming the Sophomores in athletic events, win the right to do away with Freshmen regulations one week before the end of the official hazing period.

Another tradition, it is hoped, is being established is the institution of a Delaware Day, on which all students who are interested are invited to visit the campus for a pre-Freshmen conference to acquaint them with college life.

A major accomplishment is marked by the revision of the S.G.A. Constitution which has culminated in close attention to the student budget. At the beginning of the year, the S.G.A. drew up its budget from the estimate submitted by the different organizations, together with recommendations from last year's group. This is probably one of the most difficult jobs attempted, and the effort was made to be as equitable as possible in making allotments. Based on the expenditures of this year, the Student Government will be prepared to meet next year's demands in the one way fair to all students and organizations, and thus to establish a firm policy in its relationship with all aspects of campus institutions and activities.

Officers: President, Wray Hushebeck; Vice-President, Jane Raymond; Treasurer, Joseph Bradley; Secretary, Lois Deiss.

THE MUSIC CLUB

The University Music Club was organized in the Fall of 1949. A nucleus group of students associated with the Music Department formed this organization to offer musical experiences to all of those interested. In the formation of the Club, two aims were kept in mind: To enable all interested to meet for the pure enjoyment of music; through promotion of musical activities, to gain recognition by a national music organization on the Delaware campus.

To encourage interest, meetings are held monthly and varied types of musical programs are presented to provide a variety of pleasant musical experiences. Membership is open to all interested sincerely in good music.

Officers: President, Francis Green; Vice-President, Maida Frye; Secretary, Barbara Bowers.



THE ART CLUB

The University Art Club is composed of a mixed group of Art majors, students, and faculty members interested in the field of fine arts. The club meets informally once a month to see and discuss examples of art. There have been several interesting speakers during the past year: among these were Miss Edith Mitchell, State Supervisor of Art Education, and Mr. Frank Sommer, University instructor, who spoke on the subject of Modern Art. Mr. Jon G. Govatos, Jr. also spoke to the group on the subject of Contemporary and Traditional Interiors.

As one of the projects for the year, the Art Club presented a student loan collection of paintings to the University of Delaware, selected by the Cultural Activities Committee.

We sincerely thank Miss Jean Gardner, our faculty advisor, for her help and enthusiasm throughout the year.

Officers: President, Mary Coleman; Vice-President, Bob Burke; Secretary-Treasurer, Barbara Purse; Faculty Advisor, Miss Jane Gardner.





THE ECONOMICS CLUB

The Economics Club is made up of a group of students, without regard to the course which they are taking, who are interested in economics and business administration. The Club meets about once each month for a business meeting, sponsors trips to nearby industrial plants and offices that are of interest to its members, and obtains sponsors to talk to the Club about current issues.

The Club is run by and for students, but has been fortunate in having Mr. Bernard Clyman of the Economics Department as its guiding hand. He was elected by the members to serve as faculty advisor to the Club.

Officers: President, James Morris; Vice-President, Eugene Dougherty; Secretary, Robert Donaghy; Treasurer, Richard Harold.

MATHEMATICS CLUB

The Mathematics Club gives to interested students additional opportunities outside the classroom for the enjoyment of Mathematics for its own sake. Topics in pure and applied mathematics are discussed, frequently from points of view different from those taken in the classroom. Program participants are members of the faculty, the student body, or speakers from outside. One of the club traditions is the annual presentation of a book on some mathematical topic designed for general reading to the Memorial Library of the University. Membership in the club is open to members of all classes, the main qualification being "mathematical curiosity".

Officers: President, Nancy Peter; Vice-President, Neal Rothman; Recording Secretary, Patricia Reybold; Corresponding Secretary, Donald Clark; Social Chairman, Doris Lohan; Faculty Advisor, Edith A. McDougle.





PHILOSOPHY CLUB

As the result of an impulse that has long been felt on the Delaware campus, the Philosophy Club finally became a reality this past fall. It is composed of a small number of students who are concerned with philosophical problems in general, but whose major interest is reflected in the desire to discuss contemporary developments in science and education as well as in philosophy, and to determine their relative significance. Students may also present their own papers for general discussion, and members are encouraged to participate freely in the exchange of ideas with their professors and fellow students.

Officers: President, Howard Handelman; Vice-President, Daniel Nathans; Secretary-Treasurer, Margaret Humphreys.

PSYCHOLOGY CLUB

The Psychology Club, as of this year, has opened its membership to all interested students of the University. Its purpose is to encourage, stimulate, and maintain the interests and scholarship of the members in all academic fields and particularly in psychology. To accomplish these aims, the Club has speakers, motion pictures, and symposiums included in the agenda of monthly meetings.

Through the efforts of this Club, Psi Chi, the honorary psychology society, was established on this campus this year.

Officers: President, Robert Rosenberg; Vice-President, Marcia Salkind; Secretary-Treasurer, Henry DuPont; Member-at-Large, Arnold Freedman.





THE SOCIOLOGY CLUB

The Sociology Club brings together interested students and acquaints them with the various aspects and problems in the field of sociology. Since its organization a year ago, the Club has undertaken several minor field trips to state institutions as well as instituting an annual field trip to New York City, its courts, prisons, slums, and night life. Along with entertaining such visiting scholars as Dr. Margaret Meade and Dr. Chase, it is at present doing occupational and graduate school research to help students find jobs and the best graduate schools. To further friendly faculty-student relations, a "Kaffee Klatsch" has been instituted once a week to discuss any pressing problems pertaining to sociology. This is in addition to regular monthly meetings with workers in the fields of social work, criminology, and sociology.

Membership is open to all. At present there are thirty-six members.

Officers: President, Thomas Runk; Vice-President, Joseph Connell; Secretary, Esther Rowley; Treasurer, Dorothy Keon.

SPANISH CLUB

The Spanish Club, El Patio, was initiated on the Delaware campus during the past year. Membership includes both students of Spanish and those who are interested in the language.

El Patio's objectives are to familiarize members with the way of life of the Spanish-speaking countries, and, through informal discussion, to encourage them to speak Spanish. The past year's activities have included a Christmas party, the showing of Mexican lantern slides and the singing of songs in traditional Latin American spirit.

Officers: President, Barbara Gillam; Vice-President, Jane Forman; Secretary, Jane Reigart; Treasurer, Leah McAlister; Faculty Advisor, Mr. Tirado.





ALPHA PHI OMEGA NATIONAL HONORARY SERVICE FRATERNITY

The purpose of Alpha Phi Omega is to assemble college men in the spirit of the Boy Scout Oath and Laws. Only men who have been Boy Scouts or Scouters are eligible for membership. This is a service fraternity, having two hundred one chapters, and its aims are: service to the faculty and students of the University; service to youth and the community; service to the nation as participating citizens.

The Organization has provided ushers for conventions and conferences; helped officials at track meets; sent needy Boy Scouts to summer camp; and worked, clearing land, etc., on a program to improve facilities at the Rodney Scout Camps, Northeast, Maryland. At present plans are being completed for the operation of a student used book exchange.

Officers: President, Wayne Peoples; Recording Secretary, Karl Walbeck; Vice-President, Berwyn Fragner; Treasurer, Dale Harrison; Historian, Howard Starzman; Alumni Secretary, Frank DuBell.

ALPHA ZETA

In January, 1949, the Delaware Chapter of Alpha Zeta, which was the 46th Chapter to be established in forty-four states, was established on the campus of the University of Delaware.

The Fraternity of Alpha Zeta is an honorary, agricultural fraternity. Alpha Zeta dates back to 1897, at which time it was founded at Ohio State University by Charles W. Burkett and John F. Cunningham. The objects of the fraternity are to promote the profession of agriculture, to establish, foster and develop high standards of scholarship, character, and a spirit of fellowship among all its members.

To qualify for membership, the student must be regularly enrolled in the School of Agriculture, shall have completed at least one and one-half years of his four year college course, be in the upper two-fifths of his class scholastically, and possessed of those qualities of leadership and character as to make him of promise as a servant of agriculture.

Officers: Chancellor, Robert Wheatley; Censor, Melvin Luft; Scribe, Leonard Hitch; Treasurer, Arthur Lenhart, Jr.; Chronicler, Ralph Barwick; Faculty Advisor, Dr. T. A. Baker.

Faculty Advisory Committee: Dr. T. A. Baker, Prof. L. R. Detjen, Prof. R. W. Heim, Mr. A. F. Kish, Mr. C. W. Woodmansee.





OMICRON DELTA KAPPA

The purposes of Omicron Delta Kappa are: To recognize men who have attained a high standard of efficiency in collegiate activities and to inspire others to strive for conspicuous attainments along similar lines; to bring together the most representative men in all phases of collegiate life and thus to create an organization which will help to mould the sentiment of the institution on questions of local and intercollegiate interest; to bring together members of the faculty and student body of the institution on a basis of mutual interest and understanding.

Officers: President, Hugh F. Dougherty; Vice-President, James McFadden; Secretary-Treasurer, Dean J. Fenton Daugherty.

KAPPA DELTA PI

Eager to promote a closer bond among students of Education and to enter into more intimate fellowship with those

dedicated to the cause of teaching as a profession for which specialized preparation is deemed imperative, the students interested in Education of the University of Delaware resolved to sponsor a local chapter of Kappa Delta Pi, an Honor Society in Education.

Therefore, on May 21, 1949, the Zeta Omicron Chapter with fifteen charter members was installed on this campus. During the present school year, sixteen new members were added to our group. We are aiming to foster high standards of preparation for teaching and to invite into bonds of fellowship those Juniors and Seniors who have attained excellence of scholarship and distinction of achievement as students and servants of Education.

Officers: President, Thelma Thompson; Vice-President, Mary Grant; Secretary, Mary Frances Gordy; Treasurer, Paul Capodanno; Historian Reporter, Margaret Brosius; Faculty Counselor, Dr. A. J. Dolio.



AUGUSTAN SOCIETY

"The Cauldron"

Under the faculty sponsorship of Mrs. Sara Rogers, the Augustan Society publishes Delaware's undergraduate literary magazine, "The Cauldron". Progressively striving to cultivate literary activities on campus and to encourage student writing, members and guests of the society hold regular monthly meetings to discuss topics of literary interest. Attention is focused on individual criticism, with special concern given to works of creative value. "The Cauldron" is prepared as a representative survey of student literary taste, and has occupied a prominent position on the campus under the guidance of the Augustan Society since the unification of the University.

Officers

President Robert Burk
Vice-President Jack Friedlander
Secretary Evelyn Van Devander
Treasurer Margaret Humphreys

"The Cauldron"

Staff

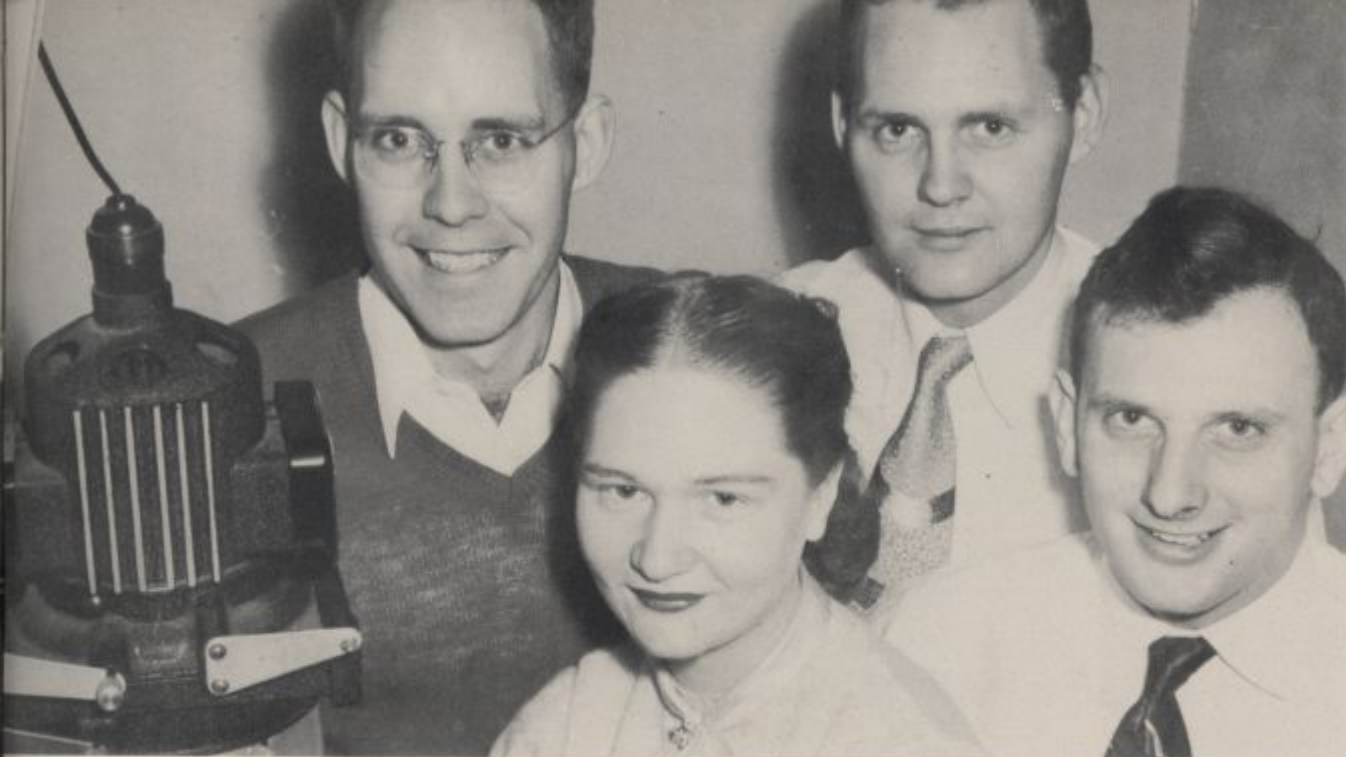
Literary Staff:

Editor-in-Chief Robert A. Burk
Associate Editor Jack Friedlander
Business Manager John Ware
Prose Editor Robert E. Howell
Assistant Prose Editor Evelyn Van Devander
Poetry Editor Betty Jane Kinder
Assistant Poetry Editor William A. Hughs, Jr.

Art Staff:

Art Editor Henry Galperin
Assistant Art Editor Mary Coleman
Associates C. Alexander Firmani
John Henry Paris
Edward Howell





THE PHOTOGRAPHY CLUB

The Photography Club of the University of Delaware was organized to give the students a chance to meet and work with others who were interested in photography as a hobby or as a profession.

Through the cooperation of the Physics Department the club was able to acquire the use of a well equipped darkroom laboratory and a lecture room for its formal meetings.

The club provides three basic things for students:

- (1) Information about photography—available through the more informed members, club meetings, and our reference books.
- (2) Material—provided by both the club and the Physics Department.
- (3) Companionship with other students of similar interests.

Officers: President, Albert B. Smith; Vice-President, Everitt B. Smith; Treasurer, Manfred Goldwein; Secretary, Mrs. Helen Kleimber; Advisor, Mr. Hirschfeld.

GOLD KEY SOCIETY

The Gold Key Society was organized at Delaware in 1948 as an honorary society composed of the head-managers of all varsity intercollegiate sports. This past year, however, the Society voted to include in its membership not only the head-managers of the various sports, but also to include those men who have served for one year as manager. It is felt that this will strengthen the fulfillment of the purposes of the Society, which are: to promote the efficiency of the managerial system through cooperation with the Athletics Department, to extend the hospitality and good will of the University to all visiting athletic teams, and to promote the general welfare of the University.

The Society meets every other week in order to arrange for the meeting of visiting teams and to undertake such other functions that will promote its objectives. A gold latch key with a blue "D" superimposed upon it is worn by the initiated members of the Society.

Officers: President, William Kutz; Vice-President, Robert Donaghy; Treasurer, W. Branner.





INTERNATIONAL RELATIONS CLUB

A knowledge of world affairs is necessary for the well-informed college student. The International Relations Club presents an excellent opportunity for students to participate in open discussion of current topics and to gain an insight into foreign affairs. The only qualification for membership is a genuine interest in international affairs.

The International Relations Club on the Delaware campus is one of many organizations in the United States sponsored by the Carnegie Endowment for World Understanding and Peace.

Informal discussions are a main feature of the I.R.C., with programs supplemented by speakers from the University and surrounding areas. Special affairs are held occasionally throughout the year as when visiting scholars are honored by the group.

Officers: President, Howard Handelman; Vice-President, Barbara Wood; Secretary, Mary Grant; Treasurer, John J. Donovan; Faculty Advisor, Dr. Felix Oppenheim.

THE INTERNATIONAL STUDENTS CLUB

The International Students Club was formed in 1947 by a small group of American students headed by Phillip Page, who realized the lack of participation by the foreign student in campus affairs. The objectives of the club are to help students from foreign countries become more acquainted with American life and to become more active members in the college community. In meeting these ends parties, picnics and hiking trips have been enjoyed by its members. This past year the Club established contact with The International House of Philadelphia and has participated in some activities there. Discussion groups have been formed with some other clubs.

The Club limits its members to all students of foreign birth and a few American students who have shown themselves really interested. At present, twelve countries are represented in the Club. Dr. Earl Hanson, Chairman of the Department of Geography, is our advisor.

Officers: President Sigurdur Jonsson; Vice-President, Takis Lambropoulos; Treasurer: Celia Bianchi; Secretary, Carol Ranshaw.





WOMEN'S ATHLETIC ASSOCIATION

The Women's Athletic Association was formed for the benefit of all women students interested in athletic activities. It sponsors many types of tournaments between dormitories, classes, and individuals. The activities, scheduled by student elected officers and executive council, are made to conform with interests shown by the participants. This year team sports have included hockey, volleyball, basketball, softball, lacrosse, and swimming; and individual and dual tournaments have been conducted in badminton, tennis, and ping pong.

The social functions of the Association include an Association Banquet to be held sometime in the Spring. This year, for the first time, the Banquet will include the presentation of service pins to those who have earned the necessary number of points through athletic activities.

Also under the sponsorship of the W.A.A. are an Aquatic Club and a Dance Club. Under the leadership of its faculty advisors, Miss Maryann Waltz and Mrs. Beatrice Hood, and the student officers, the Aquatic Club serves the student body through swimming clinics and an annual water show. Dance activities have been organized into club form this year under the guidance of Mrs. Eleanor Mason. It is hoped that both folk and modern dance activities will be under full swing in the near future.

Membership in both clubs is based on ability as determined by tryouts open to all women students.

Officers: President, Laura Lange; Vice-President, Judy Koller; Secretary, Doris Goodley; Treasurer, Patricia Gilbert; Freshman Representative, Ann Catts; Publicity Chairman, Arlene McGee.

AQUATIC CLUB

Officers: President, Adele Feldman; Vice-President, Nancy Nicoll; Secretary-Treasurer, Mary Lou Kocher.

ACTIVE YOUNG REPUBLICAN CLUB

In the past year, this group of approximately seventy-five men and women students has participated actively in the state Republican organization. There have been university AYR delegates at every state committee meeting. The towns of Dover, Georgetown, and Wilmington have been our hosts for these meetings.

The states of New York, New Jersey, and Delaware, which comprise the Eastern Regional Section of the Republican Party, held their keynoting convention in Wilmington last February. Again the University of Delaware club was active on all accounts which will be the first step to a national policy for the 1950 elections.

This political organization is authorized under the university's Committee on Organizations. Herbert Finch, the faculty advisor, holds a prominent position in the state organization. He is chairman of the Policy Committee.

Officers: President, John R. Symonds, Jr.; Vice-President, Joanne Kowaliewski; Secretary-Treasurer, Craige Snader; Publicity Director, H. Clark MacWright, Jr.; Faculty Advisor, Herbert H. Finch.



THE HONORS COMMITTEE

The purpose of the Honors Committee is to attempt to establish an Honor System at the University of Delaware that will meet the need of our own campus. This group, carefully selected by the Student Government Association to represent as wide a segment of student thought as possible, is carrying on the work begun a year ago under the direction of Robert McFann. It is believed by leading educators, both at Delaware and at leading colleges all over the country, that the adoption of an Honor System originating with and controlled by the students would academically be an important step forward in intellectual advancement. The institution of a working Honor System at Delaware may not be immediately realized, but it is hoped that as the result of spontaneous impulse from the student body culminating in the formation of this committee, an Honor System may be established on the University of Delaware campus in the near future.

Officers: Chairman, Wayne Pollari; Vice-Chairman, Ted Youngling; Secretary, Barbara Thompson; Publicity, Trudy Gilgenast.

DEBATE TEAM

The Debate Club of the University of Delaware has had an active season during the past year. Under the supervision of Mr. Milton Valentine, speech instructor and director of debate, the team has entered several tournaments—namely: the Benjamin Franklin Novice Tournament, the Benjamin Franklin Debate Tournament, a tournament at William and Mary College, and one at West Point Academy.

In addition to participating in tournaments, the squad held numerous single, inter-collegiate contests. Among the colleges which Delaware debated are Temple, Penn, Georgetown, Ursinus, Swarthmore, St. Joseph's, La Salle, Lehigh, and Washington.

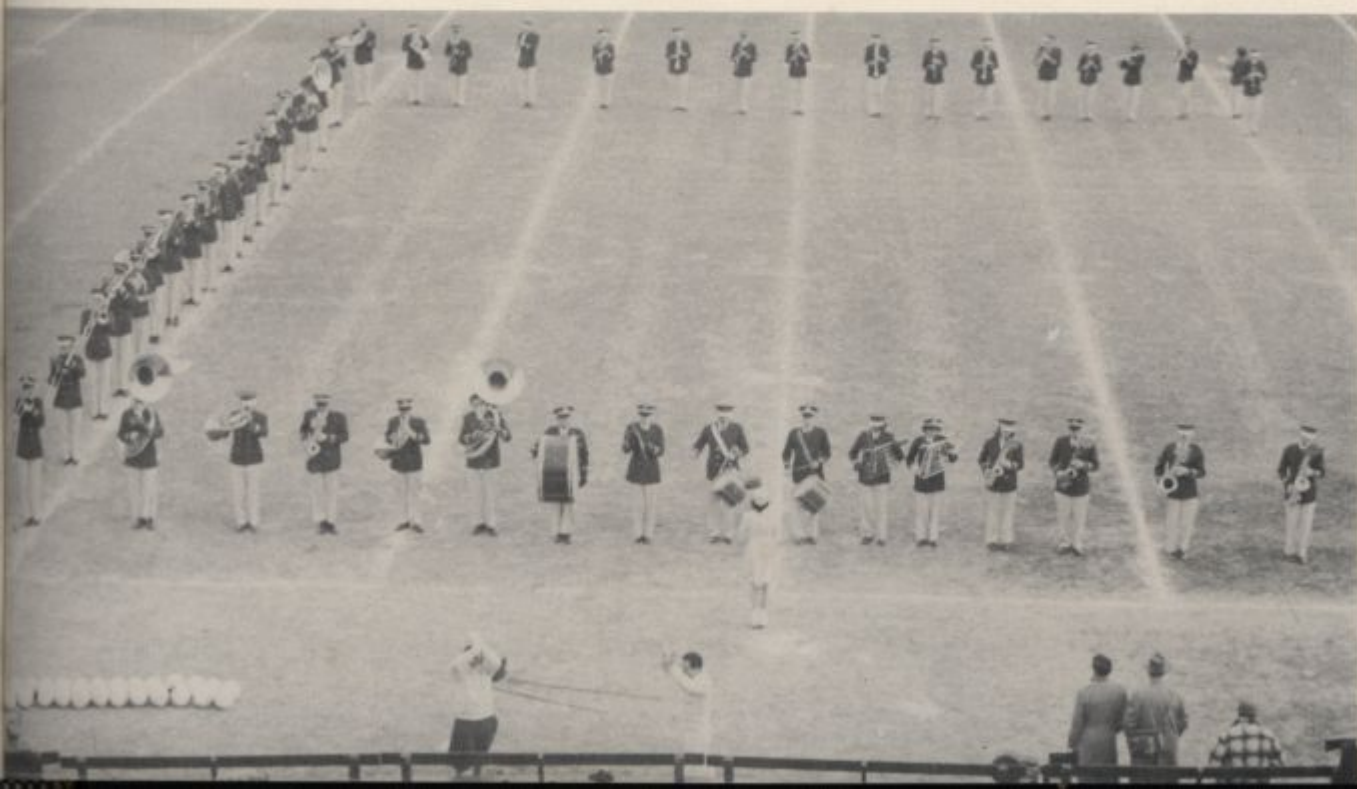


CHEERLEADERS

This year the Cheerleaders had an addition to the squad which was in the form of a papier mache' "Blue Hen". The "Hen" added a lot of color and fun to our games.

After a series of successful pep fests and bonfires, the fall section of their program ended with the awarding of the Cheerleader's Perpetual Decoration Trophy. This year the trophy was won by Alpha Tau Omega for their clever display for the West Chester game.

Co-Captains: Janet Myers and George Glynn.





A CAPPELLA CHOIR

BRASS ENSEMBLE

French Horn	STEWART PRATT
Trombone	GEORGE GRONDE
Trumpet	CLYDE GREER
Trumpet	LANCY BOYCE
Tuba	DONALD CLARK
Director	J. ROBERT KING





NATIONAL INDEPENDENT STUDENTS' ASSOCIATION

Aided by the faculty advisor, J. Fenton Daugherty, the University of Delaware Chapter of National Independent Students' Association was established on the University of Delaware campus. Official recognition was given by the university's committee on Student Organizations, December 7, 1949. The University of Delaware Chapter of National Independent Students' Association is affiliated with the National Independent Students' Association of America which is now recognized by fifty-seven universities and colleges in the United States.

The main desire of the independents is to promote a closer fellowship relation between all students of the university and to further the institution's policy of development.

Officers: President, C. Alexander Firmani; Vice-President, Joseph Clough; Treasurer, George Sarmousakis; Arts and Science Representative, George Snyder; School of Agriculture Representative, Robert Lind; School of Education Representative, Judith Koller; School of Engineering Representative, John Bredin; Faculty Advisor, J. Fenton Daugherty.

PI MU EPSILON

Pi Mu Epsilon is a National Honorary Mathematics Fraternity organized for the purpose of promoting interest in mathematics and scholarship. The Alpha Chapter of Pi Mu Epsilon was organized on the Delaware campus in 1941.

Among the activities of the fraternity are short lectures given either by guest speakers or members of the organization, discussions by the group of mathematical ideas, and social gatherings.

Officers: Director, Russel Remmage; President, James Goldey; Secretary, Patricia Reybold; Treasurer, Mrs. E. K. Rees; Social Chairman, Nancy Peter.



TABLE TENNIS CLUB

The University Table Tennis Team, which has been playing inter-collegiate matches informally for two school years, has now organized as a club, after drawing up a formal constitution.

The club is open to anyone studying at the University. He or she may be an undergraduate or a member of the faculty—even a graduate student. Thus far the purely recreational phase of the club's activities is on paper only, for the club members are concentrating on the business of inter-collegiate match play. Relations have been established during the past two years with Temple University, on a home and home basis. Temple, incidentally, won the first three matches, but was defeated by the Delaware team 7-6 in the most recent meeting.

For next year matches are in prospect with Princeton, Rutgers, Upsala, Western Maryland, Penn State, Pennsylvania and Queens University of New York. This should provide a sound schedule for the coming year. The team began the current season by entering the national inter-collegiates which took place in Philadelphia during February. They reached the finals of this 19 team tournament, eliminating Augustana,

Temple "B", Western Maryland, Bloomfield and Union along the way. Delaware was then defeated by Upsala of New Jersey, present National Champions by a match score of 3-1. Hossein Dowlatschahi of Delaware received favorable comment for his powerful offensive game, while Terry Schall placed second in the singles competition, losing only one match throughout the tourney. Ed Clark, captain of the team and University Champion is in charge of the team, assisted in his duties by Mr. Bernard Clyman, who is faculty advisor to the club. Credit is due to Mr. Clyman, Mr. Siemen of the Athletic Department, Mr. Roberts, the Coordinator of Student Affairs, Dean Daugherty, and Mrs. Dorothy Patterson for their help in getting the club going.

Looking forward to next year, the club hopes to have its program organized for more general enjoyment of the campus, through clinics, and instruction of those who are interested in learning the game.

Officers: Captain, Edward Clark; Vice-Captain, Terrance Schall, Faculty Advisor, Mr. Bernard Clyman.

MILITARY DEPARTMENT

The Military Department is one of the largest departments on the campus. This year over 500 cadets enrolled in the Basic and Advanced ROTC courses. Training men in Military Science and Tactics has been carried out by the University of Delaware since 1870. The Military Department is staffed by five officers and nine enlisted men of the Regular Army headed by Lt. Col. Layton A. Zimmer, CAC, Professor of Military Science and Tactics. The basic course stresses introduction to military science, anti-aircraft artillery technique, leadership, drill, and exercise of command. The University required all male freshmen and sophomores who are citizens of the U.S. to register for this course and complete it as a



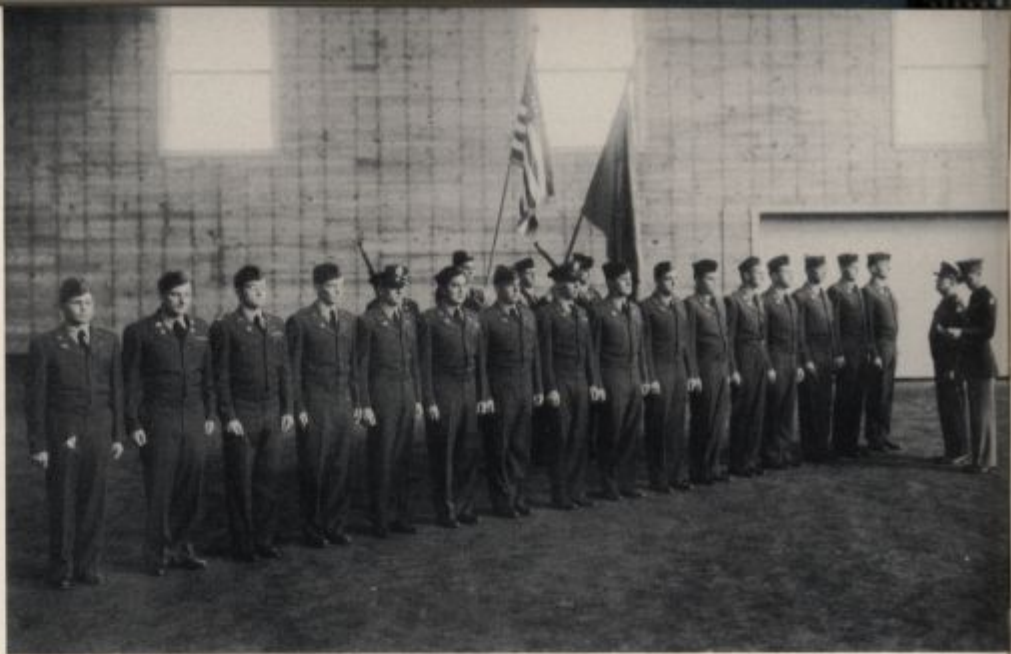
CADET COLOR GUARD. Left to Right: Cadets Wray Hushebeck, Thomas R. Silk, William F. Hutchinson, and Samuel DeBoer, of the University of Delaware. Picture taken at ROTC summer training camp at Camp Edwards, Massachusetts.

PARADE REST! Students from University of New Hampshire and Delaware stand at parade rest during retreat parade at Camp Edwards summer training camp. Students from these schools formed B battery while at camp.



RETREAT: Students from University of Maine, University of Pittsburgh, Hampton Institute, University of New Hampshire and University of Delaware standing retreat formation at Camp Edwards summer training camp. These students are A and B batteries.





prerequisite for graduation. The Advanced course is purely voluntary with instruction in Tactics and Techniques of Anti-Aircraft Artillery military administration, personnel management, leadership, drill and exercise of command. The summer camp attended between the Junior and Senior year is the most interesting experience of the entire Advanced Course. During the summer of 1949 over 40 Cadets attended the six weeks ROTC Camp on Cape Cod,

Camp Edwards, Mass. The Cadets had "Service of the piece", fired the 90 mm AA Guns, 40 mm AA Automatic Gun and the multiple Caliber .50 Machine Gun M-55. In a three day tactical problem under simulated combat conditions Cadets formed a 40 m/m Auto Weapons Battalion and a 90 m/m AA Gun Battalion. They moved to combat positions, set up AA defenses and almost suffered a defeat the first evening when Aggressor infiltration overran the mess and supply area. The problem ended the third day with a cross country march and tactical exercise. The social events were varied with dinner dances, swimming parties, conducted tours on the Cape and just plain "beer parties". As the end product of these ROTC activities, will be the commissioning of the Cadet as a 2nd Lt. in the ORC upon graduation.







