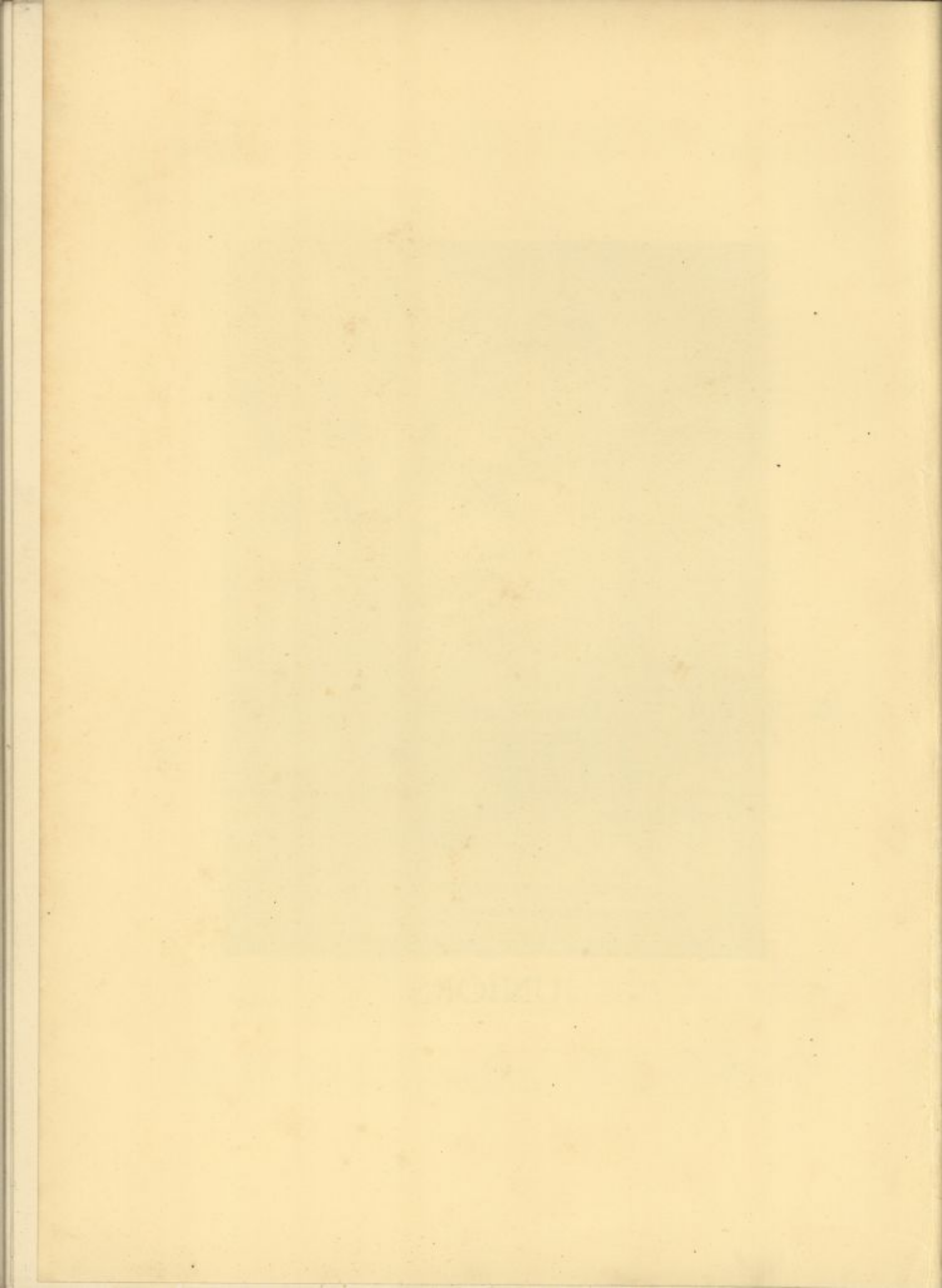




## JUNIORS







### OFFICERS OF THE JUNIOR CLASS


REBECCA ANN WILLIAMS .....	<i>President</i>
MINNIE MARGARET SMITHERS .....	<i>Vice-President</i>
KATHRYN HOWER POINSETT .....	<i>Secretary</i>
MARGARET JONES VESSELS .....	<i>Treasurer</i>
MISS QUAESITA DRAKE .....	<i>Class Adviser</i>

### JUNIOR CLASS HISTORY

A more frightened bunch of Freshmen than we were never appeared on the Delaware campus. We were, Oh, so homesick; but in a surprisingly short time we found ourselves; and at the end of Freshman Week we were a class, and a class with enough confidence in ourselves to set the world on fire. We realized our own importance, but it was not until the celebration of Founder's Day, when we marched in the procession all dressed in white, that the Women's College realized our significance. Only one thing could have made our triumph more complete . . . we should have had then the parasols which were our insignia.

College activities came along in a rush through the winter, and we always met them with boundless enthusiasm. Whether it was the Class Play or the Song Contest, we turned out whole-heartedly and worked like beavers; the results didn't always quite balance our efforts, but we at least knew that we had worked hard and had enjoyed doing our best.





Of course, the grandest event of our Freshman year was our formal. This is always given with so much enthusiasm that it is probably enjoyed more than any other dance given during the year, and no Freshman would think of appearing except in the gayest and prettiest new gowns.

The exams of our first year left us with a hollow feeling that college isn't all beer and skittles, and sometimes we longed for the ability which the Seniors seemed to have cultivated of drifting along casually and taking exams with no bother and certainly little worry. The one consolation that came to our harrowed minds was that we had finally reached the lordly estate of Sophomorehood.


We solemnly believed "Do unto others as they have done unto you"; so we concentrated all our forces on the Sophomore Rep Board, and the results of our splendid discipline showed in the serious faces and shining marks of the model children that we turned out. We felt that at last we had done something really worth while for our Alma Mater, in polishing up these rough diamonds and turning them into something resembling students. Our Sophomore year we had the fun of giving a Hallowe'en party and turned the Hilarium into a dimly-lighted, mysterious place where one might expect to find almost any kind of a witch hobbling around. The year's round of activities again found us laboring, determined to really put something across, and for weeks we gabbled lines and talked props; and after the plays for more weeks, we annoyed our fellow students with the painful mixture of altos, sopranos and monotones which issued from our open windows.

Although we did not succeed in carrying off prizes in all these contests, we felt a solid satisfaction at the end of our Sophomore year. We had finally worked around and found our place in College. We had learned not to let our studies interfere with our education, and had learned that some of the social leaders of the college were emerging from our class.

Our Junior year we entered with a feeling of dignity; we were putting aside the childish pranks of our years of underclassmanship, and still with our same enthusiasm, went out again to make a name for ourselves. And our success showed the results of training and determination. In the Competitive Plays, we had the satisfaction of knowing that we had taken a difficult play and presented it successfully; so that it was received with enthusiasm and admiration by our audience; and in the Song Contest both of our songs placed.

We Prommed gaily with the Purple and Gold Orchestra, and we were delighted with the applause which we won; every one wore stunning gowns and every one acclaimed the music—we were proud of having had a beautiful and successful dance.

We feel that this year has repaid us for all past efforts and should be an inspiration for new accomplishments in our Senior year. We did not, as a class, leap into the fore in all activities the moment we came here; we have attained our standing by our earnest endeavor and unquenchable grit and therefore appreciate what we have won all the more.





## CATHERINE LOUISE BEATTY

*Arts and Science*

Wilmington, Delaware

Spanish and Botany are the two worries of Kitty's life. We can see the appropriateness of the one to this brown-eyed Southerner, but why try to twist your tongue around the harsh syllables of botanical terms? After all, you can't hide from us that your chief idea is to finish so that you may get back to the piney woods and peach orchards of the Eastern Shore.



## FRANCES LUCILE BUTLER

*Education*

Newark, Delaware

*Glee Club I, II, III*

Frances must have some bold seaman among her ancestry, for she is a worshipper of the sea and its heroes. It's too bad she was born in the distaff line and so cannot achieve her ambition to follow the sea. Or, it might have been too bad, for in this generation there is no reason why a woman shouldn't be the master of her own sailing vessel if she wishes.



## ANNA JEANNETTE CAMERON

*Education*

Northeast, Maryland

*V. W. C. A. I; Outing Club I; Class Volley Ball Team II; Honor Volley Ball Team; Class Volley Ball Team III.*

Jeannette thinks that to get a real idea of college, one should try all kinds of life; so she has had her taste of living down and her taste of commuting. We hope that she found college fun enough her freshman year to come back and spend her senior year with us. We need more people like her around, for her cheerfulness is a comfort to homesick freshmen, and her congeniality irresistible to self-conscious newcomers.





### DORCAS HANBY CHEAVENS

*Arts and Science*

Wilmington, Delaware

*Captain of Class Baseball Team I*

Dorcas broadcasts few opinions, but those she does let escape are decisions and it would take more than one earthquake to shake them. She is one of the commuting firm of Overdeer and Cheavens; so that we see her only during business hours. But in spring and fall, even business hours and a conscientious devotion to study cannot keep Dorcas off the tennis courts.



### WANDA JOSEPHINE CHLADYSZ

*Arts and Science*

Wilmington, Delaware

Wanda will patiently endure wisecracking professors for just so long and then she turns and holds them up with an argument which is usually so reasonable that it is irrefutable. Wanda keeps an eye open to all things and finds an interest in all; she never condemns a subject as useless and silly just because it may prove hard; but looks at it clearly from all sides until she finds in it some truth which has made it necessary and lasting to a liberal education.



### MARGARET MIRANDA COLEMAN

*Home Economics*

Greenwood, Delaware

*Honor Volley Ball Team I; Class Volley Ball Team I; Home Economics Club I, II, III; Outing Club I.*

If Marg knows anything that is going to make you feel happy she'll spill it in a minute, even if it's a compliment which she has sworn not to repeat. But if things are topsy turvy and she is bothered, she doesn't add her worries to others, or whine about how tired she is and how much she has to do. She goes along, neither hurried nor slow, and manages to add dignity to the most trivial routine.



## AMY LOUISE CULVER

### *Home Economics*

Delmar, Delaware

*Home Economics Club I, II, III; Class Volley Ball Team I, II; Class Basketball Team I, II; Outing Club I; Freshman Prom Committee I.*

Amy always has new ideas but the newest in invariably "I'm starting to diet tomorrow." Fortunately for her good humor, tomorrow never quite suits when it arrives. Amy has the tolerant, good-natured attitude that attracts all types of friends, and an air of interest that is a relief to weary instructors. But dieting and studying aside, she likes best of all to dance.



## MABEL ALLEN CULVER

### *Home Economics*

Bridgeville, Delaware

*Glee Club I, II, III; Outing Club I; Home Economics Club III; Dramatics Club I.*

We are sure that Mabel has some of the Gypsy in her, anyone who loves gaiety and color the way she does. And besides she has Gypsy coloring, blackest of black hair and dark grey eyes. Mabel is one of our most effective silencers on campus, when she is proctor all the chickens go to roost very submissively; and perhaps it is because she won't break the rules enforced by herself that she rattles along so fast when quiet hours aren't on.



## MARGARET SAMANTHA CROTHERS

### *Home Economics*

Mt. Pleasant, Delaware

*Class Hockey Team II, III; Class Basketball Team II; Home Economics Club I, II, III; Vice-President of Home Economics Club III; Freshman Prom Committee; Athletic Association I, II, III; Class Competitive Play; Class Competitive Drill Squad II.*

Peg's indifferent air is misleading. She looks like one of the people who drift around wishing you weren't there. But after one or two surprising experiences, each new acquaintance recognizes her as someone with a vast supply of sympathy and disinterested helpfulness. In an age of hard-muscled sportswomen, Peg's femininity is refreshing and her slim figure and black curly hair help to make her one of the really good-looking girls on campus.







## FRANCES HURST DENNISON

*Education*

Hockessin, Delaware

A horse is swell fun to go journeying on if you don't have any definite aim in view; but ask Fran if a Nash isn't the best steed when one has eight o'clocks to make and is many long miles away. Whether because of her diligent pursuit of study or because her name comes early in the alphabet, we usually see only the back of Fran's head. We do know one thing about the front of her head, however, and that is that she has as lovely dark eyes as one could ever hope to see.



## ELIZABETH GABRIELLE DONOHUE

*Arts and Science*

Wilmington, Delaware

*Outing Club I, II.*

Lib's roots may be in Wilmington, but we firmly believe that her soul and perhaps her heart is in the West. She reluctantly comes East just long enough to take in a couple of semesters here at Delaware, then she flies back to the ranch. She is one of those lucky people to whom a horse is a friend instead of a novel kind of catapult. We appreciate Lib's fortitude in relinquishing the West for the less attractive scene of the classroom.



## ELIZABETH CAMILLA DOWNING

*Arts and Science*

Franktown, Virginia

*Thus Club I; Vice-President of Forum II; Representative Board II; Chairman of Radio Committee II; Cast of the Ghost Story by Tarkington II; Secretary of Student Board III; Cast of Nevertheless, a Puppet play III; Cast of Christmas Play III; Art Staff of Blue and Gold III; Junior member of Representative Board III.*

Is it Carm's slow southern drawl, her delicious sense of humor, or her astounding frankness that makes her so attractive? She has no compunction at all in telling you just what she thinks of you; Carm is the author of much sense and nonsense, none of us will ever forget the famous Mrs. Catnip, and her impish mind sometimes expresses itself in cartoons of cutting effectiveness. Carm's art work will always be a source of amazement and interest to her friends, for she always manages to turn out something striking. We don't know what will happen to Anna Camilla, but from what she says we might judge that she expects to return to the idyllic life of the Eastern Shore.



## IVA MEARNS EASTBURN

*Home Economics*

Newark, Delaware

Iva is a dark, demure Home Ec'er, methodical in her studies, reticent and shy. In contrast to the rest of us who declare our knowledge and so reveal our stupidity, Iva makes no attempt to bluff. Despite the daily cases of one who tries to make eight o'clocks in a car, she seems to enjoy a less hectic life than those of us who spend our days trying to hide what we don't know.



## JEAN HARPER EASTBURN

*Home Economics*

Wilmington, Delaware

*Class Hockey Team I, II, III; Athletic Council I; Home Economics Club I, II, III; Press Club II, III.*

The Skipper's scientific interest in everything has been the cause of more than one nervous breakdown, but breakdown or not, she always finds out what she wants to know. No one would accuse Jean of idle curiosity, because she obviously ponders over everything she hears. She has an appreciation of the beautiful and the sensitive spirit of an artist and it makes her a bit reticent and quite solitary despite her volleys of questions. We don't know which we'll remember longer about Jean, her lovely poetry or her inevitable "Why?".



## ELIZABETH ELEANOR ELLIS

*Home Economics*

Delmar, Delaware

*Home Economics Club I, II, III; Outing Club II; Dramatic Club II.*

Eleanor is one of the most delightfully languid people that we know. She seems a quiet sort of person, but when you find your way beneath her placidity, you are surprised by her vigorous and entertaining qualities. Eleanor's devotion to hard work doesn't keep her from smiling most of the time and her slow smile is a pleasure to see.





### MARY VIRGINIA ENGLAND

*Arts and Science*

Northeast, Maryland

*French Club I; Ibis Club II, III; Class Volley Ball Team II, III; Honor Volley Ball Team II; Class Baseball Team II; Class Hockey Team III.*

The scientific mind crops up rarely in our conglomerate generation, but Gin is a fair example of it right now. How it will last through the years is hard to say, for the frivolous example of her neighbors may wear it out. However, now, if you want Gin's company, you must wait until a few more square roots have been figured out, or until she runs up to chemistry lab to see how the latest experiment is progressing.



### MARY ELIZABETH EUBANKS

*Arts and Science*

Newark, Delaware

*Class Basketball Team II.*

Biddy is another of those who think that the world is made for fun and frolic. Gaiety and dancing, talking and laughing, these occupations would content Biddy, if her conscience didn't urge her to desultory labors. Biddy's elfish air suits her pucklike humours.



### MILDRED WALTON FABIAN

*Arts and Science*

Manoa, Penna.

*Class President I, II; Treasurer of Student Board II; Representative to Student Board III; Glee Club II; Press Club I, II, III; Ibis Club I, II, III.*

This is the itty-bitty girl of the Junior Class, but she will probably grow up over night in time to become the Mother Superior of all the students. She divides her time between Manoa and Newark with intermittent trips to the shoe stores for recreation. Everybody amuses her and whenever she's amused everyone knows it. For a Math Major, Mil gets in more than her share of hilarity.



## FLORENCE RITA GARVEY

### Education

Wilmington, Delaware

*Class Hockey Team I; Commuter Hockey Team I, II, III; Ibis Club III.*

It is safe to predict that in a few years Florence will be numbered among the great and august body of American educators. We can see her rising from the small trials of a country school to the heights in the teaching profession. For those same qualities that have endeared her to us—her good nature, frankness, Irish wit, good sense, and grit—have sent her already far toward the goal of a successful career.



## HAZEL MARIE GIBNEY

### Arts and Science

Claymont, Delaware

*Ibis Club II; Chairman of Properties of Dramatic Board II; Vice-President of Dramatic Board III; Secretary-Treasurer of Puppets III; Glee Club II, III; Outing Club II, III; Class Volley Ball Team I, II, III; Class Hockey Team III; Class Baseball Team II; Freshman Competitive Play II; Coach of Sophomore Competitive Play II; Coach of Junior Competitive Play III; Cast of Twelfth Night II; Cast of Sherwood Forest III.*

Gib's boisterous laughter and tremendous voice have become associated for all of us with the comedy roles in Shakespearean productions. Besides her dramatic interests, Gibs has unlimited enthusiasm for sports. The long legs that carry her headlong up the hockey field in the fall, cover the bases for many a home run when the baseball season arrives.



## FRANCES ANN GREENE

### Home Economics

Lincoln, Delaware

*Honor Volley Ball Team I, III; Class Hockey Team II; Glee Club III; Home Economics Club I, II, III; Outing Club I, II, III.*

Serene and undisturbed by the strife and turmoil that upset most of us, Fran pursues all life in the same tenor. Except for sudden and becoming rushes of color, nothing about Fran is easily aroused. It takes a super-funny joke to bring forth her individual chuckle; only a person of really superior talent or genius can win her genuine admiration. It's hard work to make her mad—most people get disgusted before she succumbs. Thus she gets along!







## CHARLOTTE ELIZABETH HANBY

### Education

Wilmington, Delaware

*Y. W. C. A. I, II, III; Dramatic Club I, II; Class Volley Ball Team I, III; Class Song Leader I; Y. W. Cabinet II; Secretary-Treasurer Outing Club II; Glee Club II, III; Class Hockey Team II, III; Honor Hockey Team II; Ibis Club III; Christmas Play III; Property Manager Christmas Play III; Property Manager Class Competitive Play III; Class Competitive Drill Squad I, II.*

Quiet but self-assured, Charlotte does things before she talks about them. She is successful as a student, dependable as a committee head, and a voracious news collector. We can see her going ahead through the years, adjusting herself to new ideas and new ambitions with the same quiet ease with which she changed from a teacher-training student to a four-year education major. One of the youngest members of her class, her willingness and ability make her one of its busiest.



## MARIAN HAYMAN

### Arts and Science

Wilmington, Delaware

*Glee Club II, III; Treasurer of Glee Club III; Dramatic Board III; Y. W. Cabinet III.*

Hayman is one of those ingenious people who have friends in every crowd. She is never at a loss for a friend and seldom for something to say. Harried play producers know her for one of the few really willing property managers. The most characteristic thing about her is her laugh—an ever present laugh, fed by a sense of humour that sees something funny in every situation.



## FLORENCE MARIE HICKMAN

### Education

Ocean View

Florence has one of the sunny dispositions we're always hearing of and never seeing. Even her voice has a happy lilt to it and she has as many smiles as she has expressions. We suppose her feet have caught the same infection for she never misses an opportunity to dance. Florence graduated from the Teacher Training Course in 1927 and just returned to complete the four-year education course. We're sorry for those two years of her that we missed.



## JOSEPHINE HUNPHREY HOSSINGER

*Home Economics*

Newark, Delaware

Jay decided that the Bride's course could be pursued just as well at home and is soon going to give it a trial. She is not easily disturbed or upset, but she sometimes brings forth in her nonchalant drawl things which astound those who do not know her. Jay's quiet smile and poised manner make her noticeable in any company.



## MARTHA ELIZABETH JACKSON

*Arts and Science*

Cochranville, Penna.

*Y. W. C. A. I; Dramatic Club I; Assistant Art Editor of Blue and Gold III; Glee Club III.*

Anyone familiar with the standard idea of an impetuous, volatile artist might not recognize Martha for one. Self-possessed, restrained, and composed; so quiet is the way she takes, that many of us might overlook her if it were not for her art. In the art work of *Pambo* and the "Blue and Gold," in art exhibits and poster work, Martha's help is a big addition. We are inclined to think that much of the quiet happiness that Martha radiates comes from the long walks that take up so much of her time.



## KATHRYN MAY KESSELRING

*Arts and Science*

Dover, Delaware

*Y. W. C. A. Cabinet I, II; Vice-President of Y. W. C. A. Cabinet III; Class Baseball Team I, II; Honor Baseball Team I, II; Class Hockey Team I, III; Press Club II, III; Outing Club I, II; College Baseball Manager II; Representative Board II; Cast of Sherwood II; Class Competitive Play II, III; Cast of Dr. In Spite of Himself III.*

Kate, despite her much-bemoaned lack of height, has an impressiveness all her own. The old cowbell in Sussex has never had such a year as Fire Captain Kate has given it. The same voice that is so often raised in midnight fire drills can be modulated to fit one of the best character actors that we have. And in between times, it is used mostly for laughing.







### DOROTHY KRAEMER

*Arts and Science* Wilmington, Delaware

*Press Club I, II, III; May Day Court I, II, III; Sherwood II, Competitive Play II; May Day Committee II; Treasurer of Dramatic Club III; Treasurer of Social Committee III; Class Editor of Blue and Gold; Favor Committee for Junior Prom III.*

Dot is our perfect dark beauty. We have other brunettes but none so decorative as Dot. The poise with which she carries her dark head and the self-possession with which she meets every situation are the envy of her classmates. She is an artist, but even as an artist, her touch is fine and unhurried and the results are always decorative—always conventional.



### EDITH PLUMMER LAFFERTY

*Home Economics* Wyoming, Delaware

*Volley Ball I, II, III; Hockey III; Home Economics Club I, III; Treasurer Home Economics II.*

Taffy is another of those taking the so-called bride's course. We don't know how soon she's planning to put it to practice; but if she takes it as seriously as she takes most of her assignments, we may expect to hear from her soon. Taffy is the best girl in the world to borrow from. She never turns up at embarrassing moments to reclaim things. She is thoughtful about listening, too; one can make moan to her by the hour and never get anything more drastic than sympathy.



### MARY LENA LAMBERT

*Art and Science* Milford, Delaware

We were certainly glad Mary decided to join us last year and swell the numbers of the Milford gang. Ready wit, good humour and dependability are just a few of the many good reasons why we are glad to have her. Mary is one of the few under-graduates who really have a comprehensive view of history. She is an invaluable asset to the history hash that precedes finals and a boon to the professors all the year.



## CATHERINE VERNON LEWIS

*Arts and Science* Wilmington, Delaware

*Captain Freshman Class; Prom Favor Committee III; Ring Committee III; Sophomore Representative Board I; Mistress of the Inn.*

Kit would talk to the Sphinx if she were stranded in the desert with no other way of making conversation. One just can't imagine a silent Kit. She is never too busy to sit down and talk and no really wise person is too busy to sit down and listen. For Kit's sense of humour makes everything she says entertaining. Any girl who has never roomed near her doesn't know what she's missed. If there's any mischief afoot we know that Kit is deeply involved. A loyal friend? One couldn't find a better.



## FLORENCE MILDRED LONG

*Arts and Science* West Grove, Penna.

*Glee Club I, II; Math Club I; French Club I; May Court I, II, III; Christmas Play I; Freshman Dance Committee I; Prom Committee III; "Lady Windermere's Fan" II.*

When one thinks of Flo, one instantaneously thinks of beauty and vivacity—but this is not all. Tenacity of purpose and a remarkable cleverness are unquestionably hers. It is these qualities that make Flo a drawing card, first, last, and always. The rest of us wonder just what a dance at either end of the campus would look like without her. Yet it is not the rest of us who get looks from her. These seem to be directed exclusively in one direction, but we note that they are amply appreciated.



## THELMA MAE McCABE

*Arts and Science* Selbyville, Delaware

Not many people know the real Thelma because she spends so much time on her lessons. She is a history major and she is busy keeping her ancient and modern dates straight. Sometimes Thelma manages to leave her history books long enough to learn the newest dance steps in the Hilarium. Judging by the number of visits her furniture makes to the hall each week, we give Thelma credit for having the makings of a model house-wife.







### LOUISE WELLS MCCLELLAN

*Arts and Science* Cochranville, Penna.

*Mathematics Club I, II, III; Outing Club II, III; Stage Manager Class Play II.*

There's a hoyden on our campus commonly called Wheezer. She affects a guileless care-free air, yet we find her the occasional victim of a deeply thoughtful mood. Fortunately they are only once in so often and in between times one would have difficulty imagining anything but the airiest frivolities beneath her curly crop. One of the most paradoxical things about Wheezer is that she is one of those half-mythological creatures called a Math Shark. All the smaller fish crowd around to admire her skill at biting off problems. And she's just as keen at chemistry.



### ELIZABETH ANN MCGOVERN

*Arts and Science* Wilmington, Delaware

*Baseball II; Hockey I, II, III; Vice President Outing Club; French Club I, II, III; Treasurer French Club II.*

We think of Betty and sports together, for she is one of our experts with hockey stick, bat and basketball. In her studies she is chiefly interested in French, but we are not too surprised when we see Betty dashing around campus hunting a tree to classify for Botany. Although she is often a bit slow to arrive at appointed places, we always know that she will arrive eventually, for she has that quality of perseverance that makes her finish anything she starts.



### MYRL FRANCES MCNICOL

*Home Economics* Milford, Delaware

*Home Economics Club I, II, III; Glee Club II; Basketball Manager II; Basketball II, III; Honor Team II.*

Myrl, the slim, sleek fashion plate of the Women's College, is now directing all her talents toward designing. Remember her in that chic costume the night of the Home Ec Fashion Show? Myrl always adds something in grace and finish to anything she wears. There is something in her bearing that marks her as distinguished. She has a pronounced flair for dress design and we can't imagine anything more appropriate for her career.



## MARION LOUISE MOODY

*Arts and Science*

Bear, Delaware

*Volley Ball III; French Club I, II; Rifle Team I; Library Committee III; Math. Club I, II, President III; Outing Club I, II, III.*

None can tell exactly what lies behind Marion's reserve. She has the precision and decorum of a Mid-Victorian maiden. She enjoys Math and those sciences that require a great deal of thought and ingenuity. In character, in manner, in style, Marion has the supreme excellence of simplicity.



## MARGARET OVERDEER

*Arts and Science*

Wilmington, Delaware

Margy's passion for thoroughness justifies to some extent her customary silence. We take it for granted that she is concentrating on some stray bit of work not yet completed. She is another of the Hurrying Hundred, so the on-campus students have not the opportunity to know her as well as they might like. In classes where they do see her, she is serious and taciturn, with an occasional smile that completely changes her appearance.



## KATHRYN HOWER POINSETT

*Arts and Science*

Wilmington, Delaware

*French Club I; Outing Club I; Assistant Chairman Vespers for Y. W. C. A. II; Chairman of Vespers III; Assistant Class Song Leader I; Class Song Leader II, III; College Song Leader IV; Glee Club I, II, III; Business Manager Glee Club II; President Glee Club III; Chairman Bulletin Board Committee III; Assistant Art Editor Blue and Gold III.*

Kit is the girl behind the flash-light on Wednesday nights and the girl at the piano most other times. Kit's steady, efficient practicing presents a welcome variation to the din of the average practice period in Kent or Sussex. Her leading and singing are just as steady and dependable. Patient Ben, friend to the New Castle Juniors, answers to Kit's yodel and obediently carries overloads of weary girls to every college function.







## DOROTHY MAE PHILLIPS

*Arts and Science*

Laurel, Delaware

*Outing Club I.*

Dot has a reputation for studiousness. But anyone who has lived near her remembers excited chatter and very unstudious laughs every once in awhile. Small and dark and serious-eyed, Dot saves her grins for her intimates, but we know she has them on tap. We have seen them flood her face at every vacation's beginning.



## ETHEL COLLINS REVEES

*Arts and Science*

Morristown, New Jersey

*Class Hockey Team I, II;; Honor Hockey Team II; Class Competitive Play II, III; Glee Club I, II; French Club I, II, III; President Forum III; Sherwood II; Advertising Staff of Blue and Gold III.*

Patsy is known as one of the slowest girls on campus, but that is only because she believes in doing things thoroughly instead of skimming the surface. "Friar Tuck" with his good-natured roar and his gusto for the beaker of ale and the high-heaped trencher, expresses Patsy. She always runs to the limit in her enthusiasms and prejudices, and never stints in talking about them. Yet her friends are not confined to her own crowd, but extend throughout the campus.



## DOROTHY ROGERS

*Arts and Science*

Wilmington, Delaware

*Hockey I, III; Outing Club I; Glee Club I, II, III; Secretary of Social Committee; May Day Committee; Junior Prom Committee.*

Dot is always full of excitement and talking a blue streak. Speed is her fourth dimension; she rushes around and is always ready to go places and do things. If she has nothing better to do, why it can be a game of bridge, as long as it gives Dot an opportunity to indulge in her love of companionship and gives her a chance to tell you the latest. The best proof of Dot's disposition is that she has roomed two years with a chemistry major and has come off unscathed.



## BERTHA MAE ROTHERMAL

*Home Economics*                      Wilmington, Delaware

*Class Volley Ball I, II; Track Team I; Honor Volley Ball Team I, II; Class Baseball Team I, II; Honor Team I; Home Economics Club I, II, III.*

Bert applies the same energy to her work that she does to her recreations and seems to enjoy it just as thoroughly. Long hours in the Lab do not dismay her, if she is accomplishing something, and besides Bert has an aim in view, those labs mean something to her besides so many hours a semester—she is taking up cooking from the scientific point of view and plans to be a dietician.



## JEANETTE RUST

*Arts and Science*                      Wilmington, Delaware

*Math Club I; French Club I, II; Outing Club I, II; Athletic Council II; Secretary Outing Club III; Chairman Student Industrial Group II.*

Jeanette's gods are order, efficiency, and punctuality. And after all, order is a lovely thing, so relieving after chaos; and punctuality is one branch of courtesy. We might cast aside some of our half-gods and follow hers to our advantage. Be sure you're right and then go ahead, is not a bad motto to follow.



## HENRIETTA SHRIVENS

*Home Economics*                      Hartly, Delaware

*Home Economics Club I, II, III.*

We like to see Scrive with her corn-colored hair parading modish gowns in Home Ec Fashion Shows. And instructors are glad to see her in classes, her intense interest in home making and in clothing is an inspiration and shows that an effort to make things at the same time beautiful and useful is not wasted after all.





### ELIZABETH SENFT

*Arts and Science*                      Wilmington, Delaware

Elizabeth has a mind for research; she isn't content to have vague and shadowy ideas on subjects; she wishes to know the whys and wherefores thoroughly or not at all. No wonder her chief interest is in History; for kingdoms and empires and cycles all unfold in orderly array before her eyes.



### MARIAN RUTH SINGLES

*Arts and Science*                      Newark, Delaware

Marian is a possessor of the aristocratic spirit. What the world may say will perhaps make her wince, but it will never change her, for she has a spirit in her that will make her go her own way, regardless of conventions; a spirit eager to comprehend what others have accomplished in order that it, too, may create.



### CATHERINE TURNER SMITH

*Arts and Science*                      Georgetown, Delaware

*Glee Club I, II, III; French Club II, III; Committee Freshman Play I; Committee Freshman Prom.*

Kitty is always so worried about that biology, but we think that for a lefthanded fellar she makes out pretty well. Not even biology can keep her down, however, when the latest bit of news is going around, Kitty will never be one of those people who awaken to events with a shock about ten weeks after they have occurred; she is usually too up-to-date for that! "Every lassie has her Laddie, Nane they say hae I, yet all the lads they smile on me."



## MINNIE MARGARET SMITHERS

*Arts and Science* Chesapeake City, Md.

*Class Treasurer I; Glee Club I; Student Board II; Y. W. C. A. Cabinet II; Social Committee; Volley Ball I, II; Blue and Gold Staff III; Vice-President III.*

Responsibility comes only to those who like Minnie have an ability and power to execute it. Those who were here when Minnie lived on Campus will never cease regretting that she has not been able to live down here the last two years. If you want someone to laugh with you, or someone to sympathize with you, or if you want clearheaded advice, there is no one better than Minnie. She is an antidote for cynicism and selfishness.



## HAZEL RUBY STEVENS

*Arts and Science* Wilmington, Delaware

When Hazel was named, her coloring must have been foreseen, for hair and eyes are the mingled gold-brown of hazel nuts. She is fortunate enough to have all the accoutrements for first class mitt-flopping, but we are inclined to deny appearances, for Hazel has more than once proved that A's blossom from ability.



## MARTHA STONE

*Arts and Science* Hardwick, Vermont

*Class Hockey Team I, II, III; Class Hockey Manager III; Honor Hockey Team I; Class Baseball Team I, II; Class Baseball Manager I; Honor Baseball Team I; Class Track Team I, II; Class Track Manager II; Secretary Athletic Council II; Treasurer Athletic Council III; Press Club I, II, III; Vice-President Press Club III; Outing Club I, II, III; Sherwood Cast II; Prom Committee III; Business Manager Blue and Gold III.*

Pat rushes from Vermont down here and then back again, before we have a chance to wink. What does distance mean to the one who wears the seven league boots of an efficient hustler? Pat doesn't go around yearning to go some place and do something—she goes and she does it; and it may be almost anything, for Pat is one of our most efficient business women by day, while at night she emerges from her chrysalis and will gladly finish with aching feet, if she can dance to her heart's content.







## HELEN SWAIN

*Arts and Science*

Milford, Delaware

*French Club I, II; Vice-President French Club II; Class Secretary II; Chairman Finance Y. W. C. A. Cabinet II; Secretary Y. W. C. A. Cabinet II; Secretary Y. W. C. A. Cabinet III; Curriculum Committee II, III; Class Hockey Team III; Third Vice-President Student Board III; Assistant Business Manager Blue and Gold III.*

Delaware may not be New England, but it does sometimes produce efficient and conscientious people. Helen is one of these. In a position where one must necessarily quiet boisterous frolickers, she sets us an example by always practicing the restraint which she preaches. Soft-voiced and quiet-mannered, Helen has a charm and lovely courtesy foreign to our noisy generation.



## MARJORIE CHANDLER THOMPSON

*Arts and Science*

Wilmington, Delaware

*Hockey Team II, III; Volley Ball I, II; Outing Club I, II, III; Ibis Club I, II, III.*

Marge's red-blond hair suffered a tremendous change at the beginning of this year when it burst out into curls almost over night. But Marge was just the same—rushing over from Biology lab to pounce on the latest magazine, swinging wicked blows at timid hockey balls on autumn afternoons, discussing plays and sets and costumes with Gibs whenever the occasion arises. Marge has too much energy to have many mournful moments and her unfailing good humor and unselfishness scare away the mournful interludes of those around her.



## MARY VIRGINIA TOMLINSON

*Arts and Science*

Northeast, Maryland

*Class Hockey Team I, II, III; Honor Hockey Team I, II; Class Baseball Team I, II; Honor Baseball Team I, II; Class Track II; Manager Class Tennis I; Manager Class Hockey II; Manager Baseball II; Vice-President Athletic Association III; Secretary-Treasurer Math Club III.*

When you hear a line of baby-talk from a restless, curly-topped athlete, you'll know that it couldn't be anyone but Tommy. Everything about her seems contradictory; she rushes with tremendous enthusiasm to Chemistry Lab or works on her major, Math, and rushes back with the same enthusiasm to devour movie magazines and cut out new poses of Greta Garbo. Despite her dissatisfaction with things as they are, her dependability is like the Prudential's and Tommy isn't one of these eternally busy people.



### ZELDA TOUMARKINE

*Arts and Science*                      Wilmington, Delaware

Zelda arrived from France in 1920, but so well has she mastered the English language that now there is nothing to identify her with France but the rapid-fire of her conversation and her constant gesticulation. But then Zelda's forte is languages. This year she has carried out a program including French, Spanish and German and anyone able to do that must certainly have a versatile tongue.



### MARGARET JONES VESSELS

*Arts and Science*                      Lewes, Delaware

*Math Club I, II, III; May Court I, II, III; Class Volley Ball Team II; Class Treasurer III; Radio Committee III.*

In Peg there is the rare combination of a mathematical mind and a pair of dancing feet. Though she seems at first quiet and unassuming, it doesn't take long to discover that there is an impish happy-go-lucky Peg behind her unassuming reserve. No one is more ready to stir up mischief, to share in an escapade, or to help out with sympathy than Peg.



### SARA LOUISE VREELAND

*Home Economics*                      Milford, Delaware

*Basketball Team I, II; Home Economics Club I, II, III.*

Petite Louise, with her black hair and enormous eyes, doesn't lose anything by being diminutive. She reminds us of those fragile figurines our grandmothers used to treasure. Tiny, tripping feet and small, slim-fingered hands are turned to the domestic tasks of the Home Ec Course. Even though we would prefer to see her situated like young Miss Curlylocks on a cushion, we can't deny that she does her work efficiently.





## REBECCA ANN WILLIAMS

*Arts and Science*

Smyrna, Delaware

*Y. W. C. A. Cabinet I; Treasurer Y. W. C. A. II; Glee Club II, III; May Court I; Freshman Dance Committee I; President of Class III; Sherwood, Twelfth Night, Competitive Class Play II.*

Becky's favorite indoor sport is raving about her pet orchestra. None of them are permanently in favor, but one follows another with the regularity of mid-years and finals. Just now, it is Paul Tremaine's. Becky furnishes two kinds of music to the grateful campus—one on the Hilarium piano and the other on her laughing apparatus. Her laughter runs up and down the scale and in trills and we have even heard it manage arpeggios on special occasions.

