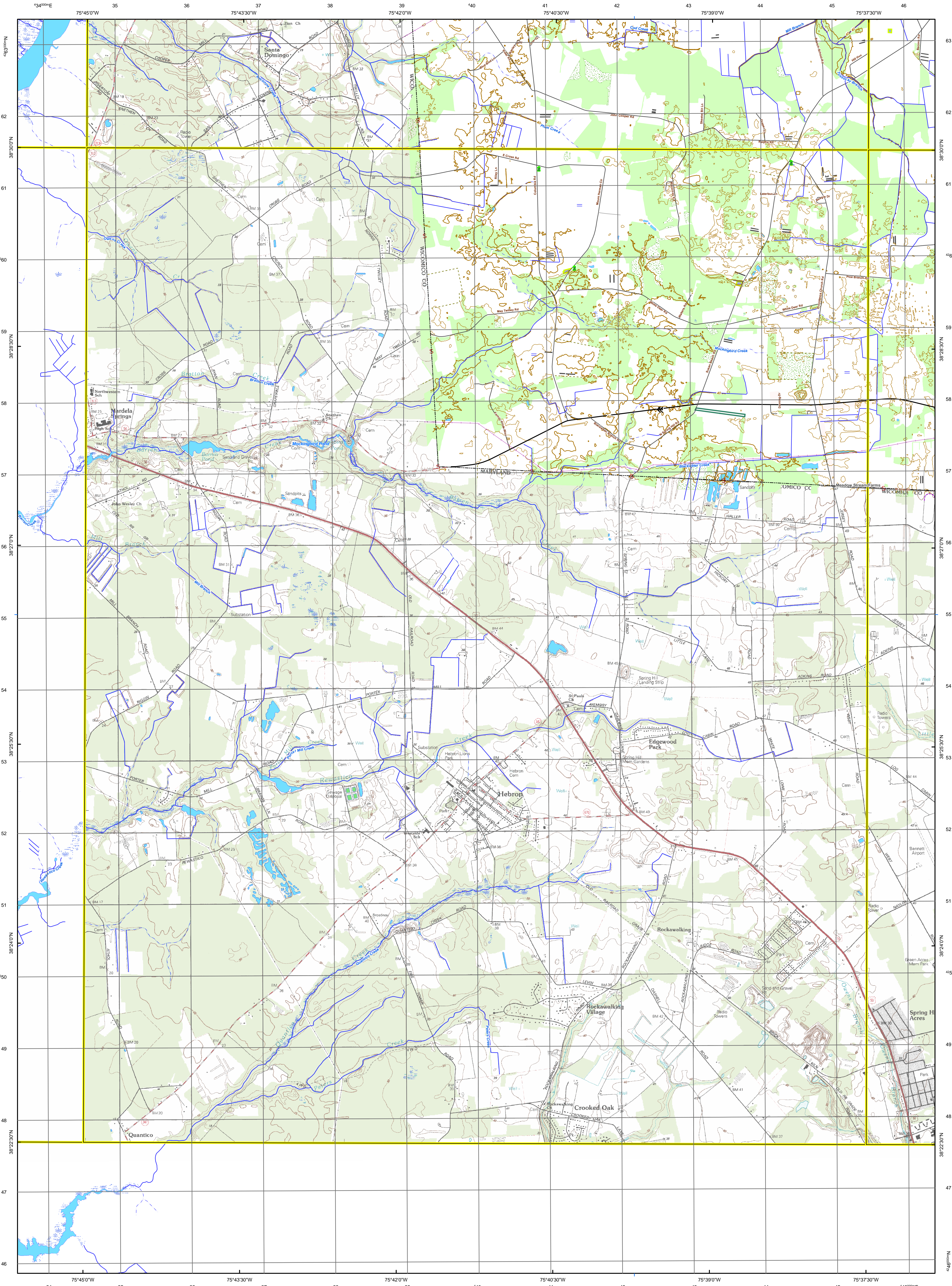




**Delaware DataMIL
7.5 Minute Series (Topographic)
Quadrangle**

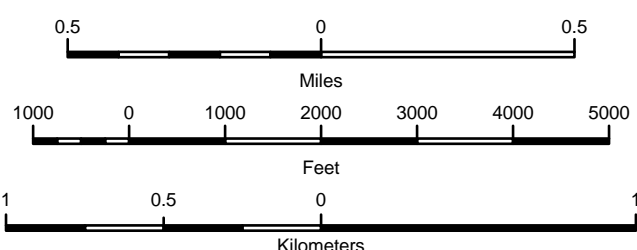


Legend

S Boundary Monument	Boardwalk	Municipalities	Power Site
V Boat Ramp	Boat Ramp	Airport	Raceway
E Embankment	Cambridge	Athletic Field	Railroad Yard
C Church	--- Fencing Line	Bulking	Refinery/Industrial Site
G Gaging Station	Land Strip	Cemetery	Rest Site
5 Gate	Per-Breakwater/Jetty	Landscape	Substation
H Helipad	--- Pipeline	Oil Sump/Sludge Pit	Tank
Sand/Gravel Pit	Power Transmission Line	Port/Breakwater/Jetty	Water Treatment Site
Picnic Area	--- Railroad	Pipeline Regulation Station	Federally Administered Area
Tank	Railroad or Siding	State Lands	Park
Tower	Railroad or Siding (Underpassing)	Swamp	Rapids

Disclaimer
This Delaware DataMIL 7.5-minute topographic map replaces the USGS 7.5-minute Primary Map Series for the State of Delaware. Reasonable efforts have been made by Delaware DataMIL staff to verify that this map and the digital data provided here accurately portray the source data used in its preparation; however, this map may contain omissions and errors in scale, resolution, rectification, positional accuracy, development methodology, and other circumstances. This map is also data specific. Data information on the individual layers comprising this map are given as part of the marginalla of this map. This map was prepared for a scale of 1:24,000 and should not be used at larger scales, nor should this map should be used for navigational, engineering, legal, or any other site-specific use. Nothing contained herein shall be deemed an expressed or implied waiver of the sovereign immunity of the State of Delaware or its duly authorized representatives, agents, or employees.

SCALE 1:24,000



CONTOUR INTERVALS: 0-10 Feet / 2-foot Contour Interval; 10-100 Feet / 10-foot Index with a 6-foot Intermediate Contour Interval;
Greater than 100 Feet / 10-foot Contour Interval

VERTICAL REFERENCE:
ETIC VERTICAL DATUM OF 1929 (NGVD29)

(TO CONVERT ELEVATIONS TO THE NORTH AMERICAN VERTICAL DATUM OF 1988, SUBTRACT 1 FOOT)
DEPTH CURVE DATA COMPILED FROM NOS CHARTS IN FEET
SHORELINE SHOWN REPRESENTS THE APPROXIMATE LINE OF MEAN HIGH WATER
MD, PA, AND NJ BORDER QUADRANGLES SHOW USGS DRG IMAGES OUTSIDE OF DELAWARE BORDER WITHIN QUADRANGLE

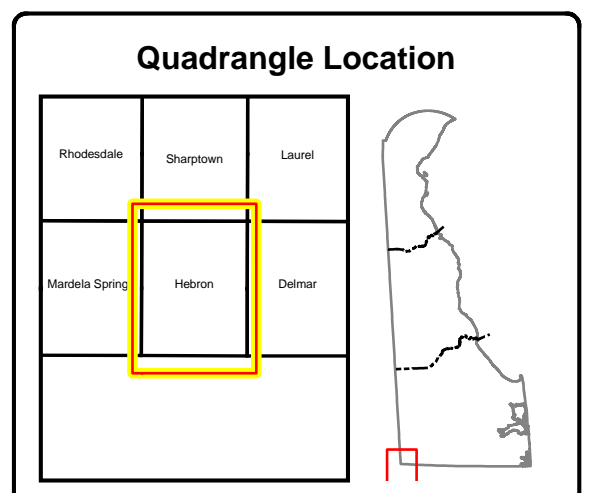
HORIZONTAL REFERENCE:
NORTH AMERICAN DATUM OF 1983 (NAD83) HIGH ACCURACY REFERENCE NETWORK 1991 (HARN 91)

PROJECTION IS 1983 DELAWARE STATE PLANE M
 ,000-meter grid: Universal Transverse Mercator, zone
 10,000-foot tick: Delaware Coordinate System of 1983
 [altitude] [elevation] grid ticks: NAD83(HARN91)

Map Produced by the Delaware DataMIL
Using the following Data Sources:

Using the following data sources:

- USGS Database of National Names 2002
- USGS Database Boundaries - County Boundary (lines) 1993
- USGS Database Boundaries [area] 2002
- USGS Database Boundaries [area] 1993
- USGS Database Miscellaneous Features [point] 1993
- USGS Database Miscellaneous Features [area] 2002
- USGS Database Miscellaneous Features [area] 1993
- USGS Database Railroads 1993
- USGS Database Rivers and Graphics 1992-93 (DRG)
- Delaware 7-minute Quadrangle Index 2006
- National Hydrography Database (NHD) - High Resolution -
DE Lakes Ponds Areas 2005
- National Hydrography Database (NHD) - High Resolution -
DE Rivers and Streams 2005
- Delaware Contours 2005 (Sussex) and 2007 (NC and Kent)
- Delaware Municipal Boundaries 2006
- Delaware County and Precinct Boundaries 2006
- Delaware Private Schools 2007
- Delaware Public Schools 2007
- DelDOT Delaware State Road Network
- New Castle County Communities 2006
- Sent County Communities 2006
- Sussex County Communities 2006



Hebron
Delaware DataMIL: <http://datamil.delaware.gov>

Created: 2/1/2009