

Since 1910
Newark's
Home Town
Newspaper

THE NEWARK POST

LIBRARY

SEP 5 1969

UNIVERSITY OF DELAWARE
NEWARK, DELAWARE

For News of
People YOU Know
Read
The Newark Post

VOL. 20 NO. 30

The Newark Post, Newark Delaware, Thursday, Sept. 4, 1969

PRICE SEVEN CENTS

Fair Hill Races To Be Offered Saturday For Elkton Hospital

Steeplechase Stakes To Feature Both Saturday Cards At Fair Hill Course Near Newark In Union Hospital Benefit Program With 2 P.M. Post Time, Daily Doubles

Thoroughbred racing for the benefit of Union Hospital, Elkton, will be conducted at Fair Hill this weekend and next. A minimum of six pari-mutuel events will be run each Saturday under auspices of the Cecil County Breeders Fair, Inc., and with the sanction of the Maryland Racing Commission.

A steeplechase stakes will be the feature attraction each Saturday, with many of the outstanding jumpers currently in training expected to meet in the \$4,500-added Fair Hill Steeplechase Handicap on Sept. 6, and in the \$5,000-added Manly Steeplechase Handicap on Sept. 13. Although a majority of the scheduled events are reserved for steeplechase and hurdles specialists, daily double races will be decided on the flat, over the famous Fair Hill turf course.

Approximately \$30,000 in purses will be at stake during the two weekends at Fair Hill's 30th fall meeting.

Post Time

A first post time of 2 p.m. will be in effect each racing day.

The course is located on Route 273, four miles from Newark. Racing Secretary John E. Cooper, who closed entries for the first day's program last Saturday at his Belmont Park offices, announces strong support from Delaware, New York, and Maryland horsemen for all races and indicated that seven races may be offered on opening day.

In addition to the afternoon horse races, the sponsoring Cecil County Breeders Fair will conduct its annual cattle show this Saturday morning.

Delaware Coed, 20 Killed At Newark In Saturday Crash

Marsha Schimp, Victim As Car Strikes Culvert On South College Avenue

A 20-year-old University of Delaware sophomore coed from McDaniel Crest was killed early Saturday morning when her car ran off South College Avenue in Newark and hit a culvert.

Newark police identified the girl as Marsha L. Schimp of 309 McDaniel Avenue, who was pronounced dead on arrival at Wilmington General Division where she was taken by Aetna ambulance at 6:30 a.m.

Miss Schimp, daughter of Mr. and Mrs. Kenneth Schimp of the same address, was spending the night with a girl friend in Newark, the family said, and was on her way to work at 6 o'clock Saturday morning.

The small car ran off the east side of South College Avenue in front of Horne's Restaurant at the 195 interchange.

The car was going south, police said. Miss Schimp's death is the first highway fatality this year in Newark.

Her death raised the Delaware highway fatality list to 70 this year, compared with 94 in the same period last year.

DuPont Research Officer Succumbs In Louviers Golf

Dr. Lawton A. Burrows, 61, head of textile fibers research for the DuPont Co., died last Thursday after suffering a heart attack while playing golf at the Louviers course near Newark. He was dead on arrival at Wilmington General Division.

Dr. Burrows was a leader in the technical work behind a number of man-made fiber developments, including Nomex nylon, Lycra spandex, and Qiana nylon.

The basic patent covering Teflon fluorocarbon fiber was issued to him and an associate.

Navy's Theodore Antonelli At School In Lakehurst

Airman Apprentice Theodore Antonelli, USN, son of Mr. and Mrs. Theodore J. Antonelli of 3019 Oglethorpe Road, Newark, is attending Aerographer's Mate School at the Naval Air Technical Center Lakehurst, N.J.

The 17-week course includes instruction in operation of meteorological equipment.

MORE WITH LESS

American farmers today grow more than 20 per cent more products on six per cent fewer acres than they did just 10 years ago, reports Richard H. Lester, chairman of the Delaware Agricultural Stabilization and Conservation Committee.

Launches Own Firm



C. of C. President Alden C. Bugher Heads Realty Firm

Newark real estate executive Alden C. Bugher has announced the opening of Alden Bugher Associates, Inc., a new general brokerage realty firm with offices at 267 East Main Street, Newark, in a restored colonial brick building owned and renovated by Bugher and a business associate.

"Ample off-street parking for clients," Bugher said, "was a major factor in choosing this location." Bugher recently resigned as vice-president and general manager of the Newark office of Harris-Hanby to become president of his own realty company.

A 1956 graduate of the University of Delaware, he has been in the real estate business in the Newark area for the past 10 years.

Bugher is president of the Greater Newark Chamber of Commerce; served two terms as president of the Newark Real Estate Association; is a member of the Greater Wilmington Board of Realtors, and state membership chairman of the National Institute of Real Estate Brokers.

Mr. and Mrs. Bugher reside at 400 Arbour Drive, Newark with their three children.

MANGOLD IN VIETNAM

Pfc Thomas F. Mangold, Jr., 23, whose parents live at 907 Baylor Drive, Newark, was assigned Aug. 3, to the 4th Infantry Division in Vietnam as a fire direction control computer.

Edgar J. Townsend Named Ass't Dean Of Men For U. D.

Edgar J. Townsend has been appointed assistant dean of men at the University of Delaware, responsible for fraternities and commuter students.

Townsend received a BA in government and MA in education from American University, where he is a PhD candidate.

While completing his master's degree, he was awarded a National Defense Education Act Fellowship, and a university travel grant for study in Tunisia in 1967.

Townsend attended America University on a four-year athletic scholarship, and in 1964, played against the Mexican Olympic basketball team.

Charles Rowe's Paintings Exhibited In Washington

Six acrylic paintings by Charles Rowe, assistant professor of art at the University of Delaware, are on exhibit through Sept. 30 at the Mickelson Gallery in Washington. The exhibit consists of the works of American and internationally famous artists.

Rowe will have a one-man exhibition at the Mickelson Gallery in early April.

Five Delaware Students Win Army Commissions

Five students at the University of Delaware have received their commissions as second lieutenants in the U.S. Army, following summer camp.

The new officers include Francis F. Pacinelli, 19 Amstel Avenue, Newark.

The New Cobbs And Gauger Schools



The architectural drawing for the Newark School District's Ramon C. Cobbs Lower School and Martin J. Gauger Middle School—both to be located on the same site in Scottfield off of Chestnut Hill Road in Newark—was shown this week for the first time. The Cobbs-Gauger complex is expected to cost about \$4,250,000

and house 1,500 students. The schools, the first in Delaware to use the School Construction Systems Development techniques were designed by Richard Phillips Fox, Inc. of Newark.

(Newark Schools Photo)

John W. Heuberger With Six Named As APS Fellows

Veteran U. of D. Prof. Honored By Pathologists At Banquet In Spokane

A veteran University of Delaware professor was named a fellow of the American Phytopathological Society at the group's annual banquet in Spokane, Wash.

Dr. John W. Heuberger, professor of plant pathology since 1947, is among six of the society's members selected for the honor.

Heuberger, a Rhode Island native, received his bachelor's and master's degrees from Rhode Island State College, and his doctorate at the University of Maryland. Since 1934, he has served as plant pathologist at the University of Maryland; the Dutch Elm Disease Laboratory, Norristown, N.J.; and at the Delaware, New York and Connecticut agricultural experiment stations.

Prior to joining the University of Delaware faculty in 1945, he served as plant pathologist at Rohm & Haas.

Since returning to Delaware, Heuberger has served as associate and extension plant pathologist and professor of plant pathology.

Heuberger's research interests include virus diseases, and field control of diseases emphasizing action and application of fungicides. He was instrumental in development and use of fungicides such as zineb, nabam and related materials.

Power Squadron To Offer Course In Safe Boating

Free classes in navigation, boat-handling and safety afloat will be offered to the public by the Northeast River Power Squadron in conjunction with the Cecil County adult education program.

Registration will be next Monday at 7:30 P.M. in the Elkton High School.

The Northeast River Power Squadron is a unit of the United States Power Squadrons, national, non-profit civilian organization dedicated for over 50 years to increasing safety afloat thru a program of nautical education for boatmen and prospective boatmen. All instructors are members of the squadron and serve without pay.

Certificates are given at the end of the course and holders are eligible to become members of the squadron.

The course consists of 12 weekly lectures and demonstrations every Monday, 7:30 to 9:30 p.m. Subjects include rules of the nautical road, equipment required by law, seamanship, boat-handling, navigation aids, compass and chart work. An examination concludes the course.

Classes are open to men and women, regardless of whether or not they own a boat.

"Little Joe" VFW Picnic Result Of Shell, Change

Last Saturday, J. Allison O'Daniel VFW Post 475 held their annual "Little Joe" Picnic at the post home on Barksdale Road, when some 250 members enjoyed clams, crabs, corn, potato salad and everything that makes for a good family reunion of members.

Dorothy Foster advised. "Little Joe" started after the second World War, when a 90-mm shell with a money slot in the post room, was nicknamed "GI Joe." Members drop their change in over the year and then gather one day to celebrate.

Air Pollution Damages State Vegetables, Flowers, Ornamentals, Stevens Reports

Air pollution damage to lima beans, potatoes and other vegetables, flowers and ornamentals again is apparent in Delaware, reports Robert F. Stevens, extension horticulturist at the University of Delaware.

The reddish brown flecking, spotting and streaking is usually found on the lower leaves of most bean plants in the state, he explains.

Damage, however, is more apparent on pole lima beans, perhaps because lower leaves are more visible.

"We always have some pollution damage on plants here in Delaware," comments the university's Dr. Donald Fieldhouse, adding "but this year, damage appears greater than usual."

Fieldhouse, who has reproduced air pollution damage on greenhouse plants, attributes a significant amount of plant damage to ozone. Although ozone is a natural constituent of air, it has been shown that auto exhaust often increases ozone to toxic levels.

White pine, an important ornamental in Delaware is often stunted and damaged by air pollution. Relatively small concentrations of ozone and sulfur dioxide may cause pollution damage to these trees in a matter of hours.

Damaging concentrations of ozone are not limited to industrialized or metropolitan areas, observes Stevens. In fact, damaging ozone levels have been recorded at Georgetown.

Not all white pines are susceptible to air pollution damage. In fact, some specimens actually seem to resist pollution. It is not uncommon to find two trees side by side, one a sickly, mottled yellow,

the other of normal size, color and vigor. The U.S. Forest Service, however, has shown that some damaged trees may recover when exposed to filtered air.

State agricultural experiment stations and the U.S. Forest Service are studying air pollution so that nurseries may develop pollution-resistant seedlings.

Brookside Resident Wayne Miles Gets King Fellowship

A Brookside resident employed at the DuPont Chestnut Run plant, is one of three recipients of a Martin Luther King Jr. Fellowship. The DuPont Co. recently contributed \$21,000 to the program conducted by the Woodrow Wilson National Fellowship Foundation.

Wayne S. Miles of 26 Monterey Drive, a technician in the Dacron research division in the Dacron textile fibers department, will study for a doctorate in chemistry at Temple University.

Miles, a graduate of Maryland State College, will receive \$7,000 to help finance his studies.

The \$7,000 grants are made to Negro veterans of outstanding promise so they may pursue graduate or professional studies, and recipients are asked to give serious consideration to careers in public service.

This is the second year that the Martin Luther King Jr. fellowships have been granted and there have been 63 participants.

VFW Auxiliary Delegate Dorothy Foster Reports On National Convention, Insignia

As a delegate to the Veterans of Foreign Wars 70th annual national convention in Philadelphia, Pa., 15-22, Dorothy Foster of Newark's Thomas Cooper Auxiliary reports learning that the VFW insignia dates back to the 11th Century with its adoption from the Cross of Malta carried by the Knights of St. John in the Crusades.

The eight-pointed Cross of Malta in the VFW insignia is formed by arrowheads, with each point in the cross representing one of the Beatitudes from the Sermon on the Mount.

"The arrowheads indicated that the Knights of old were willing to fight for justice and truth, just as the VFW is dedicated today," Mrs. Foster said. "To insure the national security, rehabilitate the disabled and needy; assist the widows and orphans; and to promote Americanism through education and programs to better all communities."

Delaware Gov. Russell N. Peterson, a principal speaker at the convention, and the flag of Delaware was first in the line of flags. VFW Commander-in-Chief Richard Homan presented the VFW National Space Award to Col. Frank Borman, commander of Apollo 10; the VFW Medal of Merit to National President Lora Waters for outstanding Auxiliary service, and the Unsung Heroine Award to Capt. Mary Lawie, Air Force nurse.

Philadelphia Police Commissioner Frank Rizzo received the J. Edgar Hoover Award and \$1,000, which he gave to charity. The Mississippi delegation was on the convention floor when the news came out about the hurricane Camille disaster. At once, the commander and delegates presented a motion for \$100,000, and the Auxiliary floor donated \$6,000.

The new U.S. Treasurer, Delaware's Mrs. Dorothy Elston, asked

2 Area Residents Killed At Turnpike During Heavy Rain

Mrs. Blanche M. Everett, Mrs. Joan Vincent Victims In Station Wagon Accident

Two women of the Newark area were killed yesterday and a 22-month-old boy critically injured in a car-truck crash on Interstate 96 near Wilmington's Maryland Avenue exit during heavy rain.

Police identified the dead as Mrs. Blanche M. Everett, 64, of 10 Carole Road, Chestnut Hill Estates, the driver; and Mrs. Joan A. Vincent, 37, of 11 Carole Road. The child is Mrs. Vincent's son, Dwight David.

The women were dead on arrival at the hospital at 4:15 p.m. The child was reported last night in critical condition with multiple internal injuries.

According to state police, the station wagon with the women and child was traveling south on I-96 about 4 p.m. when it went out of control, slid across a grass median strip and collided with a tractor-truck heading north.

Police said it was raining hard at the time of the accident, but said that no reason had been found for the car going out of control.

The truck owned by Matlack, Inc., Lansdowne, was driven by Robert J. Dapper of Allentown, Pa. A passenger in the truck, Donald O. Bensinger, 42, of Walnutport, Pa., suffered cuts of the left eye, chin and scalp, when thrown through the windshield.

Bensinger was treated and released at Wilmington General. Dapper was not hurt.

Police limited traffic on the northbound lanes of Interstate 95 for nearly two hours while wrecking trucks cleared the debris. The deaths raise the state's highway toll to 82 compared to 94 at this time last year.

May B. Leasure Delivers 1st State Letters To Alaska

Mrs. May B. Leasure has returned to her home in Langlough after a three-week Presbyterian Inside Alaska tour.

The escorted portion of the trip began in Central Chicago with the Rev. and Mrs. L. K. Anderson as tour leaders, and 26 people from 21 states.

Tour members left Seattle, Wash., and traveled to Point Barrow, farthest northern inhabited island in the Arctic Ocean, with transportation ranging from jets to dog sleds.

When the group visited Juneau, the capital, Mrs. Leasure delivered letters of introduction and greetings from Gov. Russell N. Peterson of Delaware, the second smallest state, to Gov. Keith Miller of the largest, Alaska.

Mrs. Robt. Wilson Hostess For Newark Garden Club

The Newark Garden Club will have its first meeting of the year at the home of Mrs. Robert Wilson, 113 West Park Place, next Monday.

The program will consist of a flower show workshop in preparation for the Delaware Flower Show to be held Oct. 4-6. Mrs. Ann Barczewski, flower show judge, will give helpful comments on the entries.

Members are urged to bring at least one entry to fill one of the classes.

Anyone interested in the club's activities may call the program chairman, Mrs. Thomas Nickles.

Varied Fall Classes To Begin Next Week At Newark YWCA

Mrs. Doris Nichols, Program Director, Announces Offerings At Smyth Center On South College Avenue; "Know Your Community" — For Old, New Residents

"Try a new thing or improve an old hobby. Choose from a variety of classes starting next week at the Alice P. Smyth Center, 318 South College Avenue," Mrs. Doris Nichols, Newark YWCA program director, urged Monday.

For new and old residents of Newark, a course "Know Your Community" is being offered with Mrs. Robert Crowder of the League of Women Voters, coordinator. Weekly luncheon programs begin Sept. 10,

with a panel from Alma Moore College discussing "Is Self Actualization Your Thing?"

For improving skills, classes will be offered in interior decorating, by Mrs. E. N. Simons; lampshades, by Mrs. Donald Stewart; sewing, with Mrs. John Thompson; and needlework, by Mrs. Stewart Kachel.

To add novelty to your menu, try the oriental cooking class offered by Mrs. Wilmer Aist, Mrs. Nichols suggests.

Art classes will be taught by Mrs. Stewart Kachel; ceramics, by Mrs. W. Gary Caulfield; and decoupage by Mrs. Ruth Dorsman and Mrs. Fran Hance.

For personal decoration, sign up for Joseph's hair styling class.

Golf Lessons Johnny Long, golf pro at Louviers, will teach beginners' golf on Tuesday mornings. No clubs are necessary.

"Keep active and trim with the Trim-Gim class led by Mrs. Elbert Chance, and with swimming and Karate classes," Mrs. Nichols added.

A new beginners bridge class will be taught by Mrs. H. Winston Sewell on Tuesday mornings.

Contact the YWCA about teen activities and clubs, teen fitness programs, children's art, and swimming classes.

Adult groups include TOPS (Take On Pounds Sensibly), table tennis, chess, books, Yoga, Chiester's (YWCA sculptors), and ESP.

Phone the YWCA for details on the fall program, Mrs. Nichols concludes.

Temple Beth El Sisterhood Coffee Slated Next Week

The Sisterhood of Temple Beth El of Newark, will have a coffee for new members next Tuesday in the Temple at 70 Amstel Avenue.

Mrs. Harry Horwitz, membership chairman, will explain purposes and programs of the Sisterhood, and will introduce members of the board.

The executive board of the Sisterhood includes Mrs. Emanuel Tigai, president; Mrs. Howard Klinger, Mrs. William Kantor and Mrs. Harry Horwitz, vice-presidents; Mrs. Lewis Gott and Mrs. Dennis Drayer, recording and corresponding secretaries, and Mrs. Samuel Rittberg, treasurer.

Veteran Teacher Mary Walsh, 88 Dies In Hospital

Requiem mass was offered Friday morning for Mary G. Walsh, 88, who died last Thursday in Delaware State Hospital after a long illness.

Miss Walsh had lived with her niece, Mrs. Mary McCartan of 152 Brookside Blvd., for six years.

She had taught in New York City public schools for 44 years, and also taught mentally retarded children and sight-conservation classes.

Interment was in All Saints Cemetery.

DST Hardware Purchases Top \$6.5-Million In '69

Diamond State Telephone Company has spent over \$6,500,000 this year for new telephone hardware in the state.

Dudley Connors district manager, said the company has budgeted \$9,000,000 for 1969 for new dial apparatus and cable facilities to keep pace with telephone growth in Delaware.

David C. Miller Rounds Cape Horn On Enterprise

Airman David C. Miller, USN, son of Mr. and Mrs. Francis D. Miller of 50 Matthews Road, Brookside, has arrived in Portsmouth, Va., aboard the aircraft carrier USS Enterprise.

The nuclear-powered carrier came around Cape Horn in a 28-day voyage from Alameda, Calif., for a 10-month shipyard overhaul.

Her nuclear cores will be replaced and other repairs made.

Thomas Cooper Auxiliary Offers VA Patient Bingo

The Thomas Cooper Auxiliary of J. Allison C. Daniel VFW Post 475 held their monthly bingo party at the VA Hospital on Aug. 21.

The patients were assisted and served refreshments by President Pat Goodchild, Gladys Muchnick, Marge Charnick, and Dorothy Naylor.

Children's Library To Offer Sessions Of Story-Telling

The Children's Library of the Newark Free Library will resume its story-telling program for preschool children beginning Tuesday, Sept. 16.

Bi-weekly sessions will be held in the Children's Library on Elkton Road from 10:30 to 11:15 a.m. on Tuesdays and from 1:30 to 2:15 p.m. on Wednesdays.

Mothers of the Newark area are invited to bring their children.

Eligible to attend are pre-schoolers and kindergartners who are 3 1/2 years or older. No pre-registration is necessary.

Any adult interested in telling stories for the program should contact Mrs. Paul Sammelwitz.

Architecture Construction Course To Start Sept. 15

A course on materials and methods of construction in architecture will be offered from 7 to 9:45 p.m. beginning Sept. 15 in Room 100, Sharp Lab on the University of Delaware campus.

John C. Volk, Jr., project engineer with the Delaware River and Bay Authority, will direct the course, assisted by special guest lecturers.

Coral Morris Offers Aid In Combat Of Mildew

A rain summer is good for dews and mildew. The grey, musty-smelling mold is especially prevalent this summer even in air conditioned homes, according to Coral K. Morris home management specialist at the University of Delaware.

A fact sheet "How to Remove Mildew" is available from the Cooperative Extension Service at the University of Delaware. Write the Mailing Room, Agricultural Hall, Newark.

Mill Creek Hundred News

Sara Pennington Evans, Correspondent
Phone 239-7798

Churches in the area of Mill Creek Hundred are discussing the possibility of opening a coffee house for senior highs "on up" this fall.

A workshop on this project and its ministry will be held this Sunday at 7:30 p.m. at St. Mark's Methodist Church on Limestone Road.

The basement of Trinity Baptist Church is being considered as the place for the coffee house.

Members from St. James Episcopal, St. Philip's Lutheran, Limestone Presbyterian, Skyline and St. Mark's Methodist and Trinity Baptist are urged to come to this meeting so that the project may be outlined for them.

Cesspools — Septic Tanks
CLEANED — Odorless Excavating
FREE ESTIMATES
R. J. WEST
NOTTINGHAM, PA.
PHONE 215-932-9632

J. MERRITT LYNCH
MASONRY WORK
of all types
GENERAL REPAIR WORK
1911
Old Capitol Trail
Newark
CALL
737-2866

Fourteen members of Harmony Junior Grange with Mrs. John Tweedy, matron, had a guided tour of the hospital ship S.S. Hope Wednesday morning conducted by Miss Grace Tucker, director of nursing for the ship. This is Miss Tucker's fourth trip.

Sean Tweedy, junior master, presented Mrs. W. W. Laird, vice-chairman of the Delaware committee with seven pairs of pajamas donated by juniors.


Junior Grange will begin its fall program with a meeting next Friday at 7 p.m. instead of tomorrow. Mrs. Thomas Carr will have the program.

Ebenezer Methodist Church
Promotion Day will be observed in the church school this Sunday at 10 a.m. Attendance awards will be given.

The fall schedule of two worship services at 9 and 11 a.m. will be resumed this Sunday.

The Women's Society of Christian Service met Tuesday evening with Ruth Circle in charge of the program on "Commitment."

Last evening, Mr. and Mrs. George Lynch entertained Ebenezer Fellowship at their home on Old Coach Road.

PHONE 368-3587

grover surratt
45 east main street
newark, delaware

Museum Curator Eugene S. Ferguson To Teach At U.D.

The University of Delaware and Hagley Museum have announced the joint appointment of a scholar in technological history. Eugene S. Ferguson, former professor of mechanical engineering at Iowa State University, will teach a course in the history of technology at the university, and become curator of technology at the museum.

Ferguson, a native of Wilmington, received his bachelor of science degree in mechanical engineering from Carnegie Tech in 1937. From 1938 to 1942 he was with DuPont as an engineer at Gibbstown and Pompton Lakes, N.J., and during World War II service as a naval officer, became interested in naval history. In 1966 he published a biography, "Truxton of the Constitution."

In 1955 he received his master of science degree in mechanical engineering from Iowa State. Three years later he went to the Smithsonian Institution to develop the "Hall of Tools" for the new museum of history and technology.

Returning to Iowa State in 1961, he developed a program in the history of technology. At the Hagley Museum, he will assist the long-range program of interpreting technological developments in the DuPont powder yards through restoration, exhibits, and publications; will advise the Elettner Mills Historical Library; and aid development of the Hagley Fellowship program.

Mr. and Mrs. Ferguson have three children — Judith, 18; Daniel, 16; and David, nine. They will reside at 54 Winslow Road in Newark.

The Capt. William McKenna chapter, Daughters of the American Revolution will hold its September meeting next Monday at 12:30 p.m. at the home of Mrs. Egbert S. Klair on Limestone Road. Members are reminded to pay their yearly dues at this session.

Julie Williams was reelected president of the Hill'n'Dale 4-H Club for her second year at the meeting last Thursday with Aron and David Insinga. Also reelected was her brother, Ned as treasurer. New officers are Lynn Thompson, vice-president; Patricia Williams, secretary; and Debbie Shuler, reporter.

Reports were given on the State Fair by L. Thompson, Jr. and P. Williams, and D. Schuler. Tricia Williams was commended for placing eighth in Delaware in the state dairy judging contest. Ned Williams attended 4-H State Conference last week.

Guests at the meeting included Vicki Birowski, Bobby and Michael Taylor, David Armstrong and Becky Ford.

Aron and David Insinga, Lynn Thompson, and Julie Williams were appointed to arrange a club window display for the state contest Oct. 5-11.

For his electric project, Aron Insinga showed what he had done this year. David Insinga explained his project "4-H Way for Boys."

The club will meet next Thursday with L. Thompson on Duncan Road.

Tomorrow from 7 to 11 p.m., the 4-H Junior Council will hold its annual round-up for all club members in New Castle County at Ag Hall in Newark.

Election of officers will take place this evening at the White Oak 4-H Club meeting at the home of Mrs. Joseph Mitchell, on North Star Road.

Red Clay Creek Presbyterian Church
Starting this Sunday, the fall schedule will be resumed with two worship services — at 9:30 and 11 a.m., and church school at both periods.

Installation of the Rev. Wallace G. Wingard as senior pastor will be conducted by the Presbytery of New Castle on Sept. 14 at 7:30 p.m.

Norman T. Dempsey, master of Delaware State Grange, and Mrs. Dempsey State Flora, will have charge of installation ceremonies for Harmony Grange next Monday at 8 p.m.

A native of Mill Creek Hundred, Thomas Williamson Watson, 63, died following a heart attack on Aug. 26 at Memorial Hospital.

Services were conducted by the Rev. Willett Smith, pastor of Limestone Presbyterian church of which he was a member, on Aug. 30 at the Worrall and Kuzo Funeral Home in Kennett Square with interment in New London Presbyterian Church Cemetery. Both

services and interment were private.

Born at Hockessin on Oct. 27, 1906, he had lived at Yorklyn for 57 years, moving to Hyde Park three years ago. He was a machinist at the National Vulcanized Fibre plant, Yorklyn, for 47 years.

Besides his widow, Mrs. Eva White Watson, he is survived by two sons, Robert R. at home and Thomas E. Webster, N.Y., and a daughter, Joan W. of Phoenixville, Pa., grandson Tommy four sisters, Mrs. Emma Bengt of Yorklyn, Mrs. Hazel Lohmiller of Gilbertville, Pa., and the Misses Pearl and Sara Watson, of Kennett Square.

Limestone Presbyterian Church
Carol Fisher was soloist last Sunday at this church. A music major at Maryville College, she will soon return to begin her senior year. Weekly choir rehearsals will

start for the senior group tonight, directed by Mrs. Vernon Fisher.

Junior and youth chairs will begin weekly rehearsals next Thursday at 7 p.m. Mrs. Donald Keister, Jr., is director.

The annual church school picnic will be held this Saturday from 1 to 4 p.m. at Brandywine Springs State Park.

The international student home hospitality committee of Church Women United needs families from this church to extend a welcome to incoming foreign students at the University of Delaware.

The family of Mrs. Mollie Jarrell gave her a surprise party and dinner last Sunday at her home on Limestone Road in honor of her

70th birthday anniversary on Sept. 3.

Those present were Mr. and Mrs. William Cathell and daughter, Kathy, Mr. and Mrs. Anthony Clauso, Patricia and Anthony Clauso, Jr., Mr. and Mrs. Thomas Jarrell, Carolyn and Joanne Jarrell, Mr. and Mrs. Charles McElwee, Sharon Lee and Susan Lee McElwee, Mr. and Mrs. Harry Jarrell, and son David, Mr. and Mrs. Henry Kolaski and son Bobby.

Her son Alexander Jarrell of Limestone Road, was in Indianapolis, Ind., for the past weekend participating in the NHRA summer national drag races.

St. James Episcopal Church
Church school will begin this Sunday at 10 a.m.

The teaching staff will include Mrs. Mary Burns, three-year-olds; Miss Lois Heinel, Mrs. Lila Heinel and Mary Jane Madara, kindergarten; Mrs. Clara White, Mrs. Jerry Clark, and Karen Jackson, first grade; Mrs. Jackie Holbeck, Mrs. Robert Allmeus, Avril McDermott, second grade; Mrs. Mary Farkas and Mrs. Marilyn Olson, third grade; Mr. and Mrs. Larry Goldstone, David

(Continued from Page Three)

DRINKING PROBLEM?
Alcoholics Anonymous can help. Newark AA meets at 8 p.m. Wednesdays and Saturdays.

Westminister House
292 W. Main St.
Visitors Welcome
On Saturdays

Professional precision safeguards your health

Your registered pharmacist works hand in hand with your physician for the protection of your health... fills each prescription with the utmost precision so that you may enjoy the full benefit of your doctor's skill.

CALL FRANK TOLOMEO — 368-8730

NEWARK PHARMACY
133 E. Main St.

OPEN WEDNESDAY EVENINGS 7 TO 9

Wilmington • New York • Philadelphia • Zurich • Salisbury, Md. • Dover, Del. • Newark, Del. • Boston • Hartford • Fort Lauderdale • Boca Raton • Winter Park, Fla.

Wilmington Savings Fund Society Bldg.
51 E. Main St., Newark, Delaware 19711

Wilmington 658-4241 Newark 737-4400 Elton 358-3766

Wilmington • New York • Philadelphia • Zurich • Salisbury, Md. • Dover, Del. • Newark, Del. • Boston • Hartford • Fort Lauderdale • Boca Raton • Winter Park, Fla.

OPEN WEDNESDAY EVENINGS 7 TO 9

Wilmington • New York • Philadelphia • Zurich • Salisbury, Md. • Dover, Del. • Newark, Del. • Boston • Hartford • Fort Lauderdale • Boca Raton • Winter Park, Fla.

Wilmington • New York • Philadelphia • Zurich • Salisbury, Md. • Dover, Del. • Newark, Del. • Boston • Hartford • Fort Lauderdale • Boca Raton • Winter Park, Fla.

Wilmington • New York • Philadelphia • Zurich • Salisbury, Md. • Dover, Del. • Newark, Del. • Boston • Hartford • Fort Lauderdale • Boca Raton • Winter Park, Fla.

Wilmington • New York • Philadelphia • Zurich • Salisbury, Md. • Dover, Del. • Newark, Del. • Boston • Hartford • Fort Lauderdale • Boca Raton • Winter Park, Fla.

Wilmington • New York • Philadelphia • Zurich • Salisbury, Md. • Dover, Del. • Newark, Del. • Boston • Hartford • Fort Lauderdale • Boca Raton • Winter Park, Fla.

Wilmington • New York • Philadelphia • Zurich • Salisbury, Md. • Dover, Del. • Newark, Del. • Boston • Hartford • Fort Lauderdale • Boca Raton • Winter Park, Fla.

Wilmington • New York • Philadelphia • Zurich • Salisbury, Md. • Dover, Del. • Newark, Del. • Boston • Hartford • Fort Lauderdale • Boca Raton • Winter Park, Fla.

Wilmington • New York • Philadelphia • Zurich • Salisbury, Md. • Dover, Del. • Newark, Del. • Boston • Hartford • Fort Lauderdale • Boca Raton • Winter Park, Fla.

Wilmington • New York • Philadelphia • Zurich • Salisbury, Md. • Dover, Del. • Newark, Del. • Boston • Hartford • Fort Lauderdale • Boca Raton • Winter Park, Fla.

Wilmington • New York • Philadelphia • Zurich • Salisbury, Md. • Dover, Del. • Newark, Del. • Boston • Hartford • Fort Lauderdale • Boca Raton • Winter Park, Fla.

Wilmington • New York • Philadelphia • Zurich • Salisbury, Md. • Dover, Del. • Newark, Del. • Boston • Hartford • Fort Lauderdale • Boca Raton • Winter Park, Fla.

Wilmington • New York • Philadelphia • Zurich • Salisbury, Md. • Dover, Del. • Newark, Del. • Boston • Hartford • Fort Lauderdale • Boca Raton • Winter Park, Fla.

Wilmington • New York • Philadelphia • Zurich • Salisbury, Md. • Dover, Del. • Newark, Del. • Boston • Hartford • Fort Lauderdale • Boca Raton • Winter Park, Fla.

Wilmington • New York • Philadelphia • Zurich • Salisbury, Md. • Dover, Del. • Newark, Del. • Boston • Hartford • Fort Lauderdale • Boca Raton • Winter Park, Fla.

Wilmington • New York • Philadelphia • Zurich • Salisbury, Md. • Dover, Del. • Newark, Del. • Boston • Hartford • Fort Lauderdale • Boca Raton • Winter Park, Fla.

Wilmington • New York • Philadelphia • Zurich • Salisbury, Md. • Dover, Del. • Newark, Del. • Boston • Hartford • Fort Lauderdale • Boca Raton • Winter Park, Fla.

Wilmington • New York • Philadelphia • Zurich • Salisbury, Md. • Dover, Del. • Newark, Del. • Boston • Hartford • Fort Lauderdale • Boca Raton • Winter Park, Fla.

Wilmington • New York • Philadelphia • Zurich • Salisbury, Md. • Dover, Del. • Newark, Del. • Boston • Hartford • Fort Lauderdale • Boca Raton • Winter Park, Fla.

Wilmington • New York • Philadelphia • Zurich • Salisbury, Md. • Dover, Del. • Newark, Del. • Boston • Hartford • Fort Lauderdale • Boca Raton • Winter Park, Fla.

Wilmington • New York • Philadelphia • Zurich • Salisbury, Md. • Dover, Del. • Newark, Del. • Boston • Hartford • Fort Lauderdale • Boca Raton • Winter Park, Fla.

Wilmington • New York • Philadelphia • Zurich • Salisbury, Md. • Dover, Del. • Newark, Del. • Boston • Hartford • Fort Lauderdale • Boca Raton • Winter Park, Fla.

Wilmington • New York • Philadelphia • Zurich • Salisbury, Md. • Dover, Del. • Newark, Del. • Boston • Hartford • Fort Lauderdale • Boca Raton • Winter Park, Fla.

Wilmington • New York • Philadelphia • Zurich • Salisbury, Md. • Dover, Del. • Newark, Del. • Boston • Hartford • Fort Lauderdale • Boca Raton • Winter Park, Fla.

Wilmington • New York • Philadelphia • Zurich • Salisbury, Md. • Dover, Del. • Newark, Del. • Boston • Hartford • Fort Lauderdale • Boca Raton • Winter Park, Fla.

Wilmington • New York • Philadelphia • Zurich • Salisbury, Md. • Dover, Del. • Newark, Del. • Boston • Hartford • Fort Lauderdale • Boca Raton • Winter Park, Fla.

Wilmington • New York • Philadelphia • Zurich • Salisbury, Md. • Dover, Del. • Newark, Del. • Boston • Hartford • Fort Lauderdale • Boca Raton • Winter Park, Fla.

Wilmington • New York • Philadelphia • Zurich • Salisbury, Md. • Dover, Del. • Newark, Del. • Boston • Hartford • Fort Lauderdale • Boca Raton • Winter Park, Fla.

Wilmington • New York • Philadelphia • Zurich • Salisbury, Md. • Dover, Del. • Newark, Del. • Boston • Hartford • Fort Lauderdale • Boca Raton • Winter Park, Fla.

Wilmington • New York • Philadelphia • Zurich • Salisbury, Md. • Dover, Del. • Newark, Del. • Boston • Hartford • Fort Lauderdale • Boca Raton • Winter Park, Fla.

Wilmington • New York • Philadelphia • Zurich • Salisbury, Md. • Dover, Del. • Newark, Del. • Boston • Hartford • Fort Lauderdale • Boca Raton • Winter Park, Fla.

Wilmington • New York • Philadelphia • Zurich • Salisbury, Md. • Dover, Del. • Newark, Del. • Boston • Hartford • Fort Lauderdale • Boca Raton • Winter Park, Fla.

Wilmington • New York • Philadelphia • Zurich • Salisbury, Md. • Dover, Del. • Newark, Del. • Boston • Hartford • Fort Lauderdale • Boca Raton • Winter Park, Fla.

Wilmington • New York • Philadelphia • Zurich • Salisbury, Md. • Dover, Del. • Newark, Del. • Boston • Hartford • Fort Lauderdale • Boca Raton • Winter Park, Fla.

Wilmington • New York • Philadelphia • Zurich • Salisbury, Md. • Dover, Del. • Newark, Del. • Boston • Hartford • Fort Lauderdale • Boca Raton • Winter Park, Fla.

Wilmington • New York • Philadelphia • Zurich • Salisbury, Md. • Dover, Del. • Newark, Del. • Boston • Hartford • Fort Lauderdale • Boca Raton • Winter Park, Fla.

Wilmington • New York • Philadelphia • Zurich • Salisbury, Md. • Dover, Del. • Newark, Del. • Boston • Hartford • Fort Lauderdale • Boca Raton • Winter Park, Fla.

Wilmington • New York • Philadelphia • Zurich • Salisbury, Md. • Dover, Del. • Newark, Del. • Boston • Hartford • Fort Lauderdale • Boca Raton • Winter Park, Fla.

Wilmington • New York • Philadelphia • Zurich • Salisbury, Md. • Dover, Del. • Newark, Del. • Boston • Hartford • Fort Lauderdale • Boca Raton • Winter Park, Fla.

Wilmington • New York • Philadelphia • Zurich • Salisbury, Md. • Dover, Del. • Newark, Del. • Boston • Hartford • Fort Lauderdale • Boca Raton • Winter Park, Fla.

Wilmington • New York • Philadelphia • Zurich • Salisbury, Md. • Dover, Del. • Newark, Del. • Boston • Hartford • Fort Lauderdale • Boca Raton • Winter Park, Fla.

Wilmington • New York • Philadelphia • Zurich • Salisbury, Md. • Dover, Del. • Newark, Del. • Boston • Hartford • Fort Lauderdale • Boca Raton • Winter Park, Fla.

Wilmington • New York • Philadelphia • Zurich • Salisbury, Md. • Dover, Del. • Newark, Del. • Boston • Hartford • Fort Lauderdale • Boca Raton • Winter Park, Fla.

Wilmington • New York • Philadelphia • Zurich • Salisbury, Md. • Dover, Del. • Newark, Del. • Boston • Hartford • Fort Lauderdale • Boca Raton • Winter Park, Fla.

Wilmington • New York • Philadelphia • Zurich • Salisbury, Md. • Dover, Del. • Newark, Del. • Boston • Hartford • Fort Lauderdale • Boca Raton • Winter Park, Fla.

Wilmington • New York • Philadelphia • Zurich • Salisbury, Md. • Dover, Del. • Newark, Del. • Boston • Hartford • Fort Lauderdale • Boca Raton • Winter Park, Fla.

Wilmington • New York • Philadelphia • Zurich • Salisbury, Md. • Dover, Del. • Newark, Del. • Boston • Hartford • Fort Lauderdale • Boca Raton • Winter Park, Fla.

Wilmington • New York • Philadelphia • Zurich • Salisbury, Md. • Dover, Del. • Newark, Del. • Boston • Hartford • Fort Lauderdale • Boca Raton • Winter Park, Fla.

Wilmington • New York • Philadelphia • Zurich • Salisbury, Md. • Dover, Del. • Newark, Del. • Boston • Hartford • Fort Lauderdale • Boca Raton • Winter Park, Fla.

Wilmington • New York • Philadelphia • Zurich • Salisbury, Md. • Dover, Del. • Newark, Del. • Boston • Hartford • Fort Lauderdale • Boca Raton • Winter Park, Fla.

Wilmington • New York • Philadelphia • Zurich • Salisbury, Md. • Dover, Del. • Newark, Del. • Boston • Hartford • Fort Lauderdale • Boca Raton • Winter Park, Fla.

Wilmington • New York • Philadelphia • Zurich • Salisbury, Md. • Dover, Del. • Newark, Del. • Boston • Hartford • Fort Lauderdale • Boca Raton • Winter Park, Fla.

Wilmington • New York • Philadelphia • Zurich • Salisbury, Md. • Dover, Del. • Newark, Del. • Boston • Hartford • Fort Lauderdale • Boca Raton • Winter Park, Fla.

Wilmington • New York • Philadelphia • Zurich • Salisbury, Md. • Dover, Del. • Newark, Del. • Boston • Hartford • Fort Lauderdale • Boca Raton • Winter Park, Fla.

Wilmington • New York • Philadelphia • Zurich • Salisbury, Md. • Dover, Del. • Newark, Del. • Boston • Hartford • Fort Lauderdale • Boca Raton • Winter Park, Fla.

Wilmington • New York • Philadelphia • Zurich • Salisbury, Md. • Dover, Del. • Newark, Del. • Boston • Hartford • Fort Lauderdale • Boca Raton • Winter Park, Fla.

Wilmington • New York • Philadelphia • Zurich • Salisbury, Md. • Dover, Del. • Newark, Del. • Boston • Hartford • Fort Lauderdale • Boca Raton • Winter Park, Fla.

Wilmington • New York • Philadelphia • Zurich • Salisbury, Md. • Dover, Del. • Newark, Del. • Boston • Hartford • Fort Lauderdale • Boca Raton • Winter Park, Fla.

Wilmington • New York • Philadelphia • Zurich • Salisbury, Md. • Dover, Del. • Newark, Del. • Boston • Hartford • Fort Lauderdale • Boca Raton • Winter Park, Fla.

Wilmington • New York • Philadelphia • Zurich • Salisbury, Md. • Dover, Del. • Newark, Del. • Boston • Hartford • Fort Lauderdale • Boca Raton • Winter Park, Fla.

Wilmington • New York • Philadelphia • Zurich • Salisbury, Md. • Dover, Del. • Newark, Del. • Boston • Hartford • Fort Lauderdale • Boca Raton • Winter Park, Fla.

Wilmington • New York • Philadelphia • Zurich • Salisbury, Md. • Dover, Del. • Newark, Del. • Boston • Hartford • Fort Lauderdale • Boca Raton • Winter Park, Fla.

Wilmington • New York • Philadelphia • Zurich • Salisbury, Md. • Dover, Del. • Newark, Del. • Boston • Hartford • Fort Lauderdale • Boca Raton • Winter Park, Fla.

Wilmington • New York • Philadelphia • Zurich • Salisbury, Md. • Dover, Del. • Newark, Del. • Boston • Hartford • Fort Lauderdale • Boca Raton • Winter Park, Fla.

Wilmington • New York • Philadelphia • Zurich • Salisbury, Md. • Dover, Del. • Newark, Del. • Boston • Hartford • Fort Lauderdale • Boca Raton • Winter Park, Fla.

Wilmington • New York • Philadelphia • Zurich • Salisbury, Md. • Dover, Del. • Newark, Del. • Boston • Hartford • Fort Lauderdale • Boca Raton • Winter Park, Fla.

Wilmington • New York • Philadelphia • Zurich • Salisbury, Md. • Dover, Del. • Newark, Del. • Boston • Hartford • Fort Lauderdale • Boca Raton • Winter Park, Fla.

Wilmington • New York • Philadelphia • Zurich • Salisbury, Md. • Dover, Del. • Newark, Del. • Boston • Hartford • Fort Lauderdale • Boca Raton • Winter Park, Fla.

Wilmington • New York • Philadelphia • Zurich • Salisbury, Md. • Dover, Del. • Newark, Del. • Boston • Hartford • Fort Lauderdale • Boca Raton • Winter Park, Fla.

Wilmington • New York • Philadelphia • Zurich • Salisbury, Md. • Dover, Del. • Newark, Del. • Boston • Hartford • Fort Lauderdale • Boca Raton • Winter Park, Fla.

Wilmington • New York • Philadelphia • Zurich • Salisbury, Md. • Dover, Del. • Newark, Del. • Boston • Hartford • Fort Lauderdale • Boca Raton • Winter Park, Fla.

Wilmington • New York • Philadelphia • Zurich • Salisbury, Md. • Dover, Del. • Newark, Del. • Boston • Hartford • Fort Lauderdale • Boca Raton • Winter Park, Fla.

Wilmington • New York • Philadelphia • Zurich • Salisbury, Md. • Dover, Del. • Newark, Del. • Boston • Hartford • Fort Lauderdale • Boca Raton • Winter Park, Fla.

Wilmington • New York • Philadelphia • Zurich • Salisbury, Md. • Dover, Del. • Newark, Del. • Boston • Hartford • Fort Lauderdale • Boca Raton • Winter Park, Fla.

Newark Real Estate & Insurance Co.

"See Don Armstrong First"
FOR SALE

LOT — Old Newark Road, 156x307, zoned R-1-C \$5,000


FOR AN APPOINTMENT
Call 656-3161 or 368-8797

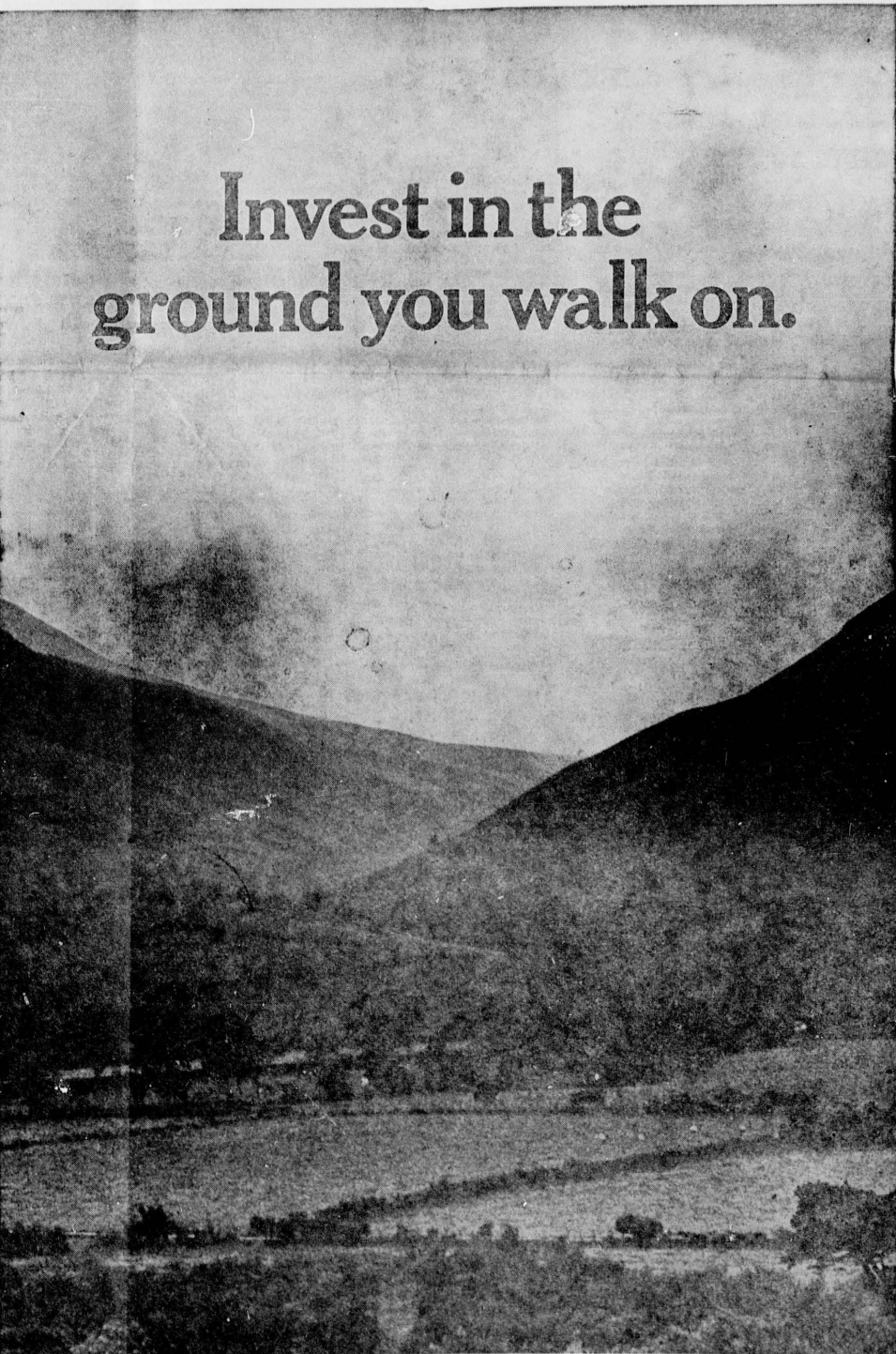
WEST KNOLL APARTMENTS

Property Management
Custom Building
Commercial Property
A. S. MACLARY, Inc.
61 East Main Street, Newark
Phone 368-8701

SALE
HARLAN C.
Williams CO.
REALTORS
102 E. MAIN ST., NEWARK
368-8734

"SIGN OF SERVICE
SEEN SO MUCH"

**HUGH F. GALLAGHER, JR. Inc.**
OFFERS
PROFESSIONAL SERVICE
TO
PROPERTY OWNERS and PURCHASERS
CALL
Hugh Gallagher, Ren George, John Stephenson, Gary Doughty



Buy U.S. Savings Bonds & Freedom Shares

The U.S. Government does not pay for this advertisement. It is presented as a public service in cooperation with The Department of the Treasury and The Advertising Council.

News of Bear

Mrs. J. Leslie Ford, Correspondent
Phone 328-6484

Mr. and Mrs. Paul Burge entertained 25 friends at a picnic supper Sunday evening.

The family of the late Joseph and Mary Laws held a reunion on Labor Day at Port Herman, Md., with the Theodore, Delaware, Julian and Charles Laws families; and the families of Mrs. Emma Sheats and Mrs. Sara Dayett attending.

Norman Mauthe, a member of Pender Church, is a patient in Delaware Division. We wish him a quick recovery.

Friends express their sympathy to the family of Edwin L. Shakespear, 65, of Polly Drummond Hill, Newark, who died Saturday in Memorial Division.

Neighbors and other friends extend their sympathy to the family with the death of Albert Thorp, 60, of Old Baltimore Pike.

Mr. and Mrs. J. Roy Arters of Klamens Gardens celebrated their 50th wedding anniversary on Aug. 28. The couple was honored Sunday at open house by their daughter, Mrs. Betty Lewis of Clay Acres, Bear. They also have a son and two grandchildren.

Friends from this neighborhood express their sympathy to the family of Charles E. Draper, Jr., 65, of Appleton Road, Elkton, who died last week in Memorial Division.

Mrs. Eleanor Marie B. Teague became the bride of Arthur A. Lovelace, Jr., in Immanuel Episcopal Church on the Green, New Castle, in an Aug. 16, ceremony with Rev. Myles W. Edwards officiating. A reception followed in the Academy Building on the Green.

The bride is the daughter of Mr. Harvey S. Burris of Bear, and parents of the groom are Mr. and Mrs. Arthur A. Lovelace of New Castle.

Mrs. John Erickson, Jr., was matron of honor, and William McCracken was best man.

Ushers were Ronald H. Burris and Richard L. McCracken.

The bride graduated from Newark High School, and her husband, from Wm. Penn.

After a wedding trip to Fort Lauderdale, Fla., the couple will reside in New Castle.

Mill Creek Hundred

(Continued From Page Two)

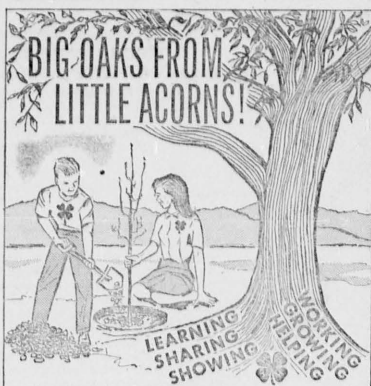
Faries, fourth grade; Mrs. Jo Madara and Mrs. Janice Sukena, fifth grade; Mr. and Mrs. Otto Morrison, sixth grade; Donald Matthews and Arthur Olson, seventh and eighth grades; Mrs. Sue Strecker and Mrs. Pat Tatman, ninth grade.

St. James Guild will hold its first meeting for the fall season next Wednesday following 10 a.m. communion service. Each woman brings her lunch. Mrs. Harold Seer is chairman for this group.

The Rev. Everett Ellis, rector, and his family are on vacation this week but will return Saturday.

William P. Keim has been named coordinator of secondary education in the Stanton school district. He was curriculum coordinator and federal projects director at Dickinson High School.

Women of the parish of St. Mary's of Assumption Church at Hockessin will sponsor a fashion show and luncheon on Sept. 25, at noon in the Gold Ballroom of the Hotel DuPont.



4-H Proves Old Adage

"You'd scarcely expect one of my age to speak in public on a stage," recited a 7-year-old school boy. "Don't view me with a critic's eye, but pass my imperfections by... tall oaks from little acorns grow. These thoughts inspire my youthful mind to be the greatest of mankind..."

This lad was not a 4-H'er, but he could have been. He lived in New Ipswich, New Hampshire in 1791.

Fifty years before a poet had written "Tis education forms the common mind; just as the twig is bent the tree's inclined."

Today's 4-H youngsters exemplify those often quoted lines, as did the first Head-Heart-Hands-Health youth of the early 1860's.

Boys and girls work on projects that frequently shape their lives and future careers. Millions of 4-H alumni say early 4-H training was a big step toward their success.

"Learning-by-doing" has always been the 4-H way. Showing and sharing new knowledge gained and skills learned is part of the 4-H pattern. The steps to growth are unending.

A pre-teen girl enrolled in a clothing program starts out by making a simple item and progresses according to her ability. By the time she is in high school, she makes most of her own clothes. As a teen 4-H leader she teaches young members how to sew.

The theme of the show "Elegance in Fashion" will be given by B. Attman and Co.

Mrs. Arthur Sullivan and Mrs. Ben Ripha are general chairmen.

Tickets may be obtained from Mrs. Lewis Accorsi and Mrs. Richard Luckring, both of Canterbury Hills. Deadline for reservations is Sept. 18.



Gov. Russell W. Peterson Grangers from this area will have their first opportunity to hear Russell W. Peterson, governor of the State of Delaware, speak on agriculture next Thursday at the meeting of New Castle County Pomona Grange at Centerville, with Center Grange as host.

A covered dish supper at 6:30 p.m. will precede meeting and program.

The governor, a member of Center Grange, will hold a question and answer period after his talk.

Eighteen members of Harmony Grange have made reservations for the annual fall women's activities luncheon next Wednesday at 10 a.m. in Dover.

Further your career. Add to your income. Serve your country. The Army Nurse Corps.



THE U.S. ARMY RESERVE

Like the New England boy and the poet, 4-H youths find plenty of inspiration for mind-stretching and using their hands to master skills. Projects are designed to arouse their curiosity and raise questions. The more they learn, the more competent they become to experiment, explore and find the answers, believes the Cooperative Extension Service which supervises 4-H.

And there are rewards both intrinsic and material.

More than \$1 million contributed annually by private sources is channeled to 4-H members through the National 4-H Service Committee. Funds are used for county, regional, state and national awards ranging from certificates and medals to \$1,000 scholarships. And educational aids covering many subjects are published and distributed to 4-H leaders and members.

For nearly 50 years, private funds have augmented the public-financed 4-H program. Some of the oldest and largest business enterprises in the U.S. have supported 4-H work since its inception.

Among the scores of 4-H sponsors are: Allis Chalmers, Armour and Company, Carnation Company, Coats & Clark Inc., The Firestone Tire & Rubber Company, General Foods Corporation, General Motors, Illinois Central Railroad and International Harvester Company.

Also, Kerr Glass Manufacturing Corporation, Montgomery Ward, Moorman Mfg. Co., Olin Mathieson Chemical Corporation, Ralston Purina Company, The Singer Company, Santa Fe Railway System, and Wilson & Co., Inc., A Subsidiary of Ling-Temco-Vought Inc.

Needlework, pot holders, coils, dolls, and jig saw puzzles will be judged.

NEWARK STATIONERS
STATIONERY - BOOKS
Office Machines SALES SERVICE
44 E. Main 368-4032

CITY OF NEWARK
Delaware

NOTICE OF PUBLIC SALE

The City of Newark will sell for cash to the highest bidder on Thursday, September 11, 1969, at 10:00 A.M. at the Brookside Sinclair Station, 35 Marrows Road, the following motor vehicle:
1962 Volkswagen Delaware 6151
The bidding will start at a \$10.00 minimum.
Betty Jane Sultz
City Secretary 9-4-1969

Head Start

for happy school days

when you serve good, quick 'n' easy energy meals. Another reason busy go-getters get...

HABBERSETT
sausage & scrapple
a family tradition of good taste since 1927



PUBLIC SALE OF VALUABLE MERCHANDISE
This is to serve as public notice that there will be a public sale of a 1969 Rambler SST 4 door Station Wagon on the premises of Short's Garage, The Causeway & S. Market, Wilmington, Delaware at 9:30 A.M., Thursday, Sept. 11, 1969.
This Automobile is being sold to satisfy a lien obtained by way of a conditional sales contract which has been assigned to the Farmers Bank of the State of Delaware, and who is the holder thereof.
It is being sold to satisfy the said Bank's claim under said conditional sales contract against Norman B. Cake.
TERMS CASH
Sept. 4, 1969

PUBLIC SALE OF VALUABLE MERCHANDISE
This is to serve as public notice that there will be a public sale of a 1963 Chevrolet Impala Super Sport on the premises of Short's Garage, The Causeway & South Market Street, Wilmington, Delaware at 9:30 A.M., Friday, September 12, 1969.
This automobile is being sold to satisfy a lien obtained by way of a conditional sales contract which has been assigned to the Farmers Bank of the State of Delaware, and who is the holder thereof.
It is being sold to satisfy the said Bank's claim under said conditional sales contract against Esther Lee Williams.
TERMS CASH
Sept. 4, 1969

PUBLIC SALE OF VALUABLE MERCHANDISE
This is to serve as public notice that there will be a public sale of a 1968 Chevrolet 4 Door Hard Top on the premises of Short's Garage, The Causeway & S. Market, Wilmington, Delaware at 9:30 A.M., Tuesday, September 9, 1969.
This automobile is being sold to satisfy a lien obtained by way of a conditional sales contract which has been assigned to the Farmers Bank of the State of Delaware, and who is the holder thereof.
It is being sold to satisfy the said Bank's claim under said conditional sales contract against Delmont Farmer.
TERMS CASH
Sept. 4, 1969

'Acme is my kind of place!'
FOR LOW PRICES AND S&H GREEN STAMPS



THIS COUPON WORTH (CO)
100 S&H Green Stamps
With Your \$10 Or More Purchase
(Excluding Cigarettes & Milk Products)
Valid After Sept. 6, 1969. One Coupon per Family Please

Lancaster Brand 100% U.S. Govt. Inspected

STEAK SALE

BONELESS CHUCK 7-lb. RIB ARM
Lb. 89c Lb. 99c Lb. 99c

SIRLOIN STEAKS lb. \$1.09

| | | |
|--|---|---|
| Del Monte Fruit Cocktail 4 1-lb. cans \$1 | Early Garden Del Monte Peas 5 1-lb. 1-oz. cans \$1 | Ideal Tomato Soup 12 10-3/4-oz. cans \$1 |
|--|---|---|

FANCY FRESH FIRM SLICING TOMATOES 2 cello ctns. 45c

Prices Effective Thru Sept. 6, 1969. Quantity Rights Reserved



to
**PHILADELPHIA
NEW YORK
BALTIMORE
WASHINGTON**

Continental Trailways
easiest travel on earth

Rhodes Drug Store
36 E. Main Street
368-2239



If you ever wanted to own a drive-in bank, may we suggest

Hardee's
Hamburger Franchise Division

Exclusive Franchise Opportunities Now Available in the Newark and Dover Delaware Trading Areas!

Hardee's charco-broiled hamburger franchises usually yield high profit returns the first year on your original cash investment.
Over 150 quick-service Hardee's restaurants now have profitable locations in 10 states and in Europe.
Over 90 franchise commitments in the Northeastern U.S. in the past 3 months alone! It is obvious why Hardee's is one of the strongest franchise systems in the country.
High return with instant profit potential.
Average cash investment is \$35,000.
Hardee's total program of training, counseling and on-the-spot assistance is specially geared for the unit manager-the key man in the profit picture.
Hardee's is the only franchisor of its kind which offers quality control and simplified ordering through its own product manufacturing and distribution systems.
Mid-Atlantic Hardee provides complete site location and construction.
Call or write: Shep Evans, Director of Franchising Mid-Atlantic Hardee Inc., 124 N. 15th St., Phila., 19102 (215) 563-4426.

Hardee's
Hamburger Franchise Division

Social Events

GEORGE-MCMULLEN FAMILY HAS REUNION

The annual reunion of the George-McMullen families was held Saturday, Aug. 23, at White Crystal Beach Manor, Md.

A prayer of thanks was offered by Mrs. Marshall Golt, before a picnic lunch.

The afternoon was spent visiting and swimming, and at 4 o'clock ice cream and cake were served.

A brief business meeting followed. Wilbur Foote will serve as president for another year and Mrs. Marshall Golt will serve again as secretary-treasurer.

It was decided to hold the reunion on the fourth Saturday in August 1970, at White Crystal Beach Manor, Md.

Family members and guests attending were:

Mr. and Mrs. Wilbur Foote and son James W. of Aberdeen, Md.; Mr. and Mrs. Earl M. Davis, Coatesville;

KATHLEEN TEMPLE MARRIED AUG. 16

Miss Kathleen Patricia Temple and George W. Miller Jr. were married Aug. 16, in Our Redeemer Lutheran Church, Newark, by the Rev. Robert G. Heckman.

Parents of the couple are Mr. and Mrs. Harry H. Temple of 4 Davies Road, Chestnut Hill Estates, Newark, and Mr. and Mrs. George W. Miller of 107 Airport Road, New Castle.

Attending the couple were Miss Phyllis Winchester and John Kabinio, Jr.

The bride is a graduate of Christiansia High School.

The groom was graduated from William Penn High School and served in the Marine Corps.

Others were Mr. and Mrs. Ernest George, Marshall Vandegrift and Mrs. Mildred George Mackie of Landenberg; Mr. and Mrs. David F. Nilan of Kennett Square, and Mr. and Mrs. Marshall B. Golt, Lincoln University, Pa.

Others were Mr. and Mrs. Earle McMullen and daughter Jean, Mrs. I. Stanton Lank, and Mrs. Ruth Davis of Wilmington; Mrs. James Nilan and sons Jim and Frank, William M. Golt and son Billy of Bellefonte, Del.

Mr. and Mrs. Charles Golt, Mrs. Gifford A. Noland, Sherry Heitzendorfer, Mr. and Mrs. David A. McMullen, Jr., Sherry Leigh Moore, and Robin Marie Moore, all of Newark; Mr. and Mrs. Alfred D. Appleby and daughter Susan and Lillian Wilson of Bear; Renee Nowland of Elkton, and Miss G. Allene Worth of Philadelphia, attended.

NEWARK BEAUTY SHOP
Permanent Waving
WIGGERS
A Specialty
All work by
Evelyn Wright Love
20 Academy St. 368-5373

CHRISTIAN & MISSIONARY ALLIANCE CHURCH
E. Chestnut Hill Rd.
Pastor: The Rev. Richard Herritt
Phone 737-0914

Sunday School 9:45 a.m.
Morning Worship 10:45 a.m.
Evening Services 7:30 p.m.
Wed.-Prayer and Bible Study 7:30 p.m.

ELIZABETH PRIOR SINCLAIR, BRIDE



Mrs. Harold Edward Tiffany, III

Miss Elizabeth Prior Sinclair and Harold Edward Tiffany, III, were married at 2 p.m. Aug. 30, in St. Thomas Episcopal Church, by the Rev. Theodore L. Ludlow.

The double-ring ceremony was followed by a reception at the Wilmington Country Club.

The bride is the daughter of Mr. and Mrs. John Prior Sinclair of Newark.

Parents of the groom are Mr. and Mrs. Harold Edward Tiffany, Jr., of Wallingford, Pa.

Maid of honor was Miss Virginia Torrains.

Bridesmaids were Mrs. Michael G. Sinclair, Miss MacLae, Miss Nancy Brush, and Mrs. H. Alan Campo.

The father of the groom was best man.

Ushers were Alden Bohrens, Jr., Thomas Johnson, Thomas D. Whittington, Jr., and Michael G. Sinclair.

A graduate of Newark High School and the University of Delaware, the bride taught at Georgetown (Del.) High School.

The groom attended the University of Delaware where he was a member of Sigma Phi Epsilon, fraternity. He recently returned from a year's tour of duty in Vietnam as a helicopter pilot.

Following the wedding trip, the couple will live in Ft. Bragg, N.C.

MARY JO ROBINSON, W. A. BAILEY ENGAGED

Mr. and Mrs. Linwood C. Robinson of Newark announce the engagement of their daughter Mary Jo, to William A. Bailey, son of Dr. and Mrs. W. Robert A. Bailey of Newark.

Miss Robinson is a graduate of Newark High School and the University of Delaware where she is employed by the Newark school district.

Mr. Bailey is a graduate of Newark High School and the University of Delaware where he was a member of Sigma Phi Epsilon fraternity. He is serving with the Army in Vietnam.

LETTERS TESTAMENTARY

Estate of Eleanor B. Cooch Deceased Notice is hereby given that Letters Testamentary upon the Estate of Eleanor B. Cooch late of Pencader Hundred, deceased, were duly granted unto Thomas Cooch and Edward Webb Cooch, Jr. on the eleventh day of August A.D. 1969 and all persons indebted to the said deceased are requested to make payments to the executors without delay, and all persons having demands against the decedent are requested to exhibit and present the same duly probated to the executors on or before the eleventh day of May A.D. 1970 or abide by the law in this behalf.

Address: Edward Webb Cooch, Jr., Attorney-at-law, 601 Market Tower, Wilmington, Delaware.

Thomas Cooch and Edward Webb Cooch, Jr., Executors
Aug. 21-29; Sept. 4

Newark Free Library
Mon. & Fri. 10-9
Sat. 10-1
Children's Library
Mon. Fri. 10-9
Tues.-Thurs. 10-5
Sat. 10-1
Elkton Rd. & Delaware Ave.

BONNIE FAYE WERTMAN WED AT ST. THOMAS

Miss Bonnie Faye Wertman and John Wallace Burkert Jr. were married Aug. 16, in St. Thomas Episcopal Church by the Rev. Theodore Ludlow. The ceremony was followed by a reception at the church hall.

The bride is the daughter of Mr. and Mrs. John R. Wertman of Newark.

Maid of honor was Miss Elke Schulze.

Bridesmaids were Miss Sheryl Wertman and Miss Wendy Wertman, sisters of the bride; and Miss Mary Burkert, sister of the bridegroom.

Best man was William E. Hayman. Ushers were Michael Schottlin, Robert Oat and John Ellis.

The bride, a graduate of Newark High School, is attending the University of Delaware.

MISS TETREAULT WED

After the wedding trip to the Ba-Neark High School, is employed as a nurse, they plan to live in Newark by Almart.

TO CAPT MCHENRY JR.

Miss Toni Sandra Tetraault and Capt. Robert Harold McHenry, Jr., were married Aug. 16, in Newark Methodist Church by the Rev. Jarvis Cooke. The ceremony was followed by a reception at the Holiday Inn.

Parents of the bride are Mr. and Mrs. Harrison B. von Duyke of Newark.

The groom is the son of Mrs. Anne McHenry of Quarryville, Pa. and Robert Harold McHenry of Newark.

Maid of honor for her sister was Miss Tina Suzanne Tetraault, sister of the bride, and Miss Katherine Gail McHenry, sister of the groom.

Best man was Dennis Quinn. Ushers were David R. McHenry, brother of the groom, and Tim D. von Duyke, brother of the bride.

The bride, a graduate of the University of Delaware, is employed by the law firm of Morris, Nichols, Arshat & Tunnell.

The groom graduated from Christiansia High School and is serving in the Army.

Following a wedding trip to the Pocomo, the groom will begin a year tour of duty in Vietnam and the bride will reside in Newark.

LESSON-SERMON

The subject of the Lesson-Sermon in all Christian Science churches in Delaware this Sunday will be "Maid Morning service and Sunday school are at 11: Wednesday evening testimonial meetings at 8. Everyone is welcome.

LETTERS TESTAMENTARY

Estate of Eleanor B. Cooch Deceased Notice is hereby given that Letters Testamentary upon the Estate of Eleanor B. Cooch late of Pencader Hundred, deceased, were duly granted unto Thomas Cooch and Edward Webb Cooch, Jr. on the eleventh day of August A.D. 1969 and all persons indebted to the said deceased are requested to make payments to the executors without delay, and all persons having demands against the decedent are requested to exhibit and present the same duly probated to the executors on or before the eleventh day of May A.D. 1970 or abide by the law in this behalf.

Address: Edward Webb Cooch, Jr., Attorney-at-law, 601 Market Tower, Wilmington, Delaware.

Thomas Cooch and Edward Webb Cooch, Jr., Executors
Aug. 21-29; Sept. 4

NEWARK FREE LIBRARY
Mon. & Fri. 10-9
Sat. 10-1
Children's Library
Mon. Fri. 10-9
Tues.-Thurs. 10-5
Sat. 10-1
Elkton Rd. & Delaware Ave.

LETTERS TESTAMENTARY

Estate of Eleanor B. Cooch Deceased Notice is hereby given that Letters Testamentary upon the Estate of Eleanor B. Cooch late of Pencader Hundred, deceased, were duly granted unto Thomas Cooch and Edward Webb Cooch, Jr. on the eleventh day of August A.D. 1969 and all persons indebted to the said deceased are requested to make payments to the executors without delay, and all persons having demands against the decedent are requested to exhibit and present the same duly probated to the executors on or before the eleventh day of May A.D. 1970 or abide by the law in this behalf.

Address: Edward Webb Cooch, Jr., Attorney-at-law, 601 Market Tower, Wilmington, Delaware.

Thomas Cooch and Edward Webb Cooch, Jr., Executors
Aug. 21-29; Sept. 4

NEWARK FREE LIBRARY
Mon. & Fri. 10-9
Sat. 10-1
Children's Library
Mon. Fri. 10-9
Tues.-Thurs. 10-5
Sat. 10-1
Elkton Rd. & Delaware Ave.

LETTERS TESTAMENTARY

Estate of Eleanor B. Cooch Deceased Notice is hereby given that Letters Testamentary upon the Estate of Eleanor B. Cooch late of Pencader Hundred, deceased, were duly granted unto Thomas Cooch and Edward Webb Cooch, Jr. on the eleventh day of August A.D. 1969 and all persons indebted to the said deceased are requested to make payments to the executors without delay, and all persons having demands against the decedent are requested to exhibit and present the same duly probated to the executors on or before the eleventh day of May A.D. 1970 or abide by the law in this behalf.

Address: Edward Webb Cooch, Jr., Attorney-at-law, 601 Market Tower, Wilmington, Delaware.

Thomas Cooch and Edward Webb Cooch, Jr., Executors
Aug. 21-29; Sept. 4

NEWARK FREE LIBRARY
Mon. & Fri. 10-9
Sat. 10-1
Children's Library
Mon. Fri. 10-9
Tues.-Thurs. 10-5
Sat. 10-1
Elkton Rd. & Delaware Ave.

LETTERS TESTAMENTARY

Estate of Eleanor B. Cooch Deceased Notice is hereby given that Letters Testamentary upon the Estate of Eleanor B. Cooch late of Pencader Hundred, deceased, were duly granted unto Thomas Cooch and Edward Webb Cooch, Jr. on the eleventh day of August A.D. 1969 and all persons indebted to the said deceased are requested to make payments to the executors without delay, and all persons having demands against the decedent are requested to exhibit and present the same duly probated to the executors on or before the eleventh day of May A.D. 1970 or abide by the law in this behalf.

Address: Edward Webb Cooch, Jr., Attorney-at-law, 601 Market Tower, Wilmington, Delaware.

Thomas Cooch and Edward Webb Cooch, Jr., Executors
Aug. 21-29; Sept. 4

NEWARK FREE LIBRARY
Mon. & Fri. 10-9
Sat. 10-1
Children's Library
Mon. Fri. 10-9
Tues.-Thurs. 10-5
Sat. 10-1
Elkton Rd. & Delaware Ave.

LETTERS TESTAMENTARY

Estate of Eleanor B. Cooch Deceased Notice is hereby given that Letters Testamentary upon the Estate of Eleanor B. Cooch late of Pencader Hundred, deceased, were duly granted unto Thomas Cooch and Edward Webb Cooch, Jr. on the eleventh day of August A.D. 1969 and all persons indebted to the said deceased are requested to make payments to the executors without delay, and all persons having demands against the decedent are requested to exhibit and present the same duly probated to the executors on or before the eleventh day of May A.D. 1970 or abide by the law in this behalf.

Address: Edward Webb Cooch, Jr., Attorney-at-law, 601 Market Tower, Wilmington, Delaware.

Thomas Cooch and Edward Webb Cooch, Jr., Executors
Aug. 21-29; Sept. 4

NEWARK FREE LIBRARY
Mon. & Fri. 10-9
Sat. 10-1
Children's Library
Mon. Fri. 10-9
Tues.-Thurs. 10-5
Sat. 10-1
Elkton Rd. & Delaware Ave.

LETTERS TESTAMENTARY

Estate of Eleanor B. Cooch Deceased Notice is hereby given that Letters Testamentary upon the Estate of Eleanor B. Cooch late of Pencader Hundred, deceased, were duly granted unto Thomas Cooch and Edward Webb Cooch, Jr. on the eleventh day of August A.D. 1969 and all persons indebted to the said deceased are requested to make payments to the executors without delay, and all persons having demands against the decedent are requested to exhibit and present the same duly probated to the executors on or before the eleventh day of May A.D. 1970 or abide by the law in this behalf.

Address: Edward Webb Cooch, Jr., Attorney-at-law, 601 Market Tower, Wilmington, Delaware.

Thomas Cooch and Edward Webb Cooch, Jr., Executors
Aug. 21-29; Sept. 4

NEWARK FREE LIBRARY
Mon. & Fri. 10-9
Sat. 10-1
Children's Library
Mon. Fri. 10-9
Tues.-Thurs. 10-5
Sat. 10-1
Elkton Rd. & Delaware Ave.

LETTERS TESTAMENTARY

Estate of Eleanor B. Cooch Deceased Notice is hereby given that Letters Testamentary upon the Estate of Eleanor B. Cooch late of Pencader Hundred, deceased, were duly granted unto Thomas Cooch and Edward Webb Cooch, Jr. on the eleventh day of August A.D. 1969 and all persons indebted to the said deceased are requested to make payments to the executors without delay, and all persons having demands against the decedent are requested to exhibit and present the same duly probated to the executors on or before the eleventh day of May A.D. 1970 or abide by the law in this behalf.

Address: Edward Webb Cooch, Jr., Attorney-at-law, 601 Market Tower, Wilmington, Delaware.

Thomas Cooch and Edward Webb Cooch, Jr., Executors
Aug. 21-29; Sept. 4

NEWARK FREE LIBRARY
Mon. & Fri. 10-9
Sat. 10-1
Children's Library
Mon. Fri. 10-9
Tues.-Thurs. 10-5
Sat. 10-1
Elkton Rd. & Delaware Ave.

LETTERS TESTAMENTARY

Estate of Eleanor B. Cooch Deceased Notice is hereby given that Letters Testamentary upon the Estate of Eleanor B. Cooch late of Pencader Hundred, deceased, were duly granted unto Thomas Cooch and Edward Webb Cooch, Jr. on the eleventh day of August A.D. 1969 and all persons indebted to the said deceased are requested to make payments to the executors without delay, and all persons having demands against the decedent are requested to exhibit and present the same duly probated to the executors on or before the eleventh day of May A.D. 1970 or abide by the law in this behalf.

Address: Edward Webb Cooch, Jr., Attorney-at-law, 601 Market Tower, Wilmington, Delaware.

If you could see the people CARE feeds...

...you wouldn't need coaxing. Mail a check.

CARE Food Crusade—New York 10016 or your nearest CARE office address

CLASSIFIED ADVERTISING

Lost

BOYS 24" Schwinn Bicycle, auburn red with chrome fenders. Call 368-5634. 9-4-1tc

MALE GERMAN Shepherd in vicinity of Paper Mill Road wearing choke chain. Answers to name of Amigo. Call 368-8323. 9-4-1tc

Help Wanted

MALE — SALES, \$15-\$20,000 juvenile safety furniture. Bonafide leads, no canvassing. Commission. Call 239-5246 or write Baby Butler, P.O. Box 223, Hockessin 19707. 12-12-ttc

WOMEN — Hours 9 to 3, five days. No experience necessary. \$50 weekly plus bonus. Jewelry made by handicapped. For information call 328-7836. 2-20-ttc

NURSE — LPN or undergraduate RN, 3-11 shift. Call 368-5576. 5-15-ttc

DRIVER-SALESMAN — "Charles Chips" needs experienced route man for Newark area. Must have record of responsibility and be capable of handling area sub-distributors. This is an opportunity for the go-getter to be self-employed. For appointments call 368-8936 or 998-9583. 9-4-1tc

ASSISTANT to optometrist. High school graduate, combines technical, clerical and patient contact activities. Pleasant working conditions. Newark area, 737-5777. 9-4-2tc

Wanted

1,000 RUGS TO CLEAN—Geo. F. Lang Co., Rug Cleaner, 704 W. 5th St., phone Wilmington OL 5-1539. 1-30-1tc

Instructions

FINISH HIGH SCHOOL—Accredited & approved International Correspondence Schools. 764-4602. 12-15-ttc

General Services

FURNITURE REFINISHED — All types. Antiques a specialty. Phone 368-0543 after 5 p.m. 12-22-ttc

PAINTING — Interior and exterior. Low cost. For free estimate call Rick Van Name, 368-0543. 7-10-ttc

For Rent

EFFICIENCY APARTMENT — 4th floor, 2 rooms, heat, hot water, gas, electricity. One-block from Newark Post Office. Adults only. \$70 per month. Phone 1-301-EX-8-0454. 6-8-ttc

APARTMENT for married couple. Phone 368-2386. 8-28-ttc

For Sale

COMPLETE KITCHENS — Individually designed and styled for your convenience and satisfaction. Wood or formica cabinets, built-in stoves, ovens, kitchen-aid dishwashers, exhaust hoods and formica countertops. New low prices, free estimates. Call 737-5502, Newark Lumber Company. 1-31-ttc

CREDIT MANAGER Looking for responsible persons to take over 3 rooms of new furniture now stored in warehouse. Consists of 2 pc. living room set, 2 end tables, 3 lamps, cocktail table, 4 pc. bedroom set, 5 pc. kitchen set. Total price \$290.95. Terms and free delivery. Call Elkton, Mr. Berg or Mr. Levinson, 368-8621 local call from Newark. 6-6-ttc

FURNITURE — Chairs, used rug, couch. Phone 368-8491. 9-4-ttc

Miscellaneous

PIANO TUNING & REPAIR—Ernest B. Thompson, 707 Brook Dr., Newark. 368-9515. 8-11-ttc

CITY OF NEWARK
Delaware
CITY COUNCIL
Public Hearing
NOTICE

September 10, 1969 — 8:00 P.M.
Pursuant to Article VIII, Section 802.2 of the Charter of the City of Newark, notice is hereby given of a public hearing in the Council Chambers, Main and Academy Streets, Newark, Delaware, at 8:00 P.M., EDST, on September 10, 1969, at which time the Council will consider the proposed 1970-74 City of Newark Capital Program and 1970 Capital Budget.

The 1970-74 Capital Program may be reviewed in the Finance Office of the City of Newark.
Betty Jane Stiltz
City Secretary
Aug. 28-Sept. 4

FAST ACTION FROM WANT ADS

Eight Cents A Word
75-cents MINIMUM
JUST PHONE
368-1691
The Newark Post

CUSTOM-MADE DRAPERIES and SLIPCOVERS

Dannemann's
136 E. Main St. Newark, Del.
Free Parking in Rear of Store

4-HR. SERVICE!

DRIVE-IN CLEANERS
Phone 368-2249

11 North Chapel Street, Newark
Newark and Parklynn Shopping Centers
THREE CONVENIENT LOCATIONS!

We own and operate our own cleaning plant

M & M BONUS COUPON
GOOD UNTIL SEPT. 30

Pants, Plain Skirts & Sweaters Cleaned and Pressed for only **59c**
Any Suit, Plain Dress or Topcoat Cleaned and Pressed for only **1.19**

BRING AS MANY AS YOU LIKE with this coupon on incoming orders

SUBSCRIBE TO YOUR NEWARK POST
For News of People YOU Know!

\$3.00 PER YEAR

Just clip this coupon and mail with check to:

THE NEWARK POST
14-16 Thompson Lane, Newark, Del.

Name _____
Address _____

YOUR NEWARK NEWSPAPER SINCE 1910

Stop hunger — Start progress

The underdeveloped nation are in a race with time. While they struggle to catch up with modern progress mankind's oldest enemies do their damage now.

Hunger and malnutrition kill 10,000 persons a day, maim children for life — stunt their bodies, deaden their minds. Needless diseases cripple and weaken many more. Lack of education and training doom young people and adults to a hopeless cycle of poverty.

America would not be America if we closed our hearts to human agony at home or abroad. CARE is a way to reach the needy in countries whose resources are far less than our own.

Your contribution does more than keep people alive. CARE's Food, Self-Help and

Mexico programs help the hungry grow self-sufficient. Health, education, food production, job training, construction of community facilities from schools to roads and water systems — these are the supplies and services CARE provides in the name of the American people.

Your dollars are multiplied by those who help: local governments share operating costs, and community groups give what they can in materials and volunteer labor. Our Government gives farm abundance for many of the feeding plans.

Every dollar can serve lunch to 90 children... \$10 treats 14 patients at a clinic... \$300 per classroom can buy materials for parents to build a school.

Whatever you give, your

concern speaks straight to the hearts of the millions of persons CARE aids in Africa, Asia, the Middle East and Latin America. Mail your check — for the sake of those who need help so badly, and for the kind of world all of us want.

CARE
New York N.Y. 10016
or your local office

Here is my \$.....
From: _____
Make checks out to CARE. Contributions are tax-deductible.

Christian Science Services
Sunday 11 a.m.
Sunday School — 11 a.m.
Wednesday Testimony Meetings
Mon. Fri. 10-9
NEWARK NEW CENTURY CLUB
Haines St. & Delaware Avenue
ALL ARE WELCOME

What do we supply?

We supply women high school graduates with Space-Age opportunities. Everything from administrative to space weather specialist.

What else?
We give you prestige as a Woman in the Air Force.
Want more?
How about a rich social life? Full and varied. How about travel?
Now it's your turn.
You supply a real desire to meet the world as an accomplished, mature, charming woman.
That's the most important thing the Air Force demands of you.
It's just a simple case of supply and demand.

USAF Recruiting Office, Custom House
6th & King Streets, Wilmington
Call T/Sgt. Donald C. Walters
658-6911, Ext. 240

BING'S BAKERY
FOOD GIFTS
253 E. Main Street

WEEKEND SPECIALS

PUMPKIN PIES — First of season!
BROWN SUGAR CHIFFON CAKE
PEACHES & CREAM COFFEE CAKE
FRESH ORANGE BREAD
FANCY BUTTERCREAM CAKE
RAISIN-FILLED COOKIES

Phone 737-5310 in Newark

BING'S BAKERY
FOOD GIFTS
253 E. Main Street

WEEKEND SPECIALS

PUMPKIN PIES — First of season!
BROWN SUGAR CHIFFON CAKE
PEACHES & CREAM COFFEE CAKE
FRESH ORANGE BREAD
FANCY BUTTERCREAM CAKE
RAISIN-FILLED COOKIES

Phone 737-5310 in Newark

YOUR PRESCRIPTIONS COMPOUNDED WHERE ACCURACY and EXPERIENCE COUNT — AT RHODES

113 Years Service In Newark
Prescriptions Since 1856

To compound your physician's prescriptions with the utmost precision is the prime responsibility of Rhodes registered pharmacists. There is never any compromise with accuracy!

RHODES DRUG STORE
C. EMERSON JOHNSON, Ph.G., Prop.
36 East Main Street Phone 368-8581

FAST ACTION FROM WANT ADS

Eight Cents A Word
75-cents MINIMUM
JUST PHONE
368-1691
The Newark Post

LEAVE THE COUNTRY.



Of all the ways America can grow, one way is by learning from others.

There are things you can learn in the Peace Corps you can't learn anywhere else.

You could start an irrigation program. And find that crabgrass and front lawns look a little ridiculous. When there isn't enough wheat to go around in Nepal.

You could be the outsider who helps bring a Jamaican fishing village to life, for the first time in three hundred years. And you could wonder if your country has outsiders enough. In Watts. In Detroit. In Appalachia. On its Indian reservations.


Last year, for the first time, Peace Corps alumni outnumbered Volunteers who are now out at work overseas.

By 1980, 200,000 Peace Corps alumni will be living their lives in every part of America.

There are those who think you can't change the world in the Peace Corps.

On the other hand, maybe it's not just what you do in the Peace Corps that counts.

But what you do when you get back.

The Peace Corps, Washington, D.C. 20525. 

ADVERTISING CONTRIBUTED FOR THE PUBLIC GOOD

Necessary Blanching Cited**By Marguerite Krackhardt**

Those vegetables you freeze now can be a real taste treat next winter — if you prepare them properly. Blanching is still an important step in getting vegetables ready to freeze, according to Marguerite Krackhardt, nutrition specialist at the University of Delaware.

"Every year I get calls asking if blanching is really necessary," she says. "The answer is an emphatic 'Yes.'"

Timetables for blanching and other information on freezing are given in the USDA Home and Garden Bulletin No. 10 "Home Freezing of Fruits and Vegetables." Copies are available from the Mailing Room, Agricultural Hall, University of Delaware.

CYSTIC FIBROSIS AID

Volunteer workers will call on their neighbors in New Castle County on Cystic Fibrosis Sunday, Sept. 7, for contributions to support the war against children's lung diseases.

Why The Christian Science Monitor recommends you read your local newspaper

Your local newspaper keeps you informed of what's happening in your area — community events, public meetings, stories about people in your vicinity. These you can't — and shouldn't — do without.

HOW THE MONITOR COMPLEMENTS YOUR LOCAL PAPER

The Monitor specializes in analyzing and interpreting national and world news... with exclusive dispatches from one of the largest news bureaus in the nation's capital and from Monitor news experts in 40 overseas countries and all 50 states. TRY THE MONITOR — IT'S A PAPER THE WHOLE FAMILY WILL ENJOY

The Christian Science Monitor
One Norway Street
Boston, Massachusetts, U.S.A. 02115
Please start my Monitor subscription for the period checked below. I enclose \$____ (U.S. funds).
☐ 1 YEAR \$26 ☐ 6 months \$13
☐ 3 months \$6.50

Name _____
Street _____
City _____
State _____ ZIP Code _____ PB-17

MANY DRUNKS HAVE LICENSES TO DRIVE

Fewer than 4% of all drivers on the road are heavy drinkers. Yet heavy drinkers are involved in nearly 50% of all traffic deaths.

The frightening truth is that drunks are the deadliest drivers over let loose on the highways.

Knowing that, you might think our licensing officials would take extraordinary measures to hunt down this small gang of killers and get them off the road, saving 25,000 lives a year.

It's not happening. The way things are now, there's no effective way to take a drunk's license away before he kills somebody.

With 25,000 lives at stake, safety experts at the Continental Insurance Companies point out, there must be a better answer than that.

Maybe it's a thorough physical examination. A doctor must certify that every new driving-license applicant is not an alcoholic.

Maybe there's a better way, but certainly what Pennsylvania does is better than nothing.

And nothing is what all but a handful of states actually do. This is one reason why safety groups ask that we write to our local legislators and urge that they get drunken potential killers off the road.

Maj. Charles N. Myers Completes Army Course

Army Reserve Maj. Charles N. Myers, 42, recently completed Phase 10 of the command and general staff officer course at the U. S. Army Command and General Staff College, Ft. Leavenworth, Kan.

The course attended by selected officers from active Army and Air Force, Army National Guard, and the Army and Air Force Reserve, was organized into 10 phases over a five-year period with the final two-week phase conducted at Ft. Leavenworth.

Maj. Myers is employed by Robert S. Burger & Associates, Inc., and he and his wife, live at 12 Fox Lane, Newark.

NEWCOMERS

Need Not
Feel Lonely

GREETERS
Community Hostess
Will Bring
Cordiality
And Offer
Helpful Suggestions

She Will
Consider It
A Privilege
To Visit You

Call:

DOROTHY ALLEN

737-6194

GREETERS
Newcomer-Welcoming Service

"A Welcome Guest
In Any Home."

"Helping Children In School"

CHRISTIAN SCIENCE RADIO SERIES

the
Bible
speaks to you

SUNDAY, SEPT. 7
9:15 A.M.
WNRK — 1260
On Your Dial

WONDERS OF THE WORLD
THE HUMAN BRAIN
IS THE MOST
COMPACT COMPUTER
KNOWN. IN MANY
WAYS IT RESEMBLES
A SWITCHBOARD
OF INTERCONNECTED
CIRCUITS. A
LARGE COMPUTER
MIGHT REQUIRE
70,000 WATTS,
BUT THE BRAIN
NEEDS ONLY AS MUCH
POWER AS A
10-WATT BULB!

NERVE SIGNALS,
ELECTRICAL IN NATURE,
TRAVEL THROUGH NERVE
FIBERS FASTER
THAN THE TOP SPEEDS OF
MIDGET AUTO RACERS.
OPTIMAL REACHING SPEEDS
AS HIGH AS
200 MILES AN HOUR!

ONE WONDER DRUG
MORE FREQUENTLY
RECOMMENDED BY
DOCTORS THAN ANY
OTHER MEDICINE IS
PURE ASPIRIN.
BAYER ASPIRIN
NOT ONLY PROVIDES
RELIEF FOR HEADACHES BUT
IT ALSO LOWERS FEVER
OF COLDS AND FLU.

State Students In Boston As Christian Scientists

Students from Delaware joined over 6,000 Christian Science students from colleges and universities in 31 countries meeting in Boston to consider their responsibilities and mission on the campus and in the world.

Theme of the meeting, which extended through last Saturday, was "Building in a Revolutionary Period."

Good Corn, Soybean Crops Pending Weather Break

Delaware farmers will harvest a bumper corn and soybean crop if the weather cooperates.

W. T. McAllister, extension farm management specialist at the University of Delaware, said most of the corn harvest will contain higher than usual levels of moisture from rains late in the growing season. For this reason, some farmers may be disappointed in the net price they receive; the margin between the wet and dry corn price may appear excessively large.

The wetter the corn, the greater the weight loss, and the more time and fuel is used in the drying process.

A pamphlet "Shrinkage and Drying Costs of Corn" is available from the Department of Agricultural and Food Economics, University of Delaware.

CAT CHAT

IN OLD CATS,
THE MOST COMMON
CAUSE OF POOR APPETITE
IS A MOUTH INFECTION,
A BROKEN TOOTH, OR A
TARTAR ACCUMULATION.
LET YOUR VETERINARIAN
EXAMINE YOUR CATS
TEETH AT LEAST EVERY
SIX MONTHS.

COME IN!
IN GEORGIA A CAT HAS LEARNED
HOW TO RING THE DOOR BELL.
WHEN HE WANTS TO COME IN,
THE CAT JUMPS UP ON THE
WINDOW SILL, REACHES
OVER TO A SMALL BELL,
HANGING THERE, AND
HITS IT WITH HIS FOOT.

FEEDING TIP:
ALL FOOD SERVED A
CAT SHOULD BE AT
ROOM TEMPERATURE,
NEVER COLD.

From Fitchell Cat Council. Support Your Local Feline Society for Human Safety.

What do you give the guy who has nothing?

You get him off to a good start.
With U.S. Savings Bonds.
On his first birthday.
On his first Christmas.
As he grows, the Bonds grow.
When he's ready for college,
the Bonds can help put him through.
And if everybody in the family
gave him Savings Bonds,
someday he'd be a very tough
guy to buy anything for.
Because what can you give a guy
who has everything?

GIVE U.S. SAVINGS BONDS

The U.S. Government does not pay for this advertisement. It is presented as a public service in cooperation with The Department of the Treasury and The Advertising Council.

**Invest in the
air you breathe.**

Buy U.S. Savings Bonds & Freedom Shares

The U.S. Government does not pay for this advertisement. It is presented as a public service in cooperation with The Department of the Treasury and The Advertising Council.

Big Line To Feature Hoffman's Defense Of Conference Title For Yellowjackets

Minus his All-State offensive trio of Gary Hayman, Pedro Swann and Bob Tucker at end, halfback and quarter, Coach Bob Hoffman will feature a big and powerful Newark line in defense of the Yellowjackets' Blue Hen Conference championship this season, along with returning All-Conference Fullback Paul Watson at 190.

A pair of juniors will key the Yellowjacket line as offensive guards and switch to linebackers on defense.

Randy MacDonald, 5-11 and 201 pounds and Dave Chapman, 6-1 and 204, have speed for pulling guards, and Jeff Brown returns at center.

Three juniors and a senior will handle the tackle duties.

Juniors Bill Records (6-11, and 185) and Dan Brady (5-11, and 210) will operate on offense with senior Fred Dute (220) and 204-pound Tom Krapf, on defense.

Non Jackson, at 6-2, returns at left and with 6-2 Junior Bob Henry replacing Hayman on the right. Both also play in the defensive secondary.

Middletown High transfer Mark Henderson will see action as a defensive end with sophomore Bill Coolidge.

Three will attempt to fill Tucker's shoes at quarterback. Junior Ray Bias (6-0 and 155), last year's back-up man, has the inside track over Junior Jim Ford and senior left-hander Steve Gronka.

Hoffman's halfback reinforcements include senior Richie Arimoto, 5-7, and Dave Johnston, Junior Ed Warren and senior speedster Mark Struss.

Watson faces a challenge from Steve Repole at fullback.

The Yellowjackets open at Delaware on Sept. 27, in quest of No. 34.

Larry Pratt Hens To Run Against 12 In Cross Country

Coach Larry Pratt's Delaware cross country team will face 12 opponents during the coming season, and the Blue Hens also will compete in the ICA Championships in New York on Nov. 21.

The Hens open their season against Lafayette at home on the Polly Drummond Hill course on Sept. 27.

There are three triangular meets on the schedule. Delaware will compete against Lehigh and Rider on Oct. 3; St. Joseph's and Temple at home, Oct. 13, and Drexel and Swarthmore at Drexel on Oct. 29.

Pratt, who has a three-year record of 23-8 will have four lettermen returning from last year's 8-4 team.

Letter-winners are Juniors Joe Godleski, Dewitt Henry and Dave Littlehales and Senior Jerry Smith.

The top two men from last year—Newark's Bob Woerner and Jimmy Smith—graduated.

"We have a difficult, challenging schedule and a basically young, inexperienced team," Pratt says, "but we are looking forward to the season."

Newark Notes

by GIBBY YOUNG
HARD, HOT WORK

Coach Tubby Raymond's Fightin' Blue Hens, the Yellowjackets of Coach Bob Hoffman, and Coach Bob Tucker's Christiana Vikings are hard at work in the heat and humidity, preparing for the new football season—and the vital ingredients that have made America great.

The boys and coaches deserve real credit for their efforts requiring great courage, determination and splendid spirit.

H. G. Young
Associates, Inc.
Realtors—Insurance
95 East Main Street
Phone 368-8538

FARMER'S GULF
One-Month Special
SIMONIZING PASTE WAX WHILE YOU WAIT
Hand motion finish. Car must be clean
\$5.95
FARMER'S GULF
Dave Farmer, prop.
Free pick-up and delivery
235 E. Main St.
Call 737-7998

Newark's Complete Pet Shop
AQUARIUMS
and SUPPLIES
PETS
Storm Windows & Screen Repair
Park 'n' Shop THE PAINT POT Elktown Road

THE NEWARK POST

EIGHT

The Newark Post, Newark Delaware, Thursday, Sept. 4, 1969



"Anglers are averaging at least 100 weakfish per man, with as many porgies, from all boats out of the Sea Isle Fishing Center," Cap'n Charlie Shaffer of the Starfish reported on Labor Day.

"Old Man Weather and Mother Nature have certainly provided a menu that has made every skipper smile and every angler happy for the last several days," the Starfish captain continues.

"Weakfish are in extremely large numbers here just off the beaches, and after loading up on trout, there are all the porgies anyone would want on the shallow water wrecks," Cap'n Charlie advises of this South Jersey bonanza out of Townsend's Inlet just north of Avalon.

Jerry Strauss of Broomall, Pa., boated 275 weakfish last Friday, along with a three-pound pool-winner, and 225 porgies—and the Straussers should have a winter supply of seafood.

"Come Labor Day, the fishing usually picks up," Cap'n Shaffer adds. "Great Scott, Charlie, it couldn't be much better than a 100-trout per day average!"—and our boats will continue to run on a daily basis this year up until Christmas."

With Senior Citizen Carroll W. Mumford, we should have joined Charlie Shaffer aboard the Starfish at Sea Isle City on the New Jersey Coast last weekend, instead of putting in a hot and comparatively dull time on the Chesapeake & Delaware Canal just east of Sunnyside Bridge, but we had some fun at that.

Mr. Mumford did a rousing business with pan-size white perch and fork-tailed channel catfish, interlarded by an occasional eel and blue crab, and his companion followed a seven-pound carp up and down the north bank rockpile as the copper-clad import fought long and strong against a light spinning rod.

This carp was a lucky, last of the day catch, and after hours of dull, doughball fishing that were but slightly enlivened by a couple of half-hearted strikes, we had wedged the rod in the rocks with a very light drag set on the spool, and wandered up the shoring to gather scattered, sparse driftwood for the fireplace on a cool autumn evening at home, cautioning the Lady of the House to keep an eye on the rod from her seat in the shade of the car parked beside the canal.

The Lady forgot about the rod while watching the Labor Day weekend parade of pleasure boats plying between Delaware and Chesapeake bays, including an ocean-going sportfisherman flying nine marlin pennants on her way home to the Chesapeake after a season at sea. And her husband returned with an armload of driftwood to observe the spinning rod bowing to the trust of a fish while the monofilament streamed steadily from the reel spool.

Setting the hook in the digestive mechanism of a seven-pound carp delayed our departure by a good quarter-hour—this maligned vegetarian foreigner has real strength with endurance—and it seemed much longer than an honest estimated 15-minutes before the big-sealed, bronzed beauty flashed a flank wearily in a surface swirl close to the rocks.

Landing that carp without gaff or net required a two-man operation to save time and fish, and passing the light rod over to Mr. Mumford, we hooked a thumb and forefinger in the mouth and gills of the weary warrior and lifted him

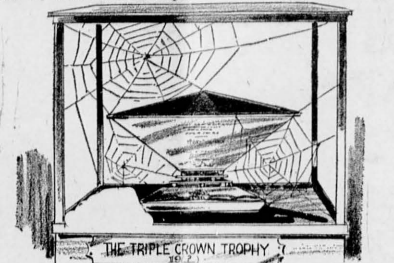
OFF AND RUNNING by John I. Day English are More Patient

Some impatient observers on the racing scene have decided that the reason why we haven't had a Triple Crown winner since Citation in 1948 is the Triple Crown itself. The fact remains that in spite of a proliferation of competition—there were 5,819 registered foals in Citation's crop of 1945 and 20,131 the year Majestic Prince arrived—five horses have won two legs of the Triple in recent years.

England too has a Triple Crown and while they started counting in 1853 when West Australian swept the Epsom Derby, St. Leger Stakes and Two Thousand Guineas, only thirteen others have turned the trick. The last to do so was Bahram, later imported to this country by Alfred G. Vanderbilt. Bahram won his Triple Crown in 1935, but thus far there has been no demand for any revision of the Triple

Crown events in Great Britain.

While the youngest of our Triple Crown events, the Kentucky Derby, dates back to 1875, this doesn't mean there were 95 Triple Crown opportunities. On many occasions two of the events were run on the same day or within days of each other. Perhaps the first thought of the three races as an entity was in 1939 when the late Col. Matt J. Winn proposed a \$50,000 bonus for a horse winning all three. Four horses had already accomplished the feat but there had been no mention of them as Triple Crown winners. Turf-writer Charles Hatton of the Morning Telegraph labeled Whirlaway a "Triple Crown" winner in 1941, and it became quasi-official in 1950 with the Thoroughbred Racing Association's creation of a Triple Crown Trophy.



THE TRIPLE CROWN TROPHY

Defensive Backs Provide Raymond Starring Depth

Delaware Football Coach Tubby Raymond is concerned about a lack of depth in the Blue Hens' defensive line, but there appears to be a wealth of talent in the defensive secondary.

Included among players who reported to start practice last Friday are seven men who earned letters as defensive backs last fall.

"We have experience and leadership in our defensive backfield," Raymond notes. "We have some people there who like to hit."

The Hens have enough talent available in the deep secondary to enable Raymond to consider switching Dick Keller, a two-year regular at safetyman, to a linebacking job.

The other veteran defensive backs are Capt. Joe Purzycki, Bruce Fad, Ron Klein, Bob Masin, Sonny Merkel and Pete Sundheim.

Purzycki, Klein and Masin joined Keller in the regular defensive backfield last season.

"We are counting on Purzycki to provide maturity and leadership in the secondary," says Defensive Backfield Coach Mickey Heinecken.

out to the astonishment of a passing boatman who almost drove his craft into the rockpile while regarding the size of the catch.

Instead of plunking the carp around the shrubbery at home—we've tried fried carp and don't care for it—this one was baked for a test, and it was surprisingly salmon-like with its color and flavor—good.

CITY OF NEWARK
Delaware
CITY COUNCIL
Public Hearing
NOTICE
September 23, 1969 - 8:00 P.M.
Pursuant to Section 409.2 of the City Charter Chapter XXIII, Part 16, Sections 1001 and 1001 of the City of Newark Code of Ordinances, Notice is hereby given of a Public Hearing at the Regular Meeting of the Council in the Council Chambers, Academy Building, Main and Academy Streets, Newark, Delaware, Tuesday, September 23, 1969, at 8:00 P.M. E.D.S.T., at which time the Council will consider for adoption and Passage the following proposed ordinances:

1. BILL NO. 69-45 - An Ordinance Amending Chapter XXIII, Newark Code of Ordinances, To Rezone 19 Acres, More or Less, Located on the South Side of West Chestnut Hill Road Adjacent to Land Owned by the City of Newark and Bounded by the Christiana and Silverbrook Creeks, from Residential "RS" to Residential "RD."

2. BILL NO. 69-46 - An Ordinance Amending Chapter XXIII, Newark Code of Ordinances, To Rezone 4 Acres of land, More or Less, Located on the Western Side of Marrows Road, Being A Part of the Dunmore Tract, From Residential "RM" to "Business C."

Betty Jane Stultz
City Secretary

Jim Albertson Elected Delaware Lacrosse Captain

Jim Albertson, Delaware's outstanding lacrosse player this year as a junior, has been elected captain of the Blue Hen stickmen for next season.

Albertson, a 205-pound defenseman from Kinnelon, N.J., received the Alumni Lacrosse Award as Delaware's outstanding player and was named to the Middle Atlantic Conference All-Star team.

"I'm confident that Albie will do a tremendous job for us as captain," says Blue Hen Coach Mickey Heinecken.

"He just started playing lacrosse as a sophomore, and is already one of the top defensemen in the league. His intensity and drive should make him a fine captain."

Albertson, who was an All-State football player at Kinnelon High School, has played several positions for the Delaware varsity. He will be an end on the 1969 team.

Heinecken, who has a record of 38-30 in six seasons at his alma mater, is looking forward to next season.

The Hens were 5-7 this year.

Fine Foods—Cocktails
ARSENAL-ON-THE-GREEN
Dinner until 8:30, Fri.-Sat. 'til 10.
Cocktail lounge open 'til Midnight
BANQUET FACILITIES
Wedding reception
Phone 328-8734

PAUL SCHLOSSER
Plumbing & Heating
Now Located at
393 EAST CLEVELAND AVE.
PHONE 368-2978
Guaranteed Materials and Workmanship
PLUMBING & HEATING SUPPLIES & FIXTURES
TRENCHING & BACK-FILLING

Chuck Gruver, Jesse Moore, Curt Payne Tri-Captains For Turnberger's Vikings

Tri-Captains Chuck Gruver at center, and a tackle too; Jesse Moore, tackle, and Halfback Curt Payne head eight lettermen returning to Coach Bob Turnberger for the Christiana High School varsity football squad this season after a 4-6 campaign last year.

Other Viking lettermen as a nucleus for Turnberger's Viking grid-ers are Mel Brooks, halfback; Dan Dolphin, Bob Hubbard, and Fred Neal, ends; and Fullback George Rawson.

Outstanding candidates for starting roles with Christiana include brothers Clyde and Dave Webster at halfback and quarter; Jim Lawrence, fullback; Max Matthes, quarterback; brothers Andy and Bob Rash as tackle and guard; Earl Rosado, guard; Eric Siena, tackle, and Rick Rettig, center.

Turnberger's Vikings open at Conrad with a 1:30 p.m. kickoff on Saturday Sept. 27.

Wm. S. Hickman
PLEASE CALL
654-2455 or 215-696-3080

CENTER BARBER SHOP
Newark Shopping Center
JACK VINTEM
EXPERTS
In Men's
Ladies' and
Children's
Hair Cutting

HORSE SHOW
Saturday
Sept. 13, 1969
8:30 a.m. Daylight
Saving Time
FAIR HILL, MD.
21 CLASSES
Ribbons, Trophies and
Cash Prizes
FREE ADMISSION
Pony Breeding Classes — Working Hunter Classes
Hunter Breeding Classes — Children's Events
Lunch Available — Benefit Local Church
RACING IN THE AFTERNOON
Sponsored by
Cecil County Breeder's Fair, Inc.

Year-end Clearance

CHRYSLER-PLYMOUTH

Double-Barrel Bargains

DYNAMITE DEALS ON CHRYSLER NEWPORT

BANG-UP FURY SAVINGS

NOW! Get a bargain deal on the '69 CHRYSLER or '69 PLYMOUTH of your choice at

UNIVERSITY MOTORS • 244 E. Cleveland Avenue

SUBSCRIBE TO YOUR NEWARK POST

For Local, Personalized
SPORTS
\$3.00 PER YEAR

Clip coupon and mail with check to:

THE NEWARK POST
14-16 Thompson Lane, Newark, Del.

Name _____
Address _____

Keep a Scrapbook
with Personalized
Headlines and Stories
From The POST

YOUR NEWARK NEWSPAPER SINCE 1910

