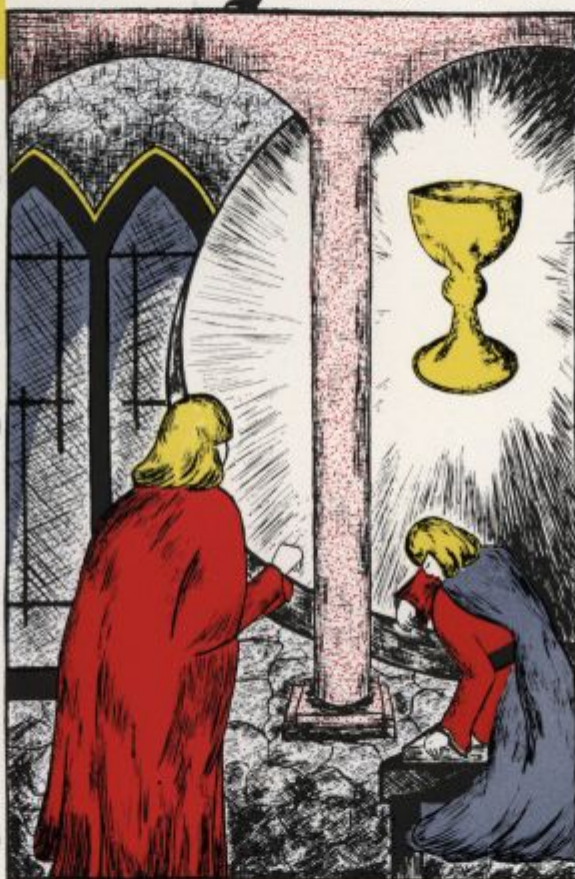


C ollege A



Peer Gynt In Honor of the May Queen

THE trumpeter announces the Queen. She is crowned to the singing of "May is Here." Then the presentation of "Peer Gynt" with the various dances for each scene.

The Court

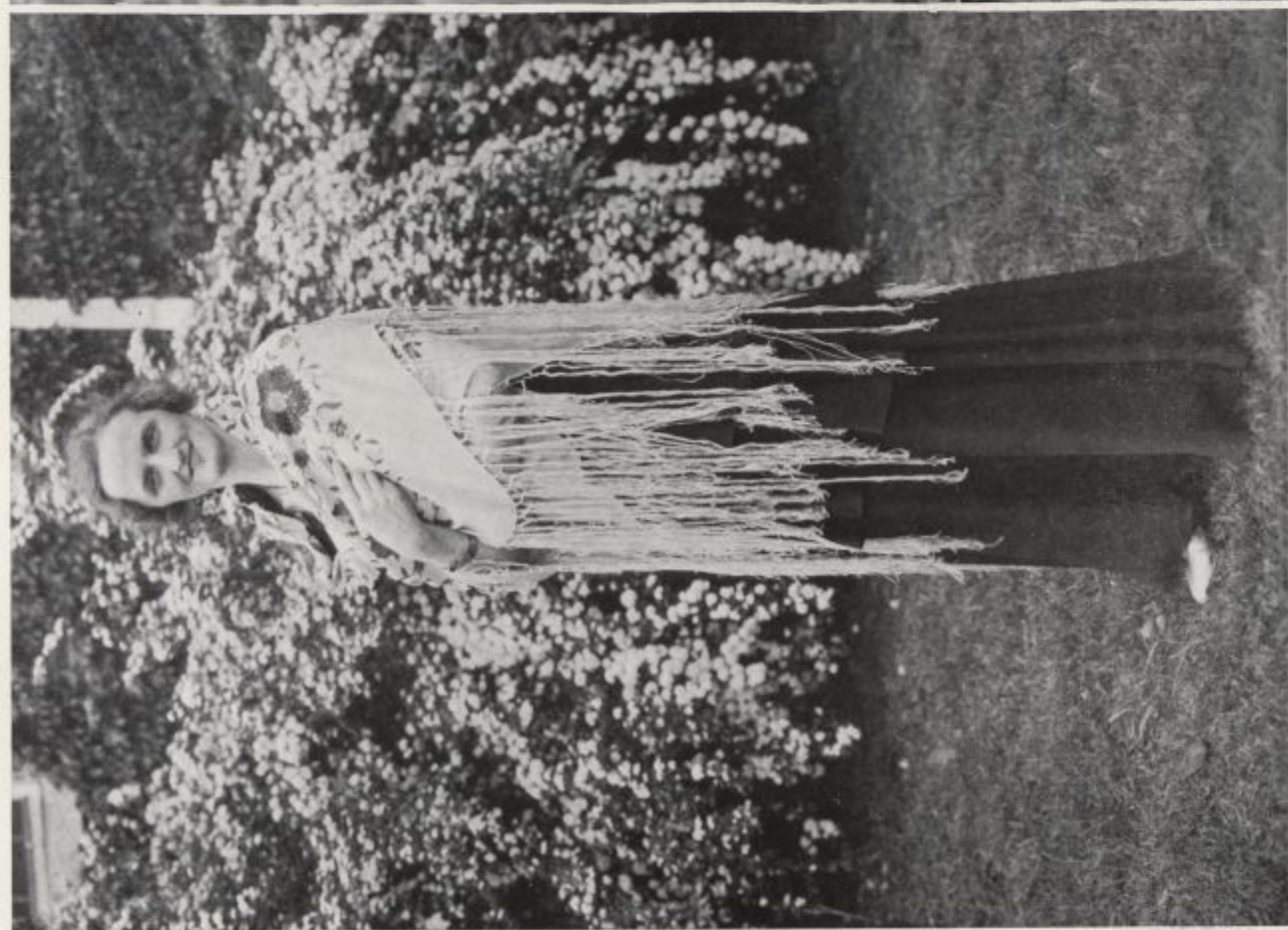
| | |
|-----------------------------|-----------------------------------|
| <i>Queen</i> | MARGARET MORRIS |
| <i>Maid of Honor</i> | ESTHER WRIGHT |
| <i>Senior Duchess</i> | CATHERINE BROAD |
| <i>Senior Attendants</i> | LOIS SHOMO, FRANCES RICHARDS |
| <i>Junior Duchess</i> | MARY INGRAM |
| <i>Junior Attendants</i> | ANNE GRIFFITH, MARGUERITE WENTZ |
| <i>Sophomore Duchess</i> | FRANCES MCGEE |
| <i>Sophomore Attendants</i> | ELINOR TOWNSEND, VERA MCCALL |
| <i>Freshman Duchess</i> | VIRGINIA WILSON |
| <i>Freshman Attendants</i> | MARGARET WAPLES, ELEANOR CLAY |
| <i>Train Bearers</i> | ISABELLE ELLIOTT, ALICE MCCORMICK |
| <i>Queen's Guards</i> | NANCY CANTWELL, MARY CROSSAN |

Pageant Characters

| | |
|----------------------------------|--|
| <i>Peer Gynt</i> | BETTY WEBER |
| <i>Ase</i> | SARA CLEMENTS |
| <i>Bride, Ingrid</i> | MARY MATLACK |
| <i>Bridegroom</i> | CATHERINE SHELLENDER |
| <i>Fiddler</i> | DOROTHY HUDSON |
| <i>Satyr Girls</i> | HELEN LAYTON, VIOLA PHILLIPS, MARY VINYARD |
| <i>Lady in Green</i> | MILDRED WHEELER |
| <i>King of the Mountain Hall</i> | PHYLLIS CHAMBERS |
| <i>Courtier</i> | ELIZABETH KELLY |

















Physical Education

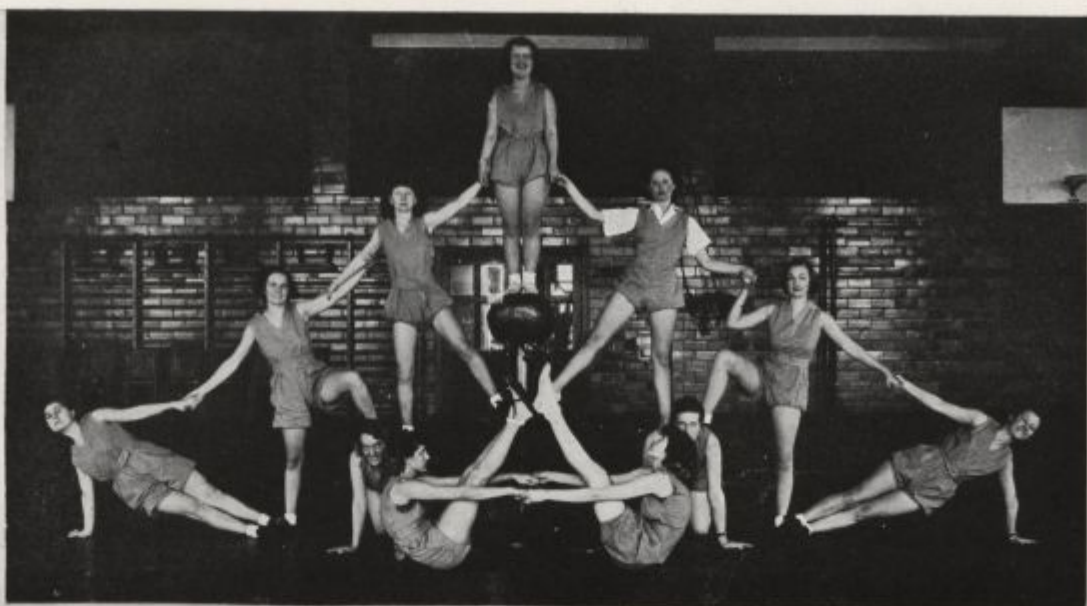
Since Women's College endorses the general trend toward intramural rather than interscholastic competition in sports, tournaments are held between classes and even dormitories. This permits of a wide program of activity in some branch of which any girl could find a suitable sport. This year championship honors were divided, each class having a share. The Freshmen were victors in basketball and swimming, the Sophomores in soccer and volley ball, the Juniors in hockey, and the Seniors in track. The archery tournament was won by a Junior, Ruth Owens, with Vernona Chalmers, another Junior, second.

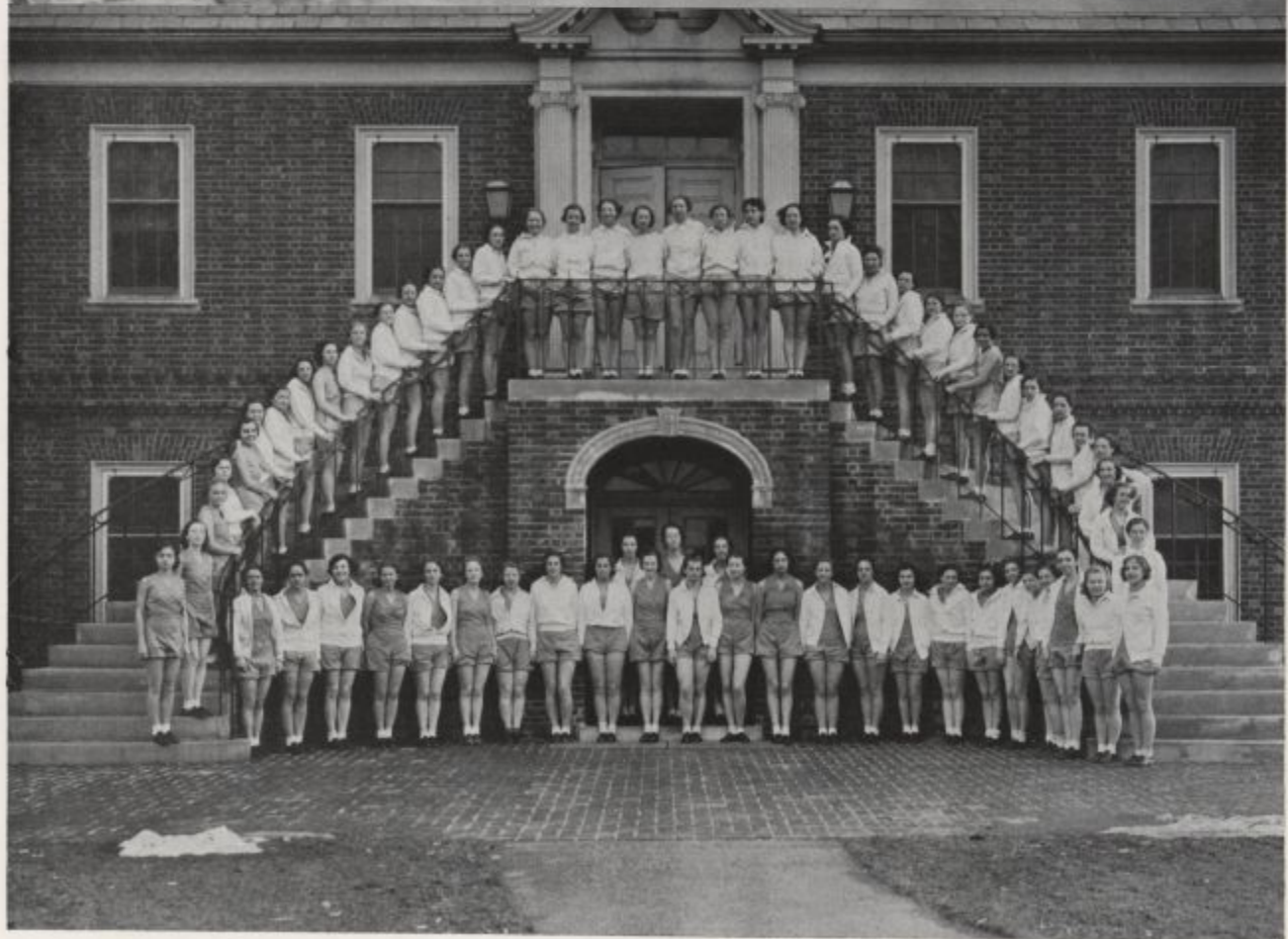
The annual Physical Education demonstration is usually given on Parent-Student Day. Although it lasts a very short time, it represents many months of work on the part of the Freshmen and Sophomores. All of them participate in some part of the program which includes every phase of indoor work in Freshman and Sophomore Physical Education courses. There are folk and character dances, gymnastics, apparatus, and tumbling.

In addition to the required courses in Physical Education there are a number of electives offered to those who wish to continue this work.

Swimming and dancing are open to upper-classmen with credit and to others without credit. A course in sports and games provides opportunity for more advanced work than is possible in the required courses, and still more advanced is a course in coaching and officiating. The introduction of tap-dancing this year proved so popular that it will no doubt be continued as an elective for all students. Many of these courses are the forerunner of a major in Physical Education which, it is hoped, will soon become a reality.







Dramatics

Although the Women's College holds its classes entirely apart from those of Delaware College, in Dramatics, the two colleges merge and produce beautifully finished plays on the stage of Mitchell Hall. The class "E 52," under the direction of Mr. Kase, a course in Play Production has played a large part in the rapid growth of university dramatics in the last few years. With this class began the organization known as the "E 52 Players." Two full length plays are produced each year by these players under the direction of Mr. Kase. Membership in the group is automatic if the applicant has satisfactorily passed the course in Play Production. Other members earn credits through work on E 52 plays. A total of two points is required for membership. In the year 1932-1933, the E 52 Players produced "Cradle Song," by Riego Sierra, and "The Doll's House," by Henrick Ibsen. In 1934 "Autumn Crocus," by C. L. Anthony, was presented. The productions are characterized by the high type of plays chosen to be presented and by fine casting, carefully planned scenery, and polished performances.

Dramatics at the University of Delaware is still in a stage of rapid growth. In spite of the fact that the Little Theatre at Mitchell Hall is very new, Delaware is rapidly becoming well known for the excellence of her dramatic productions.



The One Hundredth Anniversary of the Founding of the University

ON May 11, 12, and 13, there occurred on our campus the greatest celebration which graduates of the Women's College now living ever had the privilege of witnessing—the Centenary Celebration. For three days, the University was the host to its more than 2200 living graduates. From Friday noon till Sunday evening, the program of events was full—exercises which delighted the eye, stirred the imagination, and refreshed the spirit of those who rejoiced in calling Old Delaware their Alma Mater.

Only the main features of the celebration are indicated here. On Friday at 1 p. m., was held the first general meeting, "The University and the Schools"; at 2 p. m., the second general meeting, "International Relations and the American College"; during the afternoon, Open Classes and Laboratories, and Exhibits in the Library; at 4 p. m., the President's Reception; at 7:30 p. m., the Historical Pageant; and at 9 p. m., the Alumni-Alumnæ Reception and Dance. On Saturday morning the Classes and Laboratories were again open to visitors; at 9:30, the Academic Procession assembled in front of Wolf Hall with delegates from the colleges and universities in this country and foreign countries, followed by the Convocation Exercises at which Chancellor Lindley of the University of Kansas delivered the main address; and at 12 noon, a Complimentary luncheon was served at the Women's College and at Delaware College. In the afternoon, there were exhibits at the library, the May Day exercises at the Women's College, the Historical Pageant repeated, step singing, and the Alumnæ business meeting. In the evening were the Alumnæ and Alumni reunions and dinners. On Sunday morning, the Centenary Religious Service was held in Mitchell Hall, and in the late afternoon, a concert.

The Historical Pageant was probably in human interest the most interesting part of the Centenary. The text of the Historical Pageant was written by Frank Stephens, of Arden, and was an efficient summary of the essential facts and trends of 100 years of the University with fine dramatic evaluation. Dr. George H. Ryden, Head of the Department of History and Political Science at the University, and Professor Henry Clay Reed, of his staff, who is Curator of Delawareana, gave Mr. Stephens valuable aid.

A Prologue, nine Scenes, nine Interludes, and an Epilogue, are included in the pageant. The Interludes for the most part were musical, with some songs in Latin and some in English.

The Prologue dealt with the historical background, particularly Newark Academy, forerunner of the College. The first scene portrayed a meeting of the Board of Trustees of the Academy at the time of re-organization, June 5, 1783. The second scene revealed the meeting of the first Board of Trustees of New Ark College in April, 1834. The third scene showed the opening of the new college on May 8, 1834.

The Board of Trustees met in the fourth scene, June 23, 1835, to discuss the

lottery scheme whereby the college was financed at the beginning. Then came a momentous occasion—the graduation of the first class on September 28, 1836, shown in the fifth scene. The sixth scene offered a faculty meeting in 1845, during the "Golden Age" of Delaware College.

In the seventh scene was shown a meeting of the Delta Phi Literary Society in 1859, just as the College was about to close temporarily, with the rival society, the Athenæan, represented. The eighth scene occurred in 1872, with Dr. William H. Purnell, President and alumnus, in the chair. The ninth scene depicted the opening of the Women's College on October 10, 1914.

The Epilogue was very noteworthy, consisting of a Procession of the Presidents, the seventeen men who have occupied the executive chair. In this scene, we saw the future of the University visioned.

More than 150 persons participated in the pageant. It was shown three times, once to the student body, once on Friday evening, May 11, and the final performance was on Saturday afternoon, May 12. All the performances were in Mitchell Hall.

Professor C. R. Kase, who is in charge of dramatics at the University, directed the Pageant, and Firmin Swinnen was organist and accompanist. Students at the Women's College made most of the costumes used, and students at the two colleges of the University, together with members of the faculty, appeared in most of the rôles of the Pageant.

Many alumnæ and alumni returned to the campus to enjoy reunions with their classmates, to witness the many interesting events, and to rejoice in the glories of Alma Mater.







A Village May Day

In Honor of the May Queen

MAY DAY dawns to find spring asleep on the village green. Several wood nymphs wander in and awaken her by dancing around her. While they are thus engaged, a group of villagers enter. A herald announces the coming of the village May Queen and her Court. They enter, preceded by jesters. The Queen is crowned by her maid-of-honor and her attendants dance a minuet in her honor.

The Court

| | |
|-----------------------------|----------------------------------|
| <i>Queen</i> | MARY INGRAM |
| <i>Maid of Honor</i> | ETHEL LOU BRADY |
| <i>Senior Duchess</i> | HELEN HACKETT |
| <i>Senior Attendants</i> | BETTY WEBER, ANNE GRIFFITH |
| <i>Junior Duchess</i> | FRANCES MCGEE |
| <i>Junior Attendants</i> | VERA MCCALL, HELEN LAYTON |
| <i>Sophomore Duchess</i> | VIRGINIA WILSON |
| <i>Sophomore Attendants</i> | ANNE ROBERSON, HAZEL DARRELL |
| <i>Freshman Duchess</i> | MARJORIE ALLMOND |
| <i>Freshman Attendants</i> | LOUISE GRAHAM, ROSALIE FRIEDEL |
| <i>Trumpeter</i> | HELEN CLAYTON |
| <i>Pages</i> | ISABELLE ELLIOTT, MARGARET TYLER |

Characters

| | |
|--------------------|--|
| <i>Spring</i> | ARLENE WAGNER |
| <i>Wood Nymphs</i> | CHARLOTTE STOUT, VIOLA PHILLIPS, ALICE PALMER, ELIZABETH HARRIS |
| <i>Mayor</i> | ARLENE WAGNER |
| <i>Jesters</i> | DOROTHEA THIEL, JEAN BOYD, GERTRUDE ROSENBERG |
| <i>Towne Belle</i> | VERA MCCALL |
| <i>Archers</i> | HARRIET SEELY, HAZEL HUGHES, BETSY BENNETT, ISABELLE ASHBRIDGE |
| <i>Boxers</i> | PEACHES HOLLINGSWORTH, MARIANNE BALDT |



*Characteristic, humorous, varied, interesting---
may you find the following pages of snapshots
all these and more and may they capture for
future years those bits of college about which
we like to reminisce!*





























Songs

*When twilight falls and blots away all care, and blots away all care,
Then fades the world in dreams.*

*And nebulous the shadows fall in patterns on each walk and wall,
And weave their magic there, a fairy spell it seems.*

*In the moonlight gleaming
Stately ships sail dreaming.
On foam-tossed branches they ride the waves.
All the campus sleeping,
A young wind weeping,
And with daylight dawning, ivy-anchored, home.*

*Memories, memories,
Dreams of College Days;
Freshman awes, and Sophomore laws
And Upper-classmen ways.
Lessons drear, Professors queer,
And rules each girl obeys!
But we'll never care,
We love Delaware
And our dreams of those College Days!*

Alma Mater

*To thee, Alma Mater,
We, with tender care
Pledge our allegiance
To thy name so fair.*

*Oh, Delaware,
To thee we sing
With loyal hearts
Our love to thee
In trust we bring.*

*In storm, trial, and sorrow
We'll all burdens share;
Then Blue and Gold shall gleam
For thee, Delaware.*