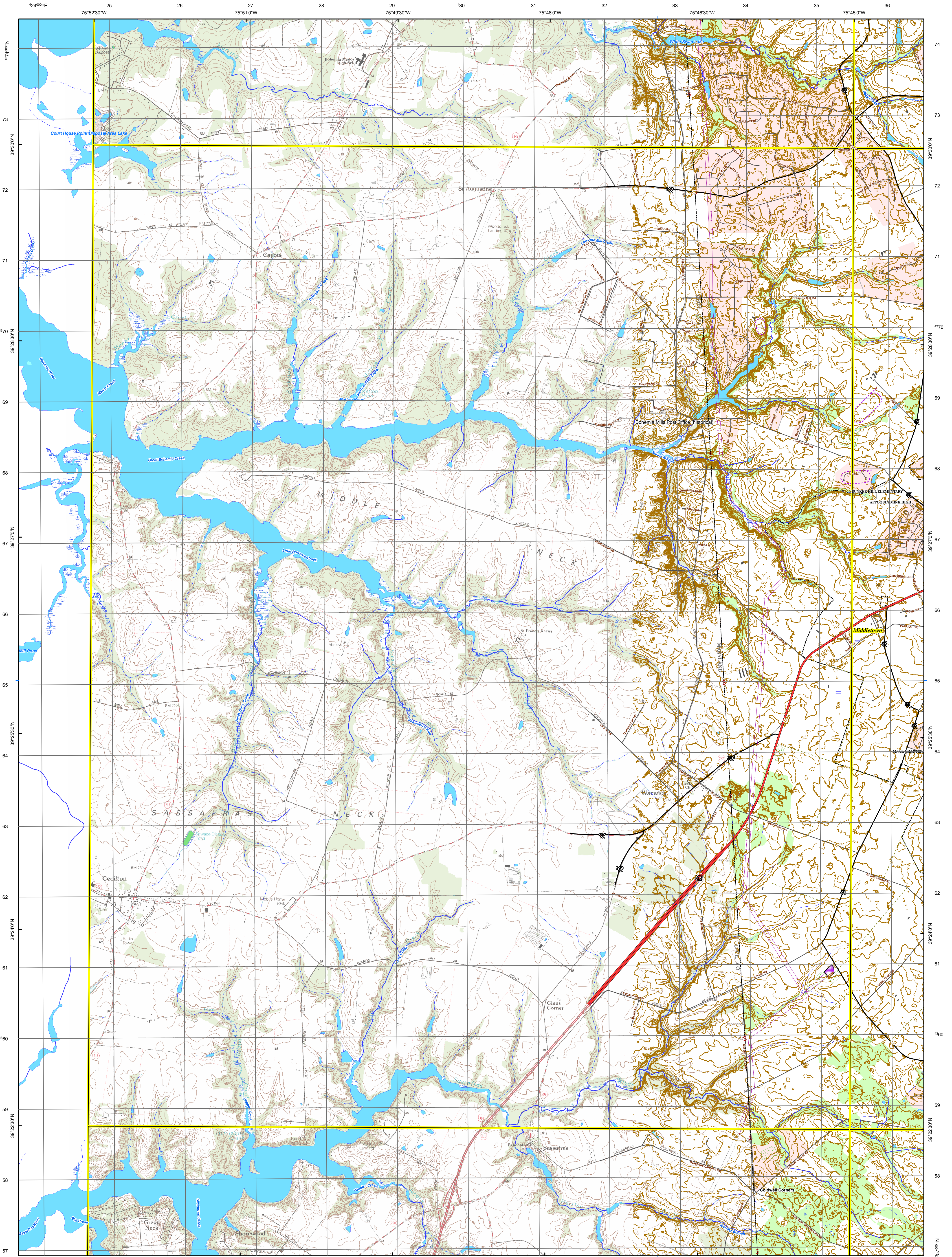




Delaware DataMIL
7.5 Minute Series (Topographic)
Quadrangle



SCALE 1:24,000

0.5 0 0.5

Miles

1000 0 1000 2000 3000 4000 5000

Feet

1 0.5 0 0.5 1

Kilometers

3

Magnetic Declination
Approx. 11 degrees

CONTOUR INTERVALS: 0-10 Feet / 2-foot Contour Interval; 10-100 Feet / 10-foot Index with a 6-foot intermediate Contour Interval;
Greater than 100 Feet / 10-foot Contour Interval

VERTICAL REFERENCE:
NORTH AMERICAN VERTICAL DATUM of 1988 (NAVD88)
DEPTH CURVE DATA COMPILED FROM NOS CHARTS IN FEET
SHORELINE SHOWN REPRESENTS THE APPROXIMATE LINE OF MEAN HIGH WATER
MD, PA. AND NJ BORDER QUADRANGLES SHOWN USING DROPPED NAMES OUTSIDE OF DELAWARE BORDER WITHIN QUADRANGLE

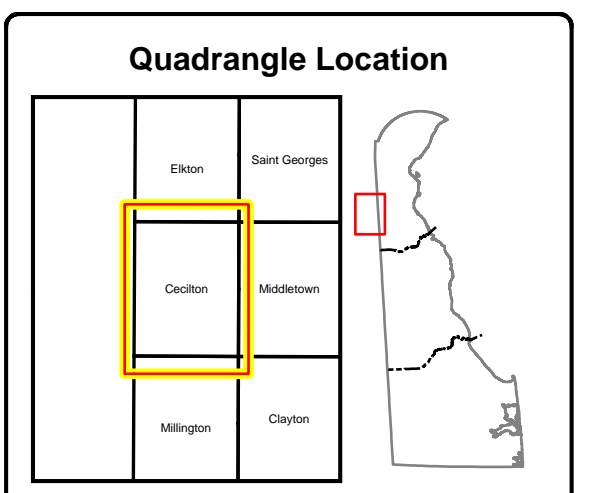
HORIZONTAL REFERENCE:
NORTH AMERICAN DATUM of 1983 (NAD83) HIGH ACCURACY REFERENCE NETWORK 1991 (HARN 91)
MAP PROJECTION IS 1983 DELAWARE STATE PLANE METERS

1,000-meter grid: Universal Transverse Mercator, zone 18
10,000-foot tick: Delianware Coordinate System of 1983
Latitude/Longitude grid ticks-NAD83(HARN91)

Magnetic Declination
Approx. 11 degree

Map Produced by the Delaware DataMIL
Using the following Data Sources

USGS Delaware Geographic Names 2006
USGS Delaware Boundaries – County Boundary [lines] 1993
USGS Federal State Land Use Data [areas] 1993
USGS Delaware Miscellaneous Features [points] 1993
USGS Delaware Miscellaneous Features [lines] 1993
USGS Delaware National Wetlands Data [areas] 1993
USGS Delaware Railroads 1993
USGS 7.5-minute Digital Raster Graphics 1992-93 (DRG)
USGS National Hydrography Dataset (NHD) – High Resolution –
DE Lakes Ponds Areas 2005
USGS National Hydrography Dataset (NHD) – High Resolution –
DE Rivers 2005
USGS 7.5-minute Quads Index 2002
Delaware Boundary Monuments 2002
Delaware State Today [lines] 2002
Delaware Contours 2005 (Sussex) and 2007 (New Castle and Kent
Delaware Municipal Boundaries 2010
Delaware Land Use and Cover 2007
Delaware Private Schools 2011
Delaware Public Schools 2011
Delaware Road Centrifuge (DeDOT) 2009
New Castle County Communities 2010
Kent County Communities 2010
Sussex County Communities 2010



Cecilton
Delaware DataMIL: <http://datamil.delaware.gov>

Created: 1/29/2012

Disclaimer
This Delaware DataMil 7.5-minute topographic map replaces the USGS 7.5-minute Primary Map Series for the State of Delaware. Reasonable efforts have been made by Delaware DataMil staff to verify that this map and the digital data provided herein accurately portray the source data used in its preparation; however, this map may contain omissions and errors in scale, resolution, rectification, positional accuracy, development methodology, and other circumstances. This map is also state specific. Data information on the individual layers comprising this map are given as part of the marginalia on this map. This map was prepared for a scale of 1:24,000 and should not be used at larger scales; nor should this map should be used for navigational, engineering, legal, or any other site-specific use. Nothing contained herein shall be deemed an expressed or implied warranty of the sovereign immunity of the State of Delaware or its duly authorized representatives, agents, or employees.