



WALTER HULLIHEN, Ph.D., D.C.L.

PRESIDENT OF THE UNIVERSITY OF DELAWARE

DR. HULLIHEN was born at Staunton, Virginia, on May 26, 1875. He was prepared by the Staunton Military Academy for the University of Virginia, where he received his A.B. and A.M. degrees. After doing post-graduate work at this University, he studied at Johns Hopkins University from 1897-1900 when he received his Ph.D. He was a University Fellow at Johns Hopkins 1899-1900 and a Fellow by Courtesy, 1900-1902. He was an instructor in Latin and Greek at Marston's University School in Baltimore from 1902-1904, and professor at the University of Chattanooga from 1904 to 1909. During his leave of absence in 1907-1908 he studied at Leipzig, Munich, and Rome. He was Professor of Greek at the University of the South from 1909 to 1920. In 1920 he was elected to the presidency of Delaware College and subsequently to that of the University of Delaware. In 1922 the University of the South conferred the honorary degree of D.C.L. on Dr. Hullihen. He served as a Major in the United States Army during the World War. Dr. Hullihen is a member of the American Philological Association, the Delta Phi Fraternity, the Phi Beta Kappa Fraternity, and the Phi Kappa Phi Fraternity.





WINIFRED J. ROBINSON
Dean of the Women's College of the University of Delaware



Trustees



EX-OFFICIO

The Governor, ROBERT P. ROBINSON, Dover

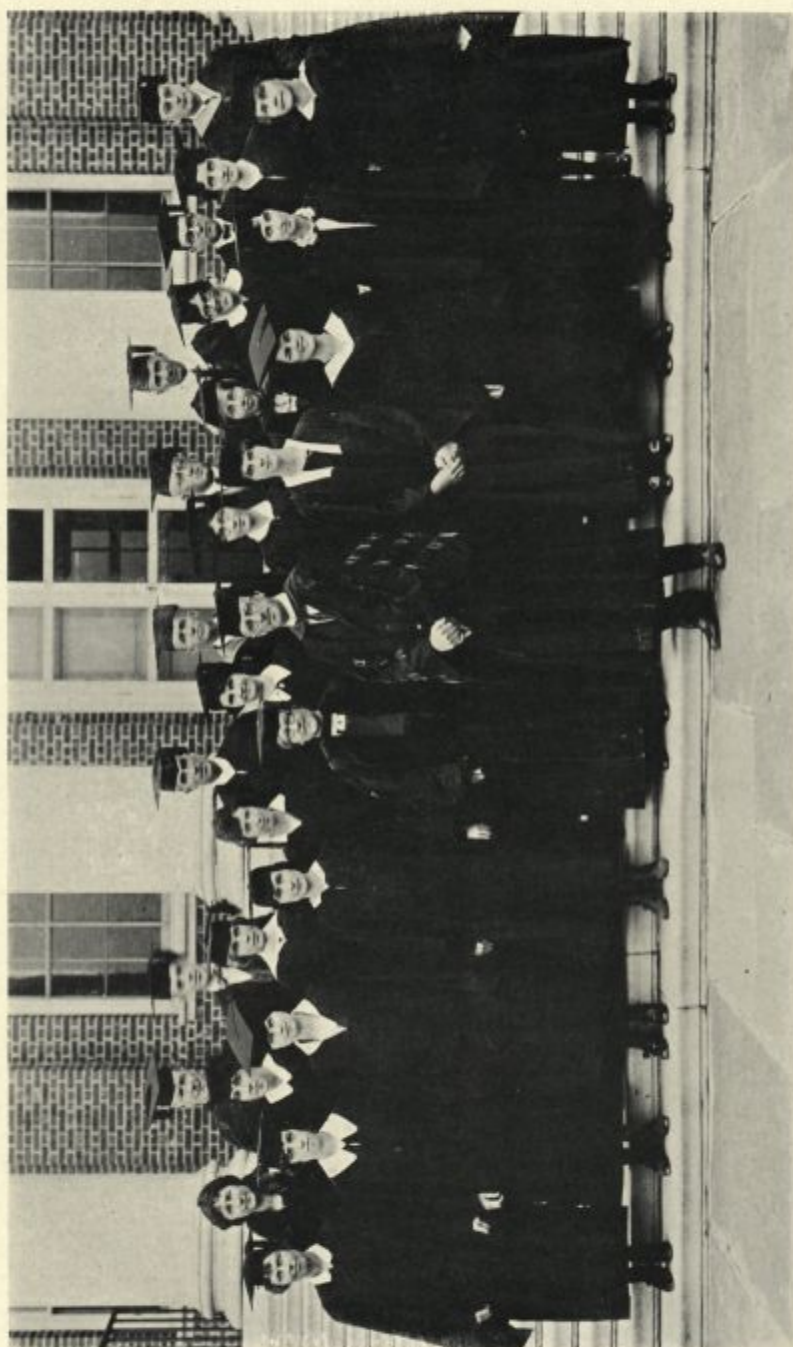
The President of the State Board of Education,
T. R. BROWN, M.D., Wyoming

The President of the University, WALTER HULLIHEN

J. HARVEY WHITEMAN, Esq., Wilmington	1892
CHARLES B. EVANS, Esq., Newark	1894
WILLIAM T. LYMAN, Esq., Wilmington	1897
CHARLES S. CONWELL, Camden	1897
L. HEISLER BALL, M.D., Marshallton	1900
W. WATSON HARRINGTON, Esq., Dover	1900
SAMUEL H. MESSICK, Bridgeville	1902
JAMES E. DUTTON, Seaford	1904
JOHN BIGGS, Esq., Wilmington	1905
SAMUEL H. DERBY, Woodside	1905
THOMAS DAVIS, Esq., Wilmington	1908
SAMUEL J. WRIGHT, Newark	1910
HENRY RIDGELY, Esq., Dover	1911
CHARLES M. CURTIS, Esq., Wilmington	1911
*EVERETT C. JOHNSON, Newark ..	1911
HENRY B. THOMPSON, Greenville	1912
EBEN B. FRAZER, Newark	1913
H. RODNEY SHARP, Wilmington	1915
W. H. HEALD, Esq., Wilmington	1915
EDWARD A. EVANS, Cheswold	1916
CHARLES R. MILLER, Wilmington	1917
H. F. DUPONT, Winterthur	1918
HARRY L. CANNON, Bridgeville	1918
HENRY P. SCOTT, Delaware City	1920
WARREN C. NEWTON, Bridgeville	1922
FRANK L. GRIER, M.D., Milford	1922
HARRY V. LYONS, Lewes	1924

* DECEASED.





THE FACULTY



The Women's College Faculty

GEORGE ABRAM HARTER

Professor of Mathematics. A.B., St. John's College, 1878; A.M., St. John's College; Ph.D., St. John's College, 1893; Phi Kappa Phi.

ELISHA CONOVER

Professor of Ancient Languages and Literatures. A.B., Dickinson College, 1884; A.M., Dickinson College, 1887; Phi Beta Kappa; Phi Kappa Phi.

WILBUR OWEN SYPHERD

Professor of English. A.B., Delaware College, 1896; A.M., Harvard University, 1901; Ph.D., Harvard University, 1906; Phi Kappa Phi.

CHARLES CONGER PALMER

Professor of Bacteriology and Hygiene. D.V.M., Ohio State University, 1912; S.N., University of Minnesota, 1915; Phi Kappa Phi.

WILLIAM ALBERT WILKINSON

Professor of Psychology and Education. S.B., University of Missouri, 1910; A.M., University of Missouri, 1911; Phi Kappa Phi.

GEORGE ELLIOTT DUTTON

Professor of English. A.B., Delaware College, 1904; A.M., Harvard University, 1911; Phi Kappa Phi.

QUAESITA CROMWELL DRAKE

Professor of Chemistry. A.B., Vassar College, 1910; A.M., Vassar College, 1911; Ph.D., University of Chicago, 1922; Phi Kappa Phi.

WILLIAM LLOYD BEVAN

Professor of European History. A.B., Johns Hopkins University, 1886; A.M., Columbia University, 1889; S.T.B., General Theological Seminary, 1891; Ph.D., University of Munich, 1893; Phi Kappa Phi.

EZRA BRECKINRIDGE CROOKS

Professor of Philosophy and Social Sciences. A.B., Central College, 1899; A.M., Vanderbilt University, 1901; Ph.D., Harvard University, 1910; Phi Kappa Phi.

ETHEL LEE PARKER

Professor of Home Economics. A.B., Indiana State Normal School, 1917; A.M., Teacher's College, Columbia University, 1922.

CLAUDE LEON BENNER

Professor of Economics. A.B., University of Michigan, 1919; A.M., University of Michigan, 1920; Ph.D., University of Michigan, 1924.

GEORGE HERBERT RYDEN

Associate Professor of American History and Political Science. A.B., Augustana College, 1909; A.M., Yale University, 1911.

WILLIAM MORRISON PATTERSON

Associate Professor of Modern Languages. A.B., Vanderbilt University, 1899; Ph.D., Columbia University, 1916; Phi Beta Kappa.

ALICE VAN DE VOORT

Associate Professor of Education. A.B., University of Alabama, 1907; A.M., Teacher's College, Columbia University, 1923.

RENA ALLEN

Associate Professor of Education. S.B., Teacher's College, Columbia University, 1924.

JAMES ALEXANDER BARKLEY

Associate Professor of History. A.B., Union University, 1912; A.M., Union University, 1913.

EDWIN COLLY BYAM

Associate Professor of Modern Languages. A.B., Boston University; A.M., Harvard University, 1921.

GEORGE ELDER BRINTON

Associate Professor of Modern Languages. Ph.D., Franklin and Marshall College, 1913.

REINHOLD EUGEN SALESKI

Assistant Professor of Modern Languages. A.B., Harvard University, 1911; A.M., Harvard University, 1917; Ph.D., University of Freiburg, 1924.

RAYMOND WATSON KIRKBRIDE

Assistant Professor of Modern Languages. S.B., Westminster College, 1916.

CARL JOHN REES

Assistant Professor of Mathematics and Physics. A.B., Franklin and Marshall, 1918; A.M., University of Chicago, 1924; Phi Kappa Phi.

ERNEST CANFIELD VANKEUREN

Assistant Professor of English. A.B., Cornell University, 1920; A.M., Harvard University, 1924.

RACHEL W. TAYLOR

Director of Fine and Applied Arts.

LULU McDOWELL RICHARDSON

Assistant Professor of Modern Languages. A.B., Goucher College, 1916; A.M., Johns Hopkins University, 1924.

WILLIAM ERWART MATTHEUS

Assistant Professor of English. A.B., Missouri University, 1921; A.M., University of Missouri, 1922.

EMMA CHARLOTTE EHLERS

Assistant Professor of Education. A.B., Iowa State Teacher's College, 1917; A.M., Teacher's College, Columbia University, 1925.

ELIZABETH GAMBLE KELLY

Assistant Professor of Home Economics. B.S., Carnegie Institute of Technology, 1913; A.M., Teacher's College, Columbia University, 1921.

HENRY RAYMOND BAKER

Instructor in Bacteriology. S.M., Massachusetts Agricultural College, 1920; S.M., University of Delaware, 1924.

MARIAN MCKINNEY

Instructor in Biology. A.B., Wellesley College, 1915.

NORA BEAN KEELY

Instructor in English. A.B., Ursinus College, 1920; A.M., University of Pennsylvania, 1923.

HENRY CLAY REED

Instructor in History. A.B., Bucknell College, 1922.

MARY EDITH GILLESPIE

Instructor in Music. B.S., Teacher's College, Columbia University, 1926.

GRANT HYDE CODE

Instructor in English. A.B., Harvard University, 1918.

HEOLGF VAGN OLSEN

Instructor in Economics. B.S., Dartmouth College, 1922.

EDITH AUGUSTA McDUGAL

Instructor in Mathematics and Physics. A.B., Women's College of Delaware, 1918.

SUSAN DEBORAH SPENCER

Instructor in Home Economics. Ph.B., University of Chicago, 1925.

HENRY EDWARD EVERDING

Instructor in English. B.S. and E., University of Pennsylvania, 1924.

MARY ELIZABETH HARDING

Assistant in Art.

MILDRED HOXIE CONGDON*

Assistant in Chemistry. A.B., Mount Holyoke, 1924.

MARGARET CLERIHEW

Assistant in Biology. A.B., New Jersey State College, 1925.

HELEN STOCKBRIDGE KENNEDY

Assistant in Chemistry. B.S., Barnard College, Columbia University, 1917.

MARIAN MULHERN

Student Assistant in Art.
* Deceased.

OTHER OFFICERS

ARTHUR G. WILKINSON *Business Administrator*

EDWINA LONG *Assistant to the Business Administrator*

GERTRUDE COOK STURGES

Assistant to the Dean, A.B., Mount Holyoke, 1918

MARY RUTH KING

Dietitian, B.S., Women's College of Delaware, 1923

AMY LITTELL CLARKE *Director of Halls*

