

UP FRONT

Vote will decide Christina's future

By **MARTY VALANIA**

NEWARK POST STAFF WRITER

A buck.
That's it.
It's one less soda at work.
One less bag of chips.
One less pack of gum.
If you can suffer through any of these hardships in a month's period of time, you'll have more than enough to pay for the Christina School District's upcoming referendum.

The Christina School District is ready to move on and it hopes to officially do so Nov. 6 with a referendum that will be voted on by district residents. It's a first rate campaign complete with an organized Web site, yard signs and an enthusiastic group of volunteers.

Simply put, the referendum will decide Christina's future.

It includes a neighborhood schools plan that will send students to the closest school to their neighborhood in both elementary and middle schools. That means it eliminates all I-95 travel for students in kindergarten through eighth grade.

However, the referendum needs to be passed for this and the other good plans to happen. There will be two choices on this referendum. Option A is the district's preferred plan. It will reorganize the schools in K-5, 6-8 and 9-12 buildings and put children in the schools closest to home. It will keep all district schools open and create full-day kindergarten as well. Those are only a few of the highlights.

What will it cost?

Well, if you have a \$500,000 house, it will cost you \$38 per year. Most residents will pay less than

See **UPFRONT, 20**



Valania

'The beautiful things in life'

Newark artist's pencil drawings on display now at Municipal Building

By **CHRISTINE NEFF**

NEWARK POST STAFF WRITER

A theme emerged in Rebecca Cebula's work as she flipped through one of many art books in the living room of her Cherry Woods home.

Flowers, trees and animals – colorful and realistic – peeked out of nearly every page. In one striking drawing, her husband, D.C., strolled through a fall forest; in another, a dragonfly rested gently on a flower bud.

Nearly all of the pictures were of outdoor scenes or involved natural elements. "When I started doing this," she explained, "I would look for things only positive."

"Only positive" is a good way to describe Cebula's approach to life, as well as her art.

Artwork, she said, was one of her favorite things to do as a child, but, as she grew up, she grew out of the hobby. She started drawing, again, in 2000 as a source of relaxation; at the time, she suffered from a

NEWARK POST PHOTOS BY CHRISTINE NEFF

Right: Rebecca Cebula, a Newark artist, at home. Her pencil drawings are on display now at the Newark City Municipal Building. Below: Cebula looks through a book containing her drawings. She has been drawing, and battling cancer, since 2000.

severe case of fibromyalgia.

"When I sat down one day and just started scribbling, I began remembering how much fun it was," she said. "And it just kind of started blossoming."

Not long after she re-sharpened her pencils, she learned she had cancer. She battled two cycles of cancer over the next seven years, all the while continuing to draw.

See **ARTIST, 16**



Community Consensus coming?

Christina administrators committed to giving the public what it appears to want

By **MARY E. PETZAK**

NEWARK POST STAFF WRITER

Christina District administrators are hoping voters will approve the \$10.5 million Option A in the Nov. 6 referendum even though they did not conceive the plan. "Our emphasis when talking about Option A on the ballot is that this is a true Community Consensus Plan," said Wendy Lapham, Christina's public information manager. "This plan didn't come from a group of District administrators working up here [in the central office] and we didn't bring in a consultant to come up with a

See **SCHOOLS, 13**

Network eyes next step

Invites public to conversation on economic development

By **CHRISTINE NEFF**

NEWARK POST STAFF WRITER

A lot of listening – that's what the Greater Newark Network has been doing over the last few months, and the group plans to continue that trend next week at a public meeting on economic development in the Newark area.

The Network, which formed in May, pulls together representatives of business and academic communities, as well as government agencies and individuals interested in promoting economic growth here. The group hopes to foster the retention and expansion of employers in the greater Newark area and to establish Newark as a hub for high-tech industries.

See **NETWORK, 18**

Can we help?

Offices: The paper's offices are located conveniently in Suite 206, Madeline Crossing, 168 Elton Rd., Newark, DE 19711. Office hours are 8:30 a.m. to 5 p.m. weekdays.

Phone: (302) 737-0724

Facsimile: (302) 737-9019

e-mail: postnews@chespub.com

To subscribe: Call 1-800-220-3311.

To begin a convenient home-delivery subscription, simply call.

To place a classified or display ad: Call 737-0724 or 1-800-220-3311.

THE STAFF of the *Newark Post* is eager to assist readers and advertisers. Reporters, writers, editors and salespeople can be contacted as listed:

Marty Valania is the General Manager of the Newark Post. He sets policies and manages all departments in the Newark office. Call him at 737-0724.

Christine Neff is the news editor. She leads the day-to-day operation of the newsroom. Call her at 737-0724.

Mary E. Petzak is a staff reporter and specializes in education coverage. Reach her at 737-0724.

Joe Backer prepares the sports pages of this newspaper. The sports editor is seldom in the office, however, he checks in frequently. Leave messages for Joe at 737-0724.

Other contributing writers include Ruth Kelly, Alfred Gruber, Tracy Downs, Elbert Chance, Marvin Hummel and Mark Sisk. Leave messages for them at 737-0724.

The office manager-editorial assistant can be reached at 737-0724.

Ed Hoffman is the Newark Post's advertising director and manages the local sales team. He can be reached at 1-800-220-3311.

Jim Galoff is the advertising sales manager. He handles accounts in the New Castle area and is an automotive account specialist. Call him at 1-800-220-3311, ext. 3087.

Betty Jo Trexler sells real estate advertising. She can be reached simply by calling 1-800-220-3311, ext. 3090.

Nancy Beaudet sells ads in the downtown Newark area. She can be reached by calling 1-800-220-3311, ext. 3306.

Our circulation manager is **Mary Ferguson**. For information regarding subscriptions, call 1-800-220-3311.

The Newark Post is published Friday by Chesapeake Publishing Corporation. News and local sales offices are located in Madeline Crossing, Suite 206, 168 Elton Rd., Newark, DE 19711. All advertising and news are accepted and printed only at the sole discretion of the publisher. The Newark Post is a member of the Maryland-Delaware-D.C. Press Association, Suburban Newspapers of America and the National Newspaper Association.

POSTMASTER: Send address changes to: Newark Post, Suite 206, 168 Elton Road, Newark, DE 19711. Periodicals postage paid at Newark, Del., and additional offices.

Police Blotter is compiled each week from the files of the Newark Police Department, New Castle County Police and the Delaware State Police by the newspaper staff.

Suspicious woman approaches toddler in Windy Hills

New Castle County Police are investigating a suspicious person and vehicle complaint involving a woman who approached a small child in a Windy Hills driveway and said, "Let me take him to his mother."

Police said the incident occurred on Wednesday, Oct. 10, in the 100 block of North Dillwyn Road in the community of Windy Hills. The mother of the 2-year-old boy told officers that a suspicious woman approached her son around 7:45 a.m.

The mother said the child's grandmother had just put the toddler's sister on the bus and was standing in the driveway with her grandson when a car stopped nearby.

The woman approached the 2-year-old and said, "let me take you to your mother." The grandmother, who was within 10 feet of the child, responded, "I'm right here," said police. The woman then got into her vehicle and quickly drove away, said police.

The subject was described as a white female, 40 to 45 years of age, tall, average build, and short brown hair. She was operating a white mini van possibly a late 1980's or early 1990's Dodge Caravan.

To offer information regarding this incident, please call the New Castle County Police Department at 395-8171 or call Crimestoppers at 1-800-TIP-3333.

Police investigate robbery in McDonald's lot

Newark Police are investigating a robbery that occurred in the parking lot of the McDonald's located at 374 E. Main Street on Friday, Oct. 12, at 4:45 p.m. Police said the 17-year-old male victim reported being approached in the parking lot by a black male in his mid-30s.

The suspect showed a black handgun and stole personal property from the victim's pockets. He punched the victim in the face prior to fleeing the area and was last seen walking north on McKees Place towards E. Cleveland Avenue. Police said the suspect may have got into a vehicle in the area of E. Cleveland Avenue and McKees Place.

The victim had minor injuries and refused medical treatment, said police.

The suspect was described as a black male 6' to 6'1" with a bushy beard, thin build, short hair and wearing a faded black leather coat, tan khaki pants and a white t-shirt.

Anyone with information

POLICE BLOTTER

One arrested in assault, two others sought

The Newark Police Department has arrested one man and obtained arrest warrants for two others on charges related to an assault that occurred at North College Avenue on Sept. 5.

Police said two victims, ages 20 and 21, were walking on North College when they were assaulted by a group of suspects who demanded property. One victim fled without turning over any belongings; the second victim gave the suspects his wallet. Both victims had minor injuries.

On Monday, Oct. 8, police arrested Nikeem Miller, 18, of the 400 block of Longfield Road in Newark, and charged him with robbery, attempted robbery,



Collins



Miller

conspiracy and two counts of third degree assault.

He was committed to the Howard Young Correctional Facility after failing to post \$19,000 bail.

Police have obtained warrants on the same charges for Darnell Collins, 18, of the unit block of Sunny Bend in Newark and a 17-year-old boy of the

unit block of Ardmore Drive in Newark.

Warrants are on file, too, charging Collins and the 17-year-old in another robbery that occurred on the same date in the back parking lot of 147 E. Main Street, said police. In that incident, a 26-year-old victim was assaulted as he got out of his car and had property stolen from him. The victim had a fractured nose and laceration on his face. Collins and the 17-year-old are charged with robbery, conspiracy, and third degree assault in that incident, said police.

Police do not know the whereabouts of Collins and the 17-year-old. Anyone with information is asked to contact the department at 366-7111.

regarding this investigation should contact Det. Nelson of the Newark Police Department at 366-7110, ext. 136 or call Crime Stoppers at 1-800-TIP-3333.

17-year-old makes threats with gun

Newark Police arrested a 17-year-old Newark boy after he allegedly threatened a group of people with a handgun on Haines Street east of Main Street on Tuesday, Oct. 9, at 3:29 a.m.

Police said the four victims were in the 7-11 parking lot when the suspect got out of his car and pointed the gun at them, making a threatening statement. Police used the description of the car to track down the suspect.

The juvenile, of the unit block of Kullen Drive, was taken into custody and charged with aggravated menacing, possession of a firearm while committing a felony, carrying a concealed deadly weapon, driving under the influence of alcohol, underage consumption of alcohol and driving without a valid license, said police. He was transported to Ferris School after failing to post \$16,500 bond.

NHS teacher injured

A teacher at Newark High School was injured during a fight at the school in which a 14-year-old Wilmington girl "jumped" a 15-year-old Wilmington girl, police were told on Wednesday, Oct. 10, at 7:17 a.m. Three other students were identified as instigators to the fight and suspended for one day. The 14-year-old suspect was issued a criminal summons for third degree assault, said police.

Would-be burglar leaves laptop dangling

An unknown suspect broke the window of a home in the unit block of E. Cleveland Avenue, climbed into the house and tried

to steal a laptop computer before fleeing, police were told on Wednesday, Oct. 10, at 10:36 p.m. Residents, who were home at the time, came downstairs on hearing noise. The would-be burglar pulled the laptop, cords and all, out the window, but left it hanging there when the residents came downstairs.

Other incidents

A schoolbag and purse were stolen from the front porch of a home in the 400 block of S. College Avenue while its owner went inside to make a sandwich, police were told on Wednesday, Oct. 10, at 5:48 p.m.

A window screen in an apartment in the 300 block of Delaware Circle was slashed with a knife by an unknown suspect, police were told on Monday, Oct. 7, at 1:18 p.m.

A city employee discovered two steel, 50-gallon trash cans set on fire by an unknown suspect on Monday, Oct. 8, at 9:28 a.m.

Police investigated a report of a 14-year-old boy having his \$400 cell phone stolen by another student while in a stairwell at Newark High School on Wednesday, Oct. 3, at 7:13 a.m. Police arrested a 15-year-old Wilmington boy, charging him with second degree robbery and conspiracy. Investigation will continue.

A drain pipe thrown at an apartment in the 2000 block of Scholar Drive shattered a window, police were told on Sunday, Oct. 14, at 6:13 p.m.

Partygoers in the unit block of E. Cleveland Avenue had their purses stolen by an unknown suspect, police were told on Sunday, Oct. 14, at 1:55 a.m. The purses were stashed under a stack of coats next to the couch. They were later found in a trash can nearby though cash, a camera and other items were missing.

A 19-year-old man reported being punched by three to five unknown suspects while walking on the sidewalk in the unit

block of E. Cleveland Avenue on Saturday, Oct. 13, at 11:51 p.m. The man said he tried to run away, but the suspects followed him and continued punching him. The suspects were described as white males between 18 and 22 years of age, wearing baggy clothes. Investigation will continue.

A 23-year-old man had a bloody nose and black eye after he was punched in the face by several unknown suspects in the unit block of N. Chapel Street on Saturday, Oct. 13, at 10:14 p.m. The victim described the suspects as three to four black men who fled the scene after punching him and throwing bottles at a home on the street.

Vehicles targeted

The driver's side window of a Plymouth Voyager parked in the 300 block of E. Main Street was broken by unknown means, police were told on Tuesday, Oct. 9, at 5:45 p.m.

An unknown suspect smashed the passenger window of a Mitsubishi Endeavor parked in the 2000 block of Scholar Drive and stole a GPS unit from inside, police were told on Tuesday, Oct. 9, at 8:57 a.m.

A radar detector was stolen from a Saab parked in the 2000 block of Scholar Drive after an unknown suspect broke the car's window to gain access, police were told on Monday, Oct. 8, at 10:27 p.m.

A dirt bike was stolen from the driveway of a home in the unit block of Benny Street, police were told on Monday, Oct. 8, at 12:34 p.m.

An unknown suspect removed all four tires and rims from two vehicles parked in a lot in the 200 block of E. Cleveland Avenue, police were told on Monday, Oct. 8, at 10:07 a.m.

A navigation system and Ipod were stolen from a Jeep Cherokee parked in the 7000 block of

See **BLOTTER**, 21 ►

IN THE NEWS

Student's words lead to teacher's resignation

BY MARY E. PETZAK

NEWARK POST STAFF WRITER

According to a member of the Newark High School community, a student who allegedly threatened to "shoot" a teacher in a classroom three weeks ago is still walking the halls. "He was suspended for five days, and when he came back, he was told not to be in the vicinity of the teacher's classroom where

the incident happened," said the person who does not want to be named. "But, a school camera showed him at the same classroom door after he came back."

Newark Police Lt. Brian Henry confirmed that the Sept. 27 incident was originally reported as a "terroristic threat," but after review with the state Attorney General, it was "downgraded" to disorderly conduct. "According to the police report, the student made a statement 'when I shoot

you,' during a classroom discussion of examples of good and evil," Henry stated. "The student claimed his remark was part of class participation."

Henry further stated that, whatever the understanding was within the school, a "No Contact Order" was not filed to keep the student away from any particular classroom in this incident. The disorderly conduct charge is still pending Court disposition.

Wendy Lapham, Christina's public information officer, said the District followed procedure and the Student Code of Conduct in dealing with the student. "I spoke with both Newark principal Curt Bedford and Sharon Denney [district supervisor of special education]," Lapham said. "The District administration and the administrators and School Resource Officer at Newark High worked closely together to resolve this issue."

According to Lapham, the incident was handled in accordance with the 2007-2008 Christina School District Student Code of Conduct, Level II, Threatening Behavior to Staff, 6-12 First Offense and steps taken following the incident included:

1. Parent/guardian was notified

fied

2. School Resource Officer was notified and charges were filed

3. DOE Student Conduct Report was filed

4. Student was suspended from school for 5 days

5. Behavior plan was recommended

6. Student was referred for mediation to the school psychologist/Wellness Center.

Lapham added that the District has a set of procedures, presumably followed, for any student who engages in threatening behavior:

• Building administrators are alerted to the situation

• The student is removed from the classroom setting

• The school psychologist is contacted and informed of the nature of the threat. The school psychologist is provided with a copy of the incident report and with other pertinent information about the student

• The school psychologist meets with the student

• A team meeting occurs at the school level. The team consists of the building administrator, school psychologist, guidance counselor, interventionist, classroom

teacher(s), and school nurse (if appropriate)

• The team reviews the school psychologist's assessment, the student's history, the student's interactions with others, and any mental/emotional needs of the student

• The team determines the level of risk the student presents to the school community and they develop a plan of action. This plan of action includes the impact of the student's behavior on other students and the staff members involved.

The teacher reportedly also felt threatened by the student's younger sibling who is in another of the teacher's classes. Sometime after the first incident, the younger student purportedly showed the teacher a drawing that included the words "kill zone." The District did not provide information about this incident, although this student was to have received a one-day suspension.

Nevertheless, the teacher decided the job wasn't worth the perceived risk despite the police investigation's finding, and with eight years of classroom experience, the teacher resigned effective this week from the Newark position that started in August.

A bright idea

New Castle County joins 'Change a Light Campaign'

New Castle County will participate in the 2007 National Association of Counties Energy Star Change a Light Campaign to encourage county residents to change the most frequently used light in their home to an energy efficient (ENERGY STAR-rated) light bulb.

The bulbs help users save money on energy bills, reducing greenhouse gas emissions in the process by using about 75 percent less energy than standard incandescent bulbs and lasting up to 10

times longer.

"This is an easy and affordable way for all of us to do our part to make a difference," said New Castle County Executive Chris Coons. "By taking the pledge and changing at least one light bulb, each of us is saving on our electric bill and preventing more than 450 pounds of greenhouse gas emissions," he added.

From now until Nov. 30, residents can pledge to change a light bulb in their home to an ENERGY STAR-rated bulb and receive a \$3 coupon toward the purchase of a light bulb at any Office Depot location.

To take the pledge and learn more, please visit www.naco.org/change-a-light



Strike on, strike off



NEWARK POST PHOTO BY CHRISTINE NEFF

Hours after members of the United Auto Workers union went on strike at Chrysler plants across the country, it was announced that a deal had been reached with the company. Employees at the Newark plant supported their fellow union members on Wednesday, Oct. 10, by picketing outside the Mopar parts center on S. College Avenue. UAW members went on strike at 19 of 24 Chrysler plants. Workers at the Newark assembly plant were off last week due to the line being temporarily idled. Talks between the union and management had begun this summer. The UAW had set a deadline of 11 a.m. Wednesday to settle or strike. Hours after the strike began, it ended with an agreement.

Owner seeks to 'Save Shaggy's'

Restrictions placed on liquor sales due to violation have hurt business

By CHRISTINE NEFF

NEWARK POST STAFF WRITER

A month ago, Joe Van Horn, owner of Shaggy's restaurant on Main Street in Newark, would have described his business as "moderately successful, and building."

But now, a month after the Delaware Alcohol Beverage Control (ABC) Commission placed restrictions on the sale of alcohol there due to a liquor law violation, Van Horn has another word for it: "killed"

Shaggy's violated an ABC guideline that regulates the ratio of food sales to alcohol sales. By state law, restaurants with a liquor license must make at least 60 percent of their sales in food; the other 40 percent can come from alcohol.

Shaggy's went before the commission on Sept. 13 for a hearing on the violation. Van Horn said the commission ruled to place restrictions on alcohol sales at the restaurant for the next four months. Shaggy's cannot sell alcohol from 12

a.m. to 1 a.m. — a busy hour for drink sales — and can host entertainment only on Saturday nights, he said.

This was a second violation for Shaggy's. Soon after the restaurant opened in May 2005, a waiter was cited for serving alcohol to an underage patron. Staff now uses a computer system to check licenses for validity.

Van Horn admits that the restaurant had "some problems in the first six months," in regards to security. But, he said, he has learned how to deal with and prevent those problems. "We finally got to a point where we know what we're doing, and this happens," he said referencing the latest restrictions.

He recognizes that the restaurant didn't meet the ABC's 60-40 ratio, but feels the punishment was severe. Even a "great business man," he said, could have trouble meeting the 60-40 requirement in a college town like Newark.

Van Horn said he never intended for the restaurant to sell more alcohol than food. "I wouldn't have bought all of these tables and doubled the size of the kitchen if I wanted this to be a bar," he said.

The loss of business has gone beyond the restricted hour. Rumors circulating that Shaggy's may close have

prompted people to cancel parties and events scheduled months in advance, and Van Horn gets few calls about booking new parties when he used to get "dozens a week," he said.

In response, the restaurant has begun waging a "Save Shaggy's" campaign complete with t-shirts and a Web site, asking locals to support the business by dining there more often. University of Delaware students and members of the business community have got on board.

Van Horn points to the positive role the restaurant plays in the community. Shaggy's often hosts charity events and donates gift certificates to campus and community groups. Three dollars of every Sunday brunch sold goes to benefit Newark churches' Habitat for Humanity projects. "I don't think I've said 'no' to anyone," he said of his charity work.

And Shaggy's, with its upscale, casual atmosphere, food inspired by Key West and live music, does offer a different dining and entertainment option downtown, something Van Horn feels Newark needs more of.

So what will save Shaggy's? "I don't know," he said. "A lot of people need to come here and eat. Come eat and make your own decision."

In Our Schools

EDUCATION NEWS FOR NEWARK FROM LOCAL SCHOOLS

NOTE PAD

Stranger Alert in Christina District

Schools in Christina School District are taking extra safety precautions after Newark Police reported that a stranger approached students who attend West Park Place and Brookside elementary schools and a car matching the description given by those students was seen by a student at Wilson Elementary School about a week later. This individual, described as a black male with a light complexion, wearing a gray hat with a red eagle on it, is driving a blue car with gray bumpers. In one incident two people were seen in the car.

New Castle County Police reported that a female approached a 2-year-old boy at 7:45 a.m. on Wednesday, Oct. 10, in the 100 block of North Dillwyn Road in Windy Hills. The child and his grandmother, who had just put a granddaughter on a school bus, were in the driveway when a white female, 40 to 45 years of age, tall, average build, and short brown hair approached the boy and stated, "let me take you to your mother." When the grandmother responded, "I'm right here," the woman quickly drove away in a white minivan, possibly a late, 1980's or early 1990's Dodge Caravan.

Please remind your children that they should have no contact with a stranger and should leave the area immediately when spoken to by someone they do not know. Under no circumstances should they ever enter a stranger's vehicle.

Local elementary students part of International Walk to School Week

Students from three schools in Christina School District participated in International Walk to School Week, Oct. 1-7.

Approximately 400 students at Downes Elementary School in Newark walked to school with their parents, teachers and community leaders on Wednesday, Oct. 3. Students from nearby West Park Elementary School celebrated the event by walking to school on Thursday, Oct. 4.

"Since I've been involved in the Walk To School Day for several years and the Safe Routes to School Program at Downes Elementary, I wanted to initiate the same programs at my other school," teacher Deborah Ann Wilson told the International Walk To School organization. "Teaching at two different schools a week creates several challenges, one being that [West Park's] Walk to School Day was on a Thursday, rather than a Wednesday since I'm not at West Park that day."

Wilson said the West Park event was similar to the one in its fifth year at Downes, with the walkers/bikers, parents and staff meeting at a central location about a half-mile from the school.

"We invite parents, grandparents and district administration to join us along with state representatives, such as the Secretary of Education and the Lt. Governor," she said.

Wilson noted that a walking/

approximately .40-mile to school. "Since most of our student population ride buses to school," explained teacher Mary Beth French, "we planned a drop-off at our local park to offer the Walk to School for all students."

Family members were invited to join their child for the 10-15 minute walk to Brader Elementary on Wednesday, Oct. 3.

Now in its 11th year, International Walk to School Day was expected to include 4,000 schools from all 50 states and 3 million children and adults in 36 countries around

in 1997 by the Partnership for a Walkable America. Canada and Great Britain already had walk to school programs in place. In 2000, these three countries joined together to create International Walk to School Day.

Organizations involved nationwide in this year's event include the Centers for Disease Control and Prevention, the U.S. Environmental Protection Agency, the Federal Highway Administration, the Institute of Transportation Engineers, the National Highway Traffic Safety Administration, the Pedestrian and Bicycle Information Center, the National SAFE KIDS Campaign and the Robert Wood Johnson Foundation.

In July 2005, Congress passed federal legislation that established a national Safe Routes to School program. The program dedicates a total of \$612 million towards Safe Routes from 2005 to 2009. The National Center for Safe Routes to School provides schools with technical information to implement safe and successful strategies and serves as the coordinating agency for Walk to School activities in the U.S.



biking program was established at Downes three years ago as part of the Safe Routes to School initiative. "We received monies to purchase safety vests, walking/biking punch cards, incentives, pedestrian programs, bicycles, helmets, and more through this program" she said. "We also partner with the University of Delaware who provides assistance for our Walk."

Students at Brader Elementary School in Glasgow were dropped off from their assigned buses near Four Seasons Plaza and walked



the world. The idea is to walk to school together to promote health, safety, physical activity and concern for the environment.

Walk to School Day was established in the United States

Christina District wellness policy

Childhood obesity and Type II Diabetes are a national epidemic and reports indicate that healthy children have a reduced incidence of illness, better attendance, and achieve better overall academic performance.

Christina's Child Nutrition Services is committed to promoting the health of its students. A district wellness policy was adopted which addresses healthy eating and physical activity habits necessary for a healthy life style.

Andrea Solge R.D., child nutrition specialist for the Christina School District, offers the following information for parents about the District's wellness policy and keeping children healthy and active.

Why does the District have a wellness policy?

The U.S. Congress established a requirement that all schools participating in federally funded school meals programs develop

and implement a wellness policy by the beginning of the school year 2006-2007.

What are the goals of the Wellness Policy?

The intent of the law is to establish healthy school nutrition environments, and reduce childhood obesity and chronic diseases related to poor nutrition and physical inactivity.

The Christina School District hopes to raise awareness throughout our community about making healthy eating choices both in and outside of school and encourage an increase in daily physical activity. Our new Wellness Policy will help us change attitudes that can have a lifetime impact on student health and school success.

What changes can I expect to see?

Promoting good health includes nutrition education and



healthy food choices in addition to daily physical activity and education. These changes will

include recommended foods for classroom parties, fundraising activities, and the availability of sweets and candy during school as well as provide for developmentally appropriate physical activity during the school day.

How can parents help?

According to Solge, parents are asked to cooperate in helping to implement the new policy, and also provide suggestions for making schools healthier, more active environments for all students.

For more information regarding the Christina District wellness policy, visit www.christina.k12.de.us/school_board/pdf/WellnessPolicy

IN OUR SCHOOLS

Einstein Academy holding Info Nights

The community is invited to attend an Informational Night to learn about Albert Einstein Academy, a K-6 day school located on the 33-acre campus at the Jewish Community Center in Wilmington.

The first one will be held at the Bear home of Caryn and Mark Rambo on Monday, Oct. 29, at 7 p.m. Their daughter, Gabrielle, a sophomore at the Charter School of Wilmington and an Einstein graduate, and fellow Einstein graduate Josh Leviton, a sophomore at Wilmington Friends School, will speak about their experiences at Einstein.

Another Info Night will take place at the Wilmington home of Laura and Tim Keller on Nov. 1 at 7 p.m.

Mari and Dan Skovronsky will host the final meeting on Tuesday, Nov. 6, at 7 p.m. at their Glen Mills home. University of Delaware senior Lara Goldstein will discuss how her Einstein experience guided her educational path.

Other Einstein alumni, as

well as parents, administrators and teachers, will be available to discuss the school and answer questions at each of the three meetings.



In addition to providing a rich Jewish education for its students, Einstein offers math, language arts, science, social studies, music and fine arts, technology and information literacy, and athletics. According to Dr. Jack Sparks,

Head of School, Einstein's graduates enter accelerated programs at the public or private schools of their choice, and win academic awards on local, statewide and national levels.

Each child's education is enriched with Jewish Studies, including Jewish history, holidays, text, values and Hebrew language. Students are encouraged to think, to question, to become problem solvers, to become fully engaged.

Current research indicates that acquiring a second language at a young age permanently increases the capacity to learn. Hebrew language study begins in kindergarten at Einstein.

Albert Einstein Academy is accredited by the Middle States Association of Colleges and Schools, and is a constituent of the Jewish Federation of Delaware. For further information about Einstein or Informational Nights, call 302-478-5026, ext. 123, or visit www.aecademy.org.

Delaware students 'Make a Splash'

More than 460 Delaware middle school students and their teachers joined the nationwide Make a Splash festival in activities designed to educate students on the importance of water.

Delaware's Make a Splash festival was held Sept. 28 at the Delaware National Estuarine Research Reserve and John Dickinson Plantation near Dover.

"Water provides the earth with the capacity for supporting life," said Jennifer Holmes,

made possible by Project WET (Water Education for Teachers), an international water science and education program dedicated to teaching children. Established in 1984, Project WET provides a complete curriculum of water education teaching materials, books and training opportunities, as well as a network of coordinators in every state of the continental U.S. and in numerous countries around the world.

Sponsors for Delaware's Make a Splash festival included Delaware Department of Natural Resources and Environmental

Control's Division of Soil and Water Conservation; Delaware Health and Social Services' Office of Drinking Water; Project WET USA; Nestle Waters North America, John Dickinson Plantation; Delaware Agricultural Museum and Village; Delaware Nature Society; and Kent Conservation District. For more information on Project WET, visit www.projectwetusa.org



project coordinator and educator with DNREC's Division of Soil and Water Conservation. "The festival was designed to encourage young people to be stewards of our water resources and protect them for future generations." Unlike traditional "look and leave" field trips, the Make a Splash festival included interactive activities at learning stations on various water-related topics. Students explored watersheds, horseshoe crabs, mosquito control, salinity, estuaries, land use, stormwater runoff, pollution and historical water use.

The Make a Splash festival was

NHS celebrating at 5th Quarter

Immediately following Newark High's football game against A.I. duPont High School on Friday, Oct. 19, NHS will hold its 5th Quarter event. From 8:30 to 11:30 p.m., the fun includes FREE pizza, wings, soda and prizes, a DJ, 3-on-3 Basketball

Bungee, and Jousting. Fifth Quarter is sponsored by NHS PTA/Building Bridges Coalition, Delaware Council on Gambling Problems and Volunteer Delaware. For information, contact Jan Mink at 292-1244 or email janmink@aol.com.

Pencader Charter Open House

Pencader Charter High School will hold an Open House for new students on Sunday, Oct. 21, from 1 - 3 p.m. The public is welcome.

Chartered in 2005, the high school requires all Pencader students to take core courses in English, math, science, social studies, health, drivers ed, and physical education, in addition to selecting one of four Career Pathways in which they will take business and finance courses.

Last month, school leader Dave Jones announced that Pencader now offers a course in Mandarin Chinese. The course is

taught by Grace Yang, a fellow member of the Chinese-American Community Center in Hockessin with Pencader board member and DelTech faculty member Tommy Lu.

As part of the graduation requirement for community service hours, Pencader began working with the Juvenile Diabetes Foundation this year to help raise money. The Foundation development team met with students on Oct. 1 to explain the program.

Pencader Charter School is located at 170 Lukens Drive in New Castle. For more info, visit www.pencadercharter.org/.



Hardwood Flooring



REFINISHING
INSTALLATION

Hardwood Floor Professionals
Residential & New Construction

(302) 731-8009
SHOWROOM LOCATED AT
115 Sandy Drive, Newark, DE 19713

PINNACLE
FLOORS

CALL NOW for a free
in-home estimate

"Adding warmth and value
to your home"

Financing Available / 6 mos. same as cash • See store for details.

NEWARK SENIOR CENTER • 302-737-2336

200 White Chapel Drive (off Marrows Rd)

FALL FLEA MARKET FUNDRAISER

Thurs. Oct 25th, 5:00 - 8:00pm • Fri, Oct. 28th, 9:00am - 7:00pm
Sat. Oct. 29th 8:00am - 12:00 noon

Featured Booths

Accents	The Bakery
Linens	American Gifts & Antiques
Readers Delight	Crafters' Gallery
Kitchen Korner	The Boutique
Garden Gate	Small Treasures
Rags to Riches Clothing	Specialty Shoppe
Jack and Jill Toys	Men's Den
Computer Equipment	Jewelry

Subs by Angie.....Thursday: 5:00pm - 7:00pm
Lunch Concessions.....Friday: 11:45am - 12:45pm
Spaghetti Dinner.....Friday: 4:00pm - 7:00pm
Meals on Wheels Pancake Breakfast.....Saturday 8:00am - 11:00am

Opinion

EDITORIALS • COLUMNS • PAGES FROM THE PAST • LETTERS

POST COLUMNIST

UD missed an opportunity in Newark Country Club

By TOM TOMASHEK

NEWARK POST COLUMNIST

This is not a proposal, but a lament regarding what is now Newark Country Club and one day will be known as Country Club Estates, another new community development with more than 200 houses.

Once designated by the National Golf Foundation as severely lacking in public golf facilities, northern Delaware golfers today have a plethora of public venues from which to choose, not only in New Castle County but nearby areas in Pennsylvania, New Jersey, and Maryland. One private club won't be missed by the daily fee golfers, and most of the Newark Country Club members are getting a longer, stronger, more streamlined facility out of the deal.



Tomashek

So, what could be the lament to the passing of a private course when the supply has more than caught up with the public's demand?

For those who live in Newark, particularly in the neighborhoods that surround the 86-year-old NCC facility, they will lose one of the community's largest parcels of park-type land within Newark's boundaries. What they will receive in turn are further traffic problems on major thoroughfares, primarily Elkton Road, Casho Mill Road, and Route 273 where previous development has generated chaos in the last couple decades.

The lament about losing Newark CC, however, isn't simply focused on the loss of green open space and the addition of further traffic chaos. Another major objection is seeing an 86-year-old golf course plowed under to accommodate another housing development when options existed.

Some residents simply don't understand why NCC members sold out to a developer. Some think once the members announced their intentions that the city should have bought the land and turned it into parkland. Another possibility was for the University of Delaware to have bought the land and preserved the golf course.

I don't agree with blame being placed on the NCC stockholders who financially were trapped in a financial Catch 22. The concept of the venue becoming city parkland is appealing, but not too practical when it comes to matching the developers' bankroll against what the city probably would have been willing or able to pay. But the University of Delaware could have afforded the purchase, which would have been admirable in the eyes of Newark

residents, not to mention a solid investment for UD.

Granted, the loss of Newark CC wouldn't be a major setback in area golf's big picture. As previously stated, supply long ago matched or even exceeded the public golfers' demand, but the open land, nestled in the middle of town, is such an integral part of the community's quaint nature and less than a mile from the university campus. One can only wonder if the university ever considered the idea, but it certainly doesn't appear to be an unreasonable concept.

Nationally, universities of various sizes have golf courses. Some are available only to administration, faculty and students, while others serve both the university and the city, depending on the demand. Eighty-six years haven't made Newark Country Club a national-caliber course, but its course is a sporty full-length 18-hole layout on which some of the state's major championships have been decided. Student and faculty fees daily, monthly, or seasonal memberships could be a source of revenue, as could be the clubhouse banquet space.

The University of Delaware golf team used NCC for practice and competitive events for years, and though the Blue Hens have used White Clay Creek Country Club in recent seasons, they could now have their home course. In addition, chairmen of university fundraisers previously rented area clubs for outings, but they could have used Delaware's own course for free or a minimal charge and increased their profit. Newark Country Club might lack some of the amenities of other private and public courses, but it's less than a mile from the campus and would provide a distinct UD flavor.

The University of Delaware's new hotel, perched along 896, and the University of Delaware agronomy department also could benefit.

The golf course is less than a mile from the hotel and could be offered as an amenity to campus guests, particularly during the football season and especially during homecoming. The agronomy department could use the course as a laboratory of sorts, not only during the growing season but during the winter maintenance period. This isn't to suggest Delaware compete with Penn State or Rutgers in turf management, but then again why not? Some of the area's top golf course superintendents launched their careers at UD.

Unfortunately, it's too late to change the course of the 86-year-old facility, destined to become just another neighborhood along Route 273. No one is to blame. Urban sprawl happens. But it seems to at least one Newark resident that UD missed an opportunity to assist its community and enhance its national reputation for diversity.

OUT OF THE ATTIC

Campus Toward the Library
University of Delaware Newark, Del.

This week's Out of the Attic features a postcard of the view from the University of Delaware campus toward the library in Newark, published between 1939 and 1950. The postcard is part of the University of Delaware Library Postcard Collection, which contains more than 2,000 postcards of Delaware and nearby areas. The cards date mainly from the very end of the 19th century to the mid 20th. The collection can be viewed online at www.lib.udel.edu. Readers who have a historic photo and would like to share it with other readers are invited to loan their photos for reprinting in these space. Special care will be taken. For more information, call the *Newark Post*, weekdays, 8:30 a.m. to 5 p.m., at 737-0724.

PAGES FROM THE PAST

News as it appeared in the *Newark Post* through the years

Oct. 20, 1932

University of Delaware Football Team to play next two games home

University of Delaware football team will play the next two games on Frazer Field and both will be exceptionally hard games. On Saturday of this week Springfield, Mass., Y.M.C.A. College team, which recently held Brown University to a 13 to 6 score, will be Delaware's opponents.

On the following Saturday, Oct. 29, Delaware plays Wake Forest College of North Carolina, one of the strongest teams in the South. The games will start at 2:15 o'clock.

Cast has been selected for musical comedy "Cynthia"

After very careful consideration, the cast has been selected for the Musical Comedy, "Cynthia," to be staged by the American Legion on Monday and Tuesday, Oct. 24 and 25. Numerous changes have been made in order to bring out the capabilities of the talent.

The story of "Cynthia," as written by Mr. Morgan, is built around "Richard Hamilton," a young author,



"Pages From The Past" is compiled from early editions of the *Newark Post* and its forerunners by staffers. Efforts are made to retain original headlines and style.

who is the leading character, portrayed by Bob Strahorn. Bob is Newark's popular radio soloist.

Oct. 19, 1977

New proposal resurrects old police troubles

Old divisions are rising to the surface in the wake of proposed changes in the jurisdictional agreement between the New Castle County Police and the Delaware State Police.

Already, spokesmen for both forces are not in total accord in evaluating the proposal, which would give state police exclusive control over crimes against businesses and county police responsibility for crimes against residences.

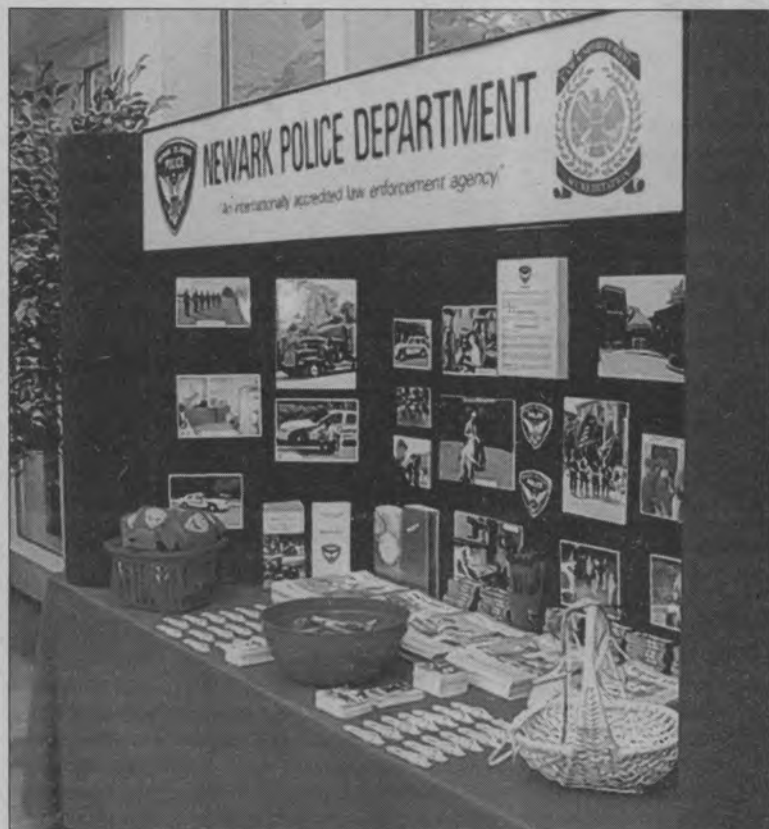
Planners watching Rt.

See PAGES, 7 ►

Visit us online at www.newarkpostonline.com

IN THE NEWS

Newark Police Department hosts open house



PHOTOS SPECIAL TO THE NEWARK POST BY CAROL HOUCK

The Newark Police Department hosted an open house on Saturday, Oct. 6, to welcome the new Chief of Police Paul M. Tiernan. Police led visitors on tours of the department on Elkton Road, showing their equipment and explaining procedures, and did ID fingerprinting for children.



Bars to pay increased fees for licenses

► PAGES, from 6

7 proposal

A proposal for an industrial park near the intersection of Delaware Rt. 7 and Churchman's

road has sent New Castle County planners and state highway engineers scurrying to review the major development slated for the area.

The 170-acre industrial park proposed by James Julian, Inc., would be the fourth major devel-

opment at this intersection near Interstate 95, known to planners as the Metroform area.

Oct. 18, 2002

Bars to pay costs

The city is getting tougher on binge drinking, and establishments that sell alcohol are paying the price.

Newark City Council unanimously passed two ordinances

Monday night that would enable local police to enforce statewide alcoholic beverage laws. To pay for this law enforcement, local businesses that sell alcoholic beverages will pay an increased fee for licenses.

FINE ART  FRAMING
622 NEWARK SHOPPING CENTER • NEWARK, DE 19711

**HARDCASTLE'S
NEWARK**
SINCE 1888

- Custom Framing
- Paintings
- Reproductions
- Sculpture
- Ceramics
- Consulting
- Commissions
- Appraisals
- Restorations

www.hardcastlesince1888.com
hardcastlesnewark@yahoo.com

738-5003

**Something terrible happens when
you don't advertise...Nothing!
Call 737-0724 to place an ad.**

Sunday Brunch Is Back!

Delaware's premier brunch offers...

- Traditional Breakfast Favorites & Made-To-Order Omelets
- Lunch Entrees, Homemade Soups & Carved Items
- Tempting Desserts, Kids' Buffet & More!
- Cooking Demonstrations Featuring Chef Paul's "Cookin' With Passion"

Every Sunday - 10am - 2pm

Adults \$22.95

Children 4-10 years \$10.95

Kids 3 and under FREE

Learn more and view the complete menu at www.deerfieldgolfclub.com.

Reservations at 302-368-6640 ext 1 are recommended but not required.

**New For
This Year!
Chef Paul's
Raw Bar!**

The **D** *at* **Deerfield**

507 Thompson Station Road
Newark, DE 19711
A Forewinds Hospitality Destination



Lifestyle

RELIGION • PEOPLE • DIVERSIONS • THE ARTS

OUTLOOK

Chain saw safety for women

By MARIA PIPPIDIS

SPECIAL TO THE NEWARK POST

During a recent Women in Agriculture event, participants discussed the need to learn how to manage fallen limbs, downed trees and even just cutting up their own firewood. As I visited with other women over the last couple of weeks, many said they'd like to learn these skills too. These types of tasks around the farm or property can be a big undertaking, and knowing how to safely use a chainsaw can make the task easier and less time consuming. Learning how to use chainsaw equipment safely and confidently is the goal of an upcoming workshop.

'Outlook' is a weekly feature prepared by the New Castle County Cooperative Extension Service

In response to the request, the University of Delaware Cooperative Extension has scheduled a program just for women. It will be held on Saturday, Oct. 27, 9 a.m. to 1 p.m. rain or shine and pre-registration is required. To sign up, contact Laurie Wolinski at 831-2528. The free program will be held in Newark at the Pine Hill Farm. Light snacks will be provided.

Using a chainsaw doesn't have to be hard or scary. It's all about having the equipment that fits your strength level, using proper safety equipment and clothing and learning techniques that will help you manage the trees you're trying to cut up or take down. Practice also helps and this workshop will give people the opportunity to try their skills.

The chainsaw workshop will include a demonstration using both an electric and gas powered chainsaw. The presentation will include discussion on how to choose the

See **OUTLOOK**, 9 ►

Hail to the Redskins' guest photographer

Newark woman lives dream taking photos from sidelines

By CHRISTINE NEFF

NEWARK POST STAFF WRITER

Barbara Lopatin of Newark got the chance to live a dream earlier this month when she took photos from the sidelines of a Washington Redskins football game. "It was a chance of a lifetime, a dream come true," she said.

Being a photographer had been a dream of hers, said Lopatin, since her childhood days. She didn't pursue it professionally, instead working as a freelance writer while caring for her four children.

Football has been another passion for the Newark woman. A Maryland native, Lopatin began rooting for the Redskins as a young adult after the Colts moved out of Baltimore, Md. "I have three sons and a daughter. Football is how you communicate with the boys," she said.

Recently, she came across a contest that tied her two passions together. Sponsored by the Canon camera company, the "Shoot Like a Pro" contest selected 80 fans of 10 NFL teams to take photos at home games. "I just thought I would enter. I never thought I would win," she said.

But, win she did, receiving a Canon Digital camera, the chance to see a Redskins home game at FedEx Field and the opportunity to take pictures from the sidelines before the game and during the first quarter.

Lopatin and her nephew — a lifelong Redskins fan — went to the Sunday, Oct. 7, game where the Redskins beat the Detroit Lions. She worked alongside team photographer Don Wright and other professional photographers on the sidelines.

Lopatin said, from the experience, she gained a "whole new respect" for the game and the photographers that capture it in pictures.

The day was unseasonably hot and the temperature on the field seemed 30 degrees warmer than that in the stands, she said. At one point, she became ill from the heat and had to leave the field for a short time.



PHOTOS SPECIAL TO THE NEWARK POST

Barbara Lopatin of Newark had the chance to take photos of her favorite football team, the Washington Redskins, from the sidelines during a recent game against the Detroit Lions.

And, the job of team photographer proved to be "very demanding," said Lopatin. "Some of my favorite photos, when I look at sporting magazines, are those that capture the players' expressions, when you can see it all on their faces. That's always fascinated me," she said. "Now, I know how hard it is to actually capture that."

Lopatin said she concentrated on getting motion shots; one

See **REDSKINS**, 9 ►

LIFESTYLE

Pass, kick, shoot!

Special athletes demonstrate soccer skills at Newark field

About 450 athletes from 20 schools throughout New Castle County participated in a Special Olympics event on Tuesday, Oct. 9, at the University of Delaware Rullo Field in Newark.

Students showed off their soccer skills through individual and team events. Events included dribbling, shooting, run and kick and control and pass, and medals were awarded to participants.

Athletes completed several weeks of training leading up to this event, which was sponsored statewide by the Knights of Columbus.



For more information about Special Olympics Delaware, visit the Web site, www.sode.org, or call 831-4653.



NEWARK POST PHOTOS BY CHRISTINE NEFF

Photos

► REDSKINS, from 8

photo she snapped shows the football dangling in mid-air.

Though she didn't get the chance to meet any players or Coach Joe Gibbs, she did take photos of them warming up and going through the first few plays of the game. "I just didn't want to bother (the players). They were so focused and intent on what they had to do," she said.

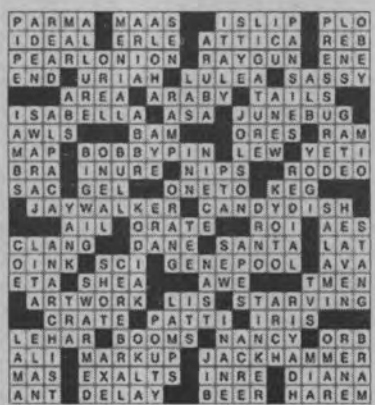
Calling photography a "great hobby," Lopatin said she doesn't think she would pursue it professionally, even though this experience fulfilled a longtime dream. "You get ideas in your head of something you really want to do — this was one of those things," she said. "It's just wonderful to say that I actually got to do that."

Learn to use chain saws

► OUTLOOK, from 8

right size chain saw, the many important safety issues, and chainsaw maintenance. There

Solution to The Post Stumper on Page 11.



will be opportunity for participants to have hands-on learning. Workshop space is limited, so please register early.

For more information on chain saw safety you can go to our sister Cooperative Extension organization's Web site at: <http://www.ag.ndsu.edu/pubs/ageng/safety/ae1025w.htm>.



NEWARK CHARTER SCHOOL

"Excellence In Academics and Decorum"

Applications are being accepted: Oct. 10 through Dec. 10, 2007

For students who will be entering grades K-8 in Sept. 2008

Applications for enrollment may be obtained by:

- downloading a copy from our web site: www.newarkcharter.org
- stopping by our school
- visiting our Open House

2001 Patriot Way, Newark, Delaware 19711

(located near the intersection of Christina Pkwy. & Elkton Rd.)
(302) 369-2001

School Rating 2003: "SUPERIOR SCHOOL"
School Rating 2004: "SUPERIOR SCHOOL"
School Rating 2005: "SUPERIOR SCHOOL"
School Rating 2006: "SUPERIOR SCHOOL"
School Rating 2007: "SUPERIOR SCHOOL"
by Delaware Department of Education

OPEN HOUSE

Sunday,
November 4

12:00 - 1:00 PM
(Kindergarten)
1:00 - 3:00 PM
(grades 1-8)

We are a debt relief agency.
We help people file for
Bankruptcy relief under
the code.

— Erin K. Brignola, Esq., Lead Attorney —

Our 70 attorneys specialize in:

Banking & Financial Services • Bankruptcy & Creditors Rights
Casino Law • Commercial Litigation • Defense Litigation
Family Law • Environmental Law • Estate Planning
Health Care • Personal Injury • Real Estate • Wills and Estates

COOPER LEVENSON
ATTORNEYS AT LAW

30 Fox Hunt Drive, Fox Run Shopping Center, Bear, DE
800-449-9803 • www.cooperlevenson.com

Diversions

THEATRE • EVENTS • EXHIBITS • NIGHTLIFE • MEETINGS

■ FRIDAY, OCT. 19

DANCE PARTY 9:30 p.m. "Awesome 80s." No cover charge. Deer Park Tavern, 108 W. Main, Newark. Info, 369-9414.

CONCERT 8 p.m. Also Oct. 21, 3 p.m. The UD Symphony Orchestra welcomes the Serrafin Quartet. Adults \$12, students \$3. Puglisi Orchestra Hall, Orchard Road, Newark. Info, 831-2577.

BOOK & BAKE SALE 10 a.m. - 5 p.m. Also Oct. 20. Sponsored by the Friends of the CC Library. Bring homemade baked goods and receive a bag to fill with books. Elkton Central Library, 301 Newark Ave., Elkton, Md. Info, 410-996-5600.

HALLOWEEN TOUR 7 & 8:30 p.m. Also Oct. 20. Join park staff for a scary trip through Fort Delaware. \$22. Pea Patch Island, Delaware City. Info, 834-7941.

HAUNTED TRAIL 7 - 10 p.m. Also Oct. 20. Ghoulish characters, freaky scenes and mazes will greet you at the park. For ages 12 and up. \$10. Brandywine Creek State Park, 41 Adams Dam Rd., Wilmington. Info, 655-5740.

PRO-LIFE SPEAKER 7 p.m. Steve Mosher, president of the Population Research Institute. Free. Immaculate Heart of Mary Church, 4701 Weldin Rd., Wilmington. Info, 475-1276.

BREAKFAST 7:15 a.m. Sponsored by Friends of Agriculture - "Plants for a Livable Delaware." \$15. Modern Maturity Center, 1121 Forrest Ave., Dover. Info, 831-2504.

FINE CRAFT FESTIVAL 10 a.m. - 6 p.m. Also Oct. 20 and Oct. 21, 11 a.m. - 5 p.m. Sponsored by the Pennsylvania Guild of Craftsmen. \$7. Kids under 12 free. Tyler State Park, Route 332, Richboro, Pa. Info, 215-579-5997.

■ SATURDAY, OCT. 20

LIVE MUSIC 9:30 p.m. Featuring "The Crash Motive." Deer Park Tavern, 108 W. Main, Newark. Info, 369-9414.

BOOK SIGNING 2 p.m. Theresa Hessey, author of "Images of America - Newark" will sign copies of her new book. Borders Bookstore, 101 Geoffrey Dr., Newark. Info, 366-8144.

VIOLIN RECITAL 8 p.m. UD's Dept. of Music presents Xiang Gao. Free. Loudis Recital Hall, Orchard Rd., Newark. Info, 831-2577.

PARISH DRIVE 5 - 7 p.m. Also Oct. 21, 8 a.m. - noon. Sponsored by the Society of St. Vincent de Paul for the poor and needy. Items accepted include clothing, housewares, toys, blankets, non-perishable food, etc. St. Margaret of Scotland Church, Route 40 & Frazer Rd, Newark. Info, 369-8100.

ART EXHIBIT 1 - 4 p.m. Also Oct. 21. Featuring local artist Wynn Breslin with her fall collection, "Autumn Splendor in Delaware." Free. Breslin Studio, 470 Terrapin Lane, Newark. Info, 731-5738.

CROP WALK 2 p.m. Registration begins at 1 p.m. To raise awareness and funds to fight hunger. Newark United Methodist Church, 69 E. Main, Newark. Info, 292-0539.

CELEBRATE THE HARVEST



Visit the 12th annual Suburban Plaza Harvest Festival and sidewalk sale on Saturday, Oct. 20, from 11 a.m. to 4 p.m. Activities include a Halloween costume contest at 11 a.m. with prizes in three age groups, Sponge Bob moon bounce, balloon sculpting and face painting, live music, strolling entertainment and more. Special appearances will be made by Sponge

Bob, Bob the Builder, Scooby Doo, Winnie the Pooh and Piglet. Free hotdogs and sodas will be available, and kids can trick or treat at Suburban Plaza Merchant Association Stores.

BASKET SALE 9 a.m. - 5 p.m. Featuring pottery, wrought iron, hand bags and door prizes. Salem United Methodist Church, 469 Salem Church Rd., Newark. Info, 738-4822.

MUSIC FEST & FAIR 10 a.m. - 4 p.m. Music, shopping, food and games. Free. St. Andrew's Presbyterian Church, 200 Marrows Rd., Newark. Info, 733-7036.

HARVEST FESTIVAL 11 a.m. - 4 p.m. Sidewalk sale, costume contest, moon bounce, live music and more. Suburban Plaza, Newark.

BAND FESTIVAL 7 p.m. Featuring area high schools and the UD Marching Band. Adults \$6, students \$3, children under 6 free. Robert T. Hoffman Memorial Stadium, Newark High School. Info, 453-9079.

CRAFT FAIR 10 a.m. - 5 p.m. Also Oct. 21. Crafts and Wares of the Mid-Atlantic artisans. \$4, children under six free. Hagley Museum, Route 100, Wilmington. Info, 658-2400.

CABARET 7 p.m. Featuring students and faculty from the music and theatre departments. \$10, includes hors d'oeuvres. Premier Centre for the Arts, 27 Anderson St., Middletown. Info, 378-1384.

APPLE BUTTER FESTIVAL 10 a.m. - 4 p.m. Apple butter making, crafts, and

more sponsored by the Cecil County Farm Museum. The Bee Hive, Route 273, Fair Hill, Md. Info, 410-441-4287.

QUILT SHOW 10 a.m. - 5 p.m. Also Oct. 21, noon - 5 p.m. The Kent-Sussex quilters present "Stitching Memories Year after Year." \$5. Milford Senior Center, 111 Park Ave., Milford. Info, 539-2606.

HOMEOWNERSHIP CONFERENCE 9 a.m. - noon. Featuring U.S. Senator Tom Carper. Sessions will include credit and mortgage advice in home buying. Free breakfast, activities for kids and door prizes. Wesley College, Malmberg Hall, Dover. Info, 877-307-6858.

■ SUNDAY, OCT. 21

CONCERT 3 p.m. Featuring Carol Lind of Wilmington known for her performances in many recitals and theatre productions. First Presbyterian Church, 292 W. Main St., Newark. Info, 731-5644.

LIBRARY PROGRAM 3 p.m. Featuring Ed Okonowicz, UD folklore instructor and author, with ghost stories and legends. Registration required. Newark Free Library, 750 Library Ave., Newark. Info, 731-7550.

PARK PROGRAM 1 - 4 p.m. The Mason and Dixon Stone Tour. White Clay Creek State Park, 425 Wedgewood Rd., Newark. Info, 368-6900.

MEET THE AUTHOR 10 a.m. - 2 p.m. Featuring Delaware native and UD graduate, Amy Butler, contributing author in the new book, "101 Great Ways to Improve Your Health." Newark Natural Foods, 280 E. Main St., Newark. Info, 368-5894.

MISSIONARY SPEAKER 10:45 a.m. & 6:30 p.m. Featuring Dr. Jim Kutnow with Cross World Mission. Faith Baptist Church, 4210 Limestone Rd., Wilmington. Info, 998-4105.

TEXAS HOLD'EM 1:30 - 7:30 p.m. Benefits the Weston Senior Center and the Adult Day Care Center. \$140. The Poker Room, Four Seasons Plaza, Route 896, Glasgow. Info, 328-6626.

LECTURE 3 p.m. Wilmington Friends of Italian Culture presents "The Unification of Italy and its Ramification on the Italian Language." Free. Ursuline Academy, North Franklin St., Wilmington. Info, 998-7249.

■ MONDAY, OCT. 22

CONCERT 8 p.m. UD's Dept. of Music presents the percussion/marimba ensembles and Delaware Steel. Adults \$12, students \$3. Loudis Recital Hall, Orchard Road, Newark. Info, 831-2577.

LECTURE 6 p.m. Noted garden historian, Allyson M. Hayward, will present a slice lecture, "Norah Lindsay, The Life and Art of a Garden Designer." \$25. Winterthur Museum, Copeland Hall, Route 52, Wilmington. Info, 888-4734.

See **EVENTS, 11** ►

■ SATURDAY, OCT. 20

MEN'S BREAKFAST 7:30 a.m. Saturday. \$5 donation goes to missions. Life Community Church, 750 Otts Chapel Rd. Info, 738-1530.

DECORATIVE PAINTERS GROUP 9:30 a.m. Third Saturday. All painting levels welcome. Yearly dues. Claymont Community Center, 504 S. Clayton St., Wilmington. Info, 239-9884.

■ SUNDAY, OCT. 21

RELIGIOUS COURSE 9 a.m. Sundays through Nov. 18. Dr. Alan Fox presents a five-week course on Eastern Traditions. \$15, members \$10. First Presbyterian Church, 292 W. Main St., Newark. Info, 731-5644.

KNITTING KNUTZ GUILD 1 p.m. First and Third Sunday. Limestone Medical Center, Room 005, 1941 Limestone Rd., Wilmington. Info, 452-0146.

DELAWARE ACCORDION CLUB 2 - 5 p.m. Third Sunday. Meeting for an open mic session. Open to the public. First State Diner, I-95 exit 1-B, Route 896 North. Info, 738-7378.

■ MONDAY, OCT. 22

AAUW 7:30 p.m. Branch Meeting. First Presbyterian Church, 292 W. Main, Newark. Info, 731-4724.

MHA DEPRESSION SUPPORT GROUP 7 - 9 p.m. Mondays. Sponsored by Mental Health Association in Delaware. To protect privacy of members, meeting locations provided only with registration. Info, 654-6833.

NEWARK ROTARY CLUB 6:15 - 7:30 p.m. Mondays. Timothy's, 100 Creek View Rd, Newark. Info, 453-8853.

SCOTTISH DANCING 7:30 p.m. Mondays. St. Thomas Episcopal Church, 276 S. College Ave., Newark. Info, 368-2318

ENGLISH CLASSES 1 and 7 p.m. Mondays. English Conversational Classes. Free. Newark United Methodist Church, 69 E. Main St., Newark. Info, 368-8774, or esl-nunc@hotmail.com.

TAI CHI 3 - 4 p.m. Monday (Advanced); or Wednesday, 4:30 - 5:30 p.m. (Beginner/Intermediate). \$20 per month. Newark Senior Center, 200 White Chapel Dr. Info, 737-2336.

TAI CHI 10 - 11 a.m. and 11:45 a.m. - 12:30 p.m. Monday through Friday. \$70/month. Shaolin Martial Monks School, 181 Main St., Newark. Info, 373-2918.

JAZZERCISE LITE 10:15 - 11:15 a.m. Mondays, 5:30 - 6:30 p.m. Tuesdays, 9 - 10 a.m. Wednesdays, and 8:30 - 9:30 a.m. Fridays. Low Impact, modified version for Seniors. Newark Senior Center, 200 White Chapel Dr. Info, 737-2336.

JAZZERCISE 5:45 - 6:45 p.m. Mondays, Wednesdays and Thursdays; 8:45 - 9:45 a.m. Tuesdays, Thursdays and Saturdays; 4:30 - 5:30 p.m. Tuesdays and Thursdays. Certified instructor Nadine Weisenbach. George Wilson Center, 303 New London Rd., Newark. Info, 366-7060, or www.newarkjazz.net.

PILATES 11:30 a.m. - 12:30 p.m. Mondays, 9 - 10 a.m. Tuesdays, 6:45 - 7:45 p.m. Wednesdays, 10:15 - 11:15 a.m. Thursdays. Newark Senior Center, 200 White Chapel Dr., Newark. Info, 737-2336.

STRENGTH TRAINING 9 - 10 a.m. Mondays; 6:45 - 7:45 p.m. Tues. and Thurs.; 10:15 - 11:15 a.m. Wed. and Fri. Newark Senior Center, 200 White Chapel Dr. Info, 737-2336.

STRENGTH & FLEXIBILITY CLASS Mondays, Wednesdays, & Fridays; 9:30

MEETINGS

- 10:30 a.m. \$4 per session/\$50 for 6 weeks. First Presbyterian Church, 292 W. Main, Newark. Info, 731-5644.

KUNG FU 6 - 7 and 7 - 8 p.m. Mondays, Wednesdays, and Fridays. \$70/month. Shaolin Martial Monks School, 181 Main Street, Newark. Info, 373-2918.

KUNG FU 6:30 p.m. Mondays, Wednesdays, and Fridays; 10 a.m. Saturdays. \$100/month unlimited sessions. Shao Lin Tiger and Crane Kung Fu Academy, Market East Plaza, 280 E. Main, Newark. Info, 737-4696.

PANIC RELIEF 7 p.m. Mondays and Wednesdays. Phone workshop. Programs available. Overcome fears, anxiety and agoraphobia, and achieve positive self-image. Info, 732-940-9658.

■ TUESDAY, OCT. 23

HEALTHY HIKE 8 a.m. Tuesdays. White Clay Creek State Park, 425 Wedgewood Rd., Newark. Info, 368-6900.

CONSTITUENT BREAKFAST 7 - 8 a.m. Tuesdays. Join Rep. John Kowalko for coffee and conversation. Friendly's Rest, 1115 S. College Ave., Newark. Info, 577-8342.

NEWARK DELTONES 7:45 p.m. Tuesdays. For men who like to sing. New Ark United Church of Christ, 300 E. Main St. Info, 376-8934.

DIAMOND STATE CHORUS OF SWEET ADELINES 7:30 - 10 p.m. Tuesdays. Women's acapella singing group. Curious and enthusiastic singers welcome. St. James Episcopal Church, 2113 St. James Church Rd., Wilmington. Info, 731-5981.

PARKINSON'S STRENGTH TRAINING

10:30 a.m. Tuesdays. Newark Senior Center, 200 White Chapel Dr., Newark. Info, 737-2336.

OPEN SWIM 4:30 - 7 p.m. Tuesdays and Thursdays. Gore Aquatic Center, Newark Senior Center, 200 White Chapel Dr., Newark. Info, 737-2336.

YOGA 2 - 3:30 p.m. Tuesdays, 9 - 10 a.m. Thursdays. Newark Senior Center, 200 White Chapel Dr., Newark. Info, 737-2336.

TAI CHI 6 - 7 and 7 - 8 p.m. Tuesdays. \$70/month; Shaolin Martial Monks School, 181 Main St., Newark. Info, 373-2918.

TAI CHI 6:30 p.m. Tuesdays and Thursdays. \$70/month unlimited sessions. Shao Lin Tiger and Crane Kung Fu Academy, Market East Plaza, 280 E. Main St., Newark. Info, 737-4696.

■ WEDNESDAY, OCT. 24

CONSTITUENT BREAKFAST 7:30 - 8:30 a.m. Wednesdays. Terry Schooley will attend to field questions and concerns. Eagle Diner, Elkton Road. Info, 577-8476.

BINGO 12:45 p.m. Wednesdays. Lunch available for \$2.25 a platter at 11:45 a.m. Newark Senior Center, 200 White Chapel Dr. Info, 737-2336.

EVENING YOGA 5:30 - 7 and 7 - 8:30 p.m. Wednesdays. Sponsored by Newark Parks & Rec. Newark Senior Center, 200 White Chapel Dr., Newark. Info, 366-7060.

TAI CHI 9:30 a.m. and 5:30 p.m. Wednesdays. Free for people touched by cancer. The Wellness Community in New Castle, 4810 Lancaster Pike, Wilmington. Info, 995-2850.

DIVORCECARE 6:30 - 8:30 p.m. Wednesdays. Support group meeting. Evangelical Presbyterian Church, 308 Possum Park Rd. Info, 737-2300.

GRIEF SHARE 7 p.m. Wednesdays. Seminar

and support group for those who have lost someone close to them. Praise Assembly, 1421 Old Baltimore Pike. Info, 737-5040.

RELIGIOUS DISCUSSION GROUP 7 - 8:30 p.m. Wednesdays. Current events and religious discussions led by Rev. Bruce Gillette. Limestone Presbyterian Church, 2301 Limestone Rd., Wilmington. Info, 994-5646.

ADULTS WITH ADHD SUPPORT GROUP 7:30 p.m. Fourth Wednesdays. Newcomers meet at 7 p.m. New Ark United Church of Christ, 300 E. Main St., Newark. Info, 737-5063.

■ THURSDAY, OCT. 25

YOGA 10:30 a.m. and 5:30 p.m. Thursdays. Free, pre-registration is required. For people touched by cancer. The Wellness Community in New Castle, 4810 Lancaster Pike, Wilmington. Info, 995-2850.

TAI CHI 4:15 p.m. Thursdays. Free for people touched by cancer. The Wellness Community in New Castle, 4810 Lancaster Pike, Wilmington. Info, 995-2850.

LET'S DANCE CLUB 4 - 6 p.m. Thursdays. Features ballroom and line dancing. Free. Meets at Newark Senior Center, 200 White Chapel Dr., Newark. Info, 737-2336.

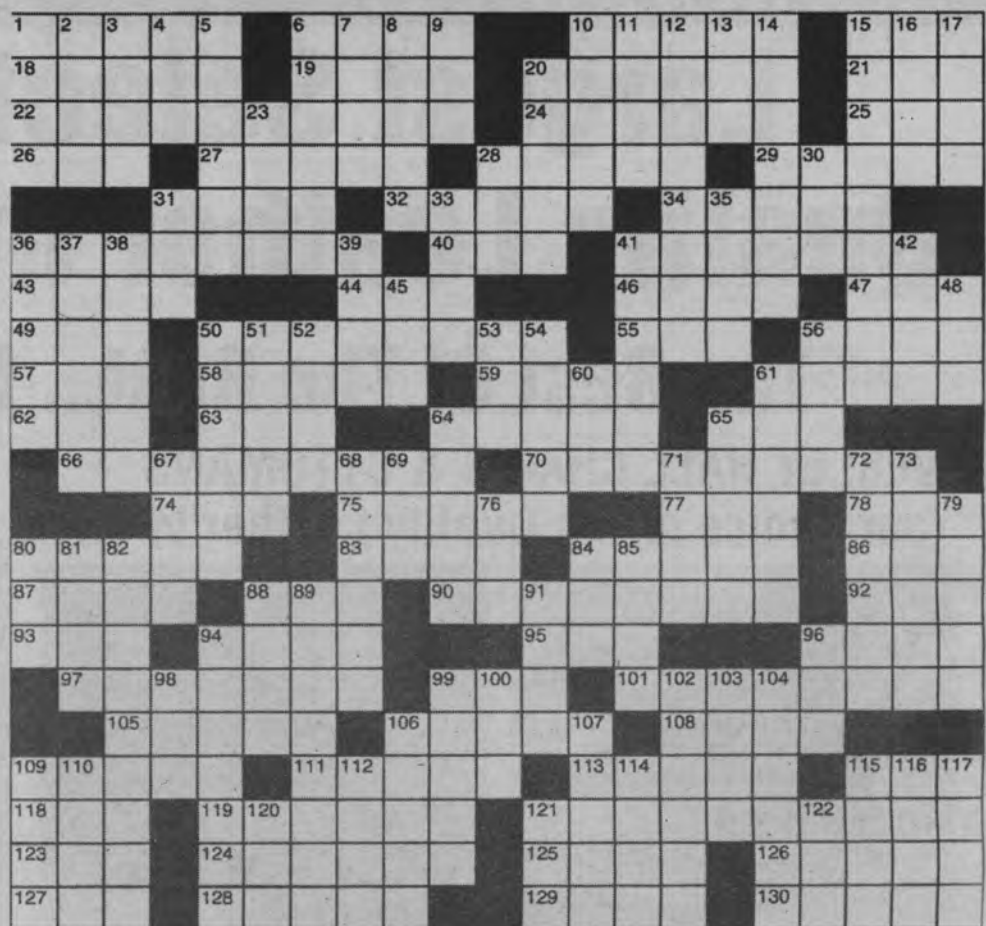
WOMEN'S DEPRESSION 7 - 9 p.m. Thursdays. Support group sponsored by Mental Health Association in Delaware. Free. To protect privacy of members, meeting locations provided only with registration. Info, 654-6833.

DIVORCECARE FOR KIDS 6:30 p.m. Thursdays. For children ages 5 - 12 of families experiencing divorce and separation. Berea Presbyterian Church, 957 Old Lancaster Pike, Hockessin. Info, 737-7239.

See **MEETINGS, 11** ►

THE POST STUMPER

- ACROSS**
- 1 Ohio city
6 "Serpico" author
10 Long Island resort
15 Arafat's grp.
18 Perfect
19 Perry's creator
20 Ancient Greek region
21 CSA soldier
22 Pungent person?
24 Hit man?
25 Compass pt.
26 Goal
27 Horrid Heep
28 Swedish port
29 Fresh
31 Length X Width
32 Sheik site
34 Coin-toss call
36 Actress Rossellini
40 Sly — fox
41 Annoying woman?
43 Hole punchers
44 Impact sound
46 Smeltery stuff
47 Merino male
49 Cartog-
- rapher's creation
50 Sharp guy?
55 Author Wallace
56 He's abominable
57 Bikini part
58 Harden
59 Puppy bites
61 Horse show
62 Cul-de —
63 Solidify
64 — a customer
65 Beer barrel
66 Avid hiker?
70 Good-looking girl?
74 Sneeze and wheeze
75 Declaim
77 "Le — Soleil" (Louis XIV)
78 Loser to DDE
80 Trolley sound
83 Great —
84 Toy toter
85 Geog. term
87 Sty cry
88 Part of B.S.
90 Billiards player?
92 Actress Gardner
93 LAX letters
94 New York stadium
95 Veneration
96 Pres. protectors
- 97 Industrious fellow?
99 Fleur-de —
101 Ravenous
105 Pack peppers
106 Austin or Smith
108 Rainbow goddess
109 "Paganini" composer
111 Flourishes
113 Sluggo's sweetie
115 Scepter's sidekick
118 Clay, today
119 Happy guy?
121 Tool man?
123 Bell and Barker
124 Glorifies
125 Memo words
126 Rigg or Ross
127 Tiny colonist
128 Hold up
129 Pilsner
130 Seraglio
- DOWN**
- 1 — dream
2 Mideastern gulf
3 Devour
4 Dickens
5 Cal. page
5 Entice
6 Servile
7 "La Rondine"
8 Maui greeting
9 DC figure
10 Pasta peninsula
11 Eye problem
12 Tourniquet, e.g.
13 Hosp. area
14 Garden flowers
15 Egged on
16 Beam bender
17 Toe the line
20 Oranjestad's locale
23 Baseball's Hershey
28 "Viva — Vegas" ('64 film)
30 Clerical garb
31 Pecs' partners
33 Inclined plane
35 Once again
36 Poetic feet
37 Self-government, in India
38 Llama kin
39 86 Across or 9 Down
41 "Swanee" singer
42 Corral
45 Assent at sea
48 "O Sole —"
50 VIP
51 Hoopster Shaquille
52 Zodiac animal
53 Hostelry
54 Sib's kid
56 Bear or Berra
60 School grp.
61 Phone button
64 Shy primate
65 Former Japanese capital
67 Pull sharply
68 Alaskan bear
69 Epoch
71 Bond foe
72 Deli meat
73 TV's "Highway to —"
76 Golfer's gadget
79 Comedian
80 Runner Sebastian
81 Ford or Grey
82 Revolution-ary
84 Create a caftan
85 Imitates
88 Worn-out
- 89 Cognitive
91 Publisher Conde
94 Behaved like bees
96 Watching machines?
98 — la-la
99 Living-room accessories
100 — Too Late" ('71 hit)
102 Fiddle (with)
103 Roman structure
104 Saudi city
106 Sullen
107 Absurd
109 Tibetan monk
110 Dash
112 Tulsa's st.
114 Farm measure
115 Actor Epps
116 Magritte or Descartes
117 Spooky Stoker
120 Bunyan's whacker
121 Triangular sail
122 Actress Farrow



▶ MEETINGS, from 10

NEWARK MORNING ROTARY 7 - 8:15 a.m. Thursdays. Meeting and breakfast. The Blue & Gold Club, Newark. Info, 738-9943.
BLUEGRASS/OLDTIME JAM 7:20 - 10 p.m.

Thursdays. Any skill level welcome. Bring your own instrument. St. Thomas Episcopal Church, 276 S. College Ave., Newark. Info, 368-4644.
DSI THUMBS UP 1 p.m. Second & fourth Thursday. Support group sponsored by Delaware Stroke Initiative. Free. Newark

Senior Center, 200 White Chapel Dr., Newark. Info, 633-9313.
TOASTMASTERS 7 p.m. Second and fourth Thursday. Develop potential and overcome fear of public speaking. Public welcome. Union Hospital, Level B, Chesapeake Room, 106 Bow St., Elkton, Md. Info, 443-553-

5358.
G.O.A.L. 7:30 p.m. Second and fourth Thursday. Meeting for widows and widowers sponsored by Going On After Loss. Aldersgate United Methodist Church, Concord Pike, Wilmington. Info, 368-8980.
GRIEF SUPPORT GROUP 2 - 4 p.m. Second

and fourth Thursday. Free. Newark United Methodist Church, 69 E. Main St. Info, 737-7080.
COLONIAL STATE KNITTERS 7 p.m. Fourth Thursday. Limestone Medical Center, Room 005, Limestone Rd., Wilmington. Info, 838-0446.

▶ EVENTS, from 10

■ TUESDAY, OCT. 23

GARDENING WORKSHOP 7 - 9 p.m. "Creating a Worm Bin-Vermicomposting 101." \$15. UD Cooperative Extension Office, 461 Wyoming Rd., Newark. Info, 831-2506.
WEAVING WORKSHOP 6 - 8 p.m. And Oct. 25. Beginner's course. \$20 - \$25, pre-registration required. DE Ag Museum & Village, 866 N. Dupont Hwy., Dover. Info, 734-1618.

■ WEDNESDAY, OCT. 24

LIVE MUSIC 9:30 p.m. Featuring Mos Eisley. Deer Park Tavern, 108 W. Main, Newark. Info, 369-9414.
CONCERT 8 p.m. UD presents the Concert Choir and University Singers. Adults \$12, students \$3. Loudis Recital Hall, Orchard Road, Newark. Info, 831-2577.
BUSINESS SEMINAR 8:30 a.m. - noon. Sponsored by the Delaware Small Business Development Center. Advice from the pros - "successful contracting and how they did it." \$15, includes continental breakfast. Delmarva Power/Conectiv Conference Center, Newark. Info, 831-0783.
CANCER SCREENING 3 - 8 p.m. Christiana Care offers Prostate Cancer screening. Free. Westside Health - Northeast, 908B E. 16th St., Wilmington. Info, 327-3320.

ISRAELI DANCING 7:30 - 9:30 p.m. With Sharon Kleban. \$4. Arden Gild Hall, 2406 Granby Rd., Wilmington. Info, 610-277-0844.
SHOP WELL GROCERY TOUR 6 - 8 p.m. A registered dietitian from Christiana Care will teach label reading. \$10 per person, \$15 per couple, registration required. Concord Pike ShopRite, Brandywine Commons,

Wilmington. Info, 661-3000.

■ THURSDAY, OCT. 25

MUG NIGHT 9:30 p.m. Featuring Mr. Greengenes. Deer Park Tavern, 108 W. Main, Newark. Info, 369-9414.
CARD PARTY 11:30 a.m. Sponsored by The Woman's Club of Cecil County. All

women welcome. If you don't play cards, bring a game. \$10, includes lunch. Elkton Presbyterian Church, Main St., Elkton, Md. Info, 410-398-3885.
DEBTOR EDUCATION PROGRAM 1 - 4 p.m. Designed to meet the needs of individuals who have filed for bankruptcy. \$40. UD Cooperative Extension Office, 461 Wyoming Rd., Newark. Info, 831-2506.

POKER NIGHT 7 p.m. - 1 a.m. Proceeds benefit the Weston Senior Center and Adult Day Care Center. The Poker Room, Four Seasons Plaza, Route 896, Glasgow. Info, 328-6626.
HALLOWEEN PROGRAM 7 p.m. Join Ed Okonowicz with "Tombstone Tales of Delaware and Maryland." \$6, pre-registration required. Bellevue State Park, 800 Carr Rd., Wilmington. Info, 793-3046.

INTRODUCING
Amici's
Fine Dining & Spirits

Mediterranean Cuisine
Seasonal Menu Specials
Martini Bar
Large selection of wines, beers & martinis
Reservations Recommended
(610) 255-5777
1215 New London Road (Route 896)
Landenberg, PA 19350
Dining hours - 4pm to midnight
Closed Mondays
www.amicislandenberg.com

From Bank Robber to Founder of Angel Tree

... a ministry to Prisoners and their Families

Mary Kay Beard
Founder of Angel Tree

Hear her amazing story how God has blessed so many through the work of Angel Tree. You too can find God's forgiveness and a new life in Christ.

Friday, October 26 - 7:00 p.m.
Hear Mary Kay's Story - All are Welcome!
Refreshments to Follow

Evangelical Presbyterian Church
308 Possum Park Road, Newark, DE

Saturday, October 27 - 9 a.m. - Noon
For the ladies -
3 Seminars on Bitterness, Forgiveness
Admission is FREE - Registration Required
Nursery Provided
Sign up online at www.epcnewark.org

fresh, certified
organic
PEPPERS, TOMATOES
& OTHER PRODUCE

PRIAPI
GARDENS
Fine Plants for Your Home & Garden

HOURS: Mon - Fri 8-5:30, Sat 8-5 Sun 10-3
5996 Augustine Herman Hwy., Cecilton, MD
410-275-9438 • www.priapigardens.com

Jodlbauer's The Furniture People, Rte 40 Elkton, 2 Miles West of DE/MD Line

Largest Selection Of Better Quality Leather In The Northeast!

The Best Of The Best... For Less... Much Less!

WESLEY HALL CHAIRS & OTTOMANS

Your Choice of Top Quality Leather 1/2 Price.....reg. \$4095 **SALE \$1999**



Scoop Chair & Ottoman

\$1999



Shaped Arm Pillow Back Chair & Ottoman

\$1999



Hand Tufted Carved Back Chair & Ottoman

\$1999



Traditional Club Chair & Ottoman

\$1999

GLOVE SOFT LEATHER SECTIONALS

Choose Stationary or Double Recliner

Your Choice \$1999



LANE LEATHER RECLINERS ALL SALE PRICE



\$599

HIDEACHAISE

\$499

Double Seat Cushion

\$399

GLOVE SOFT LEATHER SOFA



Heavy Roll Arm, Nail Head Trim **OR** Carved Wood Front Rail

Your Choice \$999



\$999
3 PIECES
SOFA, LOVESEAT
& CHAIR
Square Arm & Attach
Pillow Back



BUY NOW, ENJOY NOW, NO PAYMENTS AND NO INTEREST CHARGE TIL 2009



901 E. Pulaski Hwy., Rt. 40, Elkton
410-398-6201



Business Office 410-398-6200



701 E. Pulaski Hwy., Rt. 40, Elkton
410-398-5402

IN THE NEWS

Porter Road school needed to increase District's classrooms

► SCHOOLS, from 1

plan. This is the public's plan."

Two plan options emerged at the meetings attended this summer by parents, teachers, staff, elected officials, and community members. The first plan, called the Community Consensus Plan, is the preferred plan that was brought to the Board. It includes:

- * Simplified grade configurations with fewer transitions: K-5, 6-8, in city and suburban schools and three 9-12 schools in the suburbs;

- * All students attend elementary schools closest to their neighborhoods;

- * All students attend middle school closest to their neighborhoods;

- * Keeps all schools in Wilmington open;

- * Creates a middle school at Bayard for city students;

- * Completes an elementary school at Porter Road and Route 40 in Bear in 2009;

- * Creates space for full-day kindergarten district-wide by the 2009 school year.

The amount voters are being asked to OK in Option A is the

local portion needed to match the state's funding for inflation and additional costs since the Porter Road project started, as well as actual construction with playgrounds, technology, furniture and equipment for the elementary school and to renovate Bayard School in Wilmington for use as a middle school.

"The money we have on hand from the 2003 referendum for Porter Road is no longer enough to build it," District facilities services supervisor Kelly Racca said. "Even with 'market-pressure' monies and upgrades to 2007 levels, the state is only allowing \$230/square foot for everything, but the land and building and furnishings actually cost more than that in today's dollars. Fortunately, we already own the land and have done some site work and paid the architect's fees."

In the event that voters choose Option B on the referendum ballot, the District could not complete Porter school, leaving no classroom space for School Choice in most schools, music or art programs, still-growing student populations in the Route 40 area, nor, most significantly, full-

day kindergarten, mandated but not funded by the state.

"Donald Patton at Kirk is eager to get started with the Community Plan," Lapham said of the suburban middle school principal. "He wants sixth graders there so they have three full years to get them ready for the DSTP."

The DSTP or Delaware State Testing Program is administered to third, fifth, eighth and 10th graders throughout the state each year.

If the voters approve Option A, Bayard Intermediate School, originally designed in 1973 as a middle school, will house city students in grades 6-8 starting in August 2008. Suburban 6-8 students, (some formerly would have attended fifth and sixth grade in Wilmington) will "transition" into Kirk, Shue-Medill and Gauger-Cobbs middle schools.

Racca said funding to complete the Porter Road school is the keystone in the Consensus Plan. "We need those 800 seats to allow us to shift the grades and feeder patterns in the District for schools closest to students'

homes," Racca explained. "And operationally, we can't have full-day kindergarten without the extra space, either."

Racca and Lapham noted that Option A could allow students throughout the District to attend school with the same classmates for 12 years. "We'll keep city neighborhoods and cohorts intact all the way to Newark High School," Racca said. "It's a little trickier in the suburbs because it's more spread out, but we've been working on doing this for years."

Suburban schools will be "pretty tight" in 2008-09 while Porter Road is completed, but by the 2009 school year, Racca said the District should no longer have any classrooms in portable "capacity" trailers. "We'll have some students in portables until Porter Road opens," Racca said. "And the Wings For Learning program at Brader Elementary School will probably stay in the manufactured building we built brand new on that site."

She cautioned, however, that space and operating funds would continue to be an issue into the

future. "Porter will be almost at-capacity when it opens," Racca said. "Remember, suburban fifth graders will be in Porter and other elementary schools — and the potential kindergarten numbers are already going up. We also hope students who have opted out of the District will return once nine years of busing to the city is eliminated."

As a consequence, the District expects to need another referendum between then and now. "We're trying to be upfront with people," Racca said.

Some community members are under the impression that not busing students to and from Wilmington will save money for the District to use in other ways. But salaries for drivers and gas for buses already are paid for by the state. "What we will save, is time," said Lapham. "We will no longer have to start picking up students at dawn and students will not spend hours on I-95 each day."

The Newark Post will have additional coverage of the referendum in next week's edition.

Halloween Headquarters!

Dress to Distress...

or find a **BOO**-tiful costume for you or your little **GHOUL** (or boy!)



goodwill

Delaware Stores
 Bear • Bridgeville • Claymont • Dover • Middletown
 Millsboro • Newark • Wilmington

Pennsylvania Stores
 Holmes • Swarthmore • Boothwyn • Chadds Ford

*2 locations

(302) 761-4640

www.goodwillde.org



EAT FISH

Woody's

CRAB HOUSE

You can always catch fresh Fish at Woody's!

Serving Lunch & Dinner 7 Days a Week. Open at 11:30am

Main Street, North East, MD • 410-287-3541 • www.woodyscrabhouse.com

Only 15 minutes
from Delaware Line

Family Owned & Operated...

Our customers become our extended family!

AIR CONTROL LLC

HEATING & AIR CONDITIONING

302-834-5835
1-877-247-6531

- Furnace & A/C Maintenance
- Repair and Replacement
- Residential & Mobile Home Specialist
- **FREE** Replacement Estimates
- We service all brands.

Serving the Tri-State Area

We will meet or beat any competitors' price!

Part of the

Kirkwood Gas Family

Your propane, gas and oil company, expanding to better serve our customers!

Commercial, Residential, Restaurant & Farm Service Since 1951

www.aircontrolllc.com



AIREASE
Built for life. Yours.

MENTION OUR AD & RECEIVE

12 Months NO Payments

NO Interest

or

Up to \$1500 OFF Complete System



Something terrible happens when you don't advertise...Nothing!
Call 737-0724 to place an ad.

Sports

HIGH SCHOOLS UNIVERSITY OF DELAWARE • LEAGUES

Hens try to get better in off week

By **TOM TOMASHEK**

NEWARK POST STAFF WRITER

The University of Delaware football schedule reads "bye week" for this coming Saturday, however, coach K.C. Keeler prefers to call it a "get better week" for his Blue Hens before they complete a grueling four-game stretch of the regular season.

Keeler's pre-week itinerary included only two practice days, Wednesday and Thursday, before sending the Hens on furlough until Sunday when the team begins its regular weekly routine for an Oct. 27 date against major-college independent Navy in Annapolis.

"I can't figure out why but we seem to be a little stale . . . not crisp," Keeler said in his Monday press conference following Saturday's 30-20 victory over Northeastern. "We played those first five games of the season as well as any five games I've ever seen any team play. We played lights out."

A loss to New Hampshire two weeks ago spoiled Delaware's perfect record and dropped the Blue Hens to 2-1 in the Colonial Athletic Association. Last week's victory over then 1-4 Northeastern was gratifying in light of the Hens' closing flourish, but Keeler was disappointed by his team's inconsistent play in the two games. But the team is still 5-1 and healthy and he'd like to keep it that way, implying that the mid-season break will afford his players time to freshen up emotionally and focus on the urgency nearing the stretch.

"They need to get ready for the next four weeks," Keeler said referring to Navy, followed by CAA foes James Madison, Richmond, and Villanova. "I think the kids see it that way. If they don't, they're idiots. We have a chance [to be special]. I don't know if we can do it or not, but we have a chance."



Tomashek

See **HENS, 15** ►

Despite loss, Newark off to hot start

Glasgow tops Jackets but Newark off to good start

By **JOE BACKER**

NEWARK POST STAFF WRITER

The Newark boys' soccer team's highly successful season hit a bump in the road after falling to Flight A opponent Glasgow 2-1 in overtime Tuesday night at Hoffman Stadium.

The loss was the first for Newark in nine games.

The team won eight consecutive games before tying Dover last weekend. The Yellowjackets are now 9-2-1 on the season.

Newark coach Bill Boyer said his shorthanded team played well enough to win. "We were playing without five starters, but we make no excuses," he said.

"We had two players receive red cards (game disqualification plus a one game suspension) during the Dover game, one starter was ill, and two players did not participate due to disciplinary reasons," Boyer said.

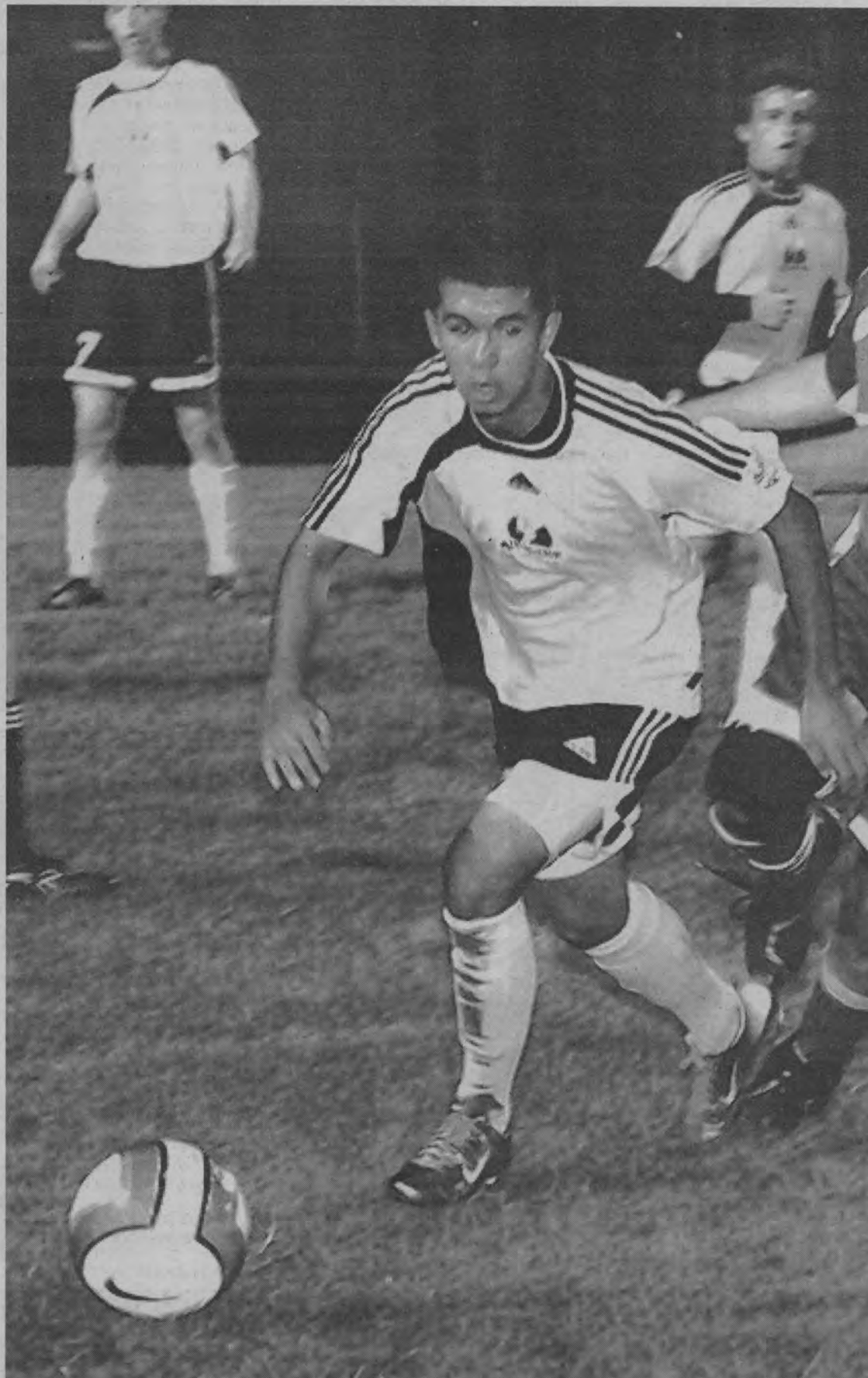
Boyer added he feels it's important to teach life lessons to the student-athletes as well as teaching the x's and o's of the game.

The Jackets were outplayed by the Dragons during much of the game. Glasgow eventually broke out on top late in the first half, but Newark's Shawn Rhoads tallied the equalizer in the 72nd minute. Rhoads is the Jackets' leading scorer with 12 on the season.

"I'm proud of what our team did out there tonight," said Boyer. "Once we got into the overtime session, we felt we had a great chance to win the game, but it just didn't happen."

The Yellowjackets have four more games on the schedule for the 2007 season, with visions of returning to the state soccer tournament. Last year, Newark made it to the post season for the first time in six seasons.

"In 2006, we were pleased to just make it to the tournament, but this year our goal is to get back there, and win at least game to get past the first round," said Boyle. "If the team pulls together for those last four games, we'll be able to make that goal a reality."



Newark's Luis Gutierrez moves the ball upfield in the Yellowjackets game against Dover.

POST PHOTO BY LINDSEY STUDIOS

SPORTS

Hens eye top 10

► HENS, from 14

Keeler isn't delighted at playing a major-college opponent so late in the season. The situation is familiar to 2004 when Delaware played Navy before heading into the conference stretch against JMU, Richmond, and Nova. Delaware lost to Navy 34-20, then lost the following week to James Madison 20-13, but still managed to earn a playoff spot at 8-3.

"We were so banged up after that game we limped into that game," he said of the JMU loss. "We totally [outplayed] them in every possible shape of the imagination, but we didn't practice short yardage the whole week because we didn't even know if our [offensive] tackles would play. We should have won the game, but we didn't because we didn't have a short-yardage package."

Keeler and his players, who are No. 14 in the national I-AA Sports Network poll, will be scoreboard watching on Saturday, not only at the Navy-Wake Forest outcome but other key matches within the conference and nationally. In the conference, No. 4 Massachusetts plays unranked Northeastern, No. 8 James Madison meets No. 18 Richmond, and No. 10 Hofstra plays No. 11 New Hampshire. Nationally, No. 6 McNeese meets No. 13 Nicholls, No. 2 North Dakota State meets I-A Minnesota, No. 7 Wofford meets No. 24 Elon.

Chances are reasonable for Delaware to crack the top 10 without gaining a yard or taking a hit this week. A high ranking and a victory over Navy would mean nothing in terms of the CAA race, but it would be a valuable get-out-of-jail free card if they stumble down the stretch wind up on the bubble in the NCAA's postseason selection process.

"It's the nature of this conference. You have to have a good team, a little luck, and you need to play well at critical times. It's going to be interesting to see how it all shakes out this year."

TRUNKS of BLESSING

WEDNESDAY OCTOBER 31, 2007

6:00 PM - 8:00 PM

FAIRWINDS BAPTIST CHURCH

801 SEYMOUR ROAD

Call for Info: 322-1029

Calling All
Kids & Teens!!!

RAIN OR SHINE

FUNZ
CANDY
MOONCE
BOUNCE
PUPPETS

Rt. 40

Holly
Ortle
Seymour

Route 1

Not Enough
STORAGE?Little Barn
starting at \$690
\$760 w/vinyl sidingSalt Box starting
at \$905
\$1,000 w/vinyl siding1 Car Garage
starting at \$3,460
12x18 w/vinyl siding

We've Got It!

• Utility Sheds • Gazebos
• Garages • Dog Houses & Much MoreBLACK BEAR
STRUCTURES, INC.1865 Lancaster Pike, Peach Bottom, PA
717-548-2937
www.blackbearstructures.comSomething terrible happens when
you don't advertise... Nothing!
Call 737-0724 to place an ad.

Fresh Dough Made Daily - Hand Tossed Pizza

EAT IN OR
TAKE OUT!

10% OFF

Your "Eat in Check"
for a family of 3 or more.
Must present coupon.Round Pizza
Stromboli
Steaks, SubsSquare Pizza
Dinner Platters
Seafood PlattersCalzone
Salads

Agostino's Pizzeria & Restaurant

Brookside Plaza, Newark, Delaware

Phone (302) 456-0700 Fax (302) 456-3696

Hours: 11 AM - 11 PM everyday • All Major Credit Cards Accepted

WE DELIVER TO LOCAL COMPANIES

FAMILY
OWNED &
OPERATEDTHE ACADEMY FOR CHRISTIAN STUDIES
OF FIRST PRESBYTERIAN CHURCH

presents

EASTERN TRADITIONS

with Dr. Alan Fox

Sundays Oct. 21st to Nov. 18th, 9:00 - 10:00am
at First Presbyterian Church

Cost \$10 members/\$15 non-members

Hear Dr. Alan Fox, Assistant Professor of Philosophy at UD and popular local lecturer; discuss the religious and cultural traditions of the Far East. This course is designed to help students value and appreciate the uniqueness of their neighbors to and from the East.

FINANCIAL FACTS FOR
THE FAITHFUL

with Fred Dawson

Wednesday Nov. 7th, 7:00 - 8:30pm
at First Presbyterian Church

Cost \$5

Hear Fred Dawson, a Chartered Financial Consultant and Vice President of Bassett, Brosius and Dawson, Inc., discuss taking care of one's financial and legal affairs during retirement. This course is designed for anyone who wishes to plan ahead at any stage of life. Dessert and coffee will be served.



Register in person or on line:

292 West Main Street, Newark, Delaware 19711
302-731-5644 • www.firstpresnewark.org

IN THE NEWS

Scaryville not so scary Haunted House

Picture a place with amazing illusions, and
some not so scary fun for your little one
No Gore/4-11 year olds suggested

October 20th and 27th, 11am-5pm

October 31st, 5pm-7pm

with Trick or Treating at
participating stores and
a Costume Contest at 7:15 pm
with great prizes!



\$5 Admission
3 Children for \$12
1 parent escort is free!

Presented by and proceeds going to:
the Perryville Lions Club
Supporting your Community
Designed by:
RikTaylorEntertainment.com



**PERRYVILLE
OUTLET CENTER**

Exit 93 off I-95, Perryville, MD • 410-378-9399
www.perryvilleoutletcenter.com

Cancer patient continues to draw

► ARTIST, from 1

Recently, doctors have told her the cancer is back, this time in her brain and liver. Doctors have said it is inoperable.

Still, Cebula draws when she can, portraying the beauty of the natural world in her pencil and paper sketches. She often works from photographs that have been taken by her husband on travels they took together.

Even through her illness, said her husband, Cebula has the ability "to see the beautiful things in life."

Newark residents now have the chance to see through those eyes as some of Cebula's artwork is on display now at the Newark Municipal Building at 220 Elkton Road. She has shown her work before at area bookstores and at Newark Community Day.

Cebula said it feels good to be able to share her art with the public. "I think that's pretty much what every artist wants is just to be able to share," she said. "And, I've been very, very, very shy about it for a long time."

Her husband jumped in, teasing, "I'm the pushy one."

"He's been the encouraging one," Cebula said, correcting him. "And, if it weren't for him, I would not be where I am. I feel very fortunate to have him."

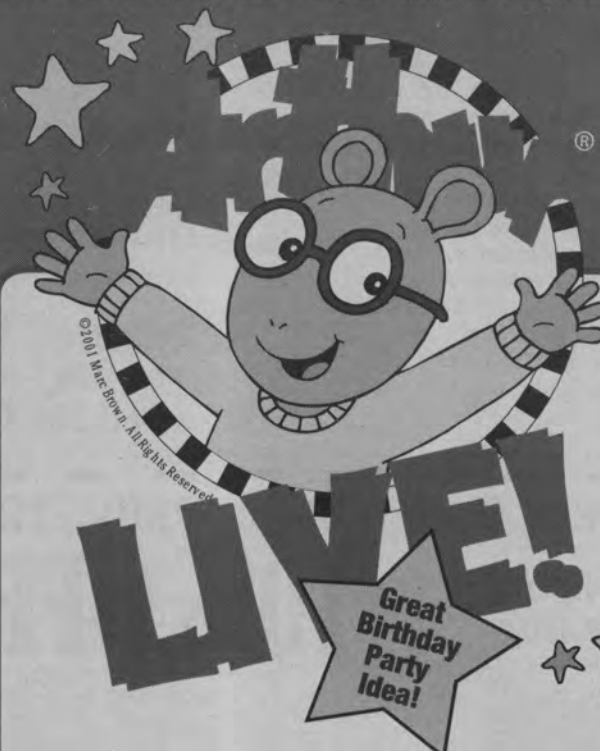
As she continued flipping through her art book, Cebula pointed to a drawing of violins she did for her oldest son – a music teacher – and the wishing well she and D.C. drove past on Route 896.

Many of her memories over the last seven years have been captured on paper. "It's just really been a fun experience," she said.

DuPont THEATRE
AT THE HOTEL DUPONT

DELAWARE'S
BROADWAY
EXPERIENCE

THE TOP-RATED PBS TV SERIES LIVE ON
STAGE IN A NEW FAMILY MUSICAL!



NOVEMBER 3, 2007
TWO SHOWS: 10 AM & 2 PM
TICKETS ONLY \$15-\$25

302.656.4401 or 800.338.0881
WWW.DUPONTTHEATRE.COM

A Turnstile Presents, Inc./Matt Mazer Production

Emmanuel's Wood Gallery

WE'RE MAKING ROOM FOR A NEW SHOWROOM

UNDER NEW
MANAGEMENT

SALE
60%

Up to Savings

Entertainment Centers
Office • Dining • Bedroom
Maintenance Free Outdoor

Masters of Craftsmanship

Quality Heirloom Furniture

9016 Gap Newport Pike, Avondale, PA 19311
610-268-2090 • Tues-Sat 10 - 5pm; Sun 12-4pm



International Credit Union Day®

October 18, 2007

Louviers Federal Credit Union

Isn't It Time We Met?

You may not know us, but we've been serving our valued members for almost 40 years. Our membership is now also open to anyone who lives, works, worships or attends school in the city of Wilmington or the city of Newark.

Every great new relationship starts with an introduction. Stop by or call us and let's get to know each other.

Here are just some of our services:

- No-Fee Interest Earning Savings and Checking Accounts
 - Money Market, IRA and Certificate Accounts
 - First and Second Mortgages
 - Low Interest Rate Vehicle, Home Equity and Personal Loans
 - Visa Platinum Card with Cash Back Feature
 - 24-Hour Account Remote Access to ATM, Visa Check Card, Home Banking or Teller Phone
- And there's more—much more!



Newark Office
2612 Kirkwood Highway
in the Meadowood II
Shopping Center
Newark, DE 19711
(302) 733-0426 or
(800) 572-2092
Monday and Wednesday:
8 a.m. - 4 p.m.
Tuesday, Thursday, Friday:
8 a.m. - 6 p.m.

Wilmington Office
City Center @ Nemours
10th and Orange Streets
Suite NG530
Wilmington, DE 19808
(302) 571-9515
Monday through Friday:
8 a.m. - 4 p.m.

Maryland Avenue Office
401 Maryland Avenue
Wilmington, DE 19805
(302) 695-0003 or
(302) 695-0004
Monday through Friday:
8 a.m. - 4 p.m.

DuPont Stine-Maskell Research Center
(Access Restricted)
P.O. Box 30 - Elkton Road
Newark, DE 19714
(302) 346-5424
Monday through Friday:
8:30 a.m. - 3:30 p.m.



WWW.LOUVIERS.COM



Where people are worth more than money...
and members are owners.

©2006 Credit Union National Association, Inc., the trade association for credit unions in the U.S.
Stock No. 27470

Roughly 46,000 credit unions with more than 172 million credit union members around the world will celebrate International Credit Union Day on Oct. 18, 2007, to commemorate the credit union movement's history and achievements.

Since 1948, International Credit Union Day has been celebrated annually on the third Thursday of October. Each year, it affords the opportunity to remember a proud history and promote understanding and support for the credit union difference. This year's theme, "Together We're Better," reflects the value of credit union cooperation on all levels for members from all walks of life. Working together, credit unions build stronger institutions and more effectively serve their members.

Why pay more than you have to?

American Spirit Federal Credit Union
NOT-FOR-PROFIT COMMUNITY CREDIT UNION
CHANGING THE WAY YOU BANK

- No-Fee Checking and Savings Accounts
- No-Fee ATM Transactions*
- Low-Interest Rate Home And Auto Loans
- Savings-IRA's, Share Certificates, Money Markets
- VISA Credit Cards, VISA Check Cards
- Free Credit Counseling/Credit Repair
- Insurance Services
- 24 Hour Audio Response
- Internet Applications
- Full-Service Cash
- Direct Deposit
- Safety Deposit Boxes
- Full-Service Lending

Ask us about our youth accounts & programs for young adults.



1110 Elkton Road, Newark, DE 19711 • www.americanspirit.org
Call today for an application! 302-738-4515

Credit unions are not-for-profit financial cooperatives that provide an effective and viable alternative to for-profit financial institutions for more than 172 million members in 97 countries. They are member-owned and exist to provide a safe place to save money and access affordable loans.

Internationally, credit unions are recognized as a force for positive economic and social change and have found great success in both industrialized and emerging nations. They are built on a one member/one vote model that provides members with a unique opportunity to experience democracy firsthand.

International Credit Union Day is sponsored by the World Council of Credit Unions (WOCCU),

the international trade association and development organization for credit unions, and the Credit Union National Association (CUNA), the premier trade association for America's credit unions.

Some people are unsure about how credit unions differ from traditional banks and other financial institutions. We are different, very different. We are not just about financial services. It's more than that. In addition to lower rates and better services, members experience the difference in our democratic structure, our service to members and our social goals. We are member-owned and operated—that means each member has an equal opportunity to vote in the decision-making process of the credit union. As not-for-profit financial cooperatives, all of our earnings are invested in helping our members.

What makes credit unions unique?

✓ **Ownership** – Credit unions are democratically controlled, member owned and operated. Each member has equal ownership and one vote – regardless of how much money he or she has on deposit.

✓ **Not-For-Profit** – Credit unions are not-for-profit financial cooperatives that provide a safe, convenient place for members to save money and to get loans and other financial services at reasonable rates.

✓ **Social Purpose** – People Helping People – Credit unions exist to serve their members, not to make a profit. Every member counts, including those of modest means.

This people-first philosophy causes credit unions and their employees to get involved in community and other worthwhile causes.

✓ **Volunteer Leadership** – Each credit union is governed by a volunteer board of directors, elected by and from the credit union's membership.

✓ **Financial Education for Members** – Credit unions place particular importance on educational opportunities for their members and the public to help everyone become better-educated consumers of financial services.

Editorial supplied by
Louviers Federal Credit Union

IN THE NEWS

Newark Planned Parenthood promotes breast health care

Organization to host Breast Exam Day on Oct. 26

By **CARLY JUNO**

NEWARK POST CONTRIBUTING WRITER

October is National Breast Cancer Awareness Month, and Planned Parenthood of Delaware (PPDE) is doing its part to promote the importance of breast health care throughout the state.

Free clinical breast exams, the Delaware Breast Cancer Coalition

mammography van, and pink bags with giveaways and breast health information will be available to patients at each of PPDE's five medical centers.

Newark's local office, located at 140 East Delaware Avenue, is one of the five Delaware sites that are participating. The mammography van will be available at the Newark PPDE on Oct. 26. Pink bags with educational breast health items are available all year long.

This is Planned Parenthood of Delaware's second year participating in the Susan G. Komen grant. "Three of our five centers –

Dover, Rehoboth and Wilmington – are recipients of the Susan G. Komen for the Cure Grant for the second year in a row, which assists PPDE with not only providing breast cancer screening, which we have always done, but now promoting the educational awareness of the importance of breast healthcare and early detection. We recognize National Breast Cancer Awareness Month annually, however, we've been able to offer special promotional gift bags and activities for the last two years, with support from the Komen grant," said Diana McWilliams, vice president of

Public Affairs for PPDE.

PPDE provides clinical breast exams as an integral part of its health care services. With grant money from the Philadelphia affiliate of the Susan G. Komen for the Cure, the organization established the Screening for Life program and educates patients about breast cancer. The Screening for Life program assists individuals who are low-income or uninsured with necessary cancer screenings.

This October, each PPDE site will host a free Clinical Breast Exam Day. This will occur in Newark on Friday, Oct. 26. Patients can call 1-800-230-

PLAN to schedule an appointment. According to McWilliams, "less than one percent of our patients will get a mammography."

There is no minimum or maximum age for a female to receive a breast exam. All females that come in to PPDE for an initial or annual medical exam get a clinical breast exam.

If a female patient comes in for a specific problem related to her breast, she also gets a clinical breast exam. If eligible, PPDE clinicians can provide women with a prescription for a mammogram.

Conversation on economic growth to be held Oct. 25

► NETWORK, from 1

Over the summer, members listened to ways to do just that in a series of "focus group" meetings hosted by the Network. Focus groups included representatives from small and tech-oriented businesses in the Newark area, companies who employ large numbers of workers and state and local elected officials.

The research, said Paul Pomeroy, Network co-chair and Newark city councilman, validated some ideas put forth already by the Network – that Newark is a desirable location for businesses,

benefiting from its geographic location, local academic institutions and thriving downtown.

But some findings were new. They learned that high-tech industries need reliable and affordable sources of electricity, that smaller companies have a desire to recruit more homegrown talent and that many factors affect employee recruitment efforts, such as the ability of a spouse to find a job and the quality of the local school system, said Pomeroy.

Focus group participants were anxious to share their thoughts, he said. "There is a strong recognition that these issues are important to Newark's future, and finding a

way to get them out in the open is something that is important for us to do as a community," said Pomeroy.

Those will be put out in the open again at a public workshop on economic development to be held next week. The conversation will take place on Thursday, Oct. 25, from 7 p.m. to 9 p.m., at the Embassy Suites Hotel on S. College Avenue. Interested individuals are invited to attend and should register with Bob Chadwick at 294-2058 or chadwickb@nccc.com.

"This is not something just for us to sit around and talk. The idea of the Network is to be something

that proactively addresses needs as we see them, and the more people that we talk to, the more we learn and the more opportunities we see to be able to reach out and effect some positive outcomes," said Pomeroy.

Some tangible results have already come from all this talking. Last week, the Newark City Council adopted a special "economic development" rate of elec-

tricity for new businesses that come to Newark or existing business that expand within city limits.

Companies are eligible for up to a 10 percent discount on electricity if they are located in an industrial or manufacturing office research district and add more than \$200,000 to the city's assessed tax base.



A fun & elegant evening celebrating the arts

(Black tie & cute hats optional!)

Saturday, November 3, 2007 • 7-10 p.m.
Trabant University Center • Main Street • Newark, DE

Proceeds benefit:

Newark Arts Alliance
Mid-Atlantic Ballet
Delaware Dance Company
Chapel Street Players
Newark Symphony Orchestra

Enjoy an evening with:

- ♦ Performances in dance, music & theater
- ♦ Live & silent art auctions
- ♦ Honorary Co-Chairs:
Jack Markel, Delaware State Treasurer
Paul Pomeroy, Newark City Councilman
- ♦ Celebrity auctioneer: Chris Coons, New Castle Co. Executive
- ♦ Cocktail reception with gourmet food



Tickets \$65 • \$75 at the door

www.newarkartsalliance.org/mosaic.html or 302-266-7266



Introducing a new apartment community featuring all two bedroom units with all the modern amenities. This community provides a convenient location that gives residents easy access to Wilmington, Newark and TOLL FREE access to I-95. Located adjacent is Suburban Plaza Shopping Center with Acme, Happy Harry's Wilmington Trust and many more restaurants, merchants and services.

Large 2 Bedrooms from \$995



Professional leasing & management services provided by

DELAWARE PROPERTY MANAGEMENT LLC: 302-366-0208

272160-040607

Get a FREE Reverse Mortgage Report

If you are 62 or older...

you can turn your home into tax free cash

- FHA Insured
- You retain title to the home
- Money can be used for any purpose
- Estate pays lender when you die
- Remaining equity is paid to your heirs



Jessica Conklin
Reverse Mortgage Specialist

For more information and a FREE Special Report

Call Direct 410-979-4827

Academy Mortgage

Email: conklinj@comcast.net



IN THE NEWS

Bruce. hardwood floors

Save at Mayer Inc.

Check out all your options at Mayer Inc. Check out our exotic floors from BR111, Wood Flooring International, Scandian, UA Floors, Pennacle & Kahrs. American & Canadian floors from Mirage, Mercier, Model, Mulligan, Mohawk, Derr & Hoboken brands, Baywood, Century, Homerwood, Chelsea, Fores, Timbercreek, Nobole House, Mannington, Somerset & Eco Cork.

FLORIDA TILE & LAMINATE FLOORS ALSO AVAILABLE.

Mayer Inc. 1014 Elkton Rd., Newark, DE 19711 • 302-366-1311 / 800-572-8391

Always
Low
Prices



Visit us
online at
www.newarkpostonline.com

Fight Social Insecurity



Trouble Eating?
Dentures Don't Fit?
Embarrassed by your dentures?

Call Us For A Dental Implant
Consultation To Change Your Life!
410-398-9500

1-800-480-9524

Kevin Myint, DDS, FICOI
121 Big Elk Mall
Elkton, MD 21921



THE ANYTHING LOAN



USE THE VALUE IN YOUR HOME TO FUND...ANYTHING!

36 MONTH
HOME EQUITY LOAN

5.99%
APR*

This fall is the perfect time to take advantage of all the hard work you put into your home with a Home Equity Loan from Delaware National Bank. Take advantage of our great rate and get started today!

To learn more about our Home Equity Loan offers, just call, visit us online or stop by an office near you.

Community Banking at its best.
That's Delaware National Bank.

COMMUNITY COMMITMENT. COMMUNITY BANKING.



A MEMBER OF THE FULTON FINANCIAL FAMILY

888.291.2400
delawarenational.com

Equal Opportunity Lender. Member FDIC. *The stated Annual Percentage Rate (APR) applies to new loans of at least \$5,000 with a term of 6-36 months and automatic deduction from a Delaware National Bank checking account. Your monthly payment would be \$30.49 per \$1,000 borrowed based on 5.99% APR for 36 months. If the loan is paid off and closed within the first 36 months, then closing costs will be assessed. Those closing costs are determined at the time of origination. The APR without automatic deduction service is 2.5% higher. If you choose to use automatic deduction service and later discontinue that service for any reason, your APR will increase. The product is a fixed-rate, closed-end loan secured with the primary residence and not exceeding 80% loan-to-value ratio. Rates and no fee offer subject to change. Higher rates available for longer terms and higher loan-to-value ratios. There are no closing costs on our home equity loans of \$10,000 or more in new money with a maximum term of 15 years. Rates are accurate as of publication date. Subject to credit approval. Property insurance is required. Flood insurance may be required.

MILBURN STONE THEATRE PRESENTS

SHANGRI-LA CHINESE ACROBATS

FEATURING:

DAZZLING ACROBATIC
DISPLAYS,
FORMIDABLE
FEATS OF
DARING
AND BALANCE,
EXPLOSIVE KUNG FU,
BRILLIANT COSTUMES,
AND EVEN A TOUCH OF
CHINESE COMEDY

OCTOBER 30
8 P.M.

FOR TICKETS, CALL OR VISIT US ON THE WEB 410-287-1037

MILBURNSTONE.ORG

CECIL COLLEGE ADULTS:\$32; STUDENTS AND SENIORS:\$25;
CHILDREN 12 AND UNDER:\$10

BUSINESS NEWS

Plan will cost \$1 a month

► UPFRONT, from 1

\$18 extra per year – \$1.50 per month.

Actually, your cost is even less than that because Option B, which will be less and won't accomplish any of the things the district wants, will cost about 90 cents per month.

That means you still pay 90 cents per month and there would

be no art, no music, no full day kindergarten, no room for growth and no guarantee where the district will be in a few years.

If you're not a numbers person – here's what you need to know. The difference in the district getting a plan that satisfies the law and does the best it can do to help children is less than one dollar per month for the average family.

This plan was fashioned by a diverse group of the district – parents, residents, teachers, elected officials and community leaders. It serves the needs of families in the Newark area and families in Wilmington.

The Christina School District has been through a lot in the last few years. But through hard work, it now has a balanced budget and strict accountability. It's done everything everybody

in the district and the state has asked of it.

It's time to reward it for a job well done. Polls will be open Nov. 6 from 8 a.m. to 10 p.m. at the district schools.

It's a big chance to help our schools, our children and our future. It seems well worth a buck a month to me.

How about you?

BRIEFS

Health expert at Newark Natural Foods

Amy Butler, a University of Delaware graduate and co-owner of www.GreenlifeSaver.net, will be at Newark Natural Foods in Market East Plaza on Main Street on Sunday, Oct. 21, from 10 a.m. to 2 p.m.

Butler is a contributing author in a new book, "101 Great Ways to Improve Your Health." It is the third volume of the "101 Ways to Improve Your Life Series," from David Riklan, president of Selfgrowth.com.

Butler's chapter, "Seven ways I fought my daughter's arthritis and won" details the steps she took to help her daughter, Cassandra, win her battle with juvenile rheumatoid arthritis. Butler began seeking alternative treatments for her daughter after she saw little to no improvement in her condition with conventional medicine. Now, Cassandra is arthritis free.

"I wanted to share our story so that other parents know that there is hope. It is a tragedy that so many children these days suffer from illnesses that can be greatly helped or reversed with natural methods," said Butler.

Butler and her daughter will be selling copies of the book and answering questions at Newark Natural Foods on Sunday. To purchase a copy of the book "101 Great Ways to Improve Your Health," for \$14.95, and learn more about the nutritional supplements, visit www.GreenlifeSaver.net. Contact Butler by e-mail at ricamy@greenlifesaver.net.

Italian cooking – it's in their blood

By CHRISTINE NEFF

NEWARK POST STAFF WRITER

Pizza sauce may run through the veins of Camillo and Sarah Rose Quagliata.

The husband-and-wife team has more than 20 years of experience working in and managing Italian restaurants in the area, and they come from families that have prepared and celebrated authentic Italian food for generations.

The Quaglias now own Agostino's Restaurant in the Brookside Shopping Center on Marrows Road. They took over ownership last summer from Sarah's uncle, Agostino Ferrantelli, who passed away.

Ferrantelli, they said, wanted to keep the business in the family, so the Quaglias moved to Newark from the pizzeria they owned in North East, Md., Frank's Pizza.

At Agostino's, they serve a wide selection of pizzas, calzones, pasta dishes, sandwiches, soups and more. Everything

is fresh and homemade. "These are our recipes," said Sarah.

Sarah learned to cook from her mother, Josephine Mione. Her father, Pietro, had her working in the pizza shop by the time she was 15.

"The passion for me is cooking because I was raised by two Italians who loved to cook," said Sarah. "My husband has a passion for pizza making."

Camillo began working at family-owned restaurants at the age of 17. He learned how to cook and run a business.

"You don't see too many businesses like this anymore. They're all chain restaurants," said Camillo.

"We're 'mom and pop,'" added Sarah.

Their two families immigrated to the United States from Italy, where they lived across the street from one another. Here, many of their family members established themselves in the restaurant business, preparing food in the Italian tradition.

It's a legacy the Quaglias embrace. "It's in the blood – on both sides," said Camillo.



NEWARK POST PHOTO BY CHRISTINE NEFF

Sarah Rose and Camillo Quagliata, owners of Agostino's Pizzeria and Restaurant on Marrows Road, took over the business last year after Sarah's uncle, Agostino Ferrantelli, passed away.

NOW OPEN!

Visit Our New Location
19 Haines Street, Suite B
Newark, DE
Free Parking

SIMON EYE ASSOCIATES
"Eye Care for Life"

We're Focused on Eye Care.

Adult and Pediatric Eye Care • Professional and Caring Staff
Experienced Doctors • Lasik Vision Correction
Clear Explanations of Procedures • Designer Eyewear
Contact Lenses • Most Insurances/HMO's Accepted

(302) 239-1933 | www.simoneye.com
Bear • Middletown • Newark • Pike Creek • Rehoboth • N. Wilmington • Wilmington

BEST

Visit us
online at
www.newarkpostonline.com

IN THE NEWS

► **BLOTTER, from 2**

Scholar Drive, police were told on Monday, Oct. 8, at 9:37 a.m. The unknown suspect entered the car by breaking the front driver's side window.

An unknown suspect stole cash, credit cards and a radar detector from a Ford Explorer parked in the **unit block of Ritter Lane** after smashing in the driver's side window, police were told on Sunday, Oct. 7, at 11:10 a.m.

A Dodge Spirit was stolen from the **300 block of E. Main Street**, police were told on Sunday, Oct. 7, at 9:46 a.m.

Three vehicles parked in a lot in the **100 block of S. College Square** had their windows smashed and items stolen from inside, police were told on Sunday, Oct. 7, at 9:45 a.m.

A Dodge Caravan parked in the **700 block of Swathmore Drive** was stolen by an unknown suspect, police were told on Saturday, Oct. 13, at 5:19 p.m.

Alcohol, noise law violations detailed

The Alcohol Enforcement Unit and other officers of the Newark Police Department continued their stepped-up, strict enforcement of alcohol and noise related laws last week.

Some of the recent violations include:

Michael Tharp, 21, of

Fairfield, Conn., noise law violation, on Thursday, Oct. 11, at 12:35 a.m., in the 700 block of Academy Street;

Brian Fogerty, 20, of Landenberg, Pa., **Mark Dilullo, 21**, of Harrington Park, N.J., and **William Keller, 20**, of Harrington Park, N.J., noise law violation, on Saturday, Oct. 6, at 1:16 a.m.;

Elias Blake Tacher, 20, of Old Westbury, N.Y., underage consumption of alcohol, on Friday, Oct. 5, at 11:31 p.m., in the unit block of N. Chapel Street;

Brian Lagarelli, 19, of New

Castle, underage consumption of alcohol, on Sunday, Oct. 14, at 3:31 a.m., on S. Chapel Street near Wyoming Avenue;

David Armstrong, 21, of Newark, and **Lee Daniel Herzog, 21**, of Newark, noise law violation, on Sunday, Oct. 14, at 12:28 a.m., in the 2000 block of Scholar Drive;

David Sayers, 19, of New Castle, noise law violation, on Saturday, Oct. 13, at 11:23 p.m., in the 200 block of E. Delaware Avenue;

Nicholas Caputo, 19, of

Wilmington, underage consumption of alcohol, on Saturday, Oct. 13, at 11:41 p.m., in the 200 block of E. Main Street;

Ryan Walsh, 19, of Wilmington, underage consumption of alcohol, on Saturday, Oct. 13, at 10:40 p.m., on Wyoming Road at Yale Road;

Thomas Grogan, 19, of Lewes, underage consumption of alcohol, on Saturday, Oct. 13, at 2:35 p.m., in the 400 block of Wollaston Avenue;

Michael Maggio, 20, of Newark, and **Jeanine Senecal,**

20, of Sayville, N.Y., underage consumption of alcohol, on Saturday, Oct. 13, at S. College Avenue at Kells Avenue;

Andrew Karl Camponelli, 22, of Middletown, disorderly premises and disorderly conduct, on Saturday, Oct. 13, at 1:31 p.m., in the 300 block of S. College Avenue;

Daniel Cuoco, 21, of Newark, disorderly premises, on Friday, Oct. 12, at 11:39 p.m., in the unit block of Ritter Lane;

Police said all were released pending court appearances.

NEWARK HIGH SCHOOL MUSIC BOOSTERS PRESENTS

MUSIC under the STARS!

The 36th Annual NEW CASTLE COUNTY FIELD BAND FESTIVAL

October 20, 2007 at 7:00 p.m.

Robert T. Hoffman Memorial Stadium

Newark High School

Featuring:

A.I. DuPont High School

Christiana High School

McKean High School

Newark High School

Caravel Academy

And

University of Delaware Marching Band

TICKETS AT THE DOOR

ADULTS \$6.00

STUDENTS \$3.00

CHILDREN UNDER 6 FREE

Use our
convenient,
time-saving
e-mail
address
today!

postnews@chespub.com

FOR INFO, CALL 737-0724




Church Directory

FOR CHANGES OF NEW ADS CALL NANCY TOKAR AT
410-398-1230 OR 1-800-220-1230 • FAX 410-398-8192
 AD DEADLINE IS FRIDAY AT 5:00 BEFORE THE FRIDAY'S RUN.




**Evangelical
Presbyterian Church (PCA)**
 Christ Centered • Biblically Based
 Sunday Worship 10:45am & 6pm
 9:30 Sunday School
 308 Possum Park Rd., Newark
 302-737-2300
www.epcnewark.org



**NEWARK WESLEYAN
CHURCH**

 708 West Church Rd
 Newark, DE
 (302)737-5190
 Pastor James E. Yoder, III
 Sunday School for all ages.....9:30am
 Morning Worship10:30am
 Children's Church & Nursery Provided
 Choir - Sunday5:30pm
 Youth Meeting - Sunday6:00pm
 Mid-Week Bible Study
 "A Family Church with a Friendly Heart"

**Fairwinds
Baptist Church**
 "Lighting The Way To The Cross"

 801 Seymour Rd., Bear, DE 19701
 (302)322-1029
 Carlo DeStefano, Pastor
 Schedule of Services
 Sunday School 9:45am
 Morning Worship 11:00am
 Sunday Evening 6:00pm
 Wednesday Prayer Meeting 7:00pm
 (Nursery Provided for all Services)
www.fairwindsbaptist.com
 Home of the Fairwinds Christian School
 "Pioneer Gospel Hour"
 Comcast Cable Channel 28
 Thursday 8:00pm
 "He Keeps Me Singing"
 Comcast Cable Channel 28
 Thursday 8:30pm



**The Way
Ministries**
 (an extension of Highway Gospel Com-
 munity Temple, West Chester PA)
 Highway Word of Faith Ministries is
 presently worshipping @ The George
 Wilson Community Center
 303 New London Rd., Newark, DE
Sunday:
 8:00-9:00am Christian Education
 classes for all ages
 9:00am Sunday Morning Celebration
Wednesday: Location
 7:00-8:00pm Bible Enrichment Class at
 Prayer Temple
 49 New London Rd.
 Newark, DE 19711
 Mailing Address: P.O. Box 220
 Bear, Delaware 19701-0220
 Visit us online @ www.theway.ws or send us
 a note at...theway238@aol.com

**Unitarian
Universalist**
 Service 10am Fellowship of
 Child Care & Newark
 Sunday School 420 Willa Rd.
 Newark, DE
 Topic: "TBA"
 Speaker Rev. Greg Chute
(302)368-2984




Pastor Carl A. Turner Sr. & Lady Karen B. Turner
 For further information or directions please call:
302-834-9003

**Our Redeemer
Lutheran Church**

 Adult Bible Class 8:45 a.m.
 Divine Worship 10:00 a.m.
 Children's Sun. School 10:00 am
Pastor Jeremy Loesch
www.orlcde.org LCMS
 10 Johnson Rd., Newark (near Rts. 4 & 273)
 302-737-6176

**NEW LIFE CHRISTIAN
FELLOWSHIP**
 Sunday Service 9:30 AM
 Multimedia Children's Ministry!
 Contemporary Worship!
 Relevant messages!
Church Office: 999-1800
 Check out our web page:
www.NewLifeDE.org
 2712 Old Milltown Rd.
 Wilmington, DE
 (near Kirkwood Hwy & Milltown Rd)



TRINITY PRESBYTERIAN CHURCH (PCA) SUNDAY WORSHIP 9:30 AM

Meeting at: First Church of the Nazarene
 357 Papermill Road, Newark, DE
 For more information please call
 302-233-6995

**Glorious
Presence
Church**
Progressive Praise and Worship
 8:30 a.m.
 -Acoustic Worship-

10:30 a.m.
 -Electric Worship-
 Pastoral Team
 Curtis E. Leins, Ph.D.
 Robert F. McKnight
 Theodore Lambert, III
 located 1 1/2 miles north
 of Elkton on Rt. 213

410-392-3456

IMPACT
 TRANSFORMING LIVES THROUGH CHRIST
Cynthia Dale
 Director of Student Ministries
youthimpact@verizon.net

Student's Impacting the World for Christ

Love of Christ Church
 2157 Bear Corbitt Rd.
 Bear, DE 19701
 tel: 302.838.0603
 fax: 302.838.3862
 mobile: 302-528-4124



CORNERSTONE
 Presbyterian Church (PCA)
 Contemporary worship with
 large praise band
 Worship 8:30 & 11:00
 Junior Church & Nursery
Pastor Mark Van Gilst
 Route 896 & Gypsy Hill Rd,
 Kemblesville, P.A.,
 (3.6 miles north of the PA line)
 610-255-5512
cornerstonepa.org



Church Directory



FOR CHANGES OF NEW ADS CALL NANCY TOKAR AT
410-398-1230 OR 1-800-220-1230 • FAX 410-398-8192
 AD DEADLINE IS FRIDAY AT 5:00 BEFORE THE FRIDAY'S RUN.

Something new is ready for you.



good shepherd
 EPISCOPAL CHURCH

Sunday Worship Service, 9:30am
 William B. Keene Elementary School
 200 Lagrange Avenue, Newark

302 547-7849
www.GoodShepherdDE.org
 Sponsored by the Diocese of Delaware

 **OGLETOWN BAPTIST CHURCH**

316 Red Mill Rd., Newark, DE 19713
 Phone: 302-737-2511 • Fax: 302-737-4356
www.ogletown.org

Sunday Services:
 8:30am - Traditional
 9:45 and 11:00am - Contemporary
 Sunday School at all three service times
 Wednesday Night Activities - 5:00-7:30pm
 Pastor: Curtis Hill
 Interim Music Ministries: Bill Archer
 Minister of Preschool & Children: Connie Zinn
 302-738-7630

 **PIKE CREEK BIBLE CHURCH**

SUNDAY MINISTRIES:
 • First Service 8:30 am
 • Christian Education 10:00 am
 • Second Service 11:15 am
 • Awana 5:30 pm
 • Youth Ministries 5:30 pm

Small Groups throughout the week
www.PikeCreekBibleChurch.org
 199 Polly Drummond Hill Rd.
 Newark • 302-731-7770

 **LIBERTY BAPTIST CHURCH**
 2 Cor. 3:17
 "...where the Spirit of the Lord is, there is liberty."


SUNDAY
 Sunday School 9:15am
 Worship Service 10:30am

WEDNESDAY
 Mid Week Bible Study & Prayer 7:00pm
 Higher Ground Youth Ministry 7:00pm
 Way Cool Wednesdays 7:00pm
 Nursery Provided for all Services

The Voice of Liberty TV Channel 28
 Broadcast every Sat 5:30pm
 Channel 22 Sat. 7:00pm Elkton, MD


We are located at 2744 Red Lion Road (Route 71) in Bear, Delaware, 19701. For more information about the Church, Please call (302)838-2060

George W. Tuten III, Pastor
www.libertybaptist.net

 **First Church of Christ, Scientist**

48 West Park Place, Newark
 Sunday Service & Sunday School 10:00am
 Wednesday Testimony Meetings 7:30pm
 Childcare available during services.

302-456-5808
ALL ARE WELCOME
www.fccsnewark.org

 You are welcome at
Ebenezer
 United Methodist Church

SUN SERVICES 8:30 & 11:00am
 SUNDAY SCHOOL 9:45am

Sat. 10/27 Testament of Faith 7:00pm
 in Ebenezer Sanctuary

525 Polly Drummond Road
 Newark 302-731-9494

Handicapped Accessible • Child Care
 TED DAY, PASTOR



Something more than the usual Church service in a friendly environment.....




THE REDEEMED CHRISTIAN CHURCH OF GOD

Abundant Life Center
 ...the presence of God's power

Sunday Worship - 10:00 am
Tuesday Bible Study - 7:00pm

97C Parkway Circle,
 (Rt 273 Opp Commerce Bank)
 Newcastle, DE 19720
 302-328-2811, 302-983-6436
www.rccgdelaware.org

 The Episcopal Church Welcomes You

St. Thomas's Parish

276 S. College Ave. at Park Place, Newark, DE 19711
 (302) 368-4644 Church Office: (9:00-1:00 Mon-Fri)
www.stthomasparish.org

Sunday Worship

Sunday Service times: 8am, 10:30am & 5:30pm
 Sunday School begins at 9:30am

Sunday Adult Education Programs 9:30-10:15am

The Rev. Ray Nelson, Rector
 Rev. Sarah Brockman, Associate Campus Minister
 Marc F. Cheban, Organist & Choir Master



FIRST PRESBYTERIAN CHURCH

292 West Main St • Newark
(302) 731-5644

Sun 9:00amChristian Education for all ages with child care

Sun 10:30amTraditional Worship
 Child Care Provided & Ramp Access

Sun 7:00pmYouth Fellowship

www.firstpresnewark.org



St. John the Baptist Catholic Church

E. Main & N. Chapel Streets

Daily Mass: Mon-Sat 8am

Sunday Mass: 7:30, 9, 10:00am

Holy Angels' Catholic Church

82 Passum Park Road

Weekend Masses: Saturday 5pm

Sunday 7:30, 10:00am

1pm (Spanish)

Pastor: Father Richard Reissman

Parish Office: 731-2200

CAMPUS NEWS

UD student documentary wins top national award

Ready or Not?, a student-produced television news documentary about disaster preparedness in Delaware, has won top honors in a national competition conducted by the National Federation of Press Women.

The documentary is the work of communication, political science and English with a concentration in journalism students in a Broadcast News Documentary

class under the guidance of Ralph Begleiter, University of Delaware distinguished journalist in residence and Rosenberg Professor of Communication.

Ready or Not? focuses on disaster readiness in Delaware and related public policy and safety measures in place in the First State. It won first prize in the category of Special Programming—Television, and also won first prize

in a competition sponsored by the Delaware Press Association.

Judges on the Delaware Press Association panel called the program "well-researched, credible, well-photographed, well-edited and informative."

The 45-minute documentary, available for viewing at www.udel.edu/communication/documentary, covers topics including Delaware's possible exposure to the effects of

an incident at the Salem-Hope Creek, N.J., nuclear power plant located across the Delaware River from Odessa, to potential chemical spills from freight trains passing through Newark.

Based on a three-month investigation, the documentary also discusses security concerns at the Port of Wilmington, a full-service deepwater port and marine terminal handling more than 400

vessels per year, with an annual import/export cargo tonnage of exceeding four million tons.

In making the documentary, students discussed preparedness plans for dealing with disaster situations with a host of state authorities and elected officials, including New Castle County Chief Executive Chris Coons, U.S. Rep. Michael N. Castle and U.S. Sen. Tom Carper.

Smile!! It's That Time Again! Pet Portraits by Rishell's Photography



Dates are filling up fast. Call today!!
Pkg only \$22.99 for 1-8x10, 2-5x7s and 8 wallets!
APPOINTMENTS NECESSARY

Oct. 21st Shoppes of Red Mill, call 302-737-8982
Nov. 4th Hockessin Square, call 302-234-9112
Nov. 10th Middletown Crossing, call 302-376-1616
Nov. 11th Fox Run Shopping Center, call 302-838-4300
Nov. 18th Chestnut Run Shopping Center, call 302-995-2255
Check store for more dates & locations

Portraits back in time for holiday giving.

Where your pets are welcome to come shopping with you!

CONCORD
PET FOODS & SUPPLIES

"For
Everything
Your
Pet Needs"

Ask about our
Frequent Buyer Program

Now with 18 Convenient Locations!
OPEN Mon. - Sat. 9am to 9pm Sunday 10am to 5pm
for your shopping convenience!



The Largest Selection!
The Friendliest Service!
And Prices That Can't Be Beat!

Peoples Plaza.....302-836-5787
Fox Run.....302-838-4300
Suburban Plaza.....302-368-2959
Elkton.....410-398-5554
Hockessin Square.....302-234-9112
Shoppes of Graylyn.....302-477-1995

Shoppes of Red Mill.....302-737-8982
Community Plaza.....302-324-0502
Middletown Crossing.....302-376-1616
Dover.....302-672-9494
Milford Crossing.....302-424-8373
Rehoboth.....302-226-2300

Chestnut Run.....302-995-2255
Concord Pike.....302-478-8966
Chadds Ford.....610-459-5930
Aston, PA.....610-364-1100
New London.....610-869-8828
Commons at Thornbury.....610-399-0124

Think pink

October is Breast Cancer Awareness Month

To go along with Breast Cancer Awareness month, Concord Pet will be collecting donations from all 18 locations. We will be matching up to \$1000.00 and donating all proceeds to Veterinary Comparative Oncology Research Federation. This is a local non-profit research facility. This will run October 1, 2007 to October 31, 2007.



\$5.99 12" Pink Loofta Dog, only with pink breast cancer ribbon embroidered on its chest



Wellness Healthy Indulgence
3 oz pouch, only

89¢

PROPLAN Adult Dog Food
37.5 lbs, only \$25.99

Nutro Dog Food
40 lb or larger,

only \$29.99

Single Door Crate,
starting at
\$29.99



Platinum ALL STAR COLLEGE TEAM

Recruiting
cheerleaders with
previous
cheerleading
experience to compete
on local

ALL STAR TEAM!

- 1 practice per week- Sunday 8-10 pm
- Very LOW tuition rate to include 4 competitions!
- Potential opportunity to go to MYRTLE BEACH for NATIONALS!

New state of the art cheer training facility in Newark Delaware! Join other local college athletes to make the ultimate all star team on the east coast!
Call 368-7104 for registration details today! Or stop by our facility !! Visit www.diamondelite.org for directions & more details!

Practices starting now!



Trilogy

PART YEAR COMPETITIVE ALL STAR TEAM!

Recruiting Middle School/ High School cheerleaders to create Delaware's finest part year competitive team!

Perfect for cheerleaders who want to compete on an ALL STAR team but don't want to commit the time or finances for a full time competitive team!

- Practice one day per week- Sunday 6-8 pm
 - Compete in 4 competitions- with 1 weekend trip!!
- Join other local athletes in making the ultimate all star team on the east coast!!

Call 368-7104 for registration details today! Or stop by our facility !! Visit www.diamondelite.org for directions & more details!

Practices starting now!

302.368.7104
www.diamondelite.org

CHEERS

Teams forming now call today for tryout information 302.368.7104

Posted

8 AM 5 PM 800-220-3311 410-398-1230 Fax us 24/7: 410-398-4044



ANNOUNCEMENT

NOTICES

Class Reunion
Bohemia Manor
1987

Nov 18, 2007
Anyone interested
contact
Marjorie Merritt Valley
302-378-4197
valley4@verizon.net

NOTICES

DONATE VEHICLE,
running or not accepted.
FREE TOWING TAX
DEDUCTIBLE NOAH'S
ARC, Support No Kill
Shelters, Animal Rights,
Research to Advance
Veterinary
Treatments/Cures
1-866-912-GIVE.



EMPLOYMENT

Help Wanted full-time

New Today

Coming Soon
TO YOUR TOWN!
NOW HIRING
EXPERIENCE SALARY MANAGERS SHOULD CALL:
1-866-771-1880
ASK FOR THE MANAGEMENT RECRUITER

\$500 Sign-on Bonus!
Call 1-866-771-1880
TACO BELL is looking
for good **MANAGERS**
to build a customer
friendly environment in
our new restaurant
coming to Middletown,
Delaware. Two years
minimum experience in
the restaurant environ-
ment is necessary

Aarsand & Co. is an
established franchise
(Taco Bell/KFC/Pizza
Hut) which operates 51
restaurant locations
throughout Maryland,
West Virginia,
Pittsburgh, PA and
Middletown, DE areas.

We have a great
benefits package to
offer to our salary
managers which
include medical, dental,
vision, 401K, short and
long term disability, life
insurance, monthly &
quarterly bonuses, paid
vacations, personal
days, competitive
salaries, training, and
advancement
opportunities for all.

SALARY MANAGERS
fax your resume to
410-771-1877;
e-mail us at
MFish@aarsand.com,
or call 410-771-1880
or toll free
1-866-771-1880
and ask for our
Management Recruiter.
EOE.

RECLINE,
RELAX &
RESELL

Check
Us Out
Or Place
Your Ad
With Us
On The
World
Wide
Web!

www.chesapeake
classified.com

Help Wanted full-time

New Today
-RN SUPERVISOR-

Ware Presbyterian Vil-
lage, a not-for-profit
Presbyterian Homes
Retirement Community,
is seeking a full-time,
experienced
RN Supervisor.

The ideal candidate
must be willing to work
the Sunday-Thursday
night shift. Requires
strong, proven leader-
ship skills with ability to
instruct, direct and lead
staff. A current CPR cer-
tification and RN license
is required. Duties also
include resident assess-
ment, care planning,
administering medica-
tion and treatments as
needed as well as partic-
ipation in the infection
control/ wound care
teams. Previous experi-
ence as a gerontological
nurse is preferred. We
offer an exc compensa-
tion package including
competitive wages, com-
prehensive benefits,
generous vacation time
and paid training. Inter-
ested candidates may
apply to:

**Ware Presbyterian
Village**
Attn: Human Resources
7 E. Locust St.,
Oxford, PA 19363
Fax: (610) 998-2422
pshelton@
phi-preshomes.org
www.phihomes.org

Find a
new job in
Classified

HELP WANTED

Help Wanted full-time

1000 ENVELOPES
\$6000 guaranteed.
receive \$6 for every
envelope stuffed with our
sales material. Free 24
hour information. 1-888-
423-3820 code 702

A COOL TRAVEL JOB!!
A great first job, over 18,
travel coast-to-coast
with young co-ed busi-
ness group. \$500 sign-
ing bonus. Transporta-
tion and lodging fur-
nished. 1-800-537-7256

ADVERTISING SALES

The Business
Ledger of Delaware is
currently accepting
interviews for a FT
Advertising Sales Pro-
fessional. Candidates
should possess strate-
gic abilities to manage
a variety of different
business sectors.
Prior advertising experi-
ence, professional
presentation skills and
a proven track record
a must. Excellent ben-
efits. For immediate
consideration, please
fax or email your
resume with salary
history to Melvin But-
ler, Ad Director,
302-737-9019 (fax)
mbutler@chespub.com



Chesapeake
Classified

Reaching
over 325,000
readers
weekly

410-398-1230
800-220-1230

www.chesapeakeclassified.com

Help Wanted full-time

CUSTOMER SERVICE
positions available with
Essco. Looking for
responsible individuals
to work flexible hours
under minimum supervi-
sion. Call 306-351-0140

DENTAL RECEPTIONIST group practice
exp pref'd. Softdent a
plus. Call Gene
410-398-3858

DRIVERS - MORE MONEY! Sign on bonus.
36-43cpm / \$1.20pm. \$0
lease / teams needed.
Class A+ 3 months
recent OTR required.
800-635-8669

DRIVERS/CDL A Van
& flatbed drivers,
\$60,000 plus yearly
potential. High weekly
miles 1 yr. T/T exp. SMX
1-866-886-9432
www.smx.com

New Today

DELIVERY DRIVER
ALL FUELS
2 yrs exp., necessary.
Seasonal position

Walker Fuel
Division Griffith
Energy Services
610-932-8524
EOE

Driver
DUE TO EXPANSION
O/O'S ARE NEEDED
TO PULL BANANA
CONTAINERS
DEDICATED LANES
HIGH REVENUES
HIGH FUEL
SURCHARGE
NO TOUCH FREIGHT
HOME WEEKLY
R & O
732-219-0940
100% O/O COMPANY

CLASSIFIEDS
410-398-1230
800-220-1230

Security Driver/Messenger

AT Systems Inc./A GARDA Company, a fast-paced
and growing armored car co is looking for FT
Driver/Messengers for their Wilmington, DE facility.
The selected employees are responsible for the
transport of coin, currency, and other valuables.
Issues and receives receipts of confirmation from
customers to verify transfer of valuables. Candidate
will have high school diploma or equivalent, 21
years of age, valid driver license. Heavy lifting
required (50lbs+), CDL a plus, training will be
provided. The qualified candidate must be eligible to
obtain a firearms permit and CDL Class B within 6
months of date of hire. We offer a great benefit pkg
for FT employees and competitive wages.
Extensive pre-employment bkgrd chks, physical
exam & other testing required. Must bring valid
driver's license and social security card.

To apply:
Email: careers3@atssystemsinco.com
Fax: 302-762-7512 or apply at
4200 Governor Printz Blvd, Wilmington, DE



Help Wanted full-time

New Today

DENTAL ASSOCIATES
OF DELAWARE seeks
an exp'd & personable
DENTAL ASSISTANT to
join our practice in Mid-
dletown. X-ray certifica-
tion is required. Com-
prehensive benefits incl.
medical coverage,
401(k) & paid time off.
Fwd resume by fax to
(302) 230-3082; email to
bbsenner@delawaresmiles
.com; or mail to 1415
Foulk Rd., Suite 201
Wilmington, DE 19803.
www.delawaresmiles.com.

New Today

DRIVERS-TRACTOR TRAILER

Food Grade tanker oper-
ation. Move up to a com-
pany that's committed to
you and your family. We
have repeating trips of 1
to 4 days max away from
home. **High pay plus**
100% company paid
FAMILY health, Rx,
dental, vision, Pension
live, vac, hol, safety
bonus. \$2000 sign on.
800-243-7483 CDL-A w/
tanker 2 yrs exp req.
P.E. Kramme, Inc.
Avondale, Pa.

EARN ONE THOU-
SAND DOLLARS each
day with tested, proven,
easily duplicatable
"Three Step Success
System" that is creating
MILLIONAIRES! 24 hour
info line 800-887-1897.
Change your life call
now

RECLINE,
RELAX &
RESELL

Help Wanted full-time

New Today

EARLY CHILDHOOD
Asst. Teacher FT
10:00am-6:00pm. PT
Asst teachers & subs-
flex. sched. Must meet
St. of DE licensing reqm-
nts.

Apply in person to
Bobbi Budin, Prog. Dir.
**Newark Day Nursery &
Children's Center 921**
Barksdale Road
Newark, DE.

FEDEX GROUND O/O
TEAMS Fleet owners
and husband, wife teams
welcome. Incentive
opportunities. Home
weekly. Start @ .98cpm
and \$1.249 Hub. Fuel.
1-866-832-6339

GOVERNMENT JOBS
\$12-\$48/hr Full Bene-
fits/Paid Training. Work
available in areas like
Homeland Security,
Law Enforcement,
Wildlife and more!
1-800-320-9353 ex 2002

New Today

HOUSEKEEPING/
LAUNDRY MANAGER

Seeking manager to
oversee the daily opera-
tion of housekeeping/
laundry departments
according to established
policies and procedures.
Responsible for training
and coaching of house-
keeping and laundry
team members. Three to
five years housekeep-
ing/laundry management
experience. Demonstrat-
ed ability to supervise
housekeeping/ laundry
operations and staff.
High school diploma or
equivalent required.
Working knowledge of
applicable federal, state
and local regulations.
MS Office (Word, Excel,
PowerPoint).

HOUSEKEEPING/
LAUNDRY AIDE
SPECIAL PROJECTS/
FLOOR CARE

Seeking energetic indi-
viduals to work with
HouseKeeping/ Laundry
team. Ability to follow
written & oral instruction,
operate basic house-
keeping/ laundry equip-
ment and/ or floor care
equipment.

Apply to:
WARE
PRESBYTERIAN
VILLAGE
7 E. Locust St. Oxford,
PA 19363
Fax: 610-998-2422
On line:
www.4phijobs.org
A Not-for-Profit
Presbyterian Homes
Retirement Community
EOE

LEGAL NOTICE LEGAL NOTICE LEGAL NOTICE LEGAL NOTICE LEGAL NOTICE LEGAL NOTICE

THE COURT OF COMMON PLEAS FOR THE STATE OF DELAWARE IN AND FOR NEW CASTLE COUNTY
IN RE: CHANGE OF NAME OF
Artimus Jenkins
Brodkey
PETITIONER(S)
TO
Artimus Jenkins
Hedrick
NOTICE IS HEREBY GIVEN that Artimus Jenkins Brodkey intends to present a Petition to the Court of Common Pleas for the State of Delaware in and for New Castle County, to change his/her name to Artimus Jenkins Hedrick.

Artimus Jenkins Hedrick
Petitioner

Dated: 9/25/07
np 10/5,12,19

THE COURT OF COMMON PLEAS FOR THE STATE OF DELAWARE IN AND FOR NEW CASTLE COUNTY
IN RE: CHANGE OF NAME OF
Alexandra Gutiérrez Ball
PETITIONER(S)
TO
Alex Gutiérrez Ball
NOTICE IS HEREBY GIVEN that Alexandra Gutiérrez Ball intends to present a Petition to the Court of Common Pleas for the State of Delaware in and for New Castle County, to change her name to Alex Gutiérrez Ball.

A. Ball
Petitioner
Dated: Sept. 17, 2007
np 10/5,12,19

PUBLIC AUCTION

Notice is hereby given that the undersigned will sell at a public auction on **November 20, 2007 at 1:30 p.m. at:**

**PS ORANGECO INC./PUBLIC STORAGE
3800 KIRKWOOD HWY.,
WILMINGTON, DE 19808
302-998-0125**

the personal property heretofore stored with the undersigned by:

1150 - Jacquelyne Parker - books, 15+ boxes, clothing, pictures, 2+ totes
5006 - Becker & Becker, P.A., Carol Winner - folding table, 40+ files
1081 - Pauline Henry - 10+ bags, 10+ boxes
2033 - Perry L. Glover - books, clothing, suitcase, tote
2004 - Lisa M. Belay - 5+ boxes, folding chair, computer, dining table, toys, console TV, TV stand
3010 - Lynn Shuford - books, 5+ boxes, 4 folding chairs, rug
2061 - Angela L. Fogarty - mattress, 10+ boxes, toys
2066 - Linda Williams - 4 kitchen chairs, coffee table
np 10/19,26

LIEN SALE

Notice is hereby given that the undersigned will sell at a lien sale on **11/20/07 at 3:00 p.m. at:**

**PS ORANGE CO PUBLIC STORAGE
425 NEW CHURCHMANS ROAD
NEW CASTLE, DE 19720**

The personal property heretofore stored with the undersigned by:

C038 - Chuka Ogumerem - 10 bags, bicycle, 20 boxes, toys
E044 - Lisa Yingling - 30 bags, mattress, box spring, 20 boxes, vacuum, portable TV, microwave
C145 - Barry Sensenig - box spring, fan, microwave, 4 totes
E020 - Tiehesha Beavers - misc. household goods
C066 - Darrel Brown - 10 boxes, 2 sofas, 6 totes
C165 - David Sharpe - suitcase, trunk, upholstered chair
B024 - Raymond DiSabatino - floor lamp, vacuum, ATV, mini bike
F116 - Ebeleo Odumegua-Ljukwa - 6 boxes, 4 suitcases
F084 - Louise Stevenson - 3 bags, clothing, 2 totes
C042 - Ann Logan - 20 bags, refrigerator, toys
C185 - Lisa Williamson - box spring, mattress, vacuum, 2 table lamps
H005 - Mark Moran - bed frame, 30 boxes, 20 totes, toys, vinyl records
np

PUBLIC AUCTION

Notice is hereby given that the undersigned will sell at public auction, on **November 20, 2007 at 4:30 p.m., at PS ORANGECO INC./PUBLIC STORAGE, 3801 Dupont Parkway, New Castle, DE 19720**, the personal property heretofore stored with the undersigned by:

A110 - James Broadnax - mattress, box spring, clothes, totes
A126 - Benjamin Lawrence - leopard print bar, mini refrigerator, glass cabinet
A142 - Juquenda Lewis - mattress, dresser
A145 - Celeste Lofland - beach chairs, vacuum, TV, TV stand
A227 - Chevon Ransome - boxes, clothes, totes
A236 - Myra Boulwara - TV, sofa, books
A260 - Lisa Rodriguez-Hunter - bookcase, suitcase, sofa, chair
A271 - Chiriga Howie - clothes, TV, stereo
B309 - Louis Dotson - sofa, microwave, speakers, mattress
B337 - Stanley Lambert - chairs, dresser, mirrors, floor lamp
B347 - Shakeeta Smith - totes, lamp, TV
B437 - Sharon Taylor - microwave, mattress, box spring, tires
B445 - Belinda Greene - rug, totes, dresser, suitcase
B446 - Christina Weeks - clothes, stereo, dresser, toys
C509 - Jontae Willingham - office chair, lawn equipment, console TV
C607 - Kimberly Morehead - stereo, vacuum, toys, clothes
C640 - Daran Henderson - speakers, sports equipment, suitcase
E1004 - Melissa Grundy - washer, TV, bikes, chair
E1006 - John Brown - lamp, sports equipment, piano
np 10/19,26

LEGAL NOTICE

VFW Gen. W.W. Atterbury Post 3420 T/A VFW Post 3420 has on September 25, 2007 applied with the Alcoholic Beverage Control Commissioner seeking approval of a 180 square foot extension of the licensed premise. Licensee must rebuild & renovate because of a fire that damaged the currently licensed premise. Premise is located at 649 Churchman's Road, Newark, DE 19702.

Persons who are against this application should provide written notice of their objections to the Commissioner. For the Commissioner to be required to hold a hearing to consider additional input from persons against the application the Commissioner must receive one or more documents containing a total of at least 10 signatures of residents or property owners located within one mile of the premises or in any incorporated areas located within one mile of the premise. The protest must be filed with the Alcoholic Beverage Control Commissioner at the 3rd Floor, Carvel State Office Building, 820 North French Street, Wilmington, Delaware 19801. The protest(s) must be received by the Commissioner's office on or before **October 31, 2007**. Failure to file such a protest may result in the Commissioner considering the applications without further notice, input or hearing. If you have questions regarding this matter please contact the Commissioner's office at (302) 577-5222.
np 10/5,12,19

CITY OF NEWARK DELAWARE PUBLIC HEARING NOTICE

OCTOBER 22, 2007 - 7:30 PM

Notice is hereby given of Public Hearing in the Council Chamber, Newark Municipal Building, 220 Elkton Road, on **Monday, October 22, 2007, at 7:30 p.m.**, at which time the Council will consider the request of Mark D. Sisk, Esquire, for an extension of the "grandfathering" for the sale of alcoholic beverages for consumption on the premises at the location of the now closed Tracks Restaurant, located in the multi-story commercial building at 60 North College Avenue.

ZONING CLASSIFICATION - BC (General Commercial)

Susan A. Lamblack, MMC
City Secretary

np 10/12,19

THE COURT OF COMMON PLEAS FOR THE STATE OF DELAWARE IN AND FOR NEW CASTLE COUNTY
IN RE: CHANGE OF NAME OF
Dazia Jaden Hess
PETITIONER(S)
TO
Dazia Jaden Jones
NOTICE IS HEREBY GIVEN that Dazia Jaden Hess intends to present a Petition to the Court of Common Pleas for the State of Delaware in and for New Castle County, to change his/her name to Dazia Jaden Jones.

Troy Jones
Petitioner

Dated: 10/1/2007
np 10/12,19,26

LEGAL NOTICE

Estate of Marilyn Whiskey, aka Marilyn C. Whiskey, Deceased.

Notice is hereby given that Letters Testamentary upon the estate of Marilyn Whiskey, aka Marilyn C. Whiskey who departed this life on the 2nd day of September, A.D. 2007, late of 154 W. Flagstone Drive, Newark, DE 19702, were duly granted unto Gerald J. McConeghy on the 28th day of September, A.D. 2007, and all persons indebted to the said deceased are requested to make payments to the Personal Representative without delay, and all persons having demands against the deceased are required to exhibit and present the same duly probated to the said Personal Representative on or before the **2nd day of May, A.D. 2008**, or abide by the law in this behalf.

Gerald J. McConeghy
Personal Representative

Address:
Gerald J. McConeghy
1325 Spruce Street
Philadelphia, PA 19107
np 10/19,26,11/2

THE COURT OF COMMON PLEAS FOR THE STATE OF DELAWARE IN AND FOR NEW CASTLE COUNTY

IN RE: CHANGE OF NAME OF
Kamille Renee Riggs
PETITIONER(S)
TO
Kamille Renee Francis-Riggs
NOTICE IS HEREBY GIVEN that Kamille Renee Riggs intends to present a Petition to the Court of Common Pleas for the State of Delaware in and for New Castle County, to change his/her name to Kamille Renee Francis-Riggs.

Kamille Renee Francis-Riggs
Petitioner

Dated: 10/15/2007
np 10/19,26,11/2

110 Help Wanted full-time

HOUSE CLEANERS
Merry Maids. No nights, weekends, weekly pay. Must have valid drivers lic, insurance & reliable vehicle. Paid mileage. 302-999-9549

POST OFFICE NOW
hiring! Avg. pay \$20/hr. or \$57K annually including Federal benefits and OT. Paid training, vacations, PT/FT. 1-866-498-4945. USWA

POST OFFICE NOW
HIRING Avg. pay \$20/hour or \$57K annually including federal benefits and OT. Paid training, vacations, PT/FT 1-866-497-0989 USWA

SALES Professionals wanted \$75,000 +. Pre-qualified leads helping seniors. Full benefits, retirement, vacations, stock options + management opportunities. Call Kris Coleman toll free 866-229-8447

NewToday

TELEPHONE / DISPATCHER - EXPERIENCED - for busy office no sales work. Call M-F 10am to 3pm for more info: **888-909-6131**

WANTED Mystery Shoppers

across Maryland. Must have internet access. No fee to apply. Register on-line at www.experienceexchange.com

NewToday

WET CAST LEAD PERSON: Rinker Materials (Concrete Pipe Mfg) has an immediate opening. We offer medical, dental, life and 401(k) plans. Apply at 800 Industrial Dr Middletown DE 19709, Phone # 302-378-8920 x18 or 15 fax # 302-378-8923. Must be 18. EOE & DFW

115 Help Wanted part-time

EARN UP TO \$550.00 weekly helping the government PT. No experience needed. Call today! 1-800-488-2921 as for Department T-4

NewToday

STYLIST / SHAMPOOER / Manicurist / Pedicurist for upscale men's salon. Also 2 styling stations for rent. 302-225-8365

200 BUSINESS OPPORTUNITIES

ABSOLUTE GOLD MINE!! Hottest product in fastest growing industry in U.S. Our 60 top producers averaged \$500K+ last yr. Are you a top producer? If so call 800-605-8675

ALL CASH CANDY ROUTE Do you earn \$800 in a day? Your own local candy route. Includes 30 Machines and Candy All for \$9,995. 1-888-753-3452

ASSEMBLE MAGNETS & crafts from home! Year-round work! Excellent pay! No experience! Top US company! Glue gun, painting, jewelry & more! Toll free 1-866-844-5091, code 2

ABLE TO TRAVEL? Hiring 6 people, free travel to all states, resort areas. No experience necessary. Paid training/transportation. OVER 18. Start ASAP. 1-888-921-1999 www.protechchemical.com

DATA ENTRY! Work from anywhere. Flexible hours, PC required. Excellent career opportunity. Serious inquiries only. 1-888-240-0064 extension 444

HELP WANTED- Earn extra income assembling CD cases from home. Start immediately, no experience necessary. 800-341-6573 ext. 1395 www.easywork-great-pay.com

MAKE \$412 DAILY: Data entry positions available now. Internet access needed. Income is guaranteed. No experience required. Apply Today. www.datahome-worker.com

MOVIE EXTRAS, Actors, Models! Make \$100-\$300/day. No experience required. All looks and types needed! Get paid and have fun! 1-800-340-8404 extension 2956

OWN A MATTRESS SANITIZING BUSINESS Earn \$200+hour. Cash in on the Green Movement. Dry, chemical free process removes dust mites & harmful allergens. New to the USA. Key areas avail. 888-999-9030 or www.hygienitech.com

PART-TIME, home based internet business. Earn \$941 per month or much more. Flexible hours. Training provided. No selling required. FREE details www.k348.com

PUBLIC SALE

Notice is hereby given that the undersigned will sell at public sale on **November 20, 2007 at PS ORANGECO INC./PUBLIC STORAGE, 201 Bellevue Rd., Newark, DE 19713 at 12:00 p.m.**, the personal property heretofore stored with the undersigned by:

B021 - Valari Lawson - books, boxes, chest of drawers, coffee table, safe
D021 - Shantel Mathis - bags, boxes, clothing
E059 - Amanda Hover-Woods - love seat, microwave
E148 - Carol Garcia - clothing, couch, sports equip., toys, stereo
E124 - Mary Conkey - boxes, suitcase, totes
np 10/19,26

200 BUSINESS OPPORTUNITIES

SECRET SHOPPERS NEEDED For Store Evaluations. Get paid to shop. Local Stores, Restaurants & Theaters. Training Provided, Flexible Hours. Email Required. 1-800-585-9024 ex 6600

**RENTALS****305 APARTMENTS UNFURNISHED**

BUY HUD HOMES from \$199/mo. 4 bd, 1 ba only \$250/mo. 5 bd, 2 ba only \$200/mo. 2 bd, 1 ba only \$199/mo. More homes from \$199/mo! For BNI listings 800-366-0142 ext. T252

HUD HOMES FROM \$199/MO Buy a 4br, 2ba home only \$238/mo! 4br, 2ba only \$350/mo! For listings 800-585-3617

310 APARTMENTS FURNISHED

New Today

Affordable Motel Rms & Eff's Airport vic. & Elkton 302-312-6949/Elkton 410-392-0955/287-9877.

315 HOUSES FOR RENT

3 BD 2.5 BA Bank Repo only \$250/mo. More homes available from \$199/mo. Great area! Must see! Listings 800-366-0142 x T104

LEGAL NOTICE

THE COURT OF COMMON PLEAS FOR THE STATE OF DELAWARE IN AND FOR NEW CASTLE COUNTY IN RE: CHANGE OF NAME OF
PATRICIA M. FROST
 PETITIONER(S)
 TO
PATRICIA M. WEIDNER
 NOTICE IS HEREBY GIVEN THAT Patricia M. Frost intends to present a Petition to the Court of Common Pleas for the State of Delaware in and for New Castle County, to change her name to Patricia M. Weidner.
 Patricia M. Frost
 Petitioner
 Dated: 10/01/2007
 np 10/12,19,26

THE COURT OF COMMON PLEAS FOR THE STATE OF DELAWARE IN AND FOR NEW CASTLE COUNTY IN RE: CHANGE OF NAME OF
DEVON NICOLE SEAL
 PETITIONER(S)
 TO
NICOLE DEVON SEAL
 NOTICE IS HEREBY GIVEN THAT Devon Nicole Seal intends to present a Petition to the Court of Common Pleas for the State of Delaware in and for New Castle County, to change his/her name to Nicole Devon Seal.
 Lisa Ann Seal
 Robert E. Seal Jr.
 Petitioner
 Dated: 10/15/2007
 np 10/19,26,11/2

315 HOUSES FOR RENT

3 BR 1.5 BA only \$215/mo! More 1-4 bedrooms from \$199/mo! 4% dn, 30 yrs @ 8%! For listings 800-585-3617 Ext. T181

AFFORDABLE foreclosures from \$199/mo! 5 bd, 2 ba only \$375/mo! 3 bd 1.5 ba home only \$300/mo! Never rent again! For listings 800-585-3617 ext. T297

315 HOUSES FOR RENT

BUY HUD HOMES from \$199/mo. 4 bd, 1 ba only \$250/mo. 5 bd, 2 ba only \$200/mo. 2 bd, 1 ba only \$199/mo. More homes from \$199/mo! For BNI listings 800-366-0142 ext. T252

CLASSIFIEDS
 410-398-1230
 800-220-1230

LEGAL NOTICE

**CITY OF NEWARK
 DELAWARE
 COUNCIL MEETING AGENDA
 OCTOBER 22, 2007 - 7:30 PM**

1. **SILENT MEDITATION & PLEDGE OF ALLEGIANCE**
2. **CITY SECRETARY'S MINUTES FOR COUNCIL APPROVAL:**
 - A. Regular Council Meeting of October 8, 2007
3. **ITEMS NOT ON PUBLISHED AGENDA:**
 - A. Public (5 minutes per speaker)
 - B. University
 - (1) Administration
 - (2) Student Body Representative
 - C. Council Members
4. **ITEMS NOT FINISHED AT PREVIOUS MEETING:**
 - A. Request for an Extension of the Grandfathering for the Sale of Alcoholic Beverages for Consumption on the Premises at the Location of the Now Closed Tracks Restaurant, Located in the Multistory Commercial Building at 60 North College Avenue (TABLED 5/29/07)
5. **RECOMMENDATIONS ON CONTRACTS & BIDS:**
 - A. Contract 07-15, Curtis Paper Mill Stack Restoration
- *6. **ORDINANCES FOR SECOND READING & PUBLIC HEARING:**
 - A. Bill 07-35 - An Ordinance Amending Ch. 2, Administration Article III, Alderman, By Revising Certain Wording Regarding Probation Before Judgment
 - B. Bill 07-36 - An Ordinance Amending Ch. 2, Administration, Article III, Alderman, By Bringing the Code Into Conformity with State Law as it Relates to the Appointment of Alderman & Deputy Alderman for the City of Newark
- *7. **PLANNING COMMISSION/DEPARTMENT RECOMMENDATIONS:** None
8. **ORDINANCES FOR FIRST READING:**
 - A. Bill 07-37 - An Ordinance Amending Ch. 2, Administration, Article IX, Personnel Rules, By Providing for New Management Employee Health & Dental Insurance Coverage, Term Life Insurance Coverage, & Long-Term Disability Insurance Coverage Effective January 1, 2008 (2nd Read. 11/12/07)
 - B. Bill 07-38 - An Ordinance Amending Ch. 23, Parades & Public Assemblies by Redefining a Private Social Gathering & By Providing for Required Fines & Eviction after a Second Offense (2nd Read. 11/12/07)
9. **ITEMS SUBMITTED FOR PUBLISHED AGENDA:**
 - A. **COUNCIL MEMBERS:**
 - *1. Discussion Selection Process for City Manager & City Secretary
 - B. **COMMITTEES, BOARDS & COMMISSIONS:**
 1. Recommendation from CD/RS Committee on Activities Proposed for 34th Year (July 1, 2008 - June 30, 2009) Community Development Block Grant & 2008 January 1, 2008 - December 31, 2008) Revenue Sharing Programs
 - C. **OTHERS:** None
10. **SPECIAL DEPARTMENTAL REPORTS:**
 - A. Special Reports from Manager & Staff:
 1. Setting Date for Public Hearing of 2008 General Operating Budget
 - B. Alderman's Report
 - C. Financial Statement
 - D. Request for Executive Session re Personnel

***OPEN FOR PUBLIC COMMENT**
 The above agenda is intended to be followed, but is subject to changes, deletions, additions and modifications, as permitted under the Freedom of Information Act of the State of Delaware. Copies may be obtained at the City Secretary's Office, 220 Elkton Road, or online at www.cityofnewarkde.us
 np 10/19

**DAVE WATLINGTON**

Direct: 733-7074

dwatlington@psre.com

Office: 733-7000



For expanded information & additional photographs regarding any of the below properties, please visit the web address given under the home's description.

204 Hanover Place - FAIRFIELD

NEW LISTING

4BR, 2 1/2 Colonial on a mature wooded 1/2 acre lot offers many updates & Newark conveniences. Family rm has floor to ceiling windows w/stunning views of the private scenic backyard, updated carpet, built-in bookcases and a frpl w/brick hearth & gas logs. Updates include: high efficiency furnace, C/A, water heater, vinyl tilt-in double hung windows, outside storm doors, water softener system including reverse osmosis supply in kitch, fan & insulation in attic, gutter helmet and Verizon FIOS. \$342,500 www.psre.com/NE12050

Here's My Card

Local Businesses At A Glance

**ASPHALT PAVING****ASPHALT PAVING**

COMMERCIAL • RESIDENTIAL • LICENSED • INSURED

Owner Supervised
 Family Owned & Operated

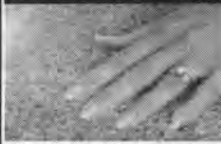
Save \$100 with
 mention of this ad
 if used by 11/31/07

302-449-1756 • 302-266-0631

FIRE WOOD**FIREWOOD FOR SALE**

Delivered
 1/4, 1/2 &
 Full Cords

610-869-3715

windyhillfarmfirewood@verizon.net**CARPET CLEANING****GIVE YOUR CARPET THE ULTIMATE SALON TREATMENT!**

SPOTLESS
 CLEANING SOLUTIONS
 MD: 443-309-9319
 DE: 302-250-2297

CARPET, UPHOLSTERY & TILE
 Offering The Area's Only
 Complete Anti-allergen
 Relief Cleaning. Spot,
 Stain & Odor Removal.
 Commercial Kitchen Vapor
 Cleaning. Residential,
 Commercial, Restaurants,
 Rental Properties.

Call For More Details
www.spotlesscleaningsolutions.com

TREES**LEYLAND CYPRESS TREES**

FREE Delivery And Planting
 6 Month Warranty

Trees 2 ft. each \$13.00
 Trees 3 1/2 to 4 ft. each \$24.00
 Trees 4 1/2 to 5 ft. each \$40.00

Other Trees Available

302-344-3696

PAINTING**INTERIOR & EXTERIOR PAINTING**

Residential - Commercial

- Painting
- Stain Work
- Power Washing
- Faux Finishes
- Gutter Service
- Wallpaper Removal

Call Today For A Free Estimate!

Galaxy Painting

Over 27 years experience • Licensed & Insured
 302-650-5061

WE BUY HOUSES

WE BUY HOUSES IN 9 DAYS!
 ANY PRICE! ANY CONDITION!
 24 HOUR RECORDED INFO

Making double payments? Divorce? No equity?
 Seeking debt relief? Job Transfer?
 Need to sell, quickly? House too big, too small? Relocating?
 We'll make your mortgage payments, be responsible for repairs and maintenance, we will pay cash when we buy, and handle all the paperwork at no expense or hassle to you.

302-521-1400

DelawareHouseBuyers.com

Call now to receive a FREE report on

how to sell your house in 9 days.

ASSISTED LIVING**Montrose Senior Living Assisted Living**

This newly renovated facility is the perfect place for your loved one. We are located in Elkton/Fair Hill.

- Approved for up to level 3
- Subsidy and Medicaid accepted
- 24/7 staff provided
- Private or semi-private rooms.
- Transportation to doctors appointments within the county

Call today to
 schedule an
 appointment for a
 tour of the facility
 at:

410-392-9993

To advertise
 your services in
 Here's My Card

Call Susie Moore

410-398-3311 ext. 3004

Cell: 302-650-0212

315 HOUSES FOR RENT

BUY A 4 BR 2 ba foreclosure! 4% dw, 30 yrs @ 8% apr. For listings 800-585-3617 ext. T182

HUD HOMES FROM \$199/MO Buy a 4br, 2ba home only \$238/mo! 4br, 2ba only \$350/mo! For listings 800-585-3617

NO RENT - \$0 DOWN HOMES Gov't & Bank foreclosures! No credit O.K. \$0 to Low Down! For listings, (800) 860-0573

New Today

RISE SUN: 4BR, 2BA rancher. C/A, 1 1/4 ac, 1 car grg, full bsmt \$1700. 443-955-2716

325 VACATION/ RESORT RENTALS

TIMESHARE!! Paying too much 4 maintenance fees adn taxes? Sell / rent your timeshare for cash. No commissions / broker fees. 866-708-3690 www.vpresales.com

365 COMMERCIAL RENTALS

New Today

ELKTON Triumph Ind. Park, 5,000-10,000 sq ft. warehouse, w/loading dock & drive-in. Ample parking & outdoor storage. Call Al Kessie at Aquafin 410-392-2300



REAL ESTATE

405 HOUSES FOR SALE

AFFORDABLE foreclosures from \$199/mo! 5 bd, 2 ba only \$375/mo! 3 bd, 1.5 ba home only \$300/mo! Never rent again! For listings 800-585-3617 ext. T297

CLASSIFIEDS
410-398-1230
800-220-1230

405 HOUSES FOR SALE

BUY A 4 BR 2 BA foreclosure! \$225/mo! Stop renting! 5% dw, 20 yrs @ 8% apr. For listings 800-585-3617 ext. T182

MOVE/RETIRE to tax free Delaware! Spacious single-family homes near beaches. From upper 100's. Brochure available. Call 302-684-8572. www.jeffersoncrossroads.com

New Today

NORTH EAST 4Br bi-level with garage. 3/4 acre, privacy fence. Relocating out of state. \$289,00 410-287-6937

415 WATERFRONT FOR SALE

GRAND OPENING sale! DEEP waterfront with direct ocean access. \$89,900 includes boat dock! Prime NC Inner Banks location. Saturday, Nov. 3rd only. Never again prices-call now 1-800-732-6601 extension 1927

420 CONDOS FOR SALE

WHITE CHAPEL VILLAGE CONDO for sale. 1 bdrm, 1 ba, garage, w/d, d/w, atrium, over 55. \$154,900. Please call 302-379-3585

430 MANUFACTURED HOMES FOR SALE

RELOCATE/RETIRE to Delaware. Fall festival of value! October 20, 2008, 12pm to 4 pm. Set sale for Mariner's Cove: waterfront manufactured housing community, homes starting at \$99,500 with 3 year boat slip. Open Mon-Fri 8:30 to 5pm and Sat. 10 to 4. 302-945-1544 CALL TODAY! Rental homes available from \$895 per month, 12 month lease.

432 MOBILE HOMES FOR SALE

MOBILE HOME Removal & Demolition Expert. We recycle & sell components. Call for removal quote. 717-464-4461 or 410-658-9588

440 LOTS/ACREAGE FOR SALE

"FIRE SALE" Owner selling homes & land in Berkely Springs, Charlestown, WV & Deep Creek Lake area. All offers considered 301-616-2349 www.americanacreage.com

BIF MOUNTAIN land bargains w/panoramic 3 state mtn views! Enjoy canoeing & trophy fishing on private riverfront park. mountainbar-gains.com

BUYER'S MARKET!! 16.3 acre mountain parcel \$99,900. Part open, part wooded, trout stream. Perked & surveyed. EZ financing! Buy direct from owner. Call today. 866-910-8832

BEST VIEW offered anywhere. 23 acre \$136,500. This has a real 50 mile view over 3 states. Beautifully wooded with easy access. You don't want to miss this one! Call now 1-800-888-1262

440 LOTS/ACREAGE FOR SALE

FLORIDA LAND owner financed- 10 acre estates, homes only, paved underground electric, \$89,900. Great value. Limited time offer www.flalnd.com Florida Woodland group, Inc. (800) 352-5263, Lic. RE Broker

MONTANA LAND Ride it, Hunt, feel it... You can't do that with stocks or CD's! 20 acres along Country Road - \$49,900 160 acre land tracts- \$625 / AC 150 ac with log cabin wraparound porch and gorgeous mtn views \$189,900 We'll finance it! "A dream come true for anyone thinking great land is out of reach" Call Western Skies Land 888-361-3006 www.Western-SkiesLand.com

NATURE LOVER'S dream! 20 + ac \$99,850. Beautiful park setting with massive hardwoods and your own hiking trails. End of road privacy! Perc done, special financing. Call now 1-800-888-1262

440 LOTS/ACREAGE FOR SALE

NORTH CAROLINA mountains. Gated community- spectacular views. Public water including fire hydrants, DSL accessibility, paved roads, nearby lakes, coming soon Phases 5-6. \$45,000+. 800-463-9980 www.theridgeat-southmountain.com

PRIVATE MOUNTAIN getaway! Owner has 2 wooded parcels with private National Forest access. Perked, buildable, views, all-weather roads. \$34,990 each or both for \$59,900. One hour from Staunton, VA. Call owner 866-363-3805

UNBELIEVEABLE Maine land bargain! 500 acres- only \$249,900. Abuts 2,000 acres of conservation land w/2 trout & salmon streams running through it. Excellent owner financing w/low down payment. Call L & S Realty 207-781-3343

This Week's FEATURED HOMES

FOR SALE BY OWNER

Creekside Condos, Newark
2 Bedrooms, 2 Bath condo fireplace garage
backs to woods, many updates.
February Settlement
302-388-1582

\$2500 Settlement Help

Come take a look at this totally renovated home in Newark. You won't be disappointed. New front door, vinyl siding, windows, railings for front porch, front concrete steps and driveway. Other features include 3 BR with new full master bath off main bedroom. Refinished hardwood and new ceramic tile floors in the all new kitchen (with 42 inch cabinets), baths and powder room. New carpet for family room with new patio sliders to rear deck. One car attached garage with inside access. Relax on the large rear deck and enjoy the tranquility of Christiana Creek. \$284,900.

Call Betty Lou Griffith at
Patterson Price Real Estate 1-800-336-5263 or
(302) 378-9550 or direct at (302) 378-2201.

Here is a great opportunity to purchase a 73+/- acre farm located in Northern Cecil County between Chesapeake City and Elkton, Maryland. \$875,000.

Call Betty Lou Griffith at
Patterson Price Real Estate 1-800-336-5263 or
(302) 378-9550 or direct at (302) 378-2201.

REDUCED

ELKTON

Come take a closer look at this lovely town home waiting for its next owner. Appliances are included with brand new hot water heater and stove. Relax on the oversized deck and brick patio and enjoy all the beautiful landscaping. Nice open floor plan. Gas fireplace in living room. Whole house sprinklers. \$185,000 Call Betty Lou at (302) 378-2201 to schedule a showing.

Call Betty Lou Griffith at
Patterson Price Real Estate 1-800-336-5263 or
(302) 378-9550 or direct at (302) 378-2201.

MOTIVATED SELLERS •

101 Woodrow Lane

5 bed. 3 1/2 bath attached garage, walk out basement. Close to Harford Co. 95, 40, 222 for easy commuting. Huge room sizes

Amenities Galore!

Real Estate Consultants

Office (410) 620-4359
Toll Free (866) 570-7823
ree1@mrsc.com

Located in Bridge Street Plaza
Next to Jakes Burgers
3 Commercial Plaza
Elkton, MD 21921

Reserve Your Space Now!

for this week's
FEATURED HOMES SECTION
Deadline: Every Monday - 12 Noon

Call: Betty Jo Trexler
Real Estate & Financial Marketing Consultant

410-398-3311
1-800-220-3311

We're at Your Service

Visit the following businesses for quality service and customer satisfaction.

515 HEALTH CARE SERVICES

FREE Diet Samples! Loose up to 30 lbs in 30 days. All natural! Super easy! 1-800-296-7796 www.nourishedyou.com

520 HOME IMPROVEMENT SERVICES

NewToday
RM INC
CONSTRUCTION / HOME IMPROVEMENT
CO. 25 yrs exp. Ref's & insurance 302-455-9233

550 LAWN & GARDEN SERVICES

PRIVACY HEDGE-FAST GROWING LEYLAND CYPRESS 2' to 3' Reg. \$29 now \$14.95 4' to 5' now \$34.95 Free professional installation & Delivery with minimum order. 1 year guarantee. (434) 349-9510 LIMITED SUPPLY

CALL OR EMAIL CHESAPEAKE CLASSIFIED
410-398-1230
800-220-1230
www.chesapeake-classified.com

560 FINANCIAL / MONEY TO LEND

\$\$\$ ACCESS LAW-SUIT CASH NOW!!! As seen on TV. Injury lawsuit dragging? need \$500-\$500,000++ within 48hrs? Low rates. Apply now by phone! 1-888-271-0463 www.cash-for-cases.com

****Free Cash Grants/Programs****
**2007 NEVER REPAY! Personal, Medical Bills, Business, School/House As Seen on T.V. Live Operators. Listings 1-800-274-5086 Ext. 240

****Free Cash Grants/Programs****
\$25,000 ++ **2007 NEVER REPAY! Personal, Medical Bills, Business, School/House Almost everyone qualifies! Live Operators. Avoid Deadlines! Listings 1-800-785-9615 Ext. 239

BURIED IN CREDIT CARD DEBT over \$10,000? We can save you thousands! Call Credit Card Relief for your free consultation 1-866-700-4343

ERASE BAD CREDIT Raise credit score within 45 days! 100% money back guarantee. Call 1-866-916-8449 ext. 991 for a free consultation. Call 24 hours!

560 FINANCIAL / MONEY TO LEND

IRS TAX DEBT keeping you awake? Local CPA firm resolves all Federal and State tax problems for individuals and businesses. US Tax Resolutions, P.A. 877-477-1108

NEED MONEY FAST? If you have pending lawsuit, I can advance you money. Call me now: 305-284-8858 Reference # 014007SH. www.freelawsuitmoney.com Free video explanation

570 Instruction

#1 TRUCK Driving School. Training for Swift, Werner & others. Dedicated/Regional/Local. Approx. \$50,000-\$70,000 yearly. Home weekly. 1-800-883-0171 Open 7 days a week.

AIRLINES ARE hiring! Train for a high paying Aviation Maintenance career. FAA approved program. Financial aid if qualified. Job placement assistance. Call Aviation Institute of Maintenance. (888)349-5387

ATTEND COLLEGE online from home. Medical, business, paralegal, computers, criminal justice. Job placement assistance. Financial aid and computer provided if you qualify. Call 866-858-2121 www.Online.Tidewater.Tech.com

580 Misc. SERVICES

ARE YOU Frustrated with dial-up internet? HughesNet, leading provider of high-speed satellite, reliable broadband service available in your area! \$0.00 upfront costs. Call now 800-961-3639 to schedule your appointment today! Promo code: Coconut

DOG GROOMING - QUALITY! Large / small breeds. Fairhill / Calvert area. 410-620-7751

DIRECTV Satellite television. FREE equipment, FREE 4 room installation. FREE HD or DVR receiver upgrade and 4100 cash back! Programming packages from \$29.99/mo. Call 1-800-380-8939

NewToday
Photography
For Any Occasion
Real Estate, family celebrations, special events. Reasonable prices. Call Sandie 302-438-8810 images.sc@comcast.net

STOP RECRUITING! Our exciting company has professional business advisors who close your prospects for you Superior Home-based business opportunity with unlimited income potential!! For free details visit: www.onlinebizsuccess4u.com Call now 863-804-0925

440 LOTS/ACREAGE FOR SALE

WEST VIRGINIA Streamfront Property Own SIX ACRES on the Middlefork Trout Stream in Elkins, West Virginia. Just \$39,990. This parcel won't last! Call owner 866-391-9278

WEST VIRGINIA hunting cabin 2 1/2 acres joins 900,000 acres on the Monongahela National Forest. Near Dolly Sods Wilderness area! \$79,990 Water, perk, all-weather roads. Call owner 866-403-8037

450 REAL ESTATE SERVICES

DO YOU WANT TO sell your house? But it needs lots of work? Local company is looking to buy single-family homes in need of improvement. Quick settlements. Call 443-553-4103 and tell us about your house.



602 ANIMALS/PETS

AKC GERMAN SHEPHERD PUPS- Farm raised, European bloodline. shots & wormed. Call for prices. 717-529-6213

RECLINE, RELAX & RESELL

602 ANIMALS/PETS

AMERICAN Pitbull Terrier, Red Nose, male, 9 mos. old, registered with Bona Fide Kennel Club. Friendly, great with people, all shots current. Great lineage! Complete records available. Can be bred. \$800 or best offer. Please Call for more information: 410-688-3395

BEAUTIFUL CATS free to loving homes only, males & females Moving can't keep call Connie at 410-378-8921

BEARDED DRAGON LIZARDS 1 1/2 years old. Healthy & very tame. \$250 or best offer. Call after 1pm 443-350-0244

GREAT DANE PUPS 7 black. 12 weeks old. \$200 443-309-9254 ask for Scott

KITTENS free to good home litter trained ready to go. Call 443-466-4273

KITTENS free to good home many to choose from, litter trained & ready to go 410-392-2391

KITTENS: Free to good homes only. Adorable and many colors available. Please call 443-566-0421

KITTENS (7) Very cute & friendly! 3 tiger striped, 4 grey & white. Born August 3rd. Litter trained. Free to good homes. Earleville area. Call 410-275-2645 leave message.

Parrotlets Parrots \$200 for pair call after 1pm 443-350-0244

PUPPIES comes w/ vet papers, socialized w/ children, dogs & cats home raised. Ready Nov 3rd Call 410-287-3279

PIT BULL PUPS Blue blood lines. 2 males, 1st shots and declaws removed. Ready to go-good homes only. \$400 732-673-0735

NewToday
SHELTIE male 16 wks no papers. Pom-Poo 37 wks \$200 each. Call 610-316-7997

TOY POODLE PUPS Shots & wormed. Family raised. Health guaranteed. \$400 each. 717-768-0744

YELLOW LAB PUPS- ACA registered. Shots, wormed & family raised. Ready 10/18. Females \$300, males \$250. Call 717-548-0869

CALL OR EMAIL CHESAPEAKE CLASSIFIED
800-220-1230
410-398-1230
www.chesapeake-classified.com

610 ANTIQUES/ART

WANTED ANTIQUES for purchase or consignment by New England Auction House. Victorian, Americana, Jewelry, coins, silver, lamps, clocks, fine art, etc. One item or house full! 1-800-887-1206 www.CYRAUCTION.COM

615 APPLIANCES

NewToday
GE SIDE BY SIDE refrigerator 26.7 cu ft, ivory, with ice/water dispenser & beverage center. \$600 410-996-9640

625 FURNITURE/FURNISHINGS

MEMORY FOAM Therapeutic Nasa-Visco mattresses wholesale! As seen on TV. Twin \$299, Full \$349, Queen-\$399, King -\$499. All sizes available! Dormia-Comfortaire Electric adjustable \$799.00 Free Delivery. 25-year Warranty. 60 night Trial. 1-800-ATSLEEP (1-800-287-5337) www.mattressdr.com

NewToday
OAK LIKE SLEIGH BED Room set 7pc good cond asking \$300 call 443-945-0390

630 FIREWOOD

FIREWOOD \$175/cord all 1 yr seasoned oak & others Quick delivery lic# 00-3352 443-309-3766

640 GENERAL MERCHANDISE

ABSOLUTELY NO COST to you!! All brand new power wheel chairs, hospital beds, and scooters. Immediate delivery. Call toll free 1-888-998-4111 to qualify

FREE WEIGHT LOSS find out to get your free bottle. With Hoodia, Vitamin C and Protein. Please, limit 1 per household + S/H call 1-800-957-9813

GAS GRILL 3 burners in mint cond comes with cover \$100 12x12 tent \$100 call 302-455-1249

FARM MARKET

730 PLANTS/TREES

Leyland Cypress Trees 3 1/2' - 4' \$25 4 1/2' - 5' \$40 price includes delivery, planting & 6 mo. warranty. Also, white pines & arborvitae Call 410-928-3707.

CLASSIFIEDS
410-398-1230
800-220-1230

Visit one of these local dealers and drive home happy!

FORD ADVANTAGE AUTOLAND 560 E. PULASKI HWY. 410-398-3600 1-800-899-FORD	VOLKSWAGEN Smith VOLKSWAGEN LTD. 4304 Kirkwood Highway, WILMINGTON, DE 302-998-0131 Drivers wanted	JEEP ADVANTAGE AUTOLAND 601 E. Pulaski Hwy Elkton, MD 1-800-420-JEEP	FORD BAYSHORE 4003 N. DuPont Highway Route 13 at I-495 800-241-6644 NO HASSLE LOW PRICES LARGE SELECTION
TOYOTA TOYOTA WORLD 400 Ogletown Rd. Newark DE, 19711 CECIL COUNTY MARYLAND Why come to us? We'll come to you! FREE PICK-UP AND DELIVERY SERVICE 1-302-368-6262 1-888-237-8434 CALL FOR A BROCHURE ASK FOR JULIE EXT. 521 newarktoyotaworld.com	DODGE ADVANTAGE AUTOLAND 410-392-4200 800-394-2277	Call Laurie To Advertise HERE	NEW & USED AUTOMOBILES CHECK OUT OUR Website at www.advantageautoland.com ADVANTAGE AUTOLAND Jeep
Call Laurie To Advertise HERE	STAPLEFORD'S CHEVROLET OLDSMOBILE 302-834-4568 CHEVROLET ST. GEORGES, DE	Call Laurie To Advertise HERE	ADVANTAGE AUTOLAND ROUTE 40 • ELKTON, MD

REACH OVER 325,00 READERS WEEKLY!
Call Laurie at 800-220-3311 to Advertise Here!

LEGAL NOTICE

THE COURT OF COMMON PLEAS FOR THE STATE OF DELAWARE IN AND FOR NEW CASTLE COUNTY
IN RE: CHANGE OF NAME OF
Juanita A. Cruz
PETITIONER(S)
TO
Juana Ayala-Lozada
NOTICE IS HEREBY GIVEN that Juanita A. Cruz intends to present a Petition to the Court of Common Pleas for the State of Delaware in and for New Castle County, to change his/her name to Juana Ayala-Lozada.
Juanita A. Cruz
Petitioner
Dated: October 10, 2007
np 10/19,26,11/2

LEGAL NOTICE

THE COURT OF COMMON PLEAS FOR THE STATE OF DELAWARE IN AND FOR NEW CASTLE COUNTY
IN RE: CHANGE OF NAME OF
Monét Nicole Hough
PETITIONER(S)
TO
Monét Nicole Williams-Hough
NOTICE IS HEREBY GIVEN that Monét Nicole Hough intends to present a Petition to the Court of Common Pleas for the State of Delaware in and for New Castle County, to change his/her name to Monét Nicole Williams-Hough.
Monét Nicole Hough
Petitioner
Dated: 10/9/2007
np 10/19,26,11/2

Limited Time Offer!
Builder Discounts on Quick Delivery Homes! Visit Site for Details

Sunnyside Village
Pond Lots Now Available!
Single family homes in Smyrna from
\$235,900
Built by Lenape Builders
3 bedroom, 2 bath, 1 car garage, full basement.
Site Office: 302-653-7700
Newark Office: 302-733-7000
*Limited time only: incentives subject to change without notice.
www.psre.com/NE11384

Open Thurs-Mon, 12-5 or by appointment

Patterson Schwartz
REAL ESTATE
45 YEARS COMMITTED TO OUR COMMUNITY

FINAL PHASE!

DIRECTIONS: Rt. 13 S thru Smyrna to right at Carter Rd. (Food Lion); L on Villanova Ln; R on Ramunno Dr., follow to end of street. Or Rt. 13 N to left on Carter Rd. Or Rt. 1 to exit 114 to Rt. 13 S for 1/10 mile to right on Carter Rd.



TRANSPORTATION

POWER BOATS

18' TAHOE '04 Ski & fish. 4.3 V6 merc cruiser w/ trailer. Garage kept. \$12,000 410-398-7178

NewToday

25' SEARAY SUNDANCER '84 350 merc cruiser, 260hp, '87 Load Rite trailer. \$8,000 b/o 302-376-8070

RECLINE, RELAX & RESELL

YARD SALE YARD SALE YARD SALE YARD SALE YARD SALE YARD SALE YARD SALE YARD SALE YARD SALE YARD SALE

660 YARD SALES

NewToday

BASKET SALE!

Newark 469 Salem Church Rd, at Salem United Methodist Church
Sat Oct 20th 9am-5pm
Basket sale! Pottery, wrought iron, hand bags, door prizes, & church accepting can goods for Fall Food Pantry!

Multi Family

BEL AIR

HUGE SALE

Sat. Oct. 20th at 8am.
We are back but at a different location. You can find us at **2902 Creswell RD, Bel Air (off 543)**. Look for the yellow signs.
We have antiques, furniture, pictures, household items, women's junior, clothing, tons of childrens/toddler clothes & much more!
Bargain Bin!
We are cleaning out the attic and the garage!
COME CHECK US OUT!

Classified is the key to more sales.

660 YARD SALES

YARD SALE

CHARLESTOWN MANOR 117 Edgewater Ave, directly in front of Beachcomber. Fri & Sat Oct 19th & 20th, 9am-?

NewToday

Multi Family

CHESAPEAKE CITY South side, 3rd Street & Walnut Dr near the water tower. Saturday, October 20, 8am-? Nice mixture of everything!

NewToday

ELKTON 234 Johnstown Rd off Rt 213. Saturday Oct 20th 8am-5pm. Toys, comic books, VHS movies. Thousands of CD's and tapes from closed store at half price. Boat anchor, etc. Rain date Oct 27th. For directions call 443-907-2367

NewToday

Multi Family

ELKTON 12 Hickory Lane (townhouses off of Muddy Lane) **Huge Multi-family Yard Sale Sat. 10/20 8a-1p**

NewToday

ELKTON 125 Maffitt, St., Sat Oct 20 8am-1p h/h, dolls, jewelry, collectibles, & more Rain date Sat 10/27

660 YARD SALES

NewToday

Community Wide

ELKTON: Whispering Pines MHP. on Rt 7. Sat, Oct 20, 9am-3pm. Assortment of items. Food available.

NewToday

YARD SALE

ELKTON 60 Long Dr. Rt 213 to circle. Leeds Rd to 60 Long Dr. **Sat. 10/20 8a-2p** Clothes all sizes & seasons, & Household items.

YARD SALE

ELKTON- 229 Mackall Street off of West Main. Sat Oct 20th 8-2. Household, music, clothes. 1st ever garage sale. Lots of bargains!!

NewToday

Community SALE

ELKTON 700 Skipjack Court in Villas At Whitehall. off Rt 213 behind Redners. Sat, Oct 20, 9am-2pm. Household, lots of misc, collectibles, clothes, dishes, misc. Rain date 10/27.

RECLINE, RELAX & RESELL

660 YARD SALES

NewToday

Don't Miss This One

ELKTON 110 Independence Dr, Washington Woods (off Old Baltimore Pike) **Sat Oct 20 8-3pm** The Ultimate Yard Sale! Country items, Christmas, h/h, lots of baby items, toys & much more. Don't miss this one!

NewToday

Multi Family

ELKTON 115 Jarmon Rd. (Rt 40 to Melbourne to West Thompson Estates) Saturday & Sun, Oct 20 & 21, 8am-? 100 year old soup tureen, file cabinets, phone desk, Mustang bra, lots of unusual & old items + regular stuff.

NewToday

YARD SALE

ELKTON 42 Winchester Dr, in West Creek Village Dev, Sun Only 10/21 10am-3pm slide scanner, computer cables, software, peripheral acc's, Power Mega Phone, replica phonograph & records tach/dwell meter, tachometer tool box full of vacuum tubes resistor collection & so much more call 410-398-4906

CHESAPEAKE CLASSIFIEDS
410-398-1230 800-220-1230
www.chesapeakeclassified.com

660 YARD SALES

NewToday

Multi Family

FAIR HILL - 242 Fair Hill Dr **Sat. 10/20 7:30-12:30pm** 2 families, h/h, clothes & misc items.

NewToday

NEWARK 453 West Chestnut Hill Rd. (Elkton / Newark Rd to Otts Chapel Rd, left to West Chestnut) **Sat, Oct 20, 9am-4pm.** Antique furniture, jewelry, misc h/h.

Multi Family

NORTH EAST 523 Red Toad Rd, **Fri 10/19 & Sat 10/20 8am-2 pm** Multi-family

NewToday

NORTH EAST / ELKTON AREA 896 East Old Philadelphia Rd between the landfill and Bacon Hill Store. **Fri, 10/19 & Sat, 10/20, 8am-?** **HUGE INSIDE SALE!** Tools, h/hold, antiques, everything must go! Rain or shine

NewToday

YARD SALE

NORTH EAST 98 Old York Court, off Shady Beach Rd, **Sat 10/20 8am-12:30pm** lawn items, bicycles & more!

660 YARD SALES

Multi Family

NEWARK, DE - Head of Christiana Presbyterian Church 1100 Church Rd **Monster yard sale! Sat 10/20 8-1p indoor out door sale rain or shine** 100's of items lg & sm come early for good choices & enjoy a cup of coffee & maybe a cookie or two From Newark take Rt 273 West toward MD line We are located on Church Rd and down the hill by the huge cemetery. If you are traveling east, pass Nutters we are on the right. All proceeds benefit disaster relief efforts locally & other places of need.

NewToday

MOVING SALE

NORTH EAST 82 Maxwell Ln. Right on Red Toad off Rt 40, right on Fineburg Ln, right to Maxwell, Sat & Sun, Oct 20 & 21, 8am-? Living room sofa & chair, treadmill, computer hutch & desk, garage items, much more. Everything must go!

HUGE SALE

NORTH EAST 587 West Old Philadelphia Rd old Rt 7 btwn NEast & Charlestown. Indoor, heated. **Sat 10/20. 8-?** **HUGE BLOWOUT YARD SALE,** clothes, h/h, antiques, lg perfume bottle collection 200+ bottles movies too much to list call 410-287-3219 or 410-441-9048 for info

CALL OR EMAIL CHESAPEAKE CLASSIFIED
800-220-1230
410-398-1230
www.chesapeakeclassified.com

NEWARK Head of Christiana Presbyterian Church 1100 Church Rd **Monster yard sale! Sat 10/20 8-1p indoor out door sale rain or shine** 100's of items lg & sm come early for good choices & enjoy a cup of coffee & maybe a cookie or two From Newark take Rt 273 West toward MD line We are located on Church Rd and down the hill by the huge cemetery. If you are traveling east, pass Nutters we are on the right. All proceeds benefit disaster relief efforts locally & other places of need.

PERRYVILLE. 100 Bayside Dr. Oct. 20, 9am-3pm. Furniture, clothing, tools, toys, wall art, baby items, etc.

PORT DEPOSIT. 411 Cokesbury RD, Sat. Oct 27th 8 to 2pm. Cribs, jars, records, albums & more good stuff.

NewToday

Multi Family

PERRYVILLE 13 Chesapeake Landing Dr, off Rt 40, **Sat 10/20 8am-?** **HUGE Multi-family Yard Sale!**

NewToday

Multi Family

PERRYVILLE 475 Franklin St. off Rt 222. Saturday, October 20, 8am-? Clothes infant - adult and much more!

RISEING SUN- 481 Biggs Hwy, Oct 20th, 9-3. Lots of old dolls, doll accessories, clothes, collectibles, band saw and much more.

815 POWER BOATS



2001 MAINSHIP PILOT SEDAN

Yanmar 350 hp Turbo Diesel, 5kw Next Generation generator, sidepower bow thruster, hydraulic steering, Windlass, AC w/reverse cycle heat, DGPS Chartplotter/FF, Icom DCS VHF radio, TV/VCR, cable TV/ phone hook ups, frig, freezer & elec. stove. New for '07, protective barrier coat and bottom paint. Located at the CC Yacht Club, Cape Coral, FL. Airfare will be reimbursed to the buyer upon completion of sale!

\$149,900
Call 239-549-9996 or email inquiries to: waterbird@comcast.net

845 CAMPERS/ POP-UPS

CIERRA TT '95, 31', dble slide, a/c, heat, deck, grill in Elkton area \$5500 call 410-459-3868

850 MOTORCYCLES/ ATVs



'06 250 CC MOTORCYCLE

Only 600 miles. Only \$1,600 302-834-1700 or 302-312-5452

TRIUMPH BONNEVILLE '77 750cc 5 spd, runs & in good cond 9200 mi., asking \$3200 or b/o 410-287-2576

870 TRUCKS/SPORT UTILITY VEHICLES

CHEVY SILVERADO 1990 V8, white, auto, p/w, p/l, cruise control, long bed \$1800 or best offer. 443-907-4831

JEEP CHEROKEE

96 Automatic, 4.0 high output, 2 wheel drive. 150k. \$1,800 OBO. Call: 410-920-1578

878 ANTIQUE AUTOS

1934 FORD 5 Window Coupe. On rolling frame, many parts w/car. \$10,300. 410-658-3984

880 AUTOS

SHELBY MUSTANG GT 500 2007. Super charged 6 speed, 5.4L, 500HP, leather interior, all options. Very rare color. One of the first made. ONLY 2900 miles. Best Offer. 410-592-6680

RECLINE, RELAX & RESELL

880 AUTOS

\$500 POLICE IMPOUNDS. Cars from \$500! Tax Reps, US Marshal and IRS sales. Cars, Trucks, SUV's, Toyota's, Honda's, Chevy's and more! For Listings: 1-800-298-1768 x1010

880 AUTOS

\$500 POLICE Impounds! Hondas, Acuras, Nissans, Jeeps, Chevys, etc. Cars/ Trucks/ SUV's from \$500! For listings 800-585-3563 xL218

880 AUTOS

\$500 POLICE Impounds! Hondas, Acuras, Nissans, Jeeps, Chevys, etc. Cars/ Trucks/ SUV's from \$500! For listings 800-585-3563 xL218

880 AUTOS

DONATE YOUR CAR Special kids fund! Help disabled children with camp and education. Free, fast towing. Its easy and tax deductible. Please call today 1-866-GIVE-TO-KIDS

880 AUTOS

New Today
PONTIAC GRAND PRIX SE '02 99K, runs great, CD player. \$5,000 410-658-4538

AN UPDATED LOOK AT MORTGAGE RATES...



ARDENT TITLE COMPANY

Susan M. Knight
Settlement Agent

149-151 E. Main Street • Elkton, MD 21921
(410) 996-9780 • Fax (410) 996-9784
info@ardenttitle.com

CLASSIC MORTGAGE CORP. CMC

WHERE GREAT RATES ARE MET WITH GREAT SERVICE!

302-366-1661
ALL TYPES OF MORTGAGES FOR ALL TYPES OF CREDIT.
SERVING DE, MD & PA

Reserve Your Space Now!

Call: Betty Jo Trexler
Real Estate & Financial Marketing Consultant
410-398-3311
1-800-220-3311

LENDER	Phone Number	15 YEAR Fixed % PTS. APR	30 YEAR Fixed % PTS. APR	1 YEAR ARM % PTS. APR	3 YEAR ARM % PTS. APR	5 YEAR ARM % PTS. APR
1ST STATE MORTGAGE	(410) 398-6272	5.375/3/5.737	5.625/3/5.99	All Credit Considered. Residential, Commercial & Investment Lending. *50 Yr Mortgage Available		
APGFCU	1-888-LOAN-391	6/1/6.231	6.375/1/6.516	5.250/1/6.866	5.5/1/6.569	5.750/1/6.493
BAY FIRST BANK	(410) 392-4000	6.25/0/6.3324	5.875/2/6.1231	N/A	6.625/0/6.7136	6.625/0/6.7353
CECIL BANK	(410) 398-1650	*PLEASE CALL FOR RATES				
CECIL TRUST MORTGAGE & LOAN	(410) 287-1515	5.5/1/5.628	5.875/1/6.005	5.5/1/5.628	5.625/1/5.823	5.75/1/5.879
CHRISTIANA HOME LOAN	(877) 777-0795	5.25/3/5.63	5.75/3/6.10	When truth & trust matter! visit us at: www.christianahomeloan.com		
CLASSIC MORTGAGE CORP	(302) 366-1661	6/0/6.21	6.25/0/6.5	N/A	5.5/0/5.64	6/0/6.19
PNC	(410) 620-0183	PLEASE CALL FOR RATES				
DESTINY HOME MORTGAGE	(410) 620-4197	*PLEASE CALL FOR RATES destinyhomemortgage.com				
HARFORD BANK	(410) 642-9160	6.25/0/6.432	6.5/0/6.697	*PLEASE CALL FOR RATES		
MBA FINANCIAL SERVICES	(410) 287-5600	Please call for quotes. Many programs. All credit considered.		100% financing available-Interest only options! 1st time home buyers, 2nd homes & investment properties.		
NBRS FINANCIAL	(410) 658-5504	Rates change daily. Call for details.		7.05/1/8.097	7.091/1/7.856	7.29/1/7.808
PEOPLES BANK OF ELKTON	(410) 996-2265	6.375/0/6.52	6.625/0/6.71	7/0/6.981	6.625/0/6.9	6.5/0/6.814
SUNTRUST MORTGAGE	(800) 232-3320	6.5/0/6.70	6.625/0/6.75		6.125/1/6.75	6.25/1/6.95
WILMINGTON MORTGAGE	(410) 398-5607	PLEASE CALL FOR RATES.		FREE PRE-APPROVAL - NO APPLICATION FEE		
WILMINGTON TRUST	(302) 651-8848	5.875/3/6.35	6.375/3/6.67	5.5/1/7.07	5.75/1/6.86	6.5/0/7.09

These rates, effective 10/9/07, were provided by the lenders and are subject to change. Other terms may be available. These rates are for existing first mortgages. Points may vary on refinances. Down payment requirements may vary. *Caps and length may vary on adjustable rates. The APR is based on a \$100,000 mortgage with a 20% down payment and is in addition to interest included points fees & other credit costs. To list your mortgage rates, call our Real Estate Sales Division at 410 398-3311 or 1-800-220-3311. These mortgage rates are a paid advertising feature of the Cecil Whig

Reserve Your Space Now!

Call: Betty Jo Trexler
Real Estate & Financial Marketing Consultant
410-398-3311
1-800-220-3311

WILMINGTON MORTGAGE OF ELKTON

BETTER RATES AND MORE
OPTIONS THAN YOUR
BANK OR CREDIT UNION



Phil Davis

205 East Main Street,
Elkton, MD 21921
Office: (410) 398-5607
Toll Free: (800) 607-5607



Kim Pettitt

REAL ESTATE Services



CHESAPEAKE BAY
349 E. Pulaski Hwy.
Elkton, MD 21921

Direct: (443) 553-6726
Office: (410) 398-9000
E-mail: 511bill@mrts.com



BILL STANDIFORD
Associate Broker, GRI
Cecil County Specialist



Kim Swyka
Mortgage Financial
Consultant
Phone: 410-287-1829
Cell: 443-553-0101
www.bayfirstbank.net

Get an Edge on Other Buyers by Meeting with Kim

She will....

- Explain the process to increase your confidence
- Educate you on our affordable housing mortgage options and competitive rates
- Walk you through... from application to settlement

CecilBANK
www.cecilbank.com

410-392-LEND

Call Sandy Feltman or John Ness for all your financing needs!

Local Lending with Local Servicing • Fixed and Adjustable Rate Mortgages
Construction to Permanent • 100% Financing • Lot Loans • Bridge Loans
40 YEAR TERM AVAILABLE • FREE PRE-QUALIFICATION • NO APPLICATION FEES

To
Reserve
Your
Space
Here
Call
Betty Jo
Today

410-398-3311

Ext. 3090

800-220-3311

Ext. 3090



Ever Dreamed of Being Your Own Boss

It's easier than you think. In fact, if you want to control your own destiny by starting your own business, become a licensed real estate professional. Start your own business in one of the most lucrative industries in the U.S. with low-risk and minimal capital investment. Earn high income your very first year. Visit www.longandfoster.com/careers for list of evening classes in our Elkton office. Call or email us for a **FREE** info packet on getting your real estate license. 410-398-0660 and/or paula.rineer@longandfoster.com

Donald Rice

MHBR#175

Commercial & Residential Construction By...

BAYSIDE DEVELOPERS
INC.

Featuring "Superior Walls"
Insulated Foundations

Servicing Cecil County for over 20 years

410-275-6000

Fax 410-275-6103

www.baysidedevelopers.com



FIND

YOUR NEW ADDRESS
AT OUR ADDRESS

pattersonschwartz.com

Visit us online to search all homes for sale...
and find your place to call home.

For more information, photos and maps visit the web address given for any of these homes.



ROSEVILLE PARK
\$99,900 Building lot in Roseville Park. 239-3000
www.psre.com/3700



SHERWOOD FOREST
\$259,900 Nice 4BR, 1½B Bi-Level w/ large fenced yard & garage. 239-3000
www.psre.com/3704



RUTLEDGE
\$259,900 3BR, 1½B w/1 car garage & media room. 239-3000
www.psre.com/3730



SOUTHRIDGE
\$259,900 Custom designed, all neutral condo in 55+ community w/2 car garage. 733-7000
www.psre.com/3699



THE WOODS
\$299,500 Spacious 4BR, 2½B Colonial w/1 car garage and fireplace. 429-4500
www.psre.com/3750



204 Hanover Place - Fairfield
\$342,500 Updated 4BR, 2½B Colonial on ½ acre. DIR: Rt 273 (Nottingham Rd) to R on Delrem Dr; R on Windsor Dr; L on Country Club Dr; R on Hanover Pl. 429-4500
www.psre.com/5430



HICKORY WOODS
909 Sugar Pine Dr.
\$389,900 5BR, 3B 2-story on .88 acre w/pool. 733-7000
www.psre.com/3607



ACADEMY HILL
\$399,900 5 year old Ranch w/large Trex deck, 2 car garage and private 1/3 acre lot 733-7000
www.psre.com/3461



NEWARK
\$525,000 Classic 4BR, 2½B in established neighborhood offers charm, lg rooms, modern amenities. 475-0800
www.psre.com/3276



TENBY CHASE
59 Tenby Chase Dr.
\$599,000 Beautiful 4BR, 3B Ranch. 429-4500
www.psre.com/7439



Brandywine 475-0800
Dover 672-9400
Greenville/Wilmington 429-4500

Hockessin
Middletown
Newark

239-3000
285-5100
733-7000

Elkton
Toll Free MD
Sussex Cnty

(410) 392-6500
800-220-7028
302-644-8656

Willowdale
Toll Free
New Homes

610-347-6000
800-220-5200
285-5100

