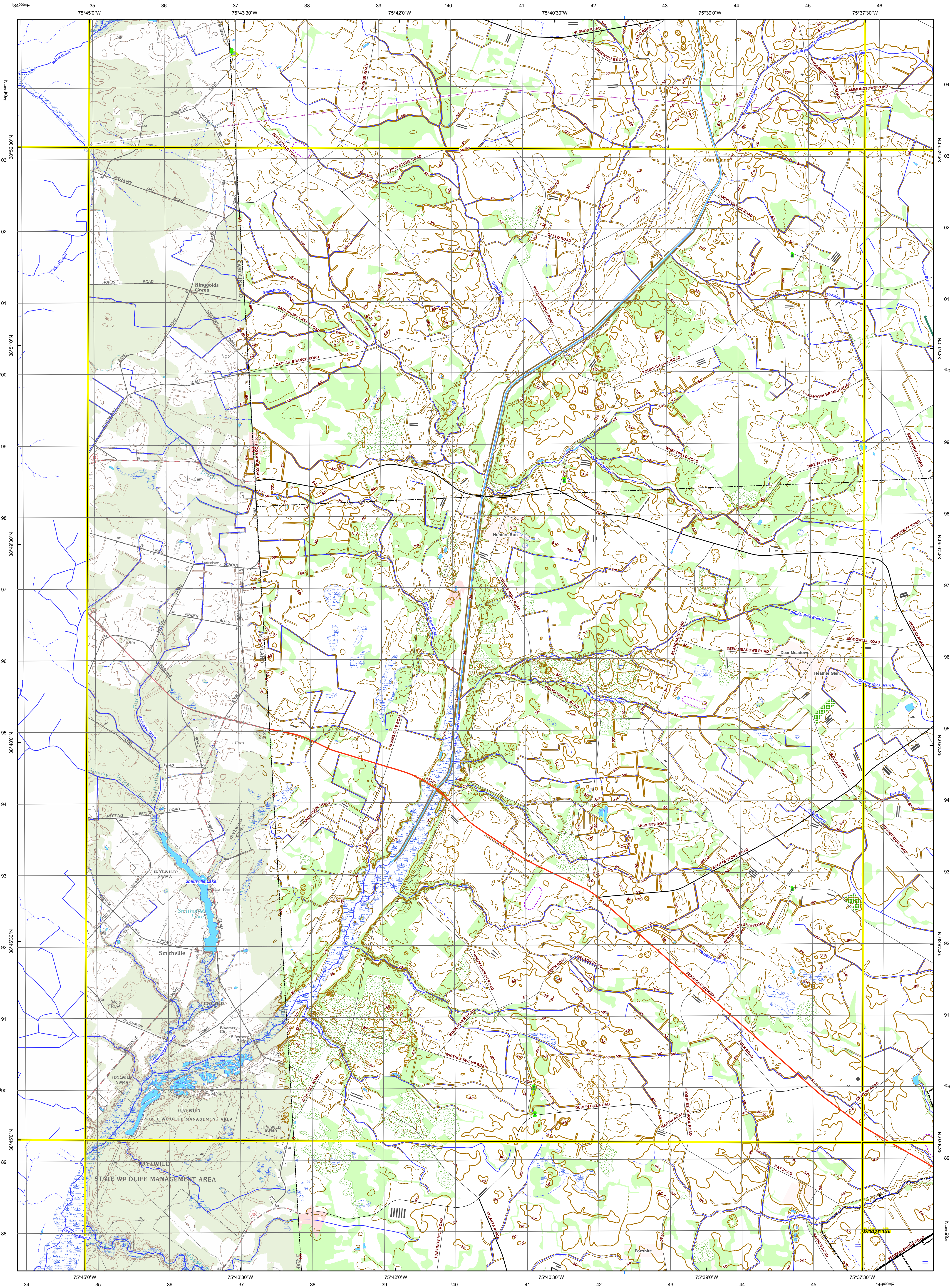
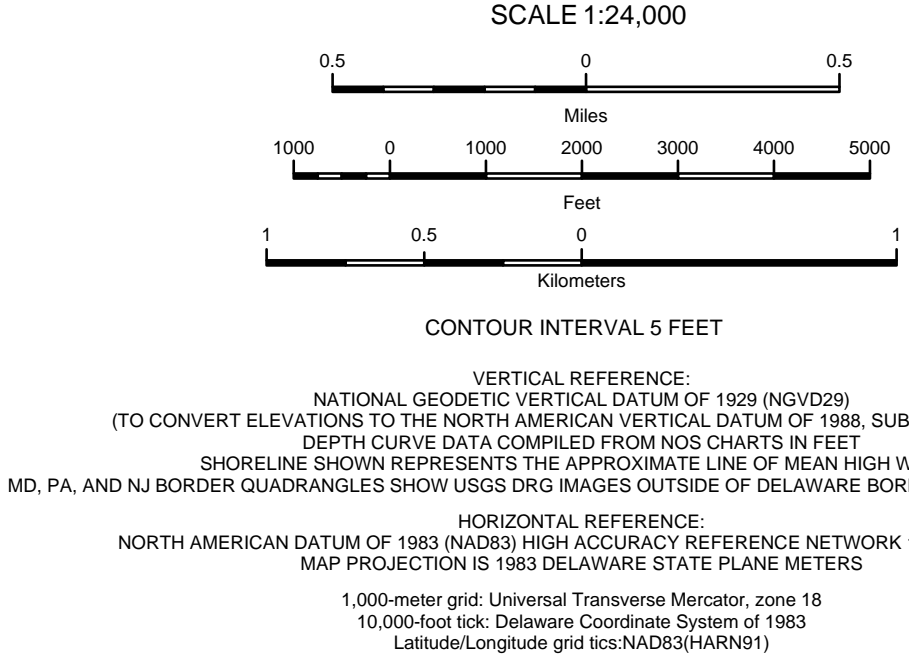




Hickman Quadrangle

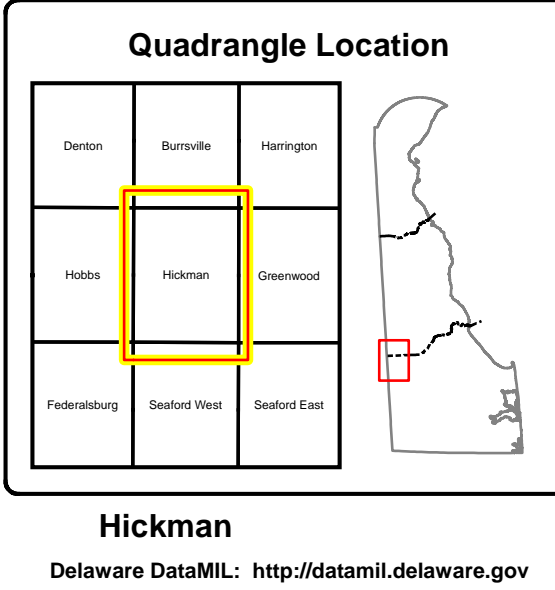


- Legend**
- Boat Ramp
 - Campground
 - Church
 - Gaging Station
 - Gate
 - Helpad
 - Sand/Gravel Pit
 - Picnic Area
 - Tank
 - Tower
 - Well
 - Boundary Monument
 - Boardwalk
 - Boat Ramp
 - Embankment
 - Fence Line
 - Landing Strip
 - Pier/Breakwater/Jetty
 - Pipeline
 - Power Transmission Line
 - Railroad or Siding (Underpassing)
 - Railroad or Siding
 - Municipalities
 - Swamp
 - Rapids
 - Urban
 - Orchards/Nurseries/Horticulture
 - Shrub/Brush Rangeland
 - Federal Lands
 - Beach/Sandy Area
 - Federally Administered Area
 - State Lands
 - Park
 - Airport
 - Agricultural Field
 - Building
 - Cemetery
 - Landmark Site
 - Oil Sump/Sludge Pit
 - Pier/Breakwater/Jetty
 - Pipeline Regulation Station
 - Power Site
 - Raceway
 - Railroad Yard
 - Refinery/Industrial Site
 - Rest Site
 - Substation
 - Tank
 - Water Treatment Site



Map Produced by the Delaware DataMIL
Using the following Data Sources

USGS Delaware Geographic Names 2006
USGS Delaware Boundary Monuments 2002
USGS Delaware Boundaries - County Boundary (lines) 1993
USGS Delaware State Boundary (line) 2002
USGS Delaware Boundaries (area) 1993
USGS Delaware Miscellaneous Features (points) 1993
USGS Delaware Miscellaneous Features (lines) 1993
USGS Delaware Miscellaneous Features (areas) 1993
USGS Delaware Railroads 1993
USGS Delaware Contours 1993
USGS 7.5-minute Digital Raster Graphics 1992-93 (DRG)
Delaware 7.5-minute Quadrangle Index 2002
National Hydrography Dataset (NHD) - High Resolution -
DE Lakes Ponds Areas 2005
National Hydrography Dataset (NHD) - High Resolution -
DE Rivers and Streams 2005
Delaware Municipal Boundaries 2006
2002 Delaware Land Use and Land Cover
Delaware Private Schools 2005
Delaware Public Schools Layer (pubschl) 2005
DelDOT Centerline for Delaware 2001
New Castle County Communities 2005
Kent Communities 2006
Sussex County Communities 2005



Disclaimer
This Delaware DataMIL 7.5-minute topographic map replaces the USGS 7.5-minute Primary Map Series for the State of Delaware. Reasonable efforts have been made by Delaware DataMIL staff to verify that this map and the digital data provided herein accurately portray the source data used in its preparation; however, this map may contain omissions and errors in scale, resolution, rectification, positional accuracy, development methodology, and other circumstances. This map is also site specific. Data information on the individual layers comprising this map are given as part of the metadata of this map. Additional information on these layers may be found at <http://maps.dnrm.state.de.us/Portal>. This map was prepared for a scale of 1:24,000 and should not be used at larger scales, nor should this map should be used for navigational, engineering, legal, or any other site-specific use. Nothing contained herein shall be deemed an expressed or implied waiver of the sovereignty immunity of the State of Delaware or its duly authorized representatives, agents, or employees.