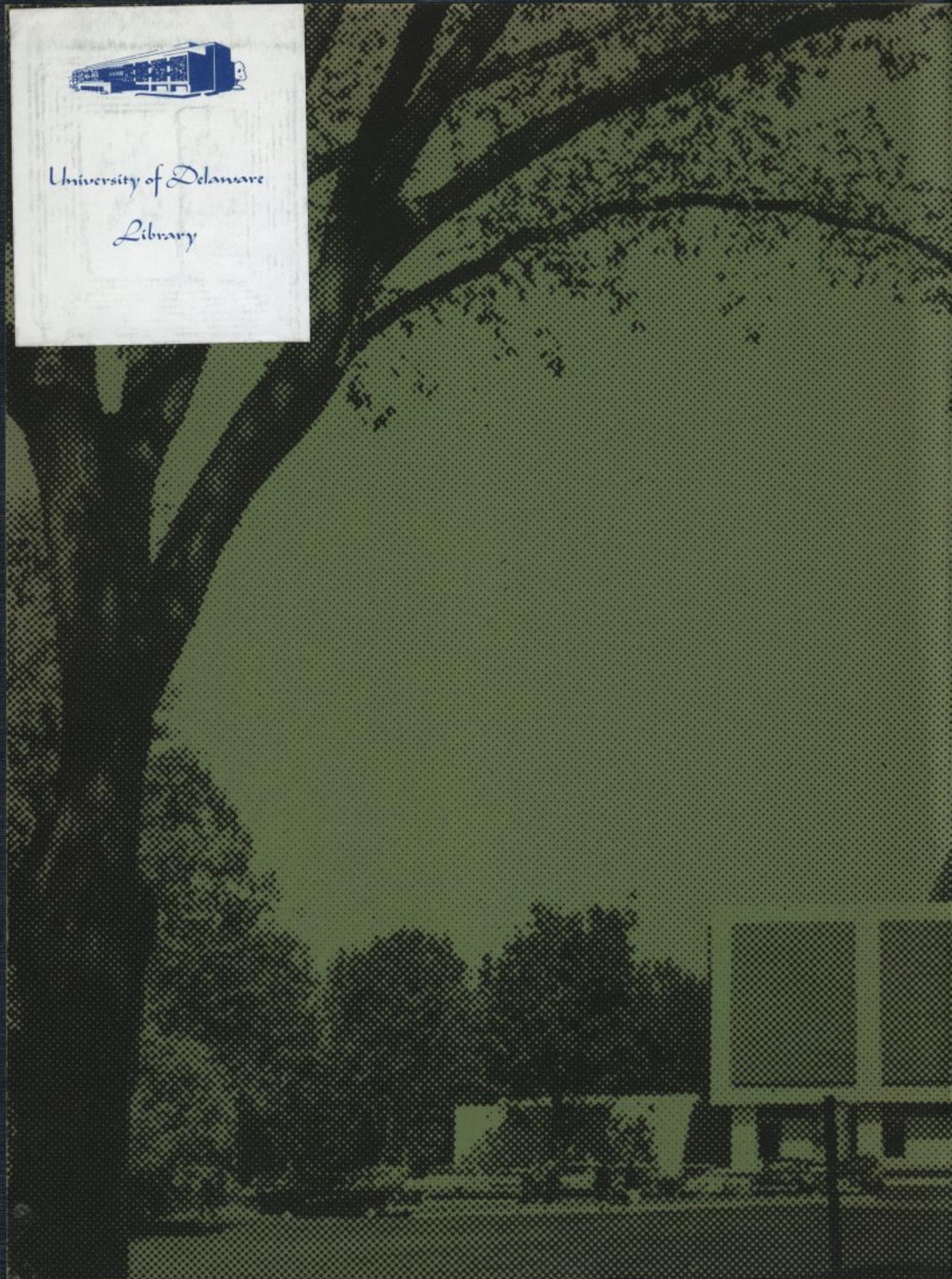




en 1964 university of delaware blue hen 1964
university of delaware blue hen 1964 univer
aware blue hen 1964 university of delaware



University of Delaware
Library







UNIVERSITY OF DELAWARE LIBRARY



BLUE HEN

UNIVERSITY OF DELAWARE

NEWARK, DELAWARE

1964

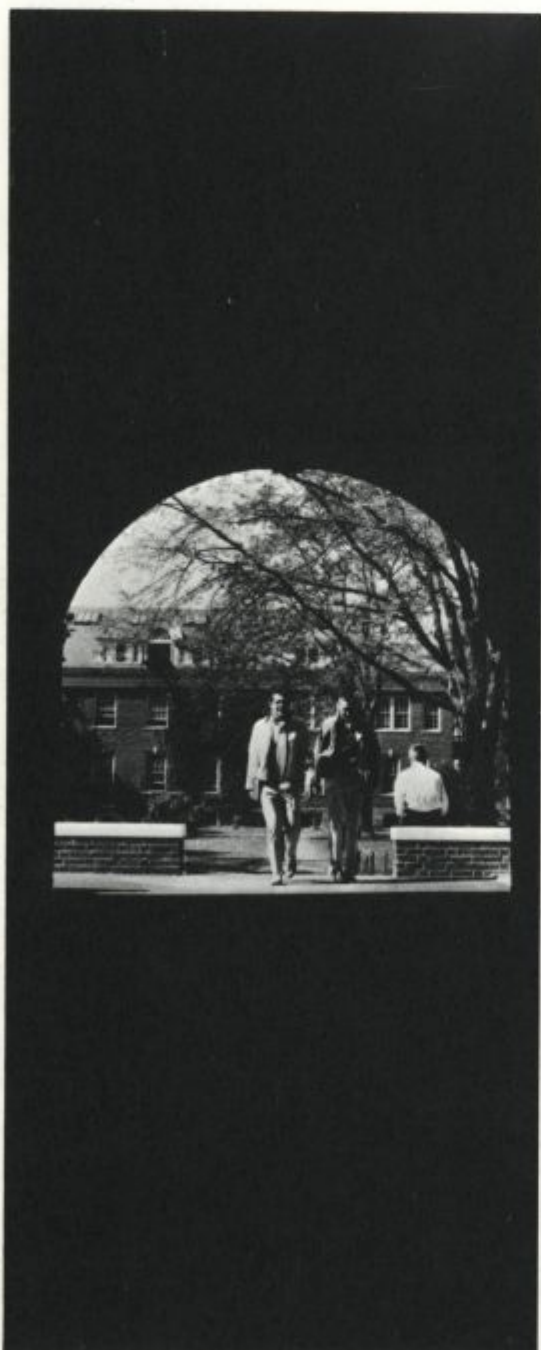
UNIVERSITY OF DELAWARE
LIBRARY



Library study room

D 2134

South Campus arches



LD
1488
B58
1964



FACE OF DELAWARE

*It is a university, to be sure, but Delaware is more than that . . . a feeling, a sense of being, a purpose, a goal . . . All taking many forms--or faces--making a world . . . The campus on a warm autumn day, too nice to be in class . . . Trees on the mall burning with color, the hurrying feet, the noon-time carillon, the whispering library--"I forgot the call number!" --the shouting scrounge--
". . . three hearts," "D.P. tonight?"*

Homecoming decorations



*The transformation after
the first snow--a quiet
time, the stillness
broken by laughter,
a snowball fight, a bell . . .*



Warner Hall

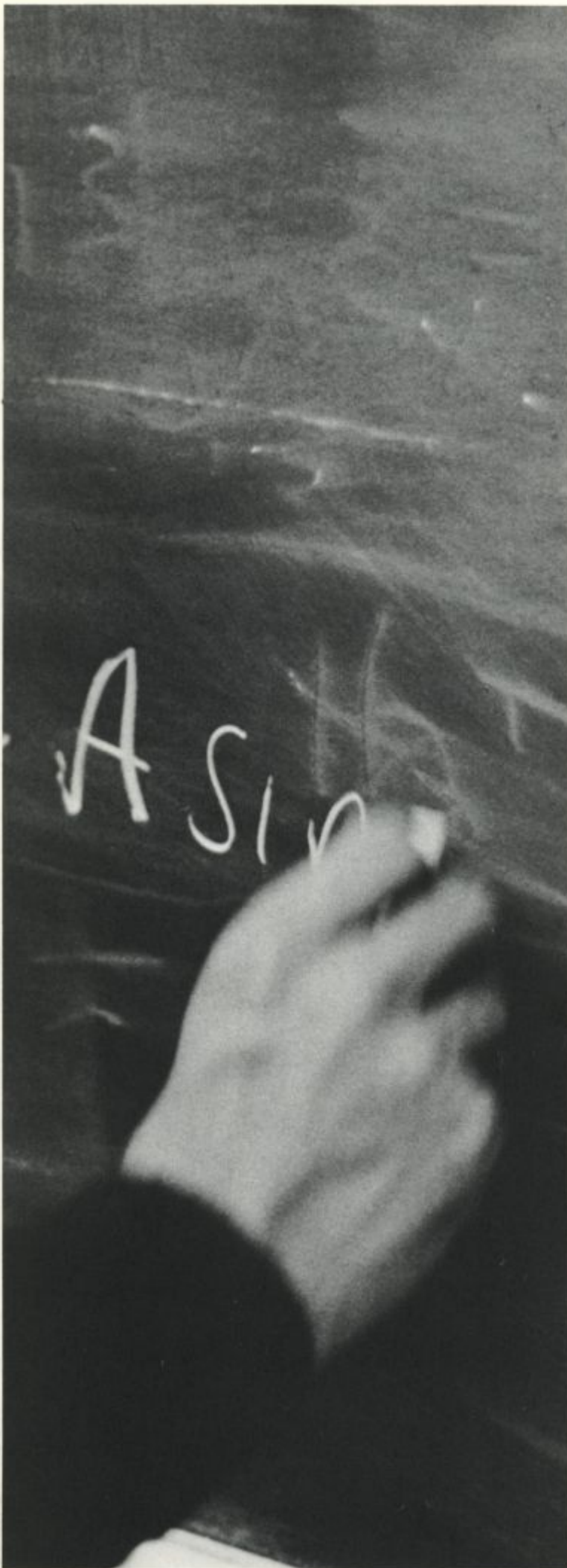




South Campus circle

Delt house





Friday in Russell dining hall





*a good time to study
or search in the warmth
of Morris Library,
loaf in a bridge game
talk with your friends.*



A campus in transition...

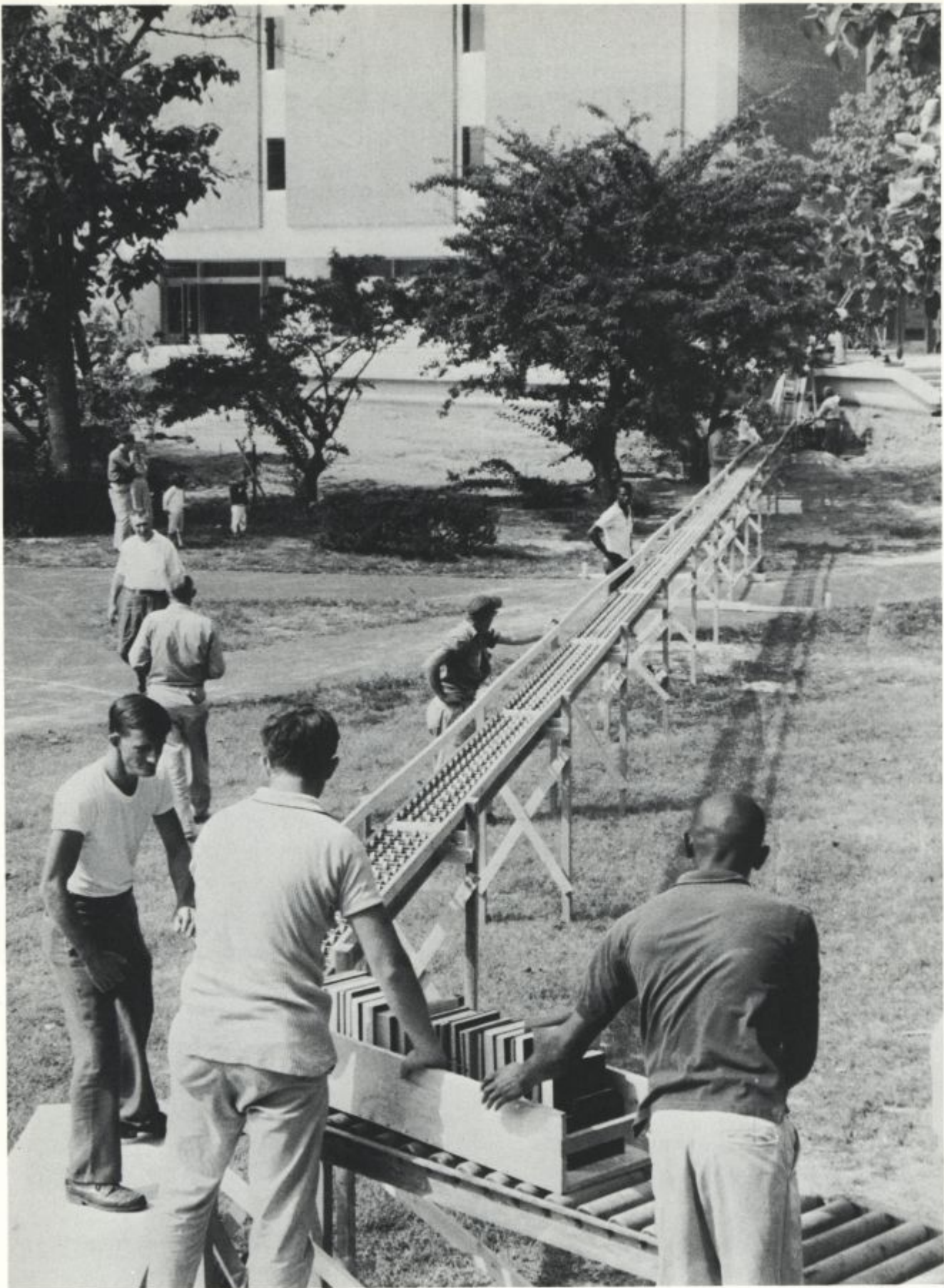


Reserve book room, Miss Helen Carlin.



John M. Dawson, library director





Morris Library

*Library and Student Center symbolize
the dynamic face of Delaware.*



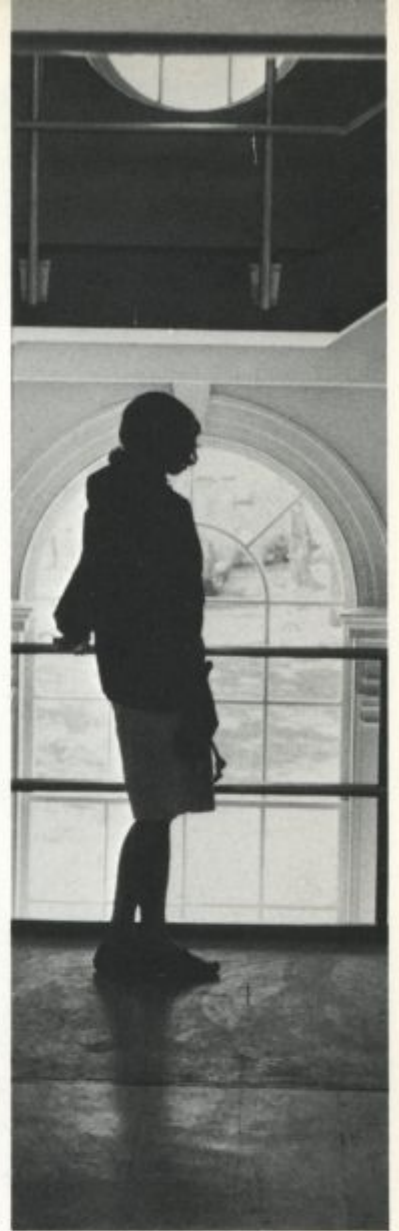
The Circle

*Spring comes to campus . . . and
the successful football
season is a happy
memory. It's an
exciting time . . . a
time to think,*

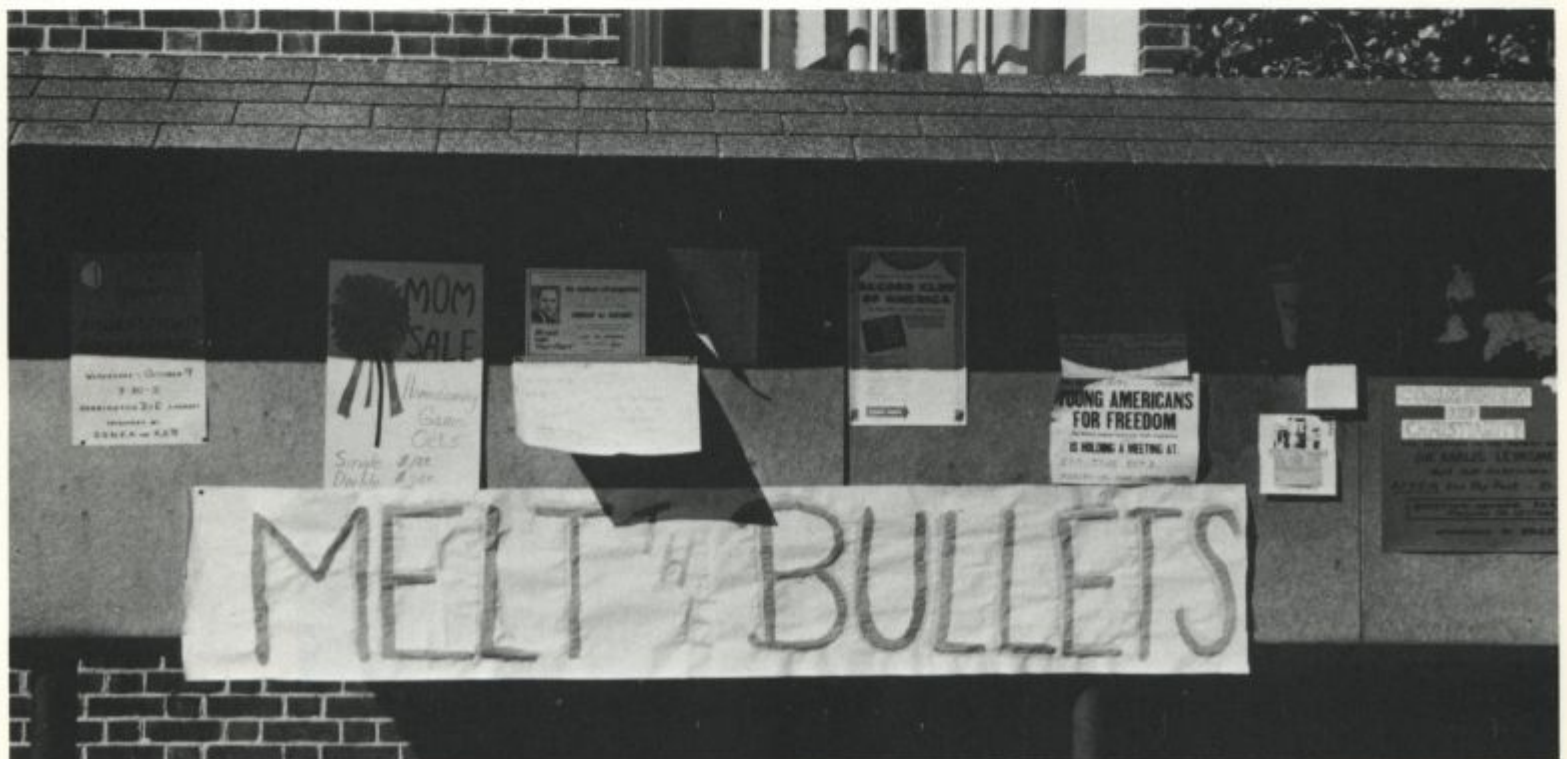




Evans Hall



Recitation Hall





Judi Williams, AWS President



The Phoenix





Mrs. Johnson, Student Center

*... work ... plan. Studies
continue, the basketball
courts are crowded.
It's a new attitude:
a time of mixed
emotions,*



*fun and finals. Graduation
is nearer--a time to leave:
new faces and new places,
even newer than Spring.*

Kent Hall



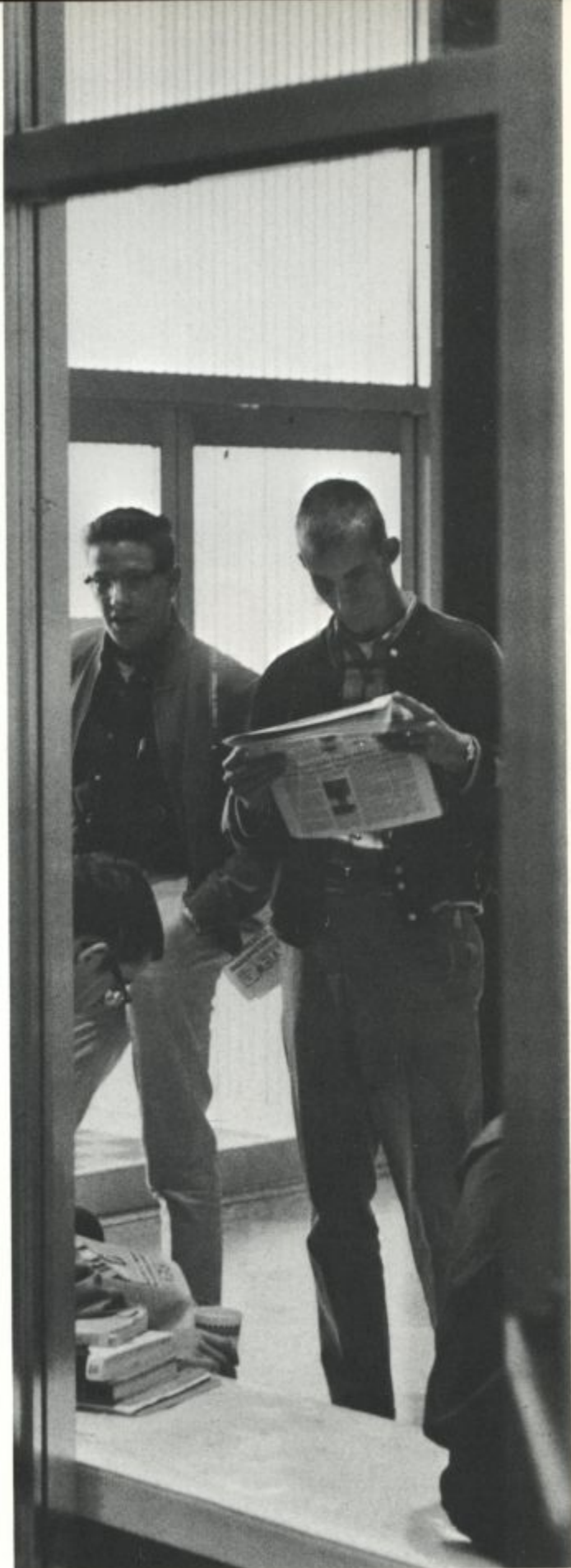
Warner's Sign-out Desk





Maintenance Center

Morris Library



Student Center, Friday



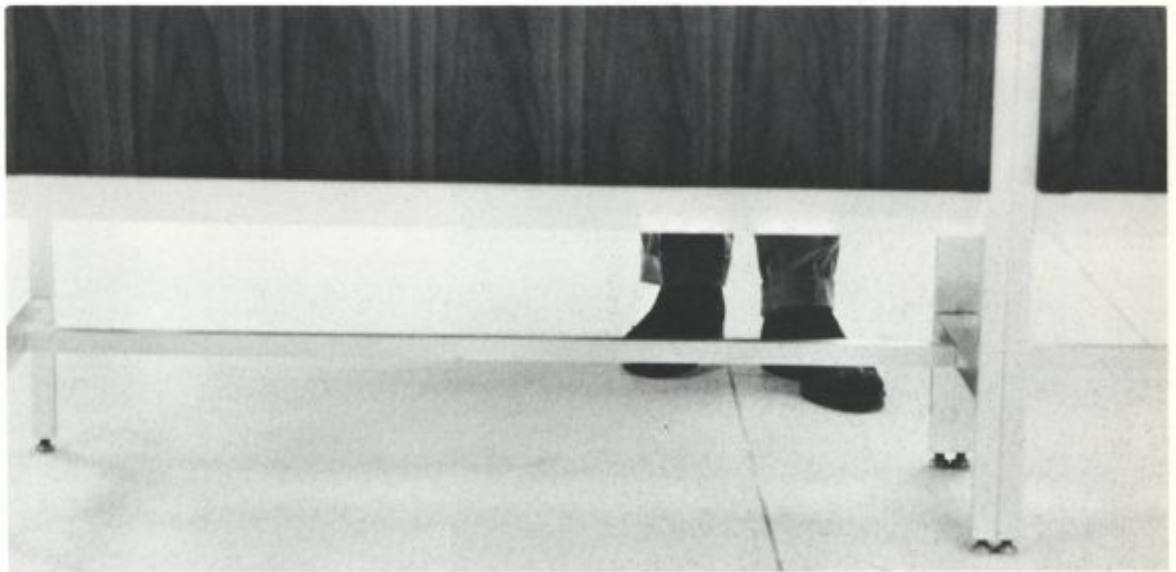
Reference Room, Library

*Physical, emotional,
intellectual . . . Delaware
is also pressure.
Everything is the present.*



Reserve Book Room, Library





Pep Fest, Old College

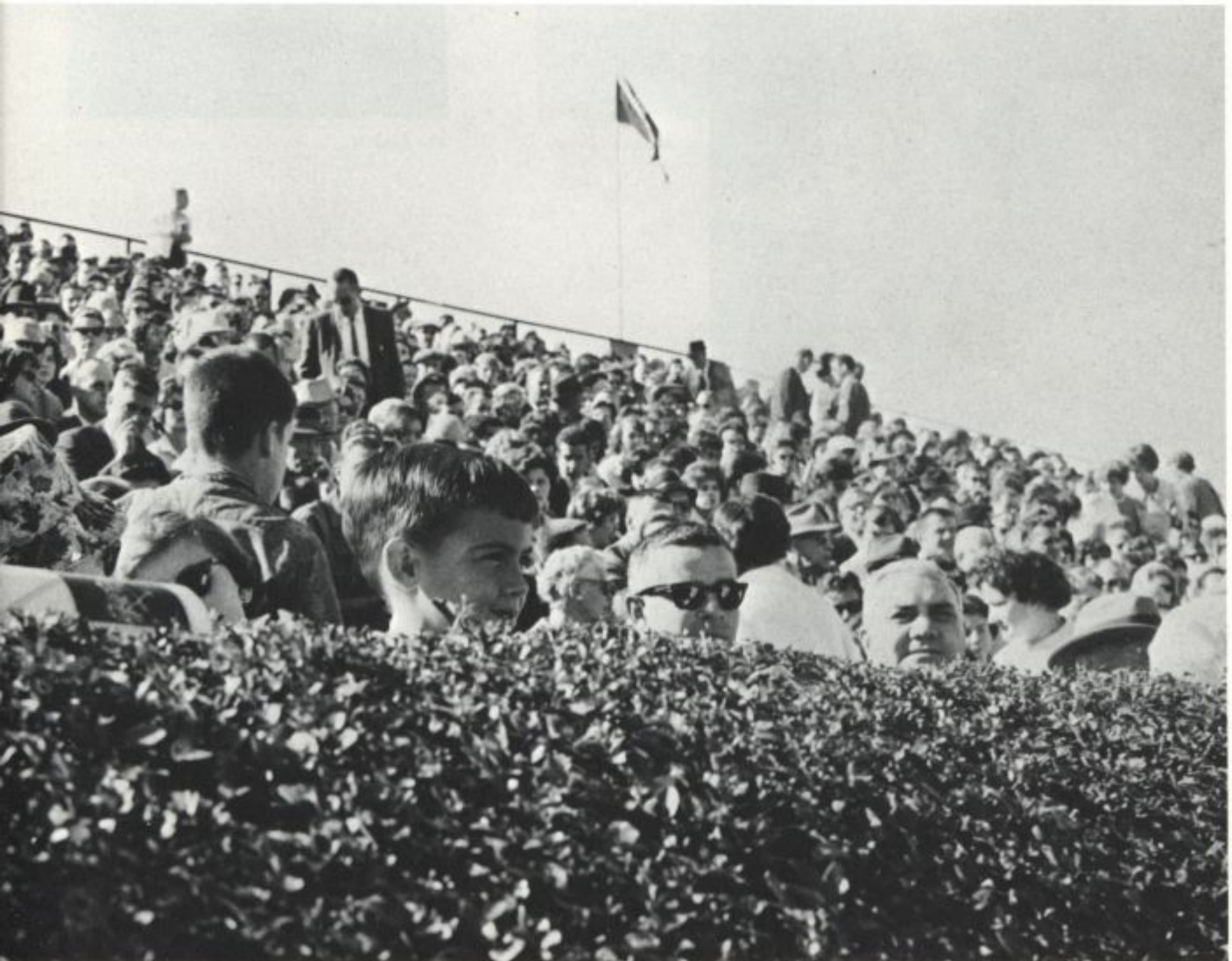


*Time is measured by
the next test, the
next game, the next
date. Endless notes,
sleepless nights . . .
tension, excitement,
victory . . . waiting,
hoping.*



Girl taking notes





*And when the pressure reaches
the breaking point, Delaware
is fun . . . a crowd, a dance,
a week-end, a walk,*

Miss Delaware with Lois Ward, Homecoming Chairman



The Admiral





Eileen McGlinchey

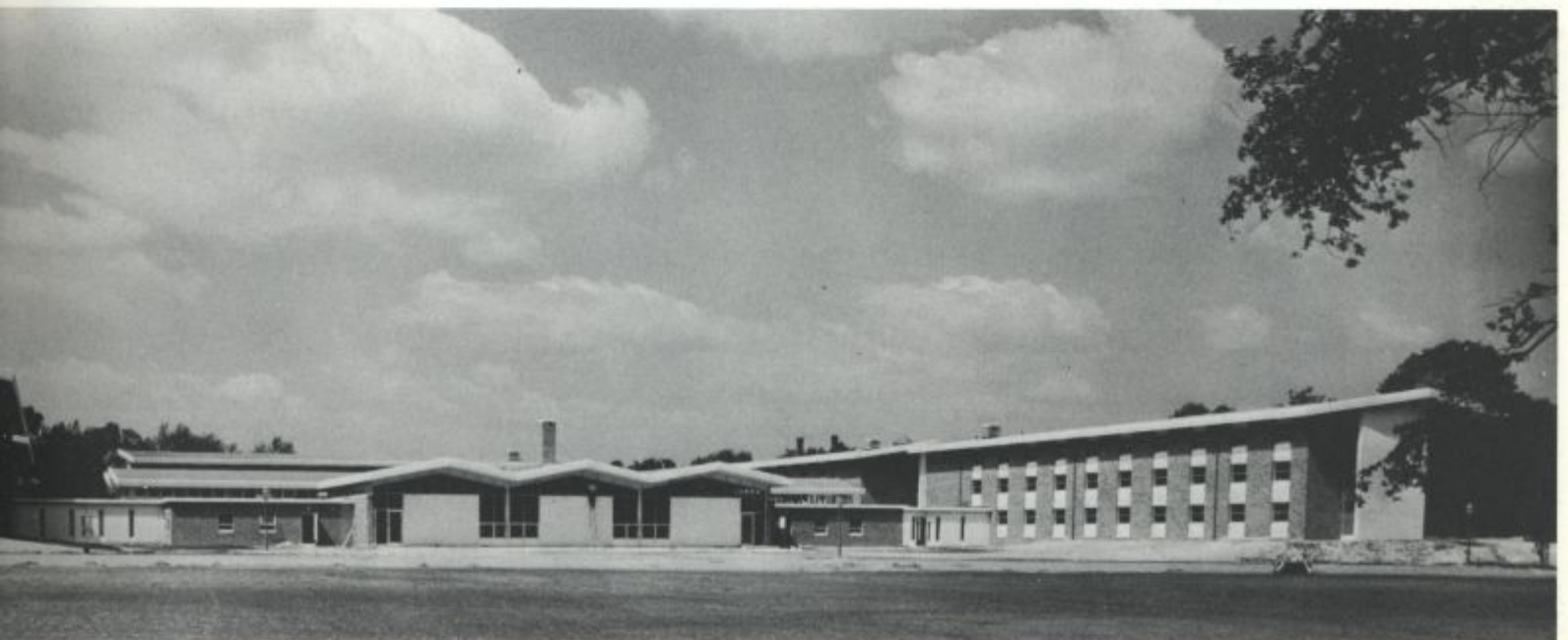


Joyce McLoughlin and escort

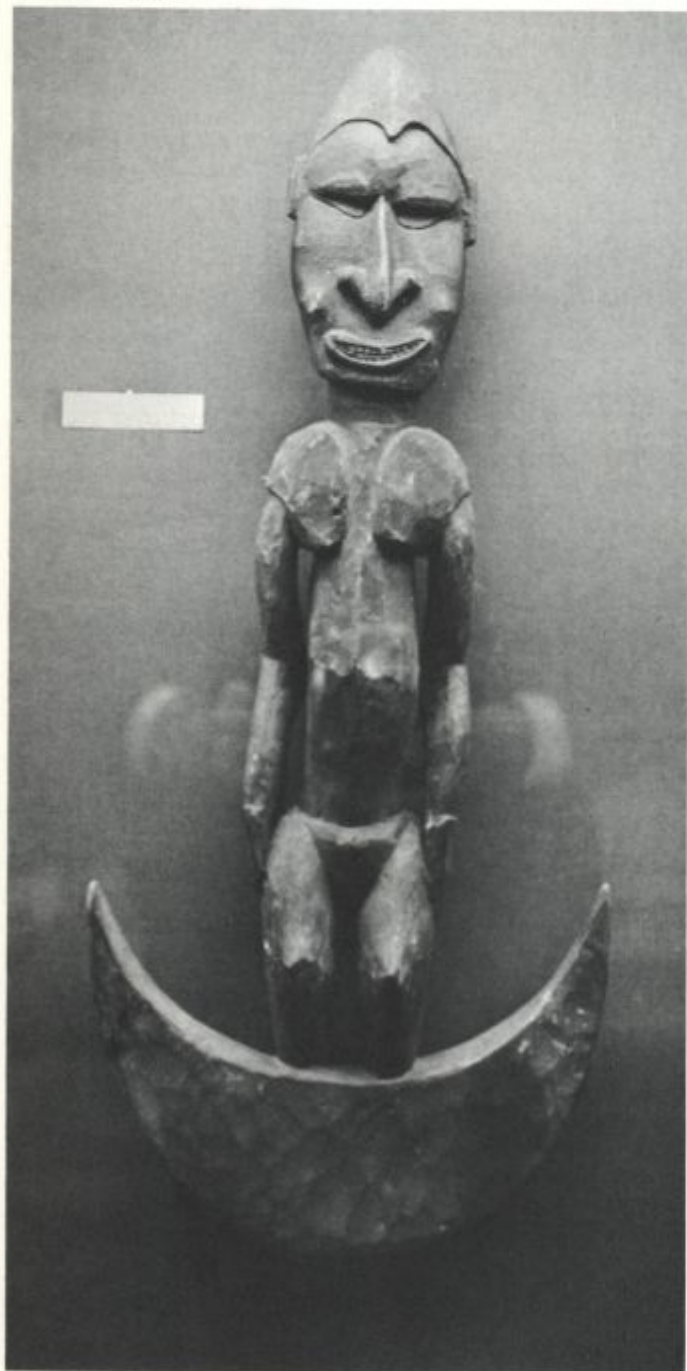


The Big Blue Hen

Russell Complex



Recitation Display



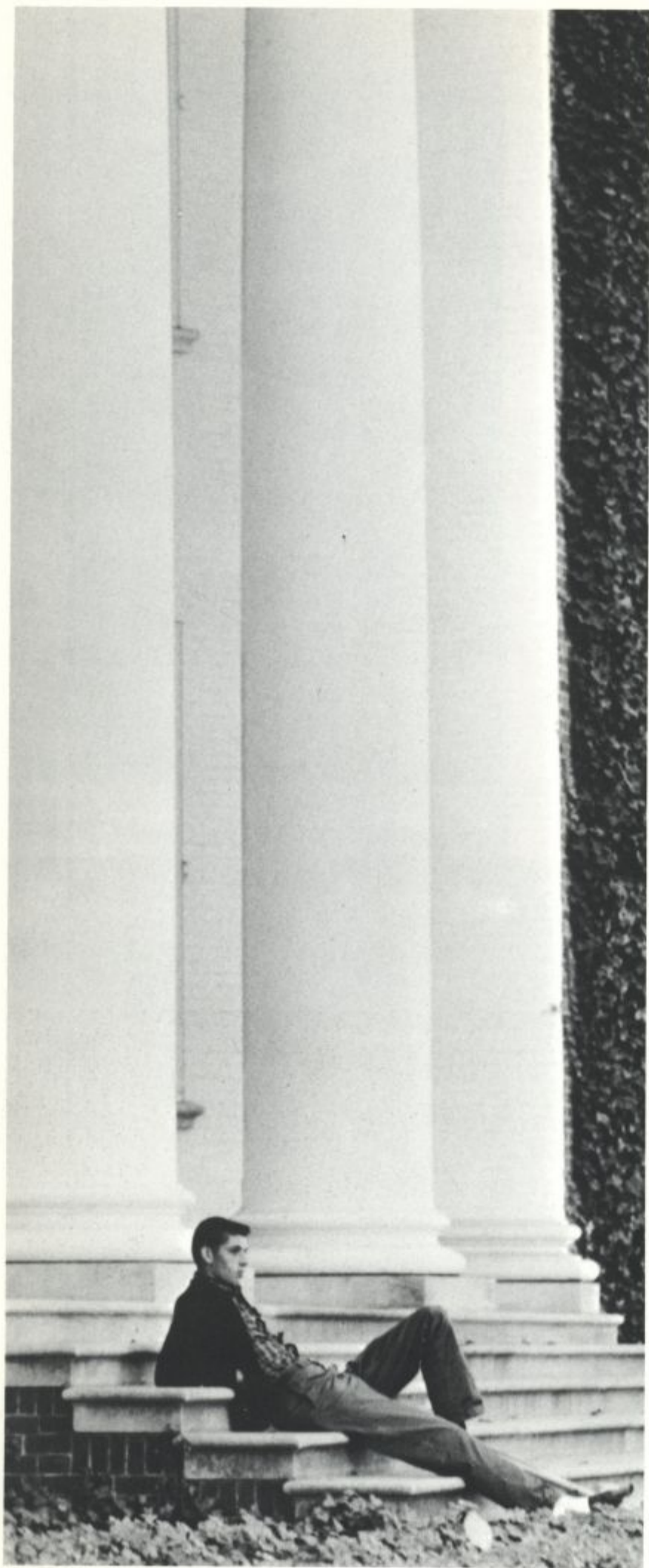
*a movie,
a concert,
a play.
Plan,
read,
think,
play . . .
together . . .
alone.*



Student Center Lounge

Bonfire, Homecoming Weekend





*Time passes, wished
away, worked away,
played away.*





Harrington Complex



Scrounge Talk





Scrounge Dance

Path To Alison

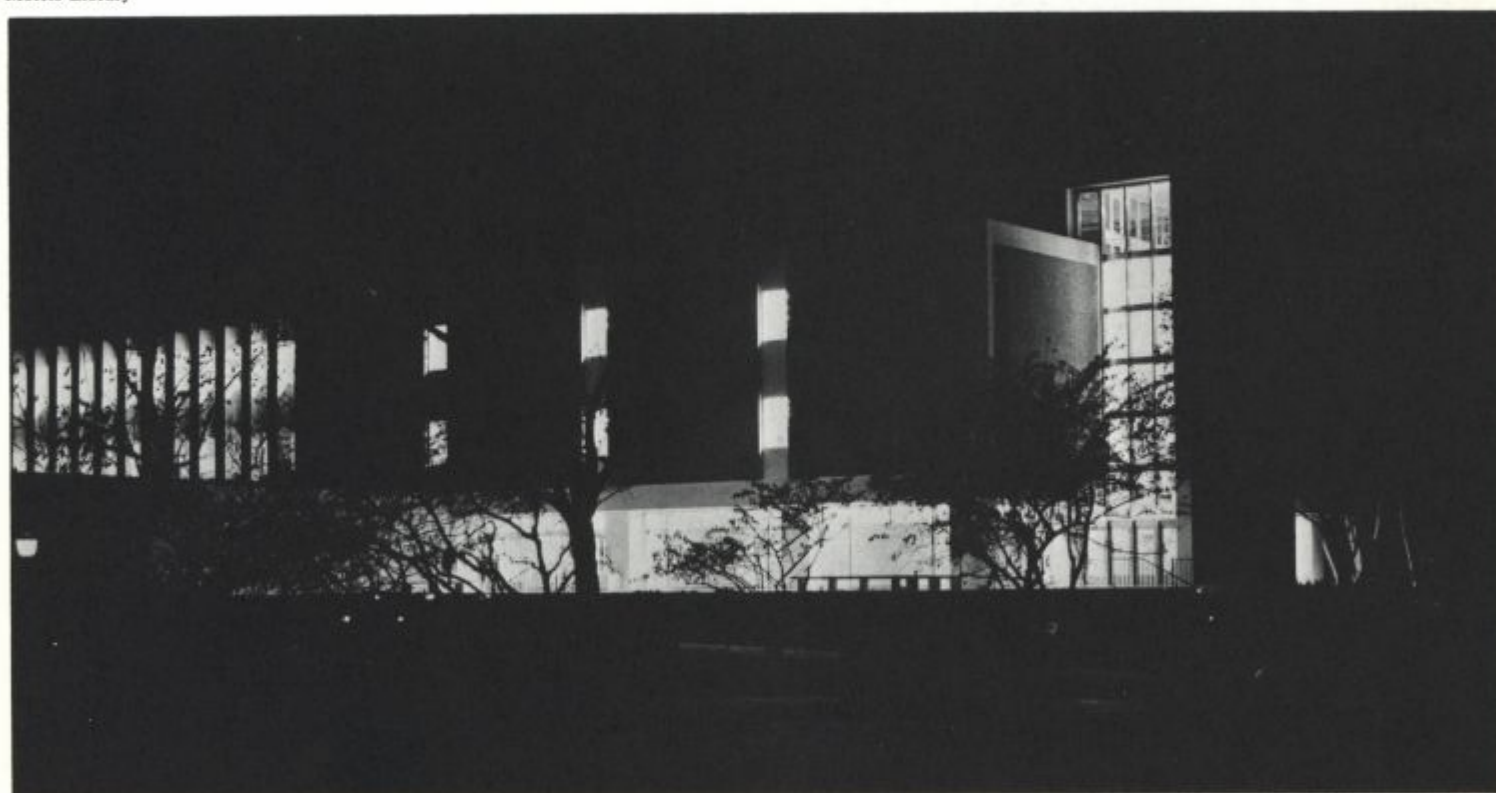


*the dances, the games, the
cram-sessions, the breaks,
the searches, the chores,
the adjustments,*



S. C. Pool Room

Morris Library



*the big week-ends, the holidays the
parties, the relaxation, the excitement,
the learning, the quiet times,*



Pennsylvania Station





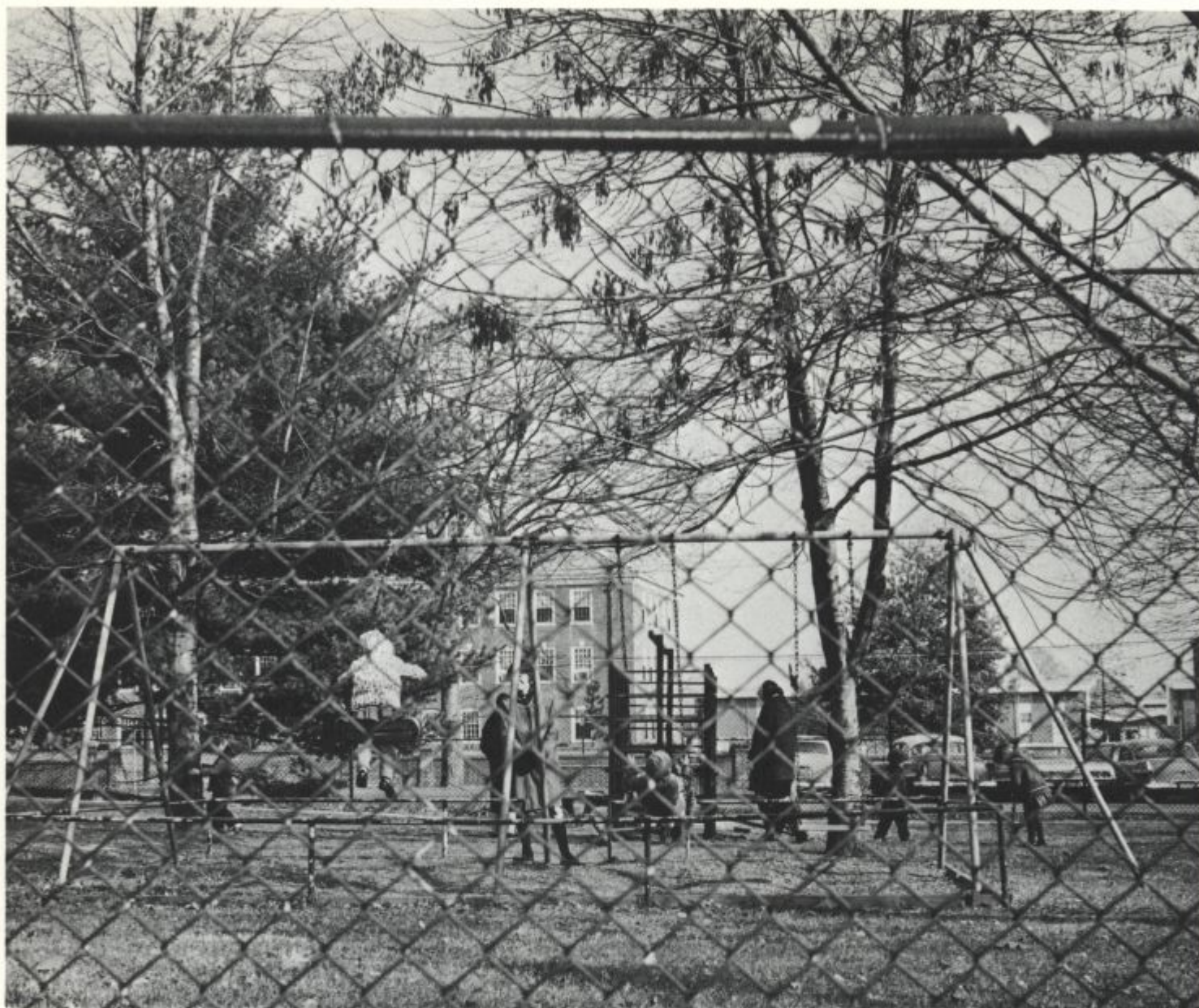
S. C. Sun Deck



S. C. Barber Shop

Memorial Hall at Christmas





Alison Nursery School

*the experience of four years are memories.
The togetherness,
the loneliness,
the joy,
the tragedy—
it's over.*

Outside Sigma Nu

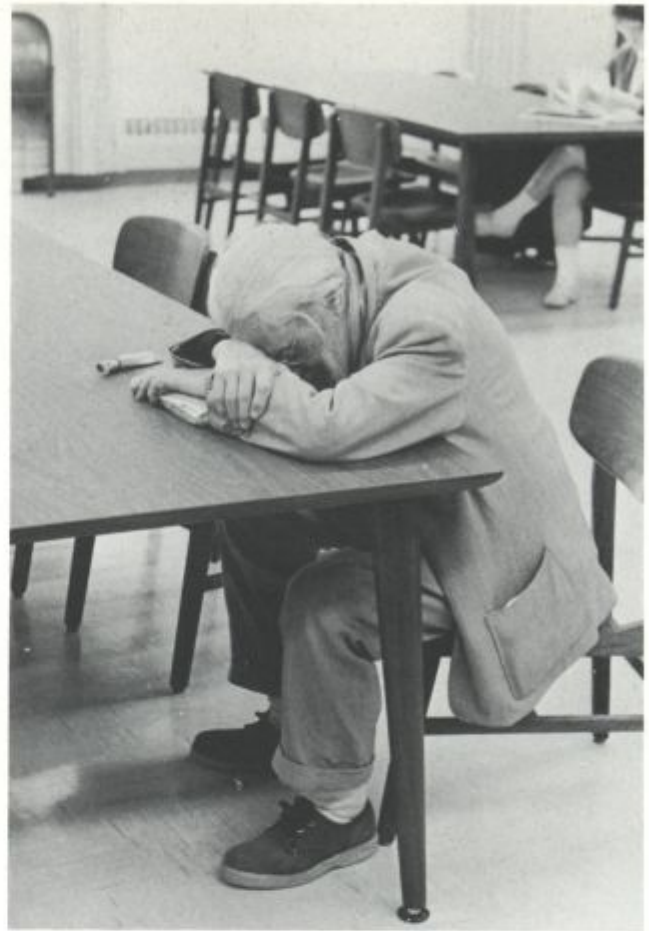




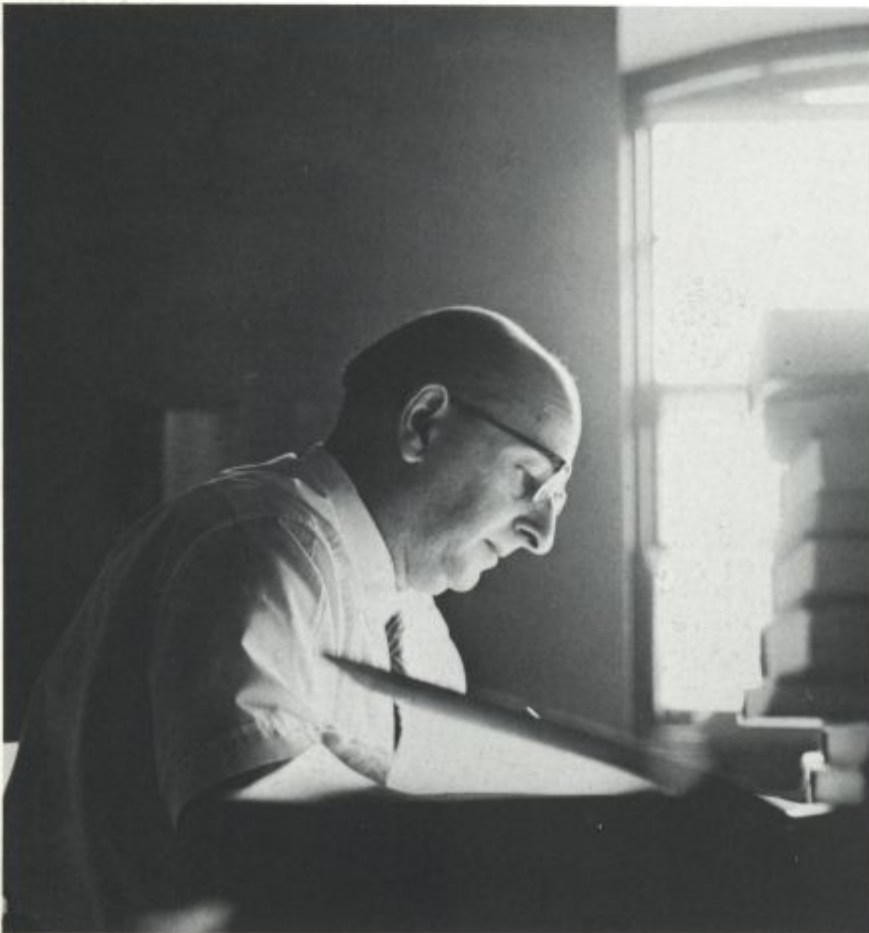
Dorm Complex Hall



North Campus Mall



*This is Delaware—many phases, many facets—
but most of all,
many faces. . .
strangers,
professors,
friends. . .you.*



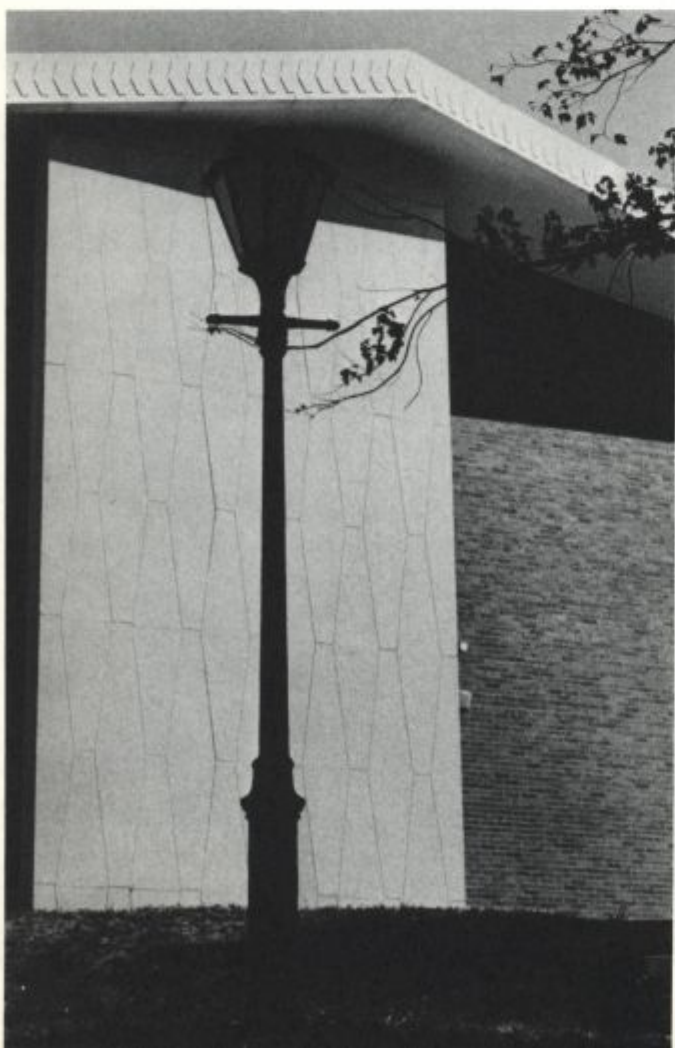




BLUE HEN 1964

<i>EDITOR-IN-CHIEF</i>	<i>JUDY SCHOTT</i>
<i>BUSINESS MANAGER</i>	<i>SHELTON WEINTRAUB</i>
<i>ADVISOR</i>	<i>JAMES R. GERVAN</i>
<i>ASSISTANT BUSINESS MANAGER</i>	<i>ED STEIN</i>
<i>COPY EDITOR</i>	<i>CAROLYN LEARY</i>
<i>COVER DESIGNER</i>	<i>JOHN ERICKSON</i>
<i>LAYOUT EDITOR</i>	<i>SUSI TROTTER</i>
<i>PHOTOGRAPHY COORINATOR</i>	<i>MARY CYGELMAN</i>
<i>PHOTOGRAPHY EDITOR</i>	<i>TONY LOTZ</i>
<i>SALES MANAGER</i>	<i>TEDDY WANG</i>
<i>SENIOR EDITOR</i>	<i>KATHY MEEHAN</i>
<i>SPORTS EDITOR</i>	<i>JOHN OWEN</i>

Russell A



Dr. Craven





Russell Dining Hall



The Scrounge

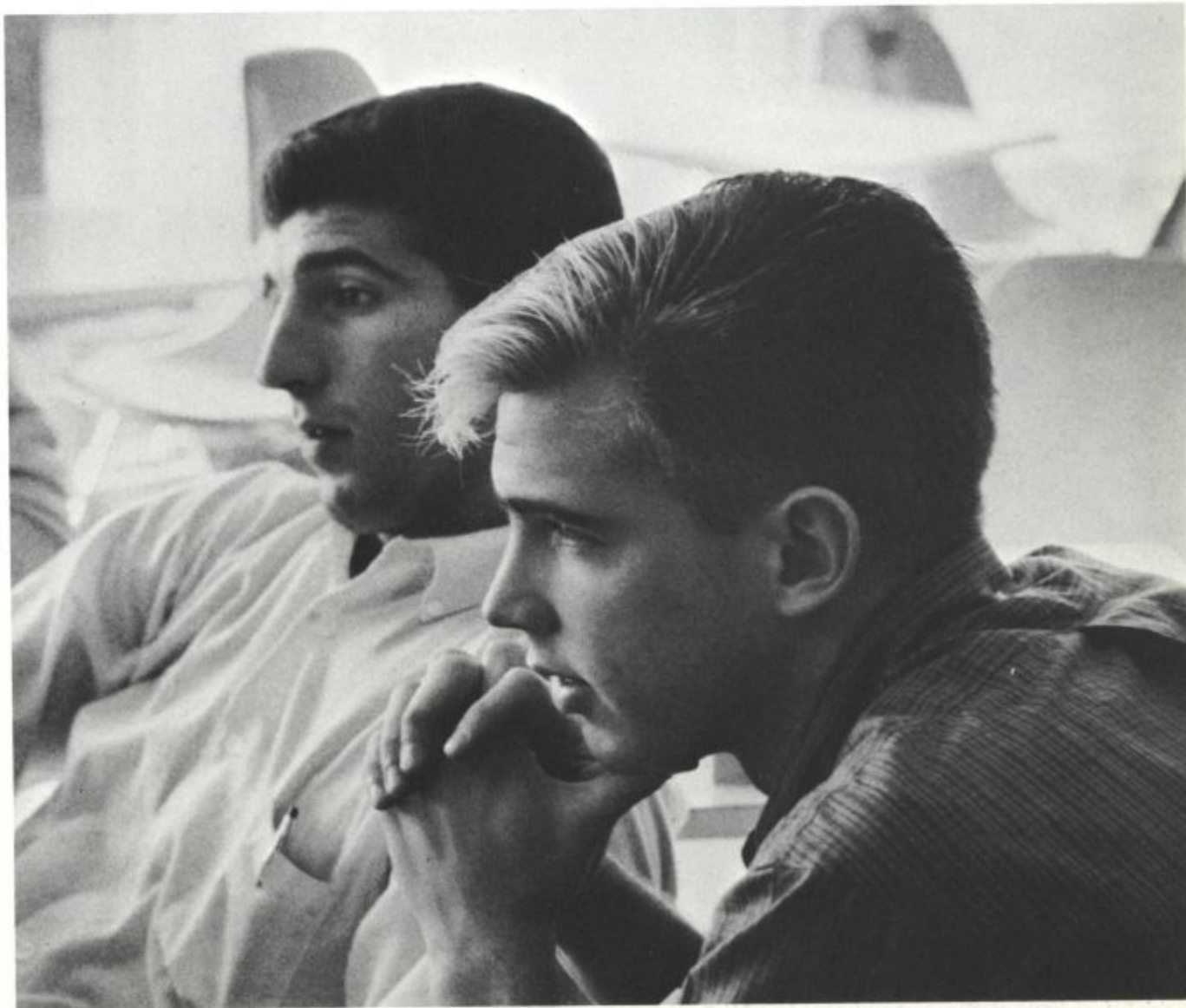


TABLE OF CONTENTS

<i>FACE OF DELAWARE</i>	<i>1</i>
<i>ADMINISTRATION</i>	<i>38</i>
<i>LIVING UNITS</i>	<i>56</i>
<i>FRATERNITIES</i>	<i>80</i>
<i>ORGANIZATIONS</i>	<i>102</i>
<i>SPORTS</i>	<i>134</i>
<i>HONORARIES</i>	<i>166</i>
<i>SENIORS</i>	<i>174</i>
<i>DIRECTORY</i>	<i>248</i>
<i>INDEX</i>	<i>256</i>



